



OTOMOTİV SANAYİİ DERNEĐİ
AUTOMOTIVE MANUFACTURERS ASSOCIATION

OTOMOTİV SEKTÖRÜ AYLIK DEĐERLENDİRME RAPORU ARALIK 2024

AUTOMOTIVE INDUSTRY MONTHLY REPORT
December 2024

OSD "OICA" Üyesidir  O I C A OSD is a Member of "OICA"

	12 - 2023	12 - 2024	%	1 - 12 / 2023	1 - 12 / 2024	%	1/2023 - 12/2023	1/2024 - 12/2024	%
Otomobil Üretimi/P.Cars Production	76.416	82.152	7,5	952.667	904.513	-5,1	952.667	904.513	-5,1
Toplam Üretim/Total Production	119.314	123.586	3,6	1.468.393	1.365.296	-7,0	1.468.393	1.365.296	-7,0
Otomobil Pazarı/P.Cars Market	126.416	134.811	6,6	967.341	980.341	1,3	967.341	980.341	1,3
Toplam Pazar/Total Market	164.748	176.545	7,2	1.284.046	1.285.632	0,1	1.284.046	1.285.632	0,1
Otomobil İthalatı/P.Cars Import	84.644	93.883	10,9	650.489	690.124	6,1	650.489	690.124	6,1
Toplam İthalat/Total Import	105.707	123.178	16,5	815.826	893.480	9,5	815.826	893.480	9,5
Otomobil İhracatı/P.Cars Export	61.549	57.866	-6,0	663.090	654.115	-1,4	663.090	654.115	-1,4
Toplam İhracat/Total Export	92.148	96.998	5,3	1.018.247	1.013.034	-0,5	1.018.247	1.013.034	-0,5
Otomobil İhracatı(\$)/P.Cars Export (\$)	1.087.572.472,08	1.202.909.602,48	10,6	10.934.266.127	11.284.675.239	3,2	10.934.266.127	11.284.675.239	3,2
Toplam İhracat(\$)/Total Export (\$)*	3.207.214.183,25	3.398.440.894,74	6,0	35.686.626.472	36.750.797.550	3,0	35.686.626.472	36.750.797.550	3,0

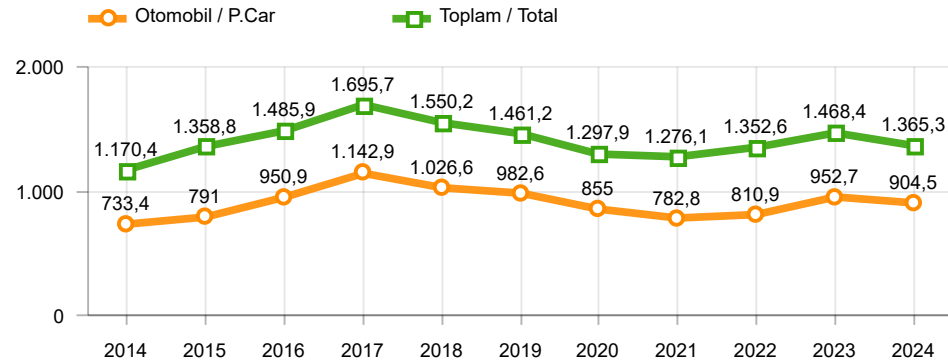
Parametreler/Parameters	12 - 2023	12 - 2024	%	1 - 12 / 2023	1 - 12 / 2024	%	1/2023 - 12/2023	1/2024 - 12/2024	%
ÜFE / PPI	1,1	0,4	-	44,2	28,5	-	49,9	41,1	-
TÜFE / CPI	2,9	1,0	-	64,8	44,4	-	53,9	58,5	-
Sanayi Endeksi / Industry Index	2,0	1,0	-	53,7	30,0	-	53,3	44,2	-
Dolar \$ ** (1 birim)	29,0	34,9	20,3	23,7	32,8	38,4	23,7	32,8	38,4
Euro € ** (1 birim)	31,6	36,6	15,5	25,6	35,4	38,4	25,6	35,4	38,4
Japon Yeni ¥ ** (100 birim)	20,0	22,6	13,0	16,7	21,5	29,1	16,7	21,5	29,1

*Kaynak :Uludağ Otomotiv Endüstrisi İhracatçıları Birliği Toplam Sanay / Total Industry Includ ng Components

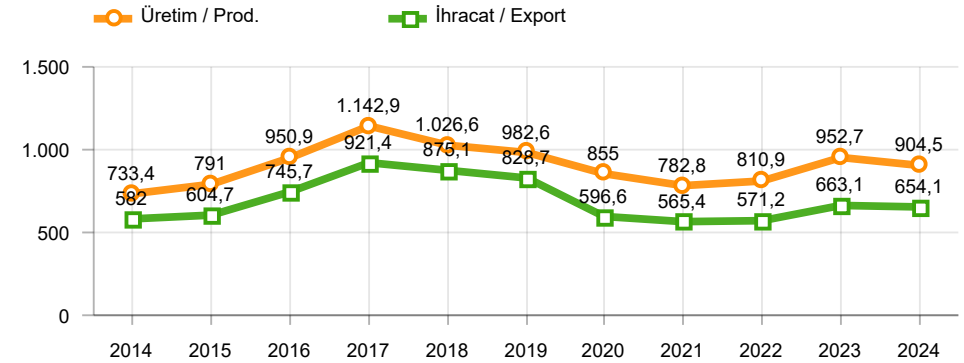
** Ortalama Değerler / Average Values

Araç Tipleri / Types	12 / 2023	12 / 2024	12 % Değişim	1-12 / 2023	1-12 / 2024	1-12 % Değişim
OTOMOBİL / Pass.Car	76.416	82.152	7,5	952.667	904.513	-5,1
OTOMOBİL Toplam / Pass.Car Total	76.416	82.152	7,5	952.667	904.513	-5,1
B.KAMYON / H. Truck	3.175	2.232	-29,7	46.812	30.793	-34,2
K.KAMYON / L. Truck	499	419	-16,0	5.432	5.077	-6,5
KAMYONET / Pick Up	34.093	30.108	-11,7	397.015	346.863	-12,6
OTOBÜS / Bus	1.198	924	-22,9	10.862	9.908	-8,8
MİNİBÜS / Minibus	3.644	7.268	99,5	50.941	63.194	24,1
MİDİBÜS / Midibus	289	483	67,1	4.664	4.948	6,1
TİCARİ ARAÇLAR Toplam / Commercial Vehicles Total	42.898	41.434	-3,4	515.726	460.783	-10,7
TAŞIT ARAÇLARI Toplam / Motor Vehicles Total	119.314	123.586	3,6	1.468.393	1.365.296	-7,0
TRAKTÖR / F.Tractor	4.345	2.582	-40,6	57.570	45.638	-20,7
TRAKTÖR Toplam / F.Tractor Total	4.345	2.582	-40,6	57.570	45.638	-20,7
GENEL TOPLAM / Grand Total	123.659	126.168	2,0	1.525.963	1.410.934	-7,5

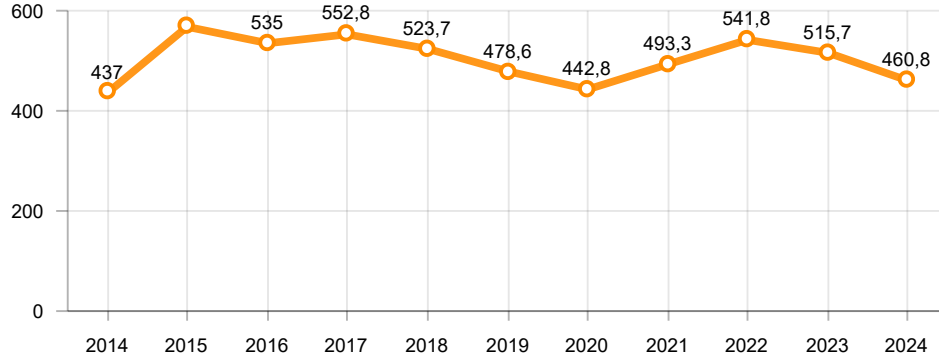
Toplam Üretim ve Otomobil Üretimi (x1000)(OCAK - ARALIK)
Total & P.Cars Production (x1000)(January - December)



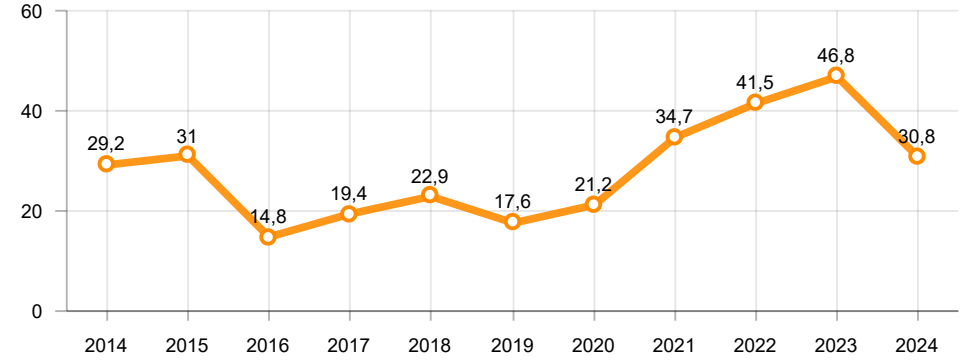
Otomobil Üretimi ve İhracat (x1000)(OCAK - ARALIK)
P.Cars Production & Exports (x1000)(January - December)



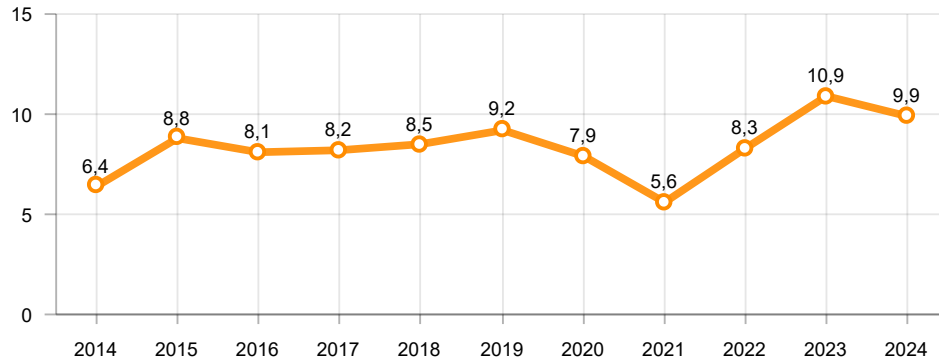
Ticari Araç Üretimi (x1000)(OCAK - ARALIK)
Commercial Vehicle Production (x1000)(January - December)



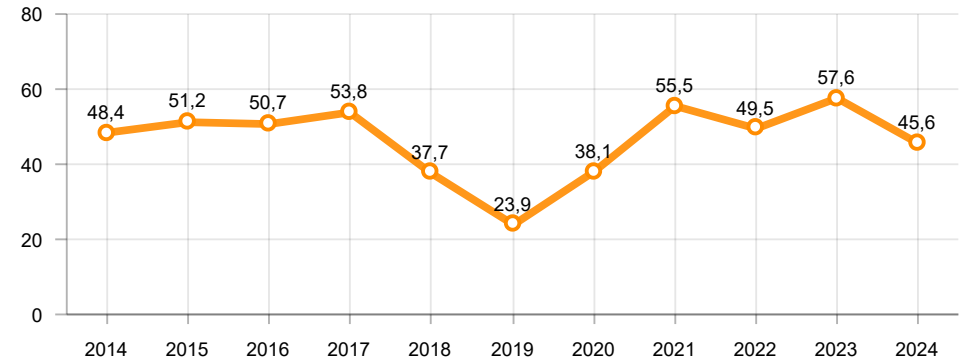
Büyük Kamyon Üretimi (x1000)(OCAK - ARALIK)
Heavy Truck Production (x1000)(January - December)

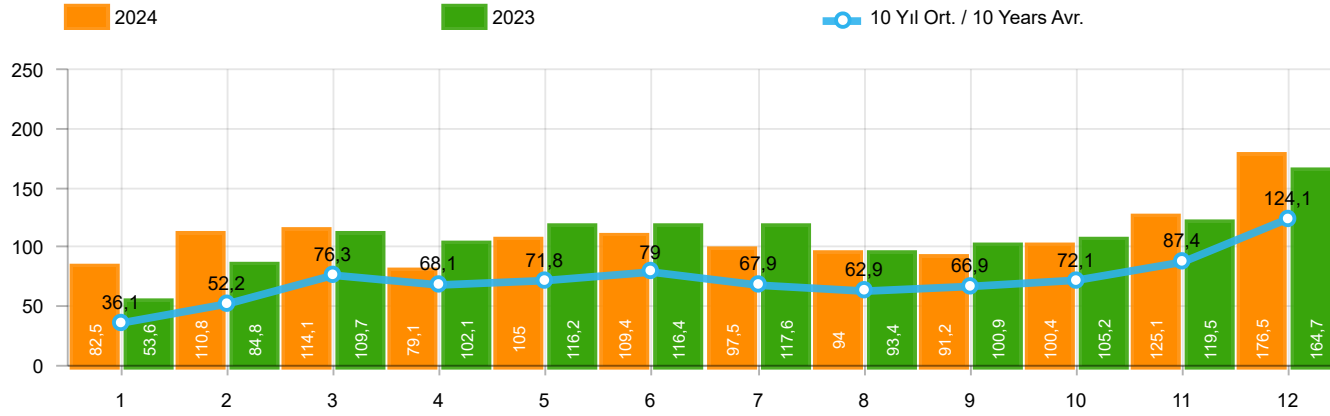


Otobüs Üretimi (x1000)(OCAK - ARALIK)
Bus Production (x1000)(January - December)



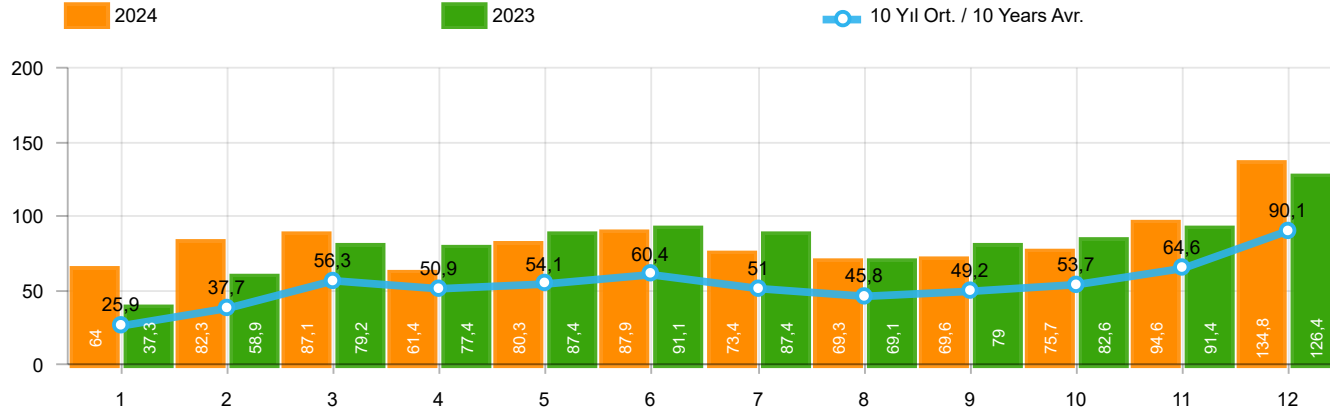
Traktör Üretimi (x1000)(OCAK - ARALIK)
F. Tractor Production (x1000)(January - December)





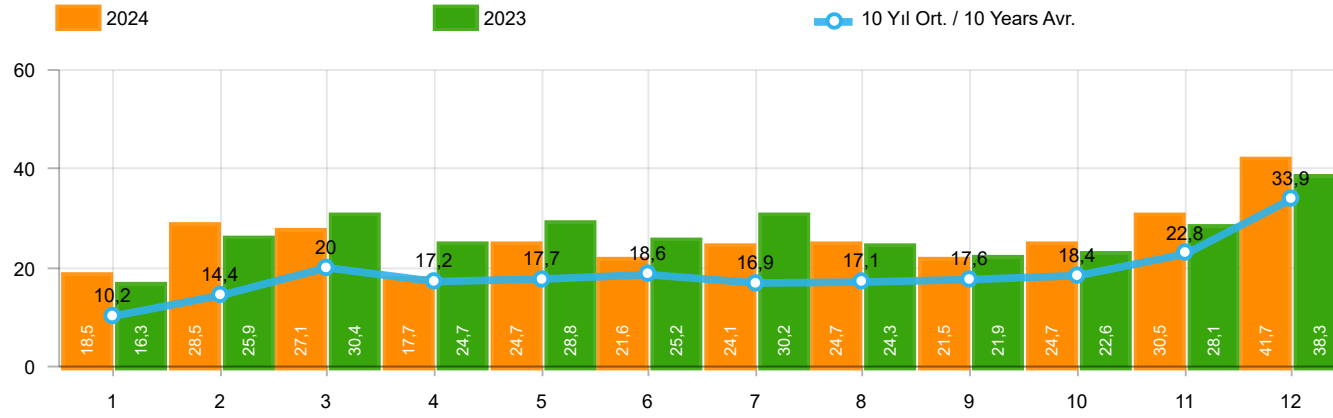
Aylar / Months	10 Yıl Ort / 10 Years Avr.	2024	%
1	36.113	82.527	128,5
2	52.172	110.760	112,3
3	76.293	114.144	49,6
4	68.148	79.137	16,1
5	71.761	104.962	46,3
6	78.977	109.408	38,5
7	67.944	97.526	43,5
8	62.883	93.976	49,4
9	66.867	91.150	36,3
10	72.098	100.395	39,2
11	87.395	125.102	43,1
12	124.068	176.545	42,3
TOPLAM/TOTAL	864.724	1.285.632	48,7

Yıl / Year	1	2	3	4	5	6	7	8	9	10	11	12	1-12 Toplam / Total	Toplam / Total	1-12 Yerli / Local	1-12 İthal / Import	İthal Oran / Import %
2014	34.751	37.659	51.312	57.113	62.447	64.295	62.770	63.303	70.764	69.742	84.368	154.843	813.367	813.367	289.849	523.518	64,4
2015	37.256	59.221	89.765	96.182	85.804	91.071	87.358	85.244	67.181	67.086	88.431	164.464	1.019.063	1.019.063	359.233	659.830	64,7
2016	34.369	54.840	85.932	87.748	97.090	94.666	59.732	73.654	69.413	85.666	125.462	145.706	1.014.278	1.014.278	333.010	681.268	67,2
2017	36.640	48.585	76.178	78.231	88.066	85.820	84.727	74.818	74.046	94.439	103.772	141.507	986.829	986.829	362.342	624.487	63,3
2018	36.525	48.768	79.600	73.886	74.996	52.788	54.194	35.137	23.915	22.321	59.406	80.014	641.550	641.550	244.282	397.268	61,9
2019	14.847	25.569	50.651	31.944	33.947	43.899	18.442	26.832	43.068	50.288	59.575	92.885	491.947	491.947	214.878	277.069	56,3
2020	28.123	48.948	51.554	27.165	33.308	72.789	89.419	63.570	93.406	97.125	82.824	107.919	796.150	796.150	369.159	426.991	53,6
2021	45.308	61.325	100.046	64.551	57.510	83.304	49.732	60.573	59.717	60.064	64.087	66.633	772.850	772.850	347.117	425.733	55,1
2022	39.741	52.030	68.241	62.584	68.221	84.788	55.424	52.297	66.304	69.072	86.499	121.962	827.163	827.163	373.004	454.159	54,9
2023	53.578	84.781	109.658	102.076	116.227	116.352	117.647	93.409	100.862	105.181	119.527	164.748	1.284.046	1.284.046	468.220	815.826	63,5
2024	82.527	110.760	114.144	79.137	104.962	109.408	97.526	93.976	91.150	100.395	125.102	176.545	1.285.632	1.285.632	392.152	893.480	69,5



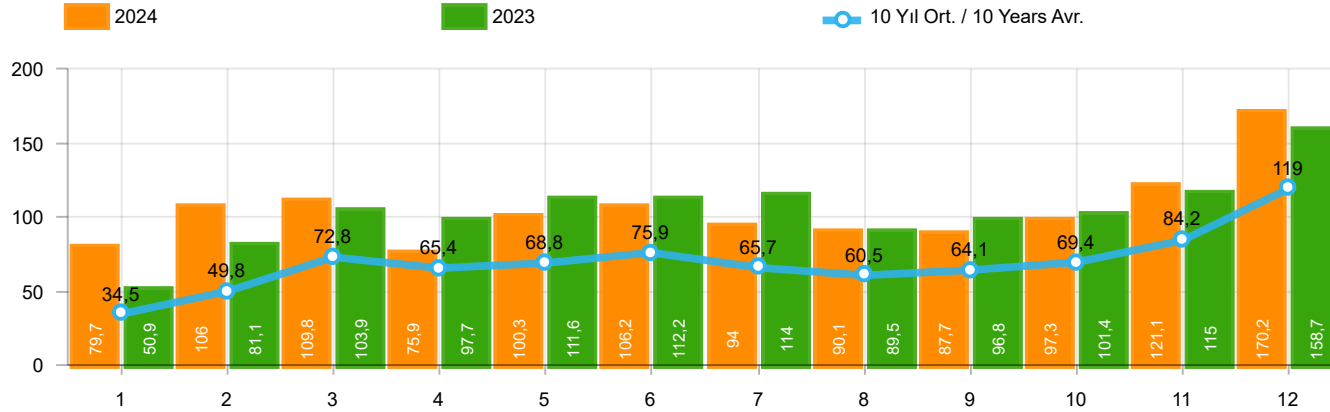
Aylar / Months	10 Yıl Ort / 10 Years Avr.	2024	%
1	25.919	64.041	147,1
2	37.736	82.277	118,0
3	56.315	87.071	54,6
4	50.928	61.448	20,7
5	54.062	80.260	48,5
6	60.425	87.858	45,4
7	51.038	73.396	43,8
8	45.776	69.288	51,4
9	49.237	69.634	41,4
10	53.671	75.662	41,0
11	64.582	94.595	46,5
12	90.127	134.811	49,6
TOPLAM / TOTAL	639.816	980.341	53,2

Yıl / Year	1	2	3	4	5	6	7	8	9	10	11	12	1-12 Toplam / Total	Toplam / Total	1-12 Yerli / Local	1-12 İthal / Import	İthal Oran / Import %
2014	24.368	27.167	37.812	42.769	46.379	47.278	46.602	45.131	49.262	50.814	59.695	110.054	587.331	587.331	157.349	429.982	73,2
2015	24.498	40.817	61.676	70.211	62.878	67.766	64.218	61.753	47.088	47.954	62.397	114.340	725.596	725.596	186.526	539.070	74,3
2016	23.358	40.588	63.975	65.618	73.832	71.111	45.566	53.977	51.340	63.746	95.783	108.044	756.938	756.938	191.893	565.045	74,6
2017	25.689	34.658	55.616	57.998	65.799	66.164	62.384	54.890	53.423	70.488	75.956	99.694	722.759	722.759	216.791	505.968	70,0
2018	26.611	35.901	59.798	55.108	57.227	41.225	42.024	26.976	17.595	16.809	46.204	60.843	486.321	486.321	163.405	322.916	66,4
2019	10.979	19.205	38.628	24.416	27.126	36.024	15.398	21.544	35.308	39.996	47.803	70.829	387.256	387.256	157.178	230.078	59,4
2020	22.016	37.727	39.887	21.825	25.073	57.067	69.427	44.372	71.296	76.341	64.357	80.721	610.109	610.109	249.659	360.450	59,1
2021	35.358	44.749	76.357	48.375	43.138	62.348	36.311	44.756	43.408	40.512	42.982	43.559	561.853	561.853	225.957	335.896	59,8
2022	29.020	37.641	50.173	45.564	51.750	64.134	41.031	35.230	44.681	47.440	59.222	86.774	592.660	592.660	231.005	361.655	61,0
2023	37.288	58.907	79.226	77.398	87.418	91.135	87.416	69.131	78.971	82.611	91.424	126.416	967.341	967.341	311.352	655.989	67,8
2024	64.041	82.277	87.071	61.448	80.260	87.858	73.396	69.288	69.634	75.662	94.595	134.811	980.341	980.341	290.675	689.666	70,3



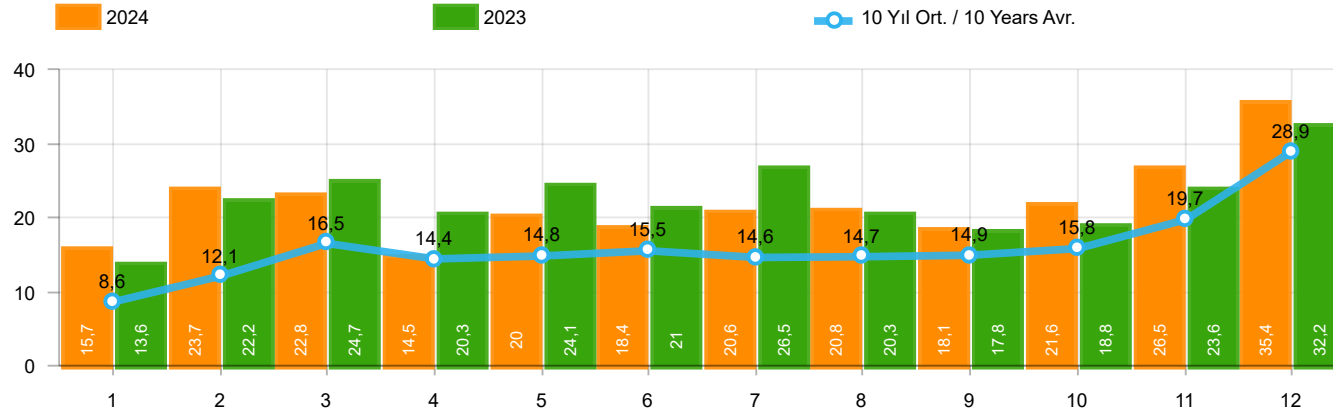
Aylar / Months	10 Yıl Ort / 10 Years Avr.	2024	%
1	10.195	18.486	81,3
2	14.437	28.483	97,3
3	19.979	27.073	35,5
4	17.220	17.689	2,7
5	17.700	24.702	39,6
6	18.552	21.550	16,2
7	16.907	24.130	42,7
8	17.108	24.688	44,3
9	17.630	21.516	22,0
10	18.427	24.733	34,2
11	22.813	30.507	33,7
12	33.941	41.734	23,0
TOPLAM / TOTAL	224.908	305.291	35,7

Yıl / Year	1	2	3	4	5	6	7	8	9	10	11	12	1-12 Toplam / Total	Toplam / Total	1-12 Yerli / Local	1-12 İthal / Import	İthal Oran / Import %
2014	10.383	10.492	13.500	14.344	16.068	17.017	16.168	18.172	21.502	18.928	24.673	44.789	226.036	226.036	132.500	93.536	41,4
2015	12.758	18.404	28.089	25.971	22.926	23.305	23.140	23.491	20.093	19.132	26.034	50.124	293.467	293.467	172.707	120.760	41,1
2016	11.011	14.252	21.957	22.130	23.258	23.555	14.166	19.677	18.073	21.920	29.679	37.662	257.340	257.340	141.117	116.223	45,2
2017	10.951	13.927	20.562	20.233	22.267	19.656	22.343	19.928	20.623	23.951	27.816	41.813	264.070	264.070	145.551	118.519	44,9
2018	9.914	12.867	19.802	18.778	17.769	11.563	12.170	8.161	6.320	5.512	13.202	19.171	155.229	155.229	80.877	74.352	47,9
2019	3.868	6.364	12.023	7.528	6.821	7.875	3.044	5.288	7.760	10.292	11.772	22.056	104.691	104.691	57.700	46.991	44,9
2020	6.107	11.221	11.667	5.340	8.235	15.722	19.992	19.198	22.110	20.784	18.467	27.198	186.041	186.041	119.500	66.541	35,8
2021	9.950	16.576	23.689	16.176	14.372	20.956	13.421	15.817	16.309	19.552	21.105	23.074	210.997	210.997	121.160	89.837	42,6
2022	10.721	14.389	18.068	17.020	16.471	20.654	14.393	17.067	21.623	21.632	27.277	35.188	234.503	234.503	141.999	92.504	39,4
2023	16.290	25.874	30.432	24.678	28.809	25.217	30.231	24.278	21.891	22.570	28.103	38.332	316.705	316.705	156.868	159.837	50,5
2024	18.486	28.483	27.073	17.689	24.702	21.550	24.130	24.688	21.516	24.733	30.507	41.734	305.291	305.291	101.477	203.814	66,8



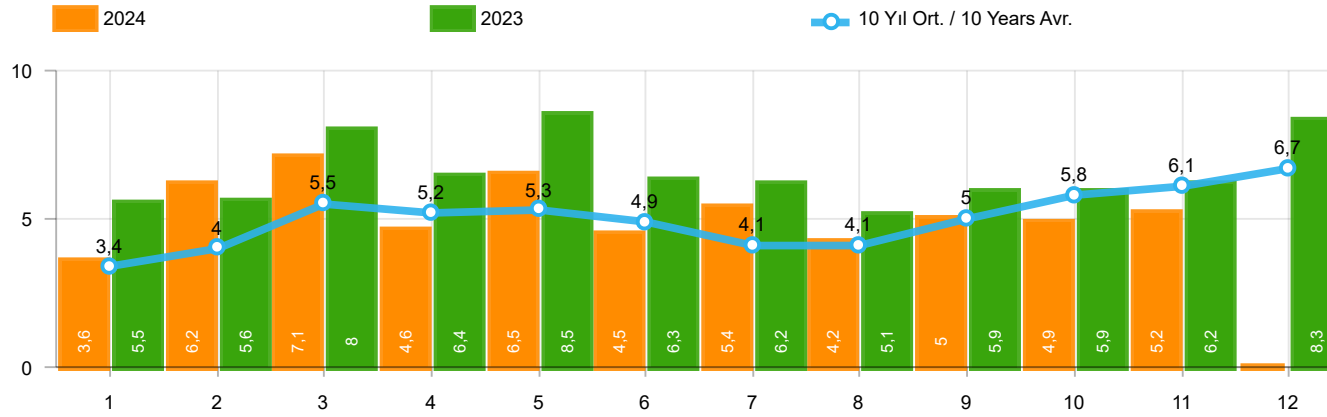
Aylar / Months	10 Yıl Ort / 10 Years Avr.	2024	%
1	34.480	79.701	131,2
2	49.845	105.990	112,6
3	72.783	109.828	50,9
4	65.354	75.919	16,2
5	68.845	100.305	45,7
6	75.885	106.238	40,0
7	65.665	94.037	43,2
8	60.524	90.134	48,9
9	64.116	87.740	36,8
10	69.429	97.274	40,1
11	84.248	121.094	43,7
12	118.993	170.249	43,1
TOPLAM / TOTAL	830.167	1.238.509	49,2

Yıl / Year	1	2	3	4	5	6	7	8	9	10	11	12	1-12 Toplam / Total	Toplam / Total	1-12 Yerli / Local	1-12 İthal / Import	İthal Oran / Import %
2014	32.670	35.021	47.581	53.305	58.121	60.163	59.907	60.199	66.531	66.573	80.621	146.989	767.681	767.681	255.573	512.108	66,7
2015	34.615	55.331	83.302	91.602	81.542	86.158	83.836	82.577	64.025	64.255	84.601	156.173	968.017	968.017	321.725	646.292	66,8
2016	32.713	52.825	82.948	84.887	93.904	91.540	58.533	71.556	67.593	83.000	122.309	141.912	983.720	983.720	310.864	672.856	68,4
2017	35.323	46.965	73.802	75.988	85.422	83.658	82.297	72.536	71.352	91.752	100.859	136.240	956.194	956.194	340.306	615.888	64,4
2018	35.076	47.009	76.345	71.126	72.755	51.037	52.734	34.346	23.028	21.571	58.204	77.706	620.937	620.937	230.493	390.444	62,9
2019	14.373	24.875	49.221	30.971	33.016	42.688	17.927	26.246	41.992	49.075	58.176	90.500	479.060	479.060	206.069	272.991	57,0
2020	27.273	47.122	50.008	26.457	32.235	70.973	87.401	61.533	90.619	94.733	80.141	104.293	772.788	772.788	353.336	419.452	54,3
2021	43.728	58.504	96.428	61.488	54.734	79.819	47.849	58.454	57.141	56.746	60.216	62.243	737.350	737.350	323.627	413.723	56,1
2022	38.131	49.652	64.267	60.035	65.167	80.652	52.206	48.336	62.084	65.222	82.311	115.220	783.283	783.283	343.228	440.055	56,2
2023	50.894	81.148	103.929	97.679	111.556	112.163	113.959	89.454	96.793	101.367	115.040	158.653	1.232.635	1.232.635	433.897	798.738	64,8
2024	79.701	105.990	109.828	75.919	100.305	106.238	94.037	90.134	87.740	97.274	121.094	170.249	1.238.509	1.238.509	360.795	877.714	70,9



Aylar / Months	10 Yıl Ort / 10 Years Avr.	2024	%
1	8.561	15.660	82,9
2	12.109	23.713	95,8
3	16.468	22.757	38,2
4	14.426	14.471	0,3
5	14.783	20.045	35,6
6	15.460	18.380	18,9
7	14.627	20.641	41,1
8	14.748	20.846	41,4
9	14.879	18.106	21,7
10	15.758	21.612	37,1
11	19.666	26.499	34,7
12	28.866	35.438	22,8
TOPLAM / TOTAL	190.350	258.168	35,6

Yıl / Year	1	2	3	4	5	6	7	8	9	10	11	12	1-12 Toplam / Total	Toplam / Total	1-12 Yerli / Local	1-12 İthal / Import	İthal Oran / Import %
2014	8.302	7.854	9.769	10.536	11.742	12.885	13.305	15.068	17.269	15.759	20.926	36.935	180.350	180.350	98.224	82.126	45,5
2015	10.117	14.514	21.626	21.391	18.664	18.392	19.618	20.824	16.937	16.301	22.204	41.833	242.421	242.421	135.199	107.222	44,2
2016	9.355	12.237	18.973	19.269	20.072	20.429	12.967	17.579	16.253	19.254	26.526	33.868	226.782	226.782	118.971	107.811	47,5
2017	9.634	12.307	18.186	17.990	19.623	17.494	19.913	17.646	17.929	21.264	24.903	36.546	233.435	233.435	123.515	109.920	47,1
2018	8.465	11.108	16.547	16.018	15.528	9.812	10.710	7.370	5.433	4.762	12.000	16.863	134.616	134.616	67.088	67.528	50,2
2019	3.394	5.670	10.593	6.555	5.890	6.664	2.529	4.702	6.684	9.079	10.373	19.671	91.804	91.804	48.891	42.913	46,7
2020	5.257	9.395	10.121	4.632	7.162	13.906	17.974	17.161	19.323	18.392	15.784	23.572	162.679	162.679	103.677	59.002	36,3
2021	8.370	13.755	20.071	13.113	11.596	17.471	11.538	13.698	13.733	16.234	17.234	18.684	175.497	175.497	97.670	77.827	44,3
2022	9.111	12.011	14.094	14.471	13.417	16.518	11.175	13.106	17.403	17.782	23.089	28.446	190.623	190.623	112.223	78.400	41,1
2023	13.606	22.241	24.703	20.281	24.138	21.028	26.543	20.323	17.822	18.756	23.616	32.237	265.294	265.294	122.545	142.749	53,8
2024	15.660	23.713	22.757	14.471	20.045	18.380	20.641	20.846	18.106	21.612	26.499	35.438	258.168	258.168	70.120	188.048	72,8



Aylar / Months	10 Yıl Ort / 10 Years Avr.	2024	%
1	3.420	3.577	4,6
2	4.015	6.152	53,2
3	5.541	7.115	28,4
4	5.198	4.567	-12,1
5	5.345	6.470	21,1
6	4.889	4.491	-8,1
7	4.122	5.390	30,8
8	4.054	4.225	4,2
9	5.045	4.969	-1,5
10	5.768	4.889	-15,2
11	6.078	5.223	-14,1
TOPLAM / TOTAL	53.474	57.068	6,7

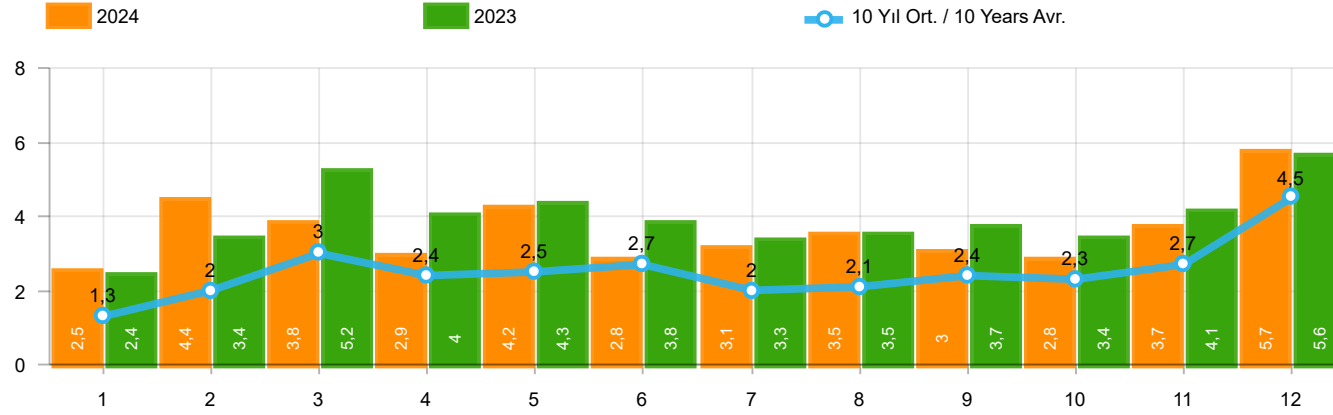
Yıl / Year	1	2	3	4	5	6	7	8	9	10	11	12	1-11 Toplam / Total	Toplam / Total
2014	2.169	3.512	4.476	4.905	5.094	5.028	4.233	4.920	5.619	5.743	6.250	7.409	51.949	59.358
2015	3.124	3.984	5.460	6.383	6.078	5.748	4.677	5.044	4.765	7.049	6.898	7.564	59.210	66.774
2016	3.739	4.731	7.067	6.546	6.575	5.543	3.833	5.134	4.945	7.372	7.090	7.603	62.575	70.178
2017	3.974	4.964	6.773	6.780	7.057	5.356	5.003	4.396	6.064	7.734	7.457	7.351	65.558	72.909
2018	4.362	4.179	5.925	5.216	4.584	3.146	3.654	2.587	3.541	3.698	3.578	3.886	44.470	48.356
2019	1.311	1.401	2.143	2.126	2.229	1.538	2.039	1.579	2.284	2.828	3.037	3.782	22.515	26.297
2020	2.425	2.778	3.771	2.606	3.244	4.173	3.727	3.974	4.928	5.466	5.831	6.221	42.923	49.144
2021	4.411	5.395	6.845	5.581	4.200	5.571	3.846	3.093	6.100	5.351	6.901	6.776	57.294	64.070
2022	3.152	3.636	4.988	5.408	5.873	6.520	3.985	4.740	6.265	6.542	7.514	8.319	58.623	66.942
2023	5.533	5.569	7.959	6.433	8.511	6.269	6.221	5.072	5.943	5.897	6.219	8.275	69.626	77.901
2024	3.577	6.152	7.115	4.567	6.470	4.491	5.390	4.225	4.969	4.889	5.223	-	57.068	57.068

Kaynak: TÜİK trafik kayıtları.

Rakamlar, son iki model yılına ait traktör tescillerinden oluşmaktadır.

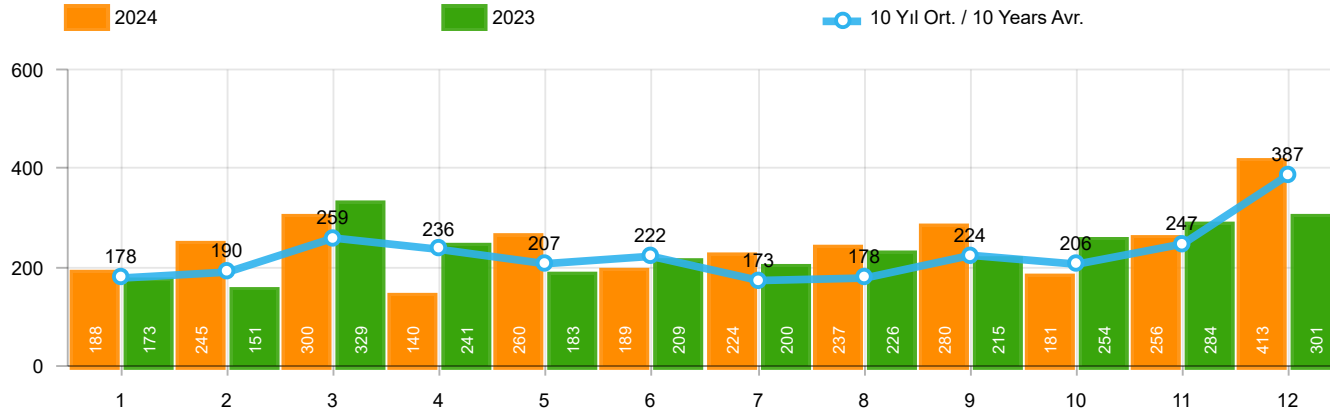
Source: Turkish Statistical Institute – Traffic registrations

Data represents the last two model year's farm tractors registration figures



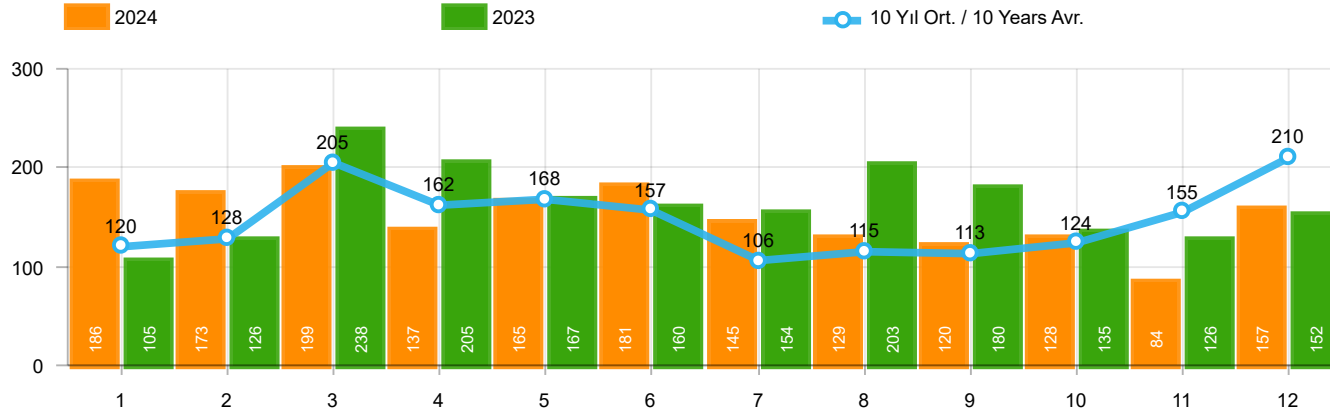
Aylar / Months	10 Yıl Ort / 10 Years Avr.	2024	%
1	1.337	2.452	83,5
2	2.009	4.352	116,6
3	3.047	3.817	25,3
4	2.396	2.941	22,8
5	2.542	4.232	66,5
6	2.714	2.800	3,2
7	2.001	3.120	55,9
8	2.067	3.476	68,2
9	2.415	3.010	24,7
10	2.339	2.812	20,2
11	2.745	3.668	33,6
12	4.478	5.726	27,9
TOPLAM / TOTAL	30.088	42.406	40,9

Yıl / Year	1	2	3	4	5	6	7	8	9	10	11	12	1-12 Toplam / Total	Toplam / Total	1-12 Yerli / Local	1-12 İthal / Import	İthal Oran / Import %
2014	1.522	2.065	3.094	3.224	3.727	3.726	2.578	2.783	3.708	2.858	3.384	6.869	39.538	39.538	28.289	11.249	28,5
2015	2.215	3.346	5.699	3.729	3.600	4.253	2.922	2.211	2.687	2.266	3.146	7.307	43.381	43.381	29.913	13.468	31,0
2016	1.167	1.648	2.515	2.319	2.711	2.623	984	1.796	1.438	2.238	2.485	3.127	25.051	25.051	16.671	8.380	33,5
2017	931	1.290	1.982	1.888	2.184	1.891	1.974	1.860	2.284	2.188	2.487	4.438	25.397	25.397	16.812	8.585	33,8
2018	1.237	1.552	2.630	2.328	1.909	1.272	1.235	603	653	488	905	1.695	16.507	16.507	9.694	6.813	41,3
2019	342	579	1.255	842	728	981	435	497	854	1.047	1.100	2.087	10.747	10.747	6.669	4.078	37,9
2020	682	1.475	1.290	628	921	1.570	1.809	1.835	2.660	2.239	2.537	3.358	21.004	21.004	13.465	7.539	35,9
2021	1.366	2.633	3.319	2.788	2.617	3.238	1.799	1.942	2.377	3.067	3.549	4.045	32.740	32.740	20.730	12.010	36,7
2022	1.498	2.148	3.520	2.260	2.701	3.764	2.939	3.617	3.811	3.574	3.777	6.214	39.823	39.823	25.719	14.104	35,4
2023	2.406	3.356	5.162	3.951	4.321	3.820	3.334	3.526	3.674	3.425	4.077	5.642	46.694	46.694	29.606	17.088	36,6
2024	2.452	4.352	3.817	2.941	4.232	2.800	3.120	3.476	3.010	2.812	3.668	5.726	42.406	42.406	26.640	15.766	37,2



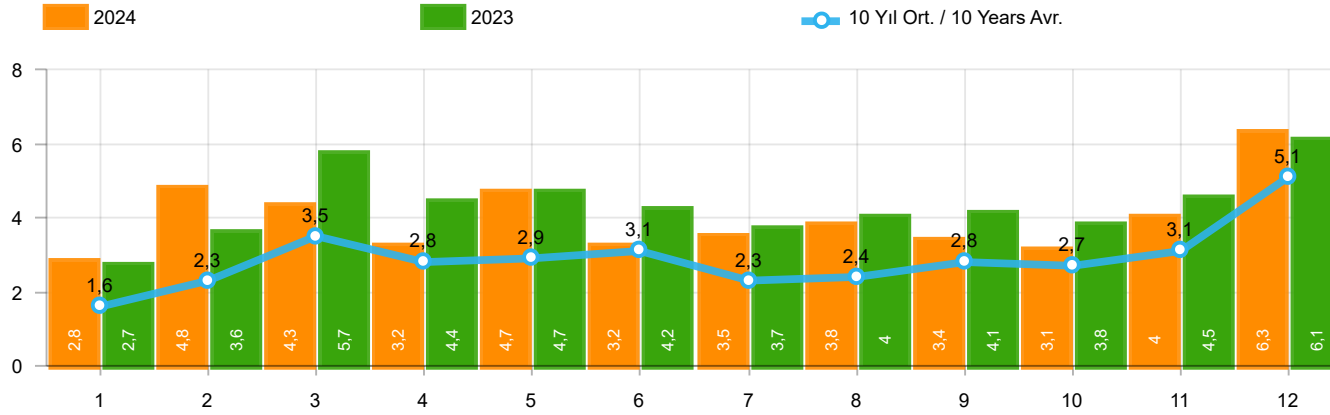
Aylar / Months	10 Yıl Ort / 10 Years Avr.	2024	%
1	178	188	5,6
2	190	245	28,9
3	259	300	15,7
4	236	140	-40,7
5	207	260	25,6
6	222	189	-14,7
7	173	224	29,4
8	178	237	32,8
9	224	280	25,0
10	206	181	-12,2
11	247	256	3,5
12	387	413	6,7
TOPLAM / TOTAL	2.708	2.913	7,6

Yıl / Year	1	2	3	4	5	6	7	8	9	10	11	12	1-12 Toplam / Total	Toplam / Total
2014	360	394	384	333	294	258	216	229	395	220	266	653	4.002	4.002
2015	280	322	451	561	372	405	389	253	316	394	325	621	4.689	4.689
2016	309	158	251	302	261	196	139	220	241	230	354	431	3.092	3.092
2017	212	211	227	231	272	156	250	235	318	268	317	594	3.291	3.291
2018	134	142	410	296	207	315	180	146	160	155	184	425	2.754	2.754
2019	57	61	63	96	106	189	55	44	138	138	257	244	1.448	1.448
2020	104	221	128	35	97	134	111	123	77	71	82	137	1.320	1.320
2021	70	108	117	135	58	131	44	139	153	178	188	172	1.493	1.493
2022	82	132	234	131	220	224	147	169	227	154	217	292	2.229	2.229
2023	173	151	329	241	183	209	200	226	215	254	284	301	2.766	2.766
2024	188	245	300	140	260	189	224	237	280	181	256	413	2.913	2.913



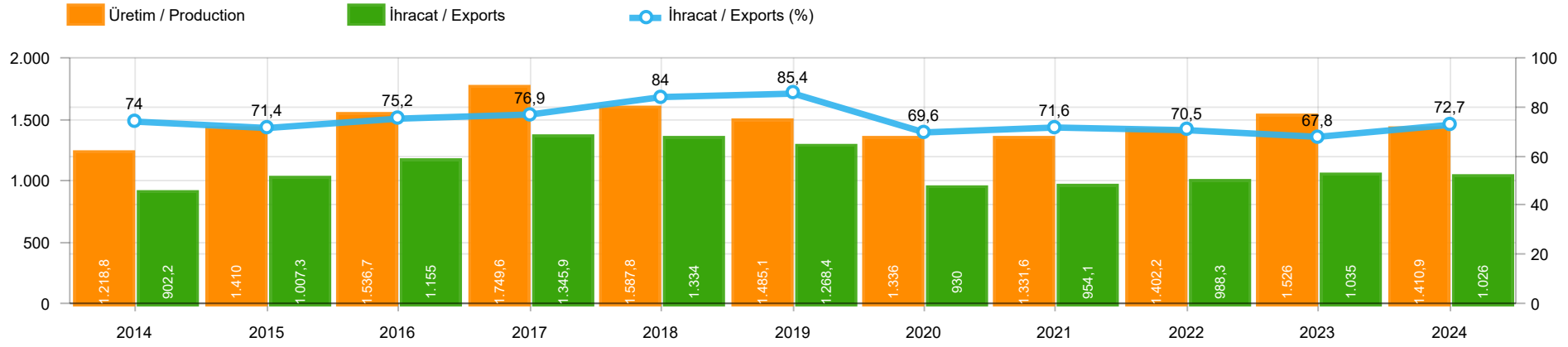
Aylar / Months	10 Yıl Ort / 10 Years Avr.	2024	%
1	120	186	55,6
2	128	173	34,9
3	205	199	-2,7
4	162	137	-15,6
5	168	165	-1,5
6	157	181	15,6
7	106	145	37,3
8	115	129	12,6
9	113	120	6,0
10	124	128	3,4
11	155	84	-45,9
12	210	157	-25,2
TOPLAM / TOTAL	1.761	1.804	2,4

Yıl / Year	1	2	3	4	5	6	7	8	9	10	11	12	1-12 Toplam / Total	Toplam / Total	1-12 Yerli / Local	1-12 İthal / Import	İthal Oran / Import %
2014	199	179	253	251	305	148	69	92	130	91	97	332	2.146	2.146	1.985	161	7,5
2015	146	222	313	290	290	255	211	203	153	171	359	363	2.976	2.976	2.906	70	2,4
2016	180	209	218	240	214	307	76	82	141	198	314	236	2.415	2.415	2.383	32	1,3
2017	174	119	167	124	188	115	206	187	92	231	109	235	1.947	1.947	1.933	14	0,7
2018	78	65	215	136	125	164	45	42	74	107	113	188	1.352	1.352	1.341	11	0,8
2019	75	54	112	35	97	41	25	45	84	28	42	54	692	692	692	-	-
2020	64	130	128	45	55	112	98	79	50	82	64	131	1.038	1.038	1.038	-	-
2021	144	80	182	140	101	116	40	38	46	73	134	173	1.267	1.267	1.267	-	-
2022	30	98	220	158	133	148	132	175	182	122	194	236	1.828	1.828	1.828	-	-
2023	105	126	238	205	167	160	154	203	180	135	126	152	1.951	1.951	1.951	-	-
2024	186	173	199	137	165	181	145	129	120	128	84	157	1.804	1.804	1.804	-	-



Aylar / Months	10 Yıl Ort / 10 Years Avr.	2024	%
1	1.634	2.826	72,9
2	2.327	4.770	104,9
3	3.511	4.316	22,9
4	2.794	3.218	15,2
5	2.916	4.657	59,7
6	3.092	3.170	2,5
7	2.280	3.489	53,1
8	2.360	3.842	62,8
9	2.752	3.410	23,9
10	2.669	3.121	16,9
11	3.147	4.008	27,3
12	5.075	6.296	24,1
TOPLAM / TOTAL	34.558	47.123	36,4

Yıl / Year	1	2	3	4	5	6	7	8	9	10	11	12	1-12 Toplam / Total	Toplam / Total	1-12 Yerli / Local	1-12 İthal / Import	İthal Oran / Import %
2014	2.081	2.638	3.731	3.808	4.326	4.132	2.863	3.104	4.233	3.169	3.747	7.854	45.686	45.686	34.276	11.410	25,0
2015	2.641	3.890	6.463	4.580	4.262	4.913	3.522	2.667	3.156	2.831	3.830	8.291	51.046	51.046	37.508	13.538	26,5
2016	1.656	2.015	2.984	2.861	3.186	3.126	1.199	2.098	1.820	2.666	3.153	3.794	30.558	30.558	22.146	8.412	27,5
2017	1.317	1.620	2.376	2.243	2.644	2.162	2.430	2.282	2.694	2.687	2.913	5.267	30.635	30.635	22.036	8.599	28,1
2018	1.449	1.759	3.255	2.760	2.241	1.751	1.460	791	887	750	1.202	2.308	20.613	20.613	13.789	6.824	33,1
2019	474	694	1.430	973	931	1.211	515	586	1.076	1.213	1.399	2.385	12.887	12.887	8.809	4.078	31,6
2020	850	1.826	1.546	708	1.073	1.816	2.018	2.037	2.787	2.392	2.683	3.626	23.362	23.362	15.823	7.539	32,3
2021	1.580	2.821	3.618	3.063	2.776	3.485	1.883	2.119	2.576	3.318	3.871	4.390	35.500	35.500	23.490	12.010	33,8
2022	1.610	2.378	3.974	2.549	3.054	4.136	3.218	3.961	4.220	3.850	4.188	6.742	43.880	43.880	29.776	14.104	32,1
2023	2.684	3.633	5.729	4.397	4.671	4.189	3.688	3.955	4.069	3.814	4.487	6.095	51.411	51.411	34.323	17.088	33,2
2024	2.826	4.770	4.316	3.218	4.657	3.170	3.489	3.842	3.410	3.121	4.008	6.296	47.123	47.123	31.357	15.766	33,5



	2014	2015	2016	2017	2018	2019	2020	2021	2022	2023	2024
İhracat/Export	902.194	1.007.267	1.155.033	1.345.917	1.333.992	1.268.430	930.033	954.053	988.278	1.034.999	1.026.022
Üretim/Production	1.218.848	1.410.034	1.536.673	1.749.572	1.587.946	1.485.143	1.335.981	1.331.643	1.402.189	1.525.963	1.410.934
İhracat/Exports (%)	74	71,4	75,2	76,9	84	85,4	69,6	71,6	70,5	67,8	72,7

Taşıt Araçları İhracatı (2022 - 2024)
Motor Vehicle Exports (2022 - 2024)

SEKTÖR / SECTOR	2022	2023	1/12-2023	1/12-2024	2024/2023 %
OTOMOBİL / Pass.Car	571.218	663.090	663.090	654.115	-1,4
OTOMOBİL TOPLAM / Pass. Car Total	571.218	663.090	663.090	654.115	-1,4
KAMYON / Truck	20.123	21.566	21.566	10.024	-53,5
KAMYONET / Pick Up	335.148	291.052	291.052	279.520	-4,0
OTOBÜS / Bus	6.579	9.447	9.447	8.674	-8,2
MİNİBÜS / Minibus	36.016	31.421	31.421	58.922	87,5
MİDİBÜS / Midibus	1.040	1.671	1.671	1.779	6,5
TİCARİ ARAÇLAR TOPLAM / Commercial Vehicle Total	398.906	355.157	355.157	358.919	1,1
TAŞIT ARAÇLARI TOPLAM / Motor Vehicles Total	970.124	1.018.247	1.018.247	1.013.034	-0,5
TRAKTÖR / F.Tractor	18.154	16.752	16.752	12.988	-22,5
TRAKTÖR TOPLAM / F.Tractor Total	18.154	16.752	16.752	12.988	-22,5
GENEL TOPLAM / GRAND TOTAL	988.278	1.034.999	1.034.999	1.026.022	-0,9

Üretici Bazında İhracat (adet)
Exports by Manufacturer (unit)

Üreticiler / Manufacturers	2022	2023	1-12 / 2023	1-12 / 2024
A.I.O.S.	911	1.102	1.102	1.067
FORD OTOSAN	297.828	311.104	311.104	330.240
HATTAT TRAKTÖR	1.059	736	736	460
HYUNDAI ASSAN	176.664	205.200	205.200	204.000
KARSAN	301	428	428	487
M. BENZ TÜRK	15.674	18.062	18.062	9.134
MAN TÜRKİYE	1.786	2.933	2.933	2.413
OTOKAR	1.506	2.584	2.584	2.240
OYAK RENAULT	176.844	230.397	230.397	241.398
TEMSA	587	1.161	1.161	1.386
TOFAŞ	121.477	60.479	60.479	33.568
TOYOTA	176.546	184.797	184.797	187.101
TÜRK TRAKTÖR	17.095	16.016	16.016	12.528
GENEL TOPLAM / Grand Total	988.278	1.034.999	1.034.999	1.026.022

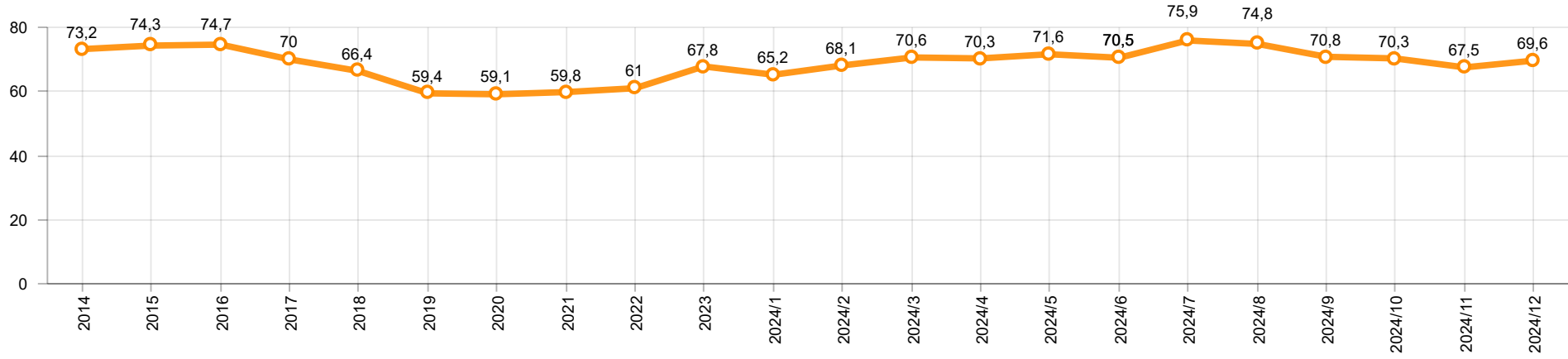
Otomotiv Ana ve Yan Sanayii İhracatı (ABD \$)
CBU and CKD Exports - \$

Sektör / Sector	2022	2023	OCAK - ARALIK / January - December 2023	OCAK - ARALIK / January - December 2024	2024 / 2023 %
Toplam Yan Sanayi / Total Component Industry	12.826.712.028,21	14.078.295.394,55	14.078.295.394,55	14.839.169.793,6	5,4
İç ve Dış Lastik / Tyres	1.766.728.479,75	1.724.808.180,08	1.724.808.180,08	1.695.712.002,38	-1,7
Emniyet Camı / Safety Glasses	234.400.901,69	263.055.895,3	263.055.895,3	280.208.750,29	6,5
Motor / Engine	233.029.231,53	253.590.728,57	253.590.728,57	382.946.759,3	51,0
Akümülatör / Batteries	547.705.920,77	482.228.706,9	482.228.706,9	574.440.860,83	19,1
Diğer Aksam ve Parça / Spare Parts&Components	10.044.847.494,47	11.354.611.883,7	11.354.611.883,7	11.905.861.420,8	4,9
Toplam Ana Sanayi / Total Vehicle Industry	18.672.498.545,28	21.608.331.077,73	21.608.331.077,73	21.911.627.756,63	1,4
Otobüs / Bus	1.199.777.172,44	1.786.354.748,27	1.786.354.748,27	1.928.277.914,79	7,9
Midibüs-Minibüs / Midibus-Minibus	162.966.486,11	342.622.940,87	342.622.940,87	458.784.135,36	33,9
Otomobil / P.Cars	9.069.545.936,14	10.934.266.126,78	10.934.266.126,78	11.284.675.238,86	3,2
Kamyon-Kamyonet / Truck-Pick Up&Van	5.633.409.584,55	5.646.557.915,75	5.646.557.915,75	6.387.961.337,89	13,1
Römork ve Yarı Römork / Trailer-Semi Trailer	762.960.672,12	777.402.947,62	777.402.947,62	670.091.733,43	-13,8
Çekici / Tractor	1.266.205.170,15	1.527.261.816,27	1.527.261.816,27	653.234.993,5	-57,2
Tarım Traktörü / Farm Tractor	577.633.523,77	593.864.582,17	593.864.582,17	528.602.402,8	-11,0
Toplam / Total	31.499.210.573,49	35.686.626.472,28	35.686.626.472,28	36.750.797.550,23	3,0

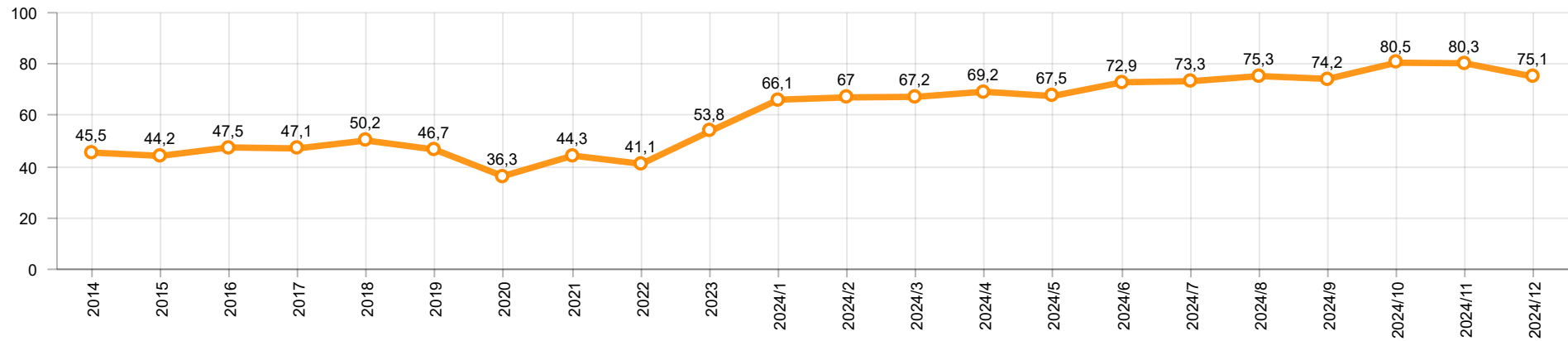
Kaynak: Uludağ İhracatçı Birlikleri . ÜİB tarafından OSD için özel olarak analiz edilen Otomotiv İhracatı kapsamında; ÜİB Türkiye Geneli Otomotiv Endüstrisi sınıflandırmasına kıyasla “Römork ve Yarı Römork” , “Tarım Traktörü” verileri dahil edilmekte; “Kullanılmış Araçlar” ,”İki Tekerlekli Taşıtlar” , “Demiryolu Taşıtları” hariç tutulmaktadır.

Source: Uludağ Exporters Association – Special Analyze for OSD.Compared to Turkish General Automotive Industry classification, this special analyze includes; farms tractors, trailers and semi-trailers, does not include; used vehicles, two-wheeled vehicles and railway vehicles

Otomobil Pazarında İthalatın Payı (%)
Import Share in P.Car Market (%)



Hafif Ticari Araçlar Pazarında İthalatın Payı (%)
Import Share in LCV Market (%)



Araç Tipleri / Vehicle Types	1	2	3	4	5	6	7	8	9	10	11	12	Toplam / Total
OTOMOBİL - Pass.Car	44.403	55.795	54.120	51.606	63.162	51.287	59.748	31.522	55.283	67.444	61.879	57.866	654.115
KAMYON - H. Truck	1.721	1.126	960	610	496	485	850	533	849	915	712	662	9.919
K.KAMYON - L. Truck	7	6	7	12	23	30	9	2	-	-	2	7	105
KAMYONET - Pick Up	26.095	28.698	32.322	19.809	16.136	18.817	22.578	19.735	26.114	21.100	20.180	27.936	279.520
OTOBÜS - Bus	560	926	942	763	855	556	469	538	627	774	778	886	8.674
MİNİBÜS - Minibus	2.651	2.616	3.403	3.073	4.250	3.805	4.837	5.276	6.553	6.917	5.986	9.555	58.922
MİDİBÜS - Midibus	112	222	170	141	240	215	100	87	96	118	192	86	1.779
TİCARİ ARAÇLAR TOPLAMI - CV Total	31.146	33.594	37.804	24.408	22.000	23.908	28.843	26.171	34.239	29.824	27.850	39.132	358.919
TAŞIT ARAÇLARI TOPLAMI - MV Total	75.549	89.389	91.924	76.014	85.162	75.195	88.591	57.693	89.522	97.268	89.729	96.998	1.013.034
TRAKTÖR - F.Tractor	1.604	1.543	1.415	1.215	1.512	1.043	1.200	718	929	681	552	576	12.988
GENEL TOPLAM - Grand Total	77.153	90.932	93.339	77.229	86.674	76.238	89.791	58.411	90.451	97.949	90.281	97.574	1.026.022

Otomobil / P.Car

Firmalar / Firms	1	2	3	4	5	6	7	8	9	10	11	12	Toplam / Total
FORD OTOSAN	-	-	-	-	-	-	-	-	-	-	-	-	-
HYUNDAI ASSAN	19.483	17.800	19.600	13.558	19.755	14.170	18.715	11.950	16.715	18.600	17.580	16.074	204.000
OYAK RENAULT	9.804	20.121	19.145	17.165	23.550	21.598	18.231	10.863	18.903	27.288	27.619	27.111	241.398
TOFAŞ	2.068	3.654	4.716	3.527	2.424	113	850	228	1.251	802	1.384	599	21.616
TOYOTA	13.048	14.220	10.659	17.356	17.433	15.406	21.952	8.481	18.414	20.754	15.296	14.082	187.101
TOPLAM - Total	44.403	55.795	54.120	51.606	63.162	51.287	59.748	31.522	55.283	67.444	61.879	57.866	654.115

Kamyonet / Pick-up

Firmalar / Firms	1	2	3	4	5	6	7	8	9	10	11	12	Toplam / Total
A.I.O.S.	-	-	-	-	-	-	-	-	-	-	-	-	-
FORD OTOSAN	24.208	25.972	30.605	18.996	14.984	17.545	22.447	19.735	26.114	21.090	18.944	26.749	267.389
KARSAN	-	-	-	-	-	-	-	-	-	-	-	-	-
OTOKAR	-	-	-	-	70	-	-	-	-	10	34	65	179
TOFAŞ	1.887	2.726	1.717	813	1.082	1.272	131	-	-	-	1.202	1.122	11.952
TOPLAM - Total	26.095	28.698	32.322	19.809	16.136	18.817	22.578	19.735	26.114	21.100	20.180	27.936	279.520

Minibüs / Minibus

Firmalar / Firms	1	2	3	4	5	6	7	8	9	10	11	12	Toplam / Total
FORD OTOSAN	2.643	2.596	3.402	3.047	4.224	3.805	4.837	5.276	6.543	6.890	5.981	9.442	58.686
KARSAN	8	20	1	26	26	-	-	-	10	27	5	113	236
TOPLAM - Total	2.651	2.616	3.403	3.073	4.250	3.805	4.837	5.276	6.553	6.917	5.986	9.555	58.922

Kamyon / Truck

Firmalar / Firms	1	2	3	4	5	6	7	8	9	10	11	12	Toplam / Total
A.I.O.S.	-	-	-	-	-	-	-	-	-	-	-	-	-
FORD OTOSAN	545	194	203	215	401	312	444	311	247	497	400	396	4.165
KARSAN	-	-	-	-	-	-	-	-	-	-	-	-	-
M. BENZ TÜRK	1.176	932	757	395	95	173	406	222	602	418	312	266	5.754
OTOKAR	1	-	3	8	5	17	-	2	-	-	2	7	45
TEMSA	6	6	4	4	18	13	9	-	-	-	-	-	60
TOPLAM - Total	1.728	1.132	967	622	519	515	859	535	849	915	714	669	10.024

Midibüs / Midibus

Firmalar / Firms	1	2	3	4	5	6	7	8	9	10	11	12	Toplam / Total
A.I.O.S.	66	99	48	55	106	91	48	35	53	39	50	49	739
KARSAN	13	9	10	18	13	3	11	8	-	30	56	9	180
OTOKAR	17	59	60	20	70	78	10	31	43	39	86	26	539
TEMSA	16	55	52	48	51	43	31	13	-	10	-	2	321
TOPLAM - Total	112	222	170	141	240	215	100	87	96	118	192	86	1.779

Otobüs / Bus

Firmalar / Firms	1	2	3	4	5	6	7	8	9	10	11	12	Toplam / Total
A.I.O.S.	14	26	48	17	18	65	21	6	18	43	20	32	328
KARSAN	-	-	-	-	11	3	-	-	-	13	2	42	71
M. BENZ TÜRK	247	257	265	253	326	198	258	227	241	351	357	400	3.380
MAN TÜRKİYE	218	387	404	248	257	118	5	42	113	160	233	228	2.413
OTOKAR	44	135	139	152	147	127	109	186	147	120	75	96	1.477
TEMSA	37	121	86	93	96	45	76	77	108	87	91	88	1.005
TOPLAM - Total	560	926	942	763	855	556	469	538	627	774	778	886	8.674

Traktör / F.Tractor

Firmalar / Firms	1	2	3	4	5	6	7	8	9	10	11	12	Toplam / Total
HATTAT TRAKTÖR	53	38	11	15	12	18	40	83	39	51	50	50	460
TÜRK TRAKTÖR	1.551	1.505	1.404	1.200	1.500	1.025	1.160	635	890	630	502	526	12.528
TOPLAM - Total	1.604	1.543	1.415	1.215	1.512	1.043	1.200	718	929	681	552	576	12.988

Firmalar / Firms	2023 Toplam / Total	1	2	3	4	5	6	7	8	9	10	11	12	Toplam / Total
	1.149	458	-	-	-	-	-	-	-	-	-	-	-	458
Alfa Romeo	2.097	106	106	111	40	45	32	57	44	50	169	199	296	1.255
ALPINE	-	-	-	-	5	2	-	-	-	-	-	1	-	8
Aston Martin	23	2	2	1	2	-	1	-	1	-	1	1	4	15
Audi	22.878	1.265	1.560	1.370	884	1.274	1.078	1.607	1.901	1.346	2.113	1.790	3.512	19.700
Bentley	36	1	2	9	2	3	2	1	1	6	2	3	5	37
BMW	23.801	666	1.470	1.794	1.388	2.172	1.665	1.510	1.689	2.462	2.461	3.783	4.724	25.784
BYD	839	155	220	175	312	203	361	235	69	-	-	407	6.194	8.331
Chery	40.590	4.450	5.006	6.011	5.315	6.208	7.511	6.638	3.643	3.215	2.814	3.105	3.131	57.047
Citroen	45.395	1.948	5.664	4.990	2.360	2.911	5.505	3.117	2.515	2.125	2.606	3.425	6.053	43.219
CUPRA	10.165	368	636	1.037	461	744	863	872	733	455	653	1.178	1.663	9.663
Dacia	41.339	3.435	3.938	3.526	2.356	3.385	3.060	2.240	2.492	1.991	2.161	2.096	2.978	33.658
DFSK	293	21	16	49	44	30	24	99	76	40	51	25	29	504
DS	3.511	403	209	189	78	127	121	117	95	40	129	169	294	1.971
Ferrari	25	2	1	2	3	3	1	2	2	1	3	1	3	24
Fiat	1.205	40	72	91	36	55	87	106	32	34	137	125	258	1.073
Ford	29.597	3.062	1.938	3.282	1.867	2.568	2.514	2.015	2.345	1.322	1.863	1.838	5.003	29.617
Honda	21.322	842	2.130	2.964	1.331	3.110	3.170	1.612	2.481	1.555	1.272	1.398	1.767	23.632
HONGQI	19	2	1	1	1	2	2	1	1	1	1	1	1	15
Hyundai	13.088	1.064	1.369	1.726	1.032	1.319	962	1.538	1.759	1.818	1.900	1.214	1.728	17.429
JAECOO	-	-	-	-	-	-	-	-	621	715	684	801	765	3.586
Jaguar	121	5	13	6	6	5	2	1	3	5	3	1	10	60
Jeep	3.622	405	377	278	121	204	298	255	351	243	235	224	375	3.366
KG MOBILITY	-	458	1.101	772	1.081	688	602	872	507	823	755	744	1.023	9.426
Kia	20.629	820	1.378	1.717	688	1.079	1.047	1.327	2.094	1.597	1.854	1.963	2.403	17.967
Lamborghini	22	2	3	1	1	2	1	1	1	4	-	2	4	22
Land Rover	2.451	143	205	202	200	291	287	296	500	153	161	244	291	2.973
LEAPMOTOR	355	22	17	19	23	17	22	16	14	23	12	15	18	218
Lexus	507	14	33	98	85	52	30	60	66	90	91	98	99	816
Maserati	533	12	23	33	21	22	20	30	25	15	18	23	34	276
Mercedes-Benz	24.646	1.718	2.135	2.697	1.772	2.160	2.189	2.188	2.298	2.937	2.690	3.002	4.181	29.967
MG	14.458	971	1.745	3.233	1.236	2.293	1.596	1.517	1.470	1.331	1.096	368	306	17.162
Mini	2.633	97	154	116	111	251	367	467	247	656	526	827	936	4.755
Mitsubishi	208	1	5	6	6	10	11	13	3	-	1	-	-	56
NETA	-	-	24	29	-	-	-	-	-	-	-	-	-	53
Nissan	21.278	2.057	1.670	1.300	1.733	1.779	1.817	2.544	2.138	2.984	2.038	2.764	4.264	27.088
Opel	61.057	1.731	4.919	4.579	3.341	3.078	3.547	3.567	3.595	3.459	3.266	4.258	5.872	45.212
Peugeot	58.549	3.020	4.333	5.627	3.777	4.025	5.118	3.645	2.840	3.354	4.191	6.250	7.706	53.886
Porsche	1.158	78	93	117	63	99	61	61	78	90	167	136	160	1.203
Renault	24.023	1.512	1.736	2.808	1.268	1.679	1.665	1.645	2.521	1.988	2.802	3.012	3.801	26.437
Seat	10.929	381	769	1.133	571	830	1.368	1.722	717	424	965	2.414	1.176	12.470
SERES	2	1	-	-	-	-	-	-	-	-	-	-	-	1
Skoda	35.041	2.718	4.065	2.797	2.125	4.162	4.352	3.459	3.230	3.414	3.766	3.674	6.210	43.972
SKYWELL	2.541	33	25	38	46	25	33	27	23	36	38	26	38	388
Subaru	966	15	23	45	43	25	30	33	17	23	19	26	36	335
Suzuki	5.378	602	525	915	520	975	648	497	250	171	61	204	526	5.894
TESLA	6.650	220	75	80	27	10	2.670	420	1.050	2.475	340	1.860	2.307	11.534
Toyota	12.418	1.636	638	531	514	435	1.051	1.261	1.086	495	420	766	1.171	10.004
Volkswagen	71.093	4.580	4.188	3.561	5.272	8.036	5.043	7.152	5.284	4.363	7.732	8.258	11.064	74.533
Volvo	11.646	665	1.397	1.400	1.044	1.100	1.138	870	948	946	897	1.155	1.464	13.024
GENEL TOPLAM - Grand Total	650.489	42.207	56.009	61.466	43.212	57.493	61.972	55.713	51.856	49.275	53.164	63.874	93.883	690.124

Firmalar / Firms	2023 Toplam / Total	1	2	3	4	5	6	7	8	9	10	11	12	Toplam / Total
	1.068	212	-	-	-	-	-	-	-	-	-	-	-	212
Citroen	17.758	1.021	2.066	1.795	273	1.000	398	1.157	1.825	1.539	1.987	2.636	2.312	18.009
DFSK	5	14	18	52	46	56	68	65	27	72	85	77	95	675
FARIZON	-	-	-	-	-	3	-	-	1	-	1	-	-	5
Fiat	15.489	1.512	2.073	1.700	1.137	995	1.093	2.161	2.285	1.724	1.872	3.328	4.636	24.516
Ford	2.268	577	1.478	1.874	2.477	3.463	2.984	2.972	2.998	2.467	3.486	4.225	4.843	33.844
Hyundai	5.882	581	385	445	655	557	708	755	148	37	13	16	114	4.414
Isuzu	1.645	89	144	101	68	124	113	248	125	49	227	154	142	1.584
Iveco	2.927	137	275	203	266	306	324	317	175	303	296	428	820	3.850
KG MOBILITY	-	212	179	234	299	367	308	75	66	87	118	213	286	2.444
Kia	2.710	11	185	855	533	907	901	526	6	-	-	-	-	3.924
Land Rover	645	-	-	-	1	-	-	-	-	-	-	-	-	1
MAXUS	112	20	20	23	105	22	5	25	2	19	21	10	30	302
Mercedes-Benz	9.294	392	950	1.064	571	719	692	455	1.216	757	791	937	1.716	10.260
Opel	12.808	588	1.407	1.363	279	674	1.222	1.316	1.720	1.328	1.776	2.446	3.125	17.244
Otokar	-	-	-	-	-	-	-	-	-	-	-	60	231	291
Peugeot	20.083	936	1.809	1.203	195	1.268	1.062	1.786	2.210	1.701	2.511	2.052	2.923	19.656
Renault	18.154	1.132	1.435	1.472	1.245	1.136	1.662	1.322	1.116	1.023	1.021	1.250	1.863	15.677
Toyota	13.656	1.192	922	1.138	342	185	166	338	457	848	940	1.345	1.213	9.086
Volkswagen	17.683	1.936	2.542	1.780	1.515	1.758	1.696	1.605	1.327	1.478	2.253	2.098	2.278	22.266
GENEL TOPLAM - Grand Total	142.350	10.562	15.888	15.302	10.007	13.540	13.402	15.123	15.704	13.432	17.398	21.275	26.627	188.260