



OTOMOTİV SANAYİİ DERNEĐİ
AUTOMOTIVE MANUFACTURERS ASSOCIATION

OTOMOTİV SEKTÖRÜ AYLIK DEĐERLENDİRME RAPORU TEMMUZ 2024

AUTOMOTIVE INDUSTRY MONTHLY REPORT
July 2024

OSD "OICA" Üyesidir © O I C A OSD is a Member of "OICA"

	7 - 2023	7 - 2024	%	1 - 7 / 2023	1 - 7 / 2024	%	8/2022 - 7/2023	8/2023 - 7/2024	%
Otomobil Üretimi/P.Cars Production	88.214	81.434	-7,7	550.615	542.177	-1,5	927.762	944.229	1,8
Toplam Üretim/Total Production	135.359	116.569	-13,9	870.600	823.636	-5,4	1.482.715	1.421.429	-4,1
Otomobil Pazarı/P.Cars Market	87.416	73.396	-16,0	518.788	536.351	3,4	792.135	984.904	24,3
Toplam Pazar/Total Market	117.647	97.430	-17,2	700.319	698.368	-0,3	1.096.453	1.282.095	16,9
Otomobil İthalatı/P.Cars Import	65.591	55.713	-15,1	347.854	378.072	8,7	516.375	680.707	31,8
Toplam İthalat/Total Import	79.967	71.836	-10,2	433.536	479.641	10,6	651.094	861.931	32,4
Otomobil İhracatı/P.Cars Export	50.196	59.748	19,0	375.669	380.383	1,3	648.514	667.804	3,0
Toplam İhracat/Total Export	80.875	88.334	9,2	586.799	581.865	-0,8	1.030.282	1.013.313	-1,7
Otomobil İhracatı(\$)/P.Cars Export (\$)	837.075.725,14	986.749.603,34	17,9	6.212.640.213	6.174.683.892	-0,6	10.283.206.384	10.896.309.805	6,0
Toplam İhracat(\$)/Total Export (\$)*	2.765.960.302,44	3.018.062.225,81	9,1	20.457.017.878	20.653.000.161	1,0	34.400.780.152	35.883.155.902	4,3

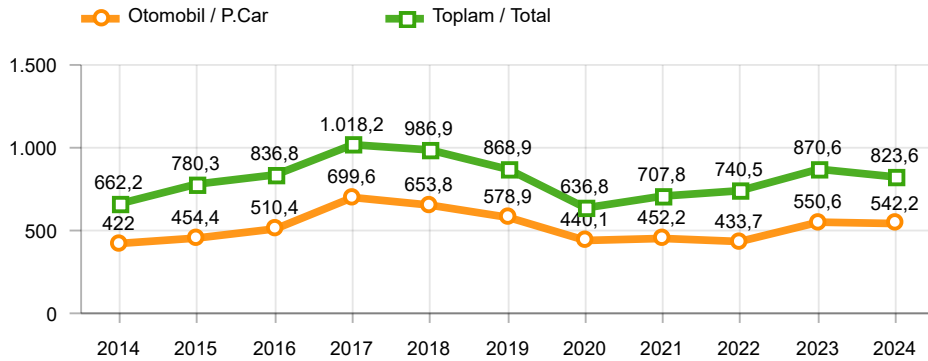
Parametreler/Parameters	7 - 2023	7 - 2024	%	1 - 7 / 2023	1 - 7 / 2024	%	8/2022 - 7/2023	8/2023 - 7/2024	%
ÜFE / PPI	8,2	1,9	-	24,3	21,8	-	78,5	47,6	-
TÜFE / CPI	9,5	3,2	-	31,1	28,8	-	57,5	65,9	-
Sanayi Endeksi / Industry Index	9,3	1,4	-	32,6	22,3	-	69,8	54,4	-
Dolar \$ ** (1 birim)	26,4	32,8	24,3	20,7	31,7	53,3	19,7	30,1	52,6
Euro € ** (1 birim)	29,2	35,6	21,8	22,5	34,3	52,8	20,9	32,5	55,9
Japon Yeni ¥ ** (100 birim)	18,6	20,6	10,8	15,2	20,7	36,3	14,3	19,9	39,3

*Toplam Sanayi / Total Industry Including Components

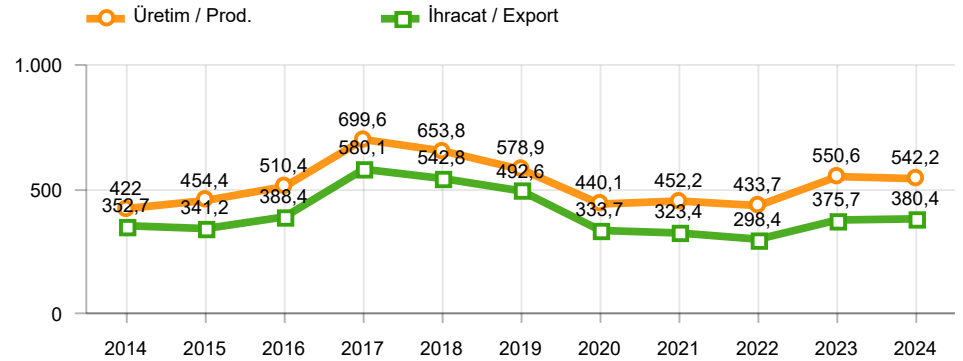
** Ortalama Değerler / Average Values

Araç Tipleri / Types	7 / 2023	7 / 2024	7 % Değişim	1-7 / 2023	1-7 / 2024	1-7 % Değişim
OTOMOBİL / Pass.Car	88.214	81.434	-7,7	550.615	542.177	-1,5
OTOMOBİL Toplam / Pass.Car Total	88.214	81.434	-7,7	550.615	542.177	-1,5
B.KAMYON / H. Truck	3.807	2.411	-36,7	27.729	19.919	-28,2
K.KAMYON / L. Truck	429	407	-5,1	2.893	2.853	-1,4
KAMYONET / Pick Up	36.707	25.603	-30,3	247.374	219.788	-11,2
OTOBÜS / Bus	884	535	-39,5	5.588	6.082	8,8
MINİBÜS / Minibus	4.909	5.849	19,1	33.755	29.769	-11,8
MİDİBÜS / Midibus	409	330	-19,3	2.646	3.048	15,2
TİCARİ ARAÇLAR Toplam / Commercial Vehicles Total	47.145	35.135	-25,5	319.985	281.459	-12,0
TAŞIT ARAÇLARI Toplam / Motor Vehicles Total	135.359	116.569	-13,9	870.600	823.636	-5,4
TRAKTÖR / F.Tractor	5.015	3.576	-28,7	35.066	30.068	-14,3
TRAKTÖR Toplam / F.Tractor Total	5.015	3.576	-28,7	35.066	30.068	-14,3
GENEL TOPLAM / Grand Total	140.374	120.145	-14,4	905.666	853.704	-5,7

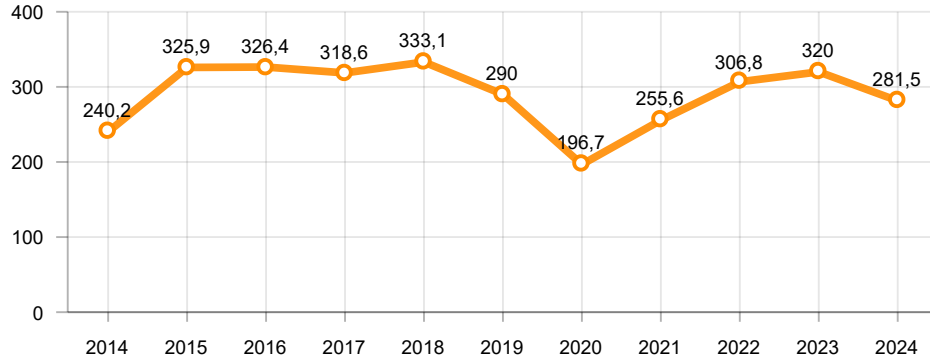
Toplam Üretim ve Otomobil Üretimi (x1000)(OCAK - TEMMUZ)
Total & P.Cars Production (x1000)(January - July)



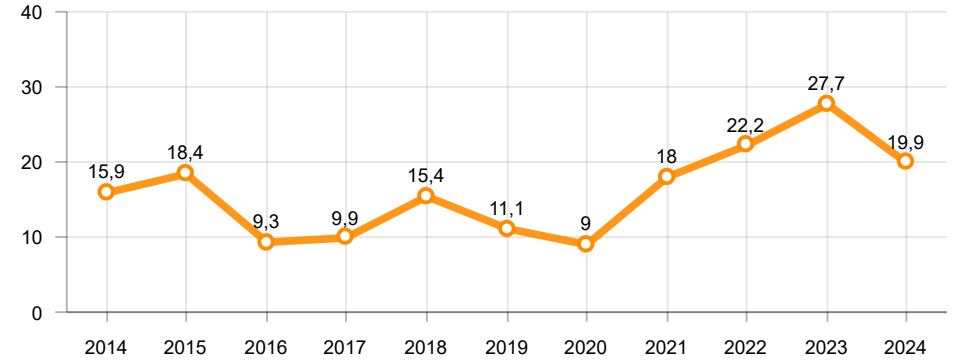
Otomobil Üretimi ve İhracat (x1000)(OCAK - TEMMUZ)
P.Cars Production & Exports (x1000)(January - July)



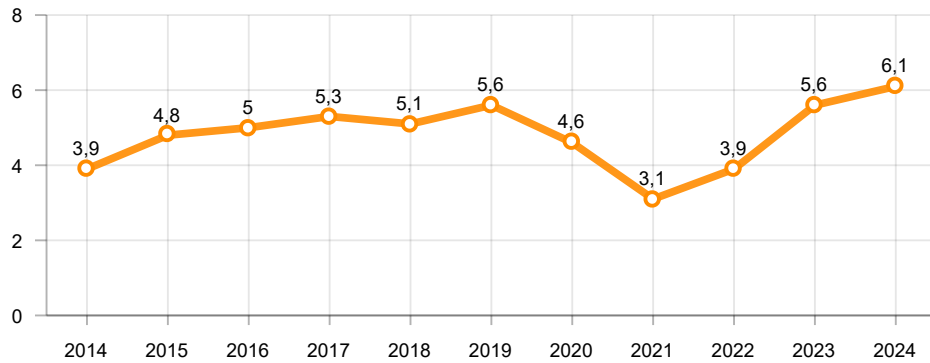
Ticari Araç Üretimi (x1000)(OCAK - TEMMUZ)
Commercial Vehicle Production (x1000)(January - July)



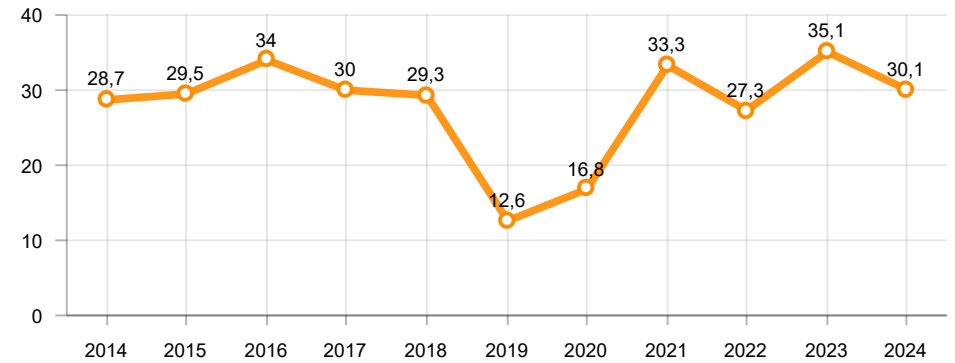
Büyük Kamyon Üretimi (x1000)(OCAK - TEMMUZ)
Heavy Truck Production (x1000)(January - July)

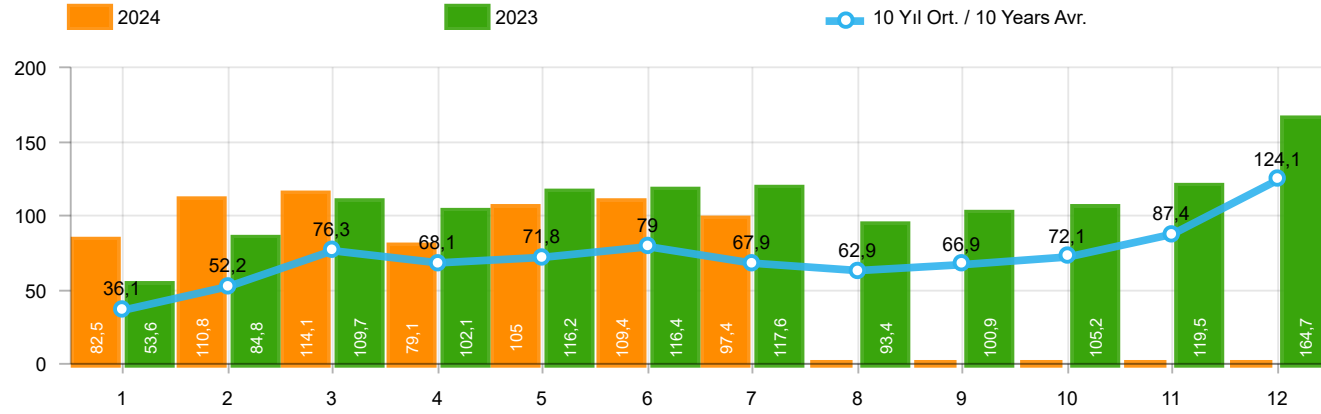


Otobüs Üretimi (x1000)(OCAK - TEMMUZ)
Bus Production (x1000)(January - July)



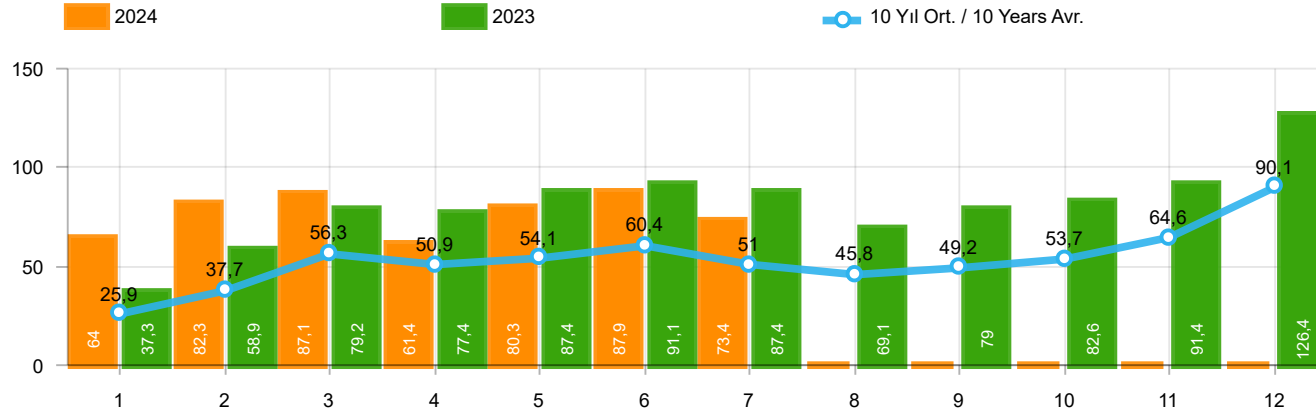
Traktör Üretimi (x1000)(OCAK - TEMMUZ)
F. Tractor Production (x1000)(January - July)





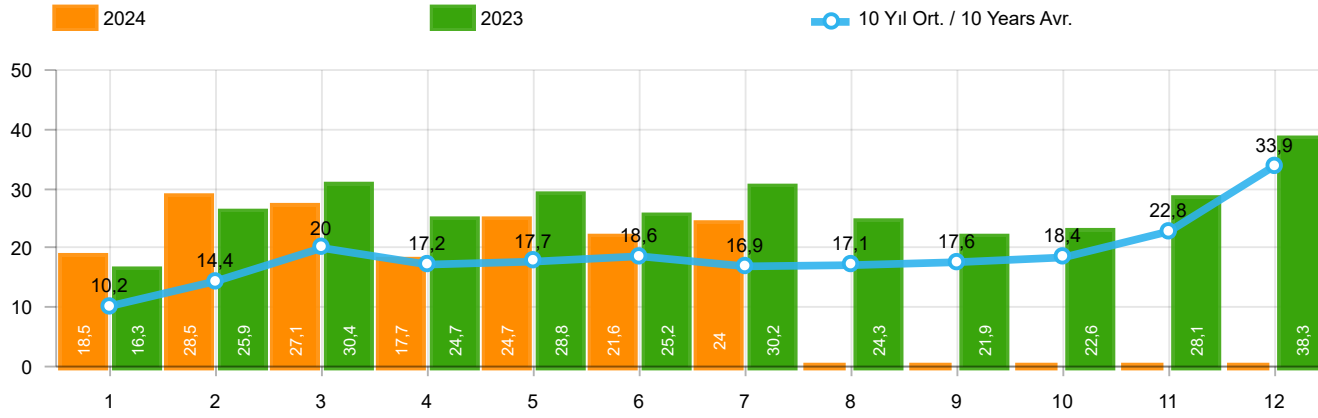
Aylar / Months	10 Yıl Ort / 10 Years Avr.	2024	%
1	36.113	82.527	128,5
2	52.172	110.760	112,3
3	76.293	114.144	49,6
4	68.148	79.137	16,1
5	71.761	104.962	46,3
6	78.977	109.408	38,5
7	67.944	97.430	43,4
TOPLAM/TOTAL	451.411	698.368	54,7

Yıl / Year	1	2	3	4	5	6	7	8	9	10	11	12	1-7 Toplam / Total	Toplam / Total	1-7 Yerli / Local	1-7 İthal / Import	İthal Oran / Import %
2014	34.751	37.659	51.312	57.113	62.447	64.295	62.770	63.303	70.764	69.742	84.368	154.843	370.347	813.367	124.339	246.008	66,4
2015	37.256	59.221	89.765	96.182	85.804	91.071	87.358	85.244	67.181	67.086	88.431	164.464	546.657	1.019.063	192.591	354.066	64,8
2016	34.369	54.840	85.932	87.748	97.090	94.666	59.732	73.654	69.413	85.666	125.462	145.706	514.377	1.014.278	169.892	344.485	67,0
2017	36.640	48.585	76.178	78.231	88.066	85.820	84.727	74.818	74.046	94.439	103.772	141.507	498.247	986.829	184.718	313.529	62,9
2018	36.525	48.768	79.600	73.886	74.996	52.788	54.194	35.137	23.915	22.321	59.406	80.014	420.757	641.550	162.259	258.498	61,4
2019	14.847	25.569	50.651	31.944	33.947	43.899	18.442	26.832	43.068	50.288	59.575	92.885	219.299	491.947	101.160	118.139	53,9
2020	28.123	48.948	51.554	27.165	33.308	72.789	89.419	63.570	93.406	97.125	82.824	107.919	351.306	796.150	156.055	195.251	55,6
2021	45.308	61.325	100.046	64.551	57.510	83.304	49.732	60.573	59.717	60.064	64.087	66.633	461.776	772.850	201.154	260.622	56,4
2022	39.741	52.030	68.241	62.584	68.221	84.788	55.424	52.297	66.304	69.072	86.499	121.962	431.029	827.163	194.428	236.601	54,9
2023	53.578	84.781	109.658	102.076	116.227	116.352	117.647	93.409	100.862	105.181	119.527	164.748	700.319	1.284.046	266.783	433.536	61,9
2024	82.527	110.760	114.144	79.137	104.962	109.408	97.430						698.368	698.368	218.727	479.641	68,7



Aylar / Months	10 Yıl Ort / 10 Years Avr.	2024	%
1	25.919	64.041	147,1
2	37.736	82.277	118,0
3	56.315	87.071	54,6
4	50.928	61.448	20,7
5	54.062	80.260	48,5
6	60.425	87.858	45,4
7	51.038	73.396	43,8
TOPLAM / TOTAL	336.422	536.351	59,4

Yıl / Year	1	2	3	4	5	6	7	8	9	10	11	12	1-7 Toplam / Total	Toplam / Total	1-7 Yerli / Local	1-7 İthal / Import	İthal Oran / Import %
2014	24.368	27.167	37.812	42.769	46.379	47.278	46.602	45.131	49.262	50.814	59.695	110.054	272.375	587.331	68.746	203.629	74,8
2015	24.498	40.817	61.676	70.211	62.878	67.766	64.218	61.753	47.088	47.954	62.397	114.340	392.064	725.596	100.601	291.463	74,3
2016	23.358	40.588	63.975	65.618	73.832	71.111	45.566	53.977	51.340	63.746	95.783	108.044	384.048	756.938	97.512	286.536	74,6
2017	25.689	34.658	55.616	57.998	65.799	66.164	62.384	54.890	53.423	70.488	75.956	99.694	368.308	722.759	114.704	253.604	68,9
2018	26.611	35.901	59.798	55.108	57.227	41.225	42.024	26.976	17.595	16.809	46.204	60.843	317.894	486.321	107.178	210.716	66,3
2019	10.979	19.205	38.628	24.416	27.126	36.024	15.398	21.544	35.308	39.996	47.803	70.829	171.776	387.256	75.132	96.644	56,3
2020	22.016	37.727	39.887	21.825	25.073	57.067	69.427	44.372	71.296	76.341	64.357	80.721	273.022	610.109	107.268	165.754	60,7
2021	35.358	44.749	76.357	48.375	43.138	62.348	36.311	44.756	43.408	40.512	42.982	43.559	346.636	561.853	138.043	208.593	60,2
2022	29.020	37.641	50.173	45.564	51.750	64.134	41.031	35.230	44.681	47.440	59.222	86.774	319.313	592.660	126.179	193.134	60,5
2023	37.288	58.907	79.226	77.398	87.418	91.135	87.416	69.131	78.971	82.611	91.424	126.416	518.788	967.341	168.434	350.354	67,5
2024	64.041	82.277	87.071	61.448	80.260	87.858	73.396						536.351	536.351	158.737	377.614	70,4

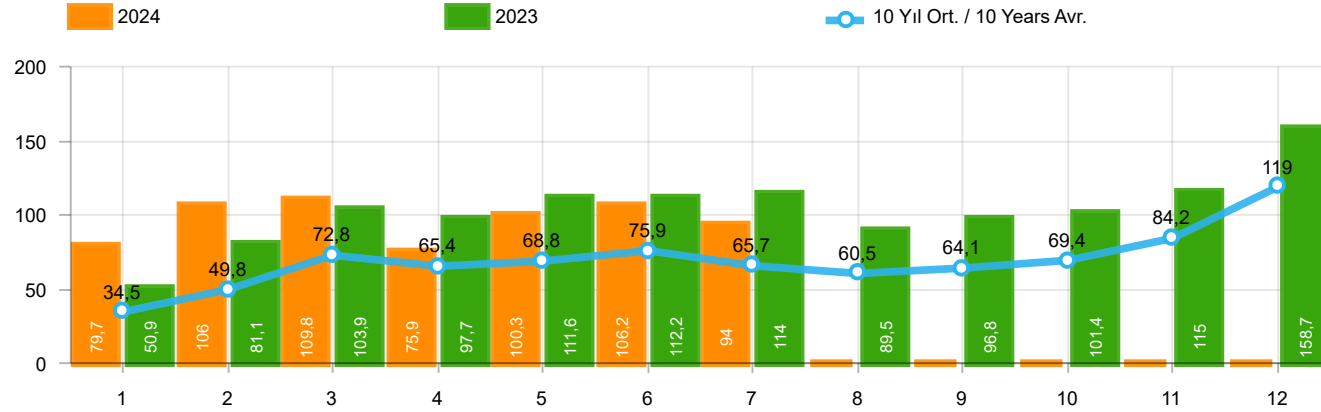


Aylar / Months	10 Yıl Ort. / 10 Years Avr.	2024	%
1	10.195	18.486	81,3
2	14.437	28.483	97,3
3	19.979	27.073	35,5
4	17.220	17.689	2,7
5	17.700	24.702	39,6
6	18.552	21.550	16,2
7	16.907	24.034	42,2
TOPLAM / TOTAL	114.989	162.017	40,9

Yıl / Year	1	2	3	4	5	6	7	8	9	10	11	12	1-7 Toplam / Total	Toplam / Total	1-7 Yerli / Local	1-7 İthal / Import	İthal Oran / Import %
2014	10.383	10.492	13.500	14.344	16.068	17.017	16.168	18.172	21.502	18.928	24.673	44.789	97.972	226.036	55.593	42.379	43,3
2015	12.758	18.404	28.089	25.971	22.926	23.305	23.140	23.491	20.093	19.132	26.034	50.124	154.593	293.467	91.990	62.603	40,5
2016	11.011	14.252	21.957	22.130	23.258	23.555	14.166	19.677	18.073	21.920	29.679	37.662	130.329	257.340	72.380	57.949	44,5
2017	10.951	13.927	20.562	20.233	22.267	19.656	22.343	19.928	20.623	23.951	27.816	41.813	129.939	264.070	70.014	59.925	46,1
2018	9.914	12.867	19.802	18.778	17.769	11.563	12.170	8.161	6.320	5.512	13.202	19.171	102.863	155.229	55.081	47.782	46,5
2019	3.868	6.364	12.023	7.528	6.821	7.875	3.044	5.288	7.760	10.292	11.772	22.056	47.523	104.691	26.028	21.495	45,2
2020	6.107	11.221	11.667	5.340	8.235	15.722	19.992	19.198	22.110	20.784	18.467	27.198	78.284	186.041	48.787	29.497	37,7
2021	9.950	16.576	23.689	16.176	14.372	20.956	13.421	15.817	16.309	19.552	21.105	23.074	115.140	210.997	63.111	52.029	45,2
2022	10.721	14.389	18.068	17.020	16.471	20.654	14.393	17.067	21.623	21.632	27.277	35.188	111.716	234.503	68.249	43.467	38,9
2023	16.290	25.874	30.432	24.678	28.809	25.217	30.231	24.278	21.891	22.570	28.103	38.332	181.531	316.705	98.349	83.182	45,8
2024	18.486	28.483	27.073	17.689	24.702	21.550	24.034						162.017	162.017	59.990	102.027	63,0

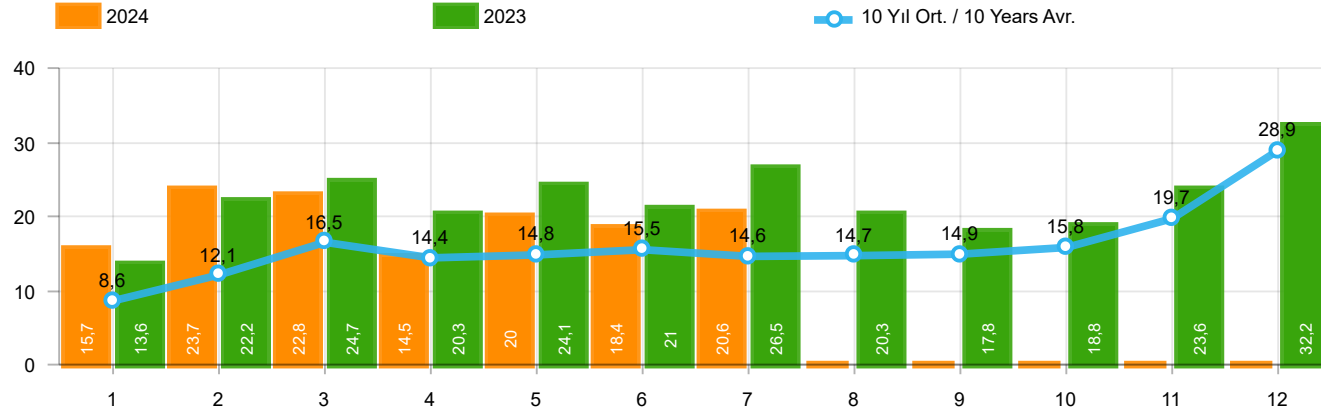
Hafif Araç Pazarının Analizi(x1000)(OCAK - TEMMUZ)

LV Market Analysis(x1000)(January - July)



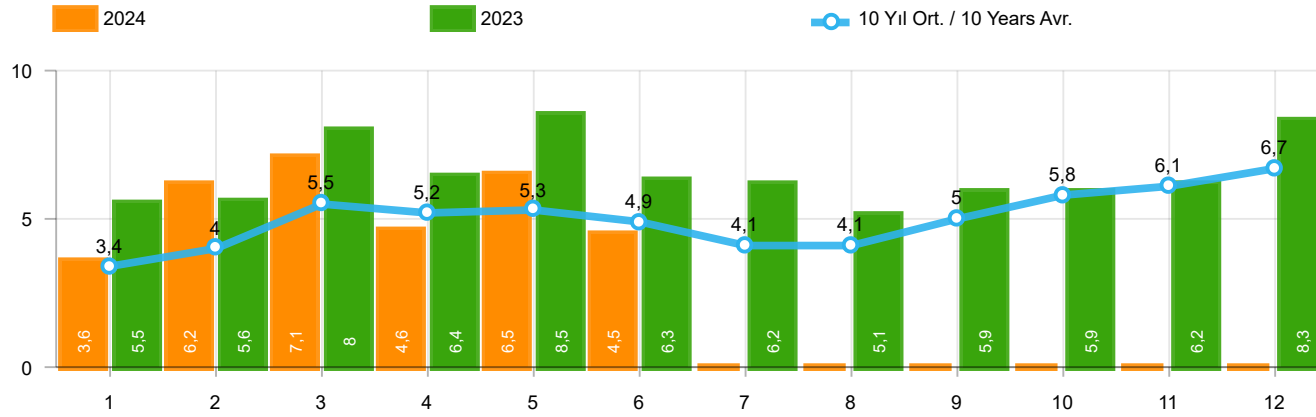
Aylar / Months	10 Yıl Ort / 10 Years Avr.	2024	%
1	34.480	79.701	131,2
2	49.845	105.990	112,6
3	72.783	109.828	50,9
4	65.354	75.919	16,2
5	68.845	100.305	45,7
6	75.885	106.238	40,0
7	65.665	94.037	43,2
TOPLAM / TOTAL	432.857	672.018	55,3

Yıl / Year	1	2	3	4	5	6	7	8	9	10	11	12	1-7 Toplam / Total	Toplam / Total	1-7 Yerli / Local	1-7 İthal / Import	İthal Oran / Import %
2014	32.670	35.021	47.581	53.305	58.121	60.163	59.907	60.199	66.531	66.573	80.621	146.989	346.768	767.681	106.223	240.545	69,4
2015	34.615	55.331	83.302	91.602	81.542	86.158	83.836	82.577	64.025	64.255	84.601	156.173	516.386	968.017	169.943	346.443	67,1
2016	32.713	52.825	82.948	84.887	93.904	91.540	58.533	71.556	67.593	83.000	122.309	141.912	497.350	983.720	157.337	340.013	68,4
2017	35.323	46.965	73.802	75.988	85.422	83.658	82.297	72.536	71.352	91.752	100.859	136.240	483.455	956.194	173.698	309.757	64,1
2018	35.076	47.009	76.345	71.126	72.755	51.037	52.734	34.346	23.028	21.571	58.204	77.706	406.082	620.937	152.578	253.504	62,4
2019	14.373	24.875	49.221	30.971	33.016	42.688	17.927	26.246	41.992	49.075	58.176	90.500	213.071	479.060	96.931	116.140	54,5
2020	27.273	47.122	50.008	26.457	32.235	70.973	87.401	61.533	90.619	94.733	80.141	104.293	341.469	772.788	149.220	192.249	56,3
2021	43.728	58.504	96.428	61.488	54.734	79.819	47.849	58.454	57.141	56.746	60.216	62.243	442.550	737.350	189.184	253.366	57,3
2022	38.131	49.652	64.267	60.035	65.167	80.652	52.206	48.336	62.084	65.222	82.311	115.220	410.110	783.283	180.326	229.784	56,0
2023	50.894	81.148	103.929	97.679	111.556	112.163	113.959	89.454	96.793	101.367	115.040	158.653	671.328	1.232.635	247.328	424.000	63,2
2024	79.701	105.990	109.828	75.919	100.305	106.238	94.037						672.018	672.018	200.792	471.226	70,1



Aylar / Months	10 Yıl Ort / 10 Years Avr.	2024	%
1	8.561	15.660	82,9
2	12.109	23.713	95,8
3	16.468	22.757	38,2
4	14.426	14.471	0,3
5	14.783	20.045	35,6
6	15.460	18.380	18,9
7	14.627	20.641	41,1
TOPLAM / TOTAL	96.435	135.667	40,7

Yıl / Year	1	2	3	4	5	6	7	8	9	10	11	12	1-7 Toplam / Total	Toplam / Total	1-7 Yerli / Local	1-7 İthal / Import	İthal Oran / Import %
2014	8.302	7.854	9.769	10.536	11.742	12.885	13.305	15.068	17.269	15.759	20.926	36.935	74.393	180.350	37.477	36.916	49,6
2015	10.117	14.514	21.626	21.391	18.664	18.392	19.618	20.824	16.937	16.301	22.204	41.833	124.322	242.421	69.342	54.980	44,2
2016	9.355	12.237	18.973	19.269	20.072	20.429	12.967	17.579	16.253	19.254	26.526	33.868	113.302	226.782	59.825	53.477	47,2
2017	9.634	12.307	18.186	17.990	19.623	17.494	19.913	17.646	17.929	21.264	24.903	36.546	115.147	233.435	58.994	56.153	48,8
2018	8.465	11.108	16.547	16.018	15.528	9.812	10.710	7.370	5.433	4.762	12.000	16.863	88.188	134.616	45.400	42.788	48,5
2019	3.394	5.670	10.593	6.555	5.890	6.664	2.529	4.702	6.684	9.079	10.373	19.671	41.295	91.804	21.799	19.496	47,2
2020	5.257	9.395	10.121	4.632	7.162	13.906	17.974	17.161	19.323	18.392	15.784	23.572	68.447	162.679	41.952	26.495	38,7
2021	8.370	13.755	20.071	13.113	11.596	17.471	11.538	13.698	13.733	16.234	17.234	18.684	95.914	175.497	51.141	44.773	46,7
2022	9.111	12.011	14.094	14.471	13.417	16.518	11.175	13.106	17.403	17.782	23.089	28.446	90.797	190.623	54.147	36.650	40,4
2023	13.606	22.241	24.703	20.281	24.138	21.028	26.543	20.323	17.822	18.756	23.616	32.237	152.540	265.294	78.894	73.646	48,3
2024	15.660	23.713	22.757	14.471	20.045	18.380	20.641						135.667	135.667	42.055	93.612	69,0



Aylar / Months	10 Yıl Ort / 10 Years Avr.	2024	%
1	3.420	3.577	4,6
2	4.015	6.152	53,2
3	5.541	7.115	28,4
4	5.198	4.567	-12,1
5	5.345	6.470	21,1
6	4.889	4.491	-8,1
TOPLAM / TOTAL	28.408	32.372	14,0

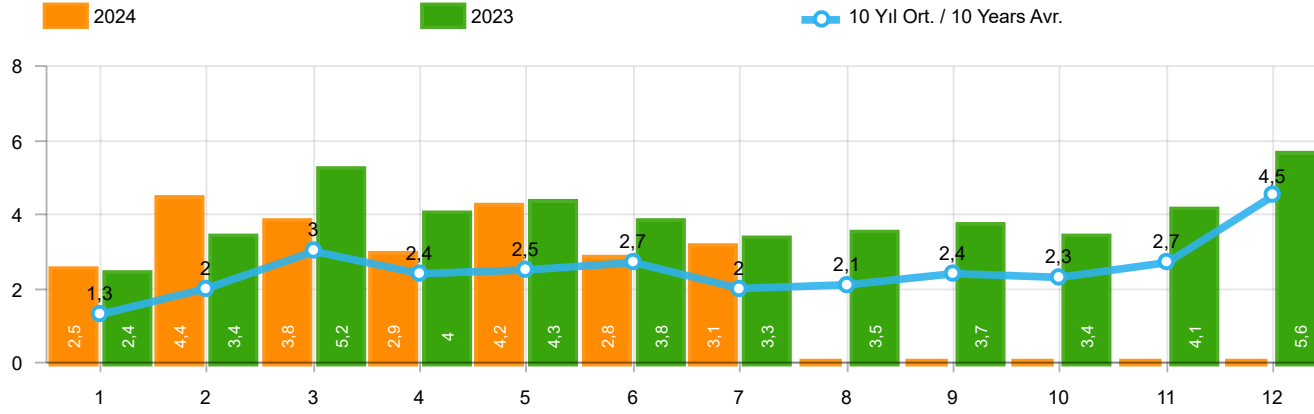
Yıl / Year	1	2	3	4	5	6	7	8	9	10	11	12	1-6 Toplam / Total	Toplam / Total
2014	2.169	3.512	4.476	4.905	5.094	5.028	4.233	4.920	5.619	5.743	6.250	7.409	25.184	59.358
2015	3.124	3.984	5.460	6.383	6.078	5.748	4.677	5.044	4.765	7.049	6.898	7.564	30.777	66.774
2016	3.739	4.731	7.067	6.546	6.575	5.543	3.833	5.134	4.945	7.372	7.090	7.603	34.201	70.178
2017	3.974	4.964	6.773	6.780	7.057	5.356	5.003	4.396	6.064	7.734	7.457	7.351	34.904	72.909
2018	4.362	4.179	5.925	5.216	4.584	3.146	3.654	2.587	3.541	3.698	3.578	3.886	27.412	48.356
2019	1.311	1.401	2.143	2.126	2.229	1.538	2.039	1.579	2.284	2.828	3.037	3.782	10.748	26.297
2020	2.425	2.778	3.771	2.606	3.244	4.173	3.727	3.974	4.928	5.466	5.831	6.221	18.997	49.144
2021	4.411	5.395	6.845	5.581	4.200	5.571	3.846	3.093	6.100	5.351	6.901	6.776	32.003	64.070
2022	3.152	3.636	4.988	5.408	5.873	6.520	3.985	4.740	6.265	6.542	7.514	8.319	29.577	66.942
2023	5.533	5.569	7.959	6.433	8.511	6.269	6.221	5.072	5.943	5.897	6.219	8.275	40.274	77.901
2024	3.577	6.152	7.115	4.567	6.470	4.491	-	-	-	-	-	-	32.372	32.372

Kaynak: TÜİK trafik kayıtları.

Rakamlar, son iki model yılına ait traktör tescillerinden oluşmaktadır.

Source: Turkish Statistical Institute – Traffic registrations

Data represents the last two model year's farm tractors registration figures

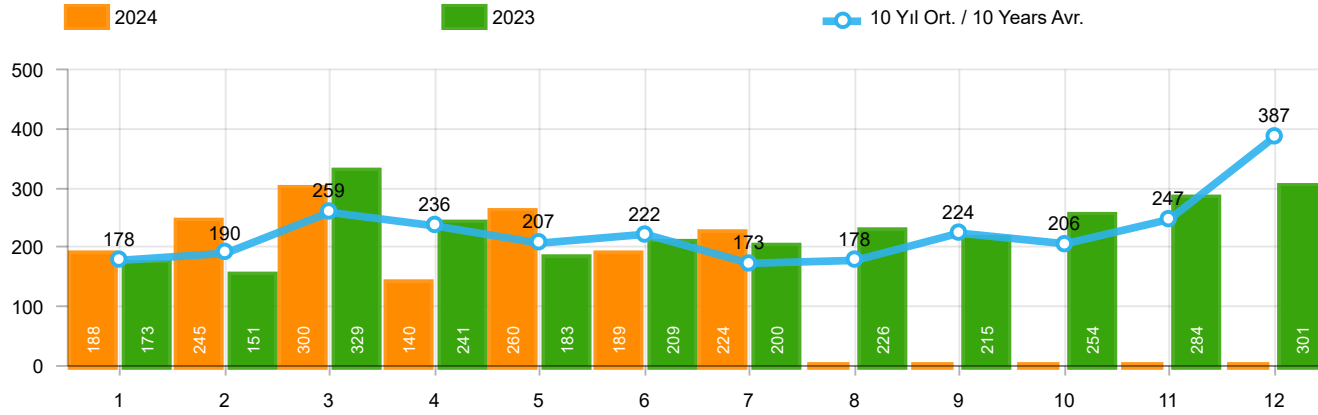


Aylar / Months	10 Yıl Ort / 10 Years Avr.	2024	%
1	1.337	2.452	83,5
2	2.009	4.352	116,6
3	3.047	3.817	25,3
4	2.396	2.941	22,8
5	2.542	4.232	66,5
6	2.714	2.800	3,2
7	2.001	3.053	52,6
TOPLAM / TOTAL	16.045	23.647	47,4

Yıl / Year	1	2	3	4	5	6	7	8	9	10	11	12	1-7 Toplam / Total	Toplam / Total	1-7 Yerli / Local	1-7 İthal / Import	İthal Oran / Import %
2014	1.522	2.065	3.094	3.224	3.727	3.726	2.578	2.783	3.708	2.858	3.384	6.869	19.936	39.538	14.616	5.320	26,7
2015	2.215	3.346	5.699	3.729	3.600	4.253	2.922	2.211	2.687	2.266	3.146	7.307	25.764	43.381	18.207	7.557	29,3
2016	1.167	1.648	2.515	2.319	2.711	2.623	984	1.796	1.438	2.238	2.485	3.127	13.967	25.051	9.526	4.441	31,8
2017	931	1.290	1.982	1.888	2.184	1.891	1.974	1.860	2.284	2.188	2.487	4.438	12.140	25.397	8.380	3.760	31,0
2018	1.237	1.552	2.630	2.328	1.909	1.272	1.235	603	653	488	905	1.695	12.163	16.507	7.180	4.983	41,0
2019	342	579	1.255	842	728	981	435	497	854	1.047	1.100	2.087	5.162	10.747	3.163	1.999	38,7
2020	682	1.475	1.290	628	921	1.570	1.809	1.835	2.660	2.239	2.537	3.358	8.375	21.004	5.373	3.002	35,8
2021	1.366	2.633	3.319	2.788	2.617	3.238	1.799	1.942	2.377	3.067	3.549	4.045	17.760	32.740	10.504	7.256	40,9
2022	1.498	2.148	3.520	2.260	2.701	3.764	2.939	3.617	3.811	3.574	3.777	6.214	18.830	39.823	12.013	6.817	36,2
2023	2.406	3.356	5.162	3.951	4.321	3.820	3.334	3.526	3.674	3.425	4.077	5.642	26.350	46.694	16.814	9.536	36,2
2024	2.452	4.352	3.817	2.941	4.232	2.800	3.053						23.647	23.647	15.232	8.415	35,6

Midibüs Pazarının Analizi(OCAK - TEMMUZ)

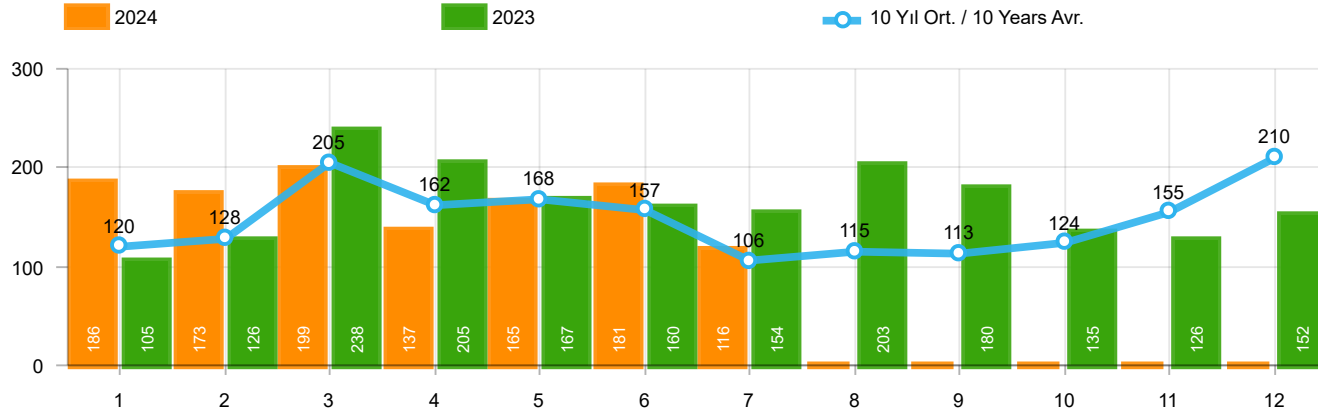
Midibus Market Analysis(January - July)



Aylar / Months	10 Yıl Ort / 10 Years Avr.	2024	%
1	178	188	5,6
2	190	245	28,9
3	259	300	15,7
4	236	140	-40,7
5	207	260	25,6
6	222	189	-14,7
7	173	224	29,4
TOPLAM / TOTAL	1.465	1.546	5,5

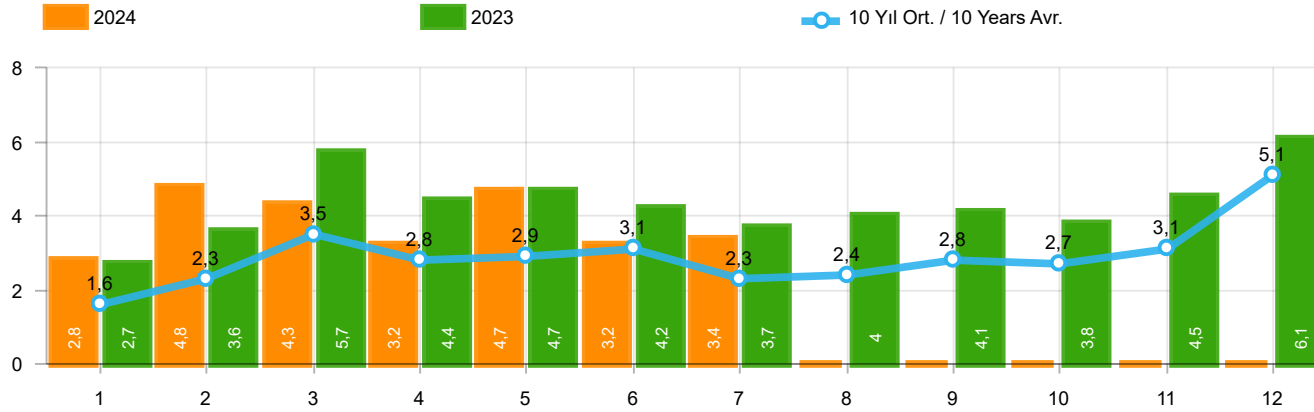
Yıl / Year	1	2	3	4	5	6	7	8	9	10	11	12	1-7 Toplam / Total	Toplam / Total
2014	360	394	384	333	294	258	216	229	395	220	266	653	2.239	4.002
2015	280	322	451	561	372	405	389	253	316	394	325	621	2.780	4.689
2016	309	158	251	302	261	196	139	220	241	230	354	431	1.616	3.092
2017	212	211	227	231	272	156	250	235	318	268	317	594	1.559	3.291
2018	134	142	410	296	207	315	180	146	160	155	184	425	1.684	2.754
2019	57	61	63	96	106	189	55	44	138	138	257	244	627	1.448
2020	104	221	128	35	97	134	111	123	77	71	82	137	830	1.320
2021	70	108	117	135	58	131	44	139	153	178	188	172	663	1.493
2022	82	132	234	131	220	224	147	169	227	154	217	292	1.170	2.229
2023	173	151	329	241	183	209	200	226	215	254	284	301	1.486	2.766
2024	188	245	300	140	260	189	224						1.546	1.546

Otobüs Pazarının Analizi(OCAK - TEMMUZ)
Otobus Market Analysis(January - July)



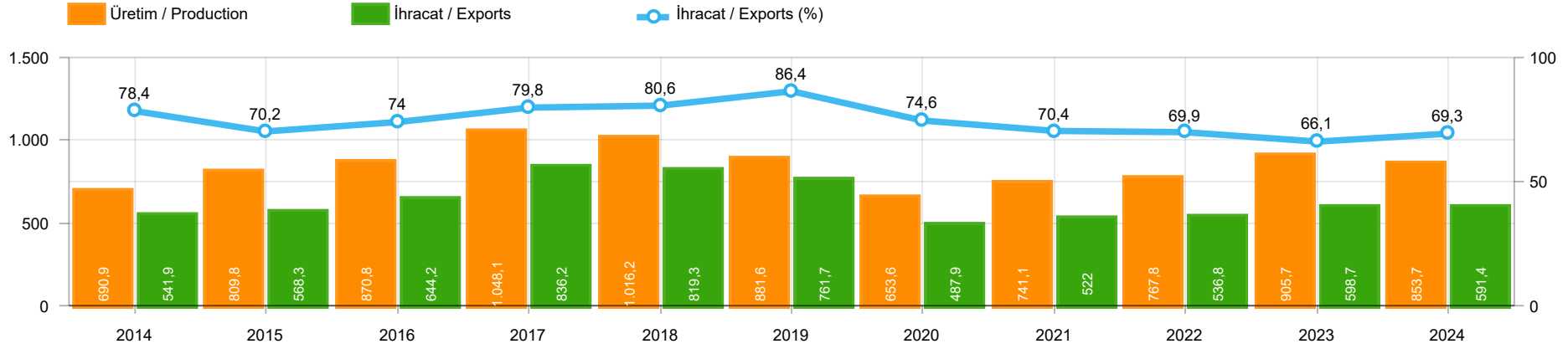
Aylar / Months	10 Yıl Ort / 10 Years Avr.	2024	%
1	120	186	55,6
2	128	173	34,9
3	205	199	-2,7
4	162	137	-15,6
5	168	165	-1,5
6	157	181	15,6
7	106	116	9,8
TOPLAM / TOTAL	1.044	1.157	10,8

Yıl / Year	1	2	3	4	5	6	7	8	9	10	11	12	1-7 Toplam / Total	Toplam / Total	1-7 Yerli / Local	1-7 İthal / Import	İthal Oran / Import %
2014	199	179	253	251	305	148	69	92	130	91	97	332	1.404	2.146	1.261	143	10,2
2015	146	222	313	290	290	255	211	203	153	171	359	363	1.727	2.976	1.661	66	3,8
2016	180	209	218	240	214	307	76	82	141	198	314	236	1.444	2.415	1.413	31	2,1
2017	174	119	167	124	188	115	206	187	92	231	109	235	1.093	1.947	1.081	12	1,1
2018	78	65	215	136	125	164	45	42	74	107	113	188	828	1.352	817	11	1,3
2019	75	54	112	35	97	41	25	45	84	28	42	54	439	692	439	-	-
2020	64	130	128	45	55	112	98	79	50	82	64	131	632	1.038	632	-	-
2021	144	80	182	140	101	116	40	38	46	73	134	173	803	1.267	803	-	-
2022	30	98	220	158	133	148	132	175	182	122	194	236	919	1.828	919	-	-
2023	105	126	238	205	167	160	154	203	180	135	126	152	1.155	1.951	1.155	-	-
2024	186	173	199	137	165	181	116						1.157	1.157	1.157	-	-



Aylar / Months	10 Yıl Ort / 10 Years Avr.	2024	%
1	1.634	2.826	72,9
2	2.327	4.770	104,9
3	3.511	4.316	22,9
4	2.794	3.218	15,2
5	2.916	4.657	59,7
6	3.092	3.170	2,5
7	2.280	3.393	48,8
TOPLAM / TOTAL	18.555	26.350	42,0

Yıl / Year	1	2	3	4	5	6	7	8	9	10	11	12	1-7 Toplam / Total	Toplam / Total	1-7 Yerli / Local	1-7 İthal / Import	İthal Oran / Import %
2014	2.081	2.638	3.731	3.808	4.326	4.132	2.863	3.104	4.233	3.169	3.747	7.854	23.579	45.686	18.116	5.463	23,2
2015	2.641	3.890	6.463	4.580	4.262	4.913	3.522	2.667	3.156	2.831	3.830	8.291	30.271	51.046	22.648	7.623	25,2
2016	1.656	2.015	2.984	2.861	3.186	3.126	1.199	2.098	1.820	2.666	3.153	3.794	17.027	30.558	12.555	4.472	26,3
2017	1.317	1.620	2.376	2.243	2.644	2.162	2.430	2.282	2.694	2.687	2.913	5.267	14.792	30.635	11.020	3.772	25,5
2018	1.449	1.759	3.255	2.760	2.241	1.751	1.460	791	887	750	1.202	2.308	14.675	20.613	9.681	4.994	34,0
2019	474	694	1.430	973	931	1.211	515	586	1.076	1.213	1.399	2.385	6.228	12.887	4.229	1.999	32,1
2020	850	1.826	1.546	708	1.073	1.816	2.018	2.037	2.787	2.392	2.683	3.626	9.837	23.362	6.835	3.002	30,5
2021	1.580	2.821	3.618	3.063	2.776	3.485	1.883	2.119	2.576	3.318	3.871	4.390	19.226	35.500	11.970	7.256	37,7
2022	1.610	2.378	3.974	2.549	3.054	4.136	3.218	3.961	4.220	3.850	4.188	6.742	20.919	43.880	14.102	6.817	32,6
2023	2.684	3.633	5.729	4.397	4.671	4.189	3.688	3.955	4.069	3.814	4.487	6.095	28.991	51.411	19.455	9.536	32,9
2024	2.826	4.770	4.316	3.218	4.657	3.170	3.393						26.350	26.350	17.935	8.415	31,9



	2014	2015	2016	2017	2018	2019	2020	2021	2022	2023	2024
İhracat/Export	541.857	568.275	644.221	836.175	819.270	761.663	487.868	521.967	536.754	598.671	591.397
Üretim/Production	690.902	809.832	870.818	1.048.131	1.016.213	881.552	653.594	741.094	767.843	905.666	853.704
İhracat/Exports (%)	78,4	70,2	74	79,8	80,6	86,4	74,6	70,4	69,9	66,1	69,3

Taşıt Araçları İhracatı (2022 - 2024)
Motor Vehicle Exports (2022 - 2024)

SEKTÖR / SECTOR	2022	2023	1/7-2023	1/7-2024	2024/2023 %
OTOMOBİL / Pass.Car	571.218	663.090	375.669	380.383	1,3
OTOMOBİL TOPLAM / Pass. Car Total	571.218	663.090	375.669	380.383	1,3
KAMYON / Truck	20.123	21.566	11.790	6.518	-44,7
KAMYONET / Pick Up	335.148	291.052	169.607	165.121	-2,6
OTOBÜS / Bus	6.579	9.447	4.828	5.071	5,0
MİNİBÜS / Minibus	36.016	31.421	24.055	23.572	-2,0
MİDİBÜS / Midibus	1.040	1.671	850	1.200	41,2
TİCARİ ARAÇLAR TOPLAM / Commercial Vehicle Total	398.906	355.157	211.130	201.482	-4,6
TAŞIT ARAÇLARI TOPLAM / Motor Vehicles Total	970.124	1.018.247	586.799	581.865	-0,8
TRAKTÖR / F.Tractor	18.154	16.752	11.872	9.532	-19,7
TRAKTÖR TOPLAM / F.Tractor Total	18.154	16.752	11.872	9.532	-19,7
GENEL TOPLAM / GRAND TOTAL	988.278	1.034.999	598.671	591.397	-1,2

Üretici Bazında İhracat (adet)
Exports by Manufacturer (unit)

Üreticiler / Manufacturers	2022	2023	1-7 / 2023	1-7 / 2024
A.I.O.S.	911	1.102	592	722
FORD OTOSAN	297.828	311.104	184.473	181.404
HATTAT TRAKTÖR	1.059	736	383	187
HYUNDAI ASSAN	176.664	205.200	122.247	123.343
KARSAN	301	428	136	172
M. BENZ TÜRK	15.674	18.062	9.472	5.738
MAN TÜRKİYE	1.786	2.933	1.433	1.637
OTOKAR	1.506	2.584	1.152	1.271
OYAK RENAULT	176.844	230.397	125.653	129.614
TEMSA	587	1.161	572	910
TOFAŞ	121.477	60.479	32.989	26.980
TOYOTA	176.546	184.797	108.080	110.074
TÜRK TRAKTÖR	17.095	16.016	11.489	9.345
GENEL TOPLAM / Grand Total	988.278	1.034.999	598.671	591.397

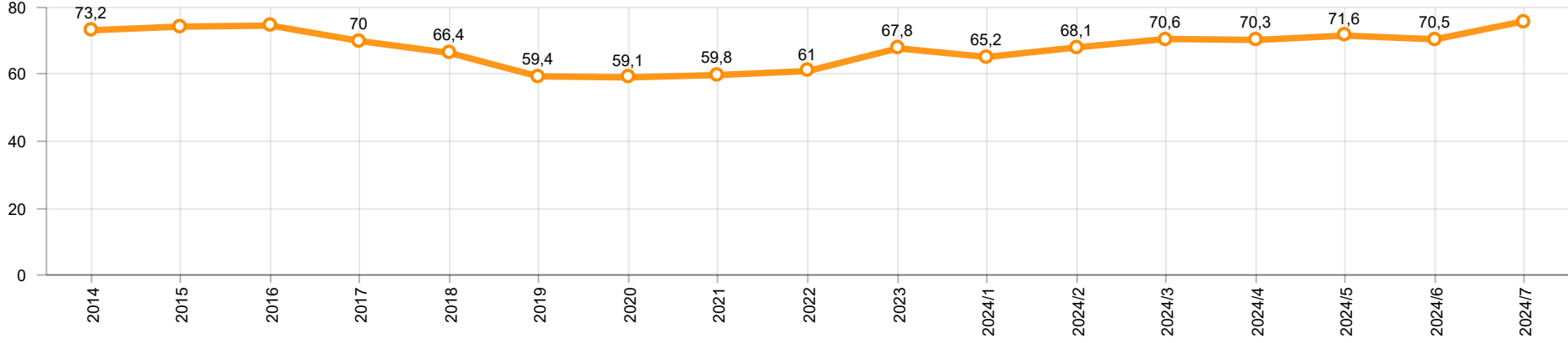
Otomotiv Ana ve Yan Sanayii İhracatı (ABD \$)
CBU and CKD Exports - \$

Sektör / Sector	2022	2023	OCAK - TEMMUZ / January - July 2023	OCAK - TEMMUZ / January - July 2024	2024 / 2023 %
Toplam Yan Sanayi / Total Component Industry	12.826.712.028,21	14.085.757.341,4	8.202.668.237,18	8.446.420.198,98	3,0
İç ve Dış Lastik / Tyres	1.766.728.479,75	1.724.883.653,44	1.041.001.185,9	934.195.216,3	-10,3
Emniyet Camı / Safety Glasses	234.400.901,69	263.108.396,94	151.548.973,32	159.050.662,12	5,0
Motor / Engine	233.029.231,53	253.590.231,89	142.933.328,06	178.060.742,64	24,6
Akümülatör / Batteries	547.705.920,77	482.673.727,33	261.011.490,19	313.841.369,07	20,2
Diğer Aksam ve Parça / Spare Parts&Components	10.044.847.494,47	11.361.501.331,8	6.606.173.259,71	6.861.272.208,85	3,9
Toplam Ana Sanayi / Total Vehicle Industry	18.672.498.545,28	21.611.804.375,57	12.254.349.640,7	12.206.579.961,98	-0,4
Otobüs / Bus	1.199.777.172,44	1.786.354.748,27	889.775.405,71	1.110.119.864,45	24,8
Midibüs-Minibüs / Midibus-Minibus	162.966.486,11	343.838.660,91	165.093.078,76	248.375.950,72	50,4
Otomobil / P.Cars	9.069.545.936,14	10.934.400.136,75	6.212.640.213,16	6.174.683.891,8	-0,6
Kamyon-Kamyonet / Truck-Pick Up&Van	5.633.409.584,55	5.647.667.250,84	3.353.120.578,9	3.521.799.548,65	5,0
Römork ve Yarı Römork / Trailer-Semi Trailer	762.960.672,12	778.263.797,44	440.087.235,4	396.498.789,13	-9,9
Çekici / Tractor	1.266.205.170,15	1.527.261.816,27	837.565.368,66	411.731.335,19	-50,8
Tarım Traktörü / Farm Tractor	577.633.523,77	594.017.965,09	356.067.760,11	343.370.582,04	-3,6
Toplam / Total	31.499.210.573,49	35.697.561.716,97	20.457.017.877,88	20.653.000.160,96	1,0

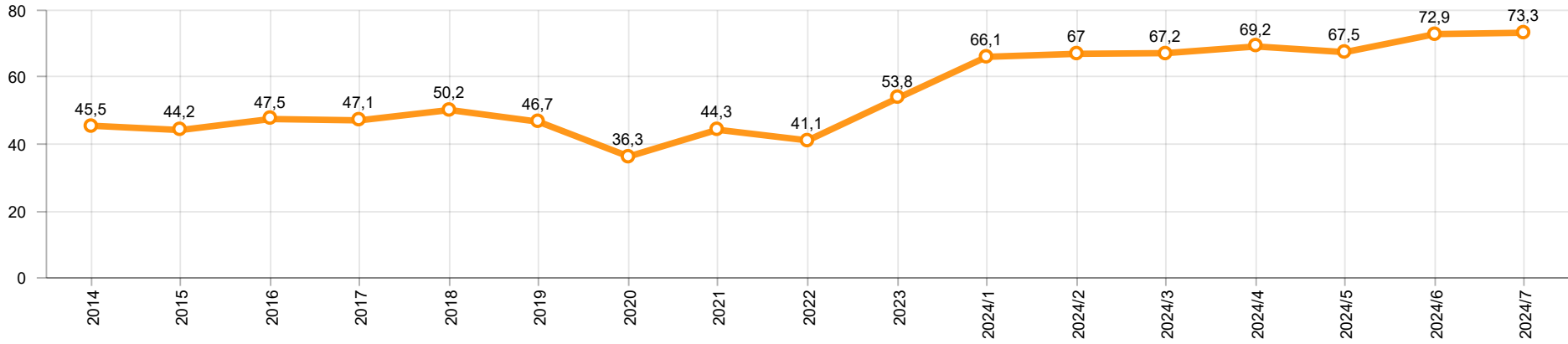
Kaynak: Uludağ İhracatçı Birlikleri . ÜİB tarafından OSD için özel olarak analiz edilen Otomotiv İhracatı kapsamında; ÜİB Türkiye Geneli Otomotiv Endüstrisi sınıflandırmasına kıyasla “Römork ve Yarı Römork” , “Tarım Traktörü” verileri dahil edilmekte; “Kullanılmış Araçlar” , “İki Tekerlekli Taşıtlar” , “Demiryolu Taşıtları” hariç tutulmaktadır.

Source: Uludağ Exporters Association – Special Analyze for OSD.Compared to Turkish General Automotive Industry classification, this special analyze includes; farms tractors, trailers and semi-trailers, does not include; used vehicles, two-wheeled vehicles and railway vehicles

Otomobil Pazarında İthalatın Payı (%)
Import Share in P.Car Market (%)



Hafif Ticari Araçlar Pazarında İthalatın Payı (%)
Import Share in LCV Market (%)



Araç Tipleri / Vehicle Types	1	2	3	4	5	6	7	8	9	10	11	12	Toplam / Total
OTOMOBİL - Pass.Car	44.403	55.795	54.120	51.868	63.162	51.287	59.748						380.383
KAMYON - H. Truck	1.721	1.126	960	609	492	954	562						6.424
K.KAMYON - L. Truck	7	6	7	12	23	30	9						94
KAMYONET - Pick Up	25.965	31.219	32.663	19.746	16.139	18.250	21.139						165.121
OTOBÜS - Bus	560	926	942	763	855	556	469						5.071
MİNİBÜS - Minibus	2.310	160	3.071	3.065	4.251	4.408	6.307						23.572
MİDİBÜS - Midibus	112	222	170	141	240	215	100						1.200
TİCARİ ARAÇLAR TOPLAMI - CV Total	30.675	33.659	37.813	24.336	22.000	24.413	28.586						201.482
TAŞIT ARAÇLARI TOPLAMI - MV Total	75.078	89.454	91.933	76.204	85.162	75.700	88.334						581.865
TRAKTÖR - F.Tractor	1.604	1.543	1.415	1.215	1.512	1.043	1.200						9.532
GENEL TOPLAM - Grand Total	76.682	90.997	93.348	77.419	86.674	76.743	89.534						591.397

Otomobil / P.Car

Firmalar / Firms	1	2	3	4	5	6	7	8	9	10	11	12	Toplam / Total
FORD OTOSAN	-	-	-	-	-	-	-	-	-	-	-	-	-
HYUNDAI ASSAN	19.483	17.800	19.600	13.820	19.755	14.170	18.715	-	-	-	-	-	123.343
OYAK RENAULT	9.804	20.121	19.145	17.165	23.550	21.598	18.231	-	-	-	-	-	129.614
TOFAŞ	2.068	3.654	4.716	3.527	2.424	113	850	-	-	-	-	-	17.352
TOYOTA	13.048	14.220	10.659	17.356	17.433	15.406	21.952	-	-	-	-	-	110.074
TOPLAM - Total	44.403	55.795	54.120	51.868	63.162	51.287	59.748	-	-	-	-	-	380.383

Kamyonet / Pick-up

Firmalar / Firms	1	2	3	4	5	6	7	8	9	10	11	12	Toplam / Total
A.I.O.S.	-	-	-	-	-	-	-	-	-	-	-	-	-
FORD OTOSAN	24.078	28.493	30.946	18.933	14.987	16.978	21.008	-	-	-	-	-	155.423
KARSAN	-	-	-	-	-	-	-	-	-	-	-	-	-
OTOKAR	-	-	-	-	70	-	-	-	-	-	-	-	70
TOFAŞ	1.887	2.726	1.717	813	1.082	1.272	131	-	-	-	-	-	9.628
TOPLAM - Total	25.965	31.219	32.663	19.746	16.139	18.250	21.139	-	-	-	-	-	165.121

Minibüs / Minibus

Firmalar / Firms	1	2	3	4	5	6	7	8	9	10	11	12	Toplam / Total
FORD OTOSAN	2.302	140	3.070	3.039	4.225	4.408	6.307	-	-	-	-	-	23.491
KARSAN	8	20	1	26	26	-	-	-	-	-	-	-	81
TOPLAM - Total	2.310	160	3.071	3.065	4.251	4.408	6.307	-	-	-	-	-	23.572

Kamyon / Truck

Firmalar / Firms	1	2	3	4	5	6	7	8	9	10	11	12	Toplam / Total
A.I.O.S.	-	-	-	-	-	-	-	-	-	-	-	-	-
FORD OTOSAN	545	194	203	214	397	781	156	-	-	-	-	-	2.490
KARSAN	-	-	-	-	-	-	-	-	-	-	-	-	-
M. BENZ TÜRK	1.176	932	757	395	95	173	406	-	-	-	-	-	3.934
OTOKAR	1	-	3	8	5	17	-	-	-	-	-	-	34
TEMSA	6	6	4	4	18	13	9	-	-	-	-	-	60
TOPLAM - Total	1.728	1.132	967	621	515	984	571	-	-	-	-	-	6.518

Midibüs / Midibus

Firmalar / Firms	1	2	3	4	5	6	7	8	9	10	11	12	Toplam / Total
A.I.O.S.	66	99	48	55	106	91	48	-	-	-	-	-	513
KARSAN	13	9	10	18	13	3	11	-	-	-	-	-	77
OTOKAR	17	59	60	20	70	78	10	-	-	-	-	-	314
TEMSA	16	55	52	48	51	43	31	-	-	-	-	-	296
TOPLAM - Total	112	222	170	141	240	215	100	-	-	-	-	-	1.200

Otobüs / Bus

Firmalar / Firms	1	2	3	4	5	6	7	8	9	10	11	12	Toplam / Total
A.I.O.S.	14	26	48	17	18	65	21	-	-	-	-	-	209
KARSAN	-	-	-	-	11	3	-	-	-	-	-	-	14
M. BENZ TÜRK	247	257	265	253	326	198	258	-	-	-	-	-	1.804
MAN TÜRKİYE	218	387	404	248	257	118	5	-	-	-	-	-	1.637
OTOKAR	44	135	139	152	147	127	109	-	-	-	-	-	853
TEMSA	37	121	86	93	96	45	76	-	-	-	-	-	554
TOPLAM - Total	560	926	942	763	855	556	469	-	-	-	-	-	5.071

Traktör / F.Tractor

Firmalar / Firms	1	2	3	4	5	6	7	8	9	10	11	12	Toplam / Total
HATTAT TRAKTÖR	53	38	11	15	12	18	40	-	-	-	-	-	187
TÜRK TRAKTÖR	1.551	1.505	1.404	1.200	1.500	1.025	1.160	-	-	-	-	-	9.345
TOPLAM - Total	1.604	1.543	1.415	1.215	1.512	1.043	1.200	-	-	-	-	-	9.532

Firmalar / Firms	2023 Toplam / Total	1	2	3	4	5	6	7	8	9	10	11	12	Toplam / Total
	1.149	458	-	-	-	-	-	-	-	-	-	-	-	458
Alfa Romeo	2.097	106	106	111	40	45	32	57	-	-	-	-	-	497
ALPINE	-	-	-	-	5	2	-	-	-	-	-	-	-	7
Aston Martin	23	2	2	1	2	-	1	-	-	-	-	-	-	8
Audi	22.878	1.265	1.560	1.370	884	1.274	1.078	1.607	-	-	-	-	-	9.038
Bentley	36	1	2	9	2	3	2	1	-	-	-	-	-	20
BMW	23.801	666	1.470	1.794	1.388	2.172	1.665	1.510	-	-	-	-	-	10.665
BYD	839	155	220	175	312	203	361	235	-	-	-	-	-	1.661
Chery	40.590	4.450	5.006	6.011	5.315	6.208	7.511	6.638	-	-	-	-	-	41.139
Citroen	45.395	1.948	5.664	4.990	2.360	2.911	5.505	3.117	-	-	-	-	-	26.495
CUPRA	10.165	368	636	1.037	461	744	863	872	-	-	-	-	-	4.981
Dacia	41.339	3.435	3.938	3.526	2.356	3.385	3.060	2.240	-	-	-	-	-	21.940
DFSK	293	21	16	49	44	30	44	24	99	-	-	-	-	283
DS	3.511	403	209	189	78	127	121	117	-	-	-	-	-	1.244
Ferrari	25	2	1	2	3	3	1	2	-	-	-	-	-	14
Fiat	1.205	40	72	91	36	55	87	106	-	-	-	-	-	487
Ford	29.597	3.062	1.938	3.282	1.867	2.568	2.514	2.015	-	-	-	-	-	17.246
Honda	21.322	842	2.130	2.964	1.331	3.110	3.170	1.612	-	-	-	-	-	15.159
HONGQI	19	2	1	1	1	2	2	1	-	-	-	-	-	10
Hyundai	13.088	1.064	1.369	1.726	1.032	1.319	962	1.538	-	-	-	-	-	9.010
Jaguar	121	5	13	6	6	5	2	1	-	-	-	-	-	38
Jeep	3.622	405	377	278	121	204	298	255	-	-	-	-	-	1.938
KG MOBILITY	-	458	1.101	772	1.081	688	602	872	-	-	-	-	-	5.574
Kia	20.629	820	1.378	1.717	688	1.079	1.047	1.327	-	-	-	-	-	8.056
Lamborghini	22	2	3	1	1	2	1	1	-	-	-	-	-	11
Land Rover	2.451	143	205	202	200	291	287	296	-	-	-	-	-	1.624
LEAPMOTOR	355	22	17	19	23	17	22	16	-	-	-	-	-	136
Lexus	507	14	33	98	85	52	30	60	-	-	-	-	-	372
Maserati	533	12	23	33	21	22	20	30	-	-	-	-	-	161
Mercedes-Benz	24.646	1.718	2.135	2.697	1.772	2.160	2.189	2.188	-	-	-	-	-	14.859
MG	14.458	971	1.745	3.233	1.236	2.293	1.596	1.517	-	-	-	-	-	12.591
Mini	2.633	97	154	116	111	251	367	467	-	-	-	-	-	1.563
Mitsubishi	208	1	5	6	6	10	11	13	-	-	-	-	-	52
NETA	-	-	24	29	-	-	-	-	-	-	-	-	-	53
Nissan	21.278	2.057	1.670	1.300	1.733	1.779	1.817	2.544	-	-	-	-	-	12.900
Opel	61.057	1.731	4.919	4.579	3.341	3.078	3.547	3.567	-	-	-	-	-	24.762
Peugeot	58.549	3.020	4.333	5.627	3.777	4.025	5.118	3.645	-	-	-	-	-	29.545
Porsche	1.158	78	93	117	63	99	61	61	-	-	-	-	-	572
Renault	24.023	1.512	1.736	2.808	1.268	1.679	1.665	1.645	-	-	-	-	-	12.313
Seat	10.929	381	769	1.133	571	830	1.368	1.722	-	-	-	-	-	6.774
SERES	2	1	-	-	-	-	-	-	-	-	-	-	-	1
Skoda	35.041	2.718	4.065	2.797	2.125	4.162	4.352	3.459	-	-	-	-	-	23.678
SKYWELL	2.541	33	25	38	46	25	33	27	-	-	-	-	-	227
Subaru	966	15	23	45	43	25	30	33	-	-	-	-	-	214
Suzuki	5.378	602	525	915	520	975	648	497	-	-	-	-	-	4.682
TESLA	6.650	220	75	80	27	10	2.670	420	-	-	-	-	-	3.502
Toyota	12.418	1.636	638	531	514	435	1.051	1.261	-	-	-	-	-	6.066
Volkswagen	71.093	4.580	4.188	3.561	5.272	8.036	5.043	7.152	-	-	-	-	-	37.832
Volvo	11.646	665	1.397	1.400	1.044	1.100	1.138	870	-	-	-	-	-	7.614
GENEL TOPLAM - Grand Total	650.489	42.207	56.009	61.466	43.212	57.493	61.972	55.713	-	-	-	-	-	378.072

Firmalar / Firms	2023 Toplam / Total	1	2	3	4	5	6	7	8	9	10	11	12	Toplam / Total
	1.068	212	-	-	-	-	-	-	-	-	-	-	-	212
Citroen	17.758	1.021	2.066	1.795	273	1.000	398	1.157	-	-	-	-	-	7.710
DFSK	5	14	18	52	46	56	68	65	-	-	-	-	-	319
FARIZON	-	-	-	-	-	3	-	-	-	-	-	-	-	3
Fiat	15.489	1.512	2.073	1.700	1.137	995	1.093	2.161	-	-	-	-	-	10.671
Ford	2.268	577	1.478	1.874	2.477	3.463	2.984	2.972	-	-	-	-	-	15.825
Hyundai	5.882	581	385	445	655	557	708	755	-	-	-	-	-	4.086
Isuzu	1.645	89	144	101	68	124	113	248	-	-	-	-	-	887
Iveco	2.927	137	275	203	266	306	324	317	-	-	-	-	-	1.828
KG MOBILITY	-	212	179	234	299	367	308	75	-	-	-	-	-	1.674
Kia	2.710	11	185	855	533	907	901	526	-	-	-	-	-	3.918
Land Rover	645	-	-	-	1	-	-	-	-	-	-	-	-	1
MAXUS	112	20	20	23	105	22	5	25	-	-	-	-	-	220
Mercedes-Benz	9.294	392	950	1.064	571	719	692	455	-	-	-	-	-	4.843
Opel	12.808	588	1.407	1.363	279	674	1.222	1.316	-	-	-	-	-	6.849
Peugeot	20.083	936	1.809	1.203	195	1.268	1.062	1.786	-	-	-	-	-	8.259
Renault	18.154	1.132	1.435	1.472	1.245	1.136	1.662	1.322	-	-	-	-	-	9.404
Toyota	13.656	1.192	922	1.138	342	185	166	338	-	-	-	-	-	4.283
Volkswagen	17.683	1.936	2.542	1.780	1.515	1.758	1.696	1.605	-	-	-	-	-	12.832
GENEL TOPLAM - Grand Total	142.350	10.562	15.888	15.302	10.007	13.540	13.402	15.123	-	-	-	-	-	93.824