



OTOMOTİV SANAYİİ DERNEĐİ
AUTOMOTIVE MANUFACTURERS ASSOCIATION

OTOMOTİV SEKTÖRÜ AYLIK DEĐERLENDİRME RAPORU HAZİRAN 2022

AUTOMOTIVE INDUSTRY MONTHLY REPORT
June 2022

OSD "OICA" Üyesidir © O I C A OSD is a Member of "OICA"

	6 - 2021	6 - 2022	%	1 - 6 / 2021	1 - 6 / 2022	%	7/2020 - 6/2021	7/2021 - 6/2022	%
Otomobil Üretimi/P.Cars Production	62.441	86.585	38,7	416.021	382.947	-8,0	908.667	749.761	-17,5
Toplam Üretim/Total Production	107.235	135.424	26,3	639.677	649.311	1,5	1.418.826	1.285.774	-9,4
Otomobil Pazarı/P.Cars Market	62.348	64.134	2,9	310.325	278.282	-10,3	716.839	529.810	-26,1
Toplam Pazar/Total Market	83.304	84.866	1,9	412.044	375.683	-8,8	946.307	736.489	-22,2
Otomobil İthalatı/P.Cars Import	35.894	35.156	-2,1	185.762	169.807	-8,6	421.975	319.941	-24,2
Toplam İthalat/Total Import	45.510	43.313	-4,8	232.053	207.662	-10,5	512.440	401.342	-21,7
Otomobil İhracatı/P.Cars Export	40.509	55.162	36,2	297.130	271.054	-8,8	612.109	539.294	-11,9
Toplam İhracat/Total Export	70.460	86.623	22,9	461.509	466.995	1,2	975.871	942.501	-3,4
Otomobil İhracatı(\$)/P.Cars Export (\$)	595.953.545,14	865.559.976,98	45,2	4.822.086.500	4.482.757.428	-7,0	9.890.571.934	8.932.743.835	-9,7
Toplam İhracat(\$)/Total Export (\$)*	2.406.691.457,23	2.817.396.342,5	17,1	14.698.285.753	15.477.818.765	5,3	29.666.802.457	30.652.441.812	3,3

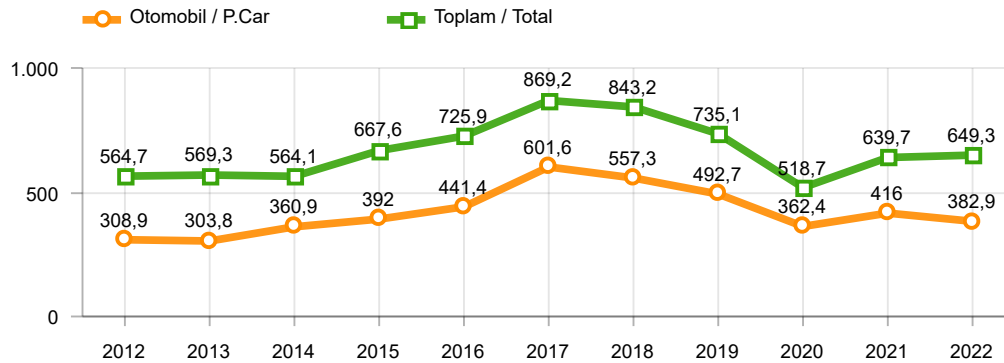
Parametreler/Parameters	6 - 2021	6 - 2022	%	1 - 6 / 2021	1 - 6 / 2022	%	7/2020 - 6/2021	7/2021 - 6/2022	%
ÜFE / PPI	4,0	6,8	-	22,0	61,7	-	25,4	88,8	-
TÜFE / CPI	1,9	5,0	-	8,5	42,4	-	14,6	44,5	-
Sanayi Endeksi / Industry Index	3,8	6,3	-	22,8	52,5	-	27,4	82,9	-
Dolar \$ ** (1 birim)	8,6	17,0	97,3	7,9	14,8	88,6	7,7	12,3	59,9
Euro € ** (1 birim)	10,4	17,9	73,2	9,5	16,2	70,9	9,2	13,8	49,9
Japon Yeni ¥ ** (100 birim)	7,8	12,6	62,7	7,3	12,0	65,3	7,2	10,3	43,9

*Toplam Sanayi / Total Industry Including Components

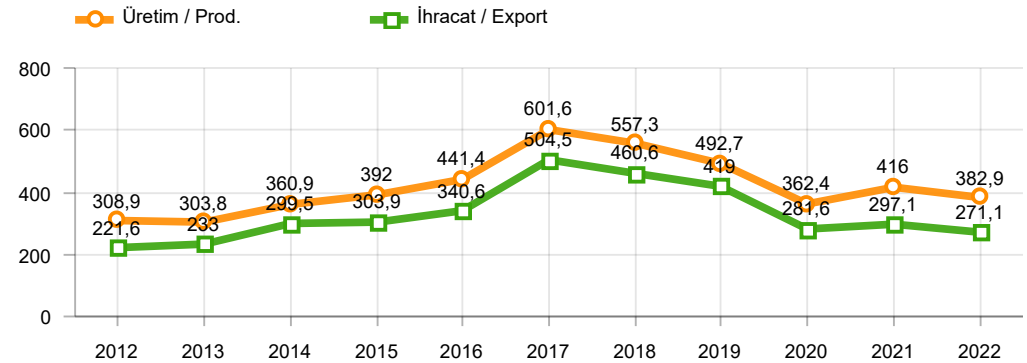
** Ortalama Değerler / Average Values

Araç Tipleri / Types	6 / 2021	6 / 2022	6 % Değişim	1-6 / 2021	1-6 / 2022	1-6 % Değişim
OTOMOBİL / Pass.Car	62.441	86.585	38,7	416.021	382.947	-8,0
OTOMOBİL Toplam / Pass.Car Total	62.441	86.585	38,7	416.021	382.947	-8,0
B.KAMYON / H. Truck	2.492	3.693	48,2	16.130	19.884	23,3
K.KAMYON / L. Truck	379	470	24,0	1.899	2.437	28,3
KAMYONET / Pick Up	37.677	38.866	3,2	182.484	213.977	17,3
OTOBÜS / Bus	612	884	44,4	2.613	3.302	26,4
MİNİBÜS / Minibus	3.413	4.594	34,6	19.660	25.287	28,6
MİDİBÜS / Midibus	221	332	50,2	870	1.477	69,8
TİCARİ ARAÇLAR Toplam / Commercial Vehicles Total	44.794	48.839	9,0	223.656	266.364	19,1
TAŞIT ARAÇLARI Toplam / Motor Vehicles Total	107.235	135.424	26,3	639.677	649.311	1,5
TRAKTÖR / F.Tractor	5.676	4.480	-21,1	29.748	24.680	-17,0
TRAKTÖR Toplam / F.Tractor Total	5.676	4.480	-21,1	29.748	24.680	-17,0
GENEL TOPLAM / Grand Total	112.911	139.904	23,9	669.425	673.991	0,7

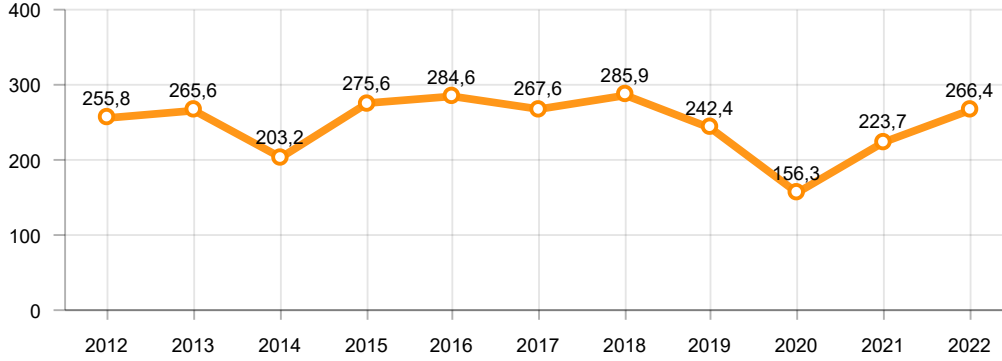
Toplam Üretim ve Otomobil Üretimi (x1000)(OCAK - HAZİRAN)
Total & P.Cars Production (x1000)(January - June)



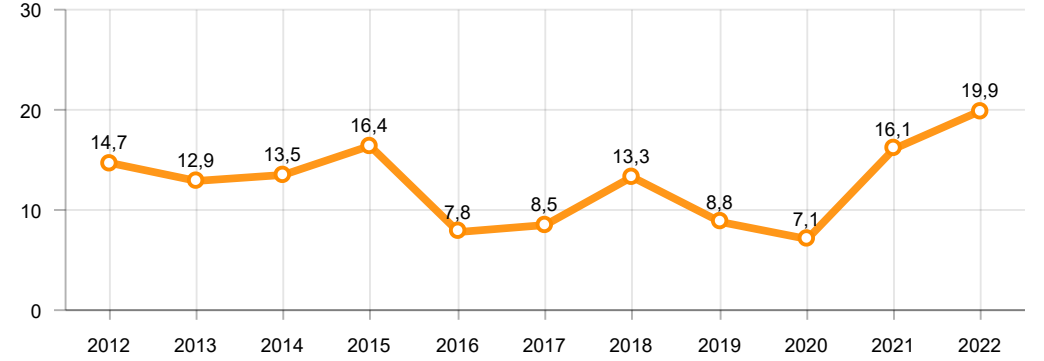
Otomobil Üretimi ve İhracat (x1000)(OCAK - HAZİRAN)
P.Cars Production & Exports (x1000)(January - June)



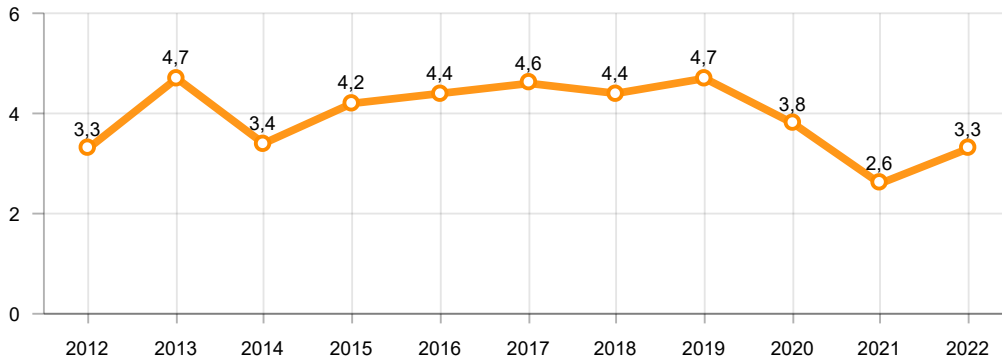
Ticari Araç Üretimi (x1000)(OCAK - HAZİRAN)
Commercial Vehicle Production (x1000)(January - June)



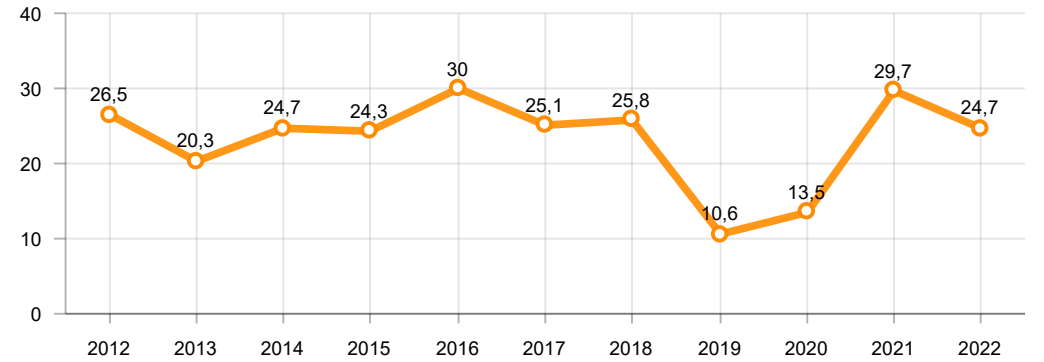
Büyük Kamyon Üretimi (x1000)(OCAK - HAZİRAN)
Heavy Truck Production (x1000)(January - June)

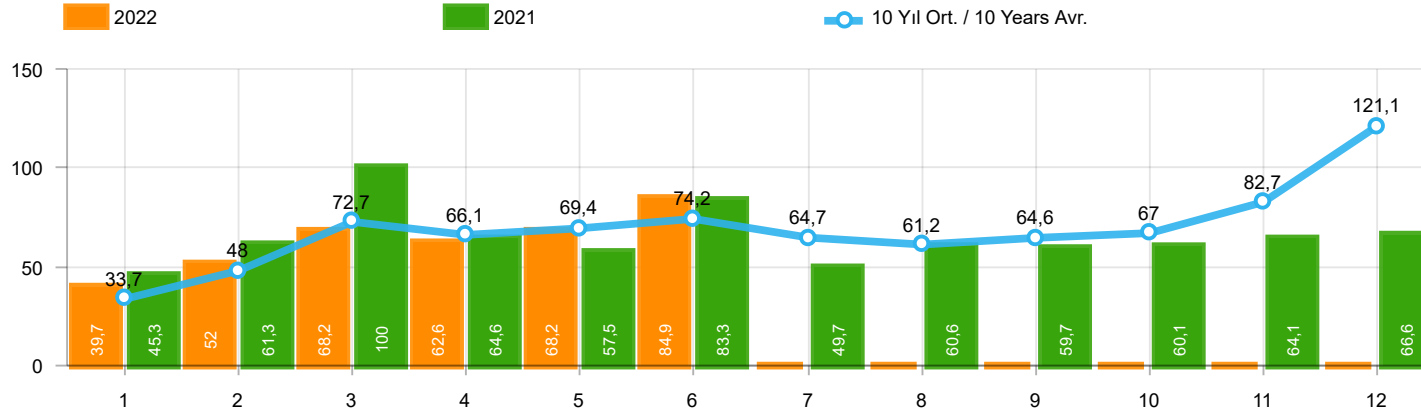


Otobüs Üretimi (x1000)(OCAK - HAZİRAN)
Bus Production (x1000)(January - June)



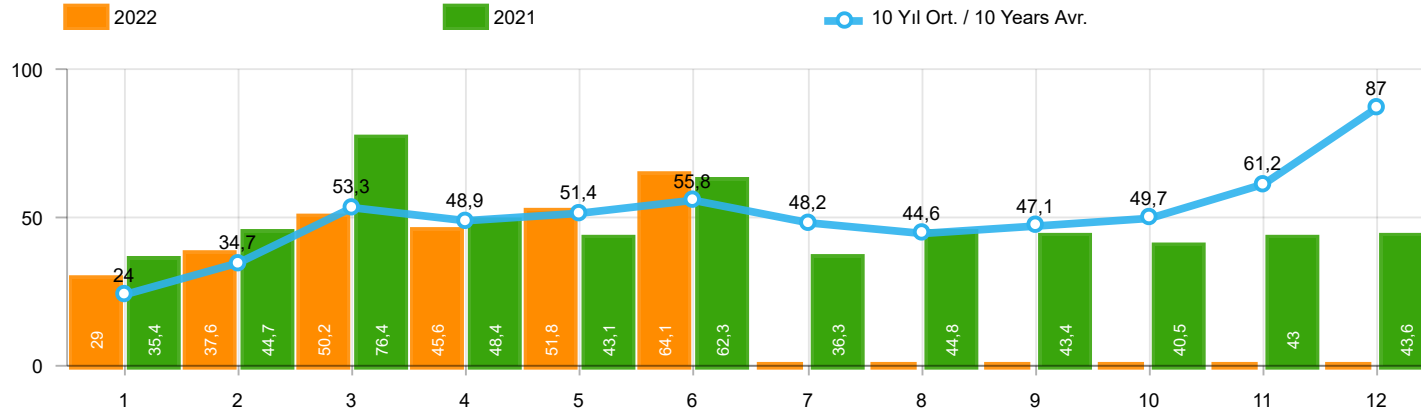
Traktör Üretimi (x1000)(OCAK - HAZİRAN)
F. Tractor Production (x1000)(January - June)





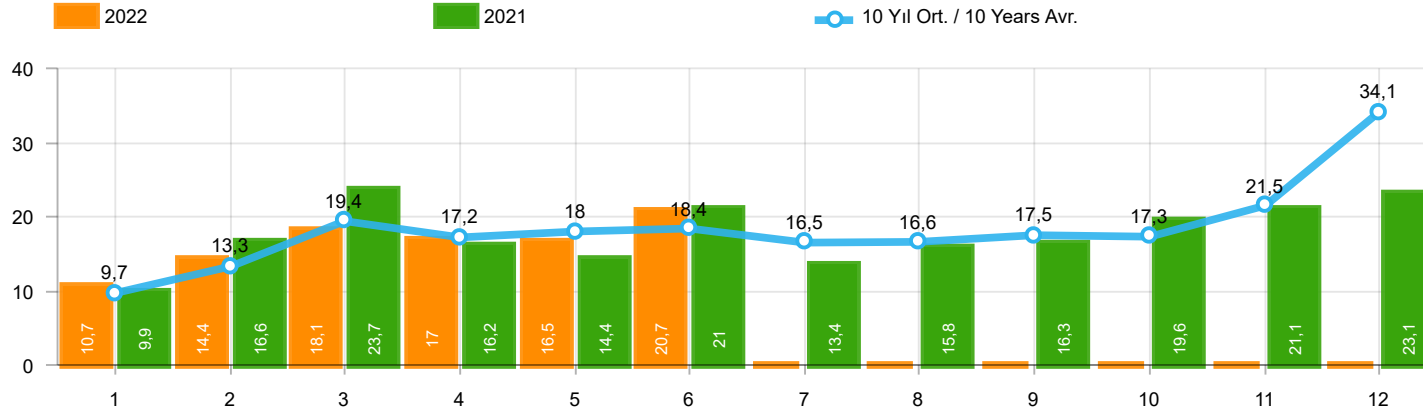
Aylar / Months	10 Yıl Ort / 10 Years Avr.	2022	%
1	33.693	39.741	18,0
2	48.018	52.030	8,4
3	72.722	68.241	-6,2
4	66.064	62.584	-5,3
5	69.419	68.221	-1,7
6	74.178	84.866	14,4
TOPLAM/TOTAL	364.096	375.683	3,2

Yıl / Year	1	2	3	4	5	6	7	8	9	10	11	12	1-6 Toplam / Total	Toplam / Total	1-6 Yerli / Local	1-6 İthal / Import	İthal Oran / Import %
2012	31.552	44.138	69.242	66.559	75.195	75.108	65.444	60.982	73.501	62.933	75.203	121.442	361.794	821.299	140.168	221.626	61,3
2013	37.563	51.133	72.943	77.265	85.835	78.043	75.152	67.662	71.388	60.690	83.470	136.048	402.782	897.192	126.686	276.096	68,5
2014	34.751	37.659	51.312	57.113	62.447	64.295	62.770	63.303	70.764	69.742	84.368	154.843	307.577	813.367	103.125	204.452	66,5
2015	37.256	59.221	89.765	96.182	85.804	91.071	87.358	85.244	67.181	67.086	88.431	164.464	459.299	1.019.063	163.138	296.161	64,5
2016	34.369	54.840	85.932	87.748	97.090	94.666	59.732	73.654	69.413	85.666	125.462	145.706	454.645	1.014.278	152.586	302.059	66,4
2017	36.640	48.585	76.178	78.231	88.066	85.820	84.727	74.818	74.046	94.439	103.772	141.507	413.520	986.829	153.331	260.189	62,9
2018	36.525	48.768	79.600	73.886	74.996	52.788	54.194	35.137	23.915	22.321	59.406	80.014	366.563	641.550	141.241	225.322	61,5
2019	14.847	25.569	50.651	31.944	33.947	43.899	18.442	26.832	43.068	50.288	59.575	92.885	200.857	491.947	92.662	108.195	53,9
2020	28.123	48.948	51.554	27.165	33.308	72.789	89.419	63.570	93.406	97.125	82.824	107.919	261.887	796.150	115.283	146.604	56,0
2021	45.308	61.325	100.046	64.551	57.510	83.304	49.732	60.573	59.717	60.064	64.087	66.633	412.044	772.850	179.991	232.053	56,3
2022	39.741	52.030	68.241	62.584	68.221	84.866							375.683	375.683	168.021	207.662	55,3



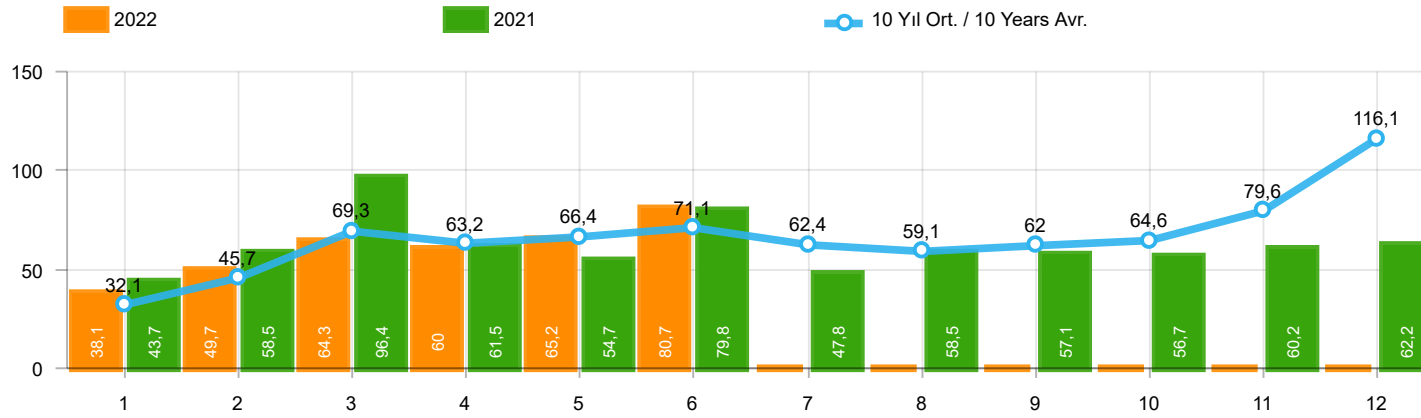
Aylar / Months	10 Yıl Ort / 10 Years Avr.	2022	%
1	23.979	29.020	21,0
2	34.682	37.641	8,5
3	53.280	50.173	-5,8
4	48.896	45.564	-6,8
5	51.430	51.750	0,6
6	55.812	64.134	14,9
TOPLAM / TOTAL	268.079	278.282	3,8

Yıl / Year	1	2	3	4	5	6	7	8	9	10	11	12	1-6 Toplam / Total	Toplam / Total	1-6 Yerli / Local	1-6 İthal / Import	İthal Oran / Import %
2012	21.077	29.189	47.270	45.645	50.460	50.849	44.531	41.236	49.360	43.440	52.297	80.926	244.490	556.280	69.994	174.496	71,4
2013	25.835	36.814	51.785	56.999	62.383	58.290	55.712	51.611	52.925	46.985	64.117	101.199	292.106	664.655	63.686	228.420	78,2
2014	24.368	27.167	37.812	42.769	46.379	47.278	46.602	45.131	49.262	50.814	59.695	110.054	225.773	587.331	56.924	168.849	74,8
2015	24.498	40.817	61.676	70.211	62.878	67.766	64.218	61.753	47.088	47.954	62.397	114.340	327.846	725.596	83.639	244.207	74,5
2016	23.358	40.588	63.975	65.618	73.832	71.111	45.566	53.977	51.340	63.746	95.783	108.044	338.482	756.938	88.101	250.381	74,0
2017	25.689	34.658	55.616	57.998	65.799	66.164	62.384	54.890	53.423	70.488	75.956	99.694	305.924	722.759	95.793	210.131	68,7
2018	26.611	35.901	59.798	55.108	57.227	41.225	42.024	26.976	17.595	16.809	46.204	60.843	275.870	486.321	92.570	183.300	66,4
2019	10.979	19.205	38.628	24.416	27.126	36.024	15.398	21.544	35.308	39.996	47.803	70.829	156.378	387.256	68.193	88.185	56,4
2020	22.016	37.727	39.887	21.825	25.073	57.067	69.427	44.372	71.296	76.341	64.357	80.721	203.595	610.109	79.358	124.237	61,0
2021	35.358	44.749	76.357	48.375	43.138	62.348	36.311	44.756	43.408	40.512	42.982	43.559	310.325	561.853	124.563	185.762	59,9
2022	29.020	37.641	50.173	45.564	51.750	64.134							278.282	278.282	108.475	169.807	61,0



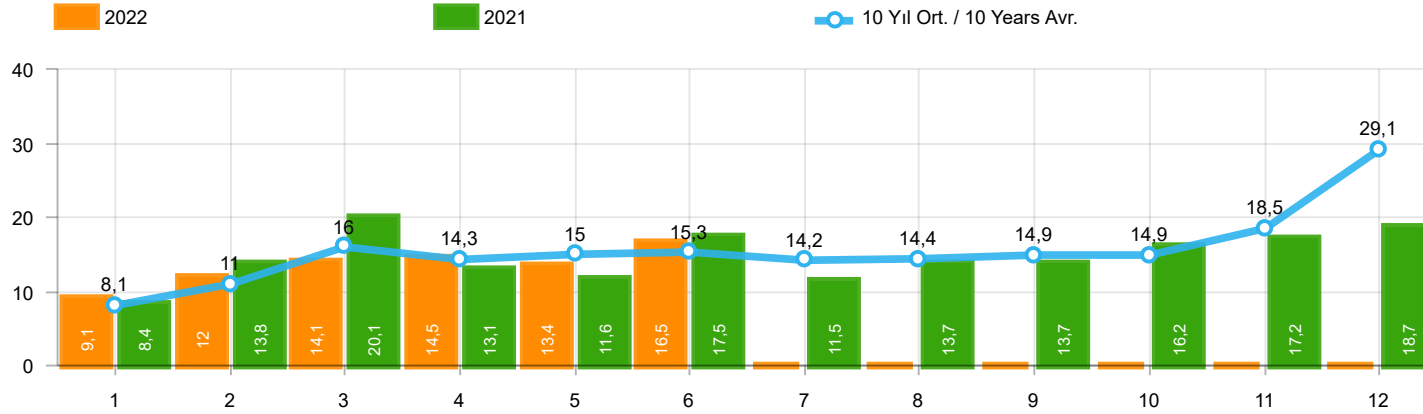
Aylar / Months	10 Yıl Ort / 10 Years Avr.	2022	%
1	9.715	10.721	10,4
2	13.337	14.389	7,9
3	19.442	18.068	-7,1
4	17.168	17.020	-9
5	17.990	16.471	-8,4
6	18.366	20.732	12,9
TOPLAM / TOTAL	96.018	97.401	1,4

Yıl / Year	1	2	3	4	5	6	7	8	9	10	11	12	1-6 Toplam / Total	Toplam / Total	1-6 Yerli / Local	1-6 İthal / Import	İthal Oran / Import %
2012	10.475	14.949	21.972	20.914	24.735	24.259	20.913	19.746	24.141	19.493	22.906	40.516	117.304	265.019	70.174	47.130	40,2
2013	11.728	14.319	21.158	20.266	23.452	19.753	19.440	16.051	18.463	13.705	19.353	34.849	110.676	232.537	63.000	47.676	43,1
2014	10.383	10.492	13.500	14.344	16.068	17.017	16.168	18.172	21.502	18.928	24.673	44.789	81.804	226.036	46.201	35.603	43,5
2015	12.758	18.404	28.089	25.971	22.926	23.305	23.140	23.491	20.093	19.132	26.034	50.124	131.453	293.467	79.499	51.954	39,5
2016	11.011	14.252	21.957	22.130	23.258	23.555	14.166	19.677	18.073	21.920	29.679	37.662	116.163	257.340	64.485	51.678	44,5
2017	10.951	13.927	20.562	20.233	22.267	19.656	22.343	19.928	20.623	23.951	27.816	41.813	107.596	264.070	57.538	50.058	46,5
2018	9.914	12.867	19.802	18.778	17.769	11.563	12.170	8.161	6.320	5.512	13.202	19.171	90.693	155.229	48.671	42.022	46,3
2019	3.868	6.364	12.023	7.528	6.821	7.875	3.044	5.288	7.760	10.292	11.772	22.056	44.479	104.691	24.469	20.010	45,0
2020	6.107	11.221	11.667	5.340	8.235	15.722	19.992	19.198	22.110	20.784	18.467	27.198	58.292	186.041	35.925	22.367	38,4
2021	9.950	16.576	23.689	16.176	14.372	20.956	13.421	15.817	16.309	19.552	21.105	23.074	101.719	210.997	55.428	46.291	45,5
2022	10.721	14.389	18.068	17.020	16.471	20.732							97.401	97.401	59.546	37.855	38,9



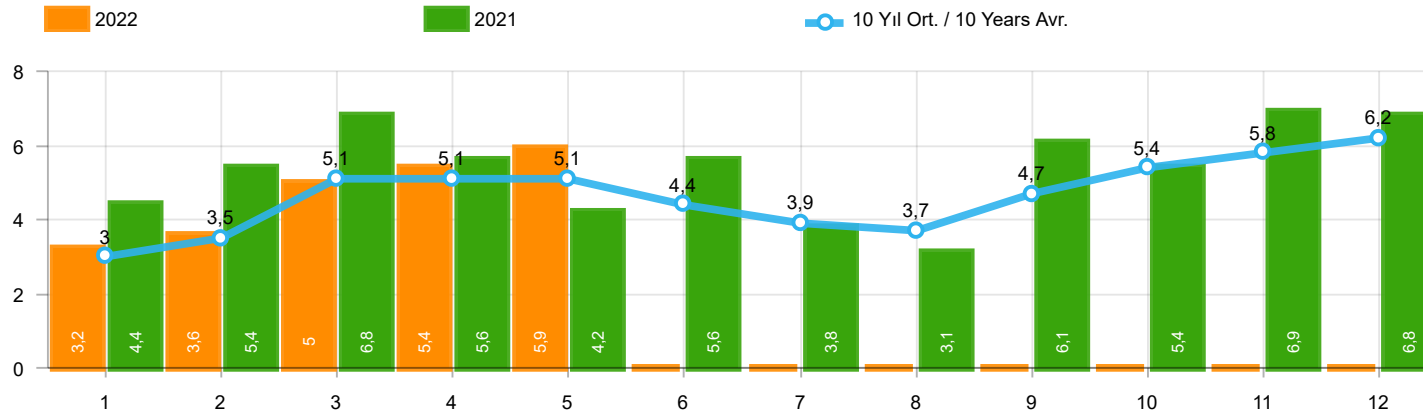
Aylar / Months	10 Yıl Ort / 10 Years Avr.	2022	%
1	32.084	38.131	18,8
2	45.728	49.652	8,6
3	69.329	64.267	-7,3
4	63.235	60.035	-5,1
5	66.406	65.167	-1,9
6	71.120	80.652	13,4
TOPLAM / TOTAL	347.902	357.904	2,9

Yıl / Year	1	2	3	4	5	6	7	8	9	10	11	12	1-6 Toplam / Total	Toplam / Total	1-6 Yerli / Local	1-6 İthal / Import	İthal Oran / Import %
2012	29.545	41.324	64.884	62.949	70.863	71.067	62.304	58.148	69.629	59.938	71.710	115.400	340.632	777.761	124.724	215.908	63,4
2013	35.523	48.307	68.774	73.575	81.468	74.096	71.596	65.043	67.963	58.014	79.301	129.718	381.743	853.378	110.647	271.096	71,0
2014	32.670	35.021	47.581	53.305	58.121	60.163	59.907	60.199	66.531	66.573	80.621	146.989	286.861	767.681	87.190	199.671	69,6
2015	34.615	55.331	83.302	91.602	81.542	86.158	83.836	82.577	64.025	64.255	84.601	156.173	432.550	968.017	143.052	289.498	66,9
2016	32.713	52.825	82.948	84.887	93.904	91.540	58.533	71.556	67.593	83.000	122.309	141.912	438.817	983.720	140.957	297.860	67,9
2017	35.323	46.965	73.802	75.988	85.422	83.658	82.297	72.536	71.352	91.752	100.859	136.240	401.158	956.194	144.000	257.158	64,1
2018	35.076	47.009	76.345	71.126	72.755	51.037	52.734	34.346	23.028	21.571	58.204	77.706	353.348	620.937	132.507	220.841	62,5
2019	14.373	24.875	49.221	30.971	33.016	42.688	17.927	26.246	41.992	49.075	58.176	90.500	195.144	479.060	88.809	106.335	54,5
2020	27.273	47.122	50.008	26.457	32.235	70.973	87.401	61.533	90.619	94.733	80.141	104.293	254.068	772.788	109.792	144.276	56,8
2021	43.728	58.504	96.428	61.488	54.734	79.819	47.849	58.454	57.141	56.746	60.216	62.243	394.701	737.350	169.122	225.579	57,2
2022	38.131	49.652	64.267	60.035	65.167	80.652							357.904	357.904	155.481	202.423	56,6



Aylar / Months	10 Yıl Ort. / 10 Years Avr.	2022	%
1	8.105	9.111	12,4
2	11.047	12.011	8,7
3	16.049	14.094	-12,2
4	14.338	14.471	0,9
5	14.977	13.417	-10,4
6	15.308	16.518	7,9
TOPLAM / TOTAL	79.823	79.622	-,3

Yıl / Year	1	2	3	4	5	6	7	8	9	10	11	12	1-6 Toplam / Total	Toplam / Total	1-6 Yerli / Local	1-6 İthal / Import	İthal Oran / Import %
2012	8.468	12.135	17.614	17.304	20.403	20.218	17.773	16.912	20.269	16.498	19.413	34.474	96.142	221.481	54.730	41.412	43,1
2013	9.688	11.493	16.989	16.576	19.085	15.806	15.884	13.432	15.038	11.029	15.184	28.519	89.637	188.723	46.961	42.676	47,6
2014	8.302	7.854	9.769	10.536	11.742	12.885	13.305	15.068	17.269	15.759	20.926	36.935	61.088	180.350	30.266	30.822	50,5
2015	10.117	14.514	21.626	21.391	18.664	18.392	19.618	20.824	16.937	16.301	22.204	41.833	104.704	242.421	59.413	45.291	43,3
2016	9.355	12.237	18.973	19.269	20.072	20.429	12.967	17.579	16.253	19.254	26.526	33.868	100.335	226.782	52.856	47.479	47,3
2017	9.634	12.307	18.186	17.990	19.623	17.494	19.913	17.646	17.929	21.264	24.903	36.546	95.234	233.435	48.207	47.027	49,4
2018	8.465	11.108	16.547	16.018	15.528	9.812	10.710	7.370	5.433	4.762	12.000	16.863	77.478	134.616	39.937	37.541	48,5
2019	3.394	5.670	10.593	6.555	5.890	6.664	2.529	4.702	6.684	9.079	10.373	19.671	38.766	91.804	20.616	18.150	46,8
2020	5.257	9.395	10.121	4.632	7.162	13.906	17.974	17.161	19.323	18.392	15.784	23.572	50.473	162.679	30.434	20.039	39,7
2021	8.370	13.755	20.071	13.113	11.596	17.471	11.538	13.698	13.733	16.234	17.234	18.684	84.376	175.497	44.559	39.817	47,2
2022	9.111	12.011	14.094	14.471	13.417	16.518							79.622	79.622	47.006	32.616	41,0



Aylar / Months	10 Yıl Ort / 10 Years Avr.	2022	%
1	3.004	3.152	4,9
2	3.536	3.636	2,8
3	5.081	4.988	-1,8
4	5.131	5.408	5,4
5	5.095	5.873	15,3
TOPLAM / TOTAL	21.847	23.057	5,5

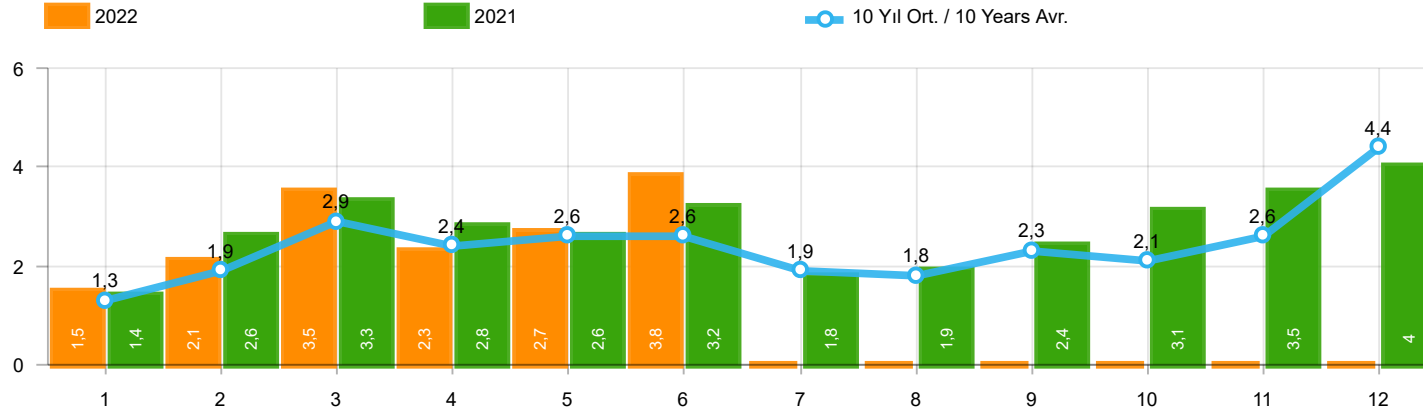
Yıl / Year	1	2	3	4	5	6	7	8	9	10	11	12	1-5 Toplam / Total	Toplam / Total
2012	2.362	1.983	4.348	6.579	6.273	4.569	3.837	3.158	3.618	4.027	4.807	4.757	21.545	50.318
2013	2.161	2.432	4.005	4.585	5.616	3.136	4.574	3.408	4.935	4.762	5.781	6.891	18.799	52.286
2014	2.169	3.512	4.476	4.905	5.094	5.028	4.233	4.920	5.619	5.743	6.250	7.409	20.156	59.358
2015	3.124	3.984	5.460	6.383	6.078	5.748	4.677	5.044	4.765	7.049	6.898	7.564	25.029	66.774
2016	3.739	4.731	7.067	6.546	6.575	5.543	3.833	5.134	4.945	7.372	7.090	7.603	28.658	70.178
2017	3.974	4.964	6.773	6.780	7.057	5.356	5.003	4.396	6.064	7.734	7.457	7.351	29.548	72.909
2018	4.362	4.179	5.925	5.216	4.584	3.146	3.654	2.587	3.541	3.698	3.578	3.886	24.266	48.356
2019	1.311	1.401	2.143	2.126	2.229	1.538	2.039	1.579	2.284	2.828	3.037	3.782	9.210	26.297
2020	2.425	2.778	3.771	2.606	3.244	4.173	3.727	3.974	4.928	5.466	5.831	6.221	14.824	49.144
2021	4.411	5.395	6.845	5.581	4.200	5.571	3.846	3.093	6.100	5.351	6.901	6.776	26.432	64.070
2022	3.152	3.636	4.988	5.408	5.873	-							23.057	23.057

Kaynak: TÜİK trafik kayıtları.

Rakamlar, son iki model yılına ait traktör tescillerinden oluşmaktadır.

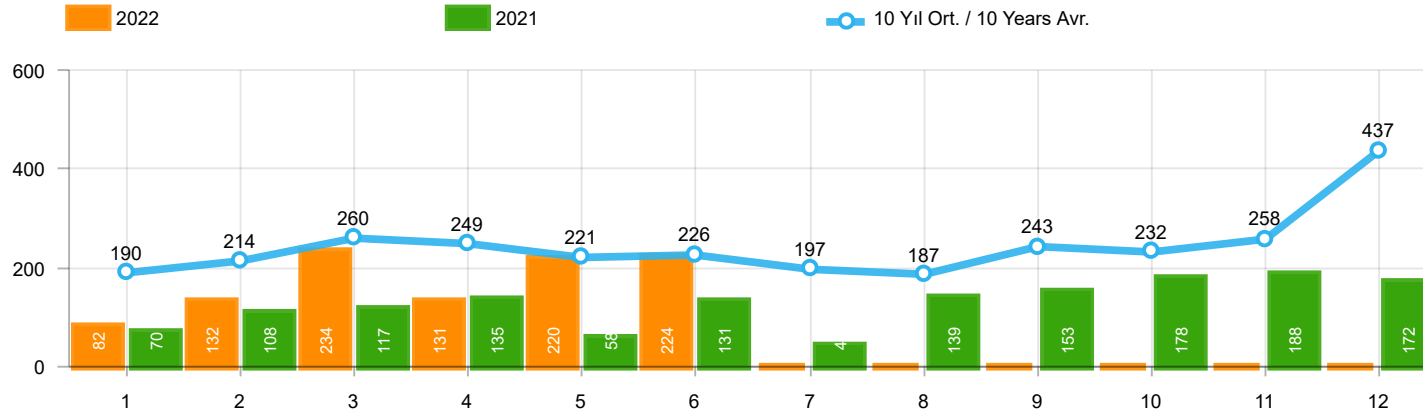
Source: Turkish Statistical Institute – Traffic registrations

Data represents the last two model year's farm tractors registration figures



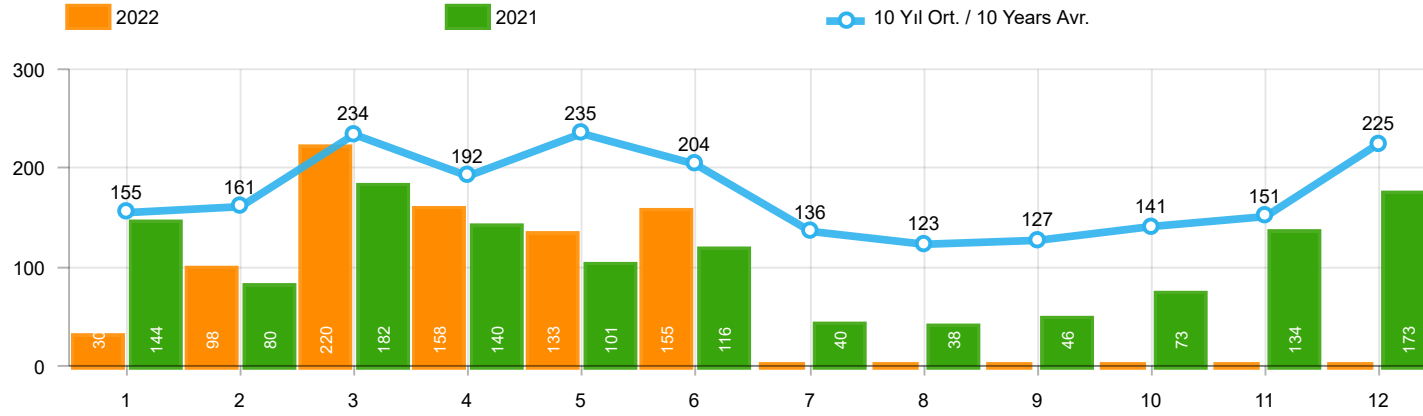
Aylar / Months	10 Yıl Ort / 10 Years Avr.	2022	%
1	1.265	1.498	18,4
2	1.916	2.148	12,1
3	2.899	3.520	21,4
4	2.388	2.260	-5,4
5	2.558	2.701	5,6
6	2.628	3.835	45,9
TOPLAM / TOTAL	13.654	15.962	16,9

Yıl / Year	1	2	3	4	5	6	7	8	9	10	11	12	1-6 Toplam / Total	Toplam / Total	1-6 Yerli / Local	1-6 İthal / Import	İthal Oran / Import %
2012	1.703	2.454	3.866	3.209	3.678	3.540	2.750	2.403	3.296	2.497	3.154	5.300	18.450	37.850	12.758	5.692	30,9
2013	1.484	2.113	3.343	2.925	3.504	3.186	2.777	2.103	2.875	2.086	3.631	5.444	16.555	35.471	11.564	4.991	30,1
2014	1.522	2.065	3.094	3.224	3.727	3.726	2.578	2.783	3.708	2.858	3.384	6.869	17.358	39.538	12.720	4.638	26,7
2015	2.215	3.346	5.699	3.729	3.600	4.253	2.922	2.211	2.687	2.266	3.146	7.307	22.842	43.381	16.240	6.602	28,9
2016	1.167	1.648	2.515	2.319	2.711	2.623	984	1.796	1.438	2.238	2.485	3.127	12.983	25.051	8.815	4.168	32,1
2017	931	1.290	1.982	1.888	2.184	1.891	1.974	1.860	2.284	2.188	2.487	4.438	10.166	25.397	7.147	3.019	29,7
2018	1.237	1.552	2.630	2.328	1.909	1.272	1.235	603	653	488	905	1.695	10.928	16.507	6.458	4.470	40,9
2019	342	579	1.255	842	728	981	435	497	854	1.047	1.100	2.087	4.727	10.747	2.867	1.860	39,3
2020	682	1.475	1.290	628	921	1.570	1.809	1.835	2.660	2.239	2.537	3.358	6.566	21.004	4.238	2.328	35,5
2021	1.366	2.633	3.319	2.788	2.617	3.238	1.799	1.942	2.377	3.067	3.549	4.045	15.961	32.740	9.487	6.474	40,6
2022	1.498	2.148	3.520	2.260	2.701	3.835							15.962	15.962	10.723	5.239	32,8



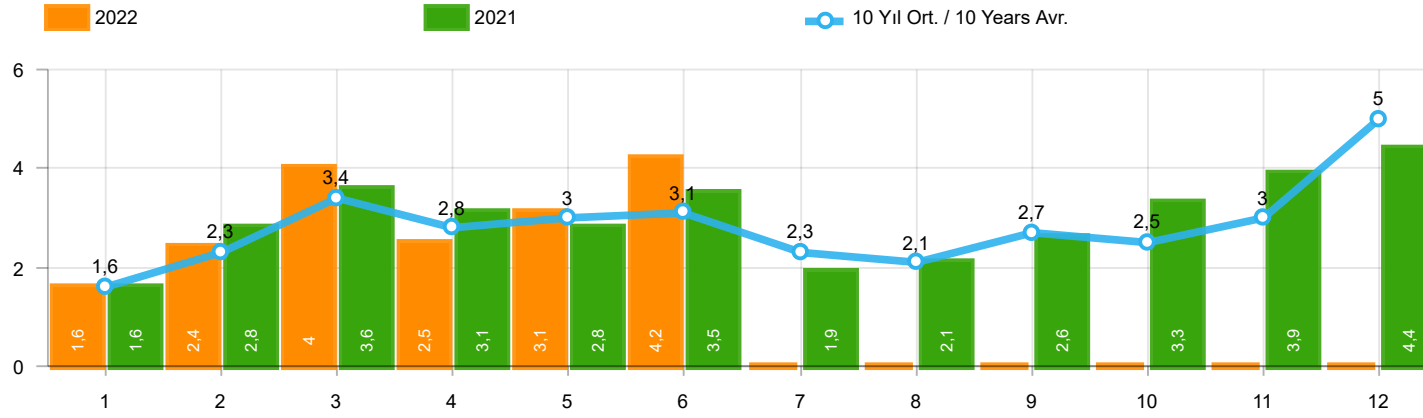
Aylar / Months	10 Yıl Ort. / 10 Years Avr.	2022	%
1	190	82	-56,8
2	214	132	-38,4
3	260	234	-9,9
4	249	131	-47,5
5	221	220	-,3
6	226	224	-1,1
TOPLAM / TOTAL	1.360	1.023	-24,8

Yıl / Year	1	2	3	4	5	6	7	8	9	10	11	12	1-6 Toplam / Total	Toplam / Total
2012	179	257	277	229	257	239	216	249	325	269	189	398	1.438	3.084
2013	191	268	289	276	283	241	367	235	305	392	415	697	1.548	3.959
2014	360	394	384	333	294	258	216	229	395	220	266	653	2.023	4.002
2015	280	322	451	561	372	405	389	253	316	394	325	621	2.391	4.689
2016	309	158	251	302	261	196	139	220	241	230	354	431	1.477	3.092
2017	212	211	227	231	272	156	250	235	318	268	317	594	1.309	3.291
2018	134	142	410	296	207	315	180	146	160	155	184	425	1.504	2.754
2019	57	61	63	96	106	189	55	44	138	138	257	244	572	1.448
2020	104	221	128	35	97	134	111	123	77	71	82	137	719	1.320
2021	70	108	117	135	58	131	44	139	153	178	188	172	619	1.493
2022	82	132	234	131	220	224							1.023	1.023



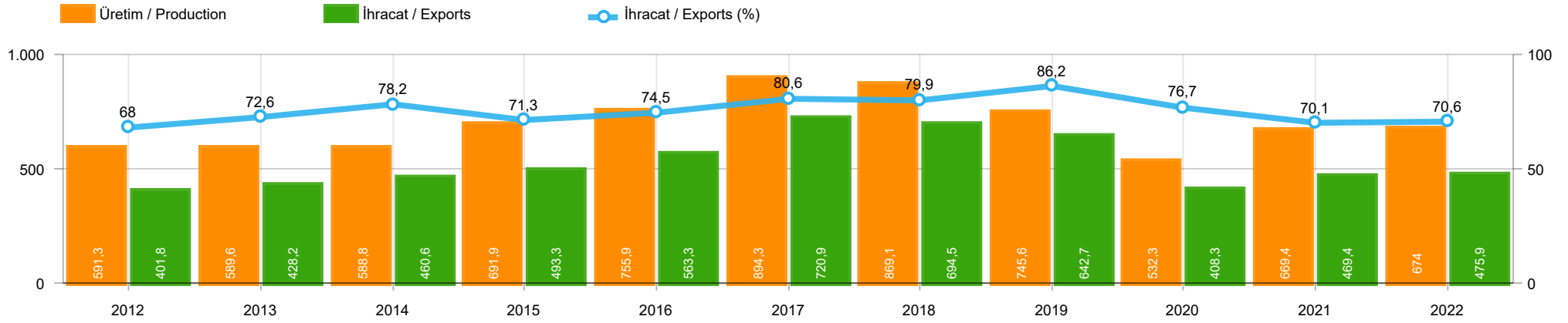
Aylar / Months	10 Yıl Ort / 10 Years Avr.	2022	%
1	155	30	-80,6
2	161	98	-39,0
3	234	220	-6,0
4	192	158	-17,8
5	235	133	-43,5
6	204	155	-24,0
TOPLAM / TOTAL	1.181	794	-32,8

Yıl / Year	1	2	3	4	5	6	7	8	9	10	11	12	1-6 Toplam / Total	Toplam / Total	1-6 Yerli / Local	1-6 İthal / Import	İthal Oran / Import %
2012	125	103	215	172	397	262	174	182	251	229	150	344	1.274	2.604	1.248	26	2,0
2013	365	445	537	489	580	520	412	281	245	198	123	189	2.936	4.384	2.927	9	0,3
2014	199	179	253	251	305	148	69	92	130	91	97	332	1.335	2.146	1.192	143	10,7
2015	146	222	313	290	290	255	211	203	153	171	359	363	1.516	2.976	1.455	61	4,0
2016	180	209	218	240	214	307	76	82	141	198	314	236	1.368	2.415	1.337	31	2,3
2017	174	119	167	124	188	115	206	187	92	231	109	235	887	1.947	875	12	1,4
2018	78	65	215	136	125	164	45	42	74	107	113	188	783	1.352	772	11	1,4
2019	75	54	112	35	97	41	25	45	84	28	42	54	414	692	414	-	-
2020	64	130	128	45	55	112	98	79	50	82	64	131	534	1.038	534	-	-
2021	144	80	182	140	101	116	40	38	46	73	134	173	763	1.267	763	-	-
2022	30	98	220	158	133	155							794	794	794	-	-



Aylar / Months	10 Yıl Ort / 10 Years Avr.	2022	%
1	1.610	1.610	0,0
2	2.290	2.378	3,8
3	3.393	3.974	17,1
4	2.830	2.549	-9,9
5	3.014	3.054	1,3
6	3.058	4.214	37,8
TOPLAM / TOTAL	16.195	17.779	9,8

Yıl / Year	1	2	3	4	5	6	7	8	9	10	11	12	1-6 Toplam / Total	Toplam / Total	1-6 Yerli / Local	1-6 İthal / Import	İthal Oran / Import %
2012	2.007	2.814	4.358	3.610	4.332	4.041	3.140	2.834	3.872	2.995	3.493	6.042	21.162	43.538	15.444	5.718	27,0
2013	2.040	2.826	4.169	3.690	4.367	3.947	3.556	2.619	3.425	2.676	4.169	6.330	21.039	43.814	16.039	5.000	23,8
2014	2.081	2.638	3.731	3.808	4.326	4.132	2.863	3.104	4.233	3.169	3.747	7.854	20.716	45.686	15.935	4.781	23,1
2015	2.641	3.890	6.463	4.580	4.262	4.913	3.522	2.667	3.156	2.831	3.830	8.291	26.749	51.046	20.086	6.663	24,9
2016	1.656	2.015	2.984	2.861	3.186	3.126	1.199	2.098	1.820	2.666	3.153	3.794	15.828	30.558	11.629	4.199	26,5
2017	1.317	1.620	2.376	2.243	2.644	2.162	2.430	2.282	2.694	2.687	2.913	5.267	12.362	30.635	9.331	3.031	24,5
2018	1.449	1.759	3.255	2.760	2.241	1.751	1.460	791	887	750	1.202	2.308	13.215	20.613	8.734	4.481	33,9
2019	474	694	1.430	973	931	1.211	515	586	1.076	1.213	1.399	2.385	5.713	12.887	3.853	1.860	32,6
2020	850	1.826	1.546	708	1.073	1.816	2.018	2.037	2.787	2.392	2.683	3.626	7.819	23.362	5.491	2.328	29,8
2021	1.580	2.821	3.618	3.063	2.776	3.485	1.883	2.119	2.576	3.318	3.871	4.390	17.343	35.500	10.869	6.474	37,3
2022	1.610	2.378	3.974	2.549	3.054	4.214							17.779	17.779	12.540	5.239	29,5



	2012	2013	2014	2015	2016	2017	2018	2019	2020	2021	2022
İhracat/Export	401.791	428.208	460.644	493.268	563.286	720.907	694.465	642.685	408.304	469.409	475.901
Üretim/Production	591.263	589.623	588.753	691.907	755.920	894.257	869.065	745.628	532.251	669.425	673.991
İhracat/Exports (%)	68	72,6	78,2	71,3	74,5	80,6	79,9	86,2	76,7	70,1	70,6

Taşıt Araçları İhracatı (2020 - 2022)
Motor Vehicle Exports (2020 - 2022)

SEKTÖR / SECTOR	2020	2021	1/6-2021	1/6-2022	2022/2021 %
OTOMOBİL / Pass.Car	596.616	565.370	297.130	271.054	-8,8
OTOMOBİL TOPLAM / Pass. Car Total	596.616	565.370	297.130	271.054	-8,8
KAMYON / Truck	10.333	17.293	7.663	9.724	26,9
KAMYONET / Pick Up	263.767	310.874	138.019	165.017	19,6
OTOBÜS / Bus	6.886	4.750	1.915	2.372	23,9
MİNİBÜS / Minibus	38.296	37.741	16.468	18.412	11,8
MİDİBÜS / Midibus	640	987	314	416	32,5
TİCARİ ARAÇLAR TOPLAM / Commercial Vehicle Total	319.922	371.645	164.379	195.941	19,2
TAŞIT ARAÇLARI TOPLAM / Motor Vehicles Total	916.538	937.015	461.509	466.995	1,2
TRAKTÖR / F.Tractor	13.495	17.038	7.900	8.906	12,7
TRAKTÖR TOPLAM / F.Tractor Total	13.495	17.038	7.900	8.906	12,7
GENEL TOPLAM / GRAND TOTAL	930.033	954.053	469.409	475.901	1,4

Üretici Bazında İhracat (adet)
Exports by Manufacturer (unit)

Üreticiler / Manufacturers	2020	2021	1-6 / 2021	1-6 / 2022
A.I.O.S.	510	1.100	307	322
FORD OTOSAN	254.003	287.609	126.355	149.254
HATTAT TRAKTÖR	942	862	323	652
HYUNDAI ASSAN	128.003	138.739	73.137	93.832
KARSAN	755	2.135	224	98
M. BENZ TÜRK	11.184	13.911	6.407	7.627
MAN TÜRKİYE	2.628	1.573	908	783
OTOKAR	862	749	301	375
OYAK RENAULT	211.954	187.923	93.750	61.186
TEMSA	243	599	200	197
TOFAŞ	117.886	112.465	62.695	58.261
TOYOTA	182.089	187.907	96.205	95.060
TÜRK TRAKTÖR	12.553	16.176	7.577	8.254
GENEL TOPLAM / Grand Total	923.612	951.748	468.389	475.901

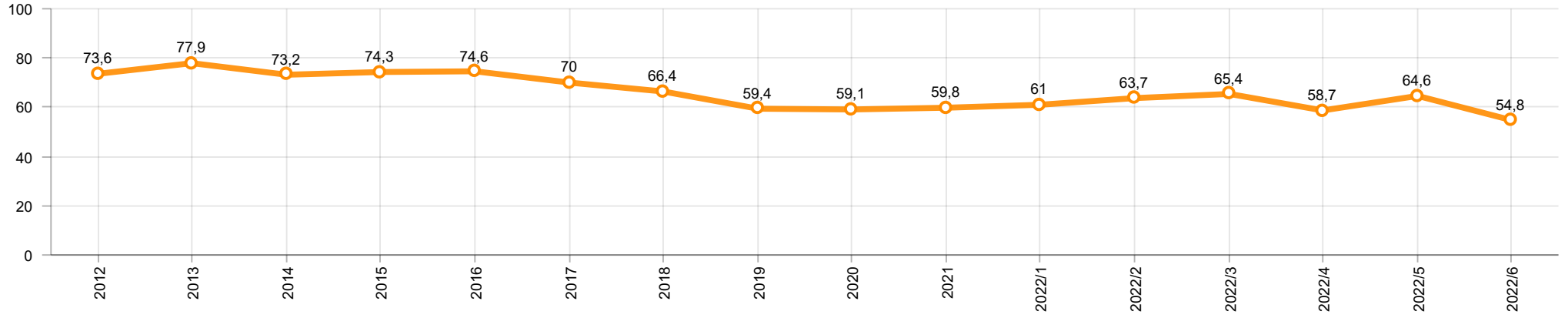
Otomotiv Ana ve Yan Sanayii İhracatı (ABD \$)
CBU and CKD Exports - \$

Sektör / Sector	2020	2021	OCAK - HAZİRAN / January - June 2021	OCAK - HAZİRAN / January - June 2022	2022 / 2021 %
Toplam Yan Sanayi / Total Component Industry	9.451.378.035,13	11.828.543.645,48	6.019.680.676,49	6.426.252.902,54	6,8
İç ve Dış Lastik / Tyres	1.248.005.046,63	1.630.375.443,31	784.903.259,82	911.845.754,9	16,2
Emniyet Camı / Safety Glasses	140.318.241,91	203.192.786,93	97.057.551,82	119.838.176,12	23,5
Motor / Engine	461.449.027,72	296.695.616,13	171.900.510,12	141.680.466,05	-17,6
Akümülatör / Batteries	352.961.830,19	509.418.521,65	224.116.711,71	256.580.808,33	14,5
Diğer Aksam ve Parça / Spare Parts&Components	7.248.643.888,68	9.188.861.277,46	4.741.702.643,02	4.996.307.697,14	5,4
Toplam Ana Sanayi / Total Vehicle Industry	16.490.597.055,37	18.050.043.451,69	8.678.605.076,76	9.051.565.862,71	4,3
Otobüs / Bus	1.300.660.458,98	1.015.438.742,73	411.066.595,05	442.982.233,03	7,8
Midibüs-Minibüs / Midibus-Minibus	188.434.401,85	193.988.030,64	75.205.864,74	88.775.714,41	18,0
Otomobil / P.Cars	9.312.088.333,82	9.272.092.055,42	4.822.086.500,12	4.482.757.427,96	-7,0
Kamyon-Kamyonet / Truck-Pick Up&Van	4.254.571.750,06	5.420.336.459,32	2.399.718.433,65	2.791.353.594,76	16,3
Römork ve Yarı Römork / Trailer-Semi Trailer	417.223.779,08	609.835.352,93	277.871.716,99	358.364.665,51	29,0
Çekici / Tractor	602.899.223,51	1.018.404.947,4	454.874.787,61	610.560.802,86	34,2
Tarım Traktörü / Farm Tractor	414.719.108,07	519.947.863,25	237.781.178,6	276.771.424,18	16,4
Toplam / Total	25.941.975.090,5	29.878.587.097,17	14.698.285.753,25	15.477.818.765,25	5,3

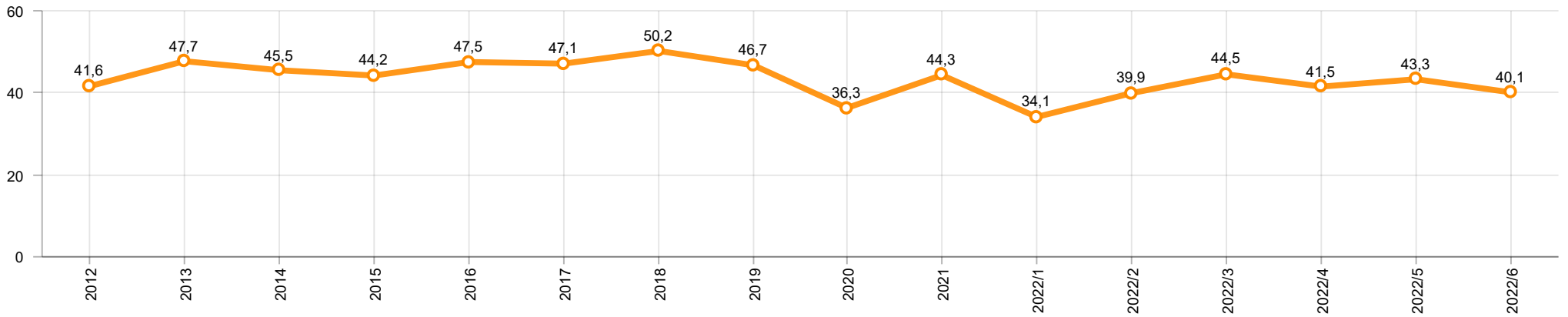
Kaynak: Uludağ İhracatçı Birlikleri . ÜİB tarafından OSD için özel olarak analiz edilen Otomotiv İhracatı kapsamında; ÜİB Türkiye Geneli Otomotiv Endüstrisi sınıflandırmasına kıyasla “Römork ve Yarı Römork” , “Tarım Traktörü” verileri dahil edilmekte; “Kullanılmış Araçlar” ,”İki Tekerlekli Taşıtlar” , “Demiryolu Taşıtları” hariç tutulmaktadır.

Source: Uludağ Exporters Association – Special Analyze for OSD.Compared to Turkish General Automotive Industry classification, this special analyze includes; farms tractors, trailers and semi-trailers, does not include; used vehicles, two-wheeled vehicles and railway vehicles

Otomobil Pazarında İthalatın Payı (%)
Import Share in P.Car Market (%)



Hafif Ticari Araçlar Pazarında İthalatın Payı (%)
Import Share in LCV Market (%)



Araç Tipleri / Vehicle Types	1	2	3	4	5	6	7	8	9	10	11	12	Toplam / Total
OTOMOBİL - Pass.Car	34.999	50.683	38.917	43.196	48.097	55.162							271.054
KAMYON - H. Truck	891	1.232	3.016	1.868	999	1.718							9.724
K.KAMYON - L. Truck	-	-	-	-	-	-							-
KAMYONET - Pick Up	28.351	24.486	32.602	27.851	25.822	25.905							165.017
OTOBÜS - Bus	163	309	473	302	445	680							2.372
MINİBÜS - Minibus	3.477	1.978	3.824	2.887	3.186	3.060							18.412
MİDİBÜS - Midibus	9	47	92	69	101	98							416
TİCARİ ARAÇLAR TOPLAMI - CV Total	32.891	28.052	40.007	32.977	30.553	31.461							195.941
TAŞIT ARAÇLARI TOPLAMI - MV Total	67.890	78.735	78.924	76.173	78.650	86.623							466.995
TRAKTÖR - F.Tractor	1.371	1.751	1.572	1.362	1.234	1.616							8.906
GENEL TOPLAM - Grand Total	69.261	80.486	80.496	77.535	79.884	88.239							475.901

Otomobil / P.Car

Firmalar / Firms	1	2	3	4	5	6	7	8	9	10	11	12	Toplam / Total
FORD OTOSAN	200	452	932	37	149	72	-	-	-	-	-	-	1.842
HYUNDAI ASSAN	10.000	16.200	15.667	15.750	18.275	17.940	-	-	-	-	-	-	93.832
OYAK RENAULT	5.484	10.845	6.891	6.757	12.250	18.959	-	-	-	-	-	-	61.186
TOFAŞ	3.791	1.311	1.442	2.230	5.072	5.288	-	-	-	-	-	-	19.134
TOYOTA	15.524	21.875	13.985	18.422	12.351	12.903	-	-	-	-	-	-	95.060
TOPLAM - Total	34.999	50.683	38.917	43.196	48.097	55.162	-	-	-	-	-	-	271.054

Kamyonet / Pick-up

Firmalar / Firms	1	2	3	4	5	6	7	8	9	10	11	12	Toplam / Total
A.I.O.S.	-	-	-	-	-	-	-	-	-	-	-	-	-
FORD OTOSAN	21.967	16.649	25.509	21.371	19.403	20.926	-	-	-	-	-	-	125.825
KARSAN	-	-	-	-	-	-	-	-	-	-	-	-	-
OTOKAR	29	-	10	-	16	10	-	-	-	-	-	-	65
TOFAŞ	6.355	7.837	7.083	6.480	6.403	4.969	-	-	-	-	-	-	39.127
TOPLAM - Total	28.351	24.486	32.602	27.851	25.822	25.905	-	-	-	-	-	-	165.017

Minibüs / Minibus

Firmalar / Firms	1	2	3	4	5	6	7	8	9	10	11	12	Toplam / Total
FORD OTOSAN	3.476	1.977	3.816	2.875	3.184	3.044	-	-	-	-	-	-	18.372
KARSAN	1	1	8	12	2	16	-	-	-	-	-	-	40
TOPLAM - Total	3.477	1.978	3.824	2.887	3.186	3.060	-	-	-	-	-	-	18.412

Kamyon / Truck

Firmalar / Firms	1	2	3	4	5	6	7	8	9	10	11	12	Toplam / Total
A.I.O.S.	-	-	-	-	-	-	-	-	-	-	-	-	-
FORD OTOSAN	240	700	712	658	236	669	-	-	-	-	-	-	3.215
KARSAN	-	-	-	-	-	-	-	-	-	-	-	-	-
M. BENZ TÜRK	651	532	2.304	1.210	763	1.049	-	-	-	-	-	-	6.509
OTOKAR	-	-	-	-	-	-	-	-	-	-	-	-	-
TEMSA	-	-	-	-	-	-	-	-	-	-	-	-	-
TOPLAM - Total	891	1.232	3.016	1.868	999	1.718	-	-	-	-	-	-	9.724

Midibüs / Midibus

Firmalar / Firms	1	2	3	4	5	6	7	8	9	10	11	12	Toplam / Total
A.I.O.S.	5	26	41	48	68	36	-	-	-	-	-	-	224
KARSAN	-	-	19	4	2	33	-	-	-	-	-	-	58
OTOKAR	3	12	27	14	29	27	-	-	-	-	-	-	112
TEMSA	1	9	5	3	2	2	-	-	-	-	-	-	22
TOPLAM - Total	9	47	92	69	101	98	-	-	-	-	-	-	416

Otobüs / Bus

Firmalar / Firms	1	2	3	4	5	6	7	8	9	10	11	12	Toplam / Total
A.I.O.S.	9	14	20	9	16	30	-	-	-	-	-	-	98
KARSAN	-	-	-	-	-	-	-	-	-	-	-	-	-
M. BENZ TÜRK	3	225	258	131	239	262	-	-	-	-	-	-	1.118
MAN TÜRKİYE	85	39	127	118	156	258	-	-	-	-	-	-	783
OTOKAR	57	12	37	15	23	54	-	-	-	-	-	-	198
TEMSA	9	19	31	29	11	76	-	-	-	-	-	-	175
TOPLAM - Total	163	309	473	302	445	680	-	-	-	-	-	-	2.372

Traktör / F.Tractor

Firmalar / Firms	1	2	3	4	5	6	7	8	9	10	11	12	Toplam / Total
HATTAT TRAKTÖR	121	142	37	178	88	86	-	-	-	-	-	-	652
TÜRK TRAKTÖR	1.250	1.609	1.535	1.184	1.146	1.530	-	-	-	-	-	-	8.254
TOPLAM - Total	1.371	1.751	1.572	1.362	1.234	1.616	-	-	-	-	-	-	8.906

Firmalar / Firms	2021 Toplam / Total	1	2	3	4	5	6	7	8	9	10	11	12	Toplam / Total
Alfa Romeo	197	1	4	4	8	15	8	-	-	-	-	-	-	40
Aston Martin	33	3	2	1	2	1	2	-	-	-	-	-	-	11
Audi	14.036	744	1.126	1.810	1.051	1.260	1.161	-	-	-	-	-	-	7.152
Bentley	11	1	2	2	2	1	1	-	-	-	-	-	-	9
BMW	15.555	414	1.449	1.166	1.094	1.131	1.216	-	-	-	-	-	-	6.470
Citroen	22.551	1.601	1.382	2.132	2.041	1.014	1.952	-	-	-	-	-	-	10.122
CUPRA	285	29	44	197	287	232	358	-	-	-	-	-	-	1.147
Dacia	27.672	2.748	2.897	3.385	2.179	3.321	3.389	-	-	-	-	-	-	17.919
DFSK	53	-	11	56	33	-	77	-	-	-	-	-	-	177
DS	918	31	64	84	237	76	144	-	-	-	-	-	-	636
Ferrari	22	-	3	2	3	2	2	-	-	-	-	-	-	12
Fiat	1.089	12	18	53	44	33	15	-	-	-	-	-	-	175
Ford	11.726	773	683	511	670	907	546	-	-	-	-	-	-	4.090
Honda	8.558	1.314	1.805	2.708	1.875	2.064	1.762	-	-	-	-	-	-	11.528
Hyundai	14.788	880	1.420	1.651	1.807	1.254	793	-	-	-	-	-	-	7.805
Jaguar	138	-	2	2	12	8	11	-	-	-	-	-	-	35
Jeep	3.164	156	164	417	203	228	247	-	-	-	-	-	-	1.415
Kia	15.250	628	853	583	1.823	1.309	1.672	-	-	-	-	-	-	6.868
Lamborghini	16	2	-	-	-	1	-	-	-	-	-	-	-	3
Land Rover	1.804	80	59	90	111	91	58	-	-	-	-	-	-	489
Lexus	232	17	5	13	24	31	67	-	-	-	-	-	-	157
Maserati	101	5	8	18	19	7	11	-	-	-	-	-	-	68
Mazda	153	6	9	14	4	13	25	-	-	-	-	-	-	71
Mercedes-Benz	15.398	529	624	1.296	1.177	1.604	2.278	-	-	-	-	-	-	7.508
MG	468	24	40	119	171	135	141	-	-	-	-	-	-	630
Mini	1.394	63	50	139	41	39	79	-	-	-	-	-	-	411
Mitsubishi	1.139	23	13	99	116	89	54	-	-	-	-	-	-	394
Nissan	12.780	327	311	460	1.060	1.166	885	-	-	-	-	-	-	4.209
Opel	20.754	1.580	2.252	2.753	592	3.793	3.574	-	-	-	-	-	-	14.544
Peugeot	28.998	1.397	2.277	1.900	759	1.636	3.037	-	-	-	-	-	-	11.006
Porsche	627	17	61	88	18	38	30	-	-	-	-	-	-	252
Renault	9.285	1.473	1.270	1.763	953	2.493	1.890	-	-	-	-	-	-	9.842
Seat	12.457	272	483	901	592	818	543	-	-	-	-	-	-	3.609
Skoda	25.228	923	1.683	2.108	1.635	1.270	2.149	-	-	-	-	-	-	9.768
Ssangyong	587	72	76	39	58	39	33	-	-	-	-	-	-	317
Subaru	796	30	33	70	58	75	41	-	-	-	-	-	-	307
Suzuki	3.826	20	68	209	125	92	169	-	-	-	-	-	-	683
Toyota	2.275	71	82	219	187	366	378	-	-	-	-	-	-	1.303
Volkswagen	53.523	1.218	2.131	5.162	5.405	5.963	5.584	-	-	-	-	-	-	25.463
Volvo	8.000	225	500	576	260	827	774	-	-	-	-	-	-	3.162
GENEL TOPLAM - Grand Total	335.896	17.709	23.964	32.800	26.736	33.442	35.156	-	-	-	-	-	-	169.807

Firmalar / Firms	2021 Toplam / Total	1	2	3	4	5	6	7	8	9	10	11	12	Toplam / Total
Citroen	6.220	274	475	455	790	222	670	-	-	-	-	-	-	2.886
Fiat	2.503	81	54	123	38	131	126	-	-	-	-	-	-	553
Ford	1.790	71	64	58	112	148	113	-	-	-	-	-	-	566
Hyundai	1.595	33	128	53	353	353	520	-	-	-	-	-	-	1.440
Isuzu	721	28	26	110	57	135	188	-	-	-	-	-	-	544
Iveco	2.652	118	222	262	231	325	131	-	-	-	-	-	-	1.289
Kia	1.333	54	88	333	209	265	368	-	-	-	-	-	-	1.317
Land Rover	-	-	-	-	3	2	70	-	-	-	-	-	-	75
Mercedes-Benz	6.100	52	312	555	391	303	587	-	-	-	-	-	-	2.200
Mitsubishi	3.775	94	88	230	278	240	116	-	-	-	-	-	-	1.046
Nissan	1.316	51	65	108	70	67	26	-	-	-	-	-	-	387
Opel	5.167	266	539	433	315	207	541	-	-	-	-	-	-	2.301
Peugeot	9.970	443	868	727	827	333	944	-	-	-	-	-	-	4.142
Renault	5.719	638	759	757	649	1.612	1.102	-	-	-	-	-	-	5.517
Ssangyong	420	-	8	28	19	57	39	-	-	-	-	-	-	151
Toyota	6.689	490	543	941	1.109	943	556	-	-	-	-	-	-	4.582
Volkswagen	14.663	412	555	1.103	557	471	522	-	-	-	-	-	-	3.620
GENEL TOPLAM - Grand Total	77.827	3.105	4.794	6.276	6.008	5.814	6.619	-	-	-	-	-	-	32.616