



OTOMOTİV SANAYİİ DERNEĐİ  
AUTOMOTIVE MANUFACTURERS ASSOCIATION

# OTOMOTİV SEKTÖRÜ AYLIK DEĐERLENDİRME RAPORU ARALIK 2020

AUTOMOTIVE INDUSTRY MONTHLY REPORT  
December 2020

OSD "OICA" Üyesidir © O I C A OSD is a Member of "OICA"

	12 - 2019	12 - 2020	%	1 - 12 / 2019	1 - 12 / 2020	%	1/2019 - 12/2019	1/2020 - 12/2020	%
Otomobil Üretimi/P.Cars Production	94.991	92.300	-2,8	982.642	855.043	-13,0	982.642	855.043	-13,0
Toplam Üretim/Total Production	135.775	149.614	10,2	1.461.244	1.297.854	-11,2	1.461.244	1.297.854	-11,2
Otomobil Pazarı/P.Cars Market	70.829	80.721	14,0	387.256	610.109	57,6	387.256	610.109	57,6
Toplam Pazar/Total Market	92.885	107.969	16,2	491.947	796.200	61,9	491.947	796.200	61,9
Otomobil İthalatı/P.Cars Import	40.333	45.486	12,8	230.078	360.450	56,7	230.078	360.450	56,7
Toplam İthalat/Total Import	49.124	54.057	10,0	277.069	427.028	54,1	277.069	427.028	54,1
Otomobil İhracatı/P.Cars Export	71.937	54.533	-24,2	828.744	596.616	-28,0	828.744	596.616	-28,0
Toplam İhracat/Total Export	106.349	94.634	-11,0	1.252.586	916.543	-26,8	1.252.586	916.543	-26,8
Otomobil İhracatı(\$)/P.Cars Export (\$)	1.123.109.066,46	1.013.262.095,1	-9,8	11.864.815.316	9.312.088.334	-21,5	11.864.815.316	9.312.088.334	-21,5
Toplam İhracat(\$)/Total Export (\$)*	2.588.662.725,49	2.836.271.979,1	9,6	31.230.103.337	25.945.492.196	-16,9	31.230.103.337	25.945.492.196	-16,9

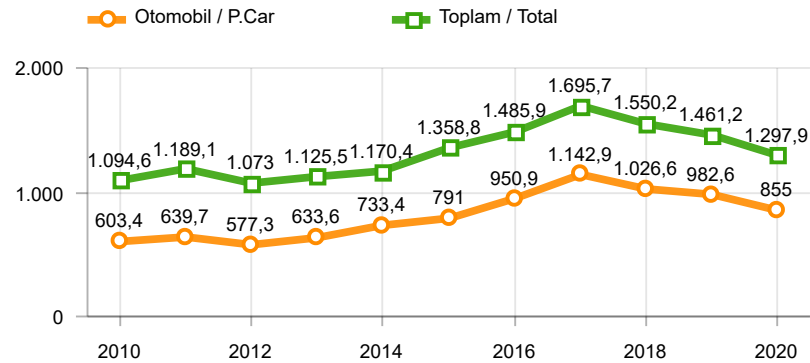
Parametreler/Parameters	12 - 2019	12 - 2020	%	1 - 12 / 2019	1 - 12 / 2020	%	1/2019 - 12/2019	1/2020 - 12/2020	%
ÜFE / PPI	0,7	2,4	-	7,4	25,2	-	17,6	12,2	-
TÜFE / CPI	0,7	1,3	-	11,8	14,6	-	15,2	12,3	-
Sanayi Endeksi / Industry Index	0,8	2,7	-	7,0	27,3	-	16,3	12,5	-
Dolar \$ ** (1 birim)	5,8	7,7	32,2	5,6	7,0	24,2	5,6	7,0	24,2
Euro € ** (1 birim)	6,5	9,4	44,5	6,3	8,0	27,0	6,3	8,0	27,0
Japon Yeni ¥ ** (100 birim)	5,3	7,4	38,9	5,1	6,5	27,2	5,1	6,5	27,2

\*Toplam Sanayi / Total Industry Including Components

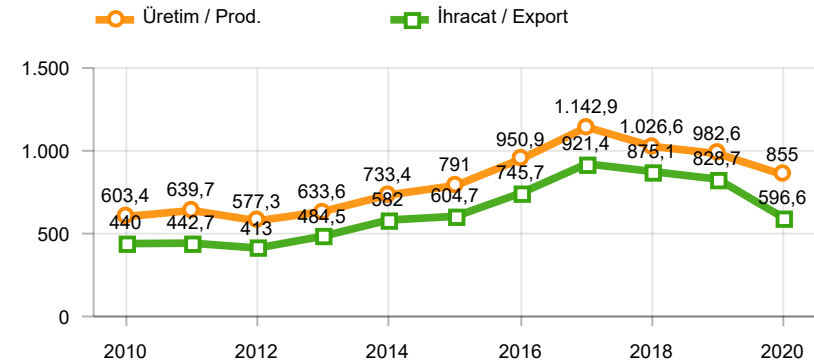
\*\* Ortalama Değerler / Average Values

Araç Tipleri / Types	12 / 2019	12 / 2020	12 % Değişim	1-12 / 2019	1-12 / 2020	1-12 % Değişim
OTOMOBİL / Pass.Car	94.991	92.300	-2,8	982.642	855.043	-13,0
<b>OTOMOBİL Toplam / Pass.Car Total</b>	<b>94.991</b>	<b>92.300</b>	<b>-2,8</b>	<b>982.642</b>	<b>855.043</b>	<b>-13,0</b>
B.KAMYON / H. Truck	960	2.615	172,4	17.604	21.169	20,3
K.KAMYON / L. Truck	396	275	-30,6	1.399	2.057	47,0
KAMYONET / Pick Up	32.526	47.881	47,2	386.245	358.182	-7,3
OTOBÜS / Bus	579	626	8,1	9.199	7.896	-14,2
MİNİBÜS / Minibus	6.038	5.658	-6,3	61.629	51.464	-16,5
MİDİBÜS / Midibus	285	259	-9,1	2.526	2.043	-19,1
<b>TİCARİ ARAÇLAR Toplam / Commercial Vehicles Total</b>	<b>40.784</b>	<b>57.314</b>	<b>40,5</b>	<b>478.602</b>	<b>442.811</b>	<b>-7,5</b>
<b>TAŞIT ARAÇLARI Toplam / Motor Vehicles Total</b>	<b>135.775</b>	<b>149.614</b>	<b>10,2</b>	<b>1.461.244</b>	<b>1.297.854</b>	<b>-11,2</b>
TRAKTÖR / F.Tractor	1.997	4.983	149,5	23.899	38.103	59,4
<b>TRAKTÖR Toplam / F.Tractor Total</b>	<b>1.997</b>	<b>4.983</b>	<b>149,5</b>	<b>23.899</b>	<b>38.103</b>	<b>59,4</b>
<b>GENEL TOPLAM / Grand Total</b>	<b>137.772</b>	<b>154.597</b>	<b>12,2</b>	<b>1.485.143</b>	<b>1.335.957</b>	<b>-10,0</b>

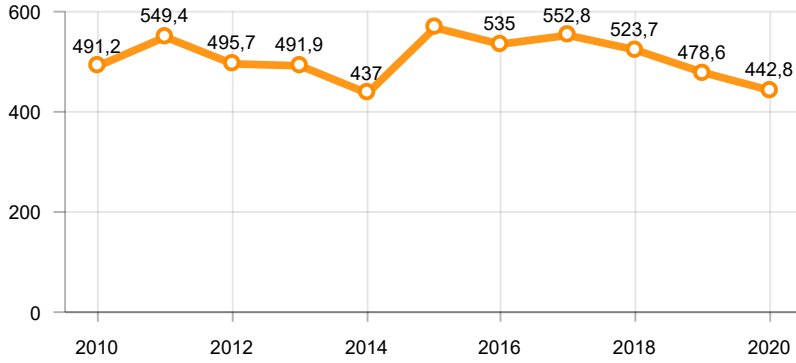
Toplam Üretim ve Otomobil Üretimi (x1000)(OCAK - ARALIK)  
Total & P.Cars Production (x1000)(January - December)



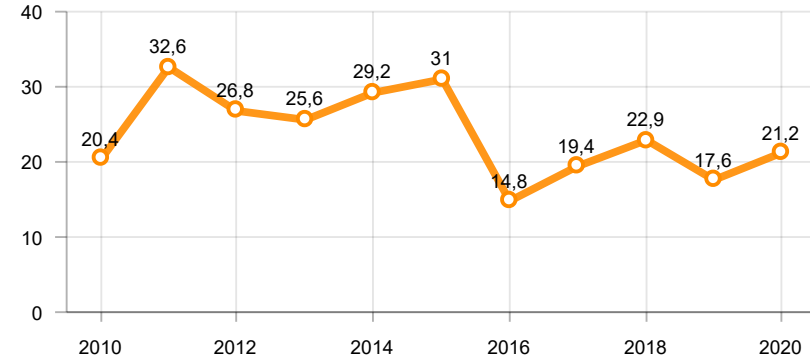
Otomobil Üretimi ve İhracat (x1000)(OCAK - ARALIK)  
P.Cars Production & Exports (x1000)(January - December)



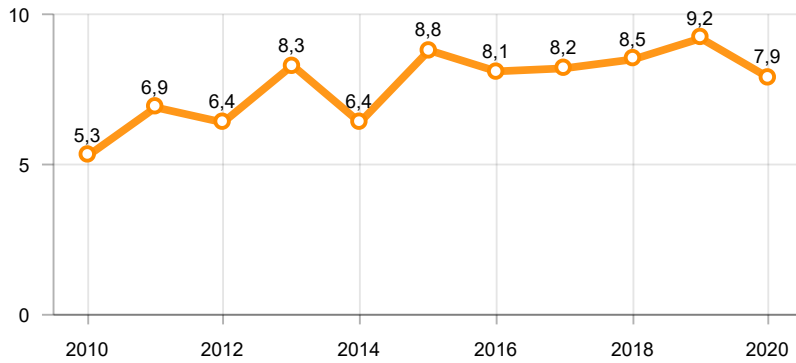
**Ticari Araç Üretimi (x1000)(OCAK - ARALIK)**  
Commercial Vehicle Production (x1000)(January - December)



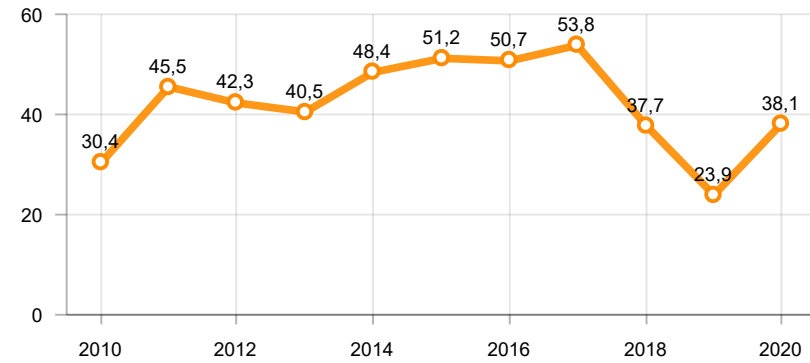
**Büyük Kamyon Üretimi (x1000)(OCAK - ARALIK)**  
Heavy Truck Production (x1000)(January - December)

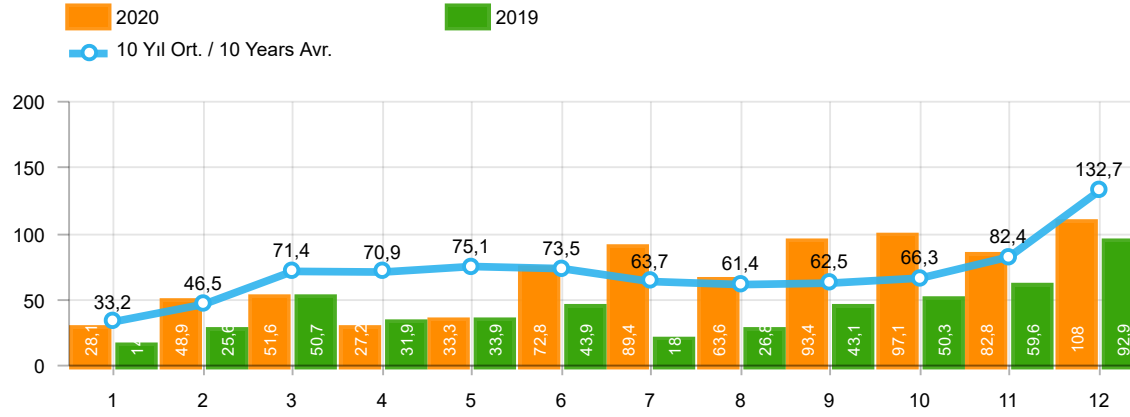


**Otobüs Üretimi (x1000)(OCAK - ARALIK)**  
Bus Production (x1000)(January - December)



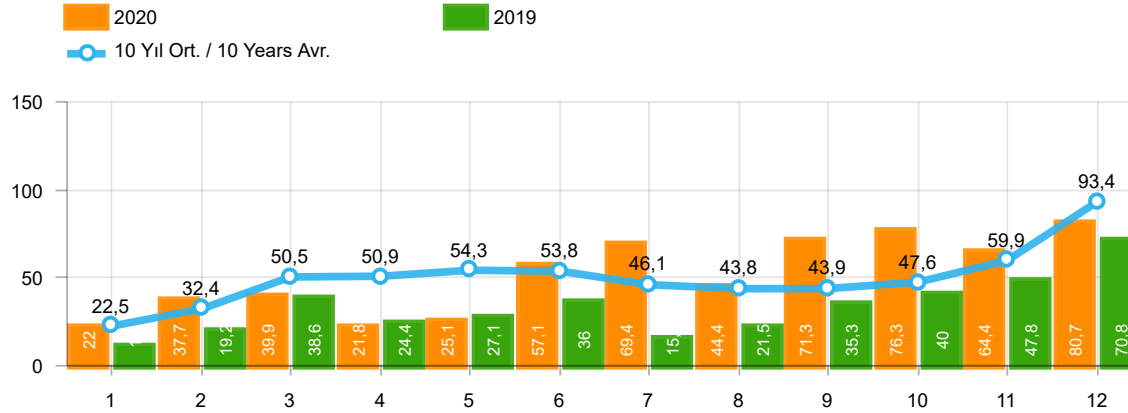
**Traktör Üretimi (x1000)(OCAK - ARALIK)**  
F. Tractor Production (x1000)(January - December)





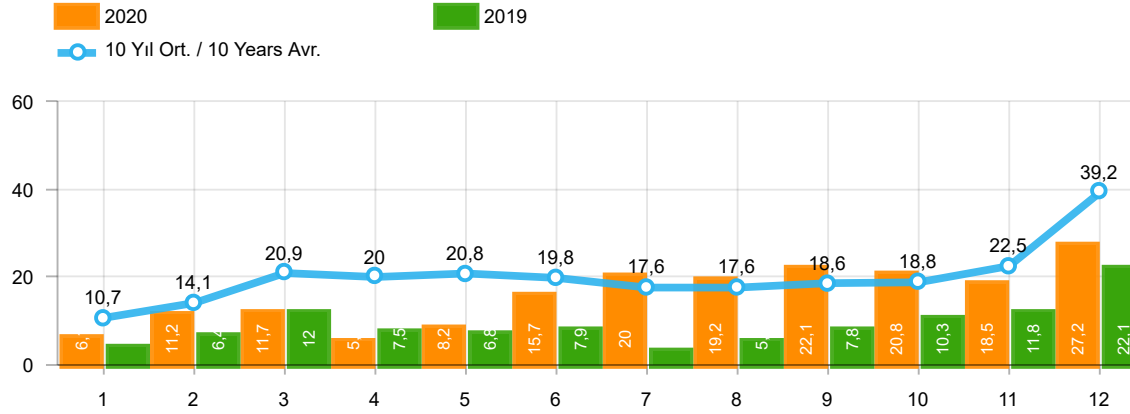
Aylar / Months	10 Yıl Ort / 10 Years Avr.	2020	%
1	33.233	28.123	-15,4
2	46.483	48.948	5,3
3	71.368	51.554	-27,8
4	70.895	27.165	-61,7
5	75.107	33.308	-55,7
6	73.519	72.789	-1,0
7	63.748	89.419	40,3
8	61.423	63.570	3,5
9	62.462	93.406	49,5
10	66.314	97.125	46,5
11	82.432	82.824	0,5
12	132.661	107.969	-18,6
TOPLAM/TOTAL	839.650	796.200	-5,2

Yıl / Year	1	2	3	4	5	6	7	8	9	10	11	12	1-12 Toplam / Total	Toplam / Total	1-12 Yerli / Local	1-12 İthal / Import	İthal Oran / Import %
2010	21.070	32.331	54.019	57.241	61.837	63.511	64.011	64.961	67.040	76.753	77.488	155.234	795.496	795.496	330.230	465.266	58,5
2011	47.759	62.586	84.045	82.782	85.862	85.992	65.658	61.645	64.313	73.227	67.150	134.468	915.487	915.487	373.734	541.753	59,2
2012	31.552	44.138	69.242	66.559	75.195	75.108	65.444	60.982	73.501	62.933	75.203	121.442	821.299	821.299	307.515	513.784	62,6
2013	37.563	51.133	72.943	77.265	85.835	78.043	75.152	67.662	71.388	60.690	83.470	136.048	897.192	897.192	279.461	617.731	68,9
2014	34.751	37.659	51.312	57.113	62.447	64.295	62.770	63.303	70.764	69.742	84.368	154.843	813.367	813.367	289.849	523.518	64,4
2015	37.256	59.221	89.765	96.182	85.804	91.071	87.358	85.244	67.181	67.086	88.431	164.464	1.019.063	1.019.063	359.233	659.830	64,7
2016	34.369	54.840	85.932	87.748	97.090	94.666	59.732	73.654	69.413	85.666	125.462	145.706	1.014.278	1.014.278	333.010	681.268	67,2
2017	36.640	48.585	76.178	78.231	88.066	85.820	84.727	74.818	74.046	94.439	103.772	141.507	986.829	986.829	362.342	624.487	63,3
2018	36.525	48.768	79.600	73.886	74.996	52.788	54.194	35.137	23.915	22.321	59.406	80.014	641.550	641.550	244.282	397.268	61,9
2019	14.847	25.569	50.651	31.944	33.947	43.899	18.442	26.832	43.068	50.288	59.575	92.885	491.947	491.947	214.878	277.069	56,3
2020	28.123	48.948	51.554	27.165	33.308	72.789	89.419	63.570	93.406	97.125	82.824	107.969	796.200	796.200	369.172	427.028	53,6



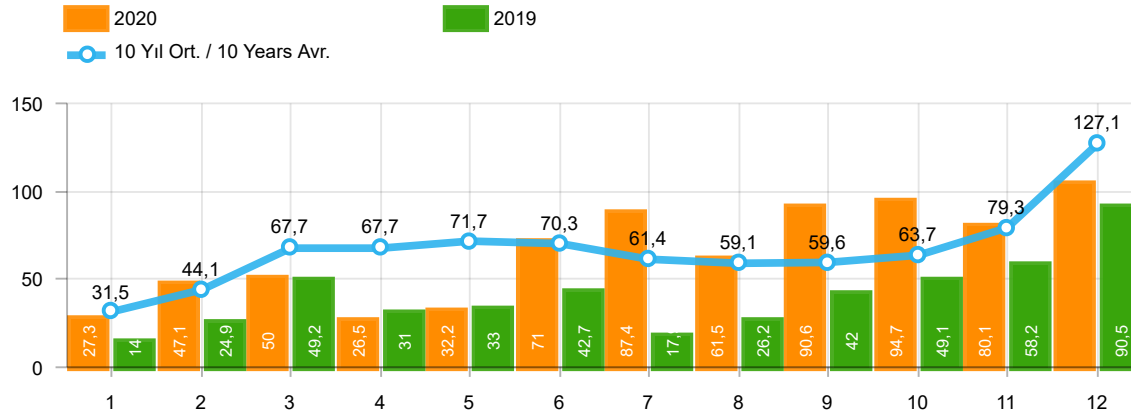
Aylar / Months	10 Yıl Ort / 10 Years Avr.	2020	%
1	22.488	22.016	-2,1
2	32.399	37.727	16,4
3	50.454	39.887	-20,9
4	50.915	21.825	-57,1
5	54.285	25.073	-53,8
6	53.751	57.067	6,2
7	46.135	69.427	50,5
8	43.822	44.372	1,3
9	43.874	71.296	62,5
10	47.560	76.341	60,5
11	59.926	64.357	7,4
12	93.435	80.721	-13,6
TOPLAM / TOTAL	599.044	610.109	1,9

Yıl / Year	1	2	3	4	5	6	7	8	9	10	11	12	1-12 Toplam / Total	Toplam / Total	1-12 Yerli / Local	1-12 İthal / Import	İthal Oran / Import %
2010	12.594	20.651	33.958	36.549	40.467	42.086	41.399	42.222	42.477	47.859	50.061	99.461	509.784	509.784	155.634	354.150	69,5
2011	29.868	39.004	54.023	53.835	56.302	56.714	43.518	38.875	39.964	47.508	44.951	88.957	593.519	593.519	179.488	414.031	69,8
2012	21.077	29.189	47.270	45.645	50.460	50.849	44.531	41.236	49.360	43.440	52.297	80.926	556.280	556.280	146.604	409.676	73,6
2013	25.835	36.814	51.785	56.999	62.383	58.290	55.712	51.611	52.925	46.985	64.117	101.199	664.655	664.655	147.128	517.527	77,9
2014	24.368	27.167	37.812	42.769	46.379	47.278	46.602	45.131	49.262	50.814	59.695	110.054	587.331	587.331	157.349	429.982	73,2
2015	24.498	40.817	61.676	70.211	62.878	67.766	64.218	61.753	47.088	47.954	62.397	114.340	725.596	725.596	186.526	539.070	74,3
2016	23.358	40.588	63.975	65.618	73.832	71.111	45.566	53.977	51.340	63.746	95.783	108.044	756.938	756.938	191.893	565.045	74,6
2017	25.689	34.658	55.616	57.998	65.799	66.164	62.384	54.890	53.423	70.488	75.956	99.694	722.759	722.759	216.791	505.968	70,0
2018	26.611	35.901	59.798	55.108	57.227	41.225	42.024	26.976	17.595	16.809	46.204	60.843	486.321	486.321	163.405	322.916	66,4
2019	10.979	19.205	38.628	24.416	27.126	36.024	15.398	21.544	35.308	39.996	47.803	70.829	387.256	387.256	157.178	230.078	59,4
2020	22.016	37.727	39.887	21.825	25.073	57.067	69.427	44.372	71.296	76.341	64.357	80.721	610.109	610.109	249.659	360.450	59,1



Aylar / Months	10 Yıl Ort / 10 Years Avr.	2020	%
1	10.746	6.107	-43,2
2	14.084	11.221	-20,3
3	20.915	11.667	-44,2
4	19.980	5.340	-73,3
5	20.823	8.235	-60,5
6	19.769	15.722	-20,5
7	17.614	19.992	13,5
8	17.602	19.198	9,1
9	18.589	22.110	18,9
10	18.755	20.784	10,8
11	22.506	18.467	-17,9
12	39.226	27.248	-30,5
TOPLAM / TOTAL	240.607	186.091	-22,7

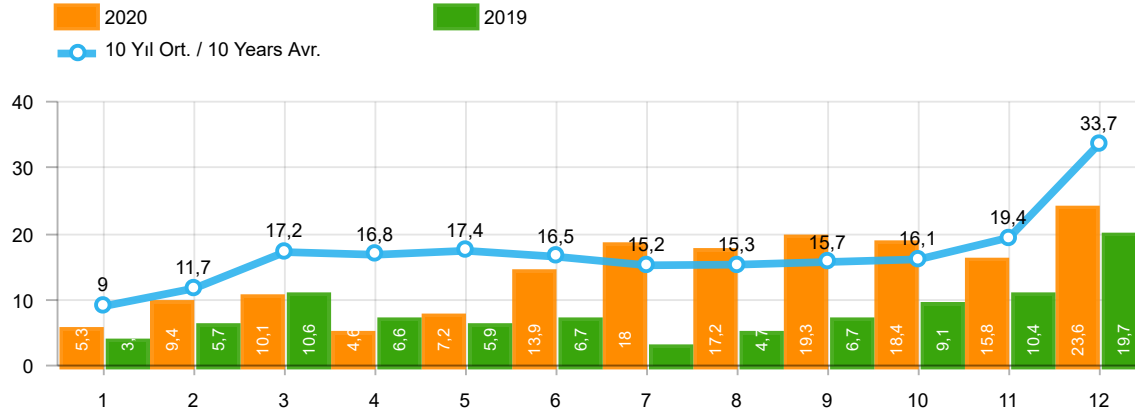
Yıl / Year	1	2	3	4	5	6	7	8	9	10	11	12	1-12 Toplam / Total	Toplam / Total	1-12 Yerli / Local	1-12 İthal / Import	İthal Oran / Import %
2010	8.476	11.680	20.061	20.692	21.370	21.425	22.612	22.739	24.563	28.894	27.427	55.773	285.712	285.712	174.596	111.116	38,9
2011	17.891	23.582	30.022	28.947	29.560	29.278	22.140	22.770	24.349	25.719	22.199	45.511	321.968	321.968	194.246	127.722	39,7
2012	10.475	14.949	21.972	20.914	24.735	24.259	20.913	19.746	24.141	19.493	22.906	40.516	265.019	265.019	160.911	104.108	39,3
2013	11.728	14.319	21.158	20.266	23.452	19.753	19.440	16.051	18.463	13.705	19.353	34.849	232.537	232.537	132.333	100.204	43,1
2014	10.383	10.492	13.500	14.344	16.068	17.017	16.168	18.172	21.502	18.928	24.673	44.789	226.036	226.036	132.500	93.536	41,4
2015	12.758	18.404	28.089	25.971	22.926	23.305	23.140	23.491	20.093	19.132	26.034	50.124	293.467	293.467	172.707	120.760	41,1
2016	11.011	14.252	21.957	22.130	23.258	23.555	14.166	19.677	18.073	21.920	29.679	37.662	257.340	257.340	141.117	116.223	45,2
2017	10.951	13.927	20.562	20.233	22.267	19.656	22.343	19.928	20.623	23.951	27.816	41.813	264.070	264.070	145.551	118.519	44,9
2018	9.914	12.867	19.802	18.778	17.769	11.563	12.170	8.161	6.320	5.512	13.202	19.171	155.229	155.229	80.877	74.352	47,9
2019	3.868	6.364	12.023	7.528	6.821	7.875	3.044	5.288	7.760	10.292	11.772	22.056	104.691	104.691	57.700	46.991	44,9
2020	6.107	11.221	11.667	5.340	8.235	15.722	19.992	19.198	22.110	20.784	18.467	27.248	186.091	186.091	119.513	66.578	35,8



Aylar / Months	10 Yıl Ort / 10 Years Avr.	2020	%
1	31.483	27.273	-13,4
2	44.149	47.122	6,7
3	67.703	50.008	-26,1
4	67.704	26.457	-60,9
5	71.711	32.235	-55,0
6	70.288	70.973	1,0
7	61.352	87.401	42,5
8	59.082	61.533	4,1
9	59.606	90.619	52,0
10	63.700	94.733	48,7
11	79.340	80.141	1,0
12	127.092	104.293	-17,9
TOPLAM / TOTAL	803.210	772.788	-3,8

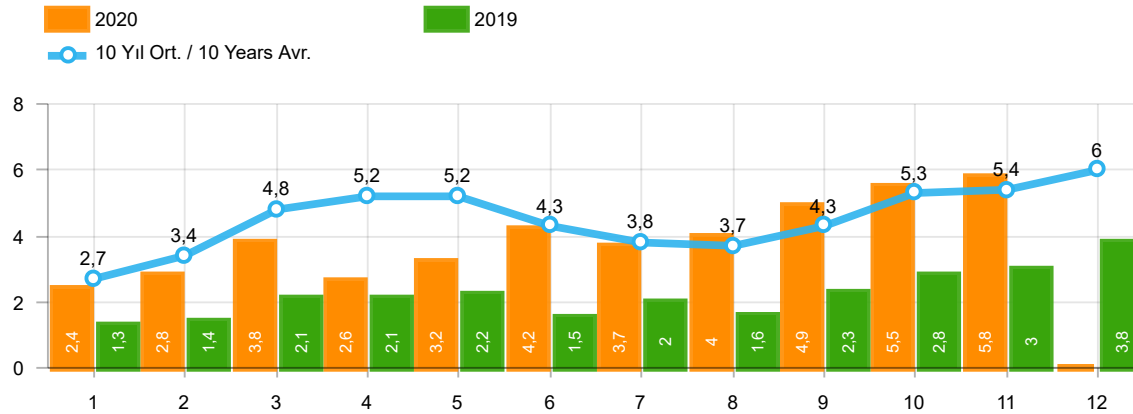
Yıl / Year	1	2	3	4	5	6	7	8	9	10	11	12	1-12 Toplam / Total	Toplam / Total	1-12 Yerli / Local	1-12 İthal / Import	İthal Oran / Import %
2010	20.095	31.172	51.769	54.946	59.377	60.896	61.345	61.764	63.814	73.404	73.962	148.369	760.913	760.913	305.354	455.559	59,9
2011	44.892	58.663	78.403	77.695	80.646	81.573	63.044	58.406	60.129	69.421	63.657	127.910	864.439	864.439	338.074	526.365	60,9
2012	29.545	41.324	64.884	62.949	70.863	71.067	62.304	58.148	69.629	59.938	71.710	115.400	777.761	777.761	276.003	501.758	64,5
2013	35.523	48.307	68.774	73.575	81.468	74.096	71.596	65.043	67.963	58.014	79.301	129.718	853.378	853.378	245.906	607.472	71,2
2014	32.670	35.021	47.581	53.305	58.121	60.163	59.907	60.199	66.531	66.573	80.621	146.989	767.681	767.681	255.573	512.108	66,7
2015	34.615	55.331	83.302	91.602	81.542	86.158	83.836	82.577	64.025	64.255	84.601	156.173	968.017	968.017	321.725	646.292	66,8
2016	32.713	52.825	82.948	84.887	93.904	91.540	58.533	71.556	67.593	83.000	122.309	141.912	983.720	983.720	310.864	672.856	68,4
2017	35.323	46.965	73.802	75.988	85.422	83.658	82.297	72.536	71.352	91.752	100.859	136.240	956.194	956.194	340.306	615.888	64,4
2018	35.076	47.009	76.345	71.126	72.755	51.037	52.734	34.346	23.028	21.571	58.204	77.706	620.937	620.937	230.493	390.444	62,9
2019	14.373	24.875	49.221	30.971	33.016	42.688	17.927	26.246	41.992	49.075	58.176	90.500	479.060	479.060	206.069	272.991	57,0
2020	27.273	47.122	50.008	26.457	32.235	70.973	87.401	61.533	90.619	94.733	80.141	104.293	772.788	772.788	353.336	419.452	54,3





Aylar / Months	10 Yıl Ort / 10 Years Avr.	2020	%
1	8.995	5.257	-41,6
2	11.750	9.395	-20,0
3	17.249	10.121	-41,3
4	16.790	4.632	-72,4
5	17.426	7.162	-58,9
6	16.537	13.906	-15,9
7	15.217	17.974	18,1
8	15.261	17.161	12,5
9	15.731	19.323	22,8
10	16.140	18.392	14,0
11	19.414	15.784	-18,7
12	33.657	23.572	-30,0
<b>TOPLAM / TOTAL</b>	<b>204.166</b>	<b>162.679</b>	<b>-20,3</b>

Yıl / Year	1	2	3	4	5	6	7	8	9	10	11	12	1-12 Toplam / Total	Toplam / Total	1-12 Yerli / Local	1-12 İthal / Import	İthal Oran / Import %
<b>2010</b>	7.501	10.521	17.811	18.397	18.910	18.810	19.946	19.542	21.337	25.545	23.901	48.908	251.129	251.129	149.720	101.409	40,4
<b>2011</b>	15.024	19.659	24.380	23.860	24.344	24.859	19.526	19.531	20.165	21.913	18.706	38.953	270.920	270.920	158.586	112.334	41,5
<b>2012</b>	8.468	12.135	17.614	17.304	20.403	20.218	17.773	16.912	20.269	16.498	19.413	34.474	221.481	221.481	129.399	92.082	41,6
<b>2013</b>	9.688	11.493	16.989	16.576	19.085	15.806	15.884	13.432	15.038	11.029	15.184	28.519	188.723	188.723	98.778	89.945	47,7
<b>2014</b>	8.302	7.854	9.769	10.536	11.742	12.885	13.305	15.068	17.269	15.759	20.926	36.935	180.350	180.350	98.224	82.126	45,5
<b>2015</b>	10.117	14.514	21.626	21.391	18.664	18.392	19.618	20.824	16.937	16.301	22.204	41.833	242.421	242.421	135.199	107.222	44,2
<b>2016</b>	9.355	12.237	18.973	19.269	20.072	20.429	12.967	17.579	16.253	19.254	26.526	33.868	226.782	226.782	118.971	107.811	47,5
<b>2017</b>	9.634	12.307	18.186	17.990	19.623	17.494	19.913	17.646	17.929	21.264	24.903	36.546	233.435	233.435	123.515	109.920	47,1
<b>2018</b>	8.465	11.108	16.547	16.018	15.528	9.812	10.710	7.370	5.433	4.762	12.000	16.863	134.616	134.616	67.088	67.528	50,2
<b>2019</b>	3.394	5.670	10.593	6.555	5.890	6.664	2.529	4.702	6.684	9.079	10.373	19.671	91.804	91.804	48.891	42.913	46,7
<b>2020</b>	5.257	9.395	10.121	4.632	7.162	13.906	17.974	17.161	19.323	18.392	15.784	23.572	162.679	162.679	103.677	59.002	36,3



Aylar / Months	10 Yıl Ort / 10 Years Avr.	2020	%
1	2.729	2.425	-11,1
2	3.442	2.778	-19,3
3	4.845	3.771	-22,2
4	5.152	2.606	-49,4
5	5.209	3.244	-37,7
6	4.304	4.173	-3,0
7	3.835	3.727	-2,8
8	3.730	3.974	6,6
9	4.272	4.928	15,4
10	5.347	5.466	2,2
11	5.382	5.831	8,3
TOPLAM / TOTAL	48.245	42.923	-11,0

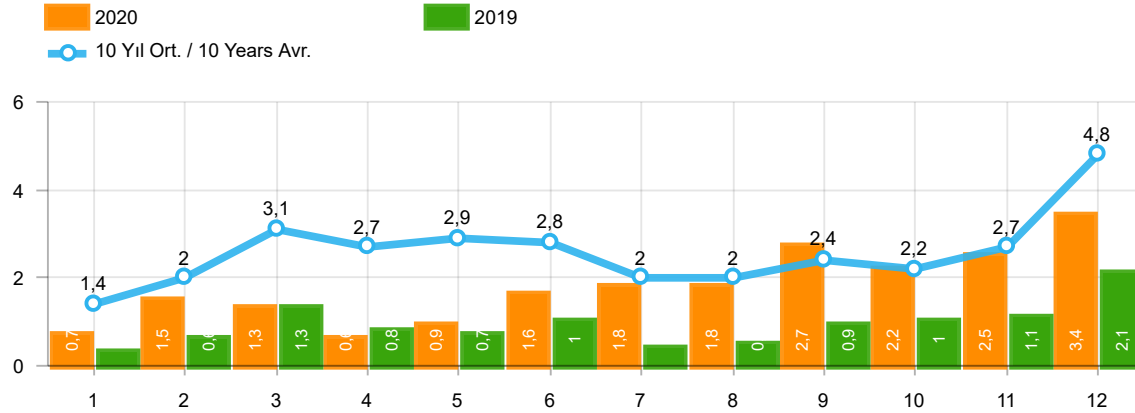
Yıl / Year	1	2	3	4	5	6	7	8	9	10	11	12	1-11 Toplam / Total	Toplam / Total
2010	1.111	1.991	2.330	3.039	2.567	2.638	1.965	3.019	2.806	4.424	3.978	6.168	29.868	36.036
2011	2.975	5.242	5.927	5.358	6.016	6.335	4.534	4.051	4.140	5.828	4.943	4.992	55.349	60.341
2012	2.362	1.983	4.348	6.579	6.273	4.569	3.837	3.158	3.618	4.027	4.807	4.757	45.561	50.318
2013	2.161	2.432	4.005	4.585	5.616	3.136	4.574	3.408	4.935	4.762	5.781	6.891	45.395	52.286
2014	2.169	3.512	4.476	4.905	5.094	5.028	4.233	4.920	5.619	5.743	6.250	7.409	51.949	59.358
2015	3.124	3.984	5.460	6.383	6.078	5.748	4.677	5.044	4.765	7.049	6.898	7.564	59.210	66.774
2016	3.739	4.731	7.067	6.546	6.575	5.543	3.833	5.134	4.945	7.372	7.090	7.603	62.575	70.178
2017	3.974	4.964	6.773	6.780	7.057	5.356	5.003	4.396	6.064	7.734	7.457	7.351	65.558	72.909
2018	4.362	4.179	5.925	5.216	4.584	3.146	3.654	2.587	3.541	3.698	3.578	3.886	44.470	48.356
2019	1.311	1.401	2.143	2.126	2.229	1.538	2.039	1.579	2.284	2.828	3.037	3.782	22.515	26.297
2020	2.425	2.778	3.771	2.606	3.244	4.173	3.727	3.974	4.928	5.466	5.831	-	42.923	42.923

Kaynak: TÜİK trafik kayıtları.

Rakamlar, son iki model yılına ait traktör tescillerinden oluşmaktadır.

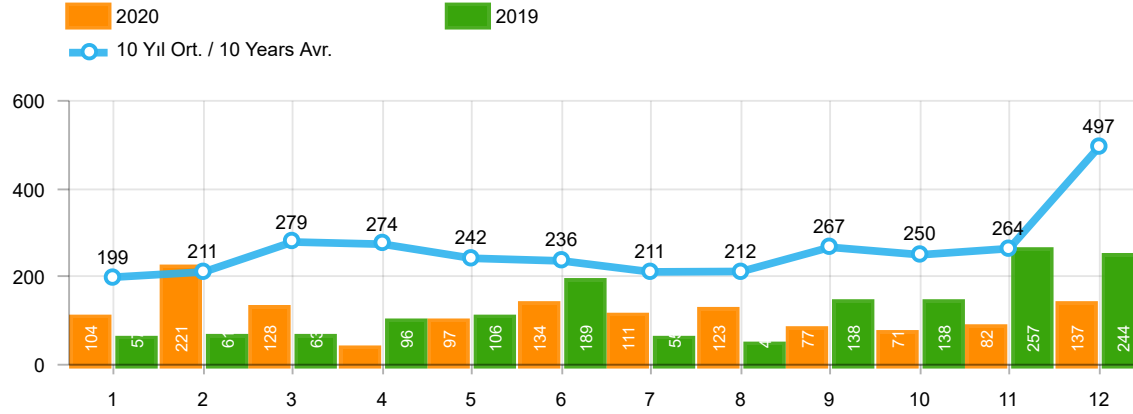
Source: Turkish Statistical Institute – Traffic registrations

Data represents the last two model year's farm tractors registration figures



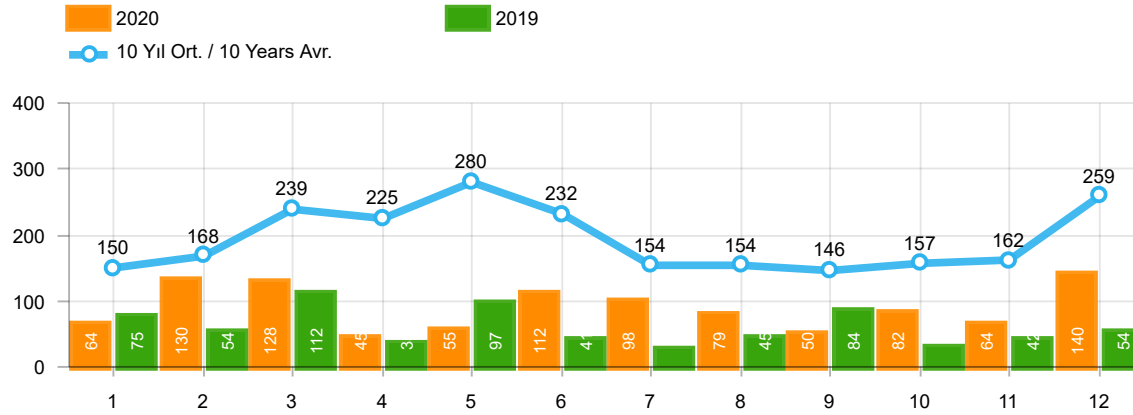
Aylar / Months	10 Yıl Ort / 10 Years Avr.	2020	%
1	1.402	682	-51,4
2	1.955	1.475	-24,6
3	3.148	1.290	-59,0
4	2.692	628	-76,7
5	2.874	921	-68,0
6	2.764	1.570	-43,2
7	2.032	1.809	-11,0
8	1.976	1.835	-7,1
9	2.444	2.660	8,8
10	2.207	2.239	1,5
11	2.667	2.537	-4,9
12	4.814	3.399	-29,4
TOPLAM / TOTAL	30.974	21.045	-32,1

Yıl / Year	1	2	3	4	5	6	7	8	9	10	11	12	1-12 Toplam / Total	Toplam / Total	1-12 Yerli / Local	1-12 İthal / Import	İthal Oran / Import %
2010	768	960	1.950	1.949	2.140	2.314	2.403	2.754	2.864	3.001	3.231	6.158	30.492	30.492	20.872	9.620	31,5
2011	2.651	3.544	5.142	4.503	4.563	3.852	2.261	2.745	3.784	3.400	3.149	5.712	45.306	45.306	30.004	15.302	33,8
2012	1.703	2.454	3.866	3.209	3.678	3.540	2.750	2.403	3.296	2.497	3.154	5.300	37.850	37.850	25.881	11.969	31,6
2013	1.484	2.113	3.343	2.925	3.504	3.186	2.777	2.103	2.875	2.086	3.631	5.444	35.471	35.471	25.259	10.212	28,8
2014	1.522	2.065	3.094	3.224	3.727	3.726	2.578	2.783	3.708	2.858	3.384	6.869	39.538	39.538	28.289	11.249	28,5
2015	2.215	3.346	5.699	3.729	3.600	4.253	2.922	2.211	2.687	2.266	3.146	7.307	43.381	43.381	29.913	13.468	31,0
2016	1.167	1.648	2.515	2.319	2.711	2.623	984	1.796	1.438	2.238	2.485	3.127	25.051	25.051	16.671	8.380	33,5
2017	931	1.290	1.982	1.888	2.184	1.891	1.974	1.860	2.284	2.188	2.487	4.438	25.397	25.397	16.812	8.585	33,8
2018	1.237	1.552	2.630	2.328	1.909	1.272	1.235	603	653	488	905	1.695	16.507	16.507	9.694	6.813	41,3
2019	342	579	1.255	842	728	981	435	497	854	1.047	1.100	2.087	10.747	10.747	6.669	4.078	37,9
2020	682	1.475	1.290	628	921	1.570	1.809	1.835	2.660	2.239	2.537	3.399	21.045	21.045	13.469	7.576	36,0



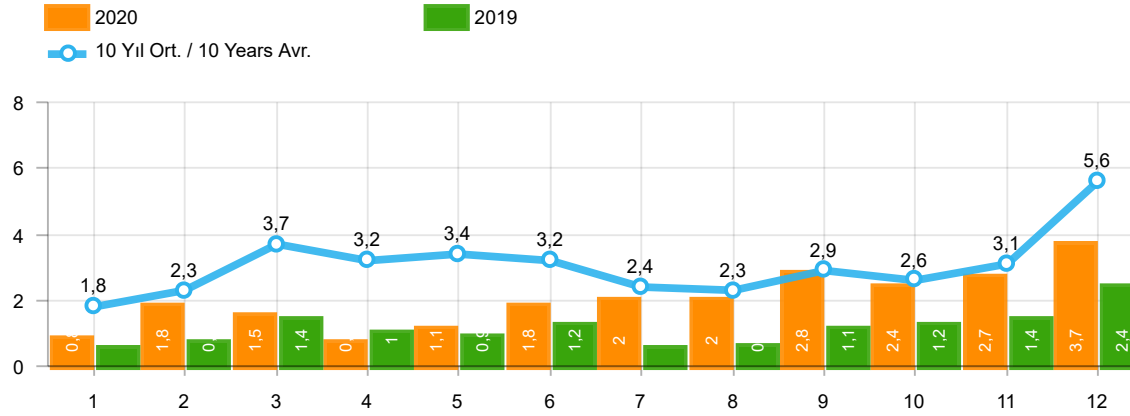
Aylar / Months	10 Yıl Ort / 10 Years Avr.	2020	%
1	199	104	-47,6
2	211	221	4,8
3	279	128	-54,1
4	274	35	-87,2
5	242	97	-59,9
6	236	134	-43,1
7	211	111	-47,4
8	212	123	-42,1
9	267	77	-71,1
10	250	71	-71,6
11	264	82	-68,9
12	497	137	-72,4
<b>TOPLAM / TOTAL</b>	<b>3.141</b>	<b>1.320</b>	<b>-58,0</b>

Yıl / Year	1	2	3	4	5	6	7	8	9	10	11	12	1-12 Toplam / Total	Toplam / Total
2010	140	128	172	153	127	124	93	232	199	204	162	382	2.116	2.116
2011	124	167	267	260	241	233	205	280	270	230	168	525	2.970	2.970
2012	179	257	277	229	257	239	216	249	325	269	189	398	3.084	3.084
2013	191	268	289	276	283	241	367	235	305	392	415	697	3.959	3.959
2014	360	394	384	333	294	258	216	229	395	220	266	653	4.002	4.002
2015	280	322	451	561	372	405	389	253	316	394	325	621	4.689	4.689
2016	309	158	251	302	261	196	139	220	241	230	354	431	3.092	3.092
2017	212	211	227	231	272	156	250	235	318	268	317	594	3.291	3.291
2018	134	142	410	296	207	315	180	146	160	155	184	425	2.754	2.754
2019	57	61	63	96	106	189	55	44	138	138	257	244	1.448	1.448
2020	104	221	128	35	97	134	111	123	77	71	82	137	1.320	1.320



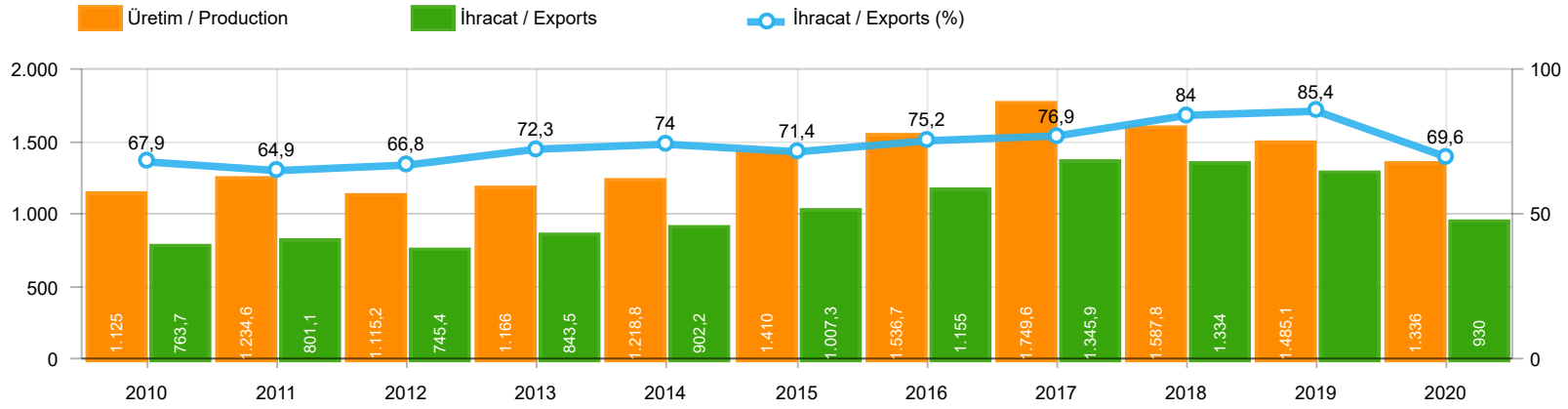
Aylar / Months	10 Yıl Ort / 10 Years Avr.	2020	%
1	150	64	-57,4
2	168	130	-22,6
3	239	128	-46,5
4	225	45	-80,0
5	280	55	-80,4
6	232	112	-51,8
7	154	98	-36,2
8	154	79	-48,7
9	146	50	-65,8
10	157	82	-47,9
11	162	64	-60,4
12	259	140	-45,9
TOPLAM / TOTAL	2.326	1.047	-55,0

Yıl / Year	1	2	3	4	5	6	7	8	9	10	11	12	1-12 Toplam / Total	Toplam / Total	1-12 Yerli / Local	1-12 İthal / Import	İthal Oran / Import %
2010	67	71	128	193	193	177	170	211	163	144	133	325	1.975	1.975	1.888	87	4,4
2011	92	212	233	324	412	334	148	214	130	176	176	321	2.772	2.772	2.686	86	3,1
2012	125	103	215	172	397	262	174	182	251	229	150	344	2.604	2.604	2.547	57	2,2
2013	365	445	537	489	580	520	412	281	245	198	123	189	4.384	4.384	4.337	47	1,1
2014	199	179	253	251	305	148	69	92	130	91	97	332	2.146	2.146	1.985	161	7,5
2015	146	222	313	290	290	255	211	203	153	171	359	363	2.976	2.976	2.906	70	2,4
2016	180	209	218	240	214	307	76	82	141	198	314	236	2.415	2.415	2.383	32	1,3
2017	174	119	167	124	188	115	206	187	92	231	109	235	1.947	1.947	1.933	14	0,7
2018	78	65	215	136	125	164	45	42	74	107	113	188	1.352	1.352	1.341	11	0,8
2019	75	54	112	35	97	41	25	45	84	28	42	54	692	692	692	-	-
2020	64	130	128	45	55	112	98	79	50	82	64	140	1.047	1.047	1.047	-	-



Aylar / Months	10 Yıl Ort. / 10 Years Avr.	2020	%
1	1.751	850	-51,4
2	2.334	1.826	-21,8
3	3.666	1.546	-57,8
4	3.191	708	-77,8
5	3.397	1.073	-68,4
6	3.232	1.816	-43,8
7	2.397	2.018	-15,8
8	2.342	2.037	-13,0
9	2.857	2.787	-2,5
10	2.614	2.392	-8,5
11	3.093	2.683	-13,2
12	5.569	3.676	-34,0
TOPLAM / TOTAL	36.441	23.412	-35,8

Yıl / Year	1	2	3	4	5	6	7	8	9	10	11	12	1-12 Toplam / Total	Toplam / Total	1-12 Yerli / Local	1-12 İthal / Import	İthal Oran / Import %
2010	975	1.159	2.250	2.295	2.460	2.615	2.666	3.197	3.226	3.349	3.526	6.865	34.583	34.583	24.876	9.707	28,1
2011	2.867	3.923	5.642	5.087	5.216	4.419	2.614	3.239	4.184	3.806	3.493	6.558	51.048	51.048	35.660	15.388	30,1
2012	2.007	2.814	4.358	3.610	4.332	4.041	3.140	2.834	3.872	2.995	3.493	6.042	43.538	43.538	31.512	12.026	27,6
2013	2.040	2.826	4.169	3.690	4.367	3.947	3.556	2.619	3.425	2.676	4.169	6.330	43.814	43.814	33.555	10.259	23,4
2014	2.081	2.638	3.731	3.808	4.326	4.132	2.863	3.104	4.233	3.169	3.747	7.854	45.686	45.686	34.276	11.410	25,0
2015	2.641	3.890	6.463	4.580	4.262	4.913	3.522	2.667	3.156	2.831	3.830	8.291	51.046	51.046	37.508	13.538	26,5
2016	1.656	2.015	2.984	2.861	3.186	3.126	1.199	2.098	1.820	2.666	3.153	3.794	30.558	30.558	22.146	8.412	27,5
2017	1.317	1.620	2.376	2.243	2.644	2.162	2.430	2.282	2.694	2.687	2.913	5.267	30.635	30.635	22.036	8.599	28,1
2018	1.449	1.759	3.255	2.760	2.241	1.751	1.460	791	887	750	1.202	2.308	20.613	20.613	13.789	6.824	33,1
2019	474	694	1.430	973	931	1.211	515	586	1.076	1.213	1.399	2.385	12.887	12.887	8.809	4.078	31,6
2020	850	1.826	1.546	708	1.073	1.816	2.018	2.037	2.787	2.392	2.683	3.676	23.412	23.412	15.836	7.576	32,4



	2010	2011	2012	2013	2014	2015	2016	2017	2018	2019	2020
<b>İhracat/Export</b>	763.670	801.112	745.354	843.467	902.194	1.007.267	1.155.033	1.345.917	1.333.992	1.268.430	930.038
<b>Üretim/Production</b>	1.124.982	1.234.637	1.115.233	1.166.043	1.218.848	1.410.034	1.536.673	1.749.572	1.587.946	1.485.143	1.335.957
<b>İhracat/Exports (%)</b>	67,9	64,9	66,8	72,3	74	71,4	75,2	76,9	84	85,4	69,6

**Taşıt Araçları İhracatı (2018 - 2020)**  
Motor Vehicle Exports (2018 - 2020)

SEKTÖR / SECTOR	2018	2019	1/12-2019	1/12-2020	2020/2019 %
OTOMOBİL / Pass.Car	875.147	828.744	828.744	596.616	-28,0
<b>OTOMOBİL TOPLAM / Pass. Car Total</b>	<b>875.147</b>	<b>828.744</b>	<b>828.744</b>	<b>596.616</b>	<b>-28,0</b>
KAMYON / Truck	14.478	14.824	14.824	10.333	-30,3
KAMYONET / Pick Up	372.954	349.490	349.490	263.767	-24,5
OTOBÜS / Bus	7.708	9.001	9.001	6.886	-23,5
MİNİBÜS / Minibus	47.736	49.283	49.283	38.301	-22,3
MİDİBÜS / Midibus	846	1.244	1.244	640	-48,6
<b>TİCARİ ARAÇLAR TOPLAM / Commercial Vehicle Total</b>	<b>443.722</b>	<b>423.842</b>	<b>423.842</b>	<b>319.927</b>	<b>-24,5</b>
<b>TAŞIT ARAÇLARI TOPLAM / Motor Vehicles Total</b>	<b>1.318.869</b>	<b>1.252.586</b>	<b>1.252.586</b>	<b>916.543</b>	<b>-26,8</b>
TRAKTÖR / F.Tractor	15.123	15.844	15.844	13.495	-14,8
<b>TRAKTÖR TOPLAM / F.Tractor Total</b>	<b>15.123</b>	<b>15.844</b>	<b>15.844</b>	<b>13.495</b>	<b>-14,8</b>
<b>GENEL TOPLAM / GRAND TOTAL</b>	<b>1.333.992</b>	<b>1.268.430</b>	<b>1.268.430</b>	<b>930.038</b>	<b>-26,7</b>

**Üretici Bazında İhracat (adet)**  
Exports by Manufacturer (unit)

Üreticiler / Manufacturers	2018	2019	1-12 / 2019	1-12 / 2020
A.I.O.S.	964	1.433	1.433	510
FORD OTOSAN	328.502	333.734	333.734	254.003
HATTAT TRAKTÖR	621	637	637	942
HONDA TÜRKİYE	13.699	7.528	7.528	6.421
HYUNDAI ASSAN	190.347	169.803	169.803	128.003
KARSAN	3.419	2.713	2.713	760
M. BENZ TÜRK	16.309	16.324	16.324	11.184
MAN TÜRKİYE	2.425	2.892	2.892	2.628
OTOKAR	901	1.156	1.156	862
OYAK RENAULT	280.411	295.275	295.275	211.954
TEMSA	645	602	602	243
TOFAŞ	243.796	194.107	194.107	117.886
TOYOTA	237.451	227.019	227.019	182.089
TÜRK TRAKTÖR	14.502	15.207	15.207	12.553
<b>GENEL TOPLAM / Grand Total</b>	<b>1.333.992</b>	<b>1.268.430</b>	<b>1.268.430</b>	<b>930.038</b>



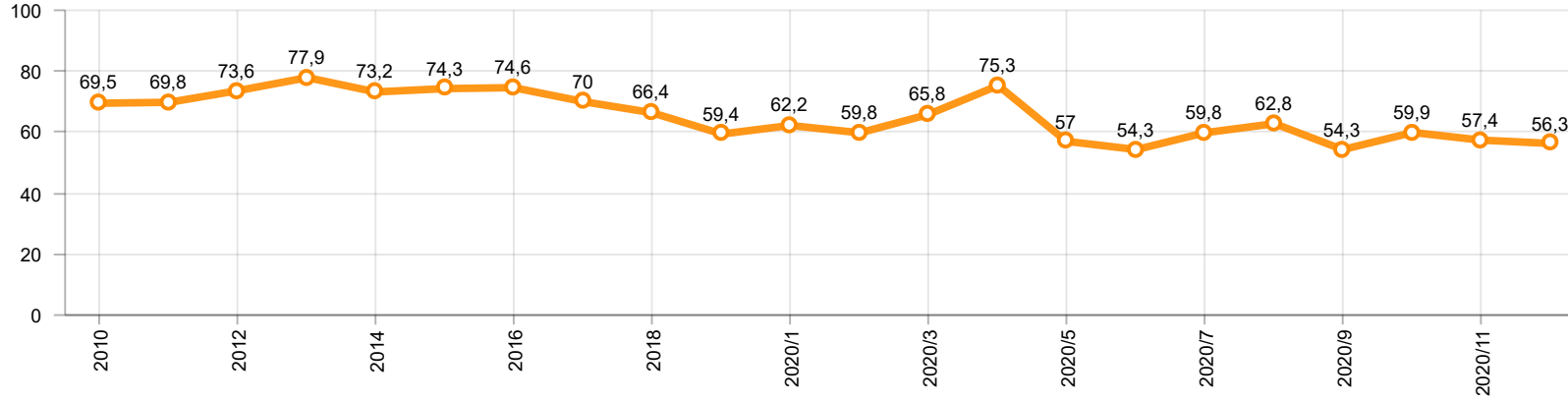
**Otomotiv Ana ve Yan Sanayii İhracatı (ABD \$)**  
CBU and CKD Exports - \$

Sektör / Sector	2018	2019	OCAK - ARALIK / January - December 2019	OCAK - ARALIK / January - December 2020	2020 / 2019 %
<b>Toplam Yan Sanayi / Total Component Industry</b>	<b>10.878.550.618</b>	<b>10.616.350.211,16</b>	<b>10.616.350.211,16</b>	<b>9.454.364.326,61</b>	<b>-10,9</b>
İç ve Dış Lastik / Tyres	1.353.862.295	1.479.050.683,54	1.479.050.683,54	1.248.005.046,63	-15,6
Emniyet Camı / Safety Glasses	151.148.111	150.643.773,04	150.643.773,04	140.363.576,74	-6,8
Motor / Engine	581.983.113	518.051.730,93	518.051.730,93	461.449.027,72	-10,9
Akümülatör / Batteries	387.879.636	397.317.829,27	397.317.829,27	353.038.607,91	-11,1
Diğer Aksam ve Parça / Spare Parts&Components	8.403.677.463	8.071.286.194,38	8.071.286.194,38	7.251.508.067,61	-10,2
<b>Toplam Ana Sanayi / Total Vehicle Industry</b>	<b>21.349.203.156</b>	<b>20.613.753.125,48</b>	<b>20.613.753.125,48</b>	<b>16.491.127.868,9</b>	<b>-20,0</b>
Otobüs / Bus	1.503.156.428	1.759.421.232,04	1.759.421.232,04	1.300.660.458,98	-26,1
Midibüs-Minibüs / Midibus-Minibus	215.450.022	222.922.951,87	222.922.951,87	188.434.401,85	-15,5
Otomobil / P.Cars	12.420.951.066	11.864.815.315,9	11.864.815.315,9	9.312.088.333,82	-21,5
Kamyon-Kamyonet / Truck-Pick Up&Van	5.375.329.018	4.945.359.113,74	4.945.359.113,74	4.254.957.839,91	-14,0
Römork ve Yarı Römork / Trailer-Semi Trailer	507.223.886	503.203.636,07	503.203.636,07	417.420.859,24	-17,0
Çekici / Tractor	904.738.051	839.891.842,8	839.891.842,8	602.899.223,51	-28,2
Tarım Traktörü / Farm Tractor	422.354.685	478.139.033,06	478.139.033,06	414.666.751,59	-13,3
<b>Toplam / Total</b>	<b>32.227.753.774</b>	<b>31.230.103.336,64</b>	<b>31.230.103.336,64</b>	<b>25.945.492.195,51</b>	<b>-16,9</b>

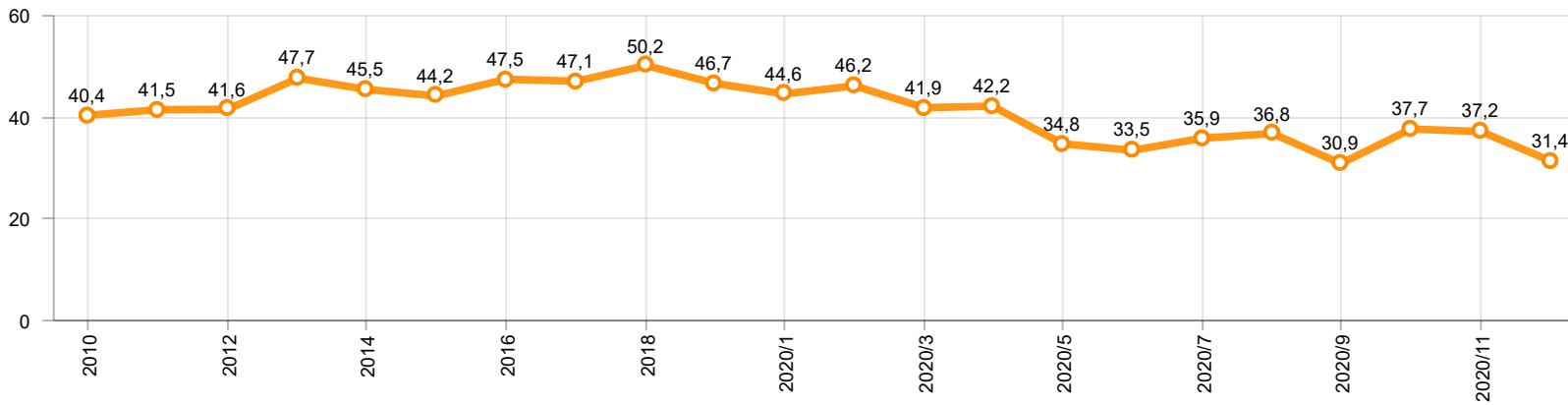
Kaynak: Uludağ İhracatçı Birlikleri . ÜİB tarafından OSD için özel olarak analiz edilen Otomotiv İhracatı kapsamında; ÜİB Türkiye Geneli Otomotiv Endüstrisi sınıflandırmasına kıyasla “Römork ve Yarı Römork” , “Tarım Traktörü” verileri dahil edilmekte; “Kullanılmış Araçlar” ,”İki Tekerlekli Taşıtlar”, “Demiryolu Taşıtları” hariç tutulmaktadır.

Source: Uludağ Exporters Association – Special Analyze for OSD.Compared to Turkish General Automotive Industry classification, this special analyze includes; farms tractors, trailers and semi-trailers, does not include; used vehicles, two-wheeled vehicles and railway vehicles

**Otomobil Pazarında İthalatın Payı (%)**  
Import Share in P.Car Market (%)



**Hafif Ticari Araçlar Pazarında İthalatın Payı (%)**  
Import Share in LCV Market (%)



Araç Tipleri / Vehicle Types	1	2	3	4	5	6	7	8	9	10	11	12	Toplam / Total
<b>OTOMOBİL - Pass.Car</b>	<b>60.438</b>	<b>73.844</b>	<b>57.326</b>	<b>9.327</b>	<b>31.849</b>	<b>48.853</b>	<b>52.088</b>	<b>26.393</b>	<b>56.927</b>	<b>63.657</b>	<b>61.381</b>	<b>54.533</b>	<b>596.616</b>
KAMYON - H. Truck	202	942	1.137	295	588	934	1.013	996	879	1.170	1.216	913	10.285
K.KAMYON - L. Truck	-	-	-	-	-	-	-	-	-	18	18	12	48
KAMYONET - Pick Up	25.435	24.356	21.081	882	9.461	17.524	21.102	12.868	29.427	34.241	33.908	33.482	263.767
OTOBÜS - Bus	551	696	593	91	418	829	604	459	814	604	656	571	6.886
MINİBÜS - Minibus	3.305	2.709	3.552	-	2.058	2.605	3.340	2.132	4.760	4.382	4.472	4.986	38.301
MİDİBÜS - Midibus	31	68	82	18	32	64	95	27	25	21	40	137	640
<b>TİCARİ ARAÇLAR TOPLAMI - CV Total</b>	<b>29.524</b>	<b>28.771</b>	<b>26.445</b>	<b>1.286</b>	<b>12.557</b>	<b>21.956</b>	<b>26.154</b>	<b>16.482</b>	<b>35.905</b>	<b>40.436</b>	<b>40.310</b>	<b>40.101</b>	<b>319.927</b>
<b>TAŞIT ARAÇLARI TOPLAMI - MV Total</b>	<b>89.962</b>	<b>102.615</b>	<b>83.771</b>	<b>10.613</b>	<b>44.406</b>	<b>70.809</b>	<b>78.242</b>	<b>42.875</b>	<b>92.832</b>	<b>104.093</b>	<b>101.691</b>	<b>94.634</b>	<b>916.543</b>
TRAKTÖR - F.Tractor	1.468	1.181	994	384	680	1.421	1.322	926	1.144	1.430	1.451	1.094	13.495
<b>GENEL TOPLAM - Grand Total</b>	<b>91.430</b>	<b>103.796</b>	<b>84.765</b>	<b>10.997</b>	<b>45.086</b>	<b>72.230</b>	<b>79.564</b>	<b>43.801</b>	<b>93.976</b>	<b>105.523</b>	<b>103.142</b>	<b>95.728</b>	<b>930.038</b>

**Otomobil / P.Car**

Firmalar / Firms	1	2	3	4	5	6	7	8	9	10	11	12	Toplam / Total
FORD OTOSAN	583	867	505	-	405	632	639	246	1.013	999	537	238	6.664
HONDA TÜRKİYE	1.087	1.566	1.009	28	117	755	341	743	58	211	310	196	6.421
HYUNDAI ASSAN	10.700	14.160	13.138	5.123	9.923	12.200	9.287	12.932	10.001	10.439	9.685	10.415	128.003
OYAK RENAULT	18.323	24.729	24.536	3.021	14.036	17.391	20.319	4.418	18.085	25.132	24.381	17.583	211.954
TOFAŞ	7.835	10.136	5.249	1.155	648	1.978	5.541	2.943	6.905	6.789	7.868	4.438	61.485
TOYOTA	21.910	22.386	12.889	-	6.720	15.897	15.961	5.111	20.865	20.087	18.600	21.663	182.089
<b>TOPLAM - Total</b>	<b>60.438</b>	<b>73.844</b>	<b>57.326</b>	<b>9.327</b>	<b>31.849</b>	<b>48.853</b>	<b>52.088</b>	<b>26.393</b>	<b>56.927</b>	<b>63.657</b>	<b>61.381</b>	<b>54.533</b>	<b>596.616</b>

**Kamyonet / Pick-up**

Firmalar / Firms	1	2	3	4	5	6	7	8	9	10	11	12	Toplam / Total
A.I.O.S.	-	-	-	-	-	-	-	-	-	-	-	-	-
FORD OTOSAN	20.932	16.627	17.047	125	9.411	14.188	15.344	10.124	22.770	27.095	26.228	26.913	206.804
KARSAN	37	-	2	-	8	34	22	54	86	-	14	96	353
OTOKAR	22	-	-	46	-	22	-	18	-	34	17	50	209
TOFAŞ	4.444	7.729	4.032	711	42	3.280	5.736	2.672	6.571	7.112	7.649	6.423	56.401
<b>TOPLAM - Total</b>	<b>25.435</b>	<b>24.356</b>	<b>21.081</b>	<b>882</b>	<b>9.461</b>	<b>17.524</b>	<b>21.102</b>	<b>12.868</b>	<b>29.427</b>	<b>34.241</b>	<b>33.908</b>	<b>33.482</b>	<b>263.767</b>

**Minibüs / Minibus**

Firmalar / Firms	1	2	3	4	5	6	7	8	9	10	11	12	Toplam / Total
FORD OTOSAN	3.303	2.708	3.552	-	2.055	2.593	3.337	2.132	4.759	4.381	4.451	4.926	38.197
KARSAN	2	1	-	-	3	12	3	-	1	1	21	60	104
<b>TOPLAM - Total</b>	<b>3.305</b>	<b>2.709</b>	<b>3.552</b>	<b>-</b>	<b>2.058</b>	<b>2.605</b>	<b>3.340</b>	<b>2.132</b>	<b>4.760</b>	<b>4.382</b>	<b>4.472</b>	<b>4.986</b>	<b>38.301</b>

**Kamyon / Truck**

Firmalar / Firms	1	2	3	4	5	6	7	8	9	10	11	12	Toplam / Total
A.I.O.S.	-	-	-	-	-	-	-	-	-	18	18	12	48
FORD OTOSAN	145	192	119	92	132	235	175	173	186	304	244	341	2.338
KARSAN	-	-	-	-	-	-	-	-	-	-	-	-	-
M. BENZ TÜRK	57	750	1.018	203	456	699	838	823	693	866	972	572	7.947
OTOKAR	-	-	-	-	-	-	-	-	-	-	-	-	-
<b>TEMSA</b>	-	-	-	-	-	-	-	-	-	-	-	-	-
<b>TOPLAM - Total</b>	<b>202</b>	<b>942</b>	<b>1.137</b>	<b>295</b>	<b>588</b>	<b>934</b>	<b>1.013</b>	<b>996</b>	<b>879</b>	<b>1.188</b>	<b>1.234</b>	<b>925</b>	<b>10.333</b>

**Midibüs / Midibus**

Firmalar / Firms	1	2	3	4	5	6	7	8	9	10	11	12	Toplam / Total
A.I.O.S.	16	42	76	15	16	43	34	17	8	8	6	43	324
KARSAN	-	-	-	-	7	4	15	-	4	5	1	18	54
OTOKAR	15	20	5	3	8	16	42	2	11	8	33	69	232
TEMSA	-	6	1	-	1	1	4	8	2	-	-	7	30
<b>TOPLAM - Total</b>	<b>31</b>	<b>68</b>	<b>82</b>	<b>18</b>	<b>32</b>	<b>64</b>	<b>95</b>	<b>27</b>	<b>25</b>	<b>21</b>	<b>40</b>	<b>137</b>	<b>640</b>

**Otobüs / Bus**

Firmalar / Firms	1	2	3	4	5	6	7	8	9	10	11	12	Toplam / Total
A.I.O.S.	6	15	26	-	12	23	-	4	24	13	8	7	138
KARSAN	-	-	23	-	-	30	42	27	54	25	25	23	249
M. BENZ TÜRK	231	380	230	53	153	401	245	229	380	321	321	293	3.237
MAN TÜRKİYE	288	284	269	3	218	270	281	161	272	166	251	165	2.628
OTOKAR	19	15	29	34	16	79	32	23	51	46	17	60	421
TEMSA	7	2	16	1	19	26	4	15	33	33	34	23	213
<b>TOPLAM - Total</b>	<b>551</b>	<b>696</b>	<b>593</b>	<b>91</b>	<b>418</b>	<b>829</b>	<b>604</b>	<b>459</b>	<b>814</b>	<b>604</b>	<b>656</b>	<b>571</b>	<b>6.886</b>

**Traktör / F.Tractor**

Firmalar / Firms	1	2	3	4	5	6	7	8	9	10	11	12	Toplam / Total
HATTAT TRAKTÖR	120	84	22	38	25	53	65	67	56	29	186	197	942
TÜRK TRAKTÖR	1.348	1.097	972	346	655	1.368	1.257	859	1.088	1.401	1.265	897	12.553
<b>TOPLAM - Total</b>	<b>1.468</b>	<b>1.181</b>	<b>994</b>	<b>384</b>	<b>680</b>	<b>1.421</b>	<b>1.322</b>	<b>926</b>	<b>1.144</b>	<b>1.430</b>	<b>1.451</b>	<b>1.094</b>	<b>13.495</b>

Firmalar / Firms	2019 Toplam / Total	1	2	3	4	5	6	7	8	9	10	11	12	Toplam / Total
Alfa Romeo	253	2	-	5	-	12	11	8	29	46	32	36	33	214
Aston Martin	18	1	2	1	-	2	1	1	5	1	1	1	1	17
Audi	10.024	461	733	995	613	321	2.211	4.076	2.617	1.413	2.174	1.216	1.338	18.168
Bentley	9	-	1	-	3	2	3	-	-	1	-	-	1	11
BMW	9.583	251	815	1.168	373	191	882	1.412	2.124	1.314	1.597	1.675	2.468	14.270
Citroen	8.827	584	1.534	1.126	1.413	1.680	2.644	1.698	905	2.479	2.769	3.295	2.127	22.254
Dacia	17.533	2.261	1.851	1.245	601	787	3.033	4.282	930	2.047	2.852	2.483	3.538	25.910
DS	269	10	101	38	34	29	26	80	52	66	131	54	73	694
Ferrari	20	1	3	2	-	2	3	2	2	-	2	3	1	21
Fiat	1.043	7	22	79	21	39	154	102	131	144	187	98	314	1.298
Ford	12.484	206	862	2.042	1.032	604	1.111	3.098	2.080	2.563	2.864	3.541	3.894	23.897
Honda	3.108	101	172	160	96	227	152	298	267	174	185	146	359	2.337
Hyundai	15.460	950	1.385	1.261	574	732	1.790	2.465	2.225	2.471	2.167	1.516	1.499	19.035
Jaguar	244	-	47	24	6	9	13	7	15	5	23	44	72	265
Jeep	2.123	196	330	504	40	91	367	713	279	582	460	420	387	4.369
Kia	4.987	325	1.140	565	314	565	1.278	1.379	1.317	1.718	1.834	1.250	1.857	13.542
Lamborghini	9	-	1	2	1	3	1	3	2	3	-	1	2	19
Land Rover	1.371	8	151	206	237	135	112	134	128	78	210	329	282	2.010
Lexus	85	7	7	7	7	12	17	22	14	3	16	13	18	143
Maserati	45	-	2	-	1	4	5	6	4	6	2	3	14	47
Mazda	417	11	7	10	6	15	12	20	16	8	18	15	18	156
Mercedes-Benz	9.862	504	1.239	1.170	944	862	1.355	1.257	1.229	1.101	1.474	1.982	2.500	15.617
Mini	1.254	28	82	168	60	26	101	37	191	165	190	216	131	1.395
Mitsubishi	747	29	21	16	16	52	360	273	78	131	158	56	47	1.237
Nissan	11.980	757	275	548	188	310	246	770	2.160	2.854	2.238	342	2.029	12.717
Opel	16.689	554	1.768	2.726	2.044	1.770	2.913	4.233	803	4.524	4.071	2.790	3.033	31.229
Peugeot	23.057	1.338	2.440	2.540	3.792	2.473	2.661	2.929	1.341	2.521	5.327	3.605	5.622	36.589
Porsche	361	11	36	19	17	14	24	42	11	58	83	157	147	619
Renault	9.410	185	715	968	393	451	709	1.229	241	681	1.575	1.096	1.096	9.339
Seat	5.914	578	1.199	1.036	532	442	694	1.567	1.417	1.658	1.035	653	740	11.551
Skoda	15.369	884	1.570	1.303	313	374	3.205	2.599	1.839	3.662	3.284	2.343	2.799	24.175
Smart	44	12	16	8	3	2	4	2	-	-	2	-	-	49
Ssangyong	111	23	33	1	5	-	139	1	72	75	90	111	100	650
Subaru	662	17	59	84	22	43	87	83	96	47	54	46	35	673
Suzuki	2.381	22	124	173	181	134	535	275	175	177	440	493	248	2.977
Toyota	1.350	30	85	479	70	117	209	280	119	34	80	255	258	2.016
Volkswagen	38.820	3.292	3.469	5.164	2.108	1.408	3.444	4.589	4.459	5.393	7.006	5.338	7.070	52.740
Volvo	4.155	44	256	397	383	357	502	1.545	507	486	1.087	1.301	1.335	8.200
<b>GENEL TOPLAM - Grand Total</b>	<b>230.078</b>	<b>13.690</b>	<b>22.553</b>	<b>26.240</b>	<b>16.443</b>	<b>14.297</b>	<b>31.014</b>	<b>41.517</b>	<b>27.880</b>	<b>38.689</b>	<b>45.718</b>	<b>36.923</b>	<b>45.486</b>	<b>360.450</b>

Firmalar / Firms	2019 Toplam / Total	1	2	3	4	5	6	7	8	9	10	11	12	Toplam / Total
<b>Citroen</b>	<b>3.206</b>	250	341	434	133	44	182	411	600	949	664	607	611	<b>5.226</b>
<b>Dacia</b>	<b>2.473</b>	271	352	474	120	272	332	125	54	501	605	535	1.249	<b>4.890</b>
<b>Fiat</b>	<b>1.767</b>	176	350	252	106	131	639	795	422	233	293	227	237	<b>3.861</b>
<b>Ford</b>	<b>1.198</b>	50	71	63	161	241	107	72	115	170	1.030	644	310	<b>3.034</b>
<b>Hyundai</b>	<b>1.114</b>	55	96	54	29	59	42	-	108	63	118	175	191	<b>990</b>
<b>Isuzu</b>	<b>75</b>	2	3	1	1	13	24	4	1	-	-	-	180	<b>229</b>
<b>Iveco</b>	<b>1.326</b>	64	83	104	62	79	164	129	183	169	265	259	290	<b>1.851</b>
<b>Kia</b>	<b>1.355</b>	5	4	144	45	118	175	83	264	266	198	196	402	<b>1.900</b>
<b>Mercedes-Benz</b>	<b>5.074</b>	219	480	372	213	263	520	433	628	518	557	367	605	<b>5.175</b>
<b>Mitsubishi</b>	<b>1.880</b>	99	146	160	185	174	379	1.084	1.185	550	371	138	158	<b>4.629</b>
<b>Nissan</b>	<b>1.087</b>	66	92	59	22	47	56	2	1	-	-	44	155	<b>544</b>
<b>Opel</b>	<b>1.370</b>	51	33	298	99	49	231	336	303	394	380	543	350	<b>3.067</b>
<b>Peugeot</b>	<b>5.804</b>	418	555	495	168	260	317	431	396	689	1.376	956	1.024	<b>7.085</b>
<b>Renault</b>	<b>4.309</b>	171	228	117	90	219	314	271	115	134	196	285	494	<b>2.634</b>
<b>Ssangyong</b>	<b>260</b>	19	21	36	19	18	61	39	7	13	52	74	75	<b>434</b>
<b>Toyota</b>	<b>939</b>	25	34	70	23	96	103	90	58	215	174	191	338	<b>1.417</b>
<b>Volkswagen</b>	<b>9.676</b>	403	1.456	1.103	479	412	1.018	2.151	1.878	1.107	659	634	736	<b>12.036</b>
<b>GENEL TOPLAM - Grand Total</b>	<b>42.913</b>	<b>2.344</b>	<b>4.345</b>	<b>4.236</b>	<b>1.955</b>	<b>2.495</b>	<b>4.664</b>	<b>6.456</b>	<b>6.318</b>	<b>5.971</b>	<b>6.938</b>	<b>5.875</b>	<b>7.405</b>	<b>59.002</b>