



OTOMOTİV SANAYİİ DERNEĐİ
AUTOMOTIVE MANUFACTURERS ASSOCIATION

OTOMOTİV SEKTÖRÜ AYLIK DEĐERLENDİRME RAPORU OCAK 2021

AUTOMOTIVE INDUSTRY MONTHLY REPORT
January 2021

OSD "OICA" Üyesidir © O I C A OSD is a Member of "OICA"

	1 - 2020	1 - 2021	%	1 - 1 / 2020	1 - 1 / 2021	%	2/2019 - 1/2020	2/2020 - 1/2021	%
Otomobil Üretimi/P.Cars Production	75.396	68.777	-8,8	75.396	68.777	-8,8	986.641	848.424	-14,0
Toplam Üretim/Total Production	109.783	106.176	-3,3	109.783	106.176	-3,3	1.461.173	1.294.271	-11,4
Otomobil Pazarı/P.Cars Market	22.016	35.358	60,6	22.016	35.358	60,6	398.293	623.451	56,5
Toplam Pazar/Total Market	28.123	45.230	60,8	28.123	45.230	60,8	505.223	813.257	61,0
Otomobil İthalatı/P.Cars Import	13.690	23.153	69,1	13.690	23.153	69,1	236.992	369.913	56,1
Toplam İthalat/Total Import	16.283	27.668	69,9	16.283	27.668	69,9	284.944	438.376	53,9
Otomobil İhracatı/P.Cars Export	60.438	48.050	-20,5	60.438	48.050	-20,5	830.375	584.228	-29,6
Toplam İhracat/Total Export	89.962	77.569	-13,8	89.962	77.569	-13,8	1.249.120	904.145	-27,6
Otomobil İhracatı(\$)/P.Cars Export (\$)	1.032.905.404,8	801.916.227,04	-22,4	1.032.905.405	801.916.227	-22,4	12.085.660.074	9.081.099.156	-24,9
Toplam İhracat(\$)/Total Export (\$)*	2.461.481.484,74	2.305.289.010,91	-6,4	2.461.481.485	2.305.289.011	-6,4	31.311.045.629	25.788.011.526	-17,6

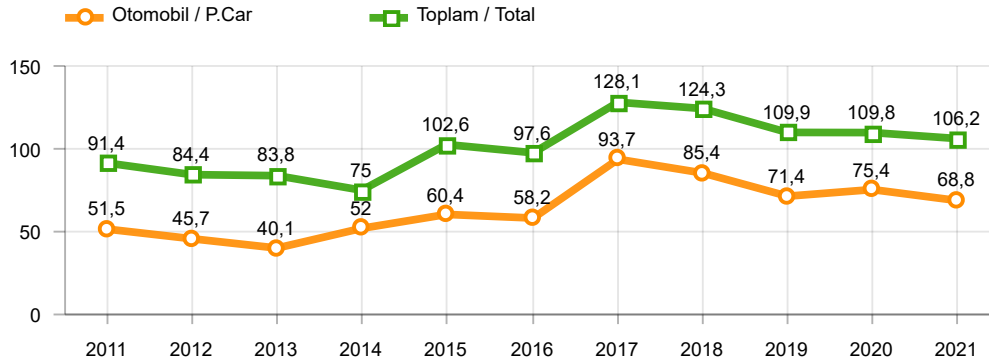
Parametreler/Parameters	1 - 2020	1 - 2021	%	1 - 1 / 2020	1 - 1 / 2021	%	2/2019 - 1/2020	2/2020 - 1/2021	%
ÜFE / PPI	1,8	2,7	-	1,8	2,7	-	15,7	13,6	-
TÜFE / CPI	1,4	1,7	-	1,4	1,7	-	14,5	12,5	-
Sanayi Endeksi / Industry Index	1,9	2,7	-	1,9	2,7	-	14,7	14,2	-
Dolar \$ ** (1 birim)	6,0	7,4	24,1	6,0	7,4	24,1	5,7	7,1	25,0
Euro € ** (1 birim)	6,6	9,0	36,0	6,6	9,0	36,0	6,4	8,2	29,2
Japon Yeni ¥ ** (100 birim)	5,4	7,1	30,3	5,4	7,1	30,3	5,2	6,7	28,5

*Toplam Sanayi / Total Industry Including Components

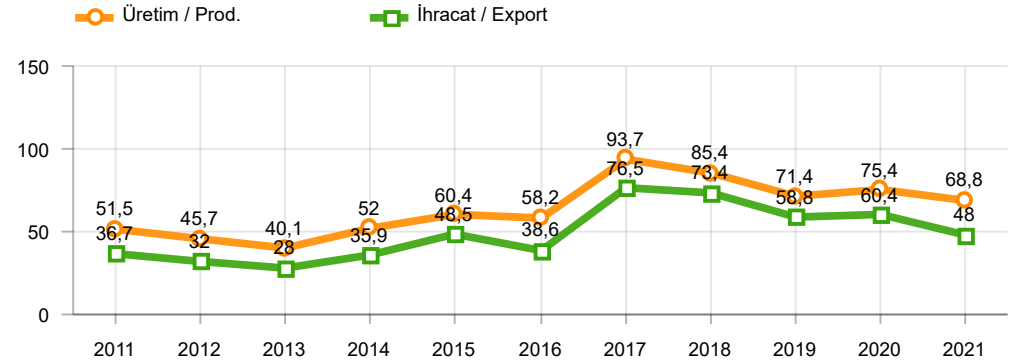
** Ortalama Değerler / Average Values

Araç Tipleri / Types	1 / 2020	1 / 2021	1 % Değişim	1-1 / 2020	1-1 / 2021	1-1 % Değişim
OTOMOBİL / Pass.Car	75.396	68.777	-8,8	75.396	68.777	-8,8
OTOMOBİL Toplam / Pass.Car Total	75.396	68.777	-8,8	75.396	68.777	-8,8
B.KAMYON / H. Truck	572	2.053	258,9	572	2.053	258,9
K.KAMYON / L. Truck	-	319	-	-	319	-
KAMYONET / Pick Up	28.197	30.611	8,6	28.197	30.611	8,6
OTOBÜS / Bus	665	254	-61,8	665	254	-61,8
MİNİBÜS / Minibus	4.885	4.093	-16,2	4.885	4.093	-16,2
MİDİBÜS / Midibus	68	69	1,5	68	69	1,5
TİCARİ ARAÇLAR Toplam / Commercial Vehicles Total	34.387	37.399	8,8	34.387	37.399	8,8
TAŞIT ARAÇLARI Toplam / Motor Vehicles Total	109.783	106.176	-3,3	109.783	106.176	-3,3
TRAKTÖR / F.Tractor	2.515	4.414	75,5	2.515	4.414	75,5
TRAKTÖR Toplam / F.Tractor Total	2.515	4.414	75,5	2.515	4.414	75,5
GENEL TOPLAM / Grand Total	112.298	110.590	-1,5	112.298	110.590	-1,5

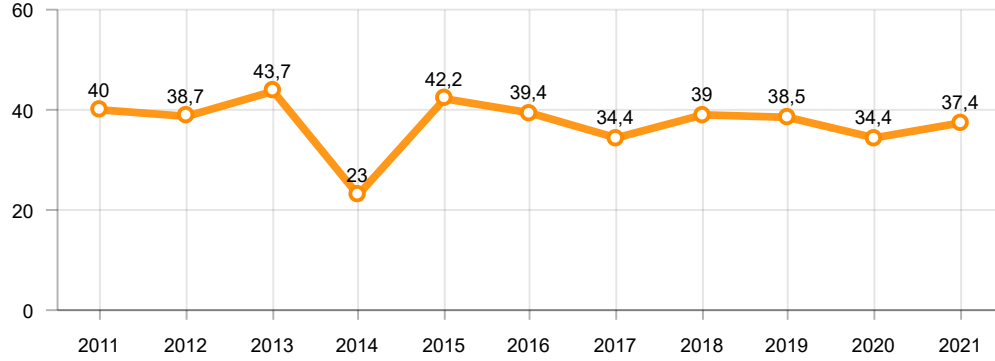
Toplam Üretim ve Otomobil Üretimi (x1000)(OCAK - OCAK)
Total & P.Cars Production (x1000)(January - January)



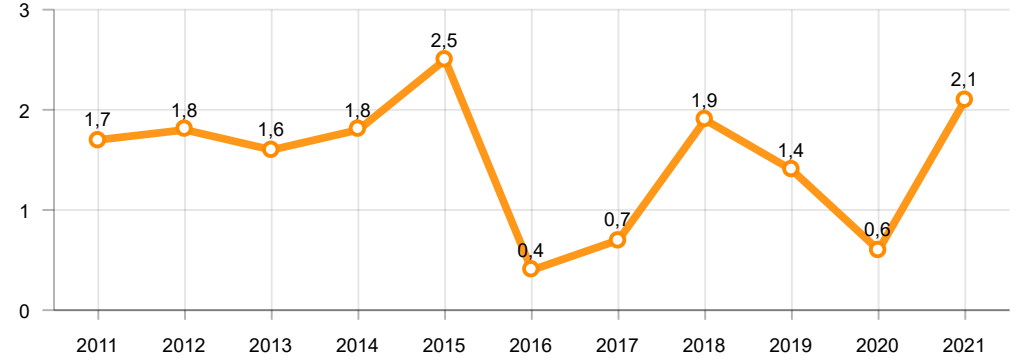
Otomobil Üretimi ve İhracat (x1000)(OCAK - OCAK)
P.Cars Production & Exports (x1000)(January - January)



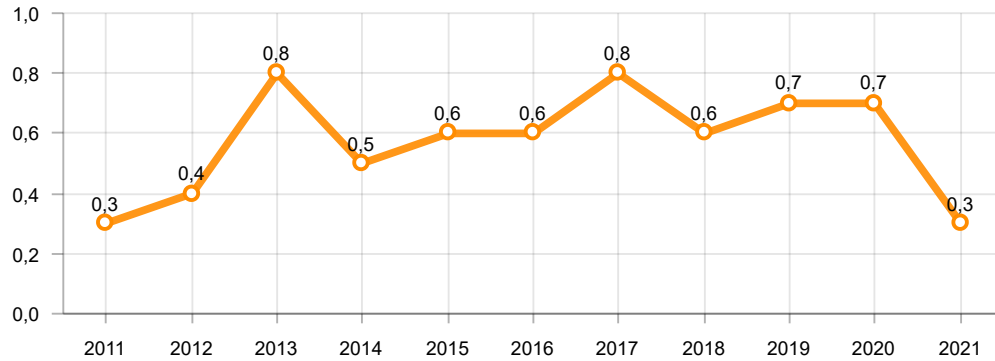
Ticari Araç Üretimi (x1000)(OCAK - OCAK)
Commercial Vehicle Production (x1000)(January - January)



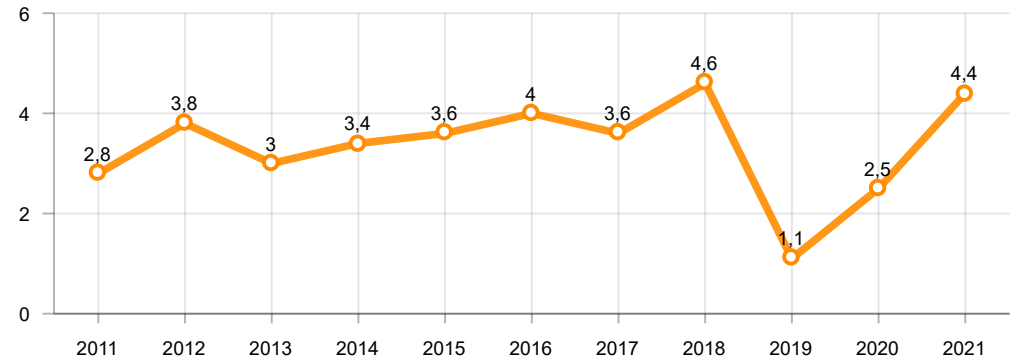
Büyük Kamyon Üretimi (x1000)(OCAK - OCAK)
Heavy Truck Production (x1000)(January - January)

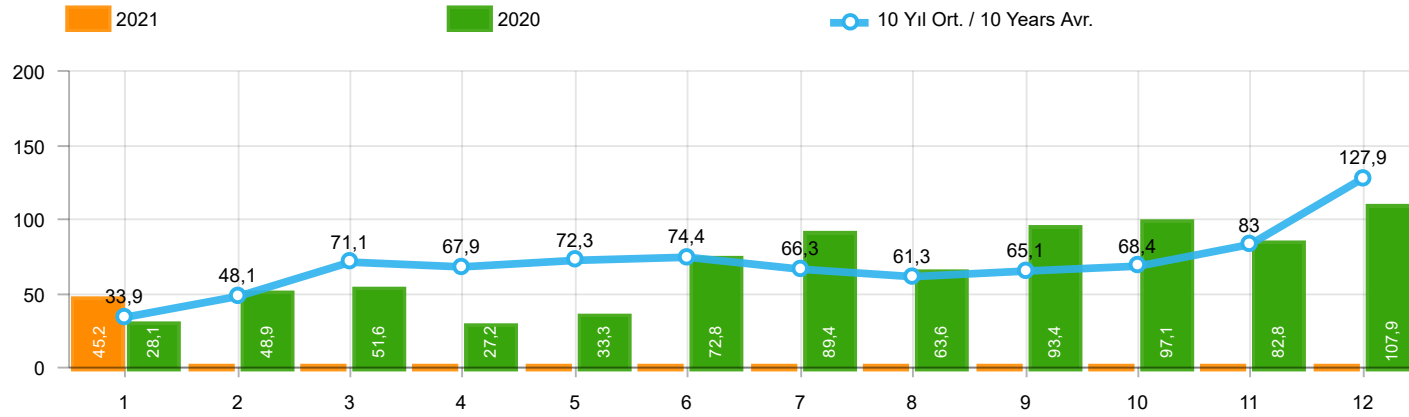


Otobüs Üretimi (x1000)(OCAK - OCAK)
Bus Production (x1000)(January - January)



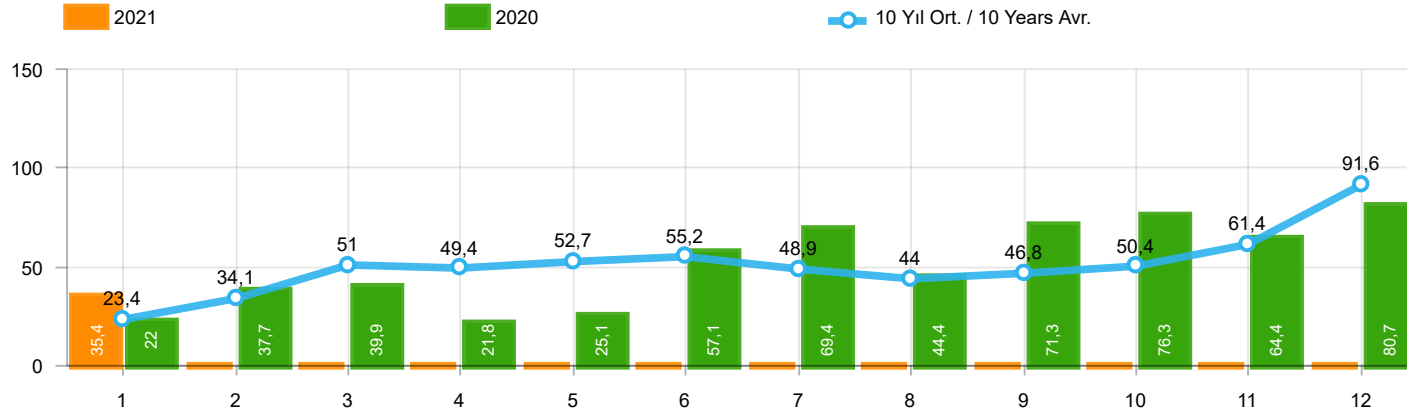
Traktör Üretimi (x1000)(OCAK - OCAK)
F. Tractor Production (x1000)(January - January)





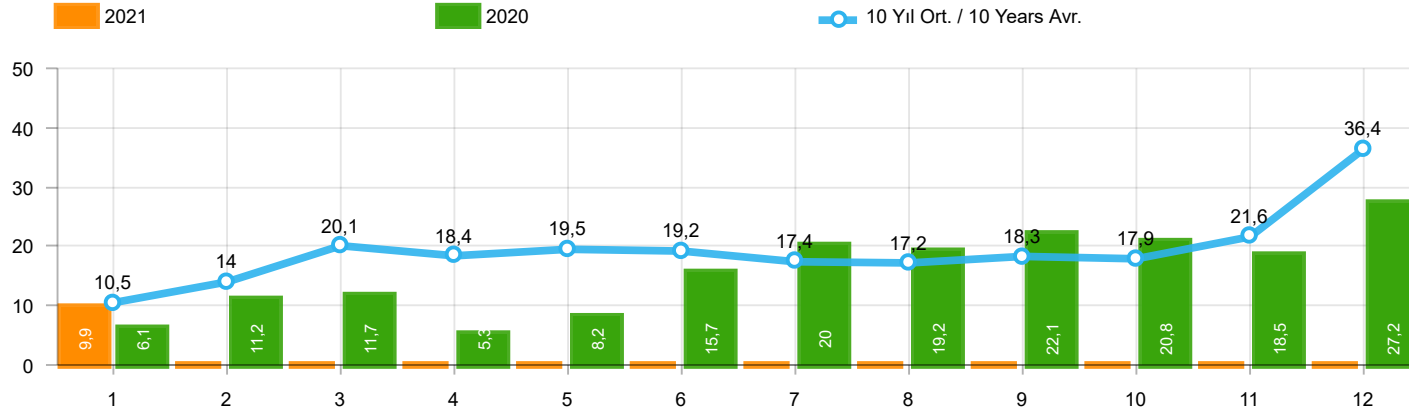
Aylar / Months	10 Yıl Ort / 10 Years Avr.	2021	%
1	33.938	45.230	33,3
TOPLAM/TOTAL	33.938	45.230	33,3

Yıl / Year	1	2	3	4	5	6	7	8	9	10	11	12	1-1 Toplam / Total	Toplam / Total	1-1 Yerli / Local	1-1 İthal / Import	İthal Oran / Import %
2011	47.759	62.586	84.045	82.782	85.862	85.992	65.658	61.645	64.313	73.227	67.150	134.468	47.759	915.487	19.822	27.937	58,5
2012	31.552	44.138	69.242	66.559	75.195	75.108	65.444	60.982	73.501	62.933	75.203	121.442	31.552	821.299	12.995	18.557	58,8
2013	37.563	51.133	72.943	77.265	85.835	78.043	75.152	67.662	71.388	60.690	83.470	136.048	37.563	897.192	13.747	23.816	63,4
2014	34.751	37.659	51.312	57.113	62.447	64.295	62.770	63.303	70.764	69.742	84.368	154.843	34.751	813.367	11.862	22.889	65,9
2015	37.256	59.221	89.765	96.182	85.804	91.071	87.358	85.244	67.181	67.086	88.431	164.464	37.256	1.019.063	15.309	21.947	58,9
2016	34.369	54.840	85.932	87.748	97.090	94.666	59.732	73.654	69.413	85.666	125.462	145.706	34.369	1.014.278	13.387	20.982	61,0
2017	36.640	48.585	76.178	78.231	88.066	85.820	84.727	74.818	74.046	94.439	103.772	141.507	36.640	986.829	14.813	21.827	59,6
2018	36.525	48.768	79.600	73.886	74.996	52.788	54.194	35.137	23.915	22.321	59.406	80.014	36.525	641.550	14.892	21.633	59,2
2019	14.847	25.569	50.651	31.944	33.947	43.899	18.442	26.832	43.068	50.288	59.575	92.885	14.847	491.947	6.439	8.408	56,6
2020	28.123	48.948	51.554	27.165	33.308	72.789	89.419	63.570	93.406	97.125	82.824	107.919	28.123	796.150	11.840	16.283	57,9
2021	45.230												45.230	45.230	17.562	27.668	61,2



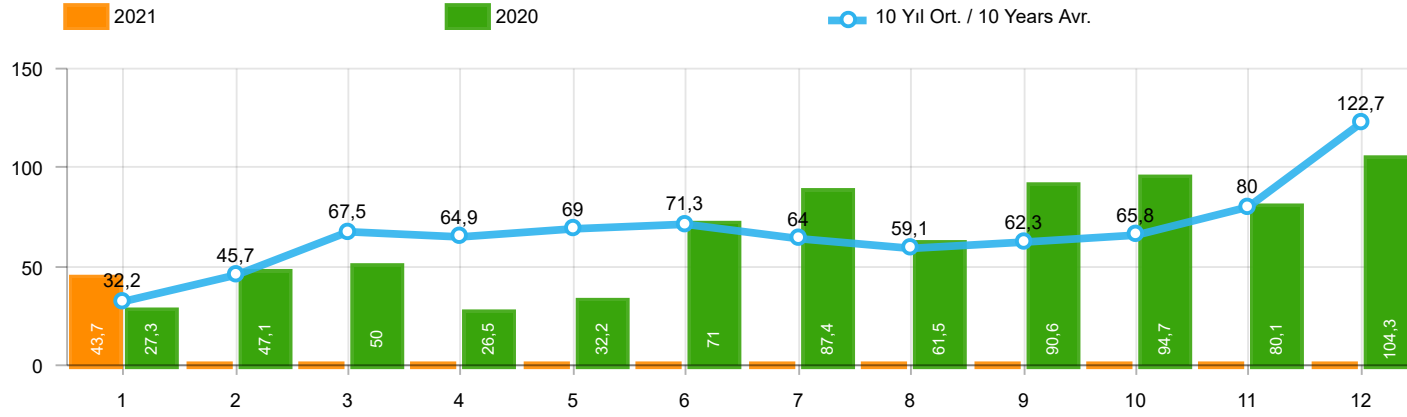
Aylar / Months	10 Yıl Ort / 10 Years Avr.	2021	%
1	23.430	35.358	50,9
TOPLAM / TOTAL	23.430	35.358	50,9

Yıl / Year	1	2	3	4	5	6	7	8	9	10	11	12	1-1 Toplam / Total	Toplam / Total	1-1 Yerli / Local	1-1 İthal / Import	İthal Oran / Import %
2011	29.868	39.004	54.023	53.835	56.302	56.714	43.518	38.875	39.964	47.508	44.951	88.957	29.868	593.519	9.237	20.631	69,1
2012	21.077	29.189	47.270	45.645	50.460	50.849	44.531	41.236	49.360	43.440	52.297	80.926	21.077	556.280	7.190	13.887	65,9
2013	25.835	36.814	51.785	56.999	62.383	58.290	55.712	51.611	52.925	46.985	64.117	101.199	25.835	664.655	6.326	19.509	75,5
2014	24.368	27.167	37.812	42.769	46.379	47.278	46.602	45.131	49.262	50.814	59.695	110.054	24.368	587.331	6.160	18.208	74,7
2015	24.498	40.817	61.676	70.211	62.878	67.766	64.218	61.753	47.088	47.954	62.397	114.340	24.498	725.596	7.396	17.102	69,8
2016	23.358	40.588	63.975	65.618	73.832	71.111	45.566	53.977	51.340	63.746	95.783	108.044	23.358	756.938	7.375	15.983	68,4
2017	25.689	34.658	55.616	57.998	65.799	66.164	62.384	54.890	53.423	70.488	75.956	99.694	25.689	722.759	8.793	16.896	65,8
2018	26.611	35.901	59.798	55.108	57.227	41.225	42.024	26.976	17.595	16.809	46.204	60.843	26.611	486.321	9.779	16.832	63,3
2019	10.979	19.205	38.628	24.416	27.126	36.024	15.398	21.544	35.308	39.996	47.803	70.829	10.979	387.256	4.203	6.776	61,7
2020	22.016	37.727	39.887	21.825	25.073	57.067	69.427	44.372	71.296	76.341	64.357	80.721	22.016	610.109	8.326	13.690	62,2
2021	35.358												35.358	35.358	12.205	23.153	65,5



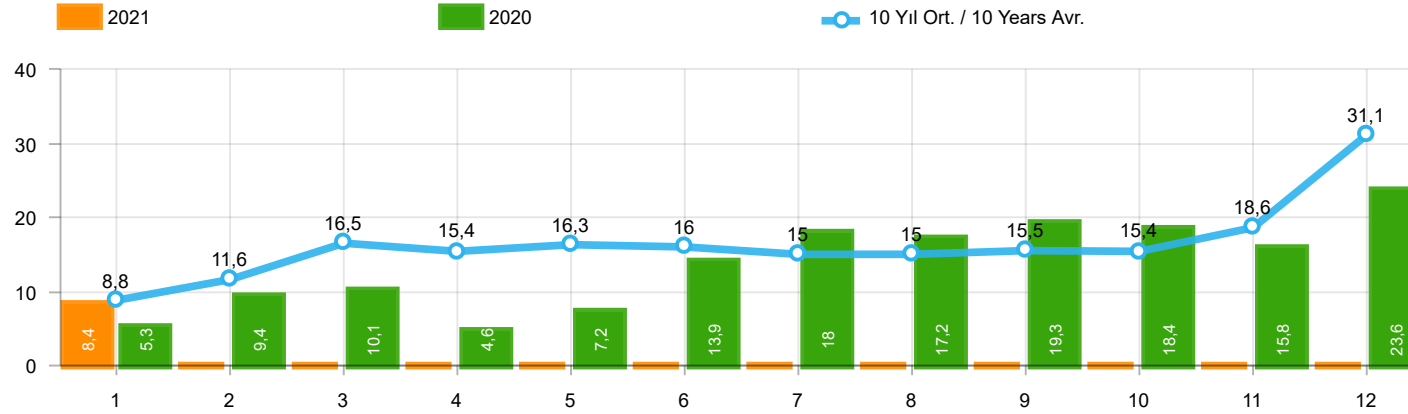
Aylar / Months	10 Yıl Ort / 10 Years Avr.	2021	%
1	10.509	9.872	-6,1
TOPLAM / TOTAL	10.509	9.872	-6,1

Yıl / Year	1	2	3	4	5	6	7	8	9	10	11	12	1-1 Toplam / Total	Toplam / Total	1-1 Yerli / Local	1-1 İthal / Import	İthal Oran / Import %
2011	17.891	23.582	30.022	28.947	29.560	29.278	22.140	22.770	24.349	25.719	22.199	45.511	17.891	321.968	10.585	7.306	40,8
2012	10.475	14.949	21.972	20.914	24.735	24.259	20.913	19.746	24.141	19.493	22.906	40.516	10.475	265.019	5.805	4.670	44,6
2013	11.728	14.319	21.158	20.266	23.452	19.753	19.440	16.051	18.463	13.705	19.353	34.849	11.728	232.537	7.421	4.307	36,7
2014	10.383	10.492	13.500	14.344	16.068	17.017	16.168	18.172	21.502	18.928	24.673	44.789	10.383	226.036	5.702	4.681	45,1
2015	12.758	18.404	28.089	25.971	22.926	23.305	23.140	23.491	20.093	19.132	26.034	50.124	12.758	293.467	7.913	4.845	38,0
2016	11.011	14.252	21.957	22.130	23.258	23.555	14.166	19.677	18.073	21.920	29.679	37.662	11.011	257.340	6.012	4.999	45,4
2017	10.951	13.927	20.562	20.233	22.267	19.656	22.343	19.928	20.623	23.951	27.816	41.813	10.951	264.070	6.020	4.931	45,0
2018	9.914	12.867	19.802	18.778	17.769	11.563	12.170	8.161	6.320	5.512	13.202	19.171	9.914	155.229	5.113	4.801	48,4
2019	3.868	6.364	12.023	7.528	6.821	7.875	3.044	5.288	7.760	10.292	11.772	22.056	3.868	104.691	2.236	1.632	42,2
2020	6.107	11.221	11.667	5.340	8.235	15.722	19.992	19.198	22.110	20.784	18.467	27.198	6.107	186.041	3.514	2.593	42,5
2021	9.872												9.872	9.872	5.357	4.515	45,7



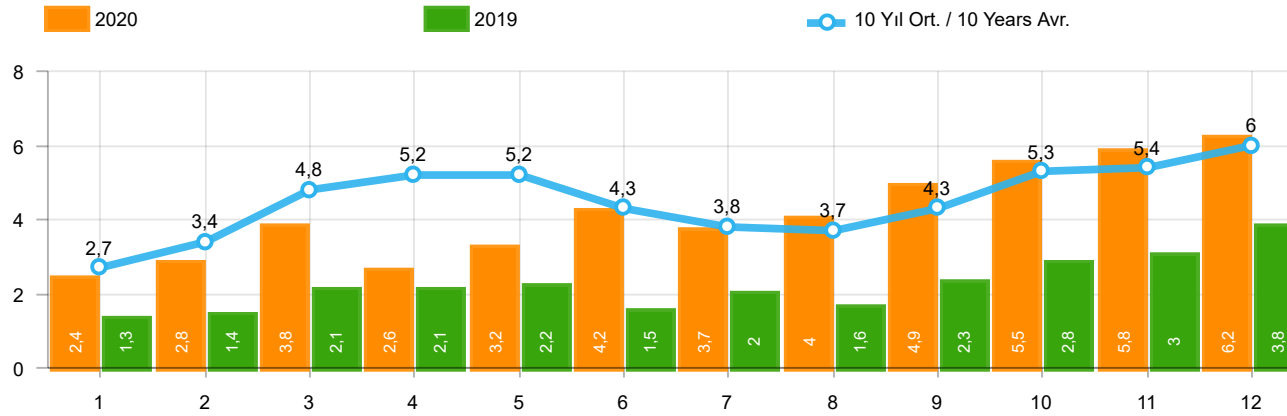
Aylar / Months	10 Yıl Ort / 10 Years Avr.	2021	%
1	32.200	43.728	35,8
TOPLAM / TOTAL	32.200	43.728	35,8

Yıl / Year	1	2	3	4	5	6	7	8	9	10	11	12	1-1 Toplam / Total	Toplam / Total	1-1 Yerli / Local	1-1 İthal / Import	İthal Oran / Import %
2011	44.892	58.663	78.403	77.695	80.646	81.573	63.044	58.406	60.129	69.421	63.657	127.910	44.892	864.439	18.023	26.869	59,9
2012	29.545	41.324	64.884	62.949	70.863	71.067	62.304	58.148	69.629	59.938	71.710	115.400	29.545	777.761	11.570	17.975	60,8
2013	35.523	48.307	68.774	73.575	81.468	74.096	71.596	65.043	67.963	58.014	79.301	129.718	35.523	853.378	12.216	23.307	65,6
2014	32.670	35.021	47.581	53.305	58.121	60.163	59.907	60.199	66.531	66.573	80.621	146.989	32.670	767.681	10.106	22.564	69,1
2015	34.615	55.331	83.302	91.602	81.542	86.158	83.836	82.577	64.025	64.255	84.601	156.173	34.615	968.017	13.173	21.442	61,9
2016	32.713	52.825	82.948	84.887	93.904	91.540	58.533	71.556	67.593	83.000	122.309	141.912	32.713	983.720	12.190	20.523	62,7
2017	35.323	46.965	73.802	75.988	85.422	83.658	82.297	72.536	71.352	91.752	100.859	136.240	35.323	956.194	13.781	21.542	61,0
2018	35.076	47.009	76.345	71.126	72.755	51.037	52.734	34.346	23.028	21.571	58.204	77.706	35.076	620.937	13.915	21.161	60,3
2019	14.373	24.875	49.221	30.971	33.016	42.688	17.927	26.246	41.992	49.075	58.176	90.500	14.373	479.060	6.068	8.305	57,8
2020	27.273	47.122	50.008	26.457	32.235	70.973	87.401	61.533	90.619	94.733	80.141	104.293	27.273	772.788	11.239	16.034	58,8
2021	43.728												43.728	43.728	16.502	27.226	62,3



Aylar / Months	10 Yıl Ort / 10 Years Avr.	2021	%
1	8.770	8.370	-4,6
TOPLAM / TOTAL	8.770	8.370	-4,6

Yıl / Year	1	2	3	4	5	6	7	8	9	10	11	12	1-1 Toplam / Total	Toplam / Total	1-1 Yerli / Local	1-1 İthal / Import	İthal Oran / Import %
2011	15.024	19.659	24.380	23.860	24.344	24.859	19.526	19.531	20.165	21.913	18.706	38.953	15.024	270.920	8.786	6.238	41,5
2012	8.468	12.135	17.614	17.304	20.403	20.218	17.773	16.912	20.269	16.498	19.413	34.474	8.468	221.481	4.380	4.088	48,3
2013	9.688	11.493	16.989	16.576	19.085	15.806	15.884	13.432	15.038	11.029	15.184	28.519	9.688	188.723	5.890	3.798	39,2
2014	8.302	7.854	9.769	10.536	11.742	12.885	13.305	15.068	17.269	15.759	20.926	36.935	8.302	180.350	3.946	4.356	52,5
2015	10.117	14.514	21.626	21.391	18.664	18.392	19.618	20.824	16.937	16.301	22.204	41.833	10.117	242.421	5.777	4.340	42,9
2016	9.355	12.237	18.973	19.269	20.072	20.429	12.967	17.579	16.253	19.254	26.526	33.868	9.355	226.782	4.815	4.540	48,5
2017	9.634	12.307	18.186	17.990	19.623	17.494	19.913	17.646	17.929	21.264	24.903	36.546	9.634	233.435	4.988	4.646	48,2
2018	8.465	11.108	16.547	16.018	15.528	9.812	10.710	7.370	5.433	4.762	12.000	16.863	8.465	134.616	4.136	4.329	51,1
2019	3.394	5.670	10.593	6.555	5.890	6.664	2.529	4.702	6.684	9.079	10.373	19.671	3.394	91.804	1.865	1.529	45,1
2020	5.257	9.395	10.121	4.632	7.162	13.906	17.974	17.161	19.323	18.392	15.784	23.572	5.257	162.679	2.913	2.344	44,6
2021	8.370												8.370	8.370	4.297	4.073	48,7



Aylar / Months	10 Yıl Ort. / 10 Years Avr.	2020	%
1	2.729	2.425	-11,1
2	3.442	2.778	-19,3
3	4.845	3.771	-22,2
4	5.152	2.606	-49,4
5	5.209	3.244	-37,7
6	4.304	4.173	-3,0
7	3.835	3.727	-2,8
8	3.730	3.974	6,6
9	4.272	4.928	15,4
10	5.347	5.466	2,2
11	5.382	5.831	8,3
12	6.040	6.221	3,0
TOPLAM / TOTAL	54.285	49.144	-9,5

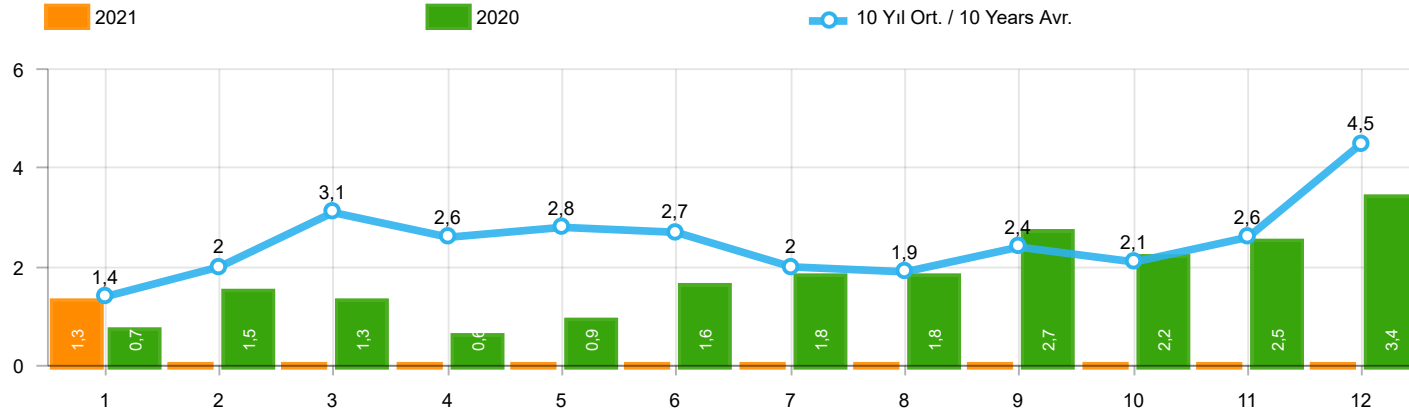
Yıl / Year	1	2	3	4	5	6	7	8	9	10	11	12	1-12 Toplam / Total	Toplam / Total
2010	1.111	1.991	2.330	3.039	2.567	2.638	1.965	3.019	2.806	4.424	3.978	6.168	36.036	36.036
2011	2.975	5.242	5.927	5.358	6.016	6.335	4.534	4.051	4.140	5.828	4.943	4.992	60.341	60.341
2012	2.362	1.983	4.348	6.579	6.273	4.569	3.837	3.158	3.618	4.027	4.807	4.757	50.318	50.318
2013	2.161	2.432	4.005	4.585	5.616	3.136	4.574	3.408	4.935	4.762	5.781	6.891	52.286	52.286
2014	2.169	3.512	4.476	4.905	5.094	5.028	4.233	4.920	5.619	5.743	6.250	7.409	59.358	59.358
2015	3.124	3.984	5.460	6.383	6.078	5.748	4.677	5.044	4.765	7.049	6.898	7.564	66.774	66.774
2016	3.739	4.731	7.067	6.546	6.575	5.543	3.833	5.134	4.945	7.372	7.090	7.603	70.178	70.178
2017	3.974	4.964	6.773	6.780	7.057	5.356	5.003	4.396	6.064	7.734	7.457	7.351	72.909	72.909
2018	4.362	4.179	5.925	5.216	4.584	3.146	3.654	2.587	3.541	3.698	3.578	3.886	48.356	48.356
2019	1.311	1.401	2.143	2.126	2.229	1.538	2.039	1.579	2.284	2.828	3.037	3.782	26.297	26.297
2020	2.425	2.778	3.771	2.606	3.244	4.173	3.727	3.974	4.928	5.466	5.831	6.221	49.144	49.144

Kaynak: TÜİK trafik kayıtları.

Rakamlar, son iki model yılına ait traktör tescillerinden oluşmaktadır.

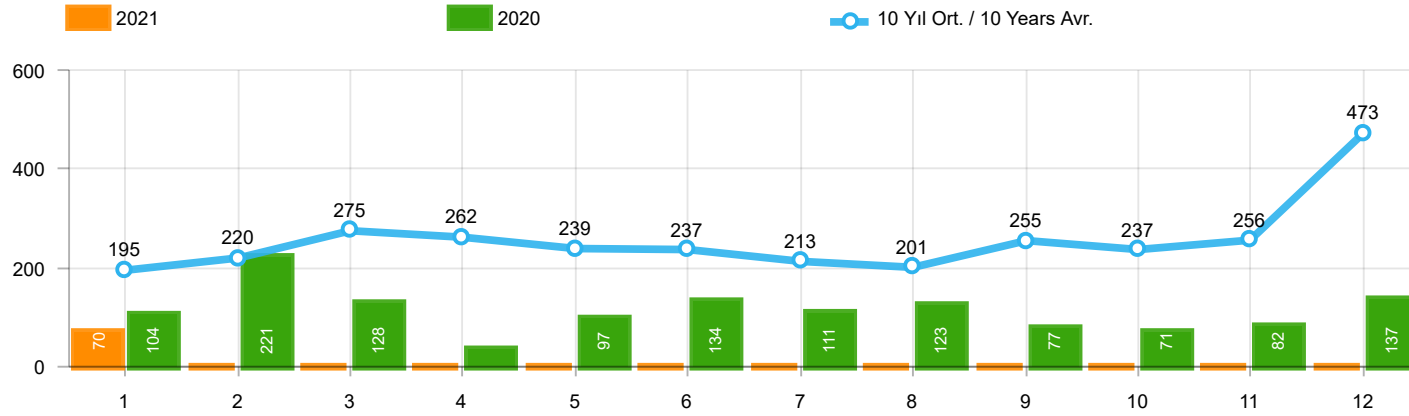
Source: Turkish Statistical Institute – Traffic registrations

Data represents the last two model year's farm tractors registration figures



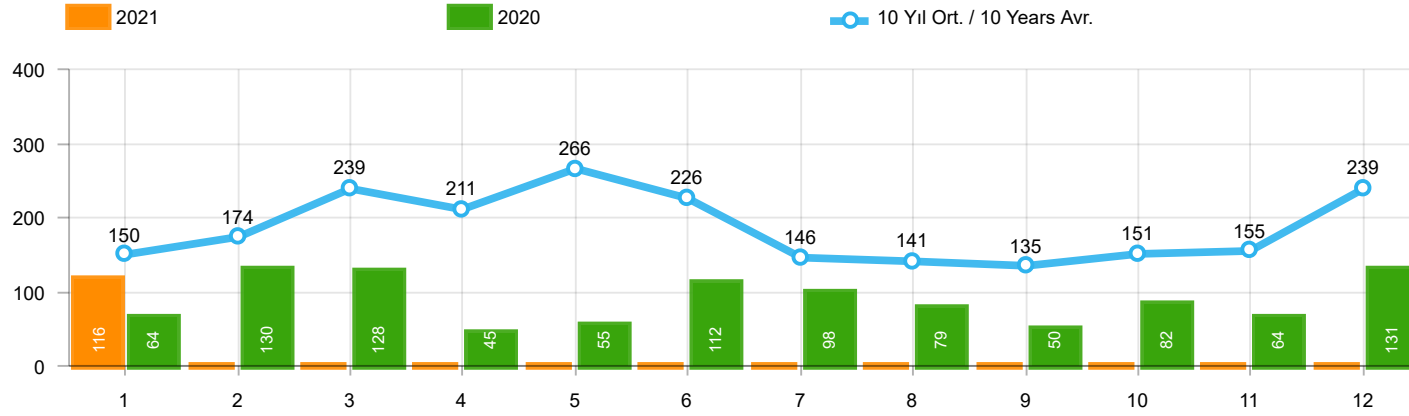
Aylar / Months	10 Yıl Ort / 10 Years Avr.	2021	%
1	1.393	1.316	-5,6
TOPLAM / TOTAL	1.393	1.316	-5,6

Yıl / Year	1	2	3	4	5	6	7	8	9	10	11	12	1-1 Toplam / Total	Toplam / Total	1-1 Yerli / Local	1-1 İthal / Import	İthal Oran / Import %
2011	2.651	3.544	5.142	4.503	4.563	3.852	2.261	2.745	3.784	3.400	3.149	5.712	2.651	45.306	1.585	1.066	40,2
2012	1.703	2.454	3.866	3.209	3.678	3.540	2.750	2.403	3.296	2.497	3.154	5.300	1.703	37.850	1.121	582	34,2
2013	1.484	2.113	3.343	2.925	3.504	3.186	2.777	2.103	2.875	2.086	3.631	5.444	1.484	35.471	977	507	34,2
2014	1.522	2.065	3.094	3.224	3.727	3.726	2.578	2.783	3.708	2.858	3.384	6.869	1.522	39.538	1.197	325	21,4
2015	2.215	3.346	5.699	3.729	3.600	4.253	2.922	2.211	2.687	2.266	3.146	7.307	2.215	43.381	1.710	505	22,8
2016	1.167	1.648	2.515	2.319	2.711	2.623	984	1.796	1.438	2.238	2.485	3.127	1.167	25.051	708	459	39,3
2017	931	1.290	1.982	1.888	2.184	1.891	1.974	1.860	2.284	2.188	2.487	4.438	931	25.397	646	285	30,6
2018	1.237	1.552	2.630	2.328	1.909	1.272	1.235	603	653	488	905	1.695	1.237	16.507	765	472	38,2
2019	342	579	1.255	842	728	981	435	497	854	1.047	1.100	2.087	342	10.747	239	103	30,1
2020	682	1.475	1.290	628	921	1.570	1.809	1.835	2.660	2.239	2.537	3.358	682	21.004	433	249	36,5
2021	1.316												1.316	1.316	874	442	33,6



Aylar / Months	10 Yıl Ort / 10 Years Avr.	2021	%
1	195	70	-64,1
TOPLAM / TOTAL	195	70	-64,1

Yıl / Year	1	2	3	4	5	6	7	8	9	10	11	12	1-1 Toplam / Total	Toplam / Total
2011	124	167	267	260	241	233	205	280	270	230	168	525	124	2.970
2012	179	257	277	229	257	239	216	249	325	269	189	398	179	3.084
2013	191	268	289	276	283	241	367	235	305	392	415	697	191	3.959
2014	360	394	384	333	294	258	216	229	395	220	266	653	360	4.002
2015	280	322	451	561	372	405	389	253	316	394	325	621	280	4.689
2016	309	158	251	302	261	196	139	220	241	230	354	431	309	3.092
2017	212	211	227	231	272	156	250	235	318	268	317	594	212	3.291
2018	134	142	410	296	207	315	180	146	160	155	184	425	134	2.754
2019	57	61	63	96	106	189	55	44	138	138	257	244	57	1.448
2020	104	221	128	35	97	134	111	123	77	71	82	137	104	1.320
2021	70												70	70

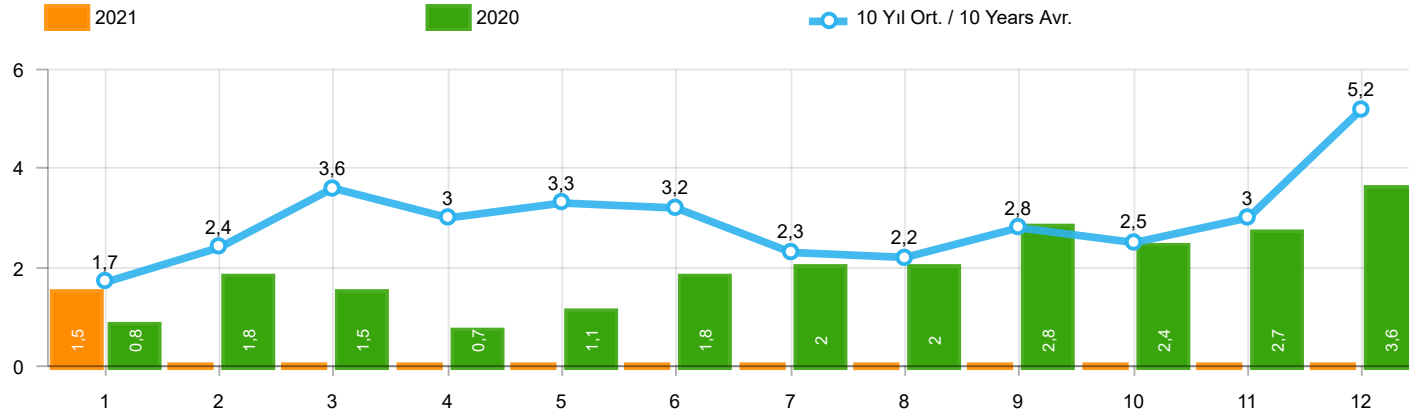


Aylar / Months	10 Yıl Ort / 10 Years Avr.	2021	%
1	150	116	-22,6
TOPLAM / TOTAL	150	116	-22,6

Yıl / Year	1	2	3	4	5	6	7	8	9	10	11	12	1-1 Toplam / Total	Toplam / Total	1-1 Yerli / Local	1-1 İthal / Import	İthal Oran / Import %
2011	92	212	233	324	412	334	148	214	130	176	176	321	92	2.772	90	2	2,2
2012	125	103	215	172	397	262	174	182	251	229	150	344	125	2.604	125	-	-
2013	365	445	537	489	580	520	412	281	245	198	123	189	365	4.384	363	2	0,5
2014	199	179	253	251	305	148	69	92	130	91	97	332	199	2.146	199	-	-
2015	146	222	313	290	290	255	211	203	153	171	359	363	146	2.976	146	-	-
2016	180	209	218	240	214	307	76	82	141	198	314	236	180	2.415	180	-	-
2017	174	119	167	124	188	115	206	187	92	231	109	235	174	1.947	174	-	-
2018	78	65	215	136	125	164	45	42	74	107	113	188	78	1.352	78	-	-
2019	75	54	112	35	97	41	25	45	84	28	42	54	75	692	75	-	-
2020	64	130	128	45	55	112	98	79	50	82	64	131	64	1.038	64	-	-
2021	116												116	116	116	-	-

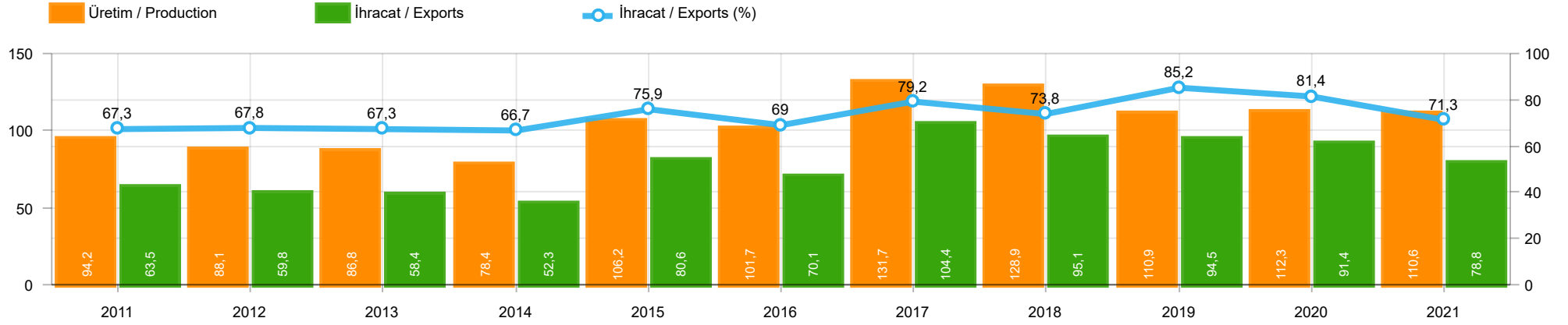
Ağır Ticari Araç Pazarının Analizi(x1000)(OCAK - OCAK)

HCV Market Analysis(x1000)(January - January)



Aylar / Months	10 Yıl Ort / 10 Years Avr.	2021	%
1	1.738	1.502	-13,6
TOPLAM / TOTAL	1.738	1.502	-13,6

Yıl / Year	1	2	3	4	5	6	7	8	9	10	11	12	1-1 Toplam / Total	Toplam / Total	1-1 Yerli / Local	1-1 İthal / Import	İthal Oran / Import %
2011	2.867	3.923	5.642	5.087	5.216	4.419	2.614	3.239	4.184	3.806	3.493	6.558	2.867	51.048	1.799	1.068	37,3
2012	2.007	2.814	4.358	3.610	4.332	4.041	3.140	2.834	3.872	2.995	3.493	6.042	2.007	43.538	1.425	582	29,0
2013	2.040	2.826	4.169	3.690	4.367	3.947	3.556	2.619	3.425	2.676	4.169	6.330	2.040	43.814	1.531	509	25,0
2014	2.081	2.638	3.731	3.808	4.326	4.132	2.863	3.104	4.233	3.169	3.747	7.854	2.081	45.686	1.756	325	15,6
2015	2.641	3.890	6.463	4.580	4.262	4.913	3.522	2.667	3.156	2.831	3.830	8.291	2.641	51.046	2.136	505	19,1
2016	1.656	2.015	2.984	2.861	3.186	3.126	1.199	2.098	1.820	2.666	3.153	3.794	1.656	30.558	1.197	459	27,7
2017	1.317	1.620	2.376	2.243	2.644	2.162	2.430	2.282	2.694	2.687	2.913	5.267	1.317	30.635	1.032	285	21,6
2018	1.449	1.759	3.255	2.760	2.241	1.751	1.460	791	887	750	1.202	2.308	1.449	20.613	977	472	32,6
2019	474	694	1.430	973	931	1.211	515	586	1.076	1.213	1.399	2.385	474	12.887	371	103	21,7
2020	850	1.826	1.546	708	1.073	1.816	2.018	2.037	2.787	2.392	2.683	3.626	850	23.362	601	249	29,3
2021	1.502												1.502	1.502	1.060	442	29,4



	2011	2012	2013	2014	2015	2016	2017	2018	2019	2020	2021
İhracat/Export	63.461	59.778	58.448	52.288	80.630	70.140	104.359	95.115	94.539	91.430	78.804
Üretim/Production	94.232	88.133	86.818	78.444	106.178	101.671	131.740	128.911	110.915	112.298	110.590
İhracat/Exports (%)	67,3	67,8	67,3	66,7	75,9	69	79,2	73,8	85,2	81,4	71,3

Taşıt Araçları İhracatı (2019 - 2021)
Motor Vehicle Exports (2019 - 2021)

SEKTÖR / SECTOR	2019	2020	1/1-2020	1/1-2021	2021/2020 %
OTOMOBİL / Pass.Car	828.744	596.616	60.438	48.050	-20,5
OTOMOBİL TOPLAM / Pass. Car Total	828.744	596.616	60.438	48.050	-20,5
KAMYON / Truck	14.824	10.333	202	998	394,1
KAMYONET / Pick Up	349.490	263.767	25.435	25.164	-1,1
OTOBÜS / Bus	9.001	6.886	551	121	-78,0
MİNİBÜS / Minibus	49.283	38.296	3.305	3.159	-4,4
MİDİBÜS / Midibus	1.244	640	31	77	148,4
TİCARİ ARAÇLAR TOPLAM / Commercial Vehicle Total	423.842	319.922	29.524	29.519	-0,0
TAŞIT ARAÇLARI TOPLAM / Motor Vehicles Total	1.252.586	916.538	89.962	77.569	-13,8
TRAKTÖR / F.Tractor	15.844	13.495	1.468	1.235	-15,9
TRAKTÖR TOPLAM / F.Tractor Total	15.844	13.495	1.468	1.235	-15,9
GENEL TOPLAM / GRAND TOTAL	1.268.430	930.033	91.430	78.804	-13,8

Üretici Bazında İhracat (adet)
Exports by Manufacturer (unit)

Üreticiler / Manufacturers	2019	2020	1-1 / 2020	1-1 / 2021
A.I.O.S.	1.433	510	22	51
FORD OTOSAN	333.734	254.003	24.963	23.607
HATTAT TRAKTÖR	637	942	120	20
HONDA TÜRKİYE	7.528	6.421	1.087	149
HYUNDAI ASSAN	169.803	128.003	10.700	9.920
KARSAN	2.713	755	39	22
M. BENZ TÜRK	16.324	11.184	288	783
MAN TÜRKİYE	2.892	2.628	288	42
OTOKAR	1.156	862	56	91
OYAK RENAULT	295.275	211.954	18.323	14.071
TEMSA	602	243	7	15
TOFAŞ	194.107	117.886	12.279	9.324
TOYOTA	227.019	182.089	21.910	19.494
TÜRK TRAKTÖR	15.207	12.553	1.348	1.215
GENEL TOPLAM / Grand Total	1.268.430	930.033	91.430	78.804

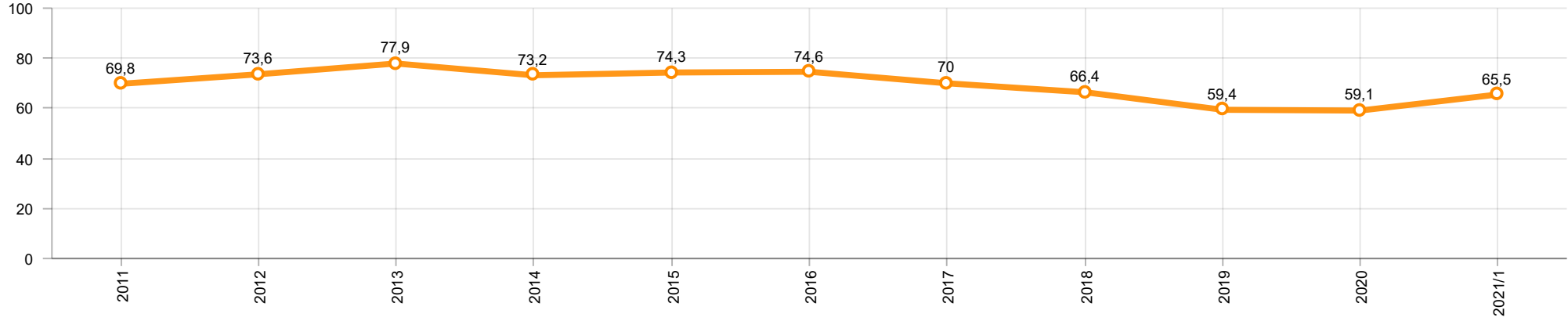
Otomotiv Ana ve Yan Sanayii İhracatı (ABD \$)
CBU and CKD Exports - \$

Sektör / Sector	2019	2020	OCAK - OCAK / January - January 2020	OCAK - OCAK / January - January 2021	2021 / 2020 %
Toplam Yan Sanayi / Total Component Industry	10.616.350.211,16	9.454.364.326,61	876.360.612,7	907.622.037,75	3,6
İç ve Dış Lastik / Tyres	1.479.050.683,54	1.248.005.046,63	112.757.392,14	103.165.549,23	-8,5
Emniyet Camı / Safety Glasses	150.643.773,04	140.363.576,74	12.620.284,19	14.229.281,49	12,7
Motor / Engine	518.051.730,93	461.449.027,72	46.023.813,57	30.406.890,02	-33,9
Akümülatör / Batteries	397.317.829,27	353.038.607,91	25.418.751,93	32.554.172,23	28,1
Diğer Aksam ve Parça / Spare Parts&Components	8.071.286.194,38	7.251.508.067,61	679.540.370,87	727.266.144,78	7,0
Toplam Ana Sanayi / Total Vehicle Industry	20.613.753.125,48	16.491.127.868,9	1.585.120.872,04	1.397.666.973,16	-11,8
Otobüs / Bus	1.759.421.232,04	1.300.660.458,98	105.353.422,32	35.455.491,5	-66,3
Midibüs-Minibüs / Midibus-Minibus	222.922.951,87	188.434.401,85	25.857.153,46	9.882.144,62	-61,8
Otomobil / P.Cars	11.864.815.315,9	9.312.088.333,82	1.032.905.404,8	801.916.227,04	-22,4
Kamyon-Kamyonet / Truck-Pick Up&Van	4.945.359.113,74	4.254.957.839,91	341.170.218,78	433.102.859,25	26,9
Römork ve Yarı Römork / Trailer-Semi Trailer	503.203.636,07	417.420.859,24	33.943.907,49	36.530.105,75	7,6
Çekici / Tractor	839.891.842,8	602.899.223,51	8.673.672,16	52.485.838,22	505,1
Tarım Traktörü / Farm Tractor	478.139.033,06	414.666.751,59	37.217.093,03	28.294.306,78	-24,0
Toplam / Total	31.230.103.336,64	25.945.492.195,51	2.461.481.484,74	2.305.289.010,91	-6,3

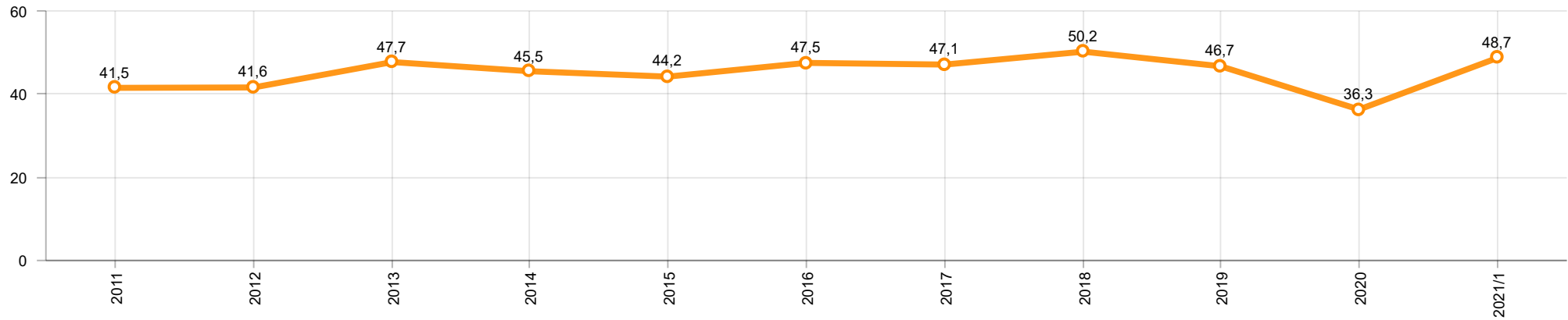
Kaynak: Uludağ İhracatçı Birlikleri . ÜİB tarafından OSD için özel olarak analiz edilen Otomotiv İhracatı kapsamında; ÜİB Türkiye Geneli Otomotiv Endüstrisi sınıflandırmasına kıyasla “Römork ve Yarı Römork” , “Tarım Traktörü” verileri dahil edilmekte; “Kullanılmış Araçlar” ,”İki Tekerlekli Taşıtlar” , “Demiryolu Taşıtları” hariç tutulmaktadır.

Source: Uludağ Exporters Association – Special Analyze for OSD.Compared to Turkish General Automotive Industry classification, this special analyze includes; farms tractors, trailers and semi-trailers, does not include; used vehicles, two-wheeled vehicles and railway vehicles

Otomobil Pazarında İthalatın Payı (%)
Import Share in P.Car Market (%)



Hafif Ticari Araçlar Pazarında İthalatın Payı (%)
Import Share in LCV Market (%)



Araç Tipleri / Vehicle Types	1	2	3	4	5	6	7	8	9	10	11	12	Toplam / Total
OTOMOBİL - Pass.Car	48.050												48.050
KAMYON - H. Truck	986												986
K.KAMYON - L. Truck	12												12
KAMYONET - Pick Up	25.164												25.164
OTOBÜS - Bus	121												121
MİNİBÜS - Minibus	3.159												3.159
MİDİBÜS - Midibus	77												77
TİCARİ ARAÇLAR TOPLAMI - CV Total	29.519												29.519
TAŞIT ARAÇLARI TOPLAMI - MV Total	77.569												77.569
TRAKTÖR - F.Tractor	1.235												1.235
GENEL TOPLAM - Grand Total	78.804												78.804

Otomobil / P.Car

Firmalar / Firms	1	2	3	4	5	6	7	8	9	10	11	12	Toplam / Total
FORD OTOSAN	378	-	-	-	-	-	-	-	-	-	-	-	378
HONDA TÜRKİYE	149	-	-	-	-	-	-	-	-	-	-	-	149
HYUNDAI ASSAN	9.920	-	-	-	-	-	-	-	-	-	-	-	9.920
OYAK RENAULT	14.071	-	-	-	-	-	-	-	-	-	-	-	14.071
TOFAŞ	4.038	-	-	-	-	-	-	-	-	-	-	-	4.038
TOYOTA	19.494	-	-	-	-	-	-	-	-	-	-	-	19.494
TOPLAM - Total	48.050	-	-	-	-	-	-	-	-	-	-	-	48.050

Kamyonet / Pick-up

Firmalar / Firms	1	2	3	4	5	6	7	8	9	10	11	12	Toplam / Total
A.I.O.S.	-	-	-	-	-	-	-	-	-	-	-	-	-
FORD OTOSAN	19.856	-	-	-	-	-	-	-	-	-	-	-	19.856
KARSAN	22	-	-	-	-	-	-	-	-	-	-	-	22
OTOKAR	-	-	-	-	-	-	-	-	-	-	-	-	-
TOFAŞ	5.286	-	-	-	-	-	-	-	-	-	-	-	5.286
TOPLAM - Total	25.164	-	-	-	-	-	-	-	-	-	-	-	25.164

Minibüs / Minibus

Firmalar / Firms	1	2	3	4	5	6	7	8	9	10	11	12	Toplam / Total
FORD OTOSAN	3.159	-	-	-	-	-	-	-	-	-	-	-	3.159
KARSAN	-	-	-	-	-	-	-	-	-	-	-	-	-
TOPLAM - Total	3.159	-	-	-	-	-	-	-	-	-	-	-	3.159

Kamyon / Truck

Firmalar / Firms	1	2	3	4	5	6	7	8	9	10	11	12	Toplam / Total
A.I.O.S.	12	-	-	-	-	-	-	-	-	-	-	-	12
FORD OTOSAN	214	-	-	-	-	-	-	-	-	-	-	-	214
KARSAN	-	-	-	-	-	-	-	-	-	-	-	-	-
M. BENZ TÜRK	772	-	-	-	-	-	-	-	-	-	-	-	772
OTOKAR	-	-	-	-	-	-	-	-	-	-	-	-	-
TEMSA	-	-	-	-	-	-	-	-	-	-	-	-	-
TOPLAM - Total	998	-	-	-	-	-	-	-	-	-	-	-	998

Midibüs / Midibus

Firmalar / Firms	1	2	3	4	5	6	7	8	9	10	11	12	Toplam / Total
A.I.O.S.	31	-	-	-	-	-	-	-	-	-	-	-	31
KARSAN	-	-	-	-	-	-	-	-	-	-	-	-	-
OTOKAR	44	-	-	-	-	-	-	-	-	-	-	-	44
TEMSA	2	-	-	-	-	-	-	-	-	-	-	-	2
TOPLAM - Total	77	-	-	-	-	-	-	-	-	-	-	-	77

Otobüs / Bus

Firmalar / Firms	1	2	3	4	5	6	7	8	9	10	11	12	Toplam / Total
A.I.O.S.	8	-	-	-	-	-	-	-	-	-	-	-	8
KARSAN	-	-	-	-	-	-	-	-	-	-	-	-	-
M. BENZ TÜRK	11	-	-	-	-	-	-	-	-	-	-	-	11
MAN TÜRKİYE	42	-	-	-	-	-	-	-	-	-	-	-	42
OTOKAR	47	-	-	-	-	-	-	-	-	-	-	-	47
TEMSA	13	-	-	-	-	-	-	-	-	-	-	-	13
TOPLAM - Total	121	-	-	-	-	-	-	-	-	-	-	-	121

Traktör / F.Tractor

Firmalar / Firms	1	2	3	4	5	6	7	8	9	10	11	12	Toplam / Total
HATTAT TRAKTÖR	20	-	-	-	-	-	-	-	-	-	-	-	20
TÜRK TRAKTÖR	1.215	-	-	-	-	-	-	-	-	-	-	-	1.215
TOPLAM - Total	1.235	-	-	-	-	-	-	-	-	-	-	-	1.235

Firmalar / Firms	2020 Toplam / Total	1	2	3	4	5	6	7	8	9	10	11	12	Toplam / Total
Alfa Romeo	214	76	-	-	-	-	-	-	-	-	-	-	-	76
Aston Martin	17	3	-	-	-	-	-	-	-	-	-	-	-	3
Audi	18.168	839	-	-	-	-	-	-	-	-	-	-	-	839
BMW	14.270	613	-	-	-	-	-	-	-	-	-	-	-	613
Citroen	22.254	1.188	-	-	-	-	-	-	-	-	-	-	-	1.188
Dacia	25.910	1.396	-	-	-	-	-	-	-	-	-	-	-	1.396
DS	694	20	-	-	-	-	-	-	-	-	-	-	-	20
Ferrari	21	1	-	-	-	-	-	-	-	-	-	-	-	1
Fiat	1.298	57	-	-	-	-	-	-	-	-	-	-	-	57
Ford	23.897	1.397	-	-	-	-	-	-	-	-	-	-	-	1.397
Honda	2.337	249	-	-	-	-	-	-	-	-	-	-	-	249
Hyundai	19.035	644	-	-	-	-	-	-	-	-	-	-	-	644
Jaguar	265	4	-	-	-	-	-	-	-	-	-	-	-	4
Jeep	4.369	177	-	-	-	-	-	-	-	-	-	-	-	177
Kia	13.542	1.306	-	-	-	-	-	-	-	-	-	-	-	1.306
Lamborghini	19	1	-	-	-	-	-	-	-	-	-	-	-	1
Land Rover	2.010	79	-	-	-	-	-	-	-	-	-	-	-	79
Lexus	143	21	-	-	-	-	-	-	-	-	-	-	-	21
Maserati	47	2	-	-	-	-	-	-	-	-	-	-	-	2
Mazda	156	7	-	-	-	-	-	-	-	-	-	-	-	7
Mercedes-Benz	15.617	977	-	-	-	-	-	-	-	-	-	-	-	977
Mini	1.395	141	-	-	-	-	-	-	-	-	-	-	-	141
Mitsubishi	1.237	63	-	-	-	-	-	-	-	-	-	-	-	63
Nissan	12.717	1.435	-	-	-	-	-	-	-	-	-	-	-	1.435
Opel	31.229	1.672	-	-	-	-	-	-	-	-	-	-	-	1.672
Peugeot	36.589	2.677	-	-	-	-	-	-	-	-	-	-	-	2.677
Porsche	619	41	-	-	-	-	-	-	-	-	-	-	-	41
Renault	9.339	673	-	-	-	-	-	-	-	-	-	-	-	673
Seat	11.551	880	-	-	-	-	-	-	-	-	-	-	-	880
Skoda	24.175	1.930	-	-	-	-	-	-	-	-	-	-	-	1.930
Ssangyong	650	68	-	-	-	-	-	-	-	-	-	-	-	68
Subaru	673	31	-	-	-	-	-	-	-	-	-	-	-	31
Suzuki	2.977	77	-	-	-	-	-	-	-	-	-	-	-	77
Toyota	2.016	111	-	-	-	-	-	-	-	-	-	-	-	111
Volkswagen	52.740	4.082	-	-	-	-	-	-	-	-	-	-	-	4.082
Volvo	8.200	215	-	-	-	-	-	-	-	-	-	-	-	215
GENEL TOPLAM - Grand Total	360.450	23.153	-	-	-	-	-	-	-	-	-	-	-	23.153

Firmalar / Firms	2020 Toplam / Total	1	2	3	4	5	6	7	8	9	10	11	12	Toplam / Total
Citroen	5.226	277	-	-	-	-	-	-	-	-	-	-	-	277
Dacia	4.890	768	-	-	-	-	-	-	-	-	-	-	-	768
Fiat	3.861	100	-	-	-	-	-	-	-	-	-	-	-	100
Ford	3.034	60	-	-	-	-	-	-	-	-	-	-	-	60
Hyundai	990	125	-	-	-	-	-	-	-	-	-	-	-	125
Isuzu	229	13	-	-	-	-	-	-	-	-	-	-	-	13
Iveco	1.851	91	-	-	-	-	-	-	-	-	-	-	-	91
Kia	1.900	152	-	-	-	-	-	-	-	-	-	-	-	152
Mercedes-Benz	5.175	155	-	-	-	-	-	-	-	-	-	-	-	155
Mitsubishi	4.629	402	-	-	-	-	-	-	-	-	-	-	-	402
Nissan	544	82	-	-	-	-	-	-	-	-	-	-	-	82
Opel	3.067	176	-	-	-	-	-	-	-	-	-	-	-	176
Peugeot	7.085	519	-	-	-	-	-	-	-	-	-	-	-	519
Renault	2.634	269	-	-	-	-	-	-	-	-	-	-	-	269
Ssangyong	434	20	-	-	-	-	-	-	-	-	-	-	-	20
Toyota	1.417	238	-	-	-	-	-	-	-	-	-	-	-	238
Volkswagen	12.036	626	-	-	-	-	-	-	-	-	-	-	-	626
GENEL TOPLAM - Grand Total	59.002	4.073	-	-	-	-	-	-	-	-	-	-	-	4.073