



OTOMOTİV SANAYİ DERNEĞİ
AUTOMOTIVE MANUFACTURERS ASSOCIATION

AYLIK RAPOR

Automotive Industry Monthly Report

Aralık / December 2015

- **Üretim/Production**
- **Satış/Sales**
- **İthalat/Imports**
- **İhracat/Exports**

OSD "OICA" Üyesidir



OSD is a Member of "OICA"

2015 Aralık Ayı Özeti / 2015 December Summary

KONULAR/MATTERS		ARALIK/DECEMBER			YILLIK/YEARLY		
		2014	2015	2015/2014 (%)	2014	2015	2015/2014 (%)
Üretim/Production	Toplam/Total	120.593	125.752	4	1.170.445	1.358.796	16
	Otomobil/P.Cars	70.480	74.688	6	733.439	791.027	8
Pazar/Market	Toplam/Total	153.941	163.432	6	807.486	1.011.194	25
	Otomobil/P.Cars	110.054	114.340	4	587.331	725.596	24
İthalat/Import	Toplam/Total	94.131	99.578	6	524.831	658.690	26
	Otomobil/P.Cars	77.965	80.726	4	429.982	537.715	25
İhracat/Export	Toplam/Total	82.308	92.283	12	885.180	992.335	12
	Otomobil/P.Cars	52.360	60.122	15	581.993	604.683	4
İhracat / Export (\$)	Toplam/Total **	1.842.855.097	1.871.677.990	2	22.763.513.769	21.618.884.498	-5
	Otomobil/P.Cars	587.287.892	617.609.590	5	7.258.361.005	6.881.972.133	-5

PARAMETRELER / PARAMETERS	ARALIK/DECEMBER			YILLIK/YEARLY		
	2014	2015	2015/2014 (%)	2014	2015	2015/2014 (%)
ÜFE/PPI	-0,76	-0,33	**	6,36	5,71	**
TÜFE/CPI	-0,44	0,21	**	8,17	8,81	**
Sanayi Endeksi/Industry Index	-0,52	-0,27	**	7,63	6,38	**
\$ (*)	2,3253	2,9032	25	2,1912	2,7312	25
EURO (*)	2,8252	3,1223	11	2,8913	3,0180	4
Japon Yeni (*)	1,9352	2,3725	23	2,0558	2,2437	9

(*) Ortalama Değerler / Average Values

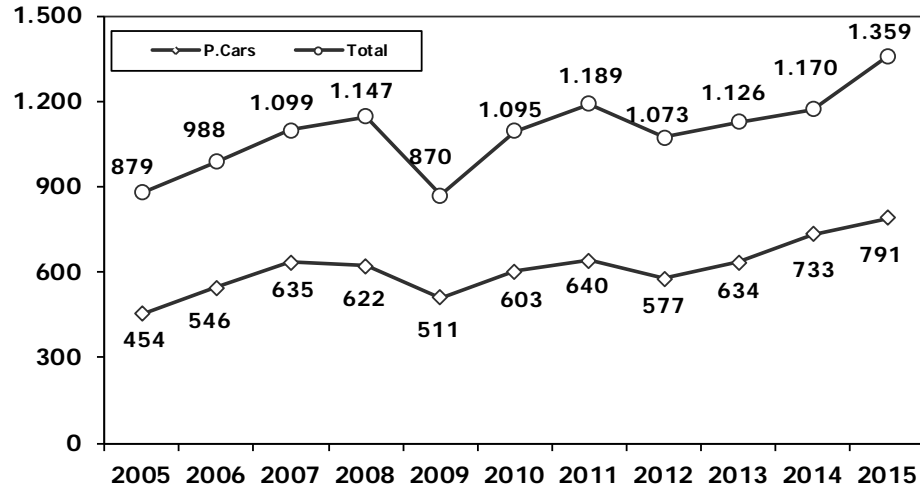
(**) Toplam Sanayi / Total Industry Including Components

2014/2015 Yılları Üretim 2014/2015 Production

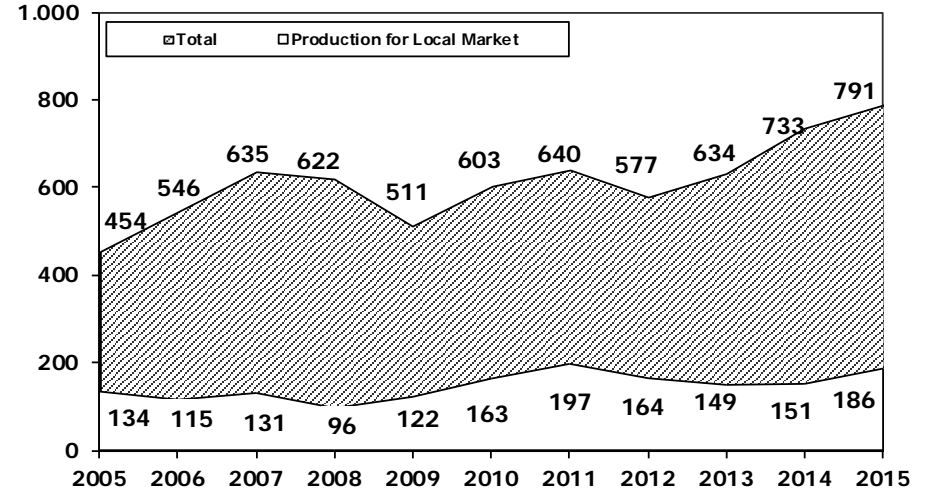
K.KAMYON : AYA 3.5-12 Ton (L.Truck:GVW 3.5-12 Ton)
B.KAMYON : AYA 12 Ton'dan Büyük (M.Truck:GVW 12 Ton And Up)

TİPLER	ARALIK AYI ÜRETİMİ December Production		12 AYLIK ÜRETİM 12 Months Production		DEĞİŞİM % Percent Change %	
	2014	2015	2014	2015	ARALIK December	12 AY 12 Months
OTOMOBİL - Pass.Car	70.480	74.688	733.439	791.027	6	8
TİCARİ ARAÇLAR - Commercial Vehicles	50.113	51.064	437.006	567.769	2	30
* B. KAMYON - M. Truck	2.988	3.067	29.169	30.968	3	6
* K. KAMYON - L. Truck	492	946	3.432	4.870	92	42
* KAMYONET - Pick Up	41.540	43.176	357.219	468.933	4	31
* OTOBÜS - Bus	533	921	6.442	8.789	73	36
* MİNİBÜS - Minibus	4.092	2.013	35.420	47.078	-51	33
* MİDİBÜS - Midibus	468	941	5.324	7.131	101	34
TAŞIT ARAÇLARI TOPLAM - MV Total	120.593	125.752	1.170.445	1.358.796	4	16
TRAKTÖR - F.Tractor	3.327	3.411	48.403	51.238	3	6
GENEL TOPLAM - Grand Total	123.920	129.163	1.218.848	1.410.034	4	16

Toplam Üretim ve Otomobil Üretimi (x1000) (Ocak-Aralık)
Total & P.Cars Production (x1000) (January- December)

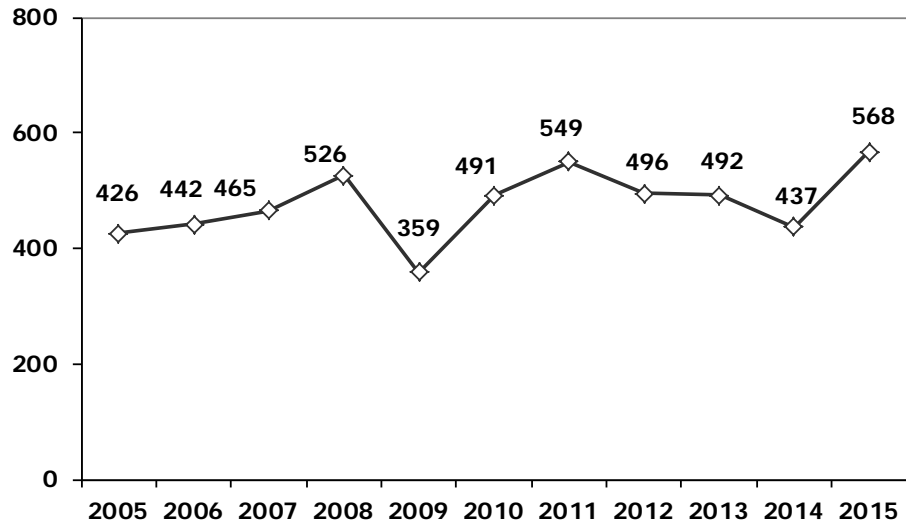


Otomobil Üretimi ve İhracat (x1000) (Ocak-Aralık)
P.Cars Production & Exports (x1000) (January- December)



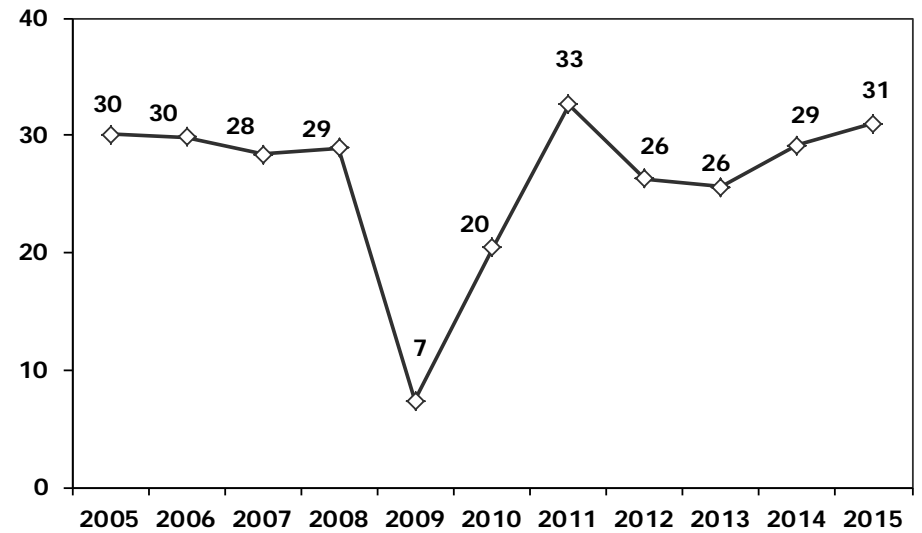
Ticari Araç Üretimi (x1000) (Ocak-Aralık)

Commercial Vehicle Production (x1000) (January- December)



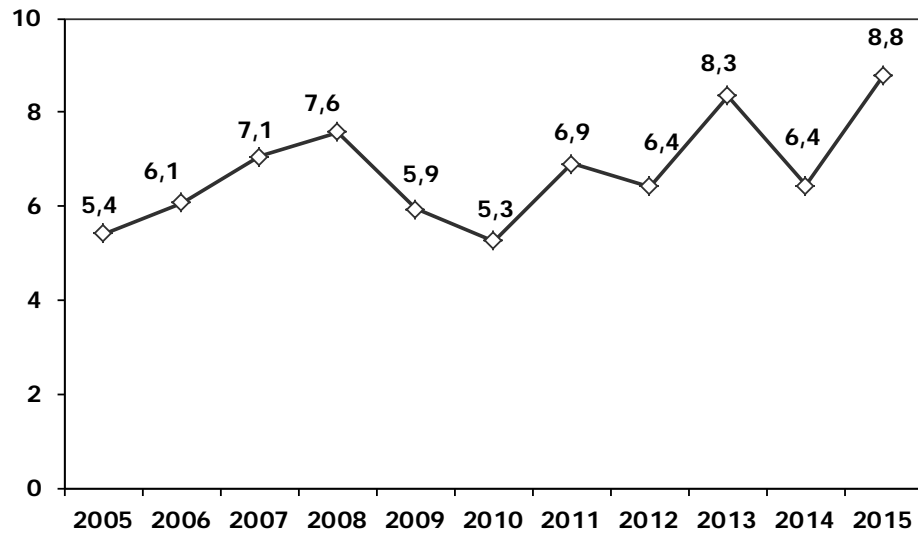
(AYA >12 Ton) Büyük Kamyon Üretimi (x1000) (Ocak-Aralık)

(GVW >12 Ton) Heavy Truck Production (x1000) (January- December)



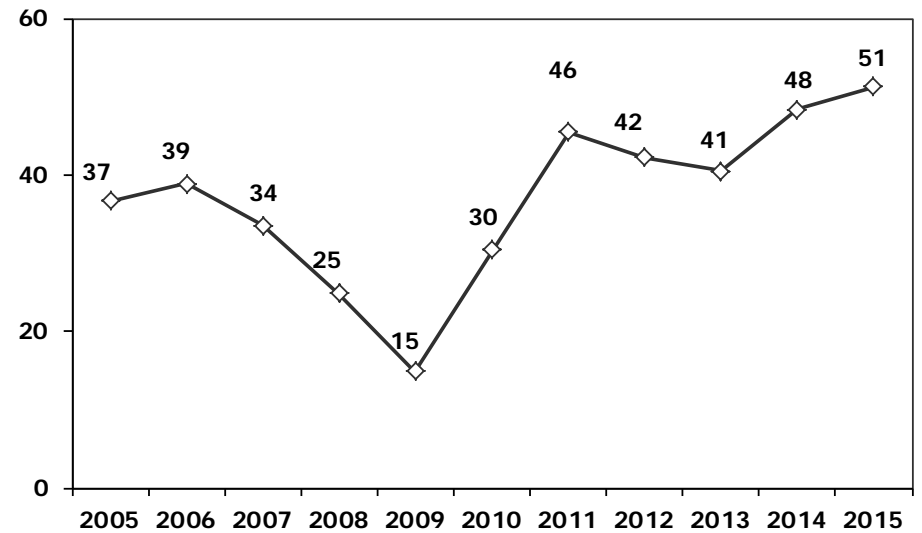
Otobüs Üretimi (x1000) (Ocak-Aralık)

Bus Production (x1000) (January- December)



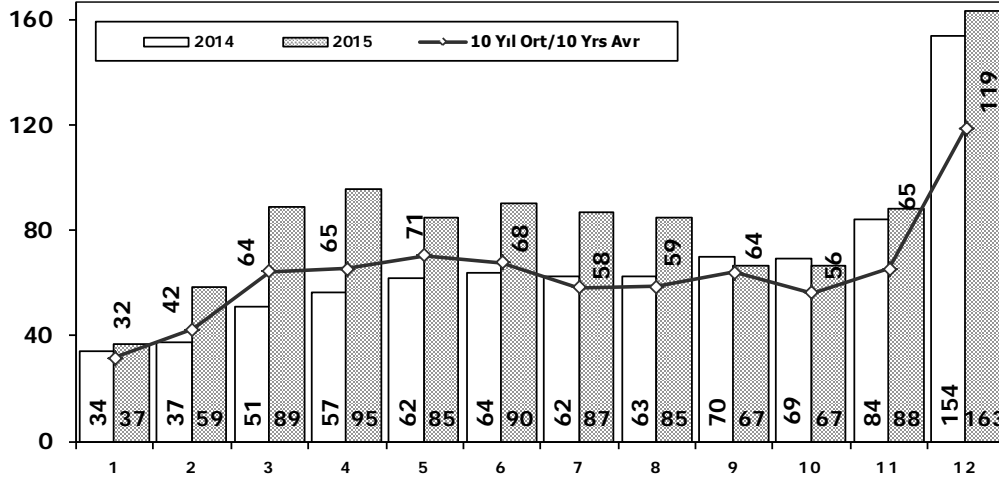
Traktör Üretimi (x1000) (Ocak-Aralık)

F. Tractor Production (x1000) (January- December)



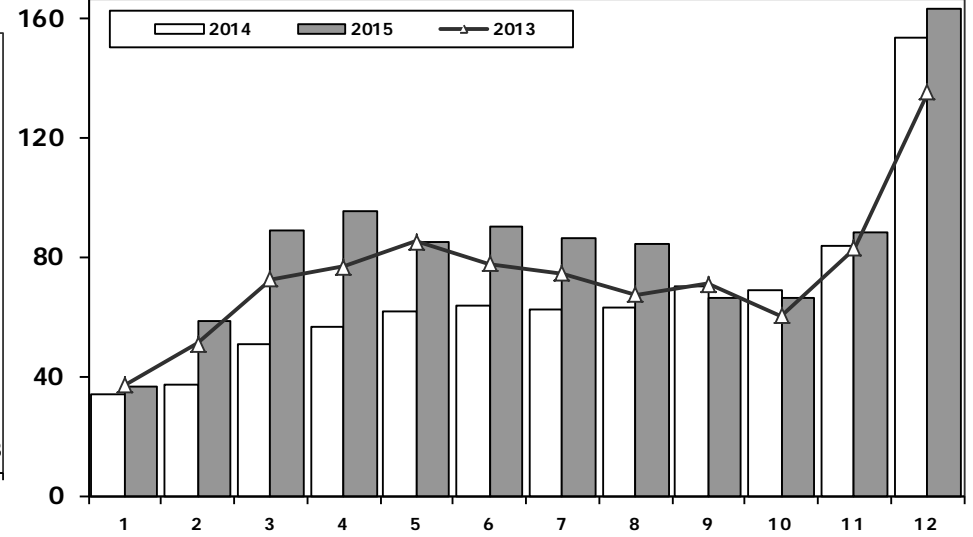
Toplam Pazarın Analizi (x1000)

Total Market Analysis (x1000)



Toplam Pazar (x1000)

Total Market (x1000)

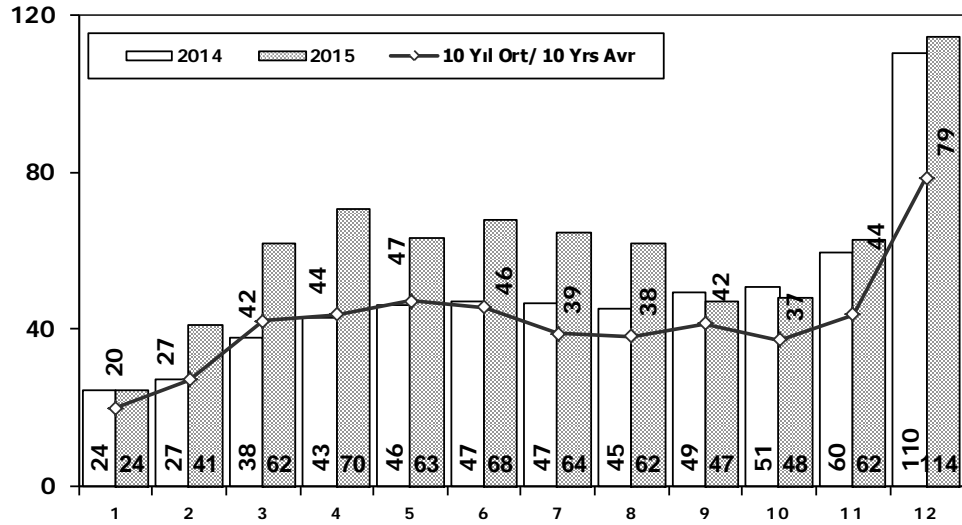


Aylar / Months	10 Yil Ort. 10 Yrs Avr. (x1000)	2015 (x1000)	%
1	31,7	36,6	15,3
2	42,3	58,5	38,5
3	64,3	89,1	38,6
4	65,4	95,4	45,9
5	70,5	85,1	20,8
6	67,9	90,5	33,3
7	58,3	86,6	48,6
8	58,7	84,7	44,3
9	64,1	66,6	3,9
10	56,1	66,5	18,5
11	65,5	88,0	34,4
12	118,8	163,4	37,6
Total	763,6	1.011,2	32,4

	1	2	3	4	5	6	7	8	9	10	11	12	Total
2005	22.687	38.291	64.502	60.873	71.383	64.379	63.847	68.647	66.580	60.791	65.719	110.838	758.537
2006	29.969	44.646	65.090	68.853	83.289	58.203	40.037	47.374	49.629	39.805	55.898	82.722	665.515
2007	24.950	31.702	45.488	45.633	51.255	51.661	50.117	54.171	50.078	56.058	67.017	106.076	634.206
2008	33.792	38.121	56.814	50.967	51.627	49.393	44.692	46.592	46.829	35.147	28.152	44.418	526.544
2009	20.631	22.846	56.531	54.426	64.887	63.102	30.246	37.092	83.403	22.117	29.202	91.386	575.869
2010	21.050	32.313	53.828	57.079	61.628	63.390	63.718	64.645	66.601	76.780	77.406	154.734	793.172
2011	47.658	62.348	83.333	82.071	85.093	85.863	65.364	61.378	63.643	72.640	67.195	134.281	910.867
2012	31.219	43.827	68.957	66.014	74.820	74.781	65.122	60.848	73.197	62.677	75.045	121.113	817.620
2013	37.140	50.931	72.688	77.015	85.421	77.771	74.726	67.383	71.037	60.399	83.017	135.596	893.124
2014	34.225	37.308	50.964	56.766	61.909	63.952	62.206	62.839	70.180	69.259	83.937	153.941	807.486
2015	36.576	58.533	89.121	95.431	85.145	90.463	86.625	84.683	66.622	66.520	88.043	163.432	1.011.194

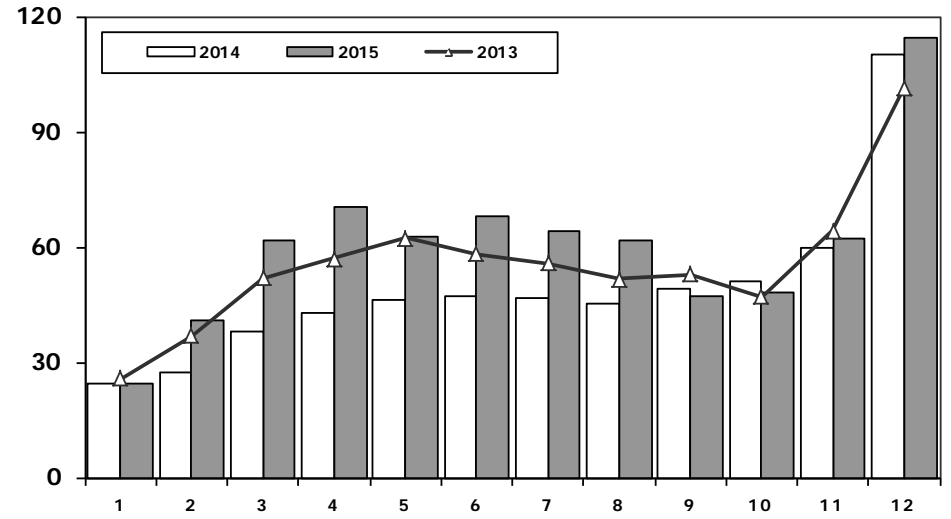
Otomobil Pazarının Analizi (x1000)

P.Cars Market Analysis (x1000)



Otomobil Pazarı (x1000)

P.Cars Market (x1000)

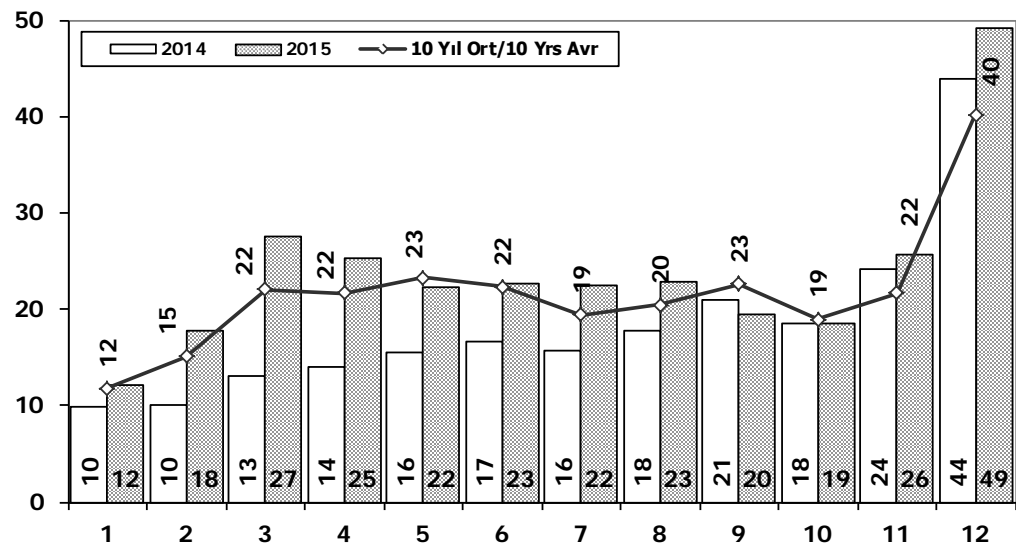


Aylar / Months	10 Yil Ort. 10 Yrs Avr. (x1000)	2015 (x1000)	%
1	20,0	24,5	22,7
2	27,1	40,8	50,4
3	42,3	61,7	45,9
4	43,8	70,2	60,3
5	47,2	62,9	33,2
6	45,6	67,8	48,7
7	38,9	64,2	65,1
8	38,3	61,8	61,3
9	41,5	47,1	13,3
10	37,2	48,0	28,9
11	43,9	62,4	42,3
12	78,6	114,3	45,5
Total	504,4	725,6	43,9

	1	2	3	4	5	6	7	8	9	10	11	12	Total
2005	11.595	21.012	38.129	36.206	38.480	40.900	38.969	38.648	36.410	34.960	37.841	65.447	438.597
2006	16.506	24.929	36.996	40.177	48.521	32.982	22.653	24.873	27.517	21.237	30.477	46.351	373.219
2007	13.186	17.212	24.336	25.204	29.067	30.126	28.246	28.469	27.662	32.569	39.643	61.745	357.465
2008	18.588	21.196	34.147	30.313	31.477	28.724	25.530	26.102	27.053	19.788	17.201	25.879	305.998
2009	13.173	14.492	40.622	36.202	44.188	41.019	16.637	22.537	52.162	13.828	17.781	57.178	369.819
2010	12.594	20.651	33.958	36.549	40.467	42.086	41.399	42.222	42.477	47.859	50.061	99.461	509.784
2011	29.868	39.004	54.023	53.835	56.302	56.714	43.518	38.875	39.964	47.508	44.951	88.957	593.519
2012	21.077	29.189	47.270	45.645	50.460	50.849	44.531	41.236	49.360	43.440	52.297	80.926	556.280
2013	25.835	36.814	51.785	56.999	62.383	58.290	55.712	51.611	52.925	46.985	64.117	101.199	664.655
2014	24.368	27.167	37.812	42.769	46.379	47.278	46.602	45.131	49.262	50.814	59.695	110.054	587.331
2015	24.498	40.817	61.676	70.211	62.878	67.766	64.218	61.753	47.088	47.954	62.397	114.340	725.596

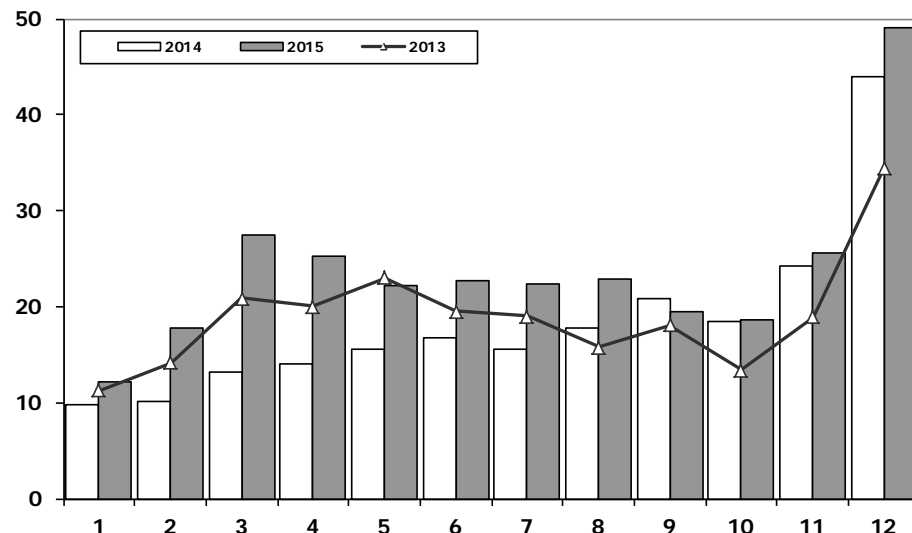
Ticari Araç Pazarının Analizi (x1000)

CV Market Analysis (x1000)



Ticari Araç Pazarı (x1000)

CV Total Market (Local + Imports) (x1000)

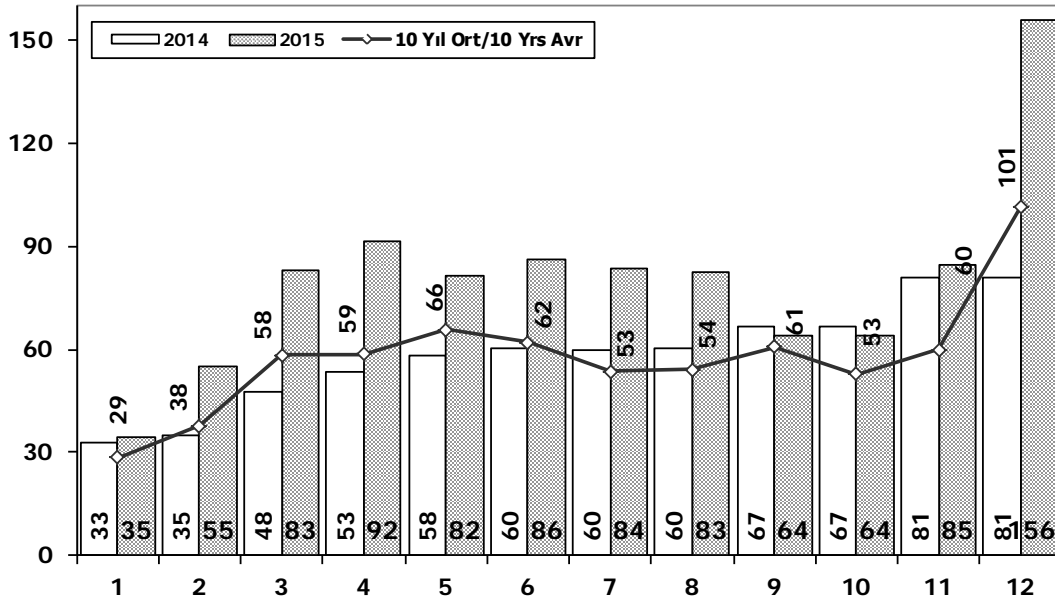


Aylar / Months	10 Yil Ort. / 10 Yrs Avr. (x1000)	2015 (x1000)	%
1	11,8	12,1	2,8
2	15,1	17,7	17,2
3	22,0	27,4	24,6
4	21,6	25,2	16,6
5	23,3	22,3	-4,4
6	22,3	22,7	1,9
7	19,4	22,4	15,6
8	20,4	22,9	12,3
9	22,6	19,5	-13,5
10	18,9	18,6	-2,0
11	21,6	25,6	18,6
12	40,2	49,1	22,2
Total	259,2	285,6	10,2

	1	2	3	4	5	6	7	8	9	10	11	12	Total
2005	11.092	17.279	26.373	24.667	32.903	23.479	24.878	29.999	30.170	25.831	27.878	45.391	319.940
2006	13.463	19.717	28.094	28.676	34.768	25.221	17.384	22.501	22.112	18.568	25.421	36.371	292.296
2007	11.764	14.490	21.152	20.429	22.188	21.535	21.871	25.702	22.416	23.489	27.374	44.331	276.741
2008	15.204	16.925	22.667	20.654	20.150	20.669	19.162	20.490	19.776	15.359	10.951	18.539	220.546
2009	7.458	8.354	15.909	18.224	20.699	22.083	13.609	14.555	31.241	8.289	11.421	34.208	206.050
2010	8.456	11.662	19.870	20.530	21.161	21.304	22.319	22.423	24.124	28.921	27.345	55.273	283.388
2011	17.790	23.344	29.310	28.236	28.791	29.149	21.846	22.503	23.679	25.132	22.244	45.324	317.348
2012	10.142	14.638	21.687	20.369	24.360	23.932	20.591	19.612	23.837	19.237	22.748	40.187	261.340
2013	11.305	14.117	20.903	20.016	23.038	19.481	19.014	15.772	18.112	13.414	18.900	34.397	228.469
2014	9.857	10.141	13.152	13.997	15.530	16.674	15.604	17.708	20.918	18.445	24.242	43.887	220.155
2015	12.078	17.716	27.445	25.220	22.267	22.697	22.407	22.930	19.534	18.566	25.646	49.092	285.598

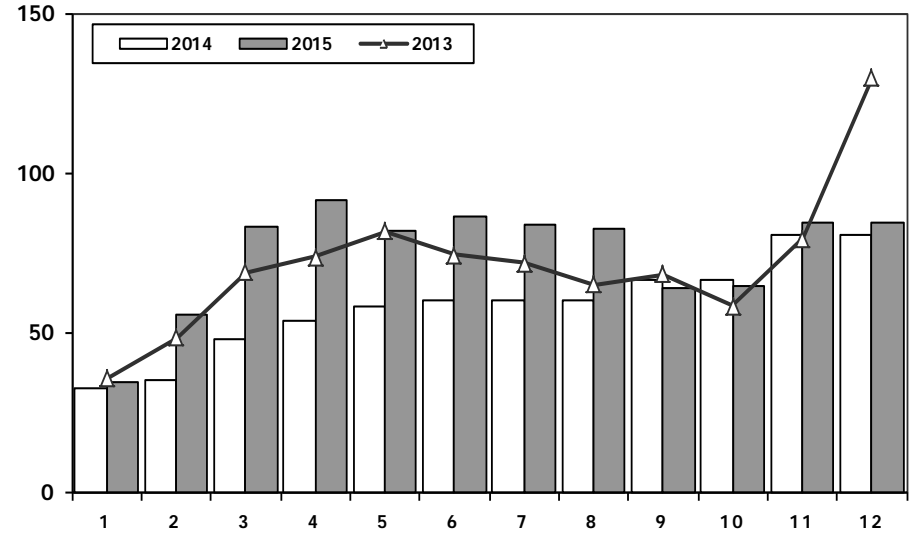
Hafif Araç Pazarının Analizi (x1000)

LV Market Analysis (x1000)



Hafif Araç Pazarı (x1000)

LV Total Market (Local + Imports) (x1000)

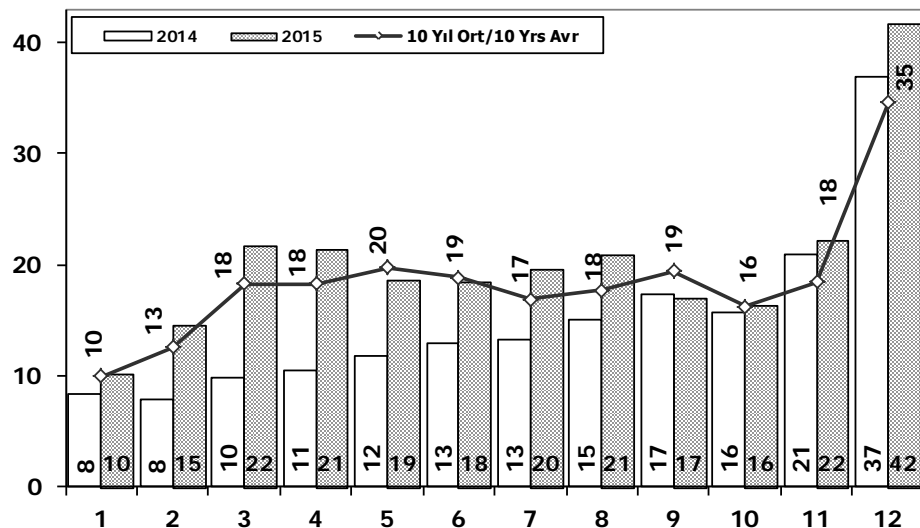


Aylar / Months	10 Yil Ort. 10 Yrs Avr. (x1000)	2015 (x1000)	%
1	28,6	34,6	21,2
2	37,7	55,3	46,6
3	58,3	83,3	42,9
4	58,6	91,6	56,3
5	65,6	81,5	24,3
6	61,9	86,2	39,2
7	53,5	83,8	56,7
8	54,1	82,6	52,6
9	60,8	64,0	5,3
10	52,7	64,3	21,9
11	60,0	84,6	41,0
12	101,4	156,2	54,0
Total	693,2	968,0	39,6

	1	2	3	4	5	6	7	8	9	10	11	12	Total
2005	20.747	35.766	60.707	56.844	67.357	60.796	61.015	64.011	61.954	56.638	61.364	103.209	710.408
2006	27.917	40.938	60.052	64.038	78.229	54.355	37.251	43.767	46.109	36.542	51.867	76.787	617.852
2007	23.117	29.184	41.890	42.366	47.938	48.674	47.490	50.558	46.581	52.725	63.313	100.926	594.762
2008	31.527	35.251	53.649	47.701	48.598	46.324	42.156	43.670	43.932	32.884	26.253	42.078	494.023
2009	19.606	21.742	55.111	52.640	63.191	61.067	28.845	35.609	81.397	21.033	27.962	88.923	557.126
2010	20.095	31.172	51.769	54.946	59.377	60.896	61.345	61.764	63.814	73.404	73.962	148.369	760.913
2011	44.892	58.663	78.403	77.695	80.646	81.573	63.044	58.406	60.129	69.421	63.657	127.910	864.439
2012	29.545	41.324	64.884	62.949	70.863	71.067	62.304	58.148	69.629	59.938	71.710	115.400	777.761
2013	35.523	48.307	68.774	73.575	81.468	74.096	71.596	65.043	67.963	58.014	79.301	129.718	853.378
2014	32.670	35.021	47.581	53.305	58.121	60.163	59.907	60.199	66.531	66.573	80.621	146.989	767.681
2015	34.615	55.331	83.302	91.602	81.542	86.158	83.836	82.577	64.025	64.255	84.601	156.173	968.017

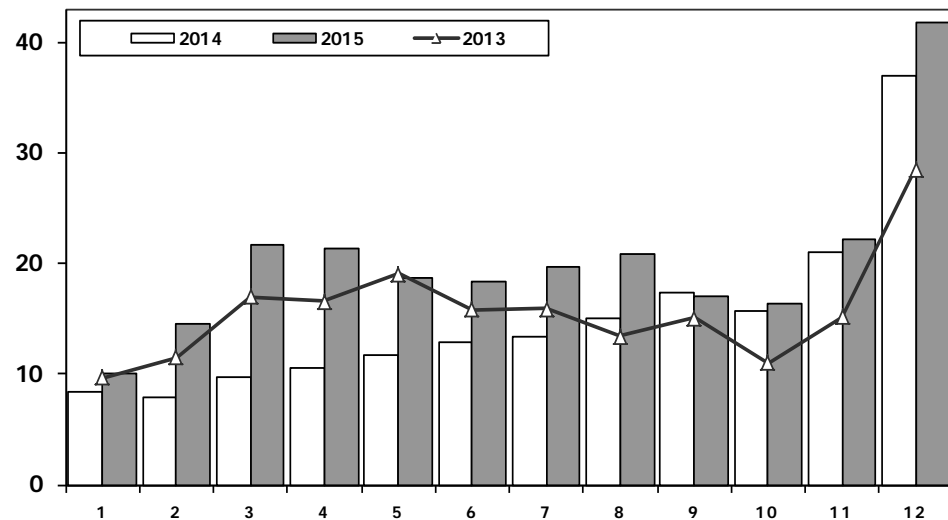
Hafif Ticari Araç Pazarının Analizi (x1000)

LCV Market Analysis (x1000)



Hafif Ticari Araç Pazarı (x1000)

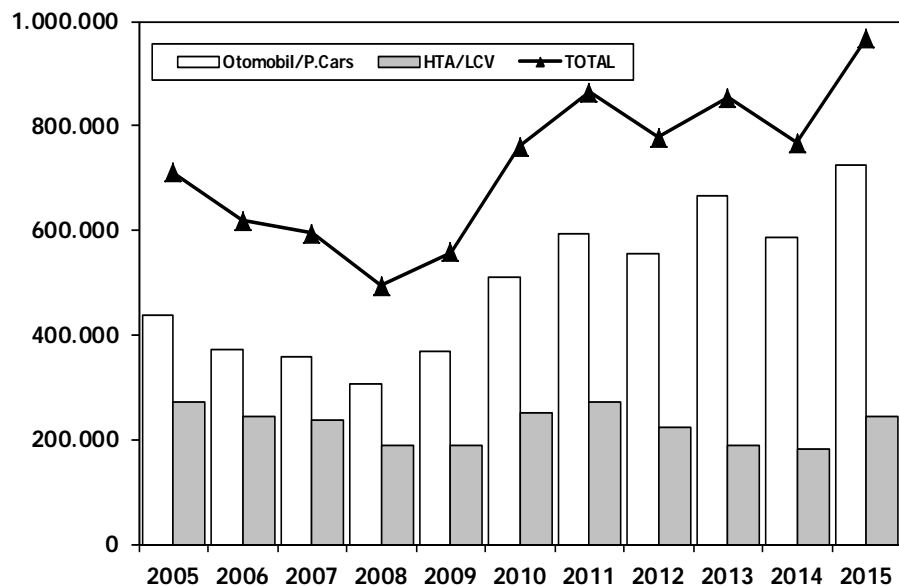
LCV Total Market (Local + Imports) (x1000)



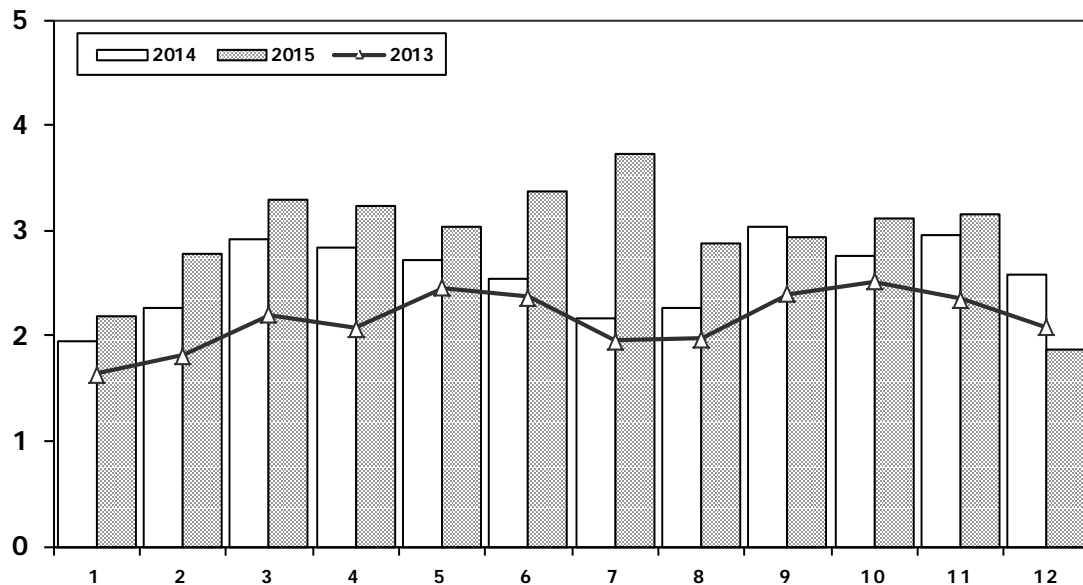
Aylar / Months	10 Yil Ort. 10 Yrs Avr. (x1000)	2015 (x1000)	%
1	10,0	10,1	1,4
2	12,5	14,5	15,7
3	18,3	21,6	18,3
4	18,3	21,4	16,9
5	19,8	18,7	-5,7
6	18,9	18,4	-2,4
7	16,9	19,6	16,3
8	17,7	20,8	17,7
9	19,5	16,9	-13,0
10	16,3	16,3	0,1
11	18,5	22,2	20,3
12	34,7	41,8	20,5
Total	221,2	242,4	9,6

	1	2	3	4	5	6	7	8	9	10	11	12	Total
2005	9.152	14.754	22.578	20.638	28.877	19.896	22.046	25.363	25.544	21.678	23.523	37.762	271.811
2006	11.411	16.009	23.056	23.861	29.708	21.373	14.598	18.894	18.592	15.305	21.390	30.436	244.633
2007	9.931	11.972	17.554	17.162	18.871	18.548	19.244	22.089	18.919	20.156	23.670	39.181	237.297
2008	12.939	14.055	19.502	17.388	17.121	17.600	16.626	17.568	16.879	13.096	9.052	16.199	188.025
2009	6.433	7.250	14.489	16.438	19.003	20.048	12.208	13.072	29.235	7.205	10.181	31.745	187.307
2010	7.501	10.521	17.811	18.397	18.910	18.810	19.946	19.542	21.337	25.545	23.901	48.908	251.129
2011	15.024	19.659	24.380	23.860	24.344	24.859	19.526	19.531	20.165	21.913	18.706	38.953	270.920
2012	8.468	12.135	17.614	17.304	20.403	20.218	17.773	16.912	20.269	16.498	19.413	34.474	221.481
2013	9.688	11.493	16.989	16.576	19.085	15.806	15.884	13.432	15.038	11.029	15.184	28.519	188.723
2014	8.302	7.854	9.769	10.536	11.742	12.885	13.305	15.068	17.269	15.759	20.926	36.935	180.350
2015	10.117	14.514	21.626	21.391	18.664	18.392	19.618	20.824	16.937	16.301	22.204	41.833	242.421

Hafif Araç Pazarı (AYA < 3.5 Ton) Light Vehicle Market (GVW < 3.5 Ton)



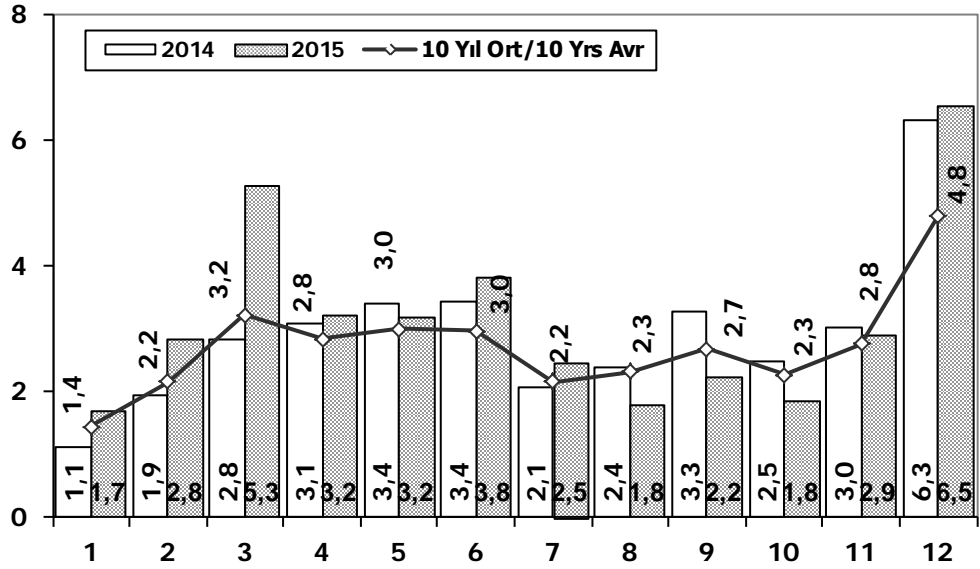
Traktör Pazarı (x1000) F.Tractor Market (x1000)



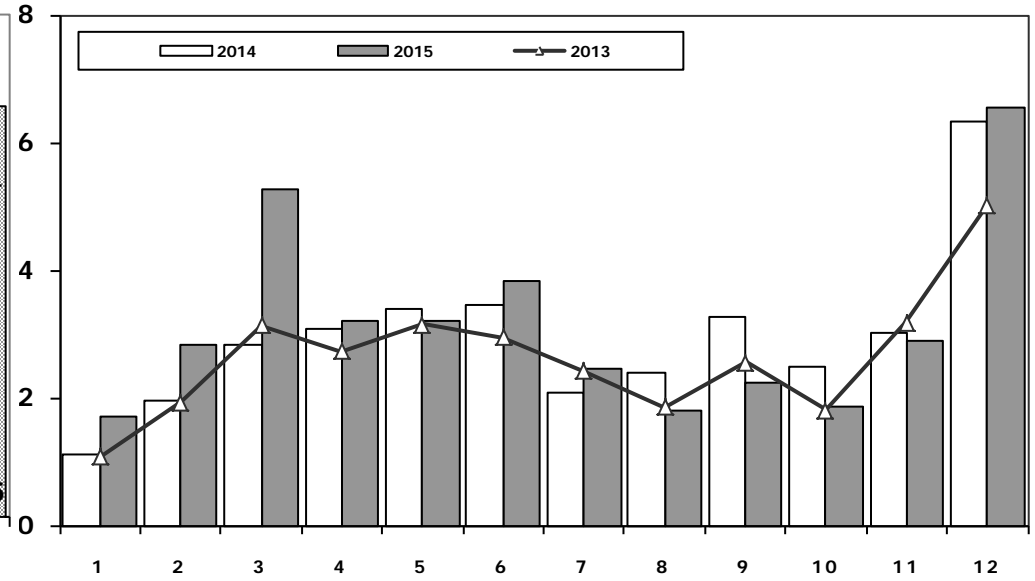
	2005	2006	2007	2008	2009	2010	2011	2012	2013	2014	2015
Otomobil/P.Cars	438.597	373.219	357.465	305.998	369.819	509.784	593.519	556.280	664.655	587.331	725.596
HTA/LCV	271.811	244.633	237.297	188.025	187.307	251.129	270.920	221.481	188.723	180.350	242.421
TOTAL	710.408	617.852	594.762	494.023	557.126	760.913	864.439	777.761	853.378	767.681	968.017
HTA/LCV (%)	38	40	40	38	34	33	31	28	22	23	25

	1	2	3	4	5	6	7	8	9	10	11	12	Total
2005	1.026	1.636	2.001	2.599	2.569	2.780	2.148	2.819	2.567	2.477	2.297	2.089	27.008
2006	1.578	2.493	2.746	2.841	3.561	2.356	1.685	2.177	2.756	1.915	2.353	1.925	28.386
2007	1.812	1.778	2.063	2.107	2.266	1.853	1.653	2.065	2.372	2.239	2.231	1.602	24.041
2008	1.510	1.427	1.933	1.692	1.689	1.592	1.275	924	904	609	707	359	14.621
2009	267	344	388	638	759	828	741	534	586	765	725	715	7.290
2010	714	903	1.432	1.653	1.736	1.673	1.613	1.527	2.351	2.787	2.656	2.345	21.390
2011	2.458	2.610	3.105	3.403	3.847	3.599	2.952	1.559	2.957	2.823	2.603	2.807	34.723
2012	2.216	2.632	3.223	3.259	3.067	2.821	2.037	1.262	1.648	1.858	1.921	1.579	27.523
2013	1.633	1.817	2.196	2.070	2.455	2.370	1.955	1.969	2.396	2.510	2.343	2.080	25.794
2014	1.941	2.256	2.915	2.837	2.723	2.534	2.171	2.265	3.039	2.755	2.964	2.573	30.973
2015	2.187	2.767	3.297	3.235	3.039	3.366	3.730	2.883	2.927	3.122	3.152	1.861	35.566

Kamyon Pazarının Analizi (x1000) AYA > 5 Ton Truck Market Analysis (x1000) GVW > 5 Ton



Kamyon Pazarı (x1000) AYA > 5 Ton Truck Market (x1000) GVW > 5 Ton

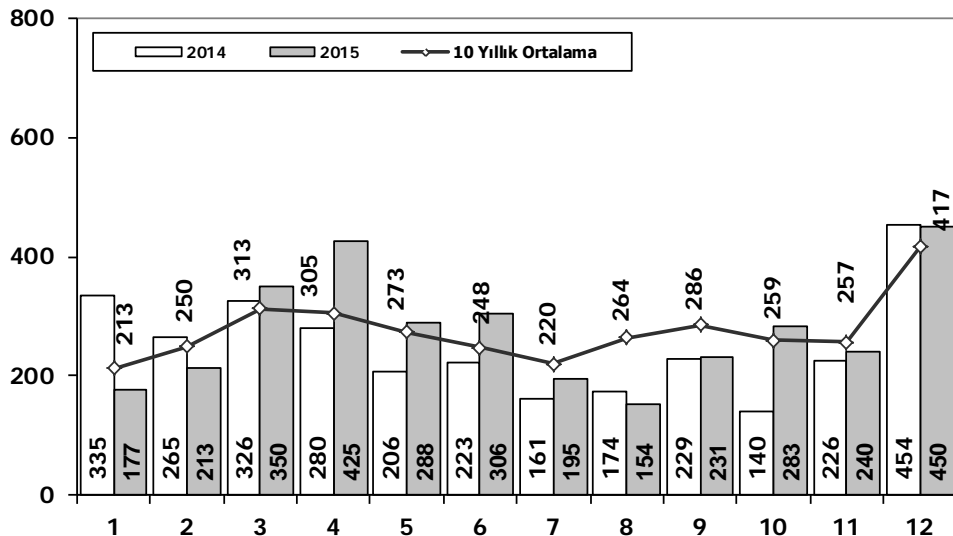


Aylar / Months	10 Yil Ort. 10 Yrs Avr. (x1000)	2015 (x100)	%
1	1,4	1,7	17,7
2	2,2	2,8	31,7
3	3,2	5,3	63,7
4	2,8	3,2	13,3
5	3,0	3,2	6,5
6	3,0	3,8	29,2
7	2,2	2,5	14,2
8	2,3	1,8	-22,2
9	2,7	2,2	-16,3
10	2,3	1,8	-18,6
11	2,8	2,9	4,9
12	4,8	6,5	36,3
Total	32,6	37,8	16,1

YIL	1	2	3	4	5	6	7	8	9	10	11	12	TOPLAM
2005	1.693	2.186	3.288	3.484	3.413	3.147	2.504	4.028	4.043	3.708	3.918	6.570	41.982
2006	1.767	3.310	4.467	4.180	4.449	3.398	2.472	3.142	3.052	2.926	3.550	5.358	42.071
2007	1.554	2.055	3.065	2.940	2.865	2.613	2.372	3.145	2.988	2.886	3.258	4.444	34.185
2008	1.797	2.309	2.621	2.578	2.459	2.526	2.067	2.377	2.390	1.790	1.512	1.834	26.260
2009	771	759	1.034	1.342	1.355	1.651	1.156	1.205	1.780	866	981	2.015	14.915
2010	777	968	1.772	1.807	1.966	2.205	2.093	2.446	2.444	3.071	3.136	5.677	28.362
2011	2.552	3.292	4.418	3.754	3.803	3.749	1.996	2.478	3.081	2.774	3.108	5.787	40.792
2012	1.375	2.159	3.595	2.697	3.321	3.250	2.450	2.277	2.991	2.244	3.006	5.000	34.365
2013	1.077	1.931	3.127	2.720	3.145	2.951	2.411	1.845	2.554	1.801	3.173	5.025	31.760
2014	1.117	1.949	2.818	3.092	3.405	3.438	2.083	2.390	3.281	2.494	3.028	6.313	35.408
2015	1.705	2.841	5.270	3.208	3.190	3.824	2.463	1.798	2.244	1.848	2.902	6.540	37.833

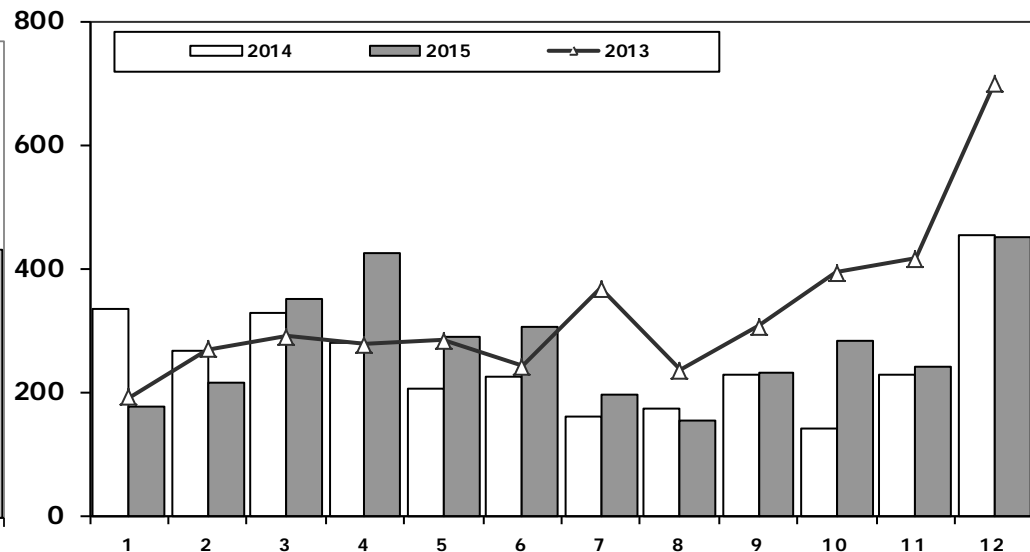
Midibüs Pazarının Analizi (7-9 mt / 25-35 Kişilik)

Midibus Market Analysis (7-9 mt / 25-35 Passengers)



Midibüs Pazarı (7-9 mt / 25-35 Kişilik Midibüs)

Midibus Market (7-9 mt / 25-35 Passengers)

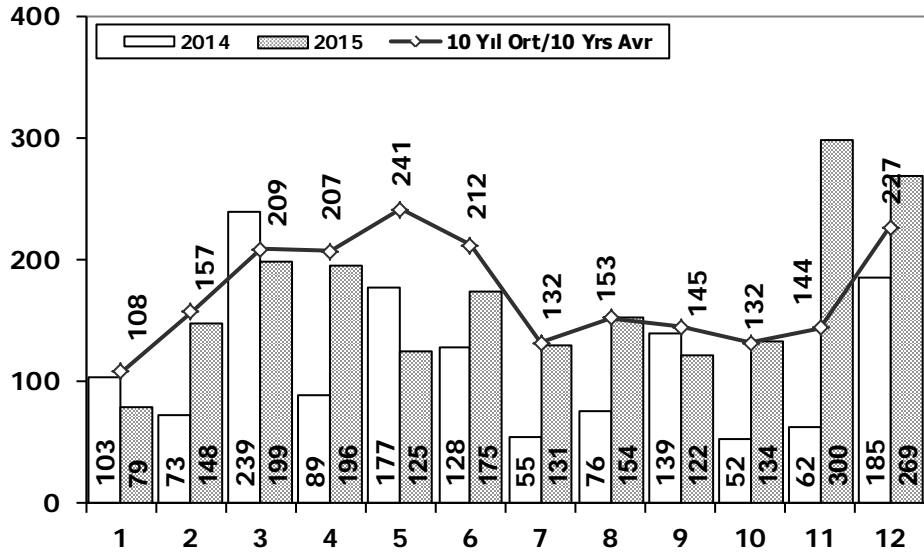


Aylar / Months	10 Yıl Ort. / 10 Yrs Avr.	2015	%
1	213	177	-17
2	250	213	-15
3	313	350	12
4	305	425	39
5	273	288	5
6	248	306	23
7	220	195	-11
8	264	154	-42
9	286	231	-19
10	259	283	9
11	257	240	-7
12	417	450	8
Total	3.305	3.312	0

YIL	1	2	3	4	5	6	7	8	9	10	11	12	TOPLAM
2005	182	258	432	393	439	269	252	459	436	329	328	574	4.351
2006	207	297	406	388	381	266	230	353	322	253	305	401	3.809
2007	207	272	404	238	302	283	164	365	399	279	283	465	3.661
2008	391	476	436	512	419	331	368	380	341	352	246	270	4.522
2009	154	124	160	220	174	198	160	175	168	143	206	323	2.205
2010	155	131	185	167	140	138	129	246	236	206	202	437	2.372
2011	138	195	294	316	280	258	211	305	301	276	260	270	3.104
2012	179	257	277	229	257	239	216	249	325	269	189	398	3.084
2013	191	268	289	276	283	241	367	235	305	392	415	697	3.959
2014	335	265	326	280	206	223	161	174	229	140	226	454	3.019
2015	177	213	350	425	288	306	195	154	231	283	240	450	3.312

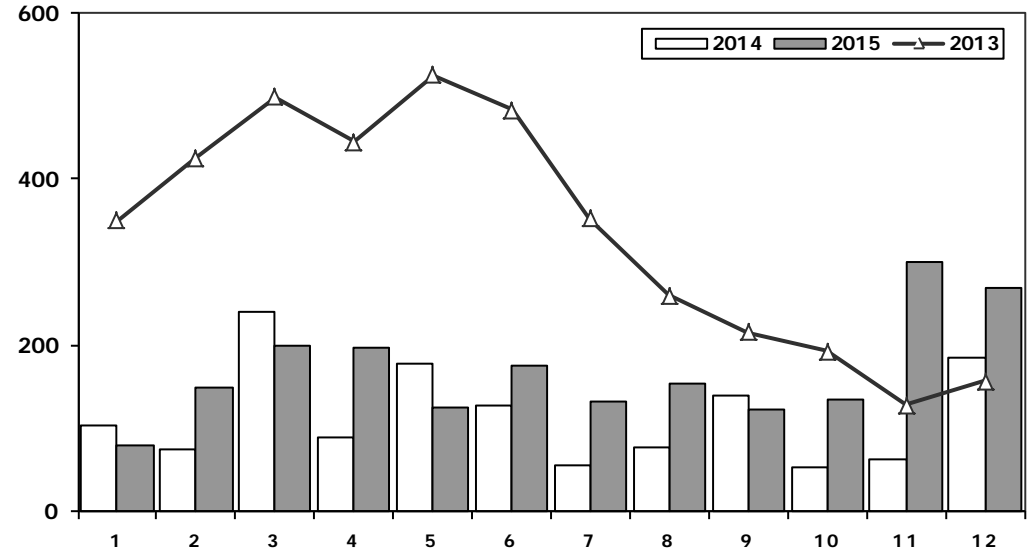
Otobüs Pazarının Analizi

Bus Market Analysis



Otobüs Pazarı

Bus Market

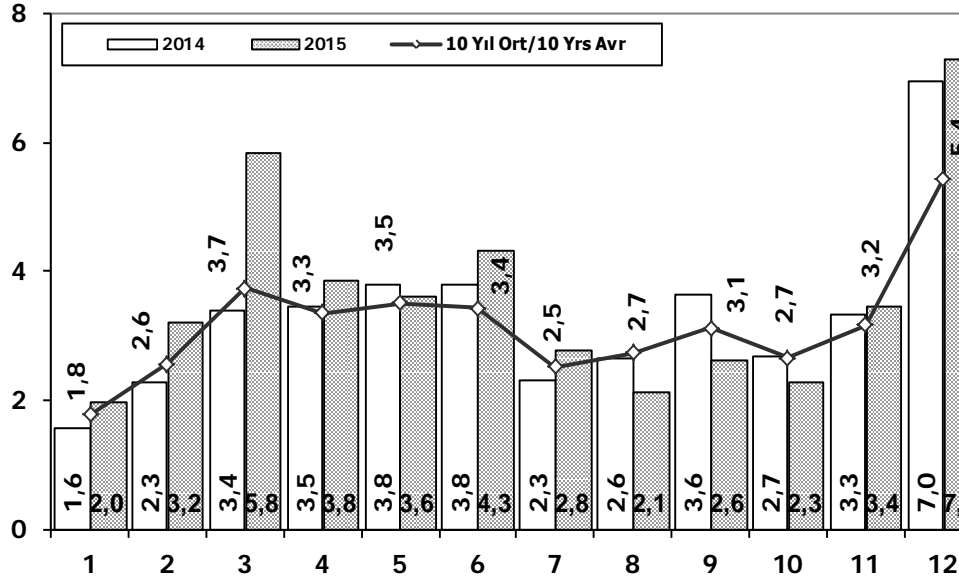


Aylar / Months	10 Yil Ort. / 10 Yrs Avr.	2015	%
1	108	79	-27
2	157	148	-6
3	209	199	-5
4	207	196	-5
5	241	125	-48
6	212	175	-17
7	132	131	0
8	153	154	1
9	145	122	-16
10	132	134	2
11	144	300	108
12	227	269	19
Total	2.065	2.032	-2

	1	2	3	4	5	6	7	8	9	10	11	12	Total
2005	65	81	75	152	174	167	76	149	147	116	109	485	1.796
2006	78	101	165	247	230	184	84	112	146	84	176	176	1.783
2007	72	191	129	89	150	91	91	103	110	168	163	241	1.598
2008	77	85	108	176	151	212	101	165	166	121	141	236	1.739
2009	100	221	226	224	167	186	85	103	58	75	53	125	1.623
2010	23	42	102	159	145	151	151	189	107	99	106	251	1.525
2011	76	198	218	306	364	283	113	189	132	169	170	314	2.532
2012	120	87	201	139	379	225	152	174	252	226	140	315	2.410
2013	349	425	498	444	525	483	352	260	215	192	128	156	4.027
2014	103	73	239	89	177	128	55	76	139	52	62	185	1.378
2015	79	148	199	196	125	175	131	154	122	134	300	269	2.032

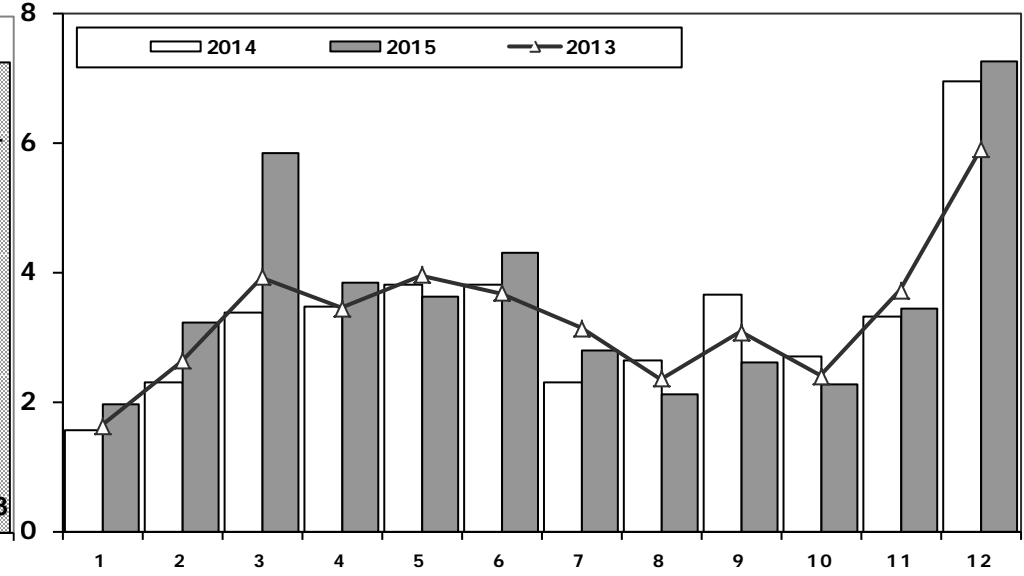
Ağır Ticari Araç Pazarının Analizi (x1000)

HCV Market Analysis (x1000)



Ağır Ticari Araç Pazarı (x1000)

HCV Market (x1000)

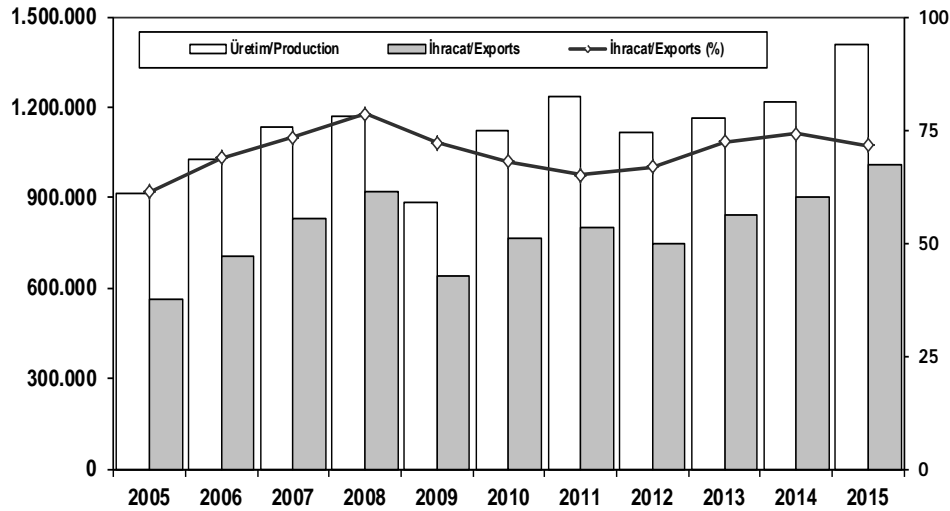


Aylar / Months	10 Yıl Ort. / 10 Yrs Avr. (x1000)	2015 (x1000)	%
1	1,8	2,0	10,8
2	2,6	3,2	24,9
3	3,7	5,8	55,6
4	3,3	3,8	14,5
5	3,5	3,6	2,6
6	3,4	4,3	25,9
7	2,5	2,8	11,2
8	2,7	2,1	-22,8
9	3,1	2,6	-16,5
10	2,7	2,3	-14,9
11	3,2	3,4	8,7
12	5,4	7,3	33,4
Total	38,0	43,2	13,7

	1	2	3	4	5	6	7	8	9	10	11	12	Total
2005	1.940	2.525	3.795	4.029	4.026	3.583	2.832	4.636	4.626	4.153	4.355	7.629	48.129
2006	2.052	3.708	5.038	4.815	5.060	3.848	2.786	3.607	3.520	3.263	4.031	5.935	47.663
2007	1.833	2.518	3.598	3.267	3.317	2.987	2.627	3.613	3.497	3.333	3.704	5.150	39.444
2008	2.265	2.870	3.165	3.266	3.029	3.069	2.536	2.922	2.897	2.263	1.899	2.340	32.521
2009	1.025	1.104	1.420	1.786	1.696	2.035	1.401	1.483	2.006	1.084	1.240	2.463	18.743
2010	955	1.141	2.059	2.133	2.251	2.494	2.373	2.881	2.787	3.376	3.444	6.365	32.259
2011	2.766	3.685	4.930	4.376	4.447	4.290	2.320	2.972	3.514	3.219	3.538	6.371	46.428
2012	1.674	2.503	4.073	3.065	3.957	3.714	2.818	2.700	3.568	2.739	3.335	5.713	39.859
2013	1.617	2.624	3.914	3.440	3.953	3.675	3.130	2.340	3.074	2.385	3.716	5.878	39.746
2014	1.555	2.287	3.383	3.461	3.788	3.789	2.299	2.640	3.649	2.686	3.316	6.952	39.805
2015	1.961	3.202	5.819	3.829	3.603	4.305	2.789	2.106	2.597	2.265	3.442	7.259	43.177

İhracat/Üretim (2005-2015)

Exports/Production (2005-2015)



	2005	2006	2007	2008	2009	2010	2011	2012	2013	2014	2015
Üretim/Production	916.062	1.026.427	1.132.951	1.171.917	884.466	1.124.982	1.234.637	1.115.233	1.166.043	1.218.848	1.410.034
İhracat/Exports	561.078	706.402	829.879	920.763	637.855	763.670	801.112	745.354	843.467	902.194	1.007.267
İhracat/Exports (%)	61	69	73	79	72	68	65	67	72	74	71

Taşıt Araçları İhracatı (2013-2015)

Motor Vehicle Exports (2013-2015)

SEKTÖR/SECTOR	2013	2014	2015	2014/2015 (%)
OTOMOBİL/ P.Cars	484.504	581.993	604.683	4
TİCARİ ARAÇLAR / CV	343.967	303.187	387.652	28
* Kamyonet/Pick-Up	300.765	269.995	341.834	27
* Minibüs/Minibus	34.664	26.458	38.255	45
* Kamyon/Truck	3.055	1.281	1.408	10
* Midibüs/Midibus	985	824	447	-46
* Otobüs/Bus	4.498	4.629	5.708	23
TAŞIT ARAÇLARI /MV TOTAL	828.471	885.180	992.335	12
TRAKTÖR/F.TRACTOR	14.996	17.014	14.932	-12
TOTAL	843.467	902.194	1.007.267	12

Otomotiv Ana ve Yan Sanayii İhracatı (ABD \$)

CBU and CKD Exports - \$

Sektör / Sector	2012	2013	2014	2015	2015/2014 (%)
Toplam Yan Sanayi/Total Component Industry	8.215.636.677	9.065.017.539	9.504.013.791	8.643.538.318	-9%
İç ve Dış Lastik / Tyres	1.199.566.307,01	1.130.005.891,78	1.126.709.610,14	961.494.045	-15%
Emniyet Camı / Safety Glasses	120.615.917,59	135.230.309,67	143.208.298,99	124.569.031	-13%
Motor (Engine)	272.085.582,31	319.294.885,46	171.893.752,32	221.897.271	29%
Akümülatör / Batteries	249.831.846,25	306.451.449,47	289.101.198,21	220.618.374	-24%
Diğer Aksam ve Parça / Spare Parts&Components	6.373.537.023,45	7.174.035.002,35	7.773.100.931,83	7.114.959.599	-8%
Toplam Ana Sanayi/Total Vehicle Industry	11.100.115.134	12.491.591.365	13.259.499.977	12.975.346.180	-2%
Otobüs / Bus	855.424.303,62	937.790.962,87	985.983.007,01	1.024.134.143	4%
Midibüs-Minibüs / Minibus- Minibus	161.806.275,12	147.769.644,17	97.685.509,12	130.195.838	33%
Otomobil (P. Cars)	6.068.045.119,19	6.855.475.589,83	7.258.361.005,24	6.881.972.133	-5%
Kamyon-Kamyonet/HCV-LCV	3.433.310.998,81	3.918.798.755,31	4.201.760.813,55	4.263.767.944	1%
Çekici/Truck-Tractor	195.093.508,21	218.385.731,69	252.354.014,20	252.432.565	0%
Römork ve Yarı Römork/Trailer-Semi Trailer	71.336.634,88	77.907.406,95	38.396.524,81	48.108.959	25%
Tarım Traktörü/Farm Tractor	315.098.293,75	335.463.274,61	424.959.103,39	374.734.597	-12%
Toplam/Total	19.315.751.810	21.556.608.904	22.763.513.769	21.618.884.498	-5%

Kaynak: Otomotiv Endüstrisi İhracatçıları Birliği

Firma Bazında İhracat (Adet)
Export Of member Companies (Unit)

FİRMALAR Companies	2013	2014	2015
OYAK RENAULT	266.508	257.992	270.299
FORD OTOSAN	208.722	187.921	252.571
HYUNDAI ASSAN	85.500	179.793	201.276
TOFAŞ	160.309	142.234	173.743
TOYOTA	86.908	109.517	81.962
TÜRK TRAKTÖR	14.402	15.866	14.122
M. BENZ TÜRK	5.331	3.438	4.252
KARSAN	10.120	37	3.067
HONDA TÜRKİYE	2.121	1.560	2.220
MAN TÜRKİYE	898	937	1.493
HATTAT TARIM	594	1.148	810
OTOKAR	620	580	720
TEMSA GLOBAL	663	423	441
A.I.O.S.	770	748	291
BMC	1	0	0
GENEL TOPLAM	843.467	902.194	1.007.267

Kaynak: OSD

Sektör Bazında İhracat (\$)
Exports on Sectorial Basis

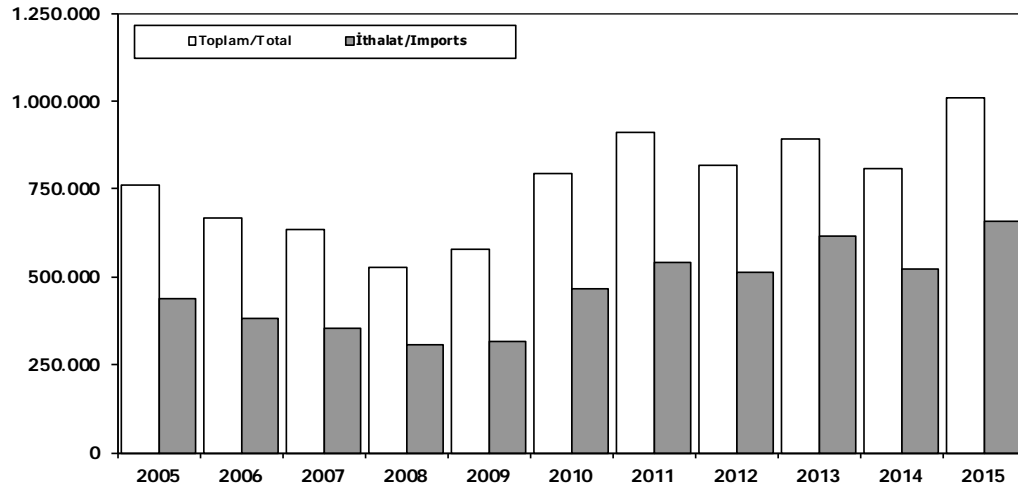
SEKTÖRLER	ARALIK				OCAK-ARALIK			
	2014	2015	Değişim ('15/'14)	Pay(15) (%)	2014	2015	Değişim ('15/'14)	Pay(15) (%)
Otomotiv Endüstrisi	1.802.455	1.849.792	3	16	22.269.926	21.156.308	-5	15
Hazırgiyim ve Konfeksiyon	1.366.294	1.393.469	2	12	18.729.283	16.969.575	-9	12
Kimyevi Maddeler ve Mamulleri	1.408.430	1.269.762	-10	11	17.779.037	15.411.032	-13	11
Elektrik Elektronik ve Hizmet	1.141.136	941.732	-17	8	12.105.262	10.495.718	-13	7
Çelik	1.182.430	766.536	-35	7	13.203.696	9.891.536	-25	7
Tekstil ve Hammaddeleri	673.221	628.747	-7	5	8.885.007	7.956.744	-10	6
Demir ve Demir Dışı Metaller	586.716	506.845	-14	4	7.102.786	6.232.639	-12	4
Hububat, Bakliyat, Yağlı Tohumlar ve Mam.	650.912	542.893	-17	5	6.714.804	6.131.854	-9	4
Makine ve Aksamları	550.123	505.010	-8	4	6.040.306	5.528.887	-8	4
Mobilya, Kağıt ve Orman Ürünleri	410.708	349.259	-15	3	4.518.104	4.077.449	-10	3
T O P L A M (TİM+TUİK*)	13.111.873	11.535.338	-12	100	157.452.759	143.729.741	-9	100

Kaynak: TİM

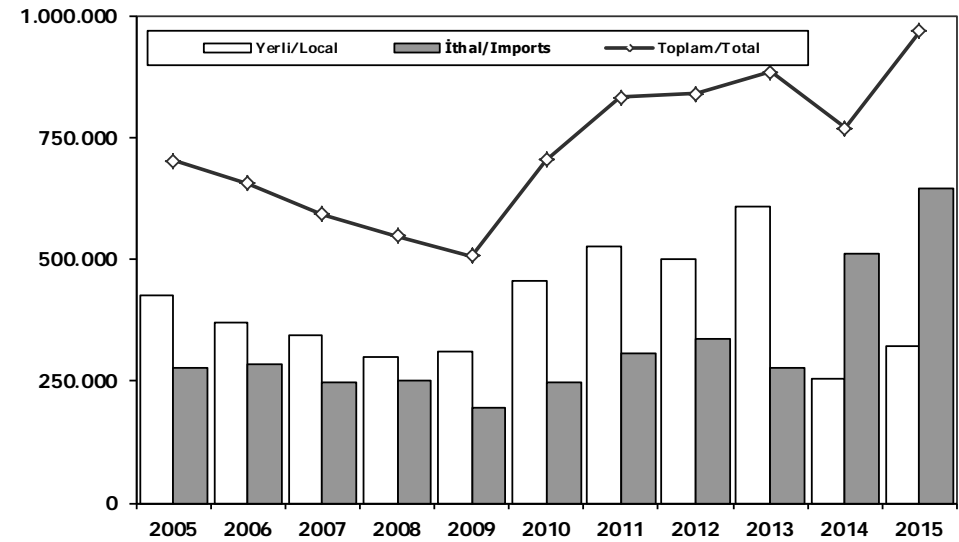
First 3 Sectors:

- 1- Transport Vehicle and Component Industry
- 2- Ready Wear and Confection
- 3- Chemical Articles and Products

Toplam Pazar (Otomobil+T.Araç) Total Market (P.Cars+C.V)



Hafif Araçlar Pazarı (2005-2015 Ocak-Aralık) LV Market (2005-2015 January-December)

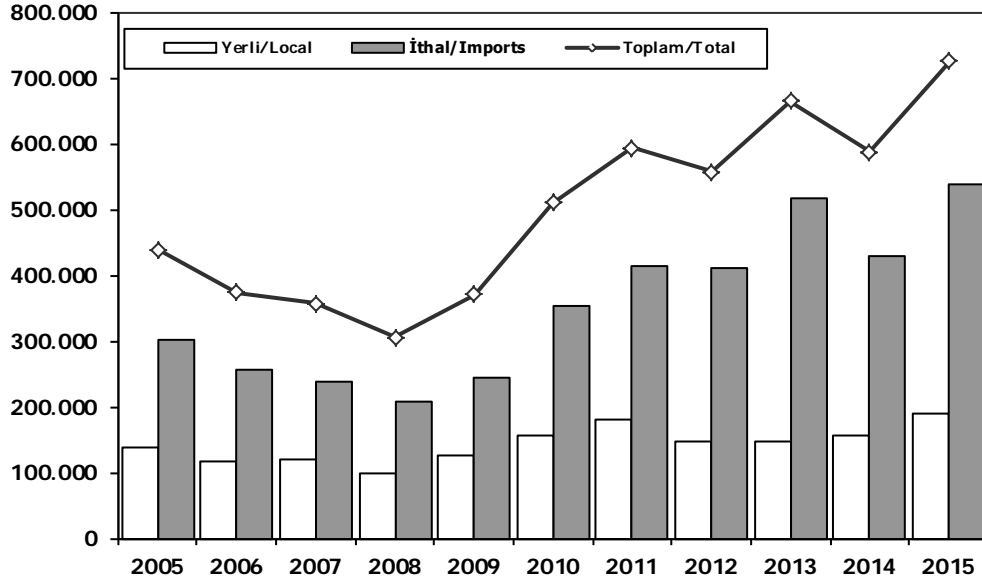


	2005	2006	2007	2008	2009	2010	2011	2012	2013	2014	2015
Toplam/Total	758.537	665.515	634.206	526.544	575.869	793.172	910.867	817.620	893.124	807.486	1.011.194
İthalat/Imports	436.033	382.460	355.752	306.087	313.921	465.408	538.532	511.694	615.609	522.842	658.690
İthalat/Imports (%)	57	57	56	58	55	59	59	63	69	65	65

	2005	2006	2007	2008	2009	2010	2011	2012	2013	2014	2015
Yerli/Local	426.274	371.052	345.057	297.861	309.432	455.559	526.365	501.758	607.472	255.573	323.080
İthal/Imports	275.521	284.134	246.800	249.705	196.162	247.694	305.354	338.074	276.003	512.108	644.937
Toplam/Total	701.795	655.186	591.857	547.566	505.594	703.253	831.719	839.832	883.475	767.681	968.017
İthalat/Imports (%)	39	43	42	46	39	35	37	40	31	67	67

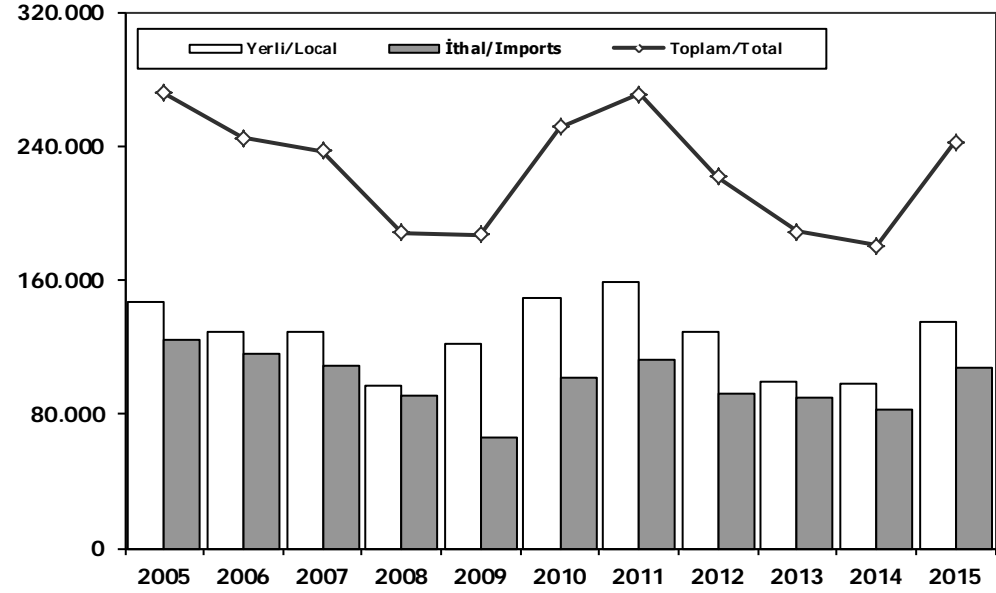
Otomobil Pazarı (2005-2015 Ocak-Aralık)

P.Cars Market (2005-2015 January-December)



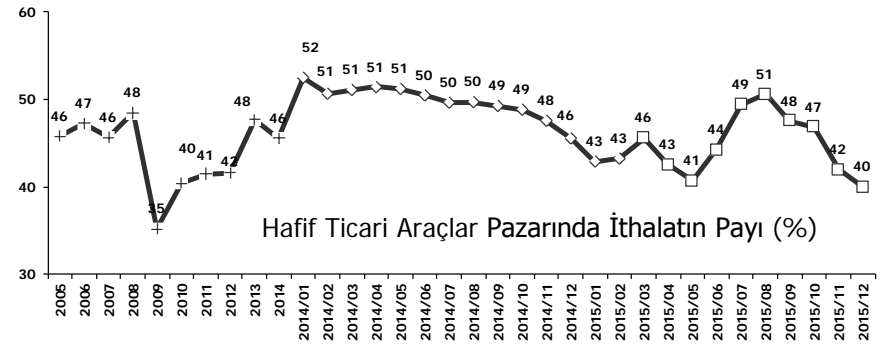
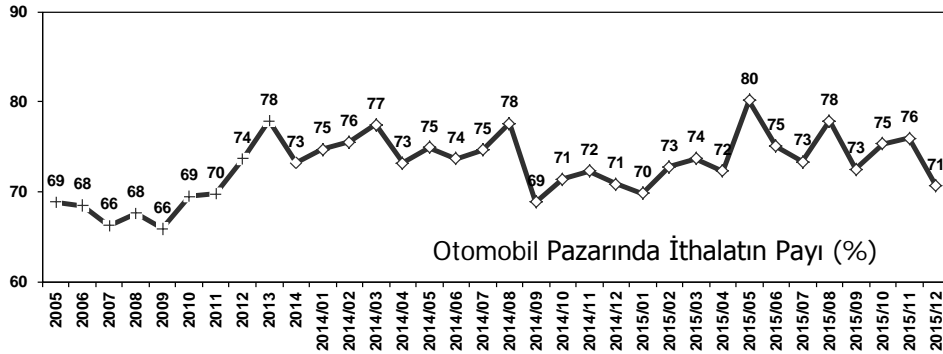
Hafif Ticari Araçlar Pazarı (2005-2015 Ocak-Aralık)

Light Commercial Vehicle Market (2005-2015 January-December)



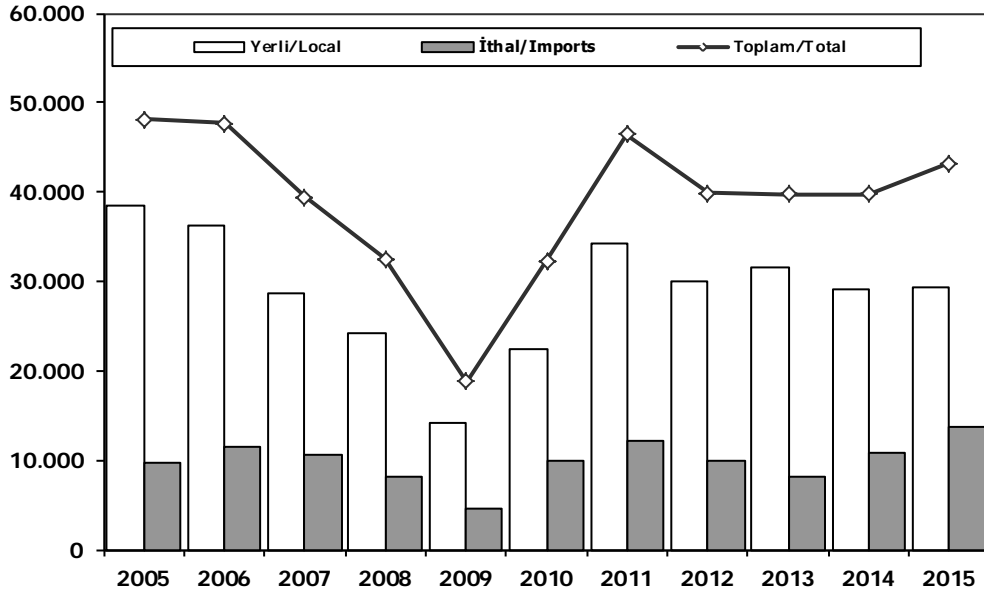
	2005	2006	2007	2008	2009	2010	2011	2012	2013	2014	2015
Yerli/Local	136.708	117.725	120.740	99.205	126.277	155.634	179.488	146.604	147.128	157.349	187.881
İthal/Imports	301.889	255.494	236.725	206.793	243.542	354.150	414.031	409.676	517.527	429.982	537.715
Toplam/Total	438.597	373.219	357.465	305.998	369.819	509.784	593.519	556.280	664.655	587.331	725.596
İthalat/Imports (%)	69	68	66	68	66	69	70	74	78	73	74

	2005	2006	2007	2008	2009	2010	2011	2012	2013	2014	2015
Yerli/Local	147.426	129.075	128.965	96.957	121.417	149.720	158.586	129.399	98.778	98.224	135.199
İthal/Imports	124.385	115.558	108.332	91.068	65.890	101.409	112.334	92.082	89.945	82.126	107.222
Toplam/Total	271.811	244.633	237.297	188.025	187.307	251.129	270.920	221.481	188.723	180.350	242.421
İthalat/Imports (%)	46	47	46	48	35	40	41	42	48	46	44



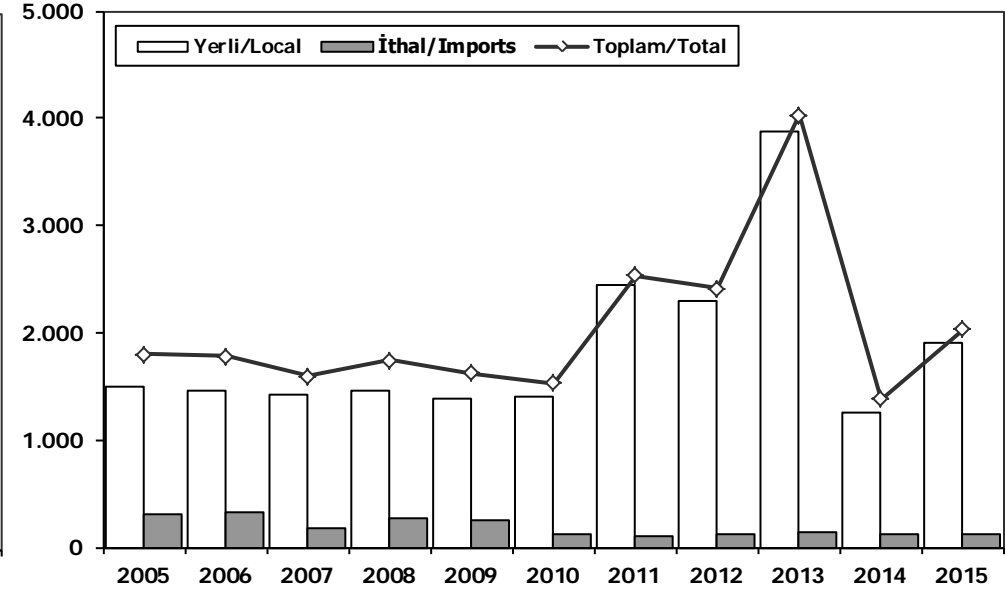
Ağır Ticari Araçlar Pazarı (2005-2015 Ocak-Aralık)

HCV Market (2005-2015 January-December)



Otobüs Pazarı (2005-2015 Ocak-Aralık)

Bus Market (2005-2015 January-December)

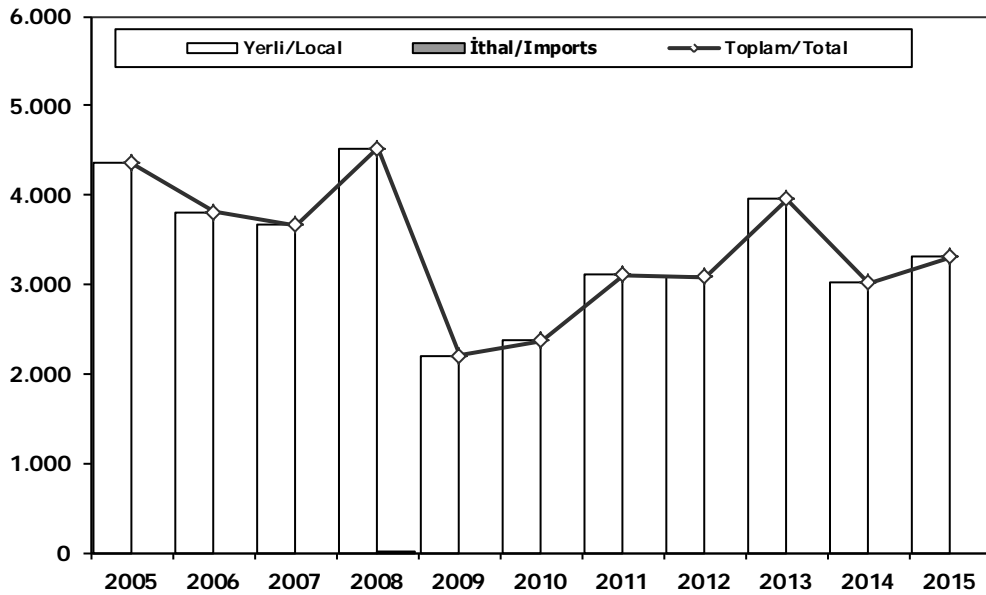


	2005	2006	2007	2008	2009	2010	2011	2012	2013	2014	2015
Yerli/Local	38.370	36.255	28.749	24.295	14.254	22.410	34.261	29.923	31.609	29.071	29.424
İthal/Imports	9.759	11.408	10.695	8.226	4.489	9.849	12.167	9.936	8.137	10.734	13.753
Toplam/Total	48.129	47.663	39.444	32.521	18.743	32.259	46.428	39.859	39.746	39.805	43.177
İthalat/Imports (%)	20	24	27	25	24	31	26	25	20	27	32

	2005	2006	2007	2008	2009	2010	2011	2012	2013	2014	2015
Yerli/Local	1.498	1.466	1.413	1.468	1.376	1.409	2.437	2.291	3.882	1.258	1.912
İthal/Imports	298	317	185	271	247	116	95	119	145	120	120
Toplam/Total	1.796	1.783	1.598	1.739	1.623	1.525	2.532	2.410	4.027	1.378	2.032
İthalat/Imports (%)	17	18	12	16	15	8	4	5	4	9	6

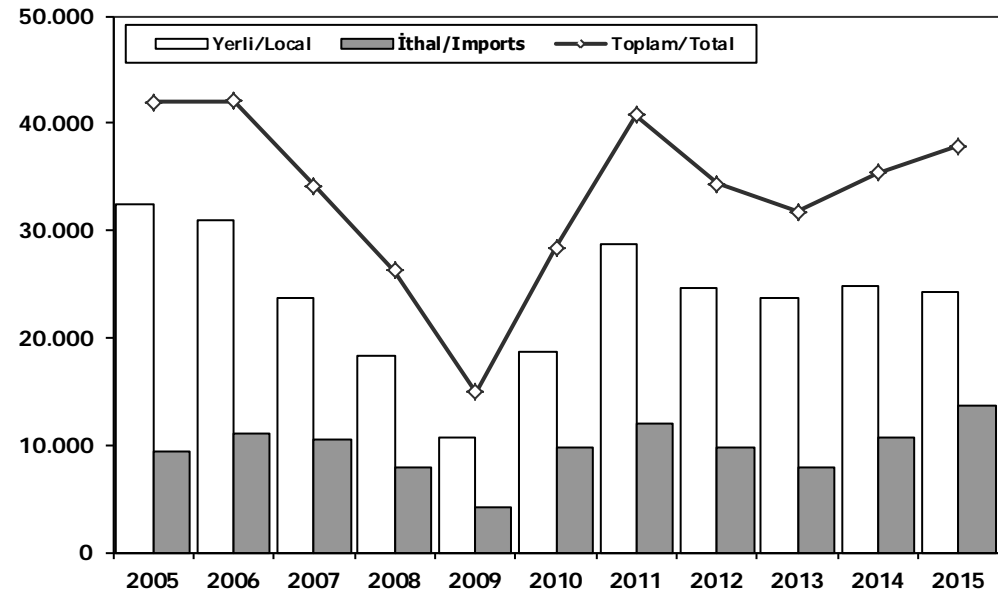
Midibüs Pazarı (2005-2015 Ocak-Aralık) (7-9 mt / 25-35 Kişilik)

Midibus (2005-2015 January-December) Market (7-9 mt / 25-35 Passengers)



Kamyon Pazarı (2005-2015 Ocak-Aralık)

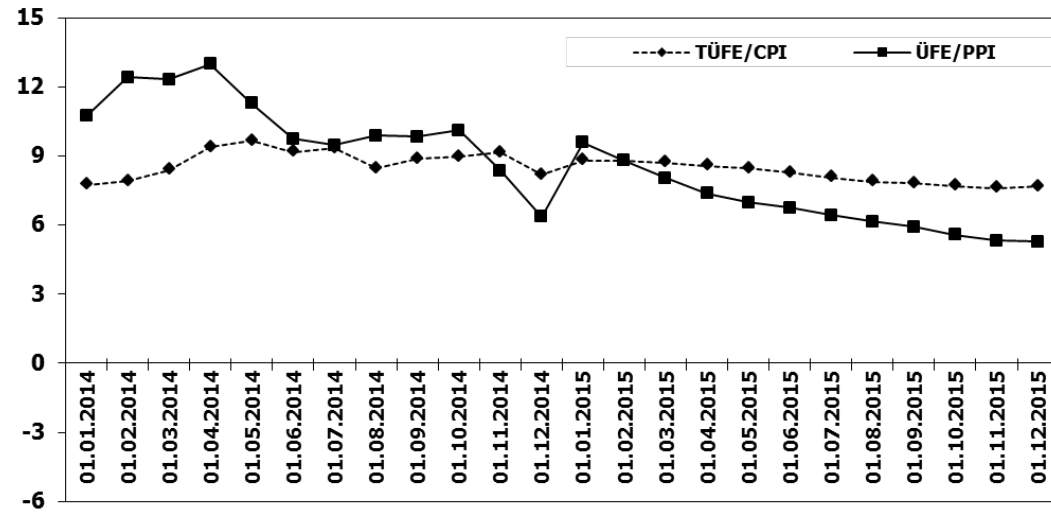
Truck Market (2005-2015 January-December)



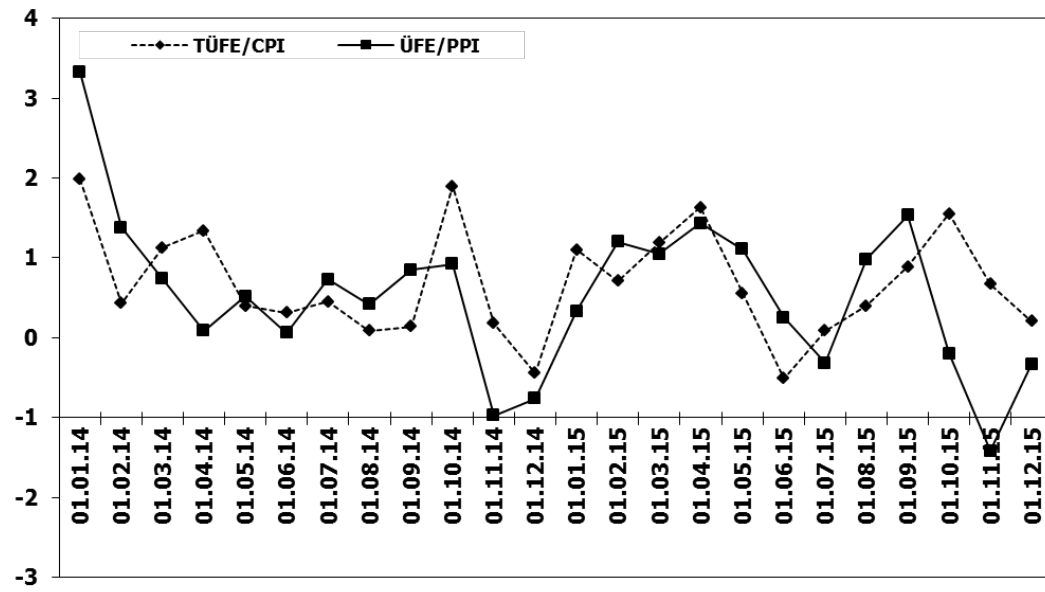
	2005	2006	2007	2008	2009	2010	2011	2012	2013	2014	2015
Yerli/Local	4.351	3.809	3.661	4.511	2.205	2.372	3.104	3.084	3.959	3.019	3.312
İthal/Imports	0	0	0	11	0	0	0	0	0	0	0
Toplam/Total	4.351	3.809	3.661	4.522	2.205	2.372	3.104	3.084	3.959	3.019	3.312
İthalat/Imports (%)	0	0	0	0	0	0	0	0	0	0	0

	2005	2006	2007	2008	2009	2010	2011	2012	2013	2014	2015
Yerli/Local	32.521	30.980	23.675	18.316	10.673	18.629	28.720	24.548	23.768	24.794	24.200
İthal/Imports	9.461	11.091	10.510	7.944	4.242	9.733	12.072	9.817	7.992	10.614	13.633
Toplam/Total	41.982	42.071	34.185	26.260	14.915	28.362	40.792	34.365	31.760	35.408	37.833
İthalat/Imports (%)	23	26	31	30	28	34	30	29	25	30	36

TÜFE ve ÜFE'nin Yıllık Değişimi (%) CPI and PPI Yearly Changes (%)



TÜFE ve ÜFE'nin Aylık Değişimi (%) CPI and PPI Monthly Changes (%)



2015 Otomotiv Sanayii Dış Satışlar 2015 Automotive Industry Exports Sales

TİPLER-Types	Ocak January	Şubat February	Mart March	Nisan April	Mayıs May	Haziran June	Temmuz July	Ağustos August	Eylül September	Ekim October	Kasım November	Aralık December	TOPLAM Total
Otomobil	48.533	51.237	58.872	52.089	36.570	56.556	37.308	35.805	51.704	58.704	57.183	60.122	604.683
OTOMOBİL-Pass. Car	48.533	51.237	58.872	52.089	36.570	56.556	37.308	35.805	51.704	58.704	57.183	60.122	604.683
TİCARİ ARAÇ	30.755	29.357	31.084	32.831	22.528	36.124	36.488	20.988	38.387	41.145	36.004	32.161	387.652
* KAMYONET-Pick Up	26.679	25.609	26.296	27.006	18.550	31.234	31.941	17.914	34.159	37.547	34.429	30.470	341.834
* KAMYON-Truck	88	13	58	127	93	112	151	129	124	115	160	238	1.408
* MIDİBUS-Midibus	31	40	19	18	35	40	40	25	45	39	58	57	447
* MINİBUS-Minibus	3.642	3.262	4.224	4.984	3.389	4.213	3.949	2.474	3.590	2.882	743	903	38.255
* OTOBUS-Bus	315	433	487	496	461	525	407	446	469	562	614	493	5.708
Traktör	1.342	1.231	1.268	949	939	1.203	1.211	1.393	1.447	1.339	1.619	991	14.932
TRAKTÖR-F.Tractor	1.342	1.231	1.268	949	939	1.203	1.211	1.393	1.447	1.339	1.619	991	14.932
TOPLAM-Total	80.630	81.825	91.224	85.669	60.037	93.883	75.007	58.186	91.538	101.188	94.806	93.274	1.007.267

Otomobil

FİRMALAR-Companies	Ocak January	Şubat February	Mart March	Nisan April	Mayıs May	Haziran June	Temmuz July	Ağustos August	Eylül September	Ekim October	Kasım November	Aralık December	TOPLAM Total
FORD OTOSAN	837	1.356	1.289	1.793	1.107	1.264	2.296	1.087	1.713	1.581	1.755	910	16.988
HONDA TÜRKİYE	0	89	352	35	270	250	473	153	88	60	330	120	2.220
HYUNDAI ASSAN	13.650	15.500	18.420	17.400	16.900	18.393	8.700	18.370	16.506	19.716	18.544	19.177	201.276
OYAK RENAULT	21.671	24.980	28.107	23.420	11.183	26.268	19.228	11.321	22.164	26.298	27.805	27.854	270.299
TOFAŞ	3.163	3.138	2.941	2.313	1.826	3.509	1.796	613	2.405	2.749	2.174	5.311	31.938
TOYOTA	9.212	6.174	7.763	7.128	5.284	6.872	4.815	4.261	8.828	8.300	6.575	6.750	81.962
TOPLAM-Total	48.533	51.237	58.872	52.089	36.570	56.556	37.308	35.805	51.704	58.704	57.183	60.122	604.683

Kamyonet

FİRMALAR-Companies	Ocak January	Şubat February	Mart March	Nisan April	Mayıs May	Haziran June	Temmuz July	Ağustos August	Eylül September	Ekim October	Kasım November	Aralık December	TOPLAM Total
A.I.O.S.	0	0	0	0	0	0	0	0	0	0	0	3	3
FORD OTOSAN	16.006	14.029	14.423	14.428	8.842	15.960	17.128	12.451	19.347	22.708	21.132	20.483	196.937
KARŞAN	0	0	0	0	276	450	203	555	376	453	573	44	2.930
OTOKAR	4	2	18	0	33	0	0	0	27	0	2	73	159
TOFAŞ	10.669	11.578	11.855	12.578	9.399	14.824	14.610	4.908	14.409	14.386	12.722	9.867	141.805
TOPLAM-Total	26.679	25.609	26.296	27.006	18.550	31.234	31.941	17.914	34.159	37.547	34.429	30.470	341.834

Minibüs

FİRMALAR-Companies	Ocak January	Şubat February	Mart March	Nisan April	Mayıs May	Haziran June	Temmuz July	Ağustos August	Eylül September	Ekim October	Kasım November	Aralık December	TOPLAM Total
FORD OTOSAN	3.641	3.262	4.223	4.980	3.374	4.201	3.946	2.474	3.590	2.879	733	892	38.195
KARŞAN	1	0	1	4	15	12	3	0	0	3	10	11	60
TOPLAM-Total	3.642	3.262	4.224	4.984	3.389	4.213	3.949	2.474	3.590	2.882	743	903	38.255

Kamyon

FİRMALAR-Companies	Ocak January	Şubat February	Mart March	Nisan April	Mayıs May	Haziran June	Temmuz July	Ağustos August	Eylül September	Ekim October	Kasım November	Aralık December	TOPLAM Total
FORD OTOSAN	7	2	2	16	19	25	49	25	33	56	92	125	451
KARŞAN	0	2	0	0	0	0	0	0	1	0	0	0	3
M. BENZ TÜRK	81	9	56	111	74	87	102	104	90	59	68	113	954
TOPLAM-Total	88	13	58	127	93	112	151	129	124	115	160	238	1.408

Midibüs

FİRMALAR-Companies	Ocak January	Şubat February	Mart March	Nisan April	Mayıs May	Haziran June	Temmuz July	Ağustos August	Eylül September	Ekim October	Kasım November	Aralık December	TOPLAM Total
A.I.O.S.	8	14	2	3	10	1	2	1	27	2	31	35	136
KARŞAN	15	0	0	0	4	8	3	1	2	18	15	8	74
OTOKAR	8	25	17	14	21	30	35	23	16	19	12	13	233
TEMSA GLOBAL	0	1	0	1	0	1	0	0	0	0	0	1	4
TOPLAM-Total	31	40	19	18	35	40	40	25	45	39	58	57	447

Otobüs

FİRMALAR-Companies	Ocak January	Şubat February	Mart March	Nisan April	Mayıs May	Haziran June	Temmuz July	Ağustos August	Eylül September	Ekim October	Kasım November	Aralık December	TOPLAM Total
A.I.O.S.	1	1	23	23	3	22	7	12	8	23	16	13	152
M. BENZ TÜRK	204	252	247	293	289	309	199	298	188	305	396	318	3.298
MAN TÜRKİYE	107	153	188	140	133	96	104	77	114	155	136	90	1.493
OTOKAR	3	5	9	24	12	67	67	21	81	20	7	12	328
TEMSA GLOBAL	0	22	20	16	24	31	30	38	78	59	59	60	437
TOPLAM-Total	315	433	487	496	461	525	407	446	469	562	614	493	5.708

Traktör

FİRMALAR-Companies	Ocak January	Şubat February	Mart March	Nisan April	Mayıs May	Haziran June	Temmuz July	Ağustos August	Eylül September	Ekim October	Kasım November	Aralık December	TOPLAM Total
HATTAT TARIM	33	88	39	49	57	68	38	91	142	37	70	98	810
TÜRK TRAKTÖR	1.309	1.143	1.229	900	882	1.135	1.173	1.302	1.305	1.302	1.549	893	14.122
TOPLAM-Total	1.342	1.231	1.268	949	939	1.203	1.211	1.393	1.447	1.339	1.619	991	14.932

2015 Yılı İthal Hafif Araç Satışları 2015 Light Vehicles Import Sales

2015 YILI İTHAL OTOMOBİL SATIŞLARI / P.Cars Import 2015

	2014 TOPLAMI 2014 Total	1	2	3	4	5	6	7	8	9	10	11	12	2015 TOPLAMI 2015 Total
VOLKSWAGEN	84.646	4.491	6.942	9.711	10.487	10.793	8.922	10.620	10.473	7.023	7.254	8.395	12.290	107.401
FORD	36.682	1.101	2.782	3.636	4.681	4.678	4.645	3.987	4.081	2.659	2.500	2.862	5.729	43.341
OPEL	39.255	952	2.239	3.964	4.753	3.943	4.460	3.378	4.069	2.438	2.756	4.961	9.087	47.000
DACIA	27.897	1.709	2.289	2.968	2.872	2.918	3.661	3.362	3.552	2.198	2.339	3.081	6.308	37.257
RENAULT	25.572	653	1.309	2.874	1.927	3.566	4.002	2.533	2.533	1.795	3.217	2.692	5.582	32.683
B.M.W	26.174	1.219	1.536	2.369	2.717	2.896	2.652	3.066	2.881	1.614	2.642	3.249	4.380	31.221
MERCEDES BENZ	23.100	417	1.384	2.200	2.135	2.101	3.558	3.283	3.206	2.585	2.230	2.403	4.831	30.333
NISSAN	19.422	949	1.372	1.859	2.304	2.402	2.305	2.307	2.209	1.851	1.853	2.404	4.606	26.421
PEUGEOT	17.026	846	1.110	2.039	2.635	2.739	2.086	1.973	1.648	1.269	1.048	1.793	3.622	22.808
HYUNDAI	21.685	784	1.011	1.884	2.259	2.392	2.423	1.676	2.175	2.077	2.039	2.765	3.679	25.164
SKODA	14.537	515	1.568	2.120	2.355	2.162	2.086	1.803	1.709	1.202	1.334	1.776	3.477	22.107
AUDI	17.809	610	1.103	1.685	2.006	1.738	1.804	1.609	1.603	1.605	1.076	1.810	3.830	20.279
CITROEN	14.389	683	941	1.522	2.077	1.406	1.810	1.388	1.658	915	472	1.441	2.207	16.520
SEAT	12.697	164	1.103	1.496	1.852	1.740	1.768	1.679	1.586	1.039	967	1.435	2.082	16.911
KIA	11.017	330	676	1.183	1.245	1.120	1.185	958	994	1.027	967	1.926	2.262	13.873
TOYOTA	10.146	327	535	1.070	1.547	1.006	757	916	997	510	900	1.058	1.326	10.949
VOLVO	6.060	295	290	657	751	856	701	453	452	440	396	648	1.000	6.939
FIAT	6.179	248	377	481	617	382	520	435	478	353	291	382	677	5.241
JEEP	1.960	239	281	308	383	268	325	264	253	148	118	358	562	3.507
HONDA	3.269	98	241	273	152	193	211	422	569	441	785	700	1.328	5.413
SUBARU	1.402	65	40	261	176	144	140	130	143	130	141	127	247	1.737
MINI (İngiliz)	1.071	21	47	139	136	143	135	170	120	124	136	204	350	1.739
LAND ROVER	1.207	31	87	240	94	132	148	66	79	100	140	241	219	1.577
MITSUBISHI	1.159	64	64	92	149	105	119	131	134	97	75	148	188	1.366
MAZDA	1.291	27	80	49	87	130	181	157	144	263	190	147	306	1.761
ALFA ROMEO	967	34	59	56	76	134	79	46	60	34	36	78	155	847
SSANGYONG	531	44	21	31	29	49	163	94	65	25	16	34	34	605
PROTON	707	55	40	67	70	84	70	50	25	10	9	10	500	500
PORSCHE	588	45	48	53	47	55	34	46	73	71	65	109	215	861
CHERY	325	26	38	46	39	35	32	29	26	35	31	31	31	394
JAGUAR	52	0	25	50	7	6	8	31	17	32	51	57	52	336
TATA	126	21	24	21	19	23	19	3	3	17	7	11	0	168
SUZUKI	958	27	17	20	28	14	2	6	13	13	12	8	17	177
SMART	76	4	3	10	11	5	7	4	36	5	0	2	1	88
MASERATI	83	2	2	3	9	9	7	5	4	6	3	6	17	73
INFINITI	6	1	1	1	0	10	7	8	1	1	6	2	5	43
GEELY	95	4	7	3	6	3	1	0	1	0	0	0	0	25
BENTLEY	21	0	4	1	0	3	1	1	1	0	0	3	5	19
LAMBORGHINI	2	1	1	2	1	0	1	0	0	0	0	0	0	6
FERRARI	11	0	0	1	2	2	0	0	1	2	1	1	0	10
LEXUS	0	0	0	0	0	0	0	0	3	0	0	1	9	13
LANCIA	210	0	2	0	0	0	0	0	0	0	0	0	0	2
CHEVROLET	572	0	0	0	0	0	0	0	0	0	0	0	0	0
TOPLAM	429.982	17.102	29.699	45.445	50.741	50.385	50.835	47.096	48.075	34.145	36.108	47.358	80.726	537.715

2015 YILI İTHAL HAFİF TİCARİ ARAÇ SATIŞLARI / Light Commercial Vehicles Import 2015

	2014 TOPLAMI 2014 Total	1	2	3	4	5	6	7	8	9	10	11	12	2015 TOPLAMI 2015 Total
VOLKSWAGEN	24.001	1.336	2.575	3.182	2.680	2.054	2.049	3.606	3.084	2.749	2.258	1.944	4.125	31.642
RENAULT	8.716	501	673	1.104	1.030	923	1.459	1.182	1.437	972	1.121	1.859	3.356	15.617
FIAT	7.664	347	491	782	815	786	685	531	1.022	729	751	883	1.250	9.072
MERCEDES BENZ	8.028	391	424	1.009	654	642	683	713	924	628	629	711	1.049	8.457
PEUGEOT	5.832	303	403	704	824	738	708	655	889	424	327	583	1.654	8.212
DACIA	6.572	250	242	696	642	583	731	563	703	546	483	890	1.228	7.555
CITROEN	6.048	269	392	730	684	301	432	777	443	723	128	251	1.381	6.511
KIA	2.057	147	221	136	444	373	373	367	613	373	357	464	242	4.110
MITSUBISHI	4.188	390	324	516	246	205	191	321	334	212	240	239	677	3.897
IVECO	2.524	117	139	282	235	210	224	131	257	252	190	224	449	2.710
HYUNDAI	1.565	89	104	164	208	142	113	181	138	84	128	115	146	1.612
TOYOTA	1.670	73	45	255	207	299	177	55	26	9	727	659	396	2.928
FORD	333	46	167	169	273	289	256	554	609	301	258	422	684	4.028
SSANGYONG	626	31	34	69	71	8	13	17	13	10	6	12	19	303
ISUZU	1.728	27	19	32	59	25	15	13	17	15	18	29	64	333
TATA	290	22	21	23	21	19	21	19	17	19	11	21	14	228
NISSAN	275	1	0	0	2	0	0	4	0	0	0	0	0	7
MAZDA	9	0	0	0	0	0	0	0	0	0	0	0	0	0
TOPLAM	82.126	4.340	6.274	9.855	9.095	7.597	8.130	9.689	10.526	8.046	7.632	9.306	16.732	107.222