



# AYLIK RAPOR

## Automotive Industry Monthly Report

Aralık / December 2014

- **Üretim**/Production
- **Satış**/Sales
- **İthalat**/Imports
- **İhracat**/Exports

OSD "OICA" Üyesidir



OSD is a Member of "OICA"

## 2014 Aralık Ayı Özeti / 2014 December Summary

KONULAR/ MATTERS		ARALIK/ DECEMBER			YILLIK/YEARLY		
		2013	2014	2014/2013 (%)	2013	2014	2014/2013 (%)
Üretim/ Production	Toplam/ Total	83.166	120.593	45	1.125.534	1.170.445	4
	Otomobil/ P.Cars	50.935	70.480	38	633.604	733.439	16
Pazar/ Market	Toplam/ Total	135.596	153.941	14	893.124	807.486	-10
	Otomobil/ P.Cars	101.199	110.054	9	664.655	587.331	-12
İthalat/ Import	Toplam/ Total	92.430	93.779	1	615.609	522.842	-15
	Otomobil/ P.Cars	78.977	77.965	-1	517.527	429.982	-17
İhracat/ Export	Toplam/ Total	64.999	82.308	27	828.471	885.180	7
	Otomobil/ P.Cars	42.834	52.360	22	484.504	581.993	20
İhracat / Export (\$)	Toplam/ Total **	1.801.245.419	1.843.965.036	2	21.556.608.904	22.780.230.802	6
	Otomobil/ P.Cars	523.561.205	587.334.966	12	6.855.475.590	7.270.836.596	6

PARAMETRELER / PARAMETERS	ARALIK/ DECEMBER			YILLIK/YEARLY		
	2013	2014	2014/2013 (%)	2013	2014	2014/2013 (%)
ÜFE/ PPI	1,11	-0,76	**	6,97	6,36	**
TÜFE/ CPI	0,46	-0,44	**	7,40	8,17	**
Sanayi Endeksi/ Industry Index	0,81	-0,52	**	8,45	7,63	**
\$ (*)	2,1328	2,3253	9	1,9327	2,1912	13
EURO (*)	2,9344	2,8252	-4	2,5658	2,8913	13
Japon Yeni (*)	2,0156	1,9352	-4	1,9624	2,0558	5

(\*) Ortalama Değerler / Average Values

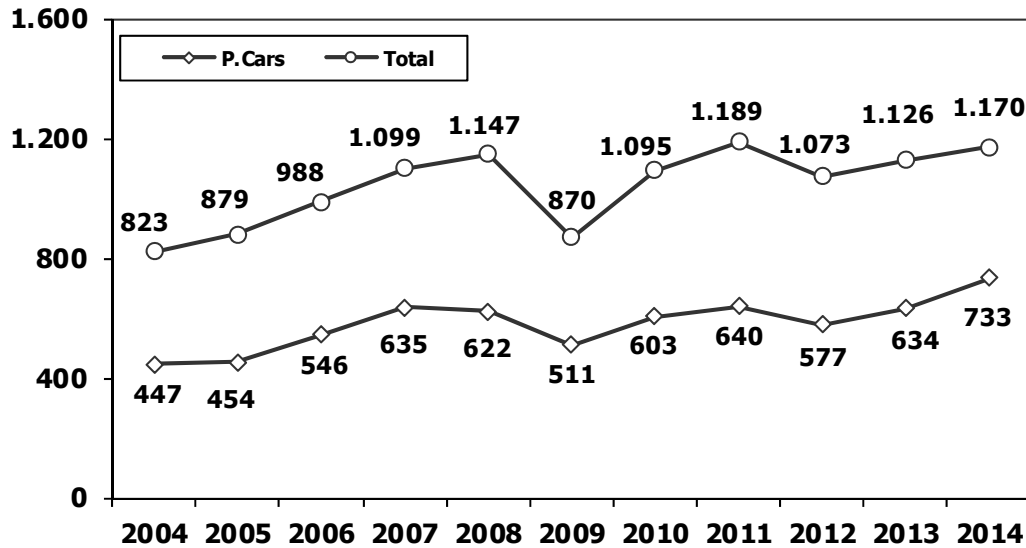
(\*\*) Toplam Sanayi / Total Industry Including Components

## 2013/2014 Yılları Üretim 2013/2014 Production

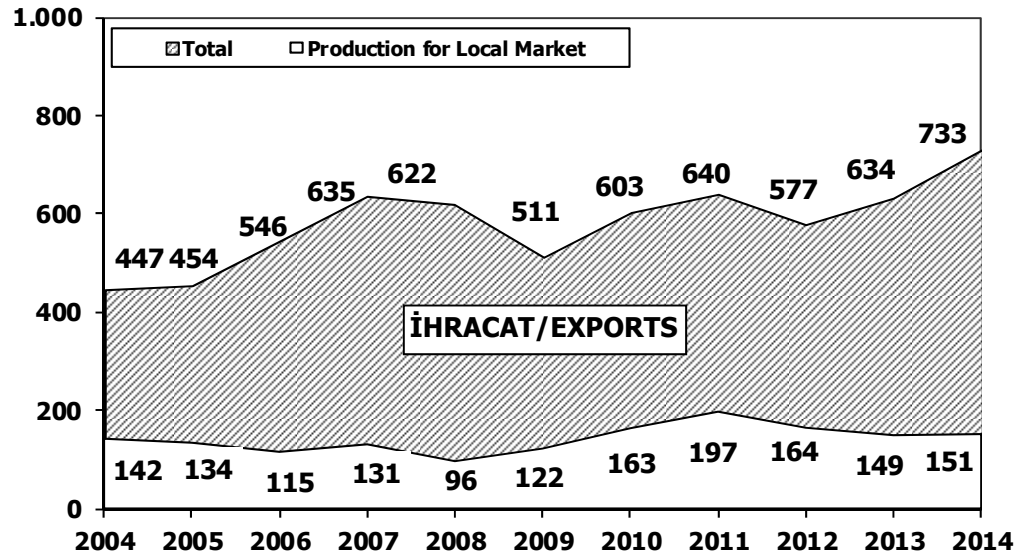
K.KAMYON : AYA 3.5-12 Ton (L.Truck:GWV 3.5-12 Ton)  
B.KAMYON : AYA 12 Ton'dan Büyük (M.Truck:GWV 12 Ton And Up)

TİPLER	ARALIK AYI ÜRETİMİ December Production		12 AYLIK ÜRETİM 12 Months Production		DEĞİŞİM % Percent Change %	
	2013	2014	2013	2014	ARALIK December	12 AY 12 Months
<b>OTOMOBİL - Pass.Car</b>	<b>50.935</b>	<b>70.480</b>	<b>633.604</b>	<b>733.439</b>	<b>38</b>	<b>16</b>
<b>TİCARİ ARAÇLAR - Commercial Vehicles</b>	<b>32.231</b>	<b>50.113</b>	<b>491.930</b>	<b>437.006</b>	<b>55</b>	<b>-11</b>
* B. KAMYON - M. Truck	2.360	2.638	25.587	26.477	12	3
* K. KAMYON - L. Truck	448	492	4.495	3.432	10	-24
* KAMYONET - Pick Up	26.682	41.890	410.556	359.911	57	-12
* OTOBÜS - Bus	516	533	8.345	6.442	3	-23
* MİNİBÜS - Minibus	1.862	4.092	37.750	35.420	120	-6
* MİDİBÜS - Midibus	363	468	5.197	5.324	29	2
<b>TAŞIT ARAÇLARI TOPLAM - MV Total</b>	<b>83.166</b>	<b>120.593</b>	<b>1.125.534</b>	<b>1.170.445</b>	<b>45</b>	<b>4</b>
TRAKTÖR - F.Tractor	2.873	3.327	40.509	48.403	16	19
<b>GENEL TOPLAM - Grand Total</b>	<b>86.039</b>	<b>123.920</b>	<b>1.166.043</b>	<b>1.218.848</b>	<b>44</b>	<b>5</b>

**Toplam Üretim ve Otomobil Üretimi** (x1000) (Ocak-Aralık)  
Total & P.Cars Production (x1000) (January- December)



**Otomobil Üretimi ve İhracat** (x1000) (Ocak-Aralık)  
P.Cars Production & Exports (x1000) (January- December)



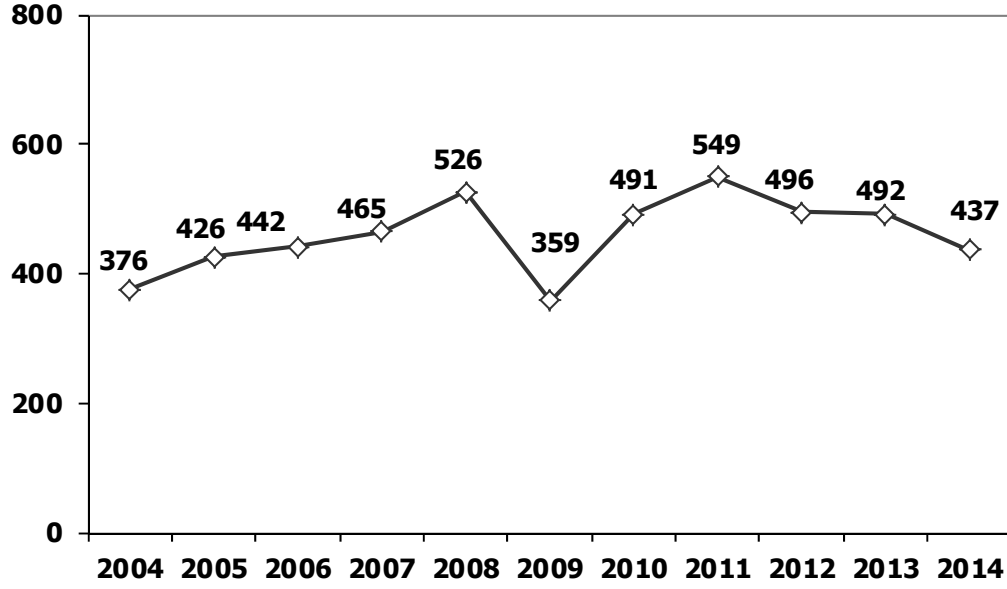
## 12 Aylık Üretim (12 Months Production)

FİRMALAR Companies	OTOMOBİL Pass.Car	%	K.KAMYON L.Truck	%	B.KAMYON Mid.Truck	%	KAMYONET Pick Up	%	OTOBÜS Bus	%	MİNİBÜS Mini-Bus	%	MİDİBÜS Midi-Bus	%	TRAKTÖR F.Tractor	%	TOPLAM Totals
A.I.O.S.	0	0	3.073	90	0	0	2.692	1	151	2	0	0	1.764	33	0	0	7.680
FORD OTOSAN	9.790	1	0	0	7.955	30	193.073	54	0	0	33.864	96	0	0	0	0	244.682
HATTAT TARIM	0	0	0	0	0	0	0	0	0	0	0	0	0	0	2.580	5	2.580
HONDA TÜRKİYE	11.633	2	0	0	0	0	0	0	0	0	0	0	0	0	0	0	11.633
HYUNDAI ASSAN	203.157	28	0	0	0	0	0	0	0	0	0	0	0	0	0	0	203.157
KARSAN	0	0	0	0	3	0	25	0	43	1	1.544	4	99	2	0	0	1.714
M. BENZ TÜRK	0	0	0	0	18.519	70	0	0	3.686	57	0	0	0	0	0	0	22.205
MANTÜRKİYE	0	0	0	0	0	0	0	0	1.051	16	0	0	0	0	0	0	1.051
OTOKAR	0	0	359	10	0	0	423	0	406	6	12	0	2.066	39	0	0	3.266
OYAK RENAULT	318.246	43	0	0	0	0	0	0	0	0	0	0	0	0	0	0	318.246
TEMSA GLOBAL	0	0	0	0	0	0	0	0	1.105	17	0	0	1.395	26	0	0	2.500
TOFAŞ	59.109	8	0	0	0	0	163.698	45	0	0	0	0	0	0	0	0	222.807
TOYOTA	131.504	18	0	0	0	0	0	0	0	0	0	0	0	0	0	0	131.504
TÜRK TRAKTÖR	0	0	0	0	0	0	0	0	0	0	0	0	0	0	45.823	95	45.823
<b>TOPLAM</b>	<b>733.439</b>	<b>100</b>	<b>3.432</b>	<b>100</b>	<b>26.477</b>	<b>100</b>	<b>359.911</b>	<b>100</b>	<b>6.442</b>	<b>100</b>	<b>35.420</b>	<b>100</b>	<b>5.324</b>	<b>100</b>	<b>48.403</b>	<b>100</b>	<b>1.218.848</b>

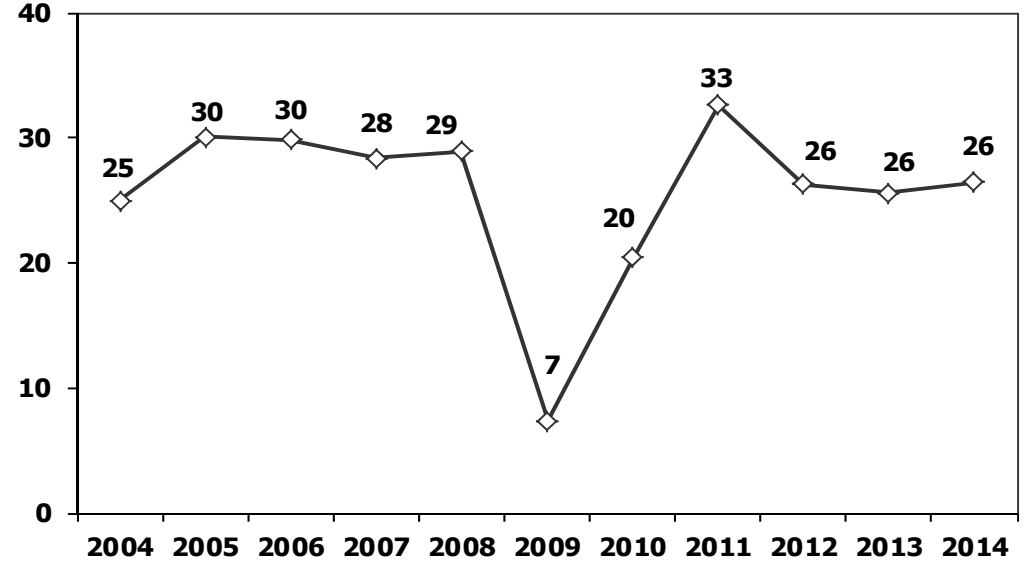
## Aralık Ayı Üretimi (December Production)

FİRMALAR Companies	OTOMOBİL Pass.Car	%	K.KAMYON L.Truck	%	B.KAMYON Mid.Truck	%	KAMYONET Pick Up	%	OTOBÜS Bus	%	MİNİBÜS Mini-Bus	%	MİDİBÜS Midi-Bus	%	TRAKTÖR F.Tractor	%	TOPLAM Totals
A.I.O.S.	0	0	440	89	0	0	350	1	31	6	0	0	110	24	0	0	931
FORD OTOSAN	736	1	0	0	1.109	42	21.241	51	0	0	3.996	98	0	0	0	0	27.082
HATTAT	0	0	0	0	0	0	0	0	0	0	0	0	0	0	117	4	117
HONDA TÜRKİYE	720	1	0	0	0	0	0	0	0	0	0	0	0	0	0	0	720
HYUNDAI ASSAN	20.835	30	0	0	0	0	0	0	0	0	0	0	0	0	0	0	20.835
KARSAN	0	0	0	0	0	0	10	0	0	0	95	2	22	5	0	0	127
M. BENZ TÜRK	0	0	0	0	1.529	58	0	0	303	57	0	0	0	0	0	0	1.832
MANTÜRKİYE	0	0	0	0	0	0	0	0	81	15	0	0	0	0	0	0	81
OTOKAR	0	0	52	11	0	0	97	0	27	5	1	0	239	51	0	0	416
OYAK RENAULT	31.057	44	0	0	0	0	0	0	0	0	0	0	0	0	0	0	31.057
TEMSA	0	0	0	0	0	0	0	0	91	17	0	0	97	21	0	0	188
TOFAŞ	5.262	7	0	0	0	0	20.192	48	0	0	0	0	0	0	0	0	25.454
TOYOTA	11.870	17	0	0	0	0	0	0	0	0	0	0	0	0	0	0	11.870
TÜRK TRAKTÖR	0	0	0	0	0	0	0	0	0	0	0	0	0	0	3.210	96	3.210
<b>TOPLAM</b>	<b>70.480</b>	<b>100</b>	<b>492</b>	<b>100</b>	<b>2.638</b>	<b>100</b>	<b>41.890</b>	<b>100</b>	<b>533</b>	<b>100</b>	<b>4.092</b>	<b>100</b>	<b>468</b>	<b>100</b>	<b>3.327</b>	<b>100</b>	<b>123.920</b>

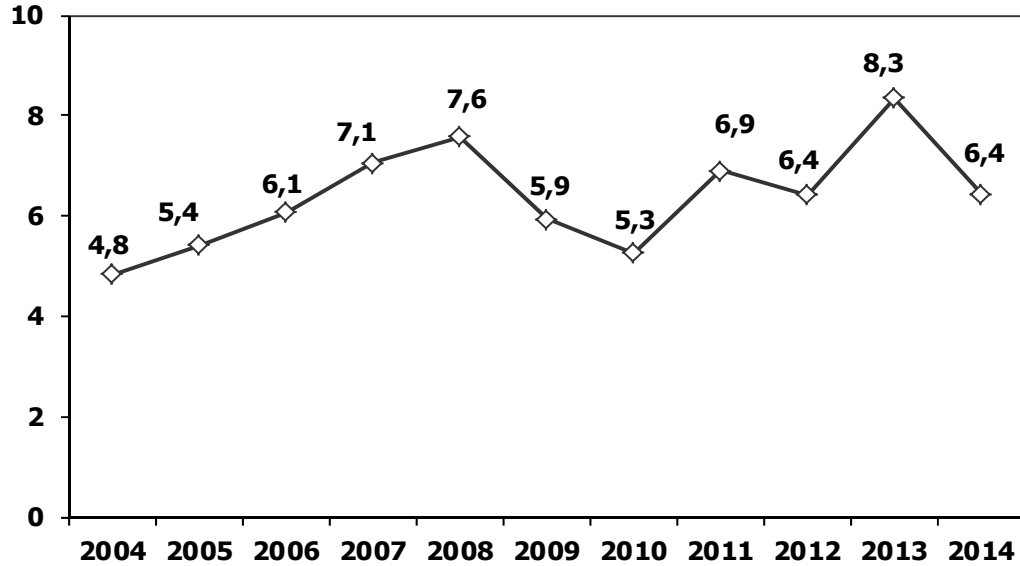
**Ticari Araç Üretimi** (x1000) (Ocak-Aralık)  
Commercial Vehicle Production (x1000) (January- December)



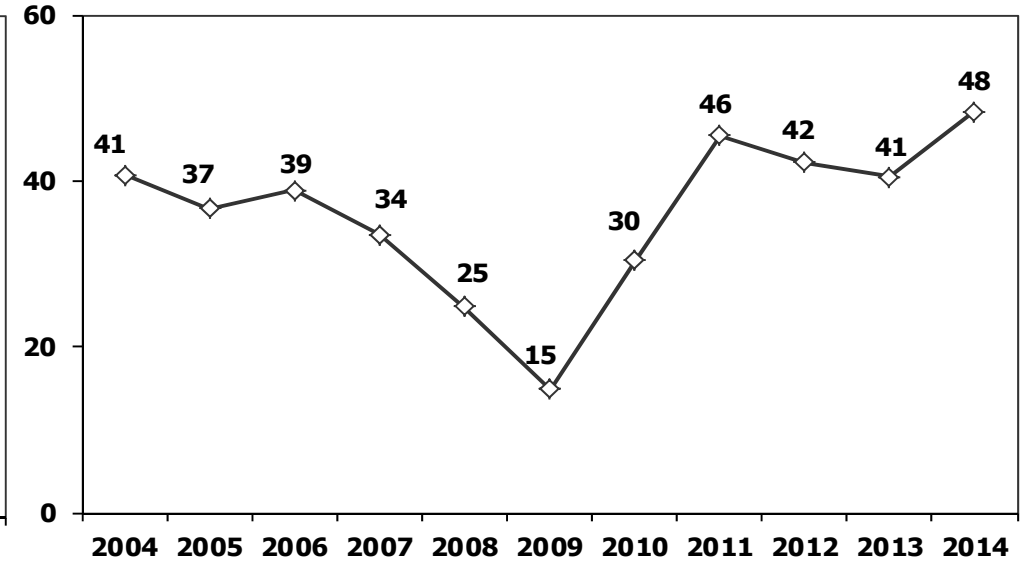
(AYA >12 Ton) **Büyük Kamyon Üretimi** (x1000) (Ocak-Aralık)  
(GVW >12 Ton) Heavy Truck Production (x1000) (January- December)



**Otobüs Üretimi** (x1000) (Ocak-Aralık)  
Bus Production (x1000) (January- December)

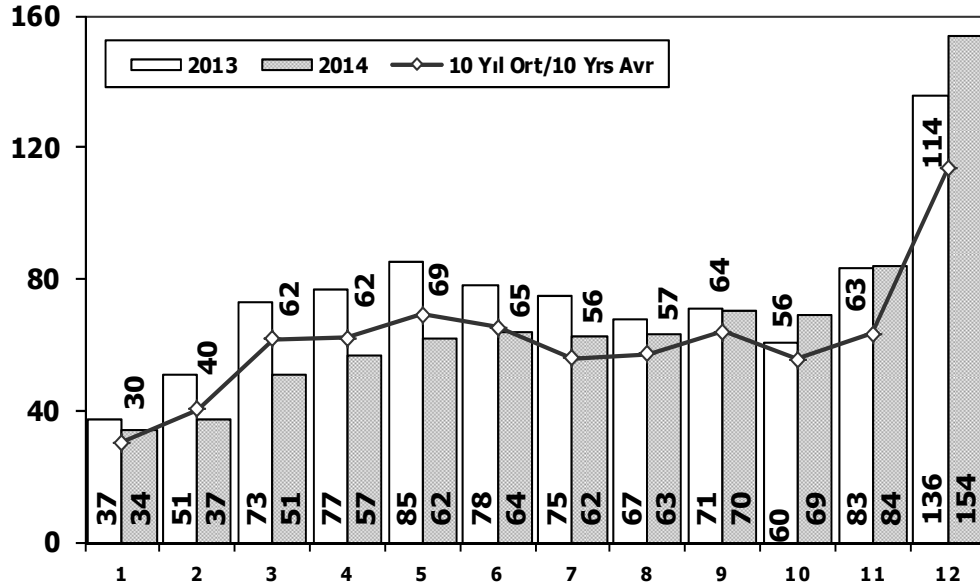


**Traktör Üretimi** (x1000) (Ocak-Aralık)  
F. Tractor Production (x1000) (January- December)



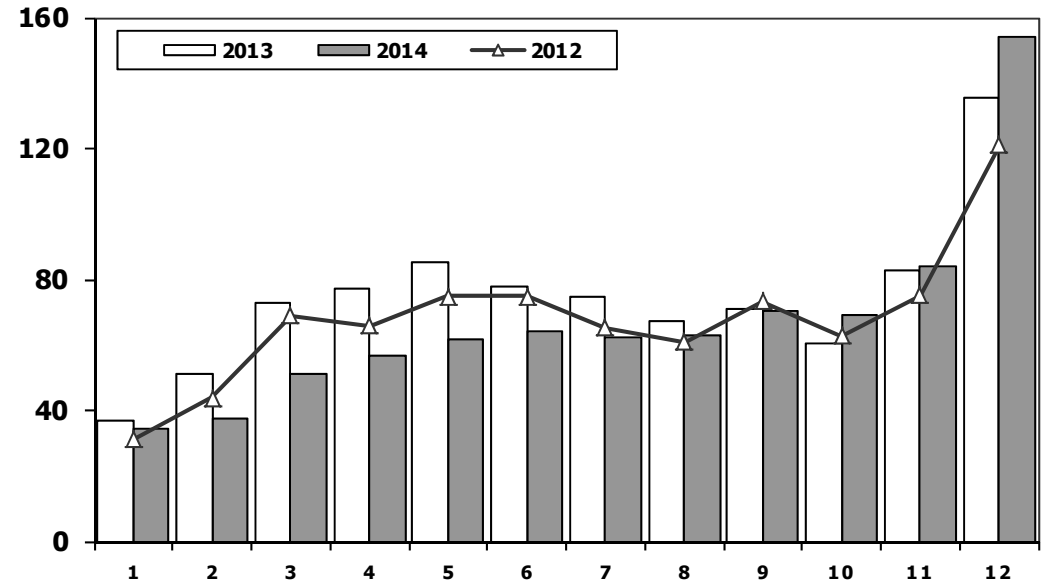
## Toplam Pazarın Analizi (x1000)

### Total Market Analysis (x1000)



## Toplam Pazar (x1000)

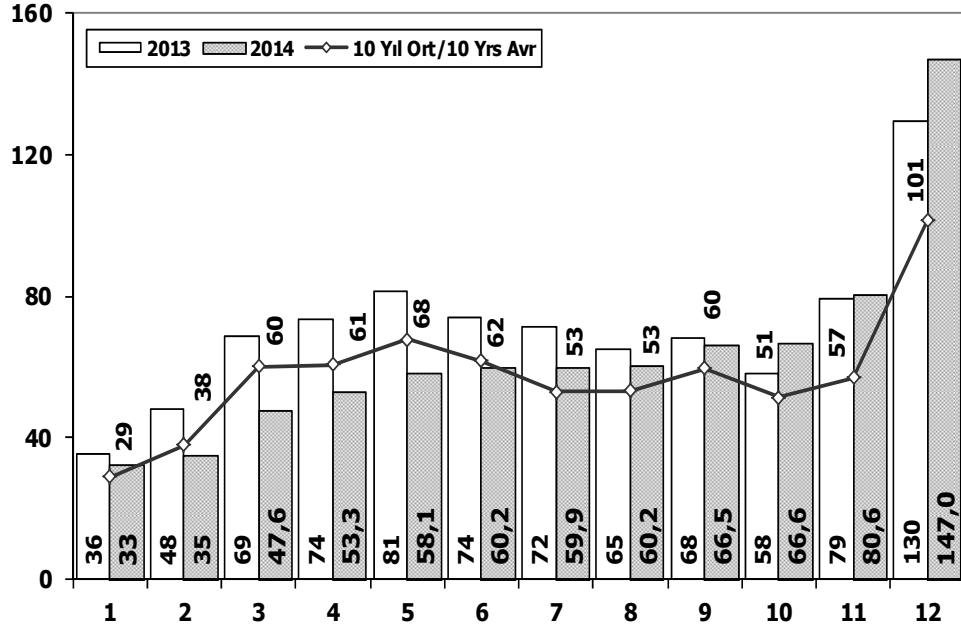
### Total Market (x1000)



Aylar / Months	10 Yil Ort. 10 Yrs Avr. (x1000)	2014 (x1000)	%
1	30,3	34,2	12,8
2	40,2	37,3	-7,3
3	61,8	51,0	-17,6
4	62,0	56,8	-8,4
5	69,1	61,9	-10,4
6	65,2	64,0	-2,0
7	56,0	62,2	11,1
8	57,1	62,8	10,1
9	64,1	70,2	9,5
10	55,6	69,3	24,6
11	63,3	83,9	32,7
12	113,5	153,9	35,6
<b>Total</b>	<b>738,3</b>	<b>807,5</b>	<b>9,4</b>

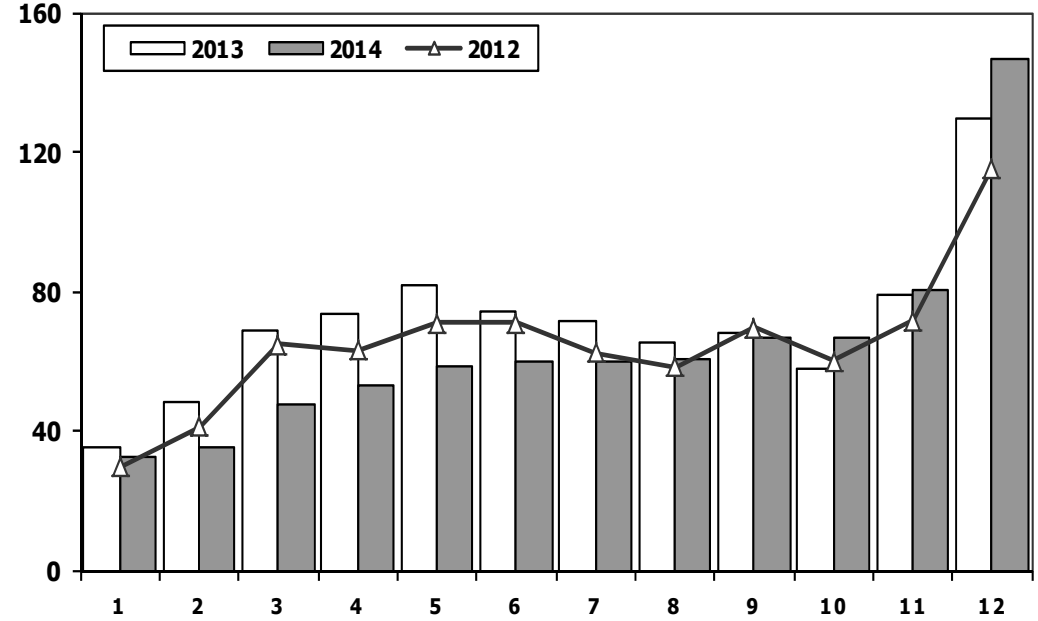
	1	2	3	4	5	6	7	8	9	10	11	12	Total
2004	38.621	39.389	71.723	77.056	84.634	63.228	57.307	56.422	59.429	56.153	52.237	85.070	741.269
2005	22.687	38.291	64.502	60.873	71.383	64.379	63.847	68.647	66.580	60.791	65.719	110.838	758.537
2006	29.969	44.646	65.090	68.853	83.289	58.203	40.037	47.374	49.629	39.805	55.898	82.722	665.515
2007	24.950	31.702	45.488	45.633	51.255	51.661	50.117	54.171	50.078	56.058	67.017	106.076	634.206
2008	33.792	38.121	56.814	50.967	51.627	49.393	44.692	46.592	46.829	35.147	28.152	44.418	526.544
2009	20.631	22.846	56.531	54.426	64.887	63.102	30.246	37.092	83.403	22.117	29.202	91.386	575.869
2010	21.050	32.313	53.828	57.079	61.628	63.390	63.718	64.645	66.601	76.780	77.406	154.734	793.172
2011	47.658	62.348	83.333	82.071	85.093	85.863	65.364	61.378	63.643	72.640	67.195	134.281	910.867
2012	31.219	43.827	68.957	66.014	74.820	74.781	65.122	60.848	73.197	62.677	75.045	121.113	817.620
2013	37.140	50.931	72.688	77.015	85.421	77.771	74.726	67.383	71.037	60.399	83.017	135.596	893.124
2014	34.225	37.308	50.964	56.766	61.909	63.952	62.206	62.839	70.180	69.259	83.937	153.941	807.486

## Hafif Araç Pazarının Analizi (x1000) LV Market Analysis (x1000)



Aylar / Months	10 Yil Ort. 10 Yrs Avr. (x1000)	2014 (x1000)	%
1	28,9	32,7	12,9
2	37,9	35,0	-7,7
3	60,2	47,6	-21,0
4	60,6	53,3	-12,0
5	67,8	58,1	-14,3
6	61,9	60,2	-2,7
7	53,0	59,9	13,1
8	53,4	60,2	12,8
9	59,7	66,5	11,4
10	51,4	66,6	29,6
11	56,9	80,6	41,8
12	101,2	147,0	45,2
<b>Total</b>	<b>692,9</b>	<b>767,7</b>	<b>10,8</b>

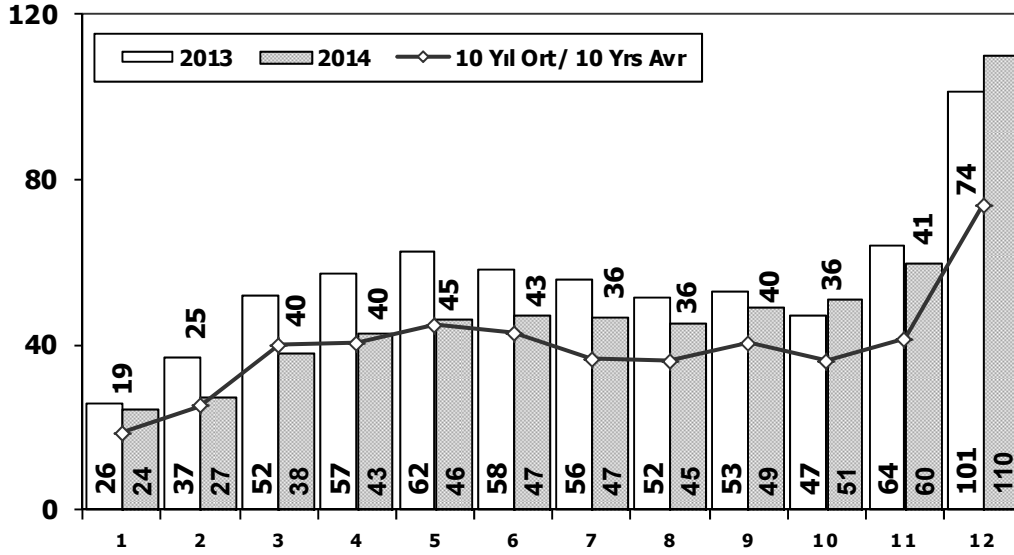
## Hafif Araç Pazarı (x1000) LV Total Market (Local + Imports) (x1000)



	1	2	3	4	5	6	7	8	9	10	11	12	Total
2004	36.352	37.079	67.144	73.075	80.290	59.730	54.816	52.876	55.609	53.000	49.200	78.924	698.095
2005	20.747	35.766	60.707	56.844	67.357	60.796	61.015	64.011	61.954	56.638	61.364	103.209	710.408
2006	27.917	40.938	60.052	64.038	78.229	54.355	37.251	43.767	46.109	36.542	51.867	76.787	617.852
2007	23.117	29.184	41.890	42.366	47.938	48.674	47.490	50.558	46.581	52.725	63.313	100.926	594.762
2008	31.527	35.251	53.649	47.701	48.598	46.324	42.156	43.670	43.932	32.884	26.253	42.078	494.023
2009	19.606	21.742	55.111	52.640	63.191	61.067	28.845	35.609	81.397	21.033	27.962	88.923	557.126
2010	20.095	31.172	51.769	54.946	59.377	60.896	61.345	61.764	63.814	73.404	73.962	148.369	760.913
2011	44.892	58.663	78.403	77.695	80.646	81.573	63.044	58.406	60.129	69.421	63.657	127.910	864.439
2012	29.545	41.324	64.884	62.949	70.863	71.067	62.304	58.148	69.629	59.938	71.710	115.400	777.761
2013	35.523	48.307	68.774	73.575	81.468	74.096	71.596	65.043	67.963	58.014	79.301	129.718	853.378
2014	32.670	35.021	47.581	53.305	58.121	60.163	59.907	60.199	66.531	66.573	80.621	146.989	767.681

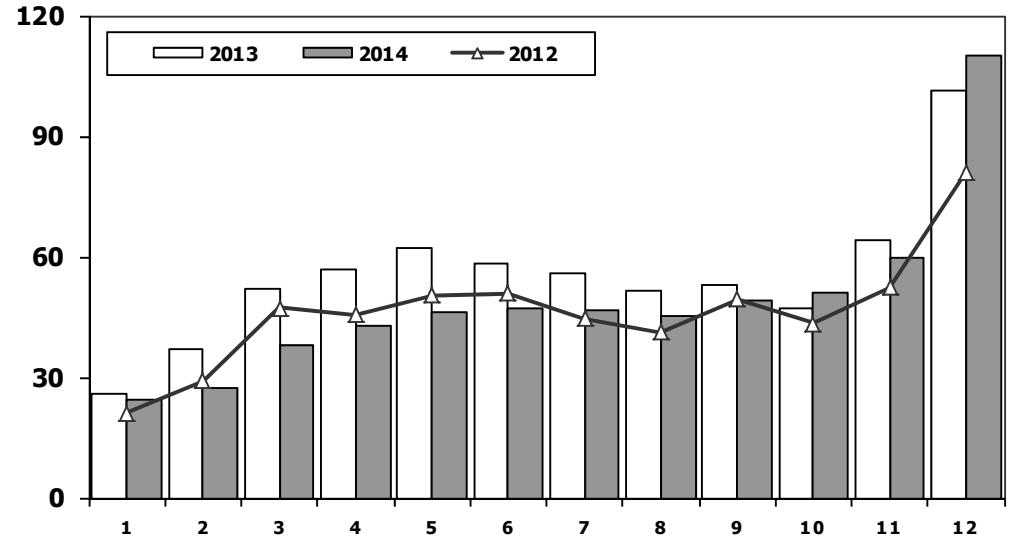
## Otomobil Pazarının Analizi (x1000)

### P.Cars Market Analysis (x1000)



## Otomobil Pazarı (x1000)

### P.Cars Market (x1000)



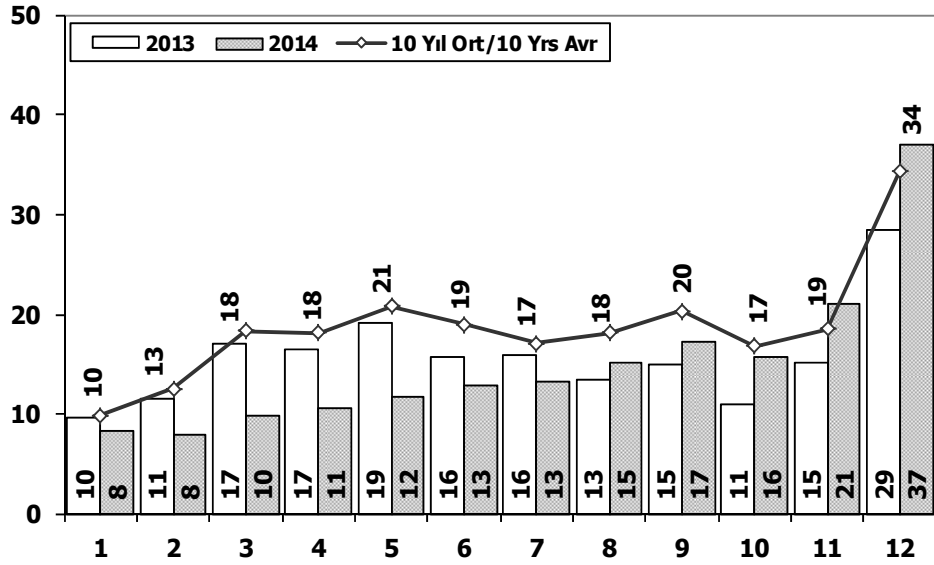
Aylar / Months	10 Yil Ort. 10 Yrs Avr. (x1000)	2014 (x1000)	%
1	18,7	24,4	30,5
2	25,2	27,2	7,9
3	39,9	37,8	-5,3
4	40,4	42,8	5,9
5	44,8	46,4	3,6
6	42,9	47,3	10,2
7	36,4	46,6	28,1
8	36,0	45,1	25,5
9	40,5	49,3	21,7
10	35,9	50,8	41,5
11	41,4	59,7	44,2
12	73,7	110,1	49,3
<b>Total</b>	<b>475,7</b>	<b>587,3</b>	<b>23,5</b>

	1	2	3	4	5	6	7	8	9	10	11	12	Total
2004	25.625	23.695	46.075	47.995	54.610	37.671	33.410	33.709	33.383	34.292	30.547	50.197	451.209
2005	11.595	21.012	38.129	36.206	38.480	40.900	38.969	38.648	36.410	34.960	37.841	65.447	438.597
2006	16.506	24.929	36.996	40.177	48.521	32.982	22.653	24.873	27.517	21.237	30.477	46.351	373.219
2007	13.186	17.212	24.336	25.204	29.067	30.126	28.246	28.469	27.662	32.569	39.643	61.745	357.465
2008	18.588	21.196	34.147	30.313	31.477	28.724	25.530	26.102	27.053	19.788	17.201	25.879	305.998
2009	13.173	14.492	40.622	36.202	44.188	41.019	16.637	22.537	52.162	13.828	17.781	57.178	369.819
2010	12.594	20.651	33.958	36.549	40.467	42.086	41.399	42.222	42.477	47.859	50.061	99.461	509.784
2011	29.868	39.004	54.023	53.835	56.302	56.714	43.518	38.875	39.964	47.508	44.951	88.957	593.519
2012	21.077	29.189	47.270	45.645	50.460	50.849	44.531	41.236	49.360	43.440	52.297	80.926	556.280
2013	25.835	36.814	51.785	56.999	62.383	58.290	55.712	51.611	52.925	46.985	64.117	101.199	664.655
2014	24.368	27.167	37.812	42.769	46.379	47.278	46.602	45.131	49.262	50.814	59.695	110.054	587.331



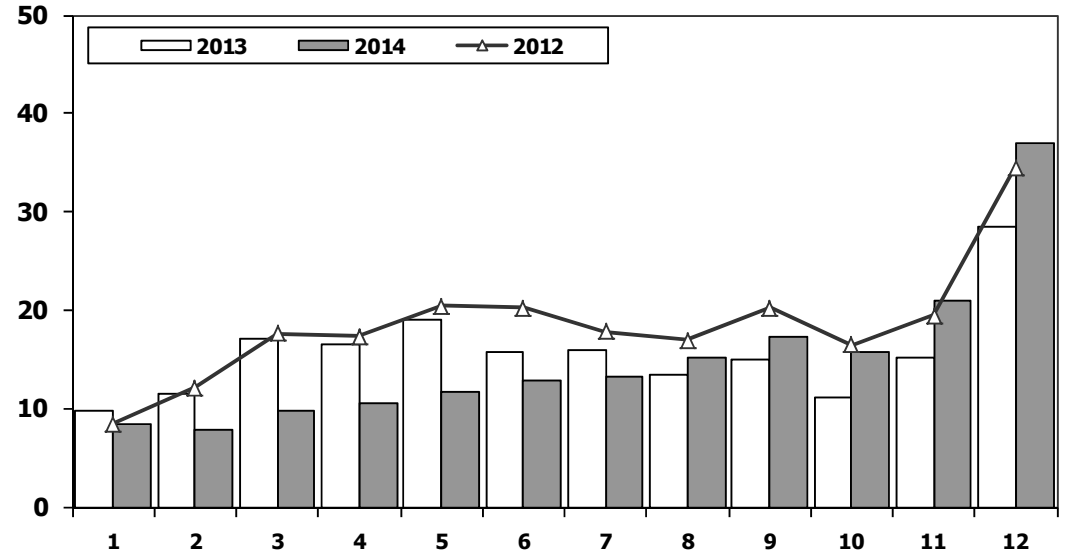
## Hafif Ticari Arac Pazarının Analizi (x1000)

### LCV Market Analysis (x1000)



## Hafif Ticari Arac Pazarı (x1000)

### LCV Total Market (Local + Imports) (x1000)

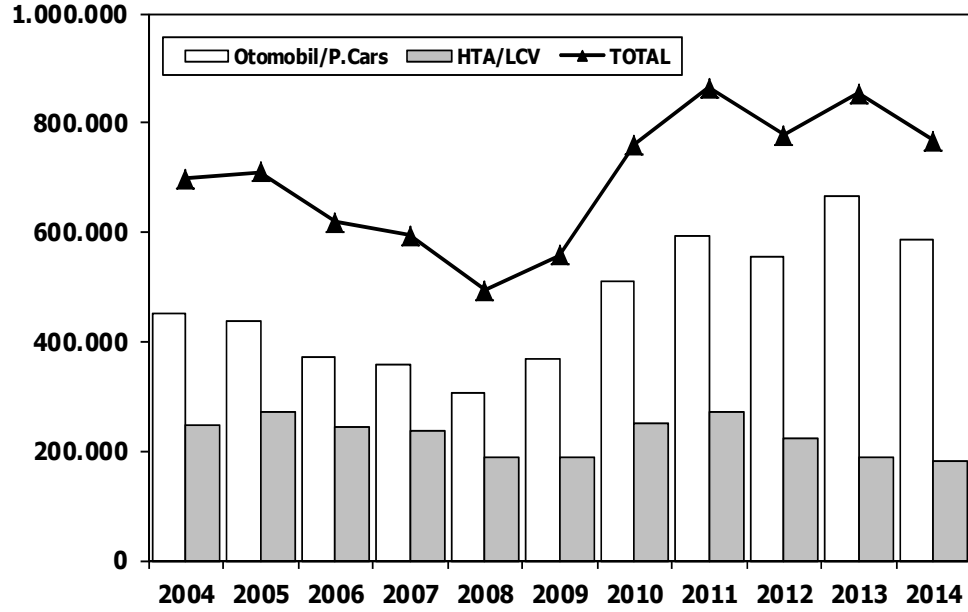


Aylar / Months	10 Yıl Ort. 10 Yrs Avr. (x1000)	2014 (x1000)	%
1	9,9	8,3	-16,0
2	12,6	7,9	-37,5
3	18,4	9,8	-46,8
4	18,2	10,5	-42,2
5	20,8	11,7	-43,6
6	19,0	12,9	-32,2
7	17,1	13,3	-22,3
8	18,1	15,1	-17,0
9	20,3	17,3	-15,0
10	16,8	15,8	-6,3
11	18,6	20,9	12,5
12	34,3	36,9	7,6
<b>Total</b>	<b>224,2</b>	<b>180,4</b>	<b>-19,5</b>

	1	2	3	4	5	6	7	8	9	10	11	12	Total
2004	10.727	13.384	21.069	25.080	25.680	22.059	21.406	19.167	22.226	18.708	18.653	28.727	246.886
2005	9.152	14.754	22.578	20.638	28.877	19.896	22.046	25.363	25.544	21.678	23.523	37.762	271.811
2006	11.411	16.009	23.056	23.861	29.708	21.373	14.598	18.894	18.592	15.305	21.390	30.436	244.633
2007	9.931	11.972	17.554	17.162	18.871	18.548	19.244	22.089	18.919	20.156	23.670	39.181	237.297
2008	12.939	14.055	19.502	17.388	17.121	17.600	16.626	17.568	16.879	13.096	9.052	16.199	188.025
2009	6.433	7.250	14.489	16.438	19.003	20.048	12.208	13.072	29.235	7.205	10.181	31.745	187.307
2010	7.501	10.521	17.811	18.397	18.910	18.810	19.946	19.542	21.337	25.545	23.901	48.908	251.129
2011	15.024	19.659	24.380	23.860	24.344	24.859	19.526	19.531	20.165	21.913	18.706	38.953	270.920
2012	8.468	12.135	17.614	17.304	20.403	20.218	17.773	16.912	20.269	16.498	19.413	34.474	221.481
2013	9.688	11.493	16.989	16.576	19.085	15.806	15.884	13.432	15.038	11.029	15.184	28.519	188.723
2014	8.302	7.854	9.769	10.536	11.742	12.885	13.305	15.068	17.269	15.759	20.926	36.935	180.350

## Hafif Arac Pazarı (AYA < 3.5 Ton)

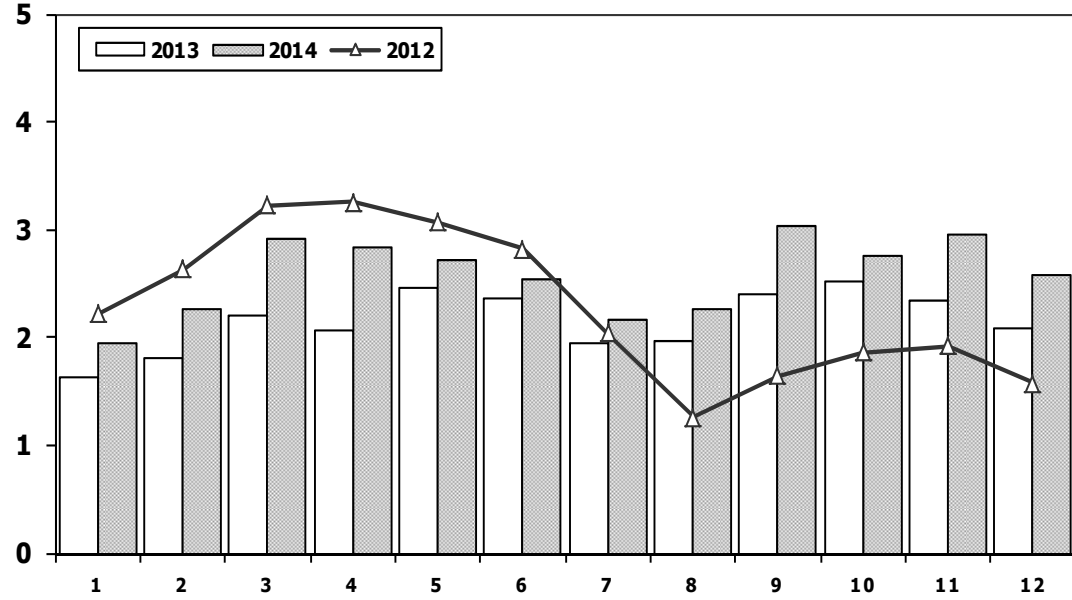
### Light Vehicle Market (GVW < 3.5 Ton)



	2004	2005	2006	2007	2008	2009	2010	2011	2012	2013	2014
Otomobil/P.Cars	451.209	438.597	373.219	357.465	305.998	369.819	509.784	593.519	556.280	664.655	587.331
HTA/LCV	246.886	271.811	244.633	237.297	188.025	187.307	251.129	270.920	221.481	188.723	180.350
TOTAL	698.095	710.408	617.852	594.762	494.023	557.126	760.913	864.439	777.761	853.378	767.681
HTA/LCV (%)	35	38	40	40	38	34	33	31	28	22	23

## Traktör Pazarı (x1000)

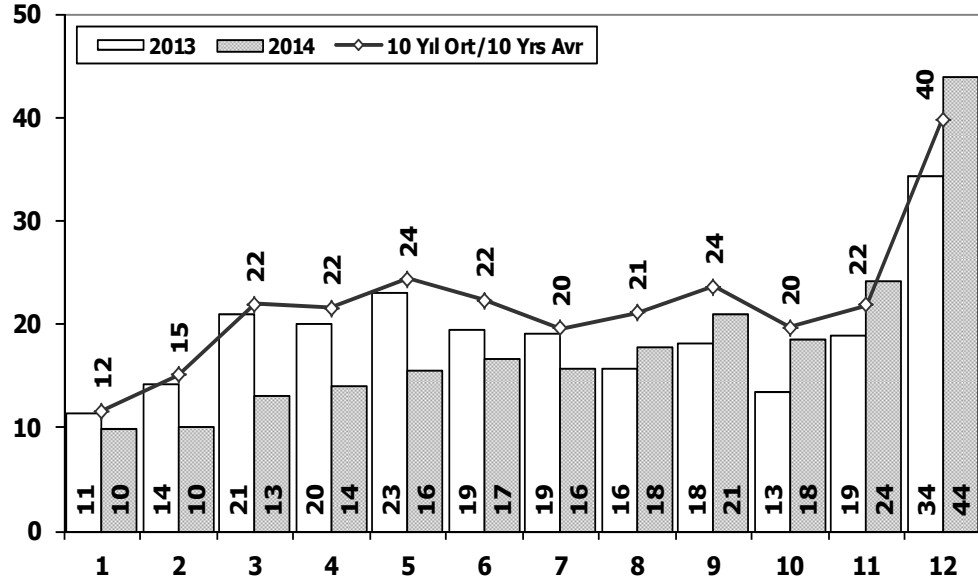
### F.Tractor Market (x1000)



	1	2	3	4	5	6	7	8	9	10	11	12	Total
2004	1.946	1.874	2.909	3.260	2.863	2.816	1.988	2.209	2.509	1.989	2.198	1.364	27.925
2005	1.026	1.636	2.001	2.599	2.569	2.780	2.148	2.819	2.567	2.477	2.297	2.089	27.008
2006	1.578	2.493	2.746	2.841	3.561	2.356	1.685	2.177	2.756	1.915	2.353	1.925	28.386
2007	1.812	1.778	2.063	2.107	2.266	1.853	1.653	2.065	2.372	2.239	2.231	1.602	24.041
2008	1.510	1.427	1.933	1.692	1.689	1.592	1.275	924	904	609	707	359	14.621
2009	267	344	388	638	759	828	741	534	586	765	725	715	7.290
2010	714	903	1.432	1.653	1.736	1.673	1.613	1.527	2.351	2.787	2.656	2.345	21.390
2011	2.458	2.610	3.105	3.403	3.847	3.599	2.952	1.559	2.957	2.823	2.603	2.807	34.723
2012	2.216	2.632	3.223	3.259	3.067	2.821	2.037	1.262	1.648	1.858	1.921	1.579	27.523
2013	1.633	1.817	2.196	2.070	2.455	2.370	1.955	1.969	2.396	2.510	2.343	2.080	25.794
2014	1.941	2.256	2.915	2.837	2.723	2.534	2.171	2.265	3.039	2.755	2.964	2.573	30.973

## Ticari Araç Pazarının Analizi (x1000)

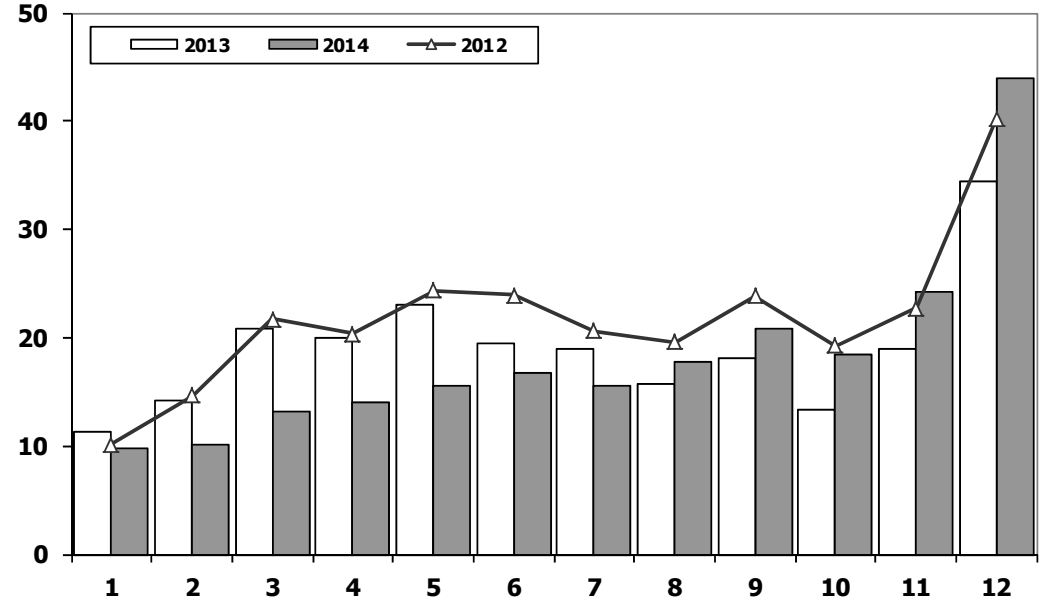
### CV Market Analysis (x1000)



Aylar / Months	10 Yil Ort. 10 Yrs Avr. (x1000)	2014 (x1000)	%
1	11,7	9,9	-15,4
2	15,1	10,1	-32,7
3	21,9	13,2	-40,0
4	21,6	14,0	-35,1
5	24,4	15,5	-36,2
6	22,4	16,7	-25,4
7	19,6	15,6	-20,5
8	21,1	17,7	-16,2
9	23,6	20,9	-11,5
10	19,7	18,4	-6,2
11	21,9	24,2	10,9
12	39,8	43,9	10,3
<b>Total</b>	<b>262,6</b>	<b>220,2</b>	<b>-16,2</b>

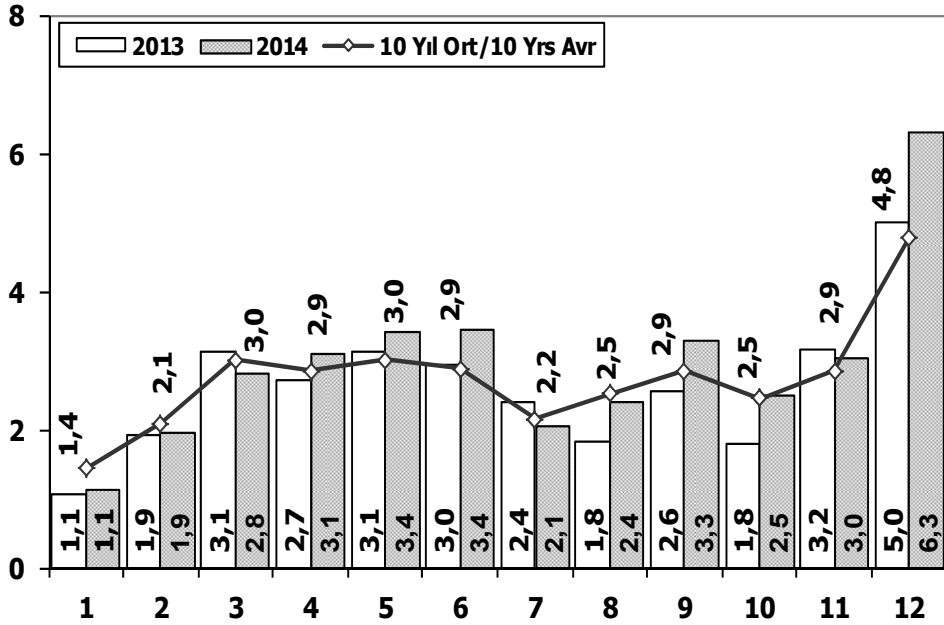
## Ticari Araç Pazarı (x1000)

### CV Total Market (Local + Imports) (x1000)

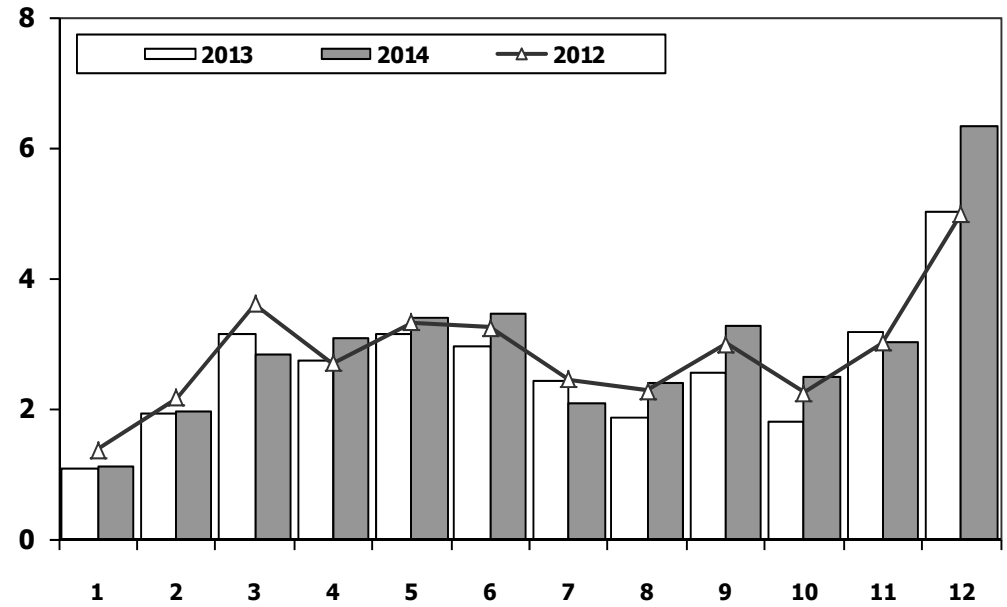


	1	2	3	4	5	6	7	8	9	10	11	12	Total
<b>2004</b>	12.996	15.694	25.648	29.061	30.024	25.557	23.897	22.713	26.046	21.861	21.690	34.873	290.060
<b>2005</b>	11.092	17.279	26.373	24.667	32.903	23.479	24.878	29.999	30.170	25.831	27.878	45.391	319.940
<b>2006</b>	13.463	19.717	28.094	28.676	34.768	25.221	17.384	22.501	22.112	18.568	25.421	36.371	292.296
<b>2007</b>	11.764	14.490	21.152	20.429	22.188	21.535	21.871	25.702	22.416	23.489	27.374	44.331	276.741
<b>2008</b>	15.204	16.925	22.667	20.654	20.150	20.669	19.162	20.490	19.776	15.359	10.951	18.539	220.546
<b>2009</b>	7.458	8.354	15.909	18.224	20.699	22.083	13.609	14.555	31.241	8.289	11.421	34.208	206.050
<b>2010</b>	8.456	11.662	19.870	20.530	21.161	21.304	22.319	22.423	24.124	28.921	27.345	55.273	283.388
<b>2011</b>	17.790	23.344	29.310	28.236	28.791	29.149	21.846	22.503	23.679	25.132	22.244	45.324	317.348
<b>2012</b>	10.142	14.638	21.687	20.369	24.360	23.932	20.591	19.612	23.837	19.237	22.748	40.187	261.340
<b>2013</b>	11.305	14.117	20.903	20.016	23.038	19.481	19.014	15.772	18.112	13.414	18.900	34.397	228.469
<b>2014</b>	9.857	10.141	13.152	13.997	15.530	16.674	15.604	17.708	20.918	18.445	24.242	43.887	220.155

## Kamyon Pazarının Analizi (x1000) AYA > 5 Ton Truck Market Analysis (x1000) GVW > 5 Ton



## Kamyon Pazarı (x1000) AYA > 5 Ton Truck Market (x1000) GVW > 5 Ton

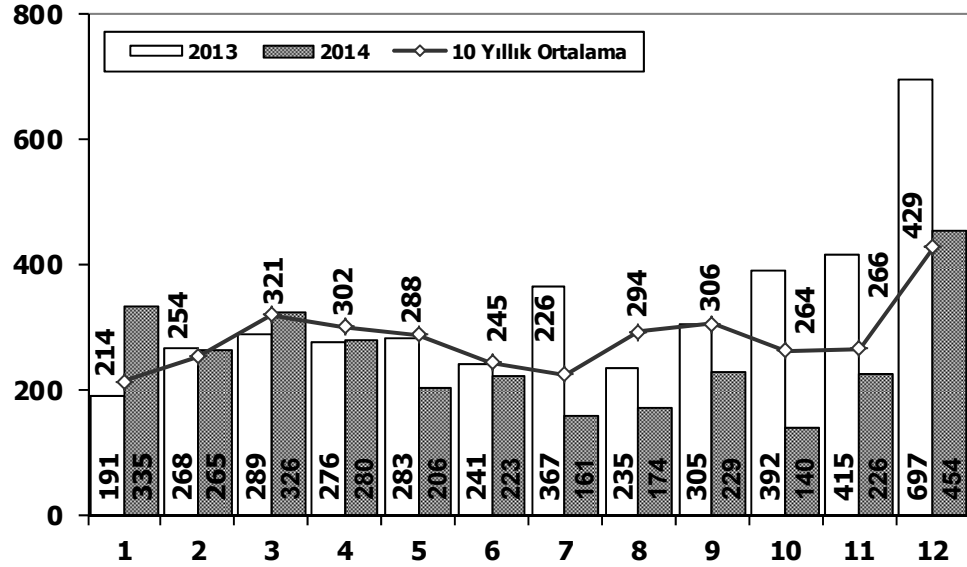


Aylar / Months	10 Yil Ort. 10 Yrs Avr. (x1000)	2014 (x100)	%
1	1,4	1,1	-22,9
2	2,1	1,9	-6,8
3	3,0	2,8	-6,7
4	2,9	3,1	8,1
5	3,0	3,4	12,8
6	2,9	3,4	18,8
7	2,2	2,1	-3,6
8	2,5	2,4	-5,7
9	2,9	3,3	14,7
10	2,5	2,5	1,5
11	2,9	3,0	5,6
12	4,8	6,3	31,5
<b>Total</b>	<b>33,0</b>	<b>35,4</b>	<b>7,3</b>

YIL	1	2	3	4	5	6	7	8	9	10	11	12	TOPLAM
2004	1.863	1.949	3.983	3.352	3.651	3.118	2.234	2.897	3.285	2.727	2.629	5.517	37.205
2005	1.693	2.186	3.288	3.484	3.413	3.147	2.504	4.028	4.043	3.708	3.918	6.570	41.982
2006	1.767	3.310	4.467	4.180	4.449	3.398	2.472	3.142	3.052	2.926	3.550	5.358	42.071
2007	1.554	2.055	3.065	2.940	2.865	2.613	2.372	3.145	2.988	2.886	3.258	4.444	34.185
2008	1.797	2.309	2.621	2.578	2.459	2.526	2.067	2.377	2.390	1.790	1.512	1.834	26.260
2009	771	759	1.034	1.342	1.355	1.651	1.156	1.205	1.780	866	981	2.015	14.915
2010	777	968	1.772	1.807	1.966	2.205	2.093	2.446	2.444	3.071	3.136	5.677	28.362
2011	2.552	3.292	4.418	3.754	3.803	3.749	1.996	2.478	3.081	2.774	3.108	5.787	40.792
2012	1.375	2.159	3.595	2.697	3.321	3.250	2.450	2.277	2.991	2.244	3.006	5.000	34.365
2013	1.077	1.931	3.127	2.720	3.145	2.951	2.411	1.845	2.554	1.801	3.173	5.025	31.760
2014	1.117	1.949	2.818	3.092	3.405	3.438	2.083	2.390	3.281	2.494	3.028	6.313	35.408

## Midibüs Pazarının Analizi (7-9 mt / 25-35 Kişilik)

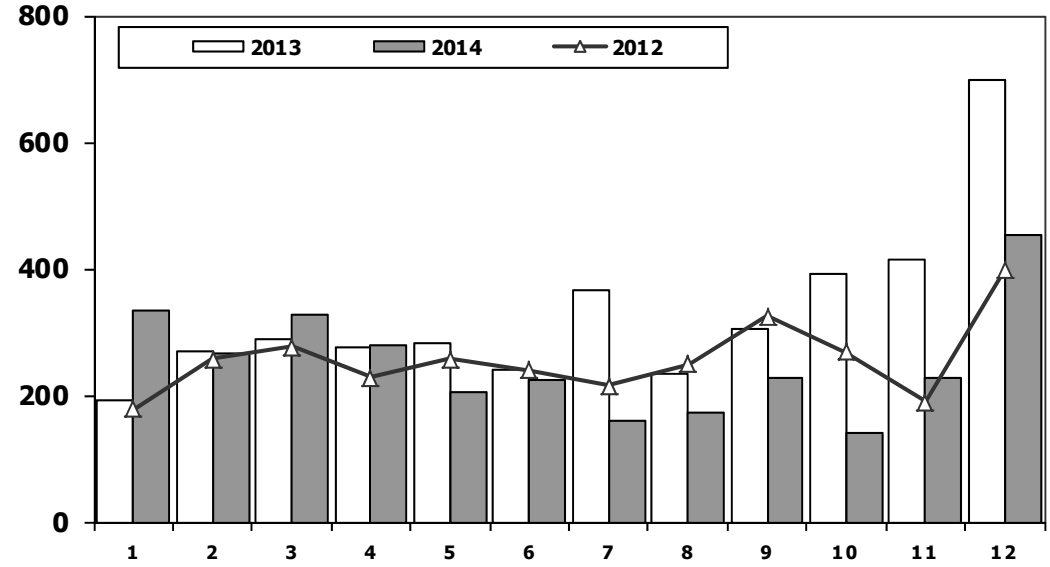
### Midibus Market Analysis (7-9 mt / 25-35 Passengers)



Aylar / Months	10 Yıl Ort. 10 Yrs Avr.	2014	%
1	214	335	57
2	254	265	4
3	321	326	2
4	302	280	-7
5	288	206	-28
6	245	223	-9
7	226	161	-29
8	294	174	-41
9	306	229	-25
10	264	140	-47
11	266	226	-15
12	429	454	6
<b>Total</b>	<b>3.409</b>	<b>3.019</b>	<b>-11</b>

## Midibüs Pazarı (7-9 mt / 25-35 Kişilik Midibüs)

### Midibus Market (7-9 mt / 25-35 Passengers)



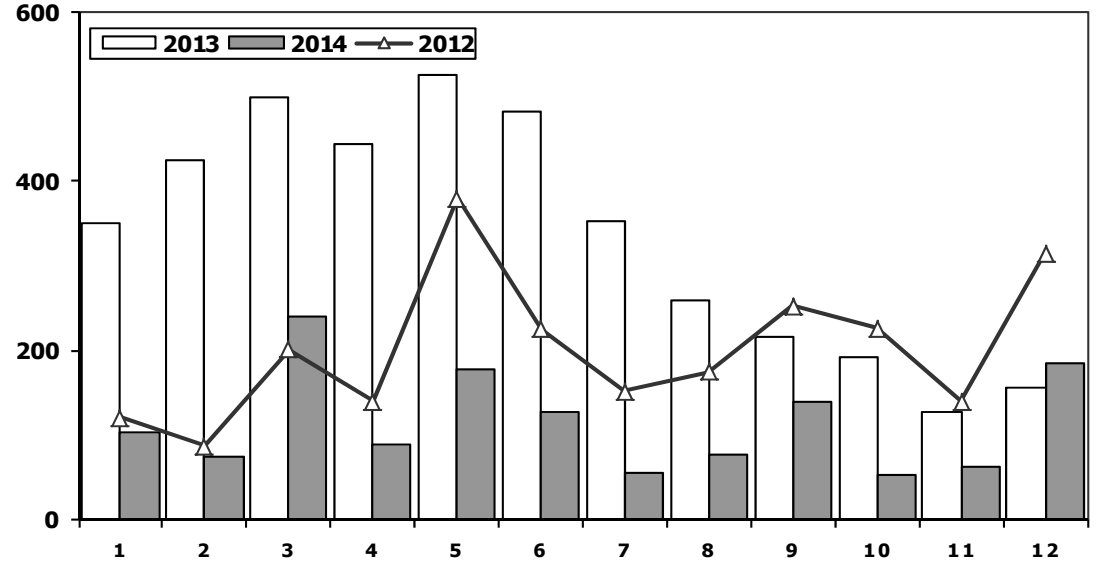
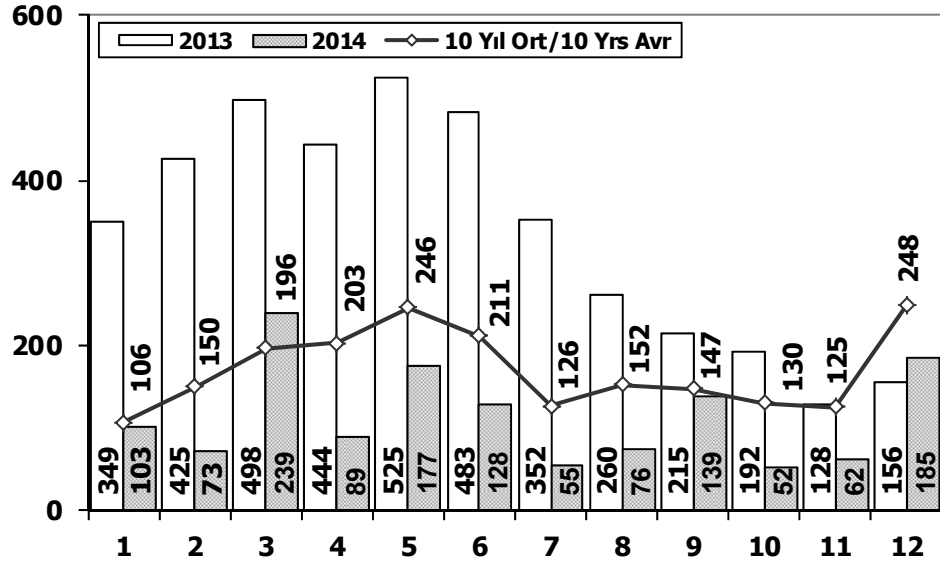
YIL	1	2	3	4	5	6	7	8	9	10	11	12	TOPLAM
2004	233	226	381	431	524	237	154	531	445	331	319	551	4.363
2005	182	258	432	393	439	269	252	459	436	329	328	574	4.351
2006	207	297	406	388	381	266	230	353	322	253	305	401	3.809
2007	207	272	404	238	302	283	164	365	399	279	283	465	3.661
2008	391	476	436	512	419	331	368	380	341	352	246	270	4.522
2009	154	124	160	220	174	198	160	175	168	143	206	323	2.205
2010	155	131	185	167	140	138	129	246	236	206	202	437	2.372
2011	138	195	294	316	280	258	211	305	301	276	260	270	3.104
2012	179	257	277	229	257	239	216	249	325	269	189	398	3.084
2013	191	268	289	276	283	241	367	235	305	392	415	697	3.959
2014	335	265	326	280	206	223	161	174	229	140	226	454	3.019

## Otobüs Pazarının Analizi

### Bus Market Analysis

## Otobüs Pazarı

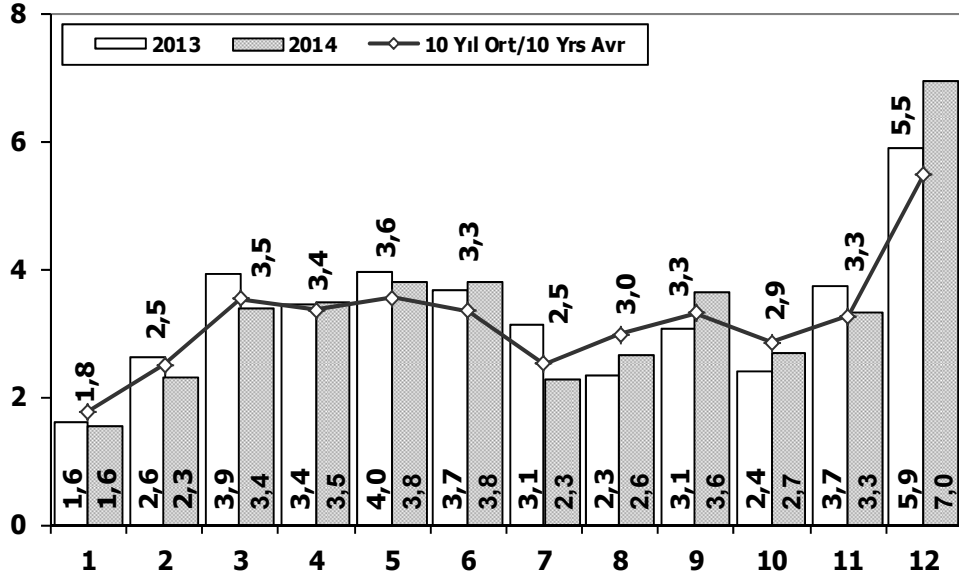
### Bus Market



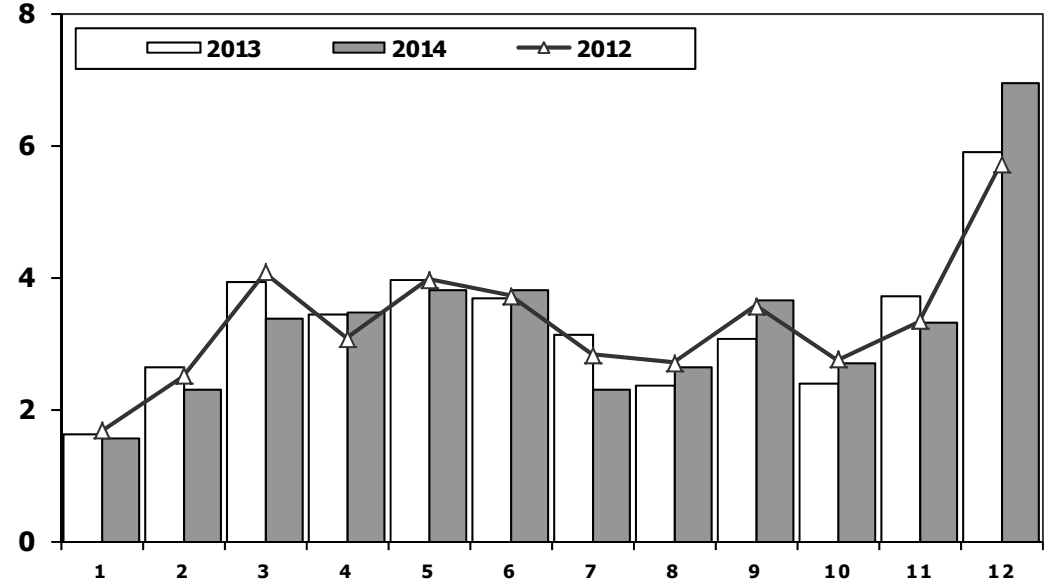
Aylar / Months	10 Yil Ort. / 10 Yrs Avr.	2014	%
1	106	103	-3
2	150	73	-51
3	196	239	22
4	203	89	-56
5	246	177	-28
6	211	128	-39
7	126	55	-56
8	152	76	-50
9	147	139	-6
10	130	52	-60
11	125	62	-50
12	248	185	-26
<b>Total</b>	<b>2.041</b>	<b>1.378</b>	<b>-32</b>

	1	2	3	4	5	6	7	8	9	10	11	12	Total
2004	173	135	215	198	169	143	103	118	90	95	89	78	1.606
2005	65	81	75	152	174	167	76	149	147	116	109	485	1.796
2006	78	101	165	247	230	184	84	112	146	84	176	176	1.783
2007	72	191	129	89	150	91	91	103	110	168	163	241	1.598
2008	77	85	108	176	151	212	101	165	166	121	141	236	1.739
2009	100	221	226	224	167	186	85	103	58	75	53	125	1.623
2010	23	42	102	159	145	151	151	189	107	99	106	251	1.525
2011	76	198	218	306	364	283	113	189	132	169	170	314	2.532
2012	120	87	201	139	379	225	152	174	252	226	140	315	2.410
2013	349	425	498	444	525	483	352	260	215	192	128	156	4.027
2014	103	73	239	89	177	128	55	76	139	52	62	185	1.378

## Ağır Ticari Araç Pazarının Analizi (x1000) HCV Market Analysis (x1000)



## Ağır Ticari Araç Pazarı (x1000) HCV Market (x1000)

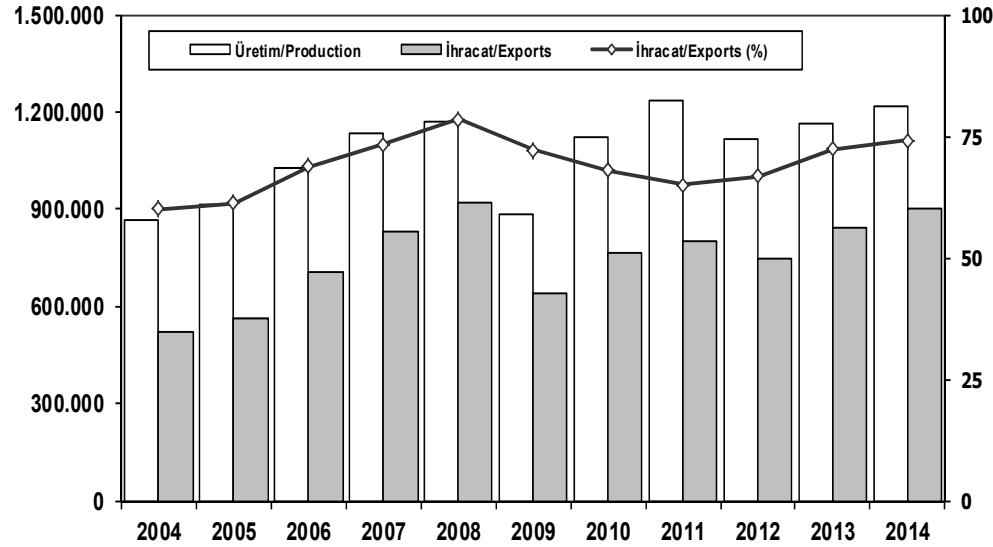


Aylar / Months	10 Yıl Ort. 10 Yrs Avr. (x1000)	2014 (x1000)	%
1	1,8	1,6	-12,1
2	2,5	2,3	-8,4
3	3,5	3,4	-4,4
4	3,4	3,5	2,9
5	3,6	3,8	6,6
6	3,3	3,8	13,2
7	2,5	2,3	-8,5
8	3,0	2,6	-11,4
9	3,3	3,6	10,1
10	2,9	2,7	-5,8
11	3,3	3,3	1,8
12	5,5	7,0	26,9
<b>Total</b>	<b>38,5</b>	<b>39,8</b>	<b>3,5</b>

	1	2	3	4	5	6	7	8	9	10	11	12	Total
2004	2.269	2.310	4.579	3.981	4.344	3.498	2.491	3.546	3.820	3.153	3.037	6.146	43.174
2005	1.940	2.525	3.795	4.029	4.026	3.583	2.832	4.636	4.626	4.153	4.355	7.629	48.129
2006	2.052	3.708	5.038	4.815	5.060	3.848	2.786	3.607	3.520	3.263	4.031	5.935	47.663
2007	1.833	2.518	3.598	3.267	3.317	2.987	2.627	3.613	3.497	3.333	3.704	5.150	39.444
2008	2.265	2.870	3.165	3.266	3.029	3.069	2.536	2.922	2.897	2.263	1.899	2.340	32.521
2009	1.025	1.104	1.420	1.786	1.696	2.035	1.401	1.483	2.006	1.084	1.240	2.463	18.743
2010	955	1.141	2.059	2.133	2.251	2.494	2.373	2.881	2.787	3.376	3.444	6.365	32.259
2011	2.766	3.685	4.930	4.376	4.447	4.290	2.320	2.972	3.514	3.219	3.538	6.371	46.428
2012	1.674	2.503	4.073	3.065	3.957	3.714	2.818	2.700	3.568	2.739	3.335	5.713	39.859
2013	1.617	2.624	3.914	3.440	3.953	3.675	3.130	2.340	3.074	2.385	3.716	5.878	39.746
2014	1.555	2.287	3.383	3.461	3.788	3.789	2.299	2.640	3.649	2.686	3.316	6.952	39.805

## İhracat/Üretim (2004-2014)

Exports/Production (2004-2014)



	2004	2005	2006	2007	2008	2009	2010	2011	2012	2013	2014
Üretim/Production	864.073	916.062	1.026.427	1.132.951	1.171.917	884.466	1.124.982	1.234.637	1.115.233	1.166.043	1.218.848
İhracat/Exports	518.595	561.078	706.402	829.879	920.763	637.855	763.670	801.112	745.354	843.467	902.194
İhracat/Exports (%)	60	61	69	73	79	72	68	65	67	72	74

## Taşıt Araçları İhracatı

Motor Vehicle Exports

SEKTÖR/SECTOR	2012	2013	2014	2013/2014 (%)
<b>OTOMOBİL / P.Cars</b>	<b>412.991</b>	<b>484.504</b>	<b>581.993</b>	<b>20</b>
<b>TİCARİ ARAÇLAR / CV</b>	<b>316.932</b>	<b>343.967</b>	<b>303.187</b>	<b>-12</b>
* Kamyonet/Pick-Up	292.601	300.765	269.995	-10
* Minibüs/Minibus	16.429	34.664	26.458	-24
* Kamyon/Truck	2.682	3.055	1.281	-58
* Midibüs/Midibus	1.173	985	824	-16
* Otobüs/Bus	4.047	4.498	4.629	3
<b>TAŞIT ARAÇLARI / MV TOTAL</b>	<b>729.923</b>	<b>828.471</b>	<b>885.180</b>	<b>7</b>
<b>TRAKTÖR/F.TRACTOR</b>	<b>15.431</b>	<b>14.996</b>	<b>17.014</b>	<b>13</b>
<b>TOTAL</b>	<b>745.354</b>	<b>843.467</b>	<b>902.194</b>	<b>7</b>

## Otomotiv Ana ve Yan Sanayii İhracatı (ABD \$)

CBU and CKD Exports - \$

SEKTÖR/SECTOR	2011 Toplam (Total)	2012 Toplam (Total)	2013 Toplam (Total)	2014 Toplam (Total)	2014/2013 (%)
<b>Toplam Yan Sanayi/Total Component Industry</b>	<b>6.595.662.583</b>	<b>8.307.826.870</b>	<b>9.065.017.539</b>	<b>9.508.032.776</b>	<b>5</b>
İç ve Dış Lastik / Tyres	988.990.821	1.373.205.546	1.130.005.892	1.126.947.745	0
Emniyet Camı / Safety Glasses	107.203.983	120.041.467	135.230.310	143.231.168	6
Motor (Engine)	305.490.804	273.896.369	319.294.885	171.893.752	-46
Akümülatör / Batteries	186.504.496	232.611.079	306.451.449	289.150.764	-6
Diğer Aksam ve Parça / Spare Parts&Components	5.007.472.478	6.308.072.409	7.174.035.002	7.776.809.346	8
<b>Toplam Ana Sanayi/Total Vehicle Industry</b>	<b>10.855.476.447</b>	<b>12.128.522.618</b>	<b>12.491.591.365</b>	<b>13.272.198.027</b>	<b>6</b>
Otobüs / Bus	744.935.284	929.372.870	937.790.963	985.983.007	5
Midibüs-Minibüs / Minibus- Minibus	120.378.674	145.199.034	147.769.644	97.685.509	-34
Otomobil (P. Cars)	6.217.404.551	6.541.969.418	6.855.475.590	7.270.836.596	6
Kamyon-Kamyonet/HCV-LCV	3.363.101.038	4.034.772.621	3.918.798.755	4.201.921.030	7
Çekici/Truck-Tractor	145.710.283	116.912.332	218.385.732	252.416.256	16
Römork ve Yarı Römork/Trailer-Semi Trailer	72.145.150	147.247.613	77.907.407	38.396.525	-51
Tarım Traktörü/Farm Tractor	191.801.467	213.048.730	335.463.275	424.959.103	27
<b>Toplam/Total</b>	<b>17.451.139.030</b>	<b>20.436.349.488</b>	<b>21.556.608.904</b>	<b>22.780.230.802</b>	<b>6</b>

**Kaynak:** Otomotiv Endüstrisi İhracatçıları Birliği



**Firma Bazında İhracat (Adet)**  
Export Of member Companies (Unit)

FİRMALAR Companies	2012	2013	2014
OYAK RENAULT	227.162	266.508	257.992
FORD OTOSAN	191.149	208.722	187.921
HYUNDAI ASSAN	67.453	85.500	179.793
TOFAŞ	154.068	160.309	142.234
TOYOTA	63.549	86.908	109.517
TÜRK TRAKTÖR	14.572	14.402	15.866
M. BENZ TÜRK	4.054	5.331	3.438
HONDA TÜRKİYE	7.959	2.121	1.560
HATTAT TARIM	859	594	1.148
MAN TÜRKİYE	885	898	937
A.I.O.S.	943	770	748
OTOKAR	510	620	580
TEMSA GLOBAL	856	663	423
KARSAN	10.994	10.120	37
BMC	341	1	0
<b>GENEL TOPLAM</b>	<b>745.354</b>	<b>843.467</b>	<b>902.194</b>

Kaynak: OSD

**Sektör Bazında İhracat (\$)**  
Exports on Sectorial Basis

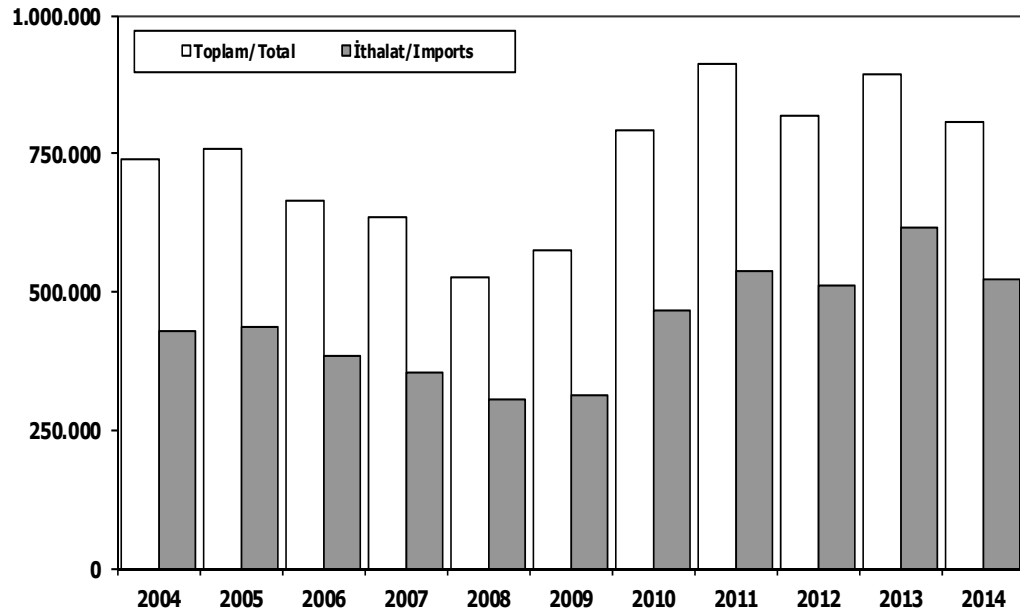
SEKTÖRLER	Aralık				Ocak-Aralık			
	2013	2014	2014/2013 (%)	Pay 2014 (%)	2013	2014	2014/2013 (%)	Pay 2014 (%)
1 Otomotiv Endüstrisi	1.764.315	1.789.927	1,5	13,6	21.303.172	22.270.672	4,5	14,1
2 Hazır giyim ve Konfeksiyon	1.421.633	1.372.215	-3,5	10,4	17.359.966	18.743.705	8,0	11,9
3 Kimyevi Maddeler ve Mamulleri	1.598.616	1.429.709	-10,6	10,9	17.431.144	17.847.131	2,4	11,3
4 Çelik	1.187.128	1.187.018	0,0	9,0	13.818.690	13.222.305	-4,3	8,4
5 Elektrik Elektronik ve Hizmet	1.113.465	1.147.586	3,1	8,7	11.693.936	12.114.407	3,6	7,7
6 Tekstil ve Hammaddeleri	661.634	674.119	1,9	5,1	8.387.720	8.887.741	6,0	5,6
7 Demir ve Demir Dışı Metaller	572.363	587.852	2,7	4,5	6.829.719	7.105.845	4,0	4,5
8 Hububat, Bakliyat, Yağlı Tohumlar ve Mam.	672.113	652.885	-2,9	5,0	6.584.642	6.719.140	2,0	4,3
9 İhracatçı Birlikleri Kaydından Muaf İhracat	**	**	**	**	6.232.535	6.329.395	1,6	4,0
10 Makine ve Aksamları	570.617	556.415	-2,5	4,2	5.797.479	6.048.710	4,3	3,8
11 Madencilik Ürünleri	420.132	367.663	-12,5	2,8	5.034.853	4.646.945	-7,7	2,9
12 Ağaç Mamulleri ve Orman Ürünleri	439.890	411.125	-6,5	3,1	4.456.538	4.519.281	1,4	2,9
13 İklimlendirme Sanayii	360.665	357.913	-0,8	2,7	4.196.033	4.424.526	5,4	2,8
14 Çimento Cam Seramik ve Toprak Ürünleri	247.834	253.543	2,3	1,9	3.152.544	3.156.874	0,1	2,0
15 Mücevher	189.189	390.234	106,3	3,0	2.253.389	3.108.750	38,0	2,0
16 Yaş Meyve ve Sebze	363.329	338.706	-6,8	2,6	2.350.965	2.396.517	1,9	1,5
17 Halı	202.543	215.091	6,2	1,6	2.195.376	2.354.635	7,3	1,5
18 Fındık ve Mamulleri	166.245	321.435	93,4	2,4	1.769.625	2.320.965	31,2	1,5
19 Su Ürünleri ve Hayvansal Mamuller	185.163	207.956	12,3	1,6	1.988.154	2.277.467	14,6	1,4
20 Deri ve Deri Mamulleri	220.909	147.908	-33,0	1,1	1.942.309	1.823.147	-6,1	1,2
21 Savunma ve Havacılık Sanayii	163.410	175.132	7,2	1,3	1.388.803	1.647.863	18,7	1,0
22 Kuru Meyve ve Mamulleri	130.314	135.547	4,0	1,0	1.438.254	1.460.876	1,6	0,9
23 Meyve Sebze Mamulleri	119.837	118.682	-1,0	0,9	1.329.992	1.417.226	6,6	0,9
24 Gemi ve Yat	95.673	164.063	71,5	1,2	1.163.591	1.280.878	10,1	0,8
25 Tütün ve Mamulleri	89.628	94.615	5,6	0,7	906.087	1.075.658	18,7	0,7
26 Zeytin ve Zeytinyağı	26.880	24.376	-9,3	0,2	439.568	228.283	-48,1	0,1
27 Diğer Sanayi Ürünleri	8.464	8.102	-4,3	0,1	104.643	110.070	5,2	0,1
28 Süs Bitkileri	6.940	6.948	0,1	0,1	76.982	83.046	7,9	0,1
<b>T O P L A M (Total)</b>	<b>12.998.929</b>	<b>13.136.763</b>	<b>1</b>	<b>100</b>	<b>151.626.709</b>	<b>157.622.057</b>	<b>4</b>	<b>100</b>

Kaynak: TİM

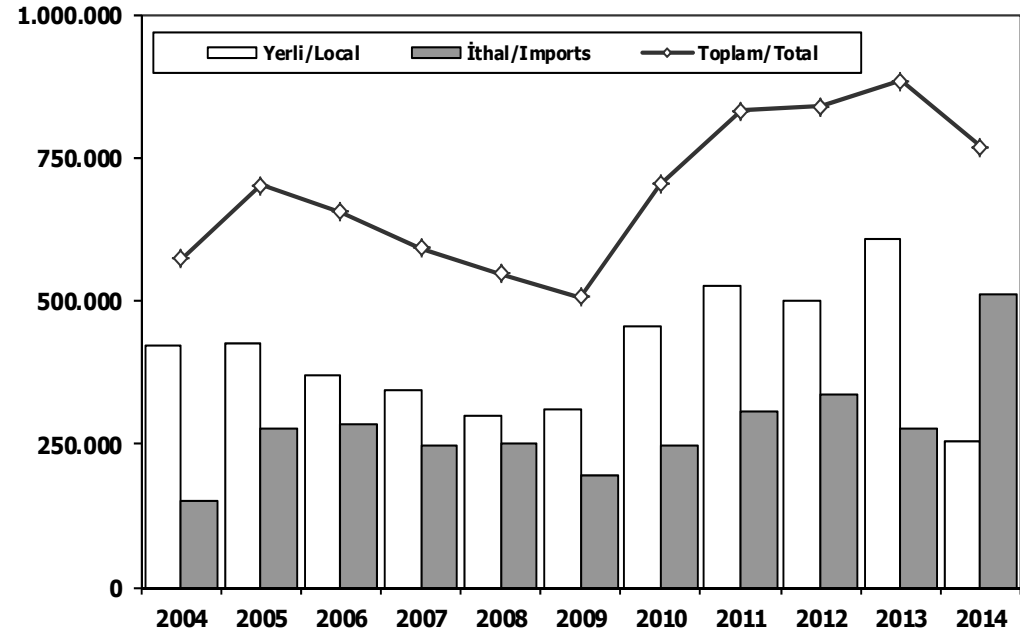
**First 3 Sectors:**

- 1- Transport Vehicle and Component Industry
- 2- Ready Wear and Confection
- 3- Chemical Articles and Products

## Toplam Pazar (Otomobil+T.Araç) Total Market (P.Cars+C.V)



## Hafif Araçlar Pazarı (2004-2014 Ocak-Aralık) LV Market (2004-2014 January-December)

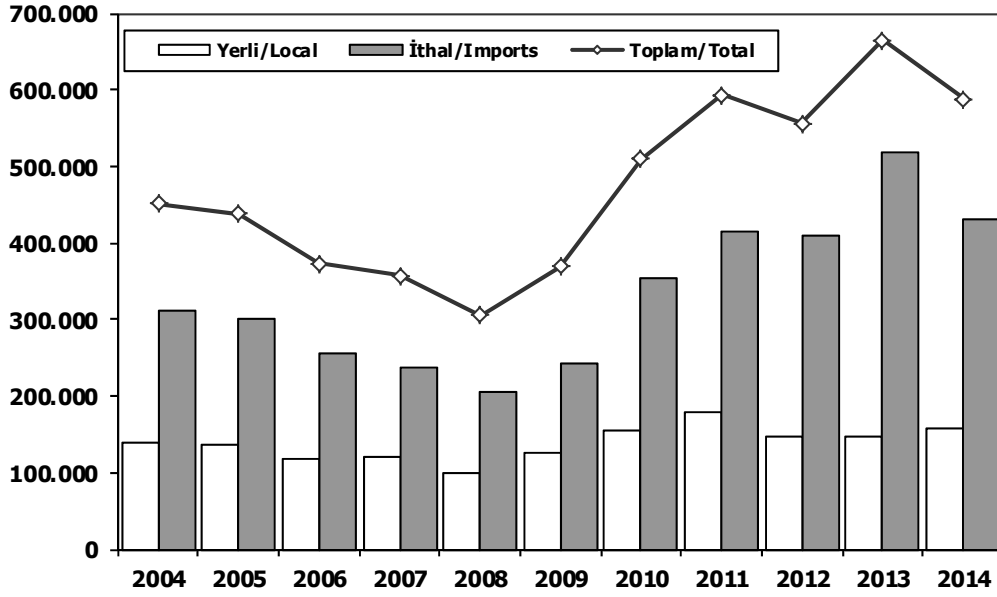


	2004	2005	2006	2007	2008	2009	2010	2011	2012	2013	2014
<b>Toplam/Total</b>	741.269	758.537	665.515	634.206	526.544	575.869	793.172	910.867	817.620	893.124	807.486
<b>İthalat/Imports</b>	430.204	436.033	382.460	355.752	306.087	313.921	465.408	538.532	511.694	615.609	522.842
<b>İthalat/Imports (%)</b>	58	57	57	56	58	55	59	59	63	69	65

	2004	2005	2006	2007	2008	2009	2010	2011	2012	2013	2014
<b>Yerli/Local</b>	422.574	426.274	371.052	345.057	297.861	309.432	455.559	526.365	501.758	607.472	255.573
<b>İthal/Imports</b>	150.842	275.521	284.134	246.800	249.705	196.162	247.694	305.354	338.074	276.003	512.108
<b>Toplam/Total</b>	573.416	701.795	655.186	591.857	547.566	505.594	703.253	831.719	839.832	883.475	767.681
<b>İthalat/Imports (%)</b>	26	39	43	42	46	39	35	37	40	31	67

## Otomobil Pazarı (2004-2014 Ocak-Aralık)

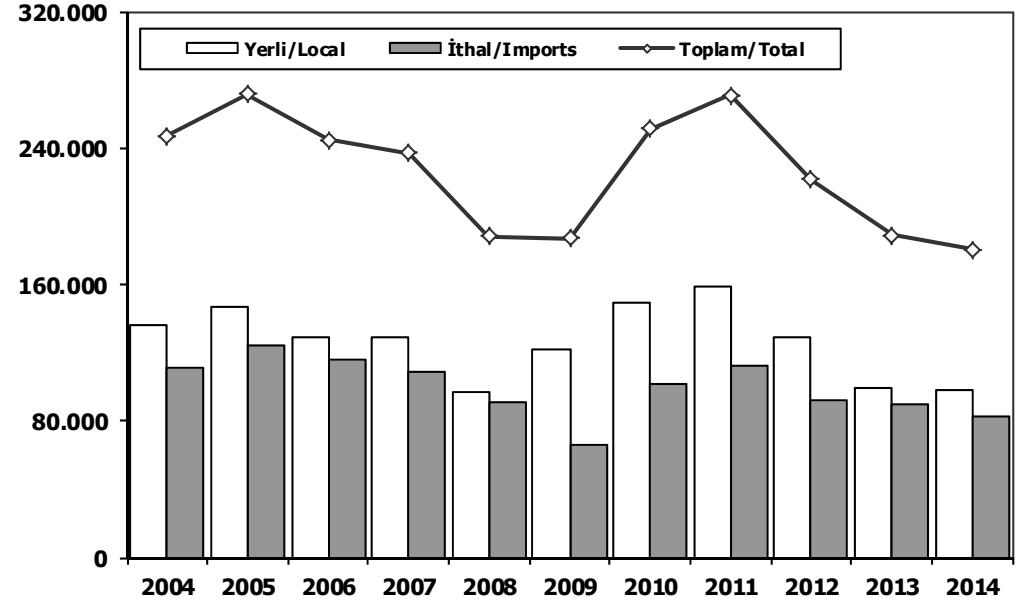
### P.Cars Market (2004-2014 January-December)



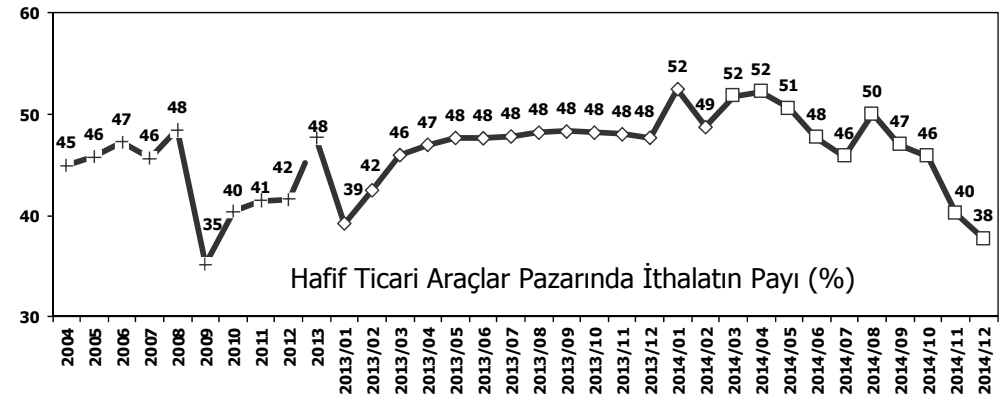
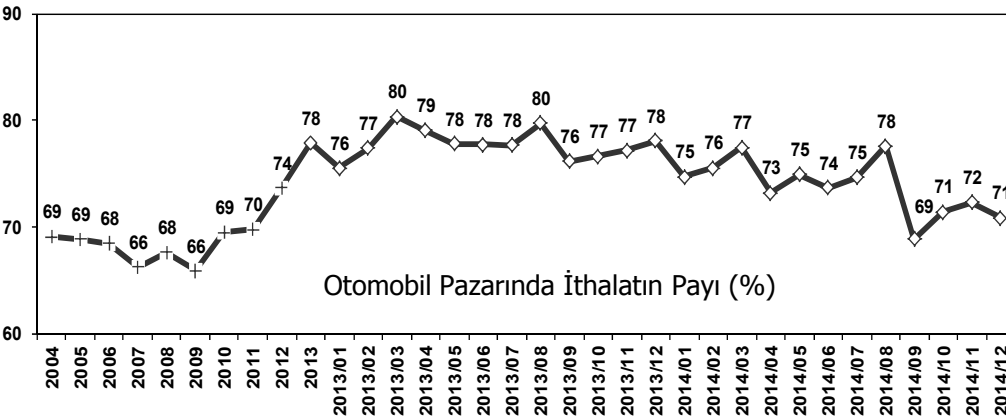
	2004	2005	2006	2007	2008	2009	2010	2011	2012	2013	2014
Yerli/Local	139.541	136.708	117.725	120.740	99.205	126.277	155.634	179.488	146.604	147.128	157.349
İthal/Imports	311.668	301.889	255.494	236.725	206.793	243.542	354.150	414.031	409.676	517.527	429.982
Toplam/Total	451.209	438.597	373.219	357.465	305.998	369.819	509.784	593.519	556.280	664.655	587.331
İthalat/Imports (%)	69	69	68	66	68	66	69	70	74	78	73

## Hafif Ticari Araçlar Pazarı (2004-2014 Ocak-Aralık)

### Light Commercial Vehicle Market (2004-2014 January-December)

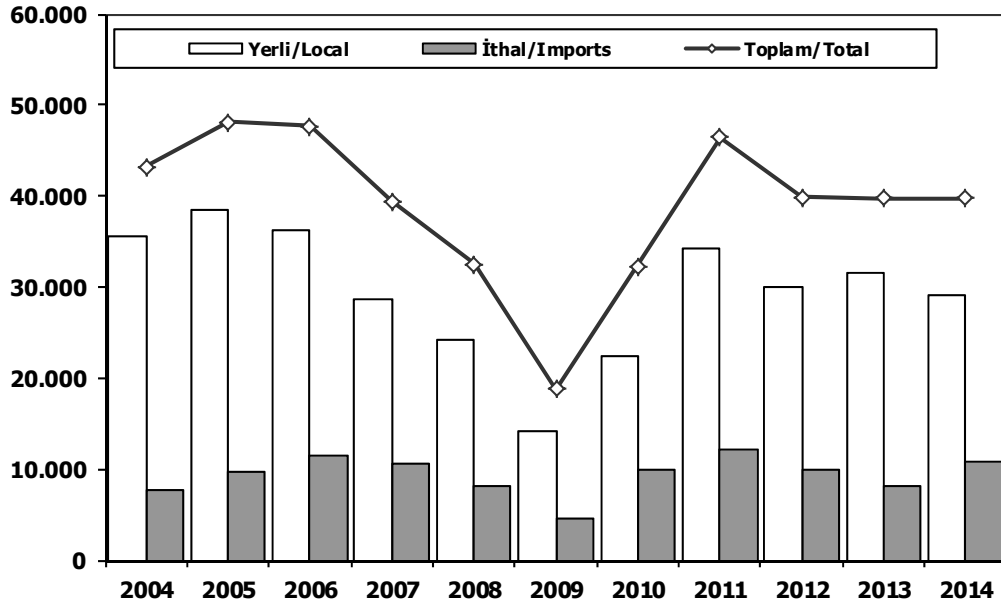


	2004	2005	2006	2007	2008	2009	2010	2011	2012	2013	2014
Yerli/Local	135.980	147.426	129.075	128.965	96.957	121.417	149.720	158.586	129.399	98.778	98.224
İthal/Imports	110.906	124.385	115.558	108.332	91.068	65.890	101.409	112.334	92.082	89.945	82.126
Toplam/Total	246.886	271.811	244.633	237.297	188.025	187.307	251.129	270.920	221.481	188.723	180.350
İthalat/Imports (%)	45	46	47	46	48	35	40	41	42	48	46



## Ağır Ticari Araçlar Pazarı (2004-2014 Ocak-Aralık)

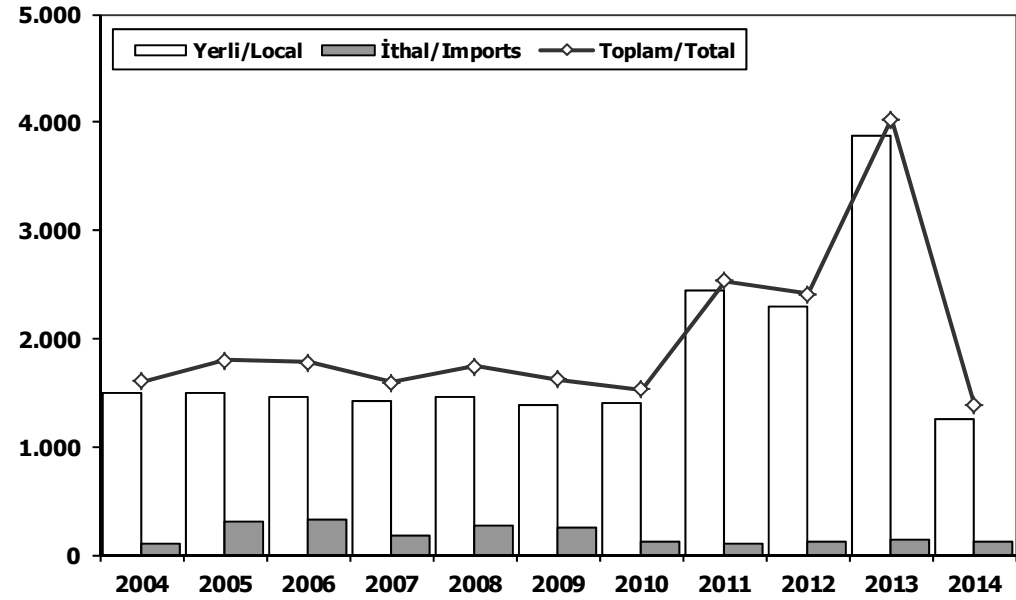
### HCV Market (2004-2014 January-December)



	2004	2005	2006	2007	2008	2009	2010	2011	2012	2013	2014
Yerli/Local	35.544	38.370	36.255	28.749	24.295	14.254	22.410	34.261	29.923	31.609	29.071
İthal/Imports	7.630	9.759	11.408	10.695	8.226	4.489	9.849	12.167	9.936	8.137	10.734
Toplam/Total	43.174	48.129	47.663	39.444	32.521	18.743	32.259	46.428	39.859	39.746	39.805
İthalat/Imports (%)	18	20	24	27	25	24	31	26	25	20	27

## Otobüs Pazarı (2004-2014 Ocak-Aralık)

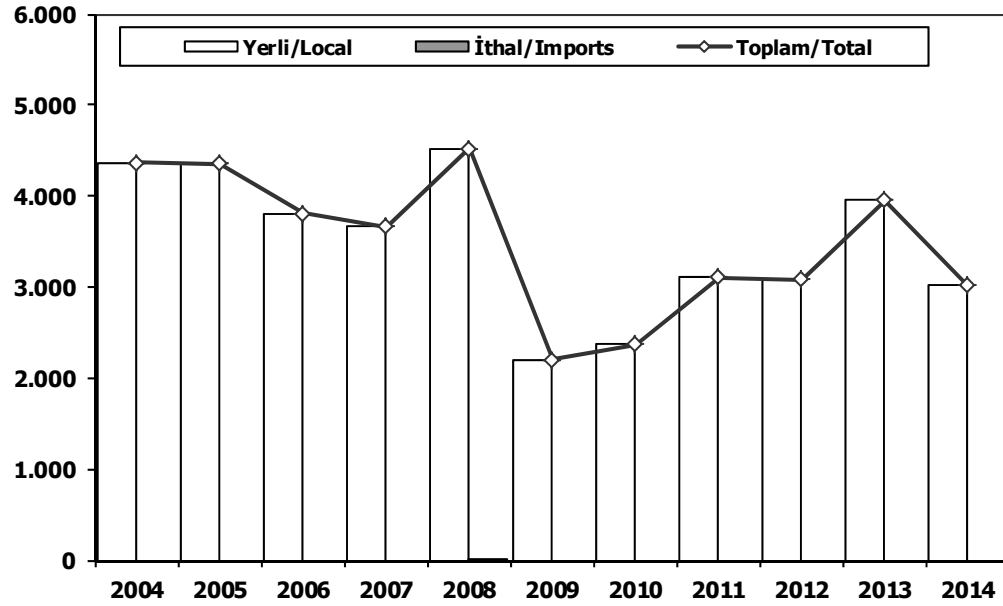
### Bus Market (2004-2014 January-December)



	2004	2005	2006	2007	2008	2009	2010	2011	2012	2013	2014
Yerli/Local	1.503	1.498	1.466	1.413	1.468	1.376	1.409	2.437	2.291	3.882	1.258
İthal/Imports	103	298	317	185	271	247	116	95	119	145	120
Toplam/Total	1.606	1.796	1.783	1.598	1.739	1.623	1.525	2.532	2.410	4.027	1.378
İthalat/Imports (%)	6	17	18	12	16	15	8	4	5	4	9

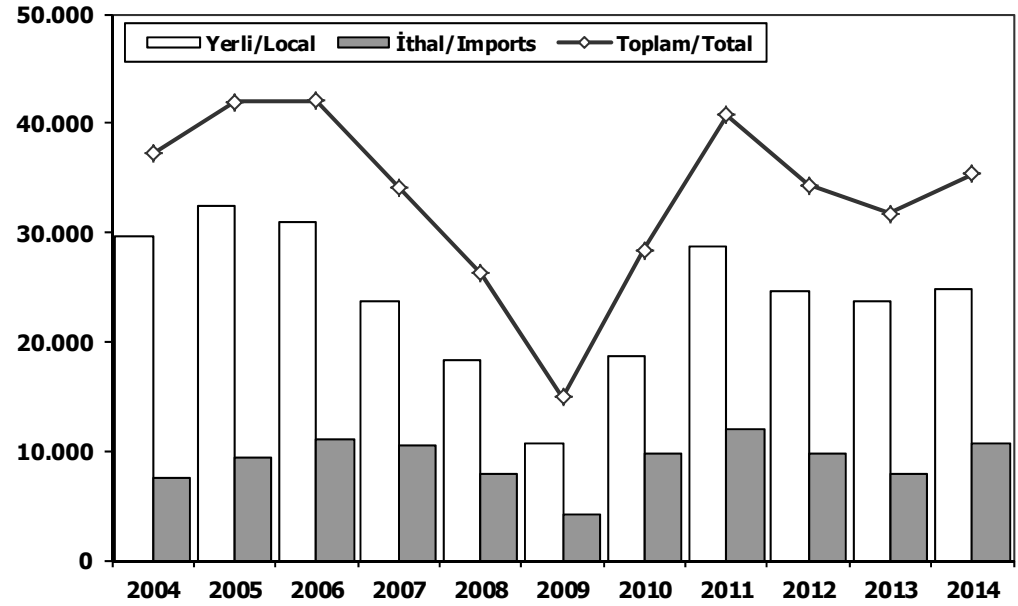
## Midibüs Pazarı (2004-2014 Ocak-Aralık) (7-9 mt/25-35 Kişilik)

Midibus Market (2004-2014 January-December) (7-9 mt/25-35 Passengers)



## Kamyon Pazarı (2004-2014 Ocak-Aralık)

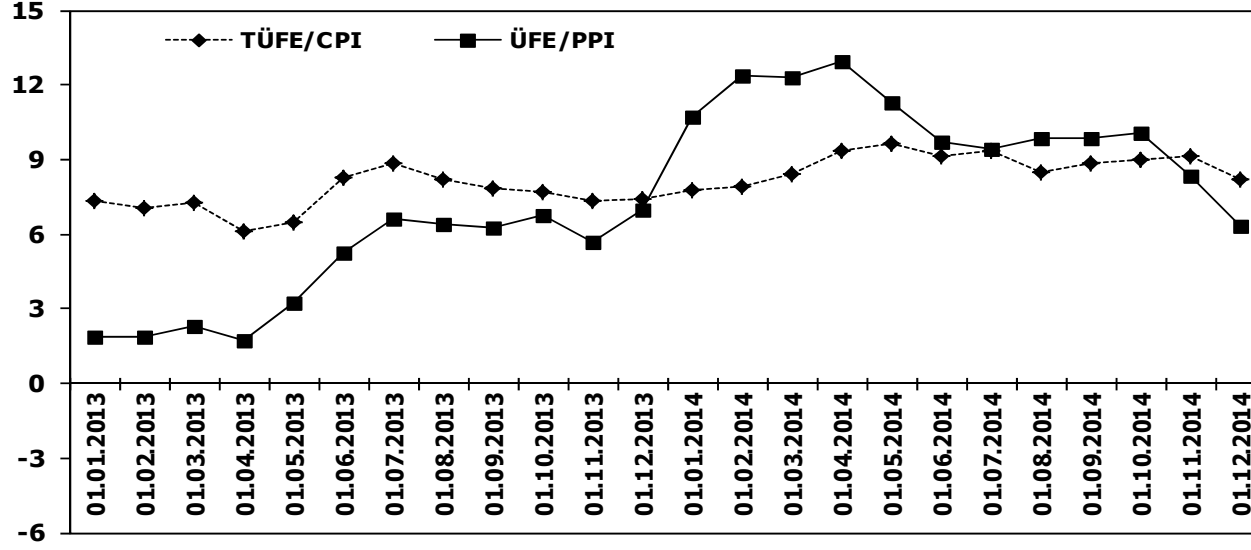
Truck Market (2004-2014 January-December)



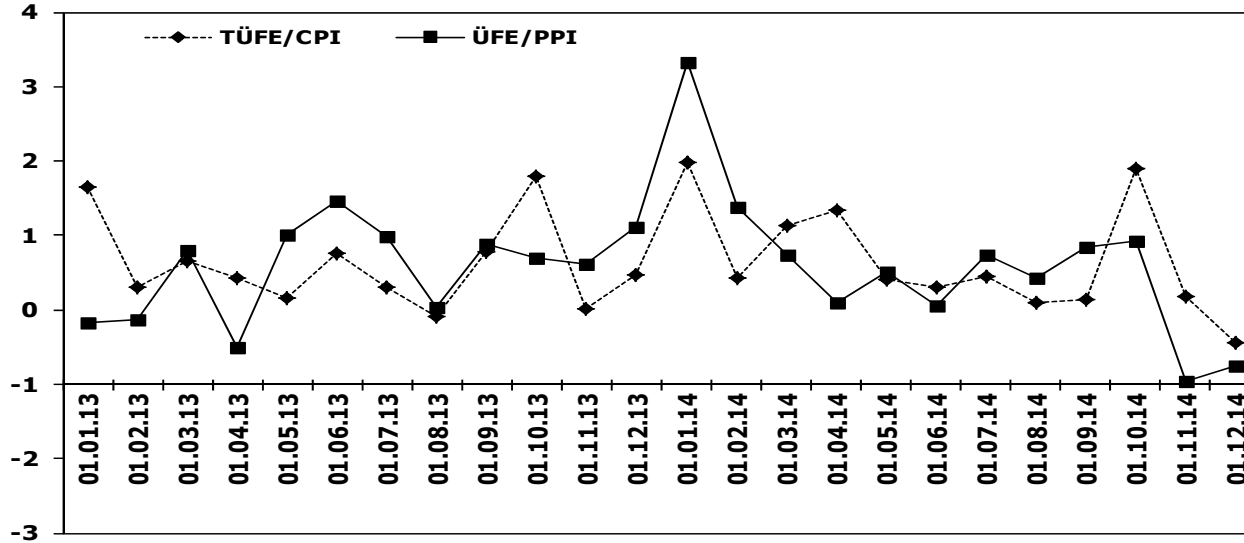
	2004	2005	2006	2007	2008	2009	2010	2011	2012	2013	2014
Yerli/Local	4.363	4.351	3.809	3.661	4.511	2.205	2.372	3.104	3.084	3.959	3.019
İthal/Imports	0	0	0	0	11	0	0	0	0	0	0
Toplam/Total	4.363	4.351	3.809	3.661	4.522	2.205	2.372	3.104	3.084	3.959	3.019
İthalat/Imports (%)	0	0	0	0	0	0	0	0	0	0	0

	2004	2005	2006	2007	2008	2009	2010	2011	2012	2013	2014
Yerli/Local	29.678	32.521	30.980	23.675	18.316	10.673	18.629	28.720	24.548	23.768	24.794
İthal/Imports	7.527	9.461	11.091	10.510	7.944	4.242	9.733	12.072	9.817	7.992	10.614
Toplam/Total	37.205	41.982	42.071	34.185	26.260	14.915	28.362	40.792	34.365	31.760	35.408
İthalat/Imports (%)	20	23	26	31	30	28	34	30	29	25	30

## TÜFE ve ÜFE'nin Yıllık Değişimi (%) CPI and PPI Yearly Changes (%)



## TÜFE ve ÜFE'nin Aylık Değişimi (%) CPI and PPI Monthly Changes (%)



## 2014 Otomotiv Sanayii Dış Satışlar

### 2014 Automotive Industry Exports Sales

TIPLER-Types	Ocak January	Şubat February	Mart March	Nisan April	Mayıs May	Haziran June	Temmuz July	Ağustos August	Eylül September	Ekim October	Kasım November	Aralık December	TOPLAM Total
<b>Otomobil</b>	<b>35.925</b>	<b>46.549</b>	<b>53.966</b>	<b>55.913</b>	<b>52.296</b>	<b>54.886</b>	<b>53.125</b>	<b>26.433</b>	<b>54.468</b>	<b>44.544</b>	<b>51.528</b>	<b>52.360</b>	<b>581.993</b>
OTOMOBİL-Pass. Car	35.925	46.549	53.966	55.913	52.296	54.886	53.125	26.433	54.468	44.544	51.528	52.360	581.993
<b>TİCARİ ARAC</b>	<b>15.499</b>	<b>22.600</b>	<b>28.280</b>	<b>26.961</b>	<b>29.622</b>	<b>29.842</b>	<b>26.562</b>	<b>11.514</b>	<b>28.890</b>	<b>24.433</b>	<b>29.036</b>	<b>29.948</b>	<b>303.187</b>
* KAMYONET-Pick Up	14.122	20.532	25.507	24.027	26.654	27.200	24.154	9.535	25.529	21.082	25.624	26.029	269.995
* KAMYON-Truck	61	94	71	73	122	106	157	71	79	77	159	211	1.281
* MIDİBUS-Midibus	54	20	126	49	79	126	14	89	23	71	63	110	824
* MINİBUS-Minibus	1.088	1.617	2.174	2.429	2.397	1.997	1.811	1.454	2.883	2.860	2.688	3.060	26.458
* OTOBÜS-Bus	174	337	402	383	370	413	426	365	376	343	502	538	4.629
<b>Traktör</b>	<b>864</b>	<b>1.332</b>	<b>1.335</b>	<b>1.198</b>	<b>1.761</b>	<b>1.819</b>	<b>1.522</b>	<b>1.256</b>	<b>1.816</b>	<b>1.618</b>	<b>1.408</b>	<b>1.085</b>	<b>17.014</b>
TRAKTÖR-F. Tractor	864	1.332	1.335	1.198	1.761	1.819	1.522	1.256	1.816	1.618	1.408	1.085	17.014
<b>TOPLAM-Total</b>	<b>52.288</b>	<b>70.481</b>	<b>83.581</b>	<b>84.072</b>	<b>83.679</b>	<b>86.547</b>	<b>81.209</b>	<b>39.203</b>	<b>85.174</b>	<b>70.595</b>	<b>81.972</b>	<b>83.393</b>	<b>902.174</b>

#### Otomobil

FİRMALAR-Companies	Ocak January	Şubat February	Mart March	Nisan April	Mayıs May	Haziran June	Temmuz July	Ağustos August	Eylül September	Ekim October	Kasım November	Aralık December	TOPLAM Total
FORD OTOSAN	0	15	17	175	1.746	1.426	1.470	153	479	372	1.473	785	8.111
HONDA TÜRKİYE	147	63	0	240	90	275	295	61	107	192	0	90	1.560
HYUNDAİ ASSAN	12.425	9.200	15.000	17.000	17.245	17.170	15.700	11.300	17.377	13.003	16.300	18.073	179.793
OYAK RENAULT	12.579	24.852	24.495	24.941	20.480	24.089	22.191	9.058	25.006	21.555	25.130	23.616	257.992
TOFAŞ	1.885	2.135	3.083	2.380	2.287	2.749	2.090	620	2.201	1.815	1.926	1.849	25.020
TOYOTA	8.889	10.284	11.371	11.177	10.448	9.177	11.379	5.241	9.298	7.607	6.699	7.947	109.517
<b>TOPLAM-Total</b>	<b>35.925</b>	<b>46.549</b>	<b>53.966</b>	<b>55.913</b>	<b>52.296</b>	<b>54.886</b>	<b>53.125</b>	<b>26.433</b>	<b>54.468</b>	<b>44.544</b>	<b>51.528</b>	<b>52.360</b>	<b>581.993</b>

#### Kamyonet

FİRMALAR-Companies	Ocak January	Şubat February	Mart March	Nisan April	Mayıs May	Haziran June	Temmuz July	Ağustos August	Eylül September	Ekim October	Kasım November	Aralık December	TOPLAM Total
FORD OTOSAN	5.035	10.950	14.732	14.368	15.771	16.000	13.203	6.829	14.425	12.279	14.103	14.899	152.594
KARSAN	6	0	0	0	2	1	0	0	0	0	0	1	10
OTOKAR	0	0	0	0	10	39	0	14	0	6	40	68	177
TOFAŞ	9.081	9.582	10.775	9.659	10.871	11.160	10.951	2.692	11.104	8.797	11.481	11.061	117.214
<b>TOPLAM-Total</b>	<b>14.122</b>	<b>20.532</b>	<b>25.507</b>	<b>24.027</b>	<b>26.654</b>	<b>27.200</b>	<b>24.154</b>	<b>9.535</b>	<b>25.529</b>	<b>21.082</b>	<b>25.624</b>	<b>26.029</b>	<b>269.995</b>

#### Minibüs

FİRMALAR-Companies	Ocak January	Şubat February	Mart March	Nisan April	Mayıs May	Haziran June	Temmuz July	Ağustos August	Eylül September	Ekim October	Kasım November	Aralık December	TOPLAM Total
FORD OTOSAN	1.088	1.617	2.173	2.429	2.387	1.996	1.807	1.449	2.879	2.860	2.688	3.053	26.426
KARSAN	0	0	1	0	0	1	4	5	4	0	0	6	21
OTOKAR	0	0	0	0	10	0	0	0	0	0	0	1	11
<b>TOPLAM-Total</b>	<b>1.088</b>	<b>1.617</b>	<b>2.174</b>	<b>2.429</b>	<b>2.397</b>	<b>1.997</b>	<b>1.811</b>	<b>1.454</b>	<b>2.883</b>	<b>2.860</b>	<b>2.688</b>	<b>3.060</b>	<b>26.458</b>

#### Kamyon

FİRMALAR-Companies	Ocak January	Şubat February	Mart March	Nisan April	Mayıs May	Haziran June	Temmuz July	Ağustos August	Eylül September	Ekim October	Kasım November	Aralık December	TOPLAM Total
FORD OTOSAN	32	55	67	53	91	81	93	30	30	46	95	117	790
KARSAN	0	0	0	1	0	0	0	0	0	0	2	0	3
M. BENZ TÜRK	29	39	4	19	31	25	64	41	49	31	58	94	484
OTOKAR	0	0	0	0	0	0	0	0	0	0	4	0	4
<b>TOPLAM-Total</b>	<b>61</b>	<b>94</b>	<b>71</b>	<b>73</b>	<b>122</b>	<b>106</b>	<b>157</b>	<b>71</b>	<b>79</b>	<b>77</b>	<b>159</b>	<b>211</b>	<b>1.281</b>

#### Midibüs

FİRMALAR-Companies	Ocak January	Şubat February	Mart March	Nisan April	Mayıs May	Haziran June	Temmuz July	Ağustos August	Eylül September	Ekim October	Kasım November	Aralık December	TOPLAM Total
A.I.O.S.	52	20	108	44	64	71	9	65	5	43	54	91	626
OTOKAR	2	0	17	5	15	55	5	24	18	28	9	19	197
TEMSA GLOBAL	0	0	1	0	0	0	0	0	0	0	0	0	1
<b>TOPLAM-Total</b>	<b>54</b>	<b>20</b>	<b>126</b>	<b>49</b>	<b>79</b>	<b>126</b>	<b>14</b>	<b>89</b>	<b>23</b>	<b>71</b>	<b>63</b>	<b>110</b>	<b>824</b>

#### Otobüs

FİRMALAR-Companies	Ocak January	Şubat February	Mart March	Nisan April	Mayıs May	Haziran June	Temmuz July	Ağustos August	Eylül September	Ekim October	Kasım November	Aralık December	TOPLAM Total
A.I.O.S.	0	0	34	1	0	0	5	1	5	14	18	44	122
KARSAN	0	0	0	0	0	0	3	0	0	0	0	0	3
M. BENZ TÜRK	86	193	255	233	282	311	278	284	230	158	353	291	2.954
MAN TÜRKİYE	66	90	76	116	70	75	69	41	91	93	77	73	937
OTOKAR	1	3	7	9	12	14	38	13	16	49	10	19	191
TEMSA GLOBAL	21	51	30	24	6	13	33	26	34	29	44	111	422
<b>TOPLAM-Total</b>	<b>174</b>	<b>337</b>	<b>402</b>	<b>383</b>	<b>370</b>	<b>413</b>	<b>426</b>	<b>365</b>	<b>376</b>	<b>343</b>	<b>502</b>	<b>538</b>	<b>4.629</b>

#### Traktör

FİRMALAR-Companies	Ocak January	Şubat February	Mart March	Nisan April	Mayıs May	Haziran June	Temmuz July	Ağustos August	Eylül September	Ekim October	Kasım November	Aralık December	TOPLAM Total
HATTAT TARIM	42	90	86	130	139	110	109	86	161	110	85	0	1.148
TÜRK TRAKTÖR	822	1.242	1.249	1.068	1.622	1.709	1.413	1.170	1.655	1.508	1.323	1.085	16.866
<b>TOPLAM-Total</b>	<b>864</b>	<b>1.332</b>	<b>1.335</b>	<b>1.198</b>	<b>1.761</b>	<b>1.819</b>	<b>1.522</b>	<b>1.256</b>	<b>1.816</b>	<b>1.618</b>	<b>1.408</b>	<b>1.085</b>	<b>17.014</b>

## 2014 Yılı İthal Hafif Araç Satışları 2014 Light Vehicles Import Sales

2014 YILI İTHAL OTOMOBİL SATIŞLARI / P.Cars Import 2014

	2013 TOPLAMI 2013 Total	1	2	3	4	5	6	7	8	9	10	11	12	2014 TOPLAMI 2014 Total
VOLKSWAGEN	88.304	4.242	5.080	6.247	7.025	7.193	6.026	7.104	6.863	6.283	7.139	8.262	13.182	84.646
OPEL	55.719	1.672	1.374	2.316	2.833	3.346	3.431	2.888	2.868	3.125	3.442	3.542	8.418	39.255
FORD	58.405	1.389	1.244	1.621	2.400	2.866	3.658	4.762	3.220	2.420	2.449	3.277	6.376	35.682
DACIA	28.901	1.158	1.229	1.854	1.586	1.883	2.274	2.358	2.096	1.492	2.269	3.214	6.484	27.897
B.M.W	20.705	334	617	1.875	1.852	1.938	2.076	2.050	2.856	2.417	3.146	2.798	4.215	26.174
RENAULT	32.904	1.719	1.616	2.101	1.842	2.121	1.629	1.719	1.862	2.159	1.771	2.674	4.359	25.572
MERCEDES	20.023	582	900	1.783	1.619	2.083	2.512	1.723	1.700	2.014	2.013	1.625	4.546	23.100
HYUNDAI	29.824	882	1.125	1.362	1.675	1.861	1.986	1.720	1.616	2.324	1.896	1.963	3.275	21.685
NISSAN	18.417	741	1.603	2.355	1.237	1.181	985	1.091	1.687	1.592	1.455	1.735	3.760	19.422
AUDI	14.987	455	750	1.175	1.391	1.598	1.255	903	1.657	1.303	1.525	2.179	3.618	17.809
PEUGEOT	23.068	622	871	1.258	1.208	1.324	1.999	1.104	1.109	1.314	1.124	1.844	3.249	17.026
SKODA	12.833	458	632	747	907	1.578	1.200	1.230	1.355	1.300	1.377	1.348	2.405	14.537
CITROEN	19.690	657	715	790	1.062	1.040	888	943	952	1.370	1.259	1.555	3.158	14.389
SEAT	11.065	536	352	524	762	811	959	1.326	1.310	719	1.350	1.922	2.126	12.697
KIA	13.195	483	462	694	733	775	944	876	981	1.208	861	1.093	1.907	11.017
TOYOTA	22.421	366	363	512	682	647	576	953	975	888	920	1.136	2.128	10.146
FIAT	10.913	587	313	306	553	723	718	516	427	370	412	534	720	6.179
VOLVO	5.021	252	256	412	509	525	501	470	428	448	557	729	973	6.060
HONDA	3.394	142	257	285	455	161	105	295	246	224	187	316	596	3.269
JEEP	973	31	66	64	71	46	63	45	171	129	263	354	657	1.960
SUBARU	1.101	120	70	116	91	108	124	68	96	135	110	134	230	1.402
MAZDA	1.377	30	40	69	133	57	170	61	53	153	155	95	275	1.291
LAND ROVER	1.323	26	52	142	95	144	94	88	66	76	114	122	188	1.207
MINI (İngiliz)	1.557	51	51	150	45	73	56	48	47	88	136	125	201	1.071
MITSUBISHI	1.488	83	81	53	70	65	62	58	68	78	70	172	299	1.159
ALFA ROMEO	1.030	60	26	32	44	147	150	110	62	47	75	95	119	967
SUZUKI	1.623	76	68	98	99	179	115	83	86	50	45	26	33	958
PROTON	715	110	22	24	74	80	50	20	20	32	30	100	145	707
PORSCHE	517	45	31	27	41	41	41	57	54	35	44	53	119	588
CHEVROLET	12.506	206	161	134	29	8	14	14	0	1	1	4	0	572
SSANGYONG	972	44	16	38	52	30	57	41	40	40	36	47	90	531
CHERY	492	17	16	34	34	53	35	12	17	22	20	30	35	325
LANCIA	782	8	31	44	69	17	18	3	2	4	2	3	9	210
TATA	326	1	0	0	0	0	17	15	5	27	19	21	21	126
GEEELY	623	12	5	9	8	3	10	10	9	10	3	6	10	95
MASERATI	40	6	8	9	4	5	4	3	5	7	6	7	19	83
SMART	110	4	5	8	8	5	8	7	0	4	6	12	9	76
JAGUAR	97	0	8	3	5	2	8	4	4	15	1	1	1	52
BENTLEY	21	0	2	1	0	2	1	2	1	1	2	1	8	21
FERRARI	23	0	3	2	0	2	0	0	0	2	1	0	1	11
INFINITI	37	1	0	1	0	1	0	0	0	0	0	2	1	6
LAMBORGHINI	4	0	1	0	0	0	0	0	0	0	1	0	0	2
<b>TOPLAM</b>	<b>517.526</b>	<b>18.208</b>	<b>20.522</b>	<b>29.275</b>	<b>31.303</b>	<b>34.722</b>	<b>34.819</b>	<b>34.780</b>	<b>35.014</b>	<b>33.926</b>	<b>36.292</b>	<b>43.156</b>	<b>77.965</b>	<b>429.982</b>

2014 YILI İTHAL HAFIF TİCARİ ARAÇ SATIŞLARI / Light Commercial Vehicles Import 2014

	2013 TOPLAMI 2013 Total	1	2	3	4	5	6	7	8	9	10	11	12	2014 TOPLAMI 2014 Total
VOLKSWAGEN	23.752	1.152	1.144	1.365	1.779	1.956	2.004	1.975	2.208	1.915	1.975	2.394	4.134	24.001
RENAULT	11.550	565	431	556	484	613	666	640	767	849	746	986	1.413	8.716
MERCEDES	10.421	490	389	712	456	493	658	479	759	679	838	833	1.242	8.028
FIAT	6.245	397	455	414	557	514	424	414	796	731	722	724	1.516	7.664
DACIA	7.494	510	400	315	340	427	409	440	505	1.063	473	732	958	6.572
CITROEN	6.679	234	103	318	386	448	666	661	424	610	596	582	1.020	6.048
PEUGEOT	8.323	78	105	249	445	539	438	361	448	701	434	667	1.367	5.832
MITSUBISHI	3.592	229	180	201	266	196	168	297	502	557	530	347	715	4.188
IVECO	2.204	77	127	212	181	168	189	138	164	201	250	224	593	2.524
KIA	453	47	44	62	102	114	158	102	241	319	240	397	231	2.057
ISUZU	2.587	228	138	174	177	190	123	212	260	76	54	29	67	1.728
TOYOTA	2.413	139	105	349	116	66	83	94	118	128	113	169	190	1.670
HYUNDAI	1.480	117	86	73	117	126	67	149	199	101	104	159	267	1.565
SSANGYONG	859	63	55	11	33	31	43	64	73	47	52	54	100	626
FORD	657	1	23	12	16	7	14	34	18	55	24	43	86	333
TATA	316	20	34	16	29	27	16	25	25	24	23	26	290	
NISSAN	878	9	2	20	13	20	19	9	26	58	50	40	9	275
MAZDA	3	0	5	0	0	3	1	0	0	0	0	0	0	9
<b>TOPLAM</b>	<b>89.906</b>	<b>4.356</b>	<b>3.826</b>	<b>5.059</b>	<b>5.497</b>	<b>5.938</b>	<b>6.146</b>	<b>6.094</b>	<b>7.533</b>	<b>8.115</b>	<b>7.225</b>	<b>8.403</b>	<b>13.934</b>	<b>82.126</b>