



OTOMOTİV SANAYİİ DERNEĞİ
AUTOMOTIVE MANUFACTURERS ASSOCIATION

AYLIK RAPOR

Automotive Industry Monthly Report

Aralık / December 2013

- **Üretim/Production**
- **Satış/Sales**
- **İthalat/Imports**
- **İhracat/Exports**

OSD "OICA" Üyesidir



OSD is a Member of "OICA"

2013 Aralık Ayı Özeti / 2013 December Summary

| KONULAR/ MATTERS | | ARALIK/ DECEMBER | | | YILLIK/ YEARLY | | |
|-----------------------|------------------|------------------|---------------|---------------|----------------|----------------|---------------|
| | | 2012 | 2013 | 2013/2012 (%) | 2012 | 2013 | 2013/2012 (%) |
| Üretim/ Production | Toplam/ Total | 86.944 | 83.166 | -4 | 1.072.978 | 1.125.534 | 5 |
| | Otomobil/ P.Cars | 44.708 | 50.935 | 14 | 577.296 | 633.604 | 10 |
| Pazar/ Market | Toplam/ Total | 121.113 | 135.596 | 12 | 817.620 | 893.124 | 9 |
| | Otomobil/ P.Cars | 80.926 | 101.199 | 25 | 556.280 | 664.655 | 19 |
| İthalat/ Import | Toplam/ Total | 76.042 | 92.430 | 22 | 511.694 | 615.609 | 20 |
| | Otomobil/ P.Cars | 61.857 | 78.977 | 28 | 409.676 | 517.527 | 26 |
| İhracat/ Export | Toplam/ Total | 64.928 | 64.999 | 0 | 729.923 | 828.471 | 14 |
| | Otomobil/ P.Cars | 35.925 | 42.834 | 19 | 412.991 | 484.504 | 17 |
| İhracat / Export (\$) | Toplam/ Total ** | 1.643.377.627 | 1.803.173.117 | 10 | 19.316.411.457 | 21.563.175.997 | 12 |
| | Otomobil/ P.Cars | 559.698.191 | 523.482.896 | -6 | 6.068.045.119 | 6.855.870.707 | 13 |

| PARAMETRELER / PARAMETERS | | ARALIK/ DECEMBER | | | YILLIK/ YEARLY | | |
|--------------------------------|--|------------------|--------|---------------|----------------|--------|---------------|
| | | 2012 | 2013 | 2013/2012 (%) | 2012 | 2013 | 2013/2012 (%) |
| ÜFE/ PPI | | -0,12 | 1,11 | ** | 2,45 | 6,97 | ** |
| TÜFE/ CPI | | 0,38 | 0,46 | ** | 6,16 | 7,40 | ** |
| Sanayi Endeksi/ Industry Index | | 0,01 | 0,81 | ** | 1,27 | 8,45 | ** |
| \$ (*) | | 1,7862 | 2,1328 | 19 | 1,7905 | 1,9327 | 8 |
| EURO (*) | | 2,3565 | 2,9344 | 25 | 2,3137 | 2,5658 | 11 |
| Japon Yeni (*) | | 2,0742 | 2,0156 | -3 | 2,2388 | 1,9624 | -12 |

(*) Ortalama Değerler / Average Values

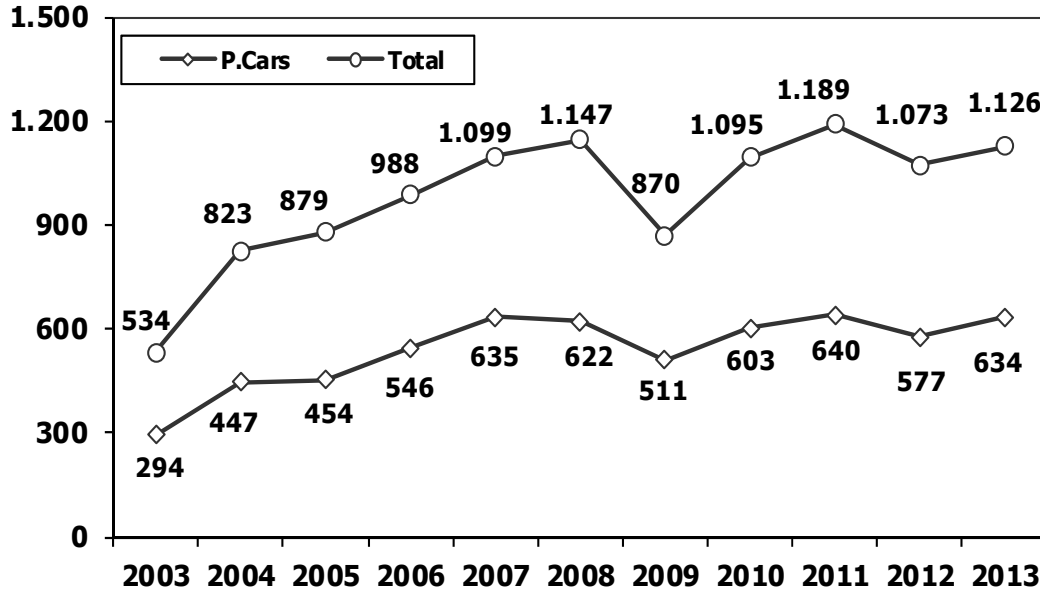
(**) Toplam Sanayi / Total Industry Including Components

2012/2013 Yılları Üretim 2012/2013 Production

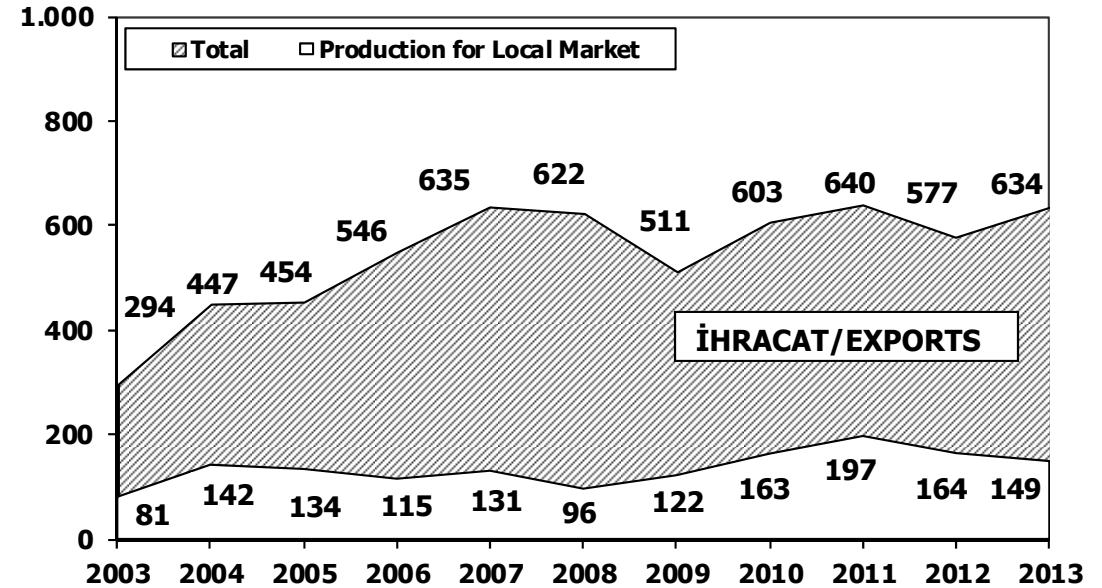
K.KAMYON : AYA 3.5-12 Ton (L.Truck:GVW 3.5-12 Ton)
B.KAMYON : AYA 12 Ton'dan Büyük (M.Truck:GVW 12 Ton And Up)

| TİPLER | ARALIK AYI ÜRETİMİ December Production | | 12 AYLIK ÜRETİM 12 Months Production | | DEĞİŞİM % Percent Change % | |
|---|---|---------------|---|------------------|-------------------------------|--------------------|
| | 2012 | 2013 | 2012 | 2013 | ARALIK December | 12 AY 12 Months |
| OTOMOBİL - Pass.Car | 44.708 | 50.935 | 577.296 | 633.604 | 14 | 10 |
| TİCARİ ARAÇLAR - Commercial Vehicles | 42.236 | 32.231 | 495.682 | 491.930 | -24 | -1 |
| * B. KAMYON - M. Truck | 1.156 | 2.360 | 26.271 | 25.587 | 104 | -3 |
| * K. KAMYON - L. Truck | 158 | 448 | 2.858 | 4.495 | 184 | 57 |
| * KAMYONET - Pick Up | 37.108 | 26.682 | 426.633 | 410.556 | -28 | -4 |
| * OTOBÜS - Bus | 497 | 516 | 6.427 | 8.345 | 4 | 30 |
| * MİNİBÜS - Minibus | 3.060 | 1.862 | 29.335 | 37.750 | -39 | 29 |
| * MİDİBÜS - Midibus | 257 | 363 | 4.158 | 5.197 | 41 | 25 |
| TAŞIT ARAÇLARI TOPLAM - MV Total | 86.944 | 83.166 | 1.072.978 | 1.125.534 | -4 | 5 |
| TRAKTÖR - F. Tractor | 1.604 | 2.873 | 42.255 | 40.509 | 79 | -4 |
| GENEL TOPLAM - Grand Total | 88.548 | 86.039 | 1.115.233 | 1.166.043 | -3 | 5 |

Toplam Üretim ve Otomobil Üretimi (x1000)
Total & P.Cars Production (x1000)



Otomobil Üretimi ve İhracat (x1000)
P.Cars Production & Exports (x1000)



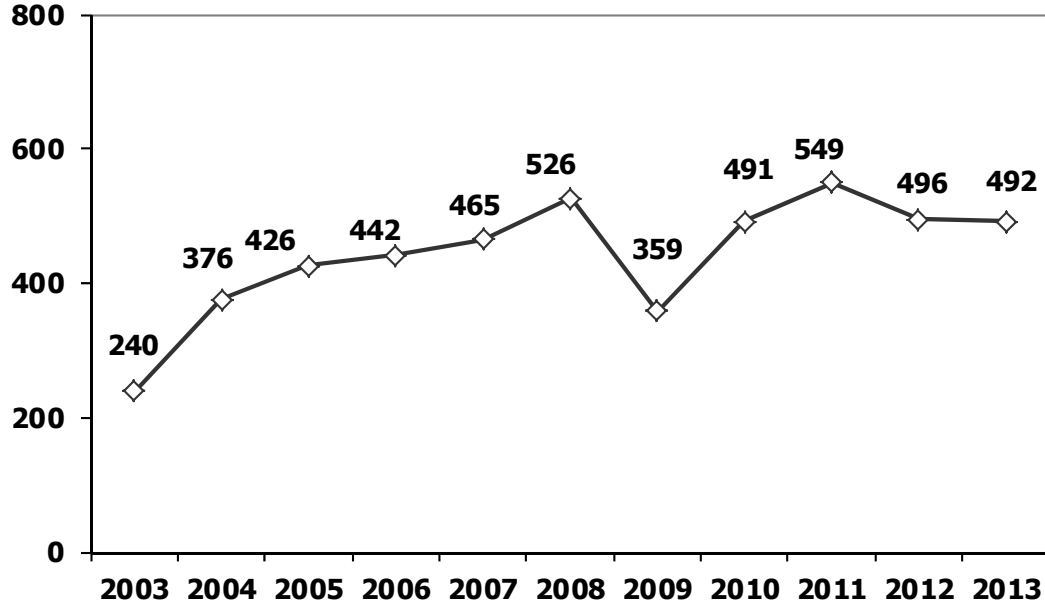
12 Aylık Üretim (12 Months Production)

| FİRMALAR Companies | OTOMOBİL Pass.Car | % | K.KAMYON L.Truck | % | B.KAMYON Mid.Truck | % | KAMYONET Pick Up | % | OTOBÜS Bus | % | MİNİBÜS Mini-Bus | % | MİDİBÜS Midi-Bus | % | TRAKTÖR F.Tractor | % | TOPLAM Totals |
|-----------------------|----------------------|------------|---------------------|------------|-----------------------|------------|---------------------|------------|---------------|------------|---------------------|------------|---------------------|------------|----------------------|------------|------------------|
| A.I.O.S. | 0 | 0 | 2.868 | 64 | 0 | 0 | 0 | 0 | 58 | 1 | 0 | 0 | 1.981 | 38 | 0 | 0 | 4.907 |
| B.M.C. | 0 | 0 | 0 | 0 | 0 | 0 | 0 | 0 | 0 | 0 | 0 | 0 | 0 | 0 | 0 | 0 | 0 |
| FORD OTOSAN | 0 | 0 | 0 | 0 | 6.293 | 25 | 238.120 | 58 | 0 | 0 | 36.874 | 98 | 0 | 0 | 0 | 0 | 281.287 |
| HATTAT TARIM | 0 | 0 | 0 | 0 | 0 | 0 | 0 | 0 | 0 | 0 | 0 | 0 | 0 | 0 | 2.098 | 5 | 2.098 |
| HONDA TÜRKİYE | 14.813 | 2 | 0 | 0 | 0 | 0 | 0 | 0 | 0 | 0 | 0 | 0 | 0 | 0 | 0 | 0 | 14.813 |
| HYUNDAI ASSAN | 102.020 | 16 | 0 | 0 | 0 | 0 | 0 | 0 | 0 | 0 | 0 | 0 | 0 | 0 | 0 | 0 | 102.020 |
| KARSAN | 0 | 0 | 90 | 2 | 900 | 4 | 10.084 | 2 | 576 | 7 | 836 | 2 | 0 | 0 | 0 | 0 | 12.486 |
| M. BENZ TÜRK | 0 | 0 | 0 | 0 | 18.394 | 72 | 0 | 0 | 4.001 | 48 | 0 | 0 | 0 | 0 | 0 | 0 | 22.395 |
| MAN TÜRKİYE | 0 | 0 | 0 | 0 | 0 | 0 | 0 | 0 | 1.300 | 16 | 0 | 0 | 0 | 0 | 0 | 0 | 1.300 |
| OTOKAR | 0 | 0 | 362 | 8 | 0 | 0 | 555 | 0 | 1.224 | 15 | 40 | 0 | 2.659 | 51 | 0 | 0 | 4.840 |
| OYAK RENAULT | 331.694 | 52 | 0 | 0 | 0 | 0 | 0 | 0 | 0 | 0 | 0 | 0 | 0 | 0 | 0 | 0 | 331.694 |
| TEMSA GLOBAL | 0 | 0 | 1.175 | 26 | 0 | 0 | 0 | 0 | 1.186 | 14 | 0 | 0 | 557 | 11 | 0 | 0 | 2.918 |
| TOFAŞ | 82.817 | 13 | 0 | 0 | 0 | 0 | 161.797 | 39 | 0 | 0 | 0 | 0 | 0 | 0 | 0 | 0 | 244.614 |
| TOYOTA | 102.260 | 16 | 0 | 0 | 0 | 0 | 0 | 0 | 0 | 0 | 0 | 0 | 0 | 0 | 0 | 0 | 102.260 |
| TÜRK TRAKTÖR | 0 | 0 | 0 | 0 | 0 | 0 | 0 | 0 | 0 | 0 | 0 | 0 | 0 | 0 | 38.411 | 95 | 38.411 |
| TOPLAM | 633.604 | 100 | 4.495 | 100 | 25.587 | 100 | 410.556 | 100 | 8.345 | 100 | 37.750 | 100 | 5.197 | 100 | 40.509 | 100 | 1.166.043 |

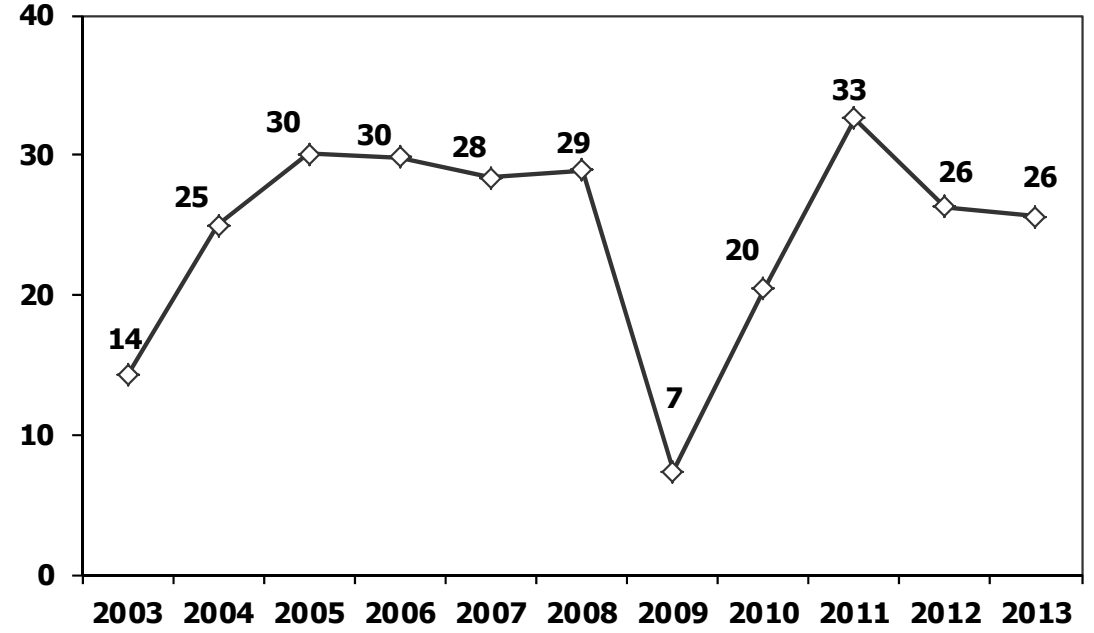
Aralık Ayı Üretimi (December Production)

| FİRMALAR Companies | OTOMOBİL Pass.Car | % | K.KAMYON L.Truck | % | B.KAMYON Mid.Truck | % | KAMYONET Pick Up | % | OTOBÜS Bus | % | MİNİBÜS Mini-Bus | % | MİDİBÜS Midi-Bus | % | TRAKTÖR F.Tractor | % | TOPLAM Totals |
|-----------------------|----------------------|------------|---------------------|------------|-----------------------|------------|---------------------|------------|---------------|------------|---------------------|------------|---------------------|------------|----------------------|------------|------------------|
| A.I.O.S. | 0 | 0 | 396 | 88 | 0 | 0 | 0 | 0 | 1 | 0 | 0 | 0 | 188 | 52 | 0 | 0 | 585 |
| B.M.C. | 0 | 0 | 0 | 0 | 0 | 0 | 0 | 0 | 0 | 0 | 0 | 0 | 0 | 0 | 0 | 0 | 0 |
| FORD OTOSAN | 0 | 0 | 0 | 0 | 915 | 39 | 12.482 | 47 | 0 | 0 | 1.857 | 100 | 0 | 0 | 0 | 0 | 15.254 |
| HATTAT | 0 | 0 | 0 | 0 | 0 | 0 | 0 | 0 | 0 | 0 | 0 | 0 | 0 | 0 | 123 | 4 | 123 |
| HONDA TÜRKİYE | 1040 | 2 | 0 | 0 | 0 | 0 | 0 | 0 | 0 | 0 | 0 | 0 | 0 | 0 | 0 | 0 | 1.040 |
| HYUNDAI ASSAN | 13075 | 26 | 0 | 0 | 0 | 0 | 0 | 0 | 0 | 0 | 0 | 0 | 0 | 0 | 0 | 0 | 13.075 |
| KARSAN | 0 | 0 | 0 | 0 | 0 | 0 | 227 | 1 | 13 | 3 | 0 | 0 | 0 | 0 | 0 | 0 | 240 |
| M. BENZ TÜRK | 0 | 0 | 0 | 0 | 1.445 | 61 | 0 | 0 | 310 | 60 | 0 | 0 | 0 | 0 | 0 | 0 | 1.755 |
| MAN TÜRKİYE | 0 | 0 | 0 | 0 | 0 | 0 | 0 | 0 | 113 | 22 | 0 | 0 | 0 | 0 | 0 | 0 | 113 |
| OTOKAR | 0 | 0 | 52 | 12 | 0 | 0 | 184 | 1 | 49 | 9 | 5 | 0 | 166 | 46 | 0 | 0 | 456 |
| OYAK RENAULT | 20030 | 39 | 0 | 0 | 0 | 0 | 0 | 0 | 0 | 0 | 0 | 0 | 0 | 0 | 0 | 0 | 20.030 |
| TEMSA | 0 | 0 | 0 | 0 | 0 | 0 | 0 | 0 | 30 | 6 | 0 | 0 | 9 | 2 | 0 | 0 | 39 |
| TOFAŞ | 5535 | 11 | 0 | 0 | 0 | 0 | 13.789 | 52 | 0 | 0 | 0 | 0 | 0 | 0 | 0 | 0 | 19.324 |
| TOYOTA | 11255 | 22 | 0 | 0 | 0 | 0 | 0 | 0 | 0 | 0 | 0 | 0 | 0 | 0 | 0 | 0 | 11.255 |
| TÜRK TRAKTÖR | 0 | 0 | 0 | 0 | 0 | 0 | 0 | 0 | 0 | 0 | 0 | 0 | 0 | 0 | 2.750 | 96 | 2.750 |
| TOPLAM | 50.935 | 100 | 448 | 100 | 2.360 | 100 | 26.682 | 100 | 516 | 100 | 1.862 | 100 | 363 | 100 | 2.873 | 100 | 86.039 |

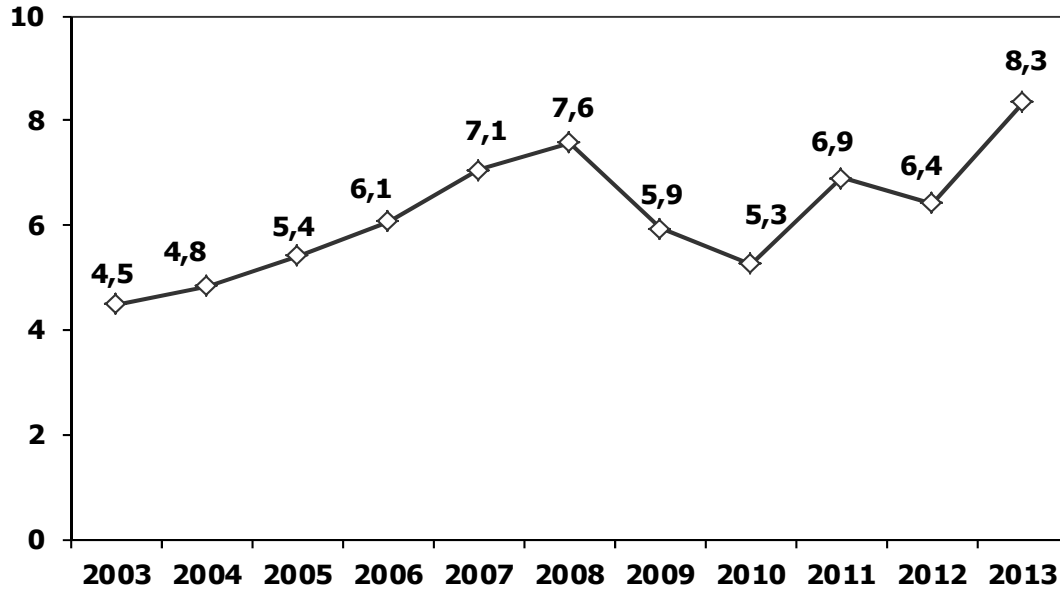
Ticari Araç Üretimi (x1000)
Commercial Vehicle Production (x1000)



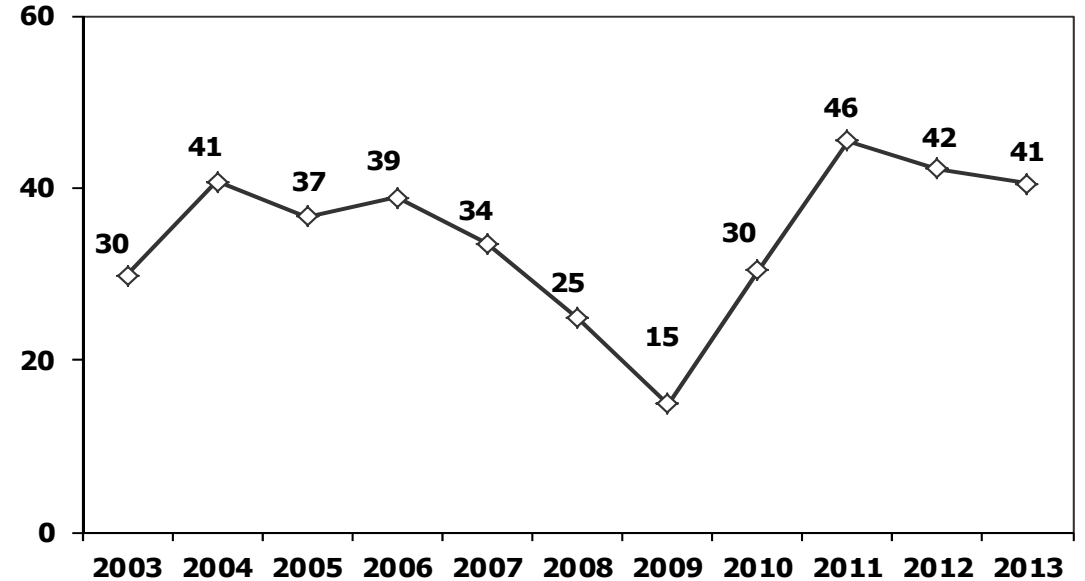
(AYA >12 Ton) **Büyük Kamyon Üretimi** (x1000)
(GVW >12 Ton) Heavy Truck Production (x1000)



Otobüs Üretimi (x1000)
Bus Production (x1000)

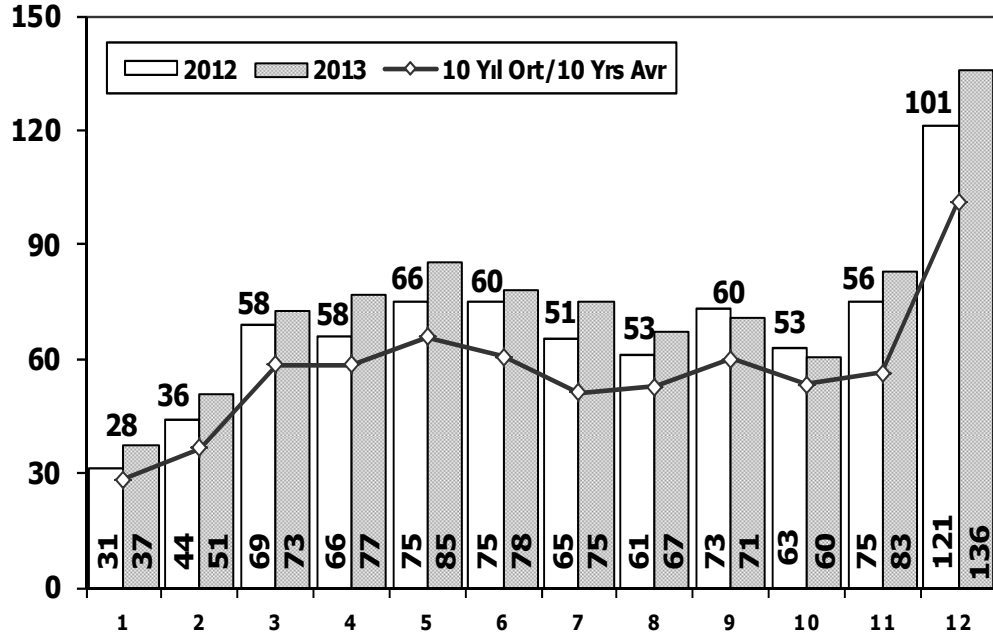


Traktör Üretimi (x1000)
F. Tractor Production (x1000)



Toplam Pazarın Analizi (x1000)

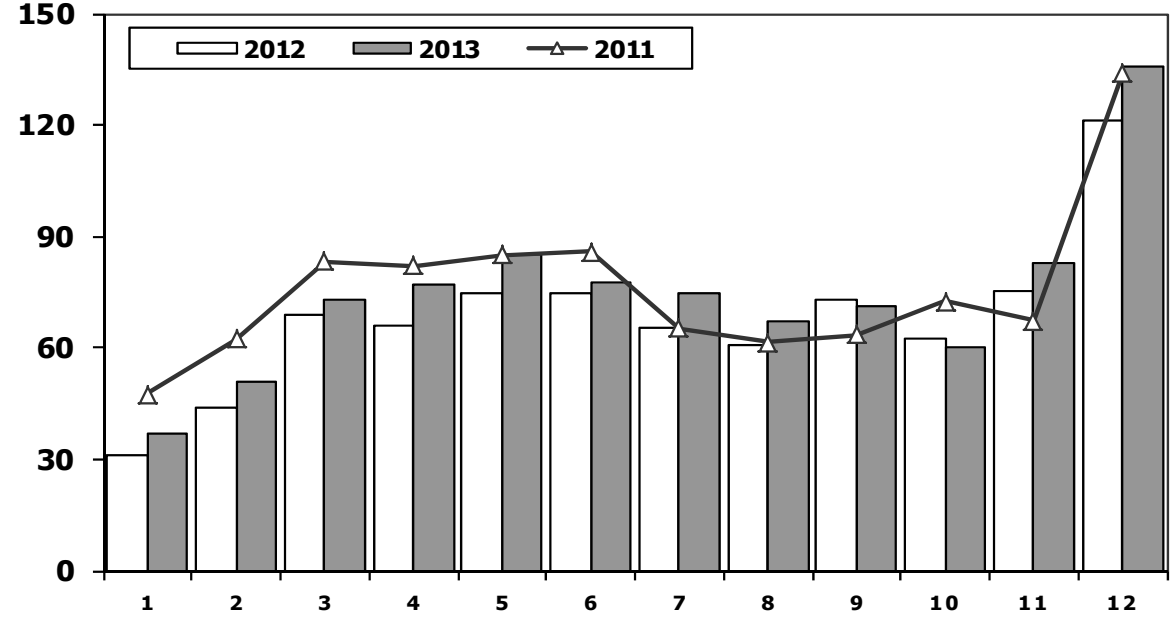
Total Market Analysis (x1000)



| Aylar / Months | 10 Yil Ort. 10 Yrs Avr. (x1000) | 2013 (x1000) | % |
|----------------|---------------------------------|--------------|-------------|
| 1 | 28,3 | 37,1 | 31,2 |
| 2 | 36,5 | 50,9 | 39,6 |
| 3 | 58,3 | 72,7 | 24,6 |
| 4 | 58,3 | 77,0 | 32,0 |
| 5 | 65,6 | 85,4 | 30,1 |
| 6 | 60,5 | 77,8 | 28,6 |
| 7 | 51,3 | 74,7 | 45,7 |
| 8 | 52,6 | 67,4 | 28,1 |
| 9 | 60,0 | 71,0 | 18,5 |
| 10 | 53,2 | 60,4 | 13,5 |
| 11 | 56,2 | 83,0 | 47,7 |
| 12 | 101,3 | 135,6 | 33,8 |
| Total | 682,2 | 893,1 | 30,9 |

Toplam Pazar (x1000)

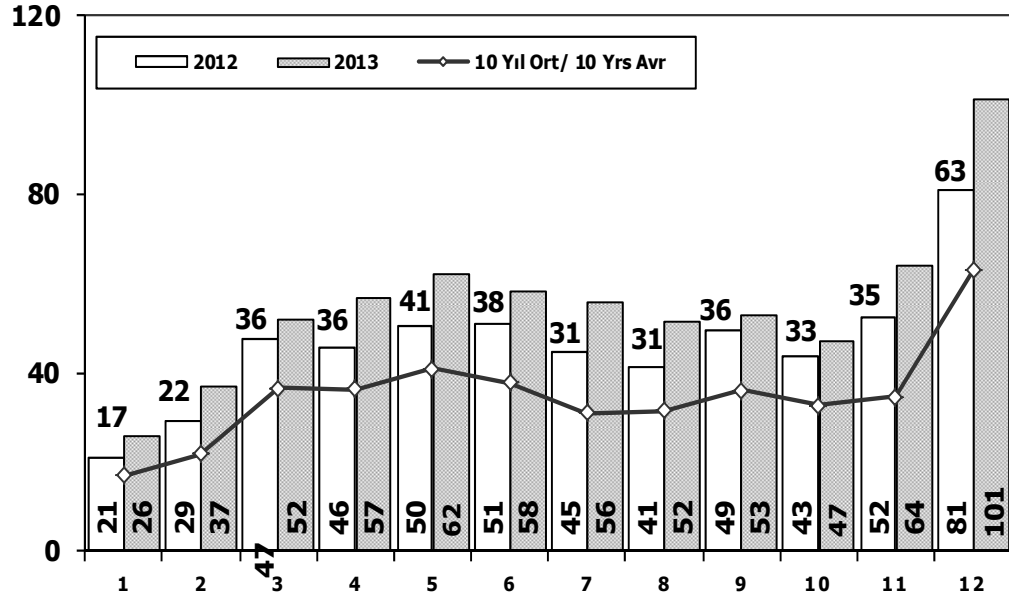
Total Market (x1000)



| | 1 | 2 | 3 | 4 | 5 | 6 | 7 | 8 | 9 | 10 | 11 | 12 | Total |
|------|--------|--------|--------|--------|--------|--------|--------|--------|--------|--------|--------|---------|---------|
| 2003 | 12.576 | 11.317 | 17.095 | 20.380 | 27.803 | 30.517 | 32.268 | 28.839 | 40.315 | 50.051 | 44.081 | 82.721 | 397.963 |
| 2004 | 38.621 | 39.389 | 71.723 | 77.056 | 84.634 | 63.228 | 57.307 | 56.422 | 59.429 | 56.153 | 52.237 | 85.070 | 741.269 |
| 2005 | 22.687 | 38.291 | 64.502 | 60.873 | 71.383 | 64.379 | 63.847 | 68.647 | 66.580 | 60.791 | 65.719 | 110.838 | 758.537 |
| 2006 | 29.969 | 44.646 | 65.090 | 68.853 | 83.289 | 58.203 | 40.037 | 47.374 | 49.629 | 39.805 | 55.898 | 82.722 | 665.515 |
| 2007 | 24.950 | 31.702 | 45.488 | 45.633 | 51.255 | 51.661 | 50.117 | 54.171 | 50.078 | 56.058 | 67.017 | 106.076 | 634.206 |
| 2008 | 33.792 | 38.121 | 56.814 | 50.967 | 51.627 | 49.393 | 44.692 | 46.592 | 46.829 | 35.147 | 28.152 | 44.418 | 526.544 |
| 2009 | 20.631 | 22.846 | 56.531 | 54.426 | 64.887 | 63.102 | 30.246 | 37.092 | 83.403 | 22.117 | 29.202 | 91.386 | 575.869 |
| 2010 | 21.050 | 32.313 | 53.828 | 57.079 | 61.628 | 63.390 | 63.718 | 64.645 | 66.601 | 76.780 | 77.406 | 154.734 | 793.172 |
| 2011 | 47.658 | 62.348 | 83.333 | 82.071 | 85.093 | 85.863 | 65.364 | 61.378 | 63.643 | 72.640 | 67.195 | 134.281 | 910.867 |
| 2012 | 31.219 | 43.827 | 68.957 | 66.014 | 74.820 | 74.781 | 65.122 | 60.848 | 73.197 | 62.677 | 75.045 | 121.113 | 817.620 |
| 2013 | 37.140 | 50.931 | 72.688 | 77.015 | 85.421 | 77.771 | 74.726 | 67.383 | 71.037 | 60.399 | 83.017 | 135.596 | 893.124 |

Otomobil Pazarının Analizi (x1000)

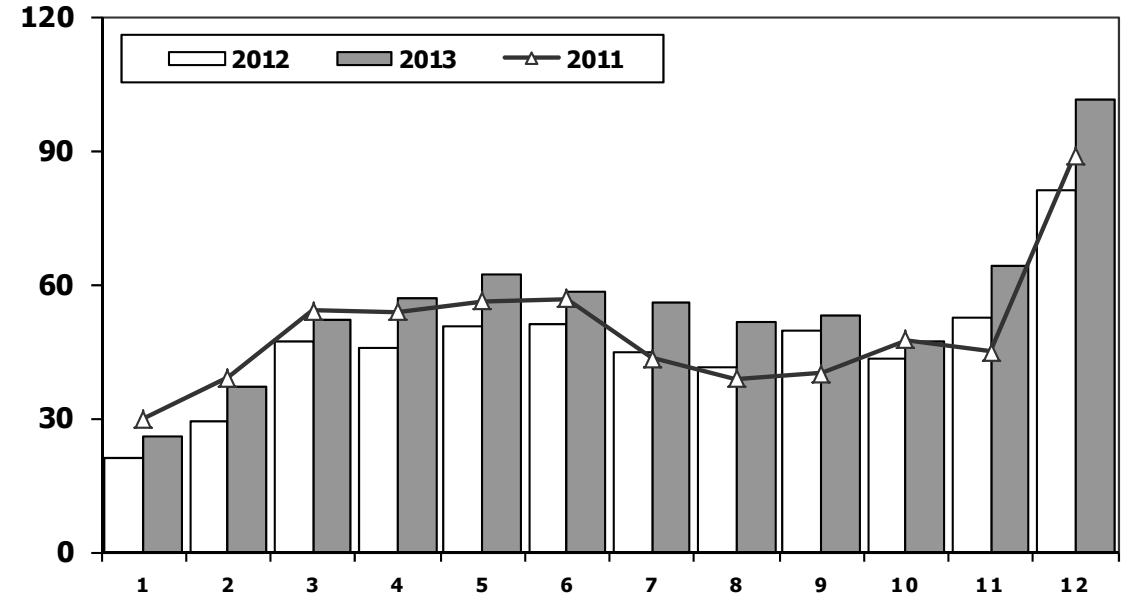
P.Cars Market Analysis (x1000)



| Aylar / Months | 10 Yil Ort. 10 Yrs Avr. (x1000) | 2013 (x1000) | % |
|----------------|---------------------------------|--------------|-------------|
| 1 | 16,9 | 25,8 | 53,3 |
| 2 | 21,7 | 36,8 | 69,8 |
| 3 | 36,4 | 51,8 | 42,2 |
| 4 | 36,3 | 57,0 | 56,9 |
| 5 | 41,0 | 62,4 | 52,3 |
| 6 | 37,7 | 58,3 | 54,5 |
| 7 | 31,0 | 55,7 | 79,9 |
| 8 | 31,4 | 51,6 | 64,6 |
| 9 | 36,0 | 52,9 | 47,1 |
| 10 | 32,6 | 47,0 | 44,1 |
| 11 | 34,7 | 64,1 | 85,0 |
| 12 | 62,8 | 101,2 | 61,2 |
| Total | 418,3 | 664,7 | 58,9 |

Otomobil Pazarı (x1000)

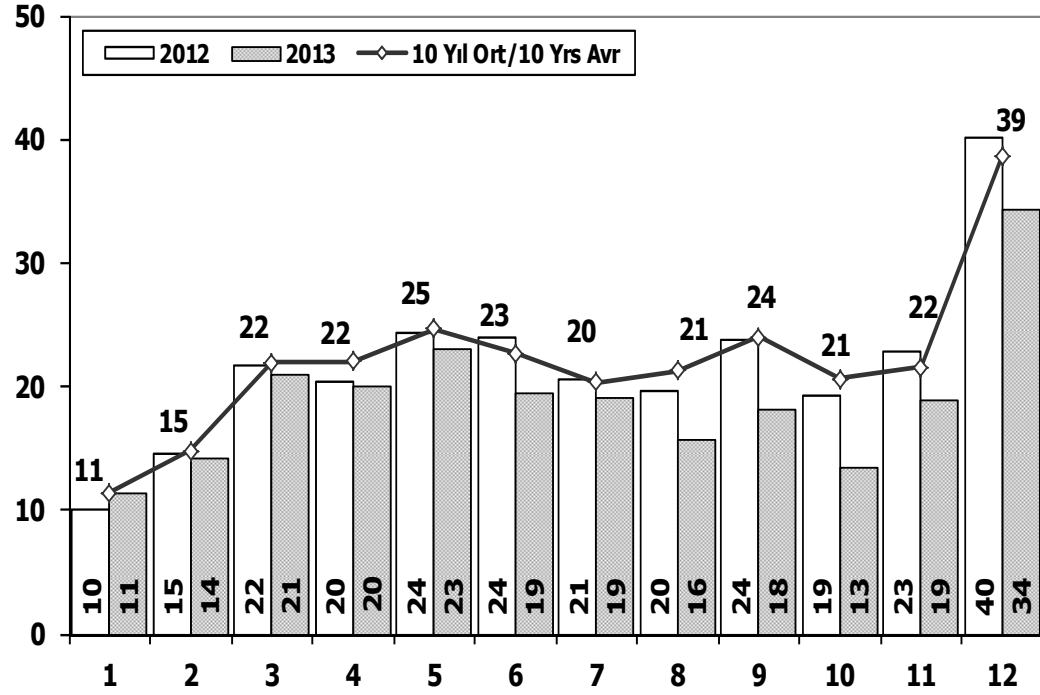
P.Cars Market (x1000)



| | 1 | 2 | 3 | 4 | 5 | 6 | 7 | 8 | 9 | 10 | 11 | 12 | Total |
|------|--------|--------|--------|--------|--------|--------|--------|--------|--------|--------|--------|---------|---------|
| 2003 | 6.309 | 5.486 | 8.555 | 11.107 | 15.965 | 16.329 | 14.764 | 16.896 | 23.772 | 30.615 | 25.777 | 51.461 | 227.036 |
| 2004 | 25.625 | 23.695 | 46.075 | 47.995 | 54.610 | 37.671 | 33.410 | 33.709 | 33.383 | 34.292 | 30.547 | 50.197 | 451.209 |
| 2005 | 11.595 | 21.012 | 38.129 | 36.206 | 38.480 | 40.900 | 38.969 | 38.648 | 36.410 | 34.960 | 37.841 | 65.447 | 438.597 |
| 2006 | 16.506 | 24.929 | 36.996 | 40.177 | 48.521 | 32.982 | 22.653 | 24.873 | 27.517 | 21.237 | 30.477 | 46.351 | 373.219 |
| 2007 | 13.186 | 17.212 | 24.336 | 25.204 | 29.067 | 30.126 | 28.246 | 28.469 | 27.662 | 32.569 | 39.643 | 61.745 | 357.465 |
| 2008 | 18.588 | 21.196 | 34.147 | 30.313 | 31.477 | 28.724 | 25.530 | 26.102 | 27.053 | 19.788 | 17.201 | 25.879 | 305.998 |
| 2009 | 13.173 | 14.492 | 40.622 | 36.202 | 44.188 | 41.019 | 16.637 | 22.537 | 52.162 | 13.828 | 17.781 | 57.178 | 369.819 |
| 2010 | 12.594 | 20.651 | 33.958 | 36.549 | 40.467 | 42.086 | 41.399 | 42.222 | 42.477 | 47.859 | 50.061 | 99.461 | 509.784 |
| 2011 | 29.868 | 39.004 | 54.023 | 53.835 | 56.302 | 56.714 | 43.518 | 38.875 | 39.964 | 47.508 | 44.951 | 88.957 | 593.519 |
| 2012 | 21.077 | 29.189 | 47.270 | 45.645 | 50.460 | 50.849 | 44.531 | 41.236 | 49.360 | 43.440 | 52.297 | 80.926 | 556.280 |
| 2013 | 25.835 | 36.814 | 51.785 | 56.999 | 62.383 | 58.290 | 55.712 | 51.611 | 52.925 | 46.985 | 64.117 | 101.199 | 664.655 |

Ticari Araç Pazarının Analizi (x1000)

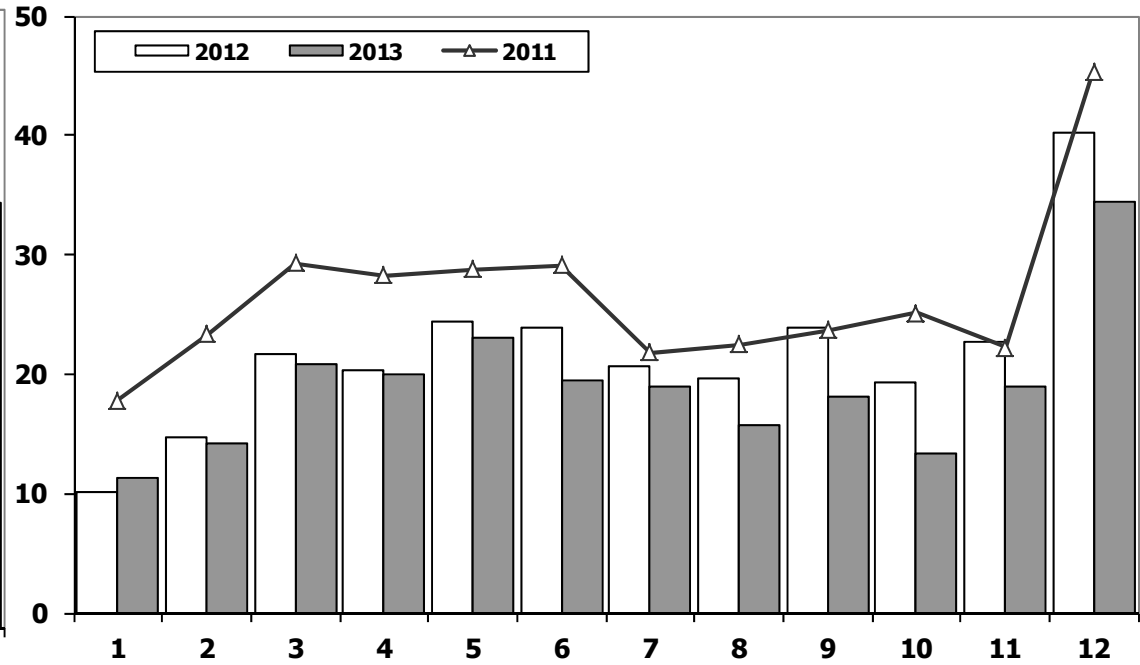
CV Market Analysis (x1000)



| Aylar / Months | 10 Yil Ort. 10 Yrs Avr. (x1000) | 2013 (x1000) | % |
|----------------|---------------------------------|--------------|--------------|
| 1 | 11,5 | 11,3 | -1,4 |
| 2 | 14,8 | 14,1 | -4,6 |
| 3 | 21,9 | 20,9 | -4,7 |
| 4 | 22,0 | 20,0 | -9,1 |
| 5 | 24,7 | 23,0 | -6,7 |
| 6 | 22,7 | 19,5 | -14,2 |
| 7 | 20,3 | 19,0 | -6,4 |
| 8 | 21,2 | 15,8 | -25,8 |
| 9 | 24,0 | 18,1 | -24,5 |
| 10 | 20,6 | 13,4 | -34,9 |
| 11 | 21,5 | 18,9 | -12,2 |
| 12 | 38,6 | 34,4 | -10,8 |
| Total | 263,9 | 228,5 | -13,4 |

Ticari Araç Pazarı (x1000)

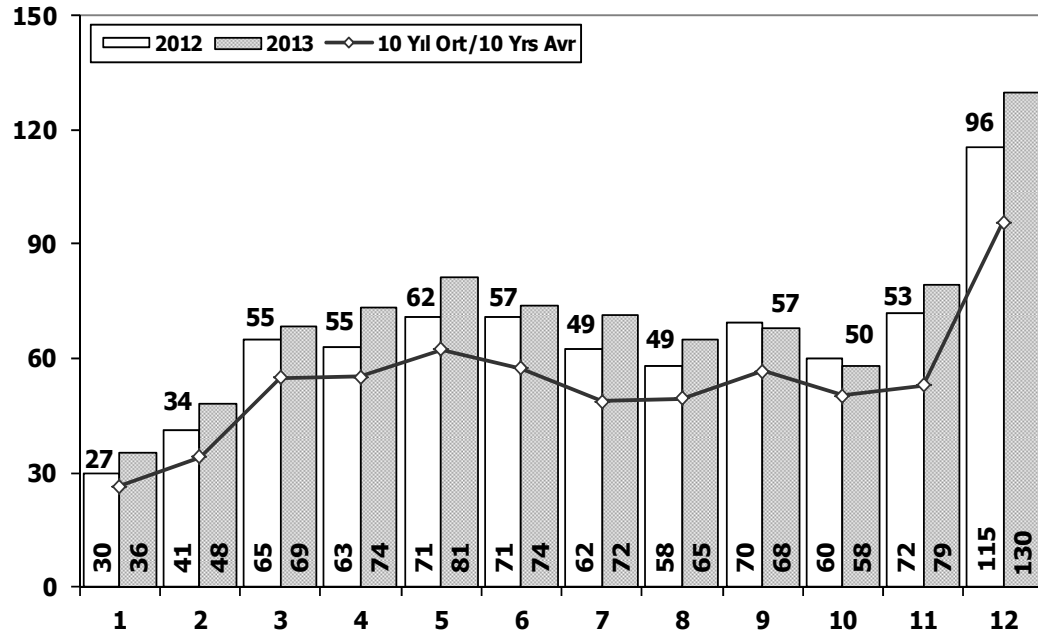
CV Total Market (Local + Imports) (x1000)



| | 1 | 2 | 3 | 4 | 5 | 6 | 7 | 8 | 9 | 10 | 11 | 12 | Total |
|------|--------|--------|--------|--------|--------|--------|--------|--------|--------|--------|--------|--------|---------|
| 2003 | 6.267 | 5.831 | 8.540 | 9.273 | 11.838 | 14.188 | 17.504 | 11.943 | 16.543 | 19.436 | 18.304 | 31.260 | 170.927 |
| 2004 | 12.996 | 15.694 | 25.648 | 29.061 | 30.024 | 25.557 | 23.897 | 22.713 | 26.046 | 21.861 | 21.690 | 34.873 | 290.060 |
| 2005 | 11.092 | 17.279 | 26.373 | 24.667 | 32.903 | 23.479 | 24.878 | 29.999 | 30.170 | 25.831 | 27.878 | 45.391 | 319.940 |
| 2006 | 13.463 | 19.717 | 28.094 | 28.676 | 34.768 | 25.221 | 17.384 | 22.501 | 22.112 | 18.568 | 25.421 | 36.371 | 292.296 |
| 2007 | 11.764 | 14.490 | 21.152 | 20.429 | 22.188 | 21.535 | 21.871 | 25.702 | 22.416 | 23.489 | 27.374 | 44.331 | 276.741 |
| 2008 | 15.204 | 16.925 | 22.667 | 20.654 | 20.150 | 20.669 | 19.162 | 20.490 | 19.776 | 15.359 | 10.951 | 18.539 | 220.546 |
| 2009 | 7.458 | 8.354 | 15.909 | 18.224 | 20.699 | 22.083 | 13.609 | 14.555 | 31.241 | 8.289 | 11.421 | 34.208 | 206.050 |
| 2010 | 8.456 | 11.662 | 19.870 | 20.530 | 21.161 | 21.304 | 22.319 | 22.423 | 24.124 | 28.921 | 27.345 | 55.273 | 283.388 |
| 2011 | 17.790 | 23.344 | 29.310 | 28.236 | 28.791 | 29.149 | 21.846 | 22.503 | 23.679 | 25.132 | 22.244 | 45.324 | 317.348 |
| 2012 | 10.142 | 14.638 | 21.687 | 20.369 | 24.360 | 23.932 | 20.591 | 19.612 | 23.837 | 19.237 | 22.748 | 40.187 | 261.340 |
| 2013 | 11.305 | 14.117 | 20.903 | 20.016 | 23.038 | 19.481 | 19.014 | 15.772 | 18.112 | 13.414 | 18.900 | 34.397 | 228.469 |

Hafif Araç Pazarının Analizi (x1000)

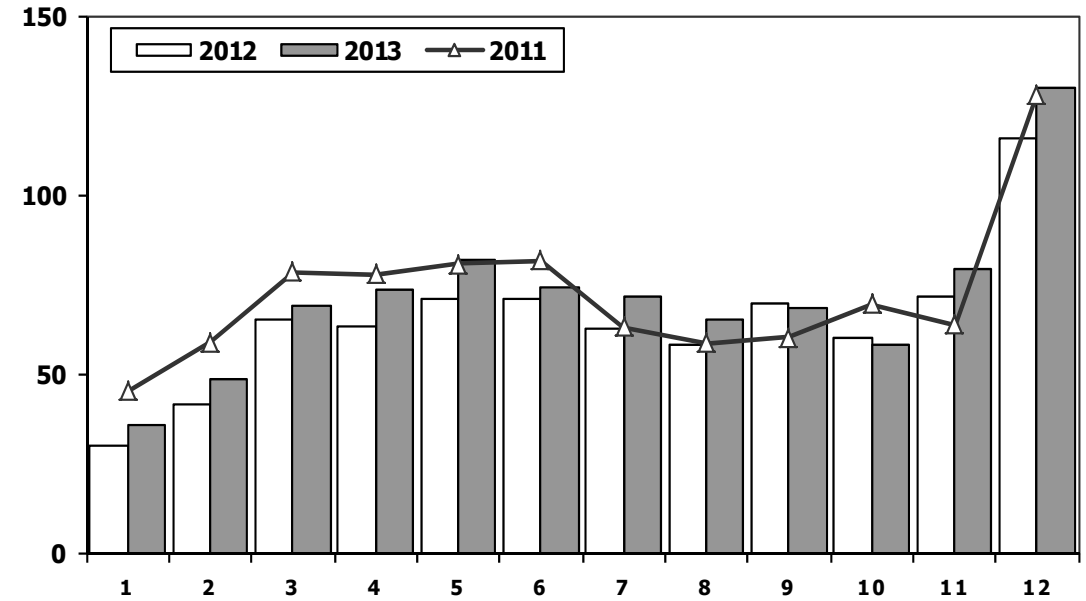
LV Market Analysis (x1000)



| Aylar / Months | 10 Yil Ort. 10 Yrs Avr. (x1000) | 2013 (x1000) | % |
|----------------|---------------------------------|--------------|-------------|
| 1 | 26,5 | 35,5 | 33,9 |
| 2 | 34,2 | 48,3 | 41,4 |
| 3 | 54,9 | 68,8 | 25,2 |
| 4 | 55,1 | 73,6 | 33,5 |
| 5 | 62,2 | 81,5 | 30,9 |
| 6 | 57,3 | 74,1 | 29,4 |
| 7 | 48,8 | 71,6 | 46,6 |
| 8 | 49,5 | 65,0 | 31,5 |
| 9 | 56,5 | 68,0 | 20,2 |
| 10 | 50,1 | 58,0 | 15,8 |
| 11 | 52,9 | 79,3 | 49,8 |
| 12 | 95,8 | 129,7 | 35,4 |
| Total | 643,9 | 853,4 | 32,5 |

Hafif Araç Pazarı (x1000)

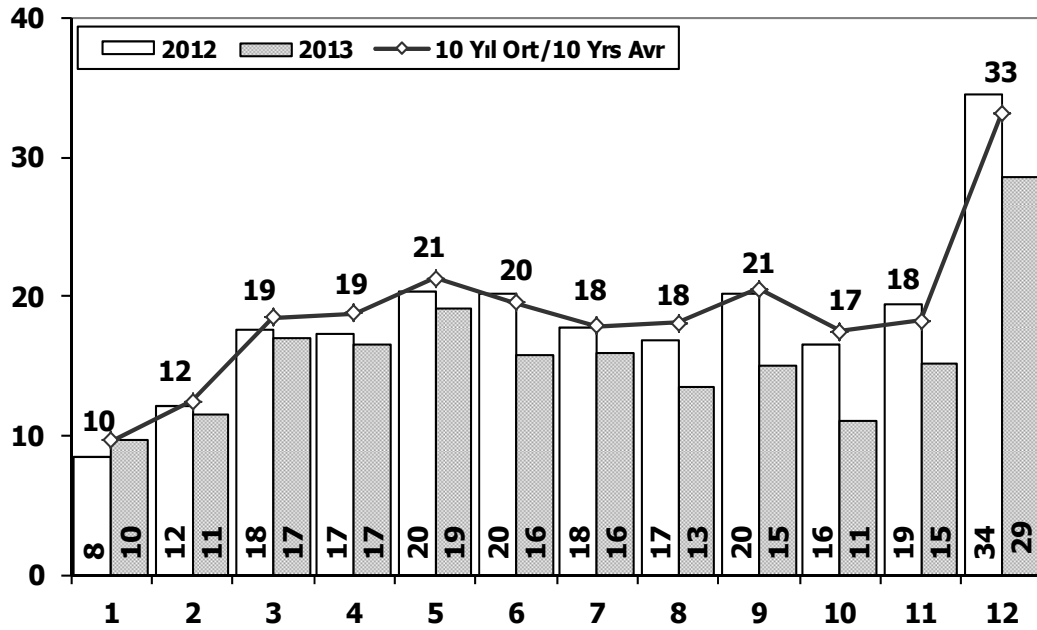
LV Total Market (Local + Imports) (x1000)



| | 1 | 2 | 3 | 4 | 5 | 6 | 7 | 8 | 9 | 10 | 11 | 12 | Total |
|------|--------|--------|--------|--------|--------|--------|--------|--------|--------|--------|--------|---------|---------|
| 2003 | 11.531 | 10.402 | 15.743 | 18.693 | 25.853 | 28.266 | 30.172 | 25.903 | 36.234 | 45.446 | 40.048 | 75.778 | 364.069 |
| 2004 | 36.352 | 37.079 | 67.144 | 73.075 | 80.290 | 59.730 | 54.816 | 52.876 | 55.609 | 53.000 | 49.200 | 78.924 | 698.095 |
| 2005 | 20.747 | 35.766 | 60.707 | 56.844 | 67.357 | 60.796 | 61.015 | 64.011 | 61.954 | 56.638 | 61.364 | 103.209 | 710.408 |
| 2006 | 27.917 | 40.938 | 60.052 | 64.038 | 78.229 | 54.355 | 37.251 | 43.767 | 46.109 | 36.542 | 51.867 | 76.787 | 617.852 |
| 2007 | 23.117 | 29.184 | 41.890 | 42.366 | 47.938 | 48.674 | 47.490 | 50.558 | 46.581 | 52.725 | 63.313 | 100.926 | 594.762 |
| 2008 | 31.527 | 35.251 | 53.649 | 47.701 | 48.598 | 46.324 | 42.156 | 43.670 | 43.932 | 32.884 | 26.253 | 42.078 | 494.023 |
| 2009 | 19.606 | 21.742 | 55.111 | 52.640 | 63.191 | 61.067 | 28.845 | 35.609 | 81.397 | 21.033 | 27.962 | 88.923 | 557.126 |
| 2010 | 20.095 | 31.172 | 51.769 | 54.946 | 59.377 | 60.896 | 61.345 | 61.764 | 63.814 | 73.404 | 73.962 | 148.369 | 760.913 |
| 2011 | 44.892 | 58.663 | 78.403 | 77.695 | 80.646 | 81.573 | 63.044 | 58.406 | 60.129 | 69.421 | 63.657 | 127.910 | 864.439 |
| 2012 | 29.545 | 41.324 | 64.884 | 62.949 | 70.863 | 71.067 | 62.304 | 58.148 | 69.629 | 59.938 | 71.710 | 115.400 | 777.761 |
| 2013 | 35.523 | 48.307 | 68.774 | 73.575 | 81.468 | 74.096 | 71.596 | 65.043 | 67.963 | 58.014 | 79.301 | 129.718 | 853.378 |

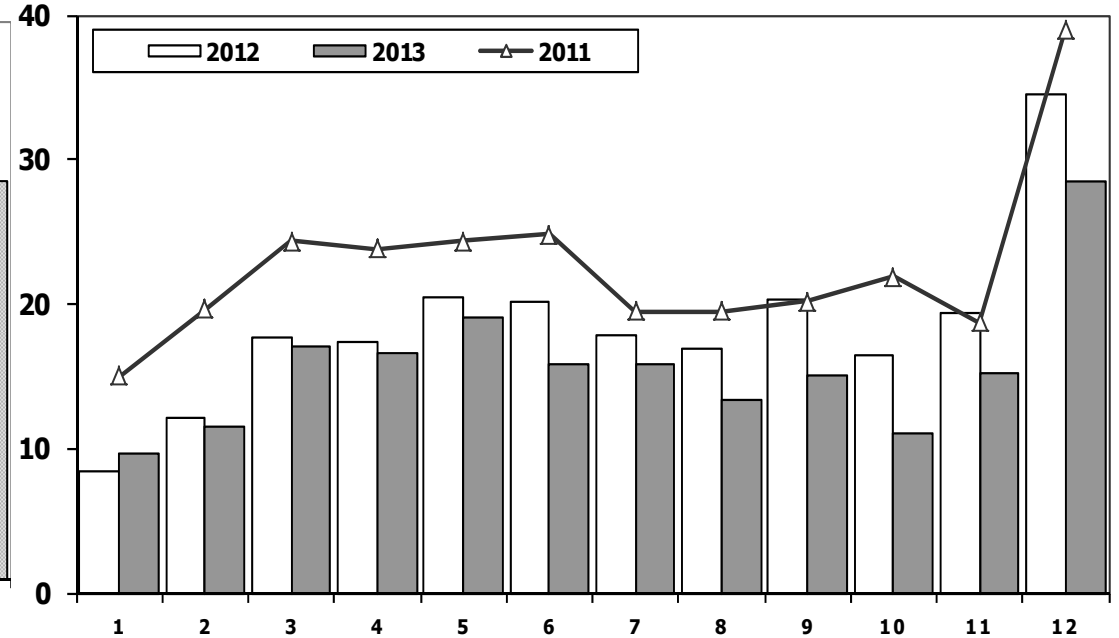
Hafif Ticari Araç Pazarının Analizi (x1000)

LCV Market Analysis (x1000)



Hafif Ticari Araç Pazarı (x1000)

LCV Total Market (Local + Imports) (x1000)

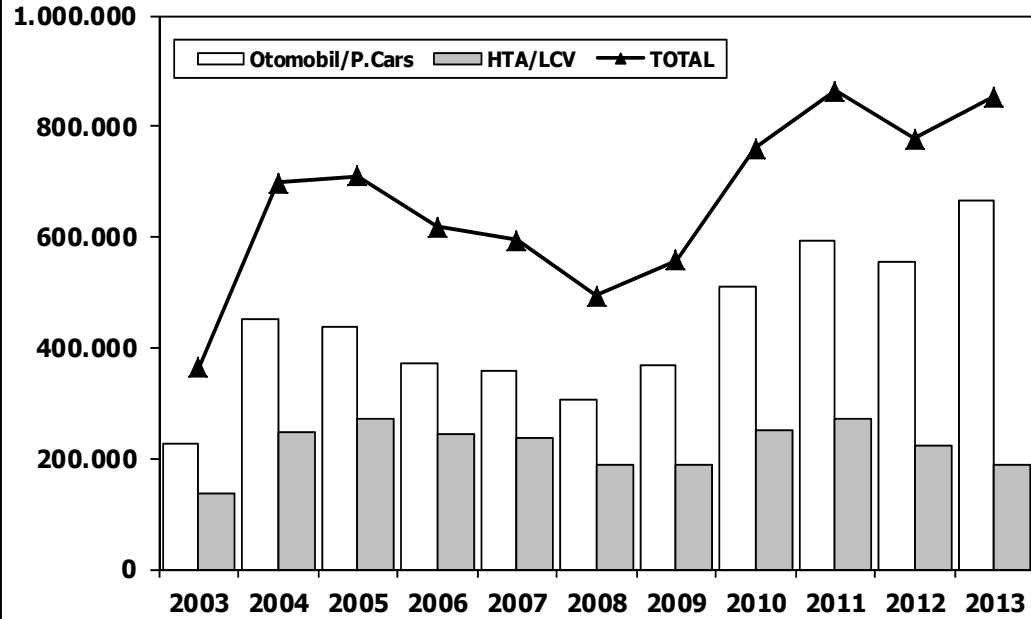


| Aylar / Months | 10 Yil Ort. 10 Yrs Avr. (x1000) | 2013 (x1000) | % |
|----------------|---------------------------------|--------------|--------------|
| 1 | 9,7 | 9,7 | 0,1 |
| 2 | 12,5 | 11,5 | -7,8 |
| 3 | 18,5 | 17,0 | -8,3 |
| 4 | 18,8 | 16,6 | -11,7 |
| 5 | 21,3 | 19,1 | -10,3 |
| 6 | 19,5 | 15,8 | -19,1 |
| 7 | 17,9 | 15,9 | -11,2 |
| 8 | 18,1 | 13,4 | -25,8 |
| 9 | 20,6 | 15,0 | -26,9 |
| 10 | 17,5 | 11,0 | -37,0 |
| 11 | 18,3 | 15,2 | -16,9 |
| 12 | 33,1 | 28,5 | -13,8 |
| Total | 225,7 | 188,7 | -16,4 |

| | 1 | 2 | 3 | 4 | 5 | 6 | 7 | 8 | 9 | 10 | 11 | 12 | Total |
|------|--------|--------|--------|--------|--------|--------|--------|--------|--------|--------|--------|--------|---------|
| 2003 | 5.222 | 4.916 | 7.188 | 7.586 | 9.888 | 11.937 | 15.408 | 9.007 | 12.462 | 14.831 | 14.271 | 24.317 | 137.033 |
| 2004 | 10.727 | 13.384 | 21.069 | 25.080 | 25.680 | 22.059 | 21.406 | 19.167 | 22.226 | 18.708 | 18.653 | 28.727 | 246.886 |
| 2005 | 9.152 | 14.754 | 22.578 | 20.638 | 28.877 | 19.896 | 22.046 | 25.363 | 25.544 | 21.678 | 23.523 | 37.762 | 271.811 |
| 2006 | 11.411 | 16.009 | 23.056 | 23.861 | 29.708 | 21.373 | 14.598 | 18.894 | 18.592 | 15.305 | 21.390 | 30.436 | 244.633 |
| 2007 | 9.931 | 11.972 | 17.554 | 17.162 | 18.871 | 18.548 | 19.244 | 22.089 | 18.919 | 20.156 | 23.670 | 39.181 | 237.297 |
| 2008 | 12.939 | 14.055 | 19.502 | 17.388 | 17.121 | 17.600 | 16.626 | 17.568 | 16.879 | 13.096 | 9.052 | 16.199 | 188.025 |
| 2009 | 6.433 | 7.250 | 14.489 | 16.438 | 19.003 | 20.048 | 12.208 | 13.072 | 29.235 | 7.205 | 10.181 | 31.745 | 187.307 |
| 2010 | 7.501 | 10.521 | 17.811 | 18.397 | 18.910 | 18.810 | 19.946 | 19.542 | 21.337 | 25.545 | 23.901 | 48.908 | 251.129 |
| 2011 | 15.024 | 19.659 | 24.380 | 23.860 | 24.344 | 24.859 | 19.526 | 19.531 | 20.165 | 21.913 | 18.706 | 38.953 | 270.920 |
| 2012 | 8.468 | 12.135 | 17.614 | 17.304 | 20.403 | 20.218 | 17.773 | 16.912 | 20.269 | 16.498 | 19.413 | 34.474 | 221.481 |
| 2013 | 9.688 | 11.493 | 16.989 | 16.576 | 19.085 | 15.806 | 15.884 | 13.432 | 15.038 | 11.029 | 15.184 | 28.519 | 188.723 |

Hafif Arac Pazarı (AYA < 3.5 Ton)

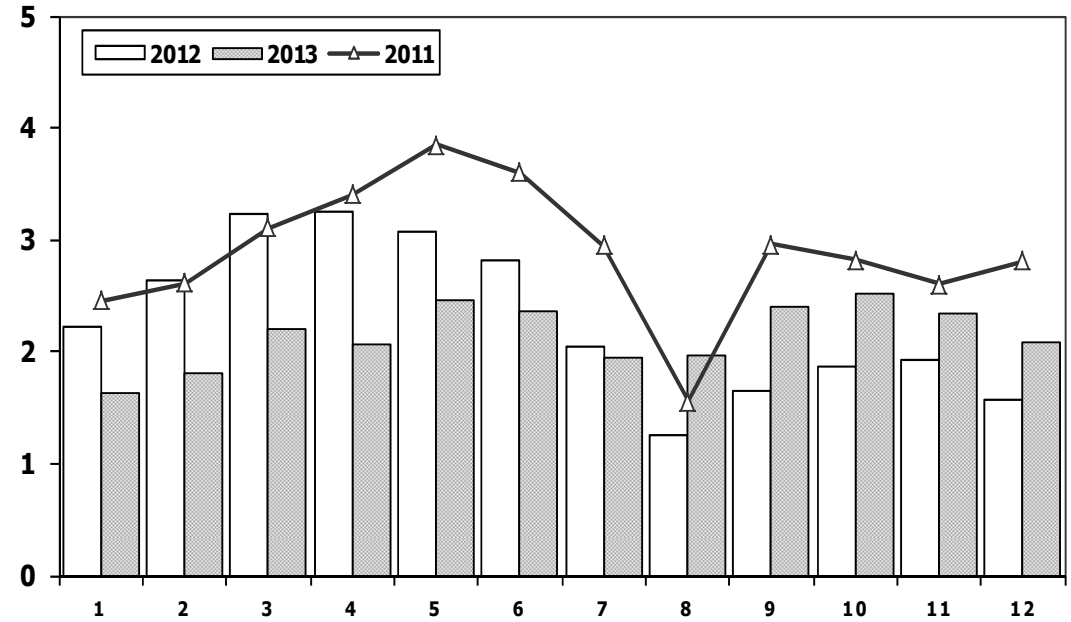
Light Vehicle Market (GVW < 3.5 Ton)



| | 2003 | 2004 | 2005 | 2006 | 2007 | 2008 | 2009 | 2010 | 2011 | 2012 | 2013 |
|------------------------|---------|---------|----------------|---------|-----------|---------|---------|---------|----------------|---------|----------------|
| Otomobil/P.Cars | 227.036 | 451.209 | 438.597 | 373.219 | 357.465 | 305.998 | 369.819 | 509.784 | 593.519 | 556.280 | 664.655 |
| HTA /LCV | 137.033 | 246.886 | 271.811 | 244.633 | 237.297 | 188.025 | 187.307 | 251.129 | 270.920 | 221.481 | 188.723 |
| TOTAL | 364.069 | 698.095 | 710.408 | 617.852 | 594.762 | 494.023 | 557.126 | 760.913 | 864.439 | 777.761 | 853.378 |
| HTA /LCV (%) | 38 | 35 | 38 | 40 | 40 | 38 | 34 | 33 | 31 | 28 | 22 |

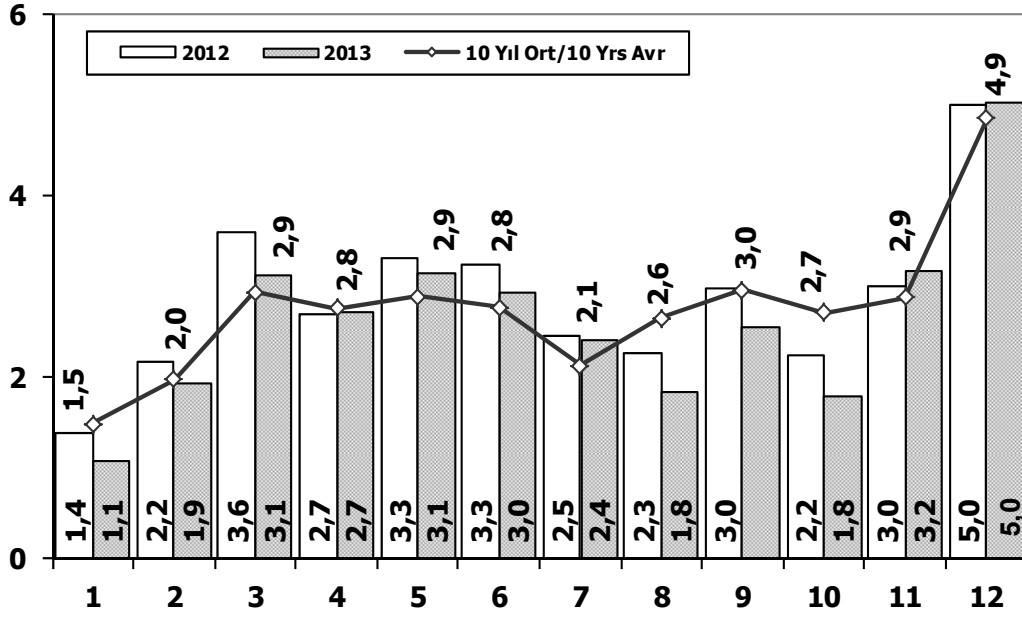
Traktör Pazarı (x1000)

F.Tractor Market (x1000)

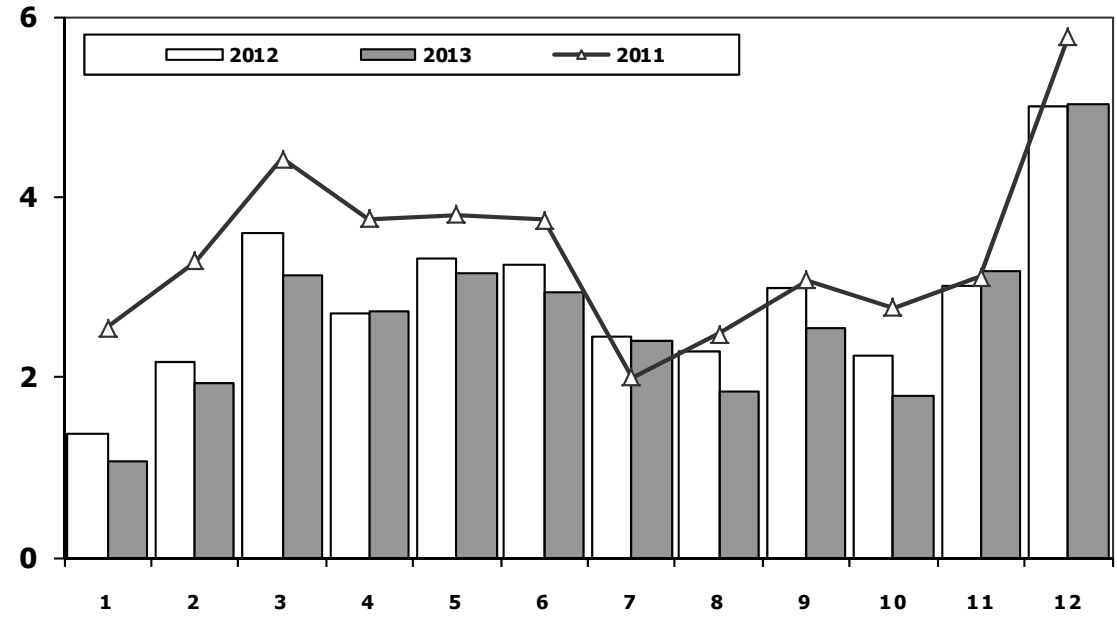


| | 1 | 2 | 3 | 4 | 5 | 6 | 7 | 8 | 9 | 10 | 11 | 12 | Total |
|-------------|-------|-------|-------|-------|-------|-------|-------|-------|-------|-------|-------|--------------|---------------|
| 2003 | 712 | 830 | 1.313 | 1.460 | 1.527 | 1.123 | 1.311 | 1.404 | 1.706 | 1.893 | 1.541 | 1.468 | 16.288 |
| 2004 | 1.946 | 1.874 | 2.909 | 3.260 | 2.863 | 2.816 | 1.988 | 2.209 | 2.509 | 1.989 | 2.198 | 1.364 | 27.925 |
| 2005 | 1.026 | 1.636 | 2.001 | 2.599 | 2.569 | 2.780 | 2.148 | 2.819 | 2.567 | 2.477 | 2.297 | 2.089 | 27.008 |
| 2006 | 1.578 | 2.493 | 2.746 | 2.841 | 3.561 | 2.356 | 1.685 | 2.177 | 2.756 | 1.915 | 2.353 | 1.925 | 28.386 |
| 2007 | 1.812 | 1.778 | 2.063 | 2.107 | 2.266 | 1.853 | 1.653 | 2.065 | 2.372 | 2.239 | 2.231 | 1.602 | 24.041 |
| 2008 | 1.510 | 1.427 | 1.933 | 1.692 | 1.689 | 1.592 | 1.275 | 924 | 904 | 609 | 707 | 359 | 14.621 |
| 2009 | 267 | 344 | 388 | 638 | 759 | 828 | 741 | 534 | 586 | 765 | 725 | 715 | 7.290 |
| 2010 | 714 | 903 | 1.432 | 1.653 | 1.736 | 1.673 | 1.613 | 1.527 | 2.351 | 2.787 | 2.656 | 2.345 | 21.390 |
| 2011 | 2.458 | 2.610 | 3.105 | 3.403 | 3.847 | 3.599 | 2.952 | 1.559 | 2.957 | 2.823 | 2.603 | 2.807 | 34.723 |
| 2012 | 2.216 | 2.632 | 3.223 | 3.259 | 3.067 | 2.821 | 2.037 | 1.262 | 1.648 | 1.858 | 1.921 | 1.579 | 27.523 |
| 2013 | 1.633 | 1.817 | 2.196 | 2.070 | 2.455 | 2.370 | 1.955 | 1.969 | 2.396 | 2.510 | 2.343 | 2.080 | 25.794 |

Kamyon Pazarının Analizi (x1000) AYA > 5 Ton Truck Market Analysis (x1000) GVW > 5 Ton



Kamyon Pazarı (x1000) AYA > 5 Ton Truck Market (x1000) GVW > 5 Ton

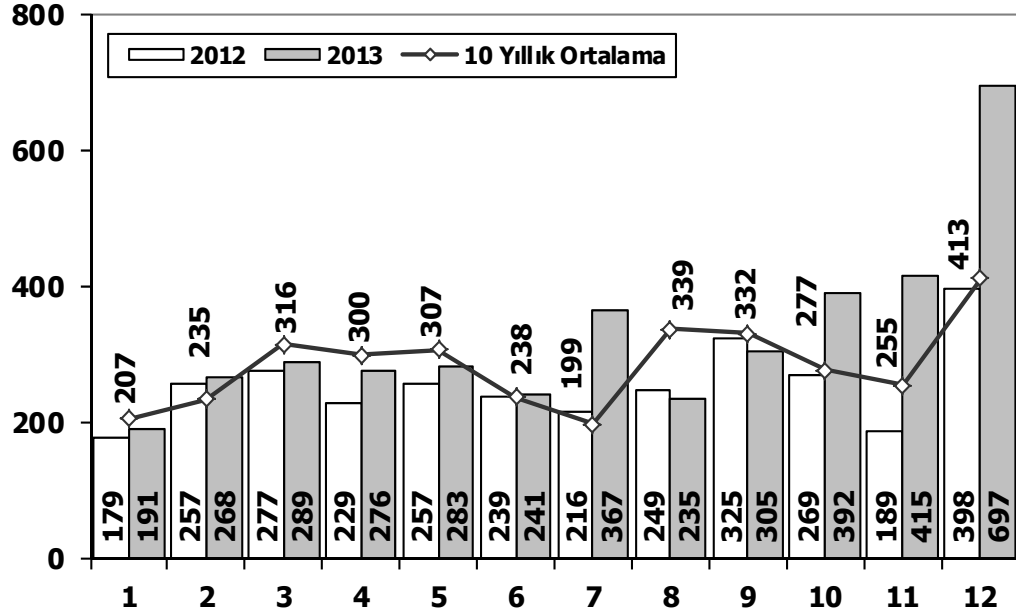


| Aylar / Months | 10 Yil Ort. 10 Yrs Avr. (x1000) | 2013 (x100) | % |
|----------------|---------------------------------|-------------|-------------|
| 1 | 1,5 | 1,1 | -27,8 |
| 2 | 2,0 | 1,9 | -2,3 |
| 3 | 2,9 | 3,1 | 6,5 |
| 4 | 2,8 | 2,7 | -1,5 |
| 5 | 2,9 | 3,1 | 8,6 |
| 6 | 2,8 | 3,0 | 6,7 |
| 7 | 2,1 | 2,4 | 13,3 |
| 8 | 2,6 | 1,8 | -30,3 |
| 9 | 3,0 | 2,6 | -13,8 |
| 10 | 2,7 | 1,8 | -33,6 |
| 11 | 2,9 | 3,2 | 10,1 |
| 12 | 4,9 | 5,0 | 3,4 |
| Total | 33,0 | 31,8 | -3,8 |

| YIL | 1 | 2 | 3 | 4 | 5 | 6 | 7 | 8 | 9 | 10 | 11 | 12 | TOPLAM |
|------|-------|-------|-------|-------|-------|-------|-------|-------|-------|-------|-------|-------|--------|
| 2003 | 771 | 773 | 1.123 | 1.494 | 1.668 | 2.008 | 1.933 | 2.490 | 3.563 | 4.147 | 3.720 | 6.406 | 30.096 |
| 2004 | 1.863 | 1.949 | 3.983 | 3.352 | 3.651 | 3.118 | 2.234 | 2.897 | 3.285 | 2.727 | 2.629 | 5.517 | 37.205 |
| 2005 | 1.693 | 2.186 | 3.288 | 3.484 | 3.413 | 3.147 | 2.504 | 4.028 | 4.043 | 3.708 | 3.918 | 6.570 | 41.982 |
| 2006 | 1.767 | 3.310 | 4.467 | 4.180 | 4.449 | 3.398 | 2.472 | 3.142 | 3.052 | 2.926 | 3.550 | 5.358 | 42.071 |
| 2007 | 1.554 | 2.055 | 3.065 | 2.940 | 2.865 | 2.613 | 2.372 | 3.145 | 2.988 | 2.886 | 3.258 | 4.444 | 34.185 |
| 2008 | 1.797 | 2.309 | 2.621 | 2.578 | 2.459 | 2.526 | 2.067 | 2.377 | 2.390 | 1.790 | 1.512 | 1.834 | 26.260 |
| 2009 | 771 | 759 | 1.034 | 1.342 | 1.355 | 1.651 | 1.156 | 1.205 | 1.780 | 866 | 981 | 2.015 | 14.915 |
| 2010 | 777 | 968 | 1.772 | 1.807 | 1.966 | 2.205 | 2.093 | 2.446 | 2.444 | 3.071 | 3.136 | 5.677 | 28.362 |
| 2011 | 2.552 | 3.292 | 4.418 | 3.754 | 3.803 | 3.749 | 1.996 | 2.478 | 3.081 | 2.774 | 3.108 | 5.787 | 40.792 |
| 2012 | 1.375 | 2.159 | 3.595 | 2.697 | 3.321 | 3.250 | 2.450 | 2.277 | 2.991 | 2.244 | 3.006 | 5.000 | 34.365 |
| 2013 | 1.077 | 1.931 | 3.127 | 2.720 | 3.145 | 2.951 | 2.411 | 1.845 | 2.554 | 1.801 | 3.173 | 5.025 | 31.760 |

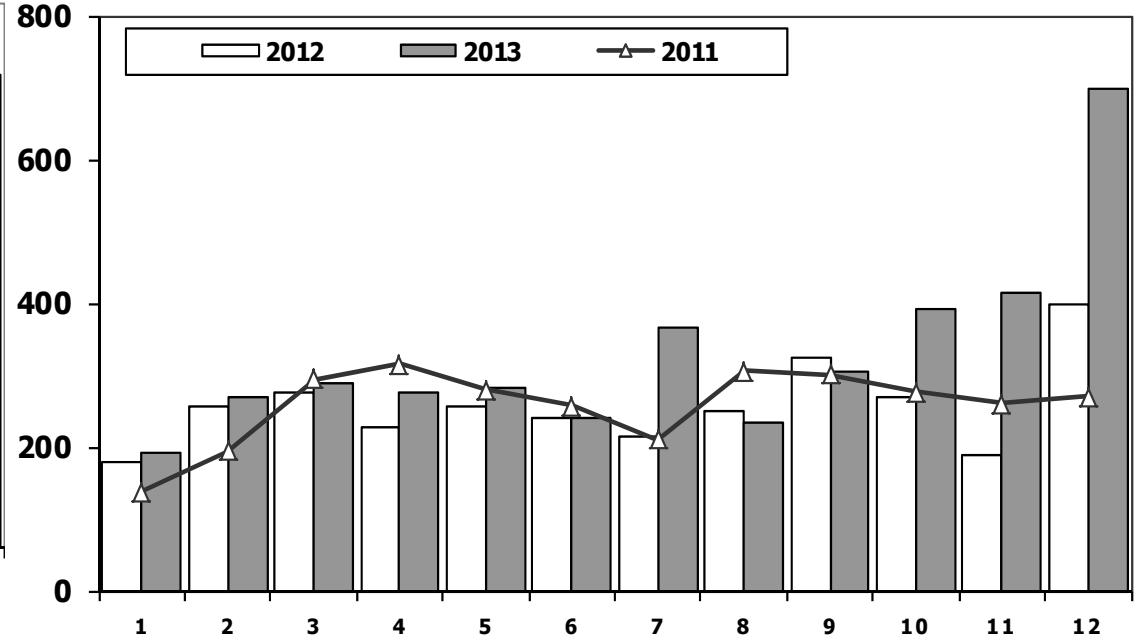
Midibüs Pazarının Analizi (7-9 mt / 25-35 Kişilik)

Midibus Market Analysis (7-9 mt / 25-35 Passengers)



Midibüs Pazarı (7-9 mt / 25-35 Kişilik Midibüs)

Midibus Market (7-9 mt / 25-35 Passengers)

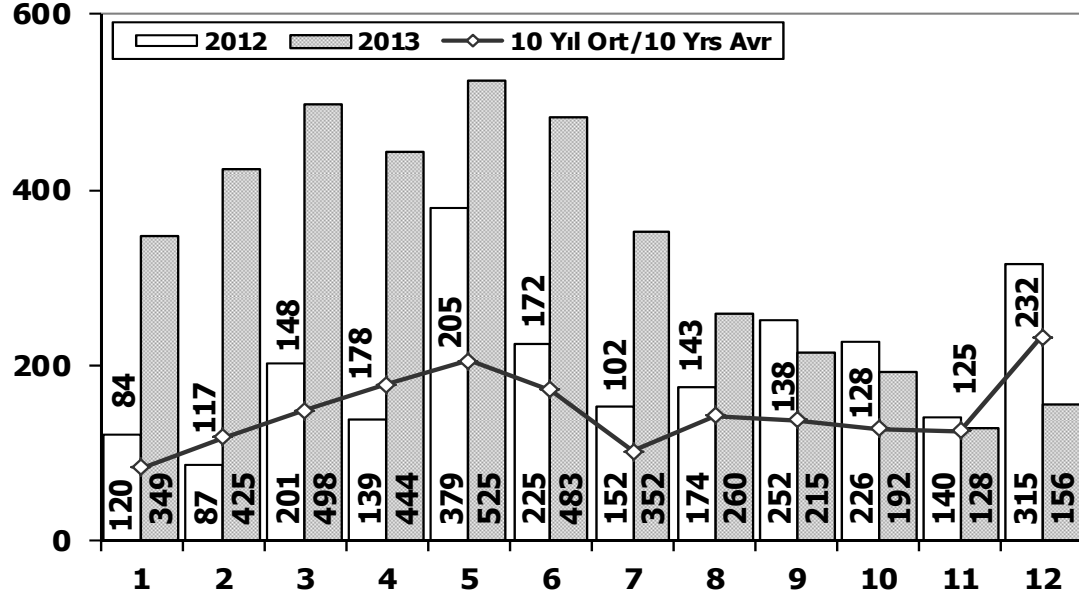


| Aylar / Months | 10 Yıl Ort. / 10 Yrs Avr. | 2013 | % |
|----------------|---------------------------|--------------|-----------|
| 1 | 207 | 191 | -8 |
| 2 | 235 | 268 | 14 |
| 3 | 316 | 289 | -9 |
| 4 | 300 | 276 | -8 |
| 5 | 307 | 283 | -8 |
| 6 | 238 | 241 | 1 |
| 7 | 199 | 367 | 85 |
| 8 | 339 | 235 | -31 |
| 9 | 332 | 305 | -8 |
| 10 | 277 | 392 | 42 |
| 11 | 255 | 415 | 63 |
| 12 | 413 | 697 | 69 |
| Total | 3.417 | 3.959 | 16 |

| YIL | 1 | 2 | 3 | 4 | 5 | 6 | 7 | 8 | 9 | 10 | 11 | 12 | TOPLAM |
|------|-----|-----|-----|-----|-----|-----|-----|-----|-----|-----|-----|-----|--------|
| 2003 | 220 | 109 | 188 | 106 | 158 | 161 | 103 | 322 | 349 | 330 | 212 | 436 | 2.694 |
| 2004 | 233 | 226 | 381 | 431 | 524 | 237 | 154 | 531 | 445 | 331 | 319 | 551 | 4.363 |
| 2005 | 182 | 258 | 432 | 393 | 439 | 269 | 252 | 459 | 436 | 329 | 328 | 574 | 4.351 |
| 2006 | 207 | 297 | 406 | 388 | 381 | 266 | 230 | 353 | 322 | 253 | 305 | 401 | 3.809 |
| 2007 | 207 | 272 | 404 | 238 | 302 | 283 | 164 | 365 | 399 | 279 | 283 | 465 | 3.661 |
| 2008 | 391 | 476 | 436 | 512 | 419 | 331 | 368 | 380 | 341 | 352 | 246 | 270 | 4.522 |
| 2009 | 154 | 124 | 160 | 220 | 174 | 198 | 160 | 175 | 168 | 143 | 206 | 323 | 2.205 |
| 2010 | 155 | 131 | 185 | 167 | 140 | 138 | 129 | 246 | 236 | 206 | 202 | 437 | 2.372 |
| 2011 | 138 | 195 | 294 | 316 | 280 | 258 | 211 | 305 | 301 | 276 | 260 | 270 | 3.104 |
| 2012 | 179 | 257 | 277 | 229 | 257 | 239 | 216 | 249 | 325 | 269 | 189 | 398 | 3.084 |
| 2013 | 191 | 268 | 289 | 276 | 283 | 241 | 367 | 235 | 305 | 392 | 415 | 697 | 3.959 |

Otobüs Pazarının Analizi

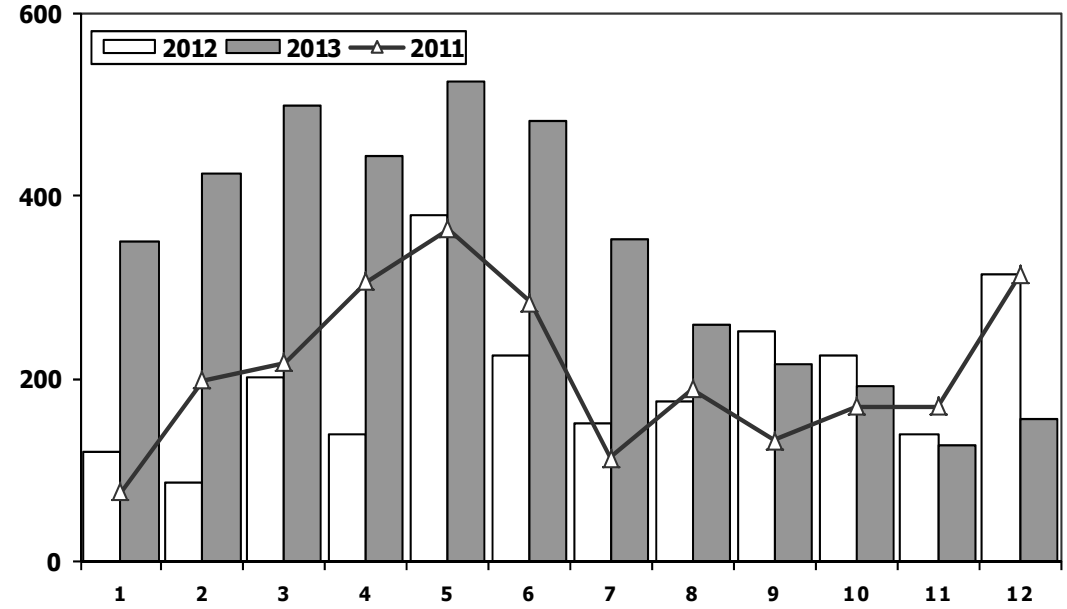
Bus Market Analysis



| Aylar / Months | 10 Yil Ort. / 10 Yrs Avr. | 2013 | % |
|----------------|---------------------------|--------------|------------|
| 1 | 84 | 349 | 316 |
| 2 | 117 | 425 | 262 |
| 3 | 148 | 498 | 236 |
| 4 | 178 | 444 | 150 |
| 5 | 205 | 525 | 156 |
| 6 | 172 | 483 | 180 |
| 7 | 102 | 352 | 246 |
| 8 | 143 | 260 | 82 |
| 9 | 138 | 215 | 56 |
| 10 | 128 | 192 | 50 |
| 11 | 125 | 128 | 3 |
| 12 | 232 | 156 | -33 |
| Total | 1.772 | 4.027 | 127 |

Otobüs Pazarı

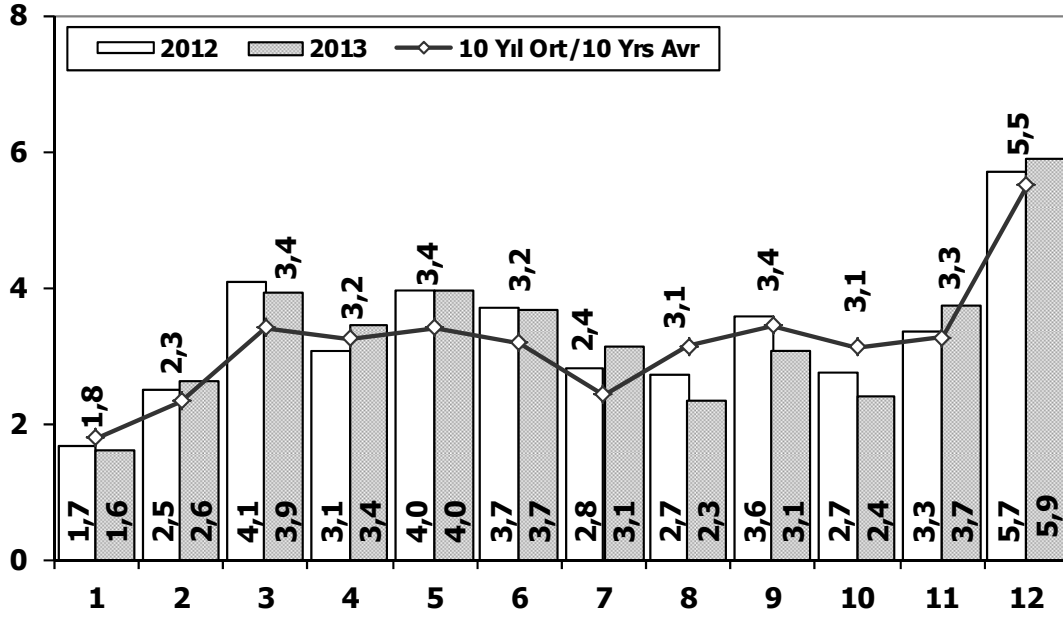
Bus Market



| | 1 | 2 | 3 | 4 | 5 | 6 | 7 | 8 | 9 | 10 | 11 | 12 | Total |
|------|-----|-----|-----|-----|-----|-----|-----|-----|-----|-----|-----|-----|-------|
| 2003 | 54 | 33 | 41 | 87 | 124 | 82 | 60 | 124 | 169 | 128 | 101 | 101 | 1.104 |
| 2004 | 173 | 135 | 215 | 198 | 169 | 143 | 103 | 118 | 90 | 95 | 89 | 78 | 1.606 |
| 2005 | 65 | 81 | 75 | 152 | 174 | 167 | 76 | 149 | 147 | 116 | 109 | 485 | 1.796 |
| 2006 | 78 | 101 | 165 | 247 | 230 | 184 | 84 | 112 | 146 | 84 | 176 | 176 | 1.783 |
| 2007 | 72 | 191 | 129 | 89 | 150 | 91 | 91 | 103 | 110 | 168 | 163 | 241 | 1.598 |
| 2008 | 77 | 85 | 108 | 176 | 151 | 212 | 101 | 165 | 166 | 121 | 141 | 236 | 1.739 |
| 2009 | 100 | 221 | 226 | 224 | 167 | 186 | 85 | 103 | 58 | 75 | 53 | 125 | 1.623 |
| 2010 | 23 | 42 | 102 | 159 | 145 | 151 | 151 | 189 | 107 | 99 | 106 | 251 | 1.525 |
| 2011 | 76 | 198 | 218 | 306 | 364 | 283 | 113 | 189 | 132 | 169 | 170 | 314 | 2.532 |
| 2012 | 120 | 87 | 201 | 139 | 379 | 225 | 152 | 174 | 252 | 226 | 140 | 315 | 2.410 |
| 2013 | 349 | 425 | 498 | 444 | 525 | 483 | 352 | 260 | 215 | 192 | 128 | 156 | 4.027 |

Ağır Ticari Araç Pazarının Analizi (x1000)

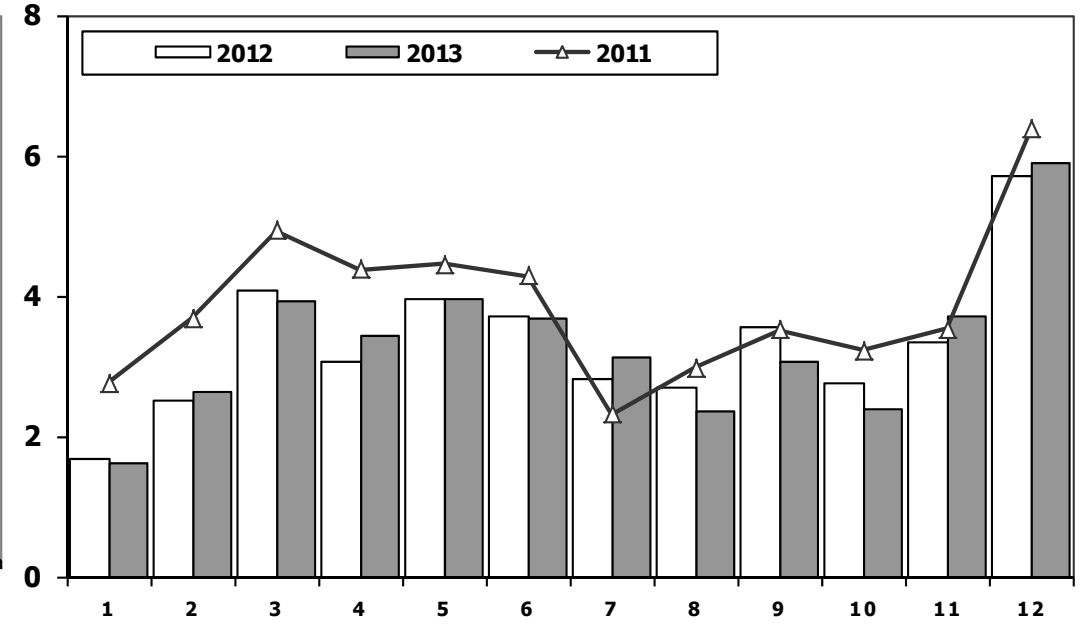
HCV Market Analysis (x1000)



| Aylar / Months | 10 Yil Ort. 10 Yrs Avr. (x1000) | 2013 (x1000) | % |
|----------------|---------------------------------|--------------|------------|
| 1 | 1,8 | 1,6 | -9,3 |
| 2 | 2,3 | 2,6 | 12,7 |
| 3 | 3,4 | 3,9 | 15,1 |
| 4 | 3,2 | 3,4 | 6,2 |
| 5 | 3,4 | 4,0 | 16,0 |
| 6 | 3,2 | 3,7 | 15,7 |
| 7 | 2,4 | 3,1 | 28,9 |
| 8 | 3,1 | 2,3 | -25,2 |
| 9 | 3,4 | 3,1 | -10,4 |
| 10 | 3,1 | 2,4 | -23,5 |
| 11 | 3,3 | 3,7 | 13,9 |
| 12 | 5,5 | 5,9 | 6,8 |
| Total | 38,2 | 39,7 | 4,0 |

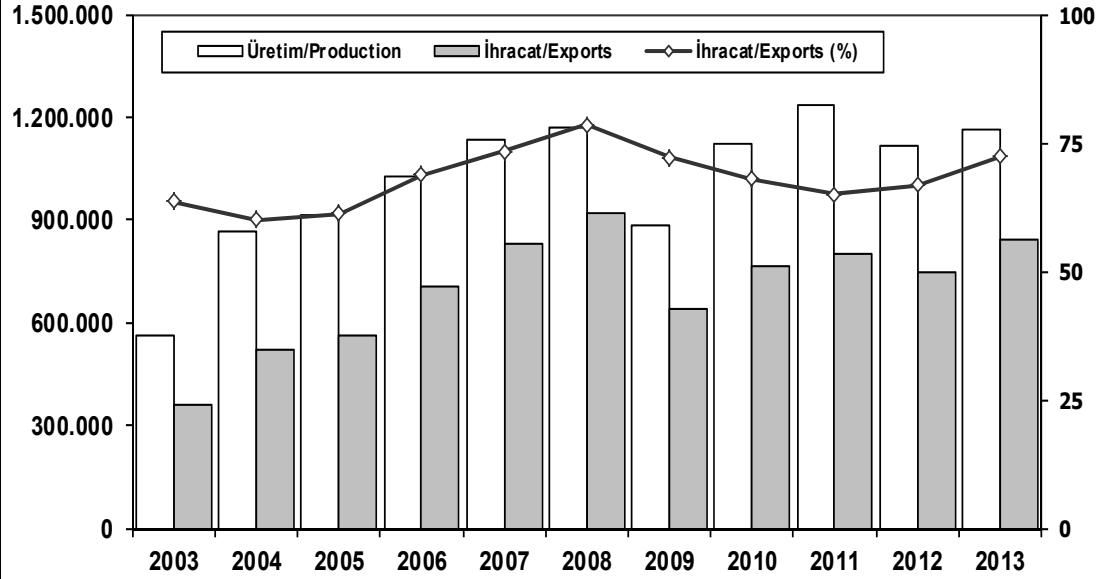
Ağır Ticari Araç Pazarı (x1000)

HCV Market (x1000)



| | 1 | 2 | 3 | 4 | 5 | 6 | 7 | 8 | 9 | 10 | 11 | 12 | Total |
|-------------|-------|-------|-------|-------|-------|-------|-------|-------|-------|-------|-------|--------------|---------------|
| 2003 | 1.045 | 915 | 1.352 | 1.687 | 1.950 | 2.251 | 2.096 | 2.936 | 4.081 | 4.605 | 4.033 | 6.943 | 33.894 |
| 2004 | 2.269 | 2.310 | 4.579 | 3.981 | 4.344 | 3.498 | 2.491 | 3.546 | 3.820 | 3.153 | 3.037 | 6.146 | 43.174 |
| 2005 | 1.940 | 2.525 | 3.795 | 4.029 | 4.026 | 3.583 | 2.832 | 4.636 | 4.626 | 4.153 | 4.355 | 7.629 | 48.129 |
| 2006 | 2.052 | 3.708 | 5.038 | 4.815 | 5.060 | 3.848 | 2.786 | 3.607 | 3.520 | 3.263 | 4.031 | 5.935 | 47.663 |
| 2007 | 1.833 | 2.518 | 3.598 | 3.267 | 3.317 | 2.987 | 2.627 | 3.613 | 3.497 | 3.333 | 3.704 | 5.150 | 39.444 |
| 2008 | 2.265 | 2.870 | 3.165 | 3.266 | 3.029 | 3.069 | 2.536 | 2.922 | 2.897 | 2.263 | 1.899 | 2.340 | 32.521 |
| 2009 | 1.025 | 1.104 | 1.420 | 1.786 | 1.696 | 2.035 | 1.401 | 1.483 | 2.006 | 1.084 | 1.240 | 2.463 | 18.743 |
| 2010 | 955 | 1.141 | 2.059 | 2.133 | 2.251 | 2.494 | 2.373 | 2.881 | 2.787 | 3.376 | 3.444 | 6.365 | 32.259 |
| 2011 | 2.766 | 3.685 | 4.930 | 4.376 | 4.447 | 4.290 | 2.320 | 2.972 | 3.514 | 3.219 | 3.538 | 6.371 | 46.428 |
| 2012 | 1.674 | 2.503 | 4.073 | 3.065 | 3.957 | 3.714 | 2.818 | 2.700 | 3.568 | 2.739 | 3.335 | 5.713 | 39.859 |
| 2013 | 1.617 | 2.624 | 3.914 | 3.440 | 3.953 | 3.675 | 3.130 | 2.340 | 3.074 | 2.385 | 3.716 | 5.878 | 39.746 |

İhracat/Üretim Exports/Production



| | 2003 | 2004 | 2005 | 2006 | 2007 | 2008 | 2009 | 2010 | 2011 | 2012 | 2013 |
|---------------------|---------|---------|---------|-----------|-----------|-----------|---------|-----------|-----------|-----------|-----------|
| Üretim/Production | 563.450 | 864.073 | 916.062 | 1.026.427 | 1.132.951 | 1.171.917 | 884.466 | 1.124.982 | 1.234.637 | 1.115.233 | 1.166.043 |
| İhracat/Exports | 358.745 | 518.595 | 561.078 | 706.402 | 829.879 | 920.763 | 637.855 | 763.670 | 801.112 | 745.354 | 843.467 |
| İhracat/Exports (%) | 64 | 60 | 61 | 69 | 73 | 79 | 72 | 68 | 65 | 67 | 72 |

Taşıt Araçları İhracatı Motor Vehicle Exports

| SEKTÖR/SECTOR | 2011 | 2012 | 2013 | 2013/2012 (%) |
|----------------------------------|----------------|----------------|----------------|---------------|
| OTOMOBİL / P.Cars | 442.674 | 412.991 | 484.504 | 17 |
| TİCARİ ARAÇLAR / CV | 348.292 | 316.932 | 343.967 | 9 |
| * Kamyonet/Pick-Up | 319.366 | 292.601 | 300.765 | 3 |
| * Minibüs/Minibus | 20.163 | 16.429 | 34.664 | 111 |
| * Kamyon/Truck | 3.912 | 2.682 | 3.055 | 14 |
| * Midibüs/Midibus | 647 | 1.173 | 985 | -16 |
| * Otobüs/Bus | 4.204 | 4.047 | 4.498 | 11 |
| TAŞIT ARAÇLARI / MV TOTAL | 790.966 | 729.923 | 828.471 | 14 |
| TRAKTÖR/F.TRACTOR | 10.146 | 15.431 | 14.996 | -3 |
| TOTAL | 801.112 | 745.354 | 843.467 | 13 |

Otomotiv Ana ve Yan Sanayii İhracatı (ABD \$) CBU and CKD Exports - \$

| SEKTÖR/SECTOR | 2010 Toplam (Total) | 2011 Toplam (Total) | 2012 Toplam (Total) | 2013 Toplam (Total) | 2013/2012 (%) |
|---|---------------------------|---------------------------|---------------------------|---------------------------|------------------|
| Toplam Yan Sanayi/Total Component Industry | 6.595.662.583 | 8.307.826.870 | 8.215.954.295 | 9.065.989.776 | 10 |
| İç ve Dış Lastik / Tyres | 988.990.821 | 1.373.205.546 | 1.199.572.093 | 1.130.088.420 | -6 |
| Emniyet Camı / Safety Glasses | 107.203.983 | 120.041.467 | 120.641.763 | 135.200.030 | 12 |
| Motor (Engine) | 305.490.804 | 273.896.369 | 272.085.582 | 319.294.885 | 17 |
| Akümülatör / Batteries | 186.504.496 | 232.611.079 | 250.104.807 | 306.455.257 | 23 |
| Diğer Aksam ve Parça / Spare Parts and Components | 5.007.472.478 | 6.308.072.409 | 6.373.550.048 | 7.174.951.182 | 13 |
| Toplam Ana Sanayi/Total Vehicle Industry | 10.855.476.447 | 12.128.522.618 | 11.100.457.162 | 12.497.186.221 | 13 |
| Otobüs / Bus | 744.935.284 | 929.372.870 | 855.424.304 | 937.790.963 | 10 |
| Midibüs-Minibüs / Minibus- Minibus | 120.378.674 | 145.199.034 | 161.806.275 | 147.802.463 | -9 |
| Otomobil (P. Cars) | 6.217.404.551 | 6.541.969.418 | 6.068.045.119 | 6.855.870.707 | 13 |
| Kamyon-Kamyonet/HCV-LCV | 3.363.101.038 | 4.034.772.621 | 3.433.310.999 | 3.919.399.958 | 14 |
| Çekici/Truck-Tractor | 145.710.283 | 116.912.332 | 71.336.635 | 77.907.407 | 9 |
| Römork ve Yarı Römork/Trailer-Semi Trailer | 72.145.150 | 147.247.613 | 195.093.537 | 218.649.302 | 12 |
| Tarım Traktörü/Farm Tractor | 191.801.467 | 213.048.730 | 315.440.294 | 339.765.421 | 8 |
| Toplam/Total | 17.451.139.030 | 20.436.349.488 | 19.316.411.457 | 21.563.175.997 | 12 |

Kaynak: T.C Ekonomi Bakanlığı UİB Otomotiv Endüstrisi İhracatçıları Birliği

Firma Bazında İhracat (Adet)
Export Of member Companies (Unit)

| FİRMALAR Companies | 2011 | 2012 | 2013 |
|-----------------------|----------------|----------------|----------------|
| OYAK RENAULT | 225.285 | 227.162 | 266.508 |
| FORD OTOSAN | 211.380 | 191.149 | 208.722 |
| TOFAŞ | 180.690 | 154.068 | 160.309 |
| TOYOTA | 81.233 | 63.549 | 86.908 |
| HYUNDAI ASSAN | 64.000 | 67.453 | 85.500 |
| TÜRK TRAKTÖR | 9.600 | 14.572 | 14.402 |
| KARSAN | 15.119 | 10.994 | 10.120 |
| M. BENZ TÜRK | 4.735 | 4.054 | 5.331 |
| HONDA TÜRKİYE | 5.023 | 7.959 | 2.121 |
| MAN TÜRKİYE | 1.216 | 885 | 898 |
| A.I.O.S. | 429 | 943 | 770 |
| TEMSA GLOBAL | 992 | 856 | 663 |
| OTOKAR | 475 | 510 | 620 |
| HATTAT TARIM | 546 | 859 | 594 |
| B.M.C. | 389 | 341 | 1 |
| GENEL TOPLAM | 801.112 | 745.354 | 843.467 |

Kaynak: OSD

Sektör Bazında İhracat (\$)
Exports on Sectorial Basis

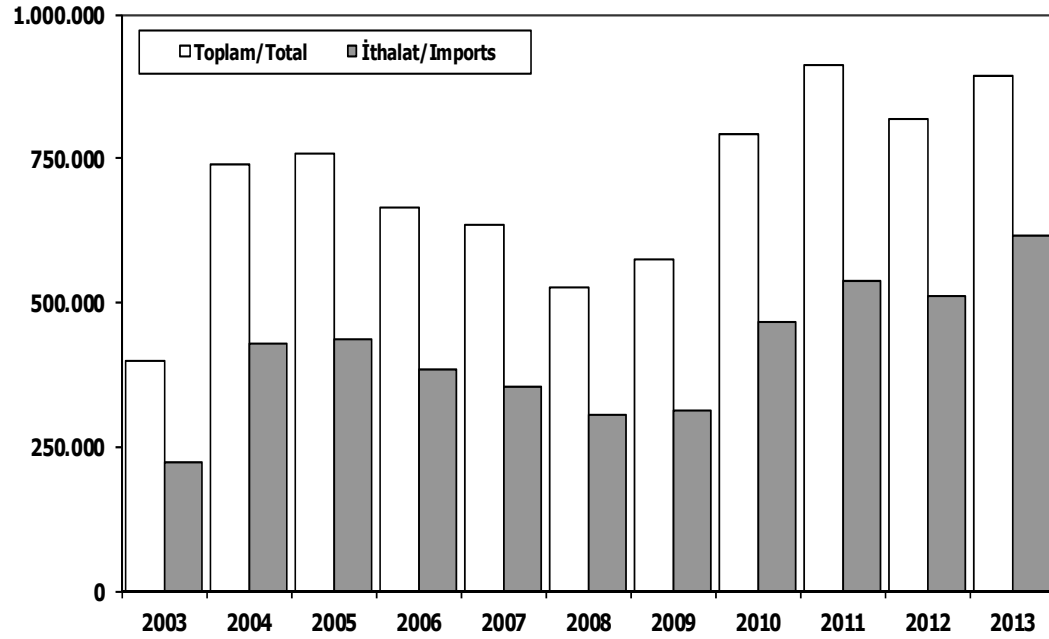
| Sıra No | Sektörler | Ocak-Aralık | | | |
|---------|---|--------------------|--------------------|---------------|--------------|
| | | 2012 | 2013 | 2013/2012 (%) | 2013 (%) Pay |
| 1 | Otomotiv Endüstrisi | 19.056.057 | 21.305.104 | 11,8 | 14,0 |
| 2 | Kimyevi Maddeler ve Mamülleri | 17.513.306 | 17.441.096 | -0,4 | 11,5 |
| 3 | Hazırgiyim ve Konfeksiyon | 16.038.094 | 17.372.633 | 8,3 | 11,5 |
| 4 | Çelik | 15.441.093 | 13.835.180 | -10,4 | 9,1 |
| 5 | Elektrik-Elektronik ve Makina | 11.792.796 | 11.701.482 | -0,8 | 7,7 |
| 6 | Tekstil ve Hammaddeleri | 7.839.144 | 8.391.398 | 7,0 | 5,5 |
| 7 | Demir ve Demir Dışı Metaller | 6.464.263 | 6.834.461 | 5,7 | 4,5 |
| 8 | Hububat, Bakliyat, Yağlı Tohumlar | 5.882.530 | 6.586.157 | 12,0 | 4,3 |
| 9 | İhracatçı Birlikleri Kaydından Muaf İhracat | 14.161.555 | 6.263.742 | -55,8 | 4,1 |
| 10 | Makine ve Aksamları | 5.319.030 | 5.801.970 | 9,1 | 3,8 |
| 11 | Madencilik Ürünleri | 4.179.511 | 5.042.322 | 20,6 | 3,3 |
| 12 | Ağaç Mamülleri, Orman Ürünleri | 3.861.594 | 4.458.639 | 15,5 | 2,9 |
| 13 | İklimlendirme Sanayi | 3.793.972 | 4.200.543 | 10,7 | 2,8 |
| 14 | Çimento ve Toprak Ürünleri | 3.097.694 | 3.153.737 | 1,8 | 2,1 |
| 15 | Yaş Meyve ve Sebze | 2.180.176 | 2.351.780 | 7,9 | 1,6 |
| 16 | Mücevher | 2.073.277 | 2.253.003 | 8,7 | 1,5 |
| 17 | Hali | 2.010.048 | 2.196.267 | 9,3 | 1,4 |
| 18 | Su Ürünleri ve Hayvansal Mamuller | 1.661.916 | 1.988.676 | 19,7 | 1,3 |
| 19 | Deri ve Deri Mamülleri | 1.633.988 | 1.901.404 | 16,4 | 1,3 |
| 20 | Fındık ve Mamülleri | 1.796.990 | 1.773.285 | -1,3 | 1,2 |
| 21 | Kuru Meyve ve Mamülleri | 1.364.650 | 1.439.207 | 5,5 | 0,9 |
| 22 | Savunma Sanayi | 1.260.810 | 1.391.603 | 10,4 | 0,9 |
| 23 | Meyve Sebze Mamülleri | 1.259.674 | 1.331.417 | 5,7 | 0,9 |
| 24 | Gemi ve Yat | 810.936 | 1.163.591 | 43,5 | 0,8 |
| 25 | Tütün ve Mamülleri | 845.418 | 906.814 | 7,3 | 0,6 |
| 26 | Zeytin ve Zeytinyağ | 201.151 | 439.742 | 118,6 | 0,3 |
| 27 | Diğer Sanayi Ürünleri | 82.364 | 104.659 | 27,1 | 0,1 |
| 28 | Süs Bitkileri | 73.154 | 77.092 | 5,4 | 0,1 |
| | TOPLAM | 151.695.191 | 151.707.004 | 0,0 | 100,0 |

Kaynak: TİM

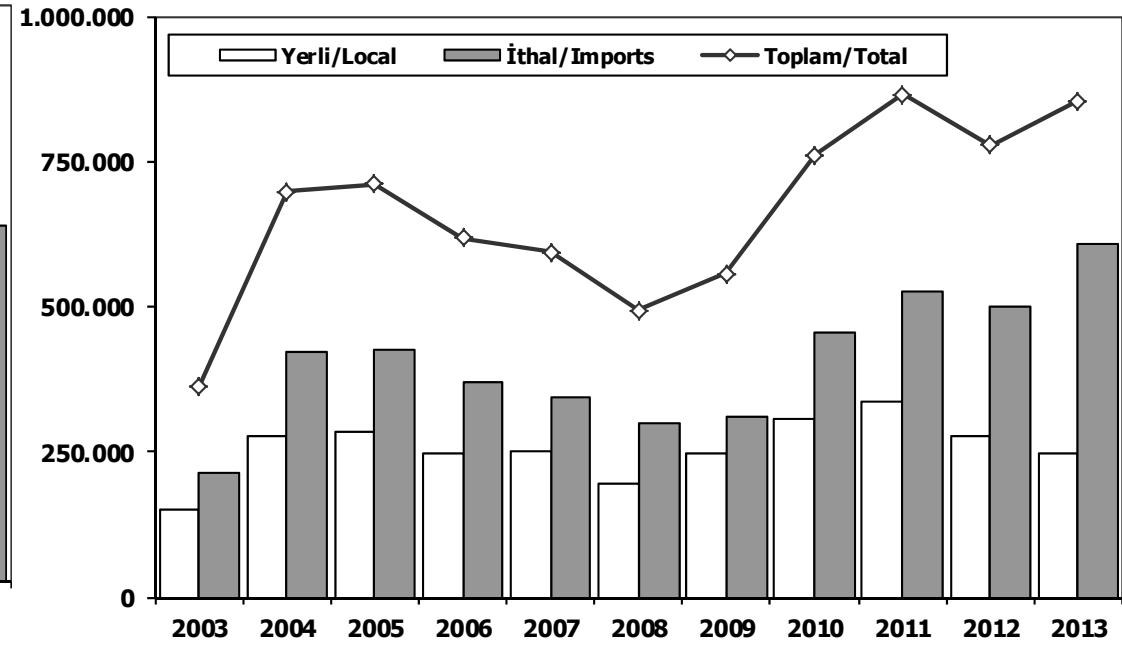
First 4 Sectors:

- 1- Transport Vehicle and Component Industry
- 2- Chemical Articles and Products
- 3-Ready Wear and Confection
- 4- Iron Steel Products

Toplam Pazar (Otomobil+T.Araç) Total Market (P.Cars+C.V)



Hafif Araçlar Pazarı LV Market

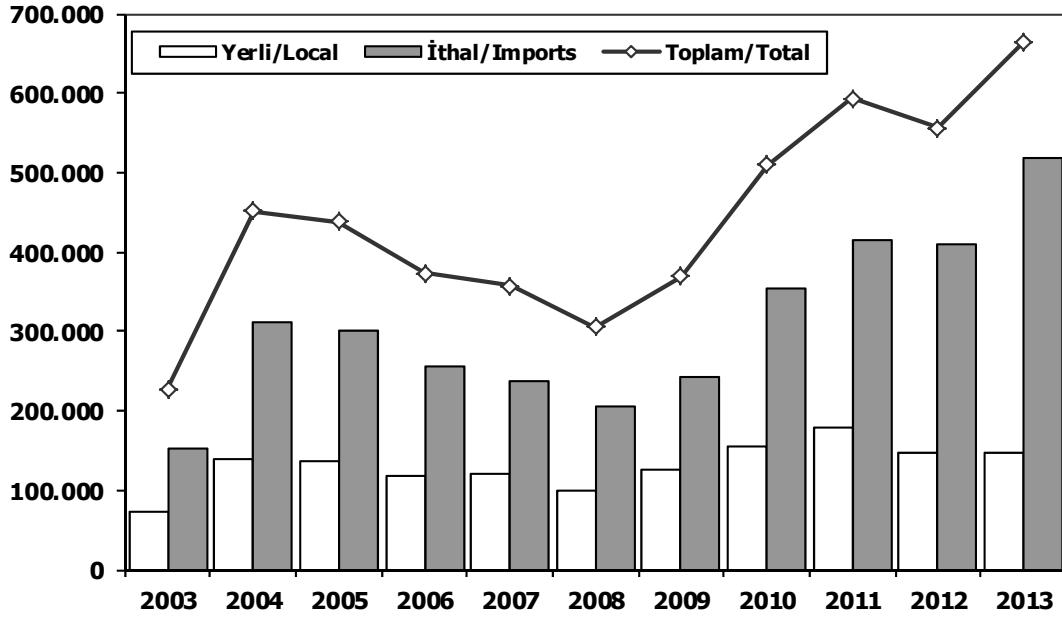


| | 2003 | 2004 | 2005 | 2006 | 2007 | 2008 | 2009 | 2010 | 2011 | 2012 | 2013 |
|----------------------------|---------|---------|---------|---------|---------|---------|---------|---------|----------------|---------|----------------|
| Toplam/Total | 397.963 | 741.269 | 758.537 | 665.515 | 634.206 | 526.544 | 575.869 | 793.172 | 910.867 | 817.620 | 893.124 |
| İthalat/Imports | 222.984 | 430.204 | 436.033 | 382.460 | 355.752 | 306.087 | 313.921 | 465.408 | 538.532 | 511.694 | 615.609 |
| İthalat/Imports (%) | 56 | 58 | 57 | 57 | 56 | 58 | 55 | 59 | 59 | 63 | 69 |

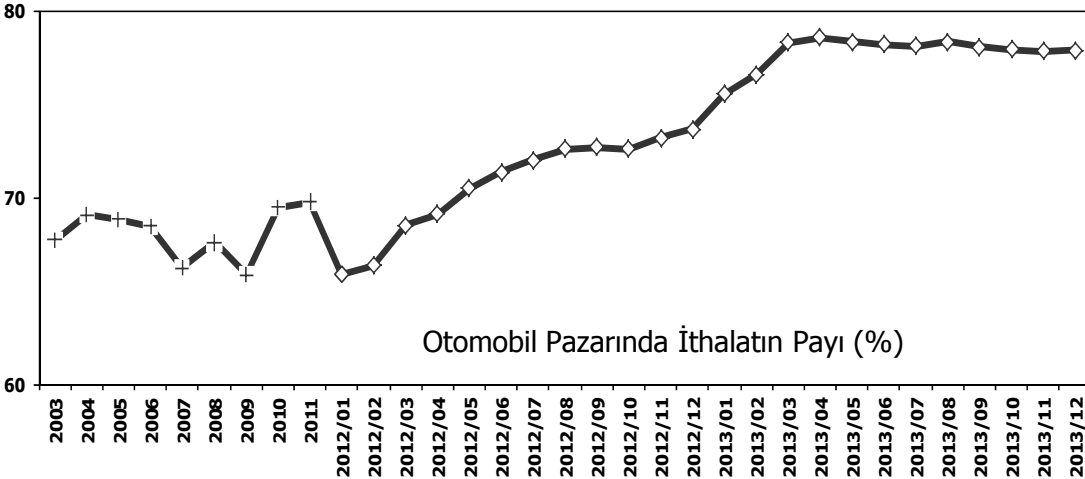
| | 2003 | 2004 | 2005 | 2006 | 2007 | 2008 | 2009 | 2010 | 2011 | 2012 | 2013 |
|----------------------------|---------|---------|---------|---------|---------|---------|---------|---------|----------------|---------|----------------|
| Yerli/Local | 150.842 | 275.521 | 284.134 | 246.800 | 249.705 | 196.162 | 247.694 | 305.354 | 338.074 | 276.003 | 245.906 |
| İthal/Imports | 213.227 | 422.574 | 426.274 | 371.052 | 345.057 | 297.861 | 309.432 | 455.559 | 526.365 | 501.758 | 607.472 |
| Toplam/Total | 364.069 | 698.095 | 710.408 | 617.852 | 594.762 | 494.023 | 557.126 | 760.913 | 864.439 | 777.761 | 853.378 |
| İthalat/Imports (%) | 59 | 61 | 60 | 60 | 58 | 60 | 56 | 60 | 61 | 65 | 71 |

Otomobil Pazarı

P.Cars Market

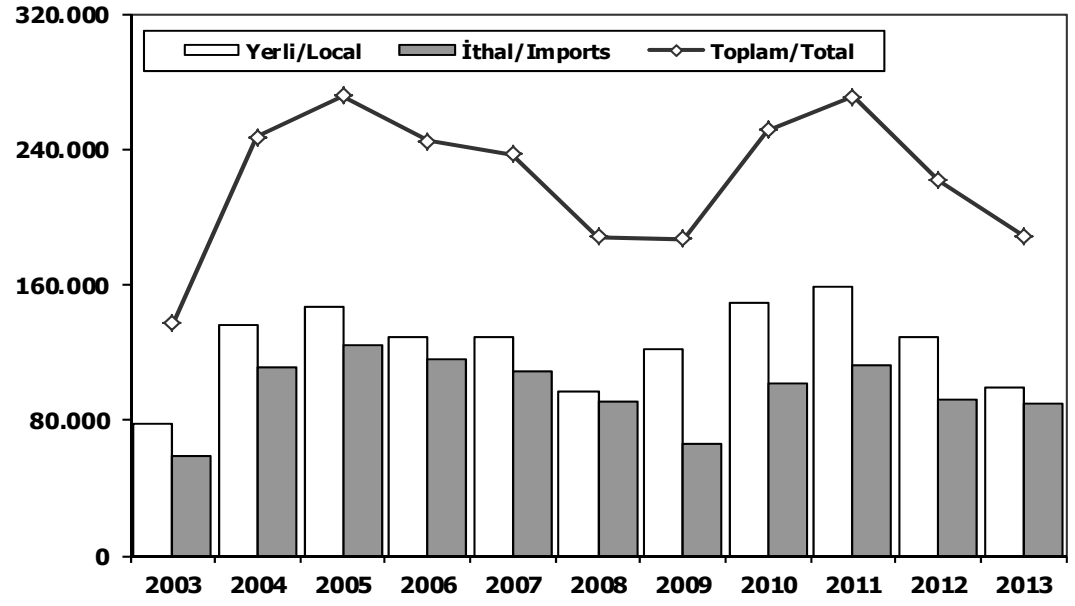


| | 2003 | 2004 | 2005 | 2006 | 2007 | 2008 | 2009 | 2010 | 2011 | 2012 | 2013 |
|---------------------|---------|---------|---------|---------|---------|---------|---------|---------|----------------|---------|----------------|
| Yerli/Local | 73.267 | 139.541 | 136.708 | 117.725 | 120.740 | 99.205 | 126.277 | 155.634 | 179.488 | 146.604 | 147.128 |
| İthal/Imports | 153.769 | 311.668 | 301.889 | 255.494 | 236.725 | 206.793 | 243.542 | 354.150 | 414.031 | 409.676 | 517.527 |
| Toplam/Total | 227.036 | 451.209 | 438.597 | 373.219 | 357.465 | 305.998 | 369.819 | 509.784 | 593.519 | 556.280 | 664.655 |
| İthalat/Imports (%) | 68 | 69 | 69 | 68 | 66 | 68 | 66 | 69 | 70 | 74 | 78 |

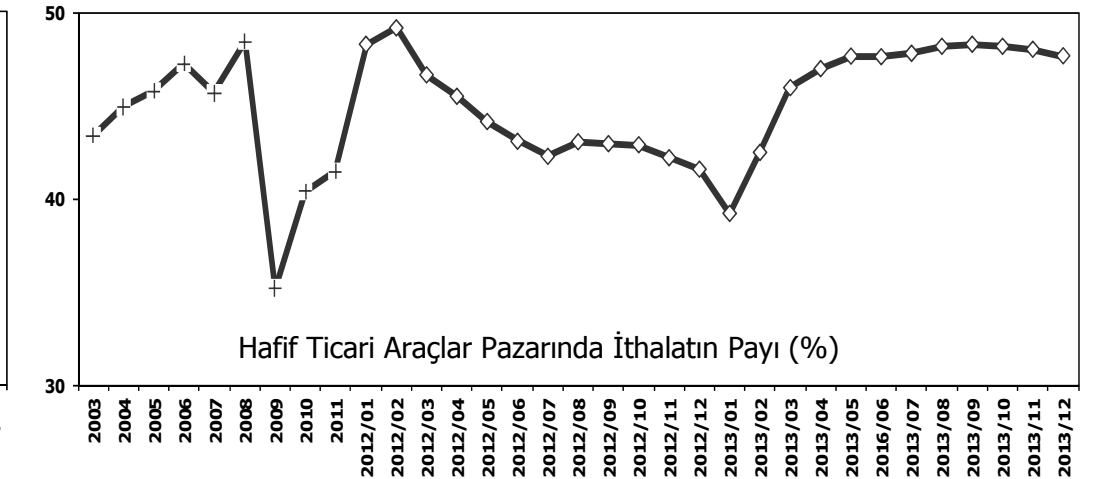


Hafif Ticari Araçlar Pazarı

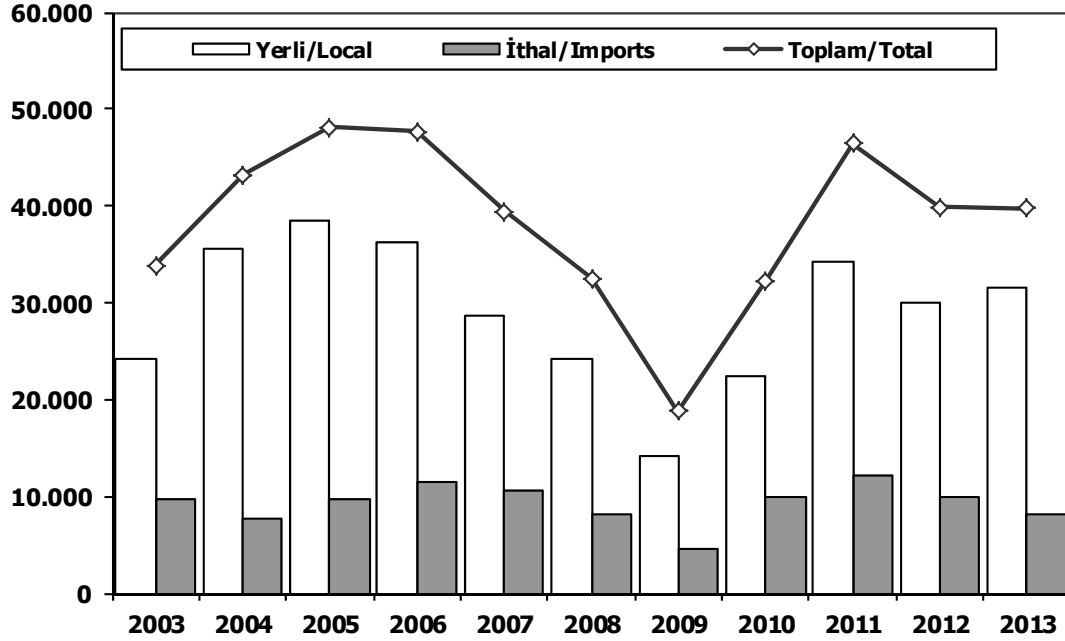
Light Commercial Vehicle Market



| | 2003 | 2004 | 2005 | 2006 | 2007 | 2008 | 2009 | 2010 | 2011 | 2012 | 2013 |
|---------------------|---------|---------|---------|----------------|---------|---------|-----------|---------|---------|----------------|---------|
| Yerli/Local | 77.575 | 135.980 | 147.426 | 129.075 | 128.965 | 96.957 | 121.417 | 149.720 | 158.586 | 129.399 | 98.778 |
| İthal/Imports | 59.458 | 110.906 | 124.385 | 115.558 | 108.332 | 91.068 | 65.890 | 101.409 | 112.334 | 92.082 | 89.945 |
| Toplam/Total | 137.033 | 246.886 | 271.811 | 244.633 | 237.297 | 188.025 | 187.307 | 251.129 | 270.920 | 221.481 | 188.723 |
| İthalat/Imports (%) | 43 | 45 | 46 | 47 | 46 | 48 | 35 | 40 | 41 | 42 | 48 |

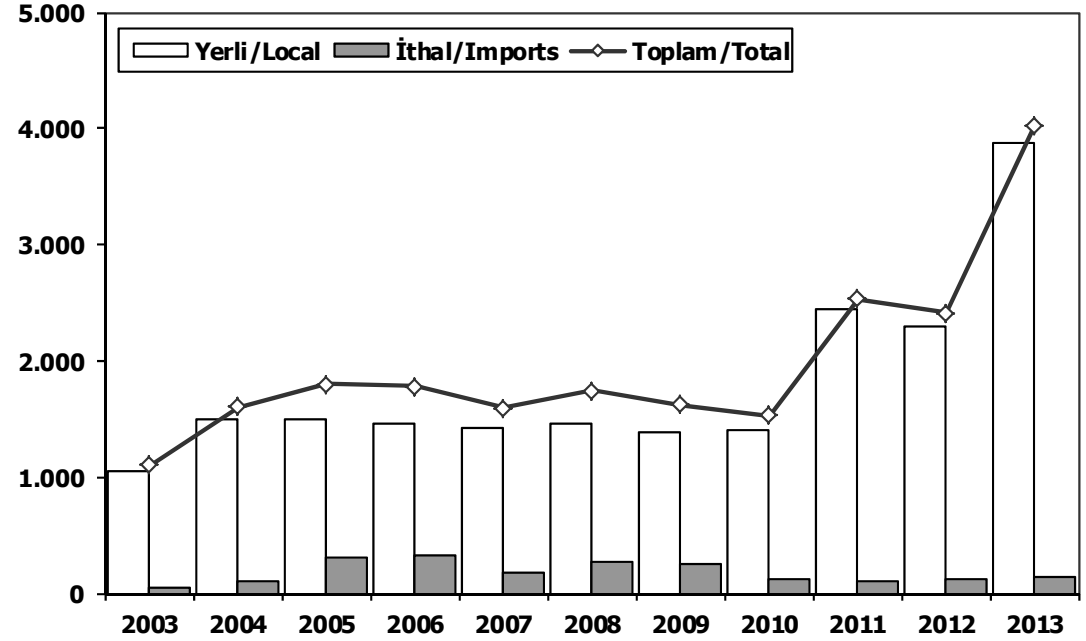


Ağır Ticari Araçlar Pazarı HCV Market



| | 2003 | 2004 | 2005 | 2006 | 2007 | 2008 | 2009 | 2010 | 2011 | 2012 | 2013 |
|---------------------|--------|--------|---------------|--------|--------|--------|--------|-----------|---------------|--------|--------|
| Yerli/Local | 24.137 | 35.544 | 38.370 | 36.255 | 28.749 | 24.295 | 14.254 | 22.410 | 34.261 | 29.923 | 31.609 |
| İthal/Imports | 9.757 | 7.630 | 9.759 | 11.408 | 10.695 | 8.226 | 4.489 | 9.849 | 12.167 | 9.936 | 8.137 |
| Toplam/Total | 33.894 | 43.174 | 48.129 | 47.663 | 39.444 | 32.521 | 18.743 | 32.259 | 46.428 | 39.859 | 39.746 |
| İthalat/Imports (%) | 29 | 18 | 20 | 24 | 27 | 25 | 24 | 31 | 26 | 25 | 20 |

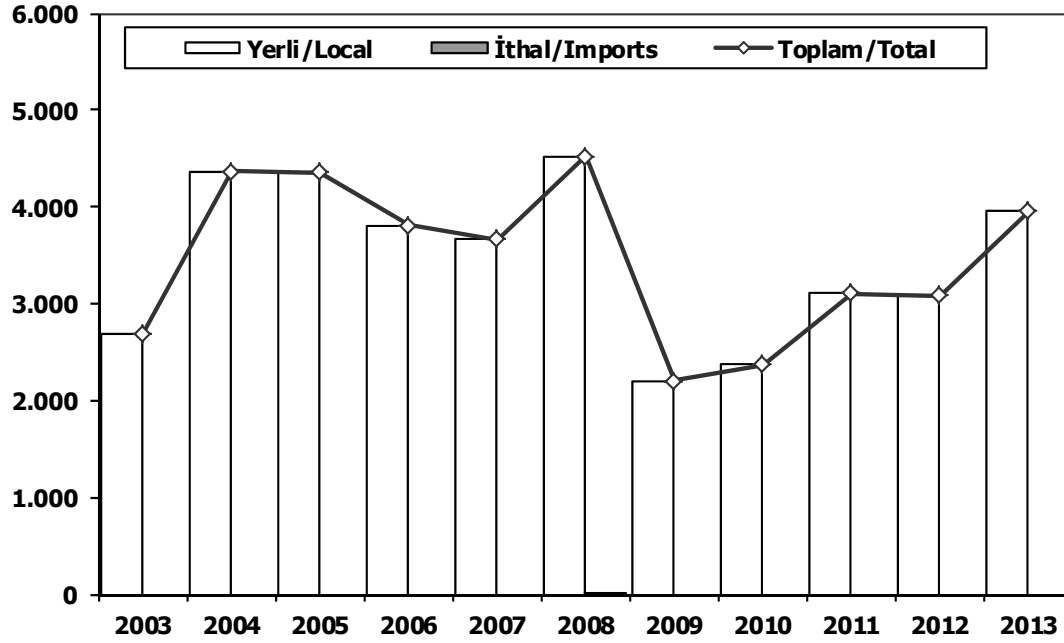
Otobüs Pazarı Bus Market



| | 2003 | 2004 | 2005 | 2006 | 2007 | 2008 | 2009 | 2010 | 2011 | 2012 | 2013 |
|---------------------|-------|-------|-------|-------|-------|-------|-------|-------|-------|-------|--------------|
| Yerli/Local | 1.051 | 1.503 | 1.498 | 1.466 | 1.413 | 1.468 | 1.376 | 1.409 | 2.437 | 2.291 | 3.882 |
| İthal/Imports | 53 | 103 | 298 | 317 | 185 | 271 | 247 | 116 | 95 | 119 | 145 |
| Toplam/Total | 1.104 | 1.606 | 1.796 | 1.783 | 1.598 | 1.739 | 1.623 | 1.525 | 2.532 | 2.410 | 4.027 |
| İthalat/Imports (%) | 5 | 6 | 17 | 18 | 12 | 16 | 15 | 8 | 4 | 5 | 4 |

Midibüs Pazarı (7-9 mt / 25-35 Kişilik)

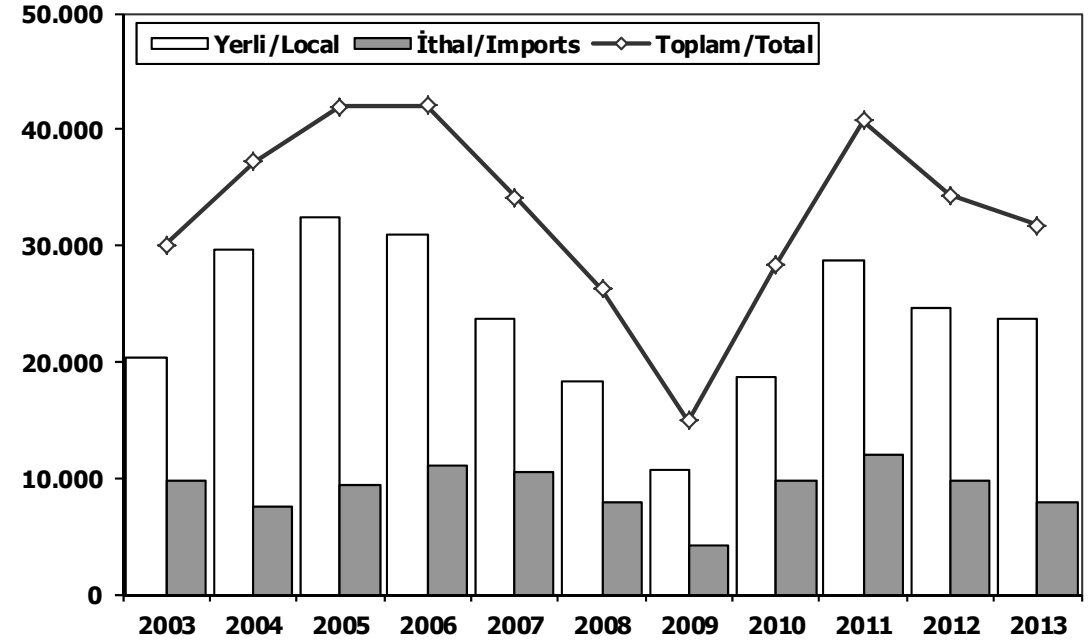
Midibus Market (7-9 mt / 25-35 Passengers)



| | 2003 | 2004 | 2005 | 2006 | 2007 | 2008 | 2009 | 2010 | 2011 | 2012 | 2013 |
|----------------------------|-------|-------|-------|-------|-------|--------------|-------|-------|-------|-------|-------|
| Yerli/Local | 2.694 | 4.363 | 4.351 | 3.809 | 3.661 | 4.511 | 2.205 | 2.372 | 3.104 | 3.084 | 3.959 |
| İthal/Imports | 0 | 0 | 0 | 0 | 0 | 11 | 0 | 0 | 0 | 0 | 0 |
| Toplam/Total | 2.694 | 4.363 | 4.351 | 3.809 | 3.661 | 4.522 | 2.205 | 2.372 | 3.104 | 3.084 | 3.959 |
| İthalat/Imports (%) | 0 | 0 | 0 | 0 | 0 | 0 | 0 | 0 | 0 | 0 | 0 |

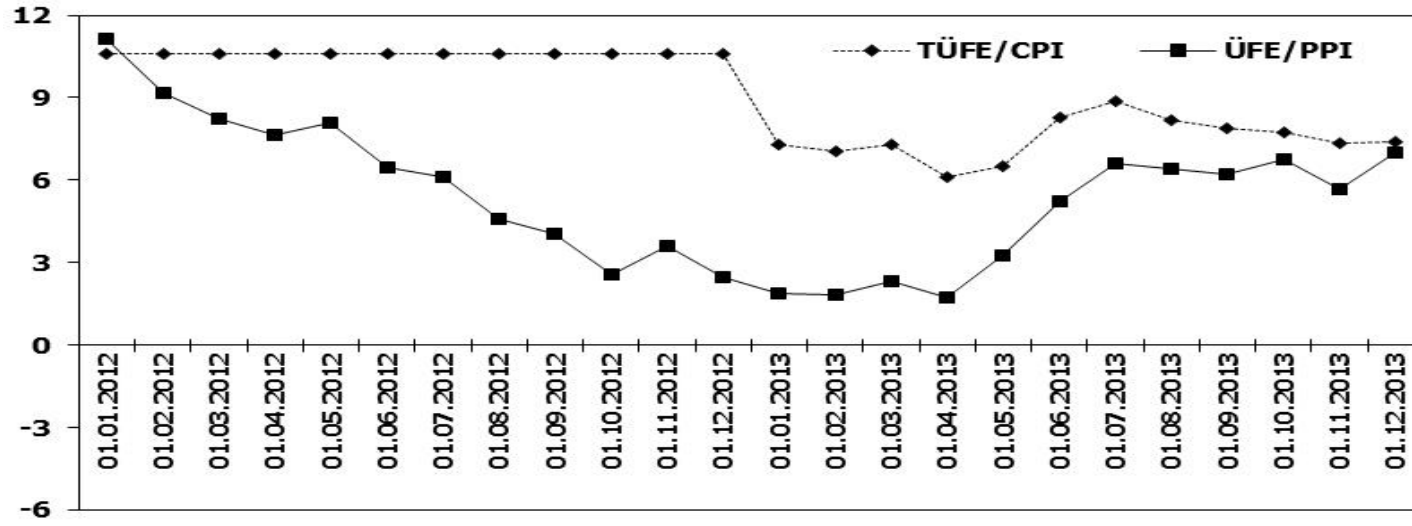
Kamyon Pazarı

Truck Market

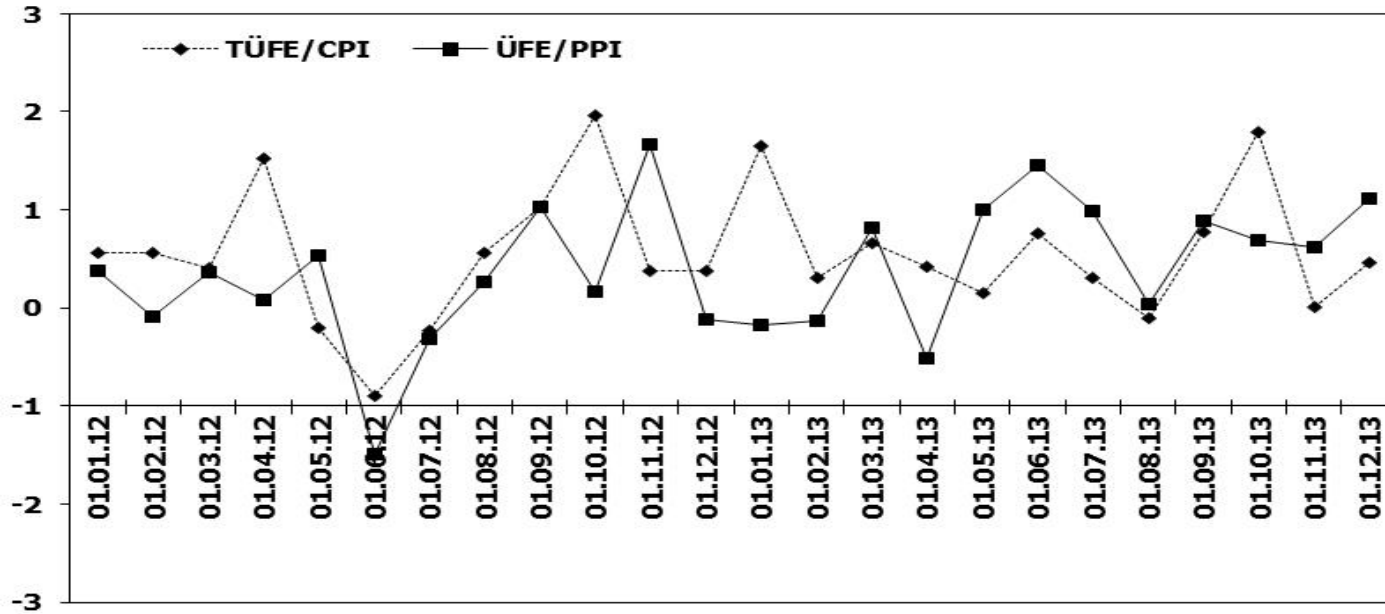


| | 2003 | 2004 | 2005 | 2006 | 2007 | 2008 | 2009 | 2010 | 2011 | 2012 | 2013 |
|----------------------------|--------|--------|---------------|---------------|--------|--------|--------|-----------|---------------|--------|--------|
| Yerli/Local | 20.392 | 29.678 | 32.521 | 30.980 | 23.675 | 18.316 | 10.673 | 18.629 | 28.720 | 24.548 | 23.768 |
| İthal/Imports | 9.704 | 7.527 | 9.461 | 11.091 | 10.510 | 7.944 | 4.242 | 9.733 | 12.072 | 9.817 | 7.992 |
| Toplam/Total | 30.096 | 37.205 | 41.982 | 42.071 | 34.185 | 26.260 | 14.915 | 28.362 | 40.792 | 34.365 | 31.760 |
| İthalat/Imports (%) | 32 | 20 | 23 | 26 | 31 | 30 | 28 | 34 | 30 | 29 | 25 |

TÜFE ve ÜFE'nin Yıllık Değişimi (%) CPI and PPI Yearly Changes (%)



TÜFE ve ÜFE'nin Aylık Değişimi (%) CPI and PPI Monthly Changes (%)



2013 Otomotiv Sanayii Dış Satışlar 2013 Automotive Industry Exports Sales

OTOMOTİV SANAYİİ DIŞ SATIŞLARI 2013 / AUTOMOTIVE INDUSTRY EXPORTS SALES

| TİPLER/TYPES | 1 | 2 | 3 | 4 | 5 | 6 | 7 | 8 | 9 | 10 | 11 | 12 | Total |
|--------------------|---------------|---------------|---------------|---------------|---------------|---------------|---------------|---------------|---------------|---------------|---------------|---------------|----------------|
| OTOMOBİL | 27.961 | 40.919 | 41.864 | 40.090 | 44.747 | 37.451 | 47.491 | 27.844 | 45.991 | 40.041 | 47.271 | 42.834 | 484.504 |
| TİCARİ ARAÇ | 29.704 | 31.907 | 33.018 | 29.906 | 30.600 | 32.690 | 33.424 | 11.842 | 30.691 | 25.498 | 32.522 | 22.165 | 343.967 |
| * KAMYON | 29 | 121 | 132 | 102 | 140 | 148 | 254 | 361 | 551 | 392 | 463 | 362 | 3.055 |
| * KAMYONET | 26.802 | 28.525 | 29.082 | 26.320 | 27.522 | 28.685 | 29.646 | 9.980 | 26.425 | 21.829 | 27.339 | 18.610 | 300.765 |
| * MİDİBÜS | 80 | 113 | 101 | 62 | 26 | 105 | 58 | 109 | 41 | 65 | 47 | 178 | 985 |
| * MİNİBÜS | 2.603 | 2.903 | 3.373 | 3.062 | 2.561 | 3.352 | 3.039 | 1.126 | 3.267 | 2.739 | 4.176 | 2.463 | 34.664 |
| * OTOBÜS | 190 | 245 | 330 | 360 | 351 | 400 | 427 | 266 | 407 | 473 | 497 | 552 | 4.498 |
| TRAKTÖR | 783 | 1.332 | 1.340 | 1.278 | 1.266 | 1.352 | 1.201 | 749 | 1.438 | 1.093 | 1.580 | 1.584 | 14.996 |
| TOTAL | 58.448 | 74.158 | 76.222 | 71.274 | 76.613 | 71.493 | 82.116 | 40.435 | 78.120 | 66.632 | 81.373 | 66.583 | 843.467 |

Otomobil / Passenger Car

| TİPLER/TYPES | 1 | 2 | 3 | 4 | 5 | 6 | 7 | 8 | 9 | 10 | 11 | 12 | Total |
|---------------|---------------|---------------|---------------|---------------|---------------|---------------|---------------|---------------|---------------|---------------|---------------|---------------|----------------|
| HONDA TÜRKİYE | 85 | 403 | 180 | 30 | 302 | 123 | 189 | 269 | 90 | 100 | 49 | 301 | 2.121 |
| HYUNDAI ASSAN | 1.700 | 6.980 | 7.000 | 6.800 | 7.689 | 6.700 | 6.200 | 4.700 | 7.710 | 8.650 | 9.850 | 11.521 | 85.500 |
| OYAK RENAULT | 18.126 | 24.974 | 25.905 | 26.213 | 28.640 | 19.121 | 27.102 | 9.655 | 24.537 | 18.465 | 23.830 | 19.940 | 266.508 |
| TOFAŞ | 3.457 | 4.620 | 4.409 | 3.510 | 4.053 | 3.654 | 3.254 | 2.173 | 4.154 | 2.991 | 3.920 | 3.272 | 43.467 |
| TOYOTA | 4.593 | 3.942 | 4.370 | 3.537 | 4.063 | 7.853 | 10.746 | 11.047 | 9.500 | 9.835 | 9.622 | 7.800 | 86.908 |
| TOTAL | 27.961 | 40.919 | 41.864 | 40.090 | 44.747 | 37.451 | 47.491 | 27.844 | 45.991 | 40.041 | 47.271 | 42.834 | 484.504 |

Kamyonet / Pick-Up

| TİPLER/TYPES | 1 | 2 | 3 | 4 | 5 | 6 | 7 | 8 | 9 | 10 | 11 | 12 | Total |
|--------------|---------------|---------------|---------------|---------------|---------------|---------------|---------------|--------------|---------------|---------------|---------------|---------------|----------------|
| FORD OTOSAN | 15.948 | 15.890 | 17.206 | 15.873 | 16.543 | 17.650 | 17.065 | 5.150 | 14.959 | 12.477 | 15.345 | 9.441 | 173.547 |
| KARSAN | 1.087 | 960 | 907 | 876 | 1.108 | 1.040 | 1.198 | 244 | 967 | 630 | 840 | 228 | 10.085 |
| OTOKAR | 0 | 0 | 26 | 0 | 0 | 48 | 10 | 0 | 44 | 3 | 12 | 48 | 191 |
| TEMSA GLOBAL | 0 | 0 | 0 | 0 | 2 | 11 | 33 | 4 | 32 | 18 | 0 | 0 | 100 |
| TOFAŞ | 9.767 | 11.675 | 10.943 | 9.571 | 9.869 | 9.936 | 11.340 | 4.582 | 10.423 | 8.701 | 11.142 | 8.893 | 116.842 |
| TOTAL | 26.802 | 28.525 | 29.082 | 26.320 | 27.522 | 28.685 | 29.646 | 9.980 | 26.425 | 21.829 | 27.339 | 18.610 | 300.765 |

Minibüs / Minibus

| TİPLER/TYPES | 1 | 2 | 3 | 4 | 5 | 6 | 7 | 8 | 9 | 10 | 11 | 12 | Total |
|--------------|--------------|--------------|--------------|--------------|--------------|--------------|--------------|--------------|--------------|--------------|--------------|--------------|---------------|
| FORD OTOSAN | 2.602 | 2.903 | 3.373 | 3.061 | 2.557 | 3.351 | 3.038 | 1.117 | 3.266 | 2.737 | 4.170 | 2.454 | 34.629 |
| KARSAN | 0 | 0 | 0 | 1 | 0 | 1 | 1 | 0 | 0 | 0 | 4 | 1 | 8 |
| OTOKAR | 1 | 0 | 0 | 0 | 4 | 0 | 0 | 9 | 1 | 2 | 2 | 8 | 27 |
| TOTAL | 2.603 | 2.903 | 3.373 | 3.062 | 2.561 | 3.352 | 3.039 | 1.126 | 3.267 | 2.739 | 4.176 | 2.463 | 34.664 |

Kamyon / Truck

| TİPLER/TYPES | 1 | 2 | 3 | 4 | 5 | 6 | 7 | 8 | 9 | 10 | 11 | 12 | Total |
|--------------|-----------|------------|------------|------------|------------|------------|------------|------------|------------|------------|------------|------------|--------------|
| FORD OTOSAN | 1 | 18 | 21 | 15 | 31 | 33 | 44 | 37 | 34 | 30 | 124 | 158 | 546 |
| KARSAN | 0 | 0 | 0 | 0 | 0 | 1 | 0 | 0 | 0 | 9 | 0 | 2 | 12 |
| M. BENZ TÜRK | 28 | 102 | 110 | 87 | 108 | 111 | 206 | 324 | 516 | 340 | 336 | 202 | 2.470 |
| TEMSA GLOBAL | 0 | 1 | 1 | 0 | 1 | 3 | 4 | 0 | 1 | 13 | 3 | 0 | 27 |
| TOTAL | 29 | 121 | 132 | 102 | 140 | 148 | 254 | 361 | 551 | 392 | 463 | 362 | 3.055 |

Midibüs / Midibus

| TİPLER/TYPES | 1 | 2 | 3 | 4 | 5 | 6 | 7 | 8 | 9 | 10 | 11 | 12 | Total |
|--------------|-----------|------------|------------|-----------|-----------|------------|-----------|------------|-----------|-----------|-----------|------------|------------|
| A.I.O.S. | 69 | 94 | 82 | 51 | 12 | 92 | 47 | 75 | 21 | 56 | 17 | 128 | 744 |
| OTOKAR | 11 | 19 | 19 | 11 | 13 | 12 | 11 | 33 | 20 | 8 | 28 | 50 | 235 |
| TEMSA GLOBAL | 0 | 0 | 0 | 0 | 1 | 1 | 0 | 1 | 0 | 1 | 2 | 0 | 6 |
| TOTAL | 80 | 113 | 101 | 62 | 26 | 105 | 58 | 109 | 41 | 65 | 47 | 178 | 985 |

Otobüs / Bus

| TİPLER/TYPES | 1 | 2 | 3 | 4 | 5 | 6 | 7 | 8 | 9 | 10 | 11 | 12 | Total |
|--------------|------------|------------|------------|------------|------------|------------|------------|------------|------------|------------|------------|------------|--------------|
| A.I.O.S. | 4 | 0 | 7 | 0 | 0 | 0 | 0 | 0 | 0 | 1 | 13 | 1 | 26 |
| B.M.C. | 0 | 1 | 0 | 0 | 0 | 0 | 0 | 0 | 0 | 0 | 0 | 0 | 1 |
| KARSAN | 0 | 0 | 0 | 0 | 0 | 0 | 0 | 0 | 0 | 0 | 0 | 15 | 15 |
| M. BENZ TÜRK | 88 | 128 | 153 | 243 | 190 | 302 | 313 | 185 | 265 | 332 | 320 | 342 | 2.861 |
| MAN TÜRKİYE | 71 | 74 | 108 | 64 | 85 | 59 | 51 | 23 | 70 | 89 | 108 | 96 | 898 |
| OTOKAR | 0 | 3 | 8 | 5 | 38 | 7 | 7 | 16 | 17 | 18 | 29 | 19 | 167 |
| TEMSA GLOBAL | 27 | 39 | 54 | 48 | 38 | 32 | 56 | 42 | 55 | 33 | 27 | 79 | 530 |
| TOTAL | 190 | 245 | 330 | 360 | 351 | 400 | 427 | 266 | 407 | 473 | 497 | 552 | 4.498 |

Traktör / Farm Tractor

| TİPLER/TYPES | 1 | 2 | 3 | 4 | 5 | 6 | 7 | 8 | 9 | 10 | 11 | 12 | Total |
|--------------|------------|--------------|--------------|--------------|--------------|--------------|--------------|------------|--------------|--------------|--------------|--------------|---------------|
| HATTAT TARIM | 9 | 16 | 43 | 64 | 63 | 77 | 99 | 37 | 13 | 35 | 82 | 56 | 594 |
| TÜRK TRAKTÖR | 774 | 1.316 | 1.297 | 1.214 | 1.203 | 1.275 | 1.102 | 712 | 1.425 | 1.058 | 1.498 | 1.528 | 14.402 |
| TOTAL | 783 | 1.332 | 1.340 | 1.278 | 1.266 | 1.352 | 1.201 | 749 | 1.438 | 1.093 | 1.580 | 1.584 | 14.996 |

2013 Yılı İthal Hafif Araç Satışları 2013 Light Vehicles Import Sales

2013 Yılı İthal Otomobil Satışları / P.Cars Imports 2013

| Marka | 2012 Total | 1 | 2 | 3 | 4 | 5 | 6 | 7 | 8 | 9 | 10 | 11 | 12 | Total |
|----------------|----------------|---------------|---------------|---------------|---------------|---------------|---------------|---------------|---------------|---------------|---------------|---------------|---------------|----------------|
| VOLKSWAGEN | 66.792 | 4.053 | 5.447 | 7.235 | 7.852 | 7.588 | 7.027 | 8.323 | 7.374 | 7.364 | 7.826 | 8.579 | 9.636 | 88.304 |
| FORD | 47.030 | 1.624 | 2.520 | 3.657 | 5.064 | 6.463 | 5.027 | 4.664 | 3.786 | 4.208 | 4.051 | 6.044 | 11.297 | 58.405 |
| OPEL | 49.143 | 1.805 | 2.486 | 5.116 | 4.661 | 5.258 | 5.020 | 4.386 | 4.867 | 3.990 | 3.139 | 4.815 | 10.176 | 55.719 |
| RENAULT | 5.965 | 228 | 1.641 | 2.984 | 3.045 | 3.161 | 2.674 | 3.086 | 3.423 | 2.467 | 1.835 | 2.894 | 5.466 | 32.904 |
| HYUNDAI | 25.141 | 1.152 | 1.594 | 2.612 | 2.711 | 2.830 | 3.028 | 1.950 | 2.460 | 2.545 | 2.273 | 2.665 | 4.004 | 29.824 |
| DACIA | 27.666 | 1.487 | 1.687 | 2.181 | 2.466 | 2.395 | 2.637 | 2.594 | 2.362 | 2.404 | 1.555 | 2.331 | 4.802 | 28.901 |
| PEUGEOT | 14.519 | 1.088 | 1.422 | 2.017 | 1.987 | 1.625 | 1.772 | 1.649 | 1.587 | 1.711 | 1.263 | 2.147 | 4.800 | 23.068 |
| TOYOTA | 20.099 | 559 | 1.742 | 2.250 | 2.510 | 2.797 | 2.475 | 1.493 | 1.300 | 1.030 | 1.495 | 2.175 | 2.595 | 22.421 |
| B.M.W | 15.247 | 469 | 1.222 | 1.564 | 1.301 | 1.909 | 2.043 | 1.801 | 1.578 | 1.711 | 1.415 | 2.401 | 3.291 | 20.705 |
| MERCEDES | 12.730 | 629 | 1.003 | 1.357 | 1.262 | 2.036 | 1.965 | 2.150 | 1.698 | 2.002 | 1.228 | 1.687 | 3.006 | 20.023 |
| CITROEN | 14.711 | 1.189 | 1.598 | 1.595 | 1.743 | 1.487 | 2.071 | 1.520 | 1.041 | 1.542 | 1.326 | 1.563 | 3.015 | 19.690 |
| NISSAN | 18.873 | 628 | 789 | 1.434 | 1.620 | 1.533 | 1.461 | 1.172 | 1.577 | 2.102 | 1.677 | 1.783 | 2.641 | 18.417 |
| AUDI | 13.720 | 649 | 804 | 1.343 | 1.352 | 1.357 | 1.000 | 1.215 | 1.114 | 902 | 1.071 | 1.577 | 2.603 | 14.987 |
| KIA | 11.870 | 709 | 689 | 959 | 1.294 | 1.483 | 995 | 983 | 941 | 921 | 987 | 1.441 | 1.793 | 13.195 |
| SKODA | 10.118 | 447 | 503 | 904 | 1.094 | 1.355 | 1.181 | 1.090 | 1.129 | 1.094 | 788 | 1.484 | 1.764 | 12.833 |
| CHEVROLET | 18.492 | 854 | 779 | 1.287 | 1.329 | 891 | 1.025 | 1.124 | 934 | 824 | 781 | 1.046 | 1.632 | 12.506 |
| SEAT | 5.811 | 302 | 477 | 596 | 751 | 926 | 1.061 | 1.226 | 1.189 | 967 | 865 | 1.169 | 1.536 | 11.065 |
| FIAT | 8.774 | 598 | 520 | 550 | 861 | 1.210 | 1.085 | 1.032 | 1.180 | 845 | 652 | 980 | 1.400 | 10.913 |
| VOLVO | 5.247 | 164 | 229 | 411 | 506 | 507 | 314 | 374 | 379 | 413 | 453 | 486 | 785 | 5.021 |
| HONDA | 2.728 | 126 | 182 | 322 | 410 | 309 | 219 | 240 | 166 | 153 | 172 | 561 | 534 | 3.394 |
| SUZUKI | 1.780 | 131 | 123 | 146 | 128 | 126 | 129 | 132 | 131 | 86 | 164 | 147 | 180 | 1.623 |
| MINI (İngiliz) | 1.758 | 65 | 123 | 144 | 92 | 170 | 169 | 143 | 111 | 92 | 74 | 152 | 222 | 1.557 |
| MITSUBISHI | 1.289 | 60 | 131 | 79 | 125 | 144 | 82 | 94 | 91 | 107 | 126 | 236 | 213 | 1.488 |
| MAZDA | 810 | 27 | 23 | 43 | 113 | 131 | 113 | 104 | 65 | 104 | 191 | 217 | 246 | 1.377 |
| LAND ROVER | 1.590 | 49 | 160 | 224 | 63 | 69 | 58 | 98 | 63 | 59 | 105 | 167 | 208 | 1.323 |
| SUBARU | 640 | 34 | 53 | 43 | 63 | 55 | 71 | 146 | 122 | 154 | 92 | 139 | 129 | 1.101 |
| ALFA ROMEO | 1.052 | 65 | 73 | 81 | 137 | 177 | 64 | 51 | 54 | 57 | 56 | 66 | 149 | 1.030 |
| JEEP | 799 | 43 | 84 | 53 | 76 | 65 | 40 | 65 | 108 | 82 | 80 | 99 | 178 | 973 |
| SSANGYONG | 946 | 65 | 76 | 85 | 87 | 69 | 65 | 81 | 90 | 71 | 53 | 78 | 152 | 972 |
| LANCIA | 276 | 10 | 9 | 27 | 36 | 51 | 156 | 67 | 45 | 109 | 64 | 86 | 122 | 782 |
| PROTON | 760 | 30 | 20 | 25 | 75 | 100 | 25 | 25 | 15 | 35 | 30 | 100 | 235 | 715 |
| GEELY | 1.019 | 36 | 65 | 26 | 39 | 82 | 117 | 60 | 45 | 40 | 40 | 66 | 7 | 623 |
| PORSCHE | 497 | 16 | 32 | 40 | 50 | 39 | 35 | 49 | 46 | 41 | 34 | 42 | 93 | 517 |
| CHERY | 810 | 32 | 73 | 95 | 73 | 36 | 43 | 31 | 35 | 28 | 20 | 26 | 0 | 492 |
| TATA | 684 | 59 | 74 | 75 | 55 | 35 | 7 | 7 | 2 | 2 | 2 | 2 | 1 | 326 |
| SMART | 96 | 10 | 11 | 2 | 2 | 12 | 22 | 6 | 4 | 4 | 3 | 11 | 23 | 110 |
| JAGUAR | 84 | 14 | 12 | 25 | 2 | 12 | 1 | 4 | 5 | 5 | 5 | 5 | 7 | 97 |
| MASERATI | 18 | 0 | 2 | 1 | 1 | 1 | 1 | 2 | 4 | 2 | 5 | 3 | 18 | 40 |
| INFINITI | 41 | 2 | 1 | 2 | 2 | 6 | 2 | 3 | 3 | 2 | 0 | 3 | 11 | 37 |
| FERRARI | 21 | 0 | 2 | 3 | 3 | 3 | 1 | 3 | 0 | 2 | 2 | 1 | 3 | 23 |
| BENTLEY | 18 | 0 | 1 | 2 | 2 | 4 | 1 | 3 | 1 | 1 | 3 | 0 | 3 | 21 |
| LAMBORGHINI | 2 | 0 | 0 | 2 | 0 | 0 | 0 | 0 | 0 | 1 | 0 | 0 | 1 | 4 |
| ASTON MARTIN | 10 | 1 | 0 | 0 | 0 | 0 | 0 | 0 | 0 | 1 | 0 | 0 | 0 | 2 |
| Total | 409.676 | 19.509 | 28.482 | 41.597 | 45.043 | 48.507 | 45.282 | 43.246 | 41.130 | 40.280 | 36.001 | 49.474 | 78.977 | 517.528 |

2013 Yılı İthal Hafif Ticari Araç Satışları / Light Commercial Vehicles Imports 2013

| Marka | 2012 Total | 1 | 2 | 3 | 4 | 5 | 6 | 7 | 8 | 9 | 10 | 11 | 12 | Total |
|--------------|---------------|--------------|--------------|--------------|--------------|--------------|--------------|--------------|--------------|--------------|--------------|--------------|---------------|---------------|
| VOLKSWAGEN | 26.048 | 1.109 | 1.637 | 2.153 | 2.393 | 2.679 | 2.088 | 2.413 | 1.912 | 1.861 | 1.402 | 1.643 | 2.462 | 23.752 |
| RENAULT | 16.331 | 715 | 767 | 1.090 | 1.043 | 1.153 | 863 | 788 | 731 | 877 | 678 | 1.018 | 1.827 | 11.550 |
| MERCEDES | 9.234 | 367 | 575 | 935 | 929 | 883 | 902 | 1.113 | 1.005 | 1.130 | 488 | 785 | 1.309 | 10.421 |
| PEUGEOT | 9.112 | 173 | 262 | 835 | 594 | 1.076 | 1.002 | 455 | 623 | 388 | 258 | 774 | 1.883 | 8.323 |
| DACIA | 1.298 | 16 | 88 | 805 | 751 | 856 | 818 | 800 | 604 | 569 | 368 | 559 | 1.260 | 7.494 |
| CITROEN | 7.672 | 156 | 379 | 860 | 732 | 902 | 363 | 527 | 325 | 676 | 355 | 422 | 982 | 6.679 |
| FIAT | 4.962 | 305 | 386 | 435 | 480 | 577 | 308 | 435 | 564 | 653 | 523 | 600 | 979 | 6.245 |
| MITSUBISHI | 2.684 | 170 | 209 | 372 | 282 | 197 | 266 | 373 | 285 | 322 | 230 | 177 | 709 | 3.592 |
| ISUZU | 2.296 | 125 | 145 | 203 | 206 | 314 | 199 | 180 | 144 | 121 | 248 | 228 | 474 | 2.587 |
| TOYOTA | 2.615 | 95 | 162 | 196 | 158 | 195 | 185 | 177 | 223 | 243 | 147 | 311 | 321 | 2.413 |
| IVECO | 1.673 | 61 | 98 | 165 | 161 | 235 | 189 | 175 | 148 | 188 | 185 | 219 | 380 | 2.204 |
| HYUNDAI | 2.454 | 173 | 107 | 62 | 145 | 123 | 92 | 88 | 92 | 148 | 94 | 142 | 214 | 1.480 |
| NISSAN | 1.247 | 44 | 126 | 204 | 93 | 53 | 41 | 84 | 74 | 45 | 33 | 45 | 36 | 878 |
| SSANGYONG | 1.143 | 109 | 61 | 87 | 66 | 66 | 85 | 48 | 57 | 79 | 65 | 51 | 85 | 859 |
| FORD | 737 | 117 | 101 | 87 | 65 | 81 | 56 | 53 | 25 | 22 | 13 | 13 | 24 | 657 |
| KIA | 845 | 38 | 26 | 27 | 52 | 42 | 19 | 18 | 28 | 48 | 43 | 44 | 68 | 453 |
| TATA | 360 | 25 | 31 | 26 | 25 | 27 | 25 | 28 | 26 | 25 | 32 | 26 | 20 | 316 |
| DFM | 921 | 0 | 39 | 0 | 0 | 0 | 0 | 0 | 0 | 0 | 0 | 0 | 0 | 39 |
| MAZDA | 203 | 0 | 0 | 0 | 0 | 2 | 0 | 0 | 0 | 0 | 1 | 0 | 0 | 3 |
| OPEL | 247 | 0 | 0 | 0 | 0 | 0 | 0 | 0 | 0 | 0 | 0 | 0 | 0 | 0 |
| Total | 92.082 | 3.798 | 5.199 | 8.542 | 8.175 | 9.461 | 7.501 | 7.755 | 6.866 | 7.395 | 5.163 | 7.057 | 13.033 | 89.945 |