



OTOMOTİV SANAYİİ DERNEĞİ
AUTOMOTIVE MANUFACTURERS ASSOCIATION

AYLIK RAPOR

Automotive Industry Monthly Report

Aralık / December 2012

- **Üretim/Production**
- **Satış/Sales**
- **İthalat/Imports**
- **İhracat/Exports**

OSD "OICA" Üyesidir



OSD is a Member of "OICA"

2012 Aralık Ayı Özeti / 2012 December Summary

KONULAR/ MATTERS		ARALIK/ DECEMBER			YILLIK/ YEARLY		
		2011	2012	2012/ 2011 (%)	2011	2012	2012/ 2011 (%)
Üretim/ Production	Toplam/ Total	104.453	86.944	-17	1.189.131	1.072.978	-10
	Otomobil/ P.Cars	51.066	44.708	-12	639.734	577.296	-10
Pazar/ Market	Toplam/ Total	134.281	121.113	-10	910.867	817.620	-10
	Otomobil/ P.Cars	88.957	80.926	-9	593.519	556.280	-6
İthalat/ Import	Toplam/ Total	78.765	76.042	-3	538.532	511.694	-5
	Otomobil/ P.Cars	64.129	61.857	-4	414.031	409.676	-1
İhracat/ Export	Toplam/ Total	67.195	64.928	-3	790.966	729.923	-8
	Otomobil/ P.Cars	35.777	35.925	0	442.674	412.991	-7
İhracat / Export (\$)	Toplam/ Total **	1.584.597.329	1.645.801.820	4	20.436.349.488	19.324.859.157	-5
	Otomobil/ P.Cars	544.212.068	559.592.211	3	6.541.969.418	6.067.964.588	-7

PARAMETRELER / PARAMETERS		ARALIK/ DECEMBER			YILLIK/ YEARLY		
		2011	2012	2012/ 2011 (%)	2011	2012	2012/ 2011 (%)
ÜFE/ PPI		1,00	-0,12	**	13,33	2,45	**
TÜFE/ CPI		0,58	0,38	**	10,45	6,16	**
Sanayi Endeksi/ Industry Index		0,37	0,01	**	14,59	1,27	**
\$ (*)		1,8498	1,7862	-3,4	1,6824	1,7905	6,4
EURO (*)		2,4636	2,3565	-4,3	2,3542	2,3137	-1,7
Japon Yeni (*)		2,3724	2,0742	-12,6	2,1130	2,2388	6,0

(*) Ortalama Değerler / Average Values

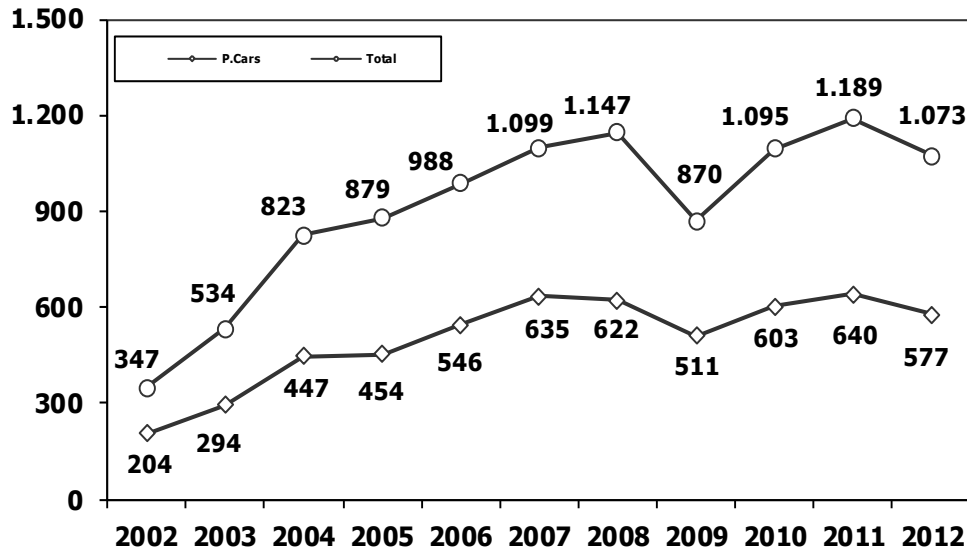
(**) Toplam Sanayi / Total Industry Including Components

2011/2012 Yılları Üretim 2011/2012 Production

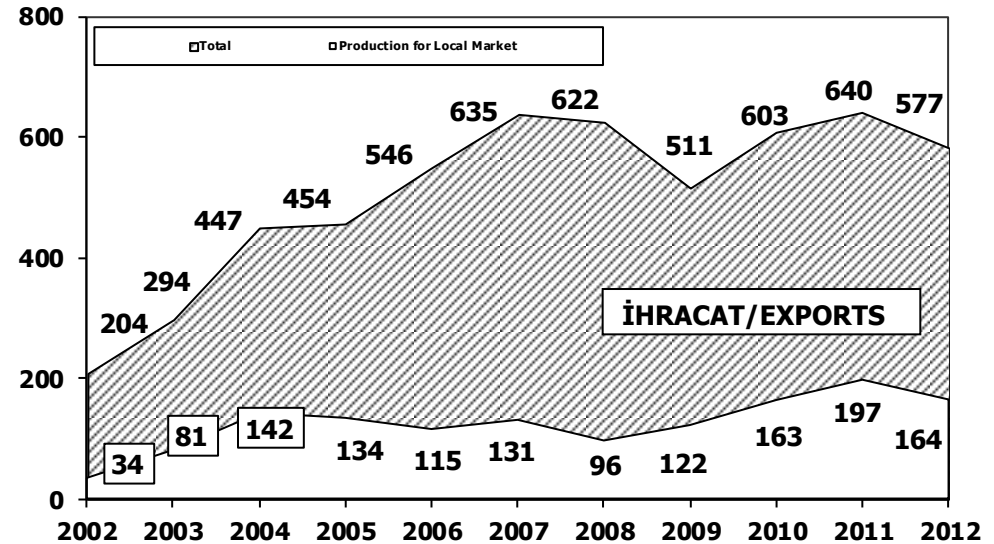
K.KAMYON : AYA 3.5-12 Ton (L.Truck:GVW 3.5-12 Ton)
B.KAMYON : AYA 12 Ton'dan Büyük (M.Truck:GVW 12 Ton And Up)

TİPLER	ARALIK AYI ÜRETİMİ December Production		12 AYLIK ÜRETİM 12 Months Production		DEĞİŞİM % Percent Change %	
	2011	2012	2011	2012	ARALIK December	12 AY 12 Months
OTOMOBİL - Pass.Car	51.066	44.708	639.734	577.296	-12	-10
TİCARİ ARAÇLAR - Commercial Vehicles	53.387	42.236	549.397	495.682	-21	-10
* B. KAMYON - M. Truck	2.793	1.156	32.635	26.271	-59	-20
* K. KAMYON - L. Truck	848	158	4.761	2.858	-81	-40
* KAMYONET - Pick Up	45.803	37.108	479.110	426.633	-19	-11
* OTOBÜS - Bus	551	497	6.907	6.427	-10	-7
* MİNİBÜS - Minibus	2.997	3.060	22.475	29.335	2	31
* MİDİBÜS - Midibus	395	257	3.509	4.158	-35	18
TAŞIT ARAÇLARI TOPLAM - MV Total	104.453	86.944	1.189.131	1.072.978	-17	-10
TRAKTÖR - F. Tractor	3.756	1.604	45.506	42.255	-57	-7
GENEL TOPLAM - Grand Total	108.209	88.548	1.234.637	1.115.233	-18	-10

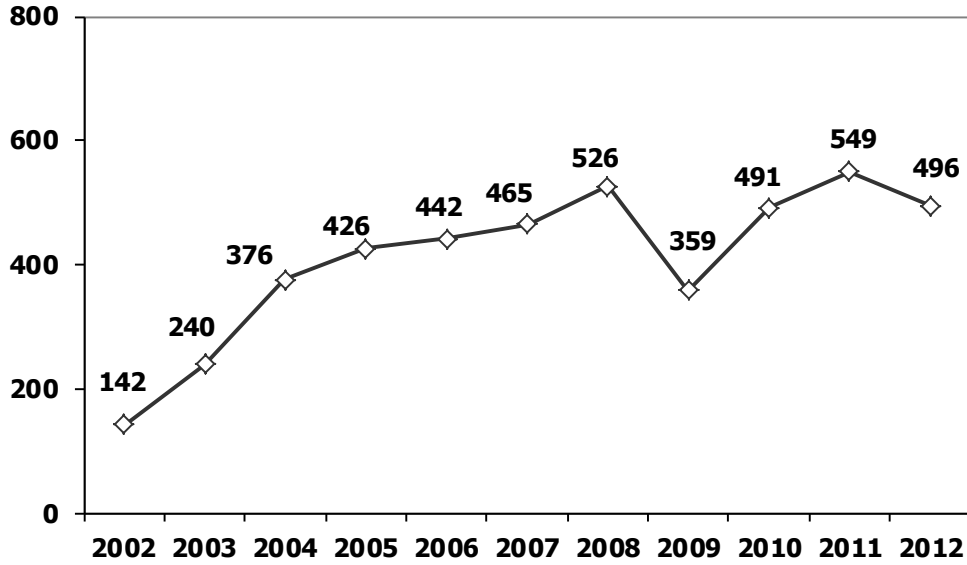
Toplam Üretim ve Otomobil Üretimi (x1000)
Total & P.Cars Production (x1000)



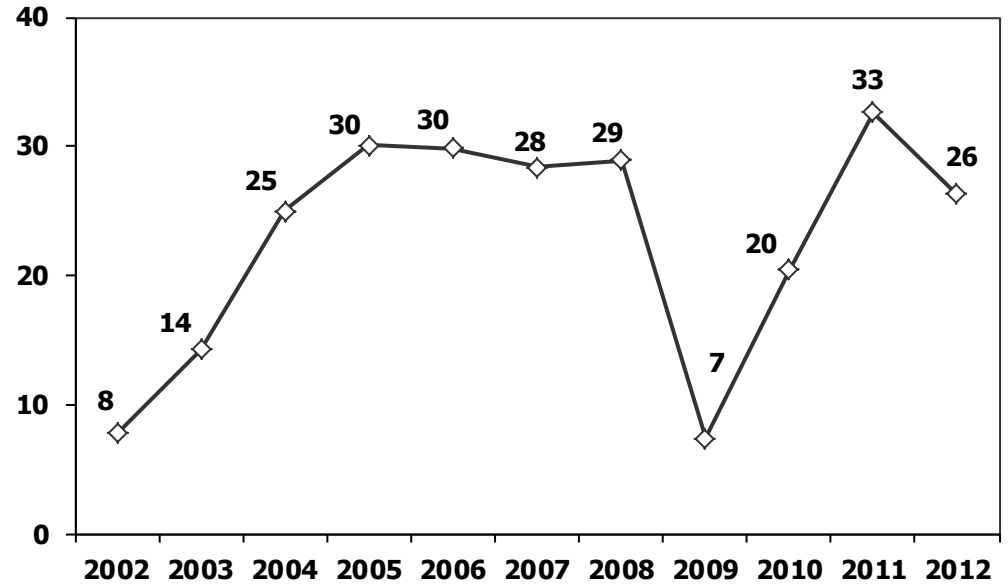
Otomobil Üretimi ve İhracat (x1000)
P.Cars Production & Exports (x1000)



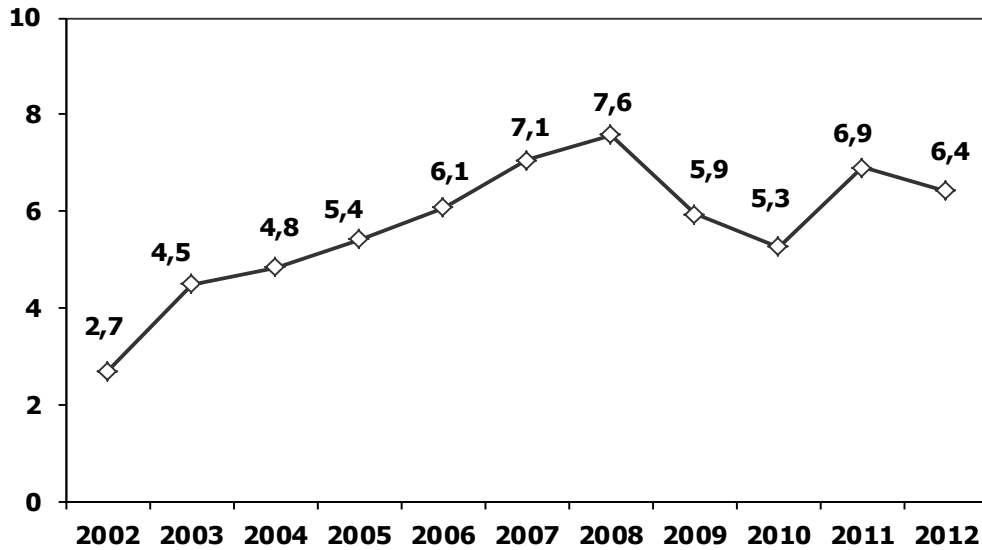
Ticari Araç Üretimi (x1000)
Commercial Vehicle Production (x1000)



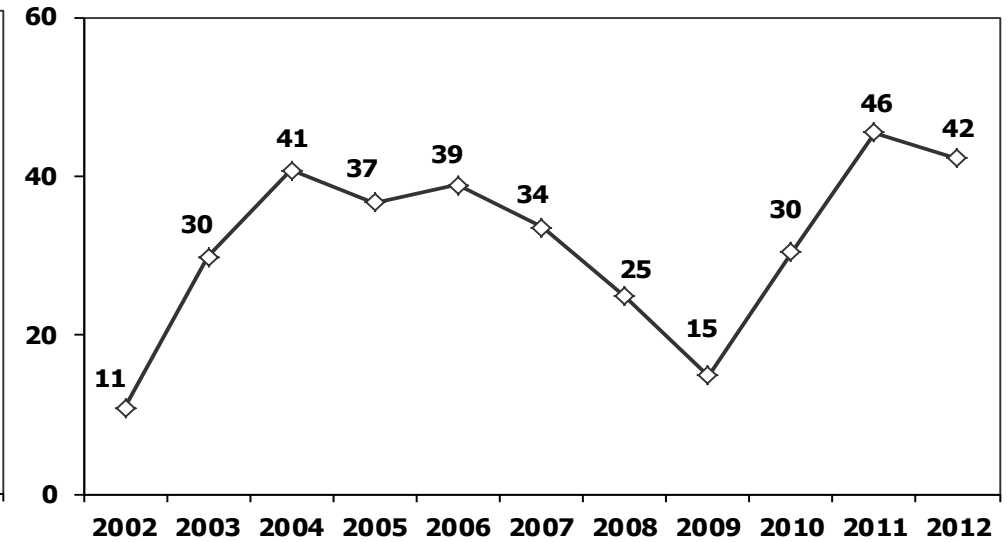
(AYA >12 Ton) **Büyük Kamyon Üretimi** (x1000)
(GVW >12 Ton) Heavy Truck Production (x1000)



Otobüs Üretimi (x1000)
Bus Production (x1000)

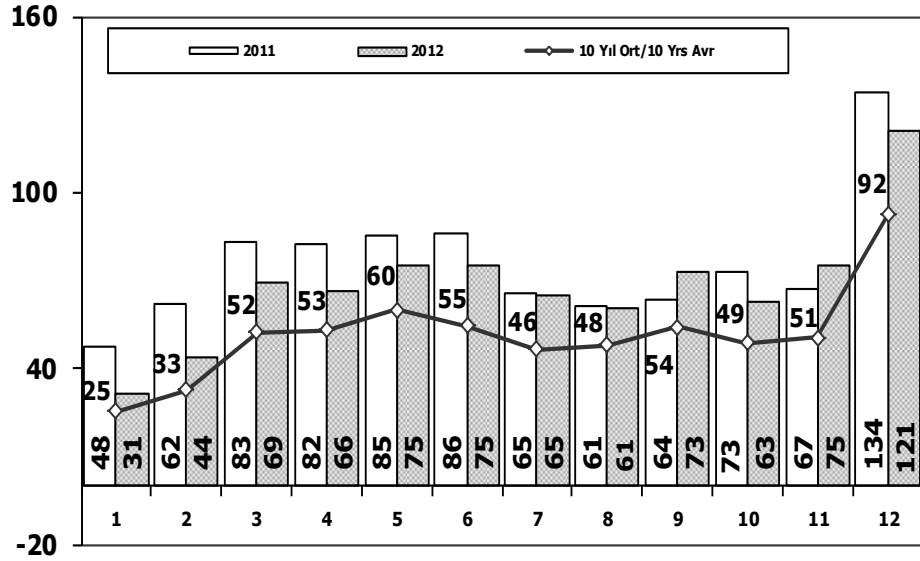


Traktör Üretimi (x1000)
F. Tractor Production (x1000)



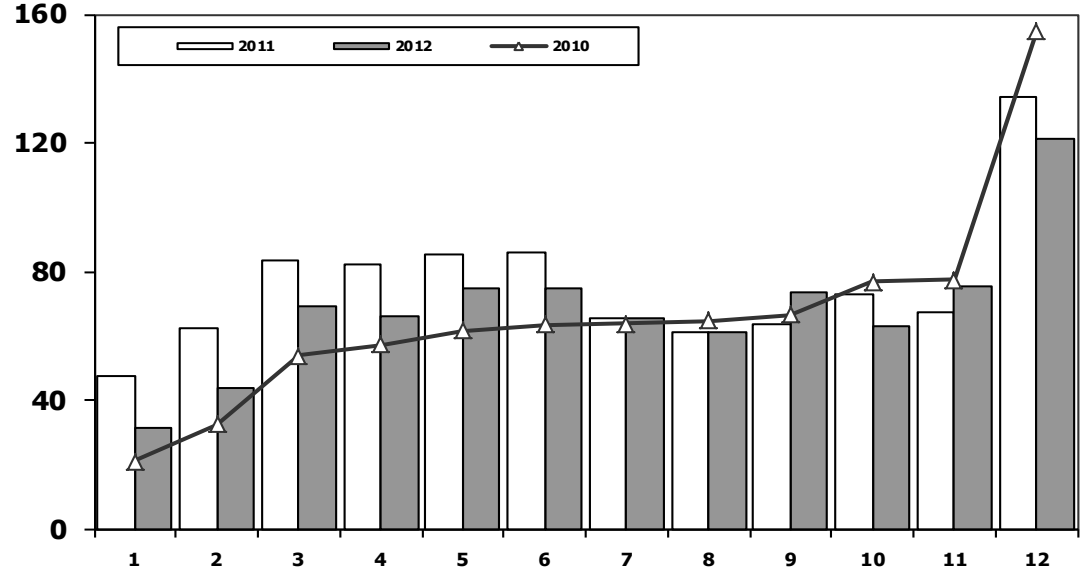
Toplam Pazarın Analizi (x1000)

Total Market Analysis (x1000)



Toplam Pazar (x1000)

Total Market (x1000)

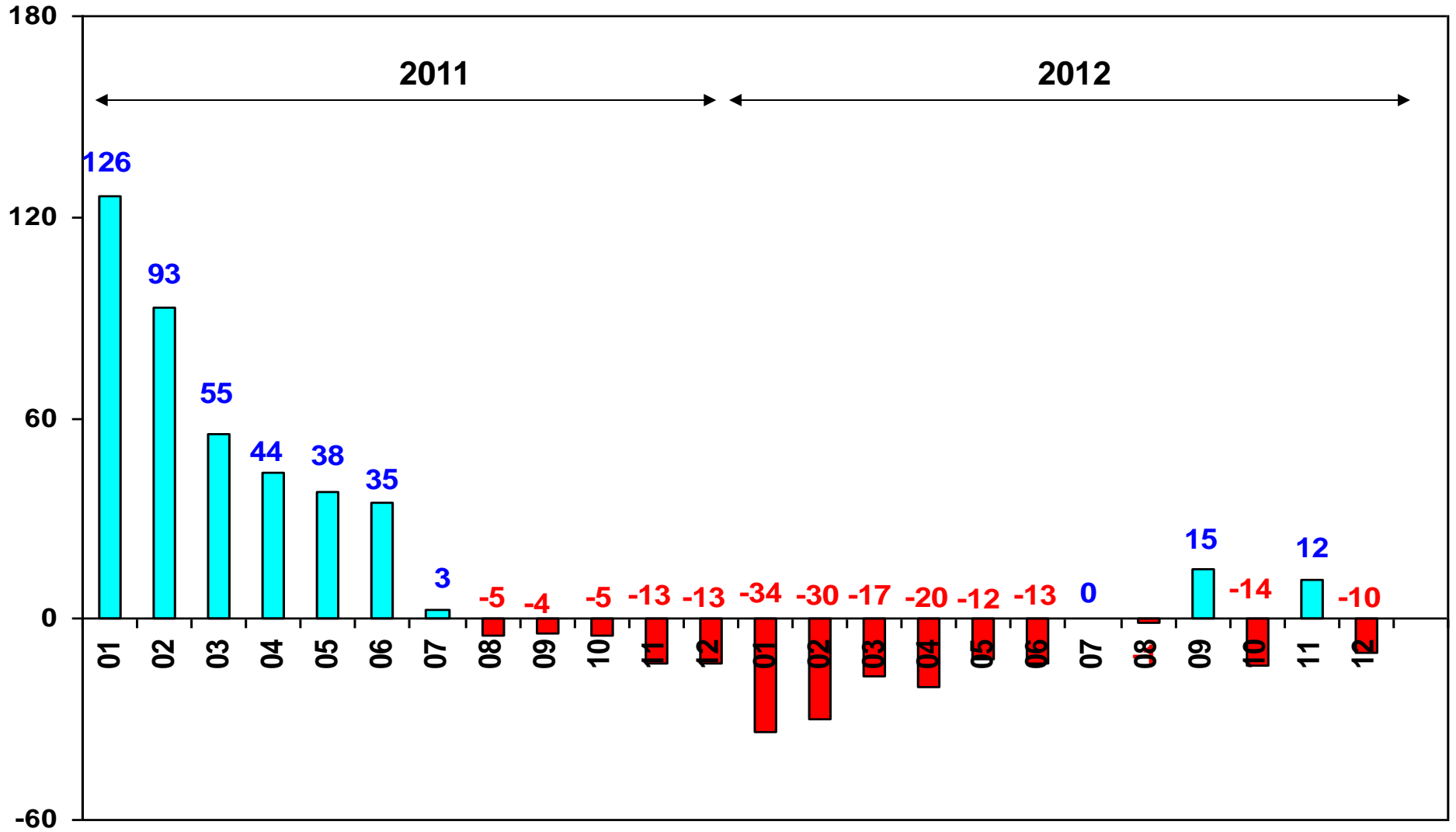


Aylar / Months	10 Yil Ort. 10 Yrs Avr. (x1000)	2012 (x1000)	%
1	25,4	31,2	22,8
2	32,5	43,8	34,7
3	52,2	69,0	32,0
4	53,0	66,0	24,7
5	59,8	74,8	25,0
6	54,5	74,8	37,1
7	46,4	65,1	40,3
8	48,0	60,8	26,8
9	54,3	73,2	34,9
10	48,8	62,7	28,5
11	50,5	75,0	48,5
12	92,3	121,1	31,2
Total	617,8	817,6	32,3

	1	2	3	4	5	6	7	8	9	10	11	12	Total
2002	2.248	4.310	8.065	12.192	16.807	15.648	16.509	14.738	16.186	18.386	18.478	30.875	174.442
2003	12.576	11.317	17.095	20.380	27.803	30.517	32.268	28.839	40.315	50.051	44.081	82.721	397.963
2004	38.621	39.389	71.723	77.056	84.634	63.228	57.307	56.422	59.429	56.153	52.237	85.070	741.269
2005	22.687	38.291	64.502	60.873	71.383	64.379	63.847	68.647	66.580	60.791	65.719	110.838	758.537
2006	29.969	44.646	65.090	68.853	83.289	58.203	40.037	47.374	49.629	39.805	55.898	82.722	665.515
2007	24.950	31.702	45.488	45.633	51.255	51.661	50.117	54.171	50.078	56.058	67.017	106.076	634.206
2008	33.792	38.121	56.814	50.967	51.627	49.393	44.692	46.592	46.829	35.147	28.152	44.418	526.544
2009	20.631	22.846	56.531	54.426	64.887	63.102	30.246	37.092	83.403	22.117	29.202	91.386	575.869
2010	21.050	32.313	53.828	57.079	61.628	63.390	63.718	64.645	66.601	76.780	77.406	154.734	793.172
2011	47.658	62.348	83.333	82.071	85.093	85.863	65.364	61.378	63.643	72.640	67.195	134.281	910.867
2012	31.219	43.827	68.957	66.014	74.820	74.781	65.122	60.848	73.197	62.677	75.045	121.113	817.620

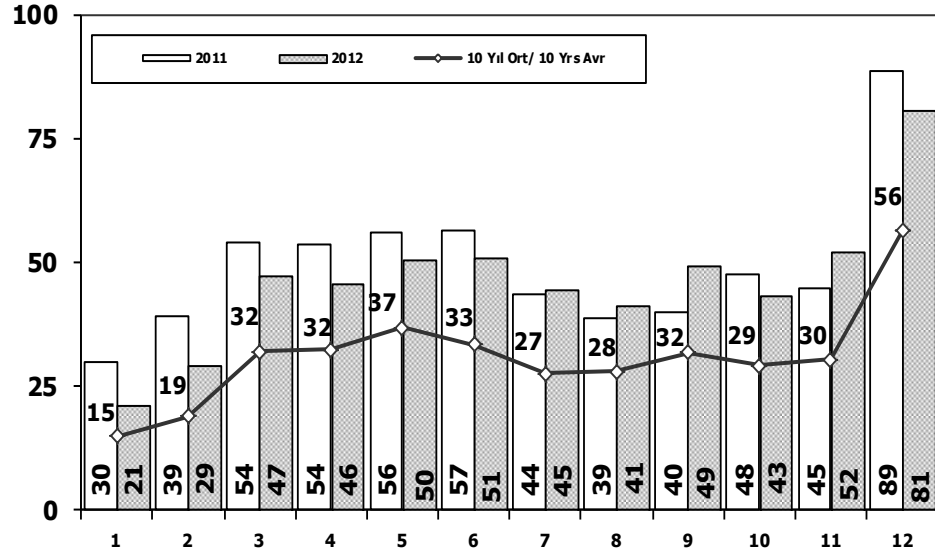
TOPLAM PAZARDA AYLIK DEĞİŞİM (%)

Monthly Change in Total Market - %



Otomobil Pazarının Analizi (x1000)

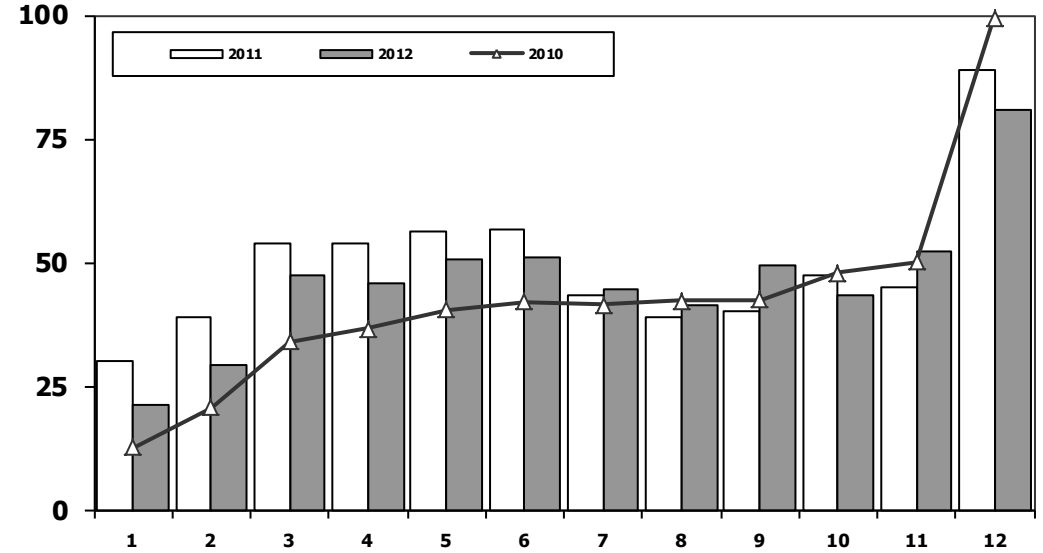
P.Cars Market Analysis (x1000)



Aylar / Months	10 Yil Ort. 10 Yrs Avr. (x1000)	2012 (x1000)	%
1	14,8	21,1	42,4
2	18,9	29,2	54,4
3	32,0	47,3	47,6
4	32,4	45,6	41,0
5	36,8	50,5	37,1
6	33,4	50,8	52,1
7	27,5	44,5	61,9
8	28,0	41,2	47,5
9	31,9	49,4	54,7
10	29,2	43,4	48,7
11	30,4	52,3	72,0
12	56,4	80,9	43,6
Total	371,7	556,3	49,6

Otomobil Pazarı (x1000)

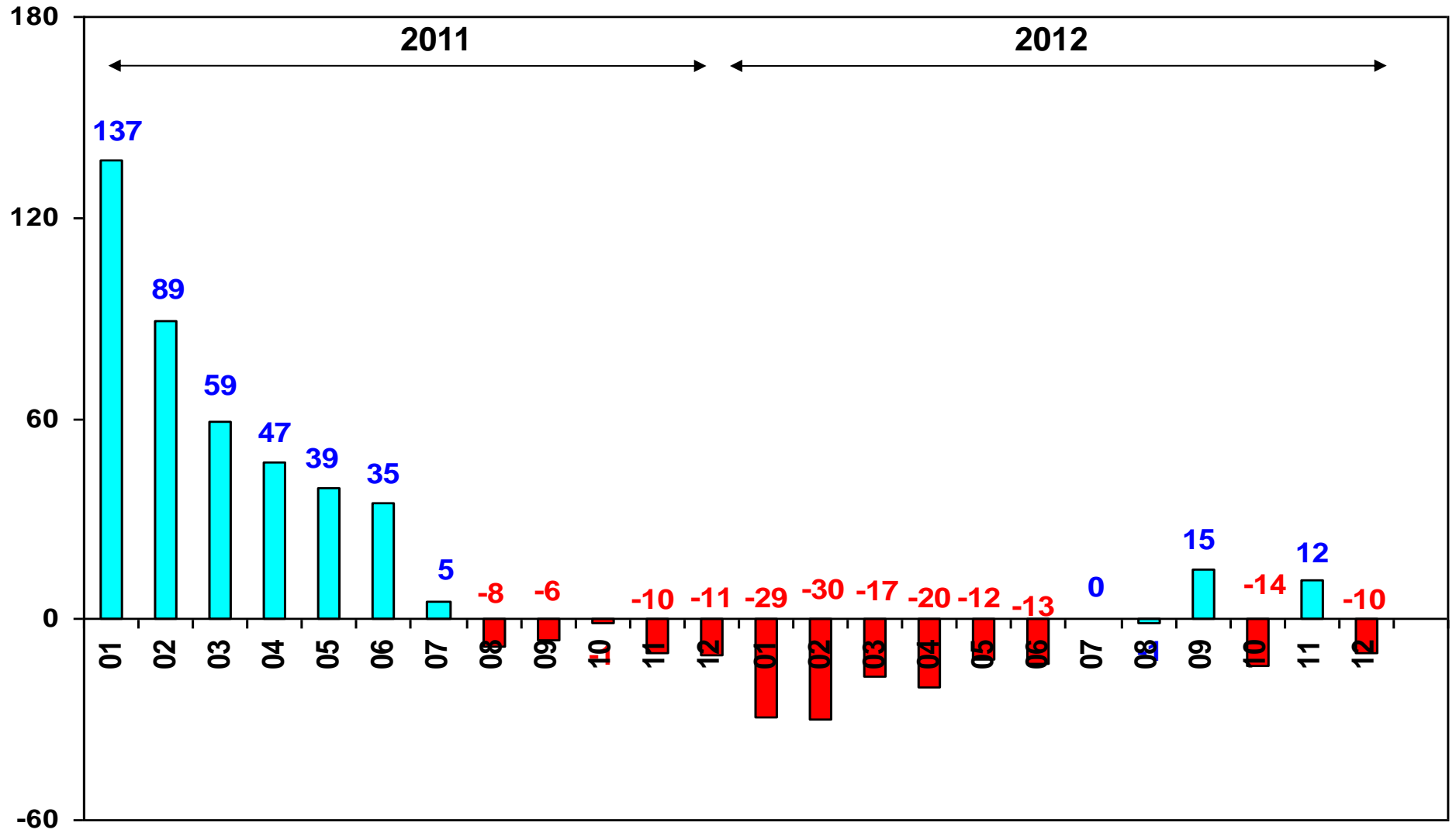
P.Cars Market (x1000)



	1	2	3	4	5	6	7	8	9	10	11	12	Total
2002	591	1.426	3.464	6.245	8.948	7.811	9.842	7.308	8.753	9.381	9.848	16.998	90.615
2003	6.309	5.486	8.555	11.107	15.965	16.329	14.764	16.896	23.772	30.615	25.777	51.461	227.036
2004	25.625	23.695	46.075	47.995	54.610	37.671	33.410	33.709	33.383	34.292	30.547	50.197	451.209
2005	11.595	21.012	38.129	36.206	38.480	40.900	38.969	38.648	36.410	34.960	37.841	65.447	438.597
2006	16.506	24.929	36.996	40.177	48.521	32.982	22.653	24.873	27.517	21.237	30.477	46.351	373.219
2007	13.186	17.212	24.336	25.204	29.067	30.126	28.246	28.469	27.662	32.569	39.643	61.745	357.465
2008	18.588	21.196	34.147	30.313	31.477	28.724	25.530	26.102	27.053	19.788	17.201	25.879	305.998
2009	13.173	14.492	40.622	36.202	44.188	41.019	16.637	22.537	52.162	13.828	17.781	57.178	369.819
2010	12.594	20.651	33.958	36.549	40.467	42.086	41.399	42.222	42.477	47.859	50.061	99.461	509.784
2011	29.868	39.004	54.023	53.835	56.302	56.714	43.518	38.875	39.964	47.508	44.951	88.957	593.519
2012	21.077	29.189	47.270	45.645	50.460	50.849	44.531	41.236	49.360	43.440	52.297	80.926	556.280

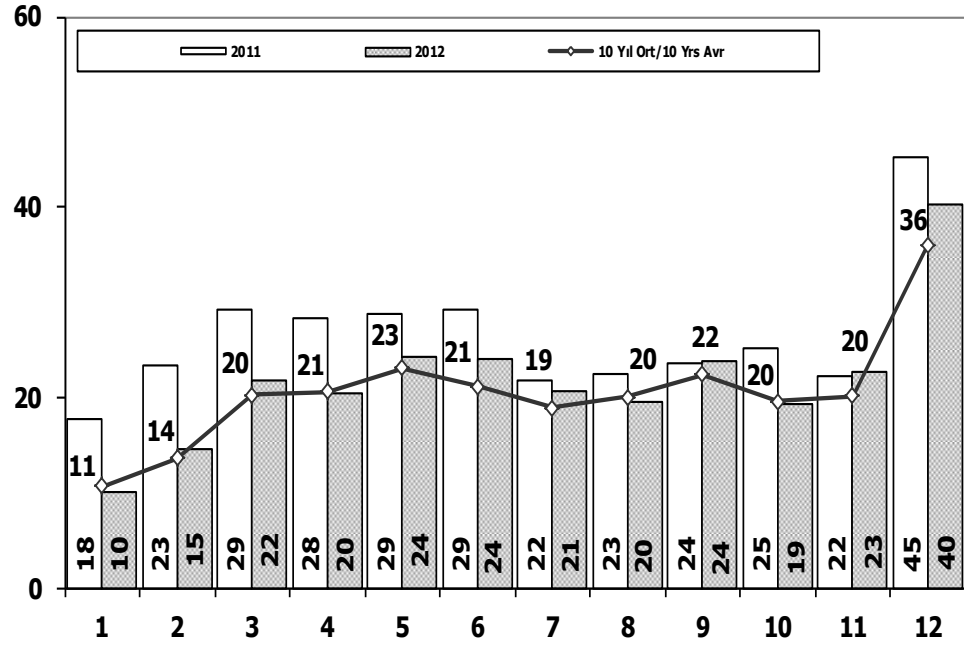
OTOMOBİL PAZARINDA AYLIK DEĞİŞİM (%)

Monthly Change in P.Cars Market - %



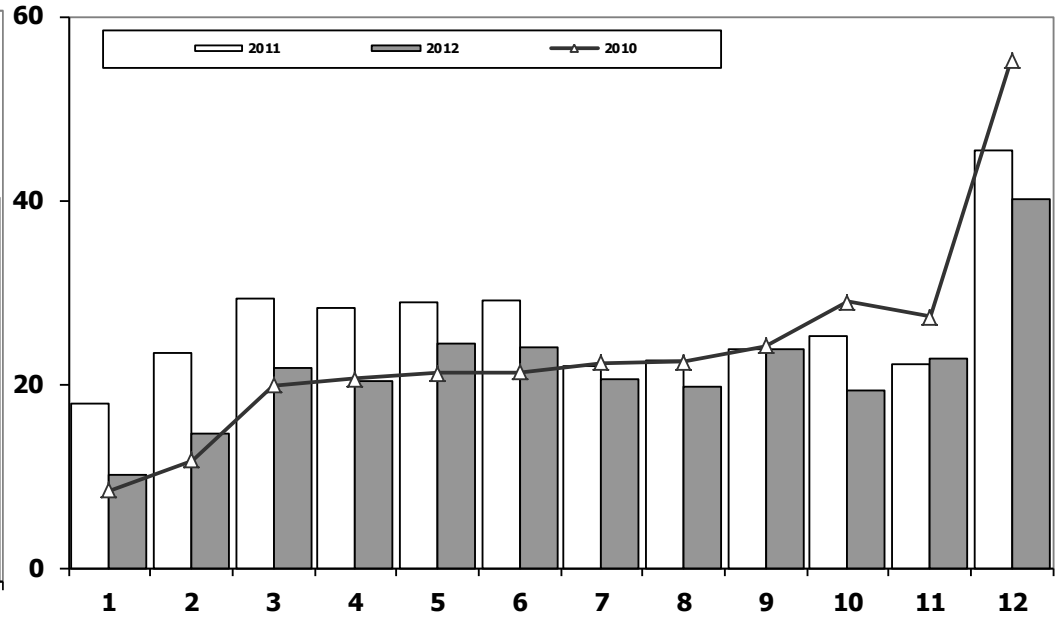
Ticari Araç Pazarının Analizi (x1000)

CV Market Analysis (x1000)



Ticari Araç Pazarı (x1000)

CV Total Market (Local + Imports) (x1000)

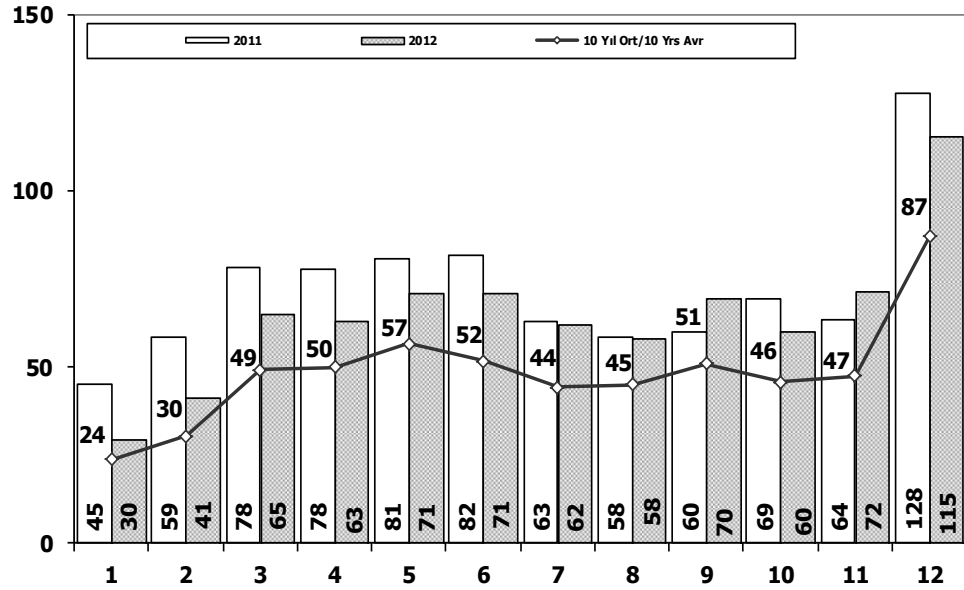


Aylar / Months	10 Yil Ort. 10 Yrs Avr. (x1000)	2012 (x1000)	%
1	10,6	10,1	-4,5
2	13,6	14,6	7,5
3	20,2	21,7	7,3
4	20,6	20,4	-1,0
5	23,0	24,4	5,7
6	21,1	23,9	13,4
7	18,9	20,6	8,9
8	20,0	19,6	-2,1
9	22,4	23,8	6,6
10	19,6	19,2	-1,8
11	20,1	22,7	13,0
12	35,9	40,2	11,8
Total	246,1	261,3	6,2

	1	2	3	4	5	6	7	8	9	10	11	12	Total
2002	1.657	2.884	4.601	5.947	7.859	7.837	6.667	7.430	7.433	9.005	8.630	13.877	83.827
2003	6.267	5.831	8.540	9.273	11.838	14.188	17.504	11.943	16.543	19.436	18.304	31.260	170.927
2004	12.996	15.694	25.648	29.061	30.024	25.557	23.897	22.713	26.046	21.861	21.690	34.873	290.060
2005	11.092	17.279	26.373	24.667	32.903	23.479	24.878	29.999	30.170	25.831	27.878	45.391	319.940
2006	13.463	19.717	28.094	28.676	34.768	25.221	17.384	22.501	22.112	18.568	25.421	36.371	292.296
2007	11.764	14.490	21.152	20.429	22.188	21.535	21.871	25.702	22.416	23.489	27.374	44.331	276.741
2008	15.204	16.925	22.667	20.654	20.150	20.669	19.162	20.490	19.776	15.359	10.951	18.539	220.546
2009	7.458	8.354	15.909	18.224	20.699	22.083	13.609	14.555	31.241	8.289	11.421	34.208	206.050
2010	8.456	11.662	19.870	20.530	21.161	21.304	22.319	22.423	24.124	28.921	27.345	55.273	283.388
2011	17.790	23.344	29.310	28.236	28.791	29.149	21.846	22.503	23.679	25.132	22.244	45.324	317.348
2012	10.142	14.638	21.687	20.369	24.360	23.932	20.591	19.612	23.837	19.237	22.748	40.187	261.340

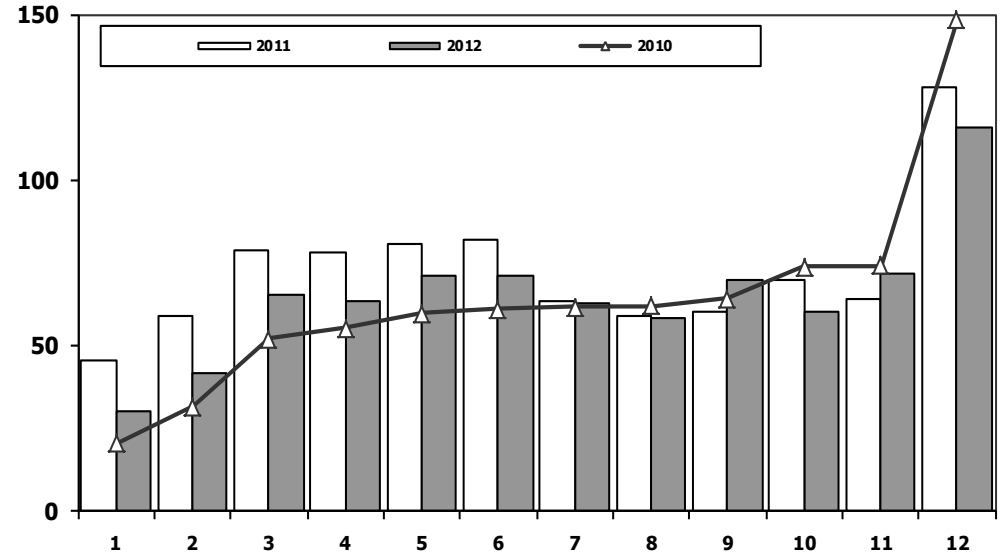
Hafif Araç Pazarının Analizi (x1000)

LV Market Analysis (x1000)



Hafif Araç Pazarı (x1000)

LV Total Market (Local + Imports) (x1000)

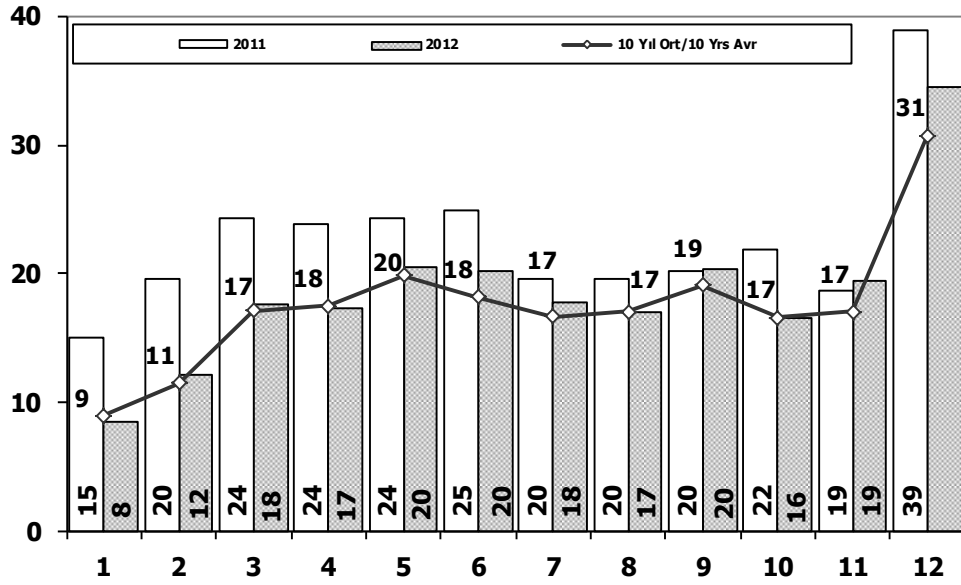


Aylar / Months	10 Yil Ort. 10 Yrs Avr. (x1000)	2012 (x1000)	%
1	23,8	29,5	24,4
2	30,4	41,3	36,0
3	49,2	64,9	32,0
4	49,9	62,9	26,1
5	56,7	70,9	25,0
6	51,6	71,1	37,7
7	44,2	62,3	41,1
8	45,0	58,1	29,3
9	51,0	69,6	36,4
10	45,8	59,9	31,0
11	47,4	71,7	51,2
12	87,0	115,4	32,6
Total	581,9	777,8	33,7

	1	2	3	4	5	6	7	8	9	10	11	12	Total
2002	1.764	3.641	7.109	11.007	15.461	14.337	15.472	13.302	14.599	16.531	16.657	27.569	157.449
2003	11.531	10.402	15.743	18.693	25.853	28.266	30.172	25.903	36.234	45.446	40.048	75.778	364.069
2004	36.352	37.079	67.144	73.075	80.290	59.730	54.816	52.876	55.609	53.000	49.200	78.924	698.095
2005	20.747	35.766	60.707	56.844	67.357	60.796	61.015	64.011	61.954	56.638	61.364	103.209	710.408
2006	27.917	40.938	60.052	64.038	78.229	54.355	37.251	43.767	46.109	36.542	51.867	76.787	617.852
2007	23.117	29.184	41.890	42.366	47.938	48.674	47.490	50.558	46.581	52.725	63.313	100.926	594.762
2008	31.527	35.251	53.649	47.701	48.598	46.324	42.156	43.670	43.932	32.884	26.253	42.078	494.023
2009	19.606	21.742	55.111	52.640	63.191	61.067	28.845	35.609	81.397	21.033	27.962	88.923	557.126
2010	20.095	31.172	51.769	54.946	59.377	60.896	61.345	61.764	63.814	73.404	73.962	148.369	760.913
2011	44.892	58.663	78.403	77.695	80.646	81.573	63.044	58.406	60.129	69.421	63.657	127.910	864.439
2012	29.545	41.324	64.884	62.949	70.863	71.067	62.304	58.148	69.629	59.938	71.710	115.400	777.761

Hafif Ticari Araç Pazarının Analizi (x1000)

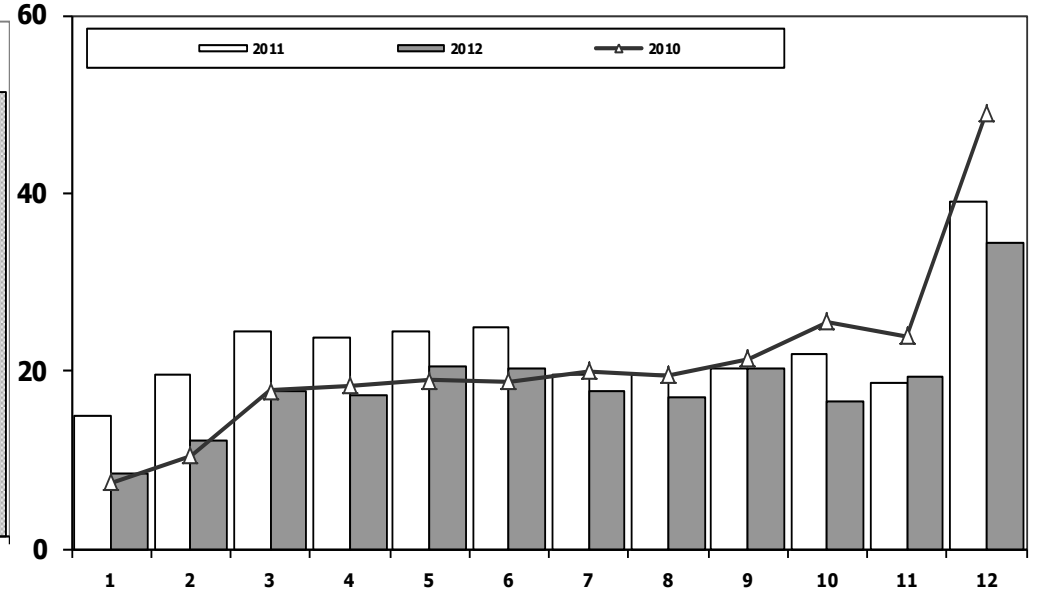
LCV Market Analysis (x1000)



Aylar / Months	10 Yil Ort. 10 Yrs Avr. (x1000)	2012 (x1000)	%
1	9,0	8,5	-5,4
2	11,5	12,1	5,8
3	17,1	17,6	2,8
4	17,5	17,3	-1,2
5	19,9	20,4	2,6
6	18,2	20,2	11,3
7	16,7	17,8	6,7
8	17,0	16,9	-0,7
9	19,1	20,3	6,0
10	16,6	16,5	-0,4
11	17,0	19,4	14,1
12	30,7	34,5	12,4
Total	210,2	221,5	5,4

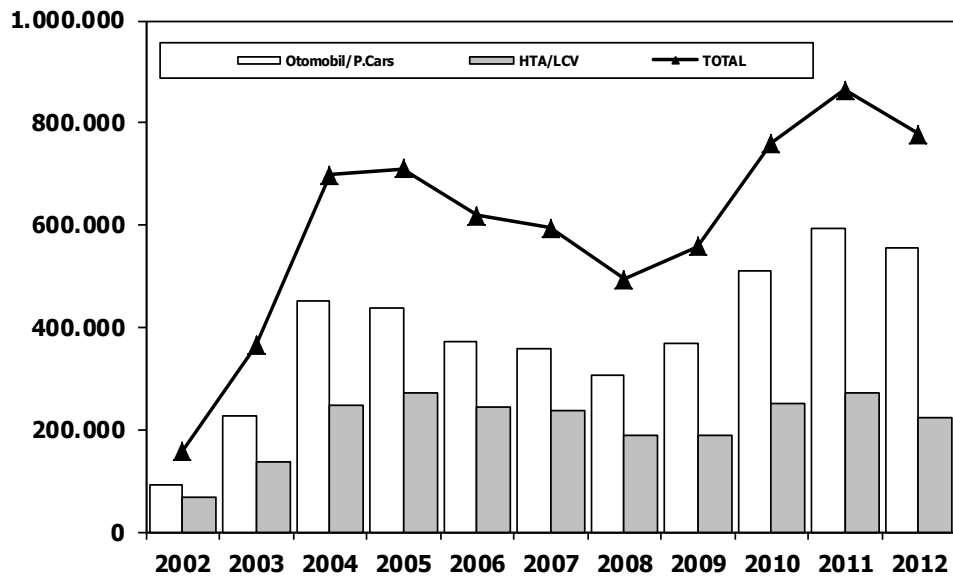
Hafif Ticari Araç Pazarı (x1000)

LCV Total Market (Local + Imports) (x1000)



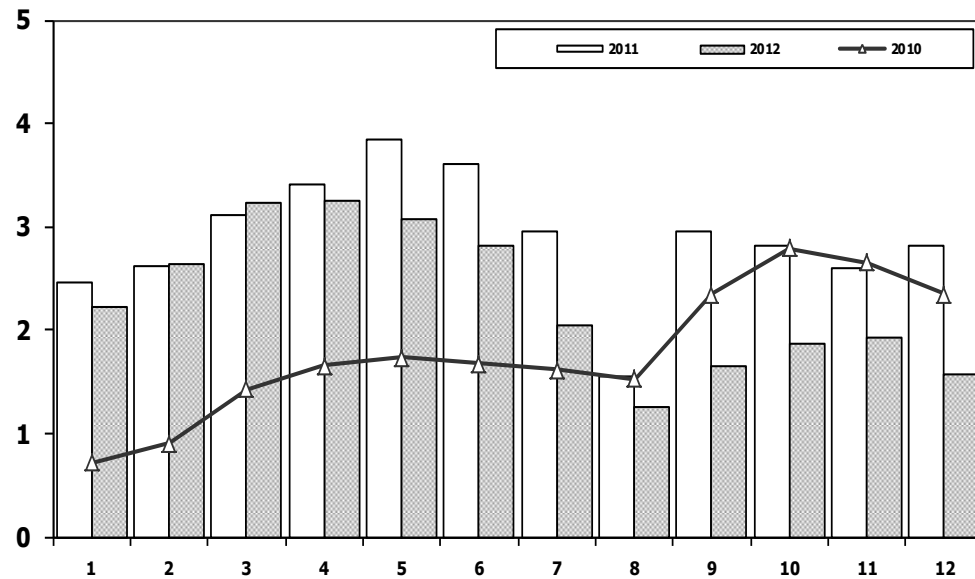
	1	2	3	4	5	6	7	8	9	10	11	12	Total
2002	1.173	2.215	3.645	4.762	6.513	6.526	5.630	5.994	5.846	7.150	6.809	10.571	66.834
2003	5.222	4.916	7.188	7.586	9.888	11.937	15.408	9.007	12.462	14.831	14.271	24.317	137.033
2004	10.727	13.384	21.069	25.080	25.680	22.059	21.406	19.167	22.226	18.708	18.653	28.727	246.886
2005	9.152	14.754	22.578	20.638	28.877	19.896	22.046	25.363	25.544	21.678	23.523	37.762	271.811
2006	11.411	16.009	23.056	23.861	29.708	21.373	14.598	18.894	18.592	15.305	21.390	30.436	244.633
2007	9.931	11.972	17.554	17.162	18.871	18.548	19.244	22.089	18.919	20.156	23.670	39.181	237.297
2008	12.939	14.055	19.502	17.388	17.121	17.600	16.626	17.568	16.879	13.096	9.052	16.199	188.025
2009	6.433	7.250	14.489	16.438	19.003	20.048	12.208	13.072	29.235	7.205	10.181	31.745	187.307
2010	7.501	10.521	17.811	18.397	18.910	18.810	19.946	19.542	21.337	25.545	23.901	48.908	251.129
2011	15.024	19.659	24.380	23.860	24.344	24.859	19.526	19.531	20.165	21.913	18.706	38.953	270.920
2012	8.468	12.135	17.614	17.304	20.403	20.218	17.773	16.912	20.269	16.498	19.413	34.474	221.481

Hafif Araç Pazarı (AYA < 3.5 Ton) Light Vehicle Market (GVW < 3.5 Ton)



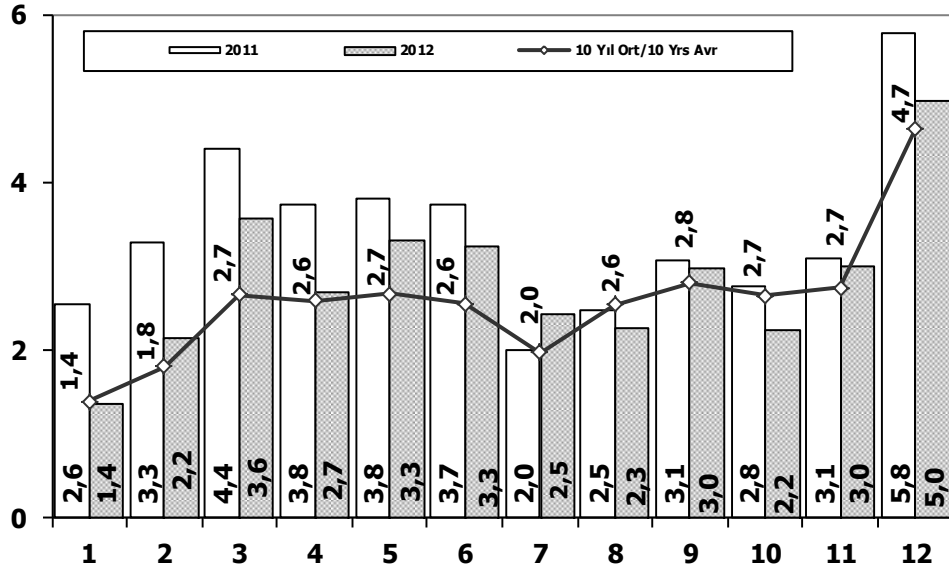
	2002	2003	2004	2005	2006	2007	2008	2009	2010	2011	2012
Otomobil/P.Cars	90.615	227.036	451.209	438.597	373.219	357.465	305.998	369.819	509.784	593.519	556.280
HTA / LCV	66.834	137.033	246.886	271.811	244.633	237.297	188.025	187.307	251.129	270.920	221.481
TOTAL	157.449	364.069	698.095	710.408	617.852	594.762	494.023	557.126	760.913	864.439	777.761
HTA / LCV (%)	42	38	35	38	40	40	38	34	33	31	28

Traktör Pazarı (x1000) F.Tractor Market (x1000)

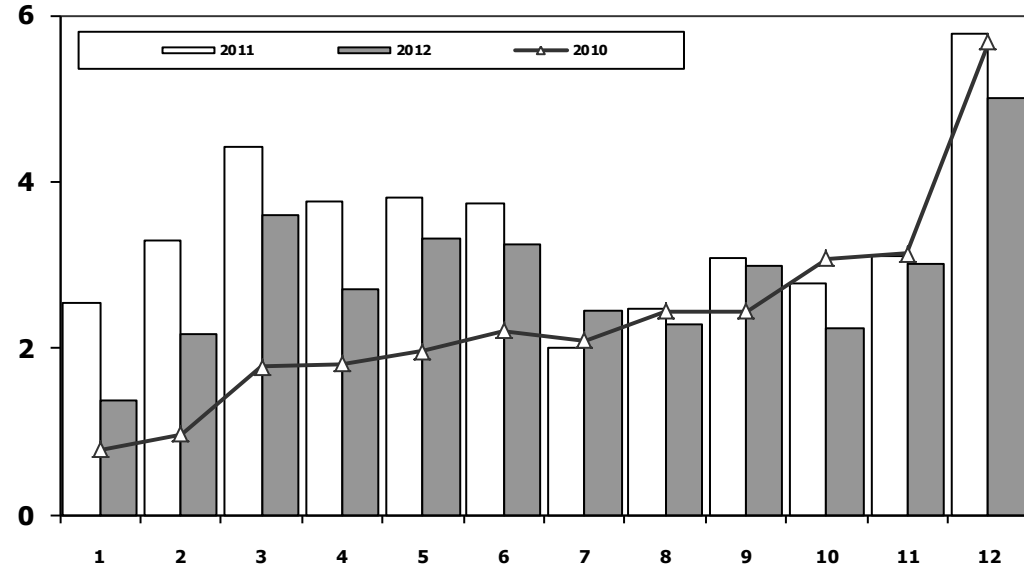


	1	2	3	4	5	6	7	8	9	10	11	12	Total
2002	291	401	380	585	435	508	561	546	747	628	560	680	6.322
2003	712	830	1.313	1.460	1.527	1.123	1.311	1.404	1.706	1.893	1.541	1.468	16.288
2004	1.946	1.874	2.909	3.260	2.863	2.816	1.988	2.209	2.509	1.989	2.198	1.364	27.925
2005	1.026	1.636	2.001	2.599	2.569	2.780	2.148	2.819	2.567	2.477	2.297	2.089	27.008
2006	1.578	2.493	2.746	2.841	3.561	2.356	1.685	2.177	2.756	1.915	2.353	1.925	28.386
2007	1.812	1.778	2.063	2.107	2.266	1.853	1.653	2.065	2.372	2.239	2.231	1.602	24.041
2008	1.510	1.427	1.933	1.692	1.689	1.592	1.275	924	904	609	707	359	14.621
2009	267	344	388	638	759	828	741	534	586	765	725	715	7.290
2010	714	903	1.432	1.653	1.736	1.673	1.613	1.527	2.351	2.787	2.656	2.345	21.390
2011	2.458	2.610	3.105	3.403	3.847	3.599	2.952	1.559	2.957	2.823	2.603	2.807	34.723
2012	2.216	2.632	3.223	3.259	3.067	2.821	2.037	1.262	1.648	1.858	1.921	1.579	27.523

Kamyon Pazarının Analizi (x1000) AYA > 5 Ton Truck Market Analysis (x1000) GVW > 5 Ton



Kamyon Pazarı (x1000) AYA > 5 Ton Truck Market (x1000) GVW > 5 Ton

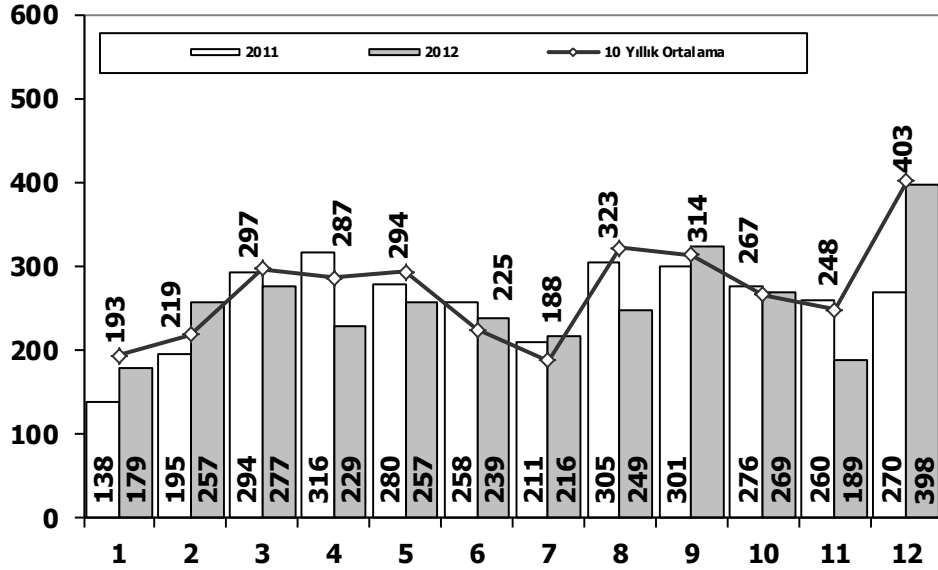


Aylar / Months	10 Yil Ort. 10 Yrs Avr. (x1000)	2012 (x100)	%
1	1,4	1,4	-1,4
2	1,8	2,2	19,1
3	2,7	3,6	35,2
4	2,6	2,7	3,8
5	2,7	3,3	24,0
6	2,6	3,3	26,9
7	2,0	2,5	24,0
8	2,6	2,3	-10,7
9	2,8	3,0	6,7
10	2,7	2,2	-15,5
11	2,7	3,0	9,5
12	4,7	5,0	7,4
Total	31,1	34,4	10,5

YIL	1	2	3	4	5	6	7	8	9	10	11	12	TOPLAM
2002	403	532	824	1.048	1.157	1.199	927	1.300	1.403	1.666	1.637	2.932	15.028
2003	771	773	1.123	1.494	1.668	2.008	1.933	2.490	3.563	4.147	3.720	6.406	30.096
2004	1.863	1.949	3.983	3.352	3.651	3.118	2.234	2.897	3.285	2.727	2.629	5.517	37.205
2005	1.693	2.186	3.288	3.484	3.413	3.147	2.504	4.028	4.043	3.708	3.918	6.570	41.982
2006	1.767	3.310	4.467	4.180	4.449	3.398	2.472	3.142	3.052	2.926	3.550	5.358	42.071
2007	1.554	2.055	3.065	2.940	2.865	2.613	2.372	3.145	2.988	2.886	3.258	4.444	34.185
2008	1.797	2.309	2.621	2.578	2.459	2.526	2.067	2.377	2.390	1.790	1.512	1.834	26.260
2009	771	759	1.034	1.342	1.355	1.651	1.156	1.205	1.780	866	981	2.015	14.915
2010	777	968	1.772	1.807	1.966	2.205	2.093	2.446	2.444	3.071	3.136	5.677	28.362
2011	2.552	3.292	4.418	3.754	3.803	3.749	1.996	2.478	3.081	2.774	3.108	5.787	40.792
2012	1.375	2.159	3.595	2.697	3.321	3.250	2.450	2.277	2.991	2.244	3.006	5.000	34.365

Midibüs Pazarının Analizi (7-9 mt / 25-35 Kişilik)

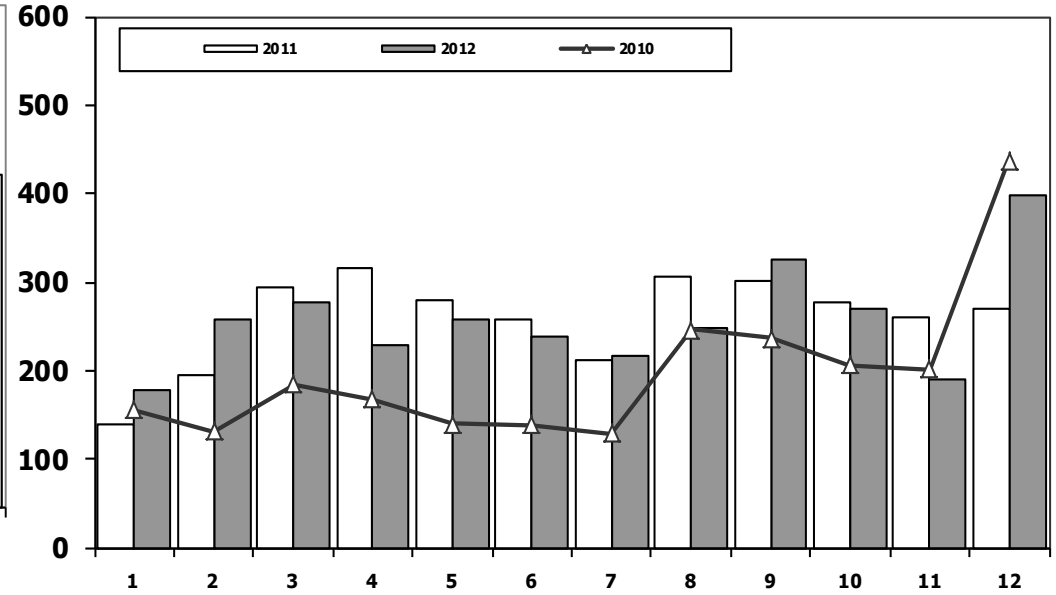
Midibus Market Analysis (7-9 mt / 25-35 Passengers)



Aylar / Months	10 Yıl Ort. / 10 Yrs Avr.	2012	%
1	193	179	-7
2	219	257	18
3	297	277	-7
4	287	229	-20
5	294	257	-13
6	225	239	6
7	188	216	15
8	323	249	-23
9	314	325	4
10	267	269	1
11	248	189	-24
12	403	398	-1
Total	3.258	3.084	-5

Midibüs Pazarı (7-9 mt / 25-35 Kişilik Midibüs)

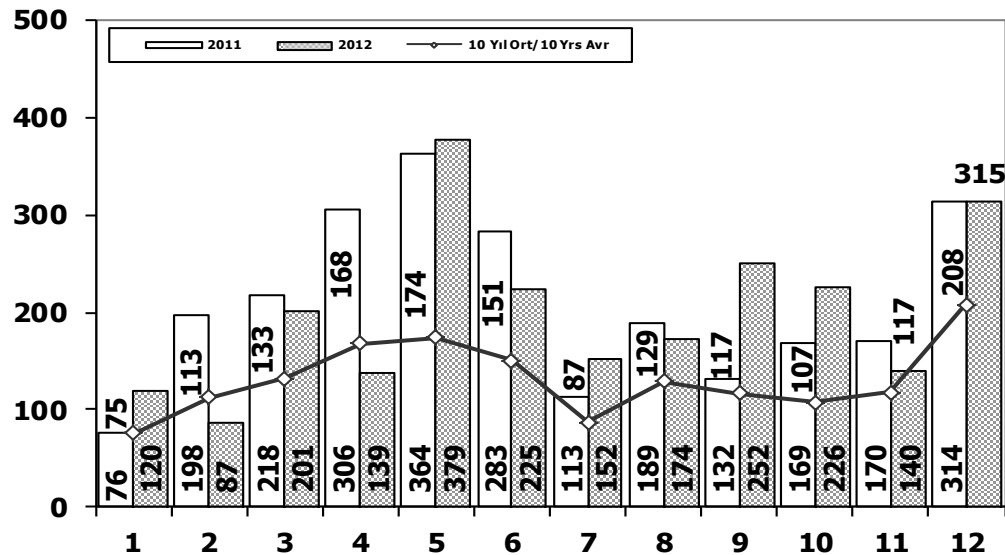
Midibus Market (7-9 mt / 25-35 Passengers)



YIL	1	2	3	4	5	6	7	8	9	10	11	12	TOPLAM
2002	47	99	86	100	125	106	105	94	141	171	120	300	1.494
2003	220	109	188	106	158	161	103	322	349	330	212	436	2.694
2004	233	226	381	431	524	237	154	531	445	331	319	551	4.363
2005	182	258	432	393	439	269	252	459	436	329	328	574	4.351
2006	207	297	406	388	381	266	230	353	322	253	305	401	3.809
2007	207	272	404	238	302	283	164	365	399	279	283	465	3.661
2008	391	476	436	512	419	331	368	380	341	352	246	270	4.522
2009	154	124	160	220	174	198	160	175	168	143	206	323	2.205
2010	155	131	185	167	140	138	129	246	236	206	202	437	2.372
2011	138	195	294	316	280	258	211	305	301	276	260	270	3.104
2012	179	257	277	229	257	239	216	249	325	269	189	398	3.084

Otobüs Pazarının Analizi

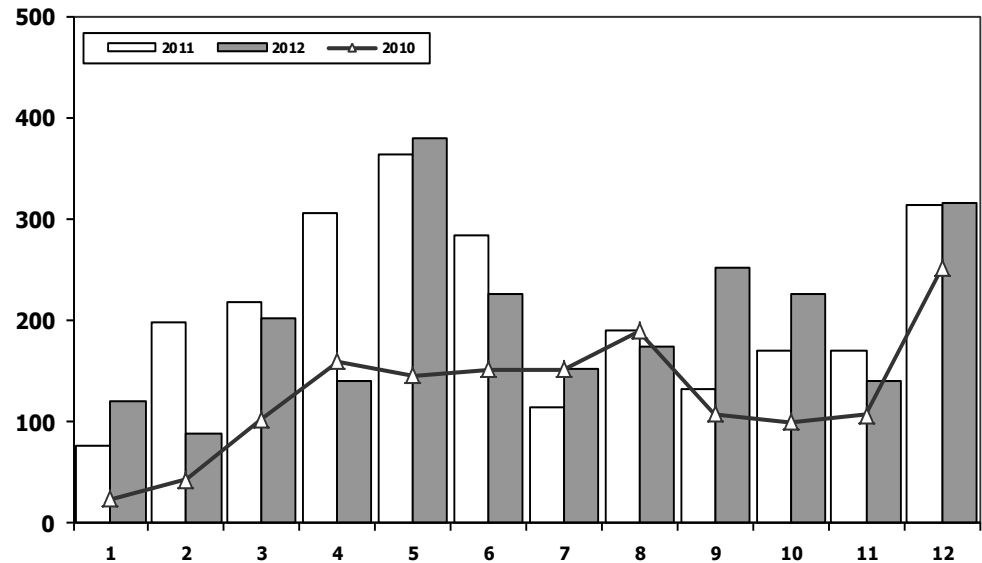
Bus Market Analysis



Aylar / Months	10 Yil Ort. 10 Yrs Avr.	2012	%
1	75	120	60
2	113	87	-23
3	133	201	52
4	168	139	-17
5	174	379	118
6	151	225	50
7	87	152	75
8	129	174	34
9	117	252	116
10	107	226	111
11	117	140	19
12	208	315	51
Total	1.578	2.410	53

Otobüs Pazarı

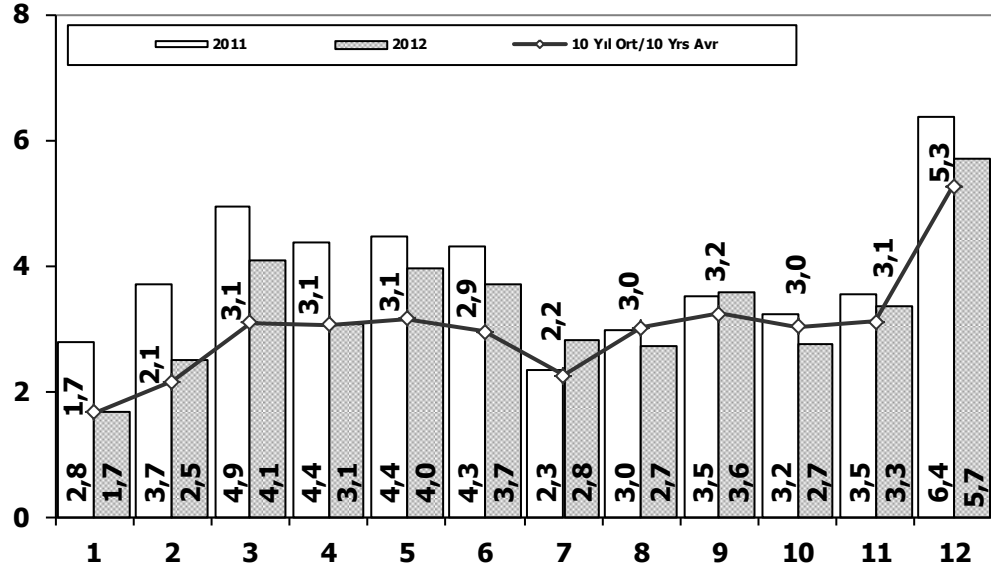
Bus Market



	1	2	3	4	5	6	7	8	9	10	11	12	Total
2002	34	38	46	37	64	6	5	42	43	18	64	74	471
2003	54	33	41	87	124	82	60	124	169	128	101	101	1.104
2004	173	135	215	198	169	143	103	118	90	95	89	78	1.606
2005	65	81	75	152	174	167	76	149	147	116	109	485	1.796
2006	78	101	165	247	230	184	84	112	146	84	176	176	1.783
2007	72	191	129	89	150	91	91	103	110	168	163	241	1.598
2008	77	85	108	176	151	212	101	165	166	121	141	236	1.739
2009	100	221	226	224	167	186	85	103	58	75	53	125	1.623
2010	23	42	102	159	145	151	151	189	107	99	106	251	1.525
2011	76	198	218	306	364	283	113	189	132	169	170	314	2.532
2012	120	87	201	139	379	225	152	174	252	226	140	315	2.410

Ağır Ticari Araç Pazarının Analizi (x1000)

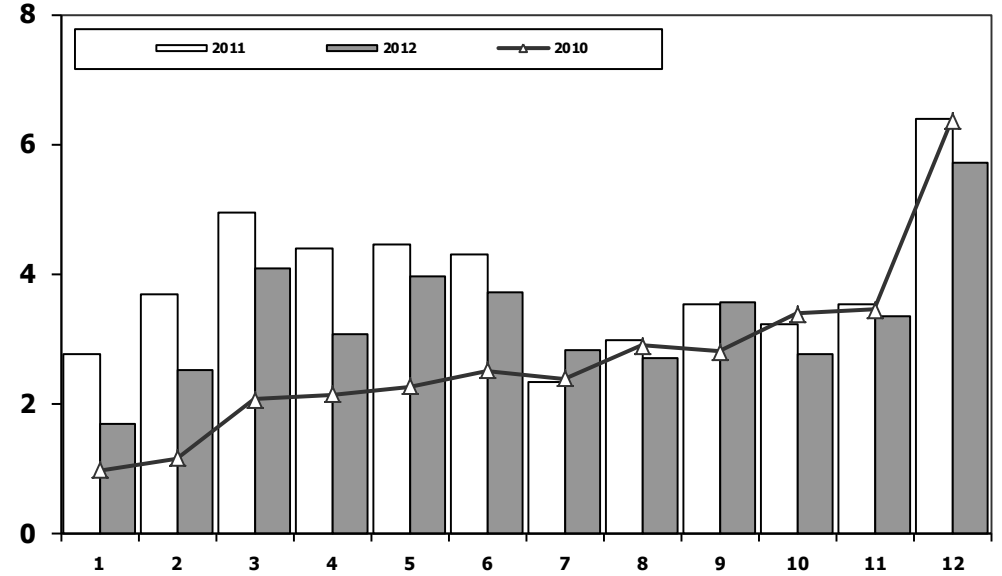
HCV Market Analysis (x1000)



Aylar / Months	10 Yil Ort. 10 Yrs Avr. (x1000)	2012 (x1000)	%
1	1,7	1,7	0,6
2	2,1	2,5	16,7
3	3,1	4,1	31,8
4	3,1	3,1	0,4
5	3,1	4,0	25,8
6	2,9	3,7	26,5
7	2,2	2,8	25,3
8	3,0	2,7	-10,1
9	3,2	3,6	10,3
10	3,0	2,7	-9,6
11	3,1	3,3	7,2
12	5,3	5,7	8,5
Total	35,9	39,9	11,0

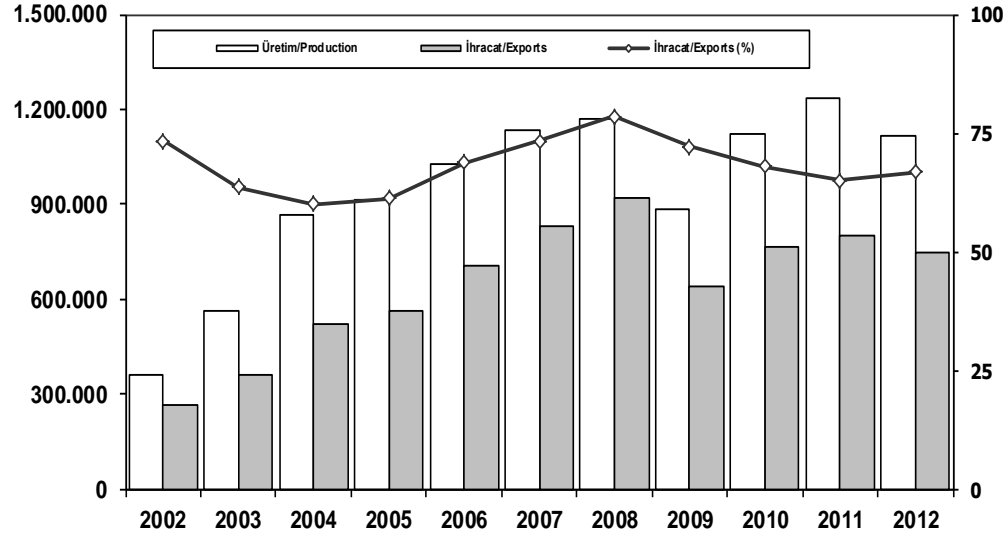
Ağır Ticari Araç Pazarı (x1000)

HCV Market (x1000)



	1	2	3	4	5	6	7	8	9	10	11	12	Total
2002	484	669	956	1.185	1.346	1.311	1.037	1.436	1.587	1.855	1.821	3.306	16.993
2003	1.045	915	1.352	1.687	1.950	2.251	2.096	2.936	4.081	4.605	4.033	6.943	33.894
2004	2.269	2.310	4.579	3.981	4.344	3.498	2.491	3.546	3.820	3.153	3.037	6.146	43.174
2005	1.940	2.525	3.795	4.029	4.026	3.583	2.832	4.636	4.626	4.153	4.355	7.629	48.129
2006	2.052	3.708	5.038	4.815	5.060	3.848	2.786	3.607	3.520	3.263	4.031	5.935	47.663
2007	1.833	2.518	3.598	3.267	3.317	2.987	2.627	3.613	3.497	3.333	3.704	5.150	39.444
2008	2.265	2.870	3.165	3.266	3.029	3.069	2.536	2.922	2.897	2.263	1.899	2.340	32.521
2009	1.025	1.104	1.420	1.786	1.696	2.035	1.401	1.483	2.006	1.084	1.240	2.463	18.743
2010	955	1.141	2.059	2.133	2.251	2.494	2.373	2.881	2.787	3.376	3.444	6.365	32.259
2011	2.766	3.685	4.930	4.376	4.447	4.290	2.320	2.972	3.514	3.219	3.538	6.371	46.428
2012	1.674	2.503	4.073	3.065	3.957	3.714	2.818	2.700	3.568	2.739	3.335	5.713	39.859

İhracat/Üretim Exports/Production



	2002	2003	2004	2005	2006	2007	2008	2009	2010	2011	2012
Üretim/Production	357.405	563.450	864.073	916.062	1.026.427	1.132.951	1.171.917	884.466	1.124.982	1.234.637	1.115.233
İhracat/Exports	261.934	358.745	518.595	561.078	706.402	829.879	920.763	637.855	763.670	801.112	745.354
İhracat/Exports (%)	73	64	60	61	69	73	79	72	68	65	67

Taşıt Araçları İhracatı Motor Vehicle Exports

SEKTÖR/SECTOR	2010	2011	2012	2012/2011 (%)
OTOMOBİL/ P.Cars	439.999	442.674	412.991	-7
TİCARİ ARAÇLAR / CV	314.470	348.292	316.932	-9
* Kamyonet/Pick-Up	306.902	319.366	292.601	-8
* Minibüs/Minibus	800	20.163	16.429	-19
* Kamyon/Truck	2.411	3.912	2.682	-31
* Midibüs/Midibus	807	647	1.173	81
* Otobüs/Bus	3.550	4.204	4.047	-4
TAŞIT ARAÇLARI / MV TOTAL	754.469	790.966	729.923	-8
TRAKTÖR/F.TRACTOR	9.201	10.146	15.431	52
TOTAL	763.670	801.112	745.354	-7

Otomotiv Ana ve Yan Sanayii İhracatı (ABD \$) CBU and CKD Exports - \$

ÜRÜN GRUBU	2007	2008	2009	2010	2011	2012	Değişim %
TOPLAM YAN SANAYİ	6.107.196.583	6.815.010.471	5.036.315.783	6.595.662.583	8.307.826.870	8.223.513.061	-1
İÇ DİŞ LASTİK	865.852.949	943.930.286	813.344.978	988.990.821	1.373.205.546	1.200.828.712	-13
EMNİYET CAMI	117.878.256	129.693.764	90.975.616	107.203.983	120.041.467	120.710.174	1
MOTOR	63.160.106	105.583.288	182.857.086	305.490.804	273.896.369	272.085.582	-1
AKÜ	153.144.601	194.460.614	147.844.133	186.504.496	232.611.079	250.345.945	8
DİĞER AKSAM ve PARÇALAR	4.907.160.671	5.441.342.519	3.801.293.970	5.007.472.478	6.308.072.409	6.379.542.648	1
TOPLAM ANA SANAYİ	13.066.064.547	15.138.693.360	9.893.379.844	10.855.476.447	12.128.522.618	11.101.346.096	-8
OTOBÜS	1.100.941.463	1.257.990.095	934.530.219	744.935.284	929.372.870	856.072.335	-8
MİDİBÜS - MİNİBÜS	163.831.782	211.421.713	114.288.278	120.378.674	145.199.034	161.806.275	11
OTOMOBİL	6.851.352.830	7.512.491.751	6.100.525.046	6.217.404.551	6.541.969.418	6.067.964.588	-7
KAMYON - KAMYONET	4.226.720.251	5.290.296.295	2.371.020.045	3.363.101.038	4.034.772.621	3.433.318.136	-15
ÇEKİCİ	350.509.320	376.862.369	67.706.067	72.145.150	147.247.613	71.336.635	-52
RÖMORK ve YARI RÖMORK	215.817.634	266.050.422	128.201.130	145.710.283	116.912.332	195.260.385	67
TARIM TRAKTÖRÜ	156.891.266	223.580.714	177.109.058	191.801.467	213.048.730	315.587.742	48
TOPLAM	19.173.261.129	21.953.703.831	14.929.695.627	17.451.139.030	20.436.349.488	19.324.859.157	-5

Kaynak: Otomotiv Endüstrisi İhracatçıları Birliği

Firma Bazında İhracat (Adet)
Export Of member Companies (Unit)

FİRMALAR Companies	2010	2011	2012
OYAK RENAULT	233.057	225.285	227.162
FORD OTOSAN	175.754	211.380	191.149
TOFAŞ	193.737	180.690	154.068
HYUNDAI ASSAN	42.249	64.000	67.453
TOYOTA	73.163	81.233	63.549
TÜRK TRAKTÖR	8.911	9.600	14.572
KARSAN	19.441	15.119	10.994
HONDA TÜRKİYE	10.633	5.023	7.959
M. BENZ TÜRK	3.471	4.735	4.054
A.I.O.S.	498	429	943
MAN TÜRKİYE	834	1.216	885
HATTAT TARIM	290	546	859
TEMSA GLOBAL	836	992	856
OTOKAR	373	475	510
B.M.C.	423	389	341
GENEL TOPLAM	763.670	801.112	745.354

Kaynak: OSD

Sektör Bazında İhracat (\$)
Exports on Sectorial Basis

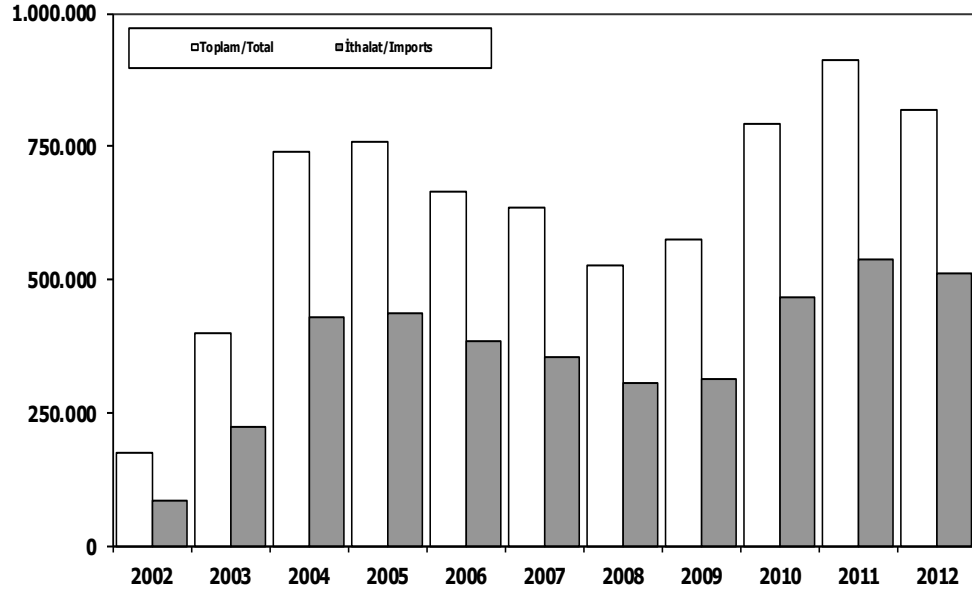
Sıra No	Sektörler Sectors	2011 Toplam (Total)	2012 Toplam (Total)	2012/2011 (%)	2012 (%)
1	Otomotiv Endüstrisi *	20.121.082	19.063.427	-5,3	12,6
2	Kimyevi Maddeler ve Mamülleri	15.764.903	17.542.394	11,3	11,6
3	Hazırgiyim ve Konfeksiyon	16.150.161	16.088.099	-0,4	10,6
4	Çelik	15.297.577	15.563.898	1,7	10,2
5	İhracatçı Birlikleri Kaydından Muaf İhracat	1.731.364	14.150.917	***	9,3
6	Elektrik-Elektronik ve Makina	11.182.476	11.182.476	0,0	7,4
7	Tekstil ve Hammaddeleri	7.944.933	7.849.702	-1,2	5,2
8	Demir ve Demir Dışı Metaller	6.283.177	6.367.209	1,3	4,2
9	Hububat, Bakliyat, Yağlı Tohumlar	5.457.379	5.887.660	7,9	3,9
10	Makine ve Aksamları	4.899.125	5.327.524	8,7	3,5
11	Madencilik Ürünleri	3.863.169	4.181.526	8,2	2,8
12	Ağaç Mamülleri, Orman Ürünleri	3.390.418	3.865.766	14,0	2,5
13	İklimlendirme Sanayi	3.789.298	3.797.942	0,2	2,5
14	Çimento ve Toprak Ürünleri	3.160.846	3.102.250	-1,9	2,0
15	Yaş Meyve ve Sebze	2.335.772	2.184.807	-6,5	1,4
16	Mücevher	1.461.408	2.083.084	42,5	1,4
17	Hali	1.628.443	2.011.941	23,5	1,3
18	Fındık ve Mamülleri	1.759.111	1.805.461	2,6	1,2
19	Su Ürünleri ve Hayvansal Mamuller	1.418.427	1.664.277	17,3	1,1
20	Deri ve Deri Mamülleri	1.479.274	1.605.069	8,5	1,1
21	Kuru Meyve ve Mamülleri	1.370.830	1.367.594	-0,2	0,9
22	Savunma Sanayi	883.845	1.262.371	42,8	0,8
23	Meyve Sebze Mamülleri	1.204.331	1.262.119	4,8	0,8
24	Tütün ve Mamülleri	677.121	845.711	24,9	0,6
25	Gemi ve Yat	1.321.678	811.246	-38,6	0,5
26	Zeytin ve Zeytinyağ	180.953	201.552	11,4	0,1
27	Diğer Sanayi Ürünleri	73.483	82.451	12,2	0,1
28	Süs Bitkileri	76.285	73.177	-4,1	0,0
TOPLAM		134.906.869	151.860.946	12,6	100,0

Kaynak: TİM

First 4 Sectors:

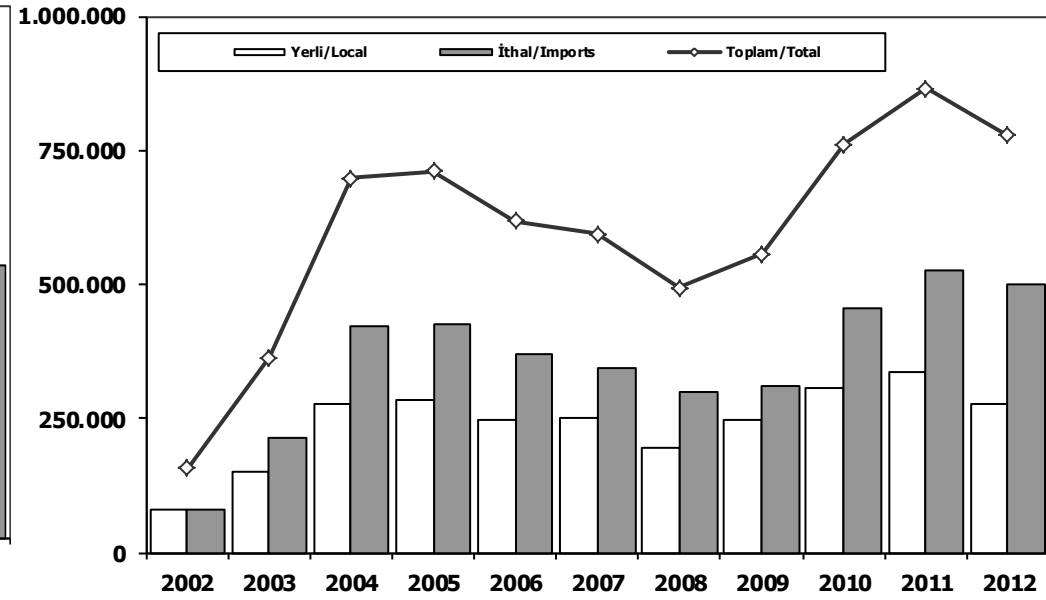
- 1- Transport Vehicle and Component Industry
- 2- Chemical Articles and Products
- 3-Ready Wear and Confection
- 4- Iron Steel Products

Toplam Pazar (Otomobil+T.Araç) Total Market (P.Cars+C.V)



	2002	2003	2004	2005	2006	2007	2008	2009	2010	2011	2012
Toplam/Total	174.442	397.963	741.269	758.537	665.515	634.206	526.544	575.869	793.172	910.867	817.620
İthalat/Imports	83.027	222.984	430.204	436.033	382.460	355.752	306.087	313.921	465.408	538.532	511.694
İthalat/Imports (%)	48	56	58	57	57	56	58	55	59	59	63

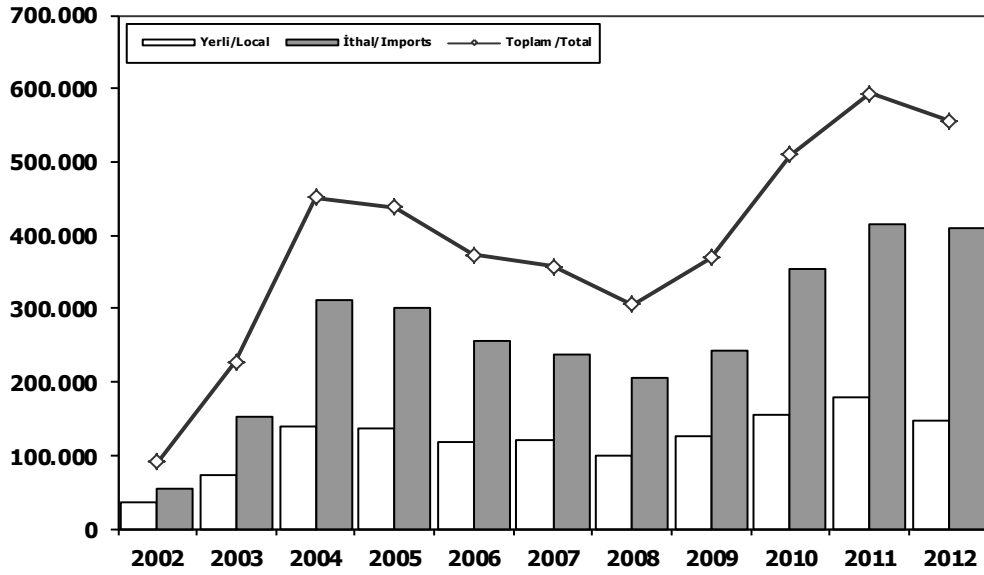
Hafif Araçlar Pazarı LV Market



	2002	2003	2004	2005	2006	2007	2008	2009	2010	2011	2012
Yerli/Local	78.321	150.842	275.521	284.134	246.800	249.705	196.162	247.694	305.354	338.074	276.003
İthal/Imports	79.128	213.227	422.574	426.274	371.052	345.057	297.861	309.432	455.559	526.365	501.758
Toplam/Total	157.449	364.069	698.095	710.408	617.852	594.762	494.023	557.126	760.913	864.439	777.761
İthalat/Imports (%)	50	59	61	60	60	58	60	56	60	61	65

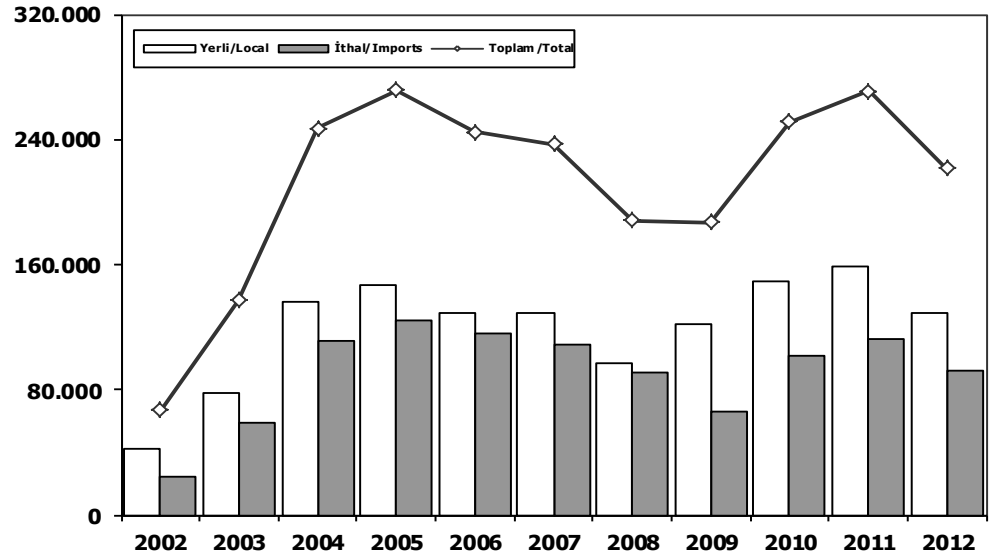
Otomobil Pazarı

P.Cars Market



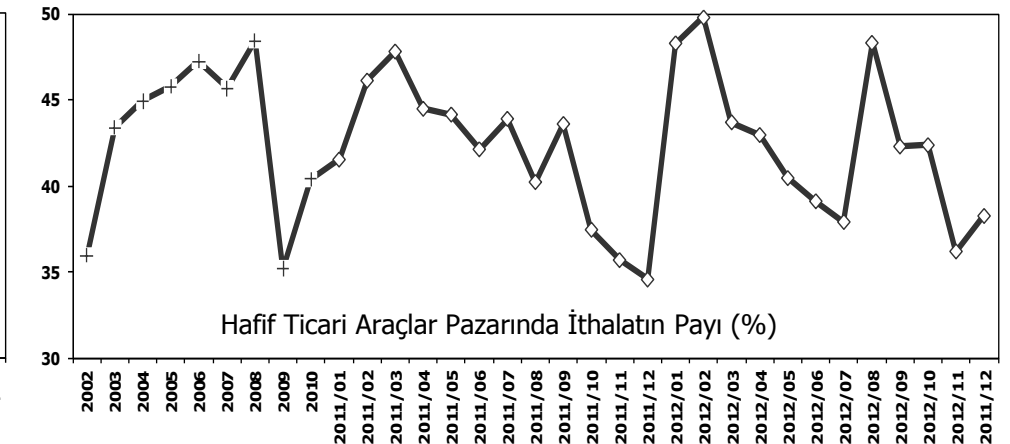
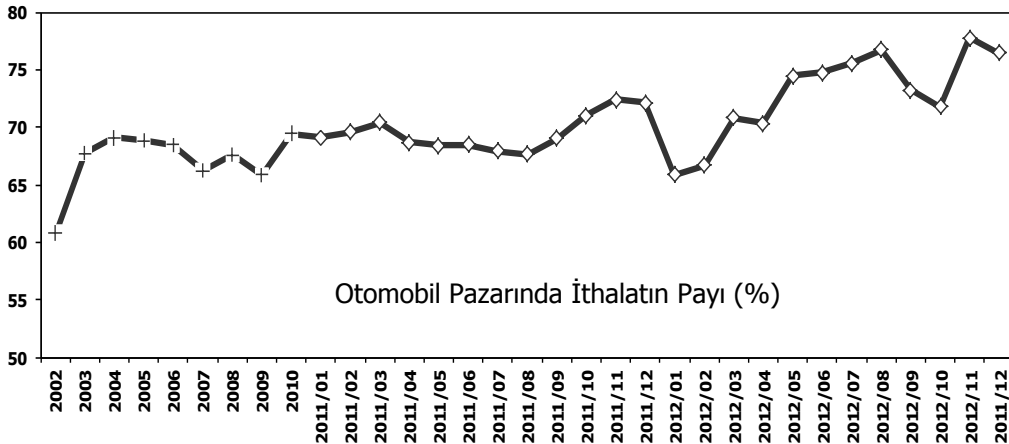
Hafif Ticari Araçlar Pazarı

Light Commercial Vehicle Market

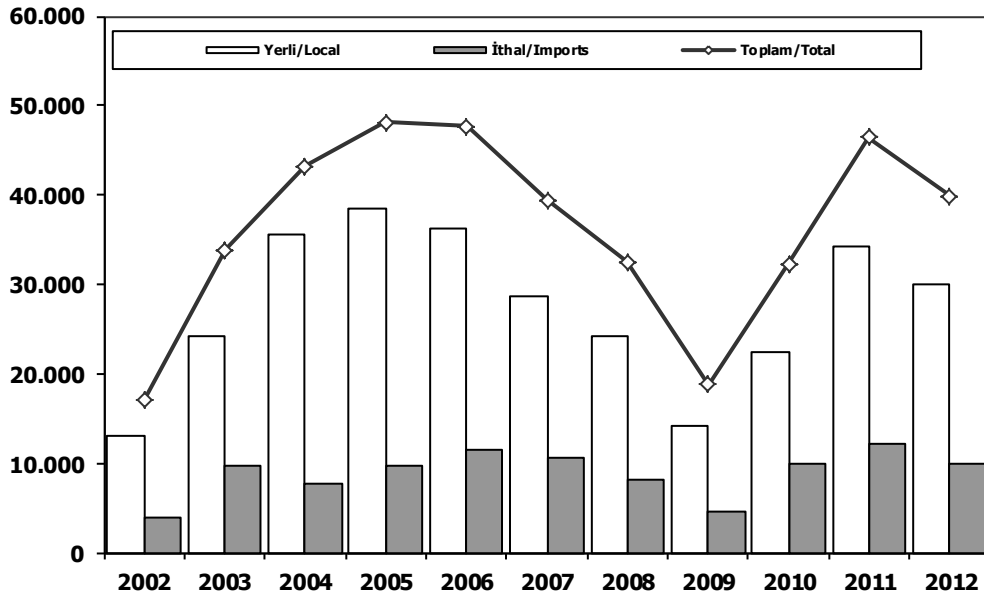


	2002	2003	2004	2005	2006	2007	2008	2009	2010	2011	2012
Yerli/Local	35.519	73.267	139.541	136.708	117.725	120.740	99.205	126.277	155.634	179.488	146.604
İthal/Imports	55.096	153.769	311.668	301.889	255.494	236.725	206.793	243.542	354.150	414.031	409.676
Toplam/Total	90.615	227.036	451.209	438.597	373.219	357.465	305.998	369.819	509.784	593.519	556.280
İthalat/Imports (%)	61	68	69	69	68	66	68	66	69	70	74

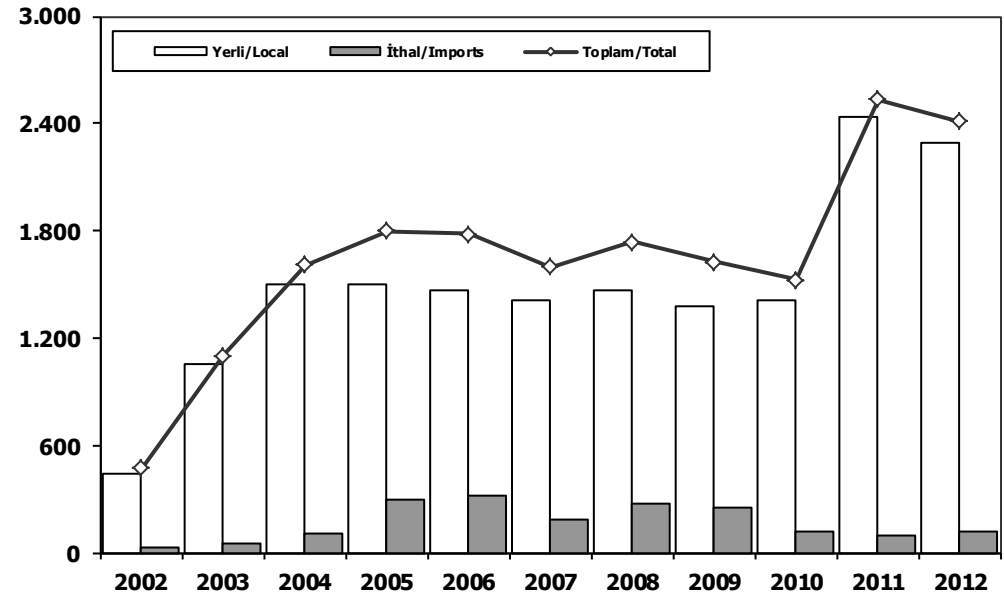
	2002	2003	2004	2005	2006	2007	2008	2009	2010	2011	2012
Yerli/Local	42.802	77.575	135.980	147.426	129.075	128.965	96.957	121.417	149.720	158.586	129.399
İthal/Imports	24.032	59.458	110.906	124.385	115.558	108.332	91.068	65.890	101.409	112.334	92.082
Toplam/Total	66.834	137.033	246.886	271.811	244.633	237.297	188.025	187.307	251.129	270.920	221.481
İthalat/Imports (%)	36	43	45	46	47	46	48	35	40	41	42



Ağır Ticari Araçlar Pazarı HCV Market



Otobüs Pazarı Bus Market

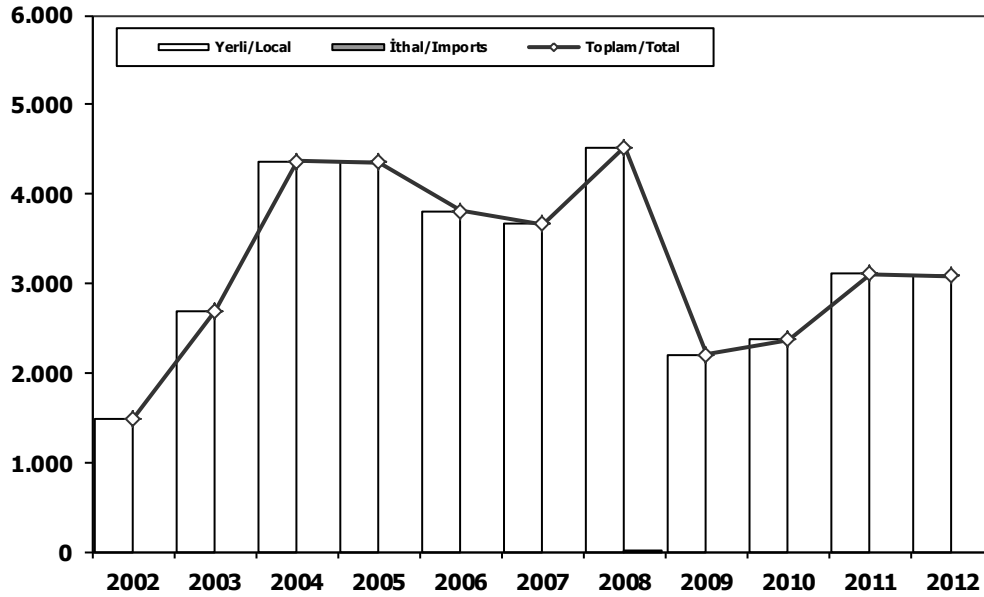


	2002	2003	2004	2005	2006	2007	2008	2009	2010	2011	2012
Yerli/Local	13.094	24.137	35.544	38.370	36.255	28.749	24.295	14.254	22.410	34.261	29.923
İthal/Imports	3.899	9.757	7.630	9.759	11.408	10.695	8.226	4.489	9.849	12.167	9.936
Toplam/Total	16.993	33.894	43.174	48.129	47.663	39.444	32.521	18.743	32.259	46.428	39.859
İthalat/Imports (%)	23	29	18	20	24	27	25	24	31	26	25

	2002	2003	2004	2005	2006	2007	2008	2009	2010	2011	2012
Yerli/Local	442	1.051	1.503	1.498	1.466	1.413	1.468	1.376	1.409	2.437	2.291
İthal/Imports	29	53	103	298	317	185	271	247	116	95	119
Toplam/Total	471	1.104	1.606	1.796	1.783	1.598	1.739	1.623	1.525	2.532	2.410
İthalat/Imports (%)	6	5	6	17	18	12	16	15	8	4	5

Midibüs Pazarı (7-9 mt / 25-35 Kişilik)

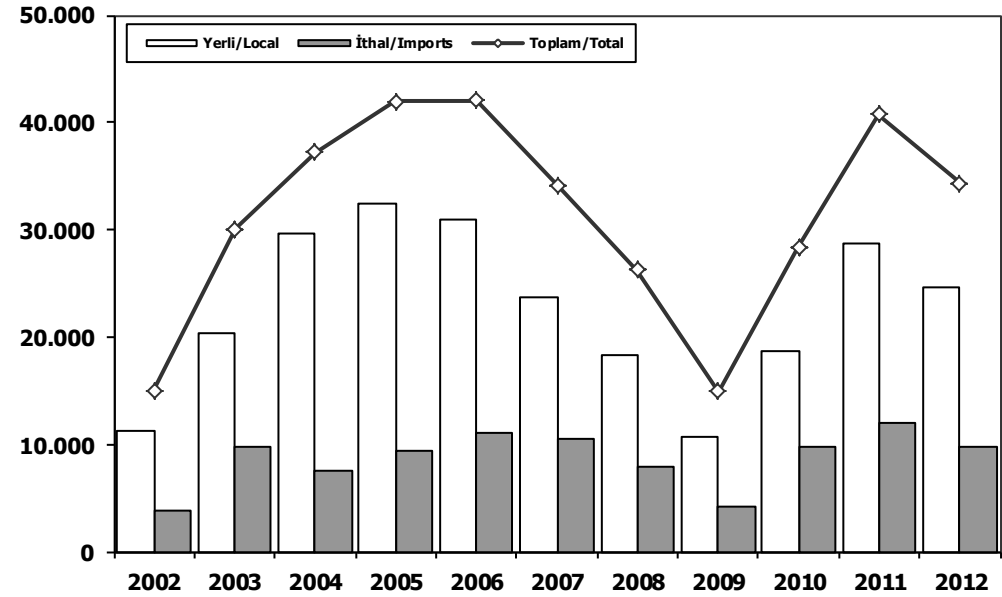
Midibus Market (7-9 mt / 25-35 Passengers)



	2002	2003	2004	2005	2006	2007	2008	2009	2010	2011	2012
Yerli/Local	1.494	2.694	4.363	4.351	3.809	3.661	4.511	2.205	2.372	3.104	3.084
İthal/Imports	0	0	0	0	0	0	11	0	0	0	0
Toplam/Total	1.494	2.694	4.363	4.351	3.809	3.661	4.522	2.205	2.372	3.104	3.084
İthalat/Imports (%)	0	0	0	0	0	0	0	0	0	0	0

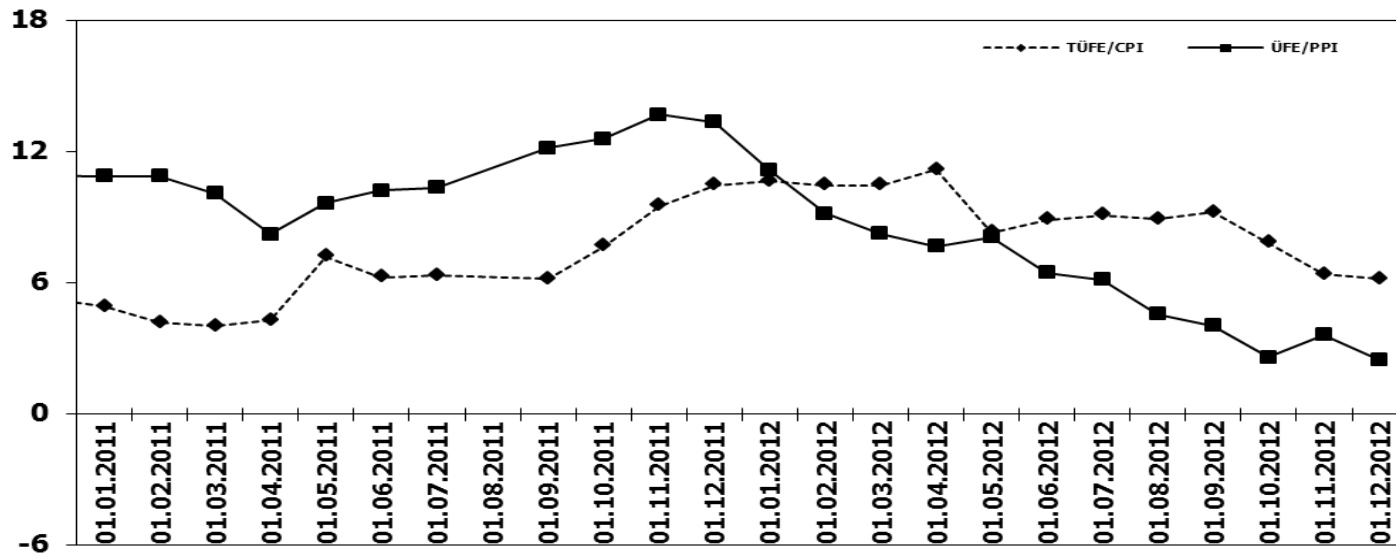
Kamyon Pazarı

Truck Market

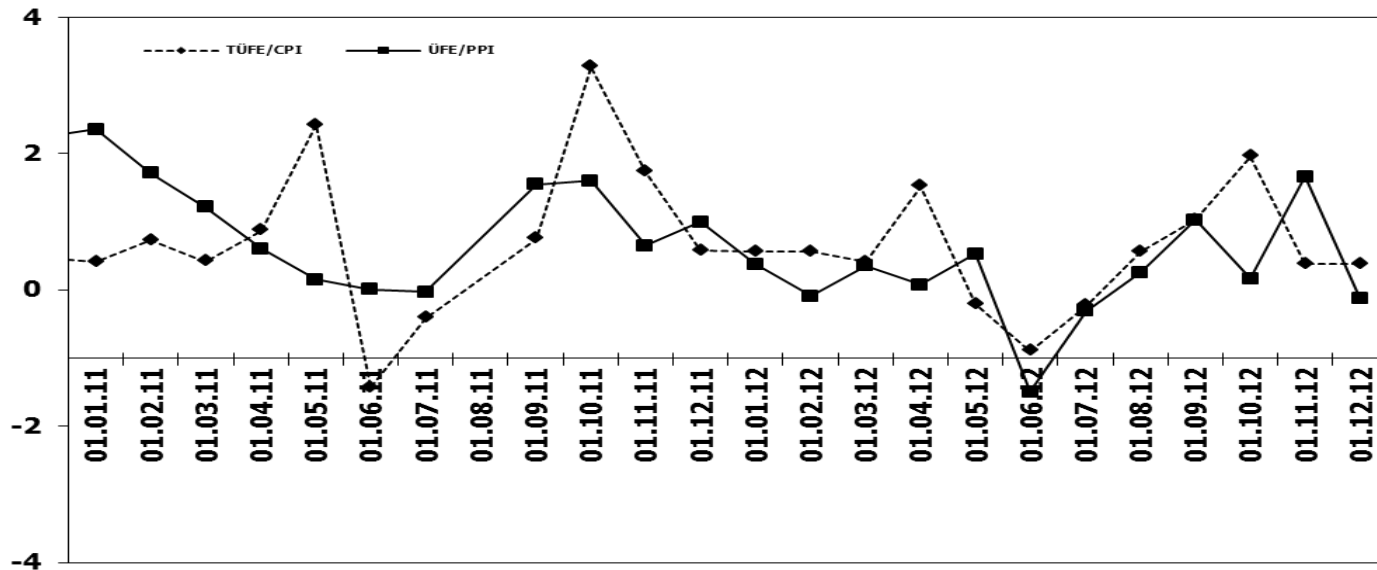


	2002	2003	2004	2005	2006	2007	2008	2009	2010	2011	2012
Yerli/Local	11.158	20.392	29.678	32.521	30.980	23.675	18.316	10.673	18.629	28.720	24.548
İthal/Imports	3.870	9.704	7.527	9.461	11.091	10.510	7.944	4.242	9.733	12.072	9.817
Toplam/Total	15.028	30.096	37.205	41.982	42.071	34.185	26.260	14.915	28.362	40.792	34.365
İthalat/Imports (%)	26	32	20	23	26	31	30	28	34	30	29

TÜFE ve ÜFE'nin Yıllık Değişimi (%) CPI and PPI Yearly Changes (%)



TÜFE ve ÜFE'nin Aylık Değişimi (%) CPI and PPI Monthly Changes (%)



2012 Otomotiv Sanayii Fabrika ve Dış Satışlar 2012 Automotive Industry Factory Sales and Exports Sales

OTOMOTİV SANAYİİ FABRİKA SATIŞLARI 2012 / AUTOMOTIVE INDUSTRY FACTORY SALES

TİPLER/TYPES	1	2	3	4	5	6	7	8	9	10	11	12	Total
OTOMOBİL	6.057	8.792	14.114	13.520	13.730	15.824	9.197	5.065	13.994	12.999	14.753	15.549	143.594
TİCARİ ARAÇ	8.027	9.199	13.249	12.902	14.932	14.120	14.208	9.694	15.369	13.325	15.866	20.917	161.808
* KAMYON	1.212	1.865	2.789	2.544	2.644	2.397	2.055	1.736	2.432	1.753	2.396	2.532	26.355
* KAMYONET	6.014	6.469	9.322	9.235	10.881	10.264	10.828	6.773	11.606	10.579	12.248	15.858	120.077
* MİDİBÜS	217	219	248	270	304	267	231	206	325	199	178	353	3.017
* MİNİBÜS	487	557	699	712	688	984	953	750	757	611	916	1.878	9.992
* OTOBÜS	97	89	191	141	415	208	141	229	249	183	128	296	2.367
TRAKTÖR	2.216	2.632	3.223	3.259	3.067	2.821	2.037	1.262	1.648	1.858	1.921	1.579	27.523
TOTAL	16.300	20.623	30.586	29.681	31.729	32.765	25.442	16.021	31.011	28.182	32.540	38.045	332.925

Otomobil / Passenger Car

TİPLER/TYPES	1	2	3	4	5	6	7	8	9	10	11	12	Total
HONDA TÜRKİYE	1.095	904	1.576	1.060	1.256	1.038	770	1.004	1.286	1.235	894	1.614	13.732
HYUNDAI ASSAN	1.239	1.469	1.823	1.814	1.239	1.570	1.131	1.112	1.893	1.661	1.908	1.566	18.425
OYAK RENAULT	2.314	3.619	6.923	6.037	5.962	8.096	2.542	461	5.007	5.923	9.079	8.745	64.708
TOFAŞ	993	2.237	3.015	3.881	4.292	3.912	2.585	1.904	3.533	2.639	2.696	3.624	35.311
TOYOTA	416	563	777	728	981	1.208	2.169	584	2.275	1.541	176	0	11.418
TOTAL	6.057	8.792	14.114	13.520	13.730	15.824	9.197	5.065	13.994	12.999	14.753	15.549	143.594

Kamyonet / Pick-Up

TİPLER/TYPES	1	2	3	4	5	6	7	8	9	10	11	12	Total
A.I.O.S.	25	39	41	32	39	22	6	2	42	14	25	84	371
FORD OTOSAN	2.670	2.241	3.581	3.949	5.054	4.622	3.740	3.203	4.438	4.394	5.690	8.962	52.544
KARSAN	51	40	74	10	20	5	0	0	0	0	0	0	200
OTOKAR	3	8	0	0	17	28	5	58	46	0	1	49	215
TEMSA GLOBAL	12	71	115	94	13	16	11	18	22	23	32	32	459
TOFAŞ	3.253	4.070	5.511	5.150	5.738	5.571	7.066	3.492	7.058	6.148	6.500	6.731	66.288
TOTAL	6.014	6.469	9.322	9.235	10.881	10.264	10.828	6.773	11.606	10.579	12.248	15.858	120.077

MİNİBÜS / Minibus

TİPLER/TYPES	1	2	3	4	5	6	7	8	9	10	11	12	Total
FORD OTOSAN	274	296	441	374	578	803	792	548	583	395	557	1.213	6.854
KARSAN	213	260	257	338	108	175	161	202	174	216	345	658	3.107
OTOKAR	0	1	1	0	2	6	0	0	0	0	14	7	31
TOTAL	487	557	699	712	688	984	953	750	757	611	916	1.878	9.992

Kamyon / Truck

TİPLER/TYPES	1	2	3	4	5	6	7	8	9	10	11	12	Total
A.I.O.S.	90	130	215	225	194	200	200	89	175	234	229	374	2.355
B.M.C.	97	92	131	282	92	76	1	11	61	1	0	12	856
FORD OTOSAN	295	387	637	684	665	507	410	394	429	400	464	614	5.886
KARSAN	96	72	76	62	72	107	217	69	214	120	45	12	1.162
M.BENZ TÜRK	533	1.126	1.554	1.228	1.541	1.503	1.213	1.162	1.419	953	1.574	1.431	15.237
TEMSA GLOBAL	101	58	176	63	80	4	14	11	134	45	84	89	859
TOTAL	1.212	1.865	2.789	2.544	2.644	2.397	2.055	1.736	2.432	1.753	2.396	2.532	26.355

MİDİBÜS / Midibus

TİPLER/TYPES	1	2	3	4	5	6	7	8	9	10	11	12	Total
A.I.O.S.	50	68	69	80	86	85	73	36	112	61	44	145	909
OTOKAR	124	105	133	148	174	149	133	155	162	97	112	179	1.671
TEMSA GLOBAL	43	46	46	42	44	33	25	15	51	41	22	29	437
TOTAL	217	219	248	270	304	267	231	206	325	199	178	353	3.017

Otobüs / Bus

TİPLER/TYPES	1	2	3	4	5	6	7	8	9	10	11	12	Total
B.M.C.	1	3	16	15	107	0	0	73	35	0	0	1	251
M.BENZ TÜRK	28	43	129	70	194	114	91	100	72	81	57	116	1.095
M.A.N.	1	11	17	21	21	14	3	4	83	27	32	40	274
OTOKAR	56	20	17	11	38	30	37	49	44	63	27	129	521
TEMSA GLOBAL	11	12	12	24	55	50	10	3	15	12	12	10	226
TOTAL	97	89	191	141	415	208	141	229	249	183	128	296	2.367

Traktör / Farm Tractor

TİPLER/TYPES	1	2	3	4	5	6	7	8	9	10	11	12	Total
HATTAT TARIM	138	201	345	401	238	263	62	105	185	239	165	118	2.460
TÜRK TRAKTÖR	2.078	2.431	2.878	2.858	2.829	2.558	1.975	1.157	1.463	1.619	1.756	1.461	25.063
TOTAL	2.216	2.632	3.223	3.259	3.067	2.821	2.037	1.262	1.648	1.858	1.921	1.579	27.523

OTOMOTİV SANAYİİ DİŞ SATIŞLARI 2012 / AUTOMOTIVE INDUSTRY EXPORTS SALES

TİPLER/TYPES	1	2	3	4	5	6	7	8	9	10	11	12	Total
OTOMOBİL	32.011	38.595	41.903	35.761	37.223	36.086	27.219	16.345	35.183	37.293	39.447	35.925	412.991
TİCARİ ARAÇ	26.973	27.088	33.813	25.844	28.415	29.818	28.633	9.971	25.149	22.949	29.276	29.003	316.932
* KAMYON	169	219	311	251	217	290	219	286	297	156	114	153	2.682
* KAMYONET	25.333	25.236	31.222	23.841	26.680	27.685	26.865	8.857	23.379	21.045	26.736	25.722	292.601
* MİDİBÜS	34	62	27	111	57	162	69	125	31	234	48	213	1.173
* MİNİBÜS	1.229	1.253	1.857	1.264	1.109	1.349	1.095	310	1.140	1.207	2.000	2.616	16.429
* OTOBÜS	208	318	396	377	352	332	385	393	302	307	378	299	4.047
TRAKTÖR	794	1.414	1.401	1.554	1.684	1.414	1.396	702	1.121	1.176	1.036	1.739	15.431
TOTAL	59.778	67.097	77.117	63.159	67.322	67.318	57.248	27.018	61.453	61.418	69.759	66.667	745.314

Otomobil / Passenger Car

TİPLER/TYPES	1	2	3	4	5	6	7	8	9	10	11	12	Total
HONDA TÜRKİYE	136	1.376	1.116	985	733	270	678	876	581	375	422	411	7.959
HYUNDAI ASSAN	4.410	4.800	6.500	5.505	6.000	6.430	6.655	3.600	6.300	5.800	6.600	4.853	67.453
OYAK RENAULT	14.755	23.730	20.915	17.175	21.529	18.183	10.779	7.175	19.068	25.331	25.314	23.208	227.162
TOFAŞ	4.303	3.797	4.798	4.498	4.548	4.804	3.664	1.551	3.649	3.081	4.853	3.322	46.868
TOYOTA	8.407	4.892	8.574	7.598	4.413	6.399	5.443	3.143	5.685	2.706	2.258	4.131	63.549
TOTAL	32.011	38.595	41.903	35.761	37.223	36.086	27.219	16.345	35.183	37.293	39.447	35.925	412.991

Kamyonet / Pick-Up

TİPLER/TYPES	1	2	3	4	5	6	7	8	9	10	11	12	Total
FORD OTOSAN	16.528	15.533	18.986	12.939	16.199	15.703	14.547	4.668	13.073	11.995	16.629	17.421	174.221
KARSAN	870	1.339	1.176	1.073	1.076	1.026	1.138	328	1.021	671	771	491	10.980
OTOKAR	0	20	16	18	0	21	0	0	19	3	2	64	163
TEMSA GLOBAL	0	2	11	8	3	1	0	0	4	0	0	0	37
TOFAŞ	7.935	8.342	11.033	9.803	9.402	10.934	11.180	3.861	9.262	8.376	9.334	7.738	107.200
TOTAL	25.333	25.236	31.222	23.841	26.680	27.685	26.865	8.857	23.379	21.045	26.736	25.722	292.601

2012 Yılı İthal Hafif Araç Satışları 2012 Light Vehicles Import Sales

2012 Yılı İthal Otomobil Satışları / P.Cars Imports 2012

	2011 Total	1	2	3	4	5	6	7	8	9	10	11	12	Total
VOLKSWAGEN	55.550	2.804	3.298	5.470	5.854	6.262	5.960	5.873	5.424	4.394	4.887	8.250	8.316	66.792
OPEL	52.624	1.126	1.770	4.433	3.226	5.039	4.409	4.043	3.196	4.142	4.794	4.429	8.536	49.143
FORD	58.807	1.501	2.330	4.012	3.531	5.613	4.890	3.546	3.827	4.738	2.746	4.468	5.828	47.030
DA CIA	17.937	1.090	1.555	2.320	2.246	2.094	2.491	1.933	2.001	2.718	2.122	2.365	4.731	27.666
HYUNDAI	17.157	834	897	1.563	1.851	1.688	2.307	2.314	2.205	2.587	2.176	2.819	3.900	25.141
TOYOTA	26.450	669	861	1.353	1.499	1.522	1.402	1.636	1.463	1.992	1.757	1.797	4.148	20.099
NISSAN	18.573	393	1.062	1.492	1.569	1.616	1.588	1.711	1.437	1.844	1.585	1.578	2.998	18.873
CHEVROLET	23.610	919	1.085	2.011	1.821	1.866	2.243	1.703	1.268	1.418	1.093	1.186	1.879	18.492
B.M.W	15.018	415	537	1.081	951	1.403	2.293	1.173	1.394	1.369	1.025	1.649	1.957	15.247
CITROEN	14.469	454	708	1.271	1.065	1.103	1.203	1.421	1.148	1.224	1.146	1.795	2.175	14.711
PEUGEOT	15.480	448	586	969	1.297	1.221	1.087	989	982	1.171	1.013	1.709	3.047	14.519
AUDI	12.064	378	498	1.080	1.288	1.337	1.443	1.059	1.330	1.169	1.003	1.379	1.756	13.720
MERCEDES	12.630	313	523	842	689	1.068	1.279	736	1.025	1.523	753	1.401	2.578	12.730
KIA	9.714	465	628	887	831	1.206	979	957	861	1.059	824	1.295	1.878	11.870
SKODA	7.589	225	570	775	804	827	703	1.004	971	952	832	830	1.625	10.118
FIAT	12.002	177	401	674	736	783	586	746	614	917	710	828	1.602	8.774
RENAULT	7.534	220	382	879	554	345	546	614	406	469	401	372	777	5.965
SEAT	6.059	89	220	305	393	391	563	470	501	550	639	648	1.042	5.811
VOLVO	4.662	211	230	427	333	602	594	414	426	450	349	437	774	5.247
HONDA	5.891	280	282	281	261	205	213	199	166	193	140	202	306	2.728
SUZUKI	1.340	53	96	139	145	150	111	153	151	213	188	166	215	1.780
MINI (İngiliz)	1.735	33	64	102	156	227	230	185	113	124	116	209	209	1.758
LAND ROVER	2.139	71	136	196	116	148	126	112	113	178	136	129	129	1.589
MITSUBISHI	3.005	108	102	116	136	136	84	85	113	100	79	80	150	1.290
ALFA ROMEO	898	21	61	79	54	131	101	90	82	160	70	62	141	1.052
GEELY	1.405	66	67	85	81	86	81	109	105	87	56	51	145	1.019
SSANGYONG	881	92	76	55	104	74	52	34	41	48	106	104	160	946
CHERY	1.932	98	91	117	74	59	47	28	43	59	66	36	92	810
MAZDA	1.620	100	107	144	30	34	54	54	25	34	72	37	119	810
JEEP	888	0	21	56	28	80	88	57	47	67	105	77	173	799
PROTON	1.113	125	98	108	213	60	41	34	20	9	15	15	22	760
TATA	1.024	46	35	40	55	52	52	35	61	76	65	69	98	684
SUBARU	761	29	39	41	31	46	41	47	34	36	56	97	164	640
PORSCHE	442	17	31	51	42	45	41	34	18	28	24	80	86	497
LANCIA	178	1	12	5	15	33	29	26	26	29	21	24	55	276
SMART	60	3	10	8	6	11	25	9	0	10	1	5	8	96
JAGUAR	168	7	5	5	5	6	6	2	3	10	7	13	15	84
INFINITI	102	2	0	0	1	3	0	2	2	5	9	6	11	41
FERRARI	23	2	2	0	1	1	1	3	0	2	3	2	4	21
BENTLEY	10	2	0	2	1	3	0	0	3	2	3	1	1	18
MASERATI	24	0	1	2	1	1	3	0	2	1	1	1	5	18
ASTON MARTIN	20	0	0	1	0	1	1	1	0	1	0	3	2	10
LAMBORGHINI	6	0	1	0	0	1	0	0	0	0	0	0	0	2
CHRYSLER	47	0	0	0	0	0	0	0	0	0	0	0	0	0
DODGE	1	0	0	0	0	0	0	0	0	0	0	0	0	0
LADA	10	0	0	0	0	0	0	0	0	0	0	0	0	0
DAIHATSU	379	0	0	0	0	0	0	0	0	0	0	0	0	0
Total	414.031	13.887	19.468	33.477	32.094	37.577	37.993	33.641	31.647	36.157	31.194	40.684	61.857	409.676

2012 Yılı İthal Hafif Ticari Araç Satışları / Light Commercial Vehicles Imports 2012

	2011 Total	1	2	3	4	5	6	7	8	9	10	11	12	Total
VOLKSWAGEN	26.361	1.044	1.652	1.989	2.530	2.603	2.457	2.271	2.389	2.313	2.014	1.893	2.893	26.048
RENAULT	25.128	826	1.138	1.796	1.342	1.379	1.332	1.140	1.393	1.669	1.050	1.270	1.996	16.331
MERCEDES	8.395	383	454	723	650	679	1.005	547	1.012	1.259	682	595	1.245	9.234
PEUGEOT	9.968	335	480	899	831	868	686	624	871	562	609	538	1.809	9.112
CITROEN	9.258	189	458	521	397	755	661	469	805	690	881	563	1.283	6.772
FIAT	5.380	179	297	379	365	345	445	350	462	498	456	553	633	4.962
MITSUBISHI	4.640	232	194	246	220	205	169	163	104	156	182	294	519	2.684
TOYOTA	1.351	56	114	136	182	227	187	169	195	298	201	272	578	2.615
HYUNDAI	2.557	83	83	115	144	284	212	208	210	229	267	278	341	2.454
ISUZU	2.296	199	382	37	34	40	74	171	164	243	143	236	573	2.296
IVECO	1.833	52	191	147	125	146	125	103	64	180	161	83	296	1.673
DA CIA	3.402	90	104	174	155	155	91	54	52	79	27	76	241	1.298
NISSAN	1.746	80	104	115	87	134	116	137	111	55	55	66	127	1.247
SSANGYONG	1.016	131	31	57	190	136	101	63	61	78	68	98	129	1.143
DFM	3.407	69	157	83	71	100	75	89	104	57	42	36	38	921
KIA	780	44	41	78	54	101	83	68	47	67	53	63	146	845
FORD	1.829	19	14	11	1	0	0	49	92	94	74	83	300	737
TATA	833	34	45	52	26	32	31	26	22	15	18	24	35	360
OPEL	1.813	25	70	128	11	2	1	5	0	1	3	1	0	247
MAZDA	228	18	31	9	17	7	54	23	11	27	2	2	2	203
CHERY	113	0	0	0	0	0	0	0	0	0	0	0	0	0
SKODA	1	0	0	0	0	0	0	0	0	0	0	0	0	0
Total	112.334	4.088	6.040	7.695	7.432	8.252	7.905	6.735	8.169	8.570	6.988	7.024	13.184	92.082