



OTOMOTİV SANAYİİ DERNEĞİ
AUTOMOTIVE MANUFACTURERS ASSOCIATION

AYLIK RAPOR

Automotive Industry Monthly Report

Aralık / December 2011

- **Üretim**/Production
- **Satış**/Sales
- **İthalat**/Imports
- **İhracat**/Exports

OSD "OICA" Üyesidir



OSD is a Member of "OICA"



2011 Aralık Ayı Özeti / 2011 December Summary

KONULAR/ MATTERS		ARALIK/ DECEMBER			YILLIK/YEARLY		
		2010	2011	2011/ 2010 (%)	2010	2011	2011/ 2010 (%)
Üretim/ Production	Toplam/ Total	111.792	104.453	-7	1.094.557	1.189.131	9
	Otomobil/ P.Cars	56.646	51.066	-10	603.394	639.734	6
Pazar/ Market	Toplam/ Total	154.734	134.281	-13	793.172	910.867	15
	Otomobil/ P.Cars	99.461	88.957	-11	509.784	593.519	16
İthalat/ Import	Toplam/ Total	92.119	78.765	-14	465.408	538.532	16
	Otomobil/ P.Cars	69.911	64.129	-8	354.150	414.031	17
İhracat/ Export	Toplam/ Total	70.382	67.195	-5	754.469	790.966	5
	Otomobil/ P.Cars	39.972	35.777	-10	439.999	442.674	1
İhracat / Export (\$)	Toplam/ Total **	1.540.377.473	1.579.367.234	3	15.905.756.475	18.509.843.767	16
	Otomobil/ P.Cars	560.685.307	544.212.068	-3	6.200.089.720	6.534.083.060	5

PARAMETRELER / PARAMETERS	ARALIK/ DECEMBER			YILLIK/YEARLY		
	2010	2011	2011/ 2010 (%)	2010	2011	2011/ 2010 (%)
ÜFE/ PPI	1,31	1,00	**	8,87	13,33	**
TÜFE/ CPI	-0,30	0,58	**	6,40	10,45	**
Sanayi Endeksi/ Industry Index	2,00	0,37	**	7,70	14,59	**
\$ (*)	1,5450	1,8498	19,7	1,5143	1,6824	11,1
EURO (*)	2,0650	2,4636	19,3	1,9976	2,3542	17,9
Japon Yeni (*)	1,8997	2,3724	24,9	1,7369	2,1130	21,7

(*) Ortalama Değerler / Average Values

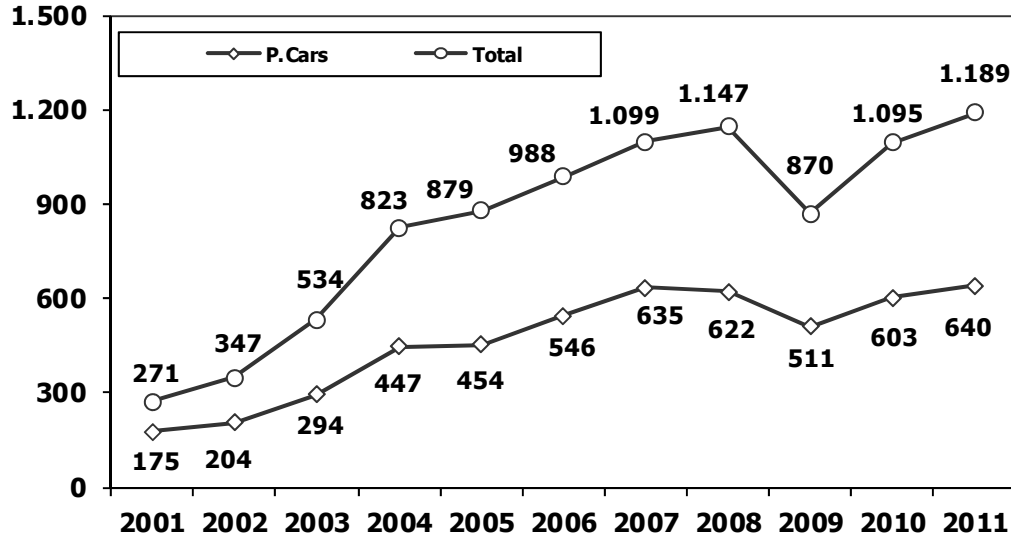
(**) Toplam Sanayi / Total Industry Including Components

2010/2011 Yılları Üretim 2010/2011 Production

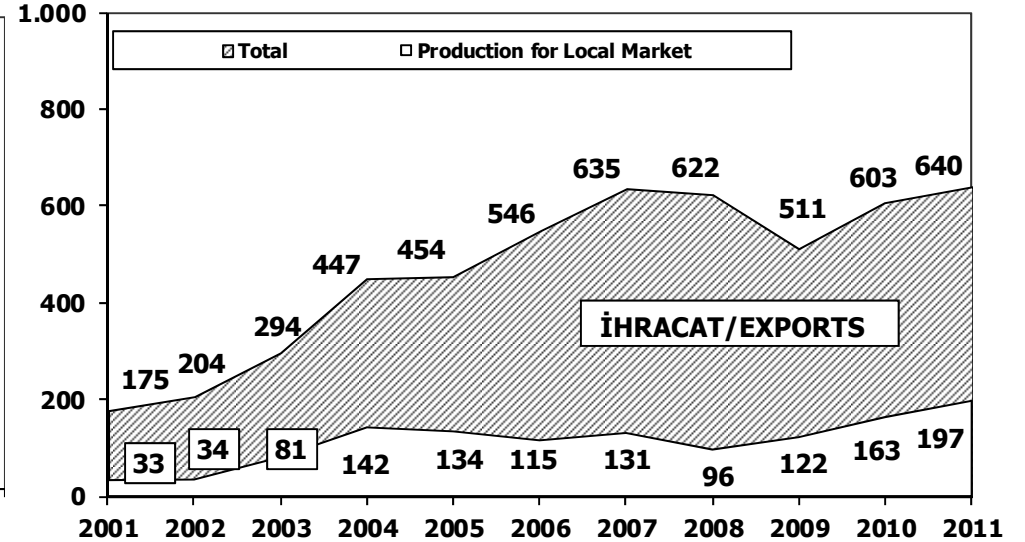
K.KAMYON : AYA 3.5-12 Ton (L.Truck:GVW 3.5-12 Ton)
B.KAMYON : AYA 12 Ton'dan Büyük (M.Truck:GVW 12 Ton And Up)

TİPLER	ARALIK AYI ÜRETİMİ December Production		12 AYLIK ÜRETİM 12 Months Production		DEĞİŞİM % Percent Change %	
	2010	2011	2010	2011	ARALIK December	12 AY 12 Months
OTOMOBİL - Pass.Car	56.646	51.066	603.394	639.734	-10	6
TİCARİ ARAÇLAR - Commercial Vehicles	55.146	53.387	491.163	549.397	-3	12
* B. KAMYON - M. Truck	3.026	2.793	20.429	32.635	-8	60
* K. KAMYON - L. Truck	394	848	3.422	4.761	115	39
* KAMYONET - Pick Up	48.854	45.803	442.408	479.110	-6	8
* OTOBÜS - Bus	581	551	5.268	6.907	-5	31
* MİNİBÜS - Minibus	1.918	2.997	16.978	22.475	56	32
* MİDİBÜS - Midibus	373	395	2.658	3.509	6	32
TAŞIT ARAÇLARI TOPLAM - MV Total	111.792	104.453	1.094.557	1.189.131	-7	9
TRAKTÖR - F.Tractor	2.880	3.756	30.425	45.506	30	50
GENEL TOPLAM - Grand Total	114.672	108.209	1.124.982	1.234.637	-6	10

Toplam Üretim ve Otomobil Üretimi (x1000) (Ocak-Aralık)
Total & P.Cars Production (x1000) (January- December)



Otomobil Üretimi ve İhracat (x1000) (Ocak-Aralık)
P.Cars Production & Exports (x1000) (January- December)





12 Aylık Üretim (12 Months Production)

FİRMALAR Companies	OTOMOBİL Pass.Car	%	K.KAMYON L.Truck	%	B.KAMYON Mid.Truck	%	KAMYONET Pick Up	%	OTOBÜS Bus	%	MİNİBÜS Mini-Bus	%	MİDİBÜS Midi-Bus	%	TRAKTÖR F.Tractor	%	TOPLAM Totals
A.I.O.S.	0	0	2.531	53	0	0	618	0	0	0	0	0	1.175	33	0	0	4.324
B.M.C.	0	0	0	0	3.234	10	0	0	488	7	0	0	2	0	0	0	3.724
FORD OTOSAN	0	0	0	0	9.239	28	267.240	56	0	0	19.371	86	0	0	0	0	295.850
HATTAT TARIM	0	0	0	0	0	0	0	0	0	0	0	0	0	0	4.889	11	4.889
HONDA TÜRKİYE	12.341	2	0	0	0	0	0	0	0	0	0	0	0	0	0	0	12.341
HYUNDAI ASSAN	90.231	14	0	0	0	0	0	0	0	0	0	0	0	0	0	0	90.231
KARSAN	0	0	574	12	1.818	6	16.742	3	76	1	2.936	13	0	0	0	0	22.146
M. BENZ TÜRK	0	0	0	0	18.344	56	0	0	3.018	44	0	0	0	0	0	0	21.362
MAN TÜRKİYE	0	0	0	0	0	0	0	0	1.610	23	0	0	0	0	0	0	1.610
OTOKAR	0	0	0	0	0	0	675	0	727	11	168	1	1.492	43	0	0	3.062
OYAK RENAULT	330.994	52	0	0	0	0	0	0	0	0	0	0	0	0	0	0	330.994
TEMSA GLOBAL	0	0	1.656	35	0	0	576	0	988	14	0	0	840	24	0	0	4.060
TOFAŞ	114.529	18	0	0	0	0	193.259	40	0	0	0	0	0	0	0	0	307.788
TOYOTA	91.639	14	0	0	0	0	0	0	0	0	0	0	0	0	0	0	91.639
TÜRK TRAKTÖR	0	0	0	0	0	0	0	0	0	0	0	0	0	0	40.617	89	40.617
TOPLAM	639.734	100	4.761	100	32.635	100	479.110	100	6.907	100	22.475	100	3.509	100	45.506	100	1.234.637

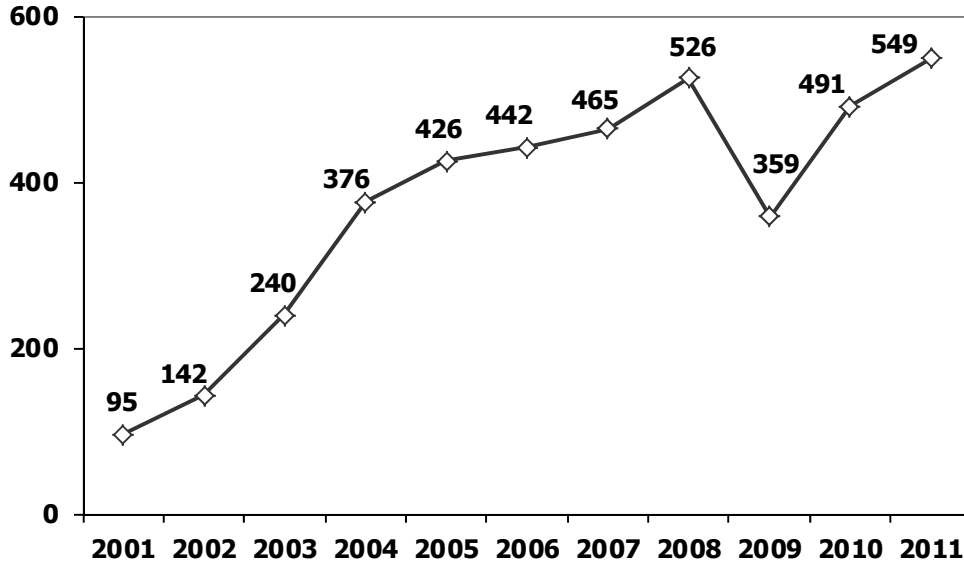
Aralık Ayı Üretimi (December Production)

FİRMALAR Companies	OTOMOBİL Pass.Car	%	K.KAMYON L.Truck	%	B.KAMYON Mid.Truck	%	KAMYONET Pick Up	%	OTOBÜS Bus	%	MİNİBÜS Mini-Bus	%	MİDİBÜS Midi-Bus	%	TRAKTÖR F.Tractor	%	TOPLAM Totals
A.I.O.S.	0	0	308	36	0	0	0	0	0	0	0	0	110	28	0	0	418
B.M.C.	0	0	0	0	335	12	0	0	66	12	0	0	0	0	0	0	401
FORD OTOSAN	0	0	0	0	868	31	26.556	58	0	0	2.617	87	0	0	0	0	30.041
HATTAT	0	0	0	0	0	0	0	0	0	0	0	0	0	0	387	10	387
HONDA TÜRKİYE	240	0	0	0	0	0	0	0	0	0	0	0	0	0	0	0	240
HYUNDAI ASSAN	8666	17	0	0	0	0	0	0	0	0	0	0	0	0	0	0	8.666
KARSAN	0	0	60	7	91	3	1.335	3	0	0	351	12	0	0	0	0	1.837
M. BENZ TÜRK	0	0	0	0	1.499	54	0	0	263	48	0	0	0	0	0	0	1.762
MAN TÜRKİYE	0	0	0	0	0	0	127	0	102	19	0	0	0	0	0	0	229
OTOKAR	0	0	0	0	0	0	0	0	63	11	29	1	126	32	0	0	218
OYAK RENAULT	24032	47	0	0	0	0	0	0	0	0	0	0	0	0	0	0	24.032
TEMSA	0	0	480	57	0	0	6	0	57	10	0	0	159	40	0	0	702
TOFAŞ	11291	22	0	0	0	0	17.779	39	0	0	0	0	0	0	0	0	29.070
TOYOTA	6837	13	0	0	0	0	0	0	0	0	0	0	0	0	0	0	6.837
TÜRK TRAKTÖR	0	0	0	0	0	0	0	0	0	0	0	0	0	0	3.369	90	3.369
TOPLAM	51.066	100	848	100	2.793	100	45.803	100	551	100	2.997	100	395	100	3.756	100	108.209



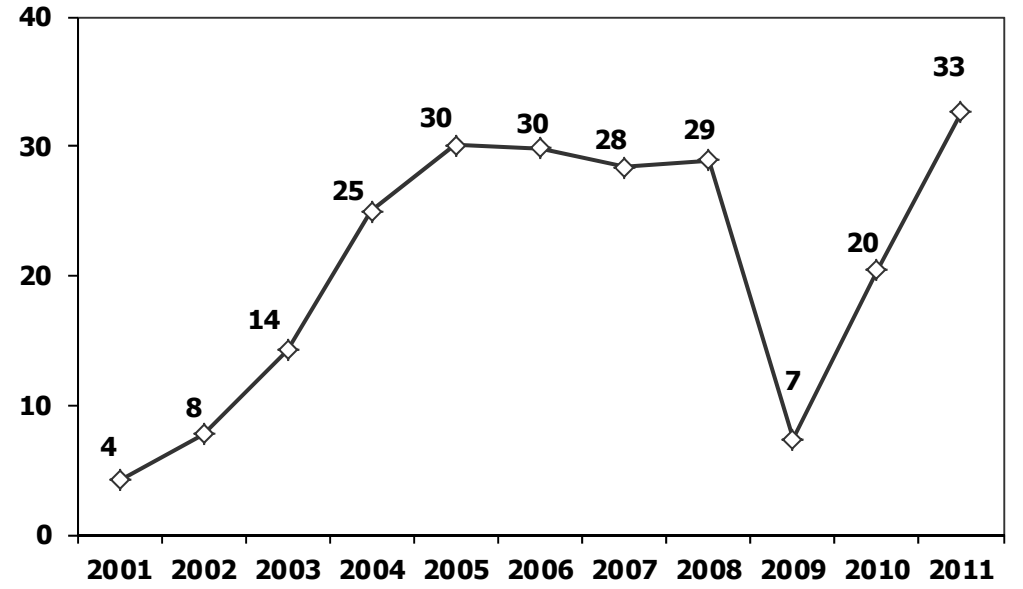
Ticari Araç Üretimi (x1000) (Ocak-Aralık)

Commercial Vehicle Production (x1000) (January- December)



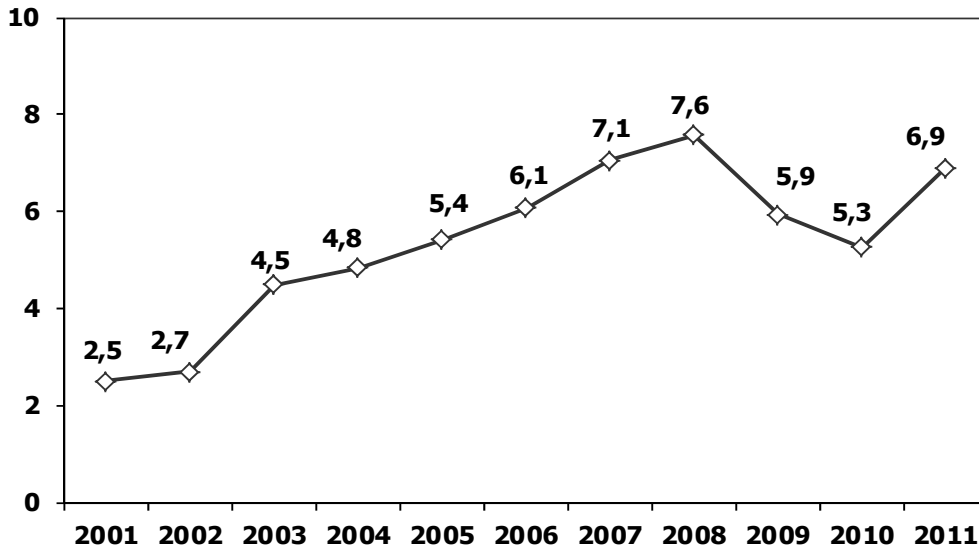
(AYA >12 Ton) Büyük Kamyon Üretimi (x1000) (Ocak-Aralık)

(GVW >12 Ton) Heavy Truck Production (x1000) (January- December)



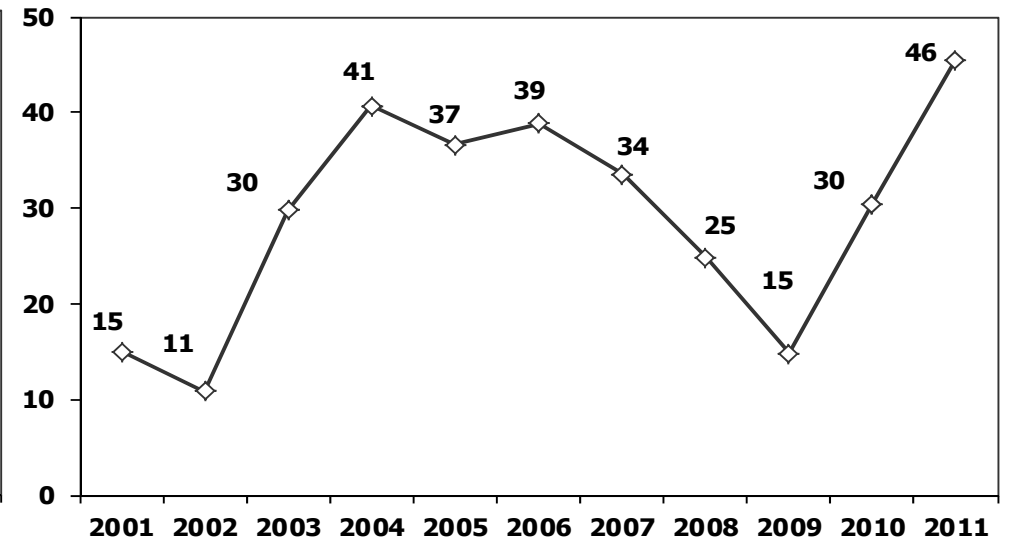
Otobüs Üretimi (x1000) (Ocak-Aralık)

Bus Production (x1000) (January- December)



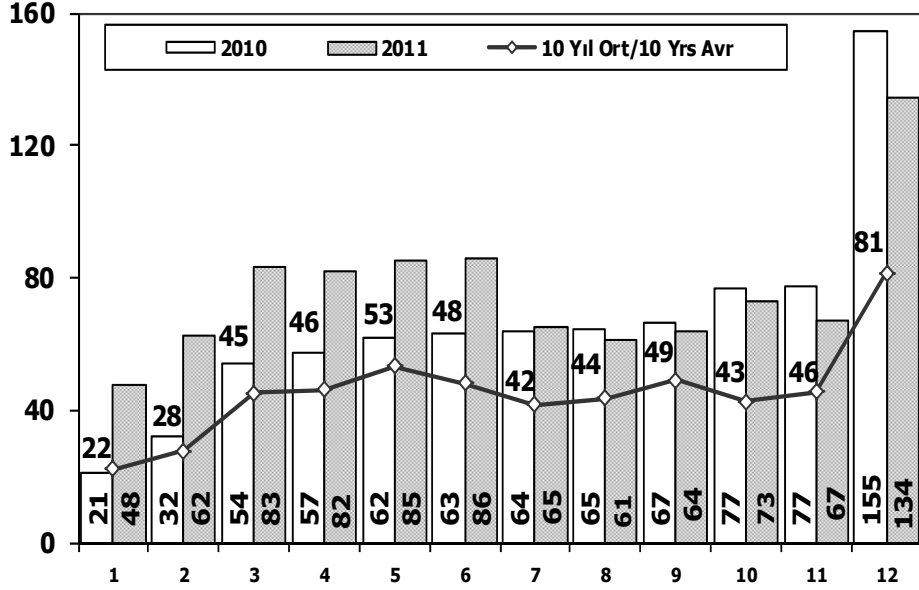
Traktör Üretimi (x1000) (Ocak-Aralık)

F. Tractor Production (x1000) (January- December)



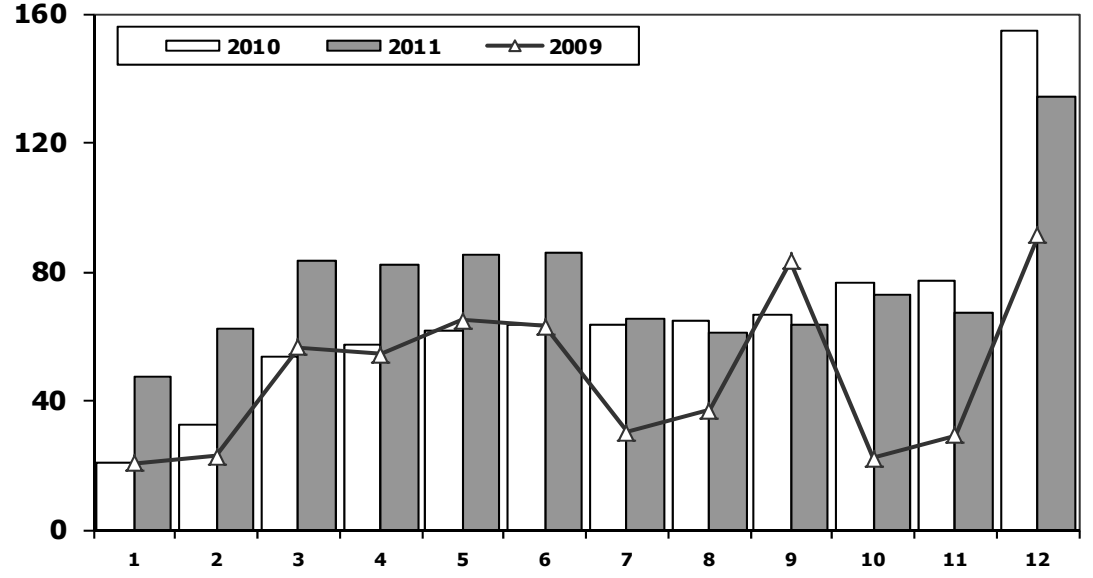


Toplam Pazarın Analizi (x1000) Total Market Analysis (x1000)



Aylar/ Months	10 Yil Ort. 10 Yrs Avr. (x1000)	2011 (x1000)	%
1	22,1	47,7	115,7
2	27,7	62,3	125,4
3	45,1	83,3	85,0
4	46,2	82,1	77,6
5	53,2	85,1	59,9
6	48,0	85,9	79,0
7	41,8	65,4	56,5
8	43,6	61,4	40,8
9	49,1	63,6	29,5
10	42,7	72,6	70,2
11	45,5	67,2	47,7
12	81,3	134,3	65,1
Total	546,3	910,9	66,7

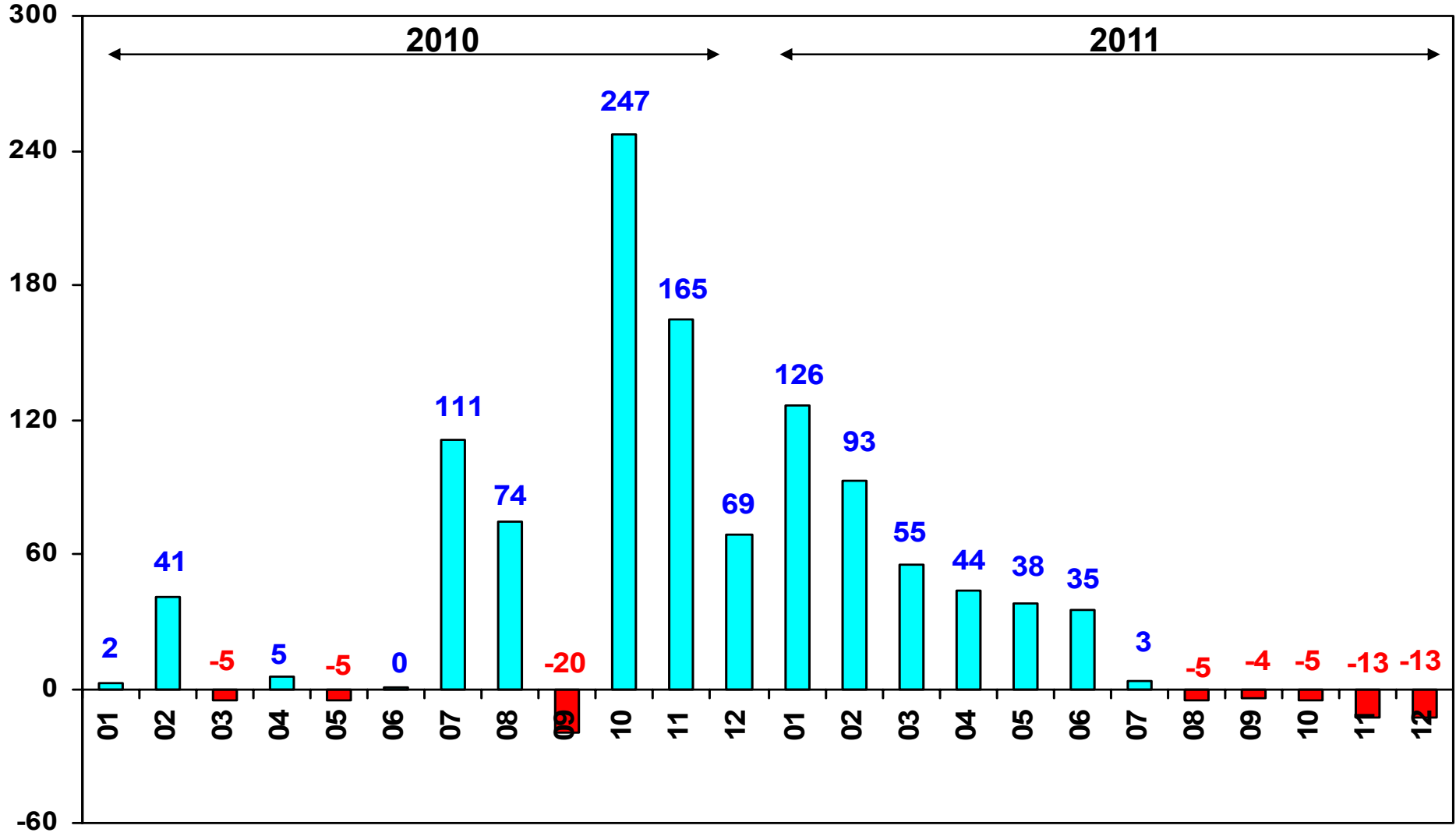
Toplam Pazar (x1000) Total Market (x1000)



	1	2	3	4	5	6	7	8	9	10	11	12	Total
2001	14.390	13.654	11.398	14.724	19.002	20.128	19.027	17.450	12.307	11.579	16.836	24.595	195.090
2002	2.248	4.310	8.065	12.192	16.807	15.648	16.509	14.738	16.186	18.386	18.478	30.875	174.442
2003	12.576	11.317	17.095	20.380	27.803	30.517	32.268	28.839	40.315	50.051	44.081	82.721	397.963
2004	38.621	39.389	71.723	77.056	84.634	63.228	57.307	56.422	59.429	56.153	52.237	85.070	741.269
2005	22.687	38.291	64.502	60.873	71.383	64.379	63.847	68.647	66.580	60.791	65.719	110.838	758.537
2006	29.969	44.646	65.090	68.853	83.289	58.203	40.037	47.374	49.629	39.805	55.898	82.722	665.515
2007	24.950	31.702	45.488	45.633	51.255	51.661	50.117	54.171	50.078	56.058	67.017	106.076	634.206
2008	33.792	38.121	56.814	50.967	51.627	49.393	44.692	46.592	46.829	35.147	28.152	44.418	526.544
2009	20.631	22.846	56.531	54.426	64.887	63.102	30.246	37.092	83.403	22.117	29.202	91.386	575.869
2010	21.050	32.313	53.828	57.079	61.628	63.390	63.718	64.645	66.601	76.780	77.406	154.734	793.172
2011	47.658	62.348	83.333	82.071	85.093	85.863	65.364	61.378	63.643	72.640	67.195	134.281	910.867

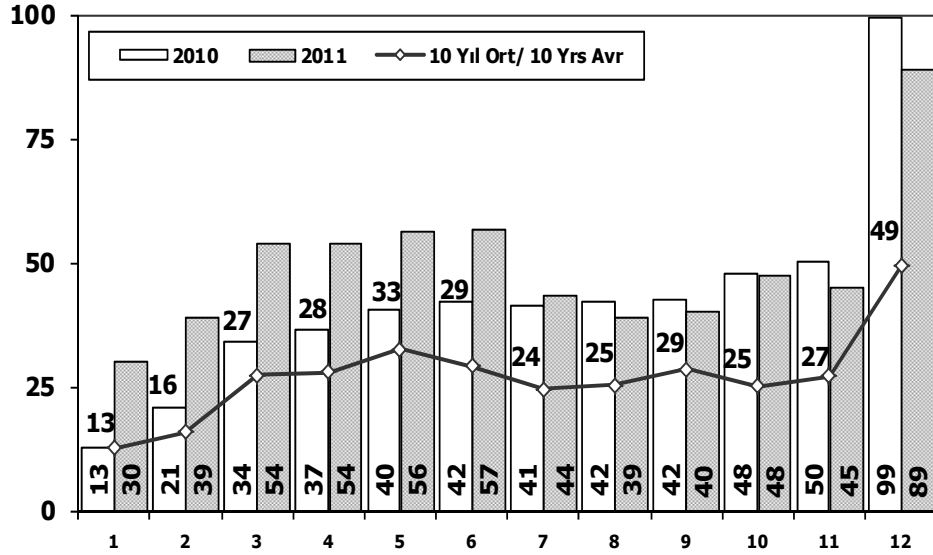


TOPLAM PAZARDA AYLIK DEĞİŞİM (%)
Monthly Change in Total Market - %



Otomobil Pazarının Analizi (x1000)

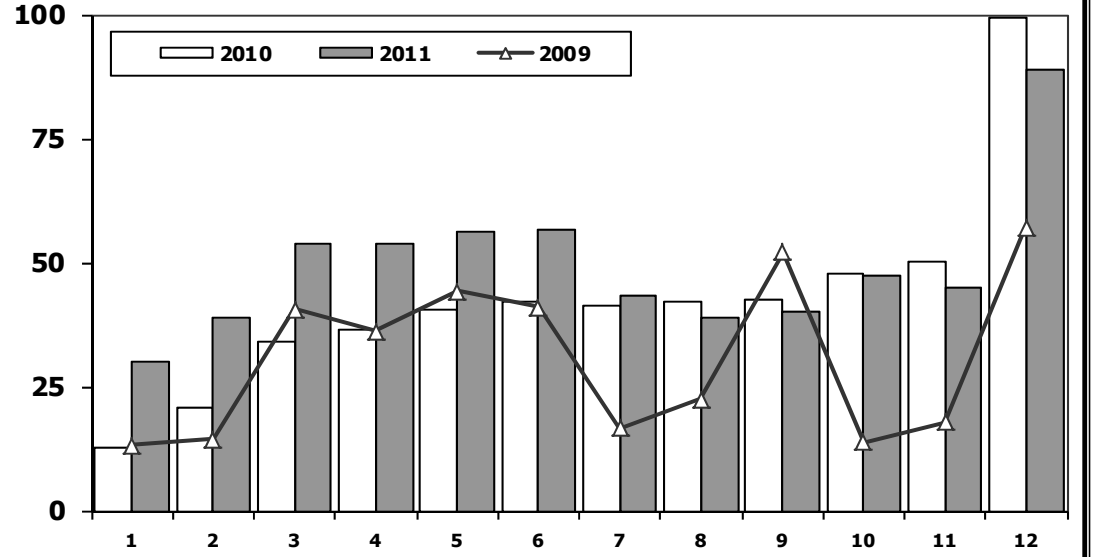
P.Cars Market Analysis (x1000)



Aylar / Months	10 Yil Ort. 10 Yrs Avr. (x1000)	2011 (x1000)	%
1	12,7	29,9	135,9
2	15,8	39,0	146,1
3	27,4	54,0	97,3
4	28,0	53,8	92,1
5	32,5	56,3	73,1
6	29,2	56,7	94,2
7	24,5	43,5	77,8
8	25,2	38,9	54,2
9	28,6	40,0	39,7
10	25,2	47,5	88,9
11	27,1	45,0	65,6
12	49,3	89,0	80,5
Total	325,5	593,5	82,3

Otomobil Pazarı (x1000)

P.Cars Market (x1000)

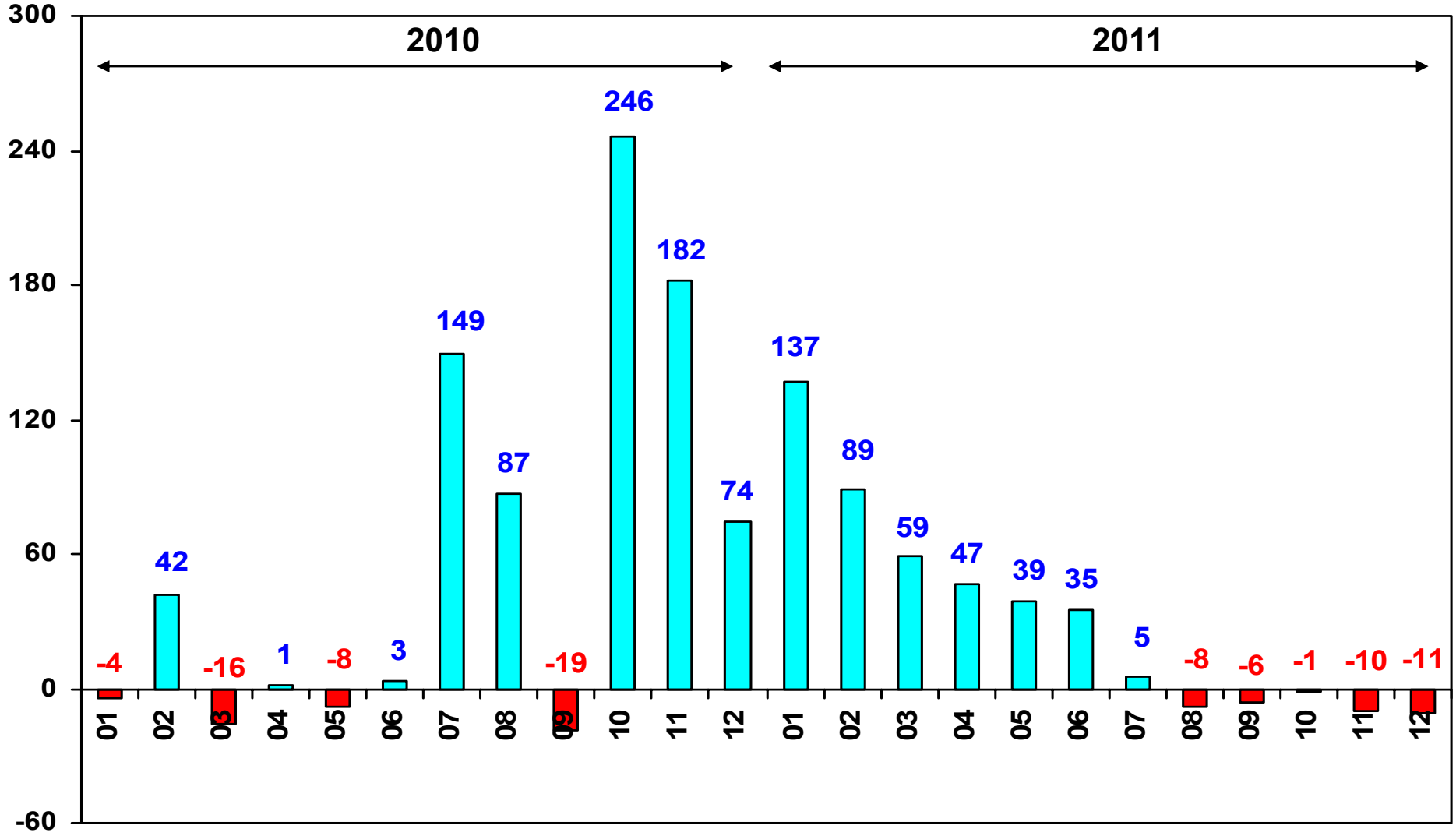


	1	2	3	4	5	6	7	8	9	10	11	12	Total
2001	8.443	8.377	7.479	10.195	13.562	14.408	13.326	11.361	6.927	7.035	12.319	18.006	131.438
2002	591	1.426	3.464	6.245	8.948	7.811	9.842	7.308	8.753	9.381	9.848	16.998	90.615
2003	6.309	5.486	8.555	11.107	15.965	16.329	14.764	16.896	23.772	30.615	25.777	51.461	227.036
2004	25.625	23.695	46.075	47.995	54.610	37.671	33.410	33.709	33.383	34.292	30.547	50.197	451.209
2005	11.595	21.012	38.129	36.206	38.480	40.900	38.969	38.648	36.410	34.960	37.841	65.447	438.597
2006	16.506	24.929	36.996	40.177	48.521	32.982	22.653	24.873	27.517	21.237	30.477	46.351	373.219
2007	13.186	17.212	24.336	25.204	29.067	30.126	28.246	28.469	27.662	32.569	39.643	61.745	357.465
2008	18.588	21.196	34.147	30.313	31.477	28.724	25.530	26.102	27.053	19.788	17.201	25.879	305.998
2009	13.173	14.492	40.622	36.202	44.188	41.019	16.637	22.537	52.162	13.828	17.781	57.178	369.819
2010	12.594	20.651	33.958	36.549	40.467	42.086	41.399	42.222	42.477	47.859	50.061	99.461	509.784
2011	29.868	39.004	54.023	53.835	56.302	56.714	43.518	38.875	39.964	47.508	44.951	88.957	593.519



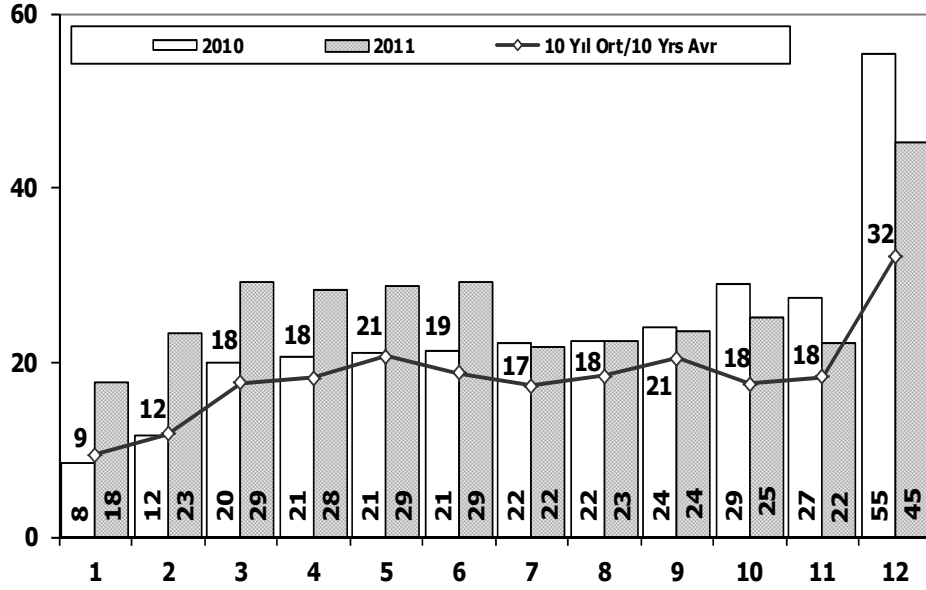
OTOMOBİL PAZARINDA AYLIK DEĞİŞİM (%)

Monthly Change in P.Cars Market - %



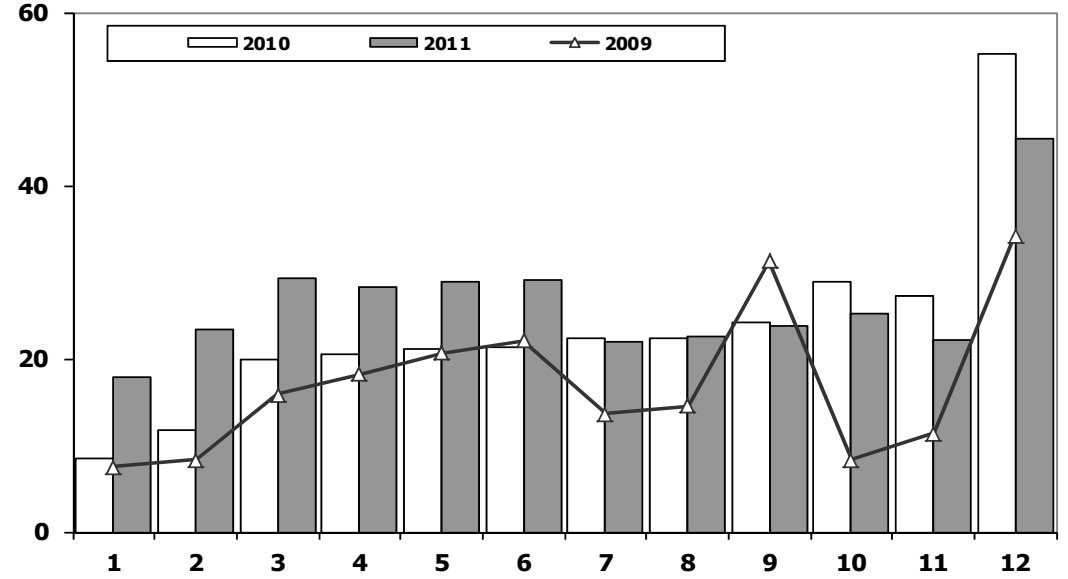


Ticari Araç Pazarının Analizi (x1000) CV Market Analysis (x1000)



Aylar / Months	10 Yil Ort. 10 Yrs Avr. (x1000)	2011 (x1000)	%
1	9,4	17,8	88,6
2	11,8	23,3	97,6
3	17,7	29,3	65,8
4	18,2	28,2	55,2
5	20,7	28,8	39,1
6	18,8	29,1	55,4
7	17,3	21,8	26,3
8	18,4	22,5	22,4
9	20,5	23,7	15,4
10	17,5	25,1	43,4
11	18,4	22,2	21,2
12	32,1	45,3	41,3
Total	220,7	317,3	43,8

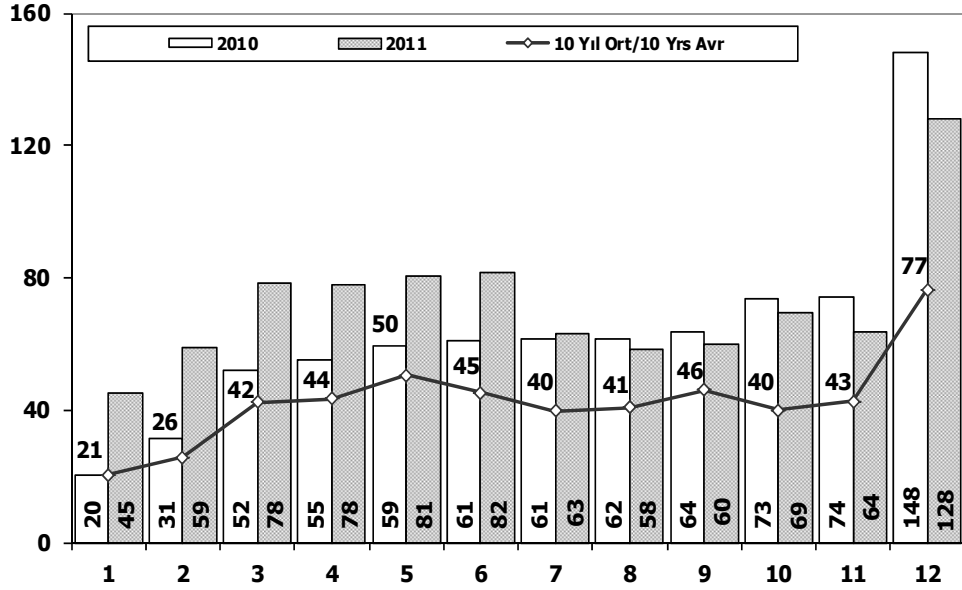
Ticari Araç Pazarı (x1000) CV Total Market (Local + Imports) (x1000)



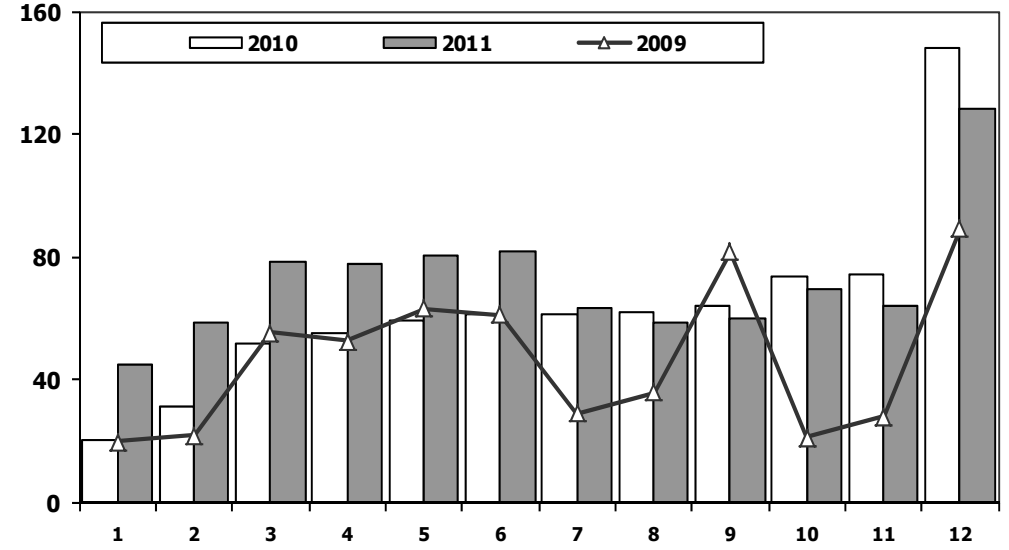
	1	2	3	4	5	6	7	8	9	10	11	12	Total
2001	5.947	5.277	3.919	4.529	5.440	5.720	5.701	6.089	5.380	4.544	4.517	6.589	63.652
2002	1.657	2.884	4.601	5.947	7.859	7.837	6.667	7.430	7.433	9.005	8.630	13.877	83.827
2003	6.267	5.831	8.540	9.273	11.838	14.188	17.504	11.943	16.543	19.436	18.304	31.260	170.927
2004	12.996	15.694	25.648	29.061	30.024	25.557	23.897	22.713	26.046	21.861	21.690	34.873	290.060
2005	11.092	17.279	26.373	24.667	32.903	23.479	24.878	29.999	30.170	25.831	27.878	45.391	319.940
2006	13.463	19.717	28.094	28.676	34.768	25.221	17.384	22.501	22.112	18.568	25.421	36.371	292.296
2007	11.764	14.490	21.152	20.429	22.188	21.535	21.871	25.702	22.416	23.489	27.374	44.331	276.741
2008	15.204	16.925	22.667	20.654	20.150	20.669	19.162	20.490	19.776	15.359	10.951	18.539	220.546
2009	7.458	8.354	15.909	18.224	20.699	22.083	13.609	14.555	31.241	8.289	11.421	34.208	206.050
2010	8.456	11.662	19.870	20.530	21.161	21.304	22.319	22.423	24.124	28.921	27.345	55.273	283.388
2011	17.790	23.344	29.310	28.236	28.791	29.149	21.846	22.503	23.679	25.132	22.244	45.324	317.348



Hafif Arac Pazarının Analizi (x1000) LV Market Analysis (x1000)



Hafif Arac Pazarı (x1000) LV Total Market (Local + Imports) (x1000)

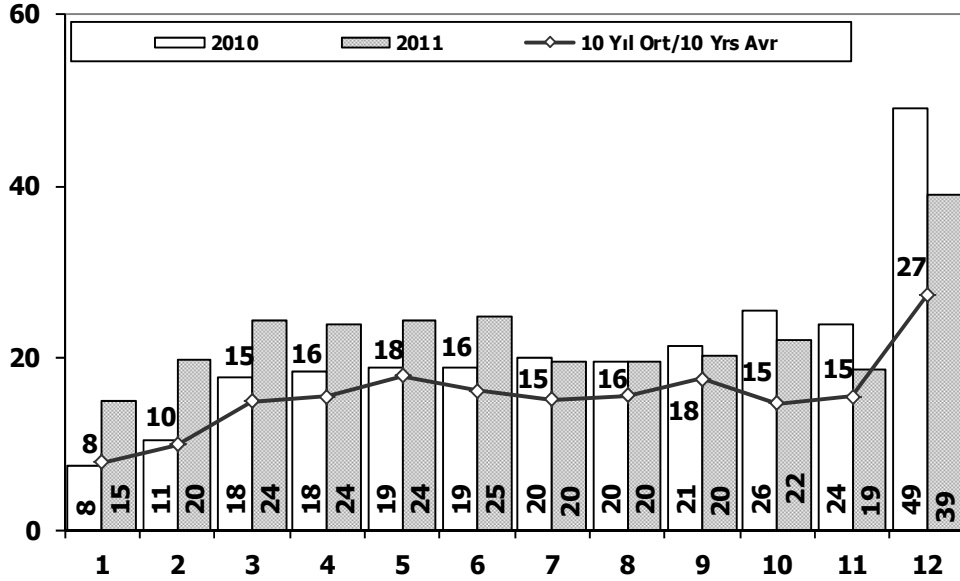


Aylar / Months	10 Yil Ort. 10 Yrs Avr. (x1000)	2011 (x1000)	%
1	20,6	44,9	118,1
2	25,8	58,7	127,6
3	42,4	78,4	85,0
4	43,5	77,7	78,5
5	50,4	80,6	59,9
6	45,4	81,6	79,7
7	39,7	63,0	58,8
8	40,8	58,4	43,1
9	46,2	60,1	30,3
10	39,9	69,4	74,1
11	42,6	63,7	49,3
12	76,6	127,9	67,1
Total	513,8	864,4	68,2

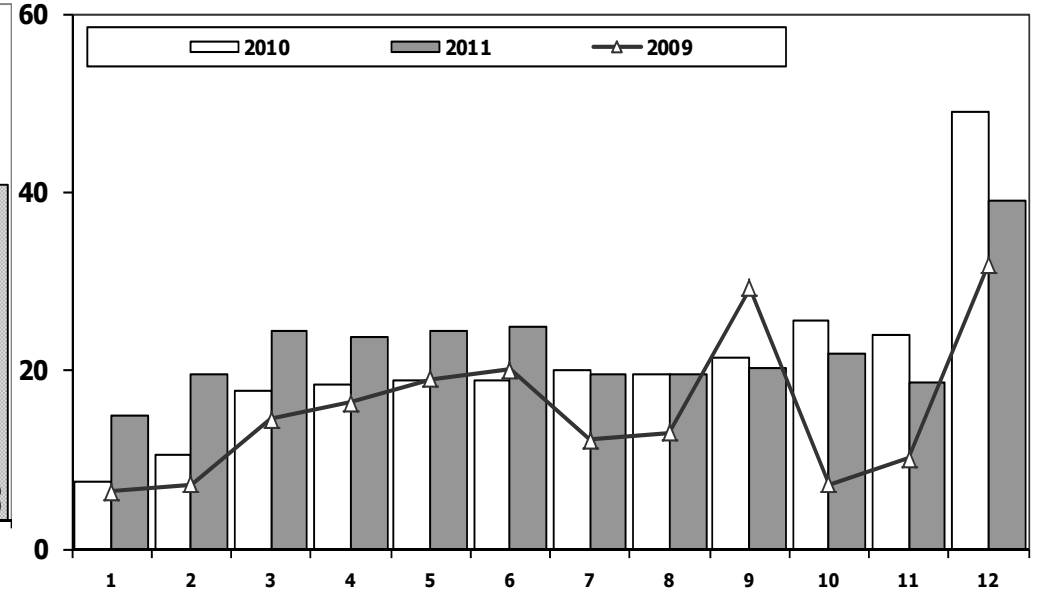
	1	2	3	4	5	6	7	8	9	10	11	12	Total
2001	13.188	12.557	10.548	13.919	18.129	19.514	18.512	16.709	11.402	10.562	15.713	22.999	183.752
2002	1.764	3.641	7.109	11.007	15.461	14.337	15.472	13.302	14.599	16.531	16.657	27.569	157.449
2003	11.531	10.402	15.743	18.693	25.853	28.266	30.172	25.903	36.234	45.446	40.048	75.778	364.069
2004	36.352	37.079	67.144	73.075	80.290	59.730	54.816	52.876	55.609	53.000	49.200	78.924	698.095
2005	20.747	35.766	60.707	56.844	67.357	60.796	61.015	64.011	61.954	56.638	61.364	103.209	710.408
2006	27.917	40.938	60.052	64.038	78.229	54.355	37.251	43.767	46.109	36.542	51.867	76.787	617.852
2007	23.117	29.184	41.890	42.366	47.938	48.674	47.490	50.558	46.581	52.725	63.313	100.926	594.762
2008	31.527	35.251	53.649	47.701	48.598	46.324	42.156	43.670	43.932	32.884	26.253	42.078	494.023
2009	19.606	21.742	55.111	52.640	63.191	61.067	28.845	35.609	81.397	21.033	27.962	88.923	557.126
2010	20.095	31.172	51.769	54.946	59.377	60.896	61.345	61.764	63.814	73.404	73.962	148.369	760.913
2011	44.892	58.663	78.403	77.695	80.646	81.573	63.044	58.406	60.129	69.421	63.657	127.910	864.439



Hafif Ticari Araç Pazarının Analizi (x1000) LCV Market Analysis (x1000)



Hafif Ticari Araç Pazarı (x1000) LCV Total Market (Local + Imports) (x1000)

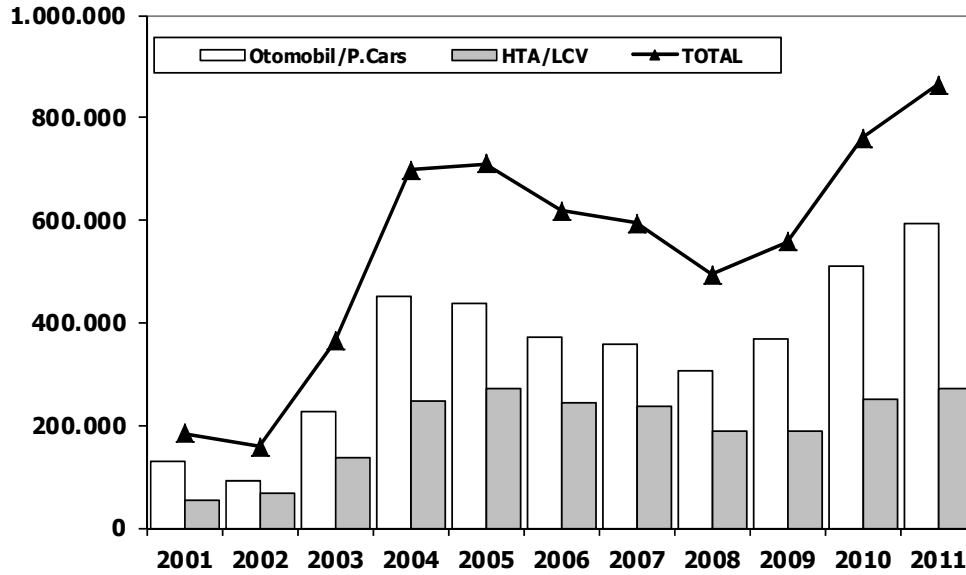


Aylar / Months	10 Yil Ort. 10 Yrs Avr. (x1000)	2011 (x1000)	%
1	7,9	15,0	89,6
2	9,9	19,7	98,1
3	15,0	24,4	62,6
4	15,5	23,9	53,9
5	17,9	24,3	35,9
6	16,2	24,9	53,5
7	15,2	19,5	28,2
8	15,6	19,5	25,2
9	17,6	20,2	14,9
10	14,7	21,9	48,9
11	15,5	18,7	20,8
12	27,3	39,0	42,8
Total	188,3	270,9	43,9

	1	2	3	4	5	6	7	8	9	10	11	12	Total
2001	4.745	4.180	3.069	3.724	4.567	5.106	5.186	5.348	4.475	3.527	3.394	4.993	52.314
2002	1.173	2.215	3.645	4.762	6.513	6.526	5.630	5.994	5.846	7.150	6.809	10.571	66.834
2003	5.222	4.916	7.188	7.586	9.888	11.937	15.408	9.007	12.462	14.831	14.271	24.317	137.033
2004	10.727	13.384	21.069	25.080	25.680	22.059	21.406	19.167	22.226	18.708	18.653	28.727	246.886
2005	9.152	14.754	22.578	20.638	28.877	19.896	22.046	25.363	25.544	21.678	23.523	37.762	271.811
2006	11.411	16.009	23.056	23.861	29.708	21.373	14.598	18.894	18.592	15.305	21.390	30.436	244.633
2007	9.931	11.972	17.554	17.162	18.871	18.548	19.244	22.089	18.919	20.156	23.670	39.181	237.297
2008	12.939	14.055	19.502	17.388	17.121	17.600	16.626	17.568	16.879	13.096	9.052	16.199	188.025
2009	6.433	7.250	14.489	16.438	19.003	20.048	12.208	13.072	29.235	7.205	10.181	31.745	187.307
2010	7.501	10.521	17.811	18.397	18.910	18.810	19.946	19.542	21.337	25.545	23.901	48.908	251.129
2011	15.024	19.659	24.380	23.860	24.344	24.859	19.526	19.531	20.165	21.913	18.706	38.953	270.920

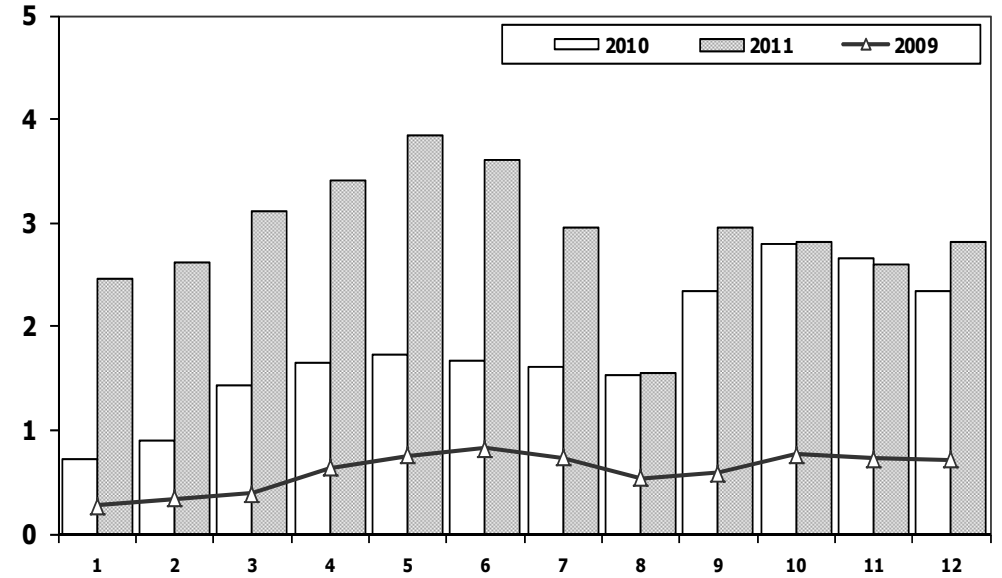


Hafif Arac Pazarı (AYA < 3.5 Ton) (2001-2011 Ocak-Aralık)
Light Vehicle Market (GVW < 3.5 Ton) (2001-2011 January-December)



	2001	2002	2003	2004	2005	2006	2007	2008	2009	2010	2011
Otomobil/ P.Cars	131.438	90.615	227.036	451.209	438.597	373.219	357.465	305.998	369.819	509.784	593.519
HTA/ LCV	52.314	66.834	137.033	246.886	271.811	244.633	237.297	188.025	187.307	251.129	270.920
TOTAL	183.752	157.449	364.069	698.095	710.408	617.852	594.762	494.023	557.126	760.913	864.439
HTA/ LCV (%)	28	42	38	35	38	40	40	38	34	33	31

Traktör Pazarı (x1000)
F.Tractor Market (x1000)

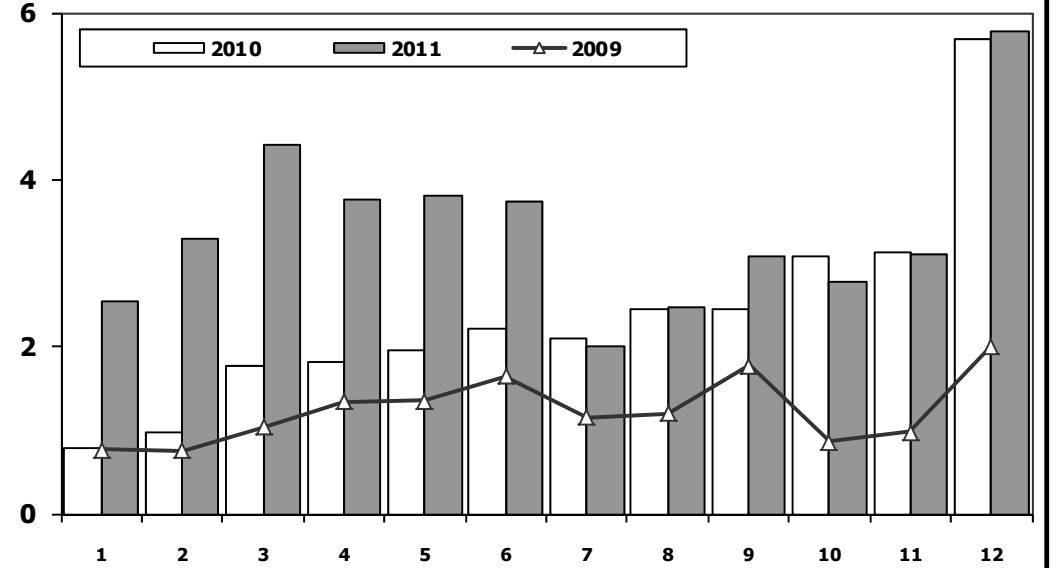
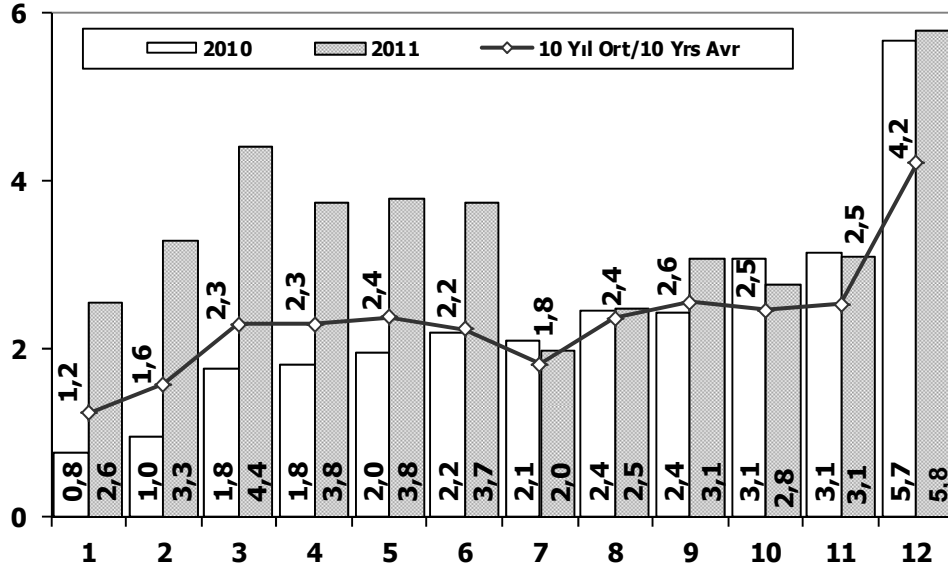


	1	2	3	4	5	6	7	8	9	10	11	12	Total
2001	1.531	1.540	1.359	1.426	1.311	563	415	664	422	416	313	165	10.125
2002	291	401	380	585	435	508	561	546	747	628	560	680	6.322
2003	712	830	1.313	1.460	1.527	1.123	1.311	1.404	1.706	1.893	1.541	1.468	16.288
2004	1.946	1.874	2.909	3.260	2.863	2.816	1.988	2.209	2.509	1.989	2.198	1.364	27.925
2005	1.026	1.636	2.001	2.599	2.569	2.780	2.148	2.819	2.567	2.477	2.297	2.089	27.008
2006	1.578	2.493	2.746	2.841	3.561	2.356	1.685	2.177	2.756	1.915	2.353	1.925	28.386
2007	1.812	1.778	2.063	2.107	2.266	1.853	1.653	2.065	2.372	2.239	2.231	1.602	24.041
2008	1.510	1.427	1.933	1.692	1.689	1.592	1.275	924	904	609	707	359	14.621
2009	267	344	388	638	759	828	741	534	586	765	725	715	7.290
2010	714	903	1.432	1.653	1.736	1.673	1.613	1.527	2.351	2.787	2.656	2.345	21.390
2011	2.458	2.610	3.105	3.403	3.847	3.599	2.952	1.559	2.957	2.823	2.603	2.807	34.723



Kamyon Pazarının Analizi (x1000) AYA > 5 Ton Truck Market Analysis (x1000) GVW > 5 Ton

Kamyon Pazarı (x1000) AYA > 5 Ton Truck Market (x1000) GVW > 5 Ton

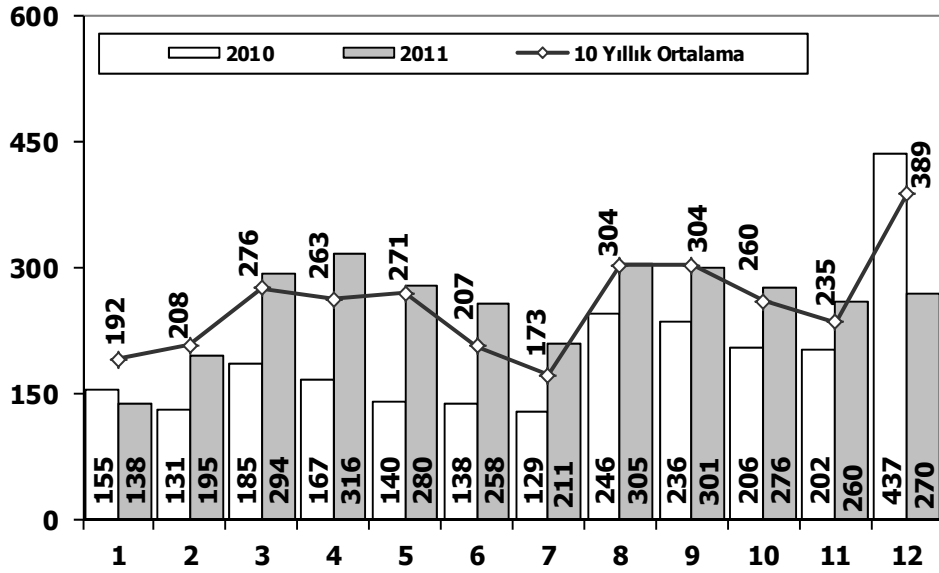


Aylar / Months	10 Yıl Ort. 10 Yrs Avr. (x1000)	2011 (x100)	%
1	1,2	2,6	106,7
2	1,6	3,3	108,6
3	2,3	4,4	92,9
4	2,3	3,8	63,7
5	2,4	3,8	60,0
6	2,2	3,7	67,6
7	1,8	2,0	9,8
8	2,4	2,5	4,8
9	2,6	3,1	20,2
10	2,5	2,8	12,8
11	2,5	3,1	22,8
12	4,2	5,8	37,3
Total	28,0	40,8	45,9

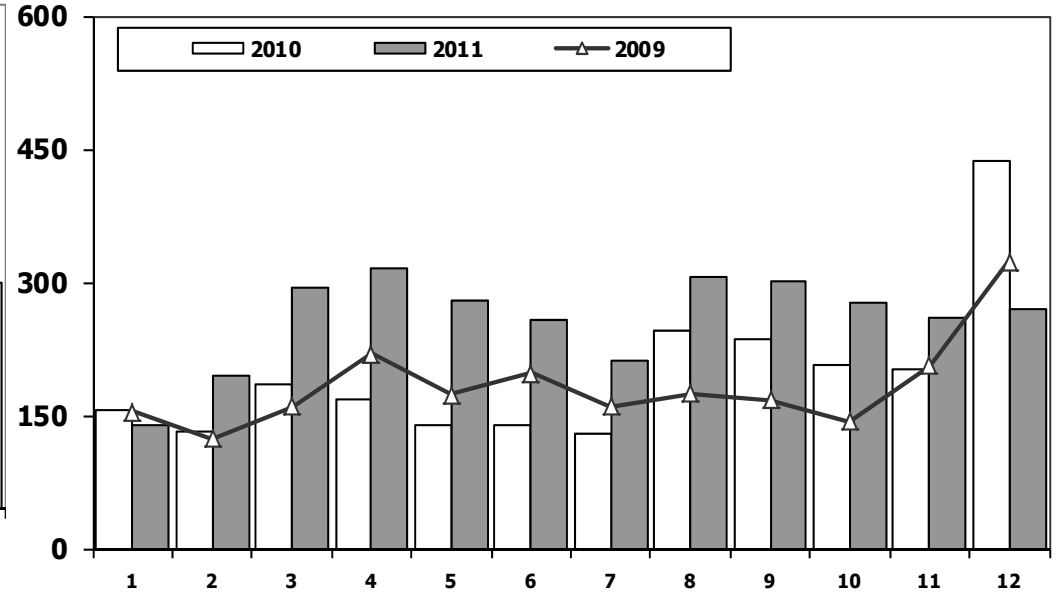
YIL	OCAK	ŞUBAT	MART	NİSAN	MAYIS	HAZİRAN	TEMMUZ	AĞUSTOS	EYLÜL	EKİM	KASIM	ARALIK	TOPLAM
2001	950	942	725	709	793	498	420	604	680	795	975	1.383	9.474
2002	403	532	824	1.048	1.157	1.199	927	1.300	1.403	1.666	1.637	2.932	15.028
2003	771	773	1.123	1.494	1.668	2.008	1.933	2.490	3.563	4.147	3.720	6.406	30.096
2004	1.863	1.949	3.983	3.352	3.651	3.118	2.234	2.897	3.285	2.727	2.629	5.517	37.205
2005	1.693	2.186	3.288	3.484	3.413	3.147	2.504	4.028	4.043	3.708	3.918	6.570	41.982
2006	1.767	3.310	4.467	4.180	4.449	3.398	2.472	3.142	3.052	2.926	3.550	5.358	42.071
2007	1.554	2.055	3.065	2.940	2.865	2.613	2.372	3.145	2.988	2.886	3.258	4.444	34.185
2008	1.797	2.309	2.621	2.578	2.459	2.526	2.067	2.377	2.390	1.790	1.512	1.834	26.260
2009	771	759	1.034	1.342	1.355	1.651	1.156	1.205	1.780	866	981	2.015	14.915
2010	777	968	1.772	1.807	1.966	2.205	2.093	2.446	2.444	3.071	3.136	5.677	28.362
2011	2.552	3.292	4.418	3.754	3.803	3.749	1.996	2.478	3.081	2.774	3.108	5.787	40.792



Midibüs Pazarının Analizi (7-9 mt / 25-35 Kişilik) Midibus Market Analysis (7-9 mt / 25-35 Passengers)



Midibüs Pazarı (7-9 mt / 25-35 Kişilik Midibüs) Midibus Market (7-9 mt / 25-35 Passengers)



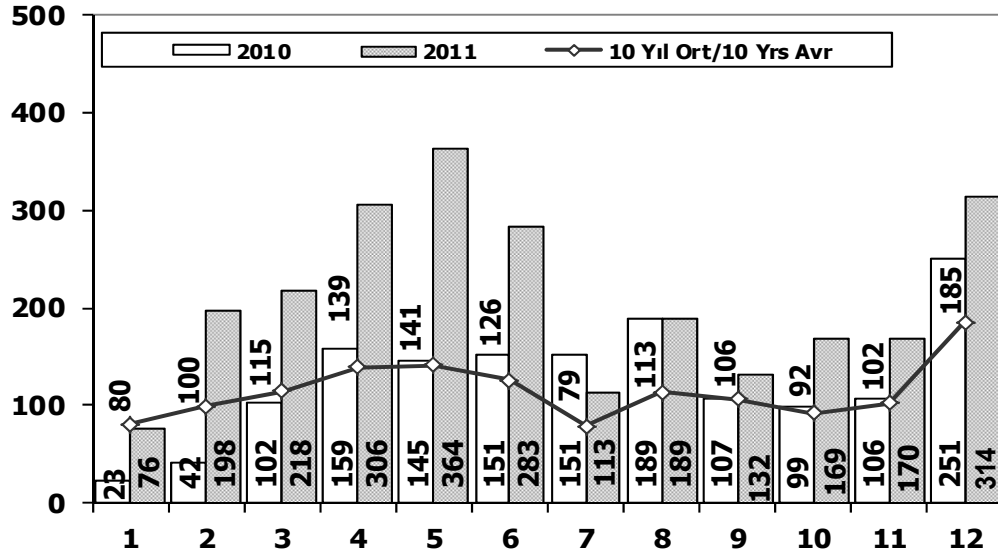
Aylar / Months	10 Yıl Ort. 10 Yrs Avr.	2011	%
1	192	138	-28
2	208	195	-6
3	276	294	6
4	263	316	20
5	271	280	4
6	207	258	25
7	173	211	22
8	304	305	0
9	304	301	-1
10	260	276	6
11	235	260	11
12	389	270	-31
Total	3.080	3.104	1

YIL	OCAK	ŞUBAT	MART	NİSAN	MAYIS	HAZİRAN	TEMMUZ	AĞUSTOS	EYLÜL	EKİM	KASIM	ARALIK	TOPLAM
2001	124	87	85	76	43	77	60	110	201	208	129	131	1.331
2002	47	99	86	100	125	106	105	94	141	171	120	300	1.494
2003	220	109	188	106	158	161	103	322	349	330	212	436	2.694
2004	233	226	381	431	524	237	154	531	445	331	319	551	4.363
2005	182	258	432	393	439	269	252	459	436	329	328	574	4.351
2006	207	297	406	388	381	266	230	353	322	253	305	401	3.809
2007	207	272	404	238	302	283	164	365	399	279	283	465	3.661
2008	391	476	436	512	419	331	368	380	341	352	246	270	4.522
2009	154	124	160	220	174	198	160	175	168	143	206	323	2.205
2010	155	131	185	167	140	138	129	246	236	206	202	437	2.372
2011	138	195	294	316	280	258	211	305	301	276	260	270	3.104



Otobüs Pazarının Analizi

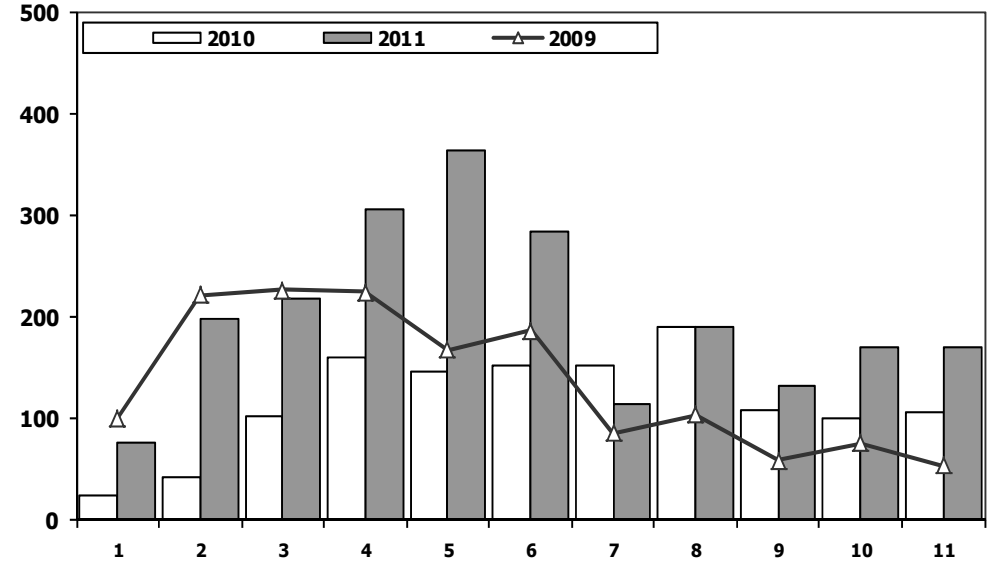
Bus Market Analysis



Aylar / Months	10 Yil Ort. 10 Yrs Avr.	2011	%
1	80	76	-5
2	100	198	99
3	115	218	90
4	139	306	120
5	141	364	158
6	126	283	124
7	79	113	43
8	113	189	67
9	106	132	25
10	92	169	84
11	102	170	67
12	185	314	70
Total	1.378	2.532	84

Otobüs Pazarı

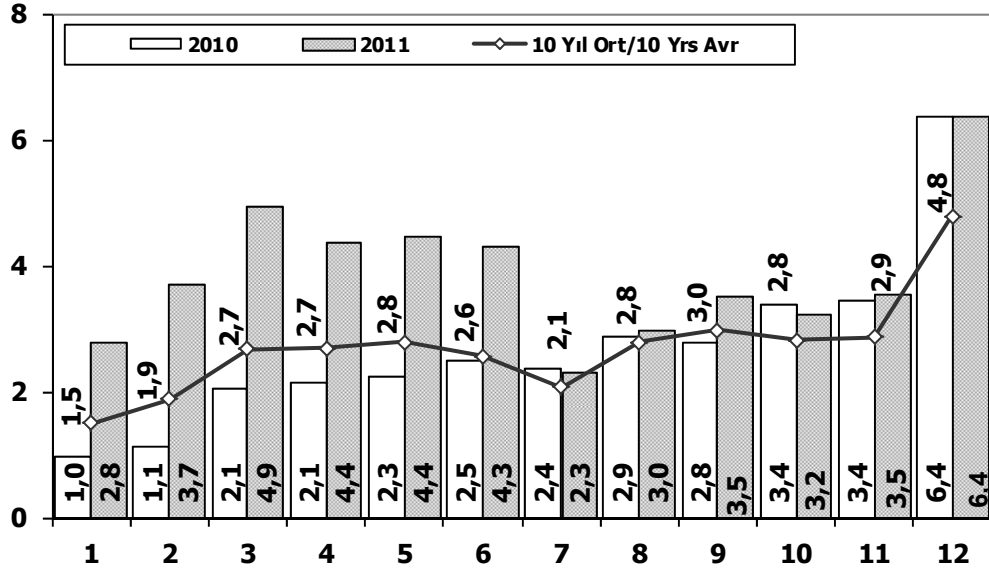
Bus Market



	1	2	3	4	5	6	7	8	9	10	11	12	Total
2001	128	68	40	20	37	39	35	27	24	14	19	82	533
2002	34	38	46	37	64	6	5	42	43	18	64	74	471
2003	54	33	41	87	124	82	60	124	169	128	101	101	1.104
2004	173	135	215	198	169	143	103	118	90	95	89	78	1.606
2005	65	81	75	152	174	167	76	149	147	116	109	485	1.796
2006	78	101	165	247	230	184	84	112	146	84	176	176	1.783
2007	72	191	129	89	150	91	91	103	110	168	163	241	1.598
2008	77	85	108	176	151	212	101	165	166	121	141	236	1.739
2009	100	221	226	224	167	186	85	103	58	75	53	125	1.623
2010	23	42	102	159	145	151	151	189	107	99	106	251	1.525
2011	76	198	218	306	364	283	113	189	132	169	170	314	2.532

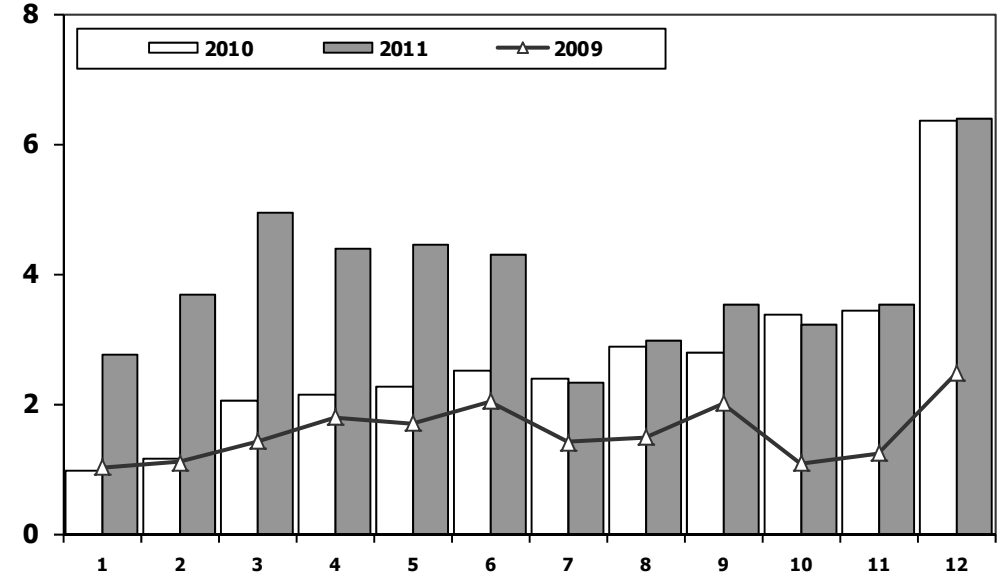


Ağır Ticari Araç Pazarının Analizi (x1000) HCV Market Analysis (x1000)



Ay / Months	10 Yıl Ort. 10 Yrs Avr. (x1000)	2011 (x1000)	%
1	1,5	2,8	83,5
2	1,9	3,7	95,4
3	2,7	4,9	83,9
4	2,7	4,4	62,4
5	2,8	4,4	59,4
6	2,6	4,3	67,0
7	2,1	2,3	12,1
8	2,8	3,0	6,9
9	3,0	3,5	18,2
10	2,8	3,2	14,5
11	2,9	3,5	23,3
12	4,8	6,4	33,1
Total	32,4	46,4	43,2

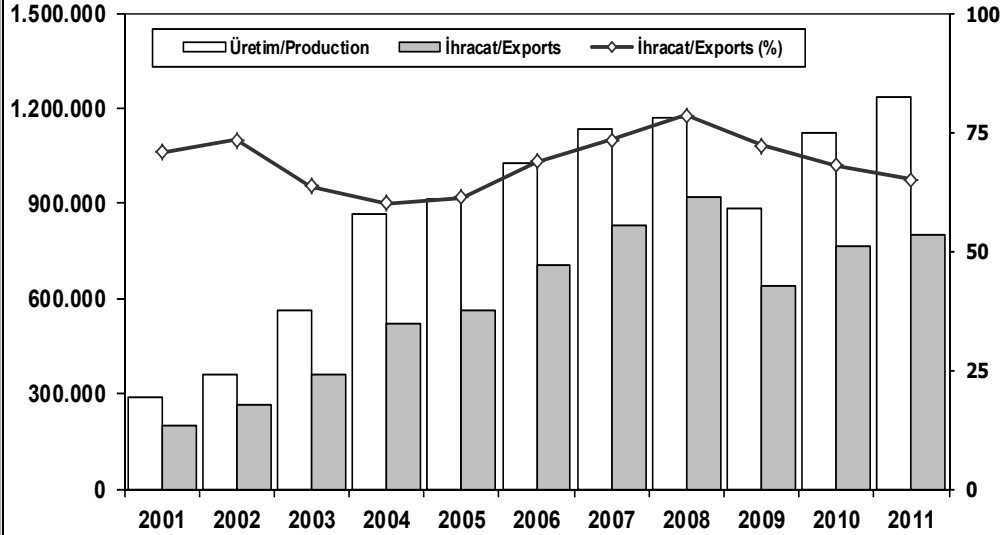
Ağır Ticari Araç Pazarı (x1000) HCV Market (x1000)



	1	2	3	4	5	6	7	8	9	10	11	12	Total
2001	1.202	1.097	850	805	873	614	515	741	905	1.017	1.123	1.596	11.338
2002	484	669	956	1.185	1.346	1.311	1.037	1.436	1.587	1.855	1.821	3.306	16.993
2003	1.045	915	1.352	1.687	1.950	2.251	2.096	2.936	4.081	4.605	4.033	6.943	33.894
2004	2.269	2.310	4.579	3.981	4.344	3.498	2.491	3.546	3.820	3.153	3.037	6.146	43.174
2005	1.940	2.525	3.795	4.029	4.026	3.583	2.832	4.636	4.626	4.153	4.355	7.629	48.129
2006	2.052	3.708	5.038	4.815	5.060	3.848	2.786	3.607	3.520	3.263	4.031	5.935	47.663
2007	1.833	2.518	3.598	3.267	3.317	2.987	2.627	3.613	3.497	3.333	3.704	5.150	39.444
2008	2.265	2.870	3.165	3.266	3.029	3.069	2.536	2.922	2.897	2.263	1.899	2.340	32.521
2009	1.025	1.104	1.420	1.786	1.696	2.035	1.401	1.483	2.006	1.084	1.240	2.463	18.743
2010	955	1.141	2.059	2.133	2.251	2.494	2.373	2.881	2.787	3.376	3.444	6.365	32.259
2011	2.766	3.685	4.930	4.376	4.447	4.290	2.320	2.972	3.514	3.219	3.538	6.371	46.428



İhracat/Üretim (2001-2011 Ocak-Aralık) Exports/Production (2001-2011 January-December)



	2001	2002	2003	2004	2005	2006	2007	2008	2009	2010	2011
Üretim/Production	285.737	357.405	563.450	864.073	916.062	1.026.427	1.132.951	1.171.917	884.466	1.124.982	1.234.637
İhracat/Exports	202.158	261.934	358.745	518.595	561.078	706.402	829.879	920.763	637.855	763.670	801.112
İhracat/Exports (%)	71	73	64	60	61	69	73	79	72	68	65

Taşıt Araçları İhracatı (2009-2011 Ocak-Aralık) Motor Vehicle Exports (2009-2011 January-December)

SEKTÖR/SECTOR	2009	2010	2011	2011/2010 (%)
OTOMOBİL/ P.Cars	388.994	439.999	442.674	1
TİCARİ ARAÇLAR / CV	239.976	314.470	348.292	11
* Kamyonet/Pick-Up	231.260	306.902	339.468	11
* Minibüs/Minibus	1.271	800	61	-92
* Kamyon/Truck	1.910	2.411	3.912	62
* Midibüs/Midibus	1.065	807	647	-20
* Otobüs/Bus	4.470	3.550	4.204	18
TAŞIT ARAÇLARI / MV TOTAL	628.970	754.469	790.966	5
TRAKTÖR/F.TRACTOR	8.885	9.201	10.146	10
TOTAL	637.855	763.670	801.112	5

Otomotiv Ana ve Yan Sanayii İhracatı (ABD \$) CBU and CKD Exports - \$

SEKTÖR/SECTOR	2008 Toplam (Total)	2009 Toplam (Total)	2010 Toplam (Total)	2011 Toplam (Total)	2011/2010 (%)
Toplam Ana Sanayi/Total Vehicle Industry	14.886.300.371	9.612.631.033	10.525.701.850	11.726.938.161	11
* Otomobil (P. Cars)	7.505.740.617	6.092.424.656	6.200.089.720	6.534.083.060	5
* Otobüs (Bus)	1.238.342.457	771.886.548	611.013.386	749.503.794	23
* Diğerleri (Others)	6.142.217.297	2.748.319.829	3.712.746.334	4.443.351.307	20
Toplam Yan Sanayi/Total Component Industry	7.015.666.404	4.919.345.973	5.378.676.218	6.782.905.606	26
* Aksam ve Parça / Spare Parts and Components	5.806.202.045	3.939.201.533	4.294.684.843	5.459.197.113	27
* İç ve Dış Lastik / Tyres	976.029.024	826.346.700	957.186.623	1.217.982.750	27
* Akümülatör / Batteries	127.902.222	83.818.491	78.540.281	79.076.921	1
* Emniyet Camı / Safety Glasses	105.533.113	69.979.249	50.263.216	26.648.821	-47
Toplam/Total	21.901.966.775	14.531.977.006	15.905.756.475	18.509.843.767	16

Kaynak: Otomotiv Endüstrisi İhracatçıları Birliği – Orta Anadolu İhracatçı Birlikleri



Firma Bazında İhracat (Adet)
Export Of member Companies (Unit)

Sektör Bazında İhracat (\$)
Exports on Sectorial Basis

FİRMALAR Companies	2009	2010	2011
OYAK RENAULT	222.278	233.057	225.285
FORD OTOSAN	128.388	175.754	211.380
TOFAŞ	168.353	193.737	180.690
TOYOTA	69.097	73.163	81.233
HYUNDAI ASSAN	17.136	42.249	64.000
KARSAN	7.287	19.441	15.119
TÜRK TRAKTÖR	8.808	8.911	9.600
HONDA TÜRKİYE	9.172	10.633	5.023
M. BENZ TÜRK	3.317	3.471	4.735
MAN TÜRKİYE	1.180	834	1.216
TEMSA GLOBAL	1.114	836	992
HATTAT TARIM	77	290	546
OTOKAR	501	373	475
A.I.O.S.	565	498	429
B.M.C.	582	423	389
GENEL TOPLAM	637.855	763.670	801.112

Kaynak: OSD

Sıra No	Sektörler Sectors	2010 Toplam (Total)	2011 Toplam (Total)	2011/2010 (%)	2011 (%)
1	Otomotiv Endüstrisi *	17.375.504	20.400.776	17,4	15,2
3	Kimyevi Maddeler ve Mamülleri	12.678.892	16.347.328	28,9	12,1
2	Hazırlanmış ve Konfeksiyon	14.622.591	16.186.506	10,7	12,0
4	Demir Çelik Ürünleri	12.291.854	15.353.615	24,9	11,4
5	Elektrik-Elektronik ve Makina	9.609.384	10.717.536	11,5	8,0
7	Makine ve Aksamları	6.331.222	8.399.508	32,7	6,2
6	Tekstil ve Hammaddeleri	6.522.737	7.953.651	21,9	5,9
8	Demir ve Demir Dışı Metaller	5.798.787	7.009.295	20,9	5,2
9	Hububat, Bakliyat, Yağlı Tohumlar	4.102.387	5.459.028	33,1	4,1
10	Madencilik Ürünleri	3.657.431	3.876.383	6,0	2,9
12	Ağaç Mamülleri, Orman Ürünleri	2.926.986	3.392.701	15,9	2,5
11	Çimento ve Toprak Ürünleri	3.212.867	3.220.507	0,2	2,4
13	Yaş Meyve ve Sebze	2.178.872	2.339.308	7,4	1,7
14	Fındık ve Mamülleri	1.547.328	1.762.755	13,9	1,3
16	Halı	1.285.039	1.629.537	26,8	1,2
19	Değerli Maden ve Mücevherat	1.201.250	1.474.587	22,8	1,1
17	Deri ve Deri Mamülleri	1.327.832	1.440.411	8,5	1,1
22	Canlı Hayvan, Su Ürünleri ve Mam.	962.206	1.421.426	47,7	1,1
18	Kuru Meyve ve Mamülleri	1.241.352	1.372.595	10,6	1,0
21	Gemi ve Yat	1.138.620	1.331.025	16,9	1,0
15	Diğerleri (Birlik Kaydı Zorunlu Olmayan Ürünler)	1.747.229	1.269.862	-27,3	0,9
20	Meyve Sebze Mamülleri	1.118.877	1.204.755	7,7	0,9
23	Tütün	693.602	698.602	0,7	0,5
24	Zeytin ve Zeytinyağ	189.249	181.212	-4,2	0,1
26	Kesme Çiçek	56.189	76.322	35,8	0,1
25	Diğer Sanayi Ürünleri	59.932	73.587	22,8	0,1
	TOPLAM (Total)	113.878.219	134.592.818	18,2	100,0

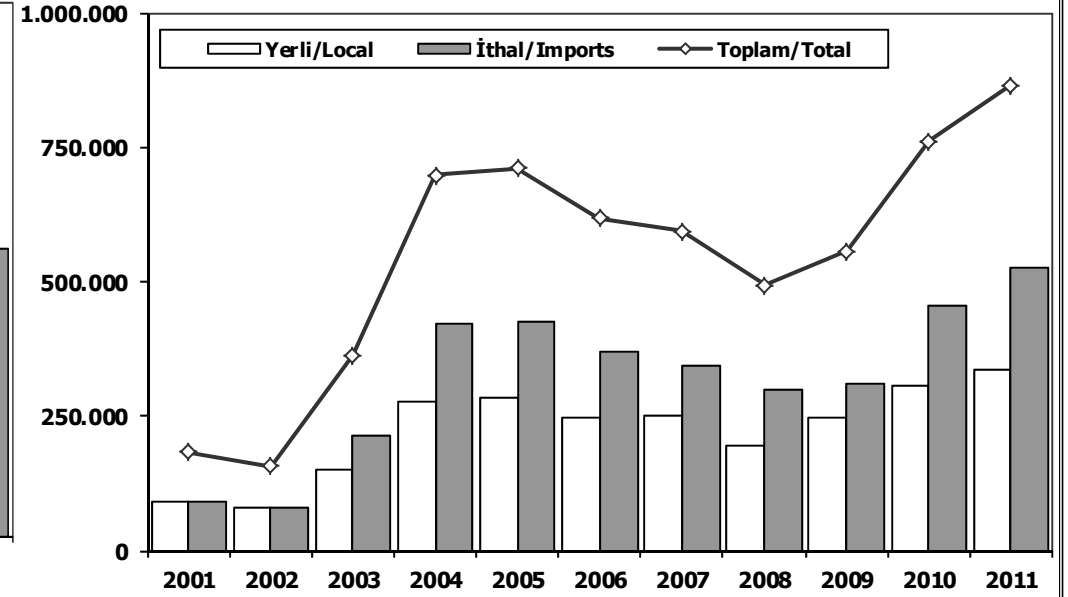
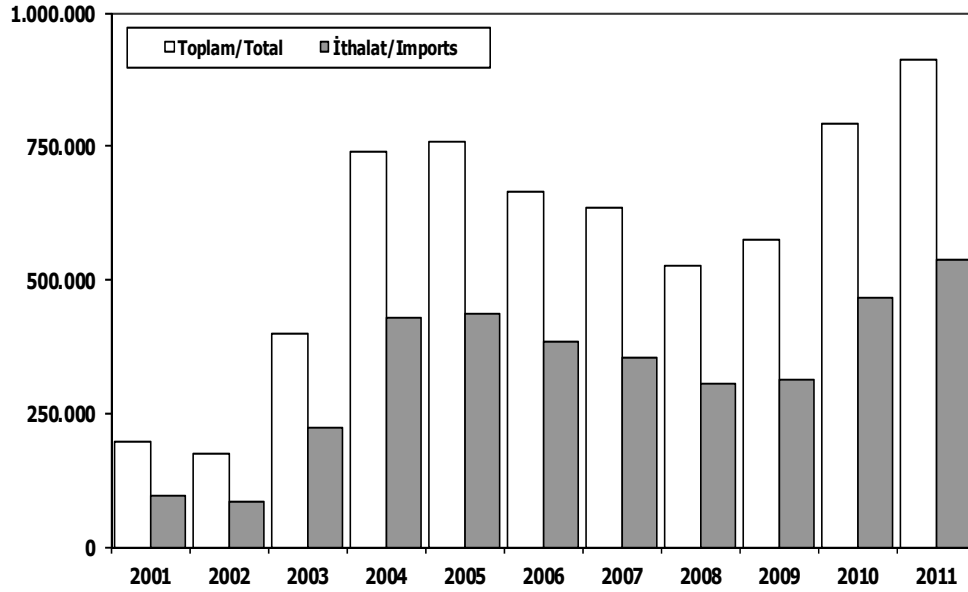
Kaynak: TİM

First 5 Sectors:

- 1- Transport Vehicle and Component Industry
- 2- Chemical Articles and Products
- 3-Ready Wear and Confection
- 4- Iron Steel Products
- 5-Electric-Electronic and Machine

Toplam Pazar (Otomobil+T.Araç) Total Market (P.Cars+C.V)

Hafif Araçlar Pazarı (2001-2011 Ocak-Aralık) LV Market (2001-2011 January-December)

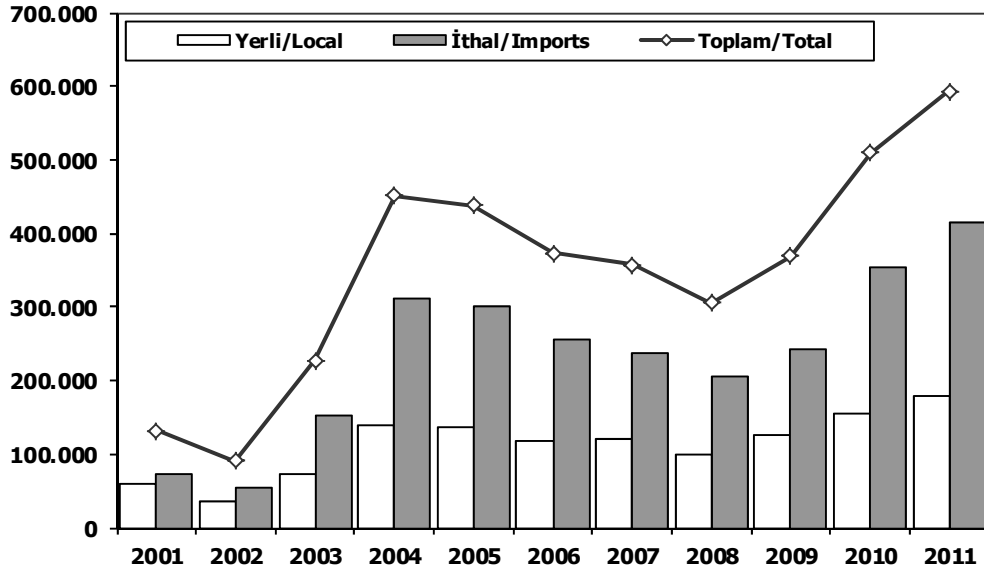


	2001	2002	2003	2004	2005	2006	2007	2008	2009	2010	2011
Toplam/Total	195.090	174.442	397.963	741.269	758.537	665.515	634.206	526.544	575.869	793.172	910.867
İthalat/Imports	93.887	83.027	222.984	430.204	436.033	382.460	355.752	306.087	313.921	465.408	538.532
İthalat/Imports (%)	48	48	56	58	57	57	56	58	55	59	59

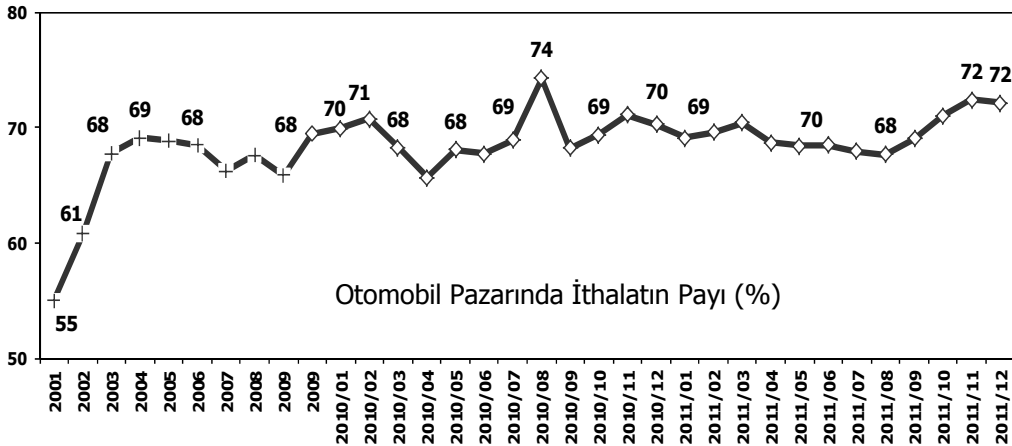
	2001	2002	2003	2004	2005	2006	2007	2008	2009	2010	2011
Yerli/Local	92.696	78.321	150.842	275.521	284.134	246.800	249.705	196.162	247.694	305.354	338.074
İthal/Imports	91.056	79.128	213.227	422.574	426.274	371.052	345.057	297.861	309.432	455.559	526.365
Toplam/Total	183.752	157.449	364.069	698.095	710.408	617.852	594.762	494.023	557.126	760.913	864.439
İthalat/Imports (%)	50	50	59	61	60	60	58	60	56	60	61

Otomobil Pazarı (2001-2011 Ocak-Aralık)

P.Cars Market (2001-2011 January-December)



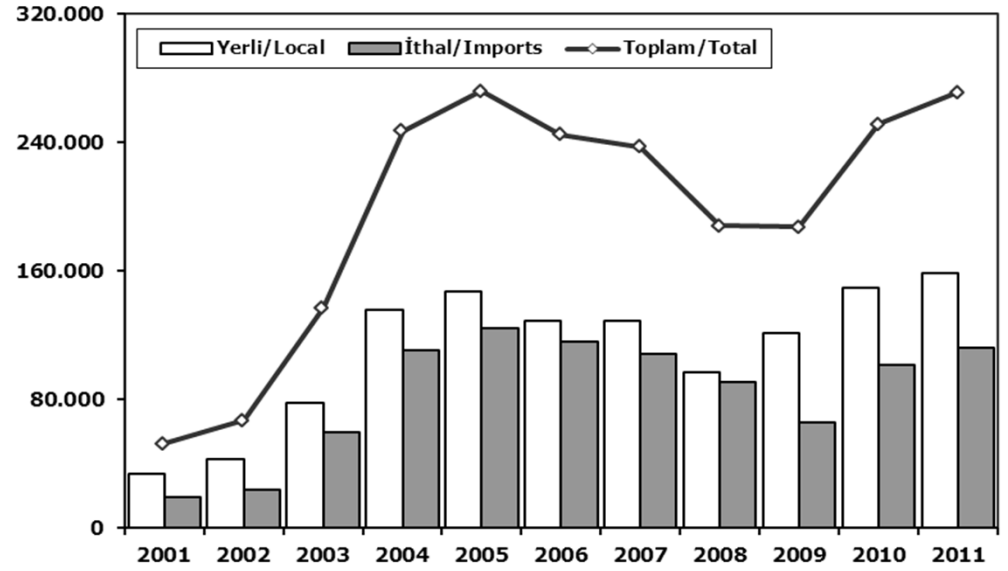
	2001	2002	2003	2004	2005	2006	2007	2008	2009	2010	2011
Yerli/Local	59.179	35.519	73.267	139.541	136.708	117.725	120.740	99.205	126.277	155.634	179.488
İthal/Imports	72.259	55.096	153.769	311.668	301.889	255.494	236.725	206.793	243.542	354.150	414.031
Toplam/Total	131.438	90.615	227.036	451.209	438.597	373.219	357.465	305.998	369.819	509.784	593.519
İthalat/Imports (%)	55	61	68	69	69	68	66	68	66	69	70



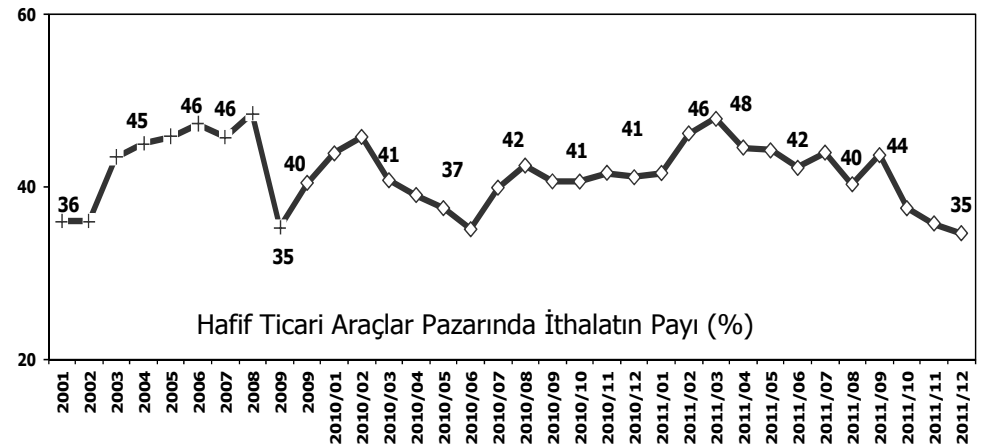
Otomobil Pazarında İthalatın Payı (%)

Hafif Ticari Araçlar Pazarı (2001-2011 Ocak-Aralık)

Light Commercial Vehicle Market (2001-2011 January-December)



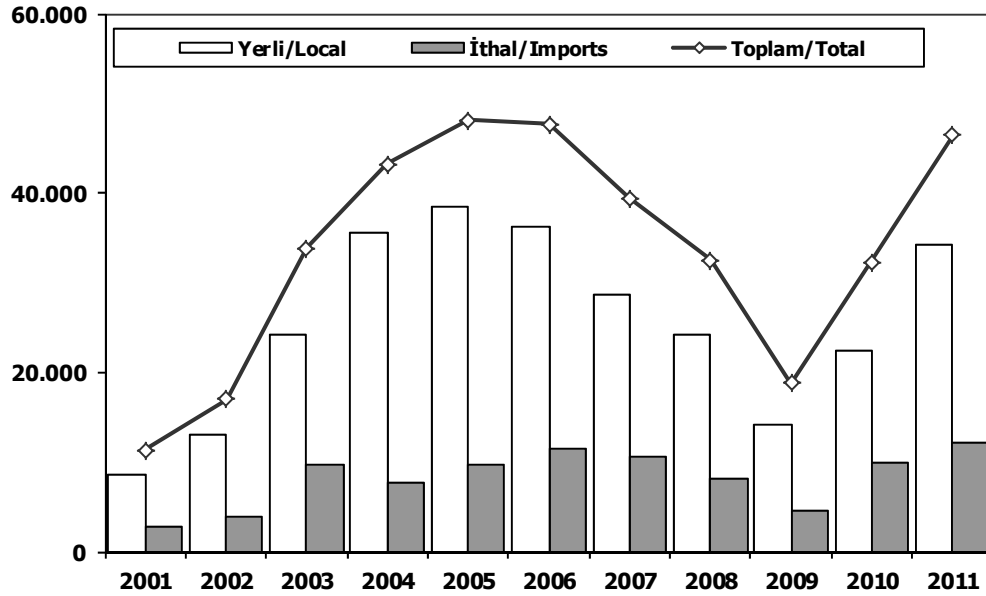
	2001	2002	2003	2004	2005	2006	2007	2008	2009	2010	2011
Yerli/Local	33.517	42.802	77.575	135.980	147.426	129.075	128.965	96.957	121.417	149.720	158.586
İthal/Imports	18.797	24.032	59.458	110.906	124.385	115.558	108.332	91.068	65.890	101.409	112.334
Toplam/Total	52.314	66.834	137.033	246.886	271.811	244.633	237.297	188.025	187.307	251.129	270.920
İthalat/Imports (%)	36	36	43	45	46	47	46	48	35	40	41



Hafif Ticari Araçlar Pazarında İthalatın Payı (%)

Ağır Ticari Araçlar Pazarı (2001-2011 Ocak-Aralık)

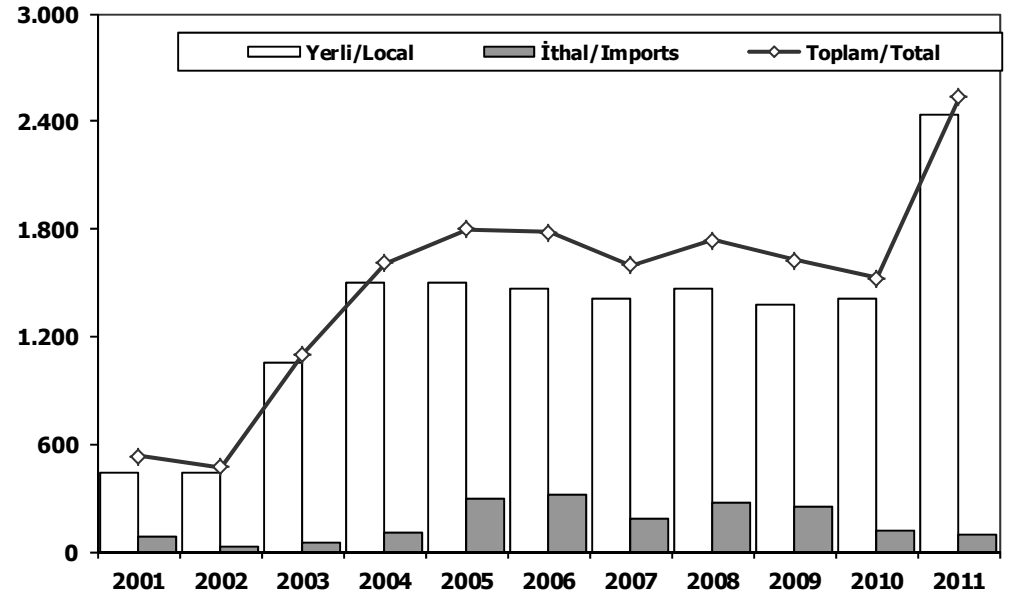
HCV Market (2001-2011 January-December)



	2001	2002	2003	2004	2005	2006	2007	2008	2009	2010	2011
Yerli/Local	8.507	13.094	24.137	35.544	38.370	36.255	28.749	24.295	14.254	22.410	34.261
İthal/Imports	2.831	3.899	9.757	7.630	9.759	11.408	10.695	8.226	4.489	9.849	12.167
Toplam/Total	11.338	16.993	33.894	43.174	48.129	47.663	39.444	32.521	18.743	32.259	46.428
İthalat/Imports (%)	25	23	29	18	20	24	27	25	24	31	26

Otobüs Pazarı (2001-2011 Ocak-Aralık)

Bus Market (2001-2011 January-December)



	2001	2002	2003	2004	2005	2006	2007	2008	2009	2010	2011
Yerli/Local	445	442	1.051	1.503	1.498	1.466	1.413	1.468	1.376	1.409	2.437
İthal/Imports	88	29	53	103	298	317	185	271	247	116	95
Toplam/Total	533	471	1.104	1.606	1.796	1.783	1.598	1.739	1.623	1.525	2.532
İthalat/Imports (%)	17	6	5	6	17	18	12	16	15	8	4

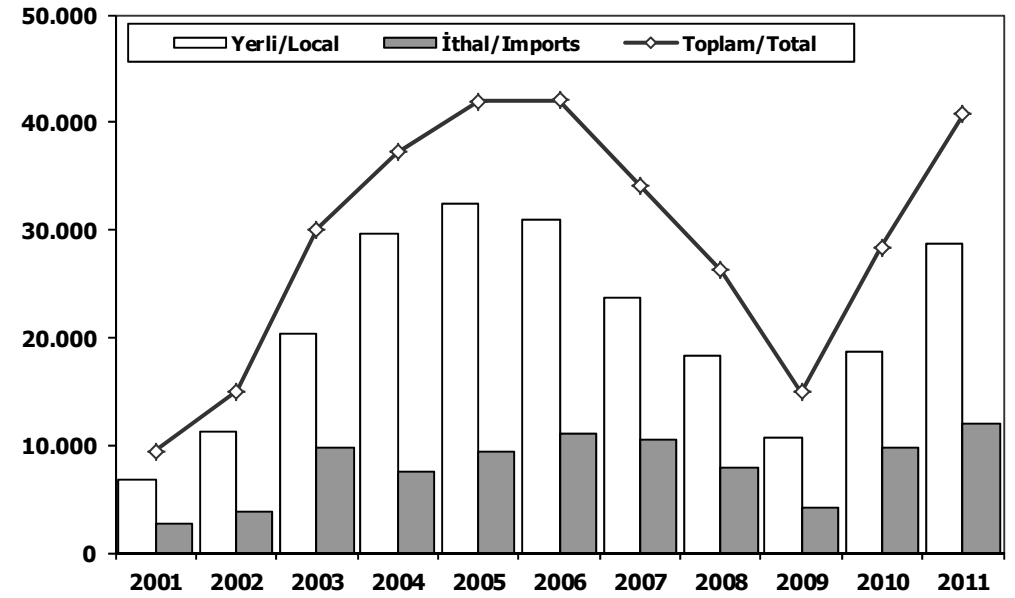
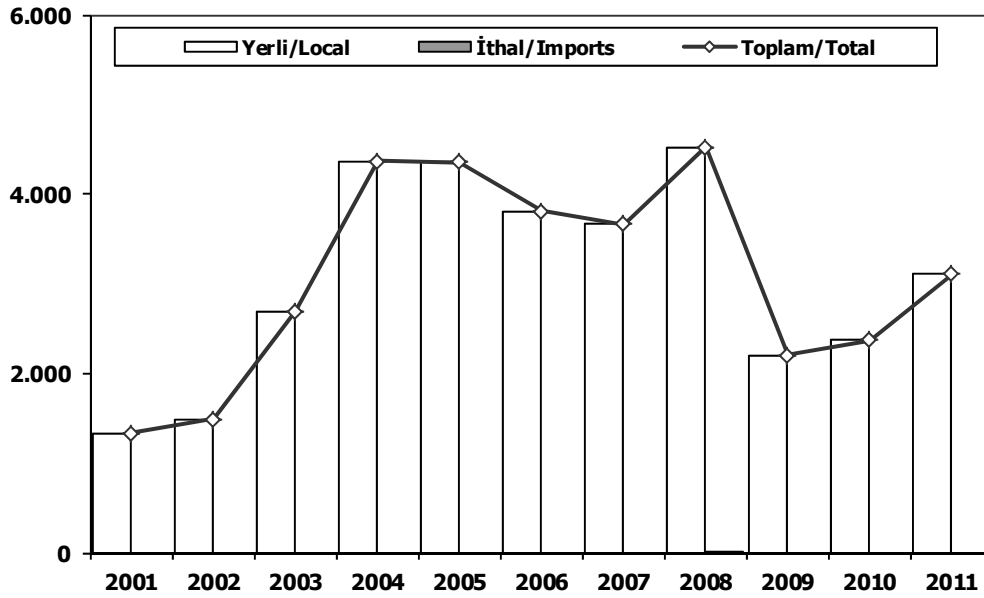


Midibüs Pazarı (2001-2011 Ocak-Aralık) (7-9 mt / 25-35 Kişilik)

Midibus (2001-2011 January-December) Market (7-9 mt / 25-35 Passengers)

Kamyon Pazarı (2001-2011 Ocak-Aralık)

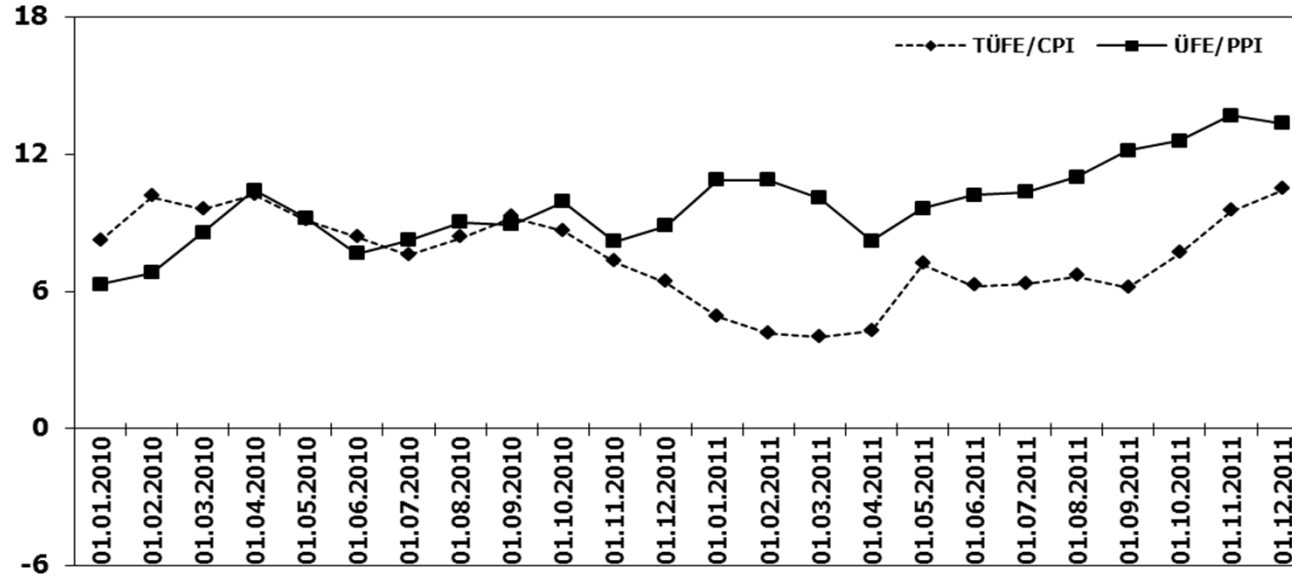
Truck Market (2001-2011 January-December)



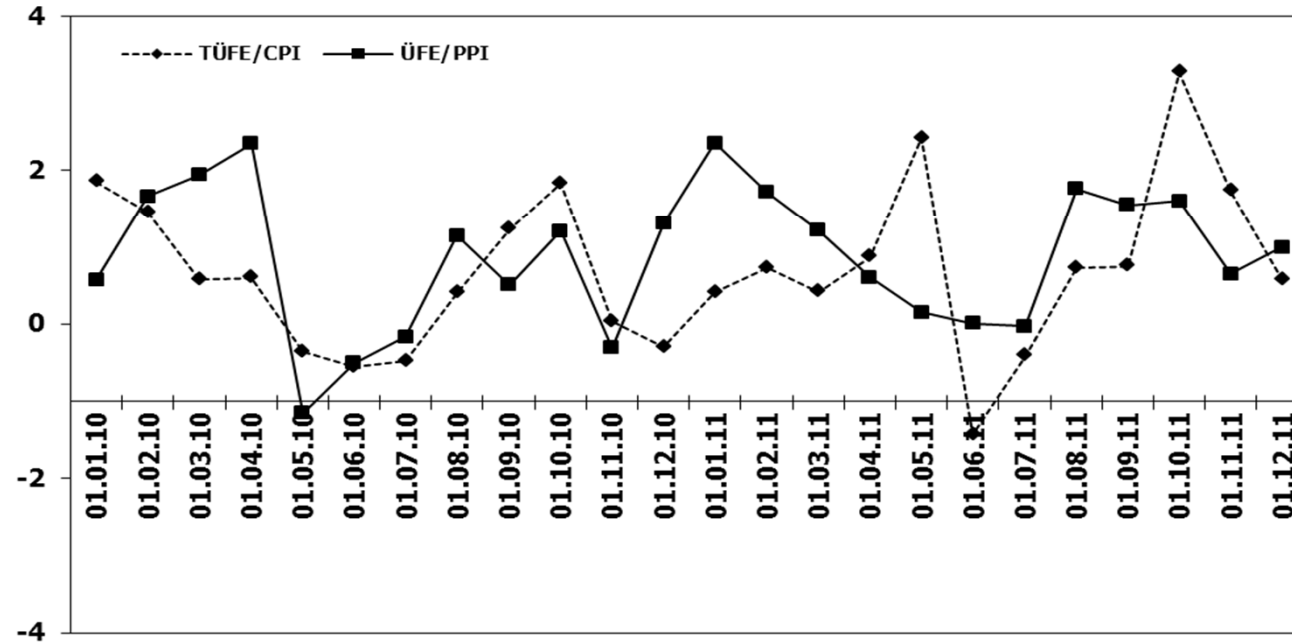
	2001	2002	2003	2004	2005	2006	2007	2008	2009	2010	2011
Yerli/Local	1.331	1.494	2.694	4.363	4.351	3.809	3.661	4.511	2.205	2.372	3.104
İthal/Imports	0	0	0	0	0	0	0	11	0	0	0
Toplam/Total	1.331	1.494	2.694	4.363	4.351	3.809	3.661	4.522	2.205	2.372	3.104
İthalat/Imports (%)	0	0	0	0	0	0	0	0	0	0	0

	2001	2002	2003	2004	2005	2006	2007	2008	2009	2010	2011
Yerli/Local	6.731	11.158	20.392	29.678	32.521	30.980	23.675	18.316	10.673	18.629	28.720
İthal/Imports	2.743	3.870	9.704	7.527	9.461	11.091	10.510	7.944	4.242	9.733	12.072
Toplam/Total	9.474	15.028	30.096	37.205	41.982	42.071	34.185	26.260	14.915	28.362	40.792
İthalat/Imports (%)	29	26	32	20	23	26	31	30	28	34	30

TÜFE ve ÜFE'nin Yıllık Değişimi (%) CPI and PPI Yearly Changes (%)



TÜFE ve ÜFE'nin Aylık Değişimi (%) CPI and PPI Monthly Changes (%)





OTOMOTİV SANAYİİ FABRİKA SATIŞLARI 2011 / AUTOMOTIVE INDUSTRY FACTORY SALES

TIPLER/TYPES	1	2	3	4	5	6	7	8	9	10	11	12	Total
OTOMOBİL	9.181	12.697	15.959	16.749	20.919	18.875	8.766	14.455	13.245	14.818	14.095	20.517	180.276
TİCARİ ARAÇ	11.799	14.786	18.481	18.305	16.933	16.078	11.137	17.883	14.192	15.945	17.265	26.012	198.816
* KAMYON	1.596	2.614	3.464	3.176	3.227	2.575	1.546	3.051	2.918	2.566	2.674	3.576	32.983
* KAMYONET	9.336	11.107	13.983	13.936	12.666	12.467	8.815	13.183	10.070	11.958	13.121	19.954	150.596
* MIDİBÜS	129	233	209	231	262	224	144	363	232	271	243	499	3.040
* MİNİBÜS	671	656	609	692	420	549	540	1.047	791	966	1.107	1.654	9.702
* OTOBÜS	67	176	216	270	358	263	92	239	181	184	120	329	2.495
TRAKTÖR	2.458	2.610	3.105	3.403	3.847	3.599	2.952	1.559	2.957	2.823	2.603	2.807	34.723
TOTAL	23.438	30.093	37.545	38.457	41.699	38.552	22.855	33.897	30.394	33.586	33.963	49.336	413.815

Otomobil / Passenger Car

TIPLER/TYPES	1	2	3	4	5	6	7	8	9	10	11	12	Total
HONDA TÜRKİYE	220	860	1.371	606	386	618	432	639	750	1.008	357	59	7.306
HYUNDAI ASSAN	1.565	2.422	3.115	3.139	2.489	2.682	913	2.810	2.226	1.600	1.991	2.340	27.292
OYAK RENAULT	4.923	5.790	6.517	7.197	11.132	10.632	4.085	7.173	5.559	8.713	7.179	11.217	90.117
TOFAŞ	1.407	2.647	3.739	5.068	6.487	3.969	2.828	3.008	3.367	2.673	3.616	6.469	45.278
TOYOTA	1.066	978	1.217	739	425	974	508	825	1.343	824	952	432	10.283
TOTAL	9.181	12.697	15.959	16.749	20.919	18.875	8.766	14.455	13.245	14.818	14.095	20.517	180.276

Kamyonet / Pick-Up

TIPLER/TYPES	1	2	3	4	5	6	7	8	9	10	11	12	Total
A.I.O.S.	69	73	45	32	28	57	34	44	35	76	44	71	608
B.M.C.	0	1	0	0	0	0	0	0	0	0	0	0	1
FORD OTOSAN	3.538	4.070	5.196	5.967	5.402	5.370	4.096	5.656	4.459	5.453	7.038	10.080	66.325
KARSAN	105	138	232	458	183	31	136	121	120	104	152	106	1.886
OTOKAR	0	65	1	8	4	50	6	51	36	31	68	168	488
TEMSA GLOBAL	43	53	59	52	59	1	19	13	14	20	14	21	368
TOFAŞ	5.581	6.707	8.450	7.419	6.990	6.958	4.524	7.298	5.406	6.274	5.805	9.508	80.920
TOTAL	9.336	11.107	13.983	13.936	12.666	12.467	8.815	13.183	10.070	11.958	13.121	19.954	150.596

Minibüs / Minibus

TIPLER/TYPES	1	2	3	4	5	6	7	8	9	10	11	12	Total
B.M.C.	1	1	0	1	0	0	0	0	0	0	0	0	3
FORD OTOSAN	436	394	309	397	319	437	451	563	520	657	828	1.280	6.591
KARSAN	224	246	286	278	96	107	89	466	251	298	273	349	2.963
OTOKAR	10	15	14	16	5	5	0	18	20	11	6	25	145
TOTAL	671	656	609	692	420	549	540	1.047	791	966	1.107	1.654	9.702

Kamyon / Truck

TIPLER/TYPES	1	2	3	4	5	6	7	8	9	10	11	12	Total
A.I.O.S.	139	189	308	220	316	100	104	148	240	246	263	271	2.544
B.M.C.	108	143	290	373	246	133	294	362	548	519	269	226	3.511
FORD OTOSAN	517	703	870	879	759	701	435	630	518	570	795	965	8.342
KARSAN	137	253	221	193	333	217	66	394	181	136	125	148	2.404
M. BENZ TÜRK	620	1.255	1.671	1.398	1.507	1.421	582	1.430	1.376	976	1.041	1.693	14.970
TEMSA GLOBAL	75	71	104	113	66	3	65	87	55	119	181	273	1.212
TOTAL	1.596	2.614	3.464	3.176	3.227	2.575	1.546	3.051	2.918	2.566	2.674	3.576	32.983

Midibüs / Midibus

TIPLER/TYPES	1	2	3	4	5	6	7	8	9	10	11	12	Total
A.I.O.S.	45	67	80	83	80	80	66	73	103	88	66	200	1.031
OTOKAR	31	89	88	84	122	111	66	260	79	104	97	138	1.269
TEMSA GLOBAL	53	77	41	64	60	33	12	30	50	79	80	161	740
TOTAL	129	233	209	231	262	224	144	363	232	271	243	499	3.040

Otopüs / Bus

TIPLER/TYPES	1	2	3	4	5	6	7	8	9	10	11	12	Total
B.M.C.	0	10	20	0	24	5	1	93	59	7	0	51	270
KARSAN	0	0	0	0	0	0	1	0	0	0	0	0	1
M. BENZ TÜRK	21	78	94	100	160	136	37	72	68	66	41	164	1.037
M.A.N.	14	21	19	52	53	50	26	25	0	64	20	22	366
OTOKAR	14	39	31	90	78	49	18	43	28	29	39	59	517
TEMSA GLOBAL	18	28	52	28	43	23	9	6	26	18	20	33	304
TOTAL	67	176	216	270	358	263	92	239	181	184	120	329	2.495

Traktör / Farm Tractor

TIPLER/TYPES	1	2	3	4	5	6	7	8	9	10	11	12	Total
HATTAT	257	322	486	452	491	429	299	180	437	339	440	322	4.454
TÜRK TRAKTÖR	2.201	2.288	2.619	2.951	3.356	3.170	2.653	1.379	2.520	2.484	2.163	2.485	30.269
TOTAL	2.458	2.610	3.105	3.403	3.847	3.599	2.952	1.559	2.957	2.823	2.603	2.807	34.723

OTOMOTİV SANAYİİ DIŞ SATIŞLARI 2011 / AUTOMOTIVE INDUSTRY EXPORTS SALES

TIPLER/TYPES	1	2	3	4	5	6	7	8	9	10	11	12	Total
OTOMOBİL	36.732	41.687	46.705	38.639	30.555	37.820	40.672	22.281	35.566	40.076	36.164	35.777	442.674
TİCARİ ARAÇ	26.498	30.382	31.681	31.303	32.461	32.885	38.418	10.315	28.254	28.869	25.808	31.418	348.292
* KAMYON	91	205	214	298	308	266	257	465	373	393	404	638	3.912
* KAMYONET	26.082	29.856	31.013	30.645	31.755	32.254	37.701	9.393	27.441	28.070	25.005	30.253	339.468
* MIDİBÜS	88	54	26	33	70	18	69	33	30	74	27	125	647
* MİNİBÜS	42	0	0	1	0	1	5	2	0	1	0	9	61
* OTOBÜS	195	267	428	326	328	346	386	422	410	331	372	393	4.204
TRAKTÖR	231	393	610	620	674	974	832	811	1.092	987	995	1.927	10.146
TOTAL	63.461	72.462	78.996	70.562	63.690	71.679	79.922	33.407	64.912	69.932	62.967	69.122	801.112

Otomobil / Passenger Car

TIPLER/TYPES	1	2	3	4	5	6	7	8	9	10	11	12	Total
HONDA	689	946	982	515	498	95	230	467	381	65	144	11	5.023
HYUNDAI ASSAN	3.730	4.500	4.770	4.696	5.050	6.336	5.592	4.900	6.200	5.990	5.400	6.836	64.000
OYAK RENAULT	18.953	21.433	24.904	22.458	17.843	18.521	18.290	10.084	16.366	19.693	21.395	15.345	225.285
TOFAŞ	6.239	7.350	7.684	4.760	5.324	6.409	6.271	2.917	6.035	5.426	3.209	5.509	67.133
TOYOTA	7.121	7.458	8.365	6.210	1.840	6.459	10.289	3.913	6.584	8.902	6.016	8.076	81.233
TOTAL	36.732	41.687	46.705	38.639	30.555	37.820	40.672	22.281	35.566	40.076	36.164	35.777	442.674

Kamyonet / Pick-Up

TIPLER/TYPES	1	2	3	4	5	6	7	8	9	10	11	12	Total
--------------	---	---	---	---	---	---	---	---	---	----	----	----	-------

**2011 Yılı İthal Otomobil Satışları / P.Cars Imports 2011**

2010 Total	1	2	3	4	5	6	7	8	9	10	11	12	Total	
FORD	55.212	3.120	4.190	4.746	5.282	6.118	7.376	5.271	3.214	3.152	4.201	4.282	7.855	58.807
VOLKSWAGEN	39.822	3.599	3.415	4.920	5.281	6.121	4.113	3.490	3.386	4.300	4.799	4.531	7.595	55.550
OPEL	39.768	1.677	3.050	4.773	3.450	5.158	5.973	4.422	3.673	3.163	4.371	3.052	9.862	52.624
TOYOTA	29.341	2.017	2.061	3.092	2.613	1.182	1.546	1.903	1.501	2.047	2.237	1.768	4.483	26.450
CHEVROLET	18.061	1.017	1.571	2.181	1.927	1.878	1.747	1.414	1.562	1.578	2.452	1.972	4.311	23.610
NISSAN	11.299	664	1.038	1.793	1.025	1.628	1.467	1.490	1.640	1.693	1.639	1.673	2.823	18.573
DACIA	13.230	940	1.201	1.565	1.590	1.344	1.422	1.529	1.161	1.105	1.217	1.726	3.137	17.937
HYUNDAI	16.418	443	687	1.013	1.495	1.355	1.236	1.237	1.202	1.096	1.664	2.275	3.454	17.157
PEUGEOT	18.851	377	1.480	1.145	1.990	1.903	1.425	843	766	1.095	1.159	1.168	2.129	15.480
B.M.W	12.034	646	797	1.094	1.386	1.136	2.046	645	811	803	1.537	1.419	2.698	15.018
CITROEN	11.462	605	989	1.465	1.484	1.499	1.334	1.126	898	894	1.149	1.159	1.867	14.469
MERCEDES	12.300	591	682	1.063	720	1.426	1.554	728	842	990	818	1.133	2.083	12.630
AUDI	9.656	473	859	1.058	1.404	1.209	823	574	823	888	884	1.049	2.020	12.064
FIAT	11.215	699	671	1.556	1.372	1.184	1.375	844	678	667	782	564	1.610	12.002
KIA	8.934	503	698	1.072	1.064	974	726	697	672	543	719	648	1.398	9.714
SKODA	6.332	507	652	805	691	627	634	505	410	501	470	603	1.184	7.589
RENAULT	5.291	191	589	691	601	681	641	637	623	537	620	655	1.068	7.534
SEAT	5.113	504	350	536	649	585	501	351	477	349	517	433	807	6.059
HONDA	5.505	370	510	1.014	532	422	362	248	350	436	456	532	659	5.891
VOLVO	3.276	246	369	656	430	327	501	317	333	225	358	316	584	4.662
MTSUBISHI	2.144	143	190	313	368	296	282	154	244	307	210	214	284	3.005
LAND ROVER	2.315	90	84	156	162	100	232	130	72	138	266	267	442	2.139
CHERY	2.320	265	207	264	133	254	240	145	86	72	82	45	139	1.932
MINI (İngiliz)	708	39	81	98	282	153	196	79	87	127	120	125	348	1.735
MAZDA	2.253	110	118	122	198	162	154	78	118	127	173	121	139	1.620
GEEELY	1.995	35	50	55	56	42	69	120	119	107	231	253	268	1.405
SUZUKI	1.662	162	91	132	118	108	92	67	117	117	96	65	175	1.340
PROTON	1.134	62	51	72	84	95	78	81	64	109	127	157	133	1.113
TATA	778	129	71	100	92	102	80	106	55	57	50	48	134	1.024
ALFA ROMEO	699	31	59	84	74	84	62	74	58	81	63	90	138	898
JEEP	573	34	37	71	60	83	197	62	56	65	98	71	54	888
SSANGYONG	1.114	112	59	126	74	73	106	88	52	47	48	25	71	881
SUBARU	1.134	119	66	73	141	39	76	29	59	63	40	26	30	761
PORSCHE	390	22	30	32	40	48	44	32	42	35	19	25	73	442
DAIHATSU	619	40	43	43	55	67	69	27	10	12	10	2	1	379
LANCIA	307	6	6	22	19	12	14	6	29	21	10	14	19	178
JAGUAR	213	6	13	9	19	0	21	0	0	23	27	27	23	168
INFINITI	94	11	4	10	3	14	7	5	4	7	15	6	16	102
SMART	50	2	4	11	10	2	4	2	10	2	7	1	5	60
CHRYSLER	174	10	13	4	9	4	5	0	0	0	0	2	0	47
MASERATI	26	0	2	0	2	4	1	2	2	3	3	2	3	24
FERRARI	23	2	0	0	0	4	1	3	4	1	2	2	2	23
ASTON MARTIN	0	0	0	0	0	0	13	2	2	0	0	1	2	20
BENTLEY	14	1	0	0	0	0	1	1	0	2	3	1	1	10
LADA	101	10	0	0	0	0	0	0	0	0	0	0	0	10
LAMBORGHINI	4	0	0	1	0	2	1	0	0	0	0	0	2	6
DODGE	72	1	0	0	0	0	0	0	0	0	0	0	0	1
Total	354.036	20.631	27.138	38.036	36.985	38.505	38.850	29.562	26.311	27.588	33.748	32.548	64.129	414.031

2011 Yılı İthal Hafif Ticari Araç Satışları / Light Commercial Vehicles Imports 2011

2010 Total	1	2	3	4	5	6	7	8	9	10	11	12	Total	
VOLKSWAGEN	24.018	1.648	2.439	2.996	2.250	2.506	2.552	1.835	1.525	2.046	1.933	1.509	3.122	26.361
RENAULT	19.109	1.320	2.135	2.471	2.052	2.185	2.370	1.821	2.025	2.094	1.917	1.652	3.086	25.128
PEUGEOT	11.252	253	898	764	1.179	1.169	940	743	696	847	534	478	1.467	9.968
CITROEN	8.780	208	634	857	1.048	1.033	859	721	799	825	547	425	1.302	9.258
MERCEDES	5.262	485	535	872	819	587	550	726	686	788	819	562	966	8.395
FIAT	4.141	318	363	329	458	547	618	460	330	272	527	400	758	5.380
MTSUBISHI	3.647	416	222	692	353	343	403	395	353	310	287	272	594	4.640
DFM	2.505	303	201	310	434	379	301	237	275	304	219	180	264	3.407
DACIA	5.938	156	259	456	551	563	356	427	32	88	141	145	228	3.402
HYUNDAI	2.153	192	259	255	281	307	226	192	112	158	137	210	228	2.557
ISUZU	2.622	121	293	206	163	174	263	184	189	100	344	99	160	2.296
IVECO	1.130	103	69	155	144	178	180	137	118	139	148	125	337	1.833
FORD	1.889	154	192	172	182	116	146	80	225	329	62	93	78	1.829
OPEL	1.804	45	117	277	204	207	274	183	148	103	106	43	106	1.813
NISSAN	1.965	157	160	352	127	68	85	64	114	117	144	130	228	1.746
TOYOTA	1.539	161	82	123	92	98	92	122	62	33	126	177	183	1.351
SSANGYONG	1.275	93	52	150	108	112	110	95	40	49	53	47	106	1.015
TATA	964	71	79	101	78	58	64	45	55	65	52	53	112	833
KIA	718	5	42	66	62	85	51	57	55	114	79	60	104	780
MAZDA	300	12	12	23	17	20	14	37	15	9	30	11	28	228
CHERY	330	17	22	26	9	10	16	9	0	0	0	3	1	113
SKODA	0	0	0	1	0	0	0	0	0	0	0	0	0	1
Total	101.341	6.238	9.065	11.654	10.611	10.745	10.470	8.570	7.854	8.790	8.205	6.674	13.458	112.334