



OTOMOTİV SANAYİİ DERNEĞİ
AUTOMOTIVE MANUFACTURERS ASSOCIATION

AYLIK RAPOR

Automotive Industry Monthly Report

Aralık / December 2010

- **Üretim/Production**
- **Satış/Sales**
- **İthalat/Imports**
- **İhracat/Exports**

OSD "OICA" Üyesidir



OSD is a Member of "OICA"



2010 Aralık Ayı Özeti / 2010 December Summary

KONULAR/ MATTERS		AYLIK/MONTHLY			YILLIK/YEARLY		
		2009	2010	2010/2009 (%)	2009	2010	2010/2009 (%)
Üretim/Production	Toplam/Total	93.770	111.792	19	869.605	1.094.557	26
	Otomobil/P.Cars	48.917	56.646	16	510.931	603.394	18
Pazar/Market	Toplam/Total	91.386	154.734	69	575.869	793.172	38
	Otomobil/P.Cars	57.178	99.461	74	369.819	509.784	38
İthalat/Import	Toplam/Total	46.365	92.119	99	313.921	465.408	48
	Otomobil/P.Cars	35.223	69.911	98	243.542	354.150	45
İhracat/Export	Toplam/Total	68.158	70.382	3	628.970	754.469	20
	Otomobil/P.Cars	38.108	39.972	5	388.994	439.999	13
İhracat / Export (\$)	Toplam/Total **	1.483.317.035	1.559.446.303	5	14.608.653.488	15.905.756.475	9
	Otomobil/P.Cars	556.923.038	567.653.381	2	6.092.414.843	6.200.089.720	2

PARAMETRELER / PARAMETERS	AYLIK/MONTHLY			YILLIK/YEARLY		
	2009	2010	2010/2009 (%)	2009	2010	2010/2009 (%)
ÜFE/PPI	0,66	1,31	**	5,93	8,87	**
TÜFE/CPI	0,53	-0,30	**	6,53	6,40	**
Sanayi Endeksi/ Industry Index	0,28	2,00	**	5,20	7,70	**
\$ (*)	1,4945	1,5450	3,4	1,5503	1,5143	-2,3
EURO (*)	2,1530	2,0650	-4,1	2,1555	1,9976	-7,3
Japon Yeni (*)	1,6182	1,8997	17,4	1,6497	1,7369	5,3

(*) Ortalama Değerler / Average Values

(**) Toplam Sanayi / Total Industry Including Components

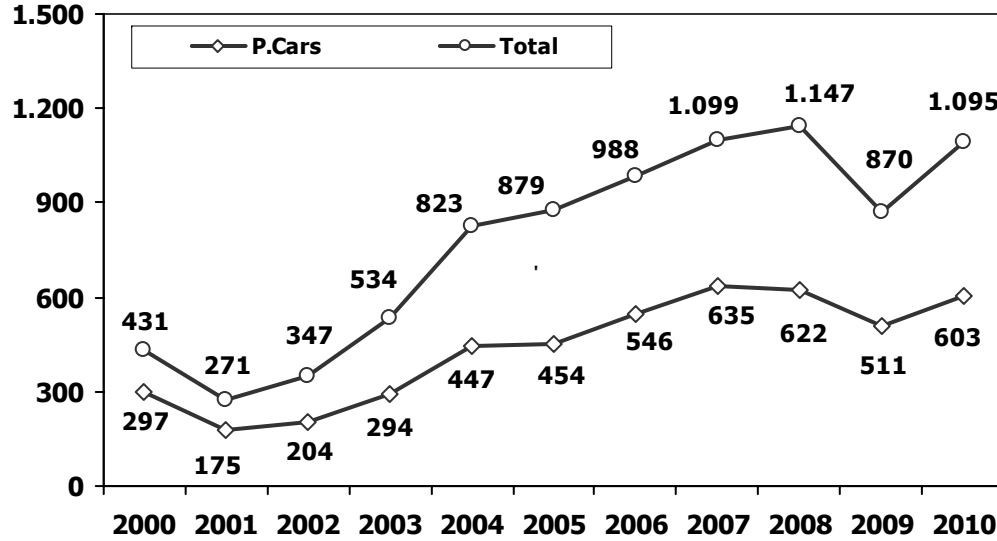


2009/2010 Yılları Üretim 2009/2010 Production

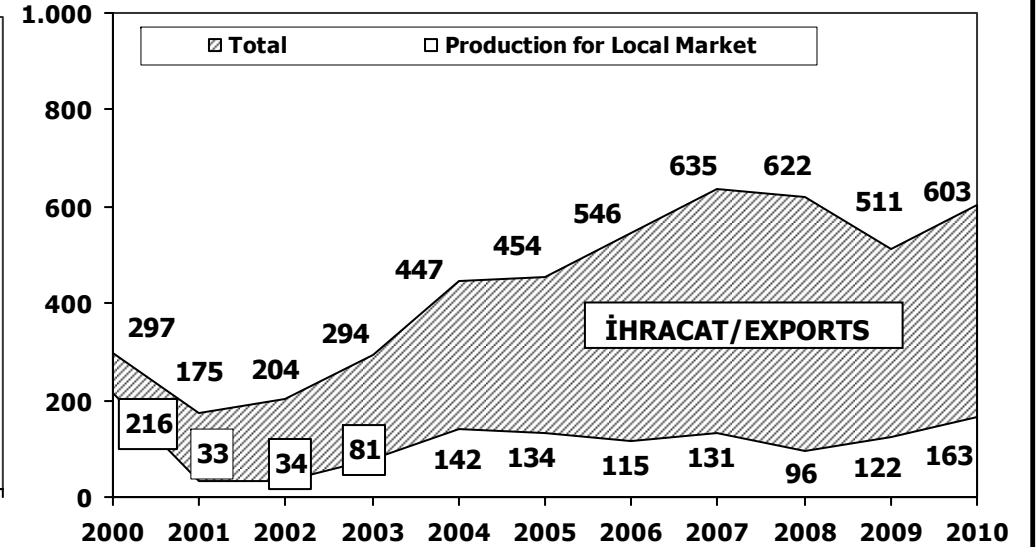
K.KAMYON : AYA 3.5-12 Ton (L.Truck:GVW 3.5-12 Ton)
B.KAMYON : AYA 12 Ton'dan Büyük (M.Truck:GVW 12 Ton And Up)

TİPLER	ARALIK AYI ÜRETİMİ December Production		12 AYLIK ÜRETİM 12 Months Production		DEĞİŞİM % Percent Change %	
	2009	2010	2009	2010	ARALIK December	12 AY 12 Months
OTOMOBİL - Pass.Car	48.917	56.646	510.931	603.394	16	18
TİCARİ ARAÇLAR - Commercial Vehicles	44.853	55.146	358.674	491.163	23	37
* B. KAMYON - M. Truck	912	3.026	7.403	20.429	232	176
* K. KAMYON - L. Truck	218	394	843	3.422	81	306
* KAMYONET - Pick Up	41.320	48.854	330.044	442.408	18	34
* OTOBÜS - Bus	477	581	5.931	5.268	22	-11
* MİNİBÜS - Minibus	1.429	1.918	11.829	16.978	34	44
* MİDİBÜS - Midibus	497	373	2.624	2.658	-25	1
TAŞIT ARAÇLARI TOPLAM - MV Total	93.770	111.792	869.605	1.094.557	19	26
TRAKTÖR - F.Tractor	1.619	2.880	14.861	30.425	78	105
GENEL TOPLAM - Grand Total	95.389	114.672	884.466	1.124.982	20	27

Toplam Üretim ve Otomobil Üretimi (x1000) (Ocak-Aralık)
Total & P.Cars Production (x1000) (January- December)



Otomobil Üretimi ve İhracat (x1000) (Ocak-Aralık)
P.Cars Production & Exports (x1000) (January- December)





12 Aylık Üretim (12 Months Production)

FİRMALAR Companies	OTOMOBİL Pass.Car	%	K.KAMYON L.Truck	%	B.KAMYON Mid.Truck	%	KAMYONET Pick Up	%	OTOBÜS Bus	%	MİNİBÜS Mini-Bus	%	MİDİBÜS Midi-Bus	%	TRAKTÖR F.Tractor	%	TOPLAM Totals
A.I.O.S.	0	0	1.509	44	0	0	693	0	0	0	0	0	1.090	41	0	0	3.292
B.M.C.	0	0	0	0	2.767	14	0	0	575	11	0	0	0	0	0	0	3.342
FORD OTOSAN	0	0	0	0	4.872	24	222.303	50	0	0	14.895	88	0	0	0	0	242.070
HATTAT	0	0	0	0	0	0	0	0	0	0	0	0	0	0	2.148	7	2.148
HONDA TÜRKİYE	20.305	3	0	0	0	0	0	0	0	0	0	0	0	0	0	0	20.305
HYUNDAI ASSAN	77.000	13	0	0	0	0	0	0	0	0	0	0	0	0	0	0	77.000
KARSAN	0	0	448	13	772	4	21.702	5	0	0	1.797	11	0	0	0	0	24.719
M. BENZ TÜRK	0	0	0	0	12.018	59	0	0	2.462	47	0	0	0	0	0	0	14.480
MANT TÜRKİYE	0	0	0	0	0	0	0	0	1.132	21	0	0	0	0	0	0	1.132
OTOKAR	0	0	0	0	0	0	582	0	379	7	286	2	989	37	0	0	2.236
OYAK RENAULT	307.083	51	0	0	0	0	0	0	0	0	0	0	0	0	0	0	307.083
TEMSA	0	0	1.465	43	0	0	603	0	720	14	0	0	579	22	0	0	3.367
TOFAŞ	115.720	19	0	0	0	0	196.525	44	0	0	0	0	0	0	0	0	312.245
TOYOTA	83.286	14	0	0	0	0	0	0	0	0	0	0	0	0	0	0	83.286
TÜRK TRAKTÖR	0	0	0	0	0	0	0	0	0	0	0	0	0	0	28.277	93	28.277
TOPLAM	603.394	100	3.422	100	20.429	100	442.408	100	5.268	100	16.978	100	2.658	100	30.425	100	1.124.982

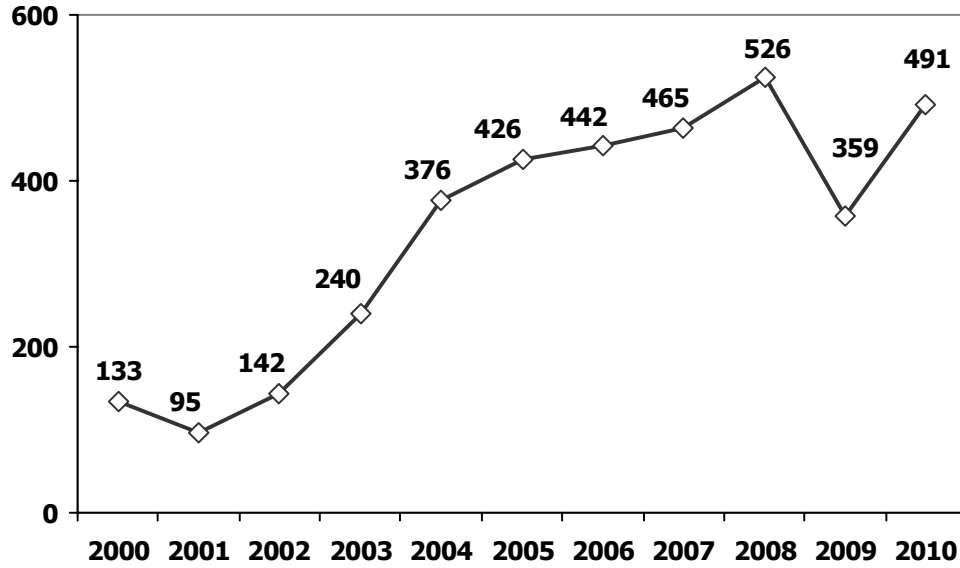
Aralık Ayı Üretimi (December Production)

FİRMALAR Companies	OTOMOBİL Pass.Car	%	K.KAMYON L.Truck	%	B.KAMYON Mid.Truck	%	KAMYONET Pick Up	%	OTOBÜS Bus	%	MİNİBÜS Mini-Bus	%	MİDİBÜS Midi-Bus	%	TRAKTÖR F.Tractor	%	TOPLAM Totals
A.I.O.S.	0	0	170	43	0	0	166	0	0	0	0	0	120	32	0	0	456
B.M.C.	0	0	0	0	608	20	0	0	66	11	0	0	0	0	0	0	674
FORD OTOSAN	0	0	0	0	844	28	24.670	50	0	0	1.517	79	0	0	0	0	27.031
HATTAT	0	0	0	0	0	0	0	0	0	0	0	0	0	0	279	10	279
HONDA TÜRKİYE	1833	3	0	0	0	0	0	0	0	0	0	0	0	0	0	0	1.833
HYUNDAI ASSAN	6798	12	0	0	0	0	0	0	0	0	0	0	0	0	0	0	6.798
KARSAN	0	0	44	11	233	8	2.042	4	0	0	385	20	0	0	0	0	2.704
M. BENZ TÜRK	0	0	0	0	1.341	44	0	0	226	39	0	0	0	0	0	0	1.567
MANT TÜRKİYE	0	0	0	0	0	0	0	0	120	21	0	0	0	0	0	0	120
OTOKAR	0	0	0	0	0	0	185	0	96	17	16	1	158	42	0	0	455
OYAK RENAULT	29858	53	0	0	0	0	0	0	0	0	0	0	0	0	0	0	29.858
TEMSA	0	0	180	46	0	0	24	0	73	13	0	0	95	25	0	0	372
TOFAŞ	9067	16	0	0	0	0	21.767	45	0	0	0	0	0	0	0	0	30.834
TOYOTA	9090	16	0	0	0	0	0	0	0	0	0	0	0	0	0	0	9.090
TÜRK TRAKTÖR	0	0	0	0	0	0	0	0	0	0	0	0	0	0	2.601	90	2.601
TOPLAM	56.646	100	394	100	3.026	100	48.854	100	581	100	1.918	100	373	100	2.880	100	114.672



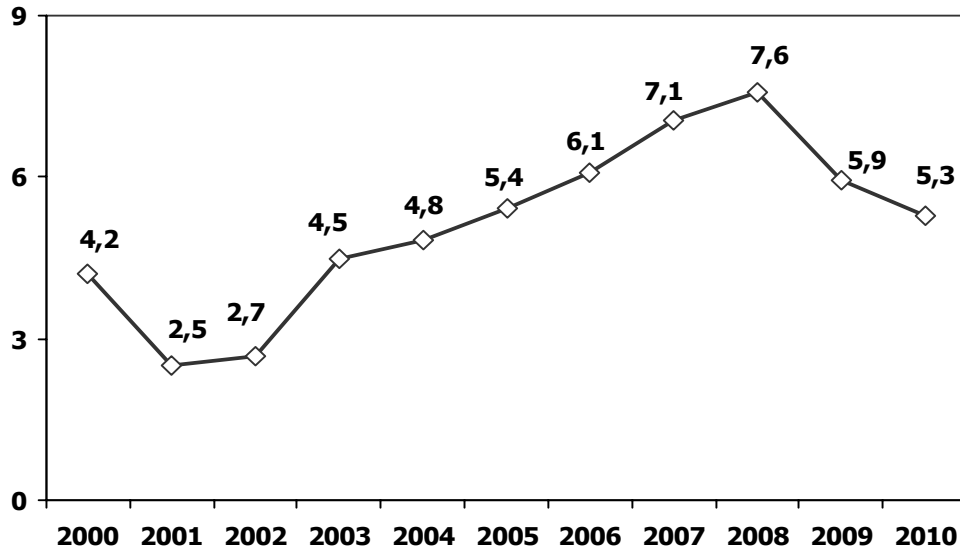
Ticari Araç Üretimi (x1000) (Ocak-Aralık)

Commercial Vehicle Production (x1000) (January- December)



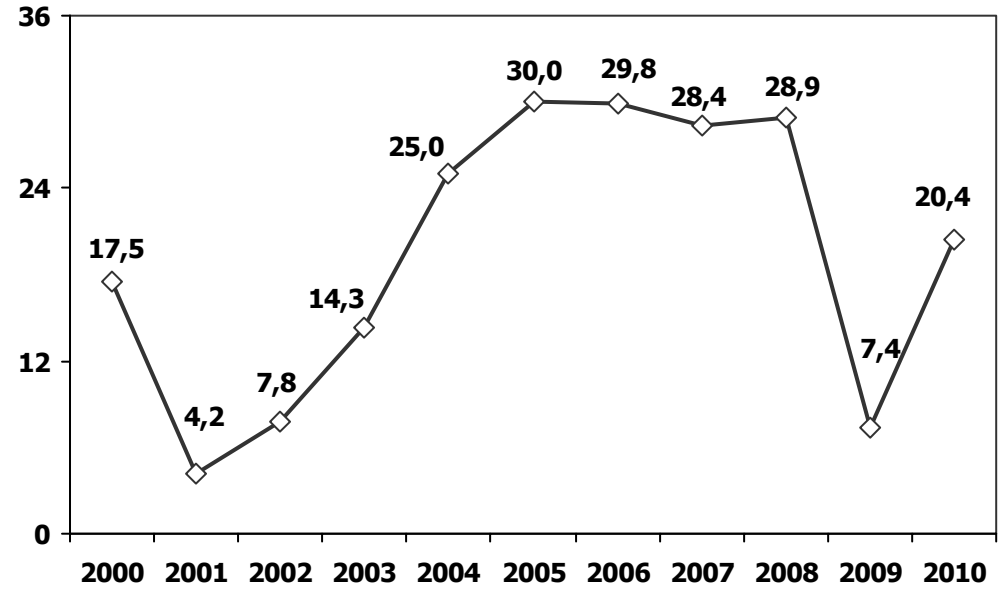
Otobüs Üretimi (x1000) (Ocak-Aralık)

Bus Production (x1000) (January- December)



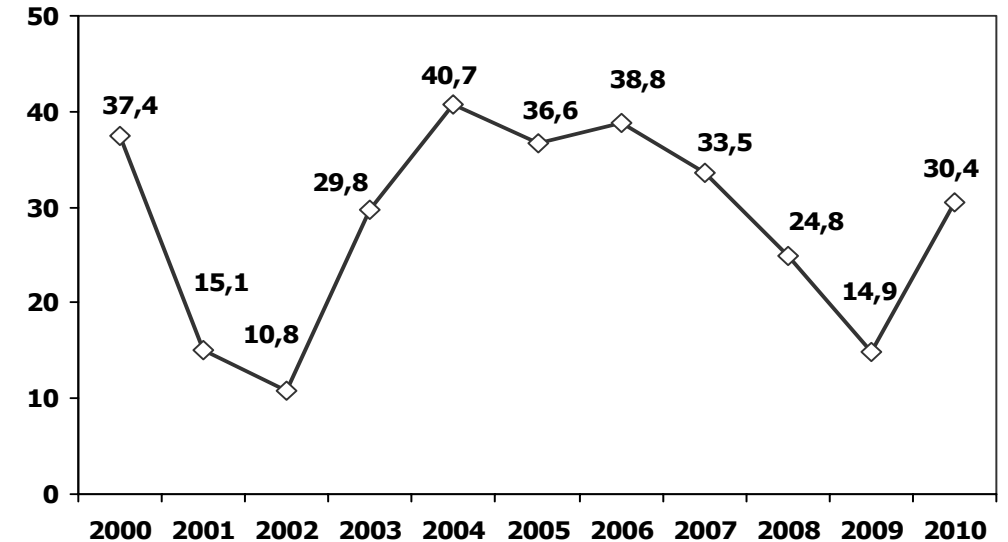
(AYA >12 Ton) Büyük Kamyon Üretimi (x1000) (Ocak-Aralık)

(GVW >12 Ton) Heavy Truck Production (x1000) (January- December)



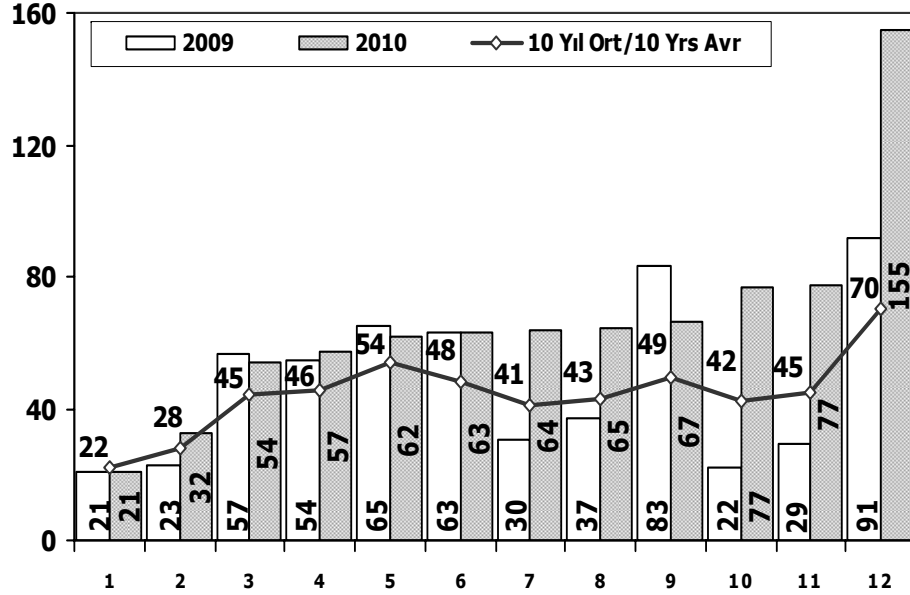
Traktör Üretimi (x1000) (Ocak-Aralık)

F. Tractor Production (x1000) (January- December)



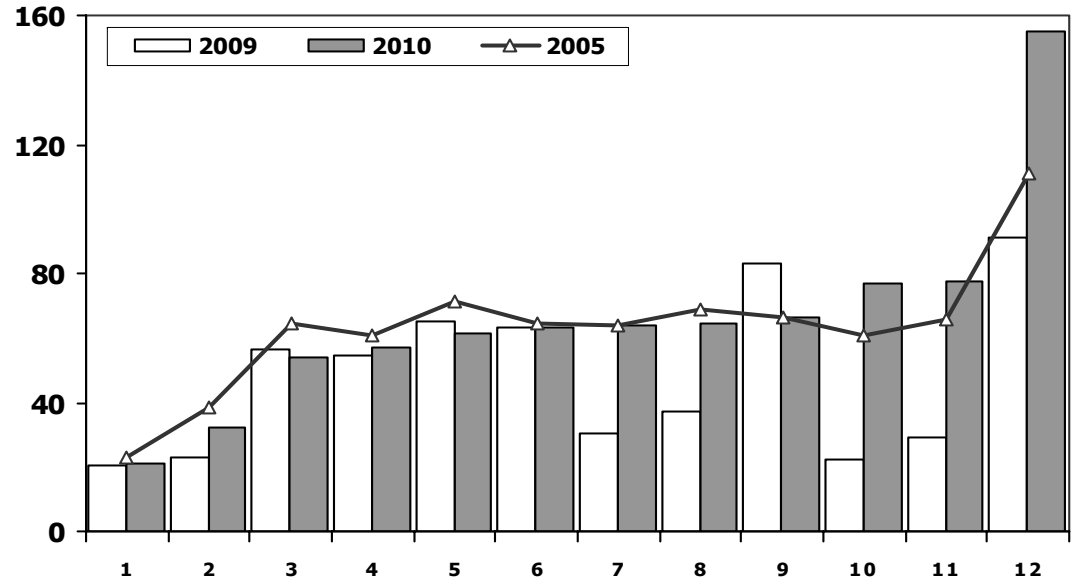


Toplam Pazarın Analizi (x1000) Total Market Analysis (x1000)



Aylar/ Months	10 Yil Ort. 10 Yrs Avr. (x1000)	2010 (x1000)	%
1	21,9	21,1	-3,7
2	28,0	32,3	15,5
3	44,5	53,8	21,0
4	45,7	57,1	24,8
5	53,8	61,6	14,6
6	48,4	63,4	31,0
7	41,1	63,7	55,0
8	43,2	64,6	49,7
9	49,1	66,6	35,5
10	42,1	76,8	82,5
11	44,9	77,4	72,5
12	70,0	154,7	121,0
Total	532,6	793,2	48,9

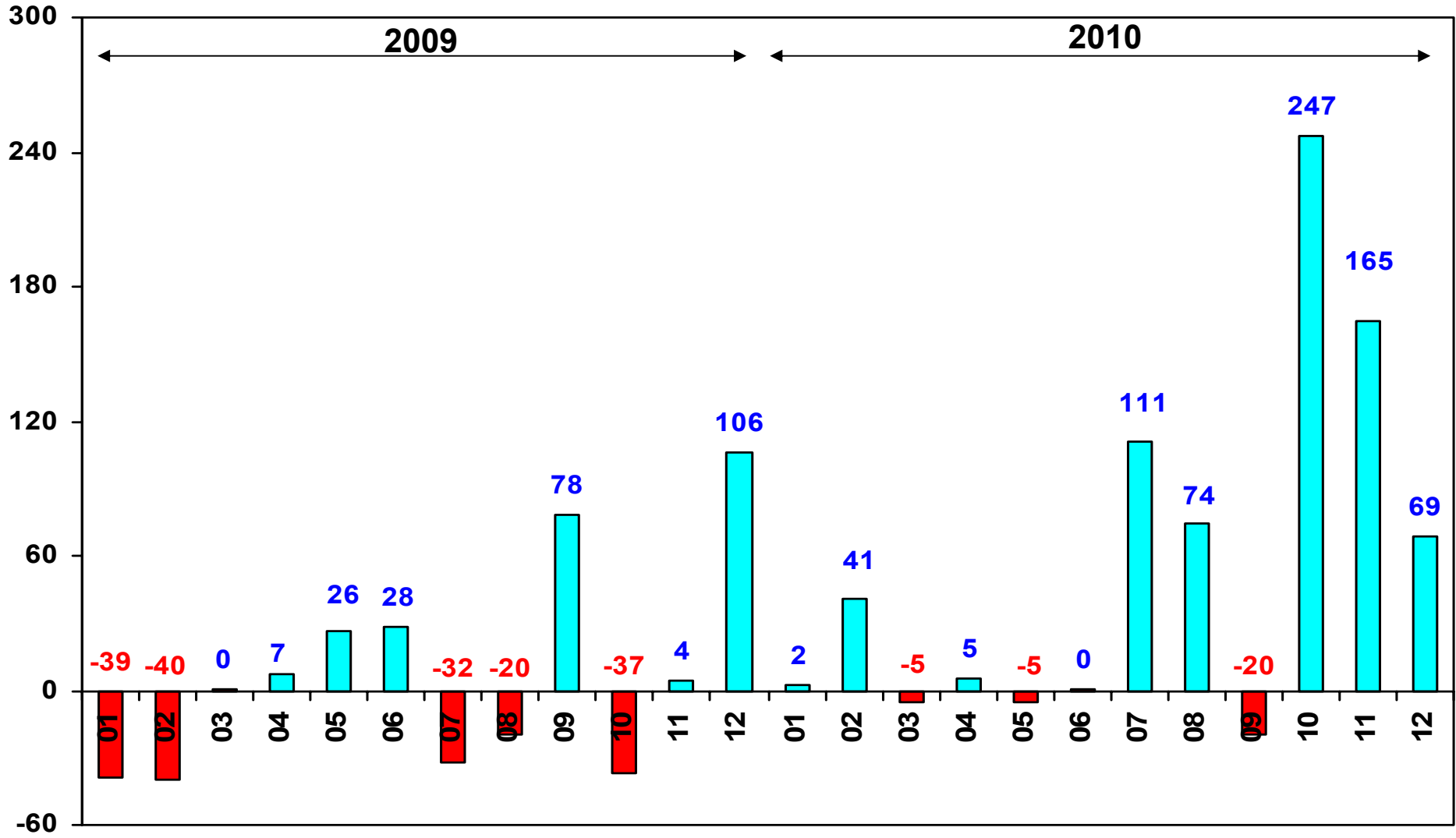
Toplam Pazar (x1000) Total Market (x1000)



	1	2	3	4	5	6	7	8	9	10	11	12	Total
2000	18.646	35.458	48.337	52.371	66.900	67.587	56.914	60.460	66.600	70.622	71.220	41.406	656.521
2001	14.390	13.654	11.398	14.724	19.002	20.128	19.027	17.450	12.307	11.579	16.836	24.595	195.090
2002	2.248	4.310	8.065	12.192	16.807	15.648	16.509	14.738	16.186	18.386	18.478	30.875	174.442
2003	12.576	11.317	17.095	20.380	27.803	30.517	32.268	28.839	40.315	50.051	44.081	82.721	397.963
2004	38.621	39.389	71.723	77.056	84.634	63.228	57.307	56.422	59.429	56.153	52.237	85.070	741.269
2005	22.687	38.291	64.502	60.873	71.383	64.379	63.847	68.647	66.580	60.791	65.719	110.838	758.537
2006	29.969	44.646	65.090	68.853	83.289	58.203	40.037	47.374	49.629	39.805	55.898	82.722	665.515
2007	24.950	31.702	45.488	45.633	51.255	51.661	50.117	54.171	50.078	56.058	67.017	106.076	634.206
2008	33.792	38.121	56.814	50.967	51.627	49.393	44.692	46.592	46.829	35.147	28.152	44.418	526.544
2009	20.631	22.846	56.531	54.426	64.887	63.102	30.246	37.092	83.403	22.117	29.202	91.386	575.869
2010	21.050	32.313	53.828	57.079	61.628	63.390	63.718	64.645	66.601	76.780	77.406	154.734	793.172

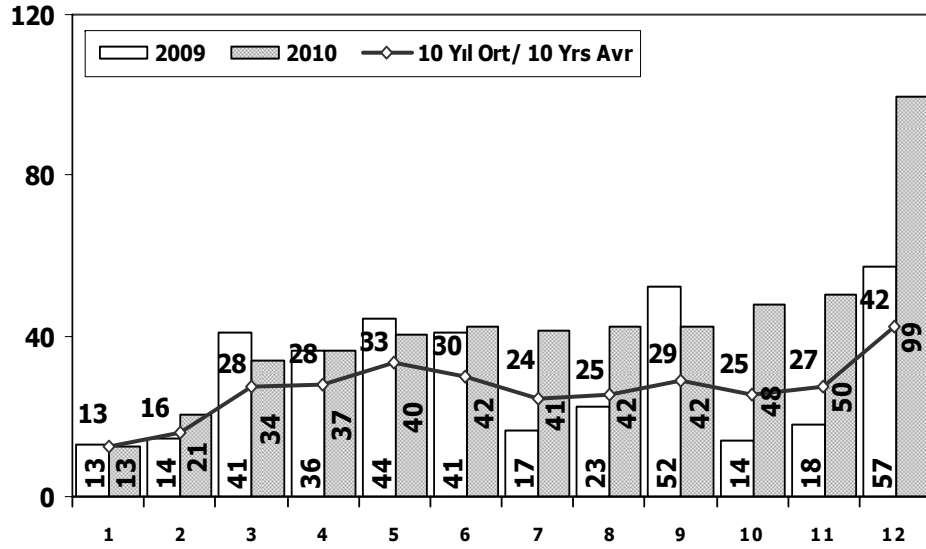


TOPLAM PAZARDA AYLIK DEĞİŞİM (%)
Monthly Change in Total Market - %



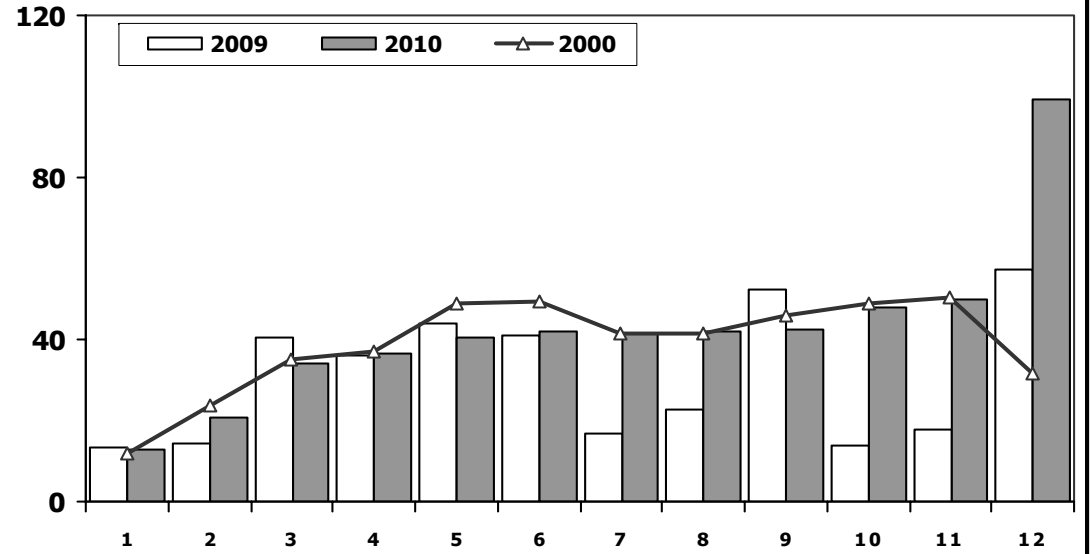
Otomobil Pazarının Analizi (x1000)

P.Cars Market Analysis (x1000)



Otomobil Pazarı (x1000)

P.Cars Market (x1000)



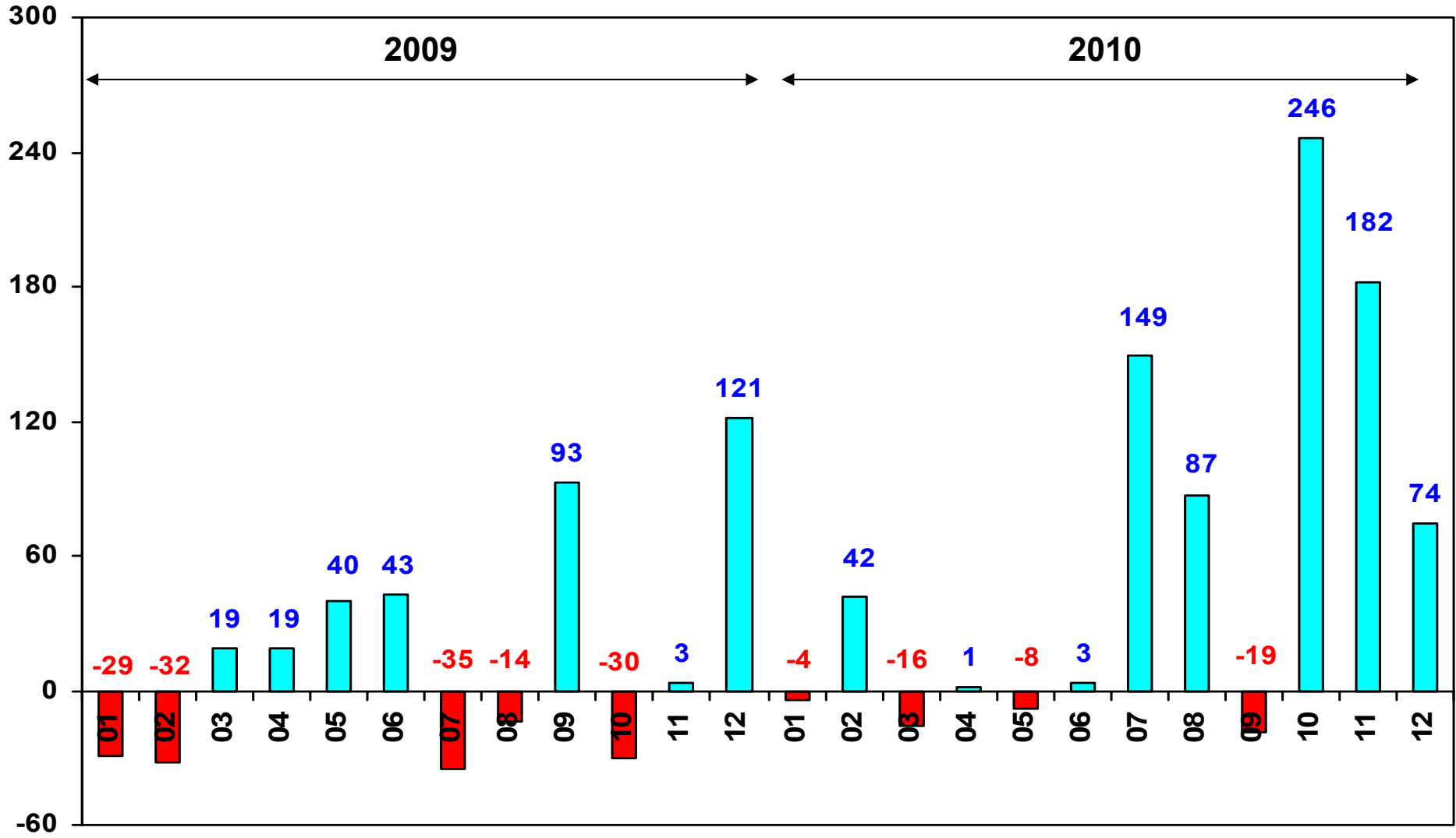
Aylar / Months	10 Yil Ort. 10 Yrs Avr. (x1000)	2010 (x1000)	%
1	12,6	12,6	0,0
2	16,1	20,7	28,0
3	27,5	34,0	23,4
4	28,1	36,5	30,1
5	33,4	40,5	21,2
6	29,9	42,1	40,5
7	24,5	41,4	69,0
8	25,2	42,2	67,8
9	29,0	42,5	46,6
10	25,3	47,9	89,4
11	27,2	50,1	84,1
12	42,5	99,5	134,2
Total	321,2	509,8	58,7

	1	2	3	4	5	6	7	8	9	10	11	12	Total
2000	11.872	23.543	35.278	37.232	49.100	49.488	41.544	41.659	46.134	48.938	50.482	31.456	466.726
2001	8.443	8.377	7.479	10.195	13.562	14.408	13.326	11.361	6.927	7.035	12.319	18.006	131.438
2002	591	1.426	3.464	6.245	8.948	7.811	9.842	7.308	8.753	9.381	9.848	16.998	90.615
2003	6.309	5.486	8.555	11.107	15.965	16.329	14.764	16.896	23.772	30.615	25.777	51.461	227.036
2004	25.625	23.695	46.075	47.995	54.610	37.671	33.410	33.709	33.383	34.292	30.547	50.197	451.209
2005	11.595	21.012	38.129	36.206	38.480	40.900	38.969	38.648	36.410	34.960	37.841	65.447	438.597
2006	16.506	24.929	36.996	40.177	48.521	32.982	22.653	24.873	27.517	21.237	30.477	46.351	373.219
2007	13.186	17.212	24.336	25.204	29.067	30.126	28.246	28.469	27.662	32.569	39.643	61.745	357.465
2008	18.588	21.196	34.147	30.313	31.477	28.724	25.530	26.102	27.053	19.788	17.201	25.879	305.998
2009	13.173	14.492	40.622	36.202	44.188	41.019	16.637	22.537	52.162	13.828	17.781	57.178	369.819
2010	12.594	20.651	33.958	36.549	40.467	42.086	41.399	42.222	42.477	47.859	50.061	99.461	509.784

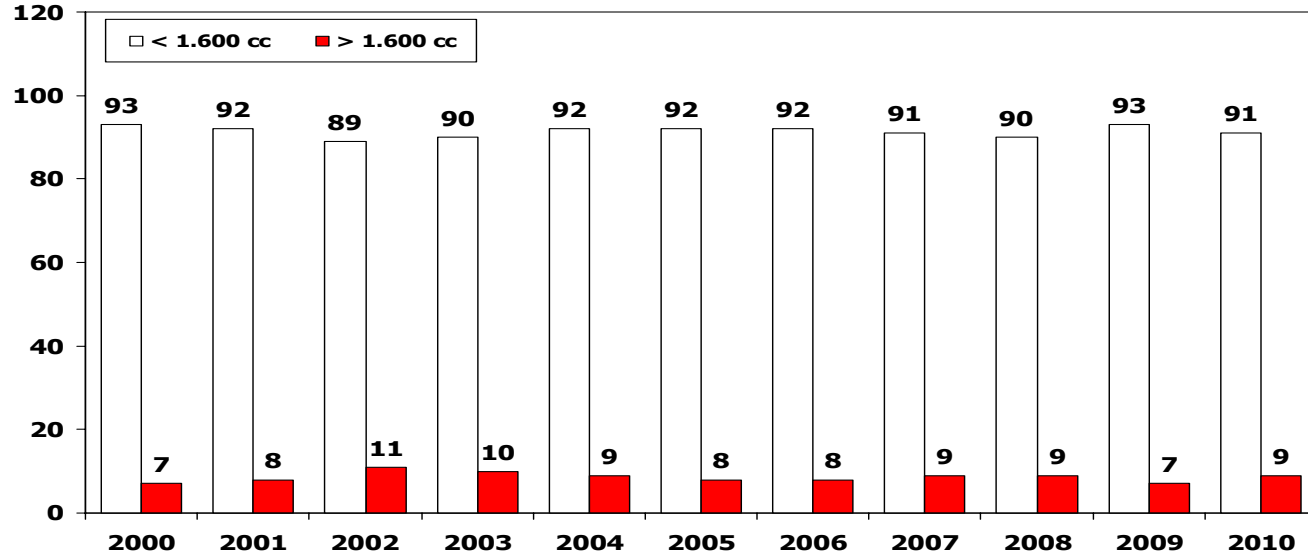


OTOMOBİL PAZARINDA AYLIK DEĞİŞİM (%)

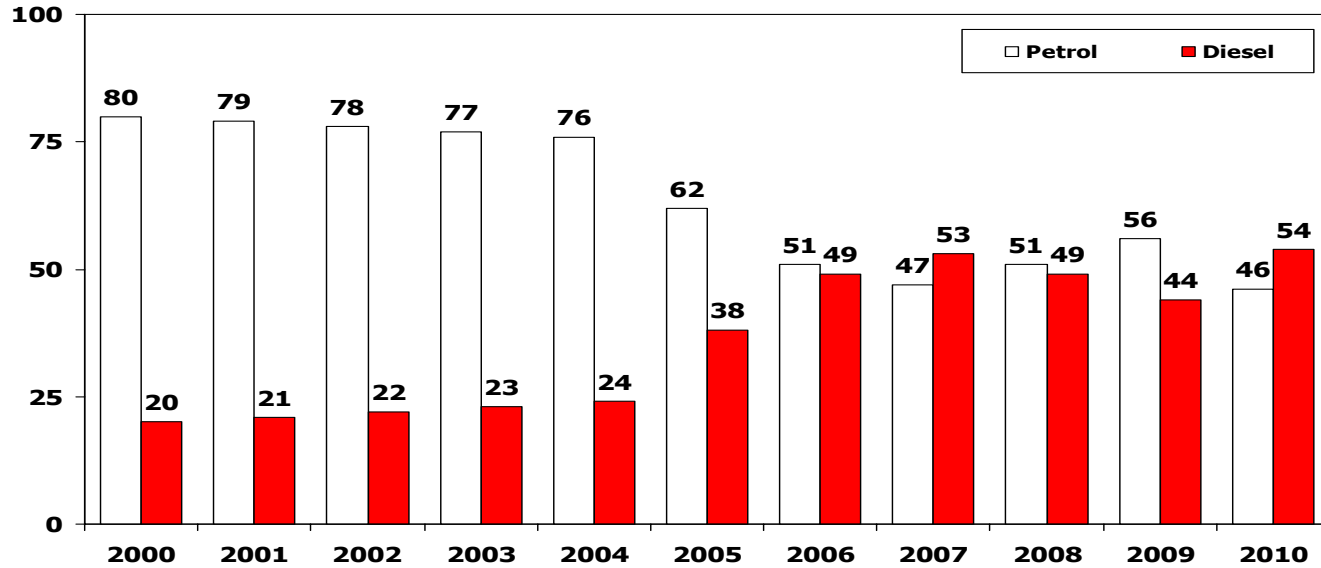
Monthly Change in P.Cars Market - %



Motor Hacmine Göre Otomobil Pazar Payı (%)
 Passenger Car Market Share According To Engine Size

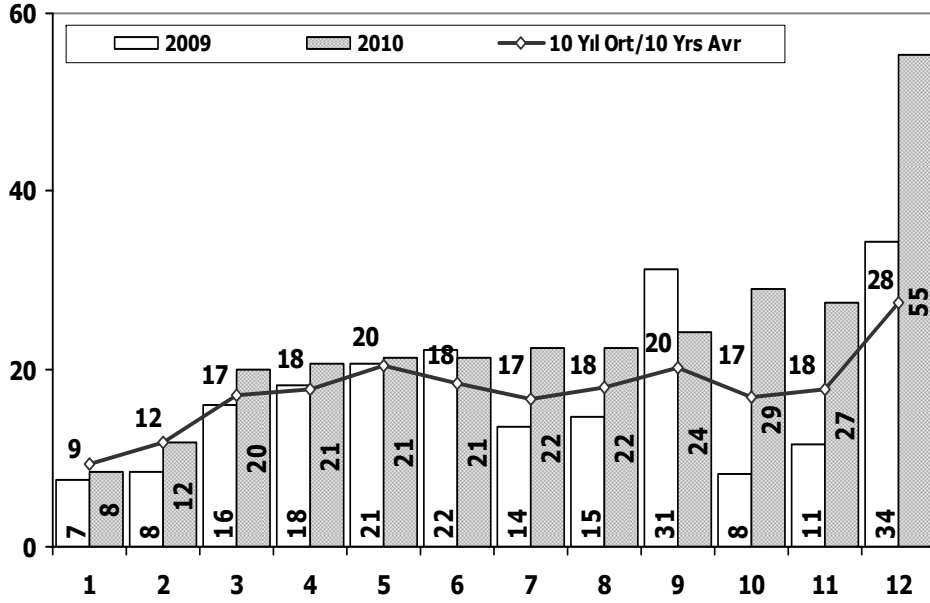


Yakıt Türüne Göre Otomobil Pazar Payı (%)
 Passenger Car Market Share According To The Fuel Type



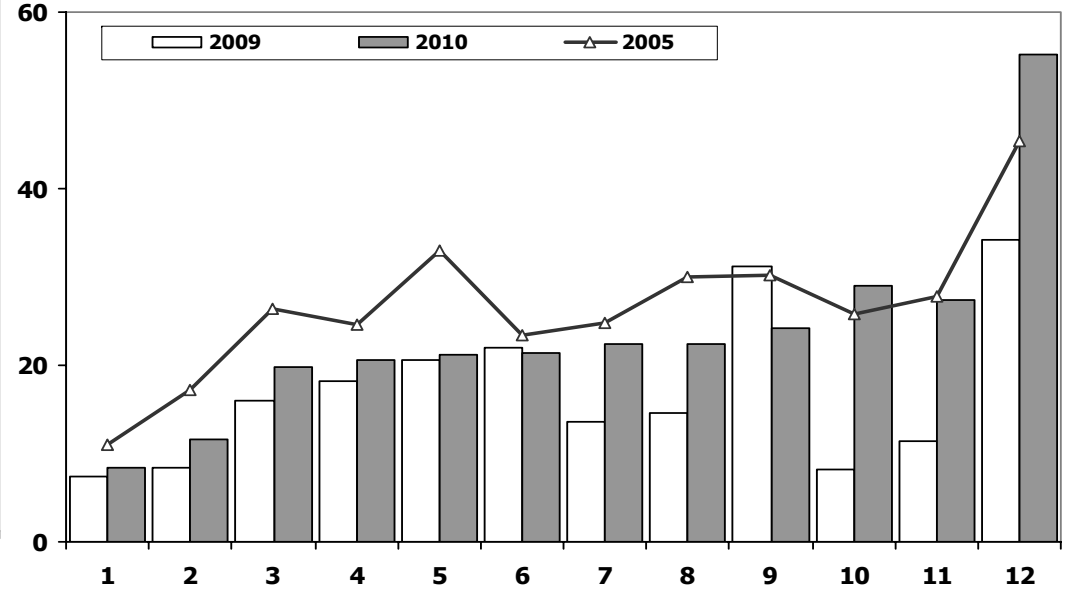


Ticari Araç Pazarının Analizi (x1000) CV Market Analysis (x1000)



Aylar / Months	10 Yil Ort. 10 Yrs Avr. (x1000)	2010 (x1000)	%
1	9,3	8,5	-8,7
2	11,8	11,7	-1,5
3	17,0	19,9	16,9
4	17,7	20,5	16,3
5	20,4	21,2	3,9
6	18,4	21,3	15,5
7	16,6	22,3	34,4
8	18,0	22,4	24,4
9	20,2	24,1	19,7
10	16,8	28,9	72,1
11	17,7	27,3	54,6
12	27,5	55,3	100,7
Total	211,4	283,4	34,1

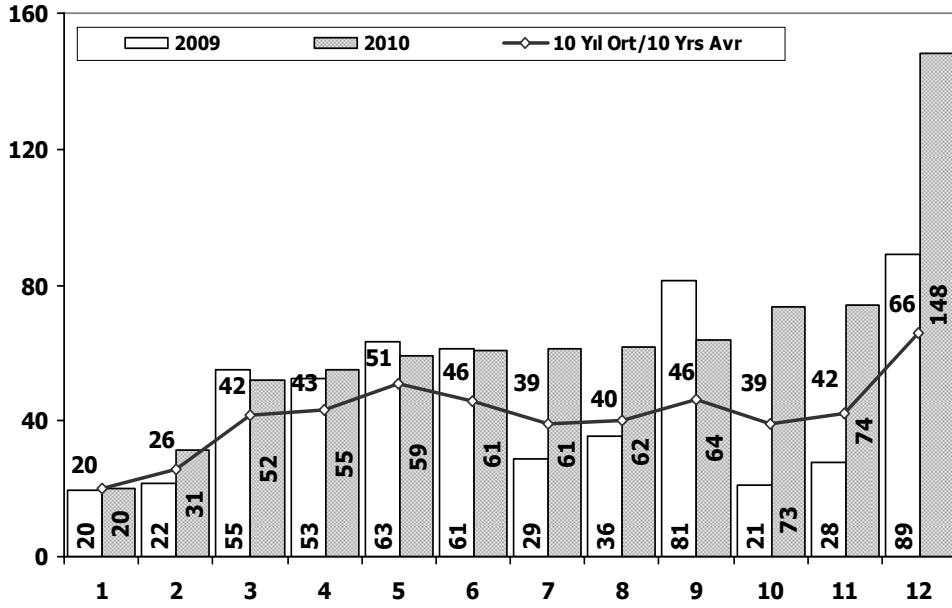
Ticari Araç Pazarı (x1000) CV Total Market (Local + Imports) (x1000)



	1	2	3	4	5	6	7	8	9	10	11	12	Total
2000	6.774	11.915	13.059	15.139	17.800	18.099	15.370	18.801	20.466	21.684	20.738	9.950	189.795
2001	5.947	5.277	3.919	4.529	5.440	5.720	5.701	6.089	5.380	4.544	4.517	6.589	63.652
2002	1.657	2.884	4.601	5.947	7.859	7.837	6.667	7.430	7.433	9.005	8.630	13.877	83.827
2003	6.267	5.831	8.540	9.273	11.838	14.188	17.504	11.943	16.543	19.436	18.304	31.260	170.927
2004	12.996	15.694	25.648	29.061	30.024	25.557	23.897	22.713	26.046	21.861	21.690	34.873	290.060
2005	11.092	17.279	26.373	24.667	32.903	23.479	24.878	29.999	30.170	25.831	27.878	45.391	319.940
2006	13.463	19.717	28.094	28.676	34.768	25.221	17.384	22.501	22.112	18.568	25.421	36.371	292.296
2007	11.764	14.490	21.152	20.429	22.188	21.535	21.871	25.702	22.416	23.489	27.374	44.331	276.741
2008	15.204	16.925	22.667	20.654	20.150	20.669	19.162	20.490	19.776	15.359	10.951	18.539	220.546
2009	7.458	8.354	15.909	18.224	20.699	22.083	13.609	14.555	31.241	8.289	11.421	34.208	206.050
2010	8.456	11.662	19.870	20.530	21.161	21.304	22.319	22.423	24.124	28.921	27.345	55.273	283.388

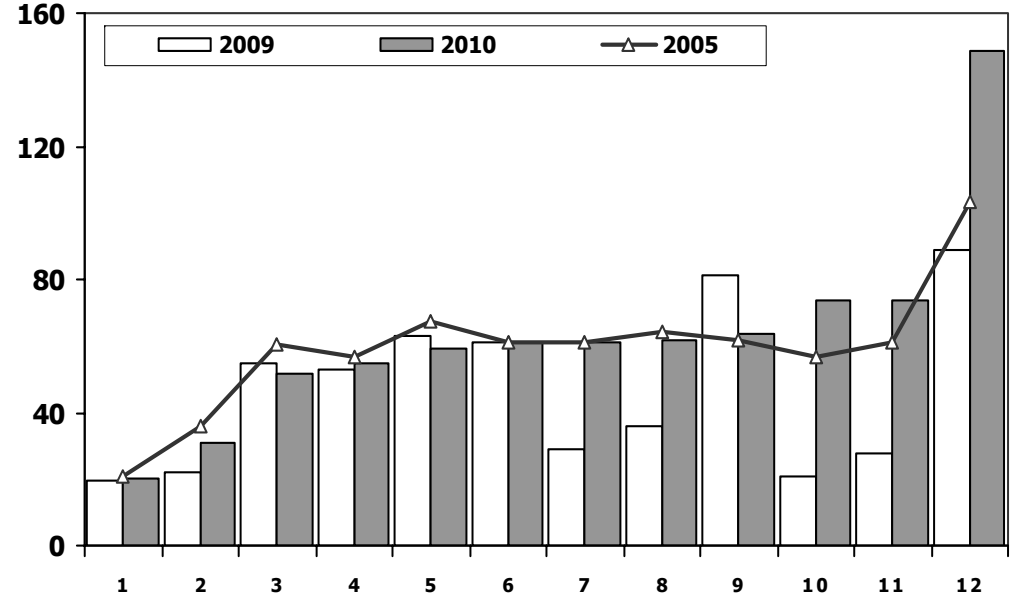


Hafif Arac Pazarının Analizi (x1000) LV Market Analysis (x1000)



Aylar / Months	10 Yil Ort. 10 Yrs Avr. (x1000)	20010 (x1000)	%
1	20,3	20,1	-1,1
2	26,0	31,2	20,0
3	41,7	51,8	24,0
4	43,0	54,9	27,8
5	50,8	59,4	16,8
6	45,7	60,9	33,2
7	39,0	61,3	57,3
8	40,3	61,8	53,2
9	46,0	63,8	38,6
10	39,2	73,4	87,2
11	42,0	74,0	76,2
12	65,7	148,4	126,0
Total	499,8	760,9	52,3

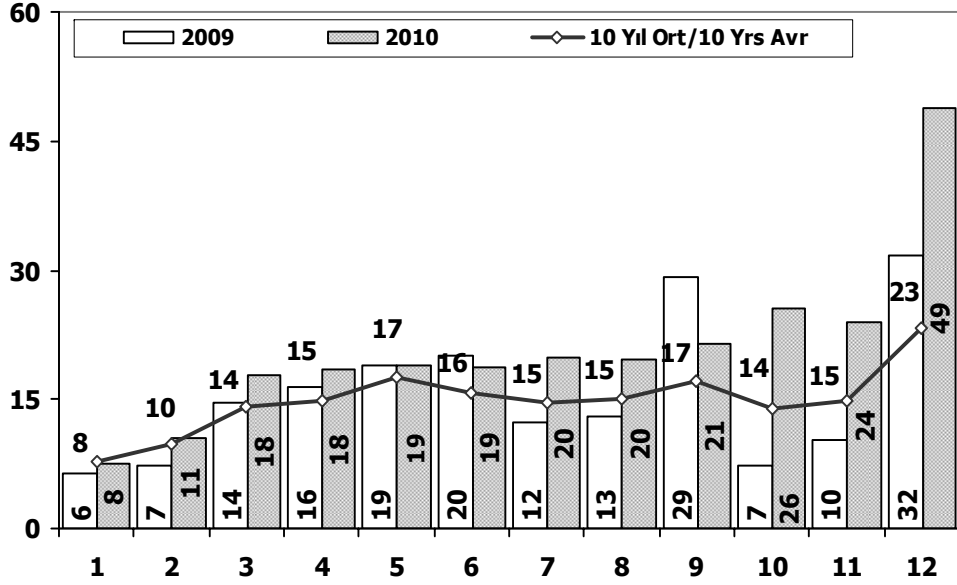
Hafif Arac Pazarı (x1000) LV Total Market (Local + Imports) (x1000)



	1	2	3	4	5	6	7	8	9	10	11	12	Total
2000	17.386	33.236	45.509	49.621	63.453	64.034	54.244	56.639	62.673	66.717	67.344	39.381	620.237
2001	13.188	12.557	10.548	13.919	18.129	19.514	18.512	16.709	11.402	10.562	15.713	22.999	183.752
2002	1.764	3.641	7.109	11.007	15.461	14.337	15.472	13.302	14.599	16.531	16.657	27.569	157.449
2003	11.531	10.402	15.743	18.693	25.853	28.266	30.172	25.903	36.234	45.446	40.048	75.778	364.069
2004	36.352	37.079	67.144	73.075	80.290	59.730	54.816	52.876	55.609	53.000	49.200	78.924	698.095
2005	20.747	35.766	60.707	56.844	67.357	60.796	61.015	64.011	61.954	56.638	61.364	103.209	710.408
2006	27.917	40.938	60.052	64.038	78.229	54.355	37.251	43.767	46.109	36.542	51.867	76.787	617.852
2007	23.117	29.184	41.890	42.366	47.938	48.674	47.490	50.558	46.581	52.725	63.313	100.926	594.762
2008	31.527	35.251	53.649	47.701	48.598	46.324	42.156	43.670	43.932	32.884	26.253	42.078	494.023
2009	19.606	21.742	55.111	52.640	63.191	61.067	28.845	35.609	81.397	21.033	27.962	88.923	557.126
2010	20.095	31.172	51.769	54.946	59.377	60.896	61.345	61.764	63.814	73.404	73.962	148.369	760.913

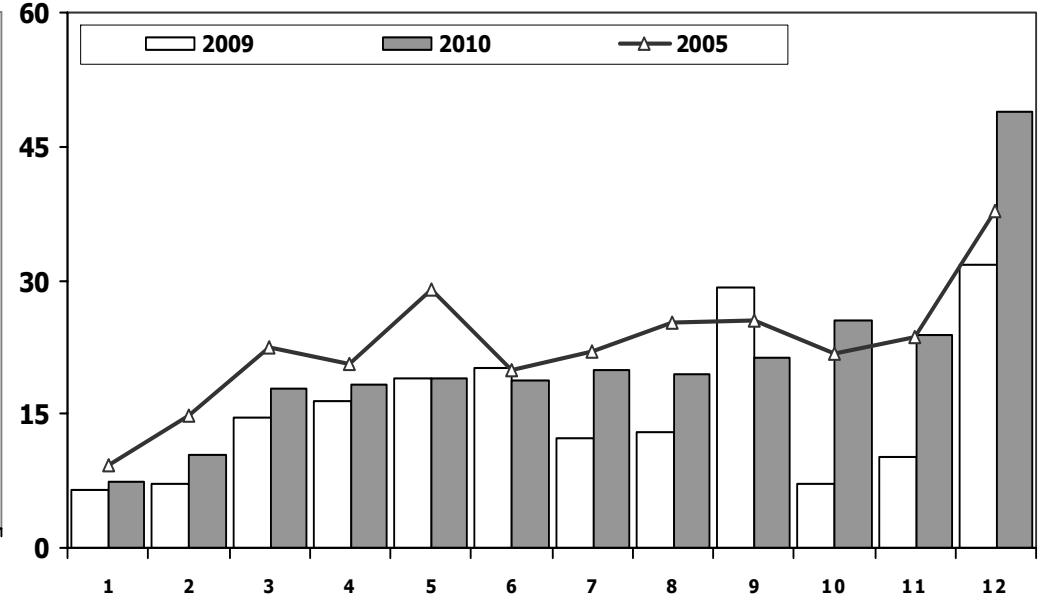


Hafif Ticari Arac Pazarının Analizi (x1000) LCV Market Analysis (x1000)



Aylar / Months	10 Yil Ort. 10 Yrs Avr. (x1000)	2010 (x1000)	%
1	7,7	7,5	-2,9
2	9,8	10,5	6,9
3	14,2	17,8	25,1
4	14,9	18,4	23,4
5	17,5	18,9	8,3
6	15,8	18,8	19,3
7	14,5	19,9	37,5
8	15,1	19,5	29,0
9	17,1	21,3	25,0
10	13,9	25,5	83,2
11	14,8	23,9	61,7
12	23,2	48,9	110,9
Total	178,6	251,1	40,6

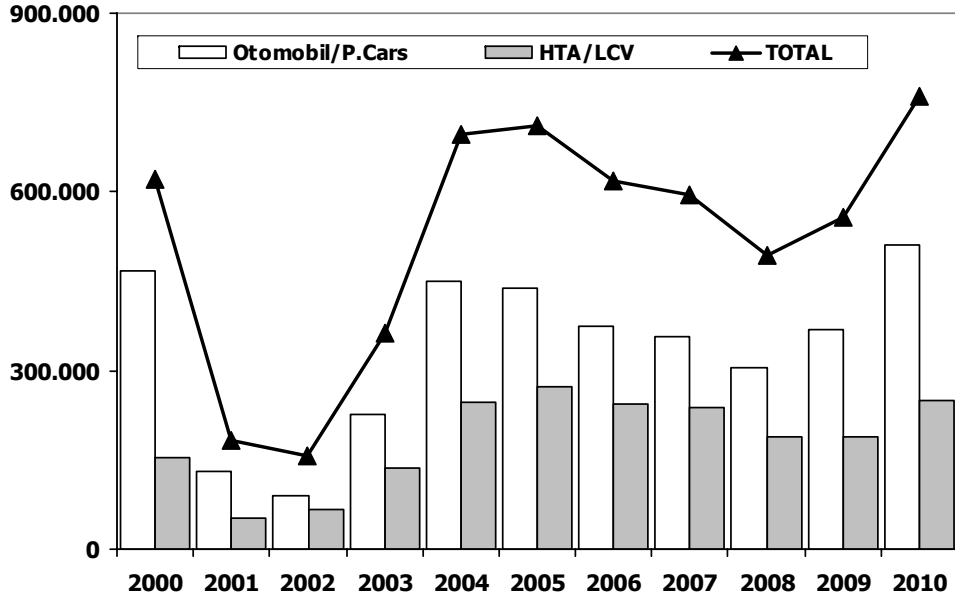
Hafif Ticari Arac Pazarı (x1000) LCV Total Market (Local + Imports) (x1000)



	1	2	3	4	5	6	7	8	9	10	11	12	Total
2000	5.514	9.693	10.231	12.389	14.353	14.546	12.700	14.980	16.539	17.779	16.862	7.925	153.511
2001	4.745	4.180	3.069	3.724	4.567	5.106	5.186	5.348	4.475	3.527	3.394	4.993	52.314
2002	1.173	2.215	3.645	4.762	6.513	6.526	5.630	5.994	5.846	7.150	6.809	10.571	66.834
2003	5.222	4.916	7.188	7.586	9.888	11.937	15.408	9.007	12.462	14.831	14.271	24.317	137.033
2004	10.727	13.384	21.069	25.080	25.680	22.059	21.406	19.167	22.226	18.708	18.653	28.727	246.886
2005	9.152	14.754	22.578	20.638	28.877	19.896	22.046	25.363	25.544	21.678	23.523	37.762	271.811
2006	11.411	16.009	23.056	23.861	29.708	21.373	14.598	18.894	18.592	15.305	21.390	30.436	244.633
2007	9.931	11.972	17.554	17.162	18.871	18.548	19.244	22.089	18.919	20.156	23.670	39.181	237.297
2008	12.939	14.055	19.502	17.388	17.121	17.600	16.626	17.568	16.879	13.096	9.052	16.199	188.025
2009	6.433	7.250	14.489	16.438	19.003	20.048	12.208	13.072	29.235	7.205	10.181	31.745	187.307
2010	7.501	10.521	17.811	18.397	18.910	18.810	19.946	19.542	21.337	25.545	23.901	48.908	251.129

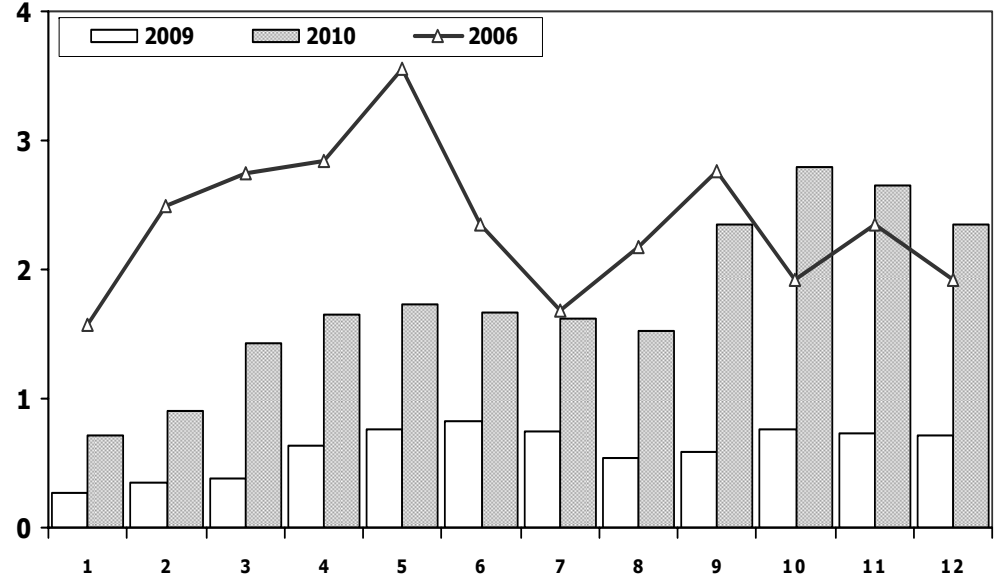


Hafif Araç Pazarı (AYA < 3.5 Ton) (2000/2009-2010 Ocak-Aralık)
Light Vehicle Market (GVW < 3.5 Ton) (2000/2009-2010 January-December)



	2000	2001	2002	2003	2004	2005	2006	2007	2008	2009	2010
Otomobil/P.Cars	466.726	131.438	90.615	227.036	451.209	438.597	373.219	357.465	305.998	369.819	509.784
HTA/LCV	153.511	52.314	66.834	137.033	246.886	271.811	244.633	237.297	188.025	187.307	251.129
TOTAL	620.237	183.752	157.449	364.069	698.095	710.408	617.852	594.762	494.023	557.126	760.913
HTA/LCV (%)	25	28	42	38	35	38	40	40	38	34	33

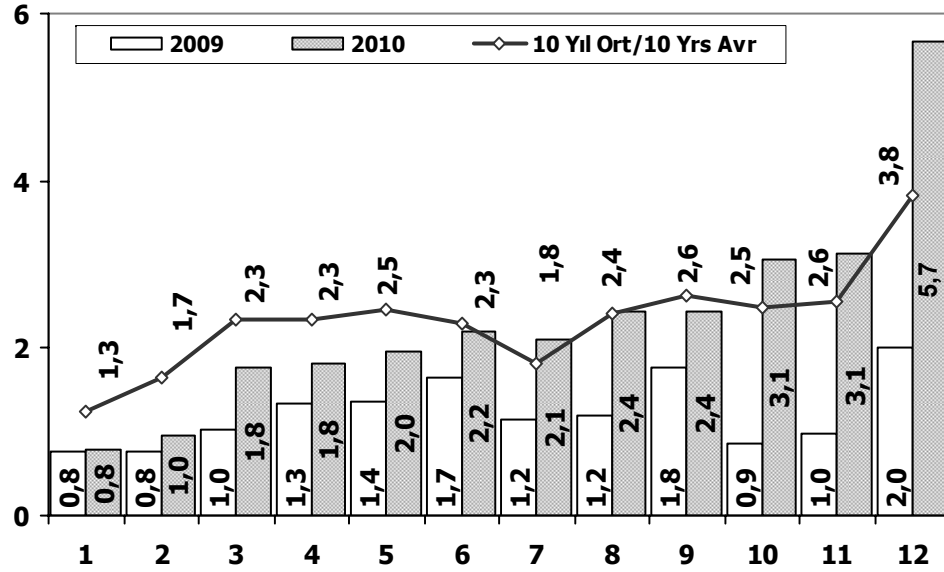
Traktör Pazarı (x1000)
F.Tractor Market (x1000)



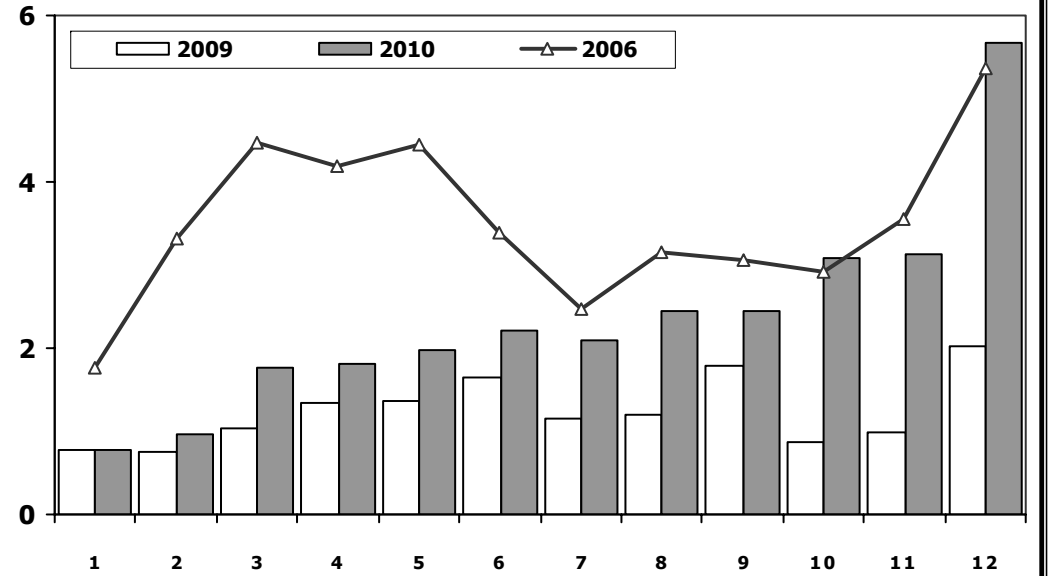
	1	2	3	4	5	6	7	8	9	10	11	12	Total
2000	777	1.037	2.266	2.913	3.507	2.746	1.959	2.324	3.345	3.108	2.669	1.146	27.797
2001	1.531	1.540	1.359	1.426	1.311	563	415	664	422	416	313	165	10.125
2002	291	401	380	585	435	508	561	546	747	628	560	680	6.322
2003	712	830	1.313	1.460	1.527	1.123	1.311	1.404	1.706	1.893	1.541	1.468	16.288
2004	1.946	1.874	2.909	3.260	2.863	2.816	1.988	2.209	2.509	1.989	2.198	1.364	27.925
2005	1.026	1.636	2.001	2.599	2.569	2.780	2.148	2.819	2.567	2.477	2.297	2.089	27.008
2006	1.578	2.493	2.746	2.841	3.561	2.356	1.685	2.177	2.756	1.915	2.353	1.925	28.386
2007	1.812	1.778	2.063	2.107	2.266	1.853	1.653	2.065	2.372	2.239	2.231	1.602	24.041
2008	1.510	1.427	1.933	1.692	1.689	1.592	1.275	924	904	609	707	359	14.621
2009	267	344	388	638	759	828	741	534	586	765	725	715	7.290
2010	714	903	1.432	1.653	1.736	1.673	1.613	1.527	2.351	2.787	2.656	2.345	21.390



Kamyon Pazarının Analizi (x1000) AYA > 5 Ton Truck Market Analysis (x1000) GVW > 5 Ton



Kamyon Pazarı (x1000) AYA > 5 Ton Truck Market (x1000) GVW > 5 Ton

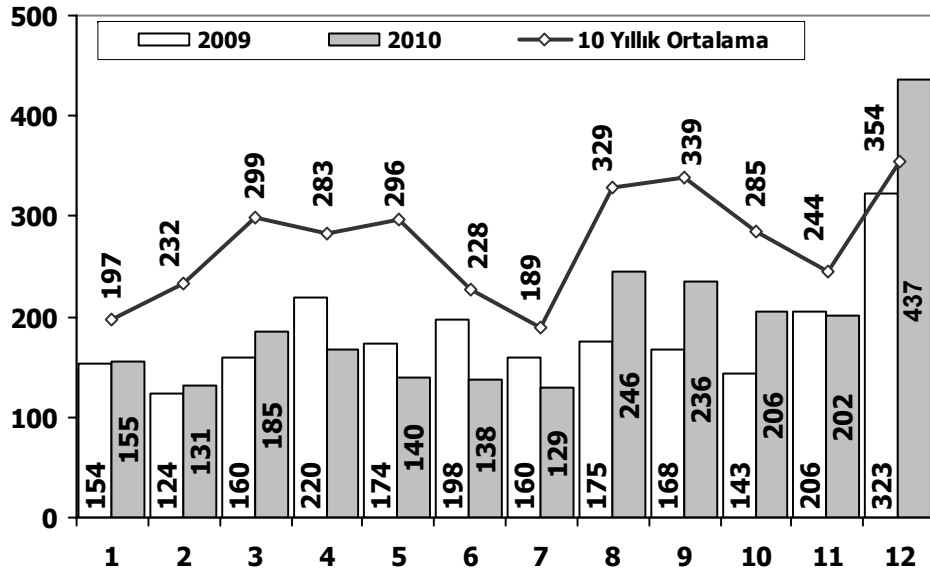


Aylar / Months	10 Yil Ort. 10 Yrs Avr. (x1000)	2010 (x100)	%
1	1,3	0,8	-38,0
2	1,7	1,0	-41,4
3	2,3	1,8	-24,2
4	2,3	1,8	-22,6
5	2,5	2,0	-20,1
6	2,3	2,2	-4,4
7	1,8	2,1	14,9
8	2,4	2,4	0,9
9	2,6	2,4	-7,0
10	2,5	3,1	24,1
11	2,6	3,1	22,7
12	3,8	5,7	48,6
Total	28,1	28,4	1,1

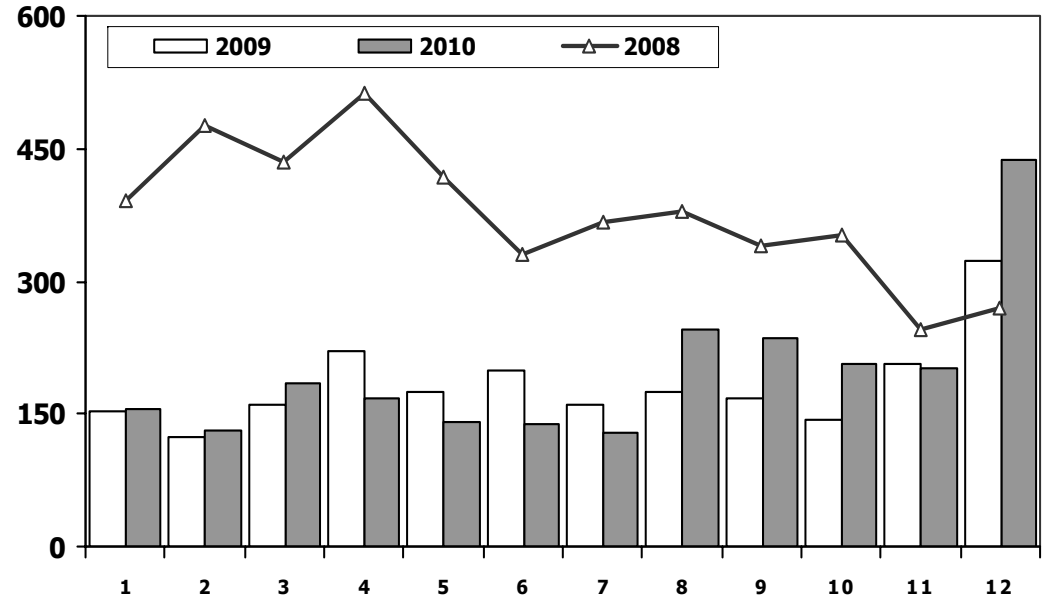
YIL	OCAK	ŞUBAT	MART	NİSAN	MAYIS	HAZİRAN	TEMMUZ	AĞUSTOS	EYLÜL	EKİM	KASIM	ARALIK	TOPLAM
2000	955	1.697	2.250	2.209	2.790	2.903	2.125	3.048	3.107	3.235	3.386	1.740	29.445
2001	950	942	725	709	793	498	420	604	680	795	975	1.383	9.474
2002	403	532	824	1.048	1.157	1.199	927	1.300	1.403	1.666	1.637	2.932	15.028
2003	771	773	1.123	1.494	1.668	2.008	1.933	2.490	3.563	4.147	3.720	6.406	30.096
2004	1.863	1.949	3.983	3.352	3.651	3.118	2.234	2.897	3.285	2.727	2.629	5.517	37.205
2005	1.693	2.186	3.288	3.484	3.413	3.147	2.504	4.028	4.043	3.708	3.918	6.570	41.982
2006	1.767	3.310	4.467	4.180	4.449	3.398	2.472	3.142	3.052	2.926	3.550	5.358	42.071
2007	1.554	2.055	3.065	2.940	2.865	2.613	2.372	3.145	2.988	2.886	3.258	4.444	34.185
2008	1.797	2.309	2.621	2.578	2.459	2.526	2.067	2.377	2.390	1.790	1.512	1.834	26.260
2009	771	759	1.034	1.342	1.355	1.651	1.156	1.205	1.780	866	981	2.015	14.915
2010	777	968	1.772	1.807	1.966	2.205	2.093	2.446	2.444	3.071	3.136	5.677	28.362



Midibüs Pazarının Analizi (7-9 mt / 25-35 Kişilik) Midibus Market Analysis (7-9 mt / 25-35 Passengers)



Midibüs Pazarı (7-9 mt / 25-35 Kişilik Midibüs) Midibus Market (7-9 mt / 25-35 Passengers)



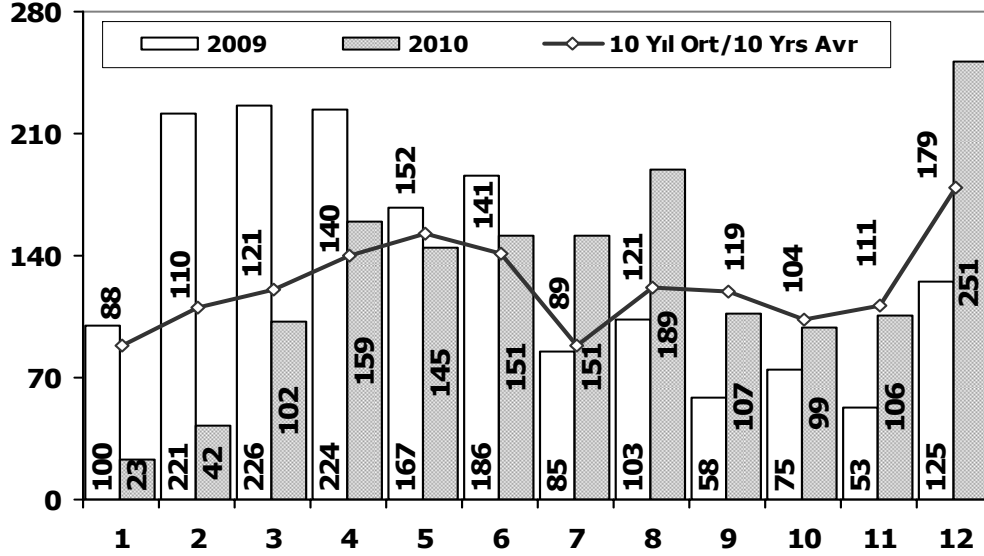
Aylar / Months	10 Yıl Ort. 10 Yrs Avr.	2010	%
1	197	155	-21
2	232	131	-44
3	299	185	-38
4	283	167	-41
5	296	140	-53
6	228	138	-39
7	189	129	-32
8	329	246	-25
9	339	236	-30
10	285	206	-28
11	244	202	-17
12	354	437	23
Total	3.277	2.372	-28

YIL	OCAK	ŞUBAT	MART	NİSAN	MAYIS	HAZİRAN	TEMMUZ	AĞUSTOS	EYLÜL	EKİM	KASIM	ARALIK	TOPLAM
2000	204	374	413	369	399	350	298	505	585	452	296	91	4.336
2001	124	87	85	76	43	77	60	110	201	208	129	131	1.331
2002	47	99	86	100	125	106	105	94	141	171	120	300	1.494
2003	220	109	188	106	158	161	103	322	349	330	212	436	2.694
2004	233	226	381	431	524	237	154	531	445	331	319	551	4.363
2005	182	258	432	393	439	269	252	459	436	329	328	574	4.351
2006	207	297	406	388	381	266	230	353	322	253	305	401	3.809
2007	207	272	404	238	302	283	164	365	399	279	283	465	3.661
2008	391	476	436	512	419	331	368	380	341	352	246	270	4.522
2009	154	124	160	220	174	198	160	175	168	143	206	323	2.205
2010	155	131	185	167	140	138	129	246	236	206	202	437	2.372



Otobüs Pazarının Analizi

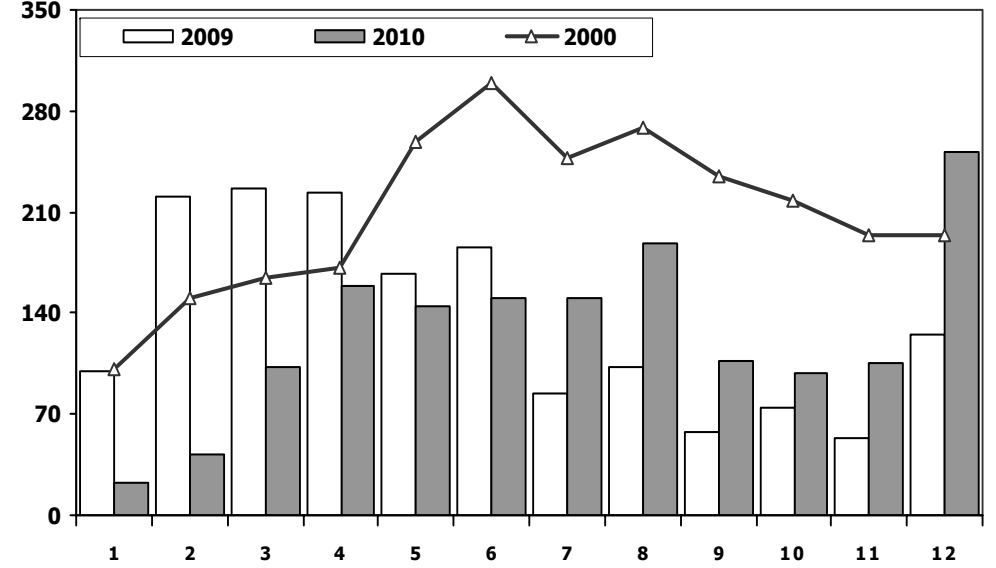
Bus Market Analysis



Aylar / Months	10 Yil Ort. 10 Yrs Avr.	2010	%
1	88	23	-74
2	110	42	-62
3	121	102	-16
4	140	159	13
5	152	145	-5
6	141	151	7
7	89	151	70
8	121	189	56
9	119	107	-10
10	104	99	-5
11	111	106	-4
12	179	251	40
Total	1.476	1.525	3

Otobüs Pazarı

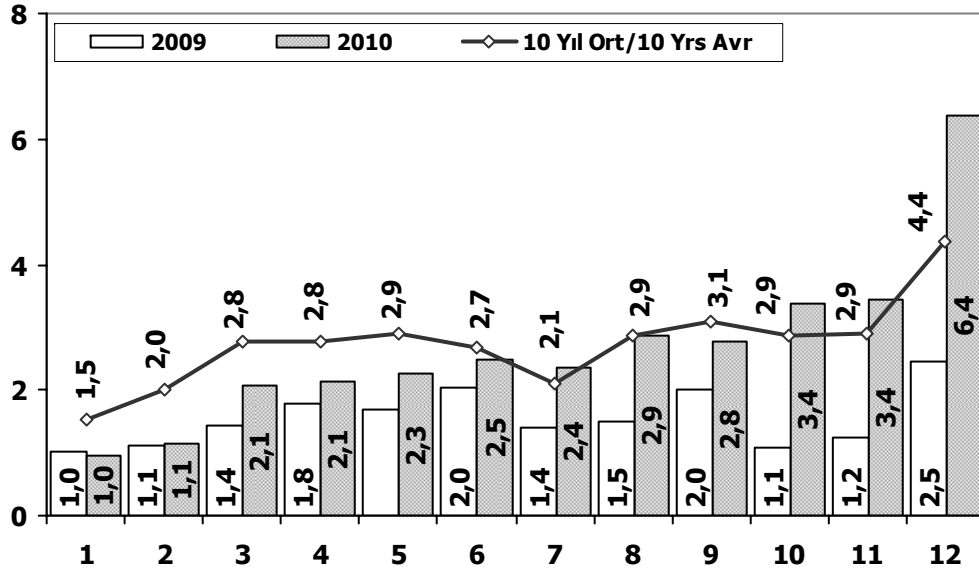
Bus Market



	1	2	3	4	5	6	7	8	9	10	11	12	Total
2000	101	151	165	172	258	300	247	268	235	218	194	194	2.503
2001	128	68	40	20	37	39	35	27	24	14	19	82	533
2002	34	38	46	37	64	6	5	42	43	18	64	74	471
2003	54	33	41	87	124	82	60	124	169	128	101	101	1.104
2004	173	135	215	198	169	143	103	118	90	95	89	78	1.606
2005	65	81	75	152	174	167	76	149	147	116	109	485	1.796
2006	78	101	165	247	230	184	84	112	146	84	176	176	1.783
2007	72	191	129	89	150	91	91	103	110	168	163	241	1.598
2008	77	85	108	176	151	212	101	165	166	121	141	236	1.739
2009	100	221	226	224	167	186	85	103	58	75	53	125	1.623
2010	23	42	102	159	145	151	151	189	107	99	106	251	1.525

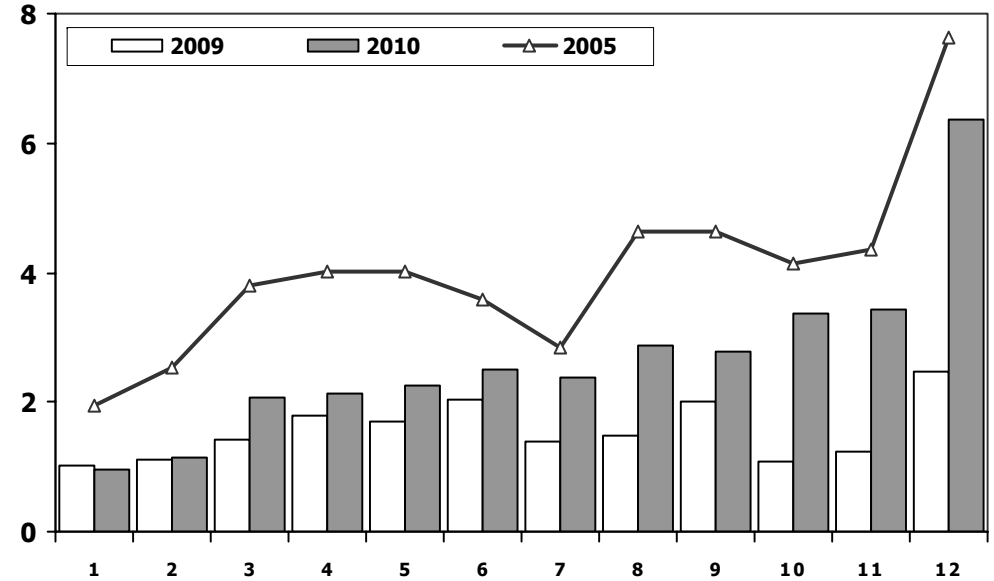


Ağır Ticari Araç Pazarının Analizi (x1000) HCV Market Analysis (x1000)



Aylar / Months	10 Yıl Ort. 10 Yrs Avr. (x1000)	2010 (x1000)	%
1	1,5	1,0	-37,9
2	2,0	1,1	-42,8
3	2,8	2,1	-25,3
4	2,8	2,1	-22,6
5	2,9	2,3	-22,6
6	2,7	2,5	-6,8
7	2,1	2,4	13,0
8	2,9	2,9	0,2
9	3,1	2,8	-9,7
10	2,9	3,4	17,9
11	2,9	3,4	18,3
12	4,4	6,4	46,2
Total	32,8	32,3	-1,7

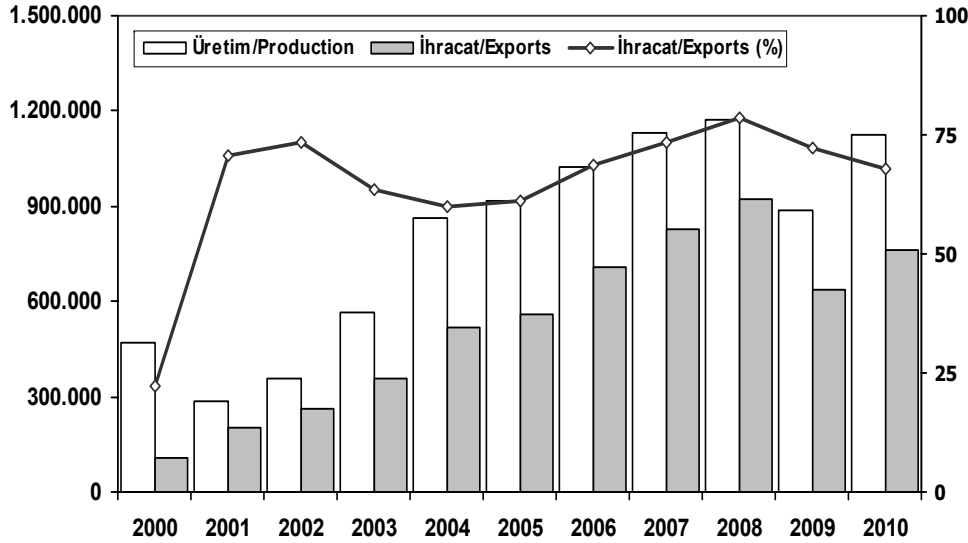
Ağır Ticari Araç Pazarı (x1000) HCV Market (x1000)



	1	2	3	4	5	6	7	8	9	10	11	12	Total
2000	1.260	2.222	2.828	2.750	3.447	3.553	2.670	3.821	3.927	3.905	3.876	2.025	36.284
2001	1.202	1.097	850	805	873	614	515	741	905	1.017	1.123	1.596	11.338
2002	484	669	956	1.185	1.346	1.311	1.037	1.436	1.587	1.855	1.821	3.306	16.993
2003	1.045	915	1.352	1.687	1.950	2.251	2.096	2.936	4.081	4.605	4.033	6.943	33.894
2004	2.269	2.310	4.579	3.981	4.344	3.498	2.491	3.546	3.820	3.153	3.037	6.146	43.174
2005	1.940	2.525	3.795	4.029	4.026	3.583	2.832	4.636	4.626	4.153	4.355	7.629	48.129
2006	2.052	3.708	5.038	4.815	5.060	3.848	2.786	3.607	3.520	3.263	4.031	5.935	47.663
2007	1.833	2.518	3.598	3.267	3.317	2.987	2.627	3.613	3.497	3.333	3.704	5.150	39.444
2008	2.265	2.870	3.165	3.266	3.029	3.069	2.536	2.922	2.897	2.263	1.899	2.340	32.521
2009	1.025	1.104	1.420	1.786	1.696	2.035	1.401	1.483	2.006	1.084	1.240	2.463	18.743
2010	955	1.141	2.059	2.133	2.251	2.494	2.373	2.881	2.787	3.376	3.444	6.365	32.259



İhracat/Üretim (2000/2010 Ocak-Aralık) Exports/Production (2000/2010 January-December)



	2000	2001	2002	2003	2004	2005	2006	2007	2008	2009	2010
Üretim/Production	468.381	285.737	357.405	563.450	864.073	916.062	1.026.427	1.132.951	1.171.917	884.466	1.124.982
İhracat/Exports	104.744	202.158	261.934	358.745	518.595	561.078	706.402	829.879	920.763	637.855	763.670
İhracat/Exports (%)	22	71	73	64	60	61	69	73	79	72	68

Taşıt Araçları İhracatı (2007/2010 Ocak-Aralık) Motor Vehicle Exports (2007/2010 January-December)

SEKTÖR/SECTOR	2007	2008	2009	2010	2010/2009 (%)
OTOMOBİL/ P.Cars	504.353	525.301	388.994	439.999	13
TİCARİ ARAÇLAR / CV	316.017	384.969	239.976	314.470	31
* Kamyonet/Pick-Up	295.585	366.646	231.260	306.902	33
* Minibüs/Minibus	2.695	891	1.271	800	-37
* Kamyon/Truck	9.398	9.742	1.910	2.411	26
* Midibüs/Midibus	2.987	2.180	1.065	807	-24
* Otobüs/Bus	5.352	5.510	4.470	3.550	-21
TAŞIT ARAÇLARI /MV TOTAL	820.370	910.270	628.970	754.469	20
TRAKTÖR/F.TRACTOR	9.509	10.493	8.885	9.201	4
TOTAL	829.879	920.763	637.855	763.670	20

Otomotiv Ana ve Yan Sanayii İhracatı (ABD \$) CBU and CKD Exports - \$

SEKTÖR/SECTOR	2008 Toplam (Total)	2009 Toplam (Total)	2010 Toplam (Total)	2010/2009 (%)
Toplam Ana Sanayi/Total Vehicle Industry	14.886.300.371	9.692.721.590	10.524.185.321	9
* Otomobil (P. Cars)	7.505.740.617	6.092.414.843	6.200.089.720	2
* Otobüs (Bus)	1.238.342.457	771.886.548	611.349.266	-21
* Diğerleri (Others)	6.142.217.297	2.828.420.200	3.712.746.334	31
Toplam Yan Sanayi/Total Component Industry	7.015.666.404	4.915.931.898	5.381.571.154	9
* Aksam ve Parça / Spare Parts and Components	5.806.202.045	3.935.854.200	4.294.684.843	9
* İç ve Dış Lastik / Tyres	976.029.024	826.339.394	958.038.048	16
* Akümülatör / Batteries	127.902.222	83.759.055	78.585.048	-6
* Emniyet Camı / Safety Glasses	105.533.113	69.979.249	50.263.215	-28
Toplam/Total	21.901.966.775	14.608.653.488	15.905.756.475	9

Kaynak: Otomotiv Endüstrisi İhracatçıları Birliği – Orta Anadolu İhracatçı Birlikleri



Firma Bazında İhracat (Adet)
Export Of member Companies (Unit)

FİRMALAR Companies	2008	2009	2010
OYAK RENAULT	252.232	222.278	233.057
TOFAŞ	209.443	168.353	193.737
FORD OTOSAN	217.876	128.388	175.754
TOYOTA	119.586	69.097	73.163
HYUNDAI ASSAN	61.000	17.136	42.249
KARSAN	482	7.287	19.441
HONDA TÜRKİYE	34.926	9.172	10.633
TÜRK TRAKTÖR	9.648	8.808	8.911
M. BENZ TÜRK	9.083	3.317	3.471
TEMSA	1.245	1.114	836
MAN TÜRKİYE	1.538	1.180	834
A.I.O.S.	1.042	565	498
B.M.C.	1.189	582	423
OTOKAR	619	501	373
HATTAT	53	77	290
GENEL TOPLAM	920.763	637.855	763.670

Kaynak: OSD

Sektör Bazında İhracat (\$)
Exports on Sectorial Basis

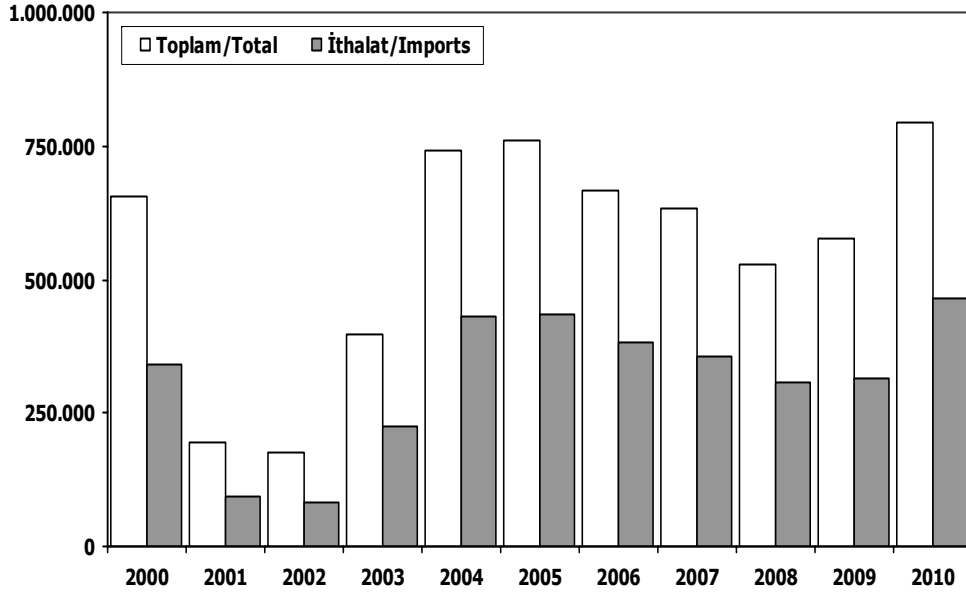
Sıra No	Sektörler Sectors	2009 Toplam (Total)	2010 Toplam (Total)	2009/2008 (%)	2010 (%) Pay (Share)
1	Otomotiv Endüstrisi *	15.043.181	17.382.809	15,6	15,3
2	Hazır giyim ve Konfeksiyon	13.301.704	14.644.153	10,1	12,9
4	Kimyevi Maddeler ve Mamülleri	9.660.896	12.720.421	31,7	11,2
3	Demir Çelik Ürünleri	11.029.428	12.302.328	11,5	10,8
5	Elektrik-Elektronik ve Makina	8.558.030	9.630.539	12,5	8,5
7	Tekstil ve Hammaddeleri	5.513.638	6.528.299	18,4	5,7
6	Makine ve Aksamları	5.607.888	6.355.791	13,3	5,6
9	Demir ve Demir Dışı Metaller	4.494.326	5.796.890	29,0	5,1
10	Hububat, Bakliyat, Yağlı Tohumlar	3.649.069	4.112.524	12,7	3,6
12	Madencilik Ürünleri	2.508.425	3.658.875	45,9	3,2
11	Çimento ve Toprak Ürünleri	3.084.987	3.216.400	4,3	2,8
13	Ağaç Mamülleri, Orman Ürünleri	2.502.229	2.928.738	17,0	2,6
14	Yaş Meyve ve Sebze	1.954.247	2.184.303	11,8	1,9
15	Fındık ve Mamülleri	1.183.263	1.544.484	30,5	1,4
16	Diğerleri (Birlik Kaydı Zorunlu Olmayan Ürünler)	5.060.116	1.466.733	-71,0	1,3
17	Halı	1.086.031	1.286.389	18,4	1,1
18	Deri ve Deri Mamülleri	1.076.640	1.272.305	18,2	1,1
19	Kuru Meyve ve Mamülleri	1.111.786	1.243.308	11,8	1,1
20	Değerli Maden ve Mücevherat	978.473	1.205.896	23,2	1,1
21	Meyve Sebze Mamülleri	1.034.873	1.119.555	8,2	1,0
22	Gemi ve Yat	1.831.905	1.118.462	-38,9	1,0
23	Canlı Hayvan, Su Ürünleri ve Mam.	828.808	962.309	16,1	0,8
24	Tütün	739.164	698.728	-5,5	0,6
25	Zeytin ve Zeytinyağ	209.337	189.520	-9,5	0,2
26	Diğer Sanayi Ürünleri	45.019	59.989	33,3	0,1
	TOPLAM (Total)	102.142.613	113.685.990	11,3	100,0

Kaynak: TİM

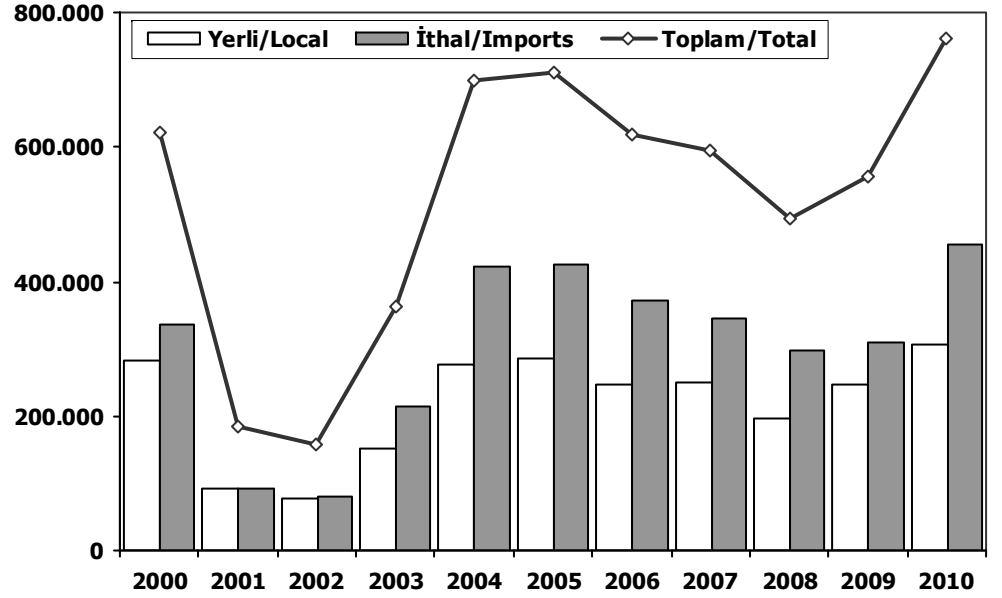
First 5 Sectors:

- 1- Transport Vehicle and Component Industry
- 2- Ready Wear and Confection
- 3- Chemical Articles and Products
- 4- Iron Steel Products
- 5-Electric-Electronic and Machine

Toplam Pazar (Otomobil+T.Araç) Total Market (P.Cars+C.V)



Hafif Araçlar Pazarı (2000-2010 Ocak-Aralık) LV Market (2000-2010 January-December)



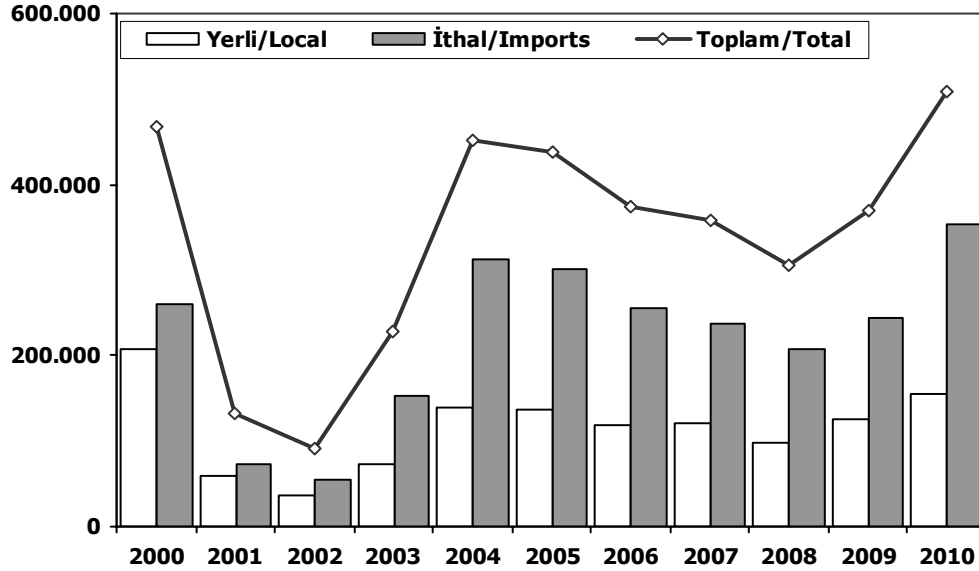
	2000	2001	2002	2003	2004	2005	2006	2007	2008	2009	2010
Toplam/Total	656.521	195.090	174.442	397.963	741.269	758.537	665.515	634.206	526.544	575.869	793.172
İthalat/Imports	341.664	93.887	83.027	222.984	430.204	436.033	382.460	355.752	306.087	313.921	465.408
İthalat/Imports (%)	52	48	48	56	58	57	57	56	58	55	59

	2000	2001	2002	2003	2004	2005	2006	2007	2008	2009	2010
Yerli/Local	283.955	92.696	78.321	150.842	275.521	284.134	246.800	249.705	196.162	247.694	305.354
İthal/Imports	336.282	91.056	79.128	213.227	422.574	426.274	371.052	345.057	297.861	309.432	455.559
Toplam/Total	620.237	183.752	157.449	364.069	698.095	710.408	617.852	594.762	494.023	557.126	760.913
İthalat/Imports (%)	54	50	50	59	61	60	60	58	60	56	60

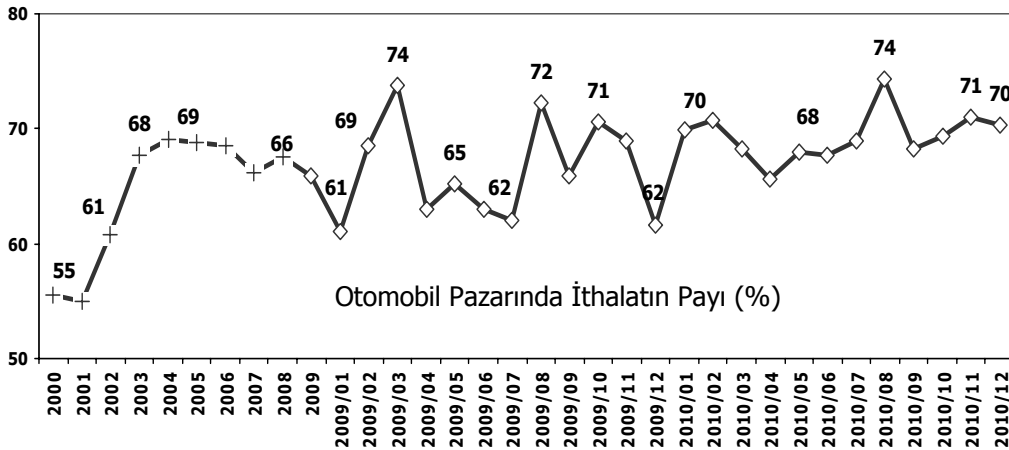


Otomobil Pazarı (2000-2010 Ocak-Aralık)

P.Cars Market (2000-2010 January-December)

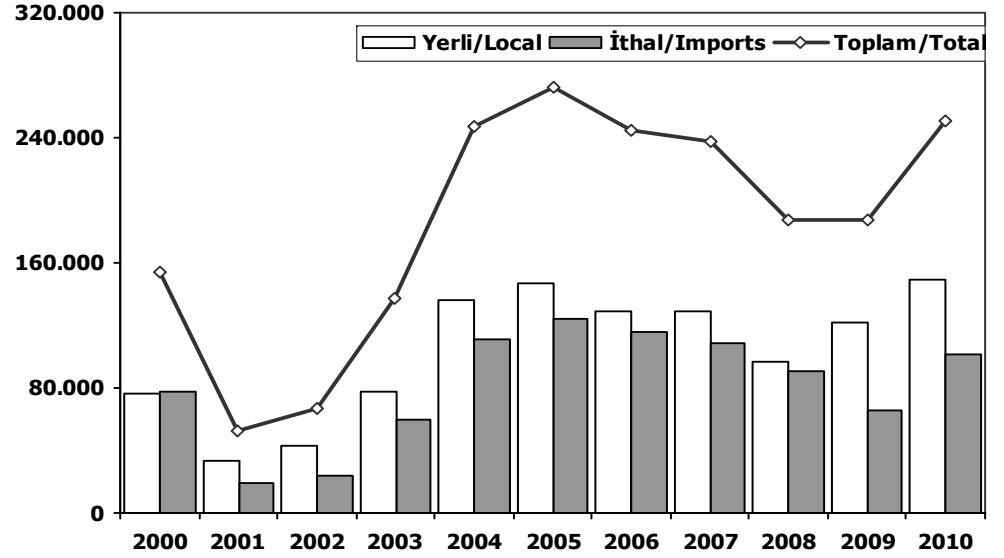


	2000	2001	2002	2003	2004	2005	2006	2007	2008	2009	2010
Yerli/Local	207.739	59.179	35.519	73.267	139.541	136.708	117.725	120.740	99.205	126.277	155.634
İthal/Imports	258.987	72.259	55.096	153.769	311.668	301.889	255.494	236.725	206.793	243.542	354.150
Toplam/Total	466.726	131.438	90.615	227.036	451.209	438.597	373.219	357.465	305.998	369.819	509.784
İthalat/Imports (%)	55	55	61	68	69	69	68	66	68	66	69

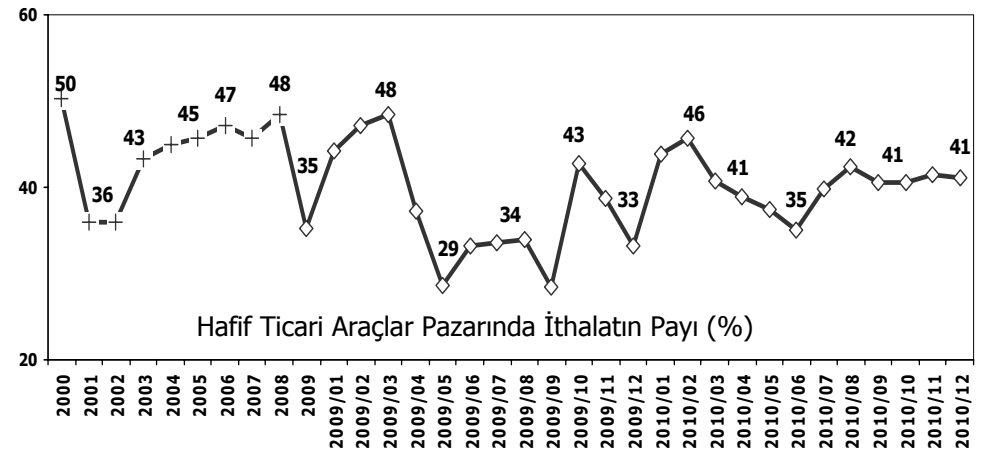


Hafif Ticari Araçlar Pazarı (2000-2010 Ocak-Aralık)

Light Commercial Vehicle Market (2000-2010 January-December)

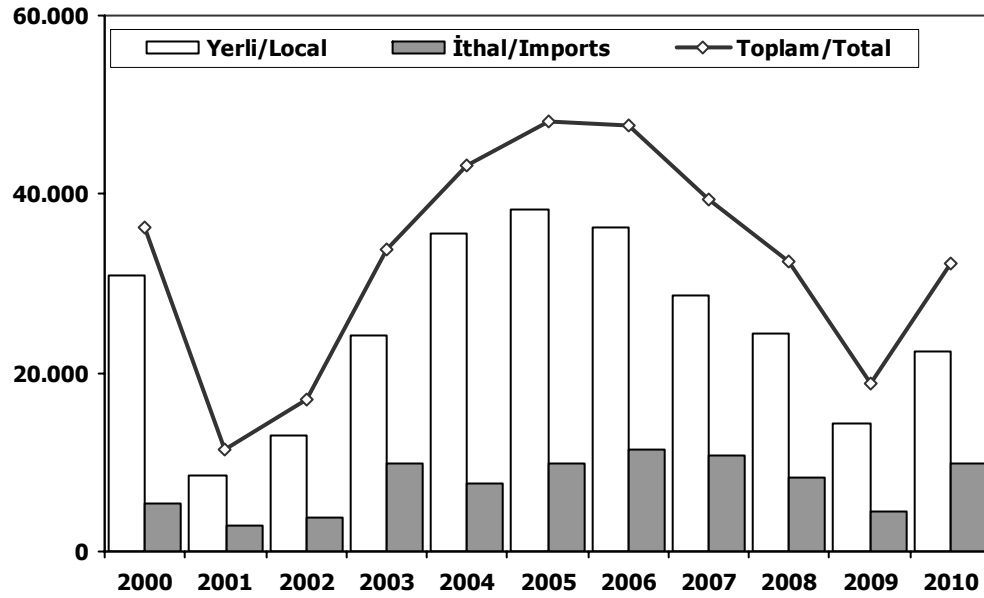


	2000	2001	2002	2003	2004	2005	2006	2007	2008	2009	2010
Yerli/Local	76.216	33.517	42.802	77.575	135.980	147.426	129.075	128.965	96.957	121.417	149.720
İthal/Imports	77.295	18.797	24.032	59.458	110.906	124.385	115.558	108.332	91.068	65.890	101.409
Toplam/Total	153.511	52.314	66.834	137.033	246.886	271.811	244.633	237.297	188.025	187.307	251.129
İthalat/Imports (%)	50	36	36	43	45	46	47	46	48	35	40



Ağır Ticari Araçlar Pazarı (2000-2010 Ocak-Aralık)

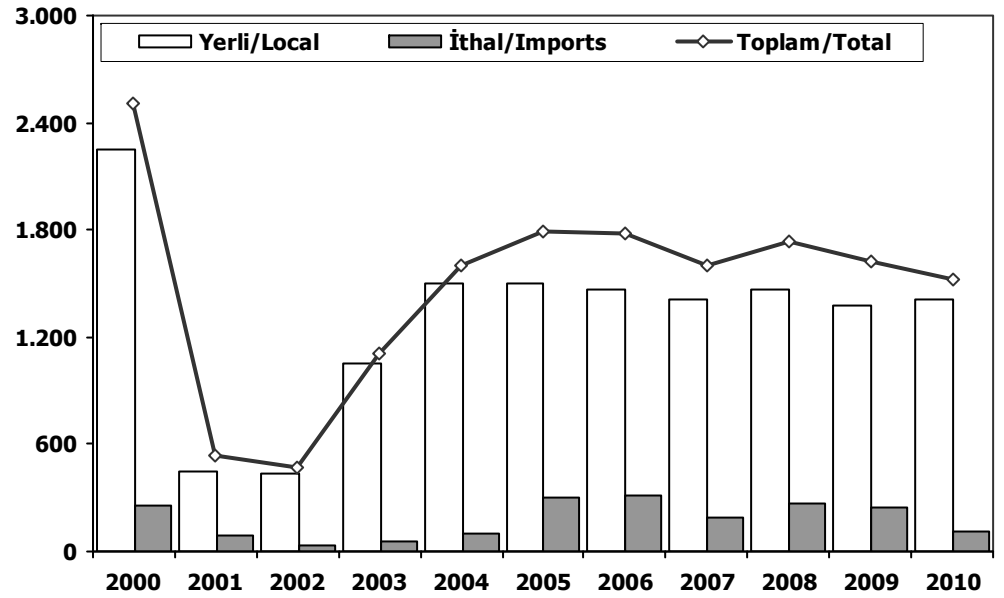
HCV Market (2000-2010 January-December)



	2000	2001	2002	2003	2004	2005	2006	2007	2008	2009	2010
Yerli/Local	30.902	8.507	13.094	24.137	35.544	38.370	36.255	28.749	24.295	14.254	22.410
İthal/Imports	5.382	2.831	3.899	9.757	7.630	9.759	11.408	10.695	8.226	4.489	9.849
Toplam/Total	36.284	11.338	16.993	33.894	43.174	48.129	47.663	39.444	32.521	18.743	32.259
İthalat/Imports (%)	15	25	23	29	18	20	24	27	25	24	31

Otobüs Pazarı (2000-2010 Ocak-Aralık)

Bus Market (2000-2010 January-December)



	2000	2001	2002	2003	2004	2005	2006	2007	2008	2009	2010
Yerli/Local	2.250	445	442	1.051	1.503	1.498	1.466	1.413	1.468	1.376	1.409
İthal/Imports	253	88	29	53	103	298	317	185	271	247	116
Toplam/Total	2.503	533	471	1.104	1.606	1.796	1.783	1.598	1.739	1.623	1.525
İthalat/Imports (%)	10	17	6	5	6	17	18	12	16	15	8

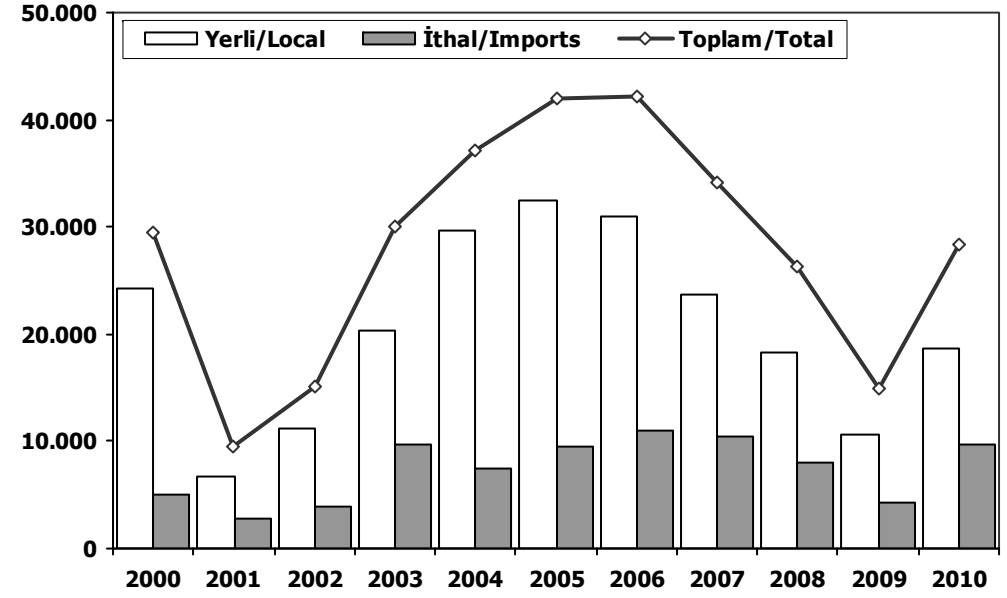
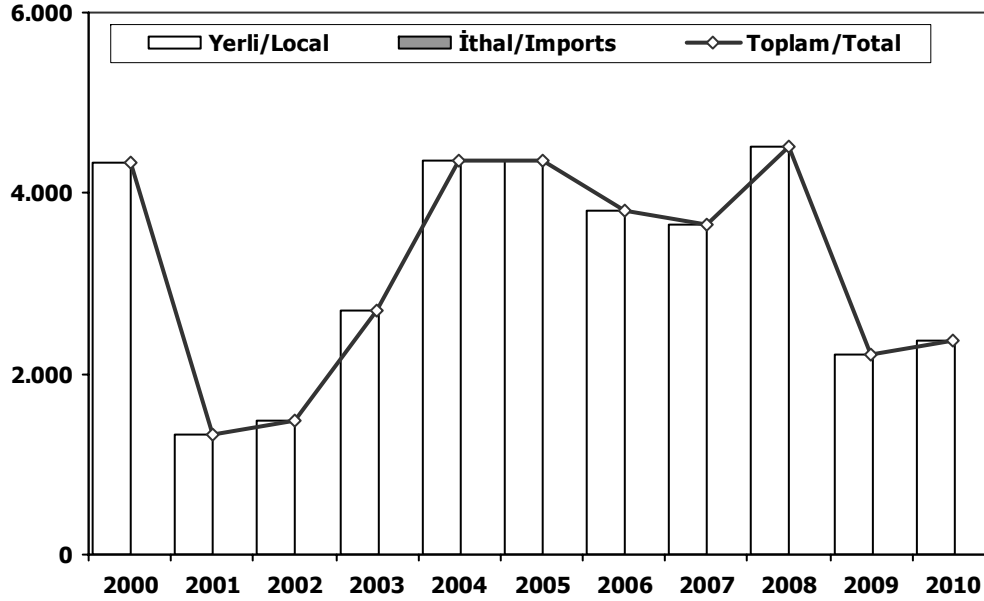


Midibüs Pazarı (2000-2010 Ocak-Aralık) (7-9 mt / 25-35 Kişilik)

Midibus (2000-2010 January-December) Market (7-9 mt / 25-35 Passengers)

Kamyon Pazarı (2000-2010 Ocak-Aralık)

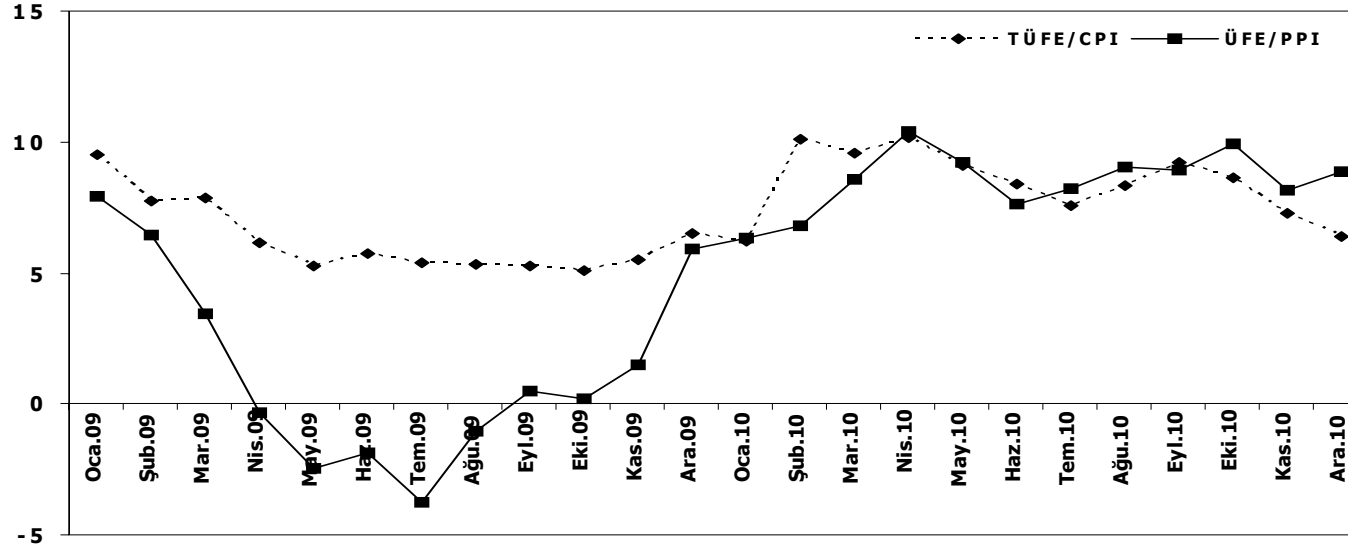
Truck Market (2000-2010 January-December)



	2000	2001	2002	2003	2004	2005	2006	2007	2008	2009	2010
Yerli/Local	4.336	1.331	1.494	2.694	4.363	4.351	3.809	3.661	4.511	2.205	2.372
İthal/Imports	0	0	0	0	0	0	0	0	11	0	0
Toplam/Total	4.336	1.331	1.494	2.694	4.363	4.351	3.809	3.661	4.522	2.205	2.372
İthalat/Imports (%)	0	0	0	0	0	0	0	0	0	0	0

	2000	2001	2002	2003	2004	2005	2006	2007	2008	2009	2010
Yerli/Local	24.316	6.731	11.158	20.392	29.678	32.521	30.980	23.675	18.316	10.673	18.629
İthal/Imports	5.129	2.743	3.870	9.704	7.527	9.461	11.091	10.510	7.944	4.242	9.733
Toplam/Total	29.445	9.474	15.028	30.096	37.205	41.982	42.071	34.185	26.260	14.915	28.362
İthalat/Imports (%)	17	29	26	32	20	23	26	31	30	28	34

TÜFE ve ÜFE'nin Yıllık Değişimi (%) CPI and PPI Yearly Changes (%)



TÜFE ve ÜFE'nin Aylık Değişimi (%) CPI and PPI Monthly Changes (%)

