



OTOMOTİV SANAYİİ DERNEĞİ  
AUTOMOTIVE MANUFACTURERS ASSOCIATION



# AYLIK RAPOR

## Automotive Industry Monthly Report

Aralık / December 2009

- **Üretim**/Production
- **Satış**/Sales
- **İthalat**/Imports
- **İhracat**/Exports

OSD "OICA" Üyesidir



OSD is a Member of "OICA"



## 2009 Aralık Ayı Özeti / 2009 December Summary

KONULAR/ MATTERS		AYLIK/ MONTHLY			YILLIK/ YEARLY		
		2008	2009	2009/ 2008 (%)	2008	2009	2009/ 2008 (%)
Üretim/ Production	Toplam/ Total	38.482	93.770	143,7	1.147.110	869.605	-24,2
	Otomobil/ P.Cars	20.500	48.917	138,6	621.567	510.931	-17,8
Pazar/ Market	Toplam/ Total	44.418	91.386	105,7	526.544	575.865	9,4
	Otomobil/ P.Cars	25.879	57.178	120,9	305.998	369.819	20,9
İthalat/ Import	Toplam/ Total	26.057	46.365	77,9	306.087	313.917	2,6
	Otomobil/ P.Cars	18.021	35.223	95,5	206.793	243.542	17,8
İhracat/ Export	Toplam/ Total	36.516	68.158	86,7	910.270	628.970	-30,9
	Otomobil/ P.Cars	24.703	38.108	54,3	525.301	388.994	-25,9
İhracat / Export (\$)	Toplam/ Total **	895.577.328	1.474.984.392	64,7	21.901.966.775	14.531.977.006	-33,6
	Otomobil/ P.Cars	298.096.640	556.899.944	86,8	7.505.740.617	6.092.424.656	-18,8

PARAMETRELER / PARAMETERS	AYLIK/ MONTHLY			YILLIK/ YEARLY		
	2008	2009	2009/ 2008 (%)	2008	2009	2009/ 2008 (%)
ÜFE/ PPI	-3,54	0,66	**	8,11	5,93	**
TÜFE/ CPI	-0,41	0,53	**	10,06	6,53	**
Sanayi Endeksi/ Industry Index	-3,69	0,28	**	10,07	5,20	**
\$ (*)	1,5291	1,4945	-2,3	1,3049	1,5503	18,8
EURO (*)	2,1435	2,1530	0,4	1,9148	2,1555	12,6
Japon Yeni (*)	1,6924	1,6182	-4,4	1,2838	1,6497	28,5

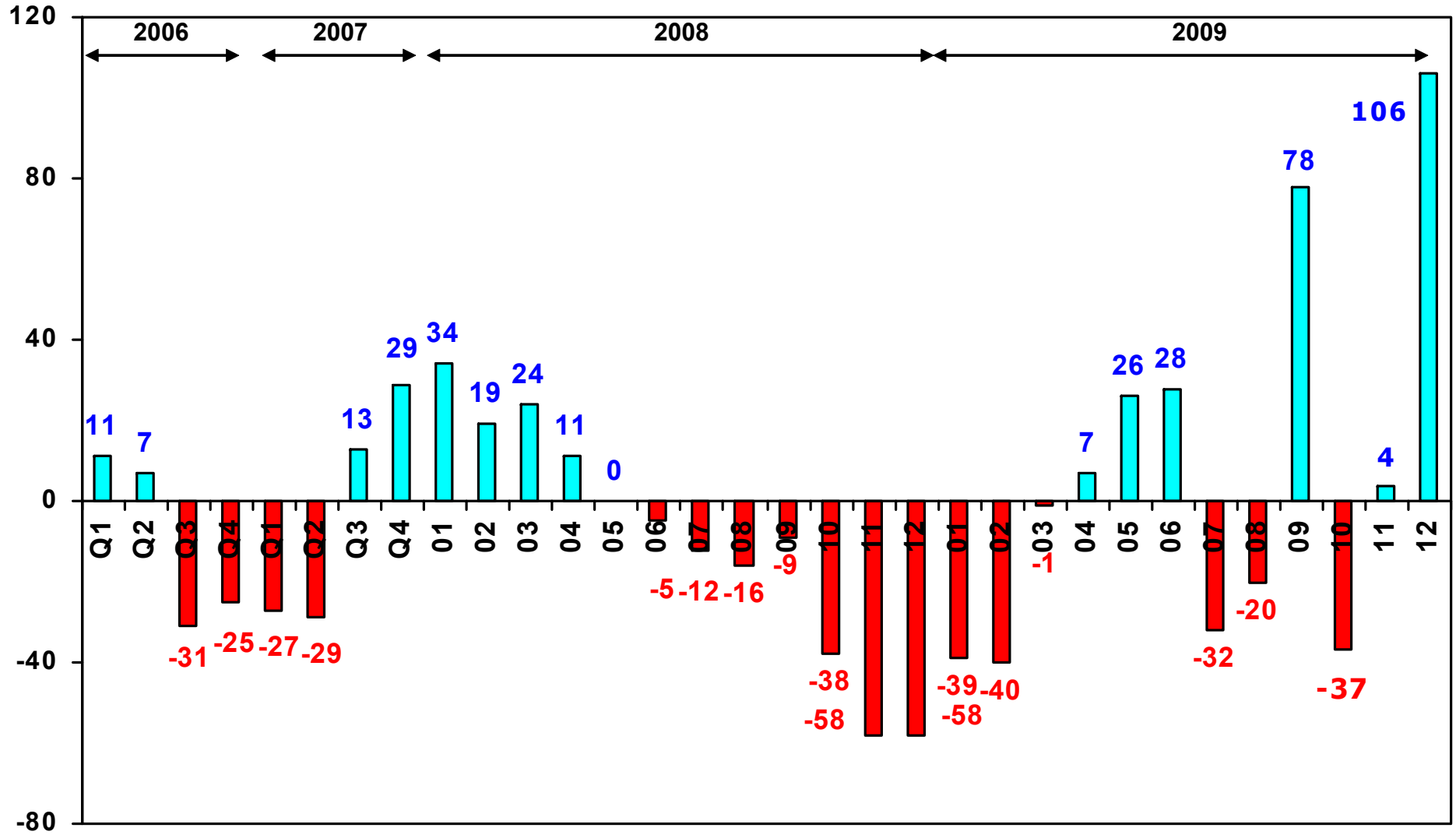
(\*) Ortalama Değerler / Average Values

(\*\*) Toplam Sanayi / Total Industry Including Components



# TOPLAM PAZARDA AYLIK DEGİSİM (%)

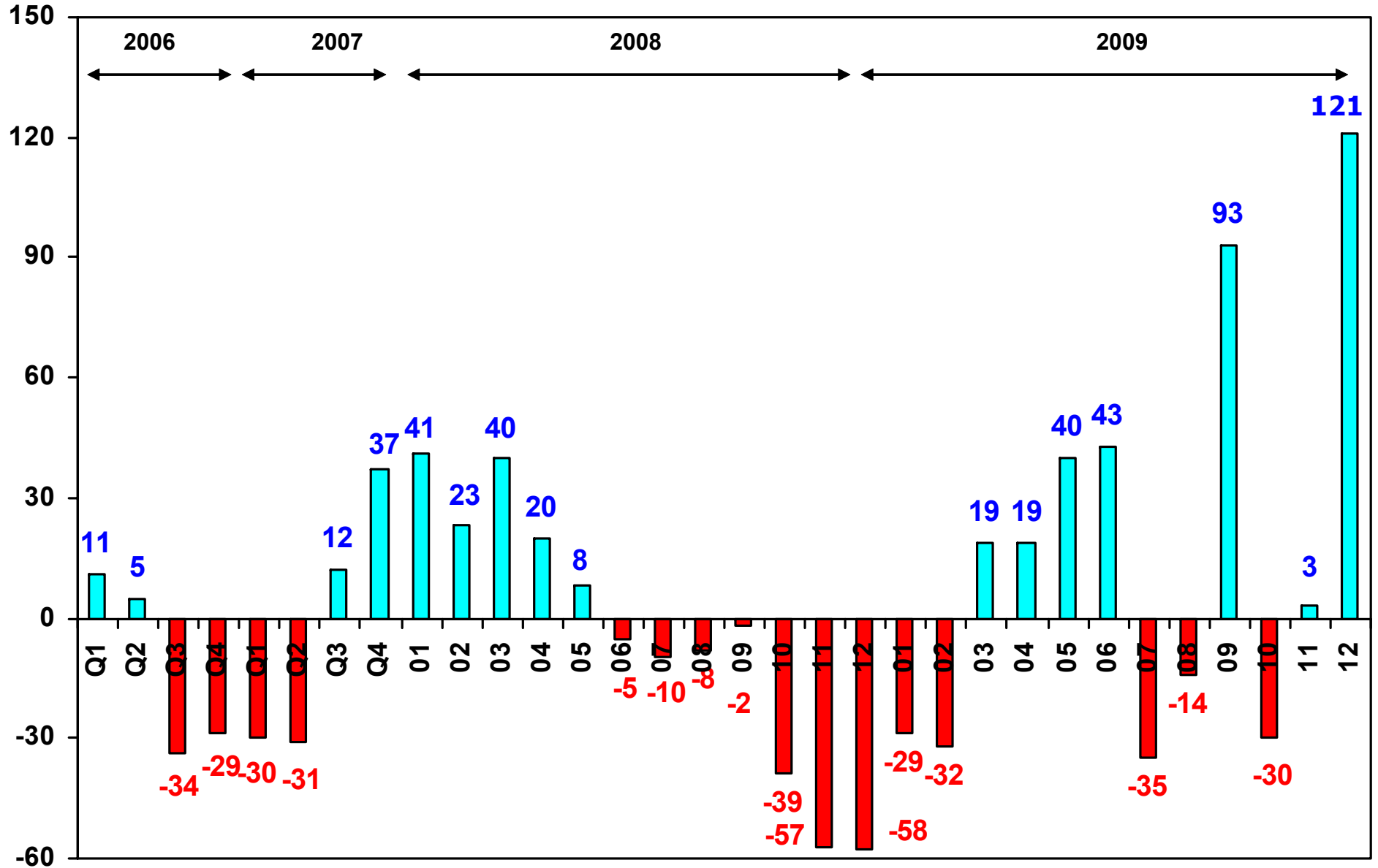
Monthly Change in Total Market - %





# OTOMOBIL PAZARINDA AYLIK DEGISIM (%)

Monthly Change in P.Cars Market - %



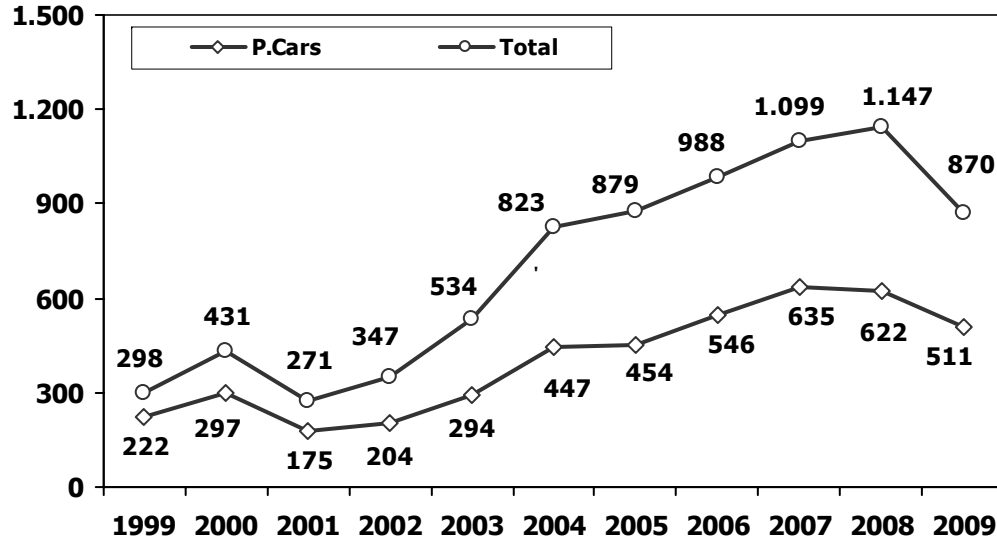


## 2008/2009 Yılları Üretim 2008/2009 Production

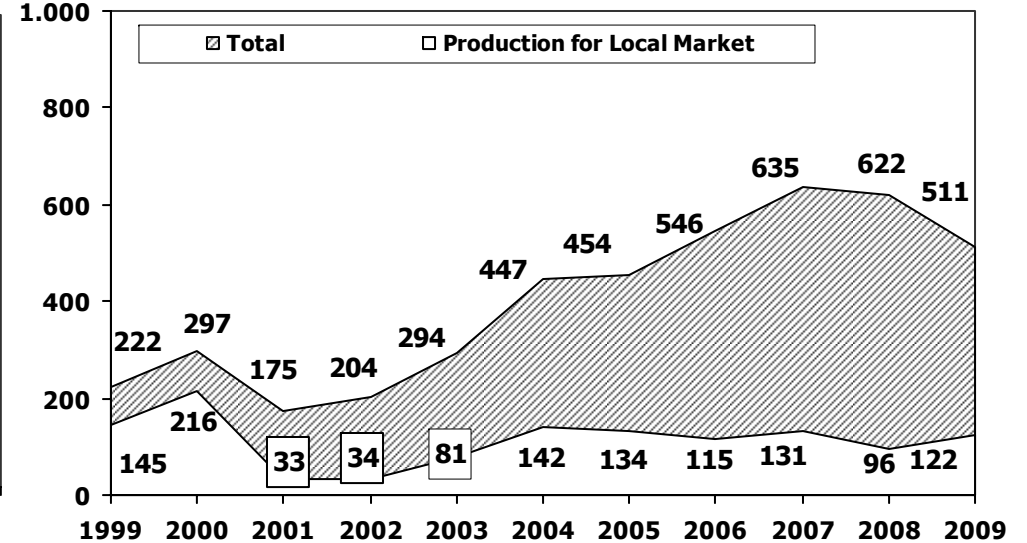
K.KAMYON : AYA 3.5-12 Ton (L.Truck:GVW 3.5-12 Ton)  
B.KAMYON : AYA 12 Ton'dan Büyük (M.Truck:GVW 12 Ton And Up)

TİPLER	ARALIK AYI ÜRETİMİ December Production		12 AYLIK ÜRETİM 12 Months Production		DEĞİŞİM % Percent Change %	
	2008	2009	2008	2009	ARALIK December	12 AY 12 Months
<b>OTOMOBİL - Pass.Car</b>	<b>20.500</b>	<b>48.917</b>	<b>621.567</b>	<b>510.931</b>	<b>139</b>	<b>-18</b>
<b>TİCARİ ARAÇLAR - Commercial Vehicles</b>	<b>17.982</b>	<b>44.853</b>	<b>525.543</b>	<b>358.674</b>	<b>149</b>	<b>-32</b>
* B. KAMYON - M. Truck	1.658	912	28.904	7.403	-45	-74
* K. KAMYON - L. Truck	778	218	7.896	843	-72	-89
* KAMYONET - Pick Up	13.278	41.320	449.434	330.044	211	-27
* OTOBÜS - Bus	615	477	7.581	5.931	-22	-22
* MİNİBÜS - Minibus	886	1.429	21.123	11.829	61	-44
* MİDİBÜS - Midibus	767	497	10.605	2.624	-35	-75
<b>TAŞIT ARAÇLARI TOPLAM - MV Total</b>	<b>38.482</b>	<b>93.770</b>	<b>1.147.110</b>	<b>869.605</b>	<b>144</b>	<b>-24</b>
TRAKTÖR - F.Tractor	836	1.619	24.807	14.861	94	-40
<b>GENEL TOPLAM - Grand Total</b>	<b>39.318</b>	<b>95.389</b>	<b>1.171.917</b>	<b>884.466</b>	<b>143</b>	<b>-25</b>

**Toplam Üretim ve Otomobil Üretimi** (x1000)  
Total & P.Cars Production (x1000)



**Otomobil Üretimi ve İhracat** (x1000)  
P.Cars Production & Exports (x1000)





## 12 Aylık Üretim (12 Months Production)

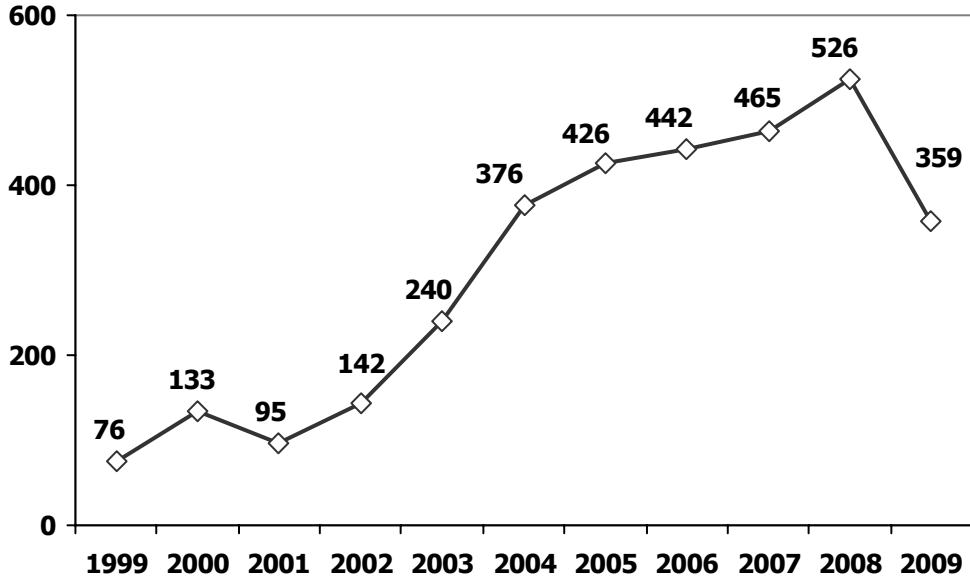
FİRMALAR Companies	OTOMOBİL Pass.Car	%	K.KAMYON L.Truck	%	B.KAMYON Mid.Truck	%	KAMYONET Pick Up	%	OTOBÜS Bus	%	MİNİBÜS Mini-Bus	%	MİDİBÜS Midi-Bus	%	TRAKTÖR F.Tractor	%	TOPLAM Totals
A.I.O.S.	0	0	402	48	0	0	210	0	0	0	0	0	1.205	46	0	0	1.817
B.M.C.	0	0	0	0	1.617	22	936	0	613	10	1	0	0	0	0	0	3.167
FORD OTOSAN	0	0	0	0	1.722	23	160.268	49	0	0	11.466	97	0	0	0	0	173.456
HATTAT	0	0	0	0	0	0	0	0	0	0	0	0	0	0	565	4	565
HONDA TÜRKİYE	18.264	4	0	0	0	0	0	0	0	0	0	0	0	0	0	0	18.264
HYUNDAI ASSAN	48.652	10	0	0	0	0	0	0	0	0	0	0	0	0	0	0	48.652
KARSAN	0	0	178	21	345	5	7.690	2	0	0	100	1	0	0	0	0	8.313
M. BENZ TÜRK	0	0	0	0	3.719	50	0	0	2.773	47	0	0	0	0	0	0	6.492
MANTÜRKİYE	0	0	0	0	0	0	0	0	1.544	26	0	0	0	0	0	0	1.544
OTOKAR	0	0	0	0	0	0	1.000	0	290	5	262	2	1.008	38	0	0	2.560
OYAK RENAULT	277.572	54	0	0	0	0	0	0	0	0	0	0	0	0	0	0	277.572
TEMSA	0	0	263	31	0	0	1.029	0	711	12	0	0	411	16	0	0	2.414
TOFAŞ	94.179	18	0	0	0	0	158.911	48	0	0	0	0	0	0	0	0	253.090
TOYOTA	72.264	14	0	0	0	0	0	0	0	0	0	0	0	0	0	0	72.264
TÜRK TRAKTÖR	0	0	0	0	0	0	0	0	0	0	0	0	0	0	14.296	96	14.296
<b>TOPLAM</b>	<b>510.931</b>	<b>100</b>	<b>843</b>	<b>100</b>	<b>7.403</b>	<b>100</b>	<b>330.044</b>	<b>100</b>	<b>5.931</b>	<b>100</b>	<b>11.829</b>	<b>100</b>	<b>2.624</b>	<b>100</b>	<b>14.861</b>	<b>100</b>	<b>884.466</b>

## Aralık Ayı Üretimi (December Production)

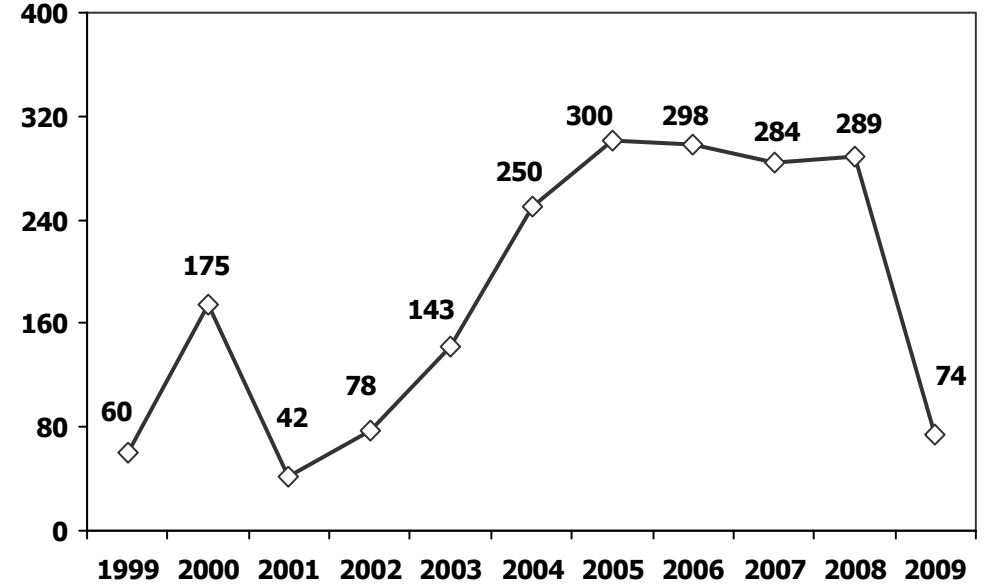
FİRMALAR Companies	OTOMOBİL Pass.Car	%	K.KAMYON L.Truck	%	B.KAMYON Mid.Truck	%	KAMYONET Pick Up	%	OTOBÜS Bus	%	MİNİBÜS Mini-Bus	%	MİDİBÜS Midi-Bus	%	TRAKTÖR F.Tractor	%	TOPLAM Totals
A.I.O.S.	0	0	62	28	0	0	140	0	0	0	0	0	253	51	0	0	455
B.M.C.	0	0	0	0	88	10	47	0	17	4	0	0	0	0	0	0	152
FORD OTOSAN	0	0	0	0	225	25	21.704	53	0	0	1.291	90	0	0	0	0	23.220
HATTAT	0	0	0	0	0	0	0	0	0	0	0	0	0	0	111	7	111
HONDA TÜRKİYE	1.141	2	0	0	0	0	0	0	0	0	0	0	0	0	0	0	1.141
HYUNDAI ASSAN	4.126	8	0	0	0	0	0	0	0	0	0	0	0	0	0	0	4.126
KARSAN	0	0	156	72	61	7	1.476	4	0	0	76	5	0	0	0	0	1.769
M. BENZ TÜRK	0	0	0	0	538	59	0	0	186	39	0	0	0	0	0	0	724
MANTÜRKİYE	0	0	0	0	0	0	0	0	121	25	0	0	0	0	0	0	121
OTOKAR	0	0	0	0	0	0	165	0	64	13	62	4	191	38	0	0	482
OYAK RENAULT	28.404	58	0	0	0	0	0	0	0	0	0	0	0	0	0	0	28.404
TEMSA	0	0	0	0	0	0	158	0	89	19	0	0	53	11	0	0	300
TOFAŞ	10.077	21	0	0	0	0	17.630	43	0	0	0	0	0	0	0	0	27.707
TOYOTA	5.169	11	0	0	0	0	0	0	0	0	0	0	0	0	0	0	5.169
TÜRK TRAKTÖR	0	0	0	0	0	0	0	0	0	0	0	0	0	0	1.508	93	1.508
<b>TOPLAM</b>	<b>48.917</b>	<b>99</b>	<b>218</b>	<b>100</b>	<b>912</b>	<b>100</b>	<b>41.320</b>	<b>100</b>	<b>477</b>	<b>100</b>	<b>1.429</b>	<b>100</b>	<b>497</b>	<b>100</b>	<b>1.619</b>	<b>100</b>	<b>95.389</b>



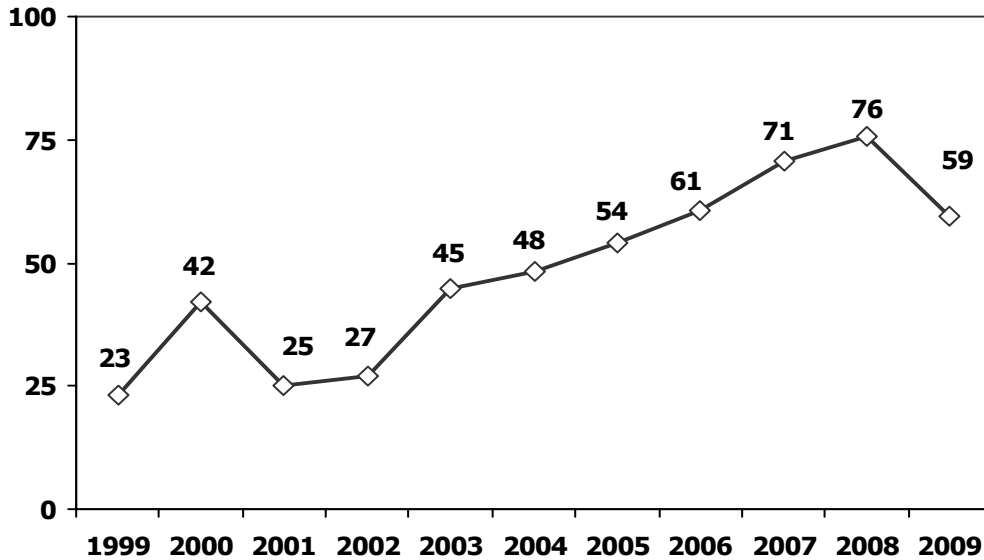
**Ticari Araç Üretimi (x1000)**  
Commercial Vehicle Production (x1000)



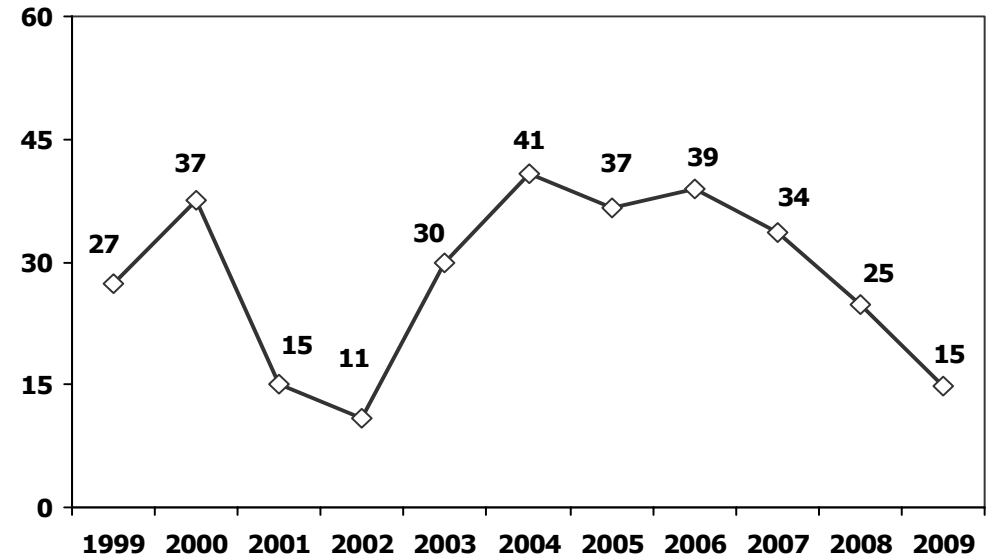
(AYA >12 Ton) **Büyük Kamyon Üretimi (x100)**  
(GVW >12 Ton) Heavy Truck Production (x100)



**Otobüs Üretimi (x100)**  
Bus Production (x100)

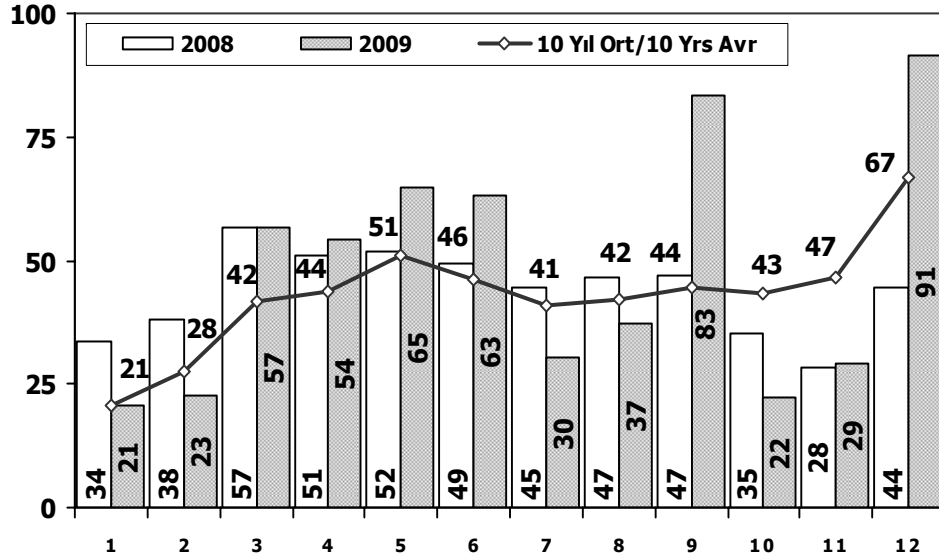


**Traktör Üretimi (x1000)**  
F. Tractor Production (x1000)



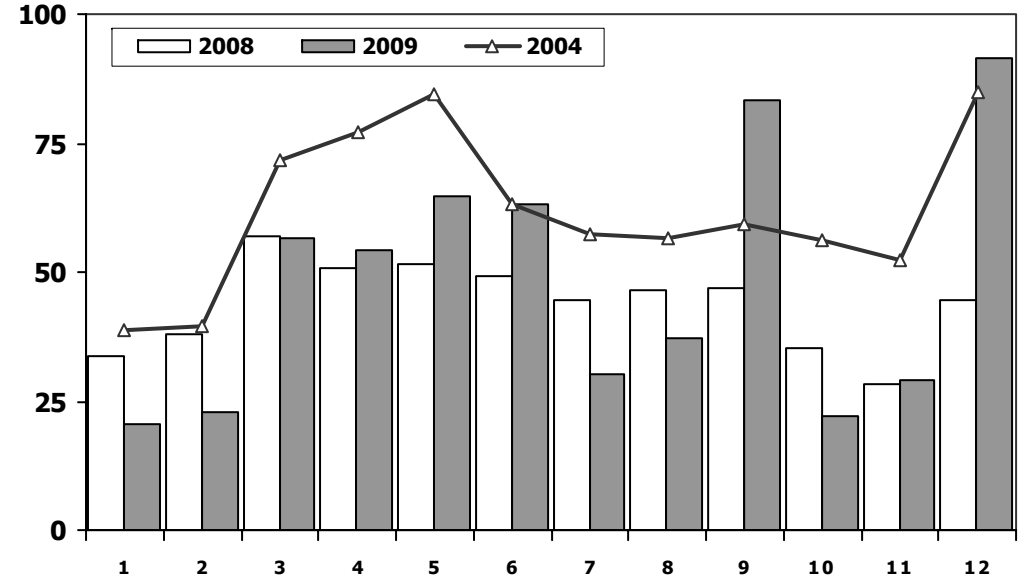


## Toplam Pazarın Analizi (x1000) Total Market Analysis (x1000)



Aylar/ Months	10 Yil Ort. 10 Yrs Avr. (x1000)	2009 (x1000)	%
1	20,8	20,6	-0,8
2	27,6	22,8	-17,1
3	41,7	56,5	35,5
4	43,7	54,4	24,6
5	50,9	64,9	27,5
6	46,1	63,1	37,0
7	41,1	30,2	-26,3
8	42,0	37,1	-11,7
9	44,3	83,4	88,1
10	43,4	22,1	-49,1
11	46,7	29,2	-37,4
12	66,9	91,4	36,6
<b>Total</b>	<b>515,2</b>	<b>575,9</b>	<b>11,8</b>

## Toplam Pazar (x1000) Total Market (x1000)

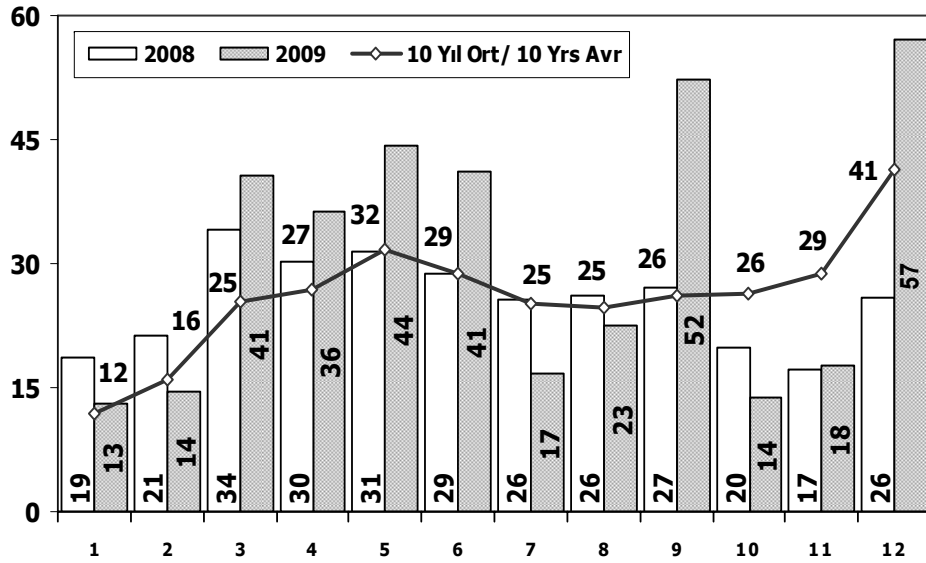


	1	2	3	4	5	6	7	8	9	10	11	12	Total
1999	10.159	18.704	28.811	33.916	36.136	39.919	29.932	25.510	35.481	35.617	46.921	60.330	401.436
2000	18.646	35.458	48.337	52.371	66.900	67.587	56.914	60.460	66.600	70.622	71.220	41.406	656.521
2001	14.390	13.654	11.398	14.724	19.002	20.128	19.027	17.450	12.307	11.579	16.836	24.595	195.090
2002	2.248	4.310	8.065	12.192	16.807	15.648	16.509	14.738	16.186	18.386	18.478	30.875	174.442
2003	12.576	11.317	17.095	20.380	27.803	30.517	32.268	28.839	40.315	50.051	44.081	82.721	397.963
2004	38.621	39.389	71.723	77.056	84.634	63.228	57.307	56.422	59.429	56.153	52.237	85.070	741.269
2005	22.687	38.291	64.502	60.873	71.383	64.379	63.847	68.647	66.580	60.791	65.719	110.838	758.537
2006	29.969	44.646	65.090	68.853	83.289	58.203	40.037	47.374	49.629	39.805	55.898	82.722	665.515
2007	24.950	31.702	45.488	45.633	51.255	51.661	50.117	54.171	50.078	56.058	67.017	106.076	634.206
2008	33.792	38.121	56.814	50.967	51.627	49.393	44.692	46.592	46.829	35.147	28.152	44.418	526.544
2009	20.631	22.846	56.531	54.426	64.887	63.102	30.246	37.085	83.406	22.117	29.202	91.386	575.865



### Otomobil Pazarının Analizi (x1000)

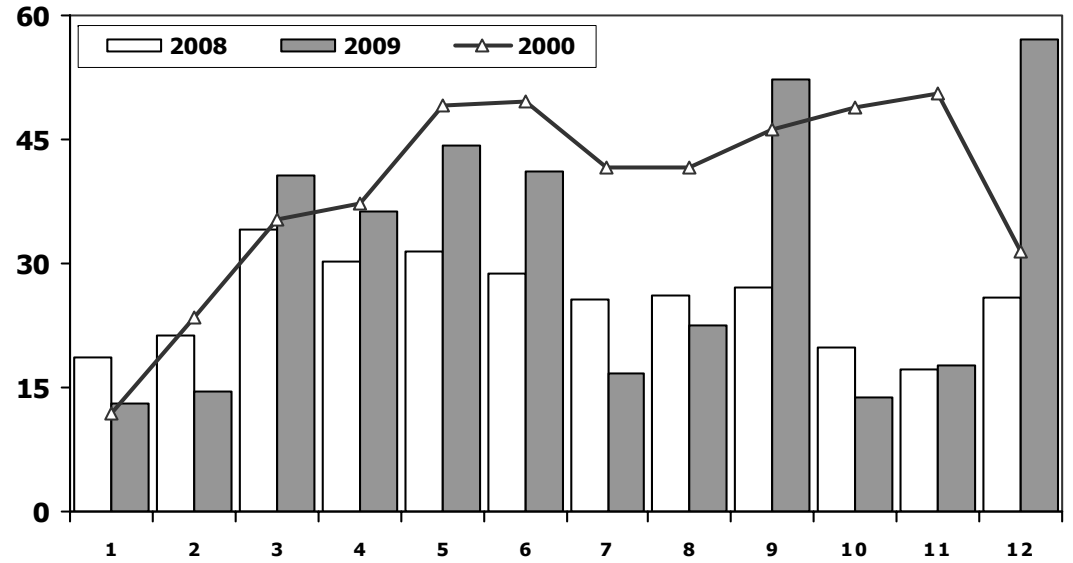
P.Cars Market Analysis (x1000)



Aylar / Months	10 Yil Ort. 10 Yrs Avr. (x1000)	2009 (x1000)	%
1	11,8	13,2	11,2
2	15,9	14,5	-8,8
3	25,4	40,6	59,7
4	26,9	36,2	34,4
5	31,6	44,2	39,7
6	28,8	41,0	42,4
7	25,1	16,6	-33,6
8	24,6	22,5	-8,3
9	26,2	52,2	98,9
10	26,4	13,8	-47,6
11	28,8	17,8	-38,3
12	41,4	57,2	38,0
<b>Total</b>	<b>313,1</b>	<b>369,8</b>	<b>18,1</b>

### Otomobil Pazarı (x1000)

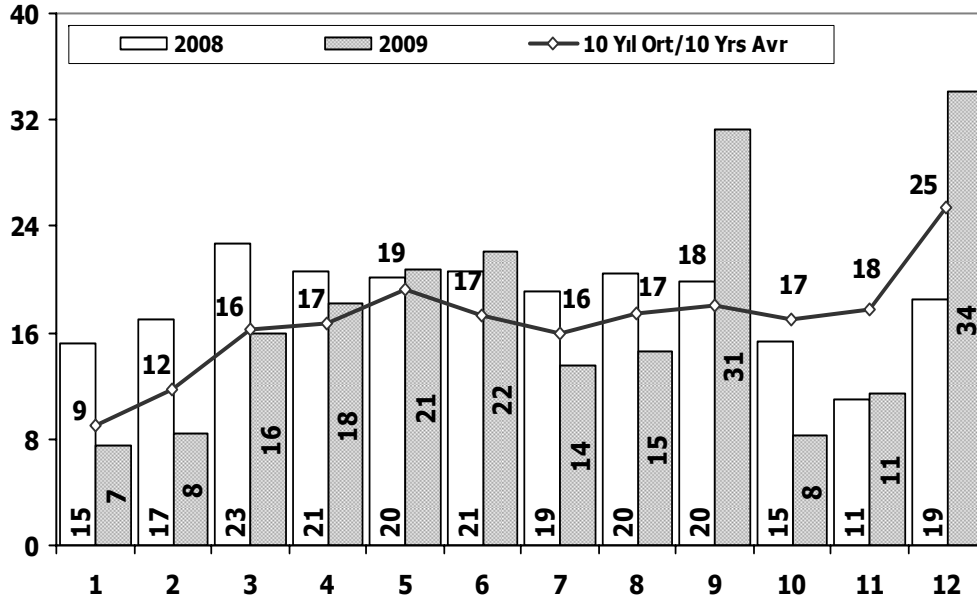
P.Cars Market (x1000)



	1	2	3	4	5	6	7	8	9	10	11	12	Total
1999	5.723	12.078	19.920	24.767	26.535	29.565	22.339	16.789	24.639	25.327	34.251	46.734	<b>288.667</b>
2000	11.872	23.543	35.278	37.232	49.100	49.488	41.544	41.659	46.134	48.938	50.482	31.456	<b>466.726</b>
2001	8.443	8.377	7.479	10.195	13.562	14.408	13.326	11.361	6.927	7.035	12.319	18.006	<b>131.438</b>
2002	591	1.426	3.464	6.245	8.948	7.811	9.842	7.308	8.753	9.381	9.848	16.998	<b>90.615</b>
2003	6.309	5.486	8.555	11.107	15.965	16.329	14.764	16.896	23.772	30.615	25.777	51.461	<b>227.036</b>
2004	25.625	23.695	46.075	47.995	54.610	37.671	33.410	33.709	33.383	34.292	30.547	50.197	<b>451.209</b>
2005	11.595	21.012	38.129	36.206	38.480	40.900	38.969	38.648	36.410	34.960	37.841	65.447	<b>438.597</b>
2006	16.506	24.929	36.996	40.177	48.521	32.982	22.653	24.873	27.517	21.237	30.477	46.351	<b>373.219</b>
2007	13.186	17.212	24.336	25.204	29.067	30.126	28.246	28.469	27.662	32.569	39.643	61.745	<b>357.465</b>
2008	18.588	21.196	34.147	30.313	31.477	28.724	25.530	26.102	27.053	19.788	17.201	25.879	<b>305.998</b>
2009	13.173	14.492	40.622	36.202	44.188	41.019	16.637	22.537	52.162	13.828	17.781	57.178	<b>369.819</b>

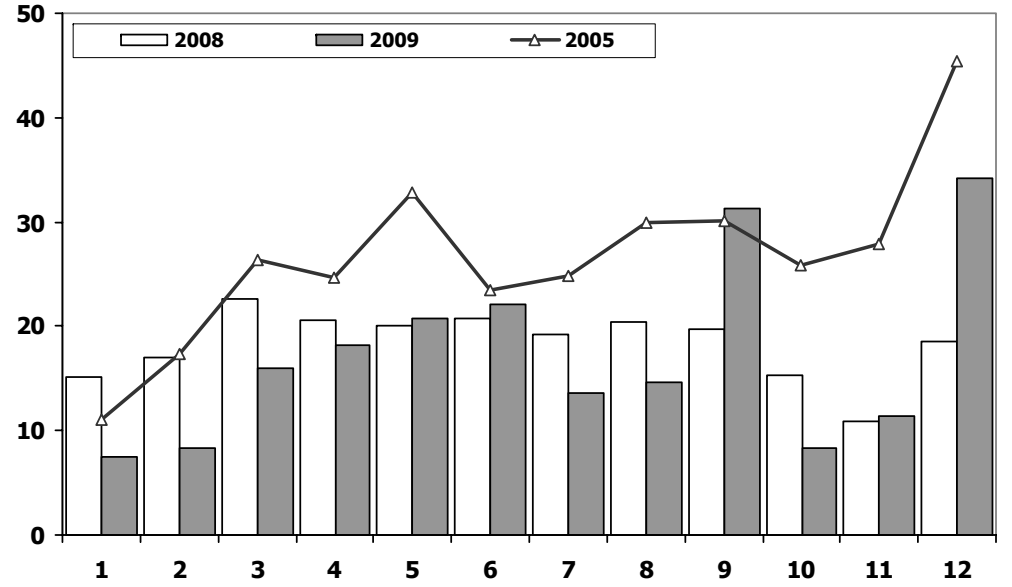


## Ticari Araç Pazarının Analizi (x1000) CV Market Analysis (x1000)



Aylar / Months	10 Yil Ort. 10 Yrs Avr. (x1000)	2009 (x1000)	%
1	9,0	7,5	-16,8
2	11,7	8,4	-28,4
3	16,3	15,9	-2,4
4	16,8	18,2	8,8
5	19,3	20,7	7,5
6	17,3	22,1	27,9
7	16,0	13,6	-15,0
8	17,4	14,5	-16,6
9	18,1	31,2	72,4
10	17,0	8,3	-51,3
11	17,8	11,4	-35,9
12	25,5	34,2	34,3
<b>Total</b>	<b>202,1</b>	<b>206,0</b>	<b>2,0</b>

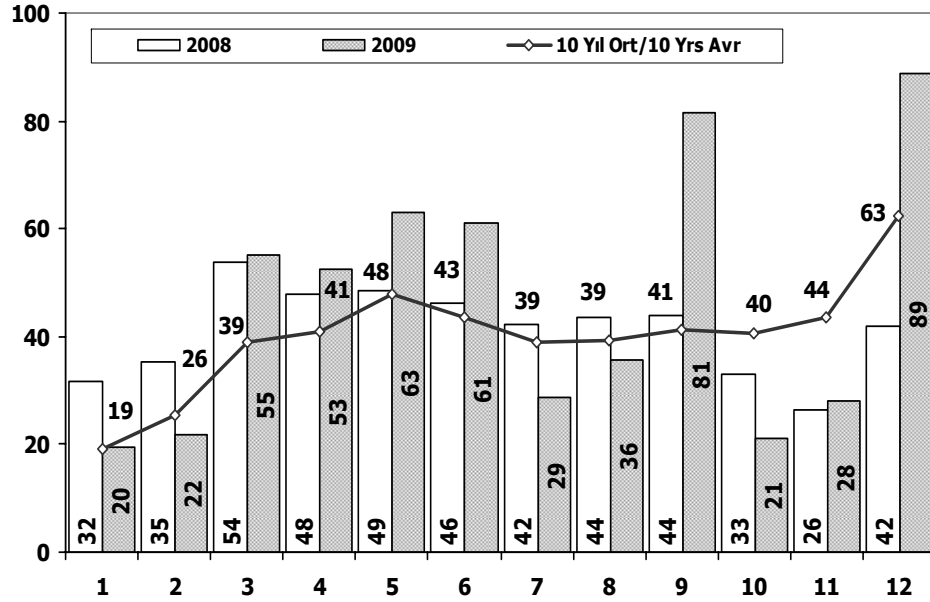
## Ticari Araç Pazarı (x1000) CV Total Market (Local + Imports) (x1000)



	1	2	3	4	5	6	7	8	9	10	11	12	Total
1999	4.436	6.626	8.891	9.149	9.601	10.354	7.593	8.721	10.842	10.290	12.670	13.596	112.769
2000	6.774	11.915	13.059	15.139	17.800	18.099	15.370	18.801	20.466	21.684	20.738	9.950	189.795
2001	5.947	5.277	3.919	4.529	5.440	5.720	5.701	6.089	5.380	4.544	4.517	6.589	63.652
2002	1.657	2.884	4.601	5.947	7.859	7.837	6.667	7.430	7.433	9.005	8.630	13.877	83.827
2003	6.267	5.831	8.540	9.273	11.838	14.188	17.504	11.943	16.543	19.436	18.304	31.260	170.927
2004	12.996	15.694	25.648	29.061	30.024	25.557	23.897	22.713	26.046	21.861	21.690	34.873	290.060
2005	11.092	17.279	26.373	24.667	32.903	23.479	24.878	29.999	30.170	25.831	27.878	45.391	319.940
2006	13.463	19.717	28.094	28.676	34.768	25.221	17.384	22.501	22.112	18.568	25.421	36.371	292.296
2007	11.764	14.490	21.152	20.429	22.188	21.535	21.871	25.702	22.416	23.489	27.374	44.331	276.741
2008	15.204	16.925	22.667	20.654	20.150	20.669	19.162	20.490	19.776	15.359	10.951	18.539	220.546
2009	7.458	8.354	15.909	18.224	20.699	22.083	13.609	14.548	31.244	8.289	11.421	34.208	206.046

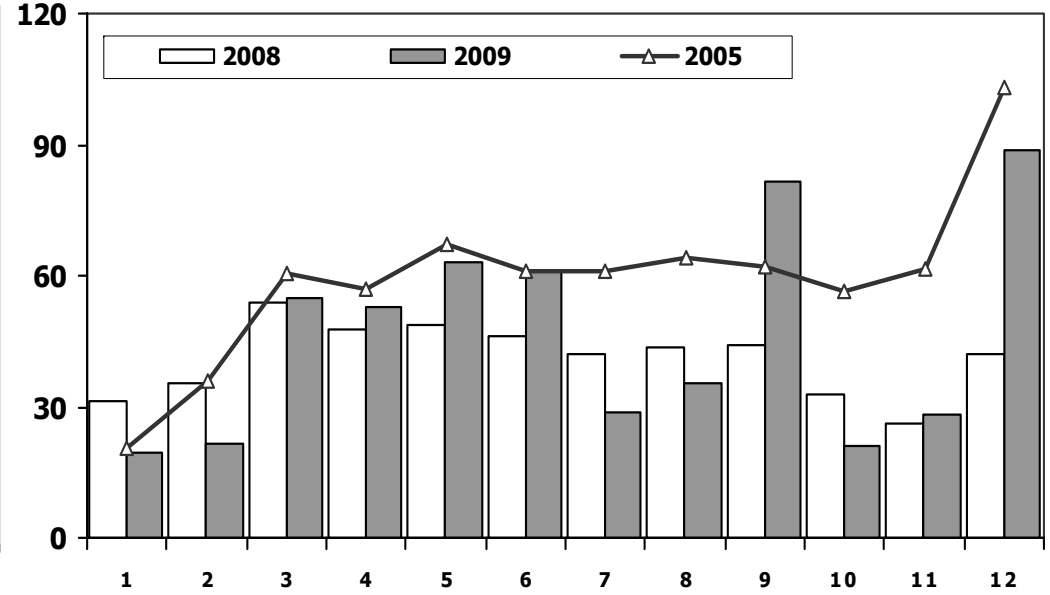


## Hafif Arac Pazarının Analizi (x1000) LV Market Analysis (x1000)



Aylar / Months	10 Yil Ort. 10 Yrs Avr. (x1000)	2009 (x1000)	%
1	19,3	19,6	1,7
2	25,5	21,7	-14,9
3	38,9	55,1	41,6
4	40,9	52,6	28,6
5	48,0	63,2	31,8
6	43,4	61,1	40,7
7	39,0	28,8	-26,0
8	39,1	35,6	-9,0
9	41,2	81,4	97,4
10	40,5	21,0	-48,0
11	43,6	28,0	-35,9
12	62,5	88,9	42,2
<b>Total</b>	<b>482,0</b>	<b>557,1</b>	<b>15,6</b>

## Hafif Arac Pazarı (x1000) LV Total Market (Local + Imports) (x1000)

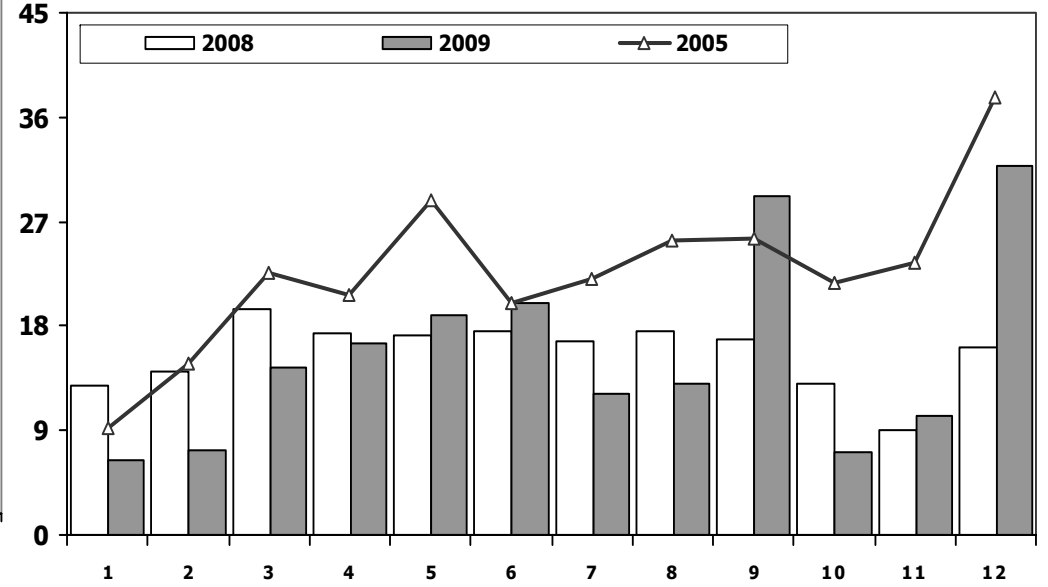
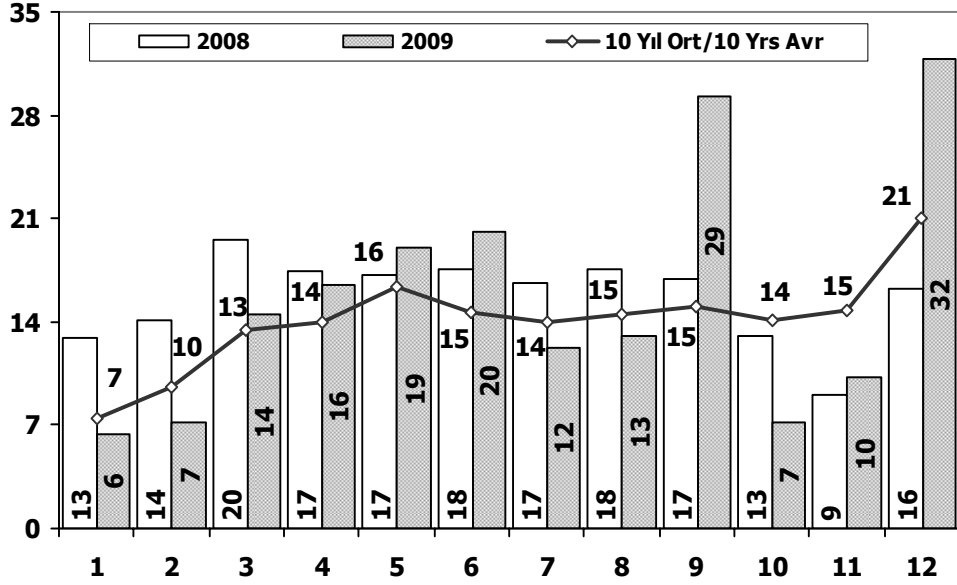


	1	2	3	4	5	6	7	8	9	10	11	12	Total
1999	9.247	17.326	26.969	32.049	34.310	38.118	28.708	23.794	33.339	33.513	44.710	57.497	379.580
2000	17.386	33.236	45.509	49.621	63.453	64.034	54.244	56.639	62.673	66.717	67.344	39.381	620.237
2001	13.188	12.557	10.548	13.919	18.129	19.514	18.512	16.709	11.402	10.562	15.713	22.999	183.752
2002	1.764	3.641	7.109	11.007	15.461	14.337	15.472	13.302	14.599	16.531	16.657	27.569	157.449
2003	11.531	10.402	15.743	18.693	25.853	28.266	30.172	25.903	36.234	45.446	40.048	75.778	364.069
2004	36.352	37.079	67.144	73.075	80.290	59.730	54.816	52.876	55.609	53.000	49.200	78.924	698.095
2005	20.747	35.766	60.707	56.844	67.357	60.796	61.015	64.011	61.954	56.638	61.364	103.209	710.408
2006	27.917	40.938	60.052	64.038	78.229	54.355	37.251	43.767	46.109	36.542	51.867	76.787	617.852
2007	23.117	29.184	41.890	42.366	47.938	48.674	47.490	50.558	46.581	52.725	63.313	100.926	594.762
2008	31.527	35.251	53.649	47.701	48.598	46.324	42.156	43.670	43.932	32.884	26.253	42.078	494.023
2009	19.606	21.742	55.111	52.640	63.191	61.067	28.845	35.609	81.397	21.033	27.962	88.923	557.126



## Hafif Ticari Arac Pazarının Analizi (x1000) LCV Market Analysis (x1000)

## Hafif Ticari Arac Pazarı (x1000) LCV Total Market (Local + Imports) (x1000)

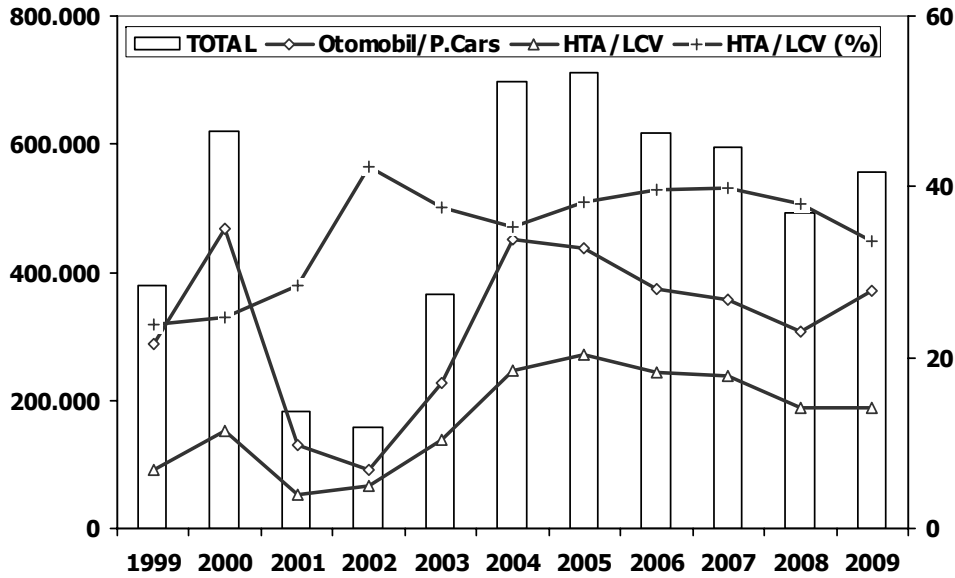


Aylar/ Months	10 Yil Ort. 10 Yrs Avr. (x1000)	2009 (x1000)	%
1	7,4	6,4	-13,5
2	9,6	7,3	-24,8
3	13,5	14,5	7,4
4	14,0	16,4	17,5
5	16,3	19,0	16,3
6	14,6	20,0	37,2
7	13,9	12,2	-12,3
8	14,5	13,1	-10,1
9	15,0	29,2	94,7
10	14,0	7,2	-48,7
11	14,8	10,2	-31,2
12	21,1	31,7	50,5
<b>Total</b>	<b>168,9</b>	<b>187,3</b>	<b>10,9</b>

	1	2	3	4	5	6	7	8	9	10	11	12	Total
1999	3.524	5.248	7.049	7.282	7.775	8.553	6.369	7.005	8.700	8.186	10.459	10.763	90.913
2000	5.514	9.693	10.231	12.389	14.353	14.546	12.700	14.980	16.539	17.779	16.862	7.925	153.511
2001	4.745	4.180	3.069	3.724	4.567	5.106	5.186	5.348	4.475	3.527	3.394	4.993	52.314
2002	1.173	2.215	3.645	4.762	6.513	6.526	5.630	5.994	5.846	7.150	6.809	10.571	66.834
2003	5.222	4.916	7.188	7.586	9.888	11.937	15.408	9.007	12.462	14.831	14.271	24.317	137.033
2004	10.727	13.384	21.069	25.080	25.680	22.059	21.406	19.167	22.226	18.708	18.653	28.727	246.886
2005	9.152	14.754	22.578	20.638	28.877	19.896	22.046	25.363	25.544	21.678	23.523	37.762	271.811
2006	11.411	16.009	23.056	23.861	29.708	21.373	14.598	18.894	18.592	15.305	21.390	30.436	244.633
2007	9.931	11.972	17.554	17.162	18.871	18.548	19.244	22.089	18.919	20.156	23.670	39.181	237.297
2008	12.939	14.055	19.502	17.388	17.121	17.600	16.626	17.568	16.879	13.096	9.052	16.199	188.025
2009	6.433	7.250	14.489	16.438	19.003	20.048	12.208	13.072	29.235	7.205	10.181	31.745	187.307

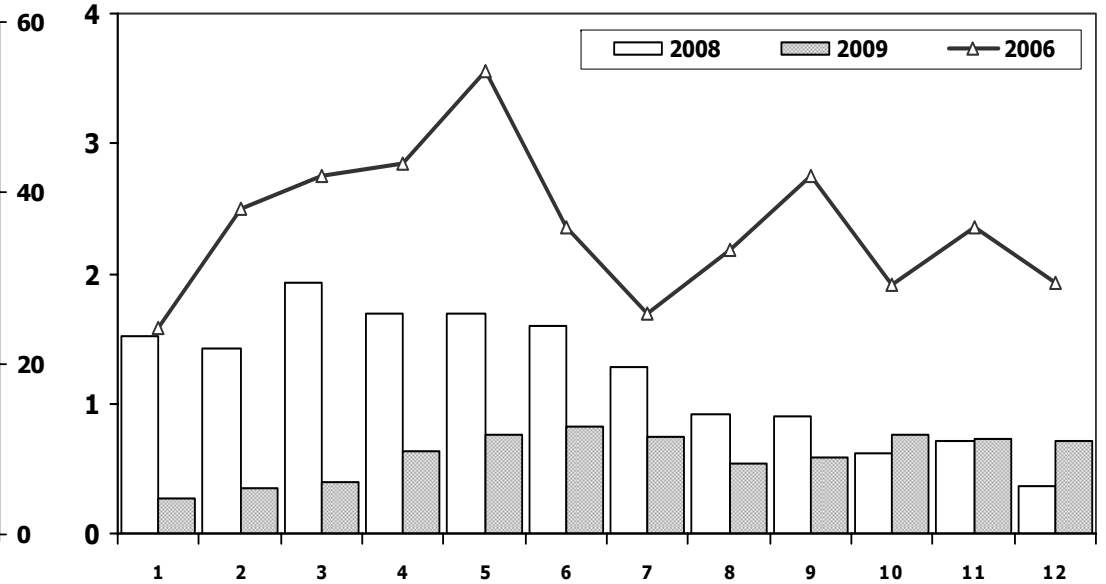


## Hafif Araç Pazarı (AYA < 3.5 Ton) Light Vehicle Market (GVW < 3.5 Ton)



	1999	2000	2001	2002	2003	2004	2005	2006	2007	2008	2009
<b>Otomobil/P.Cars</b>	288.667	466.726	131.438	90.615	227.036	451.209	438.597	373.219	357.465	305.998	369.819
<b>HTA/LCV</b>	90.913	153.511	52.314	66.834	137.033	246.886	271.811	244.633	237.297	188.025	187.307
<b>TOTAL</b>	379.580	620.237	183.752	157.449	364.069	698.095	710.408	617.852	594.762	494.023	557.126
<b>HTA/LCV (%)</b>	24	25	28	42	38	35	38	40	40	38	34

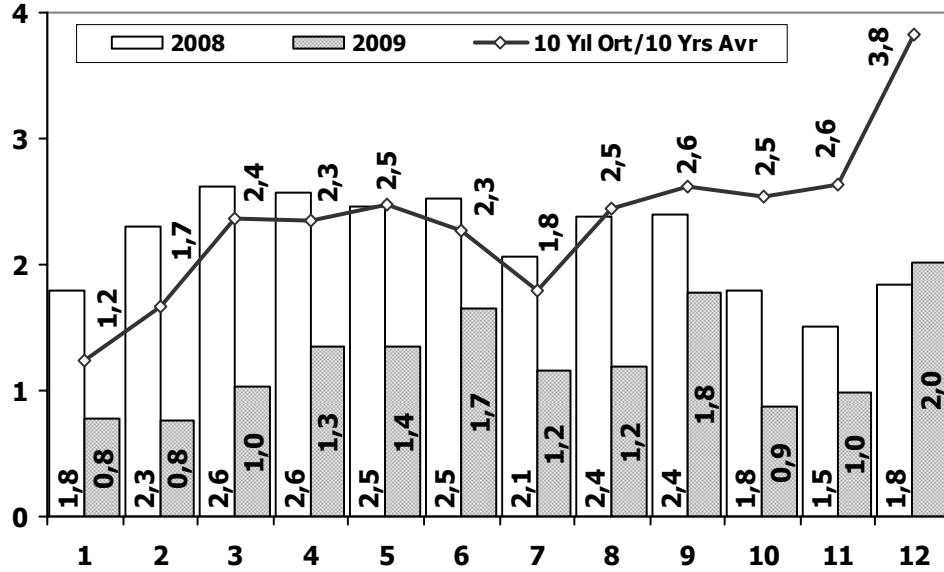
## Traktör Pazarı (x1000) F.Tractor Market (x1000)



	1	2	3	4	5	6	7	8	9	10	11	12	Total
<b>1999</b>	1.566	2.112	2.984	3.526	2.951	1.443	697	719	892	909	945	536	19.280
<b>2000</b>	777	1.037	2.266	2.913	3.507	2.746	1.959	2.324	3.345	3.108	2.669	1.146	27.797
<b>2001</b>	1.531	1.540	1.359	1.426	1.311	563	415	664	422	416	313	165	10.125
<b>2002</b>	291	401	380	585	435	508	561	546	747	628	560	680	6.322
<b>2003</b>	712	830	1.313	1.460	1.527	1.123	1.311	1.404	1.706	1.893	1.541	1.468	16.288
<b>2004</b>	1.946	1.874	2.909	3.260	2.863	2.816	1.988	2.209	2.509	1.989	2.198	1.364	27.925
<b>2005</b>	1.026	1.636	2.001	2.599	2.569	2.780	2.148	2.819	2.567	2.477	2.297	2.089	27.008
<b>2006</b>	1.578	2.493	2.746	2.841	3.561	2.356	1.685	2.177	2.756	1.915	2.353	1.925	28.386
<b>2007</b>	1.812	1.778	2.063	2.107	2.266	1.853	1.653	2.065	2.372	2.239	2.231	1.602	24.041
<b>2008</b>	1.510	1.427	1.933	1.692	1.689	1.592	1.275	924	904	609	707	359	14.621
<b>2009</b>	267	344	388	638	759	828	741	534	586	765	725	715	7.290

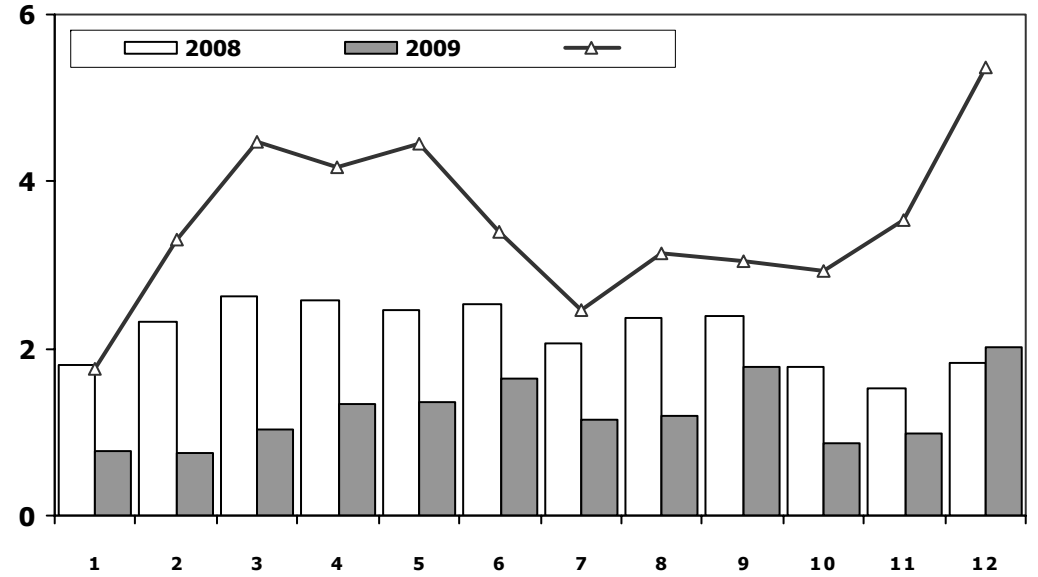


### Kamyon Pazarının Analizi (x1000) AYA > 5 Ton Truck Market Analysis (x1000) GVW > 5 Ton



Aylar / Months	10 Yil Ort. 10 Yrs Avr. (x1000)	2009 (x100)	%
1	1,2	0,8	-37,7
2	1,7	0,8	-54,5
3	2,4	1,0	-56,4
4	2,3	1,3	-42,8
5	2,5	1,4	-45,2
6	2,3	1,7	-27,4
7	1,8	1,2	-35,7
8	2,5	1,2	-51,1
9	2,6	1,8	-31,9
10	2,5	0,9	-65,9
11	2,6	1,0	-62,7
12	3,8	2,0	-47,4
<b>Total</b>	<b>28,2</b>	<b>14,9</b>	<b>-47,2</b>

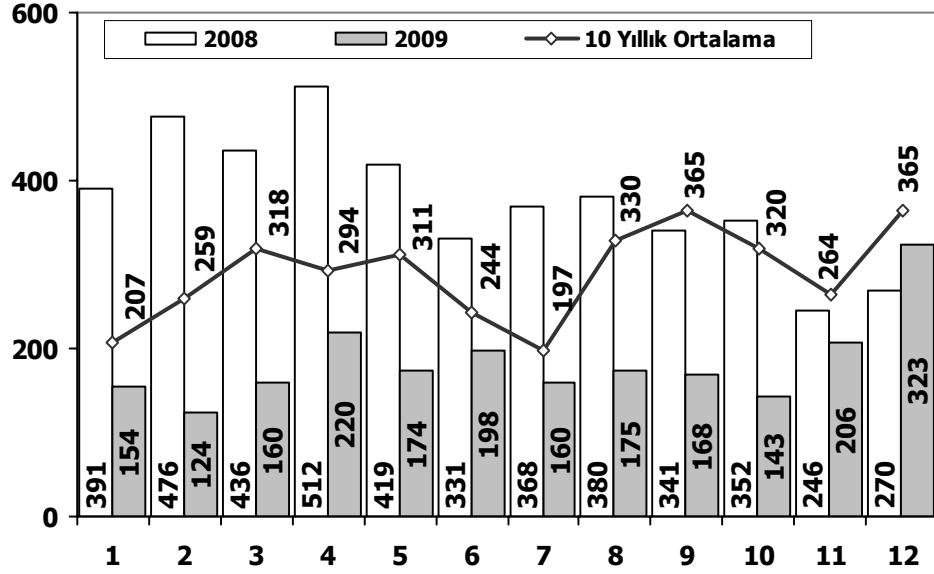
### Kamyon Pazarı (x1000) AYA > 5 Ton Truck Market (x1000) GVW > 5 Ton



YIL	OCAK	ŞUBAT	MART	NİSAN	MAYIS	HAZİRAN	TEMMUZ	AĞUSTOS	EYLÜL	EKİM	KASIM	ARALIK	TOPLAM
1999	626	914	1.353	1.450	1.462	1.335	914	1.471	1.661	1.505	1.705	2.114	16.510
2000	955	1.697	2.250	2.209	2.790	2.903	2.125	3.048	3.107	3.235	3.386	1.740	29.445
2001	950	942	725	709	793	498	420	604	680	795	975	1.383	9.474
2002	403	532	824	1.048	1.157	1.199	927	1.300	1.403	1.666	1.637	2.932	15.028
2003	771	773	1.123	1.494	1.668	2.008	1.933	2.490	3.563	4.147	3.720	6.406	30.096
2004	1.863	1.949	3.983	3.352	3.651	3.118	2.234	2.897	3.285	2.727	2.629	5.517	37.205
2005	1.693	2.186	3.288	3.484	3.413	3.147	2.504	4.028	4.043	3.708	3.918	6.570	41.982
2006	1.767	3.310	4.467	4.180	4.449	3.398	2.472	3.142	3.052	2.926	3.550	5.358	42.071
2007	1.554	2.055	3.065	2.940	2.865	2.613	2.372	3.145	2.988	2.886	3.258	4.444	34.185
2008	1.797	2.309	2.621	2.578	2.459	2.526	2.067	2.377	2.390	1.790	1.512	1.834	26.260
2009	771	759	1.034	1.342	1.355	1.651	1.156	1.198	1.783	866	981	2.015	14.911

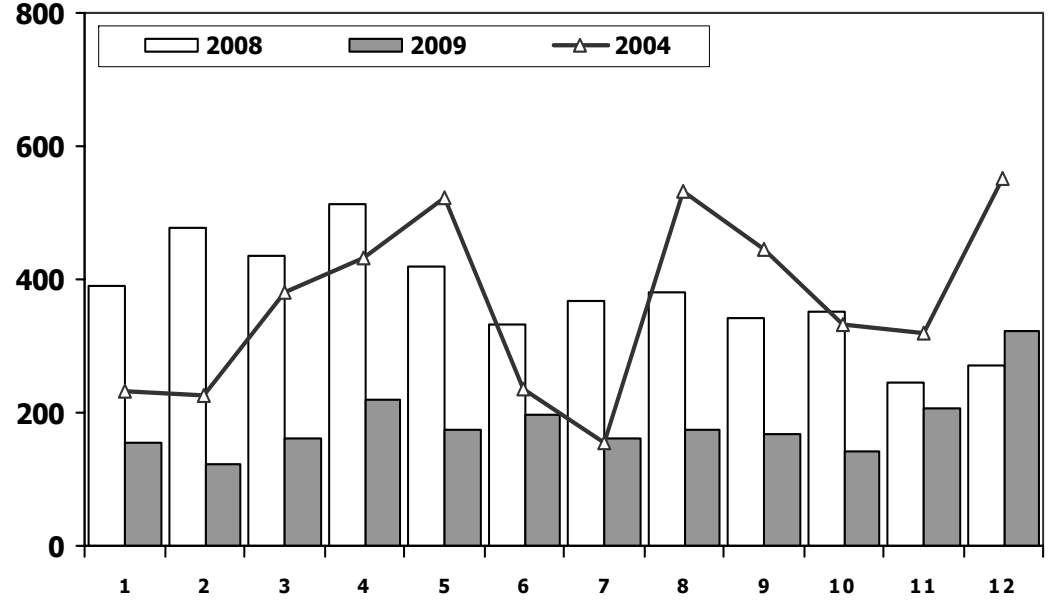


## Midibüs Pazarının Analizi (7-9 mt / 25-35 Kişilik) Midibus Market Analysis (7-9 mt / 25-35 Passengers)



Aylar / Months	10 Yıl Ort. 10 Yrs Avr.	2009	%
1	207	154	-26
2	259	124	-52
3	318	160	-50
4	294	220	-25
5	311	174	-44
6	244	198	-19
7	197	160	-19
8	330	175	-47
9	365	168	-54
10	320	143	-55
11	264	206	-22
12	365	323	-12
<b>Total</b>	<b>3.473</b>	<b>2.205</b>	<b>-37</b>

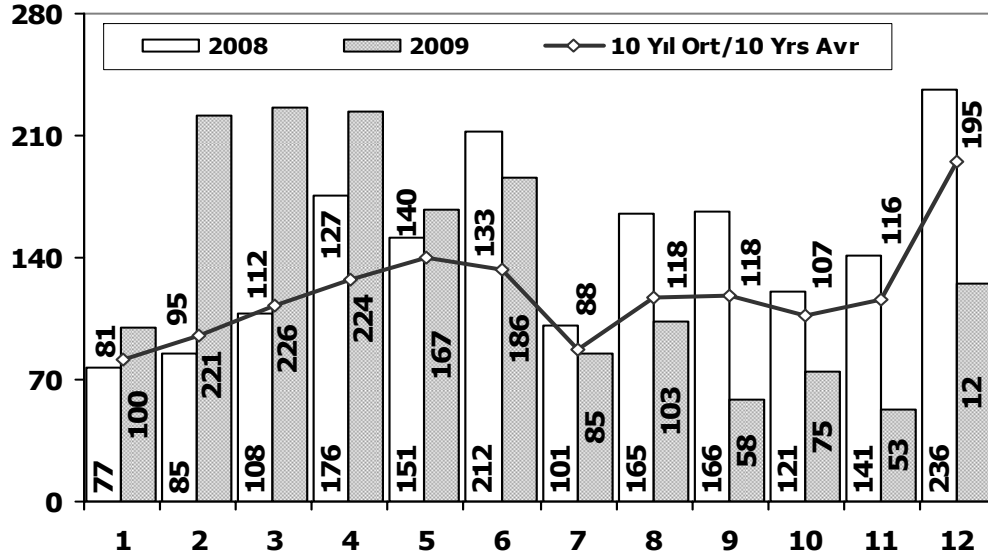
## Midibüs Pazarı (7-9 mt / 25-35 Kişilik Midibüs) Midibus Market (7-9 mt / 25-35 Passengers)



YIL	OCAK	ŞUBAT	MART	NİSAN	MAYIS	HAZİRAN	TEMMUZ	AĞUSTOS	EYLÜL	EKİM	KASIM	ARALIK	TOPLAM
1999	255	394	349	322	321	357	235	177	429	490	403	433	4.165
2000	204	374	413	369	399	350	298	505	585	452	296	91	4.336
2001	124	87	85	76	43	77	60	110	201	208	129	131	1.331
2002	47	99	86	100	125	106	105	94	141	171	120	300	1.494
2003	220	109	188	106	158	161	103	322	349	330	212	436	2.694
2004	233	226	381	431	524	237	154	531	445	331	319	551	4.363
2005	182	258	432	393	439	269	252	459	436	329	328	574	4.351
2006	207	297	406	388	381	266	230	353	322	253	305	401	3.809
2007	207	272	404	238	302	283	164	365	399	279	283	465	3.661
2008	391	476	436	512	419	331	368	380	341	352	246	270	4.522
2009	154	124	160	220	174	198	160	175	168	143	206	323	2.205

## Otobüs Pazarının Analizi

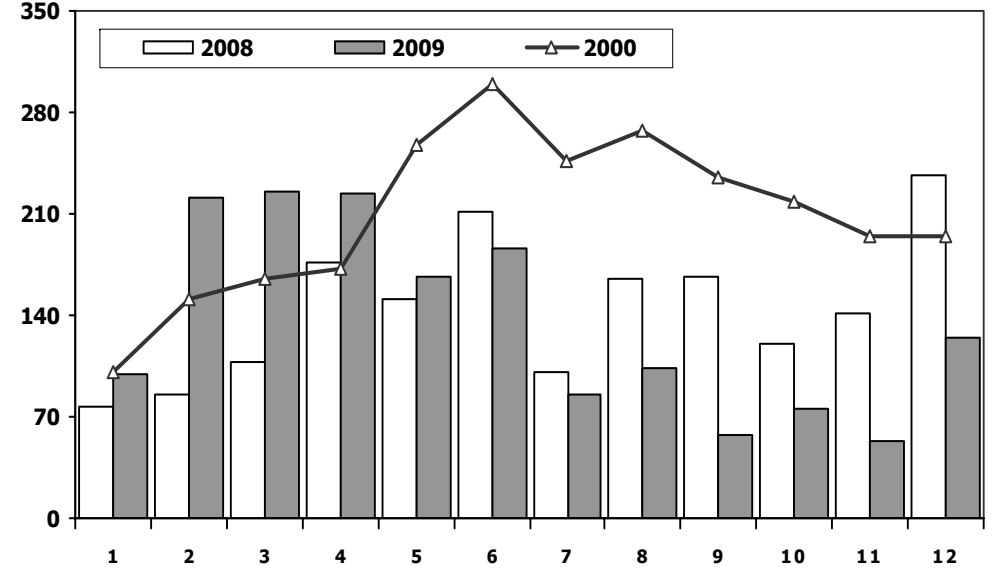
Bus Market Analysis



Aylar / Months	10 Yil Ort. / 10 Yrs Avr.	2009	%
1	81	100	23
2	95	221	132
3	112	226	101
4	127	224	76
5	140	167	19
6	133	186	40
7	88	85	-3
8	118	103	-12
9	118	58	-51
10	107	75	-30
11	116	53	-54
12	195	12	-36
<b>Total</b>	<b>1.431</b>	<b>1.623</b>	<b>13</b>

## Otobüs Pazarı

Bus Market

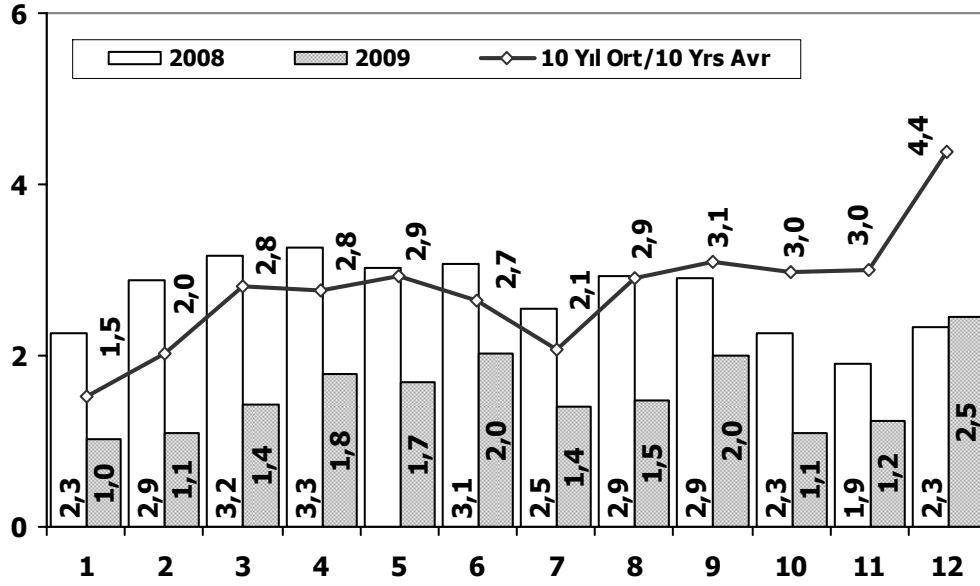


	1	2	3	4	5	6	7	8	9	10	11	12	Total
1999	31	70	140	95	43	109	75	68	52	109	103	286	1.181
2000	101	151	165	172	258	300	247	268	235	218	194	194	2.503
2001	128	68	40	20	37	39	35	27	24	14	19	82	533
2002	34	38	46	37	64	6	5	42	43	18	64	74	471
2003	54	33	41	87	124	82	60	124	169	128	101	101	1.104
2004	173	135	215	198	169	143	103	118	90	95	89	78	1.606
2005	65	81	75	152	174	167	76	149	147	116	109	485	1.796
2006	78	101	165	247	230	184	84	112	146	84	176	176	1.783
2007	72	191	129	89	150	91	91	103	110	168	163	241	1.598
2008	77	85	108	176	151	212	101	165	166	121	141	236	1.739
2009	100	221	226	224	167	186	85	103	58	75	53	125	1.623



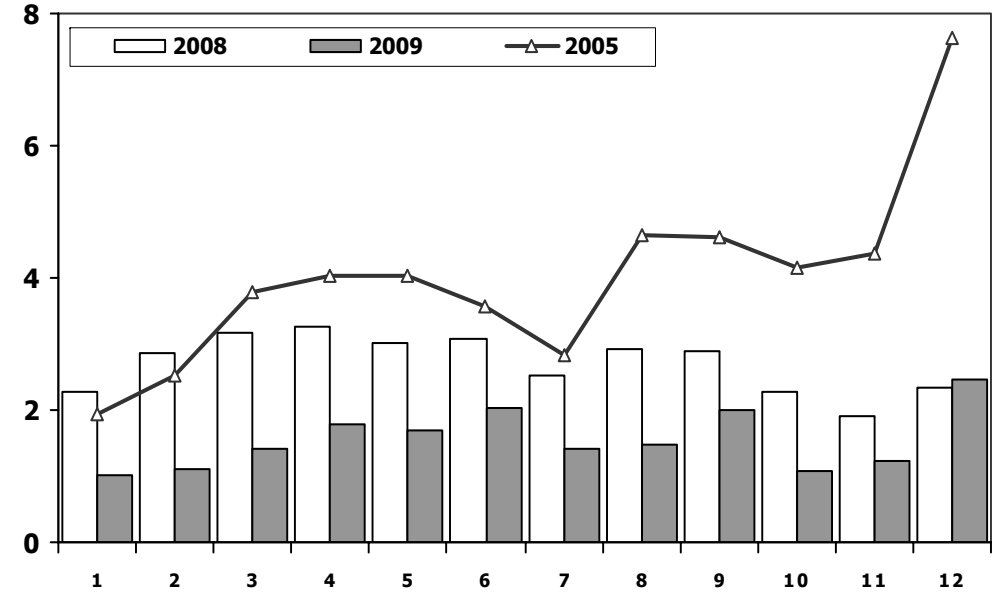


## Ağır Ticari Araç Pazarının Analizi (x1000) HCV Market Analysis (x1000)



Aylar / Months	10 Yil Ort. 10 Yrs Avr. (x1000)	2009 (x1000)	%
1	1,5	1,0	-32,8
2	2,0	1,1	-45,4
3	2,8	1,4	-49,3
4	2,8	1,8	-35,4
5	2,9	1,7	-42,0
6	2,7	2,0	-23,3
7	2,1	1,4	-32,7
8	2,9	1,5	-49,1
9	3,1	2,0	-35,2
10	3,0	1,1	-63,4
11	3,0	1,2	-58,8
12	4,4	2,5	-43,9
<b>Total</b>	<b>33,1</b>	<b>18,7</b>	<b>-43,4</b>

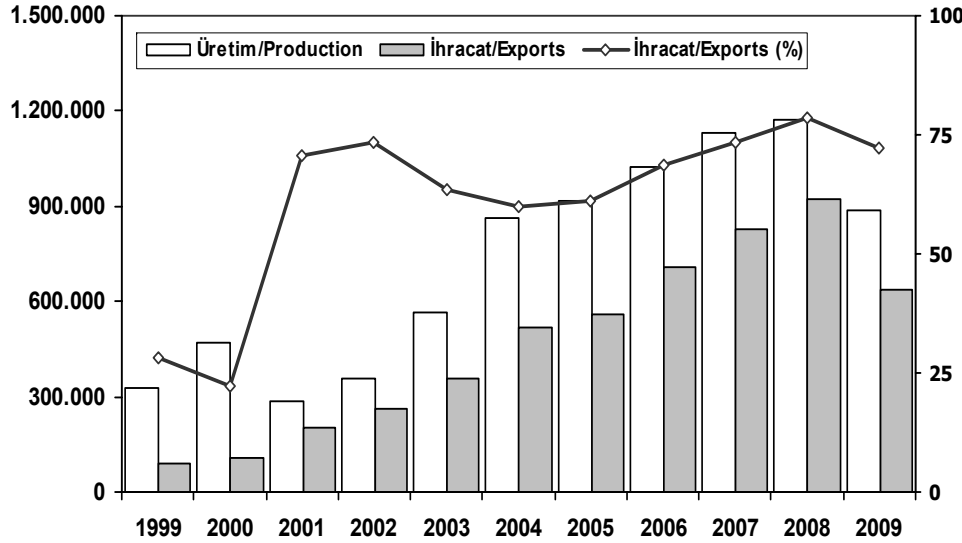
## Ağır Ticari Araç Pazarı (x1000) HCV Market (x1000)



	1	2	3	4	5	6	7	8	9	10	11	12	Total
1999	912	1.378	1.842	1.867	1.826	1.801	1.224	1.716	2.142	2.104	2.211	2.833	21.856
2000	1.260	2.222	2.828	2.750	3.447	3.553	2.670	3.821	3.927	3.905	3.876	2.025	36.284
2001	1.202	1.097	850	805	873	614	515	741	905	1.017	1.123	1.596	11.338
2002	484	669	956	1.185	1.346	1.311	1.037	1.436	1.587	1.855	1.821	3.306	16.993
2003	1.045	915	1.352	1.687	1.950	2.251	2.096	2.936	4.081	4.605	4.033	6.943	33.894
2004	2.269	2.310	4.579	3.981	4.344	3.498	2.491	3.546	3.820	3.153	3.037	6.146	43.174
2005	1.940	2.525	3.795	4.029	4.026	3.583	2.832	4.636	4.626	4.153	4.355	7.629	48.129
2006	2.052	3.708	5.038	4.815	5.060	3.848	2.786	3.607	3.520	3.263	4.031	5.935	47.663
2007	1.833	2.518	3.598	3.267	3.317	2.987	2.627	3.613	3.497	3.333	3.704	5.150	39.444
2008	2.265	2.870	3.165	3.266	3.029	3.069	2.536	2.922	2.897	2.263	1.899	2.340	32.521
2009	1.025	1.104	1.420	1.786	1.696	2.035	1.401	1.476	2.009	1.084	1.240	2.463	18.739



## İhracat/Üretim Exports/Production



	1999	2000	2001	2002	2003	2004	2005	2006	2007	2008	2009
Üretim/Production	325.291	468.381	285.737	357.405	563.450	864.073	916.062	1.026.427	1.132.951	1.171.917	884.466
İhracat/Exports	92.051	104.744	202.158	261.934	358.745	518.595	561.078	706.402	829.879	920.763	637.855
İhracat/Exports (%)	28	22	71	73	64	60	61	69	73	79	72

## Taşıt Araçları İhracatı Motor Vehicle Exports

SEKTÖR/SECTOR	2006	2007	2008	2009	2008/2007 (%)
OTOMOBİL/ P.Cars	430.420	504.353	525.301	388.994	-26
TİCARİ ARAÇLAR/ CV	266.268	316.017	384.969	239.976	-38
* Kamyonet/Pick-Up	254.159	295.585	366.646	231.260	-37
* Minibüs/Minibus	1.809	2.695	891	1.271	43
* Kamyon/Truck	4.007	9.398	9.742	1.910	-80
* Midibüs/Midibus	2.168	2.987	2.180	1.065	-51
* Otobüs/Bus	4.125	5.352	5.510	4.470	-19
TAŞIT ARAÇLARI /MV TOTAL	696.688	820.370	910.270	628.970	-31
TRAKTÖR/F.TRACTOR	9.714	9.509	10.493	8.885	-15
TOTAL	706.402	829.879	920.763	637.855	-31

## Otomotiv Ana ve Yan Sanayii İhracatı (ABD \$) CBU and CKD Exports - \$

SEKTÖR/SECTOR	2006 Toplam (Total)	2007 Toplam (Total)	2008 Toplam (Total)	2009 Toplam (Total)	2009/2008 (%)
<b>Toplam Ana Sanayi/Total Vehicle Industry</b>	<b>9.921.815.775</b>	<b>12.782.627.326</b>	<b>14.886.300.371</b>	<b>9.612.631.033</b>	<b>-35</b>
* Otomobil (P. Cars)	5.683.364.186	6.849.650.057	7.505.740.617	6.092.424.656	-19
* Otobüs ( Bus)	724.611.420	1.099.543.073	1.238.342.457	771.886.548	-38
* Diğerleri (Others)	3.513.840.169	4.833.434.196	6.142.217.297	2.748.319.829	-55
<b>Toplam Yan Sanayi/Total Component Industry</b>	<b>4.508.490.757</b>	<b>6.320.762.302</b>	<b>7.015.666.404</b>	<b>4.919.345.973</b>	<b>-30</b>
* Aksam ve Parça / Spare Parts and Components	3.668.803.672	5.225.898.830	5.806.202.045	3.939.201.533	-32
* İç ve Dış Lastik / Tyres	717.230.911	895.748.611	976.029.024	826.346.700	-15
* Akümülatör / Batteries	50.020.679	102.269.786	127.902.222	83.818.491	-34
* Emniyet Camı / Safety Glasses	72.435.495	96.845.075	105.533.113	69.979.249	-34
<b>Toplam/Total</b>	<b>14.430.306.532</b>	<b>19.103.389.628</b>	<b>21.901.966.775</b>	<b>14.531.977.006</b>	<b>-34</b>

Kaynak: ÜİB - OAİB



**Firma Bazında İhracat (Adet)**  
Export Of member Companies (Unit)

**Sektör Bazında İhracat (\$)**  
Exports on Sectorial Basis

FİRMALAR Companies	2007	2008	2009
OYAK RENAULT	204.428	252.232	222.278
TOFAŞ	146.177	209.443	168.353
FORD OTOSAN	221.741	217.876	128.388
TOYOTA	154.386	119.586	69.097
HYUNDAI ASSAN	69.224	61.000	17.136
HONDA TÜRKİYE	7.732	34.926	9.172
TÜRK TRAKTÖR	5.761	9.648	8.808
KARSAN	1.632	482	7.287
M. BENZ TÜRK	8.708	9.083	3.317
MAN TÜRKİYE	1.699	1.538	1.180
TEMSA	1.151	1.245	1.114
B.M.C.	1.524	1.189	582
A.I.O.S.	750	1.042	565
OTOKAR	1.115	619	501
HATTAT	0	53	77
<b>GENEL TOPLAM</b>	<b>829.879</b>	<b>920.763</b>	<b>637.855</b>

Sıra No (Rank)	Sektörler Sectors	2008 Toplam (Total)	2009 Toplam (Total)	2009/2008 (%)	2009 (%) Pay (Share)
1	Taşıt Araçları ve Yan Sanayi	24.750.723	16.876.610	-31,8	16,6
2	Hazırgiyim ve Konfeksiyon	15.740.051	13.297.909	-15,5	13,1
3	Demir Çelik Ürünleri	19.488.896	11.030.486	-43,4	10,9
4	Kimyevi Maddeler ve Mamülleri	13.647.926	9.664.715	-29,2	9,5
5	Elektrik-Elektronik ve Makina	9.831.782	8.561.778	-12,9	8,4
6	Makine ve Aksamları	6.929.796	5.607.072	-19,1	5,5
7	Tekstil ve Hammaddeleri	6.816.679	5.514.480	-19,1	5,4
9	Demir ve Demir Dışı Metaller	6.180.509	4.494.096	-27,3	4,4
10	Hububat, Bakliyat, Yağlı Tohumlar	3.806.435	3.648.365	-4,2	3,6
11	Çimento ve Toprak Ürünleri	3.407.175	3.085.283	-9,4	3,0
12	Madencilik Ürünleri	3.260.769	2.507.373	-23,1	2,5
13	Ağaç Mamülleri, Orman Ürünleri	2.615.113	2.501.354	-4,4	2,5
14	Yaş Meyve ve Sebze	1.770.602	1.955.040	10,4	1,9
15	Fındık ve Mamülleri	1.413.405	1.183.971	-16,2	1,2
16	Kuru Meyve ve Mamülleri	1.081.296	1.111.730	2,8	1,1
17	Hali	1.170.063	1.086.295	-7,2	1,1
18	Deri ve Deri Mamülleri	1.340.365	1.064.715	-20,6	1,0
19	Meyve Sebze Mamülleri	1.099.805	1.034.853	-5,9	1,0
20	Değerli Maden ve Mücevherat	1.507.245	978.469	-35,1	1,0
21	Canlı Hayvan, Su Ürünleri ve Mam.	853.965	828.729	-3,0	0,8
22	Tütün	699.038	737.821	5,5	0,7
23	Zeytin ve Zeytinyağ	186.646	209.359	12,2	0,2
24	Kesme Çiçek	45.713	49.150	7,5	0,0
25	Diğer Sanayi Ürünleri	65.604	45.019	-31,4	0,0
26	Diğerleri (Birlik Kaydı Zorunlu Olmayan Ürünler) *	4.317.596	4.554.327	5,5	4,5
<b>TOPLAM (Total)</b>		<b>132.027.197</b>	<b>101.628.999</b>	<b>-23,0</b>	<b>100,0</b>

Kaynak: OSD

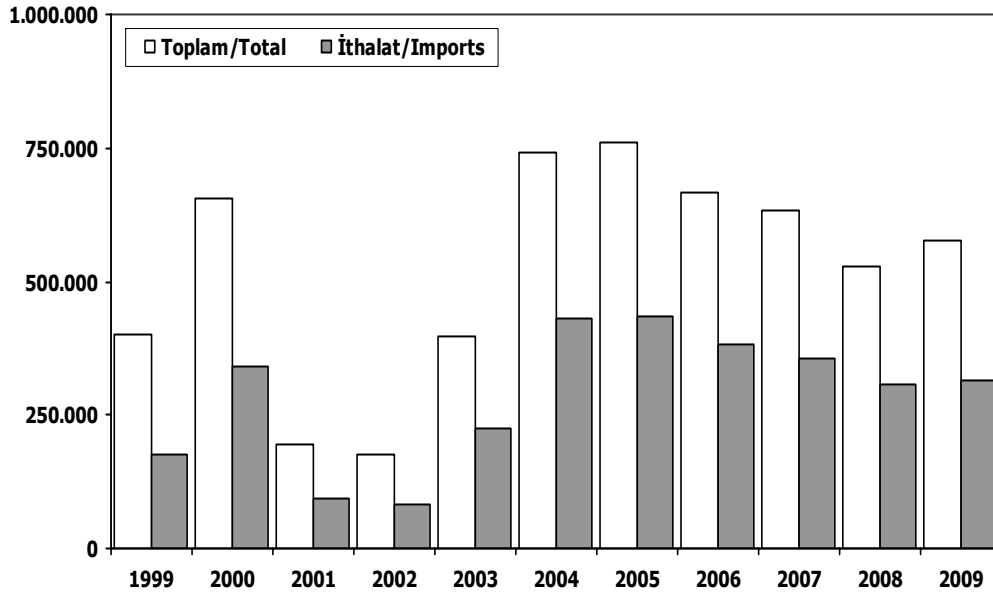
\* İşlenmemiş değerli maden, uçak ve gemilere teslim edilen akaryakıt ve kumanya ile diğer kalemler

Kaynak: TİM

**First 5 Sectors:**

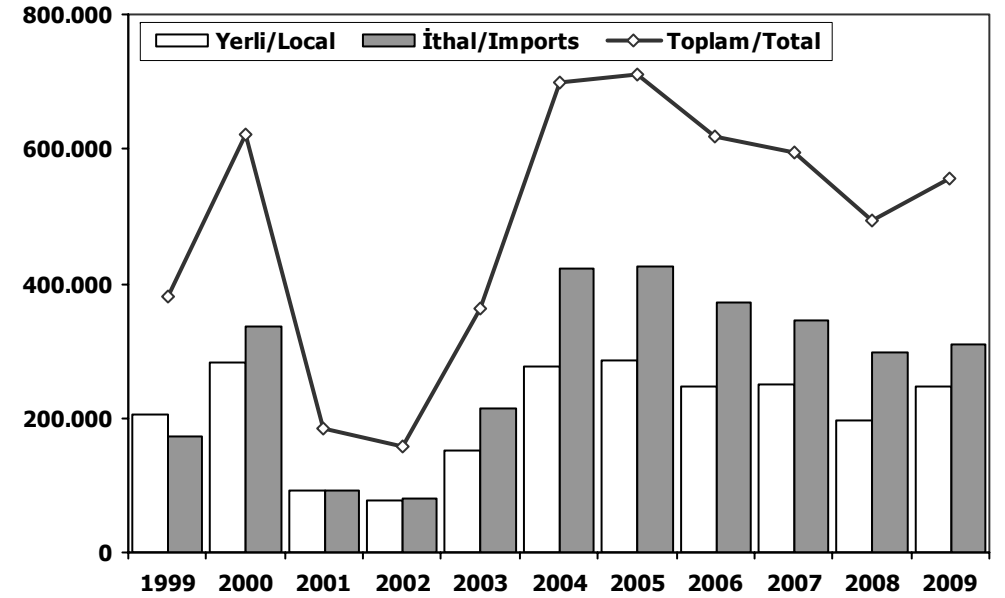
- 1- Transport Vehicle and Component Industry
- 2- Ready Wear and Confection
- 3- Iron Steel Products
- 4-Chemical Articles and Products
- 5-Electric-Electronic and Machine

## Toplam Pazar (Otomobil+T.Araç) Total Market (P.Cars+C.V)



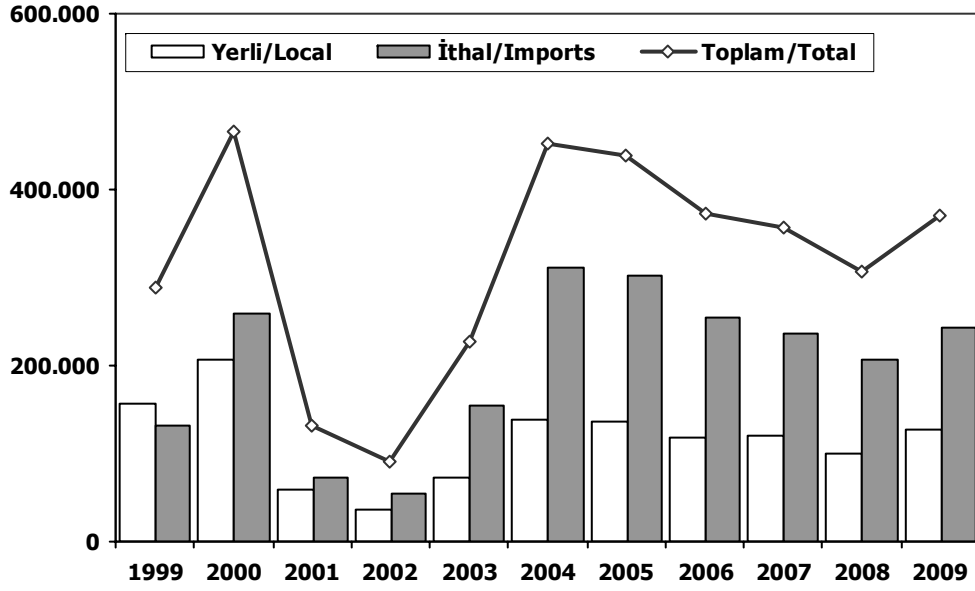
	1999	2000	2001	2002	2003	2004	2005	2006	2007	2008	2009
<b>Toplam/Total</b>	401.436	656.521	195.090	174.442	397.963	741.269	758.537	665.515	634.206	526.544	575.865
<b>İthalat/Imports</b>	175.437	341.664	93.887	83.027	222.984	430.204	436.033	382.460	355.752	306.087	313.917
<b>İthalat/Imports (%)</b>	44	52	48	48	56	58	57	57	56	58	55

## Hafif Araçlar Pazarı LV Market

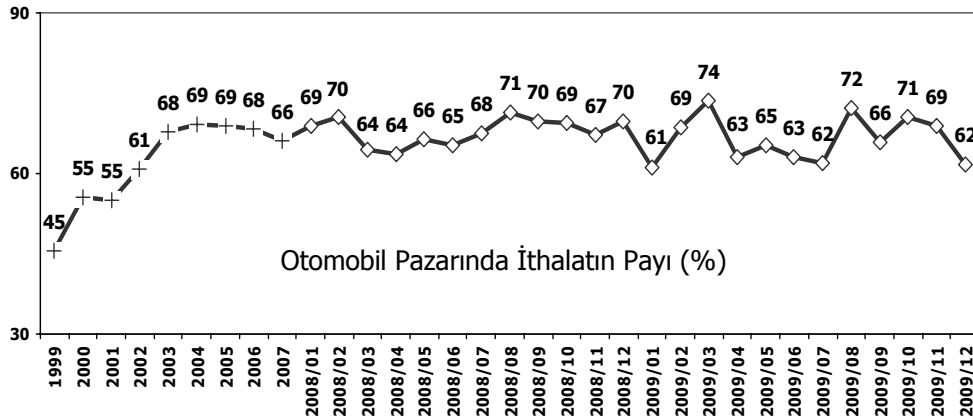


	1999	2000	2001	2002	2003	2004	2005	2006	2007	2008	2009
<b>Yerli/Local</b>	206.637	283.955	92.696	78.321	150.842	275.521	284.134	246.800	249.705	196.162	247.694
<b>İthal/Imports</b>	172.943	336.282	91.056	79.128	213.227	422.574	426.274	371.052	345.057	297.861	309.432
<b>Toplam/Total</b>	379.580	620.237	183.752	157.449	364.069	698.095	710.408	617.852	594.762	494.023	557.126
<b>İthalat/Imports (%)</b>	46	54	50	50	59	61	60	60	58	60	56

## Otomobil Pazarı P.Cars Market

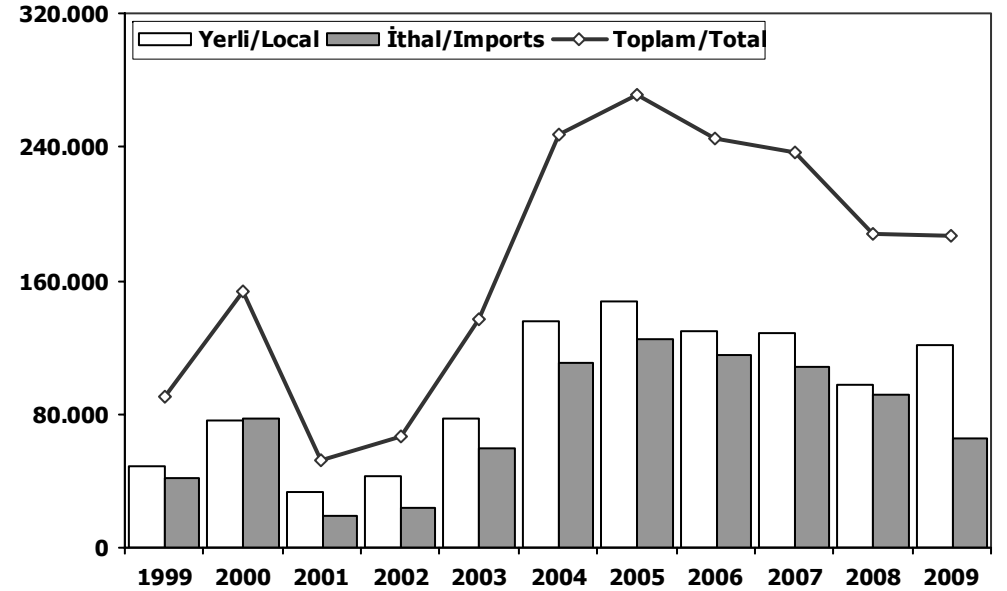


	1999	2000	2001	2002	2003	2004	2005	2006	2007	2008	2009
Yerli/Local	157.452	207.739	59.179	35.519	73.267	139.541	136.708	117.725	120.740	99.205	126.277
İthal/Imports	131.215	258.987	72.259	55.096	153.769	311.668	301.889	255.494	236.725	206.793	243.542
Toplam/Total	288.667	466.726	131.438	90.615	227.036	451.209	438.597	373.219	357.465	305.998	369.819
İthalat/Imports (%)	45	55	55	61	68	69	69	68	66	68	66

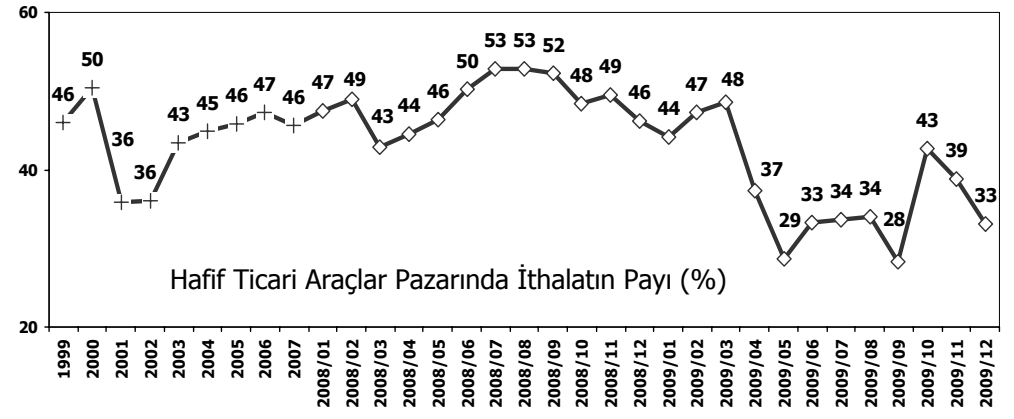


Otomobil Pazarında İthalatın Payı (%)

## Hafif Ticari Araçlar Pazarı (Light Commercial Vehicle Market)



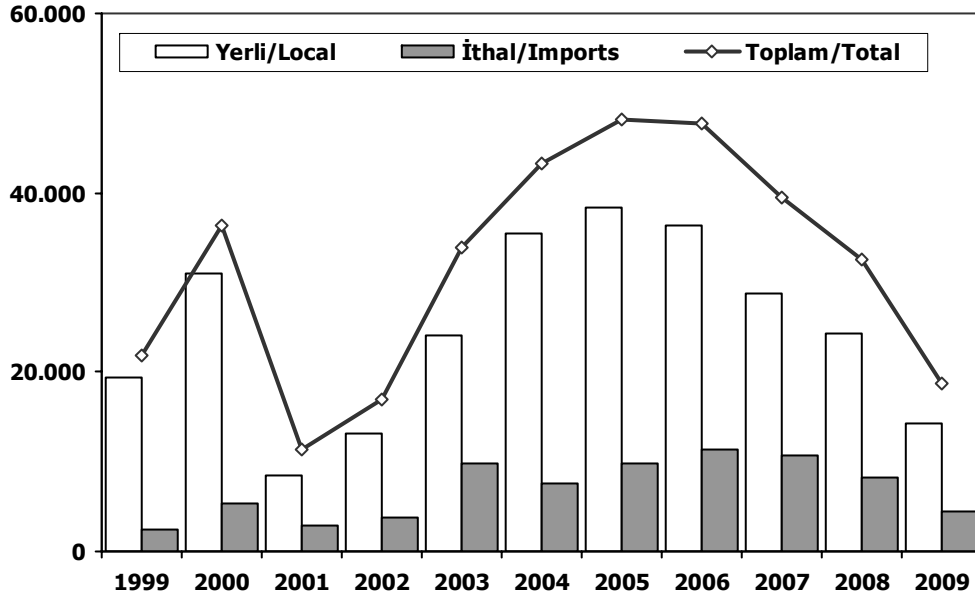
	1999	2000	2001	2002	2003	2004	2005	2006	2007	2008	2009
Yerli/Local	49.185	76.216	33.517	42.802	77.575	135.980	147.426	129.075	128.965	96.957	121.417
İthal/Imports	41.728	77.295	18.797	24.032	59.458	110.906	124.385	115.558	108.332	91.068	65.890
Toplam/Total	90.913	153.511	52.314	66.834	137.033	246.886	271.811	244.633	237.297	188.025	187.307
İthalat/Imports (%)	46	50	36	36	43	45	46	47	46	48	35



Hafif Ticari Araçlar Pazarında İthalatın Payı (%)

## Ağır Ticari Araçlar Pazarı

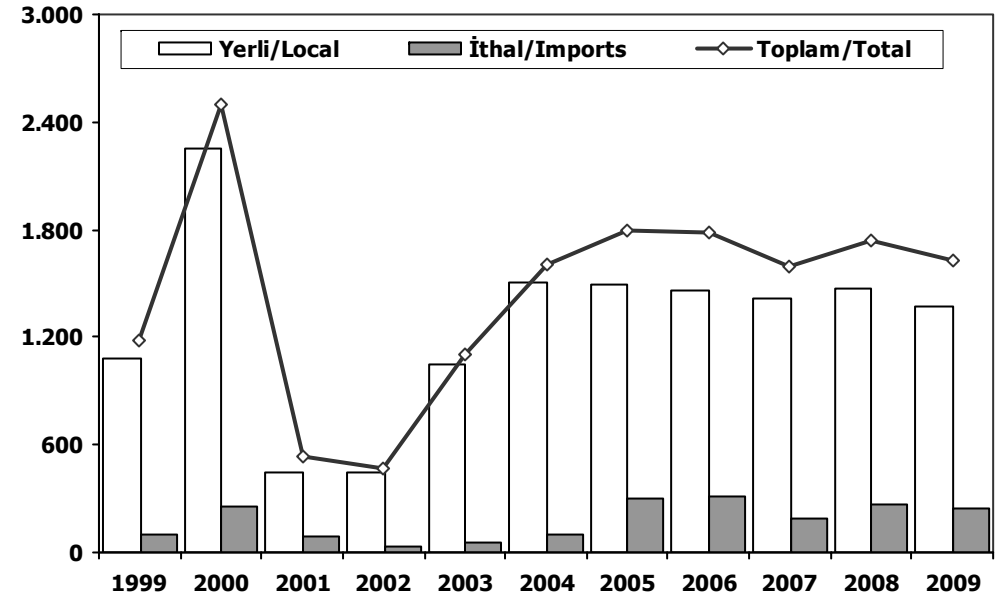
HCV Market



	1999	2000	2001	2002	2003	2004	2005	2006	2007	2008	2009
Yerli/Local	19.362	30.902	8.507	13.094	24.137	35.544	38.370	36.255	28.749	24.295	14.254
İthal/Imports	2.494	5.382	2.831	3.899	9.757	7.630	9.759	11.408	10.695	8.226	4.485
Toplam/Total	21.856	36.284	11.338	16.993	33.894	43.174	48.129	47.663	39.444	32.521	18.739
İthalat/Imports (%)	11	15	25	23	29	18	20	24	27	25	24

## Otobüs Pazarı

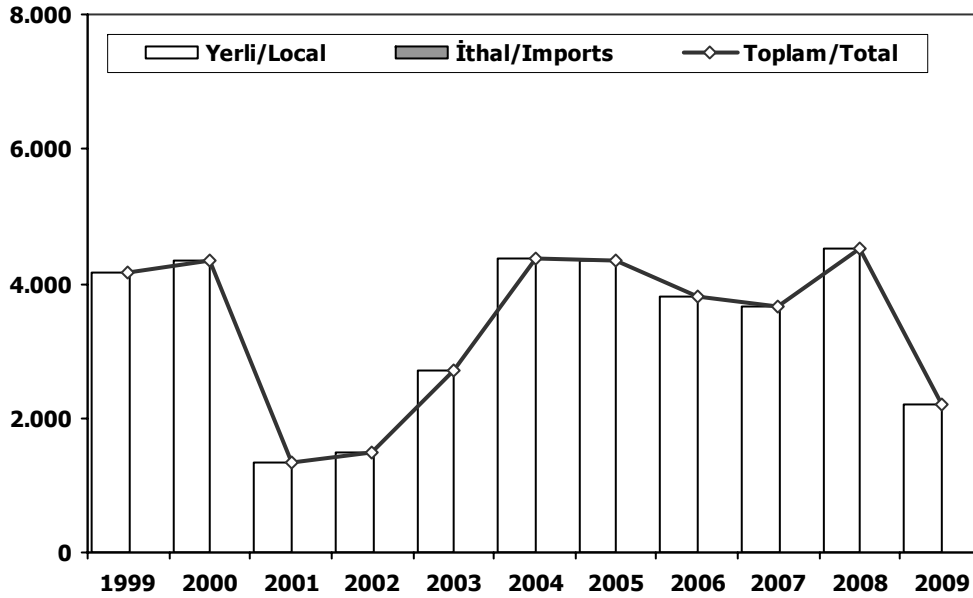
Bus Market



	1999	2000	2001	2002	2003	2004	2005	2006	2007	2008	2009
Yerli/Local	1.086	2.250	445	442	1.051	1.503	1.498	1.466	1.413	1.468	1.376
İthal/Imports	95	253	88	29	53	103	298	317	185	271	247
Toplam/Total	1.181	2.503	533	471	1.104	1.606	1.796	1.783	1.598	1.739	1.623
İthalat/Imports (%)	8	10	17	6	5	6	17	18	12	16	15

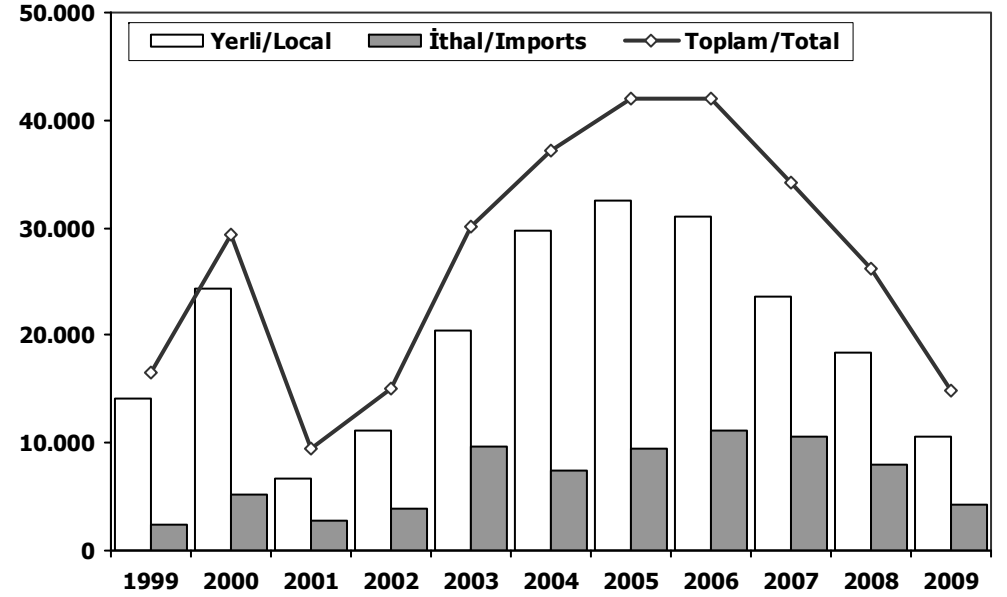


## Midibüs Pazarı (7-9 mt / 25-35 Kişilik) Midibus Market (7-9 mt / 25-35 Passengers)



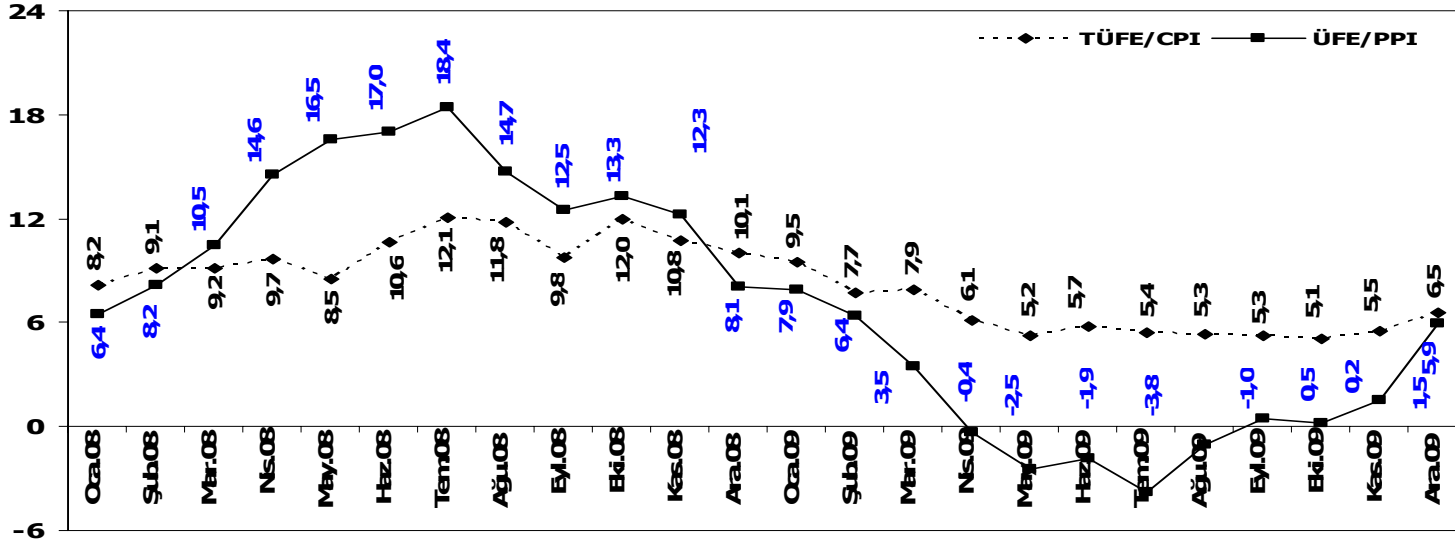
	1999	2000	2001	2002	2003	2004	2005	2006	2007	2008	2009
Yerli/Local	4.165	4.336	1.331	1.494	2.694	4.363	4.351	3.809	3.661	4.511	2.205
İthal/Imports	0	0	0	0	0	0	0	0	0	11	0
Toplam/Total	4.165	4.336	1.331	1.494	2.694	4.363	4.351	3.809	3.661	4.522	2.205
İthalat/Imports (%)	0	0	0	0	0	0	0	0	0	0	0

## Kamyon Pazarı Truck Market

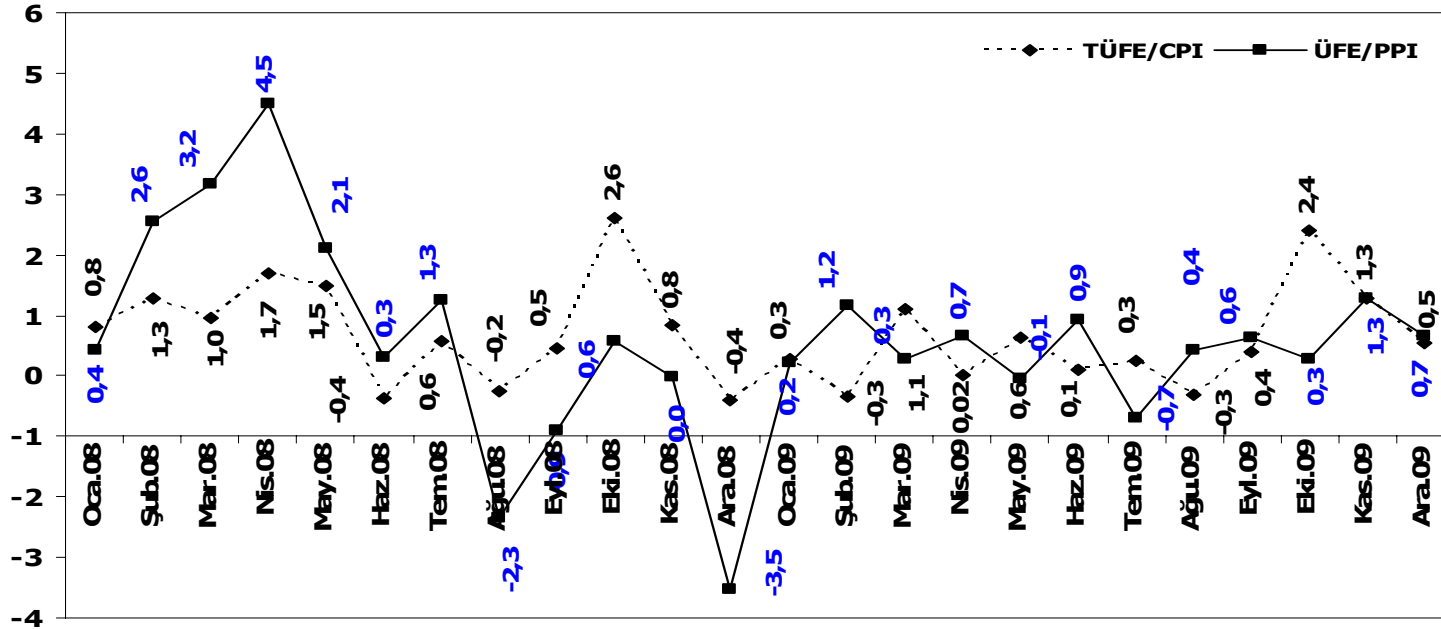


	1999	2000	2001	2002	2003	2004	2005	2006	2007	2008	2009
Yerli/Local	14.111	24.316	6.731	11.158	20.392	29.678	32.521	30.980	23.675	18.316	10.673
İthal/Imports	2.399	5.129	2.743	3.870	9.704	7.527	9.461	11.091	10.510	7.944	4.238
Toplam/Total	16.510	29.445	9.474	15.028	30.096	37.205	41.982	42.071	34.185	26.260	14.911
İthalat/Imports (%)	15	17	29	26	32	20	23	26	31	30	28

## TÜFE ve ÜFE'nin Yıllık Değişimi (%) CPI and PPI Yearly Changes (%)



## TÜFE ve ÜFE'nin Aylık Değişimi (%) CPI and PPI Monthly Changes (%)







## OTOMOTİV SANAYİİ FABRİKA SATIŞLARI 2009 / AUTOMOTIVE INDUSTRY FACTORY SALES

TIPLER/TYPES	1	2	3	4	5	6	7	8	9	10	11	12	Total
OTOMOBİL	3.362	4.402	6.562	15.239	17.603	12.352	8.239	6.633	14.906	6.790	7.522	17.900	121.510
TİCARİ ARAÇ	3.039	4.815	7.914	12.550	16.569	12.877	9.606	9.826	19.308	8.035	8.665	20.462	133.666
* KAMYON	493	450	1.048	1.004	1.159	1.216	802	830	1.229	840	814	1.646	11.531
* KAMYONET	2.207	3.471	5.958	10.667	14.588	10.930	7.967	8.031	17.112	6.563	7.140	17.422	112.056
* MIDİBÜS	59	61	191	156	115	150	166	93	80	146	171	367	1.755
* MINİBÜS	182	545	511	575	535	421	544	704	790	418	428	884	6.537
* OTOBÜS	98	288	206	148	172	160	127	168	97	68	112	143	1.787
TRAKTÖR	267	344	388	638	759	828	741	534	586	765	725	715	7.290
<b>TOTAL</b>	<b>6.668</b>	<b>9.561</b>	<b>14.864</b>	<b>28.427</b>	<b>34.931</b>	<b>26.057</b>	<b>18.586</b>	<b>16.993</b>	<b>34.800</b>	<b>15.590</b>	<b>16.912</b>	<b>39.077</b>	<b>262.466</b>

## Otomobil / Passenger Car

TIPLER/TYPES	1	2	3	4	5	6	7	8	9	10	11	12	Total
HONDA TÜRKİYE	723	206	330	197	157	643	1.193	586	1.861	432	676	1.667	8.671
HYUNDAİ ASSAN	1.663	1.961	2.269	4.959	4.179	3.771	1.656	1.768	3.531	1.510	1.617	5.623	34.507
OYAK RENAULT	449	1.526	2.118	6.661	9.570	4.604	4.060	3.029	4.943	4.039	3.781	7.349	52.129
TOFAŞ	527	659	1.805	3.398	3.667	2.684	1.143	1.133	3.842	392	1.052	2.904	23.206
TOYOTA	0	50	40	24	30	650	187	117	729	417	396	357	2.997
<b>TOTAL</b>	<b>3.362</b>	<b>4.402</b>	<b>6.562</b>	<b>15.239</b>	<b>17.603</b>	<b>12.352</b>	<b>8.239</b>	<b>6.633</b>	<b>14.906</b>	<b>6.790</b>	<b>7.522</b>	<b>17.900</b>	<b>121.510</b>

## Kamyonet / Pick-Up

TIPLER/TYPES	1	2	3	4	5	6	7	8	9	10	11	12	Total
A.I.O.S.	0	21	117	198	97	95	17	15	58	73	20	109	820
B.M.C.	11	30	52	29	59	21	34	43	202	58	44	71	654
FORD OTOSAN	1.513	1.646	1.923	2.754	6.192	4.298	3.076	3.815	6.721	2.241	2.685	8.234	45.098
HYUNDAİ ASSAN	0	0	0	0	33	50	25	30	114	90	19	76	437
KARSAN	0	495	148	97	89	129	40	0	107	96	127	489	1.817
OTOKAR	0	27	2	10	0	0	6	55	128	161	155	192	736
TEMSA	51	19	55	42	25	89	47	116	137	63	168	193	1.005
TOFAŞ	632	1.233	3.661	7.537	8.093	6.248	4.722	3.957	9.645	3.781	3.922	8.058	61.489
<b>TOTAL</b>	<b>2.207</b>	<b>3.471</b>	<b>5.958</b>	<b>10.667</b>	<b>14.588</b>	<b>10.930</b>	<b>7.967</b>	<b>8.031</b>	<b>17.112</b>	<b>6.563</b>	<b>7.140</b>	<b>17.422</b>	<b>112.056</b>

## Minibüs / Minibus

TIPLER/TYPES	1	2	3	4	5	6	7	8	9	10	11	12	Total
B.M.C.	11	2	31	35	19	17	7	8	38	11	12	6	197
FORD OTOSAN	168	255	254	307	233	170	355	413	491	279	226	645	3.796
KARSAN	0	270	201	203	201	223	182	283	261	119	165	160	2.268
OTOKAR	3	18	25	30	82	11	0	0	0	9	25	73	276
<b>TOTAL</b>	<b>182</b>	<b>545</b>	<b>511</b>	<b>575</b>	<b>535</b>	<b>421</b>	<b>544</b>	<b>704</b>	<b>790</b>	<b>418</b>	<b>428</b>	<b>884</b>	<b>6.537</b>

## Kamyon / Truck

TIPLER/TYPES	1	2	3	4	5	6	7	8	9	10	11	12	Total
A.I.O.S.	7	31	175	211	178	116	64	75	80	23	14	280	1.254
B.M.C.	80	61	138	59	123	134	189	107	305	251	231	445	2.123
FORD OTOSAN	75	80	110	157	152	224	155	172	225	147	203	326	2.026
KARSAN	0	6	26	11	53	17	7	0	8	12	33	58	231
M. BENZ TÜRK	133	180	311	505	569	683	314	320	558	380	297	522	4.772
TEMSA	198	92	288	61	84	42	73	156	53	27	36	15	1.125
<b>TOTAL</b>	<b>493</b>	<b>450</b>	<b>1.048</b>	<b>1.004</b>	<b>1.159</b>	<b>1.216</b>	<b>802</b>	<b>830</b>	<b>1.229</b>	<b>840</b>	<b>814</b>	<b>1.646</b>	<b>11.531</b>

## Midibüs / Midibus

TIPLER/TYPES	1	2	3	4	5	6	7	8	9	10	11	12	Total
A.I.O.S.	3	10	33	27	52	52	52	35	27	51	38	140	520
OTOKAR	13	8	73	74	23	69	83	55	30	63	98	145	734
TEMSA	43	43	85	55	40	29	31	3	23	32	35	82	501
<b>TOTAL</b>	<b>59</b>	<b>61</b>	<b>191</b>	<b>156</b>	<b>115</b>	<b>150</b>	<b>166</b>	<b>93</b>	<b>80</b>	<b>146</b>	<b>171</b>	<b>367</b>	<b>1.755</b>

## Otobüs / Bus

TIPLER/TYPES	1	2	3	4	5	6	7	8	9	10	11	12	Total
B.M.C.	70	115	54	76	28	42	41	77	20	16	19	9	567
M. BENZ TÜRK	16	42	78	27	95	54	38	39	26	25	7	42	489
M.A.N.	0	105	52	26	28	34	30	30	27	12	13	18	375
OTOKAR	1	7	6	1	6	11	7	11	24	10	62	51	197
TEMSA	11	19	16	18	15	19	11	11	0	5	11	23	159
<b>TOTAL</b>	<b>98</b>	<b>288</b>	<b>206</b>	<b>148</b>	<b>172</b>	<b>160</b>	<b>127</b>	<b>168</b>	<b>97</b>	<b>68</b>	<b>112</b>	<b>143</b>	<b>1.787</b>

## Traktör / Farm Tractor

TIPLER/TYPES	1	2	3	4	5	6	7	8	9	10	11	12	Total
HATTAT	40	34	40	60	54	56	60	73	58	99	50	67	691
TÜRK TRAKTÖR	227	310	348	578	705	772	681	461	528	666	675	648	6.599
<b>TOTAL</b>	<b>267</b>	<b>344</b>	<b>388</b>	<b>638</b>	<b>759</b>	<b>828</b>	<b>741</b>	<b>534</b>	<b>586</b>	<b>765</b>	<b>725</b>	<b>715</b>	<b>7.290</b>

## OTOMOTİV SANAYİİ DIŞ SATIŞLARI 2009 / AUTOMOTIVE INDUSTRY EXPORTS SALES

TIPLER/TYPES	1	2	3	4	5	6	7	8	9	10	11	12	Total
OTOMOBİL	19.253	26.757	34.003	30.064	32.659	36.657	43.651	18.576	36.899	40.836	31.531	38.108	388.994
TİCARİ ARAÇ	12.962	12.496	16.146	14.992	18.749	22.909	20.517	15.323	22.690	27.497	25.645	30.050	239.976
* KAMYON	84	129	346	242	145	154	136	81	118	102	173	200	1.910
* KAMYONET	12.440	12.002	15.282	14.257	18.010	22.175	19.812	14.490	21.892	26.797	24.891	29.212	231.260
* MIDİBÜS	86	26	44	79	71	89	57	138	181	127	61	106	1.065
* MINİBÜS	20	20	20	100	160	135	106	140	160	160	130	120	1.271
* OTOBÜS	332	319	454	314	363	356	406	474	339	311	390	412	4.470
TRAKTÖR	527	1.237	1.174	673	429	449	565	363	622	749	825	1.272	8.885
<b>TOTAL</b>	<b>32.742</b>	<b>40.490</b>	<b>51.323</b>	<b>45.729</b>	<b>51.837</b>	<b>60.015</b>	<b>64.733</b>	<b>34.262</b>	<b>60.211</b>	<b>69.082</b>	<b>58.001</b>	<b>69.430</b>	<b>637.855</b>

## Otomobil / Passenger Car

TIPLER/TYPES	1	2	3	4	5	6	7	8	9	10	11	12	Total
HONDA	288	2.492	829	1.502	378	641	744	512	807	620	321	38	9.172
HYUNDAİ ASSAN	1.755	1.565	1.620	518	408	1.100	650	1.700	1.880	2.390	1.915	1.635	17.136
OYAK RENAULT	9.400	14.155	17.039	19.986	20.319	21.252	25.612	10.802	18.362	24.458	17.610	23.283	222.278
TOFAŞ	3.432	4.213	5.025	5.276	6.274	7.791	8.609	3.346	7.224	5.834	5.952	8.335	71.311
TOYOTA	4.378	4.332	4.990	2.782	5.280	5.873	8.036	2.216	8.626	7.534	5.733	4.817	69.097
<b>TOTAL</b>	<b>19.253</b>	<b>26.757</b>	<b>34.003</b>	<b>30.064</b>	<b>32.659</b>	<b>36.657</b>	<b>43.651</b>	<b>18.576</b>	<b>36.899</b>	<b>40.836</b>	<b>31.531</b>	<b>38.108</b>	<b>388.994</b>

## Kamyonet / Pick-Up

TIPLER/TYPES	1	2	3	4	5	6	7	8	9	10	11	12	Total
B.M.C.	0	0	0	0	0	1	0	0	2	0	19	0	22
FORD OTOSAN	6.518	5.437	5.444	5.013	10.013	14.211	11.221	9.489	13.043	15.502	14.603	16.312	126.806
KARSAN	127	1.024	1.047	676	177	369	424	379	225	901	472	1.280	7.101
OTOKAR	30	26	44	0	10	9	4	37	4	17	0	0	181



2009 Yılı İthal Otomobil Satışları / P.Cars Imports 2009

	2008 Total	1	2	3	4	5	6	7	8	9	10	11	12	Total
FORD	25.898	1.183	1.092	3.806	1.449	5.253	3.279	1.710	1.701	6.297	613	1.693	5.386	33.462
VOLKSWAGEN	21.136	949	1.352	3.641	2.370	1.999	2.901	1.551	1.346	4.616	1.351	1.420	3.256	26.752
HYUNDAI	9.583	638	782	1.770	1.678	2.619	3.311	1.066	1.921	3.177	1.543	966	5.620	25.091
PEL	24.804	634	805	3.057	1.559	4.180	2.204	1.142	1.815	2.833	511	757	3.192	22.689
TOYOTA	20.173	408	916	2.708	2.706	2.019	1.175	862	1.893	1.918	861	1.070	2.101	18.637
PEUGEOT	11.752	355	613	2.179	1.971	1.090	1.537	342	661	2.009	607	608	1.811	13.783
CHEVROLET	5.404	242	308	832	1.202	1.437	838	214	786	2.235	313	618	1.383	10.408
MERCEDES	4.673	232	304	605	770	852	1.867	221	1.249	1.576	345	604	1.075	9.700
HONDA	5.984	565	464	1.580	1.326	1.160	290	265	407	292	202	205	477	7.233
B.M.W	4.849	260	320	709	494	579	773	177	320	432	202	576	1.356	6.729
CITROEN	6.563	204	286	1.044	691	670	644	239	431	846	152	315	1.105	6.627
AUDI	5.484	222	254	501	474	564	866	238	597	822	316	351	1.046	6.251
FIAT	6.488	181	143	710	700	1.222	988	201	284	510	124	233	803	6.999
NISSAN	4.275	208	333	736	431	687	334	338	352	938	293	377	912	5.949
RENAULT	5.484	134	112	621	346	522	794	203	365	768	348	598	1.097	5.908
DACIA	5.152	198	166	682	185	232	552	242	365	1.549	252	317	1.133	5.873
KIA	7.028	167	255	717	733	753	714	148	330	725	170	229	462	5.403
SKODA	3.625	127	115	498	496	438	381	102	184	408	100	108	444	3.401
MAZDA	856	149	218	496	189	81	211	114	168	493	47	118	351	2.635
SEAT	2.938	84	50	392	279	322	353	130	202	349	95	103	209	2.568
CHERY	1.744	61	99	167	398	394	306	136	119	178	134	189	180	2.361
VOLVO	2.452	55	50	214	405	296	182	128	177	254	88	139	283	2.271
LAND ROVER	1.804	42	77	151	254	136	151	52	32	85	102	133	433	1.648
SUZUKI	2.966	96	128	359	395	141	95	32	94	132	30	23	51	1.576
MITSUBISHI	1.902	109	147	374	125	97	91	36	42	194	19	35	131	1.400
GEELY	236	74	48	152	74	94	193	78	72	175	42	78	161	1.241
SUBARU	2.204	62	65	178	152	111	84	44	42	48	82	70	224	1.162
TATA	1.389	77	100	338	146	50	23	4	20	43	46	47	53	947
PROTON	1.411	41	51	94	90	186	125	82	57	61	52	27	40	906
DAIHATSU	1.151	46	31	146	182	134	129	32	28	28	26	17	31	830
SSANGYONG	1.394	73	69	94	96	69	47	47	36	21	26	71	55	704
MINI (İngiliz)	601	44	19	94	118	71	68	5	28	65	9	6	57	584
JEEP	822	14	36	40	31	69	84	26	32	15	25	30	41	443
DODGE	540	8	11	22	20	33	27	20	17	77	39	29	36	339
LANCIA	123	7	12	37	23	49	47	4	23	53	3	14	39	311
LADA	620	18	21	58	42	45	21	12	19	22	13	8	11	290
JAGUAR	307	24	19	30	43	15	26	2	10	13	10	20	51	263
ALFA ROMEO	303	11	14	32	31	40	37	23	16	25	4	10	19	262
PORSCHE	154	4	8	19	30	32	18	20	13	24	16	13	50	247
CHRYSLER	356	6	3	13	34	23	39	10	11	12	11	12	38	212
IKCO	1.999	22	24	29	32	25	17	0	12	10	12	13	7	203
SAAB	73	0	5	14	7	3	5	7	5	2	0	0	8	56
SMART	38	9	8	4	5	1	1	0	1	5	1	0	2	37
FERRARI	17	0	0	1	2	3	1	7	1	1	1	0	0	17
MASERATI	17	1	0	2	0	2	1	5	0	1	1	2	2	17
LAMBORGHINI	9	0	1	0	2	1	2	0	2	1	0	0	0	9
BENTLEY	12	0	0	2	1	1	2	1	0	0	0	0	1	8
<b>Total</b>	<b>206.793</b>	<b>8.044</b>	<b>9.934</b>	<b>29.948</b>	<b>22.787</b>	<b>28.810</b>	<b>25.834</b>	<b>10.318</b>	<b>16.286</b>	<b>34.338</b>	<b>9.768</b>	<b>12.252</b>	<b>35.223</b>	<b>243.542</b>

2009 Yılı İthal Hafif Ticari Araç Satışları / Light Commercial Vehicles Imports 2009

	2008 Total	1	2	3	4	5	6	7	8	9	10	11	12	Total
RENAULT	18.079	487	741	1.908	1.210	679	1.180	514	722	2.079	588	793	2.548	13.449
VOLKSWAGEN	19.144	400	325	1.066	1.461	1.402	1.217	581	538	973	282	775	1.581	10.601
PEUGEOT	4.056	184	320	711	471	704	1.120	592	677	1.010	357	407	1.454	8.007
DACIA	4.426	83	139	221	168	198	392	196	330	862	260	273	796	3.918
CITROEN	4.353	123	142	313	352	308	341	262	289	534	238	209	516	3.627
HYUNDAI	5.469	228	336	552	214	239	317	185	213	407	114	93	383	3.281
MERCEDES	3.759	101	110	260	340	332	465	221	233	333	134	141	355	3.025
MITSUBISHI	6.544	326	273	370	298	264	206	178	168	204	97	160	294	2.838
DFM	1.112	156	173	190	182	262	296	327	164	177	148	170	223	2.468
FIAT	2.905	84	68	294	350	197	100	135	158	333	74	113	352	2.157
ISUZU	2.891	113	73	106	358	83	181	119	229	264	164	188	407	2.046
PEL	4.602	100	72	154	113	130	158	150	281	281	71	151	457	2.021
FORD	3.277	123	269	248	165	102	83	12	44	181	145	51	313	1.736
NISSAN	2.028	95	75	167	129	105	106	111	98	68	60	123	239	1.376
TOYOTA	1.738	26	43	67	111	104	115	143	102	158	67	66	154	1.156
SSANGYONG	1.706	83	68	101	195	108	127	121	101	54	60	4	50	1.072
TATA	1.545	44	61	50	99	70	78	98	70	69	76	54	79	848
IVECO	629	10	39	82	64	62	70	67	59	98	48	62	133	794
KIA	2.228	29	40	94	73	52	40	41	43	129	45	73	109	768
MAZDA	133	32	20	37	25	38	46	27	35	44	31	24	38	397
CHERY	0	0	34	17	0	0	0	0	27	32	18	37	28	193
MAHINDRA	182	13	3	16	18	18	18	8	1	4	0	3	6	108
SKODA	37	1	0	1	0	0	0	0	0	0	0	0	0	2
PROTON	201	2	0	0	0	0	0	0	0	0	0	0	0	2
<b>Total</b>	<b>91.044</b>	<b>2.843</b>	<b>3.424</b>	<b>7.025</b>	<b>6.127</b>	<b>5.440</b>	<b>6.658</b>	<b>4.096</b>	<b>4.442</b>	<b>8.294</b>	<b>3.077</b>	<b>3.949</b>	<b>10.515</b>	<b>65.890</b>

Kaynak: ODD