



OTOMOTİV SANAYİİ DERNEĐİ
AUTOMOTIVE MANUFACTURERS ASSOCIATION



OTOMOTİV SANAYİİ

AUTOMOTIVE INDUSTRY

- **ÜRETİM/PRODUCTION**
- **SATIŞ/SALES**
- **İTHALAT/IMPORTS**
- **İHRACAT/EXPORTS**

Aralık / December 2008



2008 Aralık Ayı Özeti / 2008 December Summary

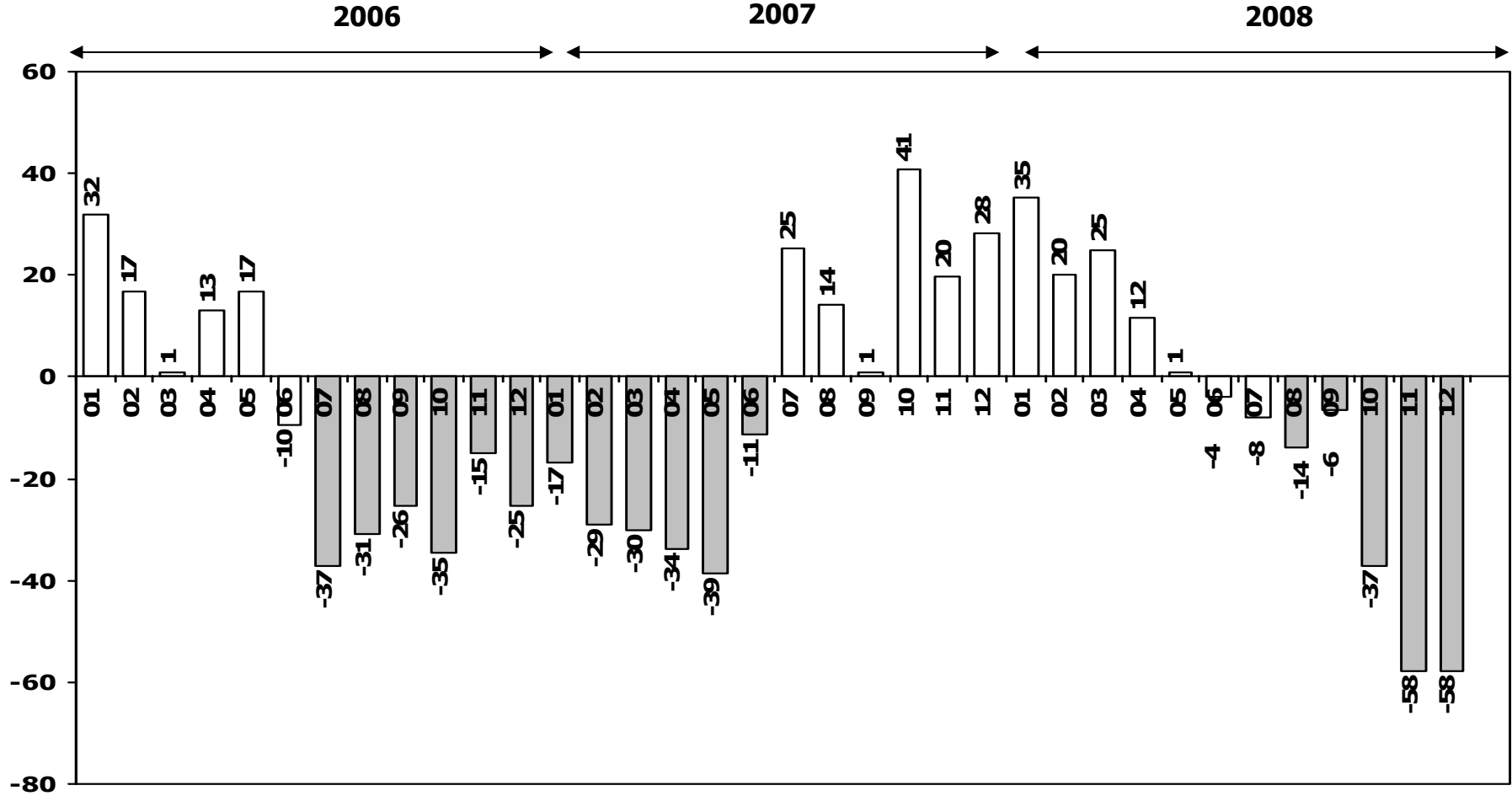
KONULAR/ MATTERS		AYLIK/MONTHLY			YILLIK/YEARLY		
		2007	2008	2008/2007 (%)	2007	2008	2008/2007 (%)
Üretim/ Production	Toplam/ Total	102.346	38.482	-62,4	1.099.413	1.147.110	4,3
	Otomobil/ P.Cars	55.991	20.500	-63,4	634.883	621.567	-2,1
Pazar/ Market	Toplam/ Total	106.076	44.418	-58,1	634.206	526.544	-17,0
	Otomobil/ P.Cars	61.745	25.879	-58,1	357.465	305.998	-14,4
İthalat/ Import	Toplam/ Total	58.019	26.057	-55,1	355.752	306.087	-14,0
	Otomobil/ P.Cars	39.770	18.021	-54,7	236.725	206.793	-12,6
İhracat/ Export	Toplam/ Total	73.041	36.516	-50,0	820.370	910.270	11,0
	Otomobil/ P.Cars	44.173	24.703	-44,1	504.353	525.301	4,2
İhracat / export (\$)	Toplam/ Total **	1.767.301.290	876.701.529	-50,4	19.103.389.628	21.889.004.563	14,6
	Otomobil/ P.Cars	622.585.689	287.955.957	-53,7	6.849.650.057	7.495.704.534	9,4

PARAMETRELER / PARAMETERS		AYLIK/MONTHLY			YILLIK/YEARLY		
		2007	2008	2008/2007 (%)	2007	2008	2008/2007 (%)
ÜFE/ PPI		0,15	-3,54	**	5,94	8,11	**
TÜFE/ CPI		0,07	-0,41	**	8,39	10,06	**
Sanayi Endeksi/ Industry Index		0,22	-3,69	**	4,27	10,07	**
\$ (*)		1,1649	1,5291	31,3	1,2943	1,3049	0,8
EURO (*)		1,7142	2,1435	25,0	1,7794	1,9148	7,6
Japon Yeni (*)		1,0400	1,6924	62,7	1,1014	1,2838	16,6

(*) Ortalama Değerler / Average Values

(**) Toplam Sanayi / Total Industry Including Components

TOPLAM PAZARDA AYLIK DEĞİŞİM (%)
Monthly Change in Total Market - %



2008/2007 Değişim (%)

	1.Çeyrek	2.Çeyrek	3.Çeyrek	4.Çeyrek
Toplam Pazar	26	2	-11	-53
Toplam İhracat	46	28	19	-39
Toplam Üretim	42	24	7	-45

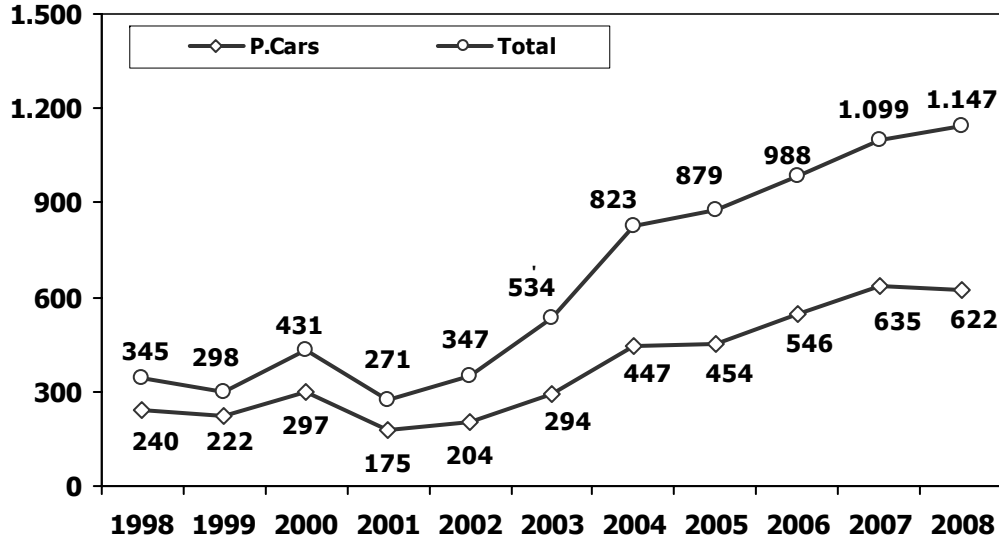


2007/2008 Yılları Üretim 2007/2008 Production

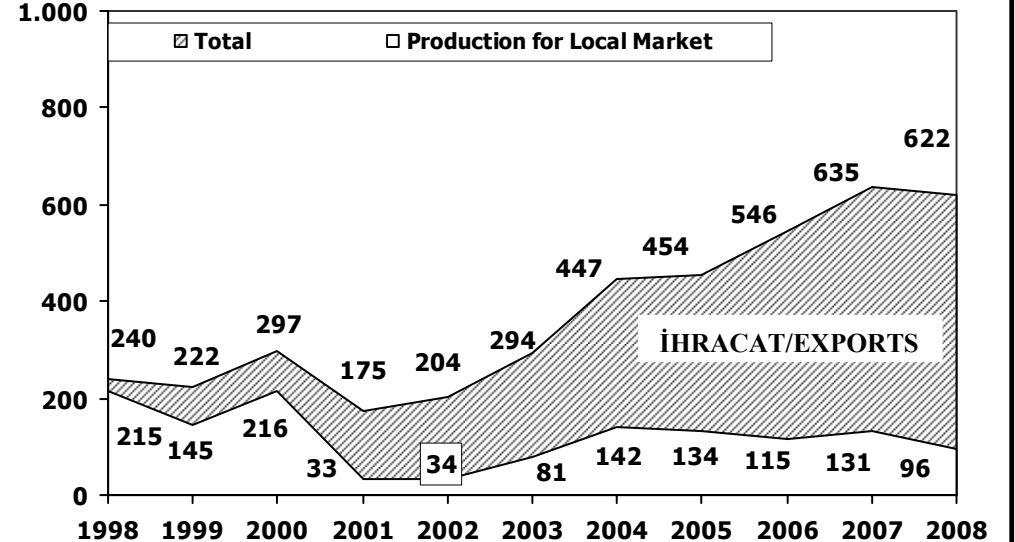
K.KAMYON : AYA 3.5-12 Ton (L.Truck:GVW 3.5-12 Ton)
B.KAMYON : AYA 12 Ton'dan Büyük (M.Truck:GVW 12 Ton And Up)

TİPLER	ARALIK AYI ÜRETİMİ December Production		12 AYLIK ÜRETİM 12 Months Production		DEĞİŞİM % Percent Change %	
	2007	2008	2007	2008	ARALIK December	12 AY 12 Months
OTOMOBİL - Pass.Car	55.991	20.500	634.883	621.567	-63	-2
TİCARİ ARAÇLAR - Commercial Vehicles	46.355	17.982	464.530	525.543	-61	13
* B. KAMYON - M. Truck	2.107	1.658	28.388	28.904	-21	2
* K. KAMYON - L. Truck	689	778	6.156	7.896	13	28
* KAMYONET - Pick Up	38.638	13.278	391.737	449.434	-66	15
* OTOBÜS - Bus	682	607	6.945	7.526	-11	8
* MİNİBÜS - Minibus	2.804	886	21.999	21.123	-68	-4
* MİDİBÜS - Midibus	1.435	775	9.305	10.660	-46	15
TAŞIT ARAÇLARI TOPLAM - MV Total	102.346	38.482	1.099.413	1.147.110	-62	4
TRAKTÖR - F.Tractor	2.520	836	33.538	24.807	-67	-26
GENEL TOPLAM - Grand Total	104.866	39.318	1.132.951	1.171.917	-63	3

Toplam Üretim ve Otomobil Üretimi (x1000) (Ocak-Aralık)
Total & P.Cars Production (x1000) (January-December)



Otomobil Üretimi ve İhracat (x1000) (Ocak-Aralık)
P.Cars Production & Exports (x1000) (January-December)





12 Aylık Üretim (12 Months Production)

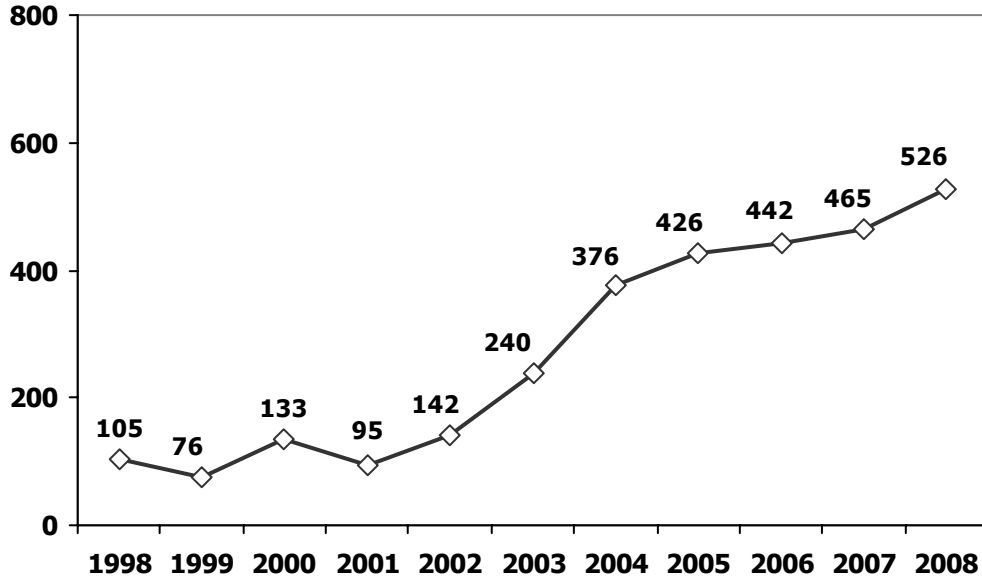
FİRMALAR Companies	OTOMOBİL Pass.Car	%	K.KAMYON L.Truck	%	B.KAMYON Mid.Truck	%	KAMYONET Pick Up	%	OTOBÜS Bus	%	MİNİBÜS Mini-Bus	%	MİDİBÜS Midi-Bus	%	TRAKTÖR F.Tractor	%	TOPLAM Totals
A.I.O.S.	0	0	3.469	44	0	0	3.796	1	0	0	0	0	2.742	26	0	0	10.007
B.M.C.	0	0	0	0	5.600	19	1.124	0	1.098	15	863	4	51	0	0	0	8.736
FORD OTOSAN	0	0	0	0	5.863	20	245.054	55	0	0	17.844	84	0	0	0	0	268.761
HATTAT	0	0	0	0	0	0	0	0	0	0	0	0	0	0	919	4	919
HONDA TÜRKİYE	50.073	8	0	0	0	0	0	0	0	0	0	0	0	0	0	0	50.073
HYUNDAI ASSAN	81.590	13	0	0	0	0	0	0	0	0	0	0	0	0	0	0	81.590
KARSAN	0	0	906	11	151	1	3.915	1	0	0	1.905	9	4.353	41	0	0	11.230
M. BENZ TÜRK	0	0	0	0	17.290	60	0	0	3.510	47	0	0	0	0	0	0	20.800
MAN TÜRKİYE	0	0	0	0	0	0	0	0	1.696	23	0	0	0	0	0	0	1.696
OTOKAR	0	0	0	0	0	0	692	0	325	4	511	2	1.495	14	0	0	3.023
OYAK RENAULT	286.695	46	0	0	0	0	0	0	0	0	0	0	0	0	0	0	286.695
TEMSA	0	0	3.521	45	0	0	4.105	1	897	12	0	0	2.019	19	0	0	10.542
TOFAŞ	76.688	12	0	0	0	0	190.748	42	0	0	0	0	0	0	0	0	267.436
TOYOTA	126.521	20	0	0	0	0	0	0	0	0	0	0	0	0	0	0	126.521
TÜRK TRAKTÖR	0	0	0	0	0	0	0	0	0	0	0	0	0	0	22.102	89	22.102
UZEL	0	0	0	0	0	0	0	0	0	0	0	0	0	0	1.786	7	1.786
TOPLAM	621.567	100	7.896	100	28.904	100	449.434	100	7.526	100	21.123	100	10.660	100	24.807	100	1.171.917

Aralık Ayı Üretimi (December Production)

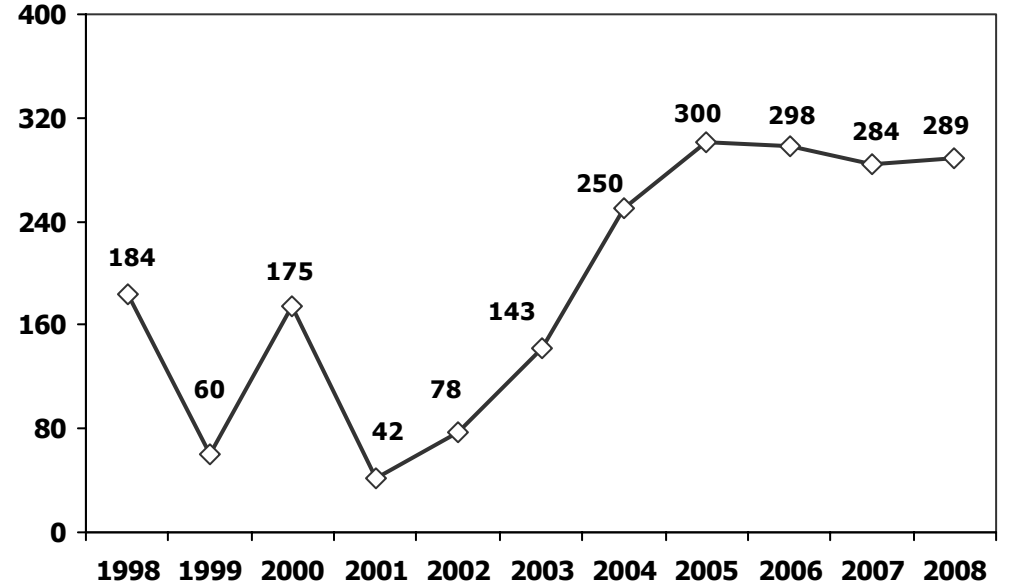
FİRMALAR Companies	OTOMOBİL Pass.Car	%	K.KAMYON L.Truck	%	B.KAMYON Mid.Truck	%	KAMYONET Pick Up	%	OTOBÜS Bus	%	MİNİBÜS Mini-Bus	%	MİDİBÜS Midi-Bus	%	TRAKTÖR F.Tractor	%	TOPLAM Totals
A.I.O.S.	0	0	222	29	0	0	254	2	0	0	0	0	160	21	0	0	636
B.M.C.	0	0	0	0	362	22	18	0	37	6	0	0	0	0	0	0	417
FORD OTOSAN	0	0	0	0	112	7	6.200	47	0	0	635	72	0	0	0	0	6.947
HATTAT	0	0	0	0	0	0	0	0	0	0	0	0	0	0	28	3	28
HONDA TÜRKİYE	2.176	11	0	0	0	0	0	0	0	0	0	0	0	0	0	0	2.176
HYUNDAI ASSAN	3.470	17	0	0	0	0	0	0	0	0	0	0	0	0	0	0	3.470
KARSAN	0	0	172	22	105	6	506	4	0	0	219	25	341	44	0	0	1.343
M. BENZ TÜRK	0	0	0	0	1.079	65	0	0	224	37	0	0	0	0	0	0	1.303
MAN TÜRKİYE	0	0	0	0	0	0	0	0	186	31	0	0	0	0	0	0	186
OTOKAR	0	0	0	0	0	0	129	1	89	15	32	4	113	15	0	0	363
OYAK RENAULT	6.453	31	0	0	0	0	0	0	0	0	0	0	0	0	0	0	6.453
TEMSA	0	0	384	49	0	0	0	0	71	12	0	0	161	21	0	0	616
TOFAŞ	4.287	21	0	0	0	0	6.171	46	0	0	0	0	0	0	0	0	10.458
TOYOTA	4.114	20	0	0	0	0	0	0	0	0	0	0	0	0	0	0	4.114
TÜRK TRAKTÖR	0	0	0	0	0	0	0	0	0	0	0	0	0	0	808	97	808
TOPLAM	20.500	100	778	100	1.658	100	13.278	100	607	100	886	100	775	100	836	100	39.318



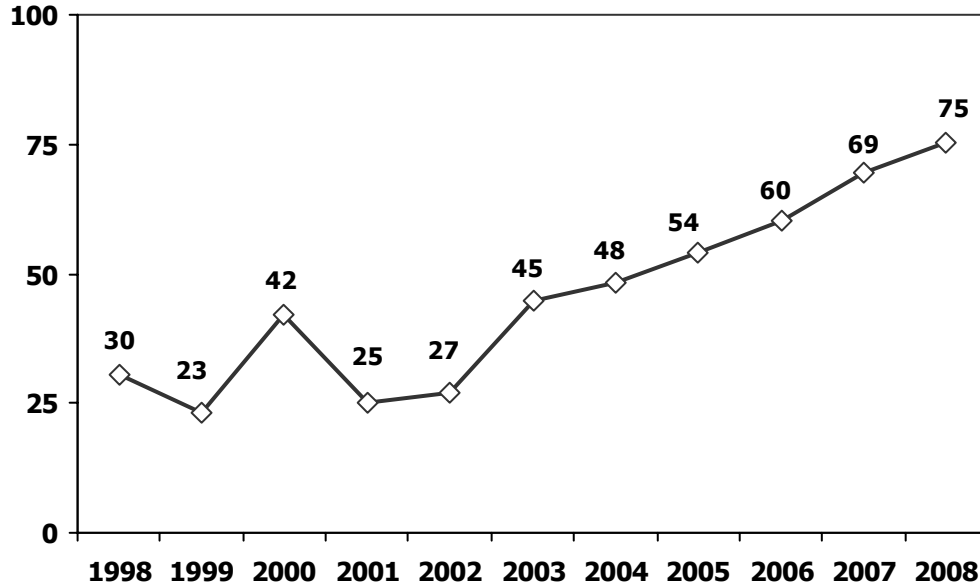
Ticari Araç Üretimi (x1000) (Ocak-Aralık)
Commercial Vehicle Production (x1000) (January-December)



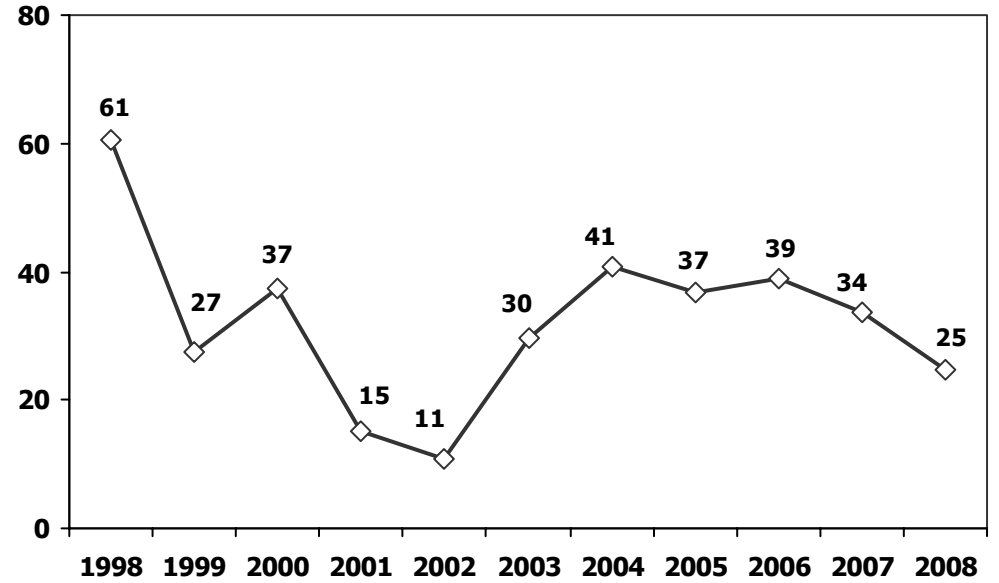
(AYA >12 Ton) **Büyük Kamyon Üretimi (x100)** (Ocak-Aralık)
(GVW >12 Ton) Heavy Truck Production (x100) (January-December)



Otobüs Üretimi (x100) (Ocak-Aralık)
Bus Production (x100) (January-December)



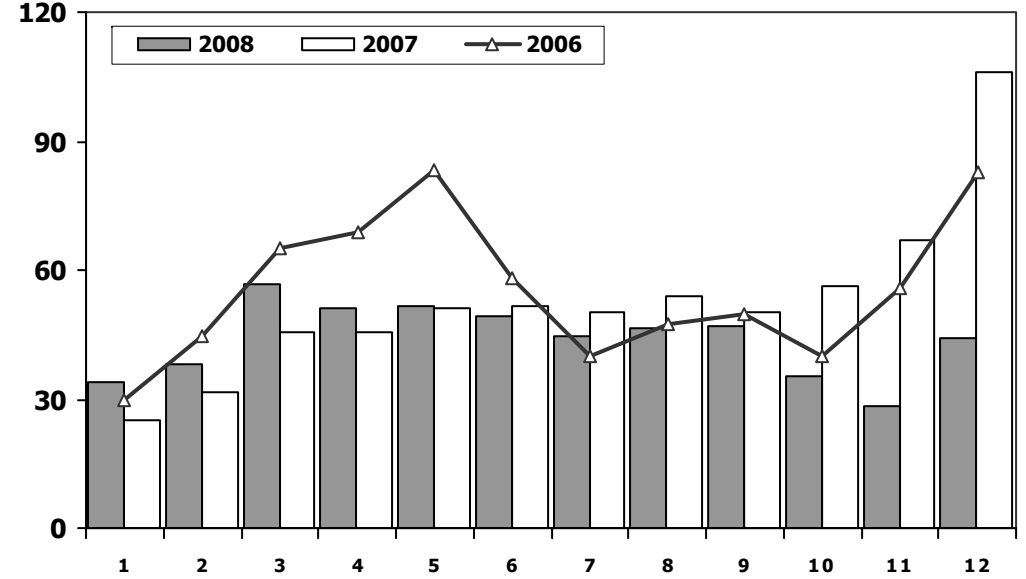
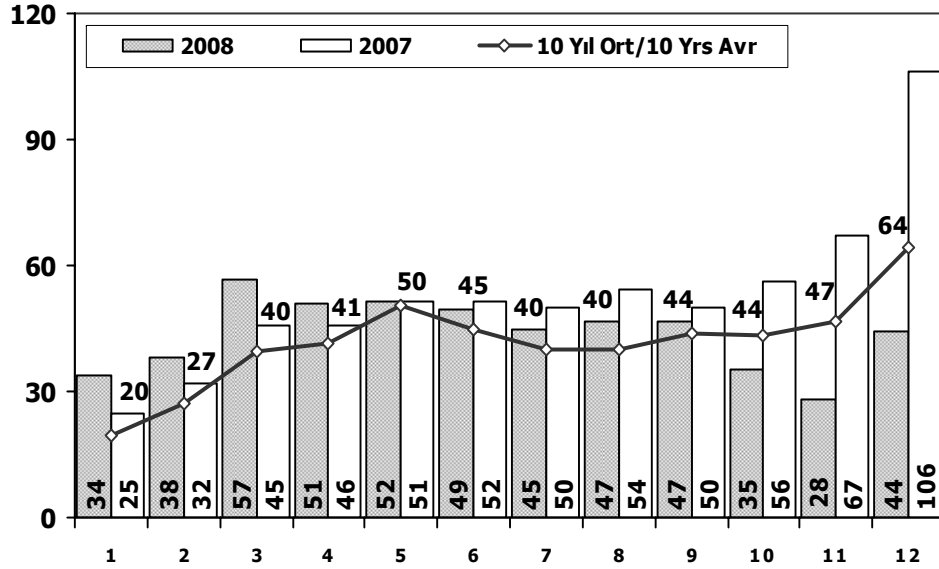
Traktör Üretimi (x1000) (Ocak-Aralık)
F. Tractor Production (x1000) (January-December)





Toplam Pazarın Analizi (x1000)
Total Market Analysis (x1000)

Toplam Pazar (x1000)
Total Market (x1000)

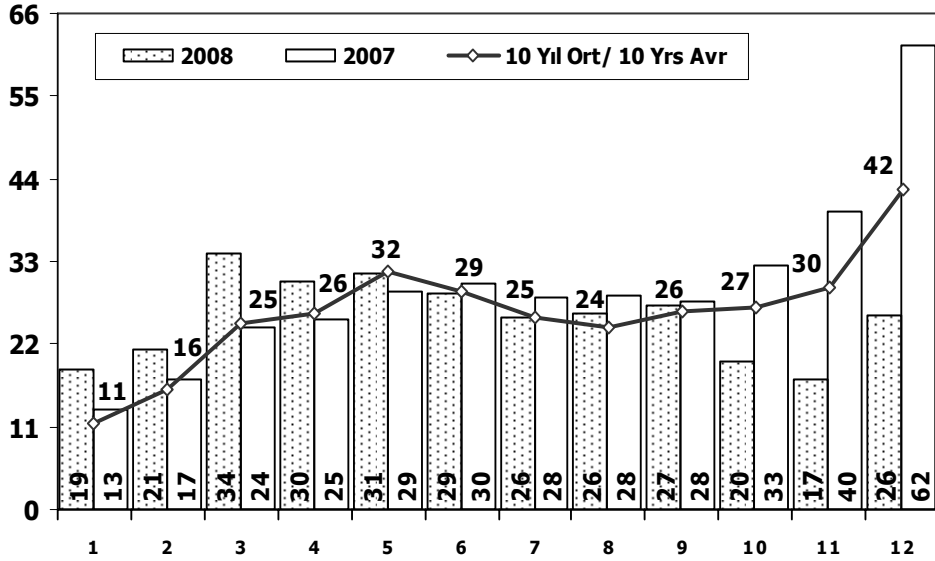


Aylar/ Months	10 Yil Ort. 10 Yrs Avr. (x1000)	2008 (x1000)	%
1	20	34	73
2	27	38	41
3	40	57	44
4	41	51	23
5	50	52	3
6	45	49	10
7	40	45	12
8	40	47	17
9	44	47	7
10	44	35	-19
11	47	28	-40
12	64	44	-31
Total	501	527	5

	1	2	3	4	5	6	7	8	9	10	11	12	Total
1998	20.939	35.853	43.130	35.642	49.747	44.172	40.978	38.547	44.013	38.954	39.041	50.262	481.278
1999	10.159	18.704	28.811	33.916	36.136	39.919	29.932	25.510	35.481	35.617	46.921	60.330	401.436
2000	18.646	35.458	48.337	52.371	66.900	67.587	56.914	60.460	66.600	70.622	71.220	41.406	656.521
2001	14.390	13.654	11.398	14.724	19.002	20.128	19.027	17.450	12.307	11.579	16.836	24.595	195.090
2002	2.248	4.310	8.065	12.192	16.807	15.648	16.509	14.738	16.186	18.386	18.478	30.875	174.442
2003	12.576	11.317	17.095	20.380	27.803	30.517	32.268	28.839	40.315	50.051	44.081	82.721	397.963
2004	38.621	39.389	71.723	77.056	84.634	63.228	57.307	56.422	59.429	56.153	52.237	85.070	741.269
2005	22.687	38.291	64.502	60.873	71.383	64.379	63.847	68.647	66.580	60.791	65.719	110.838	758.537
2006	29.969	44.646	65.090	68.853	83.289	58.203	40.037	47.374	49.629	39.805	55.898	82.722	665.515
2007	24.950	31.702	45.488	45.633	51.255	51.661	50.117	54.171	50.078	56.058	67.017	106.076	634.206
2008	33.792	38.121	56.814	50.967	51.627	49.393	44.692	46.592	46.829	35.147	28.152	44.418	526.544

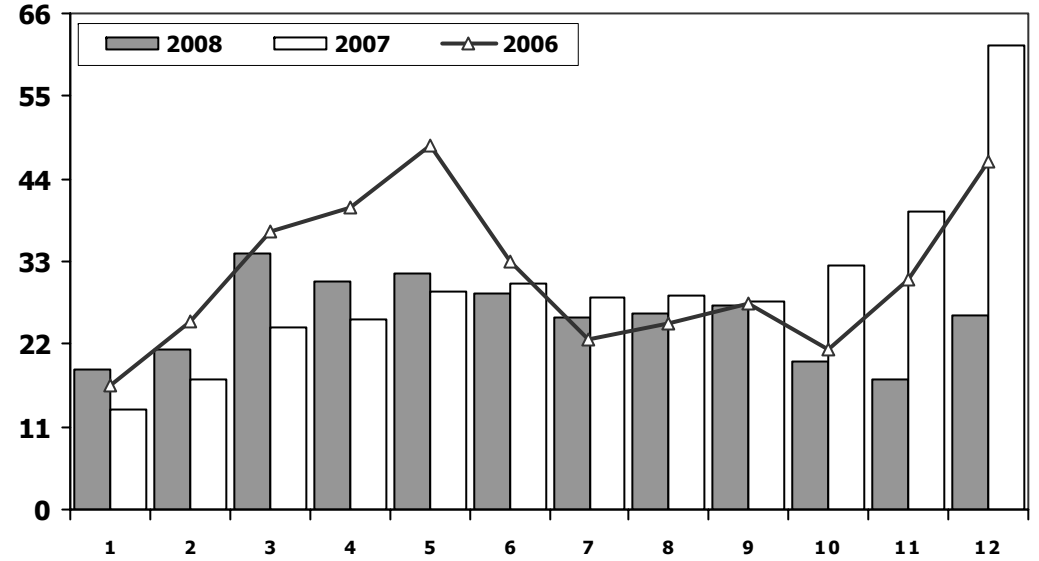


Otomobil Pazarının Analizi (x1000)
P.Cars Market Analysis (x1000)



Aylar / Months	10 Yil Ort. 10 Yrs Avr. (x1000)	2008 (x1000)	%
1	11	19	64
2	16	21	32
3	25	34	38
4	26	30	16
5	32	31	-1
6	29	29	-1
7	25	26	0
8	24	26	7
9	26	27	3
10	27	20	-26
11	30	17	-42
12	42	26	-39
Total	314	306	-3

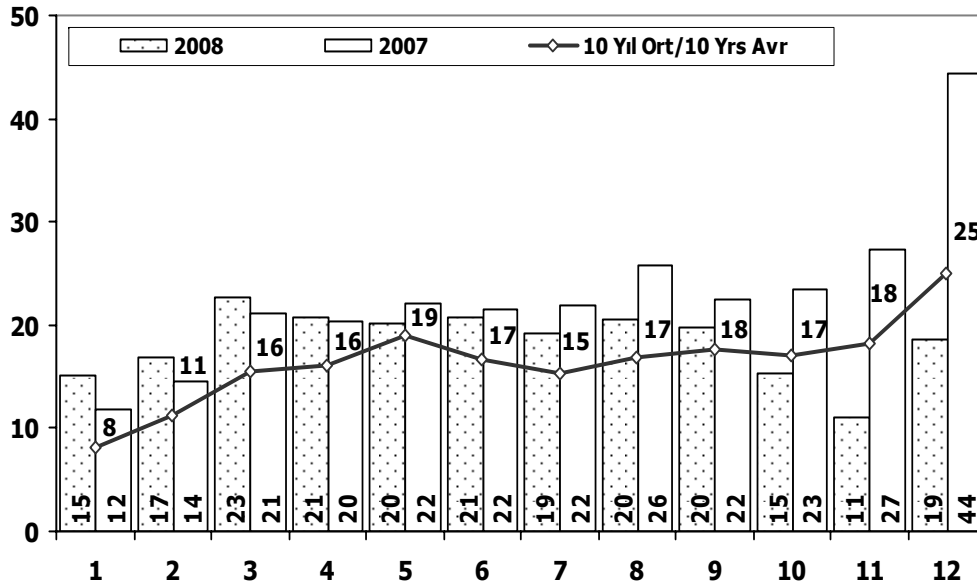
Otomobil Pazarı (x1000)
P.Cars Market (x1000)



	1	2	3	4	5	6	7	8	9	10	11	12	Total
1998	13.591	22.907	27.929	22.081	33.204	29.979	29.266	23.749	28.405	23.846	24.454	36.179	315.590
1999	5.723	12.078	19.920	24.767	26.535	29.565	22.339	16.789	24.639	25.327	34.251	46.734	288.667
2000	11.872	23.543	35.278	37.232	49.100	49.488	41.544	41.659	46.134	48.938	50.482	31.456	466.726
2001	8.443	8.377	7.479	10.195	13.562	14.408	13.326	11.361	6.927	7.035	12.319	18.006	131.438
2002	591	1.426	3.464	6.245	8.948	7.811	9.842	7.308	8.753	9.381	9.848	16.998	90.615
2003	6.309	5.486	8.555	11.107	15.965	16.329	14.764	16.896	23.772	30.615	25.777	51.461	227.036
2004	25.625	23.695	46.075	47.995	54.610	37.671	33.410	33.709	33.383	34.292	30.547	50.197	451.209
2005	11.595	21.012	38.129	36.206	38.480	40.900	38.969	38.648	36.410	34.960	37.841	65.447	438.597
2006	16.506	24.929	36.996	40.177	48.521	32.982	22.653	24.873	27.517	21.237	30.477	46.351	373.219
2007	13.186	17.212	24.336	25.204	29.067	30.126	28.246	28.469	27.662	32.569	39.643	61.745	357.465
2008	18.588	21.196	34.147	30.313	31.477	28.724	25.530	26.102	27.053	19.788	17.201	25.879	305.998

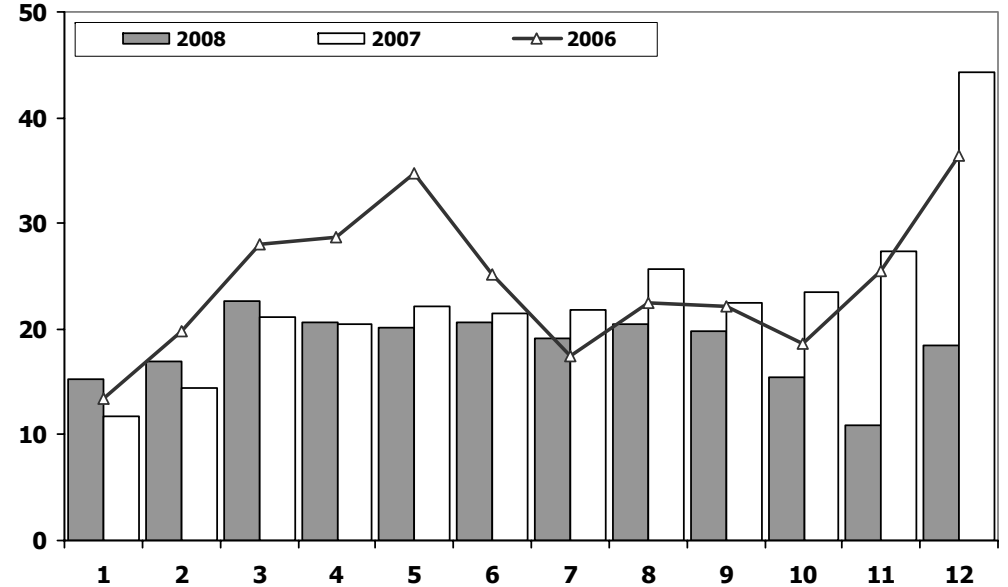


Ticari Araç Pazarının Analizi (x1000) CV Market Analysis (x1000)



Aylar / Months	10 Yil Ort. 10 Yrs Avr. (x1000)	2008 (x1000)	%
1	8	15	86
2	11	17	50
3	16	23	46
4	16	21	29
5	19	20	7
6	17	21	24
7	15	19	26
8	17	20	21
9	18	20	12
10	17	15	-10
11	18	11	-40
12	25	19	-26
Total	197	221	12

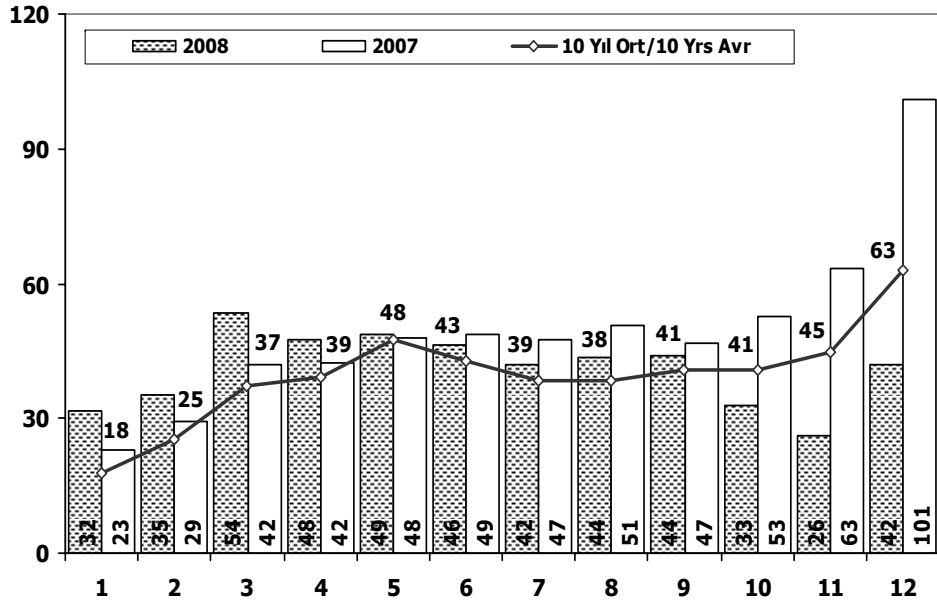
Ticari Araç Pazarı (x1000) CV Total Market (Local + Imports) (x1000)



	1	2	3	4	5	6	7	8	9	10	11	12	Total
1998	7.348	12.946	15.201	13.561	16.543	14.193	11.712	14.798	15.608	15.108	14.587	14.083	165.688
1999	4.436	6.626	8.891	9.149	9.601	10.354	7.593	8.721	10.842	10.290	12.670	13.596	112.769
2000	6.774	11.915	13.059	15.139	17.800	18.099	15.370	18.801	20.466	21.684	20.738	9.950	189.795
2001	5.947	5.277	3.919	4.529	5.440	5.720	5.701	6.089	5.380	4.544	4.517	6.589	63.652
2002	1.657	2.884	4.601	5.947	7.859	7.837	6.667	7.430	7.433	9.005	8.630	13.877	83.827
2003	6.267	5.831	8.540	9.273	11.838	14.188	17.504	11.943	16.543	19.436	18.304	31.260	170.927
2004	12.996	15.694	25.648	29.061	30.024	25.557	23.897	22.713	26.046	21.861	21.690	34.873	290.060
2005	11.092	17.279	26.373	24.667	32.903	23.479	24.878	29.999	30.170	25.831	27.878	45.391	319.940
2006	13.463	19.717	28.094	28.676	34.768	25.221	17.384	22.501	22.112	18.568	25.421	36.371	292.296
2007	11.764	14.490	21.152	20.429	22.188	21.535	21.871	25.702	22.416	23.489	27.374	44.331	276.741
2008	15.204	16.925	22.667	20.654	20.150	20.669	19.162	20.490	19.776	15.359	10.951	18.539	220.546

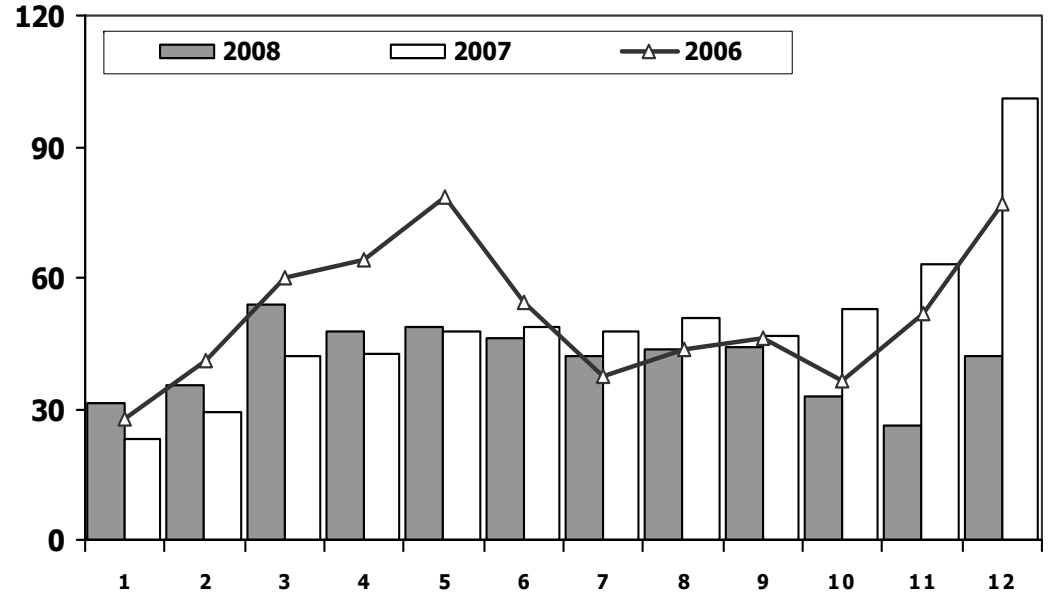


Hafif Araç Pazarının Analizi (x1000) LV Market Analysis (x1000)



Aylar / Months	10 Yil Ort. 10 Yrs Avr. (x1000)	2008 (x1000)	%
1	18	32	75
2	25	35	40
3	37	54	43
4	39	48	21
5	48	49	2
6	43	46	8
7	39	42	9
8	38	44	14
9	41	44	8
10	41	33	-19
11	45	26	-41
12	63	42	-33
Total	476	494	4

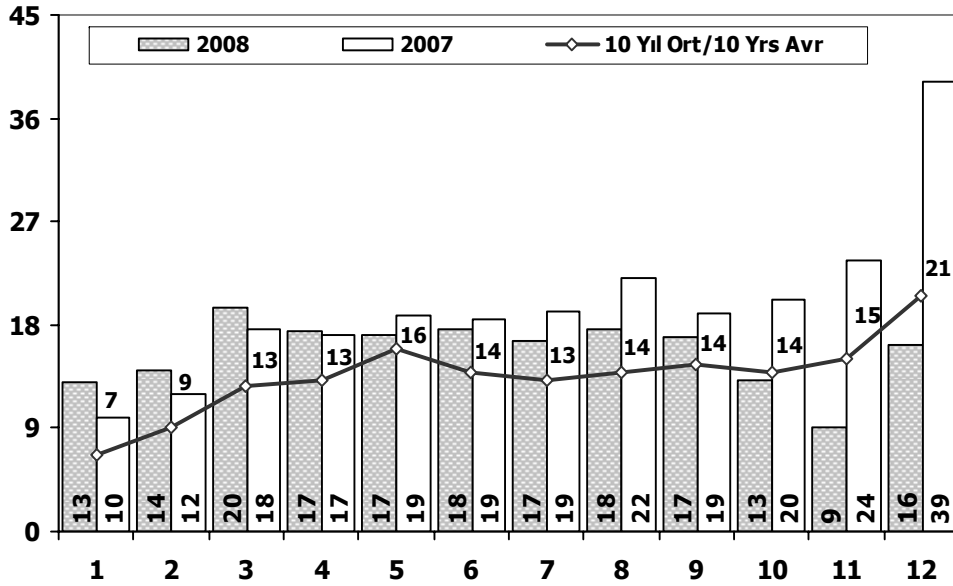
Hafif Araç Pazarı (x1000) LV Total Market (Local + Imports) (x1000)



	1	2	3	4	5	6	7	8	9	10	11	12	Total
1998	18.863	31.576	38.500	31.454	45.357	40.476	38.110	35.063	39.852	35.425	35.768	46.950	437.394
1999	9.247	17.326	26.969	32.049	34.310	38.118	28.708	23.794	33.339	33.513	44.710	57.497	379.580
2000	17.386	33.236	45.509	49.621	63.453	64.034	54.244	56.639	62.673	66.717	67.344	39.381	620.237
2001	13.188	12.557	10.548	13.919	18.129	19.514	18.512	16.709	11.402	10.562	15.713	22.999	183.752
2002	1.764	3.641	7.109	11.007	15.461	14.337	15.472	13.302	14.599	16.531	16.657	27.569	157.449
2003	11.531	10.402	15.743	18.693	25.853	28.266	30.172	25.903	36.234	45.446	40.048	75.778	364.069
2004	36.352	37.079	67.144	73.075	80.290	59.730	54.816	52.876	55.609	53.000	49.200	78.924	698.095
2005	20.747	35.766	60.707	56.844	67.357	60.796	61.015	64.011	61.954	56.638	61.364	103.209	710.408
2006	27.917	40.938	60.052	64.038	78.229	54.355	37.251	43.767	46.109	36.542	51.867	76.787	617.852
2007	23.117	29.184	41.890	42.366	47.938	48.674	47.490	50.558	46.581	52.725	63.313	100.926	594.762
2008	31.527	35.251	53.649	47.701	48.598	46.324	42.156	43.670	43.932	32.884	26.253	42.078	494.023

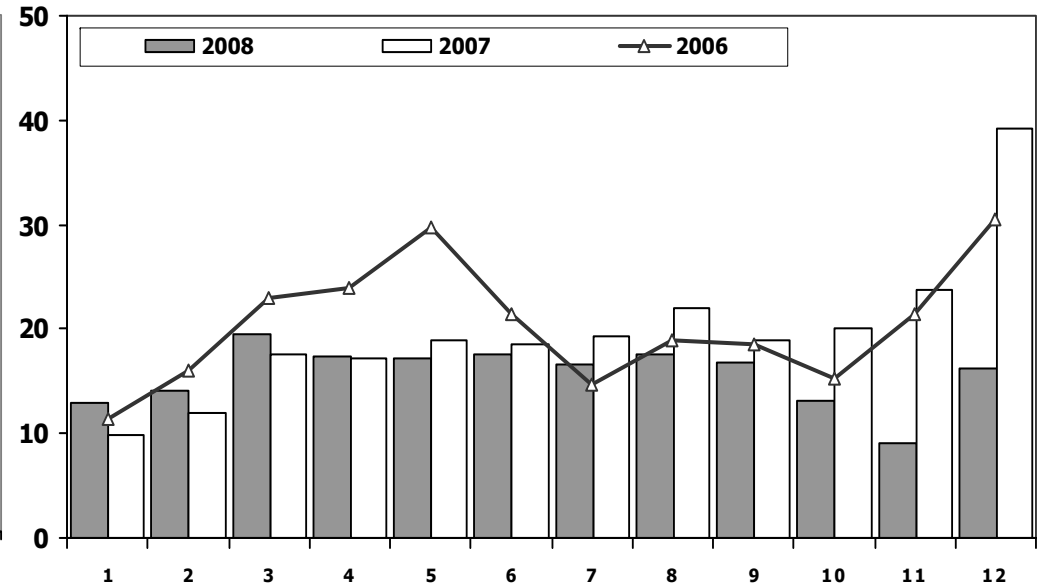


Hafif Ticari Araç Pazarının Analizi (x1000) LCV Market Analysis (x1000)



Aylar/ Months	10 Yil Ort. 10 Yrs Avr. (x1000)	2008 (x1000)	%
1	7	13	94
2	9	14	54
3	13	20	55
4	13	17	32
5	16	17	8
6	14	18	27
7	13	17	26
8	14	18	26
9	14	17	17
10	14	13	-6
11	15	9	-40
12	21	16	-21
Total	162	188	16

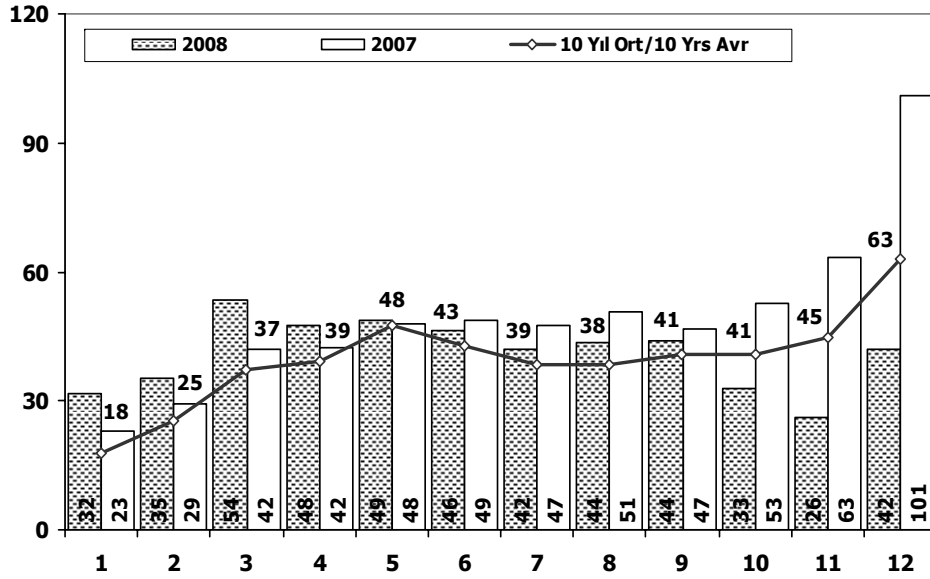
Hafif Ticari Araç Pazarı (x1000) LCV Total Market (Local + Imports) (x1000)



	1	2	3	4	5	6	7	8	9	10	11	12	Total
1998	5.272	8.669	10.571	9.373	12.153	10.497	8.844	11.314	11.447	11.579	11.314	10.771	121.804
1999	3.524	5.248	7.049	7.282	7.775	8.553	6.369	7.005	8.700	8.186	10.459	10.763	90.913
2000	5.514	9.693	10.231	12.389	14.353	14.546	12.700	14.980	16.539	17.779	16.862	7.925	153.511
2001	4.745	4.180	3.069	3.724	4.567	5.106	5.186	5.348	4.475	3.527	3.394	4.993	52.314
2002	1.173	2.215	3.645	4.762	6.513	6.526	5.630	5.994	5.846	7.150	6.809	10.571	66.834
2003	5.222	4.916	7.188	7.586	9.888	11.937	15.408	9.007	12.462	14.831	14.271	24.317	137.033
2004	10.727	13.384	21.069	25.080	25.680	22.059	21.406	19.167	22.226	18.708	18.653	28.727	246.886
2005	9.152	14.754	22.578	20.638	28.877	19.896	22.046	25.363	25.544	21.678	23.523	37.762	271.811
2006	11.411	16.009	23.056	23.861	29.708	21.373	14.598	18.894	18.592	15.305	21.390	30.436	244.633
2007	9.931	11.972	17.554	17.162	18.871	18.548	19.244	22.089	18.919	20.156	23.670	39.181	237.297
2008	12.939	14.055	19.502	17.388	17.121	17.600	16.626	17.568	16.879	13.096	9.052	16.199	188.025

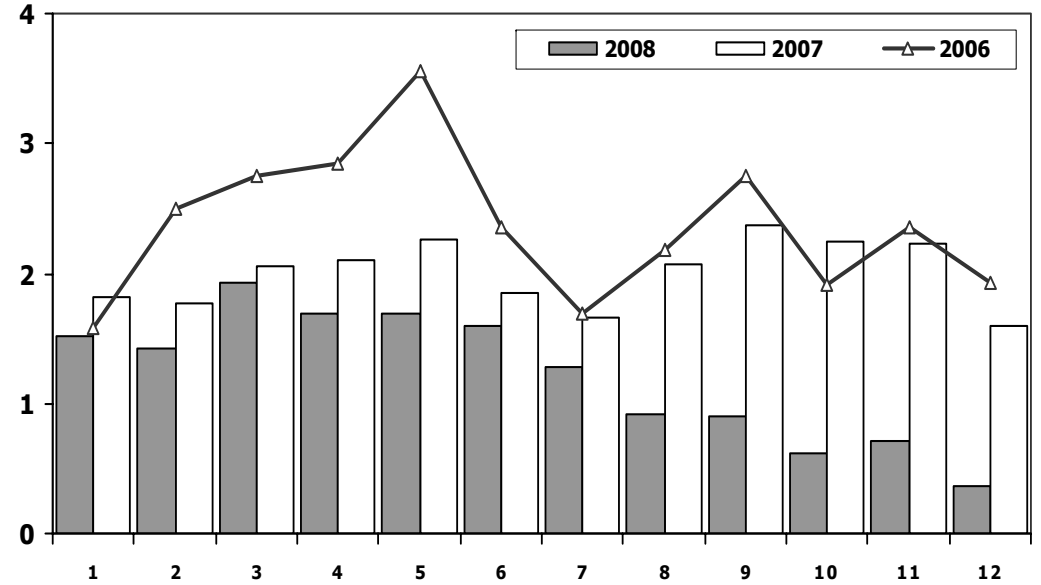


Hafif Araç Pazarı (AYA < 3.5 Ton) Light Vehicle Market (GVW < 3.5 Ton)



	1998	1999	2000	2001	2002	2003	2004	2005	2006	2007	2008
Otomobil/P.Cars	315.590	288.667	466.726	131.438	90.615	227.036	451.209	438.597	373.219	357.465	305.998
HTA/LCV	121.804	90.913	153.511	52.314	66.834	137.033	246.886	271.811	244.633	237.297	188.025
TOTAL	437.394	379.580	620.237	183.752	157.449	364.069	698.095	710.408	617.852	594.762	494.023
HTA/LCV (%)	28	24	25	28	42	38	35	38	40	40	38

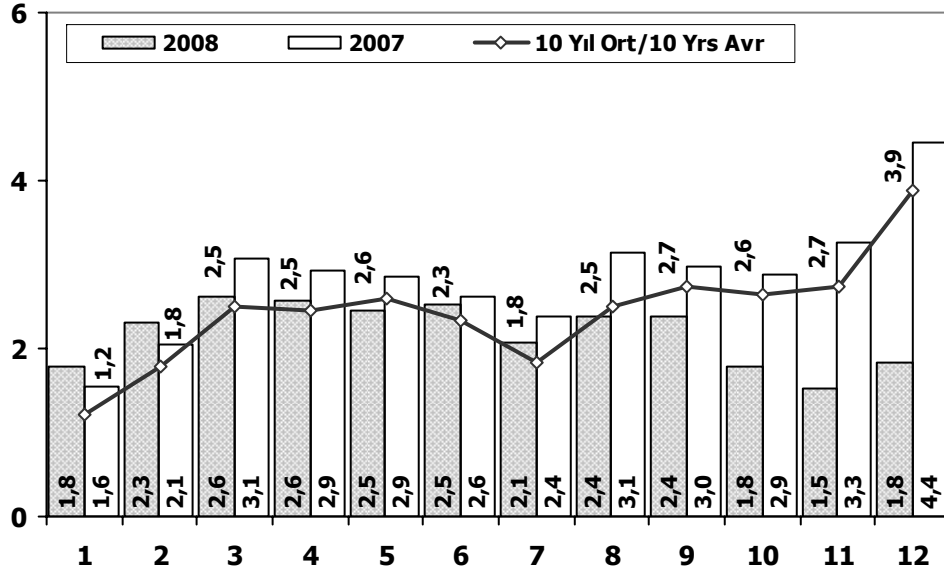
Traktör Pazarı (x1000) F.Tractor Market (x1000)



	1	2	3	4	5	6	7	8	9	10	11	12	Total
1998	2.420	3.618	5.197	4.444	5.832	6.269	4.044	4.181	5.538	3.699	2.378	948	48.568
1999	1.566	2.112	2.984	3.526	2.951	1.443	697	719	892	909	945	536	19.280
2000	777	1.037	2.266	2.913	3.507	2.746	1.959	2.324	3.345	3.108	2.669	1.146	27.797
2001	1.531	1.540	1.359	1.426	1.311	563	415	664	422	416	313	165	10.125
2002	291	401	380	585	435	508	561	546	747	628	560	680	6.322
2003	712	830	1.313	1.460	1.527	1.123	1.311	1.404	1.706	1.893	1.541	1.468	16.288
2004	1.946	1.874	2.909	3.260	2.863	2.816	1.988	2.209	2.509	1.989	2.198	1.364	27.925
2005	1.026	1.636	2.001	2.599	2.569	2.780	2.148	2.819	2.567	2.477	2.297	2.089	27.008
2006	1.578	2.493	2.746	2.841	3.561	2.356	1.685	2.177	2.756	1.915	2.353	1.925	28.386
2007	1.812	1.778	2.063	2.107	2.266	1.853	1.653	2.065	2.372	2.239	2.231	1.602	24.041
2008	1.510	1.427	1.933	1.692	1.689	1.592	1.275	924	904	609	707	359	14.621

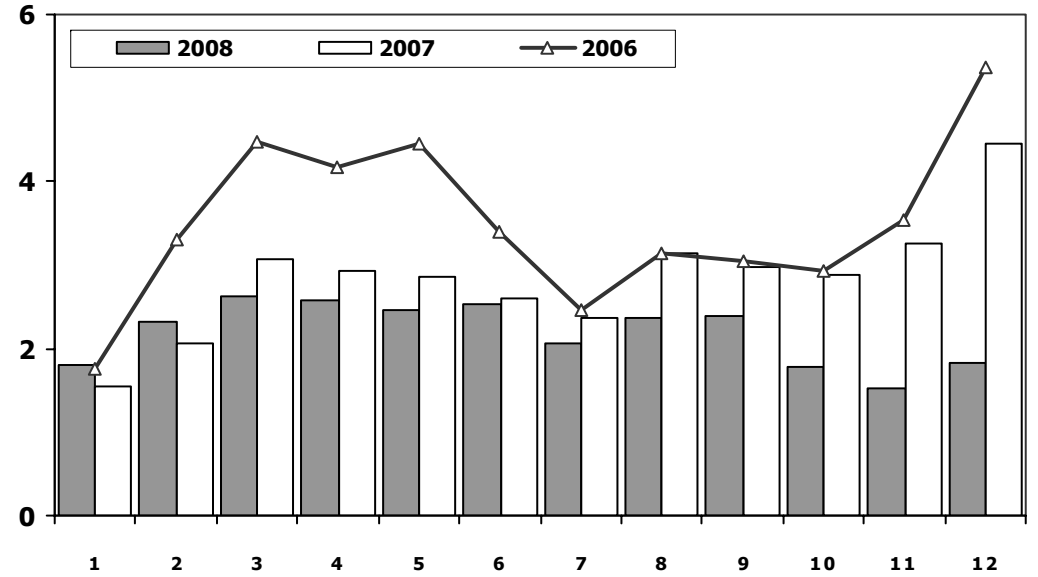


Kamyon Pazarının Analizi (x1000) AYA > 5 Ton Truck Market Analysis (x1000) GVW > 5 Ton



Ayar / Months	10 Yil Ort. 10 Yrs Avr. (x1000)	2008 (x1000)	%
1	1	2	47
2	2	2	29
3	2	3	5
4	2	3	5
5	3	2	-6
6	2	3	9
7	2	2	12
8	2	2	-5
9	3	2	-12
10	3	2	-32
11	3	2	-45
12	4	2	-53
Total	29	26	-10

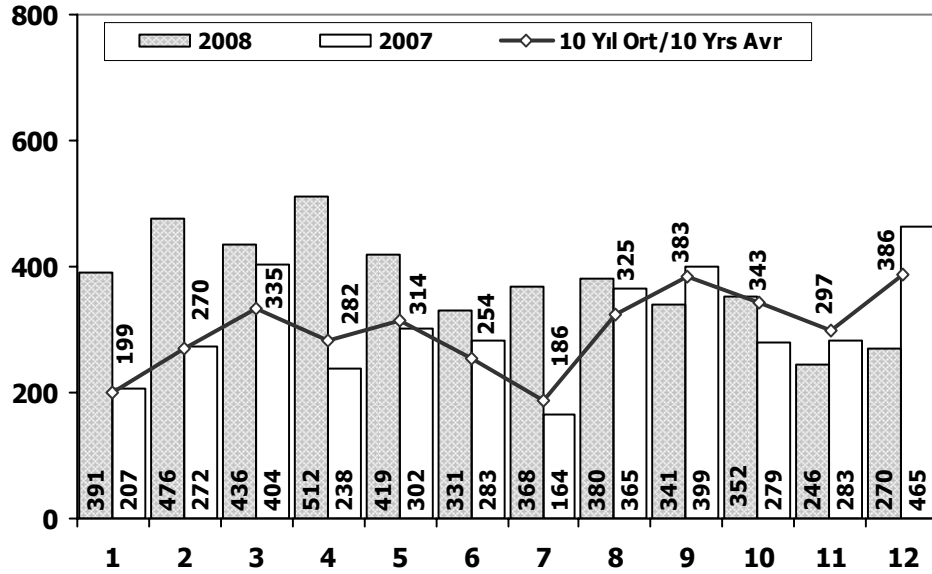
Kamyon Pazarı (x1000) AYA > 5 Ton Truck Market (x1000) GVW > 5 Ton



YIL	OCAK	ŞUBAT	MART	NİSAN	MAYIS	HAZİRAN	TEMMUZ	AĞUSTOS	EYLÜL	EKİM	KASIM	ARALIK	TOPLAM
1998	1.630	3.529	3.845	3.650	3.776	3.058	2.513	2.865	3.483	2.883	2.544	2.427	36.203
1999	626	914	1.353	1.450	1.462	1.335	914	1.471	1.661	1.505	1.705	2.114	16.510
2000	955	1.697	2.250	2.209	2.790	2.903	2.125	3.048	3.107	3.235	3.386	1.740	29.445
2001	950	942	725	709	793	498	420	604	680	795	975	1.383	9.474
2002	403	532	824	1.048	1.157	1.199	927	1.300	1.403	1.666	1.637	2.932	15.028
2003	771	773	1.123	1.494	1.668	2.008	1.933	2.490	3.563	4.147	3.720	6.406	30.096
2004	1.863	1.949	3.983	3.352	3.651	3.118	2.234	2.897	3.285	2.727	2.629	5.517	37.205
2005	1.693	2.186	3.288	3.484	3.413	3.147	2.504	4.028	4.043	3.708	3.918	6.570	41.982
2006	1.767	3.310	4.467	4.180	4.449	3.398	2.472	3.142	3.052	2.926	3.550	5.358	42.071
2007	1.554	2.055	3.065	2.940	2.865	2.613	2.372	3.145	2.988	2.886	3.258	4.444	34.185
2008	1.797	2.309	2.621	2.578	2.459	2.526	2.067	2.377	2.390	1.790	1.512	1.834	26.260

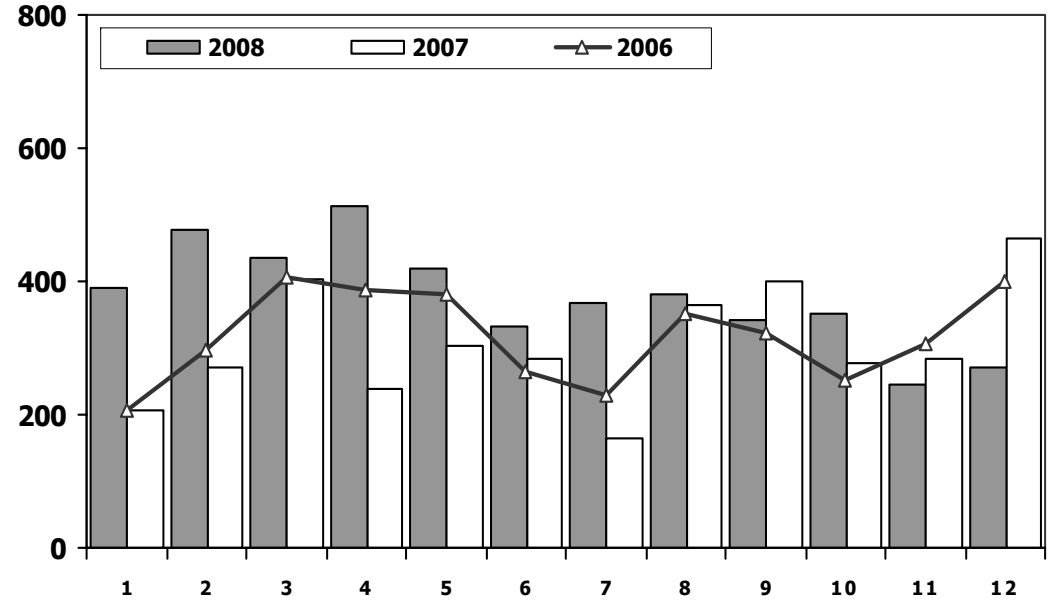


Midibüs Pazarının Analizi (7-9 mt / 25-35 Kişilik)
Midibus Market Analysis (7-9 mt / 25-35 Passengers)



Aylar / Months	10 Yıl Ort. 10 Yrs Avr.	2008	%
1	199	391	97
2	270	476	76
3	335	436	30
4	282	512	82
5	314	419	33
6	254	331	31
7	186	368	98
8	325	380	17
9	383	341	-11
10	343	352	3
11	297	246	-17
12	386	270	-30
Total	3.574	4.522	27

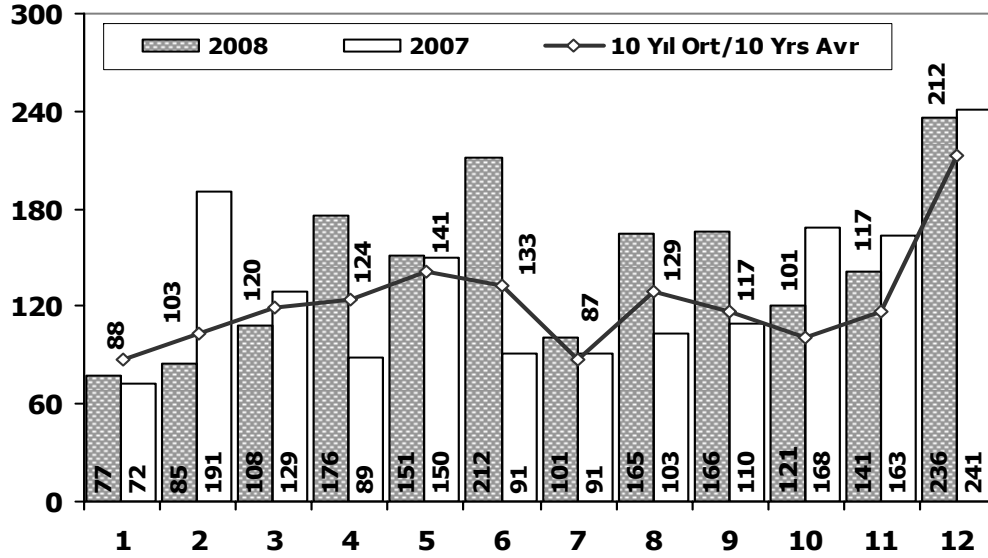
Midibüs Pazarı (7-9 mt / 25-35 Kişilik Midibüs)
Midibus Market (7-9 mt / 25-35 Passengers)



YIL	OCAK	ŞUBAT	MART	NİSAN	MAYIS	HAZİRAN	TEMMUZ	AĞUSTOS	EYLÜL	EKİM	KASIM	ARALIK	TOPLAM
1998	306	585	604	397	452	429	257	336	526	585	577	481	5.535
1999	255	394	349	322	321	357	235	177	429	490	403	433	4.165
2000	204	374	413	369	399	350	298	505	585	452	296	91	4.336
2001	124	87	85	76	43	77	60	110	201	208	129	131	1.331
2002	47	99	86	100	125	106	105	94	141	171	120	300	1.494
2003	220	109	188	106	158	161	103	322	349	330	212	436	2.694
2004	233	226	381	431	524	237	154	531	445	331	319	551	4.363
2005	182	258	432	393	439	269	252	459	436	329	328	574	4.351
2006	207	297	406	388	381	266	230	353	322	253	305	401	3.809
2007	207	272	404	238	302	283	164	365	399	279	283	465	3.661
2008	391	476	436	512	419	331	368	380	341	352	246	270	4.522

Otobüs Pazarının Analizi

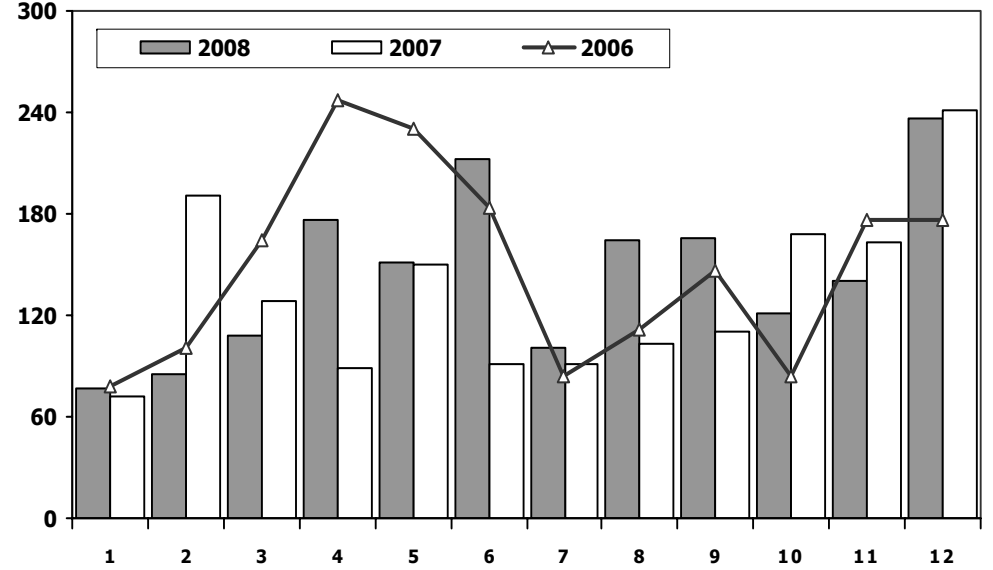
Bus Market Analysis



Aylar / Months	10 Yil Ort. / 10 Yrs Avr.	2008	%
1	88	77	-12
2	103	85	-18
3	120	108	-10
4	124	176	42
5	141	151	7
6	133	212	59
7	87	101	16
8	129	165	28
9	117	166	42
10	101	121	20
11	117	141	21
12	212	236	11
Total	1.472	1.739	18

Otobüs Pazarı

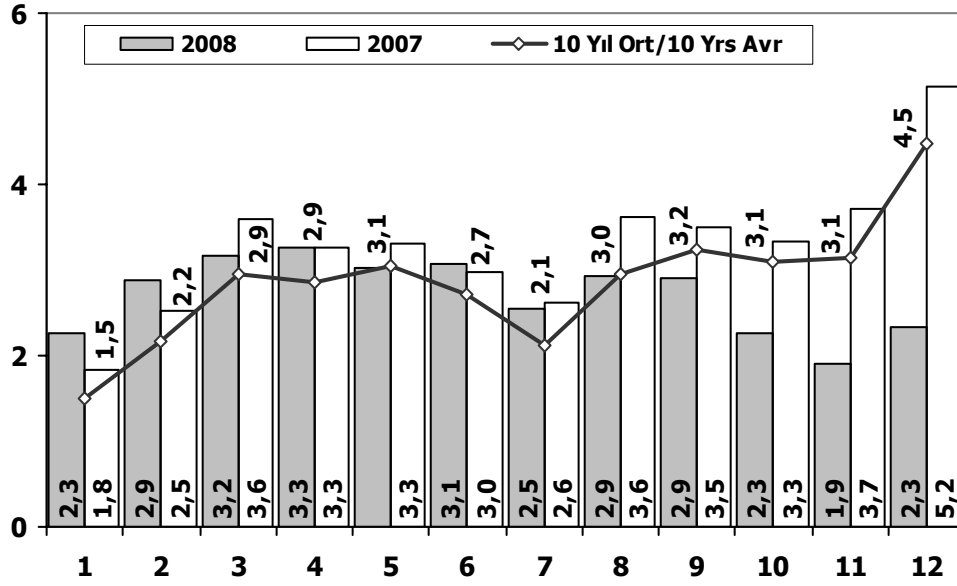
Bus Market



	1	2	3	4	5	6	7	8	9	10	11	12	Total
1998	140	163	181	141	162	209	98	283	152	61	152	404	2.146
1999	31	70	140	95	43	109	75	68	52	109	103	286	1.181
2000	101	151	165	172	258	300	247	268	235	218	194	194	2.503
2001	128	68	40	20	37	39	35	27	24	14	19	82	533
2002	34	38	46	37	64	6	5	42	43	18	64	74	471
2003	54	33	41	87	124	82	60	124	169	128	101	101	1.104
2004	173	135	215	198	169	143	103	118	90	95	89	78	1.606
2005	65	81	75	152	174	167	76	149	147	116	109	485	1.796
2006	78	101	165	247	230	184	84	112	146	84	176	176	1.783
2007	72	191	129	89	150	91	91	103	110	168	163	241	1.598
2008	77	85	108	176	151	212	101	165	166	121	141	236	1.739

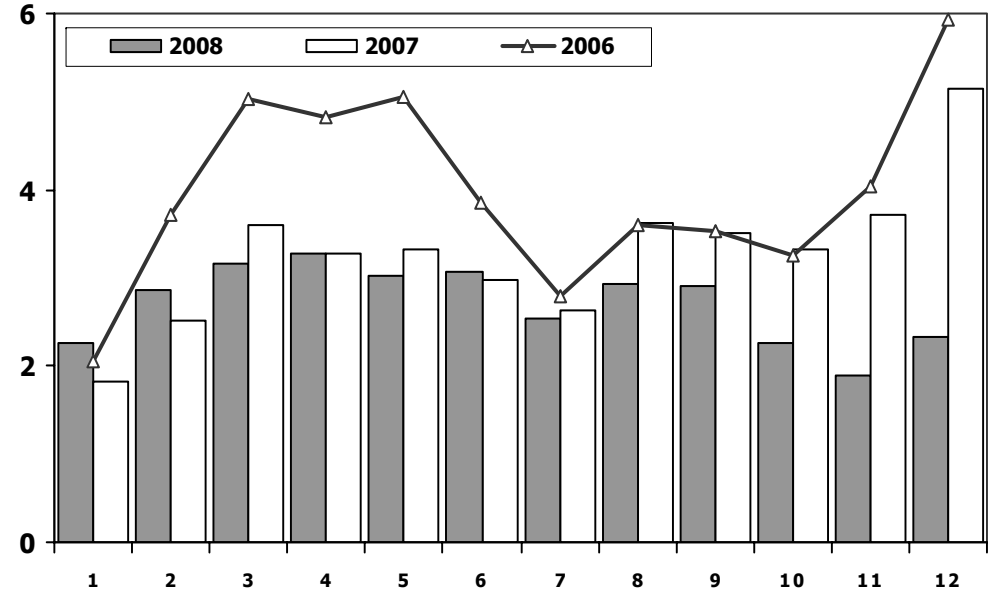


Ağır Ticari Araç Pazarının Analizi (x1000) HCV Market Analysis (x1000)



Aylar / Months	10 Yil Ort. 10 Yrs Avr. (x1000)	2008 (x1000)	%
1	2	2	50
2	2	3	33
3	3	3	7
4	3	3	14
5	3	3	-1
6	3	3	13
7	2	3	20
8	3	3	-1
9	3	3	-10
10	3	2	-27
11	3	2	-40
12	4	2	-48
Total	34	33	-5

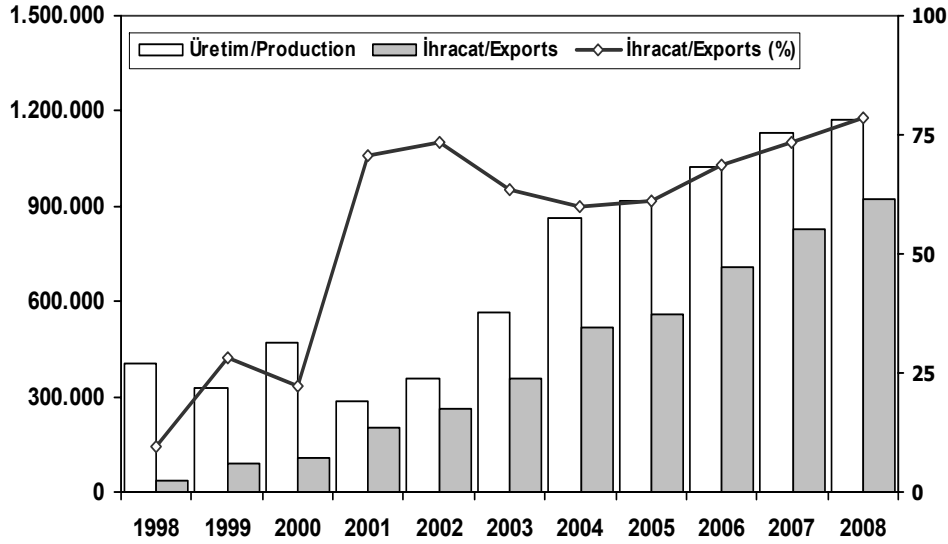
Ağır Ticari Araç Pazarı (x1000) HCV Market (x1000)



	1	2	3	4	5	6	7	8	9	10	11	12	Total
1998	2.076	4.277	4.630	4.188	4.390	3.696	2.868	3.484	4.161	3.529	3.273	3.312	43.884
1999	912	1.378	1.842	1.867	1.826	1.801	1.224	1.716	2.142	2.104	2.211	2.833	21.856
2000	1.260	2.222	2.828	2.750	3.447	3.553	2.670	3.821	3.927	3.905	3.876	2.025	36.284
2001	1.202	1.097	850	805	873	614	515	741	905	1.017	1.123	1.596	11.338
2002	484	669	956	1.185	1.346	1.311	1.037	1.436	1.587	1.855	1.821	3.306	16.993
2003	1.045	915	1.352	1.687	1.950	2.251	2.096	2.936	4.081	4.605	4.033	6.943	33.894
2004	2.269	2.310	4.579	3.981	4.344	3.498	2.491	3.546	3.820	3.153	3.037	6.146	43.174
2005	1.940	2.525	3.795	4.029	4.026	3.583	2.832	4.636	4.626	4.153	4.355	7.629	48.129
2006	2.052	3.708	5.038	4.815	5.060	3.848	2.786	3.607	3.520	3.263	4.031	5.935	47.663
2007	1.833	2.518	3.598	3.267	3.317	2.987	2.627	3.613	3.497	3.333	3.704	5.150	39.444
2008	2.265	2.870	3.165	3.266	3.029	3.069	2.536	2.922	2.897	2.263	1.899	2.340	32.521



İhracat/Üretim (1998/2008 Ocak-Aralık) Exports/Production



	1998	1999	2000	2001	2002	2003	2004	2005	2006	2007	2008
Üretim/Production	405.001	325.291	468.381	285.737	357.405	563.450	864.073	916.062	1.026.427	1.132.951	1.171.917
İhracat/Exports	37.926	92.051	104.744	202.158	261.934	358.745	518.595	561.078	706.402	829.879	920.763
İhracat/Exports (%)	9	28	22	71	73	64	60	61	69	73	79

Taşıt Araçları İhracatı (2005/2008) Motor Vehicle Exports

SEKTÖR/SECTOR	2005	2006	2007	2008	2008/2007 (%)
OTOMOBİL/ P.Cars	319.825	430.420	504.353	525.301	4
TİCARİ ARAÇLAR/ CV	233.013	266.268	316.017	384.969	22
* Kamyonet/Pick-Up	218.467	254.159	295.585	366.646	24
* Minibüs/Minibus	3.720	1.809	2.695	891	-67
* Kamyon/Truck	5.061	4.007	9.398	9.742	4
* Midibüs/Midibus	1.935	2.168	2.987	2.180	-27
* Otobüs/Bus	3.830	4.125	5.352	5.510	3
TAŞIT ARAÇLARI /MV TOTAL	552.838	696.688	820.370	910.270	11
TRAKTÖR/F.TRACTOR	8.240	9.714	9.509	10.493	10
TOTAL	561.078	706.402	829.879	920.763	11

Otomotiv Ana ve Yan Sanayii İhracatı (ABD \$) CBU and CKD Exports - \$

SEKTÖR/SECTOR	2005 Toplam (Total)	2006 Toplam (Total)	2007 Toplam (Total)	2008 Toplam (Total)	2008/2007 (%)
Toplam Ana Sanayi/Total Vehicle Industry	8.035.352.707	9.921.815.775	12.782.627.326	14.872.403.452	16
* Otomobil (P. Cars)	4.368.734.982	5.683.364.186	6.849.650.057	7.495.704.534	9
* Otobüs (Bus)	609.904.617	724.611.420	1.099.543.073	1.239.947.457	13
* Diğerleri (Others)	3.056.713.107	3.513.840.169	4.833.434.196	6.136.751.461	27
Toplam Yan Sanayi/Total Component Industry	3.504.213.036	4.508.490.757	6.320.762.302	7.016.601.111	11
* Aksam ve Parça / Spare Parts and Components	2.785.312.434	3.668.803.672	5.225.898.830	5.807.139.074	11
* İç ve Dış Lastik / Tyres	639.805.929	717.230.911	895.748.611	976.029.024	9
* Akümülatör / Batteries	26.008.662	50.020.679	102.269.786	127.902.222	25
* Emniyet Camı/ Safety Glasses	53.086.011	72.435.495	96.845.075	105.530.791	9
Toplam/Total	11.539.565.743	14.350.824.949	19.103.389.628	21.889.004.563	15

Kaynak: ÜİB - OAİB



Firma Bazında İhracat (Adet)
Export Of member Companies (Unit)

FİRMALAR/COMPANIES	2006	2007	2008
OYAK RENAULT	177.411	204.428	252.232
FORD OTOSAN	184.606	221.741	217.876
TOFAŞ	123.061	146.177	209.443
TOYOTA	160.479	154.386	119.586
HYUNDAI ASSAN	34.511	69.224	61.000
HONDA TÜRKİYE	5.692	7.732	34.926
TÜRK TRAKTÖR	4.597	5.761	9.648
M. BENZ TÜRK	3.903	8.708	9.083
MAN TÜRKİYE	1.874	1.699	1.538
TEMSA	1.106	1.151	1.245
B.M.C.	712	1.524	1.189
A.I.O.S.	711	750	1.042
UZEL	5.117	3.748	792
OTOKAR	1.276	1.115	619
KARSAN	394	1.632	482
HATTAT	0	0	53
OTOYOL	925	103	9
ASKAM	27	0	0
GENEL TOPLAM	706.402	829.879	920.763

Kaynak: OSD

Sektör Bazında İhracat (\$)
Exports on Sectoral Basis

Sıra No (Rank)	Sektörler Sectors	2007 Toplam (Total)	2008 Toplam (Total)	2008/2007 (%)	2008 (%) Pay (Share)
1	Taşıt Araçları ve Yan Sanayi	21.255.865	24.730.601	16,3	19,4
2	Demir Çelik Ürünleri	11.386.703	19.398.703	70,4	15,2
3	Hazırgiyim ve Konfeksiyon	16.059.858	15.722.503	-2,1	12,3
4	Kimyevi Maddeler ve Mamülleri	10.457.267	13.608.594	30,1	10,7
5	Elektrik-Elektronik ve Makina	9.094.522	9.860.425	8,4	7,7
6	Makine ve Aksamları	5.552.212	6.916.307	24,6	5,4
7	Tekstil ve Hammaddeleri	6.554.050	6.807.831	3,9	5,3
8	Demir ve Demir Dışı Metaller	5.189.620	6.173.135	19,0	4,8
9	Hububat, Bakliyat, Yağlı	2.807.971	3.806.566	35,6	3,0
10	Çimento ve Toprak Ürünleri	2.534.437	3.403.833	34,3	2,7
11	Madencilik Ürünleri	2.715.830	3.258.830	20,0	2,6
12	Ağaç Mamülleri, Orman Ürünleri	2.118.051	2.600.553	22,8	2,0
13	Yaş Meyve ve Sebze	1.478.862	1.770.762	19,7	1,4
14	Değerli Maden ve Mücevherat	1.479.951	1.507.951	1,9	1,2
15	Fındık ve Mamülleri	1.517.100	1.416.100	-6,7	1,1
16	Deri ve Deri Mamülleri	1.268.796	1.318.046	3,9	1,0
17	Halı	1.003.720	1.168.608	16,4	0,9
18	Meyve Sebze Mamülleri	1.000.293	1.097.900	9,8	0,9
19	Kuru Meyve ve Mamülleri	904.569	1.081.512	19,6	0,8
20	Canlı Hayvan, Su Ürünleri ve	592.143	854.194	44,3	0,7
21	Tütün	642.457	699.038	8,8	0,5
22	Zeytin ve Zeytinyağ	246.766	186.646	-24,4	0,1
23	Diğer Sanayi Ürünleri	56.603	65.548	15,8	0,1
24	Kesme Çiçek	47.019	45.713	-2,8	0,0
	TOPLAM (Total)	105.964.665	127.499.899	20,3	100,0

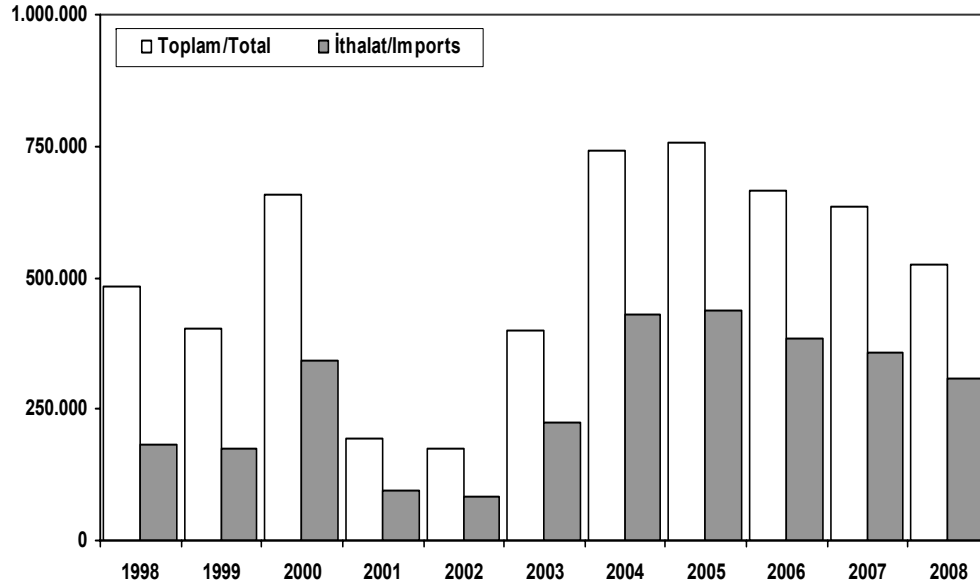
Kaynak: TİM

First 5 Sectors:

- 1-Transport Vehicle and Component Industry
- 2- Iron Steel Products
- 3- Ready Wear and Confection
- 4-Chemical Articles and Products
- 5-Electric-Electronic and Machine

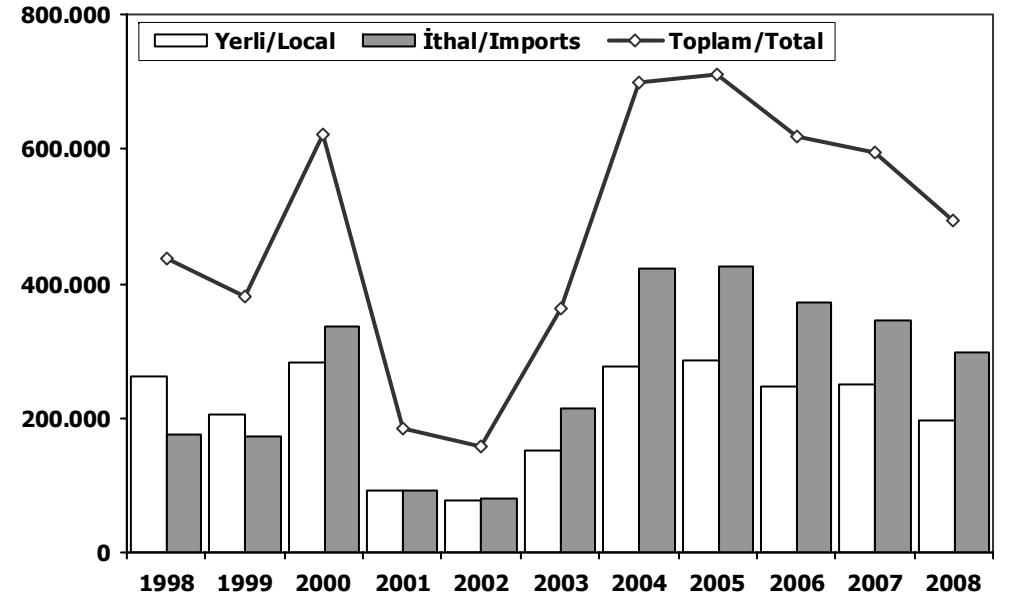


Toplam Pazar (Otomobil+T.Araç)
Total Market (P.Cars+C.V)



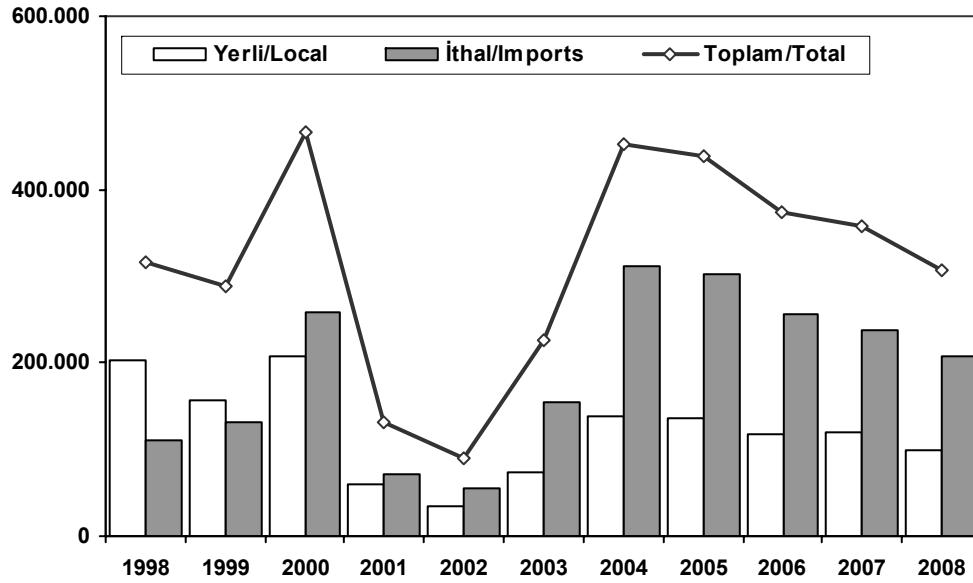
	1998	1999	2000	2001	2002	2003	2004	2005	2006	2007	2008
Toplam/Total	481.278	401.436	656.521	195.090	174.442	397.963	741.269	758.537	665.515	634.206	526.544
İthalat/Imports	183.721	175.437	341.664	93.887	83.027	222.984	430.204	436.033	382.460	355.752	306.087
İthalat/Imports (%)	38	44	52	48	48	56	58	57	57	56	58

Hafif Araçlar Pazarı (Ocak-Aralık)
LV Market (January-December)



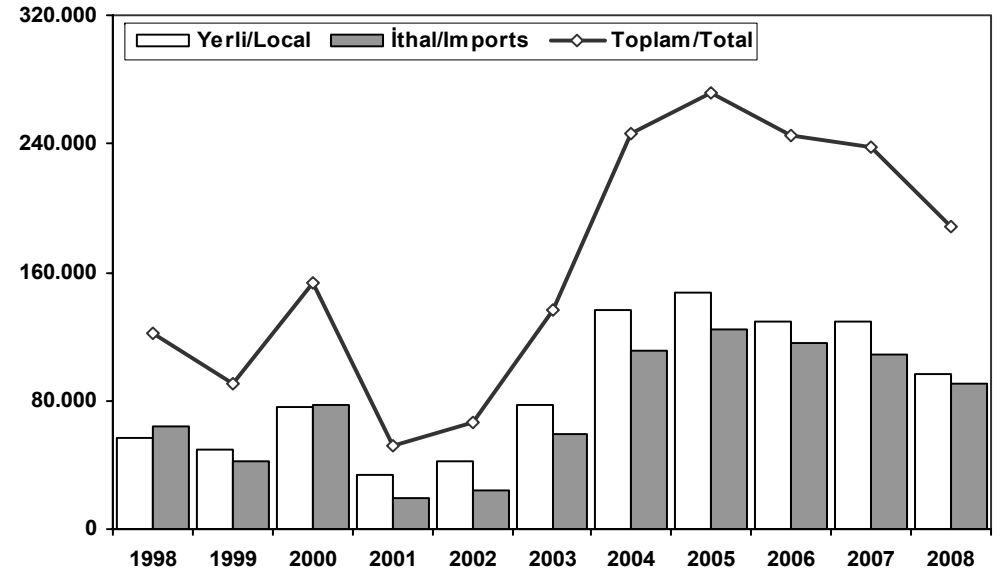
	1998	1999	2000	2001	2002	2003	2004	2005	2006	2007	2008
Yerli/Local	261.270	206.637	283.955	92.696	78.321	150.842	275.521	284.134	246.800	249.705	196.162
İthal/Imports	176.124	172.943	336.282	91.056	79.128	213.227	422.574	426.274	371.052	345.057	297.861
Toplam/Total	437.394	379.580	620.237	183.752	157.449	364.069	698.095	710.408	617.852	594.762	494.023
İthalat/Imports (%)	40	46	54	50	50	59	61	60	60	58	60

Otomobil Pazarı (Ocak-Aralık) P.Cars Market (January-December)

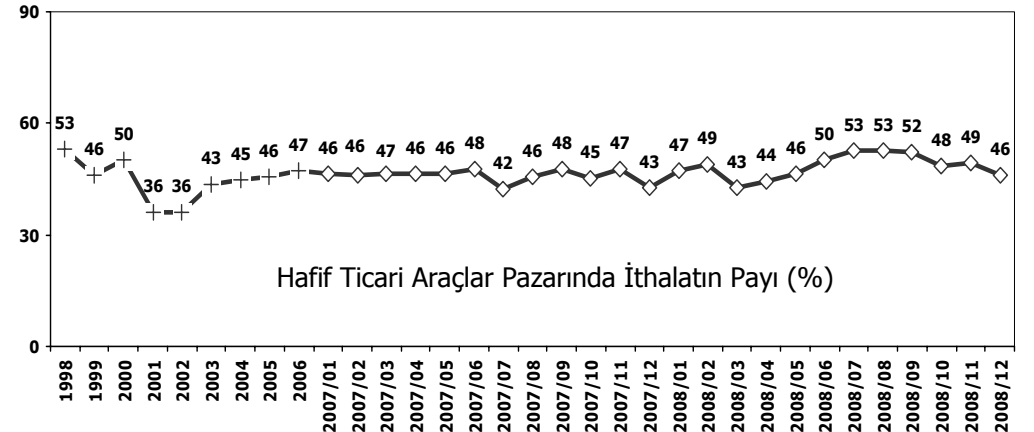
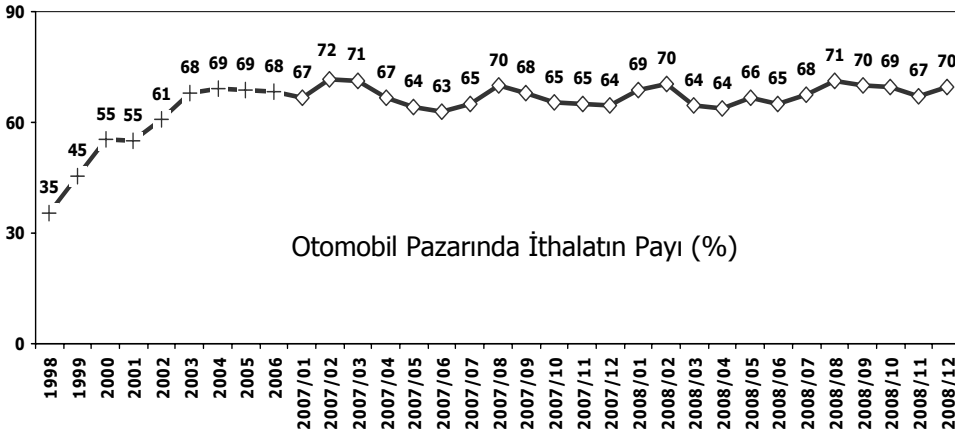


	1998	1999	2000	2001	2002	2003	2004	2005	2006	2007	2008
Yerli/Local	204.054	157.452	207.739	59.179	35.519	73.267	139.541	136.708	117.725	120.740	99.205
İthal/Imports	111.536	131.215	258.987	72.259	55.096	153.769	311.668	301.889	255.494	236.725	206.793
Toplam/Total	315.590	288.667	466.726	131.438	90.615	227.036	451.209	438.597	373.219	357.465	305.998
İthalat/Imports (%)	35	45	55	55	61	68	69	69	68	66	68

Hafif Ticari Araçlar Pazarı (Ocak-Aralık) (Light Commercial Vehicle Market) (January-December)

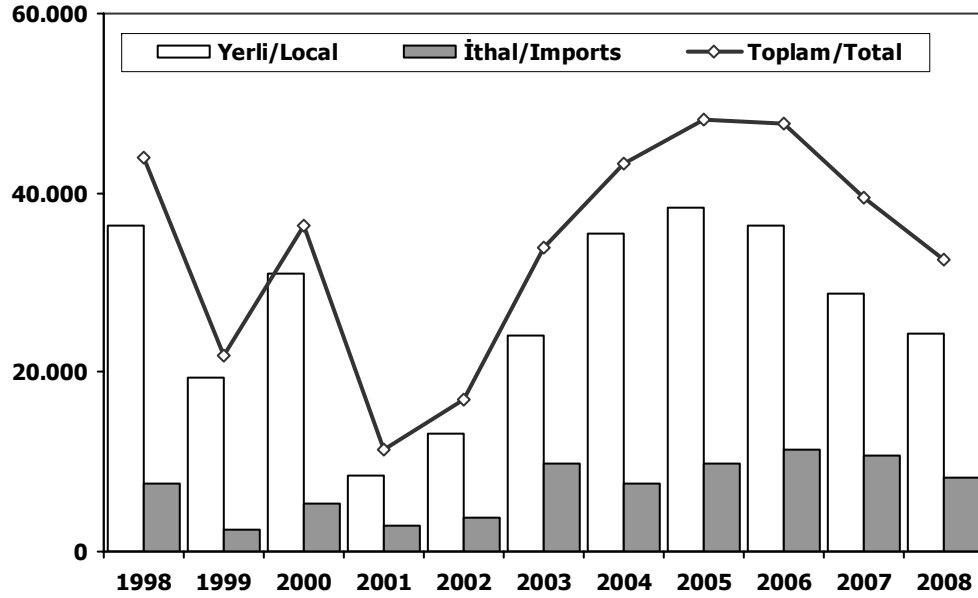


	1998	1999	2000	2001	2002	2003	2004	2005	2006	2007	2008
Yerli/Local	57.216	49.185	76.216	33.517	42.802	77.575	135.980	147.426	129.075	128.965	96.957
İthal/Imports	64.588	41.728	77.295	18.797	24.032	59.458	110.906	124.385	115.558	108.332	91.068
Toplam/Total	121.804	90.913	153.511	52.314	66.834	137.033	246.886	271.811	244.633	237.297	188.025
İthalat/Imports (%)	53	46	50	36	36	43	45	46	47	46	48



Ağır Ticari Araçlar Pazarı (Ocak-Aralık)

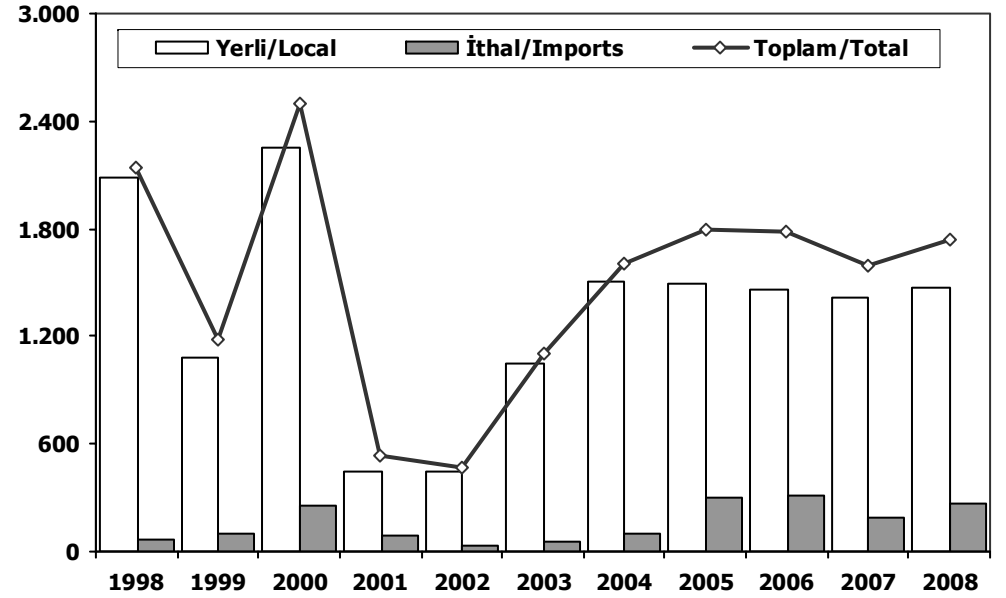
HCV Market (January-December)



	1998	1999	2000	2001	2002	2003	2004	2005	2006	2007	2008
Yerli/Local	36.287	19.362	30.902	8.507	13.094	24.137	35.544	38.370	36.255	28.749	24.295
İthal/Imports	7.597	2.494	5.382	2.831	3.899	9.757	7.630	9.759	11.408	10.695	8.226
Toplam/Total	43.884	21.856	36.284	11.338	16.993	33.894	43.174	48.129	47.663	39.444	32.521
İthalat/Imports (%)	17	11	15	25	23	29	18	20	24	27	25

Otobüs Pazarı (Ocak-Aralık)

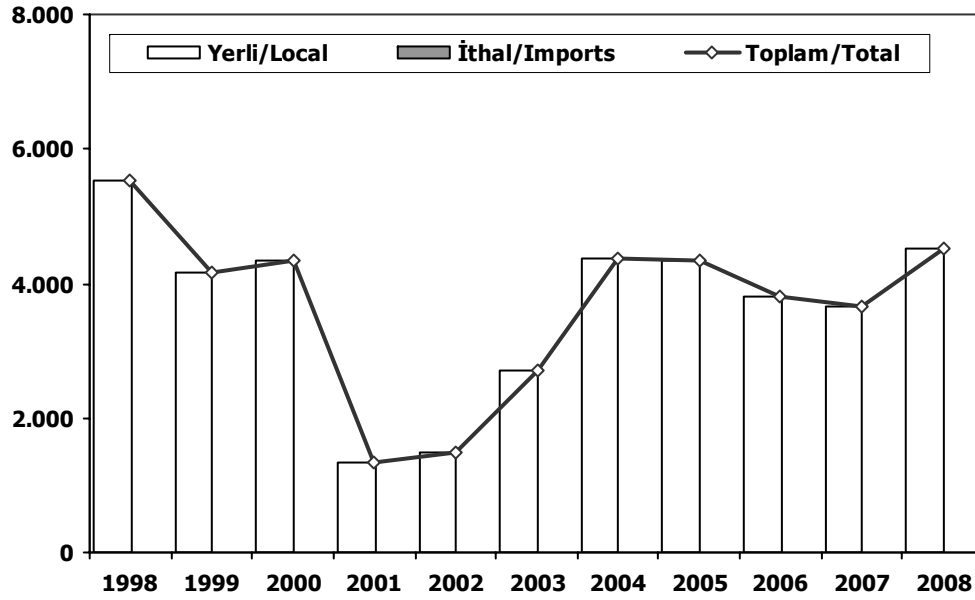
Bus Market (January-December)



	1998	1999	2000	2001	2002	2003	2004	2005	2006	2007	2008
Yerli/Local	2.080	1.086	2.250	445	442	1.051	1.503	1.498	1.466	1.413	1.468
İthal/Imports	66	95	253	88	29	53	103	298	317	185	271
Toplam/Total	2.146	1.181	2.503	533	471	1.104	1.606	1.796	1.783	1.598	1.739
İthalat/Imports (%)	3	8	10	17	6	5	6	17	18	12	16

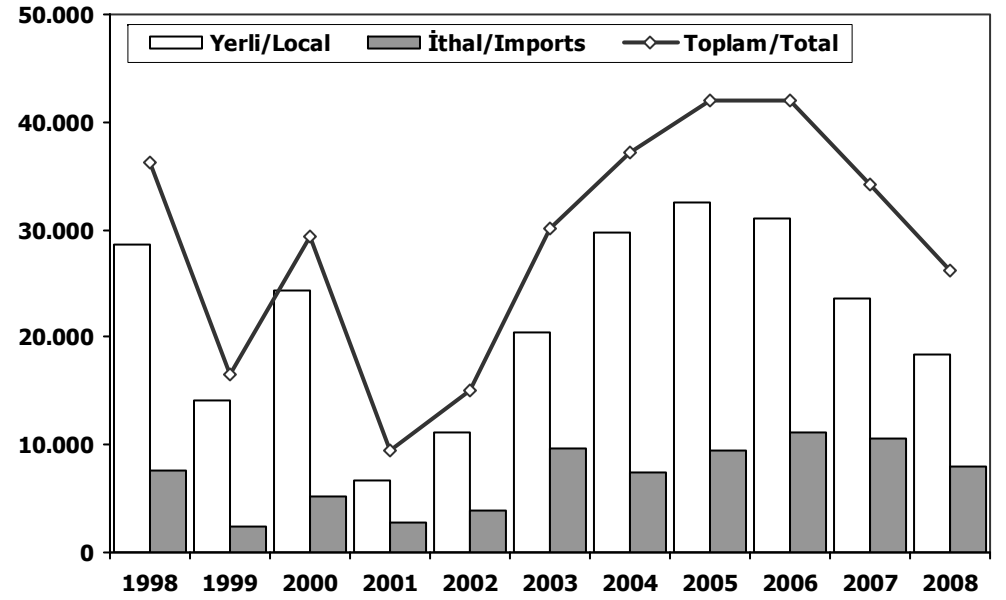


Midibüs Pazarı (Ocak-Aralık) (7-9 mt / 25-35 Kişilik)
Midibus Market (January-December) (7-9 mt / 25-35 Passengers)



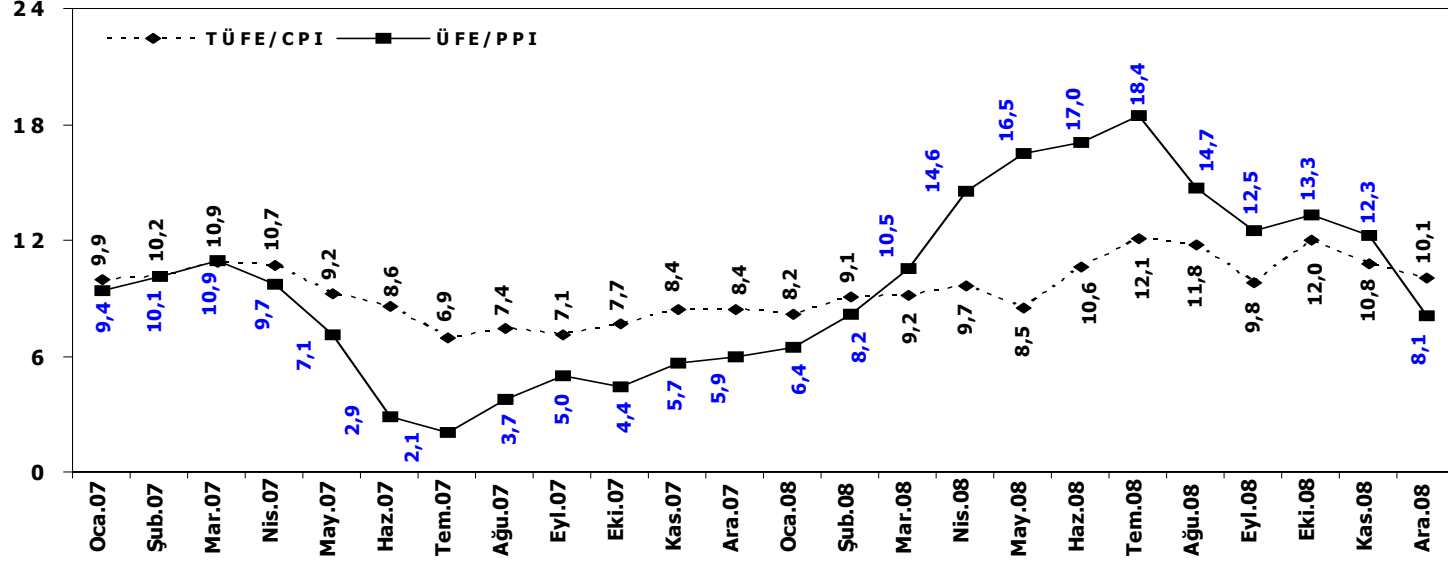
	1998	1999	2000	2001	2002	2003	2004	2005	2006	2007	2008
Yerli/Local	5.535	4.165	4.336	1.331	1.494	2.694	4.363	4.351	3.809	3.661	4.511
İthal/Imports	0	0	0	0	0	0	0	0	0	0	11
Toplam/Total	5.535	4.165	4.336	1.331	1.494	2.694	4.363	4.351	3.809	3.661	4.522
İthalat/Imports (%)	0	0	0	0	0	0	0	0	0	0	0

Kamyon Pazarı (Ocak-Aralık)
Truck Market (January-December)

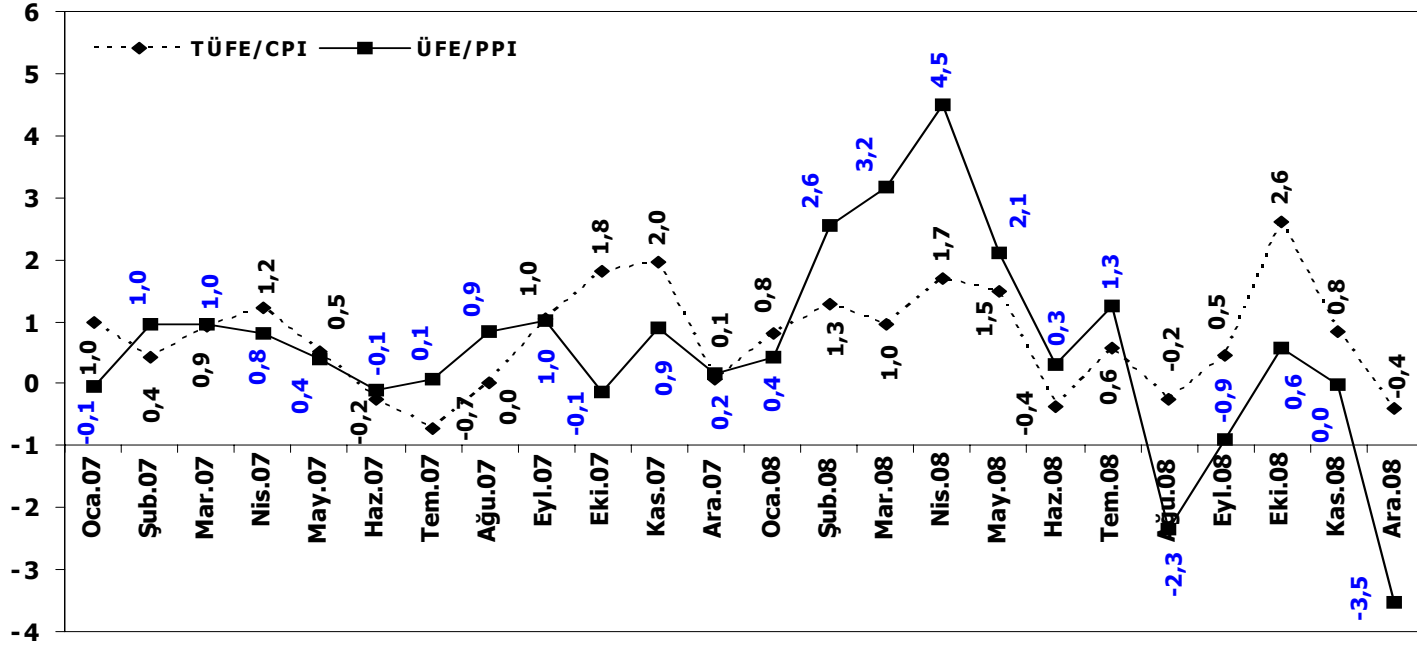


	1998	1999	2000	2001	2002	2003	2004	2005	2006	2007	2008
Yerli/Local	28.672	14.111	24.316	6.731	11.158	20.392	29.678	32.521	30.980	23.675	18.316
İthal/Imports	7.531	2.399	5.129	2.743	3.870	9.704	7.527	9.461	11.091	10.510	7.944
Toplam/Total	36.203	16.510	29.445	9.474	15.028	30.096	37.205	41.982	42.071	34.185	26.260
İthalat/Imports (%)	21	15	17	29	26	32	20	23	26	31	30

TÜFE ve ÜFE'nin Yıllık Değişimi (%) CPI and PPI Yearly Changes (%)



TÜFE ve ÜFE'nin Aylık Değişimi (%) CPI and PPI Monthly Changes (%)



**OTOMOTİV SANAYİİ FABRİKA SATIŞLARI 2008 / AUTOMOTIVE INDUSTRY FACTORY SALES**

TİPLER/TYPES	1	2	3	4	5	6	7	8	9	10	11	12	Total
OTOMOBİL	8.316	7.722	11.940	11.175	10.586	10.085	9.053	4.092	9.902	8.965	5.351	4.833	102.020
TIÇARI ARAÇ	8.808	10.074	16.708	13.681	11.642	12.683	10.893	9.926	11.288	8.352	5.961	7.745	127.761
* KAMYON	1.451	2.000	2.190	2.443	1.989	2.233	2.000	1.958	1.950	1.133	969	1.439	21.755
* KAMYONET	6.617	6.891	12.937	9.406	8.567	9.093	7.928	6.680	8.012	6.112	4.206	5.449	91.898
* MİDİBÜS	339	521	636	794	397	646	501	626	537	465	319	256	6.037
* MİNİBÜS	302	492	742	824	462	579	371	515	630	552	315	342	6.126
* OTOBÜS	99	170	203	214	227	132	93	147	159	90	152	259	1.945
TRAKTÖR	1.510	1.427	1.933	1.692	1.689	1.592	1.275	924	904	609	707	359	14.621
TOTAL	18.634	19.223	30.581	26.548	23.917	24.360	21.221	14.942	22.094	17.926	12.019	12.937	244.402

Otomobil / Passenger Car

TİPLER/TYPES	1	2	3	4	5	6	7	8	9	10	11	12	Total
HONDA TÜRKİYE	1.075	1.008	1.495	1.205	1.413	1.547	1.727	693	1.162	1.108	1.109	1.473	15.015
HYUNDAI ASSAN	1.207	970	2.103	2.186	2.499	1.596	1.631	1.338	2.226	1.133	1.579	1.219	19.687
OYAK RENAULT	4.626	4.097	4.760	4.632	4.341	3.951	3.380	563	4.266	5.638	1.084	408	41.746
TOFAŞ	991	1.215	2.809	2.285	2.038	1.739	1.714	1.392	1.934	645	942	1.431	19.135
TOYOTA	417	432	773	867	295	1.252	601	106	314	441	637	302	6.437
TOTAL	8.316	7.722	11.940	11.175	10.586	10.085	9.053	4.092	9.902	8.965	5.351	4.833	102.020

Kamyonet / Pick-Up

TİPLER/TYPES	1	2	3	4	5	6	7	8	9	10	11	12	Total
A.I.O.S	312	338	367	327	169	293	121	377	295	135	178	194	3.106
B.M.C.	165	138	171	141	102	194	34	52	23	67	21	14	1.122
FORD OTOSAN	3.269	3.897	5.238	4.157	3.575	3.686	3.183	3.658	3.358	2.924	1.257	3.008	41.210
KARSAN	172	283	434	238	324	223	200	111	140	196	0	142	2.463
OTOKAR	26	15	79	34	4	79	23	45	46	36	17	142	546
TEMSA	319	339	220	247	380	271	489	240	362	177	678	114	3.836
TOFAŞ	2.354	1.881	6.428	4.262	4.013	4.347	3.878	2.197	3.788	2.577	2.055	1.835	39.615
TOTAL	6.617	6.891	12.937	9.406	8.567	9.093	7.928	6.680	8.012	6.112	4.206	5.449	91.898

Minibüs / Minibus

TİPLER/TYPES	1	2	3	4	5	6	7	8	9	10	11	12	Total
B.M.C	38	36	216	114	64	98	52	28	39	40	27	6	758
FORD OTOSAN	216	242	212	339	385	389	269	432	385	331	141	276	3.617
KARSAN	0	159	256	313	0	70	23	30	150	160	50	0	1.211
OTOKAR	48	55	58	58	13	22	27	25	56	21	97	60	540
TOTAL	302	492	742	824	462	579	371	515	630	552	315	342	6.126

Kamyon / Truck

TİPLER/TYPES	1	2	3	4	5	6	7	8	9	10	11	12	Total
A.I.O.S.	231	261	298	259	181	269	154	326	196	84	77	176	2.512
B.M.C.	233	353	352	625	418	441	271	203	209	120	237	143	3.605
FORD OTOSAN	341	294	329	313	254	232	240	213	176	251	126	139	2.908
KARSAN	96	192	96	195	69	178	181	89	136	77	34	104	1.447
M. BENZ TÜRK	322	732	922	868	836	853	841	908	940	413	396	715	8.746
TEMSA	228	168	193	183	231	260	313	219	293	188	99	162	2.537
TOTAL	1.451	2.000	2.190	2.443	1.989	2.233	2.000	1.958	1.950	1.133	969	1.439	21.755

Midibüs / Midibus

TİPLER/TYPES	1	2	3	4	5	6	7	8	9	10	11	12	Total
A.I.O.S.	127	156	211	191	187	84	84	150	101	76	65	83	1.515
KARSAN	0	118	185	265	5	220	235	271	212	190	115	0	1.816
OTOKAR	97	109	105	168	82	189	82	108	141	95	78	67	1.321
OTOYOL	5	3	6	2	9	0	0	0	0	0	0	0	25
TEMSA	110	135	129	168	114	153	100	97	83	104	61	106	1.360
TOTAL	339	521	636	794	397	646	501	626	537	465	319	256	6.037

Otobüs / Bus

TİPLER/TYPES	1	2	3	4	5	6	7	8	9	10	11	12	Total
B.M.C.	35	59	54	60	85	29	23	24	33	19	38	42	501
M. BENZ TÜRK	29	41	45	92	98	71	50	84	74	47	42	102	775
M.A.N.	2	36	22	11	11	6	4	13	3	10	50	69	237
OTOKAR	24	12	61	26	12	12	4	6	23	13	20	36	249
TEMSA	9	22	21	25	21	14	12	20	26	1	2	10	183
TOTAL	99	170	203	214	227	132	93	147	159	90	152	259	1.945

Traktör / Farm Tractor

TİPLER/TYPES	1	2	3	4	5	6	7	8	9	10	11	12	Total
HATTAT	39	105	94	103	92	99	102	89	51	76	38	41	929
TÜRK TRAKTÖR	842	1.125	1.431	1.580	1.545	1.493	1.173	835	853	533	669	318	12.397
UZEL	629	197	408	9	52	0	0	0	0	0	0	0	1.295
TOTAL	1.510	1.427	1.933	1.692	1.689	1.592	1.275	924	904	609	707	359	14.621



OTOMOTİV SANAYİİ DIŞ SATIŞLARI 2008 / AUTOMOTIVE INDUSTRY EXPORTS SALES

TIPLER/TYPES	1	2	3	4	5	6	7	8	9	10	11	12	Total
OTOMOBİL	49.243	51.744	50.953	52.349	51.116	54.247	58.315	25.068	48.082	32.084	27.397	24.703	525.301
TİCARİ ARAÇ	40.201	39.608	44.060	39.857	43.549	40.276	38.054	13.220	32.159	22.845	19.327	11.813	384.969
* KAMYON	481	855	1.047	924	960	923	1.065	800	933	794	569	391	9.742
* KAMYONET	39.020	37.826	42.115	38.245	41.765	38.623	36.287	11.739	30.648	21.467	18.143	10.768	366.646
* MİDİBÜS	267	310	336	219	100	96	76	216	95	155	103	207	2.180
* MİNİBÜS	84	140	20	26	160	160	110	65	44	22	20	40	891
* OTOBÜS	349	477	542	443	564	474	516	400	439	407	492	407	5.510
TRAKTÖR	944	846	1.589	741	878	903	591	352	1.039	910	831	869	10.493
TOTAL	90.388	92.198	96.602	92.947	95.543	95.426	96.960	38.640	81.280	55.839	47.555	37.385	920.763

Otomobil / Passenger Car

TIPLER/TYPES	1	2	3	4	5	6	7	8	9	10	11	12	Total
HONDA	3.007	2.527	3.319	4.188	2.859	2.285	3.331	1.749	4.260	2.963	2.992	1.446	34.926
HYUNDAI ASSAN	3.372	5.700	4.870	6.300	5.330	6.620	5.440	5.084	5.282	4.854	4.559	3.589	61.000
OYAK RENAULT	21.717	25.192	22.796	23.359	23.984	27.428	30.148	11.973	26.346	16.565	10.245	12.479	252.232
TOFAŞ	5.521	5.168	6.321	5.700	5.818	6.199	8.201	1.445	4.028	2.216	3.209	3.731	57.557
TOYOTA	15.626	13.157	13.647	12.802	13.125	11.715	11.195	4.817	8.166	5.486	6.392	3.458	119.586
TOTAL	49.243	51.744	50.953	52.349	51.116	54.247	58.315	25.068	48.082	32.084	27.397	24.703	525.301

Kamyonet / Pick-Up

TIPLER/TYPES	1	2	3	4	5	6	7	8	9	10	11	12	Total
B.M.C.	0	0	0	0	0	0	3	4	0	0	0	0	7
FORD OTOSAN	23.178	23.410	24.478	22.124	23.174	23.003	22.911	8.704	17.374	12.813	7.690	5.551	214.410
KARSAN	0	0	1	0	0	0	1	0	2	2	0	0	6
OTOKAR	0	0	48	4	4	41	8	39	36	8	23	2	213
TEMSA	0	34	0	26	11	0	6	3	12	6	17	9	124
TOFAŞ	15.842	14.382	17.588	16.091	18.576	15.579	13.358	2.989	13.224	8.638	10.413	5.206	151.886
TOTAL	39.020	37.826	42.115	38.245	41.765	38.623	36.287	11.739	30.648	21.467	18.143	10.768	366.646

Minibüs / Minibus

TIPLER/TYPES	1	2	3	4	5	6	7	8	9	10	11	12	Total
BMC	4	0	0	6	0	0	10	5	4	2	0	0	31
FORD OTOSAN	80	140	20	20	160	160	100	60	40	20	20	40	860
TOTAL	84	140	20	26	160	160	110	65	44	22	20	40	891

Kamyon / Truck

TIPLER/TYPES	1	2	3	4	5	6	7	8	9	10	11	12	Total
A.I.O.S.	0	0	0	10	0	0	0	0	0	0	0	0	10
B.M.C.	9	89	45	76	44	63	46	30	18	85	28	39	572
FORD OTOSAN	253	368	252	107	200	255	427	151	207	61	200	125	2.606
M. BENZ TÜRK	214	396	748	715	707	596	587	618	681	627	317	207	6.413
TEMSA	5	2	2	16	9	9	5	1	27	21	24	20	141
TOTAL	481	855	1.047	924	960	923	1.065	800	933	794	569	391	9.742

Midibüs / Midibus

TIPLER/TYPES	1	2	3	4	5	6	7	8	9	10	11	12	Total
A.I.O.S.	84	141	190	73	49	63	33	163	44	109	42	41	1.032
KARSAN	150	150	97	75	2	0	0	0	0	2	0	0	476
OTOKAR	10	4	15	50	16	16	26	14	26	13	43	112	345
OTOYOL	2	0	0	7	0	0	0	0	0	0	0	0	9
TEMSA	21	15	34	14	33	17	17	39	25	31	18	54	318
TOTAL	267	310	336	219	100	96	76	216	95	155	103	207	2.180

Otobüs / Bus

TIPLER/TYPES	1	2	3	4	5	6	7	8	9	10	11	12	Total
B.M.C.	36	100	79	68	51	51	55	28	41	28	27	15	579
M. BENZ TÜRK	160	219	232	232	277	219	290	205	211	225	251	149	2.670
M.A.N.	139	137	159	86	161	133	100	86	98	111	176	152	1.538
OTOKAR	0	0	0	1	0	1	13	4	18	10	0	14	61
TEMSA	14	21	72	56	75	70	58	77	71	33	38	77	662
TOTAL	349	477	542	443	564	474	516	400	439	407	492	407	5.510

Traktör / Farm Tractor

TIPLER/TYPES	1	2	3	4	5	6	7	8	9	10	11	12	Total
HATTAT	0	0	0	0	0	0	0	0	9	3	0	41	53
TÜRK TRAKTÖR	600	677	1.336	737	856	903	591	352	1.030	907	831	828	9.648
UZEL	344	169	253	4	22	0	0	0	0	0	0	0	792
TOTAL	944	846	1.589	741	878	903	591	352	1.039	910	831	869	10.493



2008 Yılı İthal Otomobil Satışları / P.Cars Imports 2008

	2007 Total	1	2	3	4	5	6	7	8	9	10	11	12	Total
FORD	32.756	1.500	1.762	2.535	2.302	2.270	3.060	2.098	2.317	2.587	1.945	1.526	1.996	25.898
OPEL	27.761	1.327	1.738	2.677	2.270	2.764	2.284	2.180	2.283	2.012	1.595	1.392	2.282	24.804
VOLKSWAGEN	26.739	1.715	1.414	2.347	1.813	1.702	1.799	1.910	1.743	1.939	1.302	1.254	2.198	21.136
TOYOTA	23.526	1.139	1.274	1.687	1.895	1.681	1.689	2.151	1.980	1.802	1.414	1.164	2.297	20.173
PEUGEOT	13.417	737	899	1.307	1.154	1.257	1.156	916	1.081	1.129	729	522	865	11.752
HYUNDAI	9.783	600	690	1.369	1.355	936	811	796	760	756	599	332	579	9.583
KIA	10.319	583	659	907	713	998	607	509	631	504	387	250	280	7.028
CITROEN	8.492	293	405	789	547	805	701	446	551	647	493	305	581	6.563
FIAT	8.641	305	689	870	537	503	608	459	590	630	347	325	625	6.488
HONDA	6.134	260	370	506	780	693	580	641	534	562	275	289	494	5.984
AUDI	6.118	288	261	424	546	662	429	413	698	543	353	389	478	5.484
RENAULT	5.630	170	222	674	687	474	446	398	464	459	419	466	605	5.484
CHEVROLET	4.963	329	368	523	473	528	577	474	444	610	399	278	401	5.404
DACIA	3.688	167	412	700	377	237	385	409	525	270	356	435	879	5.152
B.M.W	7.256	276	212	479	294	572	435	353	466	531	364	442	425	4.849
MERCEDES	4.640	376	353	410	397	428	363	351	496	538	189	269	503	4.673
NISSAN	4.668	258	408	626	341	342	385	323	332	482	324	183	271	4.275
SKODA	5.465	303	326	365	297	340	380	304	300	312	317	203	178	3.625
SUZUKI	3.764	255	197	265	268	386	277	255	256	275	177	196	159	2.966
SEAT	3.628	301	330	358	152	301	252	188	230	352	171	151	152	2.938
VOLVO	2.747	199	278	265	187	224	246	139	256	258	104	116	180	2.452
SUBARU	2.295	152	133	238	176	237	142	259	201	243	140	126	157	2.204
IKCO	0	426	396	196	309	203	98	72	88	70	61	48	32	1.999
MITSUBISHI	1.573	59	95	133	158	140	107	110	263	211	302	148	176	1.902
LAND ROVER	2.259	137	142	98	92	268	171	78	150	150	97	55	366	1.804
CHERY	0	0	184	260	290	713	0	297	0	0	0	0	0	1.744
PROTON	766	16	54	119	190	217	77	58	116	255	207	48	54	1.411
SSANGYONG	0	99	142	151	150	159	130	120	130	109	84	62	58	1.394
TATA	1.567	105	152	244	152	149	116	71	125	104	80	41	50	1.389
DAIHATSU	1.843	105	65	69	95	119	69	94	137	130	103	94	71	1.151
MAZDA	1.029	8	4	2	6	7	1	133	72	89	114	159	261	856
JEEP	837	53	54	92	38	180	83	38	82	93	60	17	32	822
LADA	845	95	88	60	66	59	65	49	34	38	42	9	15	620
MINI (İngiliz)	804	29	21	95	32	64	31	40	82	53	43	46	65	601
DODGE	669	54	49	56	32	161	31	23	59	22	17	7	29	540
CHRYSLER	547	23	27	40	40	45	36	14	36	35	24	12	24	356
JAGUAR	374	12	20	20	29	40	25	25	29	23	17	30	37	307
ALFA ROMEO	648	20	14	38	40	14	34	19	31	20	37	15	21	303
GEELY	0	0	0	0	0	0	0	0	0	0	0	132	104	236
PORSCHE	213	4	16	11	16	20	13	16	16	17	9	9	7	154
LANCIA	71	4	0	8	8	9	6	7	9	20	29	6	17	123
SAAB	98	4	8	4	5	8	8	2	4	10	8	1	11	73
SMART	73	6	5	1	1	6	4	3	1	2	0	6	3	38
FERRARI	29	1	2	2	0	1	2	1	2	3	2	0	1	17
MASERATI	28	0	0	1	1	2	1	1	3	1	5	1	1	17
BENTLEY	19	3	0	1	2	1	1	1	2	0	0	1	0	12
LAMBORGHINI	3	0	0	0	0	2	1	0	2	0	1	2	1	9
DAEWOO		0	0	0	0	0	0	0	0	0	0	0	0	0
Total	236.725	12.796	14.938	22.022	19.313	20.927	18.722	17.244	18.611	18.896	13.741	11.562	18.021	206.793

Kaynak: ODD

2008 Yılı İthal Hafif Ticari Araç Satışları / Light Commercial Vehicles Imports 2008

	2007 Total	1	2	3	4	5	6	7	8	9	10	11	12	Total
VOLKSWAGEN	28.242	1.793	1.576	1.843	1.803	2.303	1.796	1.816	1.980	1.398	1.028	788	1.020	19.144
RENAULT	22.773	800	1.063	1.519	1.423	1.265	2.130	1.573	2.028	1.728	1.131	1.155	2.264	18.079
MITSUBISHI	5.415	410	423	483	491	446	921	937	504	487	415	277	750	6.544
HYUNDAI	6.506	363	320	461	540	632	608	541	526	479	433	213	353	5.469
OPEL	5.459	210	311	437	469	411	481	386	377	574	366	168	412	4.602
DACIA	5.263	303	508	545	325	294	272	350	432	345	302	316	434	4.426
CITROEN	5.215	209	450	478	392	284	251	437	478	534	365	185	290	4.353
PEUGEOT	1.817	122	130	151	120	137	268	774	718	464	419	253	500	4.056
MERCEDES	4.963	306	358	346	283	300	326	354	504	389	310	121	162	3.759
FORD	3.348	198	291	239	276	196	410	208	201	648	197	118	295	3.277
FIAT	4.536	156	223	412	301	271	233	235	359	293	183	141	98	2.905
ISUZU	2.659	324	168	151	288	241	202	337	284	226	192	193	285	2.891
KIA	3.699	265	234	275	233	344	179	193	141	170	101	45	48	2.228
NISSAN	2.770	176	215	358	116	208	156	130	168	118	111	62	210	2.028
TOYOTA	2.073	211	181	165	210	139	122	143	182	131	87	103	64	1.738
SSANGYONG	0	105	160	164	176	174	164	146	181	152	127	101	56	1.706
TATA	1.923	82	149	180	178	135	208	133	126	116	74	63	101	1.545
DFM	0	0	0	0	0	0	0	0	0	482	407	144	79	1.112
IVECO	715	71	61	66	54	80	74	39	54	40	38	18	34	629
PROTON	176	4	15	33	19	29	21	18	15	20	19	4	4	201
MAHINDRA	47	12	3	22	11	15	30	21	25	17	19	6	1	182
MAZDA	500	16	28	12	21	10	3	1	3	11	10	5	13	133
SKODA	0	0	6	10	4	6	0	2	2	4	3	0	0	37
ASKAM	33	0	0	11	4	4	0	0	0	0	0	0	0	19
DAIHATSU	161	2	2	0	0	1	0	0	0	0	0	0	0	5
GAZ	39	0	0	0	0	0	0	0	0	0	0	0	0	0
Total	108.332	6.138	6.875	8.361	7.737	7.925	8.855	8.774	9.288	8.826	6.337	4.479	7.473	91.068

Kaynak: ODD