



OTOMOTİV SANAYİİ DERNEĞİ
AUTOMOTIVE MANUFACTURERS ASSOCIATION



OTOMOTİV SANAYİİ AUTOMOTIVE INDUSTRY

- **ÜRETİM/PRODUCTION**
- **SATIŞ/SALES**
- **İTHALAT/IMPORTS**
- **İHRACAT/EXPORTS**

Revize Edilmiştir/Revised

Aralık / December 2007



2007 Aralık Ayı Özeti / 2007 December Summary

KONULAR/ MATTERS		AYLIK/MONTHLY			YILLIK/YEARLY		
		2006	2007	2007/2006 (%)	2006	2007	2007/2006 (%)
Üretim/ Production	Toplam/ Total	84.852	102.347	20,6	987.580	1.099.414	11,3
	Otomobil/ P.Cars	45.519	55.991	23,0	545.682	634.883	16,3
Pazar/ Market	Toplam/ Total	83.129	106.950	28,7	669.604	641.315	-4,2
	Otomobil/ P.Cars	46.351	61.745	33,2	373.219	357.465	-4,2
İthalat/ Import	Toplam/ Total	44.463	58.334	31,2	384.174	359.089	-6,5
	Otomobil/ P.Cars	29.914	39.770	32,9	255.494	236.725	-7,3
İhracat/ Export	Toplam/ Total	68.151	73.041	7,2	696.688	820.370	17,8
	Otomobil/ P.Cars	45.411	44.173	-2,7	430.420	504.353	17,2
İhracat / export (\$)	Toplam/ Total **	1.467.579.882	1.778.407.256	21,2	14.350.824.949	19.270.546.978	34,3
	Otomobil/ P.Cars	612.225.418	621.163.029	1,5	5.683.364.186	6.849.650.057	20,5

PARAMETRELER / PARAMETERS		AYLIK/MONTHLY			YILLIK/YEARLY		
		2006	2007	2007/2006 (%)	2006	2007	2007/2006 (%)
ÜFE/ PPI		-0,12	0,15	**	11,58	5,94	**
TÜFE/ CPI		0,23	0,07	**	9,65	8,39	**
Sanayi Endeksi/ Industry Index		0,06	0,22	**	12,33	4,27	**
\$ (*)		1,4124	1,1649	-17,5	1,4333	1,2943	-9,7
EURO (*)		1,8502	1,7142	-7,4	1,8134	1,7794	-1,9
Japon Yeni (*)		1,1875	1,0400	-12,4	1,2351	1,1014	-10,8

(*) Ortalama Değerler / Average Values

(**) Toplam Sanayi / Total Industry Including Components

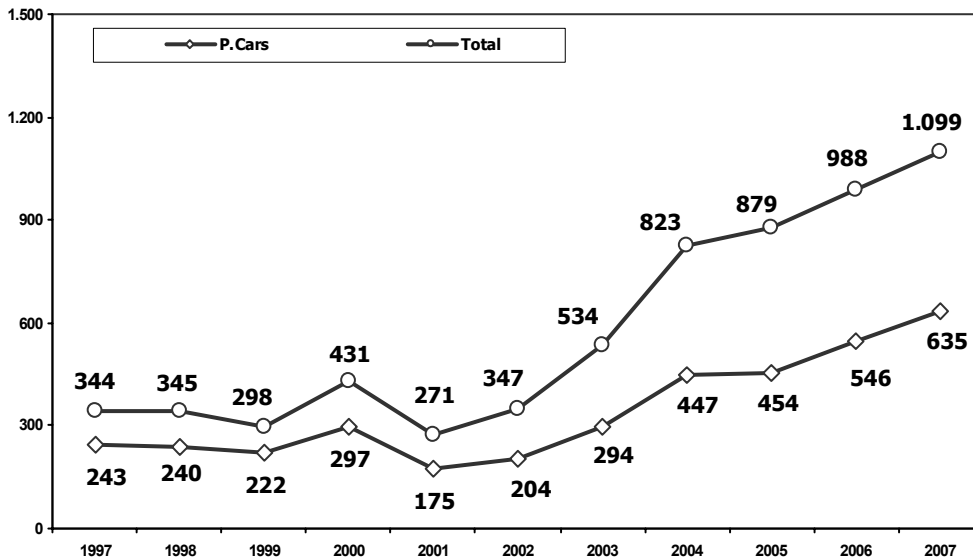


2006/2007 Yılları Üretim 2006/2007 Production

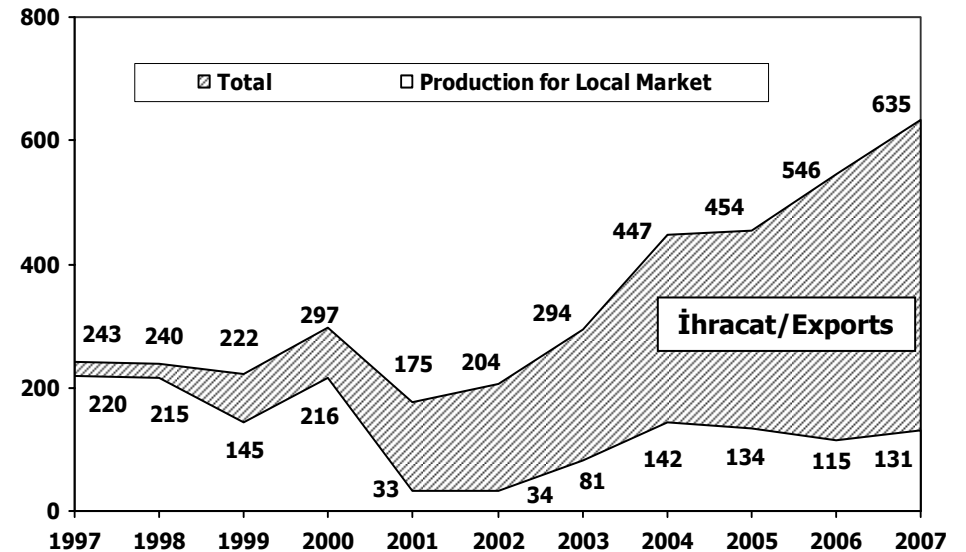
K.KAMYON : AYA 3.5-12 Ton (L.Truck:GVW 3.5-12 Ton)
B.KAMYON : AYA 12 Ton'dan Büyük (M.Truck:GVW 12 Ton And Up)

TİPLER	ARALIK AYI ÜRETİMİ December Production		12 AYLIK ÜRETİM 12 Months Production		DEĞİŞİM % Percent Change %	
	2006	2007	2006	2007	ARALIK December	12 AY 12 Months
OTOMOBİL - Pass.Car	45.519	55.991	545.682	634.883	23	16
TİCARİ ARAÇLAR - Commercial Vehicles	39.333	46.356	441.898	464.531	18	5
* B. KAMYON - M. Truck	1.856	2.107	29.831	28.388	14	-5
* K. KAMYON - L. Truck	634	689	7.195	6.156	9	-14
* KAMYONET - Pick Up	33.318	38.638	369.862	391.737	16	6
* OTOBÜS - Bus	535	683	6.019	6.946	28	15
* MİNİBÜS - Minibus	2.395	2.804	20.728	21.999	17	6
* MİDİBÜS - Midibus	595	1.435	8.263	9.305	141	13
TAŞIT ARAÇLARI TOPLAM - MV Total	84.852	102.347	987.580	1.099.414	21	11
TRAKTÖR - F. Tractor	2.829	2.520	38.847	33.518	-11	-14
GENEL TOPLAM - Grand Total	87.681	104.867	1.026.427	1.132.932	20	10

Toplam Üretim ve Otomobil Üretimi (x1000) (Ocak-Aralık)
Total & P.Cars Production (x1000) (January-December)



Otomobil Üretimi ve İhracat (x1000) (Ocak-Aralık)
P.Cars Production & Exports (x1000) (January-December)





Aralık Ayı Üretimi (December Production)

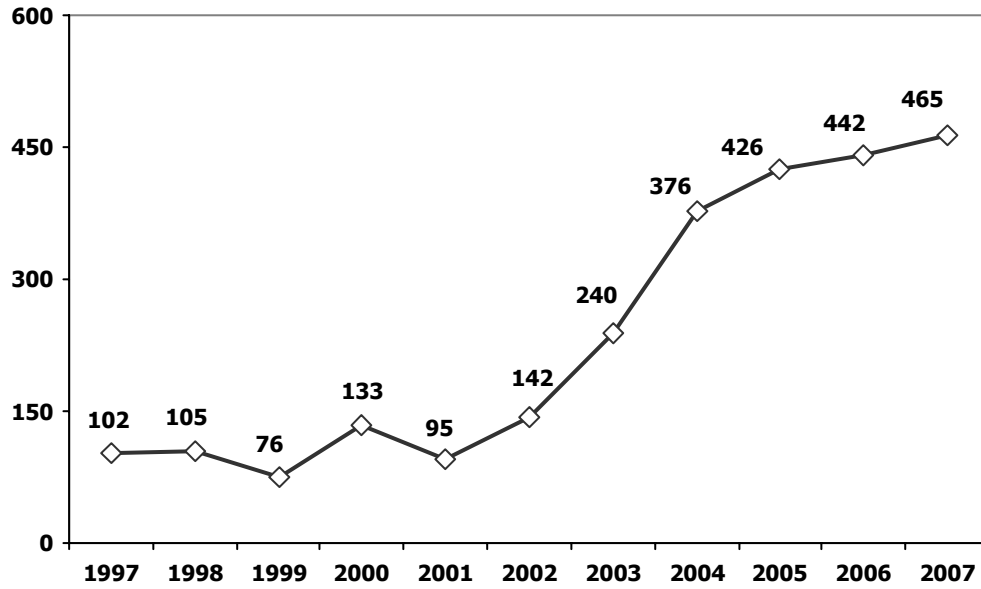
FİRMALAR Companies	OTOMOBİL Pass.Car	%	K.KAMYON L.Truck	%	B.KAMYON Mid.Truck	%	KAMYONET Pick Up	%	OTOBÜS Bus	%	MİNİBÜS Mini-Bus	%	MİDİBÜS Midi-Bus	%	TRAKTÖR F.Tractor	%	TOPLAM Totals
A.I.O.S.	0	0	309	45	0	0	288	1	0	0	0	0	211	15	0	0	808
ASKAM	0	0	0	0	0	0	0	0	0	0	0	0	0	0	0	0	0
B.M.C.	0	0	0	0	431	20	131	0	113	17	117	4	15	1	0	0	807
FORD OTOSAN	0	0	0	0	566	27	22.366	58	0	0	2.209	79	0	0	0	0	25.141
HATTAT	0	0	0	0	0	0	0	0	0	0	0	0	0	0	71	3	71
HONDA TÜRKİYE	3.269	6	0	0	0	0	0	0	0	0	0	0	0	0	0	0	3.269
HYUNDAI ASSAN	7.301	13	0	0	0	0	0	0	0	0	0	0	0	0	0	0	7.301
KARSAN	0	0	37	5	0	0	438	1	0	0	436	16	933	65	0	0	1.844
M. BENZ TÜRK	0	0	0	0	1.110	53	0	0	239	35	0	0	0	0	0	0	1.349
MAN TÜRKİYE	0	0	0	0	0	0	0	0	192	28	0	0	0	0	0	0	192
OTOKAR	0	0	0	0	0	0	81	0	40	6	42	1	113	8	0	0	276
OTOYOL	0	0	0	0	0	0	0	0	0	0	0	0	0	0	0	0	0
OYAK RENAULT	25.117	45	0	0	0	0	0	0	0	0	0	0	0	0	0	0	25.117
TEMSA	0	0	343	50	0	0	458	1	99	14	0	0	163	11	0	0	1.063
TOFAŞ	8.292	15	0	0	0	0	14.876	39	0	0	0	0	0	0	0	0	23.168
TOYOTA	12.012	21	0	0	0	0	0	0	0	0	0	0	0	0	0	0	12.012
TÜRK TRAKTÖR	0	0	0	0	0	0	0	0	0	0	0	0	0	0	1.738	69	1.738
UZEL	0	0	0	0	0	0	0	0	0	0	0	0	0	0	711	28	711
TOPLAM	55.991	100	689	100	2.107	100	38.638	100	683	100	2.804	100	1.435	100	2.520	72	104.867

12 Aylık Üretim (12 Months Production)

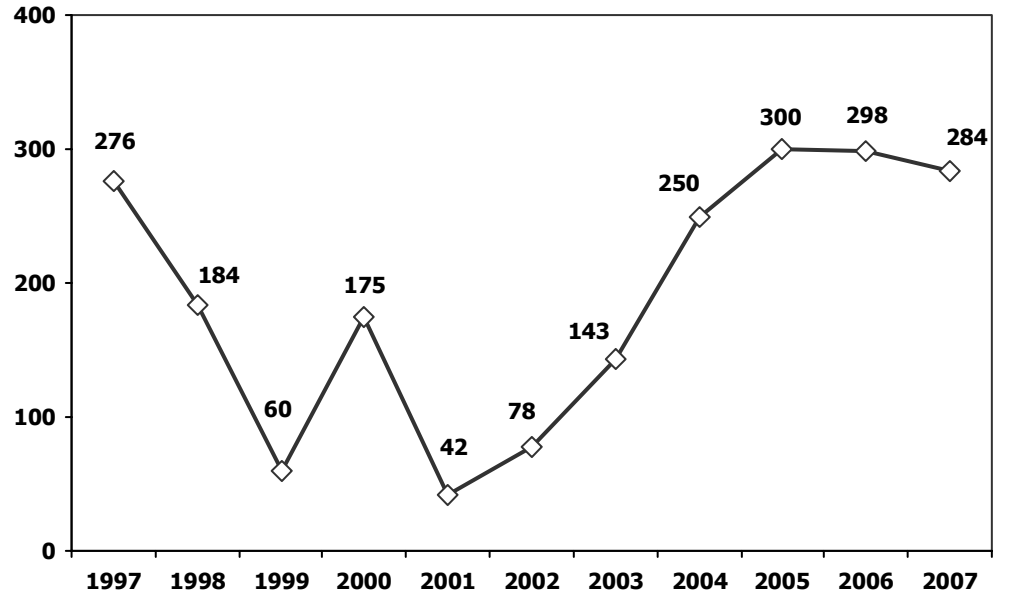
FİRMALAR Companies	OTOMOBİL Pass.Car	%	K.KAMYON L.Truck	%	B.KAMYON Mid.Truck	%	KAMYONET Pick Up	%	OTOBÜS Bus	%	MİNİBÜS Mini-Bus	%	MİDİBÜS Midi-Bus	%	TRAKTÖR F.Tractor	%	TOPLAM Totals
A.I.O.S.	0	0	2.930	48	0	0	2.984	1	0	0	0	0	1.928	21	0	0	7.842
ASKAM	0	0	0	0	74	0	5	0	0	0	0	0	0	0	0	0	79
B.M.C.	0	0	0	0	5.637	20	2.624	1	959	14	965	4	184	2	0	0	10.369
FORD OTOSAN	0	0	0	0	6.434	23	261.025	67	0	0	18.897	86	0	0	0	0	286.356
HATTAT	0	0	0	0	0	0	0	0	0	0	0	0	0	0	1.254	4	1.254
HONDA TÜRKİYE	23.663	4	0	0	0	0	0	0	0	0	0	0	0	0	0	0	23.663
HYUNDAI ASSAN	83.691	13	0	0	0	0	6.207	2	0	0	292	1	0	0	0	0	90.190
KARSAN	0	0	93	2	0	0	3.824	1	0	0	1.550	7	4.253	46	0	0	9.720
M. BENZ TÜRK	0	0	0	0	16.008	56	0	0	3.006	43	0	0	0	0	0	0	19.014
MAN TÜRKİYE	0	0	0	0	0	0	0	0	2.069	30	0	0	0	0	0	0	2.069
OTOKAR	0	0	0	0	0	0	969	0	106	2	295	1	1.164	13	0	0	2.534
OTOYOL	0	0	0	0	235	1	0	0	0	0	0	0	350	4	0	0	585
OYAK RENAULT	263.656	42	0	0	0	0	0	0	0	0	0	0	0	0	0	0	263.656
TEMSA	0	0	3.133	51	0	0	3.963	1	806	12	0	0	1.426	15	0	0	9.328
TOFAŞ	102.357	16	0	0	0	0	110.136	28	0	0	0	0	0	0	0	0	212.493
TOYOTA	161.516	25	0	0	0	0	0	0	0	0	0	0	0	0	0	0	161.516
TÜRK TRAKTÖR	0	0	0	0	0	0	0	0	0	0	0	0	0	0	18.350	55	18.350
UZEL	0	0	0	0	0	0	0	0	0	0	0	0	0	0	13.914	42	13.914
TOPLAM	634.883	100	6.156	100	28.388	100	391.737	100	6.946	100	21.999	100	9.305	100	33.518	100	1.132.932



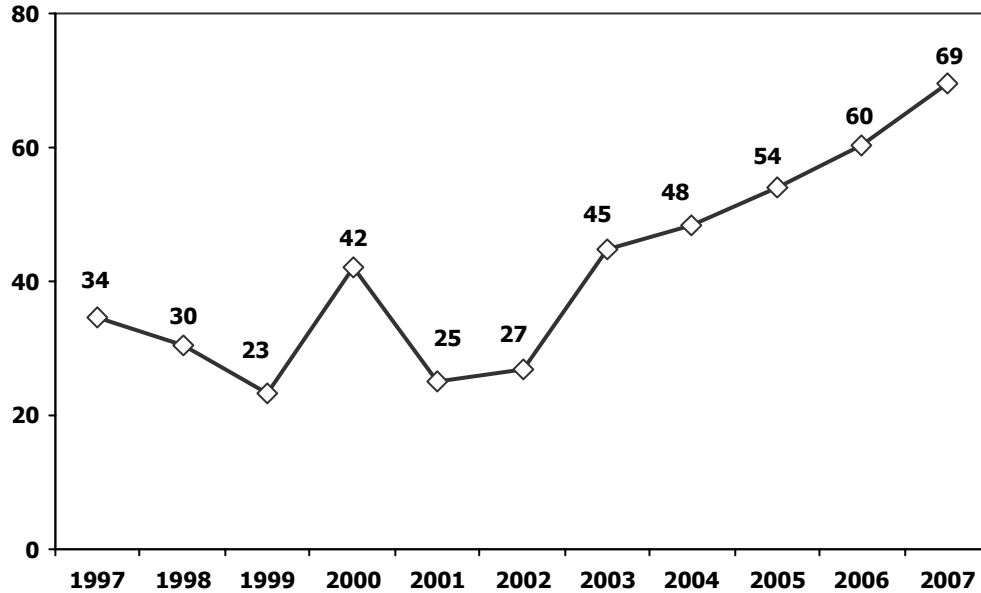
Ticari Araç Üretimi (x1000) (Ocak-Aralık)
Commercial Vehicle Production (x1000) (January-December)



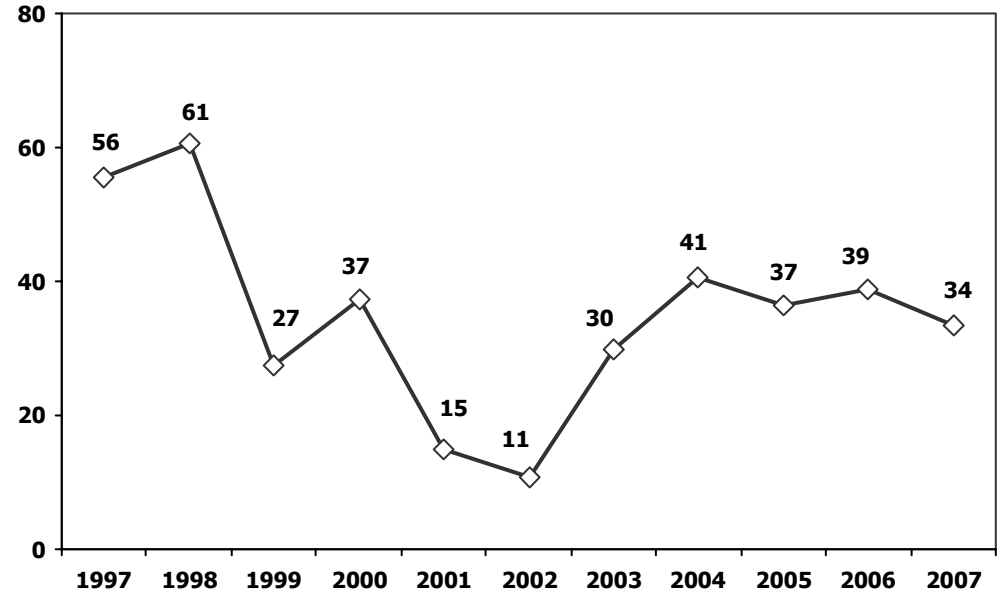
(AYA >12 Ton) **Büyük Kamyon Üretimi** (x100) (Ocak-Aralık)
(GVW >12 Ton) Heavy Truck Production (x100) (January-December)



Otobüs Üretimi (x100) (Ocak-Aralık)
Bus Production (x100) (January-December)

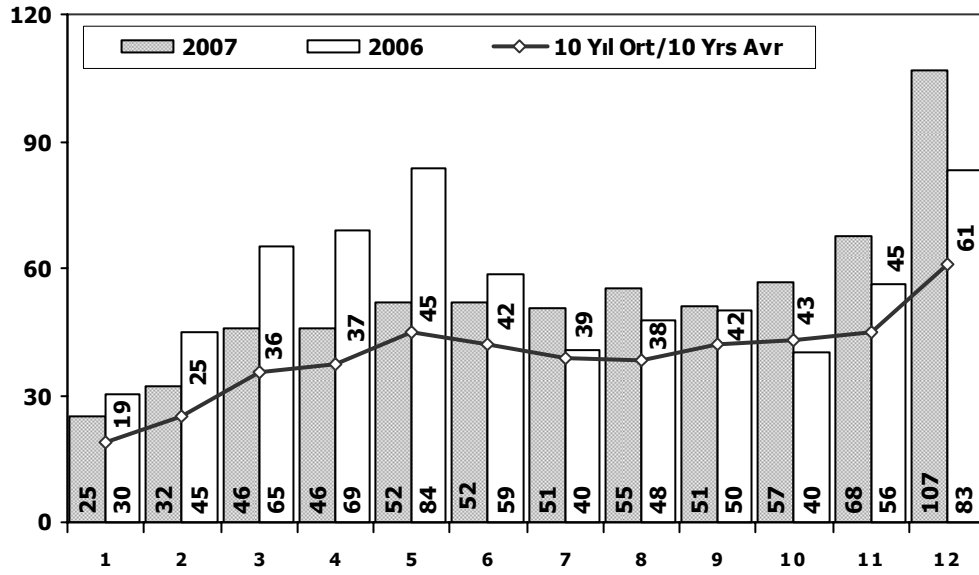


Traktör Üretimi (x1000) (Ocak-Aralık)
F. Tractor Production (x1000) (January-December)



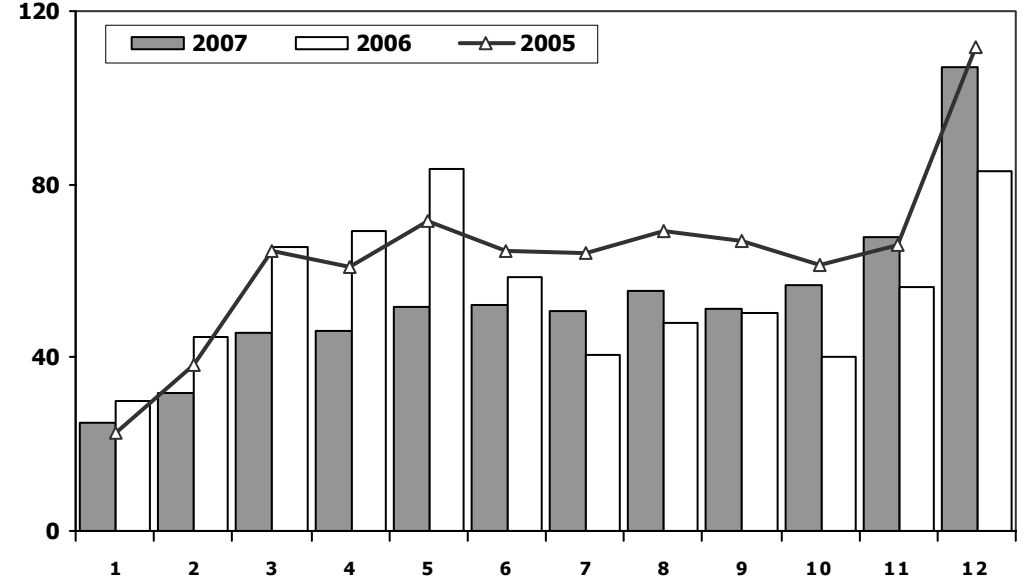


Toplam Pazarın Analizi (x1000) Total Market Analysis (x1000)



Aylar/ Months	10 Yil Ort. 10 Yrs Avr. (x1000)	2007 (x1000)	%
1	19	25	34
2	25	32	28
3	36	46	29
4	37	46	24
5	45	52	15
6	42	52	24
7	39	51	30
8	38	55	45
9	42	51	22
10	43	57	32
11	45	68	50
12	61	107	75
Total	471	641	36

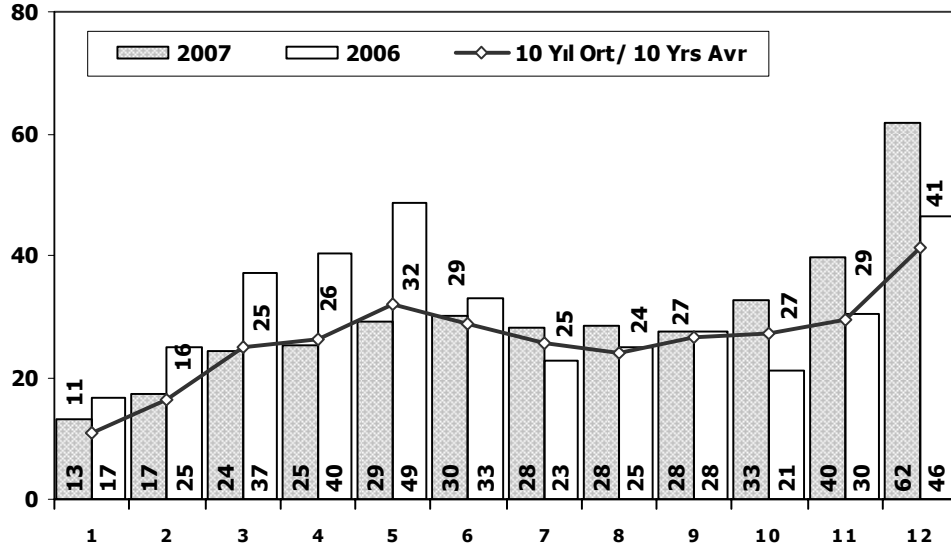
Toplam Pazar (x1000) Total Market (x1000)



	1	2	3	4	5	6	7	8	9	10	11	12	Total
1997	16.418	28.365	37.264	37.480	47.647	45.432	41.968	40.308	47.823	53.681	56.256	72.600	525.242
1998	21.318	36.244	43.477	35.978	50.066	44.808	41.196	39.032	44.503	39.462	39.368	50.674	486.126
1999	10.539	19.219	29.342	34.544	36.781	40.476	30.654	25.788	35.804	36.025	47.345	60.767	407.284
2000	18.751	35.749	48.520	52.660	67.168	67.853	57.112	60.905	67.156	70.978	71.532	41.693	660.077
2001	14.413	13.681	11.483	14.751	19.028	20.165	19.042	17.458	12.332	11.611	16.833	24.629	195.426
2002	2.240	4.308	8.082	12.206	16.816	15.684	16.574	14.925	16.216	18.472	18.556	30.967	175.046
2003	12.620	11.574	17.148	20.496	27.769	30.686	32.425	29.182	40.765	50.407	44.523	83.116	400.711
2004	38.937	39.782	72.355	77.435	84.918	63.554	57.823	57.033	59.952	56.335	52.364	85.324	745.812
2005	22.833	38.466	64.730	61.127	71.735	64.781	64.086	69.389	67.144	61.170	66.112	111.613	763.186
2006	30.119	44.920	65.380	69.138	83.601	58.550	40.415	47.872	50.217	40.089	56.174	83.129	669.604
2007	25.127	31.918	45.848	45.996	51.776	52.121	50.608	55.350	51.183	56.744	67.694	106.950	641.315

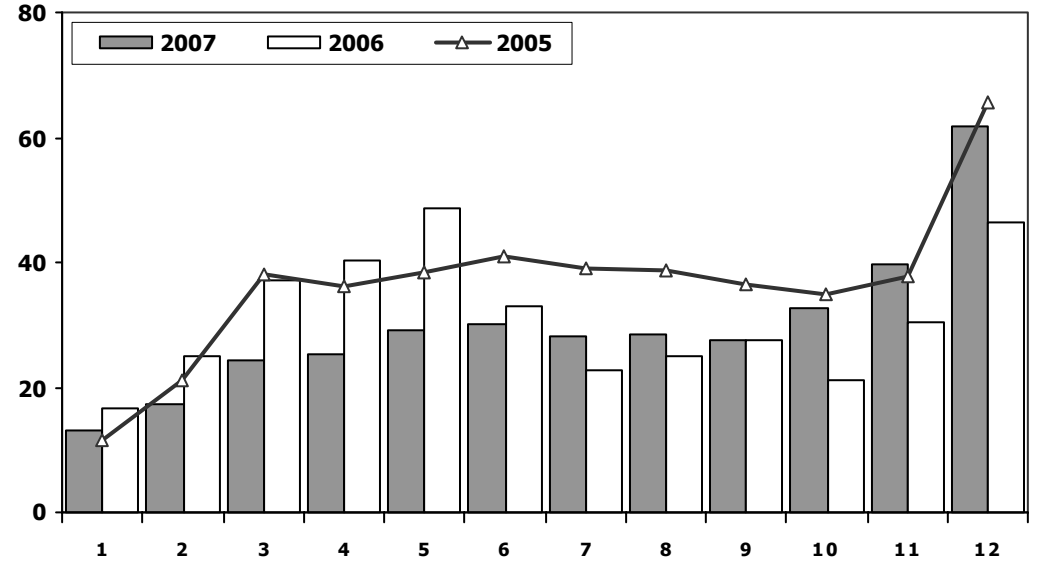


Otomobil Pazarının Analizi (x1000)
P.Cars Market Analysis (x1000)



Aylar / Months	10 Yil Ort. 10 Yrs Avr. (x1000)	2007 (x1000)	%
1	11	13	20
2	16	17	6
3	25	24	-2
4	26	25	-3
5	32	29	-9
6	29	30	4
7	25	28	11
8	24	28	19
9	27	28	4
10	27	33	20
11	29	40	35
12	41	62	50
Total	313	357	14

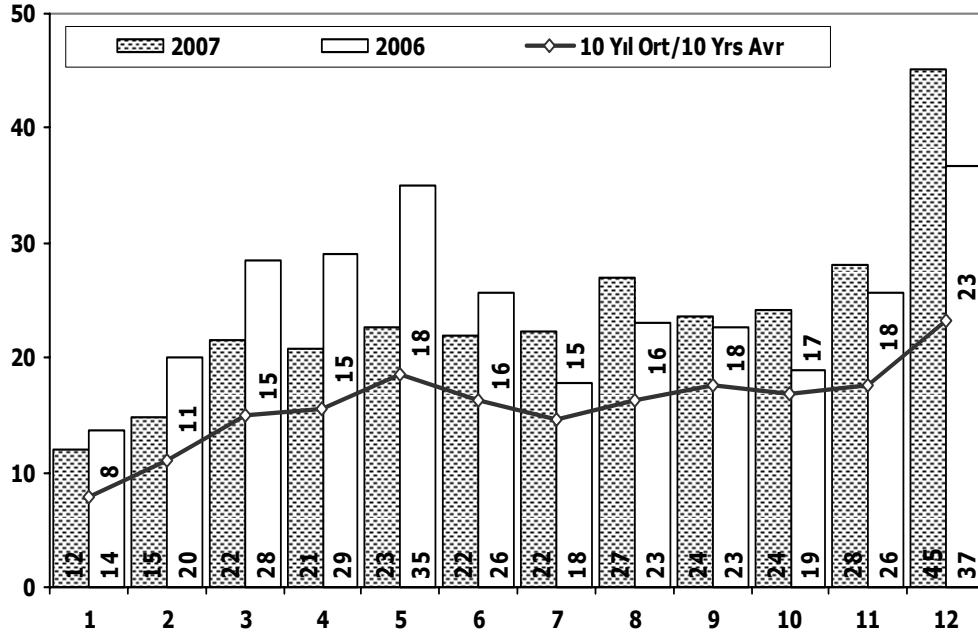
Otomobil Pazarı (x1000)
P.Cars Market (x1000)



	1	2	3	4	5	6	7	8	9	10	11	12	Total
1997	9.408	19.080	25.067	25.040	32.103	29.822	28.357	24.668	29.339	34.913	36.981	50.057	344.835
1998	13.591	22.907	27.929	22.081	33.204	29.979	29.266	23.749	28.405	23.846	24.454	36.179	315.590
1999	5.723	12.078	19.920	24.767	26.535	29.565	22.339	16.789	24.639	25.327	34.251	46.734	288.667
2000	11.872	23.543	35.278	37.232	49.100	49.488	41.544	41.659	46.134	48.938	50.482	31.456	466.726
2001	8.443	8.377	7.479	10.195	13.562	14.408	13.326	11.361	6.927	7.035	12.319	18.006	131.438
2002	591	1.426	3.464	6.245	8.948	7.811	9.842	7.308	8.753	9.381	9.848	16.998	90.615
2003	6.309	5.486	8.555	11.107	15.965	16.329	14.764	16.896	23.772	30.615	25.777	51.461	227.036
2004	25.625	23.695	46.075	47.995	54.610	37.671	33.410	33.709	33.383	34.292	30.547	50.197	451.209
2005	11.595	21.012	38.129	36.206	38.480	40.900	38.969	38.648	36.410	34.960	37.841	65.447	438.597
2006	16.506	24.929	36.996	40.177	48.521	32.982	22.653	24.873	27.517	21.237	30.477	46.351	373.219
2007	13.186	17.212	24.336	25.204	29.067	30.126	28.246	28.469	27.662	32.569	39.643	61.745	357.465

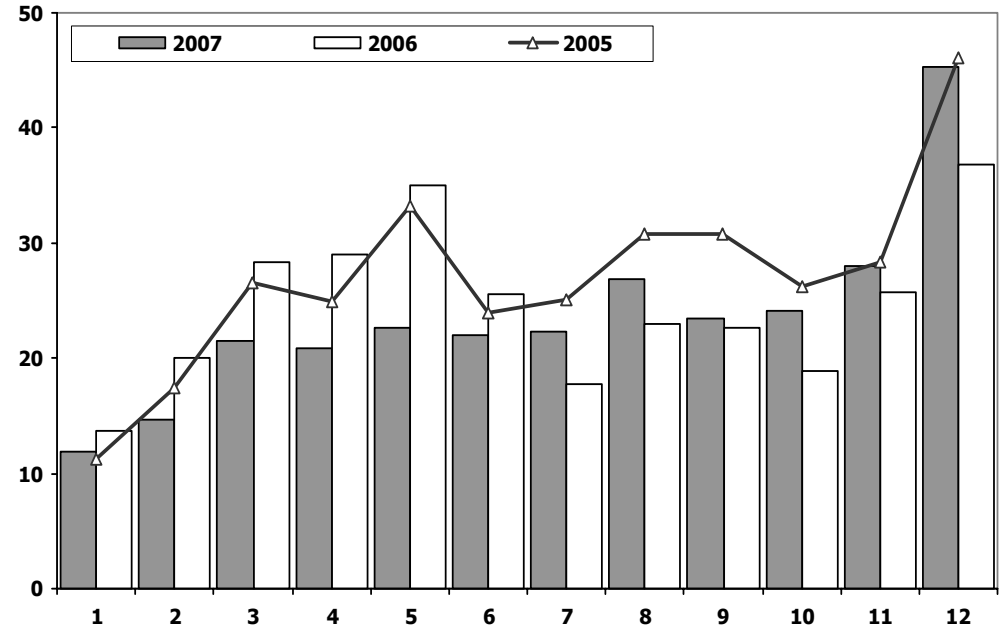


Ticari Araç Pazarının Analizi (x1000) CV Market Analysis (x1000)



Aylar / Months	10 Yil Ort. 10 Yrs Avr. (x1000)	2007 (x1000)	%
1	8	12	52
2	11	15	34
3	15	22	44
4	15	21	34
5	18	23	23
6	16	22	35
7	15	22	52
8	16	27	66
9	18	24	33
10	17	24	44
11	18	28	59
12	23	45	95
Total	190	284	49

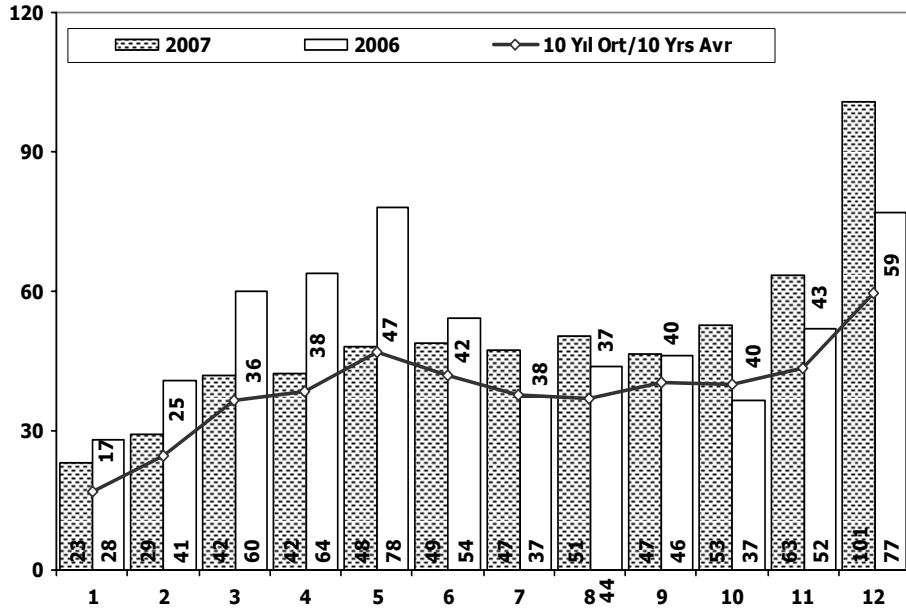
Ticari Araç Pazarı (x1000) CV Total Market (Local + Imports) (x1000)



	1	2	3	4	5	6	7	8	9	10	11	12	Total
1997	7.010	9.285	12.197	12.440	15.544	15.610	13.611	15.640	18.484	18.768	19.275	22.543	180.407
1998	7.727	13.337	15.548	13.897	16.862	14.829	11.930	15.283	16.098	15.616	14.914	14.495	170.536
1999	4.816	7.141	9.422	9.777	10.246	10.911	8.315	8.999	11.165	10.698	13.094	14.033	118.617
2000	6.879	12.206	13.242	15.428	18.068	18.365	15.568	19.246	21.022	22.040	21.050	10.237	193.351
2001	5.970	5.304	4.004	4.556	5.466	5.757	5.716	6.097	5.405	4.576	4.514	6.623	63.988
2002	1.649	2.882	4.618	5.961	7.868	7.873	6.732	7.617	7.463	9.091	8.708	13.969	84.431
2003	6.311	6.088	8.593	9.389	11.804	14.357	17.661	12.286	16.993	19.792	18.746	31.655	173.675
2004	13.312	16.087	26.280	29.440	30.308	25.883	24.413	23.324	26.569	22.043	21.817	35.127	294.603
2005	11.238	17.454	26.601	24.921	33.255	23.881	25.117	30.741	30.734	26.210	28.271	46.166	324.589
2006	13.613	19.991	28.384	28.961	35.080	25.568	17.762	22.999	22.700	18.852	25.697	36.778	296.385
2007	11.941	14.706	21.512	20.792	22.709	21.995	22.362	26.881	23.521	24.175	28.051	45.205	283.850

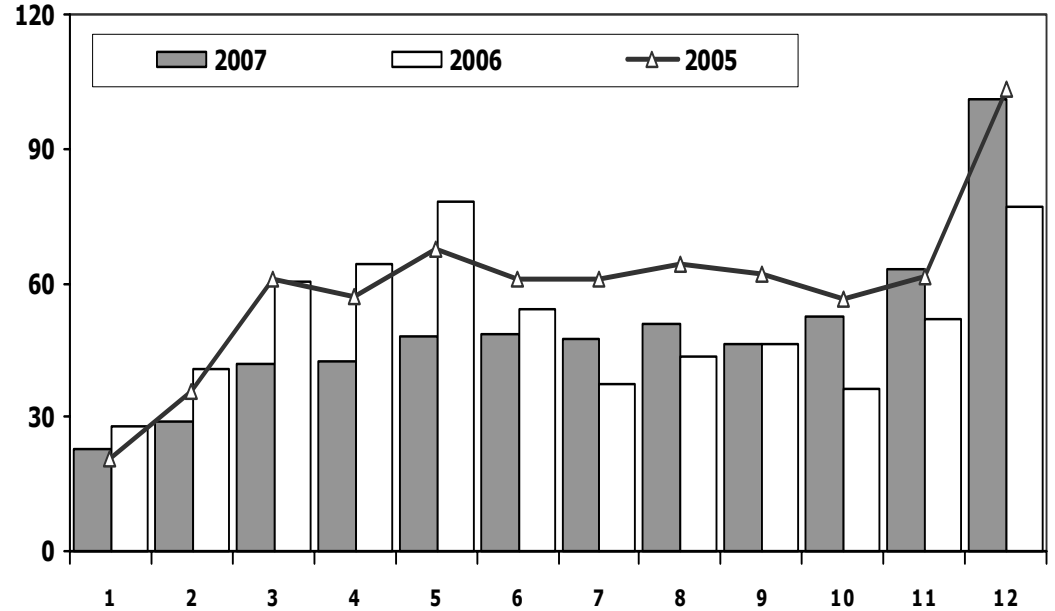


Hafif Araç Pazarının Analizi (x1000) LV Market Analysis (x1000)



Aylar / Months	10 Yil Ort. 10 Yrs Avr. (x1000)	2007 (x1000)	%
1	17	23	36
2	25	29	18
3	36	42	15
4	38	42	10
5	47	48	2
6	42	49	16
7	38	47	26
8	37	51	38
9	40	47	16
10	40	53	31
11	43	63	46
12	59	101	70
Total	463	595	28

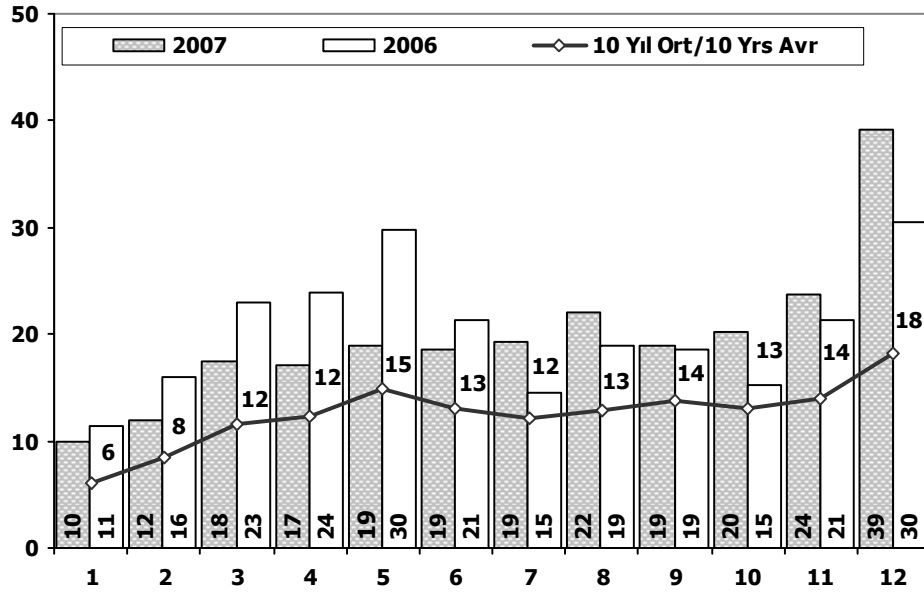
Hafif Araç Pazarı (x1000) LV Total Market (Local + Imports) (x1000)



	1	2	3	4	5	6	7	8	9	10	11	12	Total
1997	13.515	24.602	32.416	33.024	42.248	40.338	37.360	35.436	41.395	47.532	50.700	65.830	464.396
1998	18.863	31.576	38.500	31.454	45.357	40.476	38.110	35.063	39.852	35.425	35.768	46.950	437.394
1999	9.247	17.326	26.969	32.049	34.310	38.118	28.708	23.794	33.339	33.513	44.710	57.497	379.580
2000	17.386	33.236	45.509	49.621	63.453	64.034	54.244	56.639	62.673	66.717	67.344	39.381	620.237
2001	13.188	12.557	10.548	13.919	18.129	19.514	18.512	16.709	11.402	10.562	15.713	22.999	183.752
2002	1.764	3.641	7.109	11.007	15.461	14.337	15.472	13.302	14.599	16.531	16.657	27.569	157.449
2003	11.531	10.402	15.743	18.693	25.853	28.266	30.172	25.903	36.234	45.446	40.048	75.778	364.069
2004	36.352	37.079	67.144	73.075	80.290	59.730	54.816	52.876	55.609	53.000	49.200	78.924	698.095
2005	20.747	35.766	60.707	56.844	67.357	60.796	61.015	64.011	61.954	56.638	61.364	103.209	710.408
2006	27.917	40.938	60.052	64.038	78.229	54.355	37.251	43.767	46.109	36.542	51.867	76.787	617.852
2007	23.117	29.184	41.890	42.366	47.938	48.674	47.490	50.558	46.581	52.725	63.313	100.926	594.762

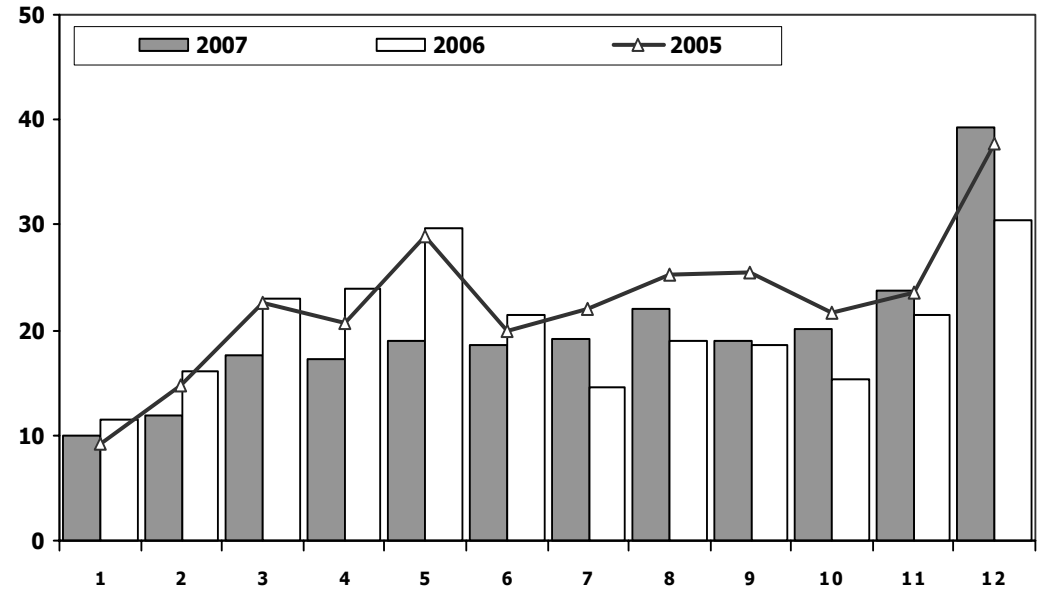


Hafif Ticari Araç Pazarının Analizi (x1000) LCV Market Analysis (x1000)



Aylar/ Months	10 Yil Ort. 10 Yrs Avr. (x1000)	2007 (x1000)	%
1	6	10	63
2	8	12	42
3	12	18	52
4	12	17	40
5	15	19	26
6	13	19	42
7	12	19	59
8	13	22	73
9	14	19	37
10	13	20	53
11	14	24	69
12	18	39	115
Total	151	237	58

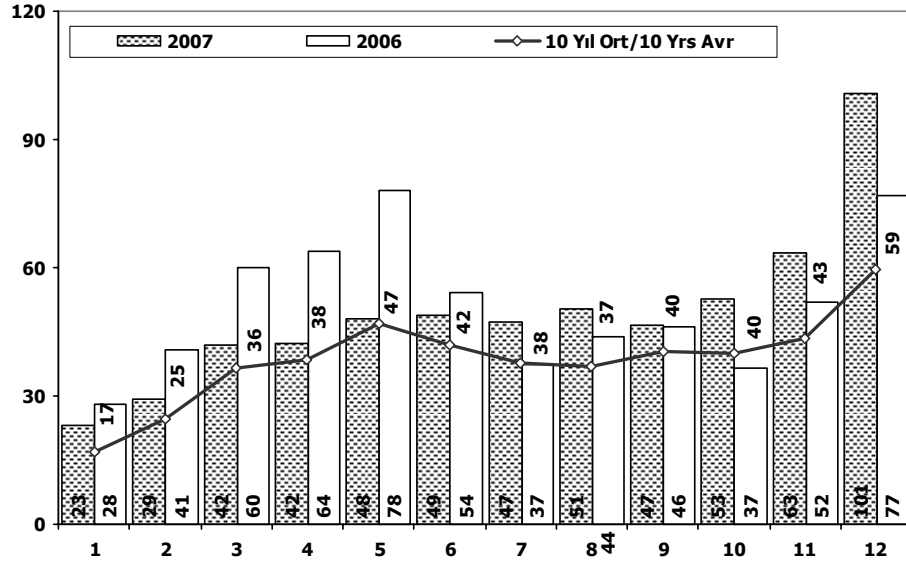
Hafif Ticari Araç Pazarı (x1000) LCV Total Market (Local + Imports) (x1000)



	1	2	3	4	5	6	7	8	9	10	11	12	Total
1997	4.107	5.522	7.349	7.984	10.145	10.516	9.003	10.768	12.056	12.619	13.719	15.773	119.561
1998	5.272	8.669	10.571	9.373	12.153	10.497	8.844	11.314	11.447	11.579	11.314	10.771	121.804
1999	3.524	5.248	7.049	7.282	7.775	8.553	6.369	7.005	8.700	8.186	10.459	10.763	90.913
2000	5.514	9.693	10.231	12.389	14.353	14.546	12.700	14.980	16.539	17.779	16.862	7.925	153.511
2001	4.745	4.180	3.069	3.724	4.567	5.106	5.186	5.348	4.475	3.527	3.394	4.993	52.314
2002	1.173	2.215	3.645	4.762	6.513	6.526	5.630	5.994	5.846	7.150	6.809	10.571	66.834
2003	5.222	4.916	7.188	7.586	9.888	11.937	15.408	9.007	12.462	14.831	14.271	24.317	137.033
2004	10.727	13.384	21.069	25.080	25.680	22.059	21.406	19.167	22.226	18.708	18.653	28.727	246.886
2005	9.152	14.754	22.578	20.638	28.877	19.896	22.046	25.363	25.544	21.678	23.523	37.762	271.811
2006	11.411	16.009	23.056	23.861	29.708	21.373	14.598	18.894	18.592	15.305	21.390	30.436	244.633
2007	9.931	11.972	17.554	17.162	18.871	18.548	19.244	22.089	18.919	20.156	23.670	39.181	237.297

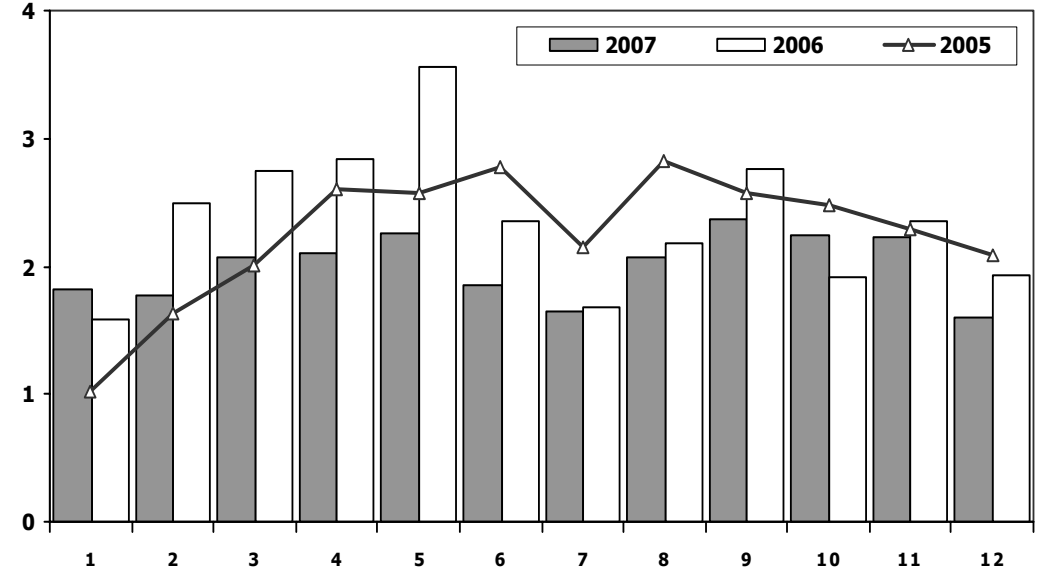


Hafif Araç Pazarı (AYA < 3.5 Ton)
Light Vehicle Market (GVW < 3.5 Ton)



	1997	1998	1999	2000	2001	2002	2003	2004	2005	2006	2007
Otomobil/P.Cars	344.835	315.590	288.667	466.726	131.438	90.615	227.036	451.209	438.597	373.219	357.465
HTA/LCV	119.561	121.804	90.913	153.511	52.314	66.834	137.033	246.886	271.811	244.633	237.297
TOTAL	464.396	437.394	379.580	620.237	183.752	157.449	364.069	698.095	710.408	617.852	594.762
HTA/LCV (%)	26	28	24	25	28	42	38	35	38	40	40

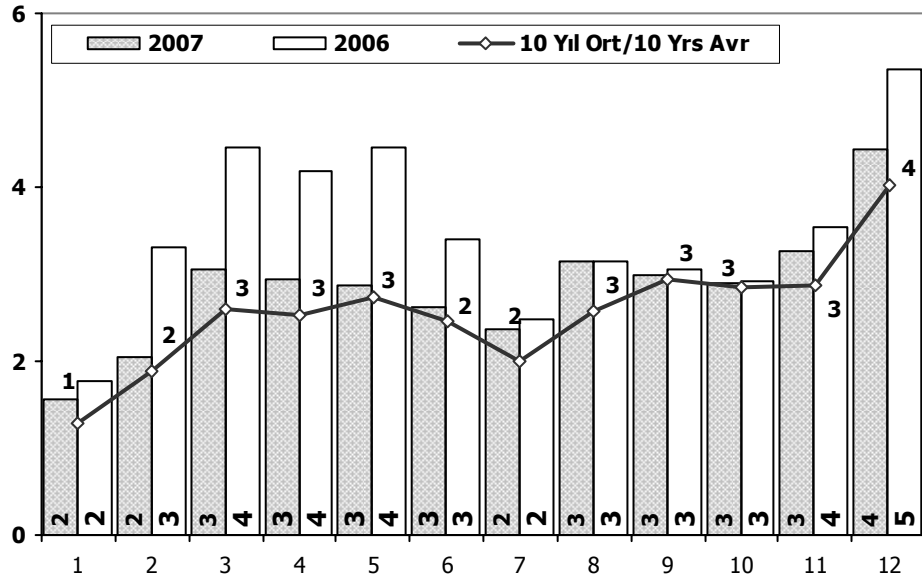
Traktör Pazarı (x1000)
F.Tractor Market (x1000)



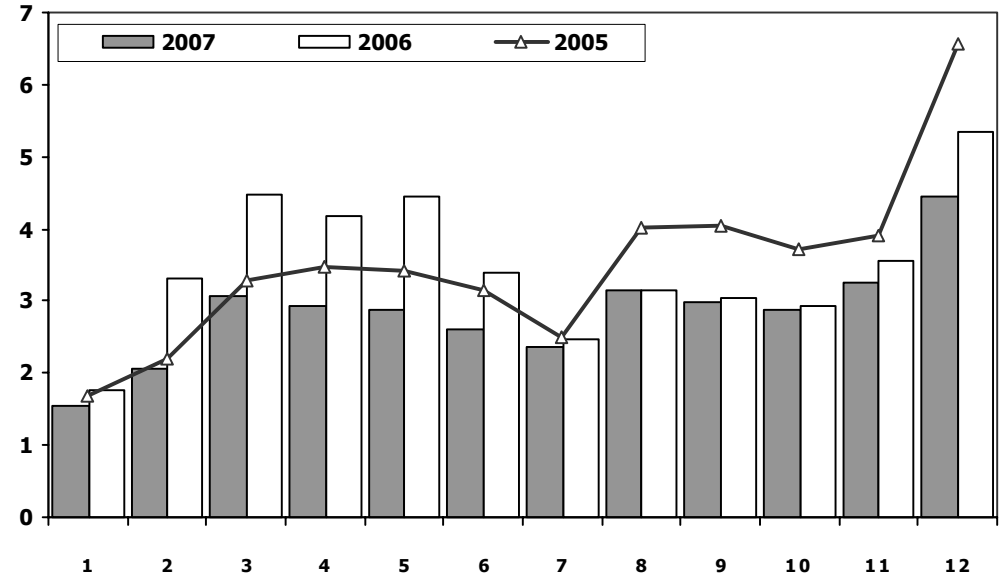
	1	2	3	4	5	6	7	8	9	10	11	12	Total
1997	2.515	2.598	4.475	4.428	4.877	4.875	4.057	4.009	5.047	5.565	3.860	2.968	49.274
1998	2.420	3.618	5.197	4.444	5.832	6.269	4.044	4.181	5.538	3.699	2.378	948	48.568
1999	1.566	2.112	2.984	3.526	2.951	1.443	697	719	892	909	945	536	19.280
2000	777	1.037	2.266	2.913	3.507	2.746	1.959	2.324	3.345	3.108	2.669	1.146	27.797
2001	1.531	1.540	1.359	1.426	1.311	563	415	664	422	416	313	165	10.125
2002	291	401	380	585	435	508	561	546	747	628	560	680	6.322
2003	712	830	1.313	1.460	1.527	1.123	1.311	1.404	1.706	1.893	1.541	1.468	16.288
2004	1.946	1.874	2.909	3.260	2.863	2.816	1.988	2.209	2.509	1.989	2.198	1.364	27.925
2005	1.026	1.636	2.001	2.599	2.569	2.780	2.148	2.819	2.567	2.477	2.297	2.089	27.008
2006	1.578	2.493	2.746	2.841	3.561	2.356	1.685	2.177	2.756	1.915	2.353	1.925	28.386
2007	1.812	1.778	2.063	2.107	2.266	1.853	1.653	2.065	2.372	2.239	2.231	1.602	24.041



Kamyon Pazarının Analizi (x1000) AYA > 5 Ton Truck Market Analysis (x1000) GVW > 5 Ton



Kamyon Pazarı (x1000) AYA > 5 Ton Truck Market (x1000) GVW > 5 Ton



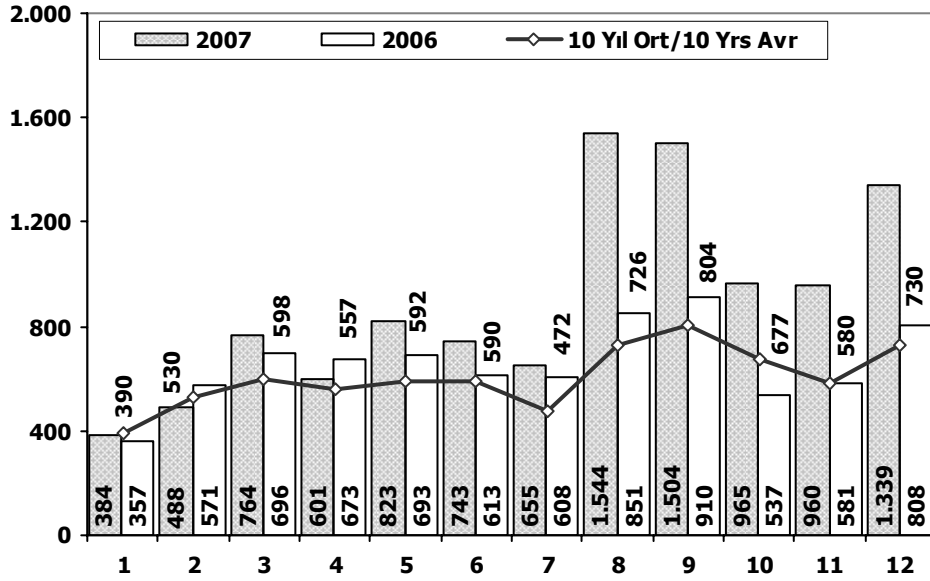
Aylar / Months	10 Yil Ort. 10 Yrs Avr. (x1000)	2007 (x1000)	%
1	1	2	21
2	2	2	8
3	3	3	18
4	3	3	17
5	3	3	4
6	2	3	6
7	2	2	19
8	3	3	22
9	3	3	1
10	3	3	1
11	3	3	13
12	4	4	11
Total	31	34	11

YIL	OCAK	ŞUBAT	MART	NİSAN	MAYIS	HAZİRAN	TEMMUZ	AĞUSTOS	EYLÜL	EKİM	KASIM	ARALIK	TOPLAM
1997	2.172	3.129	4.039	3.624	4.273	3.946	3.850	3.882	5.209	4.968	4.693	5.741	49.526
1998	1.630	3.529	3.845	3.650	3.776	3.058	2.513	2.865	3.483	2.883	2.544	2.427	36.203
1999	626	914	1.353	1.450	1.462	1.335	914	1.471	1.661	1.505	1.705	2.114	16.510
2000	955	1.697	2.250	2.209	2.790	2.903	2.125	3.048	3.107	3.235	3.386	1.740	29.445
2001	950	942	725	709	793	498	420	604	680	795	975	1.383	9.474
2002	403	532	824	1.048	1.157	1.199	927	1.300	1.403	1.666	1.637	2.932	15.028
2003	771	773	1.123	1.494	1.668	2.008	1.933	2.490	3.563	4.147	3.720	6.406	30.096
2004	1.863	1.949	3.983	3.352	3.651	3.118	2.234	2.897	3.285	2.727	2.629	5.517	37.205
2005	1.693	2.186	3.288	3.484	3.413	3.147	2.504	4.028	4.043	3.708	3.918	6.570	41.982
2006	1.767	3.310	4.467	4.180	4.449	3.398	2.472	3.142	3.052	2.926	3.550	5.358	42.071
2007	1.554	2.055	3.065	2.940	2.865	2.613	2.372	3.145	2.988	2.886	3.258	4.444	34.185



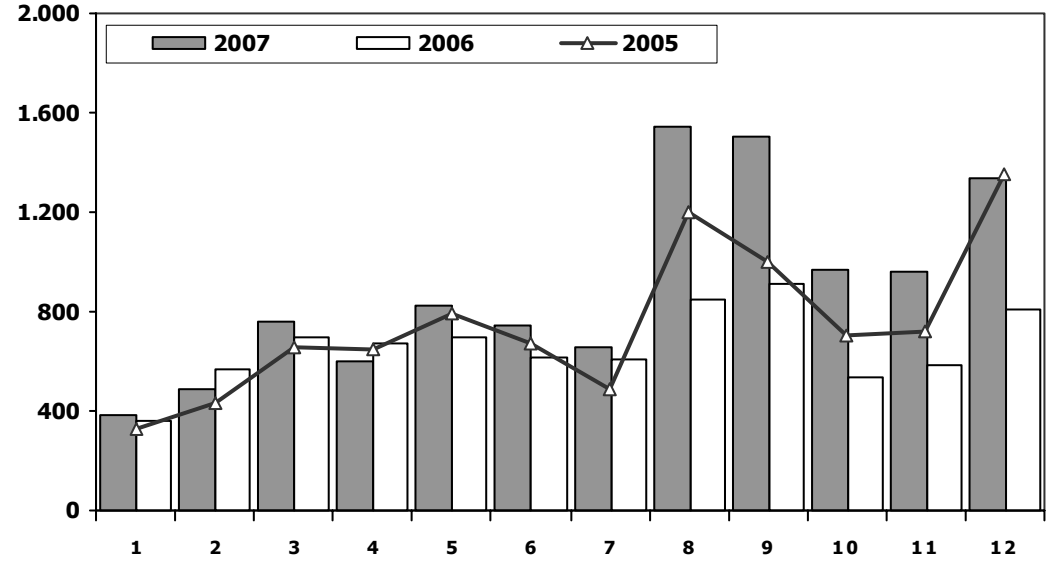
Midibüs Pazarının Analizi

Midibus Market Analysis



Midibüs Pazarı

Midibus Market



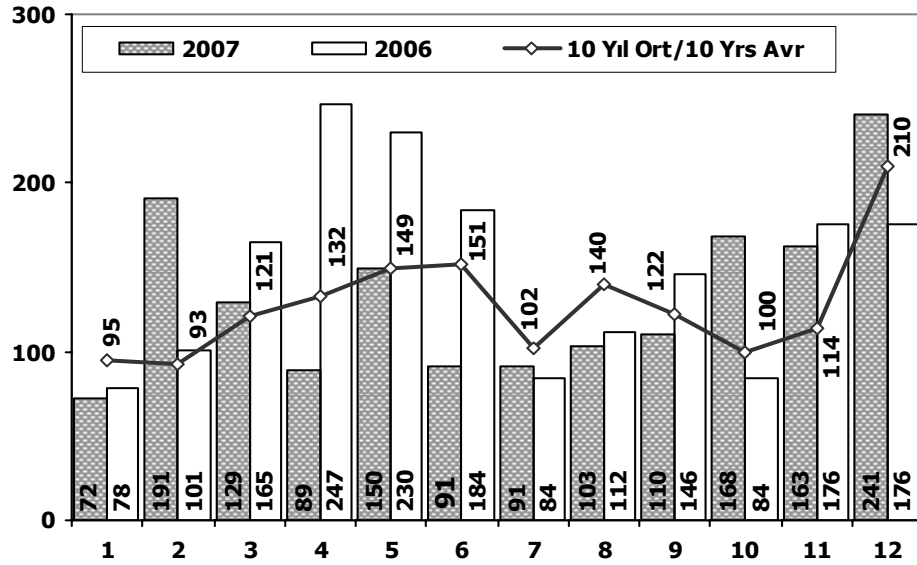
Aylar / Months	10 Yil Ort. 10 Yrs Avr.	2007	%
1	390	384	-2
2	530	488	-8
3	598	764	28
4	557	601	8
5	592	823	39
6	590	743	26
7	472	655	39
8	726	1.544	113
9	804	1.504	87
10	677	965	43
11	580	960	66
12	730	1.339	83
Total	7.246	10.770	49

YIL	OCAK	ŞUBAT	MART	NİSAN	MAYIS	HAZİRAN	TEMMUZ	AĞUSTOS	EYLÜL	EKİM	KASIM	ARALIK	TOPLAM
1997	589	547	671	658	896	874	519	778	1.055	1.026	733	810	9.156
1998	685	976	951	733	771	1.065	475	821	1.016	1.093	904	893	10.383
1999	635	909	880	950	966	914	957	455	752	898	827	870	10.013
2000	309	665	596	658	667	616	496	950	1.141	808	608	378	7.892
2001	147	114	170	103	69	114	75	118	226	240	126	165	1.667
2002	39	97	103	114	134	142	170	281	171	257	198	392	2.098
2003	264	366	241	222	124	330	260	665	799	686	654	831	5.442
2004	549	619	1.013	810	808	563	670	1.142	968	513	446	805	8.906
2005	328	433	660	647	791	671	491	1.201	1.000	708	721	1.349	9.000
2006	357	571	696	673	693	613	608	851	910	537	581	808	7.898
2007	384	488	764	601	823	743	655	1.544	1.504	965	960	1.339	10.770



Otobüs Pazarının Analizi

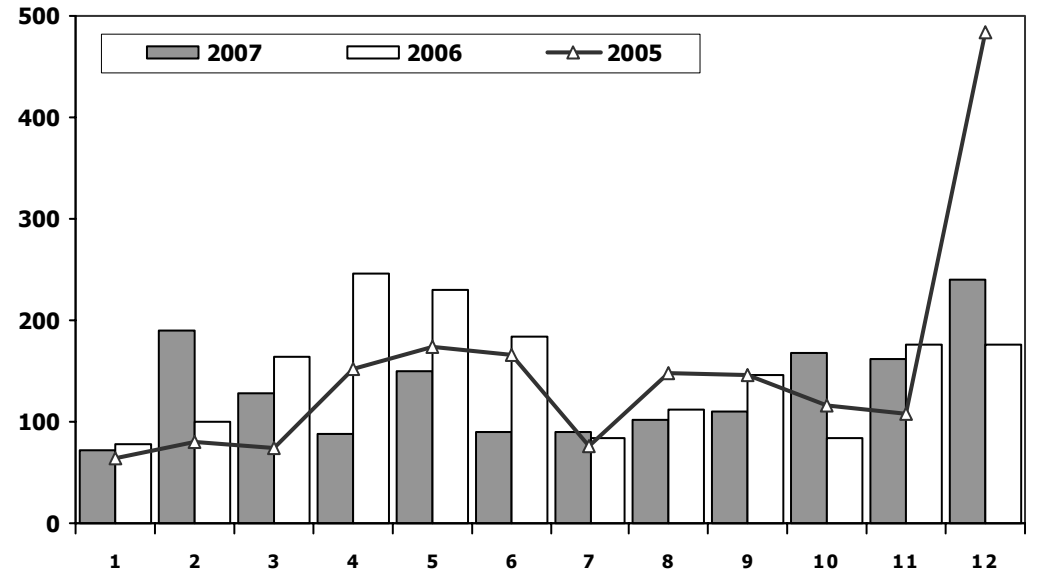
Bus Market Analysis



Aylar / Months	10 Yil Ort. 10 Yrs Avr.	2007	%
1	95	72	-24
2	93	191	106
3	121	129	7
4	132	89	-33
5	149	150	1
6	151	91	-40
7	102	91	-11
8	140	103	-27
9	122	110	-10
10	100	168	68
11	114	163	43
12	210	241	15
Total	1.529	1.598	5

Otobüs Pazarı

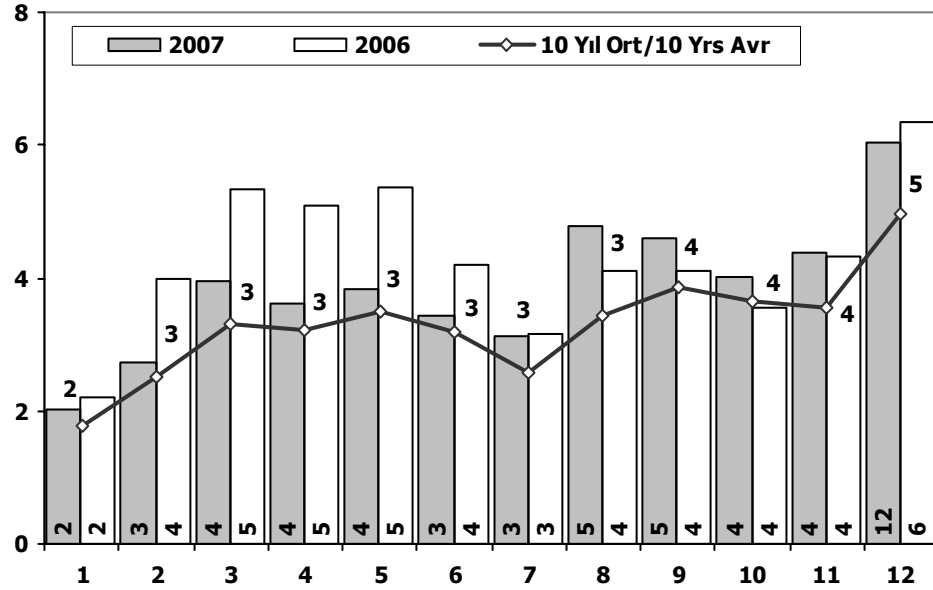
Bus Market



	1	2	3	4	5	6	7	8	9	10	11	12	Total
1997	142	87	138	174	230	274	239	212	164	155	130	219	2.164
1998	140	163	181	141	162	209	98	283	152	61	152	404	2.146
1999	31	70	140	95	43	109	75	68	52	109	103	286	1.181
2000	101	151	165	172	258	300	247	268	235	218	194	194	2.503
2001	128	68	40	20	37	39	35	27	24	14	19	82	533
2002	34	38	46	37	64	6	5	42	43	18	64	74	471
2003	54	33	41	87	124	82	60	124	169	128	101	101	1.104
2004	173	135	215	198	169	143	103	118	90	95	89	78	1.606
2005	65	81	75	152	174	167	76	149	147	116	109	485	1.796
2006	78	101	165	247	230	184	84	112	146	84	176	176	1.783
2007	72	191	129	89	150	91	91	103	110	168	163	241	1.598

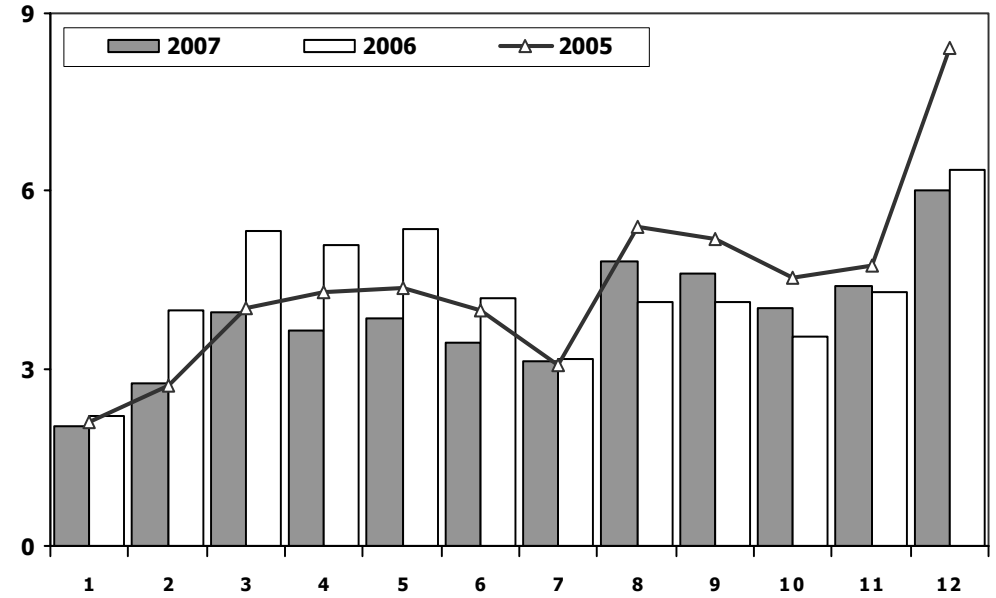


Ağır Ticari Araç Pazarının Analizi (x1000) HCV Market Analysis (x1000)



Aylar / Months	10 Yıl Ort. 10 Yrs Avr. (x1000)	2007 (x1000)	%
1	2	2	14
2	3	3	9
3	3	4	20
4	3	4	13
5	3	4	10
6	3	3	8
7	3	3	22
8	3	5	39
9	4	5	19
10	4	4	11
11	4	4	23
12	5	6	21
Total	40	47	18

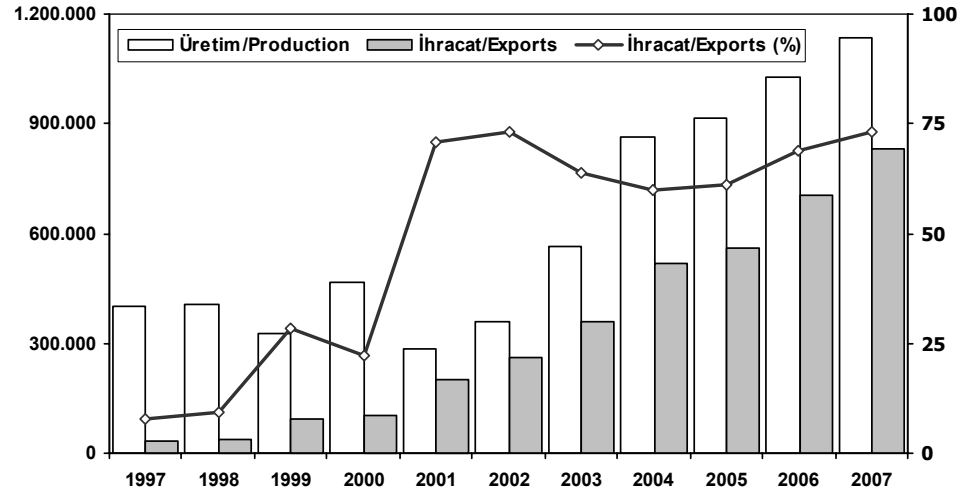
Ağır Ticari Araç Pazarı (x1000) HCV Market (x1000)



	1	2	3	4	5	6	7	8	9	10	11	12	Total
1997	2.903	3.763	4.848	4.456	5.399	5.094	4.608	4.872	6.428	6.149	5.556	6.770	60.846
1998	2.455	4.668	4.977	4.524	4.709	4.332	3.086	3.969	4.651	4.037	3.600	3.724	48.732
1999	1.292	1.893	2.373	2.495	2.471	2.358	1.946	1.994	2.465	2.512	2.635	3.270	27.704
2000	1.365	2.513	3.011	3.039	3.715	3.819	2.868	4.266	4.483	4.261	4.188	2.312	39.840
2001	1.225	1.124	935	832	899	651	530	749	930	1.049	1.120	1.630	11.674
2002	476	667	973	1.199	1.355	1.347	1.102	1.623	1.617	1.941	1.899	3.398	17.597
2003	1.089	1.172	1.405	1.803	1.916	2.420	2.253	3.279	4.531	4.961	4.475	7.338	36.642
2004	2.585	2.703	5.211	4.360	4.628	3.824	3.007	4.157	4.343	3.335	3.164	6.400	47.717
2005	2.086	2.700	4.023	4.283	4.378	3.985	3.071	5.378	5.190	4.532	4.748	8.404	52.778
2006	2.202	3.982	5.328	5.100	5.372	4.195	3.164	4.105	4.108	3.547	4.307	6.342	51.752
2007	2.010	2.734	3.958	3.630	3.838	3.447	3.118	4.792	4.602	4.019	4.381	6.024	46.553



İhracat/Üretim (1997/2007/Ocak-Aralık) Exports/Production



	1997	1998	1999	2000	2001	2002	2003	2004	2005	2006	2007
Üretim/Production	399.923	405.001	325.291	468.381	285.737	357.405	563.450	864.073	915.998	1.026.427	1.132.932
İhracat/Exports	31.174	37.926	92.051	104.744	202.158	261.934	358.745	518.595	561.078	706.402	829.879
İhracat/Exports (%)	8	9	28	22	71	73	64	60	61	69	73

Taşıt Araçları İhracatı (2004/2007) Motor Vehicle Exports

SEKTÖR/SECTOR	2004	2005	2006	2007	2007/2006 (%)
OTOMOBİL/ P.Cars	305.072	319.825	430.420	504.353	17
TİCARİ ARAÇLAR / CV	203.325	233.013	266.268	316.017	19
* Kamyonet/Pick-Up	190.780	218.467	254.159	295.585	16
* Minibüs/Minibus	5.138	3.720	1.809	2.695	49
* Kamyon/Truck	2.510	5.061	4.007	9.398	135
* Midibüs/Midibus	1.941	1.935	2.168	2.987	38
* Otobüs/Bus	2.956	3.830	4.125	5.352	30
TAŞIT ARAÇLARI /MV TOTAL	508.397	552.838	696.688	820.370	18
TRAKTÖR/F.TRACTOR	10.198	8.240	9.714	9.509	-2
TOTAL	518.595	561.078	706.402	829.879	17

Otomotiv Ana ve Yan Sanayii İhracatı (ABD \$) CBU and CKD Exports - \$

SEKTÖR/SECTOR	2004 Toplam (Total)	2005 Toplam (Total)	2006 Toplam (Total)	2007 Toplam (Total)	2007/2006 (%)
Toplam Ana Sanayi/Total Vehicle Industry	6.974.022.027	8.035.352.707	9.921.815.775	12.948.711.105	31
* Otomobil (P. Cars)	3.943.365.661	4.368.734.982	5.683.364.186	6.849.650.057	21
* Otobüs (Bus)	510.144.975	609.904.617	724.611.420	1.099.543.073	52
* Diğerleri (Others)	2.520.511.391	3.056.713.107	3.513.840.169	4.999.517.975	42
Toplam Yan Sanayi/Total Component Industry	3.046.300.785	3.504.213.036	4.508.490.757	6.321.835.873	40
* Aksam ve Parça / Spare Parts and Components	2.453.423.970	2.785.312.434	3.668.803.672	5.225.143.516	42
* İç ve Dış Lastik / Tyres	546.060.611	639.805.929	717.230.911	896.635.235	25
* Akümülatör / Batteries	19.099.600	26.008.662	50.020.679	103.262.890	106
* Emniyet Camı / Safety Glasses	27.716.604	53.086.011	72.435.495	96.794.232	34
Toplam/Total	10.020.322.812	11.539.565.743	14.350.824.949	19.270.546.978	34

Kaynak: UİB - OAİB



Firma Bazında İhracat (Adet)
Export Of member Compaies (Unit)

FİRMALAR/COMPANIES	2005	2006	2007
FORD OTOSAN	162.675	184.606	221.741
OYAK RENAULT	123.162	177.411	204.428
TOYOTA	144.058	160.479	154.386
TOFAŞ	88.020	123.061	146.177
HYUNDAI ASSAN	20.322	34.511	69.224
M. BENZ TÜRK	5.045	3.903	8.708
HONDA TÜRKİYE	2.992	5.692	7.732
TÜRK TRAKTÖR	5.124	4.597	5.761
UZEL	3.116	5.117	3.748
MAN TÜRKİYE	1.349	1.874	1.699
KARSAN	366	394	1.632
B.M.C.	1.146	712	1.524
TEMSA	970	1.106	1.151
OTOKAR	1.099	1.276	1.115
A.I.O.S.	767	711	750
OTOYOL	851	925	103
HATTAT	0	0	0
ASKAM	16	27	0
GENERAL TOTAL	561.078	706.402	829.879

Kaynak: OSD

Sektör Bazında İhracat (\$)
Exports on Sectoral Basis

Sıra No	Sektörler	Ocak-Aralık			
		2006	2007	Değişim 2006/2006 (%)	Dağılım 2007 (%)
1	Taşıt Araçları ve Yan Sanayi	15.728.515	21.256.158	35,1	20,1
2	Hazırgiyim ve Konfeksiyon	13.986.002	16.049.056	14,8	15,2
3	Demir Çelik Ürünleri	8.672.586	11.389.129	31,3	10,8
4	Kimyevi Maddeler ve Mamülleri	8.781.063	10.462.232	19,1	9,9
5	Elektrik-Elektronik ve Makina	8.062.199	9.091.920	12,8	8,6
6	Tekstil ve Hammaddeleri	5.576.708	6.551.786	17,5	6,2
7	Makine ve Aksamları	3.876.855	5.552.333	43,2	5,2
8	Demir ve Demir Dışı Metaller	4.065.282	5.188.560	27,6	4,9
9	Hububat, Bakliyat, Yağlı Tohumlar	2.584.614	2.806.375	8,6	2,6
10	Madencilik Ürünleri	2.080.494	2.715.489	30,5	2,6
11	Çimento ve Toprak Ürünleri	2.045.967	2.532.826	23,8	2,4
12	Ağaç Mamülleri, Orman Ürünleri	1.552.432	2.117.802	36,4	2,0
13	Fındık ve Mamülleri	1.467.410	1.520.393	3,6	1,4
14	Yaş Meyve ve Sebze	1.156.817	1.479.164	27,9	1,4
15	Değerli Maden ve Mücevherat	1.172.444	1.478.824	26,1	1,4
16	Deri ve Deri Mamülleri	1.178.517	1.239.453	5,2	1,2
17	Halı	744.870	1.003.831	34,8	0,9
18	Meyve Sebze Mamülleri	814.250	1.000.264	22,8	0,9
19	Kuru Meyve ve Mamülleri	730.604	904.831	23,8	0,9
20	Tütün	683.401	642.457	-6,0	0,6
21	Canlı Hayvan, Su Ürünleri ve Mam.	463.460	592.115	27,8	0,6
22	Zeytin ve Zeytinyağ	270.144	246.866	-8,6	0,2
23	Diğer Sanayi Ürünleri	38.920	56.603	45,4	0,1
24	Kesme Çiçek	41.089	47.019	14,4	0,0
TOPLAM		85.774.643	105.925.486	23,5	100,0

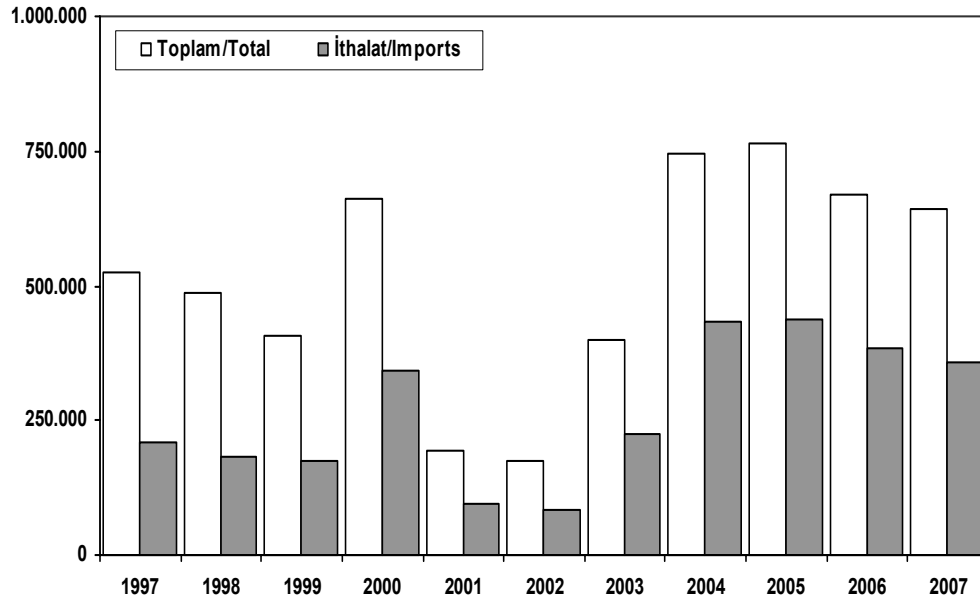
Kaynak: TİM

First 5 Sectors:

- 1-Transport Vehicle and Component Industry
- 2-Ready Wear and Confection
- 3-Iron and Other Metals
- 4-Chemical Articles and Products
- 5-Electric-Electronic and Machine

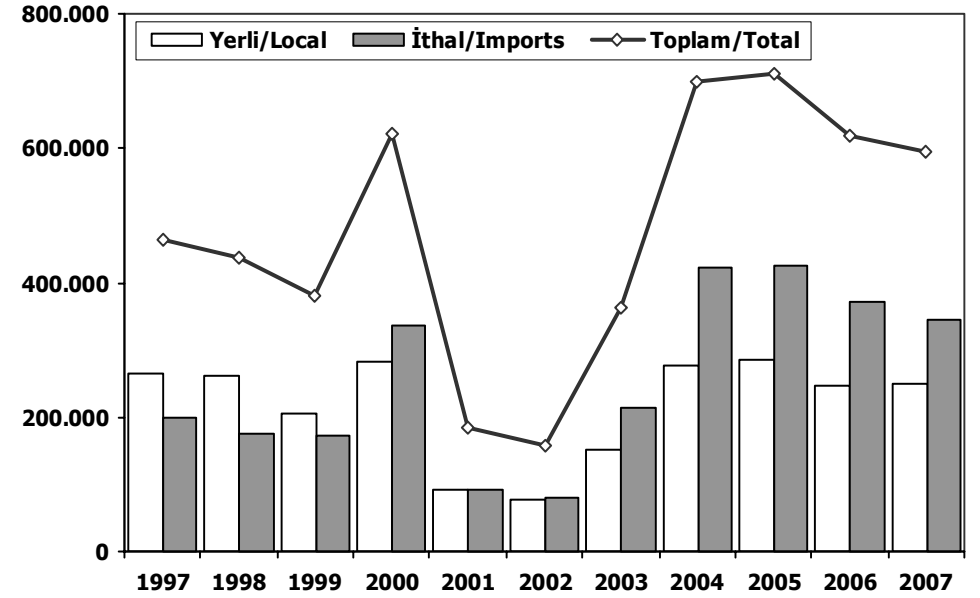


Toplam Pazar (Otomobil+T.Araç)
Total Market (P.Cars+C.V)



	1997	1998	1999	2000	2001	2002	2003	2004	2005	2006	2007
Toplam/Total	525.242	486.126	407.284	660.077	195.426	175.046	400.711	745.812	763.186	669.604	641.315
İthalat/Imports	210.035	183.829	175.497	342.174	94.211	83.291	223.224	432.293	438.114	384.174	359.089
İthalat/Imports (%)	40	38	43	52	48	48	56	58	57	57	56

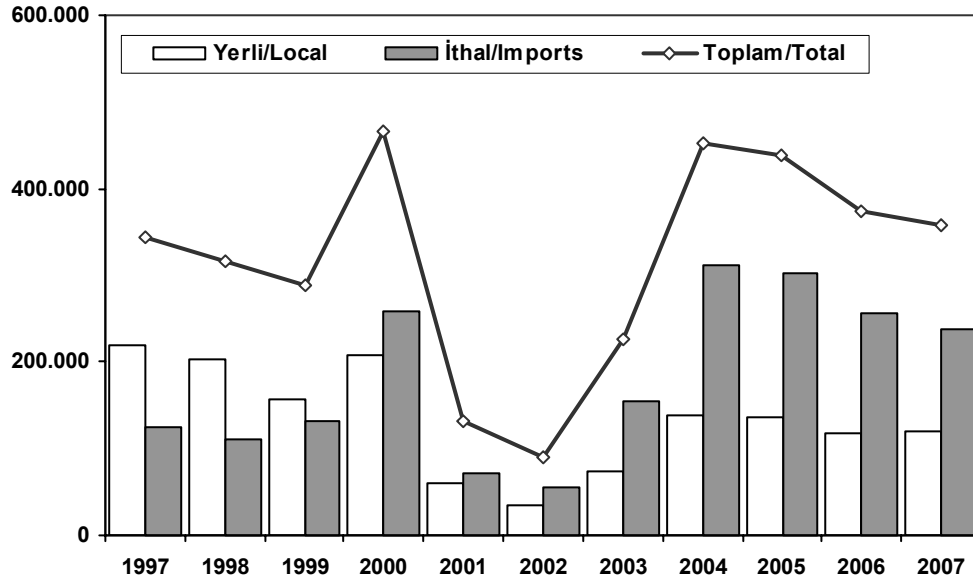
Hafif Araçlar Pazarı (Ocak-Aralık)
LV Market (January–December)



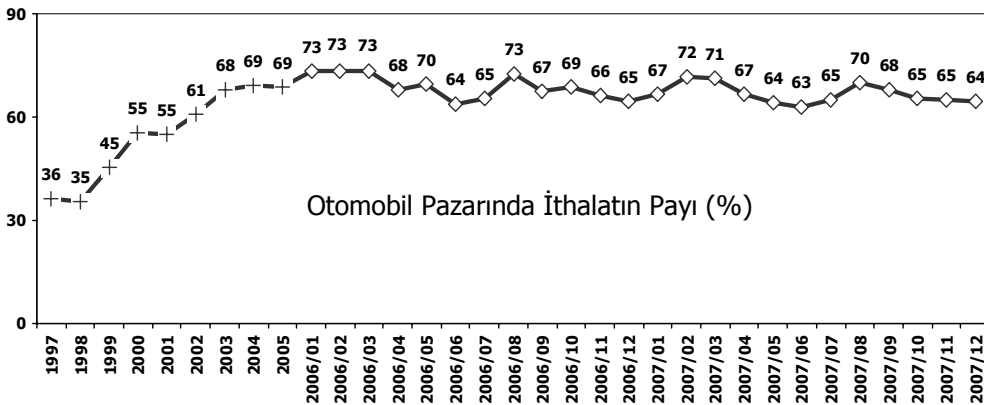
	1997	1998	1999	2000	2001	2002	2003	2004	2005	2006	2007
Yerli/Local	264.147	261.270	206.637	283.955	92.696	78.321	150.842	275.521	284.134	246.800	249.705
İthal/Imports	200.249	176.124	172.943	336.282	91.056	79.128	213.227	422.574	426.274	371.052	345.057
Toplam/Total	464.396	437.394	379.580	620.237	183.752	157.449	364.069	698.095	710.408	617.852	594.762
İthalat/Imports (%)	43	40	46	54	50	50	59	61	60	60	58



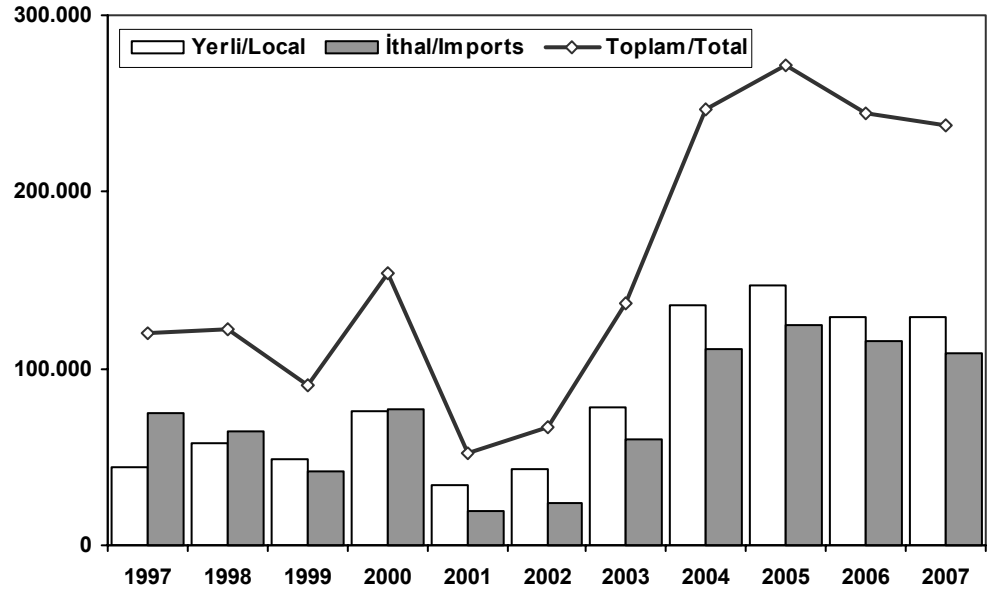
Otomobil Pazarı (Ocak-Aralık) P.Cars Market (January-December)



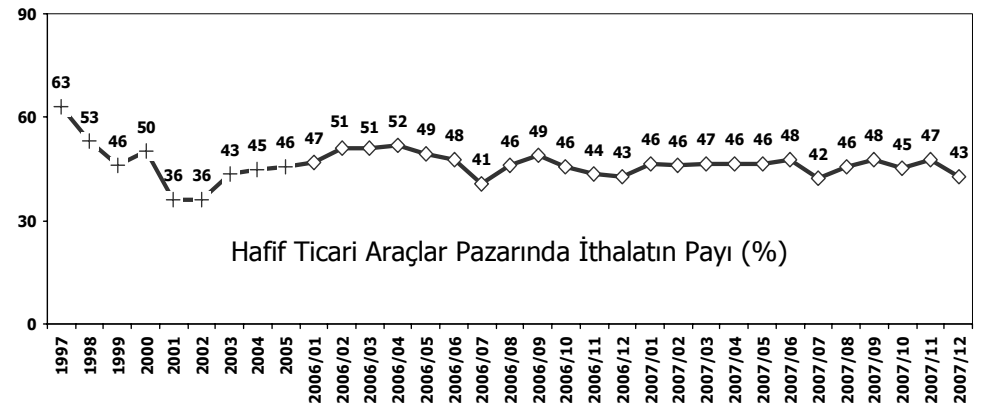
	1997	1998	1999	2000	2001	2002	2003	2004	2005	2006	2007
Yerli/Local	219.810	204.054	157.452	207.739	59.179	35.519	73.267	139.541	136.708	117.725	120.740
İthal/Imports	125.025	111.536	131.215	258.987	72.259	55.096	153.769	311.668	301.889	255.494	236.725
Toplam/Total	344.835	315.590	288.667	466.726	131.438	90.615	227.036	451.209	438.597	373.219	357.465
İthalat/Imports (%)	36	35	45	55	55	61	68	69	69	68	66



Hafif Ticari Araçlar Pazarı (Ocak-Aralık) (Light Commercial Vehicle Market) (January-December)

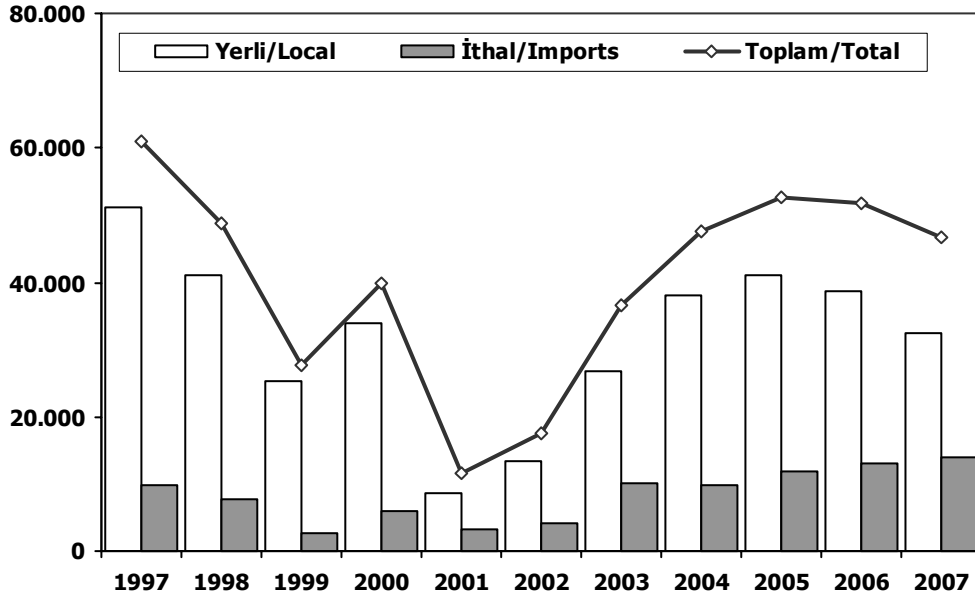


	1997	1998	1999	2000	2001	2002	2003	2004	2005	2006	2007
Yerli/Local	44.337	57.216	49.185	76.216	33.517	42.802	77.575	135.980	147.426	129.075	128.965
İthal/Imports	75.224	64.588	41.728	77.295	18.797	24.032	59.458	110.906	124.385	115.558	108.332
Toplam/Total	119.561	121.804	90.913	153.511	52.314	66.834	137.033	246.886	271.811	244.633	237.297
İthalat/Imports (%)	63	53	46	50	36	36	43	45	46	47	46



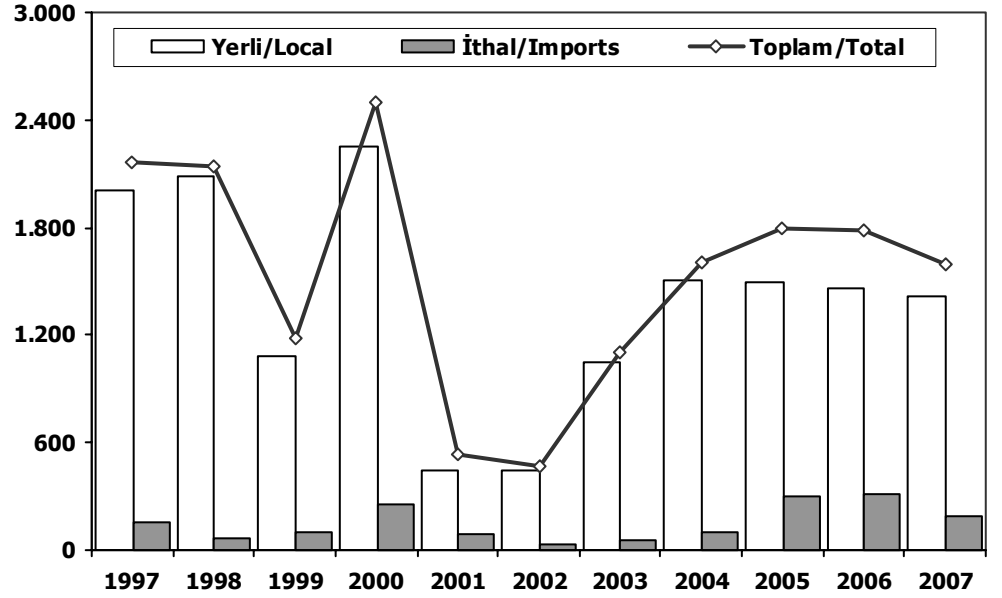


Ağır Ticari Araçlar Pazarı (Ocak-Aralık) HCV Market (January-December)



	1997	1998	1999	2000	2001	2002	2003	2004	2005	2006	2007
Yerli/Local	51.060	41.027	25.150	33.948	8.519	13.434	26.645	37.998	40.938	38.630	32.521
İthal/Imports	9.786	7.705	2.554	5.892	3.155	4.163	9.997	9.719	11.840	13.122	14.032
Toplam/Total	60.846	48.732	27.704	39.840	11.674	17.597	36.642	47.717	52.778	51.752	46.553
İthalat/Imports (%)	16	16	9	15	27	24	27	20	22	25	30

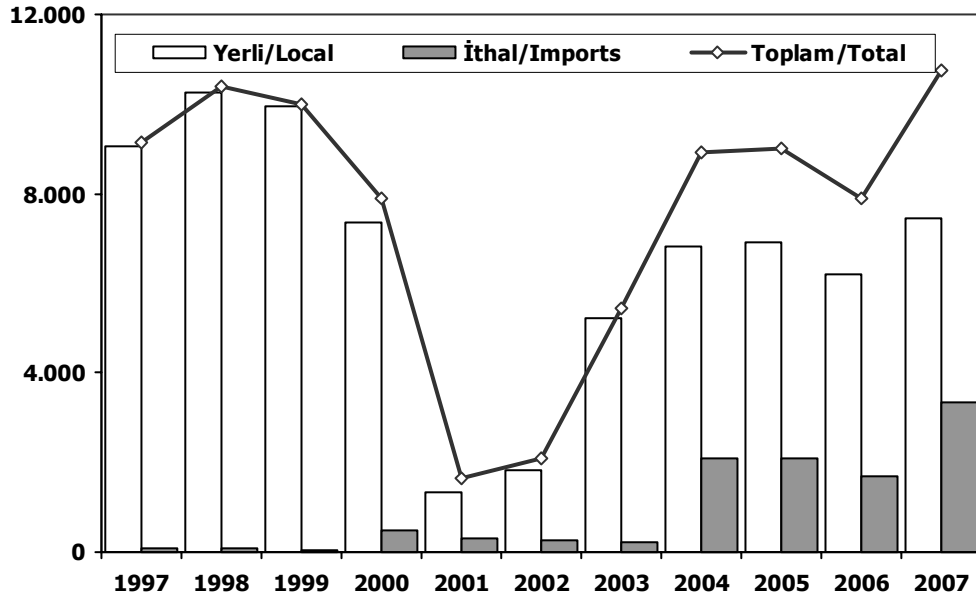
Otobüs Pazarı (Ocak-Aralık) Bus Market (January-December)



	1997	1998	1999	2000	2001	2002	2003	2004	2005	2006	2007
Yerli/Local	2.006	2.080	1.086	2.250	445	442	1.051	1.503	1.498	1.466	1.413
İthal/Imports	158	66	95	253	88	29	53	103	298	317	185
Toplam/Total	2.164	2.146	1.181	2.503	533	471	1.104	1.606	1.796	1.783	1.598
İthalat/Imports (%)	7	3	8	10	17	6	5	6	17	18	12

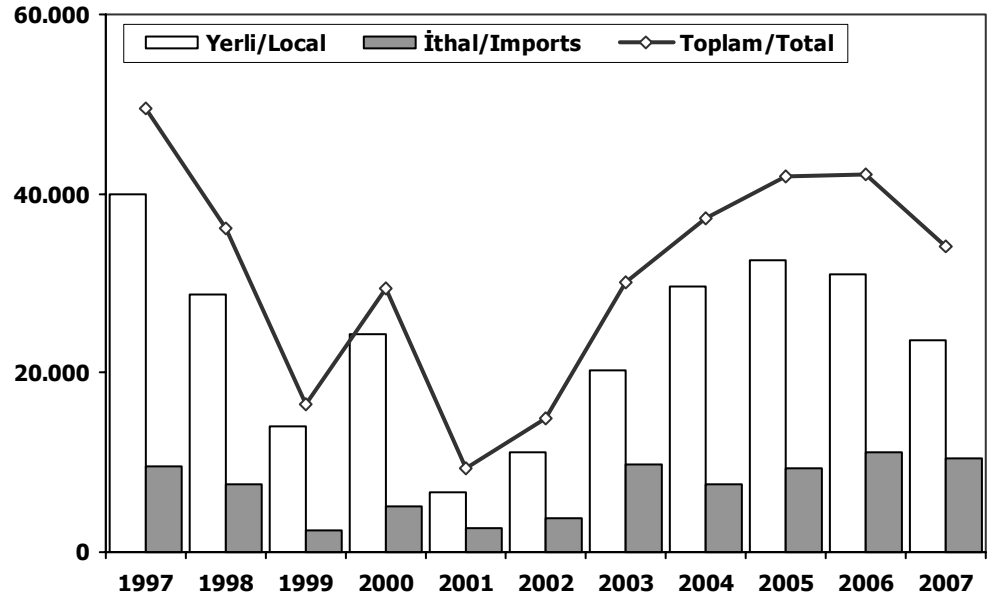


Midibüs Pazarı (Ocak-Aralık)
Midibus Market (January–December)



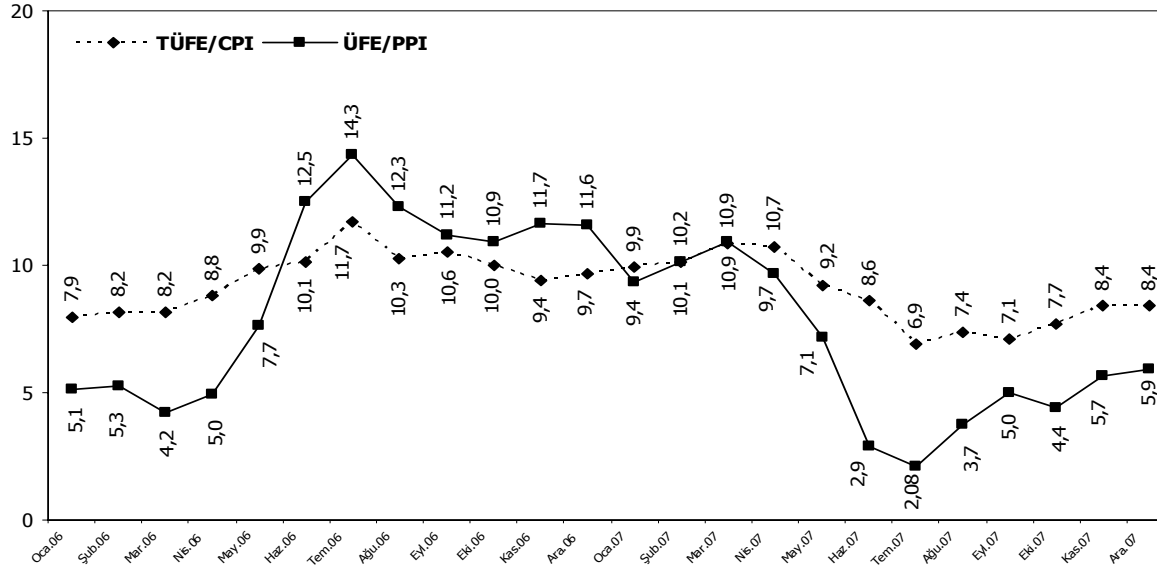
	1997	1998	1999	2000	2001	2002	2003	2004	2005	2006	2007
Yerli/Local	9.060	10.275	9.953	7.382	1.343	1.834	5.202	6.817	6.919	6.184	7.433
İthal/Imports	96	108	60	510	324	264	240	2.089	2.081	1.714	3.337
Toplam/Total	9.156	10.383	10.013	7.892	1.667	2.098	5.442	8.906	9.000	7.898	10.770
İthalat/Imports (%)	1	1	1	6	19	13	4	23	23	22	31

Kamyon Pazarı (Ocak-Aralık)
Truck Market (January–December)

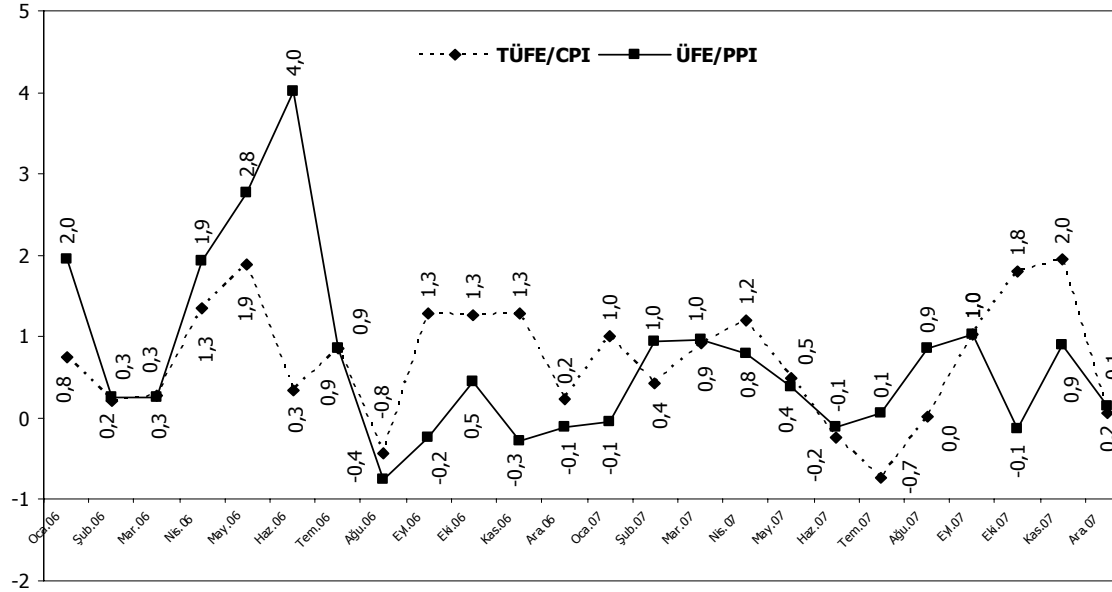


	1997	1998	1999	2000	2001	2002	2003	2004	2005	2006	2007
Yerli/Local	39.994	28.672	14.111	24.316	6.731	11.158	20.392	29.678	32.521	30.980	23.675
İthal/Imports	9.532	7.531	2.399	5.129	2.743	3.870	9.704	7.527	9.461	11.091	10.510
Toplam/Total	49.526	36.203	16.510	29.445	9.474	15.028	30.096	37.205	41.982	42.071	34.185
İthalat/Imports (%)	19	21	15	17	29	26	32	20	23	26	31

TÜFE ve ÜFE'nin Yıllık Değişimi (%)
CPI and PPI Yearly Changes (%)



TÜFE ve ÜFE'nin Aylık Değişimi (%)
CPI and PPI Monthly Changes (%)



**2007 Yılı İthal Otomobil Satışları / P.Cars Imports 2007**

2006 Total	1	2	3	4	5	6	7	8	9	10	11	12	Total	
FORD	38.171	1.001	1.738	2.119	1.979	2.170	2.850	2.561	2.707	3.071	2.836	3.191	6.533	32.756
OPEL	28.171	884	1.402	2.567	1.860	2.304	2.375	2.289	1.728	1.596	2.398	3.310	5.048	27.761
VOLKSWAGEN	27.624	995	1.486	1.876	1.768	1.845	2.050	1.929	2.519	1.886	2.894	3.048	4.443	26.739
TOYOTA	13.400	522	1.478	1.955	2.153	1.929	1.999	1.854	2.272	1.943	1.816	2.557	3.048	23.526
PEUGEOT	17.585	597	731	935	982	1.089	1.084	1.326	1.322	996	952	1.360	2.043	13.417
KIA	11.689	729	566	660	738	874	814	762	731	822	1.020	1.047	1.556	10.319
HYUNDAI	18.080	556	620	795	673	856	715	690	792	911	943	1.026	1.206	9.783
CITROEN	9.718	335	378	630	626	666	648	692	739	679	739	869	1.491	8.492
FIAT	11.592	208	306	677	640	646	523	650	915	653	747	950	1.726	8.641
AUDI	4.928	268	328	389	400	554	434	350	635	574	584	709	893	6.118
HONDA	6.259	347	358	454	349	335	466	467	420	696	667	651	924	6.134
B.M.W	5.158	105	131	159	368	680	554	489	604	481	639	858	2.188	7.256
RENAULT	7.840	188	323	414	400	386	441	475	412	440	543	829	779	5.630
SKODA	5.226	150	153	484	404	406	465	453	416	404	459	807	864	5.465
CHEVROLET	4.882	145	189	233	358	441	352	419	527	356	563	571	809	4.963
NISSAN	5.842	145	252	344	489	497	290	327	305	406	517	495	601	4.668
MERCEDES	4.125	180	251	301	300	392	301	286	416	447	466	540	760	4.640
SUZUKI	2.381	164	303	306	436	389	316	273	292	232	217	314	522	3.764
DACIA	7.355	224	170	354	271	348	478	271	318	252	191	536	3.688	
SEAT	4.897	133	159	195	300	219	252	290	264	267	426	371	752	3.628
VOLVO	1.844	78	81	161	154	232	248	189	249	309	282	277	487	2.747
SUBARU	2.212	205	163	202	182	173	134	126	225	236	230	202	217	2.295
LAND ROVER	2.301	76	100	104	102	196	219	155	232	129	112	309	525	2.259
DAIHATSU	1.891	107	94	157	151	151	176	169	195	131	124	205	183	1.843
TATA	1.962	59	82	124	73	147	122	154	144	152	154	176	180	1.567
MITSUBISHI	1.984	89	77	160	102	94	76	69	93	107	137	157	412	1.573
MAZDA	2.407	124	147	189	122	123	82	142	29	34	15	18	4	1.029
LADA	1.441	20	25	72	78	82	102	81	70	65	70	87	93	845
JEEP	0	0	0	61	68	75	95	99	85	37	84	118	115	837
ALFA ROMEO	742	26	24	30	55	56	49	37	46	38	52	72	163	648
MINI (İngiliz)	412	28	36	47	46	98	51	39	50	71	65	93	180	804
DODGE	0	0	0	7	17	82	28	64	74	115	95	101	86	669
PROTON	404	19	37	38	30	34	39	47	66	52	76	99	229	766
CHRYSLER	1.485	70	92	37	60	46	37	40	44	28	21	31	41	547
JAGUAR	836	10	20	45	47	30	30	28	25	27	30	42	40	374
PORSCHE	217	8	16	22	11	28	17	20	11	23	20	13	24	213
SAAB	205	6	11	7	4	5	8	11	8	12	8	12	6	98
LANCIA	0	0	0	0	1	9	11	6	2	7	10	5	20	71
SMART	180	2	0	6	2	0	0	0	22	2	4	5	30	73
FERRARI	28	1	0	5	1	3	2	5	3	3	1	3	2	29
MASERATI	20	1	0	3	2	1	1	1	1	3	1	8	6	28
BENTLEY	0	0	0	0	4	5	1	2	2	0	0	1	4	19
LAMBORGHINI	0	0	0	0	0	0	1	0	0	0	1	0	1	3
Total	255.494	8.805	12.327	17.324	16.806	18.696	18.936	18.341	19.963	18.759	21.270	25.728	39.770	236.725

2007 Yılı İthal Hafif Ticari Araç Satışları / Light Commercial Vehicles Imports 2007

2006 Total	1	2	3	4	5	6	7	8	9	10	11	12	Total	
VOLKSWAGEN	31.625	1.213	1.472	2.074	2.024	2.166	2.369	2.204	2.944	2.208	2.516	2.924	4.128	28.242
RENAULT	25.603	892	1.274	1.894	1.701	1.753	1.969	1.818	2.260	1.830	1.522	2.346	3.514	22.773
HYUNDAI	8.972	275	288	432	536	775	660	533	513	611	563	749	571	6.506
OPEL	6.776	238	332	412	294	472	427	392	487	415	518	641	831	5.459
MITSUBISHI	4.579	292	269	316	461	436	360	311	520	474	481	614	881	5.415
CITROEN	5.030	157	232	345	333	429	481	398	521	541	527	536	715	5.215
MERCEDES	5.552	202	279	362	339	333	354	420	575	481	385	514	719	4.963
FIAT	3.327	168	297	401	352	356	404	287	453	505	381	445	487	4.536
DACIA	1	0	0	287	317	433	398	478	366	396	463	567	1.558	5.263
KIA	3.491	184	104	218	374	253	203	243	210	289	374	395	852	3.699
FORD	3.904	145	141	285	249	235	276	225	231	256	326	315	664	3.348
ISUZU	2.928	273	143	186	210	247	214	130	285	201	254	174	342	2.659
NISSAN	3.306	108	151	261	232	269	212	175	200	306	187	207	462	2.770
TOYOTA	1.726	113	113	134	156	167	239	159	142	139	258	178	275	2.073
TATA	1.955	64	115	186	94	191	118	144	157	150	167	256	281	1.923
PEUGEOT	1.245	75	128	177	174	133	86	139	160	132	146	221	246	1.817
IVECO	1.922	60	71	91	70	52	44	49	17	7	25	76	153	715
MAZDA	1.770	80	55	80	31	28	42	32	37	34	22	33	26	500
DAIHATSU	194	16	16	25	18	22	11	14	9	5	12	7	6	161
PROTON	52	3	10	7	8	12	11	17	8	12	12	31	45	176
MAHINDRA	0	0	0	0	0	0	0	0	17	3	6	14	7	47
GAZ	1.341	39	0	0	0	0	0	0	0	0	0	0	0	39
ASKAM	99	5	0	16	4	0	0	0	0	0	0	0	8	33
SKODA	160	0	0	0	0	0	0	0	0	0	0	0	0	160
Total	115.558	4.602	5.490	8.189	7.977	8.762	8.878	8.168	10.112	8.995	9.145	11.243	16.771	108.332