



OTOMOTİV SANAYİİ DERNEĞİ



OTOMOTİV SANAYİİ

AUTOMOTIVE INDUSTRY

- **ÜRETİM/PRODUCTION**
- **SATIŞ/SALES**
- **İTHALAT/IMPORTS**
- **İHRACAT/EXPORTS**

Aralık / December 2006



2006 Aralık Ayı Özeti / 2006 December Summary

KONULAR/ MATTERS		AYLIK/ MONTHLY			YILLIK/ YEARLY		
		2005	2006	2006/ 2005 (%)	2005	2006	2006/ 2005 (%)
Üretim/ Production	Toplam/ Total	78.362	84.852	8,3	879.452	987.580	12,3
	Otomobil/ P.Cars	37.755	45.519	20,6	453.663	545.682	20,3
Pazar/ Market	Toplam/ Total	111.613	83.129	-25,5	763.186	669.604	-12,3
	Otomobil/ P.Cars	65.447	46.351	-29,2	438.597	373.219	-14,9
İthalat/ Import	Toplam/ Total	64.625	44.469	-31,2	438.114	384.322	-12,3
	Otomobil/ P.Cars	44.977	29.914	-33,5	301.889	255.494	-15,4
İhracat/ Export	Toplam/ Total	50.586	68.151	34,7	552.838	696.688	26,0
	Otomobil/ P.Cars	31.388	45.411	44,7	319.825	430.420	34,6
İhracat / export (\$)	Toplam/ Total **	1.201.312.585	1.547.641.314	28,8	11.539.565.743	14.350.824.949	24,4
	Otomobil/ P.Cars	456.557.476	612.096.495	34,1	4.368.734.982	5.683.246.431	30,1

PARAMETRELER / PARAMETERS	AYLIK/ MONTHLY			YILLIK/ YEARLY		
	2005	2006	2006/ 2005 (%)	2005	2006	2006/ 2005 (%)
ÜFE/ PPI	-0,04	-0,12	**	2,66	11,58	**
TÜFE/ CPI	0,42	0,23	**	7,72	9,65	**
Sanayi Endeksi/ Industry Index	0,58	0,06	**	3,15	12,33	**
\$ (*)	1,3483	1,4124	4,8	1,3436	1,4333	6,7
EURO (*)	1,5952	1,8502	16,0	1,6643	1,8134	9,0
Japon Yeni/ Japanese Yen (*)	1,1476	1,1875	3,5	1,2186	1,2351	1,4

(*) Ortalama Değerler / Average Values

(**) Toplam Sanayi / Total Industry Including Components



2005/2006 Yılları Üretim (2005/2006 Production)

K.KAMYON : AYA 3.5-12 Ton (L.Truck:GVW 3.5-12 Ton)
B.KAMYON : AYA 12 Ton'dan Büyük (M.Truck:GVW 12 Ton And Up)

TİPLER	ARALIK AYI ÜRETİMİ December Production		12 AYLIK ÜRETİM 12 Months Production		DEĞİŞİM % Percent Change %	
	2005 YILI	2006 YILI	2005 YILI	2006 YILI	ARALIK December	12 AY 12 Months
	OTOMOBİL - Pass.Car	37.755	45.519	453.663	545.682	21
TİCARİ ARAÇLAR - Commercial Vehicles	40.607	39.333	425.789	441.898	-3	4
* B. KAMYON - M. Truck	2.773	1.856	30.047	29.831	-33	-1
* K. KAMYON - L. Truck	923	634	7.180	7.195	-31	0
* KAMYONET - Pick Up	33.511	33.318	349.885	369.862	-1	6
* OTOBÜS - Bus	571	535	5.406	6.019	-6	11
* MİNİBÜS - Minibus	2.171	2.395	26.162	20.728	10	-21
* MİDİBÜS - Midibus	658	595	7.109	8.263	-10	16
TAŞIT ARAÇLARI TOPLAM - MV Total	78.362	84.852	879.452	987.580	8	12
TRAKTÖR - F.Tractor	2.739	2.660	34.907	37.407	-3	7
GENEL TOPLAM - Grand Total	81.101	87.512	914.359	1.024.987	8	12

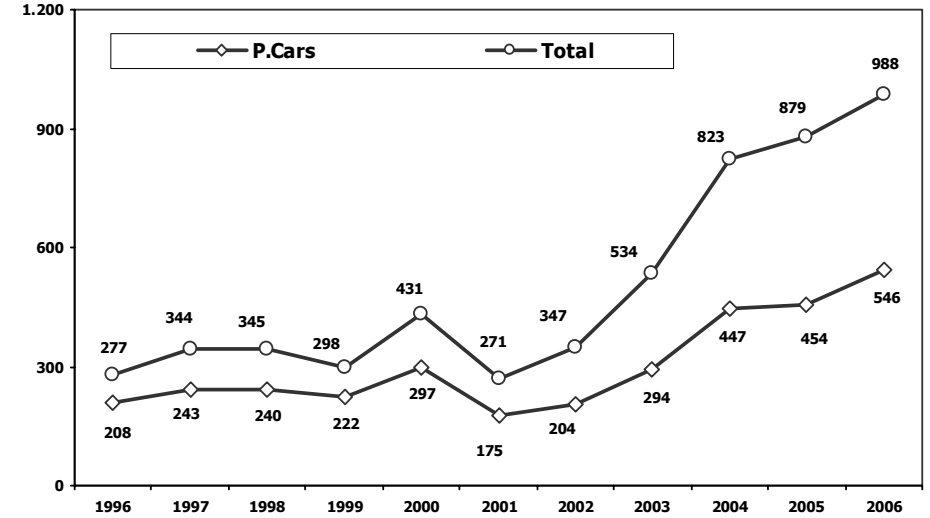
2006 Yılı Üretimi (2006 Production)

FİRMALAR Companies	OTOMOBİL Pass.Car	%	K.KAMYON L.Truck	%	B.KAMYON Mid.Truck	%	KAMYONET Pick Up	%	OTOBÜS Bus	%	MİNİBÜS Mini-Bus	%	MİDİBÜS Mid-Bus	%	TRAKTÖR F.Tractor	%	TOPLAM Totals
AIOS	0	0	3.055	42	0	0	2.398	1	0	0	0	1.992	24	0	0	0	7.445
ASKAM	0	0	0	0	1.116	4	185	0	0	0	8	0	0	0	0	0	1.309
BMC	0	0	0	0	6.628	22	3.566	1	565	9	629	3	291	4	0	0	11.679
FORD OTOSAN	0	0	0	0	7.825	26	233.580	63	0	0	16.721	81	0	0	0	0	258.126
HONDA TÜRKİYE	18.322	3	0	0	0	0	0	0	0	0	0	0	0	0	0	0	18.322
HYUNDAI ASSAN	42.350	8	0	0	0	0	17.365	5	0	0	1.180	6	0	0	0	0	60.895
KARSAN	0	0	0	0	0	0	8.954	2	0	0	1.735	8	1.835	22	0	0	12.524
M BENZ TÜRK	0	0	0	0	13.009	44	0	0	2.200	37	0	0	0	0	0	0	15.209
MAN TÜRKİYE	0	0	0	0	150	1	0	0	2.351	39	0	0	0	0	0	0	2.501
OTOKAR	0	0	0	0	0	0	1.385	0	0	0	455	2	935	11	0	0	2.775
OTOYOL	0	0	1.092	15	1.103	4	61	0	0	0	0	1.909	23	0	0	0	4.165
OYAK RENAULT	228.593	42	0	0	0	0	0	0	0	0	0	0	0	0	0	0	228.593
TEMSA	0	0	3.048	42	0	0	3.663	1	903	15	0	0	1.301	16	0	0	8.915
TOFAS	79.729	15	0	0	0	0	98.705	27	0	0	0	0	0	0	0	0	178.434
TOYOTA	176.688	32	0	0	0	0	0	0	0	0	0	0	0	0	0	0	176.688
TÜRK TRAKTÖR	0	0	0	0	0	0	0	0	0	0	0	0	0	17.257	46	0	17.257
UZEL	0	0	0	0	0	0	0	0	0	0	0	0	0	20.150	54	0	20.150
TOPLAM	545.682	100	7.195	100	29.831	100	369.862	100	6.019	100	20.728	100	8.263	100	37.407	100	1.024.987

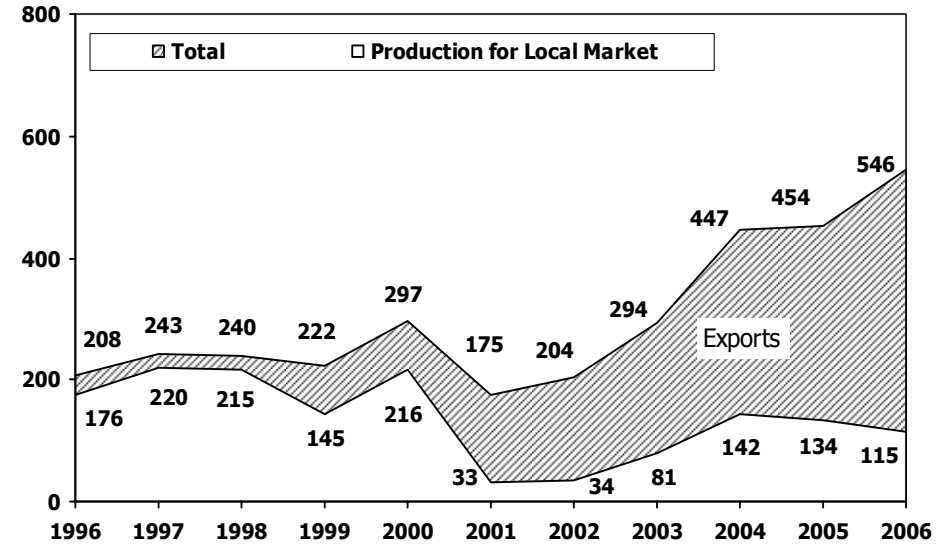
Aralık Ayı Üretimi (December Production)

FİRMALAR Companies	OTOMOBİL Pass.Car	%	K.KAMYON L.Truck	%	B.KAMYON Mid.Truck	%	KAMYONET Pick Up	%	OTOBÜS Bus	%	MİNİBÜS Mini-Bus	%	MİDİBÜS Mid-Bus	%	TRAKTÖR F.Tractor	%	TOPLAM Totals
A.I.O.S.	0	0	263	41	0	0	274	1	0	0	0	162	27	0	0	0	699
ASKAM	0	0	0	0	61	3	34	0	0	0	5	0	0	0	0	0	100
B.M.C.	0	0	0	0	361	19	248	1	49	9	61	3	0	0	0	0	719
FORD OTOSAN	0	0	0	0	480	26	21.399	64	0	0	2.009	84	0	0	0	0	23.888
HONDA TÜRKİYE	1.773	4	0	0	0	0	0	0	0	0	0	0	0	0	0	0	1.773
HYUNDAI ASSAN	4.605	10	0	0	0	0	1.365	4	0	0	44	2	0	0	0	0	6.014
KARSAN	0	0	0	0	0	0	432	1	0	0	226	9	102	17	0	0	760
M. BENZ TÜRK	0	0	0	0	783	42	0	0	222	41	0	0	0	0	0	0	1.005
MAN TÜRKİYE	0	0	0	0	37	2	0	0	171	32	0	0	0	0	0	0	208
OTOKAR	0	0	0	0	0	0	59	0	0	0	50	2	65	11	0	0	174
OTOYOL	0	0	58	9	134	7	0	0	0	0	0	0	160	27	0	0	352
OYAK RENAULT	16.882	37	0	0	0	0	0	0	0	0	0	0	0	0	0	0	16.882
TEMSA	0	0	313	49	0	0	386	1	93	17	0	0	106	18	0	0	898
TOFAS	6.430	14	0	0	0	0	9.121	27	0	0	0	0	0	0	0	0	15.551
TOYOTA	15.829	35	0	0	0	0	0	0	0	0	0	0	0	947	36	0	16.776
TÜRK TRAKTÖR	0	0	0	0	0	0	0	0	0	0	0	0	0	1.713	64	0	1.713
UZEL	0	0	0	0	0	0	0	0	0	0	0	0	0	0	0	0	0
TOPLAM	45.519	100	634	100	1.856	100	33.318	100	535	100	2.395	100	595	100	2.660	100	87.512

Toplam Üretim ve Otomobil Üretimi (x1000) Total & P.Cars Production (x1000)

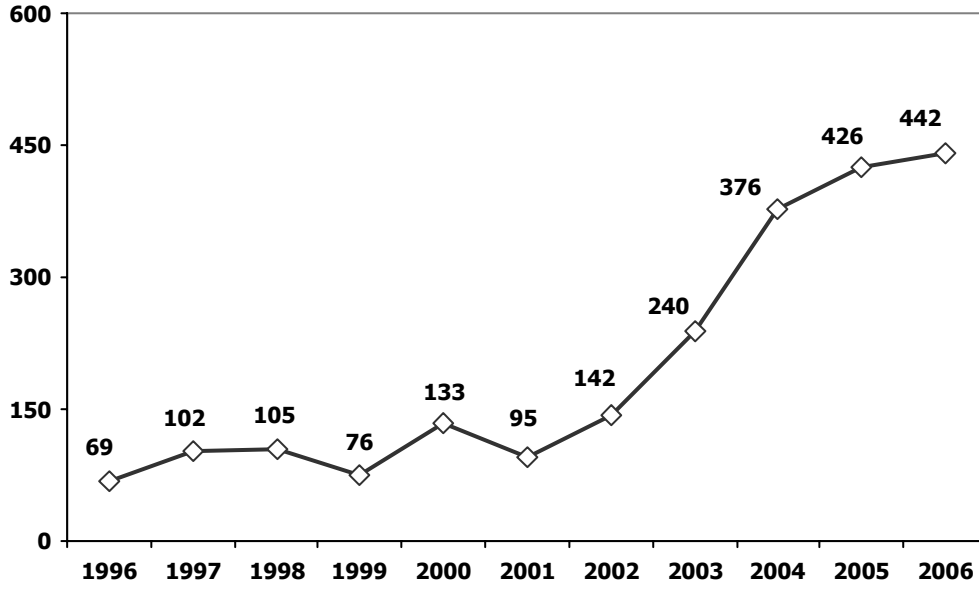


Otomobil Üretimi ve İhracat (x1000) P.Cars Production & Exports (x1000)

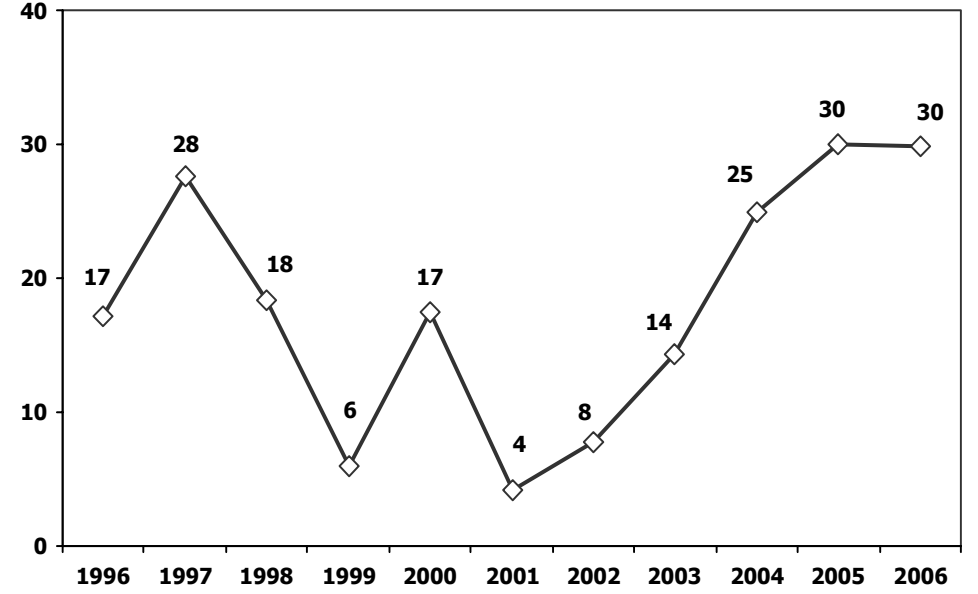




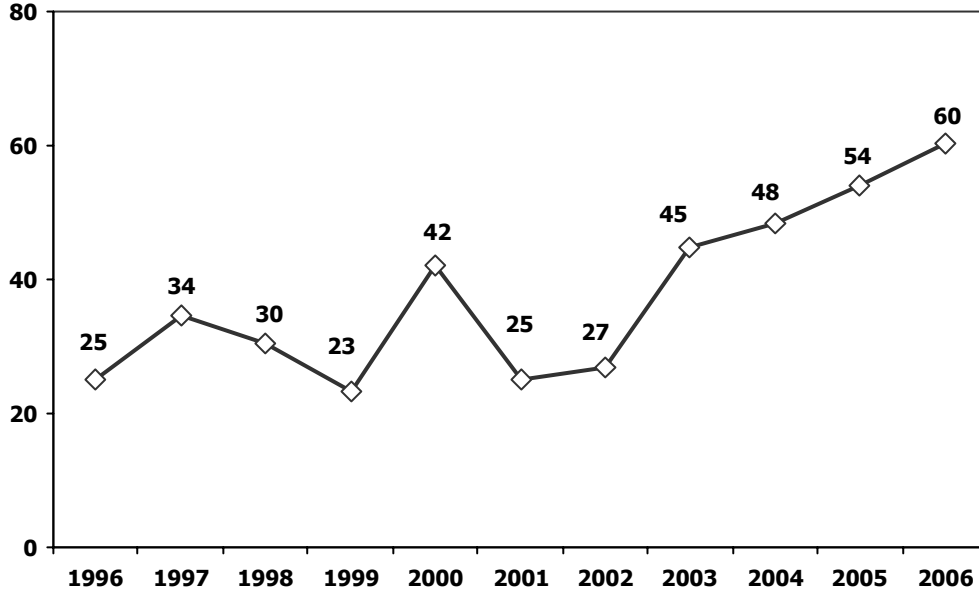
Ticari Araç Üretimi (x1000)
Commercial Vehicle Production (x1000)



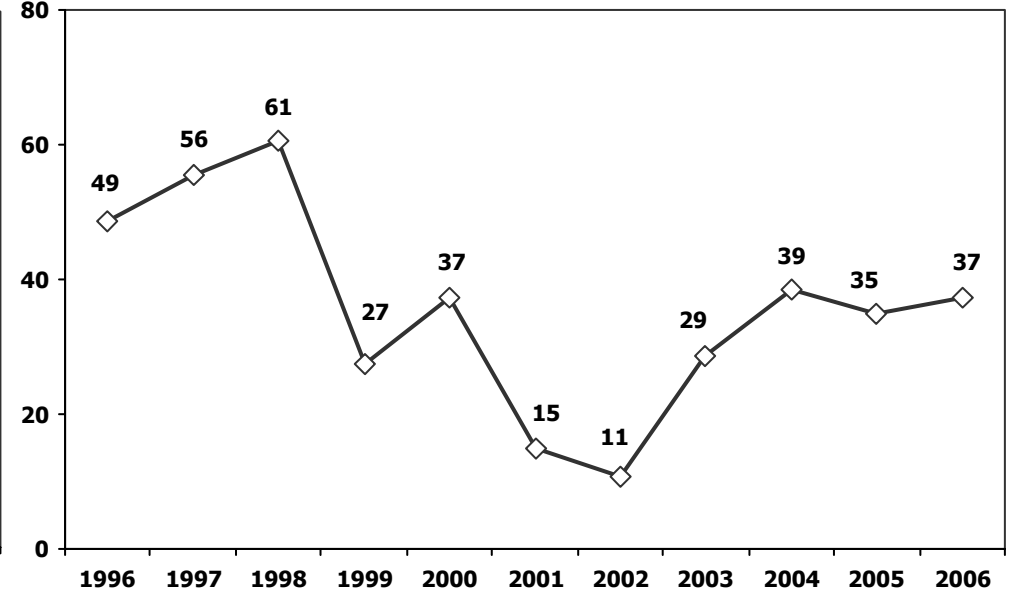
(AYA >12 Ton) **Büyük Kamyon Üretimi**
(GVW >12 Ton) Heavy Truck Production (x1000)



Otobüs Üretimi (x100)
Bus Production (x100)

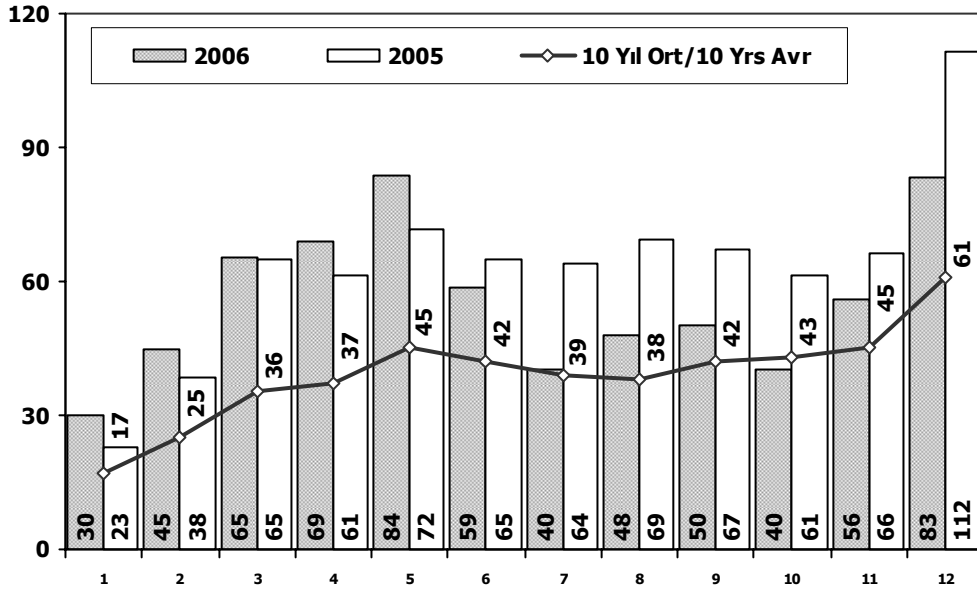


Traktör Üretimi (x1000)
F. Tractor Production (x1000)

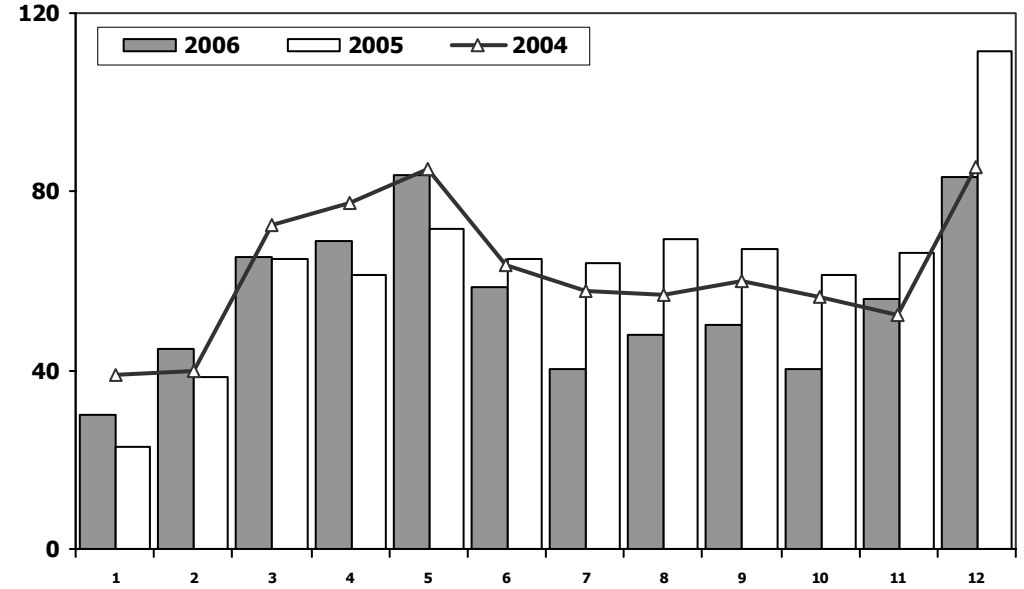




Toplam Pazarın Analizi (x1000)
Total Market Analysis (x1000)



Toplam Pazar (x1000)
Total Market (x1000)

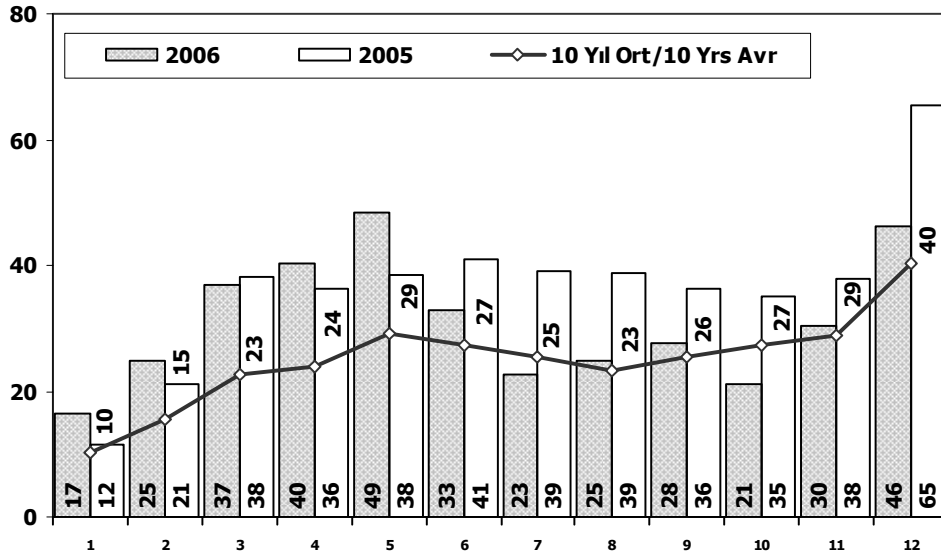


Aylar/ Months	10 Yil Ort. 10 Yrs Avr. (x1000)	2006 (x1000)	%
1	17	30	77
2	25	45	80
3	36	65	84
4	37	69	86
5	45	84	86
6	42	59	40
7	39	40	4
8	38	48	26
9	42	50	20
10	43	40	-7
11	45	56	25
12	61	83	36
Total	470	670	43

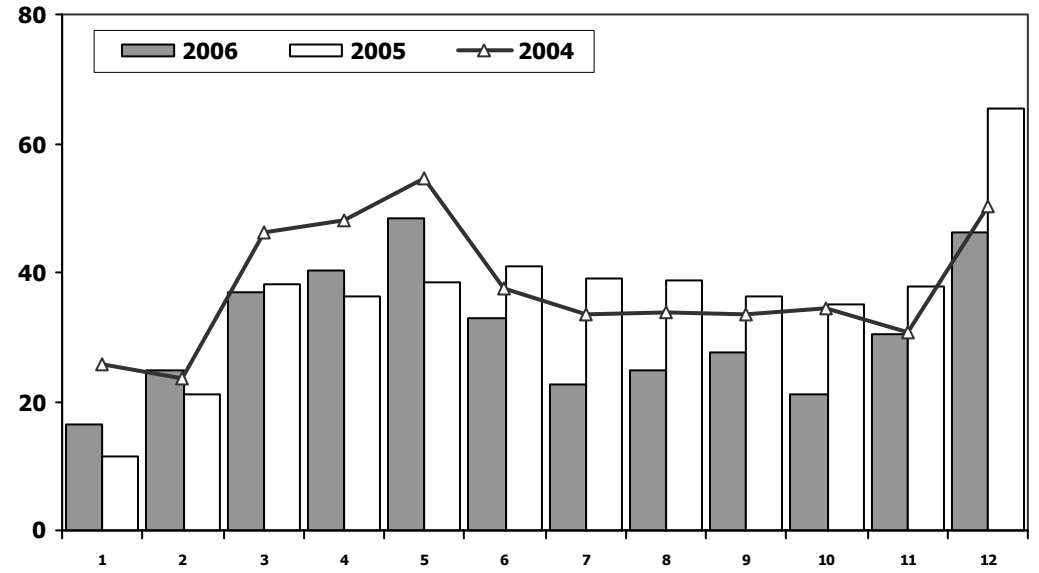
	1	2	3	4	5	6	7	8	9	10	11	12	Total
1994	44.418	27.441	21.961	16.181	17.494	10.141	21.951	13.219	24.407	21.001	22.734	28.530	269.478
1995	12.266	19.226	22.259	18.417	17.960	23.434	23.129	22.393	26.022	27.631	30.959	36.542	280.238
1996	12.344	21.581	22.827	25.642	28.107	25.422	28.266	26.624	27.269	32.869	37.240	48.981	337.172
1997	16.418	28.365	37.264	37.480	47.647	45.432	41.968	40.308	47.823	53.681	56.256	72.600	525.242
1998	21.318	36.244	43.477	35.978	50.066	44.808	41.196	39.032	44.503	39.462	39.368	50.674	486.126
1999	10.539	19.219	29.342	34.544	36.781	40.476	30.654	25.788	35.804	36.025	47.345	60.767	407.284
2000	18.751	35.749	48.520	52.660	67.168	67.853	57.112	60.905	67.156	70.978	71.532	41.693	660.077
2001	14.413	13.681	11.483	14.751	19.028	20.165	19.042	17.458	12.332	11.611	16.833	24.629	195.426
2002	2.240	4.308	8.082	12.206	16.816	15.684	16.574	14.925	16.216	18.472	18.556	30.967	175.046
2003	12.620	11.574	17.148	20.496	27.769	30.686	32.425	29.182	40.765	50.407	44.523	83.116	400.711
2004	38.937	39.782	72.355	77.435	84.918	63.554	57.823	57.033	59.952	56.335	52.364	85.324	745.812
2005	22.833	38.466	64.730	61.127	71.735	64.781	64.086	69.389	67.144	61.170	66.112	111.613	763.186
2006	30.119	44.920	65.380	69.138	83.601	58.550	40.415	47.872	50.217	40.089	56.174	83.129	669.604



Otomobil Pazarının Analizi (x1000)
P.Cars Market Analysis (x1000)



Otomobil Pazarı (x1000)
P.Cars Market (x1000)

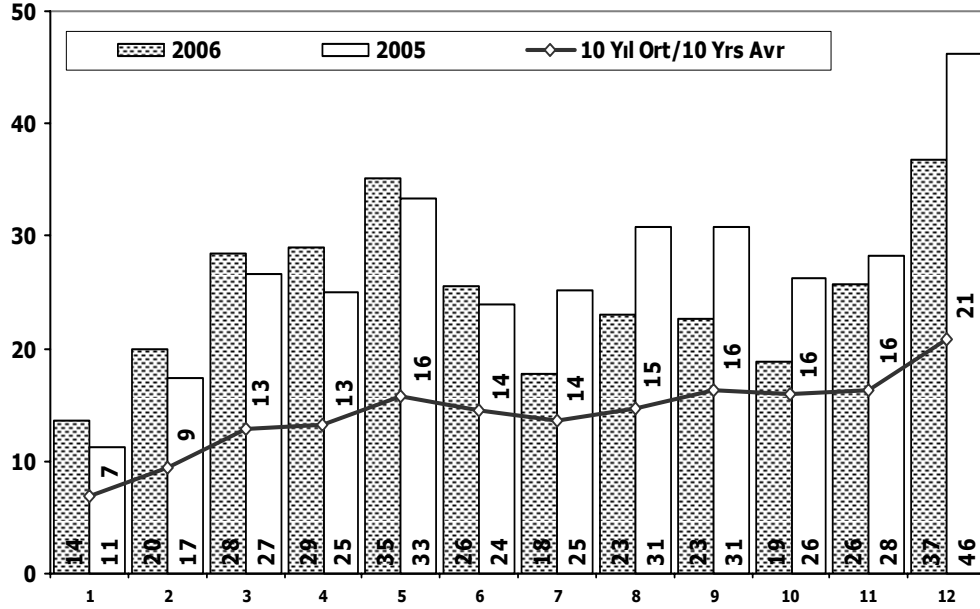


Aylar/ Months	10 Yil Ort. 10 Yrs Avr. (x1000)	2006 (x1000)	%
1	10	17	62
2	15	25	61
3	23	37	63
4	24	40	67
5	29	49	66
6	27	33	20
7	25	23	-10
8	23	25	7
9	26	28	8
10	27	21	-22
11	29	30	6
12	40	46	15
Total	299	373	25

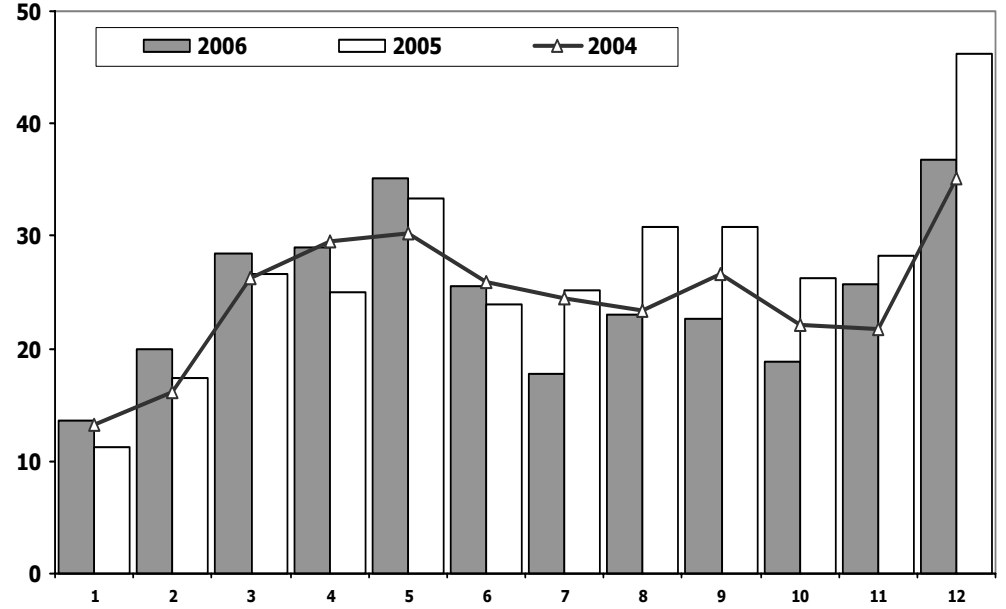
	1	2	3	4	5	6	7	8	9	10	11	12	Total
1994	37.501	23.720	19.113	14.096	15.847	8.874	19.290	10.512	20.412	17.364	18.702	23.732	229.163
1995	9.473	16.824	18.617	13.988	14.213	18.603	18.470	16.273	19.117	20.759	22.235	28.039	216.611
1996	8.693	17.379	15.354	19.179	20.357	18.259	20.954	18.573	17.743	22.138	25.262	35.827	239.718
1997	9.408	19.080	25.067	25.040	32.103	29.822	28.357	24.668	29.339	34.913	36.981	50.057	344.835
1998	13.591	22.907	27.929	22.081	33.204	29.979	29.266	23.749	28.405	23.846	24.454	36.179	315.590
1999	5.723	12.078	19.920	24.767	26.535	29.565	22.339	16.789	24.639	25.327	34.251	46.734	288.667
2000	11.872	23.543	35.278	37.232	49.100	49.488	41.544	41.659	46.134	48.938	50.482	31.456	466.726
2001	8.443	8.377	7.479	10.195	13.562	14.408	13.326	11.361	6.927	7.035	12.319	18.006	131.438
2002	591	1.426	3.464	6.245	8.948	7.811	9.842	7.308	8.753	9.381	9.848	16.998	90.615
2003	6.309	5.486	8.555	11.107	15.965	16.329	14.764	16.896	23.772	30.615	25.777	51.461	227.036
2004	25.625	23.695	46.075	47.995	54.610	37.671	33.410	33.709	33.383	34.292	30.547	50.197	451.209
2005	11.595	21.012	38.129	36.206	38.480	40.900	38.969	38.648	36.410	34.960	37.841	65.447	438.597
2006	16.506	24.929	36.996	40.177	48.521	32.982	22.653	24.873	27.517	21.237	30.477	46.351	373.219



Ticari Araç Pazarının Analizi (x1000) CV Market Analysis (x1000)



Ticari Araç Pazarı (x1000) CV Total Market (Local + Imports) (x1000)

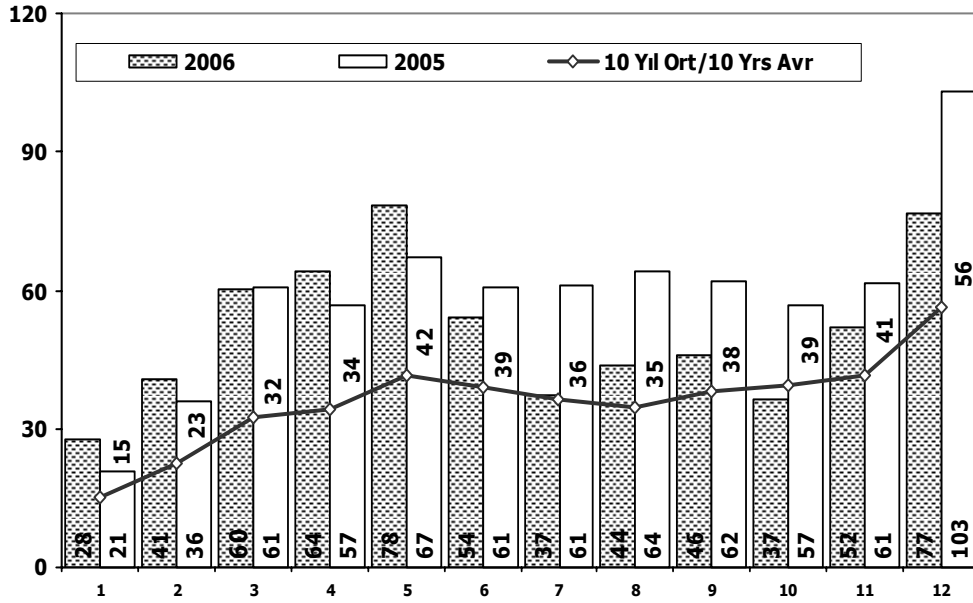


Aylar/ Months	10 Yil Ort. 10 Yrs Avr. (x1000)	2006 (x1000)	%
1	7	14	99
2	9	20	113
3	13	28	122
4	13	29	119
5	16	35	123
6	14	26	77
7	14	18	30
8	15	23	56
9	16	23	39
10	16	19	18
11	16	26	58
12	21	37	77
Total	170	296	74

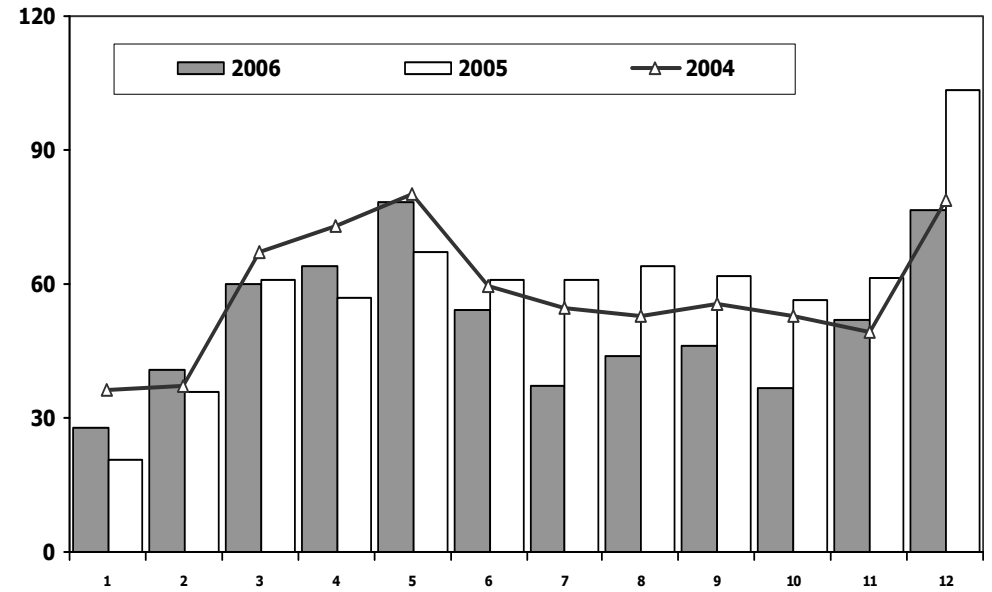
	1	2	3	4	5	6	7	8	9	10	11	12	Total
1994	6.917	3.721	2.848	2.085	1.647	1.267	2.661	2.707	3.995	3.637	4.032	4.798	40.315
1995	2.793	2.402	3.642	4.429	3.747	4.831	4.659	6.120	6.905	6.872	8.724	8.503	63.627
1996	3.651	4.202	7.473	6.463	7.750	7.163	7.312	8.051	9.526	10.731	11.978	13.154	97.454
1997	7.010	9.285	12.197	12.440	15.544	15.610	13.611	15.640	18.484	18.768	19.275	22.543	180.407
1998	7.727	13.337	15.548	13.897	16.862	14.829	11.930	15.283	16.098	15.616	14.914	14.495	170.536
1999	4.816	7.141	9.422	9.777	10.246	10.911	8.315	8.999	11.165	10.698	13.094	14.033	118.617
2000	6.879	12.206	13.242	15.428	18.068	18.365	15.568	19.246	21.022	22.040	21.050	10.237	193.351
2001	5.970	5.304	4.004	4.556	5.466	5.757	5.716	6.097	5.405	4.576	4.514	6.623	63.988
2002	1.649	2.882	4.618	5.961	7.868	7.873	6.732	7.617	7.463	9.091	8.708	13.969	84.431
2003	6.311	6.088	8.593	9.389	11.804	14.357	17.661	12.286	16.993	19.792	18.746	31.655	173.675
2004	13.312	16.087	26.280	29.440	30.308	25.883	24.413	23.324	26.569	22.043	21.817	35.127	294.603
2005	11.238	17.454	26.601	24.921	33.255	23.881	25.117	30.741	30.734	26.210	28.271	46.166	324.589
2006	13.613	19.991	28.384	28.961	35.080	25.568	17.762	22.999	22.700	18.852	25.697	36.778	296.385



Hafif Araç Pazarının Analizi (x1000) LV Market Analysis (x1000)



Hafif Araç Pazarı (x1000) LV Total Market (Local + Imports) (x1000)

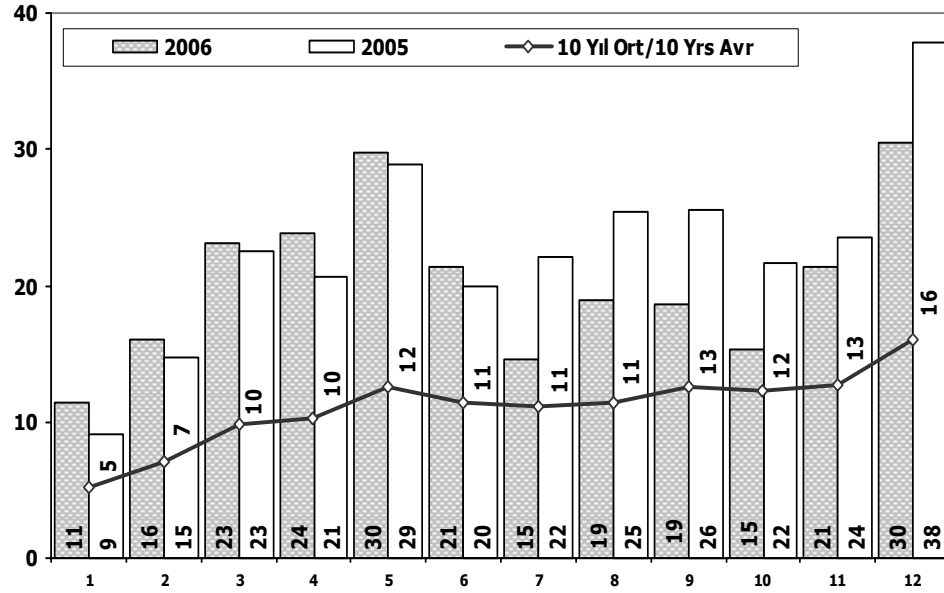


Aylar/ Months	10 Yil Ort. 10 Yrs Avr. (x1000)	2006 (x1000)	%
1	15	28	82
2	23	41	81
3	32	60	85
4	34	64	87
5	42	78	87
6	39	54	40
7	36	37	2
8	35	44	26
9	38	46	21
10	39	37	-7
11	41	52	25
12	56	77	36
Total	432	618	43

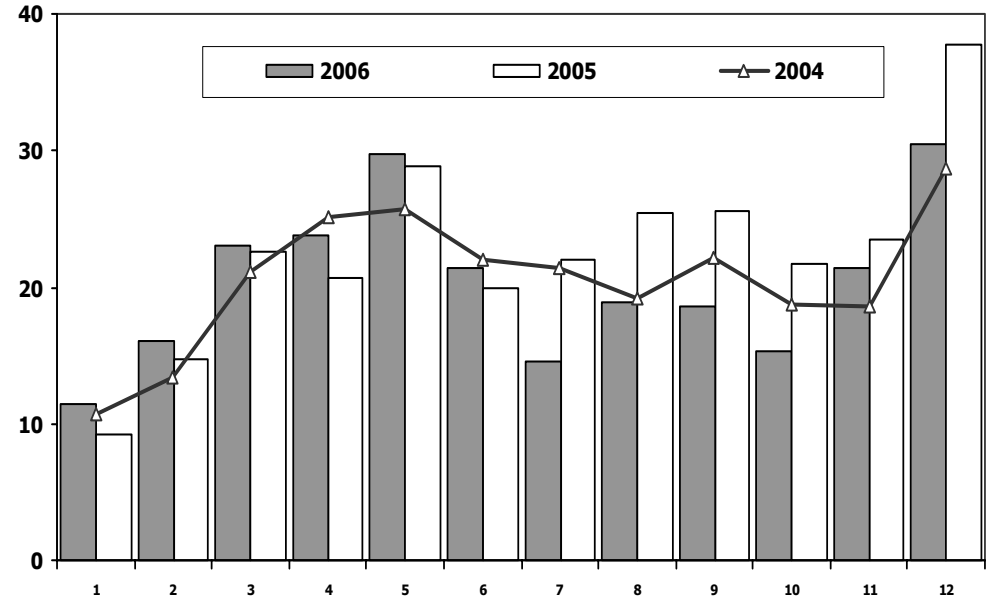
	1	2	3	4	5	6	7	8	9	10	11	12	Total
1994	41.132	25.271	21.050	15.545	16.855	9.847	21.259	12.028	22.861	19.374	20.939	26.733	252.894
1995	10.774	18.147	20.683	16.535	16.299	21.188	21.237	20.433	23.424	24.901	27.593	33.207	254.421
1996	10.857	20.174	20.350	23.284	25.325	22.576	25.771	23.793	24.063	29.166	33.334	44.728	303.421
1997	13.515	24.602	32.416	33.024	42.248	40.338	37.360	35.436	41.395	47.532	50.700	65.830	464.396
1998	18.863	31.576	38.500	31.454	45.357	40.476	38.110	35.063	39.852	35.425	35.768	46.950	437.394
1999	9.247	17.326	26.969	32.049	34.310	38.118	28.708	23.794	33.339	33.513	44.710	57.497	379.580
2000	17.386	33.236	45.509	49.621	63.453	64.034	54.244	56.639	62.673	66.717	67.344	39.381	620.237
2001	13.188	12.557	10.548	13.919	18.129	19.514	18.512	16.709	11.402	10.562	15.713	22.999	183.752
2002	1.764	3.641	7.109	11.007	15.461	14.337	15.472	13.302	14.599	16.531	16.657	27.569	157.449
2003	11.531	10.402	15.743	18.693	25.853	28.266	30.172	25.903	36.234	45.446	40.048	75.778	364.069
2004	36.352	37.079	67.144	73.075	80.290	59.730	54.816	52.876	55.609	53.000	49.200	78.924	698.095
2005	20.747	35.766	60.707	56.844	67.357	60.796	61.015	64.011	61.954	56.638	61.364	103.209	710.408
2006	27.917	40.938	60.052	64.038	78.229	54.355	37.251	43.767	46.109	36.542	51.867	76.787	617.852



Hafif Ticari Araç Pazarının Analizi (x1000) LCV Market Analysis (x1000)



Hafif Ticari Araç Pazarı (x1000) LCV Total Market (Local + Imports) (x1000)

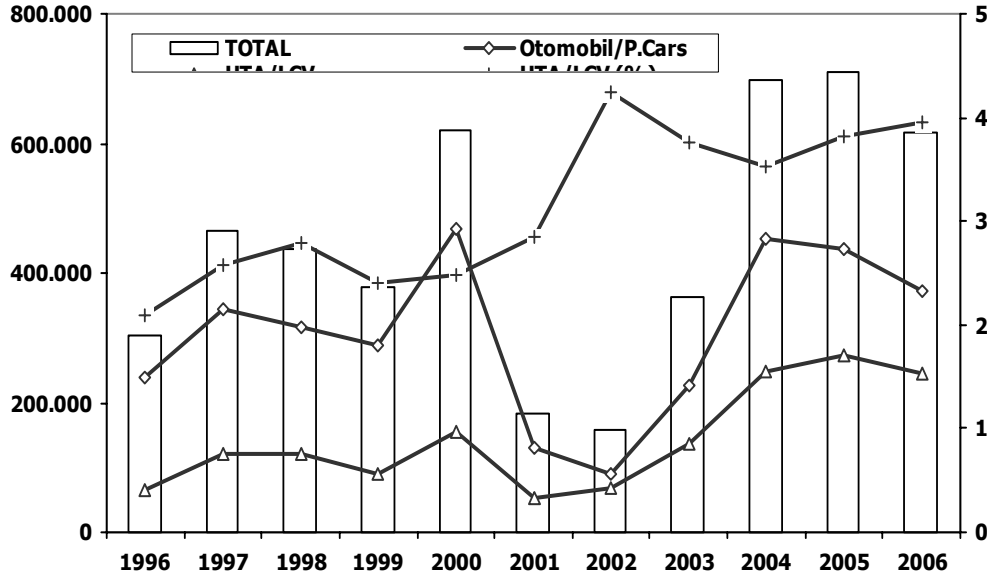


Aylar/ Months	10 Yil Ort. 10 Yrs Avr. (x1000)	2006 (x1000)	%
1	5	11	121
2	7	16	124
3	10	23	136
4	10	24	132
5	12	30	138
6	11	21	88
7	11	15	31
8	11	19	65
9	13	19	48
10	12	15	24
11	13	21	68
12	16	30	90
Total	132	245	85

	1	2	3	4	5	6	7	8	9	10	11	12	Total
1994	3.631	1.551	1.937	1.449	1.008	973	1.969	1.516	2.449	2.010	2.237	3.001	23.731
1995	1.301	1.323	2.066	2.547	2.086	2.585	2.767	4.160	4.307	4.142	5.358	5.168	37.810
1996	2.164	2.795	4.996	4.105	4.968	4.317	4.817	5.220	6.320	7.028	8.072	8.901	63.703
1997	4.107	5.522	7.349	7.984	10.145	10.516	9.003	10.768	12.056	12.619	13.719	15.773	119.561
1998	5.272	8.669	10.571	9.373	12.153	10.497	8.844	11.314	11.447	11.579	11.314	10.771	121.804
1999	3.524	5.248	7.049	7.282	7.775	8.553	6.369	7.005	8.700	8.186	10.459	10.763	90.913
2000	5.514	9.693	10.231	12.389	14.353	14.546	12.700	14.980	16.539	17.779	16.862	7.925	153.511
2001	4.745	4.180	3.069	3.724	4.567	5.106	5.186	5.348	4.475	3.527	3.394	4.993	52.314
2002	1.173	2.215	3.645	4.762	6.513	6.526	5.630	5.994	5.846	7.150	6.809	10.571	66.834
2003	5.222	4.916	7.188	7.586	9.888	11.937	15.408	9.007	12.462	14.831	14.271	24.317	137.033
2004	10.727	13.384	21.069	25.080	25.680	22.059	21.406	19.167	22.226	18.708	18.653	28.727	246.886
2005	9.152	14.754	22.578	20.638	28.877	19.896	22.046	25.363	25.544	21.678	23.523	37.762	271.811
2006	11.411	16.009	23.056	23.861	29.708	21.373	14.598	18.894	18.592	15.305	21.390	30.436	244.633

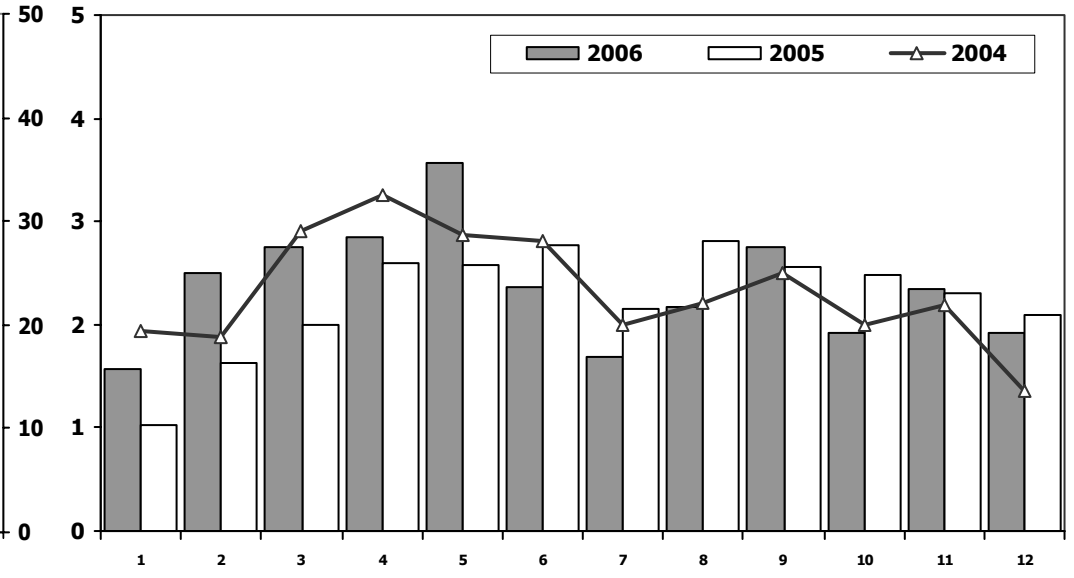


Hafif Araç Pazarı (AYA < 3.5 Ton)
Light Vehicle Market (GVW < 3.5 Ton)



	1996	1997	1998	1999	2000	2001	2002	2003	2004	2005	2006
Otomobil/P.Cars	239.718	344.835	315.590	288.667	466.726	131.438	90.615	227.036	451.209	438.597	373.219
HTA/LCV	63.703	119.561	121.804	90.913	153.511	52.314	66.834	137.033	246.886	271.811	244.633
TOTAL	303.421	464.396	437.394	379.580	620.237	183.752	157.449	364.069	698.095	710.408	617.852
HTA/LCV (%)	21	26	28	24	25	28	42	38	35	38	40

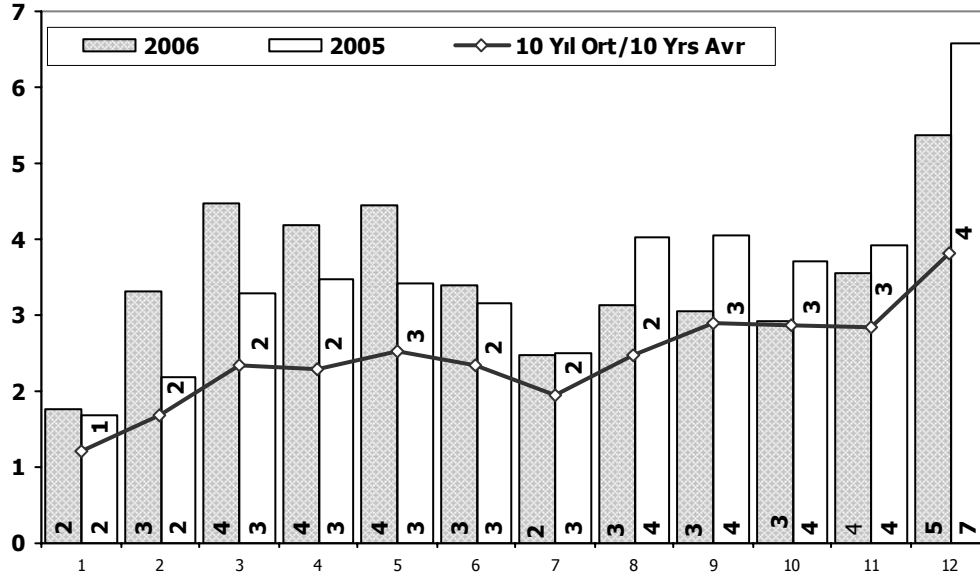
Traktör Pazarı (x1000)
F.Tractor Market (x1000)



	1	2	3	4	5	6	7	8	9	10	11	12	Total
1993	1.800	1.800	1.800	2.400	2.700	2.900	2.500	2.500	3.600	3.800	3.500	3.600	32.900
1994	2.600	2.100	2.100	2.200	1.600	1.100	900	1.500	1.900	2.200	2.400	2.400	23.000
1996	2.943	2.796	3.450	3.495	3.908	3.642	2.420	3.251	4.534	4.409	3.557	2.647	41.052
1997	2.515	2.598	4.475	4.428	4.877	4.875	4.057	4.009	5.047	5.565	3.860	2.968	49.274
1998	2.420	3.618	5.197	4.444	5.832	6.269	4.044	4.181	5.538	3.699	2.378	948	48.568
1999	1.566	2.112	2.984	3.526	2.951	1.443	697	719	892	909	945	536	19.280
2000	777	1.037	2.266	2.913	3.507	2.746	1.959	2.324	3.345	3.108	2.669	1.146	27.797
2001	1.531	1.540	1.359	1.426	1.311	563	415	664	422	416	313	165	10.125
2002	291	401	380	585	435	508	561	546	747	628	560	680	6.322
2003	712	830	1.313	1.460	1.527	1.123	1.311	1.404	1.706	1.893	1.541	1.468	16.288
2004	1.946	1.874	2.909	3.260	2.863	2.816	1.988	2.209	2.509	1.989	2.198	1.364	27.925
2005	1.026	1.636	2.001	2.599	2.569	2.780	2.148	2.819	2.567	2.477	2.297	2.089	27.008
2006	1.578	2.493	2.746	2.841	3.561	2.356	1.685	2.177	2.756	1.915	2.353	1.925	28.386

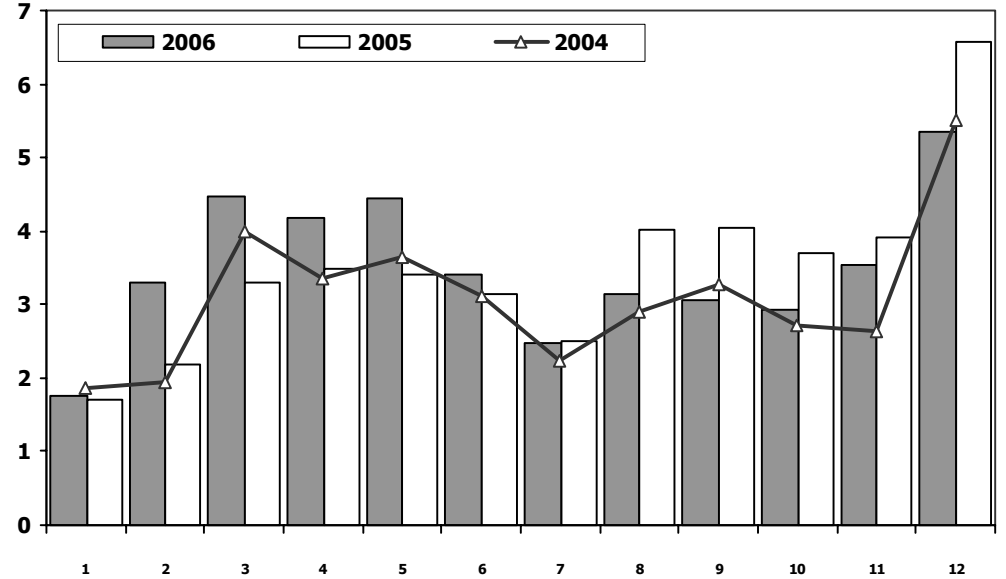


Kamyon Pazarının Analizi (x1000) AYA > 5 Ton
Truck Market Analysis (x1000) GVW > 5 Ton



Aylar/ Months	10 Yil Ort. 10 Yrs Avr. (x1000)	2006 (x1000)	%
1	1	2	46
2	2	3	97
3	2	4	90
4	2	4	83
5	3	4	77
6	2	3	45
7	2	2	27
8	2	3	27
9	3	3	6
10	3	3	2
11	3	4	25
12	4	5	40
Total	29	42	44

Kamyon Pazarı (x1000) AYA > 5 Ton
Truck Market (x1000) GVW > 5 Ton

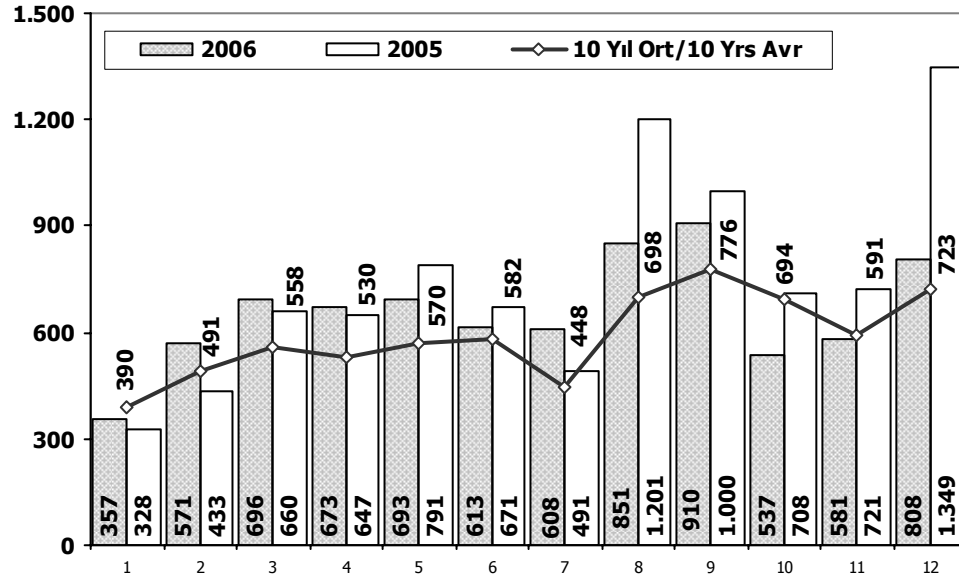


	1	2	3	4	5	6	7	8	9	10	11	12	Total
1994	2.643	1.727	760	551	336	152	468	828	1.213	1.386	1.546	1.478	13.088
1995	1.205	902	1.334	1.551	1.358	1.945	1.523	1.549	2.113	2.208	2.856	2.845	21.389
1996	1.061	1.127	2.080	1.835	2.217	2.227	2.015	2.111	2.474	2.953	3.103	3.323	26.526
1997	2.172	3.129	4.039	3.624	4.273	3.946	3.850	3.882	5.209	4.968	4.693	5.741	49.526
1998	1.630	3.529	3.845	3.650	3.776	3.058	2.513	2.865	3.483	2.883	2.544	2.427	36.203
1999	626	914	1.353	1.450	1.462	1.335	914	1.471	1.661	1.505	1.705	2.114	16.510
2000	955	1.697	2.250	2.209	2.790	2.903	2.125	3.048	3.107	3.235	3.386	1.740	29.445
2001	950	942	725	709	793	498	420	604	680	795	975	1.383	9.474
2002	403	532	824	1.048	1.157	1.199	927	1.300	1.403	1.666	1.637	2.932	15.028
2003	771	773	1.123	1.494	1.668	2.008	1.933	2.490	3.563	4.147	3.720	6.406	30.096
2004	1.863	1.949	3.983	3.352	3.651	3.118	2.234	2.897	3.285	2.727	2.629	5.517	37.205
2005	1.693	2.186	3.288	3.484	3.413	3.147	2.504	4.028	4.043	3.708	3.918	6.570	41.982
2006	1.767	3.310	4.467	4.180	4.449	3.398	2.472	3.142	3.052	2.926	3.550	5.358	42.071



Midibüs Pazarının Analizi

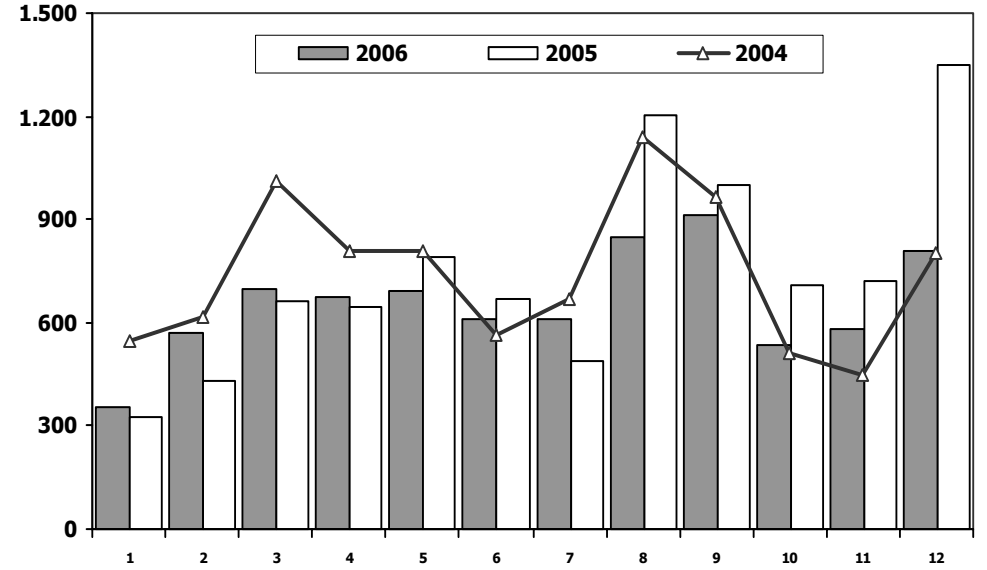
Midibus Market Analysis



Aylar/ Months	10 Yil Ort. 10 Yrs Avr.	2006	%
1	390	357	-8
2	491	571	16
3	558	696	25
4	530	673	27
5	570	693	22
6	582	613	5
7	448	608	36
8	698	851	22
9	776	910	17
10	694	537	-23
11	591	581	-2
12	723	808	12
Total	7.050	7.898	12

Midibüs Pazarı

Midibus Market

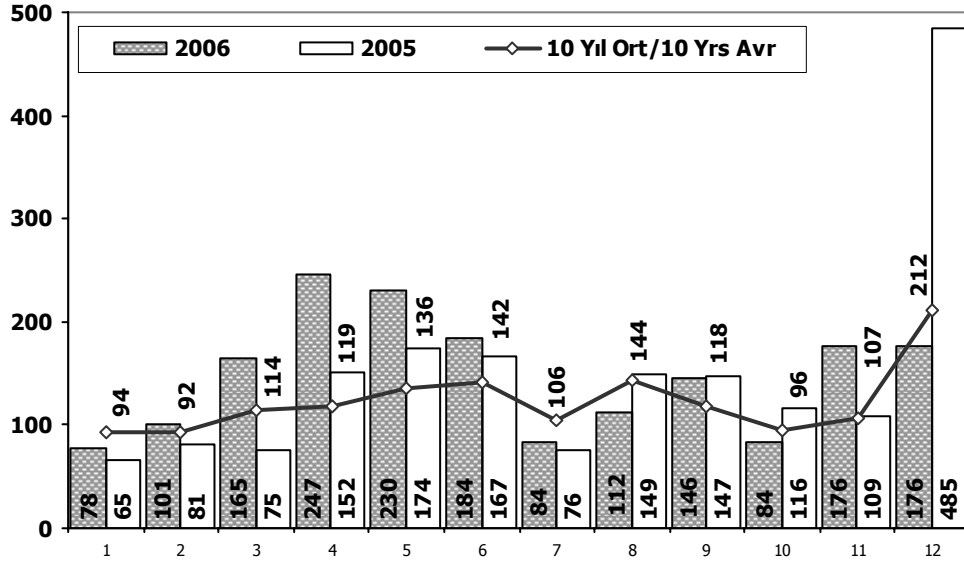


	1	2	3	4	5	6	7	8	9	10	11	12	Total
1994	556	380	103	49	253	101	143	245	320	232	230	279	2.891
1995	264	105	208	287	269	254	292	325	384	413	411	373	3.585
1996	355	182	296	409	470	531	362	570	629	709	695	738	5.946
1997	589	547	671	658	896	874	519	778	1.055	1.026	733	810	9.156
1998	685	976	951	733	771	1.065	475	821	1.016	1.093	904	893	10.383
1999	635	909	880	950	966	914	957	455	752	898	827	870	10.013
2000	309	665	596	658	667	616	496	950	1.141	808	608	378	7.892
2001	147	114	170	103	69	114	75	118	226	240	126	165	1.667
2002	39	97	103	114	134	142	170	281	171	257	198	392	2.098
2003	264	366	241	222	124	330	260	665	799	686	654	831	5.442
2004	549	619	1.013	810	808	563	670	1.142	968	513	446	805	8.906
2005	328	433	660	647	791	671	491	1.201	1.000	708	721	1.349	9.000
2006	357	571	696	673	693	613	608	851	910	537	581	808	7.898



Otobüs Pazarının Analizi

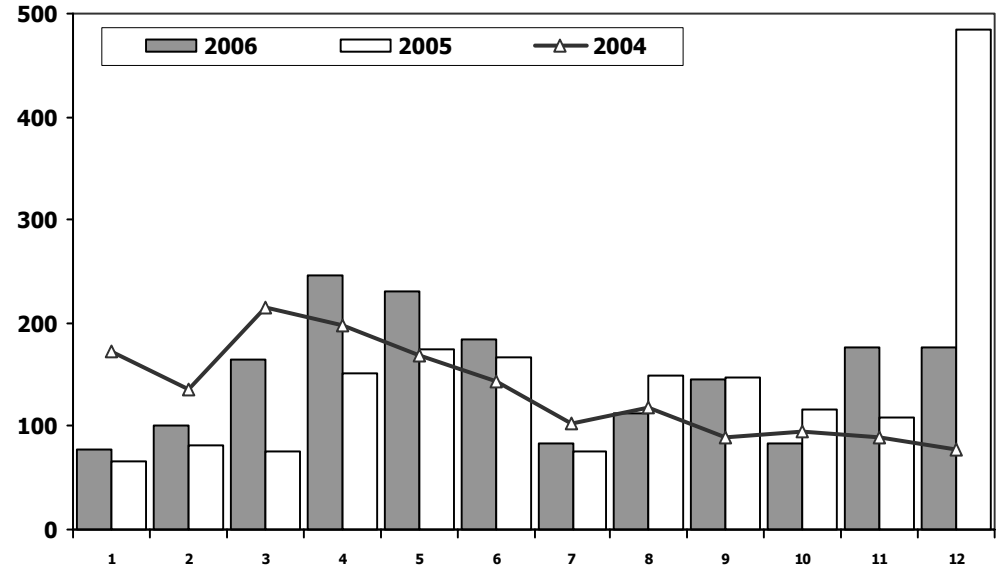
Bus Market Analysis



Aylar/ Months	10 Yil Ort. 10 Yrs Avr.	2006	%
1	94	78	-17
2	92	101	9
3	114	165	44
4	119	247	108
5	136	230	70
6	142	184	30
7	106	84	-20
8	144	112	-22
9	118	146	24
10	96	84	-12
11	107	176	65
12	212	176	-17
Total	1.478	1.783	21

Otobüs Pazarı

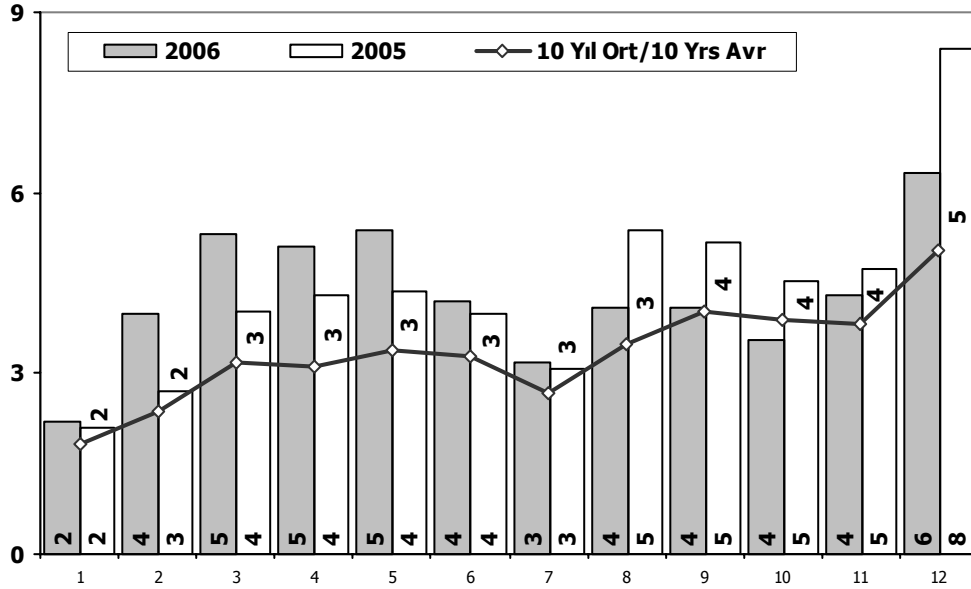
Bus Market



	1	2	3	4	5	6	7	8	9	10	11	12	Total
1994	87	63	48	36	50	41	81	118	13	9	19	40	605
1995	23	72	34	44	34	47	77	86	101	109	99	117	843
1996	71	98	101	114	95	88	118	150	103	41	108	192	1.279
1997	142	87	138	174	230	274	239	212	164	155	130	219	2.164
1998	140	163	181	141	162	209	98	283	152	61	152	404	2.146
1999	31	70	140	95	43	109	75	68	52	109	103	286	1.181
2000	101	151	165	172	258	300	247	268	235	218	194	194	2.503
2001	128	68	40	20	37	39	35	27	24	14	19	82	533
2002	34	38	46	37	64	6	5	42	43	18	64	74	471
2003	54	33	41	87	124	82	60	124	169	128	101	101	1.104
2004	173	135	215	198	169	143	103	118	90	95	89	78	1.606
2005	65	81	75	152	174	167	76	149	147	116	109	485	1.796
2006	78	101	165	247	230	184	84	112	146	84	176	176	1.783

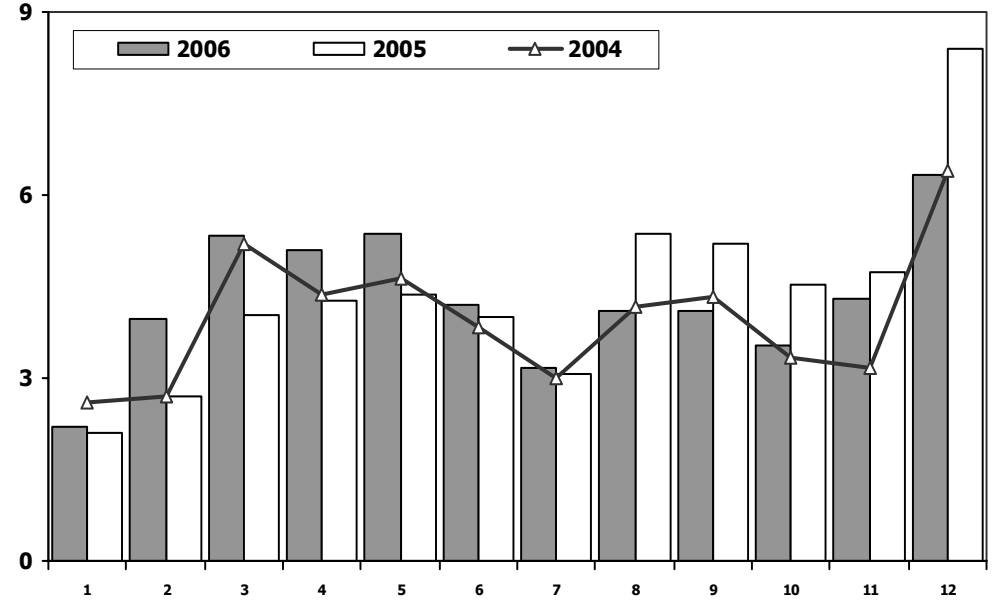


Ağır Ticari Araç Pazarının Analizi (x1000) HCV Market Analysis (x1000)



Aylar/ Months	10 Yıl Ort. 10 Yrs Avr. (x1000)	2006 (x1000)	%
1	1,8	2,2	20,0
2	2,4	4,0	68,6
3	3,2	5,3	68,1
4	3,1	5,1	64,2
5	3,4	5,4	59,2
6	3,3	4,2	28,3
7	2,7	3,2	18,4
8	3,5	4,1	17,6
9	4,0	4,1	2,2
10	3,9	3,5	-8,8
11	3,8	4,3	12,4
12	5,1	6,3	25,6
Total	40,1	51,8	29,2

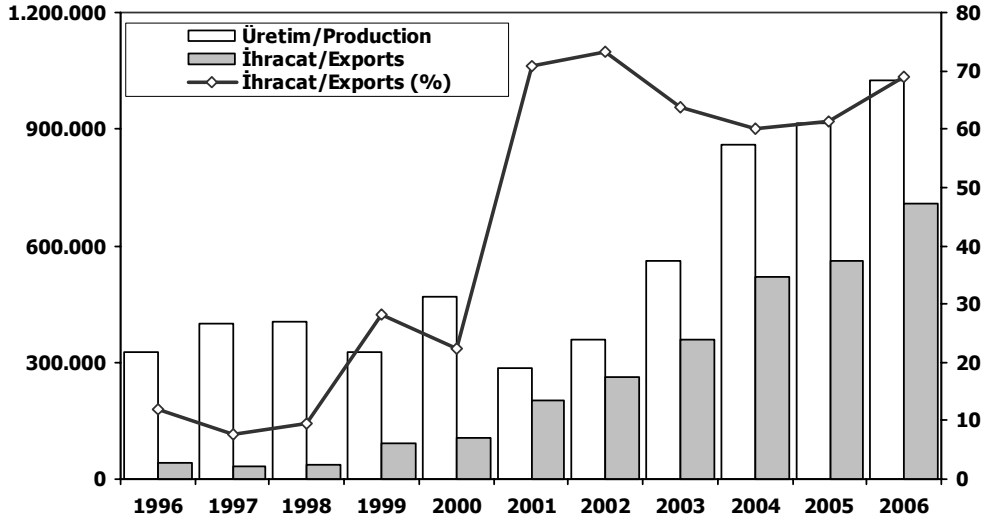
Ağır Ticari Araç Pazarı (x1000) HCV Market (x1000)



	1	2	3	4	5	6	7	8	9	10	11	12	Total
1994	3.286	2.170	911	636	639	294	692	1.191	1.546	1.627	1.795	1.797	16.584
1995	1.492	1.079	1.576	1.882	1.661	2.246	1.892	1.960	2.598	2.730	3.366	3.335	25.817
1996	2.867	2.417	3.937	4.067	4.280	4.863	4.248	4.608	5.553	6.096	6.947	7.254	57.137
1997	2.903	3.763	4.848	4.456	5.399	5.094	4.608	4.872	6.428	6.149	5.556	6.770	60.846
1998	2.455	4.668	4.977	4.524	4.709	4.332	3.086	3.969	4.651	4.037	3.600	3.724	48.732
1999	1.292	1.893	2.373	2.495	2.471	2.358	1.946	1.994	2.465	2.512	2.635	3.270	27.704
2000	1.365	2.513	3.011	3.039	3.715	3.819	2.868	4.266	4.483	4.261	4.188	2.312	39.840
2001	1.225	1.124	935	832	899	651	530	749	930	1.049	1.120	1.630	11.674
2002	476	667	973	1.199	1.355	1.347	1.102	1.623	1.617	1.941	1.899	3.398	17.597
2003	1.089	1.172	1.405	1.803	1.916	2.420	2.253	3.279	4.531	4.961	4.475	7.338	36.642
2004	2.585	2.703	5.211	4.360	4.628	3.824	3.007	4.157	4.343	3.335	3.164	6.400	47.717
2005	2.086	2.700	4.023	4.283	4.378	3.985	3.071	5.378	5.190	4.532	4.748	8.404	52.778
2006	2.202	3.982	5.328	5.100	5.372	4.195	3.164	4.105	4.108	3.547	4.307	6.342	51.752



İhracat/Üretim (1996/2006) Exports/Production



	1996	1997	1998	1999	2000	2001	2002	2003	2004	2005	2006
Üretim/Production	325.460	399.923	405.001	325.291	468.381	285.737	357.217	562.466	862.035	914.359	1.024.987
İhracat/Exports	39.252	31.174	37.926	92.051	104.744	202.158	261.934	358.745	518.595	561.078	706.402
İhracat/Exports (%)	12	8	9	28	22	71	73	64	60	61	69

Taşıt Araçları İhracatı (2003/2006) Motor Vehicle Exports

SEKTÖR/SECTOR	2003	2004	2005	2006	2006/2005 (%)
OTOMOBİL/ P.Cars	213.587	305.072	319.825	430.420	35
TİCARİ ARAÇLAR / CV	133.243	203.325	233.013	266.268	14
* Kamyonet/Pick-Up	122.814	190.780	218.467	254.159	16
* Minibüs/Minibus	4.200	5.138	3.720	1.809	-51
* Kamyon/Truck	1.626	2.510	5.061	4.007	-21
* Midibüs/Midibus	1.507	1.941	1.935	2.168	12
* Otobüs/Bus	3.096	2.956	3.830	4.125	8
TAŞIT ARAÇLARI / MV TOTAL	346.830	508.397	552.838	696.688	26
TRAKTÖR/F.TRACTOR	11.915	10.198	8.240	9.714	18
TOTAL	358.745	518.595	561.078	706.402	26

Otomotiv Ana ve Yan Sanayii İhracatı (ABD \$) CBU and CKD Exports - \$

SEKTÖR/SECTOR	2004 Total	2005 Total	2006 Total	06/05 (%)
Toplam Ana Sanayi/ Total Vehicle Industry	6.974.022.027	8.034.472.829	9.923.805.517	24
* Otomobil /P.Cars	3.943.365.661	4.368.744.306	5.683.246.431	30
* Otobüs/Bus	510.144.975	609.904.617	726.385.974	19
* Diğerleri/Others	2.520.511.391	3.055.823.906	3.514.173.112	15
Toplam Yan Sanayi/ Total Component Industry	3.046.300.785	3.658.915.996	4.427.019.432	21
* Aksam ve Parça/Spare Parts And Components	2.453.423.970	2.939.996.892	3.587.333.245	22
* İç ve Dış Lastik/Tyres	546.060.611	639.826.756	717.230.013	12
* Akümülatör/Batteries	19.099.600	26.008.662	50.020.679	92
* Emniyet Camı / Safety Glasses	27.716.604	53.083.686	72.435.495	36
Toplam / Total	10.020.322.812	11.693.388.825	14.350.824.949	23

UIB ve OAIB



Firma Bazında İhracat (Adet)
Exports of Member Companies (Unit)

FİRMALAR/COMPANIES	2004	2005	2006
FORD OTOSAN	139.233	162.675	184.606
OYAK RENAULT	130.903	123.162	177.411
TOYOTA	118.629	144.058	160.479
TOFAŞ	82.475	88.020	123.061
HYUNDAI ASSAN	23.370	20.322	34.511
HONDA TÜRKİYE	5.910	2.992	5.692
UZEL	3.475	3.116	5.117
TÜRK TRAKTÖR	6.723	5.124	4.597
M. BENZ TÜRK	2.377	5.045	3.903
MAN TÜRKİYE	1.047	1.349	1.874
OTOKAR	497	1.099	1.276
TEMSA	664	970	1.106
OTOYOL	788	851	925
B.M.C.	882	1.146	712
A.I.O.S.	1.074	767	711
KARSAN	513	366	394
ASKAM	35	16	27
GENERAL TOTAL	518.595	561.078	706.402

OSD

Sektör Bazında İhracat (\$)
Exports on Sectoral Basis

Sıra No	Sektörler	2005	2006	Değişim 2006/2005 (%)	Dağılım 2006 (%)
1	Taahhüt Araçları ve Yan Sanayi	12.598.072	15.482.067	22,9	18,0
2	Hazırgiyim ve Konfeksiyon	13.699.068	13.987.651	2,1	16,3
3	Demir ve Demir Dışı Metaller	9.705.226	12.738.849	31,3	14,8
4	Kimyevi Maddeler ve Mamülleri	6.797.552	8.785.525	29,2	10,2
5	Elektrik-Elektronik ve Makina	6.795.362	8.067.353	18,7	9,4
6	Tekstil ve Hammaddeleri	4.860.887	5.576.097	14,7	6,5
7	Makine ve Aksamları	3.389.194	4.217.401	24,4	4,9
8	Hububat, Bakliyat, Yağlı Tohumlar	2.179.132	2.585.939	18,7	3,0
9	Madencilik Ürünleri	1.513.969	2.080.727	37,4	2,4
10	Çimento ve Toprak Ürünleri	2.028.398	2.045.964	0,9	2,4
11	Ağaç Mamülleri, Orman Ürünleri	1.331.103	1.553.366	16,7	1,8
12	Fındık ve Mamülleri	1.923.177	1.470.398	-23,5	1,7
13	Değerli Maden ve Mücevherat	1.078.918	1.172.444	8,7	1,4
14	Yaş Meyve ve Sebze	974.329	1.157.591	18,8	1,3
15	Deri ve Deri Mamülleri	1.040.692	1.141.436	9,7	1,3
16	Meyve Sebze Mamülleri	777.210	815.042	4,9	0,9
17	Halı	670.171	744.967	11,2	0,9
18	Kuru Meyve ve Mamülleri	632.279	731.405	15,7	0,9
19	Tütün	563.781	683.401	21,2	0,8
20	Canlı Hayvan, Su Ürünleri ve Mam.	414.984	463.572	11,7	0,5
21	Zeytin ve Zeytinyağ	396.857	270.144	-31,9	0,3
22	Kesme Çiçek	35.394	41.089	16,1	0,0
23	Diğer Sanayi Ürünleri	27.883	38.708	38,8	0,0
	TOPLAM	73.433.638	85.851.136	16,9	100,0

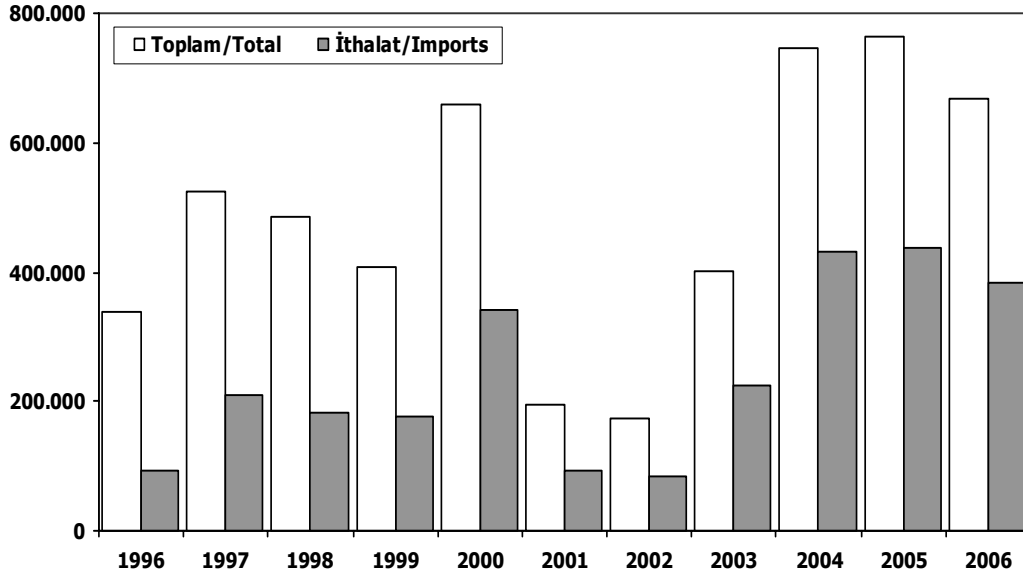
TİM

First 5 Sectors:

- 1-Transport Vehicle and Component Industry
- 2-Ready Wear and Confection
- 3-Iron and Other Metals
- 4-Chemical Articles and Products
- 5-Electric-Electronic and Machine

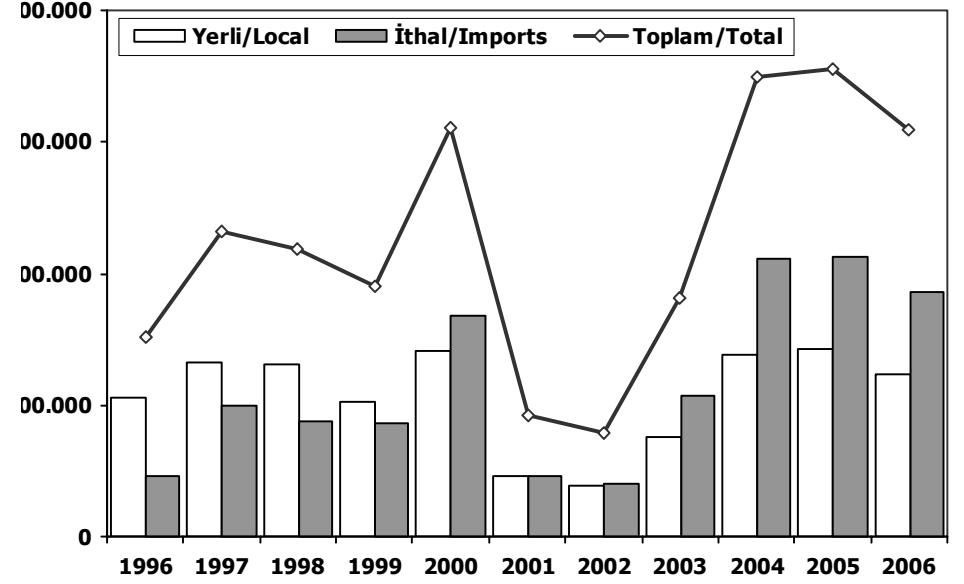


Toplam Pazar (Otomobil+T.Araç)
Total Market (P.Cars+C.V)



	1996	1997	1998	1999	2000	2001	2002	2003	2004	2005	2006
Toplam/Total	337.172	525.242	486.126	407.284	660.077	195.426	175.046	400.711	745.812	763.186	669.604
İthalat/Imports	93.720	210.035	183.829	175.497	342.174	94.211	83.291	223.224	432.293	438.114	384.322
İthalat/Imports (%)	28	40	38	43	52	48	48	56	58	57	57

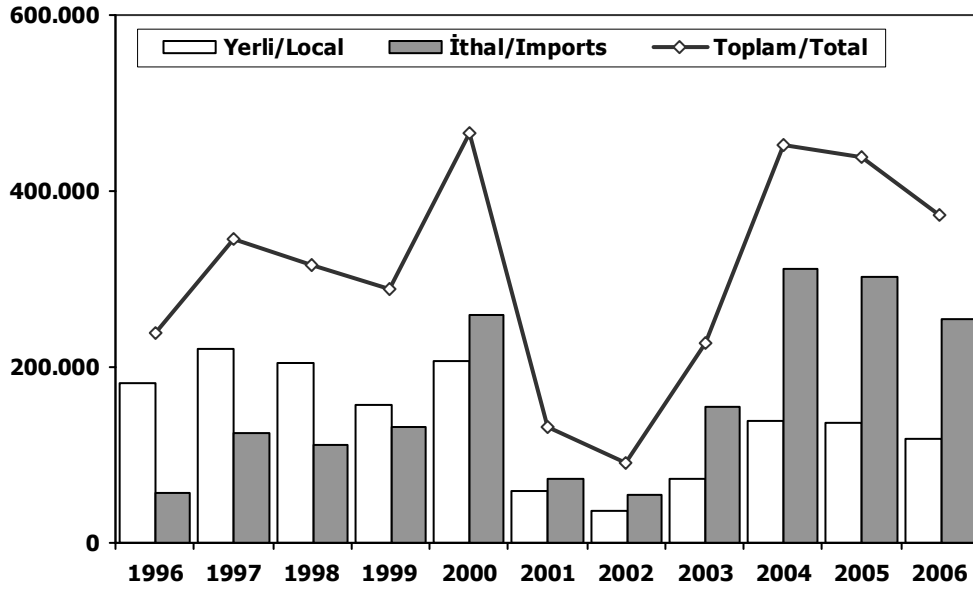
Hafif Araçlar Pazarı
LV Market



	1996	1997	1998	1999	2000	2001	2002	2003	2004	2005	2006
Yerli/Local	210.451	264.147	261.270	206.637	283.955	92.696	78.321	150.842	275.521	284.134	246.800
İthal/Imports	92.970	200.249	176.124	172.943	336.282	91.056	79.128	213.227	422.574	426.274	371.052
Toplam/Total	303.421	464.396	437.394	379.580	620.237	183.752	157.449	364.069	698.095	710.408	617.852
İthal/Imports (%)	31	43	40	46	54	50	50	59	61	60	60

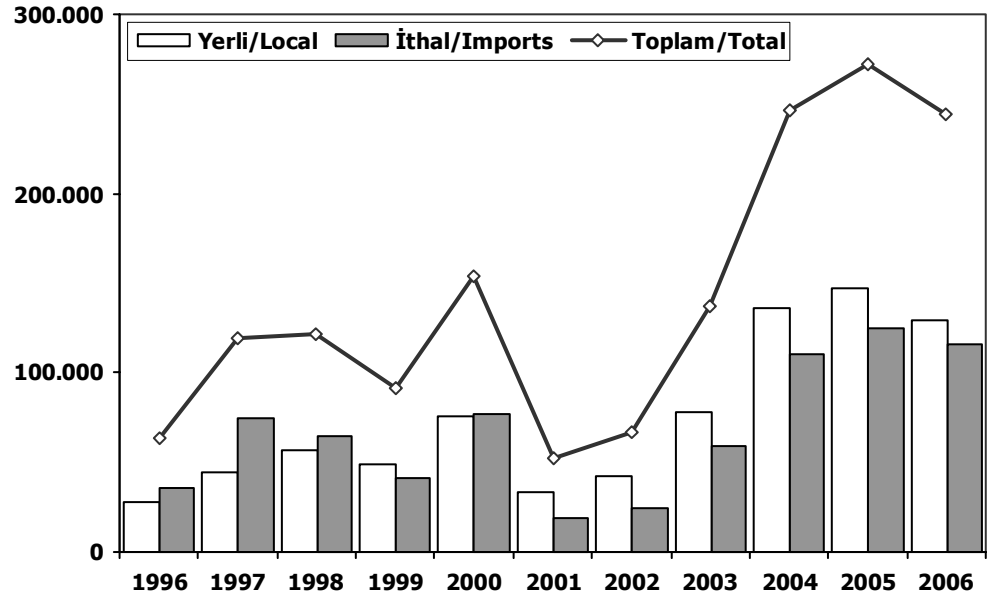


Otomobil Pazarı P.Cars Market

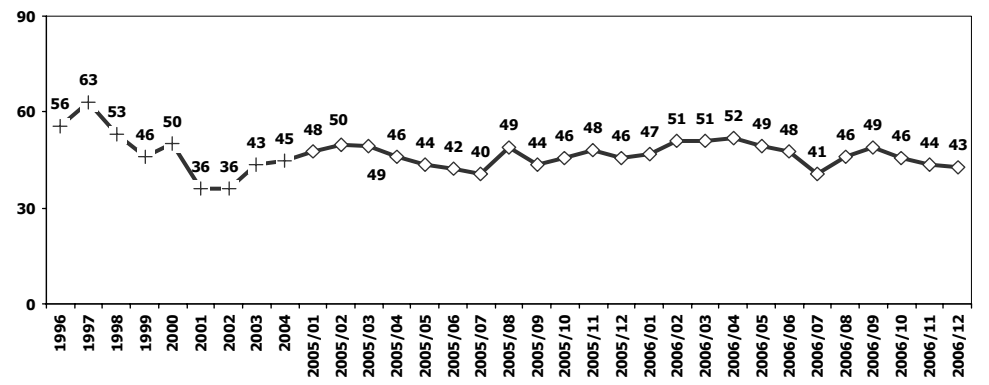
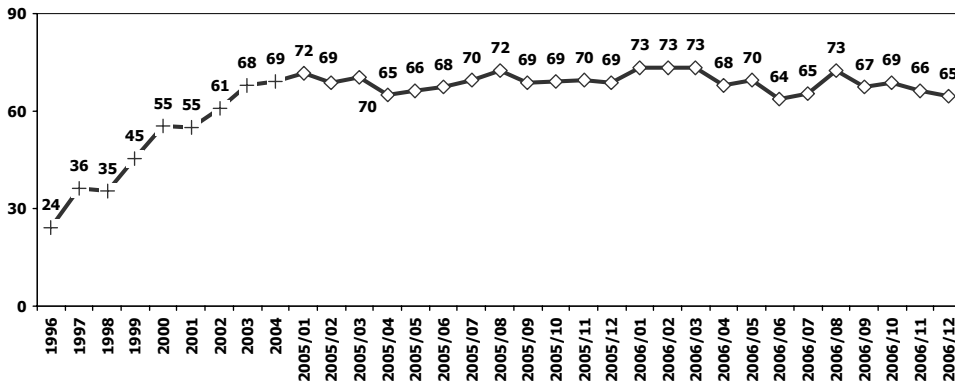


	1996	1997	1998	1999	2000	2001	2002	2003	2004	2005	2006
Yerli/Local	182.239	219.810	204.054	157.452	207.739	59.179	35.519	73.267	139.541	136.708	117.725
İthal/Imports	57.479	125.025	111.536	131.215	258.987	72.259	55.096	153.769	311.668	301.889	255.494
Toplam/Total	239.718	344.835	315.590	288.667	466.726	131.438	90.615	227.036	451.209	438.597	373.219
İthalat/Imports (%)	24	36	35	45	55	55	61	68	69	69	68

Hafif Ticari Araçlar Pazarı Light Commercial Vehicle Market

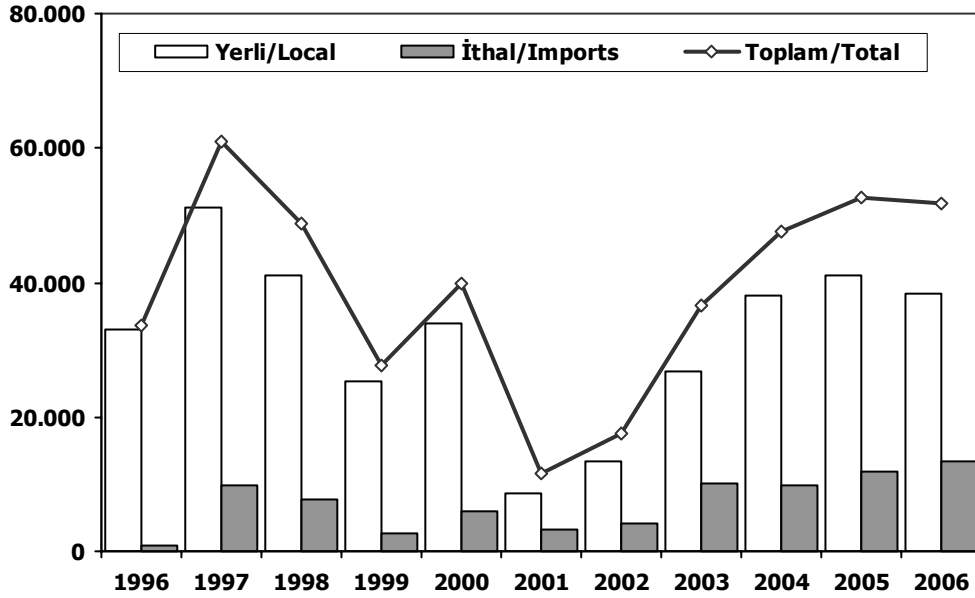


	1996	1997	1998	1999	2000	2001	2002	2003	2004	2005	2006
Yerli/Local	28.212	44.337	57.216	49.185	76.216	33.517	42.802	77.575	135.980	147.426	129.075
İthal/Imports	35.491	75.224	64.588	41.728	77.295	18.797	24.032	59.458	110.906	124.385	115.558
Toplam/Total	63.703	119.561	121.804	90.913	153.511	52.314	66.834	137.033	246.886	271.811	244.633
İthalat/Imports (%)	56	63	53	46	50	36	36	43	45	46	47



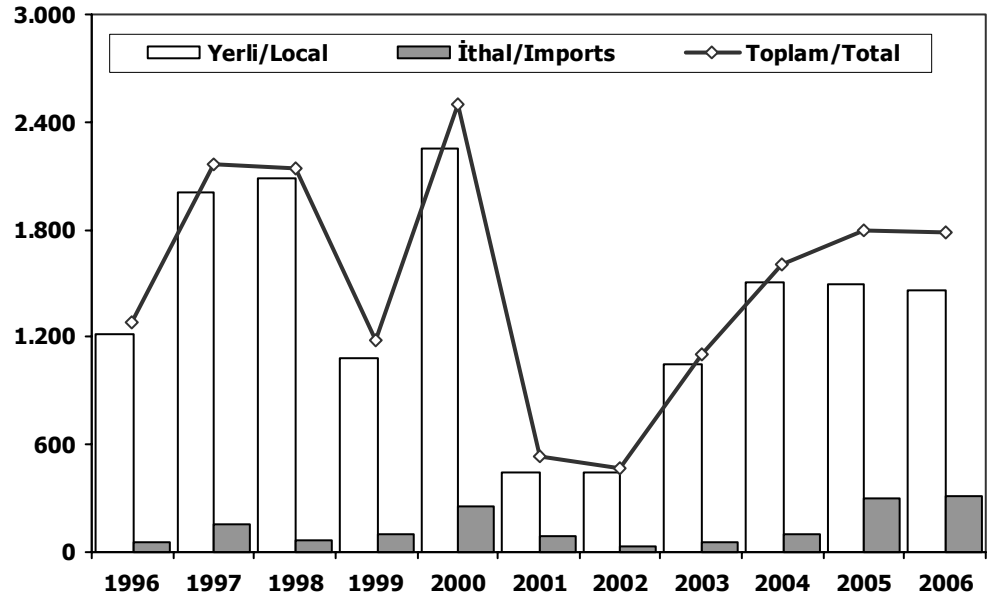


Ağır Ticari Araçlar Pazarı HCV Market



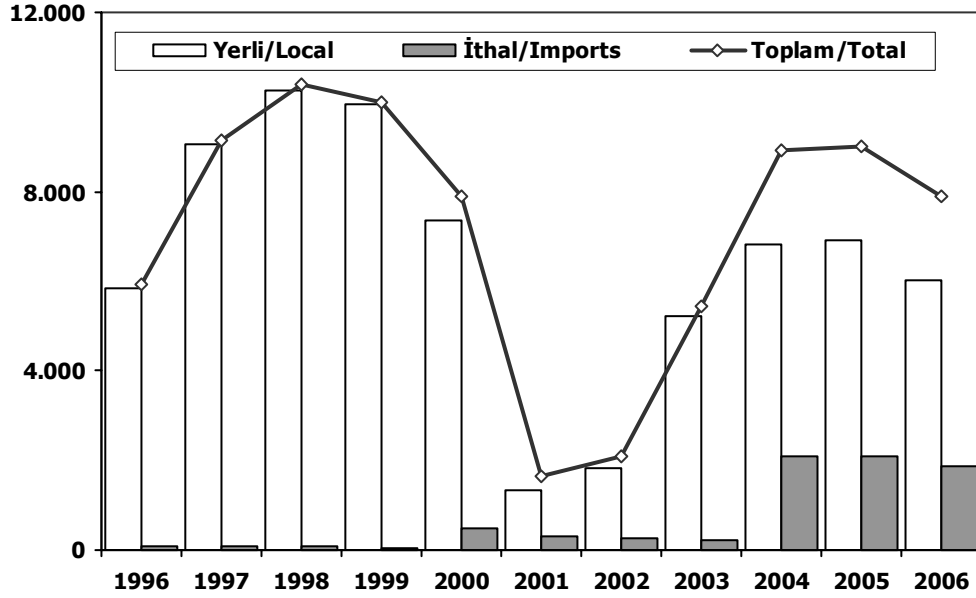
	1996	1997	1998	1999	2000	2001	2002	2003	2004	2005	2006
Yerli/Local	33.001	51.060	41.027	25.150	33.948	8.519	13.434	26.645	37.998	40.938	38.482
İthal/Imports	750	9.786	7.705	2.554	5.892	3.155	4.163	9.997	9.719	11.840	13.270
Toplam/Total	33.751	60.846	48.732	27.704	39.840	11.674	17.597	36.642	47.717	52.778	51.752
İthalat/Imports (%)	2	16	16	9	15	27	24	27	20	22	26

Otobüs Pazarı Bus Market



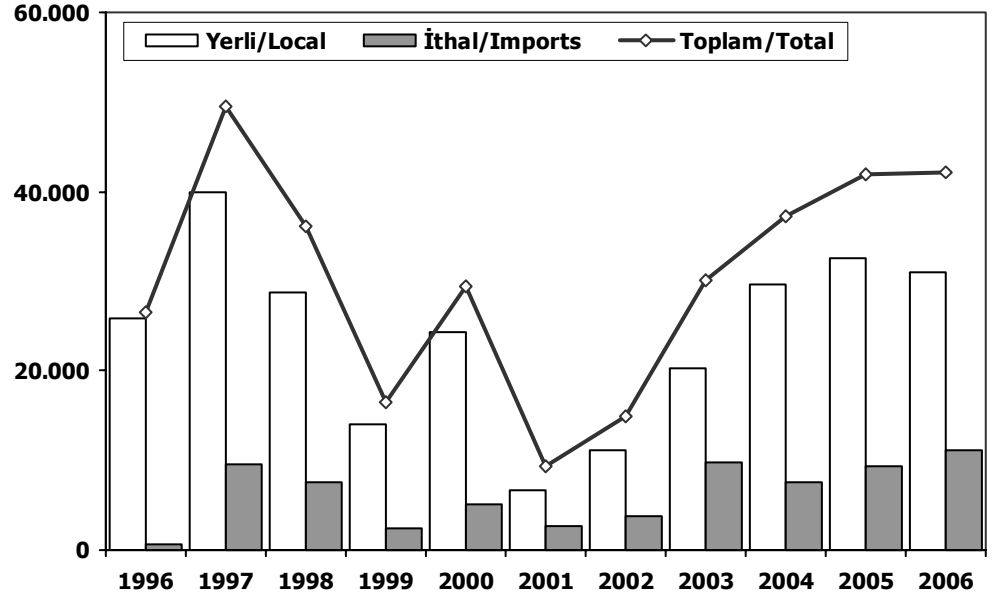
	1996	1997	1998	1999	2000	2001	2002	2003	2004	2005	2006
Yerli/Local	1.219	2.006	2.080	1.086	2.250	445	442	1.051	1.503	1.498	1.466
İthal/Imports	60	158	66	95	253	88	29	53	103	298	317
Toplam/Total	1.279	2.164	2.146	1.181	2.503	533	471	1.104	1.606	1.796	1.783
İthalat/Imports (%)	5	7	3	8	10	17	6	5	6	17	18

Midibüs Pazarı Midibus Market



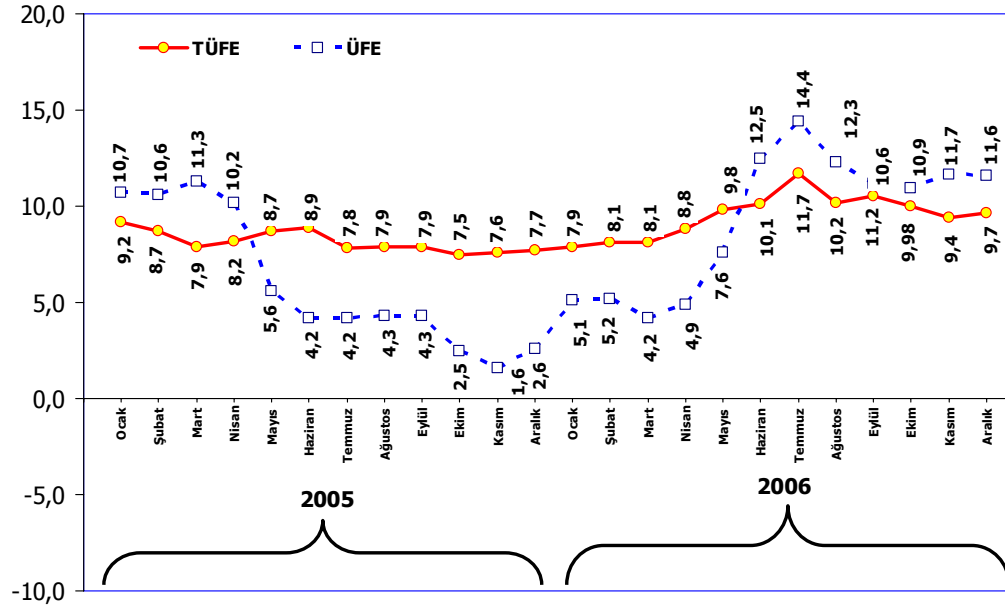
	1996	1997	1998	1999	2000	2001	2002	2003	2004	2005	2006
Yerli/Local	5.856	9.060	10.275	9.953	7.382	1.343	1.834	5.202	6.817	6.919	6.036
İthal/Imports	90	96	108	60	510	324	264	240	2.089	2.081	1.862
Toplam/Total	5.946	9.156	10.383	10.013	7.892	1.667	2.098	5.442	8.906	9.000	7.898
İthalat/Imports (%)	2	1	1	1	6	19	13	4	23	23	24

Kamyon Pazarı Truck Market

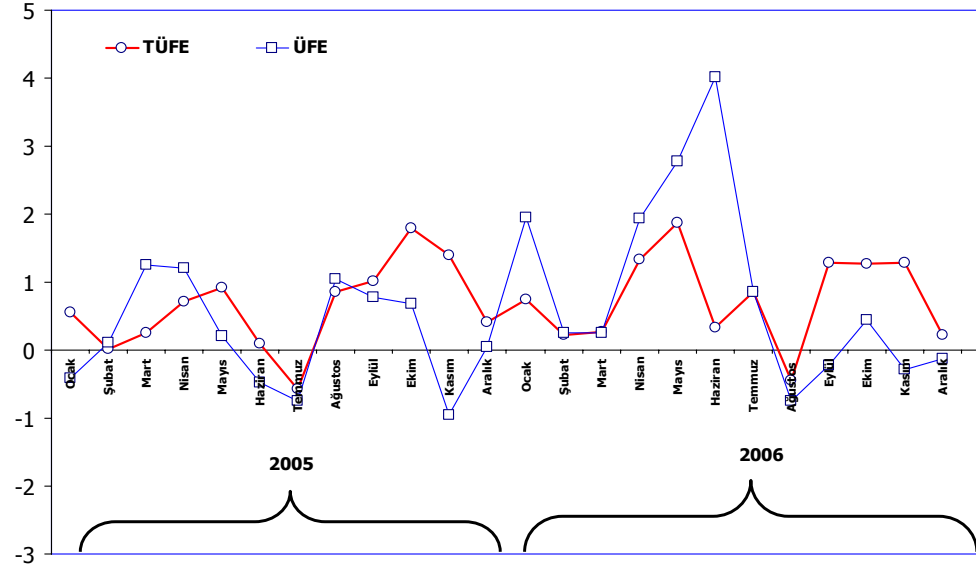


	1996	1997	1998	1999	2000	2001	2002	2003	2004	2005	2006
Yerli/Local	25.926	39.994	28.672	14.111	24.316	6.731	11.158	20.392	29.678	32.521	30.980
İthal/Imports	600	9.532	7.531	2.399	5.129	2.743	3.870	9.704	7.527	9.461	11.091
Toplam/Total	26.526	49.526	36.203	16.510	29.445	9.474	15.028	30.096	37.205	41.982	42.071
İthalat/Imports (%)	2	19	21	15	17	29	26	32	20	23	26

TÜFE ve ÜFE'nin Yıllık Değişimi (%)
CPI and PPI Yearly Changes (%)



TÜFE ve ÜFE'nin Aylık Değişimi (%)
CPI and PPI Monthly Changes (%)





2006 Yılı İthal Otomobil Satışları / P.Cars Imports 2006

2005 Total	1	2	4	4	5	6	7	8	9	10	11	12	Total	
ALFA ROMEO	991	46	90	67	50	68	62	86	55	53	68	42	742	
AUDI	4.689	165	213	394	301	285	294	376	468	449	443	563	4.928	
B.M.W	5.266	82	152	377	366	281	239	352	279	295	384	439	5.158	
CHEVROLET	8.650	283	424	692	476	619	375	235	210	200	348	510	4.882	
CHRYSLER	1.161	57	91	128	140	95	101	81	121	150	110	175	1.485	
CITROEN	9.926	416	577	977	1.008	1.427	680	576	737	662	509	947	9.718	
FERRARI	0	0	0	0	0	0	0	0	17	2	5	4	28	
FIAT	4.283	126	997	1.578	1.454	1.849	905	734	678	736	440	851	11.592	
FORD	46.213	1.904	2.673	4.206	4.264	6.150	3.712	1.939	2.530	2.332	2.001	2.792	3.668	
HONDA	8.627	182	300	717	552	851	594	364	445	499	505	436	814	
JAGUAR	113	94	97	77	58	64	41	18	35	57	85	100	110	
LAND ROVER	2.012	50	183	221	183	129	98	209	264	186	152	239	387	
MASERATI	0	0	0	0	0	0	0	0	14	1	1	4	20	
MG	10	0	0	0	0	0	0	0	0	0	0	0	0	
MERCEDES	3.400	191	243	416	425	257	278	200	417	337	327	416	618	
MINI (İngiliz)	310	1	0	14	18	34	10	21	13	22	21	34	224	
MITSUBISHI	3.360	239	159	297	171	210	184	74	75	57	101	171	246	
NISSAN	6.551	151	348	571	761	765	549	250	323	393	601	562	568	
PELGEOT	37.320	1.345	2.105	2.960	2.818	4.050	2.278	1.706	1.409	3.160	1.091	2.213	3.036	
PEUGEOT	22.313	659	1.306	1.689	1.767	2.530	1.541	1.144	1.260	1.146	716	1.667	2.160	
PORSCHE	153	17	18	25	25	22	15	18	15	17	17	13	15	
RENAULT	19.142	419	620	880	859	838	635	470	405	480	508	636	1.090	
ROVER	65	0	0	0	0	0	0	0	0	0	0	0	0	
SAAB	153	7	30	37	21	12	13	7	16	18	10	18	16	
SEAT	6.246	269	301	484	804	833	375	351	371	252	257	268	332	
SMART	273	9	13	15	11	14	6	2	21	31	27	22	9	
TOYOTA	12.759	808	969	1.475	1.439	1.394	1.364	890	896	1.068	968	783	1.346	
VOLKSWAGEN	31.508	1.158	2.195	3.026	2.863	3.631	2.004	1.322	2.192	1.900	1.860	1.867	3.606	
VOLVO	2.411	111	127	195	133	114	107	130	164	255	145	146	217	
AB+EFTA/EU+EFTA	237.905	8.789	14.231	21.518	20.967	26.522	16.460	11.555	13.399	14.788	11.682	15.942	24.593	200.446
DACIA	8.464	527	618	850	812	730	602	461	503	447	415	597	793	7.355
LADA	3.562	215	220	202	130	130	120	89	50	45	90	80	70	1.441
SKODA	8.080	327	454	661	679	587	354	311	396	363	196	472	426	5.226
Doğu Bloku / E.Europe	20.106	1.069	1.292	1.713	1.621	1.447	1.076	861	949	855	701	1.149	1.289	14.022
DAIHATSU	1.790	95	133	130	168	203	240	158	138	110	99	187	230	1.891
HYUNDAI	21.700	745	918	1.439	2.217	2.860	1.315	989	1.990	1.193	817	1.288	2.309	18.080
KIA	11.484	837	1.110	1.310	1.385	1.698	1.083	676	786	751	673	793	587	11.689
MAZDA	3.063	118	133	214	238	261	269	195	162	187	160	208	262	2.407
PROTON	81	12	27	28	36	34	64	34	65	21	17	18	48	404
SUBARU	1.751	167	128	230	231	182	89	39	240	246	224	243	193	2.212
SUZUKI	1.844	105	229	313	266	329	208	137	146	166	111	159	212	2.381
TATA	2.165	135	82	161	171	201	193	140	160	201	121	206	191	1.962
UZAK DOĞU / Far East	43.878	2.214	2.760	3.825	4.712	5.768	3.461	2.368	3.687	2.875	2.222	3.102	4.032	41.026
TOTAL	301.889	12.072	18.283	27.056	27.300	33.737	20.997	14.784	18.035	18.518	14.605	20.193	29.914	255.494

2006 Yılı İthal Hafif Ticari Araç Satışları / Light Commercial Vehicles Imports 2006

2005 Total	1	2	3	4	5	6	7	8	9	10	11	12	Total	
ASKAM	0	0	0	0	37	8	3	1	0	0	48	2	99	
CHRYSLER	100	0	0	0	0	0	0	0	0	0	0	0	0	
CITROEN	4.828	121	356	701	653	584	325	207	283	293	317	504	686	
FIAT	4.300	162	276	398	348	315	223	153	141	300	151	392	468	
IVECO	0	77	153	216	221	225	135	165	136	114	151	192	137	
MERCEDES	5.425	263	436	584	708	666	448	329	372	439	320	386	601	
PELGEOT	9.137	230	622	760	789	1.027	485	334	365	395	519	512	738	
PEUGEOT	2.248	53	100	111	95	115	97	59	82	97	59	142	235	
RENAULT	31.428	1.174	1.533	2.269	2.310	3.031	2.729	1.534	2.047	2.047	1.649	2.284	2.996	
VOLKSWAGEN	32.743	1.453	2.369	3.078	3.495	4.462	3.038	1.403	2.522	2.287	1.902	2.150	3.466	
AB+EFTA/EU+EFTA	90.109	3.533	5.845	8.117	8.619	10.462	7.488	4.187	5.949	5.972	5.068	6.610	9.329	81.179
DACIA	241	1	0	0	0	0	0	0	0	0	0	0	0	1
GAZ	0	155	195	242	162	140	106	69	57	63	36	66	50	1.341
SKODA	94	15	21	21	22	15	12	17	9	10	6	3	9	160
Doğu Bloku / E.Europe	335	171	216	263	184	155	118	86	66	73	42	69	59	1.502
DAIHATSU	140	8	16	29	19	32	12	6	11	6	13	14	28	194
FORD	3.985	303	286	456	371	468	302	219	287	249	196	309	458	3.904
HYUNDAI	10.623	349	490	907	1.236	1.353	732	467	644	729	397	630	1.038	8.972
ISUZU	0	129	145	272	192	264	208	154	388	438	148	223	367	2.928
KIA	5.624	203	292	425	416	516	317	225	249	271	199	232	146	3.491
MAZDA	2.056	104	123	156	173	181	187	157	121	139	115	131	183	1.770
MITSUBISHI	3.934	316	283	365	361	306	173	185	537	601	393	428	631	4.579
NISSAN	3.969	114	255	388	370	439	361	50	176	280	201	340	332	3.306
PROTON	0	0	0	0	0	0	0	0	21	3	6	10	12	52
SUZUKI	1	0	0	0	0	0	0	0	0	0	0	0	0	0
TATA	1.701	119	103	242	230	196	140	85	110	164	116	223	227	1.955
TOYOTA	1.808	0	116	145	150	235	171	136	157	175	118	123	200	1.726
UZAK DOĞU / Far East	33.841	1.645	2.109	3.385	3.518	3.990	2.603	1.684	2.701	3.055	1.902	2.663	3.622	32.877
TOTAL	124.285	5.349	8.170	11.765	12.321	14.607	10.209	5.957	8.716	9.100	7.012	9.342	13.010	115.558