



OTOMOTİV SANAYİİ DERNEĐİ
AUTOMOTIVE MANUFACTURERS ASSOCIATION

Otomotiv Sanayii Genel ve İstatistik Bülteni General and Statistical Information Bulletin Of Automotive Manufacturers 2014 - I

OSD "OICA" Üyesidir



OSD is a Member of "OICA"

İÇİNDEKİLER**SAHİFE**

OTOMOTİV SANAYİİ FİRMALARI HAKKINDA GENEL BİLGİLER - 2014	1
OTOMOTİV SANAYİİ FİRMALARININ ÜRETTİKLERİ MODELLER VE GENEL SPESİFİKASYONLARI - 2014	2 - 14
OTOMOTİV SANAYİİ FİRMALARININ 2014 YILI ÜRETİM KAPASİTELERİ	15
OTOMOTİV SANAYİİ FİRMALARININ 2009 - 2013 YILLARI ÜRTİM ADETLERİ	16 - 18
YILLARA GÖRE ÜRETİM GRAFİKLERİ	19 - 20
OTOMOTİV SANAYİİ FİRMALARININ ÜRETİM ADETLERİ	21
KAPASİTE KULLANIM VE İHRACAT GRAFİKLERİ	22
YILLAR İTİBARIYLA ÜRETİM ADETLERİ VE KAPASİTE KULLANIMLARI	23
OTOMOTİV SANAYİİ FİRMALARININ İHRACATLARI	24
OTOMOBİL İTHALATI – HAFİF TİCARİ ARAÇ İTHALATI	25
OTOMOBİL VE HAFİF TİCARİ ARAÇLAR/ÜRETİM/İTHALAT/İHRACAT GRAFİKLERİ	26
OTOMOTİV SANAYİİ İSTİHDAMI	27 - 30
OTOMOTİV SANAYİİ YATIRIMLARI	31
TÜRKİYE ARAÇ PARKI	32

CONTENTS**PAGE**

GENERAL INFORMATION ON THE AUTOMOTIVE MANUFACTURERS - 2014	1
GENERAL SPESIFICATIONS OF THE PRODUCTS - 2014	2 - 12
PRODUCTION CAPACITIES - 2014	13
PRODUCTION UNITS FOR THE YEARS 2009 -2013	16 - 18
PRODUCTION BY YEARS IN GRAPHICS	19 - 20
THE PRODUCTION UNITS OF THE AUTOMOTIVE MANUFACTURERS	21
CAPACITY USAGE AND EXPORTS IN GRAPHICS	22
PRODUCTION UNITS AND CAPACITY UTILIZATION BY YEARS	23
AUTOMOTIVE INDUSTRY EXPORTS	24
P. CAR IMPORTS - LIGHT COMMERCIAL VEHICLE IMPORTS	25
P. CARS AND LIGHT COMMERCIAL VEHICLES/PRODUCTION/IMPORTS/EXPORTS	26
AUTOMOTIVE INDUSTRY EMPLOYMENT	27 - 30
AUTOMOTIVE INDUSTRY INVESTMENTS	31
AUTOMOTIVE VEHICLES PARK IN TURKEY	32

OTOMOTİV SANAYİİ FİRMALARI HAKKINDA GENEL BİLGİLER - 2014
General Information On The Automotive Manufacturers - 2014

OCAK SONU/By the end of January

FİRMALAR Firms	ÜRETİM YERİ The Production Place	ÜRETİME BAŞLAMA TARİHİ Starting Year Of Production	LİSANS Licence	SERMAYE Capital (1000 YTL)	YABANCI SERMAYE Foreign Cap. (%)	KAPALI ALAN Covered Area (1.000 M2)	TOPLAM ALAN Total Area (1.000 M2)
A.I.O.S.	KOCAELİ	1966	ISUZU	25.419	29,74	82	299
FORD OTOSAN	ESKİŞEHİR GÖLCÜK/KOCAELİ YENİKÖY/KOCAELİ	1983 2001 2014	FORD	350.910	41	77 345 86	1.105 1.528 1.614
HATTAT TARIM	TEKİRDAĞ	2002	VALTRA, UNIVERSAL, HATTAT	40.000	0	41	172
HONDA TÜRKİYE	KOCAELİ	1997	HONDA MOTOR EUROPE. LTD.	180.000	100	77	292
HYUNDAI ASSAN	KOCAELİ	1997	HYUNDAI MOTOR COMP.	627.235	70	123	687
KARSAN	BURSA	1966	HYUNDAI MOTOR COMPANY BRED A MENARINI BUS	460.000	0	110	230
M.A.N. TÜRKİYE	ANKARA	1966	MAN TRUCK & BUS AG	65.000	99,9	111	317
M.BENZ TÜRK	İSTANBUL AKSARAY	1968 1985	MERCEDES BENZ	275.000	84,99	215 107	503 558
OTOKAR	SAKARYA	1963	LAND ROVER / FRUEHAUF	24.000	0	141	552
O.RENAULT	BURSA	1971	RENAULT	323.381	51	301	534
TEMSA GLOBAL	ADANA SAKARYA	1987 2008	TEMSA / MITSUBISHI	210.000	0	105 32	555 131
TOFAŞ	BURSA	1971	FIAT	500.000	37,8	399	934
TOYOTA	SAKARYA	1994	TOYOTA	150.165	100	212	917
T.TRAKTÖR	ANKARA	1954		53.369	37,5	82	257
TOPLAM/Total				3.284.479		2.646	11.185

OTOMOTİV SANAYİİ FİRMALARININ ÜRETTİKLERİ MODELLER VE GENEL SPESİFİKASYONLARI - 2014
General Specifications Of The Products - 2014

OCAK SONU/By the end of January

FİRMALAR/MODELLER - Firms/Models		A.Y.A. G.V.W. K.G.	NET AG. Net We. K.G.	CİNSİ Type	MOTOR / Engine			VİTES Gear	LASTİK EBADI / Tire Size
					SİLİNDİR ADEĐİ No.Of Cylinder	CC cc	GÜCÜ/Power BHP/DEVİR Hp/Rpm		
A.ISUZU									
KAMYONET NLR85 FFL KISA	Truck	3500	1995	DİZEL	4	2999	150/2800	5/1	ÖN-ARKA 195/75R16C
KAMYONET NLR85 FFL UZUN	Truck	3500	2065	DİZEL	4	2999	150/2800	5/1	ÖN-ARKA 195/75R16C
KAMYONET NNR85 KISA	Truck	3500	2175	DİZEL	4	2999	150/2800	5/1	ÖN-ARKA 215/75R17,5
KAMYONET NNR85 UZUN	Truck	3500	2205	DİZEL	4	2999	150/2800	5/1	ÖN-ARKA 215/75R17,5
KAMYON NPR75 KISA	Truck	8000	2685	DİZEL	4	5193	155/2600	6/1	ÖN-ARKA 215/75R17,5
KAMYON NPR75 UZUN	Truck	8000	2790	DİZEL	4	5193	155/2600	6/1	ÖN-ARKA 215/75R17,5
KAMYON NPR10 KISA	Truck	9800	2920	DİZEL	4	5193	155/2600	6/1	ÖN-ARKA 225/75R17,5
KAMYON NPR10 UZUN	Truck	9800	2960	DİZEL	4	5193	155/2600	6/1	ÖN-ARKA 225/75R17,5
KAMYON NPR3D	Truck	12500	3540	DİZEL	4	5193	190/2600	6/1	ÖN-ARKA 215/75R17,5
MİDİBÜS TURKUAZ	Midibus	10400	7110	DİZEL	4	5193	190/2600	6/1	ÖN-ARKA 235/75 R 17,5
MİDİBÜS INTERURBAN	Midibus	10400	6700	DİZEL	4	5193	190/2600	6/1	ÖN-ARKA 235/75 R 17,5
MİDİBÜS ROYBUS	Midibus	8800	5332	DİZEL	4	4570	121/3200	5/1	ÖN-ARKA 215/75 R 17,5
MİDİBÜS ROYBUS C	Midibus	8800	5292	DİZEL	4	4570	121/3200	5/1	ÖN-ARKA 215/75 R 17,5
MİDİBÜS CLASSIC	Midibus	8800	4972	DİZEL	4	4570	121/3200	5/1	ÖN-ARKA 215/75 R 17,5
MİDİBÜS URBAN 22	Midibus	8800	4942	DİZEL	4	4570	121/3200	5/1	ÖN-ARKA 215/75 R 17,5
MİDİBÜS URBAN 50	Midibus	8800	4852	DİZEL	4	4570	121/3200	5/1	ÖN-ARKA 215/75 R 17,5
MİDİBÜS CITIMARK	Midibus	13000	6924	DİZEL	4	5193	204/2600	6/1	ÖN-ARKA 265/70 R 19,5
MİDİBÜS NOVO	Midibus	9100	6262	DİZEL	4	5193	155/2600	6/1	ÖN-ARKA 215/75R17,5
MİDİBÜS NOVO Lüks	Midibus	9100	6450	DİZEL	4	5193	155/2600	6/1	ÖN-ARKA 215/75R17,5
MİDİBÜS NOVO Ultra	Midibus	9800	6474	DİZEL	4	5193	190/2600	6/1	ÖN-ARKA 215/75R17,5
MİDİBÜS NOVOCITI	Midibus	9800	5681	DİZEL	4	5193	155/2600	6/1	ÖN-ARKA 215/75R17,5
MİDİBÜS NOVOCITI Ultra	Midibus	9800	5835	DİZEL	4	5193	155/2600	6/1	ÖN-ARKA 215/75R17,5
MİDİBÜS CITIBUS	Midibus	14000	7900	DİZEL	4	5193	204/2600	6/1	ÖN-ARKA 265/70 R 19,5
MİDİBÜS VISIGO	Midibus	14000	8900	DİZEL	4	5193	204/2600	6/1	ÖN-ARKA 265/70 R 19,5
FORD OTOSAN									
KAMYONET Transit Courier Van 100 PS	Truck	1765	1115	BENZİN	3	998	100/6000	5/1	ÖN-ARKA 195/60 R15 - 195/55 R16 - 185/60 R15
KAMYONET Transit Courier Van 95 PS	Truck	1795	1134	DİZEL	4	1560	95/3800	5/1	ÖN-ARKA 195/60 R15 - 195/55 R16 - 185/60 R15
KAMYONET Transit Courier Van 75 PS	Truck	1795	1132	DİZEL	4	1499	75/4000	5/1	ÖN-ARKA 195/60 R15 - 195/55 R16 - 185/60 R15
KAMYONET Tourneo Courier Kombi/Business Kombi 100 PS	Truck	1775	1209	BENZİN	3	998	100/6000	5/1	ÖN-ARKA 195/60 R15 - 195/55 R16 - 185/60 R15
KAMYONET Tourneo Courier Kombi/Business Kombi 95 PS	Truck	1795	1229	DİZEL	4	1560	95/3800	5/1	ÖN-ARKA 195/60 R15 - 195/55 R16 - 185/60 R15
KAMYONET Tourneo Courier Kombi/Business Kombi 75 PS	Truck	1795	1227	DİZEL	4	1499	75/4000	5/1	ÖN-ARKA 195/60 R15 - 195/55 R16 - 185/60 R15
KAMYONET Transit 330S Tek Kabin Trend 2.2L Duratorq TDCi 125PS (Kasasız)	Pick Up	3300	1724	DİZEL	4	2198	125/3500	6/1	ÖN-ARKA 235/65 R16C
KAMYONET Transit 330S Tek Kabin Trend 2.2L Duratorq TDCi 125PS (Çelik Kasalı)	Pick Up	3300	1979	DİZEL	4	2198	125/3500	6/1	ÖN-ARKA 235/65 R16C
KAMYONET Transit 350M Tek Kabin Trend 2.2L Duratorq TDCi 155PS (Kasasız)	Pick Up	3500	1743	DİZEL	4	2198	155/3500	6/1	ÖN-ARKA 235/65 R16C
KAMYONET Transit 350M Tek Kabin Trend 2.2L Duratorq TDCi 155PS (Çelik Kasalı)	Pick Up	3500	2023	DİZEL	4	2198	155/3500	6/1	ÖN-ARKA 235/65 R16C
KAMYONET Transit 350L Tek Kabin Trend 2.2L Duratorq TDCi 155PS (Kasasız)	Pick Up	3500	1765	DİZEL	4	2198	155/3500	6/1	ÖN-ARKA 235/65 R16C
KAMYONET Transit 350ED Tek Kabin Trend 2.2L Duratorq TDCi 155PS (Kasasız)	Pick Up	3500	1849	DİZEL	4	2198	155/3500	6/1	ÖN-ARKA 195/75 R16C
KAMYONET Transit 470ED Tek Kabin Trend 2.2L Duratorq TDCi 125PS (Kasasız)	Pick Up	4700	1887	DİZEL	4	2198	125/3500	6/1	ÖN-ARKA 195/75 R16C
KAMYONET Transit 350M Van Trend 2.2L Duratorq TDCi 125PS	Truck	3500	2016	DİZEL	4	2198	125/3500	6/1	ÖN-ARKA 235/65 R16C
KAMYONET Transit 350MF Van Trend 2.2L Duratorq TDCi 125PS	Truck	3500	1900	DİZEL	4	2198	125/3500	6/1	ÖN-ARKA 235/65 R16C
KAMYONET Transit 350L Van 2.2L Duratorq TDCi 155PS	Truck	3500	2073	DİZEL	4	2198	155/3500	6/1	ÖN-ARKA 235/65 R16C
KAMYONET Transit 350L Van Yüksek Tavan 2.2L Duratorq TDCi 155PS	Truck	3500	2100	DİZEL	4	2198	155/3500	6/1	ÖN-ARKA 235/65 R16C
KAMYONET Transit 350LF Van 2.2L Duratorq TDCi 155PS	Truck	3500	1955	DİZEL	4	2198	155/3500	6/1	ÖN-ARKA 235/65 R16C
KAMYONET Transit 350LF Van Yüksek Tavan 2.2L Duratorq TDCi 155PS	Truck	3500	1982	DİZEL	4	2198	155/3500	6/1	ÖN-ARKA 235/65 R16C
KAMYONET Transit 350E Van Trend 2.2L Duratorq TDCi 155PS	Truck	3500	2243	DİZEL	4	2198	155/3500	6/1	ÖN-ARKA 235/65 R16C
KAMYONET Transit 350ED Van Trend 2.2L Duratorq TDCi 155PS	Truck	3500	2308	DİZEL	4	2198	155/3500	6/1	ÖN-ARKA 195/75 R16C
KAMYONET Transit 470ED Van 2.2L Duratorq TDCi 155PS	Truck	4700	2355	DİZEL	4	2198	155/3500	6/1	ÖN-ARKA 195/75 R16C
MİNİBÜS Transit 370M (11+1) Trend / Deluxe 2.2L Duratorq TDCi 135PS	Minibus	3750	2505	DİZEL	4	2198	135/3750	6/1	ÖN-ARKA 215/65 R16C
MİNİBÜS Transit 410L (14+1) Trend / Deluxe 2.2L Duratorq TDCi 135PS	Minibus	4100	2667	DİZEL	4	2198	135/3750	6/1	ÖN-ARKA 215/65 R16C
MİNİBÜS Transit 460ED (16+1 / 17+1) Trend / Deluxe 2.2L Duratorq TDCi 135PS	Minibus	4600	2913	DİZEL	4	2198	135/3750	6/1	ÖN-ARKA 195/75 R16C
KAMYON CARGO 1826(4x2)-DC	Truck	18000	6439	DİZEL	6	7330	260/2400	9/1	ÖN-ARKA 275/70 R22.5 - 315/60 R22.5 - 12R22.5
KAMYON CARGO 1826(4x2)-LRSC	Truck	18000	6549	DİZEL	6	7330	260/2400	9/1	ÖN-ARKA 275/70 R22.5 - 315/60 R22.5 - 12R22.5

KAMYON CARGO 1826D(4x2)	Truck	18000	6470	DİZEL	6	7330	260/2400	9/1	ÖN-ARKA 315/80 R22.5
KAMYON CARGO 1832D(4x2)	Truck	18000	6617	DİZEL	6	8974	320/2200	9/1	ÖN-ARKA 315/80 R22.5
KAMYON CARGO 1832(4x2)-DC	Truck	18000	6553	DİZEL	6	8974	320/2200	9/1	ÖN-ARKA 275/70 R22.5 - 315/60 R22.5 - 12R22.5
KAMYON CARGO 1832(4x2)-LRSC	Truck	18000	6663	DİZEL	6	8974	320/2200	9/1	ÖN-ARKA 275/70 R22.5 - 315/60 R22.5 - 12R22.5
KAMYON CARGO 2532D(6x2)	Truck	26000	8188	DİZEL	6	8974	320/2200	9/1	ÖN-ARKA 315/80 R22.5
KAMYON CARGO 2532(6x2)-DC	Truck	26000	7932	DİZEL	6	8974	320/2200	9/1	ÖN-ARKA 315/60 R22.5 - 315/80 R22.5 - 12R22.5
KAMYON CARGO 2532(6x2)-HRSC	Truck	26000	8092	DİZEL	6	8974	320/2200	9/1	ÖN-ARKA 315/60 R22.5 - 315/80 R22.5 - 12R22.5
KAMYON CARGO 2526D(6x2)	Truck	26000	8173	DİZEL	6	7330	260/2400	9/1	ÖN-ARKA 315/80 R22.5
KAMYON CARGO 2526(6x2)-DC	Truck	26000	7825	DİZEL	6	7330	260/2400	9/1	ÖN-ARKA 315/60 R22.5 - 315/80 R22.5 - 12R22.5
KAMYON CARGO 2526(6x2)-HRSC	Truck	26000	7975	DİZEL	6	7330	260/2400	9/1	ÖN-ARKA 315/60 R22.5 - 315/80 R22.5 - 12R22.5
KAMYON CARGO 2536D(6x2)DC	Truck	26000	9082	DİZEL	6	8974	360/2200	16/2	ÖN-ARKA 315/80 R22.5
KAMYON CARGO 3532M (6x4)	Truck	26000	9260	DİZEL	6	8974	320/2200	9/1	ÖN-ARKA 315/80 R 22.5
KAMYON CARGO 3232S (8x2)	Truck	32000	9597	DİZEL	6	8974	320/2200	9/1	ÖN-ARKA 315/80 R 22.5
KAMYON CARGO 3232C (8x2)	Truck	32000	9495	DİZEL	6	8974	320/2200	9/1	ÖN-ARKA 315/80 R 22.5
ÇEKİCİ CARGO 1838T (4x2)	R. Tractor	18000	8262	DİZEL	6	8974	380/2200	16/2	ÖN-ARKA 295/80 R22.5 - 315/60 R22.5 - 12R22.5
KAMYON CARGO 2538 (6x2)	Truck	26000	8889	DİZEL	6	8974	380/2200	16/2	ÖN-ARKA 315/80 R22.5 - 12R 22.5
KAMYON CARGO 3238S (8x2)	Truck	32000	9968	DİZEL	6	8974	380/2200	16/2	ÖN-ARKA 315/80 R 22.5
KAMYON CARGO 3238C (8x2)	Truck	32000	10074	DİZEL	6	8974	380/2200	16/2	ÖN-ARKA 315/80 R 22.5
KAMYON CARGO 4136M (8x4)	Truck	39000	10755	DİZEL	6	8974	360/2200	16/2	ÖN-ARKA 315/80 R 22.5
KAMYON CARGO 4136D (8x4)	Truck	39000	11021	DİZEL	6	8974	360/2200	16/2	ÖN-ARKA 315/80 R 22.5
KAMYON CARGO 3936M (8x4)	Truck	39000	10174	DİZEL	6	8974	360/2200	16/2	ÖN-ARKA 315/80 R 22.5
KAMYON CARGO 3536M (6x4)	Truck	34000	9250	DİZEL	6	8974	360/2200	16/2	ÖN-ARKA 315/80 R 22.5
KAMYON CARGO 3536D (6x4)	Truck	34000	9550	DİZEL	6	8974	360/2200	16/2	ÖN-ARKA 315/80 R 22.5
ÇEKİCİ CARGO 1846T (4x2) (Air suspension) LRSC	R. Tractor	18000	7536	DİZEL	6	10308	460/2100	12/2-16/2	ÖN-ARKA 295/60 R22.5 - 295/80 R22.5 - 315/60 R22.5
ÇEKİCİ CARGO 1846T (4x2) (Mech Susp). XHRSC	R. Tractor	18000	7744	DİZEL	6	10308	460/2100	12/2-16/2	ÖN-ARKA 295/60 R22.5 - 295/80 R22.5 - 315/60 R22.5
KAMYON CARGO 3232SD (8x2)	Truck	32000	9404	DİZEL	6	8974	320/2200	9/1	ÖN-ARKA 315/80 R 22.5
KAMYON CARGO 3232CD (8x2)	Truck	32000	9364	DİZEL	6	8974	320/2200	9/1	ÖN-ARKA 315/80 R 22.5
KAMYON CARGO 2538T (6x2)	Truck	26000	9549	DİZEL	6	8974	380/2200	16/2	ÖN-ARKA 315/80 R22.5
KAMYON CARGO 3236CD(8x2)	Truck	32000	10390	DİZEL	6	8974	360/2200	16/2	ÖN-ARKA 315/80 R22.5
KAMYON CARGO 2532T (6x2)-HRSC	Truck	25000	8459	DİZEL	6	8974	320/2200	9/1	ÖN-ARKA 315/80 R22.5
KAMYON CARGO 1832 (4x2) Crew Cab	Truck	18000	7048	DİZEL	6	8974	320/2200	9/1	ÖN-ARKA 315/80 R22.5
KAMYON CARGO 2532T (6x2)-HRSC	Truck	25000	8459	DİZEL	6	8974	320/2200	9/1	ÖN-ARKA 315/80 R22.5
KAMYON CARGO 2536D(6x2)-LRSC	Truck	26000	9082	DİZEL	6	8974	360/2200	16/2	ÖN-ARKA 315/80 R22.5

HATTAT TARIM

TRAKTÖR VALTRA A 75 2 WD	F. Tractor	7000	3145	DİZEL	3 TURBO	3300	74/2270	16/8-12/12	ÖN-ARKA 16.9/14-30
TRAKTÖR VALTRA A 75 4 WD	F. Tractor	7000	3375	DİZEL	3 TURBO	3300	74/2270	16/8-12/12	ÖN-ARKA 11.2-24/16.9-30
TRAKTÖR VALTRA A 85 2 WD	F. Tractor	7000	3205	DİZEL	4 TURBO	4400	88/2270	16/8-12/12	ÖN-ARKA 18.4/15-30
TRAKTÖR VALTRA A 85 4 WD	F. Tractor	7000	3435	DİZEL	4 TURBO	4400	88/2270	16/8-12/12	ÖN-ARKA 13.6-24/16.9R34
TRAKTÖR VALTRA A 95 2 WD	F. Tractor	7000	3205	DİZEL	4 TURBO	4400	102/2270	16/8-12/12	ÖN-ARKA 13.6-24/16.9R34
TRAKTÖR VALTRA A 95 4 WD	F. Tractor	7000	3435	DİZEL	4 TURBO	4400	102/2270	16/8-12/12	ÖN-ARKA 13.6-24/16.9R34
TRAKTÖR VALTRA A 53 O 2 WD	F. Tractor	3800	2230	DİZEL	3 DOĞAL	3300	50/2200	12/12	ÖN-ARKA 6.00-16/13.6-24
TRAKTÖR VALTRA A 53 O 4 WD	F. Tractor	4100	3230	DİZEL	3 DOĞAL	3300	50/2200	12/12	ÖN-ARKA 280/70R18/380/85R24
TRAKTÖR VALTRA A 63 O 2 WD	F. Tractor	3800	2230	DİZEL	3 TURBO	3300	68/2200	12/12	ÖN-ARKA 6.00-16/13.6-24
TRAKTÖR VALTRA A 63 O 4 WD	F. Tractor	4100	3230	DİZEL	3 TURBO	3300	68/2200	12/12	ÖN-ARKA 280/70R18/380/85R24
TRAKTÖR VALTRA A 73 O 2 WD	F. Tractor	3800	2230	DİZEL	3 TURBO	3300	79/2200	12/12	ÖN-ARKA 6.00-16/13.6-24
TRAKTÖR VALTRA A 73 O 4 WD	F. Tractor	4100	3230	DİZEL	3 TURBO	3300	79/2200	12/12	ÖN-ARKA 280/70R18/380/85R24
TRAKTÖR VALTRA A 53 C 2 WD	F. Tractor	3800	2230	DİZEL	3 DOĞAL	3300	50/2200	12/12	ÖN-ARKA 6.00-16/13.6-28
TRAKTÖR VALTRA A 53 C 4 WD	F. Tractor	4100	3230	DİZEL	3 DOĞAL	3300	50/2200	12/12	ÖN-ARKA 280/70R18/13.6-28
TRAKTÖR VALTRA A 63 C 2 WD	F. Tractor	3800	2230	DİZEL	3 TURBO	3300	68/2200	12/12	ÖN-ARKA 6.00-16/13.6-28
TRAKTÖR VALTRA A 63 C 4 WD	F. Tractor	4100	3230	DİZEL	3 TURBO	3300	68/2200	12/12	ÖN-ARKA 280/70R18/13.6-28
TRAKTÖR VALTRA A 73 C 2 WD	F. Tractor	3800	2230	DİZEL	3 TURBO	3300	79/2200	12/12	ÖN-ARKA 6.00-16/13.6-28
TRAKTÖR VALTRA A 73 C 4 WD	F. Tractor	4100	3230	DİZEL	3 TURBO	3300	79/2200	12/12	ÖN-ARKA 280/70R18/13.6-28
TRAKTÖR HATTAT 240S 2 WD	F. Tractor	3000	2050	DİZEL	3 DOĞAL	3300	50/2200	8/2	ÖN-ARKA 6.00-16/13.6-28
TRAKTÖR HATTAT 290 2 WD	F. Tractor	6000	3000	DİZEL	4 DOĞAL	4400	84/2200	8/2	ÖN-ARKA 7.50-16/13.6-38
TRAKTÖR HATTAT A 50B 2 WD	F. Tractor	3800	2300	DİZEL	4 DOĞAL	2835	50/2400	8/4	ÖN-ARKA 6.00-16/13.6-24
TRAKTÖR HATTAT A 50B 4 WD	F. Tractor	3800	2300	DİZEL	4 DOĞAL	2835	50/2400	8/4	ÖN-ARKA 280/70R18/380/85R24
TRAKTÖR HATTAT A 55B 2 WD	F. Tractor	3800	2350	DİZEL	3 DOĞAL	3300	50/2200	12/12	ÖN-ARKA 6.00-16/13.6-24
TRAKTÖR HATTAT A 55B 4 WD	F. Tractor	4100	2550	DİZEL	3 DOĞAL	3300	50/2200	12/12	ÖN-ARKA 280/70R18/380/85R24
TRAKTÖR HATTAT A 60B 2 WD	F. Tractor	3800	2350	DİZEL	3 TURBO	3300	68/2200	8/4	ÖN-ARKA 6.00-16/13.6-24
TRAKTÖR HATTAT A 60B 4 WD	F. Tractor	4100	2550	DİZEL	3 TURBO	3300	68/2200	8/4	ÖN-ARKA 280/70R18/380/85R24
TRAKTÖR HATTAT A 65B 2 WD	F. Tractor	3800	2350	DİZEL	3 TURBO	3300	68/2200	12/12	ÖN-ARKA 6.00-16/13.6-24
TRAKTÖR HATTAT A 65B 4 WD	F. Tractor	4100	2550	DİZEL	3 TURBO	3300	68/2200	12/12	ÖN-ARKA 280/70R18/380/85R24

TRAKTÖR HATTAT A 80B 4 WD	F. Tractor	4100	2600	DİZEL	3 TURBO	3300	79/2200	12/12	ÖN-ARKA 280/70R18/380/85R24
TRAKTÖR HATTAT B 3050 2 WD	F. Tractor	3800	2300	DİZEL	3 DOĞAL	3300	50/2200	12/12	ÖN-ARKA 6.0-16/13.6-24
TRAKTÖR HATTAT B 3050 4 WD	F. Tractor	4100	3230	DİZEL	3 DOĞAL	3300	50/2200	12/12	ÖN-ARKA 280/70R18/380/85R24
TRAKTÖR HATTAT B 3065 2 WD	F. Tractor	3800	2300	DİZEL	3 TURBO	3300	68/2200	12/12	ÖN-ARKA 6.0-16/13.6-24
TRAKTÖR HATTAT B 3065 4 WD	F. Tractor	4100	3230	DİZEL	3 TURBO	3300	68/2200	12/12	ÖN-ARKA 280/70R18/380/85R24
TRAKTÖR HATTAT B 3080 2 WD	F. Tractor	3800	2300	DİZEL	3 TURBO	3300	79/2200	12/12	ÖN-ARKA 6.00-16/13.6-24
TRAKTÖR HATTAT B 3080 4 WD	F. Tractor	4100	3230	DİZEL	3 TURBO	3300	79/2200	12/12	ÖN-ARKA 280/70R18/380/85R24
TRAKTÖR HATTAT A 50 2 WD	F. Tractor	3800	2400	DİZEL	4 DOĞAL	2835	50/2400	8/4	ÖN-ARKA 6.0-16/13.6-28
TRAKTÖR HATTAT A 50 4 WD	F. Tractor	4100	2610	DİZEL	4 DOĞAL	2835	50/2400	8/4	ÖN-ARKA 280/70R18/13.6-28
TRAKTÖR HATTAT A 55 2 WD	F. Tractor	3800	2400	DİZEL	3 DOĞAL	3300	50/2200	8/4-12/12	ÖN-ARKA 6.00-16/13.6-28
TRAKTÖR HATTAT A 55 4 WD	F. Tractor	4100	2610	DİZEL	3 DOĞAL	3300	50/2200	8/4-12/12	ÖN-ARKA 280/70R18/13.6-28
TRAKTÖR HATTAT A 60 2 WD	F. Tractor	3800	2400	DİZEL	3 TURBO	3300	68/2200	8/4	ÖN-ARKA 7.50-16/14.9-30
TRAKTÖR HATTAT A 60 4 WD	F. Tractor	4100	2610	DİZEL	3 TURBO	3300	68/2200	8/4	ÖN-ARKA 300/70R20/14.9-30
TRAKTÖR HATTAT A 65 2 WD	F. Tractor	3800	2400	DİZEL	3 TURBO	3300	68/2200	12/12	ÖN-ARKA 7.50-16/14.9-30
TRAKTÖR HATTAT A 65 4 WD	F. Tractor	4100	2610	DİZEL	3 TURBO	3300	68/2200	12/12	ÖN-ARKA 300/70R20/14.9-30
TRAKTÖR HATTAT A 80C 2 WD	F. Tractor	3800	2400	DİZEL	3 TURBO	3300	79/2200	12/12	ÖN-ARKA 7.50-16/14.9-30
TRAKTÖR HATTAT A 80C 4 WD	F. Tractor	4100	2610	DİZEL	3 TURBO	3300	79/2200	12/12	ÖN-ARKA 300/70R20/14.9-30
TRAKTÖR HATTAT C 3050 2 WD	F. Tractor	3800	2300	DİZEL	3 DOĞAL	3300	50/2200	12/12	ÖN-ARKA 6.0-16/13.6-28
TRAKTÖR HATTAT C 3050 4 WD	F. Tractor	4100	3230	DİZEL	3 DOĞAL	3300	50/2200	12/12	ÖN-ARKA 280/70R18/13.6-28
TRAKTÖR HATTAT C 3065 2 WD	F. Tractor	3800	2300	DİZEL	3 TURBO	3300	68/2200	12/12	ÖN- ARKA 6.0-16/13.6-28
TRAKTÖR HATTAT C 3065 4 WD	F. Tractor	4100	3230	DİZEL	3 TURBO	3300	68/2200	12/12	ÖN-ARKA 280/70R18/13.6-28
TRAKTÖR HATTAT C 3080 2 WD	F. Tractor	3800	2300	DİZEL	3 TURBO	3300	79/2200	12/12	ÖN-ARKA 6.0-16/13.6-28
TRAKTÖR HATTAT C 3080 4 WD	F. Tractor	4100	3230	DİZEL	3 TURBO	3300	79/2200	12/12	ÖN-ARKA 280/70R18/13.6-28
TRAKTÖR HATTAT A 70 2 WD	F. Tractor	7000	2860	DİZEL	3 TURBO	3300	68/2200	16/8-12/12	ÖN-ARKA 7.50-16/16.9-30
TRAKTÖR HATTAT A 70 4 WD	F. Tractor	7000	3090	DİZEL	3 TURBO	3300	68/2200	16/8-12/12	ÖN-ARKA 11.2-24/16.9-30
TRAKTÖR HATTAT A 80 4 WD	F. Tractor	7000	3090	DİZEL	3 TURBO	3300	79/2200	16/8-12/12	ÖN-ARKA 11.2-24/16.9-30
TRAKTÖR HATTAT A 90 4 WD	F. Tractor	7060	3460	DİZEL	4 TURBO	4400	82/2200	12/12-16/8	ÖN-ARKA 13.6-24/16.9R34
TRAKTÖR HATTAT A 100 4 WD	F. Tractor	7060	3490	DİZEL	4 TURBO	4400	92/2200	12/12-16/8	ÖN-ARKA 13.6-24/16.9R34
TRAKTÖR HATTAT A 110 4 WD	F. Tractor	7060	3490	DİZEL	4 TURBO	4400	102/2200	12/12-16/8	ÖN-ARKA 13.6-24/16.9R34
TRAKTÖR HTT 240S 2 WD	F. Tractor	3000	2050	DİZEL	3 DOĞAL	3300	50/2200	8/2	ÖN-ARKA 6.0-16/13.6-28
TRAKTÖR HTT B 3050 2 WD	F. Tractor	3800	2300	DİZEL	3 DOĞAL	3300	50/2200	12/12	ÖN-ARKA 6.0-16/13.6-24
TRAKTÖR HTT B 3050 4 WD	F. Tractor	4100	3230	DİZEL	3 DOĞAL	3300	50/2200	12/12	ÖN-ARKA 280/70R18/380/85R24
TRAKTÖR HTT B 3065 2 WD	F. Tractor	3800	2300	DİZEL	3 TURBO	3300	68/2200	12/12	ÖN-ARKA 6.0-16/13.6-24
TRAKTÖR HTT B 3065 4 WD	F. Tractor	4100	3230	DİZEL	3 TURBO	3300	68/2200	12/12	ÖN-ARKA 280/70R18/380/85R24
TRAKTÖR HTT B 3080 2 WD	F. Tractor	3800	2300	DİZEL	3 TURBO	3300	79/2200	12/12	ÖN-ARKA 6.0-16/13.6-24
TRAKTÖR HTT B 3080 4 WD	F. Tractor	4100	3230	DİZEL	3 TURBO	3300	79/2200	12/12	ÖN-ARKA 280/70R18/380/85R24
TRAKTÖR HTT C 3050 2 WD	F. Tractor	3800	2300	DİZEL	3 DOĞAL	3300	50/2200	12/12	ÖN-ARKA 6.0-16/13.6-28
TRAKTÖR HTT C 3050 4 WD	F. Tractor	4100	3230	DİZEL	3 DOĞAL	3300	50/2200	12/12	ÖN-ARKA 280/70R18/13.6-28
TRAKTÖR HTT C 3065 2 WD	F. Tractor	3800	2300	DİZEL	3 TURBO	3300	68/2200	12/12	ÖN-ARKA 6.0-16/13.6-28
TRAKTÖR HTT C 3065 4 WD	F. Tractor	4100	3230	DİZEL	3 TURBO	3300	68/2200	12/12	ÖN-ARKA 280/70R18/13.6-28
TRAKTÖR HTT C 3080 2 WD	F. Tractor	3800	2300	DİZEL	3 TURBO	3300	79/2200	12/12	ÖN-ARKA 6.0-16/13.6-28
TRAKTÖR HTT C 3080 4 WD	F. Tractor	4100	3230	DİZEL	3 TURBO	3300	79/2200	12/12	ÖN-ARKA 280/70R18/13.6-28
TRAKTÖR HTT A 80B 4 WD	F. Tractor	4100	2600	DİZEL	3 TURBO	3300	79/2200	12/12	ÖN-ARKA 280/70R18/380/85R24
TRAKTÖR HTT A 65C 4 WD	F. Tractor	4100	2610	DİZEL	3 TURBO	3300	68/2200	12/12	ÖN-ARKA 280/70R18/13.6-28
TRAKTÖR HTT A 80C 4 WD	F. Tractor	4100	2610	DİZEL	3 TURBO	3300	79/2200	12/12	ÖN-ARKA 280/70R18/13.6-28
TRAKTÖR HTT A 70 4 WD	F. Tractor	7000	3090	DİZEL	3 TURBO	3300	68/2200	12/12	ÖN-ARKA 11.2-24/16.9-30
TRAKTÖR HTT A 80 4 WD	F. Tractor	7000	3090	DİZEL	3 TURBO	3300	79/2200	12/12	ÖN-ARKA 11.2-24/16.9-30
TRAKTÖR HTT A 90 4 WD	F. Tractor	7060	3580	DİZEL	4 TURBO	4400	82/2200	12/12	ÖN-ARKA 13.6-24/16.9R34
TRAKTÖR HTT A 100 4 WD	F. Tractor	7060	3580	DİZEL	4 TURBO	4400	92/2200	12/12	ÖN-ARKA 13.6-24/16.9R34
TRAKTÖR HTT A 110 4 WD	F. Tractor	7060	3580	DİZEL	4 TURBO	4400	102/2200	12/12	ÖN-ARKA 13.6-24/16.9R34
TRAKTÖR POLMOT A 90 4 WD	F. Tractor	7060	3580	DİZEL	4 TURBO	4400	82/2200	12/12	ÖN-ARKA 13.6-24/16.9R34
TRAKTÖR POLMOT A 100 4 WD	F. Tractor	7060	3580	DİZEL	4 TURBO	4400	92/2200	12/12	ÖN-ARKA 13.6-24/16.9R34
TRAKTÖR POLMOT A 110 4 WD	F. Tractor	7060	3580	DİZEL	4 TURBO	4400	102/2200	12/12	ÖN-ARKA 13.6-24/16.9R34
TRAKTÖR URSUS A 90 4 WD	F. Tractor	7060	3580	DİZEL	4 TURBO	4400	82/2200	12/12	ÖN-ARKA 13.6-24/16.9R34
TRAKTÖR URSUS A 100 4 WD	F. Tractor	7060	3580	DİZEL	4 TURBO	4400	92/2200	12/12	ÖN-ARKA 13.6-24/16.9R34
TRAKTÖR URSUS A 110 4 WD	F. Tractor	7060	3580	DİZEL	4 TURBO	4400	102/2200	12/12	ÖN-ARKA 13.6-24/16.9R34

HONDA TÜRKİYE

OTOMOBİL CIVIC 1,6 DREAM DÜZ	P. Car	1670	1220	BENZİN	4	1598	125/6500	5/1	ÖN-ARKA 195/65R15
OTOMOBİL CIVIC 1,6 DREAM OTOMATİK	P. Car	1700	1241	BENZİN	4	1598	125/6500	5/1	ÖN-ARKA 195/65R15
OTOMOBİL CIVIC 1,6 PREMIUM DÜZ	P. Car	1670	1220	BENZİN	4	1598	125/6500	5/1	ÖN-ARKA 205/55R16
OTOMOBİL CIVIC 1,6 PREMIUM OTOMATİK	P. Car	1700	1241	BENZİN	4	1598	125/6500	5/1	ÖN-ARKA 205/55R16

OTOMOBİL CIVIC 1,6 ELEGANCE DÜZ	P. Car	1670	1220	BENZİN	4	1598	125/6500	5/1	ÖN-ARKA 205/55R16
OTOMOBİL CIVIC 1,6 ELEGANCE OTOMATİK	P. Car	1700	1241	BENZİN	4	1598	125/6500	5/1	ÖN-ARKA 205/55R16

HYUNDAI ASSAN

OTOMOBİL YENİ i10 1.0 D-CVVT STYLE	P. Car	1420	1008	BENZİN	3	998	66/5500	5/1	ÖN-ARKA 175/65 R 14
OTOMOBİL YENİ i10 1.0 D-CVVT STYLE OTM.	P. Car	1440	1027	BENZİN	3	998	66/5500	4/1	ÖN-ARKA 175/65 R 14
OTOMOBİL YENİ i10 1.2 D-CVVT ELITE OTM.	P. Car	1455	1036	BENZİN	4	1248	87/6000	4/1	ÖN-ARKA 185/55 R 15
OTOMOBİL YENİ i10 1.0 D-CVVT STYLE LPG	P. Car	1470	1064	BENZİN/LPG	3	998	67/6200	5/1	ÖN-ARKA 175/65 R 14
OTOMOBİL YENİ i20 1.2 D-CVVT JUMP	P. Car	1515	1045	BENZİN	4	1248	85/4000	5/1	ÖN-ARKA 185/60 R 15
OTOMOBİL YENİ i20 1.2 D-CVVT SENSE	P. Car	1515	1045	BENZİN	4	1248	85/4000	5/1	ÖN-ARKA 185/60 R 15
OTOMOBİL YENİ i20 1.2 D-CVVT ELITE	P. Car	1515	1045	BENZİN	4	1248	85/4000	5/1	ÖN-ARKA 185/60 R 16
OTOMOBİL YENİ i20 1.4 CVVT JUMP OTM.	P. Car	1565	1131	BENZİN	4	1396	100/4000	4/1	ÖN-ARKA 185/60 R 15
OTOMOBİL YENİ i20 1.4 CVVT SENSE OTM.	P. Car	1565	1131	BENZİN	4	1396	100/4000	4/1	ÖN-ARKA 185/60 R 15
OTOMOBİL YENİ i20 1.4 CVVT GO! OTM.	P. Car	1565	1131	BENZİN	4	1396	100/4000	4/1	ÖN-ARKA 185/60 R 15
OTOMOBİL YENİ i20 1.4 CVVT ELITE OTM.	P. Car	1565	1131	BENZİN	4	1396	100/4000	4/1	ÖN-ARKA 185/60 R 15
OTOMOBİL YENİ i20 1.4 CRDi JUMP	P. Car	1650	1190	DİZEL	4	1396	90/4200	6/1	ÖN-ARKA 185/60 R 15
OTOMOBİL YENİ i20 1.4 CRDi SENSE	P. Car	1650	1190	DİZEL	4	1396	90/4200	6/1	ÖN-ARKA 185/60 R 15

KARSAN

KAMYONET HD35 (Euro 5) WB 2820 mm	Pick Up	3500	2460	DİZEL	4	3933	140/2700	5/1 or 6/1	ÖN-ARKA 205/75 R16
KAMYONET HD35 (Euro 5) WB 3415 mm	Pick Up	3500	2592	DİZEL	4	3933	140/2700	5/1 or 6/1	ÖN-ARKA 205/75 R16
KAMYON HD75 (103 kW) WB 3415 mm	Truck	7500	2756	DİZEL	4	3933	140/2700	5/1 or 6/1	ÖN-ARKA 8,5 R 17,5
KAMYON HD75 (103 kW) WB 3610 mm	Truck	7500	2793	DİZEL	4	3933	140/2700	5/1 or 6/1	ÖN-ARKA 8,5 R 17,5
KAMYON HD75 (103 kW) WB 3775 mm	Truck	7500	2830	DİZEL	4	3933	140/2700	5/1 or 6/1	ÖN-ARKA 8,5 R 17,5
KAMYON HD75 Hihgpower (117,6 kW) WB 3415 mm	Truck	7500	2756	DİZEL	4	3933	160/2500	5/1 or 6/1	ÖN-ARKA 8,5 R 17,5
KAMYON HD75 Hihgpower (117,6 kW) WB 3610 mm	Truck	7500	2793	DİZEL	4	3933	160/2500	5/1 or 6/1	ÖN-ARKA 8,5 R 17,5
KAMYON HD75 Hihgpower (117,6 kW) WB 3775 mm	Truck	7500	2830	DİZEL	4	3933	160/2500	5/1 or 6/1	ÖN-ARKA 8,5 R 17,5
OTOBÜS Avancity +L (12.000 mm) = Avancity diesel urban + suburban	Bus	18000	11475	DİZEL	6	7146	290/2100	6/1	ÖN-ARKA 275/70 R 22,5
OTOBÜS Avancity + L CNG (12.000 mm) only urban	Bus	18000	11825	CNG	6	6880	279/2200	4/1	ÖN-ARKA 275/70 R 22,5
OTOBÜS Avancity +L (12.000 mm) = Avancity diesel urban + suburban	Bus	18000	11475	DİZEL	6	7146	290/2100	6/1	ÖN-ARKA 275/70 R 22,5
OTOBÜS Avancity + L CNG (12.000 mm) only urban	Bus	18000	11825	CNG	6	6880	279/2200	4/1	ÖN-ARKA 275/70 R 22,5
OTOBÜS Avancity + N (10.800 mm) = Avancity diesel urban + suburban	Bus	18000	11275	DİZEL	6	7146	290/2100	6/1	ÖN-ARKA 275/70 R 22,5
OTOBÜS Avancity + N (10.800 mm) = Avancity CNG urban + suburban	Bus	18000	11275	CNG	6	7146	290/2100	4/1	ÖN-ARKA 275/70 R 22,5
OTOBÜS Avancity + N (10.800 mm) = Avancity diesel urban + suburban	Bus	18000	11275	DİZEL	6	7146	290/2100	6/1	ÖN-ARKA 275/70 R 22,5
OTOBÜS Avancity + N (10.800 mm) = Avancity CNG urban + suburban	Bus	18000	11275	CNG	6	7146	290/2100	4/1	ÖN-ARKA 275/70 R 22,5
OTOBÜS Avancity +L (12.000 mm) = Avancity diesel urban + suburban	Bus	19200	11475	DİZEL	6	7146	290/2100	6/1	ÖN-ARKA 275/70 R 22,5
OTOBÜSAvancity + L CNG (12.000 mm) only urban	Bus	19200	11825	CNG	6	6880	279/2200	4/1	ÖN-ARKA 275/70 R 22,5
OTOBÜS Avancity +L (12.000 mm) = Avancity diesel urban + suburban	Bus	19200	11475	DİZEL	6	7146	290/2100	6/1	ÖN-ARKA 275/70 R 22,5
OTOBÜS Avancity + L CNG (12.000 mm) only urban	Bus	19200	11825	CNG	6	6880	279/2200	4/1	ÖN-ARKA 275/70 R 22,5
OTOBÜS Avancity + N (10.800 mm) = Avancity diesel urban + suburban	Bus	19200	11275	DİZEL	6	7146	290/2100	6/1	ÖN-ARKA 275/70 R 22,5
OTOBÜS Avancity + N (10.800 mm) = Avancity CNG urban + suburban	Bus	19200	11275	CNG	6	7146	290/2100	4/1	ÖN-ARKA 275/70 R 22,5
OTOBÜS Avancity + N (10.800 mm) = Avancity diesel urban + suburban	Bus	19200	11275	DİZEL	6	7146	290/2100	6/1	ÖN-ARKA 275/70 R 22,5
OTOBÜS Avancity + N (10.800 mm) = Avancity CNG urban + suburban	Bus	19200	11275	CNG	6	7146	290/2100	4/1	ÖN-ARKA 275/70 R 22,5
OTOBÜS Vivacity + M (9387 mm) urban + suburban	Bus	16000	9625	DİZEL	4	4764	219/2300	6/1	ÖN 315/60 R 22,5 ARKA 385/55 R 22,5
OTOBÜS Vivacity + C (7900 mm) urban	Bus	13200	8425	DİZEL	4	4764	219/2300	5/1	ÖN-ARKA 315/60 R 22,5
OTOBÜS Vivacity + C CNG (8000 mm)	Bus	13850	9025	CNG	6	6880	231/2200	5/1	ÖN-ARKA 315/60 R 22,5
OTOBÜS Avancity +S Diesel (18.125 mm)	Bus	28890	16830	DİZEL	6	10518	320/1900	4/1	ÖN-ARKA 275/70 R 22,5
OTOBÜS Avancity +S CNG (18.125 mm)	Bus	28890	17410	CNG	6	12820	310/2000	4/1	ÖN-ARKA 275/70 R 22,5
OTOBÜS Lander	Bus	18000	12790	DİZEL	6	10518	360/1900	4/1	ÖN-ARKA 295/80 R22,5
OTOBÜS Lander	Bus	18000	12790	DİZEL	6	10518	360/1900	6/1	ÖN-ARKA 295/80 R22,5
MİNİBÜS JEST	Minibus	4600	2815	DİZEL	4	2287	125/3600	6/1	ÖN-ARKA 215/75 R16C

M.A.N. TÜRKİYE

OTOBÜS Lion's City (A21)	Bus	18000	11500	DİZEL	6	10518	270-400/1900	OTOMATİK	ÖN-ARKA 295/80 R 22,5 / 275/70 R 22,5
OTOBÜS Lion's City (A21)	Bus	18000	11500	CNG	6	12816	272/2000	OTOMATİK	ÖN-ARKA 295/80 R 22,5 / 275/70 R 22,5
OTOBÜS Lion's City G (A23)	Bus	28000	11500	CNG	6	12816	310/2000	OTOMATİK	ÖN-ARKA 275/70 R 22,5
OTOBÜS Lion's City G (A23)	Bus	28000	11500	DİZEL	6	10518	320/1900	OTOMATİK	ÖN-ARKA 275/70 R 22,5
OTOBÜS Lion's City G (A23)	Bus	28000	11500	DİZEL	6	10518	360/1900	OTOMATİK	ÖN-ARKA 275/70 R 22,5
OTOBÜS Lion's City T (A37)	Bus	18000	11500	DİZEL	6	6871	290/2300	OTOMATİK	ÖN-ARKA 295/80 R 22,5 / 275/70 R 22,5
OTOBÜS Lion's City M (A47)	Bus	18000	11500	DİZEL	6	6871	290/2300	OTOMATİK	ÖN-ARKA 295/80 R 22,5 / 275/70 R 22,5
OTOBÜS Lion's City T (A78)	Bus	18000	11500	DİZEL	6	6871	280/2300	OTOMATİK	ÖN-ARKA 295/80 R 22,5 / 275/70 R 22,5
OTOBÜS Lion's City T (A78)	Bus	18000	11500	DİZEL	6	6871	290/2300	OTOMATİK	ÖN-ARKA 295/80 R 22,5 / 275/70 R 22,5

OTOBÜS Fortuna (R07)	Bus	18000	13775	DİZEL	6	10518	400/1900	MANUEL/OTOMATİK	ÖN-ARKA 295/80 R 22.5
OTOBÜS Fortuna (R07)	Bus	18000	13775	DİZEL	6	12419	440/1900	MANUEL/OTOMATİK	ÖN-ARKA 295/80 R 22.5
OTOBÜS Fortuna Mega (R08)	Bus	24900	16350	DİZEL	6	12419	440/1900	MANUEL/OTOMATİK	ÖN-ARKA 295/80 R 22.5
OTOBÜS Fortuna Mega (R08)	Bus	24900	16350	DİZEL	6	12419	480/1900	MANUEL/OTOMATİK	ÖN-ARKA 295/80 R 22.5
OTOBÜS Lion's Coach L (R09)	Bus	24900	16070	DİZEL	6	12419	440/1900	MANUEL/OTOMATİK	ÖN-ARKA 295/80 R 22.5
OTOBÜS Lion's Coach L (R09)	Bus	24900	16070	DİZEL	6	12419	480/1900	MANUEL/OTOMATİK	ÖN-ARKA 295/80 R 22.5
OTOBÜS LION'S REGIO (R12)	Bus	18000	12300	DİZEL	6	10518	320/1900	MANUEL/OTOMATİK	ÖN-ARKA 295/80 R 22.5
OTOBÜS LION'S REGIO (R12)	Bus	18000	12300	DİZEL	6	10518	360/1900	MANUEL/OTOMATİK	ÖN-ARKA 295/80 R 22.5
OTOBÜS LION'S REGIO (R12)	Bus	18000	12300	DİZEL	6	10518	400/1900	MANUEL/OTOMATİK	ÖN-ARKA 295/80 R 22.5
OTOBÜS LION'S REGIO L (R13)	Bus	24900	14900	DİZEL	6	10518	320/1900	MANUEL/OTOMATİK	ÖN-ARKA 295/80 R 22.5
OTOBÜS LION'S REGIO L (R13)	Bus	24900	14900	DİZEL	6	10518	360/1900	MANUEL/OTOMATİK	ÖN-ARKA 295/80 R 22.5
OTOBÜS LION'S REGIO L (R13)	Bus	24900	14900	DİZEL	6	10518	400/1900	MANUEL/OTOMATİK	ÖN-ARKA 295/80 R 22.5
OTOBÜS LION'S REGIO 13M (R14)	Bus	18000	13000	DİZEL	6	10518	320/1900	MANUEL/OTOMATİK	ÖN-ARKA 295/80 R 22.5
OTOBÜS LION'S REGIO 13M (R14)	Bus	18000	13000	DİZEL	6	10518	360/1900	MANUEL/OTOMATİK	ÖN-ARKA 295/80 R 22.5
OTOBÜS LION'S REGIO 13M (R14)	Bus	18000	13000	DİZEL	6	10518	400/1900	MANUEL/OTOMATİK	ÖN-ARKA 295/80 R 22.5
OTOBÜS N2216/3 SHD TOURLINER (P20)	Bus	24900	16070	DİZEL	6	10518	440/1900	MANUEL/OTOMATİK	ÖN-ARKA 295/80 R 22.5
OTOBÜS N2216/3 SHD TOURLINER (P20)	Bus	24900	16070	DİZEL	6	10518	480/1900	MANUEL/OTOMATİK	ÖN-ARKA 295/80 R 22.5
OTOBÜS N 2216 SHD TOURLINER (P21)	Bus	18000	13775	DİZEL	6	10518	400/1900	MANUEL/OTOMATİK	ÖN-ARKA 295/80 R 22.5
OTOBÜS N 2216 SHD TOURLINER (P21)	Bus	18000	13775	DİZEL	6	10518	440/1900	MANUEL/OTOMATİK	ÖN-ARKA 295/80 R 22.5
OTOBÜS N 2216/3 SHD-L TOURLINER (P22)	Bus	24900	16350	DİZEL	6	12419	440/1900	MANUEL/OTOMATİK	ÖN-ARKA 295/80 R 22.5
OTOBÜS N 2216/3 SHD-L TOURLINER (P22)	Bus	24900	16350	DİZEL	6	12419	480/1900	MANUEL/OTOMATİK	ÖN-ARKA 295/80 R 22.5

M. BENZ TÜRK

KAMYON AXOR 1829 K (4x2)	Truck	18.000	6490	DİZEL	6	6374	286/2200	9/1	ÖN-ARKA 12 R 22,5
KAMYON AXOR 2529 CD (6 x 2)	Truck	25.000	8120	DİZEL	6	6374	286/2200	9/1	ÖN-ARKA 12 R 22,5
KAMYON AXOR 2640 CL-RÖM (6x2)	Truck	26.000	8610	DİZEL	6	11967	401/1900	12/4	ÖN-ARKA 315/80 R 22,5
KAMYON AXOR 2529 K (6x2)	Truck	25.000	7920	DİZEL	6	6374	286/2200	9/1	ÖN-ARKA 12 R 22,5
KAMYON AXOR 3229 C (8x2)	Truck	32.000	9450	DİZEL	6	6374	286/2200	9/1	ÖN-ARKA 315/80 R 22,5
KAMYON AXOR 3229 C-HL6 ADR (8X2)	Truck	32.000	8840	DİZEL	6	6374	286/2200	9/1	ÖN-ARKA 315/80 R 22,5
KAMYON AXOR 3240 C (8X2)	Truck	32.000	9940	DİZEL	6	11967	401/1900	12/4	ÖN-ARKA 315/80 R 22,5
KAMYON AXOR 3240 C-HL7 (8x2)	Truck	32.000	10140	DİZEL	6	11967	401/1900	16/2	ÖN-ARKA 315/80 R 22,5
KAMYON ATEGO 1216 C/36-KK (4x2)	Truck	11.990	4270	DİZEL	4	4249	156/2200	6/1	ÖN-ARKA 265/70 R 19,5
KAMYON ATEGO 1216 C/42-KK (4x2)	Truck	11.990	4340	DİZEL	4	4249	156/2200	6/1	ÖN-ARKA 265/70 R 19,5
KAMYON ATEGO 1518 C/36-KK (4x2)	Truck	15.000	4530	DİZEL	4	4249	177/2200	6/1	ÖN-ARKA 285/70 R 19,5
KAMYON ATEGO 1518 C/42-KK (4x2)	Truck	15.500	4580	DİZEL	4	4249	177/2200	6/1	ÖN-ARKA 285/70 R 19,5
KAMYON ATEGO 1518 C/42-UK (4x2)	Truck	15.500	4730	DİZEL	4	4249	177/2200	6/1	ÖN-ARKA 285/70 R 19,5
KAMYON ATEGO 2124 C/42 (6x2)	Truck	21.000	6330	DİZEL	6	6374	238/2200	6/1	ÖN-ARKA 285/70 R 22,5
KAMYON ATEGO 2124 C/48 (6x2)	Truck	21.000	6330	DİZEL	6	6374	238/2200	6/1	ÖN-ARKA 285/70 R 22,5
ÇEKİCİ ACTROS 1841 LSNRL	R. Tractor	18.000	7650	DİZEL	6	11946	408/1800	12/4	ÖN-ARKA 295/60 R 22,5
ÇEKİCİ ACTROS 1941 LS	R. Tractor	18.000	6950	DİZEL	6	11946	408/1800	12/4	ÖN-ARKA 315 / 80 R 22,5
ÇEKİCİ ACTROS 1841 LS	R. Tractor	18.000	7390	DİZEL	6	11946	408/1800	12/4	ÖN-ARKA 295 / 80 R 22,5
ÇEKİCİ ACTROS 1844 LS	R. Tractor	18.000	8020	DİZEL	6	11946	435/1800	12/4	ÖN-ARKA 315 / 70 R 22,5
ÇEKİCİ ACTROS 1851 LS	R. Tractor	18.000	8670	DİZEL	8	15928	510/1800	12/4	ÖN-ARKA 295 / 80 R 22,5
ÇEKİCİ ACTROS 3341 S	R. Tractor	33.000	9670	DİZEL	6	11946	408/1800	16/2	ÖN-ARKA 315 / 80 R 22,5
ÇEKİCİ AXOR 1836 LS	R. Tractor	18.000	7200	DİZEL	6	11967	360/1900	16/2	ÖN-ARKA 295 / 80 R 22,5
ÇEKİCİ AXOR 1840 LS	R. Tractor	18.000	7500	DİZEL	6	11967	401/1900	12/4	ÖN-ARKA 295 / 80 R 22,5
İNŞAAT KAMYON ACTROS 4151 K	Truck	48.000	11940	DİZEL	8	15928	510/1800	16/2	ÖN-ARKA 12,00 R 24
İNŞAAT KAMYON AXOR 3029 B	Truck	33.500	8660	DİZEL	6	6374	286/2200	9/1	ÖN-ARKA 315/80 R 22,5
İNŞAAT KAMYON AXOR 3029 K	Truck	33.500	8540	DİZEL	6	6374	286/2200	9/1	ÖN-ARKA 315/80 R 22,5
İNŞAAT KAMYON AXOR 3236	Truck	32.000	9670	DİZEL	6	11967	360/1900	9/1	ÖN-ARKA 315/80 R 22,5
İNŞAAT KAMYON AXOR 3340 K/36	Truck	33.500	9130	DİZEL	6	11967	401/1900	16/2	ÖN-ARKA 315/80 R 22,5
İNŞAAT KAMYON AXOR 3340 K/39	Truck	33.500	9290	DİZEL	6	11967	401/1900	16/2	ÖN-ARKA 315/80 R 22,5
İNŞAAT KAMYON AXOR 3340 K/45	Truck	33.000	9260	DİZEL	6	11967	401/1900	16/2	ÖN-ARKA 315/80 R 22,5
İNŞAAT KAMYON AXOR 3340 K/51	Truck	33.000	9500	DİZEL	6	11967	401/1900	16/2	ÖN-ARKA 315/80 R 22,5
İNŞAAT KAMYON AXOR 4140 B/42	Truck	41.000	10460	DİZEL	6	11967	401/1900	16/2	ÖN-ARKA 315/80 R 22,5
İNŞAAT KAMYON AXOR 4140 B/51	Truck	41.000	10550	DİZEL	6	11967	401/1900	16/2	ÖN-ARKA 315/80 R 22,5
OTOBÜS Travego 15 SHD	Bus	18000	14150	DİZEL	6	11967	428/2000	6/1	ÖN-ARKA 295/80 R 22.5
OTOBÜS Travego 15 SHD	Bus	18000	14150	DİZEL	6	11967	455/2000	6/1	ÖN-ARKA 295/80 R 22.5
OTOBÜS Travego 15 SHD	Bus	18000	14150	DİZEL	6	11967	428/2000	8/2	ÖN-ARKA 295/80 R 22.5
OTOBÜS Travego 15 SHD	Bus	18000	14150	DİZEL	6	11967	455/2000	8/2	ÖN-ARKA 295/80 R 22.5
OTOBÜS Travego 17 SHD	Bus	24000	17000	DİZEL	8	15928	476/2000	6/1	ÖN-ARKA 295/80 R 22.5
OTOBÜS Travego 17 SHD	Bus	24000	17000	DİZEL	8	15928	503/2000	6/1	ÖN-ARKA 295/80 R 22.5

OTOBÜS Travego 17 SHD	Bus	24000	17000	DİZEL	8	15928	476/2000	8/2	ÖN-ARKA 295/80 R 22.5
OTOBÜS Travego 17 SHD	Bus	24000	17000	DİZEL	8	15928	503/2000	8/2	ÖN-ARKA 295/80 R 22.5
OTOBÜS Travego 15 RHD	Bus	18000	14150	DİZEL	6	11967	428/2000	6/1	ÖN-ARKA 295/80 R 22.5
OTOBÜS Turismo 15 RH	Bus	18000	12600	DİZEL	6	11967	354/2000	6/1	ÖN-ARKA 295/80 R 22.5
OTOBÜS Turismo 16 RH	Bus	18000	12700	DİZEL	6	11967	354/2000	6/1	ÖN-ARKA 295/80 R 22.5
OTOBÜS Turismo 15 RH	Bus	18000	12600	DİZEL	6	11967	408/2200	6/1	ÖN-ARKA 295/80 R 22.5
OTOBÜS Turismo 16 RH	Bus	18000	12700	DİZEL	6	11967	408/2200	6/1	ÖN-ARKA 295/80 R 22.5
OTOBÜS Turismo 15 RH	Bus	18000	12600	DİZEL	6	11967	408/2200	8/1	ÖN-ARKA 295/80 R 22.5
OTOBÜS Turismo 16 RH	Bus	18000	12700	DİZEL	6	11967	408/2200	8/1	ÖN-ARKA 295/80 R 22.5
OTOBÜS Turismo 15 RH	Bus	18000	12600	DİZEL	6	11967	354/2000	6/1	ÖN-ARKA 295/80 R 22.5
OTOBÜS Turismo 16 RH	Bus	18000	12700	DİZEL	6	11967	354/2000	6/1	ÖN-ARKA 295/80 R 22.5
OTOBÜS Turismo 15 RHD sağ veya sol direksiyonlu	Bus	18000	12900	DİZEL	6	11967	354/2000	6/1	ÖN-ARKA 295/80 R 22.5
OTOBÜS Turismo 15 RHD sağ veya sol direksiyonlu	Bus	18000	12900	DİZEL	6	11967	354/2000	6/1	ÖN-ARKA 295/80 R 22.5
OTOBÜS Turismo 15 RHD sağ veya sol direksiyonlu	Bus	18000	12900	DİZEL	6	11967	408/2200	6/1	ÖN-ARKA 295/80 R 22.5
OTOBÜS Turismo 15 RHD sağ veya sol direksiyonlu	Bus	18000	12900	DİZEL	6	11967	408/2200	12/1	ÖN-ARKA 295/80 R 22.5
OTOBÜS Turismo 15 RHD sağ veya sol direksiyonlu	Bus	18000	12900	DİZEL	6	11967	408/2200	8/1	ÖN-ARKA 295/80 R 22.5
OTOBÜS Turismo 16 RHD	Bus	24000	15200	DİZEL	6	11967	428/2100	6/1	ÖN-ARKA 295/80 R 22.5
OTOBÜS Turismo 16 RHD	Bus	24000	15200	DİZEL	6	11967	428/2100	8/1	ÖN-ARKA 295/80 R 22.5
OTOBÜS Turismo 16 RHD	Bus	24000	15200	DİZEL	6	11967	428/2100	12/1	ÖN-ARKA 295/80 R 22.5
OTOBÜS Turismo 16 RHD -2A	Bus	18000	13800	DİZEL	6	11967	354/2000	6/1	ÖN-ARKA 295/80 R 22.5
OTOBÜS Turismo 16 RHD -2A	Bus	18000	13800	DİZEL	6	11967	354/2000	6/1	ÖN-ARKA 295/80 R 22.5
OTOBÜS Turismo 16 RHD -2A	Bus	18000	13800	DİZEL	6	11967	408/2200	6/1	ÖN-ARKA 295/80 R 22.5
OTOBÜS Turismo 16 RHD -2A	Bus	18000	13800	DİZEL	6	11967	408/2200	12/1	ÖN-ARKA 295/80 R 22.5
OTOBÜS Turismo 16 RHD -2A	Bus	18000	13800	DİZEL	6	11967	408/2200	8/1	ÖN-ARKA 295/80 R 22.5
OTOBÜS Turismo 17 RHD	Bus	24000	16500	DİZEL	6	11967	421/2000	6/1	ÖN-ARKA 295/80 R 22.5
OTOBÜS Turismo 17 RHD	Bus	24000	16500	DİZEL	6	11967	428/2100	6/1	ÖN-ARKA 295/80 R 22.5
OTOBÜS Turismo 17 RHD	Bus	24000	16500	DİZEL	6	11967	428/2100	6/1	ÖN-ARKA 295/80 R 22.5
OTOBÜS Turismo 17 RHD	Bus	24000	16500	DİZEL	6	11967	428/2100	12/1	ÖN-ARKA 295/80 R 22.5
OTOBÜS Intouro MBÜ-Ü 15	Bus	18000	11500	DİZEL	6	7200	285/2200	6/1	ÖN-ARKA 295/80 R 22.5 ve 275/70 R 22.5
OTOBÜS Intouro MBÜ-Ü 16	Bus	18000	11700	DİZEL	6	7200	285/2200	6/1	ÖN-ARKA 295/80 R 22.5 ve 275/70 R 22.5
OTOBÜS Intouro MBÜ-S 15	Bus	18000	11500	DİZEL	6	7200	285/2200	6/1	ÖN-ARKA 295/80 R 22.5
OTOBÜS Intouro MBÜ-S 16	Bus	18000	11700	DİZEL	6	7200	285/2200	6/1	ÖN-ARKA 295/80 R 22.5 ve 275/70 R 22.5
OTOBÜS Intouro MBÜ-Ü 15	Bus	18000	12300	DİZEL	6	11967	299/2000	6/1	ÖN-ARKA 295/80 R 22.5 ve 275/70 R 22.5
OTOBÜS Intouro MBÜ-Ü 16	Bus	18000	13000	DİZEL	6	11967	299/2000	6/1	ÖN-ARKA 295/80 R 22.5 ve 275/70 R 22.5
OTOBÜS Intouro MBÜ-S 15	Bus	18000	12000	DİZEL	6	11967	299/2000	6/1	ÖN-ARKA 295/80 R 22.5
OTOBÜS Intouro MBÜ-S 16	Bus	18000	12700	DİZEL	6	11967	299/2000	6/1	ÖN-ARKA 295/80 R 22.5 ve 275/70 R 22.5
OTOBÜS Conecto	Bus	18000	11150	DİZEL	6	6370	279/2200	6/1	ÖN-ARKA 275/70 R 22.5
OTOBÜS Conecto	Bus	18000	11150	DİZEL	6	7201	286/2200	4/1-6/1	ÖN-ARKA 275/70 R 22.5
OTOBÜS Conecto	Bus	18000	11150	DİZEL	6	7201	286/2200	4/1-6/1	ÖN-ARKA 275/70 R 22.5
OTOBÜS Conecto G (mafsalli)	Bus	28.000	16600	DİZEL	6	11967	354/2000	6/1	ÖN-ARKA 275/70 R 22.5

OTOKAR

MINIBUS M 2010	Minibus	5800	3900	DİZEL	4	2998	146/3500	5/1	ÖN-ARKA 205/75 R16C
MINIBUS CENTRO C	Minibus	5800	3900	DİZEL	4	2998	146/3500	5/1 (4/1)	ÖN-ARKA 205/75 R16C
MİDİBÜS NAVIGO 145 S	Midibus	9200	5466-6402	DİZEL	4	4764	152/2400	6/1	ÖN-ARKA 225/75 R17,5
MİDİBÜS NAVIGO T	Midibus	9200	5466-7092	DİZEL	4	4462	180/2300	6/1 (4/1)	ÖN-ARKA 225/75 R17,5 (235/75 R17,5)
MİDİBÜS NAVIGO U	Midibus	9900	6118-7092	DİZEL	4	4462	180/2300	6/1 (4/1)	ÖN-ARKA 235/75 R17,5
MİDİBÜS NAVIGO C	Midibus	10500	5716-6096	DİZEL	4	4462	180/2300	6/1 (4/1)	ÖN-ARKA 235/75 R17,5
MIDIBUS NAVIGO MEGA	Midibus	10500	7100	DİZEL	4	4462	180/2300	6/1	ÖN-ARKA 245/75 R17,5
MİDİBÜS NAVIGO MAXI CITY 145 S	Midibus	9200	5466-6402	DİZEL	4	4764	152/2400	6/1	ÖN-ARKA 235/75 R17,5
MİDİBÜS SULTAN 140 COMFORT	Midibus	9200	5466-6402	DİZEL	4	4462	140/2300	6/1	ÖN-ARKA 225/75 R17,5
MİDİBÜS SULTAN 140 S	Midibus	9000	5466-6402	DİZEL	4	4462	140/2300	6/1	ÖN-ARKA 215/75 R17,5
MİDİBÜS SULTAN 140 S CITY	Midibus	9000	5466-6402	DİZEL	4	4462	140/2300	6/1	ÖN-ARKA 225/75 R17,5
MİDİBÜS SULTAN MAXI	Midibus	10500	5896-6464	DİZEL	4	4462	160/2300	6/1	ÖN-ARKA 235/75 R17,5
MİDİBÜS SULTAN MAXI CITY	Midibus	10500	5716-6096	DİZEL	4	4462	140/2300	6/1	ÖN-ARKA 235/75 R17,5
MIDIBUS SULTAN MEGA	Midibus	10500	7100	DİZEL	4	4462	185/2300	6/1	ÖN-ARKA 245/75 R17,5
MIDIBUS TEMPO	Midibus	8500	5450-5900	DİZEL	4	3200	160/3000	6/1	ÖN-ARKA 215/75 R17,5
MİDİBÜS TEMPO	Midibus	8500	5450-5900	DİZEL	4	3000	140/3400	6/1	ÖN-ARKA 215/75 R17,5
OTOBÜS DORUK 220 H	Bus	13500	7601-9814	DİZEL	4	4764	220/2300	6/1	ÖN-ARKA 265/70 R19,5
OTOBÜS DORUK 220 S	Bus	13500	7601-9814	DİZEL	4	4764	220/2300	6/1	ÖN-ARKA 265/70 R19,5
OTOBÜS DORUK 220 LE	Bus	13500	7783-8190	DİZEL	4	4764	220/2300	6/1	ÖN-ARKA 265/70 R19,5
OTOBÜS DORUK 220 T	Bus	14000	7601-9814	DİZEL	4	4764	220/2300	6/1	ÖN-ARKA 265/70 R19,5

OTOBUS VECTIO C	Bus	EU6 - 14000	7900-8306	DİZEL	6	6871	250/2300	4/1	ÖN-ARKA 265/70 R19.5
OTOBUS VECTIO U	Bus	EU6 - 14000	8165-9027	DİZEL	6	6871	250/2300	6/1 (4/1)	ÖN-ARKA 265/70 R19.5
OTOBÜS VECTIO U LE		EU6 - 14000		DİZEL	6	6871	250/2300	Ecolife 6/1	ÖN-ARKA 265/70 R19.5
OTOBUS VECTIO T	Bus	14000	6799-9827	DİZEL	6	6871	290/2300	6/1	ÖN-ARKA 265/70 R19.5
OTOBÜS KENT 290 H	Bus	18000	3754-10974	DİZEL	6	7150	290/2100	4/1	ÖN-ARKA 295/80 R22.5
OTOBÜS KENT 290 LF	Bus	18000	3640 - 1105	DİZEL	6	7150	290/2100	4/1	ÖN- ARKA 275/70 R22,5
OTOBÜS KENT C	Bus	18000	3640 - 1105	DİZEL	6	7150	290/2100	4/1	ÖN- ARKA 275/70 R22,5
OTOBÜS KENT U	Bus	18000	3754-11758	DİZEL	6	7150	290/2100	6/1	ÖN-ARKA 295/80 R22.5
OTOBÜS TERRITO	Bus	18000	3754-13052	DİZEL	6	7150	290/2100	6/1	ÖN-ARKA 295/80 R22.5
OTOBÜS TERRITO	Bus	18000-19000	3754-13052	DİZEL	6	6870	290/2300	6/1	ÖN-ARKA 295/80 R22.5
KAMYON ATLAS	Truck	8500	2970-3100	DİZEL	4	3760	156/2600	6/1	ÖN-ARKA 215/75 R17.5
LAND ROVER DEFENDER 110 Panelvan	Pick Up	3050	2040	DİZEL	4	2402	122/3500	6/1	ÖN-ARKA 7.50 R16
LAND ROVER DEFENDER 110 PU	Pick Up	3050	2130	DİZEL	4	2402	122/3500	6/1	ÖN-ARKA 7.50 R16
LAND ROVER DEFENDER 130 PU Tek Kabin	Pick Up	3500	2185	DİZEL	4	2402	122/3500	6/1	ÖN-ARKA 235/85 R16
LAND ROVER DEFENDER 130 PU Çift Kabin	Pick Up	3500	2200	DİZEL	4	2402	122/3500	6/1	ÖN-ARKA 235/85 R16

OYAK RENAULT

OTOMOBİL FLUENCE Sedan DİZEL 1.5 (90 bg)	P. Car	1760	1280	DİZEL	4	1461	85 / 3750	5/1	ÖN-ARKA 205/65 R 15 - 205/60 R 16 - 205/55 R 17
OTOMOBİL FLUENCE Sedan DİZEL 1.5 (110 bg)	P. Car	1777	1280	DİZEL	4	1461	105 / 4000	6/1	ÖN-ARKA 205/65 R 15 - 205/60 R 16 - 205/55 R 17
OTOMOBİL FLUENCE Sedan DİZEL 1.5 OTOMATİK "EDC" (110 bg)	P. Car	1814	1389	DİZEL	4	1461	110 / 4000	OTOMATİK	ÖN-ARKA 205/65 R 15 - 205/60 R 16 - 205/55 R 17
OTOMOBİL FLUENCE Sedan DİZEL 1.6 (130 bg)	P. Car	1850	1390	DİZEL	4	1598	130 / 4000	6/1	ÖN-ARKA 205/65 R 15 - 205/60 R 16 - 205/55 R 17
OTOMOBİL FLUENCE Sedan BENZİNLİ 1.6 16V Düz vites	P. Car	1725	1265	BENZİN	4	1598	110 / 6000	5/1	ÖN-ARKA 205/65 R 15 - 205/60 R 16 - 205/55 R 17
OTOMOBİL FLUENCE Sedan BENZİNLİ 1.6 16V Otomatik	P. Car	1767	1280	BENZİN	4	1598	115 / 6000	OTOMATİK	ÖN-ARKA 205/65 R 15 - 205/60 R 16 - 205/55 R 17
OTOMOBİL FLUENCE Sedan BENZİNLİ 2,0 16V Düz vites	P. Car	1760	1260	BENZİN	4	1997	143 / 6000	6 / 1	ÖN-ARKA 205/65 R 15 - 205/60 R 16 - 205/55 R 17
OTOMOBİL FLUENCE Sedan BENZİNLİ 2,0 16V Otomatik	P. Car	1785	1268	BENZİN	4	1997	143 / 6000	OTOMATİK	ÖN-ARKA 205/65 R 15 - 205/60 R 16 - 205/55 R 17
OTOMOBİL MEGANE III Hatch-back 5 kapı DİZEL 1.5 (90 bg)	P. Car	1766	1280	DİZEL	4	1461	85 / 3750	5/1	ÖN-ARKA 205/65 R 15 - 205/60 R 16 - 205/55 R 17
OTOMOBİL MEGANE III Hatch-back 5 kapı DİZEL 1.5 (110 bg)	P. Car	1772	1280	DİZEL	4	1461	105 / 4000	6/1	ÖN-ARKA 205/65 R 15 - 205/60 R 16 - 205/55 R 17
OTOMOBİL MEGANE III Hatchback DİZEL 1.5 OTOMATİK "EDC" (110 bg)	P. Car	1809	1384	DİZEL	4	1461	110 / 4000	OTOMATİK	ÖN-ARKA 205/65 R 15 - 205/60 R 16 - 205/55 R 17
OTOMOBİL MEGANE III Hatch-back 5 kapı BENZİNLİ 1.6 16V Düz vites	P. Car	1720	1260	BENZİN	4	1598	110 / 6000	5/1	ÖN-ARKA 205/65 R 15 - 205/60 R 16 - 205/55 R 17
OTOMOBİL MEGANE III Hatch-back 5 kapı BENZİNLİ 1.6 16V Otomatik vites	P. Car	1767	1280	BENZİN	4	1598	115 / 6000	OTOMATİK	ÖN-ARKA 205/65 R 15 - 205/60 R 16 - 205/55 R 17
OTOMOBİL MEGANE III Hatchback BENZİNLİ 2,0 16V Düz vites	P. Car	1758	1273	BENZİN	4	1997	143 / 6000	6 / 1	ÖN-ARKA 205/65 R 15 - 205/60 R 16 - 205/55 R 17
OTOMOBİL MEGANE III Hatchback BENZİNLİ 2,0 16V Otomatik	P. Car	1783	1281	BENZİN	4	1997	143 / 6000	OTOMATİK	ÖN-ARKA 205/65 R 15 - 205/60 R 16 - 205/55 R 17
OTOMOBİL CLİO IV hatch-back 5 kapı 1,2 16V	P. Car	1563	1055	BENZİN	4	1149	75 / 5500	5/1	ÖN-ARKA 185/65 R 15 - 195/55 R 16 - 205/45 R 17
OTOMOBİL CLİO IV hatch-back 5 kapı 0,9 l 16V	P. Car	1588	1084	BENZİN	3	898	90 / 5250	5/1	ÖN-ARKA 185/65 R 15 - 195/55 R 16 - 205/45 R 17
OTOMOBİL CLİO IV hatch-back 5 kapı 1,2 l TURBO 120 hp OTOMATİK "EDC"	P.Car	1657	1165	BENZİN	4	1197	120 / 4900	6 / 1	ÖN-ARKA 185/65 R 15 - 195/55 R 16 - 205/45 R 17
OTOMOBİL CLİO IV hatch-back 5 kapı 1,5 l DİZEL 75 hp	P. Car	1651	1146	DİZEL	4	1461	75 / 4000	5/1	ÖN-ARKA 185/65 R 15 - 195/55 R 16 - 205/45 R 17
OTOMOBİL CLİO IV hatch-back 5 kapı 1,5 l DİZEL 90 hp	P. Car	1658	1146	DİZEL	4	1461	90 / 4000	5/1	ÖN-ARKA 185/65 R 15 - 195/55 R 16 - 205/45 R 17
OTOMOBİL CLİO IV hatch-back 5 kapı 1,5 l DİZEL 90 hp OTOMATİK "EDC"	P. Car	1708	1227	DİZEL	4	1461	90 / 4000	6 / 1	ÖN-ARKA 185/65 R 15 - 195/55 R 16 - 205/45 R 17
OTOMOBİL CLİO IV SPORT TOURER 1,2 16V	P. Car	1610	1105	BENZİN	4	1149	75 / 5500	5/1	ÖN-ARKA 185/65 R 15 - 195/55 R 16
OTOMOBİL CLİO IV SPORT TOURER 0,9 l 16V	P. Car	1640	1130	BENZİN	3	898	90 / 5250	5/1	ÖN-ARKA 185/65 R 15 - 195/55 R 16 - 205/45 R17
OTOMOBİL CLİO IV SPORT TOURER 1,2 l TURBO 120 hp OTOMATİK "EDC"	P.Car	1705	1199	BENZİN	4	1197	120 / 4900	6 / 1	ÖN-ARKA 185/65 R 15 - 195/55 R 16 - 205/45 R17
OTOMOBİL CLİO IV SPORT TOURER 1,5 l DİZEL 75 hp	P. Car	1703	1194	DİZEL	4	1461	75 / 4000	5/1	ÖN-ARKA 185/65 R 15 - 195/55 R 16 - 205/45 R17
OTOMOBİL CLİO IV SPORT TOURER 1,5 l DİZEL 90 hp	P. Car	1711	1196	DİZEL	4	1461	90 / 4000	5/1	ÖN-ARKA 185/65 R 15 - 195/55 R 16 - 205/45 R17
OTOMOBİL CLİO IV SPORT TOURER 1,5 l DİZEL 90 hp OTOMATİK "EDC"	P. Car	1741	1255	DİZEL	4	1461	90 / 4000	6 / 1	ÖN-ARKA 185/65 R15 - 195/55 R16

TEMSA GLOBAL

OTOBÜS AVENUE LF 12	Bus	18000	11440	DİZEL	6	9186	310/1900	6/1	ÖN-ARKA 275/70 R22.5
OTOBÜS AVENUE LF12	Bus	18000	10800	DİZEL	6	6692.4	285/2300	6/1	ÖN-ARKA 275/70 R22.5
OTOBÜS AVENUE LF 12	Bus	18000	11440	DİZEL	6	9186	310/1900	6/1	ÖN-ARKA 275/70 R22.5
OTOBÜS BUS01 EPA10	Bus	18000	12000	DİZEL	6	8900	345/1400	6/1	ÖN-ARKA 295/80R22.5
OTOBÜS BUS01 EPA07	Bus	18000	12000	DİZEL	6	8900	365/1400	6/1	ÖN-ARKA 295/80R22.5
OTOBÜS DIAMOND 14	Bus	25300	17130	DİZEL	6	12816	480/1900	12/1	ÖN-ARKA 275/70 R22.5
OTOBÜS TS30 9.3	Bus	14440	9580	DİZEL	6	6692.4	250/2300	6/1	ÖN-ARKA 265/70R19.5
OTOBÜS TS30 9.3	Bus	14440	9580	DİZEL	6	6692.4	250/2300	6/1	ÖN-ARKA 265/70R19.5
OTOBÜS TOURMALIN IC 12.8	Bus	19000	12500	DİZEL	6	9186	360/1900	6/1	ÖN-ARKA 295/80R22.5
OTOBÜS TOURMALIN IC 12.8	Bus	19000	12500	DİZEL	6	9186	360/1900	6/1	ÖN-ARKA 295/80R22.5
OTOBÜS TOURMALIN IC 12.8	Bus	19000	12500	DİZEL	6	9186	300/2500	6/1	ÖN-ARKA 295/80R22.5
OTOBÜS TOURMALIN IC 12	Bus	19000	12500	DİZEL	6	9186	360/1900	6/1	ÖN-ARKA 295/80R22.5
OTOBÜS TOURMALIN IC 12	Bus	19000	12500	DİZEL	6	9186	360/1900	6/1	ÖN-ARKA 295/80R22.5
OTOBÜS TOURMALIN IC 12	Bus	19000	12500	DİZEL	6	9186	360/1900	6/1	ÖN-ARKA 295/80R22.5

OTOBÜS TOURMALIN IC 12	Bus	19000	12500	DİZEL	6	9186	360/1900	6/1	ÖN-ARKA 295/80R22.5
OTOBÜS TOURMALIN 13	Bus	19000	12820	DİZEL	6	6692.4	300/2500	6/1	ÖN-ARKA 295/80R22.5
OTOBÜS TOURMALIN 12.2	Bus	19000	12500	DİZEL	6	6692.4	300/2500	6/1	ÖN-ARKA 295/80R22.5
OTOBÜS TOURMALIN 12	Bus	19000	12500	DİZEL	6	6692.4	300/2500	6/1	ÖN-ARKA 295/80R22.5
OTOBÜS TOURMALIN 12	Bus	19000	12500	DİZEL	6	6692.4	300/2500	6/1	ÖN-ARKA 295/80R22.5
OTOBÜS TOURMALIN 12	Bus	19000	12500	DİZEL	6	9186	310/1900	6/1	ÖN-ARKA 295/80R22.5
OTOBÜS TOURMALIN 12	Bus	19000	12000	DİZEL	6	6692.4	300/2500	6/1	ÖN-ARKA 295/80 R22.5
OTOBÜS TOURMALIN 12	Bus	19000	12500	DİZEL	6	9186	310/1900	6/1	ÖN-ARKA 295/80R22.5
OTOBÜS SAFIR 13	Bus	19000	13500	DİZEL	6	12902	410/1900	6/1	ÖN-ARKA 295/80R22.5
OTOBÜS SAFIR 13	Bus	19000	13500	DİZEL	6	12902	410/1900	12/1	ÖN-ARKA 295/80R22.5
OTOBÜS SAFIR 12.2	Bus	19000	13500	DİZEL	6	12902	410/1900	6/1	ÖN-ARKA 295/80R22.5
OTOBÜS SAFARI RD 13	Bus	19000	13500	DİZEL	6	9186	360/1900	6/1	ÖN-ARKA 295/80R22.5
OTOBÜS SAFARI RD 13	Bus	19000	13500	DİZEL	6	9186	360/1900	6/1	ÖN-ARKA 295/80R22.5
OTOBÜS SAFARI RD 12.2	Bus	19000	13500	DİZEL	6	9186	360/1900	6/1	ÖN-ARKA 295/80R22.5
OTOBÜS SAFARI RD 12.2	Bus	19000	13500	DİZEL	6	9186	360/1900	6/1	ÖN-ARKA 295/80R22.5
OTOBÜS SAFARI RD 12.2	Bus	19000	13500	DİZEL	6	9186	360/1900	6/1	ÖN-ARKA 295/80R22.5
OTOBÜS SAFARI RD 12.2	Bus	19000	13500	DİZEL	6	9186	360/1900	6/1	ÖN-ARKA 295/80R22.5
OTOBÜS SAFARI RD 12.2	Bus	19000	13500	DİZEL	6	9186	360/1900	6/1	ÖN-ARKA 295/80R22.5
OTOBÜS SAFARI RD 12.2	Bus	19000	13500	DİZEL	6	9186	360/1900	12/1	ÖN-ARKA 295/80R22.5
OTOBÜS SAFARI IC 13	Bus	19000	13500	DİZEL	6	9186	360/1900	6/1	ÖN-ARKA 295/80R22.5
OTOBÜS SAFARI IC 12.2	Bus	19000	13500	DİZEL	6	9186	360/1900	6/1	ÖN-ARKA 295/80R22.5
OTOBÜS SAFARI IC 12.2	Bus	19000	13500	DİZEL	6	9186	360/1900	6/1	ÖN-ARKA 295/80R22.5
OTOBÜS SAFARI IC 12.2	Bus	19000	13500	DİZEL	6	9186	360/1900	6/1	ÖN-ARKA 295/80R22.5
OTOBÜS SAFARI IC 12.2	Bus	19000	13500	DİZEL	6	9186	360/1900	6/1	ÖN-ARKA 295/80R22.5
OTOBÜS SAFARI HD C14	Bus	26000	15640	DİZEL	6	12900	462/1900	12/1	ÖN-ARKA 295/80R22.5
OTOBÜS SAFARI HD 13	Bus	19000	13500	DİZEL	6	12902	410/1900	6/1	ÖN-ARKA 295/80R22.5
OTOBÜS SAFARI HD 13	Bus	19000	13500	DİZEL	6	12902	410/1900	6/1	ÖN-ARKA 295/80R22.5
OTOBÜS SAFARI HD 13	Bus	19000	13500	DİZEL	6	12902	410/1900	12/1	ÖN-ARKA 295/80R22.5
OTOBÜS SAFARI HD 12.2 RHD	Bus	19000	13500	DİZEL	6	9186	360/1900	6/1	ÖN-ARKA 295/80R22.5
OTOBÜS SAFARI HD 12.2	Bus	19000	13500	DİZEL	6	12902	410/1900	6/1	ÖN-ARKA 295/80R22.5
OTOBÜS SAFARI HD 12.2	Bus	19000	13500	DİZEL	6	12902	410/1900	6/1	ÖN-ARKA 295/80R22.5
OTOBÜS SAFARI HD 12.2	Bus	19000	13500	DİZEL	6	12902	410/1900	12/1	ÖN-ARKA 295/80R22.5
OTOBÜS MD L9 LE 9.5	Bus	13834	9440	DİZEL	6	4500	185/3200	6/1	ÖN-ARKA 265/70 R19.5
OTOBÜS MD C9 9.3	Bus	14440	9440	DİZEL	6	6871	250/2300	6/1	ÖN-ARKA 265/70R19.5
OTOBÜS MD C9 9.3	Bus	14440	9440	DİZEL	6	6692.4	250/2300	6/1	ÖN-ARKA 265/70R19.5
OTOBÜS HD C12 (12.2)	Bus	19000	13000	DİZEL	6	10518	350/1900	6/1	ÖN-ARKA 295/80R22.5
MİDİBÜS PRESTIJ SUPERDELUXE	Midibus	7860	5220	DİZEL	4	2977	145/3200	6/1	ÖN-ARKA 225/75R17.5
MİDİBÜS PRESTIJ CITY	Midibus	7860	5220	DİZEL	4	2977	145/3200	6/1	ÖN-ARKA 225/75R17.5
MİDİBÜS OPALIN 9	Midibus	12500	8500	DİZEL	6	6871	240/2300	6/1	ÖN-ARKA 265/70 R 17.5
MİDİBÜS OPALIN 9	Midibus	12500	8500	DİZEL	6	6871	250/2300	6/1	ÖN-ARKA 265/70 R 17.5
MİDİBÜS OPALIN 9	Midibus	12500	8500	DİZEL	6	6871	250/2300	6/1	ÖN-ARKA 265/70 R 17.5
KAMYON CANTER TF B75	Truck	7500	2360	DİZEL	4	2998	150/3500	5/1	ÖN-ARKA 215/75R17.5
KAMYON CANTER TF B75 AMT	Truck	7500	2385	DİZEL	4	2998	150/3500	6/1	ÖN-ARKA 215/75R17.5
KAMYON CANTER TF B75L	Truck	7500	2380	DİZEL	4	2998	150/3500	5/1	ÖN-ARKA 215/75R17.5
KAMYON CANTER TF B75L AMT	Truck	7500	2405	DİZEL	4	2998	150/3500	6/1	ÖN-ARKA 215/75R17.5
KAMYON CANTER 859E	Truck	7500	2445	DİZEL	4	3908	136/2900	5/1	ÖN-ARKA 8.5R17.5
KAMYON CANTER 859G	Truck	7700	2465	DİZEL	4	3908	136/2900	5/1	ÖN-ARKA 8.5R17.5
KAMYONET CANTER TF B35	Truck	3500	2005	DİZEL	4	2998	130/3500	5/1	ÖN-ARKA 205/75R16
KAMYONET CANTER TF B35 AMT	Truck	3500	2025	DİZEL	4	2998	130/3500	6/1	ÖN-ARKA 205/75R16
KAMYONET CANTER TF A35	Truck	3500	1855	DİZEL	4	2998	110/3500	5/1	ÖN-ARKA 195/75R16
KAMYONET CANTER TF A35L	Truck	3500	1900	DİZEL	4	2998	110/3500	5/1	ÖN-ARKA 195/75R16
KAMYONET CANTER TF A35L AMT	Truck	3500	1930	DİZEL	4	2998	110/3500	6/1	ÖN-ARKA 195/75R16
KAMYONET CANTER 839C	Truck	3500	2125	DİZEL	4	3907	105/3200	5/1	ÖN-ARKA 205/75 R16
KAMYONET CANTER 711B	Truck	3500	1760	DİZEL	4	2835	90/4000	5/1	ÖN-ARKA 195/75 R16
TOFAŞ									
OTOMOBİL LINEA 1.4 8V	P. Car	1660	1160	BENZİN	4	1368	77/6000	5/1	ÖN-ARKA 185/65 R 15 T
OTOMOBİL LINEA 1.3 MULTIJET	P. Car	1720	1200	DİZEL	4	1248	95/4000	5/1	ÖN-ARKA 185/65 R 15 T
OTOMOBİL LINEA 1.6 MULTIJET	P. Car	1790	1290	DİZEL	4	1598	105/4000	6/1	ÖN-ARKA 185/65 R 15 S
OTOMOBİL DOBLO 1.4 16V 5 KOLTUKLU	P. Car	1970	1370	BENZİN	4	1368	95/6000	5/1	ÖN-ARKA 185/65 R 15 T
OTOMOBİL DOBLO 1.4 16V 5 KOLTUKLU YUKSEK TAVAN	P. Car	2210	1430	BENZİN	4	1368	95/6000	5/1	ÖN-ARKA 195/60 R16C 99/97T
OTOMOBİL DOBLO 1.4 16V 7 KOLTUKLU	P. Car	2120	1370	BENZİN	4	1368	95/6000	5/1	ÖN-ARKA 195/60 R16C 99/97T
OTOMOBİL DOBLO 1.6 MULTIJET 5 KOLTUKLU	P. Car	2030	1430	DİZEL	4	1598	105/4000	6/1	ÖN-ARKA 185/65 R 15 88T

OTOMOBİL DOBLO 1.6 MULTIJET 5 KOLTUKLU YUKSEK TAVAN	P. Car	2400	1500	DIZEL	4	1598	105/4000	6/1	ON-ARKA 185/65 R 15 88T
OTOMOBİL DOBLO 1.6 MULTIJET 7 KOLTUKLU	P. Car	2180	1430	DIZEL	4	1598	105/4000	6/1	ON-ARKA 195/60 R16C 99/97T
OTOMOBİL DOBLO 1.6 MULTIJET 5 KOLTUKLU MTA	P. Car	2030	1430	DIZEL	4	1598	90/4000	6/1	ON-ARKA 195/60 R16C 99/97T
OTOMOBİL DOBLO 1.6 MULTIJET 5 KOLTUKLU MTA YUKSEK TAVAN	P. Car	2400	1500	DIZEL	4	1598	90/4000	6/1	ON-ARKA 185/65 R 15 88T
OTOMOBİL DOBLO 1.6 MULTIJET 7 KOLTUKLU MTA	P. Car	2180	1430	DIZEL	4	1598	90/4000	6/1	ON-ARKA 195/60 R16C 99/97T
OTOMOBİL DOBLO 2.0 MULTIJET 5 KOLTUKLU	P. Car	2080	1480	DIZEL	4	1956	135/3500	6/1	ON-ARKA 185/65 R 15 T
OTOMOBİL DOBLO 2.0 MULTIJET 5 KOLTUKLU YUKSEK TAVAN	P. Car	2440	1540	DIZEL	4	1956	135/3500	6/1	ON-ARKA 195/60 R16C 99/97T
OTOMOBİL DOBLO 2.0 MULTIJET 7 KOLTUKLU	P. Car	2230	1480	DIZEL	4	1956	135/3500	6/1	ON-ARKA 185/65 R 15 T
OTOMOBİL LINEA 1.4 8V	P. Car	1660	1160	BENZIN	4	1368	77/6000	5/1	ON-ARKA 185/65 R 15 T
OTOMOBİL LINEA 1.3 MULTIJET	P. Car	1720	1200	DIZEL	4	1248	95/4000	5/1	ON-ARKA 185/65 R 15 T
OTOMOBİL LINEA 1.6 MULTIJET	P. Car	1790	1290	DIZEL	4	1598	105/4000	6/1	ON-ARKA 185/65 R 15 S
KAMYONET DOBLO CARGO 1.4 16V İSTIAB HADDİ 750 KG	Pick Up	1990	1240	BENZIN	4	1368	95/6000	5/1	ON-ARKA 195/60 R16C 99/97T
KAMYONET DOBLO CARGO 1.4 16V İSTIAB HADDİ 750 KG YUKSEK TAVAN	Pick Up	2010	1260	BENZIN	4	1368	95/6000	5/1	ON-ARKA 195/60 R16C 99/97T
KAMYONET DOBLO CARGO 1.4 16V İSTIAB HADDİ 900 KG	Pick Up	2160	1260	BENZIN	4	1368	95/6000	5/1	ON-ARKA 195/60 R16C 99/97T
KAMYONET DOBLO CARGO 1.4 16V İSTIAB HADDİ 900 KG YUKSEK TAVAN	Pick Up	2180	1280	BENZIN	4	1368	95/6000	5/1	ON-ARKA 195/60 R16C 99/97T
KAMYONET DOBLO CARGO LUNGO 1.4 16V İSTIAB HADDİ 900 KG	Pick Up	2200	1300	BENZIN	4	1368	95/6000	5/1	ON-ARKA 185/65 R 15 92T
KAMYONET DOBLO CARGO 1.3 M.JET İSTIAB HADDİ 750 KG	Pick Up	2020	1270	DIZEL	4	1248	90/4000	5/1	ON-ARKA 185/65 R 15 92T
KAMYONET DOBLO CARGO 1.3 M.JET İSTIAB HADDİ 1000 KG	Pick Up	2290	1290	DIZEL	4	1248	90/4000	5/1	ON-ARKA 195/60 R16C 99/97T
KAMYONET DOBLO CARGO LUNGO 1.3 M.JET İSTIAB HADDİ 1000 KG	Pick Up	2330	1330	DIZEL	4	1248	90/4000	5/1	ON-ARKA 195/60 R16C 99/97T
KAMYONET DOBLO CARGO 1.6 M.JET İSTIAB HADDİ 750 KG	Pick Up	2060	1310	DIZEL	4	1598	105/4000	6/1	ON-ARKA 195/60 R16C 99/97T
KAMYONET DOBLO CARGO 1.6 M.JET İSTIAB HADDİ 750 KG YUKSEK TAVAN	Pick Up	2080	1330	DIZEL	4	1598	105/4000	6/1	ON-ARKA 195/60 R16C 99/97T
KAMYONET DOBLO CARGO 1.6 M.JET İSTIAB HADDİ 1000 KG	Pick Up	2330	1330	DIZEL	4	1598	105/4000	6/1	ON-ARKA 195/60 R16C 99/97T
KAMYONET DOBLO CARGO 1.6 M.JET İSTIAB HADDİ 1000 KG YUKSEK TAVAN	Pick Up	2350	1350	DIZEL	4	1598	105/4000	6/1	ON-ARKA 195/60 R16C 99/97T
KAMYONET DOBLO CARGO LUNGO 1.6 M.JET İSTIAB HADDİ 1000 KG	Pick Up	2370	1370	DIZEL	4	1598	105/4000	6/1	ON-ARKA 195/60 R16C 99/97T
KAMYONET DOBLO CARGO 1.6 M.JET MTA İSTIAB HADDİ 750 KG	Pick Up	2060	1310	DIZEL	4	1598	90/4000	5/1	ON-ARKA 195/60 R16C 99/97T
KAMYONET DOBLO CARGO 1.6 M.JET MTA İSTIAB HADDİ 1000 KG	Pick Up	2330	1330	DIZEL	4	1598	90/4000	5/1	ON-ARKA 195/60 R16C 99/97T
KAMYONET DOBLO CARGO LUNGO 1.6 M.JET MTA İSTIAB HADDİ 1000 KG	Pick Up	2370	1370	DIZEL	4	1598	90/4000	5/1	ON-ARKA 195/60 R16C 99/97T
KAMYONET DOBLO CARGO 2.0 M.JET İSTIAB HADDİ 750 KG	Pick Up	2100	1350	DIZEL	4	1956	135/3500	6/1	ON-ARKA 195/60 R16C 99/97T
KAMYONET DOBLO CARGO 2.0 M.JET İSTIAB HADDİ 750 KG YUKSEK TAVAN	Pick Up	2120	1370	DIZEL	4	1956	135/3500	6/1	ON-ARKA 195/60 R16C 99/97T
KAMYONET DOBLO CARGO 2.0 M.JET İSTIAB HADDİ 1000 KG	Pick Up	2370	1370	DIZEL	4	1956	135/3500	6/1	ON-ARKA 195/60 R16C 99/97T
KAMYONET DOBLO CARGO 2.0 M.JET İSTIAB HADDİ 1000 KG YUKSEK TAVAN	Pick Up	2390	1390	DIZEL	4	1956	135/3500	6/1	ON-ARKA 195/60 R16C 99/97T
KAMYONET DOBLO CARGO LUNGO 2.0 M.JET İSTIAB HADDİ 1000 KG	Pick Up	2410	1410	DIZEL	4	1956	135/3500	6/1	ON-ARKA 195/60 R16C 99/97T
KAMYONET DOBLO CARGO COMBI 1.4 16V İSTIAB HADDİ 710 KG	Pick Up	2060	1350	BENZIN	4	1368	95/6000	5/1	ON-ARKA 195/60 R16C 99/97T
KAMYONET DOBLO CARGO COMBI LUNGO 1.4 16V İSTIAB HADDİ 800 KG	Pick Up	2200	1400	BENZIN	4	1368	95/6000	5/1	ON-ARKA 195/60 R16C 99/97T
KAMYONET DOBLO CARGO COMBI 1.3 M.JET İSTIAB HADDİ 710 KG	Pick Up	2090	1380	DIZEL	4	1248	90/4000	5/1	ON-ARKA 195/60 R16C 99/97T
KAMYONET DOBLO CARGO COMBI LUNGO 1.3 M.JET İSTIAB HADDİ 800 KG	Pick Up	2230	1430	DIZEL	4	1248	90/4000	5/1	ON-ARKA 195/60 R16C 99/97T
KAMYONET DOBLO CARGO COMBI 1.6 M.JET İSTIAB HADDİ 710 KG	Pick Up	2130	1420	DIZEL	4	1598	105/4000	6/1	ON-ARKA 195/60 R16C 99/97T
KAMYONET DOBLO CARGO COMBI LUNGO 1.6 M.JET İSTIAB HADDİ 800 KG	Pick Up	2270	1470	DIZEL	4	1598	105/4000	6/1	ON-ARKA 195/60 R16C 99/97T
KAMYONET DOBLO CARGO COMBI 1.6 M.JET MTA İSTIAB HADDİ 710 KG	Pick Up	2130	1420	DIZEL	4	1598	90/4000	5/1	ON-ARKA 195/60 R16C 99/97T
KAMYONET DOBLO CARGO COMBI LUNGO 1.6 M.JET MTA İSTIAB HADDİ 800 KG	Pick Up	2270	1470	DIZEL	4	1598	90/4000	5/1	ON-ARKA 195/60 R16C 99/97T
KAMYONET DOBLO CARGO COMBI 2.0 M.JET İSTIAB HADDİ 710 KG	Pick Up	2170	1460	DIZEL	4	1956	99/3500	6/1	ON-ARKA 195/60 R16C 99/97T
KAMYONET DOBLO CARGO COMBI LUNGO 2.0 M.JET İSTIAB HADDİ 800 KG	Pick Up	2310	1510	DIZEL	4	1956	99/3500	6/1	ON-ARKA 195/60 R16C 99/97T
KAMYONET PRATICO 1.3 M.JET	Pick Up	2430	1430	DIZEL	4	1248	90/4000	5/1	ON-ARKA 195/60 R16C 99/97T
KAMYONET PRATICO 1.6 M.JET	Pick Up	2505	1505	DIZEL	4	1598	105/4000	6/1	ON-ARKA 195/60 R16C 99/97T
KAMYONET PRATICO 1.6 M.JET MTA	Pick Up	2505	1505	DIZEL	4	1598	90/4000	5/1	ON-ARKA 195/60 R16C 99/97T
KAMYONET PRATICO 2.0 M.JET	Pick Up	2505	1505	DIZEL	4	1956	135/3500	6/1	ON-ARKA 195/60 R16C 99/97T
KAMYONET FIORINO 1.4 8V 54 KW	Pick Up	1700	1070	BENZIN	4	1360	74/5200	5/1	ON-ARKA 185/65 R 15 88T
KAMYONET FIORINO 1.3 MULTIJET 55 KW	Pick Up	1750	1090	DIZEL	4	1248	75/4000	5/1	ON-ARKA 185/65 R 15 88T
KAMYONET FIORINO 1.3 MULTIJET OTOMATİK VİTES 55 KW	Pick Up	1750	1090	DIZEL	4	1248	75/4000	5/1	ON-ARKA 185/65 R 15 88T
KAMYONET FIORINO 1.3 MULTIJET 70 KW	Pick Up	1750	1090	DIZEL	4	1248	95/4000	5/1	ON-ARKA 185/65 R 15 88T
KAMYONET FIORINO COMBİ 1.3 MULTIJET 55 KW	Pick Up	1755	1190	DIZEL	4	1248	75/4000	5/1	ON-ARKA 185/65 R 15 88T
KAMYONET FIORINO COMBİ 1.3 MULTIJET OTOMATİK VİTES 55KW	Pick Up	1755	1190	DIZEL	4	1248	75/4000	5/1	ON-ARKA 185/65 R 15 88T
KAMYONET FIORINO COMBİ 1.3 MULTIJET 70 KW	Pick Up	1755	1190	DIZEL	4	1248	95/4000	5/1	ON-ARKA 185/65 R 15 88T
OTOMOBİL FIORINO PANORAMA 1.3 M.JET 55 KW	P. Car	1710	1200	DIZEL	4	1248	75/4000	5/1	ON-ARKA 185/65 R 15 88T
OTOMOBİL FIORINO PANORAMA 1.3 M.JET 70 KW	P. Car	1710	1200	DIZEL	4	1248	75/4000	5/1	ON-ARKA 185/65 R 15 88T
OTOMOBİL FIORINO PANORAMA 1.3 M.JET 70 KW	P. Car	1710	1200	DIZEL	4	1248	95/4000	5/1	ON-ARKA 185/65 R 15 88T
OTOMOBİL FIORINO PANORAMA 1.4 54 KW	P. Car	1690	1180	BENZIN	4	1360	74/5200	5/1	ON-ARKA 185/65 R 15 88T

TOYOTA

OTOMOBİL VERSO	P. Car	2260	1640	Dizel	4	1998	125/3600	6/1	ÖN-ARKA 205/60R16
OTOMOBİL VERSO	P. Car	2260	1640	Dizel	4	1998	125/3600	6/1	ÖN-ARKA 205/60R16
OTOMOBİL VERSO	P. Car	2260	1640	Dizel	4	1998	125/3600	6/1	ÖN-ARKA 205/60R16
OTOMOBİL VERSO	P. Car	2260	1640	Dizel	4	1998	125/3600	6/1	ÖN-ARKA 205/60R16
OTOMOBİL VERSO	P. Car	2260	1660	Dizel	4	2231	174/3600	6/1	ÖN-ARKA 215/55R17
OTOMOBİL VERSO	P. Car	2260	1640	Dizel	4	1998	125/3600	6/1	ÖN-ARKA 205/60R16
OTOMOBİL VERSO	P. Car	2260	1640	Dizel	4	1998	125/3600	6/1	ÖN-ARKA 215/55R17
OTOMOBİL VERSO	P. Car	2260	1660	Dizel	4	2231	174/3600	6/1	ÖN-ARKA 215/55R17
OTOMOBİL VERSO	P. Car	2260	1660	Dizel	4	2231	148/3600	6/1	ÖN-ARKA 215/55R17
OTOMOBİL VERSO	P. Car	2260	1660	Dizel	4	2231	148/3600	6/1	ÖN-ARKA 215/55R17
OTOMOBİL VERSO	P. Car	2260	1620	Dizel	4	1598	115/4000	6/1	ÖN-ARKA 205/60R16
OTOMOBİL VERSO	P. Car	2260	1620	Dizel	4	1598	115/4000	6/1	ÖN-ARKA 205/60R16
OTOMOBİL VERSO	P. Car	2260	1620	Dizel	4	1598	115/4000	6/1	ÖN-ARKA 205/60R16
OTOMOBİL VERSO	P. Car	2260	1620	Dizel	4	1598	115/4000	6/1	ÖN-ARKA 205/60R16
OTOMOBİL VERSO	P. Car	2260	1620	Dizel	4	1598	115/4000	6/1	ÖN-ARKA 205/60R16
OTOMOBİL VERSO	P. Car	2260	1620	Dizel	4	1598	115/4000	6/1	ÖN-ARKA 205/60R16

OTOMOBİL COROLLA	P. Car	1770	1310	Benzin	4	1598	130/6400	CVT	ÖN-ARKA 205/55R16
OTOMOBİL COROLLA	P. Car	1785	1300	Benzin	4	1798	138/6400	CVT	ÖN-ARKA 205/55R16
OTOMOBİL COROLLA	P. Car	1770	1310	Benzin	4	1598	130/6400	CVT	ÖN-ARKA 195/65R15
OTOMOBİL COROLLA	P. Car	1760	1300	Benzin	4	1598	120/6000	CVT	ÖN-ARKA 205/55R16
OTOMOBİL COROLLA	P. Car	1760	1300	Benzin	4	1598	120/6000	CVT	ÖN-ARKA 205/55R16

TÜRK TRAKTÖR

TRAKTÖR TT50 2WD ROPSLU	F. Tractor	3110	2110	DİZEL	3 TURBO	2930	50/2300	8/2	ÖN 6.00-16 ARKA 13.6-28
TRAKTÖR TT50 4WD ROPSLU	F. Tractor	3110	2390	DİZEL	3 TURBO	2930	50/2300	8/2	ÖN 11.2R20 ARKA 13.6-28
TRAKTÖR TT50 2WD KABİNLİ	F. Tractor	3110	2425	DİZEL	3 TURBO	2930	50/2300	8/2	ÖN 6.00-16 ARKA 13.6-28
TRAKTÖR TT50 4WD KABİNLİ	F. Tractor	3110	2590	DİZEL	3 TURBO	2930	50/2300	8/2	ÖN 11.2R20 ARKA 13.6-28
TRAKTÖR TT55 2WD ROPSLU	F. Tractor	3110	2110	DİZEL	3 TURBO	2930	55/2300	8/2	ÖN 6.00-16 ARKA 13.6-28
TRAKTÖR TT55 2WD KABİNLİ	F. Tractor	3110	2425	DİZEL	3 TURBO	2930	55/2300	8/2	ÖN 6.00-16 ARKA 13.6-28
TRAKTÖR TT55 4WD ROPSLU	F. Tractor	3110	2390	DİZEL	3 TURBO	2930	55/2300	8/2	ÖN 11.2R20 ARKA 13.6-28
TRAKTÖR TT55 4WD KABİNLİ	F. Tractor	3110	2590	DİZEL	3 TURBO	2930	55/2300	8/2	ÖN 11.2R20 ARKA 13.6-28
TRAKTÖR TT65 2WD ROPSLU	F. Tractor	3110	2220	DİZEL	3 TURBO	2930	65/2300	8/2	ÖN 6.50-16 ARKA 14.9-28
TRAKTÖR TT65 2WD KABİNLİ	F. Tractor	3110	2535	DİZEL	3 TURBO	2930	65/2300	8/2	ÖN 6.50-16 ARKA 14.9-28
TRAKTÖR TT65 4WD ROPSLU	F. Tractor	3110	2500	DİZEL	3 TURBO	2930	65/2300	8/2	ÖN 300/70R20 ARKA 380/70R28
TRAKTÖR TT65 4WD KABİNLİ	F. Tractor	3110	2700	DİZEL	3 TURBO	2930	65/2300	8/2	ÖN 300/70R20 ARKA 380/70R28
TRAKTÖR TT75 2WD ROPSLU	F. Tractor	3110	2220	DİZEL	3 TURBO	2930	72/2300	8/2	ÖN 7.50-16 ARKA 16.9-30
TRAKTÖR TT75 2WD KABİNLİ	F. Tractor	3110	2535	DİZEL	3 TURBO	2930	72/2300	8/2	ÖN 7.50-16 ARKA 14.9-30
TRAKTÖR TT75 4WD ROPSLU	F. Tractor	3110	2500	DİZEL	3 TURBO	2930	72/2300	8/2	ÖN 11.2R24 ARKA 16.9-30
TRAKTÖR TT75 4WD KABİNLİ	F. Tractor	3110	2700	DİZEL	3 TURBO	2930	72/2300	8/2	ÖN 11.2R24 ARKA 14.9-30
TRAKTÖR TT50B Bağ-bahçe 2WD ROPSLU	F. Tractor	3110	2220	DİZEL	3 TURBO	2930	50/2300	8/2	ÖN 5.50-16 ARKA 12.4-24
TRAKTÖR TT55B Bağ-bahçe 2WD ROPSLU	F. Tractor	3110	2220	DİZEL	3 TURBO	2930	55/2300	8/2	ÖN 5.50-16 ARKA 12.4-24
TRAKTÖR TT55B Bağ-bahçe 4WD ROPSLU	F. Tractor	3110	2350	DİZEL	3 TURBO	2930	55/2300	8/2	ÖN 11.2R20 ARKA 13.6-28
TRAKTÖR TT65B Bağ-bahçe 2WD ROPSLU	F. Tractor	3110	2220	DİZEL	3 TURBO	2930	65/2300	8/2	ÖN 6.00-16 ARKA 13.6-28
TRAKTÖR TT65B Bağ-bahçe 4WD ROPSLU	F. Tractor	3110	2350	DİZEL	3 TURBO	2930	65/2300	8/2	ÖN 300/70R20 ARKA 380/70R28
TRAKTÖR 55-56S Bağ-bahçe 4WD ROPSLU	F. Tractor	3500	2300	DİZEL	3 TURBO	2930	55/2300	8/2	ÖN 11.2R20 ARKA 14.9R30
TRAKTÖR 55-56S Bağ-bahçe 2WD ROPSLU	F. Tractor	3500	2100	DİZEL	3 TURBO	2930	55/2300	8/2	ÖN 6.50-16 ARKA 14.9-28
TRAKTÖR 55-56S Bağ-bahçe4WD KABİNLİ	F. Tractor	3500	2420	DİZEL	3 TURBO	2930	55/2300	8/2	ÖN 11.2R20 ARKA 14.9R30
TRAKTÖR 55-56S Bağ-bahçe2WD KABİNLİ	F. Tractor	3500	2220	DİZEL	3 TURBO	2930	55/2300	8/2	ÖN 6.50-16 ARKA 14.9-28
TRAKTÖR 65-56S 2WD ROPSLU	F. Tractor	3500	2190	DİZEL	3 TURBO	2930	65/2300	8/2	ÖN 7.50-16 ARKA 14.9-30
TRAKTÖR 65-56S 4WD ROPSLU	F. Tractor	3500	2420	DİZEL	3 TURBO	2930	65/2300	8/2	ÖN 11.2R20 ARKA 14.9R30
TRAKTÖR 65-56S 2WD KABİNLİ	F. Tractor	3500	2310	DİZEL	3 TURBO	2930	65/2300	8/2	ÖN 7.50-16 ARKA 14.9-30
TRAKTÖR 65-56S 4WD KABİNLİ	F. Tractor	3500	2540	DİZEL	3 TURBO	2930	65/2300	8/2	ÖN 11.2R20 ARKA 14.9R30
TRAKTÖR 75-56S 2WD ROPSLU	F. Tractor	3500	2610	DİZEL	4 TURBO	3908	75/2300	8/2	ÖN 7.50-16 ARKA 16.9-30
TRAKTÖR 75-56S 4WD ROPSLU	F. Tractor	3500	2840	DİZEL	4 TURBO	3908	75/2300	8/2	ÖN 11.2R24 ARKA 13.6-36
TRAKTÖR 75-56 2WD KABİNLİ	F. Tractor	3500	2730	DİZEL	4 TURBO	3908	75/2300	8/2	ÖN 7.50-16 ARKA 16.9-30
TRAKTÖR 75-56 4WD KABİNLİ	F. Tractor	3500	2960	DİZEL	4 TURBO	3908	75/2300	8/2	ÖN 11.2R24 ARKA 13.6-36
TRAKTÖR TD65S 2WD ROPSLU	F. Tractor	3810	2690	DİZEL	3 TURBO	2930	65/2300	12/12	ÖN :7.50-16 ARKA 14.9-30
TRAKTÖR TD65S 4WD ROPSLU	F. Tractor	3810	2950	DİZEL	3 TURBO	2930	65/2300	12/12	ÖN 11.2-24 ARKA 14.9-30
TRAKTÖR TD75S 2WD ROPSLU	F. Tractor	3810	2830	DİZEL	3 TURBO	2930	72/2300	12/12	ÖN :7.50-16 ARKA 16.9-34
TRAKTÖR TD75S 4WD ROPSLU	F. Tractor	3810	3190	DİZEL	3 TURBO	2930	72/2300	12/12	ÖN 11.2-24 ARKA 13.6-36
TRAKTÖR TD80S 2WD ROPSLU	F. Tractor	3810	2830	DİZEL	3 TURBO	2930	80/2300	12/12	ÖN :7.50-16 ARKA 16.9-30
TRAKTÖR TD80S 4WD ROPSLU	F. Tractor	3810	3190	DİZEL	3 TURBO	2930	80/2300	12/12	ÖN 11.2-24 ARKA 13.6-36
TRAKTÖR TD65D 2WD ROPSLU	F. Tractor	5200	2650	DİZEL	3 TURBO	2930	65/2300	12/4 & 12/12 & 20/12	ÖN 7.50-16 ARKA 14.9-30
TRAKTÖR TD65D 2WD KABİNLİ	F. Tractor	5200	2900	DİZEL	3 TURBO	2930	65/2300	12/4 & 12/12 & 20/12	ÖN 7.50-16 ARKA 14.9-30
TRAKTÖR TD65D 4WD ROPSLU	F. Tractor	5400	2950	DİZEL	3 TURBO	2930	65/2300	12/4 & 12/12 & 20/12	ÖN 11.2R24 ARKA 14.9-30
TRAKTÖR TD65D 4WD KABİNLİ	F. Tractor	5400	3200	DİZEL	3 TURBO	2930	65/2300	12/4 & 12/12 & 20/12	ÖN 11.2R24 ARKA 14.9-30
TRAKTÖR TD75D 2WD ROPSLU	F. Tractor	5500	3000	DİZEL	4 TURBO	3908	75/2300	12/4 & 12/12 & 20/12	ÖN 7.50-16 ARKA 14.9-30
TRAKTÖR TD75D 2WD KABİNLİ	F. Tractor	5500	3300	DİZEL	4 TURBO	3908	75/2300	12/4 & 12/12 & 20/12	ÖN 7.50-16 ARKA 14.9-30
TRAKTÖR TD75D 4WD ROPSLU	F. Tractor	5900	3450	DİZEL	4 TURBO	3908	75/2300	12/4 & 12/12 & 20/12	ÖN 11.2R24 ARKA 14.9-30
TRAKTÖR TD75D 4WD KABİNLİ	F. Tractor	5900	3600	DİZEL	4 TURBO	3908	75/2300	12/4 & 12/12 & 20/12	ÖN 11.2R24 ARKA 14.9-30
TRAKTÖR TD80D 2WD ROPSLU	F. Tractor	5400	2900	DİZEL	3 TURBO	2930	80/2300	12/4 & 12/12 & 20/12	ÖN 7.50-16 ARKA 14.9-30
TRAKTÖR TD80D 2WD KABİNLİ	F. Tractor	5400	3100	DİZEL	3 TURBO	2930	80/2300	12/4 & 12/12 & 20/12	ÖN 7.50-16 ARKA 14.9-30
TRAKTÖR TD80D 4WD ROPSLU	F. Tractor	5800	3100	DİZEL	3 TURBO	2930	80/2300	12/4 & 12/12 & 20/12	ÖN 11.2R24 ARKA 14.9-30
TRAKTÖR TD80D 4WD KABİNLİ	F. Tractor	5800	3400	DİZEL	3 TURBO	2930	80/2300	12/4 & 12/12 & 20/12	ÖN 11.2R24 ARKA 14.9-30
TRAKTÖR TD90D 2WD ROPSLU	F. Tractor	5500	3000	DİZEL	4 TURBO	3908	88/2300	12/12 & 20/12	ÖN 7.50-18 ARKA 18.4-30
TRAKTÖR TD90D 2WD KABİNLİ	F. Tractor	5500	3300	DİZEL	4 TURBO	3908	88/2300	12/12 & 20/12	ÖN 7.50-18 ARKA 18.4-30
TRAKTÖR TD90D 4WD ROPSLU	F. Tractor	5900	3450	DİZEL	4 TURBO	3908	88/2300	12/12 & 20/12	ÖN 12.4-24 ARKA 18.4-30
TRAKTÖR TD90D 4WD KABİNLİ	F. Tractor	5900	3700	DİZEL	4 TURBO	3908	88/2300	12/12 & 20/12	ÖN 12.4-24 ARKA 18.4-30

TRAKTÖR TD100D 2WD ROPSLU	F. Tractor	5600	3250	DİZEL	4 TURBO	3908	98/2300	12/12 & 20/12	ÖN 7.50-18 ARKA 18.4-30
TRAKTÖR TD100D 2WD KABİNLİ	F. Tractor	5600	3500	DİZEL	4 TURBO	3908	98/2300	12/12 & 20/12	ÖN 7.50-18 ARKA 18.4-30
TRAKTÖR TD100D 4WD ROPSLU	F. Tractor	6000	3650	DİZEL	4 TURBO	3908	98/2300	12/12 & 20/12	ÖN 12.4-24 ARKA 18.4-30
TRAKTÖR TD100D 4WD KABİNLİ	F. Tractor	6000	3900	DİZEL	4 TURBO	3908	98/2300	12/12 & 20/12	ÖN 12.4-24 ARKA 18.4-30
TRAKTÖR TD110D 4WD ROPSLU	F. Tractor	6500	3650	DİZEL	4 TURBO	3908	110/2300	12/12 & 20/12	ÖN 13.6R24 ARKA 16.9R34
TRAKTÖR TD110D 4WD KABİNLİ	F. Tractor	6500	3900	DİZEL	4 TURBO	3908	110/2300	12/12 & 20/12	ÖN 13.6R24 ARKA 16.9R34
TRAKTÖR JX70 2WD ROPSLU	F. Tractor	5200	2650	DİZEL	3 TURBO	2930	65/2300	12/4 & 12/12 & 20/12	ÖN 7.50X16 ARKA 14.9R30
TRAKTÖR JX70 2WD KABİNLİ	F. Tractor	5200	2900	DİZEL	3 TURBO	2930	65/2300	12/4 & 12/12 & 20/12	ÖN 7.50-16 ARKA 14.9R30
TRAKTÖR JX70 4WD ROPSLU	F. Tractor	5400	2950	DİZEL	3 TURBO	2930	65/2300	12/4 & 12/12 & 20/12	ÖN 12.4R20 ARKA 14.9R30
TRAKTÖR JX70 4WD KABİNLİ	F. Tractor	5400	3200	DİZEL	3 TURBO	2930	65/2300	12/4 & 12/12 & 20/12	ÖN 12.4R20 ARKA 14.9R30
TRAKTÖR JX75 2WD ROPSLU	F. Tractor	5500	3000	DİZEL	4 TURBO	3908	75/2300	12/4 & 12/12 & 20/12	ÖN 7.50-18 ARKA 14.9R38
TRAKTÖR JX75 2WD KABİNLİ	F. Tractor	5500	3300	DİZEL	4 TURBO	3908	75/2300	12/4 & 12/12 & 20/12	ÖN 7.50-18 ARKA 14.9R38
TRAKTÖR JX75 4WD ROPSLU	F. Tractor	5900	3450	DİZEL	4 TURBO	3908	75/2300	12/4 & 12/12 & 20/12	ÖN 12.4-24 ARKA 18.4R30
TRAKTÖR JX75 4WD KABİNLİ	F. Tractor	5900	3600	DİZEL	4 TURBO	3908	75/2300	12/4 & 12/12 & 20/12	ÖN 12.4-24 ARKA 18.4-30
TRAKTÖR JX80 2WD ROPSLU	F. Tractor	5400	2900	DİZEL	3 TURBO	2930	80/2300	12/4 & 12/12 & 20/12	ÖN 9.00-16 ARKA 16.9R34
TRAKTÖR JX80 2WD KABİNLİ	F. Tractor	5400	3100	DİZEL	3 TURBO	2930	80/2300	12/4 & 12/12 & 20/12	ÖN 9.00-16 ARKA 16.9R34
TRAKTÖR JX80 4WD ROPSLU	F. Tractor	5800	3100	DİZEL	3 TURBO	2930	80/2300	12/4 & 12/12 & 20/12	ÖN 13.6R24 ARKA 16.9R34
TRAKTÖR JX80 4WD KABİNLİ	F. Tractor	5800	3400	DİZEL	3 TURBO	2930	80/2300	12/4 & 12/12 & 20/12	ÖN 13.6R24 ARKA 16.9R34
TRAKTÖR JX90 2WD ROPSLU	F. Tractor	5500	3000	DİZEL	4 TURBO	3908	88/2300	12/12 & 20/12	ÖN 7.50-18 ARKA 14.9R38
TRAKTÖR JX90 2WD KABİNLİ	F. Tractor	5500	3300	DİZEL	4 TURBO	3908	88/2300	12/12 & 20/12	ÖN 7.50-18 ARKA 14.9R38
TRAKTÖR JX90 4WD ROPSLU	F. Tractor	5900	3450	DİZEL	4 TURBO	3908	88/2300	12/12 & 20/12	ÖN 12.4-24 ARKA 18.4R30
TRAKTÖR JX90 4WD KABİNLİ	F. Tractor	5900	3700	DİZEL	4 TURBO	3908	88/2300	12/12 & 20/12	ÖN 12.4-24 ARKA 18.4-30
TRAKTÖR JX100 2WD ROPSLU	F. Tractor	5600	3250	DİZEL	4 TURBO	3908	98/2300	12/12 & 20/12	ÖN 7.50-18 ARKA 18.4R30
TRAKTÖR JX100 2WD KABİNLİ	F. Tractor	5600	3500	DİZEL	4 TURBO	3908	98/2300	12/12 & 20/12	ÖN 7.50-18 ARKA 18.4-30
TRAKTÖR JX100 4WD ROPSLU	F. Tractor	6000	3650	DİZEL	4 TURBO	3908	98/2300	12/12 & 20/12	ÖN 12.4-24 ARKA 18.4R30
TRAKTÖR JX100 4WD KABİNLİ	F. Tractor	6000	3900	DİZEL	4 TURBO	3908	98/2300	12/12 & 20/12	ÖN 12.4-24 ARKA 18.4-30
TRAKTÖR JX110 4WD ROPSLU	F. Tractor	6500	3650	DİZEL	4 TURBO	3908	110/2300	12/12 & 20/12	ÖN 13.6R24 ARKA 16.9R34
TRAKTÖR JX110 4WD KABİNLİ	F. Tractor	6500	3900	DİZEL	4 TURBO	3908	110/2300	12/12 & 20/12	ÖN 13.6R24 ARKA 16.9R34
TRAKTÖR T480 4WD ROPSLU	F. Tractor	3000	1950	DİZEL	4	2216	48/2800	8/8	ÖN 280/70R18 ARKA 13.6R28
TRAKTÖR T480 2WD ROPSLU	F. Tractor	3000	1800	DİZEL	4	2216	48/2800	8/2	ÖN 6.00-16 ARKA 12.4R24
TRAKTÖR TD65B 4WD ROPSLU	F. Tractor	4300	2710	DİZEL	3 TURBO	2930	65/2300	12/12 & 20/12	ÖN 280/70R20 ARKA 380/70R28
TRAKTÖR TD75B 4WD ROPSLU	F. Tractor	4300	2710	DİZEL	3 TURBO	2930	72/2300	12/12 & 20/12	ÖN 280/70R20 ARKA 380/70R28
TRAKTÖR TD80B 4WD ROPSLU	F. Tractor	4300	2710	DİZEL	3 TURBO	2930	80/2300	12/12 & 20/12	ÖN 280/70R20 ARKA 380/70R28
TRAKTÖR JX55C 2WD ROPSLU	F. Tractor	4500	2250	DİZEL	4 TURBO	3200	55/2300	8/8	ÖN 6.50-16 ARKA 380/70R28
TRAKTÖR JX55C 4WD ROPSLU	F. Tractor	4800	2600	DİZEL	4 TURBO	3200	55/2300	8/8	ÖN 12.4R20 ARKA 14.9R30
TRAKTÖR JX55C 2WD KABİNLİ	F. Tractor	4500	2450	DİZEL	4 TURBO	3200	55/2300	8/8	ÖN 6.50-16 ARKA 380/70R28
TRAKTÖR JX55C 4WD KABİNLİ	F. Tractor	4800	2800	DİZEL	4 TURBO	3200	55/2300	8/8	ÖN 12.4R20 ARKA 14.9R30
TRAKTÖR JX65C 2WD ROPSLU	F. Tractor	4500	2250	DİZEL	4 TURBO	3200	65/2300	8/8	ÖN 6.50-16 ARKA 380/70R28
TRAKTÖR JX65C 4WD ROPSLU	F. Tractor	4800	2600	DİZEL	4 TURBO	3200	65/2300	8/8	ÖN 12.4R20 ARKA 14.9R30
TRAKTÖR JX65C 2WD KABİNLİ	F. Tractor	4500	2450	DİZEL	4 TURBO	3200	65/2300	8/8	ÖN 6.50-16 ARKA 380/70R28
TRAKTÖR JX65C 4WD KABİNLİ	F. Tractor	4800	2800	DİZEL	4 TURBO	3200	65/2300	8/8	ÖN 12.4R20 ARKA 14.9R30
TRAKTÖR JX75C 2WD ROPSLU	F. Tractor	4500	2250	DİZEL	4 TURBO	3200	75/2300	8/8	ÖN 6.50-16 ARKA 380/70R28
TRAKTÖR JX75C 4WD ROPSLU	F. Tractor	4800	2600	DİZEL	4 TURBO	3200	75/2300	8/8	ÖN 12.4R20 ARKA 14.9R30
TRAKTÖR JX75C 2WD KABİNLİ	F. Tractor	4500	2450	DİZEL	4 TURBO	3200	75/2300	8/8	ÖN 6.50-16 ARKA 380/70R28
TRAKTÖR JX75C 4WD KABİNLİ	F. Tractor	4800	2800	DİZEL	4 TURBO	3200	75/2300	8/8	ÖN 12.4R20 ARKA 14.9R30
TRAKTÖR TT50J ROPSLU 2WD	F. Tractor	3200	2120	DİZEL	3 TURBO	2930	50/2300	8/8 & 12/12	ÖN 5.50-16 6PR ARKA 360/70R24
TRAKTÖR TT55J ROPSLU 2WD	F. Tractor	3200	2120	DİZEL	3 TURBO	2930	55/2300	8/8 & 12/12	ÖN 5.50-16 6PR ARKA 360/70R24
TRAKTÖR TT65J ROPSLU 2WD	F. Tractor	3200	2120	DİZEL	3 TURBO	2930	65/2300	8/8 & 12/12	ÖN 5.50-16 6PR ARKA 360/70R24
TRAKTÖR TT75J ROPSLU 2WD	F. Tractor	3200	2120	DİZEL	3 TURBO	2930	75/2300	8/8 & 12/12	ÖN 5.50-16 6PR ARKA 360/70R24
TRAKTÖR TT50J ROPSLU 4WD	F. Tractor	4200	2260	DİZEL	3 TURBO	2930	50/2300	8/8 & 12/12 & 20/20	ÖN 280/70R16 ARKA 360/70R24
TRAKTÖR TT55J ROPSLU 4WD	F. Tractor	4200	2260	DİZEL	3 TURBO	2930	55/2300	8/8 & 12/12 & 20/20	ÖN 280/70R16 ARKA 360/70R24
TRAKTÖR TT65J ROPSLU 4WD	F. Tractor	4200	2260	DİZEL	3 TURBO	2930	65/2300	8/8 & 12/12 & 20/20	ÖN 280/70R16 ARKA 360/70R24
TRAKTÖR TT75J ROPSLU 4WD	F. Tractor	4200	2260	DİZEL	3 TURBO	2930	75/2300	8/8 & 12/12 & 20/20	ÖN 280/70R16 ARKA 360/70R24

DİZEL = Diesel

BENZİN = Petrol

ÖN-ARKA = Front-Rear KAT = Ply

**OTOMOTİV SANAYİİ FİRMALARININ
2014 YILI ÜRETİM KAPASİTELERİ
Production Capacities 2014**

FİRMALAR Firms	OTOMOBİL P.Car	KAMYON Truck	KAMYONET Pick Up	OTOBÜS Bus	MİNİBÜS Mini-Bus	MİDİBÜS Midi-Bus	TRAKTÖR F. Tractor	TOPLAM Total
A. ISUZU	0	6.700	2.900	0	922	2.633	0	13.155
FORD OTOSAN	0	10.200	366.000	0	34.000	0	0	410.200
HATTAT TARIM	0	0	0	0	0	0	15.000	15.000
HONDA TÜRKİYE	50.000	0	0	0	0	0	0	50.000
HYUNDAI ASSAN	200.000	0	0	0	0	0	0	200.000
KARSAN	0	0	40.500	2.025	7.000	2.700	0	52.225
M.A.N. TÜRKİYE	0	0	0	1.700	0	0	0	1.700
M. BENZ TÜRK	0	14.500	0	4.000	0	0	0	18.500
OTOKAR	0	0	4.200	1.000	1.500	2.100	0	8.800
O. RENAULT	360.000	0	0	0	0	0	0	360.000
TEMSA GLOBAL	0	4.500	3.000	2.000	0	2.000	0	11.500
TOFAŞ	400.000	0	0	0	0	0	0	400.000
TOYOTA	150.000	0	0	0	0	0	0	150.000
T. TRAKTÖR	0	0	0	0	0	0	40.000	40.000
TOPLAM/Total	1.160.000	35.900	416.600	10.725	43.422	9.433	55.000	1.731.080

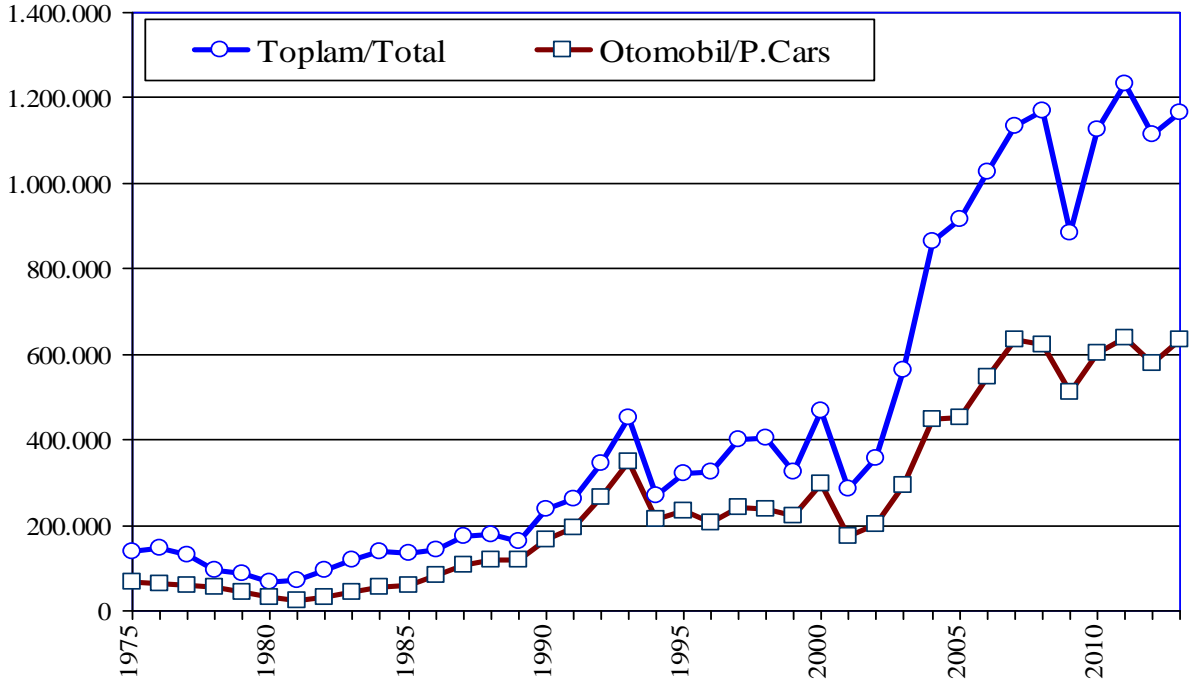
OTOMOTİV SANAYİİ FİRMALARININ 2009 - 2013 YILLARI ÜRETİM ADETLERİ
Production Units For The Years 2009 - 2013

FİRMALAR/MODELLER	Firms/Models	2009	2010	2011	2012	2013
A.I.O.S.						
Kamyonet	Pick Up	210	693	618	521	0
Kamyon	Truck	402	1.509	2.531	2.258	2.868
Otobüs	Bus	0	0	0	166	58
Midibüs	Midibus	1.205	1.090	1.175	1.818	1.981
TOPLAM	Total	1.817	3.292	4.324	4.763	4.907
B.M.C.						
Kamyon	Truck	1.617	2.767	3.234	1.241	0
Kamyonet	Pick Up	936	0	0	0	0
Minibus	Minibus	1	0	0	0	0
Midibüs	Midibus	0	0	2	100	0
Otobüs	Bus	613	575	488	207	
TOPLAM	Total	3.167	3.342	3.724	1.548	0
FORD OTOSAN						
Kamyon	Truck	1.722	4.872	9.239	7.362	6.293
Minibüs	Minibus	11.466	14.895	19.371	26.029	36.874
Kamyonet	Pick Up	160.268	222.303	267.240	238.706	238.120
TOPLAM	Total	173.456	242.070	295.850	272.097	281.287
HATTAT TARIM						
Traktör	F. Tractor	565	2.148	4.889	2.713	2.098
TOPLAM	Total	565	2.148	4.889	2.713	2.098
HONDA TÜRKİYE						
Otomobil	P. Car	18.264	20.305	12.341	21.850	14.813
TOPLAM	Total	18.264	20.305	12.341	21.850	14.813

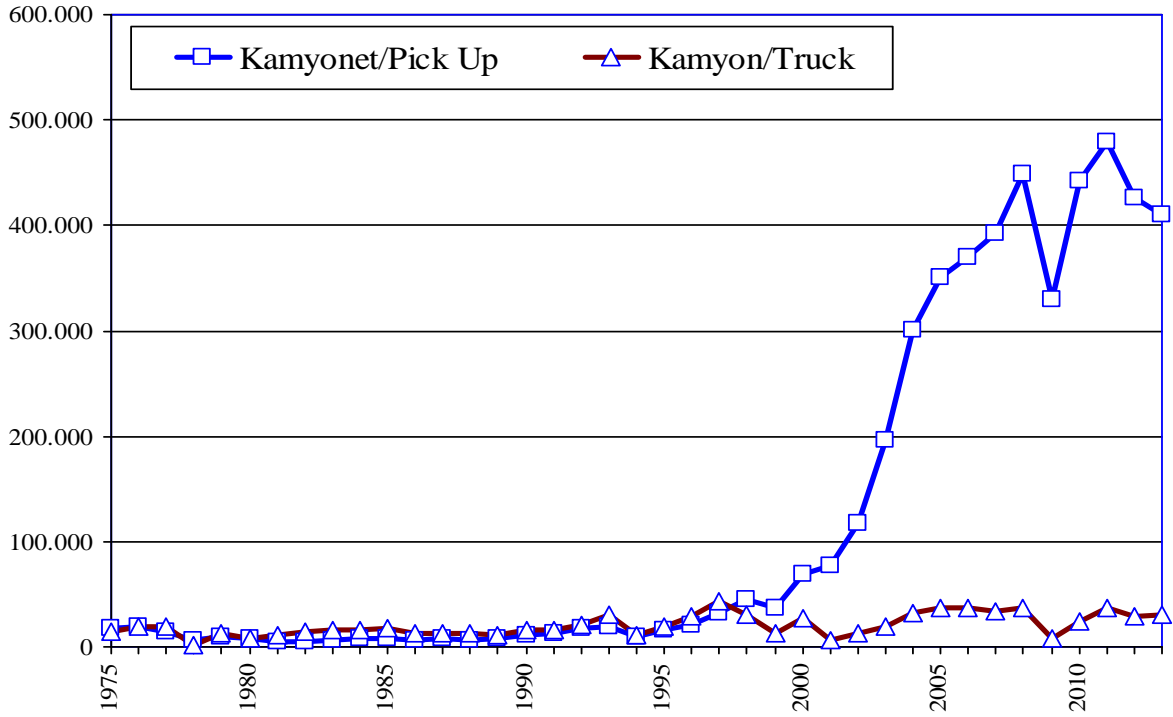
FİRMALAR/MODELLER	Firms/Models	2009	2010	2011	2012	2013
HYUNDAI ASSAN						
Otomobil	P. Car	48.652	77.000	90.231	86.976	102.020
TOPLAM	Total	48.652	77.000	90.231	86.976	102.020
KARSAN						
Kamyon	Truck	523	1.220	2.392	1.005	990
Minibüs	Minibus	100	1.797	2.936	3.255	836
Otobüs	Bus	0	0	76	8	576
Kamyonet	Pick Up	7.690	21.702	16.742	11.180	10.084
TOPLAM	Total	8.313	24.719	22.146	15.448	12.486
M.A.N. TÜRKİYE						
Otobüs	Bus	1.544	1.132	1.610	1.134	1.300
TOPLAM	Total	1.544	1.132	1.610	1.134	1.300
M. BENZ TÜRK						
Otobüs	Bus	2.773	2.462	3.018	3.336	4.001
Kamyon	Truck	3.719	12.018	18.344	16.666	18.394
TOPLAM	Total	6.492	14.480	21.362	20.002	22.395
OTOKAR						
Midibüs	Midibus	1.008	989	1.492	1.812	2.659
Minibüs	Minibus	262	286	168	51	40
Kamyon	Truck	0	0	0	0	362
Kamyonet	Pick Up	1.000	582	675	369	555
Otobüs	Bus	290	379	727	619	1.224
TOPLAM	Total	2.560	2.236	3.062	2.851	4.840
OYAK-RENAULT						
Otomobil	P. Car	277.502	307.083	330.994	310.602	331.694
TOPLAM	Total	277.502	307.083	330.994	310.602	331.694

FİRMALAR/MODELLER	Firms/Models	2009	2010	2011	2012	2013
TEMSA GLOBAL						
Otobüs	Bus	711	720	988	957	1.186
Kamyon	Truck	263	1.465	1.656	597	1.175
Kamyonet	Pick Up	1.029	603	576	372	0
Midibüs	Midibus	411	579	840	428	557
TOPLAM	Total	2.414	3.367	4.060	2.354	2.918
TOFAŞ						
Otomobil	P. Car	94.179	115.720	114.529	80.943	82.817
Kamyonet	Pick Up	158.911	196.525	193.259	175.485	161.797
TOPLAM	Total	253.090	312.245	307.788	256.428	244.614
TOYOTA						
Otomobil	P. Car	72.264	83.286	91.639	76.925	102.260
TOPLAM	Total	72.264	83.286	91.639	76.925	102.260
TÜRK TRAKTÖR						
Traktör	F. Tractor	14.296	28.277	40.617	39.542	38.411
TOPLAM	Total	14.296	28.277	40.617	39.542	38.411
GENEL TOPLAM	Grand Total	884.396	1.124.982	1.234.637	1.115.233	1.166.043

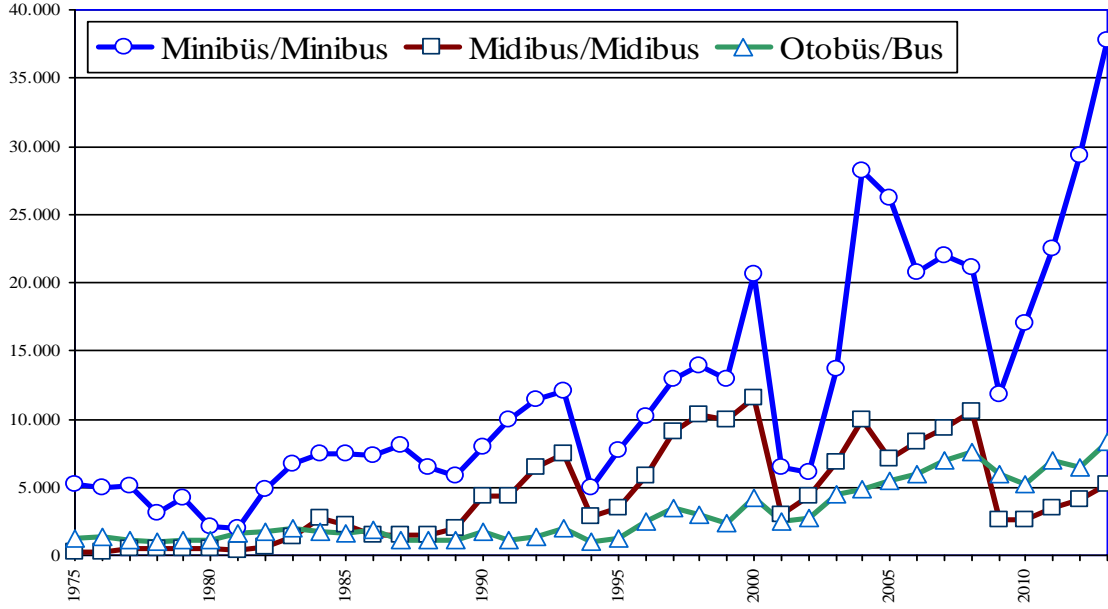
Otomobil /Toplam Üretim P.Cars /Total Production



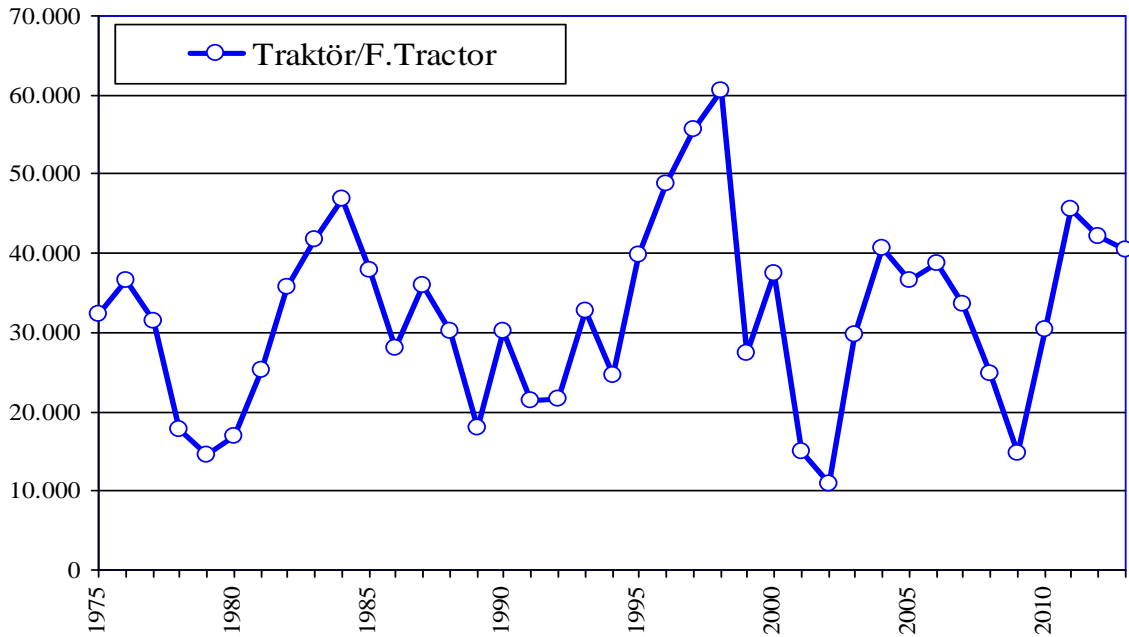
Yük Taşıt Araçları Üretimi Truck and Pick Up Production



Yolcu Taşıt Araçları Üretimi Bus Production



Traktör Üretimi F.Tractor Production

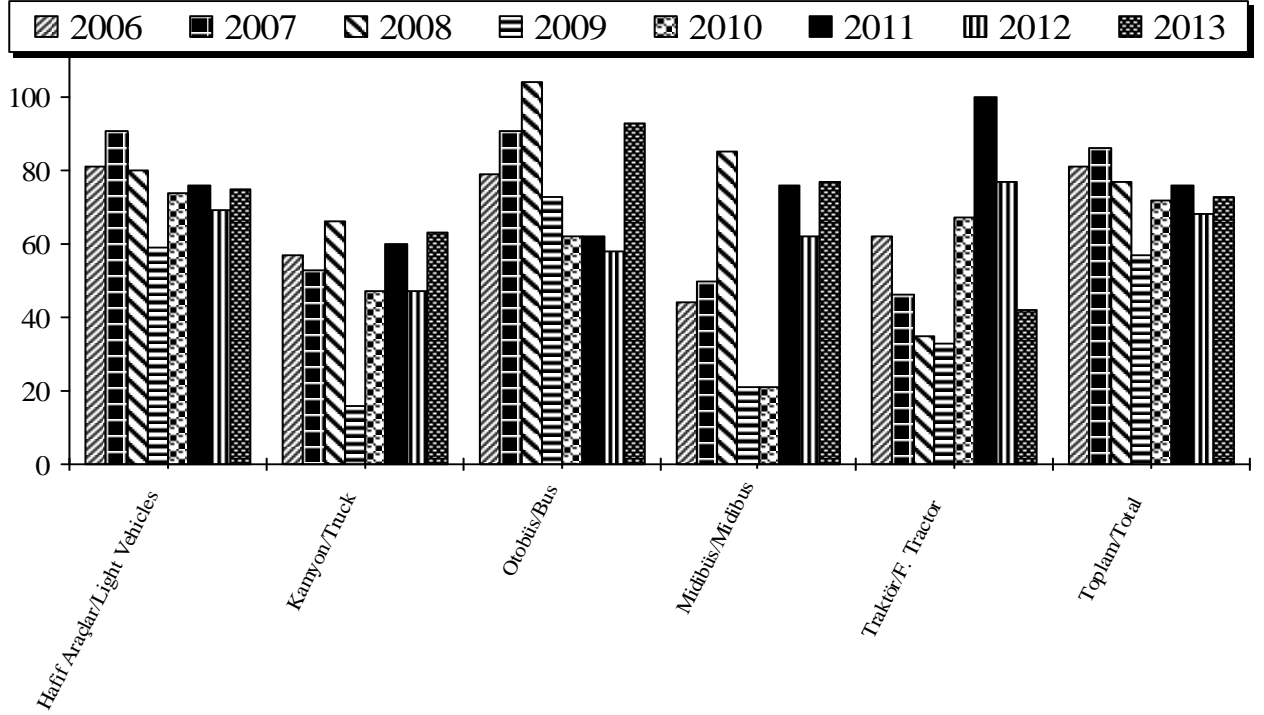


OTOMOTİV SANAYİİ FİRMALARININ ÜRETİM ADETLERİ
The Production Units Of The Automotive Manufacturers

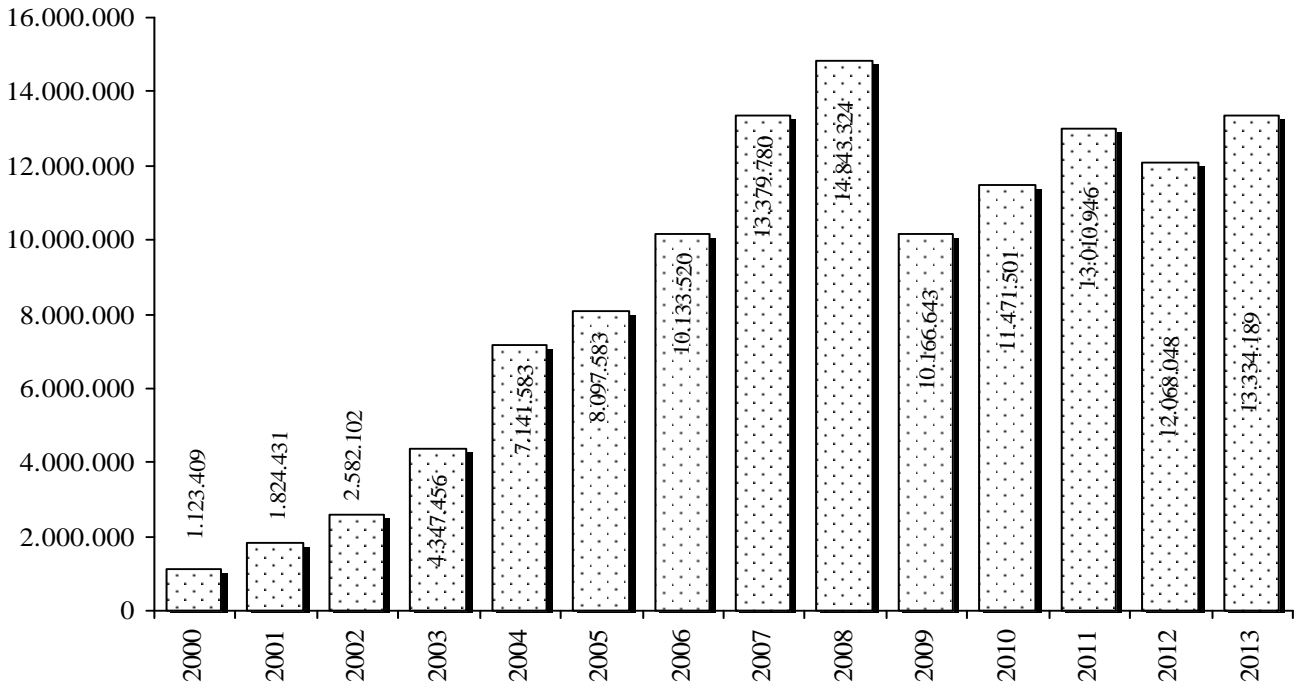
ARALIK SONU / By The end of December

YILLAR Years	OTOMOBİL P.Car	KAMYON Truck	KAMYONET Pick-Up	OTOBÜS Bus	MİNİBÜS Minibus	MİDİBÜS Midibus	TRAKTÖR F.Tractor	TOPLAM Total
1963	30	999	1.458	12	631	0	7.982	11.112
1964	100	2.741	885	56	401	0	7.006	11.189
1965	60	2.350	300	122	1.199	0	6.419	10.450
1966	18	6.258	2.476	174	0	252	8.969	18.147
1967	1.760	7.816	2.736	325	622	0	13.976	27.235
1968	2.852	9.408	2.270	466	895	0	15.118	31.009
1969	3.902	10.859	3.030	882	1.095	84	13.412	33.264
1970	3.660	6.041	4.395	806	1.099	4	7.518	23.523
1971	12.888	4.747	4.508	608	1.891	30	15.687	40.359
1972	29.628	8.596	6.044	988	3.748	0	22.893	71.897
1973	46.855	11.723	8.674	1.267	4.533	22	32.585	105.659
1974	59.906	10.591	11.861	1.113	4.584	148	25.363	113.566
1975	67.291	14.670	18.489	1.284	5.222	239	32.365	139.560
1976	62.992	20.498	19.415	1.376	4.910	302	36.602	146.095
1977	58.245	20.700	14.016	1.077	5.152	467	31.380	131.037
1978	54.085	13.144	6.879	972	3.163	444	17.673	96.360
1979	43.808	13.367	9.384	1.151	4.222	547	14.484	86.963
1980	31.529	8.308	7.322	1.101	2.130	491	16.936	67.817
1981	25.306	12.486	5.454	1.584	2.040	378	25.358	72.606
1982	31.195	15.131	4.991	1.703	4.850	587	35.716	94.173
1983	42.509	17.514	6.822	1.964	6.712	1.382	41.799	118.702
1984	54.832	17.518	7.279	1.766	7.460	2.750	46.782	138.387
1985	60.353	18.162	7.888	1.637	7.397	2.191	37.830	135.458
1986	82.032	13.646	6.605	1.813	7.318	1.508	28.053	140.975
1987	107.185	13.545	7.580	1.137	8.026	1.434	35.986	174.893
1988	120.796	12.842	7.196	1.078	6.401	1.449	30.167	179.929
1989	118.314	11.763	7.250	1.069	5.898	1.984	18.077	164.355
1990	167.556	16.933	10.553	1.689	7.898	4.288	30.098	239.015
1991	195.574	16.918	13.541	1.075	9.912	4.401	21.381	262.802
1992	265.245	21.266	16.984	1.415	11.450	6.399	21.723	344.482
1993	348.095	31.343	19.766	1.933	12.084	7.435	32.809	453.465
1994	212.651	12.108	9.602	1.034	4.924	2.855	25.169	268.343
1995	233.412	19.759	16.808	1.279	7.645	3.537	44.068	326.508
1996	207.757	29.432	21.032	2.499	10.171	5.856	52.590	329.337
1997	242.780	43.693	32.435	3.449	12.935	9.060	55.565	399.917
1998	239.937	31.823	45.517	3.040	13.910	10.275	60.500	405.002
1999	222.041	13.096	37.551	2.327	12.894	9.953	27.435	325.297
2000	297.476	28.348	68.807	4.213	20.597	11.506	37.434	468.381
2001	175.343	6.683	76.672	2.501	6.486	3.000	15.052	285.737
2002	204.198	12.295	116.872	2.684	6.139	4.377	10.840	357.405
2003	294.116	19.041	195.606	4.490	13.625	6.794	29.778	563.450
2004	447.152	31.790	301.563	4.839	28.161	9.903	40.665	864.073
2005	453.663	37.227	349.885	5.406	26.162	7.109	36.527	915.979
2006	545.682	37.026	369.862	6.019	20.728	8.263	38.841	1.026.421
2007	634.883	34.544	391.737	6.946	21.999	9.305	33.518	1.132.932
2008	621.567	36.800	449.434	7.526	21.123	10.660	24.807	1.171.917
2009	510.931	8.246	330.044	5.931	11.829	2.624	14.861	884.466
2010	603.394	23.851	442.408	5.268	16.978	2.658	30.425	1.124.982
2011	639.734	37.396	479.110	6.907	22.475	3.509	45.506	1.234.637
2012	577.296	29.129	426.633	6.427	29.335	4.158	42.255	1.115.233
2013	633.604	30.082	410.556	8.345	37.750	5.197	40.509	1.166.043

Kapasite Kullanımı (%) Capacity Usage (%)



OSD Üyeleri İhracat (US Dollars) (Bin/Thousand) OSD Members Exports



YILLAR İTİBARIYLA ÜRETİM ADETLERİ VE KAPASİTE KULLANIMI
Production Units And Capacity Usage By Years

ARALIK SONU/By the end of December

TİPLER / Types	1997	1998	1999	2000	2001	2002	2003	2004	2005	2006	2007	2008	2009	2010	2011	2012	2013
OTOMOBİL / P.Car	242.780	239.937	222.041	297.476	175.343	204.198	294.116	447.152	453.663	545.682	634.883	621.567	510.931	603.394	639.734	577.296	633.604
KAMYON / Truck	43.693	31.823	13.096	28.348	6.683	12.295	19.041	31.790	37.227	37.026	34.544	36.800	8.246	23.851	37.396	29.129	30.082
KAMYONET / Pick-Up	32.435	45.517	37.551	68.807	76.672	116.872	195.606	301.563	349.885	369.862	391.737	449.434	330.044	442.408	479.110	426.633	410.556
OTOBÜS / Bus	3.449	3.040	2.327	4.213	2.501	2.684	4.490	4.839	5.406	6.019	6.946	7.526	5.931	5.268	6.907	6.427	8.345
MİNİBÜS / Minibus	12.935	13.910	12.894	20.597	6.486	6.139	13.625	28.161	26.162	20.728	21.999	21.123	11.829	16.978	22.475	29.335	37.750
MİDİBÜS / Midibus	9.060	10.275	9.953	11.506	3.000	4.377	6.794	9.903	7.109	8.263	9.305	10.660	2.624	2.658	3.509	4.158	5.197
TRAKTÖR / F.Tractor	55.565	60.500	27.435	37.434	15.052	10.840	29.778	40.665	36.527	38.841	33.518	24.807	14.861	30.425	45.506	42.255	40.509
TOPLAM / Total	399.917	405.002	325.297	468.381	285.737	357.405	563.450	864.073	915.979	1.026.421	1.132.932	1.171.917	884.466	1.124.982	1.234.637	1.115.233	1.166.043

NOT: EN YÜKSEK ÜRETİM ADETLERİ [] İÇİNE ALINMIŞTIR.

Note: The highest production volumes are shown in []

KAPASİTE KULLANIMI
Capacity Usage

% 49	% 49	50%	36%	29%	35%	52%	73%	76%	81%	86%	77%	57%	72%	76%	68%	73%
------	------	-----	-----	-----	-----	-----	-----	-----	-----	-----	-----	-----	-----	-----	-----	-----

OTOMOTİV SANAYİİ FİRMALARININ İHRACATLARI
Automotive Industry Exports

ARALIK SONU/By the end of December

TİPLER / Types	YILLAR / Years									
	2009	2010		2011		2012		2013		
	ADET Units	DEĞER \$ Value	ADET Units	DEĞER \$ Value	ADET Units	DEĞER \$ Value	ADET Units	DEĞER \$ Value	ADET Units	DEĞER \$ Value
OTOMOBİL / P. Car	340.211	4.603.458.146	393.577	5.100.281.905	405.919	5.289.921.692	383.850	4.773.273.240	459.250	5.589.014.235
KAMYON / Truck	1.890	162.028.403	2.248	166.523.409	3.618	238.457.284	2.697	188.722.464	2.942	191.767.361
KAMYONET / Pick Up	270.885	3.583.111.873	340.225	4.259.641.966	354.450	4.994.360.768	321.206	4.462.472.072	323.036	4.516.972.999
OTOBÜS / Bus	4.368	851.987.295	3.556	694.535.225	4.196	844.773.764	4.059	787.872.937	3.933	742.396.441
MİNİBÜS / Minibus	9.674	138.792.878	12.416	227.391.269	20.114	360.950.511	16.590	308.654.809	34.645	666.073.004
MİDİBÜS / Midibus	1.203	89.534.719	857	56.923.573	660	47.832.717	1.189	71.772.844	1.013	71.821.187
TRAKTÖR / F. Tractor	8.672	173.671.038	9.214	176.043.967	10.152	205.861.160	15.424	312.921.170	14.906	336.685.280
YEDEK PARÇA / Miscellaneous Parts		564.058.442		790.159.387		1.028.788.578		1.162.358.056		1.219.458.507
TOPLAM / Total	636.903	10.166.642.794	762.093	11.471.500.701	799.109	13.010.946.474	745.015	12.068.047.592	839.725	13.334.189.014

YURTIÇİ TEŞVİKLİ SATIŞLARI HARİÇTİR / Excluding Local Incentive Sales

OTOMOBİL İTHALATI / Passenger Car Imports

BÖLGE / ÜLKE Region / Country	2009		2010		2011		2012		2013	
	Adet / Unit	%	Adet / Unit	%	Adet / Unit	%	Adet / Unit	%	Adet / Unit	%
AT + EFTA / EU + EFTA	190.919	78,4	295.920	83,6	351.067	84,8	327.391	79,9	425.508	82,2
DOĞU AVRUPA / East Europe	12.128	5,0	22.095	6,2	27.468	6,6	38.594	9,4	41.734	8,1
UZAK DOĞU / Far East	40.495	16,6	36.135	10,2	35.496	8,6	43.691	10,7	50.285	9,7
TOPLAM/Total	243.542	100,0	354.150	100,0	414.031	100,0	409.676	100,0	517.527	100,0

Kaynak: Otomotiv Distribütörleri Derneği

Source: Association of Automotive Distributors

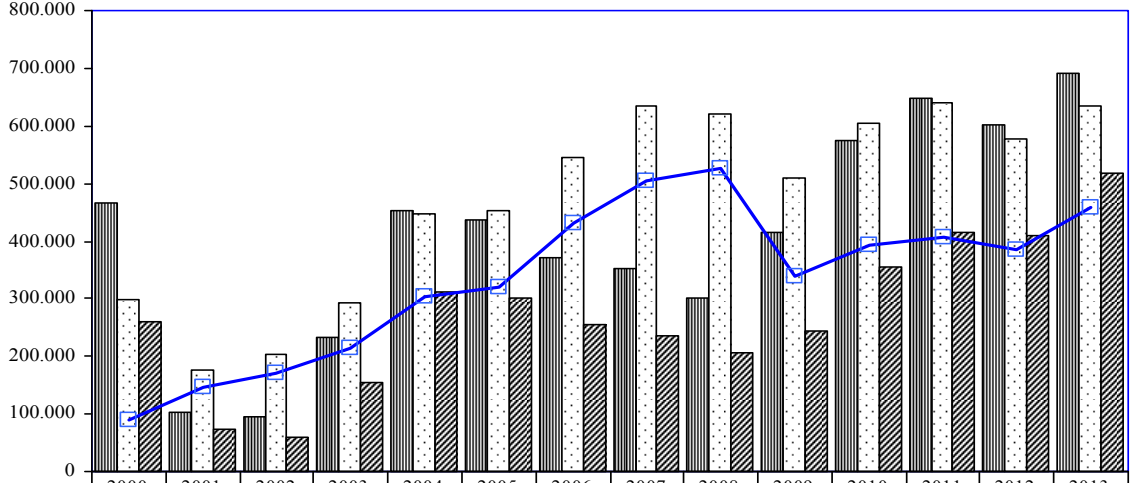
HAFİF TİCARİ ARAÇ İTHALATI / Light Commercial Vehicle Imports

BÖLGE / ÜLKE Region / Country	2009		2010		2011		2012		2013	
	Adet / Unit	%	Adet / Unit	%	Adet / Unit	%	Adet / Unit	%	Adet / Unit	%
AT + EFTA / EU + EFTA	43.681	66,3	75.496	74,4	88.136	78,5	75.279	81,8	69.174	76,9
DOĞU AVRUPA / East Europe	4.113	6,2	6.268	6,2	3.516	3,1	1.298	1,4	7.494	8,3
UZAK DOĞU / Far East	18.096	27,5	19.645	19,4	20.682	18,4	15.505	16,8	13.277	14,8
TOPLAM/Total	65.890	100,0	101.409	100,0	112.334	100,0	92.082	100,0	89.945	100,0

Kaynak: Otomotiv Distribütörleri Derneği

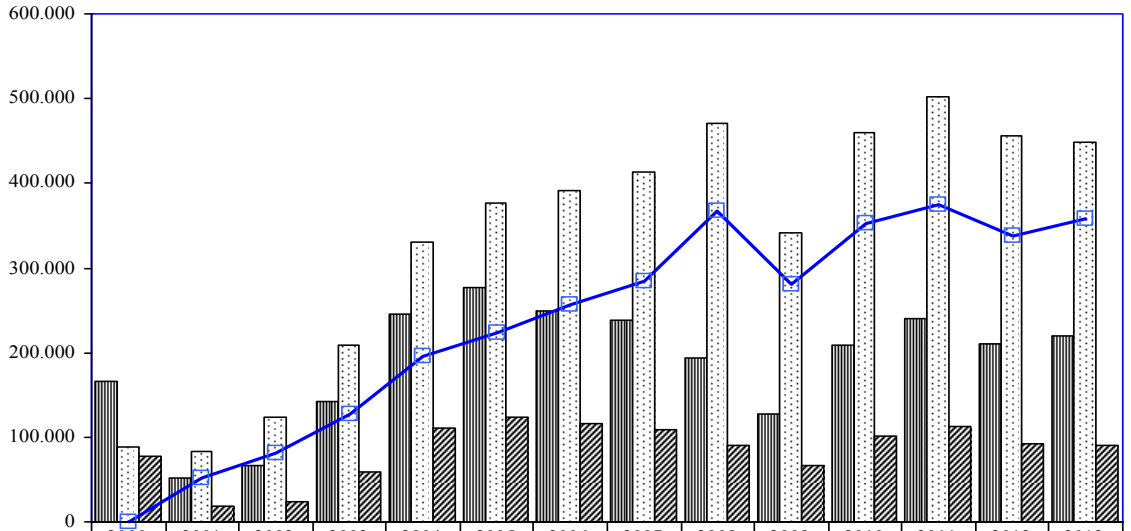
Source: Association of Automotive Distributors

Otomobil Üretim/İthalat/İhracat P.Cars Production/Imports/Exports



	2000	2001	2002	2003	2004	2005	2006	2007	2008	2009	2010	2011	2012	2013
Talep/Demand	466.437	102.145	94.537	232.806	453.748	435.703	370.648	353.280	302.059	414.262	573.967	647.846	603.122	691.881
Üretim/Production	297.476	175.343	204.198	294.116	447.152	453.663	545.682	634.883	621.567	510.931	603.394	639.734	577.296	633.604
İthalat/Imports	258.987	72.259	60.283	154.007	311.668	301.889	255.494	236.725	206.793	243.542	354.150	414.031	409.676	517.527
İhracat/Exports	90.026	145.457	169.944	215.317	305.072	319.825	430.420	504.353	526.301	340.211	393.577	405.919	383.850	459.250

Hafif Ticari Araçlar Üretim/İthalat/İhracat Light Commercial Vehicles Production/Imports/Exports



	2000	2001	2002	2003	2004	2005	2006	2007	2008	2009	2010	2011	2012	2013
Talep/Demand	166.037	51.028	66.168	141.479	244.751	277.632	250.029	237.382	194.088	127.204	208.154	239.355	210.254	220.570
Üretim/Production	89.404	83.158	123.011	209.231	329.724	376.047	390.590	413.736	470.557	341.873	459.386	501.585	455.968	448.306
İthalat/Imports	77.295	18.797	24.032	59.458	110.906	124.385	115.558	108.285	91.068	65.890	101.409	112.334	92.082	89.945
İhracat/Exports	662	50.927	80.875	127.210	195.879	222.800	256.119	284.639	367.537	280.559	352.641	374.564	337.796	357.681

OTOMOTİV SANAYİİ İSTİHDAMI
Automotive Industry Employment

<u>FİRMALAR / Firms</u>	<u>2009</u>	<u>2010</u>	<u>2011</u>	<u>2012</u>	<u>2013</u>
A.I.O.S.					
İŞÇİ / Worker	520	316	342	422	489
BÜRO PERSONELİ / Employee	95	94	94	107	120
İDARECİ / Administrator	14	14	16	18	20
MÜHENDİS / Engineer	48	45	44	52	69
İDA. MÜHENDİS / Ad. Eng.	24	21	24	23	26
TOPLAM / Total	701	490	520	622	724
B.M.C.					
İŞÇİ / Worker	2168	2040	1925	1701	0
BÜRO PERSONELİ / Employee	309	301	293	303	0
İDARECİ / Administrator	29	32	32	30	0
MÜHENDİS / Engineer	167	153	148	71	0
İDA. MÜHENDİS / Ad. Eng.	71	70	75	64	0
TOPLAM / Total	2.744	2.596	2.473	2.169	0
FORD OTOSAN					
İŞÇİ / Worker	6197	6635	7414	7069	6926
BÜRO PERSONELİ / Employee	378	417	834	517	550
İDARECİ / Administrator	73	66	107	122	103
MÜHENDİS / Engineer	647	961	829	1417	1414
İDA. MÜHENDİS / Ad. Eng.	297	334	397	402	451
TOPLAM / Total	7.592	8.413	9.581	9.527	9.444
HATTAT TARIM					
İŞÇİ / Worker	47	107	175	113	35
BÜRO PERSONELİ / Employee	23	21	52	38	15
İDARECİ / Administrator	15	12	2	10	14
MÜHENDİS / Engineer	2	5	21	11	18
İDA. MÜHENDİS / Ad. Eng.	4	17	6	12	6
TOPLAM / Total	91	162	256	184	88

<u>FİRMALAR / Firms</u>	<u>2009</u>	<u>2010</u>	<u>2011</u>	<u>2012</u>	<u>2013</u>
HONDA TÜRKİYE					
İŞÇİ / Worker	545	529	614	499	539
BÜRO PERSONELİ / Employee	223	201	216	183	143
İDARECİ / Administrator	22	18	19	22	28
MÜHENDİS / Engineer	26	58	61	59	46
İDA. MÜHENDİS / Ad. Eng.	22	7	12	14	22
TOPLAM / Total	838	813	922	777	778
HYUNDAI ASSAN					
İŞÇİ / Worker	1349	1261	1356	1256	1678
BÜRO PERSONELİ / Employee	26	90	155	161	172
İDARECİ / Administrator	102	81	37	45	63
MÜHENDİS / Engineer	118	100	93	95	107
İDA. MÜHENDİS / Ad. Eng.	14	38	38	43	33
TOPLAM / Total	1.609	1.570	1.679	1.600	2.053
KARSAN					
İŞÇİ / Worker	617	878	812	1047	719
BÜRO PERSONELİ / Employee	36	34	38	40	35
İDARECİ / Administrator	2	4	3	4	4
MÜHENDİS / Engineer	60	75	85	105	116
İDA. MÜHENDİS / Ad. Eng.	10	15	12	12	15
TOPLAM / Total	725	1.006	950	1.208	889
M.A.N. TÜRKİYE					
İŞÇİ / Worker	1177	1129	1327	1258	1242
BÜRO PERSONELİ / Employee	106	90	103	81	100
İDARECİ / Administrator	25	25	28	23	21
MÜHENDİS / Engineer	60	73	93	91	98
İDA. MÜHENDİS / Ad. Eng.	38	36	50	54	48
TOPLAM / Total	1.406	1.353	1.601	1.507	1.509

<u>FİRMALAR / Firms</u>	<u>2009</u>	<u>2010</u>	<u>2011</u>	<u>2012</u>	<u>2013</u>
M. BENZ TÜRK					
İŞÇİ / Worker	2915	3197	3564	3678	3845
BÜRO PERSONELİ / Employee	339	512	572	450	623
İDARECİ / Administrator	108	68	101	296	61
MÜHENDİS / Engineer	553	428	482	418	602
İDA. MÜHENDİS / Ad. Eng.	82	182	188	188	187
TOPLAM / Total	3.997	4.387	4.907	5.030	5.318
OTOKAR					
İŞÇİ / Worker	750	851	984	1686	1624
BÜRO PERSONELİ / Employee	182	198	217	249	257
İDARECİ / Administrator	29	30	39	42	42
MÜHENDİS / Engineer	154	141	179	201	227
İDA. MÜHENDİS / Ad. Eng.	91	92	100	103	114
TOPLAM / Total	1.206	1.312	1.519	2.281	2.264
OYAK RENAULT					
İŞÇİ / Worker	4678	4557	4813	4884	4394
BÜRO PERSONELİ / Employee	578	564	594	603	617
İDARECİ / Administrator	26	24	32	35	32
MÜHENDİS / Engineer	524	553	562	535	546
İDA. MÜHENDİS / Ad. Eng.	108	112	115	142	150
TOPLAM / Total	5.914	5.810	6.116	6.199	5.739
TEMSA GLOBAL					
İŞÇİ / Worker	1129	1002	1082	1093	1093
BÜRO PERSONELİ / Employee	289	218	245	247	247
İDARECİ / Administrator	32	28	26	31	31
MÜHENDİS / Engineer	246	120	152	150	150
İDA. MÜHENDİS / Ad. Eng.	68	84	88	100	100
TOPLAM / Total	1.764	1.452	1.593	1.621	1.621

FİRMALAR / Firms	2009	2010	2011	2012	2013
TOFAŞ					
İŞÇİ / Worker	5734	5782	6471	5967	4924
BÜRO PERSONELİ / Employee	429	400	489	483	515
İDARECİ / Administrator	51	59	58	55	61
MÜHENDİS / Engineer	504	494	562	561	594
İDA. MÜHENDİS / Ad. Eng.	139	142	145	148	158
TOPLAM / Total	6.857	6.877	7.725	7.214	6.252
TOYOTA					
İŞÇİ / Worker	2557	2472	2294	2063	2722
BÜRO PERSONELİ / Employee	139	130	115	117	120
İDARECİ / Administrator	8	8	8	8	8
MÜHENDİS / Engineer	130	114	91	94	98
İDA. MÜHENDİS / Ad. Eng.	60	56	55	56	60
TOPLAM / Total	2.894	2.780	2.563	2.338	3.008
TÜRK TRAKTÖR					
İŞÇİ / Worker	938	1464	2101	1945	2101
BÜRO PERSONELİ / Employee	146	243	233	256	263
İDARECİ / Administrator	7	7	38	35	102
MÜHENDİS / Engineer	124	73	78	98	106
İDA. MÜHENDİS / Ad. Eng.	31	30	41	44	71
TOPLAM / Total	1.246	1.817	2.491	2.378	2.643
GENEL TOPLAM/Grand Total					
İŞÇİ / Worker	31.321	32.220	35.274	34.681	32.331
BÜRO PERSONELİ / Employee	3.298	3.513	4.250	3.835	3.777
İDARECİ / Administrator	543	476	546	776	590
MÜHENDİS / Engineer	3.363	3.393	3.480	3.958	4.191
İDA. MÜHENDİS / Ad. Eng.	1.059	1.236	1.346	1.405	1.441
TOPLAM / Total	39.584	40.838	44.896	44.655	42.330

İDA. MÜHENDİS=İDARECİ MÜHENDİS
Ad. Eng.=Administrator Engineer

OTOMOTİV SANAYİ YATIRIMLARI (USD)
Realized Sectorial Investments (USD)

ARALIK SONU/By the end of December

PROJE TİPİ Projects	2009	2010	2011	2012	2013
KAPASİTE ARTTIRIMI Capacity Development	20.000.000	40.000.000	44.000.000	130.000.000	142.000.000
MODERNİZASYON Modernization	83.000.000	50.000.000	61.000.000	113.000.000	75.000.000
YENİ MODEL New Model Development	401.000.000	366.000.000	430.000.000	723.000.000	855.000.000
KALİTE ARTTIRICI Quality Development	11.000.000	12.000.000	16.000.000	46.000.000	30.000.000
YERLİLEŞTİRMEYİ ARTTIRICI Localization	87.000.000	11.000.000	70.000.000	23.000.000	3.000.000
DİĞER Others	70.000.000	72.000.000	125.000.000	80.000.000	95.000.000
TOPLAM Toplam	672.000.000	551.000.000	746.000.000	1.115.000.000	1.200.000.000

TÜRKİYE ARAÇ PARKI
Automotive Vehicles Park In Turkey

YILLAR Years	OTOMOBİL P.Car	KAMYON Truck	KAMYONET Pick-Up	MINİBÜS Minibus	OTOBÜS Bus	TRAKTÖR F.Tractor	TOPLAM Total
1963	72.034	49.356	30.739	7.543	11.726	50.844	222.242
1964	79.449	46.721	28.658	9.196	11.216	51.781	227.021
1965	87.584	49.317	29.804	10.476	11.693	54.608	243.482
1966	91.469	47.931	31.462	11.239	12.041	65.108	259.250
1967	112.867	56.889	39.927	16.008	13.332	74.982	314.005
1968	125.375	62.616	43.441	18.967	13.948	84.874	349.221
1969	137.345	69.478	48.655	20.540	15.520	96.407	387.945
1970	137.771	70.770	52.152	20.916	15.980	105.865	403.454
1971	153.676	73.433	57.011	22.380	17.040	118.525	442.065
1972	187.272	78.920	62.796	25.559	18.504	135.726	508.777
1973	240.360	86.780	71.043	30.055	20.011	156.139	604.388
1974	313.160	95.309	81.025	34.122	21.404	200.466	745.486
1975	403.546	108.381	98.579	40.623	23.763	243.066	917.958
1976	488.894	122.176	116.861	46.066	25.388	281.802	1.081.187
1977	560.424	138.093	134.213	51.999	27.096	320.578	1.232.403
1978	624.438	146.551	144.695	56.836	28.559	370.259	1.371.338
1979	688.687	157.095	155.278	61.596	30.634	402.777	1.496.067
1980	742.252	164.893	165.821	64.707	32.783	436.369	1.606.825
1981	776.432	172.372	172.269	66.514	33.839	458.714	1.680.140
1982	811.465	180.772	178.762	69.598	35.432	491.001	1.767.030
1983	856.350	190.277	186.427	73.585	38.478	513.516	1.858.633
1984	919.577	197.721	198.106	80.697	43.638	556.781	1.996.520
1985	983.444	205.496	212.505	87.951	47.119	583.974	2.120.489
1986	1.087.234	217.111	224.755	97.917	50.798	612.731	2.290.546
1987	1.193.021	225.872	233.480	106.314	53.554	637.449	2.449.690
1988	1.310.257	234.166	240.718	112.885	56.172	654.636	2.608.834
1989	1.434.830	241.392	248.567	118.026	58.859	672.845	2.774.519
1990	1.649.879	257.353	263.407	125.399	63.700	692.454	3.052.192
1991	1.864.344	273.409	280.891	133.632	68.973	704.373	3.325.622
1992	2.181.388	379.410	308.180	145.312	75.592	828.580	3.918.462
1993	2.619.852	406.398	354.290	159.900	84.254	870.559	4.495.253
1994	2.861.640	419.374	374.473	166.424	87.545	895.506	4.804.962
1995	3.058.511	432.216	397.743	173.051	90.197	937.528	5.089.246
1996	3.274.156	453.796	442.788	182.694	94.978	988.142	5.436.554
1997	3.570.105	489.071	529.838	197.057	101.896	1.053.381	5.941.348
1998	3.838.631	519.749	626.004	211.495	108.361	1.107.157	6.411.397
1999	4.072.326	531.690	692.935	221.683	112.186	1.131.626	6.762.446
2000	4.422.180	557.295	794.459	235.885	118.454	1.159.070	7.287.343
2001	4.534.803	562.063	833.175	239.381	119.306	1.179.068	7.467.796
2002	4.600.140	567.152	875.381	241.700	120.097	1.180.127	7.584.597
2003	4.700.343	579.010	973.457	245.394	123.500	1.184.256	7.805.960
2004	5.400.440	647.420	1.259.867	318.954	152.712	1.210.283	8.989.676
2005	5.772.745	676.929	1.475.057	338.539	163.390	1.247.767	9.674.427
2006	6.140.992	709.535	1.695.624	357.523	175.949	1.290.679	10.370.302
2007	6.472.156	729.202	1.890.459	372.601	189.128	1.327.334	10.980.880
2008	6.796.629	744.217	2.066.007	383.548	199.934	1.358.577	11.548.912
2009	7.093.964	727.302	2.204.951	384.053	201.033	1.368.032	11.979.335
2010	7.544.871	726.359	2.399.038	386.973	208.510	1.404.872	12.670.623
2011	8.113.111	728.458	2.611.104	389.435	219.906	1.466.208	13.528.222
2012	8.648.875	751.650	2.794.606	396.119	235.949	1.515.421	14.342.620
2013	9.283.923	755.950	2.933.050	421.848	219.885	1.565.817	15.180.473

KAYNAK: T.C. BAŞBAKANLIK TÜRKİYE İSTATİSTİK KURUMU
Source: Republic Of Turkey, Prime Ministry Turkish Statistical Institute