



OTOMOTİV SANAYİİ DERNEĐİ  
AUTOMOTIVE MANUFACTURERS ASSOCIATION

# Otomotiv Sanayii Genel ve İstatistik Bülteni General and Statistical Information Bulletin Of Automotive Manufacturers 2012 - I

OSD "OICA" Üyesidir



OSD is a Member of "OICA"

**İÇİNDEKİLER****SAHİFE**

OTOMOTİV SANAYİİ FİRMALARI HAKKINDA GENEL BİLGİLER - 2012	1
OTOMOTİV SANAYİİ FİRMALARININ ÜRETTİKLERİ MODELLER VE GENEL SPESİFİKASYONLARI - 2012	2 - 10
OTOMOTİV SANAYİİ FİRMALARININ 2012 YILI ÜRETİM KAPASİTELERİ	11
OTOMOTİV SANAYİİ FİRMALARININ 2007 - 2011 YILLARI ÜRETİM ADETLERİ	12 - 16
YILLARA GÖRE ÜRETİM GRAFİKLERİ	17 - 18
OTOMOTİV SANAYİİ FİRMALARININ ÜRETİM ADETLERİ	19
KAPASİTE KULLANIM VE İHRACAT GRAFİKLERİ	20
YILLAR İTİBARIYLA ÜRETİM ADETLERİ VE KAPASİTE KULLANIMLARI	21
OTOMOTİV SANAYİİ FİRMALARININ İHRACATLARI	22 - 24
OTOMOBİL İTHALATI – HAFİF TİCARİ ARAÇ İTHALATI	25
OTOMOBİL VE HAFİF TİCARİ ARAÇLAR/ÜRETİM/İTHALAT/İHRACAT GRAFİKLERİ	26
OTOMOTİV SANAYİİ İSTİHDAMI	27 - 30
OTOMOTİV SANAYİİ YATIRIMLARI	31
TÜRKİYE ARAÇ PARKI	32

**CONTENTS****PAGE**

GENERAL INFORMATION ON THE AUTOMOTIVE MANUFACTURERS - 2012	1
GENERAL SPECIFICATIONS OF THE PRODUCTS - 2012	2 - 10
PRODUCTION CAPACITIES - 2012	11
PRODUCTION UNITS FOR THE YEARS 2007 - 2011	12 - 16
PRODUCTION BY YEARS IN GRAPHICS	17 - 18
THE PRODUCTION UNITS OF THE AUTOMOTIVE MANUFACTURERS	19
CAPACITY USAGE AND EXPORTS IN GRAPHICS	20
PRODUCTION UNITS AND CAPACITY UTILIZATION BY YEARS	21
AUTOMOTIVE INDUSTRY EXPORTS	22 - 24
P. CAR IMPORTS - LIGHT COMMERCIAL VEHICLE IMPORTS	25
P. CARS AND LIGHT COMMERCIAL VEHICLES/PRODUCTION/IMPORTS/EXPORTS	26
AUTOMOTIVE INDUSTRY EMPLOYMENT	27 - 30
AUTOMOTIVE INDUSTRY INVESTMENTS	31
AUTOMOTIVE VEHICLES PARK IN TURKEY	32

**OTOMOTİV SANAYİİ FİRMALARI HAKKINDA GENEL BİLGİLER - 2012**  
**General Information On The Automotive Manufacturers - 2012**

OCAK SONU/By the end of January

<b>FİRMALAR</b> Firms	<b>ÜRETİM YERİ</b> The Production Place	<b>ÜRETİME BAŞLAMA TARİHİ</b> Starting Year Of Production	<b>LİSANS</b> Licence	<b>SERMAYE</b> Capital (1000 YTL)	<b>YABANCI SERMAYE</b> Foreign Cap. (%)	<b>KAPALI ALAN</b> Covered Area (1.000 M2)	<b>TOPLAM ALAN</b> Total Area (1.000 M2)
A.I.O.S.	KOCAELİ	1966	ISUZU	25.419	29,74	82	299
B.M.C.	İZMİR	1966		500.000	0	123	826
FORD OTOSAN	ESKİŞEHİR KOCAELİ	1983 2001	FORD	350.910	41	72 345	1.105 1.528
HATTAT TARIM	TEKİRDAĞ	2002	VALTRA, UNIVERSAL, HATTAT	40.000	0	41	172
HONDA TÜRKİYE	KOCAELİ	1997	HONDA MOTOR EUROPE. LTD.	180.000	100	77	292
HYUNDAI ASSAN	KOCAELİ	1997	HYUNDAI MOTOR COMP.	206.220	70	100	1.000
KARSAN	BURSA	1966	KARSAN / PEUGEOT HYUNDAI MOTOR COMPANY RENAULT TRUCKS BRED A MENARINI BUS	195.553	0	105	230
M.A.N. TÜRKİYE	ANKARA	1966	MAN TRUCK & BUS AG	65.000	99,9	111	317
M.BENZ TÜRK	İSTANBUL AKSARAY	1968 1985	MERCEDES BENZ	275.000	85	158 82	511 558
OTOKAR	SAKARYA	1963	LAND ROVER / FRUEHAUF	24.000	0	141	552
O.RENAULT	BURSA	1971	RENAULT	323.300	51	292	510
TEMSA GLOBAL	ADANA SAKARYA	1987 2008	TEMSA / MITSUBISHI FUSO TRUCK & BUS CORP.	210.000	0	105 32	555 131
TOFAŞ	BURSA	1971	FIAT	500.000	37,8	369	935
TOYOTA	SAKARYA	1994	TOYOTA	150.165	100	212	917
T.TRAKTÖR	ANKARA	1954		53.369	37,5	82	282
<b>TOPLAM/Total</b>				<b>3.098.936</b>		<b>2.529</b>	<b>10.720</b>



















TRAKTÖR TD75S 4WD ROPSLU	F. Tractor	3810	3190	DIZEL	3 TURBO	2930	72/2300	12/12	NEW HOLLAND	ÖN 11.2-24 ARKA 13.6-36
TRAKTÖR TD80S 2WD ROPSLU	F. Tractor	3810	2830	DIZEL	3 TURBO	2930	80/2300	12/12	NEW HOLLAND	ÖN 7.50-16 ARKA 16.9-30
TRAKTÖR TD80S 4WD ROPSLU	F. Tractor	3810	3190	DIZEL	3 TURBO	2930	80/2300	12/12	NEW HOLLAND	ÖN 11.2-24 ARKA 13.6-36
TRAKTÖR TD 65D 2WD ROPSLU	F. Tractor	5200	2650	DIZEL	3 TURBO	2930	65/2300	12/12 & 20/12	NEW HOLLAND	ÖN 7.50-16 ARKA 14.9-30
TRAKTÖR TD 65D 2WD KABINLI	F. Tractor	5200	2840	DIZEL	3 TURBO	2930	65/2300	12/12 & 20/12	NEW HOLLAND	ÖN 7.50-16 ARKA 14.9-30
TRAKTÖR TD 65D 4WD ROPSLU	F. Tractor	5400	2920	DIZEL	3 TURBO	2930	65/2300	12/12 & 20/12	NEW HOLLAND	ÖN 9.50/24 ARKA 14.9-30
TRAKTÖR TD 65D 4WD KABINLI	F. Tractor	5400	3080	DIZEL	3 TURBO	2930	65/2300	12/12 & 20/12	NEW HOLLAND	ÖN 9.50-24 ARKA 14.9-30
TRAKTÖR TD 75D 2WD ROPSLU	F. Tractor	5400	2940	DIZEL	4 TURBO	3908	75/2300	12/12 & 20/12	NEW HOLLAND	ÖN 7.50-16 ARKA 16.9-30
TRAKTÖR TD 75D 2WD KABINLI	F. Tractor	5400	3170	DIZEL	4 TURBO	3908	75/2300	12/12 & 20/12	NEW HOLLAND	ÖN 7.50-16 ARKA 16.9-30
TRAKTÖR TD 75D 4WD ROPSLU	F. Tractor	5800	3420	DIZEL	4 TURBO	3908	75/2300	12/12 & 20/12	NEW HOLLAND	ÖN 11.2-24 ARKA 16.9-30
TRAKTÖR TD 75D 4WD KABINLI	F. Tractor	5800	3600	DIZEL	4 TURBO	3908	75/2300	12/12 & 20/12	NEW HOLLAND	ÖN 11.2-24 ARKA 16.9-30
TRAKTÖR TD 80D 4WD KABINLI	F. Tractor	5800	3600	DIZEL	3 TURBO	2930	80/2300	12/12 & 20/12	NEW HOLLAND	ÖN 11.2-24 ARKA 16.9-30
TRAKTÖR TD 90D 2WD ROPSLU	F. Tractor	5500	2940	DIZEL	4 TURBO	3908	88/2300	12/12 & 20/12	NEW HOLLAND	ÖN 7.50-18 ARKA 18.4-30
TRAKTÖR TD 90D 2WD KABINLI	F. Tractor	5500	3170	DIZEL	4 TURBO	3908	88/2300	12/12 & 20/12	NEW HOLLAND	ÖN 7.50-18 ARKA 18.4-30
TRAKTÖR TD 90D 4WD ROPSLU	F. Tractor	5900	3420	DIZEL	4 TURBO	3908	88/2300	12/12 & 20/12	NEW HOLLAND	ÖN 12.4-24 ARKA 18.4-30
TRAKTÖR TD 90D 4WD KABINLI	F. Tractor	5900	3600	DIZEL	4 TURBO	3908	88/2300	12/12 & 20/12	NEW HOLLAND	ÖN 12.4-24 ARKA 18.4-30
TRAKTÖR TD 100D 2WD ROPSLU	F. Tractor	5600	3150	DIZEL	4 TURBO	3908	98/2300	12/12 & 20/12	NEW HOLLAND	ÖN 7.50-18 ARKA 18.4-30
TRAKTÖR TD 100D 2WD KABINLI	F. Tractor	5600	3340	DIZEL	4 TURBO	3908	98/2300	12/12 & 20/12	NEW HOLLAND	ÖN 7.50-18 ARKA 18.4-30
TRAKTÖR TD 100D 4WD ROPSLU	F. Tractor	6000	3580	DIZEL	4 TURBO	3908	98/2300	12/12 & 20/12	NEW HOLLAND	ÖN 12.4-24 ARKA 18.4-30
TRAKTÖR TD 100D 4WD KABINLI	F. Tractor	6000	3770	DIZEL	4 TURBO	3908	98/2300	12/12 & 20/12	NEW HOLLAND	ÖN 12.4-24 ARKA 18.4-30
TRAKTÖR JX 70 2WD ROPSLU	F. Tractor	5200	2650	DIZEL	3 TURBO	2930	65/2300	12/12 & 20/12	CASE IH	ÖN 7.50X16 ARKA 14.9R30
TRAKTÖR JX 70 2WD KABINLI	F. Tractor	5200	2840	DIZEL	3 TURBO	2930	65/2300	12/12 & 20/12	CASE IH	ÖN 7.50-16 ARKA 14.9R30
TRAKTÖR JX 70 4WD ROPSLU	F. Tractor	5400	2920	DIZEL	3 TURBO	2930	65/2300	12/12 & 20/12	CASE IH	ÖN 12.4R20 ARKA 14.9R30
TRAKTÖR JX 70 4WD KABINLI	F. Tractor	5400	3080	DIZEL	3 TURBO	2930	65/2300	12/12 & 20/12	CASE IH	ÖN 12.4R20 ARKA 14.9R30
TRAKTÖR JX 75 2WD ROPSLU	F. Tractor	5500	2940	DIZEL	4 TURBO	3908	75/2300	12/12 & 20/12	CASE IH	ÖN 7.50-16 ARKA 14.9R30
TRAKTÖR JX 75 2WD KABINLI	F. Tractor	5500	3170	DIZEL	4 TURBO	3908	75/2300	12/12 & 20/12	CASE IH	ÖN 7.50-16 ARKA 14.9R30
TRAKTÖR JX 75 4WD ROPSLU	F. Tractor	5900	3420	DIZEL	4 TURBO	3908	75/2300	12/12 & 20/12	CASE IH	ÖN 12.4-24 ARKA 18.4-30
TRAKTÖR JX 75 4WD KABINLI	F. Tractor	5900	3600	DIZEL	4 TURBO	3908	75/2300	12/12 & 20/12	CASE IH	ÖN 12.4-24 ARKA 18.4-30
TRAKTÖR JX 80 2WD ROPSLU	F. Tractor	5400	2940	DIZEL	3 TURBO	2930	80/2300	12/12 & 20/12	CASE IH	ÖN 9.00-16 ARKA 16.9R34
TRAKTÖR JX 80 2WD KABINLI	F. Tractor	5400	3170	DIZEL	3 TURBO	2930	80/2300	12/12 & 20/12	CASE IH	ÖN 9.00-16 ARKA 16.9R34
TRAKTÖR JX 80 4WD ROPSLU	F. Tractor	5800	3420	DIZEL	3 TURBO	2930	80/2300	12/12 & 20/12	CASE IH	ÖN 13.6R24 ARKA 16.9R34
TRAKTÖR JX 80 4WD KABINLI	F. Tractor	5800	3600	DIZEL	3 TURBO	2930	80/2300	12/12 & 20/12	CASE IH	ÖN 13.6R24 ARKA 16.9R34
TRAKTÖR JX 90 2WD ROPSLU	F. Tractor	5500	2940	DIZEL	4 TURBO	3908	88/2300	12/12 & 20/12	CASE IH	ÖN 7.50-16 ARKA 14.9R30
TRAKTÖR JX 90 2WD KABINLI	F. Tractor	5500	3170	DIZEL	4 TURBO	3908	88/2300	12/12 & 20/12	CASE IH	ÖN 7.50-16 ARKA 14.9R30
TRAKTÖR JX 90 4WD ROPSLU	F. Tractor	5900	3420	DIZEL	4 TURBO	3908	88/2300	12/12 & 20/12	CASE IH	ÖN 12.4-24 ARKA 18.4-30
TRAKTÖR JX 90 4WD KABINLI	F. Tractor	5900	3600	DIZEL	4 TURBO	3908	88/2300	12/12 & 20/12	CASE IH	ÖN 12.4-24 ARKA 18.4-30
TRAKTÖR JX 100 2WD ROPSLU	F. Tractor	5600	3150	DIZEL	4 TURBO	3908	98/2300	12/12 & 20/12	CASE IH	ÖN 7.50-18 ARKA 18.4-30
TRAKTÖR JX 100 2WD KABINLI	F. Tractor	5600	3340	DIZEL	4 TURBO	3908	98/2300	12/12 & 20/12	CASE IH	ÖN 7.50-18 ARKA 18.4-30
TRAKTÖR JX 100 4WD ROPSLU	F. Tractor	6000	3580	DIZEL	4 TURBO	3908	98/2300	12/12 & 20/12	CASE IH	ÖN 12.4-24 ARKA 18.4-30
TRAKTÖR JX 100 4WD KABINLI	F. Tractor	6000	3370	DIZEL	4 TURBO	3908	98/2300	12/12 & 20/12	CASE IH	ÖN 12.4-24 ARKA 18.4-30
TRAKTÖR T480 4WD ROPSLU	F. Tractor	3000	1950	DIZEL	4	2216	48/2800	8/2 & 8/8	NEW HOLLAND	ÖN 280/70R18 ARKA 13.6R28
TRAKTÖR T480 2WD ROPSLU	F. Tractor	3000	1800	DIZEL	4	2216	48/2800	8/2	NEW HOLLAND	ÖN 8.00-16 ARKA 12.4R24
TRAKTÖR TD65B 4WD ROPSLU	F. Tractor	4300	2710	DIZEL	3 TURBO	2930	65/2300	12/12 & 20/12	NEW HOLLAND	ÖN 280/70R20 ARKA 380/70R28
TRAKTÖR TD75B 4WD ROPSLU	F. Tractor	4300	2710	DIZEL	3 TURBO	2930	72/2300	12/12 & 20/12	NEW HOLLAND	ÖN 280/70R20 ARKA 380/70R28
TRAKTÖR TD80B 4WD ROPSLU	F. Tractor	4300	2710	DIZEL	3 TURBO	2930	80/2300	12/12 & 20/12	NEW HOLLAND	ÖN 280/70R20 ARKA 380/70R28

DIZEL = Diesel  
BENZIN = Petrol  
ÖN-ARKA = Front-Rear KAT = Ply

**OTOMOTİV SANAYİİ FİRMALARININ  
2012 YILI ÜRETİM KAPASİTELERİ  
Production Capacities 2012**

<b>FİRMALAR Firms</b>	<b>OTOMOBİL P.Car</b>	<b>KAMYON Truck</b>	<b>KAMYONET Pick Up</b>	<b>OTOBÜS Bus</b>	<b>MİNİBÜS Mini-Bus</b>	<b>MİDİBÜS Midi-Bus</b>	<b>TRAKTÖR F. Tractor</b>	<b>TOPLAM Total</b>
<b>A. ISUZU</b>	0	7.200	2.400	0	922	2.633	0	13.155
<b>B.M.C.</b>	0	10.000	5.000	1.800	3.200	0	0	20.000
<b>FORD OTOSAN</b>	0	10.000	270.000	0	50.000	0	0	330.000
<b>HATTAT TARIM</b>	0	0	0	0	0	0	15.000	15.000
<b>HONDA TÜRKİYE</b>	50.000	0	0	0	0	0	0	50.000
<b>HYUNDAI ASSAN</b>	100.000	0	15.000	0	10.000	0	0	125.000
<b>KARSAN</b>	0	16.000	61.400	1.350	16.300	0	0	95.050
<b>M.A.N. TÜRKİYE</b>	0	0	0	1.700	0	0	0	1.700
<b>M. BENZ TÜRK</b>	0	14.500	0	4.000	0	0	0	18.500
<b>OTOKAR</b>	0	0	4.200	1.000	1.500	2.100	0	8.800
<b>O. RENAULT</b>	360.000	0	0	0	0	0	0	360.000
<b>TEMSA GLOBAL</b>	0	4.500	3.000	1.250	0	2.000	0	10.750
<b>TOFAŞ</b>	400.000	0	0	0	0	0	0	400.000
<b>TOYOTA</b>	150.000	0	0	0	0	0	0	150.000
<b>T. TRAKTÖR</b>	0	0	0	0	0	0	40.000	40.000
<b>TOPLAM/Total</b>	<b>1.060.000</b>	<b>62.200</b>	<b>361.000</b>	<b>11.100</b>	<b>81.922</b>	<b>6.733</b>	<b>55.000</b>	<b>1.637.955</b>

**OTOMOTİV SANAYİİ FİRMALARININ 2007 - 2011 YILLARI ÜRETİM ADETLERİ**  
**Production Units For The Years 2007 - 2011**

<b>FİRMALAR/MODELLER</b>	<b>Firms/Models</b>	<b>2007</b>	<b>2008</b>	<b>2009</b>	<b>2010</b>	<b>2011</b>
<b>A.I.O.S.</b>						
Kamyonet	Pick Up	2.984	3.796	210	693	618
Kamyon (A.Y.A. 3.501 - 12.000 KG)	Truck	2.930	3.469	402	1.509	2.531
Midibüs	Midibus	1.928	2.742	1.205	1.090	1.175
<b>TOPLAM</b>	<b>Total</b>	<b>7.842</b>	<b>10.007</b>	<b>1.817</b>	<b>3.292</b>	<b>4.324</b>
<b>ASKAM</b>						
Kamyon (A.Y.A. > 12.001 KG)	Truck	74	0	0	0	0
Kamyonet	Pick Up	5	0	0	0	0
Minibüs	Minibus	0	0	0	0	0
<b>TOPLAM</b>	<b>Total</b>	<b>79</b>	<b>0</b>	<b>0</b>	<b>0</b>	<b>0</b>
<b>B.M.C.</b>						
Kamyon (A.Y.A. > 12.001 KG)	Truck	5.637	5.600	1.617	2.767	3.234
Kamyonet	Pick Up	2.624	1.124	936	0	0
Minibus	Minibus	965	863	1	0	0
Midibüs	Midibus	184	51	0	0	2
Otobüs	Bus	959	1.098	613	575	488
<b>TOPLAM</b>	<b>Total</b>	<b>10.369</b>	<b>8.736</b>	<b>3.167</b>	<b>3.342</b>	<b>3.724</b>
<b>FORD OTOSAN</b>						
Kamyon (A.Y.A. > 12.001 KG)	Truck	6.434	5.863	1.722	4.872	9.239
Minibüs	Minibus	18.897	17.844	11.466	14.895	19.371
Kamyonet	Pick Up	52.336	46.960	19.328	35.916	44.507
Kamyonet Van	Pick Up	208.689	198.094	140.940	186.387	222.733
<b>TOPLAM</b>	<b>Total</b>	<b>286.356</b>	<b>268.761</b>	<b>173.456</b>	<b>242.070</b>	<b>295.850</b>

<b>FİRMALAR/MODELLER</b>	<b>Firms/Models</b>	<b>2007</b>	<b>2008</b>	<b>2009</b>	<b>2010</b>	<b>2011</b>
<b>HATTAT TARIM</b>						
Traktör (< 60 HP)	F. Tractor	548	391	206	792	1.459
Traktör (> 61 HP)	F. Tractor	706	528	359	1.356	3.430
<b>TOPLAM</b>	<b>Total</b>	<b>1.254</b>	<b>919</b>	<b>565</b>	<b>2.148</b>	<b>4.889</b>
<b>HONDA TÜRKİYE</b>						
Otomobil (1.301 - 1.600 CC - SEDAN)	P. Car	18.354	17.402	7.944	10.795	7.391
Otomobil (1.601 - 2.000 CC - SEDAN)	P. Car	5.309	32.671	10.320	9.510	4.950
<b>TOPLAM</b>	<b>Total</b>	<b>23.663</b>	<b>50.073</b>	<b>18.264</b>	<b>20.305</b>	<b>12.341</b>
<b>HYUNDAI ASSAN</b>						
Minibüs	Minibus	292	0	0	0	0
Kamyonet Van	Pick Up	6.207	0	0	0	0
Otomobil (< 1.300 CC - HATCHBACK)	P. Car	0	0	0	26.847	47.873
Otomobil (1.301 - 1.600 CC - HATCHBACK)	P. Car	0	4.144	36.816	9.721	25.138
Otomobil (1.301 - 1.600 CC - SEDAN)	P. Car	83.691	77.446	11.836	40.432	17.220
<b>TOPLAM</b>	<b>Total</b>	<b>90.190</b>	<b>81.590</b>	<b>48.652</b>	<b>77.000</b>	<b>90.231</b>
<b>KARSAN</b>						
Kamyon (A.Y.A. 3.501 - 12.000 KG)	Truck	93	906	178	448	574
Kamyon (A.Y.A. > 12.001 KG)	Truck	0	151	345	772	1.818
Minibüs	Minibus	1.550	1.905	100	1.797	2.936
Midibüs	Midibus	4.253	4.353	0	0	0
Otobüs	Bus	0	0	0	0	76
Kamyonet	Pick Up	1.879	1.839	0	8.052	6.806
Kamyonet Van	Pick Up	1.945	2.076	7.690	13.650	9.936
<b>TOPLAM</b>	<b>Total</b>	<b>9.720</b>	<b>11.230</b>	<b>8.313</b>	<b>24.719</b>	<b>22.146</b>

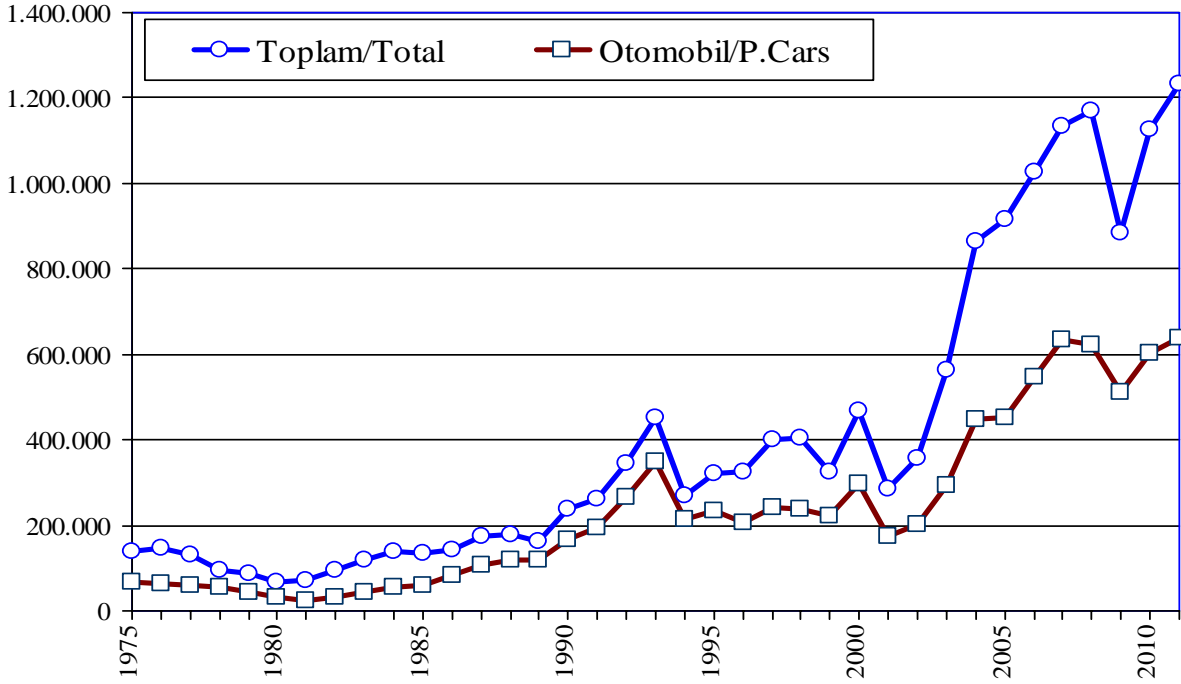
<b>FİRMALAR/MODELLER</b>	<b>Firms/Models</b>	<b>2007</b>	<b>2008</b>	<b>2009</b>	<b>2010</b>	<b>2011</b>
<b>M.A.N. TÜRKİYE</b>						
Kamyon (A.Y.A. > 12.001 KG)	Truck	0	0	0	0	0
Otobüs	Bus	2.069	1.696	1.544	1.132	1.610
<b>TOPLAM</b>	<b>Total</b>	<b>2.069</b>	<b>1.696</b>	<b>1.544</b>	<b>1.132</b>	<b>1.610</b>
<b>M. BENZ TÜRK</b>						
Otobüs	Bus	3.006	3.510	2.773	2.462	3.018
Kamyon (A.Y.A. > 12.001 KG)	Truck	16.008	17.290	3.719	12.018	18.344
<b>TOPLAM</b>	<b>Total</b>	<b>19.014</b>	<b>20.800</b>	<b>6.492</b>	<b>14.480</b>	<b>21.362</b>
<b>OTOKAR</b>						
Midibüs	Midibus	1.164	1.495	1.008	989	1.492
Minibüs	Minibus	295	511	262	286	168
Kamyonet	Pick Up	969	692	1.000	582	675
Otobüs	Bus	106	325	290	379	727
<b>TOPLAM</b>	<b>Total</b>	<b>2.534</b>	<b>3.023</b>	<b>2.560</b>	<b>2.236</b>	<b>3.062</b>
<b>OTOYOL</b>						
Kamyon (A.Y.A. 3.501 - 12.000 KG)	Truck	0	0	0	0	0
Kamyon (A.Y.A. > 12.001 KG)	Truck	235	0	0	0	0
Kamyonet	Pick Up	0	0	0	0	0
Minibüs	Midibus	0	0	0	0	0
Midibüs	Midibus	350	0	0	0	0
<b>TOPLAM</b>	<b>Total</b>	<b>585</b>	<b>0</b>	<b>0</b>	<b>0</b>	<b>0</b>



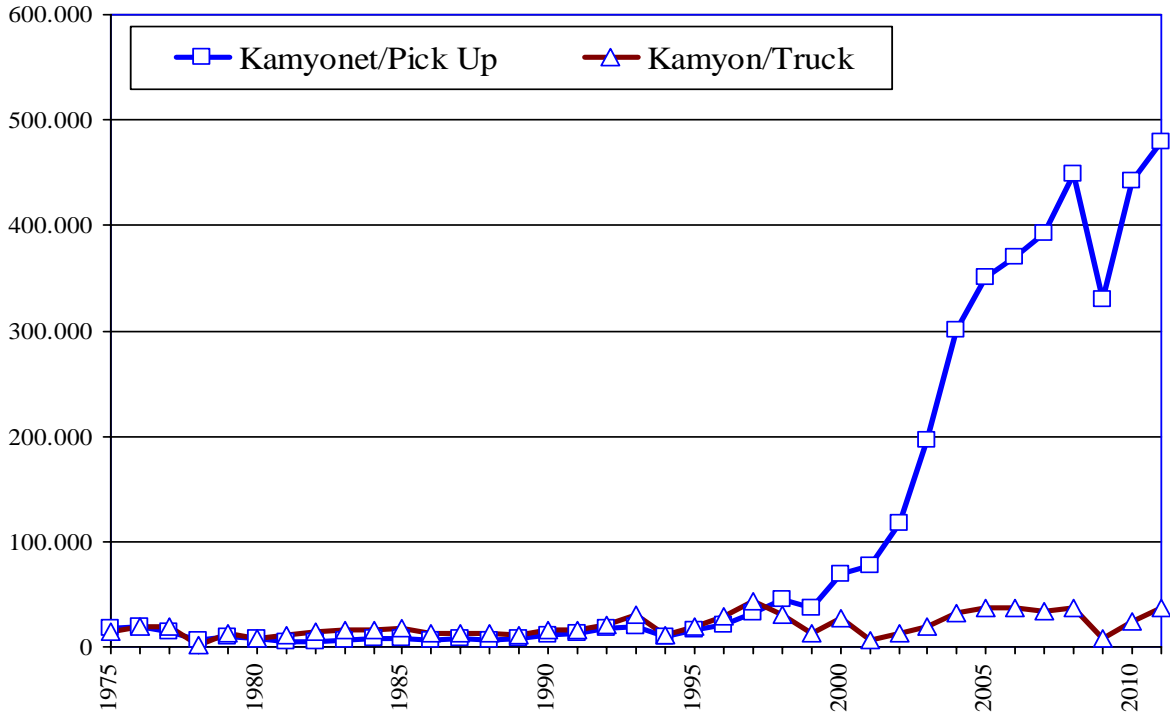
<b>FİRMALAR/MODELLER</b>	<b>Firms/Models</b>	<b>2007</b>	<b>2008</b>	<b>2009</b>	<b>2010</b>	<b>2011</b>
<b>OYAK-RENAULT</b>						
Otomobil (< 1.300 CC - SEDAN)	P. Car	46.432	69.528	93.665	72.037	86.001
Otomobil (1.301 - 1.600 CC - SEDAN)	P. Car	207.291	211.595	182.876	211.675	199.680
Otomobil (1.301 - 1.600 CC - HATCHBACK)	P. Car	0	0	0	20.129	25.808
Otomobil (1.601 - 2.000 CC - HATCHBACK)	P. Car	0	0	0	1.705	4.157
Otomobil (1.601 - 2.000 CC - SEDAN)	P. Car	9.933	5.572	1.031	1.537	15.348
<b>TOPLAM</b>	<b>Total</b>	<b>263.656</b>	<b>286.695</b>	<b>277.572</b>	<b>307.083</b>	<b>330.994</b>
<b>TEMSA GLOBAL</b>						
Otobüs	Bus	806	897	711	720	988
Kamyon (A.Y.A. 3.501 - 12.000 KG)	Truck	3.133	3.521	263	1.465	1.656
Kamyonet	Pick Up	3.963	4.105	1.029	603	576
Midibüs	Midibus	1.426	2.019	411	579	840
<b>TOPLAM</b>	<b>Total</b>	<b>9.328</b>	<b>10.542</b>	<b>2.414</b>	<b>3.367</b>	<b>4.060</b>
<b>TOFAŞ</b>						
Otomobil (< 1.300 CC - SEDAN)	P. Car	29.259	16.525	13.994	24.896	38.196
Otomobil (< 1.300 CC - HATCHBACK)	P. Car	2.186	1.196	801	741	601
Otomobil (< 1.300 CC - STATION WAGON)	P. Car	14.304	8.817	23.615	21.026	25.337
Otomobil (1.301 - 1.600 CC - SEDAN)	P. Car	29.792	30.708	12.080	19.795	22.730
Otomobil (1.301 - 1.600 CC - HATCHBACK)	P. Car	915	965	970	847	315
Otomobil (1.301 - 1.600 CC - STATION WAGON)	P. Car	11.315	10.243	38.620	45.489	25.765
Otomobil (1.601 - 2.000 CC - SEDAN)	P. Car	0	35	0	0	0
Otomobil (1.601 - 2.000 CC - STATION WAGON)	P. Car	14.586	8.199	4.099	2.926	1.585
Kamyonet Van	Pick Up	110.136	190.748	158.911	196.525	193.259
<b>TOPLAM</b>	<b>Total</b>	<b>212.493</b>	<b>267.436</b>	<b>253.090</b>	<b>312.245</b>	<b>307.788</b>
<b>TOYOTA</b>						
Otomobil (1.301 - 1.600 CC - SEDAN)	P. Car	11.120	6.920	7.470	7.024	7.369
Otomobil (1.301 - 1.600 CC - HATCHBACK)	P. Car	49.511	56.846	26.355	40.164	43.408
Otomobil (1.601 - 2.000 CC - SEDAN)	P. Car	89.654	53.674	37.293	33.326	37.320
Otomobil (1.601 - 2.000 CC - HATCHBACK)	P. Car	11.231	9.081	1.146	2.772	3.542
<b>TOPLAM</b>	<b>Total</b>	<b>161.516</b>	<b>126.521</b>	<b>72.264</b>	<b>83.286</b>	<b>91.639</b>

<b>FİRMALAR/MODELLER</b>	<b>Firms/Models</b>	<b>2007</b>	<b>2008</b>	<b>2009</b>	<b>2010</b>	<b>2011</b>
<b>TÜRK TRAKTÖR</b>						
Traktör (< 60 HP)	F. Tractor	11.228	11.642	4.973	13.428	21.962
Traktör (> 61 HP)	F. Tractor	7.122	10.460	9.323	14.849	18.655
<b>TOPLAM</b>	<b>Total</b>	<b>18.350</b>	<b>22.102</b>	<b>14.296</b>	<b>28.277</b>	<b>40.617</b>
<b>UZEL</b>						
Traktör (< 60 HP)	F. Tractor	6.658	1.786	0	0	0
Traktör (> 61 HP)	F. Tractor	7.256	0	0	0	0
<b>TOPLAM</b>	<b>Total</b>	<b>13.914</b>	<b>1.786</b>	<b>0</b>	<b>0</b>	<b>0</b>
<b>GENEL TOPLAM</b>	<b>Grand Total</b>	<b>1.132.932</b>	<b>1.171.917</b>	<b>884.466</b>	<b>1.124.982</b>	<b>1.234.637</b>

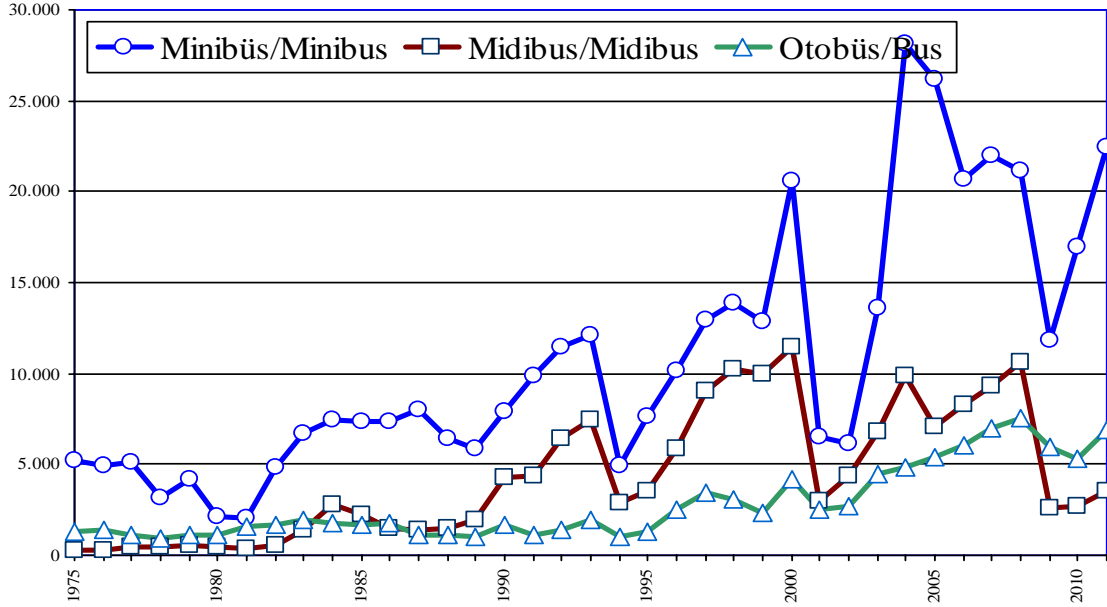
## Otomobil /Toplam Üretim P.Cars /Total Production



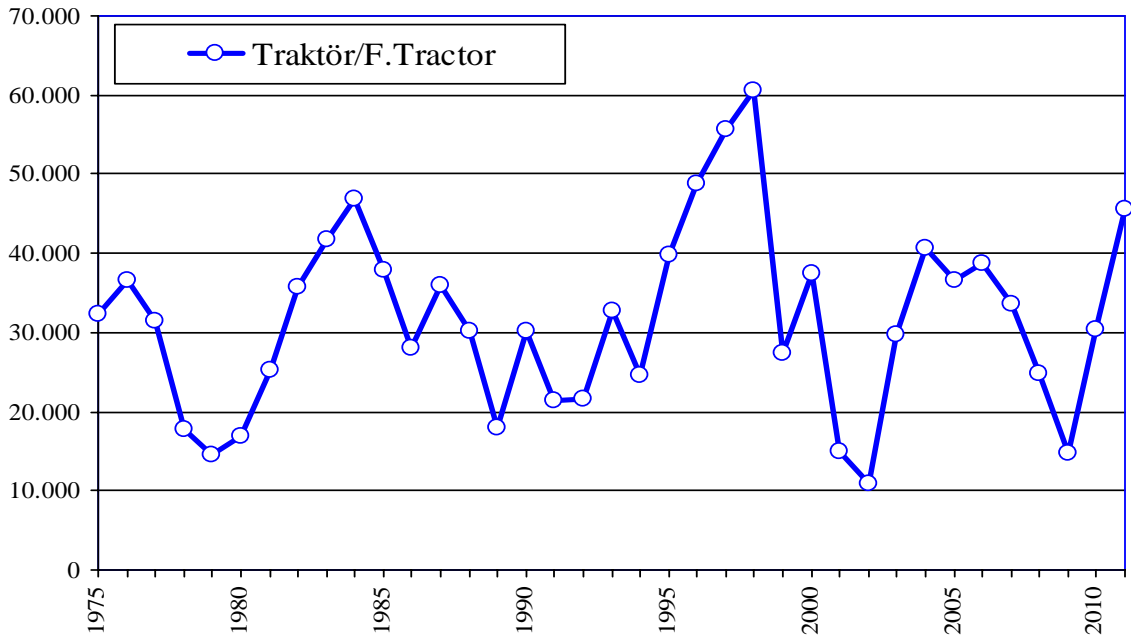
## Yük Taşıt Araçları Üretimi Truck and Pick Up Production



## Yolcu Taşıt Araçları Üretimi Bus Production



## Traktör Üretimi F.Tractor Production

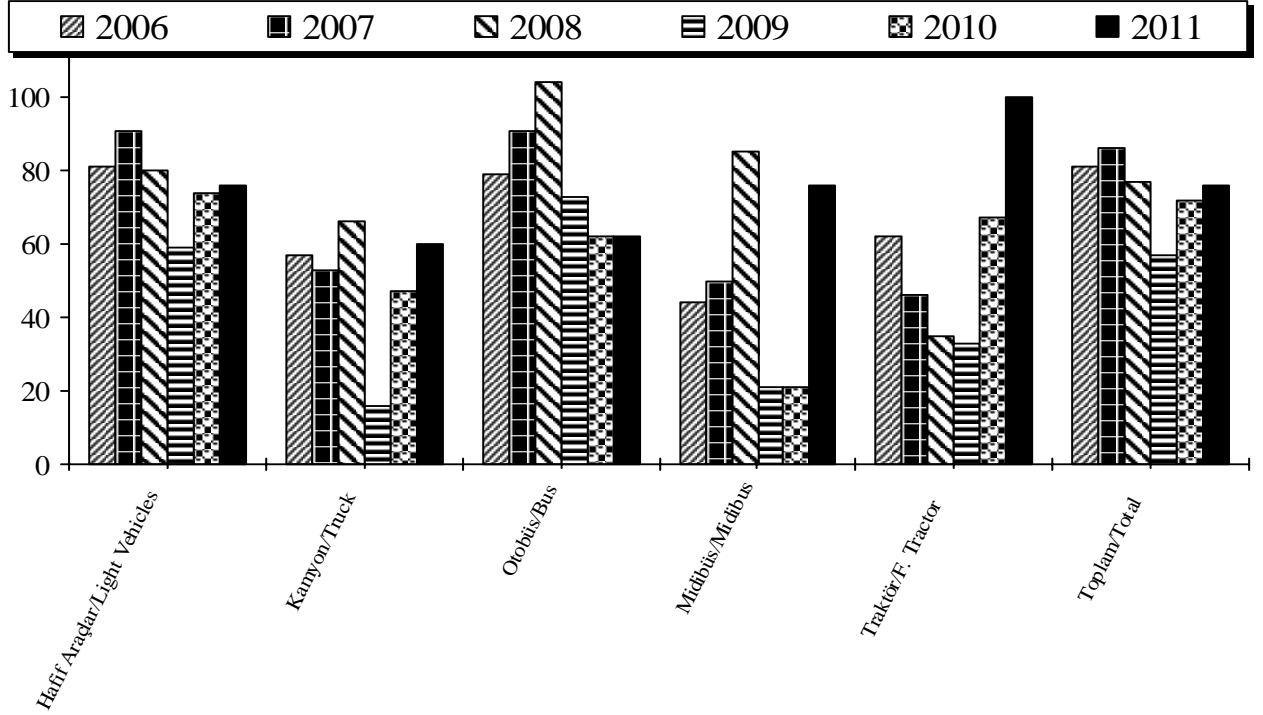


**OTOMOTİV SANAYİİ FİRMALARININ ÜRETİM ADETLERİ**  
**The Production Units Of The Automotive Manufacturers**

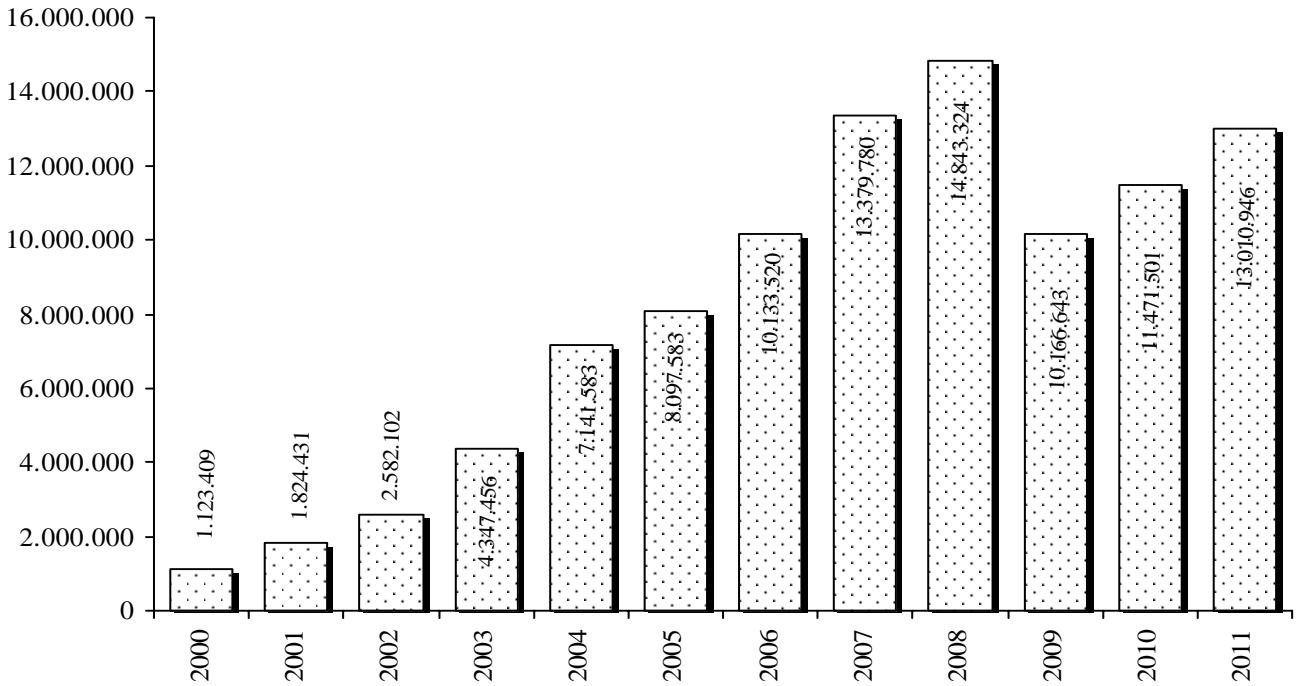
ARALIK SONU / By The end of December

YILLAR Years	OTOMOBİL P.Car	KAMYON Truck	KAMYONET Pick-Up	OTOBÜS Bus	MİNİBÜS Minibus	MİDİBÜS Midibus	TRAKTÖR F.Tractor	TOPLAM Total
1963	30	999	1.458	12	631	0	7.982	11.112
1964	100	2.741	885	56	401	0	7.006	11.189
1965	60	2.350	300	122	1.199	0	6.419	10.450
1966	18	6.258	2.476	174	0	252	8.969	18.147
1967	1.760	7.816	2.736	325	622	0	13.976	27.235
1968	2.852	9.408	2.270	466	895	0	15.118	31.009
1969	3.902	10.859	3.030	882	1.095	84	13.412	33.264
1970	3.660	6.041	4.395	806	1.099	4	7.518	23.523
1971	12.888	4.747	4.508	608	1.891	30	15.687	40.359
1972	29.628	8.596	6.044	988	3.748	0	22.893	71.897
1973	46.855	11.723	8.674	1.267	4.533	22	32.585	105.659
1974	59.906	10.591	11.861	1.113	4.584	148	25.363	113.566
1975	67.291	14.670	18.489	1.284	5.222	239	32.365	139.560
1976	62.992	20.498	19.415	1.376	4.910	302	36.602	146.095
1977	58.245	20.700	14.016	1.077	5.152	467	31.380	131.037
1978	54.085	13.144	6.879	972	3.163	444	17.673	96.360
1979	43.808	13.367	9.384	1.151	4.222	547	14.484	86.963
1980	31.529	8.308	7.322	1.101	2.130	491	16.936	67.817
1981	25.306	12.486	5.454	1.584	2.040	378	25.358	72.606
1982	31.195	15.131	4.991	1.703	4.850	587	35.716	94.173
1983	42.509	17.514	6.822	1.964	6.712	1.382	41.799	118.702
1984	54.832	17.518	7.279	1.766	7.460	2.750	46.782	138.387
1985	60.353	18.162	7.888	1.637	7.397	2.191	37.830	135.458
1986	82.032	13.646	6.605	1.813	7.318	1.508	28.053	140.975
1987	107.185	13.545	7.580	1.137	8.026	1.434	35.986	174.893
1988	120.796	12.842	7.196	1.078	6.401	1.449	30.167	179.929
1989	118.314	11.763	7.250	1.069	5.898	1.984	18.077	164.355
1990	167.556	16.933	10.553	1.689	7.898	4.288	30.098	239.015
1991	195.574	16.918	13.541	1.075	9.912	4.401	21.381	262.802
1992	265.245	21.266	16.984	1.415	11.450	6.399	21.723	344.482
1993	348.095	31.343	19.766	1.933	12.084	7.435	32.809	453.465
1994	212.651	12.108	9.602	1.034	4.924	2.855	25.169	268.343
1995	233.412	19.759	16.808	1.279	7.645	3.537	44.068	326.508
1996	207.757	29.432	21.032	2.499	10.171	5.856	52.590	329.337
1997	242.780	43.693	32.435	3.449	12.935	9.060	55.565	399.917
1998	239.937	31.823	45.517	3.040	13.910	10.275	60.500	405.002
1999	222.041	13.096	37.551	2.327	12.894	9.953	27.435	325.297
2000	297.476	28.348	68.807	4.213	20.597	11.506	37.434	468.381
2001	175.343	6.683	76.672	2.501	6.486	3.000	15.052	285.737
2002	204.198	12.295	116.872	2.684	6.139	4.377	10.840	357.405
2003	294.116	19.041	195.606	4.490	13.625	6.794	29.778	563.450
2004	447.152	31.790	301.563	4.839	28.161	9.903	40.665	864.073
2005	453.663	37.227	349.885	5.406	26.162	7.109	36.527	915.979
2006	545.682	37.026	369.862	6.019	20.728	8.263	38.841	1.026.421
2007	634.883	34.544	391.737	6.946	21.999	9.305	33.518	1.132.932
2008	621.567	36.800	449.434	7.526	21.123	10.660	24.807	1.171.917
2009	510.931	8.246	330.044	5.931	11.829	2.624	14.861	884.466
2010	603.394	23.851	442.408	5.268	16.978	2.658	30.425	1.124.982
2011	639.734	37.396	479.110	6.907	22.475	3.509	45.506	1.234.637

## Kapasite Kullanımı (%) Capacity Usage (%)



## OSD Üyeleri İhracat (US Dollars) (Bin/Thousand) OSD Members Exports



**YILLAR İTİBARIYLA ÜRETİM ADETLERİ VE KAPASİTE KULLANIMI**  
Production Units And Capacity Usage By Years

ARALIK SONU/By the end of December

TİPLER / Types	1997	1998	1999	2000	2001	2002	2003	2004	2005	2006	2007	2008	2009	2010	2011
OTOMOBİL / P.Car	242.780	239.937	222.041	297.476	175.343	204.198	294.116	447.152	453.663	545.682	634.883	621.567	510.931	603.394	639.734
KAMYON / Truck	43.693	31.823	13.096	28.348	6.683	12.295	19.041	31.790	37.227	37.026	34.544	36.800	8.246	23.851	37.396
KAMYONET / Pick-Up	32.435	45.517	37.551	68.807	76.672	116.872	195.606	301.563	349.885	369.862	391.737	449.434	330.044	442.408	479.110
OTOBÜS / Bus	3.449	3.040	2.327	4.213	2.501	2.684	4.490	4.839	5.406	6.019	6.946	7.526	5.931	5.268	6.907
MİNİBÜS / Minibus	12.935	13.910	12.894	20.597	6.486	6.139	13.625	28.161	26.162	20.728	21.999	21.123	11.829	16.978	22.475
MİDİBÜS / Midibus	9.060	10.275	9.953	11.506	3.000	4.377	6.794	9.903	7.109	8.263	9.305	10.660	2.624	2.658	3.509
TRAKTÖR / F.Tractor	55.565	60.500	27.435	37.434	15.052	10.840	29.778	40.665	36.527	38.841	33.518	24.807	14.861	30.425	45.506
<b>TOPLAM / Total</b>	<b>399.917</b>	<b>405.002</b>	<b>325.297</b>	<b>468.381</b>	<b>285.737</b>	<b>357.405</b>	<b>563.450</b>	<b>864.073</b>	<b>915.979</b>	<b>1.026.421</b>	<b>1.132.932</b>	<b>1.171.917</b>	<b>884.466</b>	<b>1.124.982</b>	<b>1.234.637</b>

NOT: EN YÜKSEK ÜRETİM ADETLERİ [ ] İÇİNE ALINMIŞTIR.

Note: The highest production volumes are shown in [ ]

**KAPASİTE KULLANIMI**  
Capacity Usage

% 49	% 49	50%	36%	29%	35%	52%	73%	76%	81%	86%	77%	57%	72%	76%
------	------	-----	-----	-----	-----	-----	-----	-----	-----	-----	-----	-----	-----	-----

OTOMOTİV SANAYİİ FİRMALARININ İHRACATLARI  
Automotive Industry Exports

ARALIK SONU/By the end of December

YILLAR / Years

2007

2008

2009

2010

2011

TİPLER / Types	ADET Units	DEĞER \$ Value	ADET Units	DEĞER \$ Value	ADET Units	DEĞER \$ Value	ADET Units	DEĞER \$ Value	ADET Units	DEĞER \$ Value
OTOMOBİL / P. Car	518.328	6.941.721.286	530.175	7.338.172.370	340.211	4.603.458.146	393.577	5.100.281.905	405.919	5.289.921.692
KAMYON / Truck	9.399	644.492.876	9.740	718.225.590	1.890	162.028.403	2.248	166.523.409	3.618	238.457.284
KAMYONET / Pick Up	273.017	3.850.694.467	348.814	5.022.968.619	270.894	3.583.111.873	340.225	4.259.641.966	354.450	4.994.360.768
OTOBÜS / Bus	5.349	1.068.409.224	5.521	1.098.374.965	4.368	851.987.295	3.556	694.535.225	4.196	844.773.764
MİNİBÜS / Minibus	11.622	220.139.691	14.270	290.029.482	9.674	138.792.878	12.416	227.391.269	20.114	360.950.511
MİDİBÜS / Midibus	2.031	125.803.388	2.143	163.516.254	1.203	89.534.719	857	56.923.573	660	47.832.717
TRAKTÖR / F. Tractor	9.458	164.941.590	10.420	212.036.447	8.672	173.671.038	9.214	176.043.967	10.152	205.861.160
YEDEK PARÇA / Miscellaneous Parts		363.577.505		484.509.113		564.058.442		790.159.387		1.028.788.578
<b>TOPLAM / Total</b>	<b>829.204</b>	<b>13.379.780.027</b>	<b>921.083</b>	<b>15.327.832.840</b>	<b>636.912</b>	<b>10.166.642.794</b>	<b>762.093</b>	<b>11.471.500.701</b>	<b>799.109</b>	<b>13.010.946.474</b>

YURTIÇİ TEŞVİKLİ SATIŞLARI HARİÇTİR / Excluding Local Incentive Sales



**OTOMOTİV SANAYİİ FİRMALARININ İHRACATLARI**

**Automotive Industry Exports**

(A) Complete Vehicle, (B) Miscellaneous Parts

ARALIK SONU/By the end of December

FİRMALAR/Firms	2007		2008		2009		2010		2011	
	ADET Units	DEĞER \$ Value \$	ADET Units	DEĞER \$ Value \$	ADET Units	DEĞER \$ Value \$	ADET Units	DEĞER \$ Value \$	ADET Units	DEĞER \$ Value \$
<b>A.I.O.S.</b>										
Komple Araç (A)	750	52.859.501	1.042	88.310.971	565	36.287.990	498	25.779.953	429	25.912.558
Muhtelif Parça (B)	0	2.482.358	0	4.305.179	0	3.411.381	0	3.943.186	0	4.702.223
<b>ASKAM</b>										
Komple Araç (A)	0	0	0	0	0	0	0	0	0	0
Muhtelif Parça (B)	0	4.994	0	0	0	0	0	0	0	0
<b>B.M.C.</b>										
Komple Araç (A)	1.524	117.713.052	1.189	118.547.951	582	53.328.047	433	45.373.471	389	44.036.519
Muhtelif Parça (B)	0	6.725.073	0	4.810.401	0	3.383.953	0	6.843.892	0	7.525.516
<b>FORD OTOSAN</b>										
Komple Araç (A)	221.964	3.373.728.560	218.046	3.700.683.548	128.738	2.004.292.289	175.749	2.539.286.824	211.147	3.296.156.041
Muhtelif Parça (B)	0	50.219.794	0	24.638.672	0	38.077.817	0	87.236.169	0	156.763.385
<b>HATTAT TARIM</b>										
Komple Araç (A)	0	0	53	1.323.226	77	2.549.906	227	5.758.495	552	15.276.181
Muhtelif Parça (B)	0	0	0	0	0	0	0	168.937	0	176.822
<b>HONDA TÜRKİYE</b>										
Komple Araç (A)	7.732	135.550.960	34.926	595.442.974	9.149	156.557.640	10.632	202.492.381	5.023	101.460.928
Muhtelif Parça (B)	0	289.437	0	0	0	1.937.372	0	2.848.625	0	2.949.241
<b>HYUNDAI ASSAN</b>										
Komple Araç (A)	69.336	764.485.169	61.269	642.532.489	17.314	159.900.315	42.396	432.062.807	64.090	726.042.926
Muhtelif Parça (B)	0	1.136.964	0	2.370.900	0	1.605.754	0	2.468.567	0	3.090.594
<b>KARSAN</b>										
Komple Araç (A)	682	11.265.196	442	7.083.667	6.075	66.238.409	17.653	163.020.729	13.255	147.780.450
Muhtelif Parça (B)	0	456.325	0	957.704	0	534.429	0	354.457	0	640.838
<b>M.A.N. TÜRKİYE</b>										
Komple Araç (A)	1.696	350.815.402	1.527	360.889.220	1.148	289.629.987	881	204.248.923	1.213	294.440.400
Muhtelif Parça (B)	0	10.014.447	0	13.588.212	0	9.963.960	0	9.793.319	0	8.068.910

**M. BENZ TÜRK**

Komple Araç (A)	8.708	972.039.362	9.092	1.000.073.122	3.317	493.681.799	3.471	474.443.993	4.735	539.995.826
Muhtelif Parça (B)	0	29.443.281	0	33.636.572	0	20.486.261	0	5.321.577	0	3.960.000

**OTOKAR**

Komple Araç (A)	1.113	97.817.549	619	104.138.416	501	87.927.551	373	44.751.993	478	94.527.355
Muhtelif Parça (B)	0	2.766.898	0	10.587.971	0	12.358.921	0	1.498.622	0	2.130.673

**OTOYOL**

Komple Araç (A)	104	5.681.586	9	751.684	9	0	0	0	0	0
Muhtelif Parça (B)	0	1.072.000	0	25.421	0	0	0	0	0	0

**OYAK-RENAULT**

Komple Araç (A)	204.428	2.389.521.053	252.232	3.086.031.532	222.278	2.684.977.963	233.057	2.719.370.681	225.285	2.547.889.101
Muhtelif Parça (B)	0	139.652.097	0	182.884.238	0	327.451.183	0	517.577.849	0	665.688.276

**TEMSA GLOBAL**

Komple Araç (A)	1.145	176.236.455	1.240	186.885.207	1.114	165.399.415	836	113.320.699	992	151.538.226
Muhtelif Parça (B)	0	5.291.069	0	15.439.586	0	8.028.845	0	12.544.774	0	8.351.463

**TOYOTA**

Komple Araç (A)	154.386	2.842.393.047	119.586	2.303.580.309	69.097	1.312.697.698	73.163	1.290.701.973	81.231	1.497.452.658
Muhtelif Parça (B)	0	16.446.922	0	17.998.963	0	19.028.652	0	21.385.043	0	24.843.879

**TOFAŞ**

Komple Araç (A)	146.178	1.561.154.040	209.444	2.436.336.190	168.353	1.917.994.211	193.737	2.250.442.920	180.690	2.309.063.748
Muhtelif Parça (B)	0	44.290.197	0	118.156.005	0	84.021.747	0	74.704.587	0	89.813.204

**TÜRK TRAKTÖR**

Komple Araç (A)	5.761	103.741.952	9.598	198.013.971	8.595	171.121.132	8.987	170.285.472	9.600	190.584.979
Muhtelif Parça (B)	0	46.661.382	0	52.466.366	0	33.768.167	0	43.469.783	0	50.083.554

**UZEL**

Komple Araç (A)	3.697	61.199.638	769	12.699.250	0	0	0	0	0	0
Muhtelif Parça (B)	0	6.624.267	0	2.642.923	0	0	0	0	0	0

<b>829.204</b>	<b>13.016.202.522</b>	<b>921.083</b>	<b>14.843.323.727</b>	<b>636.912</b>	<b>9.602.584.352</b>	<b>762.093</b>	<b>10.681.341.314</b>	<b>799.109</b>	<b>11.982.157.896</b>
<b>0</b>	<b>363.577.505</b>	<b>0</b>	<b>484.509.113</b>	<b>0</b>	<b>564.058.442</b>	<b>0</b>	<b>790.159.387</b>	<b>0</b>	<b>1.028.788.578</b>

**TOPLAM/Total**

<b>829.204</b>	<b>13.379.780.027</b>	<b>921.083</b>	<b>15.327.832.840</b>	<b>636.912</b>	<b>10.166.642.794</b>	<b>762.093</b>	<b>11.471.500.701</b>	<b>799.109</b>	<b>13.010.946.474</b>
----------------	-----------------------	----------------	-----------------------	----------------	-----------------------	----------------	-----------------------	----------------	-----------------------

YURTIÇİ TEŞVİKLİ SATIŞLARI HARIÇTİR / Excluding Local Incentive Sales

## OTOMOBİL İTHALATI / Passenger Car Imports

BÖLGE / ÜLKE Region / Country	2006		2007		2008		2009		2010		2011	
	Adet / Unit	%	Adet / Unit	%	Adet / Unit	%	Adet / Unit	%	Adet / Unit	%	Adet / Unit	%
<b>AT + EFTA / EU + EFTA</b>	<b>200.446</b>	<b>78,5</b>	<b>195.361</b>	<b>82,5</b>	<b>165.435</b>	<b>80,0</b>	<b>190.919</b>	<b>78,4</b>	<b>295.920</b>	<b>83,6</b>	<b>351.067</b>	<b>84,8</b>
<b>DOĞU AVRUPA / East Europe</b>	<b>14.022</b>	<b>5,5</b>	<b>9.998</b>	<b>4,2</b>	<b>13.140</b>	<b>6,4</b>	<b>12.128</b>	<b>5,0</b>	<b>22.095</b>	<b>6,2</b>	<b>27.468</b>	<b>6,6</b>
* RUSYA FED. / Russian Fed.	1.441	0,6	845	0,4	620	0,3	290	0,1	101	0,0	10	0,0
* ROMANYA / Romania	7.355	2,9	3.688	1,6	5.152	2,5	5.873	2,4	13.230	3,7	17.937	4,3
* ÇEK CUM. / Czech Republic	5.226	2,0	5.465	2,3	3.625	1,8	3.401	1,4	6.332	1,8	7.589	1,8
* DİGER / Others	0	0,0	0	0,0	3.743	1,8	2.564	1,1	2.432	0,7	1.932	0,5
<b>UZAK DOĞU / Far East</b>	<b>41.026</b>	<b>16,1</b>	<b>31.366</b>	<b>13,2</b>	<b>28.218</b>	<b>13,6</b>	<b>40.495</b>	<b>16,6</b>	<b>36.135</b>	<b>10,2</b>	<b>35.496</b>	<b>8,6</b>
* JAPONYA / Japan	8.891	3,5	8.931	3,8	7.177	3,5	6.203	2,5	5.668	1,6	4.100	1,0
* G. KORE / S. Korea	29.769	11,7	20.102	8,5	18.005	8,7	31.198	12,8	26.466	7,5	27.752	6,7
* DİGER / Others	2.366	0,9	2.333	1,0	3.036	1,5	3.094	1,3	4.001	1,1	3.644	0,9
<b>TOPLAM/Total</b>	<b>255.494</b>	<b>100,0</b>	<b>236.725</b>	<b>100,0</b>	<b>206.793</b>	<b>100,0</b>	<b>243.542</b>	<b>100,0</b>	<b>354.150</b>	<b>100,0</b>	<b>414.031</b>	<b>100,0</b>

Kaynak: Otomotiv Distribütörleri Derneği

Source: Association of Automotive Distributors

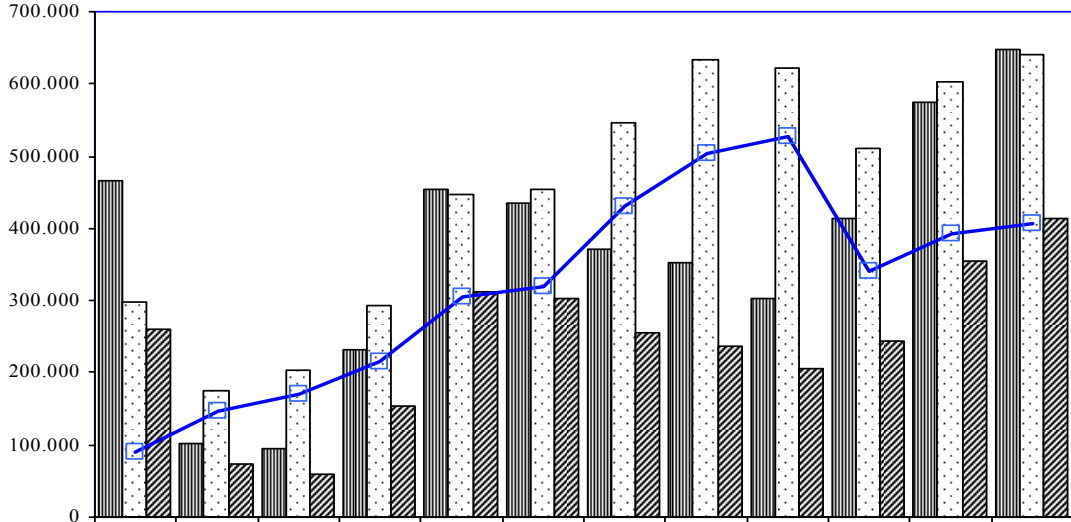
## HAFİF TİCARİ ARAÇ İTHALATI / Light Commercial Vehicle Imports

BÖLGE / ÜLKE Region / Country	2006		2007		2008		2009		2010		2011	
	Adet / Unit	%	Adet / Unit	%	Adet / Unit	%	Adet / Unit	%	Adet / Unit	%	Adet / Unit	%
<b>AT + EFTA / EU + EFTA</b>	<b>81.179</b>	<b>70,2</b>	<b>73.753</b>	<b>68,1</b>	<b>57.527</b>	<b>63,2</b>	<b>43.681</b>	<b>66,3</b>	<b>75.496</b>	<b>74,4</b>	<b>88.136</b>	<b>78,5</b>
<b>DOĞU AVRUPA / East Europe</b>	<b>1.502</b>	<b>1,3</b>	<b>5.263</b>	<b>4,9</b>	<b>4.463</b>	<b>4,9</b>	<b>4.113</b>	<b>6,2</b>	<b>6.268</b>	<b>6,2</b>	<b>3.516</b>	<b>3,1</b>
* RUSYA FED. / Russian Fed.	1.341	1,2	0	0,0	0	0,0	0	0,0	0	0,0	0	0,0
* ROMANYA / Romania	1	0,0	5.263	4,9	4.426	4,9	3.918	5,9	5.938	5,9	3.403	3,0
* ÇEK CUM. / Czech Republic	160	0,1	0	0,0	37	0,0	2	0,0	0	0,0	0	0,0
* DİGER / Others	0	0,0	0	0,0	0	0,0	193	0,3	330	0,3	113	0,1
<b>UZAK DOĞU / Far East</b>	<b>32.877</b>	<b>28,5</b>	<b>29.269</b>	<b>27,0</b>	<b>29.054</b>	<b>31,9</b>	<b>18.096</b>	<b>27,5</b>	<b>19.645</b>	<b>19,4</b>	<b>20.682</b>	<b>18,4</b>
* JAPONYA / Japan	11.197	9,7	13.578	12,5	13.334	14,6	7.813	11,9	10.073	9,9	10.261	9,1
* G. KORE / S. Korea	15.769	13,6	10.205	9,4	9.403	10,3	5.121	7,8	4.146	4,1	4.352	3,9
* DİGER / Others	5.911	5,1	5.486	5,1	6.317	6,9	5.162	7,8	5.426	5,4	6.069	5,4
<b>TOPLAM/Total</b>	<b>115.558</b>	<b>100,0</b>	<b>108.285</b>	<b>100,0</b>	<b>91.044</b>	<b>100,0</b>	<b>65.890</b>	<b>100,0</b>	<b>101.409</b>	<b>100,0</b>	<b>112.334</b>	<b>100,0</b>

Kaynak: Otomotiv Distribütörleri Derneği

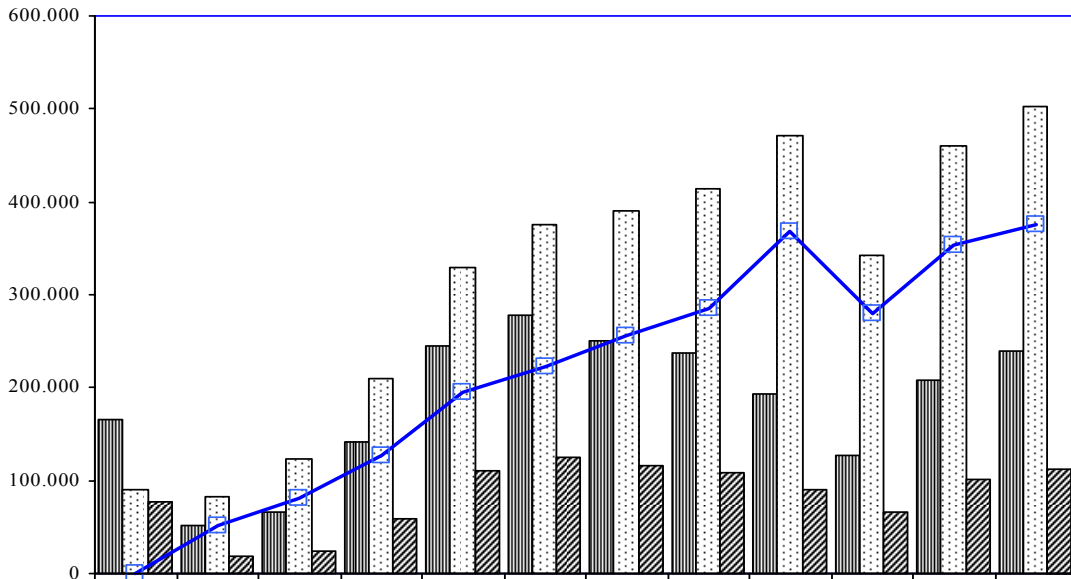
Source: Association of Automotive Distributors

## Otomobil Üretim/İthalat/İhracat P.Cars Production/Imports/Exports



	2000	2001	2002	2003	2004	2005	2006	2007	2008	2009	2010	2011
Talep/Demand	466.437	102.145	94.537	232.806	453.748	435.703	370.648	353.280	302.059	414.262	573.967	647.846
Üretim/Production	297.476	175.343	204.198	294.116	447.152	453.663	545.682	634.883	621.567	510.931	603.394	639.734
İthalat/Imports	258.987	72.259	60.283	154.007	311.668	301.889	255.494	236.725	206.793	243.542	354.150	414.031
İhracat/Exports	90.026	145.457	169.944	215.317	305.072	319.825	430.420	504.353	526.301	340.211	393.577	405.919

## Hafif Ticari Araçlar Üretim/İthalat/İhracat Light Commercial Vehicles Production/Imports/Exports



	2000	2001	2002	2003	2004	2005	2006	2007	2008	2009	2010	2011
Talep/Demand	166.037	51.028	66.168	141.479	244.751	277.632	250.029	237.382	194.088	127.204	208.154	239.355
Üretim/Production	89.404	83.158	123.011	209.231	329.724	376.047	390.590	413.736	470.557	341.873	459.386	501.585
İthalat/Imports	77.295	18.797	24.032	59.458	110.906	124.385	115.558	108.285	91.068	65.890	101.409	112.334
İhracat/Exports	662	50.927	80.875	127.210	195.879	222.800	256.119	284.639	367.537	280.559	352.641	374.564

**OTOMOTİV SANAYİİ İSTİHDAMI**  
**Automotive Industry Employment**

<b><u>FİRMALAR / Firms</u></b>	<b><u>2007</u></b>	<b><u>2008</u></b>	<b><u>2009</u></b>	<b><u>2010</u></b>	<b><u>2011</u></b>
<b>A.I.O.S.</b>					
İŞÇİ / Worker	537	574	520	316	342
BÜRO PERSONELİ / Employee	122	132	95	94	94
İDARECİ / Administrator	15	15	14	14	16
MÜHENDİS / Engineer	49	55	48	45	44
İDA. MÜHENDİS / Ad. Eng.	23	27	24	21	24
<b>TOPLAM / Total</b>	<b>746</b>	<b>803</b>	<b>701</b>	<b>490</b>	<b>520</b>
<b>B.M.C.</b>					
İŞÇİ / Worker	2618	2377	2168	2040	1925
BÜRO PERSONELİ / Employee	356	338	309	301	293
İDARECİ / Administrator	37	34	29	32	32
MÜHENDİS / Engineer	194	183	167	153	148
İDA. MÜHENDİS / Ad. Eng.	76	75	71	70	75
<b>TOPLAM / Total</b>	<b>3.281</b>	<b>3.007</b>	<b>2.744</b>	<b>2.596</b>	<b>2.473</b>
<b>FORD OTOSAN</b>					
İŞÇİ / Worker	8100	6657	6197	6635	7414
BÜRO PERSONELİ / Employee	357	385	378	417	834
İDARECİ / Administrator	75	82	73	66	107
MÜHENDİS / Engineer	708	757	647	961	829
İDA. MÜHENDİS / Ad. Eng.	275	283	297	334	397
<b>TOPLAM / Total</b>	<b>9.515</b>	<b>8.164</b>	<b>7.592</b>	<b>8.413</b>	<b>9.581</b>
<b>HATTAT TARIM</b>					
İŞÇİ / Worker	40	37	47	107	175
BÜRO PERSONELİ / Employee	68	68	23	21	52
İDARECİ / Administrator	20	13	15	12	2
MÜHENDİS / Engineer	22	15	2	5	21
İDA. MÜHENDİS / Ad. Eng.	14	6	4	17	6
<b>TOPLAM / Total</b>	<b>164</b>	<b>139</b>	<b>91</b>	<b>162</b>	<b>256</b>

<b><u>FİRMALAR / Firms</u></b>	<b><u>2007</u></b>	<b><u>2008</u></b>	<b><u>2009</u></b>	<b><u>2010</u></b>	<b><u>2011</u></b>
<b>HONDA TÜRKİYE</b>					
İŞÇİ / Worker	937	953	545	529	614
BÜRO PERSONELİ / Employee	166	180	223	201	216
İDARECİ / Administrator	35	81	22	18	19
MÜHENDİS / Engineer	43	58	26	58	61
İDA. MÜHENDİS / Ad. Eng.	26	17	22	7	12
<b>TOPLAM / Total</b>	<b>1.207</b>	<b>1.289</b>	<b>838</b>	<b>813</b>	<b>922</b>
<b>HYUNDAI ASSAN</b>					
İŞÇİ / Worker	1796	1692	1349	1261	1356
BÜRO PERSONELİ / Employee	261	85	26	90	155
İDARECİ / Administrator	16	151	102	81	37
MÜHENDİS / Engineer	59	127	118	100	93
İDA. MÜHENDİS / Ad. Eng.	11	14	14	38	38
<b>TOPLAM / Total</b>	<b>2.143</b>	<b>2.069</b>	<b>1.609</b>	<b>1.570</b>	<b>1.679</b>
<b>KARSAN</b>					
İŞÇİ / Worker	746	727	617	878	812
BÜRO PERSONELİ / Employee	31	36	36	34	38
İDARECİ / Administrator	6	5	2	4	3
MÜHENDİS / Engineer	55	68	60	75	85
İDA. MÜHENDİS / Ad. Eng.	8	12	10	15	12
<b>TOPLAM / Total</b>	<b>846</b>	<b>848</b>	<b>725</b>	<b>1.006</b>	<b>950</b>
<b>M.A.N. TÜRKİYE</b>					
İŞÇİ / Worker	1732	1677	1177	1129	1327
BÜRO PERSONELİ / Employee	166	136	106	90	103
İDARECİ / Administrator	38	32	25	25	28
MÜHENDİS / Engineer	90	77	60	73	93
İDA. MÜHENDİS / Ad. Eng.	37	45	38	36	50
<b>TOPLAM / Total</b>	<b>2.063</b>	<b>1.967</b>	<b>1.406</b>	<b>1.353</b>	<b>1.601</b>

<b><u>FİRMALAR / Firms</u></b>	<b><u>2007</u></b>	<b><u>2008</u></b>	<b><u>2009</u></b>	<b><u>2010</u></b>	<b><u>2011</u></b>
<b>M. BENZ TÜRK</b>					
İŞÇİ / Worker	3525	3673	2915	3197	3564
BÜRO PERSONELİ / Employee	274	351	339	512	572
İDARECİ / Administrator	95	106	108	68	101
MÜHENDİS / Engineer	466	445	553	428	482
İDA. MÜHENDİS / Ad. Eng.	62	75	82	182	188
<b>TOPLAM / Total</b>	<b>4.422</b>	<b>4.650</b>	<b>3.997</b>	<b>4.387</b>	<b>4.907</b>
<b>OTOKAR</b>					
İŞÇİ / Worker	891	779	750	851	984
BÜRO PERSONELİ / Employee	149	172	182	198	217
İDARECİ / Administrator	18	26	29	30	39
MÜHENDİS / Engineer	111	130	154	141	179
İDA. MÜHENDİS / Ad. Eng.	55	77	91	92	100
<b>TOPLAM / Total</b>	<b>1.224</b>	<b>1.184</b>	<b>1.206</b>	<b>1.312</b>	<b>1.519</b>
<b>OYAK RENAULT</b>					
İŞÇİ / Worker	5002	4963	4678	4557	4813
BÜRO PERSONELİ / Employee	561	591	578	564	594
İDARECİ / Administrator	25	34	26	24	32
MÜHENDİS / Engineer	511	579	524	553	562
İDA. MÜHENDİS / Ad. Eng.	110	109	108	112	115
<b>TOPLAM / Total</b>	<b>6.209</b>	<b>6.276</b>	<b>5.914</b>	<b>5.810</b>	<b>6.116</b>
<b>TEMSA GLOBAL</b>					
İŞÇİ / Worker	1314	1380	1129	1002	1082
BÜRO PERSONELİ / Employee	321	378	289	218	245
İDARECİ / Administrator	44	42	32	28	26
MÜHENDİS / Engineer	244	278	246	120	152
İDA. MÜHENDİS / Ad. Eng.	71	77	68	84	88
<b>TOPLAM / Total</b>	<b>1.994</b>	<b>2.155</b>	<b>1.764</b>	<b>1.452</b>	<b>1.593</b>

<b><u>FİRMALAR / Firms</u></b>	<b><u>2007</u></b>	<b><u>2008</u></b>	<b><u>2009</u></b>	<b><u>2010</u></b>	<b><u>2011</u></b>
<b>TOFAŞ</b>					
İŞÇİ / Worker	6705	6814	5734	5782	6471
BÜRO PERSONELİ / Employee	470	490	429	400	489
İDARECİ / Administrator	64	64	51	59	58
MÜHENDİS / Engineer	407	546	504	494	562
İDA. MÜHENDİS / Ad. Eng.	132	137	139	142	145
<b>TOPLAM / Total</b>	<b>7.778</b>	<b>8.051</b>	<b>6.857</b>	<b>6.877</b>	<b>7.725</b>
<b>TOYOTA</b>					
İŞÇİ / Worker	3045	2728	2557	2472	2294
BÜRO PERSONELİ / Employee	191	152	139	130	115
İDARECİ / Administrator	6	9	8	8	8
MÜHENDİS / Engineer	145	149	130	114	91
İDA. MÜHENDİS / Ad. Eng.	36	39	60	56	55
<b>TOPLAM / Total</b>	<b>3.423</b>	<b>3.077</b>	<b>2.894</b>	<b>2.780</b>	<b>2.563</b>
<b>TÜRK TRAKTÖR</b>					
İŞÇİ / Worker	1061	1118	938	1464	2101
BÜRO PERSONELİ / Employee	105	191	146	243	233
İDARECİ / Administrator	5	7	7	7	38
MÜHENDİS / Engineer	57	129	124	73	78
İDA. MÜHENDİS / Ad. Eng.	18	29	31	30	41
<b>TOPLAM / Total</b>	<b>1.246</b>	<b>1.474</b>	<b>1.246</b>	<b>1.817</b>	<b>2.491</b>
<b>GENEL TOPLAM/Grand Total</b>					
İŞÇİ / Worker	<b>38.049</b>	<b>36.149</b>	<b>31.321</b>	<b>32.220</b>	<b>35.274</b>
BÜRO PERSONELİ / Employee	<b>3.598</b>	<b>3.685</b>	<b>3.298</b>	<b>3.513</b>	<b>4.250</b>
İDARECİ / Administrator	<b>499</b>	<b>701</b>	<b>543</b>	<b>476</b>	<b>546</b>
MÜHENDİS / Engineer	<b>3.161</b>	<b>3.596</b>	<b>3.363</b>	<b>3.393</b>	<b>3.480</b>
İDA. MÜHENDİS / Ad. Eng.	<b>954</b>	<b>1.022</b>	<b>1.059</b>	<b>1.236</b>	<b>1.346</b>
<b>TOPLAM / Total</b>	<b>46.261</b>	<b>45.153</b>	<b>39.584</b>	<b>40.838</b>	<b>44.896</b>

**İDA. MÜHENDİS=İDARECİ MÜHENDİS**  
**Ad. Eng.=Administrator Engineer**



**OTOMOTİV SANAYİ YATIRIMLARI (USD)**  
**Realized Sectorial Investments (USD)**

ARALIK SONU/By the end of December

<b>PROJE TİPİ</b> <b>Projects</b>	<b>2007</b>	<b>2008</b>	<b>2009</b>	<b>2010</b>	<b>2011</b>
<b>KAPASİTE ARTTIRIMI</b> Capacity Development	220.000.000	189.000.000	20.000.000	40.000.000	44.000.000
<b>MODERNİZASYON</b> Modernization	54.000.000	66.000.000	83.000.000	50.000.000	61.000.000
<b>YENİ MODEL</b> New Model Development	475.000.000	725.000.000	401.000.000	366.000.000	430.000.000
<b>KALİTE ARTTIRICI</b> Quality Development	24.000.000	33.000.000	11.000.000	12.000.000	16.000.000
<b>YERLİLEŞTİRMEYİ ARTTIRICI</b> Localization	56.000.000	97.000.000	87.000.000	11.000.000	70.000.000
<b>DİĞER</b> Others	100.000.000	198.000.000	70.000.000	72.000.000	125.000.000
<b>TOPLAM</b> <b>Toplam</b>	<b>929.000.000</b>	<b>1.308.000.000</b>	<b>672.000.000</b>	<b>551.000.000</b>	<b>746.000.000</b>

**TÜRKİYE ARAÇ PARKI**  
**Automotive Vehicles Park In Turkey**

YILLAR Years	OTOMOBİL P.Car	KAMYON Truck	KAMYONET Pick-Up	MINİBÜS Minibus	OTOBÜS Bus	TRAKTÖR F.Tractor	TOPLAM Total
1963	72.034	49.356	30.739	7.543	11.726	50.844	222.242
1964	79.449	46.721	28.658	9.196	11.216	51.781	227.021
1965	87.584	49.317	29.804	10.476	11.693	54.608	243.482
1966	91.469	47.931	31.462	11.239	12.041	65.108	259.250
1967	112.867	56.889	39.927	16.008	13.332	74.982	314.005
1968	125.375	62.616	43.441	18.967	13.948	84.874	349.221
1969	137.345	69.478	48.655	20.540	15.520	96.407	387.945
1970	137.771	70.770	52.152	20.916	15.980	105.865	403.454
1971	153.676	73.433	57.011	22.380	17.040	118.525	442.065
1972	187.272	78.920	62.796	25.559	18.504	135.726	508.777
1973	240.360	86.780	71.043	30.055	20.011	156.139	604.388
1974	313.160	95.309	81.025	34.122	21.404	200.466	745.486
1975	403.546	108.381	98.579	40.623	23.763	243.066	917.958
1976	488.894	122.176	116.861	46.066	25.388	281.802	1.081.187
1977	560.424	138.093	134.213	51.999	27.096	320.578	1.232.403
1978	624.438	146.551	144.695	56.836	28.559	370.259	1.371.338
1979	688.687	157.095	155.278	61.596	30.634	402.777	1.496.067
1980	742.252	164.893	165.821	64.707	32.783	436.369	1.606.825
1981	776.432	172.372	172.269	66.514	33.839	458.714	1.680.140
1982	811.465	180.772	178.762	69.598	35.432	491.001	1.767.030
1983	856.350	190.277	186.427	73.585	38.478	513.516	1.858.633
1984	919.577	197.721	198.106	80.697	43.638	556.781	1.996.520
1985	983.444	205.496	212.505	87.951	47.119	583.974	2.120.489
1986	1.087.234	217.111	224.755	97.917	50.798	612.731	2.290.546
1987	1.193.021	225.872	233.480	106.314	53.554	637.449	2.449.690
1988	1.310.257	234.166	240.718	112.885	56.172	654.636	2.608.834
1989	1.434.830	241.392	248.567	118.026	58.859	672.845	2.774.519
1990	1.649.879	257.353	263.407	125.399	63.700	692.454	3.052.192
1991	1.864.344	273.409	280.891	133.632	68.973	704.373	3.325.622
1992	2.181.388	379.410	308.180	145.312	75.592	828.580	3.918.462
1993	2.619.852	406.398	354.290	159.900	84.254	870.559	4.495.253
1994	2.861.640	419.374	374.473	166.424	87.545	895.506	4.804.962
1995	3.058.511	432.216	397.743	173.051	90.197	937.528	5.089.246
1996	3.274.156	453.796	442.788	182.694	94.978	988.142	5.436.554
1997	3.570.105	489.071	529.838	197.057	101.896	1.053.381	5.941.348
1998	3.838.631	519.749	626.004	211.495	108.361	1.107.157	6.411.397
1999	4.072.326	531.690	692.935	221.683	112.186	1.131.626	6.762.446
2000	4.422.180	557.295	794.459	235.885	118.454	1.159.070	7.287.343
2001	4.534.803	562.063	833.175	239.381	119.306	1.179.068	7.467.796
2002	4.600.140	567.152	875.381	241.700	120.097	1.180.127	7.584.597
2003	4.700.343	579.010	973.457	245.394	123.500	1.184.256	7.805.960
2004	5.400.440	647.420	1.259.867	318.954	152.712	1.210.283	8.989.676
2005	5.772.745	676.929	1.475.057	338.539	163.390	1.247.767	9.674.427
2006	6.140.992	709.535	1.695.624	357.523	175.949	1.290.679	10.370.302
2007	6.472.156	729.202	1.890.459	372.601	189.128	1.327.334	10.980.880
2008	6.796.629	744.217	2.066.007	383.548	199.934	1.358.577	11.548.912
2009	7.093.964	727.302	2.204.951	384.053	201.033	1.368.032	11.979.335
2010	7.544.871	726.359	2.399.038	386.973	208.510	1.404.872	12.670.623
2011	8.113.111	728.458	2.611.104	389.435	219.906	1.466.208	13.528.222

KAYNAK: T.C. BAŞBAKANLIK TÜRKİYE İSTATİSTİK KURUMU

Source: Republic Of Turkey, Prime Ministry Turkish Statistical Institute