



OTOMOTİV SANAYİİ DERNEĐİ
AUTOMOTIVE MANUFACTURERS ASSOCIATION

Otomotiv Sanayii Genel ve İstatistik Bülteni General and Statistical Information Bulletin Of Automotive Manufacturers 2011 - I

OSD "OICA" Üyesidir



OSD is a Member of "OICA"

İÇİNDEKİLER**SAHİFE**

OTOMOTİV SANAYİİ FİRMALARI HAKKINDA GENEL BİLGİLER - 2010	1
OTOMOTİV SANAYİİ FİRMALARININ ÜRETTİKLERİ MODELLER VE GENEL SPESİFİKASYONLARI - 2010	2 - 10
OTOMOTİV SANAYİİ FİRMALARININ 2010 YILI ÜRETİM KAPASİTELERİ	11
OTOMOTİV SANAYİİ FİRMALARININ 2005 - 2009 YILLARI ÜRETİM ADETLERİ	12 - 16
YILLARA GÖRE ÜRETİM GRAFİKLERİ	17 - 18
OTOMOTİV SANAYİİ FİRMALARININ ÜRETİM ADETLERİ	19
KAPASİTE KULLANIM VE İHRACAT GRAFİKLERİ	20
YILLAR İTİBARIYLA ÜRETİM ADETLERİ VE KAPASİTE KULLANIMLARI	21
OTOMOTİV SANAYİİ FİRMALARININ İHRACATLARI	22 - 24
OTOMOBİL İTHALATI – HAFİF TİCARİ ARAÇ İTHALATI	25
OTOMOBİL VE HAFİF TİCARİ ARAÇLAR/ÜRETİM/İTHALAT/İHRACAT GRAFİKLERİ	26
OTOMOTİV SANAYİİ FİRMALARININ CİROLARI	27
OTOMOTİV SANAYİİ FİRMALARININ 2009 YILINDA HAMMADDEYE VE YAN SANAYİYE ÖDEMELERİ	28
OTOMOTİV SANAYİİ FİRMALARININ 2009 YILINDA ÖDEDİKLERİ VERGİLER VE ÜCRETLER	29 - 31
OTOMOTİV SANAYİİ İSTİHDAMI	32 - 35
OTOMOTİV SANAYİİ YATIRIMLARI	36
TÜRKİYE ARAÇ PARKI	37

CONTENTS**PAGE**

GENERAL INFORMATION ON THE AUTOMOTIVE MANUFACTURERS - 2010	1
GENERAL SPECIFICATIONS OF THE PRODUCTS - 2010	2 - 10
PRODUCTION CAPACITIES - 2010	11
PRODUCTION UNITS FOR THE YEARS 2005 - 2009	12 - 16
PRODUCTION BY YEARS IN GRAPHICS	17 - 18
THE PRODUCTION UNITS OF THE AUTOMOTIVE MANUFACTURERS	19
CAPACITY USAGE AND EXPORTS IN GRAPHICS	20
PRODUCTION UNITS AND CAPACITY UTILIZATION BY YEARS	21
AUTOMOTIVE INDUSTRY EXPORTS	22 - 24
P. CAR IMPORTS - LIGHT COMMERCIAL VEHICLE IMPORTS	25
P. CARS AND LIGHT COMMERCIAL VEHICLES/PRODUCTION/IMPORTS/EXPORTS	26
AUTOMOTIVE INDUSTRY SALES	27
PAYMENT FOR RAW MATERIAL AND COMPONENTS - 2009	28
TAXES, WAGES AND SALARIES PAID BY AUTOMOTIVE MANUFACTURERS IN THE YEAR - 2009	29 - 31
AUTOMOTIVE INDUSTRY EMPLOYMENT	32 - 35
AUTOMOTIVE INDUSTRY INVESTMENTS	36
AUTOMOTIVE VEHICLES PARK IN TURKEY	37

OTOMOTİV SANAYİİ FİRMALARI HAKKINDA GENEL BİLGİLER - 2011
General Information On The Automotive Manufacturers - 2011

OCAK SONU/By the end of January

FİRMALAR Firms	ÜRETİM YERİ The Production Place	ÜRETİME BAŞLAMA TARİHİ Starting Year Of Production	LİSANS Licence	SERMAYE Capital (1000 YTL)	YABANCI SERMAYE Foreign Cap. (%)	KAPALI ALAN Covered Area (1.000 M2)	TOPLAM ALAN Total Area (1.000 M2)
A.I.O.S.	KOCAELİ	1966	ISUZU	25.419	29,74	82	299
B.M.C.	İZMİR	1966		500.000	0	123	826
FORD OTOSAN	ESKİŞEHİR KOCAELİ	1983 2001	FORD	350.910	41	72 345	1.105 1.528
HATTAT TARIM	TEKİRDAĞ	2002	VALTRA, UNIVERSAL, HATTAT	40.000	0	41	172
HONDA TÜRKİYE	KOCAELİ	1997	HONDA MOTOR EUROPE. LTD.	180.000	100	77	292
HYUNDAI ASSAN	KOCAELİ	1997	HYUNDAI MOTOR COMP.	206.220	70	100	1.000
KARSAN	BURSA	1966	KARSAN / PEUGEOT HYUNDAI MOTOR COMPANY RENAULT TRUCKS BREDA MENARINI BUS	195.553	0	105	230
M.A.N. TÜRKİYE	ANKARA	1966	MAN TRUCK & BUS AG	65.000	99,9	88	315
M.BENZ TÜRK	İSTANBUL AKSARAY	1968 1985	MERCEDES BENZ	275.000	85	158 82	511 558
OTOKAR	SAKARYA	1963	LAND ROVER / FRUEHAUF	24.000	0	141	552
O.RENAULT	BURSA	1971	RENAULT	323.300	51	292	510
TEMSA GLOBAL	ADANA SAKARYA	1987 2008	TEMSA / MITSUBISHI FUSO TRUCK & BUS CORP.	210.000	0	105 22	555 153
TOFAŞ	BURSA	1971	FIAT	500.000	37,8	352	935
TOYOTA	SAKARYA	1994	TOYOTA	150.165	100	212	917
T.TRAKTÖR	ANKARA	1954		53.369	37,5	82	282
TOPLAM/Total				3.098.936		2.479	10.740

OTOMOBİL 120 TROY 1.4 CVVT MODE OTM.	P. Car	1565	1155	BENZİN	4	1396	99/5500	4/1	OTOMATİK	ÖN-ARKA 175/70 R 14
OTOMOBİL 120 TROY 1.4 CVVT PRIME OTM.	P. Car	1565	1155	BENZİN	4	1396	99/5500	4/1	OTOMATİK	ÖN-ARKA 185/60 R 15
OTOMOBİL 120 TROY 1.4 CVVT PRIME GP OTM.	P. Car	1565	1155	BENZİN	4	1396	99/5500	4/1	OTOMATİK	ÖN-ARKA 185/60 R 15
OTOMOBİL 120 TROY 1.4 CVVT PRIME SP OTM.	P. Car	1565	1155	BENZİN	4	1396	99/5500	4/1	OTOMATİK	ÖN-ARKA 195/50 R 16
OTOMOBİL 120 TROY 1.4 CVVT PRIME GP SP OTM.	P. Car	1565	1155	BENZİN	4	1396	99/5500	4/1	OTOMATİK	ÖN-ARKA 195/50 R 16
OTOMOBİL 120 TROY 1.4 CRDI START	P. Car	1635	1222	DİZEL	4	1396	74/4000	5/1	MANUEL	ÖN-ARKA 175/70 R 14
OTOMOBİL 120 TROY 1.4 CRDI MODE	P. Car	1635	1226	DİZEL	4	1396	89/4000	6/1	MANUEL	ÖN-ARKA 175/70 R 14
OTOMOBİL 120 TROY 1.4 CRDI PRIME	P. Car	1635	1226	DİZEL	4	1396	89/4000	6/1	MANUEL	ÖN-ARKA 185/60 R 15
OTOMOBİL 120 TROY 1.4 CRDI PRIME GP	P. Car	1635	1226	DİZEL	4	1396	89/4000	6/1	MANUEL	ÖN-ARKA 185/60 R 15
OTOMOBİL 120 TROY 1.4 CRDI PRIME SP	P. Car	1635	1226	DİZEL	4	1396	89/4000	6/1	MANUEL	ÖN-ARKA 195/50 R 16
OTOMOBİL 120 TROY 1.4 CRDI PRIME GP SP	P. Car	1635	1226	DİZEL	4	1396	89/4000	6/1	MANUEL	ÖN-ARKA 195/50 R 16
KARSAN										
Midibus Kısa 17+1	Midibus	4150	2609	DİZEL	4	2287	95/3900	5/1	NZWL	ÖN-ARKA 195/75 R 16 C
Midibus Kısa 17+1 Okul Servisi	Midibus	4150	2609	DİZEL	4	2287	95/3900	5/1	NZWL	ÖN-ARKA 205/75 R 16 C
Midibus Uzun 17+1	Midibus	4240	2685	DİZEL	4	2287	95/3900	5/1	NZWL	ÖN-ARKA 205/75 R 16 C
Midibus Uzun 20+1	Midibus	4320	2730	DİZEL	4	2287	95/3900	5/1	NZWL	ÖN-ARKA 205/75 R 16 C
Midibus Uzun 20 +1 Okul servisi	Midibus	4320	2730	DİZEL	4	2287	95/3900	5/1	NZWL	ÖN-ARKA 205/75 R 16 C
Minibus Kısa 14+1 Tekli koltuk	Minibus	4150	2545	DİZEL	4	2287	95/3900	5/1	NZWL	ÖN-ARKA 205/75 R 16 C
Minibus Uzun 14+1 Tekli koltuk	Minibus	4240	2660	DİZEL	4	2287	95/3900	5/1	NZWL	ÖN-ARKA 205/75 R 16 C
Midibus Uzun 16+1	Midibus	4240	2659	DİZEL	4	2287	95/3900	5/1	NZWL	ÖN-ARKA 205/75 R 16 C
Minibus Kısa 14+1	Minibus	4150	2545	DİZEL	4	2287	95/3900	5/1	NZWL	ÖN-ARKA 205/75 R 16 C
Midibus Uzun 18+1	Midibus	4240	2718	DİZEL	4	2287	95/3900	5/1	NZWL	ÖN-ARKA 205/75 R 16 C
Minibus Uzun 14+1	Minibus	4240	2674	DİZEL	4	2287	95/3900	5/1	NZWL	ÖN-ARKA 205/75 R 16 C
Minibus Kısa 14+1 Simf A	Minibus	4150	2445	DİZEL	4	2287	95/3900	5/1	NZWL	ÖN-ARKA 205/75 R 16 C
Minibus Uzun 14+1 Simf A	Minibus	4240	2558	DİZEL	4	2287	95/3900	5/1	NZWL	ÖN-ARKA 205/75 R 16 C
Minibus Uzun 14+1 Davlumbaz üstü boş	Minibus	4240	2643	DİZEL	4	2287	95/3900	5/1	NZWL	ÖN-ARKA 205/75 R 16 C
Minibus Uzun 13+1	Minibus	4240	2611	DİZEL	4	2287	95/3900	5/1	NZWL	ÖN-ARKA 205/75 R 16 C
Midibus Uzun 15+1	Midibus	4240	2640	DİZEL	4	2287	95/3900	5/1	NZWL	ÖN-ARKA 205/75 R 16 C
Midibus Uzun 17+1 Ön teklî koltuk	Midibus	4240	2699	DİZEL	4	2287	95/3900	5/1	NZWL	ÖN-ARKA 205/75 R 16 C
KAMYONET HD35	Pick Up	3500	2592	DİZEL	4	3933	140/2700	5/1	HMC	ÖN-ARKA 205/75 R16
KAMYONET HD35	Pick Up	3500	2592	DİZEL	4	3933	140/2700	5/1	HMC	ÖN-ARKA 205/75 R16
KAMYON HD75	Truck	7500	2730	DİZEL	4	3933	140/2700	5/1	HMC	ÖN-ARKA 8.5 R 17.5
KAMYON HD75	Truck	7500	2690	DİZEL	4	3933	140/2700	5/1	HMC	ÖN-ARKA 8.5 R 17.5
KAMYON HD75	Truck	7500	2725	DİZEL	4	3933	140/2700	5/1	HMC	ÖN-ARKA 8.5 R 17.5
KAMYON HD75 Hİngpower	Truck	7500	2730	DİZEL	4	3933	150/2500	6/1	HMC	ÖN-ARKA 8.5 R 17.5
KAMYON HD75 Hİngpower	Truck	7500	2690	DİZEL	4	3933	150/2500	6/1	HMC	ÖN-ARKA 8.5 R 17.5
KAMYON HD75 Hİngpower	Truck	7500	2725	DİZEL	4	3933	150/2500	6/1	HMC	ÖN-ARKA 8.5 R 17.5
KAMYONET FOURGON KISA 1.6 75 HP	Pick Up	1930	1130	DİZEL	4	1560	75/4000	5/1	PSA	ÖN-ARKA 175/65 R14 C
KAMYONET FOURGON KISA 1.9D	Pick Up	1955	1206	DİZEL	4	1868	70/4600	5/1	PSA	ÖN-ARKA 175/65 R14 C
KAMYONET FOURGON KISA 1.4i	Pick Up	1855	1055	BENZİN	4	1360	75/6200	5/1	PSA	ÖN-ARKA 175/70 R14 C
KAMYONET FOURGON 1000 KG 1.6 75 HP	Pick Up	2140	1351	DİZEL	4	1560	75/4000	5/1	PSA	ÖN-ARKA 175/65 R14 C
KAMYONET FOURGON 1000 KG 1.6 90 HP	Pick Up	2160	1356	DİZEL	4	1560	90/4000	5/1	PSA	ÖN-ARKA 175/65 R14 C
KAMYONET FOURGON 1000 KG 1.9D	Pick Up	2180	1359	DİZEL	4	1868	70/4600	5/1	PSA	ÖN-ARKA 175/65 R14 C
KAMYONET FOURGON 1000 KG 1.6i	Pick Up	2145	1322	BENZİN	4	1587	109/6400	5/1	PSA	ÖN-ARKA 175/65 R14 C
KAMYONET KOMBİ KISA 1.6 75 HP	Pick Up	1955	1223	DİZEL	4	1560	75/4000	5/1	PSA	ÖN-ARKA 175/65 R14 C
KAMYONET KOMBİ KISA 1.6 90 HP	Pick Up	1955	1240	DİZEL	4	1560	90/4000	5/1	PSA	ÖN-ARKA 175/65 R14 C
KAMYONET KOMBİ KISA 1.9D	Pick Up	1955	1235	DİZEL	4	1868	70/4600	5/1	PSA	ÖN-ARKA 175/65 R14 C
KAMYONET KOMBİ KISA 1.4i	Pick Up	1780	1197	BENZİN	4	1360	75/6200	5/1	PSA	ÖN-ARKA 175/70 R14 C
KAMYONET KOMBİ UZUN 1.6 75 HP	Pick Up	1905	1270	DİZEL	4	1560	75/4000	5/1	PSA	ÖN-ARKA 175/65 R14 C
KAMYONET KOMBİ UZUN 1.6 90 HP	Pick Up	1910	1274	DİZEL	4	1560	90/4000	5/1	PSA	ÖN-ARKA 175/65 R14 C
KAMYONET KOMBİ UZUN 1.9D	Pick Up	1905	1268	DİZEL	4	1868	70/4600	5/1	PSA	ÖN-ARKA 175/65 R14 C
KAMYONET KOMBİ UZUN 1.4i	Pick Up	1845	1207	BENZİN	4	1360	75/6200	5/1	PSA	ÖN-ARKA 175/70 R14 C
KAMYONET KOMBİ 1000 KG 1.6 90 HP	Pick Up	2165	1236	DİZEL	4	1560	90/4000	5/1	PSA	ÖN-ARKA 185 /65 R15 88 T
KAMYONET KOMBİ 1000 KG 1.6i	Pick Up	2190	1232	BENZİN	4	1587	109/6400	5/1	PSA	ÖN-ARKA 186 /65 R15 88 T
KAMYONET KOMBİ 1000 KG 1.9D	Pick Up	2230	1267	DİZEL	4	1868	70/4600	5/1	PSA	ÖN-ARKA 187 /65 R15 88 T
ÇEKİCİ Premium T4x2 Euro4	R.Tractor	19000	6979	DİZEL	6	10837	450/1900	16/2	RT	ÖN-ARKA G 315/90 R22.5
ÇEKİCİ Premium T4x2 Euro5	R.Tractor	19000	7442	DİZEL	6	10837	430/1800	16/2	RT	ÖN-ARKA G 315/90 R22.5
ÇEKİCİ Premium T4x2 Euro5	R.Tractor	19000	7442	DİZEL	6	10837	460/1800	16/2	RT	ÖN-ARKA G 315/90 R22.5
MİDİBÜS/OTOBÜS Avancity +L (12.000 mm) = Avancity diesel urban + suburban	Midibus/Bus	18000	11475	DİZEL	6	7146	290/2100	d/1	ZF 6 HP 504 ECOMAT 4 STEP 5 TOPODYN	ÖN-ARKA 275/70 R 22.5
MİDİBÜS Avancity + L CNS (12.000 mm) only urban	Midibus/Bus	18000	11825	CNG	6	6880	279/2200	d/1	ZF 6 HP 504 ECOMAT 4 STEP 5 TOPODYN	ÖN-ARKA 275/70 R 22.5
MİDİBÜS/OTOBÜS Avancity + N (10.800 mm) = Avancity diesel urban + suburban	Midibus/Bus	18000	11275	DİZEL	6	7146	290/2100	d/1	ZF 6 HP 504 ECOMAT 4 STEP 5 TOPODYN	ÖN-ARKA 275/70 R 22.5
MİNİBÜS/MİDİBÜS Vıvacity + M (9387 mm) urban + suburban	Minibus/Bus	16000	9625	DİZEL	4	4764	219/2300	6/1	ZF 5 HP 504 ECOMAT 4 STEP 5 TOPODYN	ÖN-315/60 R 22.5 ARKA:385/55 R 22.5
MİNİBÜS Vıvacity + C (7900 mm) urban	Minibus	13200	8425	DİZEL	4	4764	219/2300	5/1	ZF 5 HP 504 ECOMAT 4 STEP 5 TOPODYN	ÖN-ARKA 315/60 R 22.5
MİNİBÜS Vıvacity + C CNG (8000 mm)	Minibus	13850	9025	CNG	6	6880	231/2200	5/1	ZF 5 HP 504 ECOMAT 4 STEP 5 TOPODYN	ÖN-ARKA 315/60 R 22.5
M.A.N. TÜRKİYE										
OTOBÜS Lion's City T (A78)	Bus	18000	11500	DİZEL	6	6871	280/2300	OTOMATİK	ZF 6AP1200B / A-Getr.Voith D854.5	ÖN-ARKA 295/80 R 22.5 / 275/70 R 22.5
OTOBÜS Lion's City T (A78)	Bus	18000	11500	DİZEL	6	6871	290/2300	OTOMATİK	ZF 6AP1200B / A-Getr.Voith D854.5	ÖN-ARKA 295/80 R 22.5 / 275/70 R 22.5
OTOBÜS Fortuna (R07)	Bus	18000	13775	DİZEL	6	10518	400/1900	6/1-otomatik	ZF 6S1901 / ZF 12AS2301	ÖN-ARKA 295/80 R 22.5
OTOBÜS Fortuna (R07)	Bus	18000	13775	DİZEL	6	1516/124	440/1900	6/1-otomatik	ZF 12AS2301 / MB GO210	ÖN-ARKA 295/80 R 22.5
OTOBÜS Fortuna (R07)	Bus	18000	13775	DİZEL	6	12419	480/1900	6/1-otomatik	ZF 12AS2301	ÖN-ARKA 295/80 R 22.5
OTOBÜS Fortuna (R07)	Bus	18000	13775	DİZEL	6	10518	430/1900	6/1-otomatik	ZF 12AS2301 / MB GO210	ÖN-ARKA 295/80 R 22.5

TRAKTÖR TD 95D 4WD ROPSLU
 TRAKTÖR TD 95D 4WD KABINLI
 TRAKTÖR JX 60 2WD ROPSLU
 TRAKTÖR JX 60 2WD KABINLI
 TRAKTÖR JX 60 4WD ROPSLU
 TRAKTÖR JX 60 4WD KABINLI
 TRAKTÖR JX 70 2WD ROPSLU
 TRAKTÖR JX 70 2WD KABINLI
 TRAKTÖR JX 70 4WD ROPSLU
 TRAKTÖR JX 70 4WD KABINLI
 TRAKTÖR JX 80 2WD ROPSLU
 TRAKTÖR JX 80 2WD KABINLI
 TRAKTÖR JX 80 4WD ROPSLU
 TRAKTÖR JX 80 4WD KABINLI
 TRAKTÖR JX 90 2WD ROPSLU
 TRAKTÖR JX 90 2WD KABINLI
 TRAKTÖR JX 90 4WD ROPSLU
 TRAKTÖR JX 90 4WD KABINLI
 TRAKTÖR JX 95 2WD ROPSLU
 TRAKTÖR JX 95 2WD KABINLI
 TRAKTÖR JX 95 4WD ROPSLU
 TRAKTÖR JX 95 4WD KABINLI
 TRAKTÖR T480 4WD ROPSLU
 TRAKTÖR T480 2WD ROPSLU
 TRAKTÖR TD5020B 4WD ROPSLU
 TRAKTÖR TD5030B 4WD ROPSLU
 TRAKTÖR TD5040B 4WD ROPSLU

F. Tractor	6000	3580	DIZEL	4 TURBO	3908	95/2500	12/12 & 20/12
F. Tractor	6000	3770	DIZEL	4 TURBO	3908	95/2500	12/12 & 20/12
F. Tractor	5200	2650	DIZEL	3	2930	59/2500	12/12 & 20/12
F. Tractor	5200	2840	DIZEL	3	2930	59/2500	12/12 & 20/12
F. Tractor	5400	2920	DIZEL	3	2930	59/2500	12/12 & 20/12
F. Tractor	5400	3080	DIZEL	3	2930	59/2500	12/12 & 20/12
F. Tractor	5200	2650	DIZEL	3 TURBO	2930	69/2500	12/12 & 20/12
F. Tractor	5200	2840	DIZEL	3 TURBO	2930	69/2500	12/12 & 20/12
F. Tractor	5400	2920	DIZEL	3 TURBO	2930	69/2500	12/12 & 20/12
F. Tractor	5400	3080	DIZEL	3 TURBO	2930	69/2500	12/12 & 20/12
F. Tractor	5400	2940	DIZEL	3 TURBO	2930	80/2300	12/12 & 20/12
F. Tractor	5400	3170	DIZEL	3 TURBO	2930	80/2300	12/12 & 20/12
F. Tractor	5800	3420	DIZEL	3 TURBO	2930	80/2300	12/12 & 20/12
F. Tractor	5800	3600	DIZEL	3 TURBO	2930	80/2300	12/12 & 20/12
F. Tractor	5500	2940	DIZEL	4 TURBO	3908	89/2500	12/12 & 20/12
F. Tractor	5500	3170	DIZEL	4 TURBO	3908	89/2500	12/12 & 20/12
F. Tractor	5900	3420	DIZEL	4 TURBO	3908	89/2500	12/12 & 20/12
F. Tractor	5900	3600	DIZEL	4 TURBO	3908	89/2500	12/12 & 20/12
F. Tractor	5600	3150	DIZEL	4 TURBO	3908	98/2500	12/12 & 20/12
F. Tractor	5600	3340	DIZEL	4 TURBO	3908	98/2500	12/12 & 20/12
F. Tractor	6000	3580	DIZEL	4 TURBO	3908	98/2500	12/12 & 20/12
F. Tractor	6000	3370	DIZEL	4 TURBO	3908	98/2500	12/12 & 20/12
F. Tractor	3000	1950	DIZEL	4	2216	48/2800	8/2 & 8/8
F. Tractor	3000	1800	DIZEL	4	2216	48/2800	8/2
F. Tractor	4300	2710	DIZEL	3 TURBO	2930	65/2300	12/12 & 20/12
F. Tractor	4300	2710	DIZEL	3 TURBO	2930	72/2300	12/12 & 20/12
F. Tractor	4300	2710	DIZEL	3 TURBO	2930	80/2300	12/12 & 20/12

NEW HOLLAND	ÖN 12.4-24 ARKA 18.4-30
NEW HOLLAND	ÖN 12.4-24 ARKA 18.4-30
CASE IH	ÖN 7.50X16 ARKA 14.9R30
CASE IH	ÖN 7.50-16 ARKA 14.9R30
CASE IH	ÖN 12.4R20 ARKA 14.9R30
CASE IH	ÖN 12.4R20 ARKA 14.9R30
CASE IH	ÖN 7.50X16 ARKA 14.9R30
CASE IH	ÖN 7.50-16 ARKA 14.9R30
CASE IH	ÖN 12.4R20 ARKA 14.9R30
CASE IH	ÖN 12.4R20 ARKA 14.9R30
CASE IH	ÖN 9.00-16 ARKA 16.9R34
CASE IH	ÖN 9.00-16 ARKA 16.9R34
CASE IH	ÖN 13.6R24 ARKA 16.9R34
CASE IH	ÖN 7.50-16 ARKA 14.9R30
CASE IH	ÖN 7.50-16 ARKA 14.9R30
CASE IH	ÖN 12.4-24 ARKA 18.4R30
CASE IH	ÖN 12.4-24 ARKA 18.4R30
CASE IH	ÖN 7.50-18 ARKA 18.4R30
CASE IH	ÖN 7.50-18 ARKA 18.4R30
CASE IH	ÖN 12.4-24 ARKA 18.4R30
CASE IH	ÖN 12.4-24 ARKA 18.4R30
NEW HOLLAND	ÖN 280/70R18 ARKA 13.6R28
NEW HOLLAND	ÖN 6.00-16 ARKA 12.4R24
NEW HOLLAND	ÖN 280/70R20 ARKA 380/70R28
NEW HOLLAND	ÖN 280/70R20 ARKA 380/70R28
NEW HOLLAND	ÖN 280/70R20 ARKA 380/70R28

DIZEL = Diesel
 BENZIN = Petrol
 ÖN-ARKA = Front-Rear KAT = Ply

**OTOMOTİV SANAYİİ FİRMALARININ
2011 YILI ÜRETİM KAPASİTELERİ
Production Capacities 2011**

FİRMALAR Firms	OTOMOBİL P.Car	KAMYON Truck	KAMYONET Pick Up	OTOBÜS Bus	MİNİBÜS Mini-Bus	MİDİBÜS Midi-Bus	TRAKTÖR F. Tractor	TOPLAM Total
A. ISUZU	0	7.200	2.400	0	922	2.633	0	13.155
B.M.C.	0	10.000	5.000	1.800	3.200	0	0	20.000
FORD OTOSAN	0	10.000	270.000	0	50.000	0	0	330.000
HATTAT TARIM	0	0	0	0	0	0	10.500	10.500
HONDA TÜRKİYE	50.000	0	0	0	0	0	0	50.000
HYUNDAI ASSAN	100.000	0	15.000	0	10.000	0	0	125.000
KARSAN	0	16.000	61.400	1.350	16.300	0	0	95.050
M.A.N. TÜRKİYE	0	0	0	1.700	0	0	0	1.700
M. BENZ TÜRK	0	14.500	0	4.000	0	0	0	18.500
OTOKAR	0	0	4.200	1.000	1.500	0	0	6.700
O. RENAULT	360.000	0	0	0	0	0	0	360.000
TEMSA GLOBAL	0	4.500	3.000	1.250	0	2.000	0	10.750
TOFAŞ	400.000	0	0	0	0	0	0	400.000
TOYOTA	150.000	0	0	0	0	0	0	150.000
T. TRAKTÖR	0	0	0	0	0	0	35.000	35.000
TOPLAM/Total	1.060.000	62.200	361.000	11.100	81.922	4.633	45.500	1.626.355

OTOMOTİV SANAYİİ FİRMALARININ 2006 - 2010 YILLARI ÜRETİM ADETLERİ
Production Units For The Years 2006 - 2010

FİRMALAR/MODELLER	Firms/Models	2006	2007	2008	2009	2010
A.I.O.S.						
Kamyonet	Pick Up	2.398	2.984	3.796	210	693
Kamyon (A.Y.A. 3.501 - 12.000 KG)	Truck	3.055	2.930	3.469	402	1.509
Midibüs	Midibus	1.992	1.928	2.742	1.205	1.090
TOPLAM	Total	7.445	7.842	10.007	1.817	3.292
ASKAM						
Kamyon (A.Y.A. > 12.001 KG)	Truck	1.116	74	0	0	0
Kamyonet	Pick Up	185	5	0	0	0
Minibüs	Minibus	8	0	0	0	0
TOPLAM	Total	1.309	79	0	0	0
B.M.C.						
Kamyon (A.Y.A. > 12.001 KG)	Truck	6.628	5.637	5.600	1.617	2.767
Kamyonet	Pick Up	3.566	2.624	1.124	936	0
Minibus	Minibus	629	965	863	1	0
Midibüs	Midibus	291	184	51	0	0
Otobüs (Şehirliçi)	Bus	565	959	1.098	613	575
TOPLAM	Total	11.679	10.369	8.736	3.167	3.342
FORD OTOSAN						
Kamyon (A.Y.A. > 12.001 KG)	Truck	7.825	6.434	5.863	1.722	4.872
Minibüs	Minibus	16.721	18.897	17.844	11.466	14.895
Kamyonet	Pick Up	36.525	52.336	46.960	19.328	35.916
Kamyonet Van	Pick Up	197.055	208.689	198.094	140.940	186.387
TOPLAM	Total	258.126	286.356	268.761	173.456	242.070

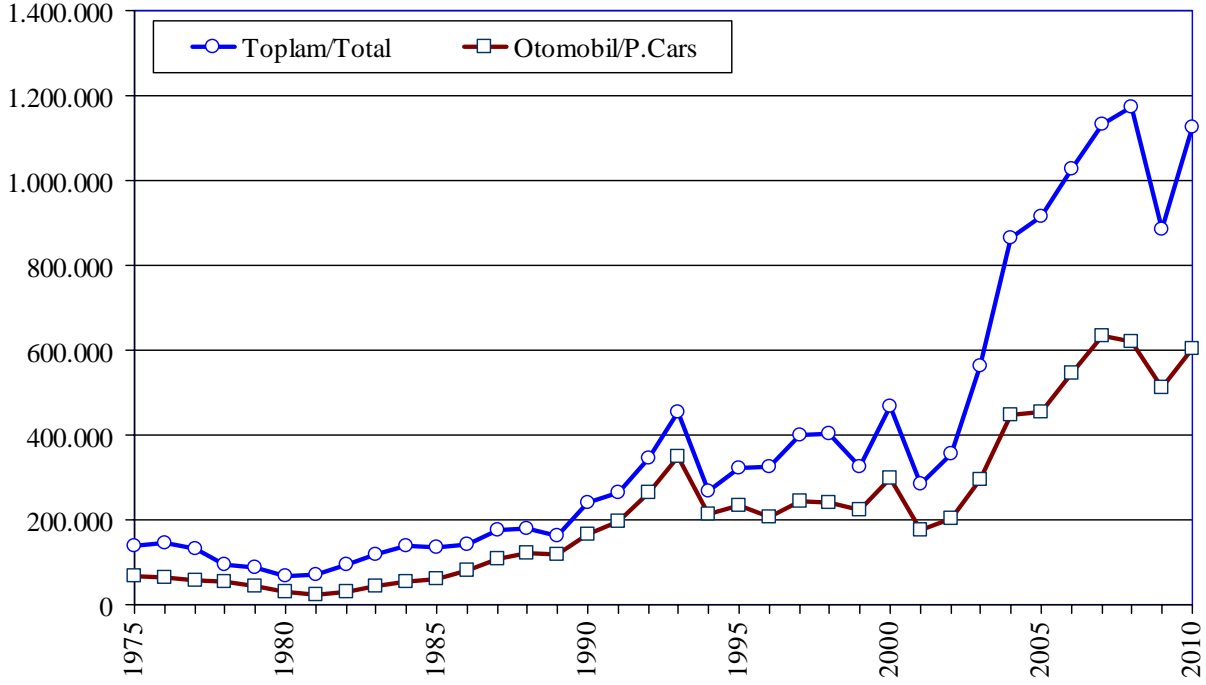
FİRMALAR/MODELLER	Firms/Models	2006	2007	2008	2009	2010
HATTAT TARIM						
Traktör (< 60 HP)	F. Tractor	897	548	391	206	792
Traktör (> 61 HP)	F. Tractor	537	706	528	359	1.356
TOPLAM	Total	1.434	1.254	919	565	2.148
HONDA TÜRKİYE						
Otomobil (1.301 - 1.600 CC - SEDAN)	P. Car	16.694	18.354	17.402	7.944	10.795
Otomobil (1.601 - 2.000 CC - SEDAN)	P. Car	1.628	5.309	32.671	10.320	9.510
TOPLAM	Total	18.322	23.663	50.073	18.264	20.305
HYUNDAI ASSAN						
Minibüs	Minibus	1.180	292	0	0	0
Kamyonet Van	Pick Up	17.365	6.207	0	0	0
Otomobil (< 1.300 CC - HATCHBACK)	P. Car	0	0	0	0	26.847
Otomobil (1.301 - 1.600 CC - HATCHBACK)	P. Car	0	0	4.144	36.816	9.721
Otomobil (1.301 - 1.600 CC - SEDAN)	P. Car	42.350	83.691	77.446	11.836	40.432
TOPLAM	Total	60.895	90.190	81.590	48.652	77.000
KARSAN						
Kamyon (A.Y.A. 3.501 - 12.000 KG)	Truck	0	93	906	178	448
Kamyon (A.Y.A. > 12.001 KG)	Truck	0	0	151	345	772
Minibüs	Minibus	1.735	1.550	1.905	100	1.797
Midibüs	Midibus	1.835	4.253	4.353	0	0
Kamyonet	Pick Up	5.550	1.879	1.839	0	8.052
Kamyonet Van	Pick Up	3.404	1.945	2.076	7.690	13.650
TOPLAM	Total	12.524	9.720	11.230	8.313	24.719

FİRMALAR/MODELLER	Firms/Models	2006	2007	2008	2009	2010
M.A.N. TÜRKİYE						
Kamyon (A.Y.A. > 12.001 KG)	Truck	150	0	0	0	0
Otobüs (Şehir içi)	Bus	1.157	694	605	699	240
Otobüs (Şehirlerarası)	Bus	1.194	1.375	1.091	845	892
TOPLAM	Total	2.501	2.069	1.696	1.544	1.132
M. BENZ TÜRK						
Otobüs (Şehir içi)	Bus	644	743	510	370	137
Otobüs (Şehirlerarası)	Bus	1.556	2.263	3.000	2.403	2.325
Kamyon (A.Y.A. > 12.001 KG)	Truck	13.009	16.008	17.290	3.719	12.018
TOPLAM	Total	15.209	19.014	20.800	6.492	14.480
OTOKAR						
Midibüs	Midibus	935	1.164	1.495	1.008	989
Minibüs	Minibus	455	295	511	262	286
Kamyonet	Pick Up	1.385	969	692	1.000	582
Otobüs (Şehir içi)	Bus	0	106	325	290	379
TOPLAM	Total	2.775	2.534	3.023	2.560	2.236
OTOYOL						
Kamyon (A.Y.A. 3.501 - 12.000 KG)	Truck	1.092	0	0	0	0
Kamyon (A.Y.A. > 12.001 KG)	Truck	1.103	235	0	0	0
Kamyonet	Pick Up	61	0	0	0	0
Minibüs	Midibus	0	0	0	0	0
Midibüs	Midibus	1.909	350	0	0	0
TOPLAM	Total	4.165	585	0	0	0

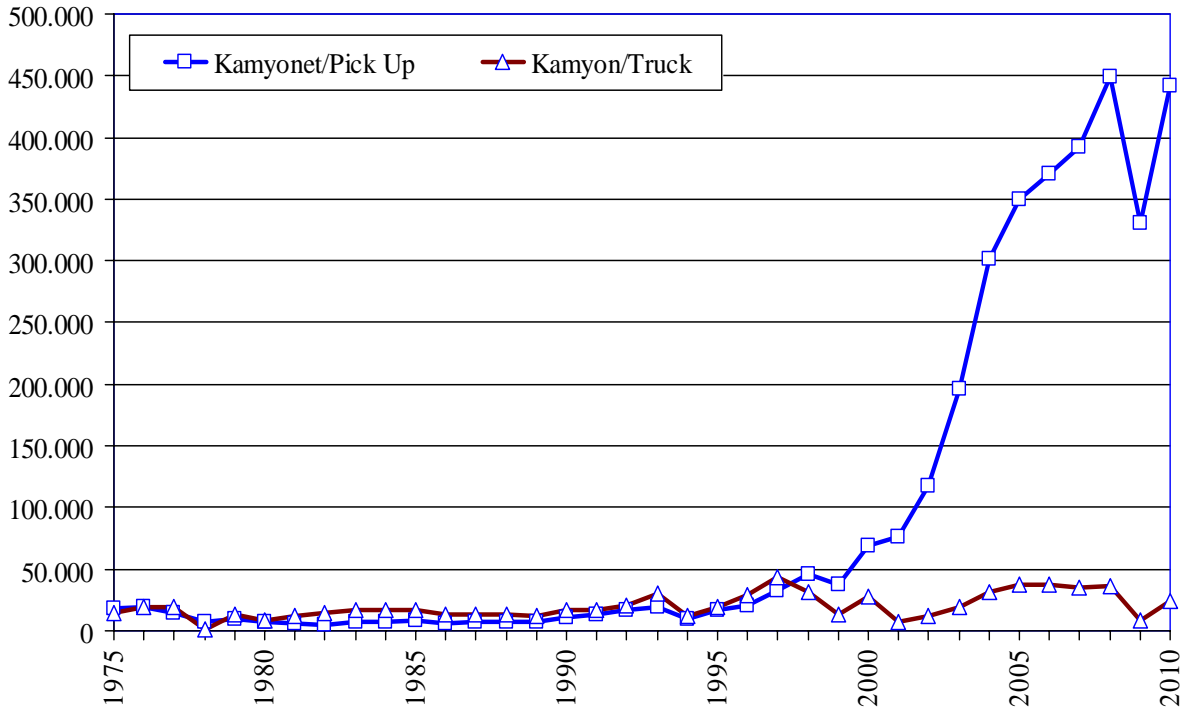
FİRMALAR/MODELLER	Firms/Models	2006	2007	2008	2009	2010
OYAK-RENAULT						
Otomobil (< 1.300 CC - SEDAN)	P. Car	36.354	46.432	69.528	93.665	72.037
Otomobil (1.301 - 1.600 CC - SEDAN)	P. Car	179.568	207.291	211.595	182.876	211.675
Otomobil (1.301 - 1.600 CC - HATCHBACK)	P. Car	0	0	0	0	20.129
Otomobil (1.601 - 2.000 CC - HATCHBACK)	P. Car	0	0	0	0	1.705
Otomobil (1.601 - 2.000 CC - SEDAN)	P. Car	12.671	9.933	5.572	1.031	1.537
TOPLAM	Total	228.593	263.656	286.695	277.572	307.083
TEMSA GLOBAL						
Otobüs (Şehirlerarası)	Bus	903	806	897	711	720
Kamyon (A.Y.A. 3.501 - 12.000 KG)	Truck	3.048	3.133	3.521	263	1.465
Kamyonet	Pick Up	3.663	3.963	4.105	1.029	603
Midibüs	Midibus	1.301	1.426	2.019	411	579
TOPLAM	Total	8.915	9.328	10.542	2.414	3.367
TOFAŞ						
Otomobil (< 1.300 CC - SEDAN)	P. Car	14.321	29.259	16.525	13.994	24.896
Otomobil (< 1.300 CC - HATCHBACK)	P. Car	2.988	2.186	1.196	801	741
Otomobil (< 1.300 CC - STATION WAGON)	P. Car	15.237	14.304	8.817	23.615	21.026
Otomobil (1.301 - 1.600 CC - SEDAN)	P. Car	21.171	29.792	30.708	12.080	19.795
Otomobil (1.301 - 1.600 CC - HATCHBACK)	P. Car	736	915	965	970	847
Otomobil (1.301 - 1.600 CC - STATION WAGON)	P. Car	14.474	11.315	10.243	38.620	45.489
Otomobil (1.601 - 2.000 CC - SEDAN)	P. Car	0	0	35	0	0
Otomobil (1.601 - 2.000 CC - STATION WAGON)	P. Car	10.802	14.586	8.199	4.099	2.926
Kamyonet Van	Pick Up	98.705	110.136	190.748	158.911	196.525
TOPLAM	Total	178.434	212.493	267.436	253.090	312.245
TOYOTA						
Otomobil (1.301 - 1.600 CC - SEDAN)	P. Car	63.191	11.120	6.920	7.470	7.024
Otomobil (1.301 - 1.600 CC - HATCHBACK)	P. Car	28.120	49.511	56.846	26.355	40.164
Otomobil (1.601 - 2.000 CC - SEDAN)	P. Car	83.313	89.654	53.674	37.293	33.326
Otomobil (1.601 - 2.000 CC - HATCHBACK)	P. Car	2.064	11.231	9.081	1.146	2.772
TOPLAM	Total	176.688	161.516	126.521	72.264	83.286

FİRMALAR/MODELLER	Firms/Models	2006	2007	2008	2009	2010
TÜRK TRAKTÖR						
Traktör (< 60 HP)	F. Tractor	11.624	11.228	11.642	4.973	13.428
Traktör (> 61 HP)	F. Tractor	5.633	7.122	10.460	9.323	14.849
TOPLAM	Total	17.257	18.350	22.102	14.296	28.277
UZEL						
Traktör (< 60 HP)	F. Tractor	10.219	6.658	1.786	0	0
Traktör (> 61 HP)	F. Tractor	9.931	7.256	0	0	0
TOPLAM	Total	20.150	13.914	1.786	0	0
GENEL TOPLAM	Grand Total	1.026.421	1.132.932	1.171.917	884.466	1.124.982

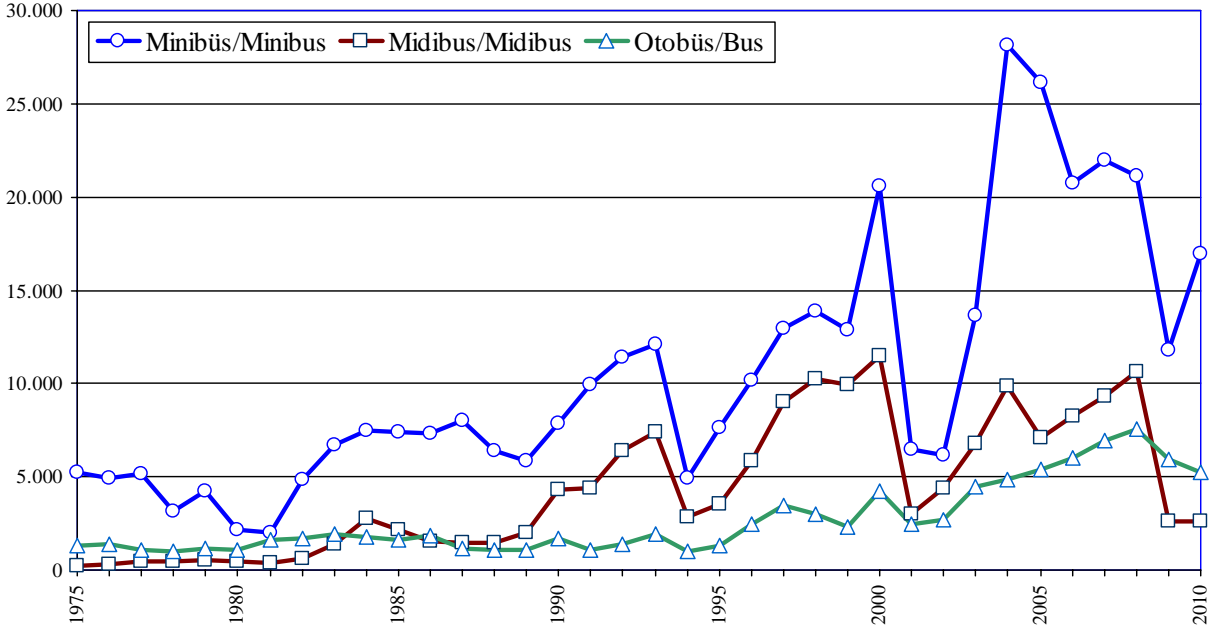
Otomobil /Toplam Üretim P.Cars /Total Production



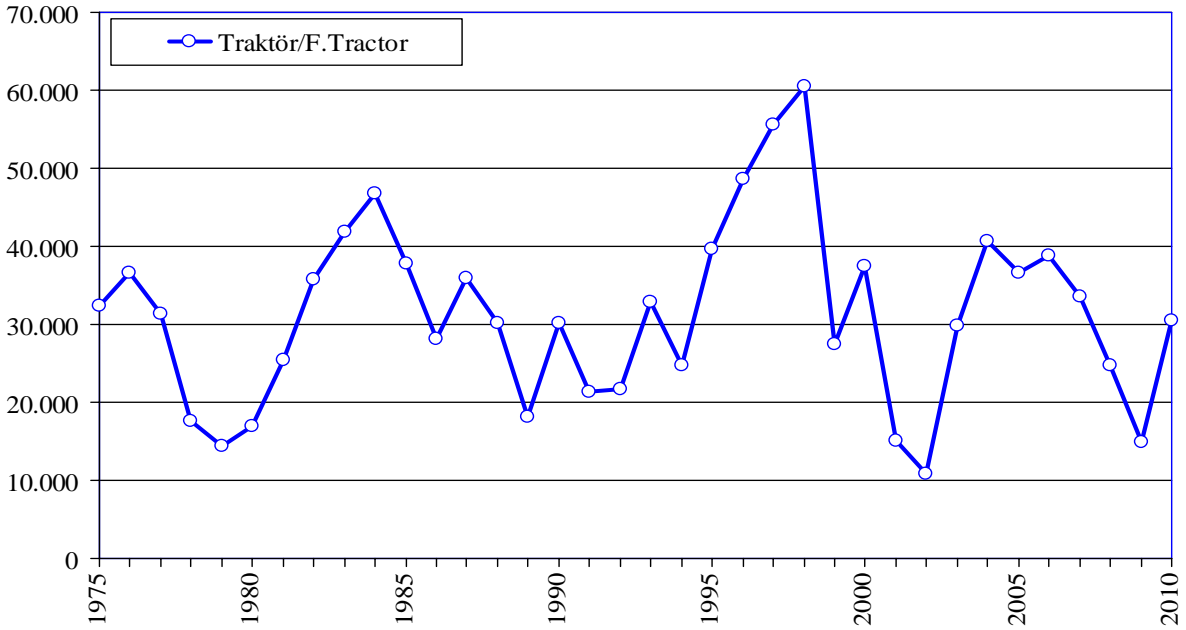
Yük Taşıt Araçları Üretimi Truck and Pick Up Production



Yolcu Taşıt Araçları Üretimi Bus Production



Traktör Üretimi F.Tractor Production

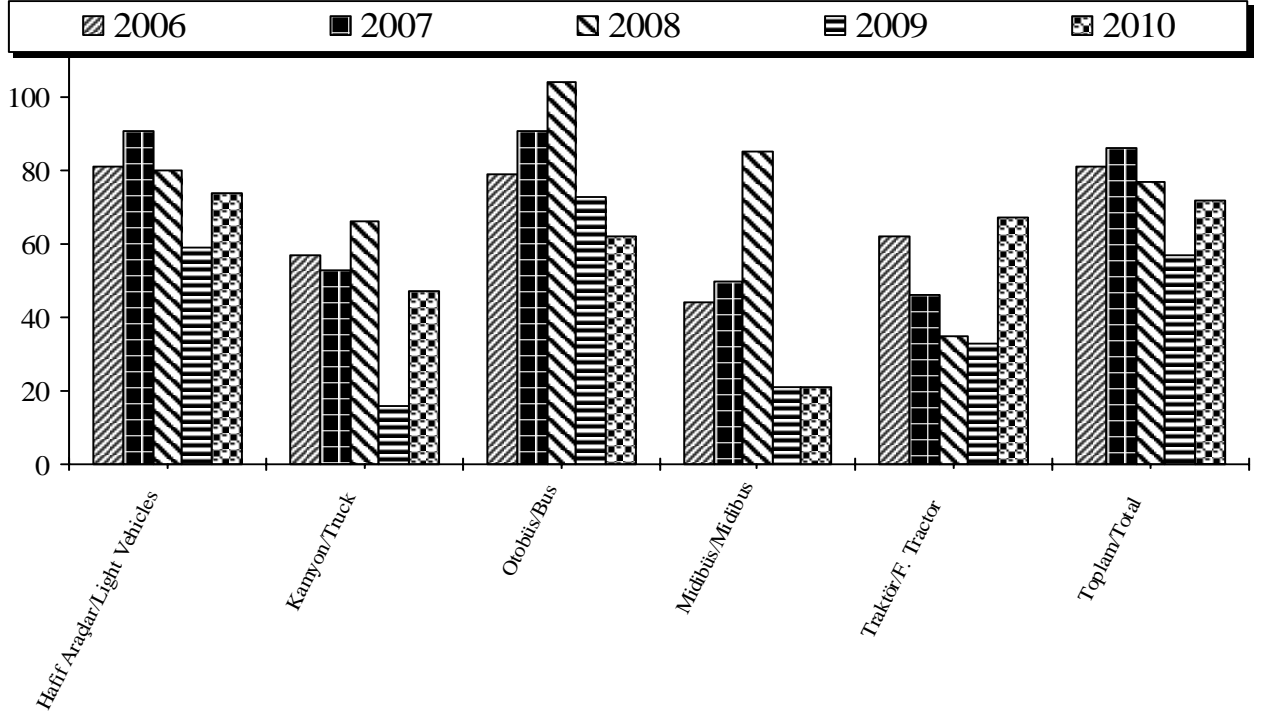


OTOMOTİV SANAYİİ FİRMALARININ ÜRETİM ADETLERİ
The Production Units Of The Automotive Manufacturers

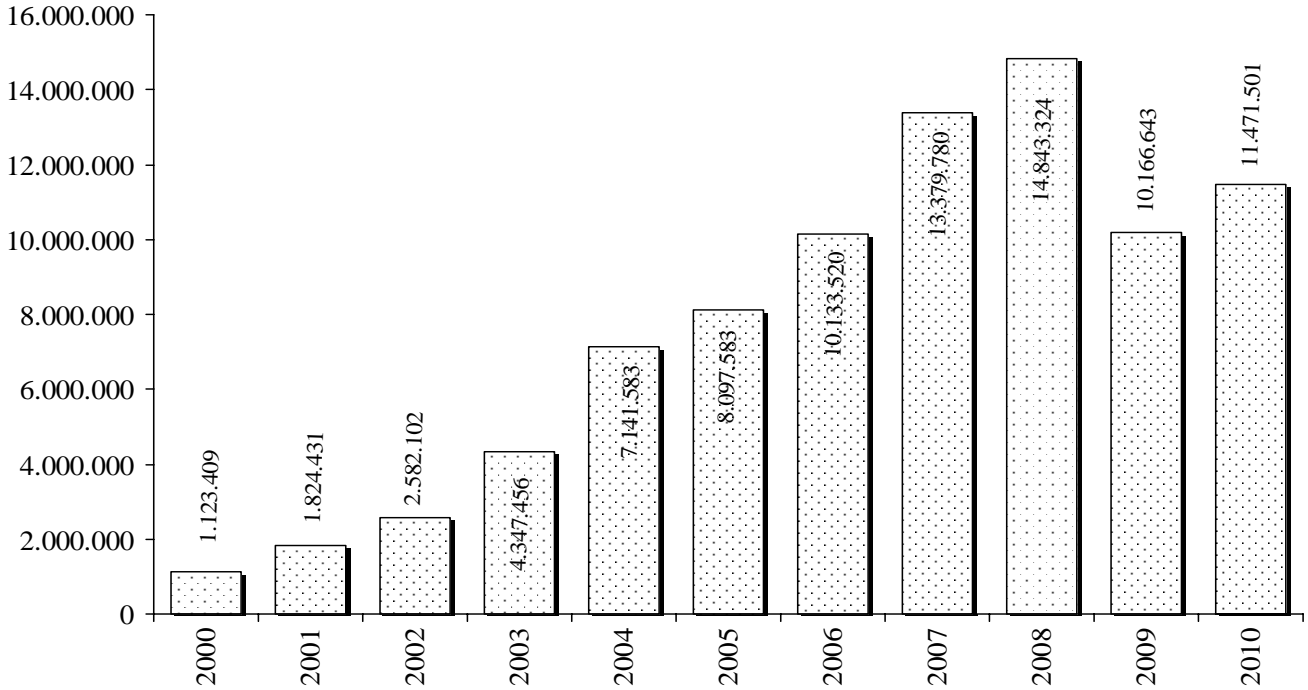
ARALIK SONU / By The end of December

YILLAR Years	OTOMOBİL P.Car	KAMYON Truck	KAMYONET Pick-Up	OTOBÜS Bus	MİNİBÜS Minibus	MİDİBÜS Midibus	TRAKTÖR F.Tractor	TOPLAM Total
1963	30	999	1.458	12	631	0	7.982	11.112
1964	100	2.741	885	56	401	0	7.006	11.189
1965	60	2.350	300	122	1.199	0	6.419	10.450
1966	18	6.258	2.476	174	0	252	8.969	18.147
1967	1.760	7.816	2.736	325	622	0	13.976	27.235
1968	2.852	9.408	2.270	466	895	0	15.118	31.009
1969	3.902	10.859	3.030	882	1.095	84	13.412	33.264
1970	3.660	6.041	4.395	806	1.099	4	7.518	23.523
1971	12.888	4.747	4.508	608	1.891	30	15.687	40.359
1972	29.628	8.596	6.044	988	3.748	0	22.893	71.897
1973	46.855	11.723	8.674	1.267	4.533	22	32.585	105.659
1974	59.906	10.591	11.861	1.113	4.584	148	25.363	113.566
1975	67.291	14.670	18.489	1.284	5.222	239	32.365	139.560
1976	62.992	20.498	19.415	1.376	4.910	302	36.602	146.095
1977	58.245	20.700	14.016	1.077	5.152	467	31.380	131.037
1978	54.085	13.144	6.879	972	3.163	444	17.673	96.360
1979	43.808	13.367	9.384	1.151	4.222	547	14.484	86.963
1980	31.529	8.308	7.322	1.101	2.130	491	16.936	67.817
1981	25.306	12.486	5.454	1.584	2.040	378	25.358	72.606
1982	31.195	15.131	4.991	1.703	4.850	587	35.716	94.173
1983	42.509	17.514	6.822	1.964	6.712	1.382	41.799	118.702
1984	54.832	17.518	7.279	1.766	7.460	2.750	46.782	138.387
1985	60.353	18.162	7.888	1.637	7.397	2.191	37.830	135.458
1986	82.032	13.646	6.605	1.813	7.318	1.508	28.053	140.975
1987	107.185	13.545	7.580	1.137	8.026	1.434	35.986	174.893
1988	120.796	12.842	7.196	1.078	6.401	1.449	30.167	179.929
1989	118.314	11.763	7.250	1.069	5.898	1.984	18.077	164.355
1990	167.556	16.933	10.553	1.689	7.898	4.288	30.098	239.015
1991	195.574	16.918	13.541	1.075	9.912	4.401	21.381	262.802
1992	265.245	21.266	16.984	1.415	11.450	6.399	21.723	344.482
1993	348.095	31.343	19.766	1.933	12.084	7.435	32.809	453.465
1994	212.651	12.108	9.602	1.034	4.924	2.855	25.169	268.343
1995	233.412	19.759	16.808	1.279	7.645	3.537	44.068	326.508
1996	207.757	29.432	21.032	2.499	10.171	5.856	52.590	329.337
1997	242.780	43.693	32.435	3.449	12.935	9.060	55.565	399.917
1998	239.937	31.823	45.517	3.040	13.910	10.275	60.500	405.002
1999	222.041	13.096	37.551	2.327	12.894	9.953	27.435	325.297
2000	297.476	28.348	68.807	4.213	20.597	11.506	37.434	468.381
2001	175.343	6.683	76.672	2.501	6.486	3.000	15.052	285.737
2002	204.198	12.295	116.872	2.684	6.139	4.377	10.840	357.405
2003	294.116	19.041	195.606	4.490	13.625	6.794	29.778	563.450
2004	447.152	31.790	301.563	4.839	28.161	9.903	40.665	864.073
2005	453.663	37.227	349.885	5.406	26.162	7.109	36.527	915.979
2006	545.682	37.026	369.862	6.019	20.728	8.263	38.841	1.026.421
2007	634.883	34.544	391.737	6.946	21.999	9.305	33.518	1.132.932
2008	621.567	36.800	449.434	7.526	21.123	10.660	24.807	1.171.917
2009	510.931	8.246	330.044	5.931	11.829	2.624	14.861	884.466
2010	603.394	23.851	442.408	5.268	16.978	2.658	30.425	1.124.982

Kapasite Kullanımı (%) Capacity Usage (%)



OSD Üyeleri İhracat (US Dollars) (Bin/Thousand) OSD Members Exports



YILLAR İTİBARIYLA ÜRETİM ADETLERİ VE KAPASİTE KULLANIMI
Production Units And Capacity Usage By Years

ARALIK SONU/By the end of December

TİPLER / Types	1997	1998	1999	2000	2001	2002	2003	2004	2005	2006	2007	2008	2009	2010
OTOMOBİL / P.Car	242.780	239.937	222.041	297.476	175.343	204.198	294.116	447.152	453.663	545.682	634.883	621.567	510.931	603.394
KAMYON / Truck	43.693	31.823	13.096	28.348	6.683	12.295	19.041	31.790	37.227	37.026	34.544	36.800	8.246	23.851
KAMYONET / Pick-Up	32.435	45.517	37.551	68.807	76.672	116.872	195.606	301.563	349.885	369.862	391.737	449.434	330.044	442.408
OTOBÜS / Bus	3.449	3.040	2.327	4.213	2.501	2.684	4.490	4.839	5.406	6.019	6.946	7.526	5.931	5.268
MİNİBÜS / Minibus	12.935	13.910	12.894	20.597	6.486	6.139	13.625	28.161	26.162	20.728	21.999	21.123	11.829	16.978
MİDİBÜS / Midibus	9.060	10.275	9.953	11.506	3.000	4.377	6.794	9.903	7.109	8.263	9.305	10.605	2.624	2.658
TRAKTÖR / F.Tractor	55.565	60.500	27.435	37.434	15.052	10.840	29.778	40.665	36.527	38.841	33.518	24.807	14.861	30.425
TOPLAM / Total	399.917	405.002	325.297	468.381	285.737	357.405	563.450	864.073	915.979	1.026.421	1.132.932	1.171.862	884.466	1.124.982

NOT: EN YÜKSEK ÜRETİM ADETLERİ [] İÇİNE ALINMIŞTIR.

Note: The highest production volumes are shown in []

KAPASİTE KULLANIMI
Capacity Usage

% 49	% 49	50%	36%	29%	35%	52%	73%	76%	81%	86%	77%	57%	72%
------	------	-----	-----	-----	-----	-----	-----	-----	-----	-----	-----	-----	-----

OTOMOTİV SANAYİİ FİRMALARININ İHRACATLARI
Automotive Industry Exports

ARALIK SONU/By the end of December

TİPLER / Types	YILLAR / Years									
	2006	2007		2008		2009		2010		
	ADET Units	DEĞER \$ Value	ADET Units	DEĞER \$ Value	ADET Units	DEĞER \$ Value	ADET Units	DEĞER \$ Value	ADET Units	DEĞER \$ Value
OTOMOBİL / P. Car	430.528	5.471.999.318	518.328	6.941.721.286	530.175	7.338.172.370	340.211	4.603.458.146	393.577	5.100.281.905
KAMYON / Truck	4.012	236.167.822	9.399	644.492.876	9.740	718.225.590	1.890	162.028.403	2.248	166.523.409
KAMYONET / Pick Up	251.911	3.113.245.220	273.017	3.850.694.467	348.814	5.022.968.619	270.894	3.583.111.873	340.225	4.259.641.966
OTOBÜS / Bus	4.122	673.747.640	5.349	1.068.409.224	5.521	1.098.374.965	4.368	851.987.295	3.556	694.535.225
MİNİBÜS / Minibus	4.208	75.387.559	11.622	220.139.691	14.270	290.029.482	9.674	138.792.878	12.416	227.391.269
MİDİBÜS / Midibus	1.918	109.027.648	2.031	125.803.388	2.143	163.516.254	1.203	89.534.719	857	56.923.573
TRAKTÖR / F. Tractor	9.710	145.034.002	9.458	164.941.590	10.420	212.036.447	8.672	173.671.038	9.214	176.043.967
YEDEK PARÇA / Miscellaneous Parts		308.910.352		363.577.505		484.509.113		564.058.442		790.159.387
TOPLAM / Total	706.409	10.133.519.561	829.204	13.379.780.027	921.083	15.327.832.840	636.912	10.166.642.794	762.093	11.471.500.701

YURTIÇİ TEŞVİKLİ SATIŞLARI HARİÇTİR / Excluding Local Incentive Sales

OTOMOTİV SANAYİİ FİRMALARININ İHRACATLARI
Automotive Industry Exports

(A) Complete Vehicle, (B) Miscellaneous Parts

ARALIK SONU/By the end of December

FİRMALAR/Firms	2006		2007		2008		2009		2010	
	ADET Units	DEĞER \$ Value \$	ADET Units	DEĞER \$ Value \$	ADET Units	DEĞER \$ Value \$	ADET Units	DEĞER \$ Value \$	ADET Units	DEĞER \$ Value \$
A.I.O.S.										
Komple Araç (A)	711	39.671.605	750	52.859.501	1.042	88.310.971	565	36.287.990	498	25.779.953
Muhtelif Parça (B)	0	2.470.922	0	2.482.358	0	4.305.179	0	3.411.381	0	3.943.186
ASKAM										
Komple Araç (A)	30	1.559.737	0	0	0	0	0	0	0	0
Muhtelif Parça (B)	0	77.341	0	4.994	0	0	0	0	0	0
B.M.C.										
Komple Araç (A)	712	64.038.157	1.524	117.713.052	1.189	118.547.951	582	53.328.047	433	45.373.471
Muhtelif Parça (B)	0	4.633.147	0	6.725.073	0	4.810.401	0	3.383.953	0	6.843.892
FORD OTOSAN										
Komple Araç (A)	184.748	2.418.455.711	221.964	3.373.728.560	218.046	3.700.683.548	128.738	2.004.292.289	175.749	2.539.286.824
Muhtelif Parça (B)	0	35.652.360	0	50.219.794	0	24.638.672	0	38.077.817	0	87.236.169
HATTAT TARIM										
Komple Araç (A)	0	0	0	0	53	1.323.226	77	2.549.906	227	5.758.495
Muhtelif Parça (B)	0	86.000	0	0	0	0	0	0	0	168.937
HONDA TÜRKİYE										
Komple Araç (A)	5.692	85.599.561	7.732	135.550.960	34.926	595.442.974	9.149	156.557.640	10.632	202.492.381
Muhtelif Parça (B)	0	549.189	0	289.437	0	0	0	1.937.372	0	2.848.625
HYUNDAI ASSAN										
Komple Araç (A)	34.630	356.265.291	69.336	764.485.169	61.269	642.532.489	17.314	159.900.315	42.396	432.062.807
Muhtelif Parça (B)	0	3.646.518	0	1.136.964	0	2.370.900	0	1.605.754	0	2.468.567
KARSAN										
Komple Araç (A)	244	3.613.190	682	11.265.196	442	7.083.667	6.075	66.238.409	17.653	163.020.729
Muhtelif Parça (B)	0	452.083	0	456.325	0	957.704	0	534.429	0	354.457
M.A.N. TÜRKİYE										
Komple Araç (A)	1.874	290.309.748	1.696	350.815.402	1.527	360.889.220	1.148	289.629.987	881	204.248.923
Muhtelif Parça (B)	0	14.187.720	0	10.014.447	0	13.588.212	0	9.963.960	0	9.793.319

M. BENZ TÜRK

Komple Araç (A)	3.903	393.075.744	8.708	972.039.362	9.092	1.000.073.122	3.317	493.681.799	3.471	474.443.993
Muhtelif Parça (B)	0	14.310.082	0	29.443.281	0	33.636.572	0	20.486.261	0	5.321.577

OTOKAR

Komple Araç (A)	1.276	101.903.326	1.113	97.817.549	619	104.138.416	501	87.927.551	373	44.751.993
Muhtelif Parça (B)	0	10.587.249	0	2.766.898	0	10.587.971	0	12.358.921	0	1.498.622

OTOYOL

Komple Araç (A)	825	22.789.212	104	5.681.586	9	751.684	9	0	0	0
Muhtelif Parça (B)	0	1.058.244	0	1.072.000	0	25.421	0	0	0	0

OYAK-RENAULT

Komple Araç (A)	177.411	2.060.598.794	204.428	2.389.521.053	252.232	3.086.031.532	222.278	2.684.977.963	233.057	2.719.370.681
Muhtelif Parça (B)	0	115.909.259	0	139.652.097	0	182.884.238	0	327.451.183	0	517.577.849

TEMSA GLOBAL

Komple Araç (A)	1.103	161.599.587	1.145	176.236.455	1.240	186.885.207	1.114	165.399.415	836	113.320.699
Muhtelif Parça (B)	0	3.177.885	0	5.291.069	0	15.439.586	0	8.028.845	0	12.544.774

TOYOTA

Komple Araç (A)	160.479	2.510.897.080	154.386	2.842.393.047	119.586	2.303.580.309	69.097	1.312.697.698	73.163	1.290.701.973
Muhtelif Parça (B)	0	13.132.160	0	16.446.922	0	17.998.963	0	19.028.652	0	21.385.043

TOFAŞ

Komple Araç (A)	123.061	1.169.198.464	146.178	1.561.154.040	209.444	2.436.336.190	168.353	1.917.994.211	193.737	2.250.442.920
Muhtelif Parça (B)	0	48.529.358	0	44.290.197	0	118.156.005	0	84.021.747	0	74.704.587

TÜRK TRAKTÖR

Komple Araç (A)	4.597	81.231.815	5.761	103.741.952	9.598	198.013.971	8.595	171.121.132	8.987	170.285.472
Muhtelif Parça (B)	0	33.729.264	0	46.661.382	0	52.466.366	0	33.768.167	0	43.469.783

UZEL

Komple Araç (A)	5.113	63.802.187	3.697	61.199.638	769	12.699.250	0	0	0	0
Muhtelif Parça (B)	0	6.721.571	0	6.624.267	0	2.642.923	0	0	0	0

706.409	9.824.609.209	829.204	13.016.202.522	921.083	14.843.323.727	636.912	9.602.584.352	762.093	10.681.341.314
0	308.910.352	0	363.577.505	0	484.509.113	0	564.058.442	0	790.159.387

TOPLAM/Total

706.409	10.133.519.561	829.204	13.379.780.027	921.083	15.327.832.840	636.912	10.166.642.794	762.093	11.471.500.701
----------------	-----------------------	----------------	-----------------------	----------------	-----------------------	----------------	-----------------------	----------------	-----------------------

YURTIÇİ TEŞVİKLİ SATIŞLARI HARIÇTİR / Excluding Local Incentive Sales

OTOMOBİL İTHALATI / Passenger Car Imports

BÖLGE / ÜLKE Region / Country	2005		2006		2007		2008		2009		2010	
	Adet / Unit	%	Adet / Unit	%	Adet / Unit	%	Adet / Unit	%	Adet / Unit	%	Adet / Unit	%
AT + EFTA / EU + EFTA	237.905	78,8	200.446	78,5	195.361	82,5	165.435	80,0	190.919	78,4	295.920	83,6
DOĞU AVRUPA / East Europe	20.106	6,7	14.022	5,5	9.998	4,2	13.140	6,4	12.128	5,0	22.095	6,2
* RUSYA FED. / Russian Fed.	3.562	1,2	1.441	0,6	845	0,4	620	0,3	290	0,1	101	0,0
* ROMANYA / Romania	8.464	2,8	7.355	2,9	3.688	1,6	5.152	2,5	5.873	2,4	13.230	3,7
* ÇEK CUM. / Czech Republic	8.080	2,7	5.226	2,0	5.465	2,3	3.625	1,8	3.401	1,4	6.332	1,8
* DİGER / Others	0	0,0	0	0,0	0	0,0	3.743	1,8	2.564	1,1	2.432	0,7
UZAK DOĞU / Far East	43.878	14,5	41.026	16,1	31.366	13,2	28.218	13,6	40.495	16,6	36.135	10,2
* JAPONYA / Japan	8.448	2,8	8.891	3,5	8.931	3,8	7.177	3,5	6.203	2,5	5.668	1,6
* G. KORE / S. Korea	33.184	11,0	29.769	11,7	20.102	8,5	18.005	8,7	31.198	12,8	26.466	7,5
* DİGER / Others	2.246	0,7	2.366	0,9	2.333	1,0	3.036	1,5	3.094	1,3	4.001	1,1
TOPLAM/Total	301.889	100,0	255.494	100,0	236.725	100,0	206.793	100,0	243.542	100,0	354.150	100,0

Kaynak: Otomotiv Distribütörleri Derneği

Source: Association of Automotive Distributors

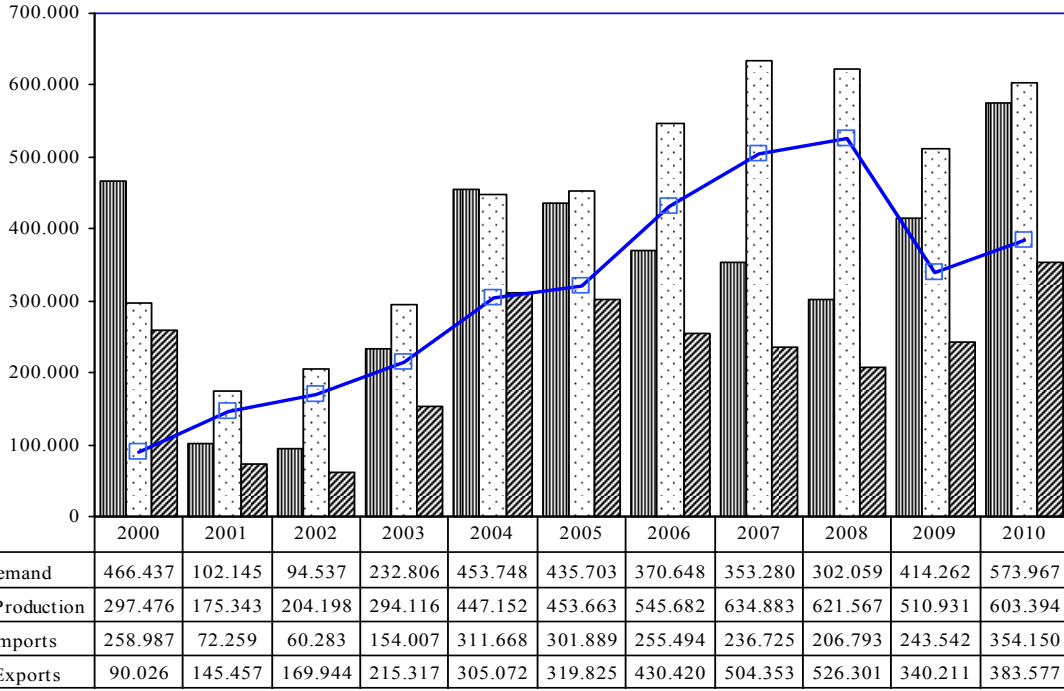
HAFİF TİCARİ ARAÇ İTHALATI / Light Commercial Vehicle Imports

BÖLGE / ÜLKE Region / Country	2005		2006		2007		2008		2009		2010	
	Adet / Unit	%	Adet / Unit	%	Adet / Unit	%	Adet / Unit	%	Adet / Unit	%	Adet / Unit	%
AT + EFTA / EU + EFTA	90.209	72,5	81.179	70,2	73.753	68,1	57.527	63,2	43.681	66,3	75.496	74,4
DOĞU AVRUPA / East Europe	335	0,3	1.502	1,3	5.263	4,9	4.463	4,9	4.113	6,2	6.268	6,2
* RUSYA FED. / Russian Fed.	0	0,0	1.341	1,2	0	0,0	0	0,0	0	0,0	0	0,0
* ROMANYA / Romania	241	0,2	1	0,0	5.263	4,9	4.426	4,9	3.918	5,9	5.938	5,9
* ÇEK CUM. / Czech Republic	94	0,1	160	0,1	0	0,0	37	0,0	2	0,0	0	0,0
* DİGER / Others	0	0,0	0	0,0	0	0,0	0	0,0	193	0,3	330	0,3
UZAK DOĞU / Far East	33.841	27,2	32.877	28,5	29.269	27,0	29.054	31,9	18.096	27,5	19.645	19,4
* JAPONYA / Japan	11.908	9,6	11.197	9,7	13.578	12,5	13.334	14,6	7.813	11,9	10.073	9,9
* G. KORE / S. Korea	16.247	13,1	15.769	13,6	10.205	9,4	9.403	10,3	5.121	7,8	4.146	4,1
* DİGER / Others	5.686	4,6	5.911	5,1	5.486	5,1	6.317	6,9	5.162	7,8	5.426	5,4
TOPLAM/Total	124.385	100,0	115.558	100,0	108.285	100,0	91.044	100,0	65.890	100,0	101.409	100,0

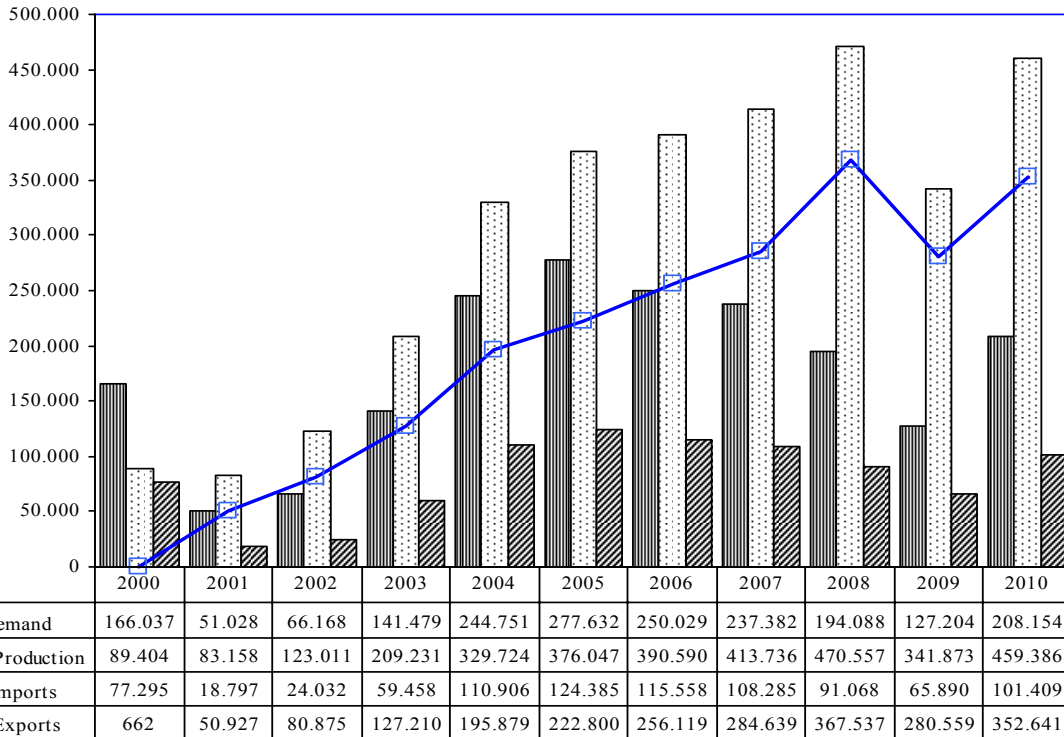
Kaynak: Otomotiv Distribütörleri Derneği

Source: Association of Automotive Distributors

Otomobil Üretim/İthalat/İhracat P.Cars Production/Imports/Exports



Hafif Ticari Araçlar Üretim/İthalat/İhracat Light Commercial Vehicles Production/Imports/Exports



OTOMOTİV SANAYİİ FİRMALARININ CİROLARI (TL)
Automotive Industry Sales (TL)

ARALIK SONU / By the end of December

FİRMALAR / Firms	2006	2007	2008	2009	2010
A.I.O.S.	289.926.445	356.555.442	377.271.138	169.166.475	225.850.548
B.M.C.	972.705.273	948.861.162	806.000.000	536.000.000	681.000.000
FORD OTOSAN	5.745.249.354	6.081.133.970	5.868.766.148	4.303.463.792	5.753.372.977
HATTAT TARIM	58.550.417	42.343.778	26.356.282	26.272.925	106.972.241
HONDA TÜRKİYE	363.123.004	747.186.423	1.087.861.860	975.799.697	472.640.544
HYUNDAI ASSAN	477.248.859	1.662.390.111	1.437.085.335	1.301.064.396	1.500.000.000
KARSAN	277.695.276	255.779.333	212.292.161	310.055.312	514.227.791
M.A.N.TÜRKİYE	520.594.413	591.553.348	551.401.948	606.042.028	392.646.689
M. BENZ TÜRK	1.678.247.277	2.328.447.374	2.512.725.887	1.472.696.530	2.068.951.320
OTOKAR	302.520.049	402.164.364	479.782.902	502.911.470	516.450.583
O. RENAULT	4.035.798.791	4.321.934.802	4.965.117.037	5.066.277.198	6.449.317.844
TEMSA GLOBAL	516.181.039	548.163.738	561.628.329	405.260.932	376.741.659
TOFAŞ	3.139.899.753	3.631.875.337	3.863.107.404	4.388.577.972	5.408.839.827
TOYOTA	3.917.716.081	3.884.994.944	3.126.769.847	2.131.616.142	2.186.619.365
T. TRAKTÖR	320.445.556	310.993.702	663.310.591	215.000.000	938.933.713
TOPLAM /Total	22.615.901.587	26.114.377.828	26.539.476.869	22.410.204.869	27.592.565.101

OTOMOTİV SANAYİİ FİRMALARININ HAMMADDEYE VE YAN SANAYİYE ÖDEMELERİ (TL) - 20109
Payments For Raw Material And Components (TL) - 2010

ARALIK SONU / By the end of December

FİRMALAR Firms	FABRİKAYA ALINAN HAMMADDEYE ÖDENEN MEBLAĞ (K.D.V. HARIÇ) Payment for raw materials (Excl. V.A.T.)	YAN SANAYİYE ÖDENEN MEBLAĞ (K.D.V. HARIÇ) Payment for components manufacturers (Excl. V.A.T.)	TOPLAM Total
A.I.O.S.	3.512.529,00	204.028.153,00	207.540.682,00
B.M.C.	31.550.954,00	244.071.261,00	275.622.215,00
FORD OTOSAN	4.909.056.672,00	570.527.974,00	5.479.584.646,00
HATTAT TARIM	7.603.092,00	26.154.946,00	33.758.038,00
HONDA TÜRKİYE	17.960.179,00	183.355.777,00	201.315.956,00
HYUNDAI ASSAN	1.102.069.150,00	349.541.652,00	1.451.610.802,00
KARSAN		433.275.793,00	433.275.793,00
M.A.N. TÜRKİYE	264.322.523,00	16.739.422,00	281.061.945,00
M. BENZ TÜRK	1.464.282.073,00	159.682.686,00	1.623.964.759,00
OTOKAR	255.565.213,00	425.332.656,00	680.897.869,00
OYAK RENAULT	5.247.738.595,00	5.449.839.790,00	10.697.578.385,00
TEMSA GLOBAL	297.622.946,00	166.668.850,00	464.291.796,00
TOFAŞ	4.712.171.976,00	348.363.015,00	5.060.534.991,00
TOYOTA	98.563.541,00	1.775.440.012,00	1.874.003.553,00
TÜRK TRAKTÖR	96.479.625,00	572.215.493,00	668.695.118,00
TOPLAM / Total			29.433.736.548,00

OTOMOTİV SANAYİİ FİRMALARININ ÖDEDİKLERİ VERGİLER VE ÜCRETLER (TL) - 2010
Taxes, Wages and Salaries Paid by Automotive Manufacturers (TL) - 2010

VERGİ VE ÖDEMELER / Taxes and Payments	<u>A.I.O.S.</u>	<u>B.M.C.</u>	<u>FORD OTOSAN</u>	<u>HATTAT TARIM</u>	<u>HONDA TÜRKİYE</u>
NET ÜCRET VE İKRAMİYELER Net wages, salaries and bonuses	16.746.672,00	55.492.484,00	201.942.329,00	3.052.610,00	33.230.208,00
GELİR VERGİSİ Income tax	4.371.706,00	12.658.300,00	57.640.338,00	638.303,00	10.136.359,00
SOSYAL GÜVENLİK KURUMU PRİMİ İŞÇİ VE İŞVEREN Social insurance premium paid by employee and employers	5.420.665,00	22.144.095,00	76.650.167,00	999.260,00	11.117.469,00
DAMGA VERGİSİ Stamp duty	170.611,00	493.588,00	1.793.657,00	25.325,00	319.038,00
DİĞER KESİNTİLER Other taxes	46.959,00	0,00	10.300.816,00	0,00	0,00
İSTİH. EDİLEN. ÖDEME. VE VERGİ. TOPLAMI Total production and tax payment	26.756.613,00	90.788.467,00	348.327.307,00	4.715.498,00	54.803.074,00
İTH. ÖDE. TOP. VERGİ VE RESİM. (K.D.V. HARIÇ) Total import taxes and duties (Excl. V.A.T.)	4.744.448,00	245.833,00	8.825.128,00	58.233,00	8.155.185,00
VERGİ DAİRELERİNE ÖDENEN K.D.V. Value added tax (V.A.T.) paid to tax offices	699.535,00	0,00	20.964.178,00	0,00	0,00
DİĞER VERGİLER Other taxes	1.122.252,00	793.089,00	9.457.893,00	213.159,00	272.761,00
KURUM STOPAJ VERGİSİ Association tax	0,00	0,00	141.706.881,00	0,00	2.148.014,00
T O P L A M / Total	33.322.848,00	91.827.389,00	529.281.387,00	4.986.890,00	65.379.034,00

VERGİ VE ÖDEMELER / Taxes and Payments	<u>HYUNDAI ASSAN</u>	<u>KARSAN</u>	<u>M.A.N. TÜRKİYE</u>	<u>M. BENZ TÜRK</u>	<u>OTOKAR</u>
NET ÜCRET VE İKRAMİYELER Net wages, salaries and bonuses	62.933.203,00	23.520.730,00	39.825.113,00	107.053.675,00	36.500.254,00
GELİR VERGİSİ Income tax	13.992.626,00	6.216.922,00	14.514.284,00	36.735.402,00	12.323.038,00
SOSYAL GÜVENLİK KURUMU PRİMİ İŞÇİ VE İŞVEREN Social insurance premium paid by employee and employers	19.522.433,00	9.384.246,00	22.665.047,00	47.211.037,00	15.851.845,00
DAMGA VERGİSİ Stamp duty	512.907,00	222.743,00	993.689,00	1.256.589,00	308.909,00
DİĞER KESİNTİLER Other taxes	0,00	1.825.025,00	2.323.385,00	1.931.124,00	6.026.573,00
İSTİH. EDİLEN. ÖDEME. VE VERGİ. TOPLAMI Total production and tax payment	96.961.169,00	41.169.666,00	80.321.518,00	194.187.827,00	71.010.619,00
İTH. ÖDE. TOP. VERGİ VE RESİM. (K.D.V. HARIÇ) Total import taxes and duties (Excl. V.A.T.)	26.009.717,00	789.906,00	1.794.795,00	12.531.694,00	547.068,00
VERGİ DAİRELERİNE ÖDENEN K.D.V. Value added tax (V.A.T.) paid to tax offices	0,00	746.696,00	0,00	13.891.154,00	697.735,00
DİĞER VERGİLER Other taxes	986.453,00	843.409,00	303.119,00	2.110.063,00	4.216.865,00
KURUM STOPAJ VERGİSİ Association tax	0,00	0,00	0,00	16.514.047,00	4.581.519,00
T O P L A M / Total	123.957.339,00	43.549.677,00	82.419.432,00	239.234.785,00	81.053.806,00

VERGİ VE ÖDEMELER / Taxes and Payments	<u>OYAK RENAULT</u>	<u>TEMSA GLOBAL</u>	<u>TOFAŞ</u>	<u>TOYOTA</u>	<u>TÜRK TRAKTÖR</u>	<u>TOPLAM/Total</u>
NET ÜCRET VE İKRAMİYELER Net wages, salaries and bonuses	118.629.929,00	44.815.070,00	200.131.747,00	88.927.598,00	31.358.945,00	1.064.160.567,00
GELİR VERGİSİ Income tax	53.760.682,00	9.128.442,00	47.875.901,00	25.292.970,00	10.211.069,00	315.496.342,00
SOSYAL GÜVENLİK KURUMU PRİMİ İŞÇİ VE İŞVEREN Social insurance premium paid by employee and employers	65.690.335,00	13.483.536,00	68.897.929,00	29.491.143,00	13.634.983,00	422.164.190,00
DAMGA VERGİSİ Stamp duty	1.828.078,00	345.595,00	1.873.644,00	869.258,00	410.261,00	11.423.892,00
DİĞER KESİNTİLER Other taxes	85.366.869,00	0,00	33.570.311,00	3.609.099,00	8.163.518,00	153.163.679,00
İSTİH. EDİLEN. ÖDEME. VE VERGİ. TOPLAMI Total production and tax payment	325.275.893,00	67.772.643,00	352.349.532,00	148.190.068,00	63.778.776,00	1.966.408.670,00
İTH. ÖDE. TOP. VERGİ VE RESİM. (K.D.V. HARIÇ) Total import taxes and duties (Excl. V.A.T.)	155.549,00	10.465.448,00	2.020.735,00	5.600.243,00	732.303,00	82.676.285,00
VERGİ DAİRELERİNE ÖDENEN K.D.V. Value added tax (V.A.T.) paid to tax offices	21.641.423,00	4.355.526,00	21.814.951,00	0,00	1.147.463,00	85.958.661,00
DİĞER VERGİLER Other taxes	7.135.068,00	1.938.031,00	305.811.616,00	523.153,00	837.357,00	336.564.288,00
KURUM STOPAJ VERGİSİ Association tax	60.202.034,00	0,00	0,00	0,00	47.776.397,00	272.928.892,00
T O P L A M / Total	414.409.967,00	84.531.648,00	681.996.834,00	154.313.464,00	114.272.296,00	2.744.536.796,00

OTOMOTİV SANAYİİ İSTİHDAMI
Automotive Industry Employment

<u>FİRMALAR / Firms</u>	<u>2006</u>	<u>2007</u>	<u>2008</u>	<u>2009</u>	<u>2010</u>
A.I.O.S.					
İŞÇİ / Worker	537	537	574	520	316
BÜRO PERSONELİ / Employee	119	122	132	95	94
İDARECİ / Administrator	15	15	15	14	14
MÜHENDİS / Engineer	41	49	55	48	45
İDA. MÜHENDİS / Ad. Eng.	25	23	27	24	21
TOPLAM / Total	737	746	803	701	490
B.M.C.					
İŞÇİ / Worker	2559	2618	2377	2168	2040
BÜRO PERSONELİ / Employee	421	356	338	309	301
İDARECİ / Administrator	34	37	34	29	32
MÜHENDİS / Engineer	179	194	183	167	153
İDA. MÜHENDİS / Ad. Eng.	69	76	75	71	70
TOPLAM / Total	3.262	3.281	3.007	2.744	2.596
FORD OTOSAN					
İŞÇİ / Worker	6765	8100	6657	6197	6635
BÜRO PERSONELİ / Employee	408	357	385	378	417
İDARECİ / Administrator	262	75	82	73	66
MÜHENDİS / Engineer	582	708	757	647	961
İDA. MÜHENDİS / Ad. Eng.	237	275	283	297	334
TOPLAM / Total	8.254	9.515	8.164	7.592	8.413
HATTAT TARIM					
İŞÇİ / Worker	63	40	37	47	107
BÜRO PERSONELİ / Employee	64	68	68	23	21
İDARECİ / Administrator	14	20	13	15	12
MÜHENDİS / Engineer	6	22	15	2	5
İDA. MÜHENDİS / Ad. Eng.	13	14	6	4	17
TOPLAM / Total	160	164	139	91	162

<u>FİRMALAR / Firms</u>	<u>2006</u>	<u>2007</u>	<u>2008</u>	<u>2009</u>	<u>2010</u>
HONDA TÜRKİYE					
İŞÇİ / Worker	514	937	953	545	529
BÜRO PERSONELİ / Employee	109	166	180	223	201
İDARECİ / Administrator	65	35	81	22	18
MÜHENDİS / Engineer	29	43	58	26	58
İDA. MÜHENDİS / Ad. Eng.	17	26	17	22	7
TOPLAM / Total	734	1.207	1.289	838	813
HYUNDAI ASSAN					
İŞÇİ / Worker	1637	1796	1692	1349	1261
BÜRO PERSONELİ / Employee	171	261	85	26	90
İDARECİ / Administrator	56	16	151	102	81
MÜHENDİS / Engineer	76	59	127	118	100
İDA. MÜHENDİS / Ad. Eng.	51	11	14	14	38
TOPLAM / Total	1.991	2.143	2.069	1.609	1.570
KARSAN					
İŞÇİ / Worker	649	746	727	617	878
BÜRO PERSONELİ / Employee	24	31	36	36	34
İDARECİ / Administrator	5	6	5	2	4
MÜHENDİS / Engineer	41	55	68	60	75
İDA. MÜHENDİS / Ad. Eng.	8	8	12	10	15
TOPLAM / Total	727	846	848	725	1.006
M.A.N. TÜRKİYE					
İŞÇİ / Worker	2288	1732	1677	1177	1129
BÜRO PERSONELİ / Employee	258	166	136	106	90
İDARECİ / Administrator	42	38	32	25	25
MÜHENDİS / Engineer	168	90	77	60	73
İDA. MÜHENDİS / Ad. Eng.	22	37	45	38	36
TOPLAM / Total	2.778	2.063	1.967	1.406	1.353

<u>FİRMALAR / Firms</u>	<u>2006</u>	<u>2007</u>	<u>2008</u>	<u>2009</u>	<u>2010</u>
M. BENZ TÜRK					
İŞÇİ / Worker	3096	3525	3673	2915	3197
BÜRO PERSONELİ / Employee	285	274	351	339	512
İDARECİ / Administrator	93	95	106	108	68
MÜHENDİS / Engineer	455	466	445	553	428
İDA. MÜHENDİS / Ad. Eng.	60	62	75	82	182
TOPLAM / Total	3.989	4.422	4.650	3.997	4.387
OTOKAR					
İŞÇİ / Worker	660	891	779	750	851
BÜRO PERSONELİ / Employee	130	149	172	182	198
İDARECİ / Administrator	20	18	26	29	30
MÜHENDİS / Engineer	103	111	130	154	141
İDA. MÜHENDİS / Ad. Eng.	36	55	77	91	92
TOPLAM / Total	949	1.224	1.184	1.206	1.312
OYAK RENAULT					
İŞÇİ / Worker	4396	5002	4963	4678	4557
BÜRO PERSONELİ / Employee	515	561	591	578	564
İDARECİ / Administrator	11	25	34	26	24
MÜHENDİS / Engineer	447	511	579	524	553
İDA. MÜHENDİS / Ad. Eng.	101	110	109	108	112
TOPLAM / Total	5.470	6.209	6.276	5.914	5.810
TEMSA GLOBAL					
İŞÇİ / Worker	1122	1314	1380	1129	1002
BÜRO PERSONELİ / Employee	204	321	378	289	218
İDARECİ / Administrator	38	44	42	32	28
MÜHENDİS / Engineer	181	244	278	246	120
İDA. MÜHENDİS / Ad. Eng.	67	71	77	68	84
TOPLAM / Total	1.612	1.994	2.155	1.764	1.452

<u>FİRMALAR / Firms</u>	<u>2006</u>	<u>2007</u>	<u>2008</u>	<u>2009</u>	<u>2010</u>
TOFAŞ					
İŞÇİ / Worker	4339	6705	6814	5734	5782
BÜRO PERSONELİ / Employee	326	470	490	429	400
İDARECİ / Administrator	186	64	64	51	59
MÜHENDİS / Engineer	287	407	546	504	494
İDA. MÜHENDİS / Ad. Eng.	120	132	137	139	142
TOPLAM / Total	5.258	7.778	8.051	6.857	6.877
TOYOTA					
İŞÇİ / Worker	3208	3045	2728	2427	2389
BÜRO PERSONELİ / Employee	164	166	109	269	213
İDARECİ / Administrator	26	28	48	8	8
MÜHENDİS / Engineer	139	139	149	130	114
İDA. MÜHENDİS / Ad. Eng.	57	45	43	60	56
TOPLAM / Total	3.594	3.423	3.077	2.894	2.780
TÜRK TRAKTÖR					
İŞÇİ / Worker	773	1061	1118	938	1464
BÜRO PERSONELİ / Employee	89	105	191	146	243
İDARECİ / Administrator	5	5	7	7	7
MÜHENDİS / Engineer	67	57	129	124	73
İDA. MÜHENDİS / Ad. Eng.	25	18	29	31	30
TOPLAM / Total	959	1.246	1.474	1.246	1.817
GENEL TOPLAM/Grand Total					
İŞÇİ / Worker	32.606	38.049	36.149	31.191	32.137
BÜRO PERSONELİ / Employee	3.287	3.573	3.642	3.428	3.596
İDARECİ / Administrator	872	521	740	543	476
MÜHENDİS / Engineer	2.801	3.155	3.596	3.363	3.393
İDA. MÜHENDİS / Ad. Eng.	908	963	1.026	1.059	1.236
TOPLAM / Total	40.474	46.261	45.153	39.584	40.838

İDA. MÜHENDİS=İDARECİ MÜHENDİS
Ad. Eng.=Administrator Engineer

OTOMOTİV SANAYİİ YATIRIMLARI (USD)
Realized Sectorial Investments (USD)

ARALIK SONU/By the end of December

PROJE TİPİ Projects	2006	2007	2008	2009	2010
KAPASİTE ARTTIRIMI Capacity Development	202.000.000	220.000.000	189.000.000	20.000.000	40.000.000
MODERNİZASYON Modernization	96.000.000	54.000.000	66.000.000	83.000.000	50.000.000
YENİ MODEL New Model Development	580.000.000	475.000.000	725.000.000	401.000.000	366.000.000
KALİTE ARTTIRICI Quality Development	19.000.000	24.000.000	33.000.000	11.000.000	12.000.000
YERLİLEŞTİRMEYİ ARTTIRICI Localization	19.000.000	56.000.000	97.000.000	87.000.000	11.000.000
DİĞER Others	120.000.000	100.000.000	198.000.000	70.000.000	72.000.000
TOPLAM Toplam	1.036.000.000	929.000.000	1.308.000.000	672.000.000	551.000.000

TÜRKİYE ARAÇ PARKI
Automotive Vehicles Park In Turkey

YILLAR Years	OTOMOBİL P.Car	KAMYON Truck	KAMYONET Pick-Up	MİNİBÜS Minibus	OTOBÜS Bus	TRAKTÖR F.Tractor	TOPLAM Total
1963	72.034	49.356	30.739	7.543	11.726	50.844	222.242
1964	79.449	46.721	28.658	9.196	11.216	51.781	227.021
1965	87.584	49.317	29.804	10.476	11.693	54.608	243.482
1966	91.469	47.931	31.462	11.239	12.041	65.108	259.250
1967	112.867	56.889	39.927	16.008	13.332	74.982	314.005
1968	125.375	62.616	43.441	18.967	13.948	84.874	349.221
1969	137.345	69.478	48.655	20.540	15.520	96.407	387.945
1970	137.771	70.770	52.152	20.916	15.980	105.865	403.454
1971	153.676	73.433	57.011	22.380	17.040	118.525	442.065
1972	187.272	78.920	62.796	25.559	18.504	135.726	508.777
1973	240.360	86.780	71.043	30.055	20.011	156.139	604.388
1974	313.160	95.309	81.025	34.122	21.404	200.466	745.486
1975	403.546	108.381	98.579	40.623	23.763	243.066	917.958
1976	488.894	122.176	116.861	46.066	25.388	281.802	1.081.187
1977	560.424	138.093	134.213	51.999	27.096	320.578	1.232.403
1978	624.438	146.551	144.695	56.836	28.559	370.259	1.371.338
1979	688.687	157.095	155.278	61.596	30.634	402.777	1.496.067
1980	742.252	164.893	165.821	64.707	32.783	436.369	1.606.825
1981	776.432	172.372	172.269	66.514	33.839	458.714	1.680.140
1982	811.465	180.772	178.762	69.598	35.432	491.001	1.767.030
1983	856.350	190.277	186.427	73.585	38.478	513.516	1.858.633
1984	919.577	197.721	198.106	80.697	43.638	556.781	1.996.520
1985	983.444	205.496	212.505	87.951	47.119	583.974	2.120.489
1986	1.087.234	217.111	224.755	97.917	50.798	612.731	2.290.546
1987	1.193.021	225.872	233.480	106.314	53.554	637.449	2.449.690
1988	1.310.257	234.166	240.718	112.885	56.172	654.636	2.608.834
1989	1.434.830	241.392	248.567	118.026	58.859	672.845	2.774.519
1990	1.649.879	257.353	263.407	125.399	63.700	692.454	3.052.192
1991	1.864.344	273.409	280.891	133.632	68.973	704.373	3.325.622
1992	2.181.388	379.410	308.180	145.312	75.592	828.580	3.918.462
1993	2.619.852	406.398	354.290	159.900	84.254	870.559	4.495.253
1994	2.861.640	419.374	374.473	166.424	87.545	895.506	4.804.962
1995	3.058.511	432.216	397.743	173.051	90.197	937.528	5.089.246
1996	3.274.156	453.796	442.788	182.694	94.978	988.142	5.436.554
1997	3.570.105	489.071	529.838	197.057	101.896	1.053.381	5.941.348
1998	3.838.631	519.749	626.004	211.495	108.361	1.107.157	6.411.397
1999	4.072.326	531.690	692.935	221.683	112.186	1.131.626	6.762.446
2000	4.422.180	557.295	794.459	235.885	118.454	1.159.070	7.287.343
2001	4.534.803	562.063	833.175	239.381	119.306	1.179.068	7.467.796
2002	4.600.140	567.152	875.381	241.700	120.097	1.180.127	7.584.597
2003	4.700.343	579.010	973.457	245.394	123.500	1.184.256	7.805.960
2004	5.400.440	647.420	1.259.867	318.954	152.712	1.210.283	8.989.676
2005	5.772.745	676.929	1.475.057	338.539	163.390	1.247.767	9.674.427
2006	6.140.992	709.535	1.695.624	357.523	175.949	1.290.679	10.370.302
2007	6.472.156	729.202	1.890.459	372.601	189.128	1.327.334	10.980.880
2008	6.796.629	744.217	2.066.007	383.548	199.934	1.358.577	11.548.912
2009	7.093.964	727.302	2.204.951	384.053	201.033	1.368.032	11.979.335
2010	7.544.871	726.359	2.399.038	386.973	208.510	1.404.872	12.670.623

KAYNAK: T.C. BAŞBAKANLIK TÜRKİYE İSTATİSTİK KURUMU

Source: Republic Of Turkey, Prime Ministry Turkish Statistical Institute