



OTOMOTİV SANAYİİ DERNEĐİ
AUTOMOTIVE MANUFACTURERS ASSOCIATION

Otomotiv Sanayii Genel ve İstatistik Bülteni General and Statistical Information Bulletin Of Automotive Manufacturers 2010 - I

OSD "OICA" Üyesidir



OSD is a Member of "OICA"

İÇİNDEKİLER**SAHİFE**

OTOMOTİV SANAYİİ FİRMALARI HAKKINDA GENEL BİLGİLER - 2010	1
OTOMOTİV SANAYİİ FİRMALARININ ÜRETTİKLERİ MODELLER VE GENEL SPESİFİKASYONLARI - 2010	2 - 10
OTOMOTİV SANAYİİ FİRMALARININ 2010 YILI ÜRETİM KAPASİTELERİ	11
OTOMOTİV SANAYİİ FİRMALARININ 2005 - 2009 YILLARI ÜRETİM ADETLERİ	12 - 16
YILLARA GÖRE ÜRETİM GRAFİKLERİ	17 - 18
OTOMOTİV SANAYİİ FİRMALARININ ÜRETİM ADETLERİ	19
KAPASİTE KULLANIM VE İHRACAT GRAFİKLERİ	20
YILLAR İTİBARIYLA ÜRETİM ADETLERİ VE KAPASİTE KULLANIMLARI	21
OTOMOTİV SANAYİİ FİRMALARININ İHRACATLARI	22 - 24
OTOMOBİL İTHALATI – HAFİF TİCARİ ARAÇ İTHALATI	25
OTOMOBİL VE HAFİF TİCARİ ARAÇLAR/ÜRETİM/İTHALAT/İHRACAT GRAFİKLERİ	26
OTOMOTİV SANAYİİ FİRMALARININ CİROLARI	27
OTOMOTİV SANAYİİ FİRMALARININ 2009 YILINDA HAMMADDEYE VE YAN SANAYİYE ÖDEMELERİ	28
OTOMOTİV SANAYİİ FİRMALARININ 2009 YILINDA ÖDEDİKLERİ VERGİLER VE ÜCRETLER	29 - 31
OTOMOTİV SANAYİİ İSTİHDAMI	32 - 36
OTOMOTİV SANAYİİ YATIRIMLARI	37
TÜRKİYE ARAÇ PARKI	38

CONTENTS**PAGE**

GENERAL INFORMATION ON THE AUTOMOTIVE MANUFACTURERS - 2010	1
GENERAL SPECIFICATIONS OF THE PRODUCTS - 2010	2 - 10
PRODUCTION CAPACITIES - 2010	11
PRODUCTION UNITS FOR THE YEARS 2005 - 2009	12 - 16
PRODUCTION BY YEARS IN GRAPHICS	17 - 18
THE PRODUCTION UNITS OF THE AUTOMOTIVE MANUFACTURERS	19
CAPACITY USAGE AND EXPORTS IN GRAPHICS	20
PRODUCTION UNITS AND CAPACITY UTILIZATION BY YEARS	21
AUTOMOTIVE INDUSTRY EXPORTS	22 - 24
P. CAR IMPORTS - LIGHT COMMERCIAL VEHICLE IMPORTS	25
P. CARS AND LIGHT COMMERCIAL VEHICLES/PRODUCTION/IMPORTS/EXPORTS	26
AUTOMOTIVE INDUSTRY SALES	27
PAYMENT FOR RAW MATERIAL AND COMPONENTS - 2009	28
TAXES, WAGES AND SALARIES PAID BY AUTOMOTIVE MANUFACTURERS IN THE YEAR - 2009	29 - 31
AUTOMOTIVE INDUSTRY EMPLOYMENT	32 - 36
AUTOMOTIVE INDUSTRY INVESTMENTS	37
AUTOMOTIVE VEHICLES PARK IN TURKEY	38

OTOMOTİV SANAYİİ FİRMALARI HAKKINDA GENEL BİLGİLER - 2010
General Information On The Automotive Manufacturers - 2010

OCAK SONU/By the end of January

FİRMALAR Firms	ÜRETİM YERİ The Production Place	ÜRETİME BAŞLAMA TARİHİ Starting Year Of Production	LİSANS Licence	SERMAYE Capital (1000 YTL)	YABANCI SERMAYE Foreign Cap. (%)	KAPALI ALAN Covered Area (1.000 M2)	TOPLAM ALAN Total Area (1.000 M2)
A.I.O.S.	KOCAELİ	1966	ISUZU	25.419	29,74	82	299
B.M.C.	İZMİR	1966		500.000	0	123	826
FORD OTOSAN	ESKİŞEHİR KOCAELİ	1983 2001	FORD	350.910	41	72 345	1.105 1.600
HATTAT TARIM	TEKİRDAĞ	2002	VALTRA, UNIVERSAL, HATTAT	40.000	0	41	172
HONDA TÜRKİYE	KOCAELİ	1997	HONDA MOTOR EUROPE. LTD.	100.000	100	77	292
HYUNDAI ASSAN	KOCAELİ	1997	HYUNDAI MOTOR COMP.	206.220	70	100	1.000
KARSAN	BURSA	1966	KARSAN / PEUGEOT HYUNDAI MOTOR COMPANY RENAULT TRUCKS	150.000	0	80	200
M.A.N. TÜRKİYE	ANKARA	1966	MAN NUTZFAHRZEUGE AG	65.000	99,9	88	315
M.BENZ TÜRK	İSTANBUL AKSARAY	1968 1985	MERCEDES BENZ	275.000	85	158 82	511 558
OTOKAR	SAKARYA	1963	LAND ROVER / FRUEHAUF	24.000	0	141	552
O.RENAULT	BURSA	1971	RENAULT	323.300	51	292	510
TEMSA GLOBAL	ADANA SAKARYA	1987 2008	TEMSA / MITSUBISHI TEMSA / MITSUBISHI / FUSO	210.000	0	105 22	555 153
TOFAŞ	BURSA	1971	FIAT	500.000	37,8	352	935
TOYOTA	SAKARYA	1994	TOYOTA	150.165	100	212	917
T.TRAKTÖR	ANKARA	1954		53.369	37,5	82	282
TOPLAM/Total				2.973.383		2.454	10.782

OTOMOTİV SANAYİİ FİRMALARININ ÜRETTİKLERİ MODELLER VE GENEL SPESİFİKASYONLARI - 2010
General Specifications Of The Products - 2010

OCAK SONU/By the end of January

FİRMALAR/MODELLER Firms/Models		A.Y.A. G.V.W. K.G.	NET AG. Net We. K.G.	ÇİNSİ Type	MOTOR / Engine			VİTES Gear	ŞANZİMAN/Gear Box		LASTİK EBADI / Tire Size
					SİLİNDİR ADEĐİ No.Of Cylinder	CC cc	GÜCÜ/Power BHP/DEVİR Hp/Rpm		MODEL	MODEL	
A.ISUZU											
KAMYONET NLR85 FFL KISA	Pick Up	3500	2065	DİZEL	4	2999	150/2800	5/1	MYY 5T		ÖN-ARKA 195/75R16C
KAMYONET NLR85 FFL UZUN	Pick Up	3500	2090	DİZEL	4	2999	150/2800	5/1	MYY 5T		ÖN-ARKA 195/75R16C
KAMYONET NNR85 KISA	Pick Up	3500	2175	DİZEL	4	2999	150/2800	5/1	MYY 5T		ÖN-ARKA 215/75R17,5
KAMYONET NNR85 UZUN	Pick Up	3500	2195	DİZEL	4	2999	150/2800	5/1	MYY 5T		ÖN-ARKA 215/75R17,5
KAMYON NPR75 KISA	Truck	7500	2625	DİZEL	4	5193	155/2600	6/1	MYY 6S		ÖN-ARKA 215/75R17,5
KAMYON NPR75 UZUN	Truck	7500	2665	DİZEL	4	5193	155/2600	6/1	MYY 6S		ÖN-ARKA 215/75R17,5
KAMYON NPR75 HP (HIGH POWER) UZUN	Truck	7500	2665	DİZEL	4	5193	190/2600	6/1	MZZ 6F		ÖN-ARKA 215/75R17,5
MİDİBÜS											
MİDİBÜS TURKUAZ (E4)	Midibus	9800	7110	DİZEL	4	5193	190/2600	6/1	MZZ 6F		ÖN-ARKA 235/75 R 17,5
MİDİBÜS INTERURBAN (E4)	Midibus	9800	6800	DİZEL	4	5193	190/2600	6/1	MZZ 6F		ÖN-ARKA 235x75 R 17,5
MİDİBÜS ROYBUS	Midibus	8800	5332	DİZEL	4	4570	121/3200	5/1	MYY5T		ÖN-ARKA 215/75 R 17,5
MİDİBÜS ROYBUS C	Midibus	8800	5292	DİZEL	4	4570	121/3200	5/1	MYY5T		ÖN-ARKA 215/75 R 17,5
MİDİBÜS CLASSIC	Midibus	8800	4972	DİZEL	4	4570	121/3200	5/1	MYY5T		ÖN-ARKA 215/75 R 17,5
MİDİBÜS URBAN 22	Midibus	8800	4942	DİZEL	4	4570	121/3200	5/1	MYY5T		ÖN-ARKA 215/75 R 17,5
MİDİBÜS URBAN 50	Midibus	8800	4852	DİZEL	4	4570	121/3200	5/1	MYY 5T		ÖN-ARKA 215/75 R 17,5
MİDİBÜS CİTİMARK (E4)	Midibus	13000	6981	DİZEL	4	5193	210/2600	6/1	MZW 6F		ÖN-ARKA 265/70 R 19,5
MİDİBÜS NOVO (E4)	Midibus	8800	6020	DİZEL	4	5193	155/2600	6/1	MYY 6S		ÖN-ARKA 215/75R17,5
MİDİBÜS NOVO Ltx (E4)	Midibus	8800	6120	DİZEL	4	5193	190/2600	6/1	MZZ 6F		ÖN-ARKA 215/75R17,5
MİDİBÜS NOVO Ultra (E4)	Midibus	8800	6260	DİZEL	4	5193	190/2600	6/1	MZZ 6F		ÖN-ARKA 215/75R17,5
B.M.C.											
ÇEKİCİ PROFESYONEL PRO 1142 ACX (4x2)	R. Tractor	18000	7430	DİZEL	6	10800	410/1900	16/1	ZF 16S 2220 TO		295/80 R22,5
ÇEKİCİ PROFESYONEL PRO 1142 DCX (4x2)	R. Tractor	18000	7430	DİZEL	6	10800	410/1900	16/1	ZF 16S 2220 TO		295 / 80 R 22,5
ÇEKİCİ PROFESYONEL PRO 827 DCX (4x2)	R. Tractor	18000	6710	DİZEL	6	8268	260/2400	16/1	ZF 16S 109 DT		295 / 80 R 22,5
KAMYON FATİH 180 SDT (6x2)	Truck	25000	6200	DİZEL	6	5880	162/2500	6/1	ZF 6S 850 DT		12.00 R 22,5
KAMYON FATİH 180 SHX (4x2)	Truck	16900	5650	DİZEL	6	5880	162/2500	6/1	ZF 6S 850		12.00 R 22,5
KAMYON FATİH 280 SDT (6x2)	Truck	25000	7180	DİZEL	6	8268	263/2200	9/1	ZF 9S 109		12.00 R 22,5
KAMYON PROFESYONEL PRO 518 GHX (4x2)	Truck	11990	4000	DİZEL	6	5880	162/2500	6/1	ZF 6S 850 OVD		245 / 70 R 19,5
KAMYON PROFESYONEL PRO 522 HHT (6x2)	Truck	21000	5550	DİZEL	6	5880	215/2500	6/1	EATON 6109 OVD		285 / 70 R 19,5
KAMYON PROFESYONEL PRO 522 HHX (4x2)	Truck	16000	4990	DİZEL	6	5880	215/2500	6/1	ZF 6S 850 OVD		285 / 70 R 19,5
KAMYON PROFESYONEL PRO 625 BSG (4x4) Arazöz	Truck	16000	9760	DİZEL	6	6700	180/2500	9/1	ZF 9S 109 (NMV 130E)		14.00 R20
KAMYON PROFESYONEL PRO 625 DHT (6x2)	Truck	25000	7325	DİZEL	6	5880	250/2500	9/1	ZF 9S 75 DT		315 / 80 R 22,5
KAMYON PROFESYONEL PRO 625 LDT (6x2)	Truck	25000	6950	DİZEL	6	5880	250/2500	9/1	ZF 9S 75 DT		315 / 80 R 22,5
KAMYON PROFESYONEL PRO 625 YHX (4x2)	Truck	18000	5500	DİZEL	6	6692	250/2500	9/1	ZF 9S 109		315 / 80 R 22,5
KAMYON PROFESYONEL PRO 827 DHF (8x2/2)	Truck	32000	9165	DİZEL	6	8268	260/2400	16/1	ZF 16S 109 DT		315 / 80 R 22,5
KAMYON PROFESYONEL PRO 827 LDT (6x2)	Truck	25000	8300	DİZEL	6	8268	260/2200	9/1	EATON 8209		315 / 80 R 22,5
KAMYON PROFESYONEL PRO 935 DHF (8x2/2)	Truck	32000	9190	DİZEL	6	8900	350/2500	16/1	ZF 16S 1820 TO		315 / 80 R 22,5
KAMYON PROFESYONEL PRO 935 LDB (6x4)	Truck	26000	9480	DİZEL	6	8900	258/2100	9/1	EATON 10309		315 / 80 R 22,5
KAMYONET LEVEND 100 BDC (ÇİFT LASTİKLİ -KASASIZ)	Pick Up	3150	1885	DİZEL	4	2953	100/3800	6/1	BMC 15		195 R 14C
KAMYONET LEVEND 100 BDT (DÜZ KASALI)	Pick Up	3150	1780	DİZEL	4	2953	100/3800	5/1	BMC 15		195 R 14 C
KAMYONET LEVEND 300 MDS (ÇİFT LASTİKLİ -KASASIZ)	Pick Up	3500	1890	DİZEL	4	2953	100/3800	5/1	BMC 15		195 / 70 R 15 C
KAMYONET LEVEND 300 MDS (ÇİFT LASTİKLİ -KASASIZ)	Pick Up	3500	1940	DİZEL	4	2953	100/3800	5/1	BMC 15		195 / 70 R 15 C
KAMYONET LEVEND 300 MDT (DÜZ KASALI)	Pick Up	3500	2275	DİZEL	4	2953	100/3800	5/1	BMC 15		225 / 70 R 15 C
KAMYONET MEGASTAR 360 PDC (ÇİFT LASTİKLİ -KASASIZ)	Pick Up	3500	2455	DİZEL	4	2776	130/3800	6/1	AİSİN AY6		225 / 70 R 15 C
KAMYONET MEGASTAR 400 PDK (ÇİFT LASTİKLİ -KASASIZ)	Pick Up	5000	2350	DİZEL	4	2776	130/3600	6/1	ZF 6S 321		225 / 70 R 15 C
MİNİBÜS LEVEND XL 300 GDM (14+1)	Minibus	4250	2800	DİZEL	4	2953	100/3800	6/1	ZF 6S 321		225/70 R 15C
MİNİBÜS LEVEND XL 300 GDM (14+1) (ÇİFT LASTİK)	Minibus	3560	2560	DİZEL	4	2953	100/3800	6/1	BMC 15		225 / 70 R 15 C
MİNİBÜS MEGASTAR 400 PDM (17+1)	Minibus	4200	2750	DİZEL	4	2776	130/3800	6/1	ZF 6S 321		225 / 70 R 15C
OTOBÜS 260 CB	Bus	17500	10180	DİZEL	6	8268	260/2200	6/1	ZF 5HP 500		11R 22,5
OTOBÜS 280 CB	Bus	17500	10780	DİZEL	6	8849	280/2100	6/1	ZF S6 85		11R 22,5
OTOBÜS 280 CB (OTOMATİK)	Bus	17500	10780	DİZEL	6	8849	280/2100	6/1	ZF 5HP (6HP) 504C		11R 22,5
OTOBÜS 280 CNG (DOĞAL GAZLI)	Bus	17500	12020	DİZEL	6	8268	280/2400	6/1	ZF (Otom.)		275/70 R 22,5
OTOBÜS PROBUS 215 RKD	Bus	11990	7820	DİZEL	6	5880	215/2500	6/1	ZF 6HP 504 C		245 / 70 R 19,5
OTOBÜS PROBUS 215 RDD	Bus	11990	7090	DİZEL	6	5880	180/2500	6/1	ZF 6S 890		245 / 70 R 19,5
OTOBÜS PROCITY 280 LSB	Bus	18000	10940	DİZEL	6	8849	280/2100	6/1	ZF 6HP 504C		275 / 70 R 22,5
FORD OTOSAN											
KAMYONET Connect Van T220S (1+1) L/R 90 PS	Pick Up	2240	1401	DİZEL	4	1753	90/4000	5/1	FORD MTX 75		ÖN-ARKA 195/65R15
KAMYONET Connect Van T220S (1+1) L/R 75PS	Pick Up	2240	1391	DİZEL	4	1753	75/4000	5/1	FORD MTX 75		ÖN-ARKA 195/65R15
KAMYONET PANELVAN Connect Kombi K210S (1+4) L/R 90 PS	Pick Up	2230	1508	DİZEL	4	1753	90/4000	5/1	FORD MTX 75		ÖN-ARKA 195/65R15
KAMYONET PANELVAN Connect Kombi K210S (1+4) L/R 75 PS	Pick Up	2230	1498	DİZEL	4	1753	75/4000	5/1	FORD MTX 75		ÖN-ARKA 195/65R15
KAMYONET PANELVAN Connect Kombi K210S (1+4) L/R 110 PS	Pick Up	2240	1525	DİZEL	4	1753	110/4000	5/1	FORD MTX 75		ÖN-ARKA 195/65R15
KAMYONET Connect Van T230L (1+1) H/R 90 PS	Pick Up	2340	1435	DİZEL	4	1753	90/4000	5/1	FORD MTX 75		ÖN-ARKA 195/65R15
KAMYONET Connect Van T230L (1+1) H/R 75 PS	Pick Up	2260	1431	DİZEL	4	1753	75/4000	5/1	FORD MTX 75		ÖN-ARKA 195/65R15
KAMYONET PANELVAN Connect Kombi K230L (1+4) H/R 90 PS	Pick Up	2330	1588	DİZEL	4	1753	90/4000	5/1	FORD MTX 75		ÖN-ARKA 195/65R15
KAMYONET PANELVAN Connect Kombi K230L (1+4) H/R 110 PS	Pick Up	2330	1578	DİZEL	4	1753	110/4000	5/1	FORD MTX 75		ÖN-ARKA 195/65R15
KAMYONET Transit 300SF Van	Pick Up	3000	1634	DİZEL	4	2200	140/3500	6/1	Ford VMT6		ÖN-ARKA 195/70 R 15
KAMYONET Transit 330SF Van	Pick Up	3300	1634	DİZEL	4	2200	140/3500	6/1	Ford VMT6		ÖN-ARKA 195/70 R 15
KAMYONET Transit 330MF Van	Pick Up	3300	1176	DİZEL	4	2200	140/3500	6/1	Ford VMT6		ÖN-ARKA 195/70 R 15
KAMYONET Transit 350MF Van	Pick Up	3500	1176	DİZEL	4	2200	140/3500	6/1	Ford VMT6		ÖN-ARKA 195/70 R 15
KAMYONET Transit 350LF Van	Pick Up	3500	1842	DİZEL	4	2200	140/3500	6/1	Ford VMT6		ÖN-ARKA 195/70 R 15
KAMYONET Transit 300S Van	Pick Up	3000	1860	DİZEL	4	2402	100/3500	5/1	Ford MT 75		ÖN-ARKA 205/75 R 16
KAMYONET Transit 330S Van	Pick Up	3300	1888	DİZEL	4	2402	100/3500	5/1	Ford MT 75		ÖN-ARKA 215/75 R16
KAMYONET Transit 330S Van	Pick Up	3300	1888	DİZEL	4	2402	140/3500	6/1	Ford MT 82		ÖN-ARKA 215/75 R 16
KAMYONET Transit 330M Van	Pick Up	3300	1931	DİZEL	4	2402	100/3500	5/1	Ford MT 75		ÖN-ARKA 215/75 R 16
KAMYONET Transit 330M Van	Pick Up	3300	1931	DİZEL	4	2402	140/3500	6/1	Ford MT 75		ÖN-ARKA 215/75 R 16
KAMYONET Transit 330L Van	Pick Up	3300	1987	DİZEL	4	2402	100/3500	5/1	Ford MT 82		ÖN-ARKA 215/75 R 16
KAMYONET Transit 330L Van	Pick Up	3300	2006	DİZEL	4	2402	140/3500	6/1	Ford MT 82		ÖN-ARKA 215/75 R 16

KAMYONET Transit 350M Van	Pick Up	3500	1945	DİZEL	4	2402	140/3500	6/1	Ford MT 82	ÖN-ARKA 215/75 R 16
KAMYONET Transit 350L Van	Pick Up	3500	1979	DİZEL	4	2402	140/3500	6/1	Ford MT 82	ÖN-ARKA 215/75 R 16
KAMYONET Transit 350E Van	Pick Up	3500	2140	DİZEL	5	3198	200/3500	6/1	Ford MT 82	ÖN-ARKA 215/75 R 16
KAMYON Transit 430ED çift teker van	Truck	4250	2319	DİZEL	5	3198	200/3500	6/1	Ford MT 82	ÖN-ARKA 185/75 R 16
KAMYON Transit 460ED çift teker van	Truck	4600	2357	DİZEL	5	3198	200/3500	6/1	Ford MT 82	ÖN-ARKA 195/75 R 16
KAMYONET Transit 350E Van	Pick Up	3500	2140	DİZEL	4	2402	140/3500	6/1	Ford MT 82	ÖN-ARKA 215/75 R 16
KAMYON Transit 430ED çift teker van	Truck	4250	2319	DİZEL	4	2402	140/3500	6/1	Ford MT 82	ÖN-ARKA 185/75 R 16
KAMYON Transit 460ED çift teker van	Truck	4600	2357	DİZEL	4	2402	140/3500	6/1	Ford MT 82	ÖN-ARKA 195/75 R 16
MINİBÜS Transit 350L 13+1	Minibus	3500	2322	DİZEL	4	2402	140/3500	6/1	Ford MT 82	ÖN-ARKA 215/75 R 16
MINİBÜS Transit 350L 13+1	Minibus	3625	2405	DİZEL	5	3198	200/3500	6/1	Ford MT 82	ÖN-ARKA 215/75 R 16
MINİBÜS Transit 350E 12+1	Minibus	3500	2504	DİZEL	4	2402	140/3500	6/1	Ford MT 82	ÖN-ARKA 215/75 R 16
MINİBÜS Transit 350E 12+1	Minibus	3500	2504	DİZEL	5	3198	200/3500	6/1	Ford MT 82	ÖN-ARKA 215/75 R 16
MINİBÜS Transit 430ED 13+1	Minibus	4100	2607	DİZEL	4	2402	140/3500	6/1	Ford MT 82	ÖN-ARKA 185/75 R 16
MINİBÜS Transit 430ED 13+1	Minibus	4100	2668	DİZEL	5	3198	200/3500	6/1	Ford MT 82	ÖN-ARKA 185/75 R 16
MİDİBÜS Transit 430ED 16+1	Midibus	4100	2673	DİZEL	5	3198	200/3500	6/1	Ford MT 82	ÖN-ARKA 185/75 R 16
KAMYONET Transit 300SF kombi	Pick Up	3000	1660	DİZEL	4	2200	140/3500	6/1	Ford VMT6	ÖN-ARKA 195/70 R 15
KAMYONET Transit 300SF kombivan	Pick Up	3000	1652	DİZEL	4	2200	140/3500	6/1	Ford VMT6	ÖN-ARKA 195/70 R 15
KAMYONET Transit 300S kombi	Pick Up	3000	1885	DİZEL	4	2402	100/3500	5/1	Ford MT 75	ÖN-ARKA 205/75 R 16
KAMYONET Transit 300S kombivan	Pick Up	3000	1877	DİZEL	4	2402	100/3500	5/1	Ford MT 75	ÖN-ARKA 205/75 R 16
KAMYONET Transit 300S kombi	Pick Up	3000	1885	DİZEL	4	2402	140/3500	6/1	Ford MT 82	ÖN-ARKA 205/75 R 16
KAMYONET Transit 300S kombivan	Pick Up	3000	1877	DİZEL	4	2402	140/3500	6/1	Ford MT 82	ÖN-ARKA 205/75 R 16
KAMYONET Transit 330S kombi	Pick Up	3300	1887	DİZEL	4	2402	100/3500	5/1	Ford MT 75	ÖN-ARKA 215/75 R 16
KAMYONET Transit 330S kombivan	Pick Up	3300	1879	DİZEL	4	2402	100/3500	5/1	Ford MT 75	ÖN-ARKA 215/75 R 16
KAMYONET Transit 330S (Kasasız)	Pick Up	3300	1653	DİZEL	4	2402	100/3500	5/1	Ford MT 75	ÖN-ARKA 215/75 R 16
KAMYONET Transit 330S (Kasalı)	Pick Up	3300	1916	DİZEL	4	2402	100/3500	5/1	Ford MT 75	ÖN-ARKA 215/75 R 16
KAMYONET Transit 350M (Kasasız)	Pick Up	3500	1688	DİZEL	4	2402	140/3500	6/1	Ford MT 82	ÖN-ARKA 215/75 R 16
KAMYONET Transit 350M (Kasasız)	Pick Up	3500	1765	DİZEL	5	3198	200/3500	6/1	Ford MT 82	ÖN-ARKA 215/75 R 16
KAMYONET Transit 350M (Kasalı)	Pick Up	3500	1980	DİZEL	4	2402	140/3500	6/1	Ford MT 82	ÖN-ARKA 215/75 R 16
KAMYONET Transit 350M (Kasalı)	Pick Up	3500	2101	DİZEL	5	3198	200/3500	6/1	Ford MT 82	ÖN-ARKA 215/75 R 16
KAMYONET Transit 350ED (Kasasız)	Pick Up	3500	1787	DİZEL	4	2402	140/3500	6/1	Ford MT 82	ÖN-ARKA 185/75 R 16
KAMYONET Transit 350ED (Kasasız)	Pick Up	3500	1864	DİZEL	5	3198	200/3500	6/1	Ford MT 82	ÖN-ARKA 185/75 R 16
KAMYONET Transit 350M çiftkabinli (Kasasız)	Pick Up	3500	1780	DİZEL	4	2402	140/3500	6/1	Ford MT 82	ÖN-ARKA 215/75 R 16
KAMYONET Transit 350M çiftkabinli (Kasasız)	Pick Up	3500	1856	DİZEL	5	3198	200/3500	6/1	Ford MT 82	ÖN-ARKA 185/75 R 16
KAMYONET Transit 350M çiftkabinli (Kasalı)	Pick Up	3500	2032	DİZEL	4	2402	140/3500	6/1	Ford MT 82	ÖN-ARKA 215/75 R 16
KAMYONET Transit 350M çiftkabinli (Kasalı)	Pick Up	3500	2091	DİZEL	5	3198	200/3500	6/1	Ford MT 82	ÖN-ARKA 215/75 R 16
KAMYONET Transit 350ED çiftkabinli (Kasasız)	Pick Up	3500	1866	DİZEL	4	2402	140/3500	6/1	Ford MT 82	ÖN-ARKA 185/75 R 16
KAMYONET Transit 350ED çiftkabinli (Kasasız)	Pick Up	3500	1943	DİZEL	5	3198	200/3500	6/1	Ford MT 82	ÖN-ARKA 185/75 R 16
KAMYONET Transit 350ED HD (Kasasız)	Pick Up	3500	1883	DİZEL	5	3198	200/3500	6/1	Ford MT 82	ÖN-ARKA 195/75 R 16
KAMYONET Transit 460ED (Kasasız)	Pick Up	3500	1934	DİZEL	5	3198	200/3500	6/1	Ford MT 82	ÖN-ARKA 195/75 R 16
OTOMOBİL Transit 330MF Kombi	P. Car	3300	1855	DİZEL	4	2200	140/3500	6/1	Ford VMT6	ÖN-ARKA 205/75 R 16
KAMYON CARGO 1826(4x2)	Truck	18000	5685	DİZEL	6	7330	260/2400	9/1	ZF 9S75	ÖN-ARKA 275/70 R22.5 - 315/60 R22.5 - 12R22.5
KAMYON CARGO 1832(4x2)	Truck	18000	5685	DİZEL	6	8974	320/2200	9/1	ZF 9S109	ÖN-ARKA 275/70 R22.5 - 315/60 R22.5 - 12R22.5
KAMYON CARGO 1832(4x2)	Truck	18000	5685	DİZEL	6	8974	320/2200	16/2	ZF 16S109	ÖN-ARKA 275/70 R22.5 - 315/60 R22.5 - 12R22.5
KAMYON CARGO 2532(6x2)	Truck	25000	7280	DİZEL	6	8974	320/2200	9/1	ZF 9S109	ÖN-ARKA 315/80 R22.5 - 12R22.5
KAMYON CARGO 2532(6x2)	Truck	25000	7280	DİZEL	6	8974	320/2200	16/2	ZF 16S109	ÖN-ARKA 315/80 R22.5 - 12R22.5
KAMYON CARGO 2526(6x2)	Truck	25000	7280	DİZEL	6	7330	260/2400	9/1	ZF 9S75	ÖN-ARKA 315/80 R22.5 - 12R22.5
KAMYON CARGO 3532 (6x4)	Truck	26000	8985	DİZEL	6	8974	320/2200	16/2	ZF 16S109	ÖN-ARKA 315/80 R 22.5
KAMYON CARGO 3232 (8x2)	Truck	32000	8650	DİZEL	6	8974	320/2200	16/2	ZF 16S109	ÖN-ARKA 315/80 R 22.5
ÇEKİCİ CARGO 1835 (4x2)	R.Tractor	18000	7200	DİZEL	6	8974	350/2200	16/2	ZF 16S1620	ÖN-ARKA 295/80 R22.5 - 295/60 R22.5
ÇEKİCİ CARGO 1838 (4x2)	R.Tractor	18000	7200	DİZEL	6	8974	380/2200	16/2	ZF 16S1620	ÖN-ARKA 295/80 R22.5 - 295/60 R22.5
KAMYON CARGO 2535 (6x2)	Truck	25000	8350	DİZEL	6	8974	350/2200	16/2	ZF 16S1620	ÖN-ARKA 12R 22.5 - 315/60 R22.5
KAMYON CARGO 2538 (6x2)	Truck	25000	8350	DİZEL	6	8974	380/2200	16/2	ZF 16S1620	ÖN-ARKA 12R 22.5 - 315/60 R22.5
KAMYON CARGO 3235 (8x2)	Truck	32000	9250	DİZEL	6	8974	350/2200	16/2	ZF 16S1620	ÖN-ARKA 315/80 R 22.5
KAMYON CARGO 3238 (8x2)	Truck	32000	9250	DİZEL	6	8974	380/2200	16/2	ZF 16S1620	ÖN-ARKA 315/80 R 22.5
KAMYON CARGO 3235 (8x4)	Truck	32000	9250	DİZEL	6	8974	350/2200	16/2	ZF 16S1620	ÖN-ARKA 315/80 R 22.5
KAMYON CARGO 3236 (8x4)	Truck	32000	9250	DİZEL	6	8974	360/2200	16/2	ZF 16S1620	ÖN-ARKA 315/80 R 22.5
KAMYON CARGO 4135 (8x4)	Truck	32000	9250	DİZEL	6	8974	350/2200	16/2	ZF 16S1620	ÖN-ARKA 315/80 R 22.5
KAMYON CARGO 4136 (8x4)	Truck	32000	9250	DİZEL	6	8974	360/2200	16/2	ZF 16S1620	ÖN-ARKA 315/80 R 22.5
KAMYON CARGO 3935 (8x4)	Truck	32000	9250	DİZEL	6	8974	360/2200	16/2	ZF 16S1620	ÖN-ARKA 315/80 R 22.5
KAMYON CARGO 3435 (6x4)	Truck	26000	8985	DİZEL	6	8974	350/2200	16/2	ZF 16S1620	ÖN-ARKA 315/80 R 22.5
KAMYON CARGO 3535 (6x4)	Truck	26000	8985	DİZEL	6	8974	350/2200	16/2	ZF 16S1620	ÖN-ARKA 315/80 R 22.5
KAMYON CARGO 3536 (6x4)	Truck	26000	8985	DİZEL	6	8974	360/2200	16/2	ZF 16S1620	ÖN-ARKA 315/80 R 22.5
HATTAT TARIM										
TRAKTÖR UNIVERSAL 453 B	F. Tractor	2700	1900	DİZEL	3	2340	45/2400	8/2	UNIVERSAL	ÖN-ARKA 12.4/11-28
TRAKTÖR UNIVERSAL 533 B	F. Tractor	2700	1900	DİZEL	3	2820	53/2400	8/2	UNIVERSAL	ÖN-ARKA 12.4/11-28
TRAKTÖR UNIVERSAL 533 DTP	F. Tractor	3980	2200	DİZEL	3	2820	53/2400	8/2	UNIVERSAL	ÖN-ARKA 12.4/11-28
TRAKTÖR UNIVERSAL 453	F. Tractor	3250	2280	DİZEL	3	2340	45/2400	8/2	UNIVERSAL	ÖN-ARKA 13.8/12-28
TRAKTÖR UNIVERSAL 533	F. Tractor	3250	2280	DİZEL	3	2820	53/2400	8/2	UNIVERSAL	ÖN-ARKA 14.9/13-28
TRAKTÖR UNIVERSAL 533 DTP	F. Tractor	5300	2670	DİZEL	3	2820	53/2400	8/2	UNIVERSAL	ÖN-ARKA 14.9/13-28
TRAKTÖR UNIVERSAL 683	F. Tractor	3900	2460	DİZEL	4	3759	68/2420	8/2	UNIVERSAL	ÖN-ARKA 16.9/14-30
TRAKTÖR UNIVERSAL 683 DT	F. Tractor	5370	2795	DİZEL	4	3759	68/2400	8/2	UNIVERSAL	ÖN-ARKA 16.9/14-30
TRAKTÖR VALTRA A 75 2 WD	F. Tractor	7000	3145	DİZEL	3	3300	74/2270	16/8	VALTRA	ÖN-ARKA 16.9/14-30
TRAKTÖR VALTRA A 75 2 WD	F. Tractor	7000	3145	DİZEL	3	3300	74/2270	12/12	VALTRA	ÖN-ARKA 16.9/14-30
TRAKTÖR VALTRA A 75 4 WD	F. Tractor	7000	3560	DİZEL	3	3300	74/2270	16/8	VALTRA	ÖN-ARKA 16.9/14-30
TRAKTÖR VALTRA A 75 4 WD	F. Tractor	7000	3560	DİZEL	3	3300	74/2270	12/12	VALTRA	ÖN-ARKA 16.9/14-30
TRAKTÖR VALTRA A 85 2 WD	F. Tractor	7000	3265	DİZEL	4	4400	88/2270	16/8	VALTRA	ÖN-ARKA 18.4/15-30
TRAKTÖR VALTRA A 85 2 WD	F. Tractor	7000	3265	DİZEL	4	4400	88/2270	12/12	VALTRA	ÖN-ARKA 18.4/15-30
TRAKTÖR VALTRA A 85 4 WD	F. Tractor	7000	3680	DİZEL	4	4400	88/2270	16/8	VALTRA	ÖN-ARKA 18.4/15-30
TRAKTÖR VALTRA A 85 4 WD	F. Tractor	7000	3680	DİZEL	4	4400	88/2270	12/12	VALTRA	ÖN-ARKA 18.4/15-30
TRAKTÖR VALTRA A 95 4 WD	F. Tractor	7000	3680	DİZEL	4	4400	98/2270	16/8	VALTRA	ÖN-ARKA 18.4/15-34
TRAKTÖR VALTRA A 95 4 WD	F. Tractor	7000	3680	DİZEL	4	4400	98/2270	12/12	VALTRA	ÖN-ARKA 18.4/15-34
TRAKTÖR HATTAT A 58 2 WD	F. Tractor	3900	2485	DİZEL	3	3300	58/2200	8/4	HEMA	ÖN-ARKA 14.9/28
TRAKTÖR HATTAT A 68 2 WD	F. Tractor	4060	2745	DİZEL	3	3300	65/2200	16/8	HEMA	ÖN-ARKA 14.9/30
TRAKTÖR HATTAT A 68 4 WD	F. Tractor	4540	2975	DİZEL	3	3300	65/2200	16/8	HEMA	ÖN-ARKA 14.9/30
TRAKTÖR HATTAT A 78 2 WD	F. Tractor	4060	2745	DİZEL	3	3300	75/2200	16/8	HEMA	ÖN-ARKA 16.9/30
TRAKTÖR HATTAT A 78 4 WD	F. Tractor	4540	2975	DİZEL	3	3300	75/2200	16/8	HEMA	ÖN-ARKA 16.9/30
TRAKTÖR HATTAT H 45 2 WD	F. Tractor	4000	2040	DİZEL	3	2835	50/2400	12/4	DONG FENG	ÖN-ARKA 6.00-16/13.6-28
TRAKTÖR HATTAT H 45 4 WD	F. Tractor	5820	2240	DİZEL	3	2835	50/2400	12/4	DONG FENG	ÖN-ARKA 7.50-20/14.9-28
TRAKTÖR HATTAT H 55 2 WD	F. Tractor	5330	2257	DİZEL	3	3300	58/2200	12/4	DONG FENG	ÖN-ARKA 6.50-16 14.9-28
TRAKTÖR HATTAT H 55 4 WD	F. Tractor	5350	2435	DİZEL	3	3300	58/2200	12/4	DONG FENG	ÖN-ARKA 7.50-20 14.9-28

TRAKTÖR HATTAT H 65 2 WD	F. Tractor	4990	2319	DİZEL	3	3300	65/2200	12/4	DONG FENG	ÖN-ARKA 7,50-16 14,9-30
TRAKTÖR HATTAT H 65 4 WD	F. Tractor	5740	2319	DİZEL	3	3300	65/2200	12/4	DONG FENG	ÖN-ARKA 8,30-24 14,9-30
TRAKTÖR POLMOT A 80 4 WD	F. Tractor	7060	3580	DİZEL	4	4400	82/2200	12/12	HEMA	ÖN-ARKA 13,6-24/16,9-34
TRAKTÖR POLMOT A 90 4 WD	F. Tractor	7060	3580	DİZEL	4	4400	92/2200	12/12	HEMA	ÖN-ARKA 13,6-24/16,9-34
TRAKTÖR POLMOT A 100 4 WD	F. Tractor	7060	3580	DİZEL	4	4400	100/2200	12/12	HEMA	ÖN-ARKA 13,6-24/16,9-34

HONDA TÜRKİYE

OTOMOBİL CIVIC 1,6 DREAM DÜZ	P. Car	1675	1193	BENZİN	4	1595	125/6500	5/1	DIREK ŞANZ. TAH.	ÖN-ARKA 195/65R15
OTOMOBİL CIVIC 1,6 DREAM OTOMATİK	P. Car	1700	1221	BENZİN	4	1595	125/6500	OTOMATİK	DIREK ŞANZ. TAH.	ÖN-ARKA 195/65R15
OTOMOBİL CIVIC 1,6 PREMIUM DÜZ	P. Car	1675	1193	BENZİN	4	1595	125/6500	5/1	DIREK ŞANZ. TAH.	ÖN-ARKA 195/65R15
OTOMOBİL CIVIC 1,6 PREMIUM OTOMATİK	P. Car	1700	1221	BENZİN	4	1595	125/6500	OTOMATİK	DIREK ŞANZ. TAH.	ÖN-ARKA 195/65R15
OTOMOBİL CIVIC 1,6 ELEGANCE DÜZ	P. Car	1675	1193	BENZİN	4	1595	125/6500	5/1	DIREK ŞANZ. TAH.	ÖN-ARKA 195/65R15
OTOMOBİL CIVIC 1,6 ELEGANCE OTOMATİK	P. Car	1700	1221	BENZİN	4	1595	125/6500	OTOMATİK	DIREK ŞANZ. TAH.	ÖN-ARKA 195/65R15
OTOMOBİL CIVIC 1,8 EXECUTIVE OTOMATİK	P. Car	1705	1224	BENZİN	4	1799	140/6300	OTOMATİK	DIREK ŞANZ. TAH.	ÖN-ARKA 205/55R16

HYUNDAI ASSAN

OTOMOBİL ACCENT ERA 1.4 START L (Econo)	P. Car	1580	1133	BENZİN	4	1399	95/6000	5/1	MANUEL	ÖN-ARKA 175/70 R 14
OTOMOBİL ACCENT ERA 1.4 START	P. Car	1580	1133	BENZİN	4	1399	95/6000	5/1	MANUEL	ÖN-ARKA 175/70 R 14
OTOMOBİL ACCENT ERA 1.4 START KLM	P. Car	1580	1133	BENZİN	4	1399	95/6000	5/1	MANUEL	ÖN-ARKA 175/70 R 14
OTOMOBİL ACCENT ERA 1.4 TEAM	P. Car	1580	1133	BENZİN	4	1399	95/6000	5/1	MANUEL	ÖN-ARKA 185/65 R 14
OTOMOBİL ACCENT ERA 1.4 TEAM ABS	P. Car	1580	1133	BENZİN	4	1399	95/6000	5/1	MANUEL	ÖN-ARKA 185/65 R 14
OTOMOBİL ACCENT ERA 1.4 SELECT	P. Car	1580	1133	BENZİN	4	1399	95/6000	5/1	MANUEL	ÖN-ARKA 185/65 R 14
OTOMOBİL ACCENT ERA 1.4 SELECT OTM	P. Car	1600	1155	BENZİN	4	1399	95/6000	4/1	OTOMATİK	ÖN-ARKA 185/65 R 14
OTOMOBİL ACCENT ERA 1.6 TEAM ABS	P. Car	1580	1133	BENZİN	4	1599	110/6000	5/1	MANUEL	ÖN-ARKA 185/65 R 14
OTOMOBİL ACCENT ERA 1.6 SELECT	P. Car	1580	1133	BENZİN	4	1599	110/6000	5/1	MANUEL	ÖN-ARKA 185/65 R 14
OTOMOBİL ACCENT ERA 1.6 SELECT OTM	P. Car	1600	1155	BENZİN	4	1599	110/6000	4/1	OTOMATİK	ÖN-ARKA 185/65 R 14
OTOMOBİL ACCENT ERA 1.6 STYLE	P. Car	1580	1133	BENZİN	4	1599	110/6000	5/1	MANUEL	ÖN-ARKA 185/65 R 14
OTOMOBİL ACCENT ERA 1.6 STYLE OTM	P. Car	1600	1155	BENZİN	4	1599	110/6000	4/1	OTOMATİK	ÖN-ARKA 185/65 R 14
OTOMOBİL ACCENT ERA 1.5 CRDI-VGT START L (Econo)	P. Car	1650	1205	DİZEL	4	1493	109/4000	5/1	MANUEL	ÖN-ARKA 175/70 R 14
OTOMOBİL ACCENT ERA 1.5 CRDI-VGT START	P. Car	1650	1205	DİZEL	4	1493	109/4000	5/1	MANUEL	ÖN-ARKA 175/70 R 14
OTOMOBİL ACCENT ERA 1.5 CRDI-VGT START KLM	P. Car	1650	1205	DİZEL	4	1493	109/4000	5/1	MANUEL	ÖN-ARKA 175/70 R 14
OTOMOBİL ACCENT ERA 1.5 CRDI-VGT TEAM	P. Car	1650	1205	DİZEL	4	1493	109/4000	5/1	MANUEL	ÖN-ARKA 185/65 R 14
OTOMOBİL ACCENT ERA 1.5 CRDI-VGT TEAM ABS	P. Car	1650	1205	DİZEL	4	1493	109/4000	5/1	MANUEL	ÖN-ARKA 185/65 R 14
OTOMOBİL ACCENT ERA 1.5 CRDI-VGT SELECT	P. Car	1650	1205	DİZEL	4	1493	109/4000	5/1	MANUEL	ÖN-ARKA 185/65 R 14
OTOMOBİL ACCENT ERA 1.5 CRDI-VGT STYLE	P. Car	1650	1205	DİZEL	4	1493	109/4000	5/1	MANUEL	ÖN-ARKA 185/65 R 14
OTOMOBİL MATRIX 1.5 CRDI VGT (110 PS) TEAM	P. Car	1840	1380	DİZEL	4	1493	109/4000	5/1	MANUEL	ÖN-ARKA 185/65 R 14
OTOMOBİL MATRIX 1.5 CRDI VGT (110 PS) TEAM ABS	P. Car	1840	1380	DİZEL	4	1493	109/4000	5/1	MANUEL	ÖN-ARKA 185/65 R 14
OTOMOBİL MATRIX 1.5 CRDI VGT (110PS) SELECT	P. Car	1840	1380	DİZEL	4	1493	109/4000	5/1	MANUEL	ÖN-ARKA 185/65 R 14
OTOMOBİL MATRIX 1.5 CRDI VGT (110PS) STYLE	P. Car	1840	1380	DİZEL	4	1493	109/4000	5/1	MANUEL	ÖN-ARKA 195/55 R 15
OTOMOBİL MATRIX 1.5 CRDI VGT (110PS) STYLE SR	P. Car	1840	1380	DİZEL	4	1493	109/4000	5/1	MANUEL	ÖN-ARKA 195/55 R 15
OTOMOBİL MATRIX 1.6 TEAM	P. Car	1800	1323	BENZİN	4	1599	102/5800	5/1	MANUEL	ÖN-ARKA 185/65 R 14
OTOMOBİL MATRIX 1.6 TEAM ABS	P. Car	1800	1323	BENZİN	4	1599	102/5800	5/1	MANUEL	ÖN-ARKA 185/65 R 14
OTOMOBİL MATRIX 1.6 SELECT	P. Car	1800	1323	BENZİN	4	1599	102/5800	5/1	MANUEL	ÖN-ARKA 185/65 R 14
OTOMOBİL MATRIX 1.6 SELECT OTM	P. Car	1820	1344	BENZİN	4	1599	102/5800	4/1	OTOMATİK	ÖN-ARKA 185/65 R 14
OTOMOBİL MATRIX 1.6 STYLE	P. Car	1800	1323	BENZİN	4	1599	102/5800	5/1	MANUEL	ÖN-ARKA 195/55 R 15
OTOMOBİL MATRIX 1.6 STYLE OTM	P. Car	1820	1344	BENZİN	4	1599	102/5800	4/1	OTOMATİK	ÖN-ARKA 195/55 R 15
OTOMOBİL MATRIX 1.6 STYLE SR	P. Car	1800	1323	BENZİN	4	1599	102/5800	5/1	MANUEL	ÖN-ARKA 195/55 R 15
OTOMOBİL MATRIX 1.6 STYLE SR OTM	P. Car	1820	1344	BENZİN	4	1599	102/5800	4/1	OTOMATİK	ÖN-ARKA 195/55 R 15

KARSAN

MİDİBÜS (17+1) 72 HP, Euro 2	Midibus	3520	2260	DİZEL	4	2498	72/4000	5/1	NZWL	ÖN-ARKA 195/75 R 16 C
MİDİBÜS (18+1) 72 HP, Euro 2	Midibus	3520	2260	DİZEL	4	2498	72/4000	5/1	NZWL	ÖN-ARKA 195/75 R 16 C
MİNİBÜS Premier (14+1) 78 HP	Minibus	3420	2377	DİZEL	4	2771	78/3500	5/1	NZWL	ÖN-ARKA 205/75 R 16 C
MİDİBÜS Premier (18+1) 78 HP	Midibus	3750	2377	DİZEL	4	2771	78/3500	5/1	NZWL	ÖN-ARKA 205/75 R 16 C
MİDİBÜS Premier (21+1) 78 HP	Midibus	4050	2420	DİZEL	4	2771	78/3500	5/1	NZWL	ÖN-ARKA 205/75 R 16 C
MİDİBÜS Premier OKUL TAŞITI (18+1) 78 HP	Midibus	3750	2377	DİZEL	4	2771	78/3500	5/1	NZWL	ÖN-ARKA 205/75 R 16 C
MİDİBÜS Premier OKUL TAŞITI (21+1) 78 HP	Midibus	4050	2420	DİZEL	4	2771	78/3500	5/1	NZWL	ÖN-ARKA 205/75 R 16 C
MİDİBÜS Premier (18+1)_uzun 78 HP	Midibus	4150	2425	DİZEL	4	2771	78/3500	5/1	NZWL	ÖN-ARKA 205/75 R 16 C
MİNİBÜS Premier (14+1)_YT 78 HP	Midibus	3850	2467	DİZEL	4	2771	78/3500	5/1	NZWL	ÖN-ARKA 205/75 R 16 C
MİDİBÜS Premier (18+1)_YT 78 HP	Midibus	3850	2467	DİZEL	4	2771	78/3500	5/1	NZWL	ÖN-ARKA 205/75 R 16 C
MİDİBÜS Premier (21+1)_YT 78 HP	Midibus	4150	2505	DİZEL	4	2771	78/3500	5/1	NZWL	ÖN-ARKA 205/75 R 16 C
MİDİBÜS Premier (18+1)_uzun YT 78 HP	Midibus	4150	2510	DİZEL	4	2771	78/3500	5/1	NZWL	ÖN-ARKA 205/75 R 16 C
MİDİBÜS Premier OKUL TAŞITI (18+1)_YT 78 HP	Midibus	3850	2467	DİZEL	4	2771	78/3500	5/1	NZWL	ÖN-ARKA 205/75 R 16 C
MİDİBÜS Premier OKUL TAŞITI (21+1)_YT 78 HP	Midibus	4150	2505	DİZEL	4	2771	78/3500	5/1	NZWL	ÖN-ARKA 205/75 R 16 C
KAMYONET CAMLI VAN (1+4) 70 HP	Pick Up	1955	1220	DİZEL	4	1868	70/4600	5/1	BE4 5LK DM47	ÖN-ARKA 175/65 R14
KAMYONET CAMLI VAN (1+4) 90 HP	Pick Up	1990	1260	DİZEL	4	1997	90/4000	5/1	BE4 5LKG DM79	ÖN-ARKA 175/65 R14
KAMYONET CAMLI VAN (1+4) ADVENTURE 90 HP	Pick Up	1990	1285	DİZEL	4	1997	90/4000	5/1	BE4 5LKG DM79	ÖN-ARKA 185/65 R 15
KAMYONET CAMLI VAN (1+4) 90 HP	Pick Up	1955	1240	DİZEL	4	1560	90/4000	5/1	BE4 5LKG DM79	ÖN-ARKA 175/70 R14
KAMYONET CAMLI VAN (1+4) ADVENTURE 90 HP	Pick Up	1955	1285	DİZEL	4	1560	90/4000	5/1	BE4 5LKG DM79	ÖN-ARKA 175/70 R14
KAMYONET UZUN VAN (1+1) 70 HP	Pick Up	1945	1246	DİZEL	4	1868	70/4600	5/1	BE4 5LK DM47	ÖN-ARKA 175/65 R14
KAMYONET UZUN CAMLI VAN (1+4) 90 HP	Pick Up	1984	1282	DİZEL	4	1997	90/4000	5/1	BE4 5LKG DM79	ÖN-ARKA 175/65 R14
KAMYONET UZUN CAMLI VAN (1+4) 70 HP	Pick Up	1984	1273	DİZEL	4	1868	70/4600	5/1	BE4 5LK DM47	ÖN-ARKA 175/65 R14
KAMYONET HD35	Pick Up	3500	2315	DİZEL	4	3907	105/3200	5/1	M3S5	ÖN-ARKA 205/75 R16
KAMYON HD75	Truck	7500	2580	DİZEL	4	3907	133/3200	5/1	M035S5	ÖN-ARKA 8,5 R 17,5

M.A.N. TÜRKİYE

OTOBÜS Lion's Classic (A74)	Bus	18000	11450	DİZEL	6	6871	280/2300	6/1	ZF 6S-1900	ÖN-ARKA 295/80 R 22.5
OTOBÜS Lion's Classic (A74)	Bus	18000	12700	DOĞALGAZ	6	12816	310/2000	OTOMATİK	ZF 6HP-504/554	ÖN-ARKA 295/80 R 22.5
OTOBÜS Lion's City T (A78)	Bus	18000	11500	DİZEL	6	6871	280/2300	OTOMATİK	VOITH D854.5 / ZF 6 HP 554	ÖN-ARKA 295/80 R 22.5 / 275/70 R 22.5
OTOBÜS Lion's City T (A78)	Bus	18000	11500	DİZEL	6	6871	260/2300	OTOMATİK	VOITH D854.5 / ZF 6 HP 554	ÖN-ARKA 295/80 R 22.5 / 275/70 R 22.5
OTOBÜS Lion's City T (A78)	Bus	18000	11500	DİZEL	6	6871	290/2300	OTOMATİK	VOITH D854.5 / ZF 6 HP 554	ÖN-ARKA 295/80 R 22.5 / 275/70 R 22.5
OTOBÜS Fortuna (R07)	Bus	18000	13775	DİZEL	6	10518	400/1900	6/1-otomatik	ZF 6S1901/ ZF 12AS2301 / MB GO210	ÖN-ARKA 295/80 R 22.5
OTOBÜS Fortuna (R07)	Bus	18000	13775	DİZEL	6	10518	440/1900	6/1-otomatik	ZF 6S1901/ ZF 12AS2301 / MB GO210	ÖN-ARKA 295/80 R 22.5
OTOBÜS Fortuna (R07)	Bus	18000	13775	DİZEL	6	12419	480/1900	6/1-otomatik	ZF 6S1901/ ZF 12AS2301 / MB GO210	ÖN-ARKA 295/80 R 22.5
OTOBÜS Fortuna (R07)	Bus	18000	13775	DİZEL	6	10518	430/1900	6/1-otomatik	ZF 6S1901/ ZF 12AS2301 / MB GO210	ÖN-ARKA 295/80 R 22.5
OTOBÜS Fortuna Mega (R08)	Bus	24900	16350	DİZEL	6	12816	460/1900	6/1-otomatik	ZF 6S1901/ ZF 12AS2301 / MB GO210	ÖN-ARKA 295/80 R 22.5
OTOBÜS Fortuna Mega (R08)	Bus	24900	16350	DİZEL	6	10518	400/1900	6/1-otomatik	ZF 6S1901/ ZF 12AS2301 / MB GO210	ÖN-ARKA 295/80 R 22.5
OTOBÜS Fortuna Mega (R08)	Bus	24900	16350	DİZEL	6	10518	440/1900	6/1-otomatik	ZF 6S1901/ ZF 12AS2301 / MB GO210	ÖN-ARKA 295/80 R 22.5
OTOBÜS Fortuna Mega (R08)	Bus	24900	16350	DİZEL	6	12419	480/1900	6/1-otomatik	ZF 6S1901/ ZF 12AS2301 / MB GO210	ÖN-ARKA 295/80 R 22.5
OTOBÜS Fortuna Mega (R08)	Bus	24900	16350	DİZEL	6	10518	430/1900	6/1-otomatik	ZF 6S1901/ ZF 12AS2301 / MB GO210	ÖN-ARKA 295/80 R 22.5
OTOBÜS Lion's Coach L (R09)	Bus	24900	16070	DİZEL	6	10518	440/1900	6/1-otomatik	ZF 6S1901/ ZF 12AS2301 / MB GO210	ÖN-ARKA 295/80 R 22.5

OTOBÜS Lion's Coach L (R09)	Bus	24900	16070	DİZEL	6	12419	480/1900	6/1-otomatik	ZF 6S1901/ ZF 12AS2301 / MB GO210	ÖN-ARKA 295/80 R 22.5
OTOBÜS LION'S REGIO (R12)	Bus	18000	12300	DİZEL	6	10518	310/1700	6/1-otomatik	ZF 6S1901/ ZF 12AS2001 / ZF 6HP604	ÖN-ARKA 295/80 R 22.5
OTOBÜS LION'S REGIO (R12)	Bus	18000	12300	DİZEL	6	10518	350/1700	6/1-otomatik	ZF 6S1901/ ZF 12AS2001 / ZF 6HP604	ÖN-ARKA 295/80 R 22.5
OTOBÜS LION'S REGIO (R12)	Bus	18000	12300	DİZEL	6	10518	390/1700	6/1-otomatik	ZF 6S1901/ ZF 12AS2001 / ZF 6HP604	ÖN-ARKA 295/80 R 22.5
OTOBÜS LION'S REGIO L (R13)	Bus	24900	14900	DİZEL	6	10518	310/1700	6/1-otomatik	ZF 6S1901/ ZF 12AS2001 / ZF 6HP604	ÖN-ARKA 295/80 R 22.5
OTOBÜS LION'S REGIO L (R13)	Bus	24900	14900	DİZEL	6	10518	350/1700	6/1-otomatik	ZF 6S1901/ ZF 12AS2001 / ZF 6HP604	ÖN-ARKA 295/80 R 22.5
OTOBÜS LION'S REGIO L (R13)	Bus	24900	14900	DİZEL	6	10518	390/1700	6/1-otomatik	ZF 6S1901/ ZF 12AS2001 / ZF 6HP604	ÖN-ARKA 295/80 R 22.5
OTOBÜS LION'S REGIO 13M (R14)	Bus	18000	13000	DİZEL	6	10518	310/1700	6/1-otomatik	ZF 6S1901/ ZF 12AS2001 / ZF 6HP604	ÖN-ARKA 295/80 R 22.5
OTOBÜS LION'S REGIO 13M (R14)	Bus	18000	13000	DİZEL	6	10518	350/1700	6/1-otomatik	ZF 6S1901/ ZF 12AS2001 / ZF 6HP604	ÖN-ARKA 295/80 R 22.5
OTOBÜS LION'S REGIO 13M (R14)	Bus	18000	13000	DİZEL	6	10518	390/1700	6/1-otomatik	ZF 6S1901/ ZF 12AS2001 / ZF 6HP604	ÖN-ARKA 295/80 R 22.5
OTOBÜS N2216/3 SHD TOURLINER (P20)	Bus	24900	16070	DİZEL	6	10518	440/1900	6/1-otomatik	ZF 6S1901/ ZF 12AS2301 / MB GO210	ÖN-ARKA 295/80 R 22.5
OTOBÜS N 2216 SHD TOURLINER (P21)	Bus	18000	13775	DİZEL	6	12816	460/1900	6/1-otomatik	ZF 6S1901/ ZF 12AS2301 / MB GO210	ÖN-ARKA 295/80 R 22.5
OTOBÜS N 2216 SHD TOURLINER (P21)	Bus	18000	13775	DİZEL	6	10518	400/1900	6/1-otomatik	ZF 6S1901/ ZF 12AS2301 / MB GO210	ÖN-ARKA 295/80 R 22.5
OTOBÜS N 2216 SHD TOURLINER (P21)	Bus	18000	13775	DİZEL	6	10518	440/1900	6/1-otomatik	ZF 6S1901/ ZF 12AS2301 / MB GO210	ÖN-ARKA 295/80 R 22.5
OTOBÜS N 2216 SHD TOURLINER (P21)	Bus	18000	13775	DİZEL	6	12419	480/1900	6/1-otomatik	ZF 6S1901/ ZF 12AS2301 / MB GO210	ÖN-ARKA 295/80 R 22.5
OTOBÜS N 2216 SHD TOURLINER (P21)	Bus	18000	13775	DİZEL	6	10518	430/1900	6/1-otomatik	ZF 6S1901/ ZF 12AS2301 / MB GO210	ÖN-ARKA 295/80 R 22.5
OTOBÜS N 2216/3 SHD-L TOURLINER (P22)	Bus	24900	16350	DİZEL	6	12816	460/1900	6/1-otomatik	ZF 6S1901/ ZF 12AS2301 / MB GO210	ÖN-ARKA 295/80 R 22.5
OTOBÜS N 2216/3 SHD-L TOURLINER (P22)	Bus	24900	16350	DİZEL	6	10518	400/1900	6/1-otomatik	ZF 6S1901/ ZF 12AS2301 / MB GO210	ÖN-ARKA 295/80 R 22.5
OTOBÜS N 2216/3 SHD-L TOURLINER (P22)	Bus	24900	16350	DİZEL	6	10518	440/1900	6/1-otomatik	ZF 6S1901/ ZF 12AS2301 / MB GO210	ÖN-ARKA 295/80 R 22.5
OTOBÜS N 2216/3 SHD-L TOURLINER (P22)	Bus	24900	16350	DİZEL	6	12419	480/1900	6/1-otomatik	ZF 6S1901/ ZF 12AS2301 / MB GO210	ÖN-ARKA 295/80 R 22.5
OTOBÜS N 2216/3 SHD-L TOURLINER (P22)	Bus	24900	16350	DİZEL	6	10518	430/1900	6/1-otomatik	ZF 6S1901/ ZF 12AS2301 / MB GO210	ÖN-ARKA 295/80 R 22.5

M. BENZ TÜRK

OTOBÜS Travego 15 SHD	Bus	18000	13700	DİZEL	6	11967	422/1900	6/1	GO 190	ÖN-ARKA 295/80 R 22.5
OTOBÜS Travego 15 SHD	Bus	18000	13700	DİZEL	6	11967	428/2000	6/1	GO 210	ÖN-ARKA 295/80 R 22.5
OTOBÜS Travego 15 SHD	Bus	18000	13700	DİZEL	6	11967	428/2000	8/2	GO 240-8 PowerShift	ÖN-ARKA 295/80 R 22.5
OTOBÜS Travego 17 SHD	Bus	24000	16500	DİZEL	8	15928	476/2000	6/1	GO 210	ÖN-ARKA 295/80 R 22.5
OTOBÜS Travego 17 SHD	Bus	24000	16500	DİZEL	8	15928	476/2000	12/1	ZF-AS Tr	ÖN-ARKA 295/80 R 22.5
OTOBÜS Travego 17 SHD	Bus	24000	16500	DİZEL	8	15928	476/2000	8/2	GO 240-8 PowerShift	ÖN-ARKA 295/80 R 22.5
OTOBÜS Turismo 15 RH	Bus	18000	12600	DİZEL	6	11967	354/2000	6/1	GO 190	ÖN-ARKA 295/80 R 22.5
OTOBÜS Turismo 16 RH	Bus	18000	12700	DİZEL	6	11967	354/2000	6/1	GO 190	ÖN-ARKA 295/80 R 22.5
OTOBÜS Turismo 15 RH	Bus	18000	12600	DİZEL	6	11967	408/2200	6/1	GO 190	ÖN-ARKA 295/80 R 22.5
OTOBÜS Turismo 16 RH	Bus	18000	12700	DİZEL	6	11967	408/2200	6/1	GO 190	ÖN-ARKA 295/80 R 22.5
OTOBÜS Turismo 15 RH	Bus	18000	12600	DİZEL	6	11967	408/2200	8/1	GO 240-8 PowerShift	ÖN-ARKA 295/80 R 22.5
OTOBÜS Turismo 16 RH	Bus	18000	12700	DİZEL	6	11967	408/2200	8/1	GO 240-8 PowerShift	ÖN-ARKA 295/80 R 22.5
OTOBÜS Turismo 15 RHD sağ veya sol direksiyonlu	Bus	18000	12900	DİZEL	6	11967	354/2000	6/1	GO 190	ÖN-ARKA 295/80 R 22.5
OTOBÜS Turismo 15 RHD sağ veya sol direksiyonlu	Bus	18000	12900	DİZEL	6	11967	354/2000	6/1	ZF-AS Tr	ÖN-ARKA 295/80 R 22.5
OTOBÜS Turismo 15 RHD sağ veya sol direksiyonlu	Bus	18000	12900	DİZEL	6	11967	408/2200	6/1	GO 190	ÖN-ARKA 295/80 R 22.5
OTOBÜS Turismo 15 RHD sağ veya sol direksiyonlu	Bus	18000	12900	DİZEL	6	11967	408/2200	12/1	ZF-AS Tr	ÖN-ARKA 295/80 R 22.5
OTOBÜS Turismo 15 RHD sağ veya sol direksiyonlu	Bus	18000	12900	DİZEL	6	11967	408/2200	8/1	GO 240-8 PowerShift	ÖN-ARKA 295/80 R 22.5
OTOBÜS Turismo 16 RHD	Bus	24000	15200	DİZEL	6	11967	428/2100	6/1	GO 210	ÖN-ARKA 295/80 R 22.5
OTOBÜS Turismo 16 RHD	Bus	24000	15200	DİZEL	6	11967	428/2100	8/1	GO 240-8 PowerShift	ÖN-ARKA 295/80 R 22.5
OTOBÜS Turismo 16 RHD	Bus	24000	15200	DİZEL	6	11967	428/2100	12/1	ZF-AS Tr	ÖN-ARKA 295/80 R 22.5
OTOBÜS Turismo 16 RHD -2A	Bus	18000	13800	DİZEL	6	11967	354/2000	6/1	GO 190	ÖN-ARKA 295/80 R 22.5
OTOBÜS Turismo 16 RHD -2A	Bus	18000	13800	DİZEL	6	11967	354/2000	6/1	ZF-AS Tr	ÖN-ARKA 295/80 R 22.5
OTOBÜS Turismo 16 RHD -2A	Bus	18000	13800	DİZEL	6	11967	408/2200	6/1	GO 190	ÖN-ARKA 295/80 R 22.5
OTOBÜS Turismo 16 RHD -2A	Bus	18000	13800	DİZEL	6	11967	408/2200	12/1	ZF-AS Tr	ÖN-ARKA 295/80 R 22.5
OTOBÜS Turismo 16 RHD -2A	Bus	18000	13800	DİZEL	6	11967	408/2200	8/1	GO 240-8 PowerShift	ÖN-ARKA 295/80 R 22.5
OTOBÜS Turismo 17 RHD	Bus	24000	16500	DİZEL	6	11967	421/2000	6/1	GO 210	ÖN-ARKA 295/80 R 22.5
OTOBÜS Turismo 17 RHD	Bus	24000	16500	DİZEL	6	11967	428/2100	6/1	GO 210	ÖN-ARKA 295/80 R 22.5
OTOBÜS Turismo 17 RHD	Bus	24000	16500	DİZEL	6	11967	428/2100	6/1	GO 240-8 PowerShift	ÖN-ARKA 295/80 R 22.5
OTOBÜS Turismo 17 RHD	Bus	24000	16500	DİZEL	6	11967	428/2100	12/1	ZF-AS Tr	ÖN-ARKA 295/80 R 22.5
OTOBÜS Intouro MBÜ-Ü 15	Bus	18000	11500	DİZEL	6	7200	285/2200	6/1	GO 110	ÖN-ARKA 295/80 R 22.5 ve 275/70 R 22.5
OTOBÜS Intouro MBÜ-Ü 16	Bus	18000	11700	DİZEL	6	7200	285/2200	6/1	GO 110	ÖN-ARKA 295/80 R 22.5 ve 275/70 R 22.5
OTOBÜS Intouro MBÜ-S 15	Bus	18000	11500	DİZEL	6	7200	285/2200	6/1	GO 110	ÖN-ARKA 295/80 R 22.5
OTOBÜS Intouro MBÜ-S 16	Bus	18000	11700	DİZEL	6	7200	285/2200	6/1	GO 110	ÖN-ARKA 295/80 R 22.5 ve 275/70 R 22.5
OTOBÜS Conecto	Bus	18000	11150	DİZEL	6	6370	279/2300	4/1	Voith 854.3	ÖN-ARKA 275/70 R 22.5
OTOBÜS Conecto	Bus	18000	11150	DİZEL	6	6370	279/2300	6/1	ZF Ecomat	ÖN-ARKA 275/70 R 22.5
OTOBÜS Conecto	Bus	18000	11150	DİZEL	6	7201	286/2200	4/1	Voith 854.3	ÖN-ARKA 275/70 R 22.5
OTOBÜS Conecto	Bus	18000	11150	DİZEL	6	7201	286/2200	6/1	Voith 854.3	ÖN-ARKA 275/70 R 22.5
OTOBÜS Conecto G (mafsallı)	Bus	28000	16600	DİZEL	6	11967	354/2000	6/1	ZF Ecomat	ÖN-ARKA 275/70 R 22.5
KAMYON ATEGO 1216 C / 3600 4x2	Truck	11990	4300	DİZEL	4	4249	156/2200	6/1	MB G 56 - 6 / 6,29 -0,78	ÖN-ARKA 265/70 R 19,5
KAMYON ATEGO 1216 C / 4200 4x2	Truck	11990	4360	DİZEL	4	4249	156/2200	6/1	MB G 56 - 6 / 6,29 -0,78	ÖN-ARKA 265/70 R 19,5
KAMYON ATEGO 1518 C / 3600 4x2	Truck	15000	4530	DİZEL	4	4249	177/2200	6/1	MB G 60 - 6 / 9,20 -1,0	ÖN-ARKA 285/70 R 19,5
KAMYON ATEGO 1518 C / 4200 4x2	Truck	15000	4730	DİZEL	4	4249	177/2200	6/1	MB G 60 - 6 / 9,20 -1,0	ÖN-ARKA 285/70 R 19,5
KAMYON ATEGO 2124 C / 4800 6x2	Truck	21000	6330	DİZEL	6	6374	238/2200	6/1	MB G 85-6/6,7-0,73	ÖN-ARKA 285/70 R 19,5
KAMYON AXOR 2524 CD / 4800 6x2 DNA	Truck	25000	8160	DİZEL	6	6374	238/2200	9/1	MB G 131-9/14.57-1.0	ÖN-ARKA 12 R 22.5
KAMYON AXOR 2529 CD / 4800 6x2 DNA	Truck	25000	8190	DİZEL	6	6374	286/2200	9/1	MB G 131-9/14.57-1.0	ÖN-ARKA 12 R 22.5
KAMYON AXOR 2529 CD/RÖM / 4800 6x2	Truck	25000	8340	DİZEL	6	6374	286/2200	9/1	MB G 131-9/14.57-1.0	ÖN-ARKA 12 R 22.5
KAMYON AXOR 2640 CL/RÖM / 4800 6x2	Truck	26000	8520	DİZEL	6	11967	401/1900	16/2	MB G 211-16/17.0-1.0	ÖN-ARKA 315/80 R 22.5
KAMYON AXOR 3229 C / 5100 8x2	Truck	32000	9430	DİZEL	6	6374	286/2200	9/1	MB G 131-9/14.57-1.0	ÖN-ARKA 315/80 R 22.5
KAMYON AXOR 3240 C / 5125 8x2	Truck	32000	10140	DİZEL	6	11967	401/1900	16/2	MB G 211-16/17.0-1.0	ÖN-ARKA 315/80 R 22.5
KAMYON AXOR 1824 K / 3600 4x2	Truck	18000	6490	DİZEL	6	6374	238/2200	9/1	MB G 131-9/14.57-1.0	ÖN-ARKA 12 R 22.5
KAMYON AXOR 1829 K / 3600 4x2	Truck	18000	6490	DİZEL	6	6374	286/2200	9/1	MB G 131-9/14.57-1.0	ÖN-ARKA 12 R 22.5
KAMYON AXOR 2529 K / 3600 6x2	Truck	25000	7920	DİZEL	6	6374	286/2200	9/1	MB G 131-9/14.57-1.0	ÖN-ARKA 12 R 22.5
KAMYON AXOR 3029 K / 3600 6x4	Truck	26000	8540	DİZEL	6	6374	286/2200	9/1	MB G 131-9/14.57-1.0	ÖN-ARKA 12 R 22.5
KAMYON AXOR 3029 B / 3600 6x4	Truck	26000	8570	DİZEL	6	6374	286/2200	9/1	MB G 131-9/14.57-1.0	ÖN-ARKA 12 R 22.5
KAMYON AXOR 3340 K / 3900 6x4	Truck	26000	9290	DİZEL	6	11967	401/1900	16/2	MB G 240-16/11.7-0.69	ÖN-ARKA 315/80 R 22.5
KAMYON AXOR 4140 B / 5100 8x4	Truck	32000	10550	DİZEL	6	11967	401/1900	16/2	MB G 240-16/11.7-0.69	ÖN-ARKA 315/80 R 22.5
ÇEKİCİ AXOR 1836 LS / 3600 4X2	R. Tractor	18000	7220	DİZEL	6	11967	360/1900	9/1	MB G 240-16/11.7-0.69	ÖN-ARKA 295/80 R 22.5
ÇEKİCİ AXOR 1840 LS / 3600 4X2	R. Tractor	18000	7550	DİZEL	6	11967	401/1900	16/2	MB G 211-16/17.0-1.0	ÖN-ARKA 295/80 R 22.5

OTOKAR

MINİBUS M 2010	Minibus	5800	3900	DİZEL	4	2998	146/3500	5/1	EATON FS 2305 C	ÖN - ARKA 205/75 R16C
K.OTOBÜS NAVİGO 160 S	Midibus	9200	5466-6402	DİZEL	4	4500	160/2300	6/1	EATON FSO 4106 B	ÖN - ARKA 225/75 R17,5
K.OTOBÜS NAVİGO 160 SE	Midibus	9900	6118-7092	DİZEL	4	4500	160/2300	6/1	EATON FSO 4106 B	ÖN - ARKA 235/75 R17,5
K.OTOBÜS NAVİGO 185 S	Midibus	9200	5466-6402	DİZEL	4	4500	185/2300	6/1	EATON FSO 4106 B	ÖN - ARKA 225/75 R17,5
K.OTOBÜS NAVİGO 185 SE	Midibus	9900	6118-7092	DİZEL	4	4500	185/2300	6/1	EATON FSO 4106 B	ÖN - ARKA 235/75 R17,5
K.OTOBUS NAVİGO 185 SH	Midibus	9900	6118-7092	DİZEL	4	4500	185/2300	6/1	EATON FSO 4106 B	ÖN - ARKA 235/75 R17,5
K.OTOBUS SULTAN 140 COMFORT	Midibus	9200	5466-6402	DİZEL	4	4462	140/2300	6/1	EATON FS 4106 B	ÖN - ARKA 225/75 R17,5
K.OTOBUS SULTAN 140 S	Midibus	9000	5466-6402	DİZEL	4	4462	140/2300	6/1	EATON FS 4106 B	ÖN - ARKA 215/75 R17,5

K.OTOBUS SULTAN 140 S CITY	Midibus	9000	5466-6402	DİZEL	4	4462	140/2300	6/1	EATON FS 4106 B	ÖN - ARKA 225/75 R17.5
K.OTOBUS SULTAN MAXI	Midibus	10500	5896-6464	DİZEL	4	4462	160/2300	6/1	EATON FSO 4106 B	ÖN - ARKA 235/75 R17.5
K.OTOBUS SULTAN MAXI CITY	Midibus	10500	5716-6096	DİZEL	4	4462	140/2300	6/1	EATON FS 4106 B	ÖN - ARKA 235/75 R17.5
B.OTOBÜS DORUK 190 H	Otobus	13500	6799-8688	DİZEL	4	4764	190/2300	6/1	EATON FSO 4106 B	ÖN - ARKA 265/70 R19.5
B.OTOBÜS DORUK 190 S	Otobus	13500	7320-8926	DİZEL	4	4764	190/2300	6/1	EATON FSO 4106 B	ÖN - ARKA 265/70 R19.5
B.OTOBÜS DORUK 215 LE	Otobus	13500	7783-8190	DİZEL	4	4764	215/2300	6/1	ALLISON T 280 R	ÖN - ARKA 265/70 R19.5
B.OTOBÜS DORUK 215 T	Otobus	14000	8142-9493	DİZEL	4	4764	215/2300	6/1	EATON FSO 5206 B	ÖN - ARKA 265/70 R19.5
B.OTOBUS VECTIO 250 LE	Otobus	13500	7900-8306	DİZEL	6	6871	250/2300	4/1	VOITH DIWA 854.5	ÖN - ARKA 265/70 R19.5
B.OTOBUS VECTIO 250 S	Otobus	13500	8165-9027	DİZEL	6	6871	250/2300	6/1 (4/1)	ZF 6S1010BO (VOITH DIWA 854.5)	ÖN - ARKA 265/70 R19.5
B.OTOBUS VECTIO 250 T	Otobus	14000	8787-9814	DİZEL	6	6871	250/2300	6/1 (4/1)	ZF 6S1010BO (VOITH DIWA 854.5)	ÖN - ARKA 265/70 R19.5
B.OTOBUS VECTIO 250 U	Otobus	13500	7944-8946	DİZEL	6	6871	250/2300	6/1 (4/1)	ZF 6S1010BO (VOITH DIWA 854.5)	ÖN - ARKA 265/70 R19.5
B.OTOBÜS KENT 290 H	Otobus	18000	9754-10974	DİZEL	6	7146	290/2100	4/1	VOITH DIWA 854.5	ÖN - ARKA 295/80 R22.5
LAND ROVER DEFENDER 110 Panelvan	PickUp	3050	2040	DİZEL	4	2402	122/3500	6/1	MT-82	ÖN-ARKA 7.50 R16
LAND ROVER DEFENDER 110 PU	PickUp	3050	2130	DİZEL	4	2402	122/3500	6/1	MT-82	ÖN-ARKA 7.50 R16
LAND ROVER DEFENDER 130 PU Tek Kabin	Pickup	3500	2185	DİZEL	4	2402	122/3500	6/1	MT-82	ÖN-ARKA 235/85 R16
LAND ROVER DEFENDER 130 PU Çift Kabin	Pickup	3500	2200	DİZEL	4	2402	122/3500	6/1	MT-82	ÖN-ARKA 235/85 R16
OYAK RENAULT										
OTOMOBİL SYMBOL 1.2 16 V	P. Car	1430	885	BENZİN	4	1149	75/5500	5/1	JB1	ÖN-ARKA 175/65 R 14
OTOMOBİL SYMBOL 1.4 8V	P. Car	1460	940	BENZİN	4	1390	75/5500	5/1	JB1	ÖN-ARKA 175/65 R 14
OTOMOBİL SYMBOL 1.4 16 V	P. Car	1500	950	BENZİN	4	1390	98/6000	5/1	JB3	ÖN-ARKA 175/65 R 14
OTOMOBİL SYMBOL 1.6 16 V AUTOMATIC	P. Car	1555	1039	BENZİN	4	1598	110/5750	OTOMATİK	DPO	ÖN-ARKA 175/65 R 15
OTOMOBİL SYMBOL 1.5 dCi (70 hp)	P. Car	1500	945	DİZEL	4	1461	65/4000	5/1	JB3	ÖN-ARKA 175/65 R 14
OTOMOBİL SYMBOL 1.5 dCi (85 hp)	P. Car	1500	945	DİZEL	4	1461	80/4000	5/1	JC5	ÖN-ARKA 175/65 R 14
OTOMOBİL FLUENCE Sedan DİZEL 1.5 (85 bg)	P. Car	1760	1280	DİZEL	4	1461	85/3750	5/1	JR5	ÖN-ARKA 205/65 R 15 / 205/60 R 16 / 205/55 R 17
OTOMOBİL FLUENCE Sedan DİZEL 1.5 (105 bg)	P. Car	1777	1280	DİZEL	4	1461	105/4000	6/1	TL4	ÖN-ARKA 205/65 R 15 / 205/60 R 16 / 205/55 R 17
OTOMOBİL FLUENCE Sedan BENZİNLİ 1.6 16V Düz vites	P. Car	1725	1265	BENZİN	4	1598	105/6000	5/1	JH3	ÖN-ARKA 205/65 R 15 / 205/60 R 16 / 205/55 R 17
OTOMOBİL FLUENCE Sedan BENZİNLİ 1.6 16V Otomatik	P. Car	1760	1280	BENZİN	4	1598	105/6000	OTOMATİK	DPO	ÖN-ARKA 205/65 R 15 / 205/60 R 16 / 205/55 R 17
OTOMOBİL MEGANE III Hatch-back 5 kapı DİZEL 1.5 (85 bg)	P. Car	1755	1280	DİZEL	4	1461	85/3750	5/1	JR5	ÖN-ARKA 205/65 R 15 / 205/60 R 16 / 205/55 R 17
OTOMOBİL MEGANE III Hatch-back 5 kapı DİZEL 1.5 (105 bg)	P. Car	1772	1280	DİZEL	4	1461	105/4000	6/1	TL4	ÖN-ARKA 205/65 R 15 / 205/60 R 16 / 205/55 R 17
OTOMOBİL MEGANE III Hatch-back 5 kapı BENZİNLİ 1.6 16V Düz vites	P. Car	1720	1260	BENZİN	4	1598	105/6000	5/1	JH3	ÖN-ARKA 205/65 R 15 / 205/60 R 16 / 205/55 R 17
OTOMOBİL MEGANE III Hatch-back 5 kapı BENZİNLİ 1.6 16V Otomatik vites	P. Car	1755	1280	BENZİN	4	1598	105/6000	OTOMATİK	DPO	ÖN-ARKA 205/65 R 15 / 205/60 R 16 / 205/55 R 17
OTOMOBİL CLİO III hatch-back 3 kapı / 5 kapı 1,2 16V	P. Car	1580	1090	BENZİN	4	1149	75/5500	5/1	JH3	ÖN-ARKA 165/65 R 15
OTOMOBİL CLİO III Hatch-back 1,2 Quick shift (BVR)	P. Car	1590	1100	BENZİN	4	1149	80/5500	(Quick shift)	BVR (JA3)	ÖN-ARKA 165/65 R 15
OTOMOBİL CLİO III hatch-back 3 kapı / 5 kapı 1,4 16V	P. Car	1635	1145	BENZİN	4	1390	100/5700	5/1	JH3	ÖN-ARKA 185/60 R 15
OTOMOBİL CLİO III hatch-back 3 kapı / 5 kapı 1,6 16V	P. Car	1640	1150	BENZİN	4	1598	110/6000	5/1	JH3	ÖN-ARKA 185/60 R 15
OTOMOBİL CLİO III hatch-back 3 kapı / 5 kapı 1,6 16V AUTOMATIC	P. Car	1680	1190	BENZİN	4	1598	110/6000	OTOMATİK	DPO	ÖN-ARKA 185/60 R 15
OTOMOBİL CLİO III hatch-back 3 kapı / 5 kapı DİZEL 1,5 I 70 hp	P. Car	1655	1165	DİZEL	4	1461	70/4000	5/1	JH3	ÖN-ARKA 185/60 R 15
OTOMOBİL CLİO III hatch-back 3 kapı / 5 kapı DİZEL 1,5 I 85 hp	P. Car	1665	1175	DİZEL	4	1461	105/4000	5/1	JR5	ÖN-ARKA 185/60 R 15
OTOMOBİL CLİO III Hatch-back 1,5 DİZEL Quick shift (BVR)	P. Car	1675	1185	DİZEL	4	1461	85/3750	(Quick shift)	BVR (JA5)	ÖN-ARKA 185/60 R 15
OTOMOBİL CLİO III Grand Tour 1,2 16V	P. Car	1598	1110	BENZİN	4	1149	75/5500	5/1	JH3	ÖN-ARKA 165/65 R 15
OTOMOBİL CLİO III Grand Tour 1,2 Quick shift (BVR)	P. Car	1608	1120	BENZİN	4	1149	80/5500	(Quick shift)	BVR (JA3)	ÖN-ARKA 165/65 R 15
OTOMOBİL CLİO III Grand Tour 1,4 16V	P. Car	1660	1165	BENZİN	4	1390	100/5700	5/1	JH3	ÖN-ARKA 185/60 R 15
OTOMOBİL CLİO III Grand Tour 1,6 16V	P. Car	1665	1170	BENZİN	4	1598	110/6000	5/1	JH3	ÖN-ARKA 185/60 R 15
OTOMOBİL CLİO III Grand Tour 1,6I 16V AUTOMATIC	P. Car	1705	1210	BENZİN	4	1598	110/6000	OTOMATİK	DPO	ÖN-ARKA 185/60 R 15
OTOMOBİL CLİO III Grand Tour DİZEL 1,5 I 70 hp	P. Car	1680	1185	DİZEL	4	1461	70/4000	5/1	JH3	ÖN-ARKA 185/60 R 15
OTOMOBİL CLİO III Grand Tour DİZEL 1,5 I 85 hp	P. Car	1690	1195	DİZEL	4	1461	85/3750	5/1	JRQ	ÖN-ARKA 185/60 R 15
OTOMOBİL CLİO III Grand Tour DİZEL 1,5I Quick shift (BVR)	P. Car	1700	1205	DİZEL	4	1461	85/3750	(Quick shift)	BVR (JA5)	ÖN-ARKA 185/60 R 15
OTOMOBİL CLİO III Grand Tour DİZEL 1,5 I 105 hp	P. Car	1715	1235	DİZEL	4	1461	105/4000	6/1	TL4	ÖN-ARKA 185/60 R 15
TEMSA GLOBAL										
PRESTIJ CITY	Midibus	7.860	4940	DİZEL	4	3908	136/2900	5/1	M035 S 5	ÖN-ARKA 225/75 R 17,5
PRESTIJ CLASSIC	Midibus	7.860	4940	DİZEL	4	3908	136/2900	5/1	M035 S 5	ÖN-ARKA 225/75 R 17,5
PRESTIJ SUPER DELUX	Midibus	7.860	4940	DİZEL	4	3908	136/2900	5/1	M035 S 5	ÖN-ARKA 225/75 R 17,5
PRESTIJ SUPER DELUX	Midibus	7.860	4940	DİZEL	4	3908	145/3200	6/1	M036 S 6	ÖN-ARKA 225/75 R 17,5
OPALIN 8	Midibus	12500	7900	DİZEL	4	4580	205/2400	6/1	ZF 6S BOIT 1000	ÖN-ARKA 245/70 R 17,5
OPALIN 9	Midibus	12500	8700	DİZEL	6	6871	220/2400	6/1	ZF 6S BOIT 1000	ÖN-ARKA 265/70 R 19,5
OPALIN 9	Midibus	12500	8700	DİZEL	6	6871	220/2400	6/1	ALLISON T 280 R	ÖN-ARKA 265/70 R 19,5
OPALIN 9	Midibus	12500	8700	DİZEL	6	6871	240/2300	6/1	ZF 6S BOIT 1000	ÖN-ARKA 265/70 R 19,5
OPALIN 9	Midibus	12500	8420	DİZEL	6	6871	240/2300	6/1	T280R INTARDER	ÖN-ARKA 265/70 R 19,5
OPALIN 9	Midibus	12500	8420	DİZEL	6	6871	240/2300	4/1	VOITH DIWA 854.5	ÖN-ARKA 265/70 R 19,5
OPALIN 9	Midibus	12500	8420	DİZEL	6	6871	250/2300	6/1	ZF6S 1010 BO	ÖN-ARKA 265/70 R 17,5
OPALIN 9	Midibus	12500	8420	DİZEL	6	6871	250/2300	6/1	ALLISON T280 R	ÖN-ARKA 265/70 R 17,5
OPALIN 9E	Midibus	12500	8700	DİZEL	4	4580	180/2400	6/1	ZF 6S BOIT 700	ÖN-ARKA 245/70 R 17,5
OPALIN 9E	Midibus	8080	8700	DİZEL	4	4580	206/2400	6/1	ZF 6S 1000 BO	ÖN-ARKA 245/70 R 17,5
CANTER	Truck	3500	1760	DİZEL	4	2835	90/4000	5/1	M015S5	ÖN-ARKA 195/75 R16
CANTER	Truck	3500	2045	DİZEL	4	3907	105/3200	5/1	M025S5	ÖN-ARKA 205/75 R16
CANTER	Truck	7500	2300	DİZEL	4	3908	136/2900	5/1	M035S5	ÖN-ARKA 8.5R17.5
CANTER	Truck	7700	2320	DİZEL	4	3908	136/2900	5/1	M035S5	ÖN-ARKA 8.5R17.5
METROPOL	Midibus	12960	9500	DİZEL	4	4580	180/2400	6/1	ZF 6S BOIT 700	ÖN-ARKA 245/70 R 19,5
METROPOL CITY	Midibus	13150	8650	DİZEL	6	6871	240/2300	6/1	ALLISON T280R	ÖN-ARKA 265/70 R 19,5
METROPOL	Midibus	13150	8650	DİZEL	4	4580	180/2400	6/1	ZF 6S 700 BO	ÖN-ARKA 245/70 R 19,5
METROPOL IC	Midibus	13.500	9500	DİZEL	6	6871	240/2300	6/1	ZF 6S BOIT 1010	ÖN-ARKA 265/70 R 19,5
METROPOL IC	Midibus	13.500	9500	DİZEL	6	6871	240/2300	6/1	ALLISON T 280 R	ÖN-ARKA 265/70 R 19,5
METROPOL SERVICE	Midibus	12960	9500	DİZEL	4	4580	180/2400	6/1	ZF 6S BOIT 700	ÖN-ARKA 245/70 R 19,5
SAFİR	Bus	18000	13970	DİZEL	6	11946	350/2200	6/1	M12S6	ÖN-ARKA 295/80 R22.5
DIAMOND 14	Bus	26000	17130	DİZEL	6	12419	480/1900	12/1	ZF AS-TRONIC	ÖN 315/80 R 22.5 ARKA 295/80 R 22,5
DIAMOND 14	Bus	26000	17130	DİZEL	6	12419	480/1900	12/1	ZF AS-TRONIC	ÖN 315/80 R 22.5 ARKA 295/80 R 22,5
SAFARI HD 12.2	Bus	19000	13500	DİZEL	6	12902	410/1900	6/1	ZF 6S BOIT 1900	ÖN-ARKA 295/80 R22.5
SAFARI HD 12.2	Bus	19000	13500	DİZEL	6	12902	410/1900	6/1	ZF 6S BOIT 1901	ÖN-ARKA 295/80 R22.5
SAFARI HD 12.2	Bus	19000	13500	DİZEL	6	10518	400/1900	6/1	ZF 6S 1901	ÖN-ARKA 295/80 R22.5
SAFARI HD 12.2	Bus	19000	13500	DİZEL	6	12902	408/1900	6/1	ZF 6S 1901	ÖN-ARKA 295/80 R22.5
SAFİR 12.2	Bus	19000	13500	DİZEL	6	12902	408/1900	6/1	ZF 6S 1901	ÖN-ARKA 295/80 R22.5
SAFİR 13	Bus	19000	13500	DİZEL	6	12902	408/1900	6/1	ZF 6S 1901	ÖN-ARKA 295/80 R22.5
SAFARI HD 13	Bus	19000	13500	DİZEL	6	12902	408/1900	6/1	ZF 6S 1901	ÖN-ARKA 295/80 R22.5
SAFARI 10.66	Bus	19000	13500	DİZEL	6	10518	360/1900	6/1	ZF 6S 1901	ÖN-ARKA 295/80 R22.5
SAFARI 12	Bus	19000	13500	DİZEL	6	10518	360/1900	6/1	ZF 6S 1901	ÖN-ARKA 295/80 R22.5
SAFARI HD 13	Bus	19000	13500	DİZEL	6	12902	408/1900	6/1	ZF 6S 1901	ÖN-ARKA 295/80 R22.5
SAFARI HD 12.2 RHD	Bus	19000	13500	DİZEL	6	9186	362/1900	6/1	ZF 6HP 604C	ÖN-ARKA 295/80 R22.5
SAFARI HD 12.2	Bus	19000	13500	DİZEL	6	12902	408/1900	6/1	ZF 6S 1901	ÖN-ARKA 295/80 R22.5
SAFARI HD 12.2	Bus	19000	13500	DİZEL	6	12902	408/1900	6/1	ZF ASTRONIC	ÖN-AR

SAFARI RD 10.66	Bus	15829	12300	DİZEL	6	9029	360/1900	6/1	ALLISON, OTOM CAT CX 28	ÖN-ARKA 295/80 R22.5
SAFARI RD 12.2	Bus	19000	13500	DİZEL	6	9186	360/1900	6/1	ZF 6S BOIT 1700	ÖN-ARKA 295/80 R22.5
SAFARI RD 12.2	Bus	19000	13500	DİZEL	6	9186	360/1900	6/1	ZF 6S BO 1701	ÖN-ARKA 295/80 R22.5
SAFARI RD 12.2	Bus	19000	13500	DİZEL	6	9186	360/1900	6/1	ZF 6S BOIT 1700	ÖN-ARKA 295/80 R22.5
SAFARI RD 12.2	Bus	19000	13500	DİZEL	6	9186	360/1900	6/1	ZF 6S BO 1701	ÖN-ARKA 295/80 R22.5
SAFARI RD 12.2	Bus	19000	13500	DİZEL	6	9186	362/1900	6/1	ZF 6S 1700	ÖN-ARKA 295/80 R22.5
SAFARI RD 12.2	Bus	19000	13500	DİZEL	6	9186	362/1901	6/1	ZF 6S 1701	ÖN-ARKA 295/80 R22.5
SAFARI RD 13	Bus	19000	13500	DİZEL	6	9186	362/1902	6/1	ZF 6S 1700	ÖN-ARKA 295/80 R22.5
SAFARI RD 13	Bus	19000	13500	DİZEL	6	9186	362/1903	6/1	ZF 6S 1701	ÖN-ARKA 295/80 R22.5
SAFARI RD 13	Bus	19000	13500	DİZEL	6	9186	362/1904	6/1	Voith 864.5E	ÖN-ARKA 295/80 R22.5
SAFARI RD 13	Bus	19000	13500	DİZEL	6	9186	362/1905	6/1	ZF 6HP 604C	ÖN-ARKA 295/80 R22.5
SAFARI RD 13	Bus	19000	13500	DİZEL	6	9186	362/1906	6/1	ZF 6S 1700	ÖN-ARKA 295/80 R22.5
SAFARI RD 13	Bus	19000	13500	DİZEL	6	9186	362/1907	6/1	ZF 6S 1701	ÖN-ARKA 295/80 R22.5
SAFARI RD 13	Bus	19000	13500	DİZEL	6	9186	362/1908	Otomatik	Voith 864.5E	ÖN-ARKA 295/80 R22.5
SAFARI RD 13	Bus	19000	13500	DİZEL	6	9186	362/1909	6/1	ZF 6HP 604C	ÖN-ARKA 295/80 R22.5
SAFARI RD 12.2	Bus	19000	13500	DİZEL	6	10518	360/1900	6/1	ZF 6S 1900	ÖN-ARKA 295/80 R22.5
SAFARI RD 12.2	Bus	19000	13500	DİZEL	6	10518	360/1900	6/1	ZF 6S 1901	ÖN-ARKA 295/80 R22.5
SAFARI RD 12.2	Bus	19000	13500	DİZEL	6	10518	360/1900	4/1	VOITH 864.5E	ÖN-ARKA 295/80 R22.5
SAFARI RD 13	Bus	19000	13500	DİZEL	6	9186	360/1900	6/1	ZF 6S BOIT 1700	ÖN-ARKA 295/80 R22.5
SAFARI RD 13	Bus	19000	13500	DİZEL	6	9186	360/1900	6/1	ZF 6S BO 1701	ÖN-ARKA 295/80 R22.5
SAFARI 12.8	Bus	19000	13500	DİZEL	6	9186	360/1900	6/1	ZF 6S 1700	ÖN-ARKA 295/80 R22.5
SAFARI 12.8	Bus	19000	13500	DİZEL	6	9186	360/1900	6/1	ZF 6S 1701	ÖN-ARKA 295/80 R22.5
SAFARI 12.8	Bus	19000	13500	DİZEL	6	9186	360/1900	6/1	ZF 6HP 604C	ÖN-ARKA 295/80 R22.5
SAFARI 12.8	Bus	19000	13500	DİZEL	6	10518	360/1900	6/1	ZF 6S 1901	ÖN-ARKA 295/80 R22.5
DIAMOND 14	Bus	19000	13500	DİZEL	6	12419	480/1900	12/1	ZF AS-TRONIC	ÖN 315/80 R 22.5 ARKA 295/80 R 22.5
TOURMALIN 12	Bus	19000	13500	DİZEL	6	9200	310/2200	6/1	ZF 6S 1700	ÖN-ARKA 295/80 R22.5
TOURMALIN 12	Bus	19000	13500	DİZEL	6	9200	310/2200	6/1	ZF 6HP594C	ÖN-ARKA 295/80 R22.5
TOURMALIN 12	Bus	19000	13500	DİZEL	6	6700	300/2500	6/1	ZF RL 75EC	ÖN-ARKA 295/80 R22.5
TOURMALIN 12	Bus	19000	13500	DİZEL	6	6700	300/2500	6/1	ALLISON T325R	ÖN-ARKA 295/80 R22.5
TOURMALIN 12	Bus	19000	13500	DİZEL	6	6700	300/2500	6/1	ZF 6S 1010 BO	ÖN-ARKA 295/80 R22.5
TOURMALIN 12	Bus	19000	13500	DİZEL	6	6700	300/2500	6/1	EATON FSBO-8406AE	ÖN-ARKA 295/80 R22.5
TOURMALIN 12	Bus	19000	13500	DİZEL	6	6700	300/2500	6/1	ZF 6S 1010 BO	ÖN-ARKA 295/80 R22.5
TOURMALIN 12	Bus	19000	13500	DİZEL	6	6700	300/2500	6/1	EATON FSBO-8406AE	ÖN-ARKA 295/80 R22.5
TOURMALIN 12	Bus	19000	13500	DİZEL	6	6700	300/2500	6/1	ALLISON T325R	ÖN-ARKA 295/80 R22.5
TOURMALIN 12	Bus	19000	13500	DİZEL	6	6700	300/2500	6/1	ZF RL 75EC	ÖN-ARKA 295/80 R22.5
TOURMALIN 12	Bus	19000	12500	DİZEL	6	9186	310/1900	6/1	ZF 6S BOIT 1700	ÖN-ARKA 295/80 R22.5
TOURMALIN 12	Bus	19000	12500	DİZEL	6	9186	310/1900	6/1	6HP594C	ÖN-ARKA 295/80 R22.5
TOURMALIN 13	Bus	19000	13500	DİZEL	6	6692.4	293/2500	6/1	ALLISON T325R	ÖN-ARKA 295/80 R22.5
TOURMALIN 13	Bus	19000	13500	DİZEL	6	6692.4	293/2500	6/1	EATON FSBO-8406AE	ÖN-ARKA 295/80 R22.5
TOURMALIN 13	Bus	19000	13500	DİZEL	6	6692.4	293/2500	6/1	ALLISON T325R	ÖN-ARKA 295/80 R22.5
TOURMALIN 13	Bus	19000	13500	DİZEL	6	6692.4	293/2500	6/1	ZF 6S 1010 BO	ÖN-ARKA 295/80 R22.5
TOURMALIN 13	Bus	19000	13500	DİZEL	6	6692.4	293/2500	6/1	EATON FSBO-8406AE	ÖN-ARKA 295/80 R22.5
TOURMALIN 13	Bus	19000	13500	DİZEL	6	9186	310/1900	6/1	ZF 6S 1700	ÖN-ARKA 295/80 R22.5
TOURMALIN 13	Bus	19000	13500	DİZEL	6	9186	310/1900	6/1	ZF 6HP594C	ÖN-ARKA 295/80 R22.5
TOURMALIN 13	Bus	19000	12500	DİZEL	6	9186	310/1900	6/1	ZF 6S BOIT 1700	ÖN-ARKA 295/80 R22.5
TOURMALIN 13	Bus	19000	12500	DİZEL	6	9186	310/1900	6/1	ZF 6HP594C	ÖN-ARKA 295/80 R22.5
TOURMALIN 12 ÇK	Bus	19000	12500	DİZEL	6	6692	300/2500	6/1	EATON FSBO	ÖN-ARKA 295/80 R22.5
TOURMALIN 12 ÇK	Bus	19000	12500	DİZEL	6	6692	300/2500	6/1	ALLISON T310R	ÖN-ARKA 295/80 R22.5
TOURMALIN IC, LHD	Bus	19000	12500	DİZEL	6	9186	310/1900	6/1	ZF 6S-1700*	ÖN-ARKA 295/80 R22.5
TOURMALIN IC, LHD	Bus	19000	12500	DİZEL	6	9186	310/1900	6/1	ZF 6HP594C	ÖN-ARKA 295/80 R22.5
TOURMALIN IC, LHD	Bus	19000	12500	DİZEL	6	9186	310/1900	6/1	ZF 6S-1700*	ÖN-ARKA 295/80 R22.5
TOURMALIN IC, LHD	Bus	19000	12500	DİZEL	6	9186	310/1900	6/1	ZF 6HP594C	ÖN-ARKA 295/80 R22.5
TOURMALIN IC, LHD	Bus	19000	12500	DİZEL	6	9186	360/1900	6/1	ZF 6S-1700*	ÖN-ARKA 295/80 R22.5
TOURMALIN IC, LHD	Bus	19000	12500	DİZEL	6	9186	360/1900	6/1	ZF 6HP594C	ÖN-ARKA 295/80 R22.5
TOURMALIN IC, LHD	Bus	19000	12500	DİZEL	6	9186	310/1900	6/1	ZF 6HP594C	ÖN-ARKA 295/80 R22.5
AVENUE LF	Bus	17900	10650	DİZEL	6	9200	310/2200	6/1	ZF 6 HP 594 C	ÖN-ARKA 275/70 R22.5
AVENUE LF	Bus	17900	10300	DİZEL	6	6700	250/2300	6/1	ZF 6 HP 504 C	ÖN-ARKA 275/70 R22.5
AVENUE LF	Bus	17900	10300	DİZEL	6	6700	250/2300	6/1	VOITH DIWA 854.5	ÖN-ARKA 275/70 R22.5
AVENUE LF RHD	Bus	17900	10300	DİZEL	6	6700	250/2300	6/1	ZF 6 HP 504	ÖN-ARKA 275/70 R22.5

TOFAŞ

OTOMOBİL PALIO 1.4 8V	P. Car	1460	955	BENZİN	4	1368	77/6000	5/1	FIAT 178	ÖN-ARKA 175/70 R 14 T
OTOMOBİL PALIO 1.3 MULTIJET	P. Car	1535	1030	DİZEL	4	1248	70/4000	5/1	FIAT 178	ÖN-ARKA 175/70 R 14 T
OTOMOBİL ALBEA 1.4 8V	P. Car	1530	1020	BENZİN	4	1368	77/6000	5/1	FIAT 178	ÖN-ARKA 185/65 R 14 H
OTOMOBİL ALBEA 1.3 MULTIJET SL/EL	P. Car	1595	1085	BENZİN	4	1248	70/4000	5/1	FIAT 178	ÖN-ARKA 175/70 R 14 H
OTOMOBİL DOBLO 1.4 8V	P. Car	1830	1230	BENZİN	4	1368	77/6000	5/1	FIAT 223	ÖN-ARKA 185/65 R 15 T
OTOMOBİL DOBLO 1.9 JTD	P. Car	1920	1320	DİZEL	4	1910	105/4000	5/1	FIAT 223	ÖN-ARKA 185/65 R 15 T
OTOMOBİL DOBLO 1.3 MULTIJET	P. Car	1910	1310	DİZEL	4	1248	75/4000	5/1	FIAT 223	ÖN-ARKA 185/65 R 15 T
OTOMOBİL DOBLO 1.4 16V 5 KOLTUKLU	P. Car	1940	1340	BENZİN	4	1368	70/6000	5/1	FIAT 263	ÖN-ARKA 195/60 R16C 99/97T
OTOMOBİL DOBLO 1.4 16V 7 KOLTUKLU	P. Car	2045	1370	BENZİN	4	1368	70/6000	5/1	FIAT 263	ÖN-ARKA 195/60 R16C 99/97T
OTOMOBİL DOBLO 1.3 MULTIJET 5 KOLTUKLU	P. Car	1970	1370	DİZEL	4	1248	66/4000	5/1	FIAT 263	ÖN-ARKA 185/65 R 15 88T
OTOMOBİL DOBLO 1.3 MULTIJET 7 KOLTUKLU	P. Car	2115	1430	DİZEL	4	1248	66/4000	5/1	FIAT 263	ÖN-ARKA 195/60 R16C 99/97T
OTOMOBİL DOBLO 1.6 MULTIJET 5 KOLTUKLU	P. Car	2010	1410	DİZEL	4	1598	77/4000	6/1	FIAT 263	ÖN-ARKA 185/65 R 15 88T
OTOMOBİL DOBLO 1.6 MULTIJET 7 KOLTUKLU	P. Car	2115	1430	DİZEL	4	1598	77/4000	6/1	FIAT 263	ÖN-ARKA 195/60 R16C 99/97T
OTOMOBİL DOBLO 2.0 MULTIJET 5 KOLTUKLU	P. Car	2050	1450	DİZEL	4	1956	99/3500	6/1	FIAT 263	ÖN-ARKA 195/60 R16C 99/97T
OTOMOBİL DOBLO 2.0 MULTIJET 7 KOLTUKLU	P. Car	2155	1480	DİZEL	4	1956	99/3500	6/1	FIAT 263	ÖN-ARKA 195/60 R16C 99/97T
OTOMOBİL LINEA 1.4 8V	P. Car	1660	1160	BENZİN	4	1368	77/6000	5/1	FIAT 323	ÖN-ARKA 185/65 R 15 T
OTOMOBİL LINEA 1.4 16V	P. Car	1700	1200	BENZİN	4	1368	120/500	5/1	FIAT 323	ÖN-ARKA 185/65 R 15 T
OTOMOBİL LINEA 1.3 MULTIJET	P. Car	1685	1185	DİZEL	4	1248	90/4000	5/1	FIAT 323	ÖN-ARKA 185/65 R 15 T
OTOMOBİL LINEA 1.3 MULTIJET OTOMATİK VİTES	P. Car	1685	1185	DİZEL	4	1248	90/4000	5/1	FIAT 323	ÖN-ARKA 185/65 R 15 T
OTOMOBİL LINEA 1.6 MULTIJET	P. Car	1790	1290	DİZEL	4	1598	77/4000	6/1	FIAT 323	ÖN-ARKA 185/65 R 15 84T
KAMYONET DOBLO CARGO 1.4 8V	Pick Up	1920	1190	BENZİN	4	1368	77/6000	5/1	FIAT 223	ÖN-ARKA 185/65 R 15 S
KAMYONET DOBLO CARGO 1.4 8V P.M.	Pick Up	2040	1190	BENZİN	4	1368	77/6000	5/1	FIAT 223	ÖN-ARKA 175/75 R 14 S
KAMYONET DOBLO CARGO 1.4 8V MAXİ	Pick Up	2090	1240	BENZİN	4	1368	77/6000	5/1	FIAT 223	ÖN-ARKA 175/75 R 14 S
KAMYONET DOBLO CARGO 1.9 JTD	Pick Up	2010	1280	DİZEL	4	1910	105/4000	5/1	FIAT 223	ÖN-ARKA 185/65 R 15 S
KAMYONET DOBLO CARGO 1.9 JTD PM	Pick Up	2130	1280	DİZEL	4	1910	105/4000	5/1	FIAT 223	ÖN-ARKA 175/75 R 14 S
KAMYONET DOBLO CARGO 1.9 JTD MAXİ	Pick Up	2180	1330	DİZEL	4	1910	105/4000	5/1	FIAT 223	ÖN-ARKA 175/75 R 14 S
KAMYONET DOBLO CARGO 1.3 MULTIJET	Pick Up	2000	1270	DİZEL	4	1248	75/4000	5/1	FIAT 223	ÖN-ARKA 185/65 R 15 S
KAMYONET DOBLO CARGO 1.3 MULTIJET PM	Pick Up	2120	1270	DİZEL	4	1248	75/4000	5/1	FIAT 223	ÖN-ARKA 175/75 R 14 S
KAMYONET DOBLO CARGO 1.3 MULTIJET MAXİ	Pick Up	2170	1320	DİZEL	4	1248	75/4000	5/1	FIAT 223	ÖN-ARKA 175/75 R 14 S
KAMYONET DOBLO CARGO COMBİ 1.4 8V	Pick Up	1945	1240	BENZİN	4	1368	77/6000	5/1	FIAT 223	ÖN-ARKA 185/65 R 15 S

TRAKTÖR TD75B 4WD ROPSLU	F. Tractor	3050	2760	DİZEL	3 TURBO	2930	72/2300	12/12	NEW HOLLAND	ÖN 300/70R20 ARKA 380/70R28
TRAKTÖR TD 65D 2WD ROPSLU	F. Tractor	5200	2650	DİZEL	3 TURBO	2931	65/2500	12/12 & 20/12	NEW HOLLAND	ÖN 7.50-16 ARKA 14.9-30
TRAKTÖR TD 65D 2WD KABİNLİ	F. Tractor	5200	2840	DİZEL	3 TURBO	2931	65/2500	12/12 & 20/12	NEW HOLLAND	ÖN 7.50-16 ARKA 14.9-30
TRAKTÖR TD 65D 4WD ROPSLU	F. Tractor	5400	2920	DİZEL	3 TURBO	2931	65/2500	12/12 & 20/12	NEW HOLLAND	ÖN 9.5024 ARKA 14.9-30
TRAKTÖR TD 65D 4WD KABİNLİ	F. Tractor	5400	3080	DİZEL	3 TURBO	2931	65/2500	12/12 & 20/12	NEW HOLLAND	ÖN 9.50-24 ARKA 14.9-30
TRAKTÖR TD 75D 2WD ROPSLU	F. Tractor	5400	2940	DİZEL	4	3908	75/2500	12/12 & 20/12	NEW HOLLAND	ÖN 7.50-16 ARKA 16.9-30
TRAKTÖR TD 75D 2WD KABİNLİ	F. Tractor	5400	3170	DİZEL	4	3908	75/2500	12/12 & 20/12	NEW HOLLAND	ÖN 7.50-16 ARKA 16.9-30
TRAKTÖR TD 75D 4WD ROPSLU	F. Tractor	5800	3420	DİZEL	4	3908	75/2500	12/12 & 20/12	NEW HOLLAND	ÖN 11.2-24 ARKA 16.9-30
TRAKTÖR TD 75D 4WD KABİNLİ	F. Tractor	5800	3600	DİZEL	4	3908	75/2500	12/12 & 20/12	NEW HOLLAND	ÖN 11.2-24 ARKA 16.9-30
TRAKTÖR TD 85D 2WD ROPSLU	F. Tractor	5500	2940	DİZEL	4 TURBO	3908	85/2500	12/12 & 20/12	NEW HOLLAND	ÖN 7.50-18 ARKA 18.4-30
TRAKTÖR TD 85D 2WD KABİNLİ	F. Tractor	5500	3170	DİZEL	4 TURBO	3908	85/2500	12/12 & 20/12	NEW HOLLAND	ÖN 7.50-18 ARKA 18.4-30
TRAKTÖR TD 85D 4WD ROPSLU	F. Tractor	5900	3420	DİZEL	4 TURBO	3908	85/2500	12/12 & 20/12	NEW HOLLAND	ÖN 12.4-24 ARKA 18.4-30
TRAKTÖR TD 85D 4WD KABİNLİ	F. Tractor	5900	3600	DİZEL	4 TURBO	3908	85/2500	12/12 & 20/12	NEW HOLLAND	ÖN 12.4-24 ARKA 18.4-30
TRAKTÖR TD 95D 2WD ROPSLU	F. Tractor	5600	3150	DİZEL	4 TURBO	3908	95/2500	12/12 & 20/12	NEW HOLLAND	ÖN 7.50-18 ARKA 18.4-30
TRAKTÖR TD 95D 2WD KABİNLİ	F. Tractor	5600	3340	DİZEL	4 TURBO	3908	95/2500	12/12 & 20/12	NEW HOLLAND	ÖN 7.50-18 ARKA 18.4-30
TRAKTÖR TD 95D 4WD ROPSLU	F. Tractor	6000	3580	DİZEL	4 TURBO	3908	95/2500	12/12 & 20/12	NEW HOLLAND	ÖN 12.4-24 ARKA 18.4-30
TRAKTÖR TD 95D 4WD KABİNLİ	F. Tractor	6000	3770	DİZEL	4 TURBO	3908	95/2500	12/12 & 20/12	NEW HOLLAND	ÖN 12.4-24 ARKA 18.4-30
TRAKTÖR JX 60 2WD ROPSLU	F. Tractor	5200	2650	DİZEL	3	2930	59/2500	12/12 & 20/12	CASE IH	ÖN 7.50X16 ARKA 14.9R30
TRAKTÖR JX 60 2WD KABİNLİ	F. Tractor	5200	2840	DİZEL	3	2930	59/2500	12/12 & 20/12	CASE IH	ÖN 7.50-16 ARKA 14.9R30
TRAKTÖR JX 60 4WD ROPSLU	F. Tractor	5400	2920	DİZEL	3	2930	59/2500	12/12 & 20/12	CASE IH	ÖN 12.4R20 ARKA 14.9R30
TRAKTÖR JX 60 4WD KABİNLİ	F. Tractor	5400	3080	DİZEL	3	2930	59/2500	12/12 & 20/12	CASE IH	ÖN 12.4R20 ARKA 14.9R30
TRAKTÖR JX 70 2WD ROPSLU	F. Tractor	5200	2650	DİZEL	3 TURBO	2930	69/2500	12/12 & 20/12	CASE IH	ÖN 7.50X16 ARKA 14.9R30
TRAKTÖR JX 70 2WD KABİNLİ	F. Tractor	5200	2840	DİZEL	3 TURBO	2930	69/2500	12/12 & 20/12	CASE IH	ÖN 7.50-16 ARKA 14.9R30
TRAKTÖR JX 70 4WD ROPSLU	F. Tractor	5400	2920	DİZEL	3 TURBO	2930	69/2500	12/12 & 20/12	CASE IH	ÖN 12.4R20 ARKA 14.9R30
TRAKTÖR JX 70 4WD KABİNLİ	F. Tractor	5400	3080	DİZEL	3 TURBO	2930	69/2500	12/12 & 20/12	CASE IH	ÖN 12.4R20 ARKA 14.9R30
TRAKTÖR JX 80 2WD ROPSLU	F. Tractor	5400	2940	DİZEL	3 TURBO	2930	80/2300	12/12 & 20/12	CASE IH	ÖN 9.00-16 ARKA 16.9R34
TRAKTÖR JX 80 2WD KABİNLİ	F. Tractor	5400	3170	DİZEL	3 TURBO	2930	80/2300	12/12 & 20/12	CASE IH	ÖN 9.00-16 ARKA 16.9R34
TRAKTÖR JX 80 4WD ROPSLU	F. Tractor	5800	3420	DİZEL	3 TURBO	2930	80/2300	12/12 & 20/12	CASE IH	ÖN 13.6R24 ARKA 16.9R34
TRAKTÖR JX 80 4WD KABİNLİ	F. Tractor	5800	3600	DİZEL	3 TURBO	2930	80/2300	12/12 & 20/12	CASE IH	ÖN 13.6R24 ARKA 16.9R34
TRAKTÖR JX 90 2WD ROPSLU	F. Tractor	5500	2940	DİZEL	4 TURBO	3908	89/2500	12/12 & 20/12	CASE IH	ÖN 7.50-16 ARKA 14.9R30
TRAKTÖR JX 90 2WD KABİNLİ	F. Tractor	5500	3170	DİZEL	4 TURBO	3908	89/2500	12/12 & 20/12	CASE IH	ÖN 7.50-16 ARKA 14.9R30
TRAKTÖR JX 90 4WD ROPSLU	F. Tractor	5900	3420	DİZEL	4 TURBO	3908	89/2500	12/12 & 20/12	CASE IH	ÖN 12.4-24 ARKA 18.4R30
TRAKTÖR JX 90 4WD KABİNLİ	F. Tractor	5900	3600	DİZEL	4 TURBO	3908	89/2500	12/12 & 20/12	CASE IH	ÖN 12.4-24 ARKA 18.4-30
TRAKTÖR JX 95 2WD ROPSLU	F. Tractor	5600	3150	DİZEL	4 TURBO	3908	98/2500	12/12 & 20/12	CASE IH	ÖN 7.50-18 ARKA 18.4R30
TRAKTÖR JX 95 2WD KABİNLİ	F. Tractor	5600	3340	DİZEL	4 TURBO	3908	98/2500	12/12 & 20/12	CASE IH	ÖN 7.50-18 ARKA 18.4-30
TRAKTÖR JX 95 4WD ROPSLU	F. Tractor	6000	3580	DİZEL	4 TURBO	3908	98/2500	12/12 & 20/12	CASE IH	ÖN 12.4-24 ARKA 18.4R30
TRAKTÖR JX 95 4WD KABİNLİ	F. Tractor	6000	3370	DİZEL	4 TURBO	3908	98/2500	12/12 & 20/12	CASE IH	ÖN 12.4-24 ARKA 18.4-30
TRAKTÖR TD 85D HC 4WD KABİNLİ	F. Tractor	5900	3600	DİZEL	4 TURBO	3908	85/2500	12/12 & 20/12	NEW HOLLAND	ÖN 13.6-38 ARKA 13.6-38
TRAKTÖR TD 95D HC 4WD KABİNLİ	F. Tractor	6000	3770	DİZEL	4 TURBO	3908	95/2500	12/12 & 20/12	NEW HOLLAND	ÖN 13.6-38 ARKA 13.6-38

DİZEL = Diesel
 BENZİN = Petrol
 ÖN-ARKA = Front-Rear KAT = Ply

**OTOMOTİV SANAYİİ FİRMALARININ
2010 YILI ÜRETİM KAPASİTELERİ
Production Capacities 2010**

FİRMALAR Firms	OTOMOBİL P.Car	KAMYON Truck	KAMYONET Pick Up	OTOBÜS Bus	MİNİBÜS Mini-Bus	MİDİBÜS Midi-Bus	TRAKTÖR F. Tractor	TOPLAM Total
A. ISUZU	0	7.200	2.400	0	922	2.633	0	13.155
B.M.C.	0	10.000	5.000	800	3.200	1.000	0	20.000
FORD OTOSAN	0	10.000	250.000	0	70.000	0	0	330.000
HATTAT TARIM	0	0	0	0	0	0	10.500	10.500
HONDA TÜRKİYE	50.000	0	0	0	0	0	0	50.000
HYUNDAI ASSAN	100.000	0	15.000	0	10.000	0	0	125.000
KARSAN	0	5.000	15.000	0	3.000	5.000	0	28.000
M.A.N. TÜRKİYE	0	0	0	1.700	0	0	0	1.700
M. BENZ TÜRK	0	14.500	0	4.000	0	0	0	18.500
OTOKAR	0	0	3.850	1.000	1.850	2.100	0	8.800
O. RENAULT	360.000	0	0	0	0	0	0	360.000
TEMSA GLOBAL	0	4.500	3.000	1.000	0	2.000	0	10.500
TOFAŞ	400.000	0	0	0	0	0	0	400.000
TOYOTA	150.000	0	0	0	0	0	0	150.000
T. TRAKTÖR	0	0	0	0	0	0	35.000	35.000
TOPLAM/Total	1.060.000	51.200	294.250	8.500	88.972	12.733	45.500	1.561.155

OTOMOTİV SANAYİİ FİRMALARININ 2005 - 2009 YILLARI ÜRETİM ADETLERİ
Production Units For The Years 2005 - 2009

FİRMALAR/MODELLER	Firms/Models	2005	2006	2007	2008	2009
A.I.O.S.						
Kamyonet	Pick Up	1.788	2.398	2.984	3.796	210
Kamyon (A.Y.A. 3.501 - 12.000 KG)	Truck	2.709	3.055	2.930	3.469	402
Midibüs	Midibus	2.265	1.992	1.928	2.742	1.205
TOPLAM	Total	6.762	7.445	7.842	10.007	1.817
ASKAM						
Kamyon (A.Y.A. > 12.001 KG)	Truck	2.046	1.116	74	0	0
Kamyonet	Pick Up	380	185	5	0	0
Minibüs	Minibus	13	8	0	0	0
TOPLAM	Total	2.439	1.309	79	0	0
B.M.C.						
Kamyon (A.Y.A. > 12.001 KG)	Truck	6.431	6.628	5.637	5.600	1.617
Kamyonet	Pick Up	4.410	3.566	2.624	1.124	936
Minibus	Minibus	784	629	965	863	1
Midibüs	Midibus	188	291	184	51	0
Otobüs (Şehiriçi)	Bus	687	565	959	1.098	613
TOPLAM	Total	12.500	11.679	10.369	8.736	3.167
FORD OTOSAN						
Kamyon (A.Y.A. > 12.001 KG)	Truck	9.530	7.825	6.434	5.863	1.722
Minibüs	Minibus	20.795	16.721	18.897	17.844	11.466
Kamyonet	Pick Up	16.597	36.525	52.336	46.960	19.328
Kamyonet Van	Pick Up	196.501	197.055	208.689	198.094	140.940
TOPLAM	Total	243.423	258.126	286.356	268.761	173.456

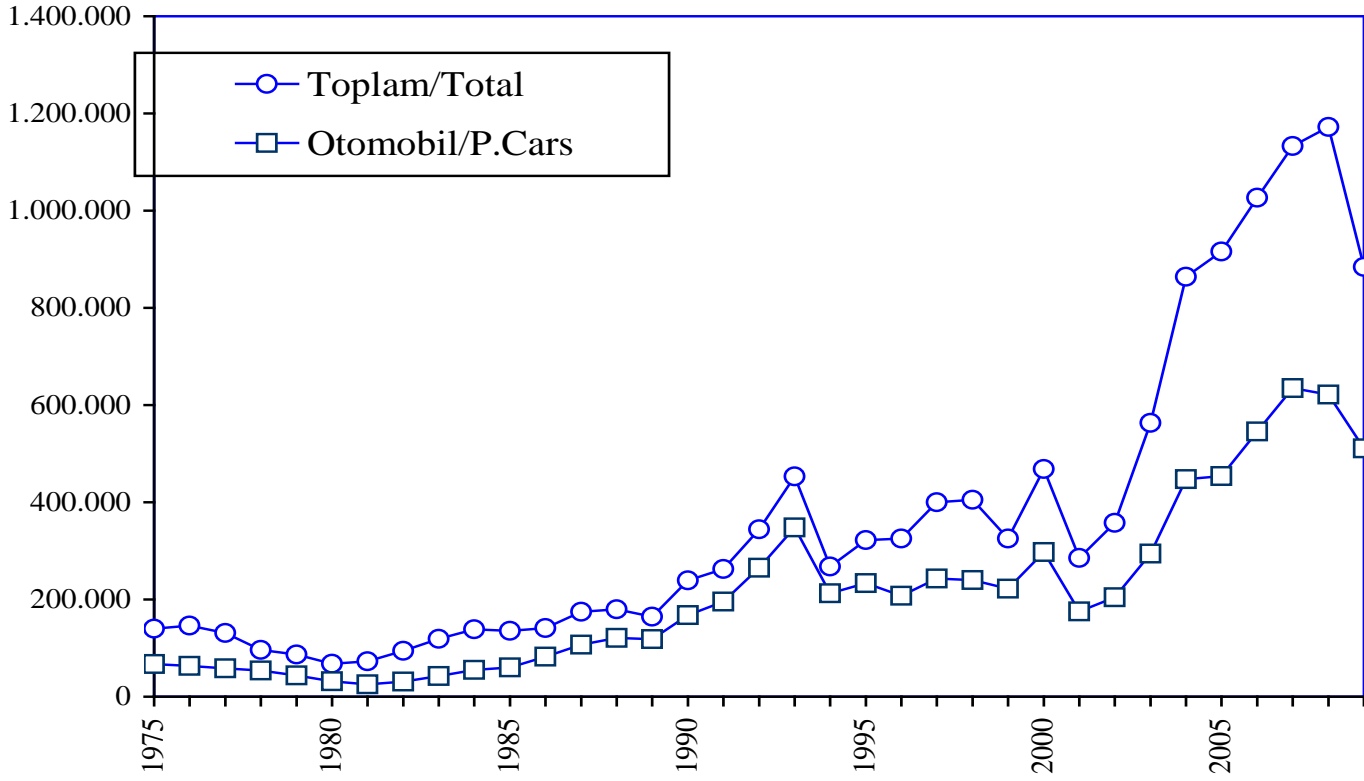
FİRMALAR/MODELLER	Firms/Models	2005	2006	2007	2008	2009
HATTAT TARIM						
Traktör (< 60 HP)	F. Tractor	1.015	897	548	391	206
Traktör (> 61 HP)	F. Tractor	605	537	706	528	359
TOPLAM	Total	1.620	1.434	1.254	919	565
HONDA TÜRKİYE						
Otomobil (1.301 - 1.600 CC - SEDAN)	P. Car	11.236	16.694	18.354	17.402	7.944
Otomobil (1.601 - 2.000 CC - SEDAN)	P. Car	0	1.628	5.309	32.671	10.320
TOPLAM	Total	11.236	18.322	23.663	50.073	18.264
HYUNDAI ASSAN						
Minibüs	Minibus	2.779	1.180	292	0	0
Kamyonet Van	Pick Up	25.839	17.365	6.207	0	0
Otomobil (1.301 - 1.600 CC - HATCHBACK)	P. Car	0	0	0	4.144	36.816
Otomobil (1.301 - 1.600 CC - SEDAN)	P. Car	31.402	42.350	83.691	77.446	11.836
TOPLAM	Total	60.020	60.895	90.190	81.590	48.652
KARSAN						
Kamyon (A.Y.A. 3.501 - 12.000 KG)	Truck	0	0	93	906	178
Kamyon (A.Y.A. > 12.001 KG)	Truck	0	0	0	151	345
Minibüs	Minibus	1.177	1.735	1.550	1.905	100
Midibüs	Midibus	890	1.835	4.253	4.353	0
Kamyonet	Pick Up	7.038	5.550	1.879	1.839	0
Kamyonet Van	Pick Up	4.041	3.404	1.945	2.076	7.690
TOPLAM	Total	13.146	12.524	9.720	11.230	8.313

FİRMALAR/MODELLER	Firms/Models	2005	2006	2007	2008	2009
M.A.N. TÜRKİYE						
Kamyon (A.Y.A. > 12.001 KG)	Truck	421	150	0	0	0
Otobüs (Şehiriçi)	Bus	701	1.157	694	605	699
Otobüs (Şehirlerarası)	Bus	908	1.194	1.375	1.091	845
TOPLAM	Total	2.030	2.501	2.069	1.696	1.544
M. BENZ TÜRK						
Otobüs (Şehiriçi)	Bus	597	644	743	510	370
Otobüs (Şehirlerarası)	Bus	1.701	1.556	2.263	3.000	2.403
Kamyon (A.Y.A. > 12.001 KG)	Truck	11.618	13.009	16.008	17.290	3.719
TOPLAM	Total	13.916	15.209	19.014	20.800	6.492
OTOKAR						
Midibüs	Midibus	793	935	1.164	1.495	1.008
Minibüs	Minibus	595	455	295	511	262
Kamyonet	Pick Up	1.202	1.385	969	692	1.000
Otobüs (Şehiriçi)	Bus	0	0	106	325	290
TOPLAM	Total	2.590	2.775	2.534	3.023	2.560
OTOYOL						
Kamyon (A.Y.A. 3.501 - 12.000 KG)	Truck	1.591	1.092	0	0	0
Kamyon (A.Y.A. > 12.001 KG)	Truck	1	1.103	235	0	0
Kamyonet	Pick Up	191	61	0	0	0
Minibüs	Midibus	19	0	0	0	0
Midibüs	Midibus	1.832	1.909	350	0	0
TOPLAM	Total	3.634	4.165	585	0	0

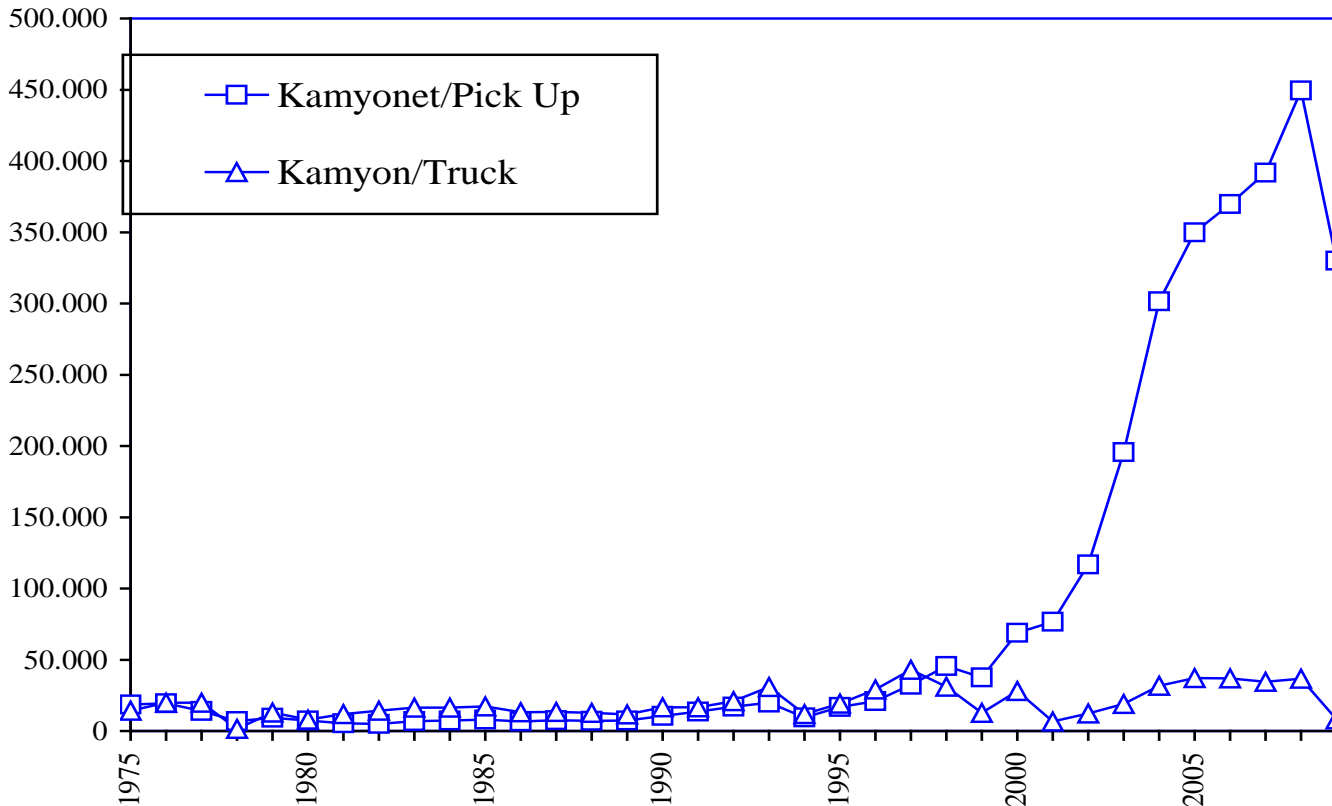
FİRMALAR/MODELLER	Firms/Models	2005	2006	2007	2008	2009
OYAK-RENAULT						
Otomobil (< 1.300 CC - SEDAN)	P. Car	4.501	36.354	46.432	69.528	93.665
Otomobil (1.301 - 1.600 CC - SEDAN)	P. Car	116.897	179.568	207.291	211.595	182.876
Otomobil (1.601 - 2.000 CC - SEDAN)	P. Car	58.271	12.671	9.933	5.572	1.031
TOPLAM	Total	179.669	228.593	263.656	286.695	277.572
TEMSA GLOBAL						
Otobüs (Şehirlerarası)	Bus	812	903	806	897	711
Kamyon (A.Y.A. 3.501 - 12.000 KG)	Truck	2.880	3.048	3.133	3.521	263
Kamyonet	Pick Up	3.328	3.663	3.963	4.105	1.029
Midibüs	Midibus	1.141	1.301	1.426	2.019	411
TOPLAM	Total	8.161	8.915	9.328	10.542	2.414
TOFAŞ						
Otomobil (< 1.300 CC - SEDAN)	P. Car	23.561	14.321	29.259	16.525	13.994
Otomobil (< 1.300 CC - HATCHBACK)	P. Car	9.856	2.988	2.186	1.196	801
Otomobil (< 1.300 CC - STATION WAGON)	P. Car	11.005	15.237	14.304	8.817	23.615
Otomobil (1.301 - 1.600 CC - SEDAN)	P. Car	10.859	21.171	29.792	30.708	12.080
Otomobil (1.301 - 1.600 CC - HATCHBACK)	P. Car	246	736	915	965	970
Otomobil (1.301 - 1.600 CC - STATION WAGON)	P. Car	4.238	14.474	11.315	10.243	38.620
Otomobil (1.601 - 2.000 CC - SEDAN)	P. Car	0	0	0	35	0
Otomobil (1.601 - 2.000 CC - STATION WAGON)	P. Car	13.025	10.802	14.586	8.199	4.099
Kamyonet Van	Pick Up	88.570	98.705	110.136	190.748	158.911
TOPLAM	Total	161.360	178.434	212.493	267.436	253.090
TOYOTA						
Otomobil (1.301 - 1.600 CC - SEDAN)	P. Car	48.085	63.191	11.120	6.920	7.470
Otomobil (1.301 - 1.600 CC - HATCHBACK)	P. Car	22.524	28.120	49.511	56.846	26.355
Otomobil (1.601 - 2.000 CC - SEDAN)	P. Car	85.181	83.313	89.654	53.674	37.293
Otomobil (1.601 - 2.000 CC - HATCHBACK)	P. Car	2.776	2.064	11.231	9.081	1.146
TOPLAM	Total	158.566	176.688	161.516	126.521	72.264

FİRMALAR/MODELLER	Firms/Models	2005	2006	2007	2008	2009
TÜRK TRAKTÖR						
Traktör (< 60 HP)	F. Tractor	11.558	11.624	11.228	11.642	4.973
Traktör (> 61 HP)	F. Tractor	6.312	5.633	7.122	10.460	9.323
TOPLAM	Total	17.870	17.257	18.350	22.102	14.296
UZEL						
Traktör (< 60 HP)	F. Tractor	9.020	10.219	6.658	1.786	0
Traktör (> 61 HP)	F. Tractor	8.017	9.931	7.256	0	0
TOPLAM	Total	17.037	20.150	13.914	1.786	0
GENEL TOPLAM	Grand Total	915.979	1.026.421	1.132.932	1.171.917	884.466

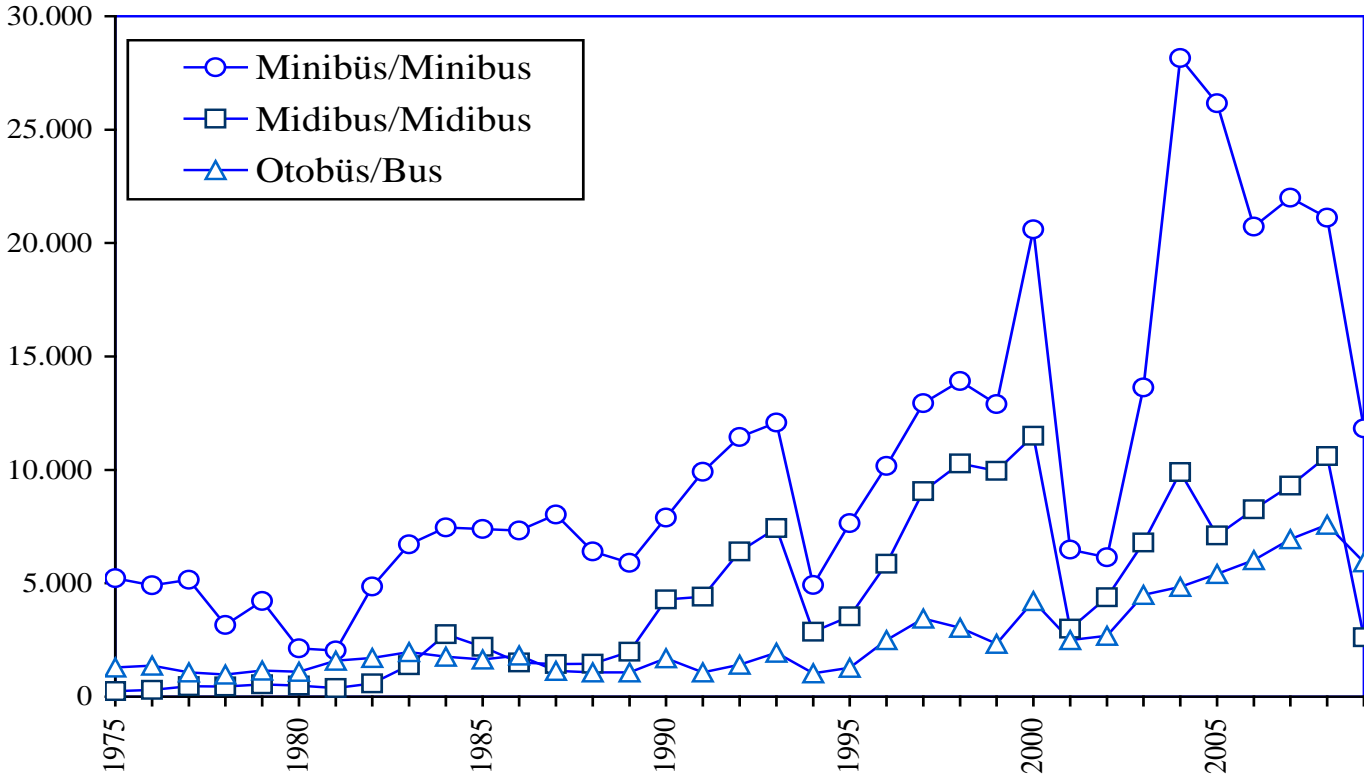
Otomobil /Toplam Üretim P.Cars /Total Production



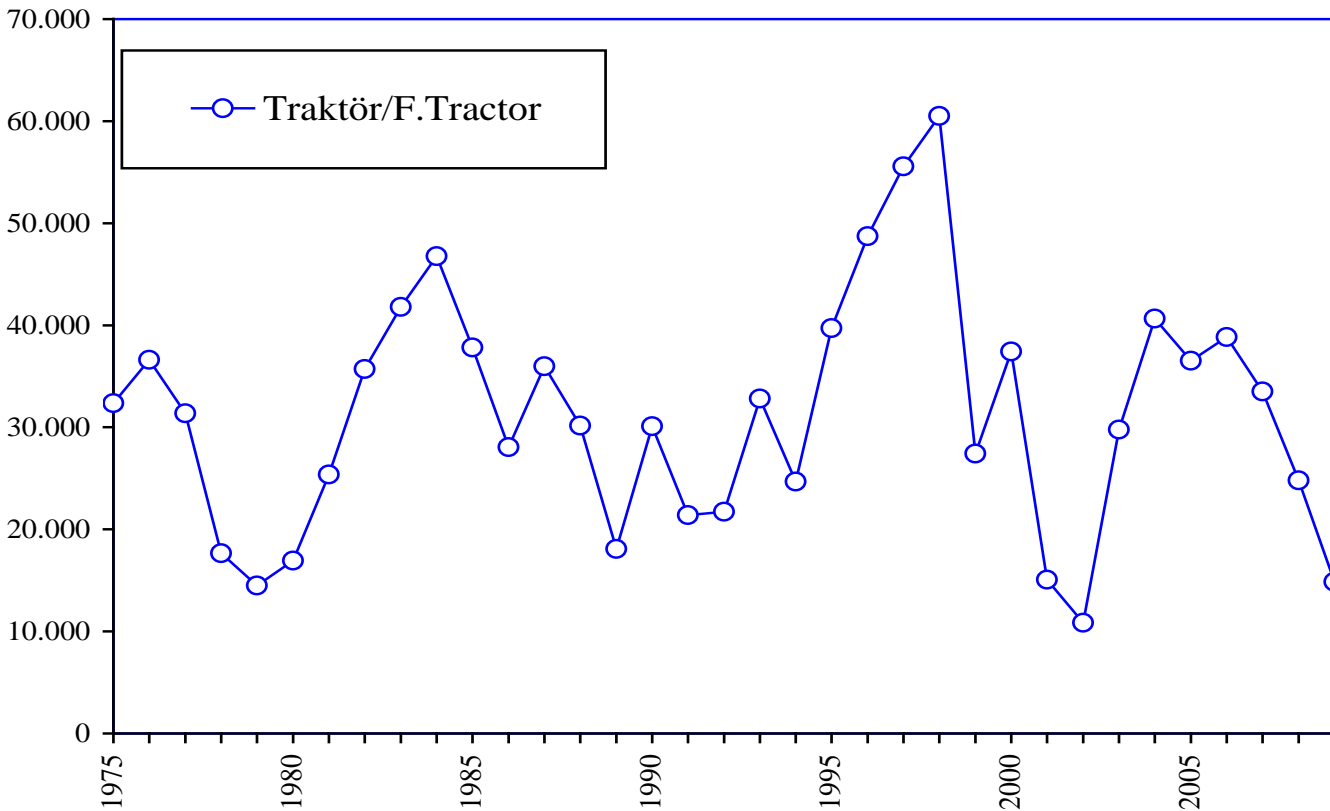
Yük Taşıt Araçları Üretimi Truck and Pick Up Production



Yolcu Taşıt Araçları Üretimi Bus Production



Traktör Üretimi F.Tractor Production

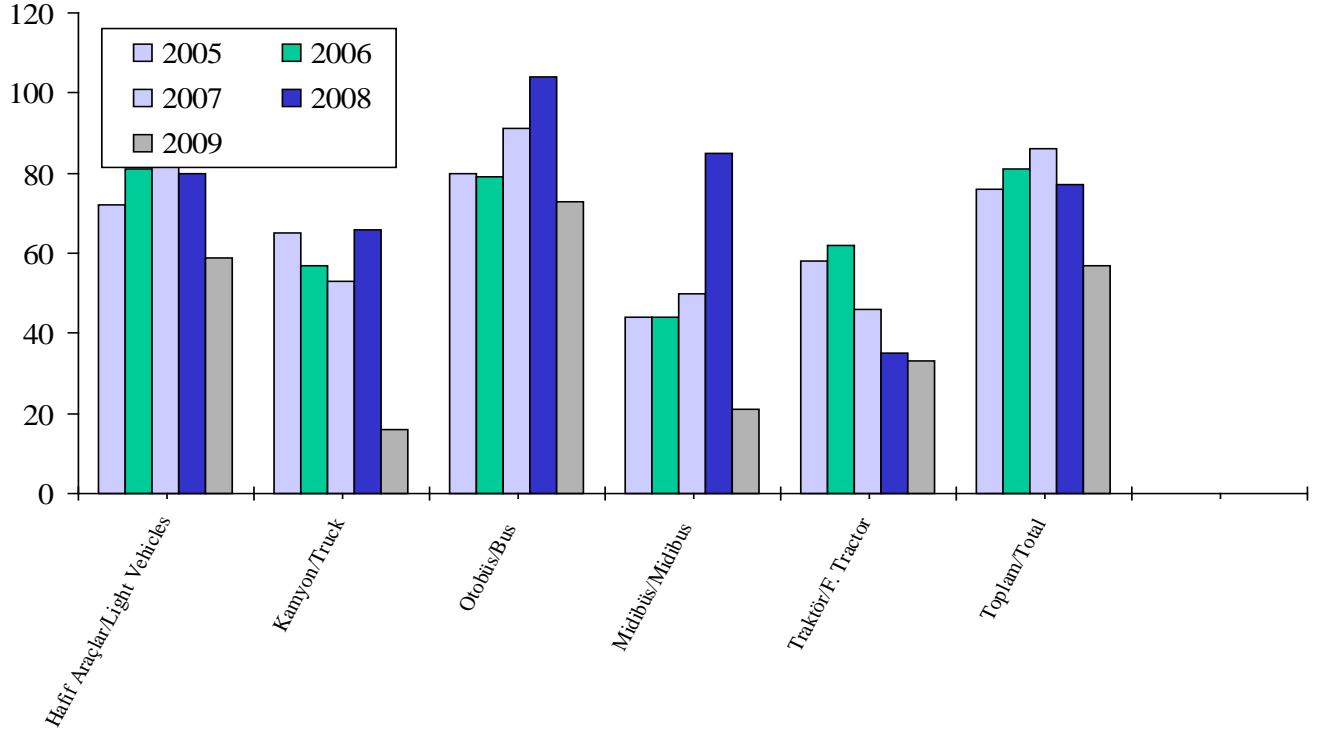


OTOMOTİV SANAYİİ FİRMALARININ ÜRETİM ADETLERİ
The Production Units Of The Automotive Manufacturers

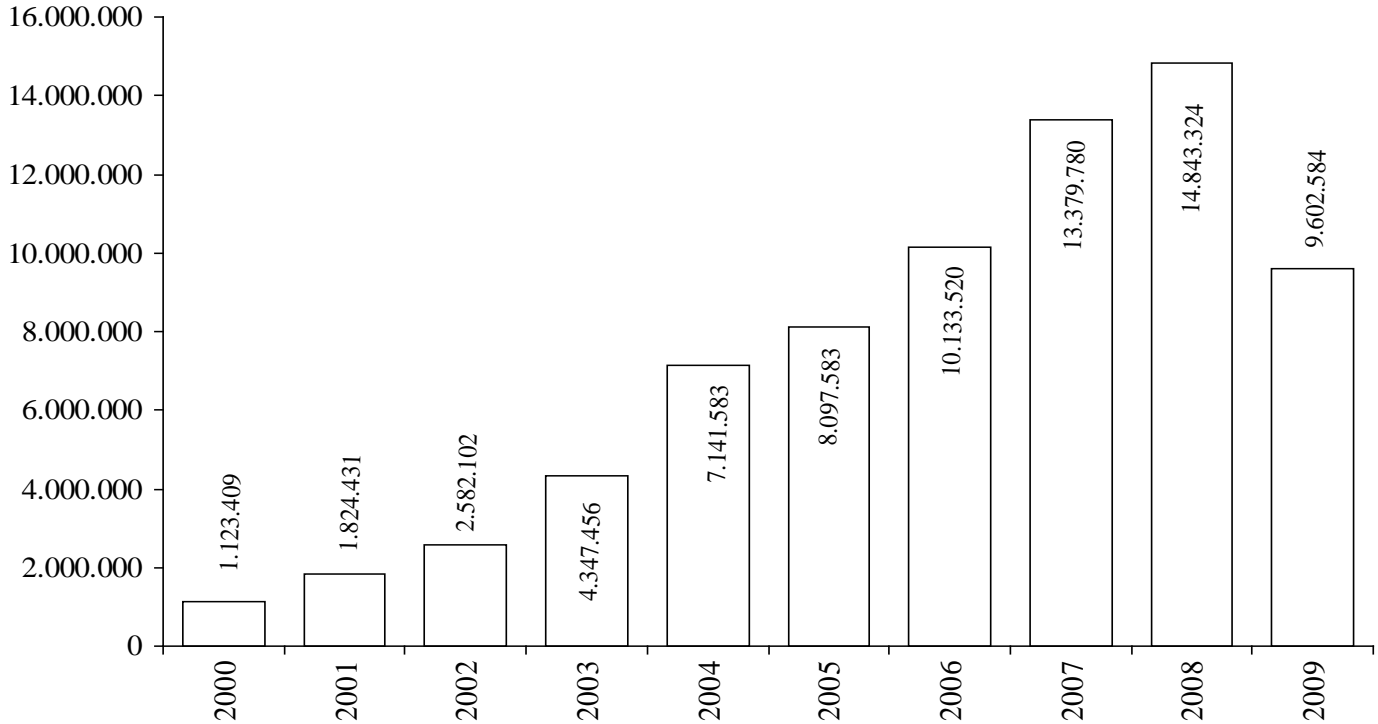
ARALIK SONU / By The end of December

YILLAR Years	OTOMOBİL P.Car	KAMYON Truck	KAMYONET Pick-Up	OTOBÜS Bus	MİNİBÜS Minibus	MİDİBÜS Midibus	TRAKTÖR F.Tractor	TOPLAM Total
1963	30	999	1.458	12	631	0	7.982	11.112
1964	100	2.741	885	56	401	0	7.006	11.189
1965	60	2.350	300	122	1.199	0	6.419	10.450
1966	18	6.258	2.476	174	0	252	8.969	18.147
1967	1.760	7.816	2.736	325	622	0	13.976	27.235
1968	2.852	9.408	2.270	466	895	0	15.118	31.009
1969	3.902	10.859	3.030	882	1.095	84	13.412	33.264
1970	3.660	6.041	4.395	806	1.099	4	7.518	23.523
1971	12.888	4.747	4.508	608	1.891	30	15.687	40.359
1972	29.628	8.596	6.044	988	3.748	0	22.893	71.897
1973	46.855	11.723	8.674	1.267	4.533	22	32.585	105.659
1974	59.906	10.591	11.861	1.113	4.584	148	25.363	113.566
1975	67.291	14.670	18.489	1.284	5.222	239	32.365	139.560
1976	62.992	20.498	19.415	1.376	4.910	302	36.602	146.095
1977	58.245	20.700	14.016	1.077	5.152	467	31.380	131.037
1978	54.085	13.144	6.879	972	3.163	444	17.673	96.360
1979	43.808	13.367	9.384	1.151	4.222	547	14.484	86.963
1980	31.529	8.308	7.322	1.101	2.130	491	16.936	67.817
1981	25.306	12.486	5.454	1.584	2.040	378	25.358	72.606
1982	31.195	15.131	4.991	1.703	4.850	587	35.716	94.173
1983	42.509	17.514	6.822	1.964	6.712	1.382	41.799	118.702
1984	54.832	17.518	7.279	1.766	7.460	2.750	46.782	138.387
1985	60.353	18.162	7.888	1.637	7.397	2.191	37.830	135.458
1986	82.032	13.646	6.605	1.813	7.318	1.508	28.053	140.975
1987	107.185	13.545	7.580	1.137	8.026	1.434	35.986	174.893
1988	120.796	12.842	7.196	1.078	6.401	1.449	30.167	179.929
1989	118.314	11.763	7.250	1.069	5.898	1.984	18.077	164.355
1990	167.556	16.933	10.553	1.689	7.898	4.288	30.098	239.015
1991	195.574	16.918	13.541	1.075	9.912	4.401	21.381	262.802
1992	265.245	21.266	16.984	1.415	11.450	6.399	21.723	344.482
1993	348.095	31.343	19.766	1.933	12.084	7.435	32.809	453.465
1994	212.651	12.108	9.602	1.034	4.924	2.855	25.169	268.343
1995	233.412	19.759	16.808	1.279	7.645	3.537	44.068	326.508
1996	207.757	29.432	21.032	2.499	10.171	5.856	52.590	329.337
1997	242.780	43.693	32.435	3.449	12.935	9.060	55.565	399.917
1998	239.937	31.823	45.517	3.040	13.910	10.275	60.500	405.002
1999	222.041	13.096	37.551	2.327	12.894	9.953	27.435	325.297
2000	297.476	28.348	68.807	4.213	20.597	11.506	37.434	468.381
2001	175.343	6.683	76.672	2.501	6.486	3.000	15.052	285.737
2002	204.198	12.295	116.872	2.684	6.139	4.377	10.840	357.405
2003	294.116	19.041	195.606	4.490	13.625	6.794	29.778	563.450
2004	447.152	31.790	301.563	4.839	28.161	9.903	40.665	864.073
2005	453.663	37.227	349.885	5.406	26.162	7.109	36.527	915.979
2006	545.682	37.026	369.862	6.019	20.728	8.263	38.841	1.026.421
2007	634.883	34.544	391.737	6.946	21.999	9.305	33.518	1.132.932
2008	621.567	36.800	449.434	7.526	21.123	10.660	24.807	1.171.917
2009	510.931	8.246	330.044	5.931	11.829	2.624	14.861	884.466

Kapasite Kullanımı (%) Capacity Usage (%)



OSD Üyeleri İhracat (US Dollars) (Bin/Thousand) OSD Members Exports



OTOMOTİV SANAYİİ FİRMALARININ İHRACATLARI
Automotive Industry Exports

ARALIK SONU/By the end of December

YILLAR / Years

2005

2006

2007

2008

2009

TİPLER / Types	ADET Units	DEĞER \$ Value	ADET Units	DEĞER \$ Value	ADET Units	DEĞER \$ Value	ADET Units	DEĞER \$ Value	ADET Units	DEĞER \$ Value
OTOMOBİL / P. Car	319.849	4.098.450.643	430.528	5.471.999.318	518.328	6.941.721.286	530.175	7.338.172.370	340.211	4.603.458.146
KAMYON / Truck	5.059	265.908.938	4.012	236.167.822	9.399	644.492.876	9.740	718.225.590	1.890	162.028.403
KAMYONET / Pick Up	219.067	2.638.935.232	251.911	3.113.245.220	273.017	3.850.694.467	348.814	5.022.968.619	270.885	3.583.111.873
OTOBÜS / Bus	3.791	568.072.883	4.122	673.747.640	5.349	1.068.409.224	5.521	1.098.374.965	4.368	851.987.295
MİNİBÜS / Minibus	3.733	57.189.589	4.208	75.387.559	11.622	220.139.691	14.270	290.029.482	9.674	138.792.878
MİDİBÜS / Midibus	1.935	85.037.627	1.918	109.027.648	2.031	125.803.388	2.143	163.516.254	1.203	89.534.719
TRAKTÖR / F. Tractor	8.244	122.154.910	9.710	145.034.002	9.458	164.941.590	10.420	212.036.447	8.672	173.671.038
YEDEK PARÇA / Miscellaneous Parts		261.833.548		308.910.352		363.577.505		484.509.113		564.058.442
TOPLAM / Total	561.678	8.097.583.370	706.409	10.133.519.561	829.204	13.379.780.027	921.083	15.327.832.840	636.903	10.166.642.794

Excluding Local Incentive Sales

OTOMOTİV SANAYİİ FİRMALARININ İHRACATLARI
Automotive Industry Exports

(A) Complete Vehicle, (B) Miscellaneous Parts

ARALIK SONU/By the end of December

FİRMALAR/Firms	2005		2006		2007		2008		2009	
	ADET Units	DEĞER \$ Value \$	ADET Units	DEĞER \$ Value \$	ADET Units	DEĞER \$ Value \$	ADET Units	DEĞER \$ Value \$	ADET Units	DEĞER \$ Value \$
A.I.O.S.										
Komple Araç (A)	767	41.550.164	711	39.671.605	750	52.859.501	1.042	88.310.971	565	36.287.990
Muhtelif Parça (B)	0	1.746.892	0	2.470.922	0	2.482.358		4.305.179		3.411.381
ASKAM										
Komple Araç (A)	16	622.476	30	1.559.737	0	0	0	0	0	0
Muhtelif Parça (B)	0	259.028	0	77.341	0	4.994		0		0
B.M.C.										
Komple Araç (A)	1.146	75.559.210	712	64.038.157	1.524	117.713.052	1.189	118.547.951	582	53.328.047
Muhtelif Parça (B)	0	3.108.868	0	4.633.147	0	6.725.073		4.810.401		3.383.953
FORD OTOSAN										
Komple Araç (A)	162.910	2.046.322.255	184.748	2.418.455.711	221.964	3.373.728.560	218.046	3.700.683.548	128.738	2.004.292.289
Muhtelif Parça (B)	0	29.062.374	0	35.652.360	0	50.219.794		24.638.672		38.077.817
HATTAT TARIM										
Komple Araç (A)	4	56.759	0	0	0	0	53	1.323.226	77	2.549.906
Muhtelif Parça (B)	0	0	0	86.000	0	0	0	0	0	0
HONDA TÜRKİYE										
Komple Araç (A)	3.011	39.716.210	5.692	85.599.561	7.732	135.550.960	34.926	595.442.974	9.149	156.557.640
Muhtelif Parça (B)	0	285.729	0	549.189	0	289.437	0	0	0	1.937.372
HYUNDAI ASSAN										
Komple Araç (A)	20.654	209.903.103	34.630	356.265.291	69.336	764.485.169	61.269	642.532.489	17.314	159.900.315
Muhtelif Parça (B)	0	472.422	0	3.646.518	0	1.136.964		2.370.900		1.605.754
KARSAN										
Komple Araç (A)	366	5.055.200	244	3.613.190	682	11.265.196	442	7.083.667	6.075	66.238.409
Muhtelif Parça (B)	0	1.733.884	0	452.083	0	456.325		957.704		534.429
M.A.N. TÜRKİYE										
Komple Araç (A)	1.310	186.971.735	1.874	290.309.748	1.696	350.815.402	1.527	360.889.220	1.148	289.629.987
Muhtelif Parça (B)	0	13.468.609	0	14.187.720	0	10.014.447		13.588.212		9.963.960

M. BENZ TÜRK										
Komple Araç (A)	5.045	448.305.185	3.903	393.075.744	8.708	972.039.362	9.092	1.000.073.122	3.317	493.681.799
Muhtelif Parça (B)	0	8.499.269	0	14.310.082	0	29.443.281		33.636.572		20.486.261
OTOKAR										
Komple Araç (A)	1.148	70.722.337	1.276	101.903.326	1.113	97.817.549	619	104.138.416	501	87.927.551
Muhtelif Parça (B)	0	7.322.154	0	10.587.249	0	2.766.898		10.587.971		12.358.921
OTOYOL										
Komple Araç (A)	851	18.317.367	825	22.789.212	104	5.681.586	9	751.684	9	0
Muhtelif Parça (B)	0	4.043.139	0	1.058.244	0	1.072.000		25.421		0
OYAK-RENAULT										
Komple Araç (A)	123.162	1.332.866.179	177.411	2.060.598.794	204.428	2.389.521.053	252.232	3.086.031.532	222.278	2.684.977.963
Muhtelif Parça (B)	0	89.734.959	0	115.909.259	0	139.652.097		182.884.238		327.451.183
TEMSA GLOBAL										
Komple Araç (A)	970	127.743.966	1.103	161.599.587	1.145	176.236.455	1.240	186.885.207	1.114	165.399.415
Muhtelif Parça (B)	0	2.264.703	0	3.177.885	0	5.291.069		15.439.586		8.028.845
TOYOTA										
Komple Araç (A)	144.058	2.308.325.619	160.479	2.510.897.080	154.386	2.842.393.047	119.586	2.303.580.309	69.097	1.312.697.698
Muhtelif Parça (B)	0	8.595.965	0	13.132.160	0	16.446.922		17.998.963		19.028.652
TOFAŞ										
Komple Araç (A)	88.020	801.613.906	123.061	1.169.198.464	146.178	1.561.154.040	209.444	2.436.336.190	168.353	1.917.994.211
Muhtelif Parça (B)	0	55.714.803	0	48.529.358	0	44.290.197		118.156.005		84.021.747
TÜRK TRAKTÖR										
Komple Araç (A)	5.124	86.178.583	4.597	81.231.815	5.761	103.741.952	9.598	198.013.971	8.595	171.121.132
Muhtelif Parça (B)	0	26.325.137	0	33.729.264	0	46.661.382		52.466.366		33.768.167
UZEL										
Komple Araç (A)	3.116	35.919.568	5.113	63.802.187	3.697	61.199.638	769	12.699.250	0	0
Muhtelif Parça (B)	0	9.195.613	0	6.721.571	0	6.624.267		2.642.923		0
	561.678	7.835.749.822	706.409	9.824.609.209	829.204	13.016.202.522	921.083	14.843.323.727	636.912	9.602.584.352
	0	261.833.548	0	308.910.352	0	363.577.505	0	484.509.113	0	564.058.442
TOPLAM/Total	561.678	8.097.583.370	706.409	10.133.519.561	829.204	13.379.780.027	921.083	15.327.832.840	636.912	10.166.642.794

YURTIÇİ TEŞVİKLİ SATIŞLARI HARIÇTİR / Excluding Local Incentive Sales

OTOMOBİL İTHALATI / Passenger Car Imports

BÖLGE / ÜLKE Region / Country	2005		2006		2007		2008		2009	
	Adet / Unit	%	Adet / Unit	%	Adet / Unit	%	Adet / Unit	%	Adet / Unit	%
AT + EFTA / EU + EFTA	237.905	78,8	200.446	78,5	195.361	82,5	165.435	80,0	190.919	78,4
DOĞU AVRUPA / East Europe	20.106	6,7	14.022	5,5	9.998	4,2	13.140	6,4	12.128	5,0
* RUSYA FED. / Russian Fed.	3.562	1,2	1.441	0,6	845	0,4	620	0,3	290	0,1
* ROMANYA / Romania	8.464	2,8	7.355	2,9	3.688	1,6	5.152	2,5	5.873	2,4
* ÇEK CUM. / Czech Republic	8.080	2,7	5.226	2,0	5.465	2,3	3.625	1,8	3.401	1,4
* DİĞER / Others	0	0,0	0	0,0	0	0,0	3.743	1,8	2.564	1,1
UZAK DOĞU / Far East	43.878	14,5	41.026	16,1	31.366	13,2	28.218	13,6	40.495	16,6
* JAPONYA / Japan	8.448	2,8	8.891	3,5	8.931	3,8	7.177	3,5	6.203	2,5
* G. KORE / S. Korea	33.184	11,0	29.769	11,7	20.102	8,5	18.005	8,7	31.198	12,8
* DİĞER / Others	2.246	0,7	2.366	0,9	2.333	1,0	3.036	1,5	3.094	1,3
TOPLAM/Total	301.889	100,0	255.494	100,0	236.725	100,0	206.793	100,0	243.542	100,0

Kaynak: Otomotiv Distribütörleri Derneği

Source: Association of Automotive Distributors

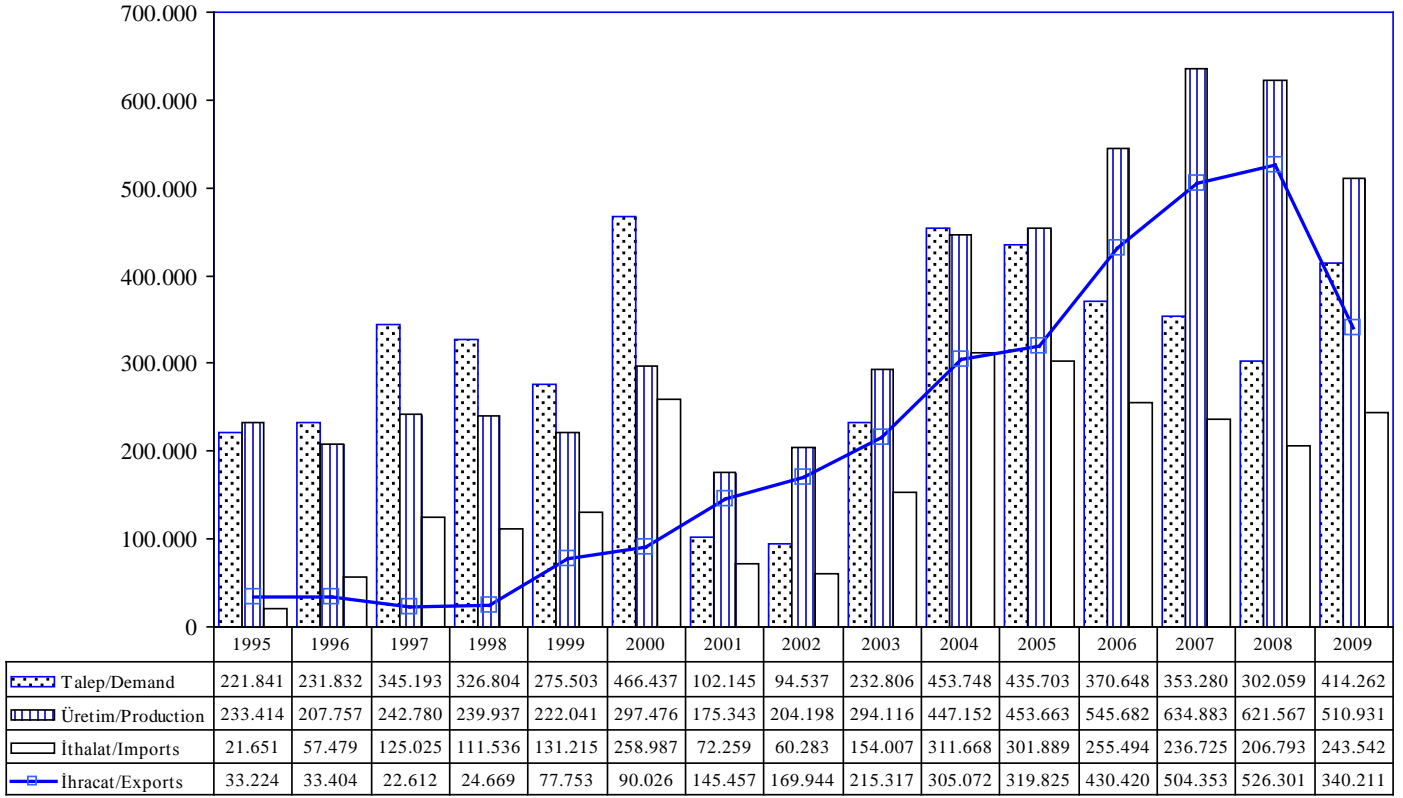
HAFİF TİCARİ ARAÇ İTHALATI / Light Commercial Vehicle Imports

BÖLGE / ÜLKE Region / Country	2005		2006		2007		2008		2009	
	Adet / Unit	%	Adet / Unit	%	Adet / Unit	%	Adet / Unit	%	Adet / Unit	%
AT + EFTA / EU + EFTA	90.209	72,5	81.179	70,2	73.753	68,1	57.527	63,2	43.681	66,3
DOĞU AVRUPA / East Europe	335	0,3	1.502	1,3	5.263	4,9	4.463	4,9	4.113	6,2
* RUSYA FED. / Russian Fed.	0	0,0	1.341	1,2	0	0,0	0	0,0	0	0,0
* ROMANYA / Romania	241	0,2	1	0,0	5.263	4,9	4.426	4,9	3.918	5,9
* ÇEK CUM. / Czech Republic	94	0,1	160	0,1	0	0,0	37	0,0	2	0,0
* DİĞER / Others	0	0,0	0	0,0	0	0,0	0	0,0	193	0,3
UZAK DOĞU / Far East	33.841	27,2	32.877	28,5	29.269	27,0	29.054	31,9	18.096	27,5
* JAPONYA / Japan	11.908	9,6	11.197	9,7	13.578	12,5	13.334	14,6	7.813	11,9
* G. KORE / S. Korea	16.247	13,1	15.769	13,6	10.205	9,4	9.403	10,3	5.121	7,8
* DİĞER / Others	5.686	4,6	5.911	5,1	5.486	5,1	6.317	6,9	5.162	7,8
TOPLAM/Total	124.385	100,0	115.558	100,0	108.285	100,0	91.044	100,0	65.890	100,0

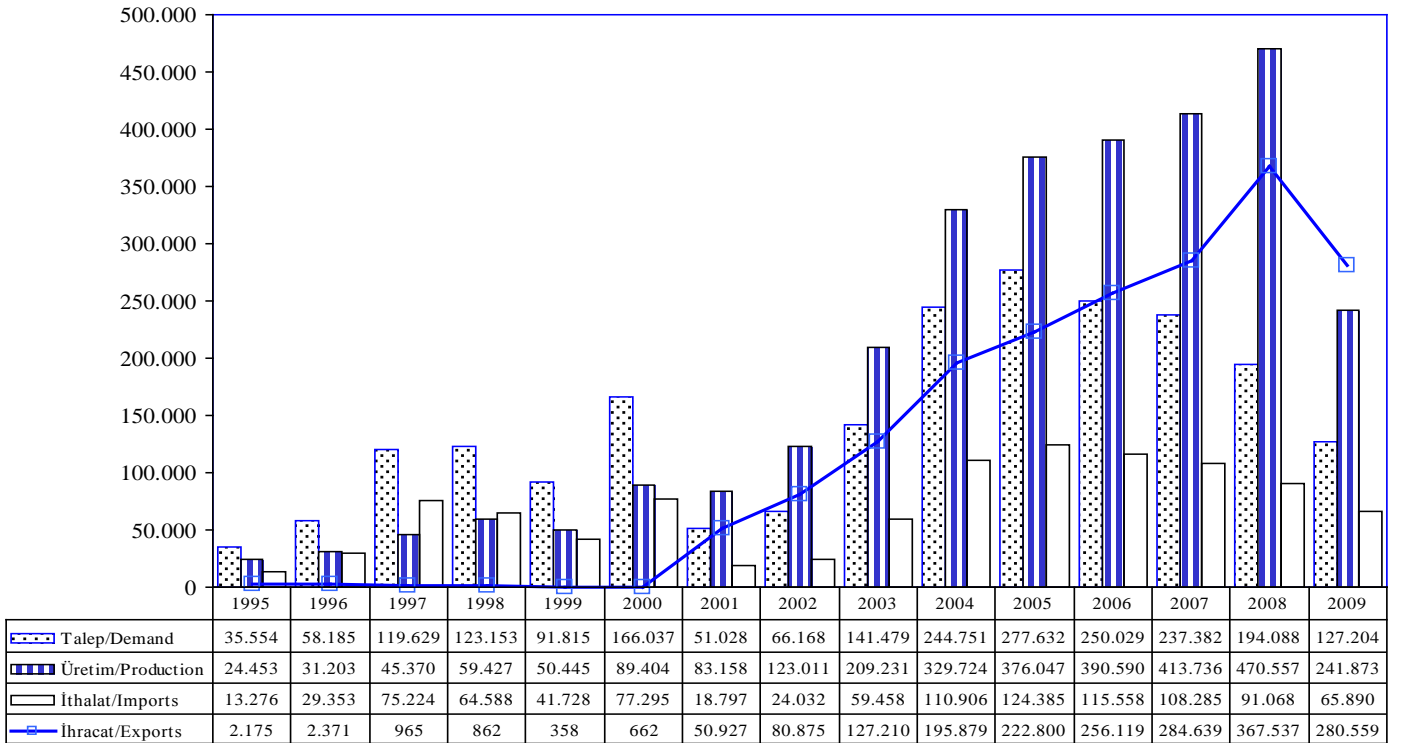
Kaynak: Otomotiv Distribütörleri Derneği

Source: Association of Automotive Distributors

Otomobil Üretim/İthalat/İhracat P.Cars Production/Imports/Exports



Hafif Ticari Araçlar Üretim/İthalat/İhracat Light Commercial Vehicles Production/Imports/Exports



OTOMOTİV SANAYİİ FİRMALARININ CİROLARI (TL)
Automotive Industry Sales (TL)

ARALIK SONU / By the end of December

FİRMALAR / Firms	2005	2006	2007	2008	2009
A.I.O.S.	312.689.366	289.926.445	356.555.442	377.271.138	169.166.475
B.M.C.	743.260.611	972.705.273	948.861.162	806.000.000	536.000.000
FORD OTOSAN	5.362.980.155	5.745.249.354	6.081.133.970	5.868.766.148	4.303.463.792
HATTAT TARIM	47.477.877	58.550.417	42.343.778	26.356.282	26.272.925
HONDA TÜRKİYE	216.275.865	363.123.004	747.186.423	1.087.861.860	975.799.697
HYUNDAI ASSAN	771.211.501	477.248.859	1.662.390.111	1.437.085.335	1.301.064.396
KARSAN	227.413.220	277.695.276	255.779.333	212.292.161	310.055.312
M.A.N.TÜRKİYE	389.634.360	520.594.413	591.553.348	551.401.948	606.042.028
M. BENZ TÜRK	2.137.058.933	1.678.247.277	2.328.447.374	2.512.725.887	1.472.696.530
OTOKAR	262.742.003	302.520.049	402.164.364	479.782.902	502.911.470
O. RENAULT	2.911.584.533	4.035.798.791	4.321.934.802	4.965.117.037	5.066.277.198
TEMSA GLOBAL	473.466.085	516.181.039	548.163.738	561.628.329	405.260.932
TOFAŞ	2.587.831.847	3.139.899.753	3.631.875.337	3.863.107.404	4.388.577.972
TOYOTA	3.325.743.699	3.917.716.081	3.884.994.944	3.126.769.847	2.131.616.142
T. TRAKTÖR	485.859.576	320.445.556	310.993.702	663.310.591	215.000.000
TOPLAM /Total	20.255.229.631	22.615.901.587	26.114.377.828	26.539.476.869	22.410.204.869

OTOMOTİV SANAYİİ FİRMALARININ HAMMADDEYE VE YAN SANAYİYE ÖDEMELERİ (TL) - 2009
Payments For Raw Material And Components (TL) - 2009

ARALIK SONU / By the end of December

FİRMALAR Firms	FABRİKAYA ALINAN HAMMADDEYE ÖDENEN MEBLAĞ (K.D.V. HARIÇ) Payment for raw materials (Excl. V.A.T.)	YAN SANAYİYE ÖDENEN MEBLAĞ (K.D.V. HARIÇ) Payment for components manufacturers (Excl. V.A.T.)	TOPLAM Total
A.I.O.S.	3.628.466,00	91.181.058,00	94.809.524,00
B.M.C.	18.795.759,00	206.670.365,00	225.466.124,00
FORD OTOSAN	3.512.401.406,00	393.528.368,00	3.905.929.774,00
HATTAT TARIM	16.602.793,00	18.256.369,00	34.859.162,00
HONDA TÜRKİYE	382.959.803,00	39.546.724,00	422.506.527,00
HYUNDAI ASSAN	510.566.960,00	255.783.660,00	766.350.620,00
KARSAN		203.686.499,00	203.686.499,00
M.A.N. TÜRKİYE	394.558.373,00	23.951.587,00	418.509.960,00
M. BENZ TÜRK	856.481.593,00	137.652.606,00	994.134.199,00
OTOKAR	232.979.595,00	446.013.110,00	678.992.705,00
OYAK RENAULT	4.757.632.217,00	4.977.311.766,00	9.734.943.983,00
TEMSA GLOBAL	182.505.492,00	115.503.295,00	298.008.787,00
TOFAŞ	3.820.268.169,00	320.408.649,00	4.140.676.818,00
TOYOTA	81.446.612,00	1.837.043.254,00	1.918.489.866,00
TÜRK TRAKTÖR	44.060.934,00	277.297.519,00	321.358.453,00
TOPLAM / Total			24.158.723.001,00

OTOMOTİV SANAYİİ FİRMALARININ ÖDEDİKLERİ VERGİLER VE ÜCRETLER (TL) - 2009
Taxes, Wages and Salaries Paid by Automotive Manufacturers (TL) - 2009

VERGİ VE ÖDEMELER / Taxes and Payments	<u>A.I.O.S.</u>	<u>B.M.C.</u>	<u>FORD OTOSAN</u>	<u>HATTAT TARIM</u>	<u>HONDA TÜRKİYE</u>
NET ÜCRET VE İKRAMİYELER Net wages, salaries and bonuses	17.013.743,00	50.258.741,00	148.548.913,00	1.462.635,00	31.498.175,00
GELİR VERGİSİ Income tax	4.654.898,00	10.167.924,00	38.311.229,00	258.659,00	7.387.383,00
SOSYAL GÜVENLİK KURUMU PRİMİ İŞÇİ VE İŞVEREN Social insurance premium paid by employee and employers	5.913.631,00	18.488.730,00	57.476.752,00	514.454,00	4.430.857,00
DAMGA VERGİSİ Stamp duty	167.552,00	394.063,00	1.273.268,00	11.903,00	211.652,00
DİĞER KESİNTİLER Other taxes	17.654,00	0,00	18.943.191,00	50.772,00	12.196.241,00
İSTİH. EDİLEN. ÖDEME. VE VERGİ. TOPLAMI Total production and tax payment	27.767.478,00	79.309.458,00	264.553.353,00	2.298.423,00	55.724.308,00
İTH. ÖDE. TOP. VERGİ VE RESİM. (K.D.V. HARIÇ) Total import taxes and duties (Excl. V.A.T.)	4.209.862,00	243.817,00	7.428.437,00	9.911,00	7.936.758,00
VERGİ DAİRELERİNE ÖDENEN K.D.V. Value added tax (V.A.T.) paid to tax offices	475.166,00	0,00	14.161.552,00	0,00	0,00
DİĞER VERGİLER Other taxes	891.490,00	666.100,00	5.039.519,00	84.746,00	219.747,00
KURUM STOPAJ VERGİSİ Association tax	0,00	0,00	106.438.668,00	0,00	0,00
T O P L A M / Total	33.343.996,00	80.219.375,00	397.621.529,00	2.393.080,00	63.880.813,00

VERGİ VE ÖDEMELER / Taxes and Payments	<u>HYUNDAI ASSAN</u>	<u>KARSAN</u>	<u>M.A.N. TÜRKİYE</u>	<u>M. BENZ TÜRK</u>	<u>OTOKAR</u>
NET ÜCRET VE İKRAMİYELER Net wages, salaries and bonuses	60.075.503,00	16.367.606,00	115.338.120,00	132.002.841,00	31.901.436,00
GELİR VERGİSİ Income tax	11.385.176,00	3.868.498,00	36.575.940,00	41.517.037,00	10.785.124,00
SOSYAL GÜVENLİK KURUMU PRİMİ İŞÇİ VE İŞVEREN Social insurance premium paid by employee and employers	16.275.494,00	5.772.731,00	68.727.055,00	49.790.897,00	13.613.915,00
DAMGA VERGİSİ Stamp duty	416.273,00	136.448,00	1.167.382,00	1.245.533,00	319.461,00
DİĞER KESİNTİLER Other taxes	2.402.269,00	1.501.370,00	1.749.798,00	1.890.122,00	4.925.421,00
İSTİH. EDİLEN. ÖDEME. VE VERGİ. TOPLAMI Total production and tax payment	90.554.715,00	27.646.653,00	223.558.295,00	226.446.430,00	61.545.357,00
İTH. ÖDE. TOP. VERGİ VE RESİM. (K.D.V. HARİÇ) Total import taxes and duties (Excl. V.A.T.)	39.200.335,00	2.346.723,00	6.743.484,00	7.667.946,00	608.114,00
VERGİ DAİRELERİNE ÖDENEN K.D.V. Value added tax (V.A.T.) paid to tax offices	0,00	695.304,00	9.672.519,00	19.370.212,00	580.046,00
DİĞER VERGİLER Other taxes	881.412,00	495.918,00	1.600.917,00	1.557.166,00	1.062.902,00
KURUM STOPAJ VERGİSİ Association tax	0,00	0,00	17.282.337,00	75.519.133,00	0,00
T O P L A M / Total	130.636.462,00	31.184.598,00	258.857.552,00	330.560.887,00	63.796.419,00

VERGİ VE ÖDEMELER / Taxes and Payments	<u>OYAK RENAULT</u>	<u>TEMSA GLOBAL</u>	<u>TOFAŞ</u>	<u>TOYOTA</u>	<u>TÜRK TRAKTÖR</u>	<u>TOPLAM/Total</u>
NET ÜCRET VE İKRAMİYELER Net wages, salaries and bonuses	127.387.025,00	49.222.209,00	162.416.752,00	75.459.764,00	20.422.896,00	1.039.376.359,00
GELİR VERGİSİ Income tax	50.228.250,00	9.187.524,00	46.873.302,00	21.553.706,00	7.432.056,00	300.186.706,00
SOSYAL GÜVENLİK KURUMU PRİMİ İŞÇİ VE İŞVEREN Social insurance premium paid by employee and employers	58.617.689,00	13.123.576,00	74.694.907,00	27.257.367,00	12.480.932,00	427.178.987,00
DAMGA VERGİSİ Stamp duty	1.501.184,00	332.026,00	1.644.840,00	711.728,00	203.060,00	9.736.373,00
DİĞER KESİNTİLER Other taxes	8.494.963,00	0,00	33.570.311,00	3.371.946,00	7.469.129,00	96.583.187,00
İSTİH. EDİLEN. ÖDEME. VE VERGİ. TOPLAMI Total production and tax payment	246.229.111,00	71.865.335,00	319.200.112,00	128.354.511,00	48.008.073,00	1.873.061.612,00
İTH. ÖDE. TOP. VERGİ VE RESİM. (K.D.V. HARIÇ) Total import taxes and duties (Excl. V.A.T.)	212.287,00	6.300.000,00	998.177,00	1.914.027,00	50.900,00	85.870.778,00
VERGİ DAİRELERİNE ÖDENEN K.D.V. Value added tax (V.A.T.) paid to tax offices	241.272,00	6.312.442,00	22.771.443,00	0,00	350.656,00	74.630.612,00
DİĞER VERGİLER Other taxes	16.722.400,00	1.220.660,00	297.312.662,00	427.496,00	1.819.154,00	330.002.289,00
KURUM STOPAJ VERGİSİ Association tax	29.067.858,00	0,00	0,00	0,00	6.539.193,00	234.847.189,00
T O P L A M / Total	292.472.928,00	85.698.437,00	640.282.394,00	130.696.034,00	56.767.976,00	2.598.412.480,00

OTOMOTİV SANAYİİ İSTİHDAMI
Automotive Industry Employment

<u>FİRMALAR / Firms</u>	<u>2005</u>	<u>2006</u>	<u>2007</u>	<u>2008</u>	<u>2009</u>
A.I.O.S.					
İŞÇİ / Worker	548	537	537	574	520
BÜRO PERSONELİ / Employee	116	119	122	132	95
İDARECİ / Administrator	12	15	15	15	14
MÜHENDİS / Engineer	35	41	49	55	48
İDA. MÜHENDİS / Ad. Eng.	24	25	23	27	24
TOPLAM / Total	735	737	746	803	701
B.M.C.					
İŞÇİ / Worker	2140	2559	2618	2377	2168
BÜRO PERSONELİ / Employee	346	421	356	338	309
İDARECİ / Administrator	24	34	37	34	29
MÜHENDİS / Engineer	137	179	194	183	167
İDA. MÜHENDİS / Ad. Eng.	59	69	76	75	71
TOPLAM / Total	2.706	3.262	3.281	3.007	2.744
FORD OTOSAN					
İŞÇİ / Worker	6460	6765	8100	6657	6197
BÜRO PERSONELİ / Employee	405	408	357	385	378
İDARECİ / Administrator	67	262	75	82	73
MÜHENDİS / Engineer	583	582	708	757	647
İDA. MÜHENDİS / Ad. Eng.	222	237	275	283	297
TOPLAM / Total	7.737	8.254	9.515	8.164	7.592
HATTAT TARIM					
İŞÇİ / Worker	42	63	40	37	47
BÜRO PERSONELİ / Employee	49	64	68	68	23
İDARECİ / Administrator	9	14	20	13	15
MÜHENDİS / Engineer	5	6	22	15	2
İDA. MÜHENDİS / Ad. Eng.	12	13	14	6	4
TOPLAM / Total	117	160	164	139	91

<u>FİRMALAR / Firms</u>	<u>2005</u>	<u>2006</u>	<u>2007</u>	<u>2008</u>	<u>2009</u>
HONDA TÜRKİYE					
İŞÇİ / Worker	285	514	937	953	545
BÜRO PERSONELİ / Employee	152	109	166	180	223
İDARECİ / Administrator	54	65	35	81	22
MÜHENDİS / Engineer	34	29	43	58	26
İDA. MÜHENDİS / Ad. Eng.	22	17	26	17	22
TOPLAM / Total	547	734	1.207	1.289	838
HYUNDAI ASSAN					
İŞÇİ / Worker	1497	1637	1796	1692	1349
BÜRO PERSONELİ / Employee	192	171	261	85	26
İDARECİ / Administrator	61	56	16	151	102
MÜHENDİS / Engineer	43	76	59	127	118
İDA. MÜHENDİS / Ad. Eng.	22	51	11	14	14
TOPLAM / Total	1.815	1.991	2.143	2.069	1.609
KARSAN					
İŞÇİ / Worker	638	649	746	727	617
BÜRO PERSONELİ / Employee	27	24	31	36	36
İDARECİ / Administrator	5	5	6	5	2
MÜHENDİS / Engineer	45	41	55	68	60
İDA. MÜHENDİS / Ad. Eng.	9	8	8	12	10
TOPLAM / Total	724	727	846	848	725
M.A.N. TÜRKİYE					
İŞÇİ / Worker	2103	2288	1732	1677	1177
BÜRO PERSONELİ / Employee	264	258	166	136	106
İDARECİ / Administrator	74	42	38	32	25
MÜHENDİS / Engineer	80	168	90	77	60
İDA. MÜHENDİS / Ad. Eng.	59	22	37	45	38
TOPLAM / Total	2.580	2.778	2.063	1.967	1.406

<u>FİRMALAR / Firms</u>	<u>2005</u>	<u>2006</u>	<u>2007</u>	<u>2008</u>	<u>2009</u>
M. BENZ TÜRK					
İŞÇİ / Worker	2846	3096	3525	3673	2915
BÜRO PERSONELİ / Employee	308	285	274	351	339
İDARECİ / Administrator	93	93	95	106	108
MÜHENDİS / Engineer	441	455	466	445	553
İDA. MÜHENDİS / Ad. Eng.	60	60	62	75	82
TOPLAM / Total	3.748	3.989	4.422	4.650	3.997
OTOKAR					
İŞÇİ / Worker	719	660	891	779	750
BÜRO PERSONELİ / Employee	120	130	149	172	182
İDARECİ / Administrator	27	20	18	26	29
MÜHENDİS / Engineer	88	103	111	130	154
İDA. MÜHENDİS / Ad. Eng.	35	36	55	77	91
TOPLAM / Total	989	949	1.224	1.184	1.206
OYAK RENAULT					
İŞÇİ / Worker	4016	4396	5002	4963	4678
BÜRO PERSONELİ / Employee	487	515	561	591	578
İDARECİ / Administrator	24	11	25	34	26
MÜHENDİS / Engineer	351	447	511	579	524
İDA. MÜHENDİS / Ad. Eng.	96	101	110	109	108
TOPLAM / Total	4.974	5.470	6.209	6.276	5.914
TEMSA GLOBAL					
İŞÇİ / Worker	1050	1122	1314	1380	1129
BÜRO PERSONELİ / Employee	203	204	321	378	289
İDARECİ / Administrator	35	38	44	42	32
MÜHENDİS / Engineer	146	181	244	278	246
İDA. MÜHENDİS / Ad. Eng.	62	67	71	77	68
TOPLAM / Total	1.496	1.612	1.994	2.155	1.764

<u>FİRMALAR / Firms</u>	<u>2005</u>	<u>2006</u>	<u>2007</u>	<u>2008</u>	<u>2009</u>
TOFAŞ					
İŞÇİ / Worker	3530	4339	6705	6814	5734
BÜRO PERSONELİ / Employee	459	326	470	490	429
İDARECİ / Administrator	69	186	64	64	51
MÜHENDİS / Engineer	209	287	407	546	504
İDA. MÜHENDİS / Ad. Eng.	112	120	132	137	139
TOPLAM / Total	4.379	5.258	7.778	8.051	6.857
TOYOTA					
İŞÇİ / Worker	3116	3208	3045	2728	2427
BÜRO PERSONELİ / Employee	131	164	166	109	269
İDARECİ / Administrator	57	26	28	48	8
MÜHENDİS / Engineer	124	139	139	149	130
İDA. MÜHENDİS / Ad. Eng.	25	57	45	43	60
TOPLAM / Total	3.453	3.594	3.423	3.077	2.894
TÜRK TRAKTÖR					
İŞÇİ / Worker	799	773	1061	1118	938
BÜRO PERSONELİ / Employee	80	89	105	191	146
İDARECİ / Administrator	6	5	5	7	7
MÜHENDİS / Engineer	69	67	57	129	124
İDA. MÜHENDİS / Ad. Eng.	21	25	18	29	31
TOPLAM / Total	975	959	1.246	1.474	1.246
GENEL TOPLAM/Grand Total					
İŞÇİ / Worker	29.789	32.606	38.049	36.149	31.191
BÜRO PERSONELİ / Employee	3.339	3.287	3.573	3.642	3.428
İDARECİ / Administrator	617	872	521	740	543
MÜHENDİS / Engineer	2.390	2.801	3.155	3.596	3.363
İDA. MÜHENDİS / Ad. Eng.	840	908	963	1.026	1.059
TOPLAM / Total	36.975	40.474	46.261	45.153	39.584

İDA. MÜHENDİS=İDARECİ MÜHENDİS
Ad. Eng.=Administrator Engineer

OTOMOTİV SANAYİİ YATIRIMLARI (USD)
Realized Sectorial Investments (USD)

ARALIK SONU/By the end of December

PROJE TİPİ Projects	2005	2006	2007	2008	2009
KAPASİTE ARTTIRIMI Capacity Development	104.000.000	202.000.000	220.000.000	189.000.000	20.000.000
MODERNİZASYON Modernization	128.000.000	96.000.000	54.000.000	66.000.000	83.000.000
YENİ MODEL New Model Development	346.000.000	580.000.000	475.000.000	725.000.000	401.000.000
KALİTE ARTTIRICI Quality Development	17.000.000	19.000.000	24.000.000	33.000.000	11.000.000
YERLİLEŞTİRMEYİ ARTTIRICI Localization	32.000.000	19.000.000	56.000.000	97.000.000	87.000.000
DİĞER Others	97.000.000	120.000.000	100.000.000	198.000.000	70.000.000
TOPLAM Toplam	724.000.000	1.036.000.000	929.000.000	1.308.000.000	672.000.000

TÜRKİYE ARAÇ PARKI
Automotive Vehicles Park In Turkey

YILLAR Years	OTOMOBİL P.Car	KAMYON Truck	KAMYONET Pick-Up	MİNİBÜS Minibus	OTOBÜS Bus	TRAKTÖR F.Tractor	TOPLAM Total
1963	72.034	49.356	30.739	7.543	11.726	50.844	222.242
1964	79.449	46.721	28.658	9.196	11.216	51.781	227.021
1965	87.584	49.317	29.804	10.476	11.693	54.608	243.482
1966	91.469	47.931	31.462	11.239	12.041	65.108	259.250
1967	112.867	56.889	39.927	16.008	13.332	74.982	314.005
1968	125.375	62.616	43.441	18.967	13.948	84.874	349.221
1969	137.345	69.478	48.655	20.540	15.520	96.407	387.945
1970	137.771	70.770	52.152	20.916	15.980	105.865	403.454
1971	153.676	73.433	57.011	22.380	17.040	118.525	442.065
1972	187.272	78.920	62.796	25.559	18.504	135.726	508.777
1973	240.360	86.780	71.043	30.055	20.011	156.139	604.388
1974	313.160	95.309	81.025	34.122	21.404	200.466	745.486
1975	403.546	108.381	98.579	40.623	23.763	243.066	917.958
1976	488.894	122.176	116.861	46.066	25.388	281.802	1.081.187
1977	560.424	138.093	134.213	51.999	27.096	320.578	1.232.403
1978	624.438	146.551	144.695	56.836	28.559	370.259	1.371.338
1979	688.687	157.095	155.278	61.596	30.634	402.777	1.496.067
1980	742.252	164.893	165.821	64.707	32.783	436.369	1.606.825
1981	776.432	172.372	172.269	66.514	33.839	458.714	1.680.140
1982	811.465	180.772	178.762	69.598	35.432	491.001	1.767.030
1983	856.350	190.277	186.427	73.585	38.478	513.516	1.858.633
1984	919.577	197.721	198.106	80.697	43.638	556.781	1.996.520
1985	983.444	205.496	212.505	87.951	47.119	583.974	2.120.489
1986	1.087.234	217.111	224.755	97.917	50.798	612.731	2.290.546
1987	1.193.021	225.872	233.480	106.314	53.554	637.449	2.449.690
1988	1.310.257	234.166	240.718	112.885	56.172	654.636	2.608.834
1989	1.434.830	241.392	248.567	118.026	58.859	672.845	2.774.519
1990	1.649.879	257.353	263.407	125.399	63.700	692.454	3.052.192
1991	1.864.344	273.409	280.891	133.632	68.973	704.373	3.325.622
1992	2.181.388	379.410	308.180	145.312	75.592	828.580	3.918.462
1993	2.619.852	406.398	354.290	159.900	84.254	870.559	4.495.253
1994	2.861.640	419.374	374.473	166.424	87.545	895.506	4.804.962
1995	3.058.511	432.216	397.743	173.051	90.197	937.528	5.089.246
1996	3.274.156	453.796	442.788	182.694	94.978	988.142	5.436.554
1997	3.570.105	489.071	529.838	197.057	101.896	1.053.381	5.941.348
1998	3.838.631	519.749	626.004	211.495	108.361	1.107.157	6.411.397
1999	4.072.326	531.690	692.935	221.683	112.186	1.131.626	6.762.446
2000	4.422.180	557.295	794.459	235.885	118.454	1.159.070	7.287.343
2001	4.534.803	562.063	833.175	239.381	119.306	1.179.068	7.467.796
2002	4.600.140	567.152	875.381	241.700	120.097	1.180.127	7.584.597
2003	4.700.343	579.010	973.457	245.394	123.500	1.184.256	7.805.960
2004	5.400.440	647.420	1.259.867	318.954	152.712	1.210.283	8.989.676
2005	5.772.745	676.929	1.475.057	338.539	163.390	1.247.767	9.674.427
2006	6.140.992	709.535	1.695.624	357.523	175.949	1.290.679	10.370.302
2007	6.472.156	729.202	1.890.459	372.601	189.128	1.327.334	10.980.880
2008	6.796.629	744.217	2.066.007	383.548	199.934	1.358.577	11.548.912
2009	7.093.964	727.302	2.204.951	384.053	201.033	1.368.032	11.979.335

KAYNAK: T.C. BAŞBAKANLIK TÜRKİYE İSTATİSTİK KURUMU

Source: Republic Of Turkey, Prime Ministry Turkish Statistical Institute