



OTOMOTİV SANAYİİ DERNEĐİ
AUTOMOTIVE MANUFACTURERS ASSOCIATION



Otomotiv Sanayii Genel ve İstatistik Bülteni General and Statistical Information Bulletin Of Automotive Manufacturers 2009 - I

OSD "OICA" Üvesidir



OSD is a Member of "OICA"

İÇİNDEKİLER**SAHİFE**

OTOMOTİV SANAYİİ FİRMALARI HAKKINDA GENEL BİLGİLER - 2009	1
OTOMOTİV SANAYİİ FİRMALARININ ÜRETTİKLERİ MODELLER VE GENEL SPESİFİKASYONLARI - 2009	2 - 11
OTOMOTİV SANAYİİ FİRMALARININ 2009 YILI ÜRETİM KAPASİTELERİ	12
OTOMOTİV SANAYİİ FİRMALARININ 2004 - 2008 YILLARI ÜRETİM ADETLERİ	13 - 17
YILLARA GÖRE ÜRETİM GRAFİKLERİ	18 - 19
OTOMOTİV SANAYİİ FİRMALARININ ÜRETİM ADETLERİ	20
KAPASİTE KULLANIM VE İHRACAT GRAFİKLERİ	21
YILLAR İTİBARIYLA ÜRETİM ADETLERİ VE KAPASİTE KULLANIMLARI	22
OTOMOTİV SANAYİİ FİRMALARININ İHRACATLARI	23 - 25
OTOMOBİL İTHALATI – HAFİF TİCARİ ARAÇ İTHALATI	26
OTOMOBİL VE HAFİF TİCARİ ARAÇLAR/ÜRETİM/İTHALAT/İHRACAT GRAFİKLERİ	27
OTOMOTİV SANAYİİ FİRMALARININ CİROLARI	28
OTOMOTİV SANAYİİ FİRMALARININ 2008 YILINDA HAMMADDEYE VE YAN SANAYİYE ÖDEMELERİ	29
OTOMOTİV SANAYİİ FİRMALARININ 2008 YILINDA ÖDEDİKLERİ VERGİLER VE ÜCRETLER	30 - 32
OTOMOTİV SANAYİİ İSTİHDAMI	33 - 37
OTOMOTİV SANAYİİ YATIRIMLARI	38
TÜRKİYE ARAÇ PARKI	39

CONTENTS**PAGE**

GENERAL INFORMATION ON THE AUTOMOTIVE MANUFACTURERS - 2009	1
GENERAL SPECIFICATIONS OF THE PRODUCTS - 2009	2 - 11
PRODUCTION CAPACITIES - 2009	12
PRODUCTION UNITS FOR THE YEARS 2004 - 2008	13 - 17
PRODUCTION BY YEARS IN GRAPHICS	18 - 19
THE PRODUCTION UNITS OF THE AUTOMOTIVE MANUFACTURERS	20
CAPACITY USAGE AND EXPORTS IN GRAPHICS	21
PRODUCTION UNITS AND CAPACITY UTILIZATION BY YEARS	22
AUTOMOTIVE INDUSTRY EXPORTS	23 - 25
P. CAR IMPORTS - LIGHT COMMERCIAL VEHICLE IMPORTS	26
P. CARS AND LIGHT COMMERCIAL VEHICLES/PRODUCTION/IMPORTS/EXPORTS	27
AUTOMOTIVE INDUSTRY SALES	28
PAYMENT FOR RAW MATERIAL AND COMPONENTS - 2008	29
TAXES, WAGES AND SALARIES PAID BY AUTOMOTIVE MANUFACTURERS IN THE YEAR - 2008	30 - 32
AUTOMOTIVE INDUSTRY EMPLOYMENT	33 - 37
AUTOMOTIVE INDUSTRY INVESTMENTS	38
AUTOMOTIVE VEHICLES PARK IN TURKEY	39

OTOMOTİV SANAYİİ FİRMALARI HAKKINDA GENEL BİLGİLER - 2009
General Information On The Automotive Manufacturers - 2009

OCAK SONU/By the end of January

FİRMALAR Firms	ÜRETİM YERİ The Production Place	ÜRETİME BAŞLAMA TARİHİ Starting Year Of Production	LİSANS Licence	SERMAYE Capital (1000 YTL)	YABANCI SERMAYE Foreign Cap. (%)	KAPALI ALAN Covered Area (1.000 M2)	TOPLAM ALAN Total Area (1.000 M2)
A.I.O.S.	KOCAELİ	1966	ISUZU	25.419	29,74	82	299
B.M.C.	İZMİR	1966		380.000	0	122	782
FORD OTOSAN	ESKİŞEHİR KOCAELİ	1983 2001	FORD	350.910	41	72 345	1.100 1.600
HATTAT TARIM	TEKİRDAĞ	2002	VALTRA, UNIVERSAL, HATTAT	40.000	0	19	118
HONDA TÜRKİYE	KOCAELİ	1997	HONDA MOTOR EUROPE. LTD.	100.000	100	77	292
HYUNDAI ASSAN	KOCAELİ	1997	HYUNDAI MOTOR COMP.	206.220	70	100	1.000
KARSAN	BURSA	1966	KARSAN / PEUGEOT HYUNDAI MOTOR COMPANY RENAULT TRUCKS	100.000	0	80	200
M.A.N. TÜRKİYE	ANKARA	1966	MAN NUTZFAHRZEUGE AG	65.000	99,9	111	316
M.BENZ TÜRK	İSTANBUL AKSARAY	1968 1985	MERCEDES BENZ	275.000	85	153 82	511 558
OTOKAR	SAKARYA	1963	LAND ROVER / FRUEHAUF	24.000	0	141	552
O.RENAULT	BURSA	1971	RENAULT	323.300	51	258	510
TEMSA	ADANA SAKARYA	1987 2008	TEMSA / MITSUBISHI TEMSA / MITSUBISHI / FUSO	210.000	0	105 22	555 153
TOFAŞ	BURSA	1971	FIAT	500.000	37,8	352	935
TOYOTA	SAKARYA	1994	TOYOTA	150.165	100	212	917
T.TRAKTÖR	ANKARA	1954		47.000	37,5	79	273
TOPLAM/Total				2.797.014		2.412	10.671

OYAK RENAULT

OTOMOBİL SYMBOL 1.2 16 V	P. Car	1430	885	BENZİN	4	1149	75/5500	5/1	JB1	ON-ARKA 175/65 R 14
OTOMOBİL SYMBOL 1.4 8V	P. Car	1460	940	BENZİN	4	1390	75/5500	5/1	JB1	ON-ARKA 175/65 R 14
OTOMOBİL SYMBOL 1.4 16 V	P. Car	1500	950	BENZİN	4	1390	98/6000	5/1	JB3	ON-ARKA 175/65 R 14
OTOMOBİL SYMBOL 1.4 16 V AUTOMATIC	P. Car	1525	1010	BENZİN	4	1390	98/6000	OTOMATİK	DPO	ON-ARKA 175/65 R 14
OTOMOBİL SYMBOL 1.6 16 V AUTOMATIC	P. Car	1555	1039	BENZİN	4	1598	110 / 5750	OTOMATİK	DPO	ON-ARKA 175/65 R 15
OTOMOBİL SYMBOL 1.5 dCi (70 hp)	P. Car	1500	945	DİZEL	4	1461	65/4000	5/1	JB3	ON-ARKA 175/65 R 14
OTOMOBİL SYMBOL 1.5 dCi (85 hp)	P. Car	1500	945	DİZEL	4	1461	80/4000	5/1	JC5	ON-ARKA 175/65 R 14
OTOMOBİL MEGANE II DİZEL 1.5 (85 hp)	P. Car	1770	1160	DİZEL	4	1461	80/4000	5/1	JR5	ON-ARKA 195/65 R 15
										ON-ARKA 205/55 R 16
										ON-ARKA 205/50 R 17
OTOMOBİL MEGANE II DİZEL 1.5 (105 hp)	P. Car	1770	1160	DİZEL	4	1461	100/4000	5/1	JR5	ON-ARKA 195/65 R 15
										ON-ARKA 205/55 R 16
										ON-ARKA 205/50 R 17
OTOMOBİL MEGANE II DİZEL 1.9	P. Car	1845	1250	DİZEL	4	1870	120/4000	6/1	NDO	ON-ARKA 205/50 R 15
										ON-ARKA 205/55 R 16
										ON-ARKA 205/50 R 17
OTOMOBİL MEGANE II DİZEL 1.9 AUTOMATIC	P. Car	1860	1310	DİZEL	4	1870	130/4000	OTOMATİK	DPO	ON-ARKA 195/65 R 15
										ON-ARKA 205/55 R 16
										ON-ARKA 205/50 R 17
OTOMOBİL MEGANE II DİZEL 2.0	P. Car	1860	1320	DİZEL	4	1995	150/4000	6/1	PK4	ON-ARKA 205/50 R 15
										ON-ARKA 205/55 R 16
										ON-ARKA 205/50 R 17
OTOMOBİL MEGANE II 1.4 16 V	P. Car	1740	1150	BENZİN	4	1390	98/6000	5/1	JH3	ON-ARKA 205/50 R 17
										ON-ARKA 195/65 R 15
										ON-ARKA 205/55 R 16
OTOMOBİL MEGANE II 1.6 16V	P. Car	1750	1160	BENZİN	4	1598	115/6000	5/1	JH3	ON-ARKA 205/50 R 17
										ON-ARKA 195/65 R 15
										ON-ARKA 205/55 R 16
OTOMOBİL MEGANE II 1.6 16V AUTOMATIC	P. Car	1800	1210	BENZİN	4	1598	115/6000	OTOMATİK	DPO	ON-ARKA 205/50 R 17
										ON-ARKA 195/65 R 15
										ON-ARKA 205/55 R 16
OTOMOBİL MEGANE II 2.0 16V	P. Car	1825	1235	BENZİN	4	1998	136/5500	6/1	NDO	ON-ARKA 205/50 R 17
										ON-ARKA 205/55 R 16
										ON-ARKA 205/50 R 17
OTOMOBİL MEGANE II 2.0 16V AUTOMATIC	P. Car	1840	1250	BENZİN	4	1998	136/5500	OTOMATİK	DPO	ON-ARKA 205/50 R 17
										ON-ARKA 205/55 R 16
										ON-ARKA 205/50 R 17
OTOMOBİL CLİO III hatch-back 3 kapı / 5 kapı 1.2 16V	P. Car	1580	1090	BENZİN	4	1149	75/5500	5/1	JH3	ON-ARKA 165/65 R 15
OTOMOBİL CLİO III Grand Tour 1.2 16V Turbo	P. Car	1588	1100	BENZİN	4	1149	101 / 5500	5/1	JH3	ON-ARKA 185/60 R 15
OTOMOBİL CLİO III hatch-back 3 kapı / 5 kapı 1.4 16V	P. Car	1635	1145	BENZİN	4	1390	100/5700	5/1	JH3	ON-ARKA 185/60 R 15
OTOMOBİL CLİO III hatch-back 3 kapı / 5 kapı 1.6 16V	P. Car	1640	1150	BENZİN	4	1598	110/6000	5/1	JH3	ON-ARKA 185/60 R 15
OTOMOBİL CLİO III hatch-back 3 kapı / 5 kapı 1.6 16V AUTOMATIC	P. Car	1680	1190	BENZİN	4	1598	110/6000	OTOMATİK	DPO	ON-ARKA 185/60 R 15
OTOMOBİL CLİO III hatch-back 3 kapı / 5 kapı DİZEL 1.5 170 hp	P. Car	1655	1165	DİZEL	4	1461	70/4000	5/1	JH3	ON-ARKA 185/60 R 15
OTOMOBİL CLİO III hatch-back 3 kapı / 5 kapı DİZEL 1.5 185 hp	P. Car	1665	1175	DİZEL	4	1461	105/4000	5/1	JR5	ON-ARKA 185/60 R 15
OTOMOBİL CLİO III Grand Tour 1.2 16V	P. Car	1598	1110	BENZİN	4	1149	75/5500	5/1	JH3	ON-ARKA 165/65 R 15
OTOMOBİL CLİO III Grand Tour 1.2 16V Turbo	P. Car	1608	1120	BENZİN	4	1149	101 / 5500	5/1	JH3	ON-ARKA 185/60 R 15
OTOMOBİL CLİO III Grand Tour 1.4 16V	P. Car	1660	1165	BENZİN	4	1390	100/5700	5/1	JH3	ON-ARKA 185/60 R 15
OTOMOBİL CLİO III Grand Tour 1.6 16V	P. Car	1665	1170	BENZİN	4	1598	110 / 6000	5/1	JH3	ON-ARKA 185/60 R 15
OTOMOBİL CLİO III Grand Tour 1.6 16V AUTOMATIC	P. Car	1705	1210	BENZİN	4	1598	110 / 6000	OTOMATİK	DPO	ON-ARKA 185/60 R 15
OTOMOBİL CLİO III Grand Tour DİZEL 1.5 170 hp	P. Car	1680	1185	DİZEL	4	1461	70 / 4000	5/1	JH3	ON-ARKA 185/60 R 15
OTOMOBİL CLİO III Grand Tour DİZEL 1.5 185 hp	P. Car	1690	1195	DİZEL	4	1461	85 / 3750	5/1	JRQ	ON-ARKA 185/60 R 15
OTOMOBİL CLİO III Grand Tour DİZEL 1.5 105 hp	P. Car	1715	1235	DİZEL	4	1461	105 / 4000	6/1	TL4	ON-ARKA 185/60 R 15

TOFAŞ

OTOMOBİL PALIO 1.4 8V	P. Car	1460	955	BENZİN	4	1368	77/6000	5/1	FIAT 178	ÖN-ARKA 175/70 R 14 T
OTOMOBİL PALIO 1.3 MULTIJET	P. Car	1535	1030	DIZEL	4	1248	70/4000	5/1	FIAT 178	ÖN-ARKA 175/70 R 14 T
OTOMOBİL ALBEA 1.4 8V	P. Car	1530	1020	BENZİN	4	1368	77/6000	5/1	FIAT 178	ÖN-ARKA 185/65 R 14 H
OTOMOBİL ALBEA 1.3 MULTIJET SL/EL	P. Car	1595	1085	BENZİN	4	1248	70/4000	5/1	FIAT 178	ÖN-ARKA 175/70 R 14 H
OTOMOBİL DOBLO 1.4 8V	P. Car	1830	1230	BENZİN	4	1368	77/6000	5/1	FIAT 223	ÖN-ARKA 185/65 R 15 T
OTOMOBİL DOBLO 1.9 JTD	P. Car	1920	1320	DIZEL	4	1910	105/4000	5/1	FIAT 223	ÖN-ARKA 185/65 R 15 T
OTOMOBİL DOBLO 1.3 MULTIJET	P. Car	1910	1310	DIZEL	4	1248	75/4000	5/1	FIAT 223	ÖN-ARKA 185/65 R 15 T
OTOMOBİL LINEA 1.4 8V	P. Car	1660	1160	BENZİN	4	1368	77/6000	5/1	FIAT 323	ÖN-ARKA 185/65 R 15 T
OTOMOBİL LINEA 1.4 16V	P. Car	1700	1200	BENZİN	4	1368	120/500	5/1	FIAT 323	ÖN-ARKA 185/65 R 15 T
OTOMOBİL LINEA 1.3 MULTIJET	P. Car	1685	1185	DIZEL	4	1248	90/4000	5/1	FIAT 323	ÖN-ARKA 185/65 R 15 T
OTOMOBİL LINEA 1.3 MULTIJET OTOMATİK VİTES	P. Car	1685	1185	DIZEL	4	1248	90/4000	5/1	FIAT 323	ÖN-ARKA 185/65 R 15 T
KAMYONET DOBLO CARGO 1.4 8V	Pick Up	1920	1190	BENZİN	4	1368	77/6000	5/1	FIAT 223	ÖN-ARKA 185/65 R 15 S
KAMYONET DOBLO CARGO 1.4 8V P.M.	Pick Up	2040	1190	BENZİN	4	1368	77/6000	5/1	FIAT 223	ÖN-ARKA 175/75 R 14 S
KAMYONET DOBLO CARGO 1.4 8V MAXI	Pick Up	2090	1240	BENZİN	4	1368	77/6000	5/1	FIAT 223	ÖN-ARKA 175/75 R 14 S
KAMYONET DOBLO CARGO 1.9 JTD	Pick Up	2010	1280	DIZEL	4	1910	105/4000	5/1	FIAT 223	ÖN-ARKA 185/65 R 15 S
KAMYONET DOBLO CARGO 1.9 JTD PM	Pick Up	2130	1280	DIZEL	4	1910	105/4000	5/1	FIAT 223	ÖN-ARKA 175/75 R 14 S
KAMYONET DOBLO CARGO 1.9 JTD MAXI	Pick Up	2180	1330	DIZEL	4	1910	105/4000	5/1	FIAT 223	ÖN-ARKA 175/75 R 14 S
KAMYONET DOBLO CARGO 1.3 MULTIJET	Pick Up	2000	1270	DIZEL	4	1248	75/4000	5/1	FIAT 223	ÖN-ARKA 185/65 R 15 S
KAMYONET DOBLO CARGO 1.3 MULTIJET PM	Pick Up	2120	1270	DIZEL	4	1248	75/4000	5/1	FIAT 223	ÖN-ARKA 175/75 R 14 S
KAMYONET DOBLO CARGO 1.3 MULTIJET MAXI	Pick Up	2170	1320	DIZEL	4	1248	75/4000	5/1	FIAT 223	ÖN-ARKA 175/75 R 14 S
KAMYONET DOBLO CARGO COMBI 1.4 8V	Pick Up	1945	1240	BENZİN	4	1368	77/6000	5/1	FIAT 223	ÖN-ARKA 185/65 R 15 S
KAMYONET DOBLO CARGO COMBI 1.4 8V	Pick Up	2035	1240	BENZİN	4	1368	77/6000	5/1	FIAT 223	ÖN-ARKA 175/75 R 14 S
KAMYONET DOBLO CARGO COMBI 1.9 JTD	Pick Up	2025	1330	DIZEL	4	1910	105/4000	5/1	FIAT 223	ÖN-ARKA 185/65 R 15 S
KAMYONET DOBLO CARGO COMBI 1.9 JTD	Pick Up	2125	1330	DIZEL	4	1910	105/4000	5/1	FIAT 223	ÖN-ARKA 175/75 R 14 S
KAMYONET DOBLO CARGO COMBI LUNGO 1.9 JTD	Pick Up	2115	1405	DIZEL	4	1910	105/4000	5/1	FIAT 223	ÖN-ARKA 185/65 R 15 S
KAMYONET DOBLO CARGO COMBI 1.3 MULTIJET	Pick Up	2025	1320	DIZEL	4	1910	75/4000	5/1	FIAT 223	ÖN-ARKA 185/65 R 15 S
KAMYONET DOBLO CARGO COMBI 1.3 MULTIJET	Pick Up	2115	1320	DIZEL	4	1248	75/4000	5/1	FIAT 223	ÖN-ARKA 175/75 R 14 S
KAMYONET DOBLO CARGO COMBI LUNGO 1.3 MULTIJET	Pick Up	2105	1395	DIZEL	4	1248	75/4000	5/1	FIAT 223	ÖN-ARKA 185/65 R 15 S
KAMYONET PALIO VAN 1.4 8V	Pick Up	1460	965	BENZİN	4	1368	77/6000	5/1	FIAT 178	ÖN-ARKA 175/70 R 14 T
KAMYONET PALIO VAN 1.3 MULTIJET	Pick Up	1495	1040	DIZEL	4	1248	70/4000	5/1	FIAT 178	ÖN-ARKA 175/70 R 14 T
KAMYONET FIORINO 1.4 8V	Pick Up	1700	1070	BENZİN	4	1360	74/5200	5/1	FIAT 225	ÖN-ARKA 175/70 R 14 T
KAMYONET FIORINO 1.3 MULTIJET	Pick Up	1720	1090	DIZEL	4	1248	75/4000	5/1	FIAT 225	ÖN-ARKA 175/70 R 14 T
KAMYONET FIORINO 1.3 MULTIJET OTOMATİK VİTES	Pick Up	1720	1090	DIZEL	4	1248	75/4000	6/1	FIAT 225	ÖN-ARKA 175/70 R 14 T
KAMYONET FIORINO COMBI 1.3 MULTIJET	Pick Up	1755	1190	DIZEL	4	1248	75/4000	5/1	FIAT 225	ÖN-ARKA 185/65 R 15 T
KAMYONET FIORINO COMBI 1.3 MULTIJET OTOMATİK VİTES	Pick Up	1755	1190	DIZEL	4	1248	75/4000	6/1	FIAT 225	ÖN-ARKA 185/65 R 15 T

**OTOMOTİV SANAYİİ FİRMALARININ
2009 YILI ÜRETİM KAPASİTELERİ
Production Capacities 2009**

FİRMALAR Firms	OTOMOBİL P.Car	KAMYON Truck	KAMYONET Pick Up	OTOBÜS Bus	MİNİBÜS Mini-Bus	MİDİBÜS Midi-Bus	TRAKTÖR F. Tractor	TOPLAM Total
A. ISUZU	0	7.200	2.400	0	922	2.633	0	13.155
B.M.C.	0	10.000	5.000	800	5.000	1.000	0	21.800
FORD OTOSAN	0	15.000	250.000	0	70.000	0	0	335.000
HATTAT TARIM	0	0	0	0	0	0	10.500	10.500
HONDA TÜRKİYE	50.000	0	0	0	0	0	0	50.000
HYUNDAI ASSAN	100.000	0	15.000	0	10.000	0	0	125.000
KARSAN	0	5.000	15.000	0	3.000	5.000	0	28.000
M.A.N. TÜRKİYE	0	0	0	1.700	0	0	0	1.700
M. BENZ TÜRK	0	10.200	0	4.000	0	0	0	14.200
OTOKAR	0	0	3.600	600	1.500	1.850	0	7.550
O. RENAULT	360.000	0	0	0	0	0	0	360.000
TEMSA	0	4.500	3.000	1.000	0	2.000	0	10.500
TOFAŞ	400.000	0	0	0	0	0	0	400.000
TOYOTA	150.000	0	0	0	0	0	0	150.000
T. TRAKTÖR	0	0	0	0	0	0	35.000	35.000
TOPLAM/Total	1.060.000	51.900	294.000	8.100	90.422	12.483	45.500	1.562.405

OTOMOTİV SANAYİİ FİRMALARININ 2004 - 2008 YILLARI ÜRETİM ADETLERİ
Production Units For The Years 2004 - 2008

FİRMALAR/MODELLER	Firms/Models	2004	2005	2006	2007	2008
A.I.O.S.						
Kamyonet	Pick Up	1.692	1.788	2.398	2.984	3.796
Kamyon (A.Y.A. 3.501 - 12.000 KG)	Truck	2.313	2.709	3.055	2.930	3.469
Midibüs	Midibus	2.006	2.265	1.992	1.928	2.742
TOPLAM	Total	6.011	6.762	7.445	7.842	10.007
ASKAM						
Kamyon (A.Y.A. 3.501 - 12.000 KG)	Truck	15	0	0	0	0
Kamyon (A.Y.A. > 12.001 KG)	Truck	1.482	2.046	1.116	74	0
Kamyonet	Pick Up	366	380	185	5	0
Minibüs	Minibus	15	13	8	0	0
TOPLAM	Total	1.878	2.439	1.309	79	0
B.M.C.						
Kamyon (A.Y.A. > 12.001 KG)	Truck	7.078	6.431	6.628	5.637	5.600
Kamyonet	Pick Up	4.164	4.410	3.566	2.624	1.124
Minibus	Minibus	427	784	629	965	863
Midibüs	Midibus	286	188	291	184	51
Otobüs (Şehiriçi)	Bus	864	687	565	959	1.098
TOPLAM	Total	12.819	12.500	11.679	10.369	8.736

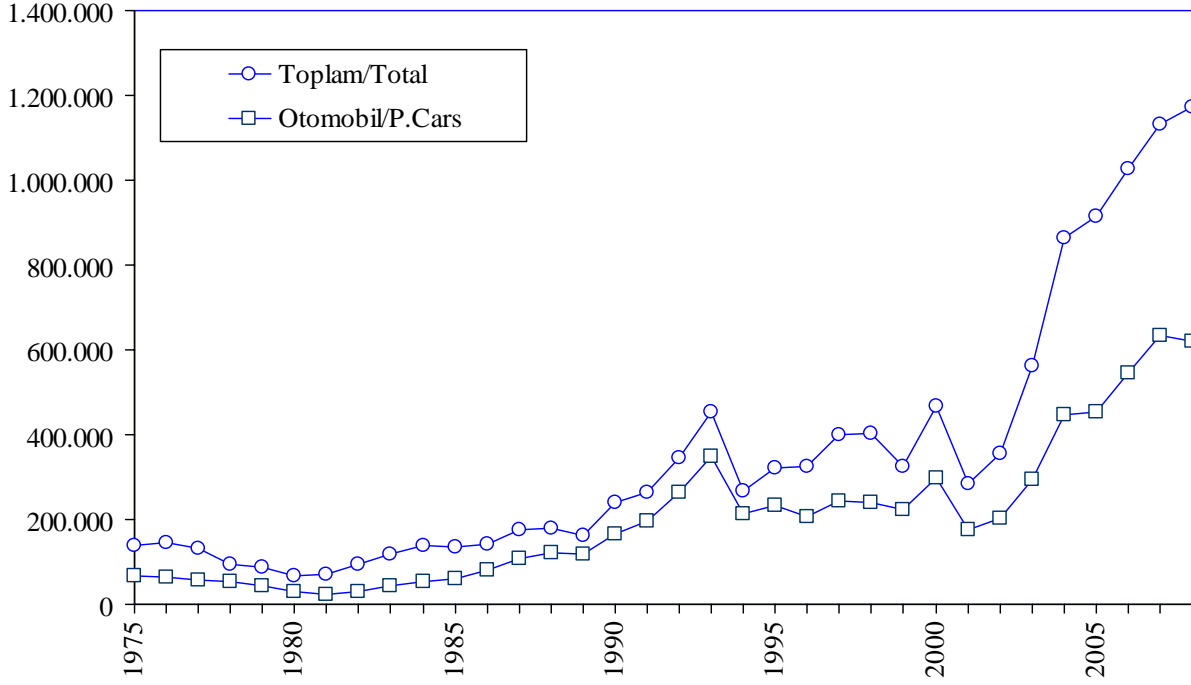
FİRMALAR/MODELLER	Firms/Models	2004	2005	2006	2007	2008
FORD OTOSAN						
Kamyon (A.Y.A. > 12.001 KG)	Truck	6.050	9.530	7.825	6.434	5.863
Minibüs	Minibus	19.271	20.795	16.721	18.897	17.844
Kamyonet	Pick Up	79.936	16.597	36.525	52.336	46.960
Kamyonet Van	Pick Up	101.503	196.501	197.055	208.689	198.094
TOPLAM	Total	206.760	243.423	258.126	286.356	268.761
HATTAT TARIM						
Traktör (< 60 HP)	F. Tractor	1.018	1.015	897	548	391
Traktör (> 61 HP)	F. Tractor	1.020	605	537	706	528
TOPLAM	Total	2.038	1.620	1.434	1.254	919
HONDA TÜRKİYE						
Otomobil (1.301 - 1.600 CC - SEDAN)	P. Car	15.581	11.236	16.694	18.354	17.402
Otomobil (1.601 - 2.000 CC - SEDAN)	P. Car	0	0	1.628	5.309	32.671
TOPLAM	Total	15.581	11.236	18.322	23.663	50.073
HYUNDAI ASSAN						
Minibüs	Minibus	5.498	2.779	1.180	292	0
Kamyonet Van	Pick Up	22.965	25.839	17.365	6.207	0
Otomobil (1.301 - 1.600 CC - HATCHBACK)	P. Car	0	0	0	0	4.144
Otomobil (1.301 - 1.600 CC - SEDAN)	P. Car	29.277	31.402	42.350	83.691	77.446
TOPLAM	Total	57.740	60.020	60.895	90.190	81.590
KARSAN						
Kamyon (A.Y.A. 3.501 - 12.000 KG)	Truck	0	0	0	93	906
Kamyon (A.Y.A. > 12.001 KG)	Truck	0	0	0	0	151
Minibüs	Minibus	1.264	1.177	1.735	1.550	1.905
Midibüs	Midibus	3.345	890	1.835	4.253	4.353
Kamyonet	Pick Up	5.013	7.038	5.550	1.879	1.839
Kamyonet Van	Pick Up	7.263	4.041	3.404	1.945	2.076
TOPLAM	Total	16.885	13.146	12.524	9.720	11.230

FİRMALAR/MODELLER	Firms/Models	2004	2005	2006	2007	2008
M.A.N. TÜRKİYE						
Kamyon (A.Y.A. > 12.001 KG)	Truck	690	421	150	0	0
Otobüs (Şehir içi)	Bus	526	701	1.157	694	605
Otobüs (Şehirlerarası)	Bus	770	908	1.194	1.375	1.091
TOPLAM	Total	1.986	2.030	2.501	2.069	1.696
M. BENZ TÜRK						
Otobüs (Şehir içi)	Bus	495	597	644	743	510
Otobüs (Şehirlerarası)	Bus	1.544	1.701	1.556	2.263	3.000
Kamyon (A.Y.A. > 12.001 KG)	Truck	9.647	11.618	13.009	16.008	17.290
TOPLAM	Total	11.686	13.916	15.209	19.014	20.800
OTOKAR						
Midibüs	Midibus	1.108	793	935	1.164	1.495
Minibüs	Minibus	1.415	595	455	295	511
Kamyonet	Pick Up	722	1.202	1.385	969	692
Otobüs (Şehir içi)	Bus	0	0	0	106	325
TOPLAM	Total	3.245	2.590	2.775	2.534	3.023
OTOYOL						
Kamyon (A.Y.A. 3.501 - 12.000 KG)	Truck	1.792	1.591	1.092	0	0
Kamyon (A.Y.A. > 12.001 KG)	Truck	14	1	1.103	235	0
Kamyonet	Pick Up	495	191	61	0	0
Minibüs	Midibus	271	19	0	0	0
Midibüs	Midibus	2.151	1.832	1.909	350	0
TOPLAM	Total	4.723	3.634	4.165	585	0

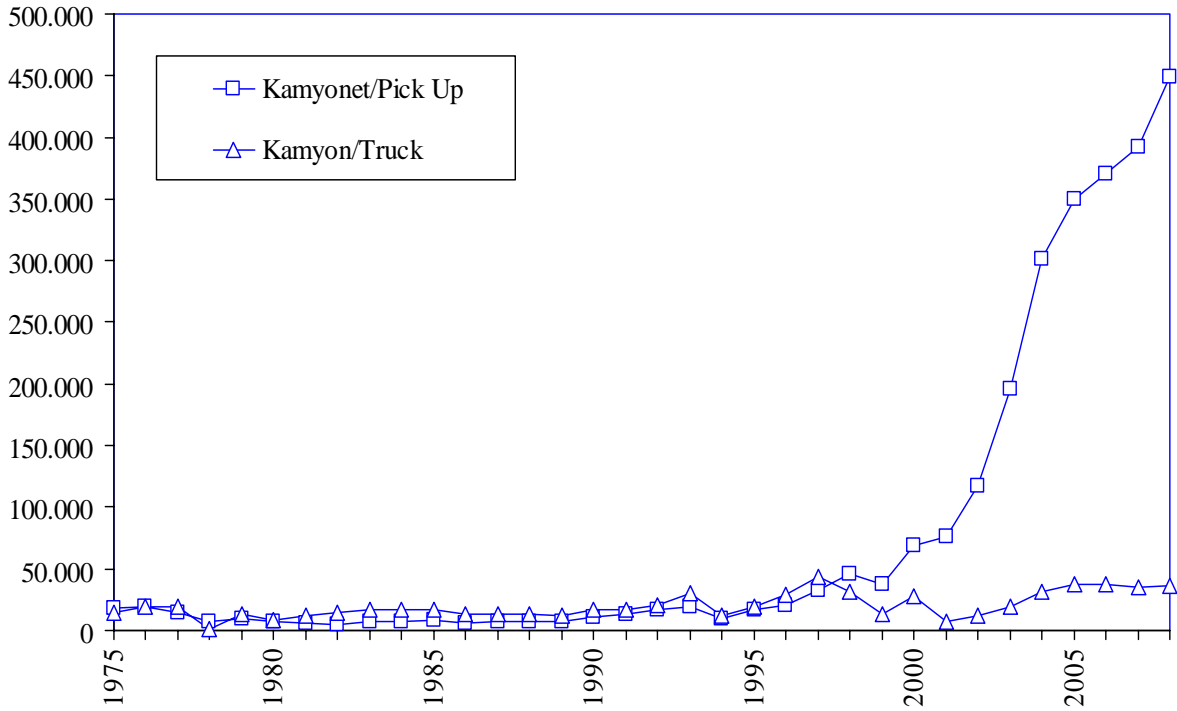
FİRMALAR/MODELLER	Firms/Models	2004	2005	2006	2007	2008
OYAK-RENAULT						
Otomobil (< 1.300 CC - SEDAN)	P. Car	5.002	4.501	36.354	46.432	69.528
Otomobil (1.301 - 1.600 CC - SEDAN)	P. Car	182.769	116.897	179.568	207.291	211.595
Otomobil (1.601 - 2.000 CC - SEDAN)	P. Car	9.582	58.271	12.671	9.933	5.572
TOPLAM	Total	197.353	179.669	228.593	263.656	286.695
TEMSA						
Otobüs (Şehirlerarası)	Bus	640	812	903	806	897
Kamyon (A.Y.A. 3.501 - 12.000 KG)	Truck	2.709	2.880	3.048	3.133	3.521
Kamyonet	Pick Up	1.960	3.328	3.663	3.963	4.105
Midibüs	Midibus	1.007	1.141	1.301	1.426	2.019
TOPLAM	Total	6.316	8.161	8.915	9.328	10.542
TOFAŞ						
Otomobil (< 1.300 CC - SEDAN)	P. Car	17.283	23.561	14.321	29.259	16.525
Otomobil (< 1.300 CC - HATCHBACK)	P. Car	11.641	9.856	2.988	2.186	1.196
Otomobil (< 1.300 CC - STATION WAGON)	P. Car	10.808	11.005	15.237	14.304	8.817
Otomobil (1.301 - 1.600 CC - SEDAN)	P. Car	12.378	10.859	21.171	29.792	30.708
Otomobil (1.301 - 1.600 CC - HATCHBACK)	P. Car	28	246	736	915	965
Otomobil (1.301 - 1.600 CC - STATION WAGON)	P. Car	3.056	4.238	14.474	11.315	10.243
Otomobil (1.601 - 2.000 CC - SEDAN)	P. Car	0	0	0	0	35
Otomobil (1.601 - 2.000 CC - STATION WAGON)	P. Car	15.370	13.025	10.802	14.586	8.199
Kamyonet Van	Pick Up	75.484	88.570	98.705	110.136	190.748
TOPLAM	Total	146.048	161.360	178.434	212.493	267.436
TOYOTA						
Otomobil (1.301 - 1.600 CC - SEDAN)	P. Car	38.648	48.085	63.191	11.120	6.920
Otomobil (1.301 - 1.600 CC - HATCHBACK)	P. Car	22.348	22.524	28.120	49.511	56.846
Otomobil (1.601 - 2.000 CC - SEDAN)	P. Car	68.684	85.181	83.313	89.654	53.674
Otomobil (1.601 - 2.000 CC - HATCHBACK)	P. Car	4.697	2.776	2.064	11.231	9.081
TOPLAM	Total	134.377	158.566	176.688	161.516	126.521

FİRMALAR/MODELLER	Firms/Models	2004	2005	2006	2007	2008
TÜMOSAN						
Traktör (< 60 HP)	F. Tractor	1	0	0	0	0
Traktör (> 61 HP)	F. Tractor	183	0	0	0	0
TOPLAM	Total	184	0	0	0	0
TÜRK TRAKTÖR						
Traktör (< 60 HP)	F. Tractor	11.506	11.558	11.624	11.228	11.642
Traktör (> 61 HP)	F. Tractor	9.466	6.312	5.633	7.122	10.460
TOPLAM	Total	20.972	17.870	17.257	18.350	22.102
UZEL						
Traktör (< 60 HP)	F. Tractor	9.606	9.020	10.219	6.658	1.786
Traktör (> 61 HP)	F. Tractor	7.865	8.017	9.931	7.256	0
TOPLAM	Total	17.471	17.037	20.150	13.914	1.786
GENEL TOPLAM	Grand Total	864.073	915.979	1.026.421	1.132.932	1.171.917

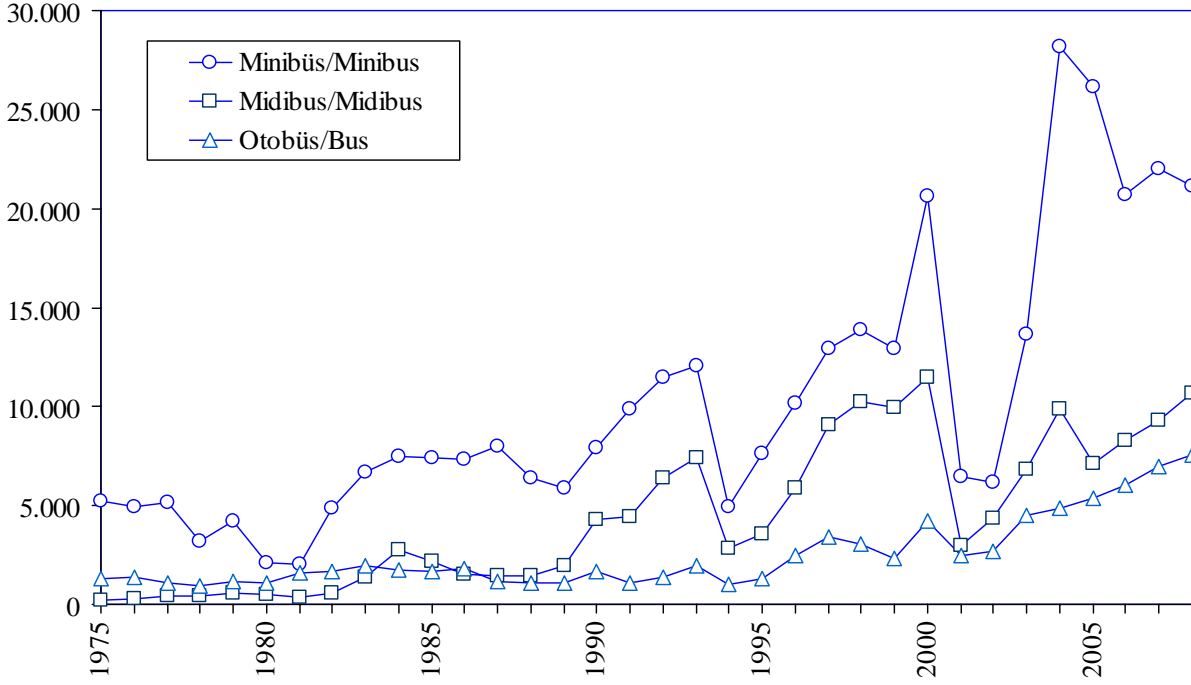
Otomobil /Toplam Üretim P.Cars /Total Production



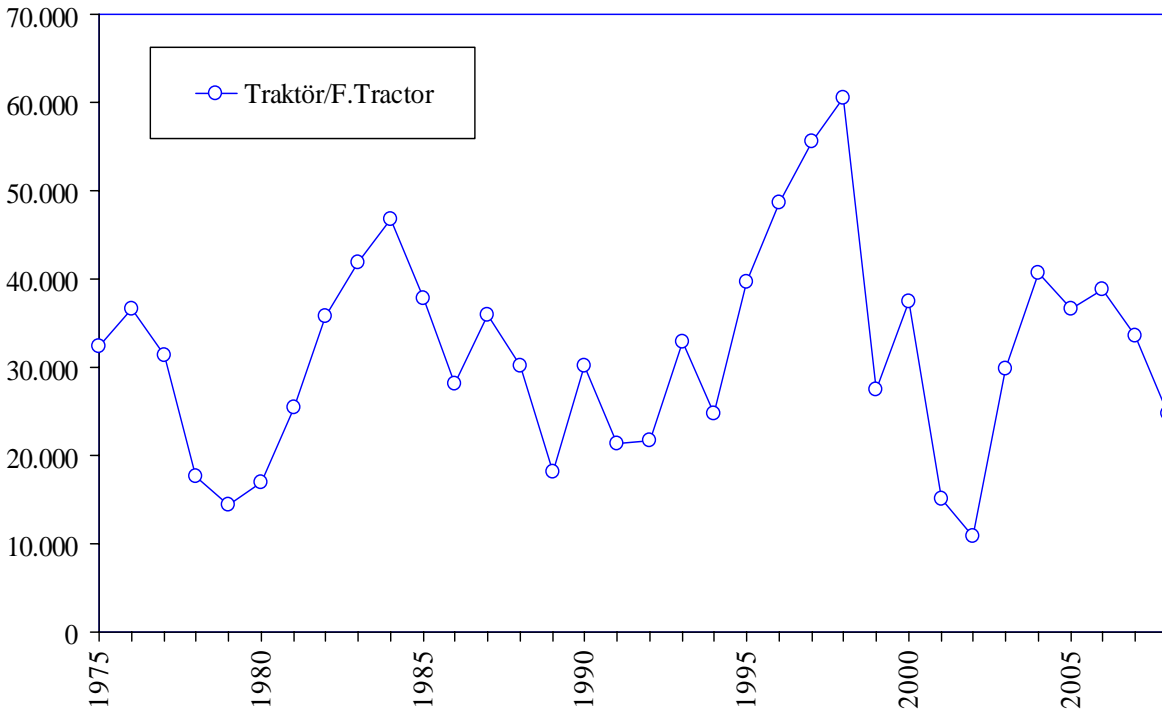
Yük Taşıt Araçları Üretimi Truck and Pick Up Production



Yolcu Taşıt Araçları Üretimi Bus Production



Traktör Üretimi F.Tractor Production

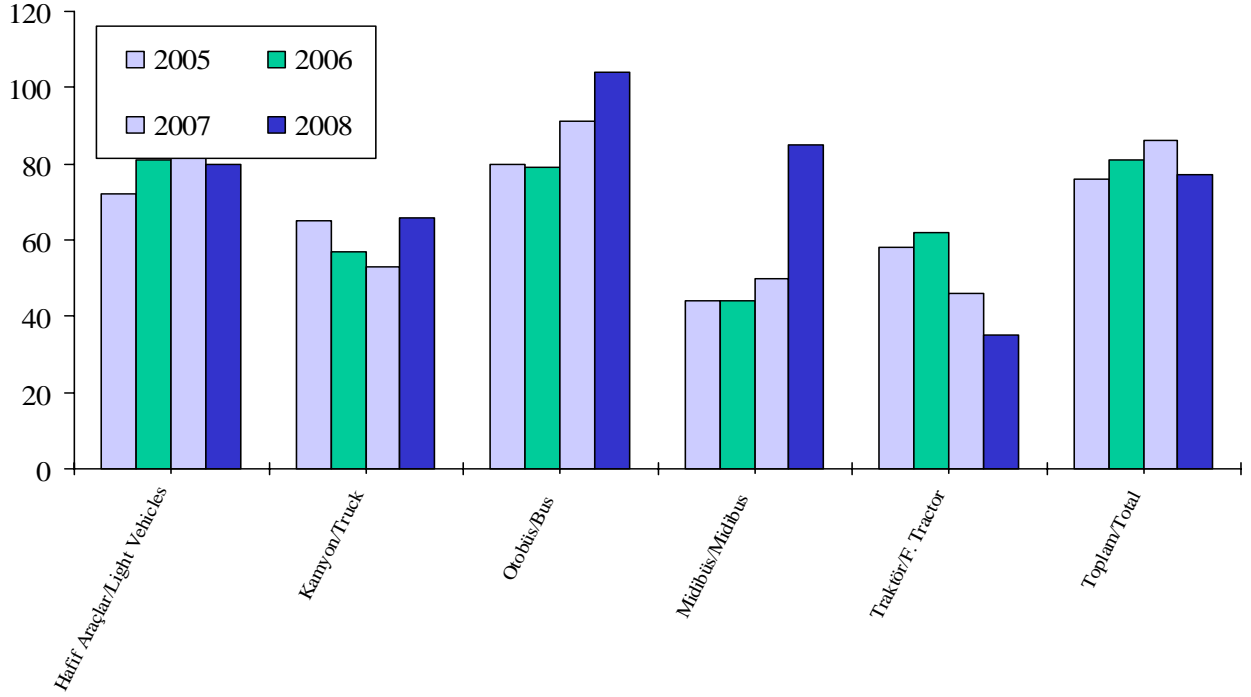


OTOMOTİV SANAYİİ FİRMALARININ ÜRETİM ADETLERİ
The Production Units Of The Automotive Manufacturers

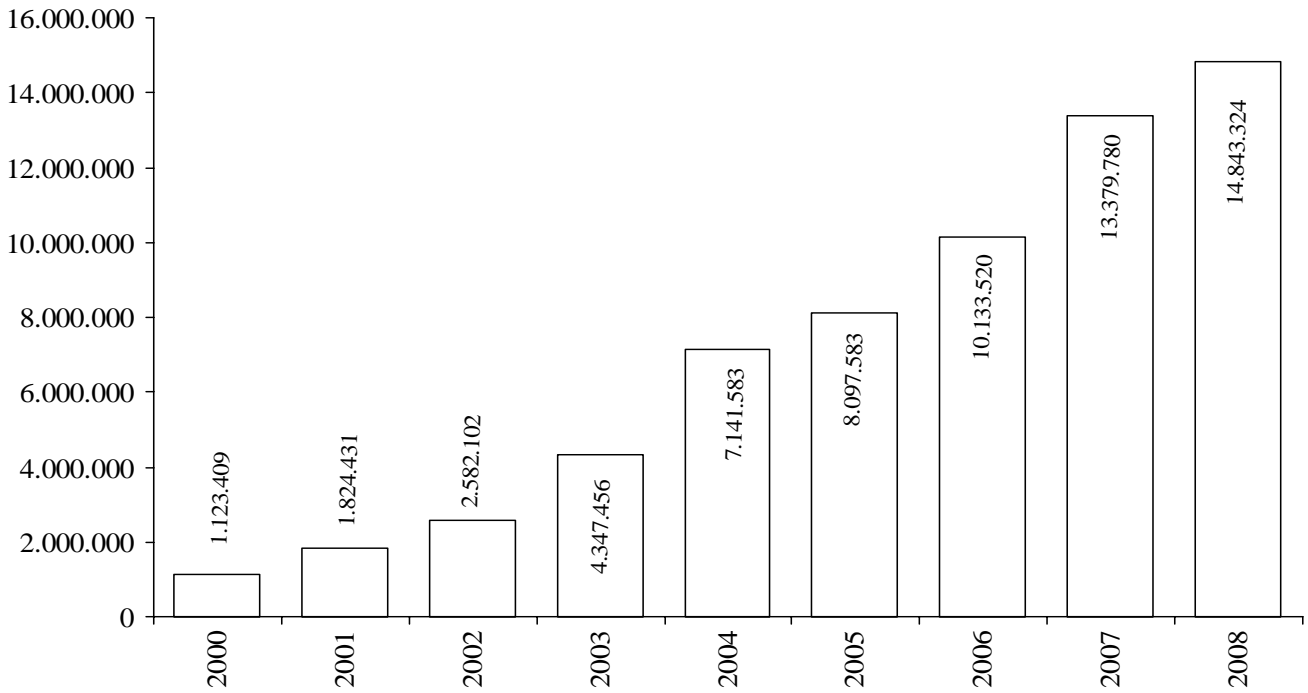
ARALIK SONU / By The end of December

YILLAR Years	OTOMOBİL P.Car	KAMYON Truck	KAMYONET Pick-Up	OTOBÜS Bus	MİNİBÜS Minibus	MİDİBÜS Midibus	TRAKTÖR F.Tractor	TOPLAM Total
1963	30	999	1.458	12	631	0	7.982	11.112
1964	100	2.741	885	56	401	0	7.006	11.189
1965	60	2.350	300	122	1.199	0	6.419	10.450
1966	18	6.258	2.476	174	0	252	8.969	18.147
1967	1.760	7.816	2.736	325	622	0	13.976	27.235
1968	2.852	9.408	2.270	466	895	0	15.118	31.009
1969	3.902	10.859	3.030	882	1.095	84	13.412	33.264
1970	3.660	6.041	4.395	806	1.099	4	7.518	23.523
1971	12.888	4.747	4.508	608	1.891	30	15.687	40.359
1972	29.628	8.596	6.044	988	3.748	0	22.893	71.897
1973	46.855	11.723	8.674	1.267	4.533	22	32.585	105.659
1974	59.906	10.591	11.861	1.113	4.584	148	25.363	113.566
1975	67.291	14.670	18.489	1.284	5.222	239	32.365	139.560
1976	62.992	20.498	19.415	1.376	4.910	302	36.602	146.095
1977	58.245	20.700	14.016	1.077	5.152	467	31.380	131.037
1978	54.085	13.144	6.879	972	3.163	444	17.673	96.360
1979	43.808	13.367	9.384	1.151	4.222	547	14.484	86.963
1980	31.529	8.308	7.322	1.101	2.130	491	16.936	67.817
1981	25.306	12.486	5.454	1.584	2.040	378	25.358	72.606
1982	31.195	15.131	4.991	1.703	4.850	587	35.716	94.173
1983	42.509	17.514	6.822	1.964	6.712	1.382	41.799	118.702
1984	54.832	17.518	7.279	1.766	7.460	2.750	46.782	138.387
1985	60.353	18.162	7.888	1.637	7.397	2.191	37.830	135.458
1986	82.032	13.646	6.605	1.813	7.318	1.508	28.053	140.975
1987	107.185	13.545	7.580	1.137	8.026	1.434	35.986	174.893
1988	120.796	12.842	7.196	1.078	6.401	1.449	30.167	179.929
1989	118.314	11.763	7.250	1.069	5.898	1.984	18.077	164.355
1990	167.556	16.933	10.553	1.689	7.898	4.288	30.098	239.015
1991	195.574	16.918	13.541	1.075	9.912	4.401	21.381	262.802
1992	265.245	21.266	16.984	1.415	11.450	6.399	21.723	344.482
1993	348.095	31.343	19.766	1.933	12.084	7.435	32.809	453.465
1994	212.651	12.108	9.602	1.034	4.924	2.855	25.169	268.343
1995	233.412	19.759	16.808	1.279	7.645	3.537	44.068	326.508
1996	207.757	29.432	21.032	2.499	10.171	5.856	52.590	329.337
1997	242.780	43.693	32.435	3.449	12.935	9.060	55.565	399.917
1998	239.937	31.823	45.517	3.040	13.910	10.275	60.500	405.002
1999	222.041	13.096	37.551	2.327	12.894	9.953	27.435	325.297
2000	297.476	28.348	68.807	4.213	20.597	11.506	37.434	468.381
2001	175.343	6.683	76.672	2.501	6.486	3.000	15.052	285.737
2002	204.198	12.295	116.872	2.684	6.139	4.377	10.840	357.405
2003	294.116	19.041	195.606	4.490	13.625	6.794	29.778	563.450
2004	447.152	31.790	301.563	4.839	28.161	9.903	40.665	864.073
2005	453.663	37.227	349.885	5.406	26.162	7.109	36.527	915.979
2006	545.682	37.026	369.862	6.019	20.728	8.263	38.841	1.026.421
2007	634.883	34.544	391.737	6.946	21.999	9.305	33.518	1.132.932
2008	621.567	36.800	449.434	7.526	21.123	10.660	24.807	1.171.917

Kapasite Kullanımı (%) Capacity Usage (%)



OSD Üyeleri İhracat (US Dollars) (Bin/Thousand) OSD Members Exports



YILLAR İTİBARIYLA ÜRETİM ADETLERİ VE KAPASİTE KULLANIMI
Production Units And Capacity Usage By Years

ARALIK SONU/By the end of December

TİPLER / Types	1997	1998	1999	2000	2001	2002	2003	2004	2005	2006	2007	2008
OTOMOBİL / P.Car	242.780	239.937	222.041	297.476	175.343	204.198	294.116	447.152	453.663	545.682	634.883	621.567
KAMYON / Truck	43.693	31.823	13.096	28.348	6.683	12.295	19.041	31.790	37.227	37.026	34.544	36.800
KAMYONET / Pick-Up	32.435	45.517	37.551	68.807	76.672	116.872	195.606	301.563	349.885	369.862	391.737	449.434
OTOBÜS / Bus	3.449	3.040	2.327	4.213	2.501	2.684	4.490	4.839	5.406	6.019	6.946	7.526
MİNİBÜS / Minibus	12.935	13.910	12.894	20.597	6.486	6.139	13.625	28.161	26.162	20.728	21.999	21.123
MİDİBÜS / Midibus	9.060	10.275	9.953	11.506	3.000	4.377	6.794	9.903	7.109	8.263	9.305	10.660
TRAKTÖR / F.Tractor	55.565	60.500	27.435	37.434	15.052	10.840	29.778	40.665	36.527	38.841	33.518	24.807
TOPLAM / Total	399.917	405.002	325.297	468.381	285.737	357.405	563.450	864.073	915.979	1.026.421	1.132.932	1.171.917

NOT: EN YÜKSEK ÜRETİM ADETLERİ [] İÇİNE ALINMIŞTIR.

Note: The highest production volumes are shown in []

KAPASİTE KULLANIMI
Capacity Usage

% 49	% 49	50%	36%	29%	35%	52%	73%	76%	81%	86%	77%
------	------	-----	-----	-----	-----	-----	-----	-----	-----	-----	-----

OTOMOTİV SANAYİİ FİRMALARININ İHRACATLARI
Automotive Industry Exports

ARALIK SONU/By the end of December

TİPLER / Types	YILLAR / Years									
	2004	2005		2006	2007		2008			
	ADET Units	DEĞER \$ Value	ADET Units	DEĞER \$ Value	ADET Units	DEĞER \$ Value	ADET Units	DEĞER \$ Value	ADET Units	DEĞER \$ Value
OTOMOBİL / P. Car	305.072	3.763.058.705	319.849	4.098.450.643	430.528	5.471.999.318	518.328	6.941.721.286	530.175	7.338.172.370
KAMYON / Truck	2.530	104.124.950	5.059	265.908.938	4.012	236.167.822	9.399	644.492.876	9.740	718.225.590
KAMYONET / Pick Up	190.358	2.278.970.894	219.067	2.638.935.232	251.911	3.113.245.220	273.017	3.850.694.467	348.814	5.022.968.619
OTOBÜS / Bus	2.933	467.852.005	3.791	568.072.883	4.122	673.747.640	5.349	1.068.409.224	5.521	1.098.374.965
MİNİBÜS / Minibus	5.521	71.953.668	3.733	57.189.589	4.208	75.387.559	11.622	220.139.691	14.270	290.029.482
MİDİBÜS / Midibus	1.939	72.152.794	1.935	85.037.627	1.918	109.027.648	2.031	125.803.388	2.143	163.516.254
TRAKTÖR / F. Tractor	10.178	144.384.771	8.244	122.154.910	9.710	145.034.002	9.458	164.941.590	10.420	212.036.447
YEDEK PARÇA / Miscellaneous Parts		239.085.076		261.833.548		308.910.352		363.577.505		484.509.113
TOPLAM / Total	518.531	7.141.582.863	561.678	8.097.583.370	706.409	10.133.519.561	829.204	13.379.780.027	921.083	15.327.832.840

YURTIÇİ TEŞVİKLİ SATIŞLARI HARİÇTİR / Excluding Local Incentive Sales

OTOMOTİV SANAYİİ FİRMALARININ İHRACATLARI
Automotive Industry Exports

(A) Complete Vehicle, (B) Miscellaneous Parts

ARALIK SONU/By the end of December

FİRMALAR/Firms	2004		2005		2006		2007		2008	
	ADET Units	DEĞER \$ Value \$	ADET Units	DEĞER \$ Value \$	ADET Units	DEĞER \$ Value \$	ADET Units	DEĞER \$ Value \$	ADET Units	DEĞER \$ Value \$
A.I.O.S.										
Komple Araç (A)	1.074	45.742.811	767	41.550.164	711	39.671.605	750	52.859.501	1.042	88.310.971
Muhtelif Parça (B)	0	2.506.614	0	1.746.892	0	2.470.922	0	2.482.358		4.305.179
ASKAM										
Komple Araç (A)	40	953.785	16	622.476	30	1.559.737	0	0	0	0
Muhtelif Parça (B)	0	309.406	0	259.028	0	77.341	0	4.994		0
B.M.C.										
Komple Araç (A)	882	51.901.952	1.146	75.559.210	712	64.038.157	1.524	117.713.052	1.189	118.547.951
Muhtelif Parça (B)	0	1.299.910	0	3.108.868	0	4.633.147	0	6.725.073		4.810.401
FORD OTOSAN										
Komple Araç (A)	139.210	1.774.729.662	162.910	2.046.322.255	184.748	2.418.455.711	221.964	3.373.728.560	218.046	3.700.683.548
Muhtelif Parça (B)	0	15.730.655	0	29.062.374	0	35.652.360	0	50.219.794		24.638.672
HATTAT TARIM										
Komple Araç (A)	10	86.726	4	56.759	0	0	0	0	53	1.323.226
Muhtelif Parça (B)	0	0	0	0	0	86.000	0	0	0	0
HONDA TÜRKİYE										
Komple Araç (A)	5.910	67.800.166	3.011	39.716.210	5.692	85.599.561	7.732	135.550.960	34.926	595.442.974
Muhtelif Parça (B)	0	257.696	0	285.729	0	549.189	0	289.437	0	0
HYUNDAI ASSAN										
Komple Araç (A)	23.370	223.659.000	20.654	209.903.103	34.630	356.265.291	69.336	764.485.169	61.269	642.532.489
Muhtelif Parça (B)	0	186.398	0	472.422	0	3.646.518	0	1.136.964		2.370.900
KARSAN										
Komple Araç (A)	513	6.709.955	366	5.055.200	244	3.613.190	682	11.265.196	442	7.083.667
Muhtelif Parça (B)	0	589.641	0	1.733.884	0	452.083	0	456.325		957.704
M.A.N. TÜRKİYE										
Komple Araç (A)	1.024	163.445.205	1.310	186.971.735	1.874	290.309.748	1.696	350.815.402	1.527	360.889.220
Muhtelif Parça (B)	0	16.072.888	0	13.468.609	0	14.187.720	0	10.014.447		13.588.212

M. BENZ TÜRK

Komple Araç (A)	2.377	268.394.757	5.045	448.305.185	3.903	393.075.744	8.708	972.039.362	9.092	1.000.073.122
Muhtelif Parça (B)	0	14.844.509	0	8.499.269	0	14.310.082	0	29.443.281		33.636.572

OTOKAR

Komple Araç (A)	494	20.324.387	1.148	70.722.337	1.276	101.903.326	1.113	97.817.549	619	104.138.416
Muhtelif Parça (B)	0	3.337.242	0	7.322.154	0	10.587.249	0	2.766.898		10.587.971

OTOYOL

Komple Araç (A)	788	14.496.029	851	18.317.367	825	22.789.212	104	5.681.586	9	751.684
Muhtelif Parça (B)	0	8.232.580	0	4.043.139	0	1.058.244	0	1.072.000		25.421

OYAK-RENAULT

Komple Araç (A)	130.903	1.431.798.201	123.162	1.332.866.179	177.411	2.060.598.794	204.428	2.389.521.053	252.232	3.086.031.532
Muhtelif Parça (B)	0	70.787.913	0	89.734.959	0	115.909.259	0	139.652.097		182.884.238

TEMSA

Komple Araç (A)	664	88.668.962	970	127.743.966	1.103	161.599.587	1.145	176.236.455	1.240	186.885.207
Muhtelif Parça (B)	0	1.366.773	0	2.264.703	0	3.177.885	0	5.291.069		15.439.586

TOYOTA

Komple Araç (A)	118.629	1.851.444.941	144.058	2.308.325.619	160.479	2.510.897.080	154.386	2.842.393.047	119.586	2.303.580.309
Muhtelif Parça (B)	0	4.442.019	0	8.595.965	0	13.132.160	0	16.446.922		17.998.963

TOFAŞ

Komple Araç (A)	82.475	748.043.203	88.020	801.613.906	123.061	1.169.198.464	146.178	1.561.154.040	209.444	2.436.336.190
Muhtelif Parça (B)	0	73.653.165	0	55.714.803	0	48.529.358	0	44.290.197		118.156.005

TÜRK TRAKTÖR

Komple Araç (A)	6.693	105.656.960	5.124	86.178.583	4.597	81.231.815	5.761	103.741.952	9.598	198.013.971
Muhtelif Parça (B)	0	16.825.740	0	26.325.137	0	33.729.264	0	46.661.382		52.466.366

UZEL

Komple Araç (A)	3.475	38.641.085	3.116	35.919.568	5.113	63.802.187	3.697	61.199.638	769	12.699.250
Muhtelif Parça (B)	0	8.641.927	0	9.195.613	0	6.721.571	0	6.624.267		2.642.923

518.531	6.902.497.787	561.678	7.835.749.822	706.409	9.824.609.209	829.204	13.016.202.522	921.083	14.843.323.727
0	239.085.076	0	261.833.548	0	308.910.352	0	363.577.505	0	484.509.113

TOPLAM/Total

518.531	7.141.582.863	561.678	8.097.583.370	706.409	10.133.519.561	829.204	13.379.780.027	921.083	15.327.832.840
----------------	----------------------	----------------	----------------------	----------------	-----------------------	----------------	-----------------------	----------------	-----------------------

YURTIÇİ TEŞVİKLİ SATIŞLARI HARIÇTİR / Excluding Local Incentive Sales

OTOMOBİL İTHALATI / Passenger Car Imports

BÖLGE / ÜLKE Region / Country	2004		2005		2006		2007		2008	
	Adet / Unit	%	Adet / Unit	%	Adet / Unit	%	Adet / Unit	%	Adet / Unit	%
AT + EFTA / EU + EFTA	261.263	83,8	237.905	78,8	200.446	78,5	195.361	82,5	165.435	80,0
DOĞU AVRUPA / East Europe	15.395	4,9	20.106	6,7	14.022	5,5	9.998	4,2	9.397	4,5
* RUSYA FED. / Russian Fed.	4.002	1,3	3.562	1,2	1.441	0,6	845	0,4	620	0,3
* ROMANYA / Romania	4.088	1,3	8.464	2,8	7.355	2,9	3.688	1,6	5.152	2,5
* ÇEK CUM. / Czech Republic	7.305	2,3	8.080	2,7	5.226	2,0	5.465	2,3	3.625	1,8
UZAK DOĞU / Far East	35.010	11,2	43.878	14,5	41.026	16,1	31.366	13,2	31.961	15,5
* JAPONYA / Japan	8.289	2,7	8.448	2,8	8.891	3,5	8.931	3,8	6.026	2,9
* G. KORE / S. Korea	26.721	8,6	33.184	11,0	29.769	11,7	20.102	8,5	17.762	8,6
* DİĞER / Others	0	0,0	2.246	0,7	2.366	0,9	2.333	1,0	8.173	4,0
TOPLAM/Total	311.668	100,0	301.889	100,0	255.494	100,0	236.725	100,0	206.793	100,0

Kaynak: Otomotiv Distribütörleri Derneği

Source: Association of Automotive Distributors

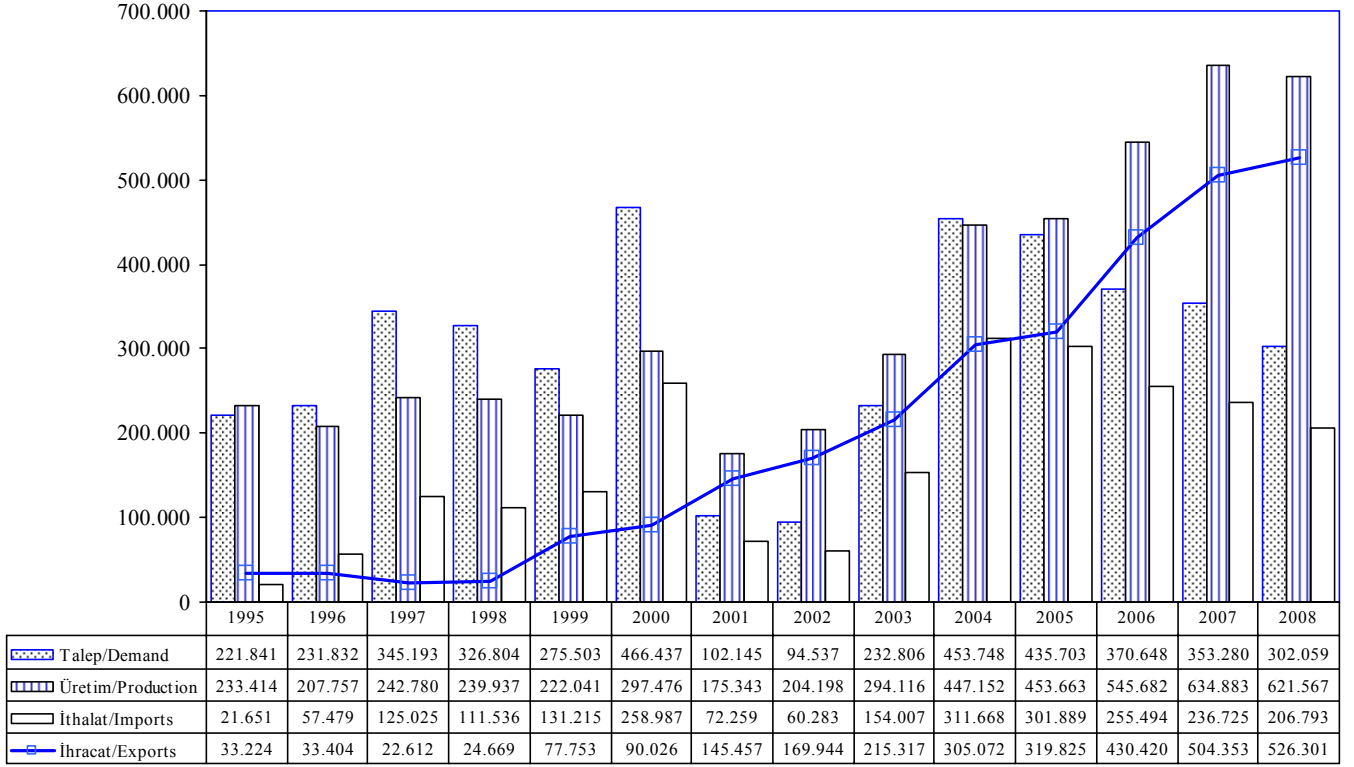
HAFİF TİCARİ ARAÇ İTHALATI / Light Commercial Vehicle Imports

BÖLGE / ÜLKE Region / Country	2004		2005		2006		2007		2008	
	Adet / Unit	%	Adet / Unit	%	Adet / Unit	%	Adet / Unit	%	Adet / Unit	%
AT + EFTA / EU + EFTA	81.580	73,6	90.209	72,5	81.179	70,2	73.753	68,1	57.546	63,2
DOĞU AVRUPA / East Europe	1.252	0,4	335	0,1	1.502	0,6	5.263	2,2	4.463	2,2
* RUSYA FED. / Russian Fed.	0	0,0	0	0,0	1.341	0,5	0	0,0	0	0,0
* ROMANYA / Romania	1.252	0,4	241	0,1	1	0,0	5.263	2,2	4.463	2,2
* ÇEK CUM. / Czech Republic	0	0,0	94	0,0	160	0,1	0	0,0	0	0,0
UZAK DOĞU / Far East	28.074	25,3	33.841	27,2	32.877	28,5	29.269	27,0	29.059	31,9
* JAPONYA / Japan	9.915	3,2	11.908	3,9	11.197	4,4	13.578	5,7	10.443	5,0
* G. KORE / S. Korea	14.348	4,6	16.247	5,4	15.769	6,2	10.205	4,3	9.403	4,5
* DİĞER / Others	3.811	1,2	5.686	1,9	5.911	2,3	5.486	2,3	9.213	4,5
TOPLAM/Total	110.906	100,0	124.385	100,0	115.558	100,0	108.285	100,0	91.068	100,0

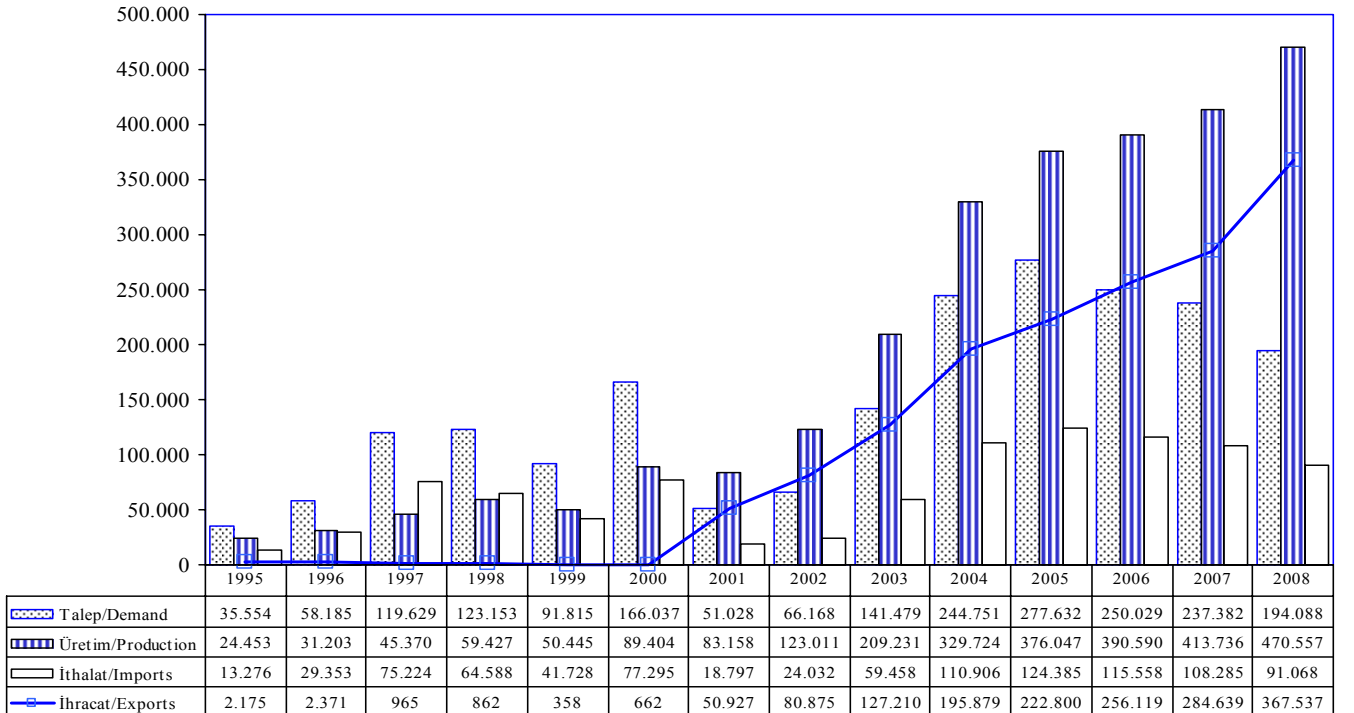
Kaynak: Otomotiv Distribütörleri Derneği

Source: Association of Automotive Distributors

Otomobil Üretim/İthalat/İhracat P.Cars Production/Imports/Exports



Hafif Ticari Araçlar Üretim/İthalat/İhracat Light Commercial Vehicles Production/Imports/Exports



OTOMOTİV SANAYİİ FİRMALARININ CİROLARI (TL)**Automotive Industry Sales (TL)**

ARALIK SONU / By the end of December

FİRMALAR / Firms	2004	2005	2006	2007	2008
A.I.O.S.	259.920.867	312.689.366	289.926.445	356.555.442	377.271.138
ASKAM	146.502.459	171.190.532	113.196.985	9.309.724	0
B.M.C.	682.588.584	743.260.611	972.705.273	948.861.162	806.000.000
FORD OTOSAN	4.338.319.163	5.362.980.155	5.745.249.354	6.081.133.970	5.868.766.148
HATTAT TARIM	45.570.101	47.477.877	58.550.417	42.343.778	26.356.282
HONDA TÜRKİYE	277.111.595	216.275.865	363.123.004	747.186.423	1.087.861.860
HYUNDAI ASSAN	924.059.362	771.211.501	477.248.859	1.662.390.111	1.437.085.335
KARSAN	360.676.553	227.413.220	277.695.276	255.779.333	212.292.161
M.A.N.TÜRKİYE	444.649.273	389.634.360	520.594.413	591.553.348	551.401.948
M. BENZ TÜRK	1.382.188.640	2.137.058.933	1.678.247.277	2.328.447.374	2.512.725.887
OTOKAR	289.746.902	262.742.003	302.520.049	402.164.364	479.782.902
OTOYOL	221.168.135	170.854.222	198.153.285	116.730.210	0
O. RENAULT	3.129.144.523	2.911.584.533	4.035.798.791	4.321.934.802	4.965.117.037
TEMSA	365.108.261	473.466.085	516.181.039	548.163.738	561.628.329
TOFAŞ	1.997.641.365	2.587.831.847	3.139.899.753	3.631.875.337	3.863.107.404
TOYOTA	2.971.458.991	3.325.743.699	3.917.716.081	3.884.994.944	3.126.769.847
T. TRAKTÖR	534.845.813	485.859.576	320.445.556	310.993.702	663.310.591
UZEL	471.370.912	400.158.165	471.527.685	332.021.328	0
TOPLAM /Total	18.842.071.499	20.997.432.550	23.398.779.542	26.572.439.090	26.539.476.869

OTOMOTİV SANAYİİ FİRMALARININ HAMMADDEYE VE YAN SANAYİYE ÖDEMELERİ (TL) - 2008
Payments For Raw Material And Components (TL) - 2008

ARALIK SONU / By the end of December

FİRMALAR Firms	FABRİKAYA ALINAN HAMMADDEYE ÖDENEN MEBLAĞ (K.D.V. HARIÇ) Payment for raw materials (Excl. V.A.T.)	YAN SANAYİYE ÖDENEN MEBLAĞ (K.D.V. HARIÇ) Payment for components manufacturers (Excl. V.A.T.)	TOPLAM Total
A.I.O.S.	342.162.409,78	18.008.547,88	360.170.957,66
B.M.C.	37.225.594,00	467.996.228,00	505.221.822,00
FORD OTOSAN	4.954.199.195,00	1.175.448.678,00	6.129.647.873,00
HATTAT TARIM	34.028.188,25	2.156.959,45	36.185.147,70
HONDA TÜRKİYE		826.185.535,00	826.185.535,00
HYUNDAI ASSAN	680.074.585,00	457.398.788,00	1.137.473.373,00
KARSAN		282.433.556,00	282.433.556,00
M.A.N. TÜRKİYE	461.483.385,70	54.442.021,00	515.925.406,70
M. BENZ TÜRK	1.948.014.308,00	163.803.262,00	2.111.817.570,00
OTOKAR	309.508.809,00	434.449.975,00	743.958.784,00
OYAK RENAULT	3.947.774.984,00	4.156.952.796,10	8.104.727.780,10
TEMSA	507.744.949,00	304.646.969,00	812.391.918,00
TOFAŞ	3.512.491.604,00	415.747.435,00	3.928.239.039,00
TOYOTA	84.396.413,00	2.216.084.551,99	2.300.480.964,99
TÜRK TRAKTÖR	438.579.416,49	80.937.429,59	519.516.846,08
TOPLAM / Total			28.314.376.573,23

OTOMOTİV SANAYİİ FİRMALARININ ÖDEDİKLERİ VERGİLER VE ÜCRETLER (TL) - 2008
Taxes, Wages and Salaries Paid by Automotive Manufacturers (TL) - 2008

VERGİ VE ÖDEMELER / Taxes and Payments	<u>A.I.O.S.</u>	<u>B.M.C.</u>	<u>FORD OTOSAN</u>	<u>HATTAT TARIM</u>	<u>HONDA TÜRKİYE</u>
NET ÜCRET VE İKRAMİYELER Net wages, salaries and bonuses	18.822.326,25	57.003.342,71	169.674.982,00	3.000.561,46	25.000.771,00
GELİR VERGİSİ Income tax	6.811.922,10	12.262.104,33	47.803.495,00	647.794,15	7.430.733,00
SOSYAL SİGORTA PRİMİ İŞÇİ VE İŞVEREN Social insurance premium paid by employee and employers	9.755.747,47	23.032.269,09	74.346.076,00	1.401.737,73	11.465.640,00
DAMGA VERGİSİ Stamp duty	203.478,92	450.116,96	1.567.050,00	25.107,94	234.410,00
DİĞER KESİNTİLER Other taxes	13.983,89	0,00	20.345.212,00	399.661,26	2.665.171,00
İSTİH. EDİLEN. ÖDEME. VE VERGİ. TOPLAMI Total production and tax payment	35.607.458,63	92.747.833,09	313.736.815,00	5.474.862,54	46.796.725,00
İTH. ÖDE. TOP. VERGİ VE RESİM. (K.D.V. HARIÇ) Total import taxes and duties (Excl. V.A.T.)	7.832.185,26	476.036,00	9.630.059,00	0,00	0,00
VERGİ DAİRELERİNE ÖDENEN K.D.V. Value added tax (V.A.T.) paid to tax offices	983.463,46	0,00	15.684.332,00	0,00	0,00
DİĞER VERGİLER Other taxes	1.398.257,42	663.493,00	3.910.613,00	46.276,00	46.433.462,00
KURUM STOPAJ VERGİSİ Association tax	0,00	0,00	114.846.441,00	0,00	17.884.891,00
T O P L A M / Total	45.821.364,77	93.887.362,09	457.808.260,00	5.521.138,54	111.115.078,00

VERGİ VE ÖDEMELER / Taxes and Payments	<u>HYUNDAI ASSAN</u>	<u>KARSAN</u>	<u>M.A.N. TÜRKİYE</u>	<u>M. BENZ TÜRK</u>	<u>OTOKAR</u>
NET ÜCRET VE İKRAMİYELER Net wages, salaries and bonuses	33.784.765,00	17.984.780,00	35.945.850,58	132.002.841,00	29.157.361,00
GELİR VERGİSİ Income tax	12.942.153,00	5.151.470,00	18.621.264,78	41.517.037,00	9.604.220,00
SOSYAL SİGORTA PRİMİ İŞÇİ VE İŞVEREN Social insurance premium paid by employee and employers	19.281.863,00	6.988.741,00	14.988.000,00	49.790.897,00	12.562.053,00
DAMGA VERGİSİ Stamp duty	415.794,00	162.352,00	37.225,00	1.245.533,00	288.309,00
DİĞER KESİNTİLER Other taxes	0,00	1.715.234,00	0,00	1.890.122,00	3.943.813,00
İSTİH. EDİLEN. ÖDEME. VE VERGİ. TOPLAMI Total production and tax payment	66.424.575,00	32.002.577,00	69.592.340,36	226.446.430,00	55.555.756,00
İTH. ÖDE. TOP. VERGİ VE RESİM. (K.D.V. HARIÇ) Total import taxes and duties (Excl. V.A.T.)	29.152.622,00	4.077.581,00	482.861,17	7.667.946,00	507.256,00
VERGİ DAİRELERİNE ÖDENEN K.D.V. Value added tax (V.A.T.) paid to tax offices	0,00	778.562,00	0,00	19.370.212,00	603.586,00
DİĞER VERGİLER Other taxes	772.202,00	503.785,00	2.542.674,25	1.557.166,00	1.820.910,00
KURUM STOPAJ VERGİSİ Association tax	0,00	0,00	0,00	75.519.133,00	8.827.323,00
T O P L A M / Total	96.349.399,00	37.362.505,00	72.617.875,78	330.560.887,00	67.314.831,00

VERGİ VE ÖDEMELER / Taxes and Payments	<u>OYAK RENAULT</u>	<u>TEMSA</u>	<u>TOFAŞ</u>	<u>TOYOTA</u>	<u>TÜRK TRAKTÖR</u>	<u>TOPLAM/Total</u>
NET ÜCRET VE İKRAMİYELER Net wages, salaries and bonuses	147.005.948,42	54.651.472,00	154.734.316,00	81.593.820,79	22.870.332,00	983.233.470,21
GELİR VERGİSİ Income tax	46.872.844,00	10.617.593,00	46.894.771,00	25.504.207,79	9.249.735,86	301.931.345,01
SOSYAL SİGORTA PRİMİ İŞÇİ VE İŞVEREN Social insurance premium paid by employee and employers	66.020.352,32	16.061.382,00	77.978.640,00	31.087.565,19	13.679.035,40	428.439.999,20
DAMGA VERGİSİ Stamp duty	1.426.713,21	369.044,00	1.570.685,00	759.935,90	267.132,18	9.022.887,11
DİĞER KESİNTİLER Other taxes	9.832.414,54	0,00	32.350.098,00	3.465.503,37	1.924.844,00	78.546.057,06
İSTİH. EDİLEN. ÖDEME. VE VERGİ. TOPLAMI Total production and tax payment	271.158.272,49	81.699.491,00	313.528.510,00	142.411.033,04	47.991.079,44	1.801.173.758,59
İTH. ÖDE. TOP. VERGİ VE RESİM. (K.D.V. HARIÇ) Total import taxes and duties (Excl. V.A.T.)	184.213,78	17.815.000,00	1.365.027,00	6.065.148,16	113.586,67	85.369.522,04
VERGİ DAİRELERİNE ÖDENEN K.D.V. Value added tax (V.A.T.) paid to tax offices	2.224.138,89	6.849.993,00	30.350.515,00	0,00	195.443,97	77.040.246,32
DİĞER VERGİLER Other taxes	13.852.970,00	1.225.260,00	364.142.159,00	471.412,00	1.240.486,40	440.581.126,07
KURUM STOPAJ VERGİSİ Association tax	15.151.540,63	0,00	0,00	0,00	17.092.419,89	249.321.748,52
T O P L A M / Total	302.571.135,79	107.589.744,00	709.386.211,00	148.947.593,20	66.633.016,37	2.653.486.401,54

OTOMOTİV SANAYİİ İSTİHDAMI
Automotive Industry Employment

<u>FİRMALAR / Firms</u>	<u>2004</u>	<u>2005</u>	<u>2006</u>	<u>2007</u>	<u>2008</u>
A.I.O.S.					
İŞÇİ / Worker	551	548	537	537	574
BÜRO PERSONELİ / Employee	115	116	119	122	132
İDARECİ / Administrator	14	12	15	15	15
MÜHENDİS / Engineer	34	35	41	49	55
İDA. MÜHENDİS / Ad. Eng.	21	24	25	23	27
TOPLAM / Total	735	735	737	746	803
ASKAM					
İŞÇİ / Worker	275	249	242	35	0
BÜRO PERSONELİ / Employee	72	73	70	24	0
İDARECİ / Administrator	27	28	29	14	0
MÜHENDİS / Engineer	42	39	35	9	0
İDA. MÜHENDİS / Ad. Eng.	31	35	32	22	0
TOPLAM / Total	447	424	408	104	0
B.M.C.					
İŞÇİ / Worker	2052	2140	2559	2618	2377
BÜRO PERSONELİ / Employee	328	346	421	356	338
İDARECİ / Administrator	24	24	34	37	34
MÜHENDİS / Engineer	129	137	179	194	183
İDA. MÜHENDİS / Ad. Eng.	59	59	69	76	75
TOPLAM / Total	2.592	2.706	3.262	3.281	3.007
FORD OTOSAN					
İŞÇİ / Worker	6405	6460	6765	8100	6657
BÜRO PERSONELİ / Employee	354	405	408	357	385
İDARECİ / Administrator	91	67	262	75	82
MÜHENDİS / Engineer	594	583	582	708	757
İDA. MÜHENDİS / Ad. Eng.	227	222	237	275	283
TOPLAM / Total	7.671	7.737	8.254	9.515	8.164

<u>FİRMALAR / Firms</u>	<u>2004</u>	<u>2005</u>	<u>2006</u>	<u>2007</u>	<u>2008</u>
HATTAT TARIM					
İŞÇİ / Worker	0	42	63	40	37
BÜRO PERSONELİ / Employee	20	49	64	68	68
İDARECİ / Administrator	3	9	14	20	13
MÜHENDİS / Engineer	0	5	6	22	15
İDA. MÜHENDİS / Ad. Eng.	5	12	13	14	6
TOPLAM / Total	28	117	160	164	139
HONDA TÜRKİYE					
İŞÇİ / Worker	308	285	514	937	953
BÜRO PERSONELİ / Employee	92	152	109	166	180
İDARECİ / Administrator	43	54	65	35	81
MÜHENDİS / Engineer	33	34	29	43	58
İDA. MÜHENDİS / Ad. Eng.	18	22	17	26	17
TOPLAM / Total	494	547	734	1.207	1.289
HYUNDAI ASSAN					
İŞÇİ / Worker	1487	1497	1637	1796	1692
BÜRO PERSONELİ / Employee	280	192	171	261	85
İDARECİ / Administrator	62	61	56	16	151
MÜHENDİS / Engineer	67	43	76	59	127
İDA. MÜHENDİS / Ad. Eng.	9	22	51	11	14
TOPLAM / Total	1.905	1.815	1.991	2.143	2.069
KARSAN					
İŞÇİ / Worker	857	638	649	746	727
BÜRO PERSONELİ / Employee	47	27	24	31	36
İDARECİ / Administrator	16	5	5	6	5
MÜHENDİS / Engineer	18	45	41	55	68
İDA. MÜHENDİS / Ad. Eng.	18	9	8	8	12
TOPLAM / Total	956	724	727	846	848

<u>FİRMALAR / Firms</u>	<u>2004</u>	<u>2005</u>	<u>2006</u>	<u>2007</u>	<u>2008</u>
M.A.N. TÜRKİYE					
İŞÇİ / Worker	2055	2103	2288	1732	1677
BÜRO PERSONELİ / Employee	234	264	258	166	136
İDARECİ / Administrator	92	74	42	38	32
MÜHENDİS / Engineer	98	80	168	90	77
İDA. MÜHENDİS / Ad. Eng.	53	59	22	37	45
TOPLAM / Total	2.532	2.580	2.778	2.063	1.967
M. BENZ TÜRK					
İŞÇİ / Worker	2781	2846	3096	3525	3673
BÜRO PERSONELİ / Employee	359	308	285	274	351
İDARECİ / Administrator	93	93	93	95	106
MÜHENDİS / Engineer	374	441	455	466	445
İDA. MÜHENDİS / Ad. Eng.	51	60	60	62	75
TOPLAM / Total	3.658	3.748	3.989	4.422	4.650
OTOKAR					
İŞÇİ / Worker	625	719	660	891	779
BÜRO PERSONELİ / Employee	89	120	130	149	172
İDARECİ / Administrator	53	27	20	18	26
MÜHENDİS / Engineer	70	88	103	111	130
İDA. MÜHENDİS / Ad. Eng.	32	35	36	55	77
TOPLAM / Total	869	989	949	1.224	1.184
OTOYOL					
İŞÇİ / Worker	731	688	566	26	0
BÜRO PERSONELİ / Employee	131	158	122	44	0
İDARECİ / Administrator	7	15	12	2	0
MÜHENDİS / Engineer	60	63	54	13	0
İDA. MÜHENDİS / Ad. Eng.	43	41	35	1	0
TOPLAM / Total	972	965	789	86	0

<u>FİRMALAR / Firms</u>	<u>2004</u>	<u>2005</u>	<u>2006</u>	<u>2007</u>	<u>2008</u>
OYAK RENAULT					
İŞÇİ / Worker	3388	4016	4396	5002	4963
BÜRO PERSONELİ / Employee	505	487	515	561	591
İDARECİ / Administrator	26	24	11	25	34
MÜHENDİS / Engineer	332	351	447	511	579
İDA. MÜHENDİS / Ad. Eng.	88	96	101	110	109
TOPLAM / Total	4.339	4.974	5.470	6.209	6.276
TEMSA					
İŞÇİ / Worker	851	1050	1122	1314	1380
BÜRO PERSONELİ / Employee	145	203	204	321	378
İDARECİ / Administrator	35	35	38	44	42
MÜHENDİS / Engineer	123	146	181	244	278
İDA. MÜHENDİS / Ad. Eng.	53	62	67	71	77
TOPLAM / Total	1.207	1.496	1.612	1.994	2.155
TOFAŞ					
İŞÇİ / Worker	3572	3530	4339	6705	6814
BÜRO PERSONELİ / Employee	456	459	326	470	490
İDARECİ / Administrator	73	69	186	64	64
MÜHENDİS / Engineer	213	209	287	407	546
İDA. MÜHENDİS / Ad. Eng.	116	112	120	132	137
TOPLAM / Total	4.430	4.379	5.258	7.778	8.051
TOYOTA					
İŞÇİ / Worker	2827	3116	3208	3045	2728
BÜRO PERSONELİ / Employee	76	131	164	166	109
İDARECİ / Administrator	66	57	26	28	48
MÜHENDİS / Engineer	138	124	139	139	149
İDA. MÜHENDİS / Ad. Eng.	43	25	57	45	43
TOPLAM / Total	3.150	3.453	3.594	3.423	3.077

<u>FİRMALAR / Firms</u>	<u>2004</u>	<u>2005</u>	<u>2006</u>	<u>2007</u>	<u>2008</u>
TÜRK TRAKTÖR					
İŞÇİ / Worker	787	799	773	1061	1118
BÜRO PERSONELİ / Employee	76	80	89	105	191
İDARECİ / Administrator	6	6	5	5	7
MÜHENDİS / Engineer	70	69	67	57	129
İDA. MÜHENDİS / Ad. Eng.	17	21	25	18	29
TOPLAM / Total	956	975	959	1.246	1.474
UZEL					
İŞÇİ / Worker	1218	720	747	667	0
BÜRO PERSONELİ / Employee	163	162	160	140	0
İDARECİ / Administrator	17	25	22	18	0
MÜHENDİS / Engineer	87	122	132	112	0
İDA. MÜHENDİS / Ad. Eng.	58	62	65	64	0
TOPLAM / Total	1.543	1.091	1.126	1.001	0
GENEL TOPLAM/Grand Total					
İŞÇİ / Worker	30.770	31.446	34.161	38.777	36.149
BÜRO PERSONELİ / Employee	3.542	3.732	3.639	3.781	3.642
İDARECİ / Administrator	748	685	935	555	740
MÜHENDİS / Engineer	2.482	2.614	3.022	3.289	3.596
İDA. MÜHENDİS / Ad. Eng.	942	978	1.040	1.050	1.026
TOPLAM / Total	38.484	39.455	42.797	47.452	45.153

İDA. MÜHENDİS=İDARECİ MÜHENDİS
Ad. Eng.=Administrator Engineer

OTOMOTİV SANAYİİ YATIRIMLARI (USD)
Realized Sectorial Investments (USD)

ARALIK SONU/By the end of December

PROJE TİPİ Projects	2004	2005	2006	2007	2008
KAPASİTE ARTTIRIMI Capacity Development	105.000.000	104.000.000	202.000.000	220.000.000	189.000.000
MODERNİZASYON Modernization	48.000.000	128.000.000	96.000.000	54.000.000	66.000.000
YENİ MODEL New Model Development	160.000.000	346.000.000	580.000.000	475.000.000	725.000.000
KALİTE ARTTIRICI Quality Development	11.000.000	17.000.000	19.000.000	24.000.000	33.000.000
YERLİLEŞTİRMEYİ ARTTIRICI Localization	35.000.000	32.000.000	19.000.000	56.000.000	97.000.000
DİĞER Others	76.000.000	97.000.000	120.000.000	100.000.000	198.000.000
TOPLAM Toplam	435.000.000	724.000.000	1.036.000.000	929.000.000	1.308.000.000

TÜRKİYE ARAÇ PARKI
Automotive Vehicles Park In Turkey

YILLAR Years	OTOMOBİL P.Car	KAMYON Truck	KAMYONET Pick-Up	MİNİBÜS Minibus	OTOBÜS Bus	TRAKTÖR F.Tractor	TOPLAM Total
1963	72.034	49.356	30.739	7.543	11.726	50.844	222.242
1964	79.449	46.721	28.658	9.196	11.216	51.781	227.021
1965	87.584	49.317	29.804	10.476	11.693	54.608	243.482
1966	91.469	47.931	31.462	11.239	12.041	65.108	259.250
1967	112.867	56.889	39.927	16.008	13.332	74.982	314.005
1968	125.375	62.616	43.441	18.967	13.948	84.874	349.221
1969	137.345	69.478	48.655	20.540	15.520	96.407	387.945
1970	137.771	70.770	52.152	20.916	15.980	105.865	403.454
1971	153.676	73.433	57.011	22.380	17.040	118.525	442.065
1972	187.272	78.920	62.796	25.559	18.504	135.726	508.777
1973	240.360	86.780	71.043	30.055	20.011	156.139	604.388
1974	313.160	95.309	81.025	34.122	21.404	200.466	745.486
1975	403.546	108.381	98.579	40.623	23.763	243.066	917.958
1976	488.894	122.176	116.861	46.066	25.388	281.802	1.081.187
1977	560.424	138.093	134.213	51.999	27.096	320.578	1.232.403
1978	624.438	146.551	144.695	56.836	28.559	370.259	1.371.338
1979	688.687	157.095	155.278	61.596	30.634	402.777	1.496.067
1980	742.252	164.893	165.821	64.707	32.783	436.369	1.606.825
1981	776.432	172.372	172.269	66.514	33.839	458.714	1.680.140
1982	811.465	180.772	178.762	69.598	35.432	491.001	1.767.030
1983	856.350	190.277	186.427	73.585	38.478	513.516	1.858.633
1984	919.577	197.721	198.106	80.697	43.638	556.781	1.996.520
1985	983.444	205.496	212.505	87.951	47.119	583.974	2.120.489
1986	1.087.234	217.111	224.755	97.917	50.798	612.731	2.290.546
1987	1.193.021	225.872	233.480	106.314	53.554	637.449	2.449.690
1988	1.310.257	234.166	240.718	112.885	56.172	654.636	2.608.834
1989	1.434.830	241.392	248.567	118.026	58.859	672.845	2.774.519
1990	1.649.879	257.353	263.407	125.399	63.700	692.454	3.052.192
1991	1.864.344	273.409	280.891	133.632	68.973	704.373	3.325.622
1992	2.181.388	379.410	308.180	145.312	75.592	828.580	3.918.462
1993	2.619.852	406.398	354.290	159.900	84.254	870.559	4.495.253
1994	2.861.640	419.374	374.473	166.424	87.545	895.506	4.804.962
1995	3.058.511	432.216	397.743	173.051	90.197	937.528	5.089.246
1996	3.274.156	453.796	442.788	182.694	94.978	988.142	5.436.554
1997	3.570.105	489.071	529.838	197.057	101.896	1.053.381	5.941.348
1998	3.838.631	519.749	626.004	211.495	108.361	1.107.157	6.411.397
1999	4.072.326	531.690	692.935	221.683	112.186	1.131.626	6.762.446
2000	4.422.180	557.295	794.459	235.885	118.454	1.159.070	7.287.343
2001	4.534.803	562.063	833.175	239.381	119.306	1.179.068	7.467.796
2002	4.600.140	567.152	875.381	241.700	120.097	1.180.127	7.584.597
2003	4.700.343	579.010	973.457	245.394	123.500	1.184.256	7.805.960
2004	5.400.440	647.420	1.259.867	318.954	152.712	1.210.283	8.989.676
2005	5.772.745	676.929	1.475.057	338.539	163.390	1.247.767	9.674.427
2006	6.140.992	709.535	1.695.624	357.523	175.949	1.290.679	10.370.302
2007	6.472.156	729.202	1.890.459	372.601	189.128	1.327.334	10.980.880
2008	6.796.629	744.217	2.066.007	383.548	199.934	1.358.577	11.548.912

KAYNAK: T.C. BAŞBAKANLIK TÜRKİYE İSTATİSTİK KURUMU

Source: Republic Of Turkey, Prime Ministry Turkish Statistical Institute