



OTOMOTİV SANAYİİ DERNEĐİ  
AUTOMOTIVE MANUFACTURERS ASSOCIATION

# Otomotiv Sanayii Genel ve İstatistik Bülteni General and Statistical Information Bulletin Of Automotive Manufacturers 2008 - I

OSD "OICA" Üvesidir



OSD is a Member of "OICA"

**İÇİNDEKİLER****SAHİFE**

OTOMOTİV SANAYİİ FİRMALARI HAKKINDA GENEL BİLGİLER - 2008	1
OTOMOTİV SANAYİİ FİRMALARININ ÜRETTİKLERİ MODELLER VE GENEL SPESİFİKASYONLARI - 2008	2 - 12
OTOMOTİV SANAYİİ FİRMALARININ 2008 YILI ÜRETİM KAPASİTELERİ	13
OTOMOTİV SANAYİİ FİRMALARININ 2003 - 2007 YILLARI ÜRETİM ADETLERİ	14 - 18
YILLARA GÖRE ÜRETİM GRAFİKLERİ	19 - 20
OTOMOTİV SANAYİİ FİRMALARININ ÜRETİM ADETLERİ	21
KAPASİTE KULLANIM VE İHRACAT GRAFİKLERİ	22
YILLAR İTİBARIYLA ÜRETİM ADETLERİ VE KAPASİTE KULLANIMLARI	23
OTOMOTİV SANAYİİ FİRMALARININ İHRACATLARI	24 - 26
OTOMOBİL İTHALATI – HAFİF TİCARİ ARAÇ İTHALATI	27
OTOMOBİL VE HAFİF TİCARİ ARAÇLAR/ÜRETİM/İTHALAT/İHRACAT GRAFİKLERİ	28
OTOMOTİV SANAYİİ FİRMALARININ CİROLARI	29
OTOMOTİV SANAYİİ FİRMALARININ 2007 YILINDA HAMMADDEYE VE YAN SANAYİYE ÖDEMELERİ	30
OTOMOTİV SANAYİİ FİRMALARININ 2007 YILINDA ÖDEDİKLERİ VERGİLER VE ÜCRETLER	31 - 34
OTOMOTİV SANAYİİ İSTİHDAMI	35 - 39
OTOMOTİV SANAYİİ YATIRIMLARI	40
TÜRKİYE ARAÇ PARKI	41

**CONTENTS****PAGE**

GENERAL INFORMATION ON THE AUTOMOTIVE MANUFACTURERS - 2008	1
GENERAL SPECIFICATIONS OF THE PRODUCTS - 2008	2 - 12
PRODUCTION CAPACITIES - 2008	13
PRODUCTION UNITS FOR THE YEARS 2003 - 2007	14 - 18
PRODUCTION BY YEARS IN GRAPHICS	19 - 20
THE PRODUCTION UNITS OF THE AUTOMOTIVE MANUFACTURERS	21
CAPACITY USAGE AND EXPORTS IN GRAPHICS	22
PRODUCTION UNITS AND CAPACITY UTILIZATION BY YEARS	23
AUTOMOTIVE INDUSTRY EXPORTS	24 - 26
P. CAR IMPORTS - LIGHT COMMERCIAL VEHICLE IMPORTS	27
P. CARS AND LIGHT COMMERCIAL VEHICLES/PRODUCTION/IMPORTS/EXPORTS	28
AUTOMOTIVE INDUSTRY SALES	29
PAYMENT FOR RAW MATERIAL AND COMPONENTS - 2007	30
TAXES, WAGES AND SALARIES PAID BY AUTOMOTIVE MANUFACTURERS IN THE YEAR - 2007	31 - 34
AUTOMOTIVE INDUSTRY EMPLOYMENT	35 - 39
AUTOMOTIVE INDUSTRY INVESTMENTS	40
AUTOMOTIVE VEHICLES PARK IN TURKEY	41

**OTOMOTİV SANAYİİ FİRMALARI HAKKINDA GENEL BİLGİLER - 2008**  
**General Information On The Automotive Manufacturers - 2008**

OCAK SONU/By the end of January

FİRMALAR Firms	ÜRETİM YERİ The Production Place	ÜRETİME BAŞLAMA TARİHİ Starting Year Of Production	LİSANS Licence	SERMAYE Capital (1000 YTL)	YABANCI SERMAYE Foreign Cap. (%)	KAPALI ALAN Covered Area (1.000 M2)	TOPLAM ALAN Total Area (1.000 M2)
A.I.O.S.	KOCAELİ	1966	ISUZU	25.419	29,74	82	299
ASKAM	KOCAELİ	1964	HINO	16.500	0	36	109
B.M.C.	İZMİR	1966		380.000	0	122	420
FORD OTOSAN	ESKİŞEHİR KOCAELİ	1983 2001	FORD	350.910	41	72 345	1.100 1.600
HATTAT TARIM	TEKİRDAĞ	2002	VALTRA, UNIVERSAL, HATTAT	36.450	0	19	118
HONDA TÜRKİYE	KOCAELİ	1997	HONDA MOTOR EUROPE. LTD.	100.000	100	77	292
HYUNDAI ASSAN	KOCAELİ	1997	HYUNDAI MOTOR COMP.	206.220	70	100	1.000
KARSAN	BURSA	1966	KARSAN / PEUGEOT HYUNDAI MOTOR COMPANY	40.000	0	70	200
M.A.N. TÜRKİYE	ANKARA	1966	MAN	65.000	99,9	114	358
M.BENZ TÜRK	İSTANBUL AKSARAY	1968 1985	MERCEDES BENZ	275.000	85	153 82	511 558
OTOKAR	SAKARYA	1963	DEUTZ / LAND ROVER / FRUEHAUF / AM GENERAL	24.000	0	52	169
OTOYOL	SAKARYA	1966	IVECO	52.674	27	88	346
O.RENAULT	BURSA	1971	RENAULT	323.300	51	258	511
TEMSA	ADANA	1987	TEMSA / MITSUBISHI	70.000	0	105	555
TOFAŞ	BURSA	1971	FIAT	500.000	37,8	346	935
TOYOTA	SAKARYA	1994	TOYOTA	150.165	100	209	855
T.TRAKTÖR	ANKARA	1954		47.000	37,5	79	273
UZEL	İSTANBUL	1962	M. FERGUSON / HOLDER	100.050	0	80	100
<b>TOPLAM/Total</b>				<b>2.762.688</b>		<b>2.489</b>	<b>10.309</b>

OTOMOTİV SANAYİİ FİRMALARININ ÜRETTİKLERİ MODELLER VE GENEL SPESİFİKASYONLARI - 2008  
General Specifications Of The Products - 2008

OCAK SONU/By the end of January

FİRMALAR/MODELLER Firms/Models		A.Y.A. G.V.W. K.G.	NET AG. Net We. K.G.	CİNSİ Type	MOTOR / Engine			ŞANZİMAN/Gear Box		
					SİLİNDİR ADEĐİ No.Of Cylinder	CC cc	GÜCÜ/Power BHP/DEVİR Hp/Rpm	VİTES Gear	MODEL	LASTİK EBADI / Tire Size
<b>A.ISUZU</b>										
KAMYON NPR 71	Truck	7500	2636	DİZEL	4	4570	121/3200	5/1	MYY 5T	ÖN-ARKA 215/75 R 17,5
KAMYON NQR 75	Truck	7500	2876	DİZEL	4	5193	175/2600	6/1	MZZ-6U	ÖN-ARKA 215/75 R-17,5
KAMYON NQR 3 Aks	Truck	12100	3476	DİZEL	4	5193	175/2600	6/1	MZZ-6U	ÖN-ARKA 235x75 R 17,5
KAMYONET NKR 55	Pick up	3500	1836	DİZEL	4	2771	80/3500	5/1	MSB-5S	ÖN-ARKA 7,50-15-10 PR
KAMYONET NKR Wide	Pick up	3500	2376	DİZEL	4	4334	100/3200	5/1	MYY-5T	ÖN-ARKA 6,50-16LT-10 PR
KAMYONET NKR 55 FL (NKR Low)	Pick up	3500	1816	DİZEL	4	2771	80/3500	5/1	MSB 5S	ÖN-6,50 R 16 LT 10 PR ARKA 185 R 14 LT 8 PR
MİDİBÜS Turkuaz 27	Midibus	10000	7133	DİZEL	4	5193	175/2600	6/1	MZZ	ÖN-ARKA 235x75 R 17,5
MİDİBÜS Turkuaz 31	Midibus	10000	7197	DİZEL	4	5193	175/2600	6/1	MZZ	ÖN-ARKA 235x75 R 17,5
MİDİBÜS Roybus 27	Midibus	8800	5332	DİZEL	4	4570	121/3200	5/1	MYY5T	ÖN-ARKA 215/75 R 17,5
MİDİBÜS Roybus C 27	Midibus	8800	5292	DİZEL	4	4570	121/3200	5/1	MYY5T	ÖN-ARKA 215/75 R 17,5
MİDİBÜS Classic 27	Midibus	8800	4972	DİZEL	4	4570	121/3200	5/1	MYY5T	ÖN-ARKA 215/75 R 17,5
MİDİBÜS Urban 22	Midibus	8800	4942	DİZEL	4	4570	121/3200	5/1	MYY5T	ÖN-ARKA 215/75 R 17,5
MİDİBÜS Urban 50	Midibus	8800	4852	DİZEL	4	4570	121/3200	5/1	MYY5T	ÖN-ARKA 215/75 R 17,5
MİDİBÜS Euroturkuaz E3 28	Midibus	10800	7157	DİZEL	4	5193	175/2600	6/1	MZZ	ÖN-ARKA 235x75 R 17,5
MİDİBÜS Euroturkuaz E4 28	Midibus	10800	7157	DİZEL	4	5193	175/2600	6/1	MZZ	ÖN-ARKA 235x75 R 17,5
MİDİBÜS Citibus 21	Midibus	10800	6527	DİZEL	4	5193	175/2600	6/1	MZZ	ÖN-ARKA 235x75 R 17,5
MİDİBÜS Interurban E3 24	Midibus	10800	6800	DİZEL	4	5193	175/2600	6/1	MZZ	ÖN-ARKA 235x75 R 17,5
MİDİBÜS Interurban E4 24	Midibus	10800	6800	DİZEL	4	5193	190/2600	6/1	MZZ	ÖN-ARKA 235x75 R 17,5
<b>ASKAM</b>										
KAMYONET AS 250 WD KASALI (4X4)	Pick Up	3500	2700	DİZEL	4	3192	90/2800	5/1	EATON FS 2035 A	ÖN-ARKA 7.50 X 16 8 KAT
KAMYONET AS 250 WD C/C ÇİFT KABIN (4X4)	Pick Up	3500	2800	DİZEL	4	3192	90/2800	5/1	EATON FS 2035 A	ÖN-ARKA 7.50 X 16 8 KAT
KAMYONET AS 250 D	Pick Up	3500	2325	DİZEL	4	3192	90/2800	5/1	EATON FS 2035 A	ÖN-ARKA 8.5 R 17.5 121/120
KAMYONET AS 250 D KASALI	Pick Up	3500	2800	DİZEL	4	3192	90/2800	5/1	EATON FS 2035 A	ÖN-ARKA 8.5 R 17.5 121/120
KAMYONET AS 250 D C/C ÇİFT KABIN	Pick Up	3500	2700	DİZEL	4	3192	90/2800	5/1	EATON FS 2035 A	ÖN-ARKA 8.5 R 17.5 121/120
KAMYONET AS 250 AD	Pick Up	4815	2325	DİZEL	4	3192	90/2800	5/1	EATON FS 2035 A	ÖN-ARKA 8.5 R 17.5 121/120
MINİBÜS AS 250 AWDM	Minibus	4815	3200	DİZEL	4	3192	90/2800	5/1	EATON FS 2035 A	ÖN-ARKA 7.50 X 16 8 KAT
MINİBÜS AS 250 AWDM SAFARI	Minibus	4815	3240	DİZEL	4	3192	90/2800	5/1	EATON FS 2035 A	ÖN-ARKA 7.50 X 16 8 KAT
KAMYON AS 950 SUPER STD (4x2)	Truck	18000	5860	DİZEL	6	7146	240/2300	9/1	ZF 9S75	ÖN-ARKA 12 RX22.5 152/148
KAMYON AS 950 SUPER TL (6x2)	Truck	25000	7350	DİZEL	6	7146	240/2300	9/1	ZF 9S75	ÖN-ARKA 12 RX22.5 152/149
KAMYON AS 950 SUPER TS (6x2)	Truck	25000	7250	DİZEL	6	7146	240/2300	9/1	ZF 9S75	ÖN-ARKA 12 RX22.5 152/150
KAMYON 26.260 LN (6X2)	Truck	25000	7650	DİZEL	6	8000	260/2500	9/1	ZF 9S75	ÖN-ARKA 12 RX22.5 152/151
KAMYON 26.260 SN (6X2)	Truck	25000	7500	DİZEL	6	8000	260/2500	9/1	ZF 9S75	ÖN-ARKA 12 RX22.5 152/152
KAMYON 26.260 FT (6X2)	Truck	25000	7850	DİZEL	6	8000	260/2500	9/1	ZF 9S75	ÖN-ARKA 12 RX22.5 152/153
KAMYON 32.260 LN (8X2)	Truck	32000	8550	DİZEL	6	8000	260/2500	9/1	ZF 9S75	ÖN-ARKA 12 RX22.5 152/154
KAMYON 19.260 LN (4X2)	Truck	18000	6150	DİZEL	6	8000	260/2500	9/1	ZF 9S75	ÖN-ARKA 12 RX22.5 152/155
KAMYON 19.260 SN (4X2)	Truck	18000	6050	DİZEL	6	8000	260/2500	9/1	ZF 9S75	ÖN-ARKA 12 RX22.5 152/156
KAMYON 32300 LN (Hi-Ex) (8X2)	Truck	32000	8650	DİZEL	6	6871	292/2400	16/2	ZF 16S109	ÖN-ARKA 12 RX22.5 152/157
KAMYON 19300 LN (Hi-Ex) (4X2)	Truck	18000	6250	DİZEL	6	6871	292/2400	16/2	ZF 16S109	ÖN-ARKA 12 RX22.5 152/158
KAMYON 19300 SN (Hi-Ex) (4X2)	Truck	18000	6150	DİZEL	6	6871	292/2400	16/2	ZF 16S109	ÖN-ARKA 12 RX22.5 152/159
KAMYON 26300 LN (Hi-Ex) (6X2)	Truck	25000	7750	DİZEL	6	6871	292/2400	16/2	ZF 16S109	ÖN-ARKA 12 RX22.5 152/160
KAMYON 26300 FT (Hi-Ex) (6X2)	Truck	25000	7950	DİZEL	6	6871	292/2400	16/2	ZF 16S109	ÖN-ARKA 12 RX22.5 152/161
ÇEKİCİ 19.260 ST (4X2)	R.Tractor	18000	6100	DİZEL	6	8000	260/2500	9/1	ZF 9S75	ÖN-ARKA 12 RX22.5 152/162
ÇEKİCİ 19300 ST (Hi-Ex) (4X2)	R.Tractor	18000	6600	DİZEL	6	6871	292/2400	16/2	ZF 16S109	ÖN-ARKA 315/80 R 22.5
<b>B.M.C.</b>										
BELDE 220 SLF (OTOBÜS)	BUS	18000	10950	DİZEL	6	5880	220 / 2500	5/1	ZF 5HP 502C, OTOMATİK	ÖN-ARKA 275/70 R 22,5
BELDE 260 CB (3 KAPILI BELEDİYE OTOBÜSÜ)	BUS	17500	10150	DİZEL	6	8267	256 / 2400	5/1	ZF 5HP 500, OTOMATİK	ÖN-ARKA 11 R 22,5
BELDE 280 CB (3 KAPILI BELEDİYE OTOBÜSÜ)	BUS	17500	10700	DİZEL	6	8267	280/2400	5/1	ZF 5HP 500, OTOMATİK	ÖN-ARKA 11 R 22,5
BMC 300-18 DD ÇİFT KATLI OTOBÜS	BUS	18000	12960	DİZEL	6	8267	300/2200	5/1	ZF 5HP 500, OTOMATİK	ÖN-ARKA 275/70 R 22,5
MİDİLUX / S (OTOBÜS)	BUS	8900	6500	DİZEL	6	3900	150/2500	6/1	ZF 6S 890	ÖN-ARKA 215/75 R 17,5
MİDİLUX / C (OTOBÜS)	BUS	9800	5920	DİZEL	6	3900	150/2500	6/1	ZF 6S 890	ÖN-ARKA 215/75 R 17,5
LEVEND 100 BDC (DÜZ KASALI, ÇİFT SIRA KAMYONET)	Pick Up	3150	1880	DİZEL	4	2953	100 / 3800	5/1	BMC 15	ÖN-ARKA 195 R 14 C
LEVEND 100 BDT (KASASIZ, TEK SIRA KAMYONET)	Pick Up	3150	1780	DİZEL	4	2953	100 / 3800	5/1	BMC 15	ÖN-ARKA 195 R 14 C
LEVEND XL MİNİBÜS (14+1) ABS'li, (Çift Lastikli)	Minibus	3560	2560	DİZEL	4	2953	100 / 3800	6/1	ZF 6S 321	ÖN-ARKA 225/70 R 15 C
LEVEND XL MİNİBÜS (14+1) ABS'li, (Tek Lastikli)	Minibus	3560	2560	DİZEL	4	2953	100 / 3800	5/1	BMC 15	ÖN-ARKA 225/70 R 15 C
LEVEND XL Minibüs (17+1) ABS'li, (Çift Lastikli)	Minibus	3560	2560	DİZEL	4	2953	100 / 3800	5/1	BMC 15	ÖN-ARKA 225/70 R 15 C
LEVEND 3.O MDS (TEK SIRA, KASASIZ, ÇİFT LASTİKLİ KAMYONET)	Pick Up	3500	1890	DİZEL	4	2953	100 / 3800	5/1	BMC 15	ÖN-ARKA 195/70 R 15 C
LEVEND 3.O MDT (TEK SIRA KASALI KAMYONET)	Pick Up	3500	2275	DİZEL	4	2953	100 / 3800	5/1	BMC 15	ÖN-ARKA 225/70 R 15 C
LEVEND 60 BDC (DÜZ KASALI, ÇİFT SIRA KAMYONET)	Pick Up	3050	1735	DİZEL	4	1798	52 / 4250	5/1	BMC 15	ÖN-ARKA 195 R 14 C
LEVEND 60 BDT (KASASIZ, TEK SIRA KAMYONET)	Pick Up	2750	1670	DİZEL	4	1798	52 / 4250	5/1	BMC 15	ÖN-ARKA 195 R 14 C
MEGASTAR 360 PDC (DÜZ KASALI, ÇİFT SIRA KAMYONET)	Pick Up	3500	2455	DİZEL	4	2776	130 / 3800	6/1	ZF 6S 321	ÖN-ARKA 225/70 R 15 C
MEGASTAR 360 PDH PANEEL VAN - YÜKSEK TAVAN	VAN	3500	2500	DİZEL	4	2776	130 / 3800	6/1	ZF 6S 321	ÖN-ARKA 225/70 R 15 C
MEGASTAR 360 PDM MİNİBÜS (14+1)	Minibus	3800	2780	DİZEL	4	2776	130 / 3800	6/1	ZF 6S 321	ÖN-ARKA 225/70 R 15 C
MEGASTAR 360 PDT DÜZ KASALI, TEK SIRA KAMYONET	Pick Up	3500	2320	DİZEL	4	2776	130 / 3800	6/1	ZF 6S 321	ÖN-ARKA 225/70 R 15 C

MEGASTAR 400 PDH PANELVAN YÜKSEK TAVAN	Pick Up	3500	2560	DİZEL	4	2776	130 / 3600	6/1	ZF 6S 321	ÖN-ARKA 225/70 R 15 C
MEGASTAR 400 PDS KASASIZ KAMYONET - 5 TON	Pick Up	5000	2350	DİZEL	4	2776	130 / 3600	6/1	ZF 6S 321	ÖN-ARKA 225/70 R 15 C
MEGASTAR 400 PDS KASASIZ KAMYONET	Pick Up	3500	2250	DİZEL	4	2776	130 / 3600	6/1	ZF 6S 321	ÖN-ARKA 225/70 R 15 C
MEGASTAR 400 PDM MIDİBÜS (14+1)	Minibus	3500	3680	DİZEL	4	2776	130 / 3600	6/1	ZF 6S 321	ÖN-ARKA 225/70 R 15 C
PROBUS 215 SCB (24+1) (OTOBÜS)	Bus	11990	7820	DİZEL	6	5880	215 / 2500	6/1	ZF 6S 890-OD	ÖN-ARKA 245 / 70 R 19.5
PROBUS 215 SCB (31+1) (OTOBÜS)	Bus	11990	7820	DİZEL	6	5880	215 / 2500	6/1	ZF 6S 890-OD	ÖN-ARKA 245 / 70 R 19.5
PROBUS 215 SCB (35+1) (OTOBÜS)	Bus	11990	7820	DİZEL	6	5880	215 / 2500	6/1	ZF 6S 890-OD	ÖN-ARKA 245 / 70 R 19.5
PROBUS 850 TBX (OTOBÜS)	Bus	12000	9150	DİZEL	6	5880	235 / 2500	6/1	ZF 6S 890-OD	ÖN-ARKA 245 / 70 R 19.5
PROBUS 850 TBX ÖRME ŞASI (OTOBÜS)	Bus	12500	9150	DİZEL	6	5880	235 / 2500	6/1	ZF 6S 890-OD	ÖN-ARKA 245 / 70 R 19.5
FATİH 280 SDT (6x2)	Truck	25000	7180	DİZEL	6	8267	263/2200	9/1	EATON 8209	ÖN-ARKA 12.00 R 22.5
PROFESYONEL PRO 518 FHX (4x2)	Truck	11990	3905	DİZEL	6	5880	162/2500	6/1	ZF 6 S 850	ÖN-ARKA 245/70 R 19.5
PROFESYONEL PRO 518 FHX (4x2)	Truck	11990	3905	DİZEL	6	5880	162/2500	6/1	ZF 6S 850 OVD	ÖN-ARKA 245/70 R 19.5
PROFESYONEL PRO 522 LHT (6x2)	Truck	21000	5550	DİZEL	6	5880	215/2500	6/1	EATON 6109 OVD	ÖN-ARKA 285/70 R 19.5
PROFESYONEL PRO 624 CH (ÇİFT SIRA)	Truck	14000	7000	DİZEL	6	5880	235/2500	9/1	ZF 9S 109NMV 13 E	ÖN-ARKA 14.00 R 20
PROFESYONEL PRO 625 DHT (6x2)	Truck	25000	7325	DİZEL	6	5880	250/2500	9/2	ZF 9S 75	ÖN-ARKA 315 80 R 22.5
PROFESYONEL PRO 625 LDT (6x2)	Truck	25000	6950	DİZEL	6	5880	250/2500	9/3	ZF 9S 75 DT	ÖN-ARKA 315 80 R 22.5
PROFESYONEL PRO 625 DHX (4x2)	Truck	18000	6150	DİZEL	6	5880	250/2500	9/4	ZF 9S 75	ÖN-ARKA 315 80 R 22.5
PROFESYONEL PRO 827 DHF	Truck	32000	9165	DİZEL	6	8268	260/2400	16/1	ZF 16S 109 DT	ÖN-ARKA 315 80 R 22.5
PROFESYONEL PRO 827 DCX	R. Tractor	18000	6710	DİZEL	6	8268	260/2400	16/1	ZF 16S 109 DT	ÖN-ARKA 295 / 80 R 22.5
PROFESYONEL PRO 827 FHB (6x4)	Truck	26000	9240	DİZEL	6	8268	260/2400	9/1	ZF 9S 109	ÖN-ARKA 315 / 80 R 22.5
PROFESYONEL PRO 832 FTB (6x4)	Truck	26000	9000	DİZEL	6	8268	300/2200	16/1	ZF 16S 109	ÖN-ARKA 315 / 80 R 22.5
PROFESYONEL PRO 832 YCX (4x2)	R. Tractor	18000	6390	DİZEL	8	8268	300/2200	16/1	ZF 16S 109	ÖN-ARKA 295/80 R 22.5 ; 315/80 R 22.5
PROFESYONEL PRO 935 YCB (6x4)	R. Tractor	26000	9970	DİZEL	6	8,9	350/2500	16/1	ZF 16S 151 DT	ÖN-ARKA 315 / 80 R 22.5
PROFESYONEL PRO 935 DHE (8x2)	Truck	32000	9190	DİZEL	6	8900	350/2500	16/1	ZF 16S 1820	ÖN-ARKA 315 / 80 R 22.5
PROFESYONEL PRO 935 FTE (8x4)	Truck	32000	10675	DİZEL	6	8900	350/2500	16/1	ZF 16S 151 DT	ÖN-ARKA 315 / 80 R 22.5
PROFESYONEL PRO 935 FDB (6x4) AĞIR MAKASLI	Truck	26000	8990	DİZEL	6	8900	350/2500	9/1	EATON 10209 OVD	ÖN-ARKA 315 / 80 R 22.5
PROFESYONEL PRO 1142/DC	R. Tractor	18000	7430	DİZEL	6	10800	410/2900	16/1	ZF 16S 2220	ÖN-ARKA 295 / 80 R 22.5

#### FORD OTOSAN

KAMYONET Connect Van (1+1) L/R 90 PS	Pick Up	2240	1401	DİZEL	4	1753	90/4000	5/1	FORD MTX 75	ÖN-ARKA 195/65R15
KAMYONET Connect Van (1+1) L/R 75PS	Pick Up	2240	1391	DİZEL	4	1753	75/4000	5/1	FORD MTX 75	ÖN-ARKA 195/65R15
KAMYONET PANELVAN Connect Kombi (1+4) L/R 90 PS	Pick Up	2240	1492	DİZEL	4	1753	90/4000	5/1	FORD MTX 75	ÖN-ARKA 195/65R15
KAMYONET PANELVAN Connect Kombi (1+4) L/R 75 PS	Pick Up	2230	1495	DİZEL	4	1753	75/4000	5/1	FORD MTX 75	ÖN-ARKA 195/65R15
KAMYONET PANELVAN Connect Kombi (1+4) L/R 110 PS	Pick Up	2240	1525	DİZEL	4	1753	110/4000	5/1	FORD MTX 75	ÖN-ARKA 195/65R15
KAMYONET Connect Van (1+1) H/R 90 PS	Pick Up	2340	1440	DİZEL	4	1753	90/4000	5/1	FORD MTX 75	ÖN-ARKA 195/65R15
KAMYONET Connect Van (1+1) H/R 75 PS	Pick Up	2260	1435	DİZEL	4	1753	75/4000	5/1	FORD MTX 75	ÖN-ARKA 195/65R15
KAMYONET PANELVAN Connect Kombi (1+4) H/R 90 PS	Pick Up	2340	1588	DİZEL	4	1753	90/4000	5/1	FORD MTX 75	ÖN-ARKA 195/65R15
KAMYONET PANELVAN Connect Kombi (1+4) H/R 75 PS	Pick Up	2330	1578	DİZEL	4	1753	75/4000	5/1	FORD MTX 75	ÖN-ARKA 195/65R15
KAMYONET PANELVAN Connect Kombi (1+4) H/R 110 PS	Pick Up	2340	1580	DİZEL	4	1753	110/4000	5/1	FORD MTX 75	ÖN-ARKA 195/65R15
KAMYONET Transit 300SF Van	Pick Up	3000	1611	DİZEL	4	2198	140/3500	6/1	Ford VMT6	ÖN-ARKA 195/70 R 15
KAMYONET Transit 300S Van	Pick Up	3000	1810	DİZEL	4	2402	100/3500	5/1	Ford MT 75	ÖN-ARKA 205/75 R 16
KAMYONET Transit 300S Van	Pick Up	3000	1815	DİZEL	4	2402	120/3500	5/1	Ford MT 75	ÖN-ARKA 205/75 R16
KAMYONET Transit 330S Van	Pick Up	3300	1837	DİZEL	4	2402	100/3500	5/1	Ford MT 75	ÖN-ARKA 215/75 R16
KAMYONET Transit 330S Van	Pick Up	3300	1842	DİZEL	4	2402	120/3500	5/1	Ford MT 75	ÖN-ARKA 215/75 R 16
KAMYONET Transit 330M Van	Pick Up	3300	1883	DİZEL	4	2402	100/3500	5/1	Ford MT 75	ÖN-ARKA 215/75 R 16
KAMYONET Transit 330M Van	Pick Up	3300	1888	DİZEL	4	2402	120/3500	5/1	Ford MT 75	ÖN-ARKA 215/75 R 16
KAMYONET Transit 330L Van	Pick Up	3300	1943	DİZEL	4	2402	120/3500	5/1	Ford MT 75	ÖN-ARKA 215/75 R 16
KAMYONET Transit 330L Van	Pick Up	3300	1963	DİZEL	4	2402	140/3500	6/1	Ford MT 82	ÖN-ARKA 215/75 R 16
KAMYONET Transit 350L Van	Pick Up	3500	1916	DİZEL	4	2402	120/3500	5/1	Ford MT 75	ÖN-ARKA 215/75 R 16
KAMYONET Transit 350L Van	Pick Up	3500	1936	DİZEL	4	2402	140/3500	6/1	Ford MT 82	ÖN-ARKA 215/75 R 16
KAMYONET Transit 350L Van	Pick Up	3500	2013	DİZEL	5	3199	200/3500	6/1	Ford MT 82	ÖN-ARKA 215/75 R 16
KAMYONET Transit 350L Yüksek tavan Van	Pick Up	3500	1943	DİZEL	4	2402	120/3500	5/1	Ford MT 75	ÖN-ARKA 215/75 R 16
KAMYONET Transit 350L Yüksek tavan Van	Pick Up	3500	1963	DİZEL	4	2402	140/3500	6/1	Ford MT 82	ÖN-ARKA 215/75 R 16
KAMYONET Transit 350L Yüksek tavan Van	Pick Up	3500	2040	DİZEL	5	3199	200/3500	6/1	Ford MT 82	ÖN-ARKA 215/75 R 16
KAMYONET Transit 350E Van	Pick Up	3500	2098	DİZEL	4	2402	140/3500	6/1	Ford MT 82	ÖN-ARKA 215/75 R 16
KAMYONET Transit 350E Van	Pick Up	3500	2175	DİZEL	4	3199	200/3500	6/1	Ford MT 82	ÖN-ARKA 215/75 R 16
KAMYONET Transit 350 ED Çift teker Van	Pick Up	3500	2141	DİZEL	4	2402	140/3500	6/1	Ford MT 82	ÖN-ARKA 185/75 R 16
KAMYONET Transit 350 ED Çift teker Van	Pick Up	3500	2217	DİZEL	5	3199	200/3500	6/1	Ford MT 82	ÖN-ARKA 185/75 R 16
KAMYONET Transit 430ED çift teker van	Pick Up	4250	2208	DİZEL	4	2402	140/3500	6/1	Ford MT 82	ÖN-ARKA 185/75 R 16
KAMYONET Transit 430ED çift teker van	Pick Up	4250	2275	DİZEL	4	3199	200/3500	6/1	Ford MT 82	ÖN-ARKA 185/75 R 16
MİNİBÜS Transit 330M 12+1	Minibus	3300	2134	DİZEL	4	2402	120/3500	5/1	Ford MT 75	ÖN-ARKA 215/75 R 16
MİNİBÜS Transit 350L 14+1	Minibus	3500	2261	DİZEL	4	2402	120/3500	5/1	Ford MT 75	ÖN-ARKA 215/75 R 16
MİNİBÜS Transit 350L 14+1	Minibus	3500	2281	DİZEL	4	2402	140/3500	6/1	Ford MT 82	ÖN-ARKA 215/75 R 16
MİNİBÜS Transit 350L 14+1	Minibus	3700	2281	DİZEL	5	3199	200/3500	6/1	Ford MT 82	ÖN-ARKA 215/75 R 16
MİNİBÜS Transit 350E 12+1	Minibus	3500	2425	DİZEL	4	2402	140/3500	6/1	Ford MT 82	ÖN-ARKA 215/75 R 16
MİNİBÜS Transit 350E 12+1	Minibus	3500	2591	DİZEL	5	3199	200/3500	6/1	Ford MT 82	ÖN-ARKA 215/75 R 16
MİNİBÜS Transit 430ED 14+1	Minibus	4100	2634	DİZEL	4	2402	140/3500	6/1	Ford MT 82	ÖN-ARKA 185/75 R 16
MİNİBÜS Transit 430ED 14+1	Minibus	4100	2659	DİZEL	5	3199	200/3500	6/1	Ford MT 82	ÖN-ARKA 185/75 R 16
MİNİBÜS Transit 430ED 17+1	Minibus	4100	2694	DİZEL	4	2402	140/3500	6/1	Ford MT 82	ÖN-ARKA 185/75 R 16
MİNİBÜS Transit 430ED 17+1	Minibus	4100	2656	DİZEL	5	3199	200/3500	6/1	Ford MT 82	ÖN-ARKA 185/75 R 16
KAMYONET Transit 300SF kombi	Pick Up	3000	1648	DİZEL	4	2198	140/3500	6/1	Ford VMT6	ÖN-ARKA 195/70 R 15
KAMYONET Transit 300SF kombivan	Pick Up	3000	1648	DİZEL	4	2198	140/3500	6/1	Ford VMT6	ÖN-ARKA 195/70 R 15
KAMYONET Transit 300S kombi	Pick Up	3000	1837	DİZEL	4	2402	100/3500	5/1	Ford MT 75	ÖN-ARKA 205/75 R 16
KAMYONET Transit 300S kombi	Pick Up	3000	1841	DİZEL	4	2402	120/3500	5/1	Ford MT 75	ÖN-ARKA 205/75 R 16
KAMYONET Transit 300S kombivan	Pick Up	3000	1837	DİZEL	4	2402	100/3500	5/1	Ford MT 75	ÖN-ARKA 205/75 R 16
KAMYONET Transit 300S kombivan	Pick Up	3000	1842	DİZEL	4	2402	120/3500	5/1	Ford MT 75	ÖN-ARKA 205/75 R 16
KAMYONET Transit 330S kombi	Pick Up	3300	1863	DİZEL	4	2402	100/3500	5/1	Ford MT 75	ÖN-ARKA 215/75 R 16
KAMYONET Transit 330S kombi	Pick Up	3300	1842	DİZEL	4	2402	120/3500	5/1	Ford MT 75	ÖN-ARKA 215/75 R 16

KAMYONET Transit 330S kombivan	Pick Up	3300	1864	DİZEL	4	2402	100/3500	5/1	Ford MT 75	ÖN-ARKA 215/75 R 16
KAMYONET Transit 330S kombivan	Pick Up	3300	1869	DİZEL	4	2402	120/3500	5/1	Ford MT 75	ÖN-ARKA 215/75 R 16
KAMYONET Transit 330S (Kasasız)	Pick Up	3300	1604	DİZEL	4	2402	100/3500	5/1	Ford MT 75	ÖN-ARKA 215/75 R 16
KAMYONET Transit 330S (Kasasız)	Pick Up	3300	1609	DİZEL	4	2402	120/3500	5/1	Ford MT 75	ÖN-ARKA 215/75 R 16
KAMYONET Transit 330S (Kasalı)	Pick Up	3300	1964	DİZEL	4	2402	100/3500	5/1	Ford MT 75	ÖN-ARKA 215/75 R 16
KAMYONET Transit 330S (Kasalı)	Pick Up	3300	1968	DİZEL	4	2402	120/3500	5/1	Ford MT 75	ÖN-ARKA 215/75 R 16
KAMYONET Transit 350M (Kasasız)	Pick Up	3500	1624	DİZEL	4	2402	120/3500	5/1	Ford MT 75	ÖN-ARKA 215/75 R 16
KAMYONET Transit 350M (Kasasız)	Pick Up	3500	1664	DİZEL	4	2402	140/3500	6/1	Ford MT 82	ÖN-ARKA 215/75 R 16
KAMYONET Transit 350M (Kasasız)	Pick Up	3500	1721	DİZEL	5	3199	200/3500	6/1	Ford MT 82	ÖN-ARKA 215/75 R 16
KAMYONET Transit 350M (Kasalı)	Pick Up	3500	1999	DİZEL	4	2402	120/3500	5/1	Ford MT 75	ÖN-ARKA 215/75 R 16
KAMYONET Transit 350M (Kasalı)	Pick Up	3500	2019	DİZEL	4	2402	140/3500	6/1	Ford MT 82	ÖN-ARKA 215/75 R 16
KAMYONET Transit 350M (Kasalı)	Pick Up	3500	2013	DİZEL	5	3199	200/3500	6/1	Ford MT 82	ÖN-ARKA 215/75 R 16
KAMYONET Transit 350ED (Kasasız)	Pick Up	3500	2005	DİZEL	4	2402	140/3500	6/1	Ford MT 82	ÖN-ARKA 185/75 R 16
KAMYONET Transit 350ED (Kasasız)	Pick Up	3500	1822	DİZEL	5	3199	200/3500	6/1	Ford MT 82	ÖN-ARKA 185/75 R 16
KAMYONET Transit 350M çiftkabinli (Kasasız)	Pick Up	3500	1717	DİZEL	4	2402	120/3500	5/1	Ford MT 75	ÖN-ARKA 215/75 R 16
KAMYONET Transit 350M çiftkabinli (Kasasız)	Pick Up	3500	1737	DİZEL	4	2402	140/3500	6/1	Ford MT 82	ÖN-ARKA 215/75 R 16
KAMYONET Transit 350M çiftkabinli (Kasasız)	Pick Up	3500	1814	DİZEL	5	3199	200/3500	6/1	Ford MT 82	ÖN-ARKA 185/75 R 16
KAMYONET Transit 350M çiftkabinli (Kasalı)	Pick Up	3500	2060	DİZEL	4	2402	120/3500	5/1	Ford MT 75	ÖN-ARKA 215/75 R 16
KAMYONET Transit 350M çiftkabinli (Kasalı)	Pick Up	3500	2081	DİZEL	4	2402	140/3500	6/1	Ford MT 82	ÖN-ARKA 215/75 R 16
KAMYONET Transit 350M çiftkabinli (Kasalı)	Pick Up	3500	2048	DİZEL	5	3199	200/3500	6/1	Ford MT 82	ÖN-ARKA 215/75 R 16
KAMYONET Transit 350ED çiftkabinli (Kasasız)	Pick Up	3500	1824	DİZEL	4	2402	140/3500	6/1	Ford MT 82	ÖN-ARKA 185/75 R 16
KAMYONET Transit 350ED çiftkabinli (Kasasız)	Pick Up	3500	1900	DİZEL	5	3199	200/3500	6/1	Ford MT 82	ÖN-ARKA 185/75 R 16
KAMYON CARGO 2524 (6x2)	Truck	25000	7250	DİZEL	6	7330	240/2400	9/1	ZF 9 S75	ÖN-ARKA 12 R 22.5
KAMYON CARGO 2524 (6x2)	Truck	25000	7130	DİZEL	6	7330	240/2400	9/1	ZF 9 S75	ÖN-ARKA 12 R 22.6
KAMYON CARGO 2530 (6x2)	Truck	25000	7250	DİZEL	6	7330	300/2400	9/1	ZF 9S109	ÖN-ARKA 315/80 R 22.5
KAMYON CARGO 2530 (6x2)	Truck	25000	7200	DİZEL	6	7330	300/2400	16/2	ZF 16S109	ÖN-ARKA 315/80 R 22.5
KAMYON CARGO 3230 (8x2)	Truck	32000	8650	DİZEL	6	7330	300/2400	16/2	ZF 16S109	ÖN-ARKA 315/80 R 22.5
KAMYON CARGO 3230 (8x2)	Truck	32000	8550	DİZEL	6	7330	300/2400	16/2	ZF 16S109	ÖN-ARKA 315/80 R 22.5
KAMYON CARGO 1824 (4x2)	Truck	18000	5685	DİZEL	6	7330	240/2400	9/1	ZF 9 S75	ÖN-ARKA 12 R 22.5
ÇEKİCİ CARGO 1830 (4x2)	R.Tractor	18000	7160	DİZEL	6	7330	300/2400	16/2	ZF 16S109	ÖN-ARKA 295/80 R 22.5
ÇEKİCİ CARGO 1830 (4x2)	R.Tractor	18000	6000	DİZEL	6	7330	300/2400	9/1	ZF 9S109	ÖN-ARKA 275/70 R 22.5
KAMYON CARGO 4030 (10x2)	Truck	40000	9530	DİZEL	6	7330	300/2400	9/1	ZF 9S109	ÖN-ARKA 315/80 R 22.5
KAMYON CARGO 3530 (6x4)	Truck	26000	8985	DİZEL	6	7330	300/2400	16/2	ZF 16S109	ÖN-ARKA 315/80 R 22.5
ÇEKİCİ CARGO 1835 (4x2)	R.Tractor	18000	7200	DİZEL	6	8974	350/2200	16/2	ZF 16S1620	ÖN-ARKA 295/80 R 22.5
KAMYON CARGO 3235 (8x2)	Truck	32000	9250	DİZEL	6	8974	350/2200	16/2	ZF 16S1620	ÖN-ARKA 315/80 R 22.5
KAMYON CARGO 3235 (8x2)	Truck	32000	9250	DİZEL	6	8974	350/2200	16/2	ZF 16S1620	ÖN-ARKA 315/80 R 22.5
KAMYON CARGO 2535 (6x2)	Truck	25000	8350	DİZEL	6	8974	350/2200	16/2	ZF 16S1620	ÖN-ARKA 315/80 R 22.5
KAMYON CARGO 2535 (6x2)	Truck	25000	8750	DİZEL	6	8974	350/2200	16/2	ZF 16S1620	ÖN-ARKA 315/80 R 22.5

#### HATTAT TARIM

TRAKTÖR UNIVERSAL 453 B	F. Tractor	2700	1900	DİZEL	3	2340	45/2400	8/2	4+1/2	ÖN-ARKA 12.4/11-28
TRAKTÖR UNIVERSAL 533 B	F. Tractor	2700	1900	DİZEL	3	2820	53/2400	8/2	4+1/2	ÖN-ARKA 12.4/11-28
TRAKTÖR UNIVERSAL 533 DTP	F. Tractor	3980	2200	DİZEL	3	2820	53/2400	8/2	4+1/2	ÖN-ARKA 12.4/11-28
TRAKTÖR UNIVERSAL 453	F. Tractor	3250	2280	DİZEL	3	2340	45/2400	8/2	4+1/2	ÖN-ARKA 13.8/12-28
TRAKTÖR UNIVERSAL 533	F. Tractor	3250	2280	DİZEL	3	2820	53/2400	8/2	4+1/2	ÖN-ARKA 14.9/13-28
TRAKTÖR UNIVERSAL 533 DTP	F. Tractor	5300	2670	DİZEL	3	2820	53/2400	8/2	4+1/2	ÖN-ARKA 14.9/13-28
TRAKTÖR UNIVERSAL 683	F. Tractor	3900	2460	DİZEL	4	3759	68/2420	8/2	4+1/2	ÖN-ARKA 16.9/14-30
TRAKTÖR UNIVERSAL 683 DT	F. Tractor	5370	2795	DİZEL	4	3759	68/2400	8/2	4+1/2	ÖN-ARKA 16.9/14-30
TRAKTÖR VALTRA A 75 2 WD	F. Tractor	7000	3145	DİZEL	3	3300	74/2270	16/8	4/2	ÖN-ARKA 16.9/14-30
TRAKTÖR VALTRA A 75 4 WD	F. Tractor	7000	3560	DİZEL	3	3300	74/2270	16/8	4/2	ÖN-ARKA 16.9/14-30
TRAKTÖR VALTRA A 85 2 WD	F. Tractor	7000	3265	DİZEL	4	4400	88/2270	16/8	4/2	ÖN-ARKA 18.4/15-30
TRAKTÖR VALTRA A 85 4 WD	F. Tractor	7000	3680	DİZEL	4	4400	88/2270	16/8	4/2	ÖN-ARKA 18.4/15-30
TRAKTÖR VALTRA A 95 4 WD	F. Tractor	7000	3680	DİZEL	4	4400	98/2270	16/8	4/2	ÖN-ARKA 18.4/15-34
TRAKTÖR HATTAT A 58 2 WD	F. Tractor	3900	2485	DİZEL	3	3300	58/2200	8/4	4/2	ÖN-ARKA 14.9/28
TRAKTÖR HATTAT A 68 2 WD	F. Tractor	4060	2745	DİZEL	3	3300	65/2200	16/8	4/2	ÖN-ARKA 14.9/30
TRAKTÖR HATTAT A 68 4 WD	F. Tractor	4540	2975	DİZEL	3	3300	65/2200	16/8	4/2	ÖN-ARKA 14.9/30
TRAKTÖR HATTAT A 78 2 WD	F. Tractor	4060	2745	DİZEL	3	3300	75/2200	16/8	4/2	ÖN-ARKA 16.9/30
TRAKTÖR HATTAT A 78 4 WD	F. Tractor	4540	2975	DİZEL	3	3300	75/2200	16/8	4/2	ÖN-ARKA 16.9/30

#### HONDA TÜRKİYE

OTOMOBİL CITY 1,4 SPORT DÜZ	P. Car	1510	1031	BENZİN	4	1339	83/5700	5/1	DİREK ŞANZ. TAH.	ÖN-ARKA 175/65R14
OTOMOBİL CITY 1,4 COMFORT DÜZ	P. Car	1510	1035	BENZİN	4	1339	83/5700	5/1	DİREK ŞANZ. TAH.	ÖN-ARKA 175/65R14
OTOMOBİL CITY 1,4 COMFORT OTOMATİK	P. Car	1530	1059	BENZİN	4	1339	83/5700	OTOMATİK	DİREK ŞANZ. TAH.	ÖN-ARKA 175/65R14
OTOMOBİL CITY 1,4 ELITE DÜZ	P. Car	1510	1046	BENZİN	4	1339	83/5700	5/1	DİREK ŞANZ. TAH.	ÖN-ARKA 185/55R15
OTOMOBİL CITY 1,4 ELITE OTOMATİK	P. Car	1530	1070	BENZİN	4	1339	83/5700	OTOMATİK	DİREK ŞANZ. TAH.	ÖN-ARKA 185/55R15
OTOMOBİL CIVIC 1,6 DREAM DÜZ	P. Car	1700	1174	BENZİN	4	1595	125/6500	5/1	DİREK ŞANZ. TAH.	ÖN-ARKA 195/65R15
OTOMOBİL CIVIC 1,6 DREAM OTOMATİK	P. Car	1700	1198	BENZİN	4	1595	125/6500	OTOMATİK	DİREK ŞANZ. TAH.	ÖN-ARKA 195/65R15
OTOMOBİL CIVIC 1,6 PREMIUM DÜZ	P. Car	1700	1181	BENZİN	4	1595	125/6500	5/1	DİREK ŞANZ. TAH.	ÖN-ARKA 205/55R16
OTOMOBİL CIVIC 1,6 PREMIUM OTOMATİK	P. Car	1700	1205	BENZİN	4	1595	125/6500	OTOMATİK	DİREK ŞANZ. TAH.	ÖN-ARKA 205/55R16
OTOMOBİL CIVIC 1,6 ELEGANCE DÜZ	P. Car	1700	1193	BENZİN	4	1595	125/6500	5/1	DİREK ŞANZ. TAH.	ÖN-ARKA 205/55R16
OTOMOBİL CIVIC 1,6 ELEGANCE OTOMATİK	P. Car	1700	1217	BENZİN	4	1595	125/6500	OTOMATİK	DİREK ŞANZ. TAH.	ÖN-ARKA 205/55R16
OTOMOBİL CIVIC 1,8 EXECUTIVE DÜZ	P. Car	1705	1203	BENZİN	4	1799	140/6300	5/1	DİREK ŞANZ. TAH.	ÖN-ARKA 205/55R16
OTOMOBİL CIVIC 1,8 EXECUTIVE OTOMATİK	P. Car	1705	1199	BENZİN	4	1799	140/6300	OTOMATİK	DİREK ŞANZ. TAH.	ÖN-ARKA 205/55R16

#### HYUNDAI ASSAN

OTOMOBİL ACCENT ERA 1.4 START	P. Car	1580	1133	BENZİN	4	1399	97/6000	5/1	HYUNDAI	ÖN-ARKA 175/70 R 14
OTOMOBİL ACCENT ERA 1.4 START KLM	P. Car	1580	1133	BENZİN	4	1399	97/6000	5/1	HYUNDAI	ÖN-ARKA 175/70 R 14
OTOMOBİL ACCENT ERA 1.4 TEAM	P. Car	1580	1133	BENZİN	4	1399	97/6000	5/1	HYUNDAI	ÖN-ARKA 185/65 R 14

OTOMOBİL ACCENT ERA 1.4 TEAM ABS	P. Car	1580	1133	BENZİN	4	1399	97/6000	5/1	HYUNDAI	ÖN-ARKA 185/65 R 14
OTOMOBİL ACCENT ERA 1.4 SELECT	P. Car	1580	1133	BENZİN	4	1399	97/6000	5/1	HYUNDAI	ÖN-ARKA 185/65 R 14
OTOMOBİL ACCENT ERA 1.4 SELECT OTM	P. Car	1600	1155	BENZİN	4	1399	97/6000	4/1 OTOMATİK	HYUNDAI	ÖN-ARKA 185/65 R 14
OTOMOBİL ACCENT ERA 1.6 TEAM ABS	P. Car	1580	1133	BENZİN	4	1599	112/6000	5/1	HYUNDAI	ÖN-ARKA 185/65 R 14
OTOMOBİL ACCENT ERA 1.6 SELECT	P. Car	1580	1133	BENZİN	4	1599	112/6000	5/1	HYUNDAI	ÖN-ARKA 185/65 R 14
OTOMOBİL ACCENT ERA 1.6 SELECT OTM	P. Car	1600	1155	BENZİN	4	1599	112/6000	4/1 OTOMATİK	HYUNDAI	ÖN-ARKA 185/65 R 14
OTOMOBİL ACCENT ERA 1.6 STYLE	P. Car	1580	1133	BENZİN	4	1599	112/6000	5/1	HYUNDAI	ÖN-ARKA 185/65 R 14
OTOMOBİL ACCENT ERA 1.6 STYLE OTM	P. Car	1600	1155	BENZİN	4	1599	112/6000	4/1 OTOMATİK	HYUNDAI	ÖN-ARKA 185/65 R 14
OTOMOBİL ACCENT ERA 1.5 CRDI-VGT START	P. Car	1650	1205	DİZEL	4	1493	110/4000	5/1	HYUNDAI	ÖN-ARKA 175/70 R 14
OTOMOBİL ACCENT ERA 1.5 CRDI-VGT START KLM	P. Car	1650	1205	DİZEL	4	1493	110/4000	5/1	HYUNDAI	ÖN-ARKA 175/70 R 14
OTOMOBİL ACCENT ERA 1.5 CRDI-VGT TEAM	P. Car	1650	1205	DİZEL	4	1493	110/4000	5/1	HYUNDAI	ÖN-ARKA 185/65 R 14
OTOMOBİL ACCENT ERA 1.5 CRDI-VGT TEAM ABS	P. Car	1650	1205	DİZEL	4	1493	110/4000	5/1	HYUNDAI	ÖN-ARKA 185/65 R 14
OTOMOBİL ACCENT ERA 1.5 CRDI-VGT SELECT	P. Car	1650	1205	DİZEL	4	1493	110/4000	5/1	HYUNDAI	ÖN-ARKA 185/65 R 14
OTOMOBİL ACCENT ERA 1.5 CRDI-VGT STYLE	P. Car	1650	1205	DİZEL	4	1493	110/4000	5/1	HYUNDAI	ÖN-ARKA 185/65 R 14
KAMYONET H 100 PANEL VAN KAPALI KASALI 2.6	Pick Up	2860	1475	DİZEL	4	2607	80/4000	5/1	HYUNDAI	ÖN-ARKA 185 R 14 8PR
KAMYONET H 100 PANEL VAN KAPALI KASA KAMYONET 2.6 AC	Pick Up	2860	1475	DİZEL	4	2607	80/4000	5/1	HYUNDAI	ÖN-ARKA 185 R 14 8PR
KAMYONET STAREX PANEL VAN L TCI HY	Pick Up	3130	1800	DİZEL	4	2476	100/3800	5/1	HYUNDAI	ÖN-ARKA 205/70 R15 C
KAMYONET STAREX PANEL VAN L TCI HY KLM	Pick Up	3130	1800	DİZEL	4	2476	100/3800	5/1	HYUNDAI	ÖN-ARKA 205/70 R15 C
KAMYONET STAREX PANEL VAN L TCI ÇHY KLM ABS	Pick Up	3130	1800	DİZEL	4	2476	100/3800	5/1	HYUNDAI	ÖN-ARKA 205/70 R15 C
KAMYONET STAREX PANEL VAN L TCI ÇHY KLM ABS OTM	Pick Up	3130	1785	DİZEL	4	2476	100/3800	4/1 OTOMATİK	HYUNDAI	ÖN-ARKA 205/70 R15 C
KAMYONET STAREX PANEL VAN L CRDI HY	Pick Up	3180	1865	DİZEL	4	2497	140/3800	5/1	HYUNDAI	ÖN-ARKA 205/70 R15 C
KAMYONET STAREX PANEL VAN L CRDI HY KLM	Pick Up	3180	1865	DİZEL	4	2497	140/3800	5/1	HYUNDAI	ÖN-ARKA 205/70 R15 C
KAMYONET STAREX PANEL VAN L CRDI ÇHY KLM ABS	Pick Up	3180	1865	DİZEL	4	2497	140/3800	5/1	HYUNDAI	ÖN-ARKA 205/70 R15 C
KAMYONET STAREX PANEL VAN S TCI HY	Pick Up	3050	1755	DİZEL	4	2476	100/3800	5/1	HYUNDAI	ÖN-ARKA 205/70 R15 C
KAMYONET STAREX PANEL VAN S TCI HY KLM	Pick Up	3050	1755	DİZEL	4	2476	100/3800	5/1	HYUNDAI	ÖN-ARKA 205/70 R15 C
KAMYONET STAREX PANEL VAN S TCI ÇHY KLM ABS	Pick Up	3050	1755	DİZEL	4	2476	100/3800	5/1	HYUNDAI	ÖN-ARKA 205/70 R15 C
KAMYONET STAREX PANEL VAN S TCI ÇHY KLM ABS OTM	Pick Up	3050	1740	DİZEL	4	2476	100/3800	4/1 OTOMATİK	HYUNDAI	ÖN-ARKA 205/70 R15 C
KAMYONET STAREX PANEL VAN S CRDI HY	Pick Up	3100	1820	DİZEL	4	2497	140/3800	5/1	HYUNDAI	ÖN-ARKA 205/70 R15 C
KAMYONET STAREX PANEL VAN S CRDI HY KLM	Pick Up	3100	1820	DİZEL	4	2497	140/3800	5/1	HYUNDAI	ÖN-ARKA 205/70 R15 C
KAMYONET STAREX PANEL VAN S CRDI ÇHY KLM ABS	Pick Up	3100	1820	DİZEL	4	2497	140/3800	5/1	HYUNDAI	ÖN-ARKA 205/70 R15 C
KAMYONET STAREX SPACE L TCI HY	Pick Up	3130	1890	DİZEL	4	2476	100/3800	5/1	HYUNDAI	ÖN-ARKA 205/70 R15 C
KAMYONET STAREX SPACE L TCI HY KLM	Pick Up	3130	1890	DİZEL	4	2476	100/3800	5/1	HYUNDAI	ÖN-ARKA 205/70 R15 C
KAMYONET STAREX SPACE L CRDI HY	Pick Up	3180	1955	DİZEL	4	2497	140/3800	5/1	HYUNDAI	ÖN-ARKA 205/70 R15 C
KAMYONET STAREX SPACE L CRDI HY KLM	Pick Up	3180	1955	DİZEL	4	2497	140/3800	5/1	HYUNDAI	ÖN-ARKA 205/70 R15 C
KAMYONET STAREX SPACE L CRDI ÇHY KLM ABS	Pick Up	3180	1955	DİZEL	4	2497	140/3800	5/1	HYUNDAI	ÖN-ARKA 205/70 R15 C
KAMYONET STAREX SPACE L CRDI ÇHY KLM ABS YAK	Pick Up	3180	1955	DİZEL	4	2497	140/3800	5/1	HYUNDAI	ÖN-ARKA 205/70 R15 C
KAMYONET STAREX SPACE S TCI HY KLM	Pick Up	3050	1845	DİZEL	4	2476	100/3800	5/1	HYUNDAI	ÖN-ARKA 205/70 R15 C
KAMYONET STAREX SPACE S TCI ÇHY KLM ABS	Pick Up	3050	1845	DİZEL	4	2476	100/3800	5/1	HYUNDAI	ÖN-ARKA 205/70 R15 C
KAMYONET STAREX SPACE S CRDI HY KLM	Pick Up	3100	1910	DİZEL	4	2497	140/3800	5/1	HYUNDAI	ÖN-ARKA 205/70 R15 C
KAMYONET STAREX SPACE S CRDI ÇHY KLM ABS	Pick Up	3100	1910	DİZEL	4	2497	140/3800	5/1	HYUNDAI	ÖN-ARKA 205/70 R15 C
KAMYONET STAREX SPACE S CRDI ÇHY KLM ABS OTM	Pick Up	3100	1890	DİZEL	4	2497	140/3800	4/1 OTOMATİK	HYUNDAI	ÖN-ARKA 205/70 R15 C
KAMYONET STAREX MULTIWAY TCI HY KLM	Pick Up	3130	1890	DİZEL	4	2476	100/3800	5/1	HYUNDAI	ÖN-ARKA 205/70 R15 C
KAMYONET STAREX MULTIWAY TCI ÇHY KLM ABS	Pick Up	3130	1890	DİZEL	4	2476	100/3800	5/1	HYUNDAI	ÖN-ARKA 205/70 R15 C
KAMYONET STAREX MULTIWAY TCI ÇHY KLM ABS OTM	Pick Up	3130	1875	DİZEL	4	2476	100/3800	4/1 OTOMATİK	HYUNDAI	ÖN-ARKA 205/70 R15 C
KAMYONET STAREX MULTIWAY CRDI HY KLM	Pick Up	3180	1955	DİZEL	4	2497	140/3800	5/1	HYUNDAI	ÖN-ARKA 205/70 R15 C
KAMYONET STAREX MULTIWAY CRDI ÇHY KLM ABS	Pick Up	3180	1955	DİZEL	4	2497	140/3800	5/1	HYUNDAI	ÖN-ARKA 205/70 R15 C
KAMYONET STAREX MULTIWAY CRDI ÇHY KLM ABS OTM	Pick Up	3180	1935	DİZEL	4	2497	140/3800	4/1 OTOMATİK	HYUNDAI	ÖN-ARKA 205/70 R15 C
MINİBÜS STAREX MINİBÜS TCI ÇHY KLM ABS AJ	Minibus	2950	2030	DİZEL	4	2476	100/3800	5/1	HYUNDAI	ÖN-ARKA 205/70 R15 C
MINİBÜS STAREX MINİBÜS TCI ÇHY KLM ABS AJ OTM	Minibus	2950	2015	DİZEL	4	2476	100/3800	4/1 OTOMATİK	HYUNDAI	ÖN-ARKA 205/70 R15 C
MINİBÜS STAREX MINİBÜS CRDI ÇHY KLM ABS AJ	Minibus	3000	2095	DİZEL	4	2497	140/3800	5/1	HYUNDAI	ÖN-ARKA 205/70 R15 C
MINİBÜS STAREX MINİBÜS CRDI ÇHY KLM ABS AJ OTM	Minibus	3000	2075	DİZEL	4	2497	140/3800	4/1 OTOMATİK	HYUNDAI	ÖN-ARKA 205/70 R15 C
<b>KARSAN</b>										
MİDİBÜS (17+1) 72 HP, Euro 2	Midibus	3520	2260	DİZEL	4	2498	72/4000	5/1	NZWL	ÖN-ARKA 195/75 R 16 C
MİDİBÜS (18+1) 72 HP, Euro 2	Midibus	3520	2260	DİZEL	4	2498	72/4000	5/1	NZWL	ÖN-ARKA 195/75 R 16 C
MINİBÜS Premier (14+1) 78 HP	Minibus	3420	2377	DİZEL	4	2771	78/3500	5/1	NZWL	ÖN-ARKA 205/75 R 16 C
MİDİBÜS Premier (18+1) 78 HP	Midibus	3750	2377	DİZEL	4	2771	78/3500	5/1	NZWL	ÖN-ARKA 205/75 R 16 C
MİDİBÜS Premier (21+1) 78 HP	Midibus	4050	2420	DİZEL	4	2771	78/3500	5/1	NZWL	ÖN-ARKA 205/75 R 16 C
MİDİBÜS Premier OKUL TAŞITI (18+1) 78 HP	Midibus	3750	2377	DİZEL	4	2771	78/3500	5/1	NZWL	ÖN-ARKA 205/75 R 16 C
MİDİBÜS Premier OKUL TAŞITI (21+1) 78 HP	Midibus	4050	2420	DİZEL	4	2771	78/3500	5/1	NZWL	ÖN-ARKA 205/75 R 16 C
MİDİBÜS Premier (18+1)_uzun 78 HP	Midibus	4150	2425	DİZEL	4	2771	78/3500	5/1	NZWL	ÖN-ARKA 205/75 R 16 C
MINİBÜS Premier (14+1)_YT 78 HP	Midibus	3850	2467	DİZEL	4	2771	78/3500	5/1	NZWL	ÖN-ARKA 205/75 R 16 C
MİDİBÜS Premier (18+1)_YT 78 HP	Midibus	3850	2467	DİZEL	4	2771	78/3500	5/1	NZWL	ÖN-ARKA 205/75 R 16 C
MİDİBÜS Premier (21+1)_YT 78 HP	Midibus	4150	2505	DİZEL	4	2771	78/3500	5/1	NZWL	ÖN-ARKA 205/75 R 16 C
MİDİBÜS Premier (18+1)_uzun YT 78 HP	Midibus	4150	2510	DİZEL	4	2771	78/3500	5/1	NZWL	ÖN-ARKA 205/75 R 16 C
MİDİBÜS Premier OKUL TAŞITI (18+1)_YT 78 HP	Midibus	3850	2467	DİZEL	4	2771	78/3500	5/1	NZWL	ÖN-ARKA 205/75 R 16 C
MİDİBÜS Premier OKUL TAŞITI (21+1)_YT 78 HP	Midibus	4150	2505	DİZEL	4	2771	78/3500	5/1	NZWL	ÖN-ARKA 205/75 R 16 C
KAMYONET CAMLI VAN (1+4) 70 HP	Pick Up	1955	1220	DİZEL	4	1868	90/4600	5/1	BE4 5LK DM47	ÖN-ARKA 175/65 R14
KAMYONET CAMLI VAN (1+4) 90 HP	Pick Up	1990	1260	DİZEL	4	1997	90/4000	5/1	BE4 5LKG DM79	ÖN-ARKA 175/65 R14
KAMYONET CAMLI VAN (1+4) ADVENTURE 90 HP	Pick Up	1990	1285	DİZEL	4	1997	90/4000	5/1	BE4 5LKG DM79	ÖN-ARKA 185/65 R 15
KAMYONET CAMLI VAN (1+4) 90 HP	Pick Up	1955	1240	DİZEL	4	1560	90/4000	5/1	BE4 5LKG DM79	ÖN-ARKA 175/70 R14
KAMYONET CAMLI VAN (1+4) ADVENTURE 90 HP	Pick Up	1955	1285	DİZEL	4	1560	90/4000	5/1	BE4 5LKG DM79	ÖN-ARKA 175/70 R14
KAMYONET UZUN VAN (1+1) 70 HP	Pick Up	1945	1246	DİZEL	4	1868	90/4600	5/1	BE4 5LK DM47	ÖN-ARKA 175/65 R14
KAMYONET UZUN CAMLI VAN (1+4) 90 HP	Pick Up	1984	1282	DİZEL	4	1997	90/4000	5/1	BE4 5LKG DM79	ÖN-ARKA 175/65 R14
KAMYONET UZUN CAMLI VAN (1+4) 70 HP	Pick Up	1984	1273	DİZEL	4	1868	90/4600	5/1	BE4 5LK DM47	ÖN-ARKA 175/65 R14
HD35 KAMYONET	Pick Up	3500	2315	DİZEL	4	3907	105/3200	5/1	M3S5	ÖN-ARKA 205/75 R16
HD75 KAMYON	Truck	7500	2580	DİZEL	4	3907	133/3200	5/1	M035S5	ÖN-ARKA 8,5 R 17,5

**M.A.N. TÜRKİYE**

KAMYON 16.220 FAEX (4X4) ASKERİ	Truck	16000	7450	DİZEL	6	6871	220/2400	9/1	ZF-9 S 109	ÖN-ARKA 14.00 R 20
KAMYON 18.220 FAX (4X4)	Truck	16000	7350	DİZEL	6	6871	220/2400	9/1	ZF-9 S 109	ÖN-ARKA 14.00 R 20
KAMYON 26.372 DFAEX (6X6) ASKERİ	Truck	26000	9770	DİZEL	6	11967	370/2000	16/2	ZF16S-151	ÖN-ARKA 14.00 R 20
OTOBÜS Lion's Classic G (A75)	Bus	28000	16400	DİZEL	6	11967	310/2000	6/1-OTOMATİK	ZF 6HP592C	ÖN-ARKA 295/80 R 22.5
OTOBÜS Lion's Classic G (A75)	Bus	28000	16400	DİZEL	6	11967	310/2000	4/1-OTOMATİK	VOITH 864.3	ÖN-ARKA 295/80 R 22.5
OTOBÜS Lion's Classic G (A75)	Bus	28000	16400	DİZEL	6	11967	260/2000	6/1-OTOMATİK	ZF 6HP502C	ÖN-ARKA 295/80 R 22.5
OTOBÜS Lion's Classic G (A75)	Bus	28000	16400	DİZEL	6	11967	260/2000	4/1-OTOMATİK	VOITH 864.3	ÖN-ARKA 295/80 R 22.5
OTOBÜS Lion's Classic (A74)	Bus	18000	11100	DİZEL	6	6871	220/2400	4/1-OTOMATİK	VOITH 854.3	ÖN-ARKA 295/80 R 22.5
OTOBÜS Lion's Classic (A74)	Bus	18000	11100	DİZEL	6	6871	220/2400	6/1-OTOMATİK	ZF 6HP-502C	ÖN-ARKA 295/80 R 22.5
OTOBÜS Lion's Classic (A74)	Bus	18000	11100	DİZEL	6	6871	220/2400	6/1	S6-1901	ÖN-ARKA 295/80 R 22.5
OTOBÜS Lion's Classic (A74)	Bus	18000	11100	DİZEL	6	6871	280/2400	4/1-OTOMATİK	VOITH 854.3	ÖN-ARKA 295/80 R 22.5
OTOBÜS Lion's Classic (A74)	Bus	18000	11100	DİZEL	6	6871	280/2400	6/1	S6-1900	ÖN-ARKA 295/80 R 22.5
OTOBÜS Lion's Classic (A74)	Bus	18000	11100	DİZEL	6	6871	280/2400	6/1-OTOMATİK	ZF 6HP-502	ÖN-ARKA 295/80 R 22.5
OTOBÜS Lion's Classic (A74)	Bus	18000	11200	DOĞALGAZ	6	12816	310/1900	4/1-OTOMATİK	VOITH 864.3	ÖN-ARKA 295/80 R 22.5
OTOBÜS Lion's Classic Ü (A72)	Bus	18000	11500	DİZEL	6	6871	280/2400	6/1	ZF S6-1901	ÖN-ARKA 295/80 R 22.5
OTOBÜS Lion's Classic Ü (A72)	Bus	18000	11500	DİZEL	6	6871	280/2400	6/1-OTOMATİK	ZF 6HP-502	ÖN-ARKA 295/80 R 22.5
OTOBÜS Lion's Classic Ü (A72)	Bus	18000	11500	DİZEL	6	11967	310/1900	6/1	ZF S6-1901	ÖN-ARKA 295/80 R 22.5
OTOBÜS Lion's Classic Ü (A72)	Bus	18000	11500	DİZEL	6	11967	310/1900	6/1-OTOMATİK	ZF 6HP592	ÖN-ARKA 295/80 R 22.5
OTOBÜS Lion's Classic Ü (A72)	Bus	18000	11500	DİZEL	6	11967	310/1900	4/1-OTOMATİK	VOITH 864.3	ÖN-ARKA 295/80 R 22.5
OTOBÜS Lion's Classic Ü (A72)	Bus	18000	11500	DİZEL	6	6871	220/2400	6/1	S6-1901	ÖN-ARKA 295/80 R 22.5
OTOBÜS Lion's Classic Ü (A72)	Bus	18000	11500	DİZEL	6	6871	220/2400	6/1-OTOMATİK	ZF 6HP-502C	ÖN-ARKA 295/80 R 22.5
OTOBÜS Lion's Classic Ü (A72)	Bus	18000	11500	DİZEL	6	6871	220/2400	4/1-OTOMATİK	VOITH 854.3	ÖN-ARKA 295/80 R 22.5
OTOBÜS Lion's City T (A78)	Bus	18000	11500	DİZEL	6	6871	240/2400	6/1 OTOMATİK	ZF 6HP-502C	ÖN-ARKA 295/80 R 22.5
OTOBÜS Lion's City T (A78)	Bus	18000	11500	DİZEL	6	6871	240/2400	4/1 OTOMATİK	VOITH D854.5	ÖN-ARKA 295/80 R 22.5
OTOBÜS Lion's City T (A78)	Bus	18000	11500	DİZEL	6	6871	280/2400	6/1 OTOMATİK	ZF 6HP-502C	ÖN-ARKA 295/80 R 22.5
OTOBÜS Lion's City T (A78)	Bus	18000	11500	DİZEL	6	6871	280/2400	4/1 OTOMATİK	VOITH D854.5	ÖN-ARKA 295/80 R 22.5
OTOBÜS Lion's City T Ü (A78)	Bus	18000	11500	DİZEL	6	6871	240/2400	6/1 OTOMATİK	ZF 6HP-502C	ÖN-ARKA 295/80 R 22.5
OTOBÜS Lion's City T Ü (A78)	Bus	18000	11500	DİZEL	6	6871	240/2400	4/1 OTOMATİK	VOITH D854.5	ÖN-ARKA 295/80 R 22.5
OTOBÜS Lion's City T Ü (A78)	Bus	18000	11500	DİZEL	6	6871	280/2400	6/1 OTOMATİK	ZF 6HP-502C	ÖN-ARKA 295/80 R 22.5
OTOBÜS Lion's City T Ü (A78)	Bus	18000	11500	DİZEL	6	6871	280/2400	4/1 OTOMATİK	VOITH D854.5	ÖN-ARKA 295/80 R 22.5
OTOBÜS Fortuna (R07)	Bus	18000	13775	DİZEL	6	11967	410/1900	8/1	8S 2100BO+VOITH-Ret.	ÖN-ARKA 295/80 R 22.5
OTOBÜS Fortuna Mega (R08)	Bus	24900	16070	DİZEL	6	12816	460/1900	8/1	8S 2100BO+VOITH-Ret.	ÖN-ARKA 295/80 R 22.5
OTOBÜS RHC 414/464 -13,3M (R09)	Bus	24900	16070	DİZEL	6	10518	430/1700	6/1	ZF 6S 1901BO+Intarter	ÖN-ARKA 295/80 R 22.5
OTOBÜS RHC 414/464 -13,3M (R09)	Bus	24900	16070	DİZEL	6	10518	440/1900	12/2	12AS2301BO+Intarder	ÖN-ARKA 295/80 R 22.5
OTOBÜS RHC 414/464 -13,3M (R09)	Bus	24900	16070	DİZEL	6	12816	460/1900	6/1	GO210-6+Voith-R115E	ÖN-ARKA 295/80 R 22.5
OTOBÜS RHC 414/464 -13,3M (R09)	Bus	24900	16070	DİZEL	6	12816	480/1900	12/2	12AS2301BO	ÖN-ARKA 295/80 R 22.5
OTOBÜS LION'S REGIO (R12)	Bus	18000	12500	DİZEL	6	10518	310/1700	6/1	ZF 6S-1900	ÖN-ARKA 295/80 R 22.5
OTOBÜS LION'S REGIO (R12)	Bus	18000	12500	DİZEL	6	10518	350/1700	12/2	12AS2001BO	ÖN-ARKA 295/80 R 22.5
OTOBÜS LION'S REGIO (R12)	Bus	18000	12500	DİZEL	6	10518	390/1700	4/1-OTOMATİK	Voith D864.5	ÖN-ARKA 295/80 R 22.5
OTOBÜS LION'S REGIO (R12)	Bus	18000	12500	DİZEL	6	10518	430/1700	6/1	GO210-6+Voith-R115E	ÖN-ARKA 295/80 R 22.5
OTOBÜS LION'S REGIO L (R13)	Bus	24900	16070	DİZEL	6	10518	310/1700	6/1	ZF 6S-1900	ÖN-ARKA 295/80 R 22.5
OTOBÜS LION'S REGIO L (R13)	Bus	24900	16070	DİZEL	6	10518	350/1700	12/2	12AS2001BO	ÖN-ARKA 295/80 R 22.5
OTOBÜS LION'S REGIO L (R13)	Bus	24900	16070	DİZEL	6	10518	390/1700	4/1-OTOMATİK	Voith D864.5	ÖN-ARKA 295/80 R 22.5
OTOBÜS LION'S REGIO L (R13)	Bus	24900	16070	DİZEL	6	10518	430/1700	6/1	GO210-6+Voith-R115E	ÖN-ARKA 295/80 R 22.5
OTOBÜS LION'S REGIO 13M (R14)	Bus	18000	13250	DİZEL	6	10518	310/1700	6/1	ZF 6S-1900	ÖN-ARKA 295/80 R 22.5
OTOBÜS LION'S REGIO 13M (R14)	Bus	18000	13250	DİZEL	6	10518	350/1700	12/2	12AS2001BO	ÖN-ARKA 295/80 R 22.5
OTOBÜS LION'S REGIO 13M (R14)	Bus	18000	13250	DİZEL	6	10518	390/1700	4/1-OTOMATİK	Voith D864.5	ÖN-ARKA 295/80 R 22.5
OTOBÜS LION'S REGIO 13M (R14)	Bus	18000	13250	DİZEL	6	10518	430/1700	6/1	GO210-6+Voith-R115E	ÖN-ARKA 295/80 R 22.5
OTOBÜS N2216/3 SHD TOURLINER (P20)	Bus	24900	16070	DİZEL	6	10518	430/1700	6/1	ZF 6S 1901BO+Intarter	ÖN-ARKA 295/80 R 22.5
OTOBÜS N2216/3 SHD TOURLINER (P20)	Bus	24900	16070	DİZEL	6	10518	440/1900	12/2	12AS2301BO+Intarder	ÖN-ARKA 295/80 R 22.5
OTOBÜS N2216/3 SHD TOURLINER (P20)	Bus	24900	16070	DİZEL	6	12816	460/1900	6/1	GO210-6+Voith-R115E	ÖN-ARKA 295/80 R 22.5
OTOBÜS N2216/3 SHD TOURLINER (P20)	Bus	24900	16070	DİZEL	6	12816	480/1900	12/2	12AS2301BO	ÖN-ARKA 295/80 R 22.5
OTOBÜS N 2216 SHD TOURLINER (P21)	Bus	18000	13775	DİZEL	6	10518	430/1900	6/1	ZF 6S 1901BO+Intarter	ÖN-ARKA 295/80 R 22.5
OTOBÜS N 2216 SHD TOURLINER (P21)	Bus	18000	13775	DİZEL	6	10518	440/1900	12/2	12AS2301BO+Intarder	ÖN-ARKA 295/80 R 22.5
OTOBÜS N 2216 SHD TOURLINER (P21)	Bus	18000	13775	DİZEL	6	12816	460/1900	6/1	GO210-6+Voith-R115E	ÖN-ARKA 295/80 R 22.5
OTOBÜS N 2216 SHD TOURLINER (P21)	Bus	18000	13775	DİZEL	6	12816	480/1900	12/2	12AS2301BO	ÖN-ARKA 295/80 R 22.5
OTOBÜS N 2216/3 SHD-L TOURLINER (P22)	Bus	24900	16070	DİZEL	6	10518	430/1900	6/1	ZF 6S 1901BO+Intarter	ÖN-ARKA 295/80 R 22.5
OTOBÜS N 2216/3 SHD-L TOURLINER (P22)	Bus	24900	16070	DİZEL	6	10518	440/1900	12/2	12AS2301BO+Intarder	ÖN-ARKA 295/80 R 22.5
OTOBÜS N 2216/3 SHD-L TOURLINER (P22)	Bus	24900	16070	DİZEL	6	12816	460/1900	6/1	GO210-6+Voith-R115E	ÖN-ARKA 295/80 R 22.5
OTOBÜS N 2216/3 SHD-L TOURLINER (P22)	Bus	24900	16070	DİZEL	6	12816	480/1900	12/2	12AS2301BO	ÖN-ARKA 295/80 R 22.5
OTOBÜS N 3516 UE TRENDLINER (P23)	Bus	18000	12500	DİZEL	6	10518	310/1700	6/1	ZF 6S 1901BO+Intarter	ÖN-ARKA 295/80 R 22.5
OTOBÜS N 3516 UE TRENDLINER (P23)	Bus	18000	12500	DİZEL	6	10518	350/1700	12/2	12AS2301BO+Intarder	ÖN-ARKA 295/80 R 22.5
OTOBÜS N 3516 UE TRENDLINER (P23)	Bus	18000	12500	DİZEL	6	10518	390/1700	6/1	GO210-6+Voith-R115E	ÖN-ARKA 295/80 R 22.5
OTOBÜS N 3516 UE TRENDLINER (P23)	Bus	18000	12500	DİZEL	6	10518	430/1700	12/2	12AS2301BO	ÖN-ARKA 295/80 R 22.5



OTOBÜS N 3516/3 UEL TRENDLINER (P24)	Bus	24900	16070	DİZEL	6	10518	310/1700	6/1	ZF 6S 1901BO+Intarter	ÖN-ARKA 295/80 R 22.5
OTOBÜS N 3516/3 UEL TRENDLINER (P24)	Bus	24900	16070	DİZEL	6	10518	350/1700	12/2	12AS2301BO+Intarder	ÖN-ARKA 295/80 R 22.5
OTOBÜS N 3516/3 UEL TRENDLINER (P24)	Bus	24900	16070	DİZEL	6	10518	390/1700	6/1	GO210-6+Voith-R115E	ÖN-ARKA 295/80 R 22.5
OTOBÜS N 3516/3 UEL TRENDLINER (P24)	Bus	24900	16070	DİZEL	6	10518	430/1700	12/2	12AS2301BO	ÖN-ARKA 295/80 R 22.5
OTOBÜS TRENDLINER 13M (P25)	Bus	18000	13775	DİZEL	6	10518	310/1700	6/1	ZF 6S 1901BO+Intarter	ÖN-ARKA 295/80 R 22.5
OTOBÜS TRENDLINER 13M (P25)	Bus	18000	13775	DİZEL	6	10518	350/1700	12/2	12AS2301BO+Intarder	ÖN-ARKA 295/80 R 22.5
OTOBÜS TRENDLINER 13M (P25)	Bus	18000	13775	DİZEL	6	10518	390/1700	6/1	GO210-6+Voith-R115E	ÖN-ARKA 295/80 R 22.5
OTOBÜS TRENDLINER 13M (P25)	Bus	18000	13775	DİZEL	6	10518	430/1700	12/2	12AS2301BO	ÖN-ARKA 295/80 R 22.5

**M. BENZ TÜRK**

OTOBÜS Travego 15 SHD	Bus	18000	13700	DİZEL	6	11967	422/2000	6/1-12/1	GO 190	ÖN-ARKA 295/80 R 22.5
OTOBÜS Travego 17 SHD	Bus	24000	16500	DİZEL	8	15928	476/2000	6/1 -12/1	GO 210, ZF-AS Tr	ÖN-ARKA 295/80 R 22.5
OTOBÜS Travego 15 RHD	Bus	18000	13600	DİZEL	6	11967	428/2100	6/1-12/1	GO 210, ZF-AS Tr	ÖN-ARKA 295/80 R 22.5
OTOBÜS Travego 16 RHD	Bus	24000	16500	DİZEL	6	11967	428/2100	6/1-12/1	GO 210, ZF-AS Tr	ÖN-ARKA 295/80 R 22.5
OTOBÜS Travego 16 RHD	Bus	24000	16500	DİZEL	8	15928	476/2000	6/1-12/1	GO 210, ZF-AS Tr	ÖN-ARKA 295/80 R 22.5
OTOBÜS Travego 17 RHD	Bus	24000	16500	DİZEL	6	11967	428/2100	6/1 -12/1	GO 210, ZF-AS Tr	ÖN-ARKA 295/80 R 22.5
OTOBÜS Travego 17 RHD	Bus	24000	16500	DİZEL	8	15928	476/2000	6/1 -12/1	GO 210, ZF-AS Tr	ÖN-ARKA 295/80 R 22.5
OTOBÜS Tourismo 15 RHD sağ veya sol direksiyonlu	Bus	18000	13600	DİZEL	6	11967	354/2000	6/1-12/1	GO 190, ZF-AS Tr	ÖN-ARKA 295/80 R 22.5
OTOBÜS Tourismo 15 RHD sağ veya sol direksiyonlu	Bus	18000	13600	DİZEL	6	11967	408/2200	6/1-12/1	GO 190, ZF-AS Tr	ÖN-ARKA 295/80 R 22.5
OTOBÜS Tourismo 16 RHD	Bus	24000	16500	DİZEL	6	11967	428/2100	6/1 -12/1	GO 210, ZF-AS Tr	ÖN-ARKA 295/80 R 22.5
OTOBÜS Tourismo 17 RHD	Bus	24000	16500	DİZEL	6	11967	421/2200	6/1	GO 210	ÖN-ARKA 295/80 R 22.5
OTOBÜS Tourismo 17 RHD	Bus	24000	16500	DİZEL	6	11967	428/2100	6/1 -12/1	GO 210, ZF-AS Tr	ÖN-ARKA 295/80 R 22.5
OTOBÜS Intouro MBÜ-Ü 15	Bus	18000	13200	DİZEL	6	7200	285/2200	6/1	GO 110	ÖN-ARKA 295/80 R 22.5 ve 275/70 R 22.5
OTOBÜS Intouro MBÜ-Ü 16	Bus	18000	13200	DİZEL	6	7200	285/2200	6/1	GO 110	ÖN-ARKA 295/80 R 22.5 ve 275/70 R 22.5
OTOBÜS Intouro MBÜ-S 15	Bus	18000	13200	DİZEL	6	7200	285/2200	6/1	GO 110	ÖN-ARKA 295/80 R 22.5
OTOBÜS Intouro MBÜ-S 16	Bus	18000	13200	DİZEL	6	7200	285/2200	6/1	GO 110	ÖN-ARKA 295/80 R 22.5 ve 275/70 R 22.5
OTOBÜS Conecto	Bus	18000	11150	DİZEL	6	6370	279/2300	4/1- 6/1	Voith 854.3 ve ZF Ecomat	ÖN-ARKA 275/70 R 22.5
OTOBÜS Conecto	Bus	18000	11200	DİZEL	6	7201	286/2200	4/1- 6/1	Voith 854.3 ve ZF Ecomat	ÖN-ARKA 275/70 R 22.5
OTOBÜS Conecto G ( mafsallı otobüs )	Bus	28000	16600	DİZEL	6	11967	354/2000	6/1	ZF Ecomat	ÖN-ARKA 275/70 R 22.5
KAMYON 1215 C / 3600 4x2	Truck	11990	4100	DİZEL	4	4249	152/2300	6/1	MB G 60 - 6 / 9.20 -1,0	ÖN-ARKA 265/70 R 19.5
KAMYON 1215 C / 4200 4x2	Truck	11990	4200	DİZEL	4	4249	152/2300	6/1	MB G 60 - 6 / 9.20 -1,0	ÖN-ARKA 265/70 R 19.5
KAMYON 1517 C / 3600 4x2	Truck	15000	4260	DİZEL	4	4249	170/2300	6/1	MB G 60 - 6 / 9.20 -1,0	ÖN-ARKA 285/70 R 19.5
KAMYON 1517 C / 4200 4x2	Truck	15000	4360	DİZEL	4	4249	170/2300	6/1	MB G 60 - 6 / 9.20 -1,0	ÖN-ARKA 285/70 R 19.5
KAMYON 1823 C / 4800 4x2	Truck	18000	6200	DİZEL	6	6374	231/2300	9/1	MB G 131-9/14.57-1.0	ÖN-ARKA 12 R 22.5
KAMYON 2523 C / 4800 6x2 DNA	Truck	25000	7210	DİZEL	6	6374	231/2300	9/1	MB G 131-9/14.57-1.0	ÖN-ARKA 12 R 22.5
KAMYON 2528 C / 4800 6x2 DNA	Truck	25000	7210	DİZEL	6	6374	279/2300	9/1	MB G 131-9/14.57-1.0	ÖN-ARKA 12 R 22.5
KAMYON 3228 C / 5100 8x2	Truck	32000	8160	DİZEL	6	6374	279/2300	9/1	MB G 131-9/14.57-1.0	ÖN-ARKA 315/80 R 22.5
KAMYON 3240 C / 5125 8x2	Truck	32000	9570	DİZEL	6	11967	401/1900	16/1	MB G 211-16/17.0-1.0	ÖN-ARKA 315/80 R 22.5
KAMYON 1823 K / 3600 4x2	Truck	18000	6260	DİZEL	6	6374	231/2300	9/1	MB G 131-9/14.57-1.0	ÖN-ARKA 12 R 22.5
KAMYON 2628 CL / 4800 6x2	Truck	26000	7135	DİZEL	6	6374	279/2300	9/1	MB G 131-9/14.57-1.0	ÖN-ARKA 12 R 22.5
KAMYON 2640 CL / 4800 6x2	Truck	26000	8460	DİZEL	6	11967	401/1900	16/1	MB G 211-16/17.0-1.0	ÖN-ARKA 315/80 R 22.5
KAMYON 2528 K / 3600 6x2	Truck	25000	7140	DİZEL	6	6374	279/2300	9/1	MB G 131-9/14.57-1.0	ÖN-ARKA 12 R 22.5
KAMYON 3028 K / 3600 6x4	Truck	26000	7985	DİZEL	6	6374	279/2300	9/1	MB G 131-9/14.57-1.0	ÖN-ARKA 12 R 22.5
KAMYON 3340 K / 3900 6x4	Truck	26000	8960	DİZEL	6	11967	401/1900	16/1	MB G 240-16/11.7-0.69	ÖN-ARKA 315/80 R 22.5
KAMYON 3028 B / 3600 6x4	Truck	26000	7985	DİZEL	6	6374	279/2300	9/1	MB G 131-9/14.57-1.0	ÖN-ARKA 12 R 22.5
KAMYON 4140 B / 5100 8x4	Truck	32000	10390	DİZEL	6	11967	401/1900	16/1	MB G 240-16/11.7-0.69	ÖN-ARKA 315/80 R 22.5
ÇEKİLCİ 1835 LS / 3600 4X2	R. Tractor	18000	6629	DİZEL	6	11967	354/1900	9/1	MB G 240-16/11.7-0.69	ÖN-ARKA 295/80 R 22.5
ÇEKİLCİ 1840 LS / 3600 4X2	R. Tractor	18000	6605	DİZEL	6	11967	401/1900	16/1	MB G 211-16/17.0-1.0	ÖN-ARKA 295/80 R 22.5

**OTOKAR**

MİNİBÜS M 2000	Minibus	5000	3540	DİZEL	4	3770	73/2800	5/1	EATON FS 2305 C	ÖN-ARKA 215/75 R17,5
K.OTOBÜS M 3000	Midibus	8500	4880	DİZEL	4	4038	122/2500	6/1	EATON FS 4106 B	ÖN-ARKA 215/75 R17,5
K.OTOBÜS SULTAN 125 L	Midibus	8500	4880	DİZEL	4	4038	122/2500	6/1	EATON FS 4106 B	ÖN-ARKA 215/75 R17,5
K.OTOBÜS SULTAN 125 S	Midibus	9000	5360	DİZEL	4	4038	122/2500	6/1	EATON FS 4106 B	ÖN-ARKA 215/75 R17,5
K.OTOBÜS SULTAN CITY	Midibus	9600	5190	DİZEL	4	4038	122/2500	6/1	EATON FS 4106 B	ÖN-ARKA 225/75 R17,5
K.OTOBÜS SULTAN 145 S	Midibus	9200	5820	DİZEL	4	4764	152/2400	6/1	EATON FSO 4106 B	ÖN-ARKA 225/75 R17,5
K.OTOBÜS SULTAN CITY	Midibus	9600	5280	DİZEL	4	4764	152/2400	6/1	EATON FSO 4106 B	ÖN-ARKA 225/75 R17,5
K.OTOBÜS SULTAN MAXI	Midibus	9600	6220	DİZEL	4	4764	152/2400	6/1	EATON FSO 4106 B	ÖN-ARKA 235/75 R17,5
K.OTOBÜS NAVIGO 125 S	Midibus	9200	6420	DİZEL	4	4462	153/2500	6/1	EATON FSO 4106 B	ÖN-ARKA 225/75 R17,5
K.OTOBÜS NAVIGO 145 S	Midibus	9200	5620	DİZEL	4	4462	160/2500	6/1	EATON FSO 4106 B	ÖN-ARKA 225/75 R17,5
K.OTOBÜS NAVIGO 160 S	Midibus	9200	6400	DİZEL	4	4462	160/2500	6/1	EATON FSO 4106 B	ÖN-ARKA 225/75 R17,5
K.OTOBÜS NAVIGO 165 S	Midibus	9200	6710	DİZEL	4	4764	170/2400	6/1	EATON FSO 4106 B	ÖN-ARKA 225/75 R17,5
OTOBÜS DORUK 190H	Bus	13500	6800	DİZEL	4	4764	190/2300	6/1	EATON FSO 4106 B	ÖN-ARKA 285/70 R19.5
OTOBÜS DORUK 190S	Bus	13500	7500	DİZEL	4	4764	190/2300	6/1	EATON FSO 4106 B	ÖN-ARKA 285/70 R19.5
LAND ROVER 110-111 SW	Pick Up	3050	2100	DİZEL	4	2495	111/4000	5/1	R380/LT230Q	ÖN-ARKA 7.5 R16LT 8PR
LAND ROVER 110-111	Pick Up	3050	2078	DİZEL	4	2495	111/4000	5/1	R380/LT230Q	ÖN-ARKA 7.5 R16LT 8PR
LAND ROVER 130-111	Pick Up	3050	2144	DİZEL	4	2495	111/4000	5/1	R380/LT230Q	ÖN-ARKA 7.5 R16LT 8PR

**OTOYOL**

KAMYON 85E13 Yataksız	Truck	8500	2799	DİZEL	4	3920	130/2700	6/1	IVECO 2855.6	ÖN-ARKA 215/75R17.5 TUBELESS
KAMYON 100E15 Yataksız	Truck	10000	3066	DİZEL	4	3920	150/2700	6/1	IVECO 2855.6	ÖN-ARKA 215/75R17.5 TUBELESS
KAMYON 130E15 Yataksız	Truck	13000	3646	DİZEL	4	3920	150/2700	6/1	IVECO 2855.6	ÖN-ARKA 215/75R17.5 TUBELESS
KAMYON 130E15 Yataklı	Truck	13000	3822	DİZEL	4	3920	150/2700	6/1	IVECO 2855.6	ÖN-ARKA 215/75R17.5 TUBELESS
KAMYON 150E21 Yataklı	Truck	15000	4475	DİZEL	4	5880	210/2700	6/1	IVECO 2865.6	ÖN-ARKA 285/70R19.5 TUBELESS
KAMYON 220E21 Yataklı	Truck	22000	5687	DİZEL	4	5880	210/2700	6/1	IVECO 2865.6	ÖN-ARKA 285/70R19.5 TUBELESS
KAMYON 250E24 Yataklı	Truck	25000	6475	DİZEL	4	5880	240/2700	6/1	IVECO 2895.9	ÖN-ARKA 285/70R19.5 TUBELESS
MİDİBÜS E27.14S	Midibus	8500	5450	DİZEL	4	3908	136/2700	6/1	IVECO 2855.6	ÖN-ARKA 215/75R17.5 TUBELESS

MİDİBÜS E27.14FS	Midibus	8500	5700	DİZEL	4	3908	136/2700	6/1	IVECO 2855.6	ÖN-ARKA 215/75R17.5 TUBELESS
MİDİBÜS E31.17	Midibus	9500	6500	DİZEL	4	3920	170/2700	6/1	IVECO 2855.6	ÖN-ARKA 225/75R17.5 TUBELESS
MİDİBÜS E35.17	Midibus	10250	7200	DİZEL	4	3920	170/2700	6/1	IVECO 2855.6	ÖN-ARKA 225/75R17.5 TUBELESS
MİDİBÜS Eurocity	Midibus	9800	5100	DİZEL	4	3908	136/2700	6/1	IVECO 2855.6	ÖN-ARKA 215/75R17.5 TUBELESS
<b>OYAK RENAULT</b>										
OTOMOBİL CLIO SYMBOL 1.2 16 V	P. Car	1430	885	BENZİN	4	1149	75/5500	5/1	JB1	ÖN-ARKA 175/65 R 14
OTOMOBİL CLIO SYMBOL 1.4 8V	P. Car	1460	940	BENZİN	4	1390	75/5500	5/1	JB1	ÖN-ARKA 175/65 R 14
OTOMOBİL CLIO SYMBOL 1.4 16 V	P. Car	1500	950	BENZİN	4	1390	98/6000	5/1	JB3	ÖN-ARKA 175/65 R 14
OTOMOBİL CLIO SYMBOL 1.4 16 V AUTOMATIC	P. Car	1525	1010	BENZİN	4	1390	98/6000	OTOMATİK	DPO	ÖN-ARKA 175/65 R 14
OTOMOBİL CLIO SYMBOL 1.5 dCi ( 65 hp )	P. Car	1500	945	DİZEL	4	1461	65/4000	5/1	JB3	ÖN-ARKA 175/65 R 14
OTOMOBİL CLIO SYMBOL 1.5 dCi ( 80 hp )	P. Car	1500	945	DİZEL	4	1461	80/4000	5/1	JC5	ÖN-ARKA 175/65 R 14
OTOMOBİL MEGANE II DİZEL 1.5 ( 80 hp )	P. Car	1770	1160	DİZEL	4	1461	80/4000	5/1	JR5	ÖN-ARKA 195/65 R 15
										ÖN-ARKA 205/55 R 16
										ÖN-ARKA 205/50 R 17
OTOMOBİL MEGANE II DİZEL 1.5 ( 100 hp )	P. Car	1770	1160	DİZEL	4	1461	100/4000	5/1	JR5	ÖN-ARKA 195/65 R 15
										ÖN-ARKA 205/55 R 16
										ÖN-ARKA 205/50 R 17
OTOMOBİL MEGANE II DİZEL 1.9	P. Car	1845	1250	DİZEL	4	1870	120/4000	6/1	NDO	ÖN-ARKA 195/65 R 15
										ÖN-ARKA 205/55 R 16
										ÖN-ARKA 205/50 R 17
OTOMOBİL MEGANE II DİZEL 1.9 AUTOMATIC	P. Car	1860	1310	DİZEL	4	1870	130/4000	OTOMATİK	DPO	ÖN-ARKA 195/65 R 15
										ÖN-ARKA 205/55 R 16
										ÖN-ARKA 205/50 R 17
OTOMOBİL MEGANE II DİZEL 2.0	P. Car	1860	1320	DİZEL	4	1995	150/4000	6/1	PK4	ÖN-ARKA 195/65 R 15
										ÖN-ARKA 205/55 R 16
										ÖN-ARKA 205/50 R 17
OTOMOBİL MEGANE II 1.4 16 V	P. Car	1740	1150	BENZİN	4	1390	98/6000	5/1	JH3	ÖN-ARKA 195/65 R 15
										ÖN-ARKA 205/55 R 16
										ÖN-ARKA 205/50 R 17
OTOMOBİL MEGANE II 1,6 16V	P. Car	1750	1160	BENZİN	4	1598	115/6000	5/1	JH3	ÖN-ARKA 195/65 R 15
										ÖN-ARKA 205/55 R 16
										ÖN-ARKA 205/50 R 17
OTOMOBİL MEGANE II 1.6 16V AUTOMATIC	P. Car	1800	1210	BENZİN	4	1598	115/6000	OTOMATİK	DPO	ÖN-ARKA 195/65 R 15
										ÖN-ARKA 205/55 R 16
										ÖN-ARKA 205/50 R 17
OTOMOBİL MEGANE II 2.0 16V	P. Car	1825	1235	BENZİN	4	1998	136/5500	6/1	NDO	ÖN-ARKA 205/55 R 16
										ÖN-ARKA 205/50 R 17
OTOMOBİL MEGANE II 2.0 16V AUTOMATIC	P. Car	1840	1250	BENZİN	4	1998	136/5500	OTOMATİK	DPO	ÖN-ARKA 205/55 R 16
										ÖN-ARKA 205/50 R 17
OTOMOBİL CLİO III hatch-back 3 kapı / 5 kapı 1,2 16V	P. Car	2500	1090	BENZİN	4	1149	75/5500	5/1	JH3	ÖN-ARKA 165/65 R 15
OTOMOBİL CLİO III hatch-back 3 kapı / 5 kapı 1,4 16V	P. Car	2250	1145	BENZİN	4	1390	100/5700	5/1	JH3	ÖN-ARKA 185/60 R 15
OTOMOBİL CLİO III hatch-back 3 kapı / 5 kapı 1,6 16V	P. Car	1640	1150	BENZİN	4	1598	110/6000	5/1	JH3	ÖN-ARKA 185/60 R 15
OTOMOBİL CLİO III hatch-back 3 kapı / 5 kapı 1,6 16V AUTOMATIC	P. Car	1680	1190	BENZİN	4	1598	110/6000	OTOMATİK	DPO	ÖN-ARKA 185/60 R 15
OTOMOBİL CLİO III hatch-back 3 kapı / 5 kapı DİZEL 1,5 l 65 hp	P. Car	1655	1175	DİZEL	4	1461	70/4000	5/1	JH3	ÖN-ARKA 185/60 R 15
OTOMOBİL CLİO III hatch-back 3 kapı / 5 kapı DİZEL 1,5 l 80 hp	P. Car	1665	1175	DİZEL	4	1461	105/4000	5/1	JR5	ÖN-ARKA 185/60 R 15
<b>TEMSA</b>										
PRESTIJ CLASSIC	Midibus	7.840		DİZEL	4	3908	136/2900	5/1	MITSUBISHI M035 S 5	ÖN-ARKA 225/75 R 17,5
PRESTIJ SUPER DELUX	Midibus	7.840		DİZEL	4	3908	136/2900	5/1	MITSUBISHI M035 S 5	ÖN-ARKA 225/75 R 17,5
OPALIN 8 EURO 3	Midibus	12500		DİZEL	4	4580	180/2400	6/1	ZF 6S BOIT 700	ÖN-ARKA 245/70 R 17,5
OPALIN 8 EURO 4	Midibus	12500		DİZEL	4	4580	205/2400	6/1	ZF 6S BOIT 1000	ÖN-ARKA 245/70 R 17,5
OPALIN 9 EURO 3	Midibus	12500		DİZEL	6	6871	220/2400	6/1	ZF 6S BOIT 1000	ÖN-ARKA 265/70 R 19,5
OPALIN 9 EURO 3	Midibus	12500		DİZEL	6	6871	220/2400	6/1	ALLISON T 280 R	ÖN-ARKA 265/70 R 19,5
OPALIN 9 EURO 4	Midibus	12500		DİZEL	6	6871	240/2300	6/1	ZF 6S BOIT 1000	ÖN-ARKA 265/70 R 19,5
OPALIN 9 RHD EURO 4	Midibus	12500		DİZEL	6	6871	240/2300	4/1	VOITH DIWA 854.5	ÖN-ARKA 265/70 R 19,5
OPALIN 9E EURO 3	Midibus	12500		DİZEL	4	4580	180/2400	6/1	ZF 6S BOIT 700	ÖN-ARKA 245/70 R 17,5
CANTER, 4M40-0A 66 KW KONFIGÜRE	Truck	3500	1880	DİZEL	4	2865	90/4000	5/1	M015S5	ÖN-ARKA 195/75 R16
CANTER, 4D34-2A 77KW KONFIGÜRE	Truck	3500	2260	DİZEL	4	3907	105/3200	5/1	M025S5	ÖN-ARKA 205/75 R16
CANTER, 4D34-2AT4 100KW KONFIGÜRE	Truck	7500	2640	DİZEL	4	3908	136/2900	5/1	M035S5	ÖN-ARKA 8.5R17.5
CANTER, 4D34-2AT4 100KW KONFIGÜRE	Truck	7700	2640	DİZEL	4	3908	136/2900	5/1	M035S5	ÖN-ARKA 8.5R17.5
METROPOL EURO 3	Midibus	12960		DİZEL	4	4580	180/2400	6/1	ZF 6S BOIT 700	ÖN-ARKA 245/70 R 19,5
METROPOL IC EURO 4	Midibus	13.500		DİZEL	6	6871	240/2300	6/1	ZF 6S BOIT 1010	ÖN-ARKA 265/70 R 19,5
METROPOL IC EURO 4	Midibus	13.500		DİZEL	6	6871	240/2300	6/1	ALLISON T 280 R	ÖN-ARKA 265/70 R 19,5
METROPOL SERVICE EURO 3	Midibus	12960		DİZEL	4	458	180/2400	6/1	ZF 6S BOIT 700	ÖN-ARKA 245/70 R 19,5
SAFİR	Bus	18000	13970	DİZEL	6	11946	350/2200	6/1	M12S6	ÖN-ARKA 295/80 R22,5
DIAMOND 13 EURO 3	Bus	26000	16315	DİZEL	6	12816	460/1900	8/1	ZF 8S BOIT 2101 (INTARDER	ÖN 315/80 R 22,5 ARKA 295/80 R 22,5
DIAMOND 13 EURO 3	Bus	26000	16315	DİZEL	6	12816	460/1900	12/1	ZF AS-TRONIC (INTARDER)	ÖN 315/80 R 22,5 ARKA 295/80 R 22,5
DIAMOND 13 EURO 4 440 PS	Bus	26000	16315	DİZEL	6	10518	440/1900	8/1	ZF 8S BOIT 2101	ÖN 315/80 R 22,5 ARKA 295/80 R 22,5
DIAMOND 13 EURO 4 440 PS	Bus	26000	16315	DİZEL	6	10518	440/1900	12/1	ZF AS-TRONIC (INTARDER)	ÖN 315/80 R 22,5 ARKA 295/80 R 22,5
DIAMOND 13 EURO 4 480 PS	Bus	26000	16315	DİZEL	6	12419	480/1900	8/1	ZF 8S BOIT 2101	ÖN 315/80 R 22,5 ARKA 295/80 R 22,5
DIAMOND 13 EURO 4 480 PS	Bus	26000	16315	DİZEL	6	12419	480/1900	12/1	ZF AS-TRONIC (INTARDER)	ÖN 315/80 R 22,5 ARKA 295/80 R 22,5
DIAMOND 14 EURO 3	Bus	26000	17130	DİZEL	6	12816	460/1900	8/1	ZF 8S BOIT 2101 (INTARDER)	ÖN 315/80 R 22,5 ARKA 295/80 R 22,5
DIAMOND 14 EURO 3	Bus	26000	17130	DİZEL	6	12816	460/1900	12/1	ZF AS-TRONIC (INTARDER)	ÖN 315/80 R 22,5 ARKA 295/80 R 22,5
DIAMOND 14 EURO 4 440 PS	Bus	26000	17130	DİZEL	6	10518	440/1900	8/1	ZF 8S BOIT 2101	ÖN 315/80 R 22,5 ARKA 295/80 R 22,5
DIAMOND 14 EURO 4 440 PS	Bus	26000	17130	DİZEL	6	10518	440/1900	12/1	ZF AS-TRONIC (INTARDER)	ÖN 315/80 R 22,5 ARKA 295/80 R 22,5
DIAMOND 14 EURO 4 480 PS	Bus	26000	17130	DİZEL	6	12419	480/1900	8/1	ZF 8S BOIT 2101	ÖN 315/80 R 22,5 ARKA 295/80 R 22,5
DIAMOND 14 EURO 4 480 PS	Bus	26000	17130	DİZEL	6	12419	480/1900	12/1	ZF AS-TRONIC (INTARDER)	ÖN 315/80 R 22,5 ARKA 295/80 R 22,5

SAFARI HD 12.2 DAF EURO 4	Bus	19000	13500	DIZEL	6	12902	410/1900	6/1	ZF 6S BOIT 1900 (std.)	ÖZ F ÖN-ARKA 295/80 R22.5
SAFARI HD 12.2 DAF EURO 4	Bus	19000	13500	DIZEL	6	12902	410/1900	12/1	AUTOMATIC ZF ASTRONIC	ÖN-ARKA 295/80 R22.5
SAFARI HD 12.2 DAF EURO 4 CS	Bus	19000	13500	DIZEL	6	12902	410/1900	6/1	ZF 6S BOIT 1900 (std.)	ÖZ F ÖN-ARKA 295/80 R22.5
SAFARI HD 12.2 DAF EURO 4 CS	Bus	19000	13500	DIZEL	6	12902	410/1900	12/1	AUTOMATIC ZF ASTRONIC	ÖN-ARKA 295/80 R22.5
SAFARI HD 12.2 DAF EURO 4 RHD	Bus	19000	13500	DIZEL	6	9186	360/1900	6/1	ZF 6HP 604 C (RETARDER)	ÖN-ARKA 295/80 R22.5
SAFARI HD 12.2 DAF EURO 5	Bus	19000	13500	DIZEL	6	12902	410/1900	6/1	ZF 6S BOIT 1900 (std.)	ÖZ F ÖN-ARKA 295/80 R22.5
SAFARI HD 12.2 DAF EURO 5	Bus	19000	13500	DIZEL	6	12902	410/1900	12/1	AUTOMATIC ZF ASTRONIC	ÖN-ARKA 295/80 R22.5
SAFARI HD 12.2 DAF EURO 5 SS	Bus	19000	13500	DIZEL	6	12902	410/1900	6/1	ZF 6S BOIT 1900 (std.)	ÖZ F ÖN-ARKA 295/80 R22.5
SAFARI HD 12.2 DAF EURO 5 SS	Bus	19000	13500	DIZEL	6	12902	410/1900	12/1	AUTOMATIC ZF ASTRONIC	ÖN-ARKA 295/80 R22.5
SAFARI HD 12.2 MAN EURO 4 CS	Bus	19000	13500	DIZEL	6	10518	400/1900	6/1	ZF 6S BOIT 1900 (std.)	ÖZ F ÖN-ARKA 295/80 R22.5
SAFARI HD 12.2 MAN EURO 4 CS	Bus	19000	13500	DIZEL	6	10518	400/1900	4/1	AUTOMATIC VOITH 864.5E	ÖN-ARKA 295/80 R22.5
SAFARI HD 12.2 MAN EURO 4 SS	Bus	19000	13500	DIZEL	6	10518	400/1900	6/1	ZF 6S BOIT 1900 (std.)	ÖZ F ÖN-ARKA 295/80 R22.5
SAFARI HD 12.2 MAN EURO 4 SS	Bus	19000	13500	DIZEL	6	10518	400/1900	4/1	AUTOMATIC VOITH 864.5E	ÖN-ARKA 295/80 R22.5
SAFARI HD 13 DAF EURO 4	Bus	19000	13500	DIZEL	6	12902	410/1900	6/1	ZF 6S BOIT 1900 (std.)	ÖZ F ÖN-ARKA 295/80 R22.5
SAFARI HD 13 DAF EURO 4	Bus	19000	13500	DIZEL	6	12902	410/1900	12/1	AUTOMATIC ZF ASTRONIC	ÖN-ARKA 295/80 R22.5
SAFARI HD 13 DAF EURO 4 DOUBLE DOOR	Bus	19000	13500	DIZEL	6	12902	410/1900	6/1	ZF 6S BOIT 1900 (std.)	ÖZ F ÖN-ARKA 295/80 R22.5
SAFARI HD 13 DAF EURO 4 DOUBLE DOOR	Bus	19000	13500	DIZEL	6	12902	410/1900	12/1	AUTOMATIC ZF ASTRONIC	ÖN-ARKA 295/80 R22.5
SAFARI HD 13 DAF EURO 4 CS	Bus	19000	13500	DIZEL	6	12902	410/1900	6/1	ZF 6S BOIT 1900 (std.)	ÖZ F ÖN-ARKA 295/80 R22.5
SAFARI HD 13 DAF EURO 4 CS	Bus	19000	13500	DIZEL	6	12902	410/1900	12/1	AUTOMATIC ZF ASTRONIC	ÖN-ARKA 295/80 R22.5
SAFARI HD 13 DAF EURO 4 CS	Bus	19000	13500	DIZEL	6	12902	410/1900	12/1	AUTOMATIC ZF ASTRONIC	ÖN-ARKA 295/80 R22.5
SAFARI HD 13 DAF EURO 5	Bus	19000	13500	DIZEL	6	12902	410/1900	6/1	ZF 6S BOIT 1900 (std.)	ÖZ F ÖN-ARKA 295/80 R22.5
SAFARI HD 13 DAF EURO 5	Bus	19000	13500	DIZEL	6	12902	410/1900	12/1	AUTOMATIC ZF ASTRONIC	ÖN-ARKA 295/80 R22.5
SAFARI HD 13 DAF EURO 5 SS	Bus	19000	13500	DIZEL	6	12902	410/1900	6/1	ZF 6S BOIT 1900 (std.)	ÖZ F ÖN-ARKA 295/80 R22.5
SAFARI HD 13 DAF EURO 5 SS	Bus	19000	13500	DIZEL	6	12902	410/1900	12/1	AUTOMATIC ZF ASTRONIC	ÖN-ARKA 295/80 R22.5
SAFARI HD 13 MAN EURO 4 SS	Bus	19000	13500	DIZEL	6	10518	400/1900	6/1	ZF 6S BOIT 1900 (std.)	ÖZ F ÖN-ARKA 295/80 R22.5
SAFARI HD 13 MAN EURO 4 CS	Bus	19000	13500	DIZEL	6	10518	400/1900	6/1	ZF 6S BOIT 1900 (std.)	ÖZ F ÖN-ARKA 295/80 R22.5
SAFARI RD 12.2 DAF EURO 4	Bus	19000	13500	DIZEL	6	9186	360/1900	6/1	ZF 6S BOIT 1700 (std.)	ÖZ F ÖN-ARKA 295/80 R22.5
SAFARI RD 12.2 DAF EURO 4 SS	Bus	19000	13500	DIZEL	6	9186	360/1900	6/1	ZF 6S BOIT 1700 (std.)	ÖZ F ÖN-ARKA 295/80 R22.5
SAFARI RD 12.2 DAF EURO 5	Bus	19000	13500	DIZEL	6	9186	360/1900	6/1	ZF 6S BOIT 1700 (std.)	ÖZ F ÖN-ARKA 295/80 R22.5
SAFARI RD 12.2 DAF EURO 5 SS	Bus	19000	13500	DIZEL	6	9186	360/1900	6/1	ZF 6S BOIT 1700 (std.)	ÖZ F ÖN-ARKA 295/80 R22.5
SAFARI RD 12.2 MAN EURO 4 (CS)	Bus	19000	13500	DIZEL	6	10518	360/1900	6/1	ZF 6S 1900, ZF 6S 1901	ÖN-ARKA 295/80 R22.5
SAFARI RD 12.2 MAN EURO 4 (CS)	Bus	19000	13500	DIZEL	6	10518	360/1900	4/1	AUTOMATIC VOITH 864.5E	ÖN-ARKA 295/80 R22.5
SAFARI RD 12.2 MAN EURO 4 (SS)	Bus	19000	13500	DIZEL	6	10518	360/1900	6/1	ZF 6S 1900, ZF 6S 1901	ÖN-ARKA 295/80 R22.5
SAFARI RD 12.2 MAN EURO 4 (SS)	Bus	19000	13500	DIZEL	6	10518	360/1900	4/1	AUTOMATIC VOITH 864.5E	ÖN-ARKA 295/80 R22.5
SAFARI RD 12.2 MAN EURO 4 (SS)	Bus	19000	13500	DIZEL	6	10518	360/1900	6/1	ZF 6S 1900, ZF 6S 1901	ÖN-ARKA 295/80 R22.5
SAFARI RD 12.2 MAN EURO 4 DOUBLE DOOR (CS)	Bus	19000	13500	DIZEL	6	10518	360/1900	4/1	AUTOMATIC VOITH 864.5E	ÖN-ARKA 295/80 R22.5
SAFARI RD 12.2 MAN EURO 4 DOUBLE DOOR (CS)	Bus	19000	13500	DIZEL	6	10518	360/1900	6/1	ZF 6S 1900, ZF 6S 1901	ÖN-ARKA 295/80 R22.5
SAFARI RD 12.2 MAN EURO 4 DOUBLE DOOR (SS)	Bus	19000	13500	DIZEL	6	10518	360/1900	4/1	AUTOMATIC VOITH 864.5E	ÖN-ARKA 295/80 R22.5
SAFARI RD 12.2 MAN EURO 4 DOUBLE DOOR (SS)	Bus	19000	13500	DIZEL	6	10518	360/1900	4/1	AUTOMATIC VOITH 864.5E	ÖN-ARKA 295/80 R22.5
SAFARI RD 13 DAF EURO 4	Bus	19000	13500	DIZEL	6	9186	360/1900	6/1	ZF 6S BOIT 1700 (std.)	ÖZ F ÖN-ARKA 295/80 R22.5
SAFARI RD 13 DAF EURO 4 SS	Bus	19000	13500	DIZEL	6	9186	360/1900	6/1	ZF 6S BOIT 1700 (std.)	ÖZ F ÖN-ARKA 295/80 R22.5
SAFARI RD 13 DAF EURO 5	Bus	19000	13500	DIZEL	6	9186	360/1900	6/1	ZF 6S BOIT 1700 (std.)	ÖZ F ÖN-ARKA 295/80 R22.5
SAFARI RD 13 DAF EURO 5 SS	Bus	19000	13500	DIZEL	6	9186	360/1900	6/1	ZF 6S BOIT 1700 (std.)	ÖZ F ÖN-ARKA 295/80 R22.5
SAFARI RD 13 MAN EURO 4 (CS)	Bus	19000	13500	DIZEL	6	10518	360/1900	6/1	ZF 6S 1900, ZF 6S 1901	ÖN-ARKA 295/80 R22.5
SAFARI RD 13 MAN EURO 4 (CS)	Bus	19000	13500	DIZEL	6	10518	360/1900	4/1	AUTOMATIC VOITH 864.5E	ÖN-ARKA 295/80 R22.5
SAFARI RD 13 MAN EURO 4 (SS)	Bus	19000	13500	DIZEL	6	10518	360/1900	6/1	ZF 6S 1900, ZF 6S 1901	ÖN-ARKA 295/80 R22.5
SAFARI RD 13 MAN EURO 4 (SS)	Bus	19000	13500	DIZEL	6	10518	360/1900	4/1	AUTOMATIC VOITH 864.5E	ÖN-ARKA 295/80 R22.5
TOURMALIN 12 CUMMINS EURO 2	Bus	19000		DIZEL	6	8268	300/2200	6/1	EATON FSBO-8406AE	ÖN-ARKA 295/80 R22.5
TOURMALIN 12 CUMMINS EURO 4	Bus	19000		DIZEL	6	6692	300/1900	6/1	EATON FSBO-8406AE	ÖN-ARKA 295/80 R22.5
TOURMALIN 12 CUMMINS EURO 4	Bus	19000		DIZEL	6	6692	300/1900	6/1	AUTOMATIC ALLISON T310R	ÖN-ARKA 295/80 R22.5
TOURMALIN 12 EURO 4	Bus	19000		DIZEL	6	9186	310/1900	6/1	ZF 6S BOIT 1700	ÖN-ARKA 295/80 R22.5
TOURMALIN 12 EURO 4	Bus	19000		DIZEL	6	9186	310/1900	6/1	AUTOMATIC ZF 6HP594C	ÖN-ARKA 295/80 R22.5
TOURMALIN 12 EURO 5	Bus	19000		DIZEL	6	9186	310/1900	6/1	ZF 6S BOIT 1700	ÖN-ARKA 295/80 R22.5
TOURMALIN 12 EURO 5	Bus	19000		DIZEL	6	9186	310/1900	6/1	AUTOMATIC ZF 6HP594C	ÖN-ARKA 295/80 R22.5
TOURMALIN 13 CUMMINS EURO 4	Bus	19000		DIZEL	6	6692	300/1900	6/1	EATON FSBO-8406AE	ÖN-ARKA 295/80 R22.5
TOURMALIN 13 CUMMINS EURO 4	Bus	19000		DIZEL	6	6692	300/1900	6/1	AUTOMATIC ALLISON T310R	ÖN-ARKA 295/80 R22.5
TOURMALIN 13 EURO 4	Bus	19000		DIZEL	6	9186	310/1900	6/1	ZF 6S BOIT 1700	ÖN-ARKA 295/80 R22.5
TOURMALIN 13 EURO 4	Bus	19000		DIZEL	6	9186	310/1900	6/1	AUTOMATIC ZF 6HP594C	ÖN-ARKA 295/80 R22.5
TOURMALIN 13 EURO 5	Bus	19000		DIZEL	6	9186	310/1900	6/1	ZF 6S BOIT 1700	ÖN-ARKA 295/80 R22.5
TOURMALIN 13 EURO 5	Bus	19000		DIZEL	6	9186	310/1900	6/1	AUTOMATIC ZF 6HP594C	ÖN-ARKA 295/80 R22.5

TOFAŞ										
OTOMOBİL PALIO 1.4 8V	P. Car	1460	955	BENZİN	4	1368	77/6000	5/1	FIAT 178	ÖN-ARKA 175/70 R 14 T
OTOMOBİL PALIO 1.3 MULTIJET	P. Car	1535	1030	DIZEL	4	1248	70/4000	5/1	FIAT 178	ÖN-ARKA 175/70 R 14 T
OTOMOBİL ALBEA 1.4 8V	P. Car	1530	1020	BENZİN	4	1368	77/6000	5/1	FIAT 178	ÖN-ARKA 185/65 R 14 H
OTOMOBİL ALBEA 1.6 16 V HL	P. Car	1585	1075	BENZİN	4	1596	103/5750	5/1	FIAT 178	ÖN-ARKA 175/65 R 14 H
OTOMOBİL ALBEA 1.3 MULTIJET SL/EL	P. Car	1595	1085	BENZİN	4	1248	70/4000	5/1	FIAT 178	ÖN-ARKA 175/70 R 14 H
OTOMOBİL DOBLO 1.4 8V	P. Car	1830	1230	BENZİN	4	1368	77/6000	5/1	FIAT 223	ÖN-ARKA 185/65 R 15 T
OTOMOBİL DOBLO 1.9 JTD	P. Car	1920	1320	DIZEL	4	1910	105/4000	5/1	FIAT 223	ÖN-ARKA 185/65 R 15 T
OTOMOBİL DOBLO 1.3 MULTIJET	P. Car	1910	1310	DIZEL	4	1248	75/4000	5/1	FIAT 223	ÖN-ARKA 185/65 R 15 T
OTOMOBİL LINEA 1.4 8V	P. Car	1660	1160	BENZİN	4	1368	77/6000	5/1	FIAT 323	ÖN-ARKA 185/65 R 15 T
OTOMOBİL LINEA 1.4 16V	P. Car	1700	1200	BENZİN	4	1368	120/500	5/1	FIAT 323	ÖN-ARKA 185/65 R 15 T
OTOMOBİL LINEA 1.3 MULTIJET	P. Car	1685	1185	DIZEL	4	1248	90/4000	5/1	FIAT 323	ÖN-ARKA 185/65 R 15 T
OTOMOBİL LINEA 1.3 MULTIJET OTOMATİK VİTES	P. Car	1685	1185	DIZEL	4	1248	90/4000	5/1	FIAT 323	ÖN-ARKA 185/65 R 15 T
KAMYONET DOBLO CARGO 1.4 8V	Pick Up	1920	1190	BENZİN	4	1368	77/6000	5/1	FIAT 223	ÖN-ARKA 185/65 R 15 S
KAMYONET DOBLO CARGO 1.4 8V P.M.	Pick Up	2040	1190	BENZİN	4	1368	77/6000	5/1	FIAT 223	ÖN-ARKA 175/75 R 14 S
KAMYONET DOBLO CARGO 1.4 8V MAXI	Pick Up	2090	1240	BENZİN	4	1368	77/6000	5/1	FIAT 223	ÖN-ARKA 175/75 R 14 S
KAMYONET DOBLO CARGO 1.9 JTD	Pick Up	2010	1280	DIZEL	4	1910	105/4000	5/1	FIAT 223	ÖN-ARKA 185/65 R 15 S
KAMYONET DOBLO CARGO 1.9 JTD PM	Pick Up	2130	1280	DIZEL	4	1910	105/4000	5/1	FIAT 223	ÖN-ARKA 175/75 R 14 S
KAMYONET DOBLO CARGO 1.9 JTD MAXI	Pick Up	2180	1330	DIZEL	4	1910	105/4000	5/1	FIAT 223	ÖN-ARKA 175/75 R 14 S



TRAKTÖR TT 50	F. Tractor	2300	1960	DİZEL	3	2931	50/2500	8/2	NEW HOLLAND	ÖN 6.00X16 ARKA 13.6X28
TRAKTÖR TT 55	F. Tractor	2360	1960	DİZEL	3	2931	55/2500	8/2 & 12/3	NEW HOLLAND	ÖN 6.50X16 ARKA 14.9X28
TRAKTÖR TT 55 4WD	F. Tractor	2640	2240	DİZEL	3	2931	55/2500	8/2 & 12/3	NEW HOLLAND	ÖN 300/70R20 ARKA 380/70R28
TRAKTÖR TT 60	F. Tractor	2440	2040	DİZEL	3	2931	60/2500	8/2 & 12/3	NEW HOLLAND	ÖN 6.50X16 ARKA 14.9X28
TRAKTÖR TT 60 KABİNLİ	F. Tractor	2755	2355	DİZEL	3	2931	60/2500	8/2 & 12/3	NEW HOLLAND	ÖN 6.50X16 ARKA 14.9X28
TRAKTÖR TT 60 4WD	F. Tractor	2720	2320	DİZEL	3	2931	60/2500	8/2 & 12/3	NEW HOLLAND	ÖN 300/70R20 ARKA 380/70R28
TRAKTÖR TT 60 4WD KABİNLİ	F. Tractor	3035	2635	DİZEL	3	2931	60/2500	8/2 & 12/3	NEW HOLLAND	ÖN 300/70R20 ARKA 380/70R28
TRAKTÖR TT 65	F. Tractor	2470	2070	DİZEL	3 TURBO	2931	65/2500	8/2 & 12/3	NEW HOLLAND	ÖN 7.50X16 ARKA 14.9X30
TRAKTÖR TT 65 KABİNLİ	F. Tractor	2785	2385	DİZEL	3 TURBO	2931	65/2500	8/2 & 12/3	NEW HOLLAND	ÖN 7.50X16 ARKA 14.9X30
TRAKTÖR TT 65 4WD	F. Tractor	2760	2350	DİZEL	3 TURBO	2931	65/2500	8/2 & 12/3	NEW HOLLAND	ÖN 300/70R20 ARKA 380/70R28
TRAKTÖR TT 65 4WD KABİNLİ	F. Tractor	3065	2665	DİZEL	3 TURBO	2931	65/2500	8/2 & 12/3	NEW HOLLAND	ÖN 300/70R20 ARKA 380/70R28
TRAKTÖR TT 55B	F. Tractor	2360	1960	DİZEL	3	2931	55/2500	8/2 & 12/3	NEW HOLLAND	ÖN 6.00X16 ARKA 13.6X28
TRAKTÖR TT 60B	F. Tractor	2440	2040	DİZEL	3	2931	60/2500	8/2 & 12/3	NEW HOLLAND	ÖN 6.00X16 ARKA 13.6X28
TRAKTÖR TT 65B	F. Tractor	2470	2070	DİZEL	3 TURBO	2931	65/2500	8/2 & 12/3	NEW HOLLAND	ÖN 6.00X16 ARKA 13.6X28
TRAKTÖR TT 55D	F. Tractor	2360	1960	DİZEL	3	2931	55/2500	8/2 & 12/3	NEW HOLLAND	ÖN 6.00X16 ARKA 13.6X28
TRAKTÖR TT 60D	F. Tractor	2440	2040	DİZEL	3	2931	60/2500	8/2 & 12/3	NEW HOLLAND	ÖN 6.00X16 ARKA 13.6X28
TRAKTÖR TT 65D	F. Tractor	2470	2070	DİZEL	3 TURBO	2931	65/2500	8/2 & 12/3	NEW HOLLAND	ÖN 6.00X16 ARKA 13.6X28
TRAKTÖR 55-56	F. Tractor	3110	2290	DİZEL	3	2931	55/2500	8/2 & 12/3	NEW HOLLAND	ÖN 6.50X16 ARKA 14.9X28
TRAKTÖR 55-56 KABİNLİ	F. Tractor	3110	2590	DİZEL	3	2931	55/2500	8/2 & 12/3	NEW HOLLAND	ÖN 6.50X16 ARKA 14.9X28
TRAKTÖR 65-56	F. Tractor	3110	2310	DİZEL	3 TURBO	2931	65/2500	8/2 & 12/3	NEW HOLLAND	ÖN 7.50X16 ARKA 14.9X30
TRAKTÖR 65-56 KABİNLİ	F. Tractor	3110	2600	DİZEL	3 TURBO	2931	65/2500	8/2 & 12/3	NEW HOLLAND	ÖN 7.50X16 ARKA 14.9X30
TRAKTÖR 75-56	F. Tractor	4700	2400	DİZEL	4	3908	75/2500	8/2 & 12/3	NEW HOLLAND	ÖN 7.50X16 ARKA 16.9X30
TRAKTÖR 75-56 KABİNLİ	F. Tractor	4700	2720	DİZEL	4	3908	75/2500	8/2 & 12/3	NEW HOLLAND	ÖN 7.50X16 ARKA 16.9X30
TRAKTÖR TD 55B	F. Tractor	2940	2690	DİZEL	3	2931	55/2500	12/12	NEW HOLLAND	ÖN 300/70R20 ARKA 380/70R28
TRAKTÖR TD 60B	F. Tractor	2940	2690	DİZEL	3	2931	60/2500	12/12	NEW HOLLAND	ÖN 300/70R20 ARKA 380/70R28
TRAKTÖR TD 65B	F. Tractor	3050	2760	DİZEL	3 TURBO	2931	65/2500	12/12	NEW HOLLAND	ÖN 300/70R20 ARKA 380/70R28
TRAKTÖR TD 75B	F. Tractor	3050	2760	DİZEL	3 TURBO	2931	72/2300	12/12	NEW HOLLAND	ÖN 300/70R20 ARKA 380/70R28
TRAKTÖR TD 65D	F. Tractor	5200	2650	DİZEL	3 TURBO	2931	65/2500	12/12 & 20/12	NEW HOLLAND	ÖN 7.50X16 ARKA 14.9X30
TRAKTÖR TD 65D KABİNLİ	F. Tractor	5200	2840	DİZEL	3 TURBO	2931	65/2500	12/12 & 20/12	NEW HOLLAND	ÖN 7.50X16 ARKA 14.9X30
TRAKTÖR TD 65D 4WD	F. Tractor	5400	2920	DİZEL	3 TURBO	2931	65/2500	12/12 & 20/12	NEW HOLLAND	ÖN 9.50X24 ARKA 14.9X30
TRAKTÖR TD 65D 4WD KABİNLİ	F. Tractor	5400	3080	DİZEL	3 TURBO	2931	65/2500	12/12 & 20/12	NEW HOLLAND	ÖN 9.50X24 ARKA 14.9X30
TRAKTÖR TD 75D	F. Tractor	5400	2940	DİZEL	4	3908	75/2500	12/12 & 20/12	NEW HOLLAND	ÖN 7.50X16 ARKA 16.9X30
TRAKTÖR TD 75D KABİNLİ	F. Tractor	5400	3170	DİZEL	4	3908	75/2500	12/12 & 20/12	NEW HOLLAND	ÖN 7.50X16 ARKA 16.9X30
TRAKTÖR TD 75D 4WD	F. Tractor	5800	3420	DİZEL	4	3908	75/2500	12/12 & 20/12	NEW HOLLAND	ÖN 11.2X24 ARKA 16.9X30
TRAKTÖR TD 75D 4WD KABİNLİ	F. Tractor	5800	3600	DİZEL	4	3908	75/2500	12/12 & 20/12	NEW HOLLAND	ÖN 11.2X24 ARKA 16.9X30
TRAKTÖR TD 85D	F. Tractor	5500	2940	DİZEL	4 TURBO	3908	85/2500	12/12 & 20/12	NEW HOLLAND	ÖN 7.50X18 ARKA 18.4X30
TRAKTÖR TD 85D KABİNLİ	F. Tractor	5500	3170	DİZEL	4 TURBO	3908	85/2500	12/12 & 20/12	NEW HOLLAND	ÖN 7.50X18 ARKA 18.4X30
TRAKTÖR TD 85D 4WD	F. Tractor	5900	3420	DİZEL	4 TURBO	3908	85/2500	12/12 & 20/12	NEW HOLLAND	ÖN 12.4X24 ARKA 18.4X30
TRAKTÖR TD 85D 4WD KABİNLİ	F. Tractor	5900	3600	DİZEL	4 TURBO	3908	85/2500	12/12 & 20/12	NEW HOLLAND	ÖN 12.4X24 ARKA 18.4X30
TRAKTÖR TD 95D	F. Tractor	5600	3150	DİZEL	4 TURBO	3908	95/2500	12/12 & 20/12	NEW HOLLAND	ÖN 7.50X18 ARKA 18.4X30
TRAKTÖR TD 95D KABİNLİ	F. Tractor	5600	3340	DİZEL	4 TURBO	3908	95/2500	12/12 & 20/12	NEW HOLLAND	ÖN 7.50X20 ARKA 18.4X30
TRAKTÖR TD 95D 4WD	F. Tractor	6000	3580	DİZEL	4 TURBO	3908	95/2500	12/12 & 20/12	NEW HOLLAND	ÖN 12.4X24 ARKA 18.4X30
TRAKTÖR TD 95D 4WD KABİNLİ	F. Tractor	6000	3770	DİZEL	4 TURBO	3908	95/2500	12/12 & 20/12	NEW HOLLAND	ÖN 12.4X24 ARKA 18.4X30
TRAKTÖR TD 65	F. Tractor	3130	2690	DİZEL	3 TURBO	2931	65/2500	12/12 & 20/12	NEW HOLLAND	ÖN 7.50X16 ARKA 16.9X30
TRAKTÖR TD 65 4WD	F. Tractor	3390	2950	DİZEL	3 TURBO	2931	65/2500	12/12 & 20/12	NEW HOLLAND	ÖN 11.2X24 ARKA 16.9X30
TRAKTÖR TD 75	F. Tractor	3450	2830	DİZEL	3 TURBO	2931	72/2300	12/12 & 20/12	NEW HOLLAND	ÖN 7.50X16 ARKA 16.9X30
TRAKTÖR TD 75 4WD	F. Tractor	3810	3190	DİZEL	3 TURBO	2931	72/2300	12/12 & 20/12	NEW HOLLAND	ÖN 12.4X24 ARKA 13.6X36
TRAKTÖR TD 85D HC 4WD KABİNLİ	F. Tractor	5900	3600	DİZEL	4 TURBO	3908	85/2500	12/12 & 20/12	NEW HOLLAND	ÖN 13.6X38 ARKA 13.6X38
TRAKTÖR TD 95D HC 4WD KABİNLİ	F. Tractor	6000	3770	DİZEL	4 TURBO	3908	95/2500	12/12 & 20/12	NEW HOLLAND	ÖN 13.6X38 ARKA 13.6X38
TRAKTÖR JX 60	F. Tractor	5200	2650	DİZEL	3 TURBO	2931	59/2500	12/12 & 20/12	CASE IH	ÖN 7.50X16 ARKA 14.9X30
TRAKTÖR JX 60 KABİNLİ	F. Tractor	5200	2840	DİZEL	3 TURBO	2931	59/2500	12/12 & 20/12	CASE IH	ÖN 7.50X16 ARKA 14.9X30
TRAKTÖR JX 60 4WD	F. Tractor	5400	2920	DİZEL	3 TURBO	2931	59/2500	12/12 & 20/12	CASE IH	ÖN 12.4X20 ARKA 14.9X30
TRAKTÖR JX 60 4WD KABİNLİ	F. Tractor	5400	3080	DİZEL	3 TURBO	2931	59/2500	12/12 & 20/12	CASE IH	ÖN 12.4X20 ARKA 14.9X30
TRAKTÖR JX 70	F. Tractor	5200	2650	DİZEL	3 TURBO	2931	69/2500	12/12 & 20/12	CASE IH	ÖN 7.50X16 ARKA 14.9X30
TRAKTÖR JX 70 KABİNLİ	F. Tractor	5200	2840	DİZEL	3 TURBO	2931	69/2500	12/12 & 20/12	CASE IH	ÖN 7.50X16 ARKA 14.9X30
TRAKTÖR JX 70 4WD	F. Tractor	5400	2920	DİZEL	3 TURBO	2931	69/2500	12/12 & 20/12	CASE IH	ÖN 12.4X20 ARKA 14.9X30
TRAKTÖR JX 70 4WD KABİNLİ	F. Tractor	5400	3080	DİZEL	3 TURBO	2931	69/2500	12/12 & 20/12	CASE IH	ÖN 12.4X20 ARKA 14.9X30
TRAKTÖR JX 80	F. Tractor	5400	2940	DİZEL	4 TURBO	3908	80/2500	12/12 & 20/12	CASE IH	ÖN 7.50X18 ARKA 16.9X30
TRAKTÖR JX 80 KABİNLİ	F. Tractor	5400	3170	DİZEL	4 TURBO	3908	80/2500	12/12 & 20/12	CASE IH	ÖN 7.50X18 ARKA 16.9X30
TRAKTÖR JX 80 4WD	F. Tractor	5800	3420	DİZEL	4 TURBO	3908	80/2500	12/12 & 20/12	CASE IH	ÖN 11.2X24 ARKA 16.9X30
TRAKTÖR JX 80 4WD KABİNLİ	F. Tractor	5800	3600	DİZEL	4 TURBO	3908	80/2500	12/12 & 20/12	CASE IH	ÖN 11.2X24 ARKA 16.9X30
TRAKTÖR JX 90	F. Tractor	5500	2940	DİZEL	4 TURBO	3908	89/2500	12/12 & 20/12	CASE IH	ÖN 7.50X18 ARKA 18.4X30
TRAKTÖR JX 90 KABİNLİ	F. Tractor	5500	3170	DİZEL	4 TURBO	3908	89/2500	12/12 & 20/12	CASE IH	ÖN 7.50X18 ARKA 18.4X30
TRAKTÖR JX 90 4WD	F. Tractor	5900	3420	DİZEL	4 TURBO	3908	89/2500	12/12 & 20/12	CASE IH	ÖN 12.4X24 ARKA 18.4X30
TRAKTÖR JX 90 4WD KABİNLİ	F. Tractor	5900	3600	DİZEL	4 TURBO	3908	89/2500	12/12 & 20/12	CASE IH	ÖN 12.4X24 ARKA 18.4X30
TRAKTÖR JX 95	F. Tractor	5600	3150	DİZEL	4 TURBO	3908	98/2500	12/12 & 20/12	CASE IH	ÖN 7.50X18 ARKA 18.4X30
TRAKTÖR JX 95 KABİNLİ	F. Tractor	5600	3340	DİZEL	4 TURBO	3908	98/2500	12/12 & 20/12	CASE IH	ÖN 7.50X18 ARKA 18.4X30
TRAKTÖR JX 95 4WD	F. Tractor	6000	3580	DİZEL	4 TURBO	3908	98/2500	12/12 & 20/12	CASE IH	ÖN 12.4X24 ARKA 18.4X30
TRAKTÖR JX 95 4WD KABİNLİ	F. Tractor	6000	3370	DİZEL	4 TURBO	3908	98/2500	12/12 & 20/12	CASE IH	ÖN 12.4X24 ARKA 18.4X30
<b>UZEL</b>										
TRAKTÖR MF 240 S	F. Tractor	5218	2206	DİZEL	3	2500	49/2250	8/2	MF	ÖN 6.00X16 ARKA 13.6/12X38 ÖN 6.00X16 veya 6.50x16 ARKA 13.6/12X28 veya 14.9/13x28
TRAKTÖR MF 3.050	F. Tractor	5000	2460	DİZEL	3	3300	52/2200	8/2	MF	ÖN 280 / 70 R 20 ARKA 13.6 R 28
TRAKTÖR MF 3.050 4x4	F. Tractor	6900	2521	DİZEL	3	3300	52/2200	8/2	MF	ÖN 5.50X16 veya 6.00x16 ARKA 12.4/11X24 veya 13.6 R24 veya 12.4/11x28 veya 13.6/12x28
TRAKTÖR MF 3.050 MM	F. Tractor	5000	2460	DİZEL	3	3300	52/2200	8/2	MF	

TRAKTÖR MF 3.050 MM 4x4	F. Tractor	6900	2401	DİZEL	3	3300	52/2200	8/2	MF	ÖN 8.25X16 veya 280/70R18 veya 280/70R20 ARKA 380/70R24 veya 13.6 R 24 veya 13.6 R 28
TRAKTÖR MF 3.060	F. Tractor	5000	2610	DİZEL	3	3300	65/2200	12/4	MF	ÖN 6.50X16 veya 7.5x16 ARKA 13,6/12X28 veya 14.9/13x28 veya 16.9/13x30 veya 12.4/11x36
TRAKTÖR MF 3.060 4x4	F. Tractor	6900	2675	DİZEL	3	3300	65/2200	12/4	MF	ÖN 280/70 R 20 veya 300/70 R 20 ARKA 13.6 R 28 veya 14.9x28
TRAKTÖR MF 3.060 MM	F. Tractor	5000	2610	DİZEL	3	3300	65/2200	12/4	MF	ÖN 5.50X16 veya 6.50x16 ARKA 12,4/11X24 veya 13.6 R 24 veya 12.4/11x28 veya 13.6/12x28
TRAKTÖR MF 3.060 4X4 MM	F. Tractor	6900	2675	DİZEL	3	3300	65/2200	12/4	MF	ÖN 8.25X16 veya 280/70 R 18 veya 280/70 R 20 ARKA 380/70R24 veya 13.6 R 24 veya 13.6 R 28
TRAKTÖR MF 256 G	F. Tractor	5180	3050	DİZEL	3	3300	56/2200	12/4	MF	ÖN 7,50X16 ARKA 14.9/ 13X28
TRAKTÖR MF 256 G 4x4	F. Tractor	6345	3110	DİZEL	3	3300	56/2200	12/4	MF	ÖN 11.2 R 20 ARKA 14.9/ 13X28
TRAKTÖR MF 266 G	F. Tractor	5180	3090	DİZEL	3	3300	65/2200	12/4	MF	ÖN 7,50X16 ARKA 13-6/12X36 veya 14.9/13x30
TRAKTÖR MF 266 G 4WD	F. Tractor	6345	3236	DİZEL	3	3300	65/2200	12/4	MF	ÖN 9,50X24 ARKA 14.9/13X30 veya 12.4/11x36
TRAKTÖR MF 277 G	F. Tractor	5180	3115	DİZEL	3	3300	74/2200	12/4	MF	ÖN 7,50X16 ARKA 13-6/12X36 veya 16.9/14x30
TRAKTÖR MF 277 G 4x4	F. Tractor	6345	3330	DİZEL	3	3300	74/2200	12/4	MF	ÖN 12.4-24 ARKA 13.6/12X36 veya 16.9/14x30
TRAKTÖR MF 3075 D	F. Tractor	7711	3428	DİZEL	4	4040	75/2200	12/4	MF	ÖN 9.00X16 ARKA 18.4x30 - 16.9x30 / 13.6x38
TRAKTÖR MF 3075 D 4WD	F. Tractor	8500	3688	DİZEL	4	4040	75/2200	12/4	MF	ÖN 12.4x24 veya 11.2x24 veya 11.2x28 ARKA 18.4x30 veya 16.9x30 veya 13.6x38
TRAKTÖR MF 3085 D	F. Tractor	7711	3378	DİZEL	4	4040	85/2200	12/4	MF	ÖN 9,00X16 ARKA 16.9 R 34 veya 14.9 R 38
TRAKTÖR MF 3085 D 4WD	F. Tractor	8500	3888	DİZEL	4	4040	85/2200	12/4	MF	ÖN 13.6 R 24 veya 12.4x28 ARKA 16.9 R 34 veya 14.9 R 38
TRAKTÖR MF 3.095D	F. Tractor	7711	3631	DİZEL	4	4040	95/2200	12/4	MF	ÖN 10,00X16 ARKA 16.9-14X38
TRAKTÖR MF 3.095D 4WD	F. Tractor	8500	3951	DİZEL	4	4040	95/2200	12/4	MF	ÖN 13.6-12X28 ARKA 16.9/14X38
TRAKTÖR MF 3.105D 4WD	F. Tractor	8500	4135	DİZEL	4	4040	105/2200	12/4	MF	ÖN 13.6-12X38 ARKA 16.9-14X38 veya 18.4 R 38
TRAKTÖR MF 288 G	F. Tractor	5180	3130	DİZEL	3	3300	83/2200	12/4	MF	ÖN 7,50X16 ARKA 13-6/12X36 veya 18.4/15x30
TRAKTÖR MF 288 G 4x4	F. Tractor	6345	3340	DİZEL	3	3300	83/2200	12/4	MF	ÖN 12.4-24 veya 11.2-24 ARKA 13-6/12X36 veya 18.4/15x30
TRAKTÖR MF 3.070 4x4 MM	F. Tractor	5200	2650	DİZEL	3	3300	74/2200	12/4	MF	ÖN 8.25x16 veya 280/70 R 18 veya 280/70 R 20 ARKA 380/70R24 veya 13.6 R24 veya 13.6 R28 veya 380/70 R 28

DİZEL = Diesel

BENZİN = Petrol

ÖN-ARKA = Front-Rear KAT = Ply

**OTOMOTİV SANAYİİ FİRMALARININ  
2008 YILI ÜRETİM KAPASİTELERİ  
Production Capacities 2008**

<b>FİRMALAR Firms</b>	<b>OTOMOBİL P.Car</b>	<b>KAMYON Truck</b>	<b>KAMYONET Pick Up</b>	<b>OTOBÜS Bus</b>	<b>MİNİBÜS Mini-Bus</b>	<b>MİDİBÜS Midi-Bus</b>	<b>TRAKTÖR F. Tractor</b>	<b>TOPLAM Total</b>
<b>A. ISUZU</b>	0	7.200	2.400	0	922	2.633	0	13.155
<b>ASKAM</b>	0	4.000	4.150	450	400	0	0	9.000
<b>B.M.C.</b>	0	10.000	5.000	800	5.000	1.000	0	21.800
<b>FORD OTOSAN</b>	0	15.000	235.000	0	65.000	0	0	315.000
<b>HATTAT TARIM</b>	0	0	0	0	0	0	10.500	10.500
<b>HONDA TÜRKİYE</b>	30.000	0	0	0	0	0	0	30.000
<b>HYUNDAI ASSAN</b>	100.000	0	15.000	0	10.000	0	0	125.000
<b>KARSAN</b>	0	5.000	15.000	0	3.000	5.000	0	28.000
<b>M.A.N. TÜRKİYE</b>	0	0	0	2.000	0	0	0	2.000
<b>M. BENZ TÜRK</b>	0	10.200	0	3.000	0	0	0	13.200
<b>OTOKAR</b>	0	0	3.600	0	2.100	1.850	0	7.550
<b>OTOYOL</b>	0	12.000	0	0	0	6.000	0	18.000
<b>O. RENAULT</b>	360.000	0	0	0	0	0	0	360.000
<b>TEMSA</b>	0	4.500	3.000	1.000	0	2.000	0	10.500
<b>TOFAŞ</b>	360.000	0	0	0	0	0	0	360.000
<b>TOYOTA</b>	150.000	0	0	0	0	0	0	150.000
<b>T. TRAKTÖR</b>	0	0	0	0	0	0	35.000	35.000
<b>UZEL</b>	0	0	0	0	0	0	25.000	25.000
<b>TOPLAM/Total</b>	<b>1.000.000</b>	<b>67.900</b>	<b>283.150</b>	<b>7.250</b>	<b>86.422</b>	<b>18.483</b>	<b>70.500</b>	<b>1.533.705</b>

**OTOMOTİV SANAYİİ FİRMALARININ 2003 - 2007 YILLARI ÜRETİM ADETLERİ**  
**Production Units For The Years 2003 - 2007**

<b>FİRMALAR/MODELLER</b>	<b>Firms/Models</b>	<b>2003</b>	<b>2004</b>	<b>2005</b>	<b>2006</b>	<b>2007</b>
<b>A.I.O.S.</b>						
Kamyonet	Pick Up	1.128	1.692	1.788	2.398	2.984
Kamyon (A.Y.A. 3.501 - 12.000 KG)	Truck	1.685	2.313	2.709	3.055	2.930
Midibüs	Midibus	1.157	2.006	2.265	1.992	1.928
<b>TOPLAM</b>	<b>Total</b>	<b>3.970</b>	<b>6.011</b>	<b>6.762</b>	<b>7.445</b>	<b>7.842</b>
<b>ASKAM</b>						
Kamyon (A.Y.A. 3.501 - 12.000 KG)	Truck	304	15	0	0	0
Kamyon (A.Y.A. > 12.001 KG)	Truck	1.118	1.482	2.046	1.116	74
Kamyonet	Pick Up	347	366	380	185	5
Minibüs	Minibus	0	15	13	8	0
<b>TOPLAM</b>	<b>Total</b>	<b>1.769</b>	<b>1.878</b>	<b>2.439</b>	<b>1.309</b>	<b>79</b>
<b>B.M.C.</b>						
Kamyon (A.Y.A. > 12.001 KG)	Truck	4.797	7.078	6.431	6.628	5.637
Kamyonet	Pick Up	3.765	4.164	4.410	3.566	2.624
Kamyonet Van	Pick Up	5	0	0	0	0
Minibus	Minibus	557	427	784	629	965
Midibüs	Midibus	245	286	188	291	184
Otobüs (Şehiriçi)	Bus	551	864	687	565	959
<b>TOPLAM</b>	<b>Total</b>	<b>9.920</b>	<b>12.819</b>	<b>12.500</b>	<b>11.679</b>	<b>10.369</b>



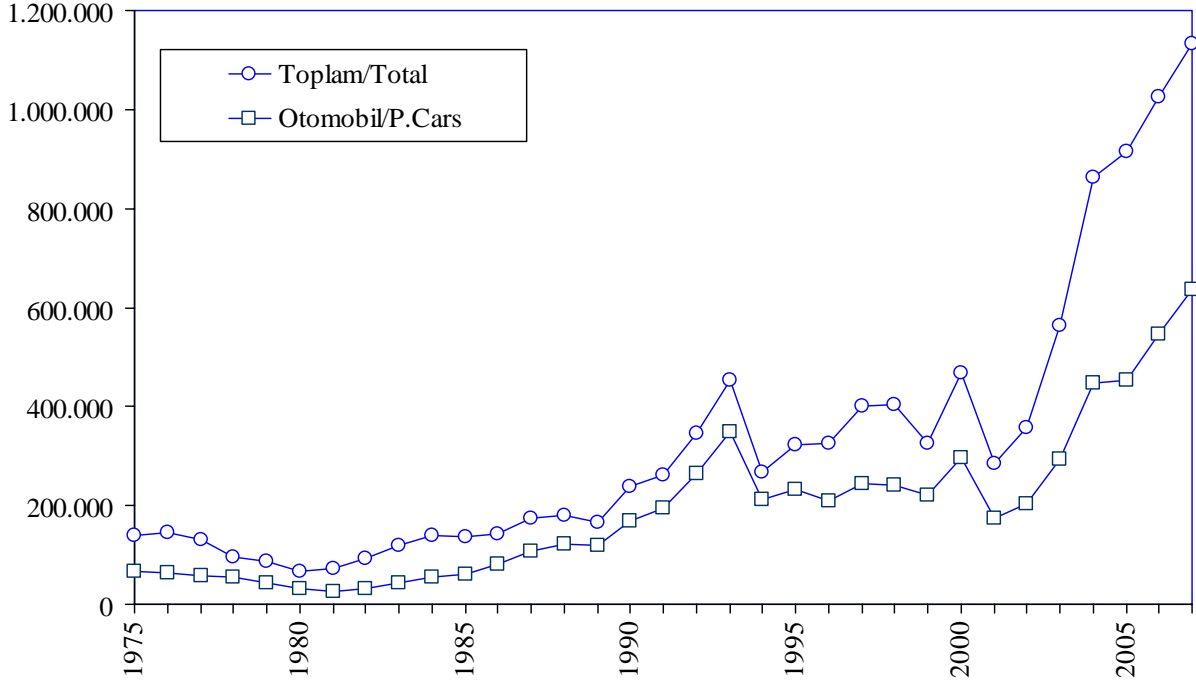
<b>FİRMALAR/MODELLER</b>	<b>Firms/Models</b>	<b>2003</b>	<b>2004</b>	<b>2005</b>	<b>2006</b>	<b>2007</b>
<b>FORD OTOSAN</b>						
Kamyon (A.Y.A. > 12.001 KG)	Truck	3.093	6.050	9.530	7.825	6.434
Minibüs	Minibus	7.046	19.271	20.795	16.721	18.897
Kamyonet	Pick Up	18.598	79.936	16.597	36.525	52.336
Kamyonet Van	Pick Up	85.778	101.503	196.501	197.055	208.689
<b>TOPLAM</b>	<b>Total</b>	<b>114.515</b>	<b>206.760</b>	<b>243.423</b>	<b>258.126</b>	<b>286.356</b>
<b>HATTAT TARIM</b>						
Traktör (< 60 HP)	F. Tractor	612	1.018	1.015	897	548
Traktör (> 61 HP)	F. Tractor	372	1.020	605	537	706
<b>TOPLAM</b>	<b>Total</b>	<b>984</b>	<b>2.038</b>	<b>1.620</b>	<b>1.434</b>	<b>1.254</b>
<b>HONDA TÜRKİYE</b>						
Otomobil (1.301 - 1.600 CC - SEDAN)	P. Car	10.970	15.581	11.236	16.694	18.354
Otomobil (1.601 - 2.000 CC - SEDAN)	P. Car	0	0	0	1.628	5.309
<b>TOPLAM</b>	<b>Total</b>	<b>10.970</b>	<b>15.581</b>	<b>11.236</b>	<b>18.322</b>	<b>23.663</b>
<b>HYUNDAI ASSAN</b>						
Minibüs	Minibus	3.824	5.498	2.779	1.180	292
Kamyonet Van	Pick Up	17.949	22.965	25.839	17.365	6.207
Otomobil (1.301 - 1.600 CC - SEDAN)	P. Car	13.957	29.277	31.402	42.350	83.691
<b>TOPLAM</b>	<b>Total</b>	<b>35.730</b>	<b>57.740</b>	<b>60.020</b>	<b>60.895</b>	<b>90.190</b>
<b>KARSAN</b>						
Kamyon (A.Y.A. 3.501 - 12.000 KG)	Truck	0	0	0	0	93
Minibüs	Minibus	870	1.264	1.177	1.735	1.550
Midibüs	Midibus	2.658	3.345	890	1.835	4.253
Kamyonet	Pick Up	635	5.013	7.038	5.550	1.879
Kamyonet Van	Pick Up	4.139	7.263	4.041	3.404	1.945
<b>TOPLAM</b>	<b>Total</b>	<b>8.302</b>	<b>16.885</b>	<b>13.146</b>	<b>12.524</b>	<b>9.720</b>

<b>FİRMALAR/MODELLER</b>	<b>Firms/Models</b>	<b>2003</b>	<b>2004</b>	<b>2005</b>	<b>2006</b>	<b>2007</b>
<b>M.A.N. TÜRKİYE</b>						
Kamyon (A.Y.A. > 12.001 KG)	Truck	822	690	421	150	0
Otobüs (Şehir içi)	Bus	533	526	701	1.157	694
Otobüs (Şehirlerarası)	Bus	579	770	908	1.194	1.375
<b>TOPLAM</b>	<b>Total</b>	<b>1.934</b>	<b>1.986</b>	<b>2.030</b>	<b>2.501</b>	<b>2.069</b>
<b>M. BENZ TÜRK</b>						
Otobüs (Şehir içi)	Bus	747	495	597	644	743
Otobüs (Şehirlerarası)	Bus	1.624	1.544	1.701	1.556	2.263
Kamyon (A.Y.A. > 12.001 KG)	Truck	4.368	9.647	11.618	13.009	16.008
<b>TOPLAM</b>	<b>Total</b>	<b>6.739</b>	<b>11.686</b>	<b>13.916</b>	<b>15.209</b>	<b>19.014</b>
<b>OTOKAR</b>						
Midibüs	Midibus	613	1.108	793	935	1.164
Minibüs	Minibus	1.237	1.415	595	455	295
Kamyonet	Pick Up	664	722	1.202	1.385	969
Otobüs (Şehir içi)	Bus	0	0	0	0	106
<b>TOPLAM</b>	<b>Total</b>	<b>2.514</b>	<b>3.245</b>	<b>2.590</b>	<b>2.775</b>	<b>2.534</b>
<b>OTOYOL</b>						
Kamyon (A.Y.A. 3.501 - 12.000 KG)	Truck	1.711	1.792	1.591	1.092	0
Kamyon (A.Y.A. > 12.001 KG)	Truck	60	14	1	1.103	235
Kamyonet	Pick Up	607	495	191	61	0
Minibüs	Midibus	91	271	19	0	0
Midibüs	Midibus	1.912	2.151	1.832	1.909	350
<b>TOPLAM</b>	<b>Total</b>	<b>4.381</b>	<b>4.723</b>	<b>3.634</b>	<b>4.165</b>	<b>585</b>

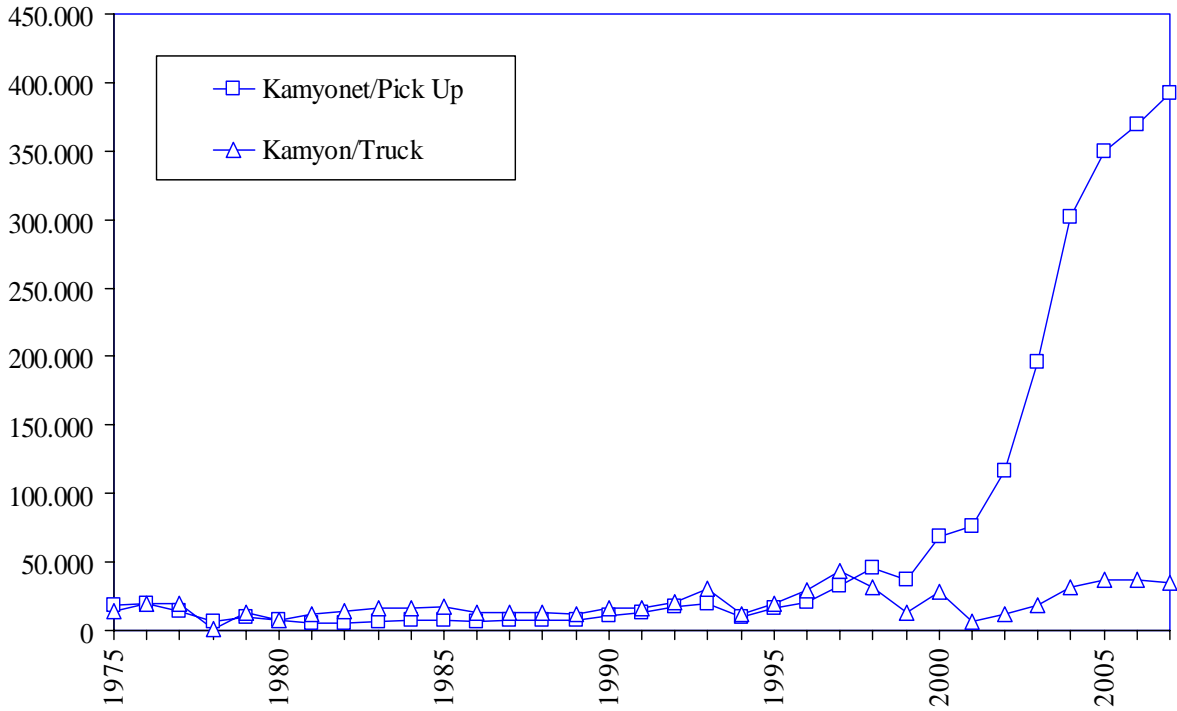
<b>FİRMALAR/MODELLER</b>	<b>Firms/Models</b>	<b>2003</b>	<b>2004</b>	<b>2005</b>	<b>2006</b>	<b>2007</b>
<b>OYAK-RENAULT</b>						
Otomobil (< 1.300 CC - SEDAN)	P. Car	0	5.002	4.501	36.354	46.432
Otomobil (1.301 - 1.600 CC - SEDAN)	P. Car	98.481	182.769	116.897	179.568	207.291
Otomobil (1.301 - 1.600 CC - STATION WAGON)	P. Car	7.492	0	0	0	0
Otomobil (1.601 - 2.000 CC - SEDAN)	P. Car	19.552	9.582	58.271	12.671	9.933
Otomobil (1.601 - 2.000 CC - STATION WAGON)	P. Car	6.732	0	0	0	0
<b>TOPLAM</b>	<b>Total</b>	<b>132.257</b>	<b>197.353</b>	<b>179.669</b>	<b>228.593</b>	<b>263.656</b>
<b>TEMSA</b>						
Otobüs (Şehirlerarası)	Bus	456	640	812	903	806
Kamyon (A.Y.A. 3.501 - 12.000 KG)	Truck	1.083	2.709	2.880	3.048	3.133
Kamyonet	Pick Up	816	1.960	3.328	3.663	3.963
Midibüs	Midibus	209	1.007	1.141	1.301	1.426
<b>TOPLAM</b>	<b>Total</b>	<b>2.564</b>	<b>6.316</b>	<b>8.161</b>	<b>8.915</b>	<b>9.328</b>
<b>TOFAŞ</b>						
Otomobil (< 1.300 CC - SEDAN)	P. Car	23.781	17.283	23.561	14.321	29.259
Otomobil (< 1.300 CC - HATCHBACK)	P. Car	6.557	11.641	9.856	2.988	2.186
Otomobil (< 1.300 CC - STATION WAGON)	P. Car	2.231	10.808	11.005	15.237	14.304
Otomobil (1.301 - 1.600 CC - SEDAN)	P. Car	7.746	12.378	10.859	21.171	29.792
Otomobil (1.301 - 1.600 CC - HATCHBACK)	P. Car	33	28	246	736	915
Otomobil (1.301 - 1.600 CC - STATION WAGON)	P. Car	3.824	3.056	4.238	14.474	11.315
Otomobil (1.601 - 2.000 CC - STATION WAGON)	P. Car	21.921	15.370	13.025	10.802	14.586
Kamyonet Van	Pick Up	61.175	75.484	88.570	98.705	110.136
<b>TOPLAM</b>	<b>Total</b>	<b>127.268</b>	<b>146.048</b>	<b>161.360</b>	<b>178.434</b>	<b>212.493</b>
<b>TOYOTA</b>						
Otomobil (1.301 - 1.600 CC - SEDAN)	P. Car	39.591	38.648	48.085	63.191	11.120
Otomobil (1.301 - 1.600 CC - HATCHBACK)	P. Car	22.086	22.348	22.524	28.120	49.511
Otomobil (1.601 - 2.000 CC - SEDAN)	P. Car	2.048	68.684	85.181	83.313	89.654
Otomobil (1.601 - 2.000 CC - HATCHBACK)	P. Car	7.114	4.697	2.776	2.064	11.231
<b>TOPLAM</b>	<b>Total</b>	<b>70.839</b>	<b>134.377</b>	<b>158.566</b>	<b>176.688</b>	<b>161.516</b>

<b>FİRMALAR/MODELLER</b>	<b>Firms/Models</b>	<b>2003</b>	<b>2004</b>	<b>2005</b>	<b>2006</b>	<b>2007</b>
<b>TÜMOSAN</b>						
Traktör (< 60 HP)	F. Tractor	24	1	0	0	0
Traktör (> 61 HP)	F. Tractor	362	183	0	0	0
<b>TOPLAM</b>	<b>Total</b>	<b>386</b>	<b>184</b>	<b>0</b>	<b>0</b>	<b>0</b>
<b>TÜRK TRAKTÖR</b>						
Traktör (< 60 HP)	F. Tractor	7.643	11.506	11.558	11.624	11.228
Traktör (> 61 HP)	F. Tractor	9.666	9.466	6.312	5.633	7.122
<b>TOPLAM</b>	<b>Total</b>	<b>17.309</b>	<b>20.972</b>	<b>17.870</b>	<b>17.257</b>	<b>18.350</b>
<b>UZEL</b>						
Traktör (< 60 HP)	F. Tractor	7.429	9.606	9.020	10.219	6.658
Traktör (> 61 HP)	F. Tractor	3.670	7.865	8.017	9.931	7.256
<b>TOPLAM</b>	<b>Total</b>	<b>11.099</b>	<b>17.471</b>	<b>17.037</b>	<b>20.150</b>	<b>13.914</b>
<b>GENEL TOPLAM</b>	<b>Grand Total</b>	<b>563.450</b>	<b>864.073</b>	<b>915.979</b>	<b>1.026.421</b>	<b>1.132.932</b>

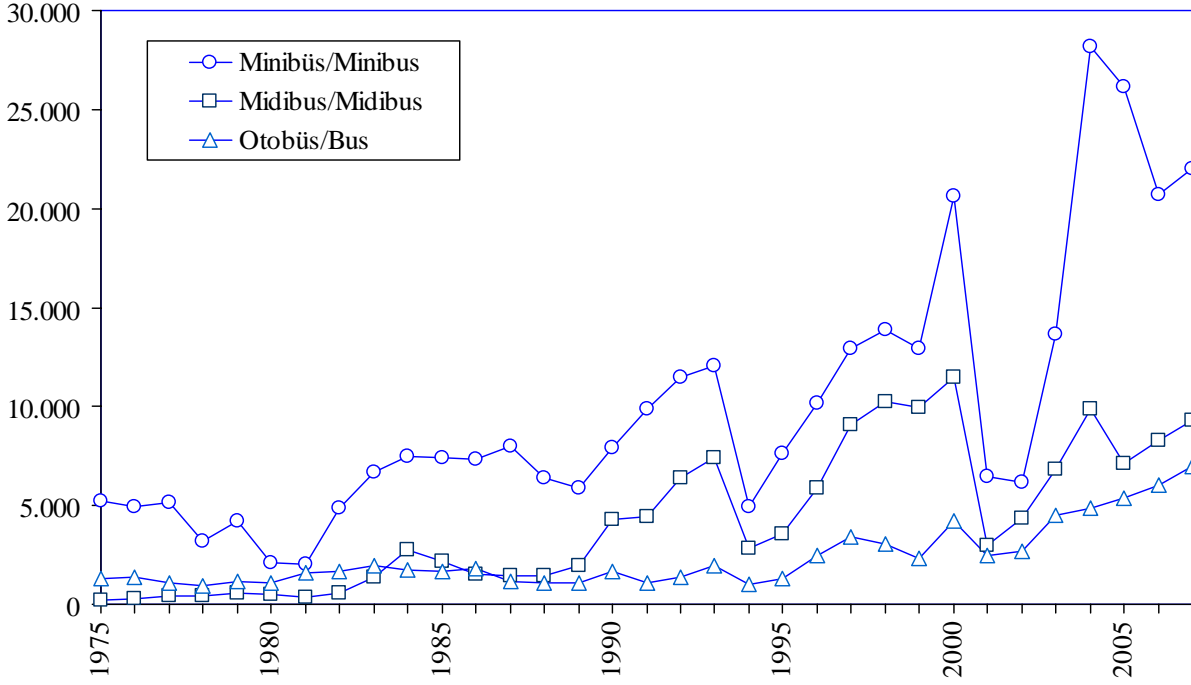
## Otomobil /Toplam Üretim P.Cars /Total Production



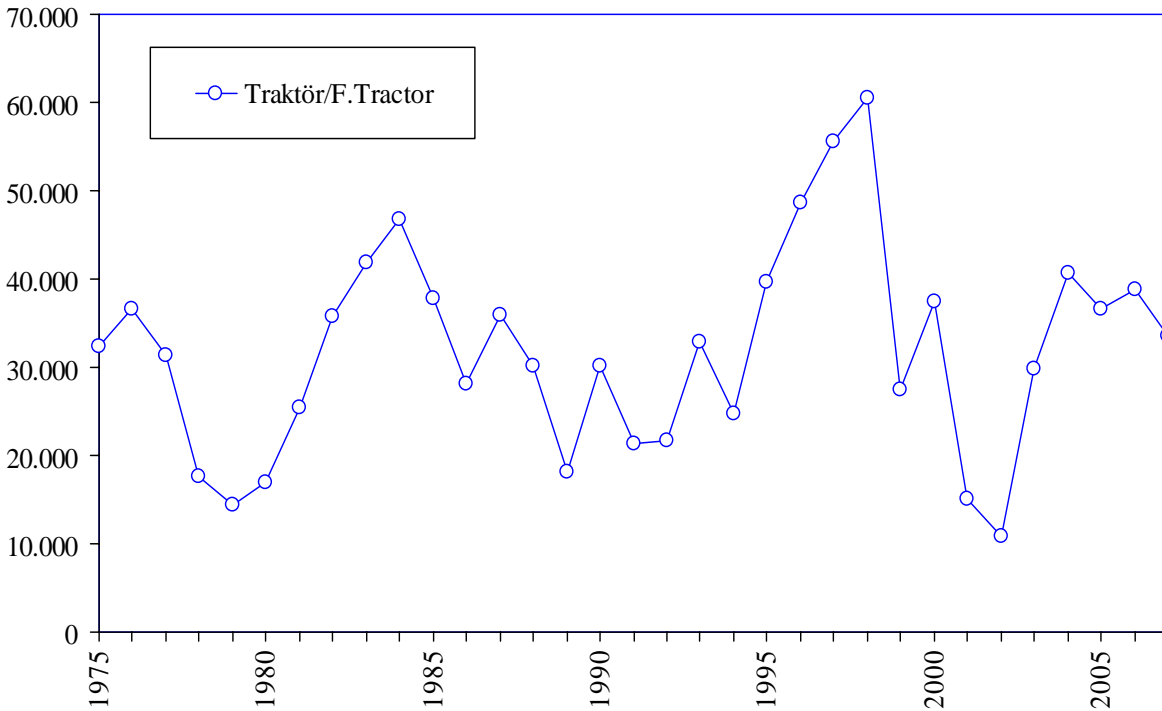
## Yük Taşıt Araçları Üretimi Truck and Pick Up Production



## Yolcu Taşıt Araçları Üretimi Bus Production



## Traktör Üretimi F.Tractor Production

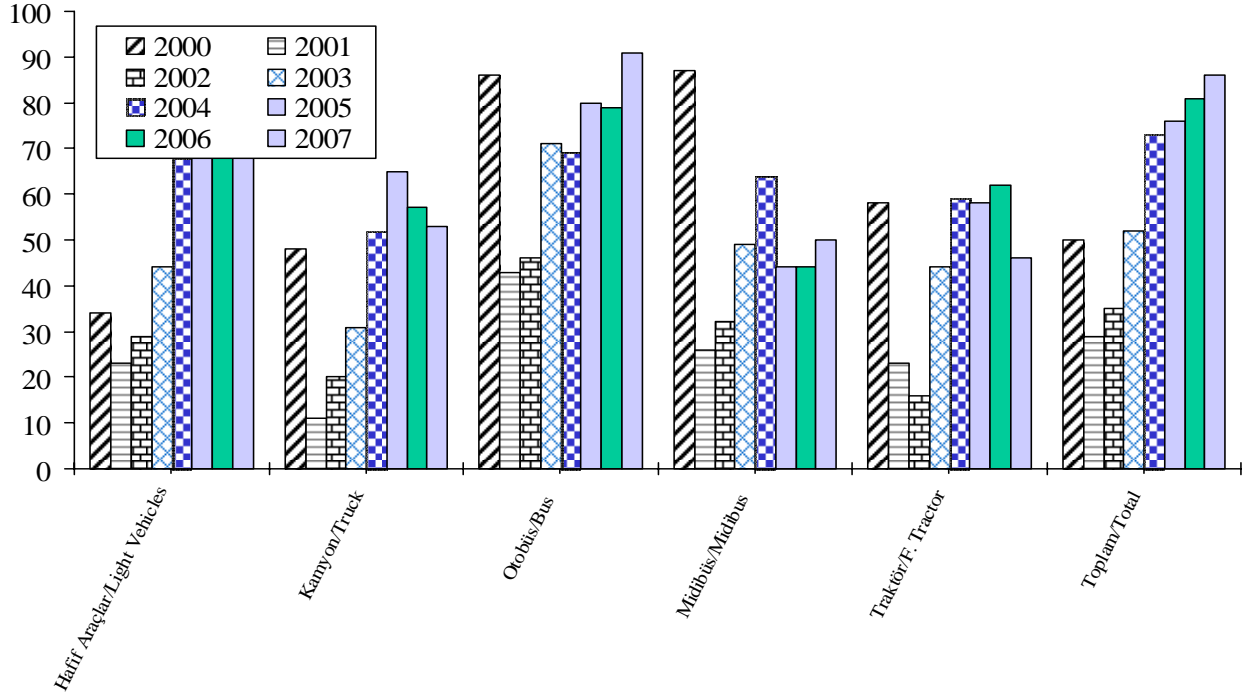


**OTOMOTİV SANAYİİ FİRMALARININ ÜRETİM ADETLERİ**  
**The Production Units Of The Automotive Manufacturers**

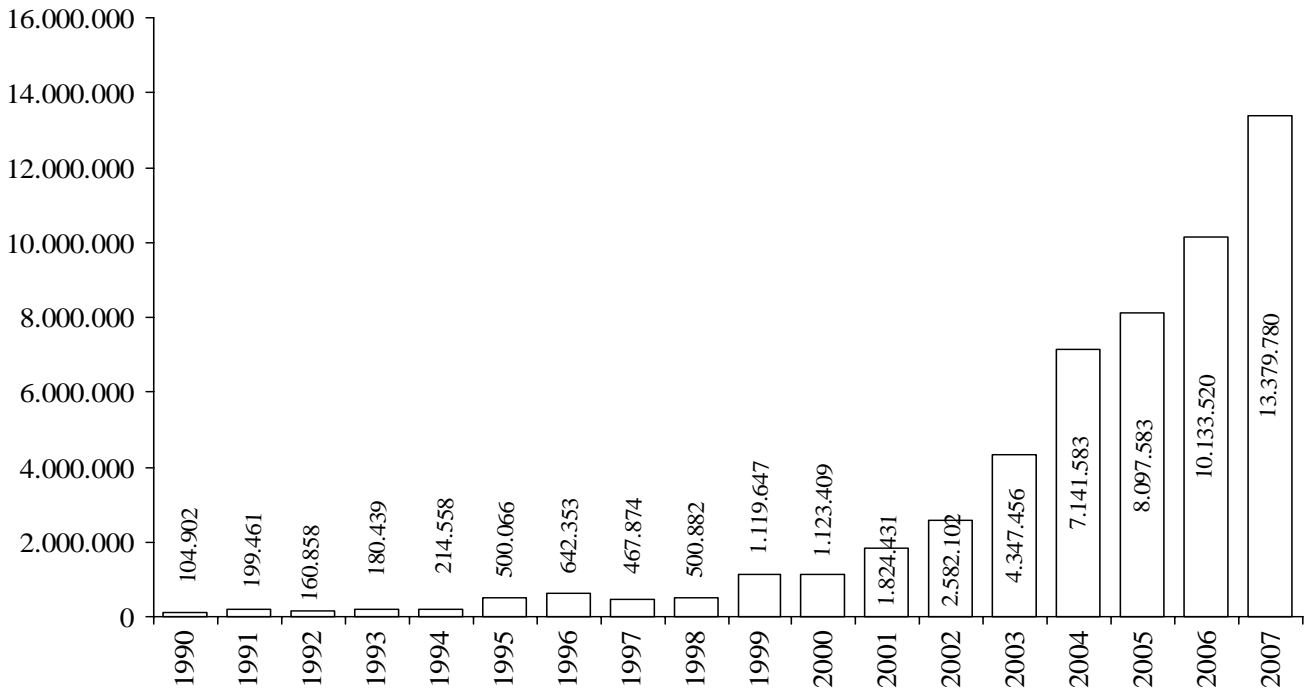
ARALIK SONU / By The end of December

YILLAR Years	OTOMOBİL P.Car	KAMYON Truck	KAMYONET Pick-Up	OTOBÜS Bus	MINİBÜS Minibus	MİDİBÜS Midibus	TRAKTÖR F.Tractor	TOPLAM Total
1963	30	999	1.458	12	631	0	7.982	11.112
1964	100	2.741	885	56	401	0	7.006	11.189
1965	60	2.350	300	122	1.199	0	6.419	10.450
1966	18	6.258	2.476	174	0	252	8.969	18.147
1967	1.760	7.816	2.736	325	622	0	13.976	27.235
1968	2.852	9.408	2.270	466	895	0	15.118	31.009
1969	3.902	10.859	3.030	882	1.095	84	13.412	33.264
1970	3.660	6.041	4.395	806	1.099	4	7.518	23.523
1971	12.888	4.747	4.508	608	1.891	30	15.687	40.359
1972	29.628	8.596	6.044	988	3.748	0	22.893	71.897
1973	46.855	11.723	8.674	1.267	4.533	22	32.585	105.659
1974	59.906	10.591	11.861	1.113	4.584	148	25.363	113.566
1975	67.291	14.670	18.489	1.284	5.222	239	32.365	139.560
1976	62.992	20.498	19.415	1.376	4.910	302	36.602	146.095
1977	58.245	20.700	14.016	1.077	5.152	467	31.380	131.037
1978	54.085	13.144	6.879	972	3.163	444	17.673	96.360
1979	43.808	13.367	9.384	1.151	4.222	547	14.484	86.963
1980	31.529	8.308	7.322	1.101	2.130	491	16.936	67.817
1981	25.306	12.486	5.454	1.584	2.040	378	25.358	72.606
1982	31.195	15.131	4.991	1.703	4.850	587	35.716	94.173
1983	42.509	17.514	6.822	1.964	6.712	1.382	41.799	118.702
1984	54.832	17.518	7.279	1.766	7.460	2.750	46.782	138.387
1985	60.353	18.162	7.888	1.637	7.397	2.191	37.830	135.458
1986	82.032	13.646	6.605	1.813	7.318	1.508	28.053	140.975
1987	107.185	13.545	7.580	1.137	8.026	1.434	35.986	174.893
1988	120.796	12.842	7.196	1.078	6.401	1.449	30.167	179.929
1989	118.314	11.763	7.250	1.069	5.898	1.984	18.077	164.355
1990	167.556	16.933	10.553	1.689	7.898	4.288	30.098	239.015
1991	195.574	16.918	13.541	1.075	9.912	4.401	21.381	262.802
1992	265.245	21.266	16.984	1.415	11.450	6.399	21.723	344.482
1993	348.095	31.343	19.766	1.933	12.084	7.435	32.809	453.465
1994	212.651	12.108	9.602	1.034	4.924	2.855	25.169	268.343
1995	233.412	19.759	16.808	1.279	7.645	3.537	44.068	326.508
1996	207.757	29.432	21.032	2.499	10.171	5.856	52.590	329.337
1997	242.780	43.693	32.435	3.449	12.935	9.060	55.565	399.917
1998	239.937	31.823	45.517	3.040	13.910	10.275	60.500	405.002
1999	222.041	13.096	37.551	2.327	12.894	9.953	27.435	325.297
2000	297.476	28.348	68.807	4.213	20.597	11.506	37.434	468.381
2001	175.343	6.683	76.672	2.501	6.486	3.000	15.052	285.737
2002	204.198	12.295	116.872	2.684	6.139	4.377	10.840	357.405
2003	294.116	19.041	195.606	4.490	13.625	6.794	29.778	563.450
2004	447.152	31.790	301.563	4.839	28.161	9.903	40.665	864.073
2005	453.663	37.227	349.885	5.406	26.162	7.109	36.527	915.979
2006	545.682	37.026	369.862	6.019	20.728	8.263	38.841	1.026.421
2007	634.883	34.544	391.737	6.946	21.999	9.305	33.518	1.132.932

## Kapasite Kullanımı (%) Capacity Usage (%)



## OSD Üyeleri İhracat (US Dollars) (Bin/Thousand) OSD Members Exports





**YILLAR İTİBARIYLA ÜRETİM ADETLERİ VE KAPASİTE KULLANIMI**  
**Production Units And Capacity Usage By Years**

ARALIK SONU/By the end of December

TİPLER / Types	1997	1998	1999	2000	2001	2002	2003	2004	2005	2006	2007
OTOMOBİL / P.Car	242.780	239.937	222.041	297.476	175.343	204.198	294.116	447.152	453.663	545.682	634.883
KAMYON / Truck	43.693	31.823	13.096	28.348	6.683	12.295	19.041	31.790	37.227	37.026	34.544
KAMYONET / Pick-Up	32.435	45.517	37.551	68.807	76.672	116.872	195.606	301.563	349.885	369.862	391.737
OTOBÜS / Bus	3.449	3.040	2.327	4.213	2.501	2.684	4.490	4.839	5.406	6.019	6.946
MİNİBÜS / Minibus	12.935	13.910	12.894	20.597	6.486	6.139	13.625	28.161	26.162	20.728	21.999
MİDİBÜS / Midibus	9.060	10.275	9.953	11.506	3.000	4.377	6.794	9.903	7.109	8.263	9.305
TRAKTÖR / F.Tractor	55.565	60.500	27.435	37.434	15.052	10.840	29.778	40.665	36.527	38.841	33.518
<b>TOPLAM / Total</b>	<b>399.917</b>	<b>405.002</b>	<b>325.297</b>	<b>468.381</b>	<b>285.737</b>	<b>357.405</b>	<b>563.450</b>	<b>864.073</b>	<b>915.979</b>	<b>1.026.421</b>	<b>1.132.932</b>

NOT: EN YÜKSEK ÜRETİM ADETLERİ [ ] İÇİNE ALINMIŞTIR.

Note: The highest production volumes are shown in [ ]

**KAPASİTE KULLANIMI**  
**Capacity Usage**

% 49	% 49	50%	36%	29%	35%	52%	73%	76%	81%	86%
------	------	-----	-----	-----	-----	-----	-----	-----	-----	-----

**OTOMOTİV SANAYİİ FİRMALARININ İHRACATLARI**  
Automotive Industry Exports

ARALIK SONU/By the end of December

TİPLER / Types	YILLAR / Years									
	2003	2004		2005		2006		2007		
	ADET Units	DEĞER \$ Value	ADET Units	DEĞER \$ Value	ADET Units	DEĞER \$ Value	ADET Units	DEĞER \$ Value	ADET Units	DEĞER \$ Value
OTOMOBİL / P. Car	215.317	2.070.548.508	305.072	3.763.058.705	319.849	4.098.450.643	430.528	5.471.999.318	518.328	6.941.721.286
KAMYON / Truck	1.656	52.566.132	2.530	104.124.950	5.059	265.908.938	4.012	236.167.822	9.399	644.492.876
KAMYONET / Pick Up	123.125	1.298.921.254	190.358	2.278.970.894	219.067	2.638.935.232	251.911	3.113.245.220	273.017	3.850.694.467
OTOBÜS / Bus	3.218	473.389.429	2.933	467.852.005	3.791	568.072.883	4.122	673.747.640	5.349	1.068.409.224
MİNİBÜS / Minibus	4.085	50.706.412	5.521	71.953.668	3.733	57.189.589	4.208	75.387.559	11.622	220.139.691
MİDİBÜS / Midibus	1.479	35.596.341	1.939	72.152.794	1.935	85.037.627	1.918	109.027.648	2.031	125.803.388
TRAKTÖR / F. Tractor	12.070	151.257.308	10.178	144.384.771	8.244	122.154.910	9.710	145.034.002	9.458	164.941.590
YEDEK PARÇA / Miscellaneous Parts		214.470.147		239.085.076		261.833.548		308.910.352		363.577.505
<b>TOPLAM / Total</b>	<b>360.950</b>	<b>4.347.455.531</b>	<b>518.531</b>	<b>7.141.582.863</b>	<b>561.678</b>	<b>8.097.583.370</b>	<b>706.409</b>	<b>10.133.519.561</b>	<b>829.204</b>	<b>13.379.780.027</b>

YURTIÇİ TEŞVİKLİ SATIŞLARI HARİÇTİR / Excluding Local Incentive Sales

**OTOMOTİV SANAYİİ FİRMALARININ İHRACATLARI**  
Automotive Industry Exports

(A) Complete Vehicle, (B) Miscellaneous Parts

ARALIK SONU/By the end of December

FİRMALAR/Firms	YILLAR/Years		2004		2005		2006		2007	
	2003									
	ADET Units	DEĞER \$ Value \$	ADET Units	DEĞER \$ Value \$	ADET Units	DEĞER \$ Value \$	ADET Units	DEĞER \$ Value \$	ADET Units	DEĞER \$ Value \$
<b>A.I.O.S.</b>										
Komple Araç (A)	565	18.325.435	1.074	45.742.811	767	41.550.164	711	39.671.605	750	52.859.501
Muhtelif Parça (B)	0	2.559.134	0	2.506.614	0	1.746.892	0	2.470.922	0	2.482.358
<b>ASKAM</b>										
Komple Araç (A)	44	1.361.735	40	953.785	16	622.476	30	1.559.737	0	0
Muhtelif Parça (B)	0	176.741	0	309.406	0	259.028	0	77.341	0	4.994
<b>B.M.C.</b>										
Komple Araç (A)	463	21.090.662	882	51.901.952	1.146	75.559.210	712	64.038.157	1.524	117.713.052
Muhtelif Parça (B)	0	1.488.414	0	1.299.910	0	3.108.868	0	4.633.147	0	6.725.073
<b>FORD OTOSAN</b>										
Komple Araç (A)	74.887	864.683.301	139.210	1.774.729.662	162.910	2.046.322.255	184.748	2.418.455.711	221.964	3.373.728.560
Muhtelif Parça (B)	0	12.741.639	0	15.730.655	0	29.062.374	0	35.652.360	0	50.219.794
<b>HATTAT TARIM</b>										
Komple Araç (A)	0	0	10	86.726	4	56.759	0	0	0	0
Muhtelif Parça (B)	0	0	0	0	0	0	0	86.000	0	0
<b>HONDA TÜRKİYE</b>										
Komple Araç (A)	5.875	57.737.000	5.910	67.800.166	3.011	39.716.210	5.692	85.599.561	7.732	135.550.960
Muhtelif Parça (B)	0	133.150	0	257.696	0	285.729	0	549.189	0	289.437
<b>HYUNDAI ASSAN</b>										
Komple Araç (A)	17.884	168.999.544	23.370	223.659.000	20.654	209.903.103	34.630	356.265.291	69.336	764.485.169
Muhtelif Parça (B)	0	249.339	0	186.398	0	472.422	0	3.646.518	0	1.136.964
<b>KARSAN</b>										
Komple Araç (A)	411	4.998.866	513	6.709.955	366	5.055.200	244	3.613.190	682	11.265.196
Muhtelif Parça (B)	0	1.629.909	0	589.641	0	1.733.884	0	452.083	0	456.325
<b>M.A.N. TÜRKİYE</b>										
Komple Araç (A)	999	161.045.280	1.024	163.445.205	1.310	186.971.735	1.874	290.309.748	1.696	350.815.402
Muhtelif Parça (B)	0	9.784.152	0	16.072.888	0	13.468.609	0	14.187.720	0	10.014.447

**M. BENZ TÜRK**

Komple Araç (A)	2.414	280.530.613	2.377	268.394.757	5.045	448.305.185	3.903	393.075.744	8.708	972.039.362
Muhtelif Parça (B)	0	10.959.564	0	14.844.509	0	8.499.269	0	14.310.082	0	29.443.281

**OTOKAR**

Komple Araç (A)	530	22.190.407	494	20.324.387	1.148	70.722.337	1.276	101.903.326	1.113	97.817.549
Muhtelif Parça (B)	0	3.299.001	0	3.337.242	0	7.322.154	0	10.587.249	0	2.766.898

**OTOYOL**

Komple Araç (A)	939	13.332.320	788	14.496.029	851	18.317.367	825	22.789.212	104	5.681.586
Muhtelif Parça (B)	0	6.586.803	0	8.232.580	0	4.043.139	0	1.058.244	0	1.072.000

**OYAK-RENAULT**

Komple Araç (A)	97.794	952.891.844	130.903	1.431.798.201	123.162	1.332.866.179	177.411	2.060.598.794	204.428	2.389.521.053
Muhtelif Parça (B)	0	63.010.703	0	70.787.913	0	89.734.959	0	115.909.259	0	139.652.097

**TEMSA**

Komple Araç (A)	517	58.041.310	664	88.668.962	970	127.743.966	1.103	161.599.587	1.145	176.236.455
Muhtelif Parça (B)	0	975.300	0	1.366.773	0	2.264.703	0	3.177.885	0	5.291.069

**TOYOTA**

Komple Araç (A)	62.964	675.108.777	118.629	1.851.444.941	144.058	2.308.325.619	160.479	2.510.897.080	154.386	2.842.393.047
Muhtelif Parça (B)	0	1.191.857	0	4.442.019	0	8.595.965	0	13.132.160	0	16.446.922

**TOFAŞ**

Komple Araç (A)	82.594	681.390.982	82.475	748.043.203	88.020	801.613.906	123.061	1.169.198.464	146.178	1.561.154.040
Muhtelif Parça (B)	0	86.391.533	0	73.653.165	0	55.714.803	0	48.529.358	0	44.290.197

**TÜRK TRAKTÖR**

Komple Araç (A)	9.113	127.832.975	6.693	105.656.960	5.124	86.178.583	4.597	81.231.815	5.761	103.741.952
Muhtelif Parça (B)	0	5.612.102	0	16.825.740	0	26.325.137	0	33.729.264	0	46.661.382

**UZEL**

Komple Araç (A)	2.957	23.424.333	3.475	38.641.085	3.116	35.919.568	5.113	63.802.187	3.697	61.199.638
Muhtelif Parça (B)	0	7.680.806	0	8.641.927	0	9.195.613	0	6.721.571	0	6.624.267

<b>360.950</b>	<b>4.132.985.384</b>	<b>518.531</b>	<b>6.902.497.787</b>	<b>561.678</b>	<b>7.835.749.822</b>	<b>706.409</b>	<b>9.824.609.209</b>	<b>829.204</b>	<b>13.016.202.522</b>
<b>0</b>	<b>214.470.147</b>	<b>0</b>	<b>239.085.076</b>	<b>0</b>	<b>261.833.548</b>	<b>0</b>	<b>308.910.352</b>	<b>0</b>	<b>363.577.505</b>

**TOPLAM/Total**

<b>360.950</b>	<b>4.347.455.531</b>	<b>518.531</b>	<b>7.141.582.863</b>	<b>561.678</b>	<b>8.097.583.370</b>	<b>706.409</b>	<b>10.133.519.561</b>	<b>829.204</b>	<b>13.379.780.027</b>
----------------	----------------------	----------------	----------------------	----------------	----------------------	----------------	-----------------------	----------------	-----------------------

YURTIÇİ TEŞVİKLİ SATIŞLARI HARIÇTİR / Excluding Local Incentive Sales

## OTOMOBİL İTHALATI / Passenger Car Imports

BÖLGE / ÜLKE Region / Country	2003		2004		2005		2006		2007	
	Adet / Unit	%	Adet / Unit	%	Adet / Unit	%	Adet / Unit	%	Adet / Unit	%
<b>AT + EFTA / EU + EFTA</b>	<b>136.228</b>	<b>88,5</b>	<b>261.263</b>	<b>83,8</b>	<b>237.905</b>	<b>78,8</b>	<b>200.446</b>	<b>78,5</b>	<b>195.361</b>	<b>82,5</b>
<b>DOĞU AVRUPA / East Europe</b>	<b>8.707</b>	<b>5,7</b>	<b>15.395</b>	<b>4,9</b>	<b>20.106</b>	<b>6,7</b>	<b>14.022</b>	<b>5,5</b>	<b>9.998</b>	<b>4,2</b>
* RUSYA FED. / Russian Fed.	2.701	1,8	4.002	1,3	3.562	1,2	1.441	0,6	845	0,4
* ROMANYA / Romania	1.190	0,8	4.088	1,3	8.464	2,8	7.355	2,9	3.688	1,6
* ÇEK CUM. / Czech Republic	4.816	3,1	7.305	2,3	8.080	2,7	5.226	2,0	5.465	2,3
<b>UZAK DOĞU / Far East</b>	<b>9.072</b>	<b>5,9</b>	<b>35.010</b>	<b>11,2</b>	<b>43.878</b>	<b>14,5</b>	<b>41.026</b>	<b>16,1</b>	<b>31.366</b>	<b>13,2</b>
* JAPONYA / Japan	4.163	2,7	8.289	2,7	8.448	2,8	8.891	3,5	8.931	3,8
* G. KORE / S. Korea	4.909	3,2	26.721	8,6	33.184	11,0	29.769	11,7	20.102	8,5
* DİĞER / Others	0	0,0	0	0,0	2.246	0,7	2.366	0,9	2.333	1,0
<b>TOPLAM/Total</b>	<b>154.007</b>	<b>100,0</b>	<b>311.668</b>	<b>100,0</b>	<b>301.889</b>	<b>100,0</b>	<b>255.494</b>	<b>100,0</b>	<b>236.725</b>	<b>100,0</b>

Kaynak: Otomotiv Distribütörleri Derneği

Source: Association of Automotive Distributors

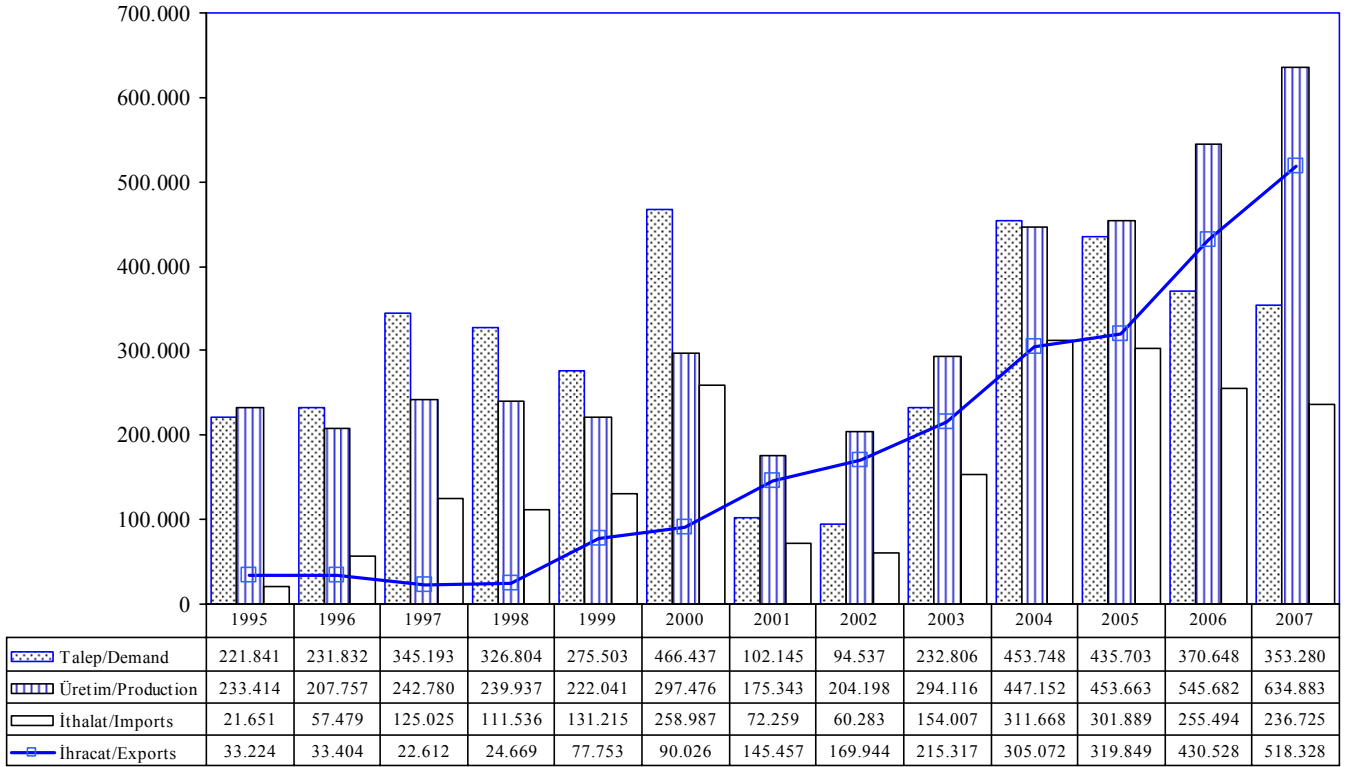
## HAFİF TİCARİ ARAÇ İTHALATI / Light Commercial Vehicle Imports

BÖLGE / ÜLKE Region / Country	2003		2004		2005		2006		2007	
	Adet / Unit	%	Adet / Unit	%	Adet / Unit	%	Adet / Unit	%	Adet / Unit	%
<b>AT + EFTA / EU + EFTA</b>	<b>43.961</b>	<b>73,9</b>	<b>81.580</b>	<b>73,6</b>	<b>90.209</b>	<b>72,5</b>	<b>81.179</b>	<b>70,2</b>	<b>73.753</b>	<b>68,1</b>
<b>DOĞU AVRUPA / East Europe</b>	<b>653</b>	<b>0,4</b>	<b>1.252</b>	<b>0,4</b>	<b>335</b>	<b>0,1</b>	<b>1.502</b>	<b>0,6</b>	<b>5.263</b>	<b>2,2</b>
* RUSYA FED. / Russian Fed.	0	0,0	0	0,0	0	0,0	1.341	0,5	0	0,0
* ROMANYA / Romania	653	0,4	1.252	0,4	241	0,1	1	0,0	5.263	2,2
* ÇEK CUM. / Czech Republic	0	0,0	0	0,0	94	0,0	160	0,1	0	0,0
<b>UZAK DOĞU / Far East</b>	<b>14.844</b>	<b>25,0</b>	<b>28.074</b>	<b>25,3</b>	<b>33.841</b>	<b>27,2</b>	<b>32.877</b>	<b>28,5</b>	<b>29.269</b>	<b>27,0</b>
* JAPONYA / Japan	6.575	4,3	9.915	3,2	11.908	3,9	11.197	4,4	13.578	5,7
* G. KORE / S. Korea	6.595	4,3	14.348	4,6	16.247	5,4	15.769	6,2	10.205	4,3
* DİĞER / Others	1.674	1,1	3.811	1,2	5.686	1,9	5.911	2,3	5.486	2,3
<b>TOPLAM/Total</b>	<b>59.458</b>	<b>100,0</b>	<b>110.906</b>	<b>100,0</b>	<b>124.385</b>	<b>100,0</b>	<b>115.558</b>	<b>100,0</b>	<b>108.285</b>	<b>100,0</b>

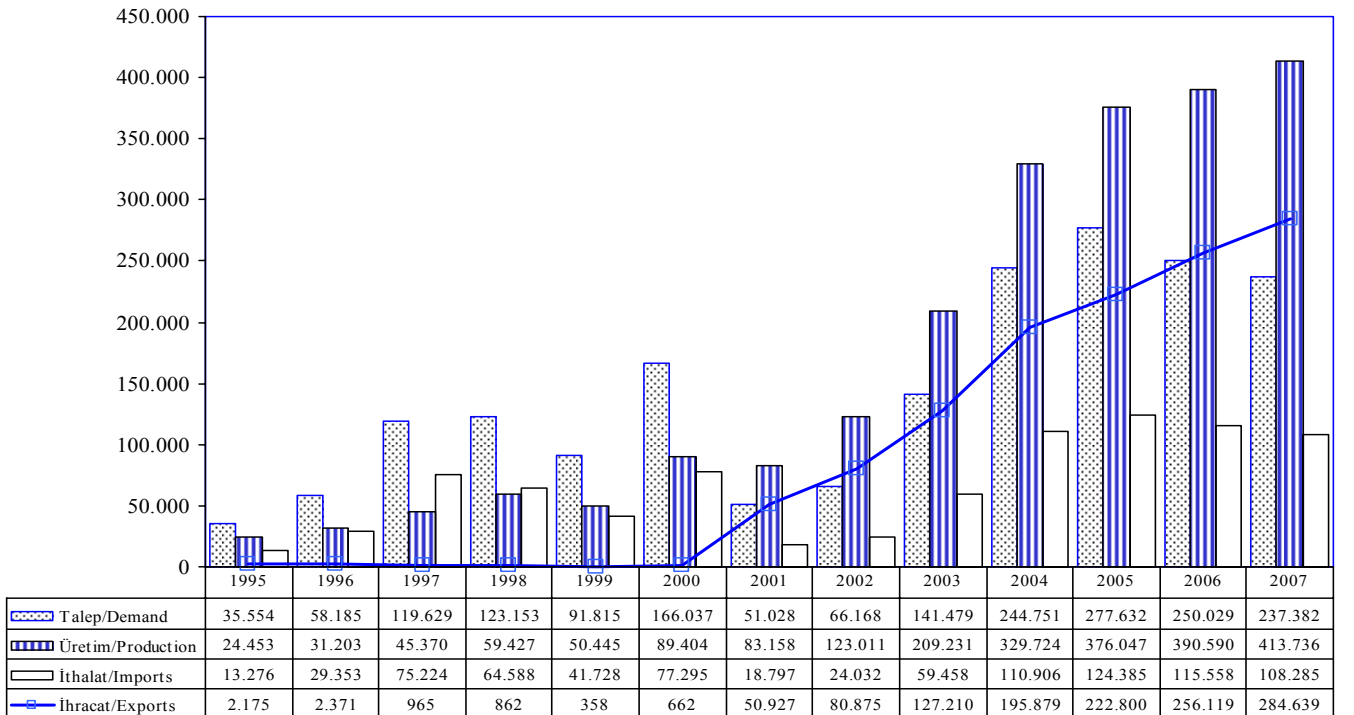
Kaynak: Otomotiv Distribütörleri Derneği

Source: Association of Automotive Distributors

## Otomobil Üretim/İthalat/İhracat P.Cars Production/Imports/Exports



## Hafif Ticari Araçlar Üretim/İthalat/İhracat Light Commercial Vehicles Production/Imports/Exports



**OTOMOTİV SANAYİİ FİRMALARININ CİROLARI (YTL)**  
**Automotive Industry Sales (YTL)**

ARALIK SONU / By the end of December

FİRMALAR / Firms	2002	2003	2004	2005	2006	2007
A.I.O.S.	103.245.145	163.124.590	259.920.867	312.689.366	289.926.445	356.555.442
ASKAM	4.126.022	71.460.203	146.502.459	171.190.532	113.196.985	9.309.724
B.M.C.	187.000.000	444.000.000	682.588.584	743.260.611	972.705.273	948.861.162
FORD OTOSAN	895.809.862	2.454.370.022	4.338.319.163	5.362.980.155	5.745.249.354	6.081.133.970
HATTAT TARIM	1.862.910	17.650.406	45.570.101	47.477.877	58.550.417	42.343.778
HONDA TÜRKİYE	88.790.000	173.216.434	277.111.595	216.275.865	363.123.004	747.186.423
HYUNDAI ASSAN	129.178.833	481.244.222	924.059.362	771.211.501	477.248.859	1.662.390.111
KARSAN	148.268.080	156.060.426	360.676.553	227.413.220	277.695.276	255.779.333
M.A.N.TÜRKİYE	271.698.788	367.382.223	444.649.273	389.634.360	520.594.413	591.553.348
M. BENZ TÜRK	880.990.362	1.331.008.508	1.382.188.640	2.137.058.933	1.678.247.277	2.328.447.374
OTOKAR	109.871.979	196.752.673	289.746.902	262.742.003	302.520.049	402.164.364
OTOYOL	120.808.941	149.549.776	221.168.135	170.854.222	198.153.285	116.730.210
O. RENAULT	1.240.981.075	2.076.941.420	3.129.144.523	2.911.584.533	4.035.798.791	4.321.934.802
TEMSA	101.130.866	177.973.363	365.108.261	473.466.085	516.181.039	548.163.738
TOFAŞ	1.254.122.847	1.655.056.720	1.997.641.365	2.587.831.847	3.139.899.753	3.631.875.337
TOYOTA	560.335.399	1.136.336.587	2.971.458.991	3.325.743.699	3.917.716.081	3.884.994.944
T. TRAKTÖR	93.301.229	388.507.833	534.845.813	485.859.576	320.445.556	310.993.702
UZEL	90.964.446	270.381.360	471.370.912	400.158.165	471.527.685	332.021.328
<b>TOPLAM /Total</b>	<b>6.282.486.784</b>	<b>11.711.016.766</b>	<b>18.842.071.499</b>	<b>20.997.432.550</b>	<b>23.398.779.542</b>	<b>26.572.439.090</b>

**OTOMOTİV SANAYİİ FİRMALARININ HAMMADDEYE VE YAN SANAYİYE ÖDEMELERİ (YTL) - 2007**  
**Payments For Raw Material And Components (YTL) - 2007**

ARALIK SONU / By the end of December

<b>FİRMALAR</b> <b><u>Firms</u></b>	<b>FABRİKAYA ALINAN HAMMADDEYE</b> <b>ÖDENEN MEBLAĞ (K.D.V. HARİÇ)</b> <b>Payment for raw materials</b> <b><u>(Excl. V.A.T.)</u></b>	<b>YAN SANAYİYE ÖDENEN</b> <b>MEBLAĞ (K.D.V. HARİÇ)</b> <b>Payment for components</b> <b><u>manufacturers (Excl. V.A.T.)</u></b>	<b>TOPLAM</b> <b><u>Total</u></b>
A.I.O.S.	236.424.958,11	12.433.418,85	248.858.376,96
ASKAM	7.927,35	2.295.419,33	2.303.346,68
B.M.C.	27.359.419,00	511.759.568,00	539.118.987,00
FORD OTOSAN	4.992.985.994,00	2.683.970.956,00	7.676.956.950,00
HATTAT TARIM	11.056.344,77	8.162.908,56	19.219.253,33
HONDA TÜRKİYE		187.372.739,00	187.372.739,00
HYUNDAI ASSAN	1.137.471.696,00	25.020.558,00	1.162.492.254,00
KARSAN		228.231.887,00	228.231.887,00
M.A.N. TÜRKİYE		1.372.477.395,00	1.372.477.395,00
M. BENZ TÜRK	1.685.541.761,00	138.603.668,00	1.824.145.429,00
OTOKAR	257.465.730,00	209.498.538,00	466.964.268,00
OTOYOL	1.566.159,00	38.940.905,00	40.507.064,00
OYAK RENAULT	3.583.807.037,30	3.872.642.138,80	7.456.449.176,10
TEMSA	150.825.702,00	226.238.553,00	377.064.255,00
TOFAŞ	288.263.495,00	369.883.310,00	658.146.805,00
TOYOTA	78.333.946,28	2.964.961.603,00	3.043.295.549,28
TÜRK TRAKTÖR	62.064.406,83	292.459.096,66	354.523.503,49
UZEL	259.158.511,06	5.715.570,48	264.874.081,54
<b>TOPLAM / Total</b>			<b>25.923.001.320,38</b>



**OTOMOTİV SANAYİİ FİRMALARININ ÖDEDİKLERİ VERGİLER VE ÜCRETLER (YTL) - 2007**  
**Taxes, Wages and Salaries Paid by Automotive Manufacturers (YTL) - 2007**

<b>VERGİ VE ÖDEMELER / Taxes and Payments</b>	<b><u>A.I.O.S.</u></b>	<b><u>ASKAM</u></b>	<b><u>B.M.C.</u></b>	<b><u>FORD OTOSAN</u></b>	<b><u>HATTAT TARIM</u></b>
<b>NET ÜCRET VE İKRAMİYELER</b> Net wages, salaries and bonuses	20.042.496,80	5.308.405,00	51.988.937,44	155.122.370,00	2.694.227,79
<b>GELİR VERGİSİ</b> Income tax	5.064.915,12	1.477.450,00	11.492.631,76	45.327.745,00	743.224,47
<b>SOSYAL SİGORTA PRİMİ İŞÇİ VE İŞVEREN</b> Social insurance premium paid by employee and employers	7.797.948,26	2.293.861,00	23.102.460,33	72.165.171,00	1.130.000,00
<b>DAMGA VERGİSİ</b> Stamp duty	167.065,95	46.702,00	414.178,23	1.468.491,00	23.348,82
<b>DİĞER KESİNTİLER</b> Other taxes	11.795,82	71.430,00	0,00	17.941.806,00	0,00
<b>İSTİH. EDİLEN. ÖDEME. VE VERGİ. TOPLAMI</b> Total production and tax payment	33.084.221,95	9.197.848,00	86.998.207,76	292.025.583,00	4.590.801,08
<b>İTH. ÖDE. TOP. VERGİ VE RESİM. (K.D.V. HARIÇ)</b> Total import taxes and duties (Excl. V.A.T.)	6.603.433,21	51.933,25	996.504,00	13.661.493,00	23.729,31
<b>VERGİ DAİRELERİNE ÖDENEN K.D.V.</b> Value added tax (V.A.T.) paid to tax offices	2.230.327,84	102.028,73	0,00	18.388.017,00	0,00
<b>DİĞER VERGİLER</b> Other taxes	396.790,06	527.927,31	573.848,00	371.563,00	1.153,16
<b>KURUM STOPAJ VERGİSİ</b> Association tax	8.198.582,46	0,00	0,00	119.500.847,00	144.735,31
<b>T O P L A M / Total</b>	<b>50.513.355,52</b>	<b>9.879.737,29</b>	<b>88.568.559,76</b>	<b>443.947.503,00</b>	<b>4.760.418,86</b>

<b>VERGİ VE ÖDEMELER / Taxes and Payments</b>	<b><u>HONDA TÜRKİYE</u></b>	<b><u>HYUNDAI ASSAN</u></b>	<b><u>KARSAN</u></b>	<b><u>M.A.N. TÜRKİYE</u></b>	<b><u>M. BENZ TÜRK</u></b>
<b>NET ÜCRET VE İKRAMİYELER</b> Net wages, salaries and bonuses	19.471.652,00	45.822.221,20	14.590.634,00	42.123.120,41	120.943.891,00
<b>GELİR VERGİSİ</b> Income tax	6.133.599,00	12.970.284,33	3.845.241,00	19.470.419,95	37.542.765,00
<b>SOSYAL SİGORTA PRİMİ İŞÇİ VE İŞVEREN</b> Social insurance premium paid by employee and employers	4.099.301,00	20.926.869,94	6.037.333,00	12.520.130,35	43.973.326,00
<b>DAMGA VERGİSİ</b> Stamp duty	184.141,00	415.286,42	126.392,00	35.528,28	1.100.345,00
<b>DİĞER KESİNTİLER</b> Other taxes	0,00	0,00	1.609.823,00	0,00	1.618.270,00
<b>İSTİH. EDİLEN. ÖDEME. VE VERGİ. TOPLAMI</b> Total production and tax payment	29.888.693,00	80.134.661,89	26.209.423,00	74.149.198,99	205.178.597,00
<b>İTH. ÖDE. TOP. VERGİ VE RESİM. (K.D.V. HARIÇ)</b> Total import taxes and duties (Excl. V.A.T.)	12.676.259,00	29.152.623,03	1.059.184,00	2.098.388,75	8.435.953,00
<b>VERGİ DAİRELERİNE ÖDENEN K.D.V.</b> Value added tax (V.A.T.) paid to tax offices	0,00	2.914.608,41	293.616,00	0,00	17.115.273,00
<b>DİĞER VERGİLER</b> Other taxes	486.273,00	837.910,56	396.449,00	264.706,26	1.419.369,00
<b>KURUM STOPAJ VERGİSİ</b> Association tax	5.751.285,00	0,00	0,00	1.964.568,42	43.908.079,00
<b>T O P L A M / Total</b>	<b>48.802.510,00</b>	<b>113.039.803,89</b>	<b>27.958.672,00</b>	<b>78.476.862,42</b>	<b>276.057.271,00</b>

<b>VERGİ VE ÖDEMELER / Taxes and Payments</b>	<b><u>OTOKAR</u></b>	<b><u>OTOYOL</u></b>	<b><u>OYAK RENAULT</u></b>	<b><u>TEMSA</u></b>	<b><u>TOFAŞ</u></b>
<b>NET ÜCRET VE İKRAMİYELER</b> Net wages, salaries and bonuses	22.536.822,00	25.420.124,00	135.889.261,68	59.809.670,00	134.101.024,00
<b>GELİR VERGİSİ</b> Income tax	7.263.785,00	4.145.461,00	40.979.114,44	11.876.921,00	42.273.953,00
<b>SOSYAL SİGORTA PRİMİ İŞÇİ VE İŞVEREN</b> Social insurance premium paid by employee and employers	9.670.471,00	3.320.287,00	53.056.260,24	15.271.723,00	63.691.037,00
<b>DAMGA VERGİSİ</b> Stamp duty	221.831,00	212.466,00	1.234.271,71	347.583,00	1.306.332,00
<b>DİĞER KESİNTİLER</b> Other taxes	3.007.627,00	502.737,00	9.280.611,21	0,00	20.543.058,00
<b>İSTİH. EDİLEN. ÖDEME. VE VERGİ. TOPLAMI</b> Total production and tax payment	42.700.536,00	33.601.075,00	240.439.519,28	87.305.897,00	261.915.404,00
<b>İTH. ÖDE. TOP. VERGİ VE RESİM. (K.D.V. HARIÇ)</b> Total import taxes and duties (Excl. V.A.T.)	659.042,00	69.486,00	124.308,00	8.558.000,00	2.165.334,00
<b>VERGİ DAİRELERİNE ÖDENEN K.D.V.</b> Value added tax (V.A.T.) paid to tax offices	494.012,00	368.115,00	17.654.902,00	4.618.000,00	14.592.754,00
<b>DİĞER VERGİLER</b> Other taxes	1.293.437,00	302.288,00	10.359.023,00	2.476.000,00	245.252.299,00
<b>KURUM STOPAJ VERGİSİ</b> Association tax	8.827.323,00	0,00	27.684.369,11	0,00	0,00
<b>T O P L A M / Total</b>	<b>53.974.350,00</b>	<b>34.340.964,00</b>	<b>296.262.121,39</b>	<b>102.957.897,00</b>	<b>523.925.791,00</b>

<b>VERGİ VE ÖDEMELER / Taxes and Payments</b>	<b><u>TOYOTA</u></b>	<b><u>TÜRK TRAKTÖR</u></b>	<b><u>UZEL</u></b>	<b><u>TOPLAM/Total</u></b>
<b>NET ÜCRET VE İKRAMİYELER</b> Net wages, salaries and bonuses	77.219.727,13	13.597.087,49	14.987.672,24	961.669.344,18
<b>GELİR VERGİSİ</b> Income tax	23.023.748,11	6.276.703,00	4.876.101,02	284.784.062,20
<b>SOSYAL SİGORTA PRİMİ İŞÇİ VE İŞVEREN</b> Social insurance premium paid by employee and employers	32.429.076,94	9.177.767,41	9.535.388,14	390.198.411,61
<b>DAMGA VERGİSİ</b> Stamp duty	718.674,91	210.231,35	183.629,84	8.416.498,51
<b>DİĞER KESİNTİLER</b> Other taxes	3.342.829,67	1.192.436,96	257.005,15	59.379.429,81
<b>İSTİH. EDİLEN. ÖDEME. VE VERGİ. TOPLAMI</b> Total production and tax payment	136.734.056,76	30.454.226,21	29.839.796,39	1.704.447.746,31
<b>İTH. ÖDE. TOP. VERGİ VE RESİM. (K.D.V. HARIÇ)</b> Total import taxes and duties (Excl. V.A.T.)	11.307.625,79	62.251,32	270.944,28	97.976.491,94
<b>VERGİ DAİRELERİNE ÖDENEN K.D.V.</b> Value added tax (V.A.T.) paid to tax offices	0,00	2.447.468,15	0,00	81.219.122,13
<b>DİĞER VERGİLER</b> Other taxes	441.858,77	570.049,95	987.958,95	266.958.904,02
<b>KURUM STOPAJ VERGİSİ</b> Association tax	0,00	24.800.759,28	0,00	240.780.548,58
<b>T O P L A M / Total</b>	<b>148.483.541,32</b>	<b>58.334.754,91</b>	<b>31.098.699,62</b>	<b>2.391.382.812,98</b>

**OTOMOTİV SANAYİİ İSTİHDAMI**  
**Automotive Industry Employment**

<b><u>FİRMALAR / Firms</u></b>	<b><u>2003</u></b>	<b><u>2004</u></b>	<b><u>2005</u></b>	<b><u>2006</u></b>	<b><u>2007</u></b>
<b>A.I.O.S.</b>					
İŞÇİ / Worker	360	551	548	537	537
BÜRO PERSONELİ / Employee	108	115	116	119	122
İDARECİ / Administrator	14	14	12	15	15
MÜHENDİS / Engineer	22	34	35	41	49
İDA. MÜHENDİS / Ad. Eng.	21	21	24	25	23
<b>TOPLAM / Total</b>	<b>525</b>	<b>735</b>	<b>735</b>	<b>737</b>	<b>746</b>
<b>ASKAM</b>					
İŞÇİ / Worker	236	275	249	242	35
BÜRO PERSONELİ / Employee	58	72	73	70	24
İDARECİ / Administrator	30	27	28	29	14
MÜHENDİS / Engineer	31	42	39	35	9
İDA. MÜHENDİS / Ad. Eng.	30	31	35	32	22
<b>TOPLAM / Total</b>	<b>385</b>	<b>447</b>	<b>424</b>	<b>408</b>	<b>104</b>
<b>B.M.C.</b>					
İŞÇİ / Worker	1504	2052	2140	2559	2618
BÜRO PERSONELİ / Employee	330	328	346	421	356
İDARECİ / Administrator	20	24	24	34	37
MÜHENDİS / Engineer	146	129	137	179	194
İDA. MÜHENDİS / Ad. Eng.	47	59	59	69	76
<b>TOPLAM / Total</b>	<b>2.047</b>	<b>2.592</b>	<b>2.706</b>	<b>3.262</b>	<b>3.281</b>
<b>FORD OTOSAN</b>					
İŞÇİ / Worker	4772	6405	6460	6765	8100
BÜRO PERSONELİ / Employee	372	354	405	408	357
İDARECİ / Administrator	67	91	67	262	75
MÜHENDİS / Engineer	519	594	583	582	708
İDA. MÜHENDİS / Ad. Eng.	220	227	222	237	275
<b>TOPLAM / Total</b>	<b>5.950</b>	<b>7.671</b>	<b>7.737</b>	<b>8.254</b>	<b>9.515</b>

<b><u>FİRMALAR / Firms</u></b>	<b><u>2003</u></b>	<b><u>2004</u></b>	<b><u>2005</u></b>	<b><u>2006</u></b>	<b><u>2007</u></b>
<b>HATTAT TARIM</b>					
İŞÇİ / Worker	0	0	42	63	68
BÜRO PERSONELİ / Employee	8	20	49	64	40
İDARECİ / Administrator	3	3	9	14	20
MÜHENDİS / Engineer	0	0	5	6	22
İDA. MÜHENDİS / Ad. Eng.	5	5	12	13	14
<b>TOPLAM / Total</b>	<b>16</b>	<b>28</b>	<b>117</b>	<b>160</b>	<b>164</b>
<b>HONDA TÜRKİYE</b>					
İŞÇİ / Worker	291	308	285	514	937
BÜRO PERSONELİ / Employee	94	92	152	109	166
İDARECİ / Administrator	24	43	54	65	35
MÜHENDİS / Engineer	17	33	34	29	43
İDA. MÜHENDİS / Ad. Eng.	21	18	22	17	26
<b>TOPLAM / Total</b>	<b>447</b>	<b>494</b>	<b>547</b>	<b>734</b>	<b>1.207</b>
<b>HYUNDAI ASSAN</b>					
İŞÇİ / Worker	1159	1487	1497	1637	1796
BÜRO PERSONELİ / Employee	247	280	192	171	261
İDARECİ / Administrator	76	62	61	56	16
MÜHENDİS / Engineer	37	67	43	76	59
İDA. MÜHENDİS / Ad. Eng.	33	9	22	51	11
<b>TOPLAM / Total</b>	<b>1.552</b>	<b>1.905</b>	<b>1.815</b>	<b>1.991</b>	<b>2.143</b>
<b>KARSAN</b>					
İŞÇİ / Worker	745	857	638	649	746
BÜRO PERSONELİ / Employee	39	47	27	24	31
İDARECİ / Administrator	7	16	5	5	6
MÜHENDİS / Engineer	37	18	45	41	55
İDA. MÜHENDİS / Ad. Eng.	7	18	9	8	8
<b>TOPLAM / Total</b>	<b>835</b>	<b>956</b>	<b>724</b>	<b>727</b>	<b>846</b>

<b><u>FİRMALAR / Firms</u></b>	<b><u>2003</u></b>	<b><u>2004</u></b>	<b><u>2005</u></b>	<b><u>2006</u></b>	<b><u>2007</u></b>
<b>M.A.N. TÜRKİYE</b>					
İŞÇİ / Worker	2022	2055	2103	2288	1732
BÜRO PERSONELİ / Employee	245	234	264	258	166
İDARECİ / Administrator	89	92	74	42	38
MÜHENDİS / Engineer	78	98	80	168	90
İDA. MÜHENDİS / Ad. Eng.	64	53	59	22	37
<b>TOPLAM / Total</b>	<b>2.498</b>	<b>2.532</b>	<b>2.580</b>	<b>2.778</b>	<b>2.063</b>
<b>M. BENZ TÜRK</b>					
İŞÇİ / Worker	2558	2781	2846	3096	3525
BÜRO PERSONELİ / Employee	375	359	308	285	274
İDARECİ / Administrator	32	93	93	93	95
MÜHENDİS / Engineer	343	374	441	455	466
İDA. MÜHENDİS / Ad. Eng.	56	51	60	60	62
<b>TOPLAM / Total</b>	<b>3.364</b>	<b>3.658</b>	<b>3.748</b>	<b>3.989</b>	<b>4.422</b>
<b>OTOKAR</b>					
İŞÇİ / Worker	590	625	719	660	891
BÜRO PERSONELİ / Employee	94	89	120	130	149
İDARECİ / Administrator	47	53	27	20	18
MÜHENDİS / Engineer	70	70	88	103	111
İDA. MÜHENDİS / Ad. Eng.	22	32	35	36	55
<b>TOPLAM / Total</b>	<b>823</b>	<b>869</b>	<b>989</b>	<b>949</b>	<b>1.224</b>
<b>OTOYOL</b>					
İŞÇİ / Worker	827	731	688	566	26
BÜRO PERSONELİ / Employee	132	131	158	122	44
İDARECİ / Administrator	13	7	15	12	2
MÜHENDİS / Engineer	57	60	63	54	13
İDA. MÜHENDİS / Ad. Eng.	28	43	41	35	1
<b>TOPLAM / Total</b>	<b>1.057</b>	<b>972</b>	<b>965</b>	<b>789</b>	<b>86</b>

<b><u>FİRMALAR / Firms</u></b>	<b><u>2003</u></b>	<b><u>2004</u></b>	<b><u>2005</u></b>	<b><u>2006</u></b>	<b><u>2007</u></b>
<b>OYAK RENAULT</b>					
İŞÇİ / Worker	3008	3388	4016	4396	5002
BÜRO PERSONELİ / Employee	455	505	487	515	561
İDARECİ / Administrator	29	26	24	11	25
MÜHENDİS / Engineer	234	332	351	447	511
İDA. MÜHENDİS / Ad. Eng.	84	88	96	101	110
<b>TOPLAM / Total</b>	<b>3.810</b>	<b>4.339</b>	<b>4.974</b>	<b>5.470</b>	<b>6.209</b>
<b>TEMSA</b>					
İŞÇİ / Worker	337	851	1050	1122	1314
BÜRO PERSONELİ / Employee	347	145	203	204	321
İDARECİ / Administrator	36	35	35	38	44
MÜHENDİS / Engineer	72	123	146	181	244
İDA. MÜHENDİS / Ad. Eng.	51	53	62	67	71
<b>TOPLAM / Total</b>	<b>843</b>	<b>1.207</b>	<b>1.496</b>	<b>1.612</b>	<b>1.994</b>
<b>TOFAŞ</b>					
İŞÇİ / Worker	3256	3572	3530	4339	6705
BÜRO PERSONELİ / Employee	459	456	459	326	470
İDARECİ / Administrator	78	73	69	186	64
MÜHENDİS / Engineer	191	213	209	287	407
İDA. MÜHENDİS / Ad. Eng.	116	116	112	120	132
<b>TOPLAM / Total</b>	<b>4.100</b>	<b>4.430</b>	<b>4.379</b>	<b>5.258</b>	<b>7.778</b>
<b>TOYOTA</b>					
İŞÇİ / Worker	2285	2827	3116	3208	3045
BÜRO PERSONELİ / Employee	126	76	131	164	166
İDARECİ / Administrator	51	66	57	26	28
MÜHENDİS / Engineer	114	138	124	139	139
İDA. MÜHENDİS / Ad. Eng.	14	43	25	57	45
<b>TOPLAM / Total</b>	<b>2.590</b>	<b>3.150</b>	<b>3.453</b>	<b>3.594</b>	<b>3.423</b>



<b><u>FİRMALAR / Firms</u></b>	<b><u>2003</u></b>	<b><u>2004</u></b>	<b><u>2005</u></b>	<b><u>2006</u></b>	<b><u>2007</u></b>
<b>TÜRK TRAKTÖR</b>					
İŞÇİ / Worker	751	787	799	773	1061
BÜRO PERSONELİ / Employee	73	76	80	89	105
İDARECİ / Administrator	6	6	6	5	5
MÜHENDİS / Engineer	63	70	69	67	57
İDA. MÜHENDİS / Ad. Eng.	13	17	21	25	18
<b>TOPLAM / Total</b>	<b>906</b>	<b>956</b>	<b>975</b>	<b>959</b>	<b>1.246</b>
<b>UZEL</b>					
İŞÇİ / Worker	1152	1218	720	747	667
BÜRO PERSONELİ / Employee	124	163	162	160	140
İDARECİ / Administrator	10	17	25	22	18
MÜHENDİS / Engineer	52	87	122	132	112
İDA. MÜHENDİS / Ad. Eng.	75	58	62	65	64
<b>TOPLAM / Total</b>	<b>1.413</b>	<b>1.543</b>	<b>1.091</b>	<b>1.126</b>	<b>1.001</b>
<b>GENEL TOPLAM/Grand Total</b>					
İŞÇİ / Worker	<b>25.853</b>	<b>30.770</b>	<b>31.446</b>	<b>34.161</b>	<b>38.805</b>
BÜRO PERSONELİ / Employee	<b>3.686</b>	<b>3.542</b>	<b>3.732</b>	<b>3.639</b>	<b>3.753</b>
İDARECİ / Administrator	<b>632</b>	<b>748</b>	<b>685</b>	<b>935</b>	<b>555</b>
MÜHENDİS / Engineer	<b>2.083</b>	<b>2.482</b>	<b>2.614</b>	<b>3.022</b>	<b>3.289</b>
İDA. MÜHENDİS / Ad. Eng.	<b>907</b>	<b>942</b>	<b>978</b>	<b>1.040</b>	<b>1.050</b>
<b>TOPLAM / Total</b>	<b>33.161</b>	<b>38.484</b>	<b>39.455</b>	<b>42.797</b>	<b>47.452</b>

**İDA. MÜHENDİS=İDARECİ MÜHENDİS**  
**Ad. Eng.=Administrator Engineer**

**OTOMOTİV SANAYİİ YATIRIMLARI (USD)**  
**Realized Sectorial Investments (USD)**

ARALIK SONU/By the end of December

<b>PROJE TİPİ</b> <b>Projects</b>	<b>2003</b>	<b>2004</b>	<b>2005</b>	<b>2006</b>	<b>2007</b>
<b>KAPASİTE ARTTIRIMI</b> Capacity Development	118.000.000	105.000.000	104.000.000	202.000.000	220.000.000
<b>MODERNİZASYON</b> Modernization	27.000.000	48.000.000	128.000.000	96.000.000	54.000.000
<b>YENİ MODEL</b> New Model Development	230.000.000	160.000.000	346.000.000	580.000.000	475.000.000
<b>KALİTE ARTTIRICI</b> Quality Development	3.000.000	11.000.000	17.000.000	19.000.000	24.000.000
<b>YERLİLEŞTİRMEYİ ARTTIRICI</b> Localization	72.000.000	35.000.000	32.000.000	19.000.000	56.000.000
<b>DİĞER</b> Others	36.000.000	76.000.000	97.000.000	120.000.000	100.000.000
<b>TOPLAM</b> <b>Toplam</b>	<b>486.000.000</b>	<b>435.000.000</b>	<b>724.000.000</b>	<b>1.036.000.000</b>	<b>929.000.000</b>

**TÜRKİYE ARAÇ PARKI**  
**Automotive Vehicles Park In Turkey**

YILLAR Years	OTOMOBİL P.Car	KAMYON Truck	KAMYONET Pick-Up	MINİBÜS Minibus	OTOBÜS Bus	TRAKTÖR F.Tractor	TOPLAM Total
1963	72.034	49.356	30.739	7.543	11.726	50.844	222.242
1964	79.449	46.721	28.658	9.196	11.216	51.781	227.021
1965	87.584	49.317	29.804	10.476	11.693	54.608	243.482
1966	91.469	47.931	31.462	11.239	12.041	65.108	259.250
1967	112.867	56.889	39.927	16.008	13.332	74.982	314.005
1968	125.375	62.616	43.441	18.967	13.948	84.874	349.221
1969	137.345	69.478	48.655	20.540	15.520	96.407	387.945
1970	137.771	70.770	52.152	20.916	15.980	105.865	403.454
1971	153.676	73.433	57.011	22.380	17.040	118.525	442.065
1972	187.272	78.920	62.796	25.559	18.504	135.726	508.777
1973	240.360	86.780	71.043	30.055	20.011	156.139	604.388
1974	313.160	95.309	81.025	34.122	21.404	200.466	745.486
1975	403.546	108.381	98.579	40.623	23.763	243.066	917.958
1976	488.894	122.176	116.861	46.066	25.388	281.802	1.081.187
1977	560.424	138.093	134.213	51.999	27.096	320.578	1.232.403
1978	624.438	146.551	144.695	56.836	28.559	370.259	1.371.338
1979	688.687	157.095	155.278	61.596	30.634	402.777	1.496.067
1980	742.252	164.893	165.821	64.707	32.783	436.369	1.606.825
1981	776.432	172.372	172.269	66.514	33.839	458.714	1.680.140
1982	811.465	180.772	178.762	69.598	35.432	491.001	1.767.030
1983	856.350	190.277	186.427	73.585	38.478	513.516	1.858.633
1984	919.577	197.721	198.106	80.697	43.638	556.781	1.996.520
1985	983.444	205.496	212.505	87.951	47.119	583.974	2.120.489
1986	1.087.234	217.111	224.755	97.917	50.798	612.731	2.290.546
1987	1.193.021	225.872	233.480	106.314	53.554	637.449	2.449.690
1988	1.310.257	234.166	240.718	112.885	56.172	654.636	2.608.834
1989	1.434.830	241.392	248.567	118.026	58.859	672.845	2.774.519
1990	1.649.879	257.353	263.407	125.399	63.700	692.454	3.052.192
1991	1.864.344	273.409	280.891	133.632	68.973	704.373	3.325.622
1992	2.181.388	379.410	308.180	145.312	75.592	828.580	3.918.462
1993	2.619.852	406.398	354.290	159.900	84.254	870.559	4.495.253
1994	2.861.640	419.374	374.473	166.424	87.545	895.506	4.804.962
1995	3.058.511	432.216	397.743	173.051	90.197	937.528	5.089.246
1996	3.274.156	453.796	442.788	182.694	94.978	988.142	5.436.554
1997	3.570.105	489.071	529.838	197.057	101.896	1.053.381	5.941.348
1998	3.838.631	519.749	626.004	211.495	108.361	1.107.157	6.411.397
1999	4.072.326	531.690	692.935	221.683	112.186	1.131.626	6.762.446
2000	4.422.180	557.295	794.459	235.885	118.454	1.159.070	7.287.343
2001	4.534.803	562.063	833.175	239.381	119.306	1.179.068	7.467.796
2002	4.600.140	567.152	875.381	241.700	120.097	1.180.127	7.584.597
2003	4.700.343	579.010	973.457	245.394	123.500	1.184.256	7.805.960
2004	5.400.440	647.420	1.259.867	318.954	152.712	1.210.283	8.989.676
2005	5.772.745	676.929	1.475.057	338.539	163.390	1.247.767	9.674.427
2006	6.140.992	709.535	1.695.624	357.523	175.949	1.290.679	10.370.302
2007	6.472.156	729.202	1.890.459	372.601	189.128	1.327.334	10.980.880

KAYNAK: T.C. BAŞBAKANLIK TÜRKİYE İSTATİSTİK KURUMU  
Source: Republic Of Turkey, Prime Ministry Turkish Statistical Institute