



OTOMOTİV SANAYİİ DERNEĐİ
AUTOMOTIVE MANUFACTURERS ASSOCIATION

Otomotiv Sanayii Genel ve İstatistik Bülteni General and Statistical Information Bulletin Of Automotive Manufacturers 2007 - I

OSD "OICA" Üyesidir



OSD is a Member of "OICA"

İÇİNDEKİLER**SAHİFE**

OTOMOTİV SANAYİİ FİRMALARI HAKKINDA GENEL BİLGİLER - 2007	1
OTOMOTİV SANAYİİ FİRMALARININ ÜRETTİKLERİ MODELLER VE GENEL SPESİFİKASYONLARI - 2007	2 - 11
OTOMOTİV SANAYİİ FİRMALARININ 2007 YILI ÜRETİM KAPASİTELERİ	12
OTOMOTİV SANAYİİ FİRMALARININ 2002 - 2006 YILLARI ÜRETİM ADETLERİ	13 - 17
YILLARA GÖRE ÜRETİM GRAFİKLERİ	18 - 19
OTOMOTİV SANAYİİ FİRMALARININ ÜRETİM ADETLERİ	20
KAPASİTE KULLANIM VE İHRACAT GRAFİKLERİ	21
YILLAR İTİBARIYLA ÜRETİM ADETLERİ VE KAPASİTE KULLANIMLARI	22
OTOMOTİV SANAYİİ FİRMALARININ İHRACATLARI	23 - 25
OTOMOBİL İTHALATI – HAFİF TİCARİ ARAÇ İTHALATI	26
OTOMOBİL VE HAFİF TİCARİ ARAÇLAR/ÜRETİM/İTHALAT/İHRACAT GRAFİKLERİ	27
OTOMOTİV SANAYİİ FİRMALARININ CİROLARI	28
OTOMOTİV SANAYİİ FİRMALARININ 2006 YILINDA HAMMADDEYE VE YAN SANAYİYE ÖDEMELERİ	29
OTOMOTİV SANAYİİ FİRMALARININ 2006 YILINDA ÖDEDİKLERİ VERGİLER VE ÜCRETLER	30 - 33
OTOMOTİV SANAYİİ İSTİHDAMI	34 - 38
OTOMOTİV SANAYİİ YATIRIMLARI	39
TÜRKİYE ARAÇ PARKI	40

CONTENTS**PAGE**

GENERAL INFORMATION ON THE AUTOMOTIVE MANUFACTURERS - 2007	1
GENERAL SPECIFICATIONS OF THE PRODUCTS - 2007	2 - 11
PRODUCTION CAPACITIES - 2007	12
PRODUCTION UNITS FOR THE YEARS 2002 - 2006	13 - 17
PRODUCTION BY YEARS IN GRAPHICS	18 - 19
THE PRODUCTION UNITS OF THE AUTOMOTIVE MANUFACTURERS	20
CAPACITY USAGE AND EXPORTS IN GRAPHICS	21
PRODUCTION UNITS AND CAPACITY UTILIZATION BY YEARS	22
AUTOMOTIVE INDUSTRY EXPORTS	23 - 25
P. CAR IMPORTS - LIGHT COMMERCIAL VEHICLE IMPORTS	26
P. CARS AND LIGHT COMMERCIAL VEHICLES/PRODUCTION/IMPORTS/EXPORTS	27
AUTOMOTIVE INDUSTRY SALES	28
PAYMENT FOR RAW MATERIAL AND COMPONENTS - 2006	29
TAXES, WAGES AND SALARIES PAID BY AUTOMOTIVE MANUFACTURERS IN THE YEAR - 2006	30 - 33
AUTOMOTIVE INDUSTRY EMPLOYMENT	34 - 38
AUTOMOTIVE INDUSTRY INVESTMENTS	39
AUTOMOTIVE VEHICLES PARK IN TURKEY	40

OTOMOTİV SANAYİİ FİRMALARI HAKKINDA GENEL BİLGİLER - 2007
General Information On The Automotive Manufacturers - 2007

OCAK SONU/By the end of January

FİRMALAR Firms	ÜRETİM YERİ The Production Place	ÜRETİME BAŞLAMA TARİHİ Starting Year Of Production	LİSANS Licence	SERMAYE Capital (1000 YTL)	YABANCI SERMAYE Foreign Cap. (%)	KAPALI ALAN Covered Area (1.000 M2)	TOPLAM ALAN Total Area (1.000 M2)
A.I.O.S.	KOCAELİ	1966	ISUZU	16.946	29,74	82	299
ASKAM	KOCAELİ	1964	DAIMLER-CHRYSLER / HINO	16.500	0	36	109
B.M.C.	İZMİR	1964		380.000	0	122	420
FORD OTOSAN	ESKİŞEHİR KOCAELİ	1983 2001	FORD	350.910	41	63 345	1.100 1.600
HATTAT TARIM	TEKİRDAĞ	2002	VALTRA, UNIVERSAL, HATTAT	36.450	0	19	78
HONDA TÜRKİYE	KOCAELİ	1997	HONDA MOTOR EUROPE. LTD.	100.000	100	44	292
HYUNDAI ASSAN	KOCAELİ	1997	HYUNDAI MOTOR COMP.	206.220	70	100	1.000
KARSAN	BURSA	1966	PEUGEOT	40.000	0	70	200
M.A.N. TÜRKİYE	ANKARA	1966	MAN	65.000	99,9	114	358
M.BENZ TÜRK	İSTANBUL AKSARAY	1968 1985	MERCEDES BENZ	275.000	85	164 75	549 558
OTOKAR	SAKARYA	1963	DEUTZ / LAND ROVER / FRUEHAUF / AM GENERAL	24.000	0	52	169
OTOYOL	SAKARYA	1966	IVECO	52.674	27	88	346
O.RENAULT	BURSA	1971	RENAULT	323.300	51	225	418
TEMSA	ADANA	1987	TEMSA / MITSUBISHI	70.000	0	104	556
TOFAŞ	BURSA	1971	FIAT	500.000	37,8	346	935
TOYOTA	SAKARYA	1994	TOYOTA	150.165	100	166	824
T.TRAKTÖR	ANKARA	1954		47.000	37,5	79	273
UZEL	İSTANBUL	1962	M. FERGUSON / HOLDER	100.050	0	80	100
TOPLAM/Total				2.754.215		2.374	10.184

OTOMOTİV SANAYİİ FİRMALARININ ÜRETTİKLERİ MODELLER VE GENEL SPESİFİKASYONLARI - 2007
General Specifications Of The Products - 2007

OCAK SONU/By the end of January

FİRMALAR/MODELLER	Firms/Models	A.Y.A. G.V.W. K.G.	NET AG. Net We. K.G.	ÇİNSİ Type	MOTOR / Engine			ŞANZİMAN/Gear Box			LASTİK EBADI / Tire Size
					SİLİNDİR ADEĐİ No.Of Cylinder	CC cc	GÜCÜ/Power BHP/DEVİR Hp/Rpm	VİTES Gear	MODEL		
A.ISUZU											
KAMYON NPR 71	Truck	7500	2636	DİZEL	4	4570	121/3200	5/1	MY5 5T	ÖN-ARKA 215/75 R 17.5	
KAMYON NQR 75	Truck	7500	2876	DİZEL	4	5193	175/2600	6/1	MZZ-6U	ÖN-ARKA 215/75 R-17.5	
KAMYON NQR 3 Aks	Truck	12100	3476	DİZEL	4	5193	175/2600	6/1	MZZ-6U	ÖN-ARKA 235x75 R 17.5	
KAMYONET NKR 55	Pick up	3500	1836	DİZEL	4	2771	80/3500	5/1	MSB-5S	ÖN-ARKA 7.50-15-10 PR	
KAMYONET NKR Wide	Pick up	3500	2376	DİZEL	4	4334	100/3200	5/1	MY5-5T	ÖN-ARKA 6,50-16LT-10 PR	
KAMYONET NKR 55 FL (NKR Low)	Pick up	3500	1816	DİZEL	4	2771	80/3500	5/1	MSB 5S	ÖN-6,50 R 16 LT 10 PR ARKA 185 R 14 LT 8 PR	
MİDİBÜS Turkuaz 27	Midibus	8677	6310	DİZEL	4	5193	175/2600	6/1	MZZ	ÖN-ARKA 225x75 R 17,5	
MİDİBÜS Turkuaz 31	Midibus	9202	6551	DİZEL	4	5193	175/2600	6/1	MZZ	ÖN-ARKA 225x75 R 17,5	
MİDİBÜS Roybus 27	Midibus	7449	5332	DİZEL	4	4570	121/3200	5/1	MYY5T	ÖN-ARKA 215/75 R 17,5	
MİDİBÜS Roybus C 27	Midibus	7409	5292	DİZEL	4	4570	121/3200	5/1	MYY5T	ÖN-ARKA 215/75 R 17,5	
MİDİBÜS Classic 27	Midibus	7089	4972	DİZEL	4	4570	121/3200	5/1	MYY5T	ÖN-ARKA 215/75 R 17,5	
MİDİBÜS Classic 23	Midibus	6445	4612	DİZEL	4	4570	121/3200	5/1	MYY5T	ÖN-ARKA 215/75 R 17,5	
MİDİBÜS Urban 22	Midibus	7866	4942	DİZEL	4	4570	121/3200	5/1	MYY5T	ÖN-ARKA 215/75 R 17,5	
MİDİBÜS Urban 50	Midibus	8252	4852	DİZEL	4	4570	121/3200	5/1	MYY5T	ÖN-ARKA 215/75 R 17,5	
ASKAM											
KAMYONET AS 250 WD KASALI (4X4)	Pick Up	3500	2700	DİZEL	4	3192	90/2800	5/1	EATON FS 2035 A	ÖN-ARKA 7.50 X 16 8 KAT	
KAMYONET AS 250 WD C/C ÇİFT KABİN (4X4)	Pick Up	3500	2800	DİZEL	4	3192	90/2800	5/1	EATON FS 2035 A	ÖN-ARKA 7.50 X 16 8 KAT	
KAMYONET AS 250 D	Pick Up	3500	2325	DİZEL	4	3192	90/2800	5/1	EATON FS 2035 A	ÖN-ARKA 8.5 R 17.5 121/120	
KAMYONET AS 250 D KASALI	Pick Up	3500	2800	DİZEL	4	3192	90/2800	5/1	EATON FS 2035 A	ÖN-ARKA 8.5 R 17.5 121/120	
KAMYONET AS 250 D C/C ÇİFT KABİN	Pick Up	3500	2700	DİZEL	4	3192	90/2800	5/1	EATON FS 2035 A	ÖN-ARKA 8.5 R 17.5 121/120	
KAMYONET AS 250 AD	Pick Up	4815	2325	DİZEL	4	3192	90/2800	5/1	EATON FS 2035 A	ÖN-ARKA 8.5 R 17.5 121/120	
MİNİBÜS AS 250 AWDM	Minibus	4815	3200	DİZEL	4	3192	90/2800	5/1	EATON FS 2035 A	ÖN-ARKA 7.50 X 16 8 KAT	
MİNİBÜS AS 250 AWDM SAFARI	Minibus	4815	3240	DİZEL	4	3192	90/2800	5/1	EATON FS 2035 A	ÖN-ARKA 7.50 X 16 8 KAT	
KAMYON AS 950 SUPER STD (4x2)	Truck	18000	5860	DİZEL	6	7146	240/2300	9/1	ZF 9S75	ÖN-ARKA 12 RX22.5 152/148	
KAMYON AS 950 SUPER TL (6x2)	Truck	25000	7350	DİZEL	6	7146	240/2300	9/1	ZF 9S75	ÖN-ARKA 12 RX22.5 152/149	
KAMYON AS 950 SUPER TS (6x2)	Truck	25000	7250	DİZEL	6	7146	240/2300	9/1	ZF 9S75	ÖN-ARKA 12 RX22.5 152/150	
KAMYON 26.260 LN (6X2)	Truck	25000	7650	DİZEL	6	8000	260/2500	9/1	ZF 9S75	ÖN-ARKA 12 RX22.5 152/151	
KAMYON 26.260 SN (6X2)	Truck	25000	7500	DİZEL	6	8000	260/2500	9/1	ZF 9S75	ÖN-ARKA 12 RX22.5 152/152	
KAMYON 26.260 FT (6X2)	Truck	25000	7850	DİZEL	6	8000	260/2500	9/1	ZF 9S75	ÖN-ARKA 12 RX22.5 152/153	
KAMYON 32.260 LN (8X2)	Truck	32000	8550	DİZEL	6	8000	260/2500	9/1	ZF 9S75	ÖN-ARKA 12 RX22.5 152/154	
KAMYON 19.260 LN (4X2)	Truck	18000	6150	DİZEL	6	8000	260/2500	9/1	ZF 9S75	ÖN-ARKA 12 RX22.5 152/155	
KAMYON 19.260 SN (4X2)	Truck	18000	6050	DİZEL	6	8000	260/2500	9/1	ZF 9S75	ÖN-ARKA 12 RX22.5 152/156	
KAMYON 32300 LN (Hi-Ex) (8X2)	Truck	32000	8650	DİZEL	6	6871	292/2400	16/2	ZF 16S109	ÖN-ARKA 12 RX22.5 152/157	
KAMYON 19300 LN (Hi-Ex) (4X2)	Truck	18000	6250	DİZEL	6	6871	292/2400	16/2	ZF 16S109	ÖN-ARKA 12 RX22.5 152/158	
KAMYON 19300 SN (Hi-Ex) (4X2)	Truck	18000	6150	DİZEL	6	6871	292/2400	16/2	ZF 16S109	ÖN-ARKA 12 RX22.5 152/159	
KAMYON 26300 LN (Hi-Ex) (6X2)	Truck	25000	7750	DİZEL	6	6871	292/2400	16/2	ZF 16S109	ÖN-ARKA 12 RX22.5 152/160	
KAMYON 26300 FT (Hi-Ex) (6X2)	Truck	25000	7950	DİZEL	6	6871	292/2400	16/2	ZF 16S109	ÖN-ARKA 12 RX22.5 152/161	
ÇEKİCİ 19.260 ST (4X2)	R.Tractor	18000	6100	DİZEL	6	8000	260/2500	9/1	ZF 9S75	ÖN-ARKA 12 RX22.5 152/162	
ÇEKİCİ 19300 ST (Hi-Ex) (4X2)	R.Tractor	18000	6600	DİZEL	6	6871	292/2400	16/2	ZF 16S109	ÖN-ARKA 315/80 R 22.5	
B.M.C.											
BELDE 220 CB (3 KAPILI BELEDİYE OTOBÜSÜ)	Bus	17500	10700	DİZEL	6	8267	217 / 2200	6/1	ZF S6 85	ÖN-ARKA 11 R 22.5	
BELDE 220 CB (2 KAPILI, BELEDİYE OTOBÜSÜ)	Bus	17500	10150	DİZEL	6	8267	217 / 2200	6/1	ZF S6 85	ÖN-ARKA 11 R 22.5	
BELDE 220 CB (3 KAPILI BELEDİYE OTOBÜSÜ)	Bus	17500	10700	DİZEL	6	8267	217 / 2200	5/1	ZF 5HP 500, OTOMATİK	ÖN-ARKA 11 R 22.5	
BELDE 220 CB (49+1) SERVİS OTOBÜSÜ	Bus	17500	10700	DİZEL	6	8267	256 / 2200	6/1	ZF S6 85	ÖN-ARKA 11 R 22.5	
BELDE 260 CB (3 KAPILI BELEDİYE OTOBÜSÜ)	Bus	17500	10700	DİZEL	6	8267	256 / 2200	5/1	ZF 5HP 502C, OTOMATİK	ÖN-ARKA 11 R 22.5	
BELDE 260 CB (3 KAPILI BELEDİYE OTOBÜSÜ)	Bus	17500	10150	DİZEL	6	8267	256 / 2400	5/1	ZF 5HP 500, OTOMATİK	ÖN-ARKA 11 R 22.5	
BELDE 280 CB (3 KAPILI BELEDİYE OTOBÜSÜ)	Bus	17500	10700	DİZEL	6	8267	280/2400	5/1	ZF 5HP 500, OTOMATİK	ÖN-ARKA 11 R 22.5	
FATİH 180 SDT (6x2)	Truck	25000	6200	DİZEL	6	5880	162/2500	5/1	HEMA (EATON)/570 SMS	ÖN-ARKA 12.00 R 22.5	
FATİH 180 SDX (4x2)	Truck	25000	6200	DİZEL	6	5880	162/2500	6/1	ZF 6S 850 DT	ÖN-ARKA 12.00 R 22.5	
FATİH 180 SHT (6x2)	Truck	25000	6340	DİZEL	6	5880	162/2500	5/1	HEMA (EATON)/570 SMS	ÖN-ARKA 12.00 R 22.5	
FATİH 180 SHX (4x2)	Truck	25000	6200	DİZEL	6	5880	162/2500	6/1	ZF 6S 850 DT	ÖN-ARKA 12.00 R 22.5	
FATİH 280 SDB (6x4)	Truck	26000	8250	DİZEL	6	8267	263/2200	9/1	EATON 8209	ÖN-ARKA 12.00 R 22.5	
FATİH 280 SDT (6x2)	Truck	25000	7180	DİZEL	6	8267	263/2200	9/1	EATON 8209	ÖN-ARKA 12.00 R 22.5	
FATİH 280 SHT (6x2)	Truck	25000	7400	DİZEL	6	8267	263/2200	9/1	EATON 8209	ÖN-ARKA 12.00 R 22.5	
LEVEND 100 BDC (DÜZ KASALI, ÇİFT SIRA)	Pick Up	3150	1880	DİZEL	4	2953	100 / 3800	5/1	BMC 15	ÖN-ARKA 195 R 14 C	
LEVEND 100 BDK (KASASIZ, ÇİFT SIRA)	Pick Up	3150	1620	DİZEL	4	2953	100 / 3800	5/1	BMC 15	ÖN-ARKA 195 R 14 C	
LEVEND 100 BDS (DÜZ KASALI, TEK SIRA)	Pick Up	3150	1440	DİZEL	4	2953	100 / 3800	5/1	BMC 15	ÖN-ARKA 195 R 14 C	
LEVEND 100 BDT (KASASIZ, TEK SIRA)	Pick Up	3150	1780	DİZEL	4	2953	100 / 3800	5/1	BMC 15	ÖN-ARKA 195 R 14 C	
LEVEND 3.0 GDM XL Minibüs (14+1) ABS'li, (Çift Lastikli)	Minibus	3560	2560	DİZEL	4	2953	100 / 3800	6/1	ZF 6S 321	ÖN-ARKA 225/70 R 15 C	
LEVEND 3.0 GDM XL Minibüs (14+1) ABS'li, (Tek Lastikli)	Minibus	3560	2560	DİZEL	4	2953	100 / 3800	5/1	BMC 15	ÖN-ARKA 225/70 R 15 C	
LEVEND 3.0 GDM XL Minibüs (17+1) ABS'li, (Çift Lastikli)	Minibus	3560	2560	DİZEL	4	2953	100 / 3800	5/1	BMC 15	ÖN-ARKA 225/70 R 15 C	
LEVEND 3.0 GDM (14+1) MİNİBÜS)	Minibus	3560	2560	DİZEL	4	2953	100 / 3800	5/1	BMC 15	ÖN-ARKA 225/70 R 15 C	
LEVEND 3.0 GDM (18+1) MİNİBÜS)	Midibus	3810	2560	DİZEL	4	2953	100 / 3800	5/1	BMC 15	ÖN-ARKA 225/70 R 15 C	

LEVEND 3.O MDS (TEK SIRA KASASIZ KAMYONET)	Pick Up	3500	1820	DIZEL	4	2953	100 / 3800	5/1	BMC 15	ÖN-ARKA 225/70 R 15 C
LEVEND 3.O MDS (TEK SIRA KASASIZ KAMYONET, DAMPER ŞASI)	Pick Up	3500	1820	DIZEL	4	2953	100 / 3800	5/1	BMC 15	ÖN-ARKA 225/70 R 15 C
LEVEND 3.O MDS (TEK SIRA, KASASIZ, ÇİFT LASTİKLİ KAMYONET)	Pick Up	3500	1890	DIZEL	4	2953	100 / 3800	5/1	BMC 15	ÖN-ARKA 195/70 R 15 C
LEVEND 3.O MDT (TEK SIRA KASALI KAMYONET)	Pick Up	3500	2275	DIZEL	4	2953	100 / 3800	5/1	BMC 15	ÖN-ARKA 225/70 R 15 C
LEVEND 60 BDC (DÜZ KASALI, ÇİFT SIRA)	Pick Up	3050	1735	DIZEL	4	1798	52 / 4250	5/1	BMC 15	ÖN-ARKA 195 R 14 C
LEVEND 60 BDT (KASASIZ, TEK SIRA)	Pick Up	2750	1670	DIZEL	4	1798	52 / 4250	5/1	BMC 15	ÖN-ARKA 195 R 14 C
MEGASTAR 290 PDF (KOMBI)	Pick Up	3200	2155	DIZEL	4	2776	82 / 3600	5/1	BMC 15	ÖN-ARKA 225/70 R 15 C
MEGASTAR 290 PDV (PANEL VAN)	Pick Up	3200	2200	DIZEL	4	2776	82 / 3600	5/1	BMC 15	ÖN-ARKA 225/70 R 15 C
MEGASTAR 290 PDY (KOMBI VAN)	Pick Up	3200	2155	DIZEL	4	2776	82 / 3600	5/1	BMC 15	ÖN-ARKA 225/70 R 15 C
MEGASTAR 310 PDC (DÜZ KASALI, ÇİFT SIRA KAMYONET)	Pick Up	3200	2310	DIZEL	4	2776	82 / 3600	5/1	BMC 15	ÖN-ARKA 225/70 R 15 C
MEGASTAR 310 PDS (KASASIZ, TEK SIRA KAMYONET)	Pick Up	3200	1780	DIZEL	4	2776	82 / 3600	5/1	BMC 15	ÖN-ARKA 225/70 R 15 C
MEGASTAR 310 PDT (DÜZ KASALI, TEK SIRA KAMYONET)	Pick Up	3200	2175	DIZEL	4	2776	82 / 3600	5/1	BMC 15	ÖN-ARKA 225/70 R 15 C
MEGASTAR 360 PDC (DÜZ KASALI, ÇİFT SIRA KAMYONET)	Pick Up	3500	2455	DIZEL	4	2776	130 / 3800	6/1	ZF 6S 321	ÖN-ARKA 225/70 R 15 C
MEGASTAR 360 PDH PANEL VAN - YÜKSEK TAVAN	Pick Up	3500	2500	DIZEL	4	2776	130 / 3800	6/1	ZF 6S 321	ÖN-ARKA 225/70 R 15 C
MEGASTAR 360 PDK (KASASIZ, ÇİFT SIRA KAMYONET)	Pick Up	3500	2075	DIZEL	4	2776	130 / 3800	6/1	ZF 6S 321	ÖN-ARKA 225/70 R 15 C
MEGASTAR 360 PDM MİNİBÜS (N.T.) (14+1)	Minibus	3800	2780	DIZEL	4	2776	130 / 3800	6/1	ZF 6S 321	ÖN-ARKA 225/70 R 15 C
MEGASTAR 360 PDS (KASASIZ, TEK SIRA KAMYONET)	Pick Up	3500	1900	DIZEL	4	2776	130 / 3800	6/1	ZF 6S 321	ÖN-ARKA 225/70 R 15 C
MEGASTAR 360 PDT (DÜZ KASALI, TEK SIRA KAMYONET)	Pick Up	3500	2320	DIZEL	4	2776	130 / 3800	6/1	ZF 6S 321	ÖN-ARKA 225/70 R 15 C
MEGASTAR 360 PDV PANEL VAN - NORMAL TAVAN	Pick Up	3500	2400	DIZEL	4	2776	130 / 3800	6/1	ZF 6S 350	ÖN-ARKA 225/70 R 15 C
PROBUS 215 SCB (24+1)	Bus	11990	7820	DIZEL	6	5880	215 / 2500	6/1	ZF 6S 890-OD	ÖN-ARKA 245 / 70 R 19.5
PROBUS 215 SCB (31+1)	Bus	11990	7820	DIZEL	6	5880	215 / 2500	6/1	ZF 6S 890-OD	ÖN-ARKA 245 / 70 R 19.5
PROBUS 215 SCB (35+1)	Bus	11990	7820	DIZEL	6	5880	215 / 2500	6/1	ZF 6S 890-OD	ÖN-ARKA 245 / 70 R 19.5
PROBUS 850 TB	Bus	12000	8800	DIZEL	6	5880	215 / 2500	6/1	ZF 6S 890-OD	ÖN-ARKA 245 / 70 R 19.5
PROBUS 850 TBX	Bus	12000	9150	DIZEL	6	5880	235 / 2500	6/1	ZF 6S 890-OD	ÖN-ARKA 245 / 70 R 19.5
PROBUS 850 TBX ÖRME ŞASI	Bus	12500	9150	DIZEL	6	5880	235 / 2500	6/1	ZF 6S 890-OD	ÖN-ARKA 245 / 70 R 19.5
PROFESYONEL PRO 1142 ZCX (4x2)	R. Tractor	-	7130	DIZEL	6	8268	410/2200	16/2	ZF 16S 2220 TO	ÖN-ARKA 315/80 R 22.5
PROFESYONEL PRO 518 FHX (4x2)	Truck	11990	3905	DIZEL	6	5880	162/2500	6/1	ZF 6 S 850	ÖN-ARKA 245/70 R 19.5
PROFESYONEL PRO 518 FHX (4x2)	Truck	11990	3905	DIZEL	6	5880	162/2500	6/1	ZF 6S 850 OVD	ÖN-ARKA 245/70 R 19.5
PROFESYONEL PRO 518 LHX (4x2)	Truck	11990	3990	DIZEL	6	5880	162/2500	6/1	ZF 6S 850 OVD	ÖN-ARKA 245/70 R 19.5
PROFESYONEL PRO 522 LHT (6x2)	Truck	21000	5550	DIZEL	6	5880	215/2500	6/1	EATON 6109 OVD	ÖN-ARKA 285/70 R 19.5
PROFESYONEL PRO 522 LHX (4x2)	Truck	16000	4710	DIZEL	6	5880	215/2500	6/1	ZF 6S 850 OVD	ÖN-ARKA 285/70 R 19.5
PROFESYONEL PRO 522 LHX (4x2)	Truck	16000	4710	DIZEL	6	5880	215/2500	6/1	EATON 6109	ÖN-ARKA 285/70 R 19.5
PROFESYONEL PRO 624 FDT (6x2)	Truck	25000	6985	DIZEL	6	5880	235/2500	9/1	ZF 9S 75 DT	ÖN-ARKA 315/80 R 22.5
PROFESYONEL PRO 624 LDT (6x2)	Truck	25000	6985	DIZEL	6	5880	235/2500	9/1	ZF 9S 75	ÖN-ARKA 315/80 R 22.5
PROFESYONEL PRO 624 YHX (4x2)	Truck	18000	5980	DIZEL	6	5880	235/2500	9/1	ZF 9S 75 DT	ÖN-ARKA 315/80 R 22.5
PROFESYONEL PRO 624 ZHT (6x2)	Truck	25000	7340	DIZEL	6	5880	235/2500	9/1	ZF 9S 75	ÖN-ARKA 315/80 R 22.5
PROFESYONEL PRO 624 ZHX (6x2)	Truck	25000	5980	DIZEL	6	5880	235/2500	9/1	ZF 9S 75	ÖN-ARKA 315/80 R 22.5
PROFESYONEL PRO 827 LDT (6x4)	Truck	25000	7820	DIZEL	6	8268	260/2200	9/1	ZF 16S 109	ÖN-ARKA 295/80 R 22.5/315/80 R 22.5
PROFESYONEL PRO 827 LHB (6x4)	Truck	26000	9315	DIZEL	6	8268	263/2200	9/1	ZF 9S 109	ÖN-ARKA 295/80 R 22.5/315/80 R 22.5
PROFESYONEL PRO 827 ZCX (4x2)	R. Tractor	-	6390	DIZEL	6	8268	263/2200	9/1;16/2	ZF 9S 109 ; 16 S 109	ÖN-ARKA 295/80 R 22.5
PROFESYONEL PRO 827 ZDB (6x4)	Truck	26000	9350	DIZEL	6	8268	350/2200	9/1	EATON FSO 10209	ÖN-ARKA 295/80 R 22.5
PROFESYONEL PRO 827 ZHF (8x2/2)	Truck	32000	9140	DIZEL	6	8268	263/2200	9/1;16/2	ZF 9S 109 ; 16 S 109	ÖN-ARKA 315/80 R 22.5
PROFESYONEL PRO 827 ZKT (6x2)	Truck	25000	7950	DIZEL	6	8268	263/2200	9/1	ZF 9S 109	ÖN-ARKA 315/80 R 22.5
PROFESYONEL PRO 827 ZKZ (6x2)	Truck	26000	7350	DIZEL	6	8268	260/2200	9/1	ZF 9S 109	ÖN-ARKA 315/80 R 22.5
PROFESYONEL PRO 832 CDX ÇİFT SIRA (4x2)	Truck	26000	9350	DIZEL	6	8268	300/2200	9/1	ZF 9S 109	ÖN-ARKA 315/80 R 22.5
PROFESYONEL PRO 832 FHB (6x4)	Truck	26000	9350	DIZEL	6	8268	300/2200	9/1	ZF 9S 109	ÖN-ARKA 315/80 R 22.5
PROFESYONEL PRO 832 LDB (6x4)	Truck	26000	9140	DIZEL	6	8268	300/2200	9/1	EATON 8209	ÖN-ARKA 315/80 R 22.5
PROFESYONEL PRO 832 LDB (6x4)	Truck	26000	9140	DIZEL	6	8268	300/2200	9/1	ZF 9S 109 DT	ÖN-ARKA 315/80 R 22.5
PROFESYONEL PRO 832 YCB (6x4)	R. Tractor	-	9100	DIZEL	6	8268	300/2200	9/1;16/2	ZF 9S 109 ; 16 S 109	ÖN-ARKA 315/80 R 22.5
PROFESYONEL PRO 832 YCX (4x2)	R. Tractor	-	6390	DIZEL	6	8268	300/2200	16/2	ZF 16S 109	ÖN-ARKA 295/80 R 22.5/315/80 R 22.5
PROFESYONEL PRO 935 ZDB (6x4)	Truck	26000	9350	DIZEL	6	8268	350/2200	9/1	EATON 10209 OVD	ÖN-ARKA 315/80 R 22.5
PROFESYONEL PRO 935 ZHF (8x2/2)	R. Tractor	32000	9140	DIZEL	6	8268	350/2200	16/2	ZF 16S 151 OVD	ÖN-ARKA 315/80 R 22.5

FORD OTOSAN

OTOMOBİL Connect (1+4) H/R 90 PS	P. Car	2058	1528	DIZEL	4	1753	90/4000	5/1	FORD MTX 75	ÖN-ARKA 195/65R15
OTOMOBİL Connect (1+4) L/R 90 PS	P. Car	1999	1485	DIZEL	4	1753	90/4000	5/1	FORD MTX 75	ÖN-ARKA 195/65R15
OTOMOBİL Connect (1+4) H/R 75 PS	P. Car	2079	1549	DIZEL	4	1753	75/4000	5/1	FORD MTX 75	ÖN-ARKA 195/65R15
OTOMOBİL Connect (1+4) L/R 75 PS	P. Car	1999	1475	DIZEL	4	1753	75/4000	5/1	FORD MTX 75	ÖN-ARKA 195/65R15
KAMYONET Connect Van (1+1) L/R 90 PS	Pick Up	2240	1415	DIZEL	4	1753	90/4000	5/1	FORD MTX 75	ÖN-ARKA 195/65R15
KAMYONET Connect Van (1+1) L/R 75PS	Pick Up	2230	1405	DIZEL	4	1753	75/4000	5/1	FORD MTX 75	ÖN-ARKA 195/65R15
KAMYONET PANELVAN Connect Kombi (1+4) L/R 90 PS	Pick Up	2270	1485	DIZEL	4	1753	90/4000	5/1	FORD MTX 75	ÖN-ARKA 195/65R15
KAMYONET PANELVAN Connect Kombi (1+4) L/R 75 PS	Pick Up	2260	1475	DIZEL	4	1753	75/4000	5/1	FORD MTX 75	ÖN-ARKA 195/65R15
KAMYONET PANELVAN Connect Kombi (1+4) L/R 110 PS	Pick Up	2245	1506	DIZEL	4	1753	115/4000	5/1	FORD MTX 75	ÖN-ARKA 195/65R15
KAMYONET Connect Van (1+1) H/R 90 PS	Pick Up	2340	1440	DIZEL	4	1753	90/4000	5/1	FORD MTX 75	ÖN-ARKA 195/65R15
KAMYONET Connect Van (1+1) L/R 75 PS	Pick Up	2260	1435	DIZEL	4	1753	75/4000	5/1	FORD MTX 75	ÖN-ARKA 195/65R15
KAMYONET PANELVAN Connect Kombi (1+4) H/R 90 PS	Pick Up	2340	1565	DIZEL	4	1753	90/4000	5/1	FORD MTX 75	ÖN-ARKA 195/65R15
KAMYONET PANELVAN Connect Kombi (1+4) H/R 75 PS	Pick Up	2330	1555	DIZEL	4	1753	75/4000	5/1	FORD MTX 75	ÖN-ARKA 195/65R15
KAMYONET PANELVAN Connect Kombi (1+4) H/R 110 PS	Pick Up	2340	1580	DIZEL	4	1753	115/4000	5/1	FORD MTX 75	ÖN-ARKA 195/65R15
KAMYONET Transit 300SF VAN	Pick Up	3000	1706	DIZEL	4	2200	130/3650	5/1	Ford VTX 75	ÖN-ARKA 195/70 R 15
KAMYONET Transit 300S VAN	Pick Up	3000	1810	DIZEL	4	2402	100/3500	5/1	Ford MT 75	ÖN-ARKA 205/75 R 16
KAMYONET Transit 300S VAN	Pick Up	3000	1815	DIZEL	4	2402	120/3500	5/1	Ford MT 75	ÖN-ARKA 205/75 R 16
KAMYONET Transit 330S VAN	Pick Up	3300	1837	DIZEL	4	2402	100/3500	5/1	Ford MT 75	ÖN-ARKA 215/75 R 16
KAMYONET Transit 330S VAN	Pick Up	3300	1842	DIZEL	4	2402	120/3500	5/1	Ford MT 75	ÖN-ARKA 215/75 R 16
KAMYONET Transit 330M VAN	Pick Up	3300	1883	DIZEL	4	2402	100/3500	5/1	Ford MT 75	ÖN-ARKA 215/75 R 16
KAMYONET Transit 330M VAN	Pick Up	3300	1888	DIZEL	4	2402	120/3500	5/1	Ford MT 75	ÖN-ARKA 215/75 R 16
KAMYONET Transit 330L VAN	Pick Up	3300	1938	DIZEL	4	2402	100/3500	5/1	Ford MT 75	ÖN-ARKA 215/75 R 16
KAMYONET Transit 330L VAN	Pick Up	3300	1943	DIZEL	4	2402	120/3500	5/1	Ford MT 75	ÖN-ARKA 215/75 R 16
KAMYONET Transit 330L VAN	Pick Up	3300	1963	DIZEL	4	2402	140/3500	6/1	Ford MT 82	ÖN-ARKA 215/75 R 16

KAMYONET Transit 350L VAN	Pick Up	3500	1916	DIZEL	4	2402	120/3500	5/1	Ford MT 75	ÖN-ARKA 215/75 R 16
KAMYONET Transit 350L VAN	Pick Up	3500	1936	DIZEL	4	2402	140/3500	6/1	Ford MT 82	ÖN-ARKA 215/75 R 16
KAMYONET Transit 350L Yüksek tavan VAN	Pick Up	3500	1943	DIZEL	4	2402	120/3500	5/1	Ford MT 75	ÖN-ARKA 215/75 R 16
KAMYONET Transit 350L Yüksek tavan VAN	Pick Up	3500	1963	DIZEL	4	2402	140/3500	6/1	Ford MT 82	ÖN-ARKA 215/75 R 16
KAMYONET Transit 350E Van	Pick Up	3500	2098	DIZEL	4	2402	140/3500	6/1	Ford MT 82	ÖN-ARKA 215/75 R 16
KAMYONET Transit 350 ED Çift teker Van	Pick Up	3500	2141	DIZEL	4	2402	140/3500	6/1	Ford MT 82	ÖN-ARKA 185/75 R 16
KAMYONET Transit 430ED çift teker van	Pick Up	4250	2208	DIZEL	4	2402	140/3500	6/1	Ford MT 82	ÖN-ARKA 185/75 R 16
MINIBÜS Transit 300SF 9+1	Minibus	3000	1878	DIZEL	4	2402	130/3650	5/1	Ford VTX 75	ÖN-ARKA 205/75 R 16
MINIBÜS Transit 300S 9+1	Minibus	3000	2008	DIZEL	4	2402	100/3500	5/1	Ford MT 75	ÖN-ARKA 205/75 R 16
MINIBÜS Transit 300S 9+1	Minibus	3000	2013	DIZEL	4	2402	120/3500	5/1	Ford MT 75	ÖN-ARKA 205/75 R 16
MINIBÜS Transit 330M 12+1	Minibus	3300	2129	DIZEL	4	2402	100/3500	5/1	Ford MT 75	ÖN-ARKA 215/75 R 16
MINIBÜS Transit 330M 12+1	Minibus	3300	2134	DIZEL	4	2402	120/3500	5/1	Ford MT 75	ÖN-ARKA 215/75 R 16
MINIBÜS Transit 350L 14+1	Minibus	3500	2261	DIZEL	4	2402	120/3500	5/1	Ford MT 75	ÖN-ARKA 215/75 R 16
MINIBÜS Transit 350L 14+1	Minibus	3500	2281	DIZEL	4	2402	140/3500	6/1	Ford MT 82	ÖN-ARKA 215/75 R 16
MINIBÜS Transit 350E 12+1	Minibus	3500	2473	DIZEL	4	2402	140/3500	6/1	Ford MT 82	ÖN-ARKA 215/75 R 16
MINIBÜS Transit 430ED 14+1	Minibus	4100	2634	DIZEL	4	2402	140/3500	6/1	Ford MT 82	ÖN-ARKA 185/75 R 16
MINIBÜS Transit 430ED 17+1	Minibus	4100	2694	DIZEL	4	2402	140/3500	6/1	Ford MT 82	ÖN-ARKA 185/75 R 16
KAMYONET Transit 300SF kombi	Pick Up	3000	1753	DIZEL	4	2402	130/3650	5/1	Ford VTX 75	ÖN-ARKA 195/70 R 15
KAMYONET Transit 300SF kombivan	Pick Up	3000	1754	DIZEL	4	2402	130/3650	5/1	Ford VTX 75	ÖN-ARKA 195/70 R 15
KAMYONET Transit 300SF Journey	Pick Up	3000	1753	DIZEL	4	2402	130/3650	5/1	Ford VTX 75	ÖN-ARKA 195/70 R 15
KAMYONET Transit 300S kombi	Pick Up	3000	1837	DIZEL	4	2402	100/3500	5/1	Ford MT 75	ÖN-ARKA 205/75 R 16
KAMYONET Transit 300S kombi	Pick Up	3000	1841	DIZEL	4	2402	120/3500	5/1	Ford MT 75	ÖN-ARKA 205/75 R 16
KAMYONET Transit 300S kombivan	Pick Up	3000	1837	DIZEL	4	2402	100/3500	5/1	Ford MT 75	ÖN-ARKA 205/75 R 16
KAMYONET Transit 300S kombivan	Pick Up	3000	1842	DIZEL	4	2402	120/3500	5/1	Ford MT 75	ÖN-ARKA 205/75 R 16
KAMYONET Transit 300S Journey	Pick Up	3000	1841	DIZEL	4	2402	120/3500	5/1	Ford MT 75	ÖN-ARKA 205/75 R 16
KAMYONET Transit 330S kombi	Pick Up	3300	1863	DIZEL	4	2402	100/3500	5/1	Ford MT 75	ÖN-ARKA 215/75 R 16
KAMYONET Transit 330S kombivan	Pick Up	3300	1864	DIZEL	4	2402	100/3500	5/1	Ford MT 75	ÖN-ARKA 215/75 R 16
KAMYONET Transit 330S kombivan	Pick Up	3300	1869	DIZEL	4	2402	120/3500	5/1	Ford MT 75	ÖN-ARKA 215/75 R 16
KAMYONET Transit 330S (Kasasız)	Pick Up	3300	1604	DIZEL	4	2402	100/3500	5/1	Ford MT 75	ÖN-ARKA 215/75 R 16
KAMYONET Transit 330S (Kasasız)	Pick Up	3300	1609	DIZEL	4	2402	120/3500	5/1	Ford MT 75	ÖN-ARKA 215/75 R 16
KAMYONET Transit 330S (Kasalı)	Pick Up	3300	1964	DIZEL	4	2402	100/3500	5/1	Ford MT 75	ÖN-ARKA 215/75 R 16
KAMYONET Transit 330S (Kasalı)	Pick Up	3300	1968	DIZEL	4	2402	120/3500	5/1	Ford MT 75	ÖN-ARKA 215/75 R 16
KAMYONET Transit 350M (Kasasız)	Pick Up	3500	1624	DIZEL	4	2402	120/3500	5/1	Ford MT 75	ÖN-ARKA 215/75 R 16
KAMYONET Transit 350M (Kasasız)	Pick Up	3500	1664	DIZEL	4	2402	140/3500	6/1	Ford MT 82	ÖN-ARKA 215/75 R 16
KAMYONET Transit 350M (Kasalı)	Pick Up	3500	1999	DIZEL	4	2402	120/3500	5/1	Ford MT 75	ÖN-ARKA 215/75 R 16
KAMYONET Transit 350M (Kasalı)	Pick Up	3500	2019	DIZEL	4	2402	140/3500	6/1	Ford MT 82	ÖN-ARKA 215/75 R 16
KAMYONET Transit 430L (Kasasız)	Pick Up	4250	1788	DIZEL	4	2402	140/3500	6/1	Ford MT 82	ÖN-ARKA 185/75 R 16
KAMYONET Transit 430L (Kasalı)	Pick Up	4250	2037	DIZEL	4	2402	140/3500	6/1	Ford MT 82	ÖN-ARKA 185/75 R 16
KAMYONET Transit 350ED (Kasasız)	Pick Up	3500	2005	DIZEL	4	2402	140/3500	6/1	Ford MT 82	ÖN-ARKA 185/75 R 16
KAMYONET Transit 430ED (Kasalı)	Pick Up	4250	2037	DIZEL	4	2402	140/3500	6/1	Ford MT 82	ÖN-ARKA 185/75 R 16
KAMYONET Transit 350M çiftkabinli (Kasasız)	Pick Up	3500	1717	DIZEL	4	2402	120/3500	5/1	Ford MT 75	ÖN-ARKA 215/75 R 16
KAMYONET Transit 350M çiftkabinli (Kasasız)	Pick Up	3500	1737	DIZEL	4	2402	140/3500	6/1	Ford MT 82	ÖN-ARKA 215/75 R 16
KAMYONET Transit 350M çiftkabinli (Kasalı)	Pick Up	3500	2060	DIZEL	4	2402	120/3500	5/1	Ford MT 75	ÖN-ARKA 215/75 R 16
KAMYONET Transit 350M çiftkabinli (Kasalı)	Pick Up	3500	2081	DIZEL	4	2402	140/3500	6/1	Ford MT 82	ÖN-ARKA 215/75 R 16
KAMYONET Transit 430L çiftkabinli (Kasasız)	Pick Up	4250	1865	DIZEL	4	2402	140/3500	6/1	Ford MT 82	ÖN-ARKA 185/75 R 16
KAMYONET Transit 430L çiftkabinli (Kasalı)	Pick Up	4250	2232	DIZEL	4	2402	140/3500	6/1	Ford MT 82	ÖN-ARKA 185/75 R 16
KAMYONET Transit 350ED çiftkabinli (Kasasız)	Pick Up	3500	1824	DIZEL	4	2402	140/3500	6/1	Ford MT 82	ÖN-ARKA 185/75 R 16
KAMYONET Transit 430ED çiftkabinli (Kasasız)	Pick Up	4250	1884	DIZEL	4	2402	140/3500	6/1	Ford MT 82	ÖN-ARKA 185/75 R 16
KAMYONET Transit 430ED çiftkabinli (Kasalı)	Pick Up	4250	2270	DIZEL	4	2402	140/3500	6/1	Ford MT 82	ÖN-ARKA 185/75 R 16
KAMYON CARGO 2524 (6x2)	Truck	25000	7250	DIZEL	6	7330	240/2400	9/1	ZF 9 S75	ÖN-ARKA 12 R 22.5
KAMYON CARGO 2524 (6x2)	Truck	25000	7130	DIZEL	6	7330	240/2400	9/1	ZF 9 S75	ÖN-ARKA 12 R 22.5
KAMYON CARGO 2530 (6x2)	Truck	25000	7250	DIZEL	6	7330	300/2400	9/1	ZF 9S109	ÖN-ARKA 315/80 R 22.5
KAMYON CARGO 2530 (6x2)	Truck	25000	7200	DIZEL	6	7330	300/2400	9/1	ZF 9S109	ÖN-ARKA 12 R 22.5
KAMYON CARGO 3230 (8x2)	Truck	32000	8650	DIZEL	6	7330	300/2400	9/1	ZF 9S109	ÖN-ARKA 315/80 R 22.5
KAMYON CARGO 3230 (8x2)	Truck	32000	8510	DIZEL	6	7330	300/2400	9/1	ZF 9S109	ÖN-ARKA 315/80 R 22.5
KAMYON CARGO 1824 (4x2)	Truck	18000	5685	DIZEL	6	7330	240/2400	9/1	ZF 9 S75	ÖN-ARKA 12 R 22.5
ÇEKİCİ CARGO 1830 (4x2)	R.Tractor	18000	7160	DIZEL	6	7330	300/2400	16/2	ZF 16S109	ÖN-ARKA 295/80 R 22.5
ÇEKİCİ CARGO 1830 (4x2)	R.Tractor	18000	6000	DIZEL	6	7330	300/2400	9/1	ZF 9S109	ÖN-ARKA 275/70 R 22.5
KAMYON CARGO 4030 (10x2)	Truck	40000	9530	DIZEL	6	7330	300/2400	9/1	ZF 9S109	ÖN-ARKA 315/80 R 22.5
KAMYON CARGO 3430 (6x4)	Truck	26000	8985	DIZEL	6	7330	300/2400	9/1	ZF 9S109	ÖN-ARKA 13 R 22.5

HATTAT TARIM

TRAKTÖR UNIVERSAL 453 B	F. Tractor	2700	1900	DIZEL	3	2340	45/2400	8/2	4+1/2	ÖN-ARKA 12.4/11-28
TRAKTÖR UNIVERSAL 533 B	F. Tractor	2700	1900	DIZEL	3	2820	53/2400	8/2	4+1/2	ÖN-ARKA 12.4/11-28
TRAKTÖR UNIVERSAL 533 DTP	F. Tractor	3980	2200	DIZEL	3	2820	53/2400	8/2	4+1/2	ÖN-ARKA 12.4/11-28
TRAKTÖR UNIVERSAL 453	F. Tractor	3250	2280	DIZEL	3	2340	45/2400	8/2	4+1/2	ÖN-ARKA 13.8/12-28
TRAKTÖR UNIVERSAL 533	F. Tractor	3250	2280	DIZEL	3	2820	53/2400	8/2	4+1/2	ÖN-ARKA 14.9/13-28
TRAKTÖR UNIVERSAL 533 DTP	F. Tractor	5300	2670	DIZEL	3	2820	53/2400	8/2	4+1/2	ÖN-ARKA 14.9/13-28
TRAKTÖR UNIVERSAL 683	F. Tractor	3900	2460	DIZEL	4	3759	68/2420	8/2	4+1/2	ÖN-ARKA 16.9/14-30
TRAKTÖR UNIVERSAL 683 DT	F. Tractor	5370	2795	DIZEL	4	3759	68/2400	8/2	4+1/2	ÖN-ARKA 16.9/14-30
TRAKTÖR VALTRA A 75 2 WD	F. Tractor	7000	3145	DIZEL	3	3300	74/2270	16/8	4/2	ÖN-ARKA 16.9/14-30
TRAKTÖR VALTRA A 75 4 WD	F. Tractor	7000	3560	DIZEL	3	3300	74/2270	16/8	4/2	ÖN-ARKA 16.9/14-30
TRAKTÖR VALTRA A 85 2 WD	F. Tractor	7000	3265	DIZEL	4	4400	88/2270	16/8	4/2	ÖN-ARKA 18.4/15-30
TRAKTÖR VALTRA A 75 4 WD	F. Tractor	7000	3680	DIZEL	4	4400	88/2270	16/8	4/2	ÖN-ARKA 18.4/15-30
TRAKTÖR VALTRA A 95 4 WD	F. Tractor	7000	3680	DIZEL	4	4400	98/2270	16/8	4/2	ÖN-ARKA 18.4/15-34
TRAKTÖR HATTAT A 58 2 WD	F. Tractor	3900	2485	DIZEL	3	3300	58/2200	8/4	4/2	ÖN-ARKA 14.9/28
TRAKTÖR HATTAT A 58 2 WD	F. Tractor	4060	2745	DIZEL	3	3300	65/2200	16/8	4/2	ÖN-ARKA 14.9/30
TRAKTÖR HATTAT A 68 4 WD	F. Tractor	4540	2975	DIZEL	3	3300	65/2200	16/8	4/2	ÖN-ARKA 14.9/30

TRAKTÖR HATTAT A 78 2 WD	F. Tractor	4060	2745	DİZEL	3	3300	75/2200	16/8	4/2	ÖN-ARKA 16.9/30
TRAKTÖR HATTAT A 78 4 WD	F. Tractor	4540	2975	DİZEL	3	3300	75/2200	16/8	4/2	ÖN-ARKA 16.9/30
HONDA TÜRKİYE										
OTOMOBİL CITY 1,4 SPORT DÜZ	P. Car	1510	1031	BENZİN	4	1339	83/5700	5/1	DİREK ŞANZ. TAH.	ÖN-ARKA 175/65R14
OTOMOBİL CITY 1,4 COMFORT DÜZ	P. Car	1510	1035	BENZİN	4	1339	83/5700	5/1	DİREK ŞANZ. TAH.	ÖN-ARKA 175/65R14
OTOMOBİL CITY 1,4 COMFORT OTOMATİK	P. Car	1530	1059	BENZİN	4	1339	83/5700	OTOMATİK	DİREK ŞANZ. TAH.	ÖN-ARKA 175/65R14
OTOMOBİL CITY 1,4 ELITE DÜZ	P. Car	1510	1046	BENZİN	4	1339	83/5700	5/1	DİREK ŞANZ. TAH.	ÖN-ARKA 185/55R15
OTOMOBİL CITY 1,4 ELITE OTOMATİK	P. Car	1530	1070	BENZİN	4	1339	83/5700	OTOMATİK	DİREK ŞANZ. TAH.	ÖN-ARKA 185/55R15
OTOMOBİL CIVIC 1,6 DREAM DÜZ	P. Car	1700	1174	BENZİN	4	1595	125/6500	5/1	DİREK ŞANZ. TAH.	ÖN-ARKA 195/65R15
OTOMOBİL CIVIC 1,6 DREAM OTOMATİK	P. Car	1700	1198	BENZİN	4	1595	125/6500	OTOMATİK	DİREK ŞANZ. TAH.	ÖN-ARKA 195/65R15
OTOMOBİL CIVIC 1,6 PREMIUM DÜZ	P. Car	1700	1181	BENZİN	4	1595	125/6500	5/1	DİREK ŞANZ. TAH.	ÖN-ARKA 205/55R16
OTOMOBİL CIVIC 1,6 PREMIUM OTOMATİK	P. Car	1700	1205	BENZİN	4	1595	125/6500	OTOMATİK	DİREK ŞANZ. TAH.	ÖN-ARKA 205/55R16
OTOMOBİL CIVIC 1,6 ELEGANCE DÜZ	P. Car	1700	1193	BENZİN	4	1595	125/6500	5/1	DİREK ŞANZ. TAH.	ÖN-ARKA 205/55R16
OTOMOBİL CIVIC 1,6 ELEGANCE OTOMATİK	P. Car	1700	1217	BENZİN	4	1595	125/6500	OTOMATİK	DİREK ŞANZ. TAH.	ÖN-ARKA 205/55R16
OTOMOBİL CIVIC 1,8 EXECUTIVE DÜZ	P. Car	1705	1203	BENZİN	4	1799	140/6300	5/1	DİREK ŞANZ. TAH.	ÖN-ARKA 205/55R16
OTOMOBİL CIVIC 1,8 EXECUTIVE OTOMATİK	P. Car	1705	1199	BENZİN	4	1799	140/6300	OTOMATİK	DİREK ŞANZ. TAH.	ÖN-ARKA 205/55R16
HYUNDAI ASSAN										
OTOMOBİL ACCENT ERA 1.4 START	P. Car	1580	1133	BENZİN	4	1399	97/6000	5/1	HYUNDAI	ÖN-ARKA 175/70 R 14
OTOMOBİL ACCENT ERA 1.4 START KLM	P. Car	1580	1133	BENZİN	4	1399	97/6000	5/1	HYUNDAI	ÖN-ARKA 175/70 R 14
OTOMOBİL ACCENT ERA 1.4 TEAM	P. Car	1580	1133	BENZİN	4	1399	97/6000	5/1	HYUNDAI	ÖN-ARKA 185/65 R 14
OTOMOBİL ACCENT ERA 1.4 TEAM ABS	P. Car	1580	1133	BENZİN	4	1399	97/6000	5/1	HYUNDAI	ÖN-ARKA 185/65 R 14
OTOMOBİL ACCENT ERA 1.4 SELECT	P. Car	1580	1133	BENZİN	4	1399	97/6000	5/1	HYUNDAI	ÖN-ARKA 185/65 R 14
OTOMOBİL ACCENT ERA 1.4 SELECT OTM	P. Car	1600	1155	BENZİN	4	1399	97/6000	4/1 OTOMATİK	HYUNDAI	ÖN-ARKA 185/65 R 14
OTOMOBİL ACCENT ERA 1.6 TEAM ABS	P. Car	1580	1133	BENZİN	4	1599	112/6000	5/1	HYUNDAI	ÖN-ARKA 185/65 R 14
OTOMOBİL ACCENT ERA 1.6 SELECT	P. Car	1580	1133	BENZİN	4	1599	112/6000	5/1	HYUNDAI	ÖN-ARKA 185/65 R 14
OTOMOBİL ACCENT ERA 1.6 SELECT OTM	P. Car	1600	1155	BENZİN	4	1599	112/6000	4/1 OTOMATİK	HYUNDAI	ÖN-ARKA 185/65 R 14
OTOMOBİL ACCENT ERA 1.6 STYLE	P. Car	1580	1133	BENZİN	4	1599	112/6000	5/1	HYUNDAI	ÖN-ARKA 185/65 R 14
OTOMOBİL ACCENT ERA 1.6 STYLE OTM	P. Car	1600	1155	BENZİN	4	1599	112/6000	4/1 OTOMATİK	HYUNDAI	ÖN-ARKA 185/65 R 14
OTOMOBİL ACCENT ERA 1.5 CRDI-VGT START	P. Car	1650	1205	DİZEL	4	1493	110/4000	5/1	HYUNDAI	ÖN-ARKA 175/70 R 14
OTOMOBİL ACCENT ERA 1.5 CRDI-VGT START KLM	P. Car	1650	1205	DİZEL	4	1493	110/4000	5/1	HYUNDAI	ÖN-ARKA 175/70 R 14
OTOMOBİL ACCENT ERA 1.5 CRDI-VGT TEAM	P. Car	1650	1205	DİZEL	4	1493	110/4000	5/1	HYUNDAI	ÖN-ARKA 185/65 R 14
OTOMOBİL ACCENT ERA 1.5 CRDI-VGT TEAM ABS	P. Car	1650	1205	DİZEL	4	1493	110/4000	5/1	HYUNDAI	ÖN-ARKA 185/65 R 14
OTOMOBİL ACCENT ERA 1.5 CRDI-VGT SELECT	P. Car	1650	1205	DİZEL	4	1493	110/4000	5/1	HYUNDAI	ÖN-ARKA 185/65 R 14
OTOMOBİL ACCENT ERA 1.5 CRDI-VGT STYLE	P. Car	1650	1205	DİZEL	4	1493	110/4000	5/1	HYUNDAI	ÖN-ARKA 185/65 R 14
KAMYONET H 100 PANEL VAN KAPALI KASALI 2.6	Pick Up	2860	1475	DİZEL	4	2607	80/4000	5/1	HYUNDAI	ÖN-ARKA 185 R 14 8PR
KAMYONET H 100 PANEL VAN KAPALI KASA KAMYONET 2.6 AC	Pick Up	2860	1475	DİZEL	4	2607	80/4000	5/1	HYUNDAI	ÖN-ARKA 185 R 14 8PR
KAMYONET STAREX PANEL VAN L TCI HY	Pick Up	3130	1800	DİZEL	4	2476	100/3800	5/1	HYUNDAI	ÖN-ARKA 205/70 R15 C
KAMYONET STAREX PANEL VAN L TCI HY KLM	Pick Up	3130	1800	DİZEL	4	2476	100/3800	5/1	HYUNDAI	ÖN-ARKA 205/70 R15 C
KAMYONET STAREX PANEL VAN L TCI ÇY KLM ABS	Pick Up	3130	1800	DİZEL	4	2476	100/3800	5/1	HYUNDAI	ÖN-ARKA 205/70 R15 C
KAMYONET STAREX PANEL VAN L TCI ÇY KLM ABS OTM	Pick Up	3130	1785	DİZEL	4	2476	100/3800	4/1 OTOMATİK	HYUNDAI	ÖN-ARKA 205/70 R15 C
KAMYONET STAREX PANEL VAN L CRDI HY	Pick Up	3180	1865	DİZEL	4	2497	140/3800	5/1	HYUNDAI	ÖN-ARKA 205/70 R15 C
KAMYONET STAREX PANEL VAN L CRDI HY KLM	Pick Up	3180	1865	DİZEL	4	2497	140/3800	5/1	HYUNDAI	ÖN-ARKA 205/70 R15 C
KAMYONET STAREX PANEL VAN L CRDI ÇY KLM ABS	Pick Up	3180	1865	DİZEL	4	2497	140/3800	5/1	HYUNDAI	ÖN-ARKA 205/70 R15 C
KAMYONET STAREX PANEL VAN S TCI HY	Pick Up	3050	1755	DİZEL	4	2476	100/3800	5/1	HYUNDAI	ÖN-ARKA 205/70 R15 C
KAMYONET STAREX PANEL VAN S TCI HY KLM	Pick Up	3050	1755	DİZEL	4	2476	100/3800	5/1	HYUNDAI	ÖN-ARKA 205/70 R15 C
KAMYONET STAREX PANEL VAN S TCI ÇY KLM ABS	Pick Up	3050	1755	DİZEL	4	2476	100/3800	5/1	HYUNDAI	ÖN-ARKA 205/70 R15 C
KAMYONET STAREX PANEL VAN S TCI ÇY KLM ABS OTM	Pick Up	3050	1740	DİZEL	4	2476	100/3800	4/1 OTOMATİK	HYUNDAI	ÖN-ARKA 205/70 R15 C
KAMYONET STAREX PANEL VAN S CRDI HY	Pick Up	3100	1820	DİZEL	4	2497	140/3800	5/1	HYUNDAI	ÖN-ARKA 205/70 R15 C
KAMYONET STAREX PANEL VAN S CRDI HY KLM	Pick Up	3100	1820	DİZEL	4	2497	140/3800	5/1	HYUNDAI	ÖN-ARKA 205/70 R15 C
KAMYONET STAREX PANEL VAN S CRDI ÇY KLM ABS	Pick Up	3100	1820	DİZEL	4	2497	140/3800	5/1	HYUNDAI	ÖN-ARKA 205/70 R15 C
KAMYONET STAREX SPACE L TCI HY	Pick Up	3130	1890	DİZEL	4	2476	100/3800	5/1	HYUNDAI	ÖN-ARKA 205/70 R15 C
KAMYONET STAREX SPACE L TCI HY KLM	Pick Up	3130	1890	DİZEL	4	2476	100/3800	5/1	HYUNDAI	ÖN-ARKA 205/70 R15 C
KAMYONET STAREX SPACE L CRDI HY	Pick Up	3180	1955	DİZEL	4	2497	140/3800	5/1	HYUNDAI	ÖN-ARKA 205/70 R15 C
KAMYONET STAREX SPACE L CRDI HY KLM	Pick Up	3180	1955	DİZEL	4	2497	140/3800	5/1	HYUNDAI	ÖN-ARKA 205/70 R15 C
KAMYONET STAREX SPACE L CRDI ÇY KLM ABS	Pick Up	3180	1955	DİZEL	4	2497	140/3800	5/1	HYUNDAI	ÖN-ARKA 205/70 R15 C
KAMYONET STAREX SPACE L CRDI ÇY KLM ABS YAK	Pick Up	3180	1955	DİZEL	4	2497	140/3800	5/1	HYUNDAI	ÖN-ARKA 205/70 R15 C
KAMYONET STAREX SPACE S TCI HY KLM	Pick Up	3050	1845	DİZEL	4	2476	100/3800	5/1	HYUNDAI	ÖN-ARKA 205/70 R15 C
KAMYONET STAREX SPACE S TCI ÇY KLM ABS	Pick Up	3050	1845	DİZEL	4	2476	100/3800	5/1	HYUNDAI	ÖN-ARKA 205/70 R15 C
KAMYONET STAREX SPACE S CRDI HY KLM	Pick Up	3100	1910	DİZEL	4	2497	140/3800	5/1	HYUNDAI	ÖN-ARKA 205/70 R15 C
KAMYONET STAREX SPACE S CRDI ÇY KLM ABS	Pick Up	3100	1910	DİZEL	4	2497	140/3800	5/1	HYUNDAI	ÖN-ARKA 205/70 R15 C
KAMYONET STAREX SPACE S CRDI ÇY KLM ABS OTM	Pick Up	3100	1890	DİZEL	4	2497	140/3800	4/1 OTOMATİK	HYUNDAI	ÖN-ARKA 205/70 R15 C
KAMYONET STAREX MULTIWAY TCI HY KLM	Pick Up	3130	1890	DİZEL	4	2476	100/3800	5/1	HYUNDAI	ÖN-ARKA 205/70 R15 C
KAMYONET STAREX MULTIWAY TCI ÇY KLM ABS	Pick Up	3130	1890	DİZEL	4	2476	100/3800	5/1	HYUNDAI	ÖN-ARKA 205/70 R15 C
KAMYONET STAREX MULTIWAY TCI ÇY KLM ABS OTM	Pick Up	3130	1875	DİZEL	4	2476	100/3800	4/1 OTOMATİK	HYUNDAI	ÖN-ARKA 205/70 R15 C
KAMYONET STAREX MULTIWAY CRDI HY KLM	Pick Up	3180	1955	DİZEL	4	2497	140/3800	5/1	HYUNDAI	ÖN-ARKA 205/70 R15 C
KAMYONET STAREX MULTIWAY CRDI ÇY KLM ABS	Pick Up	3180	1955	DİZEL	4	2497	140/3800	5/1	HYUNDAI	ÖN-ARKA 205/70 R15 C
KAMYONET STAREX MULTIWAY CRDI ÇY KLM ABS OTM	Pick Up	3180	1935	DİZEL	4	2497	140/3800	4/1 OTOMATİK	HYUNDAI	ÖN-ARKA 205/70 R15 C
MINİBÜS STAREX MINİBÜS TCI ÇY KLM ABS AJ	Minibus	2950	2030	DİZEL	4	2476	100/3800	5/1	HYUNDAI	ÖN-ARKA 205/70 R15 C
MINİBÜS STAREX MINİBÜS TCI ÇY KLM ABS AJ OTM	Minibus	2950	2015	DİZEL	4	2476	100/3800	4/1 OTOMATİK	HYUNDAI	ÖN-ARKA 205/70 R15 C
MINİBÜS STAREX MINİBÜS CRDI ÇY KLM ABS AJ	Minibus	3000	2095	DİZEL	4	2497	140/3800	5/1	HYUNDAI	ÖN-ARKA 205/70 R15 C
MINİBÜS STAREX MINİBÜS CRDI ÇY KLM ABS AJ OTM	Minibus	3000	2075	DİZEL	4	2497	140/3800	4/1 OTOMATİK	HYUNDAI	ÖN-ARKA 205/70 R15 C
KARSAN										
MİDİBÜS (17+1) 72 HP, Euro 2	Midibus	3520	2260	DİZEL	4	2498	72/4000	5/1	NZWL	ÖN-ARKA 195/75 R 16 C
MINİBÜS Premier (14+1) 78 HP	Minibus	3420	2345	DİZEL	4	2771	78/3500	5/1	NZWL	ÖN-ARKA 205/75 R 16 C
MİDİBÜS Premier (18+1) 78 HP	Midibus	3750	2365	DİZEL	4	2771	78/3500	5/1	NZWL	ÖN-ARKA 205/75 R 16 C

MİDİBÜS Premier (21+1) 78 HP	Midibus	4050	2485	DİZEL	4	2771	78/3500	5/1	NZWL	ÖN-ARKA 205/75 R 16 C
MİDİBÜS Premier OKUL TAŞITI (18+1) 78 HP	Midibus	3750	2365	DİZEL	4	2771	78/3500	5/1	NZWL	ÖN-ARKA 205/75 R 16 C
MİDİBÜS Premier OKUL TAŞITI (21+1) 78 HP	Midibus	4050	2485	DİZEL	4	2771	78/3500	5/1	NZWL	ÖN-ARKA 205/75 R 16 C
KAMYONET KISA VAN 72 HP	Pick Up	3490	2060	DİZEL	4	2498	72/4000	5/1	NZWL	ÖN-ARKA 195/75 R 16 C
KAMYONET KISA VAN H/R 72 HP	Pick Up	3490	2120	DİZEL	4	2498	72/4000	5/1	NZWL	ÖN-ARKA 195/75 R 16 C
KAMYONET STD. VAN 72 HP	Pick Up	3490	2100	DİZEL	4	2498	72/4000	5/1	NZWL	ÖN-ARKA 195/75 R 16 C
KAMYONET STD. VAN H/R 72 HP	Pick Up	3490	2180	DİZEL	4	2498	72/4000	5/1	NZWL	ÖN-ARKA 195/75 R 16 C
KAMYONET VAN (1+1) 70 HP	Pick Up	1955	1175	DİZEL	4	1868	70/4600	5/1	BE4 5LK DM47	ÖN-ARKA 175/65 R14
KAMYONET CAMLI VAN (1+4) 70 HP	Pick Up	1955	1220	DİZEL	4	1868	70/4600	5/1	BE4 5LK DM47	ÖN-ARKA 175/65 R14
OTOMOBİL (1+4) 75 HP	P. Car	1780	1188	BENZİN	4	1360	75/5500	5/1	MA 5L/B 20CP37	ÖN-ARKA 175/70 R14
KAMYONET CAMLI VAN (1+4) 90 HP	Pick Up	1990	1260	DİZEL	4	1997	90/4000	5/1	BE4 5LKG DM79	ÖN-ARKA 175/65 R14
KAMYONET CAMLI VAN (1+4) 90 HP	Pick Up	1990	1300	DİZEL	4	1997	90/4000	5/1	BE4 5LKG DM79	ÖN-ARKA 185/65 R 15
KAMYONET CAMLI VAN (1+4) 75 HP	Pick Up	1955	1200	BENZİN	4	1360	75/4600	5/1	MA 5L/B 20CP37	ÖN-ARKA 175/70 R14
KAMYONET CAMLI VAN (1+4) 90 HP	Pick Up	1955	1240	DİZEL	4	1560	90/4000	5/1	BE4 5LKG DM79	ÖN-ARKA 175/70 R14
KAMYONET UZUN VAN (1+1) 70 HP	Pick Up	1945	1246	DİZEL	4	1868	70/4600	5/1	BE4 5LK DM47	ÖN-ARKA 175/65 R14
KAMYONET UZUN CAMLI VAN (1+4) 90 HP	Pick Up	1984	1282	DİZEL	4	1997	90/4000	5/1	BE4 5LKG DM79	ÖN-ARKA 175/65 R14
KAMYONET UZUN CAMLI VAN (1+4) 70 HP	Pick Up	1984	1273	DİZEL	4	1868	70/4600	5/1	BE4 5LK DM47	ÖN-ARKA 175/65 R14

M.A.N. TÜRKİYE

KAMYON 16.220 FAEX (4X4) ASKERİ	Truck	16000	7450	DİZEL	6	6871	220/2400	9/1	ZF-9 S 109	ÖN-ARKA 14.00 R 20
KAMYON 18.220 FAX (4X4)	Truck	16000	7350	DİZEL	6	6871	220/2400	9/1	ZF-9 S 109	ÖN-ARKA 14.00 R 20
KAMYON 26.372 DFAEX (6X6) ASKERİ	Truck	26000	9770	DİZEL	6	11967	370/2000	16/2	ZF16S-151	ÖN-ARKA 14.00 R 20

OTOBÜS Lion's Classic G (A75)	Bus	28000	16400	DİZEL	6	11967	310/2000	6/1-OTOMATİK	ZF 6HP592C	ÖN-ARKA 295/80 R 22.5
OTOBÜS Lion's Classic G (A75)	Bus	28000	16400	DİZEL	6	11967	310/2000	4/1-OTOMATİK	VOITH 864.3	ÖN-ARKA 295/80 R 22.5
OTOBÜS Lion's Classic G (A75)	Bus	28000	16400	DİZEL	6	11967	260/2000	6/1-OTOMATİK	ZF 6HP502C	ÖN-ARKA 295/80 R 22.5
OTOBÜS Lion's Classic G (A75)	Bus	28000	16400	DİZEL	6	11967	260/2000	4/1-OTOMATİK	VOITH 864.3	ÖN-ARKA 295/80 R 22.5

OTOBÜS Lion's Classic (A74)	Bus	18000	11100	DİZEL	6	6871	220/2400	4/1-OTOMATİK	VOITH 854.3	ÖN-ARKA 295/80 R 22.5
OTOBÜS Lion's Classic (A74)	Bus	18000	11100	DİZEL	6	6871	220/2400	6/1-OTOMATİK	ZF 6HP-502C	ÖN-ARKA 295/80 R 22.5
OTOBÜS Lion's Classic (A74)	Bus	18000	11100	DİZEL	6	6871	220/2400	6/1	S6-1901	ÖN-ARKA 295/80 R 22.5
OTOBÜS Lion's Classic (A74)	Bus	18000	11100	DİZEL	6	6871	280/2400	4/1-OTOMATİK	VOITH 854.3	ÖN-ARKA 295/80 R 22.5
OTOBÜS Lion's Classic (A74)	Bus	18000	11100	DİZEL	6	6871	280/2400	6/1	S6-1900	ÖN-ARKA 295/80 R 22.5
OTOBÜS Lion's Classic (A74)	Bus	18000	11100	DİZEL	6	6871	280/2400	6/1-OTOMATİK	ZF 6HP-502	ÖN-ARKA 295/80 R 22.5
OTOBÜS Lion's Classic (A74)	Bus	18000	11200	DOĞALGAZ	6	12816	310/1900	4/1-OTOMATİK	VOITH 864.3	ÖN-ARKA 295/80 R 22.5

OTOBÜS Lion's Classic Ü (A72)	Bus	18000	11500	DİZEL	6	6871	280/2400	6/1	ZF S6-1901	ÖN-ARKA 295/80 R 22.5
OTOBÜS Lion's Classic Ü (A72)	Bus	18000	11500	DİZEL	6	6871	280/2400	6/1-OTOMATİK	ZF 6HP-502	ÖN-ARKA 295/80 R 22.5
OTOBÜS Lion's Classic Ü (A72)	Bus	18000	11500	DİZEL	6	11967	310/1900	6/1	ZF S6-1901	ÖN-ARKA 295/80 R 22.5
OTOBÜS Lion's Classic Ü (A72)	Bus	18000	11500	DİZEL	6	11967	310/1900	6/1-OTOMATİK	ZF 6HP592	ÖN-ARKA 295/80 R 22.5
OTOBÜS Lion's Classic Ü (A72)	Bus	18000	11500	DİZEL	6	11967	310/1900	4/1-OTOMATİK	VOITH 864.3	ÖN-ARKA 295/80 R 22.5
OTOBÜS Lion's Classic Ü (A72)	Bus	18000	11500	DİZEL	6	6871	220/2400	6/1	S6-1901	ÖN-ARKA 295/80 R 22.5
OTOBÜS Lion's Classic Ü (A72)	Bus	18000	11500	DİZEL	6	6871	220/2400	6/1-OTOMATİK	ZF 6HP-502C	ÖN-ARKA 295/80 R 22.5
OTOBÜS Lion's Classic Ü (A72)	Bus	18000	11500	DİZEL	6	6871	220/2400	4/1-OTOMATİK	VOITH 854.3	ÖN-ARKA 295/80 R 22.5

OTOBÜS Lion's City T (A78)	Bus	18000	11500	DİZEL	6	6871	240/2400	6/1 OTOMATİK	ZF 6HP-502C	ÖN-ARKA 295/80 R 22.5
OTOBÜS Lion's City T (A78)	Bus	18000	11500	DİZEL	6	6871	240/2400	4/1 OTOMATİK	VOITH D854.5	ÖN-ARKA 295/80 R 22.5
OTOBÜS Lion's City T (A78)	Bus	18000	11500	DİZEL	6	6871	280/2400	6/1 OTOMATİK	ZF 6HP-502C	ÖN-ARKA 295/80 R 22.5
OTOBÜS Lion's City T (A78)	Bus	18000	11500	DİZEL	6	6871	280/2400	4/1 OTOMATİK	VOITH D854.5	ÖN-ARKA 295/80 R 22.5
OTOBÜS Lion's City T Ü (A78)	Bus	18000	11500	DİZEL	6	6871	240/2400	6/1 OTOMATİK	ZF 6HP-502C	ÖN-ARKA 295/80 R 22.5
OTOBÜS Lion's City T Ü (A78)	Bus	18000	11500	DİZEL	6	6871	240/2400	4/1 OTOMATİK	VOITH D854.5	ÖN-ARKA 295/80 R 22.5
OTOBÜS Lion's City T Ü (A78)	Bus	18000	11500	DİZEL	6	6871	280/2400	6/1 OTOMATİK	ZF 6HP-502C	ÖN-ARKA 295/80 R 22.5
OTOBÜS Lion's City T Ü (A78)	Bus	18000	11500	DİZEL	6	6871	280/2400	4/1 OTOMATİK	VOITH D854.5	ÖN-ARKA 295/80 R 22.5

OTOBÜS Fortuna (R07)	Bus	18000	13775	DİZEL	6	11967	410/1900	8/1	8S 2100BO+VOITH-Ret.	ÖN-ARKA 295/80 R 22.5
OTOBÜS Fortuna Mega (R08)	Bus	24900	16070	DİZEL	6	12816	460/1900	8/1	8S 2100BO+VOITH-Ret.	ÖN-ARKA 295/80 R 22.5

OTOBÜS RHC 414/464 -13,3M (R09)	Bus	24900	16070	DİZEL	6	10518	430/1700	6/1	ZF 6S 1901BO+Intarter	ÖN-ARKA 295/80 R 22.5
OTOBÜS RHC 414/464 -13,3M (R09)	Bus	24900	16070	DİZEL	6	10518	440/1900	12/2	12AS2301BO+Intarder	ÖN-ARKA 295/80 R 22.5
OTOBÜS RHC 414/464 -13,3M (R09)	Bus	24900	16070	DİZEL	6	12816	460/1900	6/1	GO210-6+Voith-R115E	ÖN-ARKA 295/80 R 22.5
OTOBÜS RHC 414/464 -13,3M (R09)	Bus	24900	16070	DİZEL	6	12816	480/1900	12/2	12AS2301BO	ÖN-ARKA 295/80 R 22.5

OTOBÜS LION'S REGIO (R12)	Bus	18000	12500	DİZEL	6	10518	310/1700	6/1	ZF 6S-1900	ÖN-ARKA 295/80 R 22.5
OTOBÜS LION'S REGIO (R12)	Bus	18000	12500	DİZEL	6	10518	350/1700	12/2	12AS2001BO	ÖN-ARKA 295/80 R 22.5
OTOBÜS LION'S REGIO (R12)	Bus	18000	12500	DİZEL	6	10518	390/1700	4/1-OTOMATİK	Voith D864.5	ÖN-ARKA 295/80 R 22.5
OTOBÜS LION'S REGIO (R12)	Bus	18000	12500	DİZEL	6	10518	430/1700	6/1	GO210-6+Voith-R115E	ÖN-ARKA 295/80 R 22.5

OTOBÜS LION'S REGIO L (R13)	Bus	24900	16070	DİZEL	6	10518	310/1700	6/1	ZF 6S-1900	ÖN-ARKA 295/80 R 22.5
OTOBÜS LION'S REGIO L (R13)	Bus	24900	16070	DİZEL	6	10518	350/1700	12/2	12AS2001BO	ÖN-ARKA 295/80 R 22.5
OTOBÜS LION'S REGIO L (R13)	Bus	24900	16070	DİZEL	6	10518	390/1700	4/1-OTOMATİK	Voith D864.5	ÖN-ARKA 295/80 R 22.5
OTOBÜS LION'S REGIO L (R13)	Bus	24900	16070	DİZEL	6	10518	430/1700	6/1	GO210-6+Voith-R115E	ÖN-ARKA 295/80 R 22.5

OTOBÜS LION'S REGIO 13M (R14)	Bus	18000	13250	DİZEL	6	10518	310/1700	6/1	ZF 6S-1900	ÖN-ARKA 295/80 R 22.5
OTOBÜS LION'S REGIO 13M (R14)	Bus	18000	13250	DİZEL	6	10518	350/1700	12/2	12AS2001BO	ÖN-ARKA 295/80 R 22.5
OTOBÜS LION'S REGIO 13M (R14)	Bus	18000	13250	DİZEL	6	10518	390/1700	4/1-OTOMATİK	Voith D864.5	ÖN-ARKA 295/80 R 22.5
OTOBÜS LION'S REGIO 13M (R14)	Bus	18000	13250	DİZEL	6	10518	430/1700	6/1	GO210-6+Voith-R115E	ÖN-ARKA 295/80 R 22.5

OTOBÜS N2216/3 SHD TOURLINER (P20)	Bus	24900	16070	DİZEL	6	10518	430/1700	6/1	ZF 6S 1901BO+Intarter	ÖN-ARKA 295/80 R 22.5
------------------------------------	-----	-------	-------	-------	---	-------	----------	-----	-----------------------	-----------------------

OTOBÜS N2216/3 SHD TOURLINER (P20)	Bus	24900	16070	DIZEL	6	10518	440/1900	12/2	12AS2301BO+Intarder	ÖN-ARKA 295/80 R 22.5
OTOBÜS N2216/3 SHD TOURLINER (P20)	Bus	24900	16070	DIZEL	6	12816	460/1900	6/1	GO210-6+Voith-R115E	ÖN-ARKA 295/80 R 22.5
OTOBÜS N2216/3 SHD TOURLINER (P20)	Bus	24900	16070	DIZEL	6	12816	480/1900	12/2	12AS2301BO	ÖN-ARKA 295/80 R 22.5
OTOBÜS N 2216 SHD TOURLINER (P21)	Bus	18000	13775	DIZEL	6	10518	430/1900	6/1	ZF 6S 1901BO+Intarder	ÖN-ARKA 295/80 R 22.5
OTOBÜS N 2216 SHD TOURLINER (P21)	Bus	18000	13775	DIZEL	6	10518	440/1900	12/2	12AS2301BO+Intarder	ÖN-ARKA 295/80 R 22.5
OTOBÜS N 2216 SHD TOURLINER (P21)	Bus	18000	13775	DIZEL	6	12816	460/1900	6/1	GO210-6+Voith-R115E	ÖN-ARKA 295/80 R 22.5
OTOBÜS N 2216 SHD TOURLINER (P21)	Bus	18000	13775	DIZEL	6	12816	480/1900	12/2	12AS2301BO	ÖN-ARKA 295/80 R 22.5
OTOBÜS N 2216/3 SHD-L TOURLINER (P22)	Bus	24900	16070	DIZEL	6	10518	430/1900	6/1	ZF 6S 1901BO+Intarder	ÖN-ARKA 295/80 R 22.5
OTOBÜS N 2216/3 SHD-L TOURLINER (P22)	Bus	24900	16070	DIZEL	6	10518	440/1900	12/2	12AS2301BO+Intarder	ÖN-ARKA 295/80 R 22.5
OTOBÜS N 2216/3 SHD-L TOURLINER (P22)	Bus	24900	16070	DIZEL	6	12816	460/1900	6/1	GO210-6+Voith-R115E	ÖN-ARKA 295/80 R 22.5
OTOBÜS N 2216/3 SHD-L TOURLINER (P22)	Bus	24900	16070	DIZEL	6	12816	480/1900	12/2	12AS2301BO	ÖN-ARKA 295/80 R 22.5
OTOBÜS N 3516 UE TRENDLINER (P23)	Bus	18000	12500	DIZEL	6	10518	310/1700	6/1	ZF 6S 1901BO+Intarder	ÖN-ARKA 295/80 R 22.5
OTOBÜS N 3516 UE TRENDLINER (P23)	Bus	18000	12500	DIZEL	6	10518	350/1700	12/2	12AS2301BO+Intarder	ÖN-ARKA 295/80 R 22.5
OTOBÜS N 3516 UE TRENDLINER (P23)	Bus	18000	12500	DIZEL	6	10518	390/1700	6/1	GO210-6+Voith-R115E	ÖN-ARKA 295/80 R 22.5
OTOBÜS N 3516 UE TRENDLINER (P23)	Bus	18000	12500	DIZEL	6	10518	430/1700	12/2	12AS2301BO	ÖN-ARKA 295/80 R 22.5
OTOBÜS N 3516/3 UEL TRENDLINER (P24)	Bus	24900	16070	DIZEL	6	10518	310/1700	6/1	ZF 6S 1901BO+Intarder	ÖN-ARKA 295/80 R 22.5
OTOBÜS N 3516/3 UEL TRENDLINER (P24)	Bus	24900	16070	DIZEL	6	10518	350/1700	12/2	12AS2301BO+Intarder	ÖN-ARKA 295/80 R 22.5
OTOBÜS N 3516/3 UEL TRENDLINER (P24)	Bus	24900	16070	DIZEL	6	10518	390/1700	6/1	GO210-6+Voith-R115E	ÖN-ARKA 295/80 R 22.5
OTOBÜS N 3516/3 UEL TRENDLINER (P24)	Bus	24900	16070	DIZEL	6	10518	430/1700	12/2	12AS2301BO	ÖN-ARKA 295/80 R 22.5
OTOBÜS TRENDLINER 13M (P25)	Bus	18000	13775	DIZEL	6	10518	310/1700	6/1	ZF 6S 1901BO+Intarder	ÖN-ARKA 295/80 R 22.5
OTOBÜS TRENDLINER 13M (P25)	Bus	18000	13775	DIZEL	6	10518	350/1700	12/2	12AS2301BO+Intarder	ÖN-ARKA 295/80 R 22.5
OTOBÜS TRENDLINER 13M (P25)	Bus	18000	13775	DIZEL	6	10518	390/1700	6/1	GO210-6+Voith-R115E	ÖN-ARKA 295/80 R 22.5
OTOBÜS TRENDLINER 13M (P25)	Bus	18000	13775	DIZEL	6	10518	430/1700	12/2	12AS2301BO	ÖN-ARKA 295/80 R 22.5
M. BENZ TÜRK										
OTOBÜS Travego 15 SHD	Bus	18000	13954	DIZEL	6	11967	422/2000	6/1-12/1	GO 190	ÖN-ARKA 295/80 R 22.5
OTOBÜS Travego 17 SHD	Bus	24000	16606	DIZEL	8	15928	476/2000	6/1 -12/1	GO 190,GO 210, ZF-AS Tr	ÖN-ARKA 295/80 R 22.5
OTOBÜS-O 403 15 SHD	Bus	17907	13750	DIZEL	8	12763	381/2100	6/1	G04/160-6/8.2	ÖN-ARKA 295/80 R 22.6
OTOBÜS-O 403 15 RHD	Bus	17439	13225	DIZEL	6	10964	340/2100	6/1	G04/160-6/7.2	ÖN-ARKA 295/80 R 22.7
OTOBÜS-O 403 15 SHD	Bus	17907	13750	DIZEL	8	14618	381/2100	6/1	GO 190 veya GO210	ÖN-ARKA 295/80 R 22.8
OTOBÜS-O 403 15 RHD	Bus	17439	13225	DIZEL	8	14618	381/2100	6/1	GO 190 veya GO211	ÖN-ARKA 295/80 R 22.9
OTOBÜS-O 403 15 RHD	Bus	17951	13624	DIZEL	6	11967	422/2000	6/1	GO 190 veya GO212	ÖN-ARKA 295/80 R 22.10
OTOBÜS-O 403 15 SHD	Bus	17901	13830	DIZEL	6	11967	422/2000	6/1	GO 190 veya GO213	ÖN-ARKA 295/80 R 22.11
OTOBÜS-O 350 15 SHD	Bus	17907	13750	DIZEL	6	11967	422/2000	6/1	GO 190 veya GO214	ÖN-ARKA 295/80 R 22.12
OTOBÜS-O 350 15 RHD	Bus	17439	13225	DIZEL	6	11967	422/2000	6/1	GO 190 veya GO215	ÖN-ARKA 295/80 R 22.13
OTOBÜS-O 345	Bus	17426	10286	DIZEL	5	9973	250/2200	6/1	GO4/160 veya GO 190	ÖN-ARKA 11 R 22.5
OTOBÜS-O 345	Bus	17537	10465	DIZEL	6	11967	213/2200	4/1	ZF veya Voit	ÖN-ARKA 11 R 22.6
OTOBÜS-O 345	Bus	17537	10465	DIZEL	6	11967	250/2200	4/1	ZF veya Voit	ÖN-ARKA 11 R 22.7
OTOBÜS-O 345	Bus	17574	10434	DIZEL	6	11967	250/2200	6/1	GO4/160 veya GO 190	ÖN-ARKA 11 R 22.8
OTOBÜS-O 345	Bus	17870	12020	DIZEL	6	11967	250/2000	6/1	GO 190 veya GO210	ÖN-ARKA 11R ve 275/70 R 22.5
OTOBÜS-O 345	Bus	17870	12020	DIZEL	6	11967	299/2000	6/1	GO 190 veya GO210	ÖN-ARKA 11R ve 275/70 R 22.6
OTOBÜS-O 345	Bus	17870	12020	DIZEL	6	11967	300/2000	6/1	ZF veya Voit	ÖN-ARKA 11R ve 275/70 R 22.7
OTOBÜS-O 345	Bus	17870	12020	DIZEL	6	11967	250/2000	6/1	ZF5HP/6HP,Voith 864	ÖN-ARKA 11R ve 275/70 R 22.5
OTOBÜS-O 345	Bus	17865	11337	DIZEL	6	11980	300/2000	4,5,6/1	GO210	295/80R22.5
OTOBÜS-O 345 K	Bus	25830	15154	DIZEL	5	9973	250/2200	6/1	GO4/160 veya GO 190	ÖN-ARKA 11 R 22.5
OTOBÜS-O 345 K	Bus	25830	15154	DIZEL	5	9973	300/2200	6/1	GO4/160 veya GO 190	ÖN-ARKA 11 R 22.6
OTOBÜS-O 345 K	Bus	26686	16010	DIZEL	6	11967	300/2000	6/1	ZF veya Voit	ÖN-ARKA 11 R 22.7
OTOBÜS-O 345 K	Bus	26594	16530	DIZEL	6	11980	300/2000	4,5,6/1	ZF5HP/6HP,Voith 864	ÖN-ARKA 11R ve 275/70 R 22.5
KAMYON 1215 C / 3600 4x2	Truck	11990	4100	DIZEL	4	4249	152/2300	6/1	MB G 60 - 6 / 9,20 -1,0	ÖN-ARKA 265/70 R 19,5
KAMYON 1215 C / 4200 4x2	Truck	11990	4200	DIZEL	4	4249	152/2300	6/1	MB G 60 - 6 / 9,20 -1,0	ÖN-ARKA 265/70 R 19,5
KAMYON 1517 C / 3600 4x2	Truck	15000	4260	DIZEL	4	4249	170/2300	6/1	MB G 60 - 6 / 9,20 -1,0	ÖN-ARKA 285/70 R 19,5
KAMYON 1517 C / 4200 4x2	Truck	15000	4360	DIZEL	4	4249	170/2300	6/1	MB G 60 - 6 / 9,20 -1,0	ÖN-ARKA 285/70 R 19,5
KAMYON 1823 C / 4800 4x2	Truck	18000	6200	DIZEL	6	6374	231/2300	9/1	MB G 131-9/14.57-1.0	ÖN-ARKA 12 R 22.5
KAMYON 2523 C / 4800 6x2 DNA	Truck	25000	7210	DIZEL	6	6374	231/2300	9/1	MB G 131-9/14.57-1.0	ÖN-ARKA 12 R 22.5
KAMYON 2528 C / 4800 6x2 DNA	Truck	25000	7210	DIZEL	6	6374	279/2300	9/1	MB G 131-9/14.57-1.0	ÖN-ARKA 12 R 22.5
KAMYON 3228 C / 5100 8x2	Truck	32000	8160	DIZEL	6	6374	279/2300	9/1	MB G 131-9/14.57-1.0	ÖN-ARKA 315/80 R 22,5
KAMYON 3240 C / 5125 8x2	Truck	32000	9570	DIZEL	6	11967	401/1900	16/1	MB G 211-16/17.0-1.0	ÖN-ARKA 315/80 R 22,5
KAMYON 1823 K / 3600 4x2	Truck	18000	6260	DIZEL	6	6374	231/2300	9/1	MB G 131-9/14.57-1.0	ÖN-ARKA 12 R 22,5
KAMYON 2628 CL / 4800 6x2	Truck	26000	7135	DIZEL	6	6374	279/2300	9/1	MB G 131-9/14.57-1.0	ÖN-ARKA 12 R 22,5
KAMYON 2640 CL / 4800 6x2	Truck	26000	8460	DIZEL	6	11967	401/1900	16/1	MB G 211-16/17.0-1.0	ÖN-ARKA 315/80 R 22,5
KAMYON 2528 K / 3600 6x2	Truck	25000	7140	DIZEL	6	6374	279/2300	9/1	MB G 131-9/14.57-1.0	ÖN-ARKA 12 R 22,5
KAMYON 3028 K / 3600 6x4	Truck	26000	7985	DIZEL	6	6374	279/2300	9/1	MB G 131-9/14.57-1.0	ÖN-ARKA 12 R 22,5
KAMYON 3340 K / 3900 6x4	Truck	26000	8960	DIZEL	6	11967	401/1900	16/1	MB G 240-16/11.7-0.69	ÖN-ARKA 315/80 R 22,5
KAMYON 3028 B / 3600 6x4	Truck	26000	7985	DIZEL	6	6374	279/2300	9/1	MB G 131-9/14.57-1.0	ÖN-ARKA 12 R 22,5
KAMYON 4140 B / 5100 8x4	Truck	32000	10390	DIZEL	6	11967	401/1900	16/1	MB G 240-16/11.7-0.69	ÖN-ARKA 315/80 R 22,5
ÇEKİCİ 1835 LS / 3600 4X2	R. Tractor	18000	6629	DIZEL	6	11967	354/1900	9/1	MB G 240-16/11.7-0.69	ÖN-ARKA 295/80 R 22,5
ÇEKİCİ 1840 LS / 3600 4X2	R. Tractor	18000	6605	DIZEL	6	11967	401/1900	16/1	MB G 211-16/17.0-1.0	ÖN-ARKA 295/80 R 22,5
OTOKAR										
MINİBÜS M 2000	Minibus	5000	3580	DIZEL	4	3770	73/2800	5/1	EATON FS 2305 C	ÖN-ARKA 215/75 R17,5
K.OTOBÜS SULTAN 125 L	Midibus	8500	5060	DIZEL	4	4038	122/2500	6/1	EATON FS 4106 B	ÖN-ARKA 215/75 R17,5
K.OTOBÜS SULTAN 125 S	Midibus	9000	5430	DIZEL	4	4038	122/2500	6/1	EATON FS 4106 B	ÖN-ARKA 215/75 R17,5
K.OTOBÜS SULTAN CITY	Midibus	9600	5260	DIZEL	4	4038	122/2500	6/1	EATON FS 4106 B	ÖN-ARKA 225/75 R17,5

K.OTOBÜS SULTAN 145 S	Midibus	9200	5960	DİZEL	4	4764	152/2400	6/1	EATON FSO 4106 B	ÖN-ARKA 225/75 R17,5
K.OTOBÜS SULTAN CITY	Midibus	9600	5360	DİZEL	4	4764	152/2400	6/1	EATON FSO 4106 B	ÖN-ARKA 225/75 R17,5
K.OTOBÜS SULTAN MAXI	Midibus	9600	6360	DİZEL	4	4764	152/2400	6/1	EATON FSO 4106 B	ÖN-ARKA 235/75 R17,5
K.OTOBÜS NAVIGO 160 S	Midibus	9200	6400	DİZEL	4	4462	160/2500	6/1	EATON FSO 4106 B	ÖN-ARKA 225/75 R17,5
K.OTOBÜS NAVIGO 165 S	Midibus	9200	6290	DİZEL	4	4764	170/2400	6/1	EATON FSO 4106 B	ÖN-ARKA 225/75 R17,5
LAND ROVER 110-111 SW	Pick Up	3050	2020	DİZEL	4	2495	111/4000	5/1	R380/LT230Q	ÖN-ARKA 7.5 R16LT 8PR
LAND ROVER 110-111	Pick Up	3050	2078	DİZEL	4	2495	111/4000	5/1	R380/LT230Q	ÖN-ARKA 7.5 R16LT 8PR
LAND ROVER 130-111	Pick Up	3050	2144	DİZEL	4	2495	111/4000	5/1	R380/LT230Q	ÖN-ARKA 7.5 R16LT 8PR
OTOYOL										
KAMYON 85E13 Yataksız	Truck	8500	2799	DİZEL	4	3920	130/2700	6/1	IVECO 2855.6	ÖN-ARKA 215/75R17.5 TUBELESS
KAMYON 100E15 Yataksız	Truck	10000	3066	DİZEL	4	3920	150/2700	6/1	IVECO 2855.6	ÖN-ARKA 215/75R17.5 TUBELESS
KAMYON 130E15 Yataksız	Truck	13000	3646	DİZEL	4	3920	150/2700	6/1	IVECO 2855.6	ÖN-ARKA 215/75R17.5 TUBELESS
KAMYON 130E15 Yataklı	Truck	13000	3822	DİZEL	4	3920	150/2700	6/1	IVECO 2855.6	ÖN-ARKA 215/75R17.5 TUBELESS
KAMYON 150E21 Yataklı	Truck	15000	4475	DİZEL	4	5880	210/2700	6/1	IVECO 2865.6	ÖN-ARKA 285/70R19.5 TUBELESS
KAMYON 220E21 Yataklı	Truck	22000	5687	DİZEL	4	5880	210/2700	6/1	IVECO 2865.6	ÖN-ARKA 285/70R19.5 TUBELESS
KAMYON 250E24 Yataklı	Truck	25000	6475	DİZEL	4	5880	240/2700	6/1	IVECO 2895.9	ÖN-ARKA 285/70R19.5 TUBELESS
MİDİBÜS E27.14S	Midibus	8500	5450	DİZEL	4	3908	136/2700	6/1	IVECO 2855.6	ÖN-ARKA 215/75R17.5 TUBELESS
MİDİBÜS E27.14FS	Midibus	8500	5700	DİZEL	4	3908	136/2700	6/1	IVECO 2855.6	ÖN-ARKA 215/75R17.5 TUBELESS
MİDİBÜS E31.17	Midibus	9500	6500	DİZEL	4	3920	170/2700	6/1	IVECO 2855.6	ÖN-ARKA 225/75R17.5 TUBELESS
MİDİBÜS E35.17	Midibus	10250	7200	DİZEL	4	3920	170/2700	6/1	IVECO 2855.6	ÖN-ARKA 225/75R17.5 TUBELESS
MİDİBÜS Eurocity	Midibus	9800	5100	DİZEL	4	3908	136/2700	6/1	IVECO 2855.6	ÖN-ARKA 215/75R17.5 TUBELESS
OYAK RENAULT										
OTOMOBİL CLIO SYMBOL 1.2 16 V	P. Car	1430	885	BENZİN	4	1149	75/5500	5/1	JB1	ÖN-ARKA 175/65 R 14
OTOMOBİL CLIO SYMBOL 1.4 8V	P. Car	1460	940	BENZİN	4	1390	75/5500	5/1	JB1	ÖN-ARKA 175/65 R 14
OTOMOBİL CLIO SYMBOL 1.4 16 V	P. Car	1500	950	BENZİN	4	1390	98/6000	5/1	JB3	ÖN-ARKA 175/65 R 14
OTOMOBİL CLIO SYMBOL 1.4 16 V AUTOMATIC	P. Car	1525	1010	BENZİN	4	1390	98/6000	OTOMATİK	DPO	ÖN-ARKA 175/65 R 14
OTOMOBİL CLIO SYMBOL 1.5 dCi (65 hp)	P. Car	1500	945	DİZEL	4	1461	65/4000	5/1	JB3	ÖN-ARKA 175/65 R 14
OTOMOBİL CLIO SYMBOL 1.5 dCi (80 hp)	P. Car	1500	945	DİZEL	4	1461	80/4000	5/1	JC5	ÖN-ARKA 175/65 R 14
OTOMOBİL MEGANE II DİZEL 1.5 (80 hp)	P. Car	1770	1160	DİZEL	4	1461	80/4000	5/1	JR5	ÖN-ARKA 195/65 R 15
OTOMOBİL MEGANE II DİZEL 1.5 (100 hp)	P. Car	1770	1160	DİZEL	4	1461	100/4000	5/1	JR5	ÖN-ARKA 205/55 R 16
OTOMOBİL MEGANE II DİZEL 1.9	P. Car	1845	1250	DİZEL	4	1870	120/4000	6/1	NDO	ÖN-ARKA 205/50 R 17
OTOMOBİL MEGANE II DİZEL 1.9 AUTOMATIC	P. Car	1860	1310	DİZEL	4	1870	130/4000	OTOMATİK	DPO	ÖN-ARKA 195/65 R 15
OTOMOBİL MEGANE II DİZEL 2,0	P. Car	1860	1320	DİZEL	4	1995	150/4000	6/1	PK4	ÖN-ARKA 205/55 R 16
OTOMOBİL MEGANE II 1.4 16 V	P. Car	1740	1150	BENZİN	4	1390	98/6000	5/1	JH3	ÖN-ARKA 205/50 R 17
OTOMOBİL MEGANE II 1,6 16V	P. Car	1750	1160	BENZİN	4	1598	115/6000	5/1	JH3	ÖN-ARKA 195/65 R 15
OTOMOBİL MEGANE II 1.6 16V AUTOMATIC	P. Car	1800	1210	BENZİN	4	1598	115/6000	OTOMATİK	DPO	ÖN-ARKA 205/55 R 16
OTOMOBİL MEGANE II 2.0 16V	P. Car	1825	1235	BENZİN	4	1998	136/5500	6/1	NDO	ÖN-ARKA 205/50 R 17
OTOMOBİL MEGANE II 2.0 16V AUTOMATIC	P. Car	1840	1250	BENZİN	4	1998	136/5500	OTOMATİK	DPO	ÖN-ARKA 205/55 R 16
OTOMOBİL CLİO III hatch-back 3 kapı / 5 kapı 1,2 16V	P. Car	2500	1090	BENZİN	4	1149	75/5500	5/1	JH3	ÖN-ARKA 165/65 R 15
OTOMOBİL CLİO III hatch-back 3 kapı / 5 kapı 1,4 16V	P. Car	2250	1145	BENZİN	4	1390	100/5700	5/1	JH3	ÖN-ARKA 185/60 R 15
OTOMOBİL CLİO III hatch-back 3 kapı / 5 kapı 1,6 16V	P. Car	1640	1150	BENZİN	4	1598	110/6000	5/1	JH3	ÖN-ARKA 185/60 R 15
OTOMOBİL CLİO III hatch-back 3 kapı / 5 kapı 1,6 16V AUTOMATIC	P. Car	1680	1190	BENZİN	4	1598	110/6000	OTOMATİK	DPO	ÖN-ARKA 185/60 R 15
OTOMOBİL CLİO III hatch-back 3 kapı / 5 kapı DİZEL 1,5 l 65 hp	P. Car	1655	1175	DİZEL	4	1461	70/4000	5/1	JH3	ÖN-ARKA 185/60 R 15
OTOMOBİL CLİO III hatch-back 3 kapı / 5 kapı DİZEL 1,5 l 80 hp	P. Car	1665	1175	DİZEL	4	1461	105/4000	5/1	JR5	ÖN-ARKA 185/60 R 15
TEMSA										
OTOBÜS SAFARI-TB162W	Bus	18000	13350	DİZEL	6	11967	360/1900	6/1	ZF6S1701	ÖN-ARKA 295/80 R22.5
OTOBÜS SAFARI-TB163W	Bus	18000	13350	DİZEL	6	11967	410/1900	8/1	ZF8S2101	ÖN-ARKA 295/80 R22.5
OTOBÜS DIAMOND - 14	Bus	26000	17130	DİZEL	6	12816	460/1900	8/1	ZF8S2101	ÖN 315/80 R22.5 ARKA 295/80 R22.5
OTOBÜS DIAMOND - 13	Bus	25700	16315	DİZEL	6	12816	460/1900	8/1	ZF8S2101	ÖN-ARKA 295/80 R22.5
OTOBÜS SAFİR	Bus	18000	13970	DİZEL	6	11946	350/2200	6/1	M12S6	ÖN-ARKA 295/80 R22.5
MİDİBÜS PRESTİJ	Midibus	7281	4568	DİZEL	4	3908	136/2900	5/1	M035S5	ÖN-ARKA 8.5 R 17.5
MİDİBÜS PRESTİJ A/C	Midibus	7135	5045	DİZEL	4	3908	136/2900	5/1	M035S5	ÖN-ARKA 8.5 R 17.5
MİDİBÜS OPALIN 8	Midibus	9950	7030	DİZEL	4	4580	170/2400	6/1	ZF 6S700BO	ÖN-ARKA 235/75 R17.5
MİDİBÜS OPALIN 8.4	Midibus	11500	7565	DİZEL	4	4580	170/2400	6/1	ZF 6S700BO	ÖN-ARKA 245/70 R17.5
KAMYON FE 659 E	Truck	7500	2600	DİZEL	4	3908	136/2900	5/1	M035S5	ÖN-ARKA 8.5 R 17.5
KAMYON FE 659 F	Truck	7700	2615	DİZEL	4	3908	136/2900	5/1	M035S5	ÖN-ARKA 8.5 R 17.5
KAMYONET FE 511	Pick Up	3500	1855	DİZEL	4	2835	90/4000	5/1	MO15S5	ÖN-ARKA 195/75 R16

KAMYONET FE 519 B	Pick Up	3500	1811	DIZEL	4	3908	105/3200	5/1	M025S5	ÖN-ARKA 7.50 - 15/10
KAMYONET FE 639 C	Pick Up	3500	1995	DIZEL	4	3908	105/3200	5/1	M025S5	ÖN-ARKA 8.5 R 17.5

TOFAŞ

OTOMOBİL PALIO 1.2 SL	P. Car	1455	950	BENZİN	4	1242	60/5000	5/1	FIAT 178	ÖN-ARKA 165/80 R13 T
OTOMOBİL PALIO 1.2 16V EL/HL	P. Car	1455	950	BENZİN	4	1242	80/5000	5/1	FIAT 178	ÖN-ARKA 175/70 R14 T
OTOMOBİL PALIO 1.2 16V EL/HL SPEEDGEAR	P. Car	1495	990	BENZİN	4	1242	80/5000		OTOMATİK FIAT 178	ÖN-ARKA 175/70 R14 T
OTOMOBİL PALIO 1.4 8V	P. Car	1460	955	BENZİN	4	1368	77/6000	5/1	FIAT 178	ÖN-ARKA 175/70 R14 T
OTOMOBİL PALIO 1.3 MULTIJET	P. Car	1535	1030	DIZEL	4	1248	70/4000	5/1	FIAT 178	ÖN-ARKA 175/70 R14 T
OTOMOBİL ALBEA 1.2 8V EL	P. Car	1525	1015	BENZİN	4	1242	60/5000	5/1	FIAT 178	ON-ARKA 175/70 R 14 T
OTOMOBİL ALBEA 1.2 16V EL/HL	P. Car	1525	1015	BENZİN	4	1242	80/5000	5/1	FIAT 178	ON-ARKA 175/70 R 14 T
OTOMOBİL ALBEA 1.2 16V HL SPEEDGEAR	P. Car	1565	1055	BENZİN	4	1242	80/5000		OTOMATİK FIAT 178	ON-ARKA 175/70 R 14 T
OTOMOBİL ALBEA 1.2 16V LPG	P. Car	1525	1070	BENZİN	4	1242	80/5000	5/1	FIAT 178	ON-ARKA 175/70 R 14 T
OTOMOBİL ALBEA 1.4 8V	P. Car	1530	1020	BENZİN	4	1368	77/6000	5/1	FIAT 178	ÖN-ARKA 185/65 R 14 H
OTOMOBİL ALBEA 1.6 16 V HL	P. Car	1585	1075	BENZİN	4	1596	103/5750	5/1	FIAT 178	ON-ARKA 175/65 R 14 H
OTOMOBİL ALBEA 1.3 MULTIJET SL/EL	P. Car	1595	1085	BENZİN	4	1248	70/4000	5/1	FIAT 178	ON-ARKA 175/70 R 14 H
OTOMOBİL DOBLO 1.4 8V	P. Car	1830	1230	BENZİN	4	1368	77/6000	5/1	FIAT 223	ÖN-ARKA 185/65 R 15 T
OTOMOBİL DOBLO 1.9 JTD	P. Car	1920	1320	DIZEL	4	1910	105/4000	5/1	FIAT 223	ÖN-ARKA 185/65 R 15 T
OTOMOBİL DOBLO 1.3 MULTIJET	P. Car	1910	1310	DIZEL	4	1248	75/4000	5/1	FIAT 223	ÖN-ARKA 185/65 R 15 T
KAMYONET DOBLO CARGO 1.4 8V	Pick Up	1920	1190	BENZİN	4	1368	77/6000	5/1	FIAT 223	ÖN-ARKA 185/65 R 15 S
KAMYONET DOBLO CARGO 1.4 8V P.M.	Pick Up	2040	1190	BENZİN	4	1368	77/6000	5/1	FIAT 223	ÖN-ARKA 175/75 R 14 S
KAMYONET DOBLO CARGO 1.4 8V MAXI	Pick Up	2090	1240	BENZİN	4	1368	77/6000	5/1	FIAT 223	ÖN-ARKA 175/75 R 14 S
KAMYONET DOBLO CARGO 1.9 JTD	Pick Up	2010	1280	DIZEL	4	1910	105/4000	5/1	FIAT 223	ÖN-ARKA 185/65 R 15 S
KAMYONET DOBLO CARGO 1.9 JTD PM	Pick Up	2130	1280	DIZEL	4	1910	105/4000	5/1	FIAT 223	ÖN-ARKA 175/75 R 14 S
KAMYONET DOBLO CARGO 1.9 JTD MAXI	Pick Up	2180	1330	DIZEL	4	1910	105/4000	5/1	FIAT 223	ÖN-ARKA 175/75 R 14 S
KAMYONET DOBLO CARGO 1.3 MULTIJET	Pick Up	2000	1270	DIZEL	4	1248	75/4000	5/1	FIAT 223	ÖN-ARKA 185/65 R 15 S
KAMYONET DOBLO CARGO 1.3 MULTIJET PM	Pick Up	2120	1270	DIZEL	4	1248	75/4000	5/1	FIAT 223	ÖN-ARKA 175/75 R 14 S
KAMYONET DOBLO CARGO 1.3 MULTIJET MAXI	Pick Up	2170	1320	DIZEL	4	1248	75/4000	5/1	FIAT 223	ÖN-ARKA 175/75 R 14 S
KAMYONET DOBLO CARGO COMBI 1.4 8V	Pick Up	1945	1240	BENZİN	4	1368	77/6000	5/1	FIAT 223	ÖN-ARKA 185/65 R 15 S
KAMYONET DOBLO CARGO COMBI 1.4 8V	Pick Up	2035	1240	BENZİN	4	1368	77/6000	5/1	FIAT 223	ÖN-ARKA 175/75 R 14 S
KAMYONET DOBLO CARGO COMBI 1.9 JTD	Pick Up	2025	1330	DIZEL	4	1910	105/4000	5/1	FIAT 223	ÖN-ARKA 185/65 R 15 S
KAMYONET DOBLO CARGO COMBI 1.9 JTD	Pick Up	2125	1330	DIZEL	4	1910	105/4000	5/1	FIAT 223	ÖN-ARKA 175/75 R 14 S
KAMYONET DOBLO CARGO COMBI LUNGO 1.9 JTD	Pick Up	2115	1405	DIZEL	4	1910	105/4000	5/1	FIAT 223	ÖN-ARKA 185/65 R 15 S
KAMYONET DOBLO CARGO COMBI 1.3 MULTIJET	Pick Up	2025	1320	DIZEL	4	1910	75/4000	5/1	FIAT 223	ÖN-ARKA 185/65 R 15 S
KAMYONET DOBLO CARGO COMBI 1.3 MULTIJET	Pick Up	2115	1320	DIZEL	4	1248	75/4000	5/1	FIAT 223	ÖN-ARKA 175/75 R 14 S
KAMYONET DOBLO CARGO COMBI LUNGO 1.3 MULTIJET	Pick Up	2105	1395	DIZEL	4	1248	75/4000	5/1	FIAT 223	ÖN-ARKA 185/65 R 15 S
KAMYONET PALIO VAN 1.2 8V	Pick Up	1455	960	BENZİN	4	1242	60/5000	5/1	FIAT 178	ON-ARKA 165/80 R 13 T
KAMYONET PALIO VAN 1.2 16V	Pick Up	1455	960	BENZİN	4	1242	80/5000	5/1	FIAT 178	ON-ARKA 175/70 R 14 T
KAMYONET PALIO VAN 1.4 8V	Pick Up	1460	965	BENZİN	4	1368	77/6000	5/1	FIAT 178	ON-ARKA 175/70 R 14 T
KAMYONET PALIO VAN 1.3 MULTIJET	Pick Up	1495	1040	DIZEL	4	1248	70/4000	5/1	FIAT 178	ON-ARKA 175/70 R 14 T

TOYOTA

OTOMOBİL AURIS 3D HATCHBACK COMFORT 2.0 L	P. Car	1890	1385	DIZEL	4	1998	93/3600	6/1	TOYOTA	ÖN-ARKA 205/55R16 6.5J
OTOMOBİL AURIS 3D HATCHBACK COMFORT 2.0 L	P. Car	1890	1385	DIZEL	4	1998	93/3600	6/1	TOYOTA	ÖN-ARKA 205/55R16 6.5J
OTOMOBİL AURIS 3D HATCHBACK ELEGANT 2.0 L	P. Car	1890	1405	DIZEL	4	1998	93/3600	6/1	TOYOTA	ÖN-ARKA 205/55R16 6.5J
OTOMOBİL AURIS 3D HATCHBACK ELEGANT 2.0 L	P. Car	1890	1400	DIZEL	4	1998	93/3600	6/1	TOYOTA	ÖN-ARKA 205/55R16 6.5J
OTOMOBİL AURIS 5D HATCHBACK COMFORT 2.0 L	P. Car	1890	1385	DIZEL	4	1998	93/3600	6/1	TOYOTA	ÖN-ARKA 205/55R16 6.5J
OTOMOBİL AURIS 5D HATCHBACK COMFORT 2.0 L	P. Car	1890	1385	DIZEL	4	1998	93/3600	6/1	TOYOTA	ÖN-ARKA 205/55R16 6.5J
OTOMOBİL AURIS 5D HATCHBACK ELEGANT 2.0 L	P. Car	1890	1405	DIZEL	4	1998	93/3600	6/1	TOYOTA	ÖN-ARKA 205/55R16 6.5J
OTOMOBİL AURIS 5D HATCHBACK ELEGANT 2.0 L	P. Car	1890	1400	DIZEL	4	1998	93/3600	6/1	TOYOTA	ÖN-ARKA 205/55R16 6.5J
OTOMOBİL AURIS 3D HATCHBACK ELEGANT 2.0 R	P. Car	1890	1400	DIZEL	4	1998	93/3600	6/1	TOYOTA	ÖN-ARKA 205/55R16 6.5J
OTOMOBİL AURIS 3D HATCHBACK ELEGANT 2.2 L	P. Car	1920	1435	DIZEL	4	2231	130/3600	6/1	TOYOTA	ÖN-ARKA 225/45R17 7J
OTOMOBİL AURIS 5D HATCHBACK ELEGANT 2.2 L	P. Car	1920	1435	DIZEL	4	2231	130/3600	6/1	TOYOTA	ÖN-ARKA 225/45R17 7J
OTOMOBİL AURIS 3D HATCHBACK ELEGANT 2.2 R	P. Car	1920	1435	DIZEL	4	2231	130/3600	6/1	TOYOTA	ÖN-ARKA 225/45R17 7J
OTOMOBİL AURIS 3D HATCHBACK COMFORT 1.4 L	P. Car	1760	1265	DIZEL	4	1364	66/3600		MULTIMOD TOYOTA	ÖN-ARKA 205/55R16 6.5J
OTOMOBİL AURIS 3D HATCHBACK ELEGANT 1.4 L	P. Car	1760	1285	DIZEL	4	1364	66/3600		MULTIMOD TOYOTA	ÖN-ARKA 205/55R16 6.5J
OTOMOBİL AURIS 3D HATCHBACK COMFORT 1.4 L	P. Car	1760	1260	DIZEL	4	1364	66/3600	5/1	TOYOTA	ÖN-ARKA 205/55R16 6.5J
OTOMOBİL AURIS 3D HATCHBACK ELEGANT 1.4 L	P. Car	1760	1280	DIZEL	4	1364	66/3600	5/1	TOYOTA	ÖN-ARKA 205/55R16 6.5J
OTOMOBİL AURIS 5D HATCHBACK COMFORT 1.4 L	P. Car	1760	1265	DIZEL	4	1364	66/3600		MULTIMOD TOYOTA	ÖN-ARKA 205/55R16 6.5J
OTOMOBİL AURIS 5D HATCHBACK ELEGANT 1.4 L	P. Car	1760	1285	DIZEL	4	1364	66/3600		MULTIMOD TOYOTA	ÖN-ARKA 205/55R16 6.5J
OTOMOBİL AURIS 5D HATCHBACK COMFORT 1.4 L	P. Car	1760	1260	DIZEL	4	1364	66/3600	5/1	TOYOTA	ÖN-ARKA 195/65R15 6J
OTOMOBİL AURIS 5D HATCHBACK ELEGANT 1.4 L	P. Car	1760	1280	DIZEL	4	1364	66/3600	5/1	TOYOTA	ÖN-ARKA 205/55R16 6.5J
OTOMOBİL AURIS 3D HATCHBACK ELEGANT 1.4 R	P. Car	1760	1285	DIZEL	4	1364	66/3600		MULTIMOD TOYOTA	ÖN-ARKA 205/55R16 6.5J
OTOMOBİL AURIS 3D HATCHBACK COMFORT 1.4 R	P. Car	1760	1260	DIZEL	4	1364	66/3600	5/1	TOYOTA	ÖN-ARKA 195/65R15 6J
OTOMOBİL AURIS 3D HATCHBACK ELEGANT 1.4 R	P. Car	1760	1280	DIZEL	4	1364	66/3600	5/1	TOYOTA	ÖN-ARKA 205/55R16 6.5J
OTOMOBİL AURIS 3D HATCHBACK COMFORT 1.6 L	P. Car	1720	1235	BENZİN	4	1598	91/6000		MULTIMOD TOYOTA	ÖN-ARKA 205/55R16 6.5J
OTOMOBİL AURIS 3D HATCHBACK ELEGANT 1.6 L	P. Car	1720	1265	BENZİN	4	1598	91/6000		MULTIMOD TOYOTA	ÖN-ARKA 205/55R16 6.5J
OTOMOBİL AURIS 3D HATCHBACK COMFORT 1.6 L	P. Car	1720	1230	BENZİN	4	1598	91/6000	5/1	TOYOTA	ÖN-ARKA 205/55R16 6.5J
OTOMOBİL AURIS 3D HATCHBACK ELEGANT 1.6 L	P. Car	1720	1260	BENZİN	4	1598	91/6000	5/1	TOYOTA	ÖN-ARKA 205/55R16 6.5J
OTOMOBİL AURIS 3D HATCHBACK ELEGANT 1.6 L	P. Car	1720	1260	BENZİN	4	1598	91/6000	5/1	TOYOTA	ÖN-ARKA 205/55R16 6.5J
OTOMOBİL AURIS 5D HATCHBACK COMFORT 1.6 L	P. Car	1720	1235	BENZİN	4	1598	91/6000		MULTIMOD TOYOTA	ÖN-ARKA 205/55R16 6.5J
OTOMOBİL AURIS 5D HATCHBACK ELEGANT 1.6 L	P. Car	1720	1265	BENZİN	4	1598	91/6000		MULTIMOD TOYOTA	ÖN-ARKA 205/55R16 6.5J
OTOMOBİL AURIS 5D HATCHBACK COMFORT 1.6 L	P. Car	1720	1230	BENZİN	4	1598	91/6000	5/1	TOYOTA	ÖN-ARKA 205/55R16 6.5J
OTOMOBİL AURIS 5D HATCHBACK ELEGANT 1.6 L	P. Car	1720	1250	BENZİN	4	1598	91/6000	5/1	TOYOTA	ÖN-ARKA 205/55R16 6.5J
OTOMOBİL AURIS 3D HATCHBACK ELEGANT 1.6 R	P. Car	1720	1265	BENZİN	4	1598	91/6000		MULTIMOD TOYOTA	ÖN-ARKA 205/55R16 6.5J
OTOMOBİL AURIS 3D HATCHBACK ELEGANT 1.6 R	P. Car	1720	1260	BENZİN	4	1598	91/6000	5/1	TOYOTA	ÖN-ARKA 205/55R16 6.5J
OTOMOBİL AURIS 3D HATCHBACK COMFORT 1.4 L	P. Car	1750	1220	BENZİN	4	1398	71/6000	5/1	TOYOTA	ÖN-ARKA 205/55R16 6.5J
OTOMOBİL AURIS 3D HATCHBACK ELEGANT 1.4 L	P. Car	1750	1250	BENZİN	4	1398	71/6000	5/1	TOYOTA	ÖN-ARKA 205/55R16 6.5J
OTOMOBİL AURIS 5D HATCHBACK COMFORT 1.4 L	P. Car	1750	1220	BENZİN	4	1398	71/6000	5/1	TOYOTA	ÖN-ARKA 205/55R16 6.5J

OTOMOBİL AURIS 5D HATCHBACK ELEGANT 1.4 L	P. Car	1750	1250	BENZİN	4	1398	71/6000	5/1	TOYOTA	ÖN-ARKA 205/55R16 6,5J
OTOMOBİL AURIS 3D HATCHBACK COMFORT 1.4 R	P. Car	1750	1220	BENZİN	4	1398	71/6000	5/1	TOYOTA	ÖN-ARKA 195/65R15 6J
OTOMOBİL AURIS 3D HATCHBACK ELEGANT 1.4 R	P. Car	1750	1250	BENZİN	4	1398	71/6000	5/1	TOYOTA	ÖN-ARKA 205/55R16 6,5J
OTOMOBİL COROLLA VERSO 1.8 L COMFORT 7 KOLTUK	P. Car	2035	1415	BENZİN	4	1794	95KW/6000	MULTIMOD	TOYOTA	ÖN-ARKA 205/55 R16
OTOMOBİL COROLLA VERSO 1.8 L ELEGANT 7 KOLTUK	P. Car	2035	1435	BENZİN	4	1794	95KW/6001	MULTIMOD	TOYOTA	ÖN-ARKA 205/55 R16
OTOMOBİL COROLLA VERSO 1.8 R COMFORT 7 KOLTUK	P. Car	2035	1405	BENZİN	4	1794	95KW/6002	MULTIMOD	TOYOTA	ÖN-ARKA 205/55 R16
OTOMOBİL COROLLA VERSO 1.8 R ELEGANT 7 KOLTUK	P. Car	2035	1425	BENZİN	4	1794	95KW/6003	MULTIMOD	TOYOTA	ÖN-ARKA 205/55 R16
OTOMOBİL COROLLA VERSO 2.2 L COMFORT 7 KOLTUK	P. Car	2160	1540	DİZEL	4	2231	100KW/3600	6/1	TOYOTA	ÖN-ARKA 205/55 R16
OTOMOBİL COROLLA VERSO 2.2 L ELEGANT 7 KOLTUK	P. Car	2160	1540	DİZEL	4	2231	100/130KW/3600	6/1	TOYOTA	ÖN-ARKA 205/55 R16
OTOMOBİL COROLLA VERSO 2.2 L COMFORT 5 KOLTUK	P. Car	2160	1540	DİZEL	4	2231	100KW/3600	6/1	TOYOTA	ÖN-ARKA 205/55 R16
OTOMOBİL COROLLA VERSO 2.2 L ELEGANT 5 KOLTUK	P. Car	2160	1540	DİZEL	4	2231	100/130KW/3600	6/1	TOYOTA	ÖN-ARKA 205/55 R16
OTOMOBİL COROLLA VERSO 2.2 R COMFORT 7 KOLTUK	P. Car	2160	1540	DİZEL	4	2231	100KW/3600	6/1	TOYOTA	ÖN-ARKA 205/55 R16
OTOMOBİL COROLLA VERSO 2.2 R ELEGANT 7 KOLTUK	P. Car	2160	1540	DİZEL	4	2231	100/130KW/3600	6/1	TOYOTA	ÖN-ARKA 205/55 R16
OTOMOBİL COROLLA VERSO 1.6 L COMFORT 7 KOLTUK	P. Car	2035	1410	BENZİN	4	1598	81KW/6000	5/1	TOYOTA	ÖN-ARKA 205/55 R16
OTOMOBİL COROLLA VERSO 1.6 L ELEGANT 7 KOLTUK	P. Car	2035	1425	BENZİN	4	1598	81KW/6000	5/1	TOYOTA	ÖN-ARKA 205/55 R16
OTOMOBİL COROLLA VERSO 1.6 L COMFORT 5 KOLTUK	P. Car	2035	1380	BENZİN	4	1598	81KW/6000	5/1	TOYOTA	ÖN-ARKA 205/55 R16
OTOMOBİL COROLLA VERSO 1.6 L ELEGANT 5 KOLTUK	P. Car	2035	1410	BENZİN	4	1598	81KW/6000	5/1	TOYOTA	ÖN-ARKA 205/55 R16
OTOMOBİL COROLLA VERSO 1.6 R COMFORT 7 KOLTUK	P. Car	2035	1400	BENZİN	4	1598	81KW/6000	5/1	TOYOTA	ÖN-ARKA 205/55 R16
OTOMOBİL COROLLA VERSO 1.8 L COMFORT 7 KOLTUK	P. Car	2035	1410	BENZİN	4	1794	95KW/6000	5/1	TOYOTA	ÖN-ARKA 205/55 R16
OTOMOBİL COROLLA VERSO 1.8 L ELEGANT 7 KOLTUK	P. Car	2035	1430	BENZİN	4	1794	95KW/6000	5/1	TOYOTA	ÖN-ARKA 205/55 R16
OTOMOBİL COROLLA VERSO 1.8 L ELEGANT 5 KOLTUK	P. Car	2035	1410	BENZİN	4	1794	95KW/6000	5/1	TOYOTA	ÖN-ARKA 205/55 R16
OTOMOBİL COROLLA VERSO 1.8 R COMFORT 7 KOLTUK	P. Car	2035	1400	BENZİN	4	1794	95KW/6000	5/1	TOYOTA	ÖN-ARKA 205/55 R16
OTOMOBİL COROLLA VERSO 1.8 R ELEGANT 7 KOLTUK	P. Car	2035	1420	BENZİN	4	1794	95KW/6000	5/1	TOYOTA	ÖN-ARKA 205/55 R16

TÜRK TRAKTÖR

TRAKTÖR TT 50	F. Tractor	2300	1960	DİZEL	3	2931	50/2500	8/2	NEW HOLLAND	ÖN 6.00X16 ARKA 13.6X28
TRAKTÖR TT 55	F. Tractor	2360	1960	DİZEL	3	2931	55/2500	8/2&12/3	NEW HOLLAND	ÖN 6.50X16 ARKA 14.9X28
TRAKTÖR TT 55 4WD	F. Tractor	2640	2240	DİZEL	3	2931	55/2500	8/2&12/3	NEW HOLLAND	ÖN 300/70R20 ARKA 380/70R28
TRAKTÖR TT 60	F. Tractor	2440	2040	DİZEL	3	2931	60/2500	8/2&12/3	NEW HOLLAND	ÖN 6.50X16 ARKA 14.9X28
TRAKTÖR TT 60 4WD	F. Tractor	2720	2320	DİZEL	3	2931	60/2500	8/2&12/3	NEW HOLLAND	ÖN 300/70R20 ARKA 380/70R28
TRAKTÖR TT 60 KABİNLİ	F. Tractor	2755	2355	DİZEL	3	2931	60/2500	8/2&12/3	NEW HOLLAND	ÖN 6.50X16 ARKA 14.9X28
TRAKTÖR TT 60 4WD KABİNLİ	F. Tractor	3035	2635	DİZEL	3	2931	60/2500	8/2&12/3	NEW HOLLAND	ÖN 300/70R20 ARKA 380/70R28
TRAKTÖR TT 65	F. Tractor	2470	2070	DİZEL	3 TURBO	2931	65/2500	8/2&12/3	NEW HOLLAND	ÖN 7.50X16 ARKA 14.9X30
TRAKTÖR TT 65 4WD	F. Tractor	2760	2350	DİZEL	3 TURBO	2931	65/2500	8/2&12/3	NEW HOLLAND	ÖN 300/70R20 ARKA 380/70R28
TRAKTÖR TT 65 KABİNLİ	F. Tractor	2785	2385	DİZEL	3 TURBO	2931	65/2500	8/2&12/3	NEW HOLLAND	ÖN 7.50X16 ARKA 14.9X30
TRAKTÖR TT 65 4WD KABİNLİ	F. Tractor	3065	2665	DİZEL	3 TURBO	2931	65/2500	8/2&12/3	NEW HOLLAND	ÖN 300/70R20 ARKA 380/70R28
TRAKTÖR TT 55B	F. Tractor	2360	1960	DİZEL	3	2931	55/2500	8/2&12/3	NEW HOLLAND	ÖN 6.00X16 ARKA 13.6X28
TRAKTÖR TT 60B	F. Tractor	2440	2040	DİZEL	3	2931	60/2500	8/2&12/3	NEW HOLLAND	ÖN 6.00X16 ARKA 13.6X28
TRAKTÖR TT 65B	F. Tractor	2470	2070	DİZEL	3 TURBO	2931	65/2500	8/2&12/3	NEW HOLLAND	ÖN 6.00X16 ARKA 13.6X28
TRAKTÖR TT 55D	F. Tractor	2360	1960	DİZEL	3	2931	55/2500	8/2&12/3	NEW HOLLAND	ÖN 6.00X16 ARKA 13.6X28
TRAKTÖR TT 60D	F. Tractor	2440	2040	DİZEL	3	2931	60/2500	8/2&12/3	NEW HOLLAND	ÖN 6.00X16 ARKA 13.6X28
TRAKTÖR TT 65D	F. Tractor	2470	2070	DİZEL	3 TURBO	2931	65/2500	8/2&12/3	NEW HOLLAND	ÖN 6.00X16 ARKA 13.6X28
TRAKTÖR TD 60B	F. Tractor	5400	2540	DİZEL	3	2931	60/2500	12/12	NEW HOLLAND	ÖN 300/70R20 ARKA 380/70R28
TRAKTÖR TD 65B	F. Tractor	5400	2610	DİZEL	3 TURBO	2931	65/2500	12/12	NEW HOLLAND	ÖN 300/70R20 ARKA 380/70R28
TRAKTÖR TD 65D	F. Tractor	5170	2960	DİZEL	3 TURBO	2931	65/2500	12/12	NEW HOLLAND	ÖN 9.50-24 ARKA 14.9X30
TRAKTÖR TD 75D	F. Tractor	5850	3220	DİZEL	4	2931	70/2500	12/12	NEW HOLLAND	ÖN 11.2-24 ARKA 16.9X30
TRAKTÖR TD 85D	F. Tractor	6600	3340	DİZEL	4 TURBO	3908	85/2500	12/12	NEW HOLLAND	ÖH 12.4-24 ARKA 18.4X30
TRAKTÖR TD 95D	F. Tractor	8550	3600	DİZEL	4 TURBO	3908	95/2500	12/12	NEW HOLLAND	ÖH 14.9-24 ARKA 18.4R34
TRAKTÖR 55-56	F. Tractor	4000	2141	DİZEL	3	2931	55/2500	8/2&12/3	NEW HOLLAND	ÖN 6.50X16 ARKA 14.9X28
TRAKTÖR 65-56	F. Tractor	4350	2161	DİZEL	3 TURBO	2931	65/2500	8/2&12/3	NEW HOLLAND	ÖN 7.50X16 ARKA 14.9X30
TRAKTÖR 75-56	F. Tractor	4700	2400	DİZEL	4	3908	75/2500	8/2&12/3	NEW HOLLAND	ÖN 7.50X16 ARKA 16.9X30

UZEL

TRAKTÖR MF 240 S	F. Tractor	5218	2206	DİZEL	3	2500	49/2250	8/2	MF	ÖN 6.00X16 ARKA 13.6/12X38
TRAKTÖR MF 3.050	F. Tractor	5000	2460	DİZEL	3	3300	52/2200	8/2	MF	ÖN 6.00X16 veya 6.50x16 ARKA 13.6/12X28 veya 14.9/13x28
TRAKTÖR MF 3.050 4x4	F. Tractor	6900	2521	DİZEL	3	3300	52/2200	8/2	MF	ÖN 280 / 70 R 20 ARKA 13.6 R 28
TRAKTÖR MF 3.050 MM	F. Tractor	5000	2460	DİZEL	3	3300	52/2200	8/2	MF	ÖN 5.50X16 veya 6.00x16 ARKA 12.4/11X24 veya 13.6 R24 veya 12.4/11x28 veya 13.6/12x28 ÖN 8.25X16 veya 280/70R18 veya 280/70R20 ARKA 380/70R24 veya 13.6 R 24 veya 13.6 R 28 ÖN 6.50X16 veya 7.5x16 ARKA 13.6/12X28 veya 14.9/13x28 veya 16.9/13x30 veya 12.4/11x36
TRAKTÖR MF 3.060	F. Tractor	5000	2610	DİZEL	3	3300	65/2200	12/4	MF	ÖN 280/70 R 20 veya 300/70 R 20 ARKA 13.6 R 28 veya 14.9x28
TRAKTÖR MF 3.060 4x4	F. Tractor	6900	2675	DİZEL	3	3300	65/2200	12/4	MF	ÖN 5.50X16 veya 6.50x16 ARKA 12.4/11X24 veya 13.6 R 24 veya 12.4/11x28 veya 13.6/12x28 ÖN 8.25X16 veya 280/70 R 18 veya 280/70 R 20 ARKA 380/70R24 veya 13.6 R 24 veya 13.6 R 28
TRAKTÖR MF 3.060 MM	F. Tractor	5000	2610	DİZEL	3	3300	65/2200	12/4	MF	ÖN 7.50X16 ARKA 14.9/ 13X28
TRAKTÖR MF 3.060 4X4 MM	F. Tractor	6900	2675	DİZEL	3	3300	65/2200	12/4	MF	ÖN 7.50X16 ARKA 14.9/ 13X28
TRAKTÖR MF 256 G	F. Tractor	5180	3050	DİZEL	3	3300	56/2200	12/4	MF	ÖN 11.2 R 20 ARKA 14.9/ 13X28
TRAKTÖR MF 256 G 4x4	F. Tractor	6345	3110	DİZEL	3	3300	56/2200	12/4	MF	ÖN 11.2 R 20 ARKA 14.9/ 13X28
TRAKTÖR MF 266 G	F. Tractor	5180	3090	DİZEL	3	3300	65/2200	12/4	MF	ÖN 7,50X16 ARKA 13-6/12X36 veya 14.9/13x30
TRAKTÖR MF 266 G 4WD	F. Tractor	6345	3236	DİZEL	3	3300	65/2200	12/4	MF	ÖN 9,50X24 ARKA 14.9/13X30 veya 12.4/11x36

TRAKTÖR MF 277 G	F. Tractor	5180	3115	DİZEL	3	3300	74/2200	12/4	MF	ÖN 7,50X16 ARKA 13-6/12X36 veya 16.9/14x30
TRAKTÖR MF 277 G 4x4	F. Tractor	6345	3330	DİZEL	3	3300	74/2200	12/4	MF	ÖN 12.4-24 ARKA 13.6/12X36 veya 16.9/14x30
TRAKTÖR MF 3075 D	F. Tractor	7711	3428	DİZEL	4	4040	75/2200	12/4	MF	ÖN 9.00X16 ARKA 18.4x30 - 16.9x30 / 13.6x38
TRAKTÖR MF 3075 D 4WD	F. Tractor	8500	3688	DİZEL	4	4040	75/2200	12/4	MF	ÖN 12.4x24 veya 11.2x24 veya 11.2x28 ARKA 18.4x30 veya 16.9x30 veya 13.6x38
TRAKTÖR MF 3085 D	F. Tractor	7711	3378	DİZEL	4	4040	85/2200	12/4	MF	ÖN 9,00X16 ARKA 16.9 R 34 veya 14.9 R 38
TRAKTÖR MF 3085 D 4WD	F. Tractor	8500	3888	DİZEL	4	4040	85/2200	12/4	MF	ÖN 13.6 R 24 veya 12.4x28 ARKA 16.9 R 34 veya 14.9 R 38
TRAKTÖR MF 3.095D	F. Tractor	7711	3631	DİZEL	4	4040	95/2200	12/4	MF	ÖN 10,00X16 ARKA 16.9-14X38
TRAKTÖR MF 3.095D 4WD	F. Tractor	8500	3951	DİZEL	4	4040	95/2200	12/4	MF	ÖN 13.6-12X28 ARKA 16.9/14X38
TRAKTÖR MF 3.105D 4WD	F. Tractor	8500	4135	DİZEL	4	4040	105/2200	12/4	MF	ÖN 13.6-12X38 ARKA 16.9-14X38 veya 18.4 R 38
TRAKTÖR MF 288 G	F. Tractor	5180	3130	DİZEL	3	3300	83/2200	12/4	MF	ÖN 7,50X16 ARKA 13-6/12X36 veya 18.4/15x30
TRAKTÖR MF 288 G 4x4	F. Tractor	6345	3340	DİZEL	3	3300	83/2200	12/4	MF	ÖN 12.4-24 veya 11.2-24 ARKA 13-6/12X36 veya 18.4/15x30
TRAKTÖR MF 3.070 4x4 MM	F. Tractor	5200	2650	DİZEL	3	3300	74/2200	12/4	MF	ÖN 8.25x16 veya 280/70 R 18 veya 280/70 R 20 ARKA 380/70R24 veya 13.6 R24 veya 13.6 R28

DİZEL = Diesel

BENZİN = Petrol

ÖN-ARKA = Front-Rear KAT = Ply

**OTOMOTİV SANAYİİ FİRMALARININ
2007 YILI ÜRETİM KAPASİTELERİ
Production Capacities 2007**

FİRMALAR Firms	OTOMOBİL P.Car	KAMYON Truck	KAMYONET Pick Up	OTOBÜS Bus	MİNİBÜS Mini-Bus	MİDİBÜS Midi-Bus	TRAKTÖR F. Tractor	TOPLAM Total
A. ISUZU	0	7.200	2.400	0	922	2.633	0	13.155
ASKAM	0	4.000	4.150	450	400	0	0	9.000
B.M.C.	0	10.000	5.000	800	5.000	1.000	0	21.800
FORD OTOSAN	0	15.000	215.000	0	65.000	0	0	295.000
HATTAT TARIM	0	0	0	0	0	0	12.500	12.500
HONDA TÜRKİYE	30.000	0	0	0	0	0	0	30.000
HYUNDAI ASSAN	100.000	0	15.000	0	10.000	0	0	125.000
KARSAN	0	0	15.000	0	5.000	5.000	0	25.000
M.A.N. TÜRKİYE	0	1.750	0	2.400	0	0	0	4.150
M. BENZ TÜRK	0	10.200	0	3.000	0	0	0	13.200
OTOKAR	0	0	3.600	0	2.100	2.100	0	7.800
OTOYOL	0	12.000	0	0	0	6.000	0	18.000
O. RENAULT	266.000	0	0	0	0	0	0	266.000
TEMSA	0	4.500	3.000	1.000	0	2.000	0	10.500
TOFAŞ	250.000	0	0	0	0	0	0	250.000
TOYOTA	150.000	0	0	0	0	0	0	150.000
T. TRAKTÖR	0	0	0	0	0	0	35.000	35.000
UZEL	0	0	0	0	0	0	25.000	25.000
TOPLAM/Total	796.000	64.650	263.150	7.650	88.422	18.733	72.500	1.311.105

OTOMOTİV SANAYİİ FİRMALARININ 2002 - 2006 YILLARI ÜRETİM ADETLERİ
Production Units For The Years 2002 - 2006

FİRMALAR/MODELLER	Firms/Models	2002	2003	2004	2005	2006
A.I.O.S.						
Kamyonet	Pick Up	924	1.128	1.692	1.788	2.398
Kamyon (A.Y.A. 3.501 - 12.000 KG)	Truck	1.340	1.685	2.313	2.709	3.055
Midibüs	Midibus	1.057	1.157	2.006	2.265	1.992
TOPLAM	Total	3.321	3.970	6.011	6.762	7.445
ASKAM						
Kamyon (A.Y.A. 3.501 - 12.000 KG)	Truck	122	304	15	0	0
Kamyon (A.Y.A. > 12.001 KG)	Truck	53	1.118	1.482	2.046	1.116
Kamyonet	Pick Up	51	347	366	380	185
Minibüs	Minibus	0	0	15	13	8
TOPLAM	Total	226	1.769	1.878	2.439	1.309
B.M.C.						
Kamyon (A.Y.A. 3.501 - 12.000 KG)	Truck	88	0	0	0	0
Kamyon (A.Y.A. > 12.001 KG)	Truck	2.360	4.797	7.078	6.431	6.628
Kamyonet	Pick Up	1.711	3.765	4.164	4.410	3.566
Kamyonet Van	Pick Up	90	5	0	0	0
Minibüs	Minibus	291	557	427	784	629
Midibüs	Midibus	132	245	286	188	291
Otobüs (Şehiriçi)	Bus	111	551	864	687	565
TOPLAM	Total	4.783	9.920	12.819	12.500	11.679

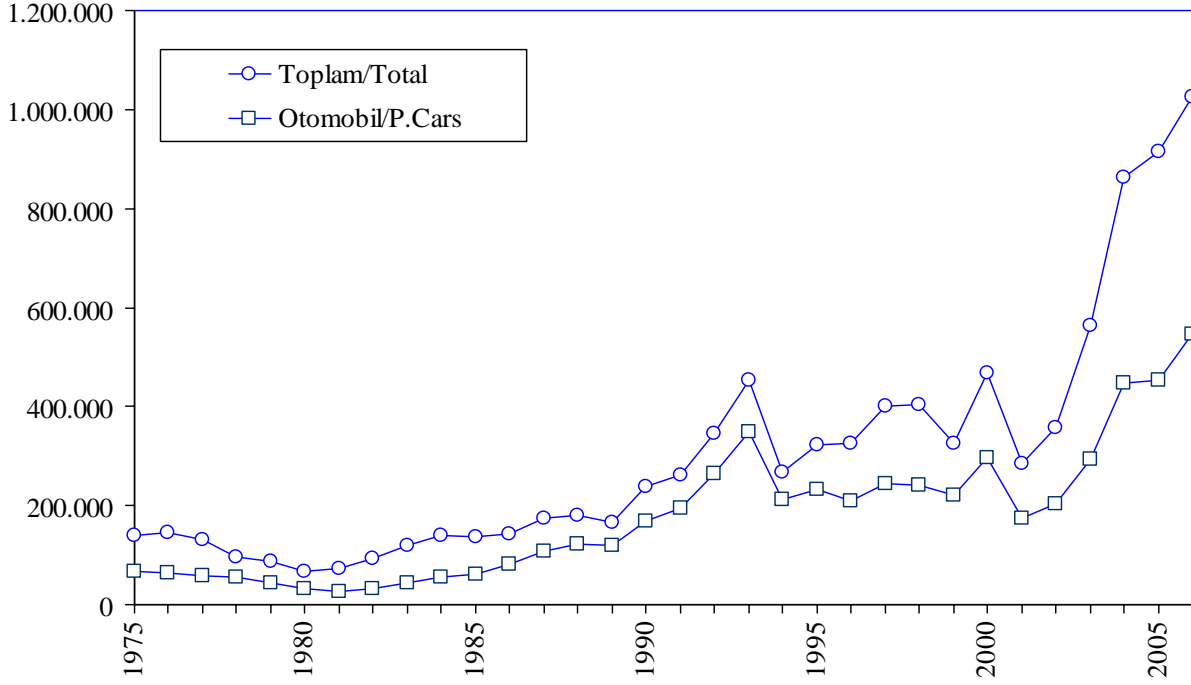
FİRMALAR/MODELLER	Firms/Models	2002	2003	2004	2005	2006
FORD OTOSAN						
Kamyon (A.Y.A. > 12.001 KG)	Truck	1.262	3.093	6.050	9.530	7.825
Minibüs	Minibus	4.431	7.046	19.271	20.795	16.721
Kamyonet	Pick Up	12.531	18.598	79.936	16.597	36.525
Kamyonet Van	Pick Up	30.341	85.778	101.503	196.501	197.055
TOPLAM	Total	48.565	114.515	206.760	243.423	258.126
HATTAT TARIM						
Traktör (< 60 HP)	F. Tractor	112	612	1.018	1.015	897
Traktör (> 61 HP)	F. Tractor	76	372	1.020	605	537
TOPLAM	Total	188	984	2.038	1.620	1.434
HONDA TÜRKİYE						
Otomobil (1.301 - 1.600 CC - SEDAN)	P. Car	5.384	10.970	15.581	11.236	18.322
TOPLAM	Total	5.384	10.970	15.581	11.236	18.322
HYUNDAI ASSAN						
Minibüs	Minibus	216	3.824	5.498	2.779	1.180
Kamyonet Van	Pick Up	2.703	17.949	22.965	25.839	17.365
Otomobil (< 1.300 CC - SEDAN)	P. Car	5.614	10.582	19.288	18.239	6
Otomobil (1.301 - 1.600 CC - SEDAN)	P. Car	2.787	3.375	9.989	13.163	42.344
TOPLAM	Total	11.320	35.730	57.740	60.020	60.895
KARSAN						
Minibüs	Minibus	325	870	1.264	1.177	1.735
Midibüs	Midibus	1.655	2.658	3.345	890	1.835
Kamyonet	Pick Up	5	635	5.013	7.038	5.550
Kamyonet Van	Pick Up	10.054	4.139	7.263	4.041	3.404
TOPLAM	Total	12.039	8.302	16.885	13.146	12.524

FİRMALAR/MODELLER	Firms/Models	2002	2003	2004	2005	2006
M.A.N. TÜRKİYE						
Kamyon (A.Y.A. > 12.001 KG)	Truck	989	822	690	421	150
Otobüs (Şehiriçi)	Bus	501	533	526	701	1.157
Otobüs (Şehirlerarası)	Bus	299	579	770	908	1.194
TOPLAM	Total	1.789	1.934	1.986	2.030	2.501
M. BENZ TÜRK						
Otobüs (Şehiriçi)	Bus	482	747	495	597	644
Otobüs (Şehirlerarası)	Bus	1.048	1.624	1.544	1.701	1.556
Kamyon (A.Y.A. 3.501 - 12.000 KG) (ÖZEL ARAÇ)	Truck	0	0	0	0	0
Kamyon (A.Y.A. 3.501 - 12.000 KG)	Truck	0	0	0	0	0
Kamyon (A.Y.A. > 12.001 KG)	Truck	2.915	4.368	9.647	11.618	13.009
TOPLAM	Total	4.445	6.739	11.686	13.916	15.209
OTOKAR						
Midibüs	Midibus	70	613	1.108	793	935
Minibüs	Minibus	762	1.237	1.415	595	455
Kamyonet	Pick Up	694	664	722	1.202	1.385
TOPLAM	Total	1.526	2.514	3.245	2.590	2.775
OTOYOL						
Kamyon (A.Y.A. 3.501 - 12.000 KG)	Truck	1.809	1.711	1.792	1.591	1.092
Kamyon (A.Y.A. > 12.001 KG)	Truck	85	60	14	1	1.103
Kamyonet	Pick Up	323	607	495	191	61
Minibüs	Midibus	114	91	271	19	0
Midibüs	Midibus	1.329	1.912	2.151	1.832	1.909
TOPLAM	Total	3.660	4.381	4.723	3.634	4.165

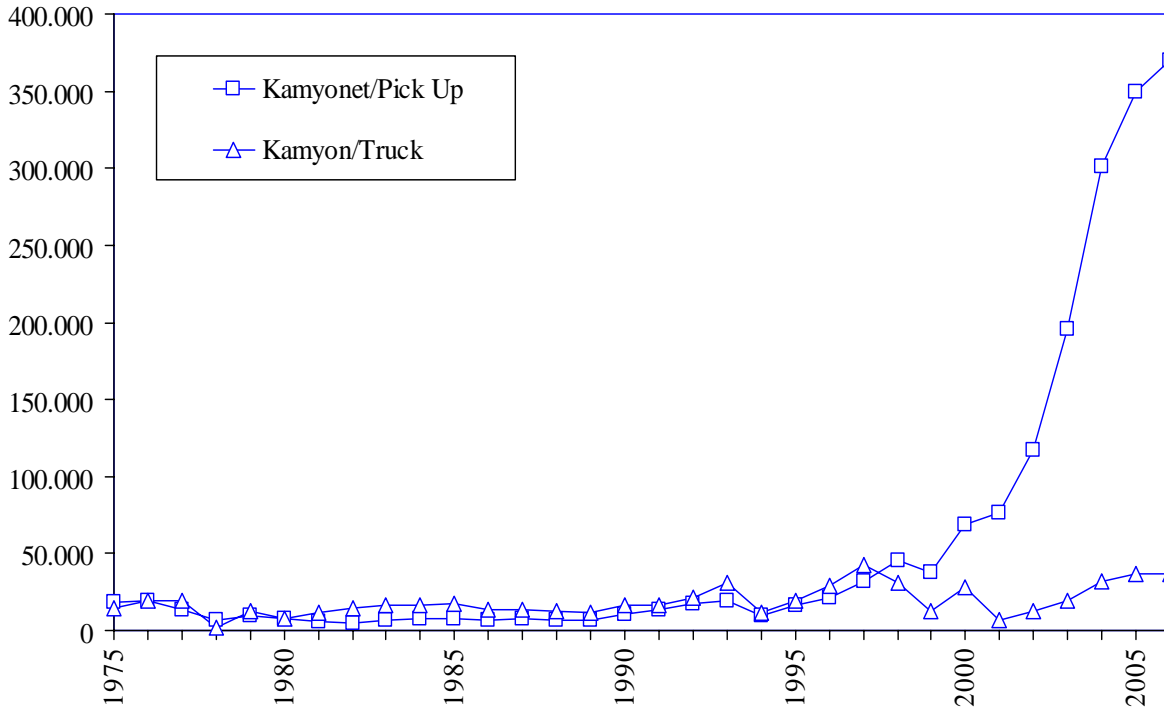
FİRMALAR/MODELLER	Firms/Models	2002	2003	2004	2005	2006
OYAK-RENAULT						
Otomobil (< 1.300 CC - SEDAN)	P. Car	0	0	5.002	4.501	36.354
Otomobil (1.301 - 1.600 CC - SEDAN)	P. Car	61.758	98.481	182.769	116.897	179.568
Otomobil (1.301 - 1.600 CC - HATCHBACK)	P. Car	0	0	0	0	0
Otomobil (1.301 - 1.600 CC - STATION WAGON)	P. Car	18.135	7.492	0	0	0
Otomobil (1.601 - 2.000 CC - SEDAN)	P. Car	1.528	19.552	9.582	58.271	12.671
Otomobil (1.601 - 2.000 CC - STATION WAGON)	P. Car	18.710	6.732	0	0	0
TOPLAM	Total	100.131	132.257	197.353	179.669	228.593
TEMSA						
Otobüs (Şehiriçi)	Bus	243	456	640	812	903
Kamyon (A.Y.A. 3.501 - 12.000 KG)	Truck	1.272	1.083	2.709	2.880	3.048
Kamyonet	Pick Up	492	816	1.960	3.328	3.663
Midibüs	Midibus	134	209	1.007	1.141	1.301
TOPLAM	Total	2.141	2.564	6.316	8.161	8.915
TOFAŞ						
Otomobil (< 1.300 CC - SEDAN)	P. Car	12.417	23.781	17.283	23.561	14.321
Otomobil (< 1.300 CC - HATCHBACK)	P. Car	3.892	6.557	11.641	9.856	2.988
Otomobil (< 1.300 CC - STATION WAGON)	P. Car	3.230	2.231	10.808	11.005	15.237
Otomobil (1.301 - 1.600 CC - SEDAN)	P. Car	2.187	7.746	12.378	10.859	21.171
Otomobil (1.301 - 1.600 CC - HATCHBACK)	P. Car	196	33	28	246	736
Otomobil (1.301 - 1.600 CC - STATION WAGON)	P. Car	4.813	3.824	3.056	4.238	14.474
Otomobil (1.601 - 2.000 CC - SEDAN)	P. Car	1	0	0	0	0
Otomobil (1.601 - 2.000 CC - STATION WAGON)	P. Car	24.647	21.921	15.370	13.025	10.802
Kamyonet Van	Pick Up	56.953	61.175	75.484	88.570	98.705
TOPLAM	Total	108.336	127.268	146.048	161.360	178.434
TOYOTA						
Otomobil (1.301 - 1.600 CC - SEDAN)	P. Car	28.982	39.591	38.648	48.085	63.191
Otomobil (1.301 - 1.600 CC - STATION WAGON)	P. Car	6.400	22.086	22.348	22.524	28.120
Otomobil (1.601 - 2.000 CC - SEDAN)	P. Car	1.433	2.048	68.684	85.181	83.313
Otomobil (1.601 - 2.000 CC - STATION WAGON)	P. Car	2.084	7.114	4.697	2.776	2.064
TOPLAM	Total	38.899	70.839	134.377	158.566	176.688

FİRMALAR/MODELLER	Firms/Models	2002	2003	2004	2005	2006
TÜMOSAN						
Traktör (< 60 HP)	F. Tractor	0	24	1	0	0
Traktör (> 61 HP)	F. Tractor	190	362	183	0	0
TOPLAM	Total	190	386	184	0	0
TÜRK TRAKTÖR						
Traktör (< 60 HP)	F. Tractor	1.942	7.643	11.506	11.558	11.624
Traktör (> 61 HP)	F. Tractor	1.804	9.666	9.466	6.312	5.633
TOPLAM	Total	3.746	17.309	20.972	17.870	17.257
T.Z.D.K.						
Traktör (> 61 HP)	F. Tractor	220	0	0	0	0
TOPLAM	Total	220	0	0	0	0
UZEL						
Traktör (< 60 HP)	F. Tractor	3.739	7.429	9.606	9.020	10.219
Traktör (> 61 HP)	F. Tractor	2.757	3.670	7.865	8.017	9.931
TOPLAM	Total	6.496	11.099	17.471	17.037	20.150
GENEL TOPLAM	Grand Total	357.405	563.450	864.073	915.979	1.026.421

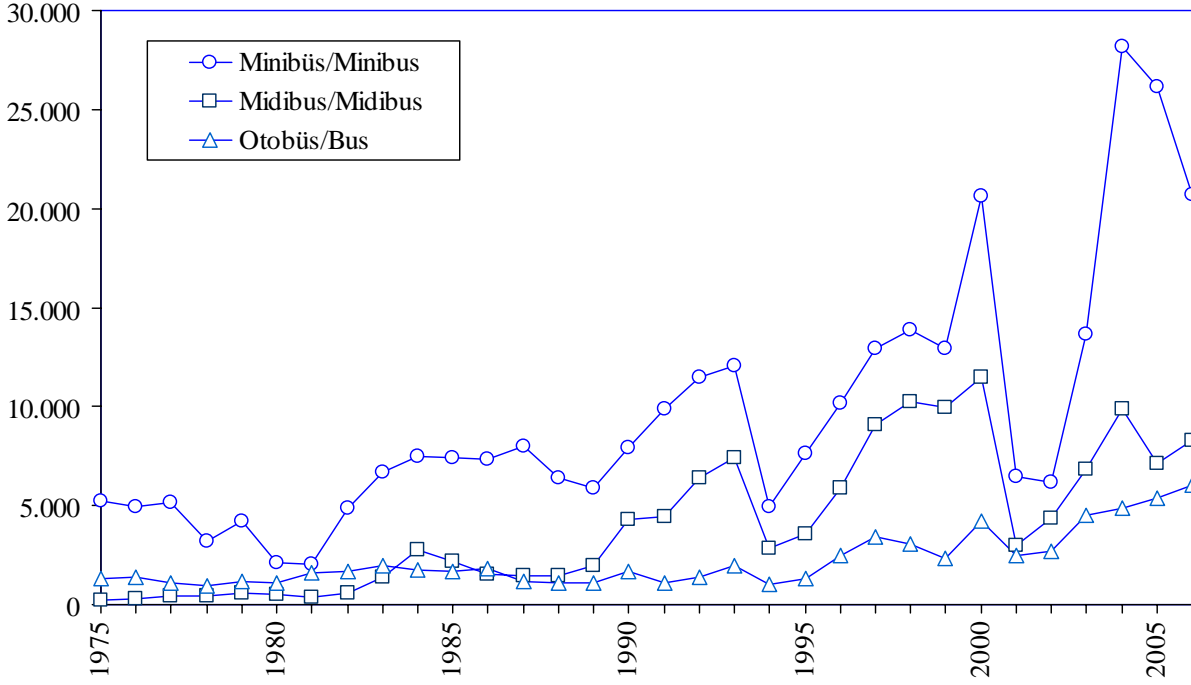
Otomobil /Toplam Üretim P.Cars /Total Production



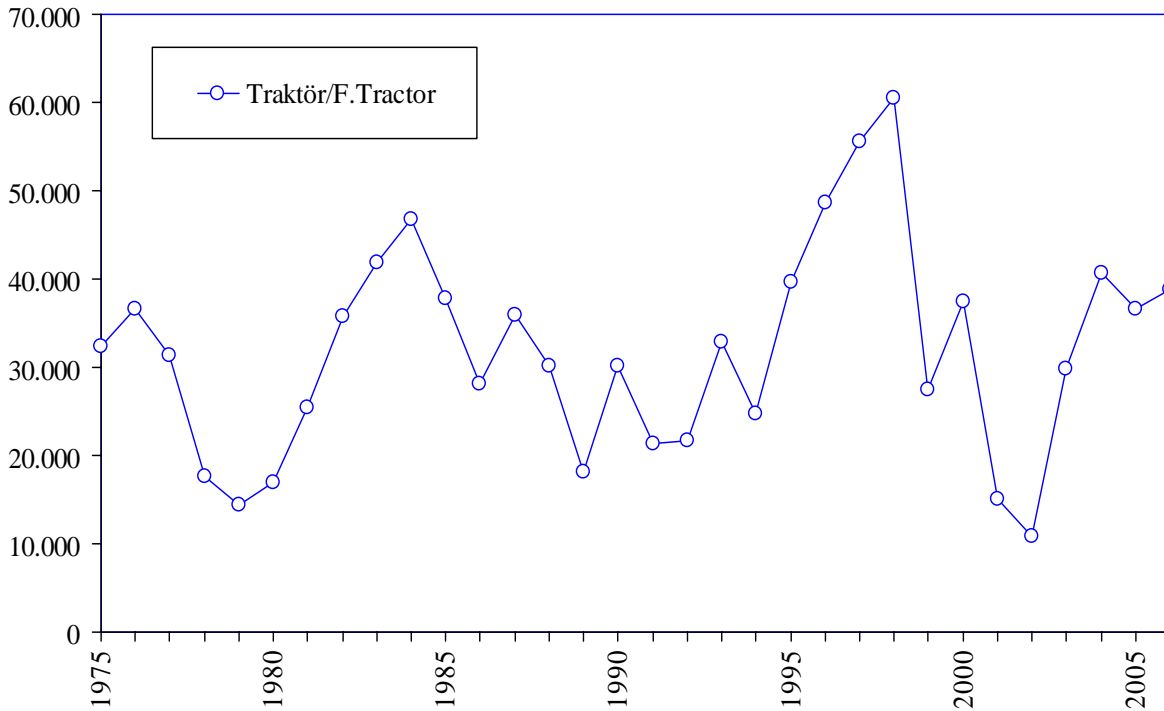
Yük Taşıt Araçları Üretimi Truck and Pick Up Production



Yolcu Taşıt Araçları Üretimi Bus Production



Traktör Üretimi F.Tractor Production

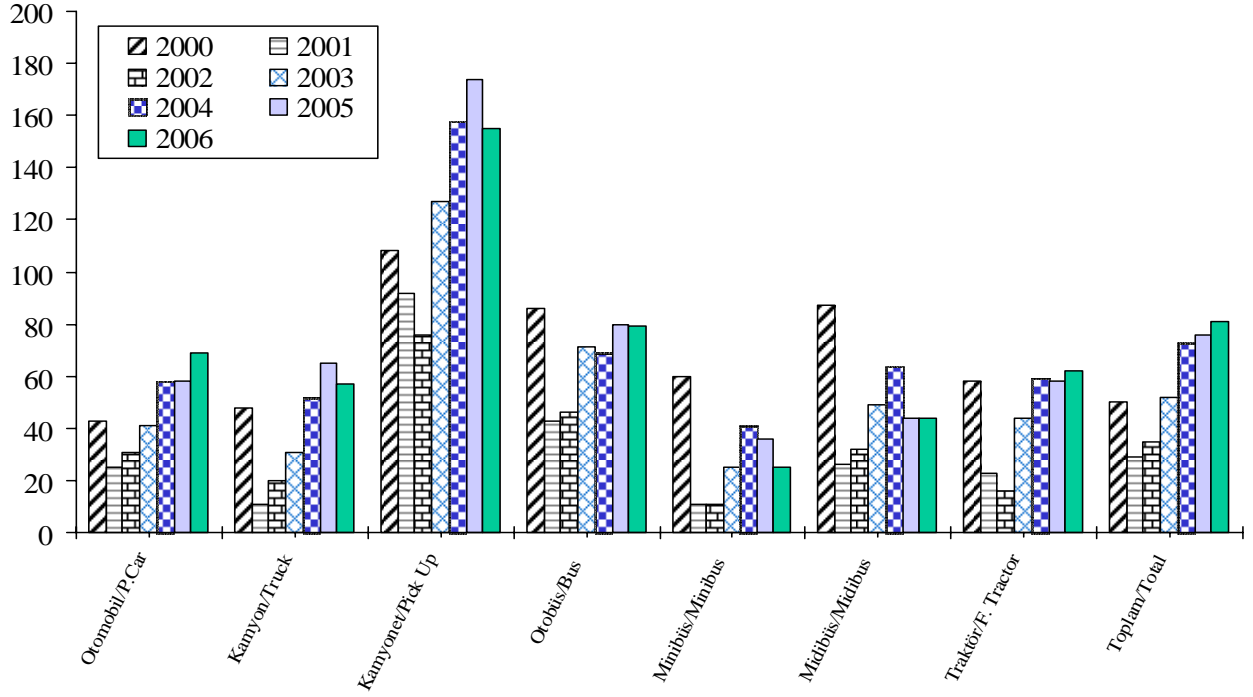


OTOMOTİV SANAYİİ FİRMALARININ ÜRETİM ADETLERİ
The Production Units Of The Automotive Manufacturers

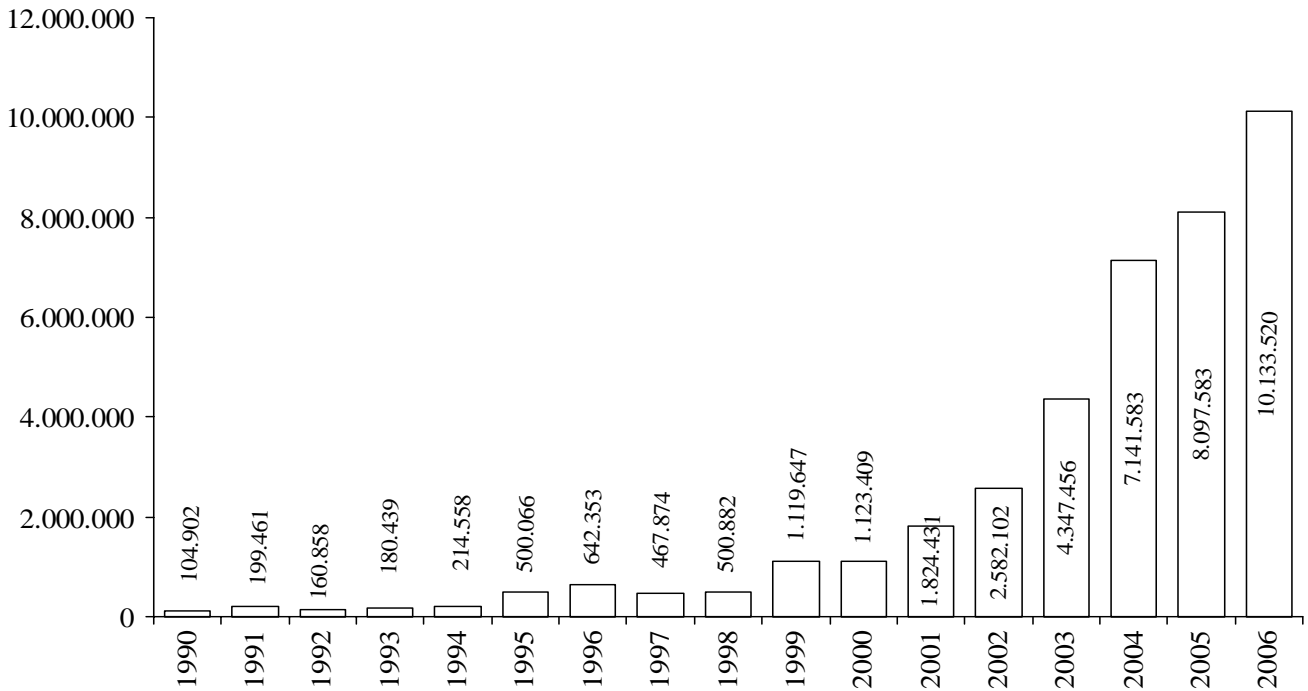
ARALIK SONU
 By The end of
 December

YILLAR Years	OTOMOBİL P.Car	KAMYON Truck	KAMYONET Pick-Up	OTOBÜS Bus	MINİBÜS Minibus	MİDİBÜS Midibus	TRAKTÖR F.Tractor	TOPLAM Total
1963	30	999	1.458	12	631	0	7.982	11.112
1964	100	2.741	885	56	401	0	7.006	11.189
1965	60	2.350	300	122	1.199	0	6.419	10.450
1966	18	6.258	2.476	174	0	252	8.969	18.147
1967	1.760	7.816	2.736	325	622	0	13.976	27.235
1968	2.852	9.408	2.270	466	895	0	15.118	31.009
1969	3.902	10.859	3.030	882	1.095	84	13.412	33.264
1970	3.660	6.041	4.395	806	1.099	4	7.518	23.523
1971	12.888	4.747	4.508	608	1.891	30	15.687	40.359
1972	29.628	8.596	6.044	988	3.748	0	22.893	71.897
1973	46.855	11.723	8.674	1.267	4.533	22	32.585	105.659
1974	59.906	10.591	11.861	1.113	4.584	148	25.363	113.566
1975	67.291	14.670	18.489	1.284	5.222	239	32.365	139.560
1976	62.992	20.498	19.415	1.376	4.910	302	36.602	146.095
1977	58.245	20.700	14.016	1.077	5.152	467	31.380	131.037
1978	54.085	13.144	6.879	972	3.163	444	17.673	96.360
1979	43.808	13.367	9.384	1.151	4.222	547	14.484	86.963
1980	31.529	8.308	7.322	1.101	2.130	491	16.936	67.817
1981	25.306	12.486	5.454	1.584	2.040	378	25.358	72.606
1982	31.195	15.131	4.991	1.703	4.850	587	35.716	94.173
1983	42.509	17.514	6.822	1.964	6.712	1.382	41.799	118.702
1984	54.832	17.518	7.279	1.766	7.460	2.750	46.782	138.387
1985	60.353	18.162	7.888	1.637	7.397	2.191	37.830	135.458
1986	82.032	13.646	6.605	1.813	7.318	1.508	28.053	140.975
1987	107.185	13.545	7.580	1.137	8.026	1.434	35.986	174.893
1988	120.796	12.842	7.196	1.078	6.401	1.449	30.167	179.929
1989	118.314	11.763	7.250	1.069	5.898	1.984	18.077	164.355
1990	167.556	16.933	10.553	1.689	7.898	4.288	30.098	239.015
1991	195.574	16.918	13.541	1.075	9.912	4.401	21.381	262.802
1992	265.245	21.266	16.984	1.415	11.450	6.399	21.723	344.482
1993	348.095	31.343	19.766	1.933	12.084	7.435	32.809	453.465
1994	212.651	12.108	9.602	1.034	4.924	2.855	25.169	268.343
1995	233.412	19.759	16.808	1.279	7.645	3.537	44.068	326.508
1996	207.757	29.432	21.032	2.499	10.171	5.856	52.590	329.337
1997	242.780	43.693	32.435	3.449	12.935	9.060	55.565	399.917
1998	239.937	31.823	45.517	3.040	13.910	10.275	60.500	405.002
1999	222.041	13.096	37.551	2.327	12.894	9.953	27.435	325.297
2000	297.476	28.348	68.807	4.213	20.597	11.506	37.434	468.381
2001	175.343	6.683	76.672	2.501	6.486	3.000	15.052	285.737
2002	204.198	12.295	116.872	2.684	6.139	4.377	10.840	357.405
2003	294.116	19.041	195.606	4.490	13.625	6.794	29.778	563.450
2004	447.152	31.790	301.563	4.839	28.161	9.903	40.665	864.073
2005	453.663	37.227	349.885	5.406	26.162	7.109	36.527	915.979
2006	545.682	37.026	369.862	6.019	20.728	8.263	38.841	1.026.421

Kapasite Kullanımı (%) Capacity Usage (%)



OSD Üyeleri İhracat (US Dollars) (Bin/Thousand) OSD Members Exports



YILLAR İTİBARIYLA ÜRETİM ADETLERİ VE KAPASİTE KULLANIMI
Production Units And Capacity Usage By Years

ARALIK SONU/By the end of December

TİPLER / Types	1997	1998	1999	2000	2001	2002	2003	2004	2005	2006
OTOMOBİL / P.Car	242.780	239.937	222.041	297.476	175.343	204.198	294.116	447.152	453.663	545.682
KAMYON / Truck	43.693	31.823	13.096	28.348	6.683	12.295	19.041	31.790	37.227	37.026
KAMYONET / Pick-Up	32.435	45.517	37.551	68.807	76.672	116.872	195.606	301.563	349.885	369.862
OTOBÜS / Bus	3.449	3.040	2.327	4.213	2.501	2.684	4.490	4.839	5.406	6.019
MİNİBÜS / Minibus	12.935	13.910	12.894	20.597	6.486	6.139	13.625	28.161	26.162	20.728
MİDİBÜS / Midibus	9.060	10.275	9.953	11.506	3.000	4.377	6.794	9.903	7.109	8.263
TRAKTÖR / F.Tractor	55.565	60.500	27.435	37.434	15.052	10.840	29.778	40.665	36.527	38.841
TOPLAM / Total	399.917	405.002	325.297	468.381	285.737	357.405	563.450	864.073	915.979	1.026.421

NOT: EN YÜKSEK ÜRETİM ADETLERİ [] İÇİNE ALINMIŞTIR.

Note: The highest production volumes are shown in []

KAPASİTE KULLANIMI
Capacity Usage

% 49	% 49	50%	36%	29%	35%	52%	73%	76%	81%
------	------	-----	-----	-----	-----	-----	-----	-----	-----

OTOMOTİV SANAYİİ FİRMALARININ İHRACATLARI
Automotive Industry Exports

ARALIK SONU/By the end of December

TİPLER / Types	YILLAR / Years									
	2002	2003		2004		2005		2006		
	ADET Units	DEĞER \$ Value	ADET Units	DEĞER \$ Value	ADET Units	DEĞER \$ Value	ADET Units	DEĞER \$ Value	ADET Units	DEĞER \$ Value
OTOMOBİL / P. Car	169.944	1.299.716.880	215.317	2.070.548.508	305.072	3.763.058.705	319.849	4.098.450.643	430.528	5.471.999.318
KAMYON / Truck	1.723	43.589.685	1.656	52.566.132	2.530	104.124.950	5.059	265.908.938	4.012	236.167.822
KAMYONET / Pick Up	80.222	686.696.522	123.125	1.298.921.254	190.358	2.278.970.894	219.067	2.638.935.232	251.911	3.113.245.220
OTOBÜS / Bus	2.253	282.686.896	3.218	473.389.429	2.933	467.852.005	3.791	568.072.883	4.122	673.747.640
MİNİBÜS / Minibus	653	7.789.943	4.085	50.706.412	5.521	71.953.668	3.733	57.189.589	4.208	75.387.559
MİDİBÜS / Midibus	2.740	46.788.529	1.479	35.596.341	1.939	72.152.794	1.935	85.037.627	1.918	109.027.648
TRAKTÖR / F. Tractor	4.157	36.179.422	12.070	151.257.308	10.178	144.384.771	8.244	122.154.910	9.710	145.034.002
YEDEK PARÇA / Miscellaneous Parts		178.654.341		214.470.147		239.085.076		261.833.548		308.910.352
TOPLAM / Total	261.692	2.582.102.218	360.950	4.347.455.531	518.531	7.141.582.863	561.678	8.097.583.370	706.409	10.133.519.561

YURTIÇİ TEŞVİKLİ SATIŞLARI HARİÇTİR / Excluding Local Incentive Sales

OTOMOTİV SANAYİİ FİRMALARININ İHRACATLARI
Automotive Industry Exports

(A) Complete Vehicle, (B) Miscellaneous Parts

ARALIK SONU/By the end of December

FİRMALAR/Firms	YILLAR/Years									
	2002		2003		2004		2005		2006	
	ADET Units	DEĞER \$ Value \$	ADET Units	DEĞER \$ Value \$	ADET Units	DEĞER \$ Value \$	ADET Units	DEĞER \$ Value \$	ADET Units	DEĞER \$ Value \$
A.I.O.S.										
Komple Araç (A)	770	19.760.355	565	18.325.435	1.074	45.742.811	767	41.550.164	711	39.671.605
Muhtelif Parça (B)	0	2.554.390	0	2.559.134	0	2.506.614	0	1.746.892	0	2.470.922
ASKAM										
Komple Araç (A)	126	1.749.879	44	1.361.735	40	953.785	16	622.476	30	1.559.737
Muhtelif Parça (B)	0	231.934	0	176.741	0	309.406	0	259.028	0	77.341
B.M.C.										
Komple Araç (A)	301	9.447.401	463	21.090.662	882	51.901.952	1.146	75.559.210	712	64.038.157
Muhtelif Parça (B)	0	914.634	0	1.488.414	0	1.299.910	0	3.108.868	0	4.633.147
FORD OTOSAN										
Komple Araç (A)	30.639	327.647.107	74.887	864.683.301	139.210	1.774.729.662	162.910	2.046.322.255	184.748	2.418.455.711
Muhtelif Parça (B)	0	6.697.028	0	12.741.639	0	15.730.655	0	29.062.374	0	35.652.360
HATTAT TARIM										
Komple Araç (A)	0	0	0	0	10	86.726	4	56.759	0	0
Muhtelif Parça (B)	0	0	0	0	0	0	0	0	0	86.000
HONDA TÜRKİYE										
Komple Araç (A)	2.057	19.940.000	5.875	57.737.000	5.910	67.800.166	3.011	39.716.210	5.692	85.599.561
Muhtelif Parça (B)	0	187.439	0	133.150	0	257.696	0	285.729	0	549.189
HYUNDAI ASSAN										
Komple Araç (A)	5.892	35.625.961	17.884	168.999.544	23.370	223.659.000	20.654	209.903.103	34.630	356.265.291
Muhtelif Parça (B)	0	0	0	249.339	0	186.398	0	472.422	0	3.646.518
KARSAN										
Komple Araç (A)	5.936	40.674.299	411	4.998.866	513	6.709.955	366	5.055.200	244	3.613.190
Muhtelif Parça (B)	0	2.249.385	0	1.629.909	0	589.641	0	1.733.884	0	452.083
M.A.N. TÜRKİYE										
Komple Araç (A)	740	91.830.283	999	161.045.280	1.024	163.445.205	1.310	186.971.735	1.874	290.309.748
Muhtelif Parça (B)	0	2.091.009	0	9.784.152	0	16.072.888	0	13.468.609	0	14.187.720

M. BENZ TÜRK

Komple Araç (A)	1.756	179.003.466	2.414	280.530.613	2.377	268.394.757	5.045	448.305.185	3.903	393.075.744
Muhtelif Parça (B)	0	7.839.111	0	10.959.564	0	14.844.509	0	8.499.269	0	14.310.082

OTOKAR

Komple Araç (A)	592	20.510.710	530	22.190.407	494	20.324.387	1.148	70.722.337	1.276	101.903.326
Muhtelif Parça (B)	0	798.938	0	3.299.001	0	3.337.242	0	7.322.154	0	10.587.249

OTOYOL

Komple Araç (A)	1.230	20.433.876	939	13.332.320	788	14.496.029	851	18.317.367	825	22.789.212
Muhtelif Parça (B)	0	4.846.764	0	6.586.803	0	8.232.580	0	4.043.139	0	1.058.244

OYAK-RENAULT

Komple Araç (A)	87.086	642.121.955	97.794	952.891.844	130.903	1.431.798.201	123.162	1.332.866.179	177.411	2.060.598.794
Muhtelif Parça (B)	0	46.445.850	0	63.010.703	0	70.787.913	0	89.734.959	0	115.909.259

TEMSA

Komple Araç (A)	500	37.814.314	517	58.041.310	664	88.668.962	970	127.743.966	1.103	161.599.587
Muhtelif Parça (B)	0	493.362	0	975.300	0	1.366.773	0	2.264.703	0	3.177.885

TOYOTA

Komple Araç (A)	33.087	295.122.650	62.964	675.108.777	118.629	1.851.444.941	144.058	2.308.325.619	160.479	2.510.897.080
Muhtelif Parça (B)	0	404.275	0	1.191.857	0	4.442.019	0	8.595.965	0	13.132.160

TOFAŞ

Komple Araç (A)	86.823	625.586.199	82.594	681.390.982	82.475	748.043.203	88.020	801.613.906	123.061	1.169.198.464
Muhtelif Parça (B)	0	85.481.819	0	86.391.533	0	73.653.165	0	55.714.803	0	48.529.358

TÜRK TRAKTÖR

Komple Araç (A)	604	7.011.185	9.113	127.832.975	6.693	105.656.960	5.124	86.178.583	4.597	81.231.815
Muhtelif Parça (B)	0	13.074.852	0	5.612.102	0	16.825.740	0	26.325.137	0	33.729.264

UZEL

Komple Araç (A)	3.553	29.168.237	2.957	23.424.333	3.475	38.641.085	3.116	35.919.568	5.113	63.802.187
Muhtelif Parça (B)	0	4.343.551	0	7.680.806	0	8.641.927	0	9.195.613	0	6.721.571

261.692	2.403.447.877	360.950	4.132.985.384	518.531	6.902.497.787	561.678	7.835.749.822	706.409	9.824.609.209
0	178.654.341	0	214.470.147	0	239.085.076	0	261.833.548	0	308.910.352

TOPLAM/Total

261.692	2.582.102.218	360.950	4.347.455.531	518.531	7.141.582.863	561.678	8.097.583.370	706.409	10.133.519.561
----------------	----------------------	----------------	----------------------	----------------	----------------------	----------------	----------------------	----------------	-----------------------

YURTIÇİ TEŞVİKLİ SATIŞLARI HARİÇTİR / Excluding Local Incentive Sales

OTOMOBİL İTHALATI / Passenger Car Imports

BÖLGE / ÜLKE Region / Country	2002		2003		2004		2005		2006	
	Adet / Unit	%	Adet / Unit	%	Adet / Unit	%	Adet / Unit	%	Adet / Unit	%
AT + EFTA / EU + EFTA	54.583	90,5	136.228	88,5	261.263	83,8	237.905	78,8	200.446	78,5
DOĞU AVRUPA / East Europe	2.074	3,4	8.707	5,7	15.395	4,9	20.106	6,7	14.022	5,5
* RUSYA FED. / Russian Fed.	246	0,4	2.701	1,8	4.002	1,3	3.562	1,2	1.441	0,6
* ROMANYA / Romania	26	0,0	1.190	0,8	4.088	1,3	8.464	2,8	7.355	2,9
* ÇEK CUM. / Czech Republic	1.802	3,0	4.816	3,1	7.305	2,3	8.080	2,7	5.226	2,0
UZAK DOĞU / Far East	3.626	6,0	9.072	5,9	35.010	11,2	43.878	14,5	41.026	16,1
* JAPONYA / Japan	1.472	2,4	4.163	2,7	8.289	2,7	8.448	2,8	8.891	3,5
* G. KORE / S. Korea	2.154	3,6	4.909	3,2	26.721	8,6	33.184	11,0	29.769	11,7
* DİĞER / Others	0	0,0	0	0,0	0	0,0	2.246	0,7	2.366	0,9
TOPLAM/Total	60.283	100,0	154.007	100,0	311.668	100,0	301.889	100,0	255.494	100,0

Kaynak: Otomotiv Distribütörleri Derneği

Source: Association of Automotive Distributors

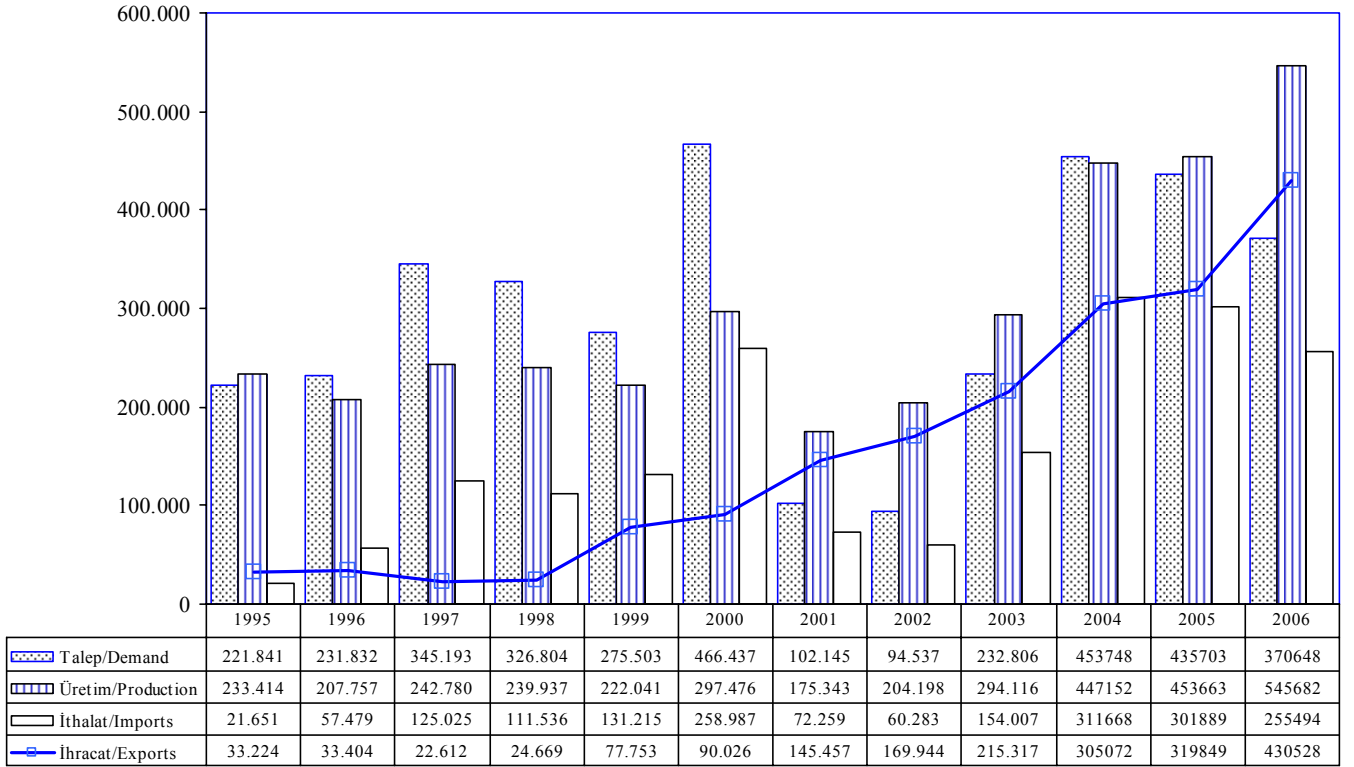
HAFİF TİCARİ ARAÇ İTHALATI / Light Commercial Vehicle Imports

BÖLGE / ÜLKE Region / Country	2002		2003		2004		2005		2006	
	Adet / Unit	%	Adet / Unit	%	Adet / Unit	%	Adet / Unit	%	Adet / Unit	%
AT + EFTA / EU + EFTA	15.740	26,1	43.961	28,5	81.580	26,2	90.209	29,9	81.179	31,8
DOĞU AVRUPA / East Europe	13	0,0	653	0,4	1.252	0,4	335	0,1	1.502	0,6
* RUSYA FED. / Russian Fed.	0	0,0	0	0,0	0	0,0	0	0,0	1.341	0,5
* ROMANYA / Romania	13	0,0	653	0,4	1.252	0,4	241	0,1	1	0,0
* ÇEK CUM. / Czech Republic	0	0,0	0	0,0	0	0,0	94	0,0	160	0,1
UZAK DOĞU / Far East	8.279	13,7	14.844	9,6	28.074	9,0	33.841	11,2	32.877	12,9
* JAPONYA / Japan	4.473	7,4	6.575	4,3	9.915	3,2	11.908	3,9	11.197	4,4
* G. KORE / S. Korea	2.217	3,7	6.595	4,3	14.348	4,6	16.247	5,4	15.769	6,2
* DİĞER / Others	1.589	2,6	1.674	1,1	3.811	1,2	5.686	1,9	5.911	2,3
TOPLAM/Total	24.032	39,9	59.458	38,6	110.906	35,6	124.385	41,2	115.558	45,2

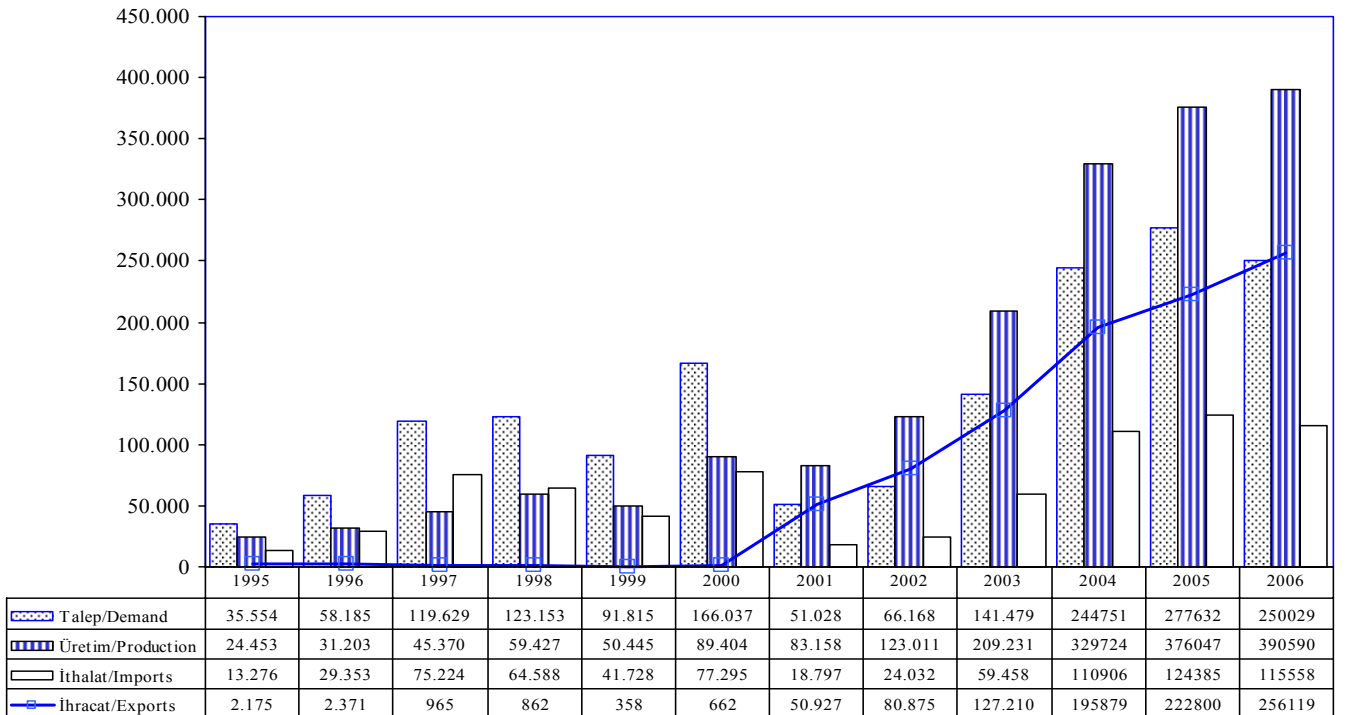
Kaynak: Otomotiv Distribütörleri Derneği

Source: Association of Automotive Distributors

Otomobil Üretim/İthalat/İhracat P.Cars Production/Imports/Exports



Hafif Ticari Araçlar Üretim/İthalat/İhracat Light Commercial Vehicles Production/Imports/Exports



OTOMOTİV SANAYİİ FİRMALARININ CİROLARI (YTL)
Automotive Industry Sales (YTL)

ARALIK SONU / By the end of December

FİRMALAR / Firms	2001	2002	2003	2004	2005	2006
A.I.O.S.	49.773.982	103.245.145	163.124.590	259.920.867	312.689.366	289.926.445
ASKAM	17.560.702	4.126.022	71.460.203	146.502.459	171.190.532	113.196.985
B.M.C.	84.365.000	187.000.000	444.000.000	682.588.584	743.260.611	972.705.273
FORD OTOSAN	252.661.804	895.809.862	2.454.370.022	4.338.319.163	5.362.980.155	5.745.249.354
HATTAT TARIM	0	1.862.910	17.650.406	45.570.101	47.477.877	58.550.417
HONDA TÜRKİYE	58.999.686	88.790.000	173.216.434	277.111.595	216.275.865	363.123.004
HYUNDAI ASSAN	74.470.821	129.178.833	481.244.222	924.059.362	771.211.501	477.248.859
KARSAN	76.563.551	148.268.080	156.060.426	360.676.553	227.413.220	277.695.276
M.A.N.TÜRKİYE	150.658.903	271.698.788	367.382.223	444.649.273	389.634.360	520.594.413
M. BENZ TÜRK	340.961.442	880.990.362	1.331.008.508	1.382.188.640	2.137.058.933	1.678.247.277
OTOKAR	74.092.617	109.871.979	196.752.673	289.746.902	262.742.003	302.520.049
OTOYOL	66.476.952	120.808.941	149.549.776	221.168.135	170.854.222	198.153.285
O. RENAULT	931.584.573	1.240.981.075	2.076.941.420	3.129.144.523	2.911.584.533	4.035.798.791
TEMSA	38.452.665	101.130.866	177.973.363	365.108.261	473.466.085	516.181.039
TOFAŞ	980.064.746	1.254.122.847	1.655.056.720	1.997.641.365	2.587.831.847	3.139.899.753
TOYOTA	22.163.604	560.335.399	1.136.336.587	2.971.458.991	3.325.743.699	3.917.716.081
T. TRAKTÖR	60.785.332	93.301.229	388.507.833	534.845.813	485.859.576	320.445.556
UZEL	76.065.000	90.964.446	270.381.360	471.370.912	400.158.165	471.527.685
TOPLAM /Total	3.355.701.380	6.282.486.784	11.711.016.766	18.842.071.499	20.997.432.550	23.398.779.542

OTOMOTİV SANAYİİ FİRMALARININ HAMMADDEYE VE YAN SANAYİYE ÖDEMELERİ (YTL) - 2006
Payments For Raw Material And Components (YTL) - 2006

ARALIK SONU / By the end of December

FİRMALAR <u>Firms</u>	FABRİKAYA ALINAN HAMMADDEYE ÖDENEN MEBLAĞ (K.D.V. HARİÇ) Payment for raw materials <u>(Excl. V.A.T.)</u>	YAN SANAYİYE ÖDENEN MEBLAĞ (K.D.V. HARİÇ) Payment for components <u>manufacturers (Excl. V.A.T.)</u>	TOPLAM <u>Total</u>
A.I.O.S.	232.888.597,39	12.257.294,60	245.145.891,99
ASKAM	2.009.332,03	67.293.638,26	69.302.970,29
B.M.C.	28.779.897,00	502.954.183,00	531.734.080,00
FORD OTOSAN	3.747.348.312,00	2.286.668.807,00	6.034.017.119,00
HATTAT TARIM		15.533.364,00	15.533.364,00
HONDA TÜRKİYE		28.968.010,00	28.968.010,00
HYUNDAI ASSAN		828.680.728,00	828.680.728,00
KARSAN		268.390.563,00	268.390.563,00
M.A.N. TÜRKİYE	760.994.693,02	96.057.779,84	857.052.472,86
M. BENZ TÜRK	1.300.285.827,00	124.130.707,55	1.424.416.534,55
OTOKAR	194.705.498,00	172.586.213,00	367.291.711,00
OTOYOL	7.239.067,00	134.390.039,00	141.629.106,00
OYAK RENAULT		1.408.287.000,80	1.408.287.000,80
TEMSA	251.591.602,00	149.733.213,00	401.324.815,00
TOFAŞ	2.142.334.286,00	68.696.661,00	2.211.030.947,00
TOYOTA	124.091.803,89	4.289.485.517,06	4.413.577.320,95
TÜRK TRAKTÖR	58.679.448,75	264.734.943,43	323.414.392,18
UZEL	336.523.611,00	5.395.957,00	341.919.568,00
TOPLAM / Total			19.911.716.594,62

OTOMOTİV SANAYİİ FİRMALARININ ÖDEDİKLERİ VERGİLER VE ÜCRETLER (YTL) - 2006
Taxes, Wages and Salaries Paid by Automotive Manufacturers (YTL) - 2006

VERGİ VE ÖDEMELER / Taxes and Payments	<u>A.I.O.S.</u>	<u>ASKAM</u>	<u>B.M.C.</u>	<u>FORD OTOSAN</u>	<u>HATTAT TARIM</u>
NET ÜCRET VE İKRAMİYELER Net wages, salaries and bonuses	17.337.824,30	9.450.660,71	48.469.789,91	132.213.674,15	2.291.383,91
GELİR VERGİSİ Income tax	3.412.691,49	2.802.536,38	10.436.952,86	39.441.911,00	628.253,57
SOSYAL SİGORTA PRİMİ İŞÇİ VE İŞVEREN Social insurance premium paid by employee and employers	6.503.110,21	4.004.709,97	20.821.560,00	61.230.799,00	889.491,67
DAMGA VERGİSİ Stamp duty	136.974,91	84.350,89	381.985,00	1.258.876,00	19.891,86
DİĞER KESİNTİLER Other taxes	128.263,42	143.556,47	0,00	14.413.087,72	69.925,97
İSTİH. EDİLEN. ÖDEME. VE VERGİ. TOPLAMI Total production and tax payment	27.518.864,33	16.485.814,42	80.110.287,77	248.558.347,87	3.898.946,98
İTH. ÖDE. TOP. VERGİ VE RESİM. (K.D.V. HARIÇ) Total import taxes and duties (Excl. V.A.T.)	7.001.469,46	55.240,07	568.908,00	11.435.010,87	19.356,52
VERGİ DAİRELERİNE ÖDENEN K.D.V. Value added tax (V.A.T.) paid to tax offices	0,00	5.877,89	0,00	20.174.759,00	12.076,79
DİĞER VERGİLER Other taxes	401.565,65	148.170,78	441.009,28	3.215.313,89	17.669,32
KURUM STOPAJ VERGİSİ Association tax	6.645.304,62	0,00	0,00	100.661.662,66	61,25
T O P L A M / Total	41.567.204,06	16.695.103,16	81.120.205,05	384.045.094,29	3.948.110,86

VERGİ VE ÖDEMELER / Taxes and Payments	<u>HONDA TÜRKİYE</u>	<u>HYUNDAI ASSAN</u>	<u>KARSAN</u>	<u>M.A.N. TÜRKİYE</u>	<u>M. BENZ TÜRK</u>
NET ÜCRET VE İKRAMİYELER Net wages, salaries and bonuses	11.685.941,51	31.700.623,00	12.488.477,00	62.605.743,52	87.882.652,23
GELİR VERGİSİ Income tax	5.208.681,83	11.674.540,00	3.562.992,00	10.327.784,18	31.575.755,46
SOSYAL SİGORTA PRİMİ İŞÇİ VE İŞVEREN Social insurance premium paid by employee and employers	5.698.502,69	17.644.619,00	4.404.599,00	18.247.762,36	35.384.291,25
DAMGA VERGİSİ Stamp duty	138.561,68	360.620,00	117.602,00	666.530,06	804.480,33
DİĞER KESİNTİLER Other taxes	6.319.580,26	0,00	1.113.697,00	2.638.274,08	19.512.874,03
İSTİH. EDİLEN. ÖDEME. VE VERGİ. TOPLAMI Total production and tax payment	29.051.267,97	61.380.402,00	21.687.367,00	94.486.094,20	175.160.053,30
İTH. ÖDE. TOP. VERGİ VE RESİM. (K.D.V. HARIÇ) Total import taxes and duties (Excl. V.A.T.)	15.004.440,00	193.517.636,00	1.056.536,00	2.060.927,86	6.024.917,72
VERGİ DAİRELERİNE ÖDENEN K.D.V. Value added tax (V.A.T.) paid to tax offices	0,00	0,00	3.213.372,00	2.713.100,32	23.980.668,02
DİĞER VERGİLER Other taxes	593.526,01	759.402,00	351.453,00	276.987,42	835.950,29
KURUM STOPAJ VERGİSİ Association tax	0,00	0,00	0,00	0,00	52.623.058,21
T O P L A M / Total	44.649.233,98	255.657.440,00	26.308.728,00	99.537.109,80	258.624.647,54

VERGİ VE ÖDEMELER / Taxes and Payments	<u>OTOKAR</u>	<u>OTOYOL</u>	<u>OYAK RENAULT</u>	<u>TEMSA</u>	<u>TOFAŞ</u>
NET ÜCRET VE İKRAMİYELER Net wages, salaries and bonuses	23.422.703,00	24.933.249,00	109.994.084,48	39.858.942,00	89.214.220,00
GELİR VERGİSİ Income tax	7.279.641,00	6.598.497,00	33.376.758,10	7.621.497,00	31.412.847,00
SOSYAL SİGORTA PRİMİ İŞÇİ VE İŞVEREN Social insurance premium paid by employee and employers	9.800.514,00	9.942.821,00	43.212.401,72	11.134.951,00	48.349.384,00
DAMGA VERGİSİ Stamp duty	229.154,00	229.790,00	994.500,43	233.236,00	983.834,00
DİĞER KESİNTİLER Other taxes	3.297.536,00	2.206.313,00	8.184.526,19	0,00	28.457.754,00
İSTİH. EDİLEN. ÖDEME. VE VERGİ. TOPLAMI Total production and tax payment	44.029.548,00	43.910.670,00	195.762.270,92	58.848.626,00	198.418.039,00
İTH. ÖDE. TOP. VERGİ VE RESİM. (K.D.V. HARIÇ) Total import taxes and duties (Excl. V.A.T.)	588.177,00	197.289,00	1.723.545,50	11.023.520,00	3.752.796,00
VERGİ DAİRELERİNE ÖDENEN K.D.V. Value added tax (V.A.T.) paid to tax offices	385.102,00	1.600.920,00	13.268.303,26	0,00	18.367.155,00
DİĞER VERGİLER Other taxes	728.204,00	337.021,00	770.061,00	737.500,00	3.288.663,00
KURUM STOPAJ VERGİSİ Association tax	9.269.324,00	0,00	40.250.055,87	0,00	0,00
T O P L A M / Total	55.000.355,00	46.045.900,00	251.774.236,55	70.609.646,00	223.826.653,00

VERGİ VE ÖDEMELER / Taxes and Payments	<u>TOYOTA</u>	<u>TÜRK TRAKTÖR</u>	<u>UZEL</u>	<u>TOPLAM/Total</u>
NET ÜCRET VE İKRAMİYELER Net wages, salaries and bonuses	89.021.856,56	11.256.361,87	20.039.205,79	823.867.392,94
GELİR VERGİSİ Income tax	20.384.109,30	4.735.643,98	5.111.908,44	235.593.000,59
SOSYAL SİGORTA PRİMİ İŞÇİ VE İŞVEREN Social insurance premium paid by employee and employers	33.241.052,71	7.259.347,19	9.415.515,40	347.185.432,17
DAMGA VERGİSİ Stamp duty	658.919,52	160.125,23	174.511,32	7.633.943,23
DİĞER KESİNTİLER Other taxes	0,00	1.420.418,16	2.524.173,64	90.429.979,94
İSTİH. EDİLEN. ÖDEME. VE VERGİ. TOPLAMI Total production and tax payment	143.305.938,09	24.831.896,43	37.265.314,59	1.504.709.748,87
İTH. ÖDE. TOP. VERGİ VE RESİM. (K.D.V. HARIÇ) Total import taxes and duties (Excl. V.A.T.)	3.405.081,21	22.430,36	31.960.675,29	289.417.956,86
VERGİ DAİRELERİNE ÖDENEN K.D.V. Value added tax (V.A.T.) paid to tax offices	0,00	5.850.948,00	0,00	89.572.282,28
DİĞER VERGİLER Other taxes	155.778,07	466.268,35	817.352,26	14.341.895,32
KURUM STOPAJ VERGİSİ Association tax	0,00	28.015.041,71	0,00	237.464.508,32
T O P L A M / Total	146.866.797,37	59.186.584,85	70.043.342,14	2.135.506.391,65

OTOMOTİV SANAYİİ İSTİHDAMI
Automotive Industry Employment

<u>FİRMALAR / Firms</u>	<u>2001</u>	<u>2002</u>	<u>2003</u>	<u>2004</u>	<u>2005</u>	<u>2006</u>
A.I.O.S.						
İŞÇİ / Worker	328	327	360	551	548	537
BÜRO PERSONELİ / Employee	115	109	108	115	116	119
İDARECİ / Administrator	15	14	14	14	12	15
MÜHENDİS / Engineer	23	23	22	34	35	41
İDA. MÜHENDİS / Ad. Eng.	27	24	21	21	24	25
TOPLAM / Total	508	497	525	735	735	737
ASKAM						
İŞÇİ / Worker	332	312	236	275	249	242
BÜRO PERSONELİ / Employee	83	65	58	72	73	70
İDARECİ / Administrator	28	33	30	27	28	29
MÜHENDİS / Engineer	40	28	31	42	39	35
İDA. MÜHENDİS / Ad. Eng.	27	27	30	31	35	32
TOPLAM / Total	510	465	385	447	424	408
B.M.C.						
İŞÇİ / Worker	1015	994	1504	2052	2140	2559
BÜRO PERSONELİ / Employee	254	330	330	328	346	421
İDARECİ / Administrator	98	20	20	24	24	34
MÜHENDİS / Engineer	122	130	146	129	137	179
İDA. MÜHENDİS / Ad. Eng.	62	46	47	59	59	69
TOPLAM / Total	1.551	1.520	2.047	2.592	2.706	3.262
FORD OTOSAN						
İŞÇİ / Worker	2429	3381	4772	6405	6460	6765
BÜRO PERSONELİ / Employee	406	397	372	354	405	408
İDARECİ / Administrator	52	43	67	91	67	262
MÜHENDİS / Engineer	402	409	519	594	583	582
İDA. MÜHENDİS / Ad. Eng.	160	191	220	227	222	237
TOPLAM / Total	3.449	4.421	5.950	7.671	7.737	8.254

<u>FİRMALAR / Firms</u>	<u>2001</u>	<u>2002</u>	<u>2003</u>	<u>2004</u>	<u>2005</u>	<u>2006</u>
HATTAT TARIM						
İŞÇİ / Worker	0	0	0	0	42	63
BÜRO PERSONELİ / Employee	0	5	8	20	49	64
İDARECİ / Administrator	0	3	3	3	9	14
MÜHENDİS / Engineer	0	0	0	0	5	6
İDA. MÜHENDİS / Ad. Eng.	0	4	5	5	12	13
TOPLAM / Total	0	12	16	28	117	160
HONDA TÜRKİYE						
İŞÇİ / Worker	227	273	291	308	285	514
BÜRO PERSONELİ / Employee	138	84	94	92	152	109
İDARECİ / Administrator	22	26	24	43	54	65
MÜHENDİS / Engineer	19	15	17	33	34	29
İDA. MÜHENDİS / Ad. Eng.	20	21	21	18	22	17
TOPLAM / Total	426	419	447	494	547	734
HYUNDAI ASSAN						
İŞÇİ / Worker	310	571	1159	1487	1497	1637
BÜRO PERSONELİ / Employee	95	50	247	280	192	171
İDARECİ / Administrator	29	54	76	62	61	56
MÜHENDİS / Engineer	19	92	37	67	43	76
İDA. MÜHENDİS / Ad. Eng.	13	0	33	9	22	51
TOPLAM / Total	466	767	1.552	1.905	1.815	1.991
KARSAN						
İŞÇİ / Worker	648	472	745	857	638	649
BÜRO PERSONELİ / Employee	48	31	39	47	27	24
İDARECİ / Administrator	19	23	7	16	5	5
MÜHENDİS / Engineer	32	33	37	18	45	41
İDA. MÜHENDİS / Ad. Eng.	6	5	7	18	9	8
TOPLAM / Total	753	564	835	956	724	727

<u>FİRMALAR / Firms</u>	<u>2001</u>	<u>2002</u>	<u>2003</u>	<u>2004</u>	<u>2005</u>	<u>2006</u>
M.A.N. TÜRKİYE						
İŞÇİ / Worker	1426	1749	2022	2055	2103	2288
BÜRO PERSONELİ / Employee	198	229	245	234	264	258
İDARECİ / Administrator	76	73	89	92	74	42
MÜHENDİS / Engineer	58	70	78	98	80	168
İDA. MÜHENDİS / Ad. Eng.	57	62	64	53	59	22
TOPLAM / Total	1.815	2.183	2.498	2.532	2.580	2.778
M. BENZ TÜRK						
İŞÇİ / Worker	1930	2177	2558	2781	2846	3096
BÜRO PERSONELİ / Employee	559	871	375	359	308	285
İDARECİ / Administrator	168	182	32	93	93	93
MÜHENDİS / Engineer	216	169	343	374	441	455
İDA. MÜHENDİS / Ad. Eng.	64	120	56	51	60	60
TOPLAM / Total	2.937	3.519	3.364	3.658	3.748	3.989
OTOKAR						
İŞÇİ / Worker	279	406	590	625	719	660
BÜRO PERSONELİ / Employee	168	74	94	89	120	130
İDARECİ / Administrator	38	49	47	53	27	20
MÜHENDİS / Engineer	44	50	70	70	88	103
İDA. MÜHENDİS / Ad. Eng.	20	30	22	32	35	36
TOPLAM / Total	549	609	823	869	989	949
OTOYOL						
İŞÇİ / Worker	1068	754	827	731	688	566
BÜRO PERSONELİ / Employee	132	114	132	131	158	122
İDARECİ / Administrator	9	25	13	7	15	12
MÜHENDİS / Engineer	50	37	57	60	63	54
İDA. MÜHENDİS / Ad. Eng.	46	45	28	43	41	35
TOPLAM / Total	1.305	975	1.057	972	965	789

<u>FİRMALAR / Firms</u>	<u>2001</u>	<u>2002</u>	<u>2003</u>	<u>2004</u>	<u>2005</u>	<u>2006</u>
OYAK RENAULT						
İŞÇİ / Worker	3007	2932	3008	3388	4016	4396
BÜRO PERSONELİ / Employee	491	479	455	505	487	515
İDARECİ / Administrator	30	29	29	26	24	11
MÜHENDİS / Engineer	205	213	234	332	351	447
İDA. MÜHENDİS / Ad. Eng.	78	78	84	88	96	101
TOPLAM / Total	3.811	3.731	3.810	4.339	4.974	5.470
TEMSA						
İŞÇİ / Worker	105	258	337	851	1050	1122
BÜRO PERSONELİ / Employee	183	205	347	145	203	204
İDARECİ / Administrator	11	40	36	35	35	38
MÜHENDİS / Engineer	17	97	72	123	146	181
İDA. MÜHENDİS / Ad. Eng.	4	13	51	53	62	67
TOPLAM / Total	320	613	843	1.207	1.496	1.612
TOFAŞ						
İŞÇİ / Worker	3702	3366	3256	3572	3530	4339
BÜRO PERSONELİ / Employee	888	454	459	456	459	326
İDARECİ / Administrator	207	84	78	73	69	186
MÜHENDİS / Engineer	199	190	191	213	209	287
İDA. MÜHENDİS / Ad. Eng.	78	111	116	116	112	120
TOPLAM / Total	5.074	4.205	4.100	4.430	4.379	5.258
TOYOTA						
İŞÇİ / Worker	760	1365	2285	2827	3116	3208
BÜRO PERSONELİ / Employee	57	101	126	76	131	164
İDARECİ / Administrator	42	25	51	66	57	26
MÜHENDİS / Engineer	166	103	114	138	124	139
İDA. MÜHENDİS / Ad. Eng.	25	40	14	43	25	57
TOPLAM / Total	1.050	1.634	2.590	3.150	3.453	3.594

<u>FİRMALAR / Firms</u>	<u>2001</u>	<u>2002</u>	<u>2003</u>	<u>2004</u>	<u>2005</u>	<u>2005</u>
TÜRK TRAKTÖR						
İŞÇİ / Worker	646	404	751	787	799	773
BÜRO PERSONELİ / Employee	61	65	73	76	80	89
İDARECİ / Administrator	5	5	6	6	6	5
MÜHENDİS / Engineer	52	51	63	70	69	67
İDA. MÜHENDİS / Ad. Eng.	13	13	13	17	21	25
TOPLAM / Total	777	538	906	956	975	959
UZEL						
İŞÇİ / Worker	1056	1004	1152	1218	720	747
BÜRO PERSONELİ / Employee	156	142	124	163	162	160
İDARECİ / Administrator	25	12	10	17	25	22
MÜHENDİS / Engineer	121	50	52	87	122	132
İDA. MÜHENDİS / Ad. Eng.	21	55	75	58	62	65
TOPLAM / Total	1.379	1.263	1.413	1.543	1.091	1.126
GENEL TOPLAM/Grand Total						
İŞÇİ / Worker	19.268	20.745	25.853	30.770	31.446	34.161
BÜRO PERSONELİ / Employee	4.032	3.805	3.686	3.542	3.732	3.639
İDARECİ / Administrator	874	740	632	748	685	935
MÜHENDİS / Engineer	1.785	1.760	2.083	2.482	2.614	3.022
İDA. MÜHENDİS / Ad. Eng.	721	885	907	942	978	1.040
TOPLAM / Total	26.680	27.935	33.161	38.484	39.455	42.797

İDA. MÜHENDİS=İDARECİ MÜHENDİS
Ad. Eng.=Administrator Engineer

OTOMOTİV SANAYİİ YATIRIMLARI (USD)
Realized Sectorial Investments (USD)

ARALIK SONU/By the end of December

PROJE TİPİ Projects	2003	2004	2005	2006
KAPASİTE ARTTIRIMI Capacity Development	118.000.000	105.000.000	104.000.000	202.000.000
MODERNİZASYON Modernization	27.000.000	48.000.000	128.000.000	96.000.000
YENİ MODEL New Model Development	230.000.000	160.000.000	346.000.000	580.000.000
KALİTE ARTTIRICI Quality Development	3.000.000	11.000.000	17.000.000	19.000.000
YERLİLEŞTİRMEYİ ARTTIRICI Localization	72.000.000	35.000.000	32.000.000	19.000.000
DİĞER Others	36.000.000	76.000.000	97.000.000	120.000.000
TOPLAM Toplam	486.000.000	435.000.000	724.000.000	1.036.000.000

TÜRKİYE ARAÇ PARKI
Automotive Vehicles Park In Turkey

YILLAR Years	OTOMOBİL P.Car	KAMYON Truck	KAMYONET Pick-Up	MINİBÜS Minibus	OTOBÜS Bus	TRAKTÖR F.Tractor	TOPLAM Total
1963	72.034	49.356	30.739	7.543	11.726	50.844	222.242
1964	79.449	46.721	28.658	9.196	11.216	51.781	227.021
1965	87.584	49.317	29.804	10.476	11.693	54.608	243.482
1966	91.469	47.931	31.462	11.239	12.041	65.108	259.250
1967	112.867	56.889	39.927	16.008	13.332	74.982	314.005
1968	125.375	62.616	43.441	18.967	13.948	84.874	349.221
1969	137.345	69.478	48.655	20.540	15.520	96.407	387.945
1970	137.771	70.770	52.152	20.916	15.980	105.865	403.454
1971	153.676	73.433	57.011	22.380	17.040	118.525	442.065
1972	187.272	78.920	62.796	25.559	18.504	135.726	508.777
1973	240.360	86.780	71.043	30.055	20.011	156.139	604.388
1974	313.160	95.309	81.025	34.122	21.404	200.466	745.486
1975	403.546	108.381	98.579	40.623	23.763	243.066	917.958
1976	488.894	122.176	116.861	46.066	25.388	281.802	1.081.187
1977	560.424	138.093	134.213	51.999	27.096	320.578	1.232.403
1978	624.438	146.551	144.695	56.836	28.559	370.259	1.371.338
1979	688.687	157.095	155.278	61.596	30.634	402.777	1.496.067
1980	742.252	164.893	165.821	64.707	32.783	436.369	1.606.825
1981	776.432	172.372	172.269	66.514	33.839	458.714	1.680.140
1982	811.465	180.772	178.762	69.598	35.432	491.001	1.767.030
1983	856.350	190.277	186.427	73.585	38.478	513.516	1.858.633
1984	919.577	197.721	198.106	80.697	43.638	556.781	1.996.520
1985	983.444	205.496	212.505	87.951	47.119	583.974	2.120.489
1986	1.087.234	217.111	224.755	97.917	50.798	612.731	2.290.546
1987	1.193.021	225.872	233.480	106.314	53.554	637.449	2.449.690
1988	1.310.257	234.166	240.718	112.885	56.172	654.636	2.608.834
1989	1.434.830	241.392	248.567	118.026	58.859	672.845	2.774.519
1990	1.649.879	257.353	263.407	125.399	63.700	692.454	3.052.192
1991	1.864.344	273.409	280.891	133.632	68.973	704.373	3.325.622
1992	2.181.388	379.410	308.180	145.312	75.592	828.580	3.918.462
1993	2.619.852	406.398	354.290	159.900	84.254	870.559	4.495.253
1994	2.861.640	419.374	374.473	166.424	87.545	895.506	4.804.962
1995	3.058.511	432.216	397.743	173.051	90.197	937.528	5.089.246
1996	3.274.156	453.796	442.788	182.694	94.978	988.142	5.436.554
1997	3.570.105	489.071	529.838	197.057	101.896	1.053.381	5.941.348
1998	3.838.631	519.749	626.004	211.495	108.361	1.107.157	6.411.397
1999	4.072.326	531.690	692.935	221.683	112.186	1.131.626	6.762.446
2000	4.422.180	557.295	794.459	235.885	118.454	1.159.070	7.287.343
2001	4.534.803	562.063	833.175	239.381	119.306	1.179.068	7.467.796
2002	4.600.140	567.152	875.381	241.700	120.097	1.180.127	7.584.597
2003	4.700.343	579.010	973.457	245.394	123.500	1.184.256	7.805.960
2004	5.400.440	647.420	1.259.867	318.954	152.712	1.210.283	8.989.676
2005	5.772.745	676.929	1.475.057	338.539	163.390	1.247.767	9.674.427
2006	6.140.992	709.535	1.695.624	357.523	175.949	1.290.679	10.370.302

KAYNAK: T.C. BAŞBAKANLIK TÜRKİYE İSTATİSTİK KURUMU
Source: Republic Of Turkey, Prime Ministry Turkish Statistical Institute