



OTOMOTİV SANAYİİ DERNEĐİ  
AUTOMOTIVE MANUFACTURERS ASSOCIATION

# Otomotiv Sanayii Genel ve İstatistik Bülteni General and Statistical Information Bulletin Of Automotive Manufacturers 2006 - I

OSD "OICA" Üyesidir



OSD is a Member of "OICA"

**İÇİNDEKİLER****SAHİFE**

OTOMOTİV SANAYİİ FİRMALARI HAKKINDA GENEL BİLGİLER - 2006	1
OTOMOTİV SANAYİİ FİRMALARININ ÜRETTİKLERİ MODELLER VE GENEL SPESİFİKASYONLARI - 2006	2 - 10
OTOMOTİV SANAYİİ FİRMALARININ 2006 YILI ÜRETİM KAPASİTELERİ	11
OTOMOTİV SANAYİİ FİRMALARININ 2001 - 2005 YILLARI ÜRETİM ADETLERİ	12 - 16
YILLARA GÖRE ÜRETİM GRAFİKLERİ	17 - 18
OTOMOTİV SANAYİİ FİRMALARININ ÜRETİM ADETLERİ	19
KAPASİTE KULLANIM VE İHRACAT GRAFİKLERİ	20
YILLAR İTİBARIYLA ÜRETİM ADETLERİ VE KAPASİTE KULLANIMLARI	21
OTOMOTİV SANAYİİ FİRMALARININ İHRACATLARI	22 - 24
OTOMOBİL İTHALATI – HAFİF TİCARİ ARAÇ İTHALATI	25
OTOMOBİL VE HAFİF TİCARİ ARAÇLAR/ÜRETİM/İTHALAT/İHRACAT GRAFİKLERİ	26
OTOMOTİV SANAYİİ FİRMALARININ CİROLARI	27
OTOMOTİV SANAYİİ FİRMALARININ 2005 YILINDA HAMMADDEYE VE YAN SANAYİYE ÖDEMELERİ	28
OTOMOTİV SANAYİİ FİRMALARININ 2005 YILINDA ÖDEDİKLERİ VERGİLER VE ÜCRETLER	29 - 32
OTOMOTİV SANAYİİ İSTİHDAMI	33 - 37
OTOMOTİV SANAYİİ YATIRIMLARI	38
TÜRKİYE ARAÇ PARKI	39

**CONTENTS****PAGE**

GENERAL INFORMATION ON THE AUTOMOTIVE MANUFACTURERS - 2006	1
GENERAL SPECIFICATIONS OF THE PRODUCTS - 2006	2 - 10
PRODUCTION CAPACITIES - 2006	11
PRODUCTION UNITS FOR THE YEARS 2001 - 2005	12 - 16
PRODUCTION BY YEARS IN GRAPHICS	17 - 18
THE PRODUCTION UNITS OF THE AUTOMOTIVE MANUFACTURERS	19
CAPACITY USAGE AND EXPORTS IN GRAPHICS	20
PRODUCTION UNITS AND CAPACITY UTILIZATION BY YEARS	21
AUTOMOTIVE INDUSTRY EXPORTS	22 - 24
P. CAR IMPORTS - LIGHT COMMERCIAL VEHICLE IMPORTS	25
P. CARS AND LIGHT COMMERCIAL VEHICLES/PRODUCTION/IMPORTS/EXPORTS	26
AUTOMOTIVE INDUSTRY SALES	27
PAYMENT FOR RAW MATERIAL AND COMPONENTS - 2005	28
TAXES, WAGES AND SALARIES PAID BY AUTOMOTIVE MANUFACTURERS IN THE YEAR - 2005	29 - 32
AUTOMOTIVE INDUSTRY EMPLOYMENT	33 - 37
AUTOMOTIVE INDUSTRY INVESTMENTS	38
AUTOMOTIVE VEHICLES PARK IN TURKEY	39

**OTOMOTİV SANAYİİ FİRMALARI HAKKINDA GENEL BİLGİLER - 2006**  
**General Information On The Automotive Manufacturers - 2006**

OCAK SONU/By the end of January

FİRMALAR Firms	ÜRETİM YERİ The Production Place	ÜRETİME BAŞLAMA TARİHİ Starting Year Of Production	LİSANS Licence	SERMAYE Capital (1000 YTL)	YABANCI SERMAYE Foreign Cap. (%)	KAPALI ALAN Covered Area (1.000 M2)	TOPLAM ALAN Total Area (1.000 M2)
A.I.O.S.	KOCAELİ	1966	ISUZU	16.946	29,74	82	299
ASKAM	KOCAELİ	1964	DAIMLER-CHRYSLER / HINO	16.500	0	36	109
B.M.C.	İZMİR	1964		265.000	0	119	420
FORD OTOSAN	ESKİŞEHİR KOCAELİ	1983 2001	FORD	350.910	41	63 345	1.100 1.600
HONDA TÜRKİYE	KOCAELİ	1997	HONDA MOTOR CO. LTD.	100.000	100	44	298
HYUNDAI ASSAN	KOCAELİ	1997	HYUNDAI MOTOR COMP.	206.220	70	100	1.000
KARSAN	BURSA	1966	PEUGEOT	19.200	0	63	200
M.A.N. TÜRKİYE	ANKARA	1966	MAN	65.000	99,9	114	358
M.BENZ TÜRK	İSTANBUL AKSARAY	1968 1985	MERCEDES BENZ	155.000	85	156 75	552 558
OTOKAR	SAKARYA	1963	DEUTZ / LAND ROVER / FRUEHAUF / AM GENERAL	24.000	0	51	169
OTOYOL	SAKARYA	1966	IVECO	62.674	27	88	346
O.RENAULT	BURSA	1971	RENAULT	323.300	51	224	418
TEMSA	ADANA	1987	MITSUBISHI	70.000	0	90	433
TOFAŞ	BURSA	1971	FIAT	500.000	37,8	339	935
TOYOTA	SAKARYA	1994	TOYOTA	150.165	100	166	824
T.TRAKTÖR	ANKARA	1954		47.000	37,5	79	273
UZEL	İSTANBUL	1962	M. FERGUSON	100.050	0	80	100
			<b>TOPLAM/Total</b>	<b>2.471.965</b>		<b>2.314</b>	<b>9.992</b>

OTOMOTİV SANAYİ FİRMALARININ ÜRETTİKLERİ MODELLER VE GENEL SPESİFİKASYONLARI - 2006  
General Specifications Of The Products - 2006

OCAK SONU/By the end of Jan.

FİRMALAR/MODELLER	Firms/Models	A.Y.A. G.V.W. K.G.	NET AG. Net We. K.G.	CİNSİ Type	MOTOR / Engine		GÜCÜ/Power BHP/DEVİR Hp/Rpm	VİTES Gear	ŞANZİMAN/Gear Box	
					SİLİNDİR ADEĐİ No.Of Cylinder	CC cc			MODEL	LASTİK EBADI / Tire Size
<b>A.ISUZU</b>										
KAMYON NPR 71	Truck	7500	2636	DİZEL	4	4570	121/3200	5/1	MY Y 5T	ÖN-ARKA 215/75 R 17.5
KAMYON NQR 75	Truck	7500	2876	DİZEL	4	5200	175/2600	6/1	MZZ-6U	ÖN-ARKA 215/75 R-17.5
KAMYON NQR 3 Aks	Truck	12100	3476	DİZEL	4	5200	175/2600	6/1	MZZ-6U	ÖN-ARKA 235x75 R 17.5
KAMYONET NKR 55	Pick up	3500	1836	DİZEL	4	2771	80/3600	5/1	MSB-5S	ÖN-ARKA 7,50-15-10 PR
KAMYONET NKR Wide	Pick up	3500	2376	DİZEL	4	4334	100/3300	5/1	MY Y-5T	ÖN-ARKA 6,50-16-10 PR
KAMYONET NKR 55 FL (NKR Low)	Pick up	3500	1816	DİZEL	4	2771	80/3600	5/1	MSB 5S	ÖN-6,50 R 16 LT 10 PR ARKA 185 R 14 LT 8 PR
MİDİBÜS Turkuaz 27	Midibus	8677	6310	DİZEL	4	4751	146/2900	6/1	MZZ	ÖN-ARKA 225x75 R 17,5
MİDİBÜS Turkuaz 31	Midibus	9202	6551	DİZEL	4	4751	146/2900	6/1	MZZ	ÖN-ARKA 225x75 R 17,5
MİDİBÜS Roybus 27	Midibus	7449	5332	DİZEL	4	4570	121/3200	5/1	MY Y5T	ÖN-ARKA 215/75 R 17,5
MİDİBÜS Classic 27	Midibus	7089	4972	DİZEL	4	4570	121/3200	5/1	MY Y5T	ÖN-ARKA 215/75 R 17,5
MİDİBÜS Classic 23	Midibus	6445	4612	DİZEL	4	4570	121/3200	5/1	MY Y5T	ÖN-ARKA 215/75 R 17,5
MİDİBÜS Urban 22	Midibus	7866	4942	DİZEL	4	4570	121/3200	5/1	MY Y5T	ÖN-ARKA 215/75 R 17,6
MİDİBÜS Urban 50	Midibus	8252	4852	DİZEL	4	4570	121/3200	5/1	MY Y5T	ÖN-ARKA 215/75 R 17,7
<b>ASKAM</b>										
KAMYONET AS 250 WD KAŞALI (4X4)	Pick Up	3500	2700	DİZEL	4	3192	90/2800	5/1	EATON FS 2035 A	ÖN-ARKA 7.50 X 16 8 KAT
KAMYONET AS 250 WD C/C ÇİFT KABİN (4X4)	Pick Up	3500	2800	DİZEL	4	3192	90/2800	5/1	EATON FS 2035 A	ÖN-ARKA 7.50 X 16 8 KAT
KAMYONET AS 250 D	Pick Up	3500	2325	DİZEL	4	3192	90/2800	5/1	EATON FS 2035 A	ÖN-ARKA 8.5 R 17.5 121/120
KAMYONET AS 250 D KAŞALI	Pick Up	3500	2800	DİZEL	4	3192	90/2800	5/1	EATON FS 2035 A	ÖN-ARKA 8.5 R 17.5 121/120
KAMYONET AS 250 D C/C ÇİFT KABİN	Pick Up	3500	2700	DİZEL	4	3192	90/2800	5/1	EATON FS 2035 A	ÖN-ARKA 8.5 R 17.5 121/120
KAMYONET AS 250 AD	Pick Up	4815	2325	DİZEL	4	3192	90/2800	5/1	EATON FS 2035 A	ÖN-ARKA 8.5 R 17.5 121/120
MİNİBÜS AS 250 AWDM	Minibus	4815	3200	DİZEL	4	3192	90/2800	5/1	EATON FS 2035 A	ÖN-ARKA 7.50 X 16 8 KAT
MİNİBÜS AS 250 AWDM SAFARI	Minibus	4815	3240	DİZEL	4	3192	90/2800	5/1	EATON FS 2035 A	ÖN-ARKA 7.50 X 16 8 KAT
KAMYON AS 950 SUPER STD (4x2)	Truck	18000	5860	DİZEL	6	7146	240/2300	9/1	ZF 9S75	ÖN-ARKA 12 RX22.5 152/148
KAMYON AS 950 SUPER TL (6x2)	Truck	25000	7350	DİZEL	6	7146	240/2300	9/1	ZF 9S75	ÖN-ARKA 12 RX22.5 152/149
KAMYON AS 950 SUPER TS (6x2)	Truck	25000	7250	DİZEL	6	7146	240/2300	9/1	ZF 9S75	ÖN-ARKA 12 RX22.5 152/150
KAMYON 26.260 LN (6X2)	Truck	25000	7650	DİZEL	6	8000	260/2500	9/1	ZF 9S75	ÖN-ARKA 12 RX22.5 152/151
KAMYON 26.260 SN (6X2)	Truck	25000	7500	DİZEL	6	8000	260/2500	9/1	ZF 9S75	ÖN-ARKA 12 RX22.5 152/152
KAMYON 26.260 FT (6X2)	Truck	25000	7850	DİZEL	6	8000	260/2500	9/1	ZF 9S75	ÖN-ARKA 12 RX22.5 152/153
KAMYON 32.260 LN (8X2)	Truck	32000	8550	DİZEL	6	8000	260/2500	9/1	ZF 9S75	ÖN-ARKA 12 RX22.5 152/154
KAMYON 19.260 LN (4X2)	Truck	18000	6150	DİZEL	6	8000	260/2500	9/1	ZF 9S75	ÖN-ARKA 12 RX22.5 152/155
KAMYON 19.260 SN (4X2)	Truck	18000	6050	DİZEL	6	8000	260/2500	9/1	ZF 9S75	ÖN-ARKA 12 RX22.5 152/156
KAMYON 32300 LN (Hi-Ex) (8X2)	Truck	32000	8650	DİZEL	6	6871	292/2400	16/2	ZF 16S109	ÖN-ARKA 12 RX22.5 152/157
KAMYON 19300 LN (Hi-Ex) (4X2)	Truck	18000	6250	DİZEL	6	6871	292/2400	16/2	ZF 16S109	ÖN-ARKA 12 RX22.5 152/158
KAMYON 19300 SN (Hi-Ex) (4X2)	Truck	18000	6150	DİZEL	6	6871	292/2400	16/2	ZF 16S109	ÖN-ARKA 12 RX22.5 152/159
KAMYON 26300 LN (Hi-Ex) (6X2)	Truck	25000	7750	DİZEL	6	6871	292/2400	16/2	ZF 16S109	ÖN-ARKA 12 RX22.5 152/160
KAMYON 26300 FT (Hi-Ex) (6X2)	Truck	25000	7950	DİZEL	6	6871	292/2400	16/2	ZF 16S109	ÖN-ARKA 12 RX22.5 152/161
ÇEKİCİ 19.260 ST (4X2)	R.Tractor	18000	6100	DİZEL	6	8000	260/2500	9/1	ZF 9S75	ÖN-ARKA 12 RX22.5 152/162
ÇEKİCİ 19300 ST (Hi-Ex) (4X2)	R.Tractor	18000	6600	DİZEL	6	6871	292/2400	16/2	ZF 16S109	ÖN-ARKA 315/80 R 22.5
<b>B.M.C.</b>										
KAMYON PROFESYONEL PRO 518 FHX (4x2)	Truck	11990	3780	DİZEL	6	5880	162/2500	6/1	ZF 6S 850 OVD	ÖN-ARKA 245/70 R 19.5
KAMYON PROFESYONEL PRO 518 LHX (4x2)	Truck	11990	3885	DİZEL	6	5880	162/2500	6/1	ZF 6S 850 OVD	ÖN-ARKA 245/70 R 19.5
KAMYON PROFESYONEL PRO 522 LHT (6x2)	Truck	21000	5500	DİZEL	6	5880	215/2500	6/1	EATON 6109 OVD	ÖN-ARKA 245/70 R 19.6
KAMYON PROFESYONEL PRO 522 LHX (4x2)	Truck	16000	4730	DİZEL	6	5880	215/2500	6/1	ZF 6S 850 OVD	ÖN-ARKA 245/70 R 19.7
KAMYON PROFESYONEL PRO 522 FHX (4x2)	Truck	16000	4650	DİZEL	6	5880	215/2500	6/1	ZF 6S 850 OVD	ÖN-ARKA 245/70 R 19.8
KAMYON PROFESYONEL PRO 624 LDT (6x2)	Truck	25000	6950	DİZEL	6	5880	235/2500	9/1	ZF 9S 75	ÖN-ARKA 315/80 R 22.5
KAMYON PROFESYONEL PRO 624 FDT (6x2)	Truck	25000	6800	DİZEL	6	5880	235/2500	9/1	ZF 9S 75	ÖN-ARKA 315/80 R 22.6
KAMYON PROFESYONEL PRO 624 LHT (6x2)	Truck	25000	7200	DİZEL	6	5880	235/2500	9/1	ZF 9S 75	ÖN-ARKA 315/80 R 22.7
KAMYON PROFESYONEL PRO 624 YHT (6x2)	Truck	25000	7170	DİZEL	6	5880	235/2500	9/1	ZF 9S 75	ÖN-ARKA 315/80 R 22.8
KAMYON PROFESYONEL PRO 624 ZHT (6x2)	Truck	25000	7450	DİZEL	6	5880	235/2500	9/1	ZF 9S 75	ÖN-ARKA 315/80 R 22.9
KAMYON PROFESYONEL PRO 625 FHX (4x2)	Truck	18000	5650	DİZEL	6	5880	247/2500	9/1	EATON 6109 ; ZF 9S 109	ÖN-ARKA 295/80 R 22.5 ; 315/80 R 22.5
KAMYON PROFESYONEL PRO 625 LHX (4x2)	Truck	18000	5900	DİZEL	6	5880	247/2500	9/1	EATON 6109 ; ZF 9S 109	ÖN-ARKA 295/80 R 22.5 ; 315/80 R 22.6
KAMYON PROFESYONEL PRO 625 YHX (4x2)	Truck	18000	5950	DİZEL	6	5880	247/2500	9/1	EATON 6109 ; ZF 9S 109	ÖN-ARKA 295/80 R 22.5 ; 315/80 R 22.7
KAMYON PROFESYONEL PRO 625 CHX (4x2)	Truck	18000	6300	DİZEL	6	5880	247/2500	9/1	EATON 6109 ; ZF 9S 109	ÖN-ARKA 295/80 R 22.5 ; 315/80 R 22.8
KAMYON PROFESYONEL PRO 625 FHT (6x2)	Truck	25000	5950	DİZEL	6	5880	247/2500	9/1	EATON 6109 ; ZF 9S 109	ÖN-ARKA 295/80 R 22.5 ; 315/80 R 22.9
KAMYON PROFESYONEL PRO 625 YHT (6x2)	Truck	25000	6970	DİZEL	6	5880	247/2500	9/1	EATON 6109 ; ZF 9S 109	ÖN-ARKA 295/80 R 22.5 ; 315/80 R 22.10
KAMYON PROFESYONEL PRO 625 ZHT (6x2)	Truck	25000	7230	DİZEL	6	5880	247/2500	9/1	EATON 6109 ; ZF 9S 109	ÖN-ARKA 295/80 R 22.5 ; 315/80 R 22.11
KAMYON PROFESYONEL PRO 625 YHZ (6x2)	Truck	26000	7350	DİZEL	6	5880	247/2500	9/1	EATON 6109 ; ZF 9S 109	ÖN-ARKA 295/80 R 22.5 ; 315/80 R 22.12
KAMYON PROFESYONEL PRO 628 YHB (6x4)	Truck	26000	8250	DİZEL	6	5880	271/2500	9/1	EATON 6109 ; ZF 9S 109	ÖN-ARKA 295/80 R 22.5 ; 315/80 R 22.13
KAMYON PROFESYONEL PRO 628 YHZ (6x2)	Truck	26000	7350	DİZEL	6	5880	271/2500	9/1	EATON 6109 ; ZF 9S 109	ÖN-ARKA 295/80 R 22.5 ; 315/80 R 22.14
KAMYON PROFESYONEL PRO 628 ZHZ (6x2)	Truck	26000	7450	DİZEL	6	5880	271/2500	9/1	EATON 6109 ; ZF 9S 109	ÖN-ARKA 295/80 R 22.5 ; 315/80 R 22.15
KAMYON PROFESYONEL PRO 628 YHT (6x2)	Truck	25000	6970	DİZEL	6	5880	271/2500	9/1	EATON 6109 ; ZF 9S 109	ÖN-ARKA 295/80 R 22.5 ; 315/80 R 22.16
KAMYON PROFESYONEL PRO 628 ZHT (6x2)	Truck	25000	7300	DİZEL	6	5880	271/2500	9/1	EATON 6109 ; ZF 9S 109	ÖN-ARKA 295/80 R 22.5 ; 315/80 R 22.17

KAMYON PROFESYONEL PRO 628 FHX (6x2)	Truck	18000	5700	DİZEL	6	5880	271/2500	9/1	EATON 6109 ; ZF 9S 109	ÖN-ARKA 295/80 R 22.5 ; 315/80 R 22.18
KAMYON PROFESYONEL PRO 827 FHX (4x2)	Truck	18000	5850	DİZEL	6	8268	263/2200	9/1	ZF 9S 109	ÖN-ARKA 315/80 R 22.5
KAMYON PROFESYONEL PRO 827 YHX (4x2)	Truck	18000	6000	DİZEL	6	8268	263/2200	9/1	ZF 9S 109	ÖN-ARKA 315/80 R 22.6
KAMYON PROFESYONEL PRO 827 FDB (6x4)	Truck	26000	9000	DİZEL	6	8268	263/2200	9/1	ZF 9S 109	ÖN-ARKA 315/80 R 22.7
KAMYON PROFESYONEL PRO 827 FTB (6x4)	Truck	26000	9000	DİZEL	6	8268	263/2200	9/1	ZF 9S 109 (NMV 130E)	ÖN-ARKA 315/80 R 22.8
ÇEKİCİ PROFESYONEL PRO 827 LCB (6x4)	R. Tractor	-	9050	DİZEL	6	8268	263/2200	9/1	ZF 9S 109	ÖN-ARKA 315/80 R 22.9
ÇEKİCİ PROFESYONEL PRO 827 LCX (4x2)	R. Tractor	-	6340	DİZEL	6	8268	263/2200	9/1	ZF 9S 109	ÖN-ARKA 315/80 R 22.10
KAMYON PROFESYONEL PRO 827 LDB (6x4)	Truck	26000	9240	DİZEL	6	8268	263/2200	9/1	ZF 9S 109	ÖN-ARKA 315/80 R 22.11
KAMYON PROFESYONEL PRO 827 LDS (8x2/4)	Truck	32000	8960	DİZEL	6	8268	263/2200	9/1	ZF 9S 109	ÖN-ARKA 315/80 R 22.12
KAMYON PROFESYONEL PRO 827 LKT (6x2)	Truck	25000	7960	DİZEL	6	8268	263/2200	9/1	ZF 9S 109	ÖN-ARKA 315/80 R 22.13
KAMYON PROFESYONEL PRO 827 ZKT (6x2)	Truck	25000	8110	DİZEL	6	8268	263/2200	9/1	ZF 9S 109	ÖN-ARKA 315/80 R 22.14
KAMYON PROFESYONEL PRO 827 LTB (6x4)	Truck	26000	9140	DİZEL	6	8268	263/2200	9/1	ZF 9S 109	ÖN-ARKA 315/80 R 22.15
KAMYON PROFESYONEL PRO 827 LTB (6x4)	Truck	26000	9140	DİZEL	6	8268	263/2200	9/1	ZF 9S 109 (NMV 130E)	ÖN-ARKA 315/80 R 22.16
KAMYON PROFESYONEL PRO 827 YHF (8x2/2)	Truck	32000	9130	DİZEL	6	8268	263/2200	9/1;16/2	ZF 9S 109 ; 16 S 109	ÖN-ARKA 315/80 R 22.17
KAMYON PROFESYONEL PRO 827 ZHF (8x2/2)	Truck	32000	9175	DİZEL	6	8268	263/2200	9/1;16/2	ZF 9S 109 ; 16 S 109	ÖN-ARKA 315/80 R 22.18
ÇEKİCİ PROFESYONEL PRO 827 YCX (4x2)	R. Tractor	-	6270	DİZEL	6	8268	263/2200	9/1;16/2	ZF 9S 109 ; 16 S 109	ÖN-ARKA 295/80 R 22.5
ÇEKİCİ PROFESYONEL PRO 827 ZCX (4x2)	R. Tractor	-	6710	DİZEL	6	8268	263/2200	9/1;16/2	ZF 9S 109 ; 16 S 109	ÖN-ARKA 295/80 R 22.5
ÇEKİCİ PROFESYONEL PRO 827 YCB (6x4)	R. Tractor	-	8980	DİZEL	6	8268	263/2200	9/1;16/2	ZF 9S 109 ; 16 S 109	ÖN-ARKA 315/80 R 22.5
KAMYON PROFESYONEL PRO 827 YKR (10x2)	Truck	40000	10500	DİZEL	6	8268	263/2200	9/1	ZF 9S 109	ÖN-ARKA 315/80 R 22.6
KAMYON PROFESYONEL PRO 832 FDB (6x4)	Truck	26000	9000	DİZEL	6	8268	300/2200	9/1	ZF 9S 109	ÖN-ARKA 315/80 R 22.7
KAMYON PROFESYONEL PRO 832 FTB (6x4)	Truck	26000	9000	DİZEL	6	8268	300/2200	9/1	ZF 9S 109 (NMV 130E)	ÖN-ARKA 315/80 R 22.8
KAMYON PROFESYONEL PRO 832 LDB (6x4)	Truck	26000	9240	DİZEL	6	8268	300/2200	9/1	EATON 8209	ÖN-ARKA 315/80 R 22.9
KAMYON PROFESYONEL PRO 832 LDB (6x4)	Truck	26000	8950	DİZEL	6	8268	300/2200	9/1	ZF 9S 109 DT	ÖN-ARKA 315/80 R 22.10
KAMYON PROFESYONEL PRO 832 FHB (6x4)	Truck	26000	9350	DİZEL	6	8268	300/2200	9/1	ZF 9S 109	ÖN-ARKA 315/80 R 22.11
ÇEKİCİ PROFESYONEL PRO 832 YCB (6x4)	R. Tractor	-	8980	DİZEL	6	8268	300/2200	9/1;16/2	ZF 9S 109 ; 16 S 109	ÖN-ARKA 315/80 R 22.12
ÇEKİCİ PROFESYONEL PRO 832 YCX (4x2)	R. Tractor	-	6650	DİZEL	6	8268	300/2200	16/2	ZF 16S 109	ÖN-ARKA 295/80 R 22.5 ; 315/80 R 22.5
KAMYON FATİH 180 SDT (6x2)	Truck	25000	6200	DİZEL	6	5880	162/2500	5/1	HEMA (EATON)/570 SMS	ÖN-ARKA 12.00 R 22.5
KAMYON FATİH 180 SHT (6x2)	Truck	25000	6340	DİZEL	6	5880	162/2500	5/1	HEMA (EATON)/570 SMS	ÖN-ARKA 12.00 R 22.6
KAMYON FATİH 280 SDB (6x4)	Truck	26000	8250	DİZEL	6	8267	263/2200	9/1	EATON 8209	ÖN-ARKA 12.00 R 22.7
KAMYON FATİH 280 SHB (6x4)	Truck	26000	9700	DİZEL	6	8267	263/2200	9/1	EATON 8209	ÖN-ARKA 12.00 R 22.8
KAMYON FATİH 280 SDT (6x2)	Truck	25000	7180	DİZEL	6	8267	263/2200	9/1	EATON 8209	ÖN-ARKA 12.00 R 22.9
KAMYON FATİH 280 SHT (6x2)	Truck	25000	7400	DİZEL	6	8267	263/2200	9/1	EATON 8209	ÖN-ARKA 12.00 R 22.10
KAMYONET LEVEND 60 BDC (DÜZ KASALI, ÇİFT SIRA)	Pick Up	3050	1735	DİZEL	4	1798	52 / 4250	5/1	BMC 15	ÖN-ARKA 195 R 14 C
KAMYONET LEVEND 60 BDK (KASASIZ, ÇİFT SIRA)	Pick Up	3050	1495	DİZEL	4	1798	52 / 4250	5/1	BMC 15	ÖN-ARKA 195 R 14 C
KAMYONET LEVEND 60 BDS (DÜZ KASALI, TEK SIRA)	Pick Up	2750	1375	DİZEL	4	1798	52 / 4250	5/1	BMC 15	ÖN-ARKA 195 R 14 C
KAMYONET LEVEND 60 BDT (KASASIZ, TEK SIRA)	Pick Up	2750	1670	DİZEL	4	1798	52 / 4250	5/1	BMC 15	ÖN-ARKA 195 R 14 C
KAMYONET LEVEND 3.0 MDS (TEK SIRA KASASIZ KAMYONET)	Pick Up	3500	1820	DİZEL	4	2953	100 / 3800	5/1	BMC 15	ÖN-ARKA 225/70 R 15 C
KAMYONET LEVEND 3.0 MDS (TEK SIRA KASASIZ KAMYONET, DAMPER ŞAŞI)	Pick Up	3500	1820	DİZEL	4	2953	100 / 3800	5/1	BMC 15	ÖN-ARKA 225/70 R 15 C
KAMYONET LEVEND 3.0 MDS (TEK SIRA, KASASIZ, ÇİFT LASTİKLİ KAMYONET)	Pick Up	3500	1890	DİZEL	4	2953	100 / 3800	5/1	BMC 15	ÖN-ARKA 195/70 R 15 C
KAMYONET LEVEND 3.0 MDT (TEK SIRA KASALI KAMYONET)	Pick Up	3500	2275	DİZEL	4	2953	100 / 3800	5/1	BMC 15	ÖN-ARKA 225/70 R 15 C
KAMYONET LEVEND 3.0 MDV (PANEL VAN)	Pick Up	3500	2245	DİZEL	4	2953	100 / 3800	5/1	BMC 15	ÖN-ARKA 225/70 R 15 C
KAMYONET LEVEND 3.0 MDH (YÜKSEK TAVAN PANEL VAN)	Pick Up	3500	2270	DİZEL	4	2953	100 / 3800	5/1	BMC 15	ÖN-ARKA 225/70 R 15 C
KAMYONET LEVEND 3.0 MDA (TEMELE AMBULANS)	Pick Up	3600	2960	DİZEL	4	2953	100 / 3800	5/1	BMC 15	ÖN-ARKA 225/70 R 15 C
MİNİBÜS LEVEND 3.0 GDM (14+1 MİNİBÜS)	Minibus	3560	2560	DİZEL	4	2953	100 / 3800	5/1	BMC 15	ÖN-ARKA 225/70 R 15 C
MİDİBÜS LEVEND 3.0 GDM (18+1 MİNİBÜS)	Midibus	3810	2560	DİZEL	4	2953	100 / 3800	5/1	BMC 15	ÖN-ARKA 225/70 R 15 C
KAMYONET LEVEND 100 BDC (DÜZ KASALI, ÇİFT SIRA)	Pick Up	3150	1880	DİZEL	4	2953	100 / 3800	5/1	BMC 15	ÖN-ARKA 195 R 14 C
KAMYONET LEVEND 100 BDK (KASASIZ, ÇİFT SIRA)	Pick Up	3150	1620	DİZEL	4	2953	100 / 3800	5/1	BMC 15	ÖN-ARKA 195 R 14 C
KAMYONET LEVEND 100 BDS (DÜZ KASALI, TEK SIRA)	Pick Up	3150	1440	DİZEL	4	2953	100 / 3800	5/1	BMC 15	ÖN-ARKA 195 R 14 C
KAMYONET LEVEND 100 BDT (KASASIZ, TEK SIRA)	Pick Up	3150	1780	DİZEL	4	2953	100 / 3800	5/1	BMC 15	ÖN-ARKA 195 R 14 C
KAMYONET MEGASTAR 310 PDT (DÜZ KASALI, TEK SIRA KAMYONET)	Pick Up	3200	2175	DİZEL	4	2776	82 / 3600	5/1	BMC 15	ÖN-ARKA 225/70 R 15 C
KAMYONET MEGASTAR 310 PDC (DÜZ KASALI, ÇİFT SIRA KAMYONET)	Pick Up	3200	2310	DİZEL	4	2776	82 / 3600	5/1	BMC 15	ÖN-ARKA 225/70 R 15 C
KAMYONET MEGASTAR 360 PDT (DÜZ KASALI, TEK SIRA KAMYONET)	Pick Up	3500	2320	DİZEL	4	2776	130 / 3800	6/1	ZF 6S 321	ÖN-ARKA 225/70 R 15 C
KAMYONET MEGASTAR 360 PDC (DÜZ KASALI, ÇİFT SIRA KAMYONET)	Pick Up	3500	2455	DİZEL	4	2776	130 / 3800	6/1	ZF 6S 321	ÖN-ARKA 225/70 R 15 C
KAMYONET MEGASTAR 310 PDS (KASASIZ, TEK SIRA KAMYONET)	Pick Up	3200	1780	DİZEL	4	2776	82 / 3600	5/1	BMC 15	ÖN-ARKA 225/70 R 15 C
KAMYONET MEGASTAR 310 PDK (KASASIZ, ÇİFT SIRA KAMYONET)	Pick Up	3200	1955	DİZEL	4	2776	82 / 3600	5/1	BMC 15	ÖN-ARKA 225/70 R 15 C
KAMYONET MEGASTAR 360 PDS (KASASIZ, TEK SIRA KAMYONET)	Pick Up	3500	1900	DİZEL	4	2776	130 / 3800	6/1	ZF 6S 321	ÖN-ARKA 225/70 R 15 C
KAMYONET MEGASTAR 360 PDK (KASASIZ, ÇİFT SIRA KAMYONET)	Pick Up	3500	2075	DİZEL	4	2776	130 / 3800	6/1	ZF 6S 321	ÖN-ARKA 225/70 R 15 C
KAMYONET MEGASTAR 290 PDV (PANEL VAN)	Pick Up	3200	2200	DİZEL	4	2776	82 / 3600	5/1	BMC 15	ÖN-ARKA 225/70 R 15 C
MİNİBÜS MEGASTAR 290 PDM (9+1 MİNİBÜS)	Minibus	3200	2185	DİZEL	4	2776	82 / 3600	5/1	BMC 15	ÖN-ARKA 225/70 R 15 C
MİNİBÜS MEGASTAR 290 PDM (12+1 MİNİBÜS)	Minibus	3200	2265	DİZEL	4	2776	82 / 3600	5/1	BMC 15	ÖN-ARKA 225/70 R 15 C
KAMYONET MEGASTAR 290 PDF (KOMBI)	Pick Up	3200	2155	DİZEL	4	2776	82 / 3600	5/1	BMC 15	ÖN-ARKA 225/70 R 15 C
KAMYONET MEGASTAR 290 PDY (KOMBI VAN)	Pick Up	3200	2155	DİZEL	4	2776	82 / 3600	5/1	BMC 15	ÖN-ARKA 225/70 R 15 C
OTOBÜS PROBUS 215 SCB (35+1)	Bus	11990	7820	DİZEL	6	5880	215 / 2500	6/1	ZF 6S 890-OD	ÖN-ARKA 245 / 70 R 19.5
OTOBÜS PROBUS 215 SCB (24+1)	Bus	11990	7820	DİZEL	6	5880	215 / 2500	6/1	ZF 6S 890-OD	ÖN-ARKA 245 / 70 R 19.6
OTOBÜS PROBUS 215 SCB (31+1)	Bus	11990	7820	DİZEL	6	5880	215 / 2500	6/1	ZF 6S 890-OD	ÖN-ARKA 245 / 70 R 19.7
OTOBÜS PROBUS 850 TBX	Bus	12000	9150	DİZEL	6	5880	235 / 2500	6/1	ZF 6S 890-OD	ÖN-ARKA 245 / 70 R 19.8
OTOBÜS PROBUS 850 TB	Bus	12000	8800	DİZEL	6	5880	215 / 2500	6/1	ZF 6S 890-OD	ÖN-ARKA 245 / 70 R 19.9
OTOBÜS BELDE 220 CB (YENİ YÜZLÜ 2 KAPILI)	Bus	17500	10150	DİZEL	6	8267	217 / 2200	6/1	ZF S6-85	ÖN-ARKA 11 R 22.5
OTOBÜS BELDE 220 CB (3 KAPILI, YENİ YÜZ) İSTANBUL	Bus	17500	10700	DİZEL	6	8267	217 / 2200	5/1	ZF 5HP 500, OTOMATİK	ÖN-ARKA 11 R 22.6
OTOBÜS BELDE 220 CB (3 KAPILI, YENİ YÜZ, STANDARD)	Bus	17500	10700	DİZEL	6	8267	217 / 2200	6/1	ZF S6-85 MANUEL	ÖN-ARKA 11 R 22.7
OTOBÜS BELDE 220 CB (3 KAPILI, YENİ YÜZ, STANDARD)	Bus	17500	10700	DİZEL	6	8267	217 / 2200	5/1	ZF 5HP 500, OTOMATİK	ÖN-ARKA 11 R 22.8
OTOBÜS BELDE 220 CB (3 KAPILI, YENİ YÜZ) İSTANBUL	Bus	17500	10700	DİZEL	6	8267	217 / 2200	6/1	ZF S6-85 MANUEL	ÖN-ARKA 11 R 22.9
OTOBÜS BELDE 260 CB (YENİ YÜZLÜ 3 KAPILI)	Bus	17500	10150	DİZEL	6	8267	256 / 2400	5/1	ZF 5HP 500, OTOMATİK	ÖN-ARKA 11 R 22.10
OTOBÜS BELDE 260 CB (YENİ YÜZLÜ 3 KAP.) İSTANBUL	Bus	17500	10150	DİZEL	6	8267	256 / 2400	5/1	ZF 5HP 500, OTOMATİK	ÖN-ARKA 11 R 22.11
OTOBÜS BELDE 260 CB (3 KAPILI)	Bus	17500	10700	DİZEL	6	8267	256 / 2200	5/1	ZF 5HP 502C, OTOMATİK	ÖN-ARKA 11 R 22.12
OTOBÜS BELDE 260 SLF(3 KAPILI)	Bus	18000	10950	DİZEL	6	8267	256 / 2400	4/1	VOITH D 854.3 OTOMATİK	ÖN-ARKA 275 / 70 R 22.5
OTOBÜS BELDE 260 SLF (3 KAPILI)	Bus	18000	10950	DİZEL	6	8267	256 / 2400	5/1	ZF 5HP 500, OTOMATİK	ÖN-ARKA 275 / 70 R 22.5
OTOBÜS PROBUS 215 SCB (KLİMASIZ, RETARDERLİ)	Bus	11990	7820	DİZEL	6	5880	215 / 2500	6/1	ZF 6S 890-OD	ÖN-ARKA 245 / 70 R 19.5

OTOBÜS BELDE 220 CB (YENİ YÜZLÜ 2 KAPILI)	Bus	17500	10150	DİZEL	6	8267	217 / 2200	6/1	ZF S6-85	ÖN-ARKA 11 R 22.5
OTOBÜS BELDE 260 CB (2 KAPILI)	Bus	17500	10150	DİZEL	6	8267	256 / 2400	6/1	ZF S6-85	ÖN-ARKA 11 R 22.5
OTOBÜS BELDE 260 SLF (30+1 KOLT)	Bus	18000	10950	DİZEL	6	8267	256 / 2400	6/1	ZF 5 HP 500	ÖN-ARKA 275 / 70 R 22.5
OTOBÜS PROBUS 850 TBX	Bus	12500	9150	DİZEL	6	5880	235 / 2500	6/1	ZF 6S 890-OD	ÖN-ARKA 245 / 70 R 19.5
OTOBÜS PROBUS 215 SCB (ÖZÜRLÜ PLATFORMLU)	Bus	11990	7820	DİZEL	6	5880	215 / 2500	6/1	ZF 6S 890-OD	ÖN-ARKA 245 / 70 R 19.6
OTOBÜS PROBUS 850 CLUB (HAVA SÜSP.) MIDİBÜS	Bus	12500	9150	DİZEL	6	8267	217 / 2500	6/1	ZF S6-85	ÖN-ARKA 245 / 70 R 19.7
OTOBÜS PROBUS 850 TBX ÖRME ŞAŞI	Bus	12500	9150	DİZEL	6	5880	235 / 2500	6/1	ZF 6S 890-OD	ÖN-ARKA 245 / 70 R 19.8
OTOBÜS PROBUS 215 SCB ÖRME ŞAŞI 35+1 KOLT	Bus	11990	7820	DİZEL	6	5880	215 / 2500	6/1	ZF 6S 890-OD	ÖN-ARKA 245 / 70 R 19.9
MİDİBÜS PROBUS 215 SCB 26+1+1 KOLT	Midibus	11990	7820	DİZEL	6	5880	215 / 2500	5/1	ZF 5 HP 502C	ÖN-ARKA 245 / 70 R 19.10
OTOBÜS BELDE 260 CB (2 KAPILI) BELEDİYE TİPİ	Bus	17500	10150	DİZEL	6	8267	256 / 2400	6/1	ZF S6-85	ÖN-ARKA 11 R 22.5
OTOBÜS BELDE 260 CB (2 KAPILI) BELEDİYE TİPİ HALK	Bus	17500	10150	DİZEL	6	8267	256 / 2400	6/1	ZF S6-85	ÖN-ARKA 11 R 22.5
OTOBÜS BELDE 260 CB (2 KAPILI) 45+1 KOLT TURİSTİK	Bus	17500	10150	DİZEL	6	8267	256 / 2400	6/1	ZF S6-85	ÖN-ARKA 11 R 22.5

#### FORD OTOSAN

OTOMOBİL Connect (1+4) L/R 115 PS	P. Car	1999	1420	BENZİN	4	1796	115/5750	5/1	FORD MTX 75	ÖN-ARKA 195/65R15
OTOMOBİL Connect (1+4) H/R 90 PS	P. Car	2058	1528	DİZEL	4	1753	90/4000	5/1	FORD MTX 75	ÖN-ARKA 195/65R15
OTOMOBİL Connect (1+4) L/R 90 PS	P. Car	1999	1485	DİZEL	4	1753	90/4000	5/1	FORD MTX 75	ÖN-ARKA 195/65R15
OTOMOBİL Connect (1+4) H/R 75 PS	P. Car	2079	1549	DİZEL	4	1753	75/4000	5/1	FORD MTX 75	ÖN-ARKA 195/65R15
OTOMOBİL Connect (1+4) L/R 75 PS	P. Car	1999	1475	DİZEL	4	1753	75/4000	5/1	FORD MTX 75	ÖN-ARKA 195/65R15
OTOMOBİL Connect (1+4) H/R 115 PS	P. Car	1999	1469	BENZİN	4	1796	115/5750	5/1	FORD MTX 75	ÖN-ARKA 195/65R15
KAMYONET Connect Van (1+1) L/R 90 PS	Pick Up	2240	1415	DİZEL	4	1753	90/4000	5/1	FORD MTX 75	ÖN-ARKA 195/65R15
KAMYONET Connect Van (1+1) L/R 75PS	Pick Up	2230	1405	DİZEL	4	1753	75/4000	5/1	FORD MTX 75	ÖN-ARKA 195/65R15
KAMYONET PANELVAN Connect Kombi (1+4) L/R 90 PS	Pick Up	2270	1485	DİZEL	4	1753	90/4000	5/1	FORD MTX 75	ÖN-ARKA 195/65R15
KAMYONET PANELVAN Connect Kombi (1+4) L/R 75 PS	Pick Up	2260	1475	DİZEL	4	1753	75/4000	5/1	FORD MTX 75	ÖN-ARKA 195/65R15
KAMYONET Connect Van (1+1) H/R 90 PS	Pick Up	2340	1440	DİZEL	4	1753	90/4000	5/1	FORD MTX 75	ÖN-ARKA 195/65R15
KAMYONET Connect Van (1+1) H/R 75 PS	Pick Up	2260	1435	DİZEL	4	1753	75/4000	5/1	FORD MTX 75	ÖN-ARKA 195/65R15
KAMYONET PANELVAN Connect Kombi (1+4) H/R 90 PS	Pick Up	2340	1565	DİZEL	4	1753	90/4000	5/1	FORD MTX 75	ÖN-ARKA 195/65R15
KAMYONET PANELVAN Connect Kombi (1+4) H/R 75 PS	Pick Up	2330	1555	DİZEL	4	1753	75/4000	5/1	FORD MTX 75	ÖN-ARKA 195/65R15
KAMYONET Transit 300SF VAN	Pick Up	3000	1630	DİZEL	4	1988	125/4000	5/1	Ford VTX 75	ÖN-ARKA 195/70 R 15
KAMYONET Transit 300S VAN	Pick Up	3100	1760	DİZEL	4	2402	100/4000	5/1	Ford MT 75	ÖN-ARKA 205/75 R 16
KAMYONET Transit 330S VAN	Pick Up	3210	1790	DİZEL	4	2402	100/4000	5/1	Ford MT 75	ÖN-ARKA 205/75 R 16
KAMYONET Transit 350L VAN	Pick Up	3500	2010	DİZEL	4	2402	120/4000	5/1	Ford MT 75	ÖN-ARKA 215/75 R 16
KAMYONET Transit 350L VAN	Pick Up	3500	2030	DİZEL	4	2402	120/4000	6/1	Ford MT 82	ÖN-ARKA 215/75 R 16
KAMYONET Transit 350L Yüksek tavan VAN	Pick Up	3500	2030	DİZEL	4	2402	120/4000	5/1	Ford MT 75	ÖN-ARKA 215/75 R 16
KAMYONET Transit 350E VAN	Pick Up	3500	2190	DİZEL	4	2402	130/4000	6/1	Ford MT 82	ÖN-ARKA 215/75 R 16
KAMYONET Transit 350 ED Çift teker Van	Pick Up	3500	2260	DİZEL	4	2402	130/4000	6/1	Ford MT 82	ÖN-ARKA 185/75 R 16
KAMYONET Transit 430ED çift teker van	Pick Up	4250	2280	DİZEL	4	2402	130/4000	6/1	Ford MT 82	ÖN-ARKA 175/75 R 16
KAMYONET Transit 350L camlı van	Pick Up	3500	2010	DİZEL	4	2402	120/4000	5/1	Ford MT 75	ÖN-ARKA 215/75 R 16
KAMYONET Transit 350E camlı van	Pick Up	3500	2190	DİZEL	4	2402	130/4000	6/1	Ford MT 82	ÖN-ARKA 215/75 R 16
KAMYONET Transit 430ED çift teker camlı van	Pick Up	4250	2260	DİZEL	4	2402	130/4000	6/1	Ford MT 82	ÖN-ARKA 175/75 R 16
MİNİBÜS Transit 300S 9+1	Minibus	2960	2010	DİZEL	4	2402	100/4000	5/1	Ford MT 75	ÖN-ARKA 205/75 R 16
MİNİBÜS Transit 330S 12+1	Minibus	3210	2070	DİZEL	4	2402	120/4000	5/1	Ford MT 75	ÖN-ARKA 205/75 R 16
MİNİBÜS Transit 350L 14+1	Minibus	3500	2270	DİZEL	4	2402	120/4000	5/1	Ford MT 75	ÖN-ARKA 215/75 R 16
MİNİBÜS Transit 350L 14+1	Minibus	3500	2270	DİZEL	4	2402	130/4000	6/1	Ford MT 82	ÖN-ARKA 215/75 R 17
MİNİBÜS Transit 350E 12+1	Minibus	3500	2320	DİZEL	4	2402	130/4000	6/1	Ford MT 82	ÖN-ARKA 215/75 R 16
MİNİBÜS Transit 430ED 14+1	Minibus	4100	2460	DİZEL	4	2402	130/4000	6/1	Ford MT 82	ÖN-ARKA 185/75 R 18
MİNİBÜS Transit 430ED 17+1	Minibus	4100	2500	DİZEL	4	2402	130/4000	6/1	Ford MT 82	ÖN-ARKA 185/75 R 17
MİNİBÜS Transit Traveller 14+1	Minibus	4100	2605	DİZEL	4	2402	130/4000	6/1	Ford MT 82	ÖN-ARKA 185/75 R 18
MİNİBÜS Transit Traveller 17+1	Minibus	4100	2605	DİZEL	4	2402	130/4000	6/1	Ford MT 82	ÖN-ARKA 185/75 R 19
KAMYONET Transit 300SF kombi	Pick Up	3000	1760	DİZEL	4	1988	125/4000	5/1	Ford VTX 75	ÖN-ARKA 195/70 R 15
KAMYONET Transit 300SF kombivan	Pick Up	3000	1760	DİZEL	4	1988	125/4000	5/1	Ford VTX 75	ÖN-ARKA 195/70 R 16
KAMYONET Transit 300SF Journey	Pick Up	3000	1760	DİZEL	4	1988	125/4000	5/1	Ford VTX 75	ÖN-ARKA 195/70 R 17
KAMYONET Transit 300S kombi	Pick Up	3100	1895	DİZEL	4	2402	100/4000	5/1	Ford MT 75	ÖN-ARKA 205/75 R 16
KAMYONET Transit 300S kombivan	Pick Up	3100	1895	DİZEL	4	2402	100/4000	5/1	Ford MT 75	ÖN-ARKA 205/75 R 17
KAMYONET Transit 310S Journey	Pick Up	3170	1895	DİZEL	4	2402	120/4000	5/1	Ford MT 75	ÖN-ARKA 205/75 R 16
KAMYONET Transit 330S kombi	Pick Up	3210	1920	DİZEL	4	2402	100/4000	5/1	Ford MT 75	ÖN-ARKA 205/75 R 16
KAMYONET Transit 330S kombivan	Pick Up	3210	1920	DİZEL	4	2402	100/4000	5/1	Ford MT 75	ÖN-ARKA 205/75 R 16
KAMYONET Transit 330S	Pick Up	3210	1820	DİZEL	4	2402	100/4000	5/1	Ford MT 75	ÖN-ARKA 215/75 R 16
KAMYONET Transit 350M	Pick Up	3500	1895	DİZEL	4	2402	120/4000	5/1	Ford MT 75	ÖN-ARKA 215/75 R 16
KAMYONET Transit 350M çiftkabinli	Pick Up	3500	2030	DİZEL	4	2402	120/4000	5/1	Ford MT 75	ÖN-ARKA 215/75 R 16
KAMYONET Transit 350E	Pick Up	3500	1715	DİZEL	4	2402	120/4000	5/1	Ford MT 75	ÖN-ARKA 185/75 R 16
KAMYONET Transit 350E	Pick Up	3500	1700	DİZEL	4	2402	130/4000	6/1	Ford MT 82	ÖN-ARKA 185/75 R 16
KAMYONET Transit 350E çiftkabinli	Pick Up	3500	1835	DİZEL	4	2402	120/4000	5/1	Ford MT 75	ÖN-ARKA 175/75 R 16
KAMYONET Transit 350E çiftkabinli	Pick Up	3500	1880	DİZEL	4	2402	130/4000	5/1	Ford MT 82	ÖN-ARKA 175/75 R 16
KAMYON CARGO 1824 (4x2)	Truck	18000	5685	DİZEL	6	7330	240/2400	9/1	ZF 9 S75	ÖN-ARKA 12 R 22.5
ÇEKİCİ CARGO 1830 (4x2)	R.Tractor	18000	6870	DİZEL	6	7330	300/2400	16/2	ZF 16S109	ÖN-ARKA 295/80 R 22.5
KAMYON CARGO 2524 (6x2)	Truck	25000	7075	DİZEL	6	7330	240/2400	9/1	ZF 9 S75	ÖN-ARKA 12 R 22.5
KAMYON CARGO 2524 (6x2)	Truck	25000	7130	DİZEL	6	7330	240/2400	9/1	ZF 9 S75	ÖN-ARKA 315/80 R 22.5
KAMYON CARGO 2530 (6x2)	Truck	25000	7075	DİZEL	6	7330	300/2400	16/2	ZF 16S109	ÖN-ARKA 315/80 R 22.5
KAMYON CARGO 3230 (8x2)	Truck	32000	8450	DİZEL	6	7330	300/2400	16/2	ZF 16S109	ÖN-ARKA 315/80 R 22.5
KAMYON CARGO 3230 (8x2)	Truck	32000	8370	DİZEL	6	7330	300/2400	16/2	ZF 16S109	ÖN-ARKA 315/80 R 22.5
ÇEKİCİ CARGO 1830 (4x2)	R.Tractor	18000	6260	DİZEL	6	7330	300/2400	16/2	ZF 16S109	ÖN-ARKA 275/70 R 22.5
KAMYON CARGO 1824 (4x2)	Truck	18000	6120	DİZEL	6	7330	240/2400	9/1	ZF 9 S75	ÖN-ARKA 275/70 R 22.5
KAMYON CARGO 2530 (6x2)	Truck	25000	7200	DİZEL	6	7330	300/2400	9/1	ZF 9S109	ÖN-ARKA 315/80 R 22.5

#### HONDA TÜRKİYE

OTOMOBİL CITY 1,4 S DÜZ	P. Car	1510	1031	BENZİN	4	1339	83/5700	5/1	DİREK ŞANZ. TAH.	ÖN-ARKA 175/65R14
OTOMOBİL CITY 1,4 LS DÜZ	P. Car	1510	1035	BENZİN	4	1339	83/5700	5/1	DİREK ŞANZ. TAH.	ÖN-ARKA 175/65R14

OTOMOBİL CITY 1,4 LS OTOMATİK	P. Car	1530	1059	BENZİN	4	1339	83/5700	OTOMATİK	DİREK ŞANZ. TAH.	ÖN-ARKA 175/65R14
OTOMOBİL CITY 1,4 ES DÜZ	P. Car	1510	1046	BENZİN	4	1339	83/5700	5/1	DİREK ŞANZ. TAH.	ÖN-ARKA 185/55R15
OTOMOBİL CITY 1,4 ES OTOMATİK	P. Car	1530	1070	BENZİN	4	1339	83/5700	OTOMATİK	DİREK ŞANZ. TAH.	ÖN-ARKA 185/55R15
OTOMOBİL CIVIC 1,6 LS DÜZ	P. Car	1570	1096	BENZİN	4	1590	110/5600	5/1	DİREK ŞANZ. TAH.	ÖN-ARKA 185/70R14
OTOMOBİL CIVIC 1,6 LS OTOMATİK	P. Car	1570	1096	BENZİN	4	1590	110/5600	OTOMATİK	DİREK ŞANZ. TAH.	ÖN-ARKA 185/70R14
OTOMOBİL CIVIC 1,6 ES DÜZ	P. Car	1590	1119	BENZİN	4	1590	110/5600	5/1	DİREK ŞANZ. TAH.	ÖN-ARKA 195/60R15
OTOMOBİL CIVIC 1,6 ES OTOMATİK	P. Car	1590	1119	BENZİN	4	1590	110/5600	OTOMATİK	DİREK ŞANZ. TAH.	ÖN-ARKA 195/60R15

#### HYUNDAI ASSAN

OTOMOBİL ACCENT ERA 1.4 TEAM	P. Car	1580	1133	BENZİN	4	1399	97/6000	5/1	HYUNDAI	ÖN-ARKA 185/65 R 14
OTOMOBİL ACCENT ERA 1.4 SELECT	P. Car	1580	1133	BENZİN	4	1399	97/6000	5/1	HYUNDAI	ÖN-ARKA 185/65 R 14
OTOMOBİL ACCENT ERA 1.4 SELECT GP	P. Car	1580	1133	BENZİN	4	1399	97/6000	5/1	HYUNDAI	ÖN-ARKA 185/65 R 14
OTOMOBİL ACCENT ERA 1.4 SELECT OTM	P. Car	1600	1155	BENZİN	4	1399	97/6000	4/1 OTOMATİK	HYUNDAI	ÖN-ARKA 185/65 R 14
OTOMOBİL ACCENT ERA 1.6 SELECT	P. Car	1580	1133	BENZİN	4	1599	112/6000	5/1	HYUNDAI	ÖN-ARKA 185/65 R 14
OTOMOBİL ACCENT ERA 1.6 SELECT GP	P. Car	1580	1133	BENZİN	4	1599	112/6000	5/1	HYUNDAI	ÖN-ARKA 185/65 R 14
OTOMOBİL ACCENT ERA 1.6 SELECT OTM	P. Car	1600	1155	BENZİN	4	1599	112/6000	4/1 OTOMATİK	HYUNDAI	ÖN-ARKA 185/65 R 14
OTOMOBİL ACCENT ERA 1.6 SELECT GP OTM	P. Car	1600	1155	BENZİN	4	1599	112/6000	4/1 OTOMATİK	HYUNDAI	ÖN-ARKA 185/65 R 14
OTOMOBİL ACCENT ERA 1.6 STYLE	P. Car	1580	1133	BENZİN	4	1599	112/6000	5/1	HYUNDAI	ÖN-ARKA 185/65 R 14
OTOMOBİL ACCENT ERA 1.6 STYLE GP SR	P. Car	1580	1133	BENZİN	4	1599	112/6000	5/1	HYUNDAI	ÖN-ARKA 185/65 R 14
OTOMOBİL ACCENT ERA 1.6 STYLE GP SR OTM	P. Car	1600	1155	BENZİN	4	1599	112/6000	4/1 OTOMATİK	HYUNDAI	ÖN-ARKA 185/65 R 14
OTOMOBİL ACCENT ERA 1.5 CRDI-VGT TEAM	P. Car	1650	1205	DİZEL	4	1493	110/4000	5/1	HYUNDAI	ÖN-ARKA 185/65 R 14
OTOMOBİL ACCENT ERA 1.5 CRDI-VGT SELECT	P. Car	1650	1205	DİZEL	4	1493	110/4000	5/1	HYUNDAI	ÖN-ARKA 185/65 R 14
OTOMOBİL ACCENT ERA 1.5 CRDI-VGT SELECT GP	P. Car	1650	1205	DİZEL	4	1493	110/4000	5/1	HYUNDAI	ÖN-ARKA 185/65 R 14
OTOMOBİL ACCENT ERA 1.5 CRDI-VGT STYLE	P. Car	1650	1205	DİZEL	4	1493	110/4000	5/1	HYUNDAI	ÖN-ARKA 185/65 R 14
OTOMOBİL ACCENT ERA 1.5 CRDI-VGT STYLE GP SR	P. Car	1650	1205	DİZEL	4	1493	110/4000	5/1	HYUNDAI	ÖN-ARKA 185/65 R 14
KAMYONET H 100 PANEL VAN KAPALI KASALI 2.6	Pick Up	2860	1475	DİZEL	4	2607	80/4000	5/1	HYUNDAI	ÖN-ARKA 185 R 14 8PR
KAMYONET H 100 PANEL VAN KAPALI KASA KAMYONET 2.6 AC	Pick Up	2860	1475	DİZEL	4	2607	80/4000	5/1	HYUNDAI	ÖN-ARKA 185 R 14 8PR
KAMYONET STAREX PANEL VAN L TCI HY	Pick Up	3130	1800	DİZEL	4	2476	100/3800	5/1	HYUNDAI	ÖN-ARKA 205/70 R15 C
KAMYONET STAREX PANEL VAN L TCI HY KLM	Pick Up	3130	1800	DİZEL	4	2476	100/3800	5/1	HYUNDAI	ÖN-ARKA 205/70 R15 C
KAMYONET STAREX PANEL VAN L TCI ÇHY KLM ABS	Pick Up	3130	1800	DİZEL	4	2476	100/3800	5/1	HYUNDAI	ÖN-ARKA 205/70 R15 C
KAMYONET STAREX PANEL VAN L TCI ÇHY KLM ABS OTM	Pick Up	3130	1785	DİZEL	4	2476	100/3800	4/1 OTOMATİK	HYUNDAI	ÖN-ARKA 205/70 R15 C
KAMYONET STAREX PANEL VAN L CRDI HY KLM	Pick Up	3180	1865	DİZEL	4	2497	140/3800	5/1	HYUNDAI	ÖN-ARKA 205/70 R15 C
KAMYONET STAREX PANEL VAN L CRDI ÇHY KLM ABS	Pick Up	3180	1865	DİZEL	4	2497	140/3800	5/1	HYUNDAI	ÖN-ARKA 205/70 R15 C
KAMYONET STAREX PANEL VAN S TCI HY	Pick Up	3050	1755	DİZEL	4	2476	100/3800	5/1	HYUNDAI	ÖN-ARKA 205/70 R15 C
KAMYONET STAREX PANEL VAN S TCI HY KLM	Pick Up	3050	1755	DİZEL	4	2476	100/3800	5/1	HYUNDAI	ÖN-ARKA 205/70 R15 C
KAMYONET STAREX PANEL VAN S TCI ÇHY KLM ABS	Pick Up	3050	1755	DİZEL	4	2476	100/3800	5/1	HYUNDAI	ÖN-ARKA 205/70 R15 C
KAMYONET STAREX PANEL VAN S TCI ÇHY KLM ABS OTM	Pick Up	3050	1740	DİZEL	4	2476	100/3800	4/1 OTOMATİK	HYUNDAI	ÖN-ARKA 205/70 R15 C
KAMYONET STAREX SPACE L TCI HY	Pick Up	3130	1890	DİZEL	4	2476	100/3800	5/1	HYUNDAI	ÖN-ARKA 205/70 R15 C
KAMYONET STAREX SPACE L TCI HY KLM	Pick Up	3130	1890	DİZEL	4	2476	100/3800	5/1	HYUNDAI	ÖN-ARKA 205/70 R15 C
KAMYONET STAREX SPACE S TCI HY KLM	Pick Up	3050	1845	DİZEL	4	2476	100/3800	5/1	HYUNDAI	ÖN-ARKA 205/70 R15 C
KAMYONET STAREX SPACE S TCI ÇHY KLM ABS	Pick Up	3050	1845	DİZEL	4	2476	100/3800	5/1	HYUNDAI	ÖN-ARKA 205/70 R15 C
KAMYONET STAREX SPACE S CRDI HY KLM	Pick Up	3100	1910	DİZEL	4	2497	140/3800	5/1	HYUNDAI	ÖN-ARKA 205/70 R15 C
KAMYONET STAREX SPACE S CRDI ÇHY KLM ABS	Pick Up	3100	1910	DİZEL	4	2497	140/3800	5/1	HYUNDAI	ÖN-ARKA 205/70 R15 C
KAMYONET STAREX SPACE S CRDI ÇHY KLM ABS OTM	Pick Up	3100	1890	DİZEL	4	2497	140/3800	4/1 OTOMATİK	HYUNDAI	ÖN-ARKA 205/70 R15 C
KAMYONET STAREX PANEL VAN Y. TAVAN TCI HY YAK	Pick Up	3130	1850	DİZEL	4	2476	100/3800	5/1	HYUNDAI	ÖN-ARKA 205/70 R15 C
KAMYONET STAREX PANEL VAN Y. TAVAN TCI HY KLM YAK	Pick Up	3130	1850	DİZEL	4	2476	100/3800	5/1	HYUNDAI	ÖN-ARKA 205/70 R15 C
KAMYONET STAREX PANEL VAN Y. TAVAN TCI ÇHY KLM ABS YAK	Pick Up	3130	1850	DİZEL	4	2476	100/3800	5/1	HYUNDAI	ÖN-ARKA 205/70 R15 C
KAMYONET STAREX SPACE Y. TAVAN TCI HY KLM YAK	Pick Up	3130	1940	DİZEL	4	2476	100/3800	5/1	HYUNDAI	ÖN-ARKA 205/70 R15 C
KAMYONET STAREX MULTIWAY TCI HY KLM	Pick Up	3130	1890	DİZEL	4	2476	100/3800	5/1	HYUNDAI	ÖN-ARKA 205/70 R15 C
KAMYONET STAREX MULTIWAY TCI ÇHY KLM ABS	Pick Up	3130	1890	DİZEL	4	2476	100/3800	5/1	HYUNDAI	ÖN-ARKA 205/70 R15 C
KAMYONET STAREX MULTIWAY TCI ÇHY KLM ABS OTM	Pick Up	3130	1875	DİZEL	4	2476	100/3800	4/1 OTOMATİK	HYUNDAI	ÖN-ARKA 205/70 R15 C
KAMYONET STAREX MULTIWAY CRDI HY KLM	Pick Up	3180	1955	DİZEL	4	2497	140/3800	5/1	HYUNDAI	ÖN-ARKA 205/70 R15 C
KAMYONET STAREX MULTIWAY CRDI ÇHY KLM ABS	Pick Up	3180	1955	DİZEL	4	2497	140/3800	5/1	HYUNDAI	ÖN-ARKA 205/70 R15 C
KAMYONET STAREX MULTIWAY CRDI ÇHY KLM ABS OTM	Pick Up	3180	1935	DİZEL	4	2497	140/3800	4/1 OTOMATİK	HYUNDAI	ÖN-ARKA 205/70 R15 C
MİNİBÜS STAREX MİNİBÜS TCI ÇHY KLM ABS AJ	Minibus	2950	2030	DİZEL	4	2476	100/3800	5/1	HYUNDAI	ÖN-ARKA 205/70 R15 C
MİNİBÜS STAREX MİNİBÜS TCI ÇHY KLM ABS AJ OTM	Minibus	2950	2015	DİZEL	4	2476	100/3800	4/1 OTOMATİK	HYUNDAI	ÖN-ARKA 205/70 R15 C
MİNİBÜS STAREX MİNİBÜS CRDI ÇHY KLM ABS AJ	Minibus	3000	2095	DİZEL	4	2497	140/3800	5/1	HYUNDAI	ÖN-ARKA 205/70 R15 C
MİNİBÜS STAREX MİNİBÜS CRDI ÇHY KLM ABS AJ OTM	Minibus	3000	2075	DİZEL	4	2497	140/3800	4/1 OTOMATİK	HYUNDAI	ÖN-ARKA 205/70 R15 C

#### KARSAN

MİNİBÜS (14+1) 72 HP	Minibus	3192	2165	DİZEL	4	2498	72/4000	5/1	NZWL	ÖN-ARKA 195/75 R 16 C
MİDİBÜS (18+1) 72 HP	Midibus	3484	2185	DİZEL	4	2498	72/4000	5/1	NZWL	ÖN-ARKA 195/75 R 16 C
MİDİBÜS (21+1) 72 HP	Midibus	3850	2305	DİZEL	4	2498	72/4000	5/1	NZWL	ÖN-ARKA 195/75 R 16 C
MİDİBÜS OKUL TAŞITI (24+1) 72 HP	Midibus	3460	2185	DİZEL	4	2498	72/4000	5/1	NZWL	ÖN-ARKA 195/75 R 16 C
MİDİBÜS (15+1) 72 HP	Midibus	3850	2260	DİZEL	4	2498	72/4000	5/1	NZWL	ÖN-ARKA 195/75 R 16 C
MİNİBÜS (13+1) 72 HP	Minibus	3850	2245	DİZEL	4	2498	72/4000	5/1	NZWL	ÖN-ARKA 195/75 R 16 C
MİNİBÜS (11+1) 72 HP	Minibus	3192	2150	DİZEL	4	2498	72/4000	5/1	NZWL	ÖN-ARKA 195/75 R 16 C
MİNİBÜS (14+1) 78 HP	Minibus	3400	2245	DİZEL	4	2771	78/3500	5/1	NZWL	ÖN-ARKA 205/75 R 16 C
MİDİBÜS (18+1) 78 HP	Midibus	3565	2265	DİZEL	4	2771	78/3500	5/1	NZWL	ÖN-ARKA 205/75 R 16 C
MİDİBÜS (15+1) TURİZM 78 HP	Midibus	3890	2320	DİZEL	4	2771	78/3500	5/1	NZWL	ÖN-ARKA 205/75 R 16 C
MİDİBÜS (21+1) 78 HP	Midibus	3890	2385	DİZEL	4	2771	78/3500	5/1	NZWL	ÖN-ARKA 205/75 R 16 C
MİDİBÜS OKUL TAŞITI (24+1) 78 HP	Midibus	3565	2265	DİZEL	4	2771	78/3500	5/1	NZWL	ÖN-ARKA 205/75 R 16 C
MİDİBÜS (17+1) 72 HP, Euro 2	Midibus	3520	2260	DİZEL	4	2498	72/4000	5/1	NZWL	ÖN-ARKA 195/75 R 16 C
MİDİBÜS (18+1) 72 HP, AVC	Midibus	3490	2160	DİZEL	4	2498	72/4000	5/1	AVC	ÖN-ARKA 6.50 R 16 C
MİNİBÜS Premier (14+1) 78 HP	Minibus	3420	2345	DİZEL	4	2771	78/3500	5/1	NZWL	ÖN-ARKA 205/75 R 16 C
MİDİBÜS Premier (18+1) 78 HP	Midibus	3750	2365	DİZEL	4	2771	78/3500	5/1	NZWL	ÖN-ARKA 205/75 R 16 C
MİDİBÜS Premier (21+1) 78 HP	Midibus	4050	2485	DİZEL	4	2771	78/3500	5/1	NZWL	ÖN-ARKA 205/75 R 16 C
KAMYONET KISA VAN 72 HP	Pick Up	3490	2060	DİZEL	4	2498	72/4000	5/1	NZWL	ÖN-ARKA 195/75 R 16 C

KAMYONET KISA VAN H/R 72 HP	Pick Up	3490	2120	DİZEL	4	2498	72/4000	5/1	NZWL	ÖN-ARKA 195/75 R 16 C
KAMYONET STD. VAN 72 HP	Pick Up	3490	2100	DİZEL	4	2498	72/4000	5/1	NZWL	ÖN-ARKA 195/75 R 16 C
KAMYONET STD. VAN H/R 72 HP	Pick Up	3490	2180	DİZEL	4	2498	72/4000	5/1	NZWL	ÖN-ARKA 195/75 R 16 C
KAMYONET VAN (1+1) 70 HP	Pick Up	1955	1175	DİZEL	4	1868	70/4600	5/1	BE4 5LK DM47	ÖN-ARKA 175/65 R14
KAMYONET CAMLI VAN (1+4) 70 HP	Pick Up	1955	1220	DİZEL	4	1868	70/4600	5/1	BE4 5LK DM47	ÖN-ARKA 175/65 R14
OTOBÜS (1+4) 75 HP	P. Car	1780	1188	BENZİN	4	1360	75/5500	5/1	MA 5L/B 20CP37	ÖN-ARKA 175/70 R14
KAMYONET CAMLI VAN (1+4) 90 HP	Pick Up	1990	1260	DİZEL	4	1997	90/4000	5/1	BE4 5LKG DM79	ÖN-ARKA 175/65 R14
KAMYONET VAN (1+1) 70 HP	Pick Up	1955	1175	DİZEL	4	1868	70/4600	5/1	BE4 5LK DM47	ÖN-ARKA 175/65 R14
KAMYONET CAMLI VAN (1+4) 90 HP	Pick Up	1990	1300	DİZEL	4	1997	90/4000	5/1	BE4 5LKG DM79	ÖN-ARKA - 185/65 R 15
KAMYONET CAMLI VAN (1+4) 75 HP	Pick Up	1955	1200	BENZİN	4	1360	75/4600	5/1	MA 5L/B 20CP37	ÖN-ARKA 175/70 R14
KAMYONET UZUN VAN (1+1) 70 HP	Pick Up	1945	1246	DİZEL	4	1868	70/4600	5/1	BE4 5LK DM47	ÖN-ARKA 175/65 R14
KAMYONET UZUN CAMLI VAN (1+4) 90 HP	Pick Up	1984	1282	DİZEL	4	1997	90/4000	5/1	BE4 5LKG DM79	ÖN-ARKA 175/65 R14
KAMYONET UZUN CAMLI VAN (1+4) 70 HP	Pick Up	1984	1273	DİZEL	4	1868	70/4600	5/1	BE4 5LK DM47	ÖN-ARKA 175/65 R14

#### M.A.N. TÜRKİYE

KAMYON 32.310 FVN (8X2)	Truck	32000	9360	DİZEL	6	11967	310/2000	16/2	ZF-16S-151	ÖN-ARKA 315/80 R 22.5
KAMYON 32.270 FVN (8X2)	Truck	32000	8550	DİZEL	6	6871	270/2400	9/1	ZF-9 S 109	ÖN-ARKA 315/80 R 22.5
KAMYON 16.220 FAEX (4X4) ASKERİ	Truck	16000	7450	DİZEL	6	6871	220/2400	9/1	ZF-9 S 109	ÖN-ARKA 14.00 R 20
KAMYON 18.220 FAX (4X4)	Truck	16000	7350	DİZEL	6	6871	220/2400	9/1	ZF-9 S 109	ÖN-ARKA 14.00 R 20
KAMYON 26.372 DFAEX (6X6) ASKERİ	Truck	26000	9770	DİZEL	6	11967	370/2000	16/2	ZF16S-151	ÖN-ARKA 14.00 R 20
OTOBÜS Lion's Classic G (A75)	Bus	28000	16400	DİZEL	6	11967	310/2000	6/1-OTOMATİK	ZF 6HP592C	ÖN-ARKA 295/80 R 22.5
OTOBÜS Lion's Classic G (A75)	Bus	28000	16400	DİZEL	6	11967	310/2000	4/1-OTOMATİK	VOITH 864.3	ÖN-ARKA 295/80 R 22.5
OTOBÜS Lion's Classic G (A75)	Bus	28000	16400	DİZEL	6	11967	260/2000	6/1-OTOMATİK	ZF 6HP502C	ÖN-ARKA 295/80 R 22.5
OTOBÜS Lion's Classic G (A75)	Bus	28000	16400	DİZEL	6	11967	260/2000	4/1-OTOMATİK	VOITH 864.3	ÖN-ARKA 295/80 R 22.5
OTOBÜS Lion's Classic (A74)	Bus	18000	11100	DİZEL	6	6871	220/2400	4/1-OTOMATİK	VOITH 854.3	ÖN-ARKA 295/80 R 22.5
OTOBÜS Lion's Classic (A74)	Bus	18000	11100	DİZEL	6	6871	220/2400	6/1-OTOMATİK	ZF 6HP-502C	ÖN-ARKA 295/80 R 22.5
OTOBÜS Lion's Classic (A74)	Bus	18000	11100	DİZEL	6	6871	220/2400	6/1	S6-1901	ÖN-ARKA 295/80 R 22.5
OTOBÜS Lion's Classic (A74)	Bus	18000	11100	DİZEL	6	6871	280/2400	4/1-OTOMATİK	VOITH 854.3	ÖN-ARKA 295/80 R 22.5
OTOBÜS Lion's Classic (A74)	Bus	18000	11100	DİZEL	6	6871	280/2400	6/1	S6-1900	ÖN-ARKA 295/80 R 22.5
OTOBÜS Lion's Classic (A74)	Bus	18000	11100	DİZEL	6	6871	280/2400	6/1-OTOMATİK	ZF 6HP-502	ÖN-ARKA 295/80 R 22.5
OTOBÜS Lion's Classic (A74)	Bus	18000	11200	DOĞALGAZ	6	12816	310/1900	4/1-OTOMATİK	VOITH 864.3	ÖN-ARKA 295/80 R 22.5
OTOBÜS Lion's Classic Ü (A72)	Bus	18000	11500	DİZEL	6	6871	280/2400	6/1	ZF S6-1901	ÖN-ARKA 295/80 R 22.5
OTOBÜS Lion's Classic Ü (A72)	Bus	18000	11500	DİZEL	6	6871	280/2400	6/1-OTOMATİK	ZF 6HP-502	ÖN-ARKA 295/80 R 22.5
OTOBÜS Lion's Classic Ü (A72)	Bus	18000	11500	DİZEL	6	11967	310/1900	6/1	ZF S6-1901	ÖN-ARKA 295/80 R 22.5
OTOBÜS Lion's Classic Ü (A72)	Bus	18000	11500	DİZEL	6	11967	310/1900	6/1-OTOMATİK	ZF 6HP592	ÖN-ARKA 295/80 R 22.5
OTOBÜS Lion's Classic Ü (A72)	Bus	18000	11500	DİZEL	6	11967	310/1900	4/1-OTOMATİK	VOITH 864.3	ÖN-ARKA 295/80 R 22.5
OTOBÜS Lion's Classic Ü (A72)	Bus	18000	11500	DİZEL	6	6871	220/2400	6/1	S6-1901	ÖN-ARKA 295/80 R 22.5
OTOBÜS Lion's Classic Ü (A72)	Bus	18000	11500	DİZEL	6	6871	220/2400	6/1-OTOMATİK	ZF 6HP-502C	ÖN-ARKA 295/80 R 22.5
OTOBÜS Lion's City T	Bus	18000	11500	DİZEL	6	6871	220/2400	4/1-OTOMATİK	VOITH 854.3	ÖN-ARKA 295/80 R 22.5
OTOBÜS Lion's City T	Bus	18000	11500	DİZEL	6	6871	240/2400	6/1 OTOMATİK	ZF 6HP-502C	ÖN-ARKA 295/80 R 22.5
OTOBÜS Lion's City T	Bus	18000	11500	DİZEL	6	6871	240/2400	4/1 OTOMATİK	VOITH D854.5	ÖN-ARKA 295/80 R 22.5
OTOBÜS Lion's City T	Bus	18000	11500	DİZEL	6	6871	280/2400	6/1 OTOMATİK	ZF 6HP-502C	ÖN-ARKA 295/80 R 22.5
OTOBÜS Lion's City T	Bus	18000	11500	DİZEL	6	6871	280/2400	4/1 OTOMATİK	VOITH D854.5	ÖN-ARKA 295/80 R 22.5
OTOBÜS Lion's City TÜ	Bus	18000	11500	DİZEL	6	6871	240/2400	6/1 OTOMATİK	ZF 6HP-502C	ÖN-ARKA 295/80 R 22.5
OTOBÜS Lion's City TÜ	Bus	18000	11500	DİZEL	6	6871	240/2400	4/1 OTOMATİK	VOITH D854.5	ÖN-ARKA 295/80 R 22.5
OTOBÜS Lion's City TÜ	Bus	18000	11500	DİZEL	6	6871	280/2400	6/1 OTOMATİK	ZF 6HP-502C	ÖN-ARKA 295/80 R 22.5
OTOBÜS Lion's City TÜ	Bus	18000	11500	DİZEL	6	6871	280/2400	4/1 OTOMATİK	VOITH D854.5	ÖN-ARKA 295/80 R 22.5
OTOBÜS Fortuna	Bus	18000	13900	DİZEL	6	11967	410/1900	8/1	8S 2100BO+VOITH-Ret.	ÖN-ARKA 295/80 R 22.5
OTOBÜS Fortuna Mega	Bus	24000	16070	DİZEL	6	12816	460/1900	8/1	8S 2100BO+VOITH-Ret.	ÖN-ARKA 295/80 R 22.5

#### M. BENZ TÜRK

OTOBÜS Travego 15 SHD	Bus	18000	13954	DİZEL	6	11967	422/2000	6/1-12/1	GO 190	ÖN-ARKA 295/80 R 22.5
OTOBÜS Travego 17 SHD	Bus	24000	16606	DİZEL	8	15928	476/2000	6/1 -12/1	GO 190,GO 210, ZF-AS Tr	ÖN-ARKA 295/80 R 22.5
OTOBÜS-O 403 15 SHD	Bus	17907	13750	DİZEL	8	12763	381/2100	6/1	G04/160-6/8.2	ÖN-ARKA 295/80 R 22.6
OTOBÜS-O 403 15 RHD	Bus	17439	13225	DİZEL	6	10964	340/2100	6/1	G04/160-6/7.2	ÖN-ARKA 295/80 R 22.7
OTOBÜS-O 403 15 SHD	Bus	17907	13750	DİZEL	8	14618	381/2100	6/1	GO 190 veya GO210	ÖN-ARKA 295/80 R 22.8
OTOBÜS-O 403 15 RHD	Bus	17439	13225	DİZEL	8	14618	381/2100	6/1	GO 190 veya GO211	ÖN-ARKA 295/80 R 22.9
OTOBÜS-O 403 15 RHD	Bus	17951	13624	DİZEL	6	11967	422/2000	6/1	GO 190 veya GO212	ÖN-ARKA 295/80 R 22.10
OTOBÜS-O 403 15 SHD	Bus	17901	13830	DİZEL	6	11967	422/2000	6/1	GO 190 veya GO213	ÖN-ARKA 295/80 R 22.11
OTOBÜS-O 350 15 SHD	Bus	17907	13750	DİZEL	6	11967	422/2000	6/1	GO 190 veya GO214	ÖN-ARKA 295/80 R 22.12
OTOBÜS-O 350 15 RHD	Bus	17439	13225	DİZEL	6	11967	422/2000	6/1	GO 190 veya GO215	ÖN-ARKA 295/80 R 22.13
OTOBÜS-O 345	Bus	17426	10286	DİZEL	5	9973	250/2200	6/1	G04/160 veya GO 190	ÖN-ARKA 11 R 22.5
OTOBÜS-O 345	Bus	17537	10465	DİZEL	6	11967	213/2200	4/1	ZF veya Voit	ÖN-ARKA 11 R 22.6
OTOBÜS-O 345	Bus	17537	10465	DİZEL	6	11967	250/2200	4/1	ZF veya Voit	ÖN-ARKA 11 R 22.7
OTOBÜS-O 345	Bus	17574	10434	DİZEL	6	11967	250/2200	6/1	G04/160 veya GO 190	ÖN-ARKA 11 R 22.8
OTOBÜS-O 345	Bus	17870	12020	DİZEL	6	11967	250/2000	6/1	GO 190 veya GO210	ÖN-ARKA 11R ve 275/70 R 22.5
OTOBÜS-O 345	Bus	17870	12020	DİZEL	6	11967	299/2000	6/1	GO 190 veya GO210	ÖN-ARKA 11R ve 275/70 R 22.6
OTOBÜS-O 345	Bus	17870	12020	DİZEL	6	11967	300/2000	6/1	ZF veya Voit	ÖN-ARKA 11R ve 275/70 R 22.7
OTOBÜS-O 345	Bus	17865	11337	DİZEL	6	11980	250/2000	4,5,6/1	ZF5HP/6HP,Voith 864	ÖN-ARKA 11R ve 275/70 R 22.5
OTOBÜS-O 345	Bus	17865	11337	DİZEL	6	11980	300/2000	4,5,6/1	GO210	295/80R22.5
OTOBÜS-O 345 K	Bus	25830	15154	DİZEL	5	9973	250/2200	6/1	G04/160 veya GO 190	ÖN-ARKA 11 R 22.5
OTOBÜS-O 345 K	Bus	25830	15154	DİZEL	5	9973	300/2200	6/1	G04/160 veya GO 190	ÖN-ARKA 11 R 22.6
OTOBÜS-O 345 K	Bus	26686	16010	DİZEL	6	11967	300/2000	6/1	ZF veya Voit	ÖN-ARKA 11 R 22.7
OTOBÜS-O 345 K	Bus	26594	16530	DİZEL	6	11980	300/2000	4,5,6/1	ZF5HP/6HP,Voith 864	ÖN-ARKA 11R ve 275/70 R 22.5
OTOBÜS-O 560	Bus	16672	12600	DİZEL	6	10964	340/2100	6/1	GO 190-6 / 7, 68	ÖN-ARKA 295/80 R 22.5
OTOBÜS-O 560	Bus	16853	12852	DİZEL	6	11967	354/2000	6/1	GO 190-6 / 7, 68	ÖN-ARKA 295/80 R 22.6
OTOBÜS-O 560 RHD	Bus	17681	13520	DİZEL	6	11967	354/2000	6/1	GO 190-6 / 7, 68	ÖN-ARKA 295/80 R 22.7
KAMYON 1215 C / 3600 4x2	Truck	11990	4100	DİZEL	4	4249	152/2300	6/1	MB G 60 - 6 / 9,20 -1,0	ÖN-ARKA 265/70 R 19,5



KAMYON 1215 C / 4200 4x2	Truck	11990	4200	DIZEL	4	4249	152/2300	6/1	MB G 60 - 6 / 9,20 -1,0	ÖN-ARKA 265/70 R 19,5
KAMYON 1517 C / 3600 4x2	Truck	15000	4260	DIZEL	4	4249	170/2300	6/1	MB G 60 - 6 / 9,20 -1,0	ÖN-ARKA 285/70 R 19,5
KAMYON 1517 C / 4200 4x2	Truck	15000	4360	DIZEL	4	4249	170/2300	6/1	MB G 60 - 6 / 9,20 -1,0	ÖN-ARKA 285/70 R 19,5
KAMYON 1823 C / 4800 4x2	Truck	18000	6200	DIZEL	6	6374	231/2300	9/1	MB G 131-9/14.57-1.0	ÖN-ARKA 12 R 22,5
KAMYON 2523 C / 4800 6x2 DNA	Truck	25000	7210	DIZEL	6	6374	231/2300	9/1	MB G 131-9/14.57-1.0	ÖN-ARKA 12 R 22,5
KAMYON 2528 C / 4800 6x2 DNA	Truck	25000	7210	DIZEL	6	6374	279/2300	9/1	MB G 131-9/14.57-1.0	ÖN-ARKA 12 R 22,5
KAMYON 3228 C / 5100 8x2	Truck	32000	8160	DIZEL	6	6374	279/2300	9/1	MB G 131-9/14.57-1.0	ÖN-ARKA 315/80 R 22,5
KAMYON 3240 C / 5125 8x2	Truck	32000	9570	DIZEL	6	11967	401/1900	16/1	MB G 211-16/17.0-1.0	ÖN-ARKA 315/80 R 22,5
KAMYON 1823 K / 3600 4x2	Truck	18000	6260	DIZEL	6	6374	231/2300	9/1	MB G 131-9/14.57-1.0	ÖN-ARKA 12 R 22,5
KAMYON 2628 CL / 4800 6x2	Truck	26000	7135	DIZEL	6	6374	279/2300	9/1	MB G 131-9/14.57-1.0	ÖN-ARKA 12 R 22,5
KAMYON 2640 CL / 4800 6x2	Truck	26000	8460	DIZEL	6	11967	401/1900	16/1	MB G 211-16/17.0-1.0	ÖN-ARKA 315/80 R 22,5
KAMYON 2528 K / 3600 6x2	Truck	25000	7140	DIZEL	6	6374	279/2300	9/1	MB G 131-9/14.57-1.0	ÖN-ARKA 12 R 22,5
KAMYON 3028 K / 3600 6x4	Truck	26000	7985	DIZEL	6	6374	279/2300	9/1	MB G 131-9/14.57-1.0	ÖN-ARKA 12 R 22,5
KAMYON 3340 K / 3900 6x4	Truck	26000	8960	DIZEL	6	11967	401/1900	16/1	MB G 240-16/11.7-0.69	ÖN-ARKA 315/80 R 22,5
KAMYON 3028 B / 3600 6x4	Truck	26000	7985	DIZEL	6	6374	279/2300	9/1	MB G 131-9/14.57-1.0	ÖN-ARKA 12 R 22,5
KAMYON 4140 B / 5100 8x4	Truck	32000	10390	DIZEL	6	11967	401/1900	16/1	MB G 240-16/11.7-0.69	ÖN-ARKA 315/80 R 22,5
ÇEKİCİ 1835 LS / 3600 4X2	R. Tractor	18000	6629	DIZEL	6	11967	354/1900	9/1	MB G 240-16/11.7-0.69	ÖN-ARKA 295/80 R 22,5
ÇEKİCİ 1840 LS / 3600 4X2	R. Tractor	18000	6605	DIZEL	6	11967	401/1900	16/1	MB G 211-16/17.0-1.0	ÖN-ARKA 295/80 R 22,5

#### OTOKAR

MİNİBÜS M2000	Minibus	4612	3660	DIZEL	4	3770	80/2800	5/1	EATON 2305C	ÖN-ARKA 215/75 R17.5
MİDİBÜS SULTAN 125 L	Midibus	8000	4910	DIZEL	4	4038	130/2500	6/1	EATON FS4106B	ÖN-ARKA 225/75 R17.5
MİDİBÜS SULTAN 145 S	Midibus	9200	5974	DIZEL	4	4764	155/2400	6/1	EATON FSO4106B	ÖN-ARKA 225/75 R17.5
MİDİBÜS NAVİGO 165 S	Midibus	9200	6390	DIZEL	4	4764	165/2400	6/1	EATON FSO4106B	ÖN-ARKA 225/75 R17.5
MİDİBÜS SULTAN City (C 145 S/B50xx)	Midibus	9600	5548	DIZEL	4	4764	155/2400	6/1	EATON FSO4106B	ÖN-ARKA 225/75 R17.5
MİDİBÜS SULTAN City Liner (N 145 S/EH44)	Midibus	9600	6210	DIZEL	4	4764	155/2400	6/1	EATON FSO4106B	ÖN-ARKA 225/75 R17.5
KAMYONET LAND ROVER 110-111 SW	Pick Up	3050	2020	DIZEL	4	2495	111/4000	5/1	R380/LT230Q	ÖN-ARKA 7.50 R16LT 8PR
KAMYONET LAND ROVER 110-111	Pick Up	3050	2078	DIZEL	4	2495	111/4000	5/1	R380/LT230Q	ÖN-ARKA 7.50 R16LT 8PR
KAMYONET LAND ROVER 130-111	Pick Up	3500	2144	DIZEL	4	2495	111/4000	5/1	R380/LT230Q	ÖN-ARKA 7.50 R16LT 8PR

#### OTOYOL

KAMYONET 35.9	Pick Up	3500	2320	DIZEL	4	3908	81/2800	5/1	IVECO 2828	ÖN-ARKA 6.50X16 10 KAT
KAMYON 50.9	Truck	4990	2395	DIZEL	4	3908	81/2800	5/1	IVECO 2828	ÖN-ARKA 6.50X16 10 KAT
KAMYON 60.9	Truck	5990	2425	DIZEL	4	3908	81/2800	5/1	IVECO 2828	ÖN-ARKA 7.50X16 12 KAT
KAMYON 65.9	Truck	7000	2403	DIZEL	4	3908	81/2800	5/1	IVECO 2828	ÖN-ARKA 7.50X16 12 KAT
KAMYON 75.12	Truck	7490	2800	DIZEL	4	3908	115/2700	6/1	IVECO 2855.6	ÖN-ARKA 215/75R17.5 TUBELESS
KAMYON 79.12	Truck	7990	2800	DIZEL	4	3908	115/2700	6/1	IVECO 2855.6	ÖN-ARKA 215/75R17.5 TUBELESS
KAMYON 85.12	Truck	8500	2730	DIZEL	4	3908	115/2700	6/1	IVECO 2855.6	ÖN-ARKA 215/75R17.5 TUBELESS
KAMYON 85.14	Truck	8500	2875	DIZEL	4	3908	136/2700	6/1	IVECO 2855.6	ÖN-ARKA 215/75R17.5 TUBELESS
KAMYON 80.12	Truck	8500	2800	DIZEL	4	3908	115/2700	6/1	IVECO 2855.6	ÖN-ARKA 215/75R17.5 TUBELESS
KAMYON 120.14	Truck	12600	3335	DIZEL	4	3908	136/2700	6/1	IVECO 2855.6	ÖN-ARKA 215/75R17.5 TUBELESS
MİDİBÜS M23.12	Midibus	7500	4450	DIZEL	4	3908	115/2700	6/1	IVECO 2855.6	ÖN-ARKA 7.50X16 12 KAT
MİDİBÜS M50	Midibus	8500	4957	DIZEL	4	3908	115/2700	6/1	IVECO 2855.6	ÖN-ARKA 215/75R17.5 TUBELESS
MİDİBÜS M23.9	Midibus	6480	4300	DIZEL	4	3908	81/2800	5/1	IVECO 2828	ÖN-ARKA 7.50X16 8 KAT
MİDİBÜS M24.9	Midibus	7000	4180	DIZEL	4	3908	81/2800	5/1	IVECO 2828	ÖN-ARKA 7.50X16 12 KAT
MİNİBÜS M(B)14.9	Minibus	5370	3800	DIZEL	4	3908	81/2800	6/1	IVECO 2855.6	ÖN-ARKA 205/75R17.5 TUBELESS
MİNİBÜS M(B)14.12	Minibus	5370	3900	DIZEL	4	3908	115/2700	6/1	IVECO 2855.6	ÖN-ARKA 205/75R17.5 TUBELESS
MİDİBÜS M(B)17.9	Midibus	5370	3800	DIZEL	4	3908	81/2800	6/1	IVECO 2855.6	ÖN-ARKA 205/75R17.5 TUBELESS
MİDİBÜS M(B)17.12	Midibus	5370	3900	DIZEL	4	3908	115/2700	6/1	IVECO 2855.6	ÖN-ARKA 205/75R17.5 TUBELESS
MİDİBÜS M(B)18.9	Midibus	5370	3800	DIZEL	4	3908	81/2800	6/1	IVECO 2855.6	ÖN-ARKA 205/75R17.5 TUBELESS
MİDİBÜS M(B)18.12	Midibus	5370	3900	DIZEL	4	3908	115/2700	6/1	IVECO 2855.6	ÖN-ARKA 205/75R17.5 TUBELESS
MİDİBÜS E25.12	Midibus	8350	5450	DIZEL	4	3908	115/2700	6/1	IVECO 2855.6	ÖN-ARKA 215/75R17.5 TUBELESS
MİDİBÜS E27.12	Midibus	8500	5490	DIZEL	4	3908	115/2700	6/1	IVECO 2855.6	ÖN-ARKA 215/75R17.5 TUBELESS
MİDİBÜS E27.14	Midibus	8500	5720	DIZEL	4	3908	136/2700	6/1	IVECO 2855.6	ÖN-ARKA 215/75R17.5 TUBELESS
MİDİBÜS E29.14	Midibus	9250	6100	DIZEL	4	3908	136/2700	6/1	IVECO 2855.6	ÖN-ARKA 215/75R17.5 TUBELESS
MİDİBÜS Eurocity	Midibus	9800	6100	DIZEL	4	3908	136/2700	6/1	IVECO 2855.6	ÖN-ARKA 215/75R17.5 TUBELESS
MİDİBÜS E31.17	Midibus	9500	6500	DIZEL	4	3920	170/2700	6/1	IVECO 2855.6	ÖN-ARKA 225/75R17.5 TUBELESS
MİDİBÜS E35.17	Midibus	10250	7200	DIZEL	4	3920	170/2700	6/1	IVECO 2855.6	ÖN-ARKA 225/75R17.5 TUBELESS

#### OYAK RENAULT

OTOMOBİL CLİO SYMBOL 1.2 16 V	P. Car	1430	885	BENZİN	4	1149	75/5500	5/1	JB1	ÖN-ARKA 175/70 R 13
OTOMOBİL CLİO SYMBOL 1.4 8V	P. Car	1460	940	BENZİN	4	1390	75/5500	5/1	JB1	ÖN-ARKA 175/65 R 14
OTOMOBİL CLİO SYMBOL 1.4 16 V	P. Car	1500	950	BENZİN	4	1390	98/6000	5/1	JB3	ÖN-ARKA 175/65 R 14
OTOMOBİL CLİO SYMBOL 1.4 16 V AUTOMATIC	P. Car	1525	1010	BENZİN	4	1390	98/6000	OTOMATİK	DPO	ÖN-ARKA 175/65 R 14
OTOMOBİL CLİO SYMBOL 1.5 dCi ( 65 hp )	P. Car	1500	945	DIZEL	4	1461	65/4000	5/1	JB3	ÖN-ARKA 175/65 R 14
OTOMOBİL CLİO SYMBOL 1.5 dCi ( 80 hp )	P. Car	1500	945	DIZEL	4	1461	80/4000	5/1	JC5	ÖN-ARKA 175/65 R 14
OTOMOBİL MEGANE II K9K 1.5 ( 80 hp )	P. Car	1770	1160	DIZEL	4	1461	80/4000	5/1	JR5	ÖN-ARKA 195/65 R 15
OTOMOBİL MEGANE II K9K 1.5 ( 100 hp )	P. Car	1770	1160	DIZEL	4	1461	100/4000	5/1	JR5	ÖN-ARKA 205/55 R 16
OTOMOBİL MEGANE II F9Q 1.9	P. Car	1845	1250	DIZEL	4	1870	120/4000	6/1	NDO	ÖN-ARKA 195/65 R 15
OTOMOBİL MEGANE II K4J 1.4	P. Car	1740	1150	BENZİN	4	1390	98/6000	5/1	JH3	ÖN-ARKA 205/50 R 17
OTOMOBİL MEGANE II K4M BVM 1.6	P. Car	1750	1160	BENZİN	4	1598	115/6000	5/1	JH3	ÖN-ARKA 195/65 R 15
										ÖN-ARKA 205/55 R 16
										ÖN-ARKA 205/50 R 17

OTOMOBİL MEGANE II K4M BVA 1.6	P. Car	1800	1210	BENZİN	4	1598	115/6000	OTOMATİK	DPO	ÖN-ARKA 195/65 R 15 ÖN-ARKA 205/55 R 16 ÖN-ARKA 205/50 R 17
OTOMOBİL MEGANE II F4R BVM 2.0	P. Car	1825	1235	BENZİN	4	1998	136/5500	6/1	NDO	ÖN-ARKA 205/55 R 16 ÖN-ARKA 205/50 R 17 ÖN-ARKA 205/55 R 16
OTOMOBİL MEGANE II F4R BVA 2.0	P. Car	1840	1250	BENZİN	4	1998	136/5500	OTOMATİK	DPO	ÖN-ARKA 205/55 R 16 ÖN-ARKA 205/50 R 17
<b>TEMSA</b>										
OTOBÜS SAFARI-TB162W	Bus	18000	13350	DİZEL	6	11967	360/1900	6/1	ZF6S1701	ÖN-ARKA 295/80 R22.5
OTOBÜS SAFARI-TB163W	Bus	18000	13350	DİZEL	6	11967	410/1900	8/1	ZF8S2101	ÖN-ARKA 295/80 R22.5
OTOBÜS DIAMOND - 14	Bus	26000	17130	DİZEL	6	12816	460/1900	8/1	ZF8S2101	ÖN 315/80 R22.5 ARKA 295/80 R22.5
OTOBÜS DIAMOND - 13	Bus	25700	16315	DİZEL	6	12816	460/1900	8/1	ZF8S2101	ÖN-ARKA 295/80 R22.5
OTOBÜS SAFİR	Bus	18000	13970	DİZEL	6	11946	350/2200	6/1	M12S6	ÖN-ARKA 295/80 R22.5
MİDİBÜS PRESTİJ	Midibus	7281	4568	DİZEL	4	3908	136/2900	5/1	M035S5	ÖN-ARKA 8.5 R 17.5
MİDİBÜS PRESTİJ A/C	Midibus	7135	5045	DİZEL	4	3908	136/2900	5/1	M035S5	ÖN-ARKA 8.5 R 17.5
MİDİBÜS OPALIN 8	Midibus	9950	7030	DİZEL	4	4580	170/2400	6/1	ZF 6S700BO	ÖN-ARKA 235/75 R17.5
MİDİBÜS OPALIN 8.4	Midibus	11500	7565	DİZEL	4	4580	170/2400	6/1	ZF 6S700BO	ÖN-ARKA 245/70 R17.5
KAMYON FE 659 E	Truck	7500	2600	DİZEL	4	3908	136/2900	5/1	M035S5	ÖN-ARKA 8.5 R 17.5
KAMYON FE 659 F	Truck	7700	2615	DİZEL	4	3908	136/2900	5/1	M035S5	ÖN-ARKA 8.5 R 17.5
KAMYONET FE 511	Pick Up	3500	1855	DİZEL	4	2835	90/4000	5/1	MO15S5	ÖN-ARKA 195/75 R16
KAMYONET FE 519 B	Pick Up	3500	1811	DİZEL	4	3908	105/3200	5/1	MO25S5	ÖN-ARKA 7.50 - 15/10
KAMYONET FE 639 C	Pick Up	3500	1995	DİZEL	4	3908	105/3200	5/1	MO25S5	ÖN-ARKA 8.5 R 17.5
<b>TOFAS</b>										
OTOMOBİL PALIO 1.2 SL	P. Car	1455	950	BENZİN	4	1242	60/5000	5/1	FIAT 178	ÖN-ARKA 165/80 R13 T
OTOMOBİL PALIO 1.2 16V EL/HL	P. Car	1455	950	BENZİN	4	1242	80/5000	5/1	FIAT 178	ÖN-ARKA 175/70 R14 T
OTOMOBİL PALIO 1.2 16V EL/HL SPEEDGEAR	P. Car	1495	990	BENZİN	4	1242	80/5000	OTOMATİK	FIAT 178	ÖN-ARKA 175/70 R14 T
OTOMOBİL PALIO 1.4 8V	P. Car	1460	955	BENZİN	4	1368	77/6000	5/1	FIAT 178	ÖN-ARKA 175/70 R14 T
OTOMOBİL PALIO 1.3 MULTIJET	P. Car	1535	1030	DİZEL	4	1248	70/4000	5/1	FIAT 178	ÖN-ARKA 175/70 R14 T
OTOMOBİL ALBEA 1.2 8V EL	P. Car	1525	1015	BENZİN	4	1242	60/5000	5/1	FIAT 178	ÖN-ARKA 175/70 R 14 T
OTOMOBİL ALBEA 1.2 16V EL/HL	P. Car	1525	1015	BENZİN	4	1242	80/5000	5/1	FIAT 178	ÖN-ARKA 175/70 R 14 T
OTOMOBİL ALBEA 1.2 16V HL SPEEDGEAR	P. Car	1565	1055	BENZİN	4	1242	80/5000	OTOMATİK	FIAT 178	ÖN-ARKA 175/70 R 14 T
OTOMOBİL ALBEA 1.2 16V LPG	P. Car	1525	1070	BENZİN	4	1242	80/5000	5/1	FIAT 178	ÖN-ARKA 175/70 R 14 T
OTOMOBİL ALBEA 1.4 8V	P. Car	1530	1020	BENZİN	4	1368	77/6000	5/1	FIAT 178	ÖN-ARKA 185/65 R 14 H
OTOMOBİL ALBEA 1.6 16 V HL	P. Car	1585	1075	BENZİN	4	1596	103/5750	5/1	FIAT 178	ÖN-ARKA 175/65 R 14 H
OTOMOBİL ALBEA 1.3 MULTIJET SL/EL	P. Car	1595	1085	BENZİN	4	1248	70/4000	5/1	FIAT 178	ÖN-ARKA 175/70 R 14 H
OTOMOBİL MAREA 1.6 16 V LIBERTY/EXCLUSIVE	P. Car	1730	1140	BENZİN	4	1596	103/5750	5/1	FIAT 185	ÖN-ARKA 185/65 R 14 H
OTOMOBİL DOBLO 1.4 8V	P. Car	1830	1230	BENZİN	4	1368	77/6000	5/1	FIAT 223	ÖN-ARKA 185/65 R 15 T
OTOMOBİL DOBLO 1.9 JTD	P. Car	1920	1320	DİZEL	4	1910	105/4000	5/1	FIAT 223	ÖN-ARKA 185/65 R 15 T
OTOMOBİL DOBLO 1.3 MULTIJET	P. Car	1910	1310	DİZEL	4	1248	75/4000	5/1	FIAT 223	ÖN-ARKA 185/65 R 15 T
KAMYONET DOBLO CARGO 1.4 8V	Pick Up	1920	1190	BENZİN	4	1368	77/6000	5/1	FIAT 223	ÖN-ARKA 185/65 R 15 S
KAMYONET DOBLO CARGO 1.4 8V P.M.	Pick Up	2040	1190	BENZİN	4	1368	77/6000	5/1	FIAT 223	ÖN-ARKA 175/75 R 14 S
KAMYONET DOBLO CARGO 1.4 8V MAXI	Pick Up	2090	1240	BENZİN	4	1368	77/6000	5/1	FIAT 223	ÖN-ARKA 175/75 R 14 S
KAMYONET DOBLO CARGO 1.9 JTD	Pick Up	2010	1280	DİZEL	4	1910	105/4000	5/1	FIAT 223	ÖN-ARKA 185/65 R 15 S
KAMYONET DOBLO CARGO 1.9 JTD PM	Pick Up	2130	1280	DİZEL	4	1910	105/4000	5/1	FIAT 223	ÖN-ARKA 175/75 R 14 S
KAMYONET DOBLO CARGO 1.9 JTD MAXI	Pick Up	2180	1330	DİZEL	4	1910	105/4000	5/1	FIAT 223	ÖN-ARKA 175/75 R 14 S
KAMYONET DOBLO CARGO 1.3 MULTIJET	Pick Up	2000	1270	DİZEL	4	1248	75/4000	5/1	FIAT 223	ÖN-ARKA 185/65 R 15 S
KAMYONET DOBLO CARGO 1.3 MULTIJET PM	Pick Up	2120	1270	DİZEL	4	1248	75/4000	5/1	FIAT 223	ÖN-ARKA 175/75 R 14 S
KAMYONET DOBLO CARGO 1.3 MULTIJET MAXI	Pick Up	2170	1320	DİZEL	4	1248	75/4000	5/1	FIAT 223	ÖN-ARKA 175/75 R 14 S
KAMYONET DOBLO CARGO COMBI 1.4 8V	Pick Up	1975	1240	BENZİN	4	1368	77/6000	5/1	FIAT 223	ÖN-ARKA 175/75 R 14 S
KAMYONET DOBLO CARGO COMBI 1.9 JTD	Pick Up	2065	1330	DİZEL	4	1910	105/4000	5/1	FIAT 223	ÖN-ARKA 175/75 R 14 S
KAMYONET DOBLO CARGO COMBI 1.3 MULTIJET	Pick Up	2055	1320	DİZEL	4	1248	75/4000	5/1	FIAT 223	ÖN-ARKA 175/75 R 14 S
KAMYONET PALIO VAN 1.2 8V	Pick Up	1455	960	BENZİN	4	1242	60/5000	5/1	FIAT 178	ÖN-ARKA 165/80 R 13 T
KAMYONET PALIO VAN 1.2 16V	Pick Up	1455	960	BENZİN	4	1242	80/5000	5/1	FIAT 178	ÖN-ARKA 175/70 R 14 T
KAMYONET PALIO VAN 1.4 8V	Pick Up	1460	965	BENZİN	4	1368	77/6000	5/1	FIAT 178	ÖN-ARKA 175/70 R 14 T
KAMYONET PALIO VAN 1.3 MULTIJET	Pick Up	1495	1040	DİZEL	4	1248	70/4000	5/1	FIAT 178	ÖN-ARKA 175/70 R 14 T
<b>TOYOTA</b>										
OTOMOBİL COROLLA 1.4 R TERRA SEDAN	P. Car	1655	1120	BENZİN	4	1398	97/6000	5/1	TOYOTA	ÖN-ARKA 175/70 R 14
OTOMOBİL COROLLA 1.4 L TERRA SEDAN	P. Car	1655	1120	BENZİN	4	1398	97/6000	5/1	TOYOTA	ÖN-ARKA 175/70 R 14
OTOMOBİL COROLLA 1.4 L SOL SEDAN	P. Car	1655	1135	BENZİN	4	1398	97/6000	5/1	TOYOTA	ÖN-ARKA 195/60 R 15
OTOMOBİL COROLLA 1.6 R TERRA SEDAN	P. Car	1655	1140	BENZİN	4	1598	110/6000	5/1	TOYOTA	ÖN-ARKA 195/60 R 15
OTOMOBİL COROLLA 1.6 R SOL SEDAN	P. Car	1670	1195	BENZİN	4	1598	110/6000	OTOMATİK	TOYOTA	ÖN-ARKA 195/60 R 15
OTOMOBİL COROLLA 1.6 L TERRA SEDAN	P. Car	1655	1140	BENZİN	4	1598	110/6000	5/1	TOYOTA	ÖN-ARKA 195/60 R 15
OTOMOBİL COROLLA 1.6 L TERRA AT SEDAN	P. Car	1670	1180	BENZİN	4	1598	110/6000	OTOMATİK	TOYOTA	ÖN-ARKA 195/60 R 15
OTOMOBİL COROLLA 1.6 L SOL SEDAN	P. Car	1655	1150	BENZİN	4	1598	110/6000	5/1	TOYOTA	ÖN-ARKA 195/60 R 15
OTOMOBİL COROLLA 1.6 L SOL AT SEDAN	P. Car	1670	1195	BENZİN	4	1598	110/6000	OTOMATİK	TOYOTA	ÖN-ARKA 195/60 R 15
OTOMOBİL COROLLA 2.0 R TERRA SEDAN	P. Car	1760	1275	DİZEL	4	1995	90/4000	5/1	TOYOTA	ÖN-ARKA 195/60 R 15
OTOMOBİL COROLLA 2.0 R TERRA SEDAN	P. Car	1760	1275	DİZEL	4	1995	90/4000	5/1	TOYOTA	ÖN-ARKA 195/60 R 15
OTOMOBİL COROLLA 2.0 R SOL SEDAN	P. Car	1760	1295	DİZEL	4	1995	90/4000	5/1	TOYOTA	ÖN-ARKA 195/60 R 15
OTOMOBİL COROLLA 1.6 L TERRA SEDAN	P. Car	1655	1140	BENZİN	4	1598	110/6000	5/1	TOYOTA	ÖN-ARKA 195/60 R 15
OTOMOBİL COROLLA 1.4 L TERRA MMT SEDAN	P. Car	1695	1225	DİZEL	4	1364	66KW/3800	MULTIMOD	TOYOTA	ÖN-ARKA 195/60 R 15
OTOMOBİL COROLLA 1.4 L TERRA SEDAN	P. Car	1695	1225	DİZEL	4	1364	66KW/3800	5/1	TOYOTA	ÖN-ARKA 195/60 R 15
OTOMOBİL COROLLA 1.4 R TERRA SEDAN	P. Car	1695	1225	DİZEL	4	1364	66KW/3800	5/1	TOYOTA	ÖN-ARKA 195/60 R 15
OTOMOBİL COROLLA 1.4 L TERRA SW	P. Car	1655	1185	BENZİN	4	1398	97/6000	5/1	TOYOTA	ÖN-ARKA 175/70 R 14
OTOMOBİL COROLLA 1.4 L SOL SW	P. Car	1655	1190	BENZİN	4	1398	97/6000	5/1	TOYOTA	ÖN-ARKA 175/70 R 14
OTOMOBİL COROLLA 1.6 L TERRA SW	P. Car	1655	1195	BENZİN	4	1598	110/6000	5/1	TOYOTA	ÖN-ARKA 195/60 R 15

OTOMOBİL COROLLA 1.6 L SOL SW	P. Car	1655	1210	BENZIN	4	1598	110/6000	5/1	TOYOTA	ÖN-ARKA 195/60 R 15
OTOMOBİL COROLLA 1.6 L TERRA SW	P. Car	1670	1225	BENZIN	4	1598	110/6000	OTOMATİK	TOYOTA	ÖN-ARKA 195/60 R 15
OTOMOBİL COROLLA 1.6 L SOL SW	P. Car	1670	1230	BENZIN	4	1598	110/6000	OTOMATİK	TOYOTA	ÖN-ARKA 195/60 R 15
OTOMOBİL COROLLA 1.6 R TERRA SW	P. Car	1655	1195	BENZIN	4	1598	110/6000	5/1	TOYOTA	ÖN-ARKA 195/60 R 15
OTOMOBİL COROLLA 2.0 L TERRA SW	P. Car	1760	1305	DİZEL	4	1995	90/4000	5/1	TOYOTA	ÖN-ARKA 195/60 R 15
OTOMOBİL COROLLA 2.0 L SOL SW	P. Car	1760	1325	DİZEL	4	1995	90/4000	5/1	TOYOTA	ÖN-ARKA 195/60 R 15
OTOMOBİL COROLLA 2.0 R TERRA SW	P. Car	1760	1305	DİZEL	4	1995	90/4000	5/1	TOYOTA	ÖN-ARKA 195/60 R 15
OTOMOBİL COROLLA 1.4 L TERRA MMT SW	P. Car	1695	1235	DİZEL	4	1364	66KW/3800	MULTIMOD	TOYOTA	ÖN-ARKA 195/60 R 15
OTOMOBİL COROLLA 1.4 L TERRA SW	P. Car	1695	1235	DİZEL	4	1364	66KW/3800	5/1	TOYOTA	ÖN-ARKA 195/60 R 15
OTOMOBİL COROLLA 1.4 SOL SW	P. Car	1695	1235	DİZEL	4	1364	66KW/3800	5/1	TOYOTA	ÖN-ARKA 195/60 R 15
OTOMOBİL COROLLA VERSO 1.8 L COMFORT 7 KOLTUK	P. Car	2035	1415	BENZIN	4	1794	95KW/6000	MULTIMOD	TOYOTA	ÖN-ARKA 205/55 R16
OTOMOBİL COROLLA VERSO 1.8 L ELEGANT 7 KOLTUK	P. Car	2035	1435	BENZIN	4	1794	95KW/6001	MULTIMOD	TOYOTA	ÖN-ARKA 205/55 R16
OTOMOBİL COROLLA VERSO 1.8 R COMFORT 7 KOLTUK	P. Car	2035	1405	BENZIN	4	1794	95KW/6002	MULTIMOD	TOYOTA	ÖN-ARKA 205/55 R16
OTOMOBİL COROLLA VERSO 1.8 R ELEGANT 7 KOLTUK	P. Car	2035	1425	BENZIN	4	1794	95KW/6003	MULTIMOD	TOYOTA	ÖN-ARKA 205/55 R16
OTOMOBİL COROLLA VERSO 2.2 L COMFORT 7 KOLTUK	P. Car	2160	1540	DİZEL	4	2231	100KW/3600	6/1	TOYOTA	ÖN-ARKA 205/55 R16
OTOMOBİL COROLLA VERSO 2.2 L ELEGANT 7 KOLTUK	P. Car	2160	1540	DİZEL	4	2231	100/130KW/3600	6/1	TOYOTA	ÖN-ARKA 205/55 R16
OTOMOBİL COROLLA VERSO 2.2 L COMFORT 5 KOLTUK	P. Car	2160	1540	DİZEL	4	2231	100KW/3600	6/1	TOYOTA	ÖN-ARKA 205/55 R16
OTOMOBİL COROLLA VERSO 2.2 L ELEGANT 5 KOLTUK	P. Car	2160	1540	DİZEL	4	2231	100/130KW/3600	6/1	TOYOTA	ÖN-ARKA 205/55 R16
OTOMOBİL COROLLA VERSO 2.2 R COMFORT 7 KOLTUK	P. Car	2160	1540	DİZEL	4	2231	100KW/3600	6/1	TOYOTA	ÖN-ARKA 205/55 R16
OTOMOBİL COROLLA VERSO 2.2 R ELEGANT 7 KOLTUK	P. Car	2160	1540	DİZEL	4	2231	100/130KW/3600	6/1	TOYOTA	ÖN-ARKA 205/55 R16
OTOMOBİL COROLLA VERSO 1.6 L COMFORT 7 KOLTUK	P. Car	2035	1410	BENZIN	4	1598	81KW/6000	5/1	TOYOTA	ÖN-ARKA 205/55 R16
OTOMOBİL COROLLA VERSO 1.6 L ELEGANT 7 KOLTUK	P. Car	2035	1425	BENZIN	4	1598	81KW/6000	5/1	TOYOTA	ÖN-ARKA 205/55 R16
OTOMOBİL COROLLA VERSO 1.6 L COMFORT 5 KOLTUK	P. Car	2035	1380	BENZIN	4	1598	81KW/6000	5/1	TOYOTA	ÖN-ARKA 205/55 R16
OTOMOBİL COROLLA VERSO 1.6 L ELEGANT 5 KOLTUK	P. Car	2035	1410	BENZIN	4	1598	81KW/6000	5/1	TOYOTA	ÖN-ARKA 205/55 R16
OTOMOBİL COROLLA VERSO 1.6 R COMFORT 7 KOLTUK	P. Car	2035	1400	BENZIN	4	1598	81KW/6000	5/1	TOYOTA	ÖN-ARKA 205/55 R16
OTOMOBİL COROLLA VERSO 1.8 L COMFORT 7 KOLTUK	P. Car	2035	1410	BENZIN	4	1794	95KW/6000	5/1	TOYOTA	ÖN-ARKA 205/55 R16
OTOMOBİL COROLLA VERSO 1.8 L ELEGANT 7 KOLTUK	P. Car	2035	1430	BENZIN	4	1794	95KW/6000	5/1	TOYOTA	ÖN-ARKA 205/55 R16
OTOMOBİL COROLLA VERSO 1.8 L ELEGANT 5 KOLTUK	P. Car	2035	1410	BENZIN	4	1794	95KW/6000	5/1	TOYOTA	ÖN-ARKA 205/55 R16
OTOMOBİL COROLLA VERSO 1.8 R COMFORT 7 KOLTUK	P. Car	2035	1400	BENZIN	4	1794	95KW/6000	5/1	TOYOTA	ÖN-ARKA 205/55 R16
OTOMOBİL COROLLA VERSO 1.8 R ELEGANT 7 KOLTUK	P. Car	2035	1420	BENZIN	4	1794	95KW/6000	5/1	TOYOTA	ÖN-ARKA 205/55 R16

#### TÜRK TRAKTÖR

TRAKTÖR TT 50	F. Tractor	2300	1960	DİZEL	3	2931	50/2500	8/2	NEW HOLLAND	ÖN 6.00X16 ARKA 13.6X28
TRAKTÖR TT 55	F. Tractor	2360	1960	DİZEL	3	2931	55/2500	8/2&12/3	NEW HOLLAND	ÖN 6.50X16 ARKA 14.9X28
TRAKTÖR TT 55 4WD	F. Tractor	2640	2240	DİZEL	3	2931	55/2500	8/2&12/3	NEW HOLLAND	ÖN 300/70R20 ARKA 380/70R28
TRAKTÖR TT 60	F. Tractor	2440	2040	DİZEL	3	2931	60/2500	8/2&12/3	NEW HOLLAND	ÖN 6.50X16 ARKA 14.9X28
TRAKTÖR TT 60 4WD	F. Tractor	2720	2320	DİZEL	3	2931	60/2500	8/2&12/3	NEW HOLLAND	ÖN 300/70R20 ARKA 380/70R28
TRAKTÖR TT 60 KABİNLİ	F. Tractor	2755	2355	DİZEL	3	2931	60/2500	8/2&12/3	NEW HOLLAND	ÖN 6.50X16 ARKA 14.9X28
TRAKTÖR TT 60 4WD KABİNLİ	F. Tractor	3035	2635	DİZEL	3	2931	60/2500	8/2&12/3	NEW HOLLAND	ÖN 300/70R20 ARKA 380/70R28
TRAKTÖR TT 65	F. Tractor	2470	2070	DİZEL	3 TURBO	2931	65/2500	8/2&12/3	NEW HOLLAND	ÖN 7.50X16 ARKA 14.9X30
TRAKTÖR TT 65 4WD	F. Tractor	2760	2350	DİZEL	3 TURBO	2931	65/2500	8/2&12/3	NEW HOLLAND	ÖN 300/70R20 ARKA 380/70R28
TRAKTÖR TT 65 KABİNLİ	F. Tractor	2785	2385	DİZEL	3 TURBO	2931	65/2500	8/2&12/3	NEW HOLLAND	ÖN 7.50X16 ARKA 14.9X30
TRAKTÖR TT 65 4WD KABİNLİ	F. Tractor	3065	2665	DİZEL	3 TURBO	2931	65/2500	8/2&12/3	NEW HOLLAND	ÖN 300/70R20 ARKA 380/70R28
TRAKTÖR TT 55B	F. Tractor	2360	1960	DİZEL	3	2931	55/2500	8/2&12/3	NEW HOLLAND	ÖN 6.00X16 ARKA 13.6X28
TRAKTÖR TT 60B	F. Tractor	2440	2040	DİZEL	3	2931	60/2500	8/2&12/3	NEW HOLLAND	ÖN 6.00X16 ARKA 13.6X28
TRAKTÖR TT 65B	F. Tractor	2470	2070	DİZEL	3 TURBO	2931	65/2500	8/2&12/3	NEW HOLLAND	ÖN 6.00X16 ARKA 13.6X28
TRAKTÖR TT 55D	F. Tractor	2360	1960	DİZEL	3	2931	55/2500	8/2&12/3	NEW HOLLAND	ÖN 6.00X16 ARKA 13.6X28
TRAKTÖR TT 60D	F. Tractor	2440	2040	DİZEL	3	2931	60/2500	8/2&12/3	NEW HOLLAND	ÖN 6.00X16 ARKA 13.6X28
TRAKTÖR TT 65D	F. Tractor	2470	2070	DİZEL	3 TURBO	2931	65/2500	8/2&12/3	NEW HOLLAND	ÖN 6.00X16 ARKA 13.6X28
TRAKTÖR TD 60B	F. Tractor	5400	2540	DİZEL	3	2931	60/2500	12/12	NEW HOLLAND	ÖN 300/70R20 ARKA 380/70R28
TRAKTÖR TD 65B	F. Tractor	5400	2610	DİZEL	3 TURBO	2931	65/2500	12/12	NEW HOLLAND	ÖN 300/70R20 ARKA 380/70R28
TRAKTÖR TD 65D	F. Tractor	5170	2960	DİZEL	3 TURBO	2931	65/2500	12/12	NEW HOLLAND	ÖN 9.50-24 ARKA 14.9X30
TRAKTÖR TD 75D	F. Tractor	5850	3220	DİZEL	4	2931	70/2500	12/12	NEW HOLLAND	ÖN 11.2-24 ARKA 16.9X30
TRAKTÖR TD 85D	F. Tractor	6600	3340	DİZEL	4 TURBO	3908	85/2500	12/12	NEW HOLLAND	ÖH 12.4-24 ARKA 18.4X30
TRAKTÖR TD 95D	F. Tractor	8550	3600	DİZEL	4 TURBO	3908	95/2500	12/12	NEW HOLLAND	ÖH 14.9-24 ARKA 18.4R34
TRAKTÖR 55-56	F. Tractor	4000	2141	DİZEL	3	2931	55/2500	8/2&12/3	NEW HOLLAND	ÖN 6.50X16 ARKA 14.9X28
TRAKTÖR 65-56	F. Tractor	4350	2161	DİZEL	3 TURBO	2931	65/2500	8/2&12/3	NEW HOLLAND	ÖN 7.50X16 ARKA 14.9X30
TRAKTÖR 75-56	F. Tractor	4700	2400	DİZEL	4	3908	75/2500	8/2&12/3	NEW HOLLAND	ÖN 7.50X16 ARKA 16.9X30

#### UZEL

TRAKTÖR MF 240 S	F. Tractor	5218	2206	DİZEL	3	2500	49/2250	8/2	MF	ÖN 6.00X16 ARKA 13.6/12X38 ÖN 6.50X16 ARKA 14.9/13X28
TRAKTÖR MF 3.050	F. Tractor	5000	2205	DİZEL	3	3300	52/2200	8/2	MF	ÖN 6.00X16 ARKA 13.6/12X28 ÖN 6.50X16 ARKA 14.9/13X28
TRAKTÖR MF 3.050 4x4	F. Tractor	6900	2521	DİZEL	3	3300	52/2200	8/2	MF	ÖN 280 / 70 R 20 ARKA 13.6 R 28
TRAKTÖR MF 3.050 MM	F. Tractor	5000	2050	DİZEL	3	3300	52/2200	8/2	MF	ÖN 5.50X16 ARKA 12.4/11X24 ÖN 5.50X16 ARKA 13.6 R 24 ÖN 6.00X16 ARKA 12.4/11X28
TRAKTÖR MF 3.050 MM 4x4	F. Tractor	6900	2401	DİZEL	3	3300	52/2200	8/2	MF	ÖN 6.00X16 ARKA 13.6/12X28 ÖN 8.25X16 ARKA 380 70 R 24 ÖN 280 / 70 R 18 ARKA 13.6 R 24 ÖN 280 / 70 R 20 ARKA 13.6 R 28
TRAKTÖR MF 3.060	F. Tractor	5000	2260	DİZEL	3	3300	65/2200	12/4	MF	ÖN 6.50X16 ARKA 13.6/12X28
TRAKTÖR MF 3.060 4x4	F. Tractor	6900	2560	DİZEL	3	3300	65/2200	12/4	MF	ÖN 6.50X16 ARKA 14.9/13X28 ÖN 7.50X16 ARKA 16.9/13X30
TRAKTÖR MF 3.060 MM	F. Tractor	5000	2061	DİZEL	3	3300	65/2200	12/4	MF	ÖN 7.50X16 ARKA 12.4/11X36 ÖN 6.00X16 ARKA 13.6/12X28

									8/8	MF	ÖN 6.00X16 ARKA 12,4/11X28
TRAKTÖR MF 3.060 4X4 MM	F. Tractor	6900	2361	DIZEL	3	3300	65/2200	12/4	MF		ÖN 5.50X16 ARKA 12,4/11X24
								8/8	MF		ÖN 5.50X16 ARKA 13,6 R 24
TRAKTÖR MF 256 G	F. Tractor	7711	2770	DIZEL	3	3300	56/2200	12/4	MF		ÖN 8.25X16 ARKA 380/70R24
TRAKTÖR MF 256 G 4x4	F. Tractor	8500	3190	DIZEL	3	3300	56/2200	12/4	MF		ÖN 280 / 70 R 18 ARKA 13,6 R 24
TRAKTÖR MF 266 G	F. Tractor	7711	2789	DIZEL	3	3300	65/2200	12/4	MF		ÖN 280 / 70 R 20 ARKA 13,6 R 28
TRAKTÖR MF 266 G 4WD	F. Tractor	8756	3236	DIZEL	3	3300	65/2200	12/4	MF		ÖN 7,50X16 ARKA 14,9/ 13X28
TRAKTÖR MF 277 G	F. Tractor	7711	2789	DIZEL	3	3300	74/2200	12/4	MF		ÖN 7,50X16 ARKA 13-6/11X36
TRAKTÖR MF 277 G 4x4	F. Tractor	8500	3236	DIZEL	3	3300	74/2200	12/4	MF		ÖN 11.2 R 20 ARKA 14,9/ 13X28
TRAKTÖR MF 3075 D	F. Tractor	7711	3428	DIZEL	4	4040	75/2200	12/4	MF		ÖN 7,50X16 ARKA 13-6/12X36
TRAKTÖR MF 3075 D 4WD	F. Tractor	8500	3688	DIZEL	4	4040	75/2200	12/4	MF		ÖN 7,50X16 ARKA 14,9/13X30
								8/8	MF		ÖN 9,50X24 ARKA 13-6/11X36
TRAKTÖR MF 3085 D	F. Tractor	7711	3378	DIZEL	4	4040	85/2200	12/4	MF		ÖN 9,50X24 ARKA 14,9/13X30
TRAKTÖR MF 3085 D 4WD	F. Tractor	8500	3888	DIZEL	4	4040	85/2200	12/4	MF		ÖN 7,50X16 ARKA 13-6/12X36
											ÖN 7,50X24 ARKA 14,9/14X30
TRAKTÖR MF 3.095D	F. Tractor	7711	3631	DIZEL	4	4040	95/2200	12/4	MF		ÖN 12,4X24 ARKA 13-6/12X36
TRAKTÖR MF 3.095D 4WD	F. Tractor	8500	3951	DIZEL	4	4040	95/2200	12/4	MF		ÖN 11,2X24 ARKA 14,9/14X30
TRAKTÖR MF 3.105D 4WD	F. Tractor	8500	4135	DIZEL	4	4040	105/2200	12/4	MF		ÖN 9,00X16 ARKA 18,4x30
											ÖN 9,00X16 ARKA 16,9x30
											ÖN 9,00X16 ARKA 13,6x38
											ÖN 12,4x24 ARKA 18,4x30
											ÖN 11,2x28 ARKA 16,9x30
											ÖN 11,2x28 ARKA 13,6x38
											ÖN 9,00X16 ARKA 16,9 R 34
											ÖN 9,00X16 ARKA 14,9 R 38
											ÖN 13,6 R 24 ARKA 16,9 R 34
											ÖN 12,4 X 28 ARKA 14,9 R 38
											ÖN 10,00X16 ARKA 16,9-14X38
											ÖN 13,6-12X28 ARKA 16,9/14X38
											ÖN 13,6-12X38 ARKA 16,9-14X38
											ÖN 14,9 R 28 ARKA 18,4 R 38

DIZEL = Diesel  
 BENZİN = Petrol  
 ÖN-ARKA = Front-Rear KAT = Ply

**OTOMOTİV SANAYİİ FİRMALARININ  
2006 YILI ÜRETİM KAPASİTELERİ  
Production Capacities 2006**

FİRMALAR Firms	OTOMOBİL P.Car	%	KAMYON Truck	%	KAMYONET Pick Up	%	OTOBÜS Bus	%	MINİBÜS Mini-Bus	%	MİDİBÜS Midi-Bus	%	TRAKTÖR F. Tractor	%	TOPLAM Total	%
A. ISUZU	0	0	7.200	11	2.400	1	0	0	922	1	2.633	14	0	0	13.155	1
ASKAM	0	0	4.000	6	4.150	2	450	6	400	1	0	0	0	0	9.000	1
B.M.C.	0	0	10.000	16	5.000	2	800	10	5.000	6	1.000	5	0	0	21.800	2
FORD OTOSAN	0	3	15.000	22	190.000	77	0	0	60.000	70	0	0	0	0	265.000	21
HONDA TÜRKİYE	30.000	4	0	0	0	0	0	0	0	0	0	0	0	0	30.000	2
HYUNDAI ASSAN	100.000	13	0	0	15.000	7	0	0	10.000	13	0	0	0	0	125.000	10
KARSAN	0	0	0	0	15.000	7	0	0	5.000	6	5.000	27	0	0	25.000	2
M.A.N. TÜRKİYE	0	0	1.750	3	0	0	2.400	31	0	0	0	0	0	0	4.150	0
M. BENZ TÜRK	0	0	10.200	16	0	0	3.000	39	0	0	0	0	0	0	13.200	1
OTOKAR	0	0	0	0	3.600	2	0	0	2.100	3	2.100	0	0	0	7.800	1
OTOYOL	0	0	12.000	19	0	0	0	0	0	0	6.000	32	0	0	18.000	1
O. RENAULT	266.000	30	0	0	0	0	0	0	0	0	0	0	0	0	266.000	19
TEMSA	0	0	4.500	7	3.000	1	1.000	13	0	0	2.000	11	0	0	10.500	1
TOFAŞ	250.000	32	0	0	0	0	0	0	0	0	0	0	0	0	250.000	20
TOYOTA	150.000	19	0	0	0	0	0	0	0	0	0	0	0	0	150.000	12
T. TRAKTÖR	0	0	0	0	0	0	0	0	0	0	0	0	35.000	58	35.000	3
UZEL	0	0	0	0	0	0	0	0	0	0	0	0	25.000	42	25.000	2
<b>TOPLAM/Total</b>	<b>796.000</b>	<b>64</b>	<b>64.650</b>	<b>5</b>	<b>238.150</b>	<b>17</b>	<b>7.650</b>	<b>1</b>	<b>83.422</b>	<b>6</b>	<b>18.733</b>	<b>2</b>	<b>60.000</b>	<b>5</b>	<b>1.268.605</b>	<b>100</b>

**OTOMOTİV SANAYİİ FİRMALARININ 2001 - 2005 YILLARI ÜRETİM ADETLERİ**  
**Production Units For The Years 2001 - 2005**

<b>FİRMALAR/MODELLER</b>	<b>Firms/Models</b>	<b>2001</b>	<b>2002</b>	<b>2003</b>	<b>2004</b>	<b>2005</b>
<b>A.I.O.S.</b>						
Kamyonet	Pick Up	692	924	1.128	1.692	1.788
Kamyon (A.Y.A. 3.501 - 12.000 KG)	Truck	591	1.340	1.685	2.313	2.709
Midibüs	Midibus	629	1.057	1.157	2.006	2.265
<b>TOPLAM</b>	<b>Total</b>	<b>1.912</b>	<b>3.321</b>	<b>3.970</b>	<b>6.011</b>	<b>6.762</b>
<b>ASKAM</b>						
Kamyon (A.Y.A. 3.501 - 12.000 KG)	Truck	150	122	304	15	0
Kamyon (A.Y.A. > 12.001 KG)	Truck	328	53	1.118	1.482	2.046
Kamyonet	Pick Up	171	51	347	366	380
Minibüs	Minibus	0	0	0	15	13
<b>TOPLAM</b>	<b>Total</b>	<b>649</b>	<b>226</b>	<b>1.769</b>	<b>1.878</b>	<b>2.439</b>
<b>B.M.C.</b>						
Kamyon (A.Y.A. 3.501 - 12.000 KG)	Truck	98	88	0	0	0
Kamyon (A.Y.A. > 12.001 KG)	Truck	1.291	2.360	4.797	7.078	6.431
Kamyonet	Pick Up	1.741	1.711	3.765	4.164	4.410
Kamyonet Van	Pick Up	30	90	5	0	0
Minibüs	Minibus	171	291	557	427	784
Midibüs	Midibus	83	132	245	286	188
Otobüs (Şehiriçi)	Bus	39	111	551	864	687
<b>TOPLAM</b>	<b>Total</b>	<b>3.453</b>	<b>4.783</b>	<b>9.920</b>	<b>12.819</b>	<b>12.500</b>

<b>FİRMALAR/MODELLER</b>	<b>Firms/Models</b>	<b>2001</b>	<b>2002</b>	<b>2003</b>	<b>2004</b>	<b>2005</b>
<b>FORD OTOSAN</b>						
Kamyon (A.Y.A. > 12.001 KG)	Truck	883	1.262	3.093	6.050	9.530
Minibüs	Minibus	5.110	4.431	7.046	19.271	20.795
Kamyonet	Pick Up	5.972	12.531	18.598	79.936	16.597
Kamyonet Van	Pick Up	7.639	30.341	85.778	101.503	196.501
<b>TOPLAM</b>	<b>Total</b>	<b>19.604</b>	<b>48.565</b>	<b>114.515</b>	<b>206.760</b>	<b>243.423</b>
<b>HONDA TÜRKİYE</b>						
Otomobil (1.301 - 1.600 CC - SEDAN)	P. Car	5.134	5.384	10.970	15.581	11.236
<b>TOPLAM</b>	<b>Total</b>	<b>5.134</b>	<b>5.384</b>	<b>10.970</b>	<b>15.581</b>	<b>11.236</b>
<b>HYUNDAI ASSAN</b>						
Minibüs	Minibus	159	216	3.824	5.498	2.779
Kamyonet Van	Pick Up	956	2.703	17.949	22.965	25.839
Otomobil (< 1.300 CC - SEDAN)	P. Car	2.030	5.614	10.582	19.288	18.239
Otomobil (1.301 - 1.600 CC - SEDAN)	P. Car	687	2.787	3.375	9.989	13.163
<b>TOPLAM</b>	<b>Total</b>	<b>3.832</b>	<b>11.320</b>	<b>35.730</b>	<b>57.740</b>	<b>60.020</b>
<b>KARSAN</b>						
Minibüs	Minibus	751	325	870	1.264	1.177
Midibüs	Midibus	1.230	1.655	2.658	3.345	890
Kamyonet	Pick Up	0	5	635	5.013	7.038
Kamyonet Van	Pick Up	5.515	10.054	4.139	7.263	4.041
<b>TOPLAM</b>	<b>Total</b>	<b>7.496</b>	<b>12.039</b>	<b>8.302</b>	<b>16.885</b>	<b>13.146</b>
<b>M.A.N. TÜRKİYE</b>						
Kamyon (A.Y.A. > 12.001 KG)	Truck	494	989	822	690	421
Otobüs (Şehiriçi)	Bus	424	501	533	526	701
Otobüs (Şehirlerarası)	Bus	257	299	579	770	908
<b>TOPLAM</b>	<b>Total</b>	<b>1.175</b>	<b>1.789</b>	<b>1.934</b>	<b>1.986</b>	<b>2.030</b>

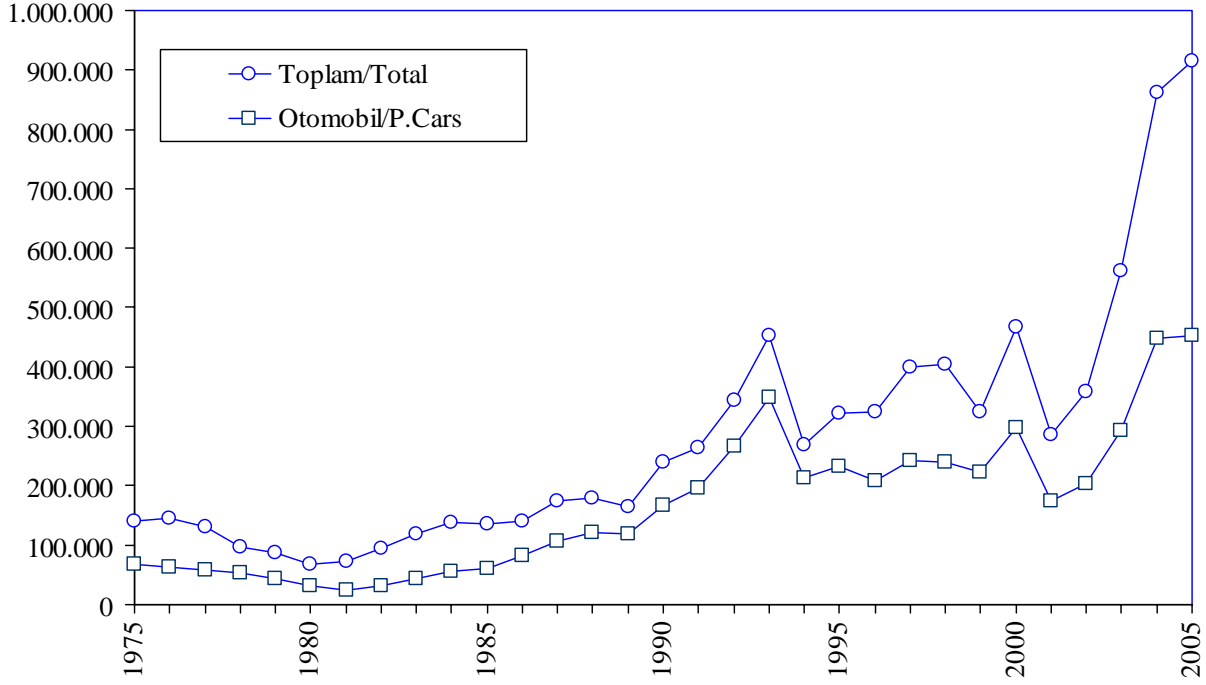
<b>FİRMALAR/MODELLER</b>	<b>Firms/Models</b>	<b>2001</b>	<b>2002</b>	<b>2003</b>	<b>2004</b>	<b>2005</b>
<b>M. BENZ TÜRK</b>						
Otobüs (Şehirçi)	Bus	561	482	747	495	597
Otobüs (Şehirlerarası)	Bus	1.095	1.048	1.624	1.544	1.701
Kamyon (A.Y.A. 3.501 - 12.000 KG) (ÖZEL ARAÇ)	Truck	0	0	0	0	0
Kamyon (A.Y.A. 3.501 - 12.000 KG)	Truck	3	0	0	0	0
Kamyon (A.Y.A. > 12.001 KG)	Truck	1.110	2.915	4.368	9.647	11.618
<b>TOPLAM</b>	<b>Total</b>	<b>2.769</b>	<b>4.445</b>	<b>6.739</b>	<b>11.686</b>	<b>13.916</b>
<b>OPEL TÜRKİYE</b>						
Otomobil (1.301 - 1.600 CC - SEDAN)	P. Car	854	0	0	0	0
Otomobil (1.601 - 2.000 CC - SEDAN)	P. Car	1.226	0	0	0	0
Otomobil (2.000 - 2.500 CC - SEDAN)	P. Car	0	0	0	0	0
<b>TOPLAM</b>	<b>Total</b>	<b>2.080</b>	<b>0</b>	<b>0</b>	<b>0</b>	<b>0</b>
<b>OTOKAR</b>						
Midibüs	Midibus	16	70	613	1.108	793
Minibüs	Minibus	295	762	1.237	1.415	595
Kamyonet	Pick Up	1.865	694	664	722	1.202
<b>TOPLAM</b>	<b>Total</b>	<b>2.176</b>	<b>1.526</b>	<b>2.514</b>	<b>3.245</b>	<b>2.590</b>
<b>OTOYOL</b>						
Kamyon (A.Y.A. 3.501 - 12.000 KG)	Truck	1.638	1.809	1.711	1.792	1.591
Kamyon (A.Y.A. > 12.001 KG)	Truck	1	85	60	14	1
Kamyonet	Pick Up	289	323	607	495	191
Minibüs	Midibus	0	114	91	271	19
Midibüs	Midibus	798	1.329	1.912	2.151	1.832
<b>TOPLAM</b>	<b>Total</b>	<b>2.726</b>	<b>3.660</b>	<b>4.381</b>	<b>4.723</b>	<b>3.634</b>



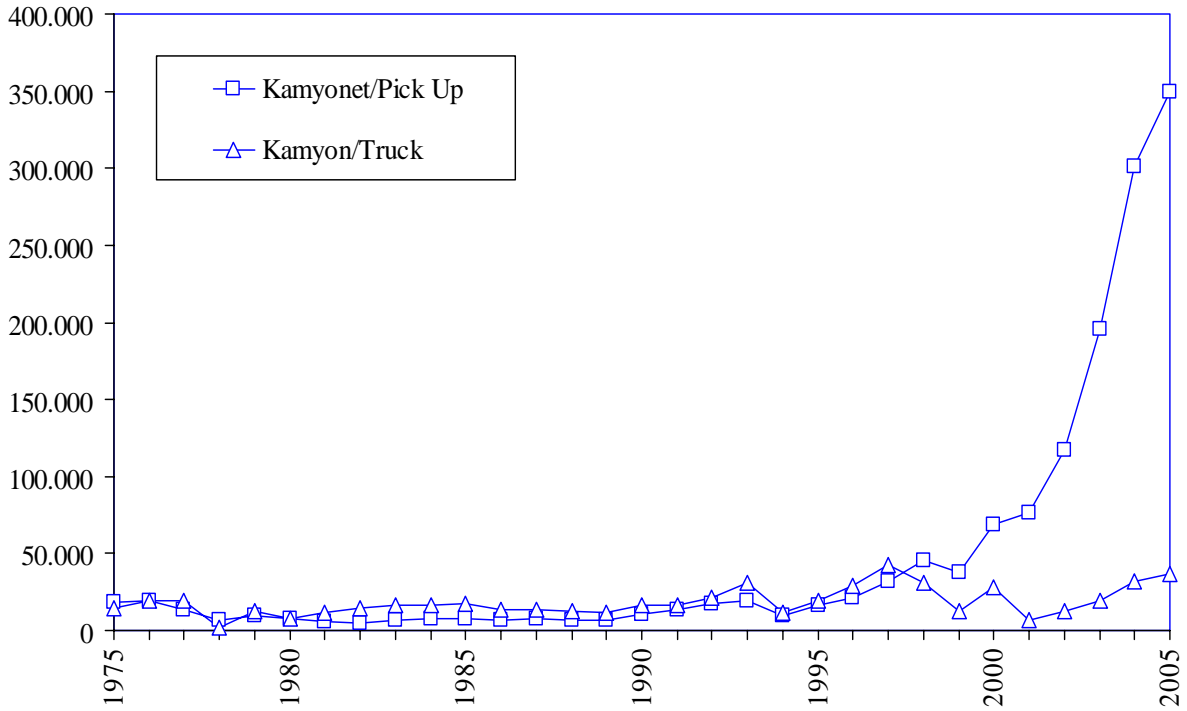
<b>FİRMALAR/MODELLER</b>	<b>Firms/Models</b>	<b>2001</b>	<b>2002</b>	<b>2003</b>	<b>2004</b>	<b>2005</b>
<b>OYAK-RENAULT</b>						
Otomobil (< 1.300 CC - SEDAN)	P. Car	0	0	0	5.002	4.501
Otomobil (1.301 - 1.600 CC - SEDAN)	P. Car	51.172	61.758	98.481	182.769	116.897
Otomobil (1.301 - 1.600 CC - HATCHBACK)	P. Car	185	0	0	0	0
Otomobil (1.301 - 1.600 CC - STATION WAGON)	P. Car	20.984	18.135	7.492	0	0
Otomobil (1.601 - 2.000 CC - SEDAN)	P. Car	918	1.528	19.552	9.582	58.271
Otomobil (1.601 - 2.000 CC - STATION WAGON)	P. Car	23.601	18.710	6.732	0	0
<b>TOPLAM</b>	<b>Total</b>	<b>96.860</b>	<b>100.131</b>	<b>132.257</b>	<b>197.353</b>	<b>179.669</b>
<b>TEMSA</b>						
Otobüs (Şehiriçi)	Bus	125	243	456	640	812
Kamyon (A.Y.A. 3.501 - 12.000 KG)	Truck	96	1.272	1.083	2.709	2.880
Kamyonet	Pick Up	132	492	816	1.960	3.328
Midibüs	Midibus	244	134	209	1.007	1.141
<b>TOPLAM</b>	<b>Total</b>	<b>597</b>	<b>2.141</b>	<b>2.564</b>	<b>6.316</b>	<b>8.161</b>
<b>TOFAŞ</b>						
Otomobil (< 1.300 CC - SEDAN)	P. Car	8.841	12.417	23.781	17.283	23.561
Otomobil (< 1.300 CC - HATCHBACK)	P. Car	6.012	3.892	6.557	11.641	9.856
Otomobil (< 1.300 CC - STATION WAGON)	P. Car	17.420	3.230	2.231	10.808	11.005
Otomobil (1.301 - 1.600 CC - SEDAN)	P. Car	3.273	2.187	7.746	12.378	10.859
Otomobil (1.301 - 1.600 CC - HATCHBACK)	P. Car	356	196	33	28	246
Otomobil (1.301 - 1.600 CC - STATION WAGON)	P. Car	2.568	4.813	3.824	3.056	4.238
Otomobil (1.601 - 2.000 CC - SEDAN)	P. Car	136	1	0	0	0
Otomobil (1.601 - 2.000 CC - STATION WAGON)	P. Car	27.084	24.647	21.921	15.370	13.025
Kamyonet Van	Pick Up	51.670	56.953	61.175	75.484	88.570
<b>TOPLAM</b>	<b>Total</b>	<b>117.360</b>	<b>108.336</b>	<b>127.268</b>	<b>146.048</b>	<b>161.360</b>
<b>TOYOTA</b>						
Otomobil (1.301 - 1.600 CC - SEDAN)	P. Car	2.862	28.982	39.591	38.648	48.085
Otomobil (1.301 - 1.600 CC - STATION WAGON)	P. Car	0	6.400	22.086	22.348	22.524
Otomobil (1.601 - 2.000 CC - SEDAN)	P. Car	0	1.433	2.048	68.684	85.181
Otomobil (1.601 - 2.000 CC - STATION WAGON)	P. Car	0	2.084	7.114	4.697	2.776
<b>TOPLAM</b>	<b>Total</b>	<b>2.862</b>	<b>38.899</b>	<b>70.839</b>	<b>134.377</b>	<b>158.566</b>

<b>FİRMALAR/MODELLER</b>	<b>Firms/Models</b>	<b>2001</b>	<b>2002</b>	<b>2003</b>	<b>2004</b>	<b>2005</b>
<b>TÜMOSAN</b>						
Traktör (< 60 HP)	F. Tractor	51	0	24	1	0
Traktör (> 61 HP)	F. Tractor	93	190	362	183	0
<b>TOPLAM</b>	<b>Total</b>	<b>144</b>	<b>190</b>	<b>386</b>	<b>184</b>	<b>0</b>
<b>TÜRK TRAKTÖR</b>						
Traktör (< 60 HP)	F. Tractor	4.480	1.942	7.643	11.506	11.558
Traktör (> 61 HP)	F. Tractor	1.468	1.804	9.666	9.466	6.312
<b>TOPLAM</b>	<b>Total</b>	<b>5.948</b>	<b>3.746</b>	<b>17.309</b>	<b>20.972</b>	<b>17.870</b>
<b>T.Z.D.K.</b>						
Traktör (> 61 HP)	F. Tractor	850	220	0	0	0
<b>TOPLAM</b>	<b>Total</b>	<b>850</b>	<b>220</b>	<b>0</b>	<b>0</b>	<b>0</b>
<b>UZEL</b>						
Traktör (< 60 HP)	F. Tractor	5.033	3.739	7.429	9.606	9.020
Traktör (> 61 HP)	F. Tractor	3.077	2.757	3.670	7.865	8.017
<b>TOPLAM</b>	<b>Total</b>	<b>8.110</b>	<b>6.496</b>	<b>11.099</b>	<b>17.471</b>	<b>17.037</b>
<b>GENEL TOPLAM</b>	<b>Grand Total</b>	<b>285.737</b>	<b>357.217</b>	<b>562.466</b>	<b>862.035</b>	<b>914.359</b>

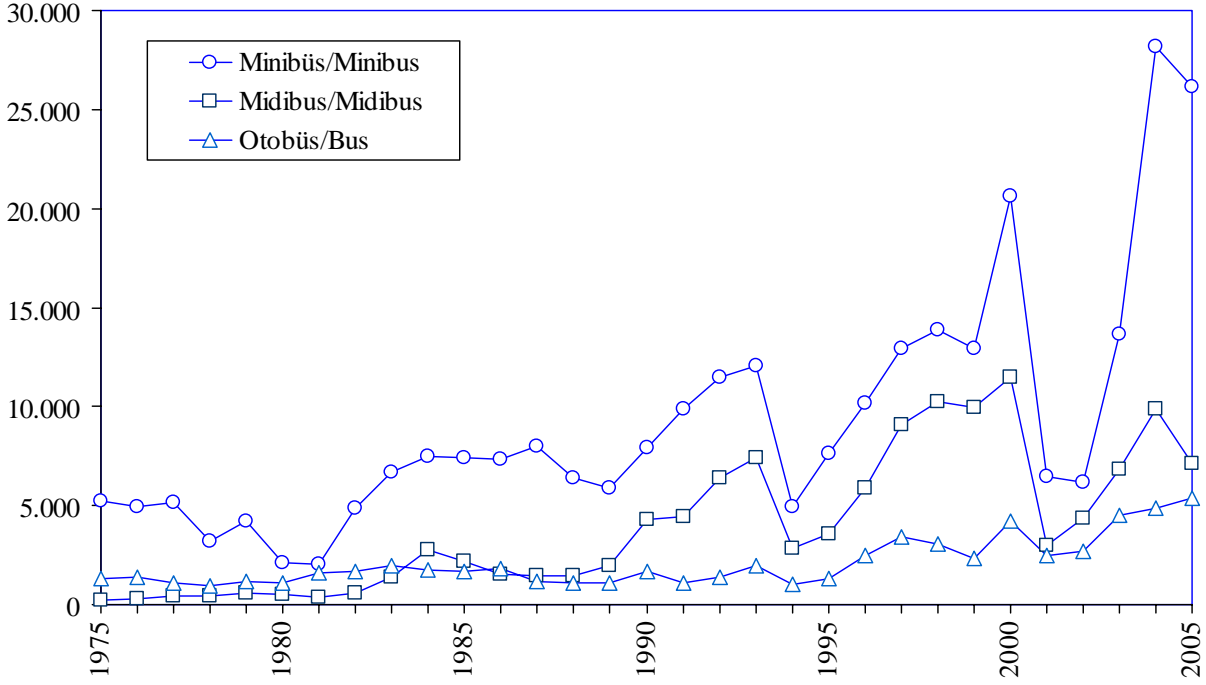
## Otomobil /Toplam Üretim P.Cars /Total Production



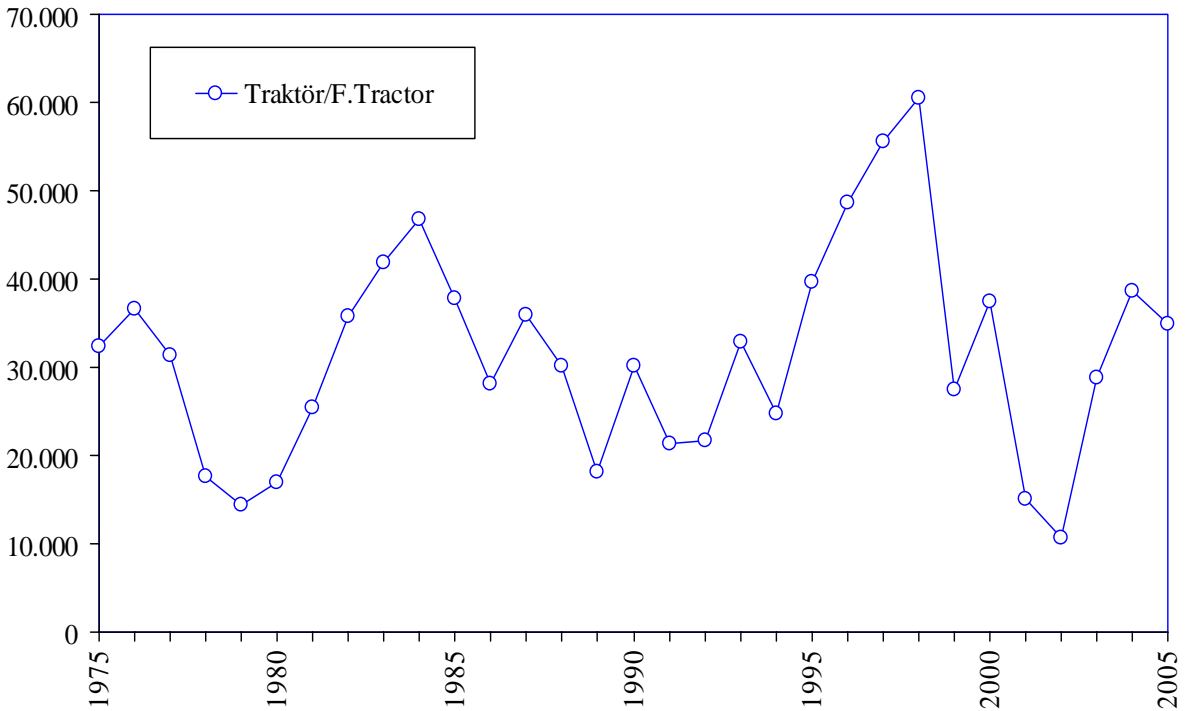
## Yük Taşıt Araçları Üretimi Truck and Pick Up Production



## Yolcu Taşıt Araçları Üretimi Bus Production



## Traktör Üretimi F.Tractor Production

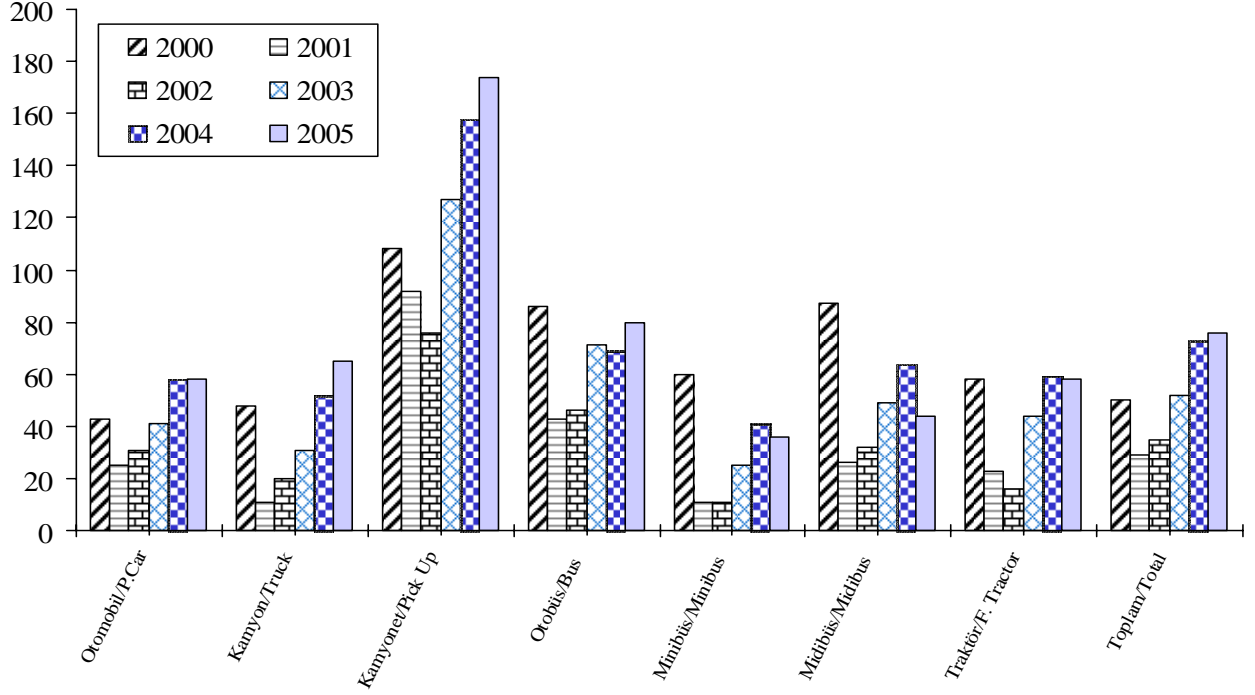


**OTOMOTİV SANAYİİ FİRMALARININ ÜRETİM ADETLERİ**  
**The Production Units Of The Automotive Manufacturers**

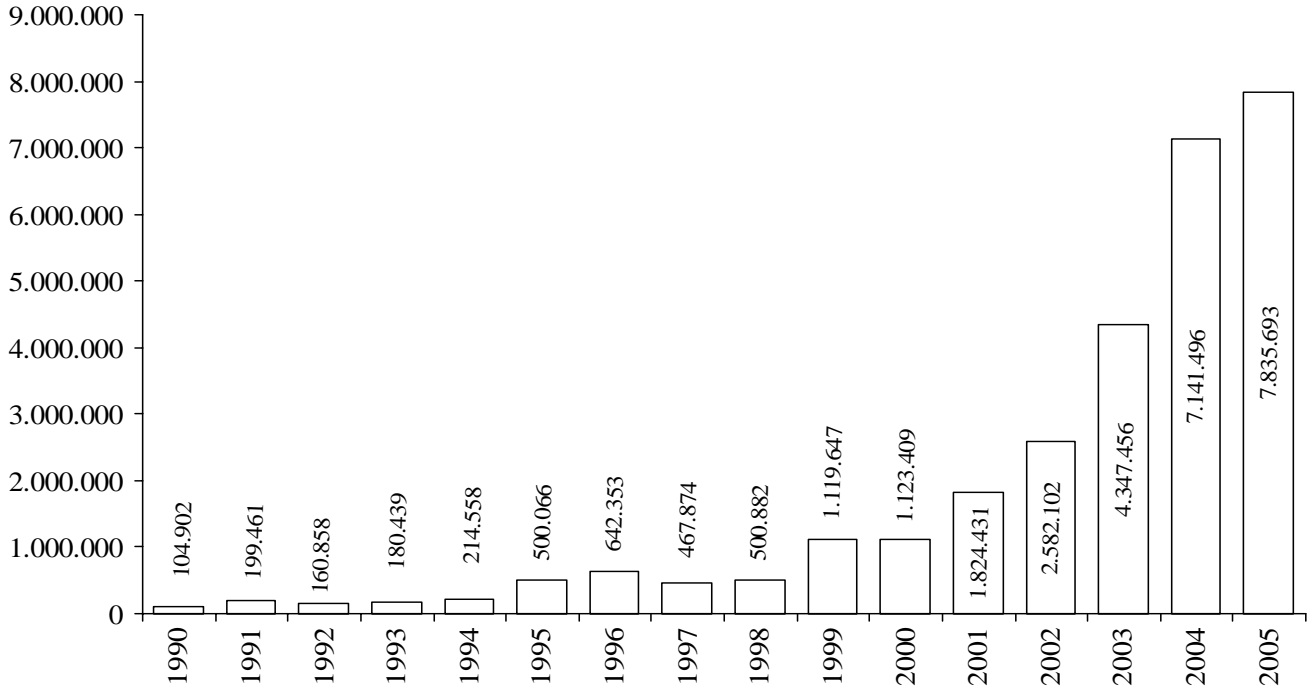
ARALIK SONU  
 By The end of  
 December

<b>YILLAR</b>	<b>OTOMOBİL</b>	<b>KAMYON</b>	<b>KAMYONET</b>	<b>OTOBÜS</b>	<b>MINİBÜS</b>	<b>MİDİBÜS</b>	<b>TRAKTÖR</b>	<b>TOPLAM</b>
<b>Years</b>	<b>P.Car</b>	<b>Truck</b>	<b>Pick-Up</b>	<b>Bus</b>	<b>Minibus</b>	<b>Midibus</b>	<b>F.Tractor</b>	<b>Total</b>
1963	30	999	1.458	12	631	0	7.982	11.112
1964	100	2.741	885	56	401	0	7.006	11.189
1965	60	2.350	300	122	1.199	0	6.419	10.450
1966	18	6.258	2.476	174	0	252	8.969	18.147
1967	1.760	7.816	2.736	325	622	0	13.976	27.235
1968	2.852	9.408	2.270	466	895	0	15.118	31.009
1969	3.902	10.859	3.030	882	1.095	84	13.412	33.264
1970	3.660	6.041	4.395	806	1.099	4	7.518	23.523
1971	12.888	4.747	4.508	608	1.891	30	15.687	40.359
1972	29.628	8.596	6.044	988	3.748	0	22.893	71.897
1973	46.855	11.723	8.674	1.267	4.533	22	32.585	105.659
1974	59.906	10.591	11.861	1.113	4.584	148	25.363	113.566
1975	67.291	14.670	18.489	1.284	5.222	239	32.365	139.560
1976	62.992	20.498	19.415	1.376	4.910	302	36.602	146.095
1977	58.245	20.700	14.016	1.077	5.152	467	31.380	131.037
1978	54.085	13.144	6.879	972	3.163	444	17.673	96.360
1979	43.808	13.367	9.384	1.151	4.222	547	14.484	86.963
1980	31.529	8.308	7.322	1.101	2.130	491	16.936	67.817
1981	25.306	12.486	5.454	1.584	2.040	378	25.358	72.606
1982	31.195	15.131	4.991	1.703	4.850	587	35.716	94.173
1983	42.509	17.514	6.822	1.964	6.712	1.382	41.799	118.702
1984	54.832	17.518	7.279	1.766	7.460	2.750	46.782	138.387
1985	60.353	18.162	7.888	1.637	7.397	2.191	37.830	135.458
1986	82.032	13.646	6.605	1.813	7.318	1.508	28.053	140.975
1987	107.185	13.545	7.580	1.137	8.026	1.434	35.986	174.893
1988	120.796	12.842	7.196	1.078	6.401	1.449	30.167	179.929
1989	118.314	11.763	7.250	1.069	5.898	1.984	18.077	164.355
1990	167.556	16.933	10.553	1.689	7.898	4.288	30.098	239.015
1991	195.574	16.918	13.541	1.075	9.912	4.401	21.381	262.802
1992	265.245	21.266	16.984	1.415	11.450	6.399	21.723	344.482
1993	348.095	31.343	19.766	1.933	12.084	7.435	32.809	453.465
1994	212.651	12.108	9.602	1.034	4.924	2.855	25.169	268.343
1995	233.412	19.759	16.808	1.279	7.645	3.537	44.068	326.508
1996	207.757	29.432	21.032	2.499	10.171	5.856	52.590	329.337
1997	242.780	43.693	32.435	3.449	12.935	9.060	55.565	399.917
1998	239.937	31.823	45.517	3.040	13.910	10.275	60.500	405.002
1999	222.041	13.096	37.551	2.327	12.894	9.953	27.435	325.297
2000	297.476	28.348	68.807	4.213	20.597	11.506	37.434	468.381
2001	175.343	6.683	76.672	2.501	6.486	3.000	15.052	285.737
2002	204.198	12.295	116.872	2.684	6.139	4.377	10.652	357.217
2003	294.116	19.041	195.606	4.490	13.625	6.794	28.794	562.466
2004	447.152	31.790	301.563	4.839	28.161	9.903	38.627	862.035
2005	453.663	37.227	349.885	5.406	26.162	7.109	34.907	914.359

## Kapasite Kullanımı (%) Capacity Usage (%)



## OSD Üyeleri İhracat (US Dollars) (Bin/Thousand) OSD Members Exports



**YILLAR İTİBARIYLA ÜRETİM ADETLERİ VE KAPASİTE KULLANIMI**  
**Production Units And Capacity Usage By Years**

ARALIK SONU/By the end of December

<b>TİPLER / Types</b>	<b>1997</b>	<b>1998</b>	<b>1999</b>	<b>2000</b>	<b>2001</b>	<b>2002</b>	<b>2003</b>	<b>2004</b>	<b>2005</b>
<b>OTOMOBİL / P.Car</b>	242.780	239.937	222.041	297.476	175.343	204.198	294.116	447.152	453.663
<b>KAMYON / Truck</b>	43.693	31.823	13.096	28.348	6.683	12.295	19.041	31.790	37.227
<b>KAMYONET / Pick-Up</b>	32.435	45.517	37.551	68.807	76.672	116.872	195.606	301.563	349.885
<b>OTOBÜS / Bus</b>	3.449	3.040	2.327	4.213	2.501	2.684	4.490	4.839	5.406
<b>MİNİBÜS / Minibus</b>	12.935	13.910	12.894	20.597	6.486	6.139	13.625	28.161	26.162
<b>MİDİBÜS / Midibus</b>	9.060	10.275	9.953	11.506	3.000	4.377	6.794	9.903	7.109
<b>TRAKTÖR / F.Tractor</b>	55.565	60.500	27.435	37.434	15.052	10.652	28.794	38.627	34.907
<b>TOPLAM / Total</b>	<b>399.917</b>	<b>405.002</b>	<b>325.297</b>	<b>468.381</b>	<b>285.737</b>	<b>357.217</b>	<b>562.466</b>	<b>862.035</b>	<b>914.359</b>

**NOT: EN YÜKSEK ÜRETİM ADETLERİ** [ ] İÇİNE ALINMIŞTIR.

**Note: The highest production volumes are shown in** [ ]

**KAPASİTE KULLANIMI**  
**Capacity Usage**

% 49      % 49      50%      36%      29%      35%      52%      73%      76%

OTOMOTİV SANAYİİ FİRMALARININ İHRACATLARI  
Automotive Industry Exports

ARALIK SONU/By the end of December ARALIK SONU/By the end of December

TİPLER / Types	YILLAR / Years									
	2001	2002		2003		2004		2005		
	ADET Units	DEĞER \$ Value	ADET Units	DEĞER \$ Value	ADET Units	DEĞER \$ Value	ADET Units	DEĞER \$ Value	ADET Units	DEĞER \$ Value
OTOMOBİL / P. Car	145.457	965.481.340	169.944	1.299.716.880	215.317	2.070.548.508	305.072	3.763.058.705	319.849	4.098.450.643
KAMYON / Truck	1.447	28.152.979	1.723	43.589.685	1.656	52.566.132	2.530	104.124.950	5.059	265.908.938
KAMYONET / Pick Up	50.011	347.759.622	80.222	686.696.522	123.125	1.298.921.254	190.358	2.278.970.894	219.067	2.638.935.232
OTOBÜS / Bus	2.162	260.052.818	2.253	282.686.896	3.218	473.389.429	2.933	467.852.005	3.791	568.072.883
MİNİBÜS / Minibus	916	9.851.315	653	7.789.943	4.085	50.706.412	5.521	71.953.668	3.733	57.189.589
MİDİBÜS / Midibus	2.008	30.368.083	2.740	46.788.529	1.479	35.596.341	1.939	72.152.794	1.935	85.037.627
TRAKTÖR / F. Tractor	3.612	29.750.611	4.157	36.179.422	12.070	151.257.308	10.168	144.298.045	8.240	122.098.151
YEDEK PARÇA / Miscellaneous Parts		153.014.383		178.654.341		214.470.147		239.085.076		261.833.548
<b>TOPLAM / Total</b>	<b>205.613</b>	<b>1.824.431.151</b>	<b>261.692</b>	<b>2.582.102.218</b>	<b>360.950</b>	<b>4.347.455.531</b>	<b>518.521</b>	<b>7.141.496.137</b>	<b>561.674</b>	<b>8.097.526.611</b>

YURTIÇİ TEŞVİKLİ SATIŞLARI HARIÇTİR / Excluding Local Incentive Sales



**OTOMOTİV SANAYİİ FİRMALARININ İHRACATLARI**  
**Automotive Industry Exports**

(A) Complete Vehicle, (B) Miscellaneous Parts

ARALIK SONU/By the end of December

FİRMALAR/Firms	YILLAR/Years									
	2001		2002		2003		2004		2005	
	ADET Units	DEĞER \$ Value \$	ADET Units	DEĞER \$ Value \$	ADET Units	DEĞER \$ Value \$	ADET Units	DEĞER \$ Value \$	ADET Units	DEĞER \$ Value \$
<b>A.I.O.S.</b>										
Komple Araç (A)	288	7.068.390	770	19.760.355	565	18.325.435	1.074	45.742.811	767	41.550.164
Muhtelif Parça (B)	0	1.317.888	0	2.554.390	0	2.559.134	0	2.506.614		1.746.892
<b>ASKAM</b>										
Komple Araç (A)	108	1.761.870	126	1.749.879	44	1.361.735	40	953.785	16	622.476
Muhtelif Parça (B)	0	64.628	0	231.934	0	176.741	0	309.406		259.028
<b>B.M.C.</b>										
Komple Araç (A)	159	6.098.688	301	9.447.401	463	21.090.662	882	51.901.952	1.146	75.559.210
Muhtelif Parça (B)	0	1.193.923	0	914.634	0	1.488.414	0	1.299.910		3.108.868
<b>FORD OTOSAN</b>										
Komple Araç (A)	5.446	63.509.923	30.639	327.647.107	74.887	864.683.301	139.210	1.774.729.662	162.910	2.046.322.255
Muhtelif Parça (B)	0	1.450.184	0	6.697.028	0	12.741.639	0	15.730.655		29.062.374
<b>HONDA TÜRKİYE</b>										
Komple Araç (A)	313	2.603.167	2.057	19.940.000	5.875	57.737.000	5.910	67.800.166	3.011	39.716.210
Muhtelif Parça (B)	0	76.904	0	187.439	0	133.150	0	257.696		285.729
<b>HYUNDAI ASSAN</b>										
Komple Araç (A)	2.992	18.229.249	5.892	35.625.961	17.884	168.999.544	23.370	223.659.000	20.654	209.903.103
Muhtelif Parça (B)	0	87.903	0	0	0	249.339	0	186.398		472.422
<b>KARSAN</b>										
Komple Araç (A)	2.360	20.478.219	5.936	40.674.299	411	4.998.866	513	6.709.955	366	5.055.200
Muhtelif Parça (B)	0	668.900	0	2.249.385	0	1.629.909	0	589.641		1.733.884
<b>M.A.N. TÜRKİYE</b>										
Komple Araç (A)	672	78.727.065	740	91.830.283	999	161.045.280	1.024	163.445.205	1.310	186.971.735
Muhtelif Parça (B)	0	2.011.417	0	2.091.009	0	9.784.152	0	16.072.888		13.468.609
<b>M. BENZ TÜRK</b>										
Komple Araç (A)	1.457	175.910.521	1.756	179.003.466	2.414	280.530.613	2.377	268.394.757	5.045	448.305.185
Muhtelif Parça (B)	0	8.880.713	0	7.839.111	0	10.959.564	0	14.844.509		8.499.269

**OTOKAR**

Komple Araç (A)	315	9.110.314	592	20.510.710	530	22.190.407	494	20.324.387	1.148	70.722.337
Muhtelif Parça (B)	0	1.412.160	0	798.938	0	3.299.001	0	3.337.242		7.322.154

**OTOYOL**

Komple Araç (A)	1.416	19.275.033	1.230	20.433.876	939	13.332.320	788	14.496.029	851	18.317.367
Muhtelif Parça (B)	0	5.496.451	0	4.846.764	0	6.586.803	0	8.232.580		4.043.139

**OYAK-RENAULT**

Komple Araç (A)	87.725	594.009.522	87.086	642.121.955	97.794	952.891.844	130.903	1.431.798.201	123.162	1.332.866.179
Muhtelif Parça (B)	0	63.634.093	0	46.445.850	0	63.010.703	0	70.787.913		89.734.959

**TEMSA**

Komple Araç (A)	277	15.718.631	500	37.814.314	517	58.041.310	664	88.668.962	970	127.743.966
Muhtelif Parça (B)	0	282.346	0	493.362	0	975.300	0	1.366.773		2.264.703

**TOYOTA**

Komple Araç (A)	298	1.907.470	33.087	295.122.650	62.964	675.108.777	118.629	1.851.444.941	144.058	2.308.325.619
Muhtelif Parça (B)	0	14.504	0	404.275	0	1.191.857	0	4.442.019		8.595.965

**TOFAŞ**

Komple Araç (A)	98.175	627.258.095	86.823	625.586.199	82.594	681.390.982	82.475	748.043.203	88.020	801.613.906
Muhtelif Parça (B)	0	56.713.597	0	85.481.819	0	86.391.533	0	73.653.165		55.714.803

**TÜRK TRAKTÖR**

Komple Araç (A)	37	316.169	604	7.011.185	9.113	127.832.975	6.693	105.656.960	5.124	86.178.583
Muhtelif Parça (B)	0	8.553.709	0	13.074.852	0	5.612.102	0	16.825.740		26.325.137

**UZEL**

Komple Araç (A)	3.575	29.434.442	3.553	29.168.237	2.957	23.424.333	3.475	38.641.085	3.116	35.919.568
Muhtelif Parça (B)	0	1.155.063	0	4.343.551	0	7.680.806	0	8.641.927		9.195.613

<b>205.613</b>	<b>1.671.416.768</b>	<b>261.692</b>	<b>2.403.447.877</b>	<b>360.950</b>	<b>4.132.985.384</b>	<b>518.521</b>	<b>6.902.411.061</b>	<b>561.674</b>	<b>7.835.693.063</b>
<b>0</b>	<b>153.014.383</b>	<b>0</b>	<b>178.654.341</b>	<b>0</b>	<b>214.470.147</b>	<b>0</b>	<b>239.085.076</b>	<b>0</b>	<b>261.833.548</b>

**TOPLAM/Total**

<b>205.613</b>	<b>1.824.431.151</b>	<b>261.692</b>	<b>2.582.102.218</b>	<b>360.950</b>	<b>4.347.455.531</b>	<b>518.521</b>	<b>7.141.496.137</b>	<b>561.674</b>	<b>8.097.526.611</b>
----------------	----------------------	----------------	----------------------	----------------	----------------------	----------------	----------------------	----------------	----------------------

YURTIÇİ TEŞVİKLİ SATIŞLARI HARIÇTİR / Excluding Local Incentive Sales

## OTOMOBİL İTHALATI / Passenger Car Imports

BÖLGE / ÜLKE Region / Country	2001		2002		2003		2004		2005	
	Adet / Unit	%	Adet / Unit	%	Adet / Unit	%	Adet / Unit	%	Adet / Unit	%
<b>AT + EFTA / EU + EFTA</b>	<b>65.921</b>	<b>91,2</b>	<b>54.583</b>	<b>90,5</b>	<b>136.228</b>	<b>88,5</b>	<b>261.263</b>	<b>83,8</b>	<b>237.905</b>	<b>78,8</b>
<b>DOĞU AVRUPA / East Europe</b>	<b>3.123</b>	<b>4,3</b>	<b>2.074</b>	<b>3,4</b>	<b>8.707</b>	<b>5,7</b>	<b>15.395</b>	<b>4,9</b>	<b>20.106</b>	<b>6,7</b>
* RUSYA FED. / Russian Fed.	1.411	2,0	246	0,4	2.701	1,8	4.002	1,3	3.562	1,2
* ROMANYA / Romania	0	0,0	26	0,0	1.190	0,8	4.088	1,3	8.464	2,8
* ÇEK CUM. / Czech Republic	1.712	2,4	1.802	3,0	4.816	3,1	7.305	2,3	8.080	2,7
<b>UZAK DOĞU / Far East</b>	<b>3.215</b>	<b>4,4</b>	<b>3.626</b>	<b>6,0</b>	<b>9.072</b>	<b>5,9</b>	<b>35.010</b>	<b>11,2</b>	<b>43.878</b>	<b>14,5</b>
* JAPONYA / Japan	2.149	3,0	1.472	2,4	4.163	2,7	8.289	2,7	8.448	2,8
* G. KORE / S. Korea	1.066	1,5	2.154	3,6	4.909	3,2	26.721	8,6	33.184	11,0
* DİĞER / Others	0	0,0	0	0,0	0	0,0	0	0,0	2.246	0,7
<b>TOPLAM/Total</b>	<b>72.259</b>	<b>100,0</b>	<b>60.283</b>	<b>100,0</b>	<b>154.007</b>	<b>100,0</b>	<b>311.668</b>	<b>100,0</b>	<b>301.889</b>	<b>100,0</b>

Kaynak: Otomotiv Distribütörleri Derneği

Source: Association of Automotive Distributors

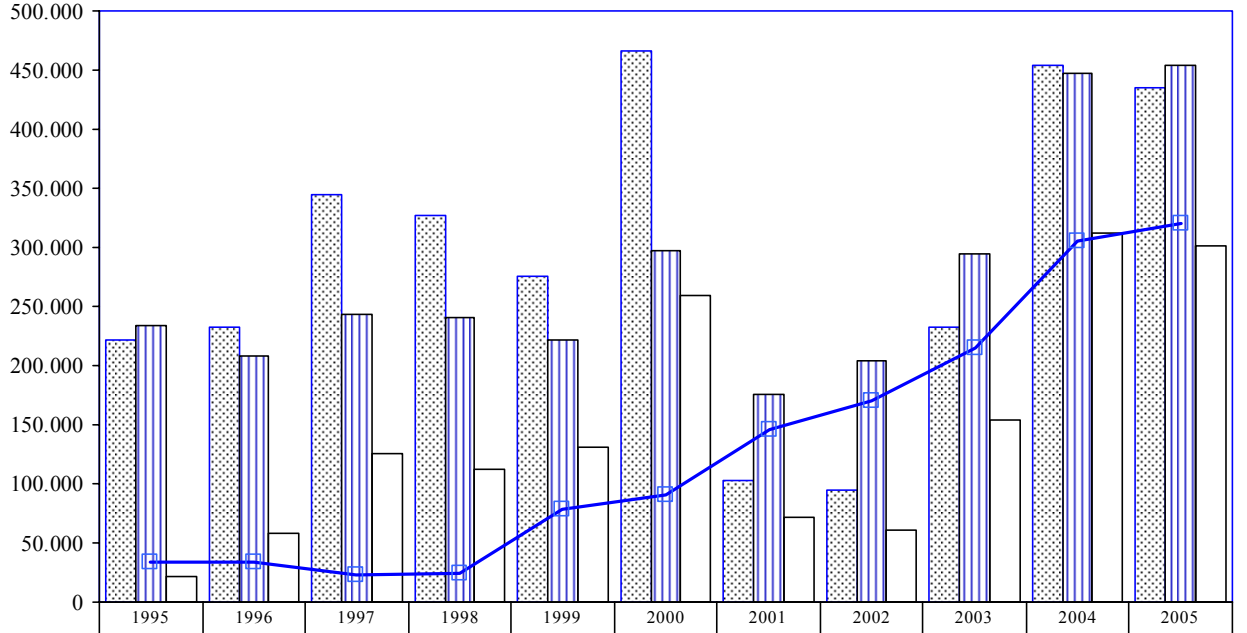
## HAFİF TİCARİ ARAÇ İTHALATI / Light Commercial Vehicle Imports

BÖLGE / ÜLKE Region / Country	2001		2002		2003		2004		2005	
	Adet / Unit	%	Adet / Unit	%	Adet / Unit	%	Adet / Unit	%	Adet / Unit	%
<b>AT + EFTA / EU + EFTA</b>	<b>11.081</b>	<b>15,3</b>	<b>15.740</b>	<b>26,1</b>	<b>43.961</b>	<b>28,5</b>	<b>81.580</b>	<b>26,2</b>	<b>90.209</b>	<b>29,9</b>
<b>DOĞU AVRUPA / East Europe</b>	<b>130</b>	<b>0,2</b>	<b>13</b>	<b>0,0</b>	<b>653</b>	<b>0,4</b>	<b>1.252</b>	<b>0,4</b>	<b>335</b>	<b>0,1</b>
* RUSYA FED. / Russian Fed.	0	0,0	0	0,0	0	0,0	0	0,0	0	0,0
* ROMANYA / Romania	0	0,0	13	0,0	653	0,4	1.252	0,4	241	0,1
* ÇEK CUM. / Czech Republic	130	0,2	0	0,0	0	0,0	0	0,0	94	0,0
<b>UZAK DOĞU / Far East</b>	<b>7.586</b>	<b>10,5</b>	<b>8.279</b>	<b>13,7</b>	<b>14.844</b>	<b>9,6</b>	<b>28.074</b>	<b>9,0</b>	<b>33.841</b>	<b>11,2</b>
* JAPONYA / Japan	4.400	6,1	4.473	7,4	6.575	4,3	9.915	3,2	11.908	3,9
* G. KORE / S. Korea	1.932	2,7	2.217	3,7	6.595	4,3	14.348	4,6	16.247	5,4
* DİĞER / Others	1.254	1,7	1.589	2,6	1.674	1,1	3.811	1,2	5.686	1,9
<b>TOPLAM/Total</b>	<b>18.797</b>	<b>26,0</b>	<b>24.032</b>	<b>39,9</b>	<b>59.458</b>	<b>38,6</b>	<b>110.906</b>	<b>35,6</b>	<b>124.385</b>	<b>41,2</b>

Kaynak: Otomotiv Distribütörleri Derneği

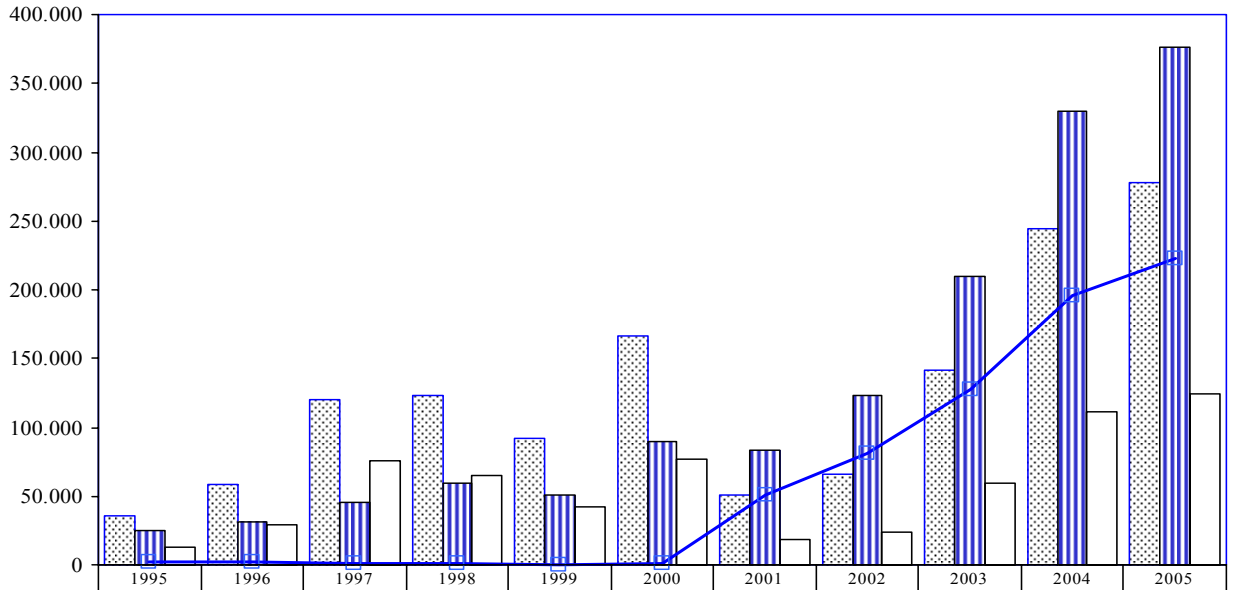
Source: Association of Automotive Distributors

## Otomobil Üretim/İthalat/İhracat P.Cars Production/Imports/Exports



	1995	1996	1997	1998	1999	2000	2001	2002	2003	2004	2005
Talep/Demand	221.841	231.832	345.193	326.804	275.503	466.437	102.145	94.537	232.806	453748	435703
Üretim/Production	233.414	207.757	242.780	239.937	222.041	297.476	175.343	204.198	294.116	447152	453663
İthalat/Imports	21.651	57.479	125.025	111.536	131.215	258.987	72.259	60.283	154.007	311668	301889
İhracat/Exports	33.224	33.404	22.612	24.669	77.753	90.026	145.457	169.944	215.317	305072	319849

## Hafif Ticari Araçlar Üretim/İthalat/İhracat Light Commercial Vehicles Production/Imports/Exports



	1995	1996	1997	1998	1999	2000	2001	2002	2003	2004	2005
Talep/Demand	35.554	58.185	119.629	123.153	91.815	166.037	51.028	66.168	141.479	244751	277632
Üretim/Production	24.453	31.203	45.370	59.427	50.445	89.404	83.158	123.011	209.231	329724	376047
İthalat/Imports	13.276	29.353	75.224	64.588	41.728	77.295	18.797	24.032	59.458	110906	124385
İhracat/Exports	2.175	2.371	965	862	358	662	50.927	80.875	127.210	195879	222800

**OTOMOTİV SANAYİİ FİRMALARININ CİROLARI (YTL)****Automotive Industry Sales (YTL)**

ARALIK SONU / By the end of December

<b>FİRMALAR / Firms</b>	<b>2000</b>	<b>2001</b>	<b>2002</b>	<b>2003</b>	<b>2004</b>	<b>2005</b>
<b>A.I.O.S.</b>	97.969.360	49.773.982	103.245.145	163.124.590	259.920.867	312.689.366
<b>ASKAM</b>	84.328.090	17.560.702	4.126.022	71.460.203	146.502.459	171.190.532
<b>B.M.C.</b>	154.872.000	84.365.000	187.000.000	444.000.000	682.588.584	743.260.611
<b>FORD OTOSAN</b>	369.250.844	252.661.804	895.809.862	2.454.370.022	4.338.319.163	5.362.980.155
<b>HONDA TÜRKİYE</b>	65.635.222	58.999.686	88.790.000	173.216.434	277.111.595	216.275.865
<b>HYUNDAI ASSAN</b>	238.035.379	74.470.821	129.178.833	481.244.222	924.059.362	771.211.501
<b>KARSAN</b>	120.238.646	76.563.551	148.268.080	156.060.426	360.676.553	227.413.220
<b>M.A.N.TÜRKİYE</b>	86.196.156	150.658.903	271.698.788	367.382.223	444.649.273	389.634.360
<b>M. BENZ TÜRK</b>	312.000.000	340.961.442	880.990.362	1.331.008.508	1.382.188.640	2.137.058.933
<b>OTOKAR</b>	71.894.025	74.092.617	109.871.979	196.752.673	289.746.902	262.742.003
<b>OTOYOL</b>	88.146.545	66.476.952	120.808.941	149.549.776	221.168.135	170.854.222
<b>O. RENAULT</b>	773.295.870	931.584.573	1.240.981.075	2.076.941.420	3.129.144.523	2.911.584.533
<b>TEMSA</b>	107.384.594	38.452.665	101.130.866	177.973.363	365.108.261	473.466.085
<b>TOFAŞ</b>	501.237.774	980.064.746	1.254.122.847	1.655.056.720	1.997.641.365	2.587.831.847
<b>TOYOTA</b>	143.649.000	22.163.604	560.335.399	1.136.336.587	2.971.458.991	3.325.743.699
<b>T. TRAKTÖR</b>	96.020.000	60.785.332	93.301.229	388.507.833	534.845.813	485.859.576
<b>UZEL</b>	116.315.139	76.065.000	90.964.446	270.381.360	471.370.912	400.158.165
<b>TOPLAM /Total</b>	<b>3.426.468.644</b>	<b>3.355.701.380</b>	<b>6.280.623.874</b>	<b>11.693.366.360</b>	<b>18.796.501.398</b>	<b>20.949.954.673</b>

**OTOMOTİV SANAYİİ FİRMALARININ HAMMADDEYE VE YAN SANAYİYE ÖDEMELERİ (YTL) - 2005**  
**Payments For Raw Material And Components (YTL) - 2005**

ARALIK SONU / By the end of December

<b>FİRMALAR</b> <b>Firms</b>	<b>FABRİKAYA ALINAN HAMMADDEYE</b> <b>ÖDENEN MEBLAĞ (K.D.V. HARİÇ)</b> <b>Payment for raw materials</b> <b>(Excl. V.A.T.)</b>	<b>YAN SANAYİYE ÖDENEN</b> <b>MEBLAĞ (K.D.V. HARİÇ)</b> <b>Payment for components</b> <b>manufacturers (Excl. V.A.T.)</b>	<b>TOPLAM</b> <b>Total</b>
A.I.O.S.	209.065.006,82	11.003.421,41	220.068.428,23
ASKAM	3.472.998,00	74.107.285,00	77.580.283,00
B.M.C.	28.872.808,00	497.538.910,00	526.411.718,00
FORD OTOSAN		3.812.819.915,00	3.812.819.915,00
HONDA TÜRKİYE	153.401.227,00	23.627.130,75	177.028.357,75
HYUNDAI ASSAN	418.871.243,00	208.517.386,00	627.388.629,00
KARSAN		254.609.477,00	254.609.477,00
M.A.N. TÜRKİYE	6.804.000,00	269.340.000,00	276.144.000,00
M. BENZ TÜRK	1.125.034,35	114.431.869,05	115.556.903,40
OTOKAR	5.408.057,00	122.888.568,00	128.296.625,00
OTOYOL	3.361.504,00	128.720.000,00	132.081.504,00
OYAK RENAULT	2.346.660.630,78	177.017.436,58	2.523.678.067,36
TEMSA	329.180.400,00	197.500.000,00	526.680.400,00
TOFAŞ	1.762.908.494,00	65.229.565,00	1.828.138.059,00
TOYOTA	43.556.014,00	1.098.790.524,00	1.142.346.538,00
TÜRK TRAKTÖR	53.358.839,26	235.377.622,53	288.736.461,79
UZEL	678.955,09	122.931.101,20	123.610.056,29
<b>TOPLAM / Total</b>			<b>12.781.175.422,82</b>

**OTOMOTİV SANAYİİ FİRMALARININ ÖDEDİKLERİ VERGİLER VE ÜCRETLER (YTL) - 2005**  
**Taxes, Wages and Salaries Paid by Automotive Manufacturers (YTL) - 2005**

<b>VERGİ VE ÖDEMELER / Taxes and Payments</b>	<b><u>A.I.O.S.</u></b>	<b><u>ASKAM</u></b>	<b><u>B.M.C.</u></b>	<b><u>FORD OTOSAN</u></b>	<b><u>HONDA TÜRKİYE</u></b>
<b>NET ÜCRET VE İKRAMİYELER</b> Net wages, salaries and bonuses	14.925.277,56	9.627.043,74	42.671.171,88	121.190.601,00	8.389.625,43
<b>GELİR VERGİSİ</b> Income tax	3.518.876,95	2.945.479,49	9.446.020,33	34.767.948,00	4.718.324,75
<b>SOSYAL SİGORTA PRİMİ İŞÇİ VE İŞVEREN</b> Social insurance premium paid by employee and employers	5.864.734,35	3.904.695,57	19.090.333,54	54.852.178,00	5.698.902,21
<b>DAMGA VERGİSİ</b> Stamp duty	121.203,61	85.882,68	345.452,72	1.137.226,00	185.087,95
<b>DİĞER KESİNTİLER</b> Other taxes	56.182,08	132.738,59	0,00	13.102.670,00	354.101,86
<b>İSTİH. EDİLEN. ÖDEME. VE VERGİ. TOPLAMI</b> Total production and tax payment	24.486.274,55	16.695.840,07	71.552.978,47	225.050.623,00	19.346.042,20
<b>İTH. ÖDE. TOP. VERGİ VE RESİM. (K.D.V. HARIÇ)</b> Total import taxes and duties (Excl. V.A.T.)	4.894.546,63	327.292,79	898.603,00	6.542.277,00	3.020.865,00
<b>VERGİ DAİRELERİNE ÖDENEN K.D.V.</b> Value added tax (V.A.T.) paid to tax offices	1.165.640,24	460.430,65	0,00	42.869.653,00	284.292,67
<b>DİĞER VERGİLER</b> Other taxes	344.006,68	226.339,03	223.517,14	5.258.307,00	462.869,08
<b>KURUM STOPAJ VERGİSİ</b> Association tax	15.148.472,09	0,00	0,00	100.003.229,00	0,00
<b>T O P L A M / Total</b>	<b>46.038.940,19</b>	<b>17.709.902,54</b>	<b>72.675.098,61</b>	<b>379.724.089,00</b>	<b>23.114.068,95</b>

<b>VERGİ VE ÖDEMELER / Taxes and Payments</b>	<b><u>HYUNDAI ASSAN</u></b>	<b><u>KARSAN</u></b>	<b><u>M.A.N. TÜRKİYE</u></b>	<b><u>M. BENZ TÜRK</u></b>	<b><u>OTOKAR</u></b>
<b>NET ÜCRET VE İKRAMİYELER</b> Net wages, salaries and bonuses	66.180.638,00	15.501.744,39	36.771.000,00	64.926.783,72	17.522.326,00
<b>GELİR VERGİSİ</b> Income tax	10.879.240,00	3.384.770,58	8.400.000,00	27.517.834,03	5.128.383,00
<b>SOSYAL SİGORTA PRİMİ İŞÇİ VE İŞVEREN</b> Social insurance premium paid by employee and employers	15.137.744,00	5.272.733,37	14.830.000,00	34.732.695,39	8.075.672,00
<b>DAMGA VERGİSİ</b> Stamp duty	338.843,00	121.736,00	311.000,00	832.550,92	161.652,00
<b>DİĞER KESİNTİLER</b> Other taxes	1.304.036,00	1.459.126,06	1.240.000,00	0,00	941.324,00
<b>İSTİH. EDİLEN. ÖDEME. VE VERGİ. TOPLAMI</b> Total production and tax payment	93.840.501,00	25.740.110,40	61.552.000,00	128.009.864,06	31.829.357,00
<b>İTH. ÖDE. TOP. VERGİ VE RESİM. (K.D.V. HARIÇ)</b> Total import taxes and duties (Excl. V.A.T.)	42.498.766,00	800.997,58	205.000,00	4.876.258,37	151.348,00
<b>VERGİ DAİRELERİNE ÖDENEN K.D.V.</b> Value added tax (V.A.T.) paid to tax offices	12.995.595,00	1.409.096,34	996.000,00	18.650.232,16	251.370,00
<b>DİĞER VERGİLER</b> Other taxes	814.612,00	345.780,50	307.000,00	820.380,34	537.930,00
<b>KURUM STOPAJ VERGİSİ</b> Association tax	19.783.958,00	0,00	0,00	20.584.237,01	3.623.169,00
<b>T O P L A M / Total</b>	<b>169.933.432,00</b>	<b>28.295.984,82</b>	<b>63.060.000,00</b>	<b>172.940.971,94</b>	<b>36.393.174,00</b>



<b>VERGİ VE ÖDEMELER / Taxes and Payments</b>	<b><u>OTOYOL</u></b>	<b><u>OYAK RENAULT</u></b>	<b><u>TEMSA</u></b>	<b><u>TOFAŞ</u></b>	<b><u>TOYOTA</u></b>
<b>NET ÜCRET VE İKRAMİYELER</b> Net wages, salaries and bonuses	20.231.611,00	85.810.433,89	31.544.519,00	81.086.885,00	75.127.132,00
<b>GELİR VERGİSİ</b> Income tax	6.084.269,00	29.411.842,01	6.963.000,00	25.537.183,35	16.638.260,00
<b>SOSYAL SİGORTA PRİMİ İŞÇİ VE İŞVEREN</b> Social insurance premium paid by employee and employers	9.042.461,00	36.216.063,52	9.128.000,00	39.704.211,83	16.078.093,00
<b>DAMGA VERGİSİ</b> Stamp duty	198.237,00	863.832,59	72.000,00	827.152,38	540.772,00
<b>DİĞER KESİNTİLER</b> Other taxes	3.061.235,00	11.660.189,19	0,00	20.909.478,44	0,00
<b>İSTİH. EDİLEN. ÖDEME. VE VERGİ. TOPLAMI</b> Total production and tax payment	38.617.813,00	163.962.361,20	47.707.519,00	168.064.911,00	108.384.257,00
<b>İTH. ÖDE. TOP. VERGİ VE RESİM. (K.D.V. HARIÇ)</b> Total import taxes and duties (Excl. V.A.T.)	159.778,00	185.456,82	8.683.000,00	5.605.817,21	9.115.370,00
<b>VERGİ DAİRELERİNE ÖDENEN K.D.V.</b> Value added tax (V.A.T.) paid to tax offices	2.411.997,00	22.162.238,56	1.005.000,00	15.069.286,91	0,00
<b>DİĞER VERGİLER</b> Other taxes	300.634,00	5.845.969,64	2.892.000,00	4.750.116,79	120.021,00
<b>KURUM STOPAJ VERGİSİ</b> Association tax	0,00	15.894.834,66	0,00	0,00	0,00
<b>T O P L A M / Total</b>	<b>41.490.222,00</b>	<b>208.050.860,88</b>	<b>60.287.519,00</b>	<b>193.490.131,91</b>	<b>117.619.648,00</b>

<b>VERGİ VE ÖDEMELER / Taxes and Payments</b>	<b><u>TÜRK TRAKTÖR</u></b>	<b><u>UZEL</u></b>	<b><u>TOPLAM/Total</u></b>
<b>NET ÜCRET VE İKRAMİYELER</b> Net wages, salaries and bonuses	10.028.339,28	14.819.541,00	716.354.672,89
<b>GELİR VERGİSİ</b> Income tax	13.654.340,01	5.081.280,00	214.077.051,50
<b>SOSYAL SİGORTA PRİMİ İŞÇİ VE İŞVEREN</b> Social insurance premium paid by employee and employers	6.892.920,12	11.254.681,00	295.776.118,90
<b>DAMGA VERGİSİ</b> Stamp duty	457.204,57	231.155,00	6.830.988,42
<b>DİĞER KESİNTİLER</b> Other taxes	1.613.809,77	0,00	55.834.890,99
<b>İSTİH. EDİLEN. ÖDEME. VE VERGİ. TOPLAMI</b> Total production and tax payment	32.646.613,75	31.386.657,00	1.288.873.722,70
<b>İTH. ÖDE. TOP. VERGİ VE RESİM. (K.D.V. HARIÇ)</b> Total import taxes and duties (Excl. V.A.T.)	23.380,71	408.886,00	88.397.643,11
<b>VERGİ DAİRELERİNE ÖDENEN K.D.V.</b> Value added tax (V.A.T.) paid to tax offices	14.731.179,44	5.457.966,00	139.919.977,97
<b>DİĞER VERGİLER</b> Other taxes	233.692,88	781.615,00	24.264.791,08
<b>KURUM STOPAJ VERGİSİ</b> Association tax	42.725.025,01	1.261.165,00	219.024.089,77
<b>T O P L A M / Total</b>	<b>90.359.891,79</b>	<b>39.296.289,00</b>	<b>1.760.480.224,63</b>

**OTOMOTİV SANAYİİ İSTİHDAMI**  
**Automotive Industry Employment**

<b><u>FİRMALAR / Firms</u></b>	<b><u>2000</u></b>	<b><u>2001</u></b>	<b><u>2002</u></b>	<b><u>2003</u></b>	<b><u>2004</u></b>	<b><u>2005</u></b>
<b>A.I.O.S.</b>						
İŞÇİ / Worker	516	328	327	360	551	548
BÜRO PERSONELİ / Employee	168	115	109	108	115	116
İDARECİ / Administrator	67	15	14	14	14	12
MÜHENDİS / Engineer	38	23	23	22	34	35
İDA. MÜHENDİS / Ad. Eng.	28	27	24	21	21	24
<b>TOPLAM / Total</b>	<b>817</b>	<b>508</b>	<b>497</b>	<b>525</b>	<b>735</b>	<b>735</b>
<b>ASKAM</b>						
İŞÇİ / Worker	348	332	312	236	275	249
BÜRO PERSONELİ / Employee	79	83	65	58	72	73
İDARECİ / Administrator	43	28	33	30	27	28
MÜHENDİS / Engineer	42	40	28	31	42	39
İDA. MÜHENDİS / Ad. Eng.	27	27	27	30	31	35
<b>TOPLAM / Total</b>	<b>539</b>	<b>510</b>	<b>465</b>	<b>385</b>	<b>447</b>	<b>424</b>
<b>B.M.C.</b>						
İŞÇİ / Worker	1797	1015	994	1504	2052	2140
BÜRO PERSONELİ / Employee	254	254	330	330	328	346
İDARECİ / Administrator	182	98	20	20	24	24
MÜHENDİS / Engineer	116	122	130	146	129	137
İDA. MÜHENDİS / Ad. Eng.	85	62	46	47	59	59
<b>TOPLAM / Total</b>	<b>2.434</b>	<b>1.551</b>	<b>1.520</b>	<b>2.047</b>	<b>2.592</b>	<b>2.706</b>
<b>FORD OTOSAN</b>						
İŞÇİ / Worker	3082	2429	3381	4772	6405	6460
BÜRO PERSONELİ / Employee	466	406	397	372	354	405
İDARECİ / Administrator	49	52	43	67	91	67
MÜHENDİS / Engineer	417	402	409	519	594	583
İDA. MÜHENDİS / Ad. Eng.	115	160	191	220	227	222
<b>TOPLAM / Total</b>	<b>4.129</b>	<b>3.449</b>	<b>4.421</b>	<b>5.950</b>	<b>7.671</b>	<b>7.737</b>

<b><u>FİRMALAR / Firms</u></b>	<b><u>2000</u></b>	<b><u>2001</u></b>	<b><u>2002</u></b>	<b><u>2003</u></b>	<b><u>2004</u></b>	<b><u>2005</u></b>
<b>HONDA TÜRKİYE</b>						
İŞÇİ / Worker	255	227	273	291	308	285
BÜRO PERSONELİ / Employee	119	138	84	94	92	152
İDARECİ / Administrator	27	22	26	24	43	54
MÜHENDİS / Engineer	21	19	15	17	33	34
İDA. MÜHENDİS / Ad. Eng.	19	20	21	21	18	22
<b>TOPLAM / Total</b>	<b>441</b>	<b>426</b>	<b>419</b>	<b>447</b>	<b>494</b>	<b>547</b>
<b>HYUNDAI ASSAN</b>						
İŞÇİ / Worker	515	310	571	1159	1487	1497
BÜRO PERSONELİ / Employee	195	95	50	247	280	192
İDARECİ / Administrator	54	29	54	76	62	61
MÜHENDİS / Engineer	24	19	92	37	67	43
İDA. MÜHENDİS / Ad. Eng.	19	13	0	33	9	22
<b>TOPLAM / Total</b>	<b>807</b>	<b>466</b>	<b>767</b>	<b>1.552</b>	<b>1.905</b>	<b>1.815</b>
<b>KARSAN</b>						
İŞÇİ / Worker	903	648	472	745	857	638
BÜRO PERSONELİ / Employee	47	48	31	39	47	27
İDARECİ / Administrator	9	19	23	7	16	5
MÜHENDİS / Engineer	25	32	33	37	18	45
İDA. MÜHENDİS / Ad. Eng.	5	6	5	7	18	9
<b>TOPLAM / Total</b>	<b>989</b>	<b>753</b>	<b>564</b>	<b>835</b>	<b>956</b>	<b>724</b>
<b>M.A.N. TÜRKİYE</b>						
İŞÇİ / Worker	1342	1426	1749	2022	2055	2103
BÜRO PERSONELİ / Employee	206	198	229	245	234	264
İDARECİ / Administrator	72	76	73	89	92	74
MÜHENDİS / Engineer	34	58	70	78	98	80
İDA. MÜHENDİS / Ad. Eng.	51	57	62	64	53	59
<b>TOPLAM / Total</b>	<b>1.705</b>	<b>1.815</b>	<b>2.183</b>	<b>2.498</b>	<b>2.532</b>	<b>2.580</b>

<b><u>FİRMALAR / Firms</u></b>	<b><u>2000</u></b>	<b><u>2001</u></b>	<b><u>2002</u></b>	<b><u>2003</u></b>	<b><u>2004</u></b>	<b><u>2005</u></b>
<b>M. BENZ TÜRK</b>						
İŞÇİ / Worker	2784	1930	2177	2558	2781	2846
BÜRO PERSONELİ / Employee	364	559	871	375	359	902
İDARECİ / Administrator	70	168	182	32	93	93
MÜHENDİS / Engineer	209	216	169	343	374	441
İDA. MÜHENDİS / Ad. Eng.	74	64	120	56	51	60
<b>TOPLAM / Total</b>	<b>3.501</b>	<b>2.937</b>	<b>3.519</b>	<b>3.364</b>	<b>3.658</b>	<b>4.342</b>
<b>OTOKAR</b>						
İŞÇİ / Worker	339	279	406	590	625	719
BÜRO PERSONELİ / Employee	93	168	74	94	89	120
İDARECİ / Administrator	38	38	49	47	53	27
MÜHENDİS / Engineer	22	44	50	70	70	88
İDA. MÜHENDİS / Ad. Eng.	20	20	30	22	32	35
<b>TOPLAM / Total</b>	<b>512</b>	<b>549</b>	<b>609</b>	<b>823</b>	<b>869</b>	<b>989</b>
<b>OTOYOL</b>						
İŞÇİ / Worker	1023	1068	754	827	731	688
BÜRO PERSONELİ / Employee	147	132	114	132	131	158
İDARECİ / Administrator	16	9	25	13	7	15
MÜHENDİS / Engineer	48	50	37	57	60	63
İDA. MÜHENDİS / Ad. Eng.	42	46	45	28	43	41
<b>TOPLAM / Total</b>	<b>1.276</b>	<b>1.305</b>	<b>975</b>	<b>1.057</b>	<b>972</b>	<b>965</b>
<b>OYAK RENAULT</b>						
İŞÇİ / Worker	3215	3007	2932	3008	3388	4016
BÜRO PERSONELİ / Employee	515	491	479	455	505	487
İDARECİ / Administrator	27	30	29	29	26	24
MÜHENDİS / Engineer	199	205	213	234	332	351
İDA. MÜHENDİS / Ad. Eng.	79	78	78	84	88	96
<b>TOPLAM / Total</b>	<b>4.035</b>	<b>3.811</b>	<b>3.731</b>	<b>3.810</b>	<b>4.339</b>	<b>4.974</b>

<b><u>FİRMALAR / Firms</u></b>	<b><u>2000</u></b>	<b><u>2001</u></b>	<b><u>2002</u></b>	<b><u>2003</u></b>	<b><u>2004</u></b>	<b><u>2005</u></b>
<b>TEMSA</b>						
İŞÇİ / Worker	782	105	258	337	851	1050
BÜRO PERSONELİ / Employee	589	183	205	347	145	203
İDARECİ / Administrator	70	11	40	36	35	35
MÜHENDİS / Engineer	70	17	97	72	123	146
İDA. MÜHENDİS / Ad. Eng.	15	4	13	51	53	62
<b>TOPLAM / Total</b>	<b>1.526</b>	<b>320</b>	<b>613</b>	<b>843</b>	<b>1.207</b>	<b>1.496</b>
<b>TOFAŞ</b>						
İŞÇİ / Worker	4703	3702	3366	3256	3572	3530
BÜRO PERSONELİ / Employee	509	888	454	459	456	459
İDARECİ / Administrator	21	207	84	78	73	69
MÜHENDİS / Engineer	271	199	190	191	213	209
İDA. MÜHENDİS / Ad. Eng.	16	78	111	116	116	112
<b>TOPLAM / Total</b>	<b>5.520</b>	<b>5.074</b>	<b>4.205</b>	<b>4.100</b>	<b>4.430</b>	<b>4.379</b>
<b>TOYOTA</b>						
İŞÇİ / Worker	460	760	1365	2285	2827	3116
BÜRO PERSONELİ / Employee	93	57	101	126	76	131
İDARECİ / Administrator	18	42	25	51	66	57
MÜHENDİS / Engineer	73	166	103	114	138	124
İDA. MÜHENDİS / Ad. Eng.	26	25	40	14	43	25
<b>TOPLAM / Total</b>	<b>670</b>	<b>1.050</b>	<b>1.634</b>	<b>2.590</b>	<b>3.150</b>	<b>3.453</b>
<b>TÜRK TRAKTÖR</b>						
İŞÇİ / Worker	822	646	404	751	787	799
BÜRO PERSONELİ / Employee	81	61	65	73	76	80
İDARECİ / Administrator	5	5	5	6	6	6
MÜHENDİS / Engineer	46	52	51	63	70	69
İDA. MÜHENDİS / Ad. Eng.	14	13	13	13	17	21
<b>TOPLAM / Total</b>	<b>968</b>	<b>777</b>	<b>538</b>	<b>906</b>	<b>956</b>	<b>975</b>

<b><u>FİRMALAR / Firms</u></b>	<b><u>2000</u></b>	<b><u>2001</u></b>	<b><u>2002</u></b>	<b><u>2003</u></b>	<b><u>2004</u></b>	<b><u>2005</u></b>
<b>UZEL</b>						
İŞÇİ / Worker	1608	1056	1004	1152	1218	720
BÜRO PERSONELİ / Employee	127	156	142	124	163	162
İDARECİ / Administrator	9	25	12	10	17	25
MÜHENDİS / Engineer	80	121	50	52	87	122
İDA. MÜHENDİS / Ad. Eng.	60	21	55	75	58	62
<b>TOPLAM / Total</b>	<b>1.884</b>	<b>1.379</b>	<b>1.263</b>	<b>1.413</b>	<b>1.543</b>	<b>1.091</b>
<b>GENEL TOPLAM/Grand Total</b>						
İŞÇİ / Worker	<b>24.494</b>	<b>19.268</b>	<b>20.745</b>	<b>25.853</b>	<b>30.770</b>	<b>31.404</b>
BÜRO PERSONELİ / Employee	<b>4.052</b>	<b>4.032</b>	<b>3.800</b>	<b>3.678</b>	<b>3.522</b>	<b>4.277</b>
İDARECİ / Administrator	<b>777</b>	<b>874</b>	<b>737</b>	<b>629</b>	<b>745</b>	<b>676</b>
MÜHENDİS / Engineer	<b>1.735</b>	<b>1.785</b>	<b>1.760</b>	<b>2.083</b>	<b>2.482</b>	<b>2.609</b>
İDA. MÜHENDİS / Ad. Eng.	<b>695</b>	<b>721</b>	<b>881</b>	<b>902</b>	<b>937</b>	<b>966</b>
<b>TOPLAM / Total</b>	<b>31.753</b>	<b>26.680</b>	<b>27.923</b>	<b>33.145</b>	<b>38.456</b>	<b>39.932</b>

**İDA. MÜHENDİS=İDARECİ MÜHENDİS**  
**Ad. Eng.=Administrator Engineer**

**OTOMOTİV SANAYİ YATIRIMLARI (USD)**  
**Realized Sectorial Investments (USD)**

ARALIK SONU/By the end of December

<b>PROJE TİPİ</b> Projects	<b>2002</b>	<b>2003</b>	<b>2004</b>	<b>2005</b>
<b>KAPASİTE ARTTIRIMI</b> Capacity Development	51.000.000	118.000.000	104.000.000	102.000.000
<b>MODERNİZASYON</b> Modernization	67.000.000	27.000.000	48.000.000	128.000.000
<b>YENİ MODEL</b> New Model Development	282.000.000	230.000.000	160.000.000	346.000.000
<b>KALİTE ARTTIRICI</b> Quality Development	3.000.000	3.000.000	11.000.000	17.000.000
<b>YERLİLEŞTİRMEYİ ARTTIRICI</b> Localization	42.000.000	72.000.000	35.000.000	32.000.000
<b>DİĞER</b> Others	11.000.000	36.000.000	76.000.000	97.000.000
<b>TOPLAM</b> Toplam	<b>456.000.000</b>	<b>486.000.000</b>	<b>434.000.000</b>	<b>722.000.000</b>



**TÜRKİYE ARAÇ PARKI**  
**Automotive Vehicles Park In Turkey**

YILLAR Years	OTOMOBİL P.Car	KAMYON Truck	KAMYONET Pick-Up	İNİBÜS Minibus	OTOBÜS Bus	TRAKTÖR F.Tractor	TOPLAM Total
1963	72.034	49.356	30.739	7.543	11.726	50.844	222.242
1964	79.449	46.721	28.658	9.196	11.216	51.781	227.021
1965	87.584	49.317	29.804	10.476	11.693	54.608	243.482
1966	91.469	47.931	31.462	11.239	12.041	65.108	259.250
1967	112.867	56.889	39.927	16.008	13.332	74.982	314.005
1968	125.375	62.616	43.441	18.967	13.948	84.874	349.221
1969	137.345	69.478	48.655	20.540	15.520	96.407	387.945
1970	137.771	70.770	52.152	20.916	15.980	105.865	403.454
1971	153.676	73.433	57.011	22.380	17.040	118.525	442.065
1972	187.272	78.920	62.796	25.559	18.504	135.726	508.777
1973	240.360	86.780	71.043	30.055	20.011	156.139	604.388
1974	313.160	95.309	81.025	34.122	21.404	200.466	745.486
1975	403.546	108.381	98.579	40.623	23.763	243.066	917.958
1976	488.894	122.176	116.861	46.066	25.388	281.802	1.081.187
1977	560.424	138.093	134.213	51.999	27.096	320.578	1.232.403
1978	624.438	146.551	144.695	56.836	28.559	370.259	1.371.338
1979	688.687	157.095	155.278	61.596	30.634	402.777	1.496.067
1980	742.252	164.893	165.821	64.707	32.783	436.369	1.606.825
1981	776.432	172.372	172.269	66.514	33.839	458.714	1.680.140
1982	811.465	180.772	178.762	69.598	35.432	491.001	1.767.030
1983	856.350	190.277	186.427	73.585	38.478	513.516	1.858.633
1984	919.577	197.721	198.106	80.697	43.638	556.781	1.996.520
1985	983.444	205.496	212.505	87.951	47.119	583.974	2.120.489
1986	1.087.234	217.111	224.755	97.917	50.798	612.731	2.290.546
1987	1.193.021	225.872	233.480	106.314	53.554	637.449	2.449.690
1988	1.310.257	234.166	240.718	112.885	56.172	654.636	2.608.834
1989	1.434.830	241.392	248.567	118.026	58.859	672.845	2.774.519
1990	1.649.879	257.353	263.407	125.399	63.700	692.454	3.052.192
1991	1.864.344	273.409	280.891	133.632	68.973	704.373	3.325.622
1992	2.181.388	379.410	308.180	145.312	75.592	828.580	3.918.462
1993	2.619.852	406.398	354.290	159.900	84.254	870.559	4.495.253
1994	2.861.640	419.374	374.473	166.424	87.545	895.506	4.804.962
1995	3.058.511	432.216	397.743	173.051	90.197	937.528	5.089.246
1996	3.274.156	453.796	442.788	182.694	94.978	988.142	5.436.554
1997	3.570.105	489.071	529.838	197.057	101.896	1.053.381	5.941.348
1998	3.838.631	519.749	626.004	211.495	108.361	1.107.157	6.411.397
1999	4.072.326	531.690	692.935	221.683	112.186	1.131.626	6.762.446
2000	4.422.180	557.295	794.459	235.885	118.454	1.159.070	7.287.343
2001	4.534.803	562.063	833.175	239.381	119.306	1.179.068	7.467.796
2002	4.600.140	567.152	875.381	241.700	120.097	1.180.127	7.584.597
2003	4.700.343	579.010	973.457	245.394	123.500	1.184.256	7.805.960
2004	5.400.440	647.420	1.259.867	318.954	152.712	1.210.283	8.989.676
2005	5.772.745	676.929	1.475.057	338.539	163.390	1.247.767	9.674.427

KAYNAK: T.C. BAŞBAKANLIK TÜRKİYE İSTATİSTİK KURUMU

Source: Republic Of Turkey, Prime Ministry Turkish Statistical Institute