



OTOMOTİV SANAYİİ DERNEĞİ
AUTOMOTIVE MANUFACTURERS ASSOCIATION

Aylık İstatistiki Bilgiler Bülteni Monthly Statistical Bulletin

Aralık 2010 / December 2010

OSD "OICA" Üyesidir



OSD is a Member of "OICA"

K.KAMYON: AYA 3.5-12 Ton
L. Truck: GVW 3.5-12 Ton
B.KAMYON: AYA 12 Ton'dan Büyük
M. Truck: GVW 12 Ton And Up

**OTOMOTİV SANAYİİ FİRMALARININ
2010 YILI ARALIK AYI ÜRETİMLERİ
Production of Automotive Manufacturers
Month of December 2010**

OSD/T11-01

Firmalar Companies	OTOMOBİL Pass.Car	%	K.KAMYON L.Truck	%	B.KAMYON Mid.Truck	%	KAMYONET Pick Up	%	OTOBÜS Bus	%	MINİBÜS Mini-Bus	%	MİDİBÜS Midi-Bus	%	TRAKTÖR F.Tractor	%	TOPLAM Totals
A.I.O.S.			170	43			166	0					120	32			456
B.M.C.					608	20	0	0	66	11	0	0					674
FORD OTOSAN					844	28	24.670	50			1.517	79					27.031
HATTAT															279	10	279
HONDA TÜRKİYE	1.833	3															1.833
HYUNDAI ASSAN	6.798	12															6.798
KARSAN			44	11	233	8	2.042	4			385	20					2.704
M. BENZ TÜRK					1.341	44			226	39							1.567
MAN TÜRKİYE									120	21							120
OTOKAR							185	0	96	17	16	1	158	42			455
OYAK RENAULT	29.858	53															29.858
TEMSA			180	46			24	0	73	13			95	25			372
TOFAŞ	9.067	16					21.767	45									30.834
TOYOTA	9.090	16															9.090
TÜRK TRAKTÖR															2.601	90	2.601
TOPLAM	56.646	100	394	100	3.026	100	48.854	100	581	100	1.918	100	373	100	2.880	100	114.672

K.KAMYON: AYA 3.5-12 Ton
L. Truck: GVW 3.5-12 Ton
B.KAMYON: AYA 12 Ton'dan Büyük
M. Truck: GVW 12 Ton And Up

**OTOMOTİV SANAYİİ FİRMALARININ
2010YILI 12 AYLIK ÜRETİMLERİ
Production of Automotive Manufacturers
12 Months of 2010**

OSD/T11-02

FİRMALAR Companies	OTOMOBİL Pass.Car	%	K.KAMYON L.Truck	%	B.KAMYON Mid.Truck	%	KAMYONET Pick Up	%	OTOBÜS Bus	%	MİNİBÜS Mini-Bus	%	MİDİBÜS Midi-Bus	%	TRAKTÖR F.Tractor	%	TOPLAM Totals
A.I.O.S.			1.509	44			693	0					1.090	41			3.292
B.M.C.					2.767	14	0	0	575	11	0	0					3.342
FORD OTOSAN					4.872	24	222.303	50			14.895	88					242.070
HATTAT															2.148	7	2.148
HONDA TÜRKİYE	20.305	3															20.305
HYUNDAI ASSAN	77.000	13															77.000
KARSAN			448	13	772	4	21.702	5			1.797	11					24.719
M. BENZ TÜRK					12.018	59			2.462	47							14.480
MAN TÜRKİYE									1.132	21							1.132
OTOKAR							582	0	379	7	286	2	989	37			2.236
OYAK RENAULT	307.083	51															307.083
TEMSA			1.465	43			603	0	720	14			579	22			3.367
TOFAŞ	115.720	19					196.525	44									312.245
TOYOTA	83.286	14															83.286
TÜRK TRAKTÖR															28.277	93	28.277
TOPLAM	603.394	100	3.422	100	20.429	100	442.408	100	5.268	100	16.978	100	2.658	100	30.425	100	1.124.982

K. KAMYON : AYA 3.5-12 Ton
L. Truck : GVW 3.5-12 Ton
B. KAMYON: AYA 12 Ton'dan Büyük
M. Truck : GVW 12 Ton And Up

OTOMOTİV SANAYİİNİN
2009/2010 YILLARI ÜRETİM MUKAYESESİ
Production Of Automotive Manufacturers
2009 vs 2010

OSD/T11/03

TİPLER	ARALIK AYI ÜRETİMİ December Production		12 AYLIK ÜRETİM 12 Months Production		DEĞİŞİM % Percent Change %	
	2009 YILI	2010 YILI	2009 YILI	2010 YILI	ARALIK December	12 AY 12 Months
<i>OTOMOBİL - Pass.Car</i>	48.917	56.646	510.931	603.394	16	18
<i>TİCARİ ARAÇLAR - Commercial Vehicles</i>	44.853	55.146	358.674	491.163	23	37
* B. KAMYON - M. Truck	912	3.026	7.403	20.429	232	176
* K. KAMYON - L. Truck	218	394	843	3.422	81	306
* KAMYONET - Pick Up	41.320	48.854	330.044	442.408	18	34
* OTOBÜS - Bus	477	581	5.931	5.268	22	-11
* MİNİBÜS - Minibus	1.429	1.918	11.829	16.978	34	44
* MİDİBÜS - Midibus	497	373	2.624	2.658	-25	1
TAŞIT ARAÇLARI TOPLAM - MV Total	93.770	111.792	869.605	1.094.557	19	26
<i>TRAKTÖR - F.Tractor</i>	1.619	2.880	14.861	30.425	78	105
GENEL TOPLAM - Grand Total	95.389	114.672	884.466	1.124.982	20	27

OTOMOTİV SANAYİİ 2009/2010 ÜRETİMİ
Automotive Manufacturers 2009/2010 Production

TİPLER - Types	YILLAR Years	OCAK January	ŞUBAT February	MART March	NİSAN April	MAYIS May	HAZİRAN June	TEMMUZ July	AĞUSTOS August	EYLÜL September	EKİM October	KASIM November	ARALIK December	TOPLAM Total
OTOMOBİL - Pass.Car														
	2009	23.838	30.192	37.125	48.566	52.631	53.577	54.873	23.805	50.320	45.452	41.635	48.917	510.931
	2010	46.810	46.365	55.755	51.459	57.433	54.660	47.516	29.192	54.046	58.059	45.453	56.646	603.394
B.KAMYON - M.Truck														
	2009	93	383	401	350	345	566	569	825	1.147	1.018	794	912	7.403
	2010	630	687	1.107	1.256	1.424	1.788	1.561	1.791	2.066	2.592	2.501	3.026	20.429
K.KAMYON - L.Truck														
	2009	146	0	0	0	0	0	48	70	74	84	203	218	843
	2010	0	85	289	197	388	430	299	306	281	364	389	394	3.422
KAMYONET - Pick Up														
	2009	13.519	13.160	19.944	25.081	32.227	32.145	29.417	23.407	32.963	34.633	32.228	41.320	330.044
	2010	27.990	33.895	39.546	35.118	37.093	42.097	29.213	26.984	37.726	45.076	38.816	48.854	442.408
OTOBÜS - Bus														
	2009	554	491	525	485	464	436	611	598	423	437	430	477	5.931
	2010	262	416	441	491	441	458	403	467	470	421	417	581	5.268
MİNİBÜS - Minibus														
	2009	469	621	672	974	1.362	1.506	733	535	1.219	1.155	1.154	1.429	11.829
	2010	824	953	1.163	1.014	1.159	1.760	1.337	1.340	1.608	2.070	1.832	1.918	16.978
MİDİBÜS - Midibus														
	2009	156	53	225	90	95	189	304	275	125	366	249	497	2.624
	2010	49	120	236	282	254	201	200	218	256	242	227	373	2.658
TRAKTÖR - Agric.Trac														
	2009	988	1.322	955	963	1.041	1.435	1.610	843	1.111	1.511	1.463	1.619	14.861
	2010	1.793	1.943	2.416	2.441	2.793	2.813	3.266	1.029	2.808	3.271	2.972	2.880	30.425
TOPLAM - Total														
	2009	39.763	46.222	59.847	76.509	88.165	89.854	88.165	50.358	87.382	84.656	78.156	95.389	884.466
	2010	78.358	84.464	100.953	92.258	100.985	104.207	83.795	61.327	99.261	112.095	92.607	114.672	1.124.982

OTOMOTİV SANAYİİ FİRMALARININ AYLIK ÜRETİMLERİ ve ÜRETİM PAYLARI - 2010
Production Of Automotive Manufacturers - 2010

TİPLER - Types	OCAK January	ŞUBAT February	MART March	NİSAN April	MAYIS May	HAZİRAN June	TEMMUZ July	AĞUSTOS August	EYLÜL September	EKİM October	KASIM November	ARALIK December	TOPLAM Total
OTOMOBİL - Pass.Car													
HONDA TÜRKİYE	1.620	1.620	1.683	1.707	1.620	2.046	1.206	1.571	2.008	2.014	1.377	1.833	20.305
Pay (%)	3	3	3	3	3	4	3	5	4	3	3	3	3
HYUNDAI ASSAN	4.000	3.500	5.102	5.100	8.000	8.900	6.600	7.700	7.800	7.100	6.400	6.798	77.000
Pay (%)	9	8	9	10	14	16	14	26	14	12	14	12	13
OYAK RENAULT	24.833	26.513	30.072	29.091	29.127	29.367	23.693	7.782	24.799	29.512	22.436	29.858	307.083
Pay (%)	53	57	54	57	51	54	50	27	46	51	49	53	51
TOFAŞ	8.618	8.853	11.001	10.840	11.745	9.612	7.925	6.269	11.725	11.177	8.888	9.067	115.720
Pay (%)	18	19	20	21	20	18	17	21	22	19	20	16	19
TOYOTA	7.739	5.879	7.897	4.721	6.941	4.735	8.092	5.870	7.714	8.256	6.352	9.090	83.286
Pay (%)	17	13	14	9	12	9	17	20	14	14	14	16	14
TOPLAM	46.810	46.365	55.755	51.459	57.433	54.660	47.516	29.192	54.046	58.059	45.453	56.646	603.394
Pay (%)	60	55	55	56	57	52	57	48	54	52	49	49	54
B.KAMYON - M.Truck													
B.M.C.	20	84	103	120	100	221	152	109	336	429	485	608	2.767
Pay (%)	3	12	9	10	7	12	10	6	16	17	19	20	14
FORD OTOSAN	160	102	192	236	338	404	343	346	539	742	626	844	4.872
Pay (%)	25	15	17	19	24	23	22	19	26	29	25	28	24
KARSAN	1	25	49	38	43	27	62	40	74	37	143	233	772
Pay (%)	0	4	4	3	3	2	4	2	4	1	6	8	4
M. BENZ TÜRK	449	476	763	862	943	1.136	1.004	1.296	1.117	1.384	1.247	1.341	12.018
Pay (%)	71	69	69	69	66	64	64	72	54	53	50	44	59
TOPLAM	630	687	1.107	1.256	1.424	1.788	1.561	1.791	2.066	2.592	2.501	3.026	20.429
Pay (%)	1	1	1	1	1	2	2	3	2	2	3	3	2
K.KAMYON - L.Truck													
A.I.O.S.	0	36	121	2	96	210	144	119	201	212	198	170	1.509
Pay (%)	#Num!	42	42	1	25	49	48	39	72	58	51	43	44
KARSAN	0	0	0	59	140	50	31	49	28	23	24	44	448
Pay (%)	#Num!	0	0	30	36	12	10	16	10	6	6	11	13
TEMSA	0	49	168	136	152	170	124	138	52	129	167	180	1.465
Pay (%)	#Num!	58	58	69	39	40	41	45	19	35	43	46	43

TİPLER - Types	OCAK January	ŞUBAT February	MART March	NİSAN April	MAYIS May	HAZİRAN June	TEMMUZ July	AĞUSTOS August	EYLÜL September	EKİM October	KASIM November	ARALIK December	TOPLAM Total
FORD OTOSAN	773	897	1.136	1.014	1.118	1.719	1.139	969	1.303	1.779	1.531	1.517	14.895
Pay (%)	94	94	98	100	96	98	85	72	81	86	84	79	88
KARSAN	0	0	0	0	25	40	188	316	281	274	288	385	1.797
Pay (%)	0	0	0	0	2	2	14	24	17	13	16	20	11
OTOKAR	51	56	27	0	16	1	10	55	24	17	13	16	286
Pay (%)	6	6	2	0	1	0	1	4	1	1	1	1	2
TOPLAM	824	953	1.163	1.014	1.159	1.760	1.337	1.340	1.608	2.070	1.832	1.918	16.978
Pay (%)	1	1	1	1	1	2	2	2	2	2	2	2	2
MİDİBÜS - Midibus													
A.I.O.S.	0	59	136	147	119	126	63	55	85	95	85	120	1.090
Pay (%)	0	49	58	52	47	63	32	25	33	39	37	32	41
OTOKAR	46	42	74	86	80	19	75	119	131	83	76	158	989
Pay (%)	94	35	31	30	31	9	38	55	51	34	33	42	37
TEMSA	3	19	26	49	55	56	62	44	40	64	66	95	579
Pay (%)	6	16	11	17	22	28	31	20	16	26	29	25	22
TOPLAM	49	120	236	282	254	201	200	218	256	242	227	373	2.658
Pay (%)	0	0	0	0	0	0	0	0	0	0	0	0	0
TRAKTÖR - Agric.Trac													
TÜRK TRAKTÖR	1.727	1.843	2.258	2.296	2.570	2.641	3.118	863	2.681	2.941	2.738	2.601	28.277
Pay (%)	96	95	93	94	92	94	95	84	95	90	92	90	93
HATTAT	66	100	158	145	223	172	148	166	127	330	234	279	2.148
Pay (%)	4	5	7	6	8	6	5	16	5	10	8	10	7
TOPLAM	1.793	1.943	2.416	2.441	2.793	2.813	3.266	1.029	2.808	3.271	2.972	2.880	30.425
Pay (%)	2	2	2	3	3	3	4	2	3	3	3	3	3
GENEL TOPLAM	78.358	84.464	100.953	92.258	100.985	104.207	83.795	61.327	99.261	112.095	92.607	114.672	1.124.982

OTOMOTİV SANAYİİ MODEL BAZINDA ÜRETİM - 2010
Production by Models Automotive Manufacturers - 2010

OSD/T11-06

FİRMA / MODELLER Companies and Models	OCAK January	ŞUBAT February	MART March	NİSAN April	MAYIS May	HAZİRAN June	TEMMUZ July	AĞUSTOS August	EYLÜL September	EKİM October	KASIM November	ARALIK December	TOPLAM Total
A.I.O.S.													
(A.Y.A 3.501-12.000 KG)	0	36	121	2	96	210	144	119	201	212	198	170	1.509
K.Kamyon Toplam	0	36	121	2	96	210	144	119	201	212	198	170	1.509
Kamyonet	0	5	60	170	104	10	24	14	52	54	34	166	693
Kamyonet Toplam	0	5	60	170	104	10	24	14	52	54	34	166	693
Midibüs	0	59	136	147	119	126	63	55	85	95	85	120	1.090
Midibüs Toplam	0	59	136	147	119	126	63	55	85	95	85	120	1.090
GENEL TOPLAM	0	100	317	319	319	346	231	188	338	361	317	456	3.292
B.M.C.													
(A.Y.A > 12.001 KG)	20	84	103	120	100	221	152	109	336	429	485	608	2.767
B.Kamyon Toplam	20	84	103	120	100	221	152	109	336	429	485	608	2.767
Kamyonet	0	0	0	0	0	0	0	0	0	0	0	0	0
Kamyonet Toplam	0	0	0	0	0	0	0	0	0	0	0	0	0
Minibüs	0	0	0	0	0	0	0	0	0	0	0	0	0
Minibüs Toplam	0	0	0	0	0	0	0	0	0	0	0	0	0
Otobüs	26	102	36	32	24	42	28	35	98	20	66	66	575
Otobüs Toplam	26	102	36	32	24	42	28	35	98	20	66	66	575
GENEL TOPLAM	46	186	139	152	124	263	180	144	434	449	551	674	3.342
FORD OTOSAN													
(A.Y.A > 12.001 KG)	160	102	192	236	338	404	343	346	539	742	626	844	4.872
B.Kamyon Toplam	160	102	192	236	338	404	343	346	539	742	626	844	4.872
Kamyonet	1.737	2.004	2.921	2.648	3.331	4.272	2.368	1.938	3.073	4.352	3.481	3.791	35.916
Kamyonet Van	8.856	13.866	16.432	13.435	16.770	18.468	10.508	13.468	16.811	19.901	16.993	20.879	186.387
Kamyonet Toplam	10.593	15.870	19.353	16.083	20.101	22.740	12.876	15.406	19.884	24.253	20.474	24.670	222.303
Minibüs	773	897	1.136	1.014	1.118	1.719	1.139	969	1.303	1.779	1.531	1.517	14.895
Minibüs Toplam	773	897	1.136	1.014	1.118	1.719	1.139	969	1.303	1.779	1.531	1.517	14.895
GENEL TOPLAM	11.526	16.869	20.681	17.333	21.557	24.863	14.358	16.721	21.726	26.774	22.631	27.031	242.070
HATTAT													
Traktör	66	100	158	145	223	172	148	166	127	330	234	279	2.148
Traktör Toplam	66	100	158	145	223	172	148	166	127	330	234	279	2.148
GENEL TOPLAM	66	100	158	145	223	172	148	166	127	330	234	279	2.148
HONDA TÜRKİYE													
1301-1600 cc - Sedan	1.350	545	571	720	780	1.200	509	708	883	1.049	767	1.713	10.795
1601-2000 cc - Sedan	270	1.075	1.112	987	840	846	697	863	1.125	965	610	120	9.510
Otomobil Toplam	1.620	1.620	1.683	1.707	1.620	2.046	1.206	1.571	2.008	2.014	1.377	1.833	20.305
GENEL TOPLAM	1.620	1.620	1.683	1.707	1.620	2.046	1.206	1.571	2.008	2.014	1.377	1.833	20.305

FİRMA / MODELLER Companies and Models	OCAK January	ŞUBAT February	MART March	NİSAN April	MAYIS May	HAZİRAN June	TEMMUZ July	AĞUSTOS August	EYLÜL September	EKİM October	KASIM November	ARALIK December	TOPLAM Total
HYUNDAI ASSAN													
< 1300 cc - Hatchback	0	0	0	550	3.739	3.508	3.365	3.718	4.135	2.754	2.191	2.887	26.847
1301-1600 cc - Hatchback	343	147	62	216	1.061	1.492	235	1.482	1.165	1.046	1.159	1.313	9.721
1301-1600 cc - Sedan	3.657	3.353	5.040	4.334	3.200	3.900	3.000	2.500	2.500	3.300	3.050	2.598	40.432
Otomobil Toplam	4.000	3.500	5.102	5.100	8.000	8.900	6.600	7.700	7.800	7.100	6.400	6.798	77.000
GENEL TOPLAM	4.000	3.500	5.102	5.100	8.000	8.900	6.600	7.700	7.800	7.100	6.400	6.798	77.000
KARSAN													
(A.Y.A > 12.001 KG)	1	25	49	38	43	27	62	40	74	37	143	233	772
B.Kamyon Toplam	1	25	49	38	43	27	62	40	74	37	143	233	772
(A.Y.A 3.501-12.000 KG)	0	0	0	59	140	50	31	49	28	23	24	44	448
K.Kamyon Toplam	0	0	0	59	140	50	31	49	28	23	24	44	448
Kamyonet	357	771	636	494	460	556	943	797	1.052	759	336	891	8.052
Kamyonet Van	447	1.012	1.341	1.966	1.298	1.383	921	787	917	1.288	1.139	1.151	13.650
Kamyonet Toplam	804	1.783	1.977	2.460	1.758	1.939	1.864	1.584	1.969	2.047	1.475	2.042	21.702
Minibüs	0	0	0	0	25	40	188	316	281	274	288	385	1.797
Minibüs Toplam	0	0	0	0	25	40	188	316	281	274	288	385	1.797
GENEL TOPLAM	805	1.808	2.026	2.557	1.966	2.056	2.145	1.989	2.352	2.381	1.930	2.704	24.719
M. BENZ TÜRK													
(A.Y.A > 12.001 KG)	365	397	669	843	894	1.081	963	1.215	1.052	1.296	1.179	1.242	11.196
Kamyonet	84	79	94	19	49	55	41	81	65	88	68	99	822
B.Kamyon Toplam	449	476	763	862	943	1.136	1.004	1.296	1.117	1.384	1.247	1.341	12.018
Otobüs	99	161	235	231	241	244	190	245	209	181	200	226	2.462
Otobüs Toplam	99	161	235	231	241	244	190	245	209	181	200	226	2.462
GENEL TOPLAM	548	637	998	1.093	1.184	1.380	1.194	1.541	1.326	1.565	1.447	1.567	14.480
MAN TÜRKİYE													
Otobüs	65	97	90	124	102	71	78	110	65	118	92	120	1.132
Otobüs Toplam	65	97	90	124	102	71	78	110	65	118	92	120	1.132
GENEL TOPLAM	65	97	90	124	102	71	78	110	65	118	92	120	1.132
OTOKAR													
Kamyonet	73	121	62	25	8	28	26	24	8	12	10	185	582
Kamyonet Toplam	73	121	62	25	8	28	26	24	8	12	10	185	582
Midibüs	46	42	74	86	80	19	75	119	131	83	76	158	989
Midibüs Toplam	46	42	74	86	80	19	75	119	131	83	76	158	989
Minibüs	51	56	27	0	16	1	10	55	24	17	13	16	286
Minibüs Toplam	51	56	27	0	16	1	10	55	24	17	13	16	286
Otobüs	12	11	27	51	21	15	25	17	39	52	13	96	379
Otobüs Toplam	12	11	27	51	21	15	25	17	39	52	13	96	379
GENEL TOPLAM	182	230	190	162	125	63	136	215	202	164	112	455	2.236

FİRMA / MODELLER Companies and Models	OCAK January	ŞUBAT February	MART March	NİSAN April	MAYIS May	HAZİRAN June	TEMMUZ July	AĞUSTOS August	EYLÜL September	EKİM October	KASIM November	ARALIK December	TOPLAM Total
OYAK RENAULT													
< 1300 cc - Sedan	6.204	7.250	7.711	7.464	7.637	6.370	5.220	1.931	4.437	6.884	5.158	5.771	72.037
1301-1600 cc - Hatchback	758	616	1.135	1.134	1.974	2.142	2.462	839	3.040	1.937	1.712	2.380	20.129
1301-1600 cc - Sedan	17.871	18.645	21.209	20.478	19.468	20.730	15.651	4.843	16.901	19.774	14.930	21.175	211.675
1601-2000 cc - Hatchback	0	1	1	8	44	101	31	21	172	645	310	371	1.705
1601-2000 cc - Sedan	0	1	16	7	4	24	329	148	249	272	326	161	1.537
Otomobil Toplam	24.833	26.513	30.072	29.091	29.127	29.367	23.693	7.782	24.799	29.512	22.436	29.858	307.083
GENEL TOPLAM	24.833	26.513	30.072	29.091	29.127	29.367	23.693	7.782	24.799	29.512	22.436	29.858	307.083
TEMSA													
(A.Y.A 3.501-12.000 KG)	0	49	168	136	152	170	124	138	52	129	167	180	1.465
K.Kamyon Toplam	0	49	168	136	152	170	124	138	52	129	167	180	1.465
Kamyonet	0	51	24	48	48	24	48	136	105	71	24	24	603
Kamyonet Toplam	0	51	24	48	48	24	48	136	105	71	24	24	603
Midibüs	3	19	26	49	55	56	62	44	40	64	66	95	579
Midibüs Toplam	3	19	26	49	55	56	62	44	40	64	66	95	579
Otobüs	60	45	53	53	53	86	82	60	59	50	46	73	720
Otobüs Toplam	60	45	53	53	53	86	82	60	59	50	46	73	720
GENEL TOPLAM	63	164	271	286	308	336	316	378	256	314	303	372	3.367
TOFAŞ													
Kamyonet Van	16.520	16.065	18.070	16.332	15.074	17.356	14.375	9.820	15.708	18.639	16.799	21.767	196.525
Kamyonet Toplam	16.520	16.065	18.070	16.332	15.074	17.356	14.375	9.820	15.708	18.639	16.799	21.767	196.525
< 1300 cc - Hatchback	69	65	54	25	67	62	82	14	60	127	42	74	741
< 1300 cc - Sedan	1.011	910	1.516	2.860	2.682	1.676	1.483	1.483	2.933	3.114	2.599	2.629	24.896
< 1300 cc - Stationwagon	903	831	1.807	2.313	2.750	2.027	1.119	789	2.732	2.127	1.934	1.694	21.026
1301-1600 cc - Hatchback	51	102	89	85	83	99	95	14	31	112	44	42	847
1301-1600 cc - Sedan	682	689	590	914	1.615	2.126	1.616	1.655	2.789	2.719	1.996	2.404	19.795
1301-1600 cc - Stationwago	5.564	5.818	6.512	4.262	4.300	3.406	3.380	2.226	3.056	2.761	2.134	2.070	45.489
1601-2000 cc - Stationwago	338	438	433	381	248	216	150	88	124	217	139	154	2.926
Otomobil Toplam	8.618	8.853	11.001	10.840	11.745	9.612	7.925	6.269	11.725	11.177	8.888	9.067	115.720
GENEL TOPLAM	25.138	24.918	29.071	27.172	26.819	26.968	22.300	16.089	27.433	29.816	25.687	30.834	312.245
TOYOTA													
1301-1600 cc - Hatchback	3.874	2.098	4.225	1.090	2.806	2.890	3.823	3.290	4.048	4.141	3.117	4.762	40.164
1301-1600 cc - Sedan	634	676	393	599	738	344	609	450	577	796	548	660	7.024
1601-2000 cc - Hatchback	79	138	308	29	69	248	413	227	188	345	317	411	2.772
1601-2000 cc - Sedan	3.152	2.967	2.971	3.003	3.328	1.253	3.247	1.903	2.901	2.974	2.370	3.257	33.326
Otomobil Toplam	7.739	5.879	7.897	4.721	6.941	4.735	8.092	5.870	7.714	8.256	6.352	9.090	83.286
GENEL TOPLAM	7.739	5.879	7.897	4.721	6.941	4.735	8.092	5.870	7.714	8.256	6.352	9.090	83.286

FİRMA / MODELLER Companies and Models	OCAK January	ŞUBAT February	MART March	NİSAN April	MAYIS May	HAZİRAN June	TEMMUZ July	AĞUSTOS August	EYLÜL September	EKİM October	KASIM November	ARALIK December	TOPLAM Total
TÜRK TRAKTÖR													
Traktör	1.727	1.843	2.258	2.296	2.570	2.641	3.118	863	2.681	2.941	2.738	2.601	28.277
Traktör Toplam	1.727	1.843	2.258	2.296	2.570	2.641	3.118	863	2.681	2.941	2.738	2.601	28.277
GENEL TOPLAM	1.727	1.843	2.258	2.296	2.570	2.641	3.118	863	2.681	2.941	2.738	2.601	28.277
TÜM GENEL TOPLAM	78.358	84.464	100.953	92.258	100.985	104.207	83.795	61.327	99.261	112.095	92.607	114.672	1.124.982

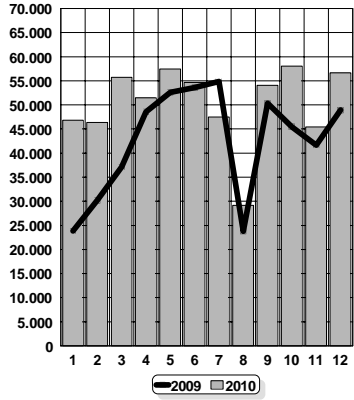
OTOMOTİV SANAYİİ KAPASİTE KULLANIMI - 2010
Capacity Usage of Automotive Manufacturers - 2010

TİPLER - Types	ARALIK December		12 AY 12 Months		KAPASİTE KULLANIM ORANI (%) Capacity Usage (%)	
	KAPASİTE Capacity	ÜRETİM Production	KAPASİTE Capacity	ÜRETİM Production	ARALIK December	12 AY 12 Months
* HAFİF ARAÇLAR - Light Vehicles	120.269	107.418	1.443.228	1.062.780	89	74
KAMYON - Truck	4.267	3.420	51.204	23.851	80	47
OTOBÜS - Bus	708	581	8.496	5.268	82	62
MİDİBÜS - Midibus	1.061	373	12.732	2.658	35	21
TRAKTÖR - F.Tractor	3.792	2.880	45.504	30.425	76	67
TOPLAM - Total	130.097	114.672	1.561.164	1.124.982	88	72

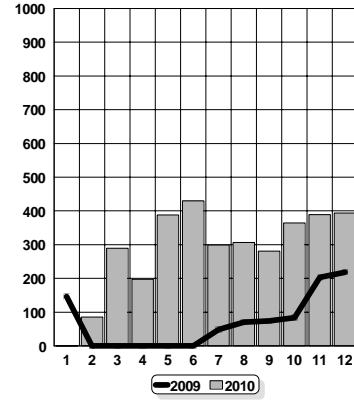
* Hafif Araçlara otomobil, kamyonet ve minibüs dahildir.

* Light Vehicles include pass.car, pick-up and minibus.

OTOMOBİL/Pass.Car

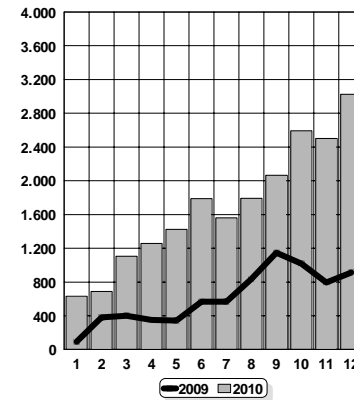


K. KAMYON/L. Truck

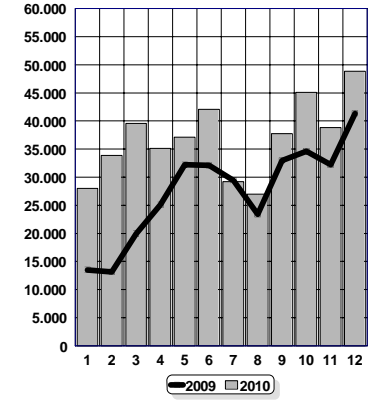


OSD/T11-08

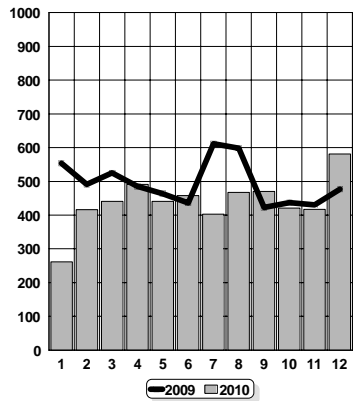
B. KAMYON/M. Truck



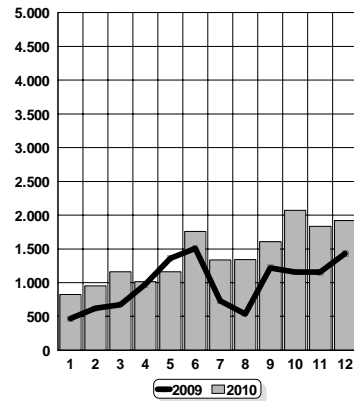
KAMYONET/Pick-Up



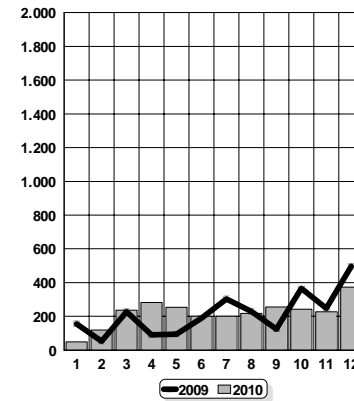
OTOBÜS/Bus (26 and Up Pass.)



MİNİBÜS/Minibus (Up to 14 Pass.)



MİDİBÜS/Midibus (15-25 Pass.)



TRAKTÖR/Agr.Tractor

