



OTOMOTİV SANAYİ DERNEĞİ  
AUTOMOTIVE MANUFACTURERS ASSOCIATION

# Aylık İstatistiki Bilgiler Bülteni Monthly Statistical Bulletin

Aralık 2008 / December 2008

OSD is a Member of "OICA"



OSD "OICA" Üyesidir

K.KAMYON: AYA 3.5-12 Ton  
L. Truck: GVW 3.5-12 Ton  
B.KAMYON: AYA 12 Ton'dan Büyük  
M. Truck: GVW 12 Ton And Up

**OTOMOTİV SANAYİİ FİRMALARININ  
2008 YILI ARALIK AYI ÜRETİMLERİ  
Production of Automotive Manufacturers  
Month of December 2008**

OSD/T09-01

Firmalar Companies	OTOMOBİL Pass.Car	%	K.KAMYON L.Truck	%	B.KAMYON Mid.Truck	%	KAMYONET Pick Up	%	OTOBÜS Bus	%	MINİBÜS Mini-Bus	%	MİDİBÜS Midi-Bus	%	TRAKTÖR F.Tractor	%	TOPLAM Totals
A.I.O.S.			222	29			254	2					160	21			636
B.M.C.					362	22	18	0	37	6	0	0	0	0			417
FORD OTOSAN					112	7	6.200	47			635	72					6.947
HATTAT															28	3	28
HONDA TÜRKİYE	2.176	11															2.176
HYUNDAI ASSAN	3.470	17															3.470
KARSAN			172	22	105	6	506	4			219	25	341	44			1.343
M. BENZ TÜRK					1.079	65			224	37							1.303
MAN TÜRKİYE									186	31							186
OTOKAR							129	1	89	15	32	4	113	15			363
OYAK RENAULT	6.453	31															6.453
TEMSA			384	49			0	0	71	12			161	21			616
TOFAŞ	4.287	21					6.171	46									10.458
TOYOTA	4.114	20															4.114
TÜRK TRAKTÖR															808	97	808
UZEL															0	0	0
<b>TOPLAM</b>	<b>20.500</b>	<b>100</b>	<b>778</b>	<b>100</b>	<b>1.658</b>	<b>100</b>	<b>13.278</b>	<b>100</b>	<b>607</b>	<b>100</b>	<b>886</b>	<b>100</b>	<b>775</b>	<b>100</b>	<b>836</b>	<b>100</b>	<b>39.318</b>

K.KAMYON: AYA 3.5-12 Ton  
L. Truck: GVW 3.5-12 Ton  
B.KAMYON: AYA 12 Ton'dan Büyük  
M. Truck: GVW 12 Ton And Up

**OTOMOTİV SANAYİİ FİRMALARININ**  
**2008 YILI 12 AYLIK ÜRETİMLER**  
**Production of Automotive Manufacturers**  
**12 Months of 2008**

OSD/T09-02

FİRMALAR Companies	OTOMOBİL Pass.Car	%	K.KAMYON L.Truck	%	B.KAMYON Mid.Truck	%	KAMYONET Pick Up	%	OTOBÜS Bus	%	MİNİBÜS Mini-Bus	%	MİDİBÜS Midi-Bus	%	TRAKTÖR F.Tractor	%	TOPLAM Totals
A.I.O.S.			3.469	44			3.796	1					2.742	26			10.007
B.M.C.					5.600	19	1.124	0	1.098	15	863	4	51	0			8.736
FORD OTOSAN					5.863	20	245.054	55			17.844	84					268.761
HATTAT															919	4	919
HONDA TÜRKİYE	50.073	8															50.073
HYUNDAI ASSAN	81.590	13															81.590
KARSAN			906	11	151	1	3.915	1			1.905	9	4.353	41			11.230
M. BENZ TÜRK					17.290	60			3.510	47							20.800
MAN TÜRKİYE									1.696	23							1.696
OTOKAR							692	0	325	4	511	2	1.495	14			3.023
OYAK RENAULT	286.695	46															286.695
TEMSA			3.521	45			4.105	1	897	12			2.019	19			10.542
TOFAŞ	76.688	12					190.748	42									267.436
TOYOTA	126.521	20															126.521
TÜRK TRAKTÖR															22.102	89	22.102
UZEL															1.786	7	1.786
<b>TOPLAM</b>	<b>621.567</b>	<b>100</b>	<b>7.896</b>	<b>100</b>	<b>28.904</b>	<b>100</b>	<b>449.434</b>	<b>100</b>	<b>7.526</b>	<b>100</b>	<b>21.123</b>	<b>100</b>	<b>10.660</b>	<b>100</b>	<b>24.807</b>	<b>100</b>	<b>1.171.917</b>

K. KAMYON : AYA 3.5-12 Ton  
L. Truck : GVW 3.5-12 Ton  
B. KAMYON: AYA 12 Ton'dan Büyük  
M. Truck : GVW 12 Ton And Up

OTOMOTİV SANAYİİNİN  
2007/2008 YILLARI ÜRETİM MUKAYESESİ  
Production Of Automotive Manufacturers  
2007 vs 2008

OSD/T09-03

TİPLER	ARALIK AYI ÜRETİMİ December Production		12 AYLIK ÜRETİM 12 Months Production		DEĞİŞİM % Percent Change %	
	2007 YILI	2008 YILI	2007 YILI	2008 YILI	ARALIK December	12 AY 12 Months
<i>OTOMOBİL - Pass.Car</i>	<b>55.991</b>	<b>20.500</b>	<b>634.883</b>	<b>621.567</b>	<b>-63</b>	<b>-2</b>
<i>TİCARİ ARAÇLAR - Commercial Vehicles</i>	<b>46.355</b>	<b>17.982</b>	<b>464.530</b>	<b>525.543</b>	<b>-61</b>	<b>13</b>
* B. KAMYON - M. Truck	2.107	1.658	28.388	28.904	-21	2
* K. KAMYON - L. Truck	689	778	6.156	7.896	13	28
* KAMYONET - Pick Up	38.638	13.278	391.737	449.434	-66	15
* OTOBÜS - Bus	682	607	6.945	7.526	-11	8
* MİNİBÜS - Minibus	2.804	886	21.999	21.123	-68	-4
* MİDİBÜS - Midibus	1.435	775	9.305	10.660	-46	15
<b>TAŞIT ARAÇLARI TOPLAM - MV Total</b>	<b>102.346</b>	<b>38.482</b>	<b>1.099.413</b>	<b>1.147.110</b>	<b>-62</b>	<b>4</b>
<i>TRAKTÖR - F.Tractor</i>	<b>2.520</b>	<b>836</b>	<b>33.538</b>	<b>24.807</b>	<b>-67</b>	<b>-26</b>
<b>GENEL TOPLAM - Grand Total</b>	<b>104.866</b>	<b>39.318</b>	<b>1.132.951</b>	<b>1.171.917</b>	<b>-63</b>	<b>3</b>

**OTOMOTİV SANAYİİ 2007/2008 ÜRETİMİ**  
**Automotive Manufacturers 2007/2008 Production**

<b>TİPLER - Types</b>	<b>YILLAR Years</b>	<b>OCAK January</b>	<b>ŞUBAT February</b>	<b>MART March</b>	<b>NİSAN April</b>	<b>MAYIS May</b>	<b>HAZİRAN June</b>	<b>TEMMUZ July</b>	<b>AĞUSTOS August</b>	<b>EYLÜL September</b>	<b>EKİM October</b>	<b>KASIM November</b>	<b>ARALIK December</b>	<b>TOPLAM Total</b>
<b>OTOMOBİL - Pass.Car</b>														
	2007	40.533	45.415	53.909	53.228	62.129	59.902	56.273	23.614	55.818	59.463	68.608	55.991	634.883
	2008	61.507	60.868	64.973	65.610	63.931	63.118	67.891	21.342	55.089	45.057	31.681	20.500	621.567
<b>B.KAMYON - M.Truck</b>														
	2007	2.069	1.957	2.377	2.416	2.508	2.546	2.029	2.268	2.652	2.674	2.785	2.107	28.388
	2008	1.838	2.526	2.690	2.763	2.634	2.494	2.378	2.717	2.738	2.505	1.963	1.658	28.904
<b>K.KAMYON - L.Truck</b>														
	2007	323	460	522	530	428	529	459	478	535	502	701	689	6.156
	2008	567	539	568	595	640	654	479	706	650	803	917	778	7.896
<b>KAMYONET - Pick Up</b>														
	2007	27.698	30.316	33.662	30.391	33.522	34.077	30.557	19.925	35.956	35.141	41.854	38.638	391.737
	2008	46.631	45.928	52.696	48.092	52.552	46.774	41.374	15.965	36.122	28.366	21.656	13.278	449.434
<b>OTOBÜS - Bus</b>														
	2007	409	537	655	564	624	600	605	568	576	521	604	682	6.945
	2008	556	579	713	620	807	666	610	520	546	615	687	607	7.526
<b>MİNİBÜS - Minibus</b>														
	2007	1.185	1.491	1.852	1.775	1.936	1.937	1.582	1.509	1.636	1.736	2.556	2.804	21.999
	2008	1.280	1.584	1.972	2.341	2.276	2.501	1.690	1.285	1.670	2.099	1.539	886	21.123
<b>MİDİBÜS - Midibus</b>														
	2007	335	528	549	395	502	634	502	1.101	1.254	971	1.099	1.435	9.305
	2008	871	1.068	948	971	1.060	1.125	769	740	838	858	637	775	10.660
<b>TRAKTÖR - Agric.Trac</b>														
	2007	2.899	2.887	3.002	2.770	3.038	2.716	2.622	2.163	2.934	2.785	3.202	2.520	33.538
	2008	2.219	2.356	2.854	2.610	2.677	2.597	2.976	783	2.048	1.161	1.690	836	24.807
<b>TOPLAM - Total</b>														
	2007	75.451	83.591	96.528	92.069	104.687	102.941	94.629	51.626	101.361	103.793	121.409	104.866	1.132.951
	2008	115.469	115.448	127.414	123.602	126.577	119.929	118.167	44.058	99.701	81.464	60.770	39.318	1.171.917

**OTOMOTİV SANAYİİ FİRMALARININ AYLIK ÜRETİMLERİ ve ÜRETİM PAYLARI - 2008**  
**Production Of Automotive Manufacturers - 2008**

TİPLER - Types	OCAK January	ŞUBAT February	MART March	NİSAN April	MAYIS May	HAZİRAN June	TEMMUZ July	AĞUSTOS August	EYLÜL September	EKİM October	KASIM November	ARALIK December	TOPLAM Total
<b>OTOMOBİL - Pass.Car</b>													
<b>HONDA TÜRKİYE</b>	4.557	4.345	4.618	4.406	4.389	4.428	5.242	2.475	4.622	4.398	4.417	2.176	50.073
Pay (%)	7	7	7	7	7	7	8	12	8	10	14	11	8
<b>HYUNDAI ASSAN</b>	5.300	7.300	7.400	7.900	7.600	9.400	7.300	6.500	7.700	6.900	4.820	3.470	81.590
Pay (%)	9	12	11	12	12	15	11	30	14	15	15	17	13
<b>OYAK RENAULT</b>	29.447	28.933	29.935	30.692	30.254	28.102	32.815	7.162	28.089	23.058	11.755	6.453	286.695
Pay (%)	48	48	46	47	47	45	48	34	51	51	37	31	46
<b>TOFAŞ</b>	6.368	6.699	8.669	8.620	8.208	8.481	9.128	2.274	6.822	3.740	3.392	4.287	76.688
Pay (%)	10	11	13	13	13	13	13	11	12	8	11	21	12
<b>TOYOTA</b>	15.835	13.591	14.351	13.992	13.480	12.707	13.406	2.931	7.856	6.961	7.297	4.114	126.521
Pay (%)	26	22	22	21	21	20	20	14	14	15	23	20	20
<b>TOPLAM</b>	<b>61.507</b>	<b>60.868</b>	<b>64.973</b>	<b>65.610</b>	<b>63.931</b>	<b>63.118</b>	<b>67.891</b>	<b>21.342</b>	<b>55.089</b>	<b>45.057</b>	<b>31.681</b>	<b>20.500</b>	<b>621.567</b>
Pay (%)	<b>53</b>	<b>53</b>	<b>51</b>	<b>53</b>	<b>51</b>	<b>53</b>	<b>57</b>	<b>48</b>	<b>55</b>	<b>55</b>	<b>52</b>	<b>52</b>	<b>53</b>
<b>B.KAMYON - M.Truck</b>													
<b>B.M.C.</b>	284	431	494	558	443	502	523	659	553	471	320	362	5.600
Pay (%)	15	17	18	20	17	20	22	24	20	19	16	22	19
<b>FORD OTOSAN</b>	606	660	660	750	630	570	494	260	560	420	141	112	5.863
Pay (%)	33	26	25	27	24	23	21	10	20	17	7	7	20
<b>KARSAN</b>	0	0	0	0	0	0	0	0	0	12	34	105	151
Pay (%)	0	0	0	0	0	0	0	0	0	0	2	6	1
<b>M. BENZ TÜRK</b>	948	1.435	1.536	1.455	1.561	1.422	1.361	1.798	1.625	1.602	1.468	1.079	17.290
Pay (%)	52	57	57	53	59	57	57	66	59	64	75	65	60

TİPLER - Types	OCAK January	ŞUBAT February	MART March	NİSAN April	MAYIS May	HAZİRAN June	TEMMUZ July	AĞUSTOS August	EYLÜL September	EKİM October	KASIM November	ARALIK December	TOPLAM Total
<b>TOPLAM</b>	<b>1.838</b>	<b>2.526</b>	<b>2.690</b>	<b>2.763</b>	<b>2.634</b>	<b>2.494</b>	<b>2.378</b>	<b>2.717</b>	<b>2.738</b>	<b>2.505</b>	<b>1.963</b>	<b>1.658</b>	<b>28.904</b>
Pay (%)	2	2	2	2	2	2	2	6	3	3	3	4	2
<b>K.KAMYON - L.Truck</b>													
<b>A.I.O.S.</b>	299	281	324	340	327	301	97	308	274	357	339	222	3.469
Pay (%)	53	52	57	57	51	46	20	44	42	44	37	29	44
<b>KARSAN</b>	36	72	36	72	68	76	72	36	35	37	194	172	906
Pay (%)	6	13	6	12	11	12	15	5	5	5	21	22	11
<b>TEMSA</b>	232	186	208	183	245	277	310	362	341	409	384	384	3.521
Pay (%)	41	35	37	31	38	42	65	51	52	51	42	49	45
<b>TOPLAM</b>	<b>567</b>	<b>539</b>	<b>568</b>	<b>595</b>	<b>640</b>	<b>654</b>	<b>479</b>	<b>706</b>	<b>650</b>	<b>803</b>	<b>917</b>	<b>778</b>	<b>7.896</b>
Pay (%)	0	0	0	0	1	1	0	2	1	1	2	2	1
<b>KAMYONET - Pick Up</b>													
<b>A.I.O.S.</b>	310	319	389	356	390	367	80	351	336	318	326	254	3.796
Pay (%)	1	1	1	1	1	1	0	2	1	1	2	2	1
<b>B.M.C.</b>	127	99	171	220	111	162	51	91	38	27	9	18	1.124
Pay (%)	0	0	0	0	0	0	0	1	0	0	0	0	0
<b>FORD OTOSAN</b>	27.523	26.872	28.475	26.469	27.328	26.083	23.786	10.311	17.904	14.890	9.213	6.200	245.054
Pay (%)	59	59	54	55	52	56	57	65	50	52	43	47	55
<b>KARSAN</b>	230	405	493	483	355	274	309	199	209	271	181	506	3.915
Pay (%)	0	1	1	1	1	1	1	1	1	1	1	4	1
<b>OTOKAR</b>	26	16	77	55	50	44	41	84	53	67	50	129	692
Pay (%)	0	0	0	0	0	0	0	1	0	0	0	1	0
<b>TEMSA</b>	353	383	216	247	384	283	486	436	621	480	216	0	4.105
Pay (%)	1	1	0	1	1	1	1	3	2	2	1	0	1
<b>TOFAŞ</b>	18.062	17.834	22.875	20.262	23.934	19.561	16.621	4.493	16.961	12.313	11.661	6.171	190.748
Pay (%)	39	39	43	42	46	42	40	28	47	43	54	46	42

TİPLER - Types	OCAK January	ŞUBAT February	MART March	NİSAN April	MAYIS May	HAZİRAN June	TEMMUZ July	AĞUSTOS August	EYLÜL September	EKİM October	KASIM November	ARALIK December	TOPLAM Total
<b>TOPLAM</b>	<b>46.631</b>	<b>45.928</b>	<b>52.696</b>	<b>48.092</b>	<b>52.552</b>	<b>46.774</b>	<b>41.374</b>	<b>15.965</b>	<b>36.122</b>	<b>28.366</b>	<b>21.656</b>	<b>13.278</b>	<b>449.434</b>
Pay (%)	40	40	41	39	42	39	35	36	36	35	36	34	38
<b>OTOBÜS - Bus</b>													
<b>B.M.C.</b>	125	126	104	126	162	89	53	78	79	63	56	37	1.098
Pay (%)	22	22	15	20	20	13	9	15	14	10	8	6	15
<b>MAN TÜRKİYE</b>	150	166	162	73	172	103	110	69	114	155	236	186	1.696
Pay (%)	27	29	23	12	21	15	18	13	21	25	34	31	23
<b>M. BENZ TÜRK</b>	234	241	333	329	349	331	348	292	230	283	316	224	3.510
Pay (%)	42	42	47	53	43	50	57	56	42	46	46	37	47
<b>OTOKAR</b>	13	15	34	12	13	34	17	17	33	24	24	89	325
Pay (%)	2	3	5	2	2	5	3	3	6	4	3	15	4
<b>TEMSA</b>	34	31	80	80	111	109	82	64	90	90	55	71	897
Pay (%)	6	5	11	13	14	16	13	12	16	15	8	12	12
<b>TOPLAM</b>	<b>556</b>	<b>579</b>	<b>713</b>	<b>620</b>	<b>807</b>	<b>666</b>	<b>610</b>	<b>520</b>	<b>546</b>	<b>615</b>	<b>687</b>	<b>607</b>	<b>7.526</b>
Pay (%)	0	1	1	1	1	1	1	1	1	1	1	2	1
<b>MİNİBÜS - Minibus</b>													
<b>B.M.C.</b>	80	64	91	59	33	94	56	255	82	49	0	0	863
Pay (%)	6	4	5	3	1	4	3	20	5	2	0	0	4
<b>FORD OTOSAN</b>	1.136	1.312	1.495	1.946	1.983	2.194	1.513	961	1.483	1.859	1.327	635	17.844
Pay (%)	89	83	76	83	87	88	90	75	89	89	86	72	84
<b>KARSAN</b>	0	159	306	288	225	201	98	51	75	170	113	219	1.905
Pay (%)	0	10	16	12	10	8	6	4	4	8	7	25	9
<b>OTOKAR</b>	64	49	80	48	35	12	23	18	30	21	99	32	511
Pay (%)	5	3	4	2	2	0	1	1	2	1	6	4	2
<b>TOPLAM</b>	<b>1.280</b>	<b>1.584</b>	<b>1.972</b>	<b>2.341</b>	<b>2.276</b>	<b>2.501</b>	<b>1.690</b>	<b>1.285</b>	<b>1.670</b>	<b>2.099</b>	<b>1.539</b>	<b>886</b>	<b>21.123</b>
Pay (%)	1	1	2	2	2	2	1	3	2	3	3	2	2



TİPLER - Types	OCAK January	ŞUBAT February	MART March	NİSAN April	MAYIS May	HAZİRAN June	TEMMUZ July	AĞUSTOS August	EYLÜL September	EKİM October	KASIM November	ARALIK December	TOPLAM Total
<b>MİDİBÜS - Midibus</b>													
A.I.O.S.	239	250	266	283	307	283	69	237	214	210	224	160	2.742
Pay (%)	27	23	28	29	29	25	9	32	26	24	35	21	26
B.M.C.	20	14	2	0	4	11	0	0	0	0	0	0	51
Pay (%)	2	1	0	0	0	1	0	0	0	0	0	0	0
KARSAN	341	532	447	355	431	484	428	273	344	257	120	341	4.353
Pay (%)	39	50	47	37	41	43	56	37	41	30	19	44	41
OTOKAR	116	116	100	144	152	129	107	83	144	168	123	113	1.495
Pay (%)	13	11	11	15	14	11	14	11	17	20	19	15	14
TEMSA	155	156	133	189	166	218	165	147	136	223	170	161	2.019
Pay (%)	18	15	14	19	16	19	21	20	16	26	27	21	19
<b>TOPLAM</b>	<b>871</b>	<b>1.068</b>	<b>948</b>	<b>971</b>	<b>1.060</b>	<b>1.125</b>	<b>769</b>	<b>740</b>	<b>838</b>	<b>858</b>	<b>637</b>	<b>775</b>	<b>10.660</b>
Pay (%)	1	1	1	1	1	1	1	2	1	1	1	2	1
<b>TRAKTÖR - Agric.Trac</b>													
TÜRK TRAKTÖR	1.451	1.793	2.299	2.491	2.500	2.519	2.872	677	1.962	1.116	1.614	808	22.102
Pay (%)	65	76	81	95	93	97	97	86	96	96	96	97	89
UZEL	724	502	480	8	72	0	0	0	0	0	0	0	1.786
Pay (%)	33	21	17	0	3	0	0	0	0	0	0	0	7
HATTAT	44	61	75	111	105	78	104	106	86	45	76	28	919
Pay (%)	2	3	3	4	4	3	3	14	4	4	4	3	4
<b>TOPLAM</b>	<b>2.219</b>	<b>2.356</b>	<b>2.854</b>	<b>2.610</b>	<b>2.677</b>	<b>2.597</b>	<b>2.976</b>	<b>783</b>	<b>2.048</b>	<b>1.161</b>	<b>1.690</b>	<b>836</b>	<b>24.807</b>
Pay (%)	2	2	2	2	2	2	3	2	2	1	3	2	2
<b>GENEL TOPLAM</b>	<b>115.469</b>	<b>115.448</b>	<b>127.414</b>	<b>123.602</b>	<b>126.577</b>	<b>119.929</b>	<b>118.167</b>	<b>44.058</b>	<b>99.701</b>	<b>81.464</b>	<b>60.770</b>	<b>39.318</b>	<b>1.171.917</b>

**OTOMOTİV SANAYİİ MODEL BAZINDA ÜRETİM - 2008**  
**Production by Models Automotive Manufacturers - 2008**

OSD/T09-06

FİRMA / MODELLER Companies and Models	OCAK January	ŞUBAT February	MART March	NİSAN April	MAYIS May	HAZİRAN June	TEMMUZ July	AĞUSTOS August	EYLÜL September	EKİM October	KASIM November	ARALIK December	TOPLAM Total
<b>A.I.O.S.</b>													
(A.Y.A 3.501-12.000 KG)	299	281	324	340	327	301	97	308	274	357	339	222	3.469
K.Kamyon Toplam	299	281	324	340	327	301	97	308	274	357	339	222	3.469
Kamyonet	310	319	389	356	390	367	80	351	336	318	326	254	3.796
Kamyonet Toplam	310	319	389	356	390	367	80	351	336	318	326	254	3.796
Midibüs	239	250	266	283	307	283	69	237	214	210	224	160	2.742
Midibüs Toplam	239	250	266	283	307	283	69	237	214	210	224	160	2.742
<b>GENEL TOPLAM</b>	<b>848</b>	<b>850</b>	<b>979</b>	<b>979</b>	<b>1.024</b>	<b>951</b>	<b>246</b>	<b>896</b>	<b>824</b>	<b>885</b>	<b>889</b>	<b>636</b>	<b>10.007</b>
<b>B.M.C.</b>													
(A.Y.A > 12.001 KG)	284	431	494	558	443	502	523	659	553	471	320	362	5.600
B.Kamyon Toplam	284	431	494	558	443	502	523	659	553	471	320	362	5.600
Kamyonet	127	99	171	220	111	162	51	91	38	27	9	18	1.124
Kamyonet Toplam	127	99	171	220	111	162	51	91	38	27	9	18	1.124
Midibüs	20	14	2	0	4	11	0	0	0	0	0	0	51
Midibüs Toplam	20	14	2	0	4	11	0	0	0	0	0	0	51
Minibüs	80	64	91	59	33	94	56	255	82	49	0	0	863
Minibüs Toplam	80	64	91	59	33	94	56	255	82	49	0	0	863
Otobüs	125	126	104	126	162	89	53	78	79	63	56	37	1.098
Otobüs Toplam	125	126	104	126	162	89	53	78	79	63	56	37	1.098
<b>GENEL TOPLAM</b>	<b>636</b>	<b>734</b>	<b>862</b>	<b>963</b>	<b>753</b>	<b>858</b>	<b>683</b>	<b>1.083</b>	<b>752</b>	<b>610</b>	<b>385</b>	<b>417</b>	<b>8.736</b>
<b>FORD OTOSAN</b>													
(A.Y.A > 12.001 KG)	606	660	660	750	630	570	494	260	560	420	141	112	5.863
B.Kamyon Toplam	606	660	660	750	630	570	494	260	560	420	141	112	5.863
Kamyonet	5.492	5.197	5.267	4.875	5.354	5.141	4.702	2.274	3.384	2.738	1.733	803	46.960
Kamyonet Van	22.031	21.675	23.208	21.594	21.974	20.942	19.084	8.037	14.520	12.152	7.480	5.397	198.094
Kamyonet Toplam	27.523	26.872	28.475	26.469	27.328	26.083	23.786	10.311	17.904	14.890	9.213	6.200	245.054
Minibüs	1.136	1.312	1.495	1.946	1.983	2.194	1.513	961	1.483	1.859	1.327	635	17.844
Minibüs Toplam	1.136	1.312	1.495	1.946	1.983	2.194	1.513	961	1.483	1.859	1.327	635	17.844
<b>GENEL TOPLAM</b>	<b>29.265</b>	<b>28.844</b>	<b>30.630</b>	<b>29.165</b>	<b>29.941</b>	<b>28.847</b>	<b>25.793</b>	<b>11.532</b>	<b>19.947</b>	<b>17.169</b>	<b>10.681</b>	<b>6.947</b>	<b>268.761</b>
<b>HATTAT</b>													
Traktör	44	61	75	111	105	78	104	106	86	45	76	28	919
Traktör Toplam	44	61	75	111	105	78	104	106	86	45	76	28	919
<b>GENEL TOPLAM</b>	<b>44</b>	<b>61</b>	<b>75</b>	<b>111</b>	<b>105</b>	<b>78</b>	<b>104</b>	<b>106</b>	<b>86</b>	<b>45</b>	<b>76</b>	<b>28</b>	<b>919</b>

FİRMA / MODELLER Companies and Models	OCAK January	ŞUBAT February	MART March	NİSAN April	MAYIS May	HAZİRAN June	TEMMUZ July	AĞUSTOS August	EYLÜL September	EKİM October	KASIM November	ARALIK December	TOPLAM Total
<b>HONDA TÜRKİYE</b>													
1301-1600 cc - Sedan	1.322	1.467	1.404	1.405	1.634	1.646	1.953	870	1.261	1.170	1.259	2.011	17.402
1601-2000 cc - Sedan	3.235	2.878	3.214	3.001	2.755	2.782	3.289	1.605	3.361	3.228	3.158	165	32.671
Otomobil Toplam	4.557	4.345	4.618	4.406	4.389	4.428	5.242	2.475	4.622	4.398	4.417	2.176	50.073
<b>GENEL TOPLAM</b>	<b>4.557</b>	<b>4.345</b>	<b>4.618</b>	<b>4.406</b>	<b>4.389</b>	<b>4.428</b>	<b>5.242</b>	<b>2.475</b>	<b>4.622</b>	<b>4.398</b>	<b>4.417</b>	<b>2.176</b>	<b>50.073</b>
<b>HYUNDAI ASSAN</b>													
1301-1600 cc - Hatchback	425	747	208	69	572	534	305	180	402	456	1	245	4.144
1301-1600 cc - Sedan	4.875	6.553	7.192	7.831	7.028	8.866	6.995	6.320	7.298	6.444	4.819	3.225	77.446
Otomobil Toplam	5.300	7.300	7.400	7.900	7.600	9.400	7.300	6.500	7.700	6.900	4.820	3.470	81.590
<b>GENEL TOPLAM</b>	<b>5.300</b>	<b>7.300</b>	<b>7.400</b>	<b>7.900</b>	<b>7.600</b>	<b>9.400</b>	<b>7.300</b>	<b>6.500</b>	<b>7.700</b>	<b>6.900</b>	<b>4.820</b>	<b>3.470</b>	<b>81.590</b>
<b>KARSAN</b>													
(A.Y.A > 12.001 KG)	0	0	0	0	0	0	0	0	0	12	34	105	151
B.Kamyon Toplam	0	0	0	0	0	0	0	0	0	12	34	105	151
(A.Y.A 3.501-12.000 KG)	36	72	36	72	68	76	72	36	35	37	194	172	906
K.Kamyon Toplam	36	72	36	72	68	76	72	36	35	37	194	172	906
Kamyonet	61	314	227	147	87	117	109	73	84	75	181	364	1.839
Kamyonet Van	169	91	266	336	268	157	200	126	125	196	0	142	2.076
Kamyonet Toplam	230	405	493	483	355	274	309	199	209	271	181	506	3.915
Midibüs	341	532	447	355	431	484	428	273	344	257	120	341	4.353
Midibüs Toplam	341	532	447	355	431	484	428	273	344	257	120	341	4.353
Minibüs	0	159	306	288	225	201	98	51	75	170	113	219	1.905
Minibüs Toplam	0	159	306	288	225	201	98	51	75	170	113	219	1.905
<b>GENEL TOPLAM</b>	<b>607</b>	<b>1.168</b>	<b>1.282</b>	<b>1.198</b>	<b>1.079</b>	<b>1.035</b>	<b>907</b>	<b>559</b>	<b>663</b>	<b>747</b>	<b>642</b>	<b>1.343</b>	<b>11.230</b>
<b>M. BENZ TÜRK</b>													
(A.Y.A > 12.001 KG)	948	1.435	1.536	1.455	1.561	1.422	1.361	1.798	1.625	1.602	1.468	1.079	17.290
B.Kamyon Toplam	948	1.435	1.536	1.455	1.561	1.422	1.361	1.798	1.625	1.602	1.468	1.079	17.290
Otobüs	234	241	333	329	349	331	348	292	230	283	316	224	3.510
Otobüs Toplam	234	241	333	329	349	331	348	292	230	283	316	224	3.510
<b>GENEL TOPLAM</b>	<b>1.182</b>	<b>1.676</b>	<b>1.869</b>	<b>1.784</b>	<b>1.910</b>	<b>1.753</b>	<b>1.709</b>	<b>2.090</b>	<b>1.855</b>	<b>1.885</b>	<b>1.784</b>	<b>1.303</b>	<b>20.800</b>
<b>MAN TÜRKİYE</b>													
Otobüs	150	166	162	73	172	103	110	69	114	155	236	186	1.696
Otobüs Toplam	150	166	162	73	172	103	110	69	114	155	236	186	1.696
<b>GENEL TOPLAM</b>	<b>150</b>	<b>166</b>	<b>162</b>	<b>73</b>	<b>172</b>	<b>103</b>	<b>110</b>	<b>69</b>	<b>114</b>	<b>155</b>	<b>236</b>	<b>186</b>	<b>1.696</b>

FİRMA / MODELLER Companies and Models	OCAK January	ŞUBAT February	MART March	NİSAN April	MAYIS May	HAZİRAN June	TEMMUZ July	AĞUSTOS August	EYLÜL September	EKİM October	KASIM November	ARALIK December	TOPLAM Total
<b>OTOKAR</b>													
Kamyonet	26	16	77	55	50	44	41	84	53	67	50	129	692
Kamyonet Toplam	26	16	77	55	50	44	41	84	53	67	50	129	692
Midibüs	116	116	100	144	152	129	107	83	144	168	123	113	1.495
Midibüs Toplam	116	116	100	144	152	129	107	83	144	168	123	113	1.495
Minibüs	64	49	80	48	35	12	23	18	30	21	99	32	511
Minibüs Toplam	64	49	80	48	35	12	23	18	30	21	99	32	511
Otobüs	13	15	34	12	13	34	17	17	33	24	24	89	325
Otobüs Toplam	13	15	34	12	13	34	17	17	33	24	24	89	325
<b>GENEL TOPLAM</b>	<b>219</b>	<b>196</b>	<b>291</b>	<b>259</b>	<b>250</b>	<b>219</b>	<b>188</b>	<b>202</b>	<b>260</b>	<b>280</b>	<b>296</b>	<b>363</b>	<b>3.023</b>
<b>OYAK RENAULT</b>													
< 1300 cc - Sedan	6.278	6.669	6.864	7.122	8.083	6.658	9.008	1.932	6.527	5.539	3.190	1.658	69.528
1301-1600 cc - Sedan	22.077	21.203	22.827	22.966	21.701	21.193	22.869	4.975	21.397	17.366	8.408	4.613	211.595
1601-2000 cc - Sedan	1.092	1.061	244	604	470	251	938	255	165	153	157	182	5.572
Otomobil Toplam	29.447	28.933	29.935	30.692	30.254	28.102	32.815	7.162	28.089	23.058	11.755	6.453	286.695
<b>GENEL TOPLAM</b>	<b>29.447</b>	<b>28.933</b>	<b>29.935</b>	<b>30.692</b>	<b>30.254</b>	<b>28.102</b>	<b>32.815</b>	<b>7.162</b>	<b>28.089</b>	<b>23.058</b>	<b>11.755</b>	<b>6.453</b>	<b>286.695</b>
<b>TEMSA</b>													
(A.Y.A 3.501-12.00 KG)	232	186	208	183	245	277	310	362	341	409	384	384	3.521
K.Kamyon Toplam	232	186	208	183	245	277	310	362	341	409	384	384	3.521
Kamyonet	353	383	216	247	384	283	486	436	621	480	216	0	4.105
Kamyonet Toplam	353	383	216	247	384	283	486	436	621	480	216	0	4.105
Midibüs	155	156	133	189	166	218	165	147	136	223	170	161	2.019
Midibüs Toplam	155	156	133	189	166	218	165	147	136	223	170	161	2.019
Otobüs	34	31	80	80	111	109	82	64	90	90	55	71	897
Otobüs Toplam	34	31	80	80	111	109	82	64	90	90	55	71	897
<b>GENEL TOPLAM</b>	<b>774</b>	<b>756</b>	<b>637</b>	<b>699</b>	<b>906</b>	<b>887</b>	<b>1.043</b>	<b>1.009</b>	<b>1.188</b>	<b>1.202</b>	<b>825</b>	<b>616</b>	<b>10.542</b>

FİRMA / MODELLER Companies and Models	OCAK January	ŞUBAT February	MART March	NİSAN April	MAYIS May	HAZİRAN June	TEMMUZ July	AĞUSTOS August	EYLÜL September	EKİM October	KASIM November	ARALIK December	TOPLAM Total
<b>TOFAŞ</b>													
Kamyonet Van	18.062	17.834	22.875	20.262	23.934	19.561	16.621	4.493	16.961	12.313	11.661	6.171	190.748
Kamyonet Toplam	18.062	17.834	22.875	20.262	23.934	19.561	16.621	4.493	16.961	12.313	11.661	6.171	190.748
< 1300 cc - Hatchback	53	41	116	204	244	221	166	37	70	24	2	18	1.196
< 1300 cc - Sedan	1.550	1.207	2.814	2.272	1.941	1.593	1.427	459	1.689	989	203	381	16.525
< 1300 cc - Stationwagon	807	690	1.268	1.096	1.188	646	1.040	80	865	304	421	412	8.817
1301-1600 cc - Hatchback	93	37	49	113	103	113	127	2	120	140	21	47	965
1301-1600 cc - Sedan	1.577	3.087	2.689	2.756	2.805	3.852	4.195	1.407	2.673	1.448	1.736	2.483	30.708
1301-1600 cc - Stationwago	1.142	639	1.010	1.174	1.054	1.013	1.259	185	873	537	729	628	10.243
1601-2000 cc - Sedan	0	6	11	1	7	10	0	0	0	0	0	0	35
1601-2000 cc - Stationwago	1.146	992	712	1.004	866	1.033	914	104	532	298	280	318	8.199
Otomobil Toplam	6.368	6.699	8.669	8.620	8.208	8.481	9.128	2.274	6.822	3.740	3.392	4.287	76.688
<b>GENEL TOPLAM</b>	<b>24.430</b>	<b>24.533</b>	<b>31.544</b>	<b>28.882</b>	<b>32.142</b>	<b>28.042</b>	<b>25.749</b>	<b>6.767</b>	<b>23.783</b>	<b>16.053</b>	<b>15.053</b>	<b>10.458</b>	<b>267.436</b>
<b>TOYOTA</b>													
1301-1600 cc - Hatchback	6.358	5.226	5.423	5.837	6.380	6.507	7.305	1.510	3.784	2.783	2.870	2.863	56.846
1301-1600 cc - Sedan	762	745	895	786	562	487	637	174	512	409	621	330	6.920
1601-2000 cc - Hatchback	1.640	1.710	1.591	896	1.298	934	365	88	232	176	103	48	9.081
1601-2000 cc - Sedan	7.075	5.910	6.442	6.473	5.240	4.779	5.099	1.159	3.328	3.593	3.703	873	53.674
Otomobil Toplam	15.835	13.591	14.351	13.992	13.480	12.707	13.406	2.931	7.856	6.961	7.297	4.114	126.521
<b>GENEL TOPLAM</b>	<b>15.835</b>	<b>13.591</b>	<b>14.351</b>	<b>13.992</b>	<b>13.480</b>	<b>12.707</b>	<b>13.406</b>	<b>2.931</b>	<b>7.856</b>	<b>6.961</b>	<b>7.297</b>	<b>4.114</b>	<b>126.521</b>
<b>TÜRK TRAKTÖR</b>													
Traktör	1.451	1.793	2.299	2.491	2.500	2.519	2.872	677	1.962	1.116	1.614	808	22.102
Traktör Toplam	1.451	1.793	2.299	2.491	2.500	2.519	2.872	677	1.962	1.116	1.614	808	22.102
<b>GENEL TOPLAM</b>	<b>1.451</b>	<b>1.793</b>	<b>2.299</b>	<b>2.491</b>	<b>2.500</b>	<b>2.519</b>	<b>2.872</b>	<b>677</b>	<b>1.962</b>	<b>1.116</b>	<b>1.614</b>	<b>808</b>	<b>22.102</b>
<b>UZEL</b>													
Traktör	724	502	480	8	72	0	0	0	0	0	0	0	1.786
Traktör Toplam	724	502	480	8	72	0	0	0	0	0	0	0	1.786
<b>GENEL TOPLAM</b>	<b>724</b>	<b>502</b>	<b>480</b>	<b>8</b>	<b>72</b>	<b>0</b>	<b>0</b>	<b>0</b>	<b>0</b>	<b>0</b>	<b>0</b>	<b>0</b>	<b>1.786</b>
<b>TÜM GENEL TOPLAM</b>	<b>115.469</b>	<b>115.448</b>	<b>127.414</b>	<b>123.602</b>	<b>126.577</b>	<b>119.929</b>	<b>118.167</b>	<b>44.058</b>	<b>99.701</b>	<b>81.464</b>	<b>60.770</b>	<b>39.318</b>	<b>1.171.917</b>

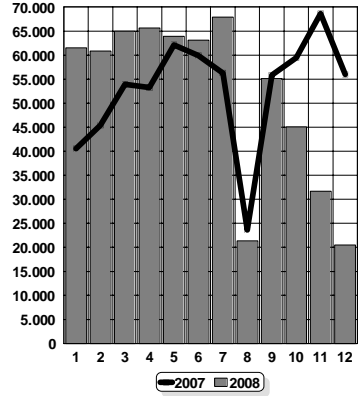
**OTOMOTİV SANAYİİ KAPASİTE KULLANIMI - 2008**  
**Capacity Usage of Automotive Manufacturers - 2008**

TİPLER - Types	ARALIK December		12 AY 12 Months		KAPASİTE KULLANIM ORANI (%) Capacity Usage (%)	
	KAPASİTE Capacity	ÜRETİM Production	KAPASİTE Capacity	ÜRETİM Production	ARALIK December	12 AY 12 Months
* HAFİF ARAÇLAR - Light Vehicles	114.131	34.664	1.369.572	1.092.124	30	80
KAMYON - Truck	4.658	2.436	55.896	36.800	52	66
OTOBÜS - Bus	604	607	7.248	7.526	100	104
MİDİBÜS - Midibus	1.040	775	12.480	10.660	75	85
TRAKTÖR - F.Tractor	5.875	836	70.500	24.807	14	35
<b>TOPLAM - Total</b>	<b>126.308</b>	<b>39.318</b>	<b>1.515.696</b>	<b>1.171.917</b>	<b>31</b>	<b>77</b>

\* Hafif Araçlara otomobil, kamyonet ve minibüs dahildir.

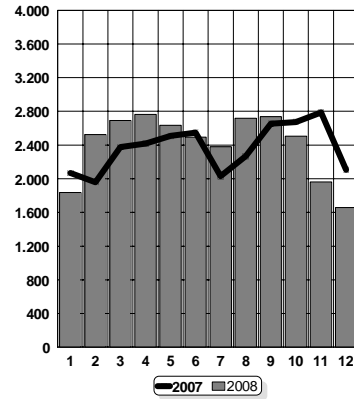
\* Light Vehicles include pass.car, pick-up and minibus.

## OTOMOBİL/Pass.Car

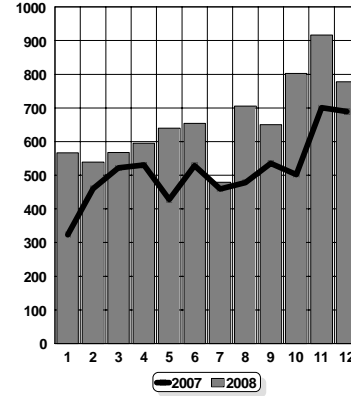


OSD/T09-08

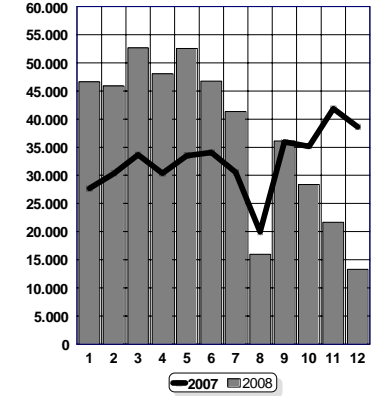
## B. KAMYON/M. Truck



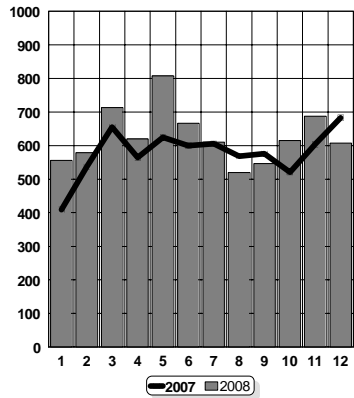
## K. KAMYON/L. Truck



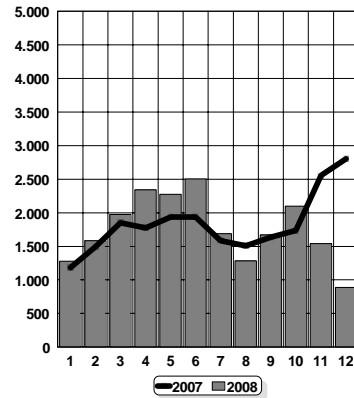
## KAMYONET/Pick-Up



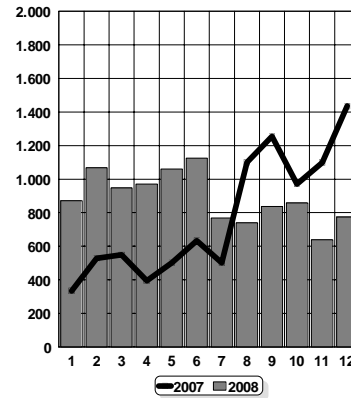
## OTOBÜS/Bus (26 and Up Pass.)



## MİNİBÜS/Minibus (Up to 14 Pass.)



## MİDİBÜS/Midibus (15-25 Pass.)



## TRAKTÖR/Agr.Tractor

