



OTOMOTİV SANAYİİ DERNEĐİ
AUTOMOTIVE MANUFACTURERS ASSOCIATION

OTOMOTİV SEKTÖRÜ AYLIK DEĐERLENDİRME RAPORU ARALIK 2019

AUTOMOTIVE INDUSTRY MONTHLY REPORT
December 2019

	12 - 2018	12 - 2019	%	1 - 12 / 2018	1 - 12 / 2019	%	1/2018 - 12/2018	1/2019 - 12/2019	%
Otomobil Üretimi/P.Cars Production	82.210	94.991	15,5	1.026.571	982.642	-4,3	1.026.571	982.642	-4,3
Toplam Üretim/Total Production	123.046	135.775	10,3	1.550.260	1.461.244	-5,7	1.550.260	1.461.244	-5,7
Otomobil Pazarı/P.Cars Market	60.843	70.829	16,4	486.321	387.256	-20,4	486.321	387.256	-20,4
Toplam Pazar/Total Market	80.014	92.847	16,0	641.550	491.909	-23,3	641.550	491.909	-23,3
Otomobil İthalatı/P.Cars Import	38.533	40.333	4,7	322.916	230.078	-28,7	322.916	230.078	-28,7
Toplam İthalat/Total Import	47.320	49.125	3,8	397.268	277.070	-30,3	397.268	277.070	-30,3
Otomobil İhracatı/P.Cars Export	65.093	71.937	10,5	875.147	828.744	-5,3	875.147	828.744	-5,3
Toplam İhracat/Total Export	99.695	106.349	6,7	1.318.869	1.252.586	-5,0	1.318.869	1.252.586	-5,0
Otomobil İhracatı(\$)/P.Cars Export (\$)	994.619.186	1.123.131.529	12,9	12.420.951.066	11.864.837.779	-4,5	12.420.951.066	11.864.837.779	-4,5
Toplam İhracat(\$)/Total Export (\$)*	2.508.369.843	2.589.417.691	3,2	32.227.753.774	31.231.731.335	-3,1	32.227.753.774	31.231.731.335	-3,1

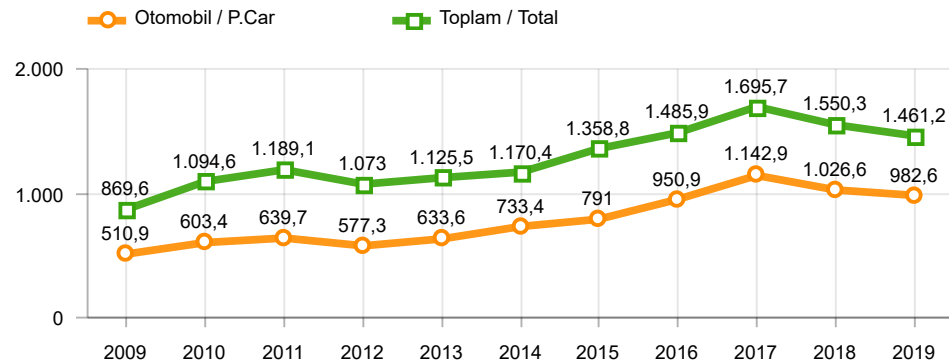
Parametreler/Parameters	12 - 2018	12 - 2019	%	1 - 12 / 2018	1 - 12 / 2019	%	1/2018 - 12/2018	1/2019 - 12/2019	%
ÜFE / PPI	-2,2	0,7	-	33,6	7,4	-	33,6	7,4	-
TÜFE / CPI	-0,4	0,7	-	20,3	11,8	-	20,3	11,8	-
Sanayi Endeksi / Industry Index	-1,6	0,8	-	31,1	7,0	-	31,1	7,0	-
Dolar \$ ** (1 birim)	5,2	5,8	11,6	4,8	5,6	18,0	4,8	5,6	18,0
Euro € ** (1 birim)	6,0	6,5	8,8	5,6	6,3	12,3	5,6	6,3	12,3
Japon Yeni ¥ ** (100 birim)	4,7	5,3	14,3	4,3	5,1	19,8	4,3	5,1	19,8

*Toplam Sanayi / Total Industry Including Components

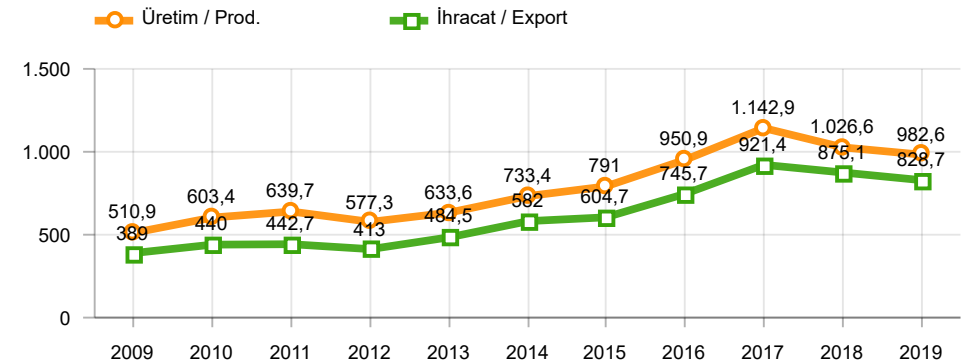
** Ortalama Değerler / Average Values

Araç Tipleri / Types	12 / 2018	12 / 2019	12 % Değişim	1-12 / 2018	1-12 / 2019	1-12 % Değişim
OTOMOBİL / Pass.Car	82.210	94.991	15,5	1.026.571	982.642	-4,3
OTOMOBİL Toplam / Pass.Car Total	82.210	94.991	15,5	1.026.571	982.642	-4,3
B.KAMYON / H. Truck	1.182	960	-18,8	22.883	17.604	-23,1
K.KAMYON / L. Truck	295	396	34,2	2.654	1.399	-47,3
KAMYONET / Pick Up	32.835	32.526	-0,9	429.361	386.245	-10,0
OTOBÜS / Bus	777	579	-25,5	8.541	9.199	7,7
MİNİBÜS / Minibus	5.574	6.038	8,3	56.934	61.629	8,2
MİDİBÜS / Midibus	173	285	64,7	3.316	2.526	-23,8
TİCARİ ARAÇLAR Toplam / Commercial Vehicles Total	40.836	40.784	-0,1	523.689	478.602	-8,6
TAŞIT ARAÇLARI Toplam / Motor Vehicles Total	123.046	135.775	10,3	1.550.260	1.461.244	-5,7
TRAKTÖR / F.Tractor	1.440	1.997	38,7	37.686	23.899	-36,6
TRAKTÖR Toplam / F.Tractor Total	1.440	1.997	38,7	37.686	23.899	-36,6
GENEL TOPLAM / Grand Total	124.486	137.772	10,7	1.587.946	1.485.143	-6,5

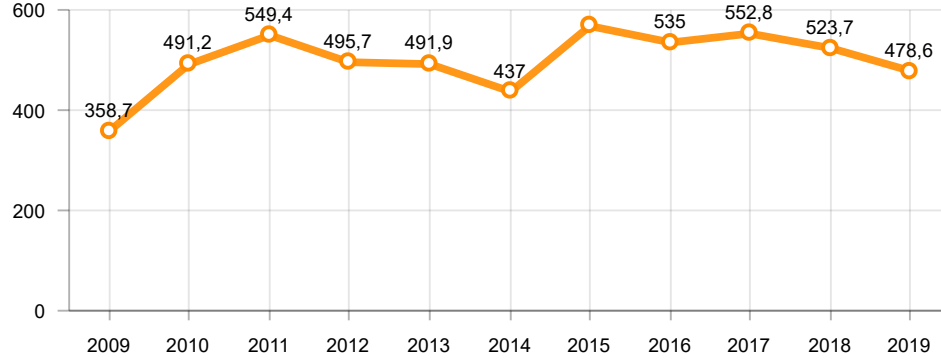
Toplam Üretim ve Otomobil Üretimi (x1000)(OCAK - ARALIK)
Total & P.Cars Production (x1000)(January - December)



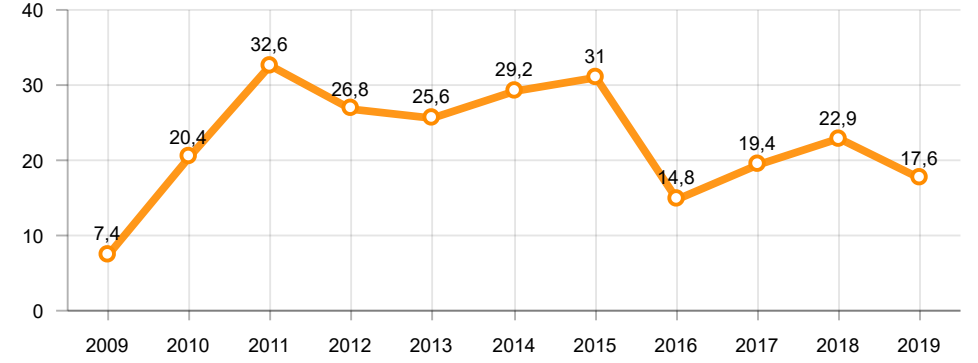
Otomobil Üretimi ve İhracat (x1000)(OCAK - ARALIK)
P.Cars Production & Exports (x1000)(January - December)



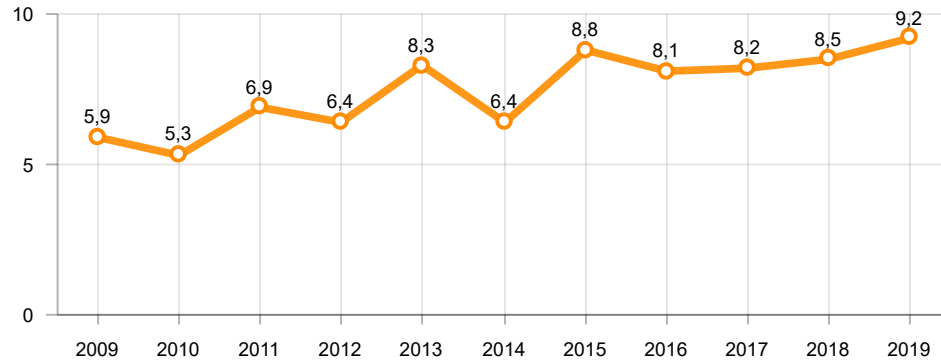
Ticari Araç Üretimi (x1000)(OCAK - ARALIK)
Commercial Vehicle Production (x1000)(January - December)



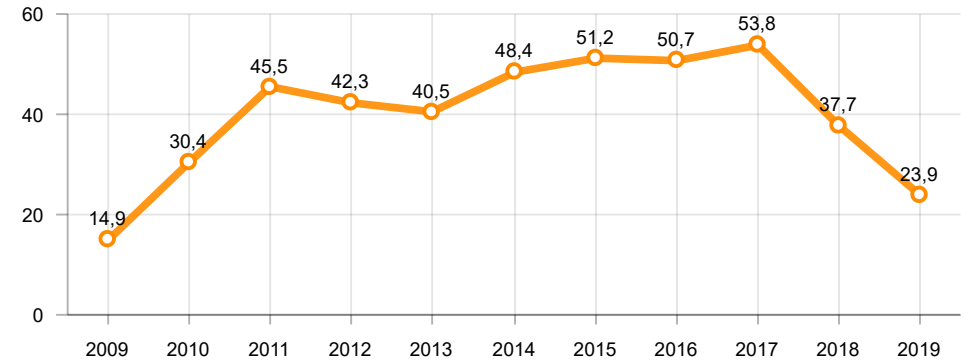
Büyük Kamyon Üretimi (x1000)(OCAK - ARALIK)
Heavy Truck Production (x1000)(January - December)

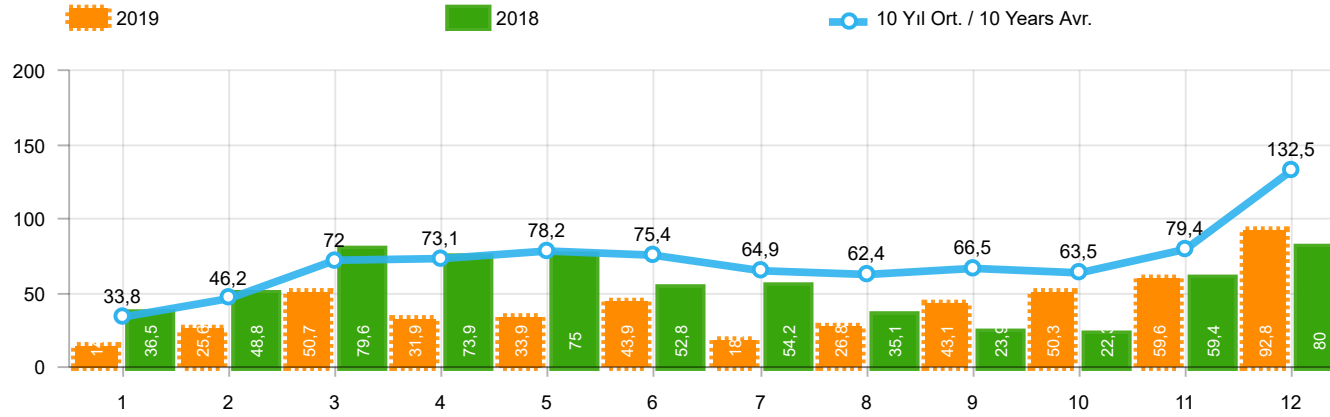


Otobüs Üretimi (x1000)(OCAK - ARALIK)
Bus Production (x1000)(January - December)



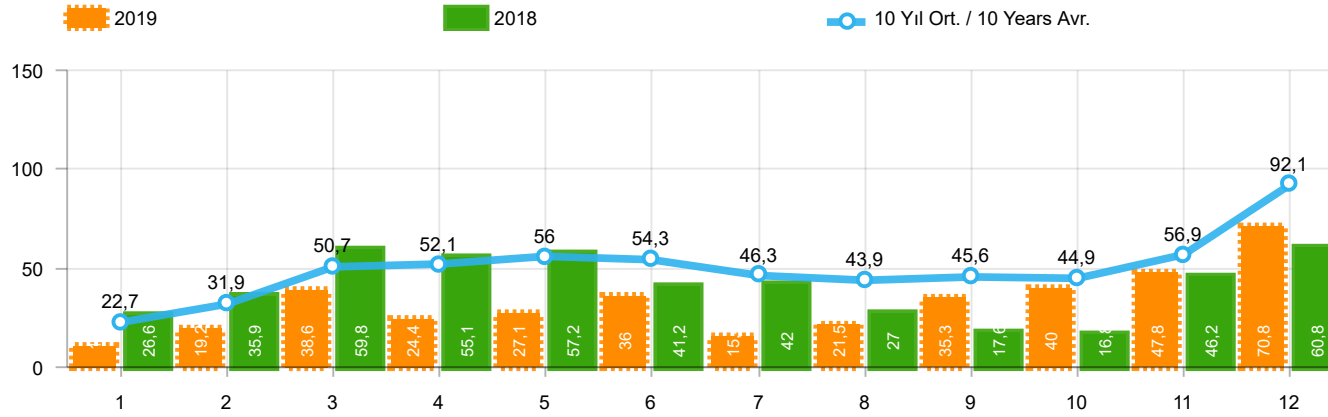
Traktör Üretimi (x1000)(OCAK - ARALIK)
F. Tractor Production (x1000)(January - December)





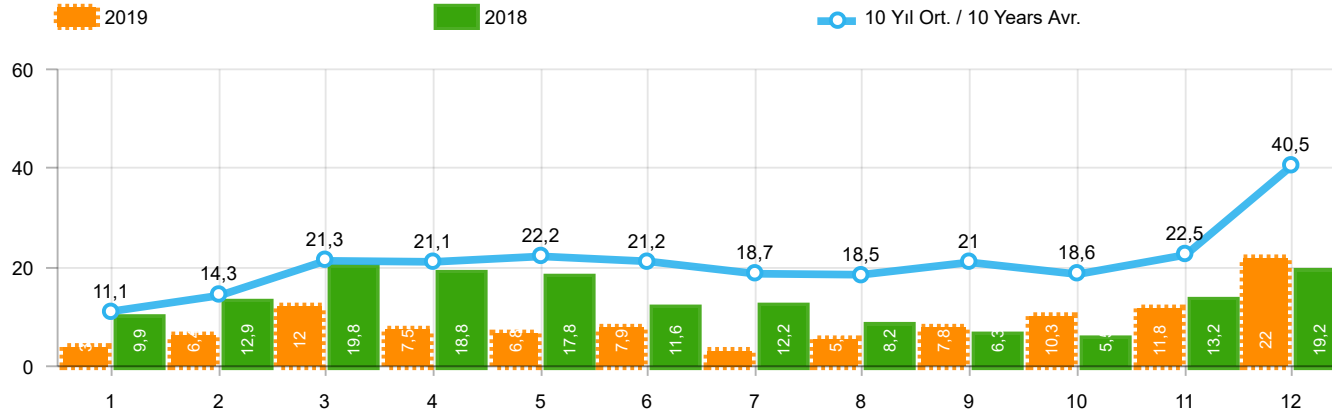
Aylar / Months	10 Yıl Ort. / 10 Years Avr.	2019	%
1	33.809	14.847	-56,1
2	46.213	25.569	-44,7
3	71.956	50.651	-29,6
4	73.144	31.944	-56,3
5	78.208	33.947	-56,6
6	75.438	43.899	-41,8
7	64.942	18.442	-71,6
8	62.444	26.832	-57,0
9	66.511	43.068	-35,2
10	63.505	50.288	-20,8
11	79.406	59.575	-25,0
12	132.549	92.847	-30,0
TOPLAM / TOTAL	848.126	491.909	-42,0

Yıl / Year	1	2	3	4	5	6	7	8	9	10	11	12	1-12 Toplam / Total	Toplam / Total	1-12 Yerli / Local	1-12 İthal / Import	İthal Oran / Import %
2009	20.605	22.873	56.527	54.433	64.947	63.090	30.374	37.038	83.553	22.191	29.309	91.762	576.702	576.702	263.597	313.105	54,3
2010	21.070	32.331	54.019	57.241	61.837	63.511	64.011	64.961	67.040	76.753	77.488	155.234	795.496	795.496	330.230	465.266	58,5
2011	47.759	62.586	84.045	82.782	85.862	85.992	65.658	61.645	64.313	73.227	67.150	134.468	915.487	915.487	373.734	541.753	59,2
2012	31.552	44.138	69.242	66.559	75.195	75.108	65.444	60.982	73.501	62.933	75.203	121.442	821.299	821.299	307.515	513.784	62,6
2013	37.563	51.133	72.943	77.265	85.835	78.043	75.152	67.662	71.388	60.690	83.470	136.048	897.192	897.192	279.461	617.731	68,9
2014	34.751	37.659	51.312	57.113	62.447	64.295	62.770	63.303	70.764	69.742	84.368	154.843	813.367	813.367	289.849	523.518	64,4
2015	37.256	59.221	89.765	96.182	85.804	91.071	87.358	85.244	67.181	67.086	88.431	164.464	1.019.063	1.019.063	359.233	659.830	64,7
2016	34.369	54.840	85.932	87.748	97.090	94.666	59.732	73.654	69.413	85.666	125.462	145.706	1.014.278	1.014.278	333.010	681.268	67,2
2017	36.640	48.585	76.178	78.231	88.066	85.820	84.727	74.818	74.046	94.439	103.772	141.507	986.829	986.829	362.342	624.487	63,3
2018	36.525	48.768	79.600	73.886	74.996	52.788	54.194	35.137	23.915	22.321	59.406	80.014	641.550	641.550	244.282	397.268	61,9
2019	14.847	25.569	50.651	31.944	33.947	43.899	18.442	26.832	43.068	50.288	59.575	92.847	491.909	491.909	214.839	277.070	56,3



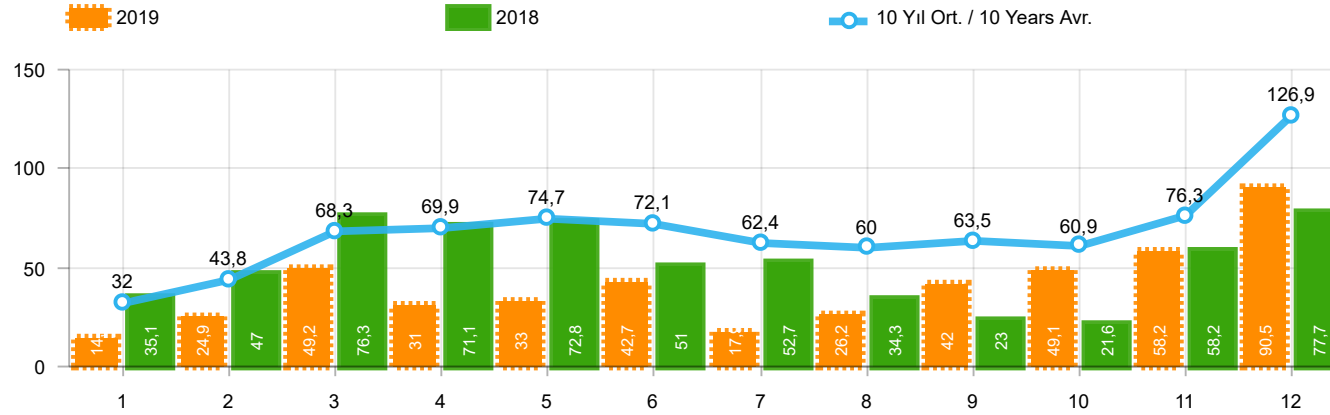
Aylar / Months	10 Yıl Ort. / 10 Years Avr.	2019	%
1	22.707	10.979	-51,6
2	31.928	19.205	-39,8
3	50.654	38.628	-23,7
4	52.093	24.416	-53,1
5	55.992	27.126	-51,6
6	54.250	36.024	-33,6
7	46.259	15.398	-66,7
8	43.921	21.544	-50,9
9	45.560	35.308	-22,5
10	44.943	39.996	-11,0
11	56.924	47.803	-16,0
12	92.070	70.829	-23,1
TOPLAM / TOTAL	597.300	387.256	-35,2

Yıl / Year	1	2	3	4	5	6	7	8	9	10	11	12	1-12 Toplam / Total	Toplam / Total	1-12 Yerli / Local	1-12 İthal / Import	İthal Oran / Import %
2009	13.173	14.492	40.622	36.202	44.188	41.019	16.637	22.537	52.162	13.828	17.781	57.178	369.819	369.819	126.277	243.542	65,9
2010	12.594	20.651	33.958	36.549	40.467	42.086	41.399	42.222	42.477	47.859	50.061	99.461	509.784	509.784	155.634	354.150	69,5
2011	29.868	39.004	54.023	53.835	56.302	56.714	43.518	38.875	39.964	47.508	44.951	88.957	593.519	593.519	179.488	414.031	69,8
2012	21.077	29.189	47.270	45.645	50.460	50.849	44.531	41.236	49.360	43.440	52.297	80.926	556.280	556.280	146.604	409.676	73,6
2013	25.835	36.814	51.785	56.999	62.383	58.290	55.712	51.611	52.925	46.985	64.117	101.199	664.655	664.655	147.128	517.527	77,9
2014	24.368	27.167	37.812	42.769	46.379	47.278	46.602	45.131	49.262	50.814	59.695	110.054	587.331	587.331	157.349	429.982	73,2
2015	24.498	40.817	61.676	70.211	62.878	67.766	64.218	61.753	47.088	47.954	62.397	114.340	725.596	725.596	186.526	539.070	74,3
2016	23.358	40.588	63.975	65.618	73.832	71.111	45.566	53.977	51.340	63.746	95.783	108.044	756.938	756.938	191.893	565.045	74,6
2017	25.689	34.658	55.616	57.998	65.799	66.164	62.384	54.890	53.423	70.488	75.956	99.694	722.759	722.759	216.791	505.968	70,0
2018	26.611	35.901	59.798	55.108	57.227	41.225	42.024	26.976	17.595	16.809	46.204	60.843	486.321	486.321	163.405	322.916	66,4
2019	10.979	19.205	38.628	24.416	27.126	36.024	15.398	21.544	35.308	39.996	47.803	70.829	387.256	387.256	157.178	230.078	59,4



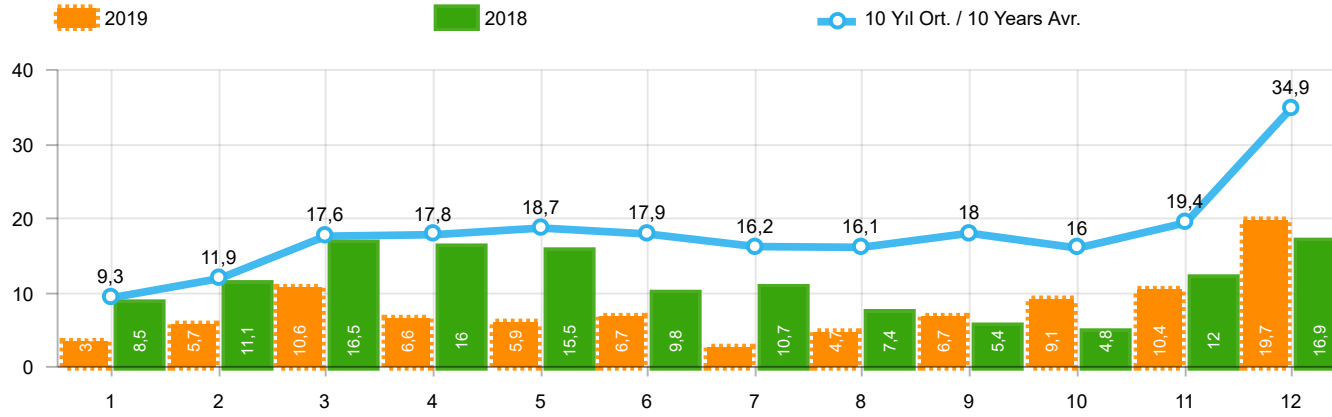
Aylar / Months	10 Yıl Ort / 10 Years Avr.	2019	%
1	11.102	3.868	-65,2
2	14.285	6.364	-55,5
3	21.303	12.023	-43,6
4	21.051	7.528	-64,2
5	22.216	6.821	-69,3
6	21.188	7.875	-62,8
7	18.683	3.044	-83,7
8	18.524	5.288	-71,5
9	20.952	7.760	-63,0
10	18.562	10.292	-44,6
11	22.482	11.772	-47,6
12	40.479	22.018	-45,6
TOPLAM / TOTAL	250.826	104.653	-58,3

Yıl / Year	1	2	3	4	5	6	7	8	9	10	11	12	1-12 Toplam / Total	Toplam / Total	1-12 Yerli / Local	1-12 İthal / Import	İthal Oran / Import %
2009	7.432	8.381	15.905	18.231	20.759	22.071	13.737	14.501	31.391	8.363	11.528	34.584	206.883	206.883	137.320	69.563	33,6
2010	8.476	11.680	20.061	20.692	21.370	21.425	22.612	22.739	24.563	28.894	27.427	55.773	285.712	285.712	174.596	111.116	38,9
2011	17.891	23.582	30.022	28.947	29.560	29.278	22.140	22.770	24.349	25.719	22.199	45.511	321.968	321.968	194.246	127.722	39,7
2012	10.475	14.949	21.972	20.914	24.735	24.259	20.913	19.746	24.141	19.493	22.906	40.516	265.019	265.019	160.911	104.108	39,3
2013	11.728	14.319	21.158	20.266	23.452	19.753	19.440	16.051	18.463	13.705	19.353	34.849	232.537	232.537	132.333	100.204	43,1
2014	10.383	10.492	13.500	14.344	16.068	17.017	16.168	18.172	21.502	18.928	24.673	44.789	226.036	226.036	132.500	93.536	41,4
2015	12.758	18.404	28.089	25.971	22.926	23.305	23.140	23.491	20.093	19.132	26.034	50.124	293.467	293.467	172.707	120.760	41,1
2016	11.011	14.252	21.957	22.130	23.258	23.555	14.166	19.677	18.073	21.920	29.679	37.662	257.340	257.340	141.117	116.223	45,2
2017	10.951	13.927	20.562	20.233	22.267	19.656	22.343	19.928	20.623	23.951	27.816	41.813	264.070	264.070	145.551	118.519	44,9
2018	9.914	12.867	19.802	18.778	17.769	11.563	12.170	8.161	6.320	5.512	13.202	19.171	155.229	155.229	80.877	74.352	47,9
2019	3.868	6.364	12.023	7.528	6.821	7.875	3.044	5.288	7.760	10.292	11.772	22.018	104.653	104.653	57.661	46.992	44,9



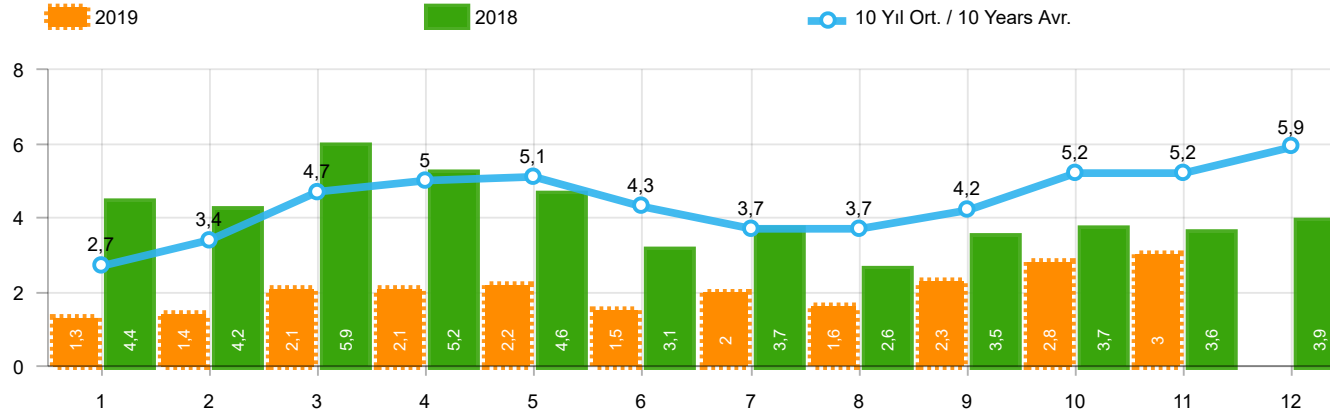
Aylar / Months	10 Yıl Ort. / 10 Years Avr.	2019	%
1	32.006	14.373	-55,1
2	43.836	24.875	-43,3
3	68.292	49.221	-27,9
4	69.871	30.971	-55,7
5	74.729	33.016	-55,8
6	72.126	42.688	-40,8
7	62.444	17.927	-71,3
8	60.018	26.246	-56,3
9	63.546	41.992	-33,9
10	60.896	49.075	-19,4
11	76.319	58.176	-23,8
12	126.934	90.500	-28,7
TOPLAM / TOTAL	811.017	479.060	-40,9

Yıl / Year	1	2	3	4	5	6	7	8	9	10	11	12	1-12 Toplam / Total	Toplam / Total	1-12 Yerli / Local	1-12 İthal / Import	İthal Oran / Import %
2009	19.606	21.742	55.111	52.640	63.191	61.067	28.845	35.609	81.397	21.033	27.962	88.923	557.126	557.126	247.694	309.432	55,5
2010	20.095	31.172	51.769	54.946	59.377	60.896	61.345	61.764	63.814	73.404	73.962	148.369	760.913	760.913	305.354	455.559	59,9
2011	44.892	58.663	78.403	77.695	80.646	81.573	63.044	58.406	60.129	69.421	63.657	127.910	864.439	864.439	338.074	526.365	60,9
2012	29.545	41.324	64.884	62.949	70.863	71.067	62.304	58.148	69.629	59.938	71.710	115.400	777.761	777.761	276.003	501.758	64,5
2013	35.523	48.307	68.774	73.575	81.468	74.096	71.596	65.043	67.963	58.014	79.301	129.718	853.378	853.378	245.906	607.472	71,2
2014	32.670	35.021	47.581	53.305	58.121	60.163	59.907	60.199	66.531	66.573	80.621	146.989	767.681	767.681	255.573	512.108	66,7
2015	34.615	55.331	83.302	91.602	81.542	86.158	83.836	82.577	64.025	64.255	84.601	156.173	968.017	968.017	321.725	646.292	66,8
2016	32.713	52.825	82.948	84.887	93.904	91.540	58.533	71.556	67.593	83.000	122.309	141.912	983.720	983.720	310.864	672.856	68,4
2017	35.323	46.965	73.802	75.988	85.422	83.658	82.297	72.536	71.352	91.752	100.859	136.240	956.194	956.194	340.306	615.888	64,4
2018	35.076	47.009	76.345	71.126	72.755	51.037	52.734	34.346	23.028	21.571	58.204	77.706	620.937	620.937	230.493	390.444	62,9
2019	14.373	24.875	49.221	30.971	33.016	42.688	17.927	26.246	41.992	49.075	58.176	90.500	479.060	479.060	206.069	272.991	57,0



Aylar / Months	10 Yıl Ort. / 10 Years Avr.	2019	%
1	9.299	3.394	-63,5
2	11.908	5.670	-52,4
3	17.638	10.593	-39,9
4	17.778	6.555	-63,1
5	18.737	5.890	-68,6
6	17.875	6.664	-62,7
7	16.185	2.529	-84,4
8	16.098	4.702	-70,8
9	17.987	6.684	-62,8
10	15.953	9.079	-43,1
11	19.394	10.373	-46,5
12	34.864	19.671	-43,6
TOPLAM / TOTAL	213.716	91.804	-57,0

Yıl / Year	1	2	3	4	5	6	7	8	9	10	11	12	1-12 Toplam / Total	Toplam / Total	1-12 Yerli / Local	1-12 İthal / Import	İthal Oran / Import %
2009	6.433	7.250	14.489	16.438	19.003	20.048	12.208	13.072	29.235	7.205	10.181	31.745	187.307	187.307	121.417	65.890	35,2
2010	7.501	10.521	17.811	18.397	18.910	18.810	19.946	19.542	21.337	25.545	23.901	48.908	251.129	251.129	149.720	101.409	40,4
2011	15.024	19.659	24.380	23.860	24.344	24.859	19.526	19.531	20.165	21.913	18.706	38.953	270.920	270.920	158.586	112.334	41,5
2012	8.468	12.135	17.614	17.304	20.403	20.218	17.773	16.912	20.269	16.498	19.413	34.474	221.481	221.481	129.399	92.082	41,6
2013	9.688	11.493	16.989	16.576	19.085	15.806	15.884	13.432	15.038	11.029	15.184	28.519	188.723	188.723	98.778	89.945	47,7
2014	8.302	7.854	9.769	10.536	11.742	12.885	13.305	15.068	17.269	15.759	20.926	36.935	180.350	180.350	98.224	82.126	45,5
2015	10.117	14.514	21.626	21.391	18.664	18.392	19.618	20.824	16.937	16.301	22.204	41.833	242.421	242.421	135.199	107.222	44,2
2016	9.355	12.237	18.973	19.269	20.072	20.429	12.967	17.579	16.253	19.254	26.526	33.868	226.782	226.782	118.971	107.811	47,5
2017	9.634	12.307	18.186	17.990	19.623	17.494	19.913	17.646	17.929	21.264	24.903	36.546	233.435	233.435	123.515	109.920	47,1
2018	8.465	11.108	16.547	16.018	15.528	9.812	10.710	7.370	5.433	4.762	12.000	16.863	134.616	134.616	67.088	67.528	50,2
2019	3.394	5.670	10.593	6.555	5.890	6.664	2.529	4.702	6.684	9.079	10.373	19.671	91.804	91.804	48.891	42.913	46,7



Aylar / Months	10 Yıl Ort. / 10 Years Avr.	2019	%
1	2.669	1.311	-50,9
2	3.359	1.401	-58,3
3	4.700	2.143	-54,4
4	5.046	2.126	-57,9
5	5.116	2.229	-56,4
6	4.276	1.538	-64,0
7	3.736	2.039	-45,4
8	3.690	1.579	-57,2
9	4.155	2.284	-45,0
10	5.199	2.828	-45,6
11	5.209	3.037	-41,7
TOPLAM / TOTAL	47.155	22.515	-52,3

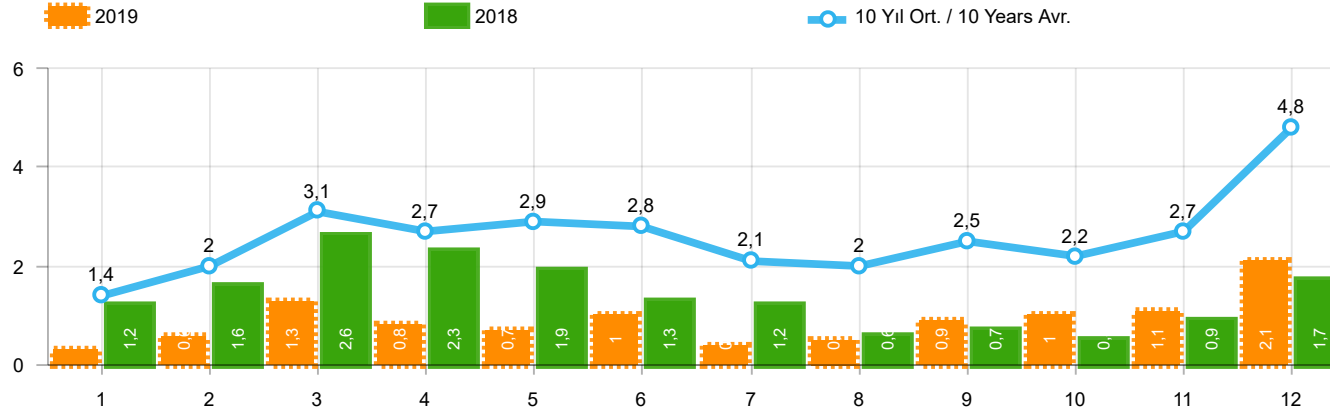
Yıl / Year	1	2	3	4	5	6	7	8	9	10	11	12	1-11 Toplam / Total	Toplam / Total
2009	717	572	688	1.070	1.297	1.256	1.054	1.183	1.117	1.356	1.304	2.144	11.614	13.758
2010	1.111	1.991	2.330	3.039	2.567	2.638	1.965	3.019	2.806	4.424	3.978	6.168	29.868	36.036
2011	2.975	5.242	5.927	5.358	6.016	6.335	4.534	4.051	4.140	5.828	4.943	4.992	55.349	60.341
2012	2.362	1.983	4.348	6.579	6.273	4.569	3.837	3.158	3.618	4.027	4.807	4.757	45.561	50.318
2013	2.161	2.432	4.005	4.585	5.616	3.136	4.574	3.408	4.935	4.762	5.781	6.891	45.395	52.286
2014	2.169	3.512	4.476	4.905	5.094	5.028	4.233	4.920	5.619	5.743	6.250	7.409	51.949	59.358
2015	3.124	3.984	5.460	6.383	6.078	5.748	4.677	5.044	4.765	7.049	6.898	7.564	59.210	66.774
2016	3.739	4.731	7.067	6.546	6.575	5.543	3.833	5.134	4.945	7.372	7.090	7.603	62.575	70.178
2017	3.974	4.964	6.773	6.780	7.057	5.356	5.003	4.396	6.064	7.734	7.457	7.351	65.558	72.909
2018	4.362	4.179	5.925	5.216	4.584	3.146	3.654	2.587	3.541	3.698	3.578	3.886	44.470	48.356
2019	1.311	1.401	2.143	2.126	2.229	1.538	2.039	1.579	2.284	2.828	3.037		22.515	22.515

Kaynak: TÜİK trafik kayıtları.

Rakamlar, son iki model yılına ait traktör tescillerinden oluşmaktadır.

Source: Turkish Statistical Institute – Traffic registrations

Data represents the last two model year's farm tractors registration figures

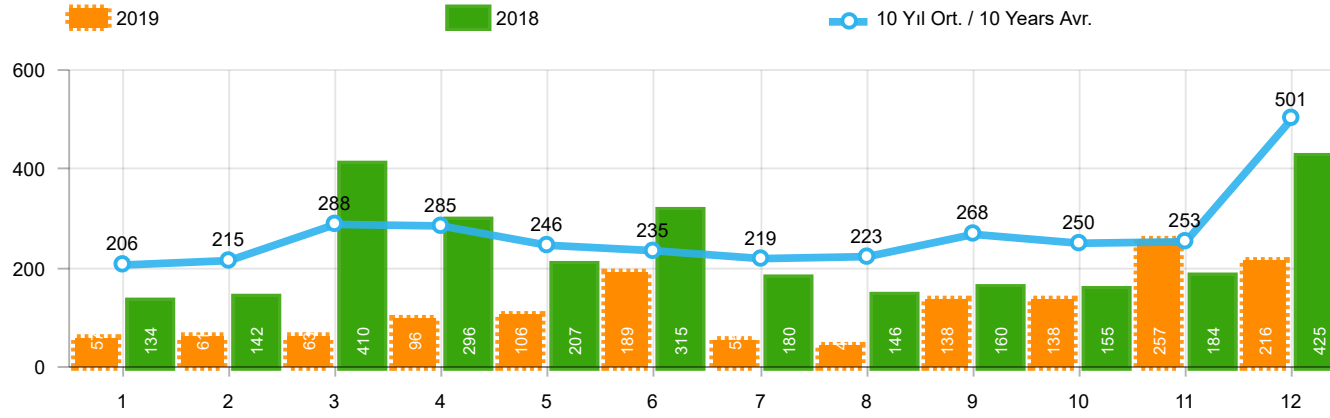


Aylar / Months	10 Yıl Ort. / 10 Years Avr.	2019	%
1	1.446	342	-76,3
2	1.974	579	-70,7
3	3.128	1.255	-59,9
4	2.746	842	-69,3
5	2.944	728	-75,3
6	2.831	981	-65,3
7	2.115	435	-79,4
8	2.042	497	-75,7
9	2.545	854	-66,4
10	2.199	1.047	-52,4
11	2.662	1.100	-58,7
12	4.842	2.077	-57,1
TOPLAM / TOTAL	31.472	10.737	-65,9

Yıl / Year	1	2	3	4	5	6	7	8	9	10	11	12	1-12 Toplam / Total	Toplam / Total	1-12 Yerli / Local	1-12 İthal / Import	İthal Oran / Import %
2009	782	763	1.062	1.381	1.426	1.649	1.261	1.164	1.862	963	1.047	2.368	15.728	15.728	12.134	3.594	22,9
2010	768	960	1.950	1.949	2.140	2.314	2.403	2.754	2.864	3.001	3.231	6.158	30.492	30.492	20.872	9.620	31,5
2011	2.651	3.544	5.142	4.503	4.563	3.852	2.261	2.745	3.784	3.400	3.149	5.712	45.306	45.306	30.004	15.302	33,8
2012	1.703	2.454	3.866	3.209	3.678	3.540	2.750	2.403	3.296	2.497	3.154	5.300	37.850	37.850	25.881	11.969	31,6
2013	1.484	2.113	3.343	2.925	3.504	3.186	2.777	2.103	2.875	2.086	3.631	5.444	35.471	35.471	25.259	10.212	28,8
2014	1.522	2.065	3.094	3.224	3.727	3.726	2.578	2.783	3.708	2.858	3.384	6.869	39.538	39.538	28.289	11.249	28,5
2015	2.215	3.346	5.699	3.729	3.600	4.253	2.922	2.211	2.687	2.266	3.146	7.307	43.381	43.381	29.913	13.468	31,0
2016	1.167	1.648	2.515	2.319	2.711	2.623	984	1.796	1.438	2.238	2.485	3.127	25.051	25.051	16.671	8.380	33,5
2017	931	1.290	1.982	1.888	2.184	1.891	1.974	1.860	2.284	2.188	2.487	4.438	25.397	25.397	16.812	8.585	33,8
2018	1.237	1.552	2.630	2.328	1.909	1.272	1.235	603	653	488	905	1.695	16.507	16.507	9.694	6.813	41,3
2019	342	579	1.255	842	728	981	435	497	854	1.047	1.100	2.077	10.737	10.737	6.658	4.079	38,0

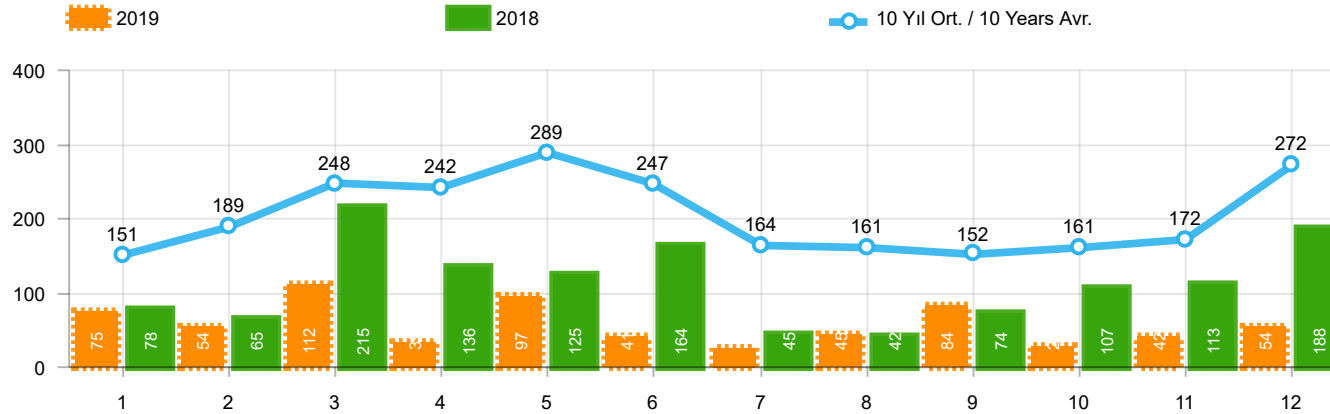
Kaynak: OSD, TAİD, TÜİK

Herhangi bir Dernek üyesi olmayan markalara ilişkin satış verisi için TÜİK trafik kayıtları esas alınmaktadır. TÜİK trafik kayıtlarının bir ay gecikmeli yayınlanması nedeniyle ilgili markalara ilişkin son ayın satış verisi bir önceki ay ile aynı kabul edilmekte ve bir sonraki ay gerçekleşen veri ile güncellenmektedir.



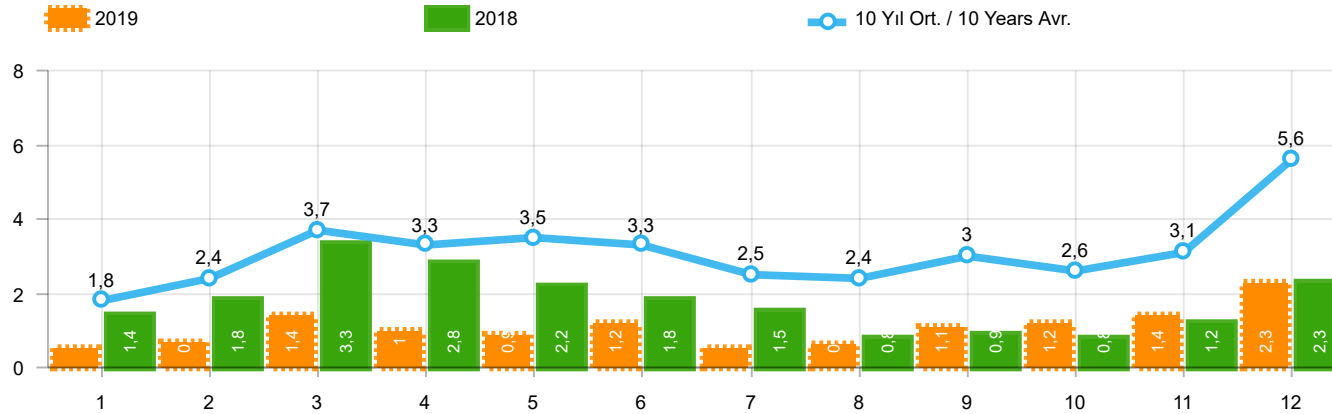
Aylar / Months	10 Yıl Ort. / 10 Years Avr.	2019	%
1	206	57	-72,4
2	215	61	-71,6
3	288	63	-78,1
4	285	96	-66,3
5	246	106	-56,9
6	235	189	-19,6
7	219	55	-74,9
8	223	44	-80,2
9	268	138	-48,5
10	250	138	-44,7
11	253	257	1,6
12	501	216	-56,9
TOPLAM / TOTAL	3.188	1.420	-55,5

Yıl / Year	1	2	3	4	5	6	7	8	9	10	11	12	1-12 Toplam / Total	Toplam / Total
2009	133	103	153	210	145	183	138	146	152	134	150	280	1.927	1.927
2010	140	128	172	153	127	124	93	232	199	204	162	382	2.116	2.116
2011	124	167	267	260	241	233	205	280	270	230	168	525	2.970	2.970
2012	179	257	277	229	257	239	216	249	325	269	189	398	3.084	3.084
2013	191	268	289	276	283	241	367	235	305	392	415	697	3.959	3.959
2014	360	394	384	333	294	258	216	229	395	220	266	653	4.002	4.002
2015	280	322	451	561	372	405	389	253	316	394	325	621	4.689	4.689
2016	309	158	251	302	261	196	139	220	241	230	354	431	3.092	3.092
2017	212	211	227	231	272	156	250	235	318	268	317	594	3.291	3.291
2018	134	142	410	296	207	315	180	146	160	155	184	425	2.754	2.754
2019	57	61	63	96	106	189	55	44	138	138	257	216	1.420	1.420



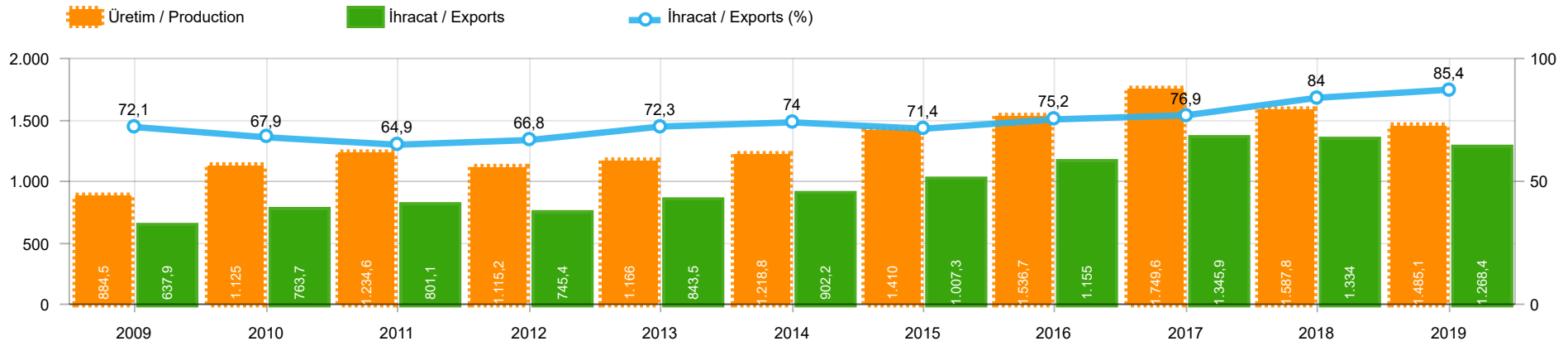
Aylar / Months	10 Yıl Ort. / 10 Years Avr.	2019	%
1	151	75	-50,3
2	189	54	-71,4
3	248	112	-54,8
4	242	35	-85,5
5	289	97	-66,4
6	247	41	-83,4
7	164	25	-84,8
8	161	45	-72,1
9	152	84	-44,8
10	161	28	-82,6
11	172	42	-75,6
12	272	54	-80,2
TOPLAM / TOTAL	2.449	692	-71,8

Yıl / Year	1	2	3	4	5	6	7	8	9	10	11	12	1-12 Toplam / Total	Toplam / Total	1-12 Yerli / Local	1-12 İthal / Import	İthal Oran / Import %
2009	84	265	201	202	185	191	130	119	142	61	150	191	1.921	1.921	1.842	79	4,1
2010	67	71	128	193	193	177	170	211	163	144	133	325	1.975	1.975	1.888	87	4,4
2011	92	212	233	324	412	334	148	214	130	176	176	321	2.772	2.772	2.686	86	3,1
2012	125	103	215	172	397	262	174	182	251	229	150	344	2.604	2.604	2.547	57	2,2
2013	365	445	537	489	580	520	412	281	245	198	123	189	4.384	4.384	4.337	47	1,1
2014	199	179	253	251	305	148	69	92	130	91	97	332	2.146	2.146	1.985	161	7,5
2015	146	222	313	290	290	255	211	203	153	171	359	363	2.976	2.976	2.906	70	2,4
2016	180	209	218	240	214	307	76	82	141	198	314	236	2.415	2.415	2.383	32	1,3
2017	174	119	167	124	188	115	206	187	92	231	109	235	1.947	1.947	1.933	14	0,7
2018	78	65	215	136	125	164	45	42	74	107	113	188	1.352	1.352	1.341	11	0,8
2019	75	54	112	35	97	41	25	45	84	28	42	54	692	692	692	-	-



Aylar / Months	10 Yıl Ort / 10 Years Avr.	2019	%
1	1.803	474	-73,7
2	2.378	694	-70,8
3	3.664	1.430	-61,0
4	3.273	973	-70,3
5	3.479	931	-73,2
6	3.313	1.211	-63,4
7	2.498	515	-79,4
8	2.426	586	-75,8
9	2.965	1.076	-63,7
10	2.609	1.213	-53,5
11	3.087	1.399	-54,7
12	5.615	2.347	-58,2
TOPLAM / TOTAL	37.110	12.849	-65,4

Yıl / Year	1	2	3	4	5	6	7	8	9	10	11	12	1-12 Toplam / Total	Toplam / Total	1-12 Yerli / Local	1-12 İthal / Import	İthal Oran / Import %
2009	999	1.131	1.416	1.793	1.756	2.023	1.529	1.429	2.156	1.158	1.347	2.839	19.576	19.576	15.903	3.673	18,8
2010	975	1.159	2.250	2.295	2.460	2.615	2.666	3.197	3.226	3.349	3.526	6.865	34.583	34.583	24.876	9.707	28,1
2011	2.867	3.923	5.642	5.087	5.216	4.419	2.614	3.239	4.184	3.806	3.493	6.558	51.048	51.048	35.660	15.388	30,1
2012	2.007	2.814	4.358	3.610	4.332	4.041	3.140	2.834	3.872	2.995	3.493	6.042	43.538	43.538	31.512	12.026	27,6
2013	2.040	2.826	4.169	3.690	4.367	3.947	3.556	2.619	3.425	2.676	4.169	6.330	43.814	43.814	33.555	10.259	23,4
2014	2.081	2.638	3.731	3.808	4.326	4.132	2.863	3.104	4.233	3.169	3.747	7.854	45.686	45.686	34.276	11.410	25,0
2015	2.641	3.890	6.463	4.580	4.262	4.913	3.522	2.667	3.156	2.831	3.830	8.291	51.046	51.046	37.508	13.538	26,5
2016	1.656	2.015	2.984	2.861	3.186	3.126	1.199	2.098	1.820	2.666	3.153	3.794	30.558	30.558	22.146	8.412	27,5
2017	1.317	1.620	2.376	2.243	2.644	2.162	2.430	2.282	2.694	2.687	2.913	5.267	30.635	30.635	22.036	8.599	28,1
2018	1.449	1.759	3.255	2.760	2.241	1.751	1.460	791	887	750	1.202	2.308	20.613	20.613	13.789	6.824	33,1
2019	474	694	1.430	973	931	1.211	515	586	1.076	1.213	1.399	2.347	12.849	12.849	8.770	4.079	31,7



	2009	2010	2011	2012	2013	2014	2015	2016	2017	2018	2019
İhracat/Export	637.855	763.670	801.112	745.354	843.467	902.194	1.007.267	1.155.033	1.345.917	1.333.992	1.268.430
Üretim/Production	884.466	1.124.982	1.234.637	1.115.233	1.166.043	1.218.848	1.410.034	1.536.673	1.749.572	1.587.946	1.485.143
İhracat/Exports (%)	72,1	67,9	64,9	66,8	72,3	74	71,4	75,2	76,9	84	85,4

Taşıt Araçları İhracatı (2017 - 2019)
Motor Vehicle Exports (2017 - 2019)

SEKTÖR / SECTOR	2017	2018	1/12-2018	1/12-2019	2019/2018 %
OTOMOBİL / Pass.Car	921.354	875.147	875.147	828.744	-5,3
OTOMOBİL TOPLAM / Pass. Car Total	921.354	875.147	875.147	828.744	-5,3
KAMYON / Truck	7.800	14.478	14.478	14.824	2,4
KAMYONET / Pick Up	350.108	372.954	372.954	349.490	-6,3
OTOBÜS / Bus	7.028	7.708	7.708	9.045	17,3
MİNİBÜS / Minibus	45.794	47.736	47.736	49.283	3,2
MİDİBÜS / Midibus	710	846	846	1.200	41,8
TİCARİ ARAÇLAR TOPLAM / Commercial Vehicle Total	411.440	443.722	443.722	423.842	-4,5
TAŞIT ARAÇLARI TOPLAM / Motor Vehicles Total	1.332.794	1.318.869	1.318.869	1.252.586	-5,0
TRAKTÖR / F.Tractor	13.123	15.123	15.123	15.844	4,8
TRAKTÖR TOPLAM / F.Tractor Total	13.123	15.123	15.123	15.844	4,8
GENEL TOPLAM / GRAND TOTAL	1.345.917	1.333.992	1.333.992	1.268.430	-4,9

Üretici Bazında İhracat (adet)
Exports by Manufacturer (unit)

Üreticiler / Manufacturers	2017	2018	1-12 / 2018	1-12 / 2019
A.I.O.S.	700	964	964	1.433
FORD OTOSAN	296.840	328.502	328.502	333.734
HATTAT TRAKTÖR	1.100	621	621	637
HONDA TÜRKİYE	9.391	13.699	13.699	7.528
HYUNDAI ASSAN	204.382	190.347	190.347	169.803
KARSAN	2.969	3.419	3.419	2.713
M. BENZ TÜRK	9.865	16.309	16.309	16.324
MAN TÜRKİYE	2.007	2.425	2.425	2.892
OTOKAR	691	901	901	1.156
OYAK RENAULT	287.915	280.411	280.411	295.275
TEMSA	870	645	645	602
TOFAŞ	270.698	243.796	243.796	194.107
TOYOTA	246.466	237.451	237.451	227.019
TÜRK TRAKTÖR	12.023	14.502	14.502	15.207
GENEL TOPLAM / Grand Total	1.345.917	1.333.992	1.333.992	1.268.430

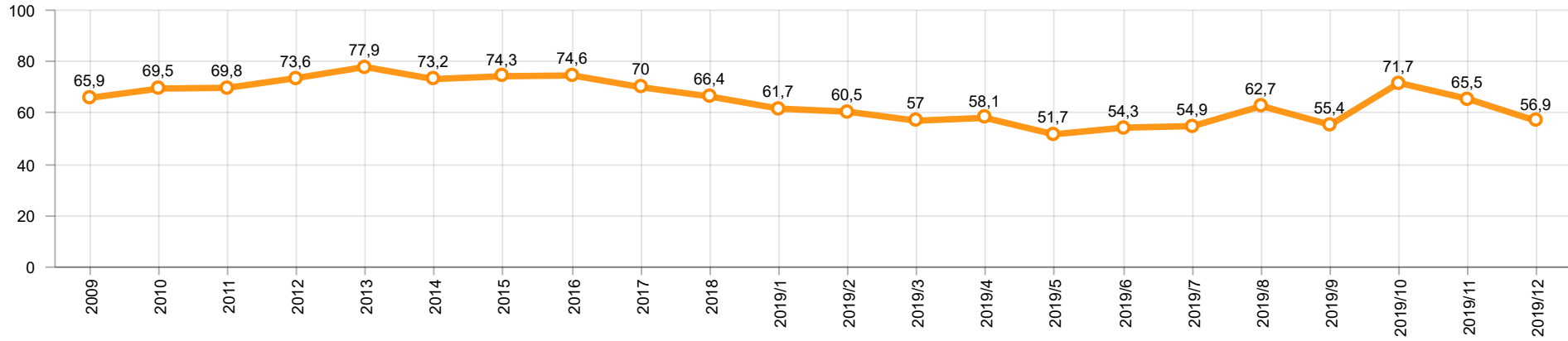
Otomotiv Ana ve Yan Sanayii İhracatı (ABD \$)
CBU and CKD Exports - \$

Sektör / Sector	2017	2018	OCAK - ARALIK / January - December 2018	OCAK - ARALIK / January - December 2019	2019 / 2018 %
Toplam Yan Sanayi / Total Component Industry	9.835.914.658	10.878.550.618	10.878.550.618	10.617.878.409	-2,4
İç ve Dış Lastik / Tyres	1.131.782.300	1.353.862.295	1.353.862.295	1.479.469.475	9,3
Emniyet Camı / Safety Glasses	136.486.099	151.148.111	151.148.111	150.706.975	-0,3
Motor / Engine	486.426.738	581.983.113	581.983.113	518.051.731	-11,0
Akümülatör / Batteries	295.794.286	387.879.636	387.879.636	397.638.079	2,5
Diğer Aksam ve Parça / Spare Parts&Components	7.785.425.235	8.403.677.463	8.403.677.463	8.072.012.149	-3,9
Toplam Ana Sanayi / Total Vehicle Industry	19.257.086.833	21.349.203.156	21.349.203.156	20.613.852.926	-3,4
Otobüs / Bus	1.308.249.224	1.503.156.428	1.503.156.428	1.759.421.232	17,0
Midibüs-Minibüs / Midibus-Minibus	217.704.499	215.450.022	215.450.022	222.922.952	3,5
Otomobil / P.Cars	11.790.577.760	12.420.951.066	12.420.951.066	11.864.837.779	-4,5
Kamyon-Kamyonet / Truck-Pick Up&Van	4.849.022.718	5.375.329.018	5.375.329.018	4.945.381.202	-8,0
Römork ve Yarı Römork / Trailer-Semi Trailer	342.793.231	507.223.886	507.223.886	503.258.885	-0,8
Çekici / Tractor	427.928.256	904.738.051	904.738.051	839.891.843	-7,2
Tarım Traktörü / Farm Tractor	320.811.145	422.354.685	422.354.685	478.139.033	13,2
Toplam / Total	29.093.001.491	32.227.753.774	32.227.753.774	31.231.731.335	-3,1

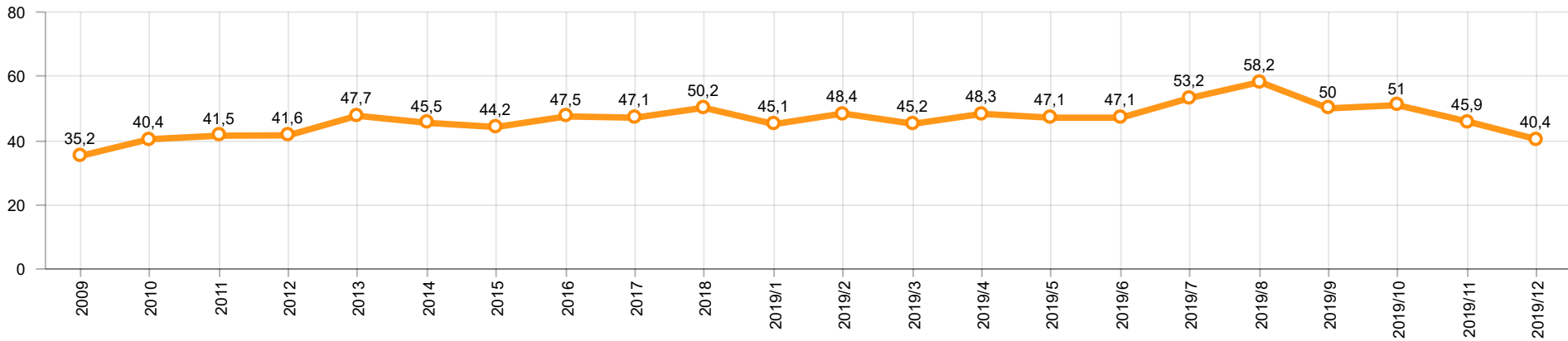
Kaynak: Uludağ İhracatçı Birlikleri . ÜİB tarafından OSD için özel olarak analiz edilen Otomotiv İhracatı kapsamında; ÜİB Türkiye Geneli Otomotiv Endüstrisi sınıflandırmasına kıyasla "Römork ve Yarı Römork" , "Tarım Traktörü" verileri dahil edilmekte; "Kullanılmış Araçlar" , "İki Tekerlekli Taşıtlar" , "Demiryolu Taşıtları" hariç tutulmaktadır.

Source: Uludağ Exporters Association – Special Analyze for OSD.Compared to Turkish General Automotive Industry classification, this special analyze includes; farms tractors, trailers and semi-trailers, does not include; used vehicles, two-wheeled vehicles and railway vehicles

Otomobil Pazarında İthalatın Payı (%)
Import Share in P.Car Market (%)



Hafif Ticari Araçlar Pazarında İthalatın Payı (%)
Import Share in LCV Market (%)



Araç Tipleri / Vehicle Types	1	2	3	4	5	6	7	8	9	10	11	12	Toplam / Total
OTOMOBİL - Pass.Car	58.807	69.340	81.736	66.084	80.233	62.846	73.598	33.852	67.590	82.400	80.321	71.937	828.744
KAMYON - H. Truck	1.270	1.594	1.312	1.153	1.170	1.247	2.150	1.533	1.425	603	808	559	14.824
KAMYONET - Pick Up	27.735	29.855	31.222	33.326	26.072	29.659	35.745	16.522	32.717	29.030	28.839	28.768	349.490
OTOBÜS - Bus	801	637	822	756	958	651	863	517	642	907	895	596	9.045
MİNİBÜS - Minibus	4.741	4.836	5.012	4.630	3.278	2.396	4.860	2.014	4.663	4.493	3.982	4.378	49.283
MİDİBÜS - Midibus	74	93	135	58	152	82	73	166	69	90	97	111	1.200
TİCARİ ARAÇLAR TOPLAMI - CV Total	34.621	37.015	38.503	39.923	31.630	34.035	43.691	20.752	39.516	35.123	34.621	34.412	423.842
TAŞIT ARAÇLARI TOPLAMI - MV Total	93.428	106.355	120.239	106.007	111.863	96.881	117.289	54.604	107.106	117.523	114.942	106.349	1.252.586
TRAKTÖR - F.Tractor	1.111	1.145	1.516	1.207	1.551	1.382	1.689	869	1.941	1.495	987	951	15.844
GENEL TOPLAM - Grand Total	94.539	107.500	121.755	107.214	113.414	98.263	118.978	55.473	109.047	119.018	115.929	107.300	1.268.430

Otomobil / P.Car

Firmalar / Firms	1	2	3	4	5	6	7	8	9	10	11	12	Toplam / Total
FORD OTOSAN	1.469	1.837	2.405	2.671	2.064	2.021	2.397	684	2.112	2.684	754	833	21.931
HONDA TÜRKİYE	800	1.009	424	689	240	449	210	838	1.224	624	860	161	7.528
HYUNDAI ASSAN	11.414	14.050	13.200	9.050	18.750	14.850	14.579	7.735	17.799	17.080	14.900	16.396	169.803
OYAK RENAULT	20.009	24.138	35.569	21.457	26.820	22.749	21.894	13.849	17.463	30.621	33.846	26.860	295.275
TOFAŞ	7.636	8.517	7.730	10.743	11.140	8.882	10.779	3.417	11.426	10.365	9.852	6.701	107.188
TOYOTA	17.479	19.789	22.408	21.474	21.219	13.895	23.739	7.329	17.566	21.026	20.109	20.986	227.019
TOPLAM - Total	58.807	69.340	81.736	66.084	80.233	62.846	73.598	33.852	67.590	82.400	80.321	71.937	828.744

Kamyonet / Pick-up

Firmalar / Firms	1	2	3	4	5	6	7	8	9	10	11	12	Toplam / Total
A.I.O.S.	-	-	-	-	-	-	-	-	-	-	-	-	-
FORD OTOSAN	22.083	22.516	23.449	24.428	16.098	20.460	25.296	13.015	24.440	21.197	23.077	24.347	260.406
KARSAN	73	54	150	95	95	142	115	72	119	270	350	444	1.979
OTOKAR	-	-	25	10	15	17	-	39	-	15	15	50	186
TOFAŞ	5.579	7.285	7.598	8.793	9.864	9.040	10.334	3.396	8.158	7.548	5.397	3.927	86.919
TOPLAM - Total	27.735	29.855	31.222	33.326	26.072	29.659	35.745	16.522	32.717	29.030	28.839	28.768	349.490

Minibüs / Minibus

Firmalar / Firms	1	2	3	4	5	6	7	8	9	10	11	12	Toplam / Total
FORD OTOSAN	4.740	4.833	4.998	4.620	3.268	2.386	4.846	2.014	4.661	4.467	3.981	4.335	49.149
KARSAN	1	3	14	10	10	10	14	-	2	26	1	43	134
TOPLAM - Total	4.741	4.836	5.012	4.630	3.278	2.396	4.860	2.014	4.663	4.493	3.982	4.378	49.283

Kamyon / Truck

Firmalar / Firms	1	2	3	4	5	6	7	8	9	10	11	12	Toplam / Total
A.I.O.S.	-	30	-	175	29	-	-	-	-	-	-	-	234
FORD OTOSAN	114	141	166	161	221	175	167	78	171	137	284	433	2.248
KARSAN	-	-	-	-	-	-	-	-	-	-	-	-	-
M. BENZ TÜRK	1.156	1.423	1.146	817	920	1.072	1.983	1.455	1.254	466	524	126	12.342
OTOKAR	-	-	-	-	-	-	-	-	-	-	-	-	-
TOPLAM - Total	1.270	1.594	1.312	1.153	1.170	1.247	2.150	1.533	1.425	603	808	559	14.824

Midibüs / Midibus

Firmalar / Firms	1	2	3	4	5	6	7	8	9	10	11	12	Toplam / Total
A.I.O.S.	52	60	88	46	121	56	36	105	57	77	74	81	853
KARSAN	5	6	39	-	1	-	1	-	1	-	2	22	77
OTOKAR	8	21	8	12	16	25	36	28	11	13	17	8	203
TEMSA	9	6	-	-	14	1	-	33	-	-	4	-	67
TOPLAM - Total	74	93	135	58	152	82	73	166	69	90	97	111	1.200

Otobüs / Bus

Firmalar / Firms	1	2	3	4	5	6	7	8	9	10	11	12	Toplam / Total
A.I.O.S.	56	12	47	18	15	50	3	18	12	25	44	46	346
KARSAN	23	17	56	2	65	58	72	39	63	56	52	20	523
M. BENZ TÜRK	261	246	318	395	446	305	390	238	268	464	396	255	3.982
MAN TÜRKİYE	298	271	273	225	256	193	229	120	234	283	275	235	2.892
OTOKAR	104	69	108	93	94	23	94	29	30	32	64	27	767
TEMSA	59	22	20	23	82	22	75	73	35	47	64	13	535
TOPLAM - Total	801	637	822	756	958	651	863	517	642	907	895	596	9.045

Traktör / F.Tractor

Firmalar / Firms	1	2	3	4	5	6	7	8	9	10	11	12	Toplam / Total
HATTAT TRAKTÖR	39	72	108	43	48	40	55	61	40	50	40	41	637
TÜRK TRAKTÖR	1.072	1.073	1.408	1.164	1.503	1.342	1.634	808	1.901	1.445	947	910	15.207
TOPLAM - Total	1.111	1.145	1.516	1.207	1.551	1.382	1.689	869	1.941	1.495	987	951	15.844

Firmalar / Firms	2018 Toplam / Total	1	2	3	4	5	6	7	8	9	10	11	12	Toplam / Total
Alfa Romeo	203	8	16	32	23	50	60	7	4	9	15	13	16	253
Aston Martin	16	2	-	3	1	-	1	2	2	3	2	2	-	18
Audi	13.295	495	404	832	515	742	891	467	633	1.191	1.546	1.249	1.059	10.024
Bentley	10	2	-	-	1	1	-	-	-	-	-	1	4	9
BMW	12.728	352	463	871	724	445	637	585	684	737	1.046	1.199	1.840	9.583
Citroen	7.669	80	97	423	378	453	469	265	533	694	1.605	1.933	1.897	8.827
Dacia	26.193	429	801	1.765	910	970	1.569	561	672	998	1.594	1.711	5.553	17.533
DS	236	3	8	8	27	8	15	5	13	15	44	40	83	269
Ferrari	18	-	2	2	3	3	2	1	1	2	-	2	2	20
Fiat	1.264	26	26	65	80	157	99	48	46	77	124	111	184	1.043
Ford	20.697	235	476	1.452	774	676	1.232	279	327	1.106	1.718	1.879	2.330	12.484
Honda	4.862	144	149	253	281	276	203	116	110	220	276	404	676	3.108
Hyundai	19.113	794	1.195	1.508	1.089	1.141	1.123	838	729	981	1.476	2.095	2.491	15.460
Infinity	18	-	-	-	-	-	-	-	-	-	-	-	-	-
Jaguar	220	2	18	20	20	10	19	12	15	32	38	31	27	244
Jeep	2.430	100	162	225	138	92	168	82	63	145	161	253	534	2.123
Kia	7.694	150	331	534	357	204	205	178	354	517	659	513	985	4.987
Lamborghini	3	1	-	-	1	1	1	3	-	-	-	1	1	9
Land Rover	1.248	36	71	63	80	59	48	88	104	143	170	238	271	1.371
Lexus	56	4	4	2	3	2	3	3	2	3	8	19	32	85
Maserati	55	2	4	2	2	6	3	1	-	2	3	5	15	45
Mazda	1.005	29	29	15	31	45	18	9	12	23	25	55	126	417
Mercedes-Benz	14.445	204	701	1.005	563	728	1.021	830	743	1.097	1.443	834	693	9.862
Mini	1.373	17	50	176	91	92	169	31	66	89	133	84	256	1.254
Mitsubishi	514	38	60	41	34	30	26	9	6	16	53	102	332	747
Nissan	24.605	538	799	1.662	887	806	1.215	459	706	980	1.204	1.270	1.454	11.980
Opel	20.960	348	765	1.684	1.055	866	1.268	641	1.000	1.437	2.406	2.350	2.869	16.689
Peugeot	24.905	524	767	2.287	1.627	1.692	1.927	782	1.031	1.403	2.511	4.263	4.243	23.057
Porsche	565	9	35	27	29	31	24	22	18	27	35	62	42	361
Renault	21.090	198	557	822	490	552	718	215	444	651	503	2.149	2.111	9.410
Seat	10.383	139	289	515	269	295	547	169	314	883	1.008	806	680	5.914
Skoda	21.340	247	585	1.414	687	778	1.441	334	1.092	1.537	2.291	2.432	2.531	15.369
Smart	35	5	3	6	2	3	1	1	1	3	7	4	8	44
Ssangyong	222	10	15	14	6	9	11	6	4	3	8	15	10	111
Subaru	1.471	52	68	76	75	45	32	22	18	52	45	64	113	662
Suzuki	2.878	65	107	236	142	245	245	31	101	207	311	305	386	2.381
Toyota	3.405	47	114	132	103	103	94	42	80	116	179	169	171	1.350
Volkswagen	49.749	1.210	2.218	3.528	2.329	2.096	3.665	1.105	3.381	3.792	5.454	4.243	5.799	38.820
Volvo	5.943	231	225	334	360	300	392	210	207	372	593	422	509	4.155
GENEL TOPLAM - Grand Total	322.916	6.776	11.614	22.034	14.187	14.012	19.562	8.459	13.516	19.563	28.694	31.328	40.333	230.078

Firmalar / Firms	2018 Toplam / Total	1	2	3	4	5	6	7	8	9	10	11	12	Toplam / Total
Citroen	4.633	126	188	181	406	281	189	150	170	363	246	262	644	3.206
Dacia	3.725	53	182	296	179	136	170	67	227	201	296	334	332	2.473
Fiat	3.019	53	54	117	59	72	175	38	122	186	266	297	328	1.767
Ford	2.783	134	106	177	65	36	34	14	70	99	176	108	179	1.198
Hyundai	1.493	83	106	121	109	88	81	52	36	59	95	97	187	1.114
Isuzu	578	3	30	23	3	1	2	-	-	1	2	4	6	75
Iveco	1.598	48	54	115	109	95	134	41	57	70	128	148	327	1.326
Karsan	-	-	-	-	-	-	-	-	-	-	-	-	-	-
Kia	1.947	14	55	189	117	84	149	55	115	130	165	137	145	1.355
Mercedes-Benz	7.993	159	404	628	288	457	319	110	352	304	403	530	1.120	5.074
Mitsubishi	3.445	47	129	69	116	103	411	33	68	125	224	156	399	1.880
Nissan	1.741	82	48	150	135	26	41	8	78	39	44	57	379	1.087
Opel	-	-	-	43	112	41	55	71	71	111	181	316	369	1.370
Peugeot	5.247	197	284	819	431	379	333	295	401	535	747	500	883	5.804
Renault	8.908	180	342	741	304	191	211	168	282	398	576	441	475	4.309
Ssangyong	174	-	-	15	38	25	22	13	10	17	32	34	54	260
Toyota	3.159	55	101	91	65	71	90	45	36	70	101	80	134	939
Volkswagen	17.085	295	662	1.017	633	689	724	186	641	636	951	1.261	1.981	9.676
GENEL TOPLAM - Grand Total	67.528	1.529	2.745	4.792	3.169	2.775	3.140	1.346	2.736	3.344	4.633	4.762	7.942	42.913