



OTOMOTİV SANAYİİ DERNEĐİ
AUTOMOTIVE MANUFACTURERS ASSOCIATION

OTOMOTİV SEKTÖRÜ AYLIK DEĐERLENDİRME RAPORU EKİM 2019

AUTOMOTIVE INDUSTRY MONTHLY REPORT
October 2019

OSD "OICA" Üyesidir @OICA OSD is a Member of "OICA"

	10 - 2018	10 - 2019	%	1 - 10 / 2018	1 - 10 / 2019	%	11/2017 - 10/2018	11/2018 - 10/2019	%
Otomobil Üretimi/P.Cars Production	89.151	93.575	5,0	858.638	794.156	-7,5	1.060.185	962.089	-9,3
Toplam Üretim/Total Production	131.231	132.155	0,7	1.298.282	1.189.539	-8,4	1.613.887	1.441.517	-10,7
Otomobil Pazarı/P.Cars Market	16.809	39.996	137,9	379.274	268.624	-29,2	554.924	375.671	-32,3
Toplam Pazar/Total Market	22.321	50.347	125,6	502.130	339.546	-32,4	747.409	478.966	-35,9
Otomobil İthalatı/P.Cars Import	11.136	28.694	157,7	252.579	158.417	-37,3	376.043	228.754	-39,2
Toplam İthalat/Total Import	13.938	33.687	141,7	310.871	191.491	-38,4	462.625	277.888	-39,9
Otomobil İhracatı/P.Cars Export	87.359	82.400	-5,7	732.142	676.486	-7,6	884.401	819.491	-7,3
Toplam İhracat/Total Export	127.062	117.524	-7,5	1.099.323	1.031.296	-6,2	1.328.773	1.250.842	-5,9
Otomobil İhracatı(\$)/P.Cars Export (\$)	1.190.622.002	1.202.679.367	1,0	10.326.697.274	9.575.446.413	-7,3	12.389.783.185	11.669.700.206	-5,8
Toplam İhracat(\$)/Total Export (\$)*	2.978.501.689	2.898.366.054	-2,7	26.895.161.896	25.888.494.206	-3,7	32.135.757.303	31.221.923.499	-2,8

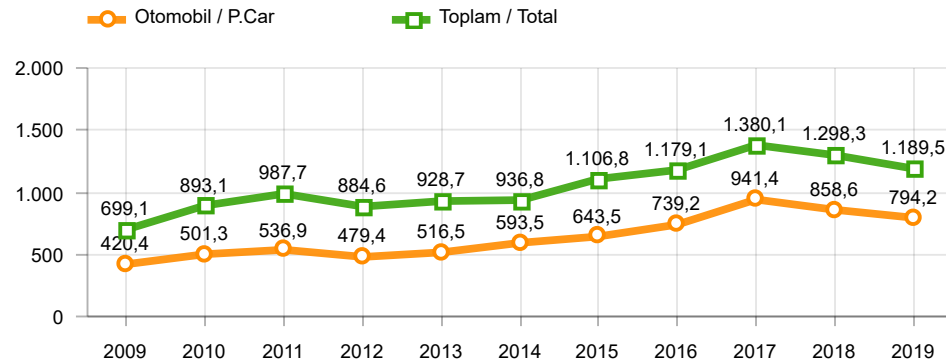
Parametreler/Parameters	10 - 2018	10 - 2019	%	1 - 10 / 2018	1 - 10 / 2019	%	11/2017 - 10/2018	11/2018 - 10/2019	%
ÜFE / PPI	0,9	0,2	-	40,2	6,7	-	23,7	22,6	-
TÜFE / CPI	2,7	2,0	-	22,6	10,6	-	14,9	16,8	-
Sanayi Endeksi / Industry Index	0,2	0,0	-	37,4	6,1	-	24,1	20,8	-
Dolar \$ ** (1 birim)	5,7	5,7	-0,7	4,7	5,6	20,0	4,5	5,6	22,5
Euro € ** (1 birim)	6,6	6,3	-4,6	5,5	6,3	13,6	5,4	6,3	16,2
Japon Yeni ¥ ** (100 birim)	5,0	5,2	4,1	4,2	5,1	21,4	4,1	5,0	23,7

*Toplam Sanayi / Total Industry Including Components

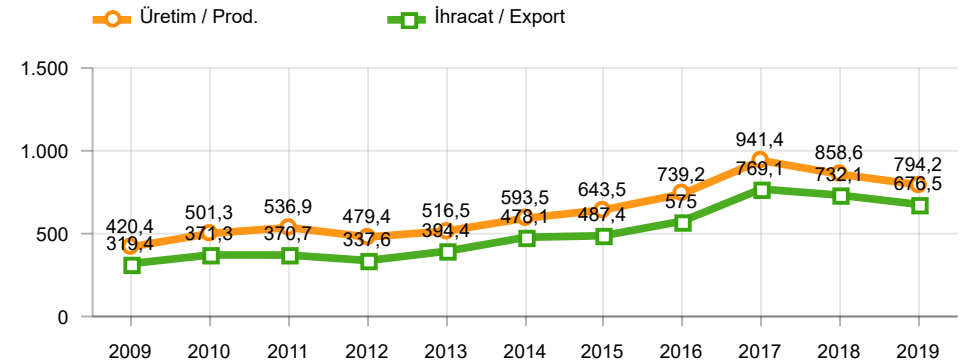
** Ortalama Değerler / Average Values

Araç Tipleri / Types	10 / 2018	10 / 2019	10 % Değişim	1-10 / 2018	1-10 / 2019	1-10 % Değişim
OTOMOBİL / Pass.Car	89.151	93.575	5,0	858.638	794.156	-7,5
OTOMOBİL Toplam / Pass.Car Total	89.151	93.575	5,0	858.638	794.156	-7,5
B.KAMYON / H. Truck	1.732	989	-42,9	20.385	15.539	-23,8
K.KAMYON / L. Truck	61	134	119,7	2.275	767	-66,3
KAMYONET / Pick Up	33.698	30.152	-10,5	361.454	319.349	-11,6
OTOBÜS / Bus	747	989	32,4	6.948	7.751	11,6
MİNİBÜS / Minibus	5.624	6.025	7,1	45.636	49.968	9,5
MİDİBÜS / Midibus	218	291	33,5	2.946	2.009	-31,8
TİCARİ ARAÇLAR Toplam / Commercial Vehicles Total	42.080	38.580	-8,3	439.644	395.383	-10,1
TAŞIT ARAÇLARI Toplam / Motor Vehicles Total	131.231	132.155	0,7	1.298.282	1.189.539	-8,4
TRAKTÖR / F.Tractor	1.768	2.656	50,2	34.444	19.134	-44,4
TRAKTÖR Toplam / F.Tractor Total	1.768	2.656	50,2	34.444	19.134	-44,4
GENEL TOPLAM / Grand Total	132.999	134.811	1,4	1.332.726	1.208.673	-9,3

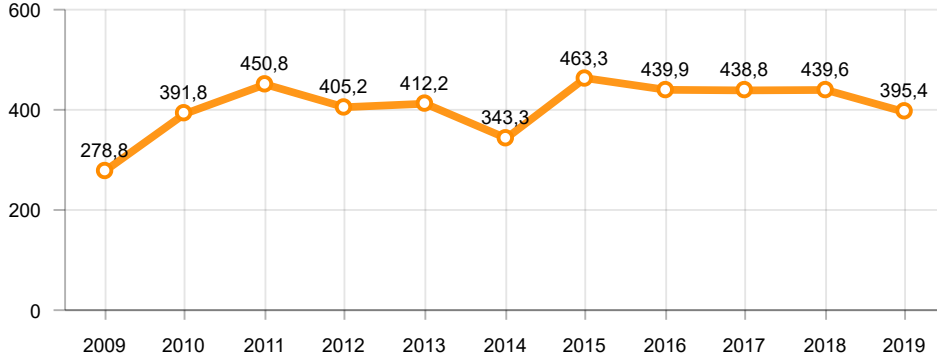
Toplam Üretim ve Otomobil Üretimi (x1000)(OCAK - EKİM)
Total & P.Cars Production (x1000)(January - October)



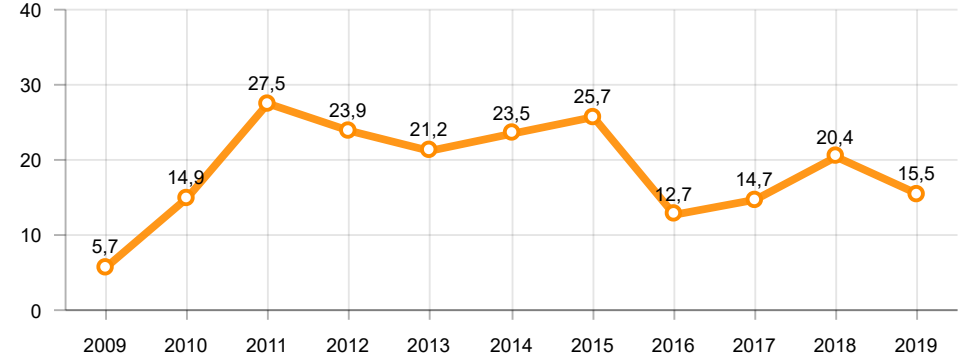
Otomobil Üretimi ve İhracat (x1000)(OCAK - EKİM)
P.Cars Production & Exports (x1000)(January - October)



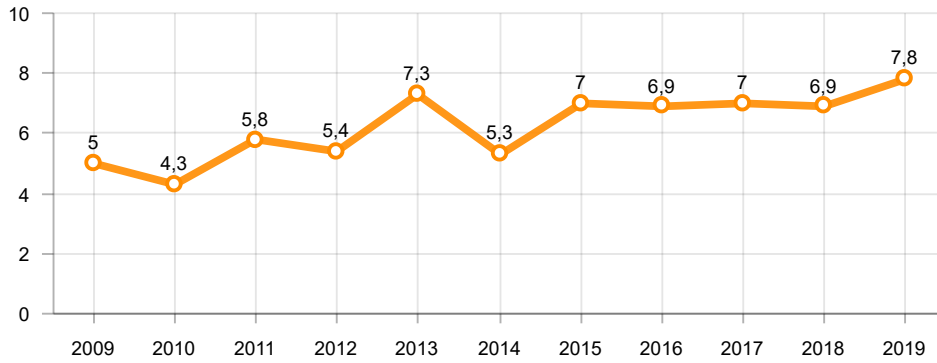
Ticari Araç Üretimi (x1000)(OCAK - EKİM)
Commercial Vehicle Production (x1000)(January - October)



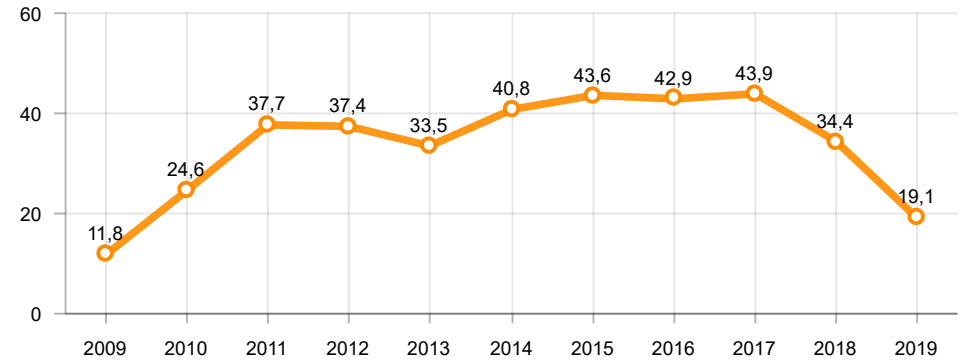
Büyük Kamyon Üretimi (x1000)(OCAK - EKİM)
Heavy Truck Production (x1000)(January - October)

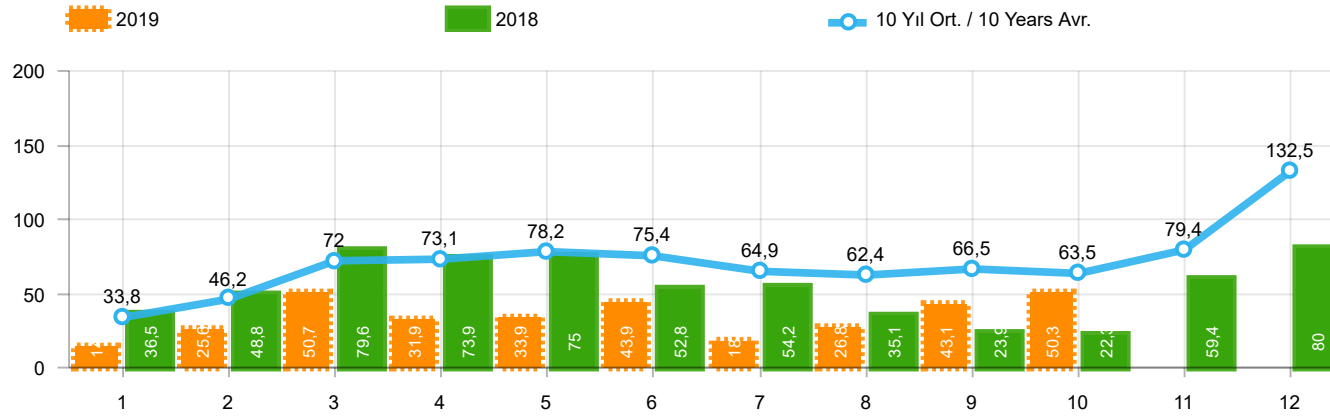


Otobüs Üretimi (x1000)(OCAK - EKİM)
Bus Production (x1000)(January - October)



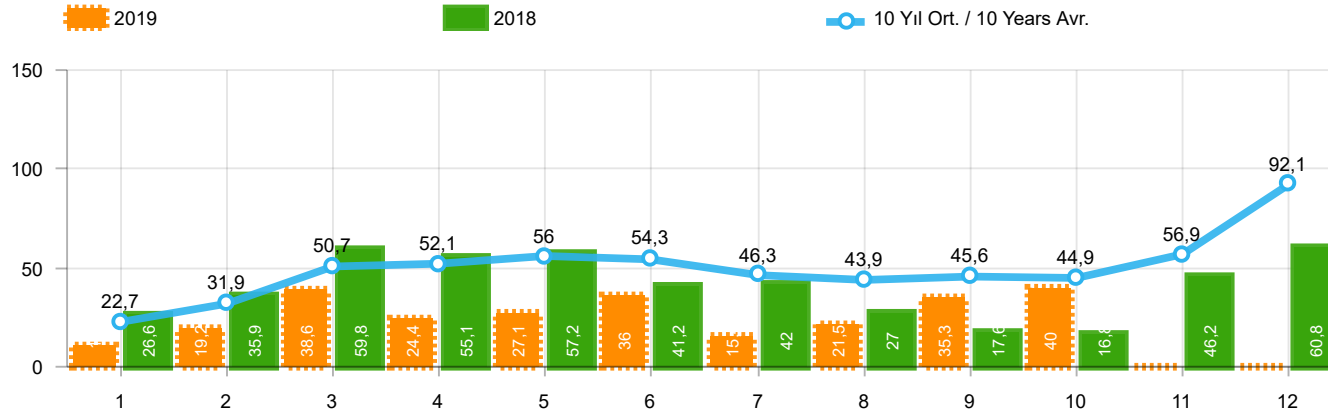
Traktör Üretimi (x1000)(OCAK - EKİM)
F. Tractor Production (x1000)(January - October)





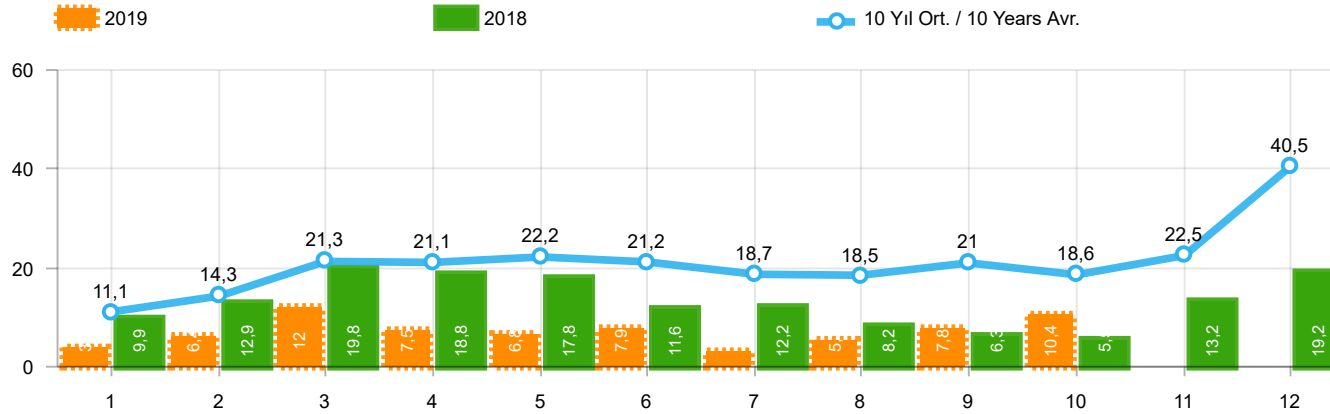
Aylar / Months	10 Yıl Ort / 10 Years Avr.	2019	%
1	33.809	14.847	-56,1
2	46.213	25.569	-44,7
3	71.956	50.651	-29,6
4	73.144	31.944	-56,3
5	78.208	33.947	-56,6
6	75.438	43.899	-41,8
7	64.942	18.442	-71,6
8	62.444	26.832	-57,0
9	66.511	43.068	-35,2
10	63.505	50.347	-20,7
TOPLAM / TOTAL	636.172	339.546	-46,6

Yıl / Year	1	2	3	4	5	6	7	8	9	10	11	12	1-10 Toplam / Total	Toplam / Total	1-10 Yerli / Local	1-10 İthal / Import	İthal Oran / Import %
2009	20.605	22.873	56.527	54.433	64.947	63.090	30.374	37.038	83.553	22.191	29.309	91.762	455.631	576.702	205.369	250.262	54,9
2010	21.070	32.331	54.019	57.241	61.837	63.511	64.011	64.961	67.040	76.753	77.488	155.234	562.774	795.496	236.484	326.290	58,0
2011	47.759	62.586	84.045	82.782	85.862	85.992	65.658	61.645	64.313	73.227	67.150	134.468	713.869	915.487	291.273	422.596	59,2
2012	31.552	44.138	69.242	66.559	75.195	75.108	65.444	60.982	73.501	62.933	75.203	121.442	624.654	821.299	236.286	388.368	62,2
2013	37.563	51.133	72.943	77.265	85.835	78.043	75.152	67.662	71.388	60.690	83.470	136.048	677.674	897.192	211.066	466.608	68,9
2014	34.751	37.659	51.312	57.113	62.447	64.295	62.770	63.303	70.764	69.742	84.368	154.843	574.156	813.367	197.036	377.120	65,7
2015	37.256	59.221	89.765	96.182	85.804	91.071	87.358	85.244	67.181	67.086	88.431	164.464	766.168	1.019.063	264.108	502.060	65,5
2016	34.369	54.840	85.932	87.748	97.090	94.666	59.732	73.654	69.413	85.666	125.462	145.706	743.110	1.014.278	238.135	504.975	68,0
2017	36.640	48.585	76.178	78.231	88.066	85.820	84.727	74.818	74.046	94.439	103.772	141.507	741.550	986.829	268.817	472.733	63,7
2018	36.525	48.768	79.600	73.886	74.996	52.788	54.194	35.137	23.915	22.321	59.406	80.014	502.130	641.550	191.259	310.871	61,9
2019	14.847	25.569	50.651	31.944	33.947	43.899	18.442	26.832	43.068	50.347			339.546	339.546	148.055	191.491	56,4



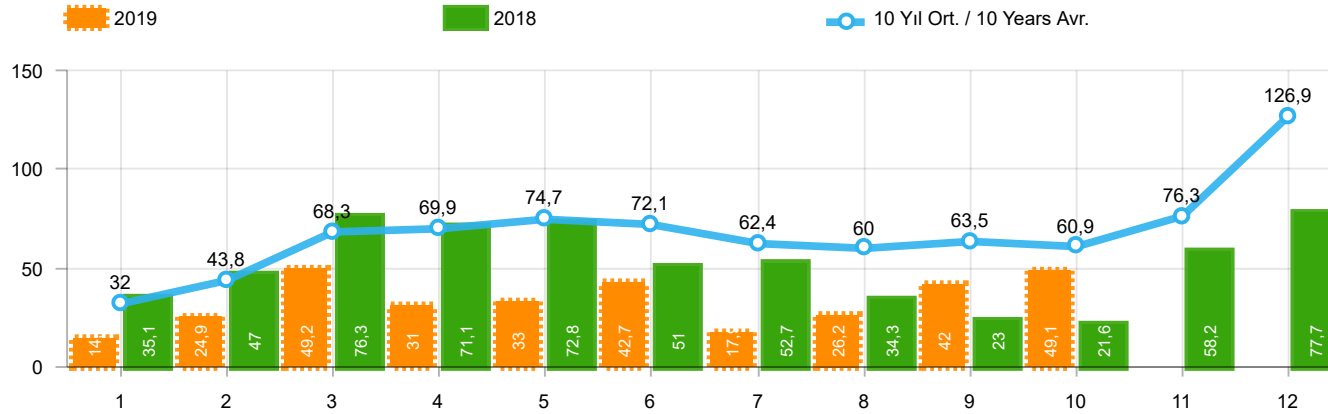
Aylar / Months	10 Yıl Ort. / 10 Years Avr.	2019	%
1	22.707	10.979	-51,6
2	31.928	19.205	-39,8
3	50.654	38.628	-23,7
4	52.093	24.416	-53,1
5	55.992	27.126	-51,6
6	54.250	36.024	-33,6
7	46.259	15.398	-66,7
8	43.921	21.544	-50,9
9	45.560	35.308	-22,5
10	44.943	39.996	-11,0
TOPLAM / TOTAL	448.306	268.624	-40,1

Yıl / Year	1	2	3	4	5	6	7	8	9	10	11	12	1-10 Toplam / Total	Toplam / Total	1-10 Yerli / Local	1-10 İthal / Import	İthal Oran / Import %
2009	13.173	14.492	40.622	36.202	44.188	41.019	16.637	22.537	52.162	13.828	17.781	57.178	294.860	369.819	98.793	196.067	66,5
2010	12.594	20.651	33.958	36.549	40.467	42.086	41.399	42.222	42.477	47.859	50.061	99.461	360.262	509.784	111.597	248.665	69,0
2011	29.868	39.004	54.023	53.835	56.302	56.714	43.518	38.875	39.964	47.508	44.951	88.957	459.611	593.519	142.257	317.354	69,0
2012	21.077	29.189	47.270	45.645	50.460	50.849	44.531	41.236	49.360	43.440	52.297	80.926	423.057	556.280	115.922	307.135	72,6
2013	25.835	36.814	51.785	56.999	62.383	58.290	55.712	51.611	52.925	46.985	64.117	101.199	499.339	664.655	110.263	389.076	77,9
2014	24.368	27.167	37.812	42.769	46.379	47.278	46.602	45.131	49.262	50.814	59.695	110.054	417.582	587.331	108.721	308.861	74,0
2015	24.498	40.817	61.676	70.211	62.878	67.766	64.218	61.753	47.088	47.954	62.397	114.340	548.859	725.596	138.431	410.428	74,8
2016	23.358	40.588	63.975	65.618	73.832	71.111	45.566	53.977	51.340	63.746	95.783	108.044	553.111	756.938	133.869	419.242	75,8
2017	25.689	34.658	55.616	57.998	65.799	66.164	62.384	54.890	53.423	70.488	75.956	99.694	547.109	722.759	164.605	382.504	69,9
2018	26.611	35.901	59.798	55.108	57.227	41.225	42.024	26.976	17.595	16.809	46.204	60.843	379.274	486.321	126.695	252.579	66,6
2019	10.979	19.205	38.628	24.416	27.126	36.024	15.398	21.544	35.308	39.996			268.624	268.624	110.207	158.417	59,0



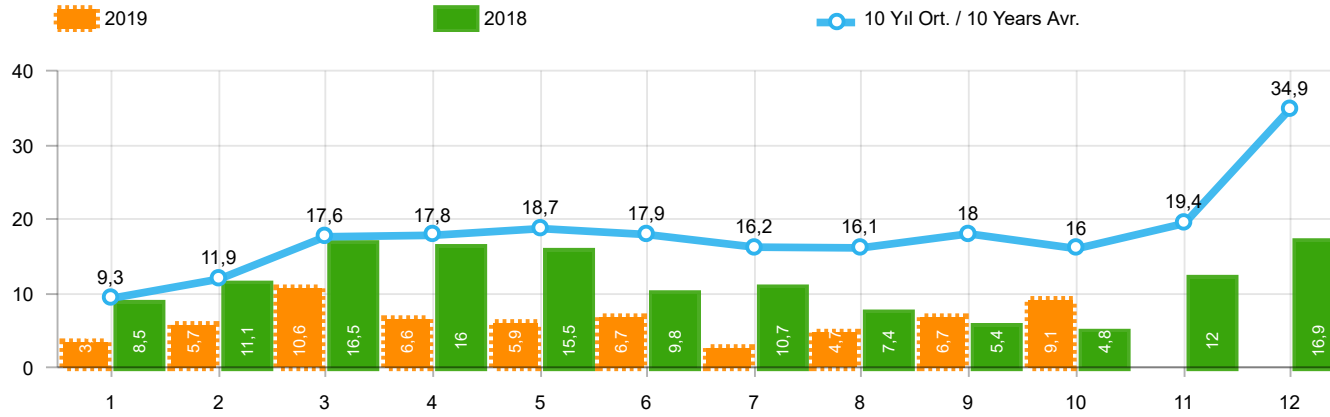
Aylar / Months	10 Yıl Ort / 10 Years Avr.	2019	%
1	11.102	3.868	-65,2
2	14.285	6.364	-55,5
3	21.303	12.023	-43,6
4	21.051	7.528	-64,2
5	22.216	6.821	-69,3
6	21.188	7.875	-62,8
7	18.683	3.044	-83,7
8	18.524	5.288	-71,5
9	20.952	7.760	-63,0
10	18.562	10.351	-44,2
TOPLAM / TOTAL	187.865	70.922	-62,3

Yıl / Year	1	2	3	4	5	6	7	8	9	10	11	12	1-10 Toplam / Total	Toplam / Total	1-10 Yerli / Local	1-10 İthal / Import	İthal Oran / Import %
2009	7.432	8.381	15.905	18.231	20.759	22.071	13.737	14.501	31.391	8.363	11.528	34.584	160.771	206.883	106.576	54.195	33,7
2010	8.476	11.680	20.061	20.692	21.370	21.425	22.612	22.739	24.563	28.894	27.427	55.773	202.512	285.712	124.887	77.625	38,3
2011	17.891	23.582	30.022	28.947	29.560	29.278	22.140	22.770	24.349	25.719	22.199	45.511	254.258	321.968	149.016	105.242	41,4
2012	10.475	14.949	21.972	20.914	24.735	24.259	20.913	19.746	24.141	19.493	22.906	40.516	201.597	265.019	120.364	81.233	40,3
2013	11.728	14.319	21.158	20.266	23.452	19.753	19.440	16.051	18.463	13.705	19.353	34.849	178.335	232.537	100.803	77.532	43,5
2014	10.383	10.492	13.500	14.344	16.068	17.017	16.168	18.172	21.502	18.928	24.673	44.789	156.574	226.036	88.315	68.259	43,6
2015	12.758	18.404	28.089	25.971	22.926	23.305	23.140	23.491	20.093	19.132	26.034	50.124	217.309	293.467	125.677	91.632	42,2
2016	11.011	14.252	21.957	22.130	23.258	23.555	14.166	19.677	18.073	21.920	29.679	37.662	189.999	257.340	104.266	85.733	45,1
2017	10.951	13.927	20.562	20.233	22.267	19.656	22.343	19.928	20.623	23.951	27.816	41.813	194.441	264.070	104.212	90.229	46,4
2018	9.914	12.867	19.802	18.778	17.769	11.563	12.170	8.161	6.320	5.512	13.202	19.171	122.856	155.229	64.564	58.292	47,4
2019	3.868	6.364	12.023	7.528	6.821	7.875	3.044	5.288	7.760	10.351			70.922	70.922	37.848	33.074	46,6



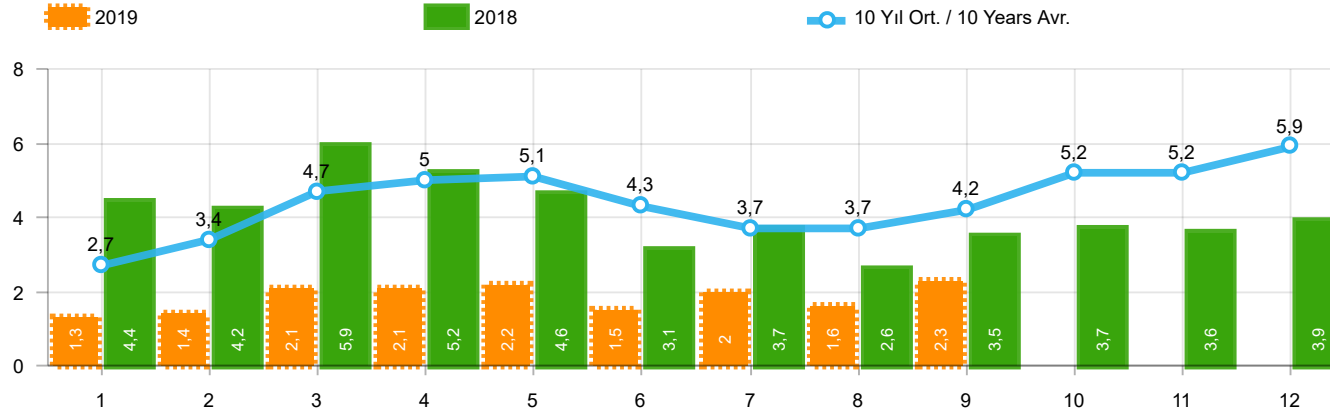
Aylar / Months	10 Yıl Ort. / 10 Years Avr.	2019	%
1	32.006	14.373	-55,1
2	43.836	24.875	-43,3
3	68.292	49.221	-27,9
4	69.871	30.971	-55,7
5	74.729	33.016	-55,8
6	72.126	42.688	-40,8
7	62.444	17.927	-71,3
8	60.018	26.246	-56,3
9	63.546	41.992	-33,9
10	60.896	49.075	-19,4
TOPLAM / TOTAL	607.764	330.384	-45,6

Yıl / Year	1	2	3	4	5	6	7	8	9	10	11	12	1-10 Toplam / Total	Toplam / Total	1-10 Yerli / Local	1-10 İthal / Import	İthal Oran / Import %
2009	19.606	21.742	55.111	52.640	63.191	61.067	28.845	35.609	81.397	21.033	27.962	88.923	440.241	557.126	192.748	247.493	56,2
2010	20.095	31.172	51.769	54.946	59.377	60.896	61.345	61.764	63.814	73.404	73.962	148.369	538.582	760.913	218.506	320.076	59,4
2011	44.892	58.663	78.403	77.695	80.646	81.573	63.044	58.406	60.129	69.421	63.657	127.910	672.872	864.439	263.316	409.556	60,9
2012	29.545	41.324	64.884	62.949	70.863	71.067	62.304	58.148	69.629	59.938	71.710	115.400	590.651	777.761	211.642	379.009	64,2
2013	35.523	48.307	68.774	73.575	81.468	74.096	71.596	65.043	67.963	58.014	79.301	129.718	644.359	853.378	185.428	458.931	71,2
2014	32.670	35.021	47.581	53.305	58.121	60.163	59.907	60.199	66.531	66.573	80.621	146.989	540.071	767.681	171.421	368.650	68,3
2015	34.615	55.331	83.302	91.602	81.542	86.158	83.836	82.577	64.025	64.255	84.601	156.173	727.243	968.017	235.631	491.612	67,6
2016	32.713	52.825	82.948	84.887	93.904	91.540	58.533	71.556	67.593	83.000	122.309	141.912	719.499	983.720	220.764	498.735	69,3
2017	35.323	46.965	73.802	75.988	85.422	83.658	82.297	72.536	71.352	91.752	100.859	136.240	719.095	956.194	252.593	466.502	64,9
2018	35.076	47.009	76.345	71.126	72.755	51.037	52.734	34.346	23.028	21.571	58.204	77.706	485.027	620.937	179.889	305.138	62,9
2019	14.373	24.875	49.221	30.971	33.016	42.688	17.927	26.246	41.992	49.075			330.384	330.384	141.758	188.626	57,1



Aylar / Months	10 Yıl Ort. / 10 Years Avr.	2019	%
1	9.299	3.394	-63,5
2	11.908	5.670	-52,4
3	17.638	10.593	-39,9
4	17.778	6.555	-63,1
5	18.737	5.890	-68,6
6	17.875	6.664	-62,7
7	16.185	2.529	-84,4
8	16.098	4.702	-70,8
9	17.987	6.684	-62,8
10	15.953	9.079	-43,1
TOPLAM / TOTAL	159.458	61.760	-61,3

Yıl / Year	1	2	3	4	5	6	7	8	9	10	11	12	1-10 Toplam / Total	Toplam / Total	1-10 Yerli / Local	1-10 İthal / Import	İthal Oran / Import %
2009	6.433	7.250	14.489	16.438	19.003	20.048	12.208	13.072	29.235	7.205	10.181	31.745	145.381	187.307	93.955	51.426	35,4
2010	7.501	10.521	17.811	18.397	18.910	18.810	19.946	19.542	21.337	25.545	23.901	48.908	178.320	251.129	106.909	71.411	40,0
2011	15.024	19.659	24.380	23.860	24.344	24.859	19.526	19.531	20.165	21.913	18.706	38.953	213.261	270.920	121.059	92.202	43,2
2012	8.468	12.135	17.614	17.304	20.403	20.218	17.773	16.912	20.269	16.498	19.413	34.474	167.594	221.481	95.720	71.874	42,9
2013	9.688	11.493	16.989	16.576	19.085	15.806	15.884	13.432	15.038	11.029	15.184	28.519	145.020	188.723	75.165	69.855	48,2
2014	8.302	7.854	9.769	10.536	11.742	12.885	13.305	15.068	17.269	15.759	20.926	36.935	122.489	180.350	62.700	59.789	48,8
2015	10.117	14.514	21.626	21.391	18.664	18.392	19.618	20.824	16.937	16.301	22.204	41.833	178.384	242.421	97.200	81.184	45,5
2016	9.355	12.237	18.973	19.269	20.072	20.429	12.967	17.579	16.253	19.254	26.526	33.868	166.388	226.782	86.895	79.493	47,8
2017	9.634	12.307	18.186	17.990	19.623	17.494	19.913	17.646	17.929	21.264	24.903	36.546	171.986	233.435	87.988	83.998	48,8
2018	8.465	11.108	16.547	16.018	15.528	9.812	10.710	7.370	5.433	4.762	12.000	16.863	105.753	134.616	53.194	52.559	49,7
2019	3.394	5.670	10.593	6.555	5.890	6.664	2.529	4.702	6.684	9.079			61.760	61.760	31.551	30.209	48,9



Aylar / Months	10 Yıl Ort. / 10 Years Avr.	2019	%
1	2.669	1.311	-50,9
2	3.359	1.401	-58,3
3	4.700	2.143	-54,4
4	5.046	2.126	-57,9
5	5.116	2.229	-56,4
6	4.276	1.538	-64,0
7	3.736	2.039	-45,4
8	3.690	1.579	-57,2
9	4.155	2.284	-45,0
TOPLAM / TOTAL	36.747	16.650	-54,7

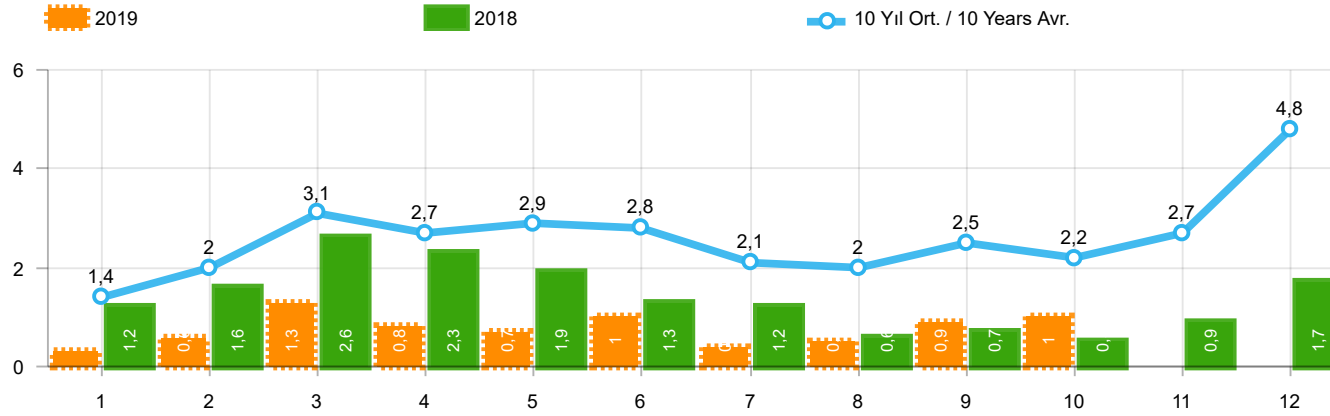
Yıl / Year	1	2	3	4	5	6	7	8	9	10	11	12	1-9 Toplam / Total	Toplam / Total
2009	717	572	688	1.070	1.297	1.256	1.054	1.183	1.117	1.356	1.304	2.144	8.954	13.758
2010	1.111	1.991	2.330	3.039	2.567	2.638	1.965	3.019	2.806	4.424	3.978	6.168	21.466	36.036
2011	2.975	5.242	5.927	5.358	6.016	6.335	4.534	4.051	4.140	5.828	4.943	4.992	44.578	60.341
2012	2.362	1.983	4.348	6.579	6.273	4.569	3.837	3.158	3.618	4.027	4.807	4.757	36.727	50.318
2013	2.161	2.432	4.005	4.585	5.616	3.136	4.574	3.408	4.935	4.762	5.781	6.891	34.852	52.286
2014	2.169	3.512	4.476	4.905	5.094	5.028	4.233	4.920	5.619	5.743	6.250	7.409	39.956	59.358
2015	3.124	3.984	5.460	6.383	6.078	5.748	4.677	5.044	4.765	7.049	6.898	7.564	45.263	66.774
2016	3.739	4.731	7.067	6.546	6.575	5.543	3.833	5.134	4.945	7.372	7.090	7.603	48.113	70.178
2017	3.974	4.964	6.773	6.780	7.057	5.356	5.003	4.396	6.064	7.734	7.457	7.351	50.367	72.909
2018	4.362	4.179	5.925	5.216	4.584	3.146	3.654	2.587	3.541	3.698	3.578	3.886	37.194	48.356
2019	1.311	1.401	2.143	2.126	2.229	1.538	2.039	1.579	2.284				16.650	16.650

Kaynak: TÜİK trafik kayıtları.

Rakamlar, son iki model yılına ait traktör tescillerinden oluşmaktadır.

Source: Turkish Statistical Institute – Traffic registrations

Data represents the last two model year's farm tractors registration figures

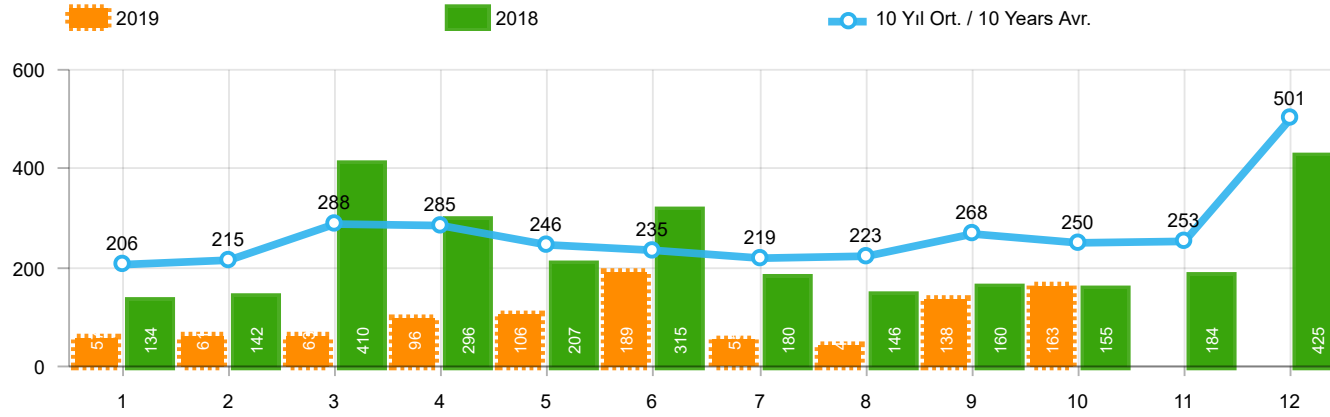


Aylar / Months	10 Yıl Ort / 10 Years Avr.	2019	%
1	1.446	342	-76,3
2	1.974	579	-70,7
3	3.128	1.255	-59,9
4	2.746	842	-69,3
5	2.944	728	-75,3
6	2.831	981	-65,3
7	2.115	435	-79,4
8	2.042	497	-75,7
9	2.545	854	-66,4
10	2.199	1.044	-52,5
TOPLAM / TOTAL	23.968	7.557	-68,5

Yıl / Year	1	2	3	4	5	6	7	8	9	10	11	12	1-10 Toplam / Total	Toplam / Total	1-10 Yerli / Local	1-10 İthal / Import	İthal Oran / Import %
2009	782	763	1.062	1.381	1.426	1.649	1.261	1.164	1.862	963	1.047	2.368	12.313	15.728	9.584	2.729	22,2
2010	768	960	1.950	1.949	2.140	2.314	2.403	2.754	2.864	3.001	3.231	6.158	21.103	30.492	14.946	6.157	29,2
2011	2.651	3.544	5.142	4.503	4.563	3.852	2.261	2.745	3.784	3.400	3.149	5.712	36.445	45.306	23.489	12.956	35,5
2012	1.703	2.454	3.866	3.209	3.678	3.540	2.750	2.403	3.296	2.497	3.154	5.300	29.396	37.850	20.071	9.325	31,7
2013	1.484	2.113	3.343	2.925	3.504	3.186	2.777	2.103	2.875	2.086	3.631	5.444	26.396	35.471	18.746	7.650	29,0
2014	1.522	2.065	3.094	3.224	3.727	3.726	2.578	2.783	3.708	2.858	3.384	6.869	29.285	39.538	20.972	8.313	28,4
2015	2.215	3.346	5.699	3.729	3.600	4.253	2.922	2.211	2.687	2.266	3.146	7.307	32.928	43.381	22.549	10.379	31,5
2016	1.167	1.648	2.515	2.319	2.711	2.623	984	1.796	1.438	2.238	2.485	3.127	19.439	25.051	13.230	6.209	31,9
2017	931	1.290	1.982	1.888	2.184	1.891	1.974	1.860	2.284	2.188	2.487	4.438	18.472	25.397	12.255	6.217	33,7
2018	1.237	1.552	2.630	2.328	1.909	1.272	1.235	603	653	488	905	1.695	13.907	16.507	8.185	5.722	41,1
2019	342	579	1.255	842	728	981	435	497	854	1.044			7.557	7.557	4.692	2.865	37,9

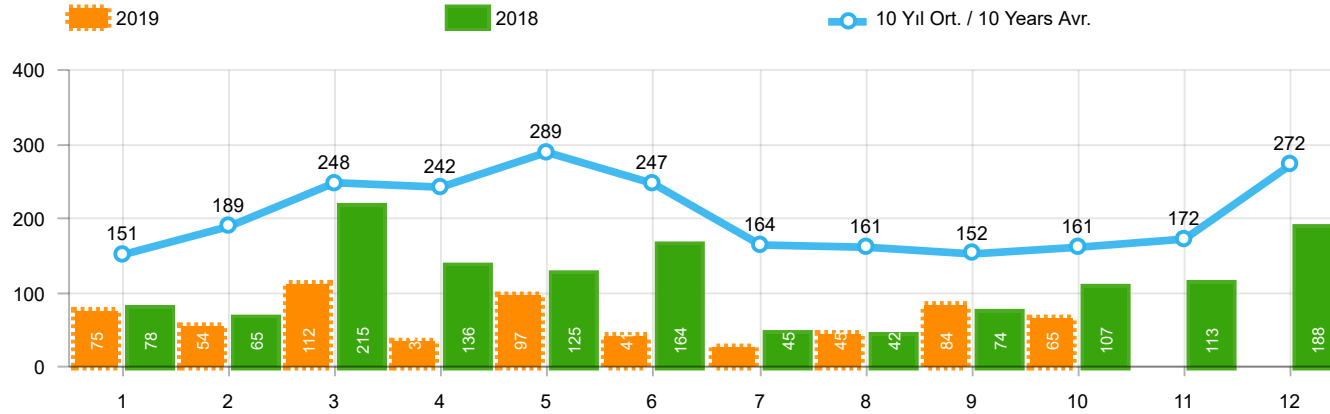
Kaynak: OSD, TAİD, TÜİK

Herhangi bir Dernek üyeliği olmayan markalara ilişkin satış verisi için TÜİK trafik kayıtları esas alınmaktadır. TÜİK trafik kayıtlarının bir ay gecikmeli yayınlanması nedeniyle ilgili markalara ilişkin son ayın satış verisi bir önceki ay ile aynı kabul edilmekte ve bir sonraki ay gerçekleşen veri ile güncellenmektedir.



Aylar / Months	10 Yıl Ort. / 10 Years Avr.	2019	%
1	206	57	-72,4
2	215	61	-71,6
3	288	63	-78,1
4	285	96	-66,3
5	246	106	-56,9
6	235	189	-19,6
7	219	55	-74,9
8	223	44	-80,2
9	268	138	-48,5
10	250	163	-34,7
TOPLAM / TOTAL	2.435	972	-60,1

Yıl / Year	1	2	3	4	5	6	7	8	9	10	11	12	1-10 Toplam / Total	Toplam / Total
2009	133	103	153	210	145	183	138	146	152	134	150	280	1.497	1.927
2010	140	128	172	153	127	124	93	232	199	204	162	382	1.572	2.116
2011	124	167	267	260	241	233	205	280	270	230	168	525	2.277	2.970
2012	179	257	277	229	257	239	216	249	325	269	189	398	2.497	3.084
2013	191	268	289	276	283	241	367	235	305	392	415	697	2.847	3.959
2014	360	394	384	333	294	258	216	229	395	220	266	653	3.083	4.002
2015	280	322	451	561	372	405	389	253	316	394	325	621	3.743	4.689
2016	309	158	251	302	261	196	139	220	241	230	354	431	2.307	3.092
2017	212	211	227	231	272	156	250	235	318	268	317	594	2.380	3.291
2018	134	142	410	296	207	315	180	146	160	155	184	425	2.145	2.754
2019	57	61	63	96	106	189	55	44	138	163			972	972

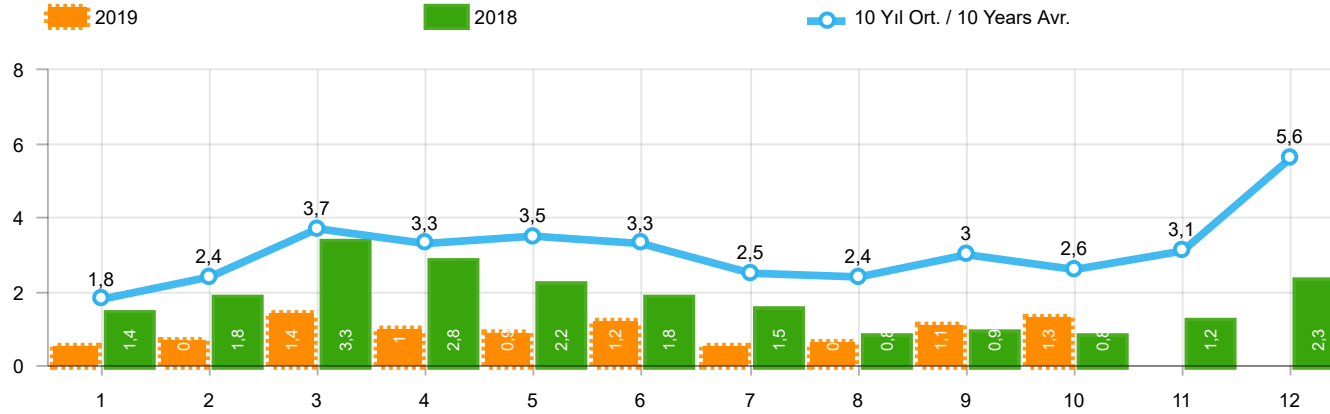


Aylar / Months	10 Yıl Ort. / 10 Years Avr.	2019	%
1	151	75	-50,3
2	189	54	-71,4
3	248	112	-54,8
4	242	35	-85,5
5	289	97	-66,4
6	247	41	-83,4
7	164	25	-84,8
8	161	45	-72,1
9	152	84	-44,8
10	161	65	-59,5
TOPLAM / TOTAL	2.004	633	-68,4

Yıl / Year	1	2	3	4	5	6	7	8	9	10	11	12	1-10 Toplam / Total	Toplam / Total	1-10 Yerli / Local	1-10 İthal / Import	İthal Oran / Import %
2009	84	265	201	202	185	191	130	119	142	61	150	191	1.580	1.921	1.540	40	2,5
2010	67	71	128	193	193	177	170	211	163	144	133	325	1.517	1.975	1.460	57	3,8
2011	92	212	233	324	412	334	148	214	130	176	176	321	2.275	2.772	2.191	84	3,7
2012	125	103	215	172	397	262	174	182	251	229	150	344	2.110	2.604	2.076	34	1,6
2013	365	445	537	489	580	520	412	281	245	198	123	189	4.072	4.384	4.045	27	0,7
2014	199	179	253	251	305	148	69	92	130	91	97	332	1.717	2.146	1.560	157	9,1
2015	146	222	313	290	290	255	211	203	153	171	359	363	2.254	2.976	2.185	69	3,1
2016	180	209	218	240	214	307	76	82	141	198	314	236	1.865	2.415	1.834	31	1,7
2017	174	119	167	124	188	115	206	187	92	231	109	235	1.603	1.947	1.589	14	0,9
2018	78	65	215	136	125	164	45	42	74	107	113	188	1.051	1.352	1.040	11	1,0
2019	75	54	112	35	97	41	25	45	84	65			633	633	633	-	-

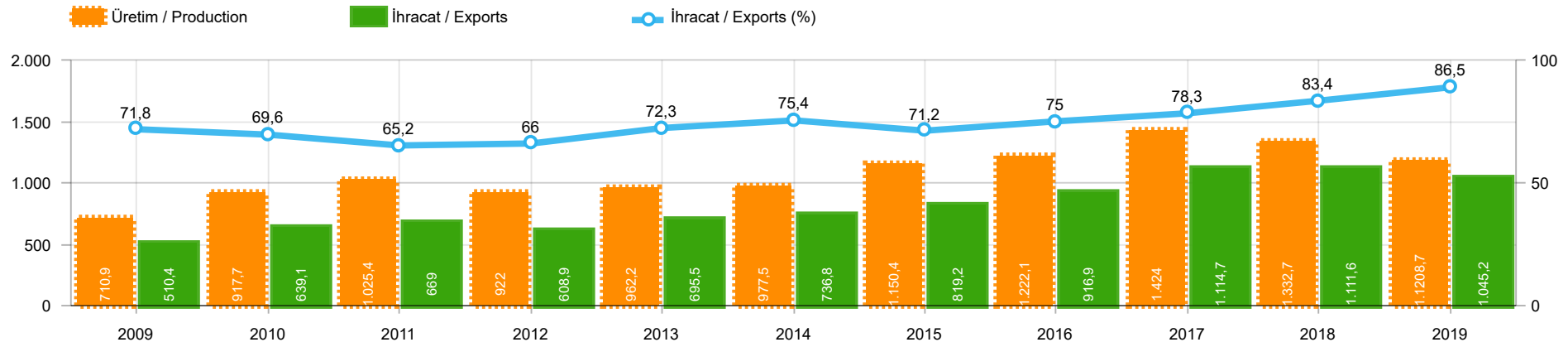
Kaynak: OSD, TÜİK

Herhangi bir Dernek üyesi olmayan markalara ilişkin satış verisi için TÜİK trafik kayıtları esas alınmaktadır. TÜİK trafik kayıtlarının bir ay gecikmeli yayınlanması nedeniyle ilgili markalara ilişkin son ayın satış verisi bir önceki ay ile aynı kabul edilmekte ve bir sonraki ay gerçekleşen veri ile güncellenmektedir.



Aylar / Months	10 Yıl Ort. / 10 Years Avr.	2019	%
1	1.803	474	-73,7
2	2.378	694	-70,8
3	3.664	1.430	-61,0
4	3.273	973	-70,3
5	3.479	931	-73,2
6	3.313	1.211	-63,4
7	2.498	515	-79,4
8	2.426	586	-75,8
9	2.965	1.076	-63,7
10	2.609	1.272	-51,2
TOPLAM / TOTAL	28.408	9.162	-67,8

Yıl / Year	1	2	3	4	5	6	7	8	9	10	11	12	1-10 Toplam / Total	Toplam / Total	1-10 Yerli / Local	1-10 İthal / Import	İthal Oran / Import %
2009	999	1.131	1.416	1.793	1.756	2.023	1.529	1.429	2.156	1.158	1.347	2.839	15.390	19.576	12.621	2.769	18,0
2010	975	1.159	2.250	2.295	2.460	2.615	2.666	3.197	3.226	3.349	3.526	6.865	24.192	34.583	17.978	6.214	25,7
2011	2.867	3.923	5.642	5.087	5.216	4.419	2.614	3.239	4.184	3.806	3.493	6.558	40.997	51.048	27.957	13.040	31,8
2012	2.007	2.814	4.358	3.610	4.332	4.041	3.140	2.834	3.872	2.995	3.493	6.042	34.003	43.538	24.644	9.359	27,5
2013	2.040	2.826	4.169	3.690	4.367	3.947	3.556	2.619	3.425	2.676	4.169	6.330	33.315	43.814	25.638	7.677	23,0
2014	2.081	2.638	3.731	3.808	4.326	4.132	2.863	3.104	4.233	3.169	3.747	7.854	34.085	45.686	25.615	8.470	24,8
2015	2.641	3.890	6.463	4.580	4.262	4.913	3.522	2.667	3.156	2.831	3.830	8.291	38.925	51.046	28.477	10.448	26,8
2016	1.656	2.015	2.984	2.861	3.186	3.126	1.199	2.098	1.820	2.666	3.153	3.794	23.611	30.558	17.371	6.240	26,4
2017	1.317	1.620	2.376	2.243	2.644	2.162	2.430	2.282	2.694	2.687	2.913	5.267	22.455	30.635	16.224	6.231	27,7
2018	1.449	1.759	3.255	2.760	2.241	1.751	1.460	791	887	750	1.202	2.308	17.103	20.613	11.370	5.733	33,5
2019	474	694	1.430	973	931	1.211	515	586	1.076	1.272			9.162	9.162	6.297	2.865	31,3



	2009	2010	2011	2012	2013	2014	2015	2016	2017	2018	2019
İhracat/Export	510.424	639.064	669.023	608.928	695.511	736.829	819.187	916.873	1.114.658	1.111.645	1.045.202
Üretim/Production	710.921	917.703	1.025.358	922.035	962.173	977.511	1.150.359	1.222.078	1.424.042	1.332.726	1.208.673
İhracat/Exports (%)	71,8	69,6	65,2	66	72,3	75,4	71,2	75	78,3	83,4	86,5

Taşıt Araçları İhracatı (2017 - 2019)
Motor Vehicle Exports (2017 - 2019)

SEKTÖR / SECTOR	2017	2018	1/10-2018	1/10-2019	2019/2018 %
OTOMOBİL / Pass.Car	921.354	875.147	732.142	676.486	-7,6
OTOMOBİL TOPLAM / Pass. Car Total	921.354	875.147	732.142	676.486	-7,6
KAMYON / Truck	7.800	14.478	11.855	13.457	13,5
KAMYONET / Pick Up	350.108	372.954	311.060	291.883	-6,2
OTOBÜS / Bus	7.028	7.708	6.096	7.554	23,9
MINİBÜS / Minibus	45.794	47.736	37.505	40.923	9,1
MİDİBÜS / Midibus	710	846	665	993	49,3
TİCARİ ARAÇLAR TOPLAM / Commercial Vehicle Total	411.440	443.722	367.181	354.810	-3,4
TAŞIT ARAÇLARI TOPLAM / Motor Vehicles Total	1.332.794	1.318.869	1.099.323	1.031.296	-6,2
TRAKTÖR / F.Tractor	13.123	15.123	12.322	13.906	12,9
TRAKTÖR TOPLAM / F.Tractor Total	13.123	15.123	12.322	13.906	12,9
GENEL TOPLAM / GRAND TOTAL	1.345.917	1.333.992	1.111.645	1.045.202	-6,0

Üretici Bazında İhracat (adet)
Exports by Manufacturer (unit)

Üreticiler / Manufacturers	2017	2018	1-10 / 2018	1-10 / 2019
A.I.O.S.	700	964	710	1.188
FORD OTOSAN	296.840	328.502	268.495	275.690
HATTAT TRAKTÖR	1.100	621	534	556
HONDA TÜRKİYE	9.391	13.699	12.388	6.507
HYUNDAI ASSAN	204.382	190.347	159.435	138.507
KARSAN	2.969	3.419	2.903	1.779
M. BENZ TÜRK	9.865	16.309	13.478	15.023
MAN TÜRKİYE	2.007	2.425	1.989	2.382
OTOKAR	691	901	554	975
OYAK RENAULT	287.915	280.411	230.869	234.569
TEMSA	870	645	462	522
TOFAŞ	270.698	243.796	212.361	168.230
TOYOTA	246.466	237.451	195.679	185.924
TÜRK TRAKTÖR	12.023	14.502	11.788	13.350
GENEL TOPLAM / Grand Total	1.345.917	1.333.992	1.111.645	1.045.202

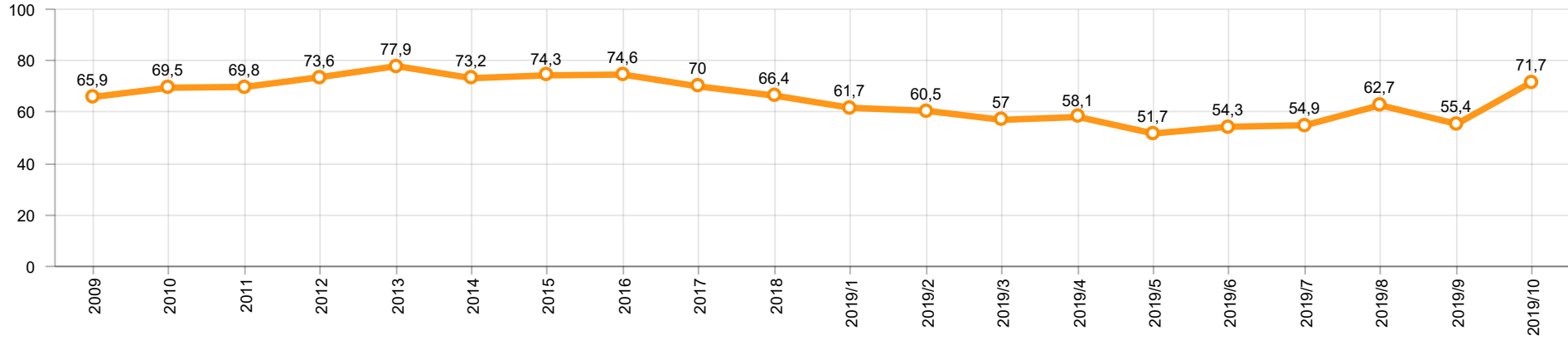
Otomotiv Ana ve Yan Sanayii İhracatı (ABD \$)
CBU and CKD Exports - \$

Sektör / Sector	2017	2018	OCAK - EKİM / January - October 2018	OCAK - EKİM / January - October 2019	2019 / 2018 %
Toplam Yan Sanayi / Total Component Industry	9.835.914.658	10.881.562.512	9.202.571.030	8.911.234.162	-3,2
İç ve Dış Lastik / Tyres	1.131.782.300	1.353.896.118	1.155.998.249	1.272.517.103	10,1
Emniyet Camı / Safety Glasses	136.486.099	151.148.689	126.776.908	124.692.539	-1,6
Motor / Engine	486.426.738	581.983.113	499.646.173	431.018.073	-13,7
Akümülatör / Batteries	295.794.286	388.107.835	302.011.140	320.162.689	6,0
Diğer Aksam ve Parça / Spare Parts&Components	7.785.425.235	8.406.426.757	7.118.138.560	6.762.843.758	-5,0
Toplam Ana Sanayi / Total Vehicle Industry	19.257.086.833	21.350.315.330	17.692.590.866	16.977.260.044	-4,0
Otobüs / Bus	1.308.249.224	1.503.188.826	1.188.912.111	1.463.795.324	23,1
Midibüs-Minibüs / Midibus-Minibus	217.704.499	215.450.022	178.104.030	172.026.629	-3,4
Otomobil / P.Cars	11.790.577.760	12.420.951.066	10.326.697.274	9.575.446.413	-7,3
Kamyon-Kamyonet / Truck-Pick Up&Van	4.849.022.718	5.376.446.529	4.505.668.262	4.154.959.311	-7,8
Römork ve Yarı Römork / Trailer-Semi Trailer	342.793.231	507.186.149	404.555.522	426.214.198	5,4
Çekici / Tractor	427.928.256	904.738.051	752.613.356	785.651.947	4,4
Tarım Traktörü / Farm Tractor	320.811.145	422.354.687	336.040.311	399.166.222	18,8
Toplam / Total	29.093.001.491	32.231.877.842	26.895.161.896	25.888.494.206	-3,7

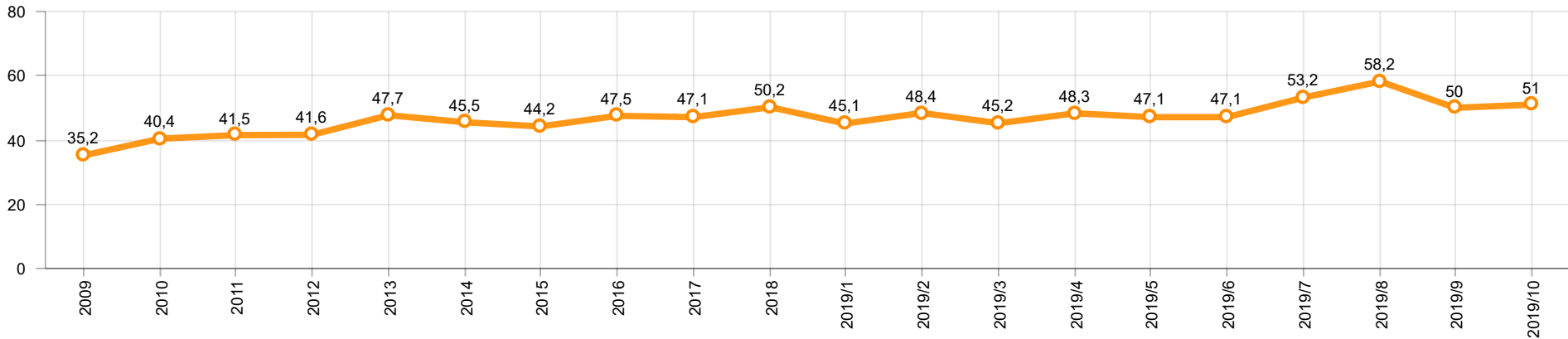
Kaynak: Uludağ İhracatçı Birlikleri . ÜİB tarafından OSD için özel olarak analiz edilen Otomotiv İhracatı kapsamında; ÜİB Türkiye Geneli Otomotiv Endüstrisi sınıflandırmasına kıyasla “Römork ve Yarı Römork” , “Tarım Traktörü” verileri dahil edilmekte; “Kullanılmış Araçlar” ,”İki Tekerlekli Taşıtlar” , “Demiryolu Taşıtları” hariç tutulmaktadır.

Source: Uludağ Exporters Association – Special Analyze for OSD.Compared to Turkish General Automotive Industry classification, this special analyze includes; farms tractors, trailers and semi-trailers, does not include; used vehicles, two-wheeled vehicles and railway vehicles

Otomobil Pazarında İthalatın Payı (%)
Import Share in P.Car Market (%)



Hafif Ticari Araçlar Pazarında İthalatın Payı (%)
Import Share in LCV Market (%)



Araç Tipleri / Vehicle Types	1	2	3	4	5	6	7	8	9	10	11	12	Toplam / Total
OTOMOBİL - Pass.Car	58.807	69.340	81.736	66.084	80.233	62.846	73.598	33.852	67.590	82.400			676.486
KAMYON - H. Truck	1.270	1.594	1.312	1.153	1.170	1.247	2.150	1.533	1.425	603			13.457
KAMYONET - Pick Up	27.735	29.855	31.222	33.326	26.072	29.659	35.745	16.522	32.717	29.030			291.883
OTOBÜS - Bus	801	637	822	756	958	651	863	517	642	907			7.554
MİNİBÜS - Minibus	4.741	4.836	5.012	4.630	3.278	2.396	4.860	2.014	4.663	4.493			40.923
MİDİBÜS - Midibus	74	93	135	58	152	82	73	166	69	91			993
TİCARİ ARAÇLAR TOPLAMI - CV Total	34.621	37.015	38.503	39.923	31.630	34.035	43.691	20.752	39.516	35.124			354.810
TAŞIT ARAÇLARI TOPLAMI - MV Total	93.428	106.355	120.239	106.007	111.863	96.881	117.289	54.604	107.106	117.524			1.031.296
TRAKTÖR - F.Tractor	1.111	1.145	1.516	1.207	1.551	1.382	1.689	869	1.941	1.495			13.906
GENEL TOPLAM - Grand Total	94.539	107.500	121.755	107.214	113.414	98.263	118.978	55.473	109.047	119.019			1.045.202

Otomobil / P.Car

Firmalar / Firms	1	2	3	4	5	6	7	8	9	10	11	12	Toplam / Total
FORD OTOSAN	1.469	1.837	2.405	2.671	2.064	2.021	2.397	684	2.112	2.684	-	-	20.344
HONDA TÜRKİYE	800	1.009	424	689	240	449	210	838	1.224	624	-	-	6.507
HYUNDAI ASSAN	11.414	14.050	13.200	9.050	18.750	14.850	14.579	7.735	17.799	17.080	-	-	138.507
OYAK RENAULT	20.009	24.138	35.569	21.457	26.820	22.749	21.894	13.849	17.463	30.621	-	-	234.569
TOFAŞ	7.636	8.517	7.730	10.743	11.140	8.882	10.779	3.417	11.426	10.365	-	-	90.635
TOYOTA	17.479	19.789	22.408	21.474	21.219	13.895	23.739	7.329	17.566	21.026	-	-	185.924
TOPLAM - Total	58.807	69.340	81.736	66.084	80.233	62.846	73.598	33.852	67.590	82.400	-	-	676.486

Kamyonet / Pick-up

Firmalar / Firms	1	2	3	4	5	6	7	8	9	10	11	12	Toplam / Total
A.I.O.S.	-	-	-	-	-	-	-	-	-	-	-	-	-
FORD OTOSAN	22.083	22.516	23.449	24.428	16.098	20.460	25.296	13.015	24.440	21.197	-	-	212.982
KARSAN	73	54	150	95	95	142	115	72	119	270	-	-	1.185
OTOKAR	-	-	25	10	15	17	-	39	-	15	-	-	121
TOFAŞ	5.579	7.285	7.598	8.793	9.864	9.040	10.334	3.396	8.158	7.548	-	-	77.595
TOPLAM - Total	27.735	29.855	31.222	33.326	26.072	29.659	35.745	16.522	32.717	29.030	-	-	291.883

Minibüs / Minibus

Firmalar / Firms	1	2	3	4	5	6	7	8	9	10	11	12	Toplam / Total
FORD OTOSAN	4.740	4.833	4.998	4.620	3.268	2.386	4.846	2.014	4.661	4.467	-	-	40.833
KARSAN	1	3	14	10	10	10	14	-	2	26	-	-	90
TOPLAM - Total	4.741	4.836	5.012	4.630	3.278	2.396	4.860	2.014	4.663	4.493	-	-	40.923

Kamyon / Truck

Firmalar / Firms	1	2	3	4	5	6	7	8	9	10	11	12	Toplam / Total
A.I.O.S.	-	30	-	175	29	-	-	-	-	-	-	-	234
FORD OTOSAN	114	141	166	161	221	175	167	78	171	137	-	-	1.531
KARSAN	-	-	-	-	-	-	-	-	-	-	-	-	-
M. BENZ TÜRK	1.156	1.423	1.146	817	920	1.072	1.983	1.455	1.254	466	-	-	11.692
OTOKAR	-	-	-	-	-	-	-	-	-	-	-	-	-
TOPLAM - Total	1.270	1.594	1.312	1.153	1.170	1.247	2.150	1.533	1.425	603	-	-	13.457

Midibüs / Midibus

Firmalar / Firms	1	2	3	4	5	6	7	8	9	10	11	12	Toplam / Total
A.I.O.S.	52	60	88	46	121	56	36	105	57	77	-	-	698
KARSAN	5	6	39	-	1	-	1	-	1	-	-	-	53
OTOKAR	8	21	8	12	16	25	36	28	11	13	-	-	178
TEMSA	9	6	-	-	14	1	-	33	-	1	-	-	64
TOPLAM - Total	74	93	135	58	152	82	73	166	69	91	-	-	993

Otobüs / Bus

Firmalar / Firms	1	2	3	4	5	6	7	8	9	10	11	12	Toplam / Total
A.I.O.S.	56	12	47	18	15	50	3	18	12	25	-	-	256
KARSAN	23	17	56	2	65	58	72	39	63	56	-	-	451
M. BENZ TÜRK	261	246	318	395	446	305	390	238	268	464	-	-	3.331
MAN TÜRKİYE	298	271	273	225	256	193	229	120	234	283	-	-	2.382
OTOKAR	104	69	108	93	94	23	94	29	30	32	-	-	676
TEMSA	59	22	20	23	82	22	75	73	35	47	-	-	458
TOPLAM - Total	801	637	822	756	958	651	863	517	642	907	-	-	7.554

Traktör / F.Tractor

Firmalar / Firms	1	2	3	4	5	6	7	8	9	10	11	12	Toplam / Total
HATTAT TRAKTÖR	39	72	108	43	48	40	55	61	40	50	-	-	556
TÜRK TRAKTÖR	1.072	1.073	1.408	1.164	1.503	1.342	1.634	808	1.901	1.445	-	-	13.350
TOPLAM - Total	1.111	1.145	1.516	1.207	1.551	1.382	1.689	869	1.941	1.495	-	-	13.906

Firmalar / Firms	2018 Toplam / Total	1	2	3	4	5	6	7	8	9	10	11	12	Toplam / Total
Alfa Romeo	203	8	16	32	23	50	60	7	4	9	15	-	-	224
Aston Martin	16	2	-	3	1	-	1	2	2	3	2	-	-	16
Audi	13.295	495	404	832	515	742	891	467	633	1.191	1.546	-	-	7.716
Bentley	10	2	-	-	1	1	-	-	-	-	-	-	-	4
BMW	12.728	352	463	871	724	445	637	585	684	737	1.046	-	-	6.544
Citroen	7.669	80	97	423	378	453	469	265	533	694	1.605	-	-	4.997
Dacia	26.193	429	801	1.765	910	970	1.569	561	672	998	1.594	-	-	10.269
DS	236	3	8	8	27	8	15	5	13	15	44	-	-	146
Ferrari	18	-	2	2	3	3	2	1	1	2	-	-	-	16
Fiat	1.264	26	26	65	80	157	99	48	46	77	124	-	-	748
Ford	20.697	235	476	1.452	774	676	1.232	279	327	1.106	1.718	-	-	8.275
Honda	4.862	144	149	253	281	276	203	116	110	220	276	-	-	2.028
Hyundai	19.113	794	1.195	1.508	1.089	1.141	1.123	838	729	981	1.476	-	-	10.874
Infinity	18	-	-	-	-	-	-	-	-	-	-	-	-	-
Jaguar	220	2	18	20	20	10	19	12	15	32	38	-	-	186
Jeep	2.430	100	162	225	138	92	168	82	63	145	161	-	-	1.336
Kia	7.694	150	331	534	357	204	205	178	354	517	659	-	-	3.489
Lamborghini	3	1	-	-	1	1	1	3	-	-	-	-	-	7
Land Rover	1.248	36	71	63	80	59	48	88	104	143	170	-	-	862
Lexus	56	4	4	2	3	2	3	3	2	3	8	-	-	34
Maserati	55	2	4	2	2	6	3	1	-	2	3	-	-	25
Mazda	1.005	29	29	15	31	45	18	9	12	23	25	-	-	236
Mercedes-Benz	14.445	204	701	1.005	563	728	1.021	830	743	1.097	1.443	-	-	8.335
Mini	1.373	17	50	176	91	92	169	31	66	89	133	-	-	914
Mitsubishi	514	38	60	41	34	30	26	9	6	16	53	-	-	313
Nissan	24.605	538	799	1.662	887	806	1.215	459	706	980	1.204	-	-	9.256
Opel	20.960	348	765	1.684	1.055	866	1.268	641	1.000	1.437	2.406	-	-	11.470
Peugeot	24.905	524	767	2.287	1.627	1.692	1.927	782	1.031	1.403	2.511	-	-	14.551
Porsche	565	9	35	27	29	31	24	22	18	27	35	-	-	257
Renault	21.090	198	557	822	490	552	718	215	444	651	503	-	-	5.150
Seat	10.383	139	289	515	269	295	547	169	314	883	1.008	-	-	4.428
Skoda	21.340	247	585	1.414	687	778	1.441	334	1.092	1.537	2.291	-	-	10.406
Smart	35	5	3	6	2	3	1	1	1	3	7	-	-	32
Ssangyong	222	10	15	14	6	9	11	6	4	3	8	-	-	86
Subaru	1.471	52	68	76	75	45	32	22	18	52	45	-	-	485
Suzuki	2.878	65	107	236	142	245	245	31	101	207	311	-	-	1.690
Toyota	3.405	47	114	132	103	103	94	42	80	116	179	-	-	1.010
Volkswagen	49.749	1.210	2.218	3.528	2.329	2.096	3.665	1.105	3.381	3.792	5.454	-	-	28.778
Volvo	5.943	231	225	334	360	300	392	210	207	372	593	-	-	3.224
GENEL TOPLAM - Grand Total	322.916	6.776	11.614	22.034	14.187	14.012	19.562	8.459	13.516	19.563	28.694	-	-	158.417

Firmalar / Firms	2018 Toplam / Total	1	2	3	4	5	6	7	8	9	10	11	12	Toplam / Total
Citroen	4.633	126	188	181	406	281	189	150	170	363	246	-	-	2.300
Dacia	3.725	53	182	296	179	136	170	67	227	201	296	-	-	1.807
Fiat	3.019	53	54	117	59	72	175	38	122	186	266	-	-	1.142
Ford	2.783	134	106	177	65	36	34	14	70	99	176	-	-	911
Hyundai	1.493	83	106	121	109	88	81	52	36	59	95	-	-	830
Isuzu	578	3	30	23	3	1	2	-	-	1	2	-	-	65
Iveco	1.598	48	54	115	109	95	134	41	57	70	128	-	-	851
Karsan	-	-	-	-	-	-	-	-	-	-	-	-	-	-
Kia	1.947	14	55	189	117	84	149	55	115	130	165	-	-	1.073
Mercedes-Benz	7.993	159	404	628	288	457	319	110	352	304	403	-	-	3.424
Mitsubishi	3.445	47	129	69	116	103	411	33	68	125	224	-	-	1.325
Nissan	1.741	82	48	150	135	26	41	8	78	39	44	-	-	651
Opel	-	-	-	43	112	41	55	71	71	111	181	-	-	685
Peugeot	5.247	197	284	819	431	379	333	295	401	535	747	-	-	4.421
Renault	8.908	180	342	741	304	191	211	168	282	398	576	-	-	3.393
Ssangyong	174	-	-	15	38	25	22	13	10	17	32	-	-	172
Toyota	3.159	55	101	91	65	71	90	45	36	70	101	-	-	725
Volkswagen	17.085	295	662	1.017	633	689	724	186	641	636	951	-	-	6.434
GENEL TOPLAM - Grand Total	67.528	1.529	2.745	4.792	3.169	2.775	3.140	1.346	2.736	3.344	4.633	-	-	30.209