



OTOMOTİV SANAYİİ DERNEĐİ  
AUTOMOTIVE MANUFACTURERS ASSOCIATION

# OTOMOTİV SEKTÖRÜ AYLIK DEĐERLENDİRME RAPORU EYLÜL 2019

AUTOMOTIVE INDUSTRY MONTHLY REPORT  
September 2019

OSD "OICA" Üyesidir @OICA OSD is a Member of "OICA"

	9 - 2018	9 - 2019	%	1 - 9 / 2018	1 - 9 / 2019	%	10/2017 - 9/2018	10/2018 - 9/2019	%
Otomobil Üretimi/P.Cars Production	86.395	90.359	4,6	769.487	700.581	-9,0	1.073.399	957.665	-10,8
Toplam Üretim/Total Production	132.931	136.236	2,5	1.167.051	1.057.384	-9,4	1.638.917	1.440.593	-12,1
Otomobil Pazarı/P.Cars Market	17.595	35.308	100,7	362.465	228.628	-36,9	608.603	352.484	-42,1
Toplam Pazar/Total Market	23.915	43.001	79,8	479.809	289.131	-39,7	819.527	450.872	-45,0
Otomobil İthalatı/P.Cars Import	12.140	19.563	61,1	241.443	129.723	-46,3	415.583	211.196	-49,2
Toplam İthalat/Total Import	15.424	23.233	50,6	296.933	157.795	-46,9	510.307	258.130	-49,4
Otomobil İhracatı/P.Cars Export	71.505	67.590	-5,5	644.783	594.086	-7,9	876.946	824.450	-6,0
Toplam İhracat/Total Export	115.092	107.106	-6,9	972.261	913.772	-6,0	1.320.581	1.260.380	-4,6
Otomobil İhracatı(\$)/P.Cars Export (\$)	985.808.850	966.477.387	-2,0	9.136.075.271	8.372.777.666	-8,4	12.283.742.410	11.657.653.460	-5,1
Toplam İhracat(\$)/Total Export (\$)*	2.659.379.547	2.658.780.546	0,0	23.916.660.201	22.991.322.521	-3,9	31.838.749.350	31.303.188.358	-1,7

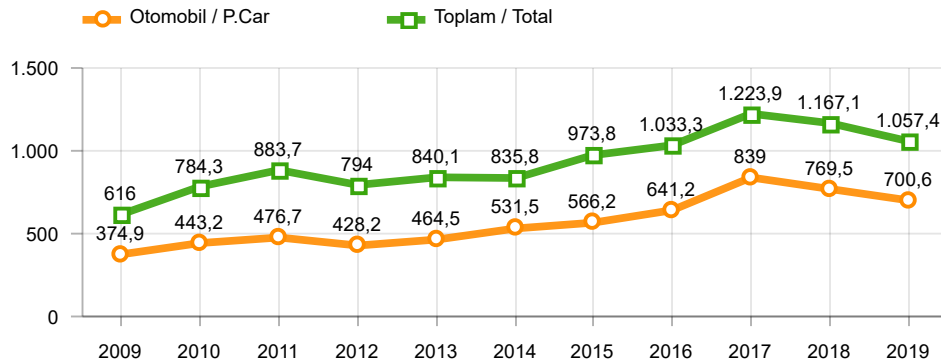
Parametreler/Parameters	9 - 2018	9 - 2019	%	1 - 9 / 2018	1 - 9 / 2019	%	10/2017 - 9/2018	10/2018 - 9/2019	%
ÜFE / PPI	10,9	0,1	-	39,0	6,5	-	21,4	26,4	-
TÜFE / CPI	6,3	1,0	-	19,4	8,4	-	13,8	18,3	-
Sanayi Endeksi / Industry Index	9,0	-0,1	-	37,2	6,1	-	22,1	24,4	-
Dolar \$ ** (1 birim)	6,3	5,7	-9,2	4,6	5,6	22,9	4,4	5,6	27,3
Euro € ** (1 birim)	7,3	6,3	-14,4	5,4	6,3	16,0	5,2	6,3	20,9
Japon Yeni ¥ ** (100 birim)	5,6	5,3	-4,9	4,1	5,1	23,8	3,9	5,0	27,9

\*Toplam Sanayi / Total Industry Including Components

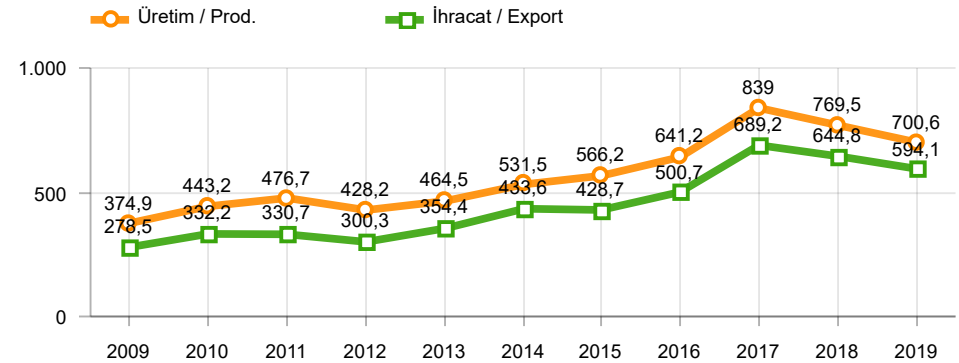
\*\* Ortalama Değerler / Average Values

Araç Tipleri / Types	9 / 2018	9 / 2019	9 % Değişim	1-9 / 2018	1-9 / 2019	1-9 % Değişim
OTOMOBİL / Pass.Car	86.395	90.359	4,6	769.487	700.581	-9,0
<b>OTOMOBİL Toplam / Pass.Car Total</b>	<b>86.395</b>	<b>90.359</b>	<b>4,6</b>	<b>769.487</b>	<b>700.581</b>	<b>-9,0</b>
B.KAMYON / H. Truck	1.993	1.724	-13,5	18.653	14.550	-22,0
K.KAMYON / L. Truck	151	170	12,6	2.214	633	-71,4
KAMYONET / Pick Up	38.197	36.540	-4,3	327.756	289.197	-11,8
OTOBÜS / Bus	631	691	9,5	6.201	6.762	9,0
MİNİBÜS / Minibus	5.315	6.531	22,9	40.012	43.943	9,8
MİDİBÜS / Midibus	249	221	-11,2	2.728	1.718	-37,0
<b>TİCARİ ARAÇLAR Toplam / Commercial Vehicles Total</b>	<b>46.536</b>	<b>45.877</b>	<b>-1,4</b>	<b>397.564</b>	<b>356.803</b>	<b>-10,3</b>
<b>TAŞIT ARAÇLARI Toplam / Motor Vehicles Total</b>	<b>132.931</b>	<b>136.236</b>	<b>2,5</b>	<b>1.167.051</b>	<b>1.057.384</b>	<b>-9,4</b>
TRAKTÖR / F.Tractor	1.845	2.668	44,6	32.676	16.478	-49,6
<b>TRAKTÖR Toplam / F.Tractor Total</b>	<b>1.845</b>	<b>2.668</b>	<b>44,6</b>	<b>32.676</b>	<b>16.478</b>	<b>-49,6</b>
<b>GENEL TOPLAM / Grand Total</b>	<b>134.776</b>	<b>138.904</b>	<b>3,1</b>	<b>1.199.727</b>	<b>1.073.862</b>	<b>-10,5</b>

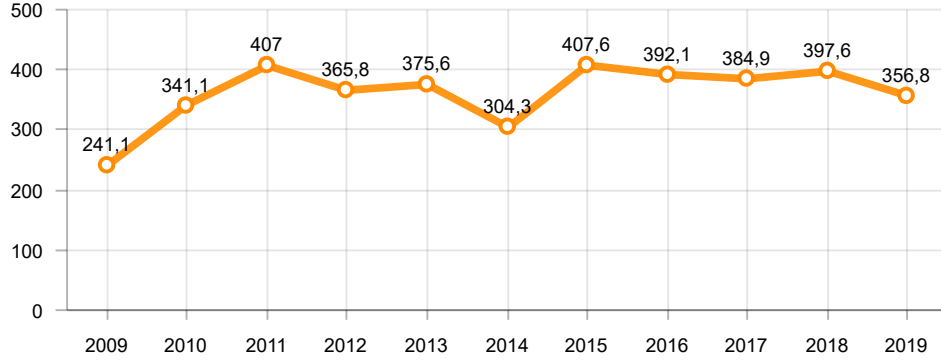
Toplam Üretim ve Otomobil Üretimi (x1000)(OCAK - EYLÜL)  
Total & P.Cars Production (x1000)(January - September)



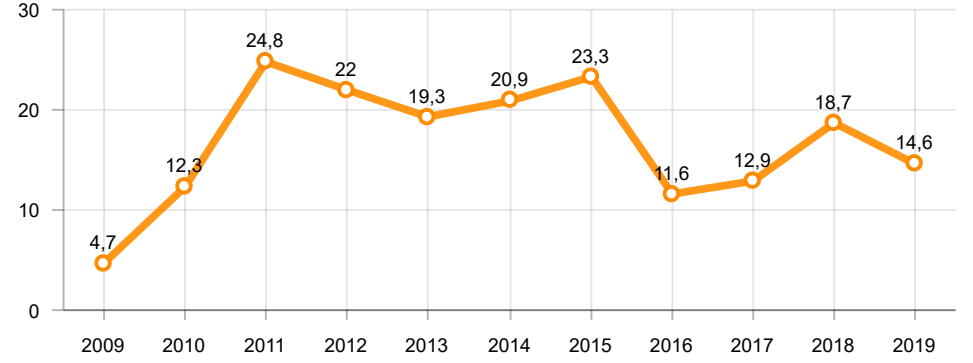
Otomobil Üretimi ve İhracat (x1000)(OCAK - EYLÜL)  
P.Cars Production & Exports (x1000)(January - September)



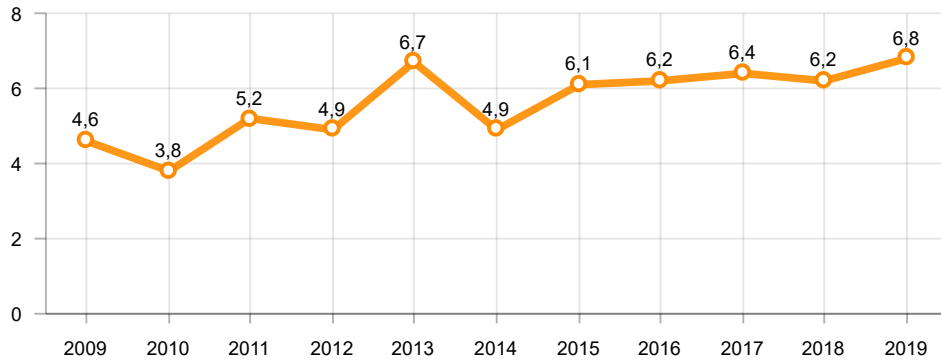
**Ticari Araç Üretimi (x1000)(OCAK - EYLÜL)**  
**Commercial Vehicle Production (x1000)(January - September)**



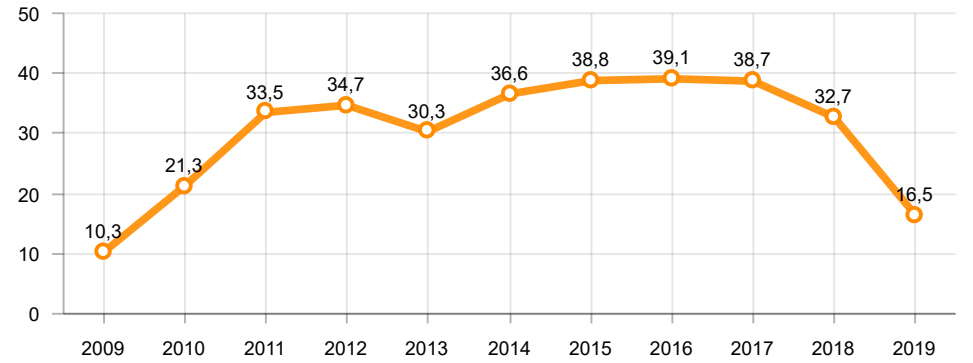
**Büyük Kamyon Üretimi (x1000)(OCAK - EYLÜL)**  
**Heavy Truck Production (x1000)(January - September)**

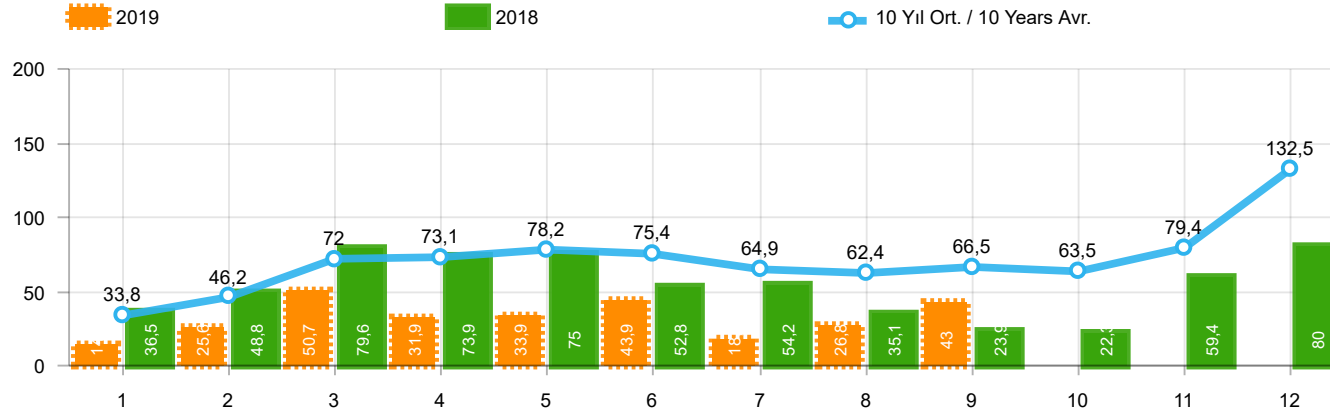


**Otobüs Üretimi (x1000)(OCAK - EYLÜL)**  
**Bus Production (x1000)(January - September)**



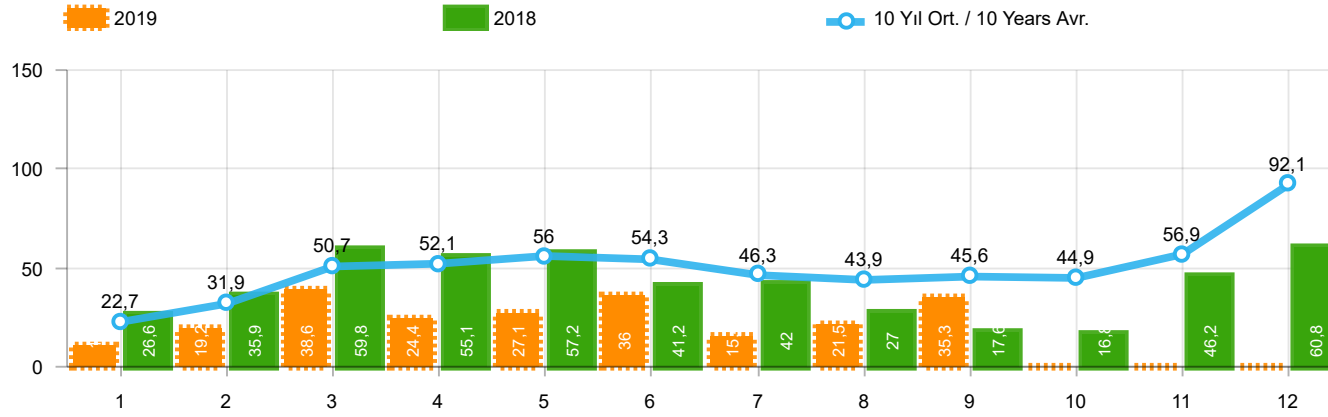
**Traktör Üretimi (x1000)(OCAK - EYLÜL)**  
**F. Tractor Production (x1000)(January - September)**





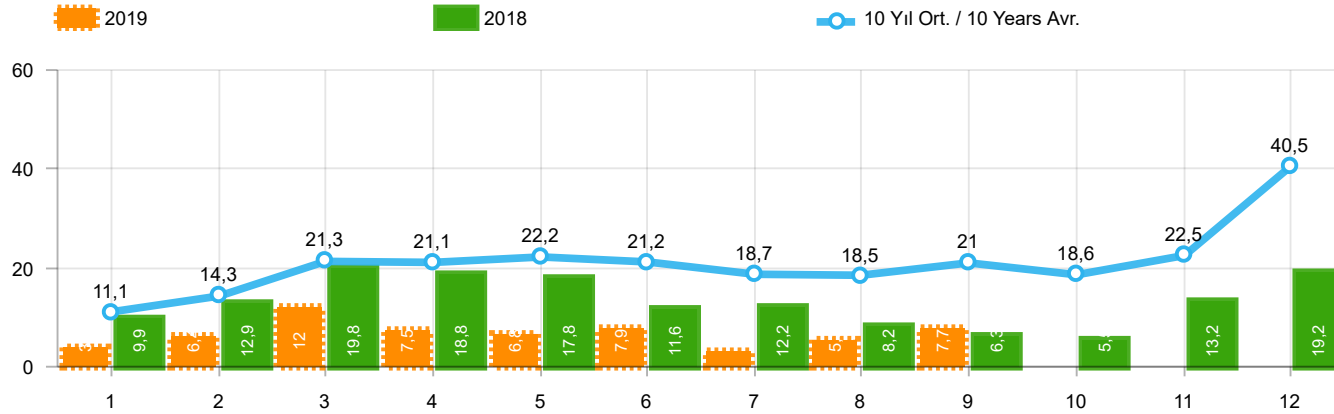
Aylar / Months	10 Yıl Ort. / 10 Years Avr.	2019	%
1	33.809	14.847	-56,1
2	46.213	25.569	-44,7
3	71.956	50.651	-29,6
4	73.144	31.944	-56,3
5	78.208	33.947	-56,6
6	75.438	43.899	-41,8
7	64.942	18.442	-71,6
8	62.444	26.831	-57,0
9	66.511	43.001	-35,3
TOPLAM / TOTAL	572.667	289.131	-49,5

Yıl / Year	1	2	3	4	5	6	7	8	9	10	11	12	1-9 Toplam / Total	Toplam / Total	1-9 Yerli / Local	1-9 İthal / Import	İthal Oran / Import %
2009	20.605	22.873	56.527	54.433	64.947	63.090	30.374	37.038	83.553	22.191	29.309	91.762	433.440	576.702	196.250	237.190	54,7
2010	21.070	32.331	54.019	57.241	61.837	63.511	64.011	64.961	67.040	76.753	77.488	155.234	486.021	795.496	204.152	281.869	58,0
2011	47.759	62.586	84.045	82.782	85.862	85.992	65.658	61.645	64.313	73.227	67.150	134.468	640.642	915.487	261.328	379.314	59,2
2012	31.552	44.138	69.242	66.559	75.195	75.108	65.444	60.982	73.501	62.933	75.203	121.442	561.721	821.299	212.373	349.348	62,2
2013	37.563	51.133	72.943	77.265	85.835	78.043	75.152	67.662	71.388	60.690	83.470	136.048	616.984	897.192	192.121	424.863	68,9
2014	34.751	37.659	51.312	57.113	62.447	64.295	62.770	63.303	70.764	69.742	84.368	154.843	504.414	813.367	171.815	332.599	65,9
2015	37.256	59.221	89.765	96.182	85.804	91.071	87.358	85.244	67.181	67.086	88.431	164.464	699.082	1.019.063	242.089	456.993	65,4
2016	34.369	54.840	85.932	87.748	97.090	94.666	59.732	73.654	69.413	85.666	125.462	145.706	657.444	1.014.278	211.443	446.001	67,8
2017	36.640	48.585	76.178	78.231	88.066	85.820	84.727	74.818	74.046	94.439	103.772	141.507	647.111	986.829	235.998	411.113	63,5
2018	36.525	48.768	79.600	73.886	74.996	52.788	54.194	35.137	23.915	22.321	59.406	80.014	479.809	641.550	182.876	296.933	61,9
2019	14.847	25.569	50.651	31.944	33.947	43.899	18.442	26.831	43.001				289.131	289.131	131.336	157.795	54,6



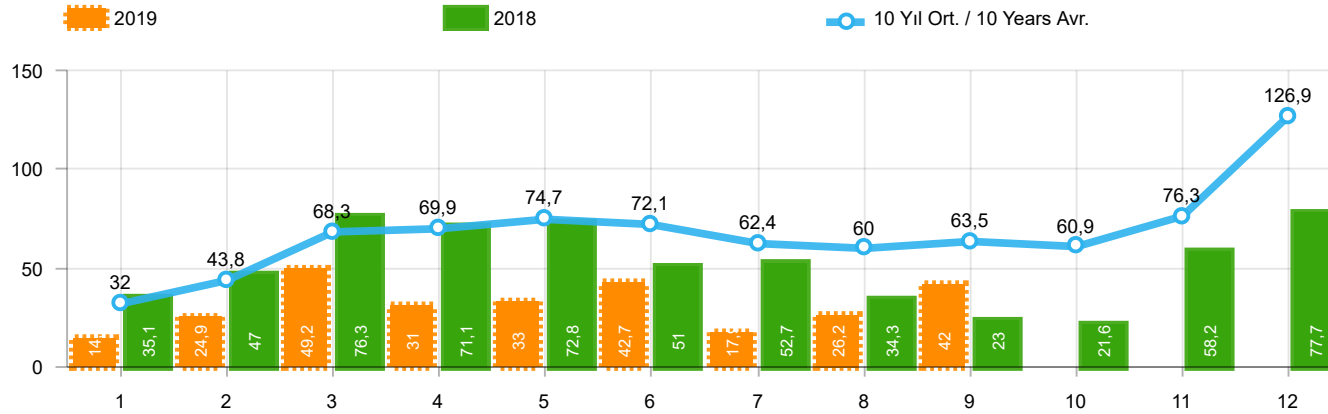
Aylar / Months	10 Yıl Ort. / 10 Years Avr.	2019	%
1	22.707	10.979	-51,6
2	31.928	19.205	-39,8
3	50.654	38.628	-23,7
4	52.093	24.416	-53,1
5	55.992	27.126	-51,6
6	54.250	36.024	-33,6
7	46.259	15.398	-66,7
8	43.921	21.544	-50,9
9	45.560	35.308	-22,5
TOPLAM / TOTAL	403.363	228.628	-43,3

Yıl / Year	1	2	3	4	5	6	7	8	9	10	11	12	1-9 Toplam / Total	Toplam / Total	1-9 Yerli / Local	1-9 İthal / Import	İthal Oran / Import %
2009	13.173	14.492	40.622	36.202	44.188	41.019	16.637	22.537	52.162	13.828	17.781	57.178	281.032	369.819	94.733	186.299	66,3
2010	12.594	20.651	33.958	36.549	40.467	42.086	41.399	42.222	42.477	47.859	50.061	99.461	312.403	509.784	96.921	215.482	69,0
2011	29.868	39.004	54.023	53.835	56.302	56.714	43.518	38.875	39.964	47.508	44.951	88.957	412.103	593.519	128.497	283.606	68,8
2012	21.077	29.189	47.270	45.645	50.460	50.849	44.531	41.236	49.360	43.440	52.297	80.926	379.617	556.280	103.676	275.941	72,7
2013	25.835	36.814	51.785	56.999	62.383	58.290	55.712	51.611	52.925	46.985	64.117	101.199	452.354	664.655	99.279	353.075	78,1
2014	24.368	27.167	37.812	42.769	46.379	47.278	46.602	45.131	49.262	50.814	59.695	110.054	366.768	587.331	94.199	272.569	74,3
2015	24.498	40.817	61.676	70.211	62.878	67.766	64.218	61.753	47.088	47.954	62.397	114.340	500.905	725.596	126.854	374.051	74,7
2016	23.358	40.588	63.975	65.618	73.832	71.111	45.566	53.977	51.340	63.746	95.783	108.044	489.365	756.938	118.694	370.671	75,7
2017	25.689	34.658	55.616	57.998	65.799	66.164	62.384	54.890	53.423	70.488	75.956	99.694	476.621	722.759	144.793	331.828	69,6
2018	26.611	35.901	59.798	55.108	57.227	41.225	42.024	26.976	17.595	16.809	46.204	60.843	362.465	486.321	121.022	241.443	66,6
2019	10.979	19.205	38.628	24.416	27.126	36.024	15.398	21.544	35.308				228.628	228.628	98.905	129.723	56,7



Aylar / Months	10 Yıl Ort / 10 Years Avr.	2019	%
1	11.102	3.868	-65,2
2	14.285	6.364	-55,5
3	21.303	12.023	-43,6
4	21.051	7.528	-64,2
5	22.216	6.821	-69,3
6	21.188	7.875	-62,8
7	18.683	3.044	-83,7
8	18.524	5.287	-71,5
9	20.952	7.693	-63,3
TOPLAM / TOTAL	169.304	60.503	-64,3

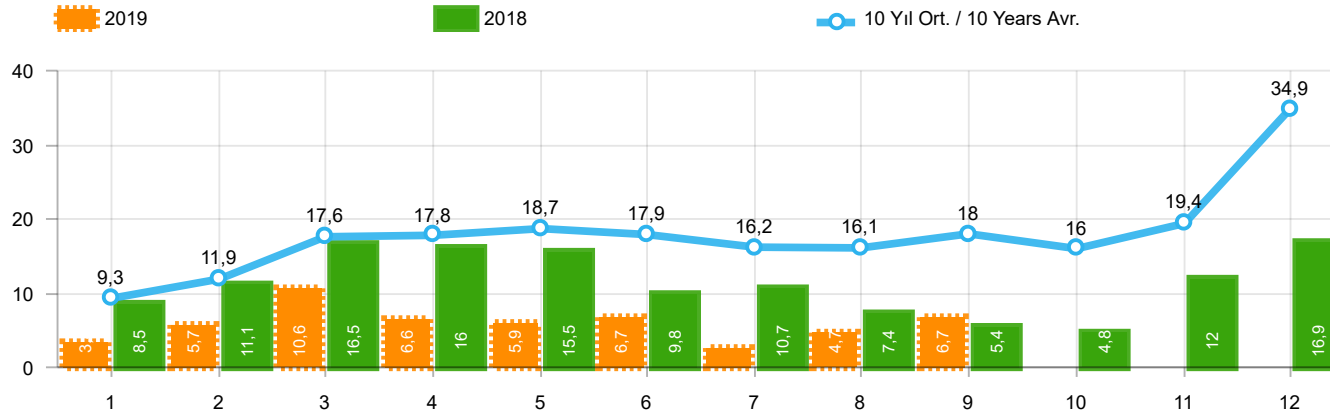
Yıl / Year	1	2	3	4	5	6	7	8	9	10	11	12	1-9 Toplam / Total	Toplam / Total	1-9 Yerli / Local	1-9 İthal / Import	İthal Oran / Import %
2009	7.432	8.381	15.905	18.231	20.759	22.071	13.737	14.501	31.391	8.363	11.528	34.584	152.408	206.883	101.517	50.891	33,4
2010	8.476	11.680	20.061	20.692	21.370	21.425	22.612	22.739	24.563	28.894	27.427	55.773	173.618	285.712	107.231	66.387	38,2
2011	17.891	23.582	30.022	28.947	29.560	29.278	22.140	22.770	24.349	25.719	22.199	45.511	228.539	321.968	132.831	95.708	41,9
2012	10.475	14.949	21.972	20.914	24.735	24.259	20.913	19.746	24.141	19.493	22.906	40.516	182.104	265.019	108.697	73.407	40,3
2013	11.728	14.319	21.158	20.266	23.452	19.753	19.440	16.051	18.463	13.705	19.353	34.849	164.630	232.537	92.842	71.788	43,6
2014	10.383	10.492	13.500	14.344	16.068	17.017	16.168	18.172	21.502	18.928	24.673	44.789	137.646	226.036	77.616	60.030	43,6
2015	12.758	18.404	28.089	25.971	22.926	23.305	23.140	23.491	20.093	19.132	26.034	50.124	198.177	293.467	115.235	82.942	41,9
2016	11.011	14.252	21.957	22.130	23.258	23.555	14.166	19.677	18.073	21.920	29.679	37.662	168.079	257.340	92.749	75.330	44,8
2017	10.951	13.927	20.562	20.233	22.267	19.656	22.343	19.928	20.623	23.951	27.816	41.813	170.490	264.070	91.205	79.285	46,5
2018	9.914	12.867	19.802	18.778	17.769	11.563	12.170	8.161	6.320	5.512	13.202	19.171	117.344	155.229	61.854	55.490	47,3
2019	3.868	6.364	12.023	7.528	6.821	7.875	3.044	5.287	7.693				60.503	60.503	32.431	28.072	46,4



Aylar / Months	10 Yıl Ort. / 10 Years Avr.	2019	%
1	32.006	14.373	-55,1
2	43.836	24.875	-43,3
3	68.292	49.221	-27,9
4	69.871	30.971	-55,7
5	74.729	33.016	-55,8
6	72.126	42.688	-40,8
7	62.444	17.927	-71,3
8	60.018	26.246	-56,3
9	63.546	41.992	-33,9
TOPLAM / TOTAL	546.868	281.309	-48,6

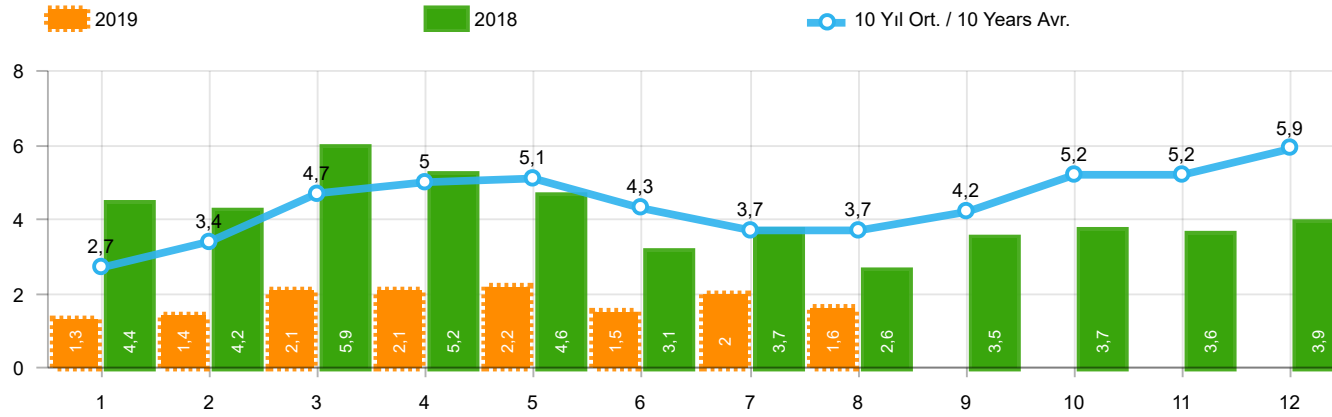
Yıl / Year	1	2	3	4	5	6	7	8	9	10	11	12	1-9 Toplam / Total	Toplam / Total	1-9 Yerli / Local	1-9 İthal / Import	İthal Oran / Import %
2009	19.606	21.742	55.111	52.640	63.191	61.067	28.845	35.609	81.397	21.033	27.962	88.923	419.208	557.126	184.560	234.648	56,0
2010	20.095	31.172	51.769	54.946	59.377	60.896	61.345	61.764	63.814	73.404	73.962	148.369	465.178	760.913	188.639	276.539	59,4
2011	44.892	58.663	78.403	77.695	80.646	81.573	63.044	58.406	60.129	69.421	63.657	127.910	603.451	864.439	235.848	367.603	60,9
2012	29.545	41.324	64.884	62.949	70.863	71.067	62.304	58.148	69.629	59.938	71.710	115.400	530.713	777.761	189.886	340.827	64,2
2013	35.523	48.307	68.774	73.575	81.468	74.096	71.596	65.043	67.963	58.014	79.301	129.718	586.345	853.378	168.578	417.767	71,2
2014	32.670	35.021	47.581	53.305	58.121	60.163	59.907	60.199	66.531	66.573	80.621	146.989	473.498	767.681	148.365	325.133	68,7
2015	34.615	55.331	83.302	91.602	81.542	86.158	83.836	82.577	64.025	64.255	84.601	156.173	662.988	968.017	215.385	447.603	67,5
2016	32.713	52.825	82.948	84.887	93.904	91.540	58.533	71.556	67.593	83.000	122.309	141.912	636.499	983.720	195.860	440.639	69,2
2017	35.323	46.965	73.802	75.988	85.422	83.658	82.297	72.536	71.352	91.752	100.859	136.240	627.343	956.194	221.520	405.823	64,7
2018	35.076	47.009	76.345	71.126	72.755	51.037	52.734	34.346	23.028	21.571	58.204	77.706	463.456	620.937	172.004	291.452	62,9
2019	14.373	24.875	49.221	30.971	33.016	42.688	17.927	26.246	41.992				281.309	281.309	126.010	155.299	55,2





Aylar / Months	10 Yıl Ort / 10 Years Avr.	2019	%
1	9.299	3.394	-63,5
2	11.908	5.670	-52,4
3	17.638	10.593	-39,9
4	17.778	6.555	-63,1
5	18.737	5.890	-68,6
6	17.875	6.664	-62,7
7	16.185	2.529	-84,4
8	16.098	4.702	-70,8
9	17.987	6.684	-62,8
TOPLAM / TOTAL	143.505	52.681	-63,3

Yıl / Year	1	2	3	4	5	6	7	8	9	10	11	12	1-9 Toplam / Total	Toplam / Total	1-9 Yerli / Local	1-9 İthal / Import	İthal Oran / Import %
2009	6.433	7.250	14.489	16.438	19.003	20.048	12.208	13.072	29.235	7.205	10.181	31.745	138.176	187.307	89.827	48.349	35,0
2010	7.501	10.521	17.811	18.397	18.910	18.810	19.946	19.542	21.337	25.545	23.901	48.908	152.775	251.129	91.718	61.057	40,0
2011	15.024	19.659	24.380	23.860	24.344	24.859	19.526	19.531	20.165	21.913	18.706	38.953	191.348	270.920	107.351	83.997	43,9
2012	8.468	12.135	17.614	17.304	20.403	20.218	17.773	16.912	20.269	16.498	19.413	34.474	151.096	221.481	86.210	64.886	42,9
2013	9.688	11.493	16.989	16.576	19.085	15.806	15.884	13.432	15.038	11.029	15.184	28.519	133.991	188.723	69.299	64.692	48,3
2014	8.302	7.854	9.769	10.536	11.742	12.885	13.305	15.068	17.269	15.759	20.926	36.935	106.730	180.350	54.166	52.564	49,2
2015	10.117	14.514	21.626	21.391	18.664	18.392	19.618	20.824	16.937	16.301	22.204	41.833	162.083	242.421	88.531	73.552	45,4
2016	9.355	12.237	18.973	19.269	20.072	20.429	12.967	17.579	16.253	19.254	26.526	33.868	147.134	226.782	77.166	69.968	47,6
2017	9.634	12.307	18.186	17.990	19.623	17.494	19.913	17.646	17.929	21.264	24.903	36.546	150.722	233.435	76.727	73.995	49,1
2018	8.465	11.108	16.547	16.018	15.528	9.812	10.710	7.370	5.433	4.762	12.000	16.863	100.991	134.616	50.982	50.009	49,5
2019	3.394	5.670	10.593	6.555	5.890	6.664	2.529	4.702	6.684				52.681	52.681	27.105	25.576	48,5



Aylar / Months	10 Yıl Ort. / 10 Years Avr.	2019	%
1	2.669	1.311	-50,9
2	3.359	1.401	-58,3
3	4.700	2.143	-54,4
4	5.046	2.126	-57,9
5	5.116	2.229	-56,4
6	4.276	1.538	-64,0
7	3.736	2.039	-45,4
8	3.690	1.620	-56,1
TOPLAM / TOTAL	32.592	14.407	-55,8

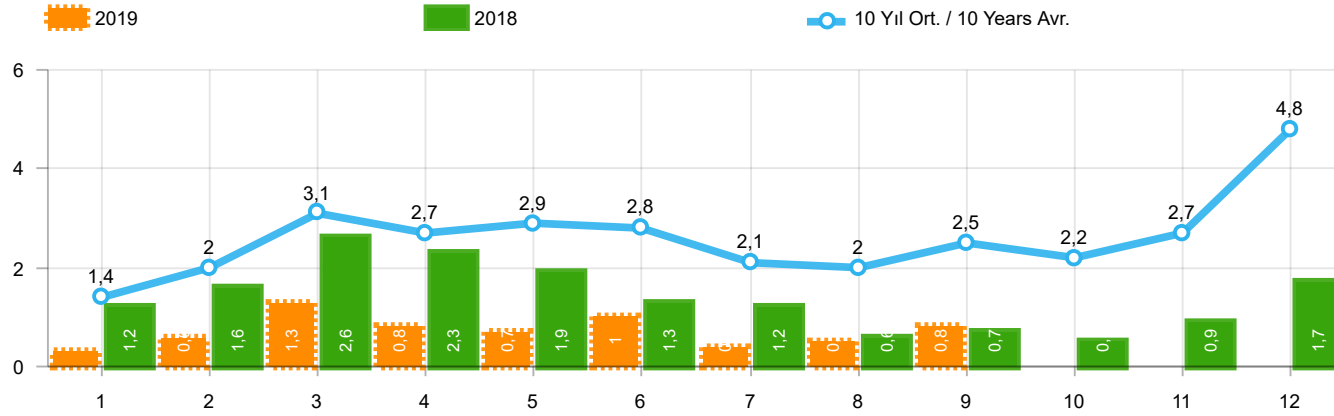
Yıl / Year	1	2	3	4	5	6	7	8	9	10	11	12	1-8 Toplam / Total	Toplam / Total
2009	717	572	688	1.070	1.297	1.256	1.054	1.183	1.117	1.356	1.304	2.144	7.837	13.758
2010	1.111	1.991	2.330	3.039	2.567	2.638	1.965	3.019	2.806	4.424	3.978	6.168	18.660	36.036
2011	2.975	5.242	5.927	5.358	6.016	6.335	4.534	4.051	4.140	5.828	4.943	4.992	40.438	60.341
2012	2.362	1.983	4.348	6.579	6.273	4.569	3.837	3.158	3.618	4.027	4.807	4.757	33.109	50.318
2013	2.161	2.432	4.005	4.585	5.616	3.136	4.574	3.408	4.935	4.762	5.781	6.891	29.917	52.286
2014	2.169	3.512	4.476	4.905	5.094	5.028	4.233	4.920	5.619	5.743	6.250	7.409	34.337	59.358
2015	3.124	3.984	5.460	6.383	6.078	5.748	4.677	5.044	4.765	7.049	6.898	7.564	40.498	66.774
2016	3.739	4.731	7.067	6.546	6.575	5.543	3.833	5.134	4.945	7.372	7.090	7.603	43.168	70.178
2017	3.974	4.964	6.773	6.780	7.057	5.356	5.003	4.396	6.064	7.734	7.457	7.351	44.303	72.909
2018	4.362	4.179	5.925	5.216	4.584	3.146	3.654	2.587	3.541	3.698	3.578	3.886	33.653	48.356
2019	1.311	1.401	2.143	2.126	2.229	1.538	2.039	1.620					14.407	14.407

Kaynak: TÜİK trafik kayıtları.

Rakamlar, son iki model yılına ait traktör tescillerinden oluşmaktadır.

Source: Turkish Statistical Institute – Traffic registrations

Data represents the last two model year's farm tractors registration figures

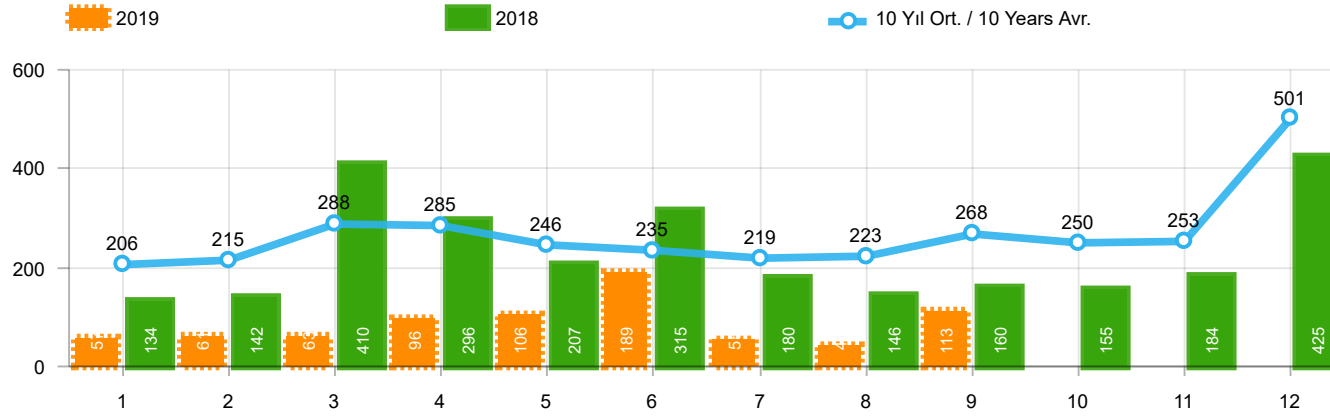


Aylar / Months	10 Yıl Ort / 10 Years Avr.	2019	%
1	1.446	342	-76,3
2	1.974	579	-70,7
3	3.128	1.255	-59,9
4	2.746	842	-69,3
5	2.944	728	-75,3
6	2.831	981	-65,3
7	2.115	435	-79,4
8	2.042	497	-75,7
9	2.545	832	-67,3
TOPLAM / TOTAL	21.770	6.491	-70,2

Yıl / Year	1	2	3	4	5	6	7	8	9	10	11	12	1-9 Toplam / Total	Toplam / Total	1-9 Yerli / Local	1-9 İthal / Import	İthal Oran / Import %
2009	782	763	1.062	1.381	1.426	1.649	1.261	1.164	1.862	963	1.047	2.368	11.350	15.728	8.848	2.502	22,0
2010	768	960	1.950	1.949	2.140	2.314	2.403	2.754	2.864	3.001	3.231	6.158	18.102	30.492	12.829	5.273	29,1
2011	2.651	3.544	5.142	4.503	4.563	3.852	2.261	2.745	3.784	3.400	3.149	5.712	33.045	45.306	21.418	11.627	35,2
2012	1.703	2.454	3.866	3.209	3.678	3.540	2.750	2.403	3.296	2.497	3.154	5.300	26.899	37.850	18.410	8.489	31,6
2013	1.484	2.113	3.343	2.925	3.504	3.186	2.777	2.103	2.875	2.086	3.631	5.444	24.310	35.471	17.241	7.069	29,1
2014	1.522	2.065	3.094	3.224	3.727	3.726	2.578	2.783	3.708	2.858	3.384	6.869	26.427	39.538	19.114	7.313	27,7
2015	2.215	3.346	5.699	3.729	3.600	4.253	2.922	2.211	2.687	2.266	3.146	7.307	30.662	43.381	21.341	9.321	30,4
2016	1.167	1.648	2.515	2.319	2.711	2.623	984	1.796	1.438	2.238	2.485	3.127	17.201	25.051	11.870	5.331	31,0
2017	931	1.290	1.982	1.888	2.184	1.891	1.974	1.860	2.284	2.188	2.487	4.438	16.284	25.397	11.008	5.276	32,4
2018	1.237	1.552	2.630	2.328	1.909	1.272	1.235	603	653	488	905	1.695	13.419	16.507	7.949	5.470	40,8
2019	342	579	1.255	842	728	981	435	497	832				6.491	6.491	3.995	2.496	38,5

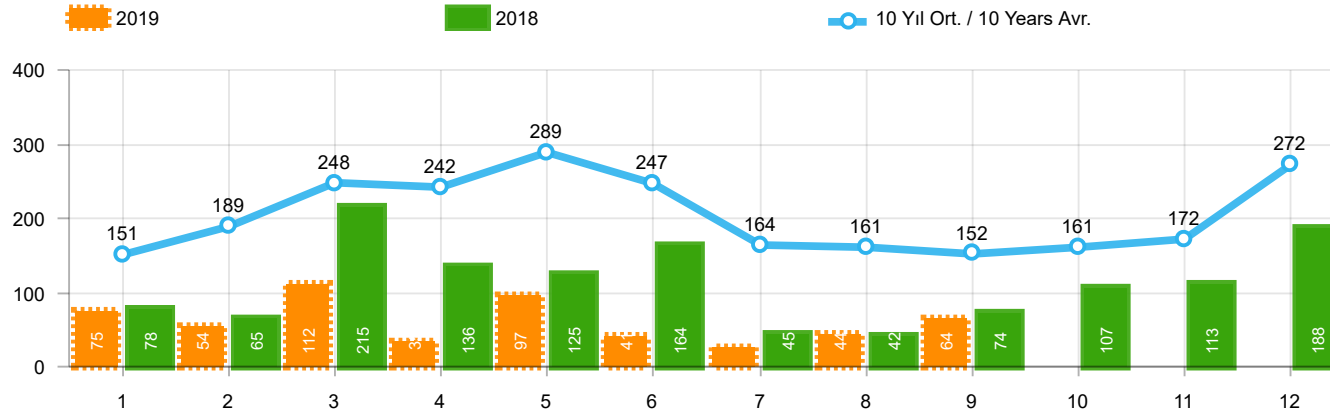
Kaynak: OSD, TAİD, TÜİK

Herhangi bir Dernek üyeliği olmayan markalara ilişkin satış verisi için TÜİK trafik kayıtları esas alınmaktadır. TÜİK trafik kayıtlarının bir ay gecikmeli yayınlanması nedeniyle ilgili markalara ilişkin son ayın satış verisi bir önceki ay ile aynı kabul edilmekte ve bir sonraki ay gerçekleşen veri ile güncellenmektedir.



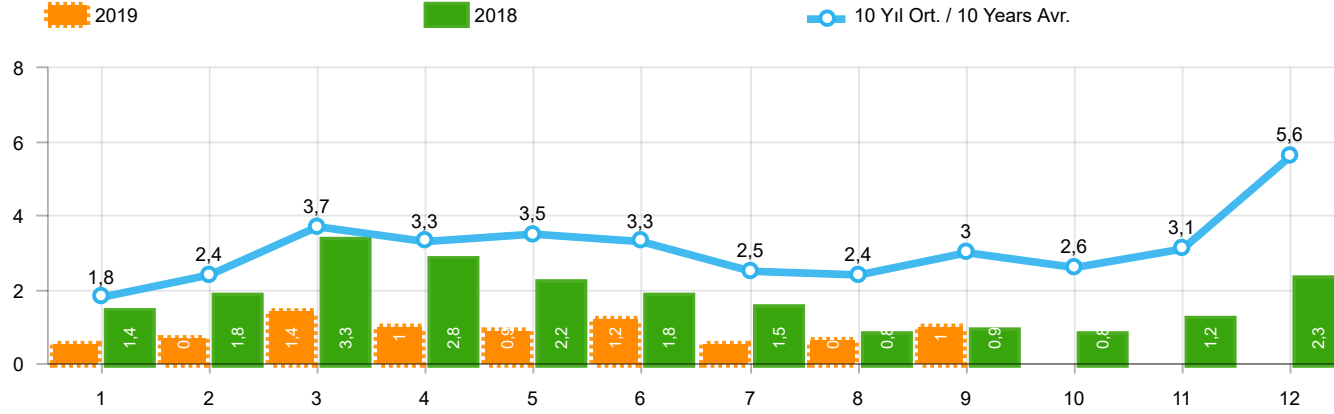
Aylar / Months	10 Yıl Ort. / 10 Years Avr.	2019	%
1	206	57	-72,4
2	215	61	-71,6
3	288	63	-78,1
4	285	96	-66,3
5	246	106	-56,9
6	235	189	-19,6
7	219	55	-74,9
8	223	44	-80,2
9	268	113	-57,9
TOPLAM / TOTAL	2.185	784	-64,1

Yıl / Year	1	2	3	4	5	6	7	8	9	10	11	12	1-9 Toplam / Total	Toplam / Total
2009	133	103	153	210	145	183	138	146	152	134	150	280	1.363	1.927
2010	140	128	172	153	127	124	93	232	199	204	162	382	1.368	2.116
2011	124	167	267	260	241	233	205	280	270	230	168	525	2.047	2.970
2012	179	257	277	229	257	239	216	249	325	269	189	398	2.228	3.084
2013	191	268	289	276	283	241	367	235	305	392	415	697	2.455	3.959
2014	360	394	384	333	294	258	216	229	395	220	266	653	2.863	4.002
2015	280	322	451	561	372	405	389	253	316	394	325	621	3.349	4.689
2016	309	158	251	302	261	196	139	220	241	230	354	431	2.077	3.092
2017	212	211	227	231	272	156	250	235	318	268	317	594	2.112	3.291
2018	134	142	410	296	207	315	180	146	160	155	184	425	1.990	2.754
2019	57	61	63	96	106	189	55	44	113				784	784



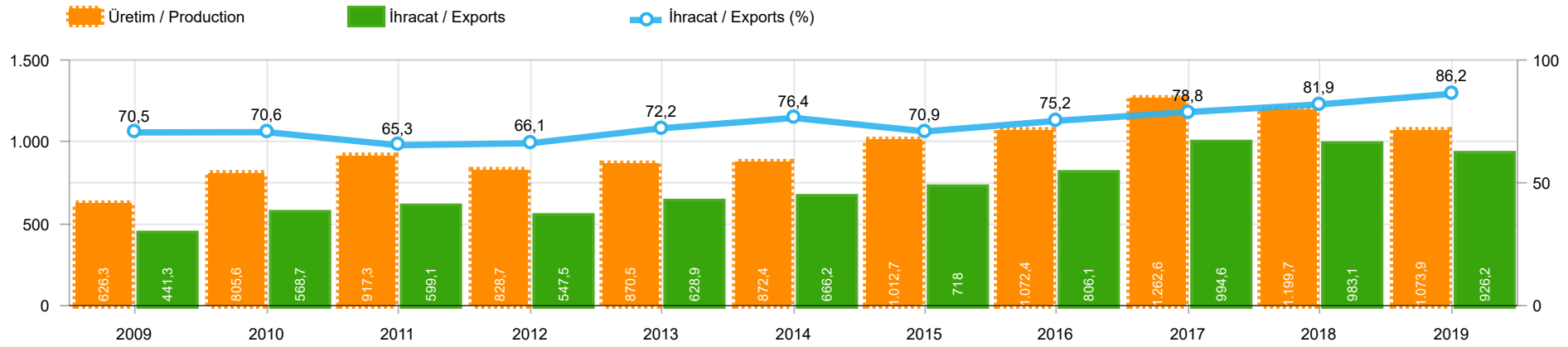
Aylar / Months	10 Yıl Ort. / 10 Years Avr.	2019	%
1	151	75	-50,3
2	189	54	-71,4
3	248	112	-54,8
4	242	35	-85,5
5	289	97	-66,4
6	247	41	-83,4
7	164	25	-84,8
8	161	44	-72,7
9	152	64	-57,9
TOPLAM / TOTAL	1.844	547	-70,3

Yıl / Year	1	2	3	4	5	6	7	8	9	10	11	12	1-9 Toplam / Total	Toplam / Total	1-9 Yerli / Local	1-9 İthal / Import	İthal Oran / Import %
2009	84	265	201	202	185	191	130	119	142	61	150	191	1.519	1.921	1.479	40	2,6
2010	67	71	128	193	193	177	170	211	163	144	133	325	1.373	1.975	1.316	57	4,2
2011	92	212	233	324	412	334	148	214	130	176	176	321	2.099	2.772	2.015	84	4,0
2012	125	103	215	172	397	262	174	182	251	229	150	344	1.881	2.604	1.849	32	1,7
2013	365	445	537	489	580	520	412	281	245	198	123	189	3.874	4.384	3.847	27	0,7
2014	199	179	253	251	305	148	69	92	130	91	97	332	1.626	2.146	1.473	153	9,4
2015	146	222	313	290	290	255	211	203	153	171	359	363	2.083	2.976	2.014	69	3,3
2016	180	209	218	240	214	307	76	82	141	198	314	236	1.667	2.415	1.636	31	1,9
2017	174	119	167	124	188	115	206	187	92	231	109	235	1.372	1.947	1.358	14	1,0
2018	78	65	215	136	125	164	45	42	74	107	113	188	944	1.352	933	11	1,2
2019	75	54	112	35	97	41	25	44	64				547	547	547	-	-



Aylar / Months	10 Yıl Ort. / 10 Years Avr.	2019	%
1	1.803	474	-73,7
2	2.378	694	-70,8
3	3.664	1.430	-61,0
4	3.273	973	-70,3
5	3.479	931	-73,2
6	3.313	1.211	-63,4
7	2.498	515	-79,4
8	2.426	585	-75,9
9	2.965	1.009	-66,0
TOPLAM / TOTAL	25.799	7.822	-69,7

Yıl / Year	1	2	3	4	5	6	7	8	9	10	11	12	1-9 Toplam / Total	Toplam / Total	1-9 Yerli / Local	1-9 İthal / Import	İthal Oran / Import %
2009	999	1.131	1.416	1.793	1.756	2.023	1.529	1.429	2.156	1.158	1.347	2.839	14.232	19.576	11.690	2.542	17,9
2010	975	1.159	2.250	2.295	2.460	2.615	2.666	3.197	3.226	3.349	3.526	6.865	20.843	34.583	15.513	5.330	25,6
2011	2.867	3.923	5.642	5.087	5.216	4.419	2.614	3.239	4.184	3.806	3.493	6.558	37.191	51.048	25.480	11.711	31,5
2012	2.007	2.814	4.358	3.610	4.332	4.041	3.140	2.834	3.872	2.995	3.493	6.042	31.008	43.538	22.487	8.521	27,5
2013	2.040	2.826	4.169	3.690	4.367	3.947	3.556	2.619	3.425	2.676	4.169	6.330	30.639	43.814	23.543	7.096	23,2
2014	2.081	2.638	3.731	3.808	4.326	4.132	2.863	3.104	4.233	3.169	3.747	7.854	30.916	45.686	23.450	7.466	24,1
2015	2.641	3.890	6.463	4.580	4.262	4.913	3.522	2.667	3.156	2.831	3.830	8.291	36.094	51.046	26.704	9.390	26,0
2016	1.656	2.015	2.984	2.861	3.186	3.126	1.199	2.098	1.820	2.666	3.153	3.794	20.945	30.558	15.583	5.362	25,6
2017	1.317	1.620	2.376	2.243	2.644	2.162	2.430	2.282	2.694	2.687	2.913	5.267	19.768	30.635	14.478	5.290	26,8
2018	1.449	1.759	3.255	2.760	2.241	1.751	1.460	791	887	750	1.202	2.308	16.353	20.613	10.872	5.481	33,5
2019	474	694	1.430	973	931	1.211	515	585	1.009				7.822	7.822	5.326	2.496	31,9



	2009	2010	2011	2012	2013	2014	2015	2016	2017	2018	2019
<b>İhracat/Export</b>	441.342	568.732	599.091	547.510	628.879	666.234	717.999	806.075	994.640	983.085	926.183
<b>Üretim/Production</b>	626.265	805.608	917.275	828.668	870.469	872.431	1.012.671	1.072.419	1.262.599	1.199.727	1.073.862
<b>İhracat/Exports (%)</b>	70,5	70,6	65,3	66,1	72,2	76,4	70,9	75,2	78,8	81,9	86,2

**Taşıt Araçları İhracatı (2017 - 2019)**  
Motor Vehicle Exports (2017 - 2019)

SEKTÖR / SECTOR	2017	2018	1/9-2018	1/9-2019	2019/2018 %
OTOMOBİL / Pass.Car	921.354	875.147	644.783	594.086	-7,9
<b>OTOMOBİL TOPLAM / Pass. Car Total</b>	<b>921.354</b>	<b>875.147</b>	<b>644.783</b>	<b>594.086</b>	<b>-7,9</b>
KAMYON / Truck	7.800	14.478	10.195	12.854	26,1
KAMYONET / Pick Up	350.108	372.954	278.901	262.853	-5,8
OTOBÜS / Bus	7.028	7.708	5.355	6.647	24,1
MİNİBÜS / Minibus	45.794	47.736	32.450	36.430	12,3
MİDİBÜS / Midibus	710	846	577	902	56,3
<b>TİCARİ ARAÇLAR TOPLAM / Commercial Vehicle Total</b>	<b>411.440</b>	<b>443.722</b>	<b>327.478</b>	<b>319.686</b>	<b>-2,4</b>
<b>TAŞIT ARAÇLARI TOPLAM / Motor Vehicles Total</b>	<b>1.332.794</b>	<b>1.318.869</b>	<b>972.261</b>	<b>913.772</b>	<b>-6,0</b>
TRAKTÖR / F.Tractor	13.123	15.123	10.824	12.411	14,7
<b>TRAKTÖR TOPLAM / F.Tractor Total</b>	<b>13.123</b>	<b>15.123</b>	<b>10.824</b>	<b>12.411</b>	<b>14,7</b>
<b>GENEL TOPLAM / GRAND TOTAL</b>	<b>1.345.917</b>	<b>1.333.992</b>	<b>983.085</b>	<b>926.183</b>	<b>-5,8</b>

**Üretici Bazında İhracat (adet)**  
Exports by Manufacturer (unit)

Üreticiler / Manufacturers	2017	2018	1-9 / 2018	1-9 / 2019
A.I.O.S.	700	964	604	1.086
FORD OTOSAN	296.840	328.502	238.140	247.205
HATTAT TRAKTÖR	1.100	621	502	506
HONDA TÜRKİYE	9.391	13.699	11.305	5.883
HYUNDAI ASSAN	204.382	190.347	139.661	121.427
KARSAN	2.969	3.419	2.552	1.427
M. BENZ TÜRK	9.865	16.309	11.727	14.093
MAN TÜRKİYE	2.007	2.425	1.761	2.099
OTOKAR	691	901	484	915
OYAK RENAULT	287.915	280.411	199.722	203.948
TEMSA	870	645	353	474
TOFAŞ	270.698	243.796	193.011	150.317
TOYOTA	246.466	237.451	172.941	164.898
TÜRK TRAKTÖR	12.023	14.502	10.322	11.905
<b>GENEL TOPLAM / Grand Total</b>	<b>1.345.917</b>	<b>1.333.992</b>	<b>983.085</b>	<b>926.183</b>



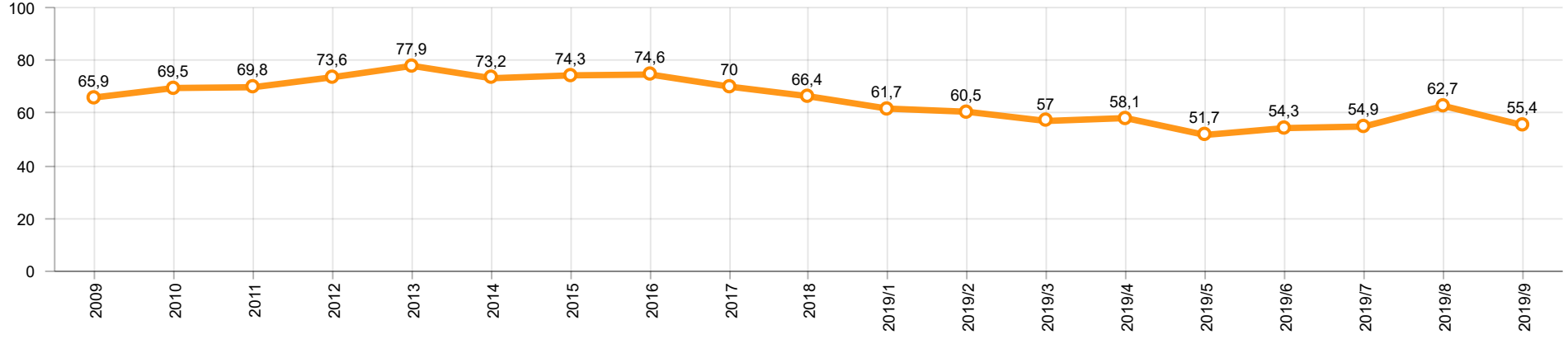
**Otomotiv Ana ve Yan Sanayii İhracatı (ABD \$)**  
CBU and CKD Exports - \$

Sektör / Sector	2017	2018	OCAK - EYLÜL / January - September 2018	OCAK - EYLÜL / January - September 2019	2019 / 2018 %
<b>Toplam Yan Sanayi / Total Component Industry</b>	<b>9.835.914.658</b>	<b>10.881.562.512</b>	<b>8.256.467.204</b>	<b>7.932.677.235</b>	<b>-3,9</b>
İç ve Dış Lastik / Tyres	1.131.782.300	1.353.896.118	1.035.186.457	1.130.728.322	9,2
Emniyet Camı / Safety Glasses	136.486.099	151.148.689	114.492.461	109.929.117	-4,0
Motor / Engine	486.426.738	581.983.113	448.724.822	384.643.169	-14,3
Akümülatör / Batteries	295.794.286	388.107.835	265.427.510	283.392.527	6,8
Diğer Aksam ve Parça / Spare Parts&Components	7.785.425.235	8.406.426.757	6.392.635.954	6.023.984.100	-5,8
<b>Toplam Ana Sanayi / Total Vehicle Industry</b>	<b>19.257.086.833</b>	<b>21.350.315.330</b>	<b>15.660.192.997</b>	<b>15.058.645.286</b>	<b>-3,8</b>
Otobüs / Bus	1.308.249.224	1.503.188.826	1.036.811.766	1.292.648.420	24,7
Midibüs-Minibüs / Midibus-Minibus	217.704.499	215.450.022	161.573.365	149.059.305	-7,7
Otomobil / P.Cars	11.790.577.760	12.420.951.066	9.136.075.271	8.372.777.666	-8,4
Kamyon-Kamyonet / Truck-Pick Up&Van	4.849.022.718	5.376.446.529	4.032.896.952	3.759.563.897	-6,8
Römork ve Yarı Römork / Trailer-Semi Trailer	342.793.231	507.186.149	358.599.946	390.396.159	8,9
Çekici / Tractor	427.928.256	904.738.051	646.458.972	750.034.623	16,0
Tarım Traktörü / Farm Tractor	320.811.145	422.354.687	287.776.725	344.165.216	19,6
<b>Toplam / Total</b>	<b>29.093.001.491</b>	<b>32.231.877.842</b>	<b>23.916.660.201</b>	<b>22.991.322.521</b>	<b>-3,9</b>

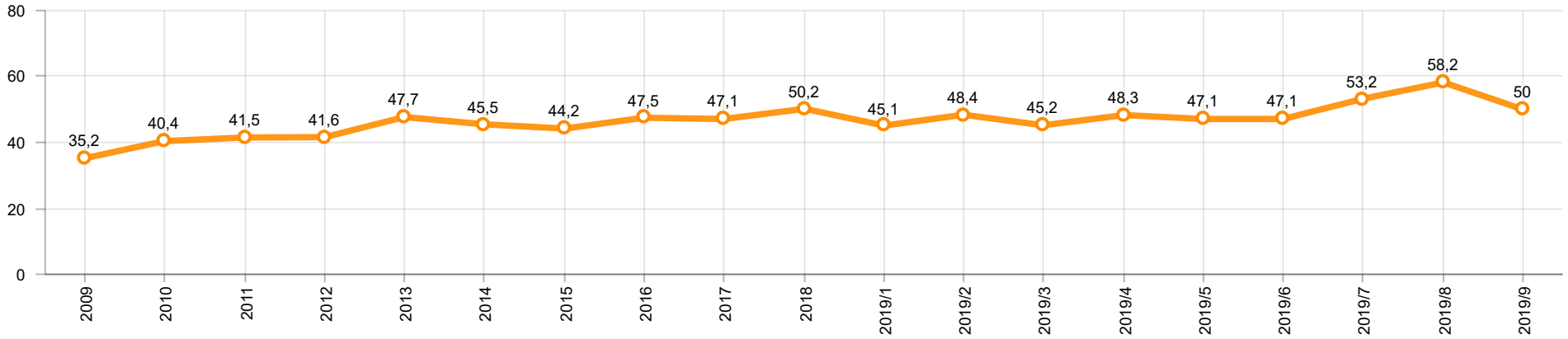
Kaynak: Uludağ İhracatçı Birlikleri . ÜİB tarafından OSD için özel olarak analiz edilen Otomotiv İhracatı kapsamında; ÜİB Türkiye Geneli Otomotiv Endüstrisi sınıflandırmasına kıyasla “Römork ve Yarı Römork” , “Tarım Traktörü” verileri dahil edilmekte; “Kullanılmış Araçlar” ,”İki Tekerlekli Taşıtlar” , “Demiryolu Taşıtları” hariç tutulmaktadır.

Source: Uludağ Exporters Association – Special Analyze for OSD.Compared to Turkish General Automotive Industry classification, this special analyze includes; farms tractors, trailers and semi-trailers, does not include; used vehicles, two-wheeled vehicles and railway vehicles

**Otomobil Pazarında İthalatın Payı (%)**  
Import Share in P.Car Market (%)



**Hafif Ticari Araçlar Pazarında İthalatın Payı (%)**  
Import Share in LCV Market (%)



Araç Tipleri / Vehicle Types	1	2	3	4	5	6	7	8	9	10	11	12	Toplam / Total
<b>OTOMOBİL - Pass.Car</b>	<b>58.807</b>	<b>69.340</b>	<b>81.736</b>	<b>66.084</b>	<b>80.233</b>	<b>62.846</b>	<b>73.598</b>	<b>33.852</b>	<b>67.590</b>				<b>594.086</b>
KAMYON - H. Truck	1.270	1.594	1.312	1.153	1.170	1.247	2.150	1.533	1.425				<b>12.854</b>
KAMYONET - Pick Up	27.735	29.855	31.222	33.326	26.072	29.659	35.745	16.522	32.717				<b>262.853</b>
OTOBÜS - Bus	801	637	822	756	958	651	863	517	642				<b>6.647</b>
MINİBÜS - Minibus	4.741	4.836	5.012	4.630	3.278	2.396	4.860	2.014	4.663				<b>36.430</b>
MİDİBÜS - Midibus	74	93	135	58	152	82	73	166	69				<b>902</b>
<b>TİCARİ ARAÇLAR TOPLAMI - CV Total</b>	<b>34.621</b>	<b>37.015</b>	<b>38.503</b>	<b>39.923</b>	<b>31.630</b>	<b>34.035</b>	<b>43.691</b>	<b>20.752</b>	<b>39.516</b>				<b>319.686</b>
<b>TAŞIT ARAÇLARI TOPLAMI - MV Total</b>	<b>93.428</b>	<b>106.355</b>	<b>120.239</b>	<b>106.007</b>	<b>111.863</b>	<b>96.881</b>	<b>117.289</b>	<b>54.604</b>	<b>107.106</b>				<b>913.772</b>
TRAKTÖR - F.Tractor	1.111	1.145	1.516	1.207	1.551	1.382	1.689	869	1.941				<b>12.411</b>
<b>GENEL TOPLAM - Grand Total</b>	<b>94.539</b>	<b>107.500</b>	<b>121.755</b>	<b>107.214</b>	<b>113.414</b>	<b>98.263</b>	<b>118.978</b>	<b>55.473</b>	<b>109.047</b>				<b>926.183</b>

**Otomobil / P.Car**

Firmalar / Firms	1	2	3	4	5	6	7	8	9	10	11	12	Toplam / Total
FORD OTOSAN	1.469	1.837	2.405	2.671	2.064	2.021	2.397	684	2.112	-	-	-	<b>17.660</b>
HONDA TÜRKİYE	800	1.009	424	689	240	449	210	838	1.224	-	-	-	<b>5.883</b>
HYUNDAI ASSAN	11.414	14.050	13.200	9.050	18.750	14.850	14.579	7.735	17.799	-	-	-	<b>121.427</b>
OYAK RENAULT	20.009	24.138	35.569	21.457	26.820	22.749	21.894	13.849	17.463	-	-	-	<b>203.948</b>
TOFAŞ	7.636	8.517	7.730	10.743	11.140	8.882	10.779	3.417	11.426	-	-	-	<b>80.270</b>
TOYOTA	17.479	19.789	22.408	21.474	21.219	13.895	23.739	7.329	17.566	-	-	-	<b>164.898</b>
<b>TOPLAM - Total</b>	<b>58.807</b>	<b>69.340</b>	<b>81.736</b>	<b>66.084</b>	<b>80.233</b>	<b>62.846</b>	<b>73.598</b>	<b>33.852</b>	<b>67.590</b>	-	-	-	<b>594.086</b>

**Kamyonet / Pick-up**

Firmalar / Firms	1	2	3	4	5	6	7	8	9	10	11	12	Toplam / Total
A.I.O.S.	-	-	-	-	-	-	-	-	-	-	-	-	-
FORD OTOSAN	22.083	22.516	23.449	24.428	16.098	20.460	25.296	13.015	24.440	-	-	-	<b>191.785</b>
KARSAN	73	54	150	95	95	142	115	72	119	-	-	-	<b>915</b>
OTOKAR	-	-	25	10	15	17	-	39	-	-	-	-	<b>106</b>
<b>TOFAŞ</b>	<b>5.579</b>	<b>7.285</b>	<b>7.598</b>	<b>8.793</b>	<b>9.864</b>	<b>9.040</b>	<b>10.334</b>	<b>3.396</b>	<b>8.158</b>	-	-	-	<b>70.047</b>
<b>TOPLAM - Total</b>	<b>27.735</b>	<b>29.855</b>	<b>31.222</b>	<b>33.326</b>	<b>26.072</b>	<b>29.659</b>	<b>35.745</b>	<b>16.522</b>	<b>32.717</b>	-	-	-	<b>262.853</b>

**Minibüs / Minibus**

Firmalar / Firms	1	2	3	4	5	6	7	8	9	10	11	12	Toplam / Total
FORD OTOSAN	4.740	4.833	4.998	4.620	3.268	2.386	4.846	2.014	4.661	-	-	-	<b>36.366</b>
KARSAN	1	3	14	10	10	10	14	-	2	-	-	-	<b>64</b>
<b>TOPLAM - Total</b>	<b>4.741</b>	<b>4.836</b>	<b>5.012</b>	<b>4.630</b>	<b>3.278</b>	<b>2.396</b>	<b>4.860</b>	<b>2.014</b>	<b>4.663</b>	-	-	-	<b>36.430</b>

**Kamyon / Truck**

Firmalar / Firms	1	2	3	4	5	6	7	8	9	10	11	12	Toplam / Total
A.I.O.S.	-	30	-	175	29	-	-	-	-	-	-	-	234
FORD OTOSAN	114	141	166	161	221	175	167	78	171	-	-	-	1.394
KARSAN	-	-	-	-	-	-	-	-	-	-	-	-	-
M. BENZ TÜRK	1.156	1.423	1.146	817	920	1.072	1.983	1.455	1.254	-	-	-	11.226
<b>OTOKAR</b>	-	-	-	-	-	-	-	-	-	-	-	-	-
<b>TOPLAM - Total</b>	<b>1.270</b>	<b>1.594</b>	<b>1.312</b>	<b>1.153</b>	<b>1.170</b>	<b>1.247</b>	<b>2.150</b>	<b>1.533</b>	<b>1.425</b>	<b>-</b>	<b>-</b>	<b>-</b>	<b>12.854</b>

**Midibüs / Midibus**

Firmalar / Firms	1	2	3	4	5	6	7	8	9	10	11	12	Toplam / Total
A.I.O.S.	52	60	88	46	121	56	36	105	57	-	-	-	621
KARSAN	5	6	39	-	1	-	1	-	1	-	-	-	53
OTOKAR	8	21	8	12	16	25	36	28	11	-	-	-	165
TEMSA	9	6	-	-	14	1	-	33	-	-	-	-	63
<b>TOPLAM - Total</b>	<b>74</b>	<b>93</b>	<b>135</b>	<b>58</b>	<b>152</b>	<b>82</b>	<b>73</b>	<b>166</b>	<b>69</b>	<b>-</b>	<b>-</b>	<b>-</b>	<b>902</b>

**Otobüs / Bus**

Firmalar / Firms	1	2	3	4	5	6	7	8	9	10	11	12	Toplam / Total
A.I.O.S.	56	12	47	18	15	50	3	18	12	-	-	-	231
KARSAN	23	17	56	2	65	58	72	39	63	-	-	-	395
M. BENZ TÜRK	261	246	318	395	446	305	390	238	268	-	-	-	2.867
MAN TÜRKİYE	298	271	273	225	256	193	229	120	234	-	-	-	2.099
OTOKAR	104	69	108	93	94	23	94	29	30	-	-	-	644
TEMSA	59	22	20	23	82	22	75	73	35	-	-	-	411
<b>TOPLAM - Total</b>	<b>801</b>	<b>637</b>	<b>822</b>	<b>756</b>	<b>958</b>	<b>651</b>	<b>863</b>	<b>517</b>	<b>642</b>	<b>-</b>	<b>-</b>	<b>-</b>	<b>6.647</b>

**Traktör / F.Tractor**

Firmalar / Firms	1	2	3	4	5	6	7	8	9	10	11	12	Toplam / Total
HATTAT TRAKTÖR	39	72	108	43	48	40	55	61	40	-	-	-	506
TÜRK TRAKTÖR	1.072	1.073	1.408	1.164	1.503	1.342	1.634	808	1.901	-	-	-	11.905
<b>TOPLAM - Total</b>	<b>1.111</b>	<b>1.145</b>	<b>1.516</b>	<b>1.207</b>	<b>1.551</b>	<b>1.382</b>	<b>1.689</b>	<b>869</b>	<b>1.941</b>	<b>-</b>	<b>-</b>	<b>-</b>	<b>12.411</b>

Firmalar / Firms	2018 Toplam / Total	1	2	3	4	5	6	7	8	9	10	11	12	Toplam / Total
Alfa Romeo	203	8	16	32	23	50	60	7	4	9	-	-	-	209
Aston Martin	16	2	-	3	1	-	1	2	2	3	-	-	-	14
Audi	13.295	495	404	832	515	742	891	467	633	1.191	-	-	-	6.170
Bentley	10	2	-	-	1	1	-	-	-	-	-	-	-	4
BMW	12.728	352	463	871	724	445	637	585	684	737	-	-	-	5.498
Citroen	7.669	80	97	423	378	453	469	265	533	694	-	-	-	3.392
Dacia	26.193	429	801	1.765	910	970	1.569	561	672	998	-	-	-	8.675
DS	236	3	8	8	27	8	15	5	13	15	-	-	-	102
Ferrari	18	-	2	2	3	3	2	1	1	2	-	-	-	16
Fiat	1.264	26	26	65	80	157	99	48	46	77	-	-	-	624
Ford	20.697	235	476	1.452	774	676	1.232	279	327	1.106	-	-	-	6.557
Honda	4.862	144	149	253	281	276	203	116	110	220	-	-	-	1.752
Hyundai	19.113	794	1.195	1.508	1.089	1.141	1.123	838	729	981	-	-	-	9.398
Infinity	18	-	-	-	-	-	-	-	-	-	-	-	-	-
Jaguar	220	2	18	20	20	10	19	12	15	32	-	-	-	148
Jeep	2.430	100	162	225	138	92	168	82	63	145	-	-	-	1.175
Kia	7.694	150	331	534	357	204	205	178	354	517	-	-	-	2.830
Lamborghini	3	1	-	-	1	1	1	3	-	-	-	-	-	7
Land Rover	1.248	36	71	63	80	59	48	88	104	143	-	-	-	692
Lexus	56	4	4	2	3	2	3	3	2	3	-	-	-	26
Maserati	55	2	4	2	2	6	3	1	-	2	-	-	-	22
Mazda	1.005	29	29	15	31	45	18	9	12	23	-	-	-	211
Mercedes-Benz	14.445	204	701	1.005	563	728	1.021	830	743	1.097	-	-	-	6.892
Mini	1.373	17	50	176	91	92	169	31	66	89	-	-	-	781
Mitsubishi	514	38	60	41	34	30	26	9	6	16	-	-	-	260
Nissan	24.605	538	799	1.662	887	806	1.215	459	706	980	-	-	-	8.052
Opel	20.960	348	765	1.684	1.055	866	1.268	641	1.000	1.437	-	-	-	9.064
Peugeot	24.905	524	767	2.287	1.627	1.692	1.927	782	1.031	1.403	-	-	-	12.040
Porsche	565	9	35	27	29	31	24	22	18	27	-	-	-	222
Renault	21.090	198	557	822	490	552	718	215	444	651	-	-	-	4.647
Seat	10.383	139	289	515	269	295	547	169	314	883	-	-	-	3.420
Skoda	21.340	247	585	1.414	687	778	1.441	334	1.092	1.537	-	-	-	8.115
Smart	35	5	3	6	2	3	1	1	1	3	-	-	-	25
Ssangyong	222	10	15	14	6	9	11	6	4	3	-	-	-	78
Subaru	1.471	52	68	76	75	45	32	22	18	52	-	-	-	440
Suzuki	2.878	65	107	236	142	245	245	31	101	207	-	-	-	1.379
Toyota	3.405	47	114	132	103	103	94	42	80	116	-	-	-	831
Volkswagen	49.749	1.210	2.218	3.528	2.329	2.096	3.665	1.105	3.381	3.792	-	-	-	23.324
Volvo	5.943	231	225	334	360	300	392	210	207	372	-	-	-	2.631
<b>GENEL TOPLAM - Grand Total</b>	<b>322.916</b>	<b>6.776</b>	<b>11.614</b>	<b>22.034</b>	<b>14.187</b>	<b>14.012</b>	<b>19.562</b>	<b>8.459</b>	<b>13.516</b>	<b>19.563</b>	<b>-</b>	<b>-</b>	<b>-</b>	<b>129.723</b>

Firmalar / Firms	2018 Toplam / Total	1	2	3	4	5	6	7	8	9	10	11	12	Toplam / Total
<b>Citroen</b>	<b>4.633</b>	126	188	181	406	281	189	150	170	363	-	-	-	<b>2.054</b>
<b>Dacia</b>	<b>3.725</b>	53	182	296	179	136	170	67	227	201	-	-	-	<b>1.511</b>
<b>Fiat</b>	<b>3.019</b>	53	54	117	59	72	175	38	122	186	-	-	-	<b>876</b>
<b>Ford</b>	<b>2.783</b>	134	106	177	65	36	34	14	70	99	-	-	-	<b>735</b>
<b>Hyundai</b>	<b>1.493</b>	83	106	121	109	88	81	52	36	59	-	-	-	<b>735</b>
<b>Isuzu</b>	<b>578</b>	3	30	23	3	1	2	-	-	1	-	-	-	<b>63</b>
<b>Iveco</b>	<b>1.598</b>	48	54	115	109	95	134	41	57	70	-	-	-	<b>723</b>
<b>Karsan</b>	-	-	-	-	-	-	-	-	-	-	-	-	-	-
<b>Kia</b>	<b>1.947</b>	14	55	189	117	84	149	55	115	130	-	-	-	<b>908</b>
<b>Mercedes-Benz</b>	<b>7.993</b>	159	404	628	288	457	319	110	352	304	-	-	-	<b>3.021</b>
<b>Mitsubishi</b>	<b>3.445</b>	47	129	69	116	103	411	33	68	125	-	-	-	<b>1.101</b>
<b>Nissan</b>	<b>1.741</b>	82	48	150	135	26	41	8	78	39	-	-	-	<b>607</b>
<b>Opel</b>	-	-	-	43	112	41	55	71	71	111	-	-	-	<b>504</b>
<b>Peugeot</b>	<b>5.247</b>	197	284	819	431	379	333	295	401	535	-	-	-	<b>3.674</b>
<b>Renault</b>	<b>8.908</b>	180	342	741	304	191	211	168	282	398	-	-	-	<b>2.817</b>
<b>Ssangyong</b>	<b>174</b>	-	-	15	38	25	22	13	10	17	-	-	-	<b>140</b>
<b>Toyota</b>	<b>3.159</b>	55	101	91	65	71	90	45	36	70	-	-	-	<b>624</b>
<b>Volkswagen</b>	<b>17.085</b>	295	662	1.017	633	689	724	186	641	636	-	-	-	<b>5.483</b>
<b>GENEL TOPLAM - Grand Total</b>	<b>67.528</b>	<b>1.529</b>	<b>2.745</b>	<b>4.792</b>	<b>3.169</b>	<b>2.775</b>	<b>3.140</b>	<b>1.346</b>	<b>2.736</b>	<b>3.344</b>	-	-	-	<b>25.576</b>