



OTOMOTİV SANAYİİ DERNEĐİ
AUTOMOTIVE MANUFACTURERS ASSOCIATION

OTOMOTİV SEKTÖRÜ AYLIK DEĐERLENDİRME RAPORU AĐUSTOS 2019

AUTOMOTIVE INDUSTRY MONTHLY REPORT
August 2019

OSD "OICA" Üyesidir @OICA OSD is a Member of "OICA"

	8 - 2018	8 - 2019	%	1 - 8 / 2018	1 - 8 / 2019	%	9/2017 - 8/2018	9/2018 - 8/2019	%
Otomobil Üretimi/P.Cars Production	29.289	31.287	6,8	683.092	610.222	-10,7	1.075.956	953.701	-11,4
Toplam Üretim/Total Production	47.175	52.242	10,7	1.034.120	921.187	-10,9	1.640.233	1.437.327	-12,4
Otomobil Pazarı/P.Cars Market	26.976	21.544	-20,1	344.870	193.320	-43,9	644.431	334.771	-48,1
Toplam Pazar/Total Market	35.137	26.862	-23,6	455.894	246.161	-46,0	869.658	431.817	-50,3
Otomobil İthalatı/P.Cars Import	18.587	13.516	-27,3	229.303	110.160	-52,0	441.233	203.773	-53,8
Toplam İthalat/Total Import	23.011	16.426	-28,6	281.509	134.565	-52,2	542.007	250.324	-53,8
Otomobil İhracatı/P.Cars Export	30.528	33.852	10,9	573.278	526.496	-8,2	869.607	828.365	-4,7
Toplam İhracat/Total Export	45.901	54.604	19,0	857.169	806.666	-5,9	1.300.237	1.268.366	-2,5
Otomobil İhracatı(\$)/P.Cars Export (\$)	497.105.649	509.886.164	2,6	8.150.266.422	7.406.315.222	-9,1	12.146.901.020	11.676.999.866	-3,9
Toplam İhracat(\$)/Total Export (\$)*	1.661.411.716	1.792.827.798	7,9	21.257.294.943	20.334.296.761	-4,3	31.382.589.846	31.305.542.148	-0,2

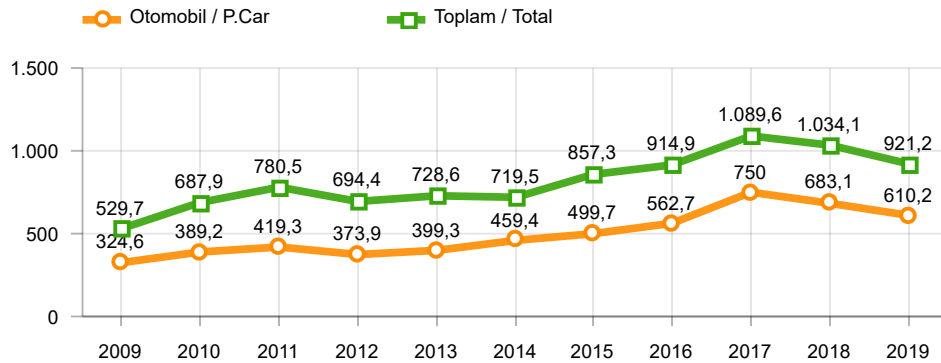
Parametreler/Parameters	8 - 2018	8 - 2019	%	1 - 8 / 2018	1 - 8 / 2019	%	9/2017 - 8/2018	9/2018 - 8/2019	%
ÜFE / PPI	6,6	-0,6	-	25,3	6,4	-	18,8	30,5	-
TÜFE / CPI	2,3	0,9	-	12,3	7,4	-	12,6	19,6	-
Sanayi Endeksi / Industry Index	7,3	-1,0	-	25,9	6,2	-	19,8	28,4	-
Dolar \$ ** (1 birim)	5,7	5,7	-0,7	4,3	5,6	28,8	4,1	5,6	35,7
Euro € ** (1 birim)	6,7	6,3	-5,9	5,2	6,3	21,4	4,9	6,4	29,2
Japon Yeni ¥ ** (100 birim)	5,1	5,3	2,8	3,9	5,1	28,8	3,7	5,1	35,5

*Toplam Sanayi / Total Industry Including Components

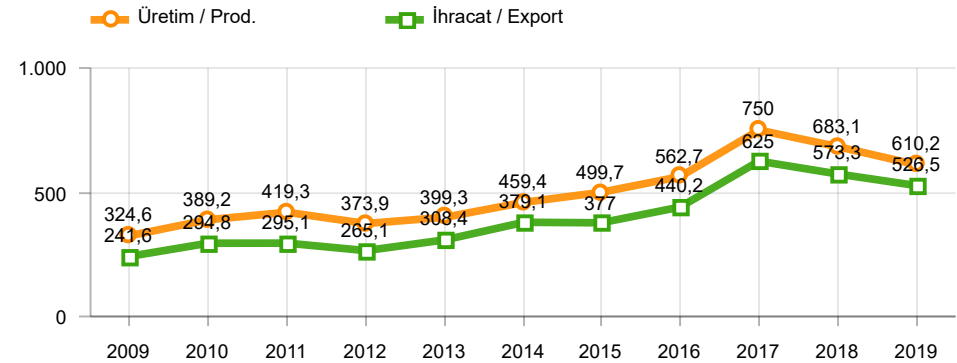
** Ortalama Değerler / Average Values

Araç Tipleri / Types	8 / 2018	8 / 2019	8 % Değişim	1-8 / 2018	1-8 / 2019	1-8 % Değişim
OTOMOBİL / Pass.Car	29.289	31.287	6,8	683.092	610.222	-10,7
OTOMOBİL Toplam / Pass.Car Total	29.289	31.287	6,8	683.092	610.222	-10,7
B.KAMYON / H. Truck	1.276	1.706	33,7	16.660	12.826	-23,0
K.KAMYON / L. Truck	88	50	-43,2	2.063	463	-77,6
KAMYONET / Pick Up	14.325	15.989	11,6	289.559	252.657	-12,7
OTOBÜS / Bus	509	464	-8,8	5.570	6.071	9,0
MİNİBÜS / Minibus	1.552	2.577	66,0	34.697	37.452	7,9
MİDİBÜS / Midibus	136	169	24,3	2.479	1.496	-39,7
TİCARİ ARAÇLAR Toplam / Commercial Vehicles Total	17.886	20.955	17,2	351.028	310.965	-11,4
TAŞIT ARAÇLARI Toplam / Motor Vehicles Total	47.175	52.242	10,7	1.034.120	921.187	-10,9
TRAKTÖR / F.Tractor	1.563	1.198	-23,4	30.831	13.810	-55,2
TRAKTÖR Toplam / F.Tractor Total	1.563	1.198	-23,4	30.831	13.810	-55,2
GENEL TOPLAM / Grand Total	48.738	53.440	9,6	1.064.951	934.997	-12,2

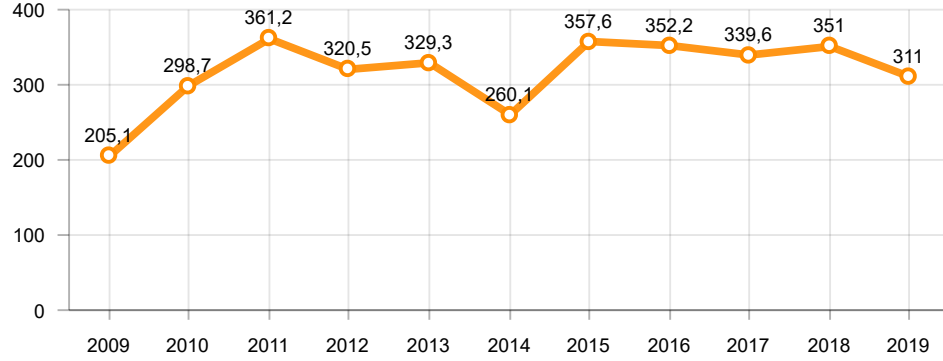
Toplam Üretim ve Otomobil Üretimi (x1000)(OCAK - AĞUSTOS)
Total & P.Cars Production (x1000)(January - August)



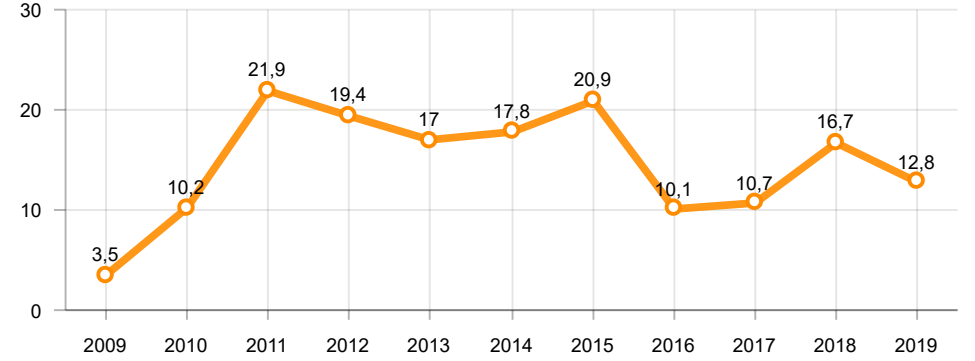
Otomobil Üretimi ve İhracat (x1000)(OCAK - AĞUSTOS)
P.Cars Production & Exports (x1000)(January - August)



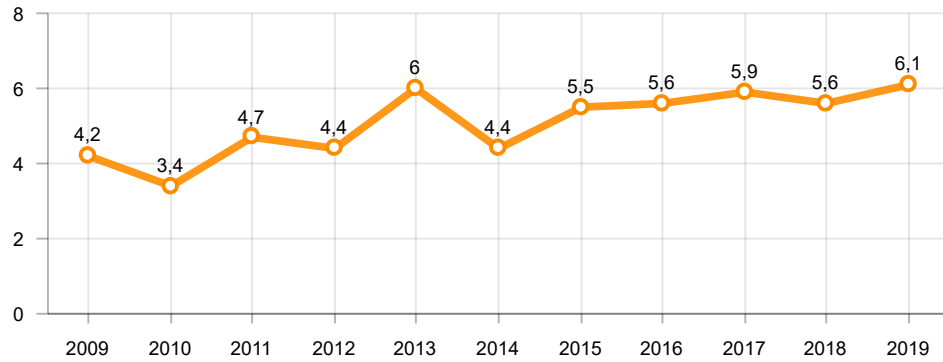
Ticari Araç Üretimi (x1000)(OCAK - AĞUSTOS)
Commercial Vehicle Production (x1000)(January - August)



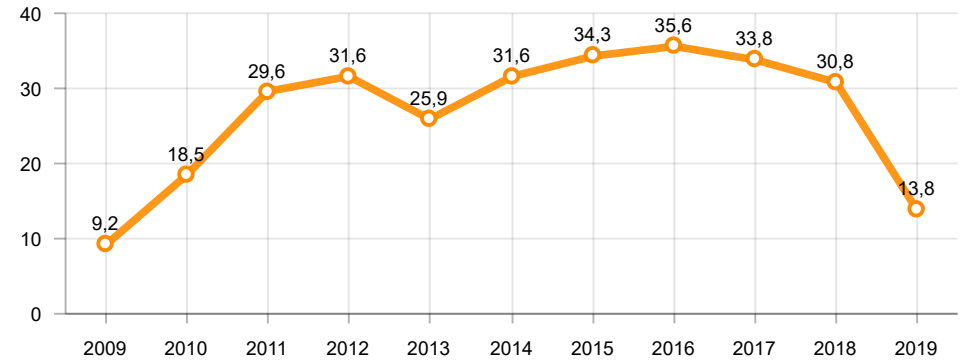
Büyük Kamyon Üretimi (x1000)(OCAK - AĞUSTOS)
Heavy Truck Production (x1000)(January - August)

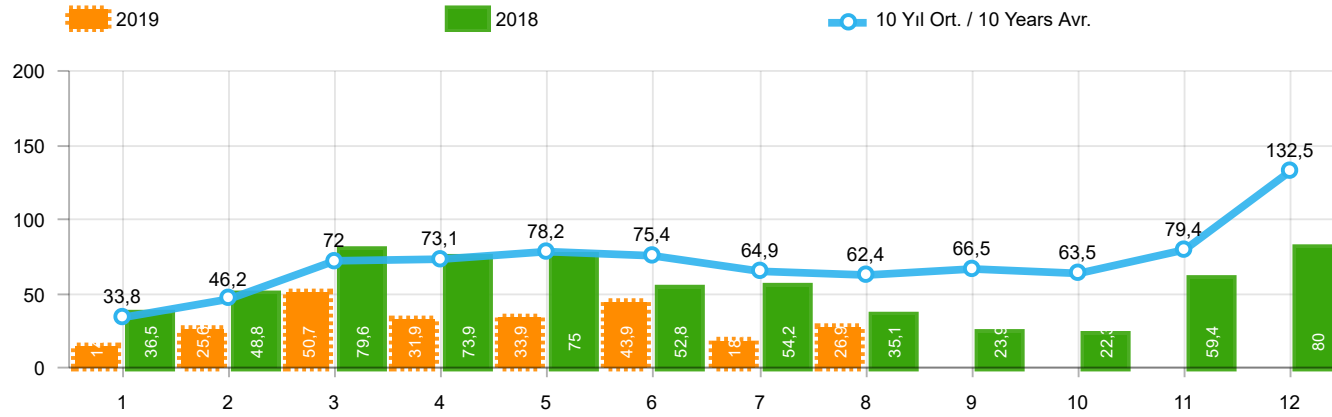


Otobüs Üretimi (x1000)(OCAK - AĞUSTOS)
Bus Production (x1000)(January - August)



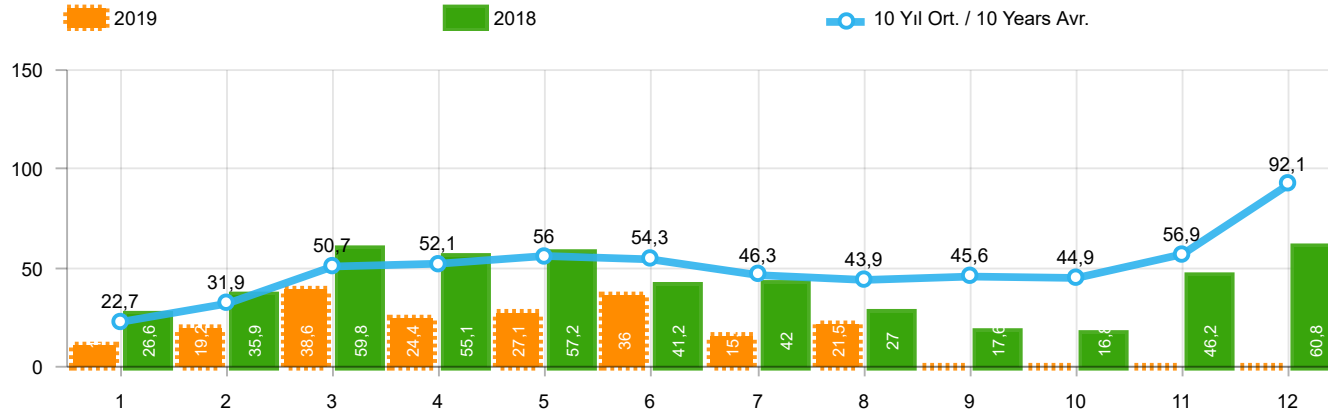
Traktör Üretimi (x1000)(OCAK - AĞUSTOS)
F. Tractor Production (x1000)(January - August)





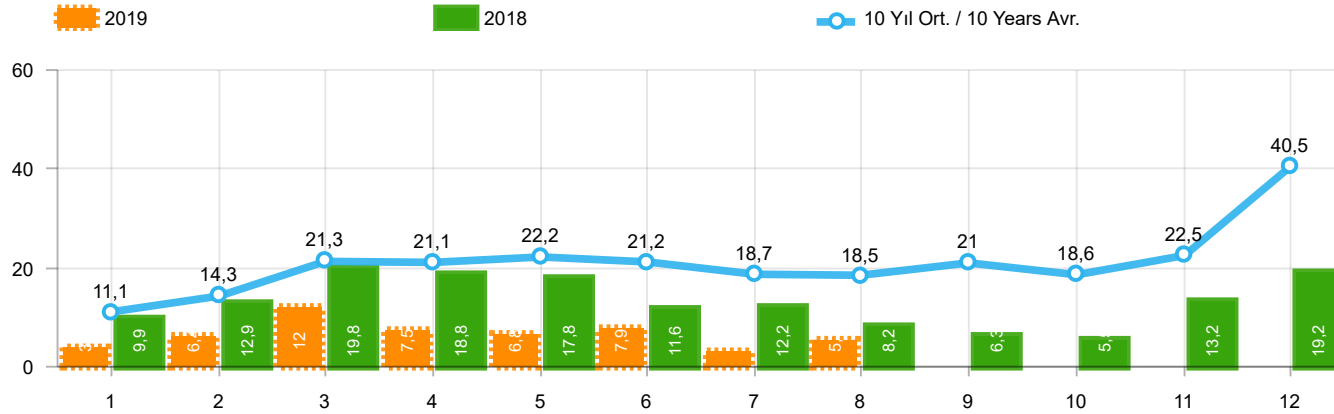
Aylar / Months	10 Yıl Ort / 10 Years Avr.	2019	%
1	33.809	14.847	-56,1
2	46.213	25.569	-44,7
3	71.956	50.651	-29,6
4	73.144	31.944	-56,3
5	78.208	33.947	-56,6
6	75.438	43.899	-41,8
7	64.942	18.442	-71,6
8	62.444	26.862	-57,0
TOPLAM / TOTAL	506.155	246.161	-51,4

Yıl / Year	1	2	3	4	5	6	7	8	9	10	11	12	1-8 Toplam / Total	Toplam / Total	1-8 Yerli / Local	1-8 İthal / Import	İthal Oran / Import %
2009	20.605	22.873	56.527	54.433	64.947	63.090	30.374	37.038	83.553	22.191	29.309	91.762	349.887	576.702	155.960	193.927	55,4
2010	21.070	32.331	54.019	57.241	61.837	63.511	64.011	64.961	67.040	76.753	77.488	155.234	418.981	795.496	175.671	243.310	58,1
2011	47.759	62.586	84.045	82.782	85.862	85.992	65.658	61.645	64.313	73.227	67.150	134.468	576.329	915.487	234.859	341.470	59,2
2012	31.552	44.138	69.242	66.559	75.195	75.108	65.444	60.982	73.501	62.933	75.203	121.442	488.220	821.299	184.713	303.507	62,2
2013	37.563	51.133	72.943	77.265	85.835	78.043	75.152	67.662	71.388	60.690	83.470	136.048	545.596	897.192	169.117	376.479	69,0
2014	34.751	37.659	51.312	57.113	62.447	64.295	62.770	63.303	70.764	69.742	84.368	154.843	433.650	813.367	144.307	289.343	66,7
2015	37.256	59.221	89.765	96.182	85.804	91.071	87.358	85.244	67.181	67.086	88.431	164.464	631.901	1.019.063	218.269	413.632	65,5
2016	34.369	54.840	85.932	87.748	97.090	94.666	59.732	73.654	69.413	85.666	125.462	145.706	588.031	1.014.278	190.691	397.340	67,6
2017	36.640	48.585	76.178	78.231	88.066	85.820	84.727	74.818	74.046	94.439	103.772	141.507	573.065	986.829	209.076	363.989	63,5
2018	36.525	48.768	79.600	73.886	74.996	52.788	54.194	35.137	23.915	22.321	59.406	80.014	455.894	641.550	174.385	281.509	61,7
2019	14.847	25.569	50.651	31.944	33.947	43.899	18.442	26.862					246.161	246.161	111.596	134.565	54,7



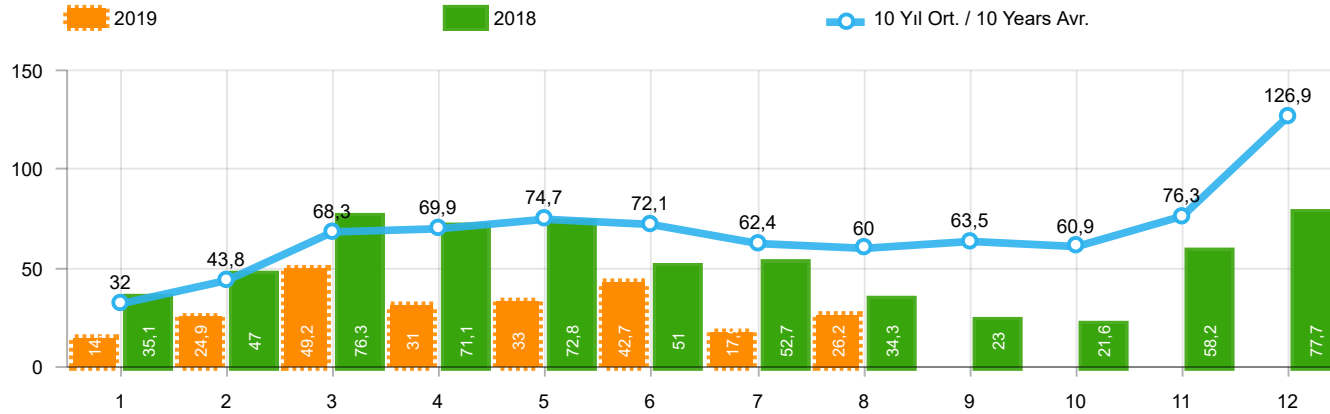
Aylar / Months	10 Yıl Ort. / 10 Years Avr.	2019	%
1	22.707	10.979	-51,6
2	31.928	19.205	-39,8
3	50.654	38.628	-23,7
4	52.093	24.416	-53,1
5	55.992	27.126	-51,6
6	54.250	36.024	-33,6
7	46.259	15.398	-66,7
8	43.921	21.544	-50,9
TOPLAM / TOTAL	357.804	193.320	-46,0

Yıl / Year	1	2	3	4	5	6	7	8	9	10	11	12	1-8 Toplam / Total	Toplam / Total	1-8 Yerli / Local	1-8 İthal / Import	İthal Oran / Import %
2009	13.173	14.492	40.622	36.202	44.188	41.019	16.637	22.537	52.162	13.828	17.781	57.178	228.870	369.819	76.909	151.961	66,4
2010	12.594	20.651	33.958	36.549	40.467	42.086	41.399	42.222	42.477	47.859	50.061	99.461	269.926	509.784	83.416	186.510	69,1
2011	29.868	39.004	54.023	53.835	56.302	56.714	43.518	38.875	39.964	47.508	44.951	88.957	372.139	593.519	116.121	256.018	68,8
2012	21.077	29.189	47.270	45.645	50.460	50.849	44.531	41.236	49.360	43.440	52.297	80.926	330.257	556.280	90.473	239.784	72,6
2013	25.835	36.814	51.785	56.999	62.383	58.290	55.712	51.611	52.925	46.985	64.117	101.199	399.429	664.655	86.633	312.796	78,3
2014	24.368	27.167	37.812	42.769	46.379	47.278	46.602	45.131	49.262	50.814	59.695	110.054	317.506	587.331	78.863	238.643	75,2
2015	24.498	40.817	61.676	70.211	62.878	67.766	64.218	61.753	47.088	47.954	62.397	114.340	453.817	725.596	114.025	339.792	74,9
2016	23.358	40.588	63.975	65.618	73.832	71.111	45.566	53.977	51.340	63.746	95.783	108.044	438.025	756.938	107.723	330.302	75,4
2017	25.689	34.658	55.616	57.998	65.799	66.164	62.384	54.890	53.423	70.488	75.956	99.694	423.198	722.759	129.160	294.038	69,5
2018	26.611	35.901	59.798	55.108	57.227	41.225	42.024	26.976	17.595	16.809	46.204	60.843	344.870	486.321	115.567	229.303	66,5
2019	10.979	19.205	38.628	24.416	27.126	36.024	15.398	21.544					193.320	193.320	83.160	110.160	57,0



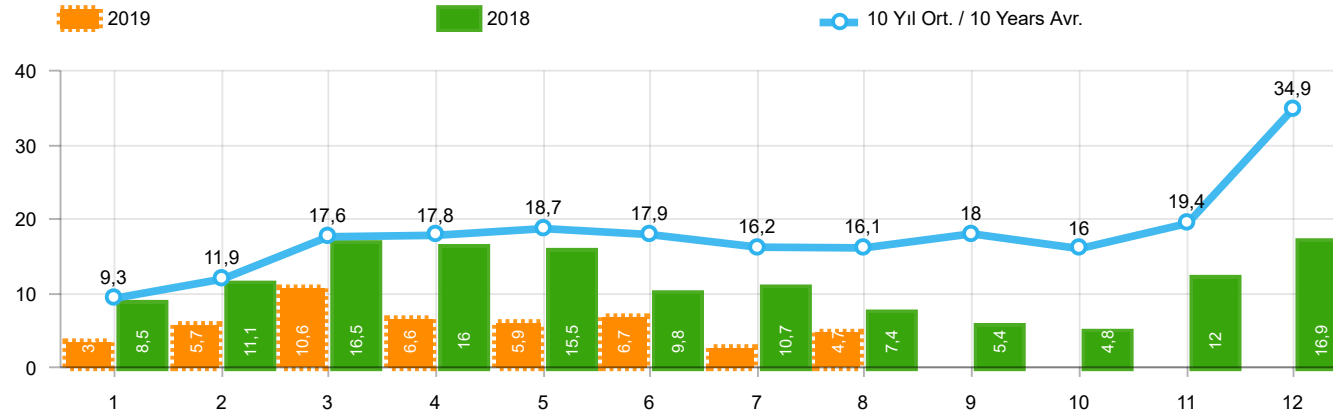
Aylar / Months	10 Yıl Ort. / 10 Years Avr.	2019	%
1	11.102	3.868	-65,2
2	14.285	6.364	-55,5
3	21.303	12.023	-43,6
4	21.051	7.528	-64,2
5	22.216	6.821	-69,3
6	21.188	7.875	-62,8
7	18.683	3.044	-83,7
8	18.524	5.318	-71,3
TOPLAM / TOTAL	148.352	52.841	-64,4

Yıl / Year	1	2	3	4	5	6	7	8	9	10	11	12	1-8 Toplam / Total	Toplam / Total	1-8 Yerli / Local	1-8 İthal / Import	İthal Oran / Import %
2009	7.432	8.381	15.905	18.231	20.759	22.071	13.737	14.501	31.391	8.363	11.528	34.584	121.017	206.883	79.051	41.966	34,7
2010	8.476	11.680	20.061	20.692	21.370	21.425	22.612	22.739	24.563	28.894	27.427	55.773	149.055	285.712	92.255	56.800	38,1
2011	17.891	23.582	30.022	28.947	29.560	29.278	22.140	22.770	24.349	25.719	22.199	45.511	204.190	321.968	118.738	85.452	41,8
2012	10.475	14.949	21.972	20.914	24.735	24.259	20.913	19.746	24.141	19.493	22.906	40.516	157.963	265.019	94.240	63.723	40,3
2013	11.728	14.319	21.158	20.266	23.452	19.753	19.440	16.051	18.463	13.705	19.353	34.849	146.167	232.537	82.484	63.683	43,6
2014	10.383	10.492	13.500	14.344	16.068	17.017	16.168	18.172	21.502	18.928	24.673	44.789	116.144	226.036	65.444	50.700	43,7
2015	12.758	18.404	28.089	25.971	22.926	23.305	23.140	23.491	20.093	19.132	26.034	50.124	178.084	293.467	104.244	73.840	41,5
2016	11.011	14.252	21.957	22.130	23.258	23.555	14.166	19.677	18.073	21.920	29.679	37.662	150.006	257.340	82.968	67.038	44,7
2017	10.951	13.927	20.562	20.233	22.267	19.656	22.343	19.928	20.623	23.951	27.816	41.813	149.867	264.070	79.916	69.951	46,7
2018	9.914	12.867	19.802	18.778	17.769	11.563	12.170	8.161	6.320	5.512	13.202	19.171	111.024	155.229	58.818	52.206	47,0
2019	3.868	6.364	12.023	7.528	6.821	7.875	3.044	5.318					52.841	52.841	28.436	24.405	46,2



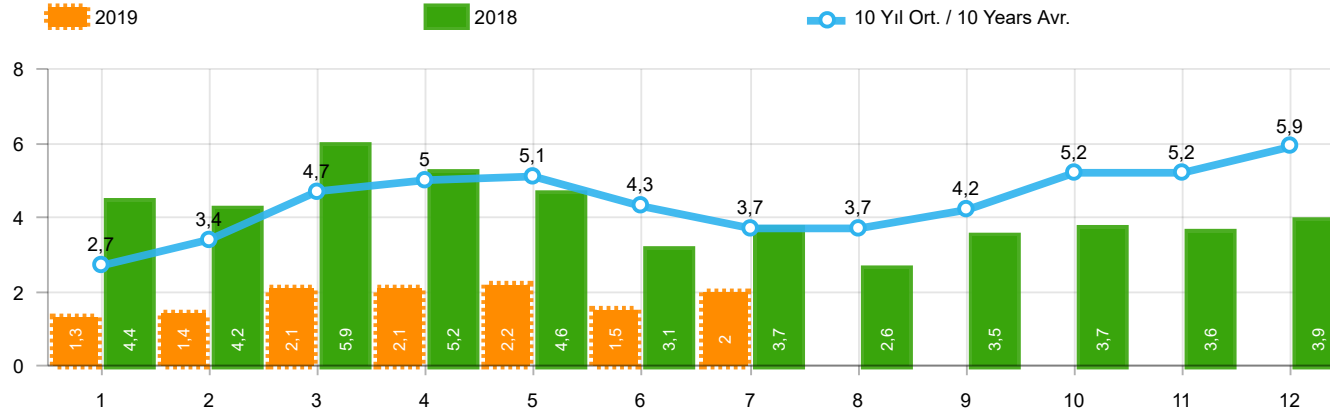
Aylar / Months	10 Yıl Ort. / 10 Years Avr.	2019	%
1	32.006	14.373	-55,1
2	43.836	24.875	-43,3
3	68.292	49.221	-27,9
4	69.871	30.971	-55,7
5	74.729	33.016	-55,8
6	72.126	42.688	-40,8
7	62.444	17.927	-71,3
8	60.018	26.246	-56,3
TOPLAM / TOTAL	483.322	239.317	-50,5

Yıl / Year	1	2	3	4	5	6	7	8	9	10	11	12	1-8 Toplam / Total	Toplam / Total	1-8 Yerli / Local	1-8 İthal / Import	İthal Oran / Import %
2009	19.606	21.742	55.111	52.640	63.191	61.067	28.845	35.609	81.397	21.033	27.962	88.923	337.811	557.126	145.795	192.016	56,8
2010	20.095	31.172	51.769	54.946	59.377	60.896	61.345	61.764	63.814	73.404	73.962	148.369	401.364	760.913	162.450	238.914	59,5
2011	44.892	58.663	78.403	77.695	80.646	81.573	63.044	58.406	60.129	69.421	63.657	127.910	543.322	864.439	212.097	331.225	61,0
2012	29.545	41.324	64.884	62.949	70.863	71.067	62.304	58.148	69.629	59.938	71.710	115.400	461.084	777.761	164.984	296.100	64,2
2013	35.523	48.307	68.774	73.575	81.468	74.096	71.596	65.043	67.963	58.014	79.301	129.718	518.382	853.378	148.289	370.093	71,4
2014	32.670	35.021	47.581	53.305	58.121	60.163	59.907	60.199	66.531	66.573	80.621	146.989	406.967	767.681	123.875	283.092	69,6
2015	34.615	55.331	83.302	91.602	81.542	86.158	83.836	82.577	64.025	64.255	84.601	156.173	598.963	968.017	193.665	405.298	67,7
2016	32.713	52.825	82.948	84.887	93.904	91.540	58.533	71.556	67.593	83.000	122.309	141.912	568.906	983.720	176.515	392.391	69,0
2017	35.323	46.965	73.802	75.988	85.422	83.658	82.297	72.536	71.352	91.752	100.859	136.240	555.991	956.194	196.518	359.473	64,7
2018	35.076	47.009	76.345	71.126	72.755	51.037	52.734	34.346	23.028	21.571	58.204	77.706	440.428	620.937	164.168	276.260	62,7
2019	14.373	24.875	49.221	30.971	33.016	42.688	17.927	26.246					239.317	239.317	106.925	132.392	55,3



Aylar / Months	10 Yıl Ort. / 10 Years Avr.	2019	%
1	9.299	3.394	-63,5
2	11.908	5.670	-52,4
3	17.638	10.593	-39,9
4	17.778	6.555	-63,1
5	18.737	5.890	-68,6
6	17.875	6.664	-62,7
7	16.185	2.529	-84,4
8	16.098	4.702	-70,8
TOPLAM / TOTAL	125.518	45.997	-63,4

Yıl / Year	1	2	3	4	5	6	7	8	9	10	11	12	1-8 Toplam / Total	Toplam / Total	1-8 Yerli / Local	1-8 İthal / Import	İthal Oran / Import %
2009	6.433	7.250	14.489	16.438	19.003	20.048	12.208	13.072	29.235	7.205	10.181	31.745	108.941	187.307	68.886	40.055	36,8
2010	7.501	10.521	17.811	18.397	18.910	18.810	19.946	19.542	21.337	25.545	23.901	48.908	131.438	251.129	79.034	52.404	39,9
2011	15.024	19.659	24.380	23.860	24.344	24.859	19.526	19.531	20.165	21.913	18.706	38.953	171.183	270.920	95.976	75.207	43,9
2012	8.468	12.135	17.614	17.304	20.403	20.218	17.773	16.912	20.269	16.498	19.413	34.474	130.827	221.481	74.511	56.316	43,0
2013	9.688	11.493	16.989	16.576	19.085	15.806	15.884	13.432	15.038	11.029	15.184	28.519	118.953	188.723	61.656	57.297	48,2
2014	8.302	7.854	9.769	10.536	11.742	12.885	13.305	15.068	17.269	15.759	20.926	36.935	89.461	180.350	45.012	44.449	49,7
2015	10.117	14.514	21.626	21.391	18.664	18.392	19.618	20.824	16.937	16.301	22.204	41.833	145.146	242.421	79.640	65.506	45,1
2016	9.355	12.237	18.973	19.269	20.072	20.429	12.967	17.579	16.253	19.254	26.526	33.868	130.881	226.782	68.792	62.089	47,4
2017	9.634	12.307	18.186	17.990	19.623	17.494	19.913	17.646	17.929	21.264	24.903	36.546	132.793	233.435	67.358	65.435	49,3
2018	8.465	11.108	16.547	16.018	15.528	9.812	10.710	7.370	5.433	4.762	12.000	16.863	95.558	134.616	48.601	46.957	49,1
2019	3.394	5.670	10.593	6.555	5.890	6.664	2.529	4.702					45.997	45.997	23.765	22.232	48,3



Aylar / Months	10 Yıl Ort. / 10 Years Avr.	2019	%
1	2.669	1.311	-50,9
2	3.359	1.401	-58,3
3	4.700	2.143	-54,4
4	5.046	2.126	-57,9
5	5.116	2.229	-56,4
6	4.276	1.538	-64,0
7	3.736	2.039	-45,4
TOPLAM / TOTAL	28.902	12.787	-55,8

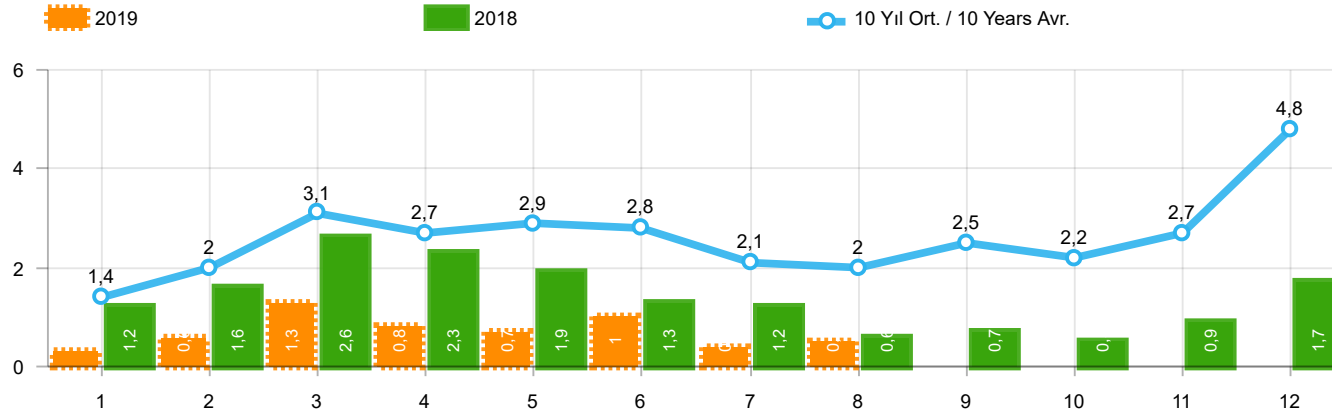
Yıl / Year	1	2	3	4	5	6	7	8	9	10	11	12	1-7 Toplam / Total	Toplam / Total
2009	717	572	688	1.070	1.297	1.256	1.054	1.183	1.117	1.356	1.304	2.144	6.654	13.758
2010	1.111	1.991	2.330	3.039	2.567	2.638	1.965	3.019	2.806	4.424	3.978	6.168	15.641	36.036
2011	2.975	5.242	5.927	5.358	6.016	6.335	4.534	4.051	4.140	5.828	4.943	4.992	36.387	60.341
2012	2.362	1.983	4.348	6.579	6.273	4.569	3.837	3.158	3.618	4.027	4.807	4.757	29.951	50.318
2013	2.161	2.432	4.005	4.585	5.616	3.136	4.574	3.408	4.935	4.762	5.781	6.891	26.509	52.286
2014	2.169	3.512	4.476	4.905	5.094	5.028	4.233	4.920	5.619	5.743	6.250	7.409	29.417	59.358
2015	3.124	3.984	5.460	6.383	6.078	5.748	4.677	5.044	4.765	7.049	6.898	7.564	35.454	66.774
2016	3.739	4.731	7.067	6.546	6.575	5.543	3.833	5.134	4.945	7.372	7.090	7.603	38.034	70.178
2017	3.974	4.964	6.773	6.780	7.057	5.356	5.003	4.396	6.064	7.734	7.457	7.351	39.907	72.909
2018	4.362	4.179	5.925	5.216	4.584	3.146	3.654	2.587	3.541	3.698	3.578	3.886	31.066	48.356
2019	1.311	1.401	2.143	2.126	2.229	1.538	2.039						12.787	12.787

Kaynak: TÜİK trafik kayıtları.

Rakamlar, son iki model yılına ait traktör tescillerinden oluşmaktadır.

Source: Turkish Statistical Institute – Traffic registrations

Data represents the last two model year's farm tractors registration figures

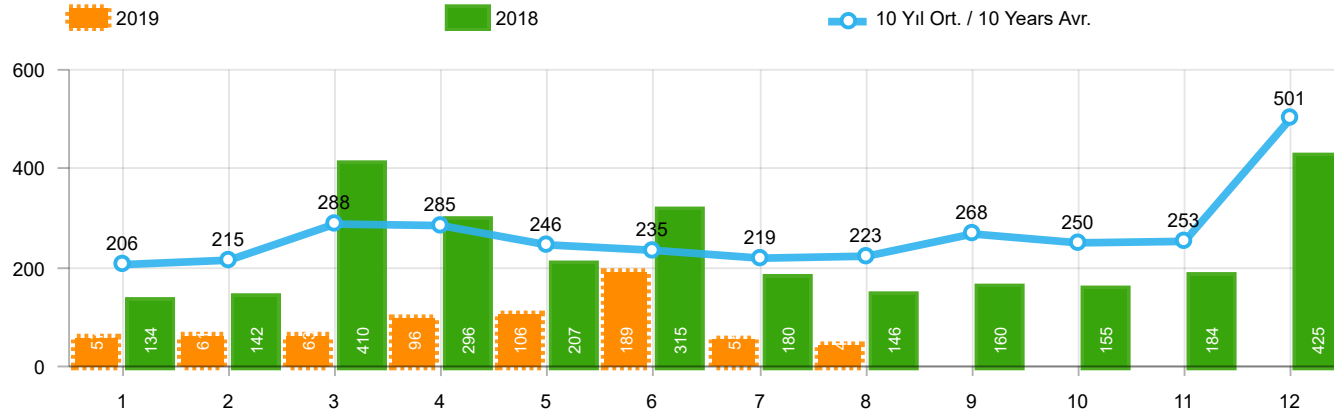


Aylar / Months	10 Yıl Ort / 10 Years Avr.	2019	%
1	1.446	342	-76,3
2	1.974	579	-70,7
3	3.128	1.255	-59,9
4	2.746	842	-69,3
5	2.944	728	-75,3
6	2.831	981	-65,3
7	2.115	435	-79,4
8	2.042	536	-73,8
TOPLAM / TOTAL	19.225	5.698	-70,4

Yıl / Year	1	2	3	4	5	6	7	8	9	10	11	12	1-8 Toplam / Total	Toplam / Total	1-8 Yerli / Local	1-8 İthal / Import	İthal Oran / Import %
2009	782	763	1.062	1.381	1.426	1.649	1.261	1.164	1.862	963	1.047	2.368	9.488	15.728	7.617	1.871	19,7
2010	768	960	1.950	1.949	2.140	2.314	2.403	2.754	2.864	3.001	3.231	6.158	15.238	30.492	10.895	4.343	28,5
2011	2.651	3.544	5.142	4.503	4.563	3.852	2.261	2.745	3.784	3.400	3.149	5.712	29.261	45.306	19.098	10.163	34,7
2012	1.703	2.454	3.866	3.209	3.678	3.540	2.750	2.403	3.296	2.497	3.154	5.300	23.603	37.850	16.228	7.375	31,2
2013	1.484	2.113	3.343	2.925	3.504	3.186	2.777	2.103	2.875	2.086	3.631	5.444	21.435	35.471	15.068	6.367	29,7
2014	1.522	2.065	3.094	3.224	3.727	3.726	2.578	2.783	3.708	2.858	3.384	6.869	22.719	39.538	16.613	6.106	26,9
2015	2.215	3.346	5.699	3.729	3.600	4.253	2.922	2.211	2.687	2.266	3.146	7.307	27.975	43.381	19.710	8.265	29,5
2016	1.167	1.648	2.515	2.319	2.711	2.623	984	1.796	1.438	2.238	2.485	3.127	15.763	25.051	10.845	4.918	31,2
2017	931	1.290	1.982	1.888	2.184	1.891	1.974	1.860	2.284	2.188	2.487	4.438	14.000	25.397	9.496	4.504	32,2
2018	1.237	1.552	2.630	2.328	1.909	1.272	1.235	603	653	488	905	1.695	12.766	16.507	7.528	5.238	41,0
2019	342	579	1.255	842	728	981	435	536					5.698	5.698	3.525	2.173	38,1

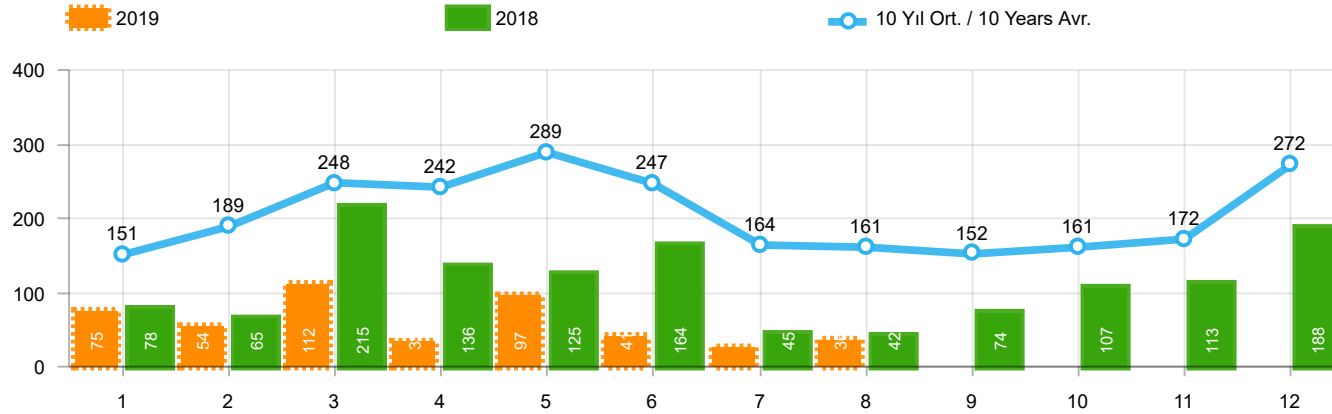
Kaynak: OSD, TAİD, TÜİK

Herhangi bir Dernek üyeliği olmayan markalara ilişkin satış verisi için TÜİK trafik kayıtları esas alınmaktadır. TÜİK trafik kayıtlarının bir ay gecikmeli yayınlanması nedeniyle ilgili markalara ilişkin son ayın satış verisi bir önceki ay ile aynı kabul edilmekte ve bir sonraki ay gerçekleşen veri ile güncellenmektedir.



Aylar / Months	10 Yıl Ort. / 10 Years Avr.	2019	%
1	206	57	-72,4
2	215	61	-71,6
3	288	63	-78,1
4	285	96	-66,3
5	246	106	-56,9
6	235	189	-19,6
7	219	55	-74,9
8	223	44	-80,2
TOPLAM / TOTAL	1.917	671	-65,0

Yıl / Year	1	2	3	4	5	6	7	8	9	10	11	12	1-8 Toplam / Total	Toplam / Total
2009	133	103	153	210	145	183	138	146	152	134	150	280	1.211	1.927
2010	140	128	172	153	127	124	93	232	199	204	162	382	1.169	2.116
2011	124	167	267	260	241	233	205	280	270	230	168	525	1.777	2.970
2012	179	257	277	229	257	239	216	249	325	269	189	398	1.903	3.084
2013	191	268	289	276	283	241	367	235	305	392	415	697	2.150	3.959
2014	360	394	384	333	294	258	216	229	395	220	266	653	2.468	4.002
2015	280	322	451	561	372	405	389	253	316	394	325	621	3.033	4.689
2016	309	158	251	302	261	196	139	220	241	230	354	431	1.836	3.092
2017	212	211	227	231	272	156	250	235	318	268	317	594	1.794	3.291
2018	134	142	410	296	207	315	180	146	160	155	184	425	1.830	2.754
2019	57	61	63	96	106	189	55	44					671	671

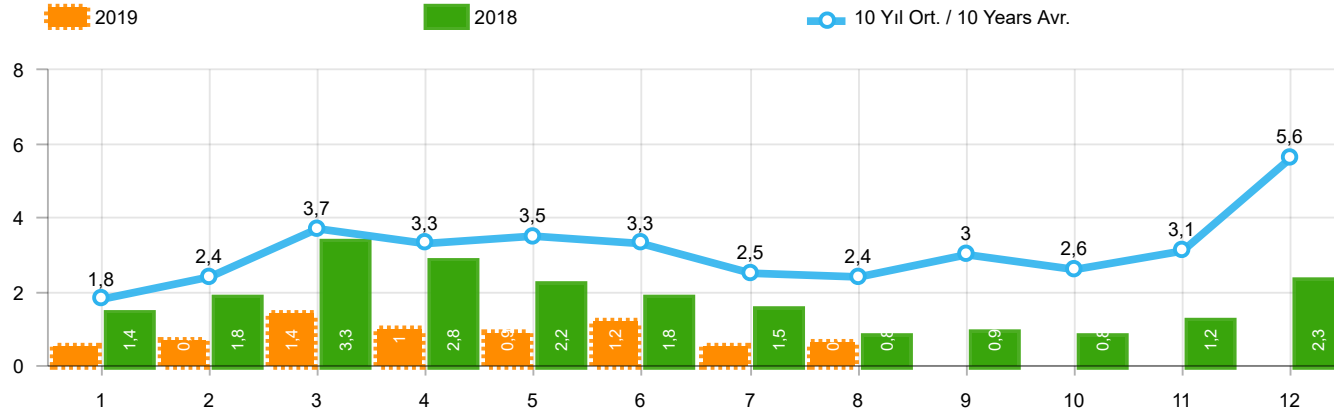


Aylar / Months	10 Yıl Ort / 10 Years Avr.	2019	%
1	151	75	-50,3
2	189	54	-71,4
3	248	112	-54,8
4	242	35	-85,5
5	289	97	-66,4
6	247	41	-83,4
7	164	25	-84,8
8	161	36	-77,7
TOPLAM / TOTAL	1.692	475	-71,9

Yıl / Year	1	2	3	4	5	6	7	8	9	10	11	12	1-8 Toplam / Total	Toplam / Total	1-8 Yerli / Local	1-8 İthal / Import	İthal Oran / Import %
2009	84	265	201	202	185	191	130	119	142	61	150	191	1.377	1.921	1.337	40	2,9
2010	67	71	128	193	193	177	170	211	163	144	133	325	1.210	1.975	1.157	53	4,4
2011	92	212	233	324	412	334	148	214	130	176	176	321	1.969	2.772	1.887	82	4,2
2012	125	103	215	172	397	262	174	182	251	229	150	344	1.630	2.604	1.598	32	2,0
2013	365	445	537	489	580	520	412	281	245	198	123	189	3.629	4.384	3.610	19	0,5
2014	199	179	253	251	305	148	69	92	130	91	97	332	1.496	2.146	1.351	145	9,7
2015	146	222	313	290	290	255	211	203	153	171	359	363	1.930	2.976	1.861	69	3,6
2016	180	209	218	240	214	307	76	82	141	198	314	236	1.526	2.415	1.495	31	2,0
2017	174	119	167	124	188	115	206	187	92	231	109	235	1.280	1.947	1.268	12	0,9
2018	78	65	215	136	125	164	45	42	74	107	113	188	870	1.352	859	11	1,3
2019	75	54	112	35	97	41	25	36	-	-	-	-	475	475	475	-	-

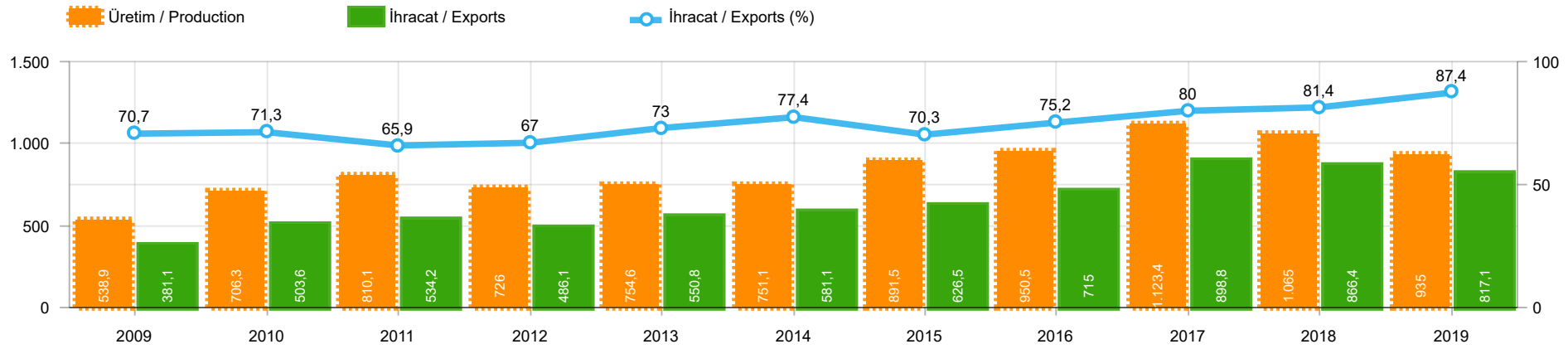
Kaynak: OSD, TÜİK

Herhangi bir Dernek üyeliği olmayan markalara ilişkin satış verisi için TÜİK trafik kayıtları esas alınmaktadır. TÜİK trafik kayıtlarının bir ay gecikmeli yayınlanması nedeniyle ilgili markalara ilişkin son ayın satış verisi bir önceki ay ile aynı kabul edilmekte ve bir sonraki ay gerçekleşen veri ile güncellenmektedir.



Aylar / Months	10 Yıl Ort. / 10 Years Avr.	2019	%
1	1.803	474	-73,7
2	2.378	694	-70,8
3	3.664	1.430	-61,0
4	3.273	973	-70,3
5	3.479	931	-73,2
6	3.313	1.211	-63,4
7	2.498	515	-79,4
8	2.426	616	-74,6
TOPLAM / TOTAL	22.834	6.844	-70,0

Yıl / Year	1	2	3	4	5	6	7	8	9	10	11	12	1-8 Toplam / Total	Toplam / Total	1-8 Yerli / Local	1-8 İthal / Import	İthal Oran / Import %
2009	999	1.131	1.416	1.793	1.756	2.023	1.529	1.429	2.156	1.158	1.347	2.839	12.076	19.576	10.165	1.911	15,8
2010	975	1.159	2.250	2.295	2.460	2.615	2.666	3.197	3.226	3.349	3.526	6.865	17.617	34.583	13.221	4.396	25,0
2011	2.867	3.923	5.642	5.087	5.216	4.419	2.614	3.239	4.184	3.806	3.493	6.558	33.007	51.048	22.762	10.245	31,0
2012	2.007	2.814	4.358	3.610	4.332	4.041	3.140	2.834	3.872	2.995	3.493	6.042	27.136	43.538	19.729	7.407	27,3
2013	2.040	2.826	4.169	3.690	4.367	3.947	3.556	2.619	3.425	2.676	4.169	6.330	27.214	43.814	20.828	6.386	23,5
2014	2.081	2.638	3.731	3.808	4.326	4.132	2.863	3.104	4.233	3.169	3.747	7.854	26.683	45.686	20.432	6.251	23,4
2015	2.641	3.890	6.463	4.580	4.262	4.913	3.522	2.667	3.156	2.831	3.830	8.291	32.938	51.046	24.604	8.334	25,3
2016	1.656	2.015	2.984	2.861	3.186	3.126	1.199	2.098	1.820	2.666	3.153	3.794	19.125	30.558	14.176	4.949	25,9
2017	1.317	1.620	2.376	2.243	2.644	2.162	2.430	2.282	2.694	2.687	2.913	5.267	17.074	30.635	12.558	4.516	26,4
2018	1.449	1.759	3.255	2.760	2.241	1.751	1.460	791	887	750	1.202	2.308	15.466	20.613	10.217	5.249	33,9
2019	474	694	1.430	973	931	1.211	515	616					6.844	6.844	4.671	2.173	31,8



	2009	2010	2011	2012	2013	2014	2015	2016	2017	2018	2019
İhracat/Export	381.131	503.580	534.179	486.057	550.759	581.060	626.461	715.006	898.816	866.389	817.136
Üretim/Production	538.883	706.347	810.077	725.951	754.562	751.112	891.548	950.485	1.123.442	1.064.951	934.997
İhracat/Exports (%)	70,7	71,3	65,9	67	73	77,4	70,3	75,2	80	81,4	87,4

Taşıt Araçları İhracatı (2017 - 2019)
Motor Vehicle Exports (2017 - 2019)

SEKTÖR / SECTOR	2017	2018	1/8-2018	1/8-2019	2019/2018 %
OTOMOBİL / Pass.Car	921.354	875.147	573.278	526.496	-8,2
OTOMOBİL TOPLAM / Pass. Car Total	921.354	875.147	573.278	526.496	-8,2
KAMYON / Truck	7.800	14.478	8.534	11.429	33,9
KAMYONET / Pick Up	350.108	372.954	242.150	230.136	-5,0
OTOBÜS / Bus	7.028	7.708	4.827	6.005	24,4
MİNİBÜS / Minibus	45.794	47.736	27.844	31.767	14,1
MİDİBÜS / Midibus	710	846	536	833	55,4
TİCARİ ARAÇLAR TOPLAM / Commercial Vehicle Total	411.440	443.722	283.891	280.170	-1,3
TAŞIT ARAÇLARI TOPLAM / Motor Vehicles Total	1.332.794	1.318.869	857.169	806.666	-5,9
TRAKTÖR / F.Tractor	13.123	15.123	9.220	10.470	13,6
TRAKTÖR TOPLAM / F.Tractor Total	13.123	15.123	9.220	10.470	13,6
GENEL TOPLAM / GRAND TOTAL	1.345.917	1.333.992	866.389	817.136	-5,7

Üretici Bazında İhracat (adet)
Exports by Manufacturer (unit)

Üreticiler / Manufacturers	2017	2018	1-8 / 2018	1-8 / 2019
A.I.O.S.	700	964	532	1.017
FORD OTOSAN	296.840	328.502	205.190	215.821
HATTAT TRAKTÖR	1.100	621	398	466
HONDA TÜRKİYE	9.391	13.699	10.386	4.659
HYUNDAI ASSAN	204.382	190.347	120.837	103.628
KARSAN	2.969	3.419	2.313	1.242
M. BENZ TÜRK	9.865	16.309	9.968	12.571
MAN TÜRKİYE	2.007	2.425	1.597	1.865
OTOKAR	691	901	434	874
OYAK RENAULT	287.915	280.411	183.667	186.485
TEMSA	870	645	330	439
TOFAŞ	270.698	243.796	169.501	130.733
TOYOTA	246.466	237.451	152.414	147.332
TÜRK TRAKTÖR	12.023	14.502	8.822	10.004
GENEL TOPLAM / Grand Total	1.345.917	1.333.992	866.389	817.136

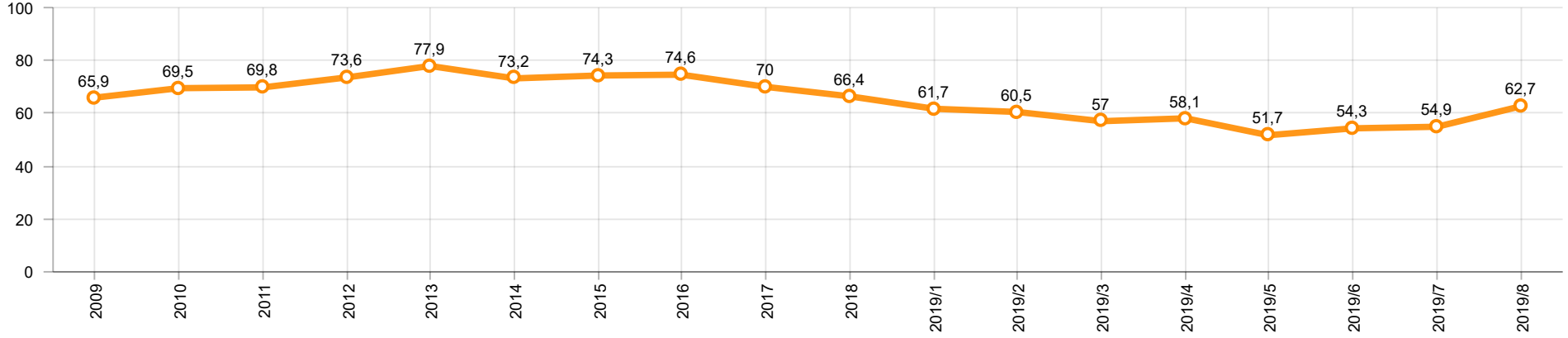
Otomotiv Ana ve Yan Sanayii İhracatı (ABD \$)
CBU and CKD Exports - \$

Sektör / Sector	2017	2018	OCAK - AĞUSTOS / January - August 2018	OCAK - AĞUSTOS / January - August 2019	2019 / 2018 %
Toplam Yan Sanayi / Total Component Industry	9.835.914.658	10.881.562.512	7.387.677.556	6.993.591.805	-5,3
İç ve Dış Lastik / Tyres	1.131.782.300	1.353.896.118	914.103.187	981.977.306	7,4
Emniyet Camı / Safety Glasses	136.486.099	151.148.689	102.836.442	97.611.905	-5,1
Motor / Engine	486.426.738	581.983.113	417.915.409	342.109.519	-18,1
Akümülatör / Batteries	295.794.286	388.107.835	228.789.759	247.964.187	8,4
Diğer Aksam ve Parça / Spare Parts&Components	7.785.425.235	8.406.426.757	5.724.032.759	5.323.928.888	-7,0
Toplam Ana Sanayi / Total Vehicle Industry	19.257.086.833	21.350.315.330	13.869.617.387	13.340.704.956	-3,8
Otobüs / Bus	1.308.249.224	1.503.188.826	932.307.730	1.163.163.275	24,8
Midibüs-Minibüs / Midibus-Minibus	217.704.499	215.450.022	146.147.567	125.607.713	-14,1
Otomobil / P.Cars	11.790.577.760	12.420.951.066	8.150.266.422	7.406.315.222	-9,1
Kamyon-Kamyonet / Truck-Pick Up&Van	4.849.022.718	5.376.446.529	3.526.100.358	3.314.789.561	-6,0
Römork ve Yarı Römork / Trailer-Semi Trailer	342.793.231	507.186.149	322.095.531	358.083.811	11,2
Çekici / Tractor	427.928.256	904.738.051	545.266.330	670.199.434	22,9
Tarım Traktörü / Farm Tractor	320.811.145	422.354.687	247.433.449	302.545.940	22,3
Toplam / Total	29.093.001.491	32.231.877.842	21.257.294.943	20.334.296.761	-4,3

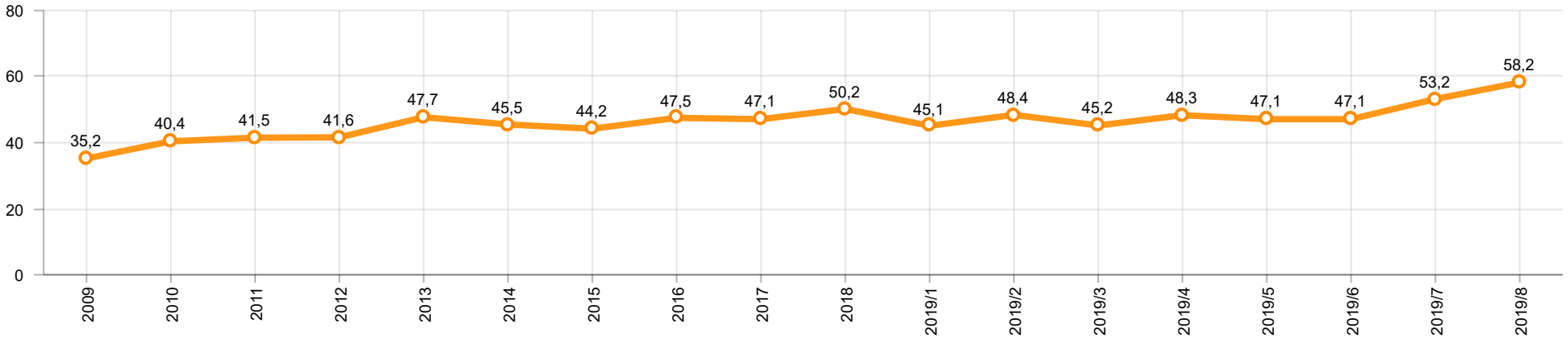
Kaynak: Uludağ İhracatçı Birlikleri . ÜİB tarafından OSD için özel olarak analiz edilen Otomotiv İhracatı kapsamında; ÜİB Türkiye Geneli Otomotiv Endüstrisi sınıflandırmasına kıyasla “Römork ve Yarı Römork” , “Tarım Traktörü” verileri dahil edilmekte; “Kullanılmış Araçlar” ,”İki Tekerlekli Taşıtlar” , “Demiryolu Taşıtları” hariç tutulmaktadır.

Source: Uludağ Exporters Association – Special Analyze for OSD.Compared to Turkish General Automotive Industry classification, this special analyze includes; farms tractors, trailers and semi-trailers, does not include; used vehicles, two-wheeled vehicles and railway vehicles

Otomobil Pazarında İthalatın Payı (%)
Import Share in P.Car Market (%)



Hafif Ticari Araçlar Pazarında İthalatın Payı (%)
Import Share in LCV Market (%)



Araç Tipleri / Vehicle Types	1	2	3	4	5	6	7	8	9	10	11	12	Toplam / Total
OTOMOBİL - Pass.Car	58.807	69.340	81.736	66.084	80.233	62.846	73.598	33.852					526.496
KAMYON - H. Truck	1.270	1.594	1.312	1.153	1.170	1.247	2.150	1.533					11.429
KAMYONET - Pick Up	27.735	29.855	31.222	33.326	26.072	29.659	35.745	16.522					230.136
OTOBÜS - Bus	801	637	822	756	958	651	863	517					6.005
MİNİBÜS - Minibus	4.741	4.836	5.012	4.630	3.278	2.396	4.860	2.014					31.767
MİDİBÜS - Midibus	74	93	135	58	152	82	73	166					833
TİCARİ ARAÇLAR TOPLAMI - CV Total	34.621	37.015	38.503	39.923	31.630	34.035	43.691	20.752					280.170
TAŞIT ARAÇLARI TOPLAMI - MV Total	93.428	106.355	120.239	106.007	111.863	96.881	117.289	54.604					806.666
TRAKTÖR - F.Tractor	1.111	1.145	1.516	1.207	1.551	1.382	1.689	869					10.470
GENEL TOPLAM - Grand Total	94.539	107.500	121.755	107.214	113.414	98.263	118.978	55.473					817.136

Otomobil / P.Car

Firmalar / Firms	1	2	3	4	5	6	7	8	9	10	11	12	Toplam / Total
FORD OTOSAN	1.469	1.837	2.405	2.671	2.064	2.021	2.397	684	-	-	-	-	15.548
HONDA TÜRKİYE	800	1.009	424	689	240	449	210	838	-	-	-	-	4.659
HYUNDAI ASSAN	11.414	14.050	13.200	9.050	18.750	14.850	14.579	7.735	-	-	-	-	103.628
OYAK RENAULT	20.009	24.138	35.569	21.457	26.820	22.749	21.894	13.849	-	-	-	-	186.485
TOFAŞ	7.636	8.517	7.730	10.743	11.140	8.882	10.779	3.417	-	-	-	-	68.844
TOYOTA	17.479	19.789	22.408	21.474	21.219	13.895	23.739	7.329	-	-	-	-	147.332
TOPLAM - Total	58.807	69.340	81.736	66.084	80.233	62.846	73.598	33.852	-	-	-	-	526.496

Kamyonet / Pick-up

Firmalar / Firms	1	2	3	4	5	6	7	8	9	10	11	12	Toplam / Total
A.I.O.S.	-	-	-	-	-	-	-	-	-	-	-	-	-
FORD OTOSAN	22.083	22.516	23.449	24.428	16.098	20.460	25.296	13.015	-	-	-	-	167.345
KARSAN	73	54	150	95	95	142	115	72	-	-	-	-	796
OTOKAR	-	-	25	10	15	17	-	39	-	-	-	-	106
TOFAŞ	5.579	7.285	7.598	8.793	9.864	9.040	10.334	3.396	-	-	-	-	61.889
TOPLAM - Total	27.735	29.855	31.222	33.326	26.072	29.659	35.745	16.522	-	-	-	-	230.136

Minibüs / Minibus

Firmalar / Firms	1	2	3	4	5	6	7	8	9	10	11	12	Toplam / Total
FORD OTOSAN	4.740	4.833	4.998	4.620	3.268	2.386	4.846	2.014	-	-	-	-	31.705
KARSAN	1	3	14	10	10	10	14	-	-	-	-	-	62
TOPLAM - Total	4.741	4.836	5.012	4.630	3.278	2.396	4.860	2.014	-	-	-	-	31.767

Kamyon / Truck

Firmalar / Firms	1	2	3	4	5	6	7	8	9	10	11	12	Toplam / Total
A.I.O.S.	-	30	-	175	29	-	-	-	-	-	-	-	234
FORD OTOSAN	114	141	166	161	221	175	167	78	-	-	-	-	1.223
KARSAN	-	-	-	-	-	-	-	-	-	-	-	-	-
M. BENZ TÜRK	1.156	1.423	1.146	817	920	1.072	1.983	1.455	-	-	-	-	9.972
OTOKAR	-	-	-	-	-	-	-	-	-	-	-	-	-
TOPLAM - Total	1.270	1.594	1.312	1.153	1.170	1.247	2.150	1.533	-	-	-	-	11.429

Midibüs / Midibus

Firmalar / Firms	1	2	3	4	5	6	7	8	9	10	11	12	Toplam / Total
A.I.O.S.	52	60	88	46	121	56	36	105	-	-	-	-	564
KARSAN	5	6	39	-	1	-	1	-	-	-	-	-	52
OTOKAR	8	21	8	12	16	25	36	28	-	-	-	-	154
TEMSA	9	6	-	-	14	1	-	33	-	-	-	-	63
TOPLAM - Total	74	93	135	58	152	82	73	166	-	-	-	-	833

Otobüs / Bus

Firmalar / Firms	1	2	3	4	5	6	7	8	9	10	11	12	Toplam / Total
A.I.O.S.	56	12	47	18	15	50	3	18	-	-	-	-	219
KARSAN	23	17	56	2	65	58	72	39	-	-	-	-	332
M. BENZ TÜRK	261	246	318	395	446	305	390	238	-	-	-	-	2.599
MAN TÜRKİYE	298	271	273	225	256	193	229	120	-	-	-	-	1.865
OTOKAR	104	69	108	93	94	23	94	29	-	-	-	-	614
TEMSA	59	22	20	23	82	22	75	73	-	-	-	-	376
TOPLAM - Total	801	637	822	756	958	651	863	517	-	-	-	-	6.005

Traktör / F.Tractor

Firmalar / Firms	1	2	3	4	5	6	7	8	9	10	11	12	Toplam / Total
HATTAT TRAKTÖR	39	72	108	43	48	40	55	61	-	-	-	-	466
TÜRK TRAKTÖR	1.072	1.073	1.408	1.164	1.503	1.342	1.634	808	-	-	-	-	10.004
TOPLAM - Total	1.111	1.145	1.516	1.207	1.551	1.382	1.689	869	-	-	-	-	10.470

Firmalar / Firms	2018 Toplam / Total	1	2	3	4	5	6	7	8	9	10	11	12	Toplam / Total
Alfa Romeo	203	8	16	32	23	50	60	7	4	-	-	-	-	200
Aston Martin	16	2	-	3	1	-	1	2	2	-	-	-	-	11
Audi	13.295	495	404	832	515	742	891	467	633	-	-	-	-	4.979
Bentley	10	2	-	-	1	1	-	-	-	-	-	-	-	4
BMW	12.728	352	463	871	724	445	637	585	684	-	-	-	-	4.761
Citroen	7.669	80	97	423	378	453	469	265	533	-	-	-	-	2.698
Dacia	26.193	429	801	1.765	910	970	1.569	561	672	-	-	-	-	7.677
DS	236	3	8	8	27	8	15	5	13	-	-	-	-	87
Ferrari	18	-	2	2	3	3	2	1	1	-	-	-	-	14
Fiat	1.264	26	26	65	80	157	99	48	46	-	-	-	-	547
Ford	20.697	235	476	1.452	774	676	1.232	279	327	-	-	-	-	5.451
Honda	4.862	144	149	253	281	276	203	116	110	-	-	-	-	1.532
Hyundai	19.113	794	1.195	1.508	1.089	1.141	1.123	838	729	-	-	-	-	8.417
Infinity	18	-	-	-	-	-	-	-	-	-	-	-	-	-
Jaguar	220	2	18	20	20	10	19	12	15	-	-	-	-	116
Jeep	2.430	100	162	225	138	92	168	82	63	-	-	-	-	1.030
Kia	7.694	150	331	534	357	204	205	178	354	-	-	-	-	2.313
Lamborghini	3	1	-	-	1	1	1	3	-	-	-	-	-	7
Land Rover	1.248	36	71	63	80	59	48	88	104	-	-	-	-	549
Lexus	56	4	4	2	3	2	3	3	2	-	-	-	-	23
Maserati	55	2	4	2	2	6	3	1	-	-	-	-	-	20
Mazda	1.005	29	29	15	31	45	18	9	12	-	-	-	-	188
Mercedes-Benz	14.445	204	701	1.005	563	728	1.021	830	743	-	-	-	-	5.795
Mini	1.373	17	50	176	91	92	169	31	66	-	-	-	-	692
Mitsubishi	514	38	60	41	34	30	26	9	6	-	-	-	-	244
Nissan	24.605	538	799	1.662	887	806	1.215	459	706	-	-	-	-	7.072
Opel	20.960	348	765	1.684	1.055	866	1.268	641	1.000	-	-	-	-	7.627
Peugeot	24.905	524	767	2.287	1.627	1.692	1.927	782	1.031	-	-	-	-	10.637
Porsche	565	9	35	27	29	31	24	22	18	-	-	-	-	195
Renault	21.090	198	557	822	490	552	718	215	444	-	-	-	-	3.996
Seat	10.383	139	289	515	269	295	547	169	314	-	-	-	-	2.537
Skoda	21.340	247	585	1.414	687	778	1.441	334	1.092	-	-	-	-	6.578
Smart	35	5	3	6	2	3	1	1	1	-	-	-	-	22
Ssangyong	222	10	15	14	6	9	11	6	4	-	-	-	-	75
Subaru	1.471	52	68	76	75	45	32	22	18	-	-	-	-	388
Suzuki	2.878	65	107	236	142	245	245	31	101	-	-	-	-	1.172
Toyota	3.405	47	114	132	103	103	94	42	80	-	-	-	-	715
Volkswagen	49.749	1.210	2.218	3.528	2.329	2.096	3.665	1.105	3.381	-	-	-	-	19.532
Volvo	5.943	231	225	334	360	300	392	210	207	-	-	-	-	2.259
GENEL TOPLAM - Grand Total	322.916	6.776	11.614	22.034	14.187	14.012	19.562	8.459	13.516	-	-	-	-	110.160

Firmalar / Firms	2018 Toplam / Total	1	2	3	4	5	6	7	8	9	10	11	12	Toplam / Total
Citroen	4.633	126	188	181	406	281	189	150	170	-	-	-	-	1.691
Dacia	3.725	53	182	296	179	136	170	67	227	-	-	-	-	1.310
Fiat	3.019	53	54	117	59	72	175	38	122	-	-	-	-	690
Ford	2.783	134	106	177	65	36	34	14	70	-	-	-	-	636
Hyundai	1.493	83	106	121	109	88	81	52	36	-	-	-	-	676
Isuzu	578	3	30	23	3	1	2	-	-	-	-	-	-	62
Iveco	1.598	48	54	115	109	95	134	41	57	-	-	-	-	653
Karsan	-	-	-	-	-	-	-	-	-	-	-	-	-	-
Kia	1.947	14	55	189	117	84	149	55	115	-	-	-	-	778
Mercedes-Benz	7.993	159	404	628	288	457	319	110	352	-	-	-	-	2.717
Mitsubishi	3.445	47	129	69	116	103	411	33	68	-	-	-	-	976
Nissan	1.741	82	48	150	135	26	41	8	78	-	-	-	-	568
Opel	-	-	-	43	112	41	55	71	71	-	-	-	-	393
Peugeot	5.247	197	284	819	431	379	333	295	401	-	-	-	-	3.139
Renault	8.908	180	342	741	304	191	211	168	282	-	-	-	-	2.419
Ssangyong	174	-	-	15	38	25	22	13	10	-	-	-	-	123
Toyota	3.159	55	101	91	65	71	90	45	36	-	-	-	-	554
Volkswagen	17.085	295	662	1.017	633	689	724	186	641	-	-	-	-	4.847
GENEL TOPLAM - Grand Total	67.528	1.529	2.745	4.792	3.169	2.775	3.140	1.346	2.736	-	-	-	-	22.232