



OTOMOTİV SANAYİİ DERNEĐİ
AUTOMOTIVE MANUFACTURERS ASSOCIATION

OTOMOTİV SEKTÖRÜ AYLIK DEĐERLENDİRME RAPORU TEMMUZ 2019

AUTOMOTIVE INDUSTRY MONTHLY REPORT
July 2019

OSD "OICA" Üyesidir @OICA OSD is a Member of "OICA"

	7 - 2018	7 - 2019	%	1 - 7 / 2018	1 - 7 / 2019	%	8/2017 - 7/2018	8/2018 - 7/2019	%
Otomobil Üretimi/P.Cars Production	96.511	86.235	-10,6	653.803	578.935	-11,5	1.097.119	951.703	-13,3
Toplam Üretim/Total Production	143.729	133.883	-6,9	986.945	868.945	-12,0	1.664.516	1.432.260	-14,0
Otomobil Pazarı/P.Cars Market	42.024	15.398	-63,4	317.894	171.776	-46,0	672.345	340.203	-49,4
Toplam Pazar/Total Market	54.194	18.386	-66,1	420.757	219.243	-47,9	909.339	440.036	-51,6
Otomobil İthalatı/P.Cars Import	27.416	8.459	-69,1	210.716	96.644	-54,1	463.080	208.844	-54,9
Toplam İthalat/Total Import	33.176	9.942	-70,0	258.498	118.137	-54,3	569.456	256.907	-54,9
Otomobil İhracatı/P.Cars Export	82.198	73.598	-10,5	542.750	492.644	-9,2	884.024	825.041	-6,7
Toplam İhracat/Total Export	123.389	117.266	-5,0	811.268	752.034	-7,3	1.315.709	1.259.635	-4,3
Otomobil İhracatı(\$)/P.Cars Export (\$)	1.102.731.581	1.140.646.526	3,4	7.653.160.773	6.896.429.057	-9,9	12.294.277.543	11.664.219.351	-5,1
Toplam İhracat(\$)/Total Export (\$)*	2.829.580.283	2.955.481.372	4,4	19.595.883.225	18.541.841.087	-5,4	31.617.861.851	31.174.498.192	-1,4

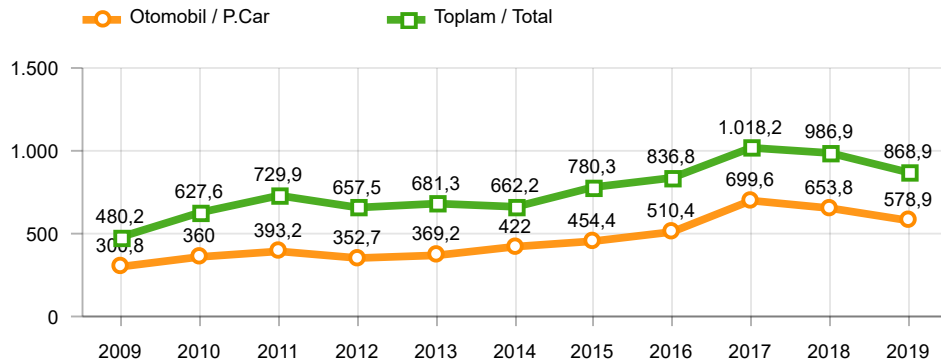
Parametreler/Parameters	7 - 2018	7 - 2019	%	1 - 7 / 2018	1 - 7 / 2019	%	8/2017 - 7/2018	8/2018 - 7/2019	%
ÜFE / PPI	1,8	-1,0	-	17,6	7,0	-	17,4	32,3	-
TÜFE / CPI	0,6	1,4	-	9,8	6,4	-	12,0	19,9	-
Sanayi Endeksi / Industry Index	1,9	-0,8	-	17,3	7,3	-	18,4	30,6	-
Dolar \$ ** (1 birim)	4,8	5,6	17,6	4,1	5,6	34,6	3,9	5,6	42,3
Euro € ** (1 birim)	5,6	6,3	13,2	5,0	6,3	26,6	4,7	6,4	35,7
Japon Yeni ¥ ** (100 birim)	4,3	5,1	20,5	3,8	5,1	33,9	3,6	5,0	41,4

*Toplam Sanayi / Total Industry Including Components

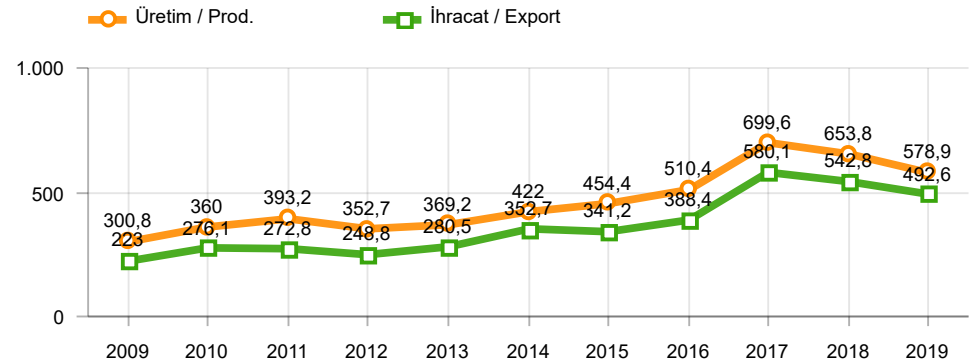
** Ortalama Değerler / Average Values

Araç Tipleri / Types	7 / 2018	7 / 2019	7 % Değişim	1-7 / 2018	1-7 / 2019	1-7 % Değişim
OTOMOBİL / Pass.Car	96.511	86.235	-10,6	653.803	578.935	-11,5
OTOMOBİL Toplam / Pass.Car Total	96.511	86.235	-10,6	653.803	578.935	-11,5
B.KAMYON / H. Truck	2.075	2.284	10,1	15.384	11.120	-27,7
K.KAMYON / L. Truck	393	63	-84,0	1.975	413	-79,1
KAMYONET / Pick Up	38.482	37.533	-2,5	275.234	236.668	-14,0
OTOBÜS / Bus	696	881	26,6	5.061	5.607	10,8
MİNİBÜS / Minibus	5.235	6.635	26,7	33.145	34.875	5,2
MİDİBÜS / Midibus	337	252	-25,2	2.343	1.327	-43,4
TİCARİ ARAÇLAR Toplam / Commercial Vehicles Total	47.218	47.648	0,9	333.142	290.010	-12,9
TAŞIT ARAÇLARI Toplam / Motor Vehicles Total	143.729	133.883	-6,9	986.945	868.945	-12,0
TRAKTÖR / F.Tractor	3.419	2.042	-40,3	29.268	12.612	-56,9
TRAKTÖR Toplam / F.Tractor Total	3.419	2.042	-40,3	29.268	12.612	-56,9
GENEL TOPLAM / Grand Total	147.148	135.925	-7,6	1.016.213	881.557	-13,3

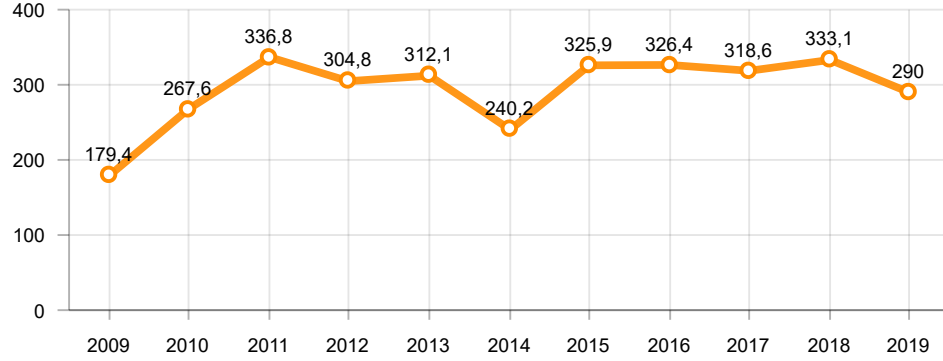
Toplam Üretim ve Otomobil Üretimi (x1000)(OCAK - TEMMUZ)
Total & P.Cars Production (x1000)(January - July)



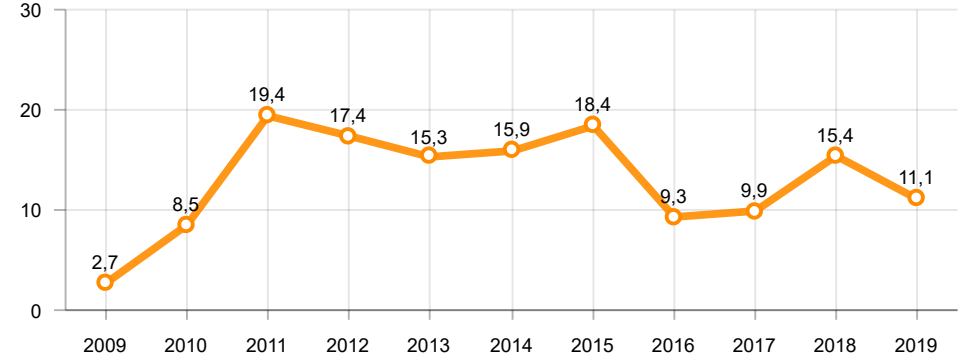
Otomobil Üretimi ve İhracat (x1000)(OCAK - TEMMUZ)
P.Cars Production & Exports (x1000)(January - July)



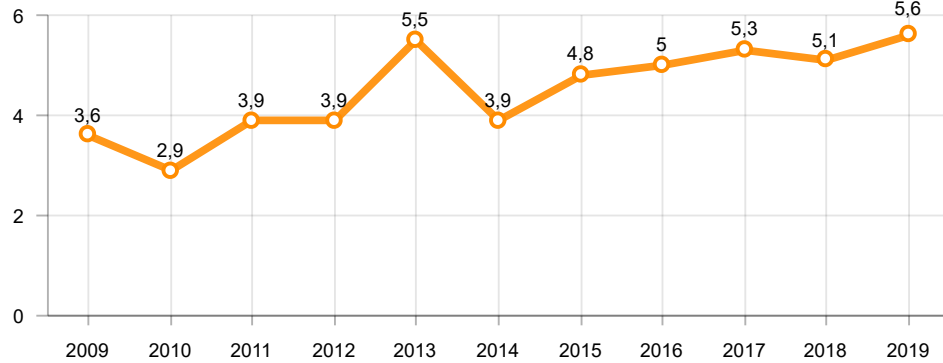
Ticari Araç Üretimi (x1000)(OCAK - TEMMUZ)
Commercial Vehicle Production (x1000)(January - July)



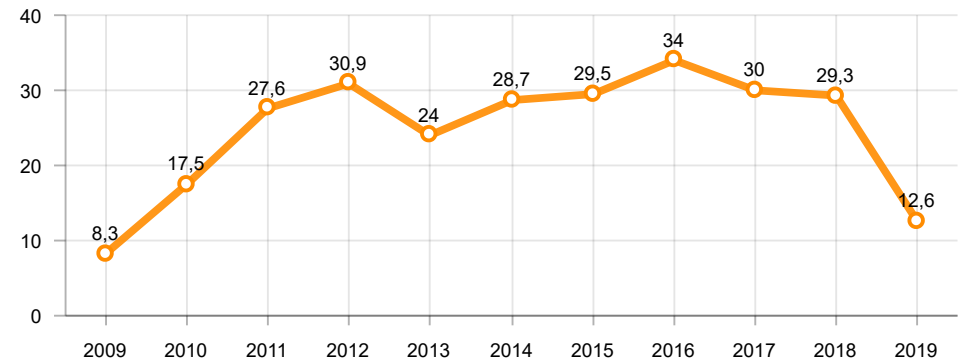
Büyük Kamyon Üretimi (x1000)(OCAK - TEMMUZ)
Heavy Truck Production (x1000)(January - July)

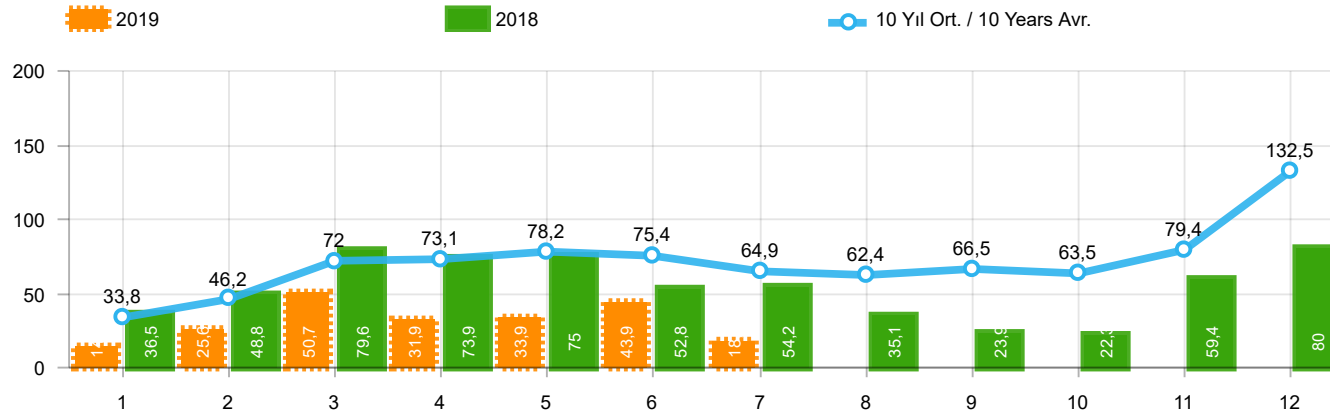


Otobüs Üretimi (x1000)(OCAK - TEMMUZ)
Bus Production (x1000)(January - July)



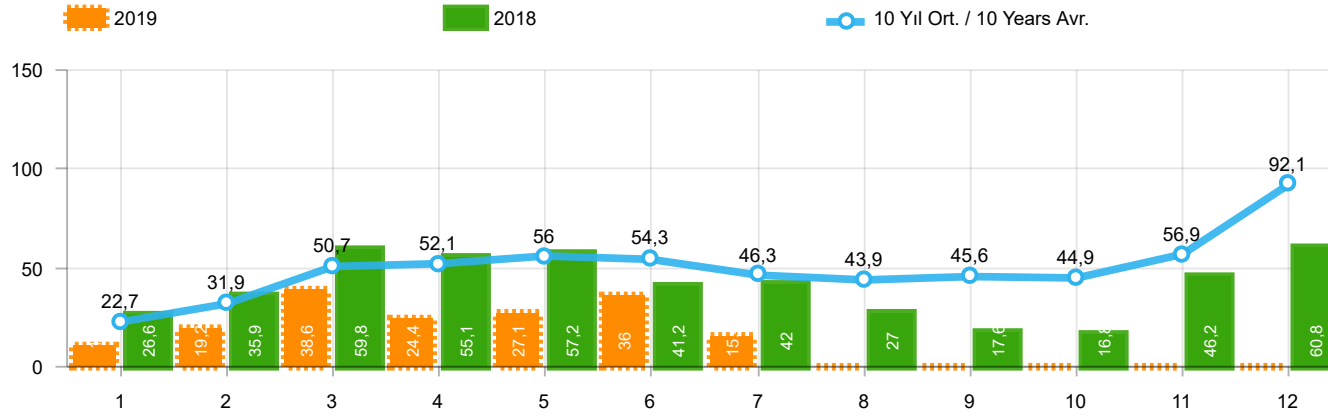
Traktör Üretimi (x1000)(OCAK - TEMMUZ)
F. Tractor Production (x1000)(January - July)





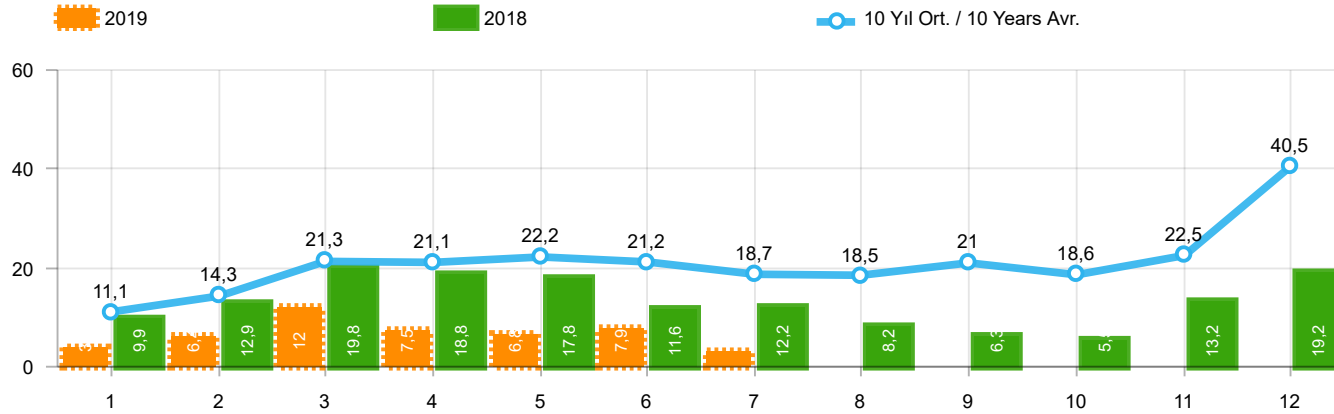
Aylar / Months	10 Yıl Ort / 10 Years Avr.	2019	%
1	33.809	14.847	-56,1
2	46.213	25.569	-44,7
3	71.956	50.651	-29,6
4	73.144	31.944	-56,3
5	78.208	33.947	-56,6
6	75.438	43.899	-41,8
7	64.942	18.386	-71,7
TOPLAM / TOTAL	443.711	219.243	-50,6

Yıl / Year	1	2	3	4	5	6	7	8	9	10	11	12	1-7 Toplam / Total	Toplam / Total	1-7 Yerli / Local	1-7 İthal / Import	İthal Oran / Import %
2009	20.605	22.873	56.527	54.433	64.947	63.090	30.374	37.038	83.553	22.191	29.309	91.762	312.849	576.702	139.958	172.891	55,3
2010	21.070	32.331	54.019	57.241	61.837	63.511	64.011	64.961	67.040	76.753	77.488	155.234	354.020	795.496	151.107	202.913	57,3
2011	47.759	62.586	84.045	82.782	85.862	85.992	65.658	61.645	64.313	73.227	67.150	134.468	514.684	915.487	208.152	306.532	59,6
2012	31.552	44.138	69.242	66.559	75.195	75.108	65.444	60.982	73.501	62.933	75.203	121.442	427.238	821.299	164.294	262.944	61,5
2013	37.563	51.133	72.943	77.265	85.835	78.043	75.152	67.662	71.388	60.690	83.470	136.048	477.934	897.192	149.951	327.983	68,6
2014	34.751	37.659	51.312	57.113	62.447	64.295	62.770	63.303	70.764	69.742	84.368	154.843	370.347	813.367	124.339	246.008	66,4
2015	37.256	59.221	89.765	96.182	85.804	91.071	87.358	85.244	67.181	67.086	88.431	164.464	546.657	1.019.063	192.591	354.066	64,8
2016	34.369	54.840	85.932	87.748	97.090	94.666	59.732	73.654	69.413	85.666	125.462	145.706	514.377	1.014.278	169.892	344.485	67,0
2017	36.640	48.585	76.178	78.231	88.066	85.820	84.727	74.818	74.046	94.439	103.772	141.507	498.247	986.829	184.718	313.529	62,9
2018	36.525	48.768	79.600	73.886	74.996	52.788	54.194	35.137	23.915	22.321	59.406	80.014	420.757	641.550	162.259	258.498	61,4
2019	14.847	25.569	50.651	31.944	33.947	43.899	18.386						219.243	219.243	101.106	118.137	53,9



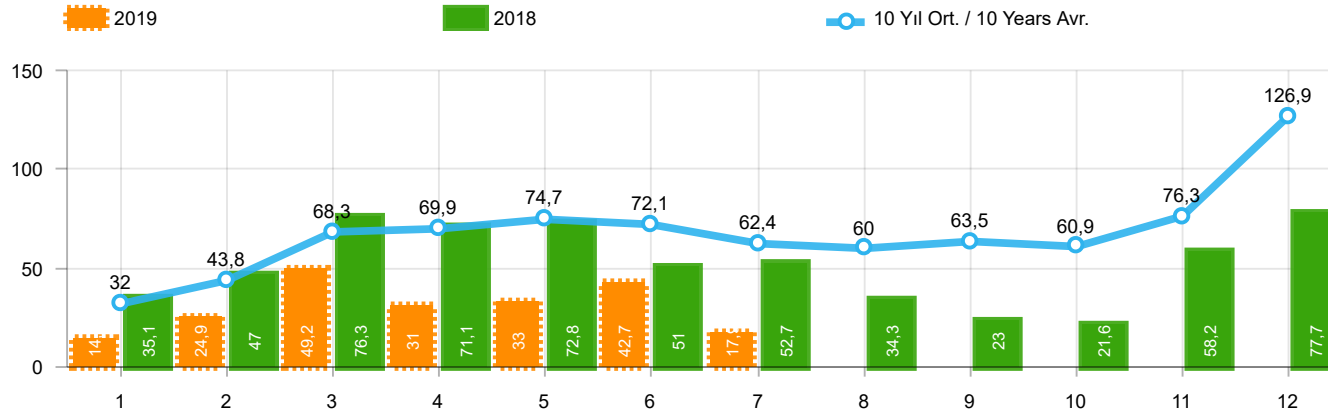
Aylar / Months	10 Yıl Ort / 10 Years Avr.	2019	%
1	22.707	10.979	-51,6
2	31.928	19.205	-39,8
3	50.654	38.628	-23,7
4	52.093	24.416	-53,1
5	55.992	27.126	-51,6
6	54.250	36.024	-33,6
7	46.259	15.398	-66,7
TOPLAM / TOTAL	313.883	171.776	-45,3

Yıl / Year	1	2	3	4	5	6	7	8	9	10	11	12	1-7 Toplam / Total	Toplam / Total	1-7 Yerli / Local	1-7 İthal / Import	İthal Oran / Import %
2009	13.173	14.492	40.622	36.202	44.188	41.019	16.637	22.537	52.162	13.828	17.781	57.178	206.333	369.819	70.658	135.675	65,8
2010	12.594	20.651	33.958	36.549	40.467	42.086	41.399	42.222	42.477	47.859	50.061	99.461	227.704	509.784	72.553	155.151	68,1
2011	29.868	39.004	54.023	53.835	56.302	56.714	43.518	38.875	39.964	47.508	44.951	88.957	333.264	593.519	103.557	229.707	68,9
2012	21.077	29.189	47.270	45.645	50.460	50.849	44.531	41.236	49.360	43.440	52.297	80.926	289.021	556.280	80.884	208.137	72,0
2013	25.835	36.814	51.785	56.999	62.383	58.290	55.712	51.611	52.925	46.985	64.117	101.199	347.818	664.655	76.152	271.666	78,1
2014	24.368	27.167	37.812	42.769	46.379	47.278	46.602	45.131	49.262	50.814	59.695	110.054	272.375	587.331	68.746	203.629	74,8
2015	24.498	40.817	61.676	70.211	62.878	67.766	64.218	61.753	47.088	47.954	62.397	114.340	392.064	725.596	100.601	291.463	74,3
2016	23.358	40.588	63.975	65.618	73.832	71.111	45.566	53.977	51.340	63.746	95.783	108.044	384.048	756.938	97.512	286.536	74,6
2017	25.689	34.658	55.616	57.998	65.799	66.164	62.384	54.890	53.423	70.488	75.956	99.694	368.308	722.759	114.704	253.604	68,9
2018	26.611	35.901	59.798	55.108	57.227	41.225	42.024	26.976	17.595	16.809	46.204	60.843	317.894	486.321	107.178	210.716	66,3
2019	10.979	19.205	38.628	24.416	27.126	36.024	15.398						171.776	171.776	75.132	96.644	56,3



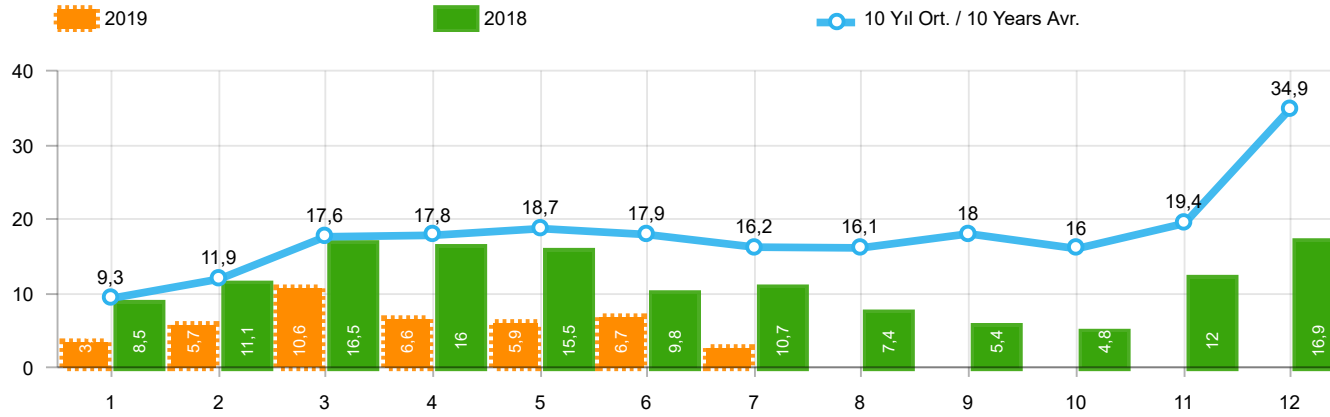
Aylar / Months	10 Yıl Ort / 10 Years Avr.	2019	%
1	11.102	3.868	-65,2
2	14.285	6.364	-55,5
3	21.303	12.023	-43,6
4	21.051	7.528	-64,2
5	22.216	6.821	-69,3
6	21.188	7.875	-62,8
7	18.683	2.988	-84,0
TOPLAM / TOTAL	129.828	47.467	-63,4

Yıl / Year	1	2	3	4	5	6	7	8	9	10	11	12	1-7 Toplam / Total	Toplam / Total	1-7 Yerli / Local	1-7 İthal / Import	İthal Oran / Import %
2009	7.432	8.381	15.905	18.231	20.759	22.071	13.737	14.501	31.391	8.363	11.528	34.584	106.516	206.883	69.300	37.216	34,9
2010	8.476	11.680	20.061	20.692	21.370	21.425	22.612	22.739	24.563	28.894	27.427	55.773	126.316	285.712	78.554	47.762	37,8
2011	17.891	23.582	30.022	28.947	29.560	29.278	22.140	22.770	24.349	25.719	22.199	45.511	181.420	321.968	104.595	76.825	42,3
2012	10.475	14.949	21.972	20.914	24.735	24.259	20.913	19.746	24.141	19.493	22.906	40.516	138.217	265.019	83.410	54.807	39,7
2013	11.728	14.319	21.158	20.266	23.452	19.753	19.440	16.051	18.463	13.705	19.353	34.849	130.116	232.537	73.799	56.317	43,3
2014	10.383	10.492	13.500	14.344	16.068	17.017	16.168	18.172	21.502	18.928	24.673	44.789	97.972	226.036	55.593	42.379	43,3
2015	12.758	18.404	28.089	25.971	22.926	23.305	23.140	23.491	20.093	19.132	26.034	50.124	154.593	293.467	91.990	62.603	40,5
2016	11.011	14.252	21.957	22.130	23.258	23.555	14.166	19.677	18.073	21.920	29.679	37.662	130.329	257.340	72.380	57.949	44,5
2017	10.951	13.927	20.562	20.233	22.267	19.656	22.343	19.928	20.623	23.951	27.816	41.813	129.939	264.070	70.014	59.925	46,1
2018	9.914	12.867	19.802	18.778	17.769	11.563	12.170	8.161	6.320	5.512	13.202	19.171	102.863	155.229	55.081	47.782	46,5
2019	3.868	6.364	12.023	7.528	6.821	7.875	2.988						47.467	47.467	25.974	21.493	45,3



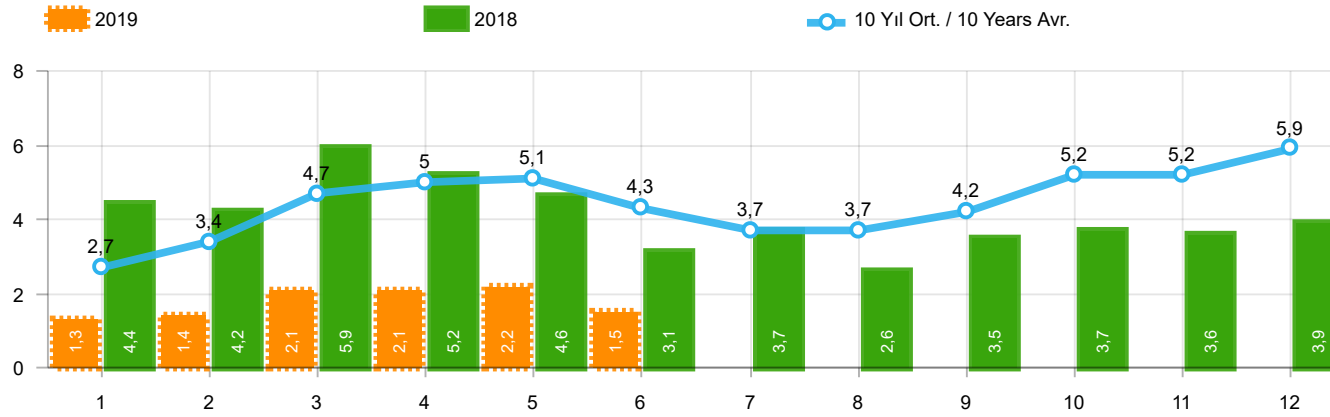
Aylar / Months	10 Yıl Ort. / 10 Years Avr.	2019	%
1	32.006	14.373	-55,1
2	43.836	24.875	-43,3
3	68.292	49.221	-27,9
4	69.871	30.971	-55,7
5	74.729	33.016	-55,8
6	72.126	42.688	-40,8
7	62.444	17.927	-71,3
TOPLAM / TOTAL	423.303	213.071	-49,7

Yıl / Year	1	2	3	4	5	6	7	8	9	10	11	12	1-7 Toplam / Total	Toplam / Total	1-7 Yerli / Local	1-7 İthal / Import	İthal Oran / Import %
2009	19.606	21.742	55.111	52.640	63.191	61.067	28.845	35.609	81.397	21.033	27.962	88.923	302.202	557.126	130.914	171.288	56,7
2010	20.095	31.172	51.769	54.946	59.377	60.896	61.345	61.764	63.814	73.404	73.962	148.369	339.600	760.913	140.328	199.272	58,7
2011	44.892	58.663	78.403	77.695	80.646	81.573	63.044	58.406	60.129	69.421	63.657	127.910	484.916	864.439	187.856	297.060	61,3
2012	29.545	41.324	64.884	62.949	70.863	71.067	62.304	58.148	69.629	59.938	71.710	115.400	402.936	777.761	146.652	256.284	63,6
2013	35.523	48.307	68.774	73.575	81.468	74.096	71.596	65.043	67.963	58.014	79.301	129.718	453.339	853.378	131.242	322.097	71,0
2014	32.670	35.021	47.581	53.305	58.121	60.163	59.907	60.199	66.531	66.573	80.621	146.989	346.768	767.681	106.223	240.545	69,4
2015	34.615	55.331	83.302	91.602	81.542	86.158	83.836	82.577	64.025	64.255	84.601	156.173	516.386	968.017	169.943	346.443	67,1
2016	32.713	52.825	82.948	84.887	93.904	91.540	58.533	71.556	67.593	83.000	122.309	141.912	497.350	983.720	157.337	340.013	68,4
2017	35.323	46.965	73.802	75.988	85.422	83.658	82.297	72.536	71.352	91.752	100.859	136.240	483.455	956.194	173.698	309.757	64,1
2018	35.076	47.009	76.345	71.126	72.755	51.037	52.734	34.346	23.028	21.571	58.204	77.706	406.082	620.937	152.578	253.504	62,4
2019	14.373	24.875	49.221	30.971	33.016	42.688	17.927						213.071	213.071	96.931	116.140	54,5



Aylar / Months	10 Yıl Ort. / 10 Years Avr.	2019	%
1	9.299	3.394	-63,5
2	11.908	5.670	-52,4
3	17.638	10.593	-39,9
4	17.778	6.555	-63,1
5	18.737	5.890	-68,6
6	17.875	6.664	-62,7
7	16.185	2.529	-84,4
TOPLAM / TOTAL	109.421	41.295	-62,3

Yıl / Year	1	2	3	4	5	6	7	8	9	10	11	12	1-7 Toplam / Total	Toplam / Total	1-7 Yerli / Local	1-7 İthal / Import	İthal Oran / Import %
2009	6.433	7.250	14.489	16.438	19.003	20.048	12.208	13.072	29.235	7.205	10.181	31.745	95.869	187.307	60.256	35.613	37,1
2010	7.501	10.521	17.811	18.397	18.910	18.810	19.946	19.542	21.337	25.545	23.901	48.908	111.896	251.129	67.775	44.121	39,4
2011	15.024	19.659	24.380	23.860	24.344	24.859	19.526	19.531	20.165	21.913	18.706	38.953	151.652	270.920	84.299	67.353	44,4
2012	8.468	12.135	17.614	17.304	20.403	20.218	17.773	16.912	20.269	16.498	19.413	34.474	113.915	221.481	65.768	48.147	42,3
2013	9.688	11.493	16.989	16.576	19.085	15.806	15.884	13.432	15.038	11.029	15.184	28.519	105.521	188.723	55.090	50.431	47,8
2014	8.302	7.854	9.769	10.536	11.742	12.885	13.305	15.068	17.269	15.759	20.926	36.935	74.393	180.350	37.477	36.916	49,6
2015	10.117	14.514	21.626	21.391	18.664	18.392	19.618	20.824	16.937	16.301	22.204	41.833	124.322	242.421	69.342	54.980	44,2
2016	9.355	12.237	18.973	19.269	20.072	20.429	12.967	17.579	16.253	19.254	26.526	33.868	113.302	226.782	59.825	53.477	47,2
2017	9.634	12.307	18.186	17.990	19.623	17.494	19.913	17.646	17.929	21.264	24.903	36.546	115.147	233.435	58.994	56.153	48,8
2018	8.465	11.108	16.547	16.018	15.528	9.812	10.710	7.370	5.433	4.762	12.000	16.863	88.188	134.616	45.400	42.788	48,5
2019	3.394	5.670	10.593	6.555	5.890	6.664	2.529						41.295	41.295	21.799	19.496	47,2



Aylar / Months	10 Yıl Ort. / 10 Years Avr.	2019	%
1	2.669	1.311	-50,9
2	3.359	1.401	-58,3
3	4.700	2.143	-54,4
4	5.046	2.126	-57,9
5	5.116	2.229	-56,4
6	4.276	1.538	-64,0
TOPLAM / TOTAL	25.166	10.748	-57,3

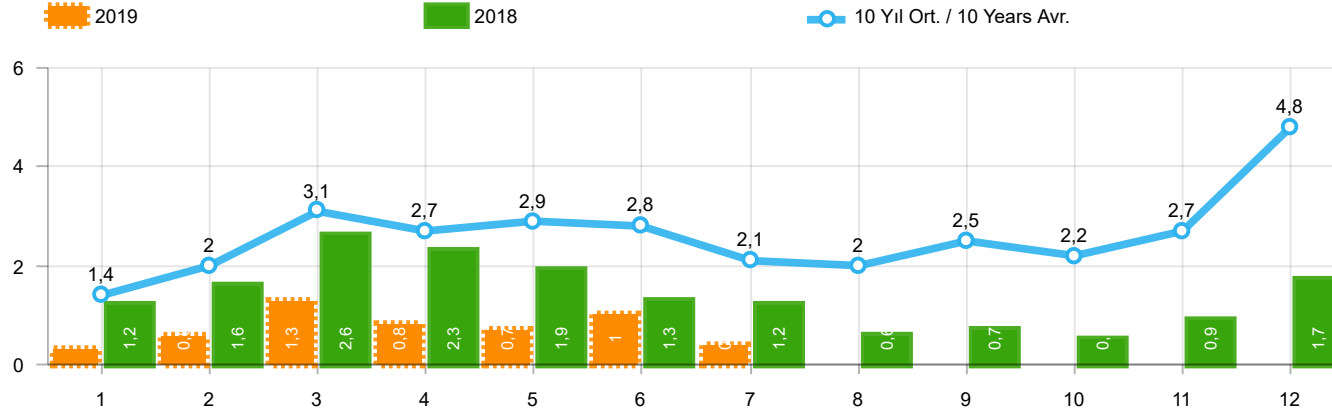
Yıl / Year	1	2	3	4	5	6	7	8	9	10	11	12	1-6 Toplam / Total	Toplam / Total
2009	717	572	688	1.070	1.297	1.256	1.054	1.183	1.117	1.356	1.304	2.144	5.600	13.758
2010	1.111	1.991	2.330	3.039	2.567	2.638	1.965	3.019	2.806	4.424	3.978	6.168	13.676	36.036
2011	2.975	5.242	5.927	5.358	6.016	6.335	4.534	4.051	4.140	5.828	4.943	4.992	31.853	60.341
2012	2.362	1.983	4.348	6.579	6.273	4.569	3.837	3.158	3.618	4.027	4.807	4.757	26.114	50.318
2013	2.161	2.432	4.005	4.585	5.616	3.136	4.574	3.408	4.935	4.762	5.781	6.891	21.935	52.286
2014	2.169	3.512	4.476	4.905	5.094	5.028	4.233	4.920	5.619	5.743	6.250	7.409	25.184	59.358
2015	3.124	3.984	5.460	6.383	6.078	5.748	4.677	5.044	4.765	7.049	6.898	7.564	30.777	66.774
2016	3.739	4.731	7.067	6.546	6.575	5.543	3.833	5.134	4.945	7.372	7.090	7.603	34.201	70.178
2017	3.974	4.964	6.773	6.780	7.057	5.356	5.003	4.396	6.064	7.734	7.457	7.351	34.904	72.909
2018	4.362	4.179	5.925	5.216	4.584	3.146	3.654	2.587	3.541	3.698	3.578	3.886	27.412	48.356
2019	1.311	1.401	2.143	2.126	2.229	1.538							10.748	10.748

Kaynak: TÜİK trafik kayıtları.

Rakamlar, son iki model yılına ait traktör tescillerinden oluşmaktadır.

Source: Turkish Statistical Institute – Traffic registrations

Data represents the last two model year's farm tractors registration figures

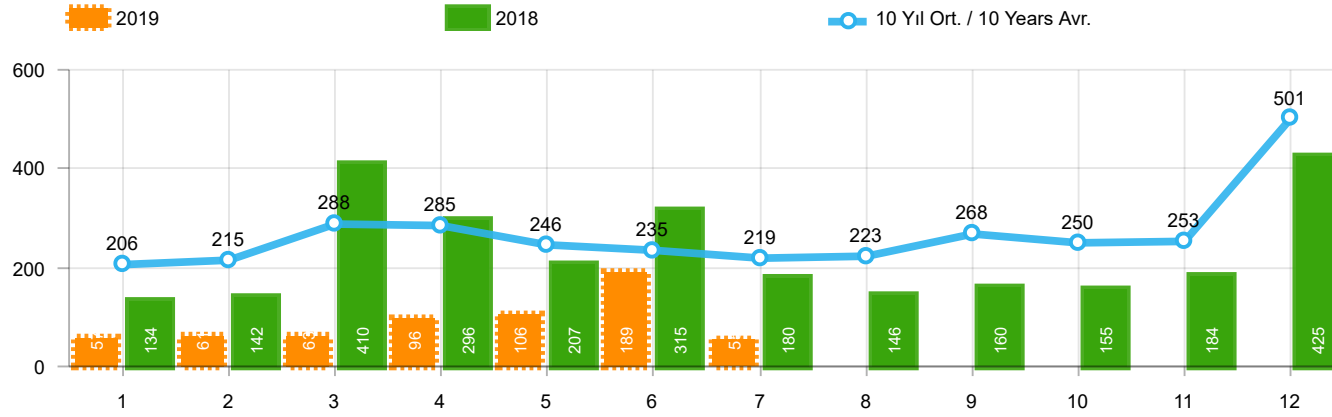


Aylar / Months	10 Yıl Ort / 10 Years Avr.	2019	%
1	1.446	342	-76,3
2	1.974	579	-70,7
3	3.128	1.255	-59,9
4	2.746	842	-69,3
5	2.944	728	-75,3
6	2.831	981	-65,3
7	2.115	388	-81,7
TOPLAM / TOTAL	17.183	5.115	-70,2

Yıl / Year	1	2	3	4	5	6	7	8	9	10	11	12	1-7 Toplam / Total	Toplam / Total	1-7 Yerli / Local	1-7 İthal / Import	İthal Oran / Import %
2009	782	763	1.062	1.381	1.426	1.649	1.261	1.164	1.862	963	1.047	2.368	8.324	15.728	6.761	1.563	18,8
2010	768	960	1.950	1.949	2.140	2.314	2.403	2.754	2.864	3.001	3.231	6.158	12.484	30.492	8.891	3.593	28,8
2011	2.651	3.544	5.142	4.503	4.563	3.852	2.261	2.745	3.784	3.400	3.149	5.712	26.516	45.306	17.121	9.395	35,4
2012	1.703	2.454	3.866	3.209	3.678	3.540	2.750	2.403	3.296	2.497	3.154	5.300	21.200	37.850	14.572	6.628	31,3
2013	1.484	2.113	3.343	2.925	3.504	3.186	2.777	2.103	2.875	2.086	3.631	5.444	19.332	35.471	13.465	5.867	30,3
2014	1.522	2.065	3.094	3.224	3.727	3.726	2.578	2.783	3.708	2.858	3.384	6.869	19.936	39.538	14.616	5.320	26,7
2015	2.215	3.346	5.699	3.729	3.600	4.253	2.922	2.211	2.687	2.266	3.146	7.307	25.764	43.381	18.207	7.557	29,3
2016	1.167	1.648	2.515	2.319	2.711	2.623	984	1.796	1.438	2.238	2.485	3.127	13.967	25.051	9.526	4.441	31,8
2017	931	1.290	1.982	1.888	2.184	1.891	1.974	1.860	2.284	2.188	2.487	4.438	12.140	25.397	8.380	3.760	31,0
2018	1.237	1.552	2.630	2.328	1.909	1.272	1.235	603	653	488	905	1.695	12.163	16.507	7.180	4.983	41,0
2019	342	579	1.255	842	728	981	388						5.115	5.115	3.118	1.997	39,0

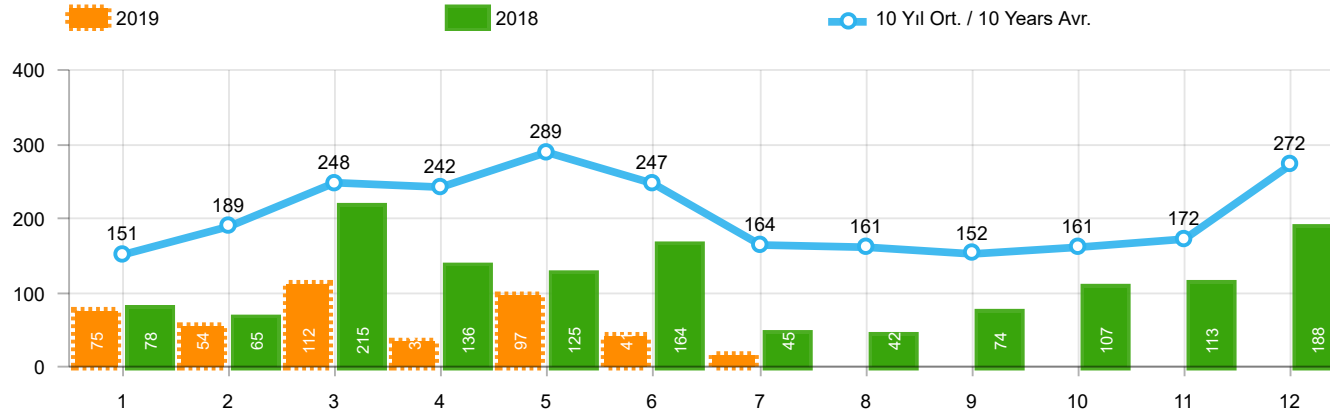
Kaynak: OSD, TAİD, TÜİK

Herhangi bir Dernek üyesi olmayan markalara ilişkin satış verisi için TÜİK trafik kayıtları esas alınmaktadır. TÜİK trafik kayıtlarının bir ay gecikmeli yayınlanması nedeniyle ilgili markalara ilişkin son ayın satış verisi bir önceki ay ile aynı kabul edilmekte ve bir sonraki ay gerçekleşen veri ile güncellenmektedir.



Aylar / Months	10 Yıl Ort. / 10 Years Avr.	2019	%
1	206	57	-72,4
2	215	61	-71,6
3	288	63	-78,1
4	285	96	-66,3
5	246	106	-56,9
6	235	189	-19,6
7	219	55	-74,9
TOPLAM / TOTAL	1.695	627	-63,0

Yıl / Year	1	2	3	4	5	6	7	8	9	10	11	12	1-7 Toplam / Total	Toplam / Total
2009	133	103	153	210	145	183	138	146	152	134	150	280	1.065	1.927
2010	140	128	172	153	127	124	93	232	199	204	162	382	937	2.116
2011	124	167	267	260	241	233	205	280	270	230	168	525	1.497	2.970
2012	179	257	277	229	257	239	216	249	325	269	189	398	1.654	3.084
2013	191	268	289	276	283	241	367	235	305	392	415	697	1.915	3.959
2014	360	394	384	333	294	258	216	229	395	220	266	653	2.239	4.002
2015	280	322	451	561	372	405	389	253	316	394	325	621	2.780	4.689
2016	309	158	251	302	261	196	139	220	241	230	354	431	1.616	3.092
2017	212	211	227	231	272	156	250	235	318	268	317	594	1.559	3.291
2018	134	142	410	296	207	315	180	146	160	155	184	425	1.684	2.754
2019	57	61	63	96	106	189	55						627	627

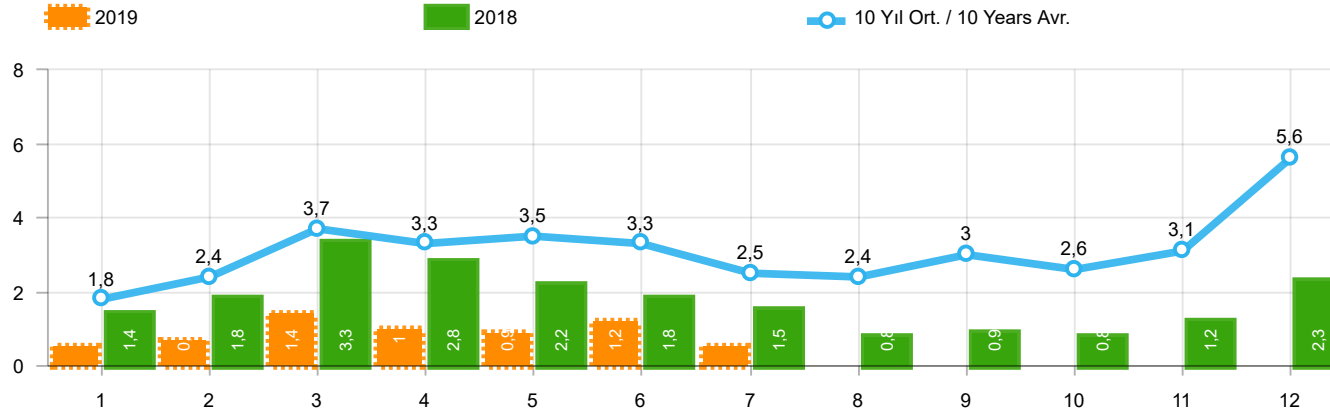


Aylar / Months	10 Yıl Ort / 10 Years Avr.	2019	%
1	151	75	-50,3
2	189	54	-71,4
3	248	112	-54,8
4	242	35	-85,5
5	289	97	-66,4
6	247	41	-83,4
7	164	16	-90,2
TOPLAM / TOTAL	1.530	430	-71,9

Yıl / Year	1	2	3	4	5	6	7	8	9	10	11	12	1-7 Toplam / Total	Toplam / Total	1-7 Yerli / Local	1-7 İthal / Import	İthal Oran / Import %
2009	84	265	201	202	185	191	130	119	142	61	150	191	1.258	1.921	1.218	40	3,2
2010	67	71	128	193	193	177	170	211	163	144	133	325	999	1.975	951	48	4,8
2011	92	212	233	324	412	334	148	214	130	176	176	321	1.755	2.772	1.678	77	4,4
2012	125	103	215	172	397	262	174	182	251	229	150	344	1.448	2.604	1.416	32	2,2
2013	365	445	537	489	580	520	412	281	245	198	123	189	3.348	4.384	3.329	19	0,6
2014	199	179	253	251	305	148	69	92	130	91	97	332	1.404	2.146	1.261	143	10,2
2015	146	222	313	290	290	255	211	203	153	171	359	363	1.727	2.976	1.661	66	3,8
2016	180	209	218	240	214	307	76	82	141	198	314	236	1.444	2.415	1.413	31	2,1
2017	174	119	167	124	188	115	206	187	92	231	109	235	1.093	1.947	1.081	12	1,1
2018	78	65	215	136	125	164	45	42	74	107	113	188	828	1.352	817	11	1,3
2019	75	54	112	35	97	41	16						430	430	430	-	-

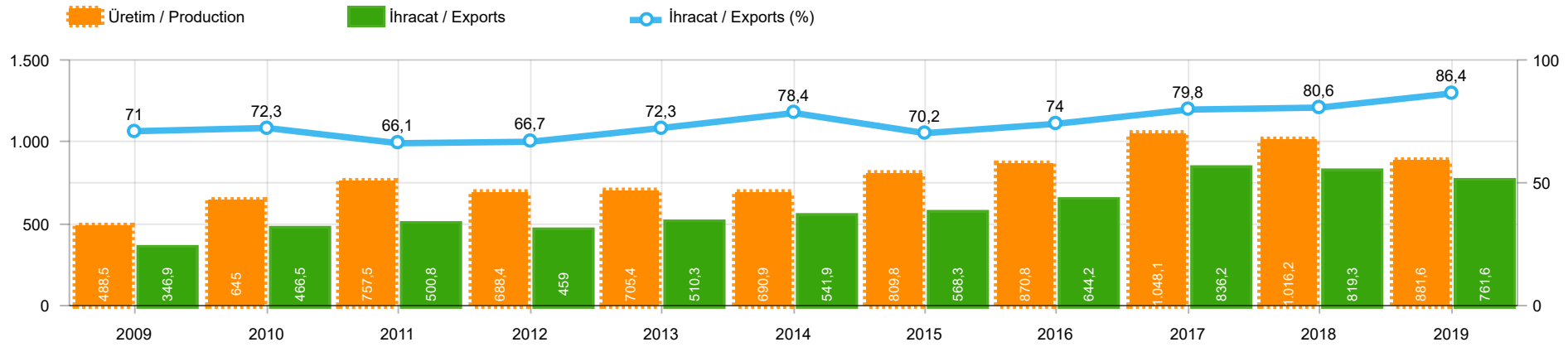
Kaynak: OSD, TÜİK

Herhangi bir Dernek üyeliği olmayan markalara ilişkin satış verisi için TÜİK trafik kayıtları esas alınmaktadır. TÜİK trafik kayıtlarının bir ay gecikmeli yayınlanması nedeniyle ilgili markalara ilişkin son ayın satış verisi bir önceki ay ile aynı kabul edilmekte ve bir sonraki ay gerçekleşen veri ile güncellenmektedir.



Aylar / Months	10 Yıl Ort. / 10 Years Avr.	2019	%
1	1.803	474	-73,7
2	2.378	694	-70,8
3	3.664	1.430	-61,0
4	3.273	973	-70,3
5	3.479	931	-73,2
6	3.313	1.211	-63,4
7	2.498	459	-81,6
TOPLAM / TOTAL	20.408	6.172	-69,8

Yıl / Year	1	2	3	4	5	6	7	8	9	10	11	12	1-7 Toplam / Total	Toplam / Total	1-7 Yerli / Local	1-7 İthal / Import	İthal Oran / Import %
2009	999	1.131	1.416	1.793	1.756	2.023	1.529	1.429	2.156	1.158	1.347	2.839	10.647	19.576	9.044	1.603	15,1
2010	975	1.159	2.250	2.295	2.460	2.615	2.666	3.197	3.226	3.349	3.526	6.865	14.420	34.583	10.779	3.641	25,2
2011	2.867	3.923	5.642	5.087	5.216	4.419	2.614	3.239	4.184	3.806	3.493	6.558	29.768	51.048	20.296	9.472	31,8
2012	2.007	2.814	4.358	3.610	4.332	4.041	3.140	2.834	3.872	2.995	3.493	6.042	24.302	43.538	17.642	6.660	27,4
2013	2.040	2.826	4.169	3.690	4.367	3.947	3.556	2.619	3.425	2.676	4.169	6.330	24.595	43.814	18.709	5.886	23,9
2014	2.081	2.638	3.731	3.808	4.326	4.132	2.863	3.104	4.233	3.169	3.747	7.854	23.579	45.686	18.116	5.463	23,2
2015	2.641	3.890	6.463	4.580	4.262	4.913	3.522	2.667	3.156	2.831	3.830	8.291	30.271	51.046	22.648	7.623	25,2
2016	1.656	2.015	2.984	2.861	3.186	3.126	1.199	2.098	1.820	2.666	3.153	3.794	17.027	30.558	12.555	4.472	26,3
2017	1.317	1.620	2.376	2.243	2.644	2.162	2.430	2.282	2.694	2.687	2.913	5.267	14.792	30.635	11.020	3.772	25,5
2018	1.449	1.759	3.255	2.760	2.241	1.751	1.460	791	887	750	1.202	2.308	14.675	20.613	9.681	4.994	34,0
2019	474	694	1.430	973	931	1.211	459						6.172	6.172	4.175	1.997	32,4



	2009	2010	2011	2012	2013	2014	2015	2016	2017	2018	2019
İhracat/Export	346.869	466.529	500.772	459.039	510.324	541.857	568.275	644.221	836.175	819.270	761.635
Üretim/Production	488.525	645.020	757.524	688.447	705.371	690.902	809.832	870.818	1.048.131	1.016.213	881.557
İhracat/Exports (%)	71	72,3	66,1	66,7	72,3	78,4	70,2	74	79,8	80,6	86,4

Taşıt Araçları İhracatı (2017 - 2019)
Motor Vehicle Exports (2017 - 2019)

SEKTÖR / SECTOR	2017	2018	1/7-2018	1/7-2019	2019/2018 %
OTOMOBİL / Pass.Car	921.354	875.147	542.750	492.644	-9,2
OTOMOBİL TOPLAM / Pass. Car Total	921.354	875.147	542.750	492.644	-9,2
KAMYON / Truck	7.800	14.478	7.573	9.896	30,7
KAMYONET / Pick Up	350.108	372.954	229.643	213.614	-7,0
OTOBÜS / Bus	7.028	7.708	4.248	5.457	28,5
MİNİBÜS / Minibus	45.794	47.736	26.617	29.753	11,8
MİDİBÜS / Midibus	710	846	437	670	53,3
TİCARİ ARAÇLAR TOPLAM / Commercial Vehicle Total	411.440	443.722	268.518	259.390	-3,4
TAŞIT ARAÇLARI TOPLAM / Motor Vehicles Total	1.332.794	1.318.869	811.268	752.034	-7,3
TRAKTÖR / F.Tractor	13.123	15.123	8.002	9.601	20,0
TRAKTÖR TOPLAM / F.Tractor Total	13.123	15.123	8.002	9.601	20,0
GENEL TOPLAM / GRAND TOTAL	1.345.917	1.333.992	819.270	761.635	-7,0

Üretici Bazında İhracat (adet)
Exports by Manufacturer (unit)

Üreticiler / Manufacturers	2017	2018	1-7 / 2018	1-7 / 2019
A.I.O.S.	700	964	451	894
FORD OTOSAN	296.840	328.502	196.607	200.030
HATTAT TRAKTÖR	1.100	621	391	405
HONDA TÜRKİYE	9.391	13.699	10.027	3.821
HYUNDAI ASSAN	204.382	190.347	117.537	95.893
KARSAN	2.969	3.419	2.132	1.131
M. BENZ TÜRK	9.865	16.309	8.914	10.878
MAN TÜRKİYE	2.007	2.425	1.473	1.745
OTOKAR	691	901	303	778
OYAK RENAULT	287.915	280.411	174.175	172.636
TEMSA	870	645	221	305
TOFAŞ	270.698	243.796	159.264	123.920
TOYOTA	246.466	237.451	140.164	140.003
TÜRK TRAKTÖR	12.023	14.502	7.611	9.196
GENEL TOPLAM / Grand Total	1.345.917	1.333.992	819.270	761.635

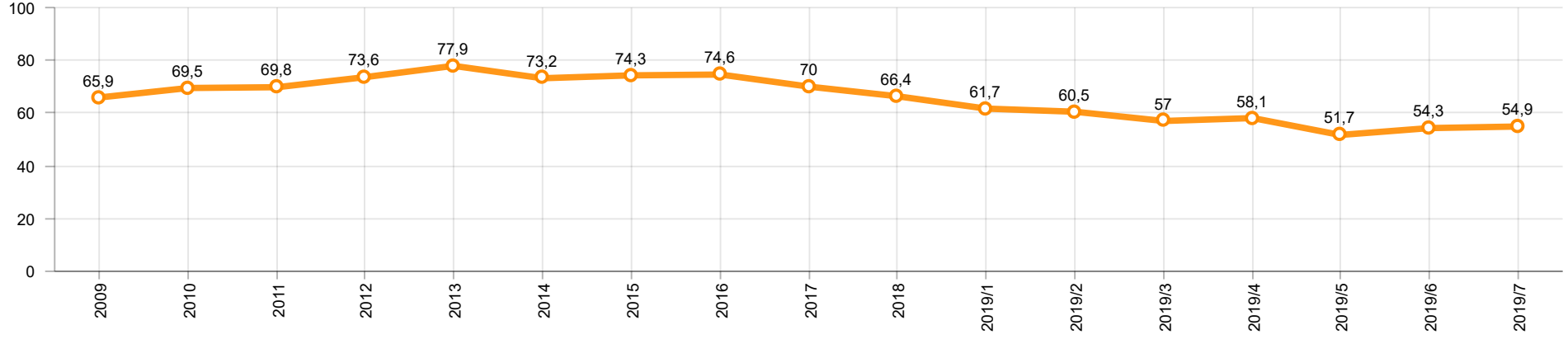
Otomotiv Ana ve Yan Sanayii İhracatı (ABD \$)
CBU and CKD Exports - \$

Sektör / Sector	2017	2018	OCAK - TEMMUZ / January - July 2018	OCAK - TEMMUZ / January - July 2019	2019 / 2018 %
Toplam Yan Sanayi / Total Component Industry	9.835.914.658	10.881.562.512	6.663.137.595	6.261.995.324	-6,0
İç ve Dış Lastik / Tyres	1.131.782.300	1.353.896.118	817.046.167	862.918.221	5,6
Emniyet Camı / Safety Glasses	136.486.099	151.148.689	92.804.842	87.807.765	-5,4
Motor / Engine	486.426.738	581.983.113	398.498.824	325.458.443	-18,3
Akümülatör / Batteries	295.794.286	388.107.835	197.925.314	213.822.022	8,0
Diğer Aksam ve Parça / Spare Parts&Components	7.785.425.235	8.406.426.757	5.156.862.448	4.771.988.873	-7,5
Toplam Ana Sanayi / Total Vehicle Industry	19.257.086.833	21.350.315.330	12.932.745.630	12.279.845.763	-5,0
Otobüs / Bus	1.308.249.224	1.503.188.826	821.136.632	1.055.861.628	28,6
Midibüs-Minibüs / Midibus-Minibus	217.704.499	215.450.022	137.844.403	105.788.589	-23,3
Otomobil / P.Cars	11.790.577.760	12.420.951.066	7.653.160.773	6.896.429.057	-9,9
Kamyon-Kamyonet / Truck-Pick Up&Van	4.849.022.718	5.376.446.529	3.333.528.295	3.050.336.970	-8,5
Römork ve Yarı Römork / Trailer-Semi Trailer	342.793.231	507.186.149	290.295.234	326.768.658	12,6
Çekici / Tractor	427.928.256	904.738.051	482.946.983	577.147.214	19,5
Tarım Traktörü / Farm Tractor	320.811.145	422.354.687	213.833.310	267.513.647	25,1
Toplam / Total	29.093.001.491	32.231.877.842	19.595.883.225	18.541.841.087	-5,4

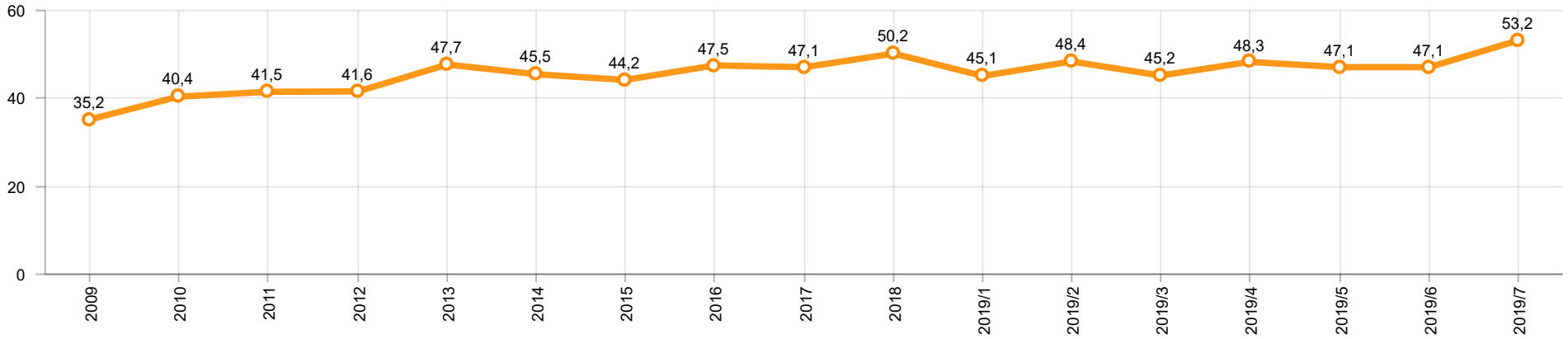
Kaynak: Uludağ İhracatçı Birlikleri . ÜİB tarafından OSD için özel olarak analiz edilen Otomotiv İhracatı kapsamında; ÜİB Türkiye Geneli Otomotiv Endüstrisi sınıflandırmasına kıyasla “Römork ve Yarı Römork” , “Tarım Traktörü” verileri dahil edilmekte; “Kullanılmış Araçlar” ,”İki Tekerlekli Taşıtlar” , “Demiryolu Taşıtları” hariç tutulmaktadır.

Source: Uludağ Exporters Association – Special Analyze for OSD.Compared to Turkish General Automotive Industry classification, this special analyze includes; farms tractors, trailers and semi-trailers, does not include; used vehicles, two-wheeled vehicles and railway vehicles

Otomobil Pazarında İthalatın Payı (%)
Import Share in P.Car Market (%)



Hafif Ticari Araçlar Pazarında İthalatın Payı (%)
Import Share in LCV Market (%)



Araç Tipleri / Vehicle Types	1	2	3	4	5	6	7	8	9	10	11	12	Toplam / Total
OTOMOBİL - Pass.Car	58.807	69.340	81.736	66.084	80.233	62.846	73.598						492.644
KAMYON - H. Truck	1.270	1.594	1.312	1.153	1.170	1.247	2.150						9.896
KAMYONET - Pick Up	27.735	29.855	31.222	33.326	26.072	29.659	35.745						213.614
OTOBÜS - Bus	801	637	822	753	958	649	837						5.457
MİNİBÜS - Minibus	4.741	4.836	5.012	4.630	3.278	2.396	4.860						29.753
MİDİBÜS - Midibus	74	93	135	58	152	82	76						670
TİCARİ ARAÇLAR TOPLAMI - CV Total	34.621	37.015	38.503	39.920	31.630	34.033	43.668						259.390
TAŞIT ARAÇLARI TOPLAMI - MV Total	93.428	106.355	120.239	106.004	111.863	96.879	117.266						752.034
TRAKTÖR - F.Tractor	1.111	1.145	1.516	1.207	1.551	1.382	1.689						9.601
GENEL TOPLAM - Grand Total	94.539	107.500	121.755	107.211	113.414	98.261	118.955						761.635

Otomobil / P.Car

Firmalar / Firms	1	2	3	4	5	6	7	8	9	10	11	12	Toplam / Total
FORD OTOSAN	1.469	1.837	2.405	2.671	2.064	2.021	2.397	-	-	-	-	-	14.864
HONDA TÜRKİYE	800	1.009	424	689	240	449	210	-	-	-	-	-	3.821
HYUNDAI ASSAN	11.414	14.050	13.200	9.050	18.750	14.850	14.579	-	-	-	-	-	95.893
OYAK RENAULT	20.009	24.138	35.569	21.457	26.820	22.749	21.894	-	-	-	-	-	172.636
TOFAŞ	7.636	8.517	7.730	10.743	11.140	8.882	10.779	-	-	-	-	-	65.427
TOYOTA	17.479	19.789	22.408	21.474	21.219	13.895	23.739	-	-	-	-	-	140.003
TOPLAM - Total	58.807	69.340	81.736	66.084	80.233	62.846	73.598	-	-	-	-	-	492.644

Kamyonet / Pick-up

Firmalar / Firms	1	2	3	4	5	6	7	8	9	10	11	12	Toplam / Total
A.I.O.S.	-	-	-	-	-	-	-	-	-	-	-	-	-
FORD OTOSAN	22.083	22.516	23.449	24.428	16.098	20.460	25.296	-	-	-	-	-	154.330
KARSAN	73	54	150	95	95	142	115	-	-	-	-	-	724
OTOKAR	-	-	25	10	15	17	-	-	-	-	-	-	67
TOFAŞ	5.579	7.285	7.598	8.793	9.864	9.040	10.334	-	-	-	-	-	58.493
TOPLAM - Total	27.735	29.855	31.222	33.326	26.072	29.659	35.745	-	-	-	-	-	213.614

Minibüs / Minibus

Firmalar / Firms	1	2	3	4	5	6	7	8	9	10	11	12	Toplam / Total
FORD OTOSAN	4.740	4.833	4.998	4.620	3.268	2.386	4.846	-	-	-	-	-	29.691
KARSAN	1	3	14	10	10	10	14	-	-	-	-	-	62
TOPLAM - Total	4.741	4.836	5.012	4.630	3.278	2.396	4.860	-	-	-	-	-	29.753

Kamyon / Truck

Firmalar / Firms	1	2	3	4	5	6	7	8	9	10	11	12	Toplam / Total
A.I.O.S.	-	30	-	175	29	-	-	-	-	-	-	-	234
FORD OTOSAN	114	141	166	161	221	175	167	-	-	-	-	-	1.145
KARSAN	-	-	-	-	-	-	-	-	-	-	-	-	-
M. BENZ TÜRK	1.156	1.423	1.146	817	920	1.072	1.983	-	-	-	-	-	8.517
OTOKAR	-	-	-	-	-	-	-	-	-	-	-	-	-
TOPLAM - Total	1.270	1.594	1.312	1.153	1.170	1.247	2.150	-	-	-	-	-	9.896

Midibüs / Midibus

Firmalar / Firms	1	2	3	4	5	6	7	8	9	10	11	12	Toplam / Total
A.I.O.S.	52	60	88	46	121	56	36	-	-	-	-	-	459
KARSAN	5	6	39	-	1	-	1	-	-	-	-	-	52
OTOKAR	8	21	8	12	16	25	36	-	-	-	-	-	126
TEMSA	9	6	-	-	14	1	3	-	-	-	-	-	33
TOPLAM - Total	74	93	135	58	152	82	76	-	-	-	-	-	670

Otobüs / Bus

Firmalar / Firms	1	2	3	4	5	6	7	8	9	10	11	12	Toplam / Total
A.I.O.S.	56	12	47	18	15	50	3	-	-	-	-	-	201
KARSAN	23	17	56	2	65	58	72	-	-	-	-	-	293
M. BENZ TÜRK	261	246	318	395	446	305	390	-	-	-	-	-	2.361
MAN TÜRKİYE	298	271	273	225	256	193	229	-	-	-	-	-	1.745
OTOKAR	104	69	108	93	94	23	94	-	-	-	-	-	585
TEMSA	59	22	20	20	82	20	49	-	-	-	-	-	272
TOPLAM - Total	801	637	822	753	958	649	837	-	-	-	-	-	5.457

Traktör / F.Tractor

Firmalar / Firms	1	2	3	4	5	6	7	8	9	10	11	12	Toplam / Total
HATTAT TRAKTÖR	39	72	108	43	48	40	55	-	-	-	-	-	405
TÜRK TRAKTÖR	1.072	1.073	1.408	1.164	1.503	1.342	1.634	-	-	-	-	-	9.196
TOPLAM - Total	1.111	1.145	1.516	1.207	1.551	1.382	1.689	-	-	-	-	-	9.601

Firmalar / Firms	2018 Toplam / Total	1	2	3	4	5	6	7	8	9	10	11	12	Toplam / Total
Alfa Romeo	203	8	16	32	23	50	60	7	-	-	-	-	-	196
Aston Martin	16	2	-	3	1	-	1	2	-	-	-	-	-	9
Audi	13.295	495	404	832	515	742	891	467	-	-	-	-	-	4.346
Bentley	10	2	-	-	1	1	-	-	-	-	-	-	-	4
BMW	12.728	352	463	871	724	445	637	585	-	-	-	-	-	4.077
Citroen	7.669	80	97	423	378	453	469	265	-	-	-	-	-	2.165
Dacia	26.193	429	801	1.765	910	970	1.569	561	-	-	-	-	-	7.005
DS	236	3	8	8	27	8	15	5	-	-	-	-	-	74
Ferrari	18	-	2	2	3	3	2	1	-	-	-	-	-	13
Fiat	1.264	26	26	65	80	157	99	48	-	-	-	-	-	501
Ford	20.697	235	476	1.452	774	676	1.232	279	-	-	-	-	-	5.124
Honda	4.862	144	149	253	281	276	203	116	-	-	-	-	-	1.422
Hyundai	19.113	794	1.195	1.508	1.089	1.141	1.123	838	-	-	-	-	-	7.688
Infinity	18	-	-	-	-	-	-	-	-	-	-	-	-	-
Jaguar	220	2	18	20	20	10	19	12	-	-	-	-	-	101
Jeep	2.430	100	162	225	138	92	168	82	-	-	-	-	-	967
Kia	7.694	150	331	534	357	204	205	178	-	-	-	-	-	1.959
Lamborghini	3	1	-	-	1	1	1	3	-	-	-	-	-	7
Land Rover	1.248	36	71	63	80	59	48	88	-	-	-	-	-	445
Lexus	56	4	4	2	3	2	3	3	-	-	-	-	-	21
Maserati	55	2	4	2	2	6	3	1	-	-	-	-	-	20
Mazda	1.005	29	29	15	31	45	18	9	-	-	-	-	-	176
Mercedes-Benz	14.445	204	701	1.005	563	728	1.021	830	-	-	-	-	-	5.052
Mini	1.373	17	50	176	91	92	169	31	-	-	-	-	-	626
Mitsubishi	514	38	60	41	34	30	26	9	-	-	-	-	-	238
Nissan	24.605	538	799	1.662	887	806	1.215	459	-	-	-	-	-	6.366
Opel	20.960	348	765	1.684	1.055	866	1.268	641	-	-	-	-	-	6.627
Peugeot	24.905	524	767	2.287	1.627	1.692	1.927	782	-	-	-	-	-	9.606
Porsche	565	9	35	27	29	31	24	22	-	-	-	-	-	177
Renault	21.090	198	557	822	490	552	718	215	-	-	-	-	-	3.552
Seat	10.383	139	289	515	269	295	547	169	-	-	-	-	-	2.223
Skoda	21.340	247	585	1.414	687	778	1.441	334	-	-	-	-	-	5.486
Smart	35	5	3	6	2	3	1	1	-	-	-	-	-	21
Ssangyong	222	10	15	14	6	9	11	6	-	-	-	-	-	71
Subaru	1.471	52	68	76	75	45	32	22	-	-	-	-	-	370
Suzuki	2.878	65	107	236	142	245	245	31	-	-	-	-	-	1.071
Toyota	3.405	47	114	132	103	103	94	42	-	-	-	-	-	635
Volkswagen	49.749	1.210	2.218	3.528	2.329	2.096	3.665	1.105	-	-	-	-	-	16.151
Volvo	5.943	231	225	334	360	300	392	210	-	-	-	-	-	2.052
GENEL TOPLAM - Grand Total	322.916	6.776	11.614	22.034	14.187	14.012	19.562	8.459	-	-	-	-	-	96.644

Firmalar / Firms	2018 Toplam / Total	1	2	3	4	5	6	7	8	9	10	11	12	Toplam / Total
Citroen	4.633	126	188	181	406	281	189	150	-	-	-	-	-	1.521
Dacia	3.725	53	182	296	179	136	170	67	-	-	-	-	-	1.083
Fiat	3.019	53	54	117	59	72	175	38	-	-	-	-	-	568
Ford	2.783	134	106	177	65	36	34	14	-	-	-	-	-	566
Hyundai	1.493	83	106	121	109	88	81	52	-	-	-	-	-	640
Isuzu	578	3	30	23	3	1	2	-	-	-	-	-	-	62
Iveco	1.598	48	54	115	109	95	134	41	-	-	-	-	-	596
Karsan	-	-	-	-	-	-	-	-	-	-	-	-	-	-
Kia	1.947	14	55	189	117	84	149	55	-	-	-	-	-	663
Mercedes-Benz	7.993	159	404	628	288	457	319	110	-	-	-	-	-	2.365
Mitsubishi	3.445	47	129	69	116	103	411	33	-	-	-	-	-	908
Nissan	1.741	82	48	150	135	26	41	8	-	-	-	-	-	490
Opel	-	-	-	43	112	41	55	71	-	-	-	-	-	322
Peugeot	5.247	197	284	819	431	379	333	295	-	-	-	-	-	2.738
Renault	8.908	180	342	741	304	191	211	168	-	-	-	-	-	2.137
Ssangyong	174	-	-	15	38	25	22	13	-	-	-	-	-	113
Toyota	3.159	55	101	91	65	71	90	45	-	-	-	-	-	518
Volkswagen	17.085	295	662	1.017	633	689	724	186	-	-	-	-	-	4.206
GENEL TOPLAM - Grand Total	67.528	1.529	2.745	4.792	3.169	2.775	3.140	1.346	-	-	-	-	-	19.496