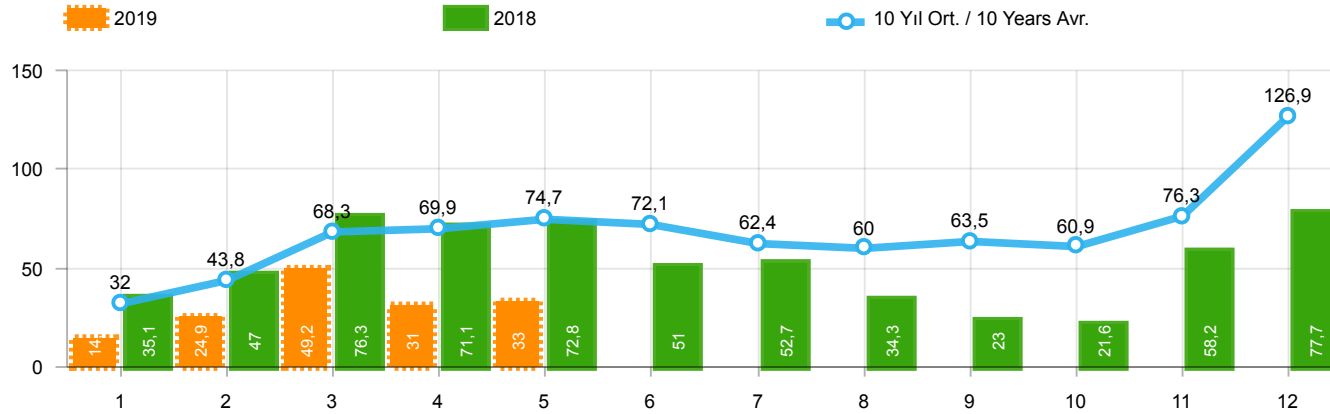


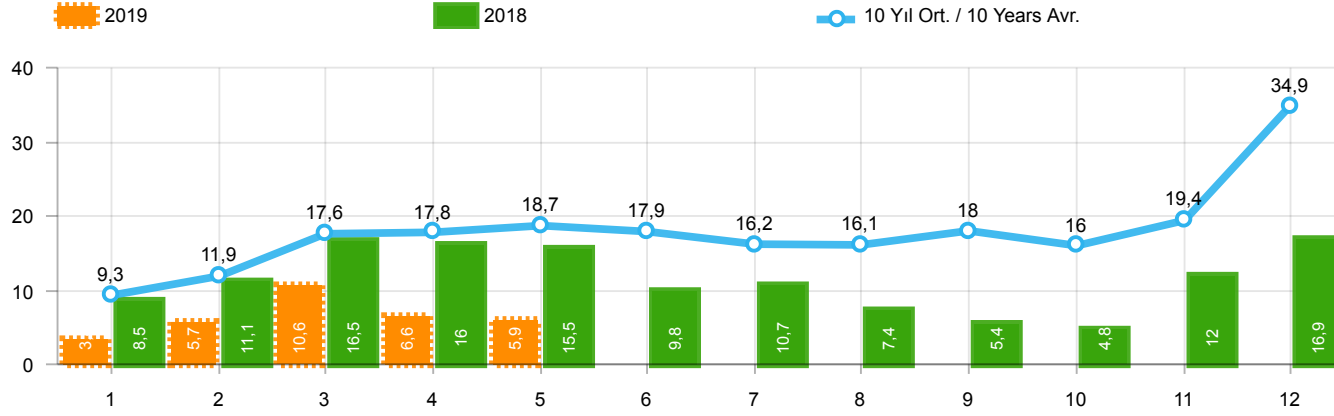
Aylar / Months	10 Yıl Ort / 10 Years Avr.	2019	%
1	11.102	3.868	-65,2
2	14.285	6.364	-55,5
3	21.303	12.023	-43,6
4	21.051	7.528	-64,2
5	22.216	6.853	-69,2
TOPLAM / TOTAL	89.957	36.636	-59,3

Yıl / Year	1	2	3	4	5	6	7	8	9	10	11	12	1-5 Toplam / Total	Toplam / Total	1-5 Yerli / Local	1-5 İthal / Import	İthal Oran / Import %
2009	7.432	8.381	15.905	18.231	20.759	22.071	13.737	14.501	31.391	8.363	11.528	34.584	70.708	206.883	44.958	25.750	36,4
2010	8.476	11.680	20.061	20.692	21.370	21.425	22.612	22.739	24.563	28.894	27.427	55.773	82.279	285.712	50.500	31.779	38,6
2011	17.891	23.582	30.022	28.947	29.560	29.278	22.140	22.770	24.349	25.719	22.199	45.511	130.002	321.968	74.171	55.831	42,9
2012	10.475	14.949	21.972	20.914	24.735	24.259	20.913	19.746	24.141	19.493	22.906	40.516	93.045	265.019	55.099	37.946	40,8
2013	11.728	14.319	21.158	20.266	23.452	19.753	19.440	16.051	18.463	13.705	19.353	34.849	90.923	232.537	51.775	39.148	43,1
2014	10.383	10.492	13.500	14.344	16.068	17.017	16.168	18.172	21.502	18.928	24.673	44.789	64.787	226.036	36.466	28.321	43,7
2015	12.758	18.404	28.089	25.971	22.926	23.305	23.140	23.491	20.093	19.132	26.034	50.124	108.148	293.467	65.521	42.627	39,4
2016	11.011	14.252	21.957	22.130	23.258	23.555	14.166	19.677	18.073	21.920	29.679	37.662	92.608	257.340	51.475	41.133	44,4
2017	10.951	13.927	20.562	20.233	22.267	19.656	22.343	19.928	20.623	23.951	27.816	41.813	87.940	264.070	46.911	41.029	46,7
2018	9.914	12.867	19.802	18.778	17.769	11.563	12.170	8.161	6.320	5.512	13.202	19.171	79.130	155.229	42.188	36.942	46,7
2019	3.868	6.364	12.023	7.528	6.853								36.636	36.636	20.209	16.427	44,8



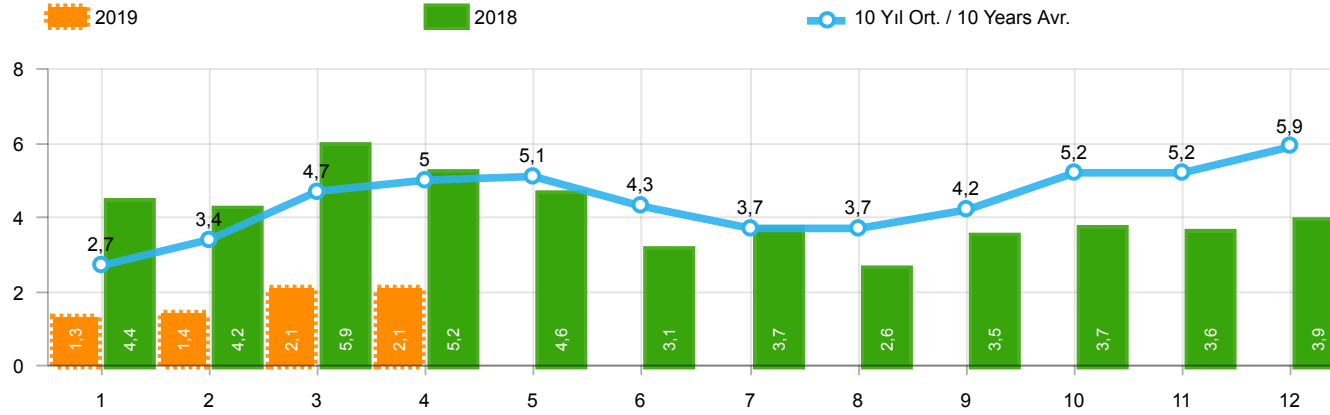
Aylar / Months	10 Yıl Ort. / 10 Years Avr.	2019	%
1	32.006	14.373	-55,1
2	43.836	24.875	-43,3
3	68.292	49.221	-27,9
4	69.871	30.971	-55,7
5	74.729	33.016	-55,8
TOPLAM / TOTAL	288.734	152.456	-47,2

Yıl / Year	1	2	3	4	5	6	7	8	9	10	11	12	1-5 Toplam / Total	Toplam / Total	1-5 Yerli / Local	1-5 İthal / Import	İthal Oran / Import %
2009	19.606	21.742	55.111	52.640	63.191	61.067	28.845	35.609	81.397	21.033	27.962	88.923	212.290	557.126	87.908	124.382	58,6
2010	20.095	31.172	51.769	54.946	59.377	60.896	61.345	61.764	63.814	73.404	73.962	148.369	217.359	760.913	89.649	127.710	58,8
2011	44.892	58.663	78.403	77.695	80.646	81.573	63.044	58.406	60.129	69.421	63.657	127.910	340.299	864.439	130.691	209.608	61,6
2012	29.545	41.324	64.884	62.949	70.863	71.067	62.304	58.148	69.629	59.938	71.710	115.400	269.565	777.761	99.558	170.007	63,1
2013	35.523	48.307	68.774	73.575	81.468	74.096	71.596	65.043	67.963	58.014	79.301	129.718	307.647	853.378	89.334	218.313	71,0
2014	32.670	35.021	47.581	53.305	58.121	60.163	59.907	60.199	66.531	66.573	80.621	146.989	226.698	767.681	67.992	158.706	70,0
2015	34.615	55.331	83.302	91.602	81.542	86.158	83.836	82.577	64.025	64.255	84.601	156.173	346.392	968.017	115.859	230.533	66,6
2016	32.713	52.825	82.948	84.887	93.904	91.540	58.533	71.556	67.593	83.000	122.309	141.912	347.277	983.720	113.643	233.634	67,3
2017	35.323	46.965	73.802	75.988	85.422	83.658	82.297	72.536	71.352	91.752	100.859	136.240	317.500	956.194	112.998	204.502	64,4
2018	35.076	47.009	76.345	71.126	72.755	51.037	52.734	34.346	23.028	21.571	58.204	77.706	302.311	620.937	112.694	189.617	62,7
2019	14.373	24.875	49.221	30.971	33.016								152.456	152.456	68.823	83.633	54,9



Aylar / Months	10 Yıl Ort / 10 Years Avr.	2019	%
1	9.299	3.394	-63,5
2	11.908	5.670	-52,4
3	17.638	10.593	-39,9
4	17.778	6.555	-63,1
5	18.737	5.890	-68,6
TOPLAM / TOTAL	75.360	32.102	-57,4

Yıl / Year	1	2	3	4	5	6	7	8	9	10	11	12	1-5 Toplam / Total	Toplam / Total	1-5 Yerli / Local	1-5 İthal / Import	İthal Oran / Import %
2009	6.433	7.250	14.489	16.438	19.003	20.048	12.208	13.072	29.235	7.205	10.181	31.745	63.613	187.307	38.754	24.859	39,1
2010	7.501	10.521	17.811	18.397	18.910	18.810	19.946	19.542	21.337	25.545	23.901	48.908	73.140	251.129	43.547	29.593	40,5
2011	15.024	19.659	24.380	23.860	24.344	24.859	19.526	19.531	20.165	21.913	18.706	38.953	107.267	270.920	58.954	48.313	45,0
2012	8.468	12.135	17.614	17.304	20.403	20.218	17.773	16.912	20.269	16.498	19.413	34.474	75.924	221.481	42.417	33.507	44,1
2013	9.688	11.493	16.989	16.576	19.085	15.806	15.884	13.432	15.038	11.029	15.184	28.519	73.831	188.723	38.656	35.175	47,6
2014	8.302	7.854	9.769	10.536	11.742	12.885	13.305	15.068	17.269	15.759	20.926	36.935	48.203	180.350	23.527	24.676	51,2
2015	10.117	14.514	21.626	21.391	18.664	18.392	19.618	20.824	16.937	16.301	22.204	41.833	86.312	242.421	49.151	37.161	43,1
2016	9.355	12.237	18.973	19.269	20.072	20.429	12.967	17.579	16.253	19.254	26.526	33.868	79.906	226.782	42.383	37.523	47,0
2017	9.634	12.307	18.186	17.990	19.623	17.494	19.913	17.646	17.929	21.264	24.903	36.546	77.740	233.435	39.128	38.612	49,7
2018	8.465	11.108	16.547	16.018	15.528	9.812	10.710	7.370	5.433	4.762	12.000	16.863	67.666	134.616	34.692	32.974	48,7
2019	3.394	5.670	10.593	6.555	5.890								32.102	32.102	17.092	15.010	46,8



Aylar / Months	10 Yıl Ort / 10 Years Avr.	2019	%
1	2.669	1.311	-50,9
2	3.359	1.401	-58,3
3	4.700	2.143	-54,4
4	5.046	2.126	-57,9
TOPLAM / TOTAL	15.774	6.981	-55,7

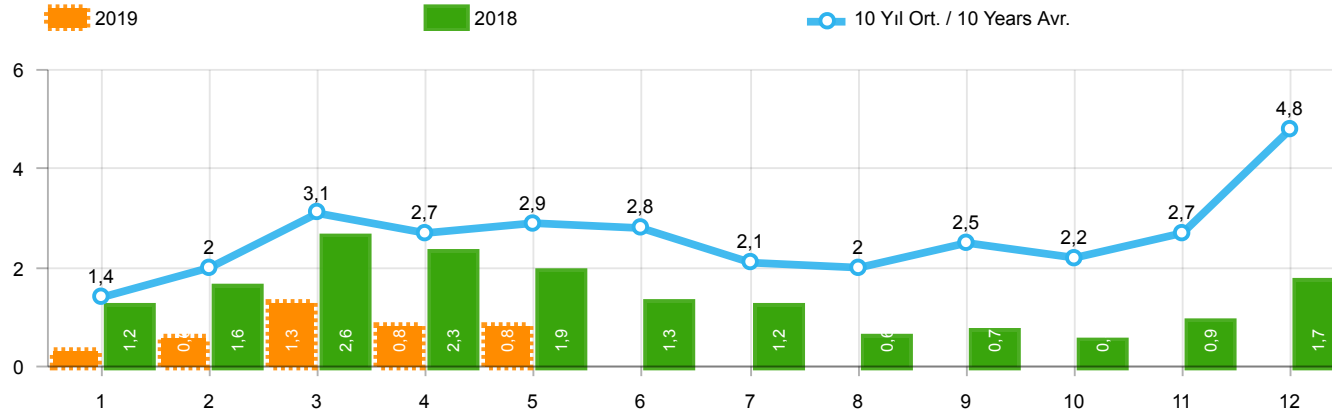
Yıl / Year	1	2	3	4	5	6	7	8	9	10	11	12	1-4 Toplam / Total	Toplam / Total
2009	717	572	688	1.070	1.297	1.256	1.054	1.183	1.117	1.356	1.304	2.144	3.047	13.758
2010	1.111	1.991	2.330	3.039	2.567	2.638	1.965	3.019	2.806	4.424	3.978	6.168	8.471	36.036
2011	2.975	5.242	5.927	5.358	6.016	6.335	4.534	4.051	4.140	5.828	4.943	4.992	19.502	60.341
2012	2.362	1.983	4.348	6.579	6.273	4.569	3.837	3.158	3.618	4.027	4.807	4.757	15.272	50.318
2013	2.161	2.432	4.005	4.585	5.616	3.136	4.574	3.408	4.935	4.762	5.781	6.891	13.183	52.286
2014	2.169	3.512	4.476	4.905	5.094	5.028	4.233	4.920	5.619	5.743	6.250	7.409	15.062	59.358
2015	3.124	3.984	5.460	6.383	6.078	5.748	4.677	5.044	4.765	7.049	6.898	7.564	18.951	66.774
2016	3.739	4.731	7.067	6.546	6.575	5.543	3.833	5.134	4.945	7.372	7.090	7.603	22.083	70.178
2017	3.974	4.964	6.773	6.780	7.057	5.356	5.003	4.396	6.064	7.734	7.457	7.351	22.491	72.909
2018	4.362	4.179	5.925	5.216	4.584	3.146	3.654	2.587	3.541	3.698	3.578	3.886	19.682	48.356
2019	1.311	1.401	2.143	2.126									6.981	6.981

Kaynak: TÜİK trafik kayıtları.

Rakamlar, son iki model yılına ait traktör tescillerinden oluşmaktadır.

Source: Turkish Statistical Institute – Traffic registrations

Data represents the last two model year's farm tractors registration figures

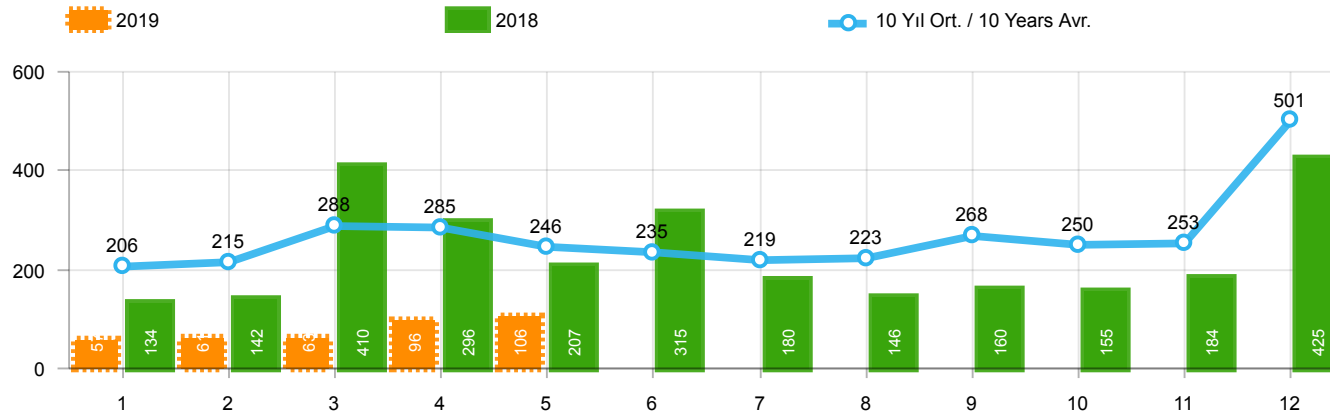


Aylar / Months	10 Yıl Ort / 10 Years Avr.	2019	%
1	1.446	342	-76,3
2	1.974	579	-70,7
3	3.128	1.255	-59,9
4	2.746	842	-69,3
5	2.944	753	-74,4
TOPLAM / TOTAL	12.238	3.771	-69,2

Yıl / Year	1	2	3	4	5	6	7	8	9	10	11	12	1-5 Toplam / Total	Toplam / Total	1-5 Yerli / Local	1-5 İthal / Import	İthal Oran / Import %
2009	782	763	1.062	1.381	1.426	1.649	1.261	1.164	1.862	963	1.047	2.368	5.414	15.728	4.548	866	16,0
2010	768	960	1.950	1.949	2.140	2.314	2.403	2.754	2.864	3.001	3.231	6.158	7.767	30.492	5.612	2.155	27,7
2011	2.651	3.544	5.142	4.503	4.563	3.852	2.261	2.745	3.784	3.400	3.149	5.712	20.403	45.306	12.947	7.456	36,5
2012	1.703	2.454	3.866	3.209	3.678	3.540	2.750	2.403	3.296	2.497	3.154	5.300	14.910	37.850	10.484	4.426	29,7
2013	1.484	2.113	3.343	2.925	3.504	3.186	2.777	2.103	2.875	2.086	3.631	5.444	13.369	35.471	9.402	3.967	29,7
2014	1.522	2.065	3.094	3.224	3.727	3.726	2.578	2.783	3.708	2.858	3.384	6.869	13.632	39.538	10.129	3.503	25,7
2015	2.215	3.346	5.699	3.729	3.600	4.253	2.922	2.211	2.687	2.266	3.146	7.307	18.589	43.381	13.165	5.424	29,2
2016	1.167	1.648	2.515	2.319	2.711	2.623	984	1.796	1.438	2.238	2.485	3.127	10.360	25.051	6.751	3.609	34,8
2017	931	1.290	1.982	1.888	2.184	1.891	1.974	1.860	2.284	2.188	2.487	4.438	8.275	25.397	5.870	2.405	29,1
2018	1.237	1.552	2.630	2.328	1.909	1.272	1.235	603	653	488	905	1.695	9.656	16.507	5.699	3.957	41,0
2019	342	579	1.255	842	753								3.771	3.771	2.354	1.417	37,6

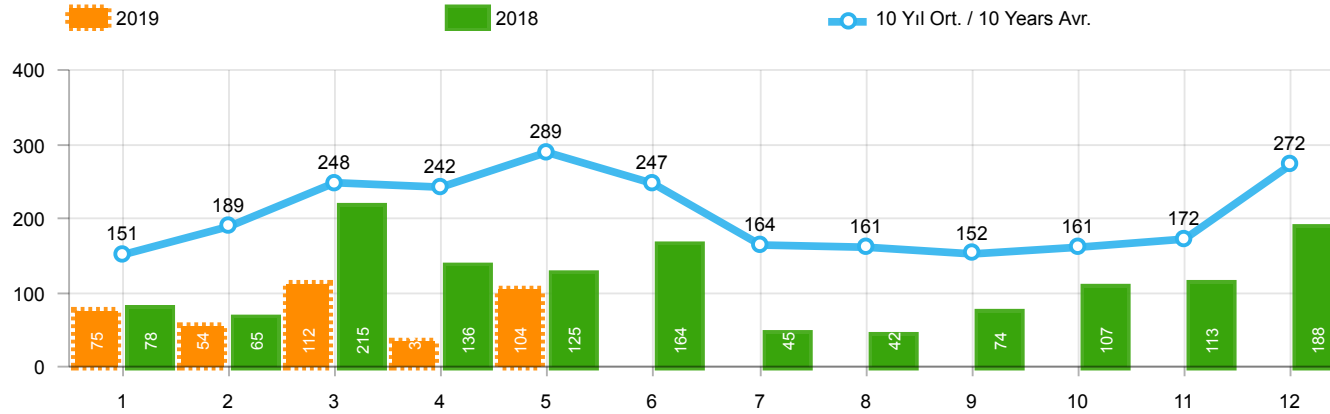
Kaynak: OSD, TAİD, TÜİK

Herhangi bir Dernek üyeliği olmayan markalara ilişkin satış verisi için TÜİK trafik kayıtları esas alınmaktadır. TÜİK trafik kayıtlarının bir ay gecikmeli yayınlanması nedeniyle ilgili markalara ilişkin son ayın satış verisi bir önceki ay ile aynı kabul edilmekte ve bir sonraki ay gerçekleşen veri ile güncellenmektedir.



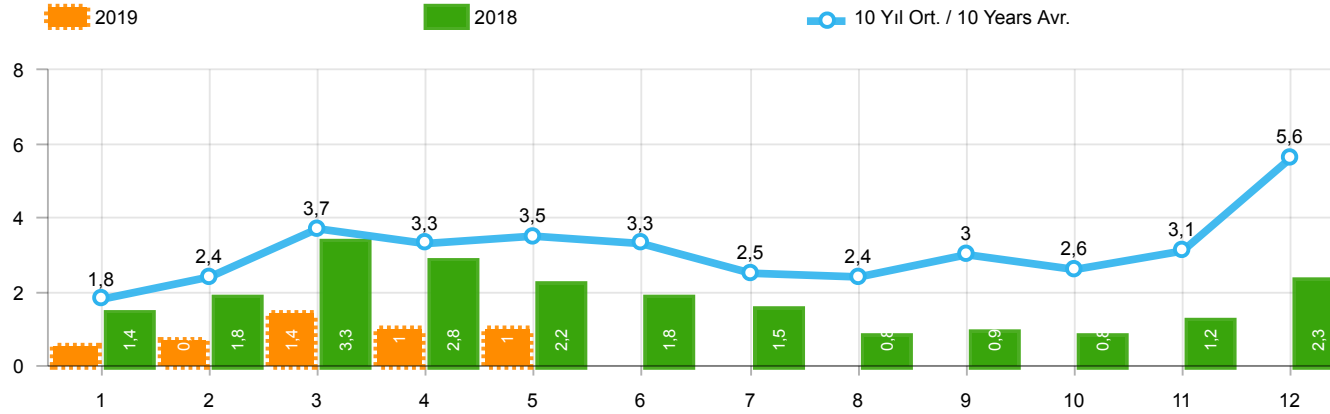
Aylar / Months	10 Yıl Ort / 10 Years Avr.	2019	%
1	206	57	-72,4
2	215	61	-71,6
3	288	63	-78,1
4	285	96	-66,3
5	246	106	-56,9
TOPLAM / TOTAL	1.240	383	-69,1

Yıl / Year	1	2	3	4	5	6	7	8	9	10	11	12	1-5 Toplam / Total	Toplam / Total
2009	133	103	153	210	145	183	138	146	152	134	150	280	744	1.927
2010	140	128	172	153	127	124	93	232	199	204	162	382	720	2.116
2011	124	167	267	260	241	233	205	280	270	230	168	525	1.059	2.970
2012	179	257	277	229	257	239	216	249	325	269	189	398	1.199	3.084
2013	191	268	289	276	283	241	367	235	305	392	415	697	1.307	3.959
2014	360	394	384	333	294	258	216	229	395	220	266	653	1.765	4.002
2015	280	322	451	561	372	405	389	253	316	394	325	621	1.986	4.689
2016	309	158	251	302	261	196	139	220	241	230	354	431	1.281	3.092
2017	212	211	227	231	272	156	250	235	318	268	317	594	1.153	3.291
2018	134	142	410	296	207	315	180	146	160	155	184	425	1.189	2.754
2019	57	61	63	96	106								383	383



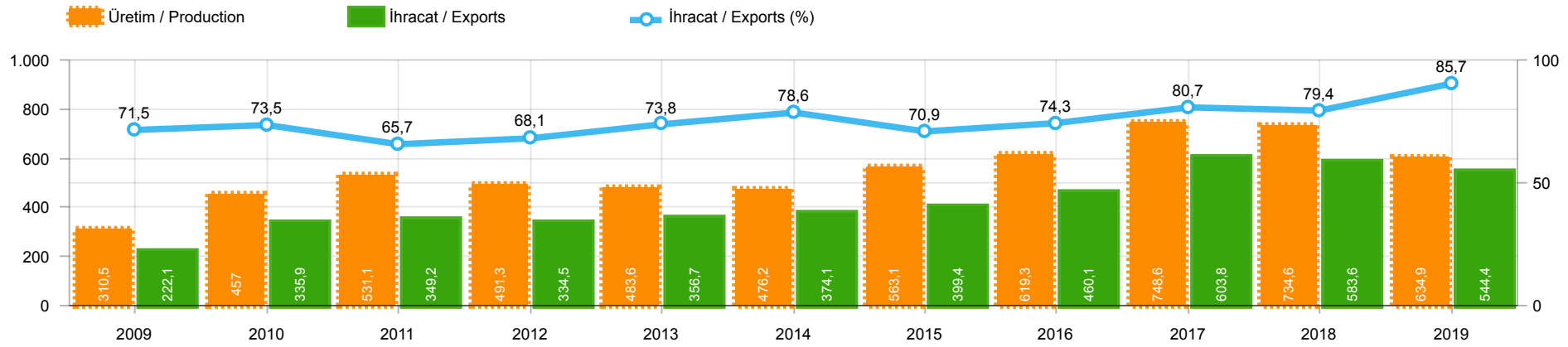
Aylar / Months	10 Yıl Ort. / 10 Years Avr.	2019	%
1	151	75	-50,3
2	189	54	-71,4
3	248	112	-54,8
4	242	35	-85,5
5	289	104	-64,0
TOPLAM / TOTAL	1.119	380	-66,0

Yıl / Year	1	2	3	4	5	6	7	8	9	10	11	12	1-5 Toplam / Total	Toplam / Total	1-5 Yerli / Local	1-5 İthal / Import	İthal Oran / Import %
2009	84	265	201	202	185	191	130	119	142	61	150	191	937	1.921	912	25	2,7
2010	67	71	128	193	193	177	170	211	163	144	133	325	652	1.975	621	31	4,8
2011	92	212	233	324	412	334	148	214	130	176	176	321	1.273	2.772	1.211	62	4,9
2012	125	103	215	172	397	262	174	182	251	229	150	344	1.012	2.604	999	13	1,3
2013	365	445	537	489	580	520	412	281	245	198	123	189	2.416	4.384	2.410	6	0,2
2014	199	179	253	251	305	148	69	92	130	91	97	332	1.187	2.146	1.045	142	12,0
2015	146	222	313	290	290	255	211	203	153	171	359	363	1.261	2.976	1.219	42	3,3
2016	180	209	218	240	214	307	76	82	141	198	314	236	1.061	2.415	1.060	1	0,1
2017	174	119	167	124	188	115	206	187	92	231	109	235	772	1.947	760	12	1,6
2018	78	65	215	136	125	164	45	42	74	107	113	188	619	1.352	608	11	1,8
2019	75	54	112	35	104								380	380	380	-	-



Aylar / Months	10 Yıl Ort. / 10 Years Avr.	2019	%
1	1.803	474	-73,7
2	2.378	694	-70,8
3	3.664	1.430	-61,0
4	3.273	973	-70,3
5	3.479	963	-72,3
TOPLAM / TOTAL	14.597	4.534	-68,9

Yıl / Year	1	2	3	4	5	6	7	8	9	10	11	12	1-5 Toplam / Total	Toplam / Total	1-5 Yerli / Local	1-5 İthal / Import	İthal Oran / Import %
2009	999	1.131	1.416	1.793	1.756	2.023	1.529	1.429	2.156	1.158	1.347	2.839	7.095	19.576	6.204	891	12,6
2010	975	1.159	2.250	2.295	2.460	2.615	2.666	3.197	3.226	3.349	3.526	6.865	9.139	34.583	6.953	2.186	23,9
2011	2.867	3.923	5.642	5.087	5.216	4.419	2.614	3.239	4.184	3.806	3.493	6.558	22.735	51.048	15.217	7.518	33,1
2012	2.007	2.814	4.358	3.610	4.332	4.041	3.140	2.834	3.872	2.995	3.493	6.042	17.121	43.538	12.682	4.439	25,9
2013	2.040	2.826	4.169	3.690	4.367	3.947	3.556	2.619	3.425	2.676	4.169	6.330	17.092	43.814	13.119	3.973	23,2
2014	2.081	2.638	3.731	3.808	4.326	4.132	2.863	3.104	4.233	3.169	3.747	7.854	16.584	45.686	12.939	3.645	22,0
2015	2.641	3.890	6.463	4.580	4.262	4.913	3.522	2.667	3.156	2.831	3.830	8.291	21.836	51.046	16.370	5.466	25,0
2016	1.656	2.015	2.984	2.861	3.186	3.126	1.199	2.098	1.820	2.666	3.153	3.794	12.702	30.558	9.092	3.610	28,4
2017	1.317	1.620	2.376	2.243	2.644	2.162	2.430	2.282	2.694	2.687	2.913	5.267	10.200	30.635	7.783	2.417	23,7
2018	1.449	1.759	3.255	2.760	2.241	1.751	1.460	791	887	750	1.202	2.308	11.464	20.613	7.496	3.968	34,6
2019	474	694	1.430	973	963								4.534	4.534	3.117	1.417	31,3



	2009	2010	2011	2012	2013	2014	2015	2016	2017	2018	2019
İhracat/Export	222.121	335.860	349.171	334.473	356.715	374.097	399.385	460.064	603.764	583.610	544.419
Üretim/Production	310.506	457.018	531.111	491.255	483.647	476.226	563.100	619.319	748.575	734.633	634.928
İhracat/Exports (%)	71,5	73,5	65,7	68,1	73,8	78,6	70,9	74,3	80,7	79,4	85,7

Taşıt Araçları İhracatı (2017 - 2019)
Motor Vehicle Exports (2017 - 2019)

SEKTÖR / SECTOR	2017	2018	1/5-2018	1/5-2019	2019/2018 %
OTOMOBİL / Pass.Car	921.354	875.147	392.522	356.200	-9,3
OTOMOBİL TOPLAM / Pass. Car Total	921.354	875.147	392.522	356.200	-9,3
KAMYON / Truck	7.800	14.478	4.884	6.499	33,1
KAMYONET / Pick Up	350.108	372.954	160.304	148.210	-7,5
OTOBÜS / Bus	7.028	7.708	3.013	3.971	31,8
MİNİBÜS / Minibus	45.794	47.736	17.212	22.497	30,7
MİDİBÜS / Midibus	710	846	259	512	97,7
TİCARİ ARAÇLAR TOPLAM / Commercial Vehicle Total	411.440	443.722	185.672	181.689	-2,1
TAŞIT ARAÇLARI TOPLAM / Motor Vehicles Total	1.332.794	1.318.869	578.194	537.889	-7,0
TRAKTÖR / F.Tractor	13.123	15.123	5.416	6.530	20,6
TRAKTÖR TOPLAM / F.Tractor Total	13.123	15.123	5.416	6.530	20,6
GENEL TOPLAM / GRAND TOTAL	1.345.917	1.333.992	583.610	544.419	-6,7

Üretici Bazında İhracat (adet)
Exports by Manufacturer (unit)

Üreticiler / Manufacturers	2017	2018	1-5 / 2018	1-5 / 2019
A.I.O.S.	700	964	264	749
FORD OTOSAN	296.840	328.502	135.135	142.282
HATTAT TRAKTÖR	1.100	621	179	310
HONDA TÜRKİYE	9.391	13.699	7.318	3.162
HYUNDAI ASSAN	204.382	190.347	81.856	66.464
KARSAN	2.969	3.419	1.372	719
M. BENZ TÜRK	9.865	16.309	5.887	7.128
MAN TÜRKİYE	2.007	2.425	1.144	1.323
OTOKAR	691	901	177	583
OYAK RENAULT	287.915	280.411	126.029	127.993
TEMSA	870	645	131	232
TOFAŞ	270.698	243.796	117.359	84.885
TOYOTA	246.466	237.451	101.522	102.369
TÜRK TRAKTÖR	12.023	14.502	5.237	6.220
GENEL TOPLAM / Grand Total	1.345.917	1.333.992	583.610	544.419

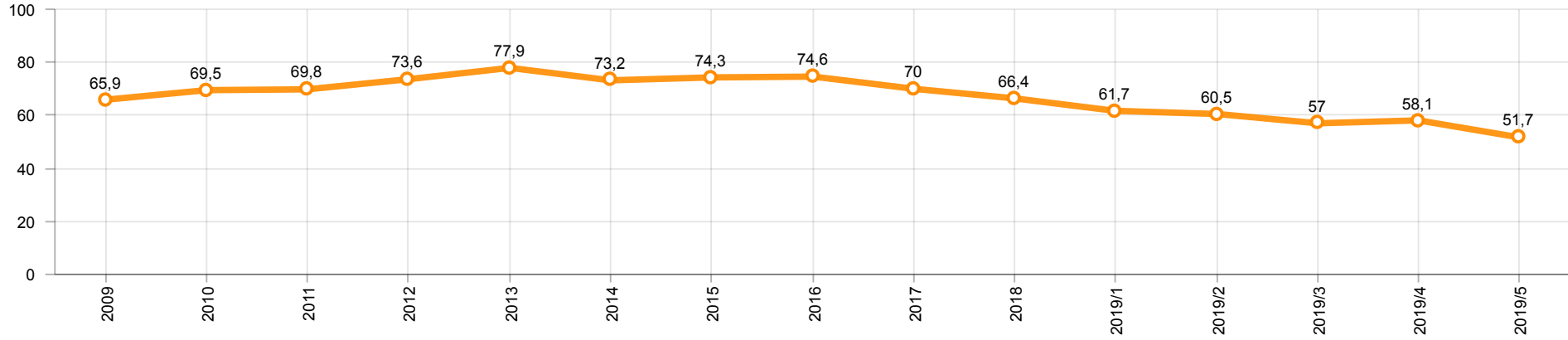
Otomotiv Ana ve Yan Sanayii İhracatı (ABD \$)
CBU and CKD Exports - \$

Sektör / Sector	2017	2018	OCAK - MAYIS / January - May 2018	OCAK - MAYIS / January - May 2019	2019 / 2018 %
Toplam Yan Sanayi / Total Component Industry	9.835.914.658	10.881.562.512	4.854.417.718	4.687.356.608	-3,4
İç ve Dış Lastik / Tyres	1.131.782.300	1.353.896.118	584.882.844	633.064.136	8,2
Emniyet Camı / Safety Glasses	136.486.099	151.148.689	67.413.174	64.781.893	-3,9
Motor / Engine	486.426.738	581.983.113	287.440.165	242.782.891	-15,5
Akümülatör / Batteries	295.794.286	388.107.835	137.741.301	160.725.497	16,7
Diğer Aksam ve Parça / Spare Parts&Components	7.785.425.235	8.406.426.757	3.776.940.234	3.586.002.191	-5,1
Toplam Ana Sanayi / Total Vehicle Industry	19.257.086.833	21.350.315.330	9.312.942.041	8.685.456.010	-6,7
Otobüs / Bus	1.308.249.224	1.503.188.826	599.487.549	784.369.797	30,8
Midibüs-Minibüs / Midibus-Minibus	217.704.499	215.450.022	89.936.888	64.404.250	-28,4
Otomobil / P.Cars	11.790.577.760	12.420.951.066	5.587.953.106	4.891.943.690	-12,5
Kamyon-Kamyonet / Truck-Pick Up&Van	4.849.022.718	5.376.446.529	2.368.562.608	2.151.124.774	-9,2
Römork ve Yarı Römork / Trailer-Semi Trailer	342.793.231	507.186.149	204.005.161	240.904.784	18,1
Çekici / Tractor	427.928.256	904.738.051	325.413.147	368.285.892	13,2
Tarım Traktörü / Farm Tractor	320.811.145	422.354.687	137.583.582	184.422.823	34,0
Toplam / Total	29.093.001.491	32.231.877.842	14.167.359.759	13.372.812.618	-5,6

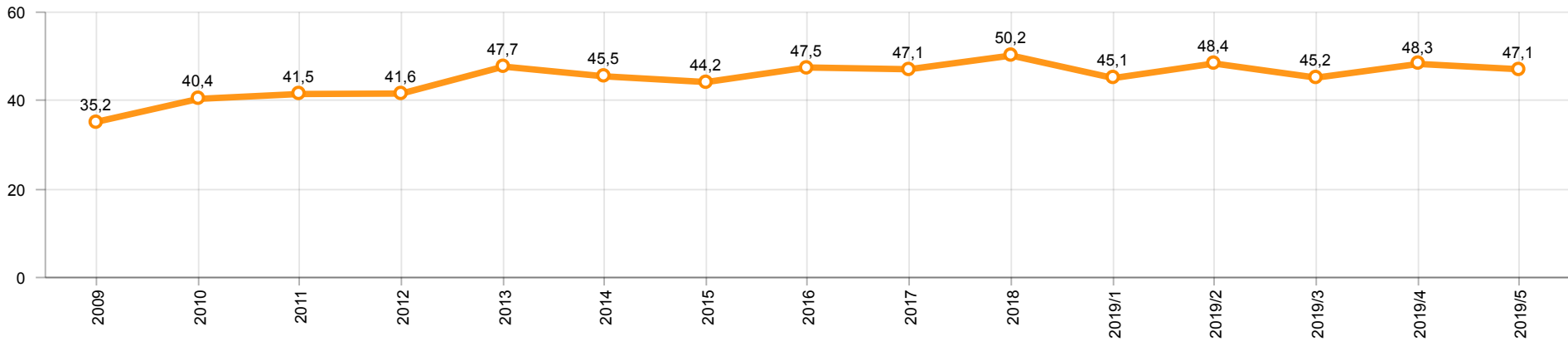
Kaynak: Uludağ İhracatçı Birlikleri . ÜİB tarafından OSD için özel olarak analiz edilen Otomotiv İhracatı kapsamında; ÜİB Türkiye Geneli Otomotiv Endüstrisi sınıflandırmasına kıyasla “Römork ve Yarı Römork” , “Tarım Traktörü” verileri dahil edilmekte; “Kullanılmış Araçlar” ,”İki Tekerlekli Taşıtlar” , “Demiryolu Taşıtları” hariç tutulmaktadır.

Source: Uludağ Exporters Association – Special Analyze for OSD.Compared to Turkish General Automotive Industry classification, this special analyze includes; farms tractors, trailers and semi-trailers, does not include; used vehicles, two-wheeled vehicles and railway vehicles

Otomobil Pazarında İthalatın Payı (%)
Import Share in P.Car Market (%)



Hafif Ticari Araçlar Pazarında İthalatın Payı (%)
Import Share in LCV Market (%)



Araç Tipleri / Vehicle Types	1	2	3	4	5	6	7	8	9	10	11	12	Toplam / Total
OTOMOBİL - Pass.Car	58.807	69.340	81.736	66.084	80.233								356.200
KAMYON - H. Truck	1.270	1.594	1.312	1.153	1.170								6.499
KAMYONET - Pick Up	27.735	29.855	31.222	33.326	26.072								148.210
OTOBÜS - Bus	801	637	822	753	958								3.971
MINİBÜS - Minibus	4.741	4.836	5.012	4.630	3.278								22.497
MİDİBÜS - Midibus	74	93	135	58	152								512
TİCARİ ARAÇLAR TOPLAMI - CV Total	34.621	37.015	38.503	39.920	31.630								181.689
TAŞIT ARAÇLARI TOPLAMI - MV Total	93.428	106.355	120.239	106.004	111.863								537.889
TRAKTÖR - F.Tractor	1.111	1.145	1.516	1.207	1.551								6.530
GENEL TOPLAM - Grand Total	94.539	107.500	121.755	107.211	113.414								544.419

Otomobil / P.Car

Firmalar / Firms	1	2	3	4	5	6	7	8	9	10	11	12	Toplam / Total
FORD OTOSAN	1.469	1.837	2.405	2.671	2.064	-	-	-	-	-	-	-	10.446
HONDA TÜRKİYE	800	1.009	424	689	240	-	-	-	-	-	-	-	3.162
HYUNDAI ASSAN	11.414	14.050	13.200	9.050	18.750	-	-	-	-	-	-	-	66.464
OYAK RENAULT	20.009	24.138	35.569	21.457	26.820	-	-	-	-	-	-	-	127.993
TOFAŞ	7.636	8.517	7.730	10.743	11.140	-	-	-	-	-	-	-	45.766
TOYOTA	17.479	19.789	22.408	21.474	21.219	-	-	-	-	-	-	-	102.369
TOPLAM - Total	58.807	69.340	81.736	66.084	80.233	-	-	-	-	-	-	-	356.200

Kamyonet / Pick-up

Firmalar / Firms	1	2	3	4	5	6	7	8	9	10	11	12	Toplam / Total
A.I.O.S.	-	-	-	-	-	-	-	-	-	-	-	-	-
FORD OTOSAN	22.083	22.516	23.449	24.428	16.098	-	-	-	-	-	-	-	108.574
KARSAN	73	54	150	95	95	-	-	-	-	-	-	-	467
OTOKAR	-	-	25	10	15	-	-	-	-	-	-	-	50
TOFAŞ	5.579	7.285	7.598	8.793	9.864	-	-	-	-	-	-	-	39.119
TOPLAM - Total	27.735	29.855	31.222	33.326	26.072	-	-	-	-	-	-	-	148.210

Minibüs / Minibus

Firmalar / Firms	1	2	3	4	5	6	7	8	9	10	11	12	Toplam / Total
FORD OTOSAN	4.740	4.833	4.998	4.620	3.268	-	-	-	-	-	-	-	22.459
KARSAN	1	3	14	10	10	-	-	-	-	-	-	-	38
TOPLAM - Total	4.741	4.836	5.012	4.630	3.278	-	-	-	-	-	-	-	22.497

Kamyon / Truck

Firmalar / Firms	1	2	3	4	5	6	7	8	9	10	11	12	Toplam / Total
A.I.O.S.	-	30	-	175	29	-	-	-	-	-	-	-	234
FORD OTOSAN	114	141	166	161	221	-	-	-	-	-	-	-	803
KARSAN	-	-	-	-	-	-	-	-	-	-	-	-	-
M. BENZ TÜRK	1.156	1.423	1.146	817	920	-	-	-	-	-	-	-	5.462
OTOKAR	-	-	-	-	-	-	-	-	-	-	-	-	-
TOPLAM - Total	1.270	1.594	1.312	1.153	1.170	-	-	-	-	-	-	-	6.499

Midibüs / Midibus

Firmalar / Firms	1	2	3	4	5	6	7	8	9	10	11	12	Toplam / Total
A.I.O.S.	52	60	88	46	121	-	-	-	-	-	-	-	367
KARSAN	5	6	39	-	1	-	-	-	-	-	-	-	51
OTOKAR	8	21	8	12	16	-	-	-	-	-	-	-	65
TEMSA	9	6	-	-	14	-	-	-	-	-	-	-	29
TOPLAM - Total	74	93	135	58	152	-	-	-	-	-	-	-	512

Otobüs / Bus

Firmalar / Firms	1	2	3	4	5	6	7	8	9	10	11	12	Toplam / Total
A.I.O.S.	56	12	47	18	15	-	-	-	-	-	-	-	148
KARSAN	23	17	56	2	65	-	-	-	-	-	-	-	163
M. BENZ TÜRK	261	246	318	395	446	-	-	-	-	-	-	-	1.666
MAN TÜRKİYE	298	271	273	225	256	-	-	-	-	-	-	-	1.323
OTOKAR	104	69	108	93	94	-	-	-	-	-	-	-	468
TEMSA	59	22	20	20	82	-	-	-	-	-	-	-	203
TOPLAM - Total	801	637	822	753	958	-	-	-	-	-	-	-	3.971

Traktör / F.Tractor

Firmalar / Firms	1	2	3	4	5	6	7	8	9	10	11	12	Toplam / Total
HATTAT TRAKTÖR	39	72	108	43	48	-	-	-	-	-	-	-	310
TÜRK TRAKTÖR	1.072	1.073	1.408	1.164	1.503	-	-	-	-	-	-	-	6.220
TOPLAM - Total	1.111	1.145	1.516	1.207	1.551	-	-	-	-	-	-	-	6.530

Firmalar / Firms	2018 Toplam / Total	1	2	3	4	5	6	7	8	9	10	11	12	Toplam / Total
Alfa Romeo	203	8	16	32	23	50	-	-	-	-	-	-	-	129
Aston Martin	16	2	-	3	1	-	-	-	-	-	-	-	-	6
Audi	13.295	495	404	832	515	742	-	-	-	-	-	-	-	2.988
Bentley	10	2	-	-	1	1	-	-	-	-	-	-	-	4
BMW	12.728	352	463	871	724	445	-	-	-	-	-	-	-	2.855
Citroen	7.669	80	97	423	378	453	-	-	-	-	-	-	-	1.431
Dacia	26.193	429	801	1.765	910	970	-	-	-	-	-	-	-	4.875
DS	236	3	8	8	27	8	-	-	-	-	-	-	-	54
Ferrari	18	-	2	2	3	3	-	-	-	-	-	-	-	10
Fiat	1.264	26	26	65	80	157	-	-	-	-	-	-	-	354
Ford	20.697	235	476	1.452	774	676	-	-	-	-	-	-	-	3.613
Honda	4.862	144	149	253	281	276	-	-	-	-	-	-	-	1.103
Hyundai	19.113	794	1.195	1.508	1.089	1.141	-	-	-	-	-	-	-	5.727
Infinity	18	-	-	-	-	-	-	-	-	-	-	-	-	-
Jaguar	220	2	18	20	20	10	-	-	-	-	-	-	-	70
Jeep	2.430	100	162	225	138	92	-	-	-	-	-	-	-	717
Kia	7.694	150	331	534	357	204	-	-	-	-	-	-	-	1.576
Lamborghini	3	1	-	-	1	1	-	-	-	-	-	-	-	3
Land Rover	1.248	36	71	63	80	59	-	-	-	-	-	-	-	309
Lexus	56	4	4	2	3	2	-	-	-	-	-	-	-	15
Maserati	55	2	4	2	2	6	-	-	-	-	-	-	-	16
Mazda	1.005	29	29	15	31	45	-	-	-	-	-	-	-	149
Mercedes-Benz	14.445	204	701	1.005	563	728	-	-	-	-	-	-	-	3.201
Mini	1.373	17	50	176	91	92	-	-	-	-	-	-	-	426
Mitsubishi	514	38	60	41	34	30	-	-	-	-	-	-	-	203
Nissan	24.605	538	799	1.662	887	806	-	-	-	-	-	-	-	4.692
Opel	20.960	348	765	1.684	1.055	866	-	-	-	-	-	-	-	4.718
Peugeot	24.905	524	767	2.287	1.627	1.692	-	-	-	-	-	-	-	6.897
Porsche	565	9	35	27	29	31	-	-	-	-	-	-	-	131
Renault	21.090	198	557	822	490	552	-	-	-	-	-	-	-	2.619
Seat	10.383	139	289	515	269	295	-	-	-	-	-	-	-	1.507
Skoda	21.340	247	585	1.414	687	778	-	-	-	-	-	-	-	3.711
Smart	35	5	3	6	2	3	-	-	-	-	-	-	-	19
Ssangyong	222	10	15	14	6	9	-	-	-	-	-	-	-	54
Subaru	1.471	52	68	76	75	45	-	-	-	-	-	-	-	316
Suzuki	2.878	65	107	236	142	245	-	-	-	-	-	-	-	795
Toyota	3.405	47	114	132	103	103	-	-	-	-	-	-	-	499
Volkswagen	49.749	1.210	2.218	3.528	2.329	2.096	-	-	-	-	-	-	-	11.381
Volvo	5.943	231	225	334	360	300	-	-	-	-	-	-	-	1.450
GENEL TOPLAM - Grand Total	322.916	6.776	11.614	22.034	14.187	14.012	-	-	-	-	-	-	-	68.623

Firmalar / Firms	2018 Toplam / Total	1	2	3	4	5	6	7	8	9	10	11	12	Toplam / Total
Citroen	4.633	126	188	181	406	281	-	-	-	-	-	-	-	1.182
Dacia	3.725	53	182	296	179	136	-	-	-	-	-	-	-	846
Fiat	3.019	53	54	117	59	72	-	-	-	-	-	-	-	355
Ford	2.783	134	106	177	65	36	-	-	-	-	-	-	-	518
Hyundai	1.493	83	106	121	109	88	-	-	-	-	-	-	-	507
Isuzu	578	3	30	23	3	1	-	-	-	-	-	-	-	60
Iveco	1.598	48	54	115	109	95	-	-	-	-	-	-	-	421
Karsan	-	-	-	-	-	-	-	-	-	-	-	-	-	-
Kia	1.947	14	55	189	117	84	-	-	-	-	-	-	-	459
Mercedes-Benz	7.993	159	404	628	288	457	-	-	-	-	-	-	-	1.936
Mitsubishi	3.445	47	129	69	116	103	-	-	-	-	-	-	-	464
Nissan	1.741	82	48	150	135	26	-	-	-	-	-	-	-	441
Opel	-	-	-	43	112	41	-	-	-	-	-	-	-	196
Peugeot	5.247	197	284	819	431	379	-	-	-	-	-	-	-	2.110
Renault	8.908	180	342	741	304	191	-	-	-	-	-	-	-	1.758
Ssangyong	174	-	-	15	38	25	-	-	-	-	-	-	-	78
Toyota	3.159	55	101	91	65	71	-	-	-	-	-	-	-	383
Volkswagen	17.085	295	662	1.017	633	689	-	-	-	-	-	-	-	3.296
GENEL TOPLAM - Grand Total	67.528	1.529	2.745	4.792	3.169	2.775	-	-	-	-	-	-	-	15.010