



OTOMOTİV SANAYİİ DERNEĐİ  
AUTOMOTIVE MANUFACTURERS ASSOCIATION

# OTOMOTİV SEKTÖRÜ AYLIK DEĐERLENDİRME RAPORU NİSAN 2019

AUTOMOTIVE INDUSTRY MONTHLY REPORT  
April 2019

OSD "OICA" Üyesidir @OICA OSD is a Member of "OICA"

	4 - 2018	4 - 2019	%	1 - 4 / 2018	1 - 4 / 2019	%	5/2017 - 4/2018	5/2018 - 4/2019	%
Otomobil Üretimi/P.Cars Production	90.805	83.459	-8,1	375.977	322.281	-14,3	1.116.792	972.875	-12,9
Toplam Üretim/Total Production	138.520	127.913	-7,7	563.715	489.429	-13,2	1.686.200	1.475.974	-12,5
Otomobil Pazarı/P.Cars Market	55.108	24.416	-55,7	177.418	93.228	-47,5	726.216	402.131	-44,6
Toplam Pazar/Total Market	73.886	32.088	-56,6	238.779	123.155	-48,4	985.974	525.926	-46,7
Otomobil İthalatı/P.Cars Import	37.464	14.187	-62,1	118.424	54.611	-53,9	503.637	259.103	-48,6
Toplam İthalat/Total Import	46.790	17.685	-62,2	147.260	68.059	-53,8	620.421	318.067	-48,7
Otomobil İhracatı/P.Cars Export	79.786	66.084	-17,2	315.225	275.967	-12,5	899.197	835.889	-7,0
Toplam İhracat/Total Export	116.945	106.004	-9,4	461.643	426.026	-7,7	1.321.811	1.283.252	-2,9
Otomobil İhracatı(\$)/P.Cars Export (\$)	1.244.067.138	960.202.917	-22,8	4.536.950.436	3.897.316.766	-14,1	12.351.962.847	11.781.317.395	-4,6
Toplam İhracat(\$)/Total Export (\$)*	2.968.513.351	2.659.806.464	-10,4	11.342.508.166	10.549.816.607	-7,0	31.001.332.881	31.435.997.311	1,4

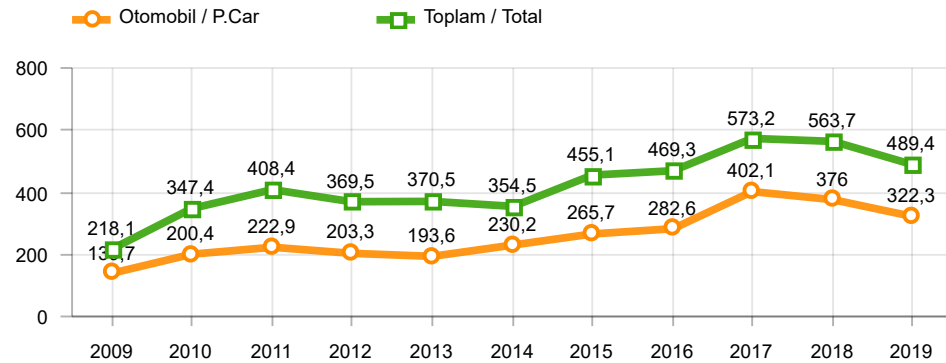
Parametreler/Parameters	4 - 2018	4 - 2019	%	1 - 4 / 2018	1 - 4 / 2019	%	5/2017 - 4/2018	5/2018 - 4/2019	%
ÜFE / PPI	2,6	3,0	-	8,0	5,2	-	15,4	32,2	-
TÜFE / CPI	1,9	1,7	-	4,7	4,0	-	11,1	19,4	-
Sanayi Endeksi / Industry Index	2,8	2,9	-	7,9	5,6	-	16,7	30,9	-
Dolar \$ **	4,0	5,8	44,5	3,9	5,4	41,4	3,7	5,3	43,8
Euro € **	4,9	6,5	32,7	4,7	6,2	30,8	4,4	6,1	39,5
Japon Yeni ¥ **	3,7	5,2	40,1	3,5	4,9	38,7	3,3	4,8	42,9

\*Toplam Sanayi / Total Industry Including Components

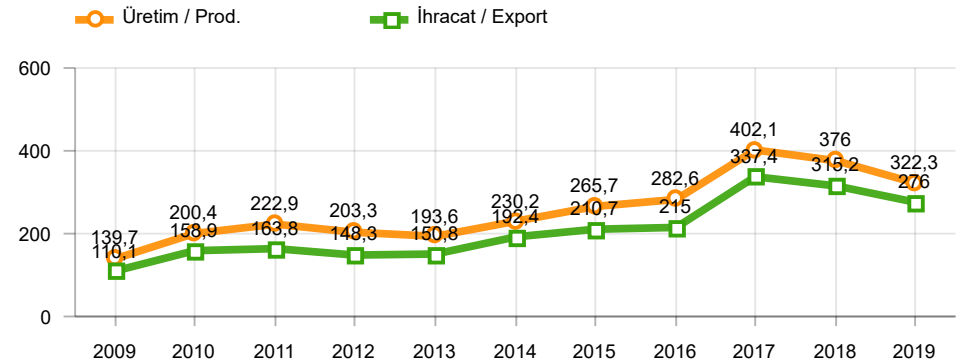
\*\* Ortalama Değerler / Average Values

Araç Tipleri / Types	4 / 2018	4 / 2019	4 % Değişim	1-4 / 2018	1-4 / 2019	1-4 % Değişim
OTOMOBİL / Pass.Car	90.805	83.459	-8,1	375.977	322.281	-14,3
<b>OTOMOBİL Toplam / Pass.Car Total</b>	<b>90.805</b>	<b>83.459</b>	<b>-8,1</b>	<b>375.977</b>	<b>322.281</b>	<b>-14,3</b>
B.KAMYON / H. Truck	2.270	979	-56,9	8.628	5.801	-32,8
K.KAMYON / L. Truck	232	190	-18,1	1.146	279	-75,7
KAMYONET / Pick Up	38.848	37.200	-4,2	155.998	136.334	-12,6
OTOBÜS / Bus	754	886	17,5	2.863	3.124	9,1
MİNİBÜS / Minibus	5.296	5.025	-5,1	17.792	20.961	17,8
MİDİBÜS / Midibus	315	174	-44,8	1.311	649	-50,5
<b>TİCARİ ARAÇLAR Toplam / Commercial Vehicles Total</b>	<b>47.715</b>	<b>44.454</b>	<b>-6,8</b>	<b>187.738</b>	<b>167.148</b>	<b>-11,0</b>
<b>TAŞIT ARAÇLARI Toplam / Motor Vehicles Total</b>	<b>138.520</b>	<b>127.913</b>	<b>-7,7</b>	<b>563.715</b>	<b>489.429</b>	<b>-13,2</b>
TRAKTÖR / F.Tractor	4.188	2.192	-47,7	18.382	6.936	-62,3
<b>TRAKTÖR Toplam / F.Tractor Total</b>	<b>4.188</b>	<b>2.192</b>	<b>-47,7</b>	<b>18.382</b>	<b>6.936</b>	<b>-62,3</b>
<b>GENEL TOPLAM / Grand Total</b>	<b>142.708</b>	<b>130.105</b>	<b>-8,8</b>	<b>582.097</b>	<b>496.365</b>	<b>-14,7</b>

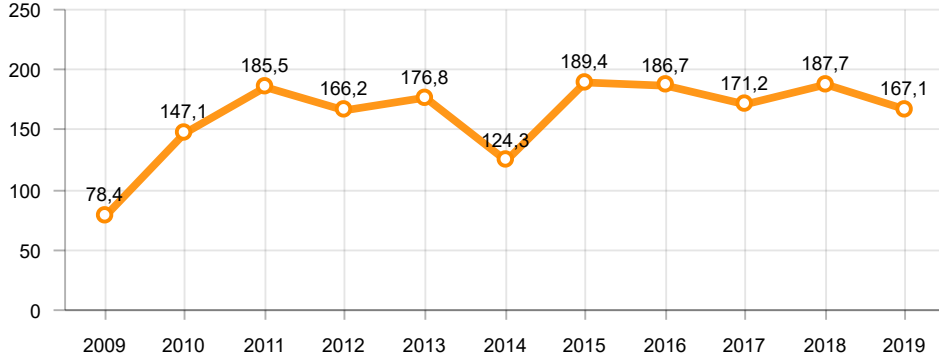
Toplam Üretim ve Otomobil Üretimi (x1000)(OCAK - NİSAN)  
Total & P.Cars Production (x1000)(January - April)



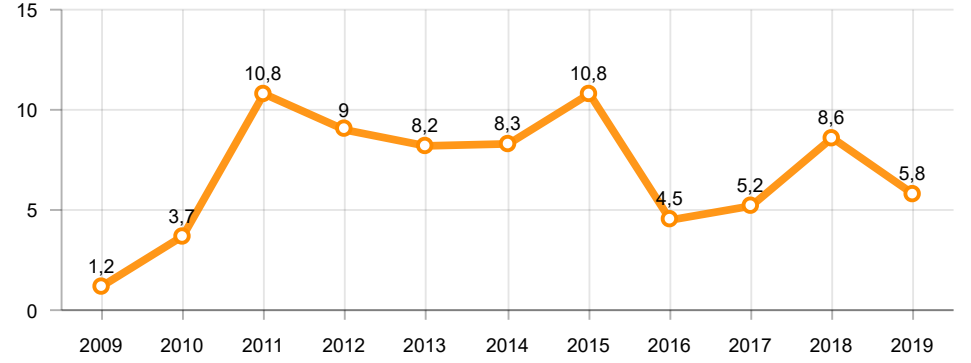
Otomobil Üretimi ve İhracat (x1000)(OCAK - NİSAN)  
P.Cars Production & Exports (x1000)(January - April)



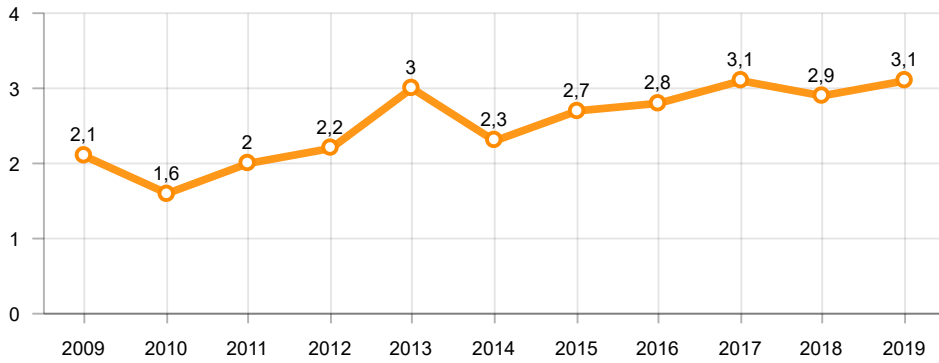
**Ticari Araç Üretimi (x1000)(OCAK - NİSAN)**  
Commercial Vehicle Production (x1000)(January - April)



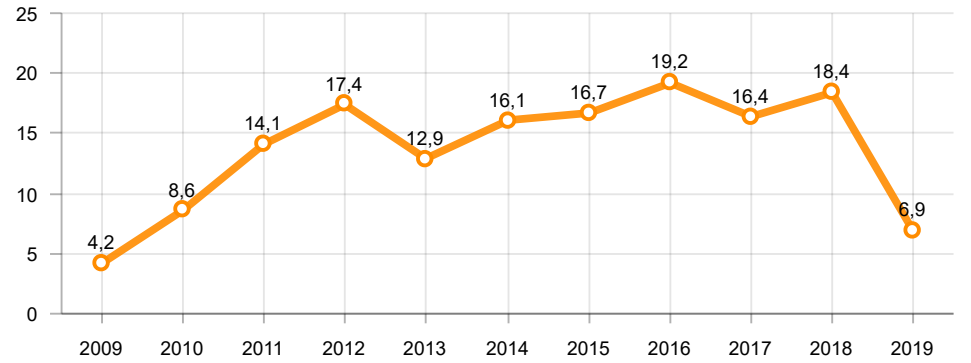
**Büyük Kamyon Üretimi (x1000)(OCAK - NİSAN)**  
Heavy Truck Production (x1000)(January - April)

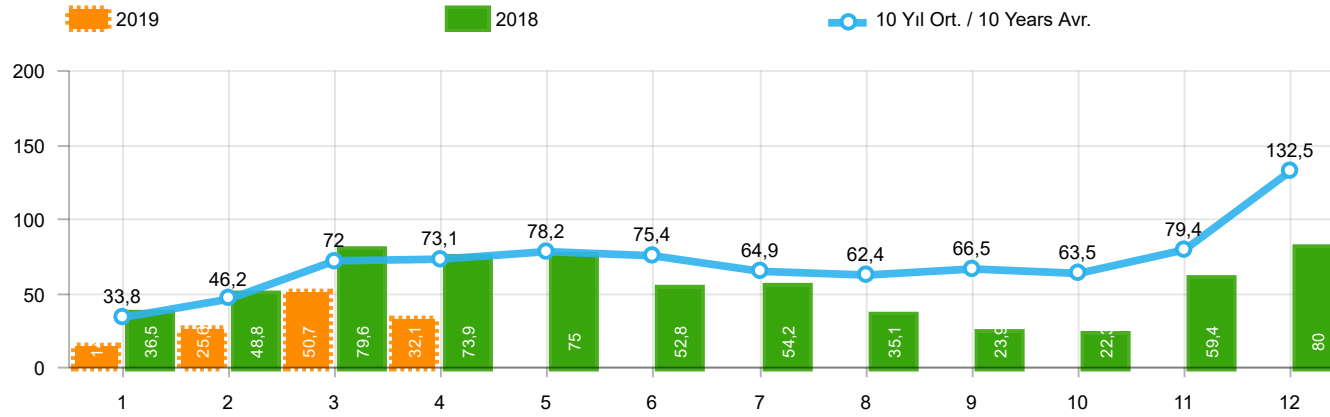


**Otobüs Üretimi (x1000)(OCAK - NİSAN)**  
Bus Production (x1000)(January - April)



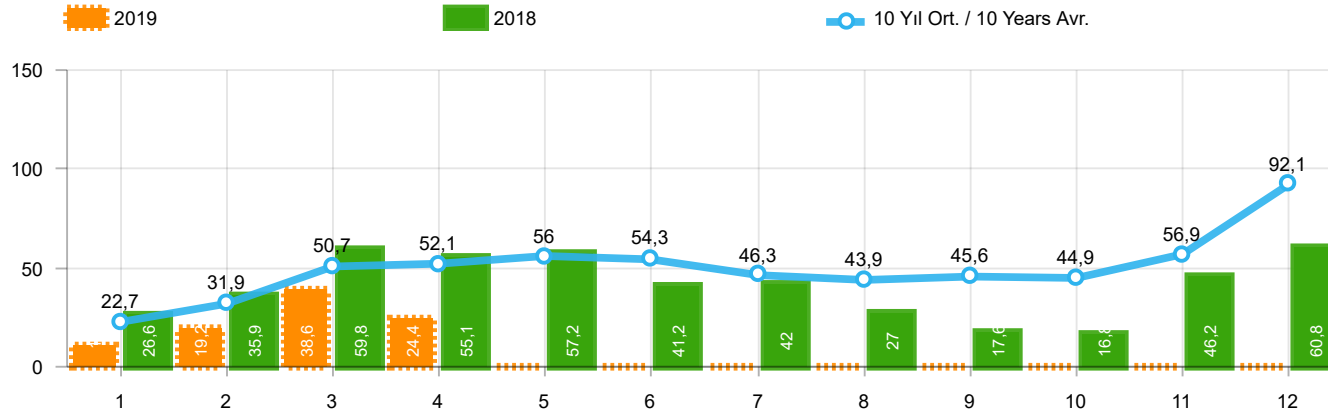
**Traktör Üretimi (x1000)(OCAK - NİSAN)**  
F. Tractor Production (x1000)(January - April)





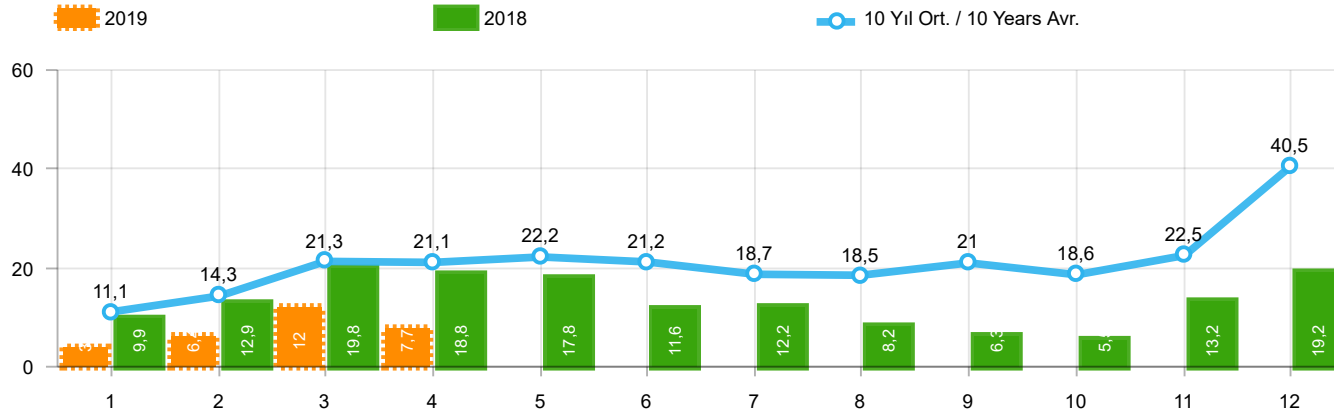
Aylar / Months	10 Yıl Ort / 10 Years Avr.	2019	%
1	33.809	14.847	-56,1
2	46.213	25.569	-44,7
3	71.956	50.651	-29,6
4	73.144	32.088	-56,1
TOPLAM / TOTAL	225.123	123.155	-45,3

Yıl / Year	1	2	3	4	5	6	7	8	9	10	11	12	1-4 Toplam / Total	Toplam / Total	1-4 Yerli / Local	1-4 İthal / Import	İthal Oran / Import %
2009	20.605	22.873	56.527	54.433	64.947	63.090	30.374	37.038	83.553	22.191	29.309	91.762	154.438	576.702	63.645	90.793	58,8
2010	21.070	32.331	54.019	57.241	61.837	63.511	64.011	64.961	67.040	76.753	77.488	155.234	164.661	795.496	70.000	94.661	57,5
2011	47.759	62.586	84.045	82.782	85.862	85.992	65.658	61.645	64.313	73.227	67.150	134.468	277.172	915.487	111.096	166.076	59,9
2012	31.552	44.138	69.242	66.559	75.195	75.108	65.444	60.982	73.501	62.933	75.203	121.442	211.491	821.299	84.034	127.457	60,3
2013	37.563	51.133	72.943	77.265	85.835	78.043	75.152	67.662	71.388	60.690	83.470	136.048	238.904	897.192	75.732	163.172	68,3
2014	34.751	37.659	51.312	57.113	62.447	64.295	62.770	63.303	70.764	69.742	84.368	154.843	180.835	813.367	60.174	120.661	66,7
2015	37.256	59.221	89.765	96.182	85.804	91.071	87.358	85.244	67.181	67.086	88.431	164.464	282.424	1.019.063	105.860	176.564	62,5
2016	34.369	54.840	85.932	87.748	97.090	94.666	59.732	73.654	69.413	85.666	125.462	145.706	262.889	1.014.278	89.730	173.159	65,9
2017	36.640	48.585	76.178	78.231	88.066	85.820	84.727	74.818	74.046	94.439	103.772	141.507	239.634	986.829	88.308	151.326	63,1
2018	36.525	48.768	79.600	73.886	74.996	52.788	54.194	35.137	23.915	22.321	59.406	80.014	238.779	641.550	91.519	147.260	61,7
2019	14.847	25.569	50.651	32.088									123.155	123.155	55.096	68.059	55,3



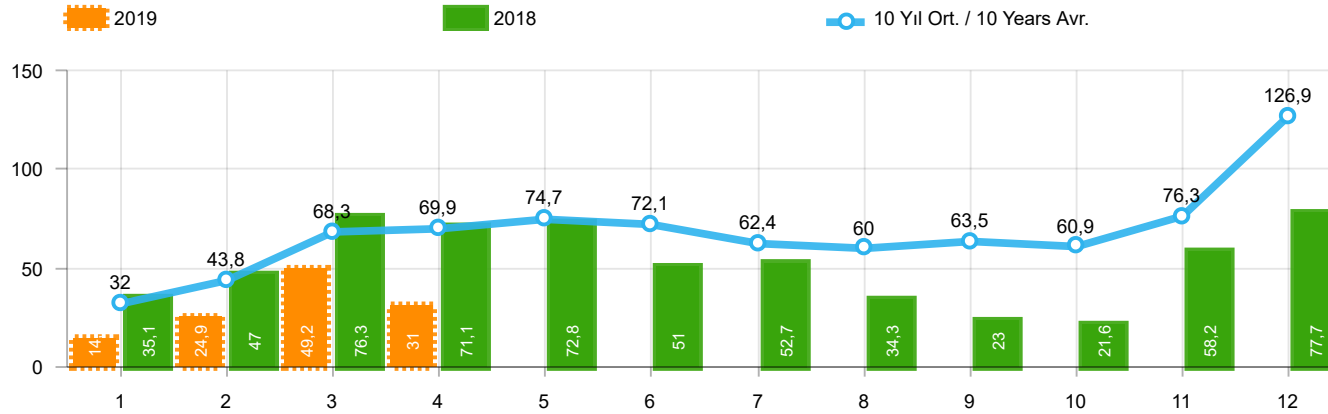
Aylar / Months	10 Yıl Ort / 10 Years Avr.	2019	%
1	22.707	10.979	-51,6
2	31.928	19.205	-39,8
3	50.654	38.628	-23,7
4	52.093	24.416	-53,1
TOPLAM / TOTAL	157.382	93.228	-40,8

Yıl / Year	1	2	3	4	5	6	7	8	9	10	11	12	1-4 Toplam / Total	Toplam / Total	1-4 Yerli / Local	1-4 İthal / Import	İthal Oran / Import %
2009	13.173	14.492	40.622	36.202	44.188	41.019	16.637	22.537	52.162	13.828	17.781	57.178	104.489	369.819	33.776	70.713	67,7
2010	12.594	20.651	33.958	36.549	40.467	42.086	41.399	42.222	42.477	47.859	50.061	99.461	103.752	509.784	33.164	70.588	68,0
2011	29.868	39.004	54.023	53.835	56.302	56.714	43.518	38.875	39.964	47.508	44.951	88.957	176.730	593.519	53.940	122.790	69,5
2012	21.077	29.189	47.270	45.645	50.460	50.849	44.531	41.236	49.360	43.440	52.297	80.926	143.181	556.280	44.255	98.926	69,1
2013	25.835	36.814	51.785	56.999	62.383	58.290	55.712	51.611	52.925	46.985	64.117	101.199	171.433	664.655	36.802	134.631	78,5
2014	24.368	27.167	37.812	42.769	46.379	47.278	46.602	45.131	49.262	50.814	59.695	110.054	132.116	587.331	32.808	99.308	75,2
2015	24.498	40.817	61.676	70.211	62.878	67.766	64.218	61.753	47.088	47.954	62.397	114.340	197.202	725.596	54.215	142.987	72,5
2016	23.358	40.588	63.975	65.618	73.832	71.111	45.566	53.977	51.340	63.746	95.783	108.044	193.539	756.938	51.824	141.715	73,2
2017	25.689	34.658	55.616	57.998	65.799	66.164	62.384	54.890	53.423	70.488	75.956	99.694	173.961	722.759	53.206	120.755	69,4
2018	26.611	35.901	59.798	55.108	57.227	41.225	42.024	26.976	17.595	16.809	46.204	60.843	177.418	486.321	58.994	118.424	66,7
2019	10.979	19.205	38.628	24.416									93.228	93.228	38.617	54.611	58,6



Aylar / Months	10 Yıl Ort. / 10 Years Avr.	2019	%
1	11.102	3.868	-65,2
2	14.285	6.364	-55,5
3	21.303	12.023	-43,6
4	21.051	7.672	-63,6
TOPLAM / TOTAL	67.741	29.927	-55,8

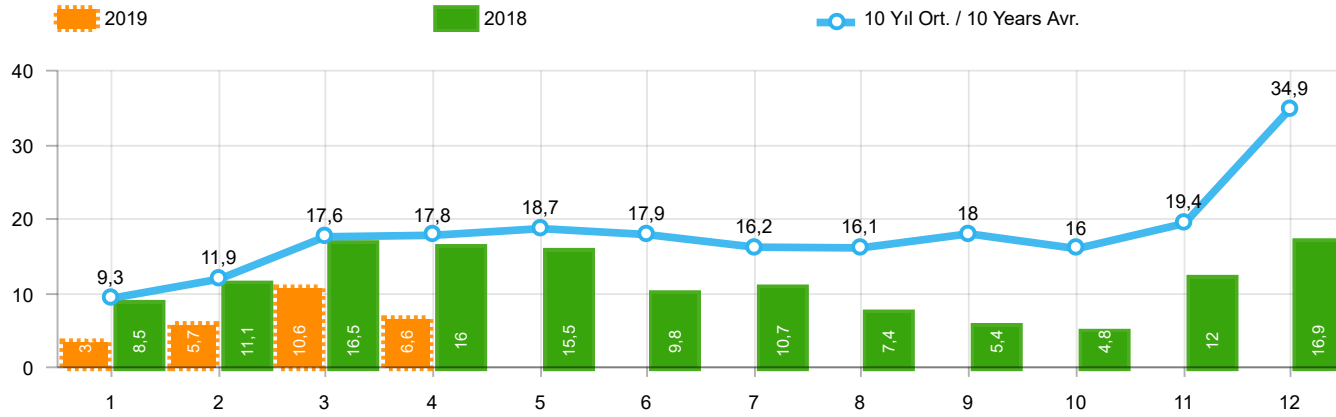
Yıl / Year	1	2	3	4	5	6	7	8	9	10	11	12	1-4 Toplam / Total	Toplam / Total	1-4 Yerli / Local	1-4 İthal / Import	İthal Oran / Import %
2009	7.432	8.381	15.905	18.231	20.759	22.071	13.737	14.501	31.391	8.363	11.528	34.584	49.949	206.883	29.869	20.080	40,2
2010	8.476	11.680	20.061	20.692	21.370	21.425	22.612	22.739	24.563	28.894	27.427	55.773	60.909	285.712	36.836	24.073	39,5
2011	17.891	23.582	30.022	28.947	29.560	29.278	22.140	22.770	24.349	25.719	22.199	45.511	100.442	321.968	57.156	43.286	43,1
2012	10.475	14.949	21.972	20.914	24.735	24.259	20.913	19.746	24.141	19.493	22.906	40.516	68.310	265.019	39.779	28.531	41,8
2013	11.728	14.319	21.158	20.266	23.452	19.753	19.440	16.051	18.463	13.705	19.353	34.849	67.471	232.537	38.930	28.541	42,3
2014	10.383	10.492	13.500	14.344	16.068	17.017	16.168	18.172	21.502	18.928	24.673	44.789	48.719	226.036	27.366	21.353	43,8
2015	12.758	18.404	28.089	25.971	22.926	23.305	23.140	23.491	20.093	19.132	26.034	50.124	85.222	293.467	51.645	33.577	39,4
2016	11.011	14.252	21.957	22.130	23.258	23.555	14.166	19.677	18.073	21.920	29.679	37.662	69.350	257.340	37.906	31.444	45,3
2017	10.951	13.927	20.562	20.233	22.267	19.656	22.343	19.928	20.623	23.951	27.816	41.813	65.673	264.070	35.102	30.571	46,6
2018	9.914	12.867	19.802	18.778	17.769	11.563	12.170	8.161	6.320	5.512	13.202	19.171	61.361	155.229	32.525	28.836	47,0
2019	3.868	6.364	12.023	7.672									29.927	29.927	16.479	13.448	44,9



Aylar / Months	10 Yıl Ort. / 10 Years Avr.	2019	%
1	32.006	14.373	-55,1
2	43.836	24.875	-43,3
3	68.292	49.221	-27,9
4	69.871	30.971	-55,7
TOPLAM / TOTAL	214.005	119.440	-44,2

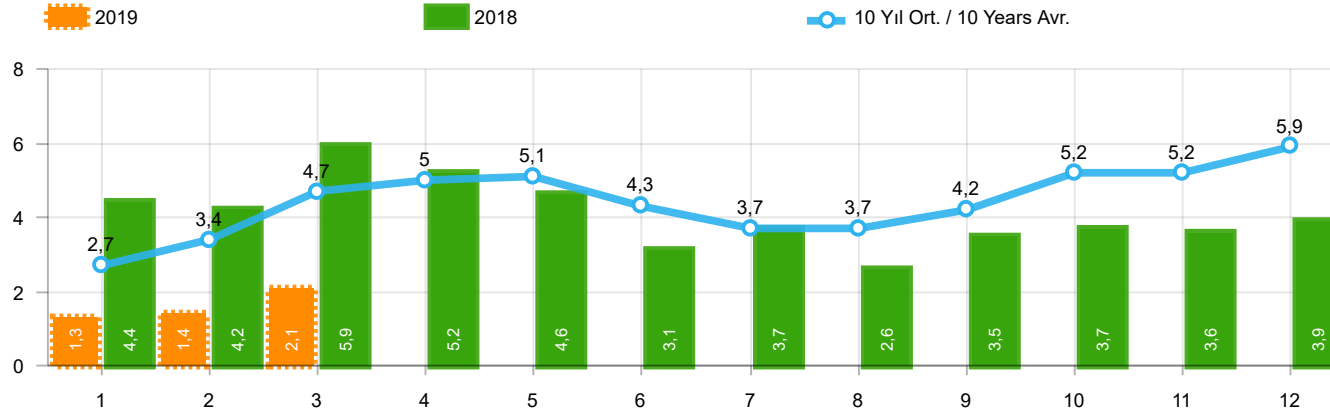
Yıl / Year	1	2	3	4	5	6	7	8	9	10	11	12	1-4 Toplam / Total	Toplam / Total	1-4 Yerli / Local	1-4 İthal / Import	İthal Oran / Import %
2009	19.606	21.742	55.111	52.640	63.191	61.067	28.845	35.609	81.397	21.033	27.962	88.923	149.099	557.126	58.967	90.132	60,5
2010	20.095	31.172	51.769	54.946	59.377	60.896	61.345	61.764	63.814	73.404	73.962	148.369	157.982	760.913	64.884	93.098	58,9
2011	44.892	58.663	78.403	77.695	80.646	81.573	63.044	58.406	60.129	69.421	63.657	127.910	259.653	864.439	99.295	160.358	61,8
2012	29.545	41.324	64.884	62.949	70.863	71.067	62.304	58.148	69.629	59.938	71.710	115.400	198.702	777.761	74.521	124.181	62,5
2013	35.523	48.307	68.774	73.575	81.468	74.096	71.596	65.043	67.963	58.014	79.301	129.718	226.179	853.378	65.834	160.345	70,9
2014	32.670	35.021	47.581	53.305	58.121	60.163	59.907	60.199	66.531	66.573	80.621	146.989	168.577	767.681	50.531	118.046	70,0
2015	34.615	55.331	83.302	91.602	81.542	86.158	83.836	82.577	64.025	64.255	84.601	156.173	264.850	968.017	92.299	172.551	65,2
2016	32.713	52.825	82.948	84.887	93.904	91.540	58.533	71.556	67.593	83.000	122.309	141.912	253.373	983.720	83.208	170.165	67,2
2017	35.323	46.965	73.802	75.988	85.422	83.658	82.297	72.536	71.352	91.752	100.859	136.240	232.078	956.194	82.559	149.519	64,4
2018	35.076	47.009	76.345	71.126	72.755	51.037	52.734	34.346	23.028	21.571	58.204	77.706	229.556	620.937	85.456	144.100	62,8
2019	14.373	24.875	49.221	30.971									119.440	119.440	52.594	66.846	56,0





Aylar / Months	10 Yıl Ort. / 10 Years Avr.	2019	%
1	9.299	3.394	-63,5
2	11.908	5.670	-52,4
3	17.638	10.593	-39,9
4	17.778	6.555	-63,1
TOPLAM / TOTAL	56.623	26.212	-53,7

Yıl / Year	1	2	3	4	5	6	7	8	9	10	11	12	1-4 Toplam / Total	Toplam / Total	1-4 Yerli / Local	1-4 İthal / Import	İthal Oran / Import %
2009	6.433	7.250	14.489	16.438	19.003	20.048	12.208	13.072	29.235	7.205	10.181	31.745	44.610	187.307	25.191	19.419	43,5
2010	7.501	10.521	17.811	18.397	18.910	18.810	19.946	19.542	21.337	25.545	23.901	48.908	54.230	251.129	31.720	22.510	41,5
2011	15.024	19.659	24.380	23.860	24.344	24.859	19.526	19.531	20.165	21.913	18.706	38.953	82.923	270.920	45.355	37.568	45,3
2012	8.468	12.135	17.614	17.304	20.403	20.218	17.773	16.912	20.269	16.498	19.413	34.474	55.521	221.481	30.266	25.255	45,5
2013	9.688	11.493	16.989	16.576	19.085	15.806	15.884	13.432	15.038	11.029	15.184	28.519	54.746	188.723	29.032	25.714	47,0
2014	8.302	7.854	9.769	10.536	11.742	12.885	13.305	15.068	17.269	15.759	20.926	36.935	36.461	180.350	17.723	18.738	51,4
2015	10.117	14.514	21.626	21.391	18.664	18.392	19.618	20.824	16.937	16.301	22.204	41.833	67.648	242.421	38.084	29.564	43,7
2016	9.355	12.237	18.973	19.269	20.072	20.429	12.967	17.579	16.253	19.254	26.526	33.868	59.834	226.782	31.384	28.450	47,5
2017	9.634	12.307	18.186	17.990	19.623	17.494	19.913	17.646	17.929	21.264	24.903	36.546	58.117	233.435	29.353	28.764	49,5
2018	8.465	11.108	16.547	16.018	15.528	9.812	10.710	7.370	5.433	4.762	12.000	16.863	52.138	134.616	26.462	25.676	49,2
2019	3.394	5.670	10.593	6.555									26.212	26.212	13.977	12.235	46,7



Aylar / Months	10 Yıl Ort. / 10 Years Avr.	2019	%
1	2.669	1.311	-50,9
2	3.359	1.401	-58,3
3	4.700	2.143	-54,4
TOPLAM / TOTAL	10.728	4.855	-54,8

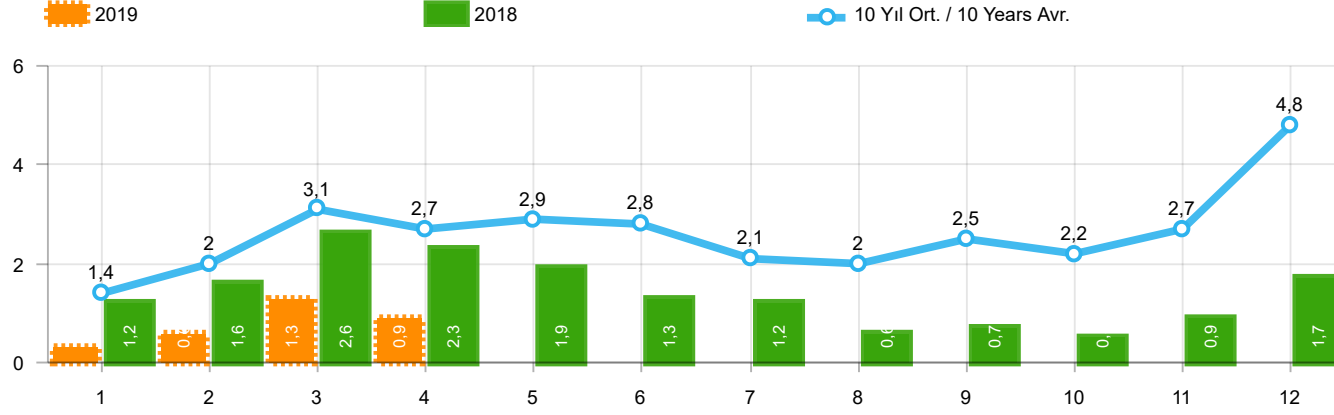
Yıl / Year	1	2	3	4	5	6	7	8	9	10	11	12	1-3 Toplam / Total	Toplam / Total
2009	717	572	688	1.070	1.297	1.256	1.054	1.183	1.117	1.356	1.304	2.144	1.977	13.758
2010	1.111	1.991	2.330	3.039	2.567	2.638	1.965	3.019	2.806	4.424	3.978	6.168	5.432	36.036
2011	2.975	5.242	5.927	5.358	6.016	6.335	4.534	4.051	4.140	5.828	4.943	4.992	14.144	60.341
2012	2.362	1.983	4.348	6.579	6.273	4.569	3.837	3.158	3.618	4.027	4.807	4.757	8.693	50.318
2013	2.161	2.432	4.005	4.585	5.616	3.136	4.574	3.408	4.935	4.762	5.781	6.891	8.598	52.286
2014	2.169	3.512	4.476	4.905	5.094	5.028	4.233	4.920	5.619	5.743	6.250	7.409	10.157	59.358
2015	3.124	3.984	5.460	6.383	6.078	5.748	4.677	5.044	4.765	7.049	6.898	7.564	12.568	66.774
2016	3.739	4.731	7.067	6.546	6.575	5.543	3.833	5.134	4.945	7.372	7.090	7.603	15.537	70.178
2017	3.974	4.964	6.773	6.780	7.057	5.356	5.003	4.396	6.064	7.734	7.457	7.351	15.711	72.909
2018	4.362	4.179	5.925	5.216	4.584	3.146	3.654	2.587	3.541	3.698	3.578	3.886	14.466	48.356
2019	1.311	1.401	2.143										4.855	4.855

Kaynak: TÜİK trafik kayıtları.

Rakamlar, son iki model yılına ait traktör tescillerinden oluşmaktadır.

Source: Turkish Statistical Institute – Traffic registrations

Data represents the last two model year's farm tractors registration figures

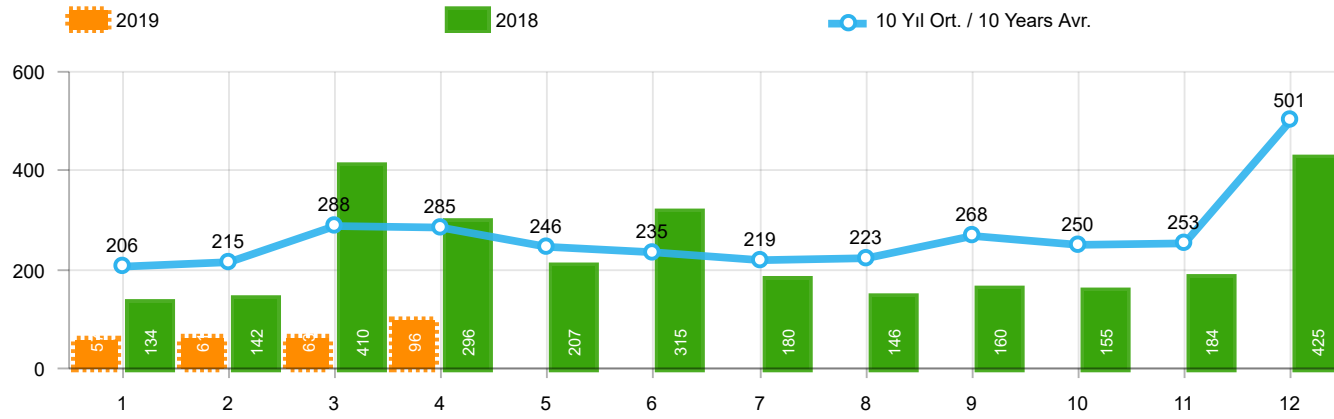


Aylar / Months	10 Yıl Ort / 10 Years Avr.	2019	%
1	1.446	342	-76,3
2	1.974	579	-70,7
3	3.128	1.255	-59,9
4	2.746	921	-66,5
TOPLAM / TOTAL	9.293	3.097	-66,7

Yıl / Year	1	2	3	4	5	6	7	8	9	10	11	12	1-4 Toplam / Total	Toplam / Total	1-4 Yerli / Local	1-4 İthal / Import	İthal Oran / Import %
2009	782	763	1.062	1.381	1.426	1.649	1.261	1.164	1.862	963	1.047	2.368	3.988	15.728	3.342	646	16,2
2010	768	960	1.950	1.949	2.140	2.314	2.403	2.754	2.864	3.001	3.231	6.158	5.627	30.492	4.087	1.540	27,4
2011	2.651	3.544	5.142	4.503	4.563	3.852	2.261	2.745	3.784	3.400	3.149	5.712	15.840	45.306	10.162	5.678	35,8
2012	1.703	2.454	3.866	3.209	3.678	3.540	2.750	2.403	3.296	2.497	3.154	5.300	11.232	37.850	7.967	3.265	29,1
2013	1.484	2.113	3.343	2.925	3.504	3.186	2.777	2.103	2.875	2.086	3.631	5.444	9.865	35.471	7.044	2.821	28,6
2014	1.522	2.065	3.094	3.224	3.727	3.726	2.578	2.783	3.708	2.858	3.384	6.869	9.905	39.538	7.410	2.495	25,2
2015	2.215	3.346	5.699	3.729	3.600	4.253	2.922	2.211	2.687	2.266	3.146	7.307	14.989	43.381	11.013	3.976	26,5
2016	1.167	1.648	2.515	2.319	2.711	2.623	984	1.796	1.438	2.238	2.485	3.127	7.649	25.051	4.656	2.993	39,1
2017	931	1.290	1.982	1.888	2.184	1.891	1.974	1.860	2.284	2.188	2.487	4.438	6.091	25.397	4.294	1.797	29,5
2018	1.237	1.552	2.630	2.328	1.909	1.272	1.235	603	653	488	905	1.695	7.747	16.507	4.598	3.149	40,6
2019	342	579	1.255	921									3.097	3.097	1.884	1.213	39,2

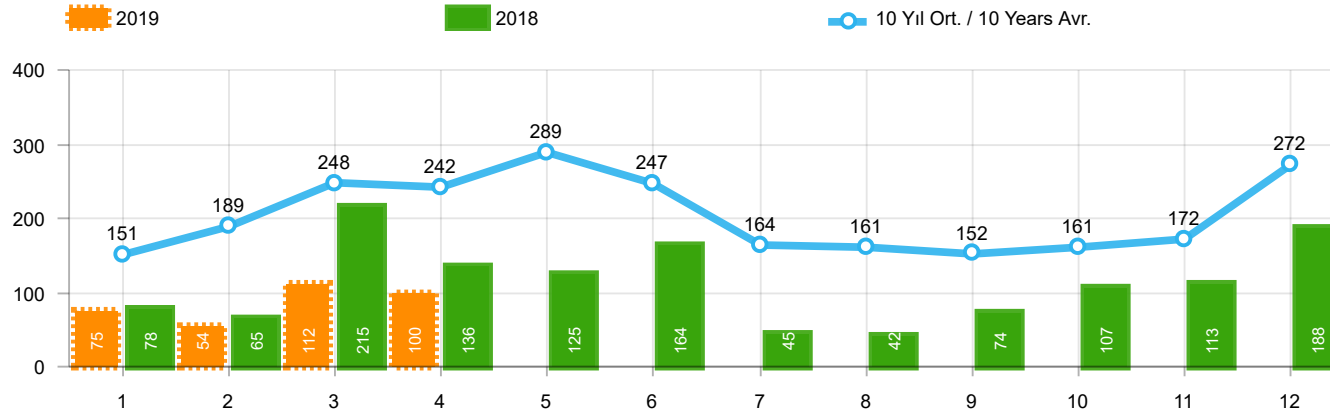
Kaynak: OSD, TAİD, TÜİK

Herhangi bir Dernek üyeliği olmayan markalara ilişkin satış verisi için TÜİK trafik kayıtları esas alınmaktadır. TÜİK trafik kayıtlarının bir ay gecikmeli yayınlanması nedeniyle ilgili markalara ilişkin son ayın satış verisi bir önceki ay ile aynı kabul edilmekte ve bir sonraki ay gerçekleşen veri ile güncellenmektedir.



Aylar / Months	10 Yıl Ort / 10 Years Avr.	2019	%
1	206	57	-72,4
2	215	61	-71,6
3	288	63	-78,1
4	285	96	-66,3
TOPLAM / TOTAL	994	277	-72,1

Yıl / Year	1	2	3	4	5	6	7	8	9	10	11	12	1-4 Toplam / Total	Toplam / Total
2009	133	103	153	210	145	183	138	146	152	134	150	280	599	1.927
2010	140	128	172	153	127	124	93	232	199	204	162	382	593	2.116
2011	124	167	267	260	241	233	205	280	270	230	168	525	818	2.970
2012	179	257	277	229	257	239	216	249	325	269	189	398	942	3.084
2013	191	268	289	276	283	241	367	235	305	392	415	697	1.024	3.959
2014	360	394	384	333	294	258	216	229	395	220	266	653	1.471	4.002
2015	280	322	451	561	372	405	389	253	316	394	325	621	1.614	4.689
2016	309	158	251	302	261	196	139	220	241	230	354	431	1.020	3.092
2017	212	211	227	231	272	156	250	235	318	268	317	594	881	3.291
2018	134	142	410	296	207	315	180	146	160	155	184	425	982	2.754
2019	57	61	63	96									277	277

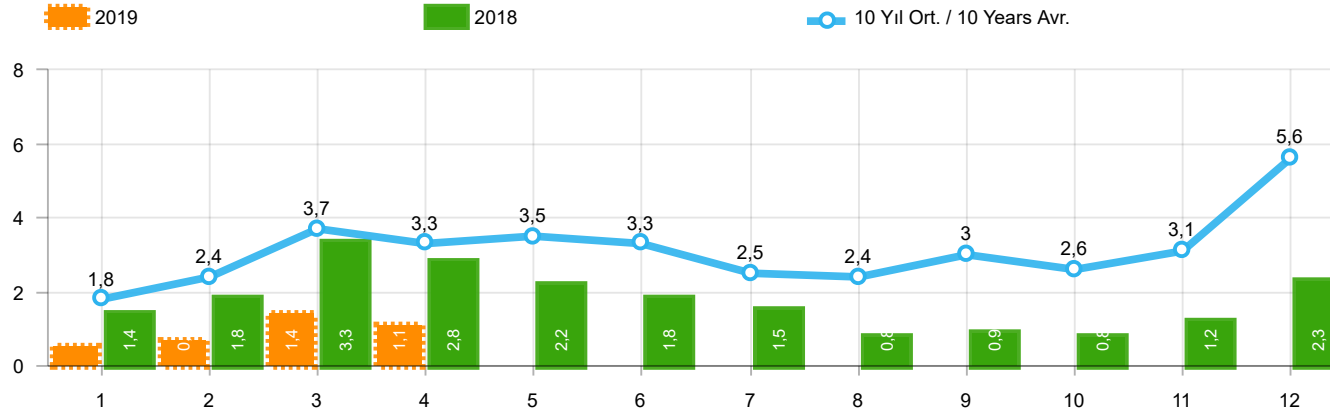


Aylar / Months	10 Yıl Ort / 10 Years Avr.	2019	%
1	151	75	-50,3
2	189	54	-71,4
3	248	112	-54,8
4	242	100	-58,7
TOPLAM / TOTAL	830	341	-58,9

Yıl / Year	1	2	3	4	5	6	7	8	9	10	11	12	1-4 Toplam / Total	Toplam / Total	1-4 Yerli / Local	1-4 İthal / Import	İthal Oran / Import %
2009	84	265	201	202	185	191	130	119	142	61	150	191	752	1.921	737	15	2,0
2010	67	71	128	193	193	177	170	211	163	144	133	325	459	1.975	436	23	5,0
2011	92	212	233	324	412	334	148	214	130	176	176	321	861	2.772	821	40	4,6
2012	125	103	215	172	397	262	174	182	251	229	150	344	615	2.604	604	11	1,8
2013	365	445	537	489	580	520	412	281	245	198	123	189	1.836	4.384	1.830	6	0,3
2014	199	179	253	251	305	148	69	92	130	91	97	332	882	2.146	762	120	13,6
2015	146	222	313	290	290	255	211	203	153	171	359	363	971	2.976	934	37	3,8
2016	180	209	218	240	214	307	76	82	141	198	314	236	847	2.415	846	1	0,1
2017	174	119	167	124	188	115	206	187	92	231	109	235	584	1.947	574	10	1,7
2018	78	65	215	136	125	164	45	42	74	107	113	188	494	1.352	483	11	2,2
2019	75	54	112	100									341	341	341	-	-

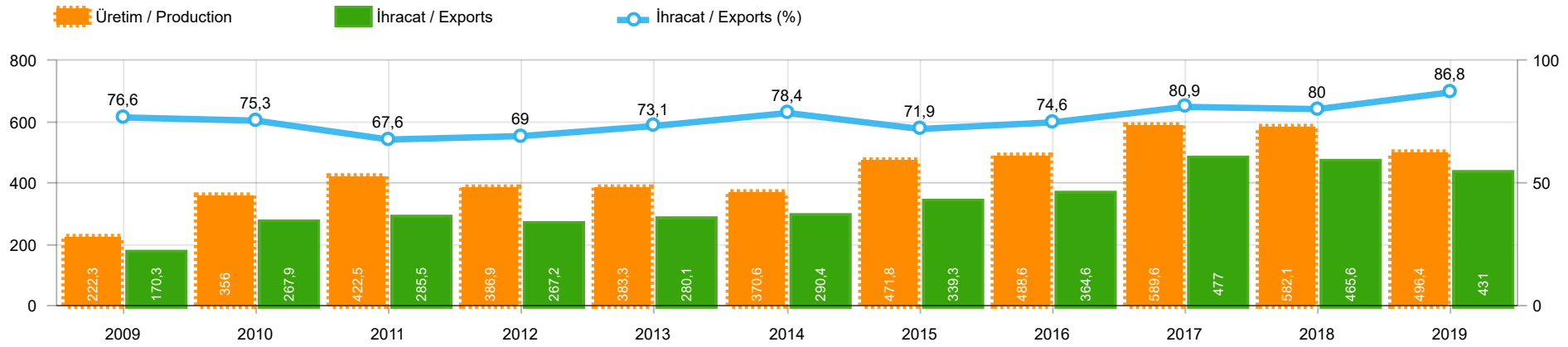
Kaynak: OSD, TÜİK

Herhangi bir Dernek üyeliği olmayan markalara ilişkin satış verisi için TÜİK trafik kayıtları esas alınmaktadır. TÜİK trafik kayıtlarının bir ay gecikmeli yayınlanması nedeniyle ilgili markalara ilişkin son ayın satış verisi bir önceki ay ile aynı kabul edilmekte ve bir sonraki ay gerçekleşen veri ile güncellenmektedir.



Aylar / Months	10 Yıl Ort / 10 Years Avr.	2019	%
1	1.803	474	-73,7
2	2.378	694	-70,8
3	3.664	1.430	-61,0
4	3.273	1.117	-65,9
TOPLAM / TOTAL	11.118	3.715	-66,6

Yıl / Year	1	2	3	4	5	6	7	8	9	10	11	12	1-4 Toplam / Total	Toplam / Total	1-4 Yerli / Local	1-4 İthal / Import	İthal Oran / Import %
2009	999	1.131	1.416	1.793	1.756	2.023	1.529	1.429	2.156	1.158	1.347	2.839	5.339	19.576	4.678	661	12,4
2010	975	1.159	2.250	2.295	2.460	2.615	2.666	3.197	3.226	3.349	3.526	6.865	6.679	34.583	5.116	1.563	23,4
2011	2.867	3.923	5.642	5.087	5.216	4.419	2.614	3.239	4.184	3.806	3.493	6.558	17.519	51.048	11.801	5.718	32,6
2012	2.007	2.814	4.358	3.610	4.332	4.041	3.140	2.834	3.872	2.995	3.493	6.042	12.789	43.538	9.513	3.276	25,6
2013	2.040	2.826	4.169	3.690	4.367	3.947	3.556	2.619	3.425	2.676	4.169	6.330	12.725	43.814	9.898	2.827	22,2
2014	2.081	2.638	3.731	3.808	4.326	4.132	2.863	3.104	4.233	3.169	3.747	7.854	12.258	45.686	9.643	2.615	21,3
2015	2.641	3.890	6.463	4.580	4.262	4.913	3.522	2.667	3.156	2.831	3.830	8.291	17.574	51.046	13.561	4.013	22,8
2016	1.656	2.015	2.984	2.861	3.186	3.126	1.199	2.098	1.820	2.666	3.153	3.794	9.516	30.558	6.522	2.994	31,5
2017	1.317	1.620	2.376	2.243	2.644	2.162	2.430	2.282	2.694	2.687	2.913	5.267	7.556	30.635	5.749	1.807	23,9
2018	1.449	1.759	3.255	2.760	2.241	1.751	1.460	791	887	750	1.202	2.308	9.223	20.613	6.063	3.160	34,3
2019	474	694	1.430	1.117									3.715	3.715	2.502	1.213	32,7



	2009	2010	2011	2012	2013	2014	2015	2016	2017	2018	2019
<b>İhracat/Export</b>	170.284	267.926	285.481	267.151	280.102	290.418	339.348	364.571	477.020	465.649	431.005
<b>Üretim/Production</b>	222.341	356.033	422.537	386.906	383.336	370.581	471.824	488.575	589.602	582.097	496.365
<b>İhracat/Exports (%)</b>	76,6	75,3	67,6	69	73,1	78,4	71,9	74,6	80,9	80	86,8

**Taşıt Araçları İhracatı (2017 - 2019)**  
Motor Vehicle Exports (2017 - 2019)

SEKTÖR / SECTOR	2017	2018	1/4-2018	1/4-2019	2019/2018 %
OTOMOBİL / Pass.Car	921.354	875.147	315.225	275.967	-12,5
<b>OTOMOBİL TOPLAM / Pass. Car Total</b>	<b>921.354</b>	<b>875.147</b>	<b>315.225</b>	<b>275.967</b>	<b>-12,5</b>
KAMYON / Truck	7.800	14.478	3.917	5.329	36,0
KAMYONET / Pick Up	350.108	372.954	125.571	122.139	-2,7
OTOBÜS / Bus	7.028	7.708	2.285	3.013	31,9
MİNİBÜS / Minibus	45.794	47.736	14.435	19.218	33,1
MİDİBÜS / Midibus	710	846	210	360	71,4
<b>TİCARİ ARAÇLAR TOPLAM / Commercial Vehicle Total</b>	<b>411.440</b>	<b>443.722</b>	<b>146.418</b>	<b>150.059</b>	<b>2,5</b>
<b>TAŞIT ARAÇLARI TOPLAM / Motor Vehicles Total</b>	<b>1.332.794</b>	<b>1.318.869</b>	<b>461.643</b>	<b>426.026</b>	<b>-7,7</b>
TRAKTÖR / F.Tractor	13.123	15.123	4.006	4.979	24,3
<b>TRAKTÖR TOPLAM / F.Tractor Total</b>	<b>13.123</b>	<b>15.123</b>	<b>4.006</b>	<b>4.979</b>	<b>24,3</b>
<b>GENEL TOPLAM / GRAND TOTAL</b>	<b>1.345.917</b>	<b>1.333.992</b>	<b>465.649</b>	<b>431.005</b>	<b>-7,4</b>

**Üretici Bazında İhracat (adet)**  
Exports by Manufacturer (unit)

Üreticiler / Manufacturers	2017	2018	1-4 / 2018	1-4 / 2019
A.I.O.S.	700	964	197	584
FORD OTOSAN	296.840	328.502	108.012	120.631
HATTAT TRAKTÖR	1.100	621	119	262
HONDA TÜRKİYE	9.391	13.699	5.795	2.922
HYUNDAI ASSAN	204.382	190.347	64.591	47.714
KARSAN	2.969	3.419	1.161	548
M. BENZ TÜRK	9.865	16.309	4.667	5.762
MAN TÜRKİYE	2.007	2.425	916	1.067
OTOKAR	691	901	140	458
OYAK RENAULT	287.915	280.411	97.986	101.173
TEMSA	870	645	76	136
TOFAŞ	270.698	243.796	93.334	63.881
TOYOTA	246.466	237.451	84.768	81.150
TÜRK TRAKTÖR	12.023	14.502	3.887	4.717
<b>GENEL TOPLAM / Grand Total</b>	<b>1.345.917</b>	<b>1.333.992</b>	<b>465.649</b>	<b>431.005</b>



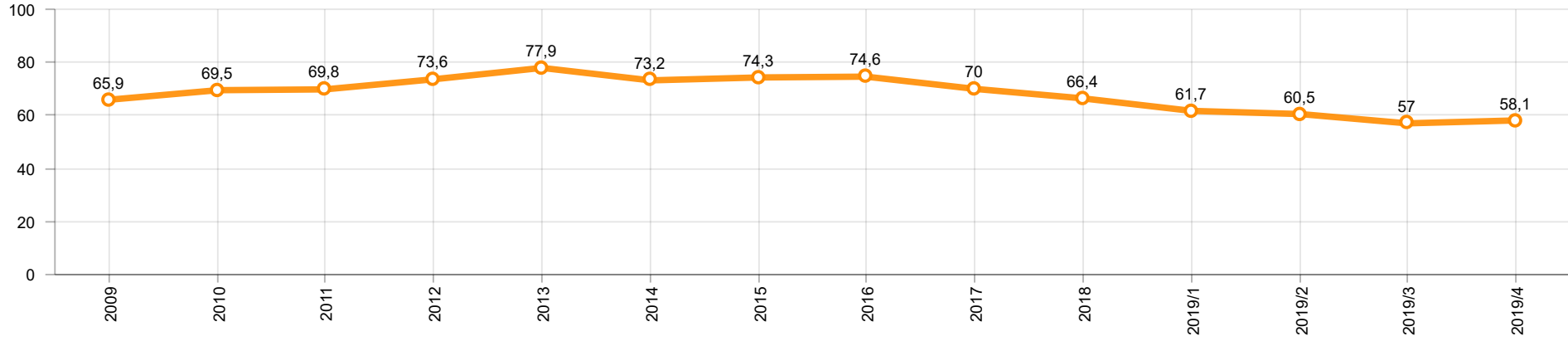
**Otomotiv Ana ve Yan Sanayii İhracatı (ABD \$)**  
CBU and CKD Exports - \$

Sektör / Sector	2017	2018	OCAK - NİSAN / January - April 2018	OCAK - NİSAN / January - April 2019	2019 / 2018 %
<b>Toplam Yan Sanayi / Total Component Industry</b>	<b>9.835.914.658</b>	<b>10.881.562.512</b>	<b>3.846.773.679</b>	<b>3.628.052.375</b>	<b>-5,7</b>
İç ve Dış Lastik / Tyres	1.131.782.300	1.353.896.118	465.666.625	499.789.965	7,3
Emniyet Camı / Safety Glasses	136.486.099	151.148.689	53.634.015	49.473.089	-7,8
Motor / Engine	486.426.738	581.983.113	222.954.295	180.353.240	-19,1
Akümülatör / Batteries	295.794.286	388.107.835	108.411.376	122.994.711	13,5
Diğer Aksam ve Parça / Spare Parts&Components	7.785.425.235	8.406.426.757	2.996.107.368	2.775.441.370	-7,4
<b>Toplam Ana Sanayi / Total Vehicle Industry</b>	<b>19.257.086.833</b>	<b>21.350.315.330</b>	<b>7.495.734.487</b>	<b>6.921.764.232</b>	<b>-7,7</b>
Otobüs / Bus	1.308.249.224	1.503.188.826	468.197.005	595.639.460	27,2
Midibüs-Minibüs / Midibus-Minibus	217.704.499	215.450.022	78.497.055	53.122.163	-32,3
Otomobil / P.Cars	11.790.577.760	12.420.951.066	4.536.950.436	3.897.316.766	-14,1
Kamyon-Kamyonet / Truck-Pick Up&Van	4.849.022.718	5.376.446.529	1.892.808.390	1.753.489.750	-7,4
Römork ve Yarı Römork / Trailer-Semi Trailer	342.793.231	507.186.149	159.000.002	182.845.274	15,0
Çekici / Tractor	427.928.256	904.738.051	254.555.768	306.054.883	20,2
Tarım Traktörü / Farm Tractor	320.811.145	422.354.687	105.725.831	133.295.936	26,1
<b>Toplam / Total</b>	<b>29.093.001.491</b>	<b>32.231.877.842</b>	<b>11.342.508.166</b>	<b>10.549.816.607</b>	<b>-7,0</b>

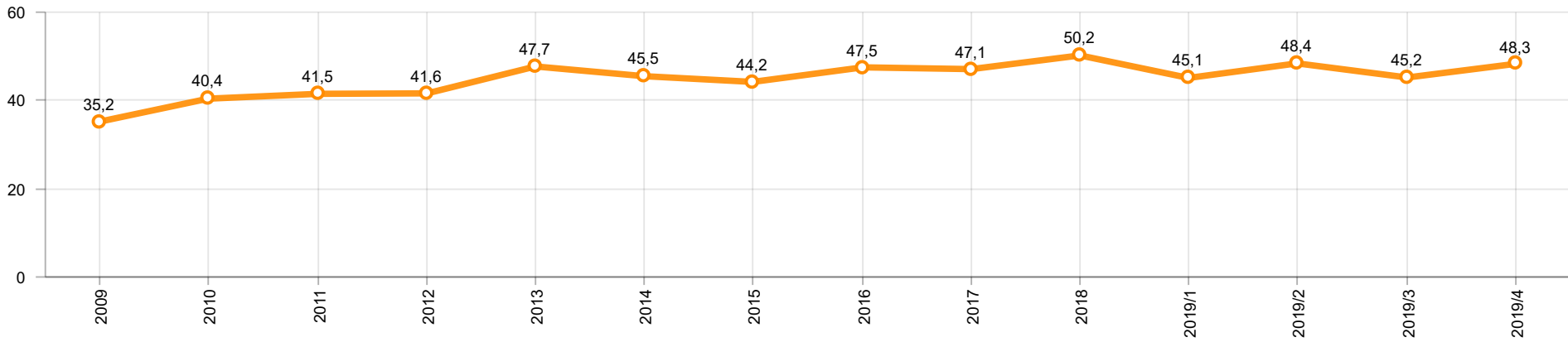
Kaynak: Uludağ İhracatçı Birlikleri . ÜİB tarafından OSD için özel olarak analiz edilen Otomotiv İhracatı kapsamında; ÜİB Türkiye Geneli Otomotiv Endüstrisi sınıflandırmasına kıyasla “Römork ve Yarı Römork” , “Tarım Traktörü” verileri dahil edilmekte; “Kullanılmış Araçlar” ,”İki Tekerlekli Taşıtlar” , “Demiryolu Taşıtları” hariç tutulmaktadır.

Source: Uludağ Exporters Association – Special Analyze for OSD.Compared to Turkish General Automotive Industry classification, this special analyze includes; farms tractors, trailers and semi-trailers, does not include; used vehicles, two-wheeled vehicles and railway vehicles

**Otomobil Pazarında İthalatın Payı (%)**  
Import Share in P.Car Market (%)



**Hafif Ticari Araçlar Pazarında İthalatın Payı (%)**  
Import Share in LCV Market (%)



Araç Tipleri / Vehicle Types	1	2	3	4	5	6	7	8	9	10	11	12	Toplam / Total
<b>OTOMOBİL - Pass.Car</b>	<b>58.807</b>	<b>69.340</b>	<b>81.736</b>	<b>66.084</b>									<b>275.967</b>
KAMYON - H. Truck	1.270	1.594	1.312	1.153									<b>5.329</b>
KAMYONET - Pick Up	27.735	29.856	31.222	33.326									<b>122.139</b>
OTOBÜS - Bus	801	637	822	753									<b>3.013</b>
MİNİBÜS - Minibus	4.741	4.835	5.012	4.630									<b>19.218</b>
MİDİBÜS - Midibus	74	93	135	58									<b>360</b>
<b>TİCARİ ARAÇLAR TOPLAMI - CV Total</b>	<b>34.621</b>	<b>37.015</b>	<b>38.503</b>	<b>39.920</b>									<b>150.059</b>
<b>TAŞIT ARAÇLARI TOPLAMI - MV Total</b>	<b>93.428</b>	<b>106.355</b>	<b>120.239</b>	<b>106.004</b>									<b>426.026</b>
TRAKTÖR - F.Tractor	1.111	1.145	1.516	1.207									<b>4.979</b>
<b>GENEL TOPLAM - Grand Total</b>	<b>94.539</b>	<b>107.500</b>	<b>121.755</b>	<b>107.211</b>									<b>431.005</b>

**Otomobil / P.Car**

Firmalar / Firms	1	2	3	4	5	6	7	8	9	10	11	12	Toplam / Total
FORD OTOSAN	1.469	1.837	2.405	2.671	-	-	-	-	-	-	-	-	<b>8.382</b>
HONDA TÜRKİYE	800	1.009	424	689	-	-	-	-	-	-	-	-	<b>2.922</b>
HYUNDAI ASSAN	11.414	14.050	13.200	9.050	-	-	-	-	-	-	-	-	<b>47.714</b>
OYAK RENAULT	20.009	24.138	35.569	21.457	-	-	-	-	-	-	-	-	<b>101.173</b>
TOFAŞ	7.636	8.517	7.730	10.743	-	-	-	-	-	-	-	-	<b>34.626</b>
TOYOTA	17.479	19.789	22.408	21.474	-	-	-	-	-	-	-	-	<b>81.150</b>
<b>TOPLAM - Total</b>	<b>58.807</b>	<b>69.340</b>	<b>81.736</b>	<b>66.084</b>	-	-	-	-	-	-	-	-	<b>275.967</b>

**Kamyonet / Pick-up**

Firmalar / Firms	1	2	3	4	5	6	7	8	9	10	11	12	Toplam / Total
A.I.O.S.	-	-	-	-	-	-	-	-	-	-	-	-	<b>-</b>
FORD OTOSAN	22.083	22.516	23.449	24.428	-	-	-	-	-	-	-	-	<b>92.476</b>
KARSAN	73	55	150	95	-	-	-	-	-	-	-	-	<b>373</b>
OTOKAR	-	-	25	10	-	-	-	-	-	-	-	-	<b>35</b>
<b>TOFAŞ</b>	<b>5.579</b>	<b>7.285</b>	<b>7.598</b>	<b>8.793</b>	-	-	-	-	-	-	-	-	<b>29.255</b>
<b>TOPLAM - Total</b>	<b>27.735</b>	<b>29.856</b>	<b>31.222</b>	<b>33.326</b>	-	-	-	-	-	-	-	-	<b>122.139</b>

**Minibüs / Minibus**

Firmalar / Firms	1	2	3	4	5	6	7	8	9	10	11	12	Toplam / Total
FORD OTOSAN	4.740	4.833	4.998	4.620	-	-	-	-	-	-	-	-	<b>19.191</b>
KARSAN	1	2	14	10	-	-	-	-	-	-	-	-	<b>27</b>
<b>TOPLAM - Total</b>	<b>4.741</b>	<b>4.835</b>	<b>5.012</b>	<b>4.630</b>	-	-	-	-	-	-	-	-	<b>19.218</b>

**Kamyon / Truck**

Firmalar / Firms	1	2	3	4	5	6	7	8	9	10	11	12	Toplam / Total
A.I.O.S.	-	30	-	175	-	-	-	-	-	-	-	-	205
FORD OTOSAN	114	141	166	161	-	-	-	-	-	-	-	-	582
KARSAN	-	-	-	-	-	-	-	-	-	-	-	-	-
M. BENZ TÜRK	1.156	1.423	1.146	817	-	-	-	-	-	-	-	-	4.542
OTOKAR	-	-	-	-	-	-	-	-	-	-	-	-	-
<b>TOPLAM - Total</b>	<b>1.270</b>	<b>1.594</b>	<b>1.312</b>	<b>1.153</b>	<b>-</b>	<b>-</b>	<b>-</b>	<b>-</b>	<b>-</b>	<b>-</b>	<b>-</b>	<b>-</b>	<b>5.329</b>

**Midibüs / Midibus**

Firmalar / Firms	1	2	3	4	5	6	7	8	9	10	11	12	Toplam / Total
A.I.O.S.	52	60	88	46	-	-	-	-	-	-	-	-	246
KARSAN	5	6	39	-	-	-	-	-	-	-	-	-	50
OTOKAR	8	21	8	12	-	-	-	-	-	-	-	-	49
TEMSA	9	6	-	-	-	-	-	-	-	-	-	-	15
<b>TOPLAM - Total</b>	<b>74</b>	<b>93</b>	<b>135</b>	<b>58</b>	<b>-</b>	<b>-</b>	<b>-</b>	<b>-</b>	<b>-</b>	<b>-</b>	<b>-</b>	<b>-</b>	<b>360</b>

**Otobüs / Bus**

Firmalar / Firms	1	2	3	4	5	6	7	8	9	10	11	12	Toplam / Total
A.I.O.S.	56	12	47	18	-	-	-	-	-	-	-	-	133
KARSAN	23	17	56	2	-	-	-	-	-	-	-	-	98
M. BENZ TÜRK	261	246	318	395	-	-	-	-	-	-	-	-	1.220
MAN TÜRKİYE	298	271	273	225	-	-	-	-	-	-	-	-	1.067
OTOKAR	104	69	108	93	-	-	-	-	-	-	-	-	374
TEMSA	59	22	20	20	-	-	-	-	-	-	-	-	121
<b>TOPLAM - Total</b>	<b>801</b>	<b>637</b>	<b>822</b>	<b>753</b>	<b>-</b>	<b>-</b>	<b>-</b>	<b>-</b>	<b>-</b>	<b>-</b>	<b>-</b>	<b>-</b>	<b>3.013</b>

**Traktör / F.Tractor**

Firmalar / Firms	1	2	3	4	5	6	7	8	9	10	11	12	Toplam / Total
HATTAT TRAKTÖR	39	72	108	43	-	-	-	-	-	-	-	-	262
TÜRK TRAKTÖR	1.072	1.073	1.408	1.164	-	-	-	-	-	-	-	-	4.717
<b>TOPLAM - Total</b>	<b>1.111</b>	<b>1.145</b>	<b>1.516</b>	<b>1.207</b>	<b>-</b>	<b>-</b>	<b>-</b>	<b>-</b>	<b>-</b>	<b>-</b>	<b>-</b>	<b>-</b>	<b>4.979</b>

Firmalar / Firms	2018 Toplam / Total	1	2	3	4	5	6	7	8	9	10	11	12	Toplam / Total
Alfa Romeo	203	8	16	32	23	-	-	-	-	-	-	-	-	79
Aston Martin	16	2	-	3	1	-	-	-	-	-	-	-	-	6
Audi	13.295	495	404	832	515	-	-	-	-	-	-	-	-	2.246
Bentley	10	2	-	-	1	-	-	-	-	-	-	-	-	3
BMW	12.728	352	463	871	724	-	-	-	-	-	-	-	-	2.410
Citroen	7.669	80	97	423	378	-	-	-	-	-	-	-	-	978
Dacia	26.193	429	801	1.765	910	-	-	-	-	-	-	-	-	3.905
DS	236	3	8	8	27	-	-	-	-	-	-	-	-	46
Ferrari	18	-	2	2	3	-	-	-	-	-	-	-	-	7
Fiat	1.264	26	26	65	80	-	-	-	-	-	-	-	-	197
Ford	20.697	235	476	1.452	774	-	-	-	-	-	-	-	-	2.937
Honda	4.862	144	149	253	281	-	-	-	-	-	-	-	-	827
Hyundai	19.113	794	1.195	1.508	1.089	-	-	-	-	-	-	-	-	4.586
Infinity	18	-	-	-	-	-	-	-	-	-	-	-	-	-
Jaguar	220	2	18	20	20	-	-	-	-	-	-	-	-	60
Jeep	2.430	100	162	225	138	-	-	-	-	-	-	-	-	625
Kia	7.694	150	331	534	357	-	-	-	-	-	-	-	-	1.372
Lamborghini	3	1	-	-	1	-	-	-	-	-	-	-	-	2
Land Rover	1.248	36	71	63	80	-	-	-	-	-	-	-	-	250
Lexus	56	4	4	2	3	-	-	-	-	-	-	-	-	13
Maserati	55	2	4	2	2	-	-	-	-	-	-	-	-	10
Mazda	1.005	29	29	15	31	-	-	-	-	-	-	-	-	104
Mercedes-Benz	14.445	204	701	1.005	563	-	-	-	-	-	-	-	-	2.473
Mini	1.373	17	50	176	91	-	-	-	-	-	-	-	-	334
Mitsubishi	514	38	60	41	34	-	-	-	-	-	-	-	-	173
Nissan	24.605	538	799	1.662	887	-	-	-	-	-	-	-	-	3.886
Opel	20.960	348	765	1.684	1.055	-	-	-	-	-	-	-	-	3.852
Peugeot	24.905	524	767	2.287	1.627	-	-	-	-	-	-	-	-	5.205
Porsche	565	9	35	27	29	-	-	-	-	-	-	-	-	100
Renault	21.090	198	557	822	490	-	-	-	-	-	-	-	-	2.067
Seat	10.383	139	289	515	269	-	-	-	-	-	-	-	-	1.212
Skoda	21.340	247	585	1.414	687	-	-	-	-	-	-	-	-	2.933
Smart	35	5	3	6	2	-	-	-	-	-	-	-	-	16
Ssangyong	222	10	15	14	6	-	-	-	-	-	-	-	-	45
Subaru	1.471	52	68	76	75	-	-	-	-	-	-	-	-	271
Suzuki	2.878	65	107	236	142	-	-	-	-	-	-	-	-	550
Toyota	3.405	47	114	132	103	-	-	-	-	-	-	-	-	396
Volkswagen	49.749	1.210	2.218	3.528	2.329	-	-	-	-	-	-	-	-	9.285
Volvo	5.943	231	225	334	360	-	-	-	-	-	-	-	-	1.150
<b>GENEL TOPLAM - Grand Total</b>	<b>322.916</b>	<b>6.776</b>	<b>11.614</b>	<b>22.034</b>	<b>14.187</b>	-	-	-	-	-	-	-	-	<b>54.611</b>

Firmalar / Firms	2018 Toplam / Total	1	2	3	4	5	6	7	8	9	10	11	12	Toplam / Total
<b>Citroen</b>	<b>4.633</b>	126	188	181	406	-	-	-	-	-	-	-	-	<b>901</b>
<b>Dacia</b>	<b>3.725</b>	53	182	296	179	-	-	-	-	-	-	-	-	<b>710</b>
<b>Fiat</b>	<b>3.019</b>	53	54	117	59	-	-	-	-	-	-	-	-	<b>283</b>
<b>Ford</b>	<b>2.783</b>	134	106	177	65	-	-	-	-	-	-	-	-	<b>482</b>
<b>Hyundai</b>	<b>1.493</b>	83	106	121	109	-	-	-	-	-	-	-	-	<b>419</b>
<b>Isuzu</b>	<b>578</b>	3	30	23	3	-	-	-	-	-	-	-	-	<b>59</b>
<b>Iveco</b>	<b>1.598</b>	48	54	115	109	-	-	-	-	-	-	-	-	<b>326</b>
<b>Karsan</b>	-	-	-	-	-	-	-	-	-	-	-	-	-	-
<b>Kia</b>	<b>1.947</b>	14	55	189	117	-	-	-	-	-	-	-	-	<b>375</b>
<b>Mercedes-Benz</b>	<b>7.993</b>	159	404	628	288	-	-	-	-	-	-	-	-	<b>1.479</b>
<b>Mitsubishi</b>	<b>3.445</b>	47	129	69	116	-	-	-	-	-	-	-	-	<b>361</b>
<b>Nissan</b>	<b>1.741</b>	82	48	150	135	-	-	-	-	-	-	-	-	<b>415</b>
<b>Opel</b>	-	-	-	43	112	-	-	-	-	-	-	-	-	<b>155</b>
<b>Peugeot</b>	<b>5.247</b>	197	284	819	431	-	-	-	-	-	-	-	-	<b>1.731</b>
<b>Renault</b>	<b>8.908</b>	180	342	741	304	-	-	-	-	-	-	-	-	<b>1.567</b>
<b>Ssangyong</b>	<b>174</b>	-	-	15	38	-	-	-	-	-	-	-	-	<b>53</b>
<b>Toyota</b>	<b>3.159</b>	55	101	91	65	-	-	-	-	-	-	-	-	<b>312</b>
<b>Volkswagen</b>	<b>17.085</b>	295	662	1.017	633	-	-	-	-	-	-	-	-	<b>2.607</b>
<b>GENEL TOPLAM - Grand Total</b>	<b>67.528</b>	<b>1.529</b>	<b>2.745</b>	<b>4.792</b>	<b>3.169</b>	-	-	-	-	-	-	-	-	<b>12.235</b>