



OTOMOTİV SANAYİİ DERNEĐİ
AUTOMOTIVE MANUFACTURERS ASSOCIATION

OTOMOTİV SEKTÖRÜ
AYLIK DEĐERLENDİRME RAPORU
MART 2019

AUTOMOTIVE INDUSTRY MONTHLY REPORT
March 2019

	3 - 2018	3 - 2019	%	1 - 3 / 2018	1 - 3 / 2019	%	4/2017 - 3/2018	4/2018 - 3/2019	%
Otomobil Üretimi/P.Cars Production	105.687	87.348	-17,4	285.172	238.822	-16,3	1.127.826	980.221	-13,1
Toplam Üretim/Total Production	159.464	132.189	-17,1	425.195	361.516	-15,0	1.696.710	1.486.581	-12,4
Otomobil Pazarı/P.Cars Market	59.798	38.628	-35,4	122.310	68.812	-43,7	729.106	432.823	-40,6
Toplam Pazar/Total Market	79.600	50.472	-36,6	164.893	90.888	-44,9	990.319	567.545	-42,7
Otomobil İthalatı/P.Cars Import	40.079	22.034	-45,0	80.960	40.424	-50,1	506.685	282.380	-44,3
Toplam İthalat/Total Import	48.847	27.302	-44,1	100.470	50.311	-49,9	623.645	347.109	-44,3
Otomobil İhracatı/P.Cars Export	86.252	81.737	-5,2	235.439	209.884	-10,9	901.997	849.592	-5,8
Toplam İhracat/Total Export	128.983	120.445	-6,6	344.698	320.213	-7,1	1.322.093	1.294.384	-2,1
Otomobil İhracatı(\$)/P.Cars Export (\$)	1.274.403.667	1.172.283.429	-8,0	3.292.883.298	2.937.113.849	-10,8	12.141.460.334	12.065.181.617	-0,6
Toplam İhracat(\$)/Total Export (\$)*	3.196.571.902	2.934.029.421	-8,2	8.373.994.815	7.891.134.154	-5,8	30.534.058.617	31.746.488.473	4,0

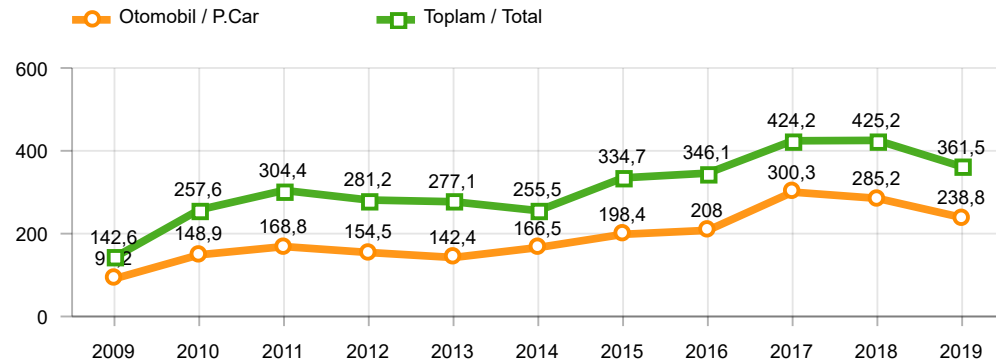
Parametreler/Parameters	3 - 2018	3 - 2019	%	1 - 3 / 2018	1 - 3 / 2019	%	4/2017 - 3/2018	4/2018 - 3/2019	%
ÜFE / PPI	1,5	1,6	-	5,3	2,1	-	15,4	31,2	-
TÜFE / CPI	1,0	1,0	-	2,8	2,3	-	11,1	18,7	-
Sanayi Endeksi / Industry Index	1,8	1,6	-	5,0	2,7	-	16,8	30,1	-
Dolar \$ **	3,9	5,5	41,5	3,8	5,3	40,3	3,7	5,2	41,1
Euro € **	4,8	6,2	30,3	4,7	6,1	30,2	4,3	6,0	39,1
Japon Yeni ¥ **	3,6	4,9	35,3	3,5	4,8	38,2	3,3	4,6	40,9

*Toplam Sanayi / Total Industry Including Components

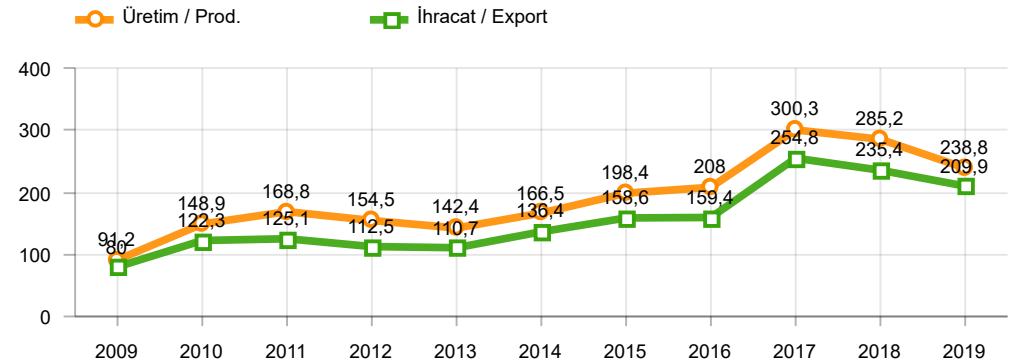
** Ortalama Değerler / Average Values

Araç Tipleri / Types	3 / 2018	3 / 2019	3 % Değişim	1-3 / 2018	1-3 / 2019	1-3 % Değişim
OTOMOBİL / Pass.Car	105.687	87.348	-17,4	285.172	238.822	-16,3
OTOMOBİL Toplam / Pass.Car Total	105.687	87.348	-17,4	285.172	238.822	-16,3
B.KAMYON / H. Truck	2.350	1.768	-24,8	6.358	4.822	-24,2
K.KAMYON / L. Truck	222	59	-73,4	914	89	-90,3
KAMYONET / Pick Up	45.190	36.491	-19,2	117.150	99.134	-15,4
OTOBÜS / Bus	833	812	-2,5	2.109	2.238	6,1
MİNİBÜS / Minibus	4.831	5.505	14,0	12.496	15.936	27,5
MİDİBÜS / Midibus	351	206	-41,3	996	475	-52,3
TİCARİ ARAÇLAR Toplam / Commercial Vehicles Total	53.777	44.841	-16,6	140.023	122.694	-12,4
TAŞIT ARAÇLARI Toplam / Motor Vehicles Total	159.464	132.189	-17,1	425.195	361.516	-15,0
TRAKTÖR / F.Tractor	5.122	2.048	-60,0	14.194	4.744	-66,6
TRAKTÖR Toplam / F.Tractor Total	5.122	2.048	-60,0	14.194	4.744	-66,6
GENEL TOPLAM / Grand Total	164.586	134.237	-18,4	439.389	366.260	-16,6

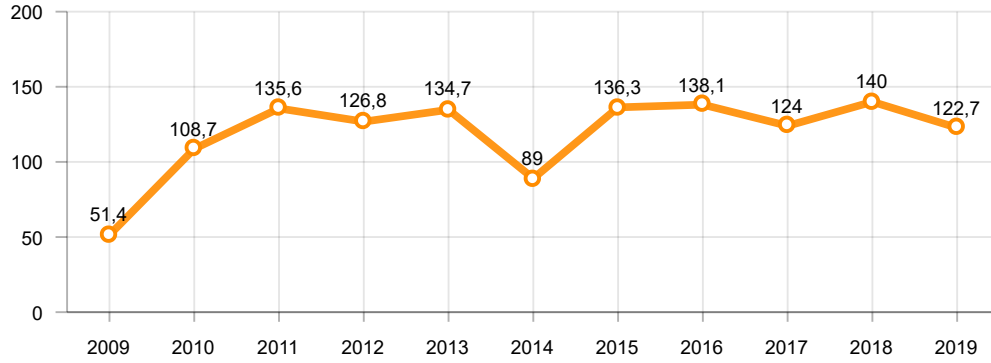
Toplam Üretim ve Otomobil Üretimi (x1000)(OCAK - MART)
Total & P.Cars Production (x1000)(January - March)



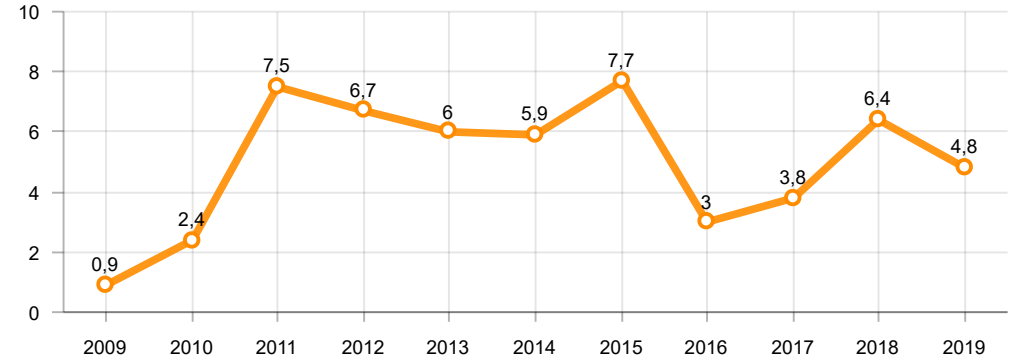
Otomobil Üretimi ve İhracat (x1000)(OCAK - MART)
P.Cars Production & Exports (x1000)(January - March)



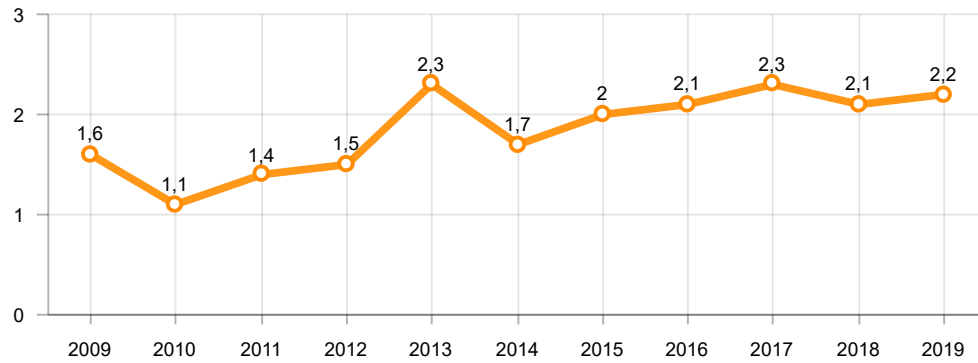
Ticari Araç Üretimi (x1000)(OCAK - MART)
Commercial Vehicle Production (x1000)(January - March)



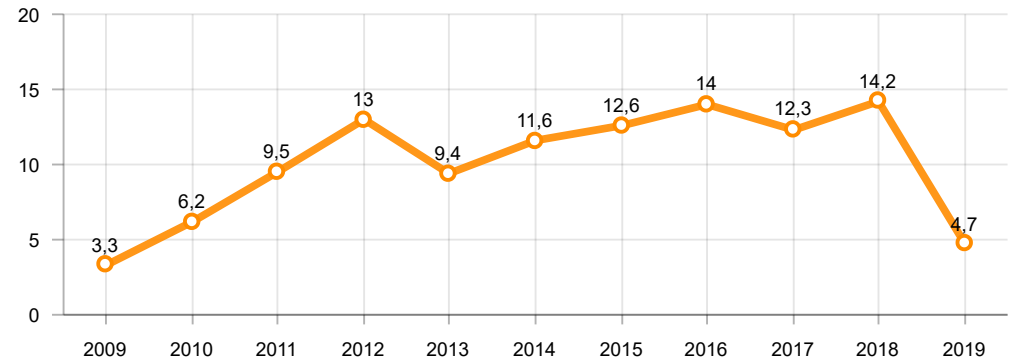
Büyük Kamyon Üretimi (x1000)(OCAK - MART)
Heavy Truck Production (x1000)(January - March)

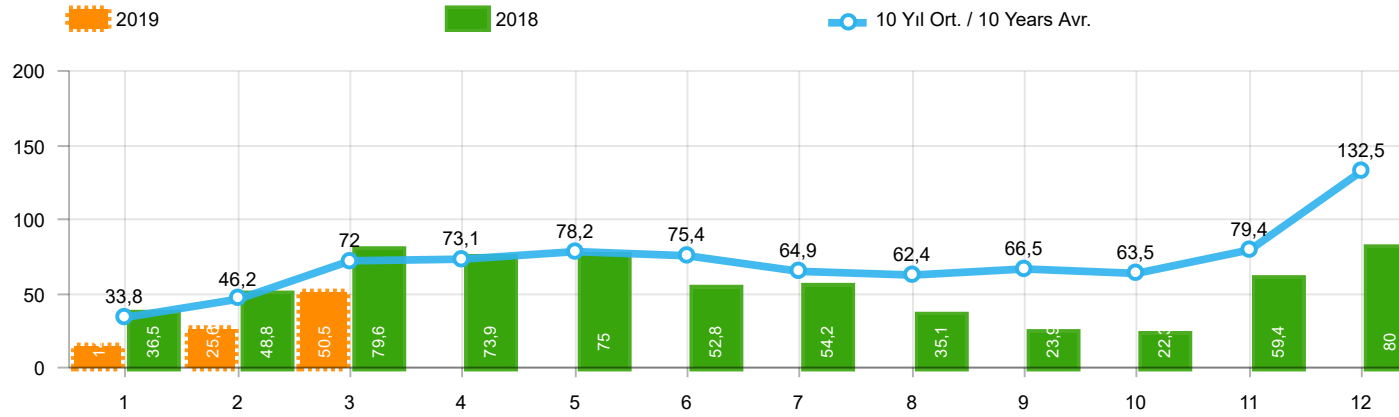


Otobüs Üretimi (x1000)(OCAK - MART)
Bus Production (x1000)(January - March)



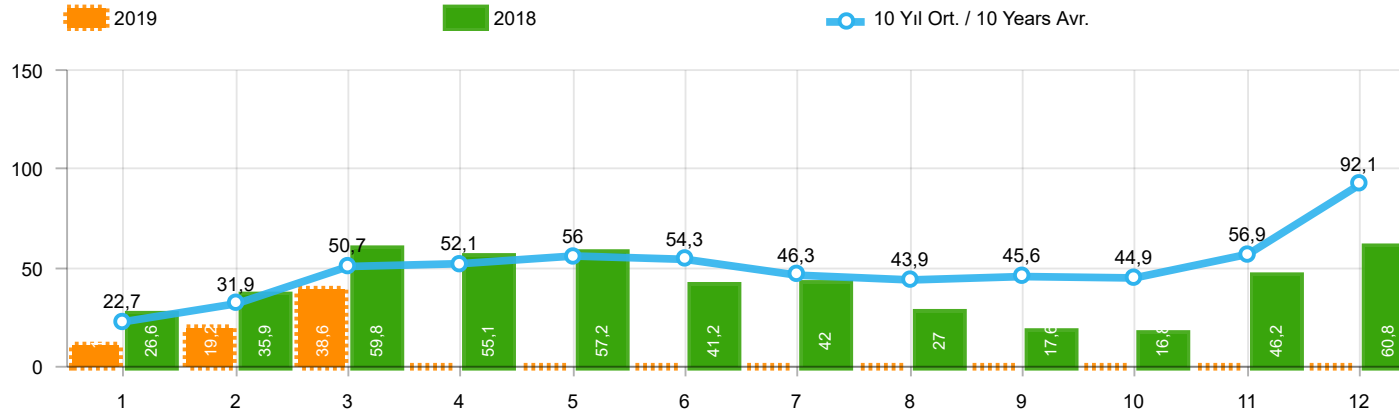
Traktör Üretimi (x1000)(OCAK - MART)
F. Tractor Production (x1000)(January - March)





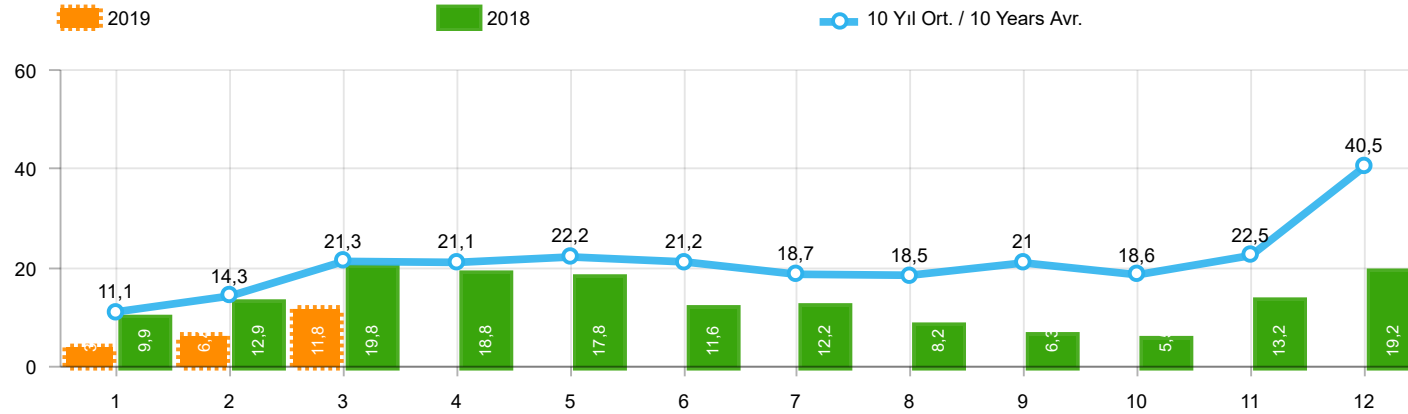
Aylar / Months	10 Yıl Ort / 10 Years Avr.	2019	%
1	33.809	14.847	-56,1
2	46.213	25.569	-44,7
3	71.956	50.472	-29,9
TOPLAM / TOTAL	151.979	90.888	-40,2

Yıl / Year	1	2	3	4	5	6	7	8	9	10	11	12	1-3 Toplam / Total	Toplam / Total	1-3 Yerli / Local	1-3 İthal / Import	İthal Oran / Import %
2009	20.605	22.873	56.527	54.433	64.947	63.090	30.374	37.038	83.553	22.191	29.309	91.762	100.005	576.702	38.333	61.672	61,7
2010	21.070	32.331	54.019	57.241	61.837	63.511	64.011	64.961	67.040	76.753	77.488	155.234	107.420	795.496	44.501	62.919	58,6
2011	47.759	62.586	84.045	82.782	85.862	85.992	65.658	61.645	64.313	73.227	67.150	134.468	194.390	915.487	77.652	116.738	60,1
2012	31.552	44.138	69.242	66.559	75.195	75.108	65.444	60.982	73.501	62.933	75.203	121.442	144.932	821.299	58.089	86.843	59,9
2013	37.563	51.133	72.943	77.265	85.835	78.043	75.152	67.662	71.388	60.690	83.470	136.048	161.639	897.192	52.500	109.139	67,5
2014	34.751	37.659	51.312	57.113	62.447	64.295	62.770	63.303	70.764	69.742	84.368	154.843	123.722	813.367	40.774	82.948	67,0
2015	37.256	59.221	89.765	96.182	85.804	91.071	87.358	85.244	67.181	67.086	88.431	164.464	186.242	1.019.063	70.708	115.534	62,0
2016	34.369	54.840	85.932	87.748	97.090	94.666	59.732	73.654	69.413	85.666	125.462	145.706	175.141	1.014.278	58.892	116.249	66,4
2017	36.640	48.585	76.178	78.231	88.066	85.820	84.727	74.818	74.046	94.439	103.772	141.507	161.403	986.829	60.091	101.312	62,8
2018	36.525	48.768	79.600	73.886	74.996	52.788	54.194	35.137	23.915	22.321	59.406	80.014	164.893	641.550	64.423	100.470	60,9
2019	14.847	25.569	50.472										90.888	90.888	40.577	50.311	55,4



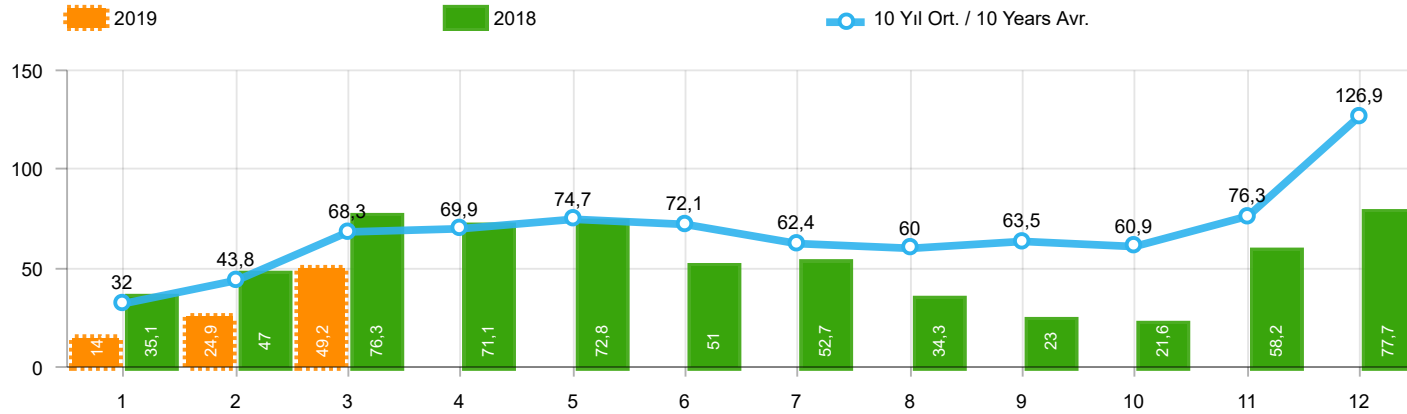
Aylar / Months	10 Yıl Ort. / 10 Years Avr.	2019	%
1	22.707	10.979	-51,6
2	31.928	19.205	-39,8
3	50.654	38.628	-23,7
TOPLAM / TOTAL	105.289	68.812	-34,6

Yıl / Year	1	2	3	4	5	6	7	8	9	10	11	12	1-3 Toplam / Total	Toplam / Total	1-3 Yerli / Local	1-3 İthal / Import	İthal Oran / Import %
2009	13.173	14.492	40.622	36.202	44.188	41.019	16.637	22.537	52.162	13.828	17.781	57.178	68.287	369.819	20.361	47.926	70,2
2010	12.594	20.651	33.958	36.549	40.467	42.086	41.399	42.222	42.477	47.859	50.061	99.461	67.203	509.784	20.614	46.589	69,3
2011	29.868	39.004	54.023	53.835	56.302	56.714	43.518	38.875	39.964	47.508	44.951	88.957	122.895	593.519	37.090	85.805	69,8
2012	21.077	29.189	47.270	45.645	50.460	50.849	44.531	41.236	49.360	43.440	52.297	80.926	97.536	556.280	30.704	66.832	68,5
2013	25.835	36.814	51.785	56.999	62.383	58.290	55.712	51.611	52.925	46.985	64.117	101.199	114.434	664.655	24.846	89.588	78,3
2014	24.368	27.167	37.812	42.769	46.379	47.278	46.602	45.131	49.262	50.814	59.695	110.054	89.347	587.331	21.342	68.005	76,1
2015	24.498	40.817	61.676	70.211	62.878	67.766	64.218	61.753	47.088	47.954	62.397	114.340	126.991	725.596	34.745	92.246	72,6
2016	23.358	40.588	63.975	65.618	73.832	71.111	45.566	53.977	51.340	63.746	95.783	108.044	127.921	756.938	33.436	94.485	73,9
2017	25.689	34.658	55.616	57.998	65.799	66.164	62.384	54.890	53.423	70.488	75.956	99.694	115.963	722.759	35.720	80.243	69,2
2018	26.611	35.901	59.798	55.108	57.227	41.225	42.024	26.976	17.595	16.809	46.204	60.843	122.310	486.321	41.350	80.960	66,2
2019	10.979	19.205	38.628										68.812	68.812	28.388	40.424	58,7



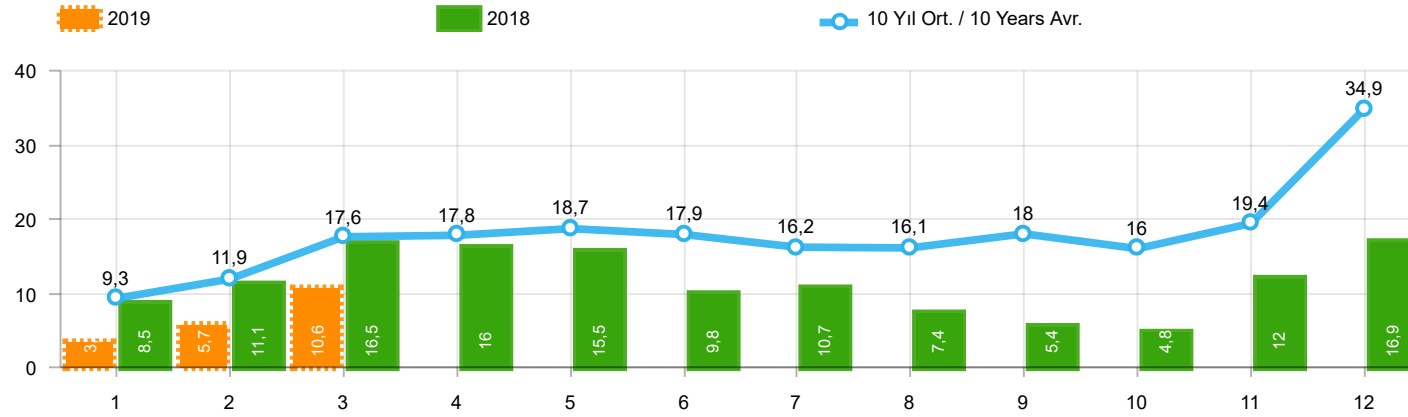
Aylar / Months	10 Yıl Ort / 10 Years Avr.	2019	%
1	11.102	3.868	-65,2
2	14.285	6.364	-55,5
3	21.303	11.844	-44,4
TOPLAM / TOTAL	46.690	22.076	-52,7

Yıl / Year	1	2	3	4	5	6	7	8	9	10	11	12	1-3 Toplam / Total	Toplam / Total	1-3 Yerli / Local	1-3 İthal / Import	İthal Oran / Import %
2009	7.432	8.381	15.905	18.231	20.759	22.071	13.737	14.501	31.391	8.363	11.528	34.584	31.718	206.883	17.972	13.746	43,3
2010	8.476	11.680	20.061	20.692	21.370	21.425	22.612	22.739	24.563	28.894	27.427	55.773	40.217	285.712	23.887	16.330	40,6
2011	17.891	23.582	30.022	28.947	29.560	29.278	22.140	22.770	24.349	25.719	22.199	45.511	71.495	321.968	40.562	30.933	43,3
2012	10.475	14.949	21.972	20.914	24.735	24.259	20.913	19.746	24.141	19.493	22.906	40.516	47.396	265.019	27.385	20.011	42,2
2013	11.728	14.319	21.158	20.266	23.452	19.753	19.440	16.051	18.463	13.705	19.353	34.849	47.205	232.537	27.654	19.551	41,4
2014	10.383	10.492	13.500	14.344	16.068	17.017	16.168	18.172	21.502	18.928	24.673	44.789	34.375	226.036	19.432	14.943	43,5
2015	12.758	18.404	28.089	25.971	22.926	23.305	23.140	23.491	20.093	19.132	26.034	50.124	59.251	293.467	35.963	23.288	39,3
2016	11.011	14.252	21.957	22.130	23.258	23.555	14.166	19.677	18.073	21.920	29.679	37.662	47.220	257.340	25.456	21.764	46,1
2017	10.951	13.927	20.562	20.233	22.267	19.656	22.343	19.928	20.623	23.951	27.816	41.813	45.440	264.070	24.371	21.069	46,4
2018	9.914	12.867	19.802	18.778	17.769	11.563	12.170	8.161	6.320	5.512	13.202	19.171	42.583	155.229	23.073	19.510	45,8
2019	3.868	6.364	11.844										22.076	22.076	12.189	9.887	44,8



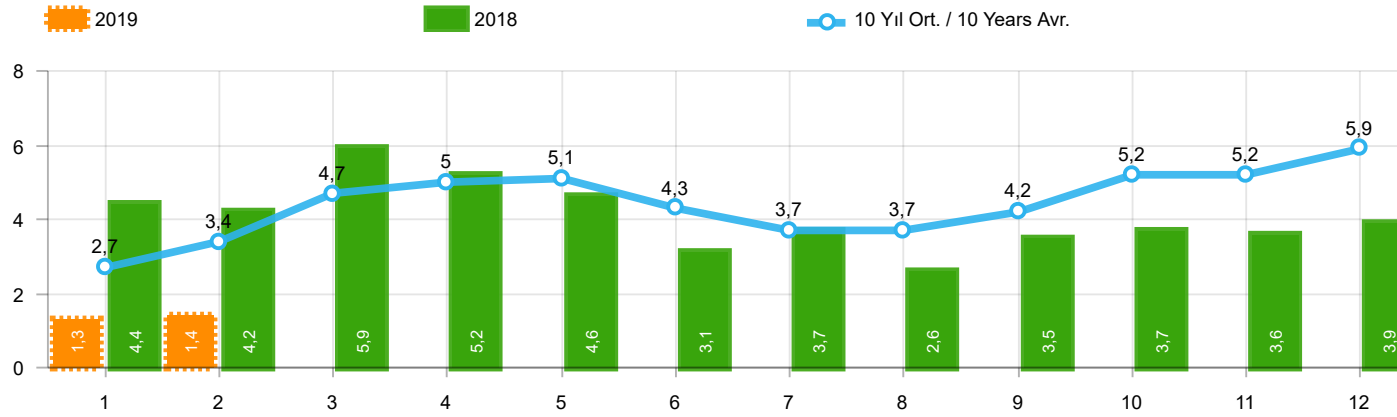
Aylar / Months	10 Yıl Ort / 10 Years Avr.	2019	%
1	32.006	14.373	-55,1
2	43.836	24.875	-43,3
3	68.292	49.221	-27,9
TOPLAM / TOTAL	144.134	88.469	-38,6

Yıl / Year	1	2	3	4	5	6	7	8	9	10	11	12	1-3 Toplam / Total	Toplam / Total	1-3 Yerli / Local	1-3 İthal / Import	İthal Oran / Import %
2009	19.606	21.742	55.111	52.640	63.191	61.067	28.845	35.609	81.397	21.033	27.962	88.923	96.459	557.126	35.241	61.218	63,5
2010	20.095	31.172	51.769	54.946	59.377	60.896	61.345	61.764	63.814	73.404	73.962	148.369	103.036	760.913	41.107	61.929	60,1
2011	44.892	58.663	78.403	77.695	80.646	81.573	63.044	58.406	60.129	69.421	63.657	127.910	181.958	864.439	69.196	112.762	62,0
2012	29.545	41.324	64.884	62.949	70.863	71.067	62.304	58.148	69.629	59.938	71.710	115.400	135.753	777.761	51.098	84.655	62,4
2013	35.523	48.307	68.774	73.575	81.468	74.096	71.596	65.043	67.963	58.014	79.301	129.718	152.604	853.378	45.477	107.127	70,2
2014	32.670	35.021	47.581	53.305	58.121	60.163	59.907	60.199	66.531	66.573	80.621	146.989	115.272	767.681	34.026	81.246	70,5
2015	34.615	55.331	83.302	91.602	81.542	86.158	83.836	82.577	64.025	64.255	84.601	156.173	173.248	968.017	60.533	112.715	65,1
2016	32.713	52.825	82.948	84.887	93.904	91.540	58.533	71.556	67.593	83.000	122.309	141.912	168.486	983.720	54.494	113.992	67,7
2017	35.323	46.965	73.802	75.988	85.422	83.658	82.297	72.536	71.352	91.752	100.859	136.240	156.090	956.194	56.013	100.077	64,1
2018	35.076	47.009	76.345	71.126	72.755	51.037	52.734	34.346	23.028	21.571	58.204	77.706	158.430	620.937	60.068	98.362	62,1
2019	14.373	24.875	49.221										88.469	88.469	38.979	49.490	55,9



Aylar / Months	10 Yıl Ort / 10 Years Avr.	2019	%
1	9.299	3.394	-63,5
2	11.908	5.670	-52,4
3	17.638	10.593	-39,9
TOPLAM / TOTAL	38.845	19.657	-49,4

Yıl / Year	1	2	3	4	5	6	7	8	9	10	11	12	1-3 Toplam / Total	Toplam / Total	1-3 Yerli / Local	1-3 İthal / Import	İthal Oran / Import %
2009	6.433	7.250	14.489	16.438	19.003	20.048	12.208	13.072	29.235	7.205	10.181	31.745	28.172	187.307	14.880	13.292	47,2
2010	7.501	10.521	17.811	18.397	18.910	18.810	19.946	19.542	21.337	25.545	23.901	48.908	35.833	251.129	20.493	15.340	42,8
2011	15.024	19.659	24.380	23.860	24.344	24.859	19.526	19.531	20.165	21.913	18.706	38.953	59.063	270.920	32.106	26.957	45,6
2012	8.468	12.135	17.614	17.304	20.403	20.218	17.773	16.912	20.269	16.498	19.413	34.474	38.217	221.481	20.394	17.823	46,6
2013	9.688	11.493	16.989	16.576	19.085	15.806	15.884	13.432	15.038	11.029	15.184	28.519	38.170	188.723	20.631	17.539	45,9
2014	8.302	7.854	9.769	10.536	11.742	12.885	13.305	15.068	17.269	15.759	20.926	36.935	25.925	180.350	12.684	13.241	51,1
2015	10.117	14.514	21.626	21.391	18.664	18.392	19.618	20.824	16.937	16.301	22.204	41.833	46.257	242.421	25.788	20.469	44,3
2016	9.355	12.237	18.973	19.269	20.072	20.429	12.967	17.579	16.253	19.254	26.526	33.868	40.565	226.782	21.058	19.507	48,1
2017	9.634	12.307	18.186	17.990	19.623	17.494	19.913	17.646	17.929	21.264	24.903	36.546	40.127	233.435	20.293	19.834	49,4
2018	8.465	11.108	16.547	16.018	15.528	9.812	10.710	7.370	5.433	4.762	12.000	16.863	36.120	134.616	18.718	17.402	48,2
2019	3.394	5.670	10.593										19.657	19.657	10.591	9.066	46,1



Aylar / Months	10 Yıl Ort / 10 Years Avr.	2019	%
1	2.669	1.311	-50,9
2	3.359	1.401	-58,3
TOPLAM / TOTAL	6.028	2.712	-55,0

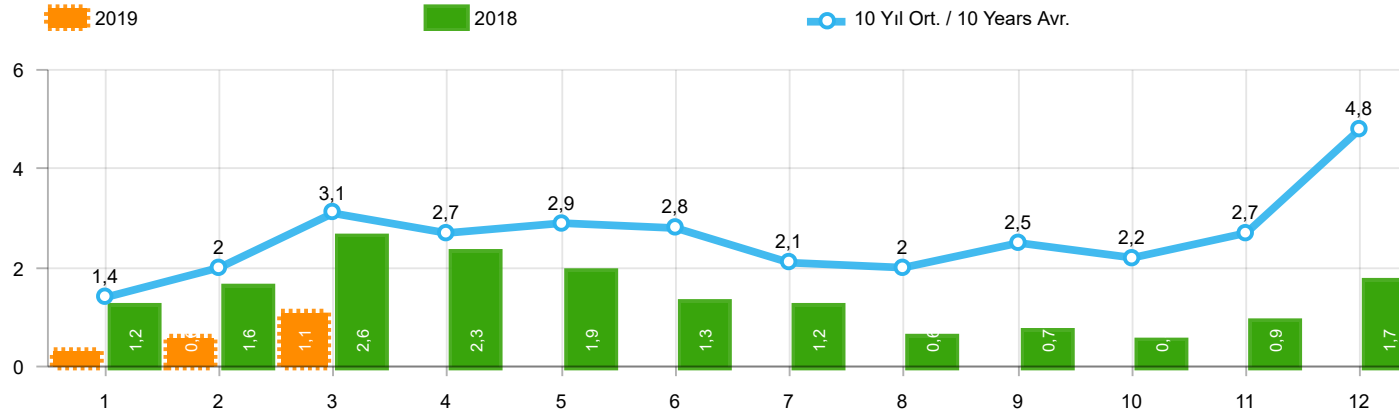
Yıl / Year	1	2	3	4	5	6	7	8	9	10	11	12	1-2 Toplam / Total	Toplam / Total
2009	717	572	688	1.070	1.297	1.256	1.054	1.183	1.117	1.356	1.304	2.144	1.289	13.758
2010	1.111	1.991	2.330	3.039	2.567	2.638	1.965	3.019	2.806	4.424	3.978	6.168	3.102	36.036
2011	2.975	5.242	5.927	5.358	6.016	6.335	4.534	4.051	4.140	5.828	4.943	4.992	8.217	60.341
2012	2.362	1.983	4.348	6.579	6.273	4.569	3.837	3.158	3.618	4.027	4.807	4.757	4.345	50.318
2013	2.161	2.432	4.005	4.585	5.616	3.136	4.574	3.408	4.935	4.762	5.781	6.891	4.593	52.286
2014	2.169	3.512	4.476	4.905	5.094	5.028	4.233	4.920	5.619	5.743	6.250	7.409	5.681	59.358
2015	3.124	3.984	5.460	6.383	6.078	5.748	4.677	5.044	4.765	7.049	6.898	7.564	7.108	66.774
2016	3.739	4.731	7.067	6.546	6.575	5.543	3.833	5.134	4.945	7.372	7.090	7.603	8.470	70.178
2017	3.974	4.964	6.773	6.780	7.057	5.356	5.003	4.396	6.064	7.734	7.457	7.351	8.938	72.909
2018	4.362	4.179	5.925	5.216	4.584	3.146	3.654	2.587	3.541	3.698	3.578	3.886	8.541	48.356
2019	1.311	1.401											2.712	2.712

Kaynak: TÜİK trafik kayıtları.

Rakamlar, son iki model yılına ait traktör tescillerinden oluşmaktadır.

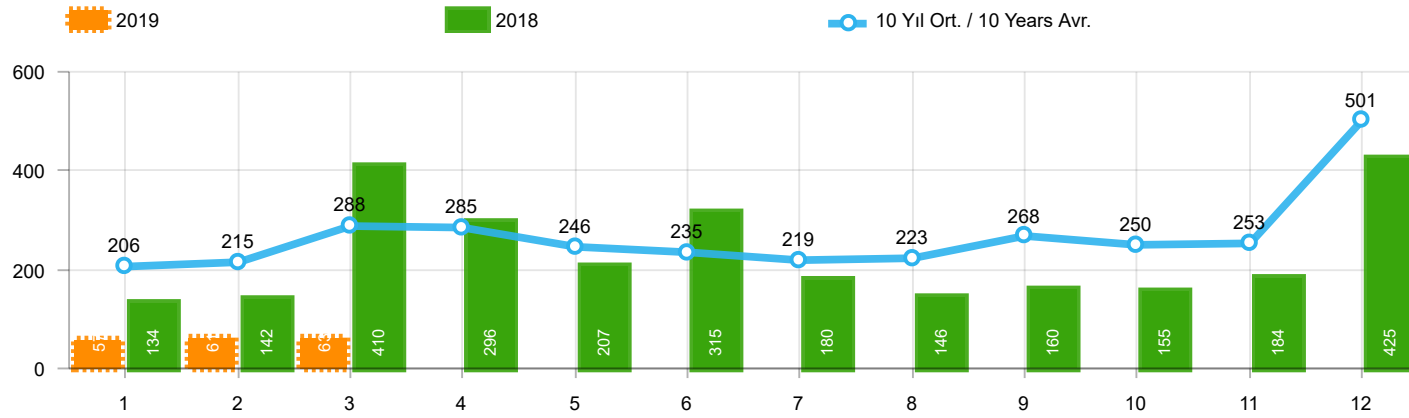
Source: Turkish Statistical Institute – Traffic registrations

Data represents the last two model year's farm tractors registration figures



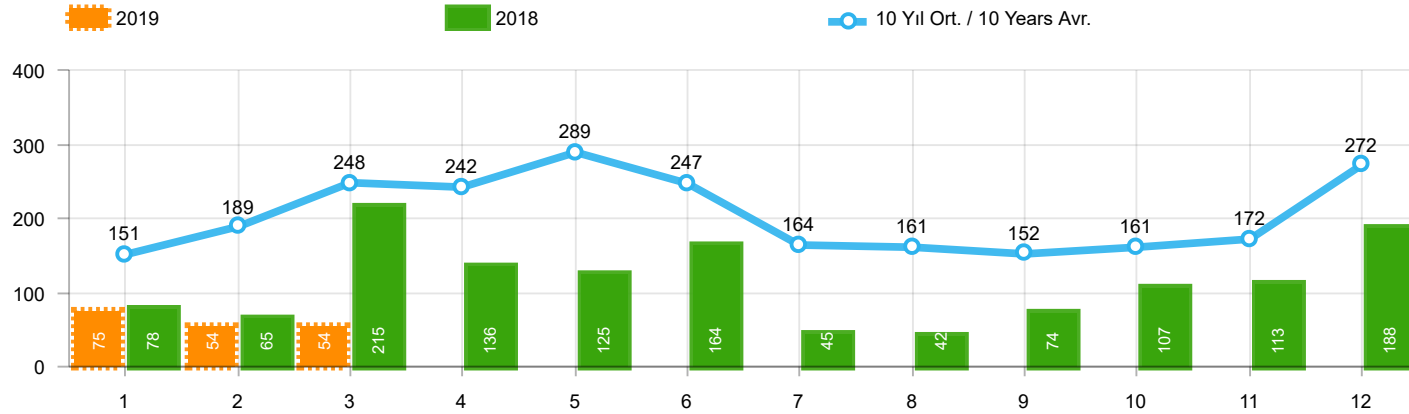
Aylar / Months	10 Yıl Ort / 10 Years Avr.	2019	%
1	1.446	342	-76,3
2	1.974	579	-70,7
3	3.128	1.134	-63,8
TOPLAM / TOTAL	6.548	2.055	-68,6

Yıl / Year	1	2	3	4	5	6	7	8	9	10	11	12	1-3 Toplam / Total	Toplam / Total	1-3 Yerli / Local	1-3 İthal / Import	İthal Oran / Import %
2009	782	763	1.062	1.381	1.426	1.649	1.261	1.164	1.862	963	1.047	2.368	2.607	15.728	2.161	446	17,1
2010	768	960	1.950	1.949	2.140	2.314	2.403	2.754	2.864	3.001	3.231	6.158	3.678	30.492	2.703	975	26,5
2011	2.651	3.544	5.142	4.503	4.563	3.852	2.261	2.745	3.784	3.400	3.149	5.712	11.337	45.306	7.384	3.953	34,9
2012	1.703	2.454	3.866	3.209	3.678	3.540	2.750	2.403	3.296	2.497	3.154	5.300	8.023	37.850	5.841	2.182	27,2
2013	1.484	2.113	3.343	2.925	3.504	3.186	2.777	2.103	2.875	2.086	3.631	5.444	6.940	35.471	4.931	2.009	28,9
2014	1.522	2.065	3.094	3.224	3.727	3.726	2.578	2.783	3.708	2.858	3.384	6.869	6.681	39.538	5.059	1.622	24,3
2015	2.215	3.346	5.699	3.729	3.600	4.253	2.922	2.211	2.687	2.266	3.146	7.307	11.260	43.381	8.466	2.794	24,8
2016	1.167	1.648	2.515	2.319	2.711	2.623	984	1.796	1.438	2.238	2.485	3.127	5.330	25.051	3.073	2.257	42,3
2017	931	1.290	1.982	1.888	2.184	1.891	1.974	1.860	2.284	2.188	2.487	4.438	4.203	25.397	2.978	1.225	29,1
2018	1.237	1.552	2.630	2.328	1.909	1.272	1.235	603	653	488	905	1.695	5.419	16.507	3.312	2.107	38,9
2019	342	579	1.134										2.055	2.055	1.234	821	40,0



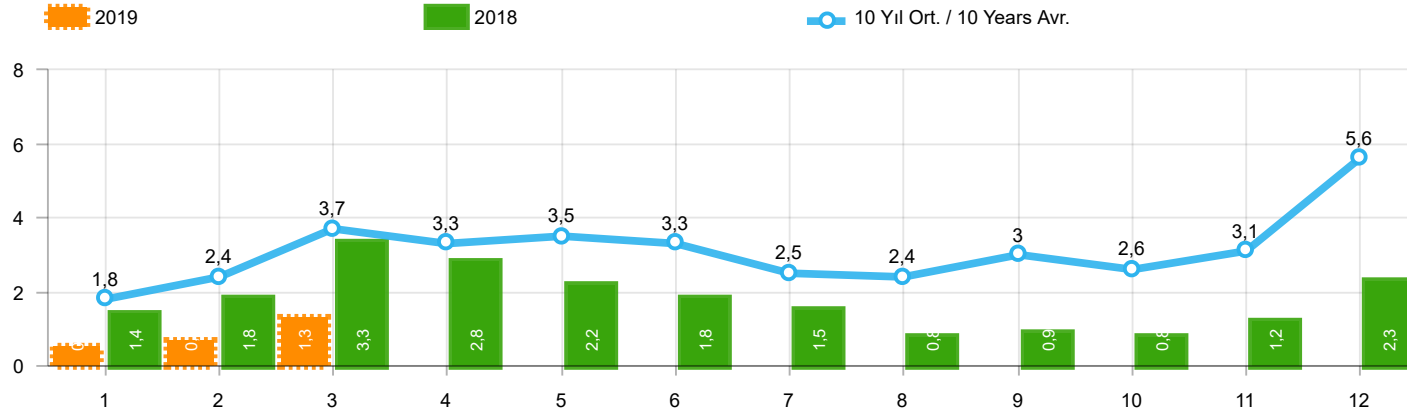
Aylar / Months	10 Yıl Ort. / 10 Years Avr.	2019	%
1	206	57	-72,4
2	215	61	-71,6
3	288	63	-78,1
TOPLAM / TOTAL	709	181	-74,5

Yıl / Year	1	2	3	4	5	6	7	8	9	10	11	12	1-3 Toplam / Total	Toplam / Total
2009	133	103	153	210	145	183	138	146	152	134	150	280	389	1.927
2010	140	128	172	153	127	124	93	232	199	204	162	382	440	2.116
2011	124	167	267	260	241	233	205	280	270	230	168	525	558	2.970
2012	179	257	277	229	257	239	216	249	325	269	189	398	713	3.084
2013	191	268	289	276	283	241	367	235	305	392	415	697	748	3.959
2014	360	394	384	333	294	258	216	229	395	220	266	653	1.138	4.002
2015	280	322	451	561	372	405	389	253	316	394	325	621	1.053	4.689
2016	309	158	251	302	261	196	139	220	241	230	354	431	718	3.092
2017	212	211	227	231	272	156	250	235	318	268	317	594	650	3.291
2018	134	142	410	296	207	315	180	146	160	155	184	425	686	2.754
2019	57	61	63										181	181



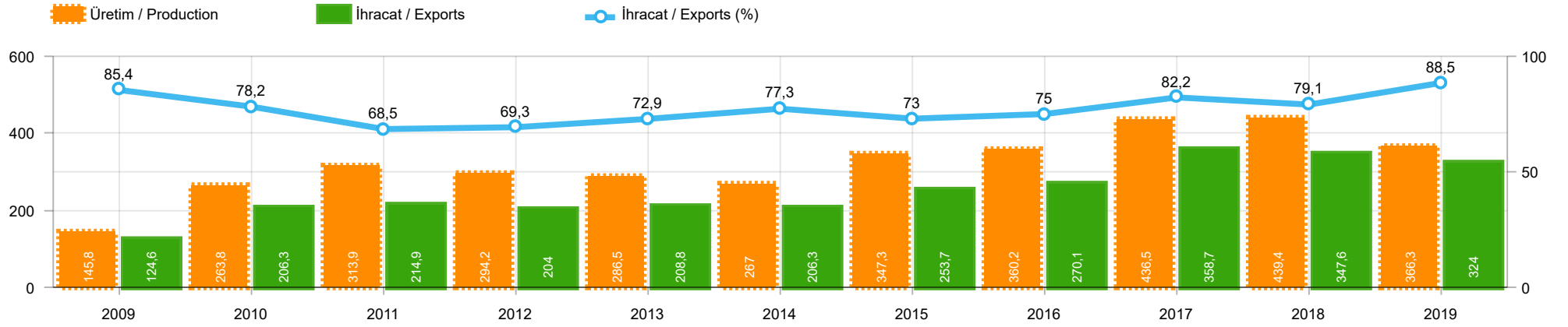
Aylar / Months	10 Yil Ort / 10 Years Avr.	2019	%
1	151	75	-50,3
2	189	54	-71,4
3	248	54	-78,2
TOPLAM / TOTAL	588	183	-68,9

Yıl / Year	1	2	3	4	5	6	7	8	9	10	11	12	1-3 Toplam / Total	Toplam / Total	1-3 Yerli / Local	1-3 İthal / Import	İthal Oran / Import %
2009	84	265	201	202	185	191	130	119	142	61	150	191	550	1.921	542	8	1,5
2010	67	71	128	193	193	177	170	211	163	144	133	325	266	1.975	251	15	5,6
2011	92	212	233	324	412	334	148	214	130	176	176	321	537	2.772	514	23	4,3
2012	125	103	215	172	397	262	174	182	251	229	150	344	443	2.604	437	6	1,4
2013	365	445	537	489	580	520	412	281	245	198	123	189	1.347	4.384	1.344	3	0,2
2014	199	179	253	251	305	148	69	92	130	91	97	332	631	2.146	551	80	12,7
2015	146	222	313	290	290	255	211	203	153	171	359	363	681	2.976	656	25	3,7
2016	180	209	218	240	214	307	76	82	141	198	314	236	607	2.415	607	-	-
2017	174	119	167	124	188	115	206	187	92	231	109	235	460	1.947	450	10	2,2
2018	78	65	215	136	125	164	45	42	74	107	113	188	358	1.352	357	1	0,3
2019	75	54	54										183	183	183	-	-



Aylar / Months	10 Yıl Ort / 10 Years Avr.	2019	%
1	1.803	474	-73,7
2	2.378	694	-70,8
3	3.664	1.251	-65,9
TOPLAM / TOTAL	7.845	2.419	-69,2

Yıl / Year	1	2	3	4	5	6	7	8	9	10	11	12	1-3 Toplam / Total	Toplam / Total	1-3 Yerli / Local	1-3 İthal / Import	İthal Oran / Import %
2009	999	1.131	1.416	1.793	1.756	2.023	1.529	1.429	2.156	1.158	1.347	2.839	3.546	19.576	3.092	454	12,8
2010	975	1.159	2.250	2.295	2.460	2.615	2.666	3.197	3.226	3.349	3.526	6.865	4.384	34.583	3.394	990	22,6
2011	2.867	3.923	5.642	5.087	5.216	4.419	2.614	3.239	4.184	3.806	3.493	6.558	12.432	51.048	8.456	3.976	32,0
2012	2.007	2.814	4.358	3.610	4.332	4.041	3.140	2.834	3.872	2.995	3.493	6.042	9.179	43.538	6.991	2.188	23,8
2013	2.040	2.826	4.169	3.690	4.367	3.947	3.556	2.619	3.425	2.676	4.169	6.330	9.035	43.814	7.023	2.012	22,3
2014	2.081	2.638	3.731	3.808	4.326	4.132	2.863	3.104	4.233	3.169	3.747	7.854	8.450	45.686	6.748	1.702	20,1
2015	2.641	3.890	6.463	4.580	4.262	4.913	3.522	2.667	3.156	2.831	3.830	8.291	12.994	51.046	10.175	2.819	21,7
2016	1.656	2.015	2.984	2.861	3.186	3.126	1.199	2.098	1.820	2.666	3.153	3.794	6.655	30.558	4.398	2.257	33,9
2017	1.317	1.620	2.376	2.243	2.644	2.162	2.430	2.282	2.694	2.687	2.913	5.267	5.313	30.635	4.078	1.235	23,2
2018	1.449	1.759	3.255	2.760	2.241	1.751	1.460	791	887	750	1.202	2.308	6.463	20.613	4.355	2.108	32,6
2019	474	694	1.251										2.419	2.419	1.598	821	33,9



	2009	2010	2011	2012	2013	2014	2015	2016	2017	2018	2019
İhracat/Export	124.555	206.302	214.919	203.992	208.828	206.346	253.679	270.104	358.682	347.596	323.985
Üretim/Production	145.832	263.775	313.944	294.212	286.502	267.042	347.317	360.151	436.510	439.389	366.260
İhracat/Exports (%)	85,4	78,2	68,5	69,3	72,9	77,3	73	75	82,2	79,1	88,5

Taşıt Araçları İhracatı (2017 - 2019)
Motor Vehicle Exports (2017 - 2019)

SEKTÖR / SECTOR	2017	2018	1/3-2018	1/3-2019	2019/2018 %
OTOMOBİL / Pass.Car	921.354	875.147	235.439	209.884	-10,9
OTOMOBİL TOPLAM / Pass. Car Total	921.354	875.147	235.439	209.884	-10,9
KAMYON / Truck	7.800	14.478	2.836	4.112	45,0
KAMYONET / Pick Up	350.108	372.954	94.481	88.988	-5,8
OTOBÜS / Bus	7.028	7.708	1.691	2.260	33,6
MİNİBÜS / Minibus	45.794	47.736	10.099	14.667	45,2
MİDİBÜS / Midibus	710	846	152	302	98,7
TİCARİ ARAÇLAR TOPLAM / Commercial Vehicle Total	411.440	443.722	109.259	110.329	1,0
TAŞIT ARAÇLARI TOPLAM / Motor Vehicles Total	1.332.794	1.318.869	344.698	320.213	-7,1
TRAKTÖR / F.Tractor	13.123	15.123	2.898	3.772	30,2
TRAKTÖR TOPLAM / F.Tractor Total	13.123	15.123	2.898	3.772	30,2
GENEL TOPLAM / GRAND TOTAL	1.345.917	1.333.992	347.596	323.985	-6,8

Üretici Bazında İhracat (adet)
Exports by Manufacturer (unit)

Üreticiler / Manufacturers	2017	2018	1-3 / 2018	1-3 / 2019
A.I.O.S.	700	964	136	345
FORD OTOSAN	296.840	328.502	82.898	88.957
HATTAT TRAKTÖR	1.100	621	70	219
HONDA TÜRKİYE	9.391	13.699	4.365	2.233
HYUNDAI ASSAN	204.382	190.347	47.284	38.664
KARSAN	2.969	3.419	889	441
M. BENZ TÜRK	9.865	16.309	3.362	4.535
MAN TÜRKİYE	2.007	2.425	688	842
OTOKAR	691	901	117	343
OYAK RENAULT	287.915	280.411	72.279	79.716
TEMSA	870	645	48	116
TOFAŞ	270.698	243.796	69.971	44.345
TOYOTA	246.466	237.451	62.661	59.676
TÜRK TRAKTÖR	12.023	14.502	2.828	3.553
GENEL TOPLAM / Grand Total	1.345.917	1.333.992	347.596	323.985

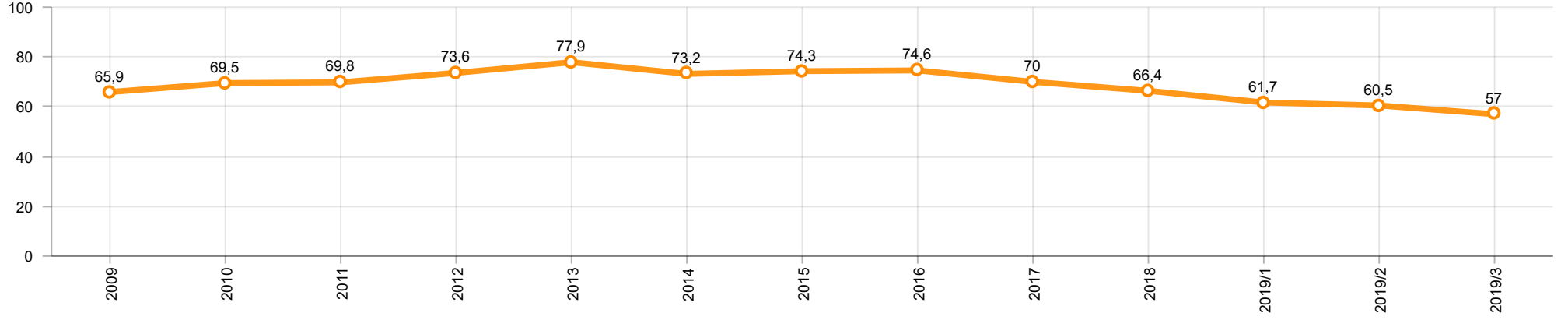
Otomotiv Ana ve Yan Sanayii İhracatı (ABD \$)
CBU and CKD Exports - \$

Sektör / Sector	2017	2018	OCAK - MART / January - March 2018	OCAK - MART / January - March 2019	2019 / 2018 %
Toplam Yan Sanayi / Total Component Industry	9.835.914.658	10.881.562.512	2.894.775.402	2.719.104.680	-6,1
İç ve Dış Lastik / Tyres	1.131.782.300	1.353.896.118	348.334.074	367.143.706	5,4
Emniyet Camı / Safety Glasses	136.486.099	151.148.689	40.659.045	36.804.191	-9,5
Motor / Engine	486.426.738	581.983.113	171.317.237	134.400.752	-21,5
Akümülatör / Batteries	295.794.286	388.107.835	77.174.407	92.492.550	19,8
Diğer Aksam ve Parça / Spare Parts&Components	7.785.425.235	8.406.426.757	2.257.290.639	2.088.263.481	-7,5
Toplam Ana Sanayi / Total Vehicle Industry	19.257.086.833	21.350.315.330	5.479.219.413	5.172.029.474	-5,6
Otobüs / Bus	1.308.249.224	1.503.188.826	344.295.074	444.718.486	29,2
Midibüs-Minibüs / Midibus-Minibus	217.704.499	215.450.022	57.301.966	39.186.683	-31,6
Otomobil / P.Cars	11.790.577.760	12.420.951.066	3.292.883.298	2.937.113.849	-10,8
Kamyon-Kamyonet / Truck-Pick Up&Van	4.849.022.718	5.376.446.529	1.413.935.039	1.274.591.795	-9,9
Römork ve Yarı Römork / Trailer-Semi Trailer	342.793.231	507.186.149	114.184.861	127.678.781	11,8
Çekici / Tractor	427.928.256	904.738.051	187.317.207	252.644.895	34,9
Tarım Traktörü / Farm Tractor	320.811.145	422.354.687	69.301.968	96.094.985	38,7
Toplam / Total	29.093.001.491	32.231.877.842	8.373.994.815	7.891.134.154	-5,8

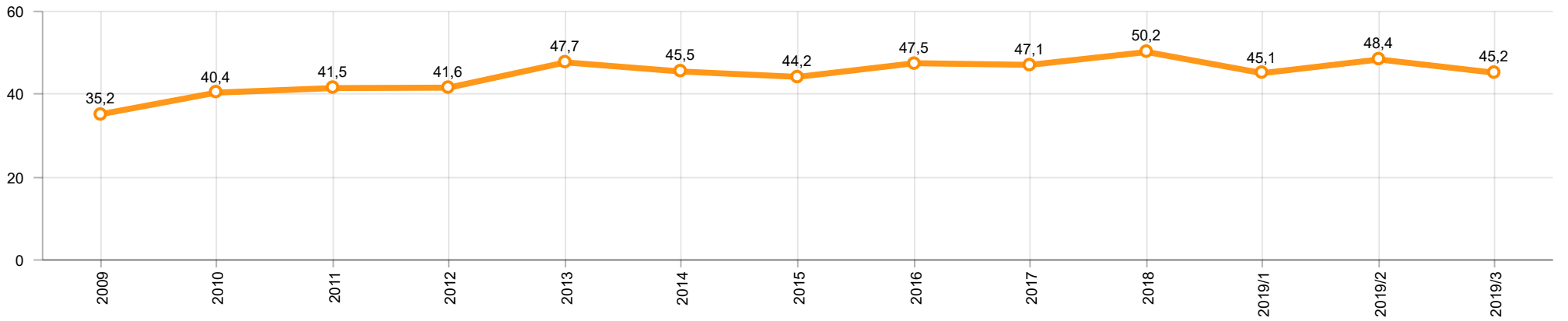
Kaynak: Uludağ İhracatçı Birlikleri . ÜİB tarafından OSD için özel olarak analiz edilen Otomotiv İhracatı kapsamında; ÜİB Türkiye Geneli Otomotiv Endüstrisi sınıflandırmasına kıyasla “Römork ve Yarı Römork” , “Tarım Traktörü” verileri dahil edilmekte; “Kullanılmış Araçlar” ,”İki Tekerlekli Taşıtlar” , “Demiryolu Taşıtları” hariç tutulmaktadır.

Source: Uludağ Exporters Association – Special Analyze for OSD.Compared to Turkish General Automotive Industry classification, this special analyze includes; farms tractors, trailers and semi-trailers, does not include; used vehicles, two-wheeled vehicles and railway vehicles

Otomobil Pazarında İthalatın Payı (%)
Import Share in P.Car Market (%)



Hafif Ticari Araçlar Pazarında İthalatın Payı (%)
Import Share in LCV Market (%)



Araç Tipleri / Vehicle Types	1	2	3	4	5	6	7	8	9	10	11	12	Toplam / Total
OTOMOBİL - Pass.Car	58.807	69.340	81.737										209.884
KAMYON - H. Truck	1.255	1.594	1.263										4.112
KAMYONET - Pick Up	27.735	29.856	31.397										88.988
OTOBÜS - Bus	801	637	822										2.260
MİNİBÜS - Minibus	4.741	4.835	5.091										14.667
MİDİBÜS - Midibus	74	93	135										302
TİCARİ ARAÇLAR TOPLAMI - CV Total	34.606	37.015	38.708										110.329
TAŞIT ARAÇLARI TOPLAMI - MV Total	93.413	106.355	120.445										320.213
TRAKTÖR - F.Tractor	1.111	1.145	1.516										3.772
GENEL TOPLAM - Grand Total	94.524	107.500	121.961										323.985

Otomobil / P.Car

Firmalar / Firms	1	2	3	4	5	6	7	8	9	10	11	12	Toplam / Total
FORD OTOSAN	1.469	1.837	2.406	-	-	-	-	-	-	-	-	-	5.712
HONDA TÜRKİYE	800	1.009	424	-	-	-	-	-	-	-	-	-	2.233
HYUNDAI ASSAN	11.414	14.050	13.200	-	-	-	-	-	-	-	-	-	38.664
OYAK RENAULT	20.009	24.138	35.569	-	-	-	-	-	-	-	-	-	79.716
TOFAŞ	7.636	8.517	7.730	-	-	-	-	-	-	-	-	-	23.883
TOYOTA	17.479	19.789	22.408	-	-	-	-	-	-	-	-	-	59.676
TOPLAM - Total	58.807	69.340	81.737	-	-	-	-	-	-	-	-	-	209.884

Kamyonet / Pick-up

Firmalar / Firms	1	2	3	4	5	6	7	8	9	10	11	12	Toplam / Total
A.I.O.S.	-	-	-	-	-	-	-	-	-	-	-	-	-
FORD OTOSAN	22.083	22.516	23.624	-	-	-	-	-	-	-	-	-	68.223
KARSAN	73	55	150	-	-	-	-	-	-	-	-	-	278
OTOKAR	-	-	25	-	-	-	-	-	-	-	-	-	25
TOFAŞ	5.579	7.285	7.598	-	-	-	-	-	-	-	-	-	20.462
TOPLAM - Total	27.735	29.856	31.397	-	-	-	-	-	-	-	-	-	88.988

Minibüs / Minibus

Firmalar / Firms	1	2	3	4	5	6	7	8	9	10	11	12	Toplam / Total
FORD OTOSAN	4.740	4.833	5.077	-	-	-	-	-	-	-	-	-	14.650
KARSAN	1	2	14	-	-	-	-	-	-	-	-	-	17
TOPLAM - Total	4.741	4.835	5.091	-	-	-	-	-	-	-	-	-	14.667

Kamyon / Truck

Firmalar / Firms	1	2	3	4	5	6	7	8	9	10	11	12	Toplam / Total
A.I.O.S.	-	30	-	-	-	-	-	-	-	-	-	-	30
FORD OTOSAN	114	141	117	-	-	-	-	-	-	-	-	-	372
KARSAN	-	-	-	-	-	-	-	-	-	-	-	-	-
M. BENZ TÜRK	1.141	1.423	1.146	-	-	-	-	-	-	-	-	-	3.710
OTOKAR	-	-	-	-	-	-	-	-	-	-	-	-	-
TOPLAM - Total	1.255	1.594	1.263	-	-	-	-	-	-	-	-	-	4.112

Midibüs / Midibus

Firmalar / Firms	1	2	3	4	5	6	7	8	9	10	11	12	Toplam / Total
A.I.O.S.	52	60	88	-	-	-	-	-	-	-	-	-	200
KARSAN	5	6	39	-	-	-	-	-	-	-	-	-	50
OTOKAR	8	21	8	-	-	-	-	-	-	-	-	-	37
TEMSA	9	6	-	-	-	-	-	-	-	-	-	-	15
TOPLAM - Total	74	93	135	-	-	-	-	-	-	-	-	-	302

Otobüs / Bus

Firmalar / Firms	1	2	3	4	5	6	7	8	9	10	11	12	Toplam / Total
A.I.O.S.	56	12	47	-	-	-	-	-	-	-	-	-	115
KARSAN	23	17	56	-	-	-	-	-	-	-	-	-	96
M. BENZ TÜRK	261	246	318	-	-	-	-	-	-	-	-	-	825
MAN TÜRKİYE	298	271	273	-	-	-	-	-	-	-	-	-	842
OTOKAR	104	69	108	-	-	-	-	-	-	-	-	-	281
TEMSA	59	22	20	-	-	-	-	-	-	-	-	-	101
TOPLAM - Total	801	637	822	-	-	-	-	-	-	-	-	-	2.260

Traktör / F.Tractor

Firmalar / Firms	1	2	3	4	5	6	7	8	9	10	11	12	Toplam / Total
HATTAT TRAKTÖR	39	72	108	-	-	-	-	-	-	-	-	-	219
TÜRK TRAKTÖR	1.072	1.073	1.408	-	-	-	-	-	-	-	-	-	3.553
TOPLAM - Total	1.111	1.145	1.516	-	-	-	-	-	-	-	-	-	3.772

Firmalar / Firms	2018 Toplam / Total	1	2	3	4	5	6	7	8	9	10	11	12	Toplam / Total
Alfa Romeo	203	8	16	32	-	-	-	-	-	-	-	-	-	56
Aston Martin	16	2	-	3	-	-	-	-	-	-	-	-	-	5
Audi	13.295	495	404	832	-	-	-	-	-	-	-	-	-	1.731
Bentley	10	2	-	-	-	-	-	-	-	-	-	-	-	2
BMW	12.728	352	463	871	-	-	-	-	-	-	-	-	-	1.686
Citroen	7.669	80	97	423	-	-	-	-	-	-	-	-	-	600
Dacia	26.193	429	801	1.765	-	-	-	-	-	-	-	-	-	2.995
DS	236	3	8	8	-	-	-	-	-	-	-	-	-	19
Ferrari	18	-	2	2	-	-	-	-	-	-	-	-	-	4
Fiat	1.264	26	26	65	-	-	-	-	-	-	-	-	-	117
Ford	20.697	235	476	1.452	-	-	-	-	-	-	-	-	-	2.163
Honda	4.862	144	149	253	-	-	-	-	-	-	-	-	-	546
Hyundai	19.113	794	1.195	1.508	-	-	-	-	-	-	-	-	-	3.497
Infinity	18	-	-	-	-	-	-	-	-	-	-	-	-	-
Jaguar	220	2	18	20	-	-	-	-	-	-	-	-	-	40
Jeep	2.430	100	162	225	-	-	-	-	-	-	-	-	-	487
Kia	7.694	150	331	534	-	-	-	-	-	-	-	-	-	1.015
Lamborghini	3	1	-	-	-	-	-	-	-	-	-	-	-	1
Land Rover	1.248	36	71	63	-	-	-	-	-	-	-	-	-	170
Lexus	56	4	4	2	-	-	-	-	-	-	-	-	-	10
Maserati	55	2	4	2	-	-	-	-	-	-	-	-	-	8
Mazda	1.005	29	29	15	-	-	-	-	-	-	-	-	-	73
Mercedes-Benz	14.445	204	701	1.005	-	-	-	-	-	-	-	-	-	1.910
Mini	1.373	17	50	176	-	-	-	-	-	-	-	-	-	243
Mitsubishi	514	38	60	41	-	-	-	-	-	-	-	-	-	139
Nissan	24.605	538	799	1.662	-	-	-	-	-	-	-	-	-	2.999
Opel	20.960	348	765	1.684	-	-	-	-	-	-	-	-	-	2.797
Peugeot	24.905	524	767	2.287	-	-	-	-	-	-	-	-	-	3.578
Porsche	565	9	35	27	-	-	-	-	-	-	-	-	-	71
Renault	21.090	198	557	822	-	-	-	-	-	-	-	-	-	1.577
Seat	10.383	139	289	515	-	-	-	-	-	-	-	-	-	943
Skoda	21.340	247	585	1.414	-	-	-	-	-	-	-	-	-	2.246
Smart	35	5	3	6	-	-	-	-	-	-	-	-	-	14
Ssangyong	222	10	15	14	-	-	-	-	-	-	-	-	-	39
Subaru	1.471	52	68	76	-	-	-	-	-	-	-	-	-	196
Suzuki	2.878	65	107	236	-	-	-	-	-	-	-	-	-	408
Toyota	3.405	47	114	132	-	-	-	-	-	-	-	-	-	293
Volkswagen	49.749	1.210	2.218	3.528	-	-	-	-	-	-	-	-	-	6.956
Volvo	5.943	231	225	334	-	-	-	-	-	-	-	-	-	790
GENEL TOPLAM - Grand Total	322.916	6.776	11.614	22.034	-	-	-	-	-	-	-	-	-	40.424

Firmalar / Firms	2018 Toplam / Total	1	2	3	4	5	6	7	8	9	10	11	12	Toplam / Total
Citroen	4.633	126	188	181	-	-	-	-	-	-	-	-	-	495
Dacia	3.725	53	182	296	-	-	-	-	-	-	-	-	-	531
Fiat	3.019	53	54	117	-	-	-	-	-	-	-	-	-	224
Ford	2.783	134	106	177	-	-	-	-	-	-	-	-	-	417
Hyundai	1.493	83	106	121	-	-	-	-	-	-	-	-	-	310
Isuzu	578	3	30	23	-	-	-	-	-	-	-	-	-	56
Iveco	1.598	48	54	115	-	-	-	-	-	-	-	-	-	217
Karsan	-	-	-	-	-	-	-	-	-	-	-	-	-	-
Kia	1.947	14	55	189	-	-	-	-	-	-	-	-	-	258
Mercedes-Benz	7.993	159	404	628	-	-	-	-	-	-	-	-	-	1.191
Mitsubishi	3.445	47	129	69	-	-	-	-	-	-	-	-	-	245
Nissan	1.741	82	48	150	-	-	-	-	-	-	-	-	-	280
Opel	-	-	-	43	-	-	-	-	-	-	-	-	-	43
Peugeot	5.247	197	284	819	-	-	-	-	-	-	-	-	-	1.300
Renault	8.908	180	342	741	-	-	-	-	-	-	-	-	-	1.263
Ssangyong	174	-	-	15	-	-	-	-	-	-	-	-	-	15
Toyota	3.159	55	101	91	-	-	-	-	-	-	-	-	-	247
Volkswagen	17.085	295	662	1.017	-	-	-	-	-	-	-	-	-	1.974
GENEL TOPLAM - Grand Total	67.528	1.529	2.745	4.792	-	-	-	-	-	-	-	-	-	9.066