



OTOMOTİV SANAYİİ DERNEĞİ  
AUTOMOTIVE MANUFACTURERS ASSOCIATION

# OTOMOTİV SEKTÖRÜ AYLIK DEĞERLENDİRME RAPORU OCAK 2019

AUTOMOTIVE INDUSTRY MONTHLY REPORT  
January 2019

OSD "OICA" Üyesidir



OSD is a Member of "OICA"

	1 - 2018	1 - 2019	%	1 - 1 / 2018	1 - 1 / 2019	%	2/2017 - 1/2018	2/2018 - 1/2019	%
Otomobil Üretimi/P.Cars Production	85.368	71.397	-16,4	85.368	71.397	-16,4	1.134.592	1.012.600	-10,8
Toplam Üretim/Total Production	124.347	109.871	-11,6	124.347	109.871	-11,6	1.691.958	1.535.784	-9,2
Otomobil Pazarı/P.Cars Market	26.611	10.979	-58,7	26.611	10.979	-58,7	723.681	470.689	-35,0
Toplam Pazarı/Total Market	36.525	14.775	-59,5	36.525	14.775	-59,5	986.714	619.800	-37,2
Otomobil İthalatı/P.Cars Import	16.832	6.776	-59,7	16.832	6.776	-59,7	505.904	312.860	-38,2
Toplam İthalat/Total Import	21.633	8.422	-61,1	21.633	8.422	-61,1	624.293	384.057	-38,5
Otomobil İhracatı/P.Cars Export	73.408	58.807	-19,9	73.408	58.807	-19,9	918.270	860.546	-6,3
Toplam İhracat/Total Export	94.313	93.760	-0,6	94.313	93.760	-0,6	1.323.737	1.318.316	-0,4
Otomobil İhracatı(\$)/P.Cars Export (\$)	951.492.580	812.076.271	-14,7	951.492.580	812.076.271	-14,7	11.918.141.424	12.281.534.758	3,0
Toplam İhracat(\$)/Total Export (\$)*	2.333.046.588	2.381.546.491	2,1	2.333.046.588	2.381.546.491	2,1	29.493.681.325	32.279.662.795	9,4

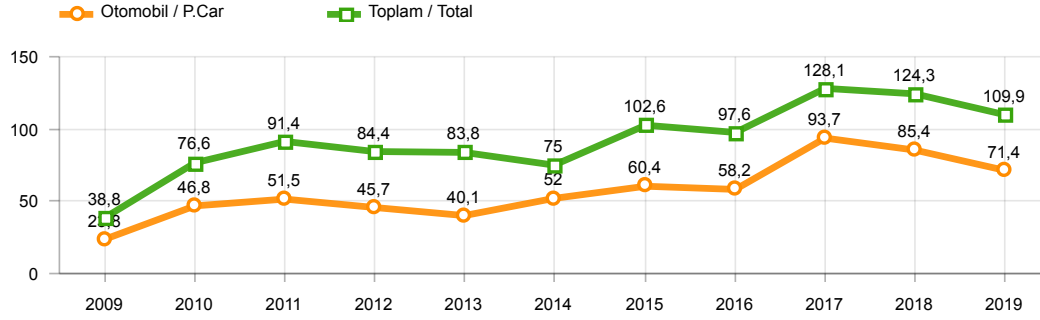
Parametreler/Parameters	1 - 2018	1 - 2019	%	1 - 1 / 2018	1 - 1 / 2019	%	2/2017 - 1/2018	2/2018 - 1/2019	%
ÜFE / PPI	1,0	0,5	-	1,0	0,5	-	12,1	32,9	-
TÜFE / CPI	1,0	1,1	-	1,0	1,1	-	10,4	20,4	-
Sanayi Endeksi / Industry Index	1,6	0,5	-	1,6	0,5	-	14,1	29,6	-
Dolar \$ **	3,8	5,3	40,2	3,8	5,3	40,2	3,6	4,9	35,1
Euro € **	4,6	6,0	31,3	4,6	6,0	31,3	4,2	5,7	38,0
Japon Yeni ¥ **	3,4	4,8	42,3	3,4	4,8	42,3	3,2	4,4	36,6

\*Toplam Sanayi / Total Industry Including Components

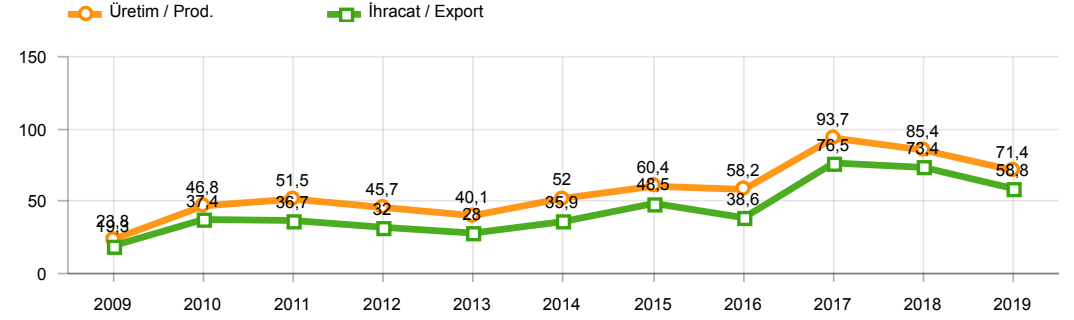
\*\* Ortalama Değerler / Average Values

Araç Tipleri / Types	1 / 2018	1 / 2019	1 % Değişim	1-1 / 2018	1-1 / 2019	1-1 % Değişim
OTOMOBİL / Pass.Car	85.368	71.397	-16,4	85.368	71.397	-16,4
<b>OTOMOBİL Toplam / Pass.Car Total</b>	<b>85.368</b>	<b>71.397</b>	<b>-16,4</b>	<b>85.368</b>	<b>71.397</b>	<b>-16,4</b>
B.KAMYON / H. Truck	1.871	1.394	-25,5	1.871	1.394	-25,5
K.KAMYON / L. Truck	268	-	-100,0	268	-	-100,0
KAMYONET / Pick Up	32.222	31.118	-3,4	32.222	31.118	-3,4
OTOBÜS / Bus	619	762	23,1	619	762	23,1
MİNİBÜS / Minibus	3.703	5.062	36,7	3.703	5.062	36,7
MİDİBÜS / Midibus	296	138	-53,4	296	138	-53,4
<b>TİCARİ ARAÇLAR Toplam / Commercial Vehicles Total</b>	<b>38.979</b>	<b>38.474</b>	<b>-1,3</b>	<b>38.979</b>	<b>38.474</b>	<b>-1,3</b>
<b>TAŞIT ARAÇLARI Toplam / Motor Vehicles Total</b>	<b>124.347</b>	<b>109.871</b>	<b>-11,6</b>	<b>124.347</b>	<b>109.871</b>	<b>-11,6</b>
TRAKTÖR / F.Tractor	4.564	1.061	-76,8	4.564	1.061	-76,8
<b>TRAKTÖR Toplam / F.Tractor Total</b>	<b>4.564</b>	<b>1.061</b>	<b>-76,8</b>	<b>4.564</b>	<b>1.061</b>	<b>-76,8</b>
<b>GENEL TOPLAM / Grand Total</b>	<b>128.911</b>	<b>110.932</b>	<b>-13,9</b>	<b>128.911</b>	<b>110.932</b>	<b>-13,9</b>

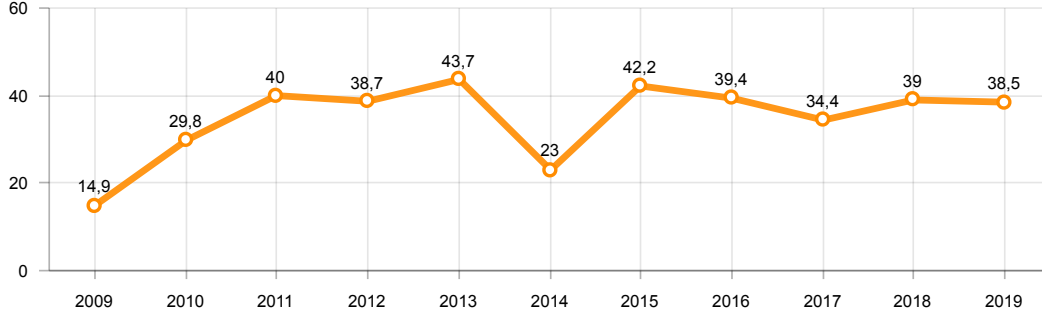
**Toplam Üretim ve Otomobil Üretimi (x1000)(OCAK)**  
Total & P.Cars Production (x1000)(January)



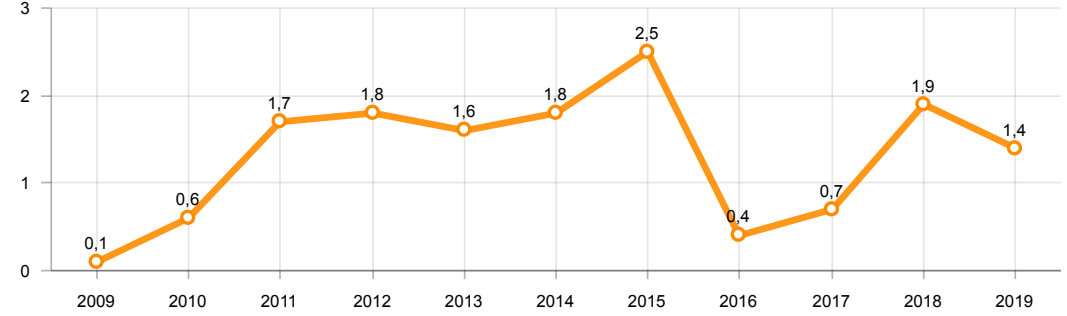
**Otomobil Üretimi ve İhracat (x1000)(OCAK)**  
P.Cars Production & Exports (x1000)(January)



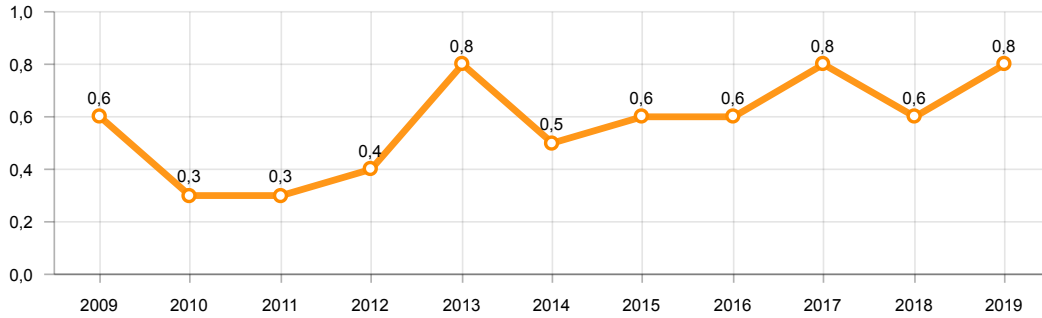
**Ticari Araç Üretimi (x1000)(OCAK)**  
Commercial Vehicle Production (x1000)(January)



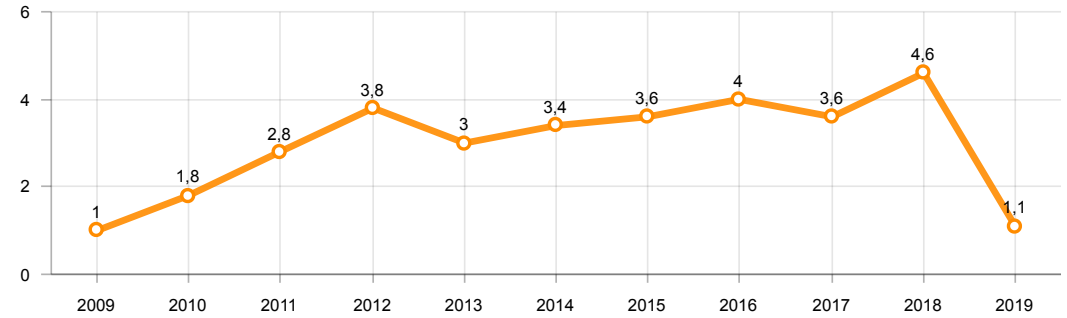
**Büyük Kamyon Üretimi (x1000)(OCAK)**  
Heavy Truck Production (x1000)(January)



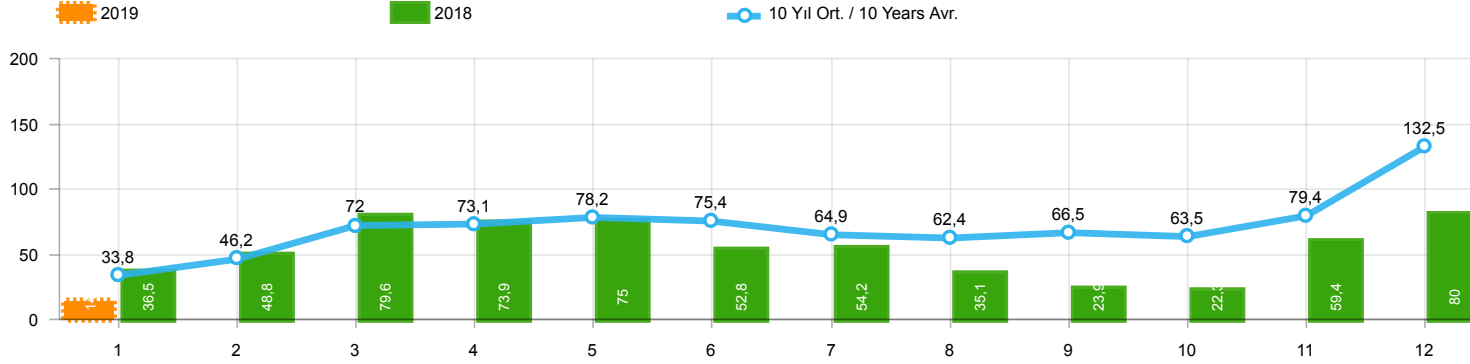
**Otobüs Üretimi (x1000)(OCAK)**  
Bus Production (x1000)(January)



**Traktör Üretimi (x1000)(OCAK)**  
F. Tractor Production (x1000)(January)

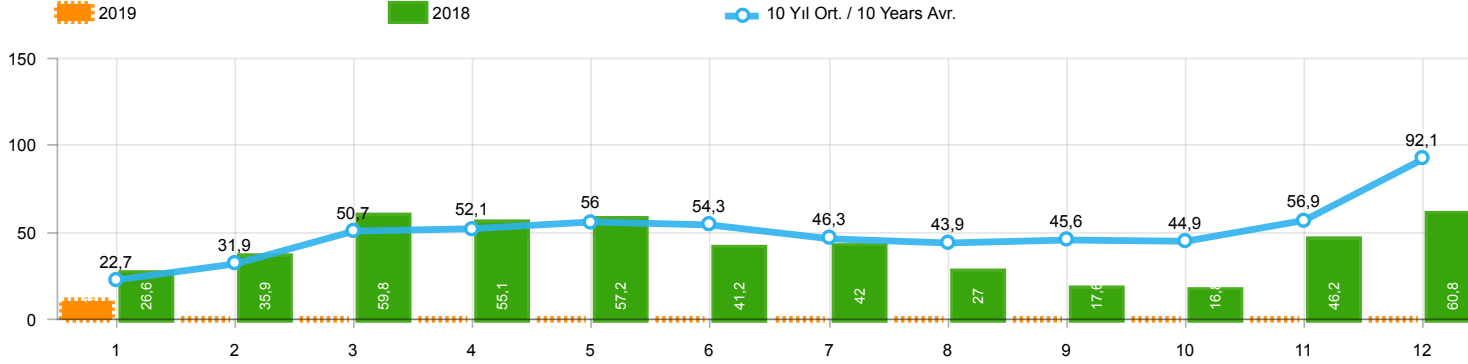


**Toplam Pazarın Analizi(x1000)(OCAK)**  
Total Market Analysis(x1000)(January)



Aylar / Months	10 Yıl Ort. / 10 Years Avr.	2019	%
1	33.809	14.775	-56,3
TOPLAM / TOTAL	33.809	14.775	-56,3

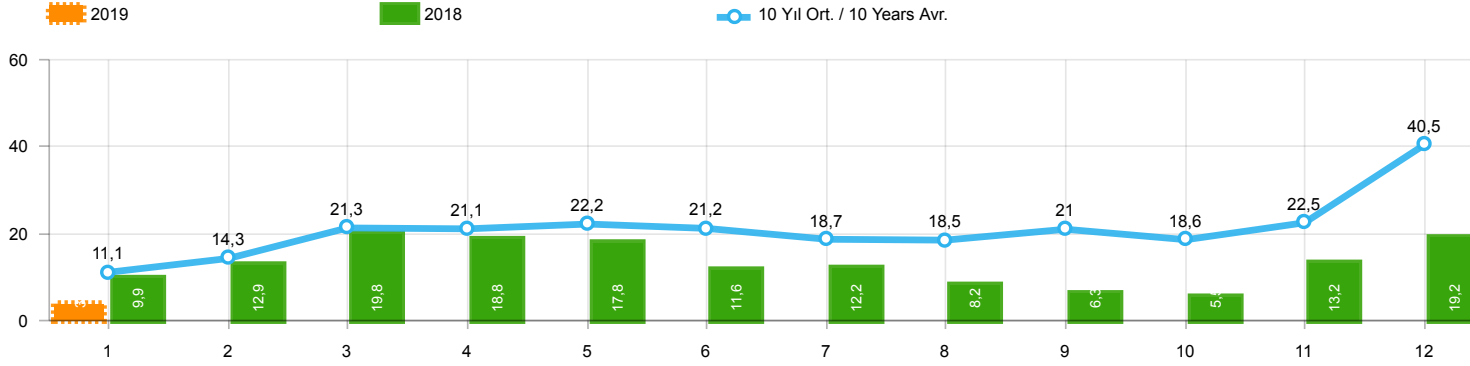
Yıl / Year	1	2	3	4	5	6	7	8	9	10	11	12	1-1 Toplam / Total	Toplam / Total	1-1 Yerli / Local	1-1 İthal / Import	İthal Oran / Import %
2009	20.605	22.873	56.527	54.433	64.947	63.090	30.374	37.038	83.553	22.191	29.309	91.762	20.605	576.702	9.558	11.047	53,6
2010	21.070	32.331	54.019	57.241	61.837	63.511	64.011	64.961	67.040	76.753	77.488	155.234	21.070	795.496	8.833	12.237	58,1
2011	47.759	62.586	84.045	82.782	85.862	85.992	65.658	61.645	64.313	73.227	67.150	134.468	47.759	915.487	19.822	27.937	58,5
2012	31.552	44.138	69.242	66.559	75.195	75.108	65.444	60.982	73.501	62.933	75.203	121.442	31.552	821.299	12.995	18.557	58,8
2013	37.563	51.133	72.943	77.265	85.835	78.043	75.152	67.662	71.388	60.690	83.470	136.048	37.563	897.192	13.747	23.816	63,4
2014	34.751	37.659	51.312	57.113	62.447	64.295	62.770	63.303	70.764	69.742	84.368	154.843	34.751	813.367	11.862	22.889	65,9
2015	37.256	59.221	89.765	96.182	85.804	91.071	87.358	85.244	67.181	67.086	88.431	164.464	37.256	1.019.063	15.309	21.947	58,9
2016	34.369	54.840	85.932	87.748	97.090	94.666	59.732	73.654	69.413	85.666	125.462	145.706	34.369	1.014.278	13.387	20.982	61,0
2017	36.640	48.585	76.178	78.231	88.066	85.820	84.727	74.818	74.046	94.439	103.772	141.507	36.640	986.829	14.813	21.827	59,6
2018	36.525	48.768	79.600	73.886	74.996	52.788	54.194	35.137	23.915	22.321	59.406	80.014	36.525	641.550	14.892	21.633	59,2
2019	14.775												14.775	14.775	6.353	8.422	57,0



Aylar / Months	10 Yıl Ort / 10 Years Avr.	2019	%
1	22.707	10.979	-51,6
TOPLAM / TOTAL	22.707	10.979	-51,7

Yıl / Year	1	2	3	4	5	6	7	8	9	10	11	12	1-1 Toplam / Total	Toplam / Total	1-1 Yerli / Local	1-1 İthal / Import	İthal Oran / Import %
2009	13.173	14.492	40.622	36.202	44.188	41.019	16.637	22.537	52.162	13.828	17.781	57.178	13.173	369.819	5.129	8.044	61,1
2010	12.594	20.651	33.958	36.549	40.467	42.086	41.399	42.222	42.477	47.859	50.061	99.461	12.594	509.784	3.789	8.805	69,9
2011	29.868	39.004	54.023	53.835	56.302	56.714	43.518	38.875	39.964	47.508	44.951	88.957	29.868	593.519	9.237	20.631	69,1
2012	21.077	29.189	47.270	45.645	50.460	50.849	44.531	41.236	49.360	43.440	52.297	80.926	21.077	556.280	7.190	13.887	65,9
2013	25.835	36.814	51.785	56.999	62.383	58.290	55.712	51.611	52.925	46.985	64.117	101.199	25.835	664.655	6.326	19.509	75,5
2014	24.368	27.167	37.812	42.769	46.379	47.278	46.602	45.131	49.262	50.814	59.695	110.054	24.368	587.331	6.160	18.208	74,7
2015	24.498	40.817	61.676	70.211	62.878	67.766	64.218	61.753	47.088	47.954	62.397	114.340	24.498	725.596	7.396	17.102	69,8
2016	23.358	40.588	63.975	65.618	73.832	71.111	45.566	53.977	51.340	63.746	95.783	108.044	23.358	756.938	7.375	15.983	68,4
2017	25.689	34.658	55.616	57.998	65.799	66.164	62.384	54.890	53.423	70.488	75.956	99.694	25.689	722.759	8.793	16.896	65,8
2018	26.611	35.901	59.798	55.108	57.227	41.225	42.024	26.976	17.595	16.809	46.204	60.843	26.611	486.321	9.779	16.832	63,3
2019	10.979												10.979	10.979	4.203	6.776	61,7

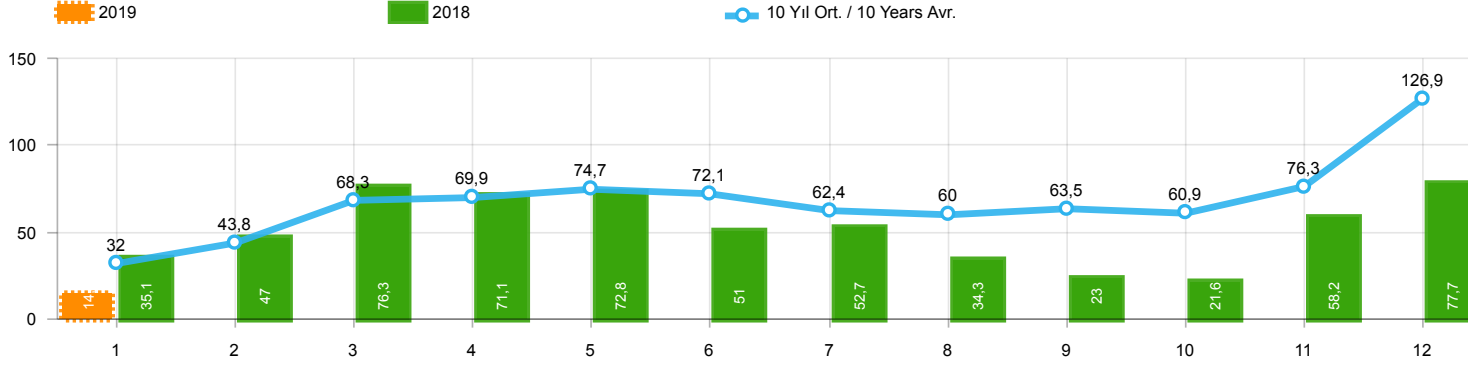
**Ticari Araç Pazarının Analizi(x1000)(OCAK)**  
CV Market Analysis(x1000)(January)



Aylar / Months	10 Yıl Ort / 10 Years Avr.	2019	%
1	11.102	3.796	-65,8
TOPLAM / TOTAL	11.102	3.796	-65,8

Yıl / Year	1	2	3	4	5	6	7	8	9	10	11	12	1-1 Toplam / Total	Toplam / Total	1-1 Yerli / Local	1-1 İthal / Import	İthal Oran / Import %
2009	7.432	8.381	15.905	18.231	20.759	22.071	13.737	14.501	31.391	8.363	11.528	34.584	7.432	206.883	4.429	3.003	40,4
2010	8.476	11.680	20.061	20.692	21.370	21.425	22.612	22.739	24.563	28.894	27.427	55.773	8.476	285.712	5.044	3.432	40,5
2011	17.891	23.582	30.022	28.947	29.560	29.278	22.140	22.770	24.349	25.719	22.199	45.511	17.891	321.968	10.585	7.306	40,8
2012	10.475	14.949	21.972	20.914	24.735	24.259	20.913	19.746	24.141	19.493	22.906	40.516	10.475	265.019	5.805	4.670	44,6
2013	11.728	14.319	21.158	20.266	23.452	19.753	19.440	16.051	18.463	13.705	19.353	34.849	11.728	232.537	7.421	4.307	36,7
2014	10.383	10.492	13.500	14.344	16.068	17.017	16.168	18.172	21.502	18.928	24.673	44.789	10.383	226.036	5.702	4.681	45,1
2015	12.758	18.404	28.089	25.971	22.926	23.305	23.140	23.491	20.093	19.132	26.034	50.124	12.758	293.467	7.913	4.845	38,0
2016	11.011	14.252	21.957	22.130	23.258	23.555	14.166	19.677	18.073	21.920	29.679	37.662	11.011	257.340	6.012	4.999	45,4
2017	10.951	13.927	20.562	20.233	22.267	19.656	22.343	19.928	20.623	23.951	27.816	41.813	10.951	264.070	6.020	4.931	45,0
2018	9.914	12.867	19.802	18.778	17.769	11.563	12.170	8.161	6.320	5.512	13.202	19.171	9.914	155.229	5.113	4.801	48,4
2019	3.796												3.796	3.796	2.150	1.646	43,4

**Hafif Araç Pazarının Analizi(x1000)(OCAK)**  
LV Market Analysis(x1000)(January)

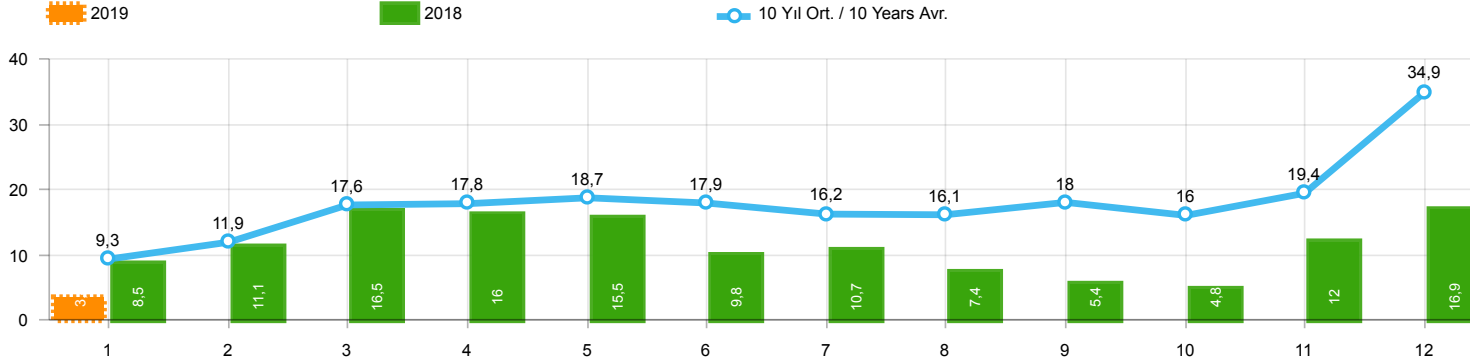


Aylar / Months	10 Yıl Ort / 10 Years Avr.	2019	%
1	32.006	14.373	-55,1
TOPLAM / TOTAL	32.006	14.373	-55,1

Yıl / Year	1	2	3	4	5	6	7	8	9	10	11	12	1-1 Toplam / Total	Toplam / Total	1-1 Yerli / Local	1-1 İthal / Import	İthal Oran / Import %
2009	19.606	21.742	55.111	52.640	63.191	61.067	28.845	35.609	81.397	21.033	27.962	88.923	19.606	557.126	8.719	10.887	55,5
2010	20.095	31.172	51.769	54.946	59.377	60.896	61.345	61.764	63.814	73.404	73.962	148.369	20.095	760.913	8.005	12.090	60,2
2011	44.892	58.663	78.403	77.695	80.646	81.573	63.044	58.406	60.129	69.421	63.657	127.910	44.892	864.439	18.023	26.869	59,9
2012	29.545	41.324	64.884	62.949	70.863	71.067	62.304	58.148	69.629	59.938	71.710	115.400	29.545	777.761	11.570	17.975	60,8
2013	35.523	48.307	68.774	73.575	81.468	74.096	71.596	65.043	67.963	58.014	79.301	129.718	35.523	853.378	12.216	23.307	65,6
2014	32.670	35.021	47.581	53.305	58.121	60.163	59.907	60.199	66.531	66.573	80.621	146.989	32.670	767.681	10.106	22.564	69,1
2015	34.615	55.331	83.302	91.602	81.542	86.158	83.836	82.577	64.025	64.255	84.601	156.173	34.615	968.017	13.173	21.442	61,9
2016	32.713	52.825	82.948	84.887	93.904	91.540	58.533	71.556	67.593	83.000	122.309	141.912	32.713	983.720	12.190	20.523	62,7
2017	35.323	46.965	73.802	75.988	85.422	83.658	82.297	72.536	71.352	91.752	100.859	136.240	35.323	956.194	13.781	21.542	61,0
2018	35.076	47.009	76.345	71.126	72.755	51.037	52.734	34.346	23.028	21.571	58.204	77.706	35.076	620.937	13.915	21.161	60,3
2019	14.373												14.373	14.373	6.068	8.305	57,8

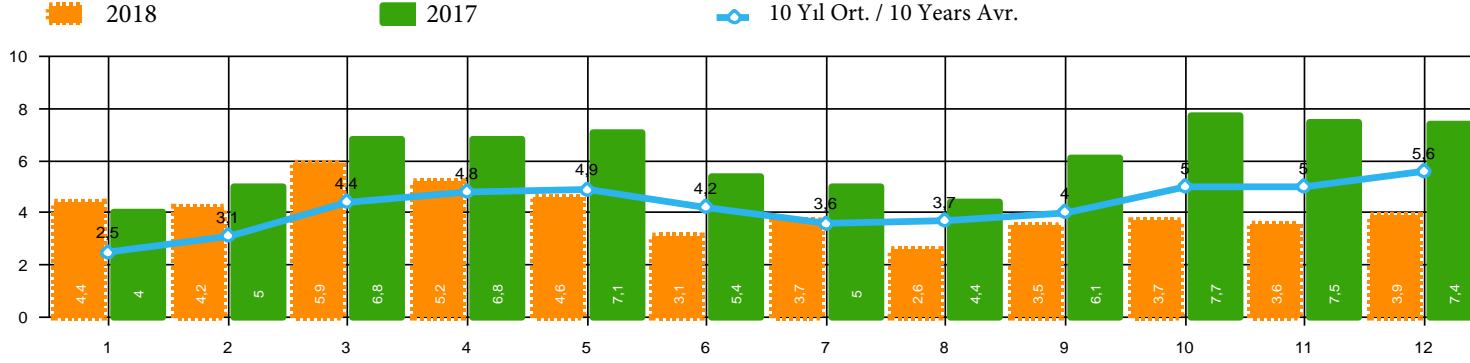


### Hafif Ticari Araç Pazarının Analizi(x1000)(OCAK) LCV Market Analysis(x1000)(January)



Aylar / Months	10 Yıl Ort / 10 Years Avr.	2019	%
1	9.299	3.394	-63,5
TOPLAM / TOTAL	9.299	3.394	-63,5

Yıl / Year	1	2	3	4	5	6	7	8	9	10	11	12	1-1 Toplam / Total	Toplam / Total	1-1 Yerli / Local	1-1 İthal / Import	İthal Oran / Import %
2009	6.433	7.250	14.489	16.438	19.003	20.048	12.208	13.072	29.235	7.205	10.181	31.745	6.433	187.307	3.590	2.843	44,2
2010	7.501	10.521	17.811	18.397	18.910	18.810	19.946	19.542	21.337	25.545	23.901	48.908	7.501	251.129	4.216	3.285	43,8
2011	15.024	19.659	24.380	23.860	24.344	24.859	19.526	19.531	20.165	21.913	18.706	38.953	15.024	270.920	8.786	6.238	41,5
2012	8.468	12.135	17.614	17.304	20.403	20.218	17.773	16.912	20.269	16.498	19.413	34.474	8.468	221.481	4.380	4.088	48,3
2013	9.688	11.493	16.989	16.576	19.085	15.806	15.884	13.432	15.038	11.029	15.184	28.519	9.688	188.723	5.890	3.798	39,2
2014	8.302	7.854	9.769	10.536	11.742	12.885	13.305	15.068	17.269	15.759	20.926	36.935	8.302	180.350	3.946	4.356	52,5
2015	10.117	14.514	21.626	21.391	18.664	18.392	19.618	20.824	16.937	16.301	22.204	41.833	10.117	242.421	5.777	4.340	42,9
2016	9.355	12.237	18.973	19.269	20.072	20.429	12.967	17.579	16.253	19.254	26.526	33.868	9.355	226.782	4.815	4.540	48,5
2017	9.634	12.307	18.186	17.990	19.623	17.494	19.913	17.646	17.929	21.264	24.903	36.546	9.634	233.435	4.988	4.646	48,2
2018	8.465	11.108	16.547	16.018	15.528	9.812	10.710	7.370	5.433	4.762	12.000	16.863	8.465	134.616	4.136	4.329	51,1
2019	3.394												3.394	3.394	1.865	1.529	45,1



Aylar / Months	10 Yıl Ort. / 10 Years Avr.	2018	%
1	2.510	4.362	73,8
2	3.127	4.179	33,7
3	4.447	5.925	33,2
4	4.833	5.216	7,9
5	4.934	4.584	-7,1
6	4.201	3.146	-25,1
7	3.594	3.654	1,7
8	3.680	2.587	-29,7
9	3.987	3.541	-11,2
10	5.007	3.698	-26,1
11	4.981	3.578	-28,2
12	5.598	3.886	-30,6
<b>TOPLAM / TOTAL</b>	<b>50.898</b>	<b>48.356</b>	<b>-5,0</b>

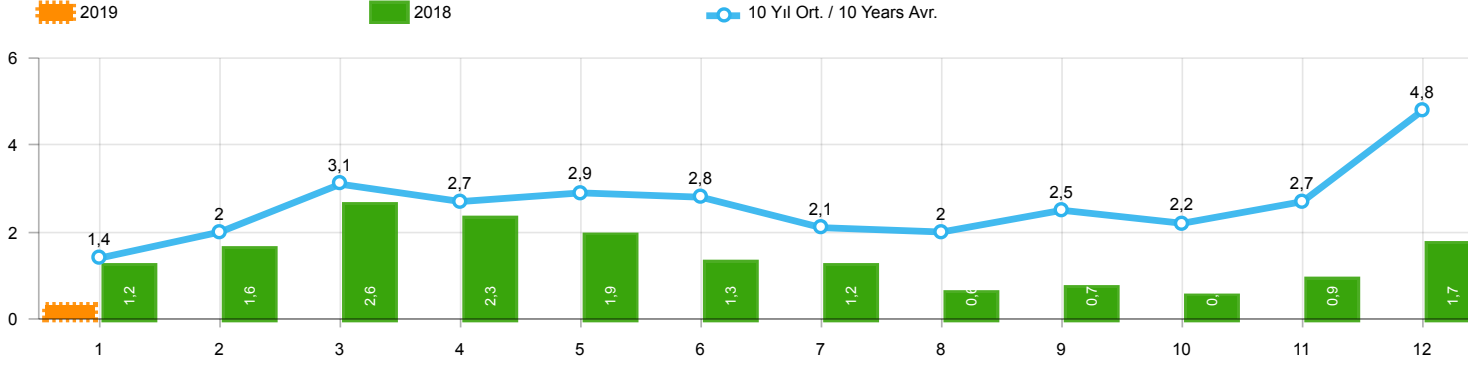
Yıl / Year	1	2	3	4	5	6	7	8	9	10	11	12	Toplam / Total
<b>2008</b>	2.770	1.855	3.395	3.081	2.769	2.400	2.232	2.485	1.856	1.773	1.305	1.101	27.022
<b>2009</b>	717	572	688	1.070	1.297	1.256	1.054	1.183	1.117	1.356	1.304	2.144	13.758
<b>2010</b>	1.111	1.991	2.330	3.039	2.567	2.638	1.965	3.019	2.806	4.424	3.978	6.168	36.036
<b>2011</b>	2.975	5.242	5.927	5.358	6.016	6.335	4.534	4.051	4.140	5.828	4.943	4.992	60.341
<b>2012</b>	2.362	1.983	4.348	6.579	6.273	4.569	3.837	3.158	3.618	4.027	4.807	4.757	50.318
<b>2013</b>	2.161	2.432	4.005	4.585	5.616	3.136	4.574	3.408	4.935	4.762	5.781	6.891	52.286
<b>2014</b>	2.169	3.512	4.476	4.905	5.094	5.028	4.233	4.920	5.619	5.743	6.250	7.409	59.358
<b>2015</b>	3.124	3.984	5.460	6.383	6.078	5.748	4.677	5.044	4.765	7.049	6.898	7.564	66.774
<b>2016</b>	3.739	4.731	7.067	6.546	6.575	5.543	3.833	5.134	4.945	7.372	7.090	7.603	70.178
<b>2017</b>	3.974	4.964	6.773	6.780	7.057	5.356	5.003	4.396	6.064	7.734	7.457	7.351	72.909
<b>2018</b>	4.362	4.179	5.925	5.216	4.584	3.146	3.654	2.587	3.541	3.698	3.578	3.886	48.356

Kaynak: TÜİK trafik kayıtları.

Rakamlar, son iki model yılına ait traktör tescillerinden oluşmaktadır.

Source: Turkish Statistical Institute – Traffic registrations

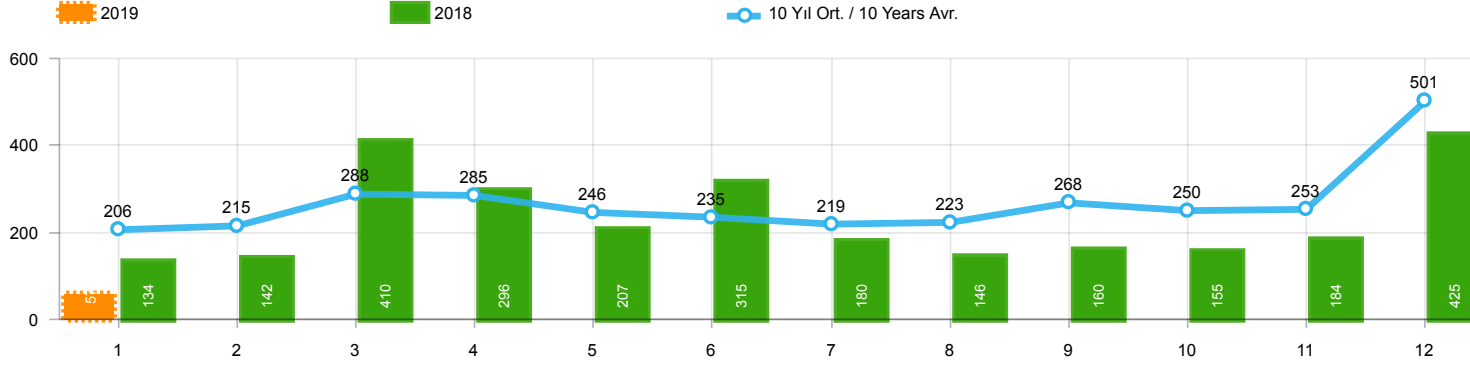
Data represents the last two model year's farm tractors registration figures



Aylar / Months	10 Yıl Ort / 10 Years Avr.	2019	%
1	1.446	318	-78,0
TOPLAM / TOTAL	1.446	318	-78,0

Yıl / Year	1	2	3	4	5	6	7	8	9	10	11	12	1-1 Toplam / Total	Toplam / Total	1-1 Yerli / Local	1-1 İthal / Import	İthal Oran / Import %
2009	782	763	1.062	1.381	1.426	1.649	1.261	1.164	1.862	963	1.047	2.368	782	15.728	622	160	20,5
2010	768	960	1.950	1.949	2.140	2.314	2.403	2.754	2.864	3.001	3.231	6.158	768	30.492	622	146	19,0
2011	2.651	3.544	5.142	4.503	4.563	3.852	2.261	2.745	3.784	3.400	3.149	5.712	2.651	45.306	1.585	1.066	40,2
2012	1.703	2.454	3.866	3.209	3.678	3.540	2.750	2.403	3.296	2.497	3.154	5.300	1.703	37.850	1.121	582	34,2
2013	1.484	2.113	3.343	2.925	3.504	3.186	2.777	2.103	2.875	2.086	3.631	5.444	1.484	35.471	977	507	34,2
2014	1.522	2.065	3.094	3.224	3.727	3.726	2.578	2.783	3.708	2.858	3.384	6.869	1.522	39.538	1.197	325	21,4
2015	2.215	3.346	5.699	3.729	3.600	4.253	2.922	2.211	2.687	2.266	3.146	7.307	2.215	43.381	1.710	505	22,8
2016	1.167	1.648	2.515	2.319	2.711	2.623	984	1.796	1.438	2.238	2.485	3.127	1.167	25.051	708	459	39,3
2017	931	1.290	1.982	1.888	2.184	1.891	1.974	1.860	2.284	2.188	2.487	4.438	931	25.397	646	285	30,6
2018	1.237	1.552	2.630	2.328	1.909	1.272	1.235	603	653	488	905	1.695	1.237	16.507	765	472	38,2
2019	318												318	318	201	117	36,8

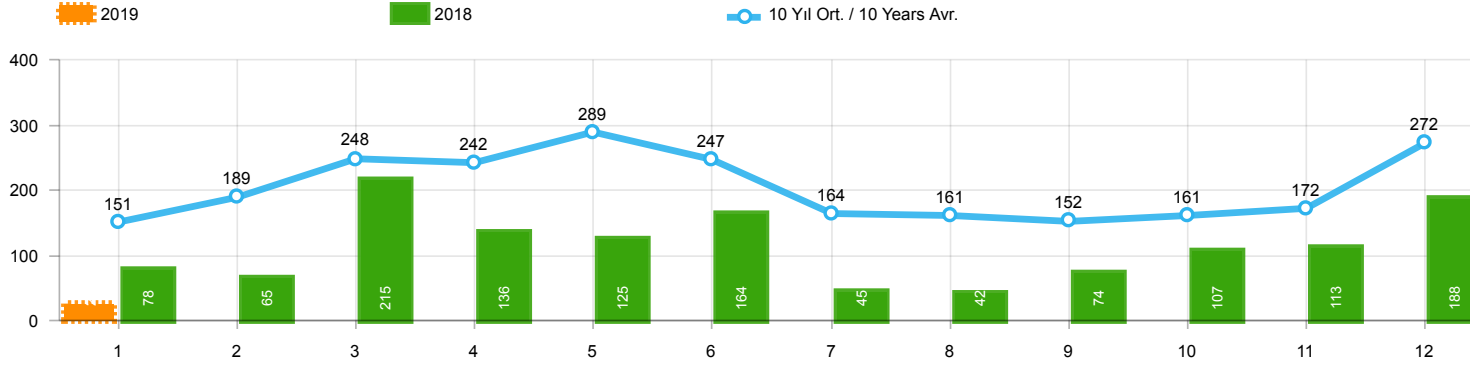
### Midibüs Pazarının Analizi(OCAK) Midibus Market Analysis(January)



Aylar / Months	10 Yıl Ort / 10 Years Avr.	2019	%
1	206	57	-72,4
TOPLAM / TOTAL	206	57	-72,4

Yıl / Year	1	2	3	4	5	6	7	8	9	10	11	12	1-1 Toplam / Total	Toplam / Total
2009	133	103	153	210	145	183	138	146	152	134	150	280	133	1.927
2010	140	128	172	153	127	124	93	232	199	204	162	382	140	2.116
2011	124	167	267	260	241	233	205	280	270	230	168	525	124	2.970
2012	179	257	277	229	257	239	216	249	325	269	189	398	179	3.084
2013	191	268	289	276	283	241	367	235	305	392	415	697	191	3.959
2014	360	394	384	333	294	258	216	229	395	220	266	653	360	4.002
2015	280	322	451	561	372	405	389	253	316	394	325	621	280	4.689
2016	309	158	251	302	261	196	139	220	241	230	354	431	309	3.092
2017	212	211	227	231	272	156	250	235	318	268	317	594	212	3.291
2018	134	142	410	296	207	315	180	146	160	155	184	425	134	2.754
2019	57												57	57

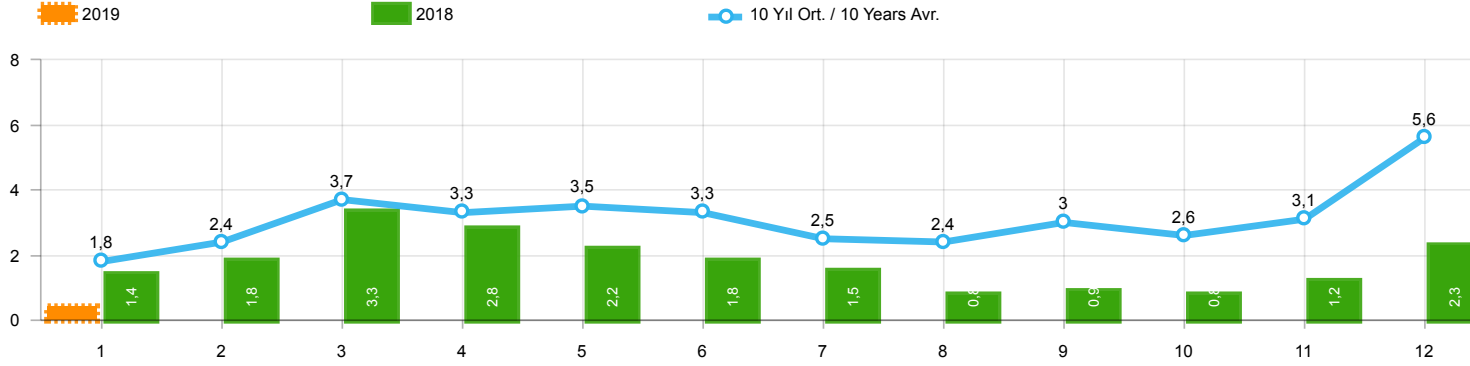
**Otobüs Pazarının Analizi(OCAK)**  
Otobus Market Analysis(January)



Aylar / Months	10 Yıl Ort / 10 Years Avr.	2019	%
1	151	27	-82,1
TOPLAM / TOTAL	151	27	-82,1

Yıl / Year	1	2	3	4	5	6	7	8	9	10	11	12	1-1 Toplam / Total	Toplam / Total	1-1 Yerli / Local	1-1 İthal / Import	İthal Oran / Import %
2009	84	265	201	202	185	191	130	119	142	61	150	191	84	1.921	84	-	-
2010	67	71	128	193	193	177	170	211	163	144	133	325	67	1.975	66	1	1,5
2011	92	212	233	324	412	334	148	214	130	176	176	321	92	2.772	90	2	2,2
2012	125	103	215	172	397	262	174	182	251	229	150	344	125	2.604	125	-	-
2013	365	445	537	489	580	520	412	281	245	198	123	189	365	4.384	363	2	0,5
2014	199	179	253	251	305	148	69	92	130	91	97	332	199	2.146	199	-	-
2015	146	222	313	290	290	255	211	203	153	171	359	363	146	2.976	146	-	-
2016	180	209	218	240	214	307	76	82	141	198	314	236	180	2.415	180	-	-
2017	174	119	167	124	188	115	206	187	92	231	109	235	174	1.947	174	-	-
2018	78	65	215	136	125	164	45	42	74	107	113	188	78	1.352	78	-	-
2019	27	-	-	-	-	-	-	-	-	-	-	-	27	27	27	-	-

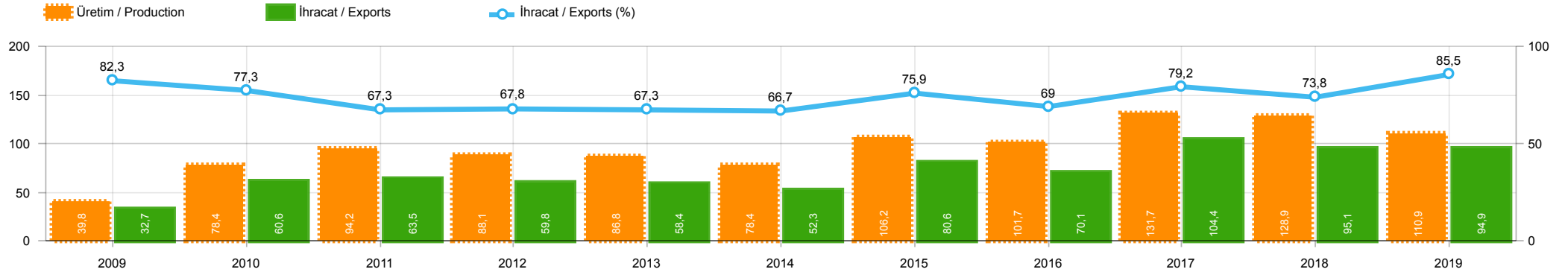
**Ağır Ticari Araç Pazarının Analizi(x1000)(OCAK)**  
HCV Market Analysis(x1000)(January)



Aylar / Months	10 Yıl Ort / 10 Years Avr.	2019	%
1	1.803	402	-77,7
TOPLAM / TOTAL	1.803	402	-77,7

Yıl / Year	1	2	3	4	5	6	7	8	9	10	11	12	1-1 Toplam / Total	Toplam / Total	1-1 Yerli / Local	1-1 İthal / Import	İthal Oran / Import %
2009	999	1.131	1.416	1.793	1.756	2.023	1.529	1.429	2.156	1.158	1.347	2.839	999	19.576	839	160	16,0
2010	975	1.159	2.250	2.295	2.460	2.615	2.666	3.197	3.226	3.349	3.526	6.865	975	34.583	828	147	15,1
2011	2.867	3.923	5.642	5.087	5.216	4.419	2.614	3.239	4.184	3.806	3.493	6.558	2.867	51.048	1.799	1.068	37,3
2012	2.007	2.814	4.358	3.610	4.332	4.041	3.140	2.834	3.872	2.995	3.493	6.042	2.007	43.538	1.425	582	29,0
2013	2.040	2.826	4.169	3.690	4.367	3.947	3.556	2.619	3.425	2.676	4.169	6.330	2.040	43.814	1.531	509	25,0
2014	2.081	2.638	3.731	3.808	4.326	4.132	2.863	3.104	4.233	3.169	3.747	7.854	2.081	45.686	1.756	325	15,6
2015	2.641	3.890	6.463	4.580	4.262	4.913	3.522	2.667	3.156	2.831	3.830	8.291	2.641	51.046	2.136	505	19,1
2016	1.656	2.015	2.984	2.861	3.186	3.126	1.199	2.098	1.820	2.666	3.153	3.794	1.656	30.558	1.197	459	27,7
2017	1.317	1.620	2.376	2.243	2.644	2.162	2.430	2.282	2.694	2.687	2.913	5.267	1.317	30.635	1.032	285	21,6
2018	1.449	1.759	3.255	2.760	2.241	1.751	1.460	791	887	750	1.202	2.308	1.449	20.613	977	472	32,6
2019	402												402	402	285	117	29,1

**İhracat / Üretim(x1000) (2009 - 2019 / 1 - 1)(Traktör Dahil)**  
Exports / Production(x1000) (2009 - 2019 / 1 - 1)(Including Tractors)



	2009	2010	2011	2012	2013	2014	2015	2016	2017	2018	2019
İhracat/Export	32.742	60.606	63.461	59.778	58.448	52.288	80.630	70.140	104.359	95.115	94.871
Üretim/Production	39.763	78.358	94.232	88.133	86.818	78.444	106.178	101.671	131.740	128.911	110.932
İhracat/Exports (%)	82,3	77,3	67,3	67,8	67,3	66,7	75,9	69	79,2	73,8	85,5

**Taşıt Araçları İhracatı (2017 - 2019)**  
Motor Vehicle Exports (2017 - 2019)

SEKTÖR / SECTOR	2017	2018	1/1-2018	1/1-2019	2019/2018 %
OTOMOBİL / Pass.Car	921.354	875.147	73.408	58.807	-19,9
<b>OTOMOBİL TOPLAM / Pass. Car Total</b>	<b>921.354</b>	<b>875.147</b>	<b>73.408</b>	<b>58.807</b>	<b>-19,9</b>
KAMYON / Truck	7.800	14.478	634	1.325	109,0
KAMYONET / Pick Up	350.108	372.954	18.119	27.998	54,5
OTOBÜS / Bus	7.028	7.708	490	801	63,5
MİNİBÜS / Minibus	45.794	47.736	1.649	4.755	188,4
MİDİBÜS / Midibus	710	846	13	74	469,2
<b>TİCARİ ARAÇLAR TOPLAM / Commercial Vehicle Total</b>	<b>411.440</b>	<b>443.722</b>	<b>20.905</b>	<b>34.953</b>	<b>67,2</b>
<b>TAŞIT ARAÇLARI TOPLAM / Motor Vehicles Total</b>	<b>1.332.794</b>	<b>1.318.869</b>	<b>94.313</b>	<b>93.760</b>	<b>-0,6</b>
TRAKTÖR / F.Tractor	13.123	15.123	802	1.111	38,5
<b>TRAKTÖR TOPLAM / F.Tractor Total</b>	<b>13.123</b>	<b>15.123</b>	<b>802</b>	<b>1.111</b>	<b>38,5</b>
<b>GENEL TOPLAM / GRAND TOTAL</b>	<b>1.345.917</b>	<b>1.333.992</b>	<b>95.115</b>	<b>94.871</b>	<b>-0,3</b>

**Üretici Bazında İhracat (adet)**  
Exports by Manufacturer (unit)

Üreticiler / Manufacturers	2017	2018	1-1 / 2018	1-1 / 2019
A.I.O.S.	700	964	9	108
FORD OTOSAN	296.840	328.502	16.668	28.753
HATTAT TRAKTÖR	1.100	621	1	39
HONDA TÜRKİYE	9.391	13.699	1.251	800
HYUNDAI ASSAN	204.382	190.347	10.899	11.414
KARSAN	2.969	3.419	248	102
M. BENZ TÜRK	9.865	16.309	786	1.402
MAN TÜRKİYE	2.007	2.425	243	298
OTOKAR	691	901	23	112
OYAK RENAULT	287.915	280.411	27.028	20.009
TEMSA	870	645	6	68
TOFAŞ	270.698	243.796	15.578	13.215
TOYOTA	246.466	237.451	21.574	17.479
TÜRK TRAKTÖR	12.023	14.502	801	1.072
<b>GENEL TOPLAM / Grand Total</b>	<b>1.345.917</b>	<b>1.333.992</b>	<b>95.115</b>	<b>94.871</b>

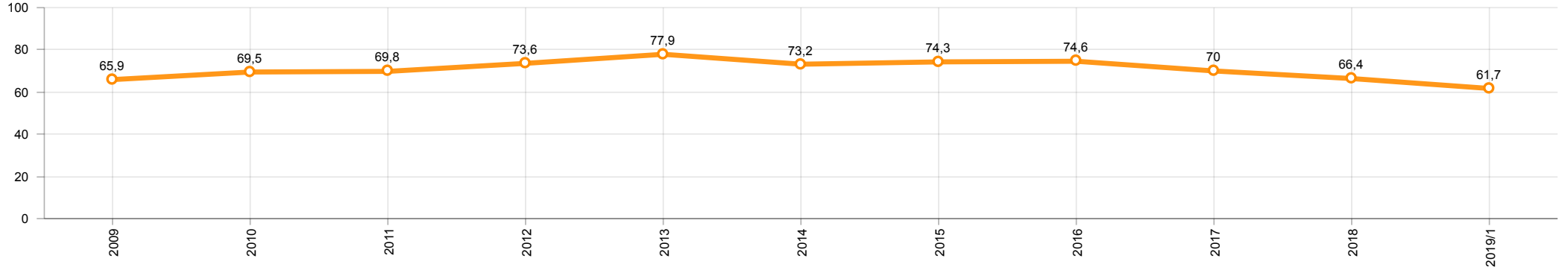
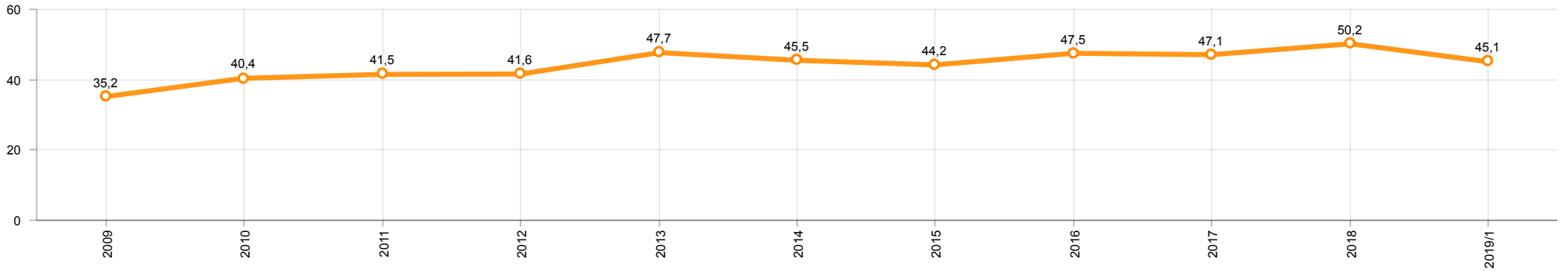


**Otomotiv Ana ve Yan Sanayii İhracatı (ABD \$)**  
CBU and CKD Exports - \$

Sektör / Sector	2017	2018	OCAK - OCAK / January - January 2018	OCAK - OCAK / January - January 2019	2019 / 2018 %
<b>Toplam Yan Sanayi / Total Component Industry</b>	<b>9.835.914.658</b>	<b>10.881.562.512</b>	<b>910.652.213</b>	<b>885.376.574</b>	<b>-2,8</b>
İç ve Dış Lastik / Tyres	1.131.782.300	1.353.896.118	105.585.076	113.873.857	7,9
Emniyet Camı / Safety Glasses	136.486.099	151.148.689	13.539.526	11.768.334	-13,1
Motor / Engine	486.426.738	581.983.113	59.330.173	44.235.289	-25,4
Akümülatör / Batteries	295.794.286	388.107.835	20.842.566	32.282.838	54,9
Diğer Aksam ve Parça / Spare Parts&Components	7.785.425.235	8.406.426.757	711.354.872	683.216.256	-4,0
<b>Toplam Ana Sanayi / Total Vehicle Industry</b>	<b>19.257.086.833</b>	<b>21.350.315.330</b>	<b>1.422.394.375</b>	<b>1.496.169.917</b>	<b>5,2</b>
Otobüs / Bus	1.308.249.224	1.503.188.826	94.614.373	152.611.319	61,3
Midibüs-Minibüs / Midibus-Minibus	217.704.499	215.450.022	16.566.351	9.978.724	-39,8
Otomobil / P.Cars	11.790.577.760	12.420.951.066	951.492.580	812.076.271	-14,7
Kamyon-Kamyonet / Truck-Pick Up&Van	4.849.022.718	5.376.446.529	272.569.611	386.685.353	41,9
Römork ve Yarı Römork / Trailer-Semi Trailer	342.793.231	507.186.149	28.108.250	37.638.533	33,9
Çekici / Tractor	427.928.256	904.738.051	42.082.169	69.946.093	66,2
Tarım Traktörü / Farm Tractor	320.811.145	422.354.687	16.961.041	27.233.624	60,6
<b>Toplam / Total</b>	<b>29.093.001.491</b>	<b>32.231.877.842</b>	<b>2.333.046.588</b>	<b>2.381.546.491</b>	<b>2,1</b>

Kaynak: Uludağ İhracatçı Birlikleri . UIB tarafından OSD için özel olarak analiz edilen Otomotiv İhracatı kapsamında; UIB Türkiye Geneli Otomotiv Endüstrisi sınıflandırmasına kıyasla "Römork ve Yarı Römork" , "Tarım Traktörü" verileri dahil edilmekte; "Kullanılmış Araçlar" , "İki Tekerlekli Taşıtlar" , "Demiryolu Taşıtları" hariç tutulmaktadır.

Source: Uludağ Exporters Association – Special Analyze for OSD.Compared to Turkish General Automotive Industry classification, this special analyze includes; farms tractors, trailers and semi-trailers, does not include; used vehicles, two-wheeled vehicles and railway vehicles

**Otomobil Pazarında İthalatın Payı (%)**  
Import Share in P.Car Market (%)**Hafif Ticari Araçlar Pazarında İthalatın Payı (%)**  
Import Share in LCV Market (%)

Araç Tipleri / Vehicle Types	1	2	3	4	5	6	7	8	9	10	11	12	Toplam / Total
<b>OTOMOBİL - Pass.Car</b>	<b>58.807</b>												<b>58.807</b>
KAMYON - H. Truck	1.325												1.325
KAMYONET - Pick Up	27.998												27.998
OTOBÜS - Bus	801												801
MINİBÜS - Minibus	4.755												4.755
MİDİBÜS - Midibus	74												74
<b>TİCARİ ARAÇLAR TOPLAMI - CV Total</b>	<b>34.953</b>												<b>34.953</b>
<b>TAŞIT ARAÇLARI TOPLAMI - MV Total</b>	<b>93.760</b>												<b>93.760</b>
TRAKTÖR - F.Tractor	1.111												1.111
<b>GENEL TOPLAM - Grand Total</b>	<b>94.871</b>												<b>94.871</b>

Otomobil / P.Car

Firmalar / Firms	1	2	3	4	5	6	7	8	9	10	11	12	Toplam / Total
FORD OTOSAN	1.469	-	-	-	-	-	-	-	-	-	-	-	1.469
HONDA TÜRKİYE	800	-	-	-	-	-	-	-	-	-	-	-	800
HYUNDAI ASSAN	11.414	-	-	-	-	-	-	-	-	-	-	-	11.414
OYAK RENAULT	20.009	-	-	-	-	-	-	-	-	-	-	-	20.009
TOFAŞ	7.636	-	-	-	-	-	-	-	-	-	-	-	7.636
TOYOTA	17.479	-	-	-	-	-	-	-	-	-	-	-	17.479
<b>TOPLAM - Total</b>	<b>58.807</b>	-	-	-	-	-	-	-	-	-	-	-	<b>58.807</b>

Kamyonet / Pick-up

Firmalar / Firms	1	2	3	4	5	6	7	8	9	10	11	12	Toplam / Total
FORD OTOSAN	22.346	-	-	-	-	-	-	-	-	-	-	-	22.346
KARSAN	73	-	-	-	-	-	-	-	-	-	-	-	73
OTOKAR	-	-	-	-	-	-	-	-	-	-	-	-	-
TOFAŞ	5.579	-	-	-	-	-	-	-	-	-	-	-	5.579
<b>TOPLAM - Total</b>	<b>27.998</b>	-	-	-	-	-	-	-	-	-	-	-	<b>27.998</b>

Minibüs / Minibus

Firmalar / Firms	1	2	3	4	5	6	7	8	9	10	11	12	Toplam / Total
FORD OTOSAN	4.754	-	-	-	-	-	-	-	-	-	-	-	4.754
KARSAN	1	-	-	-	-	-	-	-	-	-	-	-	1
<b>TOPLAM - Total</b>	<b>4.755</b>	-	-	-	-	-	-	-	-	-	-	-	<b>4.755</b>

**2019 Otomotiv Sanayii Dış Satışlar**  
2019 Automotive Industry Exports Sales

**Kamyon / Truck**

Firmalar / Firms	1	2	3	4	5	6	7	8	9	10	11	12	Toplam / Total
FORD OTOSAN	184	-	-	-	-	-	-	-	-	-	-	-	184
KARSAN	-	-	-	-	-	-	-	-	-	-	-	-	-
M. BENZ TÜRK	1.141	-	-	-	-	-	-	-	-	-	-	-	1.141
OTOKAR	-	-	-	-	-	-	-	-	-	-	-	-	-
<b>TOPLAM - Total</b>	<b>1.325</b>	<b>-</b>	<b>-</b>	<b>-</b>	<b>-</b>	<b>-</b>	<b>-</b>	<b>-</b>	<b>-</b>	<b>-</b>	<b>-</b>	<b>-</b>	<b>1.325</b>

**Midibüs / Midibus**

Firmalar / Firms	1	2	3	4	5	6	7	8	9	10	11	12	Toplam / Total
A.I.O.S.	52	-	-	-	-	-	-	-	-	-	-	-	52
KARSAN	5	-	-	-	-	-	-	-	-	-	-	-	5
OTOKAR	8	-	-	-	-	-	-	-	-	-	-	-	8
TEMSA	9	-	-	-	-	-	-	-	-	-	-	-	9
<b>TOPLAM - Total</b>	<b>74</b>	<b>-</b>	<b>-</b>	<b>-</b>	<b>-</b>	<b>-</b>	<b>-</b>	<b>-</b>	<b>-</b>	<b>-</b>	<b>-</b>	<b>-</b>	<b>74</b>

**Otobüs / Bus**

Firmalar / Firms	1	2	3	4	5	6	7	8	9	10	11	12	Toplam / Total
A.I.O.S.	56	-	-	-	-	-	-	-	-	-	-	-	56
KARSAN	23	-	-	-	-	-	-	-	-	-	-	-	23
M. BENZ TÜRK	261	-	-	-	-	-	-	-	-	-	-	-	261
MAN TÜRKİYE	298	-	-	-	-	-	-	-	-	-	-	-	298
OTOKAR	104	-	-	-	-	-	-	-	-	-	-	-	104
TEMSA	59	-	-	-	-	-	-	-	-	-	-	-	59
<b>TOPLAM - Total</b>	<b>801</b>	<b>-</b>	<b>-</b>	<b>-</b>	<b>-</b>	<b>-</b>	<b>-</b>	<b>-</b>	<b>-</b>	<b>-</b>	<b>-</b>	<b>-</b>	<b>801</b>

**Traktör / F.Tractor**

Firmalar / Firms	1	2	3	4	5	6	7	8	9	10	11	12	Toplam / Total
HATTAT TRAKTÖR	39	-	-	-	-	-	-	-	-	-	-	-	39
TÜRK TRAKTÖR	1.072	-	-	-	-	-	-	-	-	-	-	-	1.072
<b>TOPLAM - Total</b>	<b>1.111</b>	<b>-</b>	<b>-</b>	<b>-</b>	<b>-</b>	<b>-</b>	<b>-</b>	<b>-</b>	<b>-</b>	<b>-</b>	<b>-</b>	<b>-</b>	<b>1.111</b>

**2019 Yılı İthal Otomobil Satışları**  
2019 P.Cars Import Sales

Firmalar / Firms	2018 Toplam / Total	1	2	3	4	5	6	7	8	9	10	11	12	Toplam / Total
Alfa Romeo	203	8	-	-	-	-	-	-	-	-	-	-	-	8
Aston Martin	16	2	-	-	-	-	-	-	-	-	-	-	-	2
Audi	13.295	495	-	-	-	-	-	-	-	-	-	-	-	495
Bentley	10	2	-	-	-	-	-	-	-	-	-	-	-	2
BMW	12.728	352	-	-	-	-	-	-	-	-	-	-	-	352
Citroen	7.669	80	-	-	-	-	-	-	-	-	-	-	-	80
Dacia	26.193	429	-	-	-	-	-	-	-	-	-	-	-	429
DS	236	3	-	-	-	-	-	-	-	-	-	-	-	3
Ferrari	18	-	-	-	-	-	-	-	-	-	-	-	-	-
Fiat	1.264	26	-	-	-	-	-	-	-	-	-	-	-	26
Ford	20.697	235	-	-	-	-	-	-	-	-	-	-	-	235
Honda	4.862	144	-	-	-	-	-	-	-	-	-	-	-	144
Hyundai	19.113	794	-	-	-	-	-	-	-	-	-	-	-	794
Infiniti	18	-	-	-	-	-	-	-	-	-	-	-	-	-
Jaguar	220	2	-	-	-	-	-	-	-	-	-	-	-	2
Jeep	2.430	100	-	-	-	-	-	-	-	-	-	-	-	100
Kia	7.694	150	-	-	-	-	-	-	-	-	-	-	-	150
Lamborghini	3	1	-	-	-	-	-	-	-	-	-	-	-	1
Land Rover	1.248	36	-	-	-	-	-	-	-	-	-	-	-	36
Lexus	56	4	-	-	-	-	-	-	-	-	-	-	-	4
Maserati	55	2	-	-	-	-	-	-	-	-	-	-	-	2
Mazda	1.005	29	-	-	-	-	-	-	-	-	-	-	-	29
Mercedes-Benz	14.445	204	-	-	-	-	-	-	-	-	-	-	-	204
Mini	1.373	17	-	-	-	-	-	-	-	-	-	-	-	17
Mitsubishi	514	38	-	-	-	-	-	-	-	-	-	-	-	38
Nissan	24.605	538	-	-	-	-	-	-	-	-	-	-	-	538
Opel	20.960	348	-	-	-	-	-	-	-	-	-	-	-	348
Peugeot	24.905	524	-	-	-	-	-	-	-	-	-	-	-	524
Porsche	565	9	-	-	-	-	-	-	-	-	-	-	-	9
Renault	21.090	198	-	-	-	-	-	-	-	-	-	-	-	198
Seat	10.383	139	-	-	-	-	-	-	-	-	-	-	-	139
Skoda	21.340	247	-	-	-	-	-	-	-	-	-	-	-	247
Smart	35	5	-	-	-	-	-	-	-	-	-	-	-	5
Ssangyong	222	10	-	-	-	-	-	-	-	-	-	-	-	10
Subaru	1.471	52	-	-	-	-	-	-	-	-	-	-	-	52
Suzuki	2.878	65	-	-	-	-	-	-	-	-	-	-	-	65
Toyota	3.405	47	-	-	-	-	-	-	-	-	-	-	-	47
Volkswagen	49.749	1.210	-	-	-	-	-	-	-	-	-	-	-	1.210
Volvo	5.943	231	-	-	-	-	-	-	-	-	-	-	-	231
<b>GENEL TOPLAM - Grand Total</b>	<b>322.916</b>	<b>6.776</b>	-	-	-	-	-	-	-	-	-	-	-	<b>6.776</b>

**2019 Yılı İthal Hafif Ticari Araç Satışları**  
2019 Light Commercial Vehicles Import Sales

Firmalar / Firms	2018 Toplam / Total	1	2	3	4	5	6	7	8	9	10	11	12	Toplam / Total
Citroen	4.633	126	-	-	-	-	-	-	-	-	-	-	-	126
Dacia	3.725	53	-	-	-	-	-	-	-	-	-	-	-	53
Fiat	3.019	53	-	-	-	-	-	-	-	-	-	-	-	53
Ford	2.783	134	-	-	-	-	-	-	-	-	-	-	-	134
Hyundai	1.493	83	-	-	-	-	-	-	-	-	-	-	-	83
Isuzu	578	3	-	-	-	-	-	-	-	-	-	-	-	3
Iveco	1.598	48	-	-	-	-	-	-	-	-	-	-	-	48
Karsan	-	-	-	-	-	-	-	-	-	-	-	-	-	-
Kia	1.947	14	-	-	-	-	-	-	-	-	-	-	-	14
Mercedes-Benz	7.993	159	-	-	-	-	-	-	-	-	-	-	-	159
Mitsubishi	3.445	47	-	-	-	-	-	-	-	-	-	-	-	47
Nissan	1.741	82	-	-	-	-	-	-	-	-	-	-	-	82
Peugeot	5.247	197	-	-	-	-	-	-	-	-	-	-	-	197
Renault	8.908	180	-	-	-	-	-	-	-	-	-	-	-	180
Toyota	3.159	55	-	-	-	-	-	-	-	-	-	-	-	55
Volkswagen	17.085	295	-	-	-	-	-	-	-	-	-	-	-	295
<b>GENEL TOPLAM - Grand Total</b>	<b>67.354</b>	<b>1.529</b>	-	-	-	-	-	-	-	-	-	-	-	<b>1.529</b>