



OTOMOTİV SANAYİİ DERNEĞİ  
AUTOMOTIVE MANUFACTURERS ASSOCIATION

# OTOMOTİV SEKTÖRÜ AYLIK DEĞERLENDİRME RAPORU ARALIK 2018

AUTOMOTIVE INDUSTRY MONTHLY REPORT  
December 2018

OSD "OICA" Üyesidir



OSD is a Member of "OICA"

	12 - 2017	12 - 2018	%	1 - 12 / 2017	1 - 12 / 2018	%	1/2017 - 12/2017	1/2018 - 12/2018	%
Otomobil Üretimi/P.Cars Production	95.060	82.157	-13,6	1.142.906	1.026.461	-10,2	1.142.906	1.026.461	-10,2
Toplam Üretim/Total Production	152.146	122.993	-19,2	1.695.731	1.550.150	-8,6	1.695.731	1.550.150	-8,6
Otomobil Pazar/P.Cars Market	99.694	60.843	-39,0	722.759	486.321	-32,7	722.759	486.321	-32,7
Toplam Pazar/Total Market	141.507	80.005	-43,5	986.829	641.541	-35,0	986.829	641.541	-35,0
Otomobil İthalat/P.Cars Import	68.064	38.533	-43,4	505.968	322.916	-36,2	505.968	322.916	-36,2
Toplam İthalat/Total Import	84.714	47.318	-44,1	624.487	397.266	-36,4	624.487	397.266	-36,4
Otomobil İhracat/P.Cars Export	69.036	65.093	-5,7	921.354	875.147	-5,0	921.354	875.147	-5,0
Toplam İhracat/Total Export	108.550	99.695	-8,2	1.332.794	1.318.869	-1,0	1.332.794	1.318.869	-1,0
Otomobil İhracat(\$)/P.Cars Export (\$)	987.440.883	994.619.186	0,7	11.790.577.760	12.420.951.066	5,3	11.790.577.760	12.420.951.066	5,3
Toplam İhracat(\$)/Total Export (\$)*	2.534.784.748	2.509.059.795	-1,0	29.093.001.491	32.231.877.843	10,8	29.093.001.491	32.231.877.843	10,8

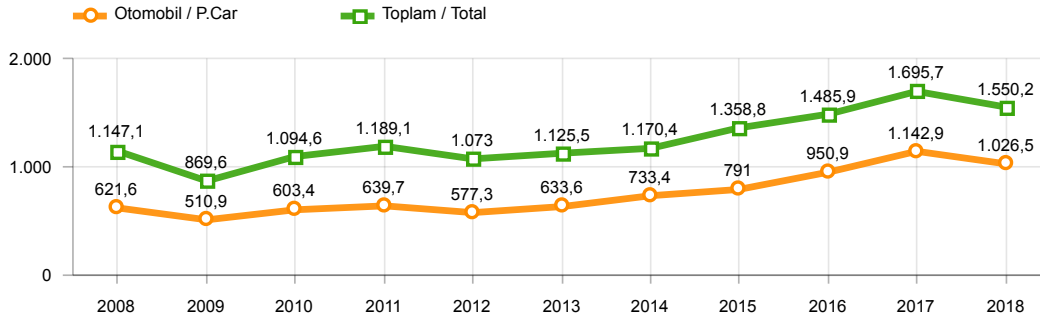
Parametreler/Parameters	12 - 2017	12 - 2018	%	1 - 12 / 2017	1 - 12 / 2018	%	1/2017 - 12/2017	1/2018 - 12/2018	%
ÜFE / PPI	1,4	-2,2	-	15,5	33,6	-	15,5	33,6	-
TÜFE / CPI	0,7	-0,4	-	11,9	20,3	-	11,9	20,3	-
Sanayi Endeksi / Industry Index	1,3	-1,6	-	16,6	31,1	-	16,6	31,1	-
Dolar \$ **	3,8	5,2	35,9	3,6	4,8	31,9	3,6	4,8	31,9
Euro € **	4,6	6,0	29,8	4,1	5,6	37,1	4,1	5,6	37,1
Japon Yeni ¥ **	3,4	4,7	36,8	3,2	4,3	33,7	3,2	4,3	33,7

\*Toplam Sanayi / Total Industry Including Components

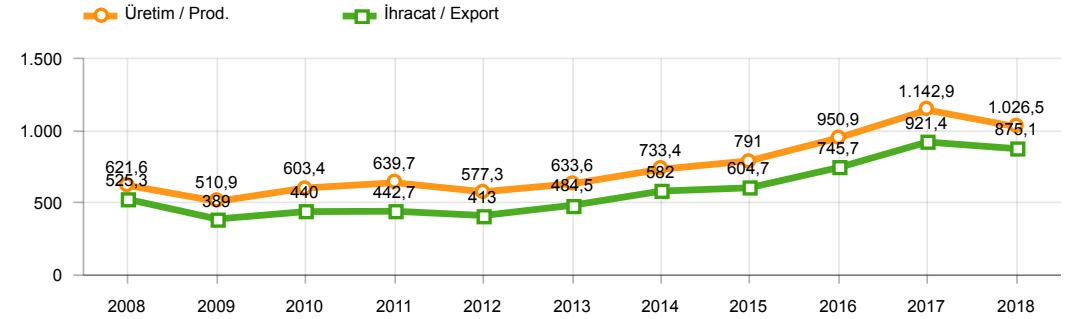
\*\* Ortalama Değerler / Average Values

Araç Tipleri / Types	12 / 2017	12 / 2018	12 % Değişim	1-12 / 2017	1-12 / 2018	1-12 % Değişim
OTOMOBİL / Pass.Car	95.060	82.157	-13,6	1.142.906	1.026.461	-10,2
<b>OTOMOBİL Toplam / Pass.Car Total</b>	<b>95.060</b>	<b>82.157</b>	<b>-13,6</b>	<b>1.142.906</b>	<b>1.026.461</b>	<b>-10,2</b>
B.KAMYON / H. Truck	2.218	1.182	-46,7	19.386	22.883	18,0
K.KAMYON / L. Truck	483	295	-38,9	4.116	2.654	-35,5
KAMYONET / Pick Up	48.696	32.835	-32,6	462.389	429.361	-7,1
OTOBÜS / Bus	557	777	39,5	8.166	8.541	4,6
MINIBÜS / Minibus	4.669	5.574	19,4	55.036	56.934	3,4
MİDİBÜS / Midibus	463	173	-62,6	3.732	3.316	-11,1
<b>TİCARİ ARAÇLAR Toplam / Commercial Vehicles Total</b>	<b>57.086</b>	<b>40.836</b>	<b>-28,5</b>	<b>552.825</b>	<b>523.689</b>	<b>-5,3</b>
<b>TAŞIT ARAÇLARI Toplam / Motor Vehicles Total</b>	<b>152.146</b>	<b>122.993</b>	<b>-19,2</b>	<b>1.695.731</b>	<b>1.550.150</b>	<b>-8,6</b>
TRAKTÖR / F.Tractor	4.645	1.440	-69,0	53.841	37.686	-30,0
<b>TRAKTÖR Toplam / F.Tractor Total</b>	<b>4.645</b>	<b>1.440</b>	<b>-69,0</b>	<b>53.841</b>	<b>37.686</b>	<b>-30,0</b>
<b>GENEL TOPLAM / Grand Total</b>	<b>156.791</b>	<b>124.433</b>	<b>-20,6</b>	<b>1.749.572</b>	<b>1.587.836</b>	<b>-9,2</b>

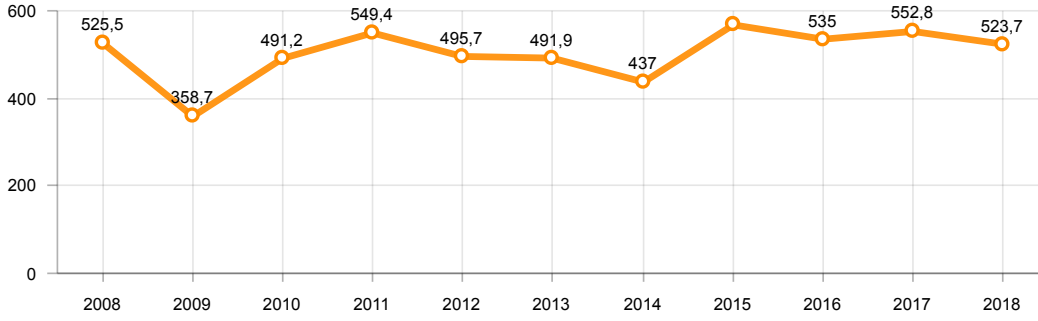
Toplam Üretim ve Otomobil Üretimi (x1000)(OCAK - ARALIK)  
Total & P.Cars Production (x1000)(January - December)



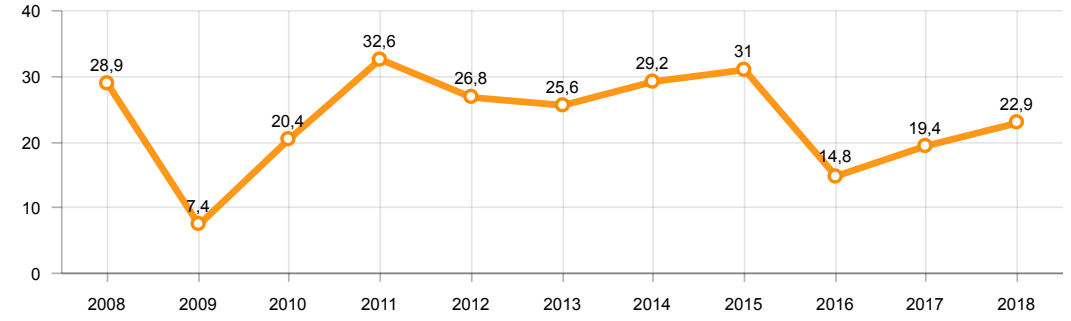
Otomobil Üretimi ve İhracat (x1000)(OCAK - ARALIK)  
P.Cars Production & Exports (x1000)(January - December)



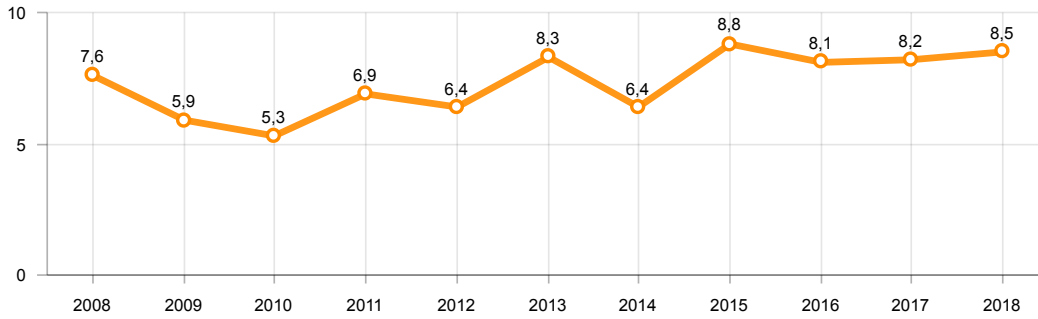
**Ticari Araç Üretimi (x1000)(OCAK - ARALIK)**  
**Commercial Vehicle Production (x1000)(January - December)**



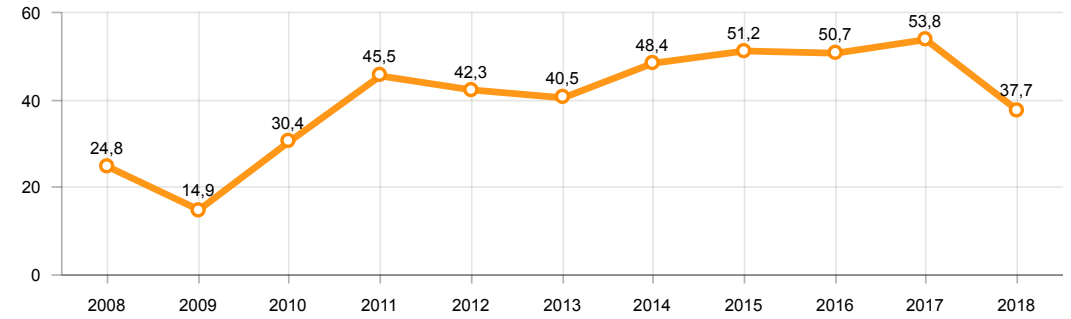
**Büyük Kamyon Üretimi (x1000)(OCAK - ARALIK)**  
**Heavy Truck Production (x1000)(January - December)**



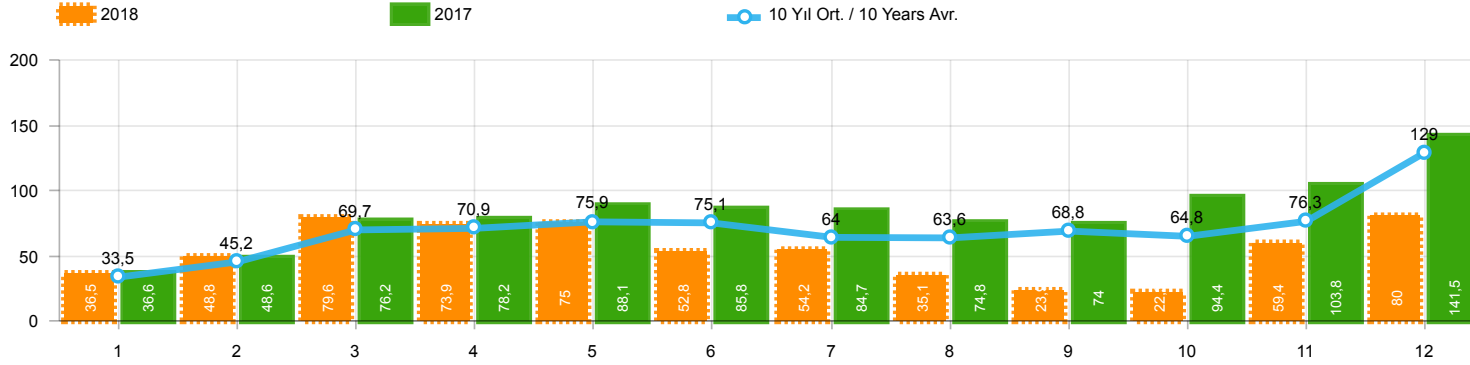
**Otobüs Üretimi (x1000)(OCAK - ARALIK)**  
**Bus Production (x1000)(January - December)**



**Traktör Üretimi (x1000)(OCAK - ARALIK)**  
**F. Tractor Production (x1000)(January - December)**



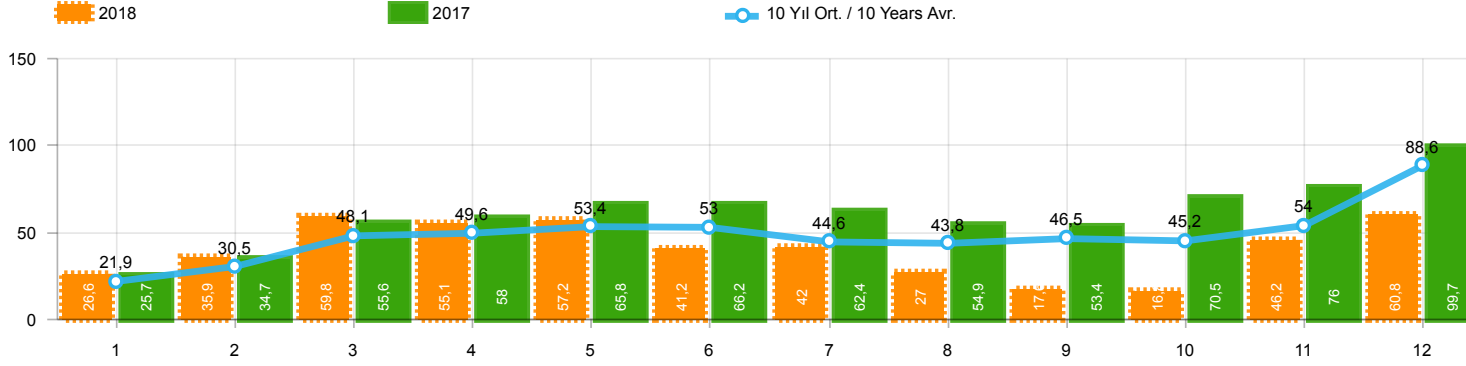
**Toplam Pazarın Analizi(x1000)(OCAK - ARALIK)**  
Total Market Analysis(x1000)(January - December)



Aylar / Months	10 Yıl Ort. / 10 Years Avr.	2018	%
1	33.545	36.525	8,9
2	45.155	48.768	8,0
3	69.683	79.600	14,2
4	70.861	73.886	4,3
5	75.885	74.996	-1,2
6	75.097	52.788	-29,7
7	63.986	54.194	-15,3
8	63.599	35.137	-44,8
9	68.790	23.915	-65,2
10	64.788	22.321	-65,5
11	76.294	59.406	-22,1
12	128.977	80.005	-38,0
TOPLAM / TOTAL	836.658	641.541	-23,3

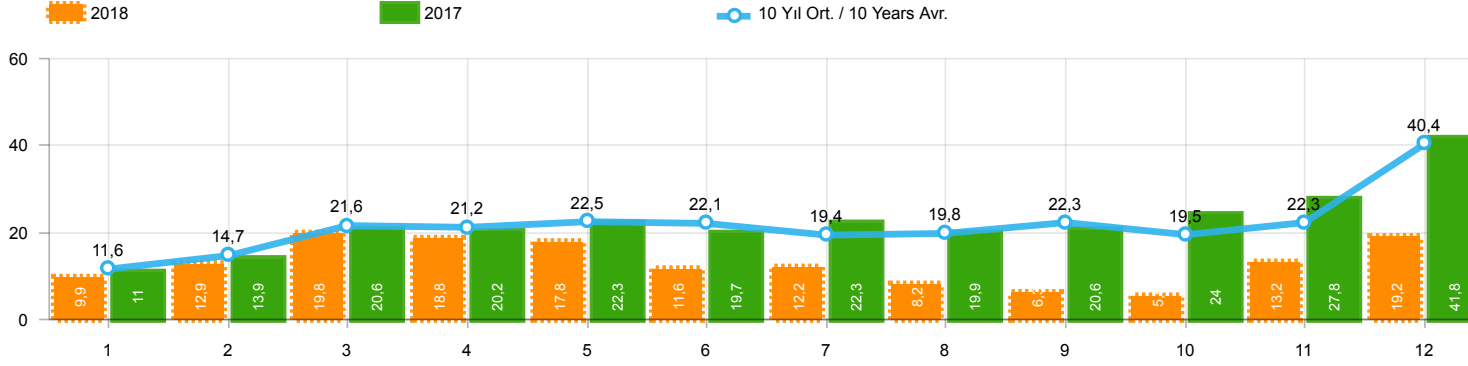
Yıl / Year	1	2	3	4	5	6	7	8	9	10	11	12	1-12 Toplam / Total	Toplam / Total	1-12 Yerli / Local	1-12 İthal / Import	İthal Oran / Import %
2008	33.882	38.187	56.863	51.052	51.762	49.371	44.634	46.679	46.696	35.152	28.291	44.296	526.865	526.865	223.131	303.734	57,6
2009	20.605	22.873	56.527	54.433	64.947	63.090	30.374	37.038	83.553	22.191	29.309	91.762	576.702	576.702	263.597	313.105	54,3
2010	21.070	32.331	54.019	57.241	61.837	63.511	64.011	64.961	67.040	76.753	77.488	155.234	795.496	795.496	330.230	465.266	58,5
2011	47.759	62.586	84.045	82.782	85.862	85.992	65.658	61.645	64.313	73.227	67.150	134.468	915.487	915.487	373.734	541.753	59,2
2012	31.552	44.138	69.242	66.559	75.195	75.108	65.444	60.982	73.501	62.933	75.203	121.442	821.299	821.299	307.515	513.784	62,6
2013	37.563	51.133	72.943	77.265	85.835	78.043	75.152	67.662	71.388	60.690	83.470	136.048	897.192	897.192	279.461	617.731	68,9
2014	34.751	37.659	51.312	57.113	62.447	64.295	62.770	63.303	70.764	69.742	84.368	154.843	813.367	813.367	289.849	523.518	64,4
2015	37.256	59.221	89.765	96.182	85.804	91.071	87.358	85.244	67.181	67.086	88.431	164.464	1.019.063	1.019.063	359.233	659.830	64,7
2016	34.369	54.840	85.932	87.748	97.090	94.666	59.732	73.654	69.413	85.666	125.462	145.706	1.014.278	1.014.278	333.010	681.268	67,2
2017	36.640	48.585	76.178	78.231	88.066	85.820	84.727	74.818	74.046	94.439	103.772	141.507	986.829	986.829	362.342	624.487	63,3
2018	36.525	48.768	79.600	73.886	74.996	52.788	54.194	35.137	23.915	22.321	59.406	80.005	641.541	641.541	244.275	397.266	61,9

**Otomobil Pazarının Analizi(x1000)(OCAK - ARALIK)**  
P.Cars Market Analysis(x1000)(January - December)



Aylar / Months	10 Yıl Ort. / 10 Years Avr.	2018	%
1	21.905	26.611	21,5
2	30.458	35.901	17,9
3	48.088	59.798	24,4
4	49.614	55.108	11,1
5	53.417	57.227	7,1
6	53.000	41.225	-22,2
7	44.610	42.024	-5,8
8	43.833	26.976	-38,5
9	46.505	17.595	-62,2
10	45.241	16.809	-62,8
11	54.024	46.204	-14,5
12	88.573	60.843	-31,3
TOPLAM / TOTAL	579.268	486.321	-16,1

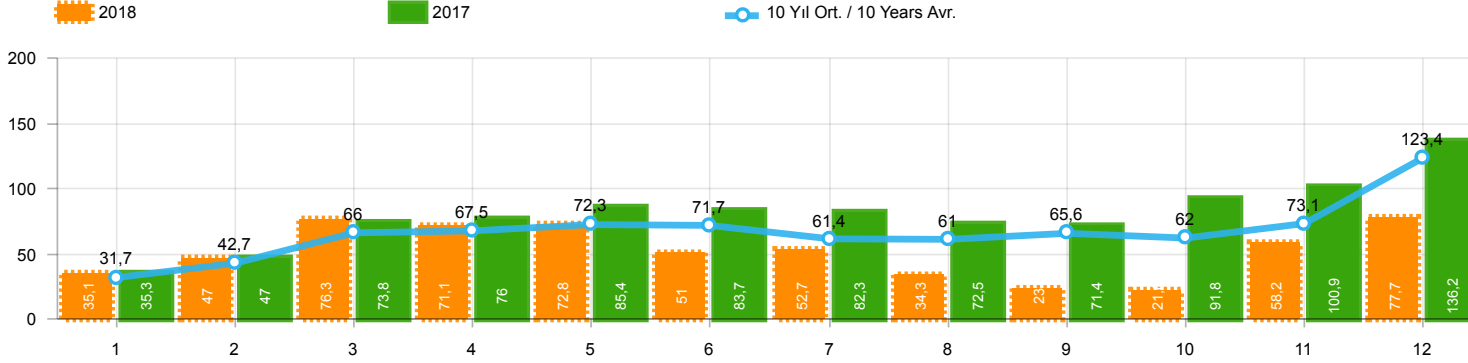
Yıl / Year	1	2	3	4	5	6	7	8	9	10	11	12	1-12 Toplam / Total	Toplam / Total	1-12 Yerli / Local	1-12 İthal / Import	İthal Oran / Import %
2008	18.588	21.196	34.147	30.313	31.477	28.724	25.530	26.102	27.053	19.788	17.201	25.879	305.998	305.998	99.205	206.793	67,6
2009	13.173	14.492	40.622	36.202	44.188	41.019	16.637	22.537	52.162	13.828	17.781	57.178	369.819	369.819	126.277	243.542	65,9
2010	12.594	20.651	33.958	36.549	40.467	42.086	41.399	42.222	42.477	47.859	50.061	99.461	509.784	509.784	155.634	354.150	69,5
2011	29.868	39.004	54.023	53.835	56.302	56.714	43.518	38.875	39.964	47.508	44.951	88.957	593.519	593.519	179.488	414.031	69,8
2012	21.077	29.189	47.270	45.645	50.460	50.849	44.531	41.236	49.360	43.440	52.297	80.926	556.280	556.280	146.604	409.676	73,6
2013	25.835	36.814	51.785	56.999	62.383	58.290	55.712	51.611	52.925	46.985	64.117	101.199	664.655	664.655	147.128	517.527	77,9
2014	24.368	27.167	37.812	42.769	46.379	47.278	46.602	45.131	49.262	50.814	59.695	110.054	587.331	587.331	157.349	429.982	73,2
2015	24.498	40.817	61.676	70.211	62.878	67.766	64.218	61.753	47.088	47.954	62.397	114.340	725.596	725.596	186.526	539.070	74,3
2016	23.358	40.588	63.975	65.618	73.832	71.111	45.566	53.977	51.340	63.746	95.783	108.044	756.938	756.938	191.893	565.045	74,6
2017	25.689	34.658	55.616	57.998	65.799	66.164	62.384	54.890	53.423	70.488	75.956	99.694	722.759	722.759	216.791	505.968	70,0
2018	26.611	35.901	59.798	55.108	57.227	41.225	42.024	26.976	17.595	16.809	46.204	60.843	486.321	486.321	163.405	322.916	66,4



Aylar / Months	10 Yıl Ort. / 10 Years Avr.	2018	%
1	11.640	9.914	-14,8
2	14.698	12.867	-12,5
3	21.594	19.802	-8,3
4	21.247	18.778	-11,6
5	22.468	17.769	-20,9
6	22.097	11.563	-47,7
7	19.376	12.170	-37,2
8	19.765	8.161	-58,7
9	22.284	6.320	-71,6
10	19.547	5.512	-71,8
11	22.271	13.202	-40,7
12	40.404	19.162	-52,6
TOPLAM / TOTAL	257.390	155.220	-39,7

Yıl / Year	1	2	3	4	5	6	7	8	9	10	11	12	1-12 Toplam / Total	Toplam / Total	1-12 Yerli / Local	1-12 İthal / Import	İthal Oran / Import %
2008	15.294	16.991	22.716	20.739	20.285	20.647	19.104	20.577	19.643	15.364	11.090	18.417	220.867	220.867	123.926	96.941	43,9
2009	7.432	8.381	15.905	18.231	20.759	22.071	13.737	14.501	31.391	8.363	11.528	34.584	206.883	206.883	137.320	69.563	33,6
2010	8.476	11.680	20.061	20.692	21.370	21.425	22.612	22.739	24.563	28.894	27.427	55.773	285.712	285.712	174.596	111.116	38,9
2011	17.891	23.582	30.022	28.947	29.560	29.278	22.140	22.770	24.349	25.719	22.199	45.511	321.968	321.968	194.246	127.722	39,7
2012	10.475	14.949	21.972	20.914	24.735	24.259	20.913	19.746	24.141	19.493	22.906	40.516	265.019	265.019	160.911	104.108	39,3
2013	11.728	14.319	21.158	20.266	23.452	19.753	19.440	16.051	18.463	13.705	19.353	34.849	232.537	232.537	132.333	100.204	43,1
2014	10.383	10.492	13.500	14.344	16.068	17.017	16.168	18.172	21.502	18.928	24.673	44.789	226.036	226.036	132.500	93.536	41,4
2015	12.758	18.404	28.089	25.971	22.926	23.305	23.140	23.491	20.093	19.132	26.034	50.124	293.467	293.467	172.707	120.760	41,1
2016	11.011	14.252	21.957	22.130	23.258	23.555	14.166	19.677	18.073	21.920	29.679	37.662	257.340	257.340	141.117	116.223	45,2
2017	10.951	13.927	20.562	20.233	22.267	19.656	22.343	19.928	20.623	23.951	27.816	41.813	264.070	264.070	145.551	118.519	44,9
2018	9.914	12.867	19.802	18.778	17.769	11.563	12.170	8.161	6.320	5.512	13.202	19.162	155.220	155.220	80.870	74.350	47,9

**Hafif Araç Pazarının Analizi(x1000)(OCAK - ARALIK)**  
LV Market Analysis(x1000)(January - December)

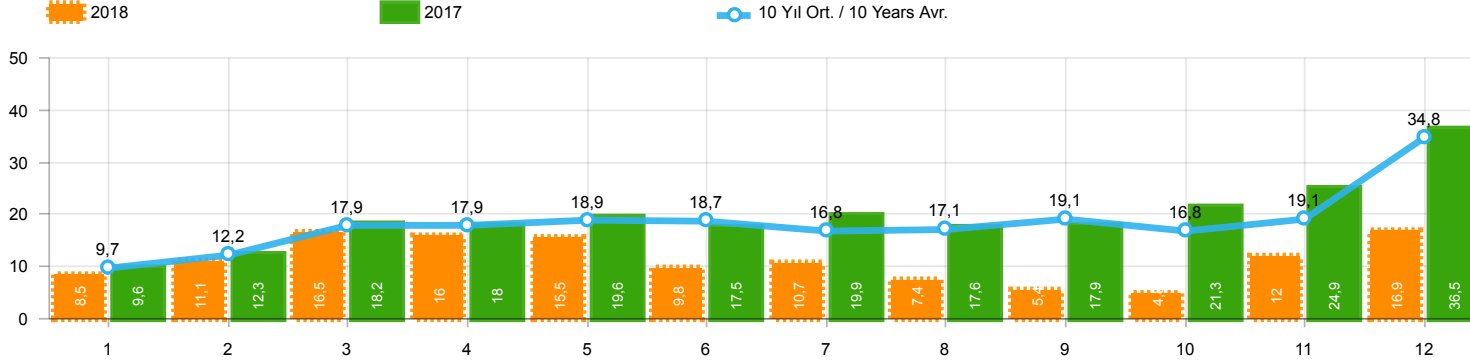


Aylar / Months	10 Yıl Ort. / 10 Years Avr.	2018	%
1	31.651	35.076	10,8
2	42.660	47.009	10,2
3	66.022	76.345	15,6
4	67.529	71.126	5,3
5	72.313	72.755	0,6
6	71.654	51.037	-28,8
7	61.386	52.734	-14,1
8	60.951	34.346	-43,6
9	65.637	23.028	-64,9
10	62.027	21.571	-65,2
11	73.124	58.204	-20,4
12	123.371	77.706	-37,0
TOPLAM / TOTAL	798.325	620.937	-22,2

Yıl / Year	1	2	3	4	5	6	7	8	9	10	11	12	1-12 Toplam / Total	Toplam / Total	1-12 Yerli / Local	1-12 İthal / Import	İthal Oran / Import %
2008	31.527	35.251	53.649	47.701	48.598	46.324	42.156	43.670	43.932	32.884	26.253	42.078	494.023	494.023	196.162	297.861	60,3
2009	19.606	21.742	55.111	52.640	63.191	61.067	28.845	35.609	81.397	21.033	27.962	88.923	557.126	557.126	247.694	309.432	55,5
2010	20.095	31.172	51.769	54.946	59.377	60.896	61.345	61.764	63.814	73.404	73.962	148.369	760.913	760.913	305.354	455.559	59,9
2011	44.892	58.663	78.403	77.695	80.646	81.573	63.044	58.406	60.129	69.421	63.657	127.910	864.439	864.439	338.074	526.365	60,9
2012	29.545	41.324	64.884	62.949	70.863	71.067	62.304	58.148	69.629	59.938	71.710	115.400	777.761	777.761	276.003	501.758	64,5
2013	35.523	48.307	68.774	73.575	81.468	74.096	71.596	65.043	67.963	58.014	79.301	129.718	853.378	853.378	245.906	607.472	71,2
2014	32.670	35.021	47.581	53.305	58.121	60.163	59.907	60.199	66.531	66.573	80.621	146.989	767.681	767.681	255.573	512.108	66,7
2015	34.615	55.331	83.302	91.602	81.542	86.158	83.836	82.577	64.025	64.255	84.601	156.173	968.017	968.017	321.725	646.292	66,8
2016	32.713	52.825	82.948	84.887	93.904	91.540	58.533	71.556	67.593	83.000	122.309	141.912	983.720	983.720	310.864	672.856	68,4
2017	35.323	46.965	73.802	75.988	85.422	83.658	82.297	72.536	71.352	91.752	100.859	136.240	956.194	956.194	340.306	615.888	64,4
2018	35.076	47.009	76.345	71.126	72.755	51.037	52.734	34.346	23.028	21.571	58.204	77.706	620.937	620.937	230.493	390.444	62,9



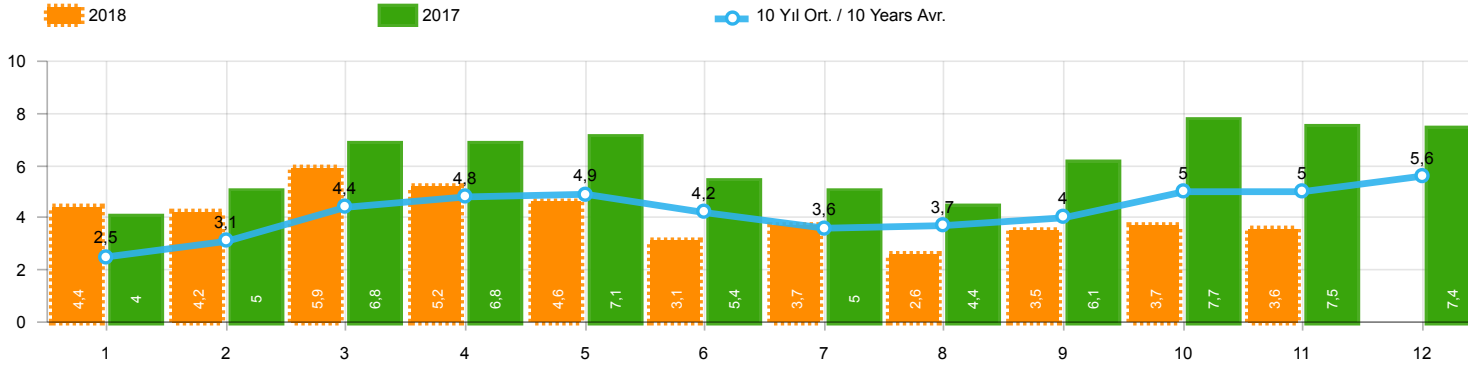
**Hafif Ticari Araç Pazarının Analizi(x1000)(OCAK - ARALIK)**  
LCV Market Analysis(x1000)(January - December)



Aylar / Months	10 Yıl Ort / 10 Years Avr.	2018	%
1	9.746	8.465	-13,1
2	12.203	11.108	-9,0
3	17.934	16.547	-7,7
4	17.915	16.018	-10,6
5	18.897	15.528	-17,8
6	18.654	9.812	-47,4
7	16.777	10.710	-36,2
8	17.117	7.370	-56,9
9	19.131	5.433	-71,6
10	16.786	4.762	-71,6
11	19.100	12.000	-37,2
12	34.798	16.863	-51,5
<b>TOPLAM / TOTAL</b>	<b>219.057</b>	<b>134.616</b>	<b>-38,6</b>

Yıl / Year	1	2	3	4	5	6	7	8	9	10	11	12	1-12 Toplam / Total	Toplam / Total	1-12 Yerli / Local	1-12 İthal / Import	İthal Oran / Import %
2008	12.939	14.055	19.502	17.388	17.121	17.600	16.626	17.568	16.879	13.096	9.052	16.199	188.025	188.025	96.957	91.068	48,4
2009	6.433	7.250	14.489	16.438	19.003	20.048	12.208	13.072	29.235	7.205	10.181	31.745	187.307	187.307	121.417	65.890	35,2
2010	7.501	10.521	17.811	18.397	18.910	18.810	19.946	19.542	21.337	25.545	23.901	48.908	251.129	251.129	149.720	101.409	40,4
2011	15.024	19.659	24.380	23.860	24.344	24.859	19.526	19.531	20.165	21.913	18.706	38.953	270.920	270.920	158.586	112.334	41,5
2012	8.468	12.135	17.614	17.304	20.403	20.218	17.773	16.912	20.269	16.498	19.413	34.474	221.481	221.481	129.399	92.082	41,6
2013	9.688	11.493	16.989	16.576	19.085	15.806	15.884	13.432	15.038	11.029	15.184	28.519	188.723	188.723	98.778	89.945	47,7
2014	8.302	7.854	9.769	10.536	11.742	12.885	13.305	15.068	17.269	15.759	20.926	36.935	180.350	180.350	98.224	82.126	45,5
2015	10.117	14.514	21.626	21.391	18.664	18.392	19.618	20.824	16.937	16.301	22.204	41.833	242.421	242.421	135.199	107.222	44,2
2016	9.355	12.237	18.973	19.269	20.072	20.429	12.967	17.579	16.253	19.254	26.526	33.868	226.782	226.782	118.971	107.811	47,5
2017	9.634	12.307	18.186	17.990	19.623	17.494	19.913	17.646	17.929	21.264	24.903	36.546	233.435	233.435	123.515	109.920	47,1
2018	8.465	11.108	16.547	16.018	15.528	9.812	10.710	7.370	5.433	4.762	12.000	16.863	134.616	134.616	67.088	67.528	50,2

**Traktör Pazarının Analizi(x1000)(OCAK - KASIM)**  
Tractor Market Analysis(x1000)(January - November)



Aylar / Months	10 Yıl Ort / 10 Years Avr.	2018	%
1	2.510	4.362	73,8
2	3.127	4.179	33,7
3	4.447	5.925	33,2
4	4.833	5.216	7,9
5	4.934	4.584	-7,1
6	4.201	3.146	-25,1
7	3.594	3.654	1,7
8	3.680	2.587	-29,7
9	3.987	3.541	-11,2
10	5.007	3.698	-26,1
11	4.981	3.578	-28,2
TOPLAM / TOTAL	45.300	44.470	-1,8

Yıl / Year	1	2	3	4	5	6	7	8	9	10	11	12	1-11 Toplam / Total	Toplam / Total
2008	2.770	1.855	3.395	3.081	2.769	2.400	2.232	2.485	1.856	1.773	1.305	1.101	25.921	27.022
2009	717	572	688	1.070	1.297	1.256	1.054	1.183	1.117	1.356	1.304	2.144	11.614	13.758
2010	1.111	1.991	2.330	3.039	2.567	2.638	1.965	3.019	2.806	4.424	3.978	6.168	29.868	36.036
2011	2.975	5.242	5.927	5.358	6.016	6.335	4.534	4.051	4.140	5.828	4.943	4.992	55.349	60.341
2012	2.362	1.983	4.348	6.579	6.273	4.569	3.837	3.158	3.618	4.027	4.807	4.757	45.561	50.318
2013	2.161	2.432	4.005	4.585	5.616	3.136	4.574	3.408	4.935	4.762	5.781	6.891	45.395	52.286
2014	2.169	3.512	4.476	4.905	5.094	5.028	4.233	4.920	5.619	5.743	6.250	7.409	51.949	59.358
2015	3.124	3.984	5.460	6.383	6.078	5.748	4.677	5.044	4.765	7.049	6.898	7.564	59.210	66.774
2016	3.739	4.731	7.067	6.546	6.575	5.543	3.833	5.134	4.945	7.372	7.090	7.603	62.575	70.178
2017	3.974	4.964	6.773	6.780	7.057	5.356	5.003	4.396	6.064	7.734	7.457	7.351	65.558	72.909
2018	4.362	4.179	5.925	5.216	4.584	3.146	3.654	2.587	3.541	3.698	3.578		44.470	44.470

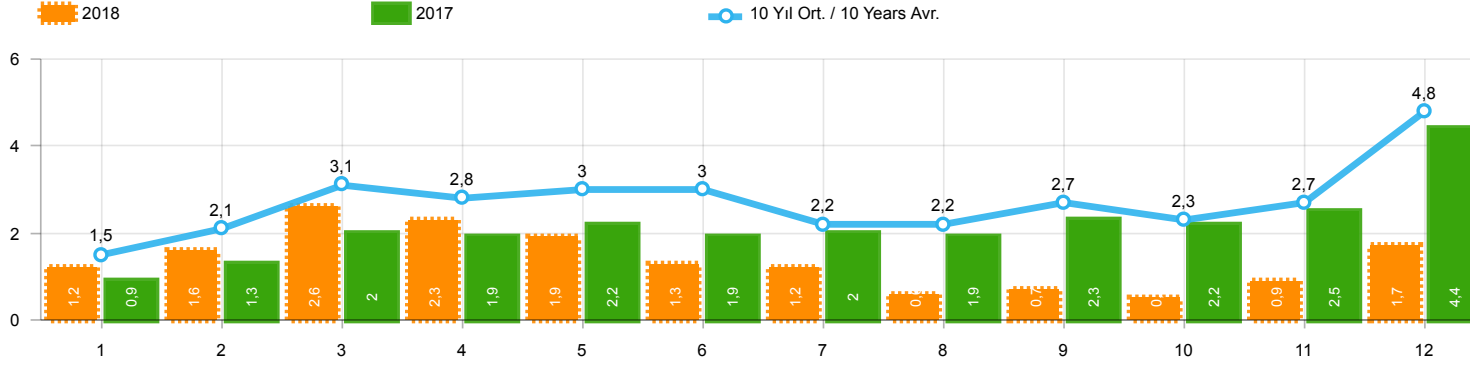
Kaynak: TÜİK trafik kayıtları.

Rakamlar, son iki model yılına ait traktör tescillerinden oluşmaktadır.

Source: Turkish Statistical Institute – Traffic registrations

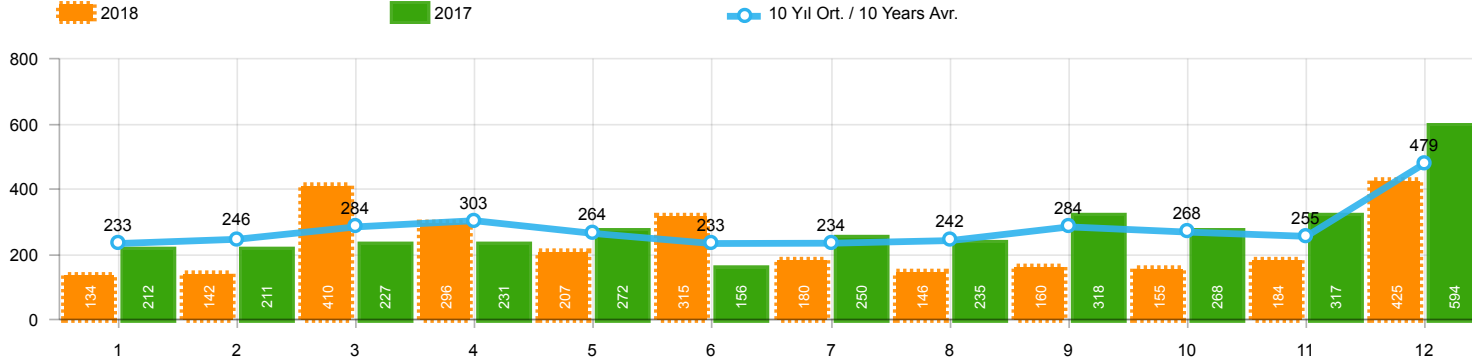
Data represents the last two model year's farm tractors registration figures

**Kamyon Pazarının Analizi(x1000)(OCAK - ARALIK)**  
Truck Market Analysis(x1000)(January - December)



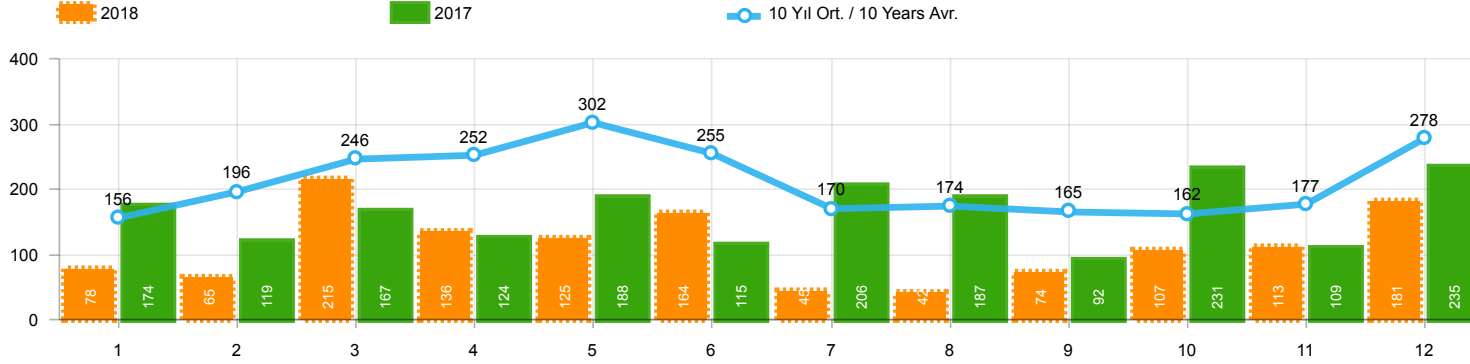
Aylar / Months	10 Yıl Ort / 10 Years Avr.	2018	%
1	1.505	1.237	-17,8
2	2.053	1.552	-24,4
3	3.131	2.630	-16,0
4	2.777	2.328	-16,2
5	3.005	1.909	-36,5
6	2.955	1.272	-57,0
7	2.196	1.235	-43,8
8	2.232	603	-73,0
9	2.704	653	-75,8
10	2.331	488	-79,1
11	2.739	905	-67,0
12	4.849	1.693	-65,1
TOPLAM / TOTAL	32.477	16.505	-49,2

Yıl / Year	1	2	3	4	5	6	7	8	9	10	11	12	1-12 Toplam / Total	Toplam / Total	1-12 Yerli / Local	1-12 İthal / Import	İthal Oran / Import %
2008	1.829	2.350	2.655	2.644	2.513	2.515	2.048	2.498	2.241	1.816	1.674	1.770	26.553	26.553	20.744	5.809	21,9
2009	782	763	1.062	1.381	1.426	1.649	1.261	1.164	1.862	963	1.047	2.368	15.728	15.728	12.134	3.594	22,9
2010	768	960	1.950	1.949	2.140	2.314	2.403	2.754	2.864	3.001	3.231	6.158	30.492	30.492	20.872	9.620	31,5
2011	2.651	3.544	5.142	4.503	4.563	3.852	2.261	2.745	3.784	3.400	3.149	5.712	45.306	45.306	30.004	15.302	33,8
2012	1.703	2.454	3.866	3.209	3.678	3.540	2.750	2.403	3.296	2.497	3.154	5.300	37.850	37.850	25.881	11.969	31,6
2013	1.484	2.113	3.343	2.925	3.504	3.186	2.777	2.103	2.875	2.086	3.631	5.444	35.471	35.471	25.259	10.212	28,8
2014	1.522	2.065	3.094	3.224	3.727	3.726	2.578	2.783	3.708	2.858	3.384	6.869	39.538	39.538	28.289	11.249	28,5
2015	2.215	3.346	5.699	3.729	3.600	4.253	2.922	2.211	2.687	2.266	3.146	7.307	43.381	43.381	29.913	13.468	31,0
2016	1.167	1.648	2.515	2.319	2.711	2.623	984	1.796	1.438	2.238	2.485	3.127	25.051	25.051	16.671	8.380	33,5
2017	931	1.290	1.982	1.888	2.184	1.891	1.974	1.860	2.284	2.188	2.487	4.438	25.397	25.397	16.812	8.585	33,8
2018	1.237	1.552	2.630	2.328	1.909	1.272	1.235	603	653	488	905	1.693	16.505	16.505	9.694	6.811	41,3



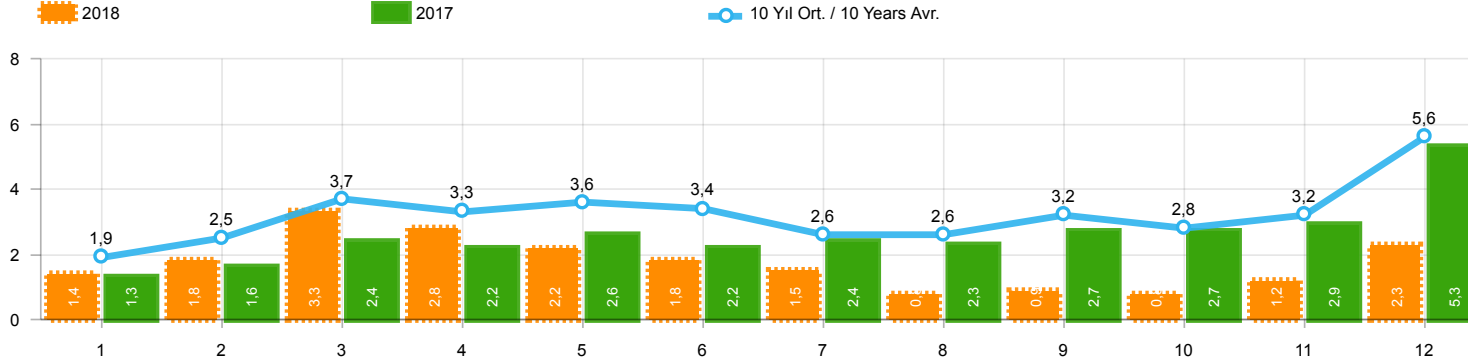
Aylar / Months	10 Yıl Ort / 10 Years Avr.	2018	%
1	233	134	-42,5
2	246	142	-42,3
3	284	410	44,6
4	303	296	-2,4
5	264	207	-21,7
6	233	315	35,4
7	234	180	-22,9
8	242	146	-39,7
9	284	160	-43,6
10	268	155	-42,1
11	255	184	-27,9
12	479	425	-11,3
<b>TOPLAM / TOTAL</b>	<b>3.324</b>	<b>2.754</b>	<b>-17,2</b>

Yıl / Year	1	2	3	4	5	6	7	8	9	10	11	12	1-12 Toplam / Total	Toplam / Total
2008	401	453	365	477	392	292	323	344	316	334	205	208	4.110	4.110
2009	133	103	153	210	145	183	138	146	152	134	150	280	1.927	1.927
2010	140	128	172	153	127	124	93	232	199	204	162	382	2.116	2.116
2011	124	167	267	260	241	233	205	280	270	230	168	525	2.970	2.970
2012	179	257	277	229	257	239	216	249	325	269	189	398	3.084	3.084
2013	191	268	289	276	283	241	367	235	305	392	415	697	3.959	3.959
2014	360	394	384	333	294	258	216	229	395	220	266	653	4.002	4.002
2015	280	322	451	561	372	405	389	253	316	394	325	621	4.689	4.689
2016	309	158	251	302	261	196	139	220	241	230	354	431	3.092	3.092
2017	212	211	227	231	272	156	250	235	318	268	317	594	3.291	3.291
2018	134	142	410	296	207	315	180	146	160	155	184	425	2.754	2.754



Aylar / Months	10 Yıl Ort / 10 Years Avr.	2018	%
1	156	78	-49,9
2	196	65	-66,8
3	246	215	-12,6
4	252	136	-45,9
5	302	125	-58,7
6	255	164	-35,7
7	170	45	-73,6
8	174	42	-75,8
9	165	74	-55,3
10	162	107	-33,8
11	177	113	-36,2
12	278	181	-34,8
TOPLAM / TOTAL	2.532	1.345	-46,9

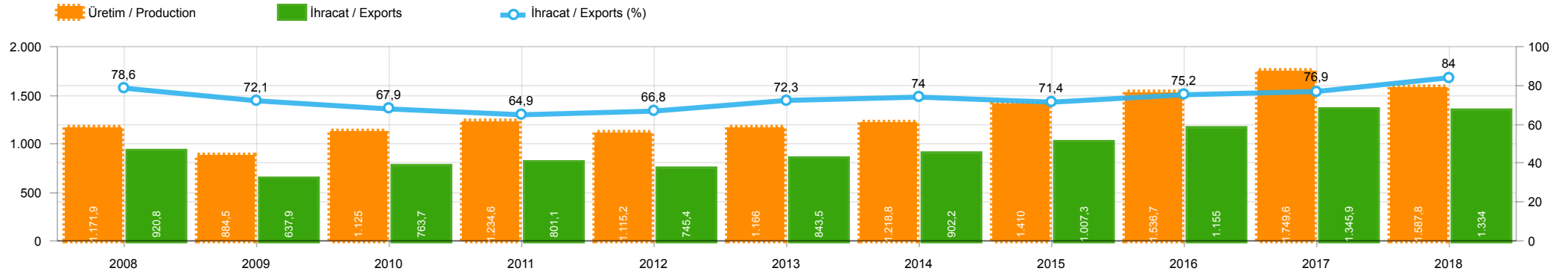
Yıl / Year	1	2	3	4	5	6	7	8	9	10	11	12	1-12 Toplam / Total	Toplam / Total	1-12 Yerli / Local	1-12 İthal / Import	İthal Oran / Import %
2008	125	133	194	230	259	240	107	167	207	118	159	240	2.179	2.179	2.115	64	2,9
2009	84	265	201	202	185	191	130	119	142	61	150	191	1.921	1.921	1.842	79	4,1
2010	67	71	128	193	193	177	170	211	163	144	133	325	1.975	1.975	1.888	87	4,4
2011	92	212	233	324	412	334	148	214	130	176	176	321	2.772	2.772	2.686	86	3,1
2012	125	103	215	172	397	262	174	182	251	229	150	344	2.604	2.604	2.547	57	2,2
2013	365	445	537	489	580	520	412	281	245	198	123	189	4.384	4.384	4.337	47	1,1
2014	199	179	253	251	305	148	69	92	130	91	97	332	2.146	2.146	1.985	161	7,5
2015	146	222	313	290	290	255	211	203	153	171	359	363	2.976	2.976	2.906	70	2,4
2016	180	209	218	240	214	307	76	82	141	198	314	236	2.415	2.415	2.383	32	1,3
2017	174	119	167	124	188	115	206	187	92	231	109	235	1.947	1.947	1.933	14	0,7
2018	78	65	215	136	125	164	45	42	74	107	113	181	1.345	1.345	1.334	11	0,8



Aylar / Months	10 Yıl Ort / 10 Years Avr.	2018	%
1	1.894	1.449	-23,5
2	2.495	1.759	-29,5
3	3.660	3.255	-11,1
4	3.332	2.760	-17,2
5	3.571	2.241	-37,2
6	3.443	1.751	-49,1
7	2.600	1.460	-43,8
8	2.648	791	-70,1
9	3.153	887	-71,9
10	2.761	750	-72,8
11	3.171	1.202	-62,1
12	5.606	2.299	-59,0
<b>TOPLAM / TOTAL</b>	<b>38.333</b>	<b>20.604</b>	<b>-46,3</b>

Yıl / Year	1	2	3	4	5	6	7	8	9	10	11	12	1-12 Toplam / Total	Toplam / Total	1-12 Yerli / Local	1-12 İthal / Import	İthal Oran / Import %
<b>2008</b>	2.355	2.936	3.214	3.351	3.164	3.047	2.478	3.009	2.764	2.268	2.038	2.218	32.842	32.842	26.969	5.873	17,9
<b>2009</b>	999	1.131	1.416	1.793	1.756	2.023	1.529	1.429	2.156	1.158	1.347	2.839	19.576	19.576	15.903	3.673	18,8
<b>2010</b>	975	1.159	2.250	2.295	2.460	2.615	2.666	3.197	3.226	3.349	3.526	6.865	34.583	34.583	24.876	9.707	28,1
<b>2011</b>	2.867	3.923	5.642	5.087	5.216	4.419	2.614	3.239	4.184	3.806	3.493	6.558	51.048	51.048	35.660	15.388	30,1
<b>2012</b>	2.007	2.814	4.358	3.610	4.332	4.041	3.140	2.834	3.872	2.995	3.493	6.042	43.538	43.538	31.512	12.026	27,6
<b>2013</b>	2.040	2.826	4.169	3.690	4.367	3.947	3.556	2.619	3.425	2.676	4.169	6.330	43.814	43.814	33.555	10.259	23,4
<b>2014</b>	2.081	2.638	3.731	3.808	4.326	4.132	2.863	3.104	4.233	3.169	3.747	7.854	45.686	45.686	34.276	11.410	25,0
<b>2015</b>	2.641	3.890	6.463	4.580	4.262	4.913	3.522	2.667	3.156	2.831	3.830	8.291	51.046	51.046	37.508	13.538	26,5
<b>2016</b>	1.656	2.015	2.984	2.861	3.186	3.126	1.199	2.098	1.820	2.666	3.153	3.794	30.558	30.558	22.146	8.412	27,5
<b>2017</b>	1.317	1.620	2.376	2.243	2.644	2.162	2.430	2.282	2.694	2.687	2.913	5.267	30.635	30.635	22.036	8.599	28,1
<b>2018</b>	1.449	1.759	3.255	2.760	2.241	1.751	1.460	791	887	750	1.202	2.299	20.604	20.604	13.782	6.822	33,1

**İhracat / Üretim(x1000) (2008 - 2018 / 1 - 12)(Traktör Dahil)**  
Exports / Production(x1000) (2008 - 2018 / 1 - 12)(Including Tractors)



	2008	2009	2010	2011	2012	2013	2014	2015	2016	2017	2018
<b>İhracat/Export</b>	920.763	637.855	763.670	801.112	745.354	843.467	902.194	1.007.267	1.155.033	1.345.917	1.333.992
<b>Üretim/Production</b>	1.171.917	884.466	1.124.982	1.234.637	1.115.233	1.166.043	1.218.848	1.410.034	1.536.673	1.749.572	1.587.836
<b>İhracat/Exports (%)</b>	78,6	72,1	67,9	64,9	66,8	72,3	74	71,4	75,2	76,9	84

**Taşıt Araçları İhracatı (2016 - 2018)**  
Motor Vehicle Exports (2016 - 2018)

SEKTÖR / SECTOR	2016	2017	1/12-2017	1/12-2018	2018/2017 %
OTOMOBİL / Pass.Car	745.709	921.354	921.354	875.147	-5,0
<b>OTOMOBİL TOPLAM / Pass. Car Total</b>	<b>745.709</b>	<b>921.354</b>	<b>921.354</b>	<b>875.147</b>	<b>-5,0</b>
KAMYON / Truck	5.521	7.800	7.800	14.478	85,6
KAMYONET / Pick Up	347.949	350.108	350.108	372.954	6,5
OTOBÜS / Bus	6.498	7.028	7.028	7.708	9,7
MINİBÜS / Minibus	34.790	45.794	45.794	47.736	4,2
MİDİBÜS / Midibus	915	710	710	846	19,2
<b>TİCARİ ARAÇLAR TOPLAM / Commercial Vehicle Total</b>	<b>395.673</b>	<b>411.440</b>	<b>411.440</b>	<b>443.722</b>	<b>7,8</b>
<b>TAŞIT ARAÇLARI TOPLAM / Motor Vehicles Total</b>	<b>1.141.382</b>	<b>1.332.794</b>	<b>1.332.794</b>	<b>1.318.869</b>	<b>-1,0</b>
TRAKTÖR / F.Tractor	13.651	13.123	13.123	15.123	15,2
<b>TRAKTÖR TOPLAM / F.Tractor Total</b>	<b>13.651</b>	<b>13.123</b>	<b>13.123</b>	<b>15.123</b>	<b>15,2</b>
<b>GENEL TOPLAM / GRAND TOTAL</b>	<b>1.155.033</b>	<b>1.345.917</b>	<b>1.345.917</b>	<b>1.333.992</b>	<b>-0,9</b>

**Üretici Bazında İhracat (adet)**  
Exports by Manufacturer (unit)

Üreticiler / Manufacturers	2016	2017	1-12 / 2017	1-12 / 2018
A.I.O.S.	673	700	700	964
FORD OTOSAN	256.706	296.840	296.840	328.502
HATTAT TRAKTÖR	1.026	1.100	1.100	621
HONDA TÜRKİYE	2.914	9.391	9.391	13.699
HYUNDAI ASSAN	207.234	204.382	204.382	190.347
KARSAN	3.629	2.969	2.969	3.419
M. BENZ TÜRK	8.307	9.865	9.865	16.309
MAN TÜRKİYE	1.717	2.007	2.007	2.425
OTOKAR	833	691	691	901
OYAK RENAULT	270.088	287.915	287.915	280.411
TEMSA	653	870	870	645
TOFAŞ	279.444	270.698	270.698	243.796
TOYOTA	109.184	246.466	246.466	237.451
TÜRK TRAKTÖR	12.625	12.023	12.023	14.502
<b>GENEL TOPLAM / Grand Total</b>	<b>1.155.033</b>	<b>1.345.917</b>	<b>1.345.917</b>	<b>1.333.992</b>



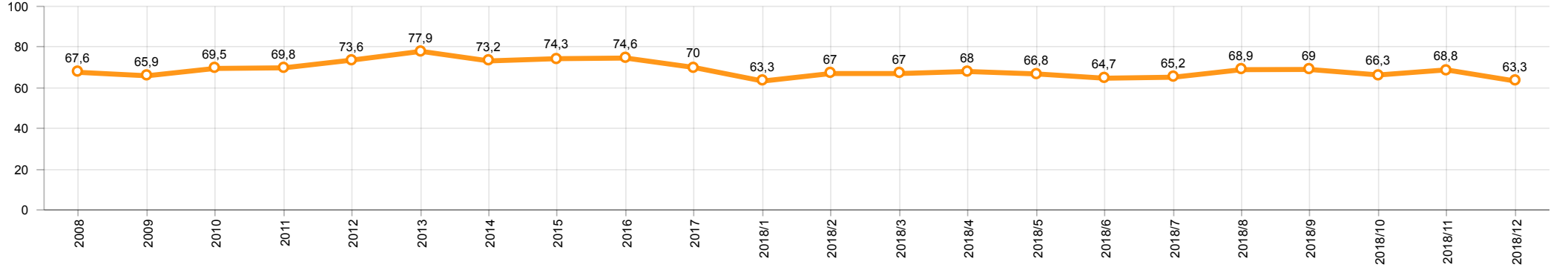
**Otomotiv Ana ve Yan Sanayii İhracatı (ABD \$)**  
CBU and CKD Exports - \$

Sektör / Sector	2016	2017	OCAK - ARALIK / January - December 2017	OCAK - ARALIK / January - December 2018	2018 / 2017 %
<b>Toplam Yan Sanayi / Total Component Industry</b>	<b>8.946.472.202</b>	<b>9.835.914.658</b>	<b>9.835.914.658</b>	<b>10.881.562.512</b>	<b>10,6</b>
İç ve Dış Lastik / Tyres	978.124.241	1.131.782.300	1.131.782.300	1.353.896.118	19,6
Emniyet Camı / Safety Glasses	119.553.098	136.486.099	136.486.099	151.148.689	10,7
Motor / Engine	370.418.066	486.426.738	486.426.738	581.983.113	19,6
Akümülatör / Batteries	224.588.995	295.794.286	295.794.286	388.107.835	31,2
Diğer Aksam ve Parça / Spare Parts&Components	7.253.787.802	7.785.425.235	7.785.425.235	8.406.426.757	8,0
<b>Toplam Ana Sanayi / Total Vehicle Industry</b>	<b>15.302.656.887</b>	<b>19.257.086.833</b>	<b>19.257.086.833</b>	<b>21.350.315.330</b>	<b>10,9</b>
Otobüs / Bus	1.190.475.986	1.308.249.224	1.308.249.224	1.503.188.826	14,9
Midibüs-Minibüs / Midibus-Minibus	238.911.957	217.704.499	217.704.499	215.450.022	-1,0
Otomobil / P.Cars	8.336.928.418	11.790.577.760	11.790.577.760	12.420.951.066	5,3
Kamyon-Kamyonet / Truck-Pick Up&Van	4.617.147.751	4.849.022.718	4.849.022.718	5.376.446.529	10,9
Römork ve Yarı Römork / Trailer-Semi Trailer	265.338.366	342.793.231	342.793.231	507.186.149	48,0
Çekici / Tractor	316.355.575	427.928.256	427.928.256	904.738.051	111,4
Tarım Traktörü / Farm Tractor	337.498.834	320.811.145	320.811.145	422.354.687	31,7
<b>Toplam / Total</b>	<b>24.249.129.089</b>	<b>29.093.001.491</b>	<b>29.093.001.491</b>	<b>32.231.877.842</b>	<b>10,8</b>

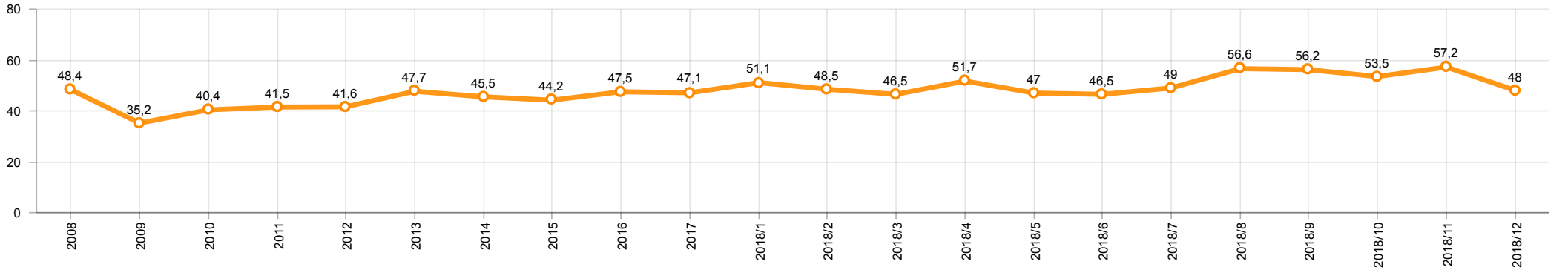
Kaynak: Uludağ İhracatçı Birlikleri . ÜİB tarafından OSD için özel olarak analiz edilen Otomotiv İhracatı kapsamında; ÜİB Türkiye Geneli Otomotiv Endüstrisi sınıflandırmasına kıyasla “Römork ve Yarı Römork” , “Tarım Traktörü” verileri dahil edilmekte; “Kullanılmış Araçlar” ,”İki Tekerlekli Taşıtlar” , “Demiryolu Taşıtları” hariç tutulmaktadır.

Source: Uludağ Exporters Association – Special Analyze for OSD.Compared to Turkish General Automotive Industry classification, this special analyze includes; farms tractors, trailers and semi-trailers, does not include; used vehicles, two-wheeled vehicles and railway vehicles

**Otomobil Pazarında İthalatın Payı (%)**  
Import Share in P.Car Market (%)



**Hafif Ticari Araçlar Pazarında İthalatın Payı (%)**  
Import Share in LCV Market (%)



Araç Tipleri / Vehicle Types	1	2	3	4	5	6	7	8	9	10	11	12	Toplam / Total
<b>OTOMOBİL - Pass.Car</b>	<b>73.408</b>	<b>75.779</b>	<b>86.252</b>	<b>79.786</b>	<b>77.297</b>	<b>68.030</b>	<b>82.198</b>	<b>30.528</b>	<b>71.505</b>	<b>87.359</b>	<b>77.912</b>	<b>65.093</b>	<b>875.147</b>
KAMYON - H. Truck	634	999	1.203	1.081	967	1.258	1.431	961	1.661	1.660	1.514	1.109	14.478
KAMYONET - Pick Up	18.119	39.567	36.795	31.090	34.733	35.060	34.279	12.507	36.751	32.159	34.196	27.698	372.954
OTOBÜS - Bus	490	486	715	594	728	612	623	579	528	741	789	823	7.708
MINİBÜS - Minibus	1.649	4.521	3.929	4.336	2.777	4.653	4.752	1.227	4.606	5.055	5.363	4.868	47.736
MİDİBÜS - Midibus	13	50	89	58	49	72	106	99	41	88	77	104	846
<b>TİCARİ ARAÇLAR TOPLAMI - CV Total</b>	<b>20.905</b>	<b>45.623</b>	<b>42.731</b>	<b>37.159</b>	<b>39.254</b>	<b>41.655</b>	<b>41.191</b>	<b>15.373</b>	<b>43.587</b>	<b>39.703</b>	<b>41.939</b>	<b>34.602</b>	<b>443.722</b>
<b>TAŞIT ARAÇLARI TOPLAMI - MV Total</b>	<b>94.313</b>	<b>121.402</b>	<b>128.983</b>	<b>116.945</b>	<b>116.551</b>	<b>109.685</b>	<b>123.389</b>	<b>45.901</b>	<b>115.092</b>	<b>127.062</b>	<b>119.851</b>	<b>99.695</b>	<b>1.318.869</b>
TRAKTÖR - F.Tractor	802	941	1.155	1.108	1.410	1.170	1.416	1.218	1.604	1.498	1.578	1.223	15.123
<b>GENEL TOPLAM - Grand Total</b>	<b>95.115</b>	<b>122.343</b>	<b>130.138</b>	<b>118.053</b>	<b>117.961</b>	<b>110.855</b>	<b>124.805</b>	<b>47.119</b>	<b>116.696</b>	<b>128.560</b>	<b>121.429</b>	<b>100.918</b>	<b>1.333.992</b>

**Otomobil / P.Car**

Firmalar / Firms	1	2	3	4	5	6	7	8	9	10	11	12	Toplam / Total
FORD OTOSAN	2.920	2.041	1.787	40	1.154	1.629	2.026	527	2.396	1.887	1.748	1.721	19.876
HONDA TÜRKİYE	1.251	2.300	814	1.430	1.523	1.362	1.347	359	919	1.083	740	571	13.699
HYUNDAI ASSAN	10.899	17.471	18.914	17.307	17.265	16.490	19.191	3.300	18.824	19.774	14.938	15.974	190.347
OYAK RENAULT	27.028	20.491	24.760	25.707	28.043	21.090	27.056	9.492	16.055	31.147	29.645	19.897	280.411
TOFAŞ	9.736	15.502	16.864	13.195	12.558	11.512	9.883	4.600	12.784	10.730	10.461	5.538	133.363
TOYOTA	21.574	17.974	23.113	22.107	16.754	15.947	22.695	12.250	20.527	22.738	20.380	21.392	237.451
<b>TOPLAM - Total</b>	<b>73.408</b>	<b>75.779</b>	<b>86.252</b>	<b>79.786</b>	<b>77.297</b>	<b>68.030</b>	<b>82.198</b>	<b>30.528</b>	<b>71.505</b>	<b>87.359</b>	<b>77.912</b>	<b>65.093</b>	<b>875.147</b>

**Kamyonet / Pick-up**

Firmalar / Firms	1	2	3	4	5	6	7	8	9	10	11	12	Toplam / Total
FORD OTOSAN	12.083	28.583	25.157	20.652	23.087	23.358	24.767	6.746	25.815	23.195	24.002	21.923	259.368
KARSAN	194	271	318	270	179	282	414	124	210	329	248	167	3.006
OTOKAR	-	6	-	-	-	-	8	-	-	15	9	109	147
TOFAŞ	5.842	10.707	11.320	10.168	11.467	11.420	9.090	5.637	10.726	8.620	9.937	5.499	110.433
<b>TOPLAM - Total</b>	<b>18.119</b>	<b>39.567</b>	<b>36.795</b>	<b>31.090</b>	<b>34.733</b>	<b>35.060</b>	<b>34.279</b>	<b>12.507</b>	<b>36.751</b>	<b>32.159</b>	<b>34.196</b>	<b>27.698</b>	<b>372.954</b>

**Minibüs / Minibus**

Firmalar / Firms	1	2	3	4	5	6	7	8	9	10	11	12	Toplam / Total
FORD OTOSAN	1.597	4.521	3.904	4.335	2.776	4.648	4.751	1.227	4.606	5.053	5.355	4.858	47.631
KARSAN	52	-	25	1	1	5	1	-	-	2	8	10	105
<b>TOPLAM - Total</b>	<b>1.649</b>	<b>4.521</b>	<b>3.929</b>	<b>4.336</b>	<b>2.777</b>	<b>4.653</b>	<b>4.752</b>	<b>1.227</b>	<b>4.606</b>	<b>5.055</b>	<b>5.363</b>	<b>4.868</b>	<b>47.736</b>

**Kamyon / Truck**

Firmalar / Firms	1	2	3	4	5	6	7	8	9	10	11	12	Toplam / Total
A.I.O.S.	-	-	-	-	-	6	-	-	-	-	-	30	36
FORD OTOSAN	68	99	138	87	106	159	134	83	133	220	194	206	1.627
KARSAN	-	-	-	-	-	-	-	-	-	-	-	-	-
M. BENZ TÜRK	566	900	1.065	994	861	1.093	1.297	878	1.528	1.440	1.320	873	12.815
OTOKAR	-	-	-	-	-	-	-	-	-	-	-	-	-
<b>TOPLAM - Total</b>	<b>634</b>	<b>999</b>	<b>1.203</b>	<b>1.081</b>	<b>967</b>	<b>1.258</b>	<b>1.431</b>	<b>961</b>	<b>1.661</b>	<b>1.660</b>	<b>1.514</b>	<b>1.109</b>	<b>14.478</b>

**Midibüs / Midibus**

Firmalar / Firms	1	2	3	4	5	6	7	8	9	10	11	12	Toplam / Total
A.I.O.S.	6	32	54	37	20	53	42	65	26	51	49	73	508
KARSAN	1	3	1	1	-	3	3	1	-	1	-	1	15
OTOKAR	4	15	27	15	15	12	56	31	14	24	27	17	257
TEMSA	2	-	7	5	14	4	5	2	1	12	1	13	66
<b>TOPLAM - Total</b>	<b>13</b>	<b>50</b>	<b>89</b>	<b>58</b>	<b>49</b>	<b>72</b>	<b>106</b>	<b>99</b>	<b>41</b>	<b>88</b>	<b>77</b>	<b>104</b>	<b>846</b>

**Otobüs / Bus**

Firmalar / Firms	1	2	3	4	5	6	7	8	9	10	11	12	Toplam / Total
A.I.O.S.	3	2	39	24	47	59	27	16	46	55	58	44	420
KARSAN	1	-	23	-	31	52	-	56	29	19	7	75	293
M. BENZ TÜRK	220	238	373	311	359	259	378	176	231	311	351	287	3.494
MAN TÜRKİYE	243	212	233	228	228	178	151	124	164	228	222	214	2.425
OTOKAR	19	19	27	8	22	26	24	100	36	31	106	79	497
TEMSA	4	15	20	23	41	38	43	107	22	97	45	124	579
<b>TOPLAM - Total</b>	<b>490</b>	<b>486</b>	<b>715</b>	<b>594</b>	<b>728</b>	<b>612</b>	<b>623</b>	<b>579</b>	<b>528</b>	<b>741</b>	<b>789</b>	<b>823</b>	<b>7.708</b>

**Traktör / F.Tractor**

Firmalar / Firms	1	2	3	4	5	6	7	8	9	10	11	12	Toplam / Total
HATTAT TRAKTÖR	1	24	45	49	60	109	103	7	104	32	56	31	621
TÜRK TRAKTÖR	801	917	1.110	1.059	1.350	1.061	1.313	1.211	1.500	1.466	1.522	1.192	14.502
<b>TOPLAM - Total</b>	<b>802</b>	<b>941</b>	<b>1.155</b>	<b>1.108</b>	<b>1.410</b>	<b>1.170</b>	<b>1.416</b>	<b>1.218</b>	<b>1.604</b>	<b>1.498</b>	<b>1.578</b>	<b>1.223</b>	<b>15.123</b>

Firmalar / Firms	2017 Toplam / Total	1	2	3	4	5	6	7	8	9	10	11	12	Toplam / Total
Alfa Romeo	320	5	14	13	32	25	10	14	15	13	24	15	23	203
Aston Martin	25	1	1	1	1	1	1	1	1	2	2	3	1	16
Audi	21.585	1.013	1.033	1.552	1.625	1.630	668	840	737	350	199	1.469	2.179	13.295
Bentley	16	-	3	-	-	1	1	-	1	-	2	-	2	10
BMW	19.564	626	1.003	1.586	1.270	1.910	1.386	760	1.005	158	343	1.086	1.595	12.728
Citroen	14.709	407	1.128	1.086	615	980	499	922	495	134	230	623	550	7.669
Dacia	41.914	937	1.298	3.600	3.199	3.193	2.254	2.343	1.220	1.141	1.042	2.993	2.973	26.193
DS	119	-	-	81	20	9	9	10	64	9	4	8	22	236
Ferrari	16	1	1	2	3	1	1	2	2	3	1	1	-	18
Fiat	2.157	56	102	142	130	178	139	112	79	57	42	114	113	1.264
Ford	33.671	920	1.440	2.638	2.506	2.803	2.016	1.914	1.438	705	724	1.959	1.634	20.697
Honda	7.250	207	189	469	646	588	451	402	322	502	361	334	391	4.862
Hyundai	26.841	1.282	1.734	2.376	2.555	2.463	1.898	1.382	656	1.036	867	1.423	1.441	19.113
Infinity	122	3	5	2	2	2	2	-	-	-	2	-	-	18
Jaguar	339	12	20	24	18	12	8	6	8	17	13	37	45	220
Jeep	2.357	101	159	255	295	185	175	140	91	90	89	435	415	2.430
Kia	10.937	431	514	872	984	742	770	795	418	241	326	958	643	7.694
Lamborghini	7	-	-	-	1	1	-	-	-	-	-	-	1	3
Land Rover	1.879	84	145	162	129	112	93	67	22	45	62	100	227	1.248
Lexus	101	2	2	8	10	7	2	5	1	2	8	3	6	56
Maserati	76	4	2	6	6	4	5	3	2	2	6	4	11	55
Mazda	1.412	62	76	135	134	129	40	73	52	110	20	21	153	1.005
Mercedes-Benz	25.588	1.190	1.151	2.031	1.496	2.153	1.326	1.251	951	781	606	674	835	14.445
Mini	1.480	55	82	116	121	146	66	103	70	45	50	228	291	1.373
Mitsubishi	354	12	9	21	58	57	39	14	14	29	28	90	143	514
Nissan	32.043	767	1.470	2.908	2.021	2.508	1.684	1.025	1.320	1.184	1.594	4.557	3.567	24.605
Opel	44.707	1.327	1.568	2.989	3.476	1.416	1.521	2.102	1.688	857	541	1.501	1.974	20.960
Peugeot	29.981	809	1.625	3.038	2.875	3.819	1.851	2.808	1.340	456	520	2.293	3.471	24.905
Porsche	670	43	50	61	70	54	36	49	75	32	28	30	37	565
Renault	37.021	1.013	1.552	1.821	2.617	2.694	1.770	1.711	1.042	782	396	2.304	3.388	21.090
Seat	16.064	663	869	1.226	1.341	1.154	753	1.387	862	285	236	634	973	10.383
Skoda	24.679	1.564	2.161	2.911	2.018	1.820	1.726	1.857	1.098	618	772	2.165	2.630	21.340
Smart	105	-	-	4	4	3	5	6	-	-	4	4	5	35
Ssangyong	362	26	25	38	18	19	6	9	7	4	6	23	41	222
Subaru	1.726	86	55	224	165	144	96	106	77	89	67	113	249	1.471
Suzuki	4.316	67	122	323	253	383	127	267	229	70	91	425	521	2.878
Toyota	7.297	309	376	294	318	370	218	193	243	101	114	632	237	3.405
Volkswagen	89.688	2.497	3.763	6.561	5.801	5.913	4.428	4.217	2.567	1.763	1.406	4.088	6.745	49.749
Volvo	4.470	250	302	503	631	590	577	520	375	427	310	457	1.001	5.943
<b>GENEL TOPLAM - Grand Total</b>	<b>505.968</b>	<b>16.832</b>	<b>24.049</b>	<b>40.079</b>	<b>37.464</b>	<b>38.219</b>	<b>26.657</b>	<b>27.416</b>	<b>18.587</b>	<b>12.140</b>	<b>11.136</b>	<b>31.804</b>	<b>38.533</b>	<b>322.916</b>

Firmalar / Firms	2017 Toplam / Total	1	2	3	4	5	6	7	8	9	10	11	12	Toplam / Total
<b>Citroen</b>	<b>8.023</b>	94	291	706	406	634	520	470	198	197	200	491	426	<b>4.633</b>
<b>Dacia</b>	<b>6.456</b>	254	302	335	337	328	293	259	467	319	245	331	255	<b>3.725</b>
<b>Fiat</b>	<b>6.582</b>	163	252	401	249	362	223	248	236	199	150	225	311	<b>3.019</b>
<b>Ford</b>	<b>4.188</b>	174	142	251	247	216	214	286	152	139	184	351	427	<b>2.783</b>
<b>Hyundai</b>	<b>2.984</b>	119	85	28	215	199	131	125	51	39	44	296	161	<b>1.493</b>
<b>Isuzu</b>	<b>302</b>	24	18	19	19	33	63	55	19	17	5	100	206	<b>578</b>
<b>Iveco</b>	<b>2.566</b>	122	148	161	146	133	107	137	82	110	72	167	213	<b>1.598</b>
<b>Kia</b>	<b>3.591</b>	111	143	207	322	221	149	127	82	70	54	226	235	<b>1.947</b>
<b>Mercedes-Benz</b>	<b>9.043</b>	480	646	1.121	1.206	1.204	328	404	476	382	317	436	993	<b>7.993</b>
<b>Mitsubishi</b>	<b>3.527</b>	158	347	403	669	184	108	303	369	181	94	195	434	<b>3.445</b>
<b>Nissan</b>	<b>2.779</b>	95	154	197	165	116	94	79	61	33	58	205	484	<b>1.741</b>
<b>Peugeot</b>	<b>10.458</b>	178	277	485	517	404	338	621	289	261	227	593	1.057	<b>5.247</b>
<b>Renault</b>	<b>16.822</b>	512	793	1.087	1.127	969	705	660	468	435	297	943	912	<b>8.908</b>
<b>Ssangyong</b>	<b>255</b>	5	1	6	8	12	21	47	27	-	1	10	36	<b>174</b>
<b>Toyota</b>	<b>4.551</b>	210	267	310	652	352	180	128	174	194	103	244	345	<b>3.159</b>
<b>Volkswagen</b>	<b>27.793</b>	1.630	1.516	1.974	1.989	1.931	1.093	1.298	1.018	476	499	2.055	1.606	<b>17.085</b>
<b>GENEL TOPLAM - Grand Total</b>	<b>109.920</b>	<b>4.329</b>	<b>5.382</b>	<b>7.691</b>	<b>8.274</b>	<b>7.298</b>	<b>4.567</b>	<b>5.247</b>	<b>4.169</b>	<b>3.052</b>	<b>2.550</b>	<b>6.868</b>	<b>8.101</b>	<b>67.528</b>