



OTOMOTİV SANAYİİ DERNEĞİ  
AUTOMOTIVE MANUFACTURERS ASSOCIATION

# OTOMOTİV SEKTÖRÜ AYLIK DEĞERLENDİRME RAPORU EYLÜL 2018

AUTOMOTIVE INDUSTRY MONTHLY REPORT  
September 2018

OSD "OICA" Üyesidir



OSD is a Member of "OICA"

	9 - 2017	9 - 2018	%	1 - 9 / 2017	1 - 9 / 2018	%	10/2016 - 9/2017	10/2017 - 9/2018	%
Otomobil Üretimi/P.Cars Production	88.952	86.395	-2,9	838.994	769.464	-8,3	1.148.701	1.073.376	-6,6
Toplam Üretim/Total Production	134.247	132.931	-1,0	1.223.865	1.167.028	-4,6	1.676.517	1.638.894	-2,2
Otomobil Pazarı/P.Cars Market	53.423	17.595	-67,1	476.621	362.465	-24,0	744.194	608.603	-18,2
Toplam Pazar/Total Market	74.046	23.933	-67,7	647.111	479.856	-25,8	1.003.945	819.574	-18,4
Otomobil İthalatı/P.Cars Import	37.790	12.140	-67,9	331.828	241.443	-27,2	526.202	415.583	-21,0
Toplam İthalat/Total Import	47.124	15.443	-67,2	411.113	296.963	-27,8	646.380	510.337	-21,0
Otomobil İhracatı/P.Cars Export	64.166	71.505	11,4	689.191	644.783	-6,4	934.177	876.946	-6,1
Toplam İhracat/Total Export	94.748	115.039	21,4	984.474	972.208	-1,2	1.329.957	1.320.528	-0,7
Otomobil İhracatı(\$)/P.Cars Export (\$)	848.967.459	986.030.010	16,1	8.642.910.621	9.139.108.577	5,7	11.506.896.809	12.286.775.716	6,8
Toplam İhracat(\$)/Total Export (\$)*	2.203.320.568	2.667.450.424	21,1	21.171.157.356	23.930.827.740	13,0	28.065.036.910	31.852.934.474	13,5

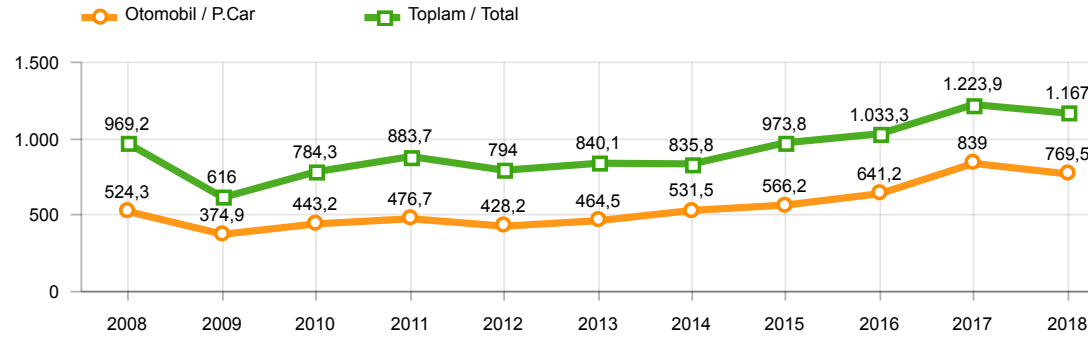
Parametreler/Parameters	9 - 2017	9 - 2018	%	1 - 9 / 2017	1 - 9 / 2018	%	10/2016 - 9/2017	10/2017 - 9/2018	%
ÜFE / PPI	0,2	10,9	-	9,8	39,0	-	13,3	21,4	-
TÜFE / CPI	0,7	6,3	-	7,3	19,4	-	10,0	13,8	-
Sanayi Endeksi / Industry Index	0,4	9,0	-	10,5	37,2	-	15,1	22,1	-
Dolar \$ **	3,5	6,3	80,4	3,6	4,6	27,9	3,5	4,4	25,2
Euro € **	4,1	7,3	76,8	4,0	5,4	36,5	3,9	5,2	34,3
Japon Yeni ¥ **	3,1	5,6	78,4	3,2	4,1	30,3	3,1	3,9	26,1

\*Toplam Sanayi / Total Industry Including Components

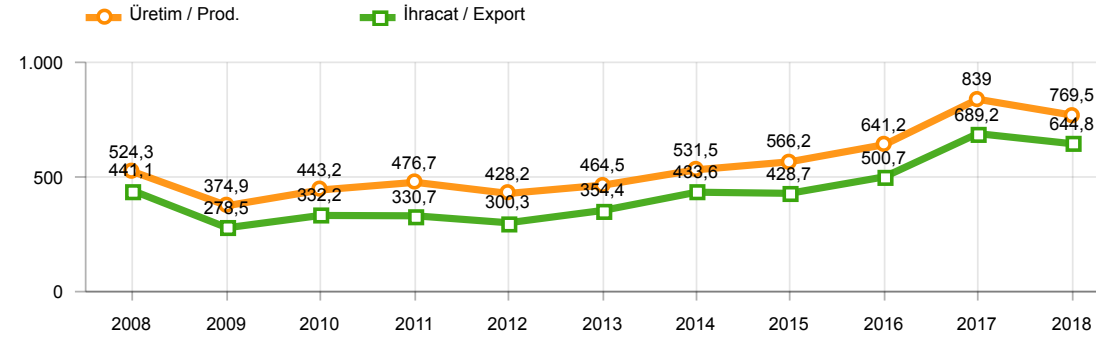
\*\* Ortalama Değerler / Average Values

Araç Tipleri / Types	9 / 2017	9 / 2018	9 % Değişim	1-9 / 2017	1-9 / 2018	1-9 % Değişim
OTOMOBİL / Pass.Car	88.952	86.395	-2,9	838.994	769.464	-8,3
<b>OTOMOBİL Toplam / Pass.Car Total</b>	<b>88.952</b>	<b>86.395</b>	<b>-2,9</b>	<b>838.994</b>	<b>769.464</b>	<b>-8,3</b>
B.KAMYON / H. Truck	2.148	1.993	-7,2	12.869	18.653	44,9
K.KAMYON / L. Truck	407	151	-62,9	2.461	2.214	-10,0
KAMYONET / Pick Up	37.458	38.197	2,0	321.365	327.756	2,0
OTOBÜS / Bus	559	631	12,9	6.430	6.201	-3,6
MİNİBÜS / Minibus	4.337	5.315	22,6	39.367	40.012	1,6
MİDİBÜS / Midibus	386	249	-35,5	2.379	2.728	14,7
<b>TİCARİ ARAÇLAR Toplam / Commercial Vehicles Total</b>	<b>45.295</b>	<b>46.536</b>	<b>2,7</b>	<b>384.871</b>	<b>397.564</b>	<b>3,3</b>
<b>TAŞIT ARAÇLARI Toplam / Motor Vehicles Total</b>	<b>134.247</b>	<b>132.931</b>	<b>-1,0</b>	<b>1.223.865</b>	<b>1.167.028</b>	<b>-4,6</b>
TRAKTÖR / F.Tractor	4.910	1.845	-62,4	38.734	32.676	-15,6
<b>TRAKTÖR Toplam / F.Tractor Total</b>	<b>4.910</b>	<b>1.845</b>	<b>-62,4</b>	<b>38.734</b>	<b>32.676</b>	<b>-15,6</b>
<b>GENEL TOPLAM / Grand Total</b>	<b>139.157</b>	<b>134.776</b>	<b>-3,1</b>	<b>1.262.599</b>	<b>1.199.704</b>	<b>-5,0</b>

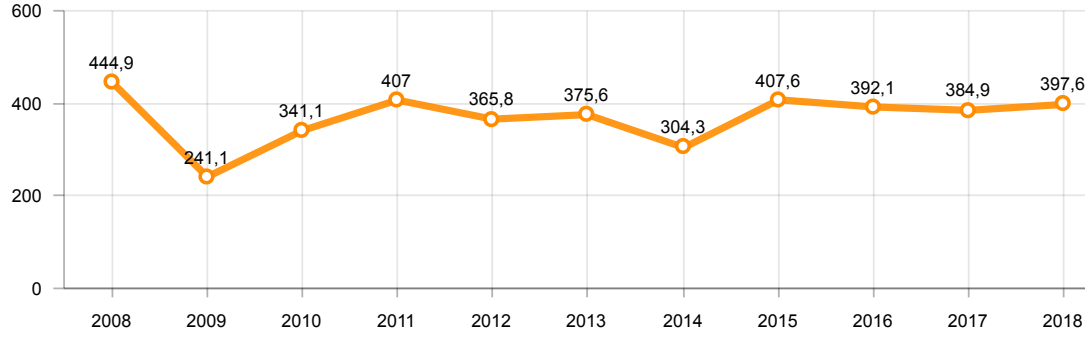
Toplam Üretim ve Otomobil Üretimi (x1000)(OCAK - EYLÜL)  
Total & P.Cars Production (x1000)(January - September)



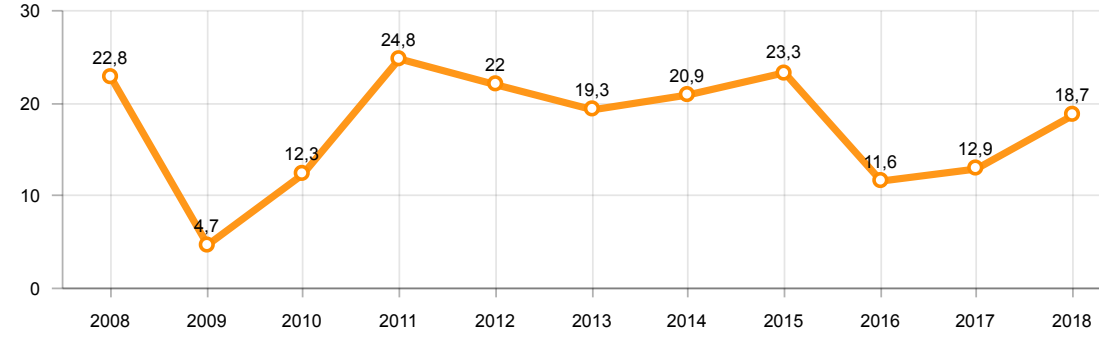
Otomobil Üretimi ve İhracat (x1000)(OCAK - EYLÜL)  
P.Cars Production & Exports (x1000)(January - September)



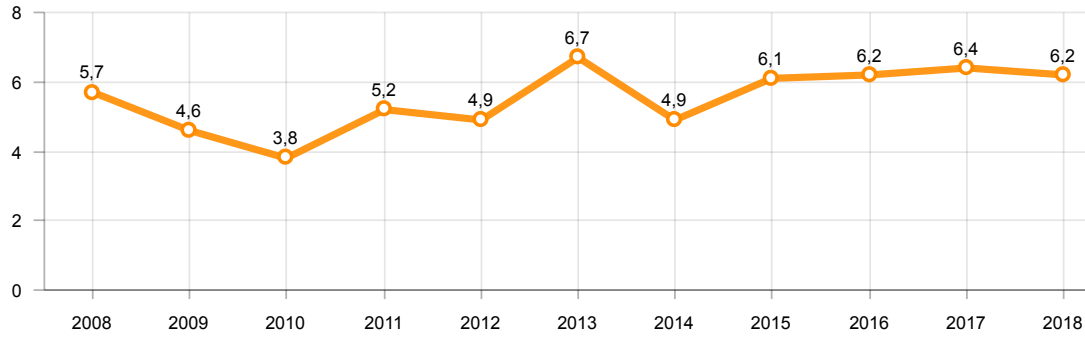
**Ticari Araç Üretimi (x1000)(OCAK - EYLÜL)**  
Commercial Vehicle Production (x1000)(January - September)



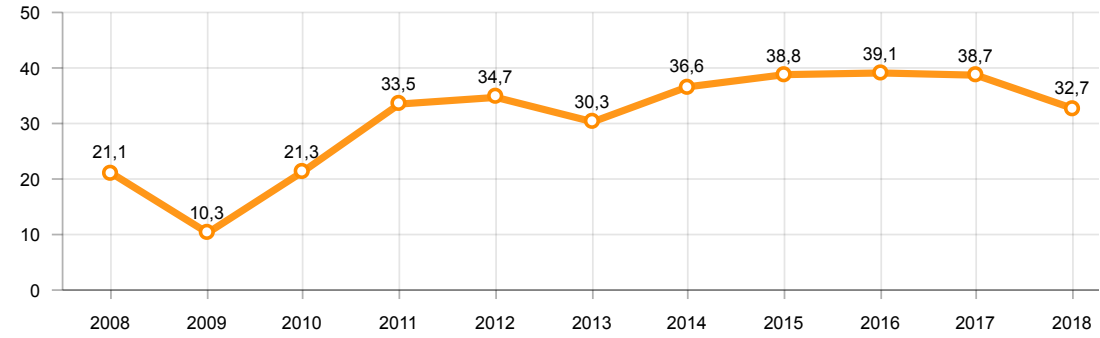
**Büyük Kamyon Üretimi (x1000)(OCAK - EYLÜL)**  
Heavy Truck Production (x1000)(January - September)



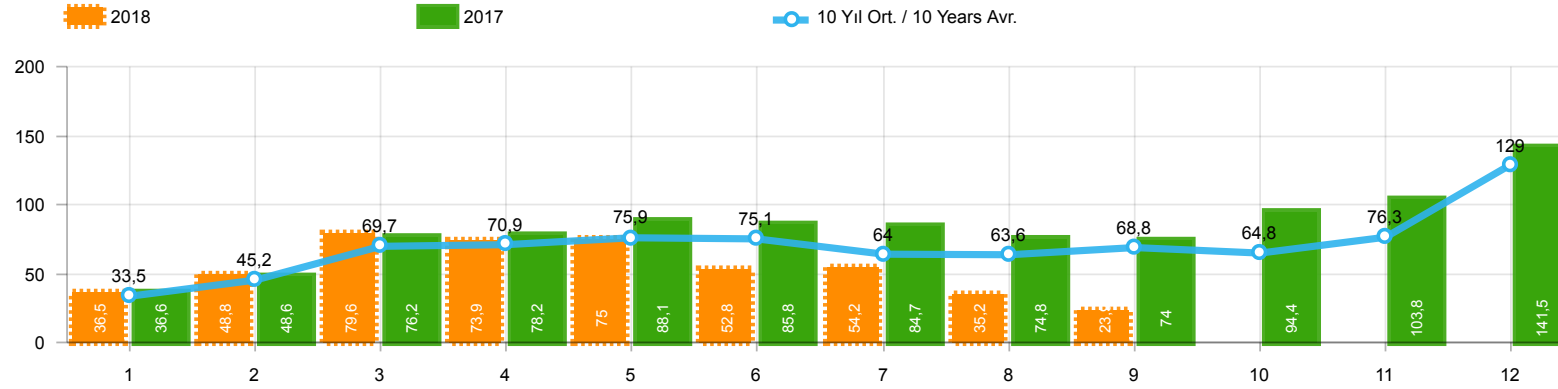
**Otobüs Üretimi (x1000)(OCAK - EYLÜL)**  
Bus Production (x1000)(January - September)



**Traktör Üretimi (x1000)(OCAK - EYLÜL)**  
F. Tractor Production (x1000)(January - September)



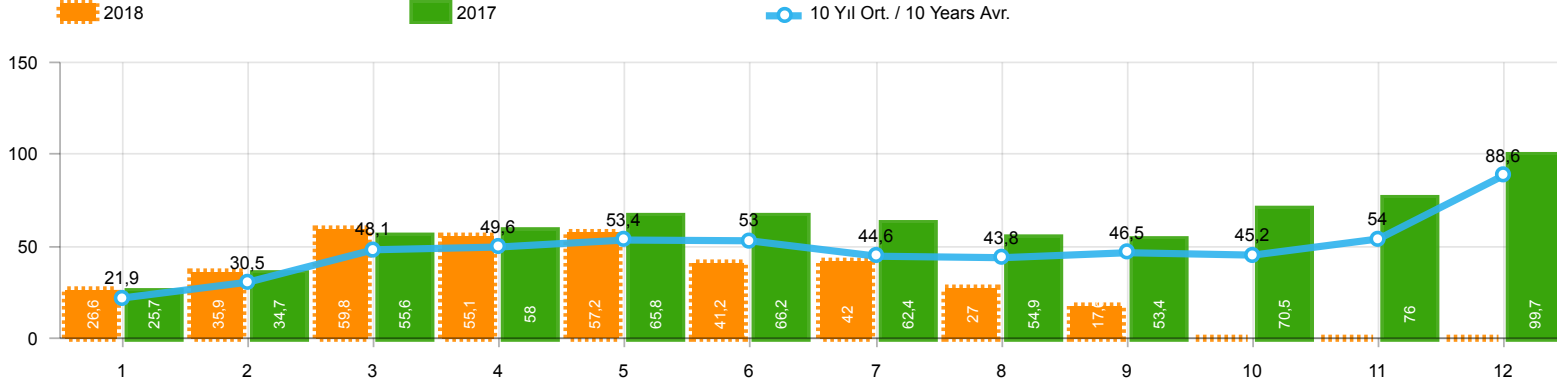
**Toplam Pazarın Analizi(x1000)(OCAK - EYLÜL)**  
Total Market Analysis(x1000)(January - September)



Aylar / Months	10 Yıl Ort. / 10 Years Avr.	2018	%
1	33.545	36.536	8,9
2	45.155	48.769	8,0
3	69.683	79.600	14,2
4	70.861	73.886	4,3
5	75.885	74.996	-1,2
6	75.097	52.788	-29,7
7	63.986	54.194	-15,3
8	63.599	35.154	-44,7
9	68.790	23.933	-65,2
TOPLAM / TOTAL	566.599	479.856	-15,3

Yıl / Year	1	2	3	4	5	6	7	8	9	10	11	12	1-9 Toplam / Total	Toplam / Total	1-9 Yerli / Local	1-9 İthal / Import	İthal Oran / Import %
2008	33.882	38.187	56.863	51.052	51.762	49.371	44.634	46.679	46.696	35.152	28.291	44.296	419.126	526.865	178.122	241.004	57,5
2009	20.605	22.873	56.527	54.433	64.947	63.090	30.374	37.038	83.553	22.191	29.309	91.762	433.440	576.702	196.250	237.190	54,7
2010	21.070	32.331	54.019	57.241	61.837	63.511	64.011	64.961	67.040	76.753	77.488	155.234	486.021	795.496	204.152	281.869	58,0
2011	47.759	62.586	84.045	82.782	85.862	85.992	65.658	61.645	64.313	73.227	67.150	134.468	640.642	915.487	261.328	379.314	59,2
2012	31.552	44.138	69.242	66.559	75.195	75.108	65.444	60.982	73.501	62.933	75.203	121.442	561.721	821.299	212.373	349.348	62,2
2013	37.563	51.133	72.943	77.265	85.835	78.043	75.152	67.662	71.388	60.690	83.470	136.048	616.984	897.192	192.121	424.863	68,9
2014	34.751	37.659	51.312	57.113	62.447	64.295	62.770	63.303	70.764	69.742	84.368	154.843	504.414	813.367	171.815	332.599	65,9
2015	37.256	59.221	89.765	96.182	85.804	91.071	87.358	85.244	67.181	67.086	88.431	164.464	699.082	1.019.063	242.089	456.993	65,4
2016	34.369	54.840	85.932	87.748	97.090	94.666	59.732	73.654	69.413	85.666	125.462	145.706	657.444	1.014.278	211.443	446.001	67,8
2017	36.640	48.585	76.178	78.231	88.066	85.820	84.727	74.818	74.046	94.439	103.772	141.507	647.111	986.829	235.998	411.113	63,5
2018	36.536	48.769	79.600	73.886	74.996	52.788	54.194	35.154	23.933				479.856	479.856	182.893	296.963	61,9

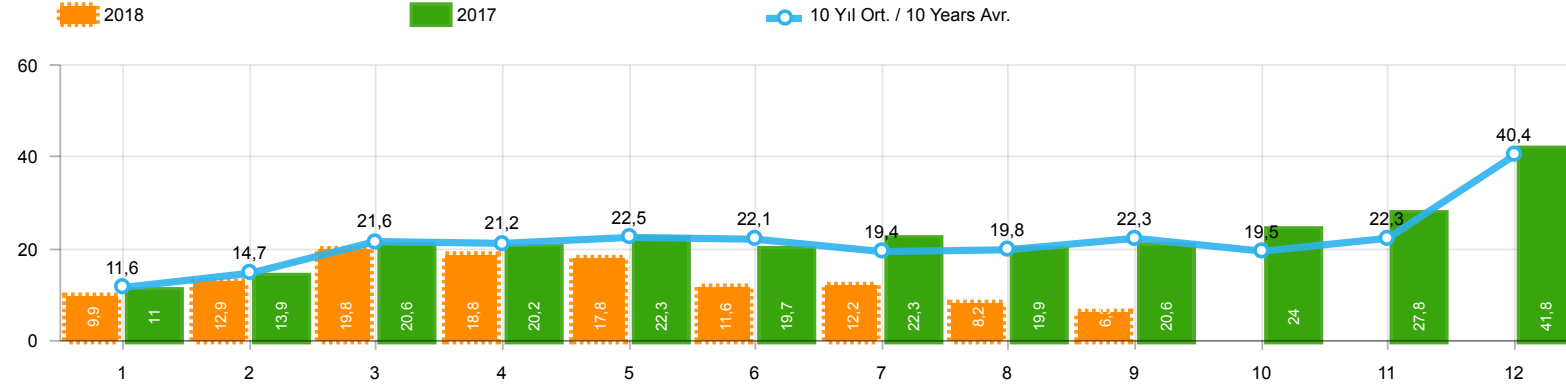
**Otomobil Pazarının Analizi(x1000)(OCAK - EYLÜL)**  
P.Cars Market Analysis(x1000)(January - September)



Aylar / Months	10 Yıl Ort / 10 Years Avr.	2018	%
1	21.905	26.611	21,5
2	30.458	35.901	17,9
3	48.088	59.798	24,4
4	49.614	55.108	11,1
5	53.417	57.227	7,1
6	53.000	41.225	-22,2
7	44.610	42.024	-5,8
8	43.833	26.976	-38,5
9	46.505	17.595	-62,2
TOPLAM / TOTAL	391.430	362.465	-7,4

Yıl / Year	1	2	3	4	5	6	7	8	9	10	11	12	1-9 Toplam / Total	Toplam / Total	1-9 Yerli / Local	1-9 İthal / Import	İthal Oran / Import %
2008	18.588	21.196	34.147	30.313	31.477	28.724	25.530	26.102	27.053	19.788	17.201	25.879	243.130	305.998	79.661	163.469	67,2
2009	13.173	14.492	40.622	36.202	44.188	41.019	16.637	22.537	52.162	13.828	17.781	57.178	281.032	369.819	94.733	186.299	66,3
2010	12.594	20.651	33.958	36.549	40.467	42.086	41.399	42.222	42.477	47.859	50.061	99.461	312.403	509.784	96.921	215.482	69,0
2011	29.868	39.004	54.023	53.835	56.302	56.714	43.518	38.875	39.964	47.508	44.951	88.957	412.103	593.519	128.497	283.606	68,8
2012	21.077	29.189	47.270	45.645	50.460	50.849	44.531	41.236	49.360	43.440	52.297	80.926	379.617	556.280	103.676	275.941	72,7
2013	25.835	36.814	51.785	56.999	62.383	58.290	55.712	51.611	52.925	46.985	64.117	101.199	452.354	664.655	99.279	353.075	78,1
2014	24.368	27.167	37.812	42.769	46.379	47.278	46.602	45.131	49.262	50.814	59.695	110.054	366.768	587.331	94.199	272.569	74,3
2015	24.498	40.817	61.676	70.211	62.878	67.766	64.218	61.753	47.088	47.954	62.397	114.340	500.905	725.596	126.854	374.051	74,7
2016	23.358	40.588	63.975	65.618	73.832	71.111	45.566	53.977	51.340	63.746	95.783	108.044	489.365	756.938	118.694	370.671	75,7
2017	25.689	34.658	55.616	57.998	65.799	66.164	62.384	54.890	53.423	70.488	75.956	99.694	476.621	722.759	144.793	331.828	69,6
2018	26.611	35.901	59.798	55.108	57.227	41.225	42.024	26.976	17.595				362.465	362.465	121.022	241.443	66,6

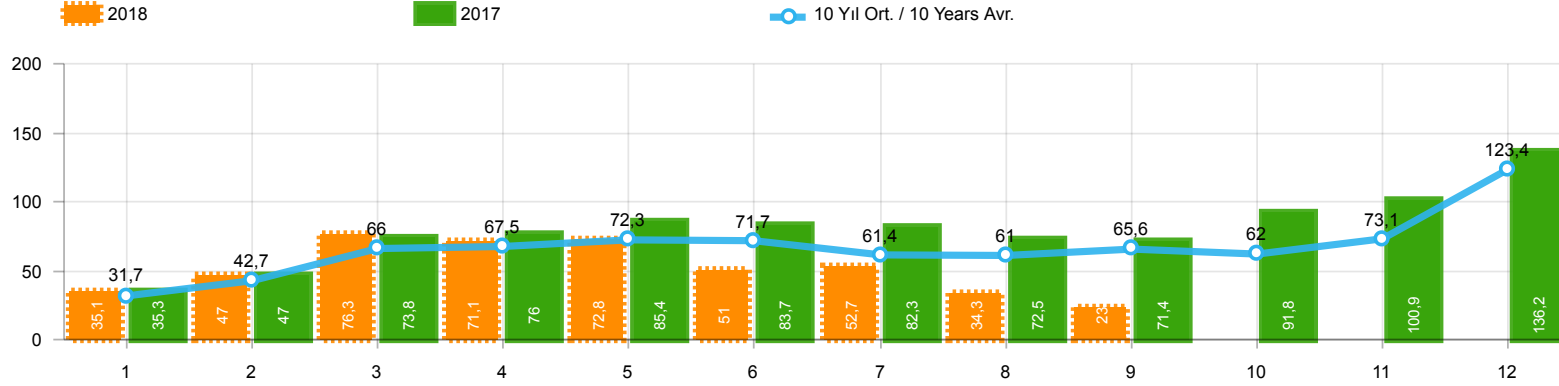
**Ticari Araç Pazarının Analizi(x1000)(OCAK - EYLÜL)**  
CV Market Analysis(x1000)(January - September)



Aylar / Months	10 Yıl Ort. / 10 Years Avr.	2018	%
1	11.640	9.925	-14,7
2	14.698	12.868	-12,4
3	21.594	19.802	-8,3
4	21.247	18.778	-11,6
5	22.468	17.769	-20,9
6	22.097	11.563	-47,7
7	19.376	12.170	-37,2
8	19.765	8.178	-58,6
9	22.284	6.338	-71,6
TOPLAM / TOTAL	175.169	117.391	-33,0

Yıl / Year	1	2	3	4	5	6	7	8	9	10	11	12	1-9 Toplam / Total	Toplam / Total	1-9 Yerli / Local	1-9 İthal / Import	İthal Oran / Import %
2008	15.294	16.991	22.716	20.739	20.285	20.647	19.104	20.577	19.643	15.364	11.090	18.417	175.996	220.867	98.461	77.535	44,1
2009	7.432	8.381	15.905	18.231	20.759	22.071	13.737	14.501	31.391	8.363	11.528	34.584	152.408	206.883	101.517	50.891	33,4
2010	8.476	11.680	20.061	20.692	21.370	21.425	22.612	22.739	24.563	28.894	27.427	55.773	173.618	285.712	107.231	66.387	38,2
2011	17.891	23.582	30.022	28.947	29.560	29.278	22.140	22.770	24.349	25.719	22.199	45.511	228.539	321.968	132.831	95.708	41,9
2012	10.475	14.949	21.972	20.914	24.735	24.259	20.913	19.746	24.141	19.493	22.906	40.516	182.104	265.019	108.697	73.407	40,3
2013	11.728	14.319	21.158	20.266	23.452	19.753	19.440	16.051	18.463	13.705	19.353	34.849	164.630	232.537	92.842	71.788	43,6
2014	10.383	10.492	13.500	14.344	16.068	17.017	16.168	18.172	21.502	18.928	24.673	44.789	137.646	226.036	77.616	60.030	43,6
2015	12.758	18.404	28.089	25.971	22.926	23.305	23.140	23.491	20.093	19.132	26.034	50.124	198.177	293.467	115.235	82.942	41,9
2016	11.011	14.252	21.957	22.130	23.258	23.555	14.166	19.677	18.073	21.920	29.679	37.662	168.079	257.340	92.749	75.330	44,8
2017	10.951	13.927	20.562	20.233	22.267	19.656	22.343	19.928	20.623	23.951	27.816	41.813	170.490	264.070	91.205	79.285	46,5
2018	9.925	12.868	19.802	18.778	17.769	11.563	12.170	8.178	6.338				117.391	117.391	61.871	55.520	47,3

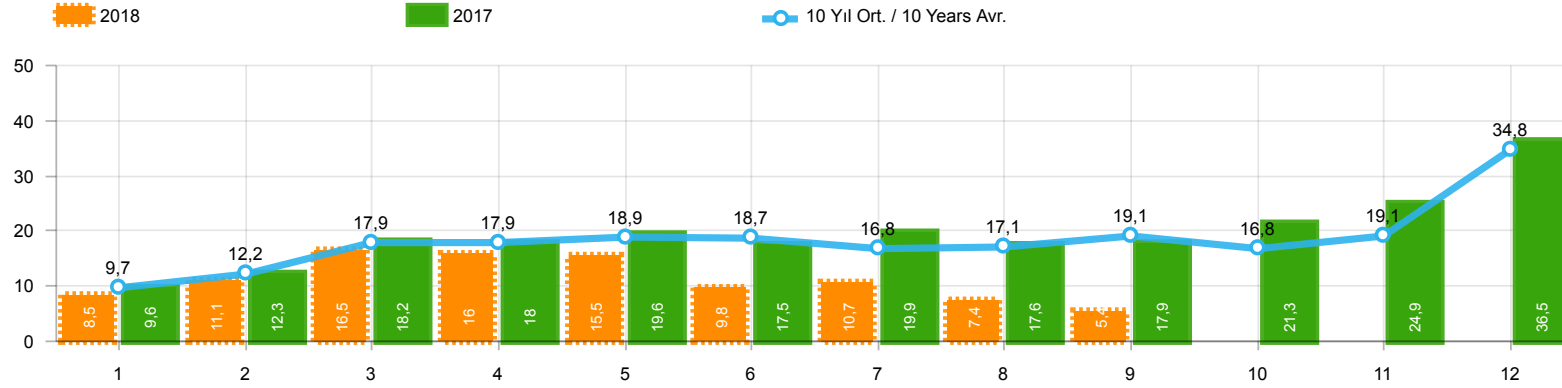
### Hafif Araç Pazarının Analizi(x1000)(OCAK - EYLÜL) LV Market Analysis(x1000)(January - September)



Aylar / Months	10 Yıl Ort. / 10 Years Avr.	2018	%
1	31.651	35.076	10,8
2	42.660	47.009	10,2
3	66.022	76.345	15,6
4	67.529	71.126	5,3
5	72.313	72.755	0,6
6	71.654	51.037	-28,8
7	61.386	52.734	-14,1
8	60.951	34.346	-43,6
9	65.637	23.028	-64,9
TOPLAM / TOTAL	539.803	463.456	-14,1

Yıl / Year	1	2	3	4	5	6	7	8	9	10	11	12	1-9 Toplam / Total	Toplam / Total	1-9 Yerli / Local	1-9 İthal / Import	İthal Oran / Import %
2008	31.527	35.251	53.649	47.701	48.598	46.324	42.156	43.670	43.932	32.884	26.253	42.078	392.808	494.023	156.560	236.248	60,1
2009	19.606	21.742	55.111	52.640	63.191	61.067	28.845	35.609	81.397	21.033	27.962	88.923	419.208	557.126	184.560	234.648	56,0
2010	20.095	31.172	51.769	54.946	59.377	60.896	61.345	61.764	63.814	73.404	73.962	148.369	465.178	760.913	188.639	276.539	59,4
2011	44.892	58.663	78.403	77.695	80.646	81.573	63.044	58.406	60.129	69.421	63.657	127.910	603.451	864.439	235.848	367.603	60,9
2012	29.545	41.324	64.884	62.949	70.863	71.067	62.304	58.148	69.629	59.938	71.710	115.400	530.713	777.761	189.886	340.827	64,2
2013	35.523	48.307	68.774	73.575	81.468	74.096	71.596	65.043	67.963	58.014	79.301	129.718	586.345	853.378	168.578	417.767	71,2
2014	32.670	35.021	47.581	53.305	58.121	60.163	59.907	60.199	66.531	66.573	80.621	146.989	473.498	767.681	148.365	325.133	68,7
2015	34.615	55.331	83.302	91.602	81.542	86.158	83.836	82.577	64.025	64.255	84.601	156.173	662.988	968.017	215.385	447.603	67,5
2016	32.713	52.825	82.948	84.887	93.904	91.540	58.533	71.556	67.593	83.000	122.309	141.912	636.499	983.720	195.860	440.639	69,2
2017	35.323	46.965	73.802	75.988	85.422	83.658	82.297	72.536	71.352	91.752	100.859	136.240	627.343	956.194	221.520	405.823	64,7
2018	35.076	47.009	76.345	71.126	72.755	51.037	52.734	34.346	23.028				463.456	463.456	172.004	291.452	62,9

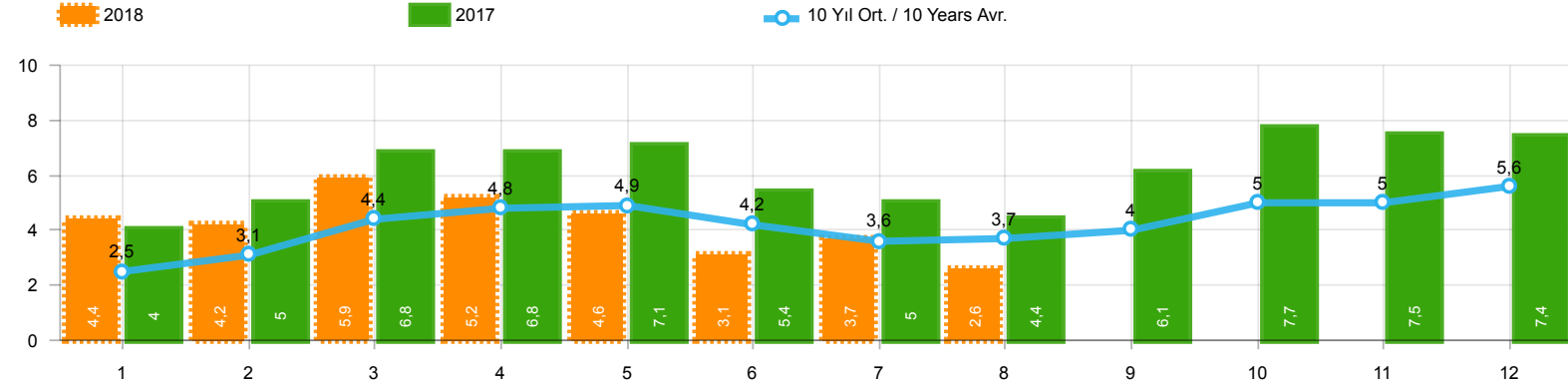




Aylar / Months	10 Yıl Ort. / 10 Years Avr.	2018	%
1	9.746	8.465	-13,1
2	12.203	11.108	-9,0
3	17.934	16.547	-7,7
4	17.915	16.018	-10,6
5	18.897	15.528	-17,8
6	18.654	9.812	-47,4
7	16.777	10.710	-36,2
8	17.117	7.370	-56,9
9	19.131	5.433	-71,6
TOPLAM / TOTAL	148.373	100.991	-31,9

Yıl / Year	1	2	3	4	5	6	7	8	9	10	11	12	1-9 Toplam / Total	Toplam / Total	1-9 Yerli / Local	1-9 İthal / Import	İthal Oran / Import %
2008	12.939	14.055	19.502	17.388	17.121	17.600	16.626	17.568	16.879	13.096	9.052	16.199	149.678	188.025	76.899	72.779	48,6
2009	6.433	7.250	14.489	16.438	19.003	20.048	12.208	13.072	29.235	7.205	10.181	31.745	138.176	187.307	89.827	48.349	35,0
2010	7.501	10.521	17.811	18.397	18.910	18.810	19.946	19.542	21.337	25.545	23.901	48.908	152.775	251.129	91.718	61.057	40,0
2011	15.024	19.659	24.380	23.860	24.344	24.859	19.526	19.531	20.165	21.913	18.706	38.953	191.348	270.920	107.351	83.997	43,9
2012	8.468	12.135	17.614	17.304	20.403	20.218	17.773	16.912	20.269	16.498	19.413	34.474	151.096	221.481	86.210	64.886	42,9
2013	9.688	11.493	16.989	16.576	19.085	15.806	15.884	13.432	15.038	11.029	15.184	28.519	133.991	188.723	69.299	64.692	48,3
2014	8.302	7.854	9.769	10.536	11.742	12.885	13.305	15.068	17.269	15.759	20.926	36.935	106.730	180.350	54.166	52.564	49,2
2015	10.117	14.514	21.626	21.391	18.664	18.392	19.618	20.824	16.937	16.301	22.204	41.833	162.083	242.421	88.531	73.552	45,4
2016	9.355	12.237	18.973	19.269	20.072	20.429	12.967	17.579	16.253	19.254	26.526	33.868	147.134	226.782	77.166	69.968	47,6
2017	9.634	12.307	18.186	17.990	19.623	17.494	19.913	17.646	17.929	21.264	24.903	36.546	150.722	233.435	76.727	73.995	49,1
2018	8.465	11.108	16.547	16.018	15.528	9.812	10.710	7.370	5.433				100.991	100.991	50.982	50.009	49,5

**Traktör Pazarının Analizi(x1000)(OCAK - AĞUSTOS)**  
Tractor Market Analysis(x1000)(January - August)



Aylar / Months	10 Yıl Ort / 10 Years Avr.	2018	%
1	2.510	4.362	73,8
2	3.127	4.179	33,7
3	4.447	5.925	33,2
4	4.833	5.216	7,9
5	4.934	4.584	-7,1
6	4.201	3.146	-25,1
7	3.594	3.654	1,7
8	3.680	2.587	-29,7
TOPLAM / TOTAL	31.325	33.653	7,4

Yıl / Year	1	2	3	4	5	6	7	8	9	10	11	12	1-8 Toplam / Total	Toplam / Total
2008	2.770	1.855	3.395	3.081	2.769	2.400	2.232	2.485	1.856	1.773	1.305	1.101	20.987	27.022
2009	717	572	688	1.070	1.297	1.256	1.054	1.183	1.117	1.356	1.304	2.144	7.837	13.758
2010	1.111	1.991	2.330	3.039	2.567	2.638	1.965	3.019	2.806	4.424	3.978	6.168	18.660	36.036
2011	2.975	5.242	5.927	5.358	6.016	6.335	4.534	4.051	4.140	5.828	4.943	4.992	40.438	60.341
2012	2.362	1.983	4.348	6.579	6.273	4.569	3.837	3.158	3.618	4.027	4.807	4.757	33.109	50.318
2013	2.161	2.432	4.005	4.585	5.616	3.136	4.574	3.408	4.935	4.762	5.781	6.891	29.917	52.286
2014	2.169	3.512	4.476	4.905	5.094	5.028	4.233	4.920	5.619	5.743	6.250	7.409	34.337	59.358
2015	3.124	3.984	5.460	6.383	6.078	5.748	4.677	5.044	4.765	7.049	6.898	7.564	40.498	66.774
2016	3.739	4.731	7.067	6.546	6.575	5.543	3.833	5.134	4.945	7.372	7.090	7.603	43.168	70.178
2017	3.974	4.964	6.773	6.780	7.057	5.356	5.003	4.396	6.064	7.734	7.457	7.351	44.303	72.909
2018	4.362	4.179	5.925	5.216	4.584	3.146	3.654	2.587					33.653	33.653

Kaynak: TÜİK trafik kayıtları.

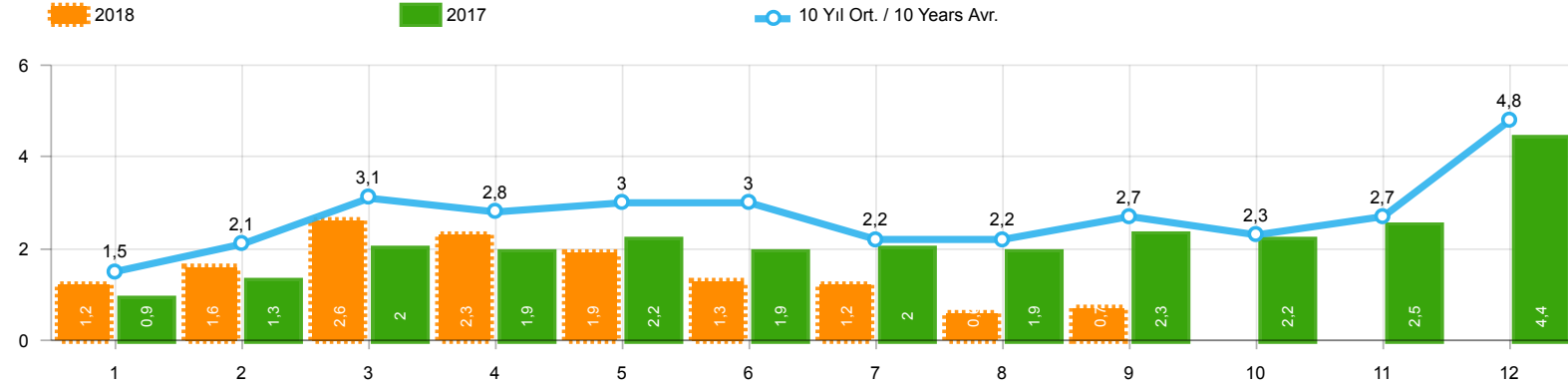
Rakamlar, son iki model yılına ait traktör tescillerinden oluşmaktadır.

Source: Turkish Statistical Institute – Traffic registrations

Data represents the last two model year's farm tractors registration figures

### Kamyon Pazarının Analizi(x1000)(OCAK - EYLÜL)

Truck Market Analysis(x1000)(January - September)

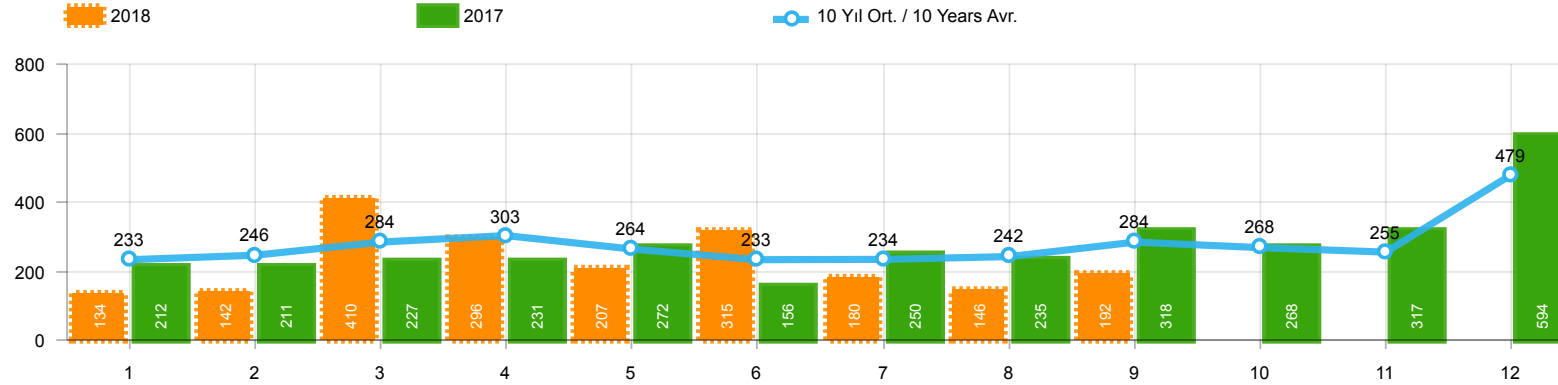


Aylar / Months	10 Yıl Ort / 10 Years Avr.	2018	%
1	1.505	1.248	-17,1
2	2.053	1.553	-24,4
3	3.131	2.630	-16,0
4	2.777	2.328	-16,2
5	3.005	1.909	-36,5
6	2.955	1.272	-57,0
7	2.196	1.235	-43,8
8	2.232	620	-72,2
9	2.704	669	-75,3
TOPLAM / TOTAL	22.557	13.464	-40,3

Yıl / Year	1	2	3	4	5	6	7	8	9	10	11	12	1-9 Toplam / Total	Toplam / Total	1-9 Yerli / Local	1-9 İthal / Import	İthal Oran / Import %
2008	1.829	2.350	2.655	2.644	2.513	2.515	2.048	2.498	2.241	1.816	1.674	1.770	21.293	26.553	16.596	4.697	22,1
2009	782	763	1.062	1.381	1.426	1.649	1.261	1.164	1.862	963	1.047	2.368	11.350	15.728	8.848	2.502	22,0
2010	768	960	1.950	1.949	2.140	2.314	2.403	2.754	2.864	3.001	3.231	6.158	18.102	30.492	12.829	5.273	29,1
2011	2.651	3.544	5.142	4.503	4.563	3.852	2.261	2.745	3.784	3.400	3.149	5.712	33.045	45.306	21.418	11.627	35,2
2012	1.703	2.454	3.866	3.209	3.678	3.540	2.750	2.403	3.296	2.497	3.154	5.300	26.899	37.850	18.410	8.489	31,6
2013	1.484	2.113	3.343	2.925	3.504	3.186	2.777	2.103	2.875	2.086	3.631	5.444	24.310	35.471	17.241	7.069	29,1
2014	1.522	2.065	3.094	3.224	3.727	3.726	2.578	2.783	3.708	2.858	3.384	6.869	26.427	39.538	19.114	7.313	27,7
2015	2.215	3.346	5.699	3.729	3.600	4.253	2.922	2.211	2.687	2.266	3.146	7.307	30.662	43.381	21.341	9.321	30,4
2016	1.167	1.648	2.515	2.319	2.711	2.623	984	1.796	1.438	2.238	2.485	3.127	17.201	25.051	11.870	5.331	31,0
2017	931	1.290	1.982	1.888	2.184	1.891	1.974	1.860	2.284	2.188	2.487	4.438	16.284	25.397	11.008	5.276	32,4
2018	1.248	1.553	2.630	2.328	1.909	1.272	1.235	620	669				13.464	13.464	7.964	5.500	40,8

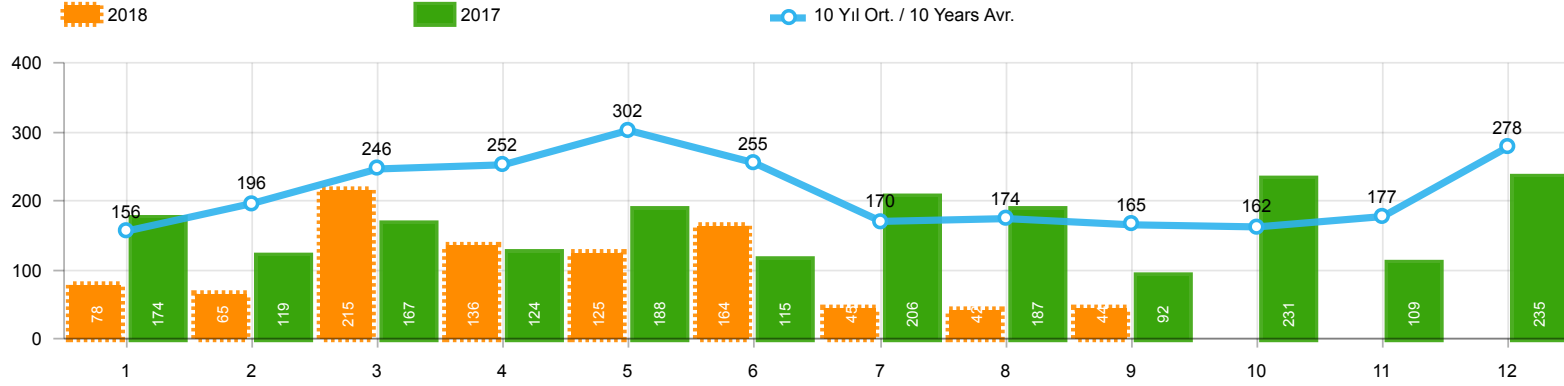
## Midibüs Pazarının Analizi(OCAK - EYLÜL)

Midibus Market Analysis(January - September)



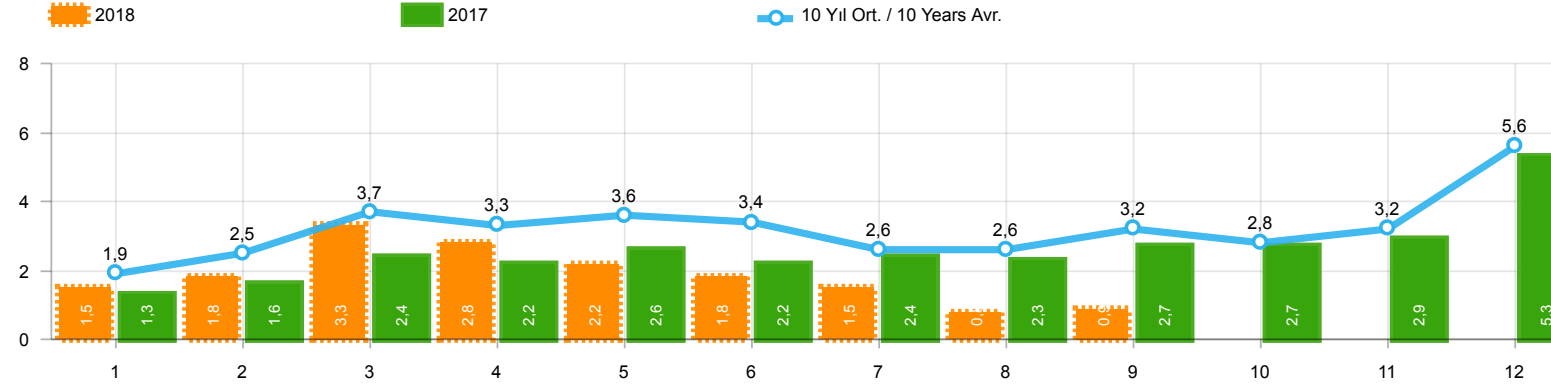
Aylar / Months	10 Yıl Ort / 10 Years Avr.	2018	%
1	233	134	-42,5
2	246	142	-42,3
3	284	410	44,6
4	303	296	-2,4
5	264	207	-21,7
6	233	315	35,4
7	234	180	-22,9
8	242	146	-39,7
9	284	192	-32,3
TOPLAM / TOTAL	2.323	2.022	-12,9

Yıl / Year	1	2	3	4	5	6	7	8	9	10	11	12	1-9 Toplam / Total	Toplam / Total
2008	401	453	365	477	392	292	323	344	316	334	205	208	3.363	4.110
2009	133	103	153	210	145	183	138	146	152	134	150	280	1.363	1.927
2010	140	128	172	153	127	124	93	232	199	204	162	382	1.368	2.116
2011	124	167	267	260	241	233	205	280	270	230	168	525	2.047	2.970
2012	179	257	277	229	257	239	216	249	325	269	189	398	2.228	3.084
2013	191	268	289	276	283	241	367	235	305	392	415	697	2.455	3.959
2014	360	394	384	333	294	258	216	229	395	220	266	653	2.863	4.002
2015	280	322	451	561	372	405	389	253	316	394	325	621	3.349	4.689
2016	309	158	251	302	261	196	139	220	241	230	354	431	2.077	3.092
2017	212	211	227	231	272	156	250	235	318	268	317	594	2.112	3.291
2018	134	142	410	296	207	315	180	146	192				2.022	2.022



Aylar / Months	10 Yıl Ort / 10 Years Avr.	2018	%
1	156	78	-49,9
2	196	65	-66,8
3	246	215	-12,6
4	252	136	-45,9
5	302	125	-58,7
6	255	164	-35,7
7	170	45	-73,6
8	174	42	-75,8
9	165	44	-73,4
TOPLAM / TOTAL	1.916	914	-52,3

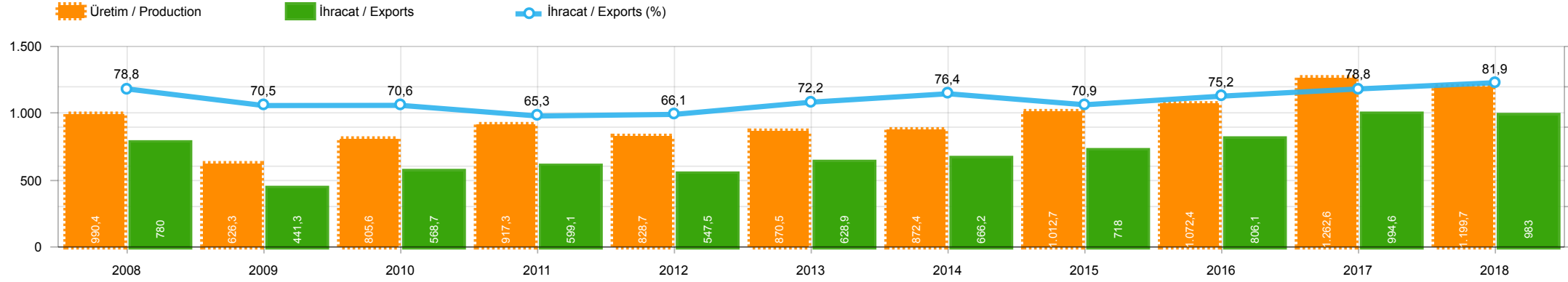
Yıl / Year	1	2	3	4	5	6	7	8	9	10	11	12	1-9 Toplam / Total	Toplam / Total	1-9 Yerli / Local	1-9 İthal / Import	İthal Oran / Import %
2008	125	133	194	230	259	240	107	167	207	118	159	240	1.662	2.179	1.603	59	3,5
2009	84	265	201	202	185	191	130	119	142	61	150	191	1.519	1.921	1.479	40	2,6
2010	67	71	128	193	193	177	170	211	163	144	133	325	1.373	1.975	1.316	57	4,2
2011	92	212	233	324	412	334	148	214	130	176	176	321	2.099	2.772	2.015	84	4,0
2012	125	103	215	172	397	262	174	182	251	229	150	344	1.881	2.604	1.849	32	1,7
2013	365	445	537	489	580	520	412	281	245	198	123	189	3.874	4.384	3.847	27	0,7
2014	199	179	253	251	305	148	69	92	130	91	97	332	1.626	2.146	1.473	153	9,4
2015	146	222	313	290	290	255	211	203	153	171	359	363	2.083	2.976	2.014	69	3,3
2016	180	209	218	240	214	307	76	82	141	198	314	236	1.667	2.415	1.636	31	1,9
2017	174	119	167	124	188	115	206	187	92	231	109	235	1.372	1.947	1.358	14	1,0
2018	78	65	215	136	125	164	45	42	44				914	914	903	11	1,2



Aylar / Months	10 Yıl Ort. / 10 Years Avr.	2018	%
1	1.894	1.460	-22,9
2	2.495	1.760	-29,5
3	3.660	3.255	-11,1
4	3.332	2.760	-17,2
5	3.571	2.241	-37,2
6	3.443	1.751	-49,1
7	2.600	1.460	-43,8
8	2.648	808	-69,5
9	3.153	905	-71,3
TOPLAM / TOTAL	26.795	16.400	-38,8

Yıl / Year	1	2	3	4	5	6	7	8	9	10	11	12	1-9 Toplam / Total	Toplam / Total	1-9 Yerli / Local	1-9 İthal / Import	İthal Oran / Import %
2008	2.355	2.936	3.214	3.351	3.164	3.047	2.478	3.009	2.764	2.268	2.038	2.218	26.318	32.842	21.562	4.756	18,1
2009	999	1.131	1.416	1.793	1.756	2.023	1.529	1.429	2.156	1.158	1.347	2.839	14.232	19.576	11.690	2.542	17,9
2010	975	1.159	2.250	2.295	2.460	2.615	2.666	3.197	3.226	3.349	3.526	6.865	20.843	34.583	15.513	5.330	25,6
2011	2.867	3.923	5.642	5.087	5.216	4.419	2.614	3.239	4.184	3.806	3.493	6.558	37.191	51.048	25.480	11.711	31,5
2012	2.007	2.814	4.358	3.610	4.332	4.041	3.140	2.834	3.872	2.995	3.493	6.042	31.008	43.538	22.487	8.521	27,5
2013	2.040	2.826	4.169	3.690	4.367	3.947	3.556	2.619	3.425	2.676	4.169	6.330	30.639	43.814	23.543	7.096	23,2
2014	2.081	2.638	3.731	3.808	4.326	4.132	2.863	3.104	4.233	3.169	3.747	7.854	30.916	45.686	23.450	7.466	24,1
2015	2.641	3.890	6.463	4.580	4.262	4.913	3.522	2.667	3.156	2.831	3.830	8.291	36.094	51.046	26.704	9.390	26,0
2016	1.656	2.015	2.984	2.861	3.186	3.126	1.199	2.098	1.820	2.666	3.153	3.794	20.945	30.558	15.583	5.362	25,6
2017	1.317	1.620	2.376	2.243	2.644	2.162	2.430	2.282	2.694	2.687	2.913	5.267	19.768	30.635	14.478	5.290	26,8
2018	1.460	1.760	3.255	2.760	2.241	1.751	1.460	808	905				16.400	16.400	10.889	5.511	33,6

**İhracat / Üretim(x1000) (2008 - 2018 / 1 - 9)(Traktör Dahil)**  
Exports / Production(x1000) (2008 - 2018 / 1 - 9)(Including Tractors)



	2008	2009	2010	2011	2012	2013	2014	2015	2016	2017	2018
<b>İhracat/Export</b>	779.984	441.342	568.732	599.091	547.510	628.879	666.234	717.999	806.075	994.640	983.032
<b>Üretim/Production</b>	990.365	626.265	805.608	917.275	828.668	870.469	872.431	1.012.671	1.072.419	1.262.599	1.199.704
<b>İhracat/Exports (%)</b>	78,8	70,5	70,6	65,3	66,1	72,2	76,4	70,9	75,2	78,8	81,9

**Taşıt Araçları İhracatı (2016 - 2018)**  
Motor Vehicle Exports (2016 - 2018)

SEKTÖR / SECTOR	2016	2017	1/9-2017	1/9-2018	2018/2017 %
OTOMOBİL / Pass.Car	745.709	921.354	689.191	644.783	-6,4
<b>OTOMOBİL TOPLAM / Pass. Car Total</b>	<b>745.709</b>	<b>921.354</b>	<b>689.191</b>	<b>644.783</b>	<b>-6,4</b>
KAMYON / Truck	5.521	7.800	5.530	10.195	84,4
KAMYONET / Pick Up	347.949	350.108	250.461	278.901	11,4
OTOBÜS / Bus	6.498	7.028	5.263	5.302	0,7
MİNİBÜS / Minibus	34.790	45.794	33.582	32.450	-3,4
MİDİBÜS / Midibus	915	710	447	577	29,1
<b>TİCARİ ARAÇLAR TOPLAM / Commercial Vehicle Total</b>	<b>395.673</b>	<b>411.440</b>	<b>295.283</b>	<b>327.425</b>	<b>10,9</b>
<b>TAŞIT ARAÇLARI TOPLAM / Motor Vehicles Total</b>	<b>1.141.382</b>	<b>1.332.794</b>	<b>984.474</b>	<b>972.208</b>	<b>-1,2</b>
TRAKTÖR / F.Tractor	13.651	13.123	10.166	10.824	6,5
<b>TRAKTÖR TOPLAM / F.Tractor Total</b>	<b>13.651</b>	<b>13.123</b>	<b>10.166</b>	<b>10.824</b>	<b>6,5</b>
<b>GENEL TOPLAM / GRAND TOTAL</b>	<b>1.155.033</b>	<b>1.345.917</b>	<b>994.640</b>	<b>983.032</b>	<b>-1,2</b>

**Üretici Bazında İhracat (adet)**  
Exports by Manufacturer (unit)

Üreticiler / Manufacturers	2016	2017	1-9 / 2017	1-9 / 2018
A.I.O.S.	673	700	388	604
FORD OTOSAN	256.706	296.840	211.189	238.140
HATTAT TRAKTÖR	1.026	1.100	898	502
HONDA TÜRKİYE	2.914	9.391	6.796	11.305
HYUNDAI ASSAN	207.234	204.382	152.282	139.661
KARSAN	3.629	2.969	1.863	2.552
M. BENZ TÜRK	8.307	9.865	7.497	11.674
MAN TÜRKİYE	1.717	2.007	1.490	1.761
OTOKAR	833	691	498	484
OYAK RENAULT	270.088	287.915	213.187	199.722
TEMSA	653	870	680	353
TOFAŞ	279.444	270.698	206.709	193.011
TOYOTA	109.184	246.466	181.895	172.941
TÜRK TRAKTÖR	12.625	12.023	9.268	10.322
<b>GENEL TOPLAM / Grand Total</b>	<b>1.155.033</b>	<b>1.345.917</b>	<b>994.640</b>	<b>983.032</b>



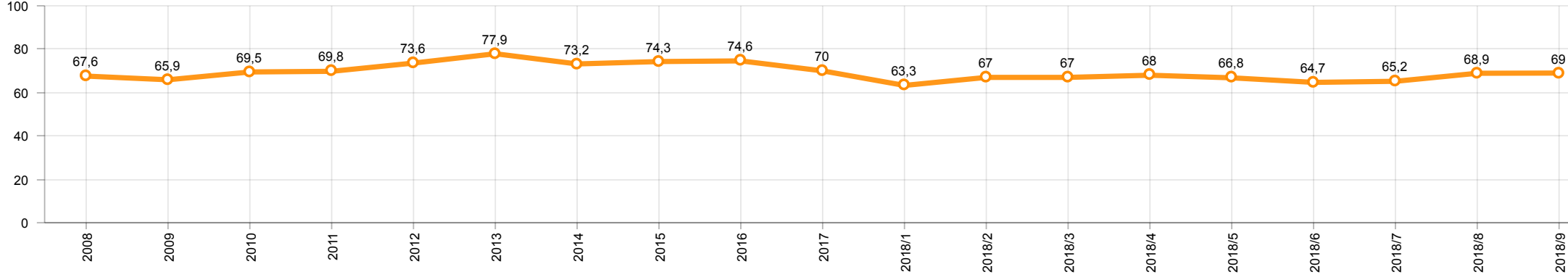
**Otomotiv Ana ve Yan Sanayii İhracatı (ABD \$)**  
CBU and CKD Exports - \$

Sektör / Sector	2016	2017	OCAK - EYLÜL / January - September 2017	OCAK - EYLÜL / January - September 2018	2018 / 2017 %
<b>Toplam Yan Sanayi / Total Component Industry</b>	<b>8.946.472.202</b>	<b>9.838.541.338</b>	<b>7.150.310.481</b>	<b>8.260.655.165</b>	<b>15,5</b>
İç ve Dış Lastik / Tyres	978.124.241	1.131.881.119	835.335.774	1.036.200.131	24,0
Emniyet Camı / Safety Glasses	119.553.098	136.486.808	100.412.280	114.576.280	14,1
Motor / Engine	370.418.066	486.426.738	326.862.292	448.724.822	37,3
Akümülatör / Batteries	224.588.995	296.139.813	190.141.299	265.818.921	39,8
Diğer Aksam ve Parça / Spare Parts&Components	7.253.787.802	7.787.606.860	5.697.558.836	6.395.335.011	12,2
<b>Toplam Ana Sanayi / Total Vehicle Industry</b>	<b>15.302.656.887</b>	<b>19.147.991.647</b>	<b>14.020.846.875</b>	<b>15.670.172.575</b>	<b>11,8</b>
Otobüs / Bus	1.190.475.986	1.311.098.736	944.049.095	1.036.844.165	9,8
Midibüs-Minibüs / Midibus-Minibus	238.911.957	217.704.499	166.462.975	161.573.365	-2,9
Otomobil / P.Cars	8.336.928.418	11.790.776.093	8.642.910.621	9.139.108.577	5,7
Kamyon-Kamyonet / Truck-Pick Up&Van	4.617.147.751	4.849.465.868	3.463.585.094	4.033.067.835	16,4
Römork ve Yarı Römork / Trailer-Semi Trailer	265.338.366	230.168.223	236.285.228	359.038.135	52,0
Çekici / Tractor	316.355.575	427.967.083	326.261.418	646.458.972	98,1
Tarım Traktörü / Farm Tractor	337.498.834	320.811.145	241.292.444	294.081.526	21,9
<b>Toplam / Total</b>	<b>24.249.129.089</b>	<b>28.986.532.985</b>	<b>21.171.157.356</b>	<b>23.930.827.740</b>	<b>13,0</b>

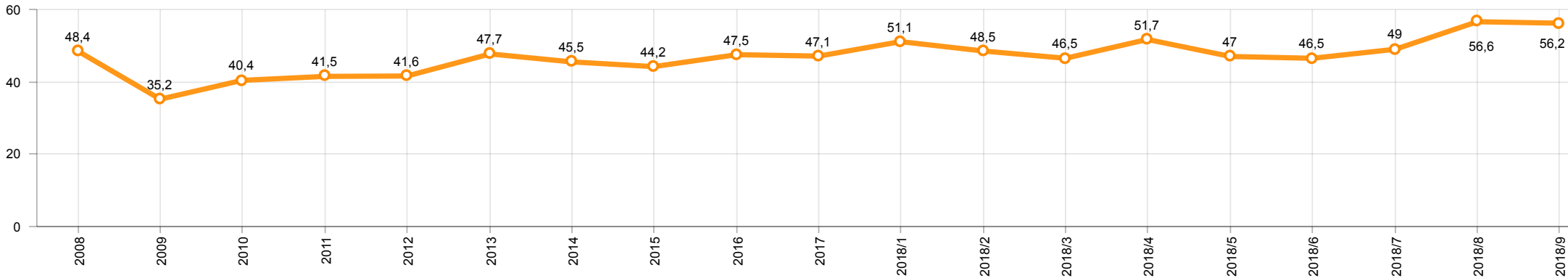
Kaynak: Uludağ İhracatçı Birlikleri . ÜİB tarafından OSD için özel olarak analiz edilen Otomotiv İhracatı kapsamında; ÜİB Türkiye Geneli Otomotiv Endüstrisi sınıflandırmasına kıyasla “Römork ve Yarı Römork” , “Tarım Traktörü” verileri dahil edilmekte; “Kullanılmış Araçlar” ,”İki Tekerlekli Taşıtlar” , “Demiryolu Taşıtları” hariç tutulmaktadır.

Source: Uludağ Exporters Association – Special Analyze for OSD.Compared to Turkish General Automotive Industry classification, this special analyze includes; farms tractors, trailers and semi-trailers, does not include; used vehicles, two-wheeled vehicles and railway vehicles

**Otomobil Pazarında İthalatın Payı (%)**  
Import Share in P.Car Market (%)



**Hafif Ticari Araçlar Pazarında İthalatın Payı (%)**  
Import Share in LCV Market (%)



Araç Tipleri / Vehicle Types	1	2	3	4	5	6	7	8	9	10	11	12	Toplam / Total
<b>OTOMOBİL - Pass.Car</b>	<b>73.408</b>	<b>75.779</b>	<b>86.252</b>	<b>79.786</b>	<b>77.297</b>	<b>68.030</b>	<b>82.198</b>	<b>30.528</b>	<b>71.505</b>				<b>644.783</b>
KAMYON - H. Truck	634	999	1.203	1.081	967	1.258	1.431	961	1.661				<b>10.195</b>
KAMYONET - Pick Up	18.119	39.567	36.795	31.090	34.733	35.060	34.279	12.507	36.751				<b>278.901</b>
OTOBÜS - Bus	490	486	715	594	728	612	623	579	475				<b>5.302</b>
MİNİBÜS - Minibus	1.649	4.521	3.929	4.336	2.777	4.653	4.752	1.227	4.606				<b>32.450</b>
MİDİBÜS - Midibus	13	50	89	58	49	72	106	99	41				<b>577</b>
<b>TİCARİ ARAÇLAR TOPLAMI - CV Total</b>	<b>20.905</b>	<b>45.623</b>	<b>42.731</b>	<b>37.159</b>	<b>39.254</b>	<b>41.655</b>	<b>41.191</b>	<b>15.373</b>	<b>43.534</b>				<b>327.425</b>
<b>TAŞIT ARAÇLARI TOPLAMI - MV Total</b>	<b>94.313</b>	<b>121.402</b>	<b>128.983</b>	<b>116.945</b>	<b>116.551</b>	<b>109.685</b>	<b>123.389</b>	<b>45.901</b>	<b>115.039</b>				<b>972.208</b>
TRAKTÖR - F.Tractor	802	941	1.155	1.108	1.410	1.170	1.416	1.218	1.604				<b>10.824</b>
<b>GENEL TOPLAM - Grand Total</b>	<b>95.115</b>	<b>122.343</b>	<b>130.138</b>	<b>118.053</b>	<b>117.961</b>	<b>110.855</b>	<b>124.805</b>	<b>47.119</b>	<b>116.643</b>				<b>983.032</b>

**Otomobil / P.Car**

Firmalar / Firms	1	2	3	4	5	6	7	8	9	10	11	12	Toplam / Total
FORD OTOSAN	2.920	2.041	1.787	40	1.154	1.629	2.026	527	2.396	-	-	-	<b>14.520</b>
HONDA TÜRKİYE	1.251	2.300	814	1.430	1.523	1.362	1.347	359	919	-	-	-	<b>11.305</b>
HYUNDAI ASSAN	10.899	17.471	18.914	17.307	17.265	16.490	19.191	3.300	18.824	-	-	-	<b>139.661</b>
OYAK RENAULT	27.028	20.491	24.760	25.707	28.043	21.090	27.056	9.492	16.055	-	-	-	<b>199.722</b>
TOFAŞ	9.736	15.502	16.864	13.195	12.558	11.512	9.883	4.600	12.784	-	-	-	<b>106.634</b>
TOYOTA	21.574	17.974	23.113	22.107	16.754	15.947	22.695	12.250	20.527	-	-	-	<b>172.941</b>
<b>TOPLAM - Total</b>	<b>73.408</b>	<b>75.779</b>	<b>86.252</b>	<b>79.786</b>	<b>77.297</b>	<b>68.030</b>	<b>82.198</b>	<b>30.528</b>	<b>71.505</b>	-	-	-	<b>644.783</b>

**Kamyonet / Pick-up**

Firmalar / Firms	1	2	3	4	5	6	7	8	9	10	11	12	Toplam / Total
FORD OTOSAN	12.083	28.583	25.157	20.652	23.087	23.358	24.767	6.746	25.815	-	-	-	<b>190.248</b>
KARSAN	194	271	318	270	179	282	414	124	210	-	-	-	<b>2.262</b>
OTOKAR	-	6	-	-	-	-	8	-	-	-	-	-	<b>14</b>
TOFAŞ	5.842	10.707	11.320	10.168	11.467	11.420	9.090	5.637	10.726	-	-	-	<b>86.377</b>
<b>TOPLAM - Total</b>	<b>18.119</b>	<b>39.567</b>	<b>36.795</b>	<b>31.090</b>	<b>34.733</b>	<b>35.060</b>	<b>34.279</b>	<b>12.507</b>	<b>36.751</b>	-	-	-	<b>278.901</b>

**Minibüs / Minibus**

Firmalar / Firms	1	2	3	4	5	6	7	8	9	10	11	12	Toplam / Total
FORD OTOSAN	1.597	4.521	3.904	4.335	2.776	4.648	4.751	1.227	4.606	-	-	-	<b>32.365</b>
KARSAN	52	-	25	1	1	5	1	-	-	-	-	-	<b>85</b>
<b>TOPLAM - Total</b>	<b>1.649</b>	<b>4.521</b>	<b>3.929</b>	<b>4.336</b>	<b>2.777</b>	<b>4.653</b>	<b>4.752</b>	<b>1.227</b>	<b>4.606</b>	-	-	-	<b>32.450</b>

**Kamyon / Truck**

Firmalar / Firms	1	2	3	4	5	6	7	8	9	10	11	12	Toplam / Total
A.I.O.S.	-	-	-	-	-	6	-	-	-	-	-	-	6
FORD OTOSAN	68	99	138	87	106	159	134	83	133	-	-	-	1.007
KARSAN	-	-	-	-	-	-	-	-	-	-	-	-	-
M. BENZ TÜRK	566	900	1.065	994	861	1.093	1.297	878	1.528	-	-	-	9.182
OTOKAR	-	-	-	-	-	-	-	-	-	-	-	-	-
<b>TOPLAM - Total</b>	<b>634</b>	<b>999</b>	<b>1.203</b>	<b>1.081</b>	<b>967</b>	<b>1.258</b>	<b>1.431</b>	<b>961</b>	<b>1.661</b>	<b>-</b>	<b>-</b>	<b>-</b>	<b>10.195</b>

**Midibüs / Midibus**

Firmalar / Firms	1	2	3	4	5	6	7	8	9	10	11	12	Toplam / Total
A.I.O.S.	6	32	54	37	20	53	42	65	26	-	-	-	335
KARSAN	1	3	1	1	-	3	3	1	-	-	-	-	13
OTOKAR	4	15	27	15	15	12	56	31	14	-	-	-	189
TEMSA	2	-	7	5	14	4	5	2	1	-	-	-	40
<b>TOPLAM - Total</b>	<b>13</b>	<b>50</b>	<b>89</b>	<b>58</b>	<b>49</b>	<b>72</b>	<b>106</b>	<b>99</b>	<b>41</b>	<b>-</b>	<b>-</b>	<b>-</b>	<b>577</b>

**Otobüs / Bus**

Firmalar / Firms	1	2	3	4	5	6	7	8	9	10	11	12	Toplam / Total
A.I.O.S.	3	2	39	24	47	59	27	16	46	-	-	-	263
KARSAN	1	-	23	-	31	52	-	56	29	-	-	-	192
M. BENZ TÜRK	220	238	373	311	359	259	378	176	178	-	-	-	2.492
MAN TÜRKİYE	243	212	233	228	228	178	151	124	164	-	-	-	1.761
OTOKAR	19	19	27	8	22	26	24	100	36	-	-	-	281
TEMSA	4	15	20	23	41	38	43	107	22	-	-	-	313
<b>TOPLAM - Total</b>	<b>490</b>	<b>486</b>	<b>715</b>	<b>594</b>	<b>728</b>	<b>612</b>	<b>623</b>	<b>579</b>	<b>475</b>	<b>-</b>	<b>-</b>	<b>-</b>	<b>5.302</b>

**Traktör / F.Tractor**

Firmalar / Firms	1	2	3	4	5	6	7	8	9	10	11	12	Toplam / Total
HATTAT TRAKTÖR	1	24	45	49	60	109	103	7	104	-	-	-	502
TÜRK TRAKTÖR	801	917	1.110	1.059	1.350	1.061	1.313	1.211	1.500	-	-	-	10.322
<b>TOPLAM - Total</b>	<b>802</b>	<b>941</b>	<b>1.155</b>	<b>1.108</b>	<b>1.410</b>	<b>1.170</b>	<b>1.416</b>	<b>1.218</b>	<b>1.604</b>	<b>-</b>	<b>-</b>	<b>-</b>	<b>10.824</b>

Firmalar / Firms	2017 Toplam / Total	1	2	3	4	5	6	7	8	9	10	11	12	Toplam / Total
Alfa Romeo	320	5	14	13	32	25	10	14	15	13	-	-	-	141
Aston Martin	25	1	1	1	1	1	1	1	1	2	-	-	-	10
Audi	21.585	1.013	1.033	1.552	1.625	1.630	668	840	737	350	-	-	-	9.448
Bentley	16	-	3	-	-	1	1	-	1	-	-	-	-	6
BMW	19.564	626	1.003	1.586	1.270	1.910	1.386	760	1.005	158	-	-	-	9.704
Citroen	14.709	407	1.128	1.086	615	980	499	922	495	134	-	-	-	6.266
Dacia	41.914	937	1.298	3.600	3.199	3.193	2.254	2.343	1.220	1.141	-	-	-	19.185
DS	119	-	-	81	20	9	9	10	64	9	-	-	-	202
Ferrari	16	1	1	2	3	1	1	2	2	3	-	-	-	16
Fiat	2.157	56	102	142	130	178	139	112	79	57	-	-	-	995
Ford	33.671	920	1.440	2.638	2.506	2.803	2.016	1.914	1.438	705	-	-	-	16.380
Honda	7.250	207	189	469	646	588	451	402	322	502	-	-	-	3.776
Hyundai	26.841	1.282	1.734	2.376	2.555	2.463	1.898	1.382	656	1.036	-	-	-	15.382
Infinity	122	3	5	2	2	2	2	-	-	-	-	-	-	16
Jaguar	339	12	20	24	18	12	8	6	8	17	-	-	-	125
Jeep	2.357	101	159	255	295	185	175	140	91	90	-	-	-	1.491
Kia	10.937	431	514	872	984	742	770	795	418	241	-	-	-	5.767
Lamborghini	7	-	-	-	1	1	-	-	-	-	-	-	-	2
Land Rover	1.879	84	145	162	129	112	93	67	22	45	-	-	-	859
Lexus	101	2	2	8	10	7	2	5	1	2	-	-	-	39
Maserati	76	4	2	6	6	4	5	3	2	2	-	-	-	34
Mazda	1.412	62	76	135	134	129	40	73	52	110	-	-	-	811
Mercedes-Benz	25.588	1.190	1.151	2.031	1.496	2.153	1.326	1.251	951	781	-	-	-	12.330
Mini	1.480	55	82	116	121	146	66	103	70	45	-	-	-	804
Mitsubishi	354	12	9	21	58	57	39	14	14	29	-	-	-	253
Nissan	32.043	767	1.470	2.908	2.021	2.508	1.684	1.025	1.320	1.184	-	-	-	14.887
Opel	44.707	1.327	1.568	2.989	3.476	1.416	1.521	2.102	1.688	857	-	-	-	16.944
Peugeot	29.981	809	1.625	3.038	2.875	3.819	1.851	2.808	1.340	456	-	-	-	18.621
Porsche	670	43	50	61	70	54	36	49	75	32	-	-	-	470
Renault	37.021	1.013	1.552	1.821	2.617	2.694	1.770	1.711	1.042	782	-	-	-	15.002
Seat	16.064	663	869	1.226	1.341	1.154	753	1.387	862	285	-	-	-	8.540
Skoda	24.679	1.564	2.161	2.911	2.018	1.820	1.726	1.857	1.098	618	-	-	-	15.773
Smart	105	-	-	4	4	3	5	6	-	-	-	-	-	22
Ssangyong	362	26	25	38	18	19	6	9	7	4	-	-	-	152
Subaru	1.726	86	55	224	165	144	96	106	77	89	-	-	-	1.042
Suzuki	4.316	67	122	323	253	383	127	267	229	70	-	-	-	1.841
Toyota	7.297	309	376	294	318	370	218	193	243	101	-	-	-	2.422
Volkswagen	89.688	2.497	3.763	6.561	5.801	5.913	4.428	4.217	2.567	1.763	-	-	-	37.510
Volvo	4.470	250	302	503	631	590	577	520	375	427	-	-	-	4.175
<b>GENEL TOPLAM - Grand Total</b>	<b>505.968</b>	<b>16.832</b>	<b>24.049</b>	<b>40.079</b>	<b>37.464</b>	<b>38.219</b>	<b>26.657</b>	<b>27.416</b>	<b>18.587</b>	<b>12.140</b>	<b>-</b>	<b>-</b>	<b>-</b>	<b>241.443</b>

Firmalar / Firms	2017 Toplam / Total	1	2	3	4	5	6	7	8	9	10	11	12	Toplam / Total
<b>Citroen</b>	<b>8.023</b>	94	291	706	406	634	520	470	198	197	-	-	-	<b>3.516</b>
<b>Dacia</b>	<b>6.456</b>	254	302	335	337	328	293	259	467	319	-	-	-	<b>2.894</b>
<b>Fiat</b>	<b>6.582</b>	163	252	401	249	362	223	248	236	199	-	-	-	<b>2.333</b>
<b>Ford</b>	<b>4.188</b>	174	142	251	247	216	214	286	152	139	-	-	-	<b>1.821</b>
<b>Hyundai</b>	<b>2.984</b>	119	85	28	215	199	131	125	51	39	-	-	-	<b>992</b>
<b>Isuzu</b>	<b>302</b>	24	18	19	19	33	63	55	19	17	-	-	-	<b>267</b>
<b>Iveco</b>	<b>2.566</b>	122	148	161	146	133	107	137	82	110	-	-	-	<b>1.146</b>
<b>Kia</b>	<b>3.591</b>	111	143	207	322	221	149	127	82	70	-	-	-	<b>1.432</b>
<b>Mercedes-Benz</b>	<b>9.043</b>	480	646	1.121	1.206	1.204	328	404	476	382	-	-	-	<b>6.247</b>
<b>Mitsubishi</b>	<b>3.527</b>	158	347	403	669	184	108	303	369	181	-	-	-	<b>2.722</b>
<b>Nissan</b>	<b>2.779</b>	95	154	197	165	116	94	79	61	33	-	-	-	<b>994</b>
<b>Peugeot</b>	<b>10.458</b>	178	277	485	517	404	338	621	289	261	-	-	-	<b>3.370</b>
<b>Renault</b>	<b>16.822</b>	512	793	1.087	1.127	969	705	660	468	435	-	-	-	<b>6.756</b>
<b>Ssangyong</b>	<b>255</b>	5	1	6	8	12	21	47	27	-	-	-	-	<b>127</b>
<b>Toyota</b>	<b>4.551</b>	210	267	310	652	352	180	128	174	194	-	-	-	<b>2.467</b>
<b>Volkswagen</b>	<b>27.793</b>	1.630	1.516	1.974	1.989	1.931	1.093	1.298	1.018	476	-	-	-	<b>12.925</b>
<b>GENEL TOPLAM - Grand Total</b>	<b>109.920</b>	<b>4.329</b>	<b>5.382</b>	<b>7.691</b>	<b>8.274</b>	<b>7.298</b>	<b>4.567</b>	<b>5.247</b>	<b>4.169</b>	<b>3.052</b>	-	-	-	<b>50.009</b>