



OTOMOTİV SANAYİİ DERNEĞİ  
AUTOMOTIVE MANUFACTURERS ASSOCIATION

# OTOMOTİV SEKTÖRÜ AYLIK DEĞERLENDİRME RAPORU AĞUSTOS 2018

AUTOMOTIVE INDUSTRY MONTHLY REPORT  
August 2018

OSD "OICA" Üyesidir



OSD is a Member of "OICA"

	8 - 2017	8 - 2018	%	1 - 8 / 2017	1 - 8 / 2018	%	9/2016 - 8/2017	9/2017 - 8/2018	%
Otomobil Üretimi/P.Cars Production	50.452	29.289	-41,9	750.042	683.069	-8,9	1.138.238	1.075.933	-5,5
Toplam Üretim/Total Production	71.458	47.175	-34,0	1.089.618	1.034.097	-5,1	1.660.661	1.640.210	-1,2
Otomobil Pazarı/P.Cars Market	54.890	26.976	-50,9	423.198	344.870	-18,5	742.111	644.431	-13,2
Toplam Pazar/Total Market	74.818	35.174	-53,0	573.065	455.943	-20,4	999.312	869.707	-13,0
Otomobil İthalatı/P.Cars Import	40.434	18.587	-54,0	294.038	229.303	-22,0	528.781	441.233	-16,6
Toplam İthalat/Total Import	50.460	23.022	-54,4	363.989	281.531	-22,7	647.917	542.029	-16,3
Otomobil İhracatı/P.Cars Export	44.945	30.528	-32,1	625.025	573.278	-8,3	930.537	869.607	-6,5
Toplam İhracat/Total Export	61.373	45.919	-25,2	889.726	857.479	-3,6	1.325.607	1.300.547	-1,9
Otomobil İhracatı(\$)/P.Cars Export (\$)	644.482.172	499.553.006	-22,5	7.793.943.162	8.153.078.560	4,6	11.374.349.555	12.149.750.158	6,8
Toplam İhracat(\$)/Total Export (\$)*	1.896.710.436	1.665.453.725	-12,2	18.967.836.895	21.264.211.120	12,1	27.800.878.909	31.393.089.498	12,9

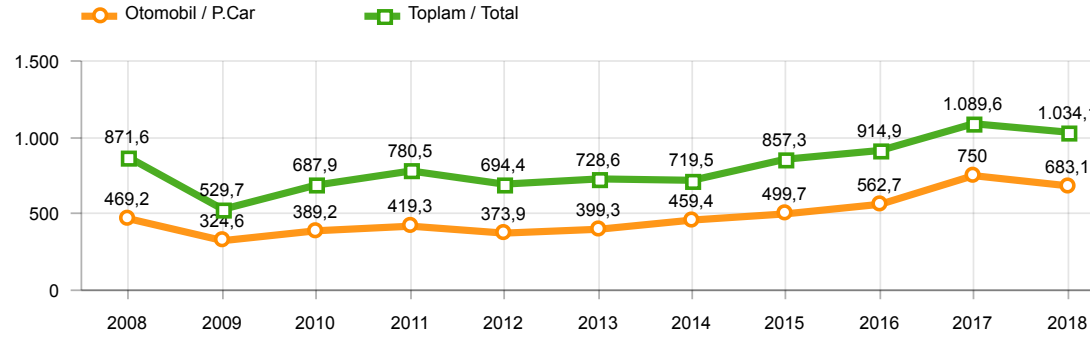
Parametreler/Parameters	8 - 2017	8 - 2018	%	1 - 8 / 2017	1 - 8 / 2018	%	9/2016 - 8/2017	9/2017 - 8/2018	%
ÜFE / PPI	0,9	6,6	-	9,5	25,3	-	12,1	18,8	-
TÜFE / CPI	0,5	2,3	-	6,6	12,3	-	9,7	12,6	-
Sanayi Endeksi / Industry Index	0,9	7,3	-	10,2	25,9	-	13,8	19,8	-
Dolar \$ **	3,5	5,7	64,9	3,6	4,3	21,5	3,4	4,1	20,0
Euro € **	4,1	6,7	61,4	4,0	5,2	31,3	3,8	4,9	29,8
Japon Yeni ¥ **	3,2	5,1	62,1	3,2	3,9	24,3	3,1	3,7	20,3

\*Toplam Sanayi / Total Industry Including Components

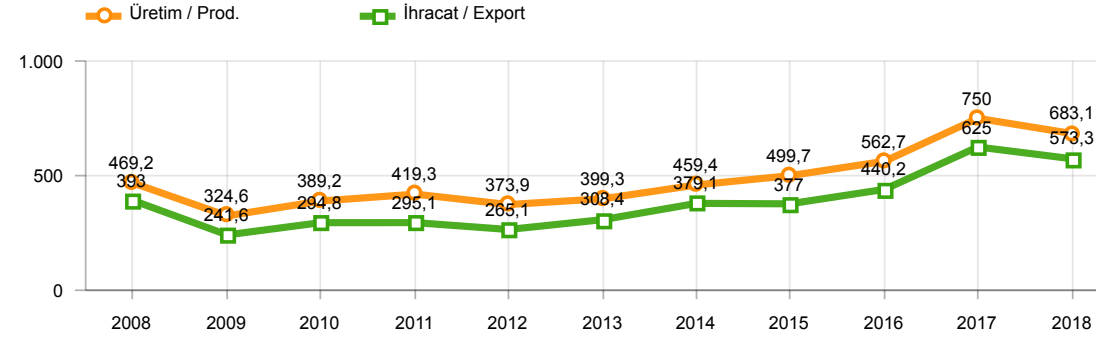
\*\* Ortalama Değerler / Average Values

Araç Tipleri / Types	8 / 2017	8 / 2018	8 % Değişim	1-8 / 2017	1-8 / 2018	1-8 % Değişim
OTOMOBİL / Pass.Car	50.452	29.289	-41,9	750.042	683.069	-8,9
<b>OTOMOBİL Toplam / Pass.Car Total</b>	<b>50.452</b>	<b>29.289</b>	<b>-41,9</b>	<b>750.042</b>	<b>683.069</b>	<b>-8,9</b>
B.KAMYON / H. Truck	800	1.276	59,5	10.721	16.660	55,4
K.KAMYON / L. Truck	272	88	-67,6	2.054	2.063	0,4
KAMYONET / Pick Up	16.668	14.325	-14,1	283.907	289.559	2,0
OTOBÜS / Bus	572	509	-11,0	5.871	5.570	-5,1
MİNİBÜS / Minibus	2.377	1.552	-34,7	35.030	34.697	-1,0
MİDİBÜS / Midibus	317	136	-57,1	1.993	2.479	24,4
<b>TİCARİ ARAÇLAR Toplam / Commercial Vehicles Total</b>	<b>21.006</b>	<b>17.886</b>	<b>-14,9</b>	<b>339.576</b>	<b>351.028</b>	<b>3,4</b>
<b>TAŞIT ARAÇLARI Toplam / Motor Vehicles Total</b>	<b>71.458</b>	<b>47.175</b>	<b>-34,0</b>	<b>1.089.618</b>	<b>1.034.097</b>	<b>-5,1</b>
TRAKTÖR / F.Tractor	3.853	1.563	-59,4	33.824	30.831	-8,8
<b>TRAKTÖR Toplam / F.Tractor Total</b>	<b>3.853</b>	<b>1.563</b>	<b>-59,4</b>	<b>33.824</b>	<b>30.831</b>	<b>-8,8</b>
<b>GENEL TOPLAM / Grand Total</b>	<b>75.311</b>	<b>48.738</b>	<b>-35,3</b>	<b>1.123.442</b>	<b>1.064.928</b>	<b>-5,2</b>

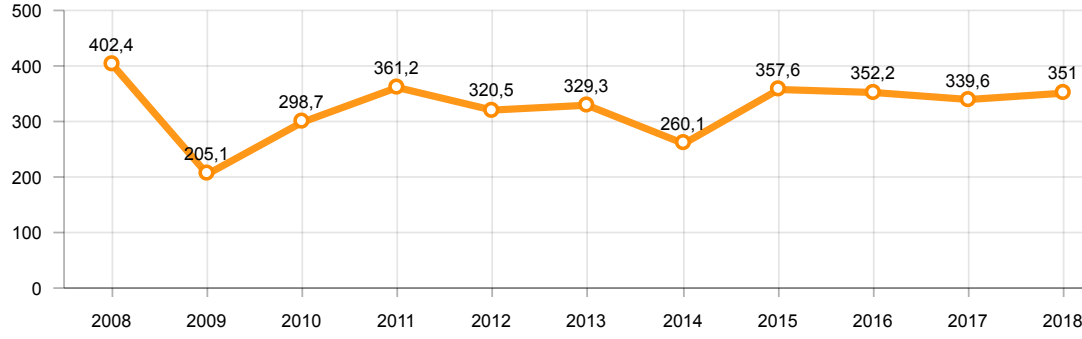
Toplam Üretim ve Otomobil Üretimi (x1000)(OCAK - AĞUSTOS)  
Total & P.Cars Production (x1000)(January - August)



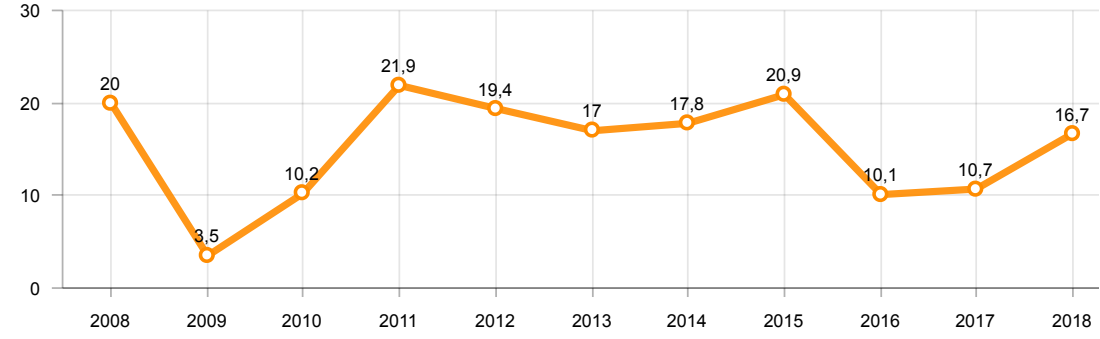
Otomobil Üretimi ve İhracatı (x1000)(OCAK - AĞUSTOS)  
P.Cars Production & Exports (x1000)(January - August)



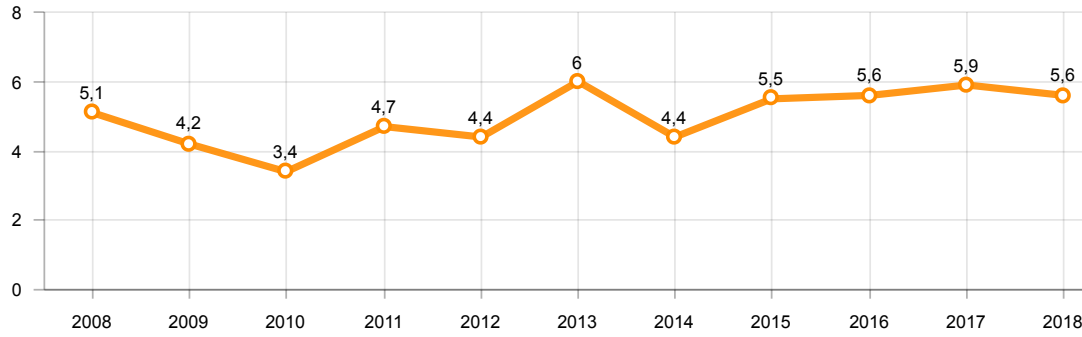
**Ticari Araç Üretimi (x1000)(OCAK - AĞUSTOS)**  
Commercial Vehicle Production (x1000)(January - August)



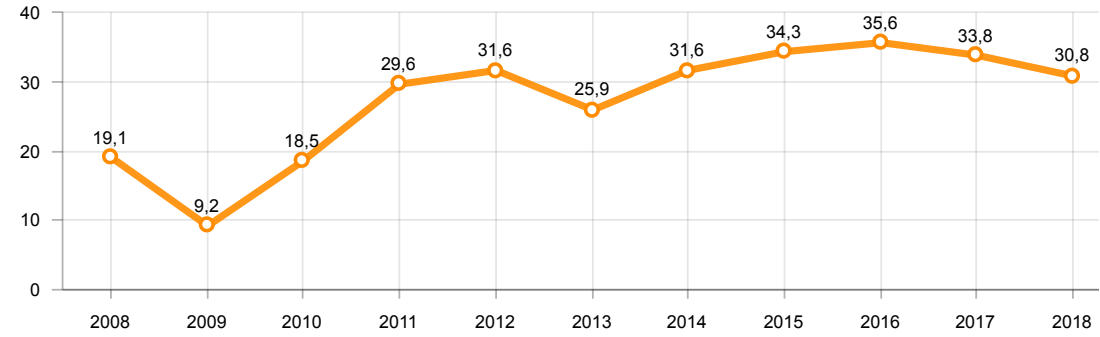
**Büyük Kamyon Üretimi (x1000)(OCAK - AĞUSTOS)**  
Heavy Truck Production (x1000)(January - August)



**Otobüs Üretimi (x1000)(OCAK - AĞUSTOS)**  
Bus Production (x1000)(January - August)

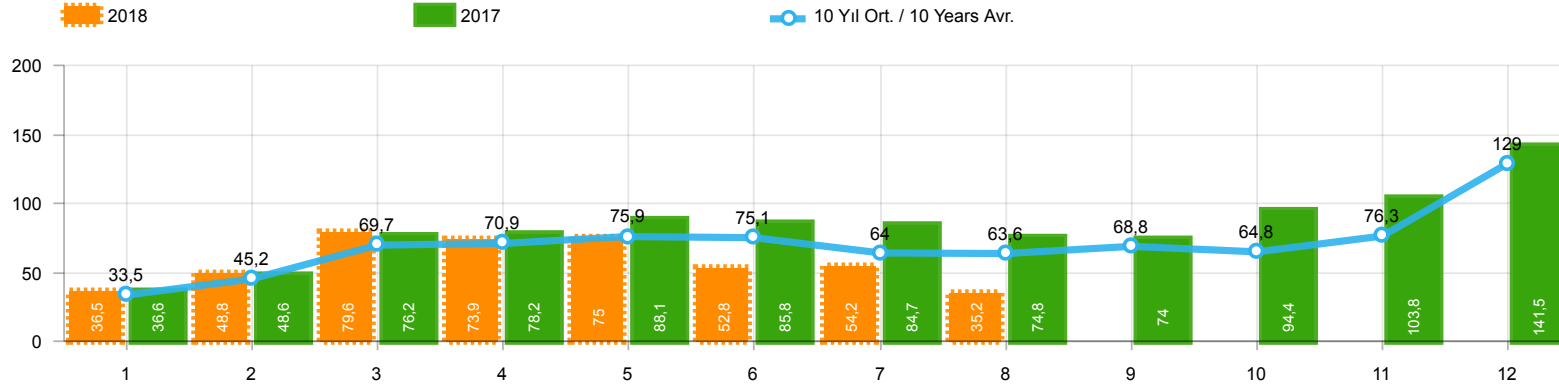


**Traktör Üretimi (x1000)(OCAK - AĞUSTOS)**  
F. Tractor Production (x1000)(January - August)



## Toplam Pazarın Analizi(x1000)(OCAK - AĞUSTOS)

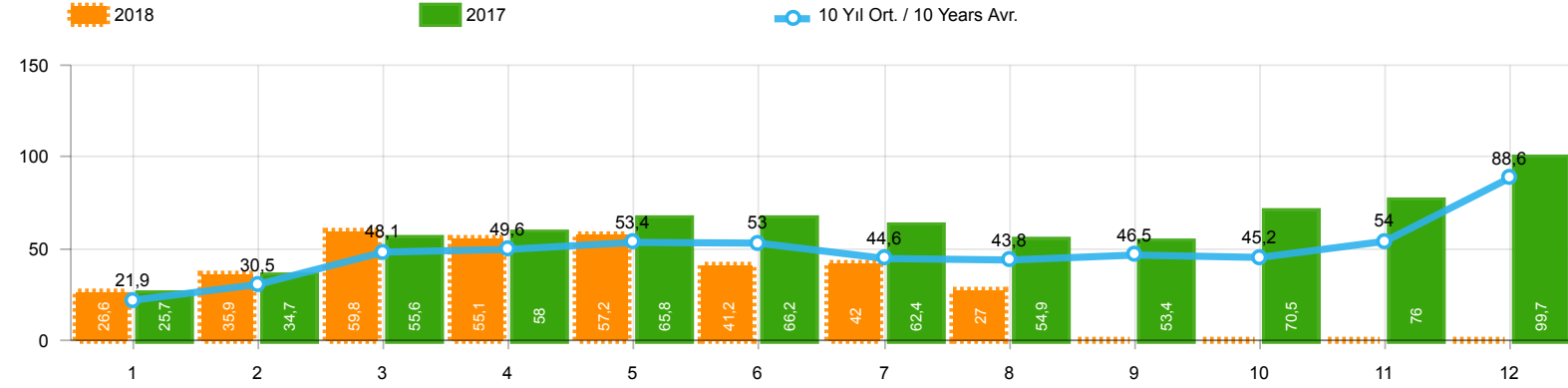
Total Market Analysis(x1000)(January - August)



Aylar / Months	10 Yıl Ort / 10 Years Avr.	2018	%
1	33.545	36.536	8,9
2	45.155	48.769	8,0
3	69.683	79.600	14,2
4	70.861	73.886	4,3
5	75.885	74.996	-1,2
6	75.097	52.788	-29,7
7	63.986	54.194	-15,3
8	63.599	35.174	-44,7
TOPLAM / TOTAL	497.809	455.943	-8,4

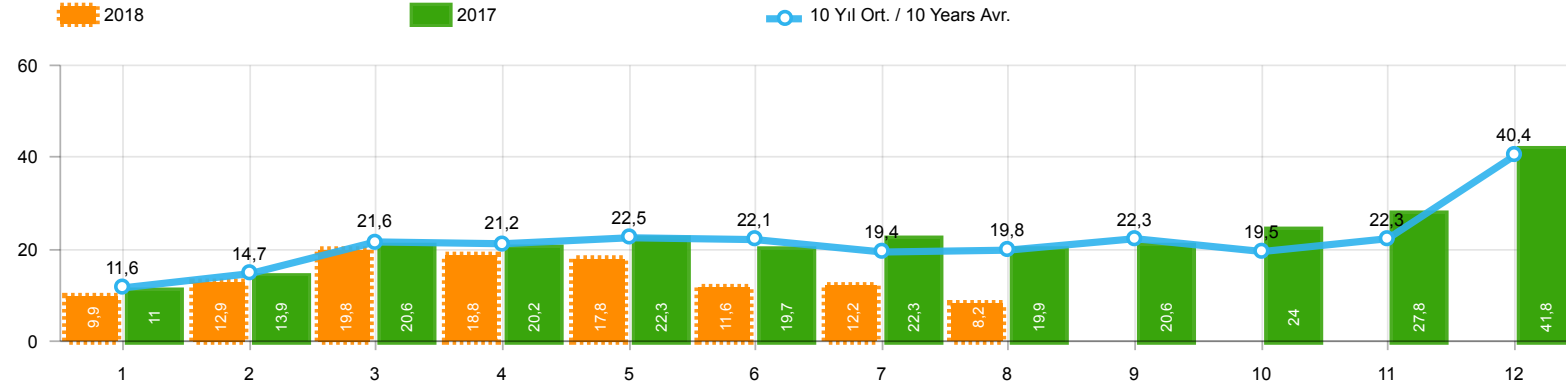
Yıl / Year	1	2	3	4	5	6	7	8	9	10	11	12	1-8 Toplam / Total	Toplam / Total	1-8 Yerli / Local	1-8 İthal / Import	İthal Oran / Import %
2008	33.882	38.187	56.863	51.052	51.762	49.371	44.634	46.679	46.696	35.152	28.291	44.296	372.430	526.865	159.306	213.124	57,2
2009	20.605	22.873	56.527	54.433	64.947	63.090	30.374	37.038	83.553	22.191	29.309	91.762	349.887	576.702	155.960	193.927	55,4
2010	21.070	32.331	54.019	57.241	61.837	63.511	64.011	64.961	67.040	76.753	77.488	155.234	418.981	795.496	175.671	243.310	58,1
2011	47.759	62.586	84.045	82.782	85.862	85.992	65.658	61.645	64.313	73.227	67.150	134.468	576.329	915.487	234.859	341.470	59,2
2012	31.552	44.138	69.242	66.559	75.195	75.108	65.444	60.982	73.501	62.933	75.203	121.442	488.220	821.299	184.713	303.507	62,2
2013	37.563	51.133	72.943	77.265	85.835	78.043	75.152	67.662	71.388	60.690	83.470	136.048	545.596	897.192	169.117	376.479	69,0
2014	34.751	37.659	51.312	57.113	62.447	64.295	62.770	63.303	70.764	69.742	84.368	154.843	433.650	813.367	144.307	289.343	66,7
2015	37.256	59.221	89.765	96.182	85.804	91.071	87.358	85.244	67.181	67.086	88.431	164.464	631.901	1.019.063	218.269	413.632	65,5
2016	34.369	54.840	85.932	87.748	97.090	94.666	59.732	73.654	69.413	85.666	125.462	145.706	588.031	1.014.278	190.691	397.340	67,6
2017	36.640	48.585	76.178	78.231	88.066	85.820	84.727	74.818	74.046	94.439	103.772	141.507	573.065	986.829	209.076	363.989	63,5
2018	36.536	48.769	79.600	73.886	74.996	52.788	54.194	35.174					455.943	455.943	174.412	281.531	61,7

Otomobil Pazarının Analizi(x1000)(OCAK - AĞUSTOS)  
P.Cars Market Analysis(x1000)(January - August)



Aylar / Months	10 Yıl Ort. / 10 Years Avr.	2018	%
1	21.905	26.611	21,5
2	30.458	35.901	17,9
3	48.088	59.798	24,4
4	49.614	55.108	11,1
5	53.417	57.227	7,1
6	53.000	41.225	-22,2
7	44.610	42.024	-5,8
8	43.833	26.976	-38,5
TOPLAM / TOTAL	344.924	344.870	0,0

Yıl / Year	1	2	3	4	5	6	7	8	9	10	11	12	1-8 Toplam / Total	Toplam / Total	1-8 Yerli / Local	1-8 İthal / Import	İthal Oran / Import %
2008	18.588	21.196	34.147	30.313	31.477	28.724	25.530	26.102	27.053	19.788	17.201	25.879	216.077	305.998	71.504	144.573	66,9
2009	13.173	14.492	40.622	36.202	44.188	41.019	16.637	22.537	52.162	13.828	17.781	57.178	228.870	369.819	76.909	151.961	66,4
2010	12.594	20.651	33.958	36.549	40.467	42.086	41.399	42.222	42.477	47.859	50.061	99.461	269.926	509.784	83.416	186.510	69,1
2011	29.868	39.004	54.023	53.835	56.302	56.714	43.518	38.875	39.964	47.508	44.951	88.957	372.139	593.519	116.121	256.018	68,8
2012	21.077	29.189	47.270	45.645	50.460	50.849	44.531	41.236	49.360	43.440	52.297	80.926	330.257	556.280	90.473	239.784	72,6
2013	25.835	36.814	51.785	56.999	62.383	58.290	55.712	51.611	52.925	46.985	64.117	101.199	399.429	664.655	86.633	312.796	78,3
2014	24.368	27.167	37.812	42.769	46.379	47.278	46.602	45.131	49.262	50.814	59.695	110.054	317.506	587.331	78.863	238.643	75,2
2015	24.498	40.817	61.676	70.211	62.878	67.766	64.218	61.753	47.088	47.954	62.397	114.340	453.817	725.596	114.025	339.792	74,9
2016	23.358	40.588	63.975	65.618	73.832	71.111	45.566	53.977	51.340	63.746	95.783	108.044	438.025	756.938	107.723	330.302	75,4
2017	25.689	34.658	55.616	57.998	65.799	66.164	62.384	54.890	53.423	70.488	75.956	99.694	423.198	722.759	129.160	294.038	69,5
2018	26.611	35.901	59.798	55.108	57.227	41.225	42.024	26.976					344.870	344.870	115.567	229.303	66,5

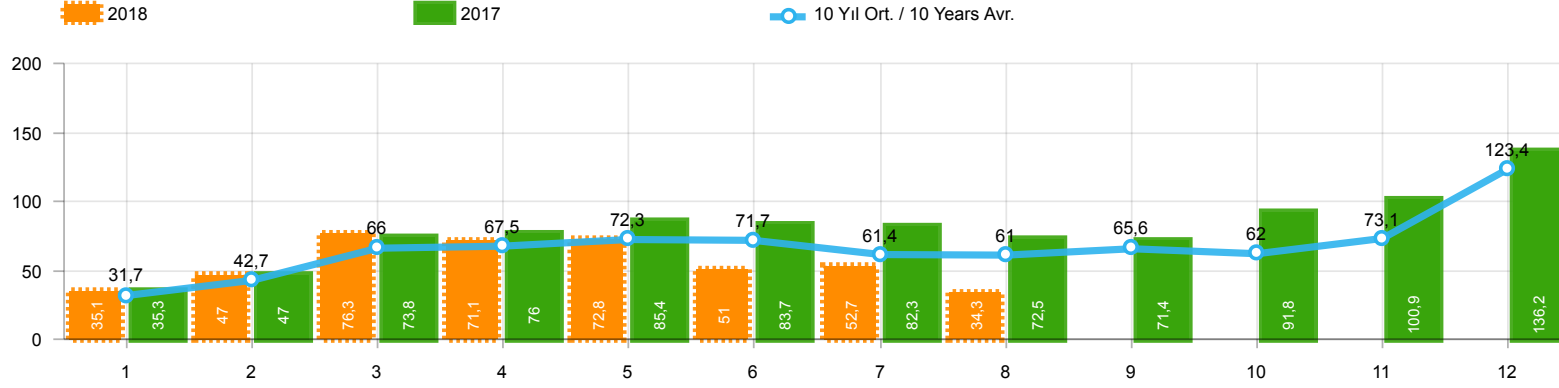


Aylar / Months	10 Yıl Ort. / 10 Years Avr.	2018	%
1	11.640	9.925	-14,7
2	14.698	12.868	-12,4
3	21.594	19.802	-8,3
4	21.247	18.778	-11,6
5	22.468	17.769	-20,9
6	22.097	11.563	-47,7
7	19.376	12.170	-37,2
8	19.765	8.198	-58,5
TOPLAM / TOTAL	152.885	111.073	-27,4

Yıl / Year	1	2	3	4	5	6	7	8	9	10	11	12	1-8 Toplam / Total	Toplam / Total	1-8 Yerli / Local	1-8 İthal / Import	İthal Oran / Import %
2008	15.294	16.991	22.716	20.739	20.285	20.647	19.104	20.577	19.643	15.364	11.090	18.417	156.353	220.867	87.802	68.551	43,8
2009	7.432	8.381	15.905	18.231	20.759	22.071	13.737	14.501	31.391	8.363	11.528	34.584	121.017	206.883	79.051	41.966	34,7
2010	8.476	11.680	20.061	20.692	21.370	21.425	22.612	22.739	24.563	28.894	27.427	55.773	149.055	285.712	92.255	56.800	38,1
2011	17.891	23.582	30.022	28.947	29.560	29.278	22.140	22.770	24.349	25.719	22.199	45.511	204.190	321.968	118.738	85.452	41,8
2012	10.475	14.949	21.972	20.914	24.735	24.259	20.913	19.746	24.141	19.493	22.906	40.516	157.963	265.019	94.240	63.723	40,3
2013	11.728	14.319	21.158	20.266	23.452	19.753	19.440	16.051	18.463	13.705	19.353	34.849	146.167	232.537	82.484	63.683	43,6
2014	10.383	10.492	13.500	14.344	16.068	17.017	16.168	18.172	21.502	18.928	24.673	44.789	116.144	226.036	65.444	50.700	43,7
2015	12.758	18.404	28.089	25.971	22.926	23.305	23.140	23.491	20.093	19.132	26.034	50.124	178.084	293.467	104.244	73.840	41,5
2016	11.011	14.252	21.957	22.130	23.258	23.555	14.166	19.677	18.073	21.920	29.679	37.662	150.006	257.340	82.968	67.038	44,7
2017	10.951	13.927	20.562	20.233	22.267	19.656	22.343	19.928	20.623	23.951	27.816	41.813	149.867	264.070	79.916	69.951	46,7
2018	9.925	12.868	19.802	18.778	17.769	11.563	12.170	8.198					111.073	111.073	58.845	52.228	47,0

### Hafif Araç Pazarının Analizi(x1000)(OCAK - AĞUSTOS)

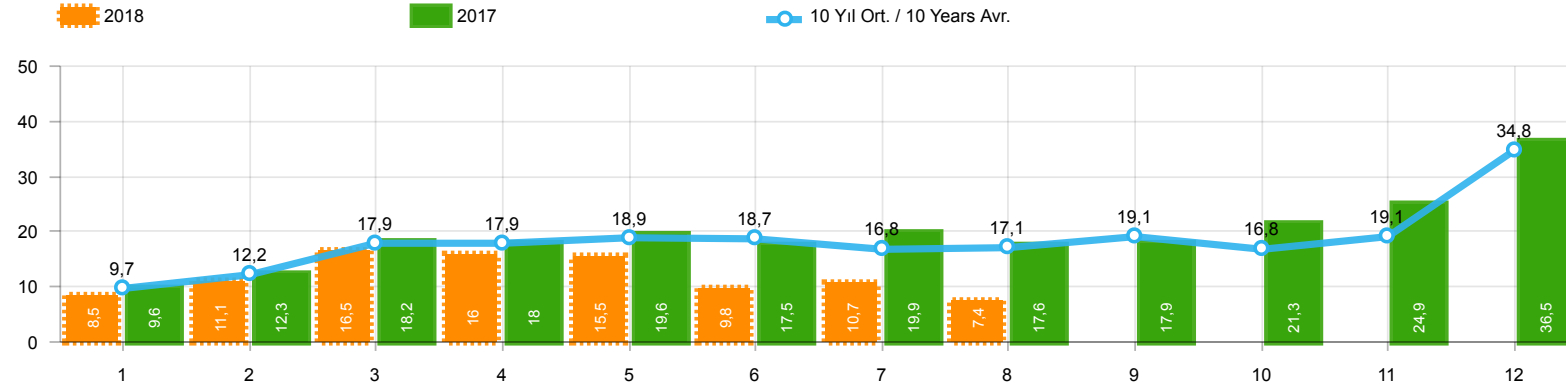
LV Market Analysis(x1000)(January - August)



Aylar / Months	10 Yıl Ort. / 10 Years Avr.	2018	%
1	31.651	35.076	10,8
2	42.660	47.009	10,2
3	66.022	76.345	15,6
4	67.529	71.126	5,3
5	72.313	72.755	0,6
6	71.654	51.037	-28,8
7	61.386	52.734	-14,1
8	60.951	34.346	-43,6
TOPLAM / TOTAL	474.167	440.428	-7,1

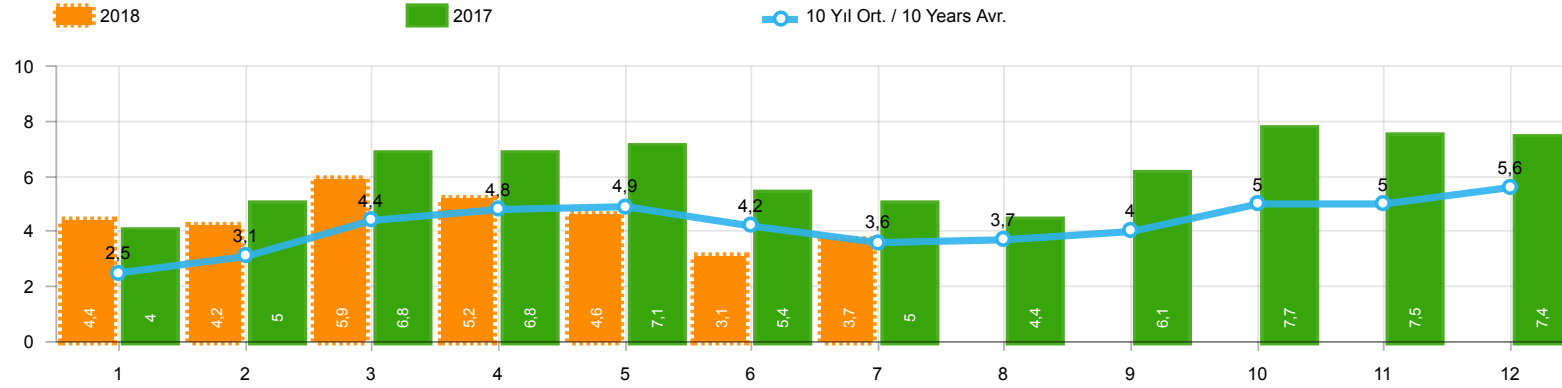
Yıl / Year	1	2	3	4	5	6	7	8	9	10	11	12	1-8 Toplam / Total	Toplam / Total	1-8 Yerli / Local	1-8 İthal / Import	İthal Oran / Import %
2008	31.527	35.251	53.649	47.701	48.598	46.324	42.156	43.670	43.932	32.884	26.253	42.078	348.876	494.023	140.350	208.526	59,8
2009	19.606	21.742	55.111	52.640	63.191	61.067	28.845	35.609	81.397	21.033	27.962	88.923	337.811	557.126	145.795	192.016	56,8
2010	20.095	31.172	51.769	54.946	59.377	60.896	61.345	61.764	63.814	73.404	73.962	148.369	401.364	760.913	162.450	238.914	59,5
2011	44.892	58.663	78.403	77.695	80.646	81.573	63.044	58.406	60.129	69.421	63.657	127.910	543.322	864.439	212.097	331.225	61,0
2012	29.545	41.324	64.884	62.949	70.863	71.067	62.304	58.148	69.629	59.938	71.710	115.400	461.084	777.761	164.984	296.100	64,2
2013	35.523	48.307	68.774	73.575	81.468	74.096	71.596	65.043	67.963	58.014	79.301	129.718	518.382	853.378	148.289	370.093	71,4
2014	32.670	35.021	47.581	53.305	58.121	60.163	59.907	60.199	66.531	66.573	80.621	146.989	406.967	767.681	123.875	283.092	69,6
2015	34.615	55.331	83.302	91.602	81.542	86.158	83.836	82.577	64.025	64.255	84.601	156.173	598.963	968.017	193.665	405.298	67,7
2016	32.713	52.825	82.948	84.887	93.904	91.540	58.533	71.556	67.593	83.000	122.309	141.912	568.906	983.720	176.515	392.391	69,0
2017	35.323	46.965	73.802	75.988	85.422	83.658	82.297	72.536	71.352	91.752	100.859	136.240	555.991	956.194	196.518	359.473	64,7
2018	35.076	47.009	76.345	71.126	72.755	51.037	52.734	34.346					440.428	440.428	164.168	276.260	62,7





Aylar / Months	10 Yıl Ort. / 10 Years Avr.	2018	%
1	9.746	8.465	-13,1
2	12.203	11.108	-9,0
3	17.934	16.547	-7,7
4	17.915	16.018	-10,6
5	18.897	15.528	-17,8
6	18.654	9.812	-47,4
7	16.777	10.710	-36,2
8	17.117	7.370	-56,9
TOPLAM / TOTAL	129.242	95.558	-26,1

Yıl / Year	1	2	3	4	5	6	7	8	9	10	11	12	1-8 Toplam / Total	Toplam / Total	1-8 Yerli / Local	1-8 İthal / Import	İthal Oran / Import %
2008	12.939	14.055	19.502	17.388	17.121	17.600	16.626	17.568	16.879	13.096	9.052	16.199	132.799	188.025	68.846	63.953	48,2
2009	6.433	7.250	14.489	16.438	19.003	20.048	12.208	13.072	29.235	7.205	10.181	31.745	108.941	187.307	68.886	40.055	36,8
2010	7.501	10.521	17.811	18.397	18.910	18.810	19.946	19.542	21.337	25.545	23.901	48.908	131.438	251.129	79.034	52.404	39,9
2011	15.024	19.659	24.380	23.860	24.344	24.859	19.526	19.531	20.165	21.913	18.706	38.953	171.183	270.920	95.976	75.207	43,9
2012	8.468	12.135	17.614	17.304	20.403	20.218	17.773	16.912	20.269	16.498	19.413	34.474	130.827	221.481	74.511	56.316	43,0
2013	9.688	11.493	16.989	16.576	19.085	15.806	15.884	13.432	15.038	11.029	15.184	28.519	118.953	188.723	61.656	57.297	48,2
2014	8.302	7.854	9.769	10.536	11.742	12.885	13.305	15.068	17.269	15.759	20.926	36.935	89.461	180.350	45.012	44.449	49,7
2015	10.117	14.514	21.626	21.391	18.664	18.392	19.618	20.824	16.937	16.301	22.204	41.833	145.146	242.421	79.640	65.506	45,1
2016	9.355	12.237	18.973	19.269	20.072	20.429	12.967	17.579	16.253	19.254	26.526	33.868	130.881	226.782	68.792	62.089	47,4
2017	9.634	12.307	18.186	17.990	19.623	17.494	19.913	17.646	17.929	21.264	24.903	36.546	132.793	233.435	67.358	65.435	49,3
2018	8.465	11.108	16.547	16.018	15.528	9.812	10.710	7.370					95.558	95.558	48.601	46.957	49,1



Aylar / Months	10 Yıl Ort / 10 Years Avr.	2018	%
1	2.510	4.362	73,8
2	3.127	4.179	33,7
3	4.447	5.925	33,2
4	4.833	5.216	7,9
5	4.934	4.584	-7,1
6	4.201	3.146	-25,1
7	3.594	3.654	1,7
<b>TOPLAM / TOTAL</b>	<b>27.646</b>	<b>31.066</b>	<b>12,4</b>

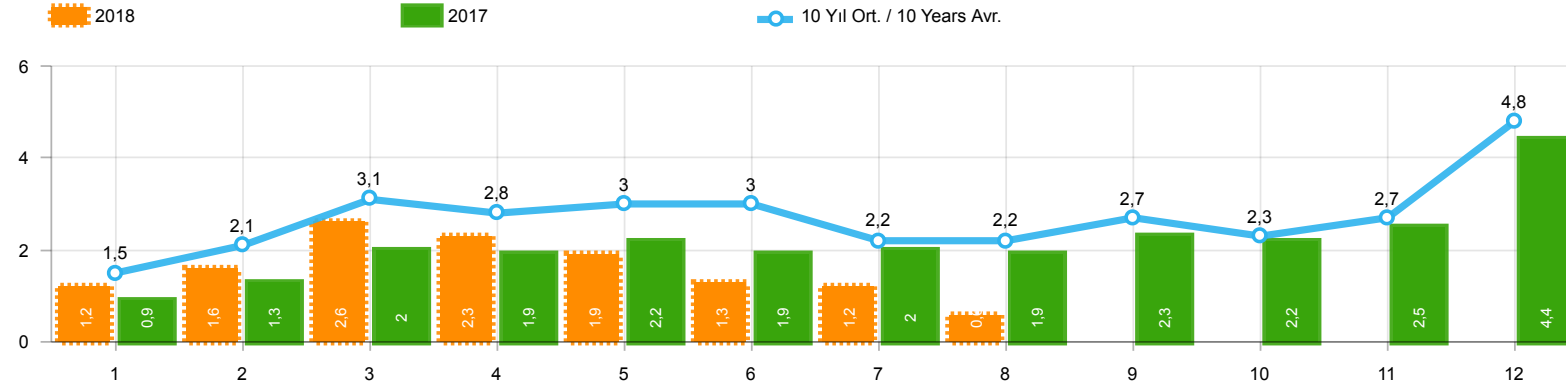
Yıl / Year	1	2	3	4	5	6	7	8	9	10	11	12	1-7 Toplam / Total	Toplam / Total
2008	2.770	1.855	3.395	3.081	2.769	2.400	2.232	2.485	1.856	1.773	1.305	1.101	18.502	27.022
2009	717	572	688	1.070	1.297	1.256	1.054	1.183	1.117	1.356	1.304	2.144	6.654	13.758
2010	1.111	1.991	2.330	3.039	2.567	2.638	1.965	3.019	2.806	4.424	3.978	6.168	15.641	36.036
2011	2.975	5.242	5.927	5.358	6.016	6.335	4.534	4.051	4.140	5.828	4.943	4.992	36.387	60.341
2012	2.362	1.983	4.348	6.579	6.273	4.569	3.837	3.158	3.618	4.027	4.807	4.757	29.951	50.318
2013	2.161	2.432	4.005	4.585	5.616	3.136	4.574	3.408	4.935	4.762	5.781	6.891	26.509	52.286
2014	2.169	3.512	4.476	4.905	5.094	5.028	4.233	4.920	5.619	5.743	6.250	7.409	29.417	59.358
2015	3.124	3.984	5.460	6.383	6.078	5.748	4.677	5.044	4.765	7.049	6.898	7.564	35.454	66.774
2016	3.739	4.731	7.067	6.546	6.575	5.543	3.833	5.134	4.945	7.372	7.090	7.603	38.034	70.178
2017	3.974	4.964	6.773	6.780	7.057	5.356	5.003	4.396	6.064	7.734	7.457	7.351	39.907	72.909
2018	4.362	4.179	5.925	5.216	4.584	3.146	3.654						31.066	31.066

Kaynak: TÜİK trafik kayıtları.

Rakamlar, son iki model yılına ait traktör tescillerinden oluşmaktadır.

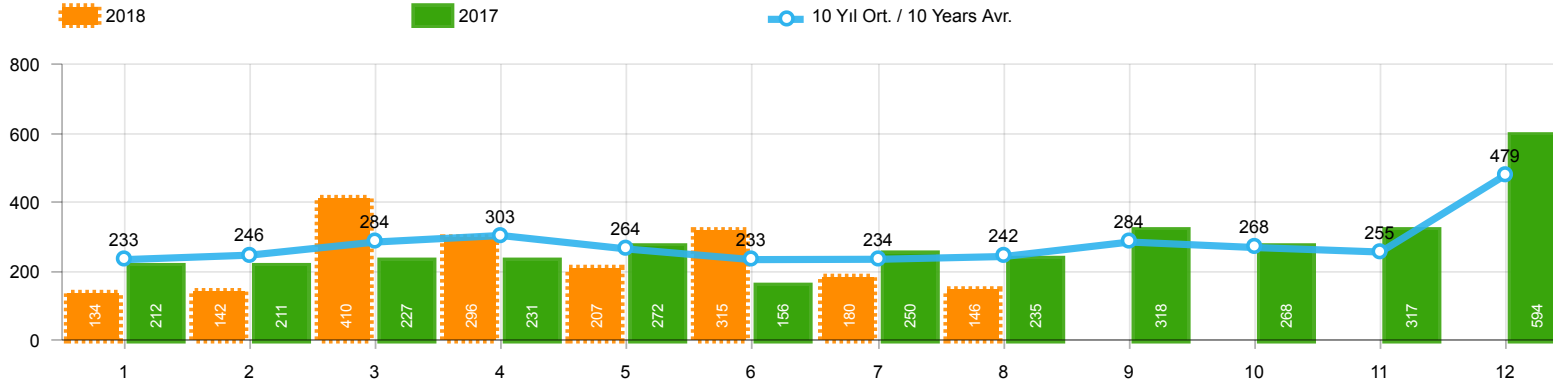
Source: Turkish Statistical Institute – Traffic registrations

Data represents the last two model year's farm tractors registration figures



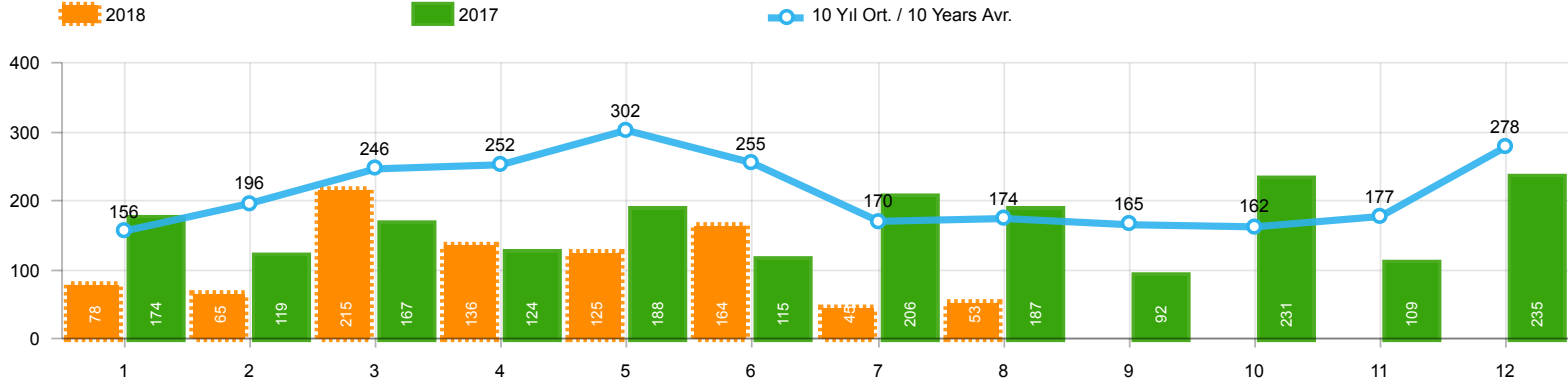
Aylar / Months	10 Yıl Ort / 10 Years Avr.	2018	%
1	1.505	1.248	-17,1
2	2.053	1.553	-24,4
3	3.131	2.630	-16,0
4	2.777	2.328	-16,2
5	3.005	1.909	-36,5
6	2.955	1.272	-57,0
7	2.196	1.235	-43,8
8	2.232	629	-71,8
TOPLAM / TOTAL	19.853	12.804	-35,5

Yıl / Year	1	2	3	4	5	6	7	8	9	10	11	12	1-8 Toplam / Total	Toplam / Total	1-8 Yerli / Local	1-8 İthal / Import	İthal Oran / Import %
2008	1.829	2.350	2.655	2.644	2.513	2.515	2.048	2.498	2.241	1.816	1.674	1.770	19.052	26.553	14.512	4.540	23,8
2009	782	763	1.062	1.381	1.426	1.649	1.261	1.164	1.862	963	1.047	2.368	9.488	15.728	7.617	1.871	19,7
2010	768	960	1.950	1.949	2.140	2.314	2.403	2.754	2.864	3.001	3.231	6.158	15.238	30.492	10.895	4.343	28,5
2011	2.651	3.544	5.142	4.503	4.563	3.852	2.261	2.745	3.784	3.400	3.149	5.712	29.261	45.306	19.098	10.163	34,7
2012	1.703	2.454	3.866	3.209	3.678	3.540	2.750	2.403	3.296	2.497	3.154	5.300	23.603	37.850	16.228	7.375	31,2
2013	1.484	2.113	3.343	2.925	3.504	3.186	2.777	2.103	2.875	2.086	3.631	5.444	21.435	35.471	15.068	6.367	29,7
2014	1.522	2.065	3.094	3.224	3.727	3.726	2.578	2.783	3.708	2.858	3.384	6.869	22.719	39.538	16.613	6.106	26,9
2015	2.215	3.346	5.699	3.729	3.600	4.253	2.922	2.211	2.687	2.266	3.146	7.307	27.975	43.381	19.710	8.265	29,5
2016	1.167	1.648	2.515	2.319	2.711	2.623	984	1.796	1.438	2.238	2.485	3.127	15.763	25.051	10.845	4.918	31,2
2017	931	1.290	1.982	1.888	2.184	1.891	1.974	1.860	2.284	2.188	2.487	4.438	14.000	25.397	9.496	4.504	32,2
2018	1.248	1.553	2.630	2.328	1.909	1.272	1.235	629					12.804	12.804	7.544	5.260	41,1



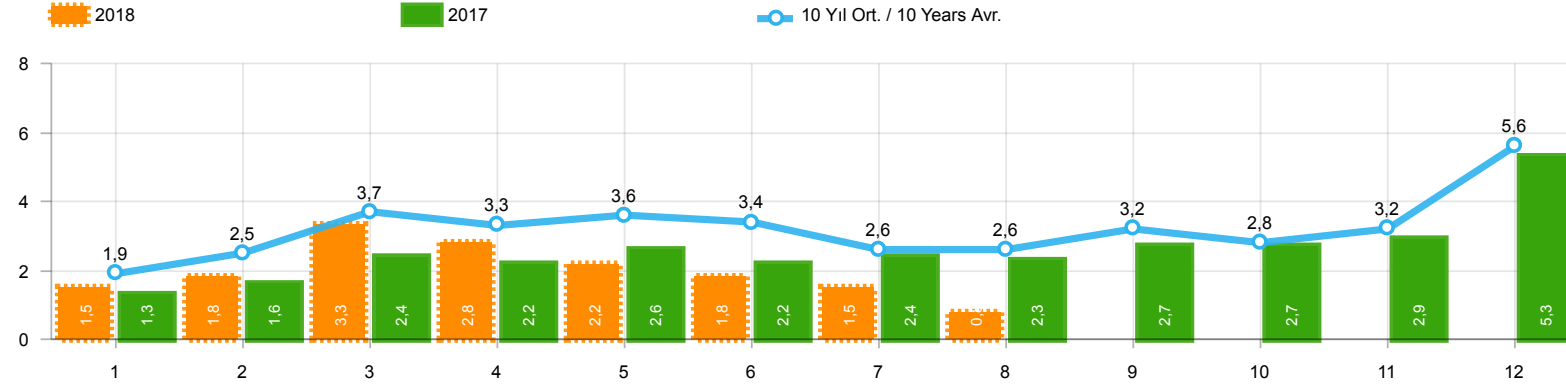
Aylar / Months	10 Yıl Ort / 10 Years Avr.	2018	%
1	233	134	-42,5
2	246	142	-42,3
3	284	410	44,6
4	303	296	-2,4
5	264	207	-21,7
6	233	315	35,4
7	234	180	-22,9
8	242	146	-39,7
TOPLAM / TOTAL	2.039	1.830	-10,2

Yıl / Year	1	2	3	4	5	6	7	8	9	10	11	12	1-8 Toplam / Total	Toplam / Total
2008	401	453	365	477	392	292	323	344	316	334	205	208	3.047	4.110
2009	133	103	153	210	145	183	138	146	152	134	150	280	1.211	1.927
2010	140	128	172	153	127	124	93	232	199	204	162	382	1.169	2.116
2011	124	167	267	260	241	233	205	280	270	230	168	525	1.777	2.970
2012	179	257	277	229	257	239	216	249	325	269	189	398	1.903	3.084
2013	191	268	289	276	283	241	367	235	305	392	415	697	2.150	3.959
2014	360	394	384	333	294	258	216	229	395	220	266	653	2.468	4.002
2015	280	322	451	561	372	405	389	253	316	394	325	621	3.033	4.689
2016	309	158	251	302	261	196	139	220	241	230	354	431	1.836	3.092
2017	212	211	227	231	272	156	250	235	318	268	317	594	1.794	3.291
2018	134	142	410	296	207	315	180	146					1.830	1.830



Aylar / Months	10 Yıl Ort / 10 Years Avr.	2018	%
1	156	78	-49,9
2	196	65	-66,8
3	246	215	-12,6
4	252	136	-45,9
5	302	125	-58,7
6	255	164	-35,7
7	170	45	-73,6
8	174	53	-69,5
TOPLAM / TOTAL	1.750	881	-49,7

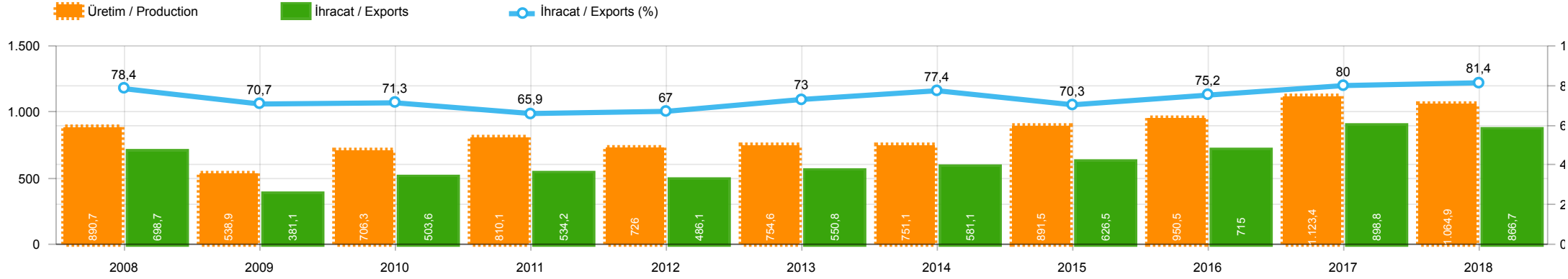
Yıl / Year	1	2	3	4	5	6	7	8	9	10	11	12	1-8 Toplam / Total	Toplam / Total	1-8 Yerli / Local	1-8 İthal / Import	İthal Oran / Import %
2008	125	133	194	230	259	240	107	167	207	118	159	240	1.455	2.179	1.397	58	4,0
2009	84	265	201	202	185	191	130	119	142	61	150	191	1.377	1.921	1.337	40	2,9
2010	67	71	128	193	193	177	170	211	163	144	133	325	1.210	1.975	1.157	53	4,4
2011	92	212	233	324	412	334	148	214	130	176	176	321	1.969	2.772	1.887	82	4,2
2012	125	103	215	172	397	262	174	182	251	229	150	344	1.630	2.604	1.598	32	2,0
2013	365	445	537	489	580	520	412	281	245	198	123	189	3.629	4.384	3.610	19	0,5
2014	199	179	253	251	305	148	69	92	130	91	97	332	1.496	2.146	1.351	145	9,7
2015	146	222	313	290	290	255	211	203	153	171	359	363	1.930	2.976	1.861	69	3,6
2016	180	209	218	240	214	307	76	82	141	198	314	236	1.526	2.415	1.495	31	2,0
2017	174	119	167	124	188	115	206	187	92	231	109	235	1.280	1.947	1.268	12	0,9
2018	78	65	215	136	125	164	45	53					881	881	870	11	1,2



Aylar / Months	10 Yıl Ort / 10 Years Avr.	2018	%
1	1.894	1.460	-22,9
2	2.495	1.760	-29,5
3	3.660	3.255	-11,1
4	3.332	2.760	-17,2
5	3.571	2.241	-37,2
6	3.443	1.751	-49,1
7	2.600	1.460	-43,8
8	2.648	828	-68,7
TOPLAM / TOTAL	23.642	15.515	-34,4

Yıl / Year	1	2	3	4	5	6	7	8	9	10	11	12	1-8 Toplam / Total	Toplam / Total	1-8 Yerli / Local	1-8 İthal / Import	İthal Oran / Import %
2008	2.355	2.936	3.214	3.351	3.164	3.047	2.478	3.009	2.764	2.268	2.038	2.218	23.554	32.842	18.956	4.598	19,5
2009	999	1.131	1.416	1.793	1.756	2.023	1.529	1.429	2.156	1.158	1.347	2.839	12.076	19.576	10.165	1.911	15,8
2010	975	1.159	2.250	2.295	2.460	2.615	2.666	3.197	3.226	3.349	3.526	6.865	17.617	34.583	13.221	4.396	25,0
2011	2.867	3.923	5.642	5.087	5.216	4.419	2.614	3.239	4.184	3.806	3.493	6.558	33.007	51.048	22.762	10.245	31,0
2012	2.007	2.814	4.358	3.610	4.332	4.041	3.140	2.834	3.872	2.995	3.493	6.042	27.136	43.538	19.729	7.407	27,3
2013	2.040	2.826	4.169	3.690	4.367	3.947	3.556	2.619	3.425	2.676	4.169	6.330	27.214	43.814	20.828	6.386	23,5
2014	2.081	2.638	3.731	3.808	4.326	4.132	2.863	3.104	4.233	3.169	3.747	7.854	26.683	45.686	20.432	6.251	23,4
2015	2.641	3.890	6.463	4.580	4.262	4.913	3.522	2.667	3.156	2.831	3.830	8.291	32.938	51.046	24.604	8.334	25,3
2016	1.656	2.015	2.984	2.861	3.186	3.126	1.199	2.098	1.820	2.666	3.153	3.794	19.125	30.558	14.176	4.949	25,9
2017	1.317	1.620	2.376	2.243	2.644	2.162	2.430	2.282	2.694	2.687	2.913	5.267	17.074	30.635	12.558	4.516	26,4
2018	1.460	1.760	3.255	2.760	2.241	1.751	1.460	828					15.515	15.515	10.244	5.271	34,0

**İhracat / Üretim(x1000) (2008 - 2018 / 1 - 8)(Traktör Dahil)**  
Exports / Production(x1000) (2008 - 2018 / 1 - 8)(Including Tractors)



	2008	2009	2010	2011	2012	2013	2014	2015	2016	2017	2018
<b>İhracat/Export</b>	698.704	381.131	503.580	534.179	486.057	550.759	581.060	626.461	715.006	898.816	866.699
<b>Üretim/Production</b>	890.664	538.883	706.347	810.077	725.951	754.562	751.112	891.548	950.485	1.123.442	1.064.928
<b>İhracat/Exports (%)</b>	78,4	70,7	71,3	65,9	67	73	77,4	70,3	75,2	80	81,4

**Taşıt Araçları İhracatı (2016 - 2018)**  
Motor Vehicle Exports (2016 - 2018)

SEKTÖR / SECTOR	2016	2017	1/8-2017	1/8-2018	2018/2017 %
OTOMOBİL / Pass.Car	745.709	921.354	625.025	573.278	-8,3
<b>OTOMOBİL TOPLAM / Pass. Car Total</b>	<b>745.709</b>	<b>921.354</b>	<b>625.025</b>	<b>573.278</b>	<b>-8,3</b>
KAMYON / Truck	5.521	7.800	4.896	8.548	74,6
KAMYONET / Pick Up	347.949	350.108	224.476	242.390	8,0
OTOBÜS / Bus	6.498	7.028	4.699	4.839	3,0
MİNİBÜS / Minibus	34.790	45.794	30.234	27.888	-7,8
MİDİBÜS / Midibus	915	710	396	536	35,4
<b>TİCARİ ARAÇLAR TOPLAM / Commercial Vehicle Total</b>	<b>395.673</b>	<b>411.440</b>	<b>264.701</b>	<b>284.201</b>	<b>7,4</b>
<b>TAŞIT ARAÇLARI TOPLAM / Motor Vehicles Total</b>	<b>1.141.382</b>	<b>1.332.794</b>	<b>889.726</b>	<b>857.479</b>	<b>-3,6</b>
TRAKTÖR / F.Tractor	13.651	13.123	9.090	9.220	1,4
<b>TRAKTÖR TOPLAM / F.Tractor Total</b>	<b>13.651</b>	<b>13.123</b>	<b>9.090</b>	<b>9.220</b>	<b>1,4</b>
<b>GENEL TOPLAM / GRAND TOTAL</b>	<b>1.155.033</b>	<b>1.345.917</b>	<b>898.816</b>	<b>866.699</b>	<b>-3,6</b>

**Üretici Bazında İhracat (adet)**  
Exports by Manufacturer (unit)

Üreticiler / Manufacturers	2016	2017	1-8 / 2017	1-8 / 2018
A.I.O.S.	673	700	311	544
FORD OTOSAN	256.706	296.840	189.391	205.488
HATTAT TRAKTÖR	1.026	1.100	828	398
HONDA TÜRKİYE	2.914	9.391	6.032	10.386
HYUNDAI ASSAN	207.234	204.382	135.682	120.837
KARSAN	3.629	2.969	1.529	2.313
M. BENZ TÜRK	8.307	9.865	6.802	9.968
MAN TÜRKİYE	1.717	2.007	1.325	1.597
OTOKAR	833	691	441	434
OYAK RENAULT	270.088	287.915	195.556	183.667
TEMSA	653	870	549	330
TOFAŞ	279.444	270.698	187.029	169.501
TOYOTA	109.184	246.466	165.079	152.414
TÜRK TRAKTÖR	12.625	12.023	8.262	8.822
<b>GENEL TOPLAM / Grand Total</b>	<b>1.155.033</b>	<b>1.345.917</b>	<b>898.816</b>	<b>866.699</b>



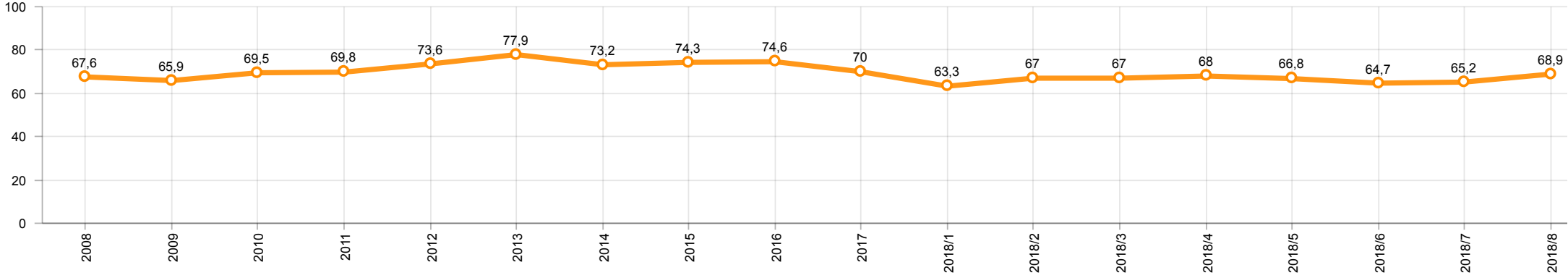
**Otomotiv Ana ve Yan Sanayii İhracatı (ABD \$)**  
CBU and CKD Exports - \$

Sektör / Sector	2016	2017	OCAK - AĞUSTOS / January - August 2017	OCAK - AĞUSTOS / January - August 2018	2018 / 2017 %
<b>Toplam Yan Sanayi / Total Component Industry</b>	<b>8.946.472.202</b>	<b>9.838.541.338</b>	<b>6.340.108.136</b>	<b>7.391.501.578</b>	<b>16,6</b>
İç ve Dış Lastik / Tyres	978.124.241	1.131.881.119	737.719.821	914.985.787	24,0
Emniyet Camı / Safety Glasses	119.553.098	136.486.808	88.308.796	102.921.447	16,5
Motor / Engine	370.418.066	486.426.738	291.605.443	417.915.409	43,3
Akümülatör / Batteries	224.588.995	296.139.813	166.067.172	229.291.554	38,1
Diğer Aksam ve Parça / Spare Parts&Components	7.253.787.802	7.787.606.860	5.056.406.904	5.726.387.381	13,3
<b>Toplam Ana Sanayi / Total Vehicle Industry</b>	<b>15.302.656.887</b>	<b>19.147.991.647</b>	<b>12.627.728.759</b>	<b>13.872.709.542</b>	<b>9,9</b>
Otobüs / Bus	1.190.475.986	1.311.098.736	857.192.629	932.340.128	8,8
Midibüs-Minibüs / Midibus-Minibus	238.911.957	217.704.499	156.198.564	146.147.567	-6,4
Otomobil / P.Cars	8.336.928.418	11.790.776.093	7.793.943.162	8.153.078.560	4,6
Kamyon-Kamyonet / Truck-Pick Up&Van	4.617.147.751	4.849.465.868	3.102.362.588	3.526.118.242	13,7
Römork ve Yarı Römork / Trailer-Semi Trailer	265.338.366	230.168.223	213.500.759	322.324.473	51,0
Çekici / Tractor	316.355.575	427.967.083	289.901.323	545.266.330	88,1
Tarım Traktörü / Farm Tractor	337.498.834	320.811.145	214.629.734	247.434.242	15,3
<b>Toplam / Total</b>	<b>24.249.129.089</b>	<b>28.986.532.985</b>	<b>18.967.836.895</b>	<b>21.264.211.120</b>	<b>12,1</b>

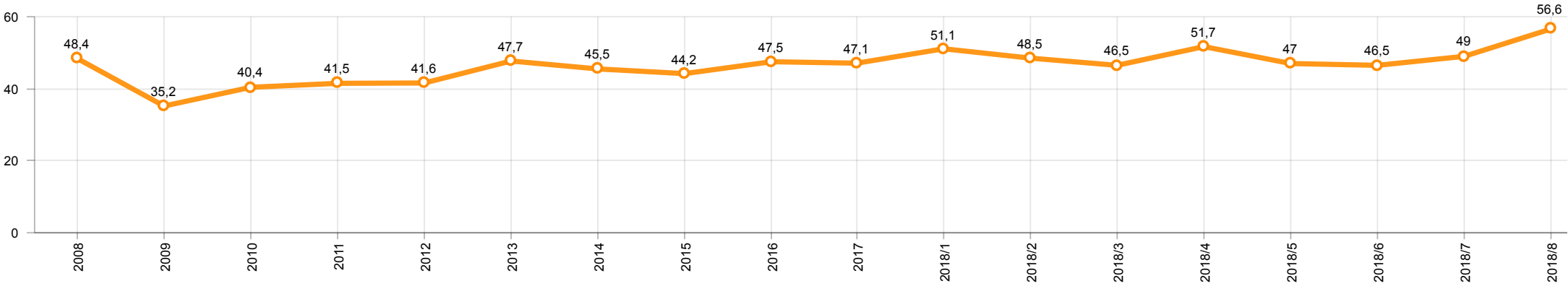
Kaynak: Uludağ İhracatçı Birlikleri . ÜİB tarafından OSD için özel olarak analiz edilen Otomotiv İhracatı kapsamında; ÜİB Türkiye Geneli Otomotiv Endüstrisi sınıflandırmasına kıyasla “Römork ve Yarı Römork” , “Tarım Traktörü” verileri dahil edilmekte; “Kullanılmış Araçlar” ,”İki Tekertepli Taşıtlar” , “Demiryolu Taşıtları” hariç tutulmaktadır.

Source: Uludağ Exporters Association – Special Analyze for OSD.Compared to Turkish General Automotive Industry classification, this special analyze includes; farms tractors, trailers and semi-trailers, does not include; used vehicles, two-wheeled vehicles and railway vehicles

**Otomobil Pazarında İthalatın Payı (%)**  
Import Share in P.Car Market (%)



**Hafif Ticari Araçlar Pazarında İthalatın Payı (%)**  
Import Share in LCV Market (%)



Araç Tipleri / Vehicle Types	1	2	3	4	5	6	7	8	9	10	11	12	Toplam / Total
<b>OTOMOBİL - Pass.Car</b>	<b>73.408</b>	<b>75.779</b>	<b>86.252</b>	<b>79.786</b>	<b>77.297</b>	<b>68.030</b>	<b>82.198</b>	<b>30.528</b>					<b>573.278</b>
KAMYON - H. Truck	636	999	1.203	1.082	967	1.268	1.431	962					<b>8.548</b>
KAMYONET - Pick Up	18.119	39.567	36.823	31.215	34.735	35.060	34.364	12.507					<b>242.390</b>
OTOBÜS - Bus	490	486	715	594	728	612	623	591					<b>4.839</b>
MİNİBÜS - Minibus	1.649	4.521	3.947	4.352	2.777	4.653	4.757	1.232					<b>27.888</b>
MİDİBÜS - Midibus	13	50	89	58	49	72	106	99					<b>536</b>
<b>TİCARİ ARAÇLAR TOPLAMI - CV Total</b>	<b>20.907</b>	<b>45.623</b>	<b>42.777</b>	<b>37.301</b>	<b>39.256</b>	<b>41.665</b>	<b>41.281</b>	<b>15.391</b>					<b>284.201</b>
<b>TAŞIT ARAÇLARI TOPLAMI - MV Total</b>	<b>94.315</b>	<b>121.402</b>	<b>129.029</b>	<b>117.087</b>	<b>116.553</b>	<b>109.695</b>	<b>123.479</b>	<b>45.919</b>					<b>857.479</b>
TRAKTÖR - F.Tractor	802	941	1.155	1.108	1.410	1.170	1.416	1.218					<b>9.220</b>
<b>GENEL TOPLAM - Grand Total</b>	<b>95.117</b>	<b>122.343</b>	<b>130.184</b>	<b>118.195</b>	<b>117.963</b>	<b>110.865</b>	<b>124.895</b>	<b>47.137</b>					<b>866.699</b>

**Otomobil / P.Car**

Firmalar / Firms	1	2	3	4	5	6	7	8	9	10	11	12	Toplam / Total
FORD OTOSAN	2.920	2.041	1.787	40	1.154	1.629	2.026	527	-	-	-	-	<b>12.124</b>
HONDA TÜRKİYE	1.251	2.300	814	1.430	1.523	1.362	1.347	359	-	-	-	-	<b>10.386</b>
HYUNDAI ASSAN	10.899	17.471	18.914	17.307	17.265	16.490	19.191	3.300	-	-	-	-	<b>120.837</b>
OYAK RENAULT	27.028	20.491	24.760	25.707	28.043	21.090	27.056	9.492	-	-	-	-	<b>183.667</b>
TOFAŞ	9.736	15.502	16.864	13.195	12.558	11.512	9.883	4.600	-	-	-	-	<b>93.850</b>
TOYOTA	21.574	17.974	23.113	22.107	16.754	15.947	22.695	12.250	-	-	-	-	<b>152.414</b>
<b>TOPLAM - Total</b>	<b>73.408</b>	<b>75.779</b>	<b>86.252</b>	<b>79.786</b>	<b>77.297</b>	<b>68.030</b>	<b>82.198</b>	<b>30.528</b>	-	-	-	-	<b>573.278</b>

**Kamyonet / Pick-up**

Firmalar / Firms	1	2	3	4	5	6	7	8	9	10	11	12	Toplam / Total
FORD OTOSAN	12.083	28.583	25.185	20.777	23.089	23.358	24.852	6.746	-	-	-	-	<b>164.673</b>
KARSAN	194	271	318	270	179	282	414	124	-	-	-	-	<b>2.052</b>
OTOKAR	-	6	-	-	-	-	8	-	-	-	-	-	<b>14</b>
TOFAŞ	5.842	10.707	11.320	10.168	11.467	11.420	9.090	5.637	-	-	-	-	<b>75.651</b>
<b>TOPLAM - Total</b>	<b>18.119</b>	<b>39.567</b>	<b>36.823</b>	<b>31.215</b>	<b>34.735</b>	<b>35.060</b>	<b>34.364</b>	<b>12.507</b>	-	-	-	-	<b>242.390</b>

**Minibüs / Minibus**

Firmalar / Firms	1	2	3	4	5	6	7	8	9	10	11	12	Toplam / Total
FORD OTOSAN	1.597	4.521	3.922	4.351	2.776	4.648	4.756	1.232	-	-	-	-	<b>27.803</b>
KARSAN	52	-	25	1	1	5	1	-	-	-	-	-	<b>85</b>
<b>TOPLAM - Total</b>	<b>1.649</b>	<b>4.521</b>	<b>3.947</b>	<b>4.352</b>	<b>2.777</b>	<b>4.653</b>	<b>4.757</b>	<b>1.232</b>	-	-	-	-	<b>27.888</b>

**Kamyon / Truck**

Firmalar / Firms	1	2	3	4	5	6	7	8	9	10	11	12	Toplam / Total
A.I.O.S.	-	-	-	-	-	6	-	-	-	-	-	-	6
FORD OTOSAN	70	99	138	88	106	169	134	84	-	-	-	-	888
KARSAN	-	-	-	-	-	-	-	-	-	-	-	-	-
M. BENZ TÜRK	566	900	1.065	994	861	1.093	1.297	878	-	-	-	-	7.654
OTOKAR	-	-	-	-	-	-	-	-	-	-	-	-	-
<b>TOPLAM - Total</b>	<b>636</b>	<b>999</b>	<b>1.203</b>	<b>1.082</b>	<b>967</b>	<b>1.268</b>	<b>1.431</b>	<b>962</b>	<b>-</b>	<b>-</b>	<b>-</b>	<b>-</b>	<b>8.548</b>

**Midibüs / Midibus**

Firmalar / Firms	1	2	3	4	5	6	7	8	9	10	11	12	Toplam / Total
A.I.O.S.	6	32	54	37	20	53	42	65	-	-	-	-	309
KARSAN	1	3	1	1	-	3	3	1	-	-	-	-	13
OTOKAR	4	15	27	15	15	12	56	31	-	-	-	-	175
TEMSA	2	-	7	5	14	4	5	2	-	-	-	-	39
<b>TOPLAM - Total</b>	<b>13</b>	<b>50</b>	<b>89</b>	<b>58</b>	<b>49</b>	<b>72</b>	<b>106</b>	<b>99</b>	<b>-</b>	<b>-</b>	<b>-</b>	<b>-</b>	<b>536</b>

**Otobüs / Bus**

Firmalar / Firms	1	2	3	4	5	6	7	8	9	10	11	12	Toplam / Total
A.I.O.S.	3	2	39	24	47	59	27	28	-	-	-	-	229
KARSAN	1	-	23	-	31	52	-	56	-	-	-	-	163
M. BENZ TÜRK	220	238	373	311	359	259	378	176	-	-	-	-	2.314
MAN TÜRKİYE	243	212	233	228	228	178	151	124	-	-	-	-	1.597
OTOKAR	19	19	27	8	22	26	24	100	-	-	-	-	245
TEMSA	4	15	20	23	41	38	43	107	-	-	-	-	291
<b>TOPLAM - Total</b>	<b>490</b>	<b>486</b>	<b>715</b>	<b>594</b>	<b>728</b>	<b>612</b>	<b>623</b>	<b>591</b>	<b>-</b>	<b>-</b>	<b>-</b>	<b>-</b>	<b>4.839</b>

**Traktör / F.Tractor**

Firmalar / Firms	1	2	3	4	5	6	7	8	9	10	11	12	Toplam / Total
HATTAT TRAKTÖR	1	24	45	49	60	109	103	7	-	-	-	-	398
TÜRK TRAKTÖR	801	917	1.110	1.059	1.350	1.061	1.313	1.211	-	-	-	-	8.822
<b>TOPLAM - Total</b>	<b>802</b>	<b>941</b>	<b>1.155</b>	<b>1.108</b>	<b>1.410</b>	<b>1.170</b>	<b>1.416</b>	<b>1.218</b>	<b>-</b>	<b>-</b>	<b>-</b>	<b>-</b>	<b>9.220</b>

Firmalar / Firms	2017 Toplam / Total	1	2	3	4	5	6	7	8	9	10	11	12	Toplam / Total
Alfa Romeo	320	5	14	13	32	25	10	14	15	-	-	-	-	128
Aston Martin	25	1	1	1	1	1	1	1	1	-	-	-	-	8
Audi	21.585	1.013	1.033	1.552	1.625	1.630	668	840	737	-	-	-	-	9.098
Bentley	16	-	3	-	-	1	1	-	1	-	-	-	-	6
BMW	19.564	626	1.003	1.586	1.270	1.910	1.386	760	1.005	-	-	-	-	9.546
Citroen	14.709	407	1.128	1.086	615	980	499	922	495	-	-	-	-	6.132
Dacia	41.914	937	1.298	3.600	3.199	3.193	2.254	2.343	1.220	-	-	-	-	18.044
DS	119	-	-	81	20	9	9	10	64	-	-	-	-	193
Ferrari	16	1	1	2	3	1	1	2	2	-	-	-	-	13
Fiat	2.157	56	102	142	130	178	139	112	79	-	-	-	-	938
Ford	33.671	920	1.440	2.638	2.506	2.803	2.016	1.914	1.438	-	-	-	-	15.675
Honda	7.250	207	189	469	646	588	451	402	322	-	-	-	-	3.274
Hyundai	26.841	1.282	1.734	2.376	2.555	2.463	1.898	1.382	656	-	-	-	-	14.346
Infinity	122	3	5	2	2	2	2	-	-	-	-	-	-	16
Jaguar	339	12	20	24	18	12	8	6	8	-	-	-	-	108
Jeep	2.357	101	159	255	295	185	175	140	91	-	-	-	-	1.401
Kia	10.937	431	514	872	984	742	770	795	418	-	-	-	-	5.526
Lamborghini	7	-	-	-	1	1	-	-	-	-	-	-	-	2
Land Rover	1.879	84	145	162	129	112	93	67	22	-	-	-	-	814
Lexus	101	2	2	8	10	7	2	5	1	-	-	-	-	37
Maserati	76	4	2	6	6	4	5	3	2	-	-	-	-	32
Mazda	1.412	62	76	135	134	129	40	73	52	-	-	-	-	701
Mercedes-Benz	25.588	1.190	1.151	2.031	1.496	2.153	1.326	1.251	951	-	-	-	-	11.549
Mini	1.480	55	82	116	121	146	66	103	70	-	-	-	-	759
Mitsubishi	354	12	9	21	58	57	39	14	14	-	-	-	-	224
Nissan	32.043	767	1.470	2.908	2.021	2.508	1.684	1.025	1.320	-	-	-	-	13.703
Opel	44.707	1.327	1.568	2.989	3.476	1.416	1.521	2.102	1.688	-	-	-	-	16.087
Peugeot	29.981	809	1.625	3.038	2.875	3.819	1.851	2.808	1.340	-	-	-	-	18.165
Porsche	670	43	50	61	70	54	36	49	75	-	-	-	-	438
Renault	37.021	1.013	1.552	1.821	2.617	2.694	1.770	1.711	1.042	-	-	-	-	14.220
Seat	16.064	663	869	1.226	1.341	1.154	753	1.387	862	-	-	-	-	8.255
Skoda	24.679	1.564	2.161	2.911	2.018	1.820	1.726	1.857	1.098	-	-	-	-	15.155
Smart	105	-	-	4	4	3	5	6	-	-	-	-	-	22
Ssangyong	362	26	25	38	18	19	6	9	7	-	-	-	-	148
Subaru	1.726	86	55	224	165	144	96	106	77	-	-	-	-	953
Suzuki	4.316	67	122	323	253	383	127	267	229	-	-	-	-	1.771
Toyota	7.297	309	376	294	318	370	218	193	243	-	-	-	-	2.321
Volkswagen	89.688	2.497	3.763	6.561	5.801	5.913	4.428	4.217	2.567	-	-	-	-	35.747
Volvo	4.470	250	302	503	631	590	577	520	375	-	-	-	-	3.748
<b>GENEL TOPLAM - Grand Total</b>	<b>505.968</b>	<b>16.832</b>	<b>24.049</b>	<b>40.079</b>	<b>37.464</b>	<b>38.219</b>	<b>26.657</b>	<b>27.416</b>	<b>18.587</b>	<b>-</b>	<b>-</b>	<b>-</b>	<b>-</b>	<b>229.303</b>

Firmalar / Firms	2017 Toplam / Total	1	2	3	4	5	6	7	8	9	10	11	12	Toplam / Total
<b>Citroen</b>	<b>8.023</b>	94	291	706	406	634	520	470	198	-	-	-	-	<b>3.319</b>
<b>Dacia</b>	<b>6.456</b>	254	302	335	337	328	293	259	467	-	-	-	-	<b>2.575</b>
<b>Fiat</b>	<b>6.582</b>	163	252	401	249	362	223	248	236	-	-	-	-	<b>2.134</b>
<b>Ford</b>	<b>4.188</b>	174	142	251	247	216	214	286	152	-	-	-	-	<b>1.682</b>
<b>Hyundai</b>	<b>2.984</b>	119	85	28	215	199	131	125	51	-	-	-	-	<b>953</b>
<b>Isuzu</b>	<b>302</b>	24	18	19	19	33	63	55	19	-	-	-	-	<b>250</b>
<b>Iveco</b>	<b>2.566</b>	122	148	161	146	133	107	137	82	-	-	-	-	<b>1.036</b>
<b>Kia</b>	<b>3.591</b>	111	143	207	322	221	149	127	82	-	-	-	-	<b>1.362</b>
<b>Mercedes-Benz</b>	<b>9.043</b>	480	646	1.121	1.206	1.204	328	404	476	-	-	-	-	<b>5.865</b>
<b>Mitsubishi</b>	<b>3.527</b>	158	347	403	669	184	108	303	369	-	-	-	-	<b>2.541</b>
<b>Nissan</b>	<b>2.779</b>	95	154	197	165	116	94	79	61	-	-	-	-	<b>961</b>
<b>Peugeot</b>	<b>10.458</b>	178	277	485	517	404	338	621	289	-	-	-	-	<b>3.109</b>
<b>Renault</b>	<b>16.822</b>	512	793	1.087	1.127	969	705	660	468	-	-	-	-	<b>6.321</b>
<b>Ssangyong</b>	<b>255</b>	5	1	6	8	12	21	47	27	-	-	-	-	<b>127</b>
<b>Toyota</b>	<b>4.551</b>	210	267	310	652	352	180	128	174	-	-	-	-	<b>2.273</b>
<b>Volkswagen</b>	<b>27.793</b>	1.630	1.516	1.974	1.989	1.931	1.093	1.298	1.018	-	-	-	-	<b>12.449</b>
<b>GENEL TOPLAM - Grand Total</b>	<b>109.920</b>	<b>4.329</b>	<b>5.382</b>	<b>7.691</b>	<b>8.274</b>	<b>7.298</b>	<b>4.567</b>	<b>5.247</b>	<b>4.169</b>	-	-	-	-	<b>46.957</b>