



OTOMOTİV SANAYİİ DERNEĞİ
AUTOMOTIVE MANUFACTURERS ASSOCIATION

AYLIK RAPOR

Automotive Industry Monthly Report

Nisan / April 2017

- **Üretim/Production**
- **Satış/Sales**
- **İthalat/Imports**
- **İhracat/Exports**

OSD "OICA" Üyesidir



OSD is a Member of "OICA"

2017 Nisan Ayı Özeti / 2017 April Summary

		NİSAN / APRIL			4 AY/ 4 MONTHS			SON 12 AYLIK / YoY		
		2016	2017	2017/2016 (%)	2016	2017	2017/2016 (%)	2016	2017	2017/2016 (%)
Üretim/Production	Toplam/Total	123.205	149.020	21	469.331	573.239	22	1.373.034	1.589.835	16
	Otomobil/P.Cars	74.625	101.839	36	282.621	402.094	42	807.938	1.070.361	32
Pazar/Market	Toplam/Total	87.041	77.849	-11	260.218	237.717	-9	991.751	985.358	-1
	Otomobil/P.Cars	65.618	57.998	-12	193.539	173.961	-10	721.933	737.360	2
İthalat/Import	Toplam/Total	56.919	50.013	-12	173.198	151.321	-13	655.320	659.433	1
	Otomobil/P.Cars	47.230	40.512	-14	141.715	120.755	-15	537.540	544.085	1
İhracat/Export	Toplam/Total	93.140	117.233	26	359.442	472.632	31	1.017.219	1.254.561	23
	Otomobil/P.Cars	55.557	82.590	49	214.958	337.386	57	608.910	868.137	43
İhracat / Export (\$)	Toplam/Total **	2.036.378.039	2.336.678.471	15	7.692.954.024	9.419.974.715	22	22.131.816.630	25.977.828.272	17
	Otomobil/P.Cars	598.619.373	965.351.864	61	2.189.670.913	3.978.282.870	82	6.655.979.960	10.125.663.829	52

PARAMETRELER / PARAMETERS		NİSAN / APRIL			4 AY/ 4 MONTHS			SON 12 AYLIK / YoY		
		2016	2017	2017/2016 (%)	2016	2017	2017/2016 (%)	2016	2017	2017/2016 (%)
ÜFE/PPI		0,52	0,76	**	1,27	7,19	**	5,47	8,01	**
TÜFE/CPI		0,78	1,31	**	2,55	5,71	**	7,84	8,66	**
Sanayi Endeksi/Industry Index		0,58	0,80	**	1,92	7,56	**	6,25	9,59	**
\$ (*)		2,8086	3,5915	28	2,9008	3,6423	26	2,8492	3,2525	14
EURO (*)		3,2005	3,8740	21	3,2116	3,8882	21	3,1448	3,5442	13
Japon Yeni (*)		2,5479	3,2069	26	2,5141	3,2039	27	2,3723	2,9740	25

(*) Ortalama Değerler / Average Values

(**) Toplam Sanayi / Total Industry Including Components

*Raporda yer alan üretim adetleri yalnızca OSD üyelerinin verilerini göstermektedir.
Production units in this report only show the data of OSD members.*

2016/2017 Yılları Üretim

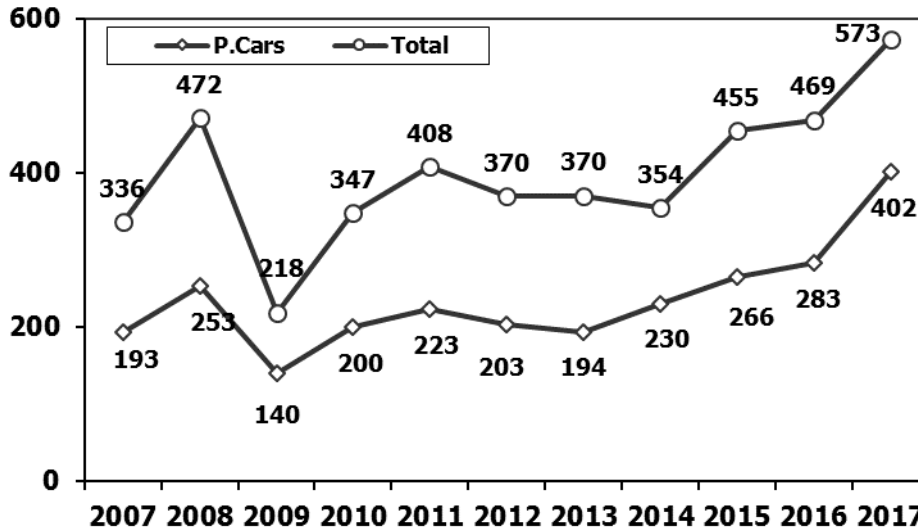
2016/2017 Production

K.KAMYON : AYA 3.5-12 Ton (L.Truck:GVW 3.5-12 Ton)

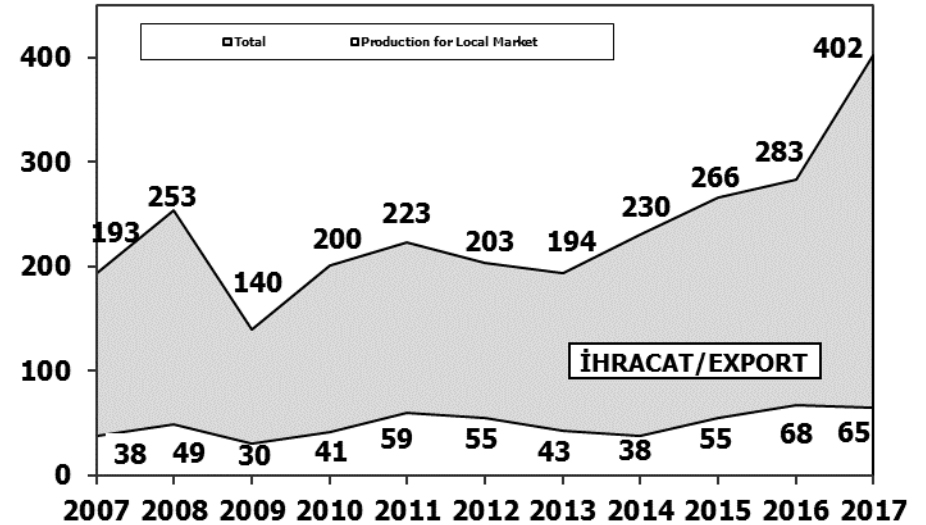
B.KAMYON : AYA 12 Ton'dan Büyük (M.Truck:GVW 12 Ton And Up)

TİPLER	NİSAN AYI ÜRETİMİ April Production		4 AYLIK ÜRETİM 4 Months Production		DEĞİŞİM % Percent Change %	
	2016	2017	2016	2017	NİSAN April	4 AY 4 Months
OTOMOBİL - Pass.Car	74.625	101.839	282.621	402.094	36	42
TİCARİ ARAÇLAR - Commercial Vehicles	48.580	47.181	186.710	171.145	-3	-8
* B. KAMYON - M. Truck	1.481	1.393	4.488	5.203	-6	16
* K. KAMYON - L. Truck	293	221	437	1.135	-25	160
* KAMYONET - Pick Up	44.069	39.911	172.158	143.896	-9	-16
* OTOBÜS - Bus	726	771	2.814	3.072	6	9
* MİNİBÜS - Minibus	1.691	4.650	5.869	16.788	175	186
* MİDİBÜS - Midibus	320	235	944	1.051	-27	11
TAŞIT ARAÇLARI TOPLAM - MV Total	123.205	149.020	469.331	573.239	21	22
TRAKTÖR - F.Tractor	5.219	4.062	19.244	16.356	-22	-15
GENEL TOPLAM - Grand Total	128.424	153.082	488.575	589.595	19	21

Toplam Üretim ve Otomobil Üretimi (x1000) (Ocak-Nisan)
Total & P.Cars Production (x1000) (January-April)

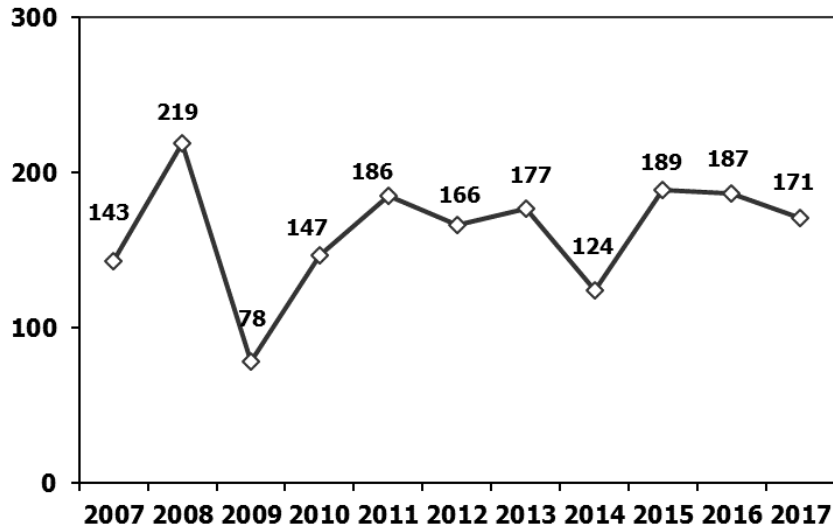


Otomobil Üretimi ve İhracat (x1000) (Ocak-Nisan)
P.Cars Production & Exports (x1000) (January-April)



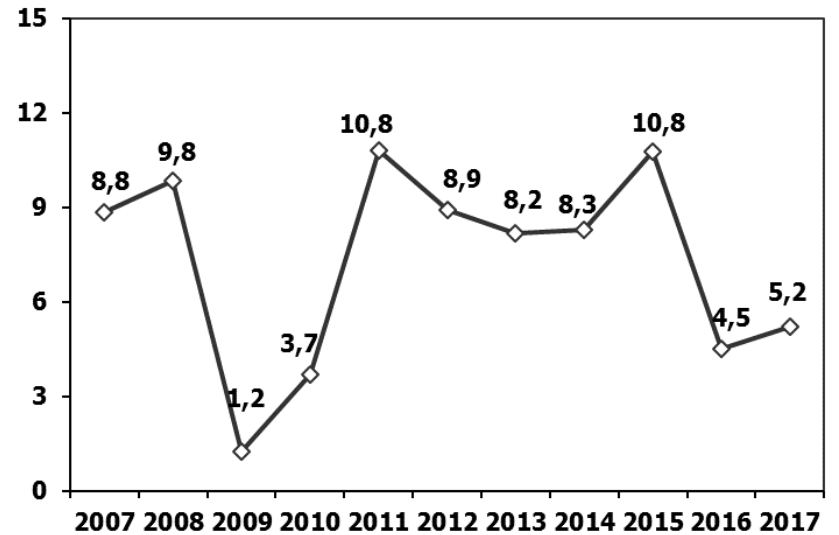
Ticari Araç Üretimi (x1000) (Ocak-Nisan)

Commercial Vehicle Production (x1000) (January-April)



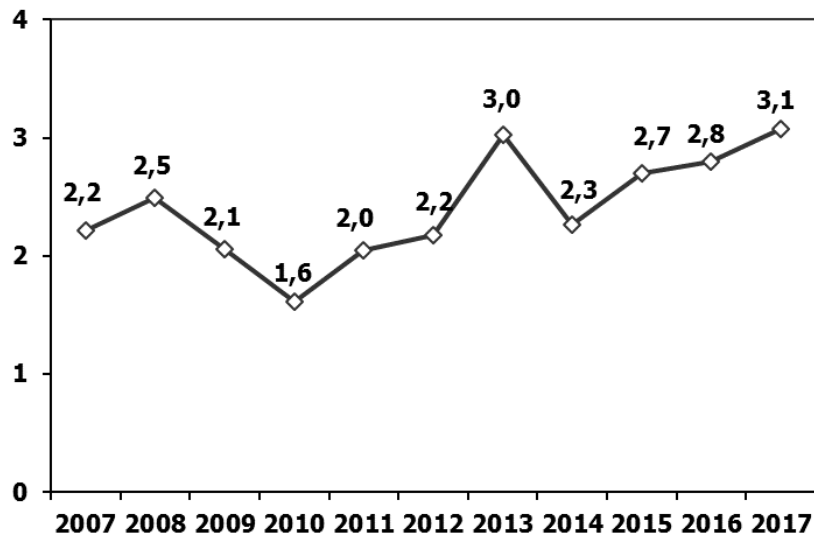
(AYA > 12 Ton) Büyük Kamyon Üretimi (x1000) (Ocak-Nisan)

(GVW > 12 Ton) Heavy Truck Production (x1000) (January-April)



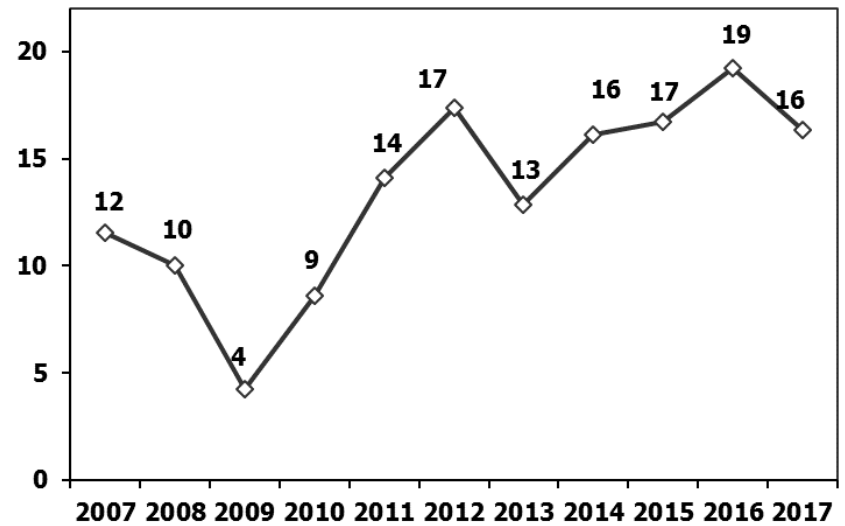
Otobüs Üretimi (x1000) (Ocak-Nisan)

Bus Production (x1000) (January-April)



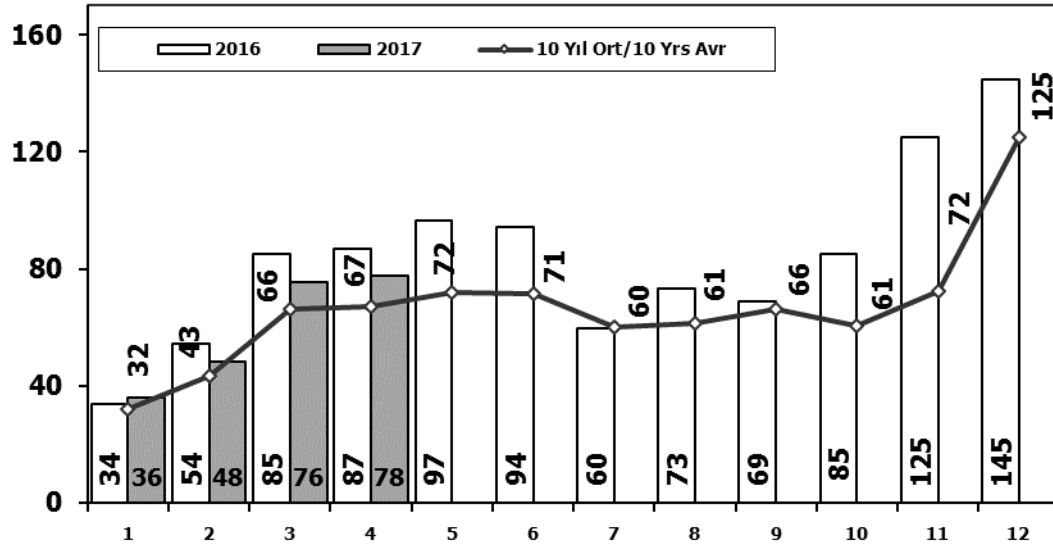
Traktör Üretimi (x1000) (Ocak-Nisan)

F. Tractor Production (x1000) (January-April)



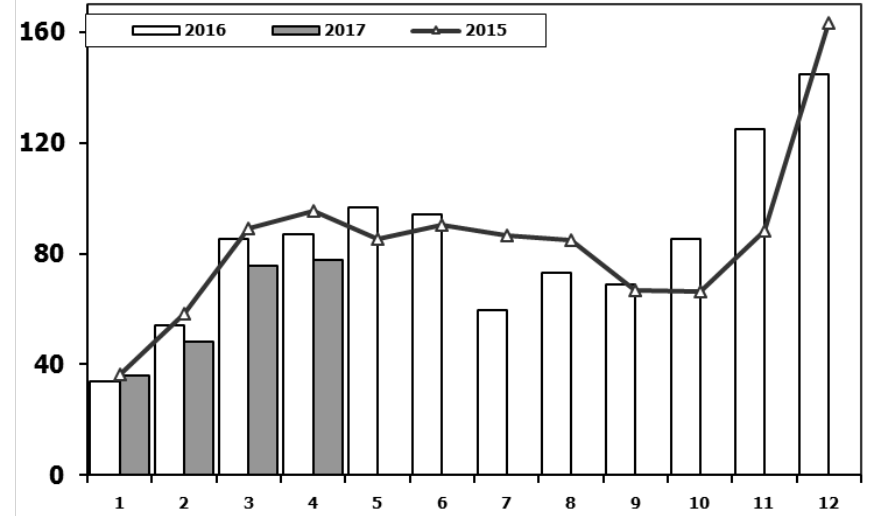
Toplam Pazarın Analizi (x1000)

Total Market Analysis (x1000)



Toplam Pazar (x1000)

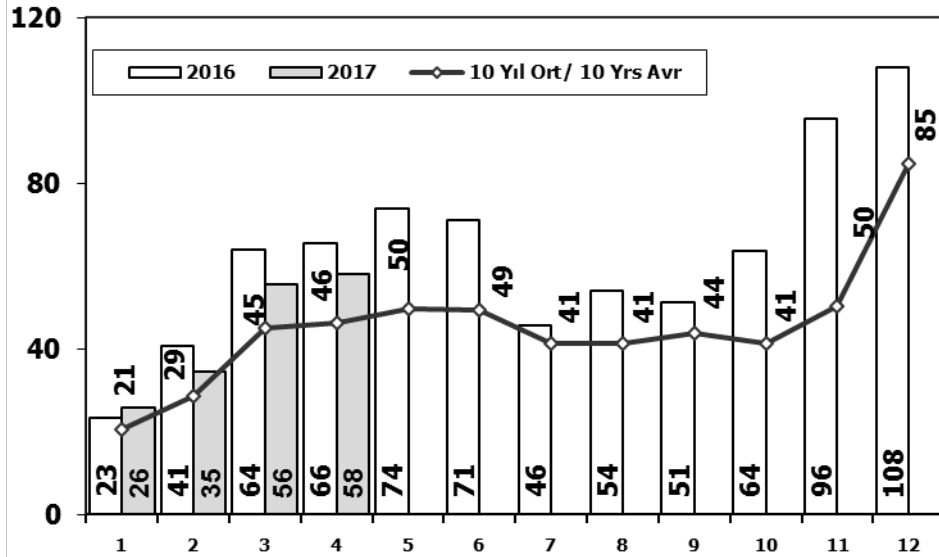
Total Market (x1000)



Aylar / Months	10 Yil Ort. 10 Yrs Avr. (x1000)	2017 (x1000)	%		1	2	3	4	5	6	7	8	9	10	11	12	4 Ay/Mo	Total
				2007	24.950	31.702	45.488	45.633	51.255	51.661	50.117	54.171	50.078	56.058	67.017	106.076	147.773	634.206
				2008	33.792	38.121	56.814	50.967	51.627	49.393	44.692	46.592	46.829	35.147	28.152	44.418	179.694	526.544
				2009	20.631	22.846	56.531	54.426	64.887	63.102	30.246	37.092	83.403	22.117	29.202	91.386	154.434	575.869
				2010	21.050	32.313	53.828	57.079	61.628	63.390	63.718	64.645	66.601	76.780	77.406	154.734	164.270	793.172
1	32,1	36,1	12,6	2011	47.658	62.348	83.333	82.071	85.093	85.863	65.364	61.378	63.643	72.640	67.195	134.281	275.410	910.867
2	43,2	48,1	11,4	2012	31.219	43.827	68.957	66.014	74.820	74.781	65.122	60.848	73.197	62.677	75.045	121.113	210.017	817.620
3	66,3	75,6	14,0	2013	37.140	50.931	72.688	77.015	85.421	77.771	74.726	67.383	71.037	60.399	83.017	135.596	237.774	893.124
4	67,2	77,8	15,8	2014	34.225	37.308	50.964	56.766	61.909	63.952	62.206	62.839	70.180	69.259	83.937	153.941	179.263	807.486
Total	208,9	237,7	13,8	2015	36.576	58.533	89.121	95.431	85.145	90.463	86.625	84.683	66.622	66.520	88.043	163.432	279.661	1.011.194
				2016	33.740	54.223	85.214	87.041	96.576	94.203	59.505	73.269	69.068	85.251	124.839	144.928	260.218	1.007.857
				2017	36.146	48.141	75.581	77.849									237.717	237.717

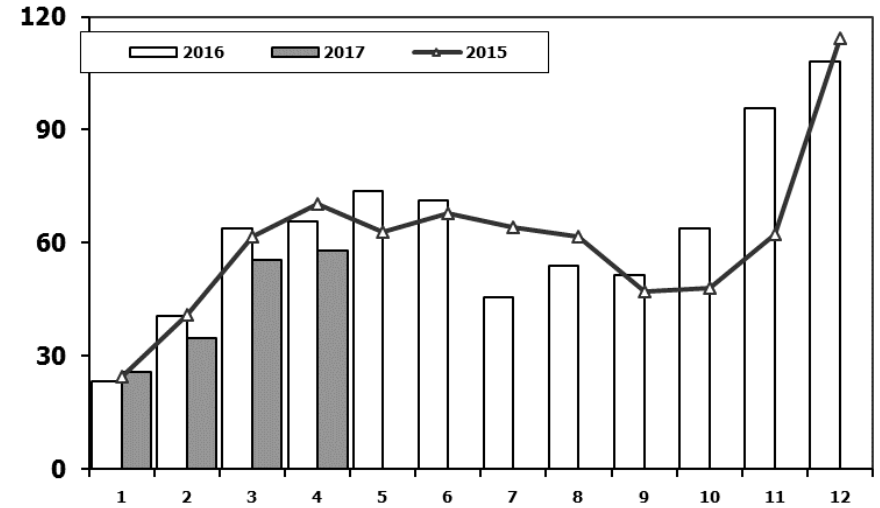
Otomobil Pazarının Analizi (x1000)

P.Cars Market Analysis (x1000)



Otomobil Pazarı (x1000)

P.Cars Market (x1000)

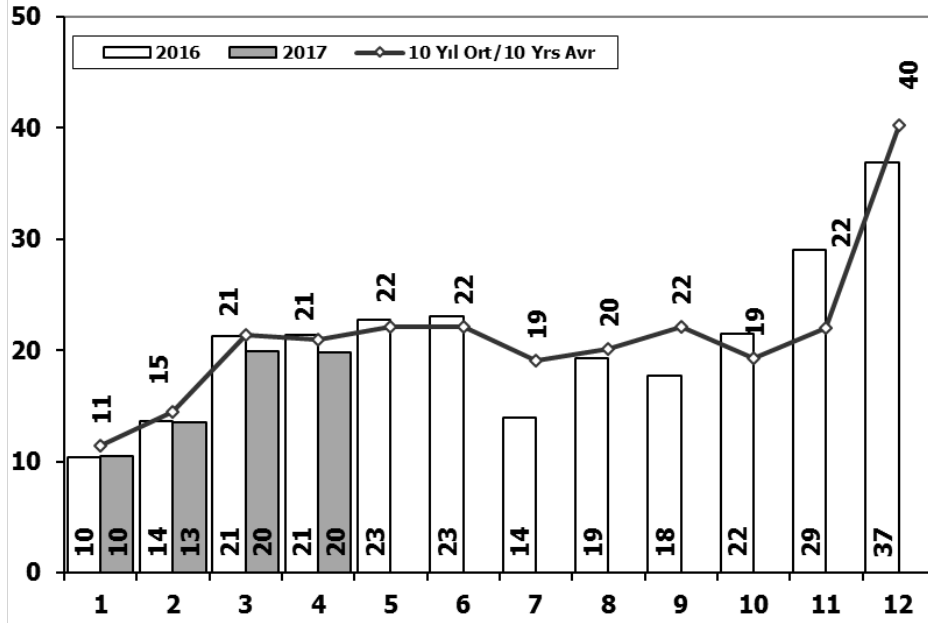


Aylar / Months	10 Yil Ort. 10 Yrs Avr. (x1000)	2017 (x1000)	%
1	20,7	25,7	24,4
2	28,7	34,7	20,7
3	45,0	55,6	23,7
4	46,3	58,0	25,2
Total	140,7	174,0	23,7

	1	2	3	4	5	6	7	8	9	10	11	12	4 Ay/Mo	Total
2007	13.186	17.212	24.336	25.204	29.067	30.126	28.246	28.469	27.662	32.569	39.643	61.745	79.938	357.465
2008	18.588	21.196	34.147	30.313	31.477	28.724	25.530	26.102	27.053	19.788	17.201	25.879	104.244	305.998
2009	13.173	14.492	40.622	36.202	44.188	41.019	16.637	22.537	52.162	13.828	17.781	57.178	104.489	369.819
2010	12.594	20.651	33.958	36.549	40.467	42.086	41.399	42.222	42.477	47.859	50.061	99.461	103.752	509.784
2011	29.868	39.004	54.023	53.835	56.302	56.714	43.518	38.875	39.964	47.508	44.951	88.957	176.730	593.519
2012	21.077	29.189	47.270	45.645	50.460	50.849	44.531	41.236	49.360	43.440	52.297	80.926	143.181	556.280
2013	25.835	36.814	51.785	56.999	62.383	58.290	55.712	51.611	52.925	46.985	64.117	101.199	171.433	664.655
2014	24.368	27.167	37.812	42.769	46.379	47.278	46.602	45.131	49.262	50.814	59.695	110.054	132.116	587.331
2015	24.498	40.817	61.676	70.211	62.878	67.766	64.218	61.753	47.088	47.954	62.397	114.340	197.202	725.596
2016	23.358	40.588	63.975	65.618	73.832	71.111	45.566	53.977	51.340	63.746	95.783	108.044	193.539	756.938
2017	25.689	34.658	55.616	57.998									173.961	173.961

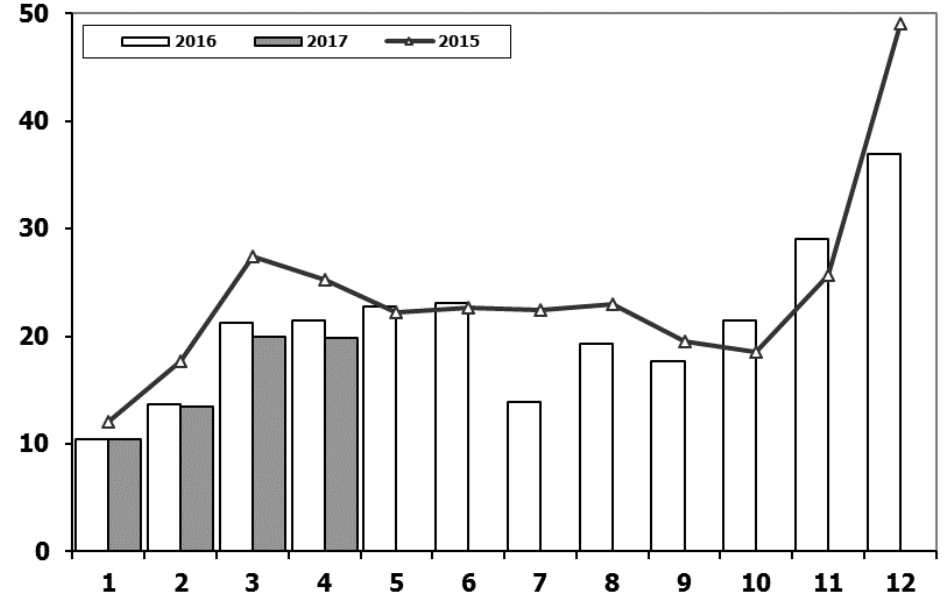
Ticari Araç Pazarının Analizi (x1000)

CV Market Analysis (x1000)



Ticari Araç Pazarı (x1000)

CV Total Market (x1000)

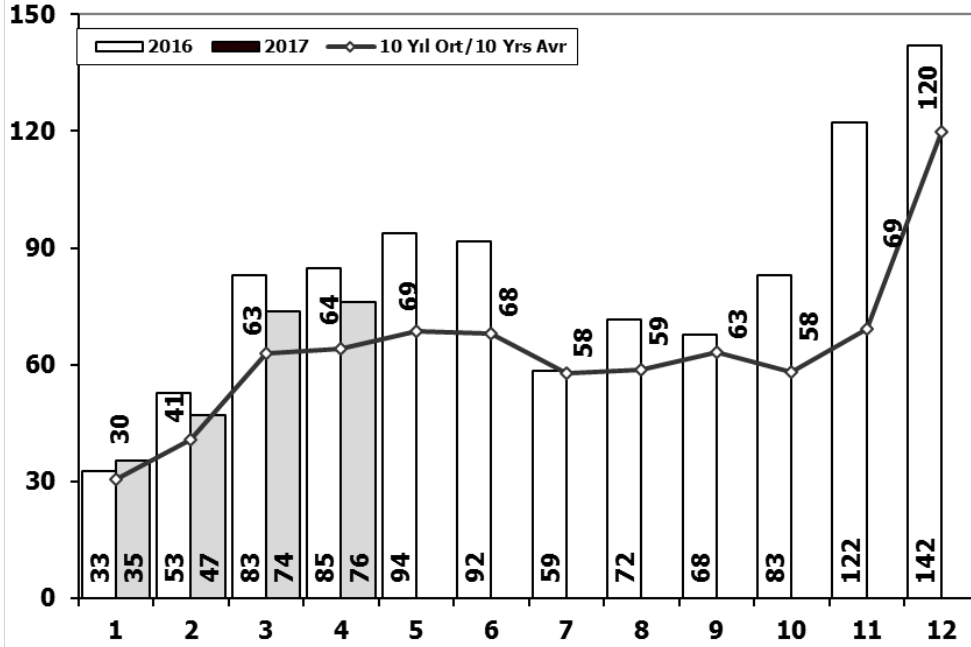


Aylar / Months	10 Yil Ort. 10 Yrs Avr. (x1000)	2017 (x1000)	%
1	11,4	10,5	-8,6
2	14,5	13,5	-7,0
3	21,3	20,0	-6,4
4	20,9	19,9	-5,1
Total	68,2	63,8	-6,5

	1	2	3	4	5	6	7	8	9	10	11	12	4 Ay/Mo	Total
2007	11.764	14.490	21.152	20.429	22.188	21.535	21.871	25.702	22.416	23.489	27.374	44.331	67.835	276.741
2008	15.204	16.925	22.667	20.654	20.150	20.669	19.162	20.490	19.776	15.359	10.951	18.539	75.450	220.546
2009	7.458	8.354	15.909	18.224	20.699	22.083	13.609	14.555	31.241	8.289	11.421	34.208	49.945	206.050
2010	8.456	11.662	19.870	20.530	21.161	21.304	22.319	22.423	24.124	28.921	27.345	55.273	60.518	283.388
2011	17.790	23.344	29.310	28.236	28.791	29.149	21.846	22.503	23.679	25.132	22.244	45.324	98.680	317.348
2012	10.142	14.638	21.687	20.369	24.360	23.932	20.591	19.612	23.837	19.237	22.748	40.187	66.836	261.340
2013	11.305	14.117	20.903	20.016	23.038	19.481	19.014	15.772	18.112	13.414	18.900	34.397	66.341	228.469
2014	9.857	10.141	13.152	13.997	15.530	16.674	15.604	17.708	20.918	18.445	24.242	43.887	47.147	220.155
2015	12.078	17.716	27.445	25.220	22.267	22.697	22.407	22.930	19.534	18.566	25.646	49.092	82.459	285.598
2016	10.382	13.635	21.239	21.423	22.744	23.092	13.939	19.292	17.728	21.505	29.056	36.884	66.679	250.919
2017	10.457	13.483	19.965	19.851									63.756	63.756

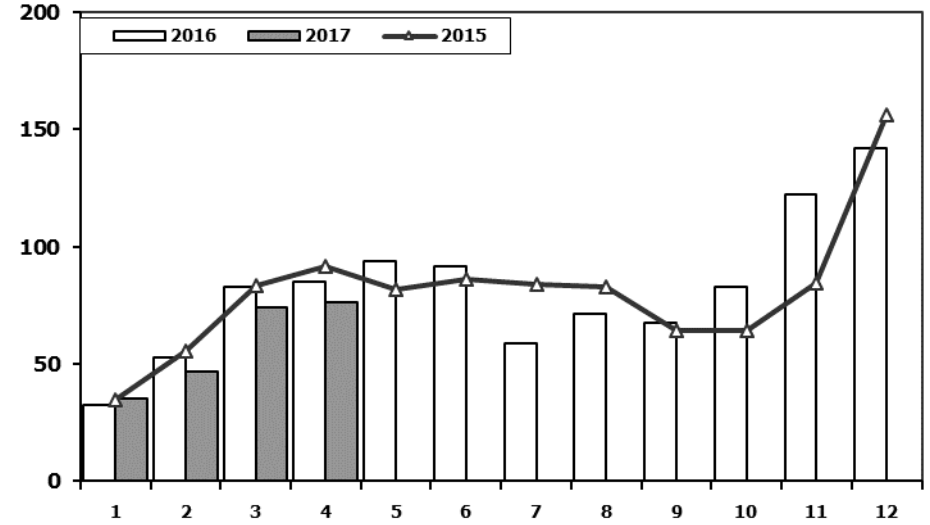
Hafif Araç Pazarının Analizi (x1000)

LV Market Analysis (x1000)



Hafif Araç Pazarı (x1000)

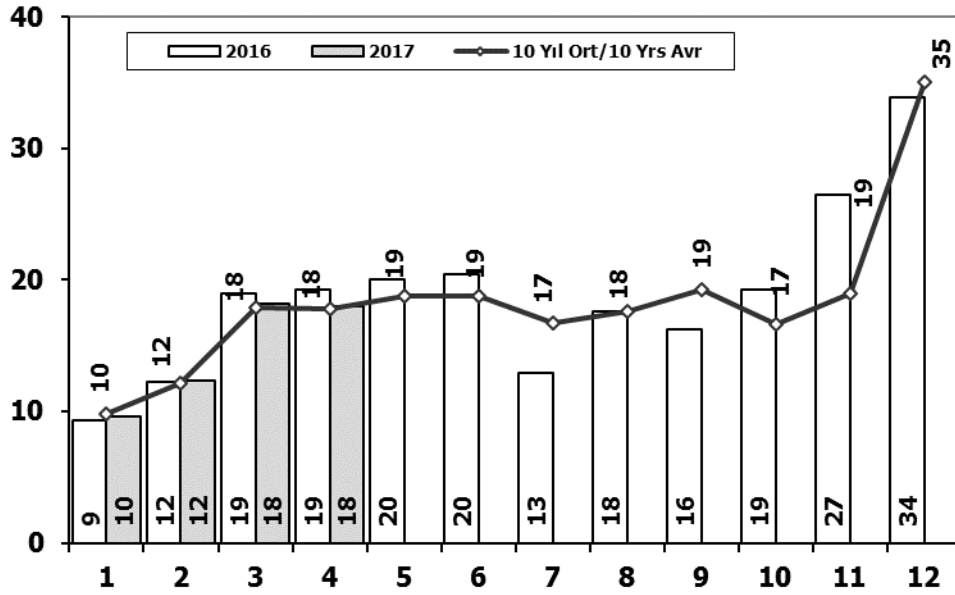
LV Total Market (x1000)



Aylar / Months	10 Yil Ort. 10 Yrs Avr. (x1000)	2017 (x1000)	%	1	2	3	4	5	6	7	8	9	10	11	12	4 Ay/Mo	Total
				23.117	29.184	41.890	42.366	47.938	48.674	47.490	50.558	46.581	52.725	63.313	100.926	136.557	594.762
				31.527	35.251	53.649	47.701	48.598	46.324	42.156	43.670	43.932	32.884	26.253	42.078	168.128	494.023
				19.606	21.742	55.111	52.640	63.191	61.067	28.845	35.609	81.397	21.033	27.962	88.923	149.099	557.126
				20.095	31.172	51.769	54.946	59.377	60.896	61.345	61.764	63.814	73.404	73.962	148.369	157.982	760.913
1	30,4	35,3	16,1	44.892	58.663	78.403	77.695	80.646	81.573	63.044	58.406	60.129	69.421	63.657	127.910	259.653	864.439
2	40,9	47,0	14,9	29.545	41.324	64.884	62.949	70.863	71.067	62.304	58.148	69.629	59.938	71.710	115.400	198.702	777.761
3	62,8	73,8	17,5	35.523	48.307	68.774	73.575	81.468	74.096	71.596	65.043	67.963	58.014	79.301	129.718	226.179	853.378
4	64,2	76,0	18,4	32.670	35.021	47.581	53.305	58.121	60.163	59.907	60.199	66.531	66.573	80.621	146.989	168.577	767.681
Total	198,3	232,1	17,0	34.615	55.331	83.302	91.602	81.542	86.158	83.836	82.577	64.025	64.255	84.601	156.173	264.850	968.017
				32.713	52.825	82.948	84.887	93.904	91.540	58.533	71.556	67.593	83.000	122.309	141.912	253.373	983.720
				35.323	46.965	73.802	75.988									232.078	232.078

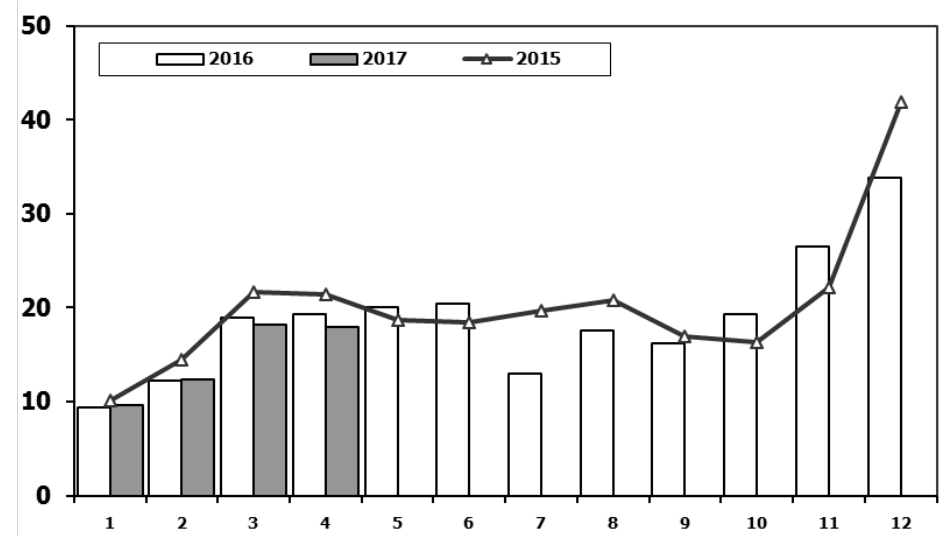
Hafif Ticari Araç Pazarının Analizi (x1000)

LCV Market Analysis (x1000)



Hafif Ticari Araç Pazarı (x1000)

LCV Total Market (x1000)

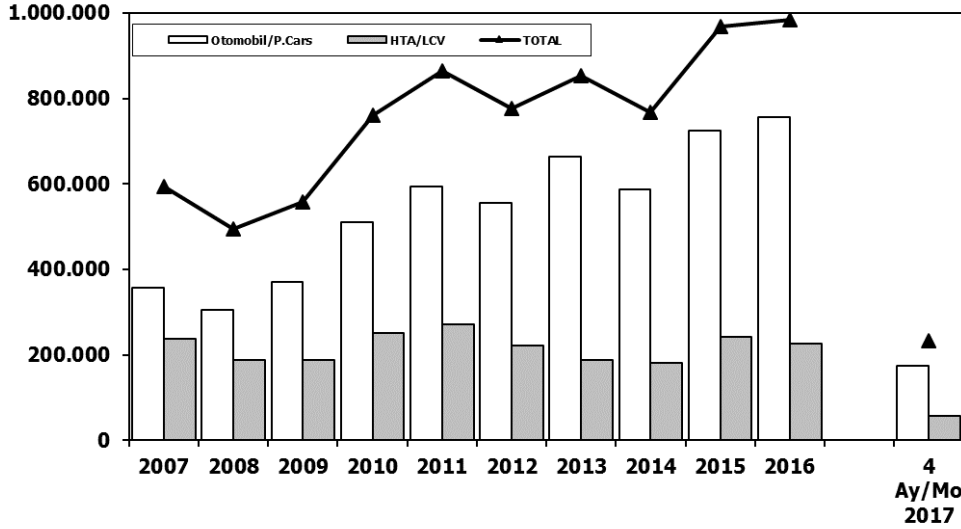


Aylar / Months	10 Yıl Ort. 10 Yrs Avr. (x1000)	2017 (x1000)	%
1	9,8	9,6	-1,5
2	12,2	12,3	1,1
3	17,9	18,2	1,8
4	17,8	18,0	0,9
Total	57,6	58,1	0,8

	1	2	3	4	5	6	7	8	9	10	11	12	4 Ay/Mo	Total
2007	9.931	11.972	17.554	17.162	18.871	18.548	19.244	22.089	18.919	20.156	23.670	39.181	56.619	237.297
2008	12.939	14.055	19.502	17.388	17.121	17.600	16.626	17.568	16.879	13.096	9.052	16.199	63.884	188.025
2009	6.433	7.250	14.489	16.438	19.003	20.048	12.208	13.072	29.235	7.205	10.181	31.745	44.610	187.307
2010	7.501	10.521	17.811	18.397	18.910	18.810	19.946	19.542	21.337	25.545	23.901	48.908	54.230	251.129
2011	15.024	19.659	24.380	23.860	24.344	24.859	19.526	19.531	20.165	21.913	18.706	38.953	82.923	270.920
2012	8.468	12.135	17.614	17.304	20.403	20.218	17.773	16.912	20.269	16.498	19.413	34.474	55.521	221.481
2013	9.688	11.493	16.989	16.576	19.085	15.806	15.884	13.432	15.038	11.029	15.184	28.519	54.746	188.723
2014	8.302	7.854	9.769	10.536	11.742	12.885	13.305	15.068	17.269	15.759	20.926	36.935	36.461	180.350
2015	10.117	14.514	21.626	21.391	18.664	18.392	19.618	20.824	16.937	16.301	22.204	41.833	67.648	242.421
2016	9.355	12.237	18.973	19.269	20.072	20.429	12.967	17.579	16.253	19.254	26.526	33.868	59.834	226.782
2017	9.634	12.307	18.186	17.990									58.117	58.117

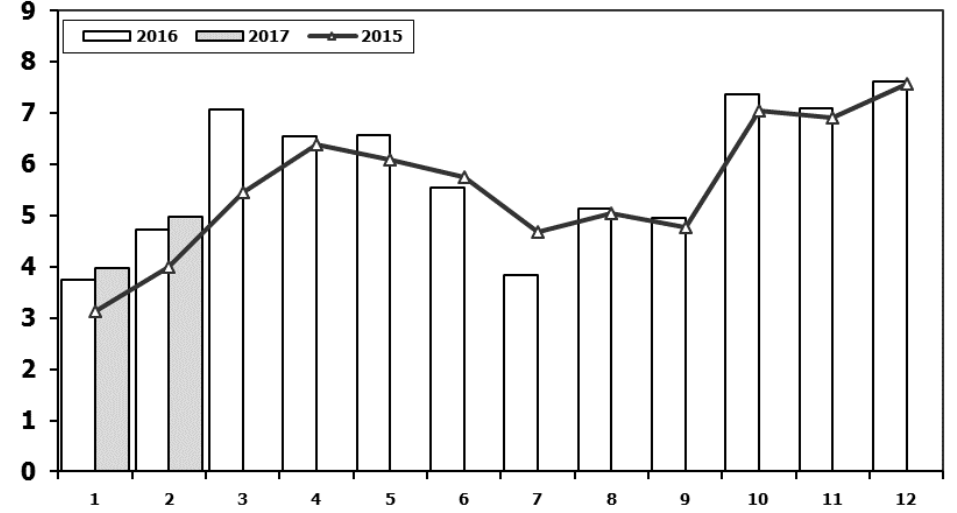
Hafif Araç Pazarı (AYA < 3.5 Ton)

Light Vehicle Market (GVW < 3.5 Ton)



Traktör Pazarı (x1000)

F.Tractor Market (x1000)



	2007	2008	2009	2010	2011	2012	2013	2014	2015	2016	4 Ay/Mo 2017
Otomobil/P.Cars	357.465	305.998	369.819	509.784	593.519	556.280	664.655	587.331	725.596	756.938	173.961
HTA/LCV	237.297	188.025	187.307	251.129	270.920	221.481	188.723	180.350	242.421	226.782	58.117
TOTAL	594.762	494.023	557.126	760.913	864.439	777.761	853.378	767.681	968.017	983.720	232.078
HTA/LCV (%)	40	38	34	33	31	28	22	23	25	23	25

	1	2	3	4	5	6	7	8	9	10	11	12	2 Ay/Mo	Total
2007	2.816	2.244	3.053	2.657	3.188	3.141	2.497	2.381	3.025	2.755	3.549	3.097	5.060	34.403
2008	2.770	1.855	3.395	3.081	2.769	2.400	2.232	2.485	1.856	1.773	1.305	1.101	4.625	27.022
2009	717	572	688	1.070	1.297	1.256	1.054	1.183	1.117	1.356	1.304	2.144	1.289	13.758
2010	1.111	1.991	2.330	3.039	2.567	2.638	1.965	3.019	2.806	4.424	3.978	6.168	3.102	36.036
2011	2.975	5.242	5.927	5.358	6.016	6.335	4.534	4.051	4.140	5.828	4.943	4.992	8.217	60.341
2012	2.362	1.983	4.348	6.579	6.273	4.569	3.837	3.158	3.618	4.027	4.807	4.757	4.345	50.318
2013	2.161	2.432	4.005	4.585	5.616	3.136	4.574	3.408	4.935	4.762	5.781	6.891	4.593	52.286
2014	2.169	3.512	4.476	4.905	5.094	5.028	4.233	4.920	5.619	5.743	6.250	7.409	5.681	59.358
2015	3.124	3.984	5.460	6.383	6.078	5.748	4.677	5.044	4.765	7.049	6.898	7.564	7.108	66.774
2016	3.739	4.731	7.067	6.546	6.575	5.543	3.833	5.134	4.945	7.372	7.090	7.603	8.470	70.178
2017	3.974	4.964											8.938	8.938

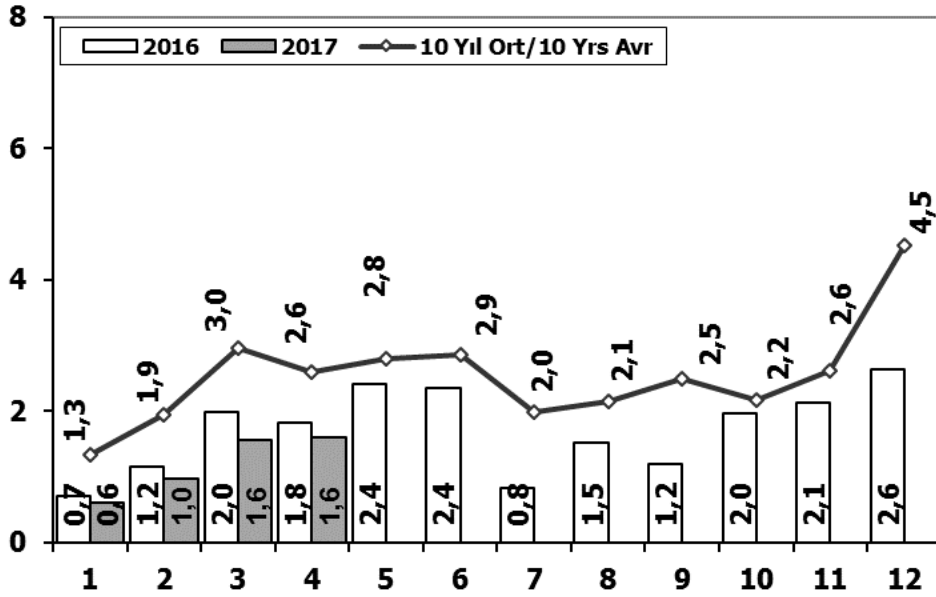
Kaynak: TÜİK trafik kayıtları.

Rakamlar, son iki model yılına ait traktör tescillerinden oluşmaktadır.

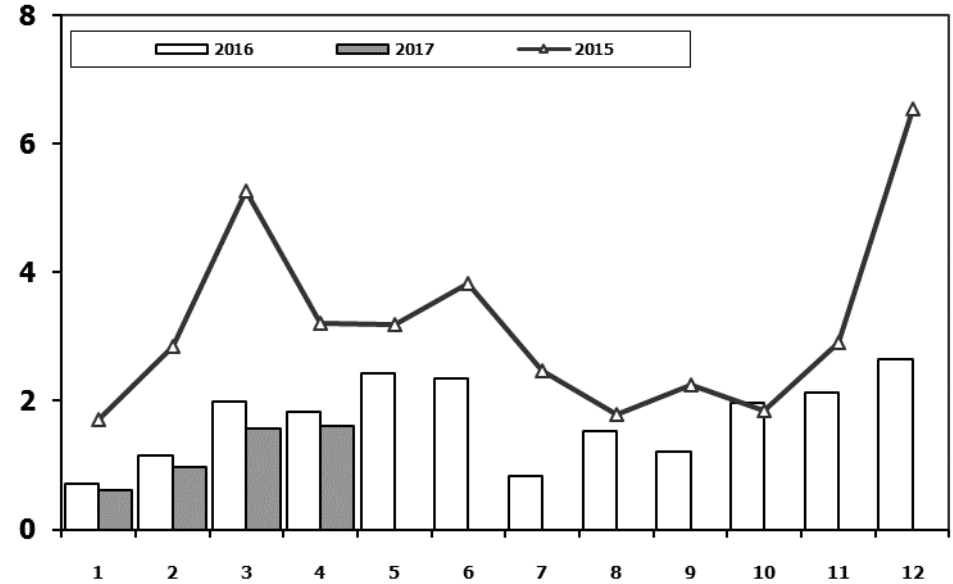
Source: Turkish Statistical Institute – Traffic registrations

Data represents the last two model year's farm tractors registration figures

Kamyon Pazarının Analizi (x1000) AYA > 5 Ton Truck Market Analysis (x1000) GVW > 5 Ton



Kamyon Pazarı (x1000) AYA > 5 Ton Truck Market (x1000) GVW > 5 Ton

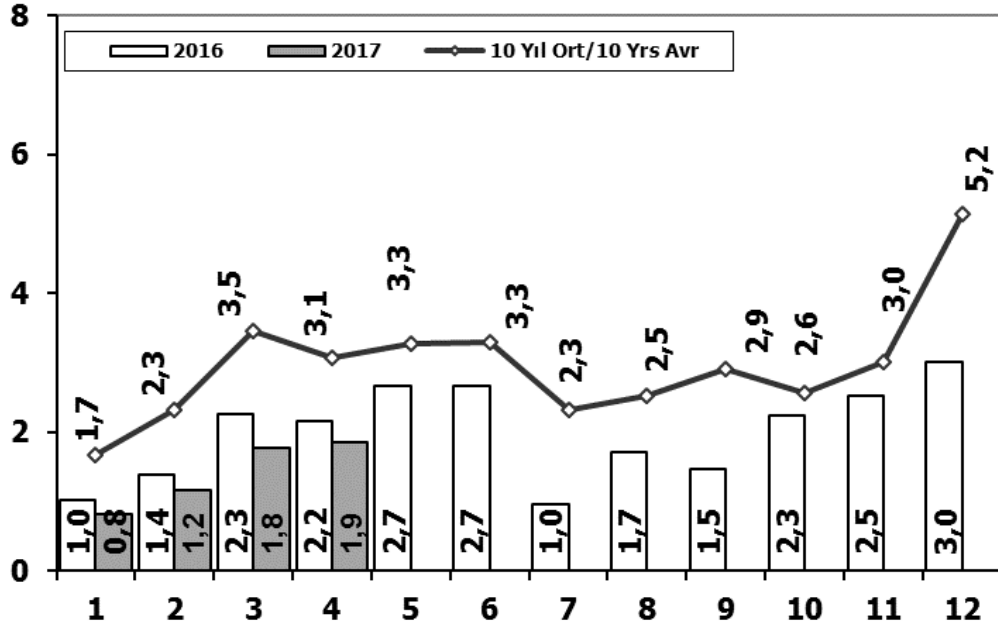


Aylar / Months	10 Yıl Ort. 10 Yrs Avr. (x1000)	2017 (x100)	%
1	1,3	0,6	-54,8
2	1,9	1,0	-50,4
3	3,0	1,6	-47,1
4	2,6	1,6	-38,0
Total	8,9	4,8	-46,3

	1	2	3	4	5	6	7	8	9	10	11	12	4 Ay/Mo	Total
2007	1.554	2.055	3.065	2.940	2.865	2.613	2.372	3.145	2.988	2.886	3.258	4.444	9.614	34.185
2008	1.797	2.309	2.621	2.578	2.459	2.526	2.067	2.377	2.390	1.790	1.512	1.834	9.305	26.260
2009	771	759	1.034	1.342	1.355	1.651	1.156	1.205	1.780	866	981	2.015	3.906	14.915
2010	777	968	1.772	1.807	1.966	2.205	2.093	2.446	2.444	3.071	3.136	5.677	5.324	28.362
2011	2.552	3.292	4.418	3.754	3.803	3.749	1.996	2.478	3.081	2.774	3.108	5.787	14.016	40.792
2012	1.375	2.159	3.595	2.697	3.321	3.250	2.450	2.277	2.991	2.244	3.006	5.000	9.826	34.365
2013	1.077	1.931	3.127	2.720	3.145	2.951	2.411	1.845	2.554	1.801	3.173	5.025	8.855	31.760
2014	1.117	1.949	2.818	3.092	3.405	3.438	2.083	2.390	3.281	2.494	3.028	6.313	8.976	35.408
2015	1.705	2.841	5.270	3.208	3.190	3.824	2.463	1.798	2.244	1.848	2.902	6.540	13.024	37.833
2016	718	1.154	1.984	1.835	2.420	2.358	830	1.529	1.204	1.962	2.123	2.640	5.691	20.757
2017	607	964	1.570	1.611									4.752	4.752

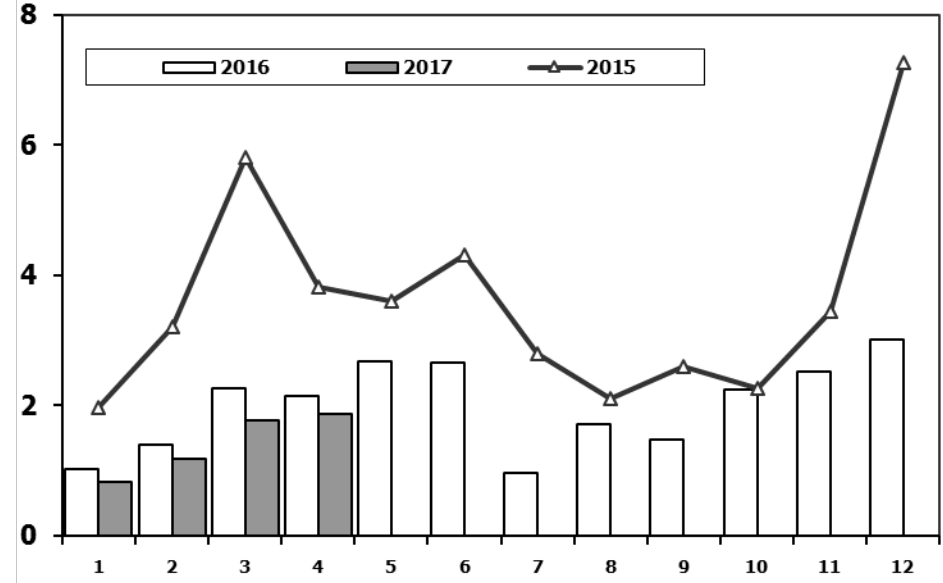
Ağır Ticari Araç Pazarının Analizi (x1000)

HCV Market Analysis (x1000)



Ağır Ticari Araç Pazarı (x1000)

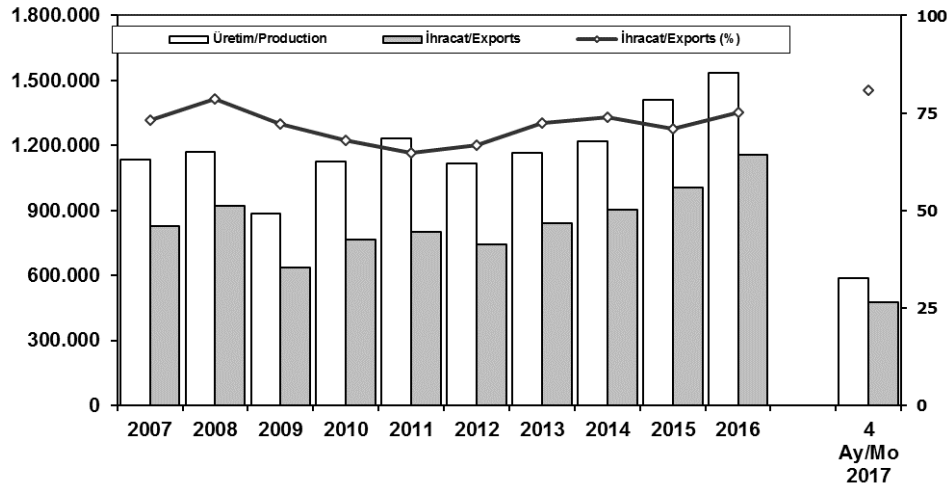
HCV Market (x1000)



Aylar / Months	10 Yil Ort. 10 Yrs Avr. (x1000)	2017 (x1000)	%	2007	2008	2009	2010	2011	2012	2013	2014	2015	2016	2017	4 Ay/Mo	Total
				1	2	3	4	5	6	7	8	9	10	11		
1	1,7	0,8	-50,7	1.833	2.265	1.025	955	2.766	1.674	1.617	1.555	1.961	1.027	823		
2	2,3	1,2	-49,6	2.518	2.870	1.104	1.141	3.685	2.503	2.624	2.287	3.202	1.398	1.176		
3	3,5	1,8	-48,6	3.598	3.165	1.420	2.059	4.930	4.073	3.914	3.383	5.819	2.266	1.779		
4	3,1	1,9	-39,5	3.267	3.266	1.786	2.133	4.376	3.065	3.440	3.461	3.829	2.154	1.861		
Total	10,5	5,6	-46,5	3.317	3.029	1.696	2.251	4.447	3.957	3.953	3.788	3.603	2.672			
				2.987	3.069	2.035	2.494	4.290	3.714	3.675	3.789	4.305	2.663			
				2.627	2.536	1.401	2.373	2.320	2.818	3.130	2.299	2.789	972			
				3.613	2.922	1.483	2.881	2.972	2.700	2.340	2.640	4.305	1.713			
				3.497	2.897	2.006	2.787	3.514	3.568	3.074	3.649	2.597	1.475			
				3.333	2.263	1.084	3.376	3.219	2.739	2.385	2.686	2.265	2.251			
				3.704	1.899	1.240	3.444	3.538	3.335	3.716	3.316	3.442	2.530			
				5.150	2.340	2.463	6.365	6.371	5.713	5.878	6.952	7.259	3.016			
				11.216	11.566	5.335	6.288	15.757	11.315	11.595	10.686	14.811	6.845			
				39.444	32.521	18.743	32.259	46.428	39.859	39.746	39.805	43.177	24.137			
															5.639	5.639

İhracat/Üretim (2007-2017) (Traktör dahil)

Exports/Production (2007-2017) (Including F. Tractor)



4 Ay/Mo
2017
589.595
477.026
81

Taşıt Araçları İhracatı (2015-2017)

Motor Vehicle Exports (2015-2017)

SEKTÖR/SECTOR	2015	2016	2016	2017	2017/2016 (%)
			4 Ay-4 Mo		
OTOMOBİL / P.Cars	604.683	745.709	214.958	337.386	57
TİCARİ ARAÇLAR / CV	387.652	395.673	144.484	135.246	-6
* Kamyonet/Pick-Up	341.834	347.949	137.989	115.928	-16
* Minibüs/Minibus	38.255	34.790	2.806	14.768	426
* Kamyon/Truck	1.408	5.521	1.238	2.112	71
* Midibüs/Midibus	447	915	216	158	-27
* Otobüs/Bus	5.708	6.498	2.235	2.280	2
TAŞIT ARAÇLARI /MV TOTAL	992.335	1.141.382	359.442	472.632	31
TRAKTÖR/F.TRACTOR	14.932	13.651	5.129	4.394	-14
TOTAL	1.007.267	1.155.033	364.571	477.026	31

Otomotiv Ana ve Yan Sanayii İhracatı (ABD \$)

CBU and CKD Exports - \$

Sektör / Sector	2013	2014	2015	2016	2016	2017	2017/2016 (%)
					Ocak-Nisan / January-April		
Yan Sanayi İhracatı/Total Component Exports	9.065.017.539	9.504.013.791	8.641.977.425	8.947.915.672	3.031.061.329	3.099.985.359	2%
İç ve Dış Lastik / Tyres	1.130.005.891,78	1.126.709.610,14	960.550.807	978.284.060	321.544.128	351.726.172	9%
Emniyet Camı / Safety Glasses	135.230.309,67	143.208.298,99	124.564.841	119.569.736	43.733.183	43.887.017	0%
Motor (Engine)	319.294.885,46	171.893.752,32	221.897.271	370.561.589	107.989.254	153.675.315	42%
Akümülatör / Batteries	306.451.449,47	289.101.198,21	220.462.827	224.590.660	64.414.336	73.147.714	14%
Diğer Aksam ve Parça / Spare Parts&Components	7.174.035.002,35	7.773.100.931,83	7.114.501.679	7.254.909.627	2.493.380.428	2.477.549.141	-1%
Ana Sanayi İhracatı/Total Vehicle Exports	12.491.591.365	13.259.499.977	12.977.346.859	15.302.074.705	4.661.892.695	6.319.989.356	36%
Otobüs / Bus	937.790.962,87	985.983.007,01	1.023.556.746	1.190.475.986	406.440.492	401.213.969	-1%
Midibüs-Minibüs / Minibus- Minibus	147.769.644,17	97.685.509,12	130.195.838	238.911.957	54.558.436	84.608.978	55%
Otomobil (P. Cars)	6.855.475.589,83	7.258.361.005,24	6.881.867.274	8.336.946.503	2.189.670.913	3.978.282.870	82%
Kamyon-Kamyonet/HCV-LCV	3.918.798.755,31	4.201.760.813,55	4.264.018.829	4.616.562.139	1.707.029.535	1.560.156.547	-9%
Römork ve Yarı Römork/Trailer-Semi Trailer	218.385.731,69	252.354.014,20	252.397.167	265.323.711	115.946.295	69.642.667	-40%
Çekici/Truck-Tractor	77.907.406,95	38.396.524,81	48.108.959	316.355.575	69.082.780	123.002.117	78%
Tarım Traktörü/Farm Tractor	335.463.274,61	424.959.103,39	377.202.046	337.498.834	119.164.243	103.082.209	-13%
Toplam/Total	21.556.608.904	22.763.513.769	21.619.324.284	24.249.990.377	7.692.954.024	9.419.974.715	22%

Kaynak: Uludağ İhracatçı Birlikleri . ÜİB tarafından OSD için özel olarak analiz edilen Otomotiv İhracatı kapsamında; ÜİB Türkiye Genel Otomotiv Endüstrisi sınıflandırmasına kıyasla "Römork ve Yarı Römork", "Tarım Traktörü" verileri dahil edilmekte; "Kullanılmış Araçlar", "İki Tekerlekli Taşıtlar", "Demiryolu Taşıtan" hariç tutulmaktadır.

Source: Uludağ Exporters Association - Special Analyze for OSD

Compared to Turkish General Automotive Industry classification, this special analyze includes: farms tractors, trailers and semi-trailers, does not include: used vehicles, two-wheeled vehicles and railway vehicles.

Firma Bazında İhracat (Adet)

Export Of Member Companies (Unit)

FİRMALAR Companies	2015	2016	Ocak-Nisan 4 Months	
			2016	2017
			OYAK RENAULT	270.299
TOFAŞ	173.743	279.444	82.052	102.285
FORD OTOSAN	252.571	256.706	94.233	100.534
TOYOTA	81.962	109.184	21.471	85.992
HYUNDAI ASSAN	201.276	207.234	72.630	70.111
TÜRK TRAKTÖR	14.122	12.625	4.756	4.024
M. BENZ TÜRK	4.252	8.307	2.377	3.108
HONDA TÜRKİYE	2.220	2.914	735	2.555
MAN TÜRKİYE	1.493	1.717	683	748
KARSAN	3.067	3.629	480	470
HATTAT TARIM	810	1.026	373	370
OTOKAR	720	833	216	182
TEMSA GLOBAL	441	653	179	162
A.I.O.S.	291	673	102	146
GENEL TOPLAM	1.007.267	1.155.033	364.571	477.026

Kaynak: OSD

Sektör Bazında İhracat (1000 \$)

Exports on Sectorial Basis

SEKTÖRLER (1.000 \$)	NİSAN				OCAK - NİSAN				SON 12 AYLIK			
	2016	2017	Değişim ('17/'16)	Pay(17)	2016	2017	Değişim ('17/'16)	Pay(17)	2016	2017	Değişim ('17/'16)	Pay(17)
Otomotiv Endüstrisi	2.045.827	2.299.136	12,4	19,4	7.587.921	9.309.701	22,7	18,7	21.699.916	25.609.435	18,0	17,6
Hazırgiyim ve Konfeksiyon	1.522.649	1.352.877	-11,1	11,4	5.767.316	5.427.007	-5,9	10,9	17.365.507	16.617.247	-4,3	11,4
Kimyevi Maddeler ve Mamulleri	1.231.415	1.232.793	0,1	10,4	4.555.815	5.344.445	17,3	10,7	14.797.237	14.726.711	-0,5	10,1
Çelik	695.901	1.022.316	46,9	8,6	2.799.374	3.997.162	42,8	8,0	8.961.458	10.272.063	14,6	7,1
Elektrik Elektronik ve Hizmet	885.135	794.018	-10,3	6,7	3.213.126	3.013.579	-6,2	6,1	10.394.628	9.773.547	-6,0	6,7
Tekstil ve Hammaddeleri	689.713	659.825	-4,3	5,6	2.622.224	2.671.710	1,9	5,4	7.911.350	7.916.902	0,1	5,4
Hububat, Bakliyat, Yağlı Tohumlar ve Mamulleri	532.964	525.069	-1,5	4,4	2.125.308	2.230.193	4,9	4,7	6.152.573	6.463.902	5,1	4,7
Demir ve Demir Dışı Metaller	515.699	548.996	6,5	4,6	1.978.067	2.130.975	7,7	4,3	6.143.274	6.098.985	-0,7	4,2
Makine ve Aksamları	493.247	486.601	-1,3	4,1	1.777.923	1.830.146	2,9	3,7	5.461.662	5.355.635	-1,9	3,7
Madencilik Ürünleri	337.035	448.854	33,2	3,8	1.082.986	1.469.027	35,6	3,0	3.797.351	4.173.314	9,9	2,9
TOPLAM	11.410.242	11.865.847	4,0	100,0	46.622.879	49.734.514	6,7	100,0	140.058.866	145.656.091	4,0	100,0

Kaynak: TİM

Nisan ayı ihracat verilerine, "İhracatçı Birlikleri Kaydından Muaf İhracat" verisi dahil değildir.

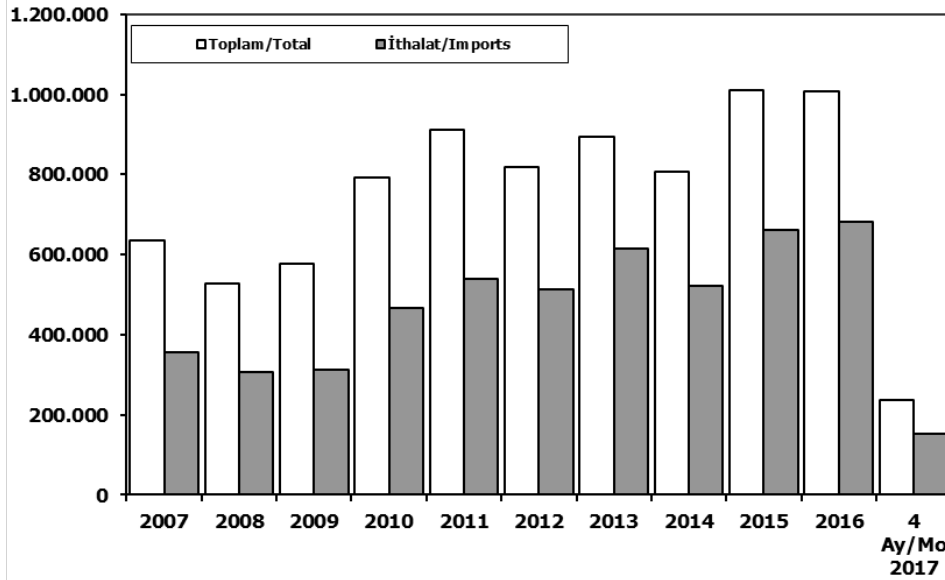
Source: TİM

Exportation data for April does not include "Exempted Exports from the Exporters' Union Registration".

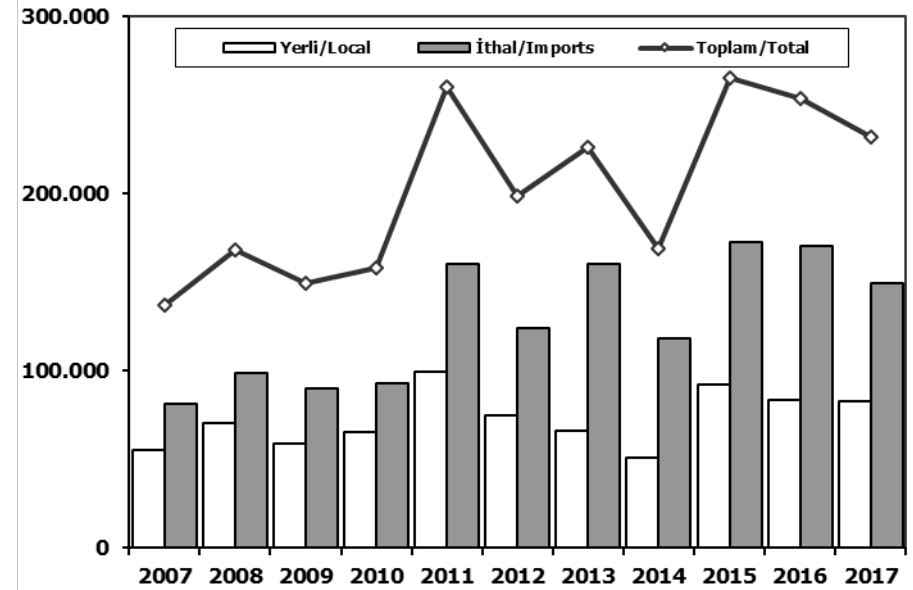
First 3 Sectors:

- 1- Automotive Industry
- 2- Ready Wear and Confection
- 3- Chemical Articles and Products

Toplam Pazar (Otomobil+T.Araç) Total Market (P.Cars+C.V)



Hafif Araçlar Pazarı (2007-2017 Ocak-Nisan) LV Market (2007-2017 January-April)

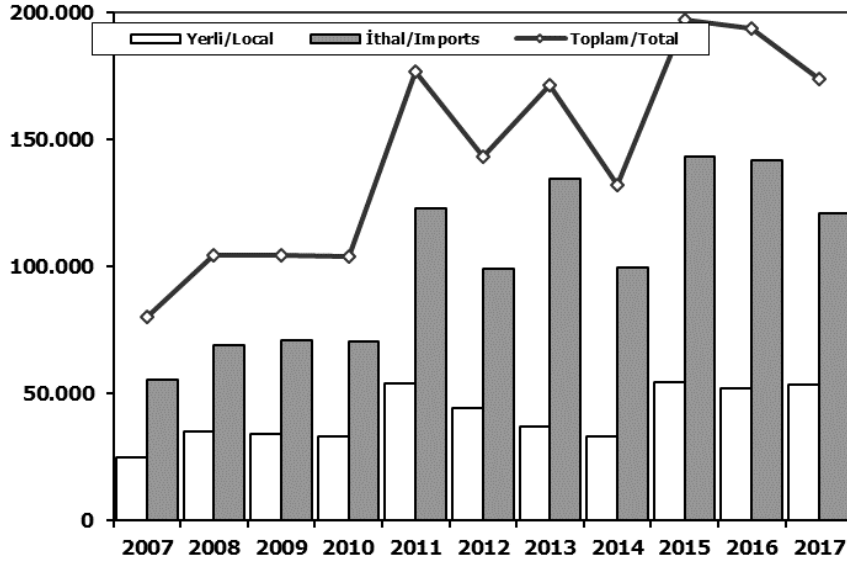


	2007	2008	2009	2010	2011	2012	2013	2014	2015	2016	4 Ay/Mo 2016	4 Ay/Mo 2017
Toplam/Total	634.206	526.544	575.869	793.172	910.867	817.620	893.124	807.486	1.011.194	1.007.857	260.218	237.717
İthalat/Imports	355.752	306.087	313.921	465.408	538.532	511.694	615.609	522.842	660.045	681.308	173.198	151.321
İthalat/Imports (%)	56	58	55	59	59	63	69	65	65	68	67	64

	2007	2008	2009	2010	2011	2012	2013	2014	2015	2016	2017
Yerli/Local	55.037	69.948	58.967	64.884	99.295	74.521	65.834	50.531	92.299	83.208	82.565
İthal/Imports	81.520	98.180	90.132	93.098	160.358	124.181	160.345	118.046	172.551	170.165	149.513
Toplam/Total	136.557	168.128	149.099	157.982	259.653	198.702	226.179	168.577	264.850	253.373	232.078
İthalat/Imports (%)	60	58	60	59	62	62	71	70	65	67	64

Otomobil Pazarı (2007-2017 Ocak-Nisan)

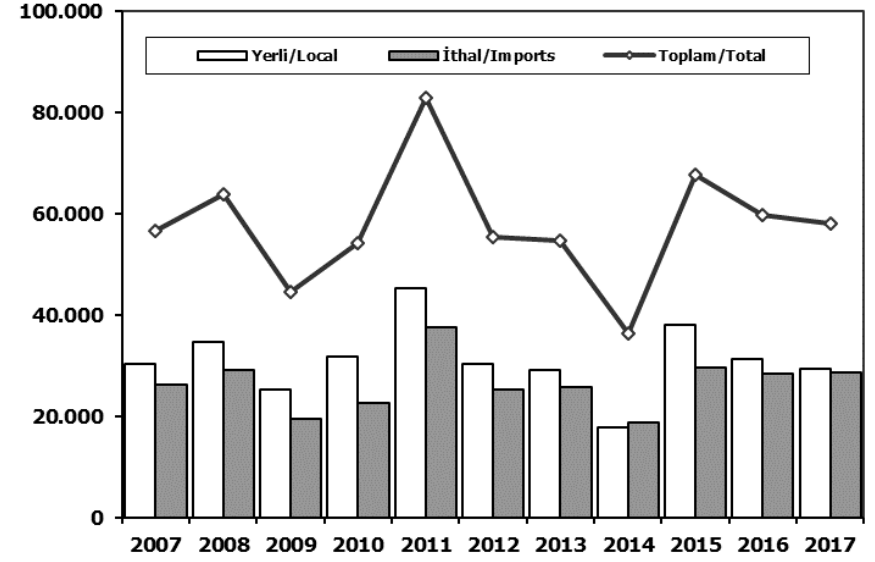
P.Cars Market (2007-2017 January-April)



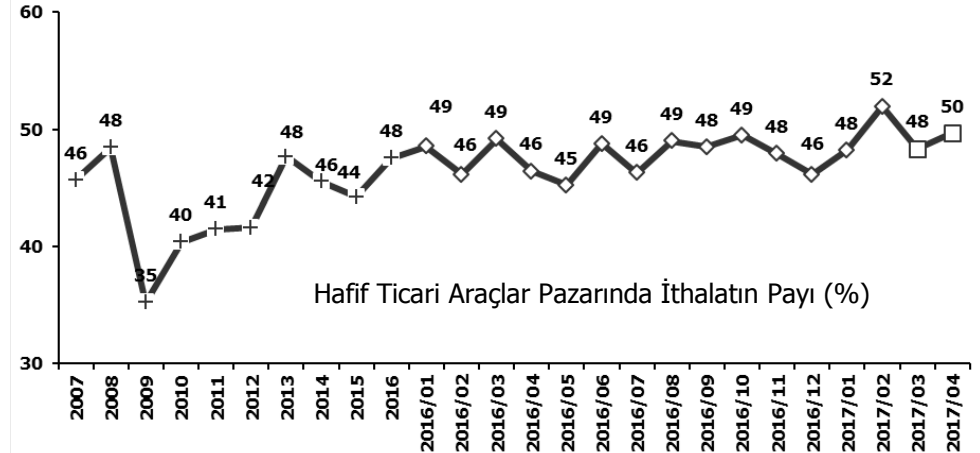
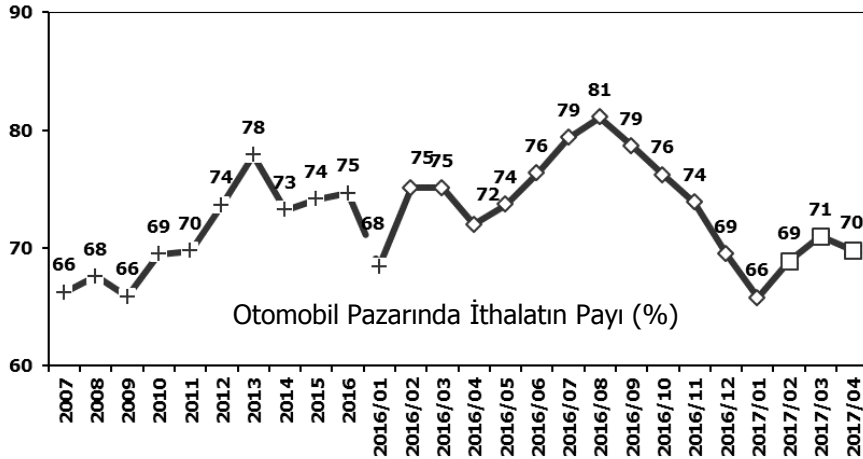
	2007	2008	2009	2010	2011	2012	2013	2014	2015	2016	2017
Yerli/Local	24.676	35.175	33.776	33.164	53.940	44.255	36.802	32.808	54.215	51.824	53.206
İthal/Imports	55.262	69.069	70.713	70.588	122.790	98.926	134.631	99.308	142.987	141.715	120.755
Toplam/Total	79.938	104.244	104.489	103.752	176.730	143.181	171.433	132.116	197.202	193.539	173.961
İthalat/Imports (%)	69	66	68	68	69	69	79	75	73	73	69

Hafif Ticari Araçlar Pazarı (2007-2017 Ocak-Nisan)

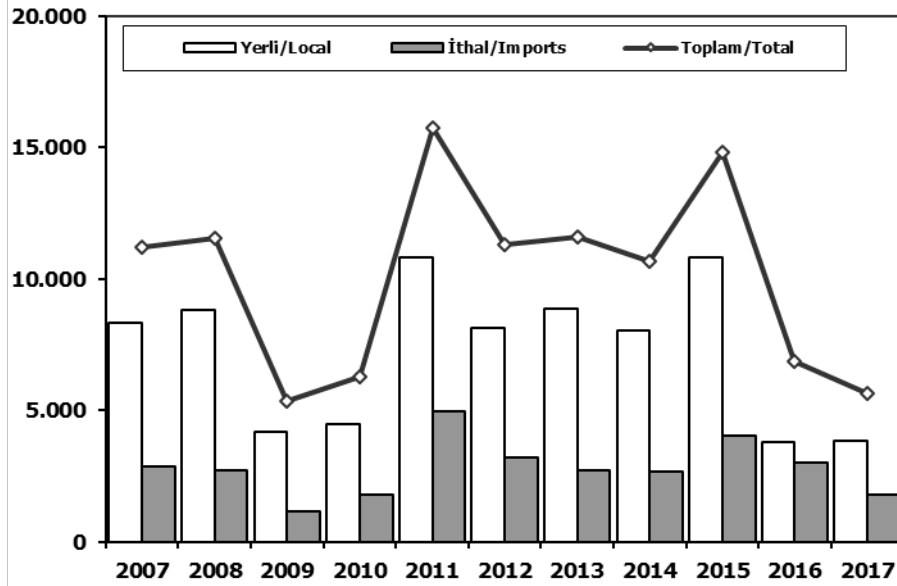
Light Commercial Vehicle Market (2007-2017 January-April)



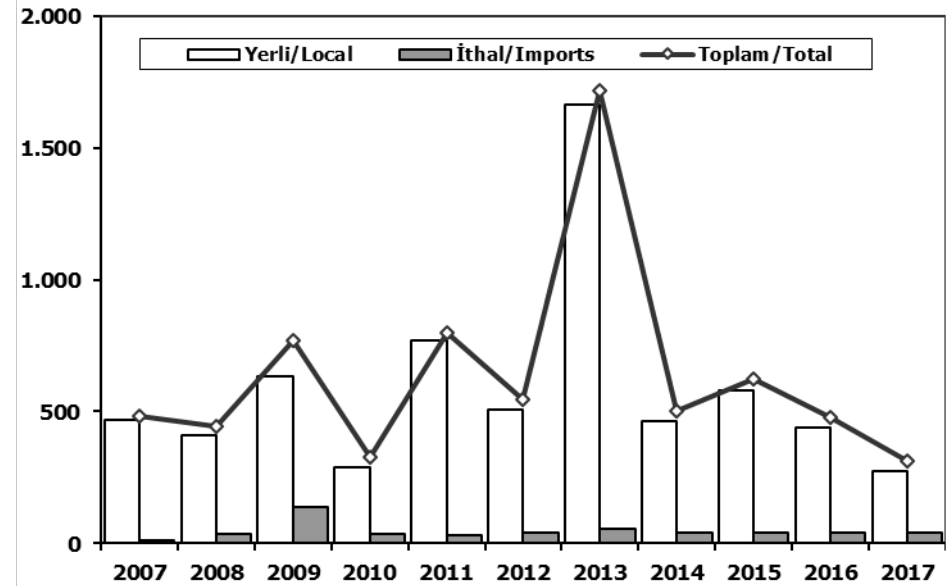
	2007	2008	2009	2010	2011	2012	2013	2014	2015	2016	2017
Yerli/Local	30.361	34.773	25.191	31.720	45.355	30.266	29.032	17.723	38.084	31.384	29.359
İthal/Imports	26.258	29.111	19.419	22.510	37.568	25.255	25.714	18.738	29.564	28.450	28.758
Toplam/Total	56.619	63.884	44.610	54.230	82.923	55.521	54.746	36.461	67.648	59.834	58.117
İthalat/Imports (%)	46	46	44	42	45	45	47	51	44	48	49



Ağır Ticari Araçlar Pazarı (2007-2017 Ocak-Nisan) HCV Market (2007-2017 January-April)



Otobüs Pazarı (2007-2017 Ocak-Nisan) Bus Market (2007-2017 January-April)

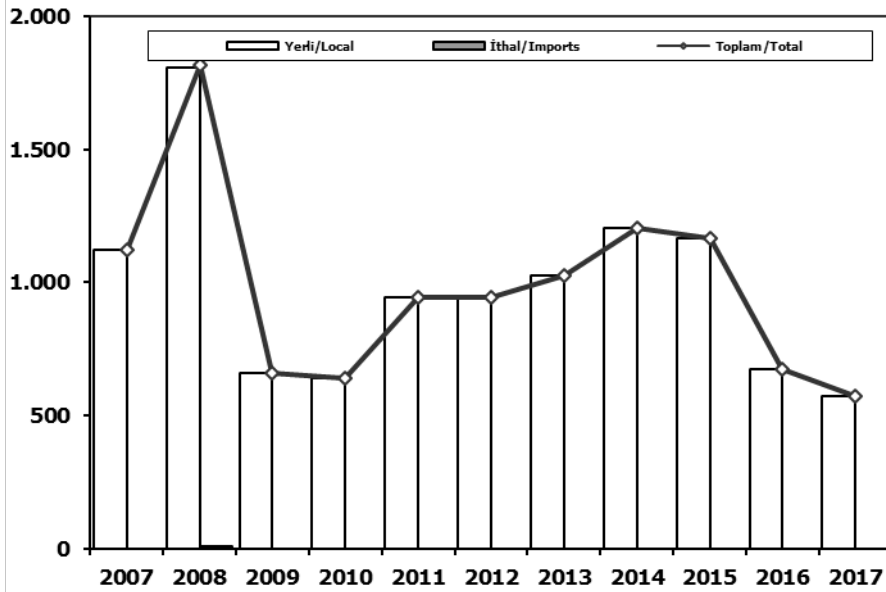


	2007	2008	2009	2010	2011	2012	2013	2014	2015	2016	2017
Yerli/Local	8.327	8.825	4.165	4.482	10.809	8.118	8.886	8.034	10.794	3.812	3.831
İthal/Imports	2.889	2.741	1.170	1.806	4.948	3.197	2.709	2.652	4.017	3.033	1.808
Toplam/Total	11.216	11.566	5.335	6.288	15.757	11.315	11.595	10.686	14.811	6.845	5.639
İthalat/Imports (%)	26	24	22	29	31	28	23	25	27	44	32

	2007	2008	2009	2010	2011	2012	2013	2014	2015	2016	2017
Yerli/Local	467	410	631	289	767	508	1.661	464	582	440	274
İthal/Imports	14	36	140	37	31	39	55	40	40	40	40
Toplam/Total	481	446	771	326	798	547	1.716	504	622	480	314
İthalat/Imports (%)	3	8	18	11	4	7	3	8	6	8	13

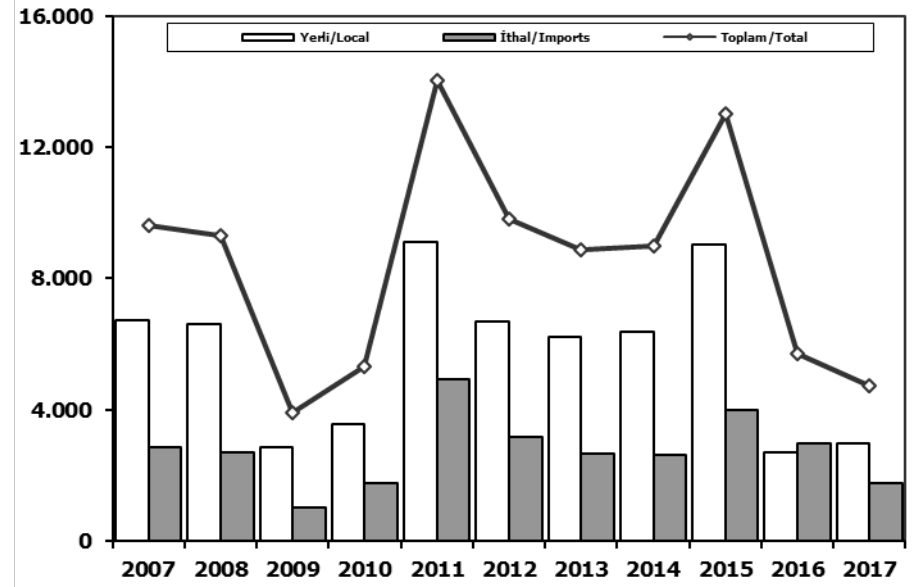
Midibüs Pazarı (2007-2017 Ocak-Nisan) (7-9 mt / 25-35 Kişilik)

Midibus Market (2007-2017 January-April) (7-9 mt / 25-35 Passengers)



Kamyon Pazarı (2007-2017 Ocak-Nisan)

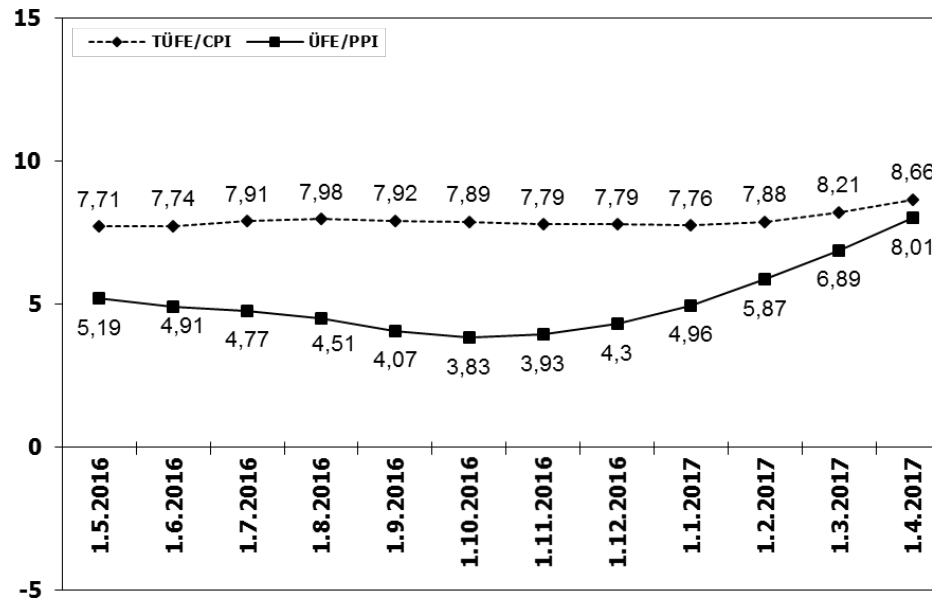
Truck Market (2007-2017 January-April)



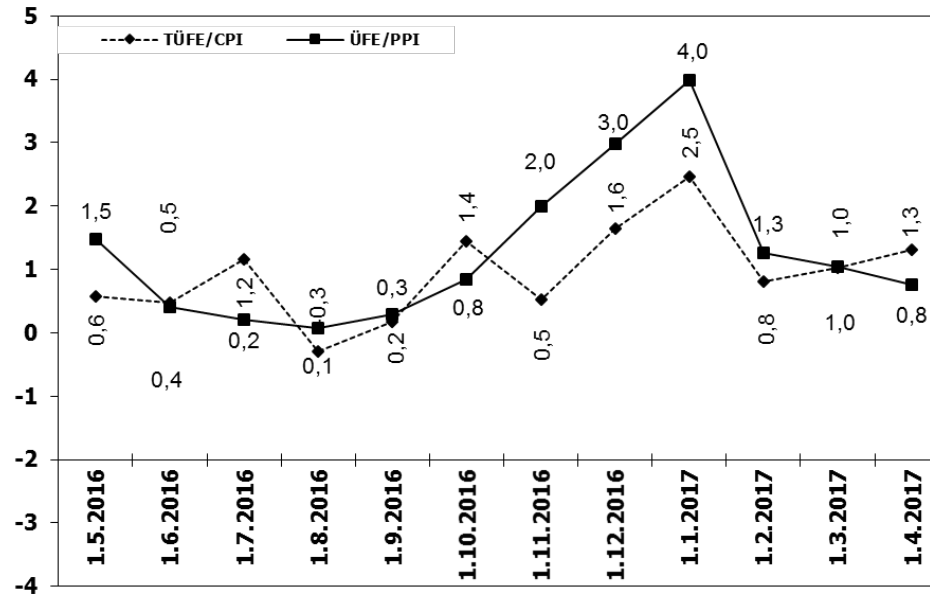
	2007	2008	2009	2010	2011	2012	2013	2014	2015	2016	2017
Yerli/Local	1.121	1.806	658	638	943	942	1.024	1.206	1.165	674	573
İthal/Imports	0	9	0	0	0	0	0	0	0	0	0
Toplam/Total	1.121	1.815	658	638	943	942	1.024	1.206	1.165	674	573
İthalat/Imports (%)	0	0	0	0	0	0	0	0	0	0	0

	2007	2008	2009	2010	2011	2012	2013	2014	2015	2016	2017
Yerli/Local	6.739	6.609	2.876	3.555	9.099	6.668	6.201	6.364	9.047	2.698	2.984
İthal/Imports	2.875	2.696	1.030	1.769	4.917	3.158	2.654	2.612	3.977	2.993	1.768
Toplam/Total	9.614	9.305	3.906	5.324	14.016	9.826	8.855	8.976	13.024	5.691	4.752
İthalat/Imports (%)	30	29	26	33	35	32	30	29	31	53	37

TÜFE ve ÜFE'nin 12 Aylık Ort. Değişimi (%) CPI and PPI 12 Months Avr. Changes (%)



TÜFE ve ÜFE'nin Aylık Değişimi (%) CPI and PPI Monthly Changes (%)



2017 Yılı İthal Hafif Araç Satışları 2017 Light Vehicles Import Sales

2017 YILI İTHAL OTOMOBİL SATIŞLARI / P.Cars Import 2017

	2016 TOPLAMI 2016 Total	1	2	3	4	5	6	7	8	9	10	11	12	2017 TOPLAMI 2017 Total
VOLKSWAGEN	101.761	3.059	4.903	6.729	6.672									21.363
OPEL	55.471	1.577	1.652	4.014	3.838									11.081
DACIA	42.109	1.471	2.303	3.534	3.557									10.865
RENAULT	42.422	844	1.462	3.148	2.879									8.333
FORD	33.453	1.175	1.199	2.760	2.902									8.036
HYUNDAI	26.463	1.413	1.393	2.563	2.003									7.372
PEUGEOT	25.440	637	1.884	2.139	2.604									7.264
NISSAN	30.513	1.154	1.519	2.083	2.254									7.010
MERCEDES-BENZ	32.666	499	1.078	2.308	2.106									5.991
SKODA	28.876	925	1.225	1.335	2.144									5.629
CITROEN	17.041	515	761	1.765	1.654									4.695
AUDI	22.009	625	702	1.287	1.673									4.287
SEAT	20.637	536	623	1.103	1.583									3.845
BMW	27.166	570	900	1.346	877									3.693
KIA	14.398	426	481	630	1.097									2.634
HONDA	8.714	206	255	642	618									1.721
TOYOTA	11.513	439	413	439	427									1.718
VOLVO	4.100	155	213	232	340									940
FIAT	3.103	106	187	229	185									707
SUZUKI	3.931	79	143	260	206									688
JEEP	2.192	111	104	162	184									561
SUBARU	1.584	67	40	195	129									431
LAND ROVER	2.108	34	72	104	175									385
MAZDA	1.427	54	76	109	100									339
MINI	1.688	55	81	82	80									298
PORSCHE	827	66	61	61	35									223
MITSUBISHI	709	28	43	50	45									166
ALFA ROMEO	634	17	43	59	27									146
SSANGYONG	507	10	20	32	27									89
JAGUAR	481	6	10	23	36									75
SMART	192	2	7	20	19									48
LEXUS	64	16	3	6	11									36
INFINITI	120	6	12	8	2									28
DS	400	9	0	1	13									23
MASERATI	72	2	7	3	5									17
ASTON MARTIN	29	1	2	3	2									8
FERRARI	18	0	1	3	1									5
BENTLEY	9	1	2	0	1									4
LAMBORGHINI	7	0	0	0	1									1
CHERY	144	0	0	0	0									0
PROTON	51	0	0	0	0									0
TATA	0	0	0	0	0									0
GEELY	0	0	0	0	0									0
LANCIA	0	0	0	0	0									0
TOPLAM	565.045	16.896	23.880	39.467	40.512	0	0	0	0	0	0	0	0	120.755

2017 YILI İTHAL HAFIF TİCARİ ARAÇ SATIŞLARI / Light Commercial Vehicles Import 2017

	2016 TOPLAMI 2016 Total	1	2	3	4	5	6	7	8	9	10	11	12	2017 TOPLAMI 2017 Total
VOLKSWAGEN	32.772	1.255	1.599	2.121	2.362									7.337
RENAULT	15.091	519	718	1.327	1.238									3.802
CITROEN	6.884	438	669	424	807									2.338
MERCEDES-BENZ	8.070	343	496	687	742									2.268
PEUGEOT	8.402	157	351	990	739									2.237
FIAT	5.885	257	448	490	602									1.797
DACIA	5.422	235	348	523	615									1.721
TOYOTA	5.645	356	451	489	304									1.600
KIA	3.952	193	240	384	306									1.123
FORD	4.878	250	270	371	212									1.103
NISSAN	1.540	167	266	337	258									1.028
HYUNDAI	2.244	134	174	242	308									858
IVECO	2.175	146	133	250	205									734
MITSUBISHI	3.533	173	213	127	209									722
SSANGYONG	254	9	4	21	12									46
ISUZU	1.055	12	12	9	11									44
TATA	9	0	0	0	0									0
TOPLAM	107.811	4.644	6.392	8.792	8.930	0	0	0	0	0	0	0	0	28.758