



OTOMOTİV SANAYİ DERNEĞİ
AUTOMOTIVE MANUFACTURERS ASSOCIATION

AYLIK RAPOR

Automotive Industry Monthly Report

Haziran / June 2016

- **Üretim/Production**
- **Satış/Sales**
- **İthalat/Imports**
- **İhracat/Exports**

OSD "OICA" Üyesidir



OSD is a Member of "OICA"

2016 Haziran Ayı Özeti / 2016 June Summary

		HAZİRAN / JUNE			6 AY / 6 MONTHS			SON 12 AYLIK / YoY		
		2015	2016	2016/2015 (%)	2015	2016	2016/2015 (%)	2015	2016	2016/2015 (%)
Üretim/Production	Toplam/Total	124.451	131.171	5	667.592	725.477	9	1.273.960	1.416.681	11
	Otomobil/P.Cars	73.928	82.175	11	391.977	441.366	13	764.525	840.415	10
Pazar/Market	Toplam/Total	90.463	94.203	4	455.269	450.997	-1	957.631	1.006.920	5
	Otomobil/P.Cars	67.766	71.111	5	327.846	338.482	3	689.404	736.232	7
İthalat/Import	Toplam/Total	60.153	64.795	8	296.161	302.088	2	615.641	663.685	8
	Otomobil/P.Cars	50.835	54.270	7	244.207	250.381	3	505.340	542.959	7
İhracat/Export	Toplam/Total	92.680	100.165	8	486.336	553.885	14	919.181	1.059.884	15
	Otomobil/P.Cars	56.556	63.103	12	303.857	338.753	11	586.315	639.579	9
İhracat / Export (\$)	Toplam/Total **	2.011.063.286	2.173.976.677	8	10.698.151.963	11.913.110.305	11	21.503.915.139	22.721.320.678	6
	Otomobil/P.Cars	694.714.034	714.690.150	3	3.553.754.256	3.570.732.404	0	6.893.408.995	6.936.766.558	1

PARAMETRELER / PARAMETERS		HAZİRAN / JUNE			6 AY / 6 MONTHS			SON 12 AYLIK / YoY		
		2015	2016	2016/2015 (%)	2015	2016	2016/2015 (%)	2015	2016	2016/2015 (%)
ÜFE/PPI		0,25	0,41	**	5,49	3,19	**	6,74	4,91	**
TÜFE/CPI		-0,51	0,47	**	4,76	3,63	**	8,28	7,74	**
Sanayi Endeksi/Industry Index		0,41	0,29	**	6,17	4,12	**	7,63	5,77	**
\$ (*)		2,6831	2,9148	9	2,5879	2,8980	12	2,4030	2,8847	20
EURO (*)		2,9961	3,2464	8	2,8723	3,2228	12	2,8454	3,1907	12
Japon Yeni (*)		2,1812	2,7308	25	2,1381	2,5684	20	2,0644	2,4592	19

(*) Ortalama Değerler / Average Values

(**) Toplam Sanayi / Total Industry Including Components

*Raporda yer alan üretim adetleri yalnızca OSD üyelerinin verilerini göstermektedir.
Production units in this report only show the data of OSD members.*

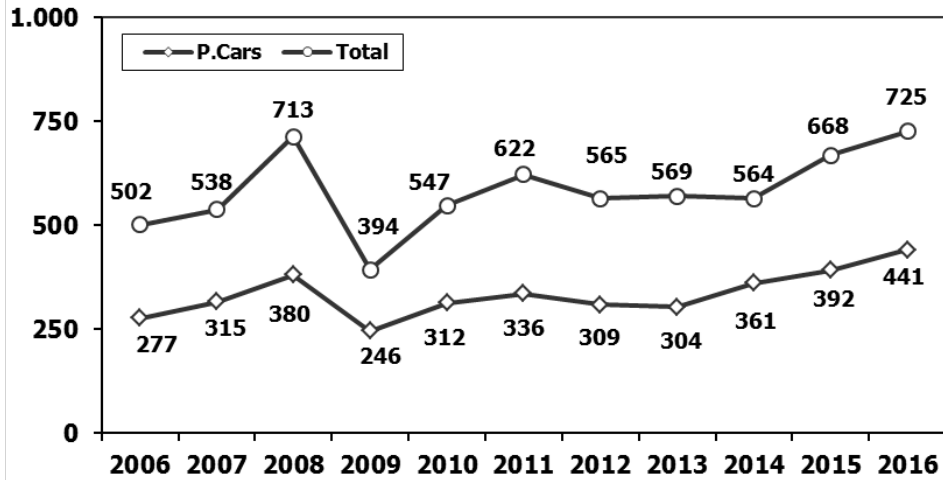
2015/2016 Yılları Üretim 2015/2016 Production

K.KAMYON : AYA 3.5-12 Ton (L.Truck:GVW 3.5-12 Ton)

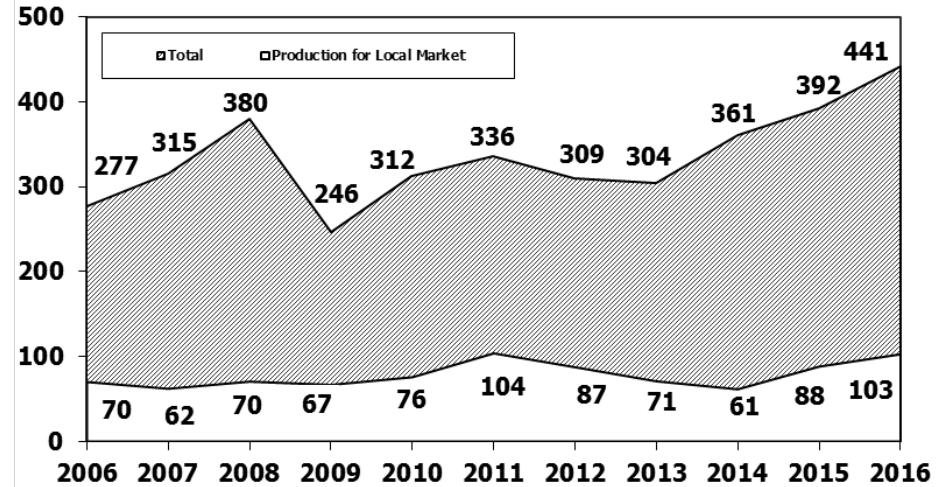
B.KAMYON : AYA 12 Ton'dan Büyük (M.Truck:GVW 12 Ton And Up)

TİPLER	HAZİRAN AYI ÜRETİMİ June Production		6 AYLIK ÜRETİM 6 Months Production		DEĞİŞİM % Percent Change %	
	2015	2016	2015	2016	HAZİRAN June	6 AY 6 Months
<i>OTOMOBİL - Pass.Car</i>	73.928	82.175	391.977	441.366	11	13
<i>TİCARİ ARAÇLAR - Commercial Vehicles</i>	50.523	48.996	275.615	284.111	-3	3
* B. KAMYON - H. Truck	2.949	1.718	16.350	7.846	-42	-52
* K. KAMYON - L. Truck	420	210	1.961	621	-50	-68
* KAMYONET - Pick Up	42.114	39.615	217.211	250.794	-6	15
* OTOBÜS - Bus	790	814	4.243	4.425	3	4
* MİNİBÜS - Minibus	3.650	6.310	32.611	18.789	73	-42
* MİDİBÜS - Midibus	600	329	3.239	1.636	-45	-49
TAŞIT ARAÇLARI TOPLAM - MV Total	124.451	131.171	667.592	725.477	5	9
TRAKTÖR - F.Tractor	4.356	5.333	24.315	29.979	22	23
GENEL TOPLAM - Grand Total	128.807	136.504	691.907	755.456	6	9

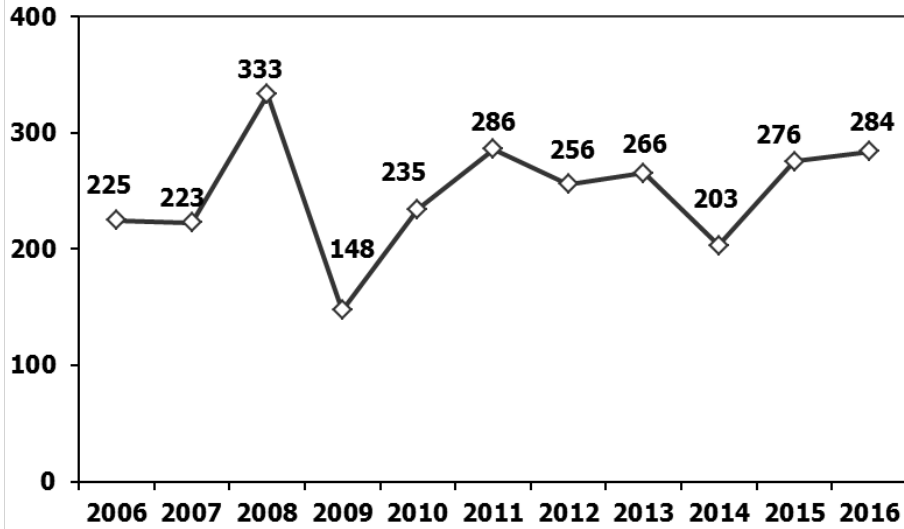
Toplam Üretim ve Otomobil Üretimi (x1000) (Ocak-Haziran)
Total & P.Cars Production (x1000) (January-June)



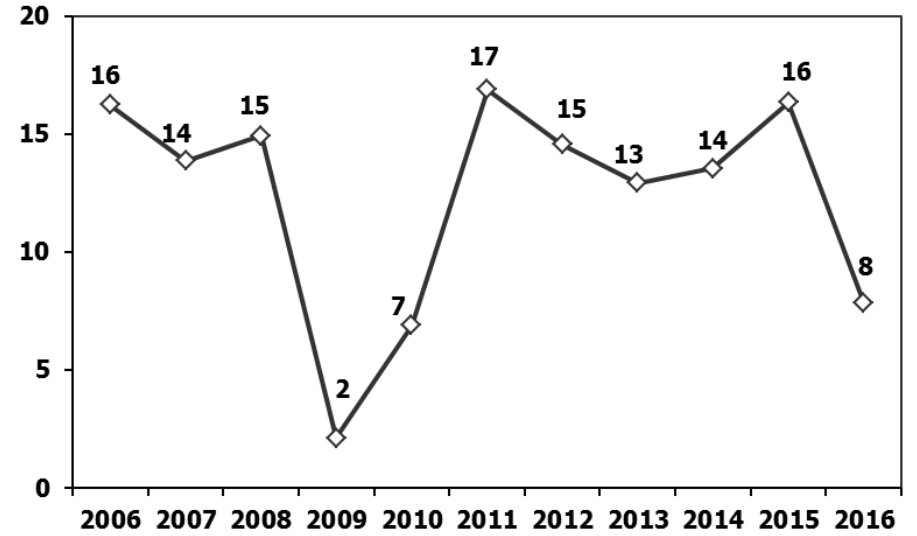
Otomobil Üretimi ve İhracat (x1000) (Ocak-Haziran)
P.Cars Production & Exports (x1000) (January-June)



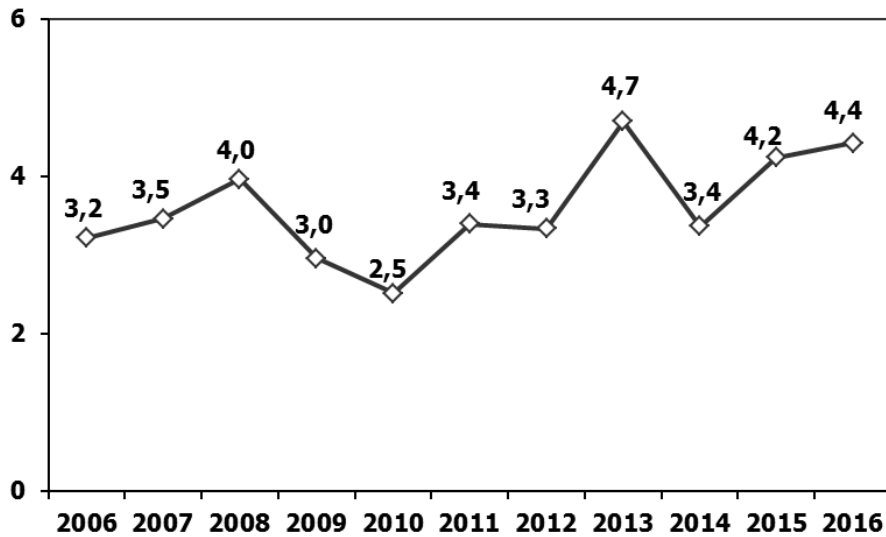
Ticari Araç Üretimi (x1000) (Ocak-Haziran)
Commercial Vehicle Production (x1000) (January-June)



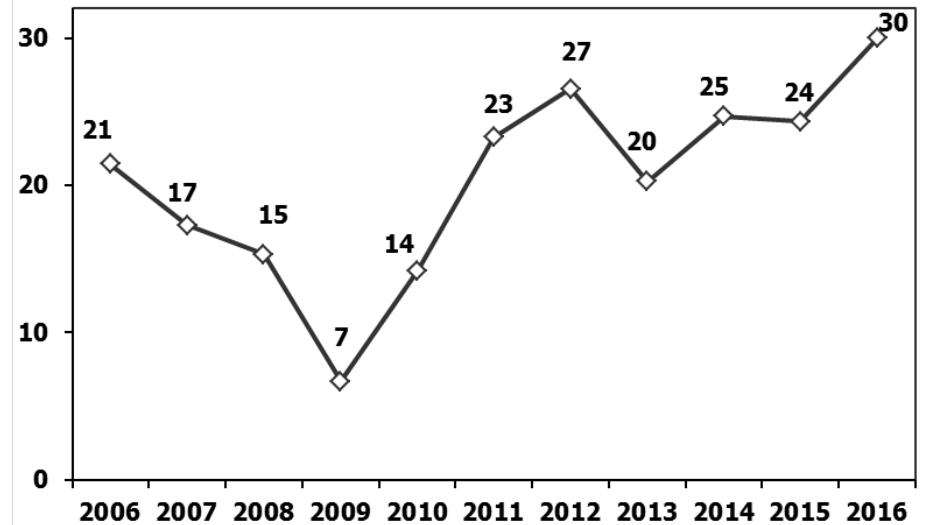
(AYA >12 Ton) **Büyük Kamyon Üretimi** (x1000) (Ocak-Haziran)
(GVW >12 Ton) Heavy Truck Production (x1000) (January-June)



Otobüs Üretimi (x1000) (Ocak-Haziran)
Bus Production (x1000) (January-June)

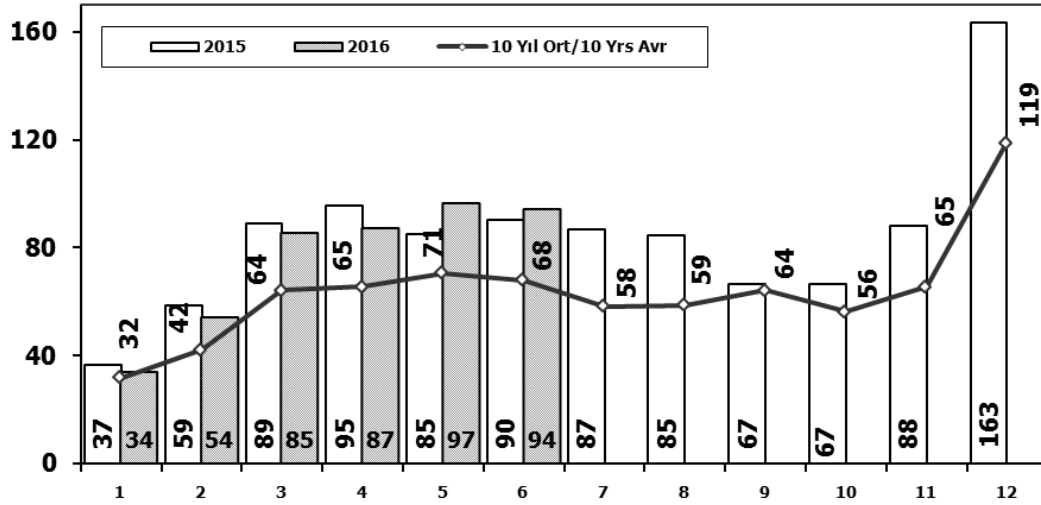


Traktör Üretimi (x1000) (Ocak-Haziran)
F. Tractor Production (x1000) (January-June)



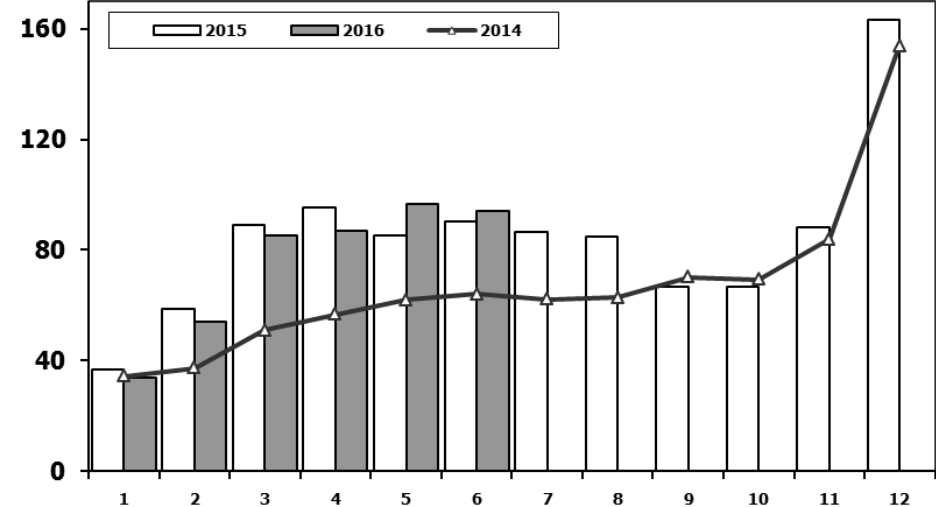
Toplam Pazarın Analizi (x1000)

Total Market Analysis (x1000)



Toplam Pazar (x1000)

Total Market (x1000)

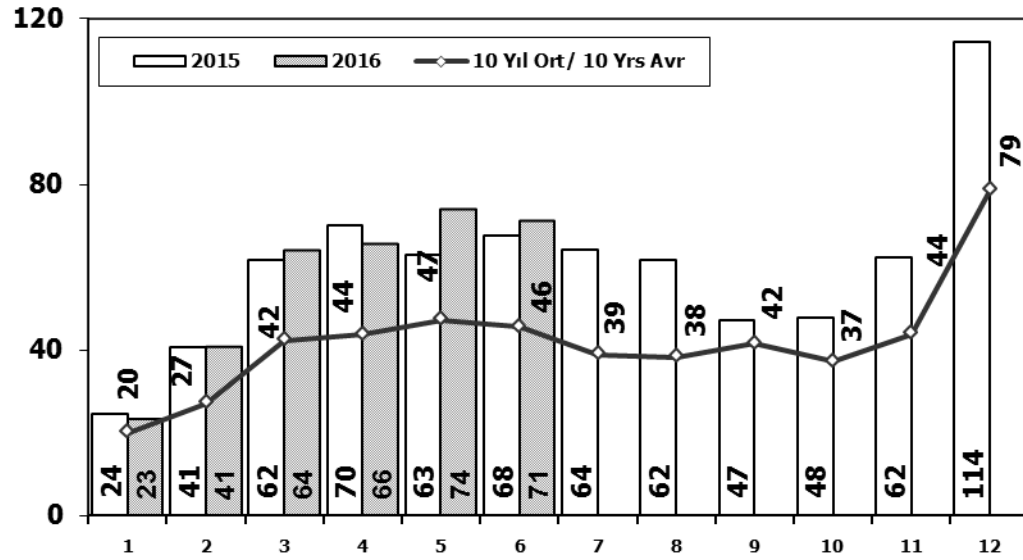


Aylar / Months	10 Yil Ort. 10 Yrs Avr. (x1000)	2016 (x1000)	%
1	31,7	33,7	6,4
2	42,3	54,2	28,3
3	64,3	85,2	32,6
4	65,4	87,0	33,0
5	70,5	96,6	37,0
6	67,9	94,2	38,8
Total	342,1	451,0	31,9

	1	2	3	4	5	6	7	8	9	10	11	12	6 Ay/Mo	Total
2006	29.969	44.646	65.090	68.853	83.289	58.203	40.037	47.374	49.629	39.805	55.898	82.722	350.050	665.515
2007	24.950	31.702	45.488	45.633	51.255	51.661	50.117	54.171	50.078	56.058	67.017	106.076	250.689	634.206
2008	33.792	38.121	56.814	50.967	51.627	49.393	44.692	46.592	46.829	35.147	28.152	44.418	280.714	526.544
2009	20.631	22.846	56.531	54.426	64.887	63.102	30.246	37.092	83.403	22.117	29.202	91.386	282.423	575.869
2010	21.050	32.313	53.828	57.079	61.628	63.390	63.718	64.645	66.601	76.780	77.406	154.734	289.288	793.172
2011	47.658	62.348	83.333	82.071	85.093	85.863	65.364	61.378	63.643	72.640	67.195	134.281	446.366	910.867
2012	31.219	43.827	68.957	66.014	74.820	74.781	65.122	60.848	73.197	62.677	75.045	121.113	359.618	817.620
2013	37.140	50.931	72.688	77.015	85.421	77.771	74.726	67.383	71.037	60.399	83.017	135.596	400.966	893.124
2014	34.225	37.308	50.964	56.766	61.909	63.952	62.206	62.839	70.180	69.259	83.937	153.941	305.124	807.486
2015	36.576	58.533	89.121	95.431	85.145	90.463	86.625	84.683	66.622	66.520	88.043	163.432	455.269	1.011.194
2016	33.740	54.223	85.214	87.041	96.576	94.203							450.997	450.997

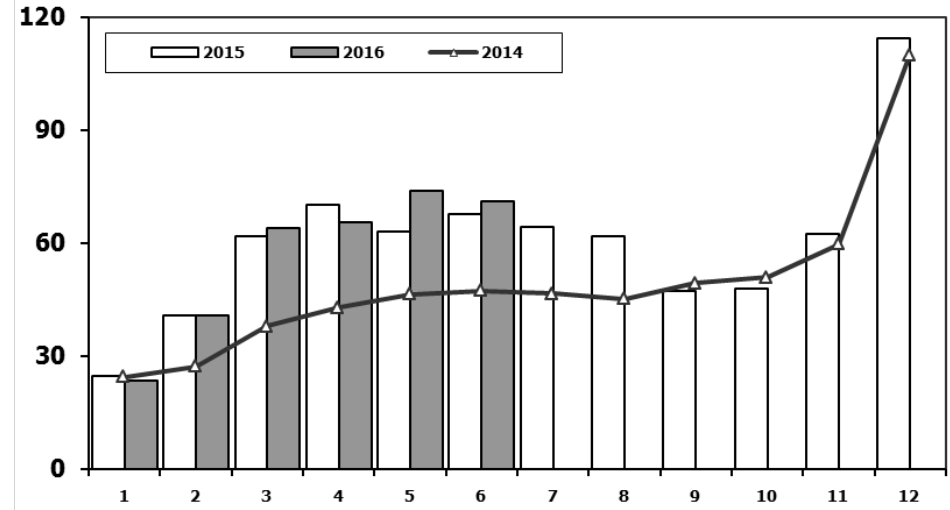
Otomobil Pazarının Analizi (x1000)

P.Cars Market Analysis (x1000)



Otomobil Pazarı (x1000)

P.Cars Market (x1000)

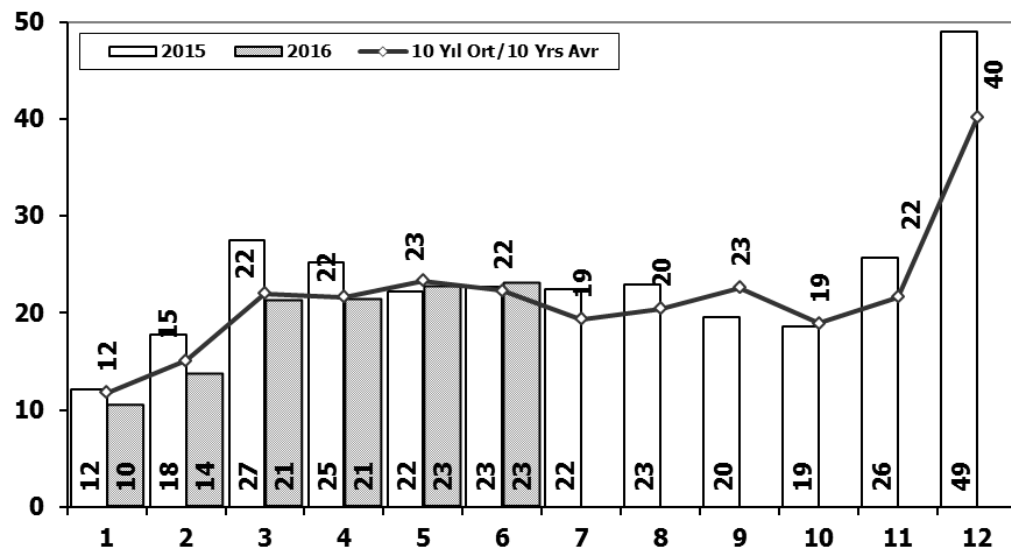


Aylar / Months	10 Yil Ort. 10 Yrs Avr. (x1000)	2016 (x1000)	%
1	20,0	23,4	17,0
2	27,1	40,6	49,5
3	42,3	64,0	51,4
4	43,8	65,6	49,8
5	47,2	73,8	56,4
6	45,6	71,1	56,0
Total	226,0	338,5	49,8

	1	2	3	4	5	6	7	8	9	10	11	12	6 Ay/Mo	Total
2006	16.506	24.929	36.996	40.177	48.521	32.982	22.653	24.873	27.517	21.237	30.477	46.351	200.111	373.219
2007	13.186	17.212	24.336	25.204	29.067	30.126	28.246	28.469	27.662	32.569	39.643	61.745	139.131	357.465
2008	18.588	21.196	34.147	30.313	31.477	28.724	25.530	26.102	27.053	19.788	17.201	25.879	164.445	305.998
2009	13.173	14.492	40.622	36.202	44.188	41.019	16.637	22.537	52.162	13.828	17.781	57.178	189.696	369.819
2010	12.594	20.651	33.958	36.549	40.467	42.086	41.399	42.222	42.477	47.859	50.061	99.461	186.305	509.784
2011	29.868	39.004	54.023	53.835	56.302	56.714	43.518	38.875	39.964	47.508	44.951	88.957	289.746	593.519
2012	21.077	29.189	47.270	45.645	50.460	50.849	44.531	41.236	49.360	43.440	52.297	80.926	244.490	556.280
2013	25.835	36.814	51.785	56.999	62.383	58.290	55.712	51.611	52.925	46.985	64.117	101.199	292.106	664.655
2014	24.368	27.167	37.812	42.769	46.379	47.278	46.602	45.131	49.262	50.814	59.695	110.054	225.773	587.331
2015	24.498	40.817	61.676	70.211	62.878	67.766	64.218	61.753	47.088	47.954	62.397	114.340	327.846	725.596
2016	23.358	40.588	63.975	65.618	73.832	71.111							338.482	338.482

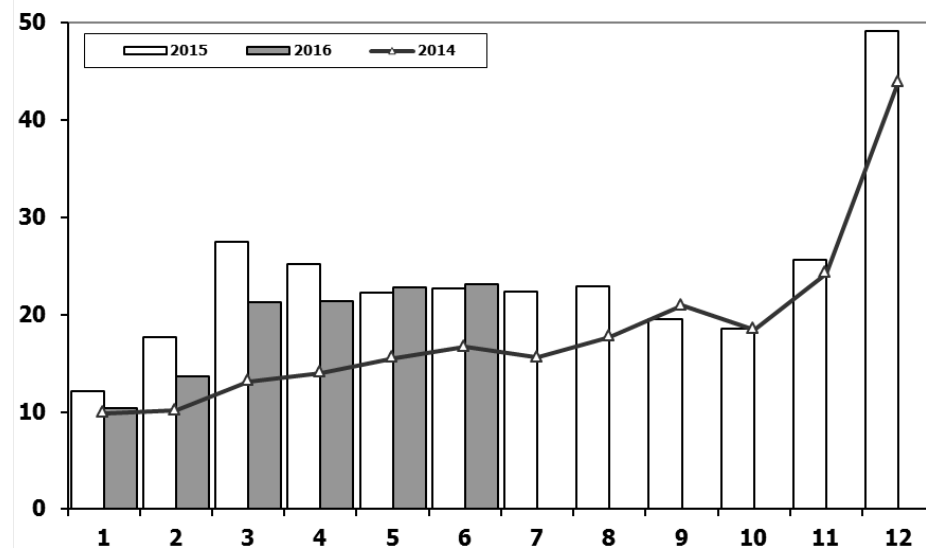
Ticari Araç Pazarının Analizi (x1000)

CV Market Analysis (x1000)



Ticari Araç Pazarı (x1000)

CV Total Market (x1000)

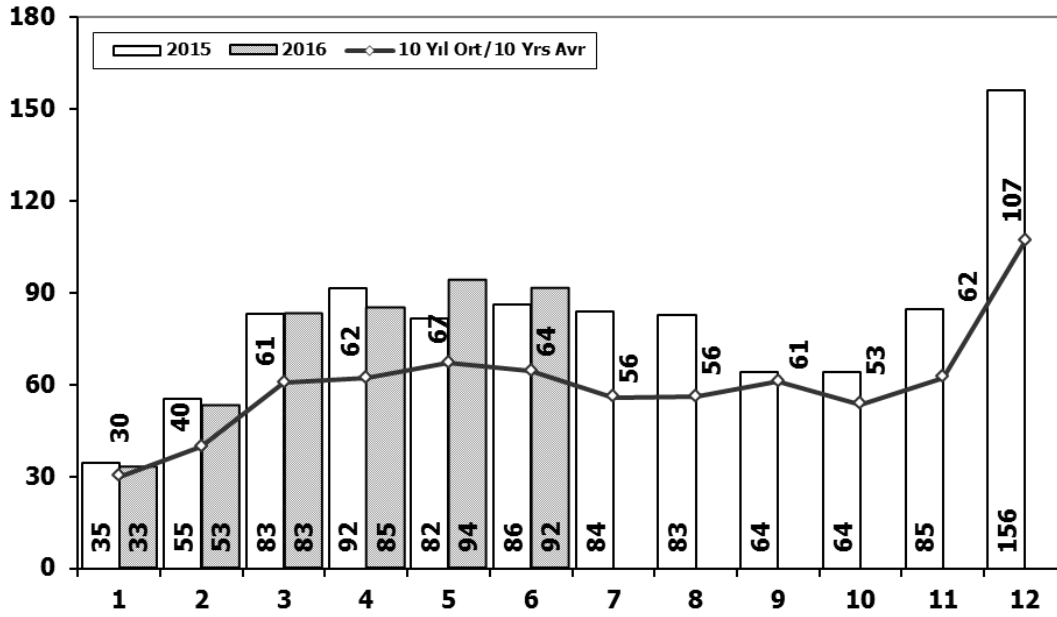


Aylar / Months	10 Yil Ort. 10 Yrs Avr. (x1000)	2016 (x1000)	%
1	11,8	10,4	-11,7
2	15,1	13,6	-9,8
3	22,0	21,2	-3,5
4	21,6	21,4	-1,0
5	23,3	22,7	-2,4
6	22,3	23,1	3,7
Total	116,1	112,5	-3,1

	1	2	3	4	5	6	7	8	9	10	11	12	6 Ay/Mo	Total
2006	13.463	19.717	28.094	28.676	34.768	25.221	17.384	22.501	22.112	18.568	25.421	36.371	149.939	292.296
2007	11.764	14.490	21.152	20.429	22.188	21.535	21.871	25.702	22.416	23.489	27.374	44.331	111.558	276.741
2008	15.204	16.925	22.667	20.654	20.150	20.669	19.162	20.490	19.776	15.359	10.951	18.539	116.269	220.546
2009	7.458	8.354	15.909	18.224	20.699	22.083	13.609	14.555	31.241	8.289	11.421	34.208	92.727	206.050
2010	8.456	11.662	19.870	20.530	21.161	21.304	22.319	22.423	24.124	28.921	27.345	55.273	102.983	283.388
2011	17.790	23.344	29.310	28.236	28.791	29.149	21.846	22.503	23.679	25.132	22.244	45.324	156.620	317.348
2012	10.142	14.638	21.687	20.369	24.360	23.932	20.591	19.612	23.837	19.237	22.748	40.187	115.128	261.340
2013	11.305	14.117	20.903	20.016	23.038	19.481	19.014	15.772	18.112	13.414	18.900	34.397	108.860	228.469
2014	9.857	10.141	13.152	13.997	15.530	16.674	15.604	17.708	20.918	18.445	24.242	43.887	79.351	220.155
2015	12.078	17.716	27.445	25.220	22.267	22.697	22.407	22.930	19.534	18.566	25.646	49.092	127.423	285.598
2016	10.382	13.635	21.239	21.423	22.744	23.092							112.515	112.515

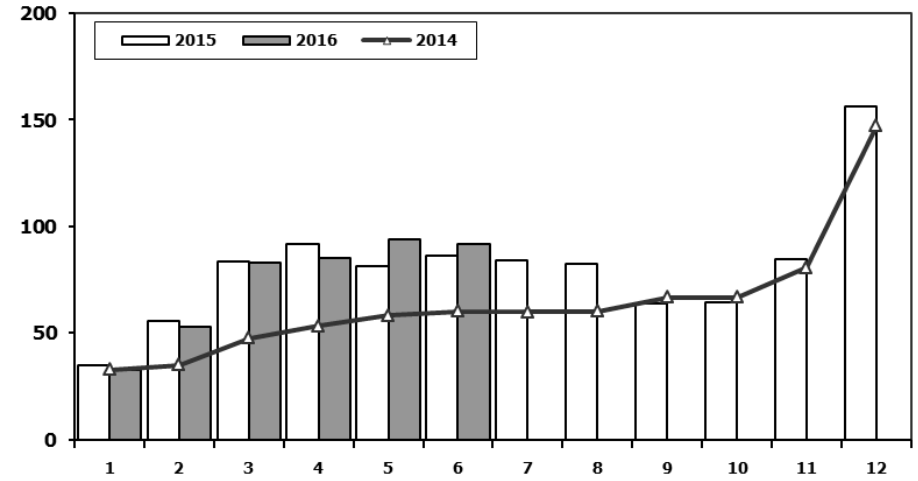
Hafif Araç Pazarının Analizi (x1000)

LV Market Analysis (x1000)



Hafif Araç Pazarı (x1000)

LV Total Market (x1000)

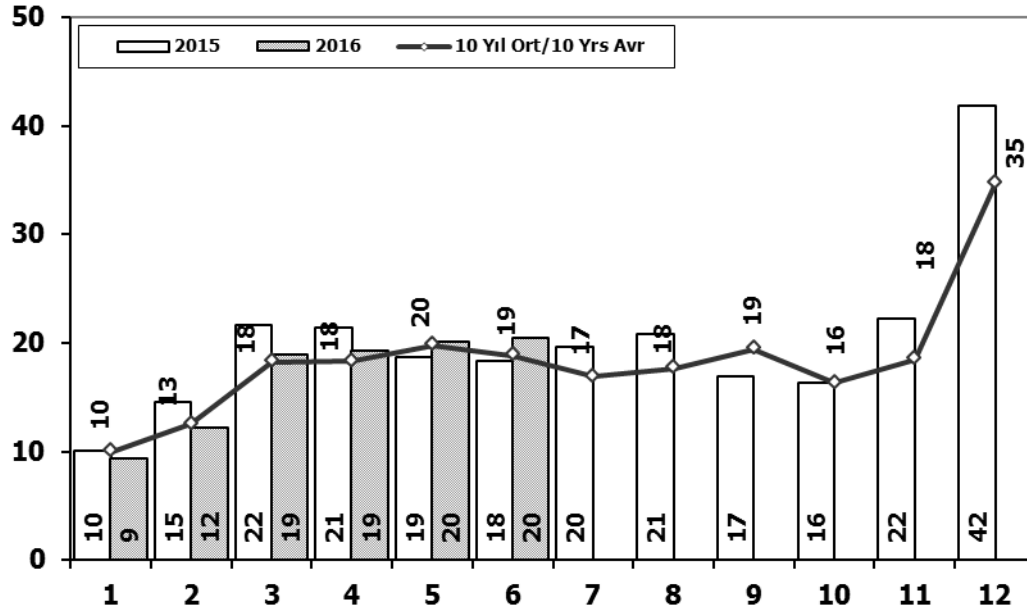


Aylar / Months	10 Yil Ort. 10 Yrs Avr. (x1000)	2016 (x1000)	%
1	30,0	32,7	9,2
2	39,7	52,8	33,1
3	60,5	82,9	37,0
4	62,1	84,9	36,7
5	67,0	93,9	40,2
6	64,4	91,5	42,1
Total	323,7	438,8	35,6

	1	2	3	4	5	6	7	8	9	10	11	12	6 Ay/Mo	Total
2006	27.917	40.938	60.052	64.038	78.229	54.355	37.251	43.767	46.109	36.542	51.867	76.787	325.529	617.852
2007	23.117	29.184	41.890	42.366	47.938	48.674	47.490	50.558	46.581	52.725	63.313	100.926	233.169	594.762
2008	31.527	35.251	53.649	47.701	48.598	46.324	42.156	43.670	43.932	32.884	26.253	42.078	263.050	494.023
2009	19.606	21.742	55.111	52.640	63.191	61.067	28.845	35.609	81.397	21.033	27.962	88.923	273.357	557.126
2010	20.095	31.172	51.769	54.946	59.377	60.896	61.345	61.764	63.814	73.404	73.962	148.369	278.255	760.913
2011	44.892	58.663	78.403	77.695	80.646	81.573	63.044	58.406	60.129	69.421	63.657	127.910	421.872	864.439
2012	29.545	41.324	64.884	62.949	70.863	71.067	62.304	58.148	69.629	59.938	71.710	115.400	340.632	777.761
2013	35.523	48.307	68.774	73.575	81.468	74.096	71.596	65.043	67.963	58.014	79.301	129.718	381.743	853.378
2014	32.670	35.021	47.581	53.305	58.121	60.163	59.907	60.199	66.531	66.573	80.621	146.989	286.861	767.681
2015	34.615	55.331	83.302	91.602	81.542	86.158	83.836	82.577	64.025	64.255	84.601	156.173	432.550	968.017
2016	32.713	52.825	82.948	84.887	93.904	91.540							438.817	438.817

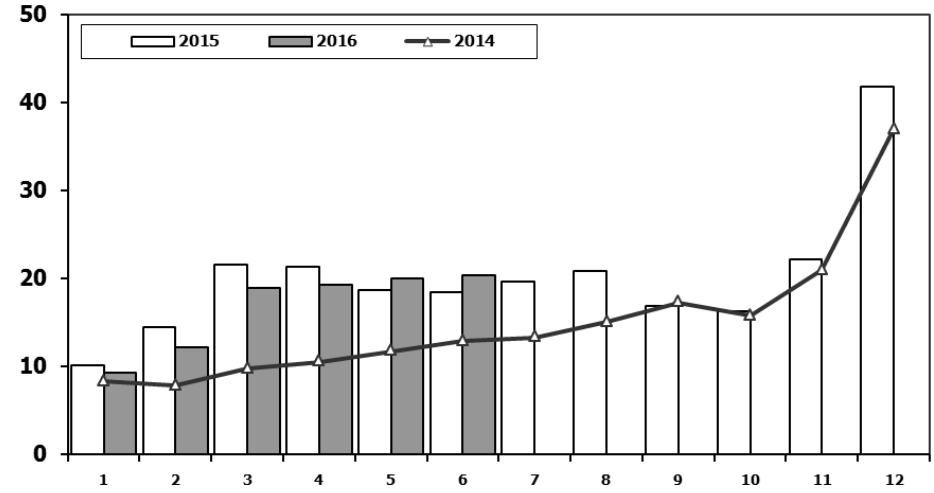
Hafif Ticari Araç Pazarının Analizi (x1000)

LCV Market Analysis (x1000)



Hafif Ticari Araç Pazarı (x1000)

LCV Total Market (x1000)



Aylar / Months	10 Yil Ort. 10 Yrs Avr. (x1000)	2016 (x1000)	%
1	10,0	9,4	-6,3
2	12,5	12,2	-2,5
3	18,3	19,0	3,8
4	18,3	19,3	5,3
5	19,8	20,1	1,5
6	18,9	20,4	8,4
Total	97,7	100,3	2,7

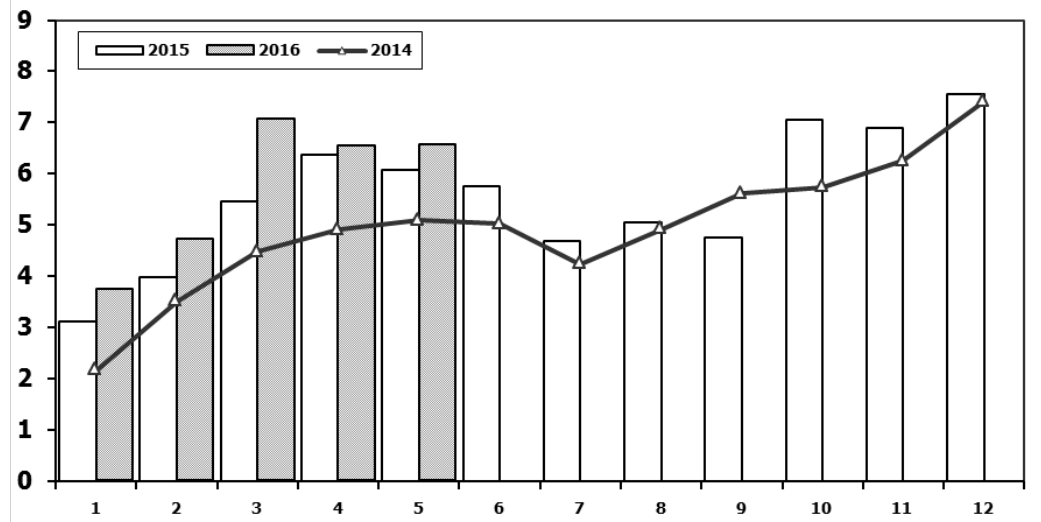
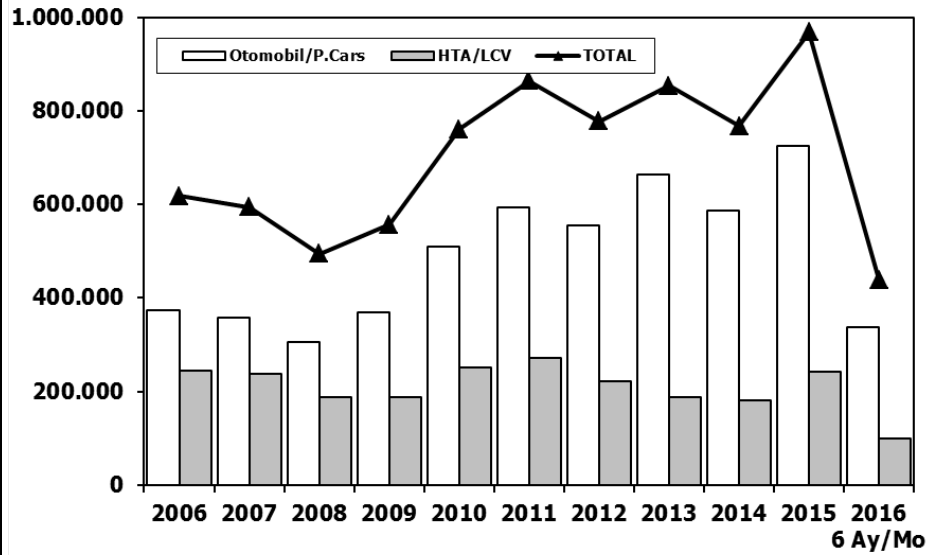
	1	2	3	4	5	6	7	8	9	10	11	12	6 Ay/Mo	Total
2006	11.411	16.009	23.056	23.861	29.708	21.373	14.598	18.894	18.592	15.305	21.390	30.436	125.418	244.633
2007	9.931	11.972	17.554	17.162	18.871	18.548	19.244	22.089	18.919	20.156	23.670	39.181	94.038	237.297
2008	12.939	14.055	19.502	17.388	17.121	17.600	16.626	17.568	16.879	13.096	9.052	16.199	98.605	188.025
2009	6.433	7.250	14.489	16.438	19.003	20.048	12.208	13.072	29.235	7.205	10.181	31.745	83.661	187.307
2010	7.501	10.521	17.811	18.397	18.910	18.810	19.946	19.542	21.337	25.545	23.901	48.908	91.950	251.129
2011	15.024	19.659	24.380	23.860	24.344	24.859	19.526	19.531	20.165	21.913	18.706	38.953	132.126	270.920
2012	8.468	12.135	17.614	17.304	20.403	20.218	17.773	16.912	20.269	16.498	19.413	34.474	96.142	221.481
2013	9.688	11.493	16.989	16.576	19.085	15.806	15.884	13.432	15.038	11.029	15.184	28.519	89.637	188.723
2014	8.302	7.854	9.769	10.536	11.742	12.885	13.305	15.068	17.269	15.759	20.926	36.935	61.088	180.350
2015	10.117	14.514	21.626	21.391	18.664	18.392	19.618	20.824	16.937	16.301	22.204	41.833	104.704	242.421
2016	9.355	12.237	18.973	19.269	20.072	20.429							100.335	100.335

Hafif Araç Pazarı (AYA < 3.5 Ton)

Light Vehicle Market (GVW < 3.5 Ton)

Traktör Pazarı (x1000)

F.Tractor Market (x1000)



	2006	2007	2008	2009	2010	2011	2012	2013	2014	2015	2016
Otomobil/P.Cars	373.219	357.465	305.998	369.819	509.784	593.519	556.280	664.655	587.331	725.596	338.482
HTA/LCV	244.633	237.297	188.025	187.307	251.129	270.920	221.481	188.723	180.350	242.421	100.335
TOTAL	617.852	594.762	494.023	557.126	760.913	864.439	777.761	853.378	767.681	968.017	438.817
HTA/LCV (%)	40	40	38	34	33	31	28	22	23	25	23

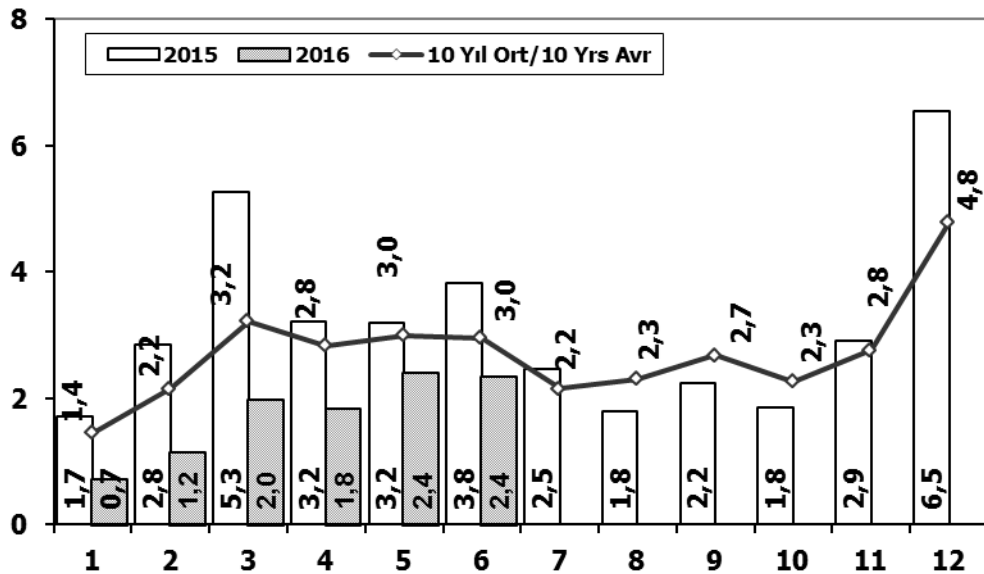
	1	2	3	4	5	6	7	8	9	10	11	12	5 Ay/Mo	Total
2006	4.018	2.139	3.201	3.599	5.529	3.401	2.450	2.608	2.820	2.872	3.697	3.373	18.486	39.707
2007	2.816	2.244	3.053	2.657	3.188	3.141	2.497	2.381	3.025	2.755	3.549	3.097	13.958	34.403
2008	2.770	1.855	3.395	3.081	2.769	2.400	2.232	2.485	1.856	1.773	1.305	1.101	13.870	27.022
2009	717	572	688	1.070	1.297	1.256	1.054	1.183	1.117	1.356	1.304	2.144	4.344	13.758
2010	1.111	1.991	2.330	3.039	2.567	2.638	1.965	3.019	2.806	4.424	3.978	6.168	11.038	36.036
2011	2.975	5.242	5.927	5.358	6.016	6.335	4.534	4.051	4.140	5.828	4.943	4.992	25.518	60.341
2012	2.362	1.983	4.348	6.579	6.273	4.569	3.837	3.158	3.618	4.027	4.807	4.757	21.545	50.318
2013	2.161	2.432	4.005	4.585	5.616	3.136	4.574	3.408	4.935	4.762	5.781	6.891	18.799	52.286
2014	2.169	3.512	4.476	4.905	5.094	5.028	4.233	4.920	5.619	5.743	6.250	7.409	20.156	59.358
2015	3.124	3.984	5.460	6.383	6.078	5.748	4.677	5.044	4.765	7.049	6.898	7.564	25.029	66.774
2016	3.739	4.731	7.067	6.546	6.575								28.658	28.658

Kaynak: TÜİK trafik kayıtları.

Rakamlar, son iki model yılına ait traktör tescillerinden oluşmaktadır.

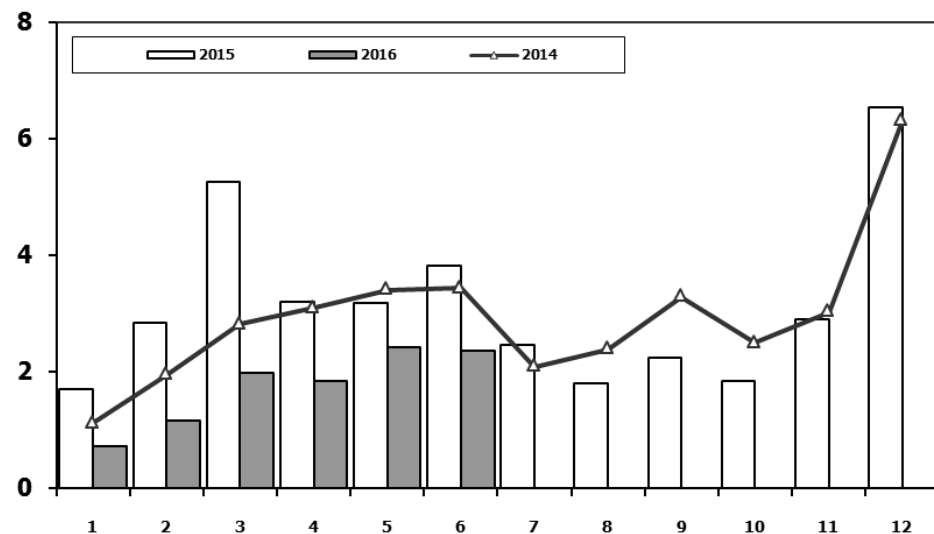
Kamyon Pazarının Analizi (x1000) AYA > 5 Ton

Truck Market Analysis (x1000) GVW > 5 Ton



Kamyon Pazarı (x1000) AYA > 5 Ton

Truck Market (x1000) GVW > 5 Ton

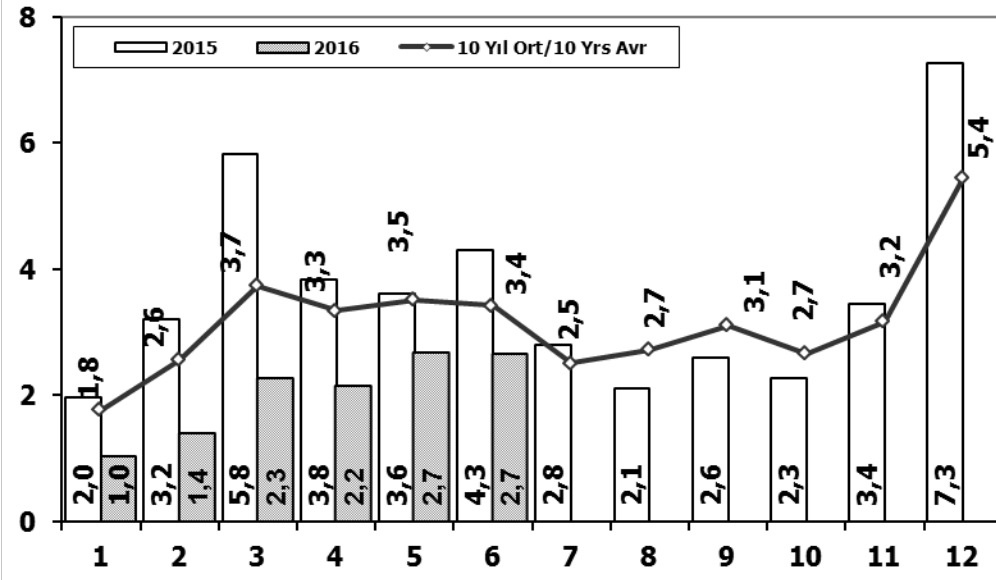


Aylar / Months	10 Yil Ort. 10 Yrs Avr. (x1000)	2016 (x100)	%
1	1,4	0,7	-50,5
2	2,2	1,2	-46,5
3	3,2	2,0	-38,4
4	2,8	1,8	-35,2
5	3,0	2,4	-19,2
6	3,0	2,4	-20,4
Total	15,6	10,5	-32,9

	1	2	3	4	5	6	7	8	9	10	11	12	6 Ay/Mo	Total
2006	1.767	3.310	4.467	4.180	4.449	3.398	2.472	3.142	3.052	2.926	3.550	5.358	21.571	42.071
2007	1.554	2.055	3.065	2.940	2.865	2.613	2.372	3.145	2.988	2.886	3.258	4.444	15.092	34.185
2008	1.797	2.309	2.621	2.578	2.459	2.526	2.067	2.377	2.390	1.790	1.512	1.834	14.290	26.260
2009	771	759	1.034	1.342	1.355	1.651	1.156	1.205	1.780	866	981	2.015	6.912	14.915
2010	777	968	1.772	1.807	1.966	2.205	2.093	2.446	2.444	3.071	3.136	5.677	9.495	28.362
2011	2.552	3.292	4.418	3.754	3.803	3.749	1.996	2.478	3.081	2.774	3.108	5.787	21.568	40.792
2012	1.375	2.159	3.595	2.697	3.321	3.250	2.450	2.277	2.991	2.244	3.006	5.000	16.397	34.365
2013	1.077	1.931	3.127	2.720	3.145	2.951	2.411	1.845	2.554	1.801	3.173	5.025	14.951	31.760
2014	1.117	1.949	2.818	3.092	3.405	3.438	2.083	2.390	3.281	2.494	3.028	6.313	15.819	35.408
2015	1.705	2.841	5.270	3.208	3.190	3.824	2.463	1.798	2.244	1.848	2.902	6.540	20.038	37.833
2016	718	1.154	1.984	1.835	2.420	2.358							10.469	10.469

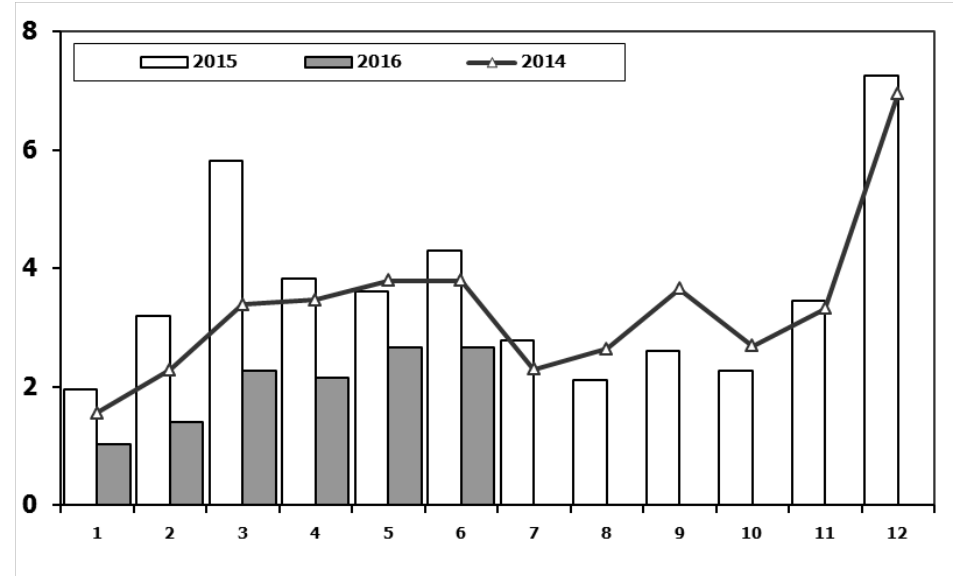
Ağır Ticari Araç Pazarının Analizi (x1000)

HCV Market Analysis (x1000)



Ağır Ticari Araç Pazarı (x1000)

HCV Market (x1000)

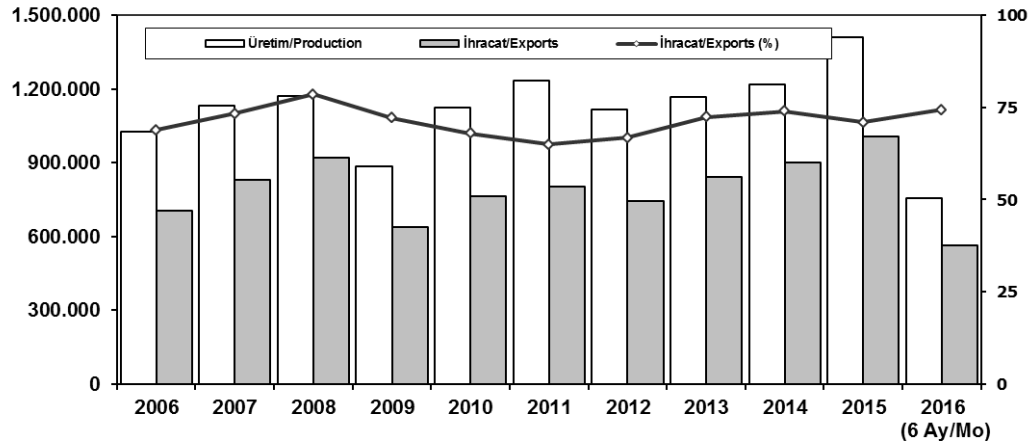


Aylar / Months	10 Yıl Ort. 10 Yrs Avr. (x1000)	2016 (x1000)	%
1	1,8	1,0	-42,0
2	2,6	1,4	-45,5
3	3,7	2,3	-39,4
4	3,3	2,2	-35,6
5	3,5	2,7	-23,9
6	3,4	2,7	-22,1
Total	18,3	12,2	-33,6

	1	2	3	4	5	6	7	8	9	10	11	12	6 Ay/Mo	Total
2006	2.052	3.708	5.038	4.815	5.060	3.848	2.786	3.607	3.520	3.263	4.031	5.935	24.521	47.663
2007	1.833	2.518	3.598	3.267	3.317	2.987	2.627	3.613	3.497	3.333	3.704	5.150	17.520	39.444
2008	2.265	2.870	3.165	3.266	3.029	3.069	2.536	2.922	2.897	2.263	1.899	2.340	17.664	32.521
2009	1.025	1.104	1.420	1.786	1.696	2.035	1.401	1.483	2.006	1.084	1.240	2.463	9.066	18.743
2010	955	1.141	2.059	2.133	2.251	2.494	2.373	2.881	2.787	3.376	3.444	6.365	11.033	32.259
2011	2.766	3.685	4.930	4.376	4.447	4.290	2.320	2.972	3.514	3.219	3.538	6.371	24.494	46.428
2012	1.674	2.503	4.073	3.065	3.957	3.714	2.818	2.700	3.568	2.739	3.335	5.713	18.986	39.859
2013	1.617	2.624	3.914	3.440	3.953	3.675	3.130	2.340	3.074	2.385	3.716	5.878	19.223	39.746
2014	1.555	2.287	3.383	3.461	3.788	3.789	2.299	2.640	3.649	2.686	3.316	6.952	18.263	39.805
2015	1.961	3.202	5.819	3.829	3.603	4.305	2.789	2.106	2.597	2.265	3.442	7.259	22.719	43.177
2016	1.027	1.398	2.266	2.154	2.672	2.663							12.180	12.180

İhracat/Üretim (2006-2016) (Traktör dahil)

Exports/Production (2006-2016) (Including F. Tractor)



	2006	2007	2008	2009	2010	2011	2012	2013	2014	2015	2016 (6 Ay/Mo)
Üretim/Production	1.026.427	1.132.951	1.171.917	884.466	1.124.982	1.234.637	1.115.233	1.166.043	1.218.848	1.410.034	755.456
İhracat/Exports	706.402	829.879	920.763	637.855	763.670	801.112	745.354	843.467	902.194	1.007.267	561.416
İhracat/Exports (%)	69	73	79	72	68	65	67	72	74	71	74

Taşıt Araçları İhracatı (2014-2016)

Motor Vehicle Exports (2014-2016)

SEKTÖR/SECTOR	2014	2015	2015		2016/2015 (%)
			6 Ay-6 Mo		
OTOMOBİL / P.Cars	581.993	604.683	303.857	338.753	11
TİCARİ ARAÇLAR / CV	303.187	387.652	182.479	215.132	18
* Kamyonet/Pick-Up	269.995	341.834	155.374	195.436	26
* Minibüs/Minibus	26.458	38.255	23.714	13.556	-43
* Kamyon/Truck	1.281	1.408	491	2.291	367
* Midibüs/Midibus	824	447	183	386	111
* Otobüs/Bus	4.629	5.708	2.717	3.463	27
TAŞIT ARAÇLARI / MV TOTAL	885.180	992.335	486.336	553.885	14
TRAKTÖR/F.TRACTOR	17.014	14.932	6.932	7.531	9
TOTAL	902.194	1.007.267	493.268	561.416	14

Otomotiv Ana ve Yan Sanayii İhracatı (ABD \$)

CBU and CKD Exports - \$

Sektör / Sector	2012	2013	2014	2015	2015		2016/2015 (%)
					Ocak-Haziran / January-June		
Toplam Yan Sanayi/Total Component Industry	8.215.636.677	9.065.017.539	9.504.013.791	8.643.538.318	4.340.914.721	4.631.749.202	7%
İç ve Dış Lastik / Tyres	1.199.566.307,01	1.130.005.891,78	1.126.709.610,14	961.494.045	485.030.421	484.873.490	0%
Emniyet Camı / Safety Glasses	120.615.917,59	135.230.309,67	143.208.298,99	124.569.031	64.333.628	64.672.666	1%
Motor (Engine)	272.085.582,31	319.294.885,46	171.893.752,32	221.897.271	74.844.192	182.201.621	143%
Akümülatör / Batteries	249.831.846,25	306.451.449,47	289.101.198,21	220.618.374	96.614.232	93.719.443	-3%
Diğer Aksam ve Parça / Spare Parts&Components	6.373.537.023,45	7.174.035.002,35	7.773.100.931,83	7.114.959.599	3.620.092.249	3.806.281.981	5%
Toplam Ana Sanayi/Total Vehicle Industry	11.100.115.134	12.491.591.365	13.259.499.977	12.975.346.180	6.357.237.242	7.281.361.103	15%
Otobüs / Bus	855.424.303,62	937.790.962,87	985.983.007,01	1.024.134.143	489.003.451	644.925.567	32%
Midibüs-Minibüs / Minibus- Minibus	161.806.275,12	147.769.644,17	97.685.509,12	130.195.838	68.423.362	111.547.194	63%
Otomobil (P. Cars)	6.068.045.119,19	6.855.475.589,83	7.258.361.005,24	6.881.972.133	3.553.754.256	3.570.732.404	0%
Kamyon-Kamyonet/HCV-LCV	3.433.310.998,81	3.918.798.755,31	4.201.760.813,55	4.263.767.944	1.946.038.673	2.481.281.931	28%
Römork ve Yarı Römork/Trailer-Semi Trailer	195.093.508,21	218.385.731,69	252.354.014,20	252.432.565	119.285.870	159.739.790	34%
Çekici/Truck-Tractor	71.336.634,88	77.907.406,95	38.396.524,81	48.108.959	17.805.519	131.769.163	640%
Tarım Traktörü/Farm Tractor	315.098.293,75	335.463.274,61	424.959.103,39	374.734.597	162.926.111	181.365.054	11%
Toplam/Total	19.315.751.810	21.556.608.904	22.763.513.769	21.618.884.498	10.698.151.963	11.913.110.305	11%

Kaynak: Uludağ İhracatçı Birlikleri . ÜİB tarafından OSD için özel olarak analiz edilen Otomotiv İhracatı kapsamında; ÜİB Türkiye Genel Otomotiv Endüstrisi sınıflandırmasına kıyasla "Römork ve Yarı Römork", "Tarım Traktörü" verileri dahil edilmekte; "Kullanılmış Araçlar", "Tki Tekerlekli Taşıtlar", "Demiryolu Taşıtları" hariç tutulmaktadır.

Firma Bazında İhracat (Adet)
Export Of member Companies (Unit)

FİRMALAR Companies	2014	2015	Ocak-Haziran 6 Months	
			2015	2016
OYAK RENAULT	257.992	270.299	135.629	137.671
FORD OTOSAN	187.921	252.571	115.086	135.260
TOFAŞ	142.234	173.743	87.793	134.264
HYUNDAI ASSAN	179.793	201.276	100.263	109.030
TOYOTA	109.517	81.962	42.433	29.350
TÜRK TRAKTÖR	15.866	14.122	6.598	6.902
M. BENZ TÜRK	3.438	4.252	2.012	3.966
KARSAN	37	3.067	788	1.326
HONDA TÜRKİYE	1.560	2.220	996	1.089
MAN TÜRKİYE	937	1.493	817	963
HATTAT TARIM	1.148	810	334	629
OTOKAR	580	720	292	391
TEMSA GLOBAL	423	441	116	334
A.I.O.S.	748	291	111	241
GENEL TOPLAM	902.194	1.007.267	493.268	561.416

Kaynak: OSD

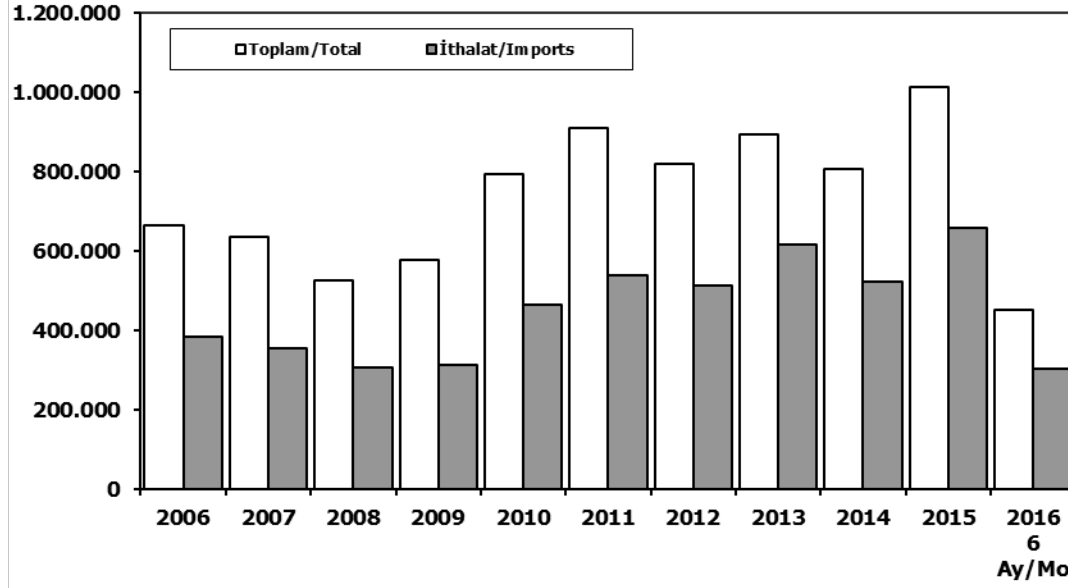
Sektör Bazında İhracat (\$)
Exports on Sectorial Basis

SEKTÖRLER	HAZİRAN				OCAK-HAZİRAN				SON 12 AYLIK			
	2015	2016	Değişim ('16/'15)	Pay(16) (%)	2015	2016	Değişim ('16/'15)	Pay(16) (%)	2015	2016	Değişim ('16/'15)	Pay(16) (%)
Otomotiv Endüstrisi	1.969.910	2.131.505	8	18	10.487.572	11.719.521	12	17	21.055.327	22.384.076	6	16
Hazırgiyim ve Konfeksiyon	1.456.442	1.531.503	5	13	8.155.921	8.729.292	7	12	17.461.702	17.529.482	0	12
Kimyevi Maddeler ve Mamulleri	1.416.857	1.322.607	-7	11	7.950.725	7.009.456	-12	10	16.829.679	14.457.209	-14	10
Elektrik Elektronik ve Hizmet	961.653	924.843	-4	8	5.070.124	4.946.563	-2	7	11.180.668	10.348.508	-7	7
Çelik	830.152	909.197	10	8	5.338.327	4.464.381	-16	6	11.536.538	9.006.134	-22	6
Tekstil ve Hammaddeleri	678.623	714.260	5	6	3.989.195	4.006.755	0	6	8.354.434	7.965.480	-5	6
Hububat, Bakliyat, Yağlı Tohumlar ve Mamulleri	480.768	535.587	11	5	3.061.236	3.175.339	4	4	6.357.839	6.241.414	-2	4
Demir ve Demir Dışı Metaller	543.287	539.023	-1	5	3.126.938	3.022.051	-3	4	6.578.438	6.125.488	-7	4
Makine ve Aksamları	470.042	474.763	1	4	2.722.478	2.709.710	0	4	5.740.816	5.510.740	-4	4
Mobilya, Kağıt ve Orman Ürünleri	354.513	380.368	7	3	2.012.229	2.072.138	3	3	4.259.651	4.134.916	-3	3
TOPLAM (TİM+TUIK*)	11.656.461	11.864.837	2	100	73.433.868	70.653.983	-4	100	150.976.845	141.064.181	-7	100

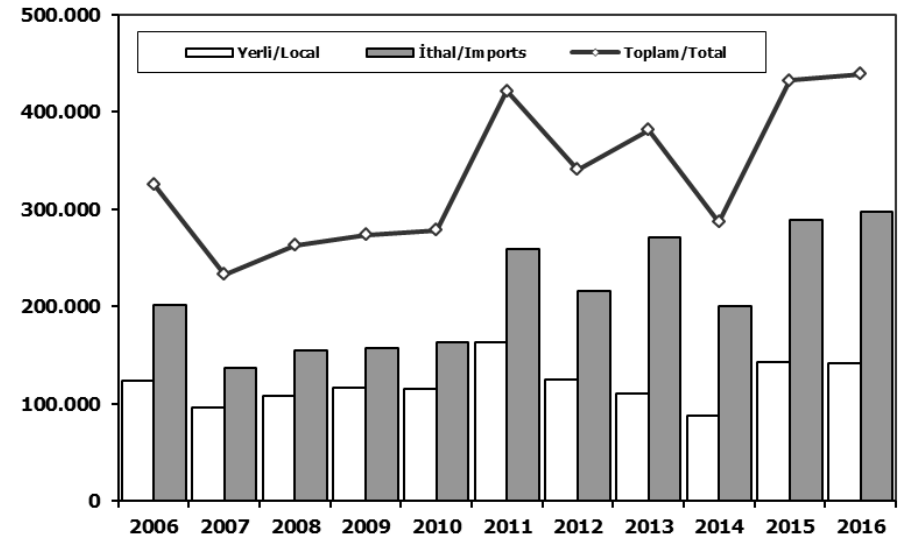
Kaynak: TİM

- First 3 Sectors:**
- 1- Automotive Industry
 - 2- Ready Wear and Confection
 - 3-Chemical Articles and Products

Toplam Pazar (Otomobil+T.Araç) Total Market (P.Cars+C.V)



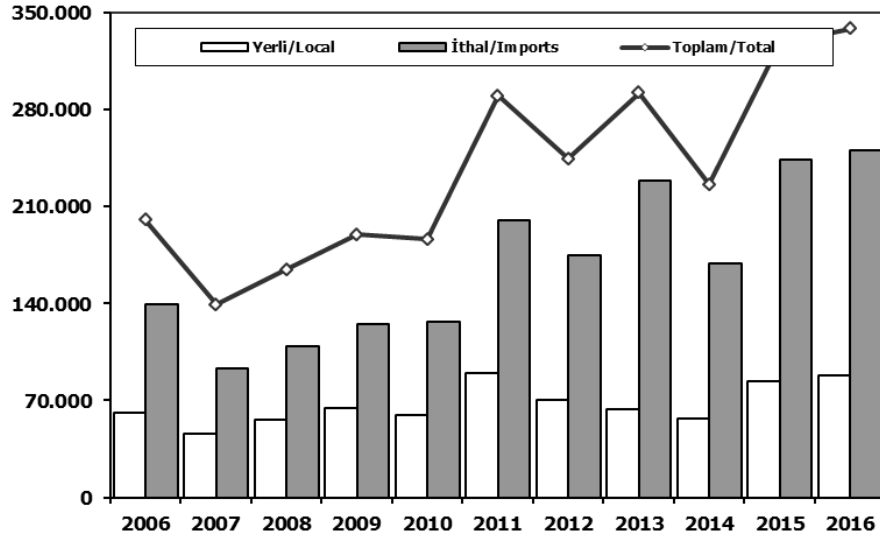
Hafif Araçlar Pazarı (2006-2016 Ocak-Haziran) LV Market (2006-2016 January-June)



	2006	2007	2008	2009	2010	2011	2012	2013	2014	2015	2015 6 Ay/Mo	2016 6 Ay/Mo		2006	2007	2008	2009	2010	2011	2012	2013	2014	2015	2016
Toplam/Total	665.515	634.206	526.544	575.869	793.172	910.867	817.620	893.124	807.486	1.011.194	455.269	450.997	Yerli/Local	123.663	96.377	108.441	116.483	115.458	162.944	124.724	110.647	87.190	143.052	140.957
İthalat/Imports	382.460	355.752	306.087	313.921	465.408	538.532	511.694	615.609	522.842	658.690	296.161	302.088	İthalat/Imports	201.866	136.792	154.609	156.874	162.797	258.928	215.908	271.096	199.671	289.498	297.860
İthalat/Imports (%)	57	56	58	55	59	59	63	69	65	65	65	67	Toplam/Total	325.529	233.169	263.050	273.357	278.255	421.872	340.632	381.743	286.861	432.550	438.817
													İthalat/Imports (%)	62	59	59	57	59	61	63	71	70	67	68

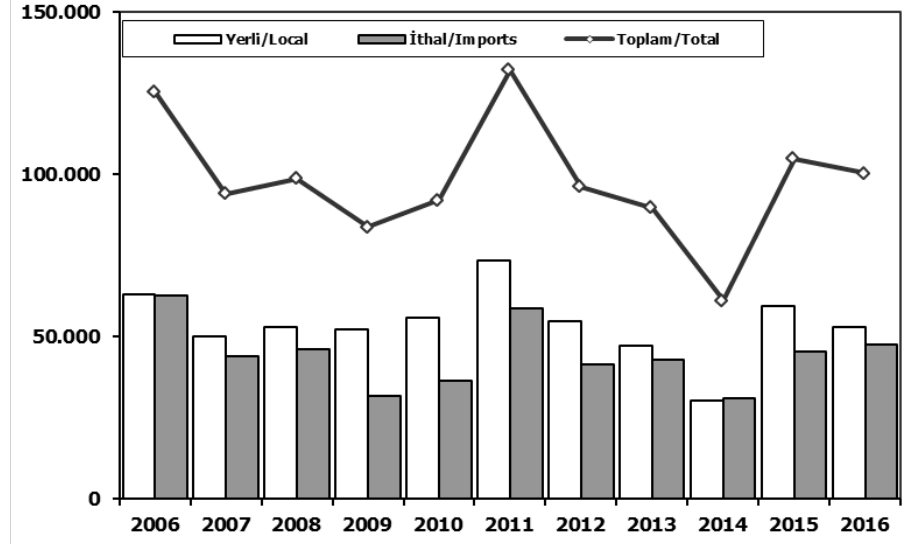
Otomobil Pazarı (2006-2016 Ocak-Haziran)

P.Cars Market (2006-2016 January-June)



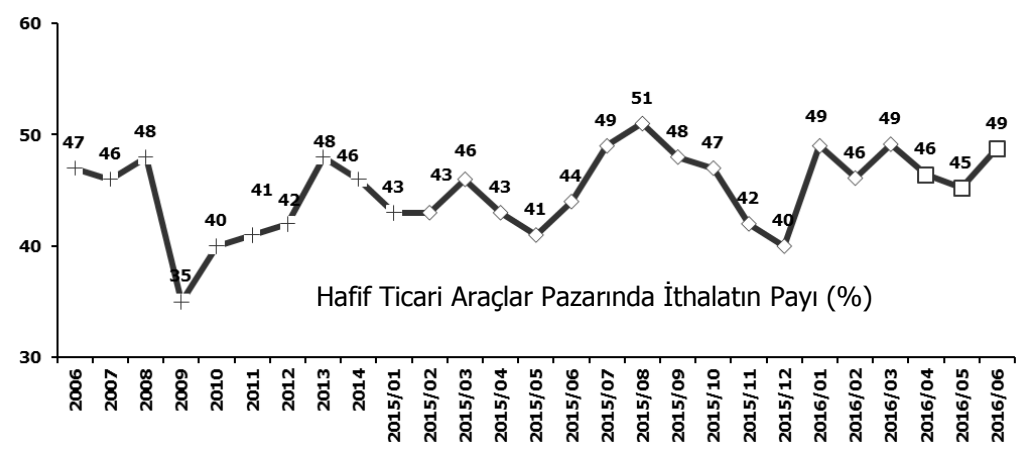
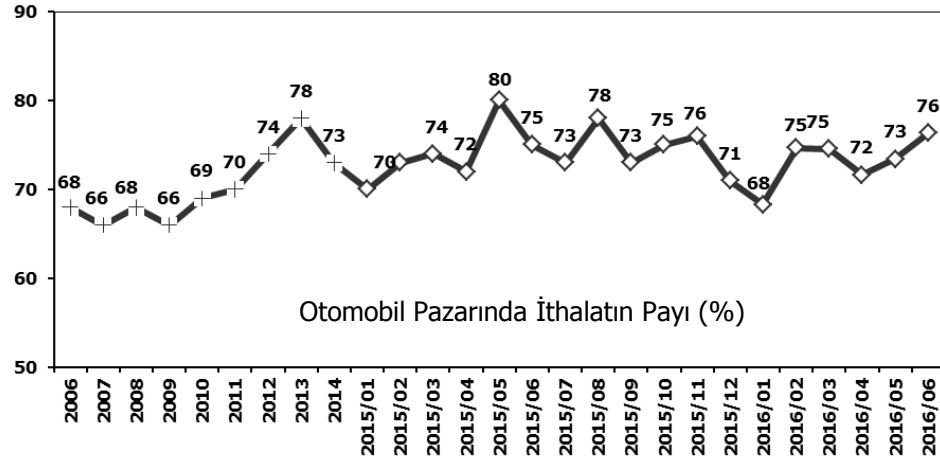
Hafif Ticari Araçlar Pazarı (2006-2016 Ocak-Haziran)

Light Commercial Vehicle Market (2006-2016 January-June)



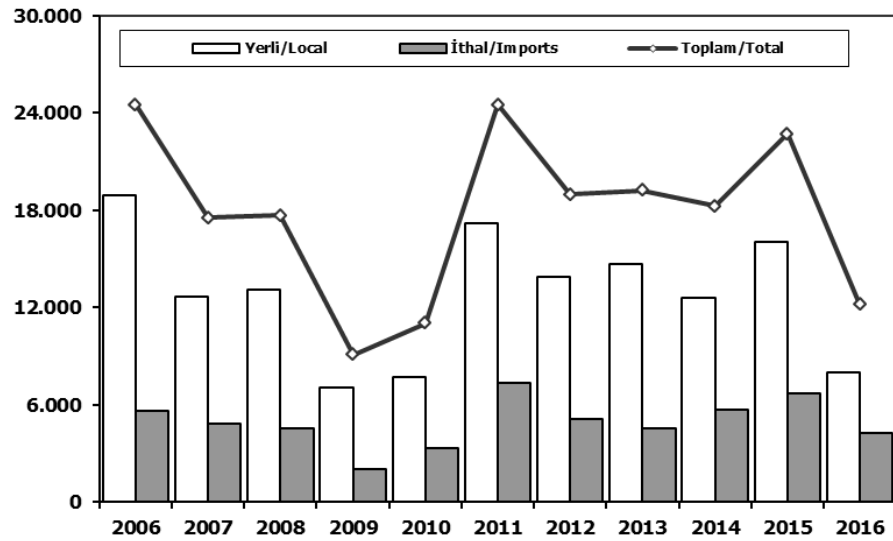
	2006	2007	2008	2009	2010	2011	2012	2013	2014	2015	2016
Yerli/Local	60.666	46.237	55.727	64.339	59.686	89.601	69.994	63.686	56.924	83.639	88.101
İthal/Imports	139.445	92.894	108.718	125.357	126.619	200.145	174.496	228.420	168.849	244.207	250.381
Toplam/Total	200.111	139.131	164.445	189.696	186.305	289.746	244.490	292.106	225.773	327.846	338.482
İthalat/Imports (%)	70	67	66	66	68	69	71	78	75	74	74

	2006	2007	2008	2009	2010	2011	2012	2013	2014	2015	2016
Yerli/Local	62.997	50.140	52.714	52.144	55.772	73.343	54.730	46.961	30.266	59.413	52.856
İthal/Imports	62.421	43.898	45.891	31.517	36.178	58.783	41.412	42.676	30.822	45.291	47.479
Toplam/Total	125.418	94.038	98.605	83.661	91.950	132.126	96.142	89.637	61.088	104.704	100.335
İthalat/Imports (%)	50	47	47	38	39	44	43	48	50	43	47



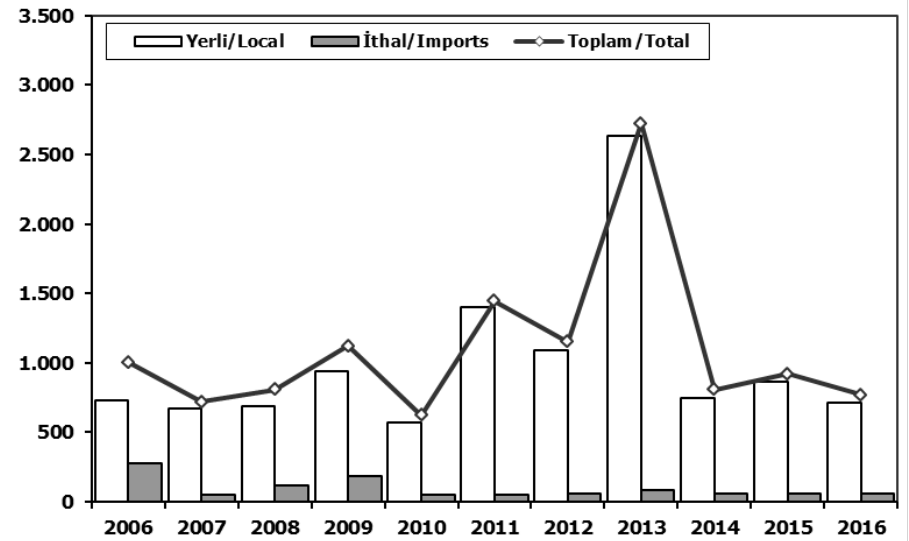
Ağır Ticari Araçlar Pazarı (2006-2016 Ocak-Haziran)

HCV Market (2006-2016 January-June)



Otobüs Pazarı (2006-2016 Ocak-Haziran)

Bus Market (2006-2016 January-June)

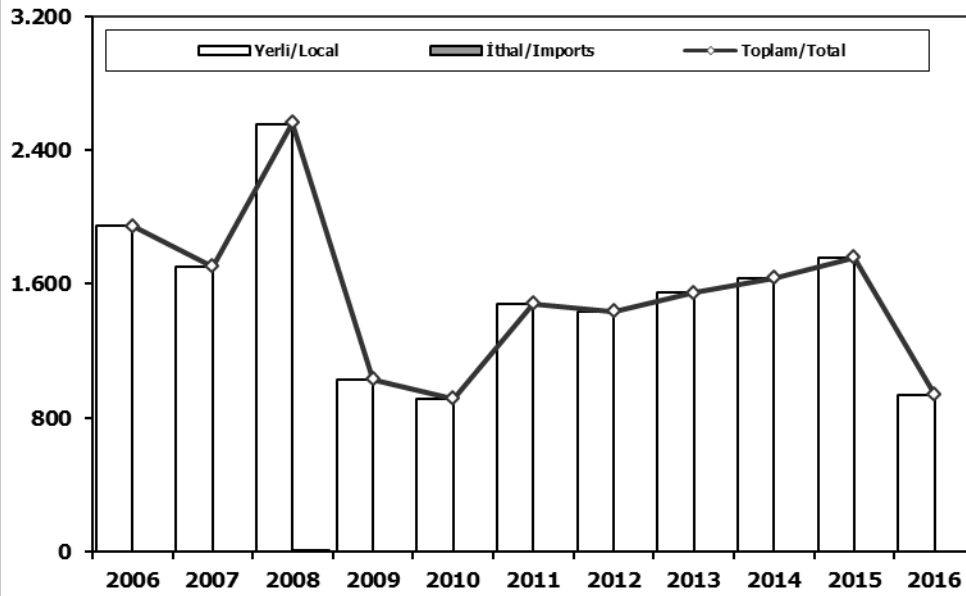


	2006	2007	2008	2009	2010	2011	2012	2013	2014	2015	2016
Yerli/Local	18.904	12.688	13.128	7.022	7.704	17.182	13.868	14.702	12.583	16.056	7.952
İthal/Imports	5.617	4.832	4.536	2.044	3.329	7.312	5.118	4.521	5.680	6.663	4.228
Toplam/Total	24.521	17.520	17.664	9.066	11.033	24.494	18.986	19.223	18.263	22.719	12.180
İthalat/Imports (%)	23	28	26	23	30	30	27	24	31	29	35

	2006	2007	2008	2009	2010	2011	2012	2013	2014	2015	2016
Yerli/Local	729	673	688	943	568	1.398	1.092	2.639	749	862	712
İthal/Imports	276	49	121	181	54	47	59	85	60	60	60
Toplam/Total	1.005	722	809	1.124	622	1.445	1.151	2.724	809	922	772
İthalat/Imports (%)	27	7	15	16	9	3	5	3	7	7	8

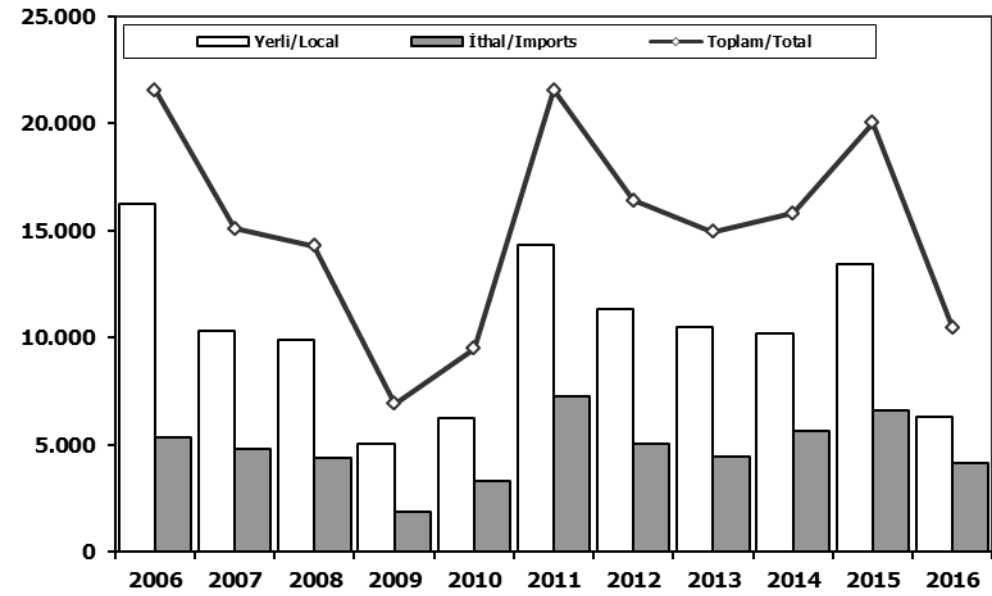
Midibüs Pazarı (2006-2016 Ocak-Haziran) (7-9 mt / 25-35 Kişilik)

Midibus Market (2006-2016 January-June) (7-9 mt / 25-35 Passengers)



Kamyon Pazarı (2006-2016 Ocak-Haziran)

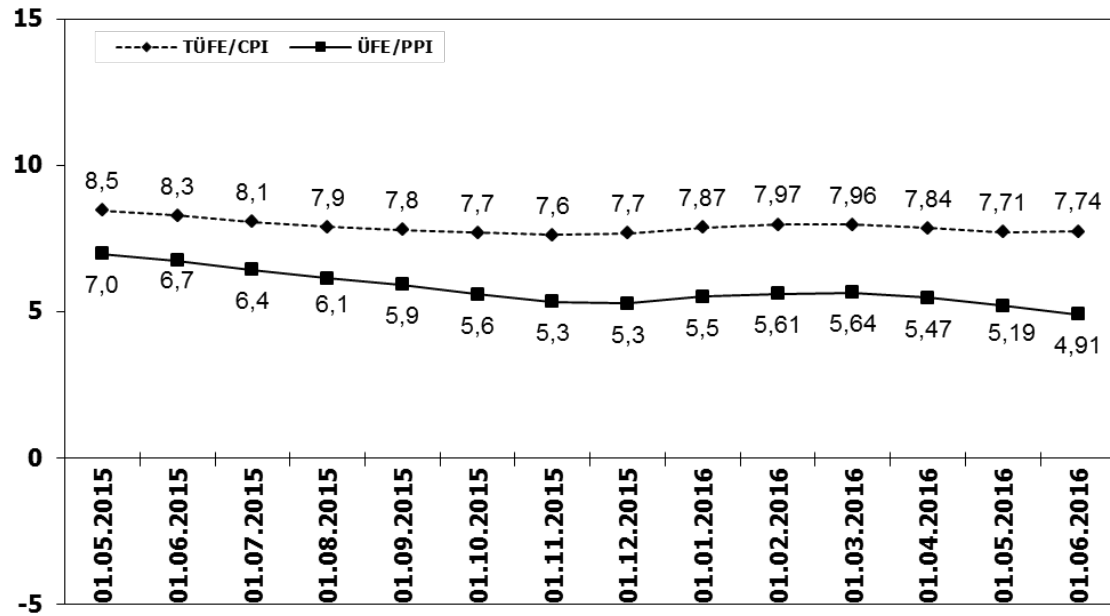
Truck Market (2006-2016 January-June)



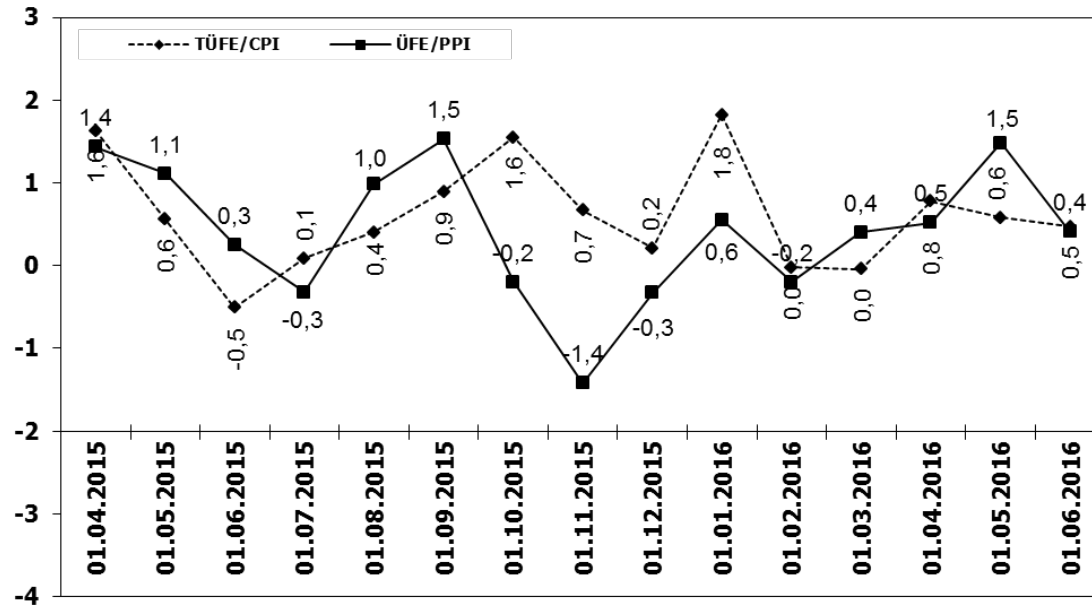
	2006	2007	2008	2009	2010	2011	2012	2013	2014	2015	2016
Yerli/Local	1.945	1.706	2.554	1.030	916	1.481	1.438	1.548	1.635	1.759	939
İthal/Imports	0	0	11	0	0	0	0	0	0	0	0
Toplam/Total	1.945	1.706	2.565	1.030	916	1.481	1.438	1.548	1.635	1.759	939
İthalat/Imports (%)	0	0	0	0	0	0	0	0	0	0	0

	2006	2007	2008	2009	2010	2011	2012	2013	2014	2015	2016
Yerli/Local	16.230	10.309	9.886	5.049	6.220	14.303	11.338	10.515	10.199	13.435	6.301
İthal/Imports	5.341	4.783	4.404	1.863	3.275	7.265	5.059	4.436	5.620	6.603	4.168
Toplam/Total	21.571	15.092	14.290	6.912	9.495	21.568	16.397	14.951	15.819	20.038	10.469
İthalat/Imports (%)	25	32	31	27	34	34	31	30	36	33	40

TÜFE ve ÜFE'nin Yıllık Değişimi (%) CPI and PPI Yearly Changes (%)



TÜFE ve ÜFE'nin Aylık Değişimi (%) CPI and PPI Monthly Changes (%)



2016 Yılı İthal Hafif Araç Satışları 2016 Light Vehicles Import Sales

2016 YILI İTHAL OTOMOBİL SATIŞLARI / P.Cars Import 2016

2015 TOPLAMI 2015 Total	1	2	3	4	5	6	7	8	9	10	11	12	2016 TOPLAMI 2016 Total
VOLKSWAGEN	107.401	2.792	5.763	8.197	7.811	9.597	9.561						43.721
OPEL	47.000	1.263	2.521	3.936	4.775	5.754	5.809						24.058
FORD	43.341	972	2.733	3.347	3.141	3.231	4.439						17.863
DACIA	37.257	1.235	1.963	3.402	3.555	4.179	3.799						18.133
RENAULT	32.683	1.258	2.007	4.030	3.336	3.983	3.759						18.373
B.M.W	31.221	496	2.042	2.080	2.332	3.174	2.640						12.764
MERCEDES BENZ	30.333	1.091	1.701	2.480	2.305	3.080	3.786						14.443
NISSAN	26.421	971	1.534	2.989	2.684	2.546	2.584						13.308
HYUNDAI	25.164	1.148	1.499	2.651	2.344	2.649	2.296						12.587
PEUGEOT	22.808	540	1.730	2.526	1.557	2.349	2.099						10.801
SKODA	22.107	715	1.435	2.640	2.663	2.787	2.865						13.105
AUDI	20.279	911	1.200	1.455	2.148	2.352	1.961						10.027
SEAT	16.911	502	853	1.443	2.130	1.726	1.929						8.583
CITROEN	16.520	394	366	1.562	1.684	1.929	1.613						7.548
KIA	13.873	263	574	1.080	1.461	979	1.281						5.638
TOYOTA	10.949	149	588	955	836	1.040	913						4.481
VOLVO	6.939	187	194	311	335	512	465						2.004
HONDA	5.413	366	669	1.077	535	629	617						3.893
FIAT	5.241	162	247	336	278	266	232						1.521
JEEP	3.507	92	161	204	188	187	218						1.050
MAZDA	1.761	50	67	114	157	171	137						696
MINI (İngiliz)	1.739	101	74	134	166	161	143						779
SUBARU	1.737	73	112	152	148	165	122						772
LAND ROVER	1.577	46	131	318	186	200	201						1.082
MITSUBISHI	1.366	39	71	53	48	79	57						347
PORSCHE	861	55	40	55	59	61	68						338
ALFA ROMEO	847	12	75	149	58	68	48						410
SSANGYONG	605	19	23	37	34	76	70						259
PROTON	500	10	7	10	12	12	0						51
CHERY	394	30	23	12	9	22	25						121
JAGUAR	336	20	25	34	31	33	48						191
SUZUKI	177	7	0	194	151	332	422						1.106
TATA	168	0	0	0	0	0	0						0
SMART	88	0	0	16	13	24	12						65
MASERATI	73	1	6	1	5	3	6						22
INFINITI	43	0	0	0	4	6	23						33
GEELY	25	0	0	0	0	0	0						0
BENTLEY	19	0	1	0	0	1	0						2
LEXUS	13	0	0	6	7	2	3						18
FERRARI	10	3	1	0	4	3	1						12
LAMBORGHINI	6	0	1	0	1	0	1						3
LANCIA	2	0	0	0	0	0	0						0
ASTON MARTIN	0	2	1	2	4	4	3						16
DS	0	8	34	42	35	24	14						157
TOPLAM	537.715	15.983	30.472	48.030	47.230	54.396	54.270	0	0	0	0	0	250.381

2016 YILI İTHAL HAFIF TİCARİ ARAÇ SATIŞLARI / Light Commercial Vehicles Import 2016

2015 TOPLAMI 2015 Total	1	2	3	4	5	6	7	8	9	10	11	12	2016 TOPLAMI 2016 Total
VOLKSWAGEN	31.642	1.736	2.391	3.096	2.674	2.839	2.845						15.581
RENAULT	15.617	451	602	983	1.442	1.466	1.333						6.277
FIAT	9.072	272	374	615	333	343	417						2.354
MERCEDES BENZ	8.457	360	549	925	671	684	760						3.949
PEUGEOT	8.212	467	284	471	835	532	1.183						3.772
DACIA	7.555	221	228	380	512	572	429						2.342
CITROEN	6.511	207	213	752	670	398	690						2.930
KIA	4.110	155	196	387	324	464	419						1.945
FORD	4.028	85	189	298	255	428	596						1.851
MITSUBISHI	3.897	324	151	312	329	220	385						1.721
TOYOTA	2.928	34	178	514	402	549	378						2.055
IVECO	2.710	88	131	173	163	246	172						973
HYUNDAI	1.612	71	117	138	163	186	158						833
ISUZU	333	57	34	90	25	23	32						261
SSANGYONG	303	3	5	16	19	31	38						112
TATA	228	9	0	0	0	0	0						9
NISSAN	7	0	0	175	126	92	121						514
MAZDA	0	0	0	0	0	0	0						0
TOPLAM	107.222	4.540	5.642	9.325	8.943	9.073	9.956	0	0	0	0	0	47.479