



OTOMOTİV SANAYİ DERNEĞİ
AUTOMOTIVE MANUFACTURERS ASSOCIATION

AYLIK RAPOR

Automotive Industry Monthly Report

Mayıs / May 2016

- **Üretim/Production**
- **Satış/Sales**
- **İthalat/Imports**
- **İhracat/Exports**

OSD "OICA" Üyesidir



OSD is a Member of "OICA"

2016 Mayıs Ayı Özeti / 2016 May Summary

KONULAR/MATTERS		MAYIS / MAY			5 AY/ 5 MONTHS			SON 12 AYLIK / YoY		
		2015	2016	2016/2015 (%)	2015	2016	2016/2015 (%)	2015	2016	2016/2015 (%)
Üretim/Production	Toplam/Total	88.048	125.190	42	543.141	594.305	9	1.257.610	1.409.961	12
	Otomobil/P.Cars	52.339	76.569	46	318.049	359.190	13	757.610	832.168	10
Pazar/Market	Toplam/Total	85.145	96.574	13	364.806	356.792	-2	931.120	1.003.180	8
	Otomobil/P.Cars	62.878	73.832	17	260.080	267.371	3	668.916	732.887	10
İthalat / Import	Toplam/Total	59.440	63.915	8	236.008	236.361	0	597.624	659.043	10
	Otomobil/P.Cars	50.385	54.218	8	193.372	195.181	1	489.324	539.524	10
İhracat / Export	Toplam/Total	59.098	94.278	60	393.656	453.720	15	911.229	1.052.399	15
	Otomobil/P.Cars	36.570	60.692	66	247.301	275.650	11	584.645	633.032	8
İhracat / Export (\$)	Toplam/Total **	1.507.409.380	2.048.568.741	36	8.687.269.870	9.740.848.513	12	21.575.543.805	22.054.753.381	2
	Otomobil/P.Cars	443.481.995	666.438.878	50	2.859.040.222	2.856.109.791	0	6.867.535.061	6.665.558.403	-3

PARAMETRELER / PARAMETERS		MAYIS / MAY			5 AY/ 5 MONTHS			SON 12 AYLIK / YoY		
		2015	2016	2016/2015 (%)	2015	2016	2016/2015 (%)	2015	2016	2016/2015 (%)
ÜFE/PPI		1,11	1,48	**	5,22	2,77	**	6,98	5,19	**
TÜFE/CPI		0,56	0,58	**	5,30	3,15	**	8,45	7,71	**
Sanayi Endeksi/Industry Index		1,53	1,87	**	5,74	3,82	**	8,02	6,03	**
\$ (*)		2,6568	2,8701	8	2,5688	2,8947	13	2,3566	2,8669	22
EURO (*)		2,9126	3,2441	11	2,8475	3,2181	13	2,8376	3,1724	12
Japon Yeni (*)		2,1341	2,6234	23	2,1295	2,5360	19	2,0578	2,4130	17

(*) Ortalama Değerler / Average Values

(**) Toplam Sanayi / Total Industry Including Components

*Raporda yer alan üretim adetleri yalnızca OSD üyelerinin verilerini göstermektedir.
Production units in this report only show the data of OSD members.*

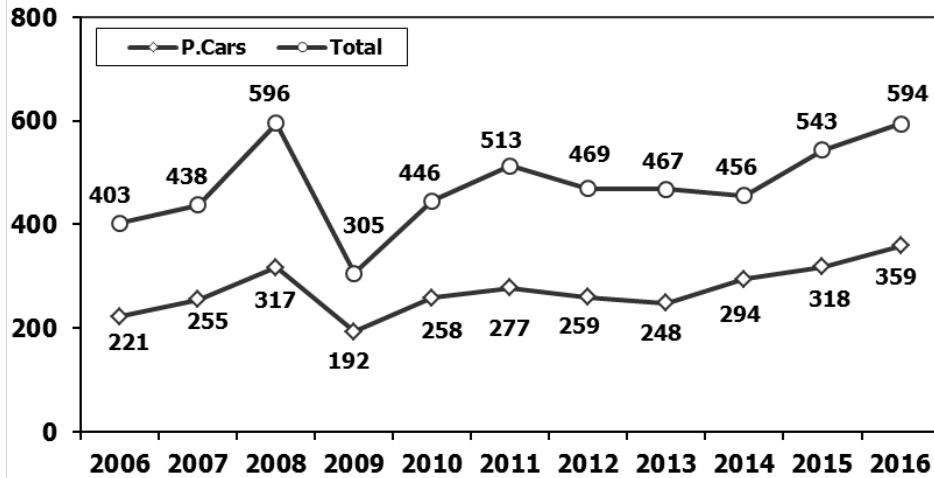
2015/2016 Yılları Üretim 2015/2016 Production

K.KAMYON : AYA 3.5-12 Ton (L.Truck:GVW 3.5-12 Ton)

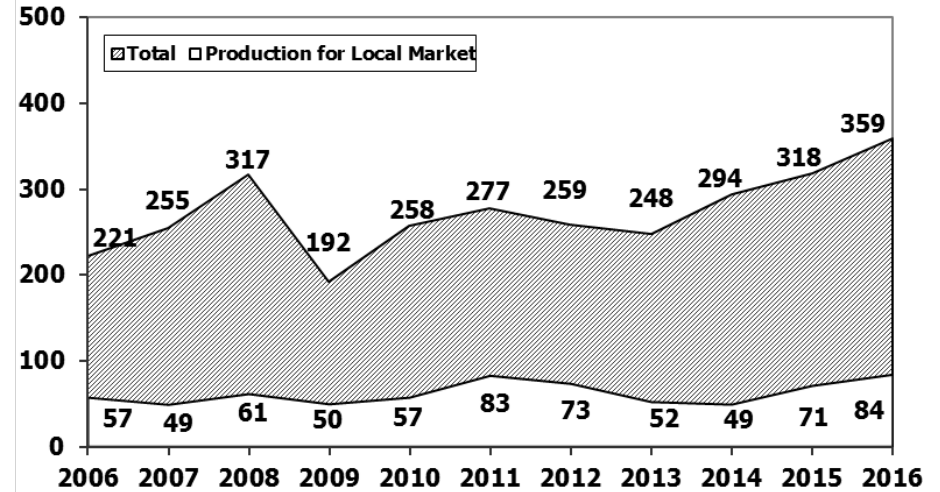
B.KAMYON : AYA 12 Ton'dan Büyük (M.Truck:GVW 12 Ton And Up)

TİPLER	MAYIS AYI ÜRETİMİ May Production		5 AYLIK ÜRETİM 5 Months Production		DEĞİŞİM % Percent Change %	
	2015	2016	2015	2016	MAYIS May	5 AY 5 Months
OTOMOBİL - Pass.Car	52.339	76.569	318.049	359.190	46	13
TİCARİ ARAÇLAR - Commercial Vehicles	35.709	48.621	225.092	235.115	36	4
* B. KAMYON - M. Truck	2.591	1.640	13.401	6.128	-37	-54
* K. KAMYON - L. Truck	413	190	1.541	411	-54	-73
* KAMYONET - Pick Up	26.601	39.021	175.097	211.179	47	21
* OTOBÜS - Bus	757	797	3.453	3.611	5	5
* MİNİBÜS - Minibus	4.832	6.610	28.961	12.479	37	-57
* MİDİBÜS - Midibus	515	363	2.639	1.307	-30	-50
TAŞIT ARAÇLARI TOPLAM - MV Total	88.048	125.190	543.141	594.305	42	9
TRAKTÖR - F.Tractor	3.228	5.402	19.959	24.646	67	23
GENEL TOPLAM - Grand Total	91.276	130.592	563.100	618.951	43	10

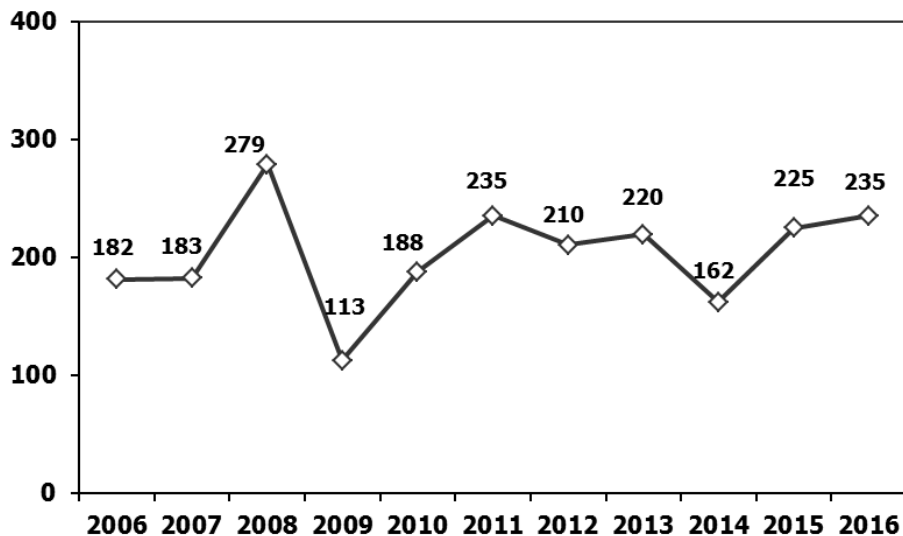
Toplam Üretim ve Otomobil Üretimi (x1000) (Ocak-Mayıs)
Total & P.Cars Production (x1000) (January-May)



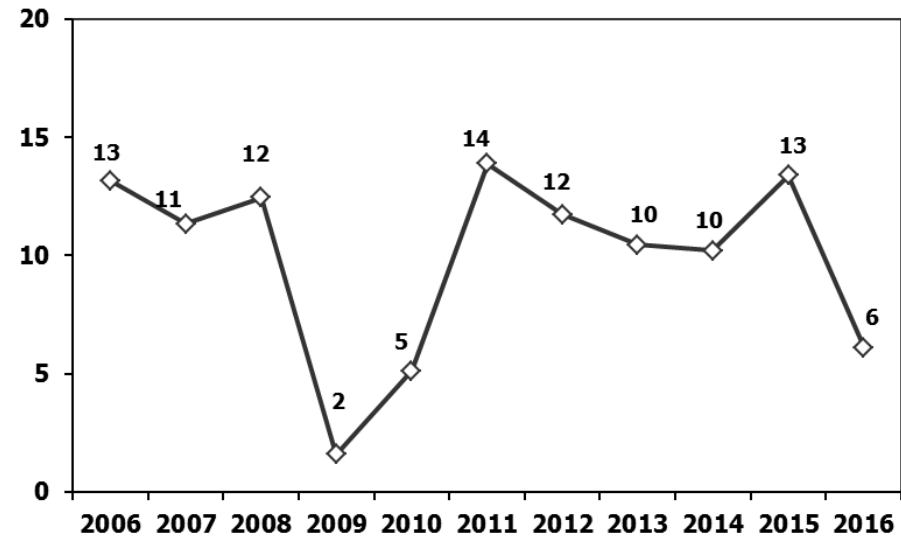
Otomobil Üretimi ve İhracat (x1000) (Ocak-Mayıs)
P.Cars Production & Exports (x1000) (January-May)



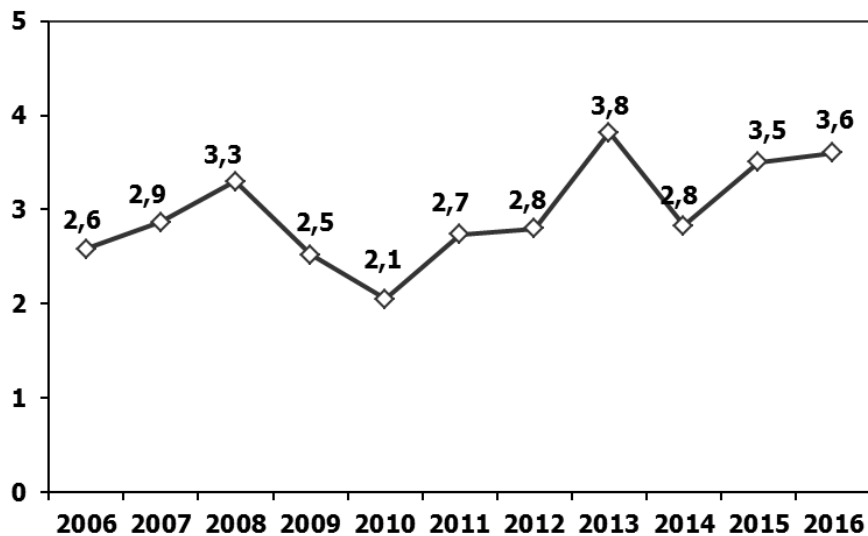
Ticari Araç Üretimi (x1000) (Ocak-Mayıs)
Commercial Vehicle Production (x1000) (January-May)



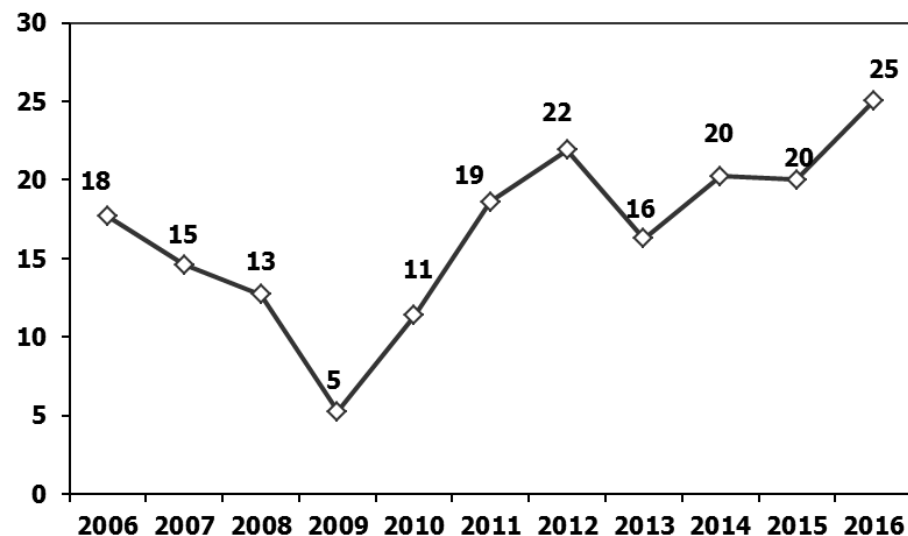
(AYA > 12 Ton) **Büyük Kamyon Üretimi** (x1000) (Ocak-Mayıs)
(GVW > 12 Ton) Heavy Truck Production (x1000) (January-May)



Otobüs Üretimi (x1000) (Ocak-Mayıs)
Bus Production (x1000) (January-May)

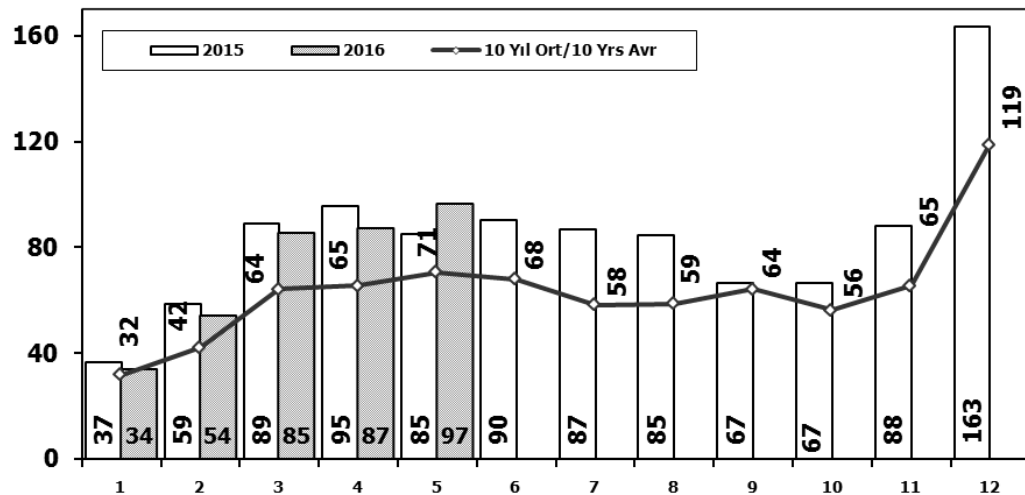


Traktör Üretimi (x1000) (Ocak-Mayıs)
F. Tractor Production (x1000) (January-May)



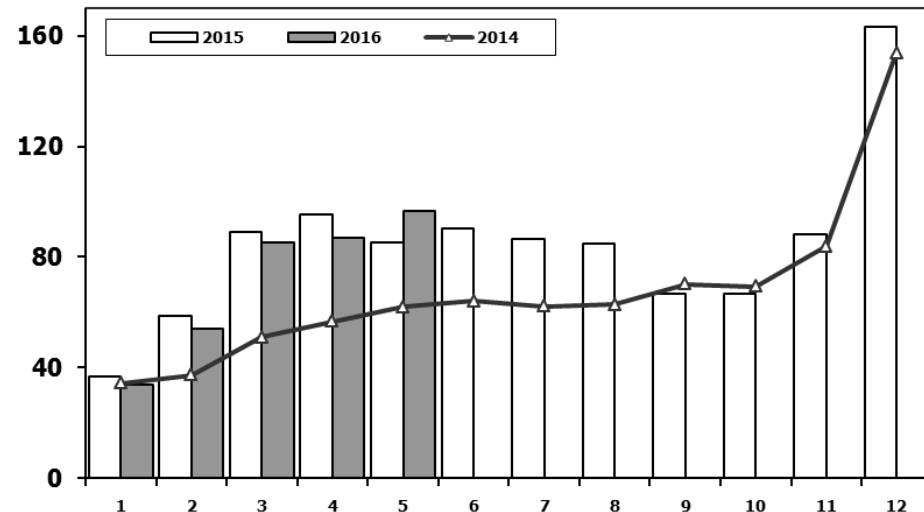
Toplam Pazarın Analizi (x1000)

Total Market Analysis (x1000)



Toplam Pazar (x1000)

Total Market (x1000)

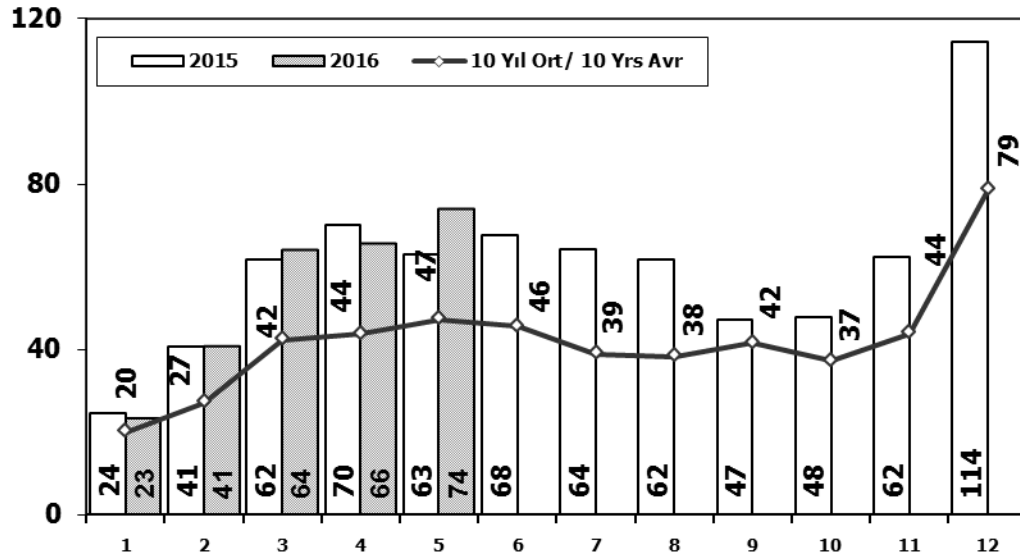


Aylar / Months	10 Yil Ort. 10 Yrs Avr. (x1000)	2016 (x1000)	%
1	31,7	33,7	6,4
2	42,3	54,2	28,3
3	64,3	85,2	32,6
4	65,4	87,0	33,0
5	70,5	96,6	37,0
Total	274,2	356,8	30,1

	1	2	3	4	5	6	7	8	9	10	11	12	5 Ay/Mo	Total
2006	29.969	44.646	65.090	68.853	83.289	58.203	40.037	47.374	49.629	39.805	55.898	82.722	291.847	665.515
2007	24.950	31.702	45.488	45.633	51.255	51.661	50.117	54.171	50.078	56.058	67.017	106.076	199.028	634.206
2008	33.792	38.121	56.814	50.967	51.627	49.393	44.692	46.592	46.829	35.147	28.152	44.418	231.321	526.544
2009	20.631	22.846	56.531	54.426	64.887	63.102	30.246	37.092	83.403	22.117	29.202	91.386	219.321	575.869
2010	21.050	32.313	53.828	57.079	61.628	63.390	63.718	64.645	66.601	76.780	77.406	154.734	225.898	793.172
2011	47.658	62.348	83.333	82.071	85.093	85.863	65.364	61.378	63.643	72.640	67.195	134.281	360.503	910.867
2012	31.219	43.827	68.957	66.014	74.820	74.781	65.122	60.848	73.197	62.677	75.045	121.113	284.837	817.620
2013	37.140	50.931	72.688	77.015	85.421	77.771	74.726	67.383	71.037	60.399	83.017	135.596	323.195	893.124
2014	34.225	37.308	50.964	56.766	61.909	63.952	62.206	62.839	70.180	69.259	83.937	153.941	241.172	807.486
2015	36.576	58.533	89.121	95.431	85.145	90.463	86.625	84.683	66.622	66.520	88.043	163.432	364.806	1.011.194
2016	33.740	54.223	85.214	87.041	96.574								356.792	356.792

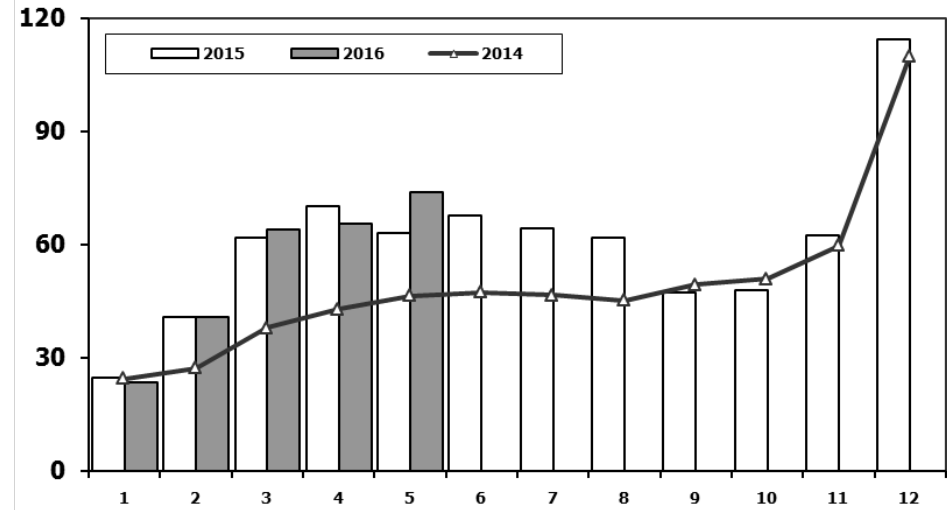
Otomobil Pazarının Analizi (x1000)

P.Cars Market Analysis (x1000)



Otomobil Pazarı (x1000)

P.Cars Market (x1000)

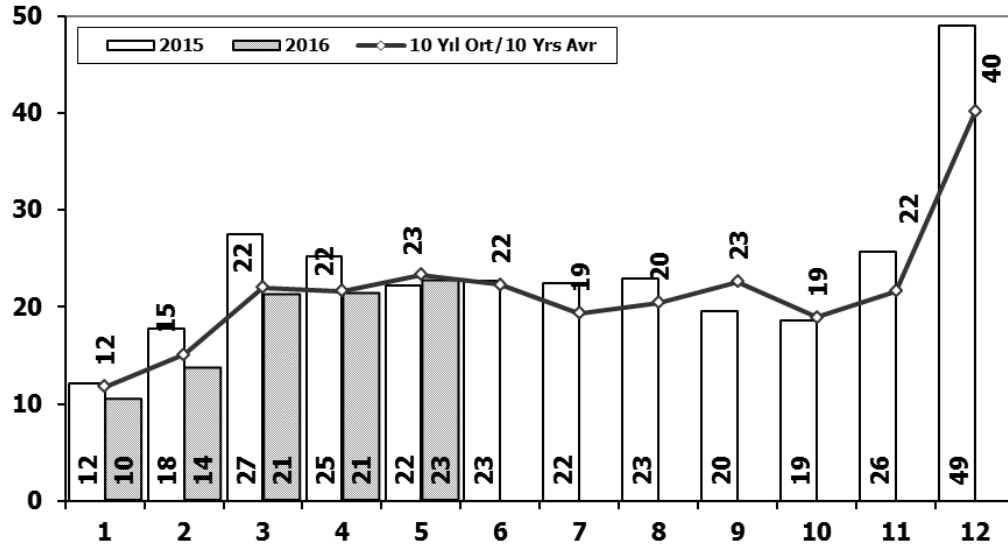


Aylar / Months	10 Yil Ort. 10 Yrs Avr. (x1000)	2016 (x1000)	%
1	20,0	23,4	17,0
2	27,1	40,6	49,5
3	42,3	64,0	51,4
4	43,8	65,6	49,8
5	47,2	73,8	56,4
Total	180,4	267,4	48,2

	1	2	3	4	5	6	7	8	9	10	11	12	5 Ay/Mo	Total
2006	16.506	24.929	36.996	40.177	48.521	32.982	22.653	24.873	27.517	21.237	30.477	46.351	167.129	373.219
2007	13.186	17.212	24.336	25.204	29.067	30.126	28.246	28.469	27.662	32.569	39.643	61.745	109.005	357.465
2008	18.588	21.196	34.147	30.313	31.477	28.724	25.530	26.102	27.053	19.788	17.201	25.879	135.721	305.998
2009	13.173	14.492	40.622	36.202	44.188	41.019	16.637	22.537	52.162	13.828	17.781	57.178	148.677	369.819
2010	12.594	20.651	33.958	36.549	40.467	42.086	41.399	42.222	42.477	47.859	50.061	99.461	144.219	509.784
2011	29.868	39.004	54.023	53.835	56.302	56.714	43.518	38.875	39.964	47.508	44.951	88.957	233.032	593.519
2012	21.077	29.189	47.270	45.645	50.460	50.849	44.531	41.236	49.360	43.440	52.297	80.926	193.641	556.280
2013	25.835	36.814	51.785	56.999	62.383	58.290	55.712	51.611	52.925	46.985	64.117	101.199	233.816	664.655
2014	24.368	27.167	37.812	42.769	46.379	47.278	46.602	45.131	49.262	50.814	59.695	110.054	178.495	587.331
2015	24.498	40.817	61.676	70.211	62.878	67.766	64.218	61.753	47.088	47.954	62.397	114.340	260.080	725.596
2016	23.358	40.588	63.975	65.618	73.832								267.371	267.371

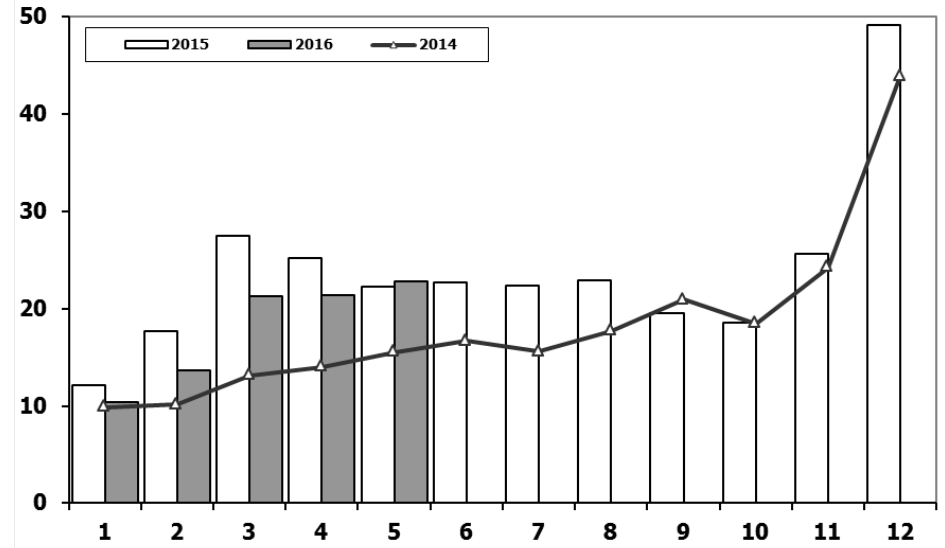
Ticari Araç Pazarının Analizi (x1000)

CV Market Analysis (x1000)



Ticari Araç Pazarı (x1000)

CV Total Market (Local + Imports) (x1000)

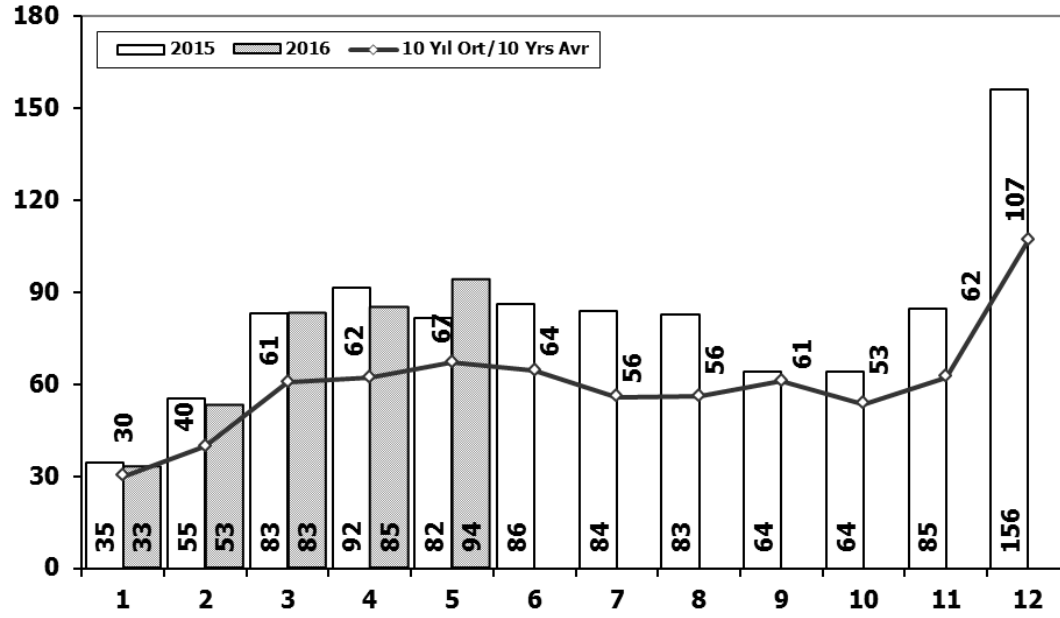


Aylar / Months	10 Yıl Ort. 10 Yrs Avr. (x1000)	2016 (x1000)	%
1	11,8	10,4	-11,7
2	15,1	13,6	-9,8
3	22,0	21,2	-3,5
4	21,6	21,4	-1,0
5	23,3	22,7	-2,4
Total	93,8	89,4	-4,7

	1	2	3	4	5	6	7	8	9	10	11	12	5 Ay/Mo	Total
2006	13.463	19.717	28.094	28.676	34.768	25.221	17.384	22.501	22.112	18.568	25.421	36.371	124.718	292.296
2007	11.764	14.490	21.152	20.429	22.188	21.535	21.871	25.702	22.416	23.489	27.374	44.331	90.023	276.741
2008	15.204	16.925	22.667	20.654	20.150	20.669	19.162	20.490	19.776	15.359	10.951	18.539	95.600	220.546
2009	7.458	8.354	15.909	18.224	20.699	22.083	13.609	14.555	31.241	8.289	11.421	34.208	70.644	206.050
2010	8.456	11.662	19.870	20.530	21.161	21.304	22.319	22.423	24.124	28.921	27.345	55.273	81.679	283.388
2011	17.790	23.344	29.310	28.236	28.791	29.149	21.846	22.503	23.679	25.132	22.244	45.324	127.471	317.348
2012	10.142	14.638	21.687	20.369	24.360	23.932	20.591	19.612	23.837	19.237	22.748	40.187	91.196	261.340
2013	11.305	14.117	20.903	20.016	23.038	19.481	19.014	15.772	18.112	13.414	18.900	34.397	89.379	228.469
2014	9.857	10.141	13.152	13.997	15.530	16.674	15.604	17.708	20.918	18.445	24.242	43.887	62.677	220.155
2015	12.078	17.716	27.445	25.220	22.267	22.697	22.407	22.930	19.534	18.566	25.646	49.092	104.726	285.598
2016	10.382	13.635	21.239	21.423	22.742								89.421	89.421

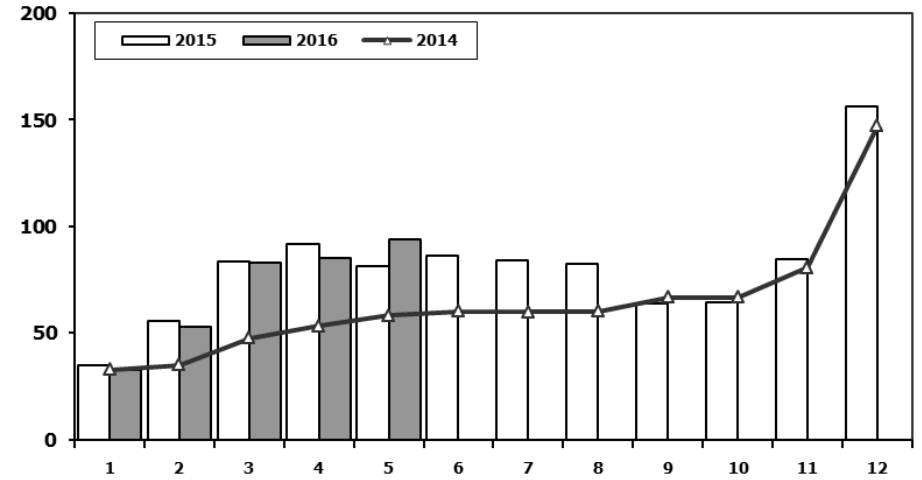
Hafif Araç Pazarının Analizi (x1000)

LV Market Analysis (x1000)



Hafif Araç Pazarı (x1000)

LV Total Market (Local + Imports) (x1000)

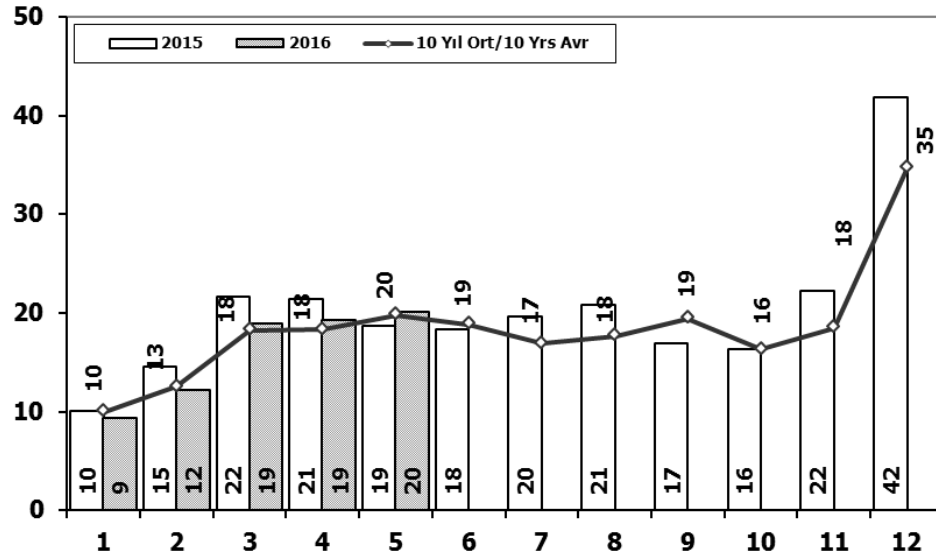


Aylar / Months	10 Yil Ort. 10 Yrs Avr. (x1000)	2016 (x1000)	%
1	30,0	32,7	9,2
2	39,7	52,8	33,1
3	60,5	82,9	37,0
4	62,1	84,9	36,7
5	67,0	93,9	40,2
Total	259,3	347,3	33,9

	1	2	3	4	5	6	7	8	9	10	11	12	5 Ay/Mo	Total
2006	27.917	40.938	60.052	64.038	78.229	54.355	37.251	43.767	46.109	36.542	51.867	76.787	271.174	617.852
2007	23.117	29.184	41.890	42.366	47.938	48.674	47.490	50.558	46.581	52.725	63.313	100.926	184.495	594.762
2008	31.527	35.251	53.649	47.701	48.598	46.324	42.156	43.670	43.932	32.884	26.253	42.078	216.726	494.023
2009	19.606	21.742	55.111	52.640	63.191	61.067	28.845	35.609	81.397	21.033	27.962	88.923	212.290	557.126
2010	20.095	31.172	51.769	54.946	59.377	60.896	61.345	61.764	63.814	73.404	73.962	148.369	217.359	760.913
2011	44.892	58.663	78.403	77.695	80.646	81.573	63.044	58.406	60.129	69.421	63.657	127.910	340.299	864.439
2012	29.545	41.324	64.884	62.949	70.863	71.067	62.304	58.148	69.629	59.938	71.710	115.400	269.565	777.761
2013	35.523	48.307	68.774	73.575	81.468	74.096	71.596	65.043	67.963	58.014	79.301	129.718	307.647	853.378
2014	32.670	35.021	47.581	53.305	58.121	60.163	59.907	60.199	66.531	66.573	80.621	146.989	226.698	767.681
2015	34.615	55.331	83.302	91.602	81.542	86.158	83.836	82.577	64.025	64.255	84.601	156.173	346.392	968.017
2016	32.713	52.825	82.948	84.887	93.904								347.277	347.277

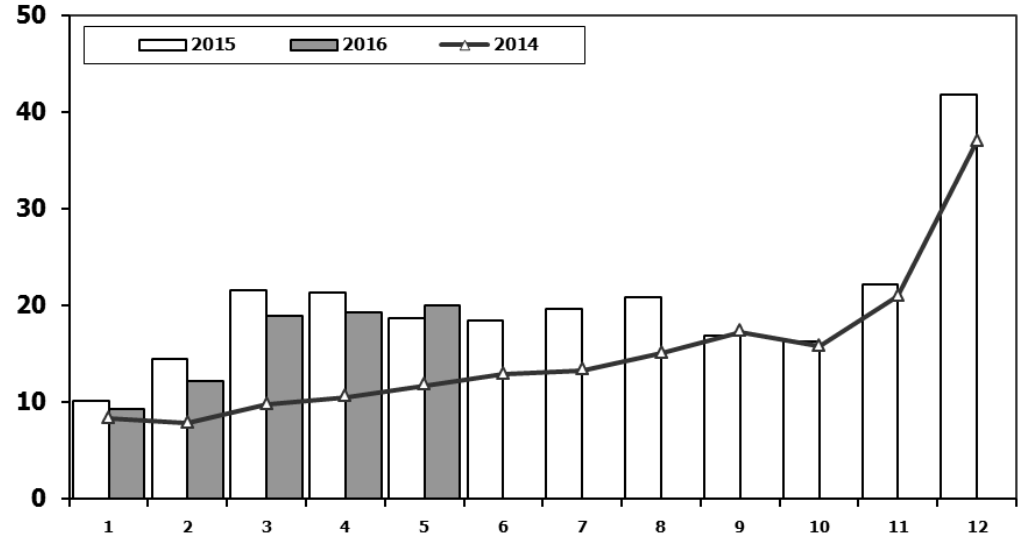
Hafif Ticari Araç Pazarının Analizi (x1000)

LCV Market Analysis (x1000)



Hafif Ticari Araç Pazarı (x1000)

LCV Total Market (Local + Imports) (x1000)



Aylar / Months	10 Yil Ort. 10 Yrs Avr. (x1000)	2016 (x1000)	%
1	10,0	9,4	-6,3
2	12,5	12,2	-2,5
3	18,3	19,0	3,8
4	18,3	19,3	5,3
5	19,8	20,1	1,5
Total	78,9	79,9	1,3

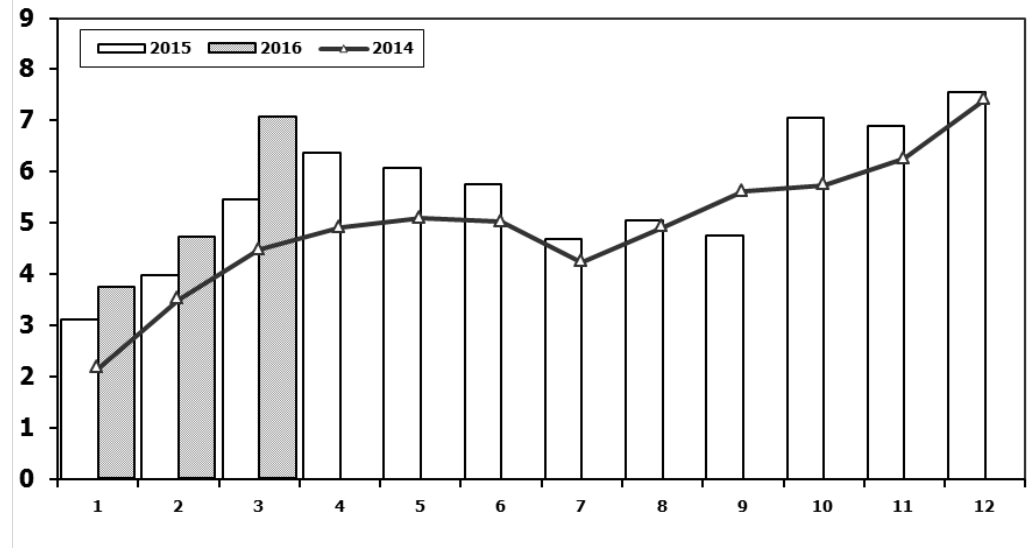
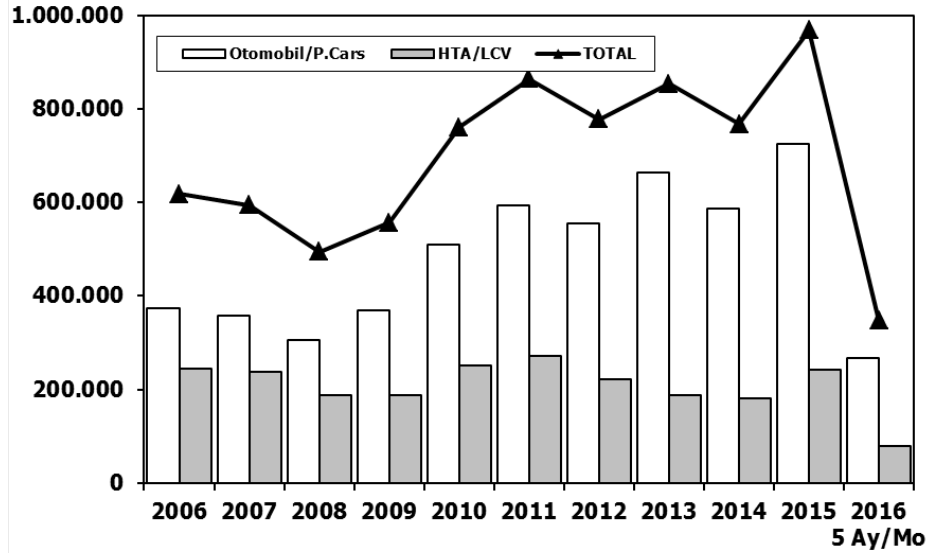
	1	2	3	4	5	6	7	8	9	10	11	12	5 Ay/Mo	Total
2006	11.411	16.009	23.056	23.861	29.708	21.373	14.598	18.894	18.592	15.305	21.390	30.436	104.045	244.633
2007	9.931	11.972	17.554	17.162	18.871	18.548	19.244	22.089	18.919	20.156	23.670	39.181	75.490	237.297
2008	12.939	14.055	19.502	17.388	17.121	17.600	16.626	17.568	16.879	13.096	9.052	16.199	81.005	188.025
2009	6.433	7.250	14.489	16.438	19.003	20.048	12.208	13.072	29.235	7.205	10.181	31.745	63.613	187.307
2010	7.501	10.521	17.811	18.397	18.910	18.810	19.946	19.542	21.337	25.545	23.901	48.908	73.140	251.129
2011	15.024	19.659	24.380	23.860	24.344	24.859	19.526	19.531	20.165	21.913	18.706	38.953	107.267	270.920
2012	8.468	12.135	17.614	17.304	20.403	20.218	17.773	16.912	20.269	16.498	19.413	34.474	75.924	221.481
2013	9.688	11.493	16.989	16.576	19.085	15.806	15.884	13.432	15.038	11.029	15.184	28.519	73.831	188.723
2014	8.302	7.854	9.769	10.536	11.742	12.885	13.305	15.068	17.269	15.759	20.926	36.935	48.203	180.350
2015	10.117	14.514	21.626	21.391	18.664	18.392	19.618	20.824	16.937	16.301	22.204	41.833	86.312	242.421
2016	9.355	12.237	18.973	19.269	20.072								79.906	79.906

Hafif Araç Pazarı (AYA < 3.5 Ton)

Light Vehicle Market (GVW < 3.5 Ton)

Traktör Pazarı (x1000)

F.Tractor Market (x1000)



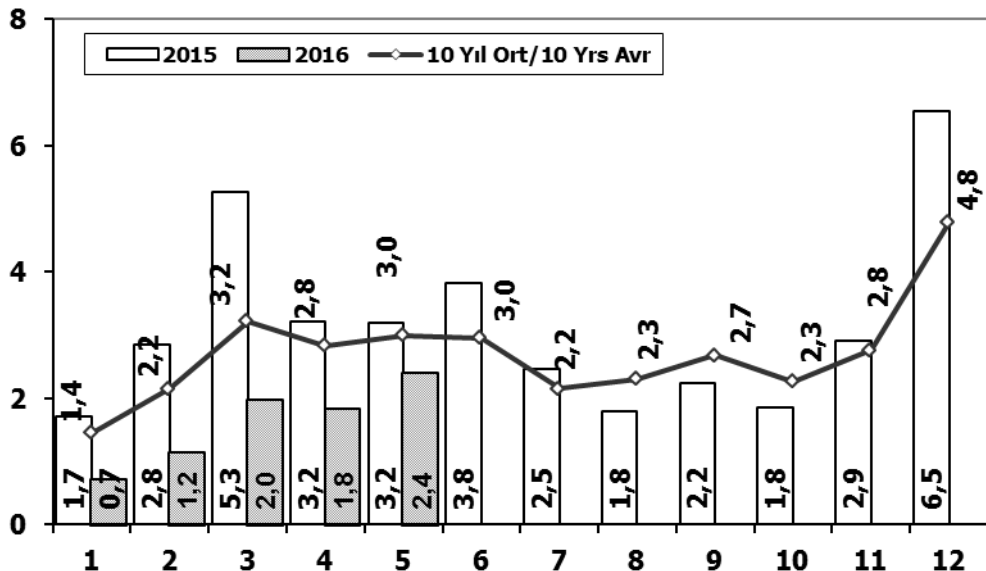
	2006	2007	2008	2009	2010	2011	2012	2013	2014	2015	2016 5 Ay/Mo
Otomobil/P.Cars	373.219	357.465	305.998	369.819	509.784	593.519	556.280	664.655	587.331	725.596	267.371
HTA/LCV	244.633	237.297	188.025	187.307	251.129	270.920	221.481	188.723	180.350	242.421	79.906
TOTAL	617.852	594.762	494.023	557.126	760.913	864.439	777.761	853.378	767.681	968.017	347.277
HTA/LCV (%)	40	40	38	34	33	31	28	22	23	25	23

	1	2	3	4	5	6	7	8	9	10	11	12	3 Ay/Mo	Total
2006	4.018	2.139	3.201	3.599	5.529	3.401	2.450	2.608	2.820	2.872	3.697	3.373	9.358	39.707
2007	2.816	2.244	3.053	2.657	3.188	3.141	2.497	2.381	3.025	2.755	3.549	3.097	8.113	34.403
2008	2.770	1.855	3.395	3.081	2.769	2.400	2.232	2.485	1.856	1.773	1.305	1.101	8.020	27.022
2009	717	572	688	1.070	1.297	1.256	1.054	1.183	1.117	1.356	1.304	2.144	1.977	13.758
2010	1.111	1.991	2.330	3.039	2.567	2.638	1.965	3.019	2.806	4.424	3.978	6.168	5.432	36.036
2011	2.975	5.242	5.927	5.358	6.016	6.335	4.534	4.051	4.140	5.828	4.943	4.992	14.144	60.341
2012	2.362	1.983	4.348	6.579	6.273	4.569	3.837	3.158	3.618	4.027	4.807	4.757	8.693	50.318
2013	2.161	2.432	4.005	4.585	5.616	3.136	4.574	3.408	4.935	4.762	5.781	6.891	8.598	52.286
2014	2.169	3.512	4.476	4.905	5.094	5.028	4.233	4.920	5.619	5.743	6.250	7.409	10.157	59.358
2015	3.124	3.984	5.460	6.383	6.078	5.748	4.677	5.044	4.765	7.049	6.898	7.564	12.568	66.774
2016	3.739	4.731	7.067										15.537	15.537

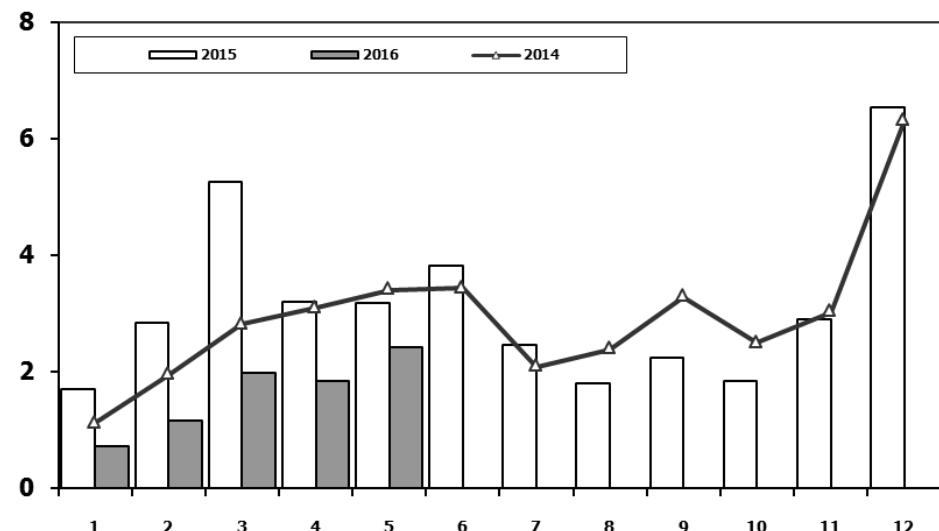
Kaynak: TÜİK trafik kayıtları.

Rakamlar, son iki model yılına ait traktör tescillerinden oluşmaktadır.

Kamyon Pazarının Analizi (x1000) AYA > 5 Ton Truck Market Analysis (x1000) GVW > 5 Ton



Kamyon Pazarı (x1000) AYA > 5 Ton Truck Market (x1000) GVW > 5 Ton

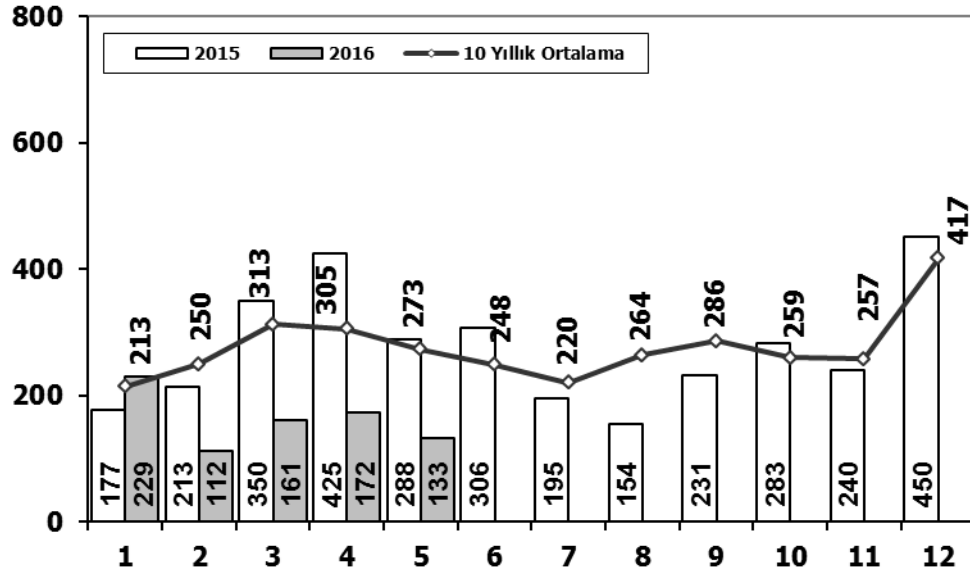


Aylar / Months	10 Yil Ort. 10 Yrs Avr. (x1000)	2016 (x100)	%
1	1,4	0,7	-50,5
2	2,2	1,2	-46,5
3	3,2	2,0	-38,4
4	2,8	1,8	-35,2
5	3,0	2,4	-19,3
Total	12,7	8,1	-35,9

	1	2	3	4	5	6	7	8	9	10	11	12	5 Ay/Mo	Total
2006	1.767	3.310	4.467	4.180	4.449	3.398	2.472	3.142	3.052	2.926	3.550	5.358	18.173	42.071
2007	1.554	2.055	3.065	2.940	2.865	2.613	2.372	3.145	2.988	2.886	3.258	4.444	12.479	34.185
2008	1.797	2.309	2.621	2.578	2.459	2.526	2.067	2.377	2.390	1.790	1.512	1.834	11.764	26.260
2009	771	759	1.034	1.342	1.355	1.651	1.156	1.205	1.780	866	981	2.015	5.261	14.915
2010	777	968	1.772	1.807	1.966	2.205	2.093	2.446	2.444	3.071	3.136	5.677	7.290	28.362
2011	2.552	3.292	4.418	3.754	3.803	3.749	1.996	2.478	3.081	2.774	3.108	5.787	17.819	40.792
2012	1.375	2.159	3.595	2.697	3.321	3.250	2.450	2.277	2.991	2.244	3.006	5.000	13.147	34.365
2013	1.077	1.931	3.127	2.720	3.145	2.951	2.411	1.845	2.554	1.801	3.173	5.025	12.000	31.760
2014	1.117	1.949	2.818	3.092	3.405	3.438	2.083	2.390	3.281	2.494	3.028	6.313	12.381	35.408
2015	1.705	2.841	5.270	3.208	3.190	3.824	2.463	1.798	2.244	1.848	2.902	6.540	16.214	37.833
2016	718	1.154	1.984	1.835	2.418								8.109	8.109

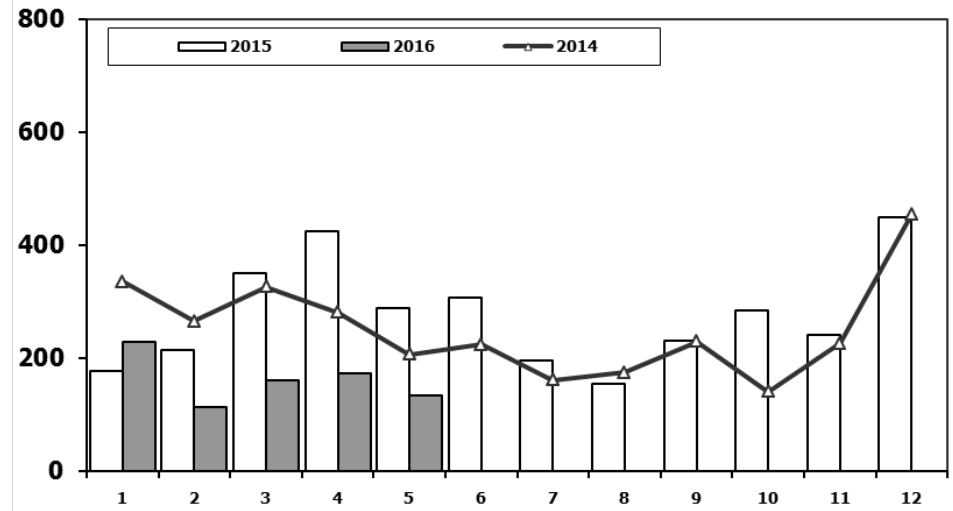
Midibüs Pazarının Analizi (7-9 mt / 25-35 Kişilik)

Midibus Market Analysis (7-9 mt / 25-35 Passengers)



Midibüs Pazarı (7-9 mt / 25-35 Kişilik Midibüs)

Midibus Market (7-9 mt / 25-35 Passengers)

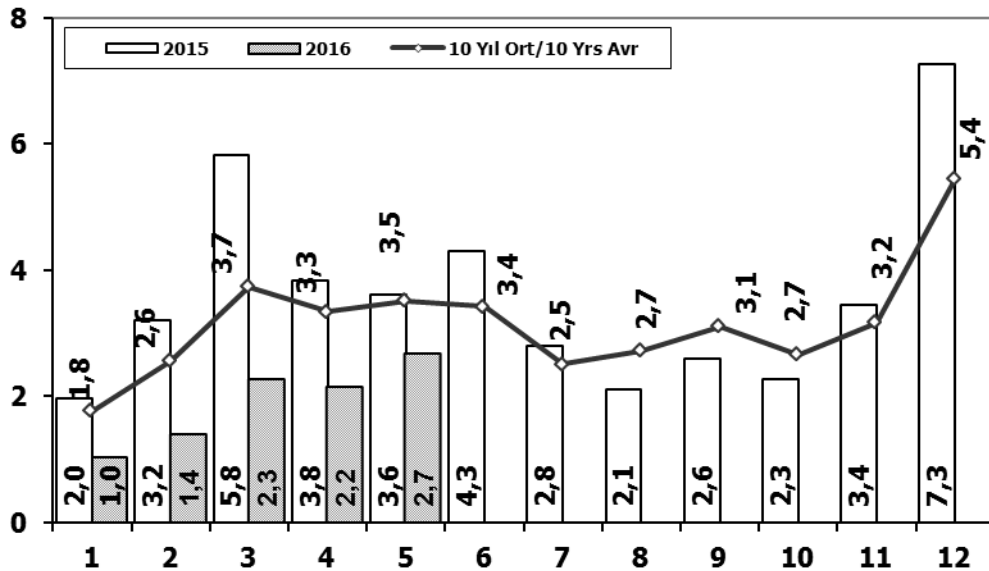


Aylar / Months	10 Yıl Ort. 10 Yrs Avr.	2016	%
1	213	229	7
2	250	112	-55
3	313	161	-49
4	305	172	-44
5	273	133	-51
Total	1.354	807	-40

	1	2	3	4	5	6	7	8	9	10	11	12	5 Ay/Mo	Total
2006	207	297	406	388	381	266	230	353	322	253	305	401	1.679	3.809
2007	207	272	404	238	302	283	164	365	399	279	283	465	1.423	3.661
2008	391	476	436	512	419	331	368	380	341	352	246	270	2.234	4.522
2009	154	124	160	220	174	198	160	175	168	143	206	323	832	2.205
2010	155	131	185	167	140	138	129	246	236	206	202	437	778	2.372
2011	138	195	294	316	280	258	211	305	301	276	260	270	1.223	3.104
2012	179	257	277	229	257	239	216	249	325	269	189	398	1.199	3.084
2013	191	268	289	276	283	241	367	235	305	392	415	697	1.307	3.959
2014	335	265	326	280	206	223	161	174	229	140	226	454	1.412	3.019
2015	177	213	350	425	288	306	195	154	231	283	240	450	1.453	3.312
2016	229	112	161	172	133							450	807	807

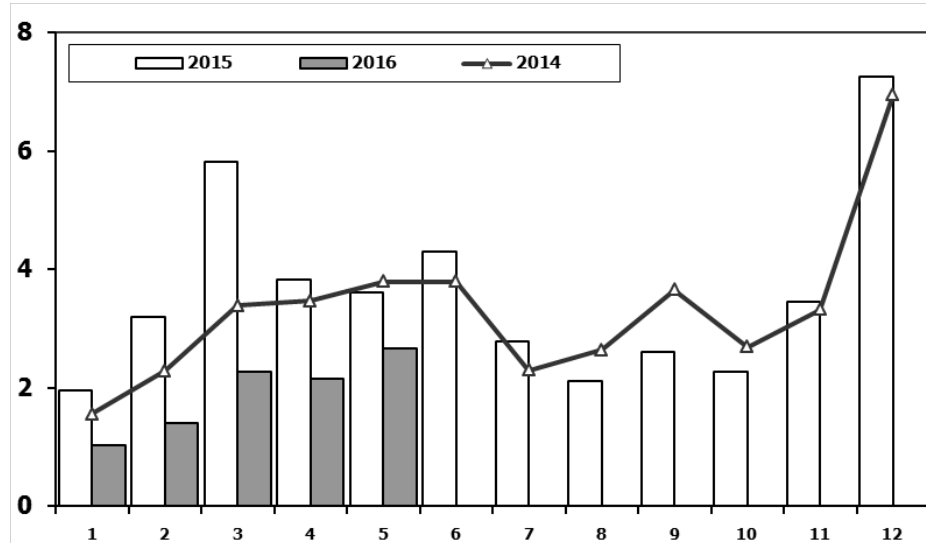
Ağır Ticari Araç Pazarının Analizi (x1000)

HCV Market Analysis (x1000)



Ağır Ticari Araç Pazarı (x1000)

HCV Market (x1000)

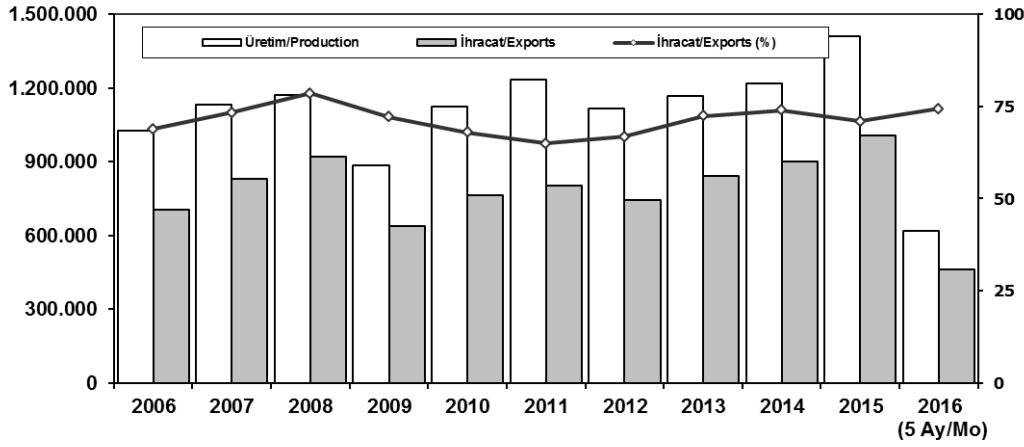


Aylar / Months	10 Yıl Ort. 10 Yrs Avr. (x1000)	2016 (x1000)	%
1	1,8	1,0	-42,0
2	2,6	1,4	-45,5
3	3,7	2,3	-39,4
4	3,3	2,2	-35,6
5	3,5	2,7	-23,9
Total	14,9	9,5	-36,3

	1	2	3	4	5	6	7	8	9	10	11	12	5 Ay/Mo	Total
2006	2.052	3.708	5.038	4.815	5.060	3.848	2.786	3.607	3.520	3.263	4.031	5.935	20.673	47.663
2007	1.833	2.518	3.598	3.267	3.317	2.987	2.627	3.613	3.497	3.333	3.704	5.150	14.533	39.444
2008	2.265	2.870	3.165	3.266	3.029	3.069	2.536	2.922	2.897	2.263	1.899	2.340	14.595	32.521
2009	1.025	1.104	1.420	1.786	1.696	2.035	1.401	1.483	2.006	1.084	1.240	2.463	7.031	18.743
2010	955	1.141	2.059	2.133	2.251	2.494	2.373	2.881	2.787	3.376	3.444	6.365	8.539	32.259
2011	2.766	3.685	4.930	4.376	4.447	4.290	2.320	2.972	3.514	3.219	3.538	6.371	20.204	46.428
2012	1.674	2.503	4.073	3.065	3.957	3.714	2.818	2.700	3.568	2.739	3.335	5.713	15.272	39.859
2013	1.617	2.624	3.914	3.440	3.953	3.675	3.130	2.340	3.074	2.385	3.716	5.878	15.548	39.746
2014	1.555	2.287	3.383	3.461	3.788	3.789	2.299	2.640	3.649	2.686	3.316	6.952	14.474	39.805
2015	1.961	3.202	5.819	3.829	3.603	4.305	2.789	2.106	2.597	2.265	3.442	7.259	18.414	43.177
2016	1.027	1.398	2.266	2.154	2.670								9.515	9.515

İhracat/Üretim (2006-2016) (Traktör dahil)

Exports/Production (2006-2016) (Including F. Tractor)



	2006	2007	2008	2009	2010	2011	2012	2013	2014	2015	2016 (5 Ay/Mo)
Üretim/Production	1.026.427	1.132.951	1.171.917	884.466	1.124.982	1.234.637	1.115.233	1.166.043	1.218.848	1.410.034	618.951
İhracat/Exports	706.402	829.879	920.763	637.855	763.670	801.112	745.354	843.467	902.194	1.007.267	460.064
İhracat/Exports (%)	69	73	79	72	68	65	67	72	74	71	74

Taşıt Araçları İhracatı (2014-2016)

Motor Vehicle Exports (2014-2016)

SEKTÖR/SECTOR	2014	2015	2015		2016/2015 (%)
			5 Ay-5 Mo		
OTOMOBİL/ P.Cars	581.993	604.683	247.301	275.650	11
TİCARİ ARAÇLAR / CV	303.187	387.652	146.355	178.070	22
* Kamyonet/Pick-Up	269.995	341.834	124.140	166.350	34
* Minibüs/Minibus	26.458	38.255	19.501	6.859	-65
* Kamyon/Truck	1.281	1.408	379	1.739	359
* Midibüs/Midibus	824	447	143	298	108
* Otobüs/Bus	4.629	5.708	2.192	2.824	29
TAŞIT ARAÇLARI /MV TOTAL	885.180	992.335	393.656	453.720	15
TRAKTÖR/F.TRACTOR	17.014	14.932	5.729	6.344	11
TOTAL	902.194	1.007.267	399.385	460.064	15

Otomotiv Ana ve Yan Sanayii İhracatı (ABD \$)

CBU and CKD Exports - \$

Sektör / Sector	2012	2013	2014	2015	2015		2016/2015 (%)
					Ocak-Mayıs / January-May		
Toplam Yan Sanayi/Total Component Industry	8.215.636.677	9.065.017.539	9.504.013.791	8.643.538.318	3.562.323.504	3.800.612.998	7%
İç ve Dış Lastik / Tyres	1.199.566.307,01	1.130.005.891,78	1.126.709.610,14	961.494.045	398.055.596	399.488.850	0%
Emniyet Camı / Safety Glasses	120.615.917,59	135.230.309,67	143.208.298,99	124.569.031	52.858.562	53.643.409	1%
Motor (Engine)	272.085.582,31	319.294.885,46	171.893.752,32	221.897.271	53.145.695	138.659.868	161%
Akümülatör / Batteries	249.831.846,25	306.451.449,47	289.101.198,21	220.618.374	79.777.778	77.228.397	-3%
Diğer Aksam ve Parça / Spare Parts&Components	6.373.537.023,45	7.174.035.002,35	7.773.100.931,83	7.114.959.599	2.978.485.873	3.131.592.473	5%
Toplam Ana Sanayi/Total Vehicle Industry	11.100.115.134	12.491.591.365	13.259.499.977	12.975.346.180	5.124.946.366	5.940.235.515	16%
Otobüs / Bus	855.424.303,62	937.790.962,87	985.983.007,01	1.024.134.143	400.695.550	523.178.498	31%
Midibüs-Minibüs / Minibus- Minibus	161.806.275,12	147.769.644,17	97.685.509,12	130.195.838	58.271.362	74.102.100	27%
Otomobil (P. Cars)	6.068.045.119,19	6.855.475.589,83	7.258.361.005,24	6.881.972.133	2.859.040.222	2.856.109.791	0%
Kamyon-Kamyonet/HCV-LCV	3.433.310.998,81	3.918.798.755,31	4.201.760.813,55	4.263.767.944	1.558.326.627	2.090.176.061	34%
Römork ve Yan Römork/Trailer-Semi Trailer	195.093.508,21	218.385.731,69	252.354.014,20	252.432.565	101.443.574	139.736.869	38%
Çekici/Truck-Tractor	71.336.634,88	77.907.406,95	38.396.524,81	48.108.959	13.191.756	99.230.487	652%
Tarım Traktörü/Farm Tractor	315.098.293,75	335.463.274,61	424.959.103,39	374.734.597	133.977.275	157.701.710	18%
Toplam/Total	19.315.751.810	21.556.608.904	22.763.513.769	21.618.884.498	8.687.269.870	9.740.848.513	12%

Kaynak: Uludağ İhracatçı Birlikleri . ÜİB tarafından OSD için özel olarak analiz edilen Otomotiv İhracatı kapsamında; ÜİB Türkiye Genel Otomotiv Endüstrisi sınıflandırmasına kıyasla "Römork ve Yan Römork", "Tarım Traktörü" verileri dahil edilmekte; "Kullanılmış Araçlar", "İki Tekerlekli Taşıtlar", "Demiryolu Taşıtları" hariç tutulmaktadır.

Firma Bazında İhracat (Adet)
Export Of member Companies (Unit)

FİRMALAR Companies	2014	2015	Ocak-Mayıs 5 Months	
			2015	2016
FORD OTOSAN	187.921	252.571	93.636	112.262
OYAK RENAULT	257.992	270.299	109.361	111.535
TOFAŞ	142.234	173.743	69.460	107.127
HYUNDAI ASSAN	179.793	201.276	81.870	89.930
TOYOTA	109.517	81.962	35.561	26.335
TÜRK TRAKTÖR	15.866	14.122	5.463	5.826
M. BENZ TÜRK	3.438	4.252	1.616	3.181
HONDA TÜRKİYE	1.560	2.220	746	965
KARSAN	37	3.067	318	877
MAN TÜRKİYE	937	1.493	721	785
HATTAT TARIM	1.148	810	266	518
TEMSA GLOBAL	423	441	84	281
OTOKAR	580	720	195	279
A.I.O.S.	748	291	88	163
GENEL TOPLAM	902.194	1.007.267	399.385	460.064

Kaynak: OSD

Sektör Bazında İhracat (\$)
Exports on Sectorial Basis

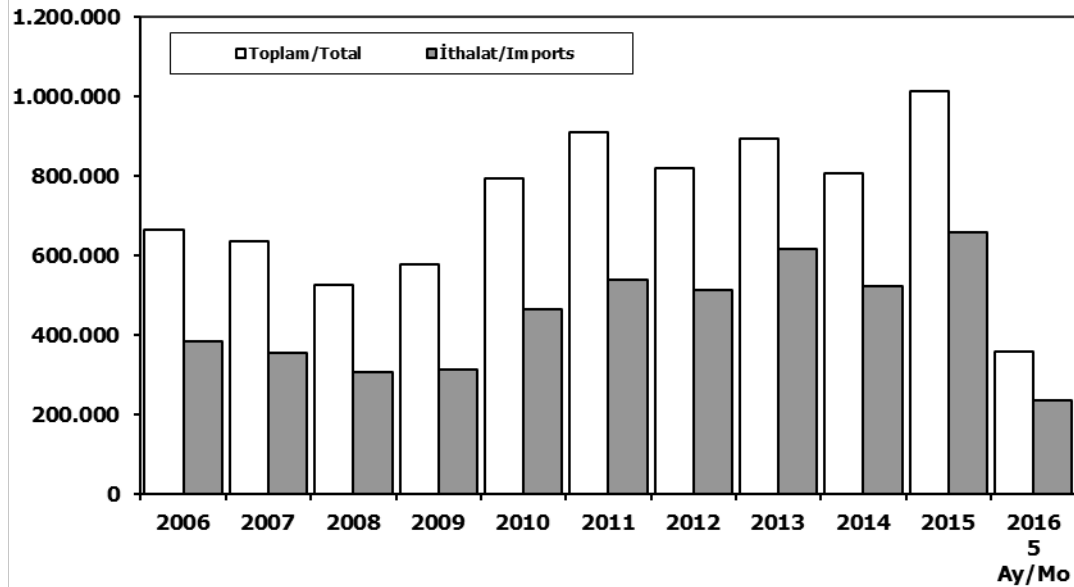
SEKTÖRLER	MAYIS				OCAK-MAYIS				SON 12 AYLIK			
	2015	2016	Değişim ('16/'15)	Pay(16) (%)	2015	2016	Değişim ('16/'15)	Pay(16) (%)	2015	2016	Değişim ('16/'15)	Pay(16) (%)
Otomotiv Endüstrisi	1.480.106	1.982.869	34	18	8.517.663	9.571.675	12	18	21.115.160	22.206.240	5	17
Hazırgiyim ve Konfeksiyon	1.342.581	1.426.372	6	13	6.699.517	7.202.086	8	13	17.600.341	17.458.727	-1	13
Kimyevi Maddeler ve Mamulleri	1.377.753	1.133.946	-18	11	6.533.919	5.687.341	-13	11	16.926.325	14.552.503	-14	11
Elektrik Elektronik ve Hizmet	826.084	809.618	-2	8	4.108.472	4.025.433	-2	7	11.189.336	10.389.133	-7	7
Çelik	790.370	757.126	-4	7	4.509.920	3.557.130	-21	6	11.772.027	8.928.968	-24	6
Tekstil ve Hammaddeleri	652.380	669.500	3	6	3.310.571	3.294.146	0	6	8.382.316	7.931.692	-5	6
Hububat, Bakliyat, Yağı Tohumlar ve Mamulleri	480.849	512.455	7	5	2.580.467	2.640.604	2	5	6.372.920	6.187.821	-3	5
Demir ve Demir Dışı Metaller	518.542	504.563	-3	5	2.583.661	2.483.727	-4	4	6.627.691	6.130.678	-7	4
Makine ve Aksamları	411.876	456.631	11	4	2.252.671	2.235.536	-1	4	5.771.162	5.506.611	-5	4
Mobilya, Kağıt ve Orman Ürünleri	328.956	359.921	9	3	1.657.716	1.691.855	2	3	4.289.299	4.109.435	-4	3
TOPLAM (TİM+TÜİK*)	10.780.631	10.794.067	0	100	61.484.193	57.475.272	-7	100	151.908.094	139.835.279	-8	100

Kaynak: TİM

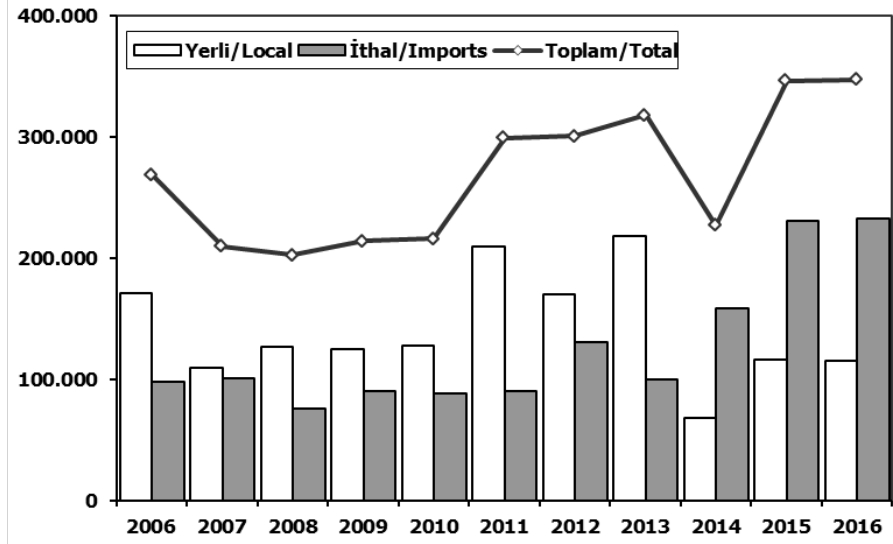
First 3 Sectors:

- 1- Automotive Industry
- 2- Ready Wear and Confection
- 3-Chemical Articles and Products

Toplam Pazar (Otomobil+T.Araç) Total Market (P.Cars+C.V)



Hafif Araçlar Pazarı (2006-2016 Ocak-Mayıs) LV Market (2006-2016 January-May)

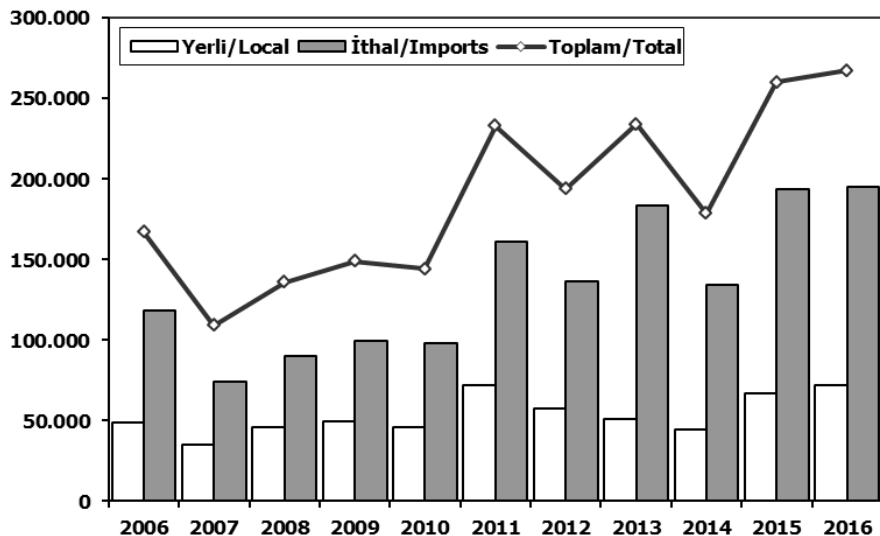


	2006	2007	2008	2009	2010	2011	2012	2013	2014	2015	2015 5 Ay/Mo	2016 5 Ay/Mo
Toplam/Total	665.515	634.206	526.544	575.869	793.172	910.867	817.620	893.124	807.486	1.011.194	364.806	356.792
İthalat/Imports	382.460	355.752	306.087	313.921	465.408	538.532	511.694	615.609	522.842	658.690	236.008	236.361
İthalat/Imports (%)	57	56	58	55	59	59	63	69	65	65	65	66

	2006	2007	2008	2009	2010	2011	2012	2013	2014	2015	2016
Yerli/Local	170.660	108.978	127.032	124.382	127.710	209.608	170.007	218.313	67.992	115.859	114.573
İthalat/Imports	97.878	100.514	75.517	89.694	87.908	89.649	130.691	99.558	158.706	230.533	232.704
Toplam/Total	268.538	209.492	202.549	214.076	215.618	299.257	300.698	317.871	226.698	346.392	347.277
İthalat/Imports (%)	36	48	37	42	41	30	43	31	70	65	67

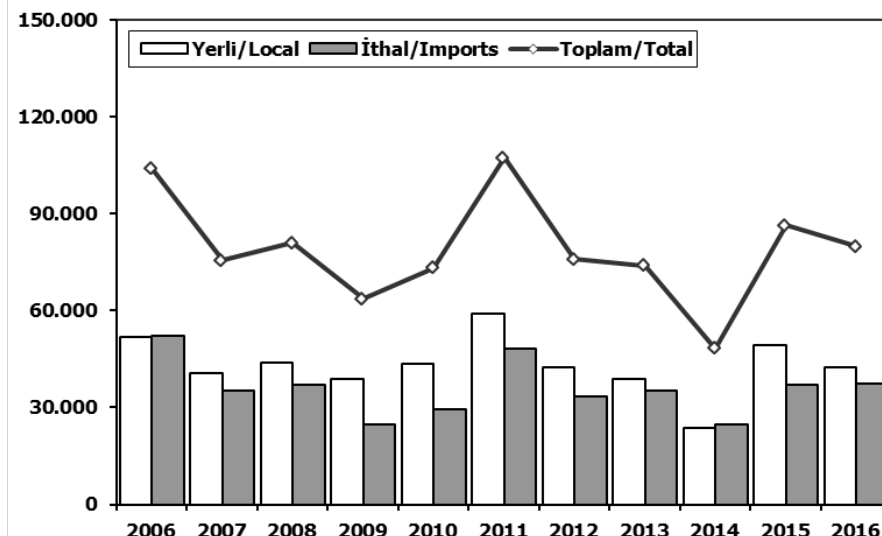
Otomobil Pazarı (2006-2016 Ocak-Mayıs)

P.Cars Market (2006-2016 January-May)



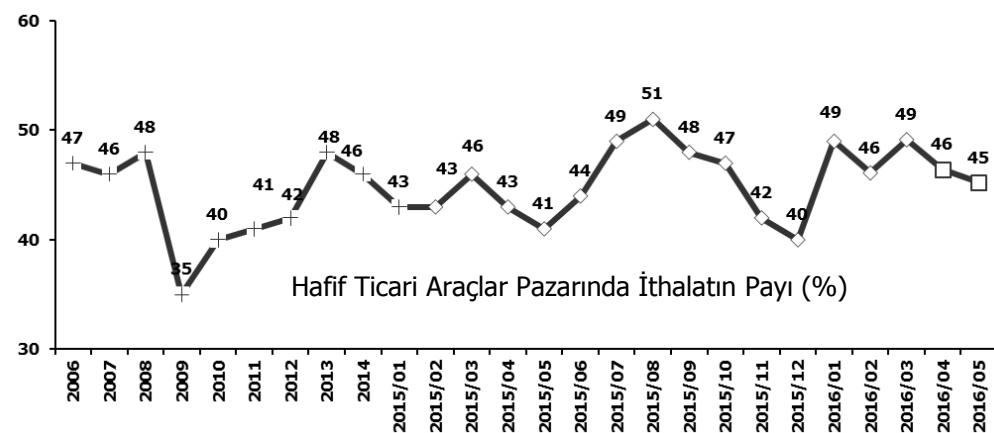
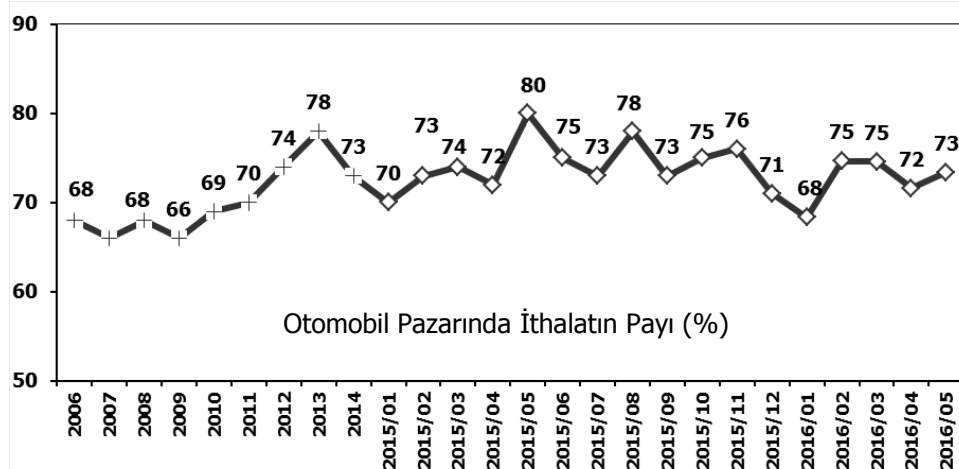
Hafif Ticari Araçlar Pazarı (2006-2016 Ocak-Mayıs)

Light Commercial Vehicle Market (2006-2016 January-May)



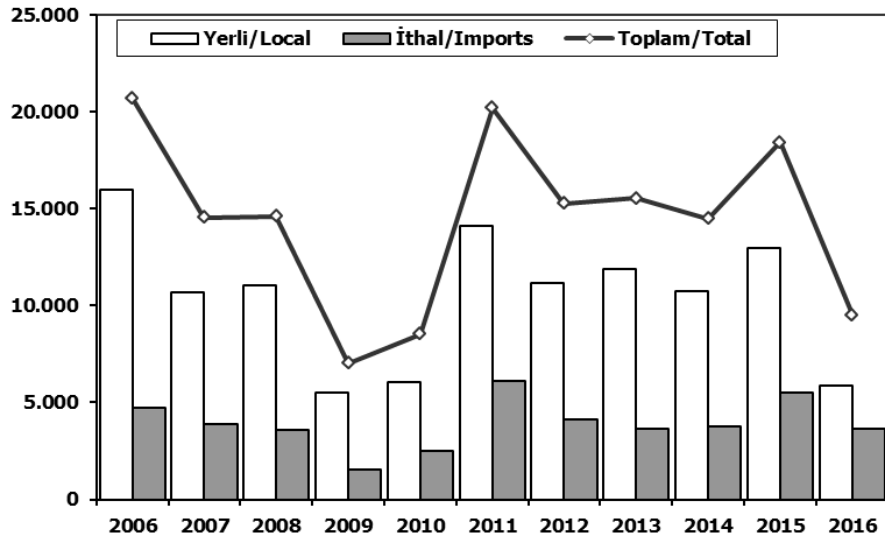
	2006	2007	2008	2009	2010	2011	2012	2013	2014	2015	2016
Yerli/Local	48.681	35.047	45.725	49.154	46.102	71.737	57.141	50.678	44.465	66.708	72.190
İthal/Imports	118.448	73.958	89.996	99.523	98.117	161.295	136.500	183.138	134.030	193.372	195.181
Toplam/Total	167.129	109.005	135.721	148.677	144.219	233.032	193.641	233.816	178.495	260.080	267.371
İthalat/Imports (%)	71	68	66	67	68	69	70	78	75	74	73

	2006	2007	2008	2009	2010	2011	2012	2013	2014	2015	2016
Yerli/Local	51.833	40.470	43.969	38.754	43.547	58.954	42.417	38.656	23.527	49.151	42.383
İthal/Imports	52.212	35.020	37.036	24.859	29.593	48.313	33.507	35.175	24.676	37.161	37.523
Toplam/Total	104.045	75.490	81.005	63.613	73.140	107.267	75.924	73.831	48.203	86.312	79.906
İthalat/Imports (%)	50	46	46	39	40	45	44	48	51	43	47



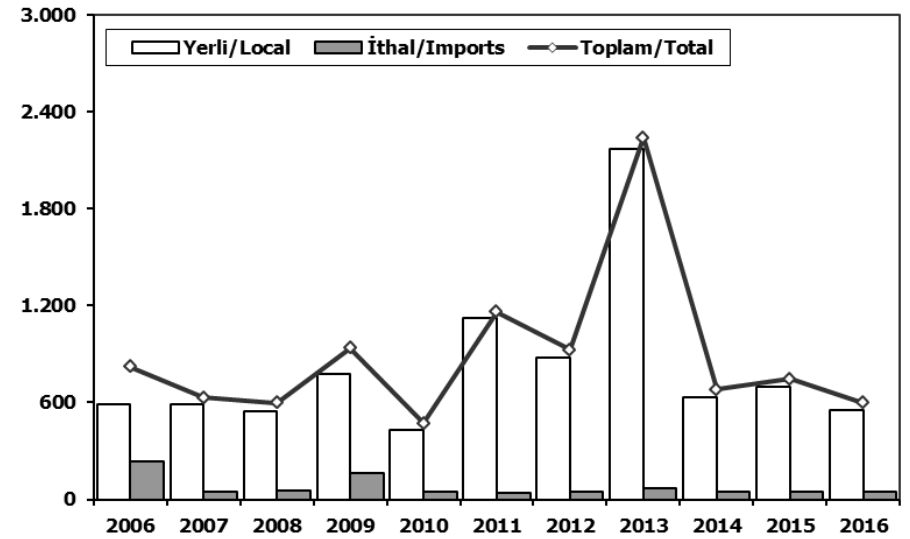
Ağır Ticari Araçlar Pazarı (2006-2016 Ocak-Mayıs)

HCV Market (2006-2016 January-May)



Otobüs Pazarı (2006-2016 Ocak-Mayıs)

Bus Market (2006-2016 January-May)

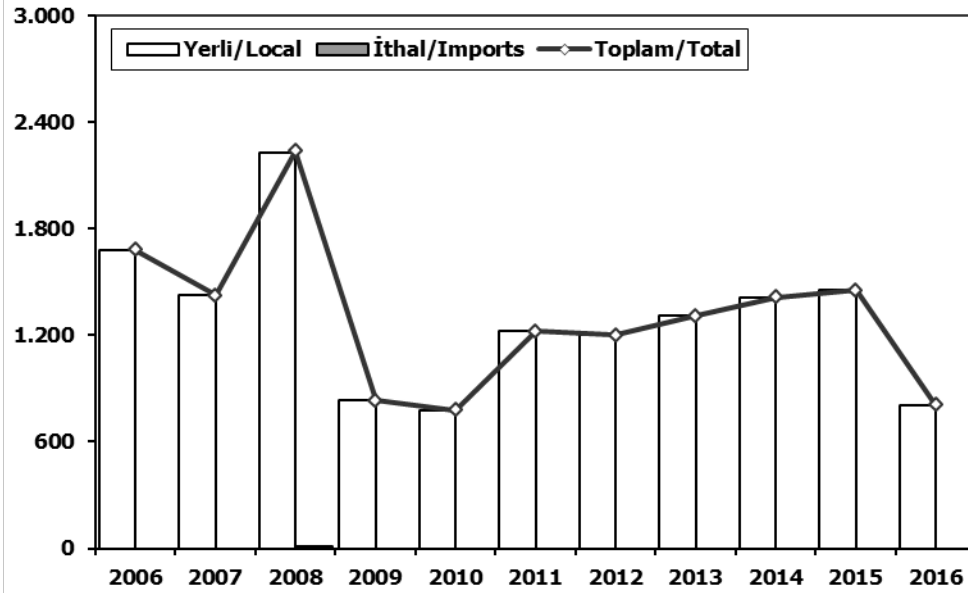


	2006	2007	2008	2009	2010	2011	2012	2013	2014	2015	2016
Yerli/Local	15.965	10.662	11.046	5.482	6.026	14.101	11.162	11.901	10.725	12.939	5.858
İthal/Imports	4.708	3.871	3.549	1.549	2.513	6.103	4.110	3.647	3.749	5.475	3.657
Toplam/Total	20.673	14.533	14.595	7.031	8.539	20.204	15.272	15.548	14.474	18.414	9.515
İthalat/Imports (%)	23	27	24	22	29	30	27	23	26	30	38

	2006	2007	2008	2009	2010	2011	2012	2013	2014	2015	2016
Yerli/Local	587	585	546	779	426	1.124	877	2.171	631	697	549
İthal/Imports	234	46	51	159	45	38	49	70	50	50	50
Toplam/Total	821	631	597	938	471	1.162	926	2.241	681	747	599
İthalat/Imports (%)	29	7	9	17	10	3	5	3	7	7	8

Midibüs Pazarı (2006-2016 Ocak-Mayıs) (7-9 mt / 25-35 Kişilik)

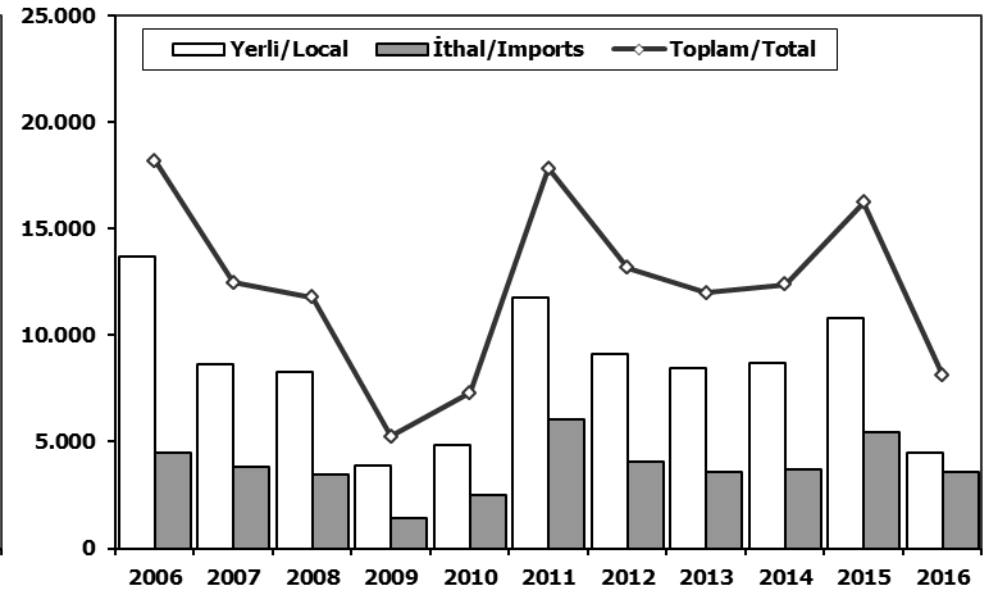
Midibus Market (2006-2016 January-May) (7-9 mt / 25-35 Passengers)



	2006	2007	2008	2009	2010	2011	2012	2013	2014	2015	2016
Yerli/Local	1.679	1.423	2.224	832	778	1.223	1.199	1.307	1.412	1.453	807
İthal/Imports	0	0	10	0	0	0	0	0	0	0	0
Toplam/Total	1.679	1.423	2.234	832	778	1.223	1.199	1.307	1.412	1.453	807
İthalat/Imports (%)	0	0	0	0	0	0	0	0	0	0	0

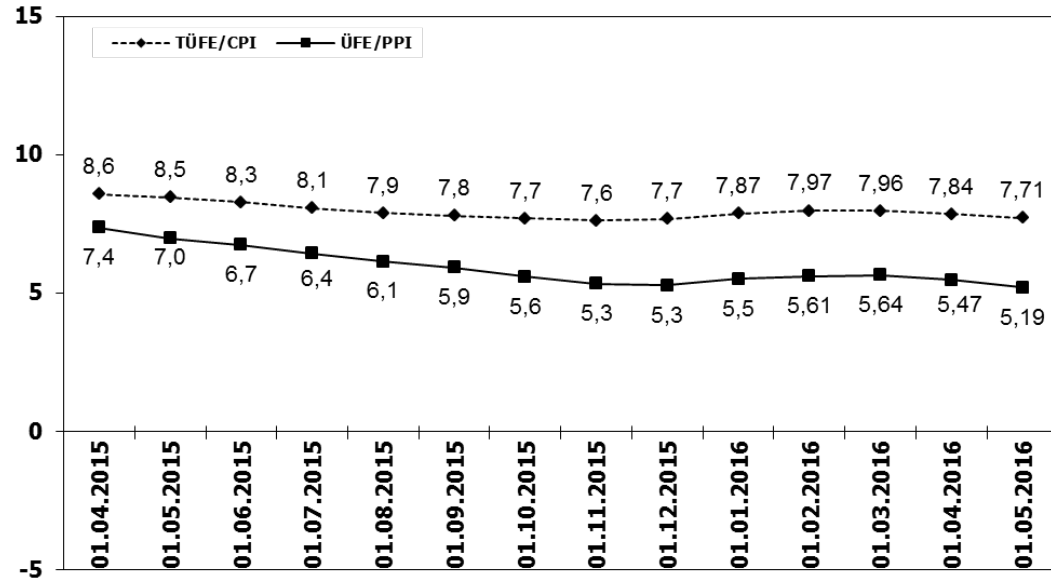
Kamyon Pazarı (2006-2016 Ocak-Mayıs)

Truck Market (2006-2016 January-May)

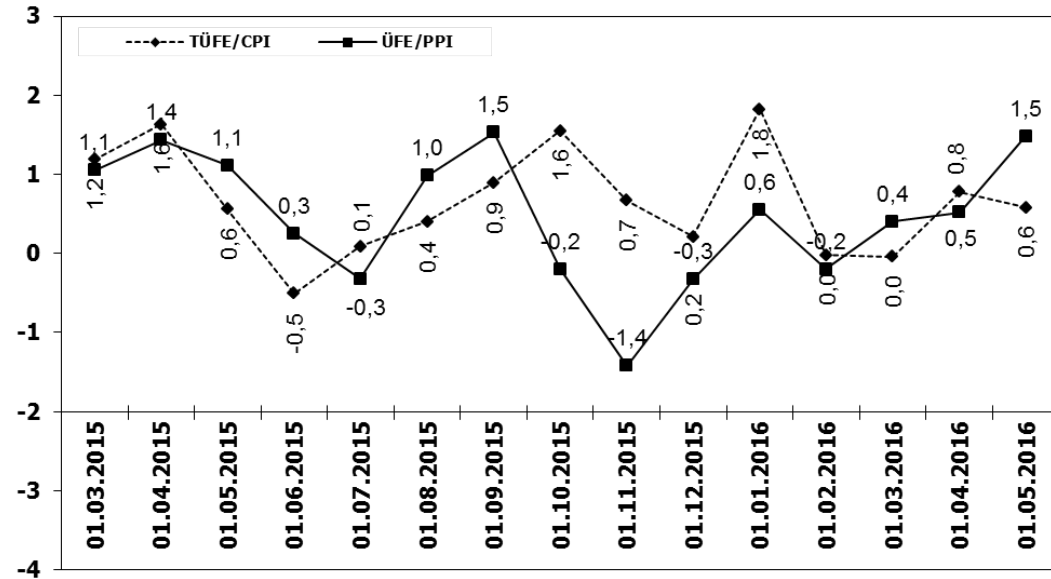


	2006	2007	2008	2009	2010	2011	2012	2013	2014	2015	2016
Yerli/Local	13.699	8.654	8.276	3.871	4.822	11.754	9.086	8.423	8.682	10.789	4.502
İthal/Imports	4.474	3.825	3.488	1.390	2.468	6.065	4.061	3.577	3.699	5.425	3.607
Toplam/Total	18.173	12.479	11.764	5.261	7.290	17.819	13.147	12.000	12.381	16.214	8.109
İthalat/Imports (%)	25	31	30	26	34	34	31	30	30	33	44

TÜFE ve ÜFE'nin Yıllık Değişimi (%) CPI and PPI Yearly Changes (%)



TÜFE ve ÜFE'nin Aylık Değişimi (%) CPI and PPI Monthly Changes (%)



2016 Yılı İthal Hafif Araç Satışları 2016 Light Vehicles Import Sales

2016 YILI İTHAL OTOMOBİL SATIŞLARI / P.Cars Import 2016

	2015 TOPLAMI 2015 Total	1	2	3	4	5	6	7	8	9	10	11	12	2016 TOPLAMI 2016 Total
VOLKSWAGEN	107.401	2.792	5.763	8.197	7.811	9.597								34.160
OPEL	47.000	1.263	2.521	3.936	4.775	5.754								18.249
FORD	43.341	972	2.733	3.347	3.141	3.231								13.424
DACIA	37.257	1.235	1.963	3.402	3.555	4.179								14.334
RENAULT	32.683	1.258	2.007	4.030	3.336	3.983								14.614
B.M.W	31.221	496	2.042	2.080	2.332	3.174								10.124
MERCEDES BENZ	30.333	1.091	1.701	2.480	2.305	3.080								10.657
NISSAN	26.421	971	1.534	2.989	2.684	2.546								10.724
HYUNDAI	25.164	1.148	1.499	2.651	2.344	2.649								10.291
PEUGEOT	22.808	540	1.730	2.526	1.557	2.349								8.702
SKODA	22.107	715	1.435	2.640	2.663	2.787								10.240
AUDI	20.279	911	1.200	1.455	2.148	2.352								8.066
SEAT	16.911	502	853	1.443	2.130	1.726								6.654
CITROEN	16.520	394	366	1.562	1.684	1.929								5.935
KIA	13.873	263	574	1.080	1.461	979								4.357
TOYOTA	10.949	123	411	631	611	862								2.638
VOLVO	6.939	187	194	311	335	512								1.539
HONDA	5.413	366	669	1.077	535	629								3.276
FIAT	5.241	162	247	336	278	266								1.289
JEEP	3.507	92	161	204	188	187								832
MAZDA	1.761	50	67	114	157	171								559
MINI (İngiliz)	1.739	101	74	134	166	161								636
SUBARU	1.737	73	112	152	148	165								650
LAND ROVER	1.577	46	131	318	186	200								881
MITSUBISHI	1.366	39	71	53	48	79								290
PORSCHE	861	55	40	55	59	61								270
ALFA ROMEO	847	12	75	149	58	68								362
SSANGYONG	605	19	23	37	34	76								189
PROTON	500	10	7	10	12	12								51
CHERY	394	30	23	12	9	22								96
JAGUAR	336	20	25	34	31	33								143
SUZUKI	177	7	0	194	151	332								684
TATA	168	0	0	0	0	0								0
SMART	88	0	0	16	13	24								53
MASERATI	73	1	6	1	5	3								16
INFINITI	43	0	0	0	4	6								10
GEELY	25	0	0	0	0	0								0
BENTLEY	19	0	1	0	0	1								2
LEXUS	13	0	0	6	7	2								15
FERRARI	10	3	1	0	4	3								11
LAMBORGHINI	6	0	1	0	1	0								2
LANCIA	2	0	0	0	0	0								0
ASTON MARTIN	0	2	1	2	4	4								13
DS	0	8	34	42	35	24								143
TOPLAM	537.715	15.957	30.295	47.706	47.005	54.218	0	0	0	0	0	0	0	195.181

2016 YILI İTHAL HAFİF TİCARİ ARAÇ SATIŞLARI / Light Commercial Vehicles Import 2016

	2015 TOPLAMI 2015 Total	1	2	3	4	5	6	7	8	9	10	11	12	2016 TOPLAMI 2016 Total
VOLKSWAGEN	31.642	1.736	2.391	3.096	2.674	2.839								12.736
RENAULT	15.617	451	602	983	1.442	1.466								4.944
FIAT	9.072	272	374	615	333	343								1.937
MERCEDES BENZ	8.457	360	549	925	671	684								3.189
PEUGEOT	8.212	467	284	471	835	532								2.589
DACIA	7.555	221	228	380	512	572								1.913
CITROEN	6.511	207	213	752	670	398								2.240
KIA	4.110	155	196	387	324	464								1.526
FORD	4.028	85	189	298	255	428								1.255
MITSUBISHI	3.897	324	151	312	329	220								1.336
TOYOTA	2.928	34	178	514	402	549								1.677
IVECO	2.710	88	131	173	163	246								801
HYUNDAI	1.612	71	117	138	163	186								675
ISUZU	333	57	34	90	25	23								229
SSANGYONG	303	3	5	16	19	31								74
TATA	228	9	0	0	0	0								9
NISSAN	7	0	0	175	126	92								393
MAZDA	0	0	0	0	0	0								0
TOPLAM	107.222	4.540	5.642	9.325	8.943	9.073	0	0	0	0	0	0	0	37.523