



OTOMOTİV SANAYİ DERNEĞİ
AUTOMOTIVE MANUFACTURERS ASSOCIATION

AYLIK RAPOR

Automotive Industry Monthly Report

Şubat / February 2016

- **Üretim/Production**
- **Satış/Sales**
- **İthalat/Imports**
- **İhracat/Exports**

OSD "OICA" Üyesidir



OSD is a Member of "OICA"

2016 Şubat Ayı Özeti / 2016 February Summary

		ŞUBAT / FEBRUARY			2 AY/ 2 MONTHS			SON 12 AYLIK / YoY		
		2015	2016	2016/2015 (%)	2015	2016	2016/2015 (%)	2015	2016	2016/2015 (%)
Üretim/Production	Toplam/Total	109.012	120.691	11	211.586	218.280	3	1.114.837	1.244.799	12
	Otomobil/P.Cars	65.238	72.740	11	125.652	130.945	4	753.835	796.320	6
Pazar/Market	Toplam/Total	58.533	54.223	-7	95.109	87.963	-8	772.529	949.815	23
	Otomobil/P.Cars	40.817	40.588	-1	65.315	63.946	-2	601.111	724.227	20
İthalat/Import	Toplam/Total	36.780	36.621	0	58.737	57.587	-2	498.758	620.919	24
	Otomobil/P.Cars	29.699	30.295	2	46.801	46.252	-1	438.053	537.166	23
İhracat/Export	Toplam/Total	80.594	98.682	22	159.882	167.482	5	843.899	901.253	7
	Otomobil/P.Cars	51.237	60.149	17	99.770	98.770	-1	599.289	603.683	1
İhracat / Export (\$)	Toplam/Total **	1.748.562.945	2.027.577.193	16	3.506.385.666	3.575.002.368	2	22.780.467.424	21.436.001.482	-6
	Otomobil/P.Cars	562.654.718	581.958.082	3	1.142.551.261	958.093.217	-16	7.310.769.960	6.701.571.438	-8

PARAMETRELER / PARAMETERS		ŞUBAT / FEBRUARY			2 AY/ 2 MONTHS			SON 12 AYLIK / YoY		
		2015	2016	2016/2015 (%)	2015	2016	2016/2015 (%)	2015	2016	2016/2015 (%)
ÜFE/PPI		1,20	-0,20	**	1,53	0,34	**	3,10	5,61	**
TÜFE/CPI		0,71	-0,02	**	1,82	1,80	**	7,55	7,97	**
Sanayi Endeksi/Industry Index		1,45	0,15	**	1,64	0,70	**	3,98	6,27	**
\$ (*)		2,5059	2,9621	18	2,4609	2,9558	20	2,2276	2,8137	26
EURO (*)		2,8128	3,2242	15	2,7753	3,2212	16	2,8436	3,0923	9
Japon Yeni (*)		2,0885	2,5184	21	2,0649	2,4826	20	2,0345	2,3133	14

(*) Ortalama Değerler / Average Values

(**) Toplam Sanayi / Total Industry Including Components

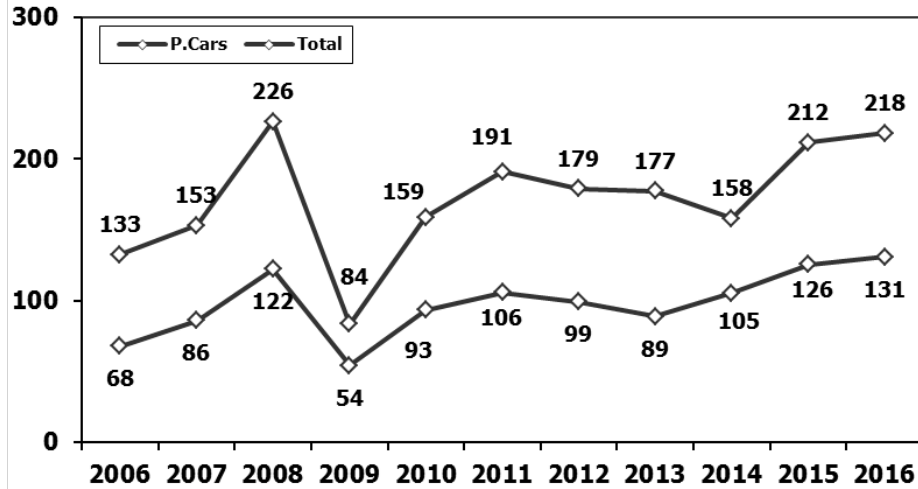
2015/2016 Yılları Üretim 2015/2016 Production

K.KAMYON : AYA 3.5-12 Ton (L.Truck:GVW 3.5-12 Ton)

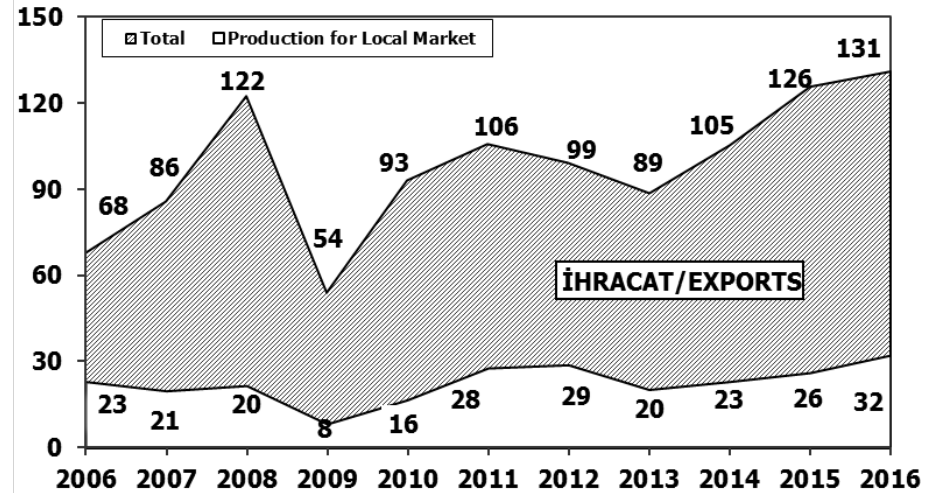
B.KAMYON : AYA 12 Ton'dan Büyük (M.Truck:GVW 12 Ton And Up)

TİPLER-Types	ŞUBAT AYI ÜRETİMİ FEBRUARY Production		2 AYLIK ÜRETİM 2 Months Production		DEĞİŞİM % Percent Change %	
	2015 YILI	2016 YILI	2015 YILI	2016 YILI	ŞUBAT FEBRUARY	2 AY 2 Months
Otomobil - Pass.Car	65.238	72.740	125.652	130.945	11	4
TİCARİ ARAÇLAR TOPLAM - CV Total	43.774	47.951	85.934	87.335	10	2
B.Kamyon - M.Truck	2.347	976	4.851	1.365	-58	-72
K.Kamyon - L.Truck	202	0	473	5	-100	-99
Kamyonet - Pick Up	35.062	44.637	69.354	81.574	27	18
Otobüs - Bus	602	711	1.237	1.300	18	5
Minibüs - Minibus	5.058	1.388	9.012	2.778	-73	-69
Midibüs - Midibus	503	239	1.007	313	-52	-69
TAŞIT ARAÇLARI TOPLAM - MV Total	109.012	120.691	211.586	218.280	11	3
Traktör - F.Tractor	4.367	4.680	7.971	8.707	7	9
GENEL TOPLAM - Grand Total	113.379	125.371	219.557	226.987	11	3

Toplam Üretim ve Otomobil Üretimi (x1000) (Ocak-Şubat)
Total & P.Cars Production (x1000) (January-February)

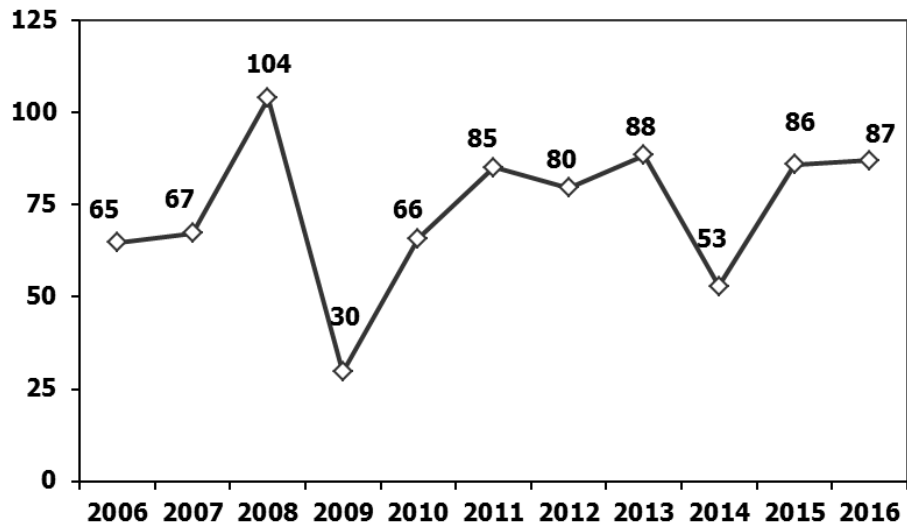


Otomobil Üretimi ve İhracat (x1000) (Ocak-Şubat)
P.Cars Production & Exports (x1000) (January-February)



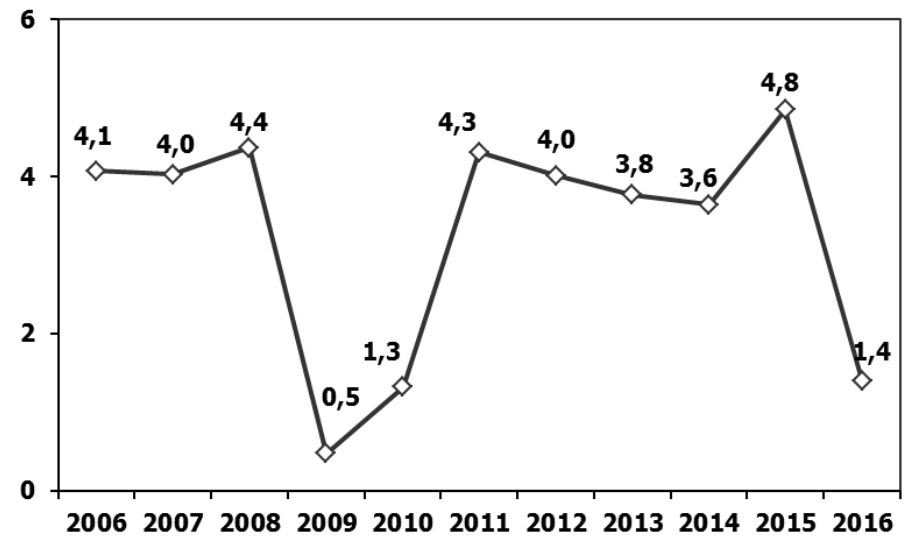
Ticari Araç Üretimi (x1000) (Ocak-Şubat)

Commercial Vehicle Production (x1000) (January-February)



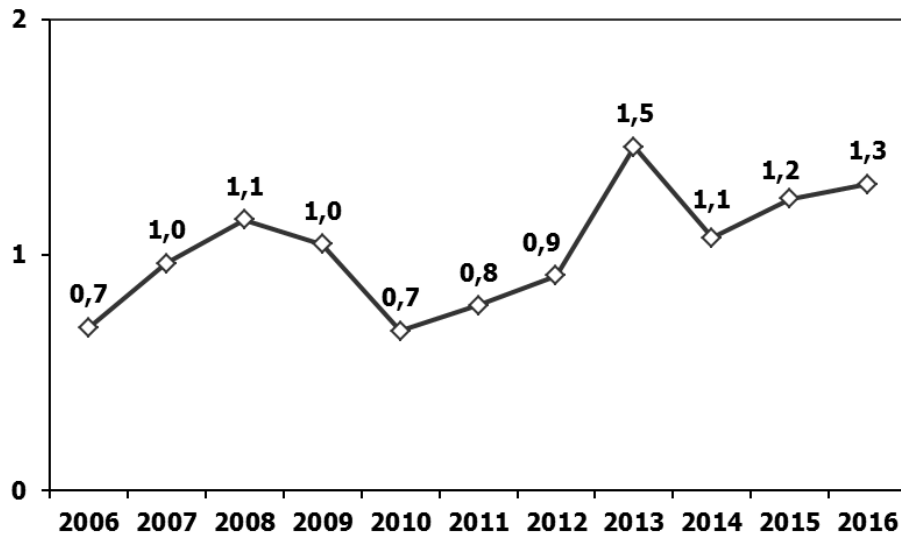
(AYA >12 Ton) Büyük Kamyon Üretimi (x1000) (Ocak-Şubat)

(GVW >12 Ton) Heavy Truck Production (x1000) (January-February)



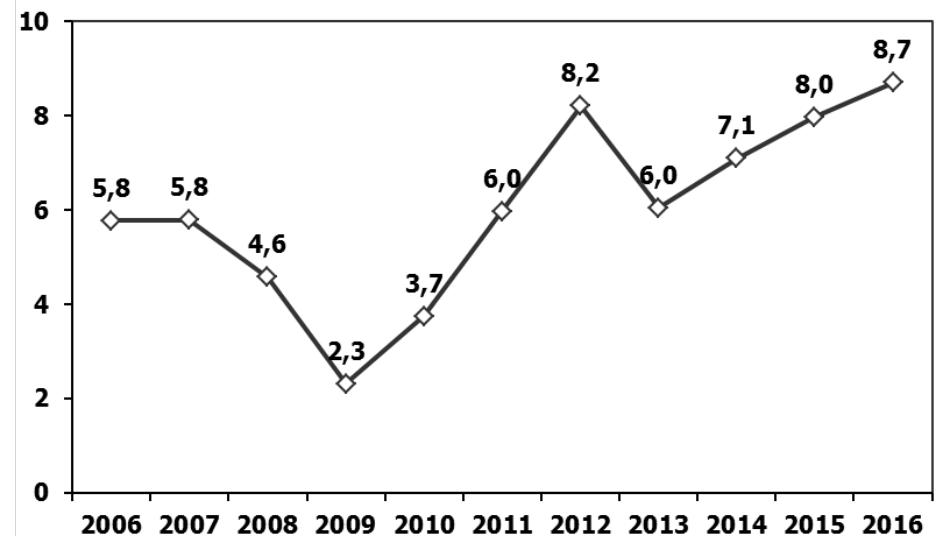
Otobüs Üretimi (x1000) (Ocak-Şubat)

Bus Production (x1000) (January-February)



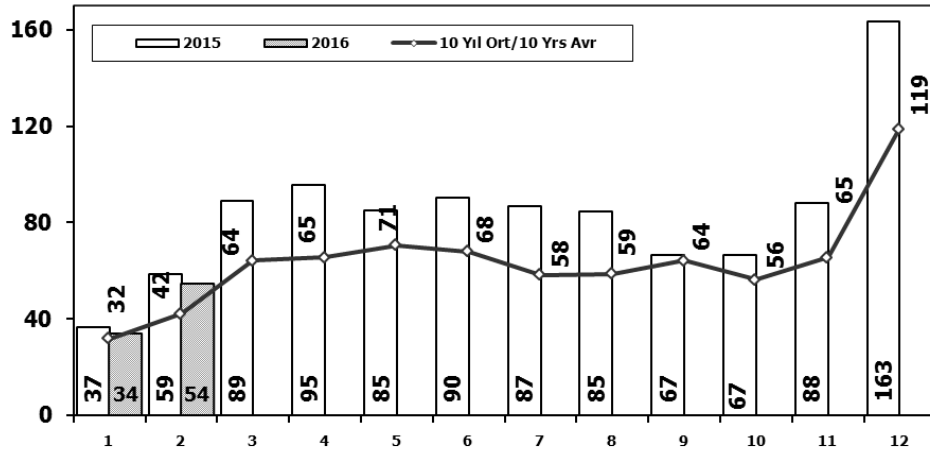
Traktör Üretimi (x1000) (Ocak-Şubat)

F. Tractor Production (x1000) (January-February)



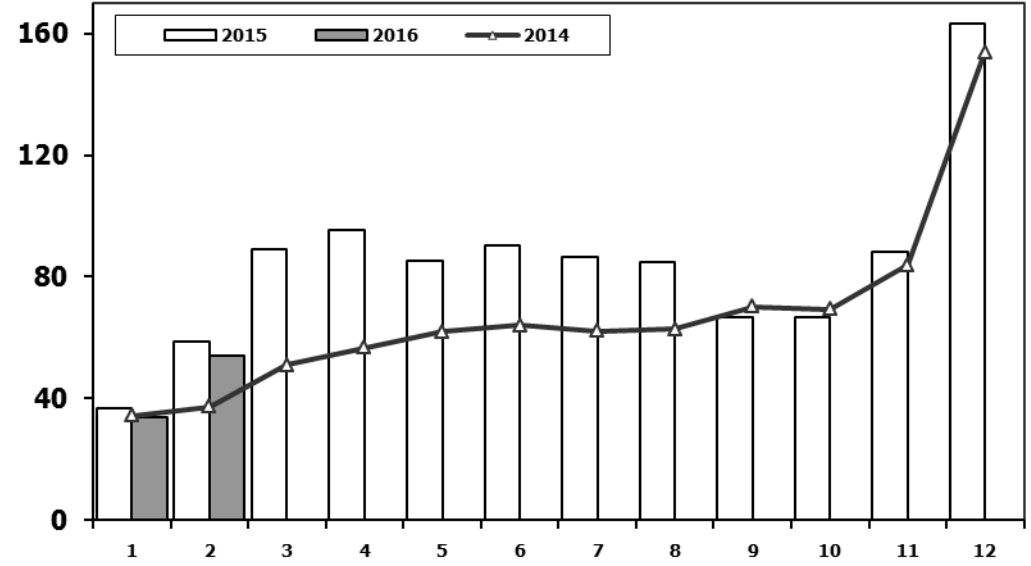
Toplam Pazarın Analizi (x1000)

Total Market Analysis (x1000)



Toplam Pazar (x1000)

Total Market (x1000)

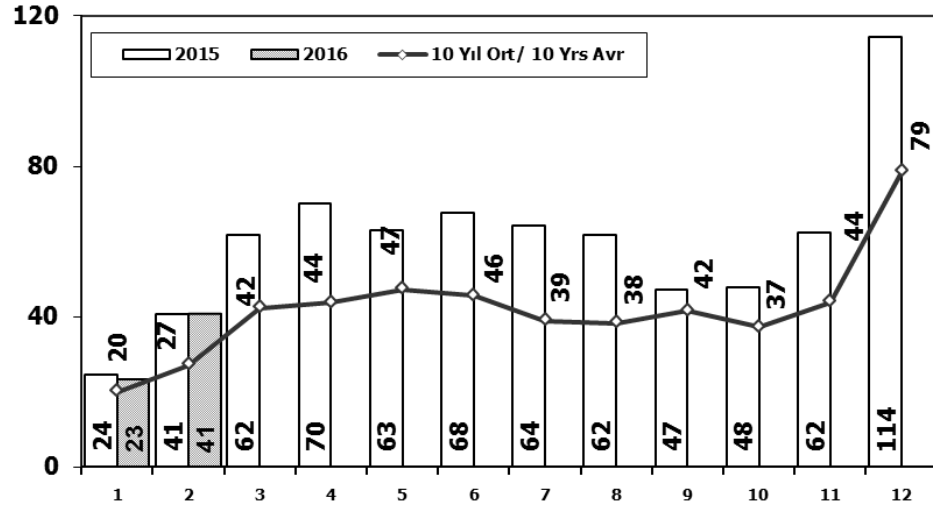


Aylar / Months	10 Yil Ort. 10 Yrs Avr. (x1000)	2016 (x1000)	%
1	31,7	33,7	6,4
2	42,3	54,5	28,9
Total	74,0	88,2	19,2

	1	2	3	4	5	6	7	8	9	10	11	12	2 Ay/Mo	Total
2006	29.969	44.646	65.090	68.853	83.289	58.203	40.037	47.374	49.629	39.805	55.898	82.722	74.615	665.515
2007	24.950	31.702	45.488	45.633	51.255	51.661	50.117	54.171	50.078	56.058	67.017	106.076	56.652	634.206
2008	33.792	38.121	56.814	50.967	51.627	49.393	44.692	46.592	46.829	35.147	28.152	44.418	71.913	526.544
2009	20.631	22.846	56.531	54.426	64.887	63.102	30.246	37.092	83.403	22.117	29.202	91.386	43.477	575.869
2010	21.050	32.313	53.828	57.079	61.628	63.390	63.718	64.645	66.601	76.780	77.406	154.734	53.363	793.172
2011	47.658	62.348	83.333	82.071	85.093	85.863	65.364	61.378	63.643	72.640	67.195	134.281	110.006	910.867
2012	31.219	43.827	68.957	66.014	74.820	74.781	65.122	60.848	73.197	62.677	75.045	121.113	75.046	817.620
2013	37.140	50.931	72.688	77.015	85.421	77.771	74.726	67.383	71.037	60.399	83.017	135.596	88.071	893.124
2014	34.225	37.308	50.964	56.766	61.909	63.952	62.206	62.839	70.180	69.259	83.937	153.941	71.533	807.486
2015	36.576	58.533	89.121	95.431	85.145	90.463	86.625	84.683	66.622	66.520	88.043	163.432	95.109	1.011.194
2016	33.740	54.223	0	0	0	0	0	0	0	0	0	0	87.963	87.963

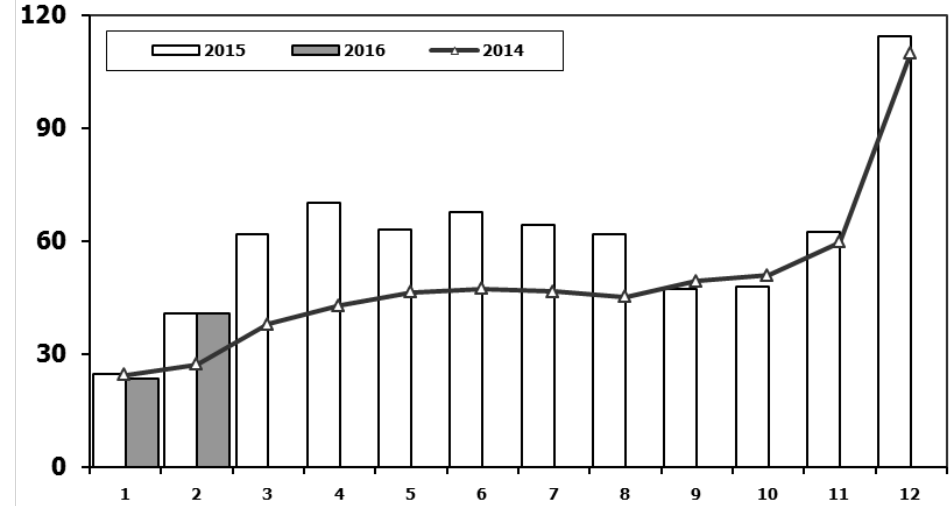
Otomobil Pazarının Analizi (x1000)

P.Cars Market Analysis (x1000)



Otomobil Pazarı (x1000)

P.Cars Market (x1000)

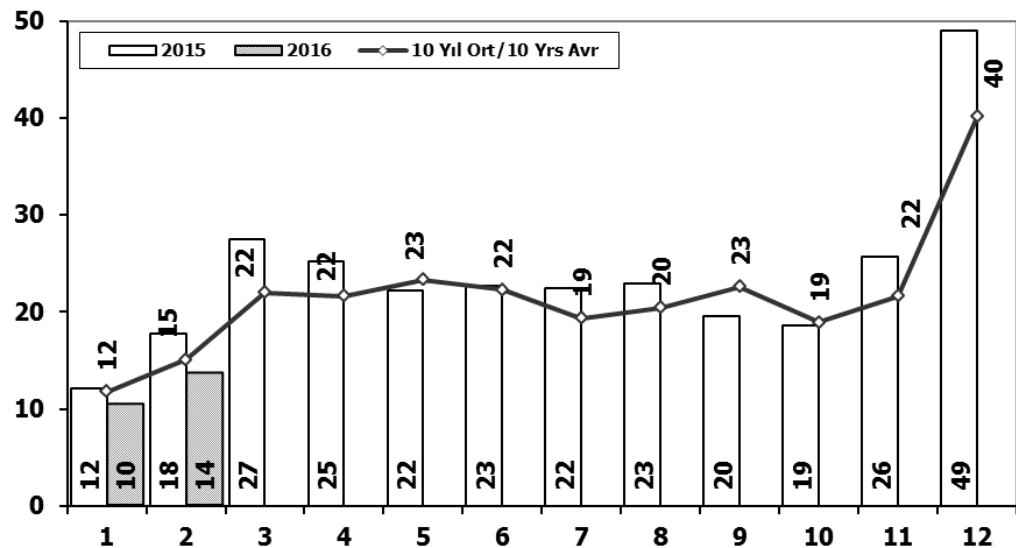


Aylar / Months	10 Yil Ort. 10 Yrs Avr. (x1000)	2016 (x1000)	%
1	20,0	23,4	17,0
2	27,1	40,6	49,5
Total	47,1	63,9	35,7

	1	2	3	4	5	6	7	8	9	10	11	12	2 Ay/Mo	Total
2006	16.506	24.929	36.996	40.177	48.521	32.982	22.653	24.873	27.517	21.237	30.477	46.351	41.435	373.219
2007	13.186	17.212	24.336	25.204	29.067	30.126	28.246	28.469	27.662	32.569	39.643	61.745	30.398	357.465
2008	18.588	21.196	34.147	30.313	31.477	28.724	25.530	26.102	27.053	19.788	17.201	25.879	39.784	305.998
2009	13.173	14.492	40.622	36.202	44.188	41.019	16.637	22.537	52.162	13.828	17.781	57.178	27.665	369.819
2010	12.594	20.651	33.958	36.549	40.467	42.086	41.399	42.222	42.477	47.859	50.061	99.461	33.245	509.784
2011	29.868	39.004	54.023	53.835	56.302	56.714	43.518	38.875	39.964	47.508	44.951	88.957	68.872	593.519
2012	21.077	29.189	47.270	45.645	50.460	50.849	44.531	41.236	49.360	43.440	52.297	80.926	50.266	556.280
2013	25.835	36.814	51.785	56.999	62.383	58.290	55.712	51.611	52.925	46.985	64.117	101.199	62.649	664.655
2014	24.368	27.167	37.812	42.769	46.379	47.278	46.602	45.131	49.262	50.814	59.695	110.054	51.535	587.331
2015	24.498	40.817	61.676	70.211	62.878	67.766	64.218	61.753	47.088	47.954	62.397	114.340	65.315	725.596
2016	23.358	40.588	0	0	0	0	0	0	0	0	0	0	63.946	63.946

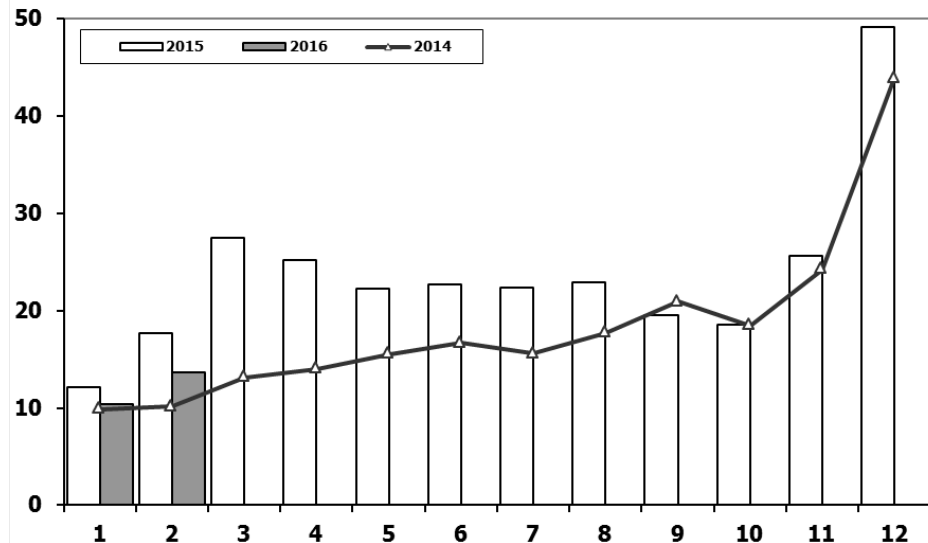
Ticari Araç Pazarının Analizi (x1000)

CV Market Analysis (x1000)



Ticari Araç Pazarı (x1000)

CV Total Market (Local + Imports) (x1000)

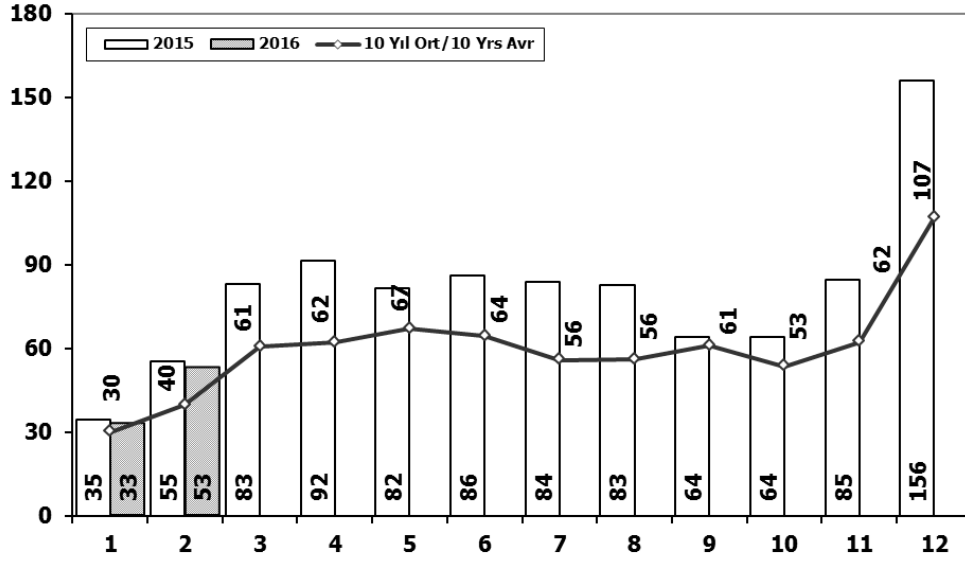


Aylar / Months	10 Yil Ort. / 10 Yrs Avr. (x1000)	2016 (x1000)	%
1	11,8	10,4	-11,7
2	15,1	13,6	-9,8
Total	26,9	24,0	-10,6

	1	2	3	4	5	6	7	8	9	10	11	12	2 Ay/Mo	Total
2006	13.463	19.717	28.094	28.676	34.768	25.221	17.384	22.501	22.112	18.568	25.421	36.371	33.180	292.296
2007	11.764	14.490	21.152	20.429	22.188	21.535	21.871	25.702	22.416	23.489	27.374	44.331	26.254	276.741
2008	15.204	16.925	22.667	20.654	20.150	20.669	19.162	20.490	19.776	15.359	10.951	18.539	32.129	220.546
2009	7.458	8.354	15.909	18.224	20.699	22.083	13.609	14.555	31.241	8.289	11.421	34.208	15.812	206.050
2010	8.456	11.662	19.870	20.530	21.161	21.304	22.319	22.423	24.124	28.921	27.345	55.273	20.118	283.388
2011	17.790	23.344	29.310	28.236	28.791	29.149	21.846	22.503	23.679	25.132	22.244	45.324	41.134	317.348
2012	10.142	14.638	21.687	20.369	24.360	23.932	20.591	19.612	23.837	19.237	22.748	40.187	24.780	261.340
2013	11.305	14.117	20.903	20.016	23.038	19.481	19.014	15.772	18.112	13.414	18.900	34.397	25.422	228.469
2014	9.857	10.141	13.152	13.997	15.530	16.674	15.604	17.708	20.918	18.445	24.242	43.887	19.998	220.155
2015	12.078	17.716	27.445	25.220	22.267	22.697	22.407	22.930	19.534	18.566	25.646	49.092	29.794	285.598
2016	10.382	13.635	0	0	0	0	0	0	0	0	0	0	24.017	24.017

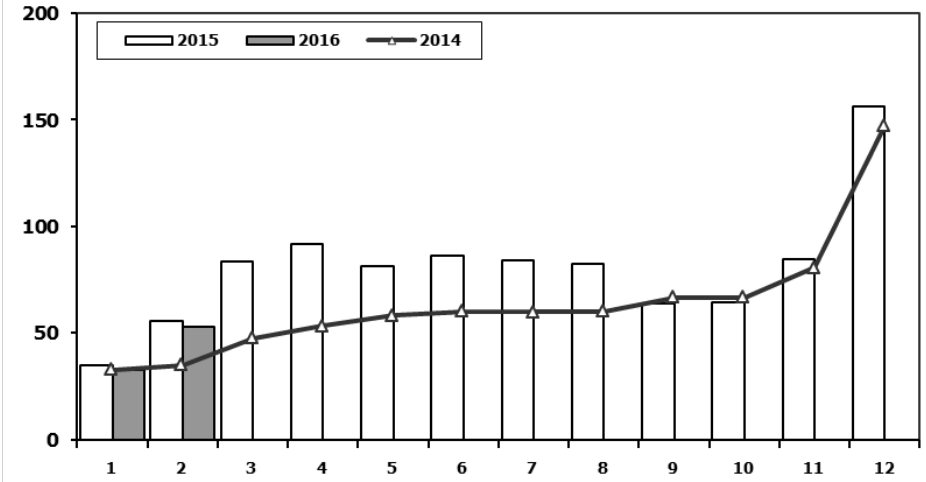
Hafif Araç Pazarının Analizi (x1000)

LV Market Analysis (x1000)



Hafif Araç Pazarı (x1000)

LV Total Market (Local + Imports) (x1000)

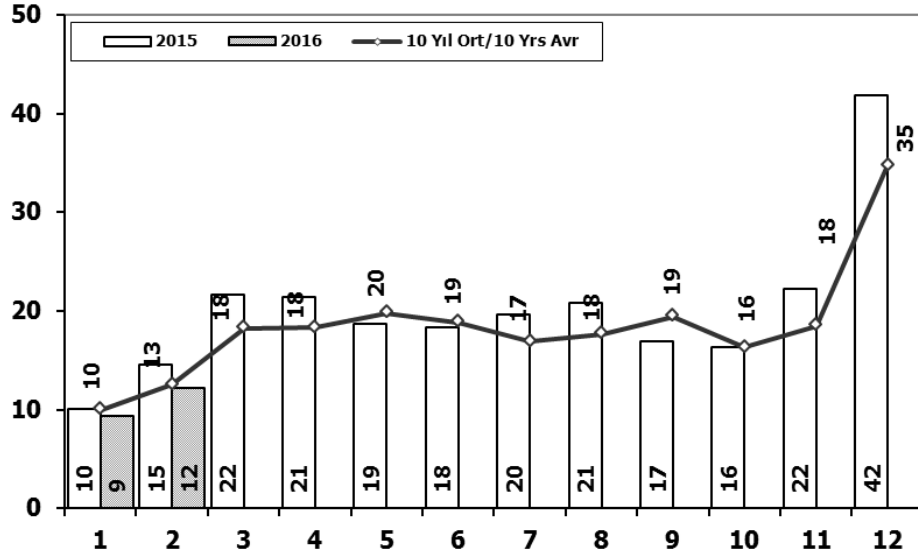


Aylar / Months	10 Yil Ort. 10 Yrs Avr. (x1000)	2016 (x1000)	%
1	30,0	32,7	9,2
2	39,7	52,8	33,1
Total	69,6	85,5	22,8

	1	2	3	4	5	6	7	8	9	10	11	12	2 Ay/Mo	Total
2006	27.917	40.938	60.052	64.038	78.229	54.355	37.251	43.767	46.109	36.542	51.867	76.787	68.855	617.852
2007	23.117	29.184	41.890	42.366	47.938	48.674	47.490	50.558	46.581	52.725	63.313	100.926	52.301	594.762
2008	31.527	35.251	53.649	47.701	48.598	46.324	42.156	43.670	43.932	32.884	26.253	42.078	66.778	494.023
2009	19.606	21.742	55.111	52.640	63.191	61.067	28.845	35.609	81.397	21.033	27.962	88.923	41.348	557.126
2010	20.095	31.172	51.769	54.946	59.377	60.896	61.345	61.764	63.814	73.404	73.962	148.369	51.267	760.913
2011	44.892	58.663	78.403	77.695	80.646	81.573	63.044	58.406	60.129	69.421	63.657	127.910	103.555	864.439
2012	29.545	41.324	64.884	62.949	70.863	71.067	62.304	58.148	69.629	59.938	71.710	115.400	70.869	777.761
2013	35.523	48.307	68.774	73.575	81.468	74.096	71.596	65.043	67.963	58.014	79.301	129.718	83.830	853.378
2014	32.670	35.021	47.581	53.305	58.121	60.163	59.907	60.199	66.531	66.573	80.621	146.989	67.691	767.681
2015	34.615	55.331	83.302	91.602	81.542	86.158	83.836	82.577	64.025	64.255	84.601	156.173	89.946	968.017
2016	32.713	52.825	0	0	0	0	0	0	0	0	0	0	85.538	85.538

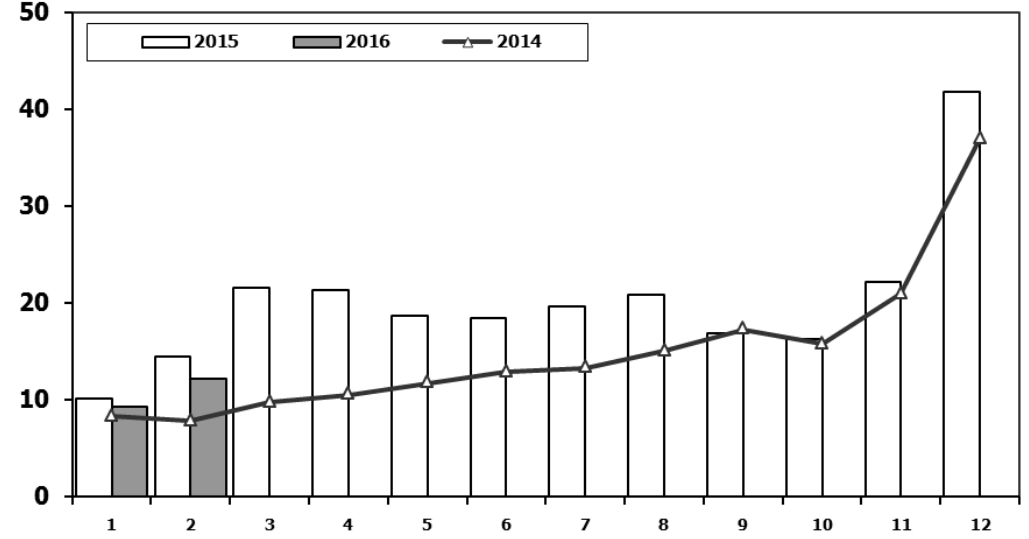
Hafif Ticari Araç Pazarının Analizi (x1000)

LCV Market Analysis (x1000)



Hafif Ticari Araç Pazarı (x1000)

LCV Total Market (Local + Imports) (x1000)

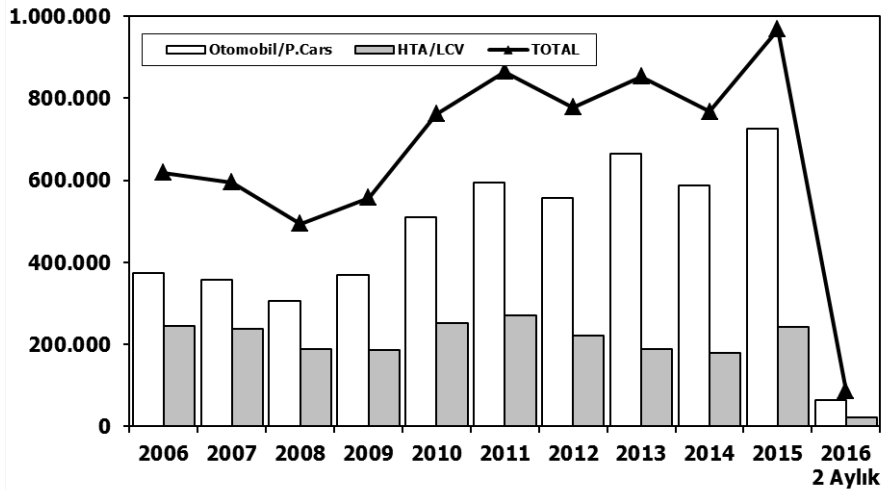


Aylar / Months	10 Yil Ort. 10 Yrs Avr. (x1000)	2016 (x1000)	%
1	10,0	9,4	-6,3
2	12,5	12,2	-2,5
Total	22,5	21,6	-4,2

	1	2	3	4	5	6	7	8	9	10	11	12	2 Ay/Mo	Total
2006	11.411	16.009	23.056	23.861	29.708	21.373	14.598	18.894	18.592	15.305	21.390	30.436	27.420	244.633
2007	9.931	11.972	17.554	17.162	18.871	18.548	19.244	22.089	18.919	20.156	23.670	39.181	21.903	237.297
2008	12.939	14.055	19.502	17.388	17.121	17.600	16.626	17.568	16.879	13.096	9.052	16.199	26.994	188.025
2009	6.433	7.250	14.489	16.438	19.003	20.048	12.208	13.072	29.235	7.205	10.181	31.745	13.683	187.307
2010	7.501	10.521	17.811	18.397	18.910	18.810	19.946	19.542	21.337	25.545	23.901	48.908	18.022	251.129
2011	15.024	19.659	24.380	23.860	24.344	24.859	19.526	19.531	20.165	21.913	18.706	38.953	34.683	270.920
2012	8.468	12.135	17.614	17.304	20.403	20.218	17.773	16.912	20.269	16.498	19.413	34.474	20.603	221.481
2013	9.688	11.493	16.989	16.576	19.085	15.806	15.884	13.432	15.038	11.029	15.184	28.519	21.181	188.723
2014	8.302	7.854	9.769	10.536	11.742	12.885	13.305	15.068	17.269	15.759	20.926	36.935	16.156	180.350
2015	10.117	14.514	21.626	21.391	18.664	18.392	19.618	20.824	16.937	16.301	22.204	41.833	24.631	242.421
2016	9.355	12.237	0	0	0	0	0	0	0	0	0	0	21.592	21.592

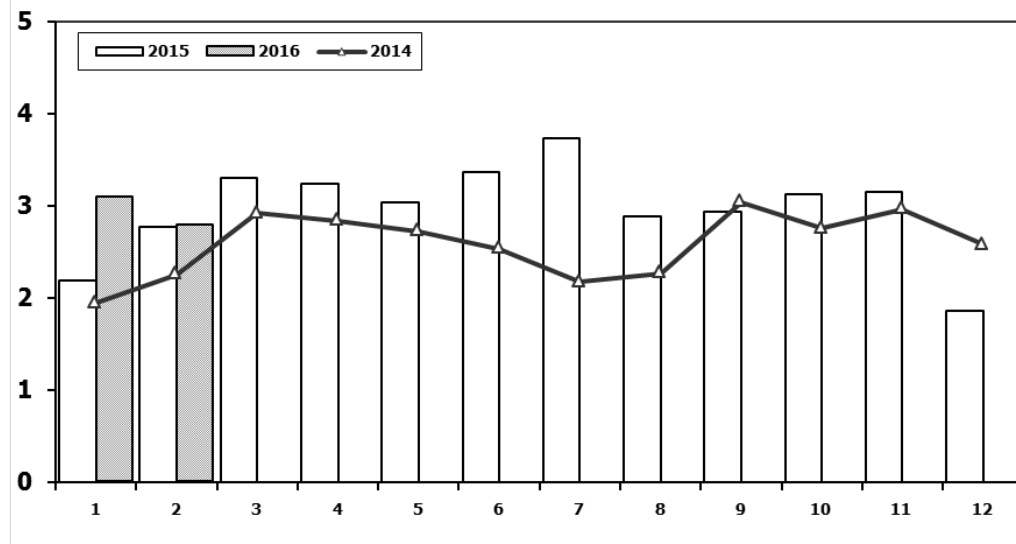
Hafif Araç Pazarı (AYA < 3.5 Ton)

Light Vehicle Market (GVW < 3.5 Ton)



Traktör Pazarı (x1000)

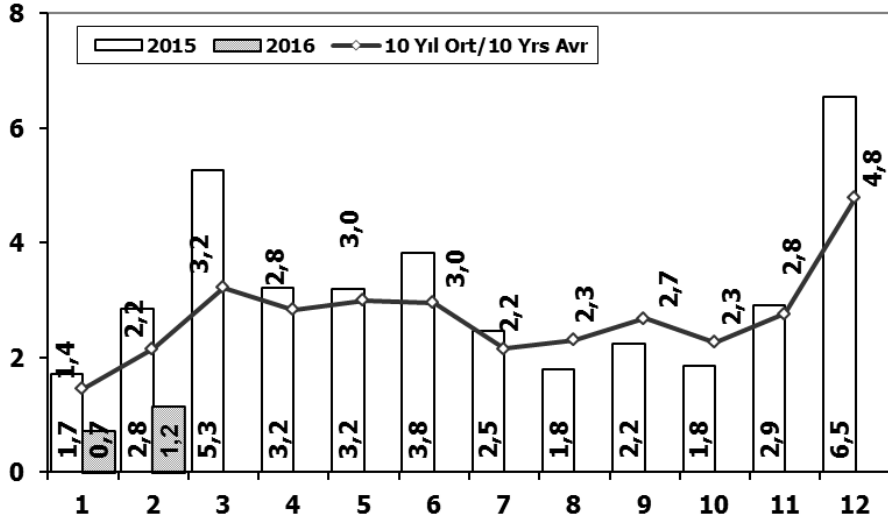
F.Tractor Market (x1000)



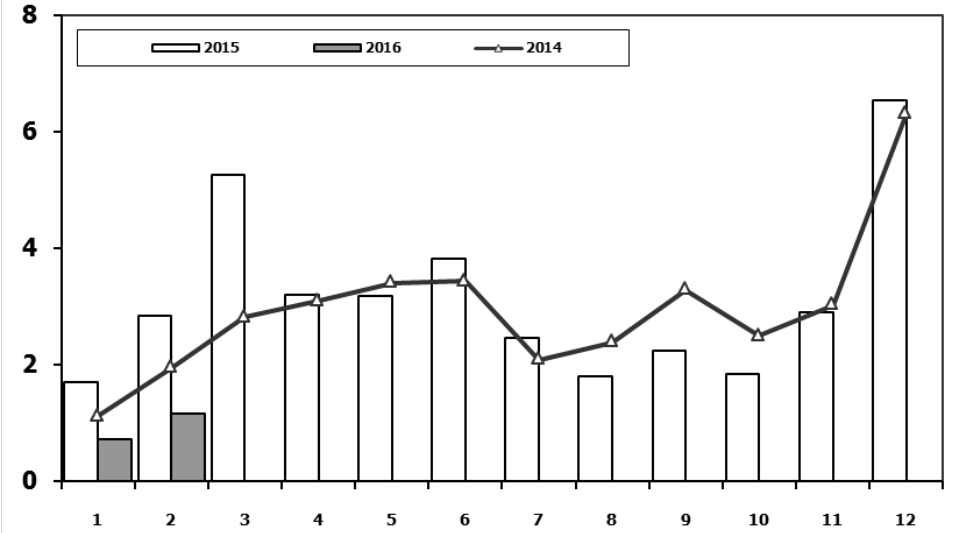
	2006	2007	2008	2009	2010	2011	2012	2013	2014	2015	2016 2 Ay/2 Mo
Otomobil/P.Cars	373.219	357.465	305.998	369.819	509.784	593.519	556.280	664.655	587.331	725.596	63.946
HTA/LCV	244.633	237.297	188.025	187.307	251.129	270.920	221.481	188.723	180.350	242.421	21.592
TOTAL	617.852	594.762	494.023	557.126	760.913	864.439	777.761	853.378	767.681	968.017	85.538
HTA/LCV (%)	40	40	38	34	33	31	28	22	23	25	25

	1	2	3	4	5	6	7	8	9	10	11	12	2 Ay/Mo	Total
2006	1.578	2.493	2.746	2.841	3.561	2.356	1.685	2.177	2.756	1.915	2.353	1.925	4.071	28.386
2007	1.812	1.778	2.063	2.107	2.266	1.853	1.653	2.065	2.372	2.239	2.231	1.602	3.590	24.041
2008	1.510	1.427	1.933	1.692	1.689	1.592	1.275	924	904	609	707	359	2.937	14.621
2009	267	344	388	638	759	828	741	534	586	765	725	715	611	7.290
2010	714	903	1.432	1.653	1.736	1.673	1.613	1.527	2.351	2.787	2.656	2.345	1.617	21.390
2011	2.458	2.610	3.105	3.403	3.847	3.599	2.952	1.559	2.957	2.823	2.603	2.807	5.068	34.723
2012	2.216	2.632	3.223	3.259	3.067	2.821	2.037	1.262	1.648	1.858	1.921	1.579	4.848	27.523
2013	1.633	1.817	2.196	2.070	2.455	2.370	1.955	1.969	2.396	2.510	2.343	2.080	3.450	25.794
2014	1.941	2.256	2.915	2.837	2.723	2.534	2.171	2.265	3.039	2.755	2.964	2.573	4.197	30.973
2015	2.187	2.767	3.297	3.235	3.039	3.366	3.730	2.883	2.927	3.122	3.152	1.861	4.954	35.566
2016	3.093	2.787	0	0	0	0	0	0	0	0	0	0	5.880	5.880

Kamyon Pazarının Analizi (x1000) AYA > 5 Ton Truck Market Analysis (x1000) GVW > 5 Ton



Kamyon Pazarı (x1000) AYA > 5 Ton Truck Market (x1000) GVW > 5 Ton

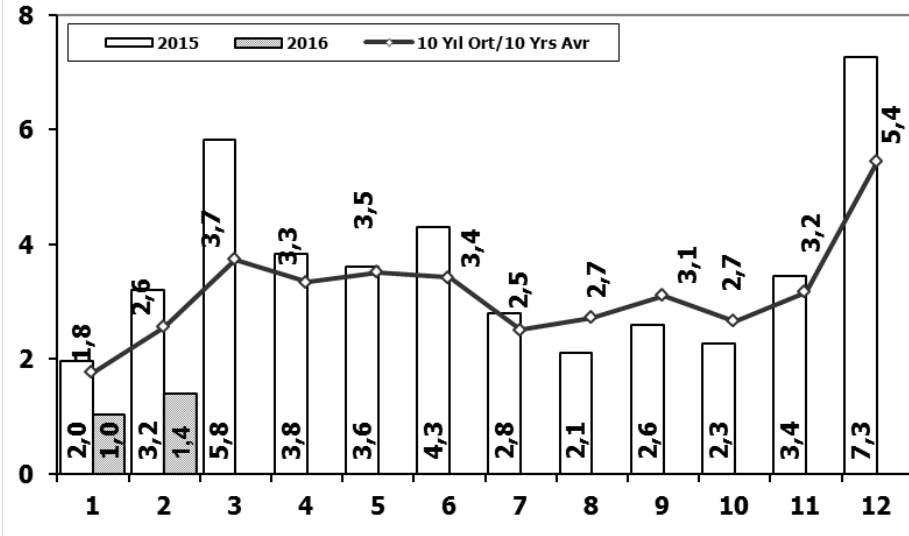


Aylar / Months	10 Yil Ort. 10 Yrs Avr. (x1000)	2016 (x1000)	%
1	1,4	0,7	-50,5
2	2,2	1,2	-46,5
Total	3,6	1,9	-48,0

	1	2	3	4	5	6	7	8	9	10	11	12	2 Ay/Mo	Total
2006	1.767	3.310	4.467	4.180	4.449	3.398	2.472	3.142	3.052	2.926	3.550	5.358	5.077	42.071
2007	1.554	2.055	3.065	2.940	2.865	2.613	2.372	3.145	2.988	2.886	3.258	4.444	3.609	34.185
2008	1.797	2.309	2.621	2.578	2.459	2.526	2.067	2.377	2.390	1.790	1.512	1.834	4.106	26.260
2009	771	759	1.034	1.342	1.355	1.651	1.156	1.205	1.780	866	981	2.015	1.530	14.915
2010	777	968	1.772	1.807	1.966	2.205	2.093	2.446	2.444	3.071	3.136	5.677	1.745	28.362
2011	2.552	3.292	4.418	3.754	3.803	3.749	1.996	2.478	3.081	2.774	3.108	5.787	5.844	40.792
2012	1.375	2.159	3.595	2.697	3.321	3.250	2.450	2.277	2.991	2.244	3.006	5.000	3.534	34.365
2013	1.077	1.931	3.127	2.720	3.145	2.951	2.411	1.845	2.554	1.801	3.173	5.025	3.008	31.760
2014	1.117	1.949	2.818	3.092	3.405	3.438	2.083	2.390	3.281	2.494	3.028	6.313	3.066	35.408
2015	1.705	2.841	5.270	3.208	3.190	3.824	2.463	1.798	2.244	1.848	2.902	6.540	4.546	37.833
2016	718	1.154	0	0	0	0	0	0	0	0	0	0	1.872	1.872

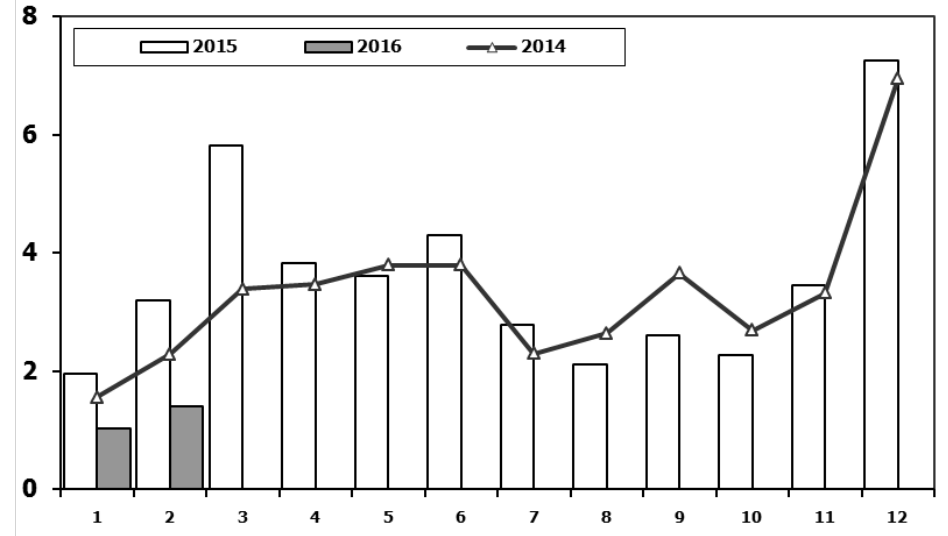
Ağır Ticari Araç Pazarının Analizi (x1000)

HCV Market Analysis (x1000)



Ağır Ticari Araç Pazarı (x1000)

HCV Market (x1000)

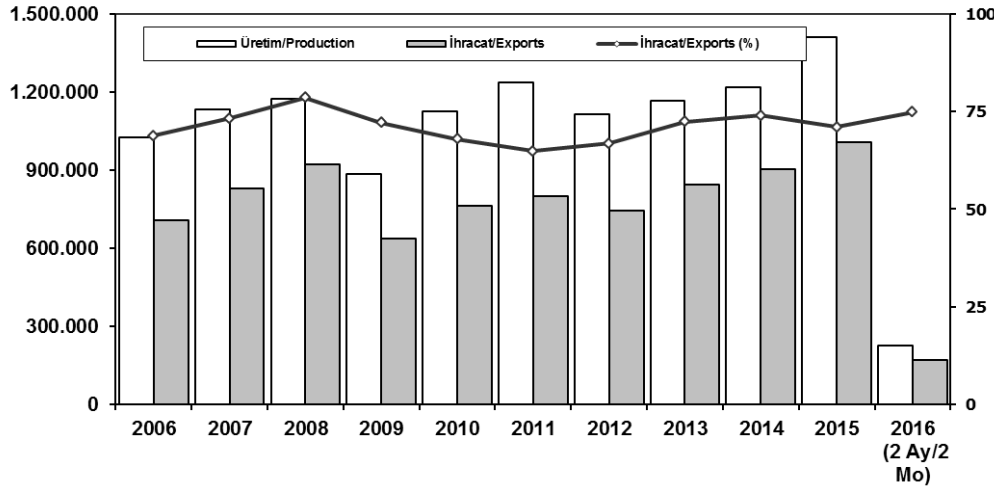


Aylar / Months	10 Yil Ort. 10 Yrs Avr. (x1000)	2016 (x1000)	%
1	1,8	1,0	-42,0
2	2,6	1,4	-45,5
Total	4,3	2,4	-44,1

	1	2	3	4	5	6	7	8	9	10	11	12	2 Ay/Mo	Total
2006	2.052	3.708	5.038	4.815	5.060	3.848	2.786	3.607	3.520	3.263	4.031	5.935	5.760	47.663
2007	1.833	2.518	3.598	3.267	3.317	2.987	2.627	3.613	3.497	3.333	3.704	5.150	4.351	39.444
2008	2.265	2.870	3.165	3.266	3.029	3.069	2.536	2.922	2.897	2.263	1.899	2.340	5.135	32.521
2009	1.025	1.104	1.420	1.786	1.696	2.035	1.401	1.483	2.006	1.084	1.240	2.463	2.129	18.743
2010	955	1.141	2.059	2.133	2.251	2.494	2.373	2.881	2.787	3.376	3.444	6.365	2.096	32.259
2011	2.766	3.685	4.930	4.376	4.447	4.290	2.320	2.972	3.514	3.219	3.538	6.371	6.451	46.428
2012	1.674	2.503	4.073	3.065	3.957	3.714	2.818	2.700	3.568	2.739	3.335	5.713	4.177	39.859
2013	1.617	2.624	3.914	3.440	3.953	3.675	3.130	2.340	3.074	2.385	3.716	5.878	4.241	39.746
2014	1.555	2.287	3.383	3.461	3.788	3.789	2.299	2.640	3.649	2.686	3.316	6.952	3.842	39.805
2015	1.961	3.202	5.819	3.829	3.603	4.305	2.789	2.106	2.597	2.265	3.442	7.259	5.163	43.177
2016	1.027	1.398	0	0	0	0	0	0	0	0	0	0	2.425	2.425

İhracat/Üretim (2006-2016) (Traktör dahil)

Exports/Production (2006-2016) (Including F. Tractor)



Taşıt Araçları İhracatı (2014-2016)

Motor Vehicle Exports (2014-2016)

SEKTÖR/SECTOR	2014	2015	2016		2016/2015 (%)
			2 Ay - 2 Mo		
OTOMOBİL / P.Cars	581.993	604.683	99.770	98.770	-1
TİCARİ ARAÇLAR / CV	303.187	387.652	60.112	68.712	14
* Kamyonet/Pick-Up	269.995	341.834	52.288	65.739	26
* Minibüs/Minibus	26.458	38.255	6.904	1.328	-81
* Kamyon/Truck	1.281	1.408	101	493	388
* Midibüs/Midibus	824	447	71	76	7
* Otobüs/Bus	4.629	5.708	748	1.076	44
TAŞIT ARAÇLARI / MV TOTAL	885.180	992.335	159.882	167.482	5
TRAKTÖR/F.TRACTOR	17.014	14.932	2.573	2.462	-4
TOTAL	902.194	1.007.267	162.155	169.944	5

	2006	2007	2008	2009	2010	2011	2012	2013	2014	2015	2016 (2 Ay/2 Mo)
Üretim/Production	1.026.427	1.132.951	1.171.917	884.466	1.124.982	1.234.637	1.115.233	1.166.043	1.218.848	1.410.034	226.987
İhracat/Exports	706.402	829.879	920.763	637.855	763.670	801.112	745.354	843.467	902.194	1.007.267	169.944
İhracat/Exports (%)	69	73	79	72	68	65	67	72	74	71	75

Otomotiv Ana ve Yan Sanayii İhracatı (ABD \$)

CBU and CKD Exports - \$

Sektör / Sector	2012	2013	2014	2015	2016		2016/2015 (%)
					Ocak-Şubat / January-February		
Toplam Yan Sanayi/Total Component Industry	8.215.636.677	9.065.017.539	9.504.013.791	8.643.538.318	1.391.986.432	1.415.654.208	2%
İç ve Dış Lastik / Tyres	1.199.566.307,01	1.130.005.891,78	1.126.709.610,14	961.494.045	159.456.743	150.110.503	-6%
Emniyet Camı / Safety Glasses	120.615.917,59	135.230.309,67	143.208.298,99	124.569.031	20.932.650	21.011.687	0%
Motor (Engine)	272.085.582,31	319.294.885,46	171.893.752,32	221.897.271	22.408.285	46.999.368	110%
Akümülatör / Batteries	249.831.846,25	306.451.449,47	289.101.198,21	220.618.374	37.272.106	32.430.949	-13%
Diğer Aksam ve Parça / Spare Parts&Components	6.373.537.023,45	7.174.035.002,35	7.773.100.931,83	7.114.959.599	1.151.916.647	1.165.101.702	1%
Toplam Ana Sanayi/Total Vehicle Industry	11.100.115.134	12.491.591.365	13.259.499.977	12.975.346.180	2.114.399.233	2.159.348.160	2%
Otobüs / Bus	855.424.303,62	937.790.962,87	985.983.007,01	1.024.134.143	137.480.862	193.606.186	41%
Midibüs-Minibüs / Minibus- Minibus	161.806.275,12	147.769.644,17	97.685.509,12	130.195.838	26.475.751	22.280.704	-16%
Otomobil (P. Cars)	6.068.045.119,19	6.855.475.589,83	7.258.361.005,24	6.881.972.133	1.142.551.261	958.093.217	-16%
Kamyon-Kamyonet/HCV-LCV	3.433.310.998,81	3.918.798.755,31	4.201.760.813,55	4.263.767.944	701.647.905	822.323.267	17%
Römork ve Yarı Römork/Trailer-Semi Trailer	195.093.508,21	218.385.731,69	252.354.014,20	252.432.565	47.251.686	71.220.464	51%
Çekici/Truck-Tractor	71.336.634,88	77.907.406,95	38.396.524,81	48.108.959	5.337.038	31.900.226	498%
Tarım Traktörü/Farm Tractor	315.098.293,75	335.463.274,61	424.959.103,39	374.734.597	53.654.730	59.924.096	12%
Toplam/Total	19.315.751.810	21.556.608.904	22.763.513.769	21.618.884.498	3.506.385.666	3.575.002.368	2%

Kaynak: Otomotiv Endüstrisi İhracatçıları Birliği

Firma Bazında İhracat (Adet)

Export Of member Companies (Unit)

FİRMALAR Companies	2014	2015	Ocak-Şubat 2 Months	
			2015	2016
FORD OTOSAN	187.921	252.571	39.140	45.672
TOFAŞ	142.234	173.743	28.548	37.350
HYUNDAI ASSAN	179.793	201.276	28.850	36.650
OYAK RENAULT	257.992	270.299	46.651	35.326
TOYOTA	109.517	81.962	15.386	10.407
TÜRK TRAKTÖR	15.866	14.122	2.452	2.322
M. BENZ TÜRK	3.438	4.252	546	1.135
MAN TÜRKİYE	937	1.493	260	362
KARSAN	37	3.067	18	311
HONDA TÜRKİYE	1.560	2.220	89	149
HATTAT TARIM	1.148	810	121	140
OTOKAR	580	720	47	46
TEMSA GLOBAL	423	441	23	44
A.I.O.S.	748	291	24	30
GENEL TOPLAM	902.194	1.007.267	162.155	169.944

Kaynak: OSD

Sektör Bazında İhracat (\$)

Exports on Sectorial Basis

SEKTÖRLER	ŞUBAT				OCAK-ŞUBAT			
	2015	2016	Değişim ('16/'15)	Pay(16) (%)	2015	2016	Değişim ('16/'15)	Pay(16) (%)
Otomotiv Endüstrisi	1.703.300	1.985.994	17	18	3.431.486	3.498.832	2	17
Hazırgiyim ve Konfeksiyon	1.264.258	1.424.937	13	13	2.647.608	2.746.421	4	13
Kimyevi Maddeler ve Mamulleri	1.176.292	1.144.660	-3	11	2.374.067	2.145.271	-10	11
Elektrik Elektronik ve Hizmet	830.882	807.630	-3	7	1.562.916	1.437.546	-8	7
Çelik	937.971	747.316	-20	7	1.789.931	1.374.584	-23	7
Tekstil ve Hammaddeleri	609.129	635.138	4	6	1.257.331	1.232.192	-2	6
Hububat, Bakliyat, Yağlı Tohumlar ve Mamulleri	491.784	563.402	15	5	1.057.905	1.024.291	-3	5
Demir ve Demir Dışı Metaller	472.961	503.863	7	5	960.369	928.046	-3	5
Makine ve Aksamları	432.355	440.731	2	4	898.101	817.079	-9	4
Mobilya, Kağıt ve Orman Ürünleri	302.160	346.144	15	3	618.683	618.393	0	3
T O P L A M (TİM+TÜİK*)	12.232.355	10.790.236	3	100	24.534.739	20.387.000	-17	100

Kaynak: TİM

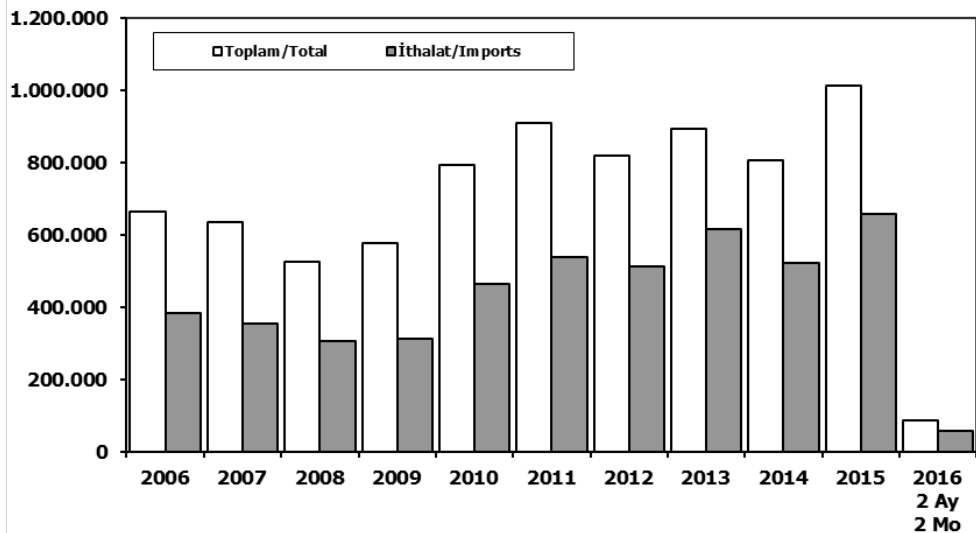
First 3 Sectors:

1- Automotive Industry

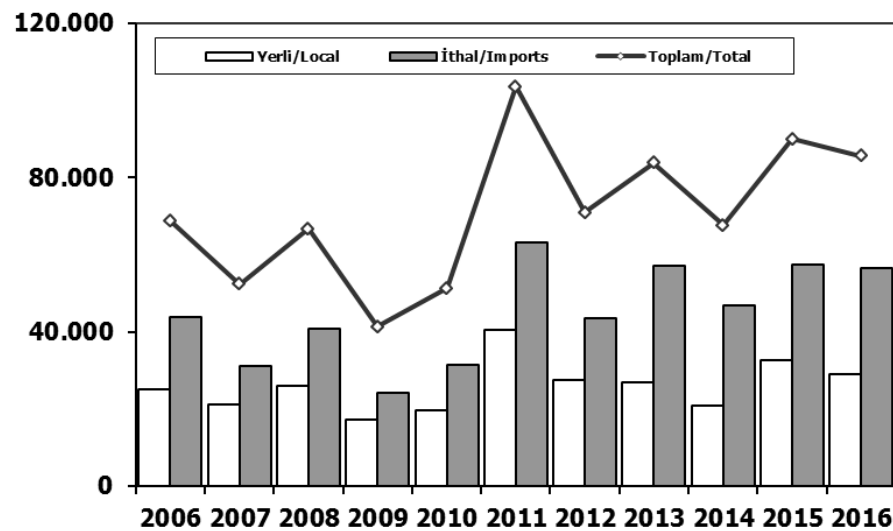
2- Ready Wear and Confection

3-Chemical Articles and Products

Toplam Pazar (Otomobil+T.Araç) Total Market (P.Cars+C.V)



Hafif Araçlar Pazarı (2006-2016 Ocak-Şubat) LV Market (2006-2016 January-February)

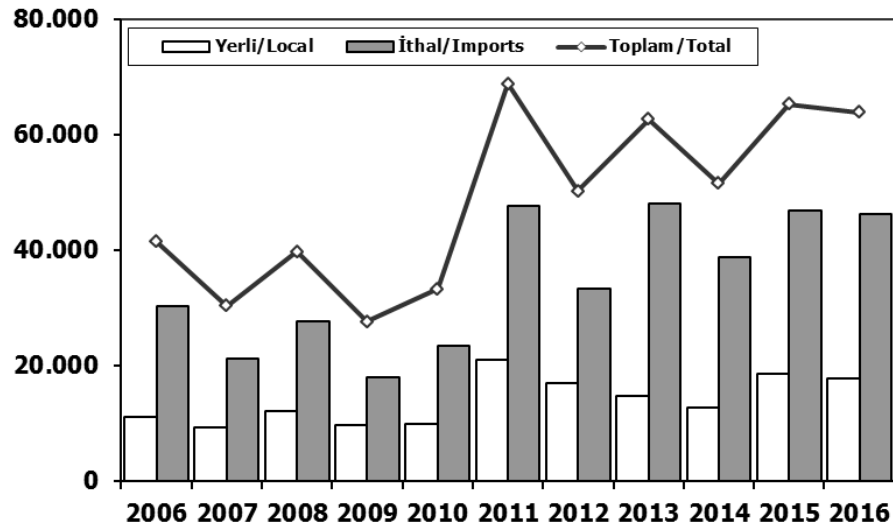


	2006	2007	2008	2009	2010	2011	2012	2013	2014	2015	2015 2 Ay 2 Mo	2016 2 Ay 2 Mo
Toplam/Total	665.515	634.206	526.544	575.869	793.172	910.867	817.620	893.124	807.486	1.011.194	95.109	87.963
İthalat/Imports	382.460	355.752	306.087	313.921	465.408	538.532	511.694	615.609	522.842	658.690	58.737	57.587
İthalat/Imports (%)	57	56	58	55	59	59	63	69	65	65	62	65

	2006	2007	2008	2009	2010	2011	2012	2013	2014	2015	2016
Yerli/Local	24.981	21.077	26.031	17.103	19.756	40.483	27.386	26.842	20.779	32.531	29.104
İthalat/Imports	43.874	31.224	40.747	24.245	31.511	63.072	43.483	56.988	46.912	57.415	56.434
Toplam/Total	68.855	52.301	66.778	41.348	51.267	103.555	70.869	83.830	67.691	89.946	85.538
İthalat/Imports (%)	64	60	61	59	61	61	61	68	69	64	66

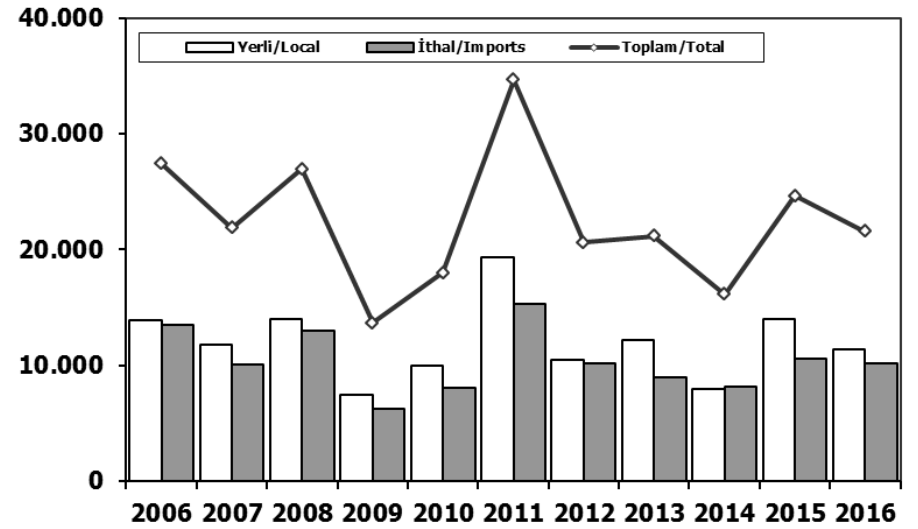
Otomobil Pazarı (2006-2016 Ocak-Şubat)

P.Cars Market (2006-2016 January-February)



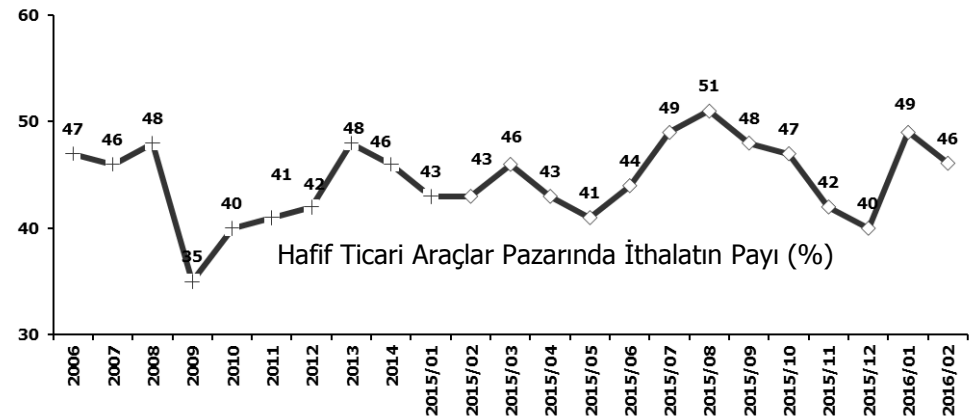
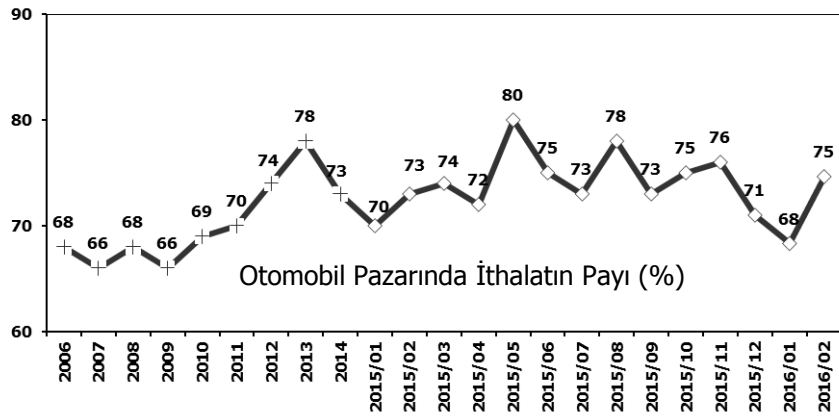
Hafif Ticari Araçlar Pazarı (2006-2016 Ocak-Şubat)

Light Commercial Vehicle Market (2006-2016 January-February)



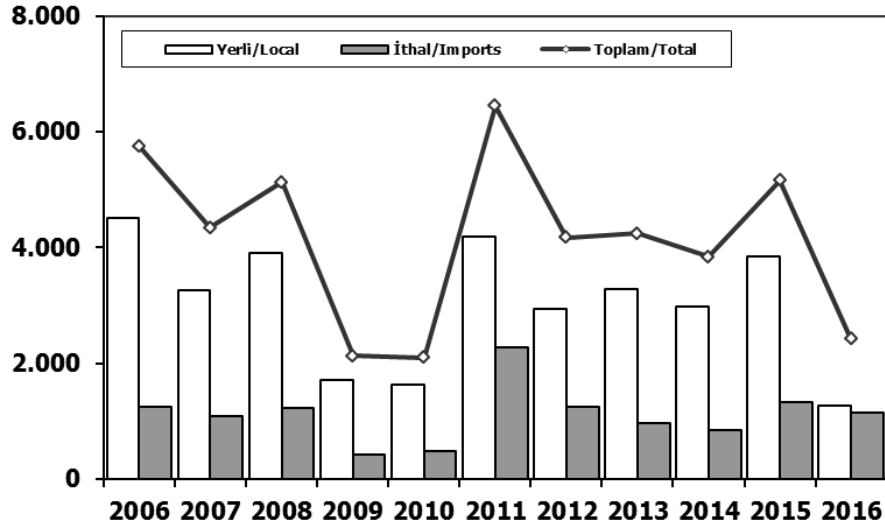
	2006	2007	2008	2009	2010	2011	2012	2013	2014	2015	2016
Yerli/Local	11.080	9.266	12.050	9.687	9.828	21.103	16.911	14.658	12.805	18.514	17.694
İthal/Imports	30.355	21.132	27.734	17.978	23.417	47.769	33.355	47.991	38.730	46.801	46.252
Toplam/Total	41.435	30.398	39.784	27.665	33.245	68.872	50.266	62.649	51.535	65.315	63.946
İthalat/Imports (%)	73	70	70	65	70	69	66	77	75	72	72

	2006	2007	2008	2009	2010	2011	2012	2013	2014	2015	2016
Yerli/Local	13.901	11.811	13.981	7.416	9.928	19.380	10.475	12.184	7.974	14.017	11.410
İthal/Imports	13.519	10.092	13.013	6.267	8.094	15.303	10.128	8.997	8.182	10.614	10.182
Toplam/Total	27.420	21.903	26.994	13.683	18.022	34.683	20.603	21.181	16.156	24.631	21.592
İthalat/Imports (%)	49	46	48	46	45	44	49	42	51	43	47



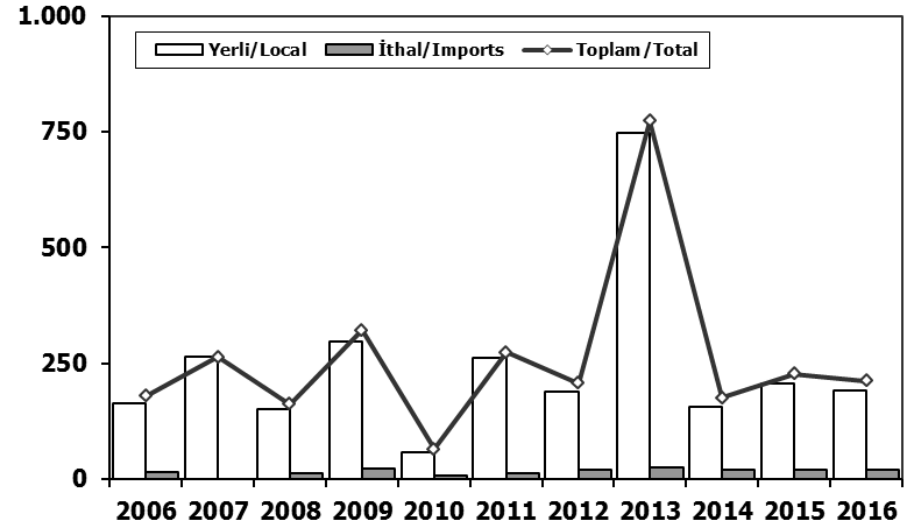
Ağır Ticari Araçlar Pazarı (2006-2016 Ocak-Şubat)

HCV Market (2006-2016 January-February)



Otobüs Pazarı (2006-2016 Ocak-Şubat)

Bus Market (2006-2016 January-February)

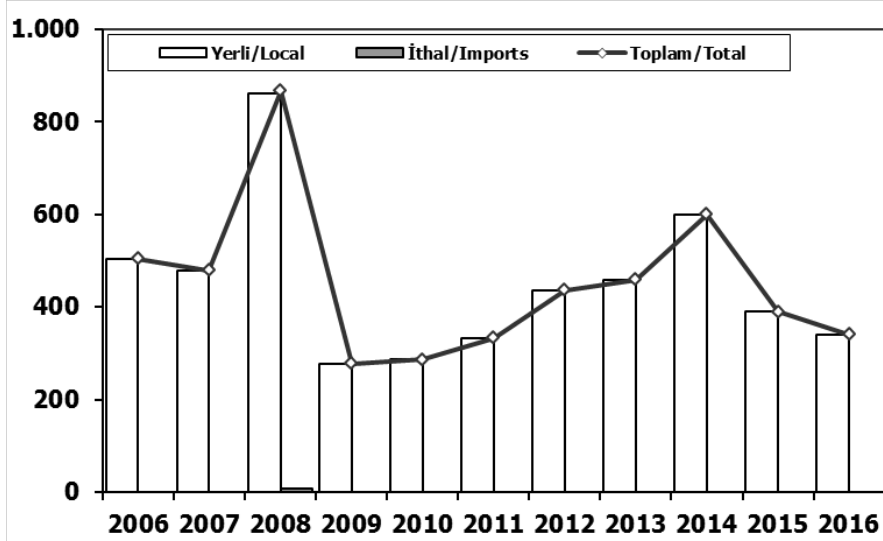


	2006	2007	2008	2009	2010	2011	2012	2013	2014	2015	2016
Yerli/Local	4.505	3.257	3.906	1.772	1.622	4.183	2.935	3.286	2.988	3.841	1.272
İthal/Imports	1.255	1.094	1.229	417	474	2.268	1.242	955	854	1.322	1.153
Toplam/Total	5.760	4.351	5.135	2.129	2.096	6.451	4.177	4.241	3.842	5.163	2.425
İthalat/Imports (%)	22	25	24	20	23	35	30	23	22	24	48

	2006	2007	2008	2009	2010	2011	2012	2013	2014	2015	2016
Yerli/Local	163	263	150	298	58	262	188	749	156	207	192
İthal/Imports	16	0	12	23	7	12	19	25	20	20	20
Toplam/Total	179	263	162	321	65	274	207	774	176	227	212
İthalat/Imports (%)	9	0	7	7	11	4	9	3	11	9	9

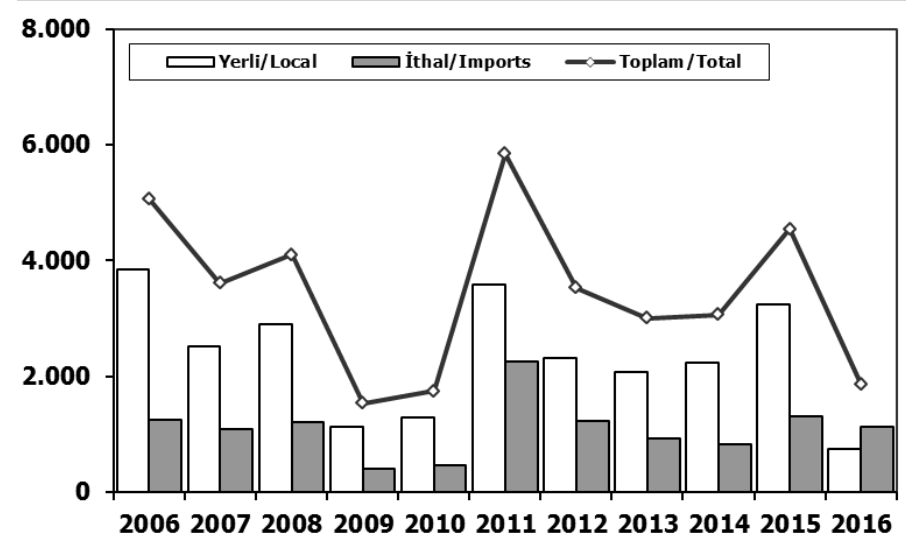
Midibüs Pazarı (2006-2016 Ocak-Şubat) (7-9 mt / 25-35 Kişilik)

Midibus Market (2006-2016 January-February) (7-9 mt / 25-35 Passengers)



Kamyon Pazarı (2006-2016 Ocak-Şubat)

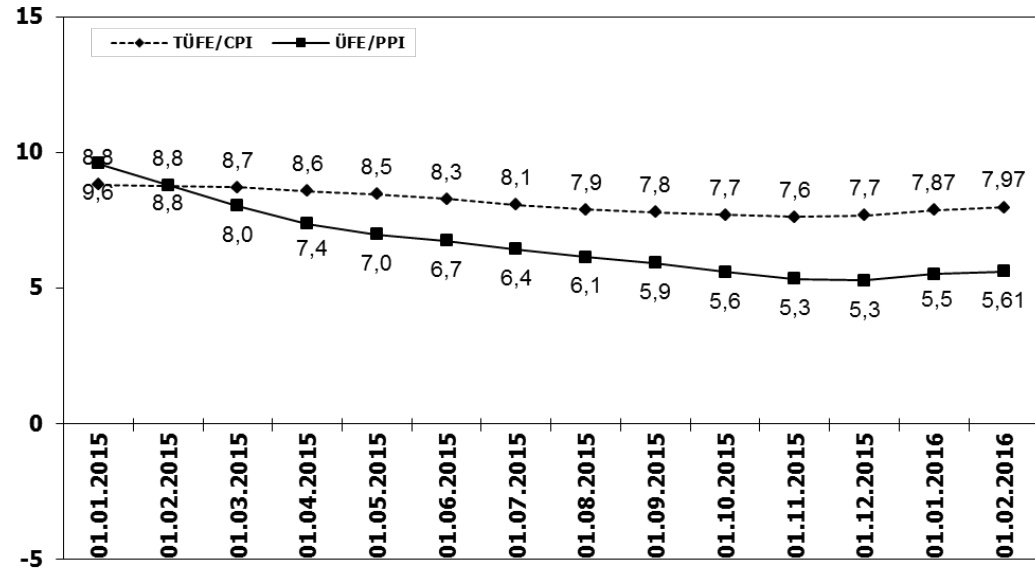
Truck Market (2006-2016 January-February)



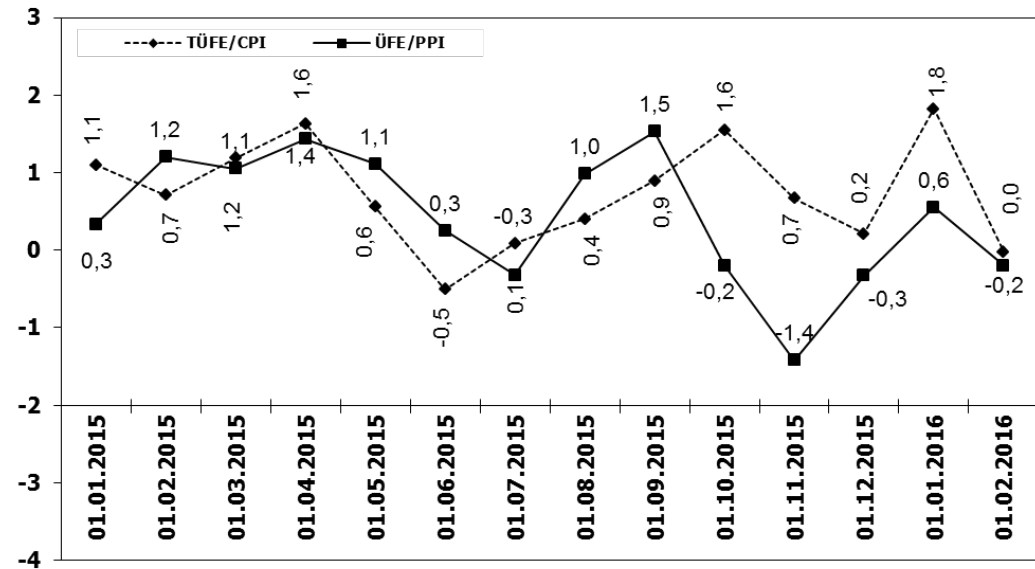
	2006	2007	2008	2009	2010	2011	2012	2013	2014	2015	2016
Yerli/Local	504	479	861	278	286	333	436	459	600	390	341
İthal/Imports	0	0	6	0	0	0	0	0	0	0	0
Toplam/Total	504	479	867	278	286	333	436	459	600	390	341
İthalat/Imports (%)	0	0	1	0	0	0	0	0	0	0	0

	2006	2007	2008	2009	2010	2011	2012	2013	2014	2015	2016
Yerli/Local	3.838	2.515	2.895	1.136	1.278	3.588	2.311	2.078	2.232	3.244	739
İthal/Imports	1.239	1.094	1.211	394	467	2.256	1.223	930	834	1.302	1.133
Toplam/Total	5.077	3.609	4.106	1.530	1.745	5.844	3.534	3.008	3.066	4.546	1.872
İthalat/Imports (%)	24	30	29	26	27	39	35	31	27	27	61

TÜFE ve ÜFE'nin Yıllık Değişimi (%) CPI and PPI Yearly Changes (%)



TÜFE ve ÜFE'nin Aylık Değişimi (%) CPI and PPI Monthly Changes (%)



2016 Yılı İthal Hafif Araç Satışları 2016 Light Vehicles Import Sales

2016 YILI İTHAL OTOMOBİL SATIŞLARI / P. Cars Import 2016

	2015 TOPLAMI 2015 Total	1	2	3	4	5	6	7	8	9	10	11	12	2016 TOPLAMI 2016 Total
VOLKSWAGEN	107.401	2.792	5.763											8.555
OPEL	47.000	1.263	2.521											3.784
FORD	43.341	972	2.733											3.705
DACIA	37.257	1.235	1.963											3.198
RENAULT	32.683	1.258	2.007											3.265
B.M.W	31.221	496	2.042											2.538
MERCEDES BENZ	30.333	1.091	1.701											2.792
NISSAN	26.421	971	1.534											2.505
HYUNDAI	25.164	1.148	1.499											2.647
PEUGEOT	22.808	540	1.730											2.270
SKODA	22.107	715	1.435											2.150
AUDI	20.279	911	1.200											2.111
SEAT	16.911	502	853											1.355
CITROEN	16.520	394	366											760
KIA	13.873	263	574											837
TOYOTA	10.949	123	411											534
VOLVO	6.939	187	194											381
HONDA	5.413	366	669											1.035
FIAT	5.241	162	247											409
JEEP	3.507	92	161											253
MAZDA	1.761	50	67											117
Mini (İngiliz)	1.739	101	74											175
SUBARU	1.737	73	112											185
LAND ROVER	1.577	46	131											177
MITSUBISHI	1.366	39	71											110
PORSCHE	861	55	40											95
ALFA ROMEO	847	12	75											87
SSANGYONG	605	19	23											42
PROTON	500	10	7											17
CHERY	394	30	23											53
JAGUAR	336	20	25											45
SUZUKI	177	7	0											7
TATA	168	0	0											0
SMART	88	0	0											0
MASERATI	73	1	6											7
INFINITI	43	0	0											0
GEELY	25	0	0											0
BENTLEY	19	0	1											1
LEXUS	13	0	0											0
FERRARI	10	3	1											4
LAMBORGHINI	6	0	1											1
LANCIA	2	0	0											0
ASTON MARTIN	0	2	1											3
DS	0	8	34											42
TOPLAM	537.715	15.957	30.295	0	0	0	0	0	0	0	0	0	0	46.252

2016 YILI İTHAL HAFİF TİCARİ ARAÇ SATIŞLARI / Light Commercial Vehicles Import 2016

	2015 TOPLAMI 2015 Total	1	2	3	4	5	6	7	8	9	10	11	12	2016 TOPLAMI 2016 Total
VOLKSWAGEN	31.642	1.736	2.391											4.127
RENAULT	15.617	451	602											1.053
FIAT	9.072	272	374											646
MERCEDES BENZ	8.457	360	549											909
PEUGEOT	8.212	467	284											751
DACIA	7.555	221	228											449
CITROEN	6.511	207	213											420
KIA	4.110	155	196											351
FORD	4.028	85	189											274
MITSUBISHI	3.897	324	151											475
TOYOTA	2.928	34	178											212
IVECO	2.710	88	131											219
HYUNDAI	1.612	71	117											188
ISUZU	333	57	34											91
SSANGYONG	303	3	5											8
TATA	228	9	0											9
NISSAN	7	0	0											0
MAZDA	0	0	0											0
TOPLAM	107.222	4.540	5.642	0	0	0	0	0	0	0	0	0	0	10.182