



OTOMOTİV SANAYİİ DERNEĐİ
AUTOMOTIVE MANUFACTURERS ASSOCIATION

OTOMOTİV SEKTÖRÜ AYLIK DEĐERLENDİRME RAPORU KASIM 2020

AUTOMOTIVE INDUSTRY MONTHLY REPORT
November 2020

OSD "OICA" Üyesidir © O I C A OSD is a Member of "OICA"

	11 - 2019	11 - 2020	%	1 - 11 / 2019	1 - 11 / 2020	%	12/2018 - 11/2019	12/2019 - 11/2020	%
Otomobil Üretimi/P.Cars Production	93.495	91.067	-2,6	887.651	762.743	-14,1	969.808	857.734	-11,6
Toplam Üretim/Total Production	135.935	143.264	5,4	1.325.469	1.148.240	-13,4	1.448.462	1.284.015	-11,4
Otomobil Pazarı/P.Cars Market	47.803	64.357	34,6	316.427	529.388	67,3	377.270	600.217	59,1
Toplam Pazar/Total Market	59.575	82.773	38,9	399.062	688.180	72,5	479.076	781.065	63,0
Otomobil İthalatı/P.Cars Import	31.328	36.923	17,9	189.745	314.964	66,0	228.278	355.297	55,6
Toplam İthalat/Total Import	36.456	43.802	20,2	227.945	372.956	63,6	275.265	422.080	53,3
Otomobil İhracatı/P.Cars Export	80.321	61.381	-23,6	756.807	542.083	-28,4	821.900	614.020	-25,3
Toplam İhracat/Total Export	114.942	101.692	-11,5	1.146.237	821.900	-28,3	1.245.932	928.249	-25,5
Otomobil İhracatı(\$)/P.Cars Export (\$)	1.166.259.836,38	985.042.858,98	-15,5	10.741.706.249	8.298.826.239	-22,7	11.736.325.435	9.421.935.305	-19,7
Toplam İhracat(\$)/Total Export (\$)*	2.757.607.495,04	2.736.180.950,95	-0,8	28.641.533.752	23.111.071.013	-19,3	31.149.892.178	25.699.733.739	-17,5

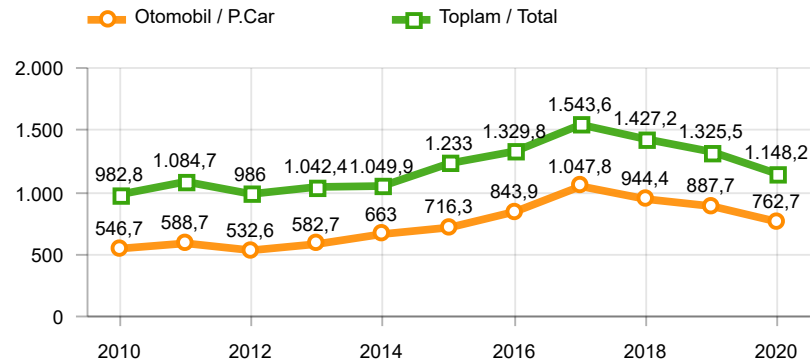
Parametreler/Parameters	11 - 2019	11 - 2020	%	1 - 11 / 2019	1 - 11 / 2020	%	12/2018 - 11/2019	12/2019 - 11/2020	%
ÜFE / PPI	-0,1	4,1	-	6,6	22,3	-	19,7	10,7	-
TÜFE / CPI	0,4	2,3	-	11,0	13,2	-	15,9	12,0	-
Sanayi Endeksi / Industry Index	-0,0	4,3	-	6,1	24,0	-	18,2	10,8	-
Dolar \$ ** (1 birim)	5,7	8,0	39,7	5,6	6,9	23,4	5,6	6,9	22,5
Euro € ** (1 birim)	6,3	9,5	49,0	6,3	7,9	25,4	6,3	7,8	24,0
Japon Yeni ¥ ** (100 birim)	5,2	7,6	45,5	5,1	6,5	26,1	5,1	6,4	25,2

*Toplam Sanayi / Total Industry Including Components

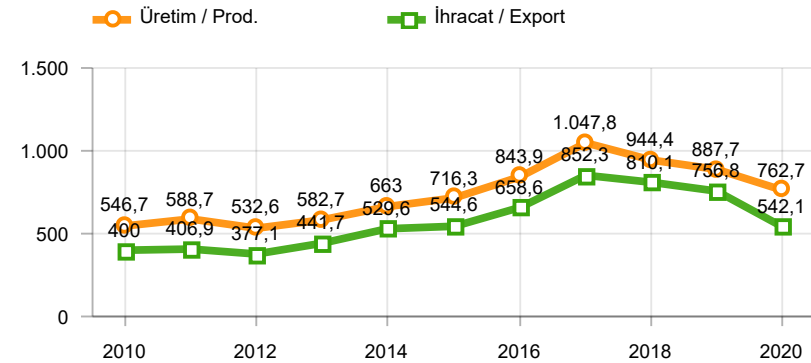
** Ortalama Değerler / Average Values

Araç Tipleri / Types	11 / 2019	11 / 2020	11 % Değişim	1-11 / 2019	1-11 / 2020	1-11 % Değişim
OTOMOBİL / Pass.Car	93.495	91.067	-2,6	887.651	762.743	-14,1
OTOMOBİL Toplam / Pass.Car Total	93.495	91.067	-2,6	887.651	762.743	-14,1
B.KAMYON / H. Truck	1.105	2.607	135,9	16.644	18.554	11,5
K.KAMYON / L. Truck	236	356	50,8	1.003	1.782	77,7
KAMYONET / Pick Up	34.371	43.360	26,2	353.719	310.301	-12,3
OTOBÜS / Bus	869	726	-16,5	8.620	7.270	-15,7
MİNİBÜS / Minibus	5.622	5.024	-10,6	55.591	45.806	-17,6
MİDİBÜS / Midibus	237	124	-47,7	2.241	1.784	-20,4
TİCARİ ARAÇLAR Toplam / Commercial Vehicles Total	42.440	52.197	23,0	437.818	385.497	-12,0
TAŞIT ARAÇLARI Toplam / Motor Vehicles Total	135.935	143.264	5,4	1.325.469	1.148.240	-13,4
TRAKTÖR / F.Tractor	2.768	4.609	66,5	21.902	33.120	51,2
TRAKTÖR Toplam / F.Tractor Total	2.768	4.609	66,5	21.902	33.120	51,2
GENEL TOPLAM / Grand Total	138.703	147.873	6,6	1.347.371	1.181.360	-12,3

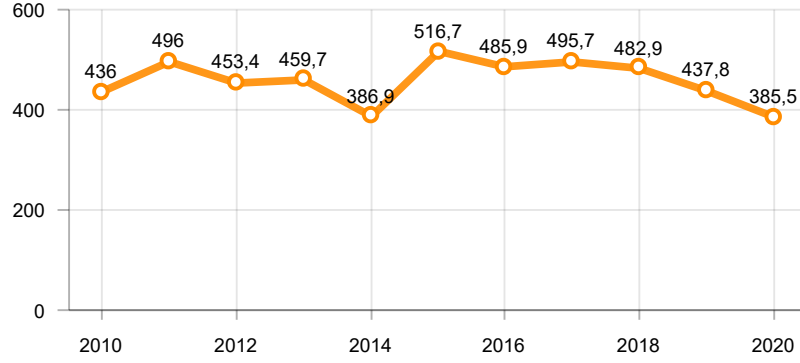
Toplam Üretim ve Otomobil Üretimi (x1000)(OCAK - KASIM)
Total & P.Cars Production (x1000)(January - November)



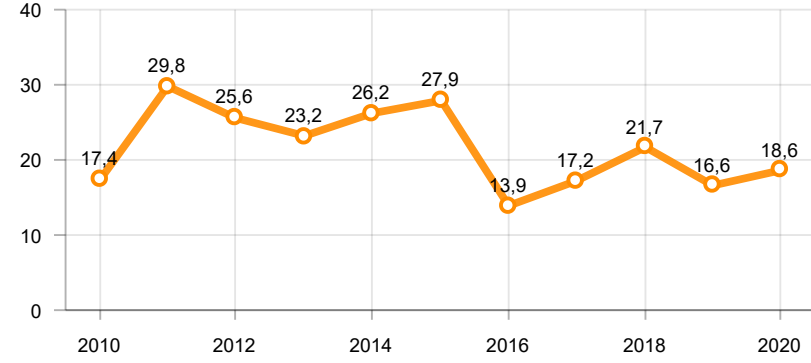
Otomobil Üretimi ve İhracat (x1000)(OCAK - KASIM)
P.Cars Production & Exports (x1000)(January - November)



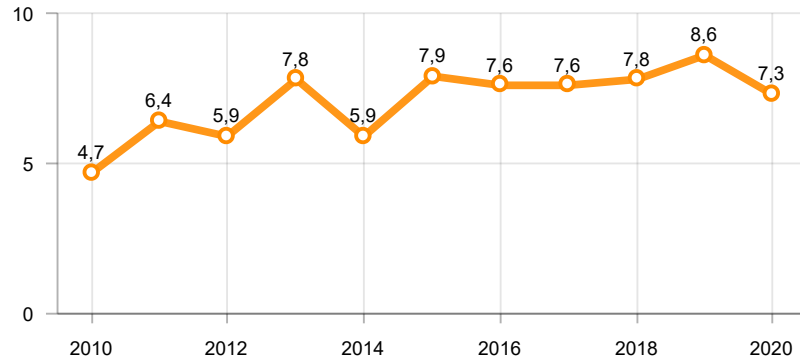
Ticari Araç Üretimi (x1000)(OCAK - KASIM)
Commercial Vehicle Production (x1000)(January - November)



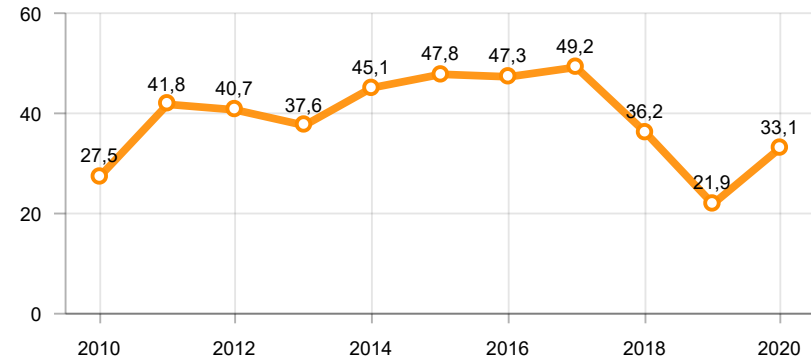
Büyük Kamyon Üretimi (x1000)(OCAK - KASIM)
Heavy Truck Production (x1000)(January - November)

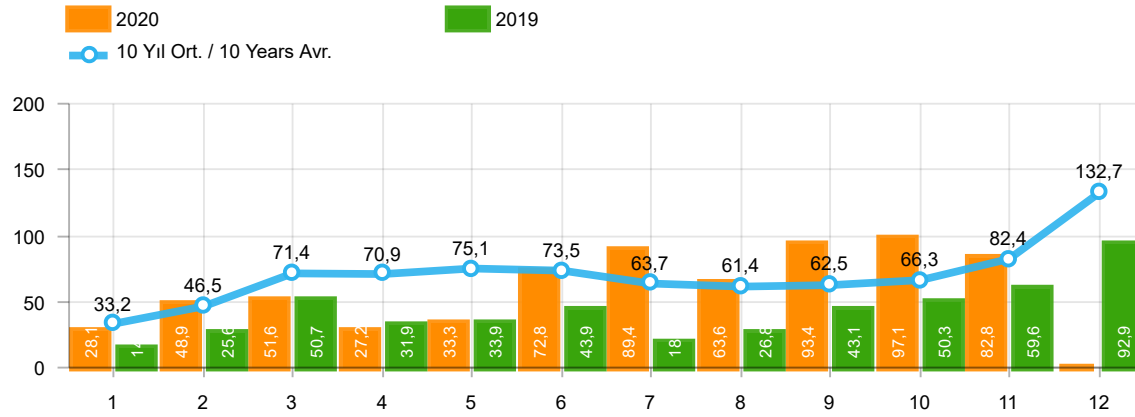


Otobüs Üretimi (x1000)(OCAK - KASIM)
Bus Production (x1000)(January - November)



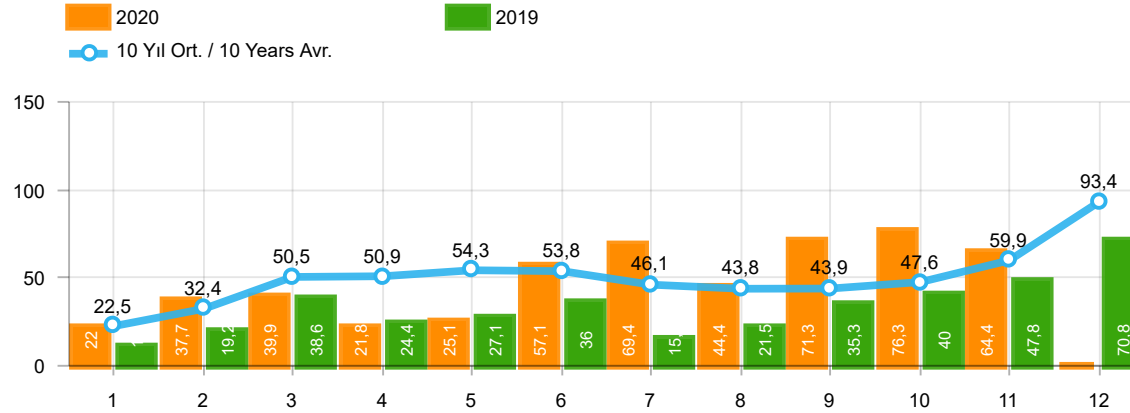
Traktör Üretimi (x1000)(OCAK - KASIM)
F. Tractor Production (x1000)(January - November)





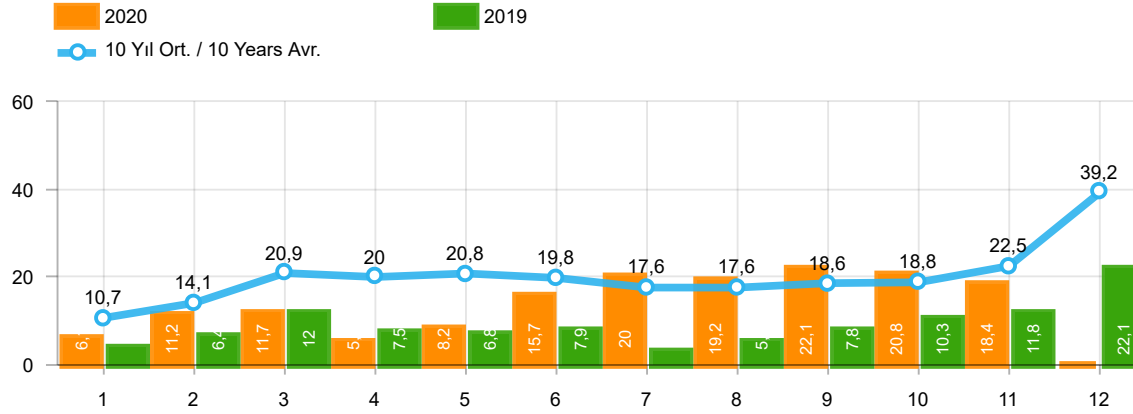
Aylar / Months	10 Yıl Ort / 10 Years Avr.	2020	%
1	33.233	28.123	-15,4
2	46.483	48.948	5,3
3	71.368	51.554	-27,8
4	70.895	27.165	-61,7
5	75.107	33.308	-55,7
6	73.519	72.789	-1,0
7	63.748	89.419	40,3
8	61.423	63.570	3,5
9	62.462	93.406	49,5
10	66.314	97.125	46,5
11	82.432	82.773	0,4
TOPLAM/TOTAL	706.989	688.180	-2,7

Yıl / Year	1	2	3	4	5	6	7	8	9	10	11	12	1-11 Toplam / Total	Toplam / Total	1-11 Yerli / Local	1-11 İthal / Import	İthal Oran / Import %
2010	21.070	32.331	54.019	57.241	61.837	63.511	64.011	64.961	67.040	76.753	77.488	155.234	640.262	795.496	267.380	372.882	58,2
2011	47.759	62.586	84.045	82.782	85.862	85.992	65.658	61.645	64.313	73.227	67.150	134.468	781.019	915.487	318.300	462.719	59,2
2012	31.552	44.138	69.242	66.559	75.195	75.108	65.444	60.982	73.501	62.933	75.203	121.442	699.857	821.299	262.844	437.013	62,4
2013	37.563	51.133	72.943	77.265	85.835	78.043	75.152	67.662	71.388	60.690	83.470	136.048	761.144	897.192	236.843	524.301	68,9
2014	34.751	37.659	51.312	57.113	62.447	64.295	62.770	63.303	70.764	69.742	84.368	154.843	658.524	813.367	228.777	429.747	65,3
2015	37.256	59.221	89.765	96.182	85.804	91.071	87.358	85.244	67.181	67.086	88.431	164.464	854.599	1.019.063	294.603	559.996	65,5
2016	34.369	54.840	85.932	87.748	97.090	94.666	59.732	73.654	69.413	85.666	125.462	145.706	868.572	1.014.278	279.298	589.274	67,8
2017	36.640	48.585	76.178	78.231	88.066	85.820	84.727	74.818	74.046	94.439	103.772	141.507	845.322	986.829	305.549	539.773	63,9
2018	36.525	48.768	79.600	73.886	74.996	52.788	54.194	35.137	23.915	22.321	59.406	80.014	561.536	641.550	211.588	349.948	62,3
2019	14.847	25.569	50.651	31.944	33.947	43.899	18.442	26.832	43.068	50.288	59.575	92.885	399.062	491.947	171.117	227.945	57,1
2020	28.123	48.948	51.554	27.165	33.308	72.789	89.419	63.570	93.406	97.125	82.773		688.180	688.180	315.224	372.956	54,2



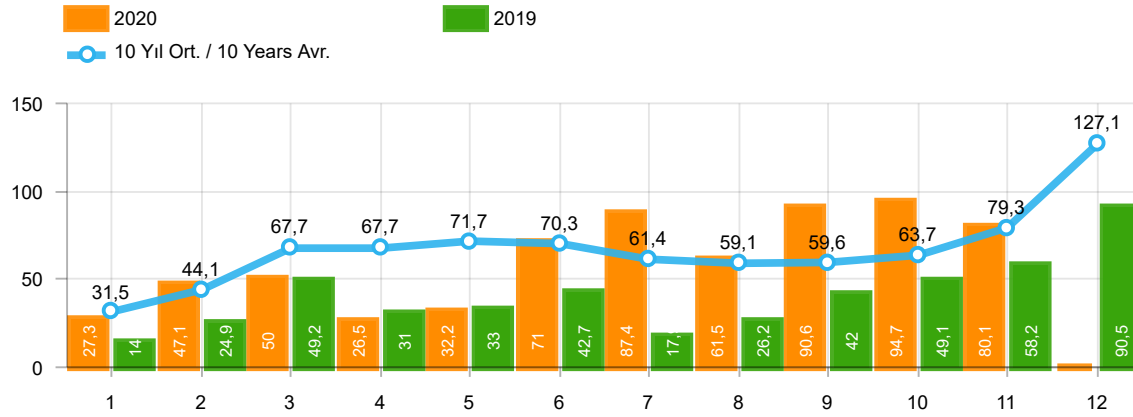
Aylar / Months	10 Yıl Ort / 10 Years Avr.	2020	%
1	22.488	22.016	-2,1
2	32.399	37.727	16,4
3	50.454	39.887	-20,9
4	50.915	21.825	-57,1
5	54.285	25.073	-53,8
6	53.751	57.067	6,2
7	46.135	69.427	50,5
8	43.822	44.372	1,3
9	43.874	71.296	62,5
10	47.560	76.341	60,5
11	59.926	64.357	7,4
TOPLAM / TOTAL	505.609	529.388	4,7

Yıl / Year	1	2	3	4	5	6	7	8	9	10	11	12	1-11 Toplam / Total	Toplam / Total	1-11 Yerli / Local	1-11 İthal / Import	İthal Oran / Import %
2010	12.594	20.651	33.958	36.549	40.467	42.086	41.399	42.222	42.477	47.859	50.061	99.461	410.323	509.784	126.084	284.239	69,3
2011	29.868	39.004	54.023	53.835	56.302	56.714	43.518	38.875	39.964	47.508	44.951	88.957	504.562	593.519	154.660	349.902	69,3
2012	21.077	29.189	47.270	45.645	50.460	50.849	44.531	41.236	49.360	43.440	52.297	80.926	475.354	556.280	127.535	347.819	73,2
2013	25.835	36.814	51.785	56.999	62.383	58.290	55.712	51.611	52.925	46.985	64.117	101.199	563.456	664.655	124.906	438.550	77,8
2014	24.368	27.167	37.812	42.769	46.379	47.278	46.602	45.131	49.262	50.814	59.695	110.054	477.277	587.331	125.260	352.017	73,8
2015	24.498	40.817	61.676	70.211	62.878	67.766	64.218	61.753	47.088	47.954	62.397	114.340	611.256	725.596	153.170	458.086	74,9
2016	23.358	40.588	63.975	65.618	73.832	71.111	45.566	53.977	51.340	63.746	95.783	108.044	648.894	756.938	158.914	489.980	75,5
2017	25.689	34.658	55.616	57.998	65.799	66.164	62.384	54.890	53.423	70.488	75.956	99.694	623.065	722.759	185.161	437.904	70,3
2018	26.611	35.901	59.798	55.108	57.227	41.225	42.024	26.976	17.595	16.809	46.204	60.843	425.478	486.321	141.095	284.383	66,8
2019	10.979	19.205	38.628	24.416	27.126	36.024	15.398	21.544	35.308	39.996	47.803	70.829	316.427	387.256	126.682	189.745	60,0
2020	22.016	37.727	39.887	21.825	25.073	57.067	69.427	44.372	71.296	76.341	64.357		529.388	529.388	214.424	314.964	59,5



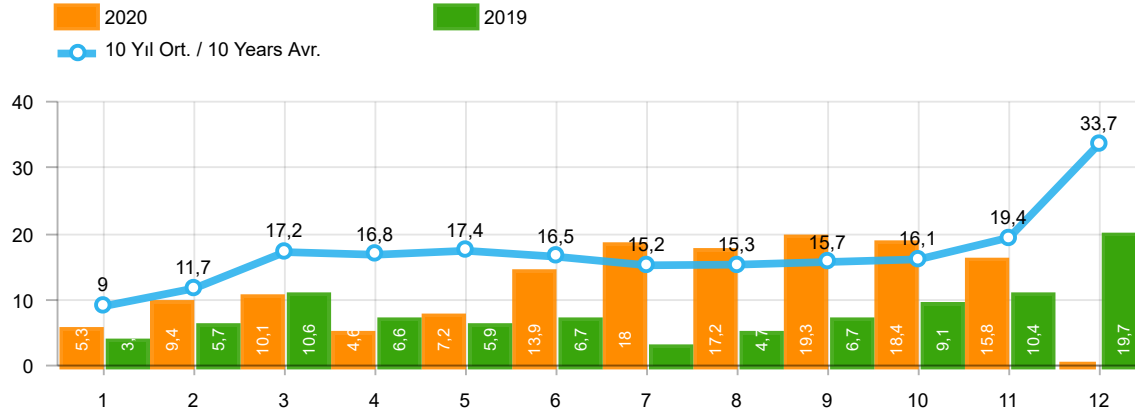
Aylar / Months	10 Yıl Ort / 10 Years Avr.	2020	%
1	10.746	6.107	-43,2
2	14.084	11.221	-20,3
3	20.915	11.667	-44,2
4	19.980	5.340	-73,3
5	20.823	8.235	-60,5
6	19.769	15.722	-20,5
7	17.614	19.992	13,5
8	17.602	19.198	9,1
9	18.589	22.110	18,9
10	18.755	20.784	10,8
11	22.506	18.416	-18,2
TOPLAM / TOTAL	201.381	158.792	-21,2

Yıl / Year	1	2	3	4	5	6	7	8	9	10	11	12	1-11 Toplam / Total	Toplam / Total	1-11 Yerli / Local	1-11 İthal / Import	İthal Oran / Import %
2010	8.476	11.680	20.061	20.692	21.370	21.425	22.612	22.739	24.563	28.894	27.427	55.773	229.939	285.712	141.296	88.643	38,6
2011	17.891	23.582	30.022	28.947	29.560	29.278	22.140	22.770	24.349	25.719	22.199	45.511	276.457	321.968	163.640	112.817	40,8
2012	10.475	14.949	21.972	20.914	24.735	24.259	20.913	19.746	24.141	19.493	22.906	40.516	224.503	265.019	135.309	89.194	39,7
2013	11.728	14.319	21.158	20.266	23.452	19.753	19.440	16.051	18.463	13.705	19.353	34.849	197.688	232.537	111.937	85.751	43,4
2014	10.383	10.492	13.500	14.344	16.068	17.017	16.168	18.172	21.502	18.928	24.673	44.789	181.247	226.036	103.517	77.730	42,9
2015	12.758	18.404	28.089	25.971	22.926	23.305	23.140	23.491	20.093	19.132	26.034	50.124	243.343	293.467	141.433	101.910	41,9
2016	11.011	14.252	21.957	22.130	23.258	23.555	14.166	19.677	18.073	21.920	29.679	37.662	219.678	257.340	120.384	99.294	45,2
2017	10.951	13.927	20.562	20.233	22.267	19.656	22.343	19.928	20.623	23.951	27.816	41.813	222.257	264.070	120.388	101.869	45,8
2018	9.914	12.867	19.802	18.778	17.769	11.563	12.170	8.161	6.320	5.512	13.202	19.171	136.058	155.229	70.493	65.565	48,2
2019	3.868	6.364	12.023	7.528	6.821	7.875	3.044	5.288	7.760	10.292	11.772	22.056	82.635	104.691	44.435	38.200	46,2
2020	6.107	11.221	11.667	5.340	8.235	15.722	19.992	19.198	22.110	20.784	18.416		158.792	158.792	100.800	57.992	36,5



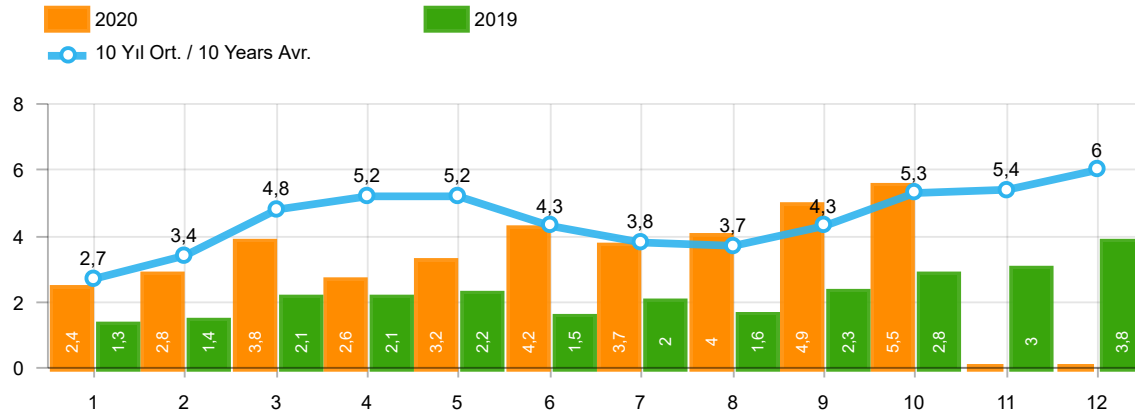
Aylar / Months	10 Yıl Ort / 10 Years Avr.	2020	%
1	31.483	27.273	-13,4
2	44.149	47.122	6,7
3	67.703	50.008	-26,1
4	67.704	26.457	-60,9
5	71.711	32.235	-55,0
6	70.288	70.973	1,0
7	61.352	87.401	42,5
8	59.082	61.533	4,1
9	59.606	90.619	52,0
10	63.700	94.733	48,7
11	79.340	80.141	1,0
TOPLAM / TOTAL	676.118	668.495	-1,1

Yıl / Year	1	2	3	4	5	6	7	8	9	10	11	12	1-11 Toplam / Total	Toplam / Total	1-11 Yerli / Local	1-11 İthal / Import	İthal Oran / Import %
2010	20.095	31.172	51.769	54.946	59.377	60.896	61.345	61.764	63.814	73.404	73.962	148.369	612.544	760.913	246.963	365.581	59,7
2011	44.892	58.663	78.403	77.695	80.646	81.573	63.044	58.406	60.129	69.421	63.657	127.910	736.529	864.439	287.751	448.778	60,9
2012	29.545	41.324	64.884	62.949	70.863	71.067	62.304	58.148	69.629	59.938	71.710	115.400	662.361	777.761	235.644	426.717	64,4
2013	35.523	48.307	68.774	73.575	81.468	74.096	71.596	65.043	67.963	58.014	79.301	129.718	723.660	853.378	208.198	515.462	71,2
2014	32.670	35.021	47.581	53.305	58.121	60.163	59.907	60.199	66.531	66.573	80.621	146.989	620.692	767.681	200.483	420.209	67,7
2015	34.615	55.331	83.302	91.602	81.542	86.158	83.836	82.577	64.025	64.255	84.601	156.173	811.844	968.017	263.268	548.576	67,6
2016	32.713	52.825	82.948	84.887	93.904	91.540	58.533	71.556	67.593	83.000	122.309	141.912	841.808	983.720	259.634	582.174	69,2
2017	35.323	46.965	73.802	75.988	85.422	83.658	82.297	72.536	71.352	91.752	100.859	136.240	819.954	956.194	287.420	532.534	64,9
2018	35.076	47.009	76.345	71.126	72.755	51.037	52.734	34.346	23.028	21.571	58.204	77.706	543.231	620.937	199.421	343.810	63,3
2019	14.373	24.875	49.221	30.971	33.016	42.688	17.927	26.246	41.992	49.075	58.176	90.500	388.560	479.060	163.844	224.716	57,8
2020	27.273	47.122	50.008	26.457	32.235	70.973	87.401	61.533	90.619	94.733	80.141		668.495	668.495	301.934	366.561	54,8



Aylar / Months	10 Yıl Ort / 10 Years Avr.	2020	%
1	8.995	5.257	-41,6
2	11.750	9.395	-20,0
3	17.249	10.121	-41,3
4	16.790	4.632	-72,4
5	17.426	7.162	-58,9
6	16.537	13.906	-15,9
7	15.217	17.974	18,1
8	15.261	17.161	12,5
9	15.731	19.323	22,8
10	16.140	18.392	14,0
11	19.414	15.784	-18,7
TOPLAM / TOTAL	170.509	139.107	-18,4

Yıl / Year	1	2	3	4	5	6	7	8	9	10	11	12	1-11 Toplam / Total	Toplam / Total	1-11 Yerli / Local	1-11 İthal / Import	İthal Oran / Import %
2010	7.501	10.521	17.811	18.397	18.910	18.810	19.946	19.542	21.337	25.545	23.901	48.908	202.221	251.129	120.879	81.342	40,2
2011	15.024	19.659	24.380	23.860	24.344	24.859	19.526	19.531	20.165	21.913	18.706	38.953	231.967	270.920	133.091	98.876	42,6
2012	8.468	12.135	17.614	17.304	20.403	20.218	17.773	16.912	20.269	16.498	19.413	34.474	187.007	221.481	108.109	78.898	42,2
2013	9.688	11.493	16.989	16.576	19.085	15.806	15.884	13.432	15.038	11.029	15.184	28.519	160.204	188.723	83.292	76.912	48,0
2014	8.302	7.854	9.769	10.536	11.742	12.885	13.305	15.068	17.269	15.759	20.926	36.935	143.415	180.350	75.223	68.192	47,5
2015	10.117	14.514	21.626	21.391	18.664	18.392	19.618	20.824	16.937	16.301	22.204	41.833	200.588	242.421	110.098	90.490	45,1
2016	9.355	12.237	18.973	19.269	20.072	20.429	12.967	17.579	16.253	19.254	26.526	33.868	192.914	226.782	100.720	92.194	47,8
2017	9.634	12.307	18.186	17.990	19.623	17.494	19.913	17.646	17.929	21.264	24.903	36.546	196.889	233.435	102.259	94.630	48,1
2018	8.465	11.108	16.547	16.018	15.528	9.812	10.710	7.370	5.433	4.762	12.000	16.863	117.753	134.616	58.326	59.427	50,5
2019	3.394	5.670	10.593	6.555	5.890	6.664	2.529	4.702	6.684	9.079	10.373	19.671	72.133	91.804	37.162	34.971	48,5
2020	5.257	9.395	10.121	4.632	7.162	13.906	17.974	17.161	19.323	18.392	15.784		139.107	139.107	87.510	51.597	37,1



Aylar / Months	10 Yıl Ort / 10 Years Avr.	2020	%
1	2.729	2.425	-11,1
2	3.442	2.778	-19,3
3	4.845	3.771	-22,2
4	5.152	2.606	-49,4
5	5.209	3.244	-37,7
6	4.304	4.173	-3,0
7	3.835	3.727	-2,8
8	3.730	3.974	6,6
9	4.272	4.928	15,4
10	5.347	5.466	2,2
TOPLAM / TOTAL	42.863	37.092	-13,5

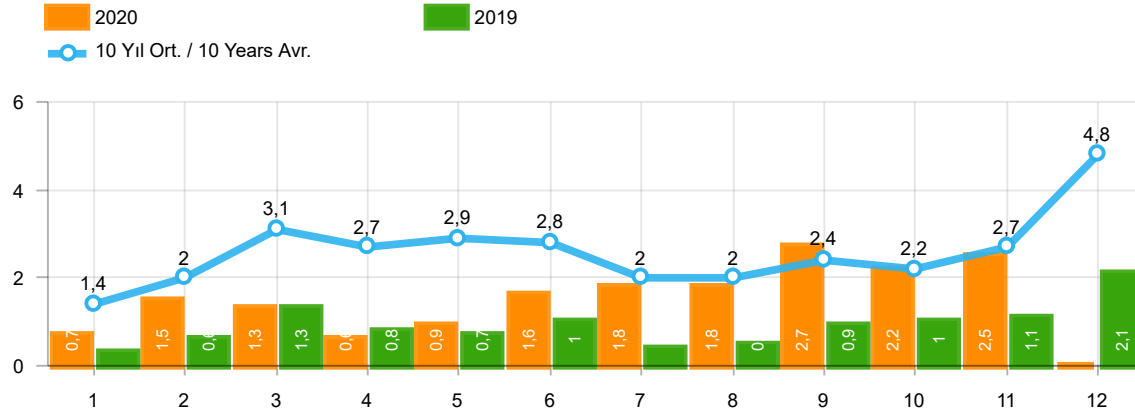
Yıl / Year	1	2	3	4	5	6	7	8	9	10	11	12	1-10 Toplam / Total	Toplam / Total
2010	1.111	1.991	2.330	3.039	2.567	2.638	1.965	3.019	2.806	4.424	3.978	6.168	25.890	36.036
2011	2.975	5.242	5.927	5.358	6.016	6.335	4.534	4.051	4.140	5.828	4.943	4.992	50.406	60.341
2012	2.362	1.983	4.348	6.579	6.273	4.569	3.837	3.158	3.618	4.027	4.807	4.757	40.754	50.318
2013	2.161	2.432	4.005	4.585	5.616	3.136	4.574	3.408	4.935	4.762	5.781	6.891	39.614	52.286
2014	2.169	3.512	4.476	4.905	5.094	5.028	4.233	4.920	5.619	5.743	6.250	7.409	45.699	59.358
2015	3.124	3.984	5.460	6.383	6.078	5.748	4.677	5.044	4.765	7.049	6.898	7.564	52.312	66.774
2016	3.739	4.731	7.067	6.546	6.575	5.543	3.833	5.134	4.945	7.372	7.090	7.603	55.485	70.178
2017	3.974	4.964	6.773	6.780	7.057	5.356	5.003	4.396	6.064	7.734	7.457	7.351	58.101	72.909
2018	4.362	4.179	5.925	5.216	4.584	3.146	3.654	2.587	3.541	3.698	3.578	3.886	40.892	48.356
2019	1.311	1.401	2.143	2.126	2.229	1.538	2.039	1.579	2.284	2.828	3.037	3.782	19.478	26.297
2020	2.425	2.778	3.771	2.606	3.244	4.173	3.727	3.974	4.928	5.466	-	-	37.092	37.092

Kaynak: TÜİK trafik kayıtları.

Rakamlar, son iki model yılına ait traktör tescillerinden oluşmaktadır.

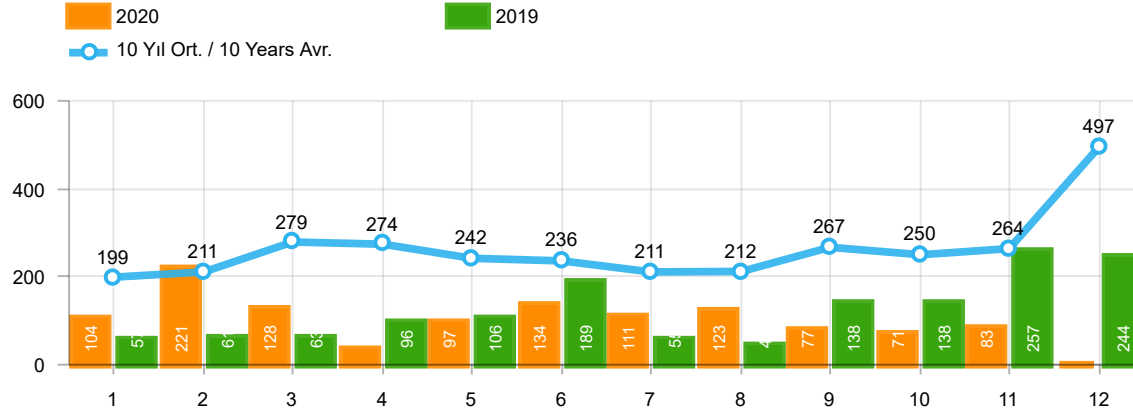
Source: Turkish Statistical Institute – Traffic registrations

Data represents the last two model year's farm tractors registration figures



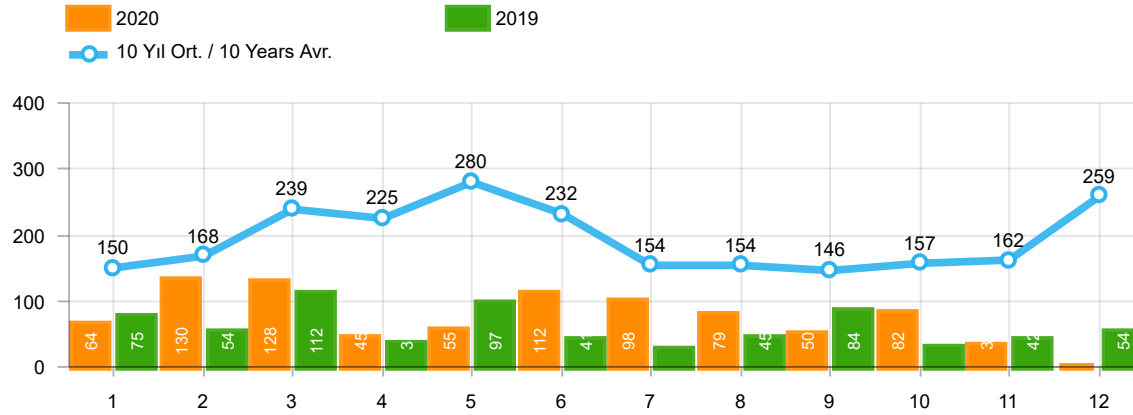
Aylar / Months	10 Yıl Ort / 10 Years Avr.	2020	%
1	1.402	682	-51,4
2	1.955	1.475	-24,6
3	3.148	1.290	-59,0
4	2.692	628	-76,7
5	2.874	921	-68,0
6	2.764	1.570	-43,2
7	2.032	1.809	-11,0
8	1.976	1.835	-7,1
9	2.444	2.660	8,8
10	2.207	2.239	1,5
11	2.667	2.518	-5,6
TOPLAM / TOTAL	26.160	17.627	-32,6

Yıl / Year	1	2	3	4	5	6	7	8	9	10	11	12	1-11 Toplam / Total	Toplam / Total	1-11 Yerli / Local	1-11 İthal / Import	İthal Oran / Import %
2010	768	960	1.950	1.949	2.140	2.314	2.403	2.754	2.864	3.001	3.231	6.158	24.334	30.492	17.098	7.236	29,7
2011	2.651	3.544	5.142	4.503	4.563	3.852	2.261	2.745	3.784	3.400	3.149	5.712	39.594	45.306	25.738	13.856	35,0
2012	1.703	2.454	3.866	3.209	3.678	3.540	2.750	2.403	3.296	2.497	3.154	5.300	32.550	37.850	22.288	10.262	31,5
2013	1.484	2.113	3.343	2.925	3.504	3.186	2.777	2.103	2.875	2.086	3.631	5.444	30.027	35.471	21.215	8.812	29,3
2014	1.522	2.065	3.094	3.224	3.727	3.726	2.578	2.783	3.708	2.858	3.384	6.869	32.669	39.538	23.288	9.381	28,7
2015	2.215	3.346	5.699	3.729	3.600	4.253	2.922	2.211	2.687	2.266	3.146	7.307	36.074	43.381	24.723	11.351	31,5
2016	1.167	1.648	2.515	2.319	2.711	2.623	984	1.796	1.438	2.238	2.485	3.127	21.924	25.051	14.855	7.069	32,2
2017	931	1.290	1.982	1.888	2.184	1.891	1.974	1.860	2.284	2.188	2.487	4.438	20.959	25.397	13.734	7.225	34,5
2018	1.237	1.552	2.630	2.328	1.909	1.272	1.235	603	653	488	905	1.695	14.812	16.507	8.685	6.127	41,4
2019	342	579	1.255	842	728	981	435	497	854	1.047	1.100	2.087	8.660	10.747	5.431	3.229	37,3
2020	682	1.475	1.290	628	921	1.570	1.809	1.835	2.660	2.239	2.518		17.627	17.627	11.232	6.395	36,3



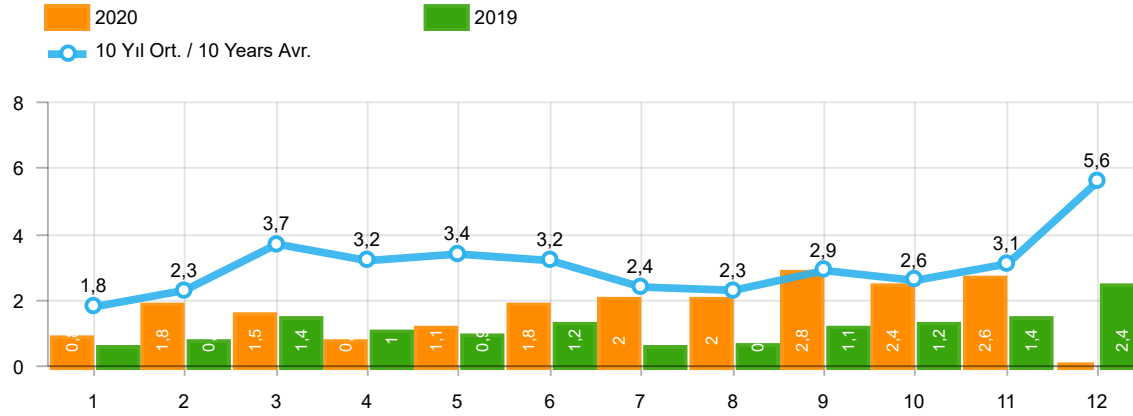
Aylar / Months	10 Yıl Ort / 10 Years Avr.	2020	%
1	199	104	-47,6
2	211	221	4,8
3	279	128	-54,1
4	274	35	-87,2
5	242	97	-59,9
6	236	134	-43,1
7	211	111	-47,4
8	212	123	-42,1
9	267	77	-71,1
10	250	71	-71,6
11	264	83	-68,5
TOPLAM / TOTAL	2.644	1.184	-55,2

Yıl / Year	1	2	3	4	5	6	7	8	9	10	11	12	1-11 Toplam / Total	Toplam / Total
2010	140	128	172	153	127	124	93	232	199	204	162	382	1.734	2.116
2011	124	167	267	260	241	233	205	280	270	230	168	525	2.445	2.970
2012	179	257	277	229	257	239	216	249	325	269	189	398	2.686	3.084
2013	191	268	289	276	283	241	367	235	305	392	415	697	3.262	3.959
2014	360	394	384	333	294	258	216	229	395	220	266	653	3.349	4.002
2015	280	322	451	561	372	405	389	253	316	394	325	621	4.068	4.689
2016	309	158	251	302	261	196	139	220	241	230	354	431	2.661	3.092
2017	212	211	227	231	272	156	250	235	318	268	317	594	2.697	3.291
2018	134	142	410	296	207	315	180	146	160	155	184	425	2.329	2.754
2019	57	61	63	96	106	189	55	44	138	138	257	244	1.204	1.448
2020	104	221	128	35	97	134	111	123	77	71	83		1.184	1.184



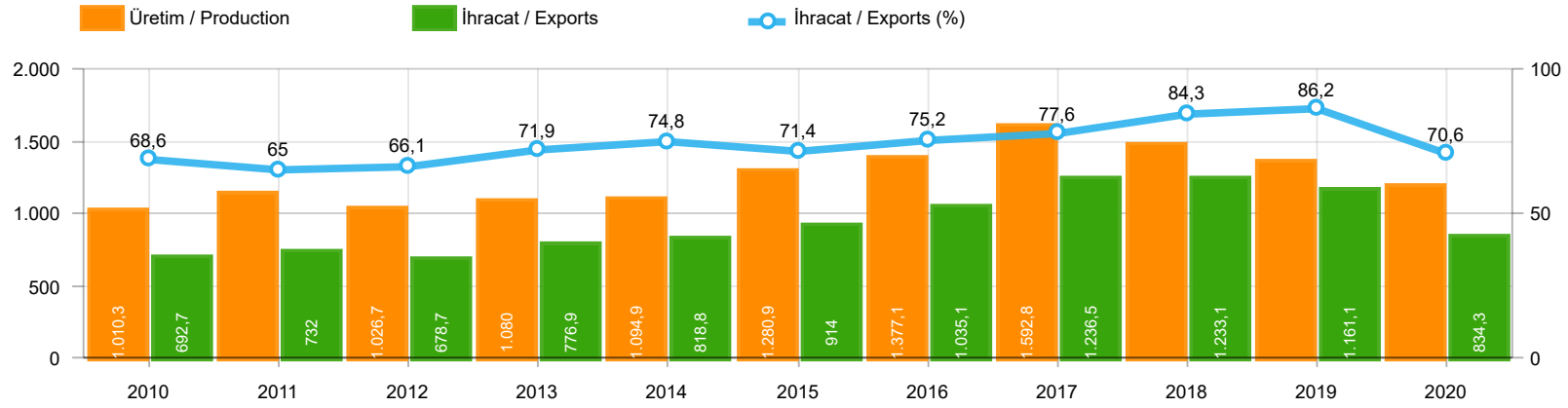
Aylar / Months	10 Yıl Ort / 10 Years Avr.	2020	%
1	150	64	-57,4
2	168	130	-22,6
3	239	128	-46,5
4	225	45	-80,0
5	280	55	-80,4
6	232	112	-51,8
7	154	98	-36,2
8	154	79	-48,7
9	146	50	-65,8
10	157	82	-47,9
11	162	31	-80,8
TOPLAM / TOTAL	2.068	874	-57,7

Yıl / Year	1	2	3	4	5	6	7	8	9	10	11	12	1-11 Toplam / Total	Toplam / Total	1-11 Yerli / Local	1-11 İthal / Import	İthal Oran / Import %
2010	67	71	128	193	193	177	170	211	163	144	133	325	1.650	1.975	1.585	65	3,9
2011	92	212	233	324	412	334	148	214	130	176	176	321	2.451	2.772	2.366	85	3,5
2012	125	103	215	172	397	262	174	182	251	229	150	344	2.260	2.604	2.226	34	1,5
2013	365	445	537	489	580	520	412	281	245	198	123	189	4.195	4.384	4.168	27	0,6
2014	199	179	253	251	305	148	69	92	130	91	97	332	1.814	2.146	1.657	157	8,7
2015	146	222	313	290	290	255	211	203	153	171	359	363	2.613	2.976	2.544	69	2,6
2016	180	209	218	240	214	307	76	82	141	198	314	236	2.179	2.415	2.148	31	1,4
2017	174	119	167	124	188	115	206	187	92	231	109	235	1.712	1.947	1.698	14	0,8
2018	78	65	215	136	125	164	45	42	74	107	113	188	1.164	1.352	1.153	11	0,9
2019	75	54	112	35	97	41	25	45	84	28	42	54	638	692	638	-	-
2020	64	130	128	45	55	112	98	79	50	82	31		874	874	874	-	-



Aylar / Months	10 Yıl Ort / 10 Years Avr.	2020	%
1	1.751	850	-51,4
2	2.334	1.826	-21,8
3	3.666	1.546	-57,8
4	3.191	708	-77,8
5	3.397	1.073	-68,4
6	3.232	1.816	-43,8
7	2.397	2.018	-15,8
8	2.342	2.037	-13,0
9	2.857	2.787	-2,5
10	2.614	2.392	-8,5
11	3.093	2.632	-14,9
TOPLAM / TOTAL	30.871	19.685	-36,2

Yıl / Year	1	2	3	4	5	6	7	8	9	10	11	12	1-11 Toplam / Total	Toplam / Total	1-11 Yerli / Local	1-11 İthal / Import	İthal Oran / Import %
2010	975	1.159	2.250	2.295	2.460	2.615	2.666	3.197	3.226	3.349	3.526	6.865	27.718	34.583	20.417	7.301	26,3
2011	2.867	3.923	5.642	5.087	5.216	4.419	2.614	3.239	4.184	3.806	3.493	6.558	44.490	51.048	30.549	13.941	31,3
2012	2.007	2.814	4.358	3.610	4.332	4.041	3.140	2.834	3.872	2.995	3.493	6.042	37.496	43.538	27.200	10.296	27,5
2013	2.040	2.826	4.169	3.690	4.367	3.947	3.556	2.619	3.425	2.676	4.169	6.330	37.484	43.814	28.645	8.839	23,6
2014	2.081	2.638	3.731	3.808	4.326	4.132	2.863	3.104	4.233	3.169	3.747	7.854	37.832	45.686	28.294	9.538	25,2
2015	2.641	3.890	6.463	4.580	4.262	4.913	3.522	2.667	3.156	2.831	3.830	8.291	42.755	51.046	31.335	11.420	26,7
2016	1.656	2.015	2.984	2.861	3.186	3.126	1.199	2.098	1.820	2.666	3.153	3.794	26.764	30.558	19.664	7.100	26,5
2017	1.317	1.620	2.376	2.243	2.644	2.162	2.430	2.282	2.694	2.687	2.913	5.267	25.368	30.635	18.129	7.239	28,5
2018	1.449	1.759	3.255	2.760	2.241	1.751	1.460	791	887	750	1.202	2.308	18.305	20.613	12.167	6.138	33,5
2019	474	694	1.430	973	931	1.211	515	586	1.076	1.213	1.399	2.385	10.502	12.887	7.273	3.229	30,7
2020	850	1.826	1.546	708	1.073	1.816	2.018	2.037	2.787	2.392	2.632		19.685	19.685	13.290	6.395	32,5



	2010	2011	2012	2013	2014	2015	2016	2017	2018	2019	2020
İhracat/Export	692.715	731.990	678.687	776.884	818.801	913.993	1.035.057	1.236.515	1.233.074	1.161.130	834.301
Üretim/Production	1.010.310	1.126.428	1.026.685	1.080.004	1.094.928	1.280.871	1.377.078	1.592.781	1.463.460	1.347.371	1.181.360
İhracat/Exports (%)	68,6	65	66,1	71,9	74,8	71,4	75,2	77,6	84,3	86,2	70,6

Taşıt Araçları İhracatı (2018 - 2020)
Motor Vehicle Exports (2018 - 2020)

SEKTÖR / SECTOR	2018	2019	1/11-2019	1/11-2020	2020/2019 %
OTOMOBİL / Pass.Car	875.147	828.744	756.807	542.083	-28,4
OTOMOBİL TOPLAM / Pass. Car Total	875.147	828.744	756.807	542.083	-28,4
KAMYON / Truck	14.478	14.824	14.265	9.408	-34,0
KAMYONET / Pick Up	372.954	349.490	320.722	230.275	-28,2
OTOBÜS / Bus	7.708	9.001	8.405	6.315	-24,9
MİNİBÜS / Minibus	47.736	49.283	44.905	33.315	-25,8
MİDİBÜS / Midibus	846	1.244	1.133	504	-55,5
TİCARİ ARAÇLAR TOPLAM / Commercial Vehicle Total	443.722	423.842	389.430	279.817	-28,1
TAŞIT ARAÇLARI TOPLAM / Motor Vehicles Total	1.318.869	1.252.586	1.146.237	821.900	-28,3
TRAKTÖR / F.Tractor	15.123	15.844	14.893	12.401	-16,7
TRAKTÖR TOPLAM / F.Tractor Total	15.123	15.844	14.893	12.401	-16,7
GENEL TOPLAM / GRAND TOTAL	1.333.992	1.268.430	1.161.130	834.301	-28,1

Üretici Bazında İhracat (adet)
Exports by Manufacturer (unit)

Üreticiler / Manufacturers	2018	2019	1-11 / 2019	1-11 / 2020
A.I.O.S.	964	1.433	1.306	448
FORD OTOSAN	328.502	333.734	303.786	221.585
HATTAT TRAKTÖR	621	637	596	745
HONDA TÜRKİYE	13.699	7.528	7.367	6.225
HYUNDAI ASSAN	190.347	169.803	153.407	117.588
KARSAN	3.419	2.713	2.184	553
M. BENZ TÜRK	16.309	16.324	15.943	10.319
MAN TÜRKİYE	2.425	2.892	2.657	2.463
OTOKAR	901	1.156	1.071	684
OYAK RENAULT	280.411	295.275	268.415	194.371
TEMSA	645	602	589	213
TOFAŞ	243.796	194.107	183.479	107.025
TOYOTA	237.451	227.019	206.033	160.426
TÜRK TRAKTÖR	14.502	15.207	14.297	11.656
GENEL TOPLAM / Grand Total	1.333.992	1.268.430	1.161.130	834.301

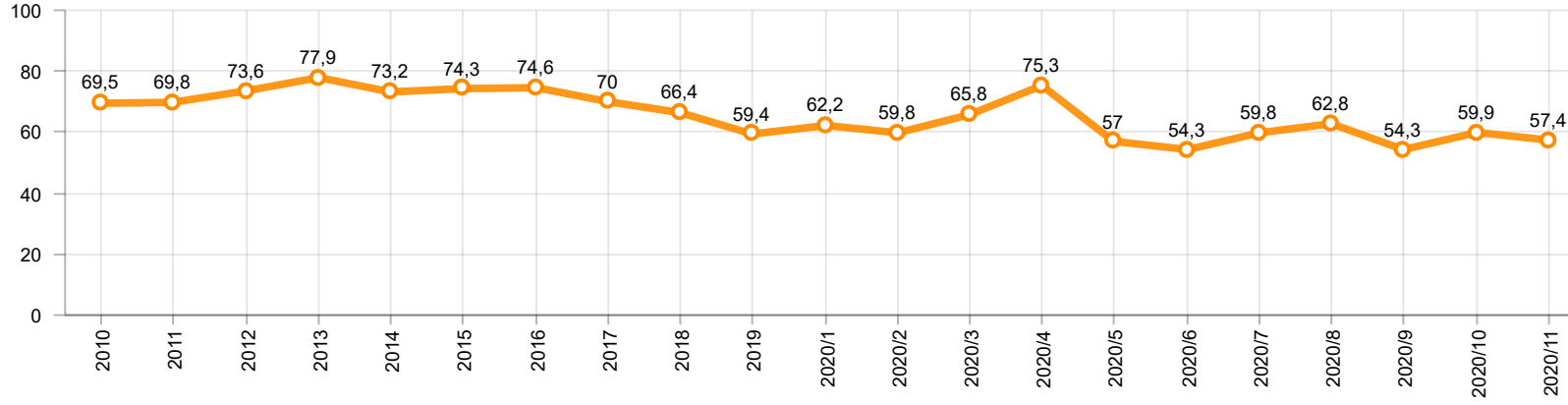
Otomotiv Ana ve Yan Sanayii İhracatı (ABD \$)
CBU and CKD Exports - \$

Sektör / Sector	2018	2019	OCAK - KASIM / January - November 2019	OCAK - KASIM / January - November 2020	2020 / 2019 %
Toplam Yan Sanayi / Total Component Industry	10.878.550.618	10.617.878.409	9.818.699.421,1	8.514.274.205,87	-13,3
İç ve Dış Lastik / Tyres	1.353.862.295	1.479.469.475	1.382.274.847,51	1.142.510.563,92	-17,3
Emniyet Camı / Safety Glasses	151.148.111	150.706.975	138.717.845,7	126.085.789,75	-9,1
Motor / Engine	581.983.113	518.051.731	477.609.743,42	444.777.033,97	-6,9
Akümülatör / Batteries	387.879.636	397.638.079	357.529.063,64	311.531.295,98	-12,9
Diğer Aksam ve Parça / Spare Parts&Components	8.403.677.463	8.072.012.149	7.462.567.920,83	6.489.369.522,25	-13,0
Toplam Ana Sanayi / Total Vehicle Industry	21.349.203.156	20.613.852.926	18.822.834.331,29	14.596.796.807,44	-22,5
Otobüs / Bus	1.503.156.428	1.759.421.232	1.629.393.678,16	1.180.769.859,51	-27,5
Midibüs-Minibüs / Midibus-Minibus	215.450.022	222.922.952	194.092.431,65	174.309.367,76	-10,2
Otomobil / P.Cars	12.420.951.066	11.864.837.779	10.741.706.249,44	8.298.826.238,72	-22,7
Kamyon-Kamyonet / Truck-Pick Up&Van	5.375.329.018	4.945.381.202	4.536.966.370,56	3.665.377.627,96	-19,2
Römork ve Yarı Römork / Trailer-Semi Trailer	507.223.886	503.258.885	461.138.511,59	365.277.451,01	-20,8
Çekici / Tractor	904.738.051	839.891.843	819.761.013,17	545.492.396,35	-33,5
Tarım Traktörü / Farm Tractor	422.354.685	478.139.033	439.776.076,72	366.743.866,13	-16,6
Toplam / Total	32.227.753.774	31.231.731.335	28.641.533.752,39	23.111.071.013,31	-19,3

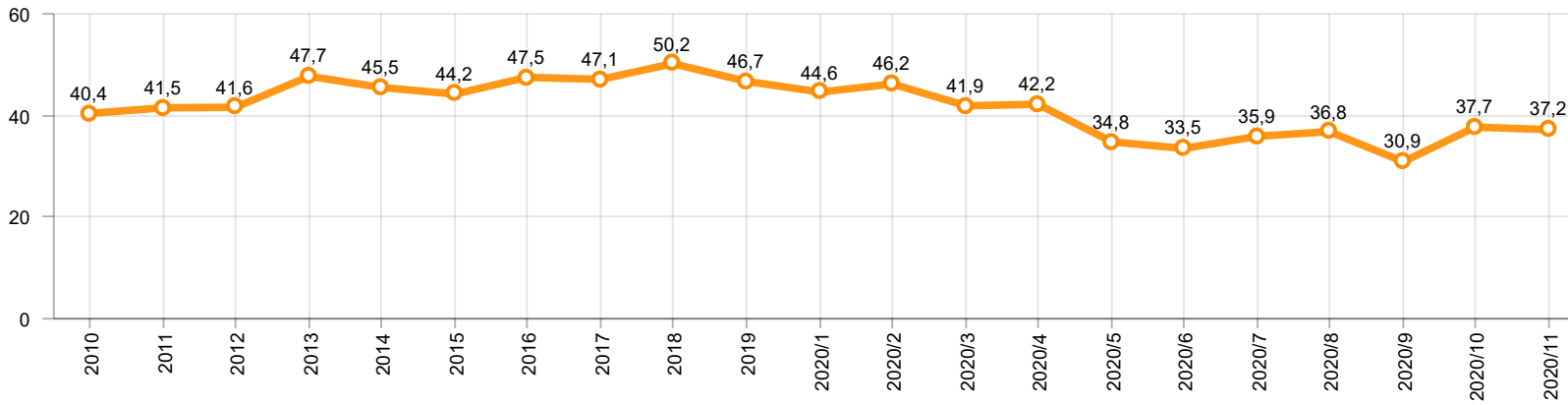
Kaynak: Uludağ İhracatçı Birlikleri . ÜİB tarafından OSD için özel olarak analiz edilen Otomotiv İhracatı kapsamında; ÜİB Türkiye Geneli Otomotiv Endüstrisi sınıflandırmasına kıyasla “Römork ve Yarı Römork” , “Tarım Traktörü” verileri dahil edilmekte; “Kullanılmış Araçlar” ,”İki Tekerlekli Taşıtlar”, “Demiryolu Taşıtları” hariç tutulmaktadır.

Source: Uludağ Exporters Association – Special Analyze for OSD.Compared to Turkish General Automotive Industry classification, this special analyze includes; farms tractors, trailers and semi-trailers, does not include; used vehicles, two-wheeled vehicles and railway vehicles

Otomobil Pazarında İthalatın Payı (%)
Import Share in P.Car Market (%)



Hafif Ticari Araçlar Pazarında İthalatın Payı (%)
Import Share in LCV Market (%)



Araç Tipleri / Vehicle Types	1	2	3	4	5	6	7	8	9	10	11	12	Toplam / Total
OTOMOBİL - Pass.Car	60.438	73.844	57.326	9.327	31.849	48.853	52.088	26.393	56.927	63.657	61.381		542.083
KAMYON - H. Truck	202	942	1.137	295	588	934	1.013	996	879	1.170	1.216		9.372
K.KAMYON - L. Truck	-	-	-	-	-	-	-	-	-	18	18		36
KAMYONET - Pick Up	25.435	24.356	21.081	882	9.461	17.524	21.102	12.858	29.427	34.241	33.908		230.275
OTOBÜS - Bus	551	696	593	91	418	829	604	459	814	604	656		6.315
MİNİBÜS - Minibus	3.305	2.709	3.552	-	2.058	2.605	3.340	2.132	4.760	4.382	4.472		33.315
MİDİBÜS - Midibus	31	68	82	18	32	64	95	27	25	21	41		504
TİCARİ ARAÇLAR TOPLAMI - CV Total	29.524	28.771	26.445	1.286	12.557	21.956	26.154	16.472	35.905	40.436	40.311		279.817
TAŞIT ARAÇLARI TOPLAMI - MV Total	89.962	102.615	83.771	10.613	44.406	70.809	78.242	42.865	92.832	104.093	101.692		821.900
TRAKTÖR - F.Tractor	1.468	1.181	994	384	680	1.421	1.322	926	1.144	1.430	1.451		12.401
GENEL TOPLAM - Grand Total	91.430	103.796	84.765	10.997	45.086	72.230	79.564	43.791	93.976	105.523	103.143		834.301

Otomobil / P.Car

Firmalar / Firms	1	2	3	4	5	6	7	8	9	10	11	12	Toplam / Total
FORD OTOSAN	583	867	505	-	405	632	639	246	1.013	999	537	-	6.426
HONDA TÜRKİYE	1.087	1.566	1.009	28	117	755	341	743	58	211	310	-	6.225
HYUNDAI ASSAN	10.700	14.160	13.138	5.123	9.923	12.200	9.287	12.932	10.001	10.439	9.685	-	117.588
OYAK RENAULT	18.323	24.729	24.536	3.021	14.036	17.391	20.319	4.418	18.085	25.132	24.381	-	194.371
TOFAŞ	7.835	10.136	5.249	1.155	648	1.978	5.541	2.943	6.905	6.789	7.868	-	57.047
TOYOTA	21.910	22.386	12.889	-	6.720	15.897	15.961	5.111	20.865	20.087	18.600	-	160.426
TOPLAM - Total	60.438	73.844	57.326	9.327	31.849	48.853	52.088	26.393	56.927	63.657	61.381	-	542.083

Kamyonet / Pick-up

Firmalar / Firms	1	2	3	4	5	6	7	8	9	10	11	12	Toplam / Total
A.I.O.S.	-	-	-	-	-	-	-	-	-	-	-	-	-
FORD OTOSAN	20.932	16.627	17.047	125	9.411	14.188	15.344	10.124	22.770	27.095	26.228	-	179.891
KARSAN	37	-	2	-	8	34	22	44	86	-	14	-	247
OTOKAR	22	-	-	46	-	22	-	18	-	34	17	-	159
TOFAŞ	4.444	7.729	4.032	711	42	3.280	5.736	2.672	6.571	7.112	7.649	-	49.978
TOPLAM - Total	25.435	24.356	21.081	882	9.461	17.524	21.102	12.858	29.427	34.241	33.908	-	230.275

Minibüs / Minibus

Firmalar / Firms	1	2	3	4	5	6	7	8	9	10	11	12	Toplam / Total
FORD OTOSAN	3.303	2.708	3.552	-	2.055	2.593	3.337	2.132	4.759	4.381	4.451	-	33.271
KARSAN	2	1	-	-	3	12	3	-	1	1	21	-	44
TOPLAM - Total	3.305	2.709	3.552	-	2.058	2.605	3.340	2.132	4.760	4.382	4.472	-	33.315

Kamyon / Truck

Firmalar / Firms	1	2	3	4	5	6	7	8	9	10	11	12	Toplam / Total
A.I.O.S.	-	-	-	-	-	-	-	-	-	18	18	-	36
FORD OTOSAN	145	192	119	92	132	235	175	173	186	304	244	-	1.997
KARSAN	-	-	-	-	-	-	-	-	-	-	-	-	-
M. BENZ TÜRK	57	750	1.018	203	456	699	838	823	693	866	972	-	7.375
OTOKAR	-	-	-	-	-	-	-	-	-	-	-	-	-
TEMSA	-	-	-	-	-	-	-	-	-	-	-	-	-
TOPLAM - Total	202	942	1.137	295	588	934	1.013	996	879	1.188	1.234	-	9.408

Midibüs / Midibus

Firmalar / Firms	1	2	3	4	5	6	7	8	9	10	11	12	Toplam / Total
A.I.O.S.	16	42	76	15	16	43	34	17	8	8	6	-	281
KARSAN	-	-	-	-	7	4	15	-	4	5	1	-	36
OTOKAR	15	20	5	3	8	16	42	2	11	8	34	-	164
TEMSA	-	6	1	-	1	1	4	8	2	-	-	-	23
TOPLAM - Total	31	68	82	18	32	64	95	27	25	21	41	-	504

Otobüs / Bus

Firmalar / Firms	1	2	3	4	5	6	7	8	9	10	11	12	Toplam / Total
A.I.O.S.	6	15	26	-	12	23	-	4	24	13	8	-	131
KARSAN	-	-	23	-	-	30	42	27	54	25	25	-	226
M. BENZ TÜRK	231	380	230	53	153	401	245	229	380	321	321	-	2.944
MAN TÜRKİYE	288	284	269	3	218	270	281	161	272	166	251	-	2.463
OTOKAR	19	15	29	34	16	79	32	23	51	46	17	-	361
TEMSA	7	2	16	1	19	26	4	15	33	33	34	-	190
TOPLAM - Total	551	696	593	91	418	829	604	459	814	604	656	-	6.315

Traktör / F.Tractor

Firmalar / Firms	1	2	3	4	5	6	7	8	9	10	11	12	Toplam / Total
HATTAT TRAKTÖR	120	84	22	38	25	53	65	67	56	29	186	-	745
TÜRK TRAKTÖR	1.348	1.097	972	346	655	1.368	1.257	859	1.088	1.401	1.265	-	11.656
TOPLAM - Total	1.468	1.181	994	384	680	1.421	1.322	926	1.144	1.430	1.451	-	12.401

Firmalar / Firms	2019 Toplam / Total	1	2	3	4	5	6	7	8	9	10	11	12	Toplam / Total
Alfa Romeo	253	2	-	5	-	12	11	8	29	46	32	36	-	181
Aston Martin	18	1	2	1	-	2	1	1	5	1	1	1	-	16
Audi	10.024	461	733	995	613	321	2.211	4.076	2.617	1.413	2.174	1.216	-	16.830
Bentley	9	-	1	-	3	2	3	-	-	1	-	-	-	10
BMW	9.583	251	815	1.168	373	191	882	1.412	2.124	1.314	1.597	1.675	-	11.802
Citroen	8.827	584	1.534	1.126	1.413	1.680	2.644	1.698	905	2.479	2.769	3.295	-	20.127
Dacia	17.533	2.261	1.851	1.245	601	787	3.033	4.282	930	2.047	2.852	2.483	-	22.372
DS	269	10	101	38	34	29	26	80	52	66	131	54	-	621
Ferrari	20	1	3	2	-	2	3	2	2	-	2	3	-	20
Fiat	1.043	7	22	79	21	39	154	102	131	144	187	98	-	984
Ford	12.484	206	862	2.042	1.032	604	1.111	3.098	2.080	2.563	2.864	3.541	-	20.003
Honda	3.108	101	172	160	96	227	152	298	267	174	185	146	-	1.978
Hyundai	15.460	950	1.385	1.261	574	732	1.790	2.465	2.225	2.471	2.167	1.516	-	17.536
Jaguar	244	-	47	24	6	9	13	7	15	5	23	44	-	193
Jeep	2.123	196	330	504	40	91	367	713	279	582	460	420	-	3.982
Kia	4.987	325	1.140	565	314	565	1.278	1.379	1.317	1.718	1.834	1.250	-	11.685
Lamborghini	9	-	1	2	1	3	1	3	2	3	-	1	-	17
Land Rover	1.371	8	151	206	237	135	112	134	128	78	210	329	-	1.728
Lexus	85	7	7	7	7	12	17	22	14	3	16	13	-	125
Maserati	45	-	2	-	1	4	5	6	4	6	2	3	-	33
Mazda	417	11	7	10	6	15	12	20	16	8	18	15	-	138
Mercedes-Benz	9.862	504	1.239	1.170	944	862	1.355	1.257	1.229	1.101	1.474	1.982	-	13.117
Mini	1.254	28	82	168	60	26	101	37	191	165	190	216	-	1.264
Mitsubishi	747	29	21	16	16	52	360	273	78	131	158	56	-	1.190
Nissan	11.980	757	275	548	188	310	246	770	2.160	2.854	2.238	342	-	10.688
Opel	16.689	554	1.768	2.726	2.044	1.770	2.913	4.233	803	4.524	4.071	2.790	-	28.196
Peugeot	23.057	1.338	2.440	2.540	3.792	2.473	2.661	2.929	1.341	2.521	5.327	3.605	-	30.967
Porsche	361	11	36	19	17	14	24	42	11	58	83	157	-	472
Renault	9.410	185	715	968	393	451	709	1.229	241	681	1.575	1.096	-	8.243
Seat	5.914	578	1.199	1.036	532	442	694	1.567	1.417	1.658	1.035	653	-	10.811
Skoda	15.369	884	1.570	1.303	313	374	3.205	2.599	1.839	3.662	3.284	2.343	-	21.376
Smart	44	12	16	8	3	2	4	2	-	-	2	-	-	49
Ssangyong	111	23	33	1	5	-	139	1	72	75	90	111	-	550
Subaru	662	17	59	84	22	43	87	83	96	47	54	46	-	638
Suzuki	2.381	22	124	173	181	134	535	275	175	177	440	493	-	2.729
Toyota	1.350	30	85	479	70	117	209	280	119	34	80	255	-	1.758
Volkswagen	38.820	3.292	3.469	5.164	2.108	1.408	3.444	4.589	4.459	5.393	7.006	5.338	-	45.670
Volvo	4.155	44	256	397	383	357	502	1.545	507	486	1.087	1.301	-	6.865
GENEL TOPLAM - Grand Total	230.078	13.690	22.553	26.240	16.443	14.297	31.014	41.517	27.880	38.689	45.718	36.923	-	314.964

Firmalar / Firms	2019 Toplam / Total	1	2	3	4	5	6	7	8	9	10	11	12	Toplam / Total
Citroen	3.206	250	341	434	133	44	182	411	600	949	664	607	-	4.615
Dacia	2.473	271	352	474	120	272	332	125	54	501	605	535	-	3.641
Fiat	1.767	176	350	252	106	131	639	795	422	233	293	227	-	3.624
Ford	1.198	50	71	63	161	241	107	72	115	170	1.030	644	-	2.724
Hyundai	1.114	55	96	54	29	59	42	-	108	63	118	175	-	799
Isuzu	75	2	3	1	1	13	24	4	1	-	-	-	-	49
Iveco	1.326	64	83	104	62	79	164	129	183	169	265	259	-	1.561
Kia	1.355	5	4	144	45	118	175	83	264	266	198	196	-	1.498
Mercedes-Benz	5.074	219	480	372	213	263	520	433	628	518	557	367	-	4.570
Mitsubishi	1.880	99	146	160	185	174	379	1.084	1.185	550	371	138	-	4.471
Nissan	1.087	66	92	59	22	47	56	2	1	-	-	44	-	389
Opel	1.370	51	33	298	99	49	231	336	303	394	380	543	-	2.717
Peugeot	5.804	418	555	495	168	260	317	431	396	689	1.376	956	-	6.061
Renault	4.309	171	228	117	90	219	314	271	115	134	196	285	-	2.140
Ssangyong	260	19	21	36	19	18	61	39	7	13	52	74	-	359
Toyota	939	25	34	70	23	96	103	90	58	215	174	191	-	1.079
Volkswagen	9.676	403	1.456	1.103	479	412	1.018	2.151	1.878	1.107	659	634	-	11.300
GENEL TOPLAM - Grand Total	42.913	2.344	4.345	4.236	1.955	2.495	4.664	6.456	6.318	5.971	6.938	5.875	-	51.597