



OTOMOTİV SANAYİİ DERNEĐİ
AUTOMOTIVE MANUFACTURERS ASSOCIATION

**OTOMOTİV SEKTÖRÜ
AYLIK DEĐERLENDİRME RAPORU
AĐUSTOS 2020**

**AUTOMOTIVE INDUSTRY MONTHLY REPORT
August 2020**

OSD "OICA" Üyesidir  O I C A OSD is a Member of "OICA"

	8 - 2019	8 - 2020	%	1 - 8 / 2019	1 - 8 / 2020	%	9/2018 - 8/2019	9/2019 - 8/2020	%
Otomobil Üretimi/P.Cars Production	31.287	45.211	44,5	610.222	485.314	-20,5	953.591	857.734	-10,1
Toplam Üretim/Total Production	52.203	75.341	44,3	921.143	712.098	-22,7	1.437.173	1.252.199	-12,9
Otomobil Pazar/P.Cars Market	21.544	44.372	106,0	193.320	317.394	64,2	334.771	511.330	52,7
Toplam Pazar/Total Market	26.832	63.621	137,1	246.131	414.931	68,6	431.787	660.747	53,0
Otomobil İthalat/P.Cars Import	13.516	27.880	106,3	110.160	193.634	75,8	203.773	313.552	53,9
Toplam İthalat/Total Import	16.423	34.815	112,0	134.562	230.060	71,0	250.321	372.567	48,8
Otomobil İhracat/P.Cars Export	33.852	26.393	-22,0	526.496	360.118	-31,6	828.365	662.366	-20,0
Toplam İhracat/Total Export	54.604	42.865	-21,5	806.666	523.288	-35,1	1.268.366	969.208	-23,6
Otomobil İhracat(\$)/P.Cars Export (\$)	509.871.221,58	381.569.430,64	-25,2	7.406.300.279	5.407.645.449	-27,0	11.676.984.924	9.866.160.486	-15,5
Toplam İhracat(\$)/Total Export (\$)*	1.791.457.367,28	1.568.142.254,78	-12,5	20.332.343.348	14.770.328.268	-27,4	31.302.494.437	25.668.041.733	-18,0

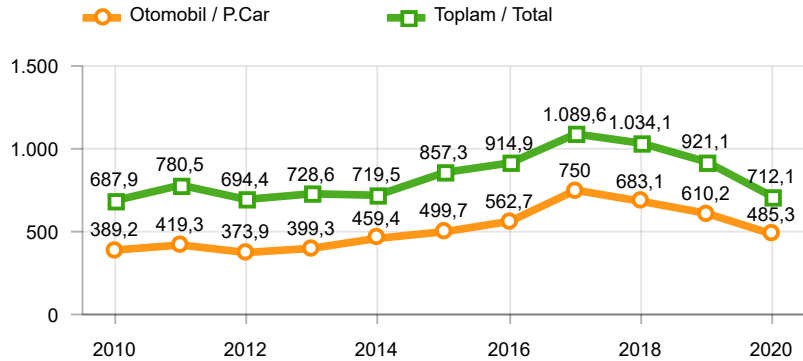
Parametreler/Parameters	8 - 2019	8 - 2020	%	1 - 8 / 2019	1 - 8 / 2020	%	9/2018 - 8/2019	9/2019 - 8/2020	%
ÜFE / PPI	-0,6	2,4	-	6,4	10,5	-	30,5	6,7	-
TÜFE / CPI	0,9	0,9	-	7,4	7,3	-	19,6	11,3	-
Sanayi Endeksi / Industry Index	-1,0	3,0	-	6,2	11,4	-	28,4	6,4	-
Dolar \$ ** (1 birim)	5,7	7,2	27,3	5,6	6,6	18,4	5,6	6,3	12,8
Euro € ** (1 birim)	6,3	8,6	36,1	6,3	7,4	17,6	6,4	7,1	10,9
Japon Yeni ¥ ** (100 birim)	5,3	6,8	29,2	5,1	6,1	20,6	5,1	5,8	15,6

*Toplam Sanayi / Total Industry Including Components

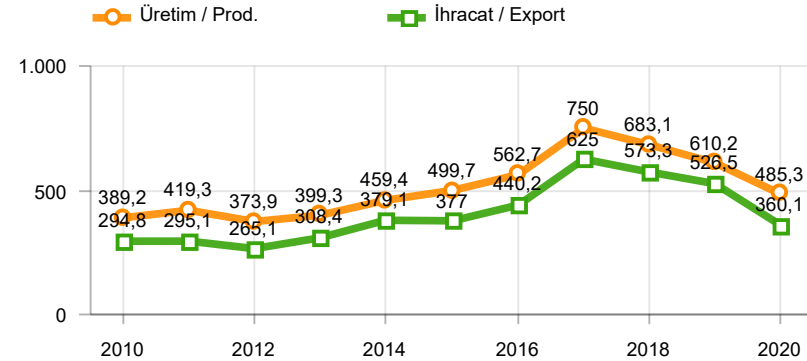
** Ortalama Değerler / Average Values

Araç Tipleri / Types	8 / 2019	8 / 2020	8 % Değişim	1-8 / 2019	1-8 / 2020	1-8 % Değişim
OTOMOBİL / Pass.Car	31.287	45.211	44,5	610.222	485.314	-20,5
OTOMOBİL Toplam / Pass.Car Total	31.287	45.211	44,5	610.222	485.314	-20,5
B.KAMYON / H. Truck	1.706	2.002	17,4	12.826	11.041	-13,9
K.KAMYON / L. Truck	50	111	122,0	463	888	91,8
KAMYONET / Pick Up	15.989	24.252	51,7	252.656	178.702	-29,3
OTOBÜS / Bus	464	459	-1,1	6.071	5.011	-17,5
MİNİBÜS / Minibus	2.537	3.163	24,7	37.413	29.857	-20,2
MİDİBÜS / Midibus	170	143	-15,9	1.492	1.285	-13,9
TİCARİ ARAÇLAR Toplam / Commercial Vehicles Total	20.916	30.130	44,1	310.921	226.784	-27,1
TAŞIT ARAÇLARI Toplam / Motor Vehicles Total	52.203	75.341	44,3	921.143	712.098	-22,7
TRAKTÖR / F.Tractor	1.198	2.968	147,7	13.810	19.803	43,4
TRAKTÖR Toplam / F.Tractor Total	1.198	2.968	147,7	13.810	19.803	43,4
GENEL TOPLAM / Grand Total	53.401	78.309	46,6	934.953	731.901	-21,7

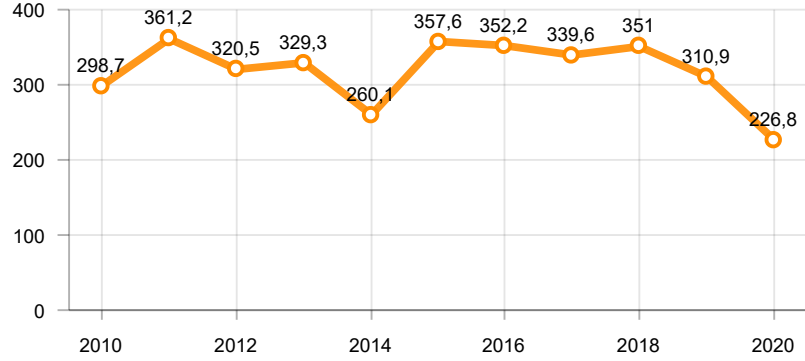
Toplam Üretim ve Otomobil Üretimi (x1000)(OCAK - AĞUSTOS)
Total & P.Cars Production (x1000)(January - August)



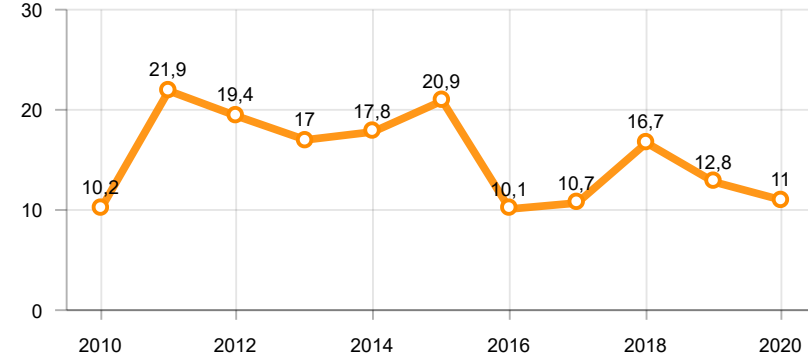
Otomobil Üretimi ve İhracat (x1000)(OCAK - AĞUSTOS)
P.Cars Production & Exports (x1000)(January - August)



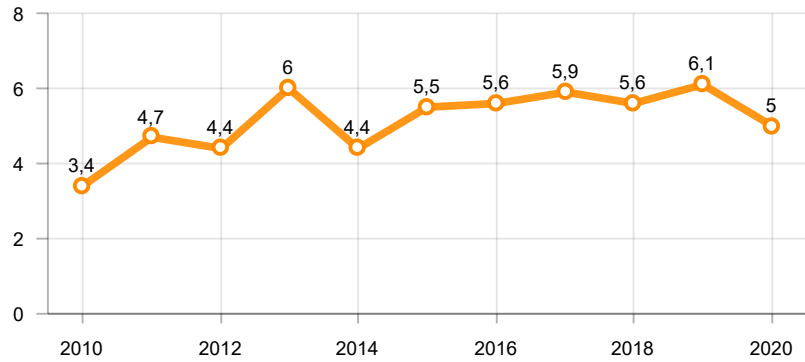
Ticari Araç Üretimi (x1000)(OCAK - AĞUSTOS)
Commercial Vehicle Production (x1000)(January - August)



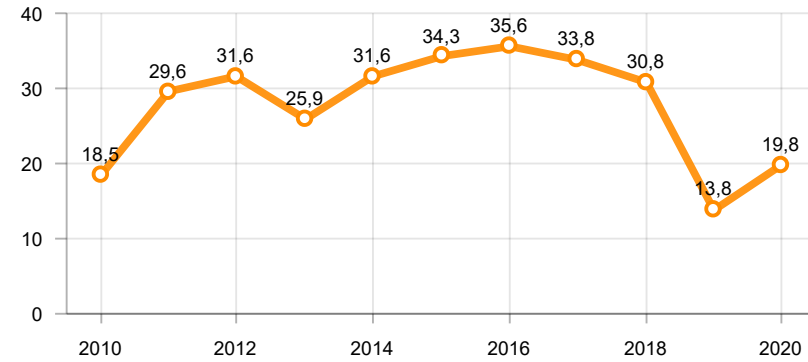
Büyük Kamyon Üretimi (x1000)(OCAK - AĞUSTOS)
Heavy Truck Production (x1000)(January - August)

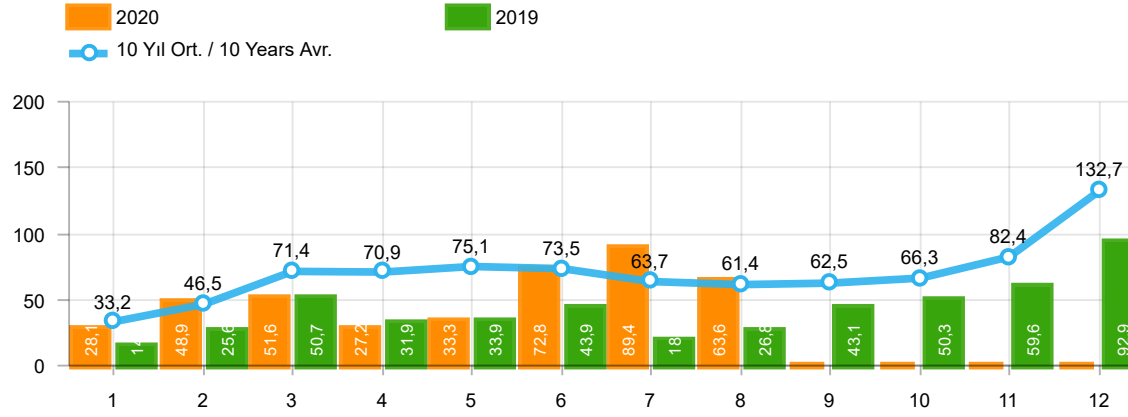


Otobüs Üretimi (x1000)(OCAK - AĞUSTOS)
Bus Production (x1000)(January - August)



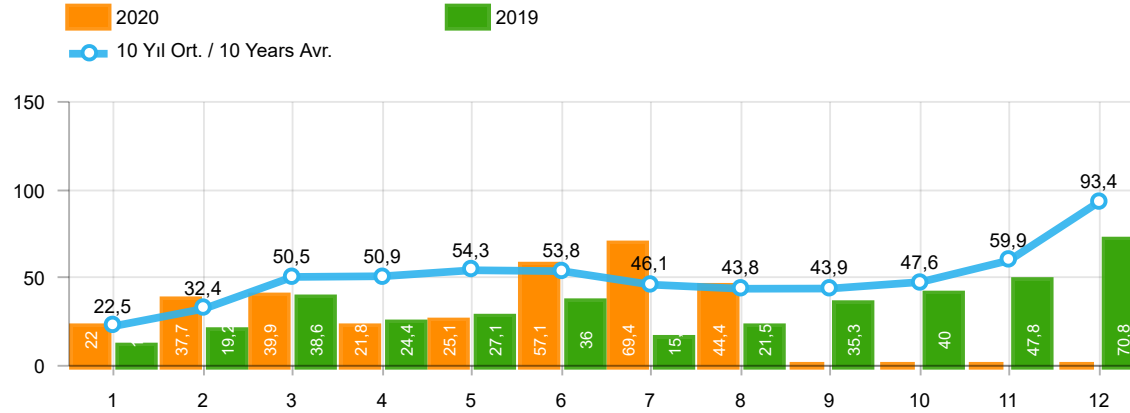
Traktör Üretimi (x1000)(OCAK - AĞUSTOS)
F. Tractor Production (x1000)(January - August)





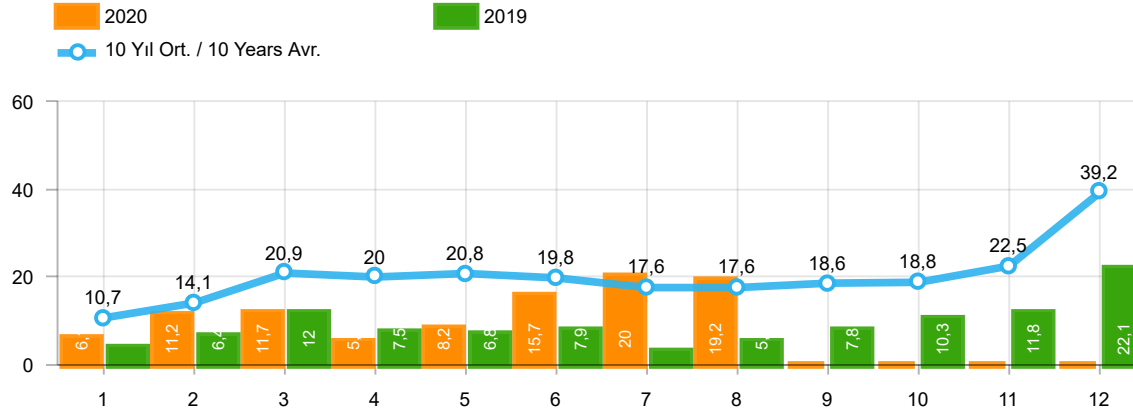
Aylar / Months	10 Yıl Ort / 10 Years Avr.	2020	%
1	33.233	28.123	-15,4
2	46.483	48.948	5,3
3	71.368	51.554	-27,8
4	70.895	27.165	-61,7
5	75.107	33.318	-55,6
6	73.519	72.789	-1,0
7	63.748	89.413	40,3
8	61.423	63.621	3,6
TOPLAM/TOTAL	495.779	414.931	-16,3

Yıl / Year	1	2	3	4	5	6	7	8	9	10	11	12	1-8 Toplam / Total	Toplam / Total	1-8 Yerli / Local	1-8 İthal / Import	İthal Oran / Import %
2010	21.070	32.331	54.019	57.241	61.837	63.511	64.011	64.961	67.040	76.753	77.488	155.234	418.981	795.496	175.671	243.310	58,1
2011	47.759	62.586	84.045	82.782	85.862	85.992	65.658	61.645	64.313	73.227	67.150	134.468	576.329	915.487	234.859	341.470	59,2
2012	31.552	44.138	69.242	66.559	75.195	75.108	65.444	60.982	73.501	62.933	75.203	121.442	488.220	821.299	184.713	303.507	62,2
2013	37.563	51.133	72.943	77.265	85.835	78.043	75.152	67.662	71.388	60.690	83.470	136.048	545.596	897.192	169.117	376.479	69,0
2014	34.751	37.659	51.312	57.113	62.447	64.295	62.770	63.303	70.764	69.742	84.368	154.843	433.650	813.367	144.307	289.343	66,7
2015	37.256	59.221	89.765	96.182	85.804	91.071	87.358	85.244	67.181	67.086	88.431	164.464	631.901	1.019.063	218.269	413.632	65,5
2016	34.369	54.840	85.932	87.748	97.090	94.666	59.732	73.654	69.413	85.666	125.462	145.706	588.031	1.014.278	190.691	397.340	67,6
2017	36.640	48.585	76.178	78.231	88.066	85.820	84.727	74.818	74.046	94.439	103.772	141.507	573.065	986.829	209.076	363.989	63,5
2018	36.525	48.768	79.600	73.886	74.996	52.788	54.194	35.137	23.915	22.321	59.406	80.014	455.894	641.550	174.385	281.509	61,7
2019	14.847	25.569	50.651	31.944	33.947	43.899	18.442	26.832	43.068	50.288	59.575	92.885	246.131	491.947	111.569	134.562	54,7
2020	28.123	48.948	51.554	27.165	33.318	72.789	89.413	63.621					414.931	414.931	184.871	230.060	55,4



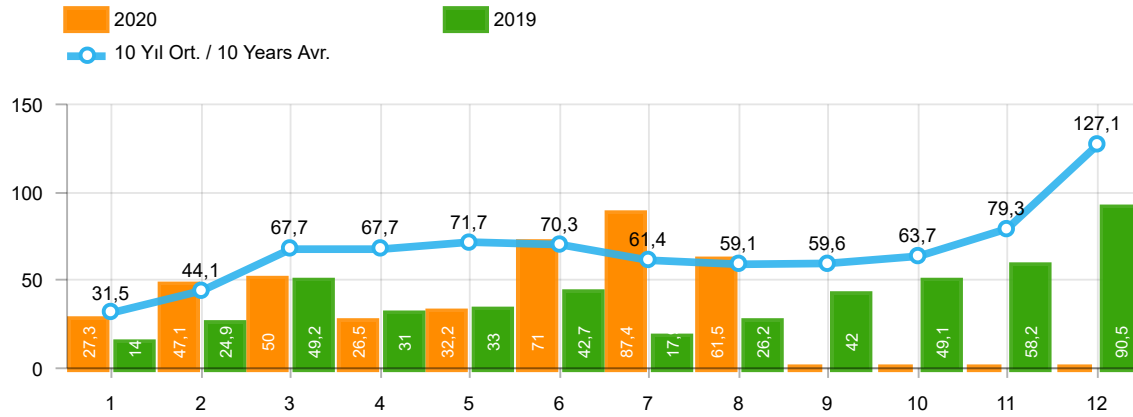
Aylar / Months	10 Yıl Ort / 10 Years Avr.	2020	%
1	22.488	22.016	-2,1
2	32.399	37.727	16,4
3	50.454	39.887	-20,9
4	50.915	21.825	-57,1
5	54.285	25.073	-53,8
6	53.751	57.067	6,2
7	46.135	69.427	50,5
8	43.822	44.372	1,3
TOPLAM / TOTAL	354.249	317.394	-10,4

Yıl / Year	1	2	3	4	5	6	7	8	9	10	11	12	1-8 Toplam / Total	Toplam / Total	1-8 Yerli / Local	1-8 İthal / Import	İthal Oran / Import %
2010	12.594	20.651	33.958	36.549	40.467	42.086	41.399	42.222	42.477	47.859	50.061	99.461	269.926	509.784	83.416	186.510	69,1
2011	29.868	39.004	54.023	53.835	56.302	56.714	43.518	38.875	39.964	47.508	44.951	88.957	372.139	593.519	116.121	256.018	68,8
2012	21.077	29.189	47.270	45.645	50.460	50.849	44.531	41.236	49.360	43.440	52.297	80.926	330.257	556.280	90.473	239.784	72,6
2013	25.835	36.814	51.785	56.999	62.383	58.290	55.712	51.611	52.925	46.985	64.117	101.199	399.429	664.655	86.633	312.796	78,3
2014	24.368	27.167	37.812	42.769	46.379	47.278	46.602	45.131	49.262	50.814	59.695	110.054	317.506	587.331	78.863	238.643	75,2
2015	24.498	40.817	61.676	70.211	62.878	67.766	64.218	61.753	47.088	47.954	62.397	114.340	453.817	725.596	114.025	339.792	74,9
2016	23.358	40.588	63.975	65.618	73.832	71.111	45.566	53.977	51.340	63.746	95.783	108.044	438.025	756.938	107.723	330.302	75,4
2017	25.689	34.658	55.616	57.998	65.799	66.164	62.384	54.890	53.423	70.488	75.956	99.694	423.198	722.759	129.160	294.038	69,5
2018	26.611	35.901	59.798	55.108	57.227	41.225	42.024	26.976	17.595	16.809	46.204	60.843	344.870	486.321	115.567	229.303	66,5
2019	10.979	19.205	38.628	24.416	27.126	36.024	15.398	21.544	35.308	39.996	47.803	70.829	193.320	387.256	83.160	110.160	57,0
2020	22.016	37.727	39.887	21.825	25.073	57.067	69.427	44.372					317.394	317.394	123.760	193.634	61,0



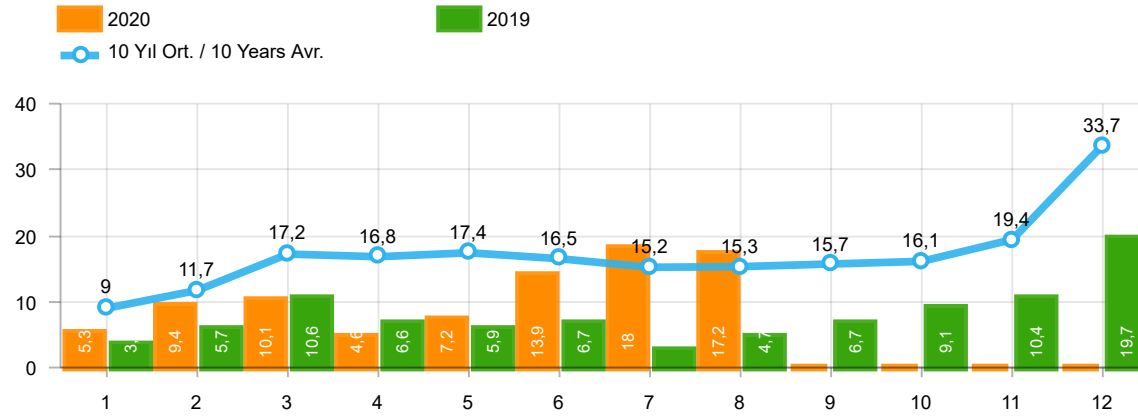
Aylar / Months	10 Yıl Ort / 10 Years Avr.	2020	%
1	10.746	6.107	-43,2
2	14.084	11.221	-20,3
3	20.915	11.667	-44,2
4	19.980	5.340	-73,3
5	20.823	8.245	-60,4
6	19.769	15.722	-20,5
7	17.614	19.986	13,5
8	17.602	19.249	9,4
TOPLAM / TOTAL	141.531	97.537	-31,1

Yıl / Year	1	2	3	4	5	6	7	8	9	10	11	12	1-8 Toplam / Total	Toplam / Total	1-8 Yerli / Local	1-8 İthal / Import	İthal Oran / Import %
2010	8.476	11.680	20.061	20.692	21.370	21.425	22.612	22.739	24.563	28.894	27.427	55.773	149.055	285.712	92.255	56.800	38,1
2011	17.891	23.582	30.022	28.947	29.560	29.278	22.140	22.770	24.349	25.719	22.199	45.511	204.190	321.968	118.738	85.452	41,8
2012	10.475	14.949	21.972	20.914	24.735	24.259	20.913	19.746	24.141	19.493	22.906	40.516	157.963	265.019	94.240	63.723	40,3
2013	11.728	14.319	21.158	20.266	23.452	19.753	19.440	16.051	18.463	13.705	19.353	34.849	146.167	232.537	82.484	63.683	43,6
2014	10.383	10.492	13.500	14.344	16.068	17.017	16.168	18.172	21.502	18.928	24.673	44.789	116.144	226.036	65.444	50.700	43,7
2015	12.758	18.404	28.089	25.971	22.926	23.305	23.140	23.491	20.093	19.132	26.034	50.124	178.084	293.467	104.244	73.840	41,5
2016	11.011	14.252	21.957	22.130	23.258	23.555	14.166	19.677	18.073	21.920	29.679	37.662	150.006	257.340	82.968	67.038	44,7
2017	10.951	13.927	20.562	20.233	22.267	19.656	22.343	19.928	20.623	23.951	27.816	41.813	149.867	264.070	79.916	69.951	46,7
2018	9.914	12.867	19.802	18.778	17.769	11.563	12.170	8.161	6.320	5.512	13.202	19.171	111.024	155.229	58.818	52.206	47,0
2019	3.868	6.364	12.023	7.528	6.821	7.875	3.044	5.288	7.760	10.292	11.772	22.056	52.811	104.691	28.409	24.402	46,2
2020	6.107	11.221	11.667	5.340	8.245	15.722	19.986	19.249					97.537	97.537	61.111	36.426	37,3



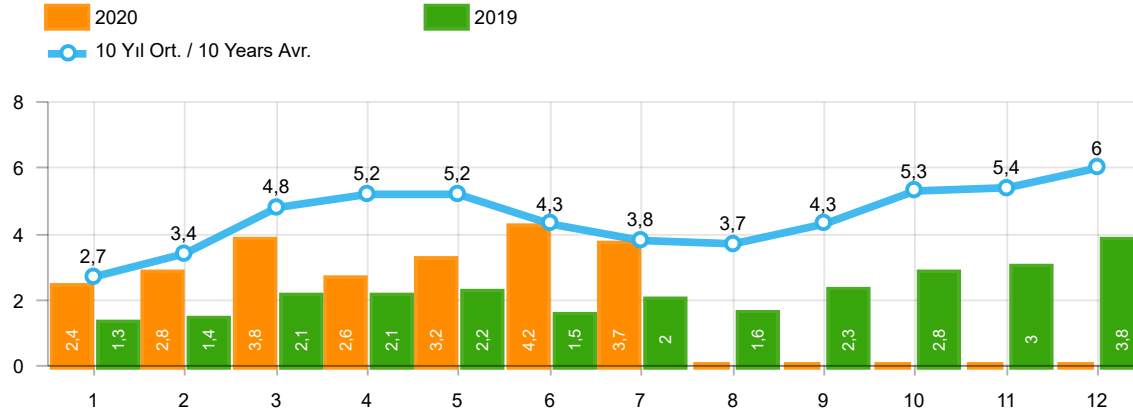
Aylar / Months	10 Yıl Ort / 10 Years Avr.	2020	%
1	31.483	27.273	-13,4
2	44.149	47.122	6,7
3	67.703	50.008	-26,1
4	67.704	26.457	-60,9
5	71.711	32.235	-55,0
6	70.288	70.973	1,0
7	61.352	87.401	42,5
8	59.082	61.533	4,1
TOPLAM / TOTAL	473.472	403.002	-14,9

Yıl / Year	1	2	3	4	5	6	7	8	9	10	11	12	1-8 Toplam / Total	Toplam / Total	1-8 Yerli / Local	1-8 İthal / Import	İthal Oran / Import %
2010	20.095	31.172	51.769	54.946	59.377	60.896	61.345	61.764	63.814	73.404	73.962	148.369	401.364	760.913	162.450	238.914	59,5
2011	44.892	58.663	78.403	77.695	80.646	81.573	63.044	58.406	60.129	69.421	63.657	127.910	543.322	864.439	212.097	331.225	61,0
2012	29.545	41.324	64.884	62.949	70.863	71.067	62.304	58.148	69.629	59.938	71.710	115.400	461.084	777.761	164.984	296.100	64,2
2013	35.523	48.307	68.774	73.575	81.468	74.096	71.596	65.043	67.963	58.014	79.301	129.718	518.382	853.378	148.289	370.093	71,4
2014	32.670	35.021	47.581	53.305	58.121	60.163	59.907	60.199	66.531	66.573	80.621	146.989	406.967	767.681	123.875	283.092	69,6
2015	34.615	55.331	83.302	91.602	81.542	86.158	83.836	82.577	64.025	64.255	84.601	156.173	598.963	968.017	193.665	405.298	67,7
2016	32.713	52.825	82.948	84.887	93.904	91.540	58.533	71.556	67.593	83.000	122.309	141.912	568.906	983.720	176.515	392.391	69,0
2017	35.323	46.965	73.802	75.988	85.422	83.658	82.297	72.536	71.352	91.752	100.859	136.240	555.991	956.194	196.518	359.473	64,7
2018	35.076	47.009	76.345	71.126	72.755	51.037	52.734	34.346	23.028	21.571	58.204	77.706	440.428	620.937	164.168	276.260	62,7
2019	14.373	24.875	49.221	30.971	33.016	42.688	17.927	26.246	41.992	49.075	58.176	90.500	239.317	479.060	106.925	132.392	55,3
2020	27.273	47.122	50.008	26.457	32.235	70.973	87.401	61.533					403.002	403.002	176.555	226.447	56,2



Aylar / Months	10 Yıl Ort / 10 Years Avr.	2020	%
1	8.995	5.257	-41,6
2	11.750	9.395	-20,0
3	17.249	10.121	-41,3
4	16.790	4.632	-72,4
5	17.426	7.162	-58,9
6	16.537	13.906	-15,9
7	15.217	17.974	18,1
8	15.261	17.161	12,5
TOPLAM / TOTAL	119.224	85.608	-28,2

Yıl / Year	1	2	3	4	5	6	7	8	9	10	11	12	1-8 Toplam / Total	Toplam / Total	1-8 Yerli / Local	1-8 İthal / Import	İthal Oran / Import %
2010	7.501	10.521	17.811	18.397	18.910	18.810	19.946	19.542	21.337	25.545	23.901	48.908	131.438	251.129	79.034	52.404	39,9
2011	15.024	19.659	24.380	23.860	24.344	24.859	19.526	19.531	20.165	21.913	18.706	38.953	171.183	270.920	95.976	75.207	43,9
2012	8.468	12.135	17.614	17.304	20.403	20.218	17.773	16.912	20.269	16.498	19.413	34.474	130.827	221.481	74.511	56.316	43,0
2013	9.688	11.493	16.989	16.576	19.085	15.806	15.884	13.432	15.038	11.029	15.184	28.519	118.953	188.723	61.656	57.297	48,2
2014	8.302	7.854	9.769	10.536	11.742	12.885	13.305	15.068	17.269	15.759	20.926	36.935	89.461	180.350	45.012	44.449	49,7
2015	10.117	14.514	21.626	21.391	18.664	18.392	19.618	20.824	16.937	16.301	22.204	41.833	145.146	242.421	79.640	65.506	45,1
2016	9.355	12.237	18.973	19.269	20.072	20.429	12.967	17.579	16.253	19.254	26.526	33.868	130.881	226.782	68.792	62.089	47,4
2017	9.634	12.307	18.186	17.990	19.623	17.494	19.913	17.646	17.929	21.264	24.903	36.546	132.793	233.435	67.358	65.435	49,3
2018	8.465	11.108	16.547	16.018	15.528	9.812	10.710	7.370	5.433	4.762	12.000	16.863	95.558	134.616	48.601	46.957	49,1
2019	3.394	5.670	10.593	6.555	5.890	6.664	2.529	4.702	6.684	9.079	10.373	19.671	45.997	91.804	23.765	22.232	48,3
2020	5.257	9.395	10.121	4.632	7.162	13.906	17.974	17.161					85.608	85.608	52.795	32.813	38,3



Aylar / Months	10 Yıl Ort / 10 Years Avr.	2020	%
1	2.729	2.425	-11,1
2	3.442	2.778	-19,3
3	4.845	3.771	-22,2
4	5.152	2.606	-49,4
5	5.209	3.244	-37,7
6	4.304	4.173	-3,0
7	3.835	3.727	-2,8
TOPLAM / TOTAL	29.515	22.724	-23,0

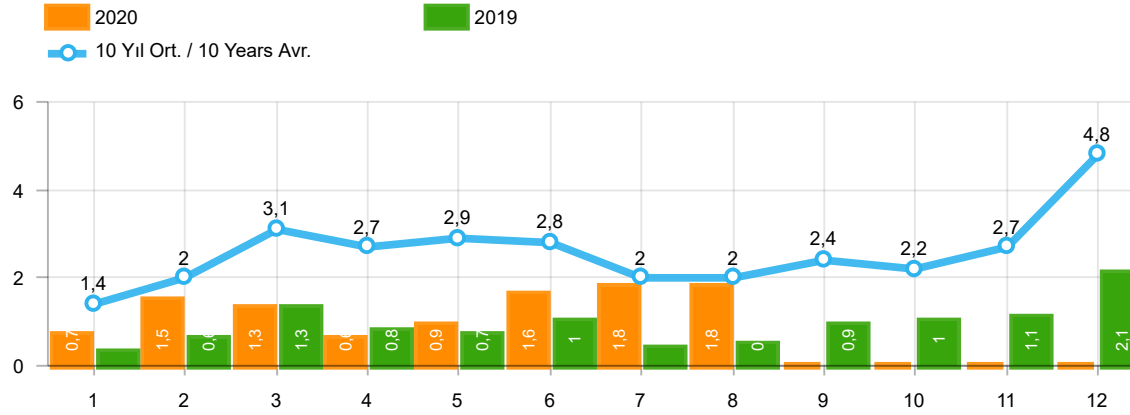
Yıl / Year	1	2	3	4	5	6	7	8	9	10	11	12	1-7 Toplam / Total	Toplam / Total
2010	1.111	1.991	2.330	3.039	2.567	2.638	1.965	3.019	2.806	4.424	3.978	6.168	15.641	36.036
2011	2.975	5.242	5.927	5.358	6.016	6.335	4.534	4.051	4.140	5.828	4.943	4.992	36.387	60.341
2012	2.362	1.983	4.348	6.579	6.273	4.569	3.837	3.158	3.618	4.027	4.807	4.757	29.951	50.318
2013	2.161	2.432	4.005	4.585	5.616	3.136	4.574	3.408	4.935	4.762	5.781	6.891	26.509	52.286
2014	2.169	3.512	4.476	4.905	5.094	5.028	4.233	4.920	5.619	5.743	6.250	7.409	29.417	59.358
2015	3.124	3.984	5.460	6.383	6.078	5.748	4.677	5.044	4.765	7.049	6.898	7.564	35.454	66.774
2016	3.739	4.731	7.067	6.546	6.575	5.543	3.833	5.134	4.945	7.372	7.090	7.603	38.034	70.178
2017	3.974	4.964	6.773	6.780	7.057	5.356	5.003	4.396	6.064	7.734	7.457	7.351	39.907	72.909
2018	4.362	4.179	5.925	5.216	4.584	3.146	3.654	2.587	3.541	3.698	3.578	3.886	31.066	48.356
2019	1.311	1.401	2.143	2.126	2.229	1.538	2.039	1.579	2.284	2.828	3.037	3.782	12.787	26.297
2020	2.425	2.778	3.771	2.606	3.244	4.173	3.727	-	-	-	-	-	22.724	22.724

Kaynak: TÜİK trafik kayıtları.

Rakamlar, son iki model yılına ait traktör tescillerinden oluşmaktadır.

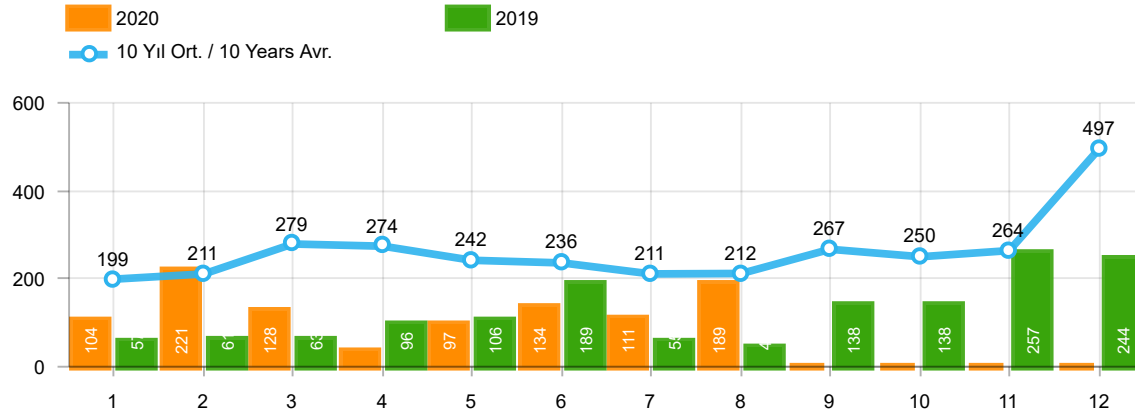
Source: Turkish Statistical Institute – Traffic registrations

Data represents the last two model year's farm tractors registration figures



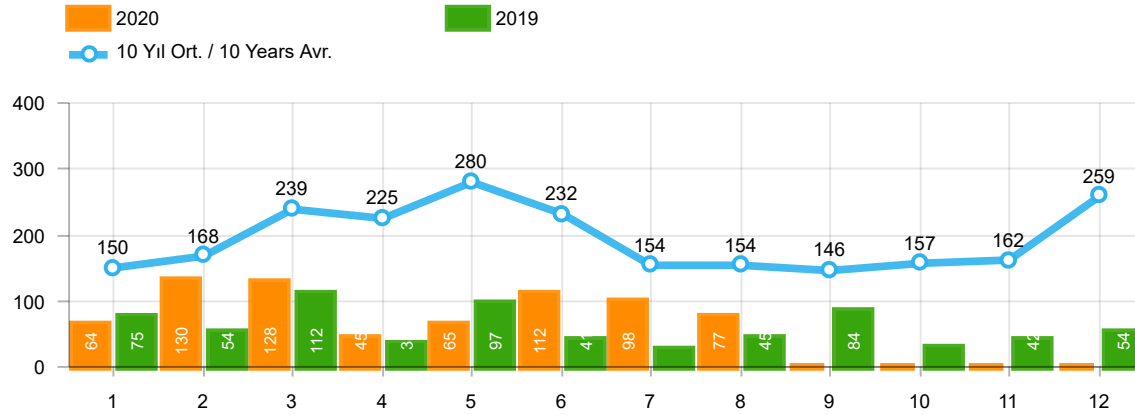
Aylar / Months	10 Yıl Ort / 10 Years Avr.	2020	%
1	1.402	682	-51,4
2	1.955	1.475	-24,6
3	3.148	1.290	-59,0
4	2.692	628	-76,7
5	2.874	921	-68,0
6	2.764	1.570	-43,2
7	2.032	1.803	-11,3
8	1.976	1.822	-7,8
TOPLAM / TOTAL	18.842	10.191	-45,9

Yıl / Year	1	2	3	4	5	6	7	8	9	10	11	12	1-8 Toplam / Total	Toplam / Total	1-8 Yerli / Local	1-8 İthal / Import	İthal Oran / Import %
2010	768	960	1.950	1.949	2.140	2.314	2.403	2.754	2.864	3.001	3.231	6.158	15.238	30.492	10.895	4.343	28,5
2011	2.651	3.544	5.142	4.503	4.563	3.852	2.261	2.745	3.784	3.400	3.149	5.712	29.261	45.306	19.098	10.163	34,7
2012	1.703	2.454	3.866	3.209	3.678	3.540	2.750	2.403	3.296	2.497	3.154	5.300	23.603	37.850	16.228	7.375	31,2
2013	1.484	2.113	3.343	2.925	3.504	3.186	2.777	2.103	2.875	2.086	3.631	5.444	21.435	35.471	15.068	6.367	29,7
2014	1.522	2.065	3.094	3.224	3.727	3.726	2.578	2.783	3.708	2.858	3.384	6.869	22.719	39.538	16.613	6.106	26,9
2015	2.215	3.346	5.699	3.729	3.600	4.253	2.922	2.211	2.687	2.266	3.146	7.307	27.975	43.381	19.710	8.265	29,5
2016	1.167	1.648	2.515	2.319	2.711	2.623	984	1.796	1.438	2.238	2.485	3.127	15.763	25.051	10.845	4.918	31,2
2017	931	1.290	1.982	1.888	2.184	1.891	1.974	1.860	2.284	2.188	2.487	4.438	14.000	25.397	9.496	4.504	32,2
2018	1.237	1.552	2.630	2.328	1.909	1.272	1.235	603	653	488	905	1.695	12.766	16.507	7.528	5.238	41,0
2019	342	579	1.255	842	728	981	435	497	854	1.047	1.100	2.087	5.659	10.747	3.489	2.170	38,3
2020	682	1.475	1.290	628	921	1.570	1.803	1.822					10.191	10.191	6.578	3.613	35,5



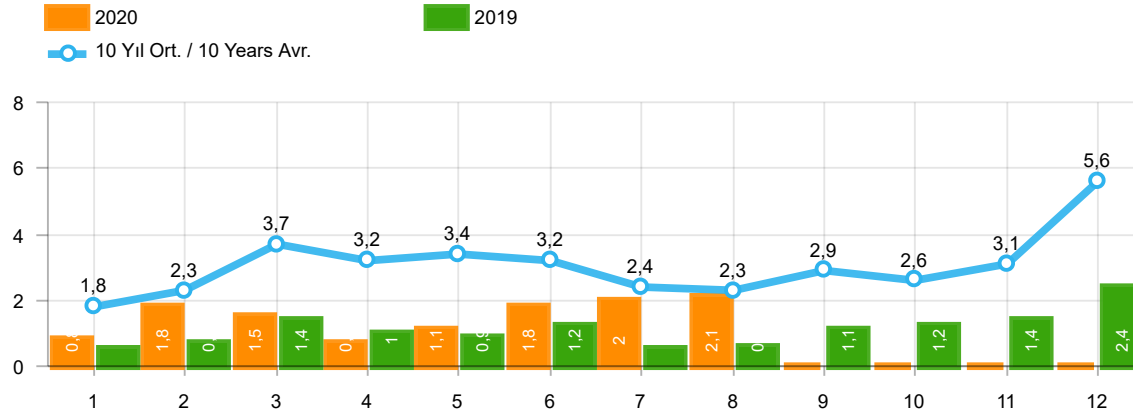
Aylar / Months	10 Yıl Ort / 10 Years Avr.	2020	%
1	199	104	-47,6
2	211	221	4,8
3	279	128	-54,1
4	274	35	-87,2
5	242	97	-59,9
6	236	134	-43,1
7	211	111	-47,4
8	212	189	-11,0
TOPLAM / TOTAL	1.863	1.019	-45,3

Yıl / Year	1	2	3	4	5	6	7	8	9	10	11	12	1-8 Toplam / Total	Toplam / Total
2010	140	128	172	153	127	124	93	232	199	204	162	382	1.169	2.116
2011	124	167	267	260	241	233	205	280	270	230	168	525	1.777	2.970
2012	179	257	277	229	257	239	216	249	325	269	189	398	1.903	3.084
2013	191	268	289	276	283	241	367	235	305	392	415	697	2.150	3.959
2014	360	394	384	333	294	258	216	229	395	220	266	653	2.468	4.002
2015	280	322	451	561	372	405	389	253	316	394	325	621	3.033	4.689
2016	309	158	251	302	261	196	139	220	241	230	354	431	1.836	3.092
2017	212	211	227	231	272	156	250	235	318	268	317	594	1.794	3.291
2018	134	142	410	296	207	315	180	146	160	155	184	425	1.830	2.754
2019	57	61	63	96	106	189	55	44	138	138	257	244	671	1.448
2020	104	221	128	35	97	134	111	189					1.019	1.019



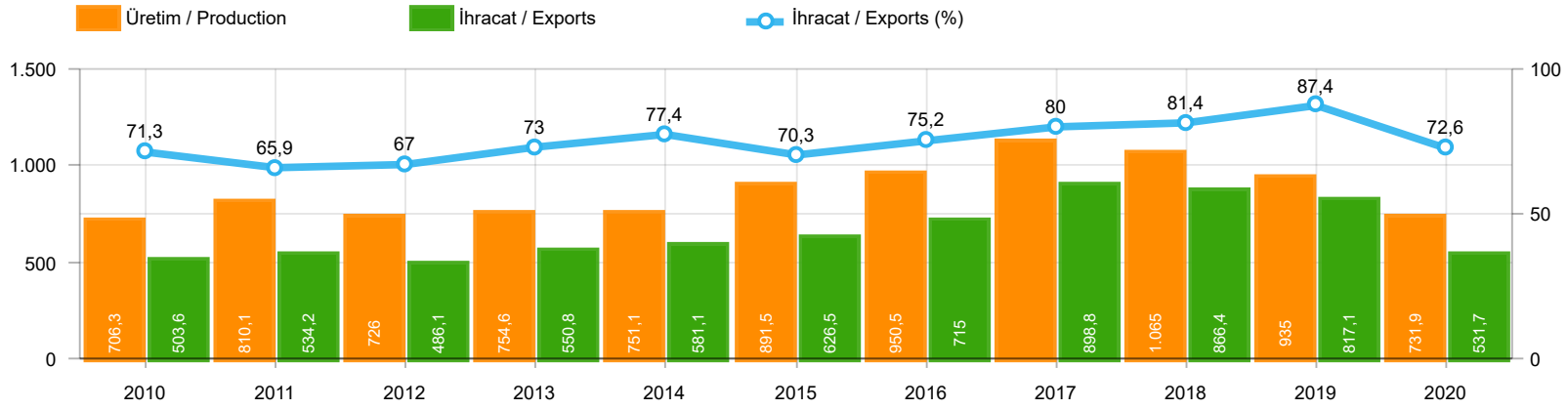
Aylar / Months	10 Yıl Ort / 10 Years Avr.	2020	%
1	150	64	-57,4
2	168	130	-22,6
3	239	128	-46,5
4	225	45	-80,0
5	280	65	-76,8
6	232	112	-51,8
7	154	98	-36,2
8	154	77	-50,0
TOPLAM / TOTAL	1.602	719	-55,1

Yıl / Year	1	2	3	4	5	6	7	8	9	10	11	12	1-8 Toplam / Total	Toplam / Total	1-8 Yerli / Local	1-8 İthal / Import	İthal Oran / Import %
2010	67	71	128	193	193	177	170	211	163	144	133	325	1.210	1.975	1.157	53	4,4
2011	92	212	233	324	412	334	148	214	130	176	176	321	1.969	2.772	1.887	82	4,2
2012	125	103	215	172	397	262	174	182	251	229	150	344	1.630	2.604	1.598	32	2,0
2013	365	445	537	489	580	520	412	281	245	198	123	189	3.629	4.384	3.610	19	0,5
2014	199	179	253	251	305	148	69	92	130	91	97	332	1.496	2.146	1.351	145	9,7
2015	146	222	313	290	290	255	211	203	153	171	359	363	1.930	2.976	1.861	69	3,6
2016	180	209	218	240	214	307	76	82	141	198	314	236	1.526	2.415	1.495	31	2,0
2017	174	119	167	124	188	115	206	187	92	231	109	235	1.280	1.947	1.268	12	0,9
2018	78	65	215	136	125	164	45	42	74	107	113	188	870	1.352	859	11	1,3
2019	75	54	112	35	97	41	25	45	84	28	42	54	484	692	484	-	-
2020	64	130	128	45	65	112	98	77					719	719	719	-	-



Aylar / Months	10 Yıl Ort / 10 Years Avr.	2020	%
1	1.751	850	-51,4
2	2.334	1.826	-21,8
3	3.666	1.546	-57,8
4	3.191	708	-77,8
5	3.397	1.083	-68,1
6	3.232	1.816	-43,8
7	2.397	2.012	-16,0
8	2.342	2.088	-10,8
TOPLAM / TOTAL	22.307	11.929	-46,5

Yıl / Year	1	2	3	4	5	6	7	8	9	10	11	12	1-8 Toplam / Total	Toplam / Total	1-8 Yerli / Local	1-8 İthal / Import	İthal Oran / Import %
2010	975	1.159	2.250	2.295	2.460	2.615	2.666	3.197	3.226	3.349	3.526	6.865	17.617	34.583	13.221	4.396	25,0
2011	2.867	3.923	5.642	5.087	5.216	4.419	2.614	3.239	4.184	3.806	3.493	6.558	33.007	51.048	22.762	10.245	31,0
2012	2.007	2.814	4.358	3.610	4.332	4.041	3.140	2.834	3.872	2.995	3.493	6.042	27.136	43.538	19.729	7.407	27,3
2013	2.040	2.826	4.169	3.690	4.367	3.947	3.556	2.619	3.425	2.676	4.169	6.330	27.214	43.814	20.828	6.386	23,5
2014	2.081	2.638	3.731	3.808	4.326	4.132	2.863	3.104	4.233	3.169	3.747	7.854	26.683	45.686	20.432	6.251	23,4
2015	2.641	3.890	6.463	4.580	4.262	4.913	3.522	2.667	3.156	2.831	3.830	8.291	32.938	51.046	24.604	8.334	25,3
2016	1.656	2.015	2.984	2.861	3.186	3.126	1.199	2.098	1.820	2.666	3.153	3.794	19.125	30.558	14.176	4.949	25,9
2017	1.317	1.620	2.376	2.243	2.644	2.162	2.430	2.282	2.694	2.687	2.913	5.267	17.074	30.635	12.558	4.516	26,4
2018	1.449	1.759	3.255	2.760	2.241	1.751	1.460	791	887	750	1.202	2.308	15.466	20.613	10.217	5.249	33,9
2019	474	694	1.430	973	931	1.211	515	586	1.076	1.213	1.399	2.385	6.814	12.887	4.644	2.170	31,8
2020	850	1.826	1.546	708	1.083	1.816	2.012	2.088					11.929	11.929	8.316	3.613	30,3



	2010	2011	2012	2013	2014	2015	2016	2017	2018	2019	2020
İhracat/Export	503.580	534.179	486.057	550.759	581.060	626.461	715.006	898.816	866.389	817.136	531.664
Üretim/Production	706.347	810.077	725.951	754.562	751.112	891.548	950.485	1.123.442	1.064.951	934.953	731.901
İhracat/Exports (%)	71,3	65,9	67	73	77,4	70,3	75,2	80	81,4	87,4	72,6

Taşıt Araçları İhracatı (2018 - 2020)
Motor Vehicle Exports (2018 - 2020)

SEKTÖR / SECTOR	2018	2019	1/8-2019	1/8-2020	2020/2019 %
OTOMOBİL / Pass.Car	875.147	828.744	526.496	360.118	-31,6
OTOMOBİL TOPLAM / Pass. Car Total	875.147	828.744	526.496	360.118	-31,6
KAMYON / Truck	14.478	14.824	11.429	6.107	-46,6
KAMYONET / Pick Up	372.954	349.490	230.136	132.699	-42,3
OTOBÜS / Bus	7.708	9.001	5.968	4.241	-28,9
MİNİBÜS / Minibus	47.736	49.283	31.767	19.706	-38,0
MİDİBÜS / Midibus	846	1.244	870	417	-52,1
TİCARİ ARAÇLAR TOPLAM / Commercial Vehicle Total	443.722	423.842	280.170	163.170	-41,8
TAŞIT ARAÇLARI TOPLAM / Motor Vehicles Total	1.318.869	1.252.586	806.666	523.288	-35,1
TRAKTÖR / F.Tractor	15.123	15.844	10.470	8.376	-20,0
TRAKTÖR TOPLAM / F.Tractor Total	15.123	15.844	10.470	8.376	-20,0
GENEL TOPLAM / GRAND TOTAL	1.333.992	1.268.430	817.136	531.664	-34,9

Üretici Bazında İhracat (adet)
Exports by Manufacturer (unit)

Üreticiler / Manufacturers	2018	2019	1-8 / 2019	1-8 / 2020
A.I.O.S.	964	1.433	1.017	345
FORD OTOSAN	328.502	333.734	215.821	128.618
HATTAT TRAKTÖR	621	637	466	474
HONDA TÜRKİYE	13.699	7.528	4.659	5.646
HYUNDAI ASSAN	190.347	169.803	103.628	87.463
KARSAN	3.419	2.713	1.242	321
M. BENZ TÜRK	16.309	16.324	12.571	6.766
MAN TÜRKİYE	2.425	2.892	1.865	1.774
OTOKAR	901	1.156	874	466
OYAK RENAULT	280.411	295.275	186.485	126.773
TEMSA	645	602	439	111
TOFAŞ	243.796	194.107	130.733	64.131
TOYOTA	237.451	227.019	147.332	100.874
TÜRK TRAKTÖR	14.502	15.207	10.004	7.902
GENEL TOPLAM / Grand Total	1.333.992	1.268.430	817.136	531.664

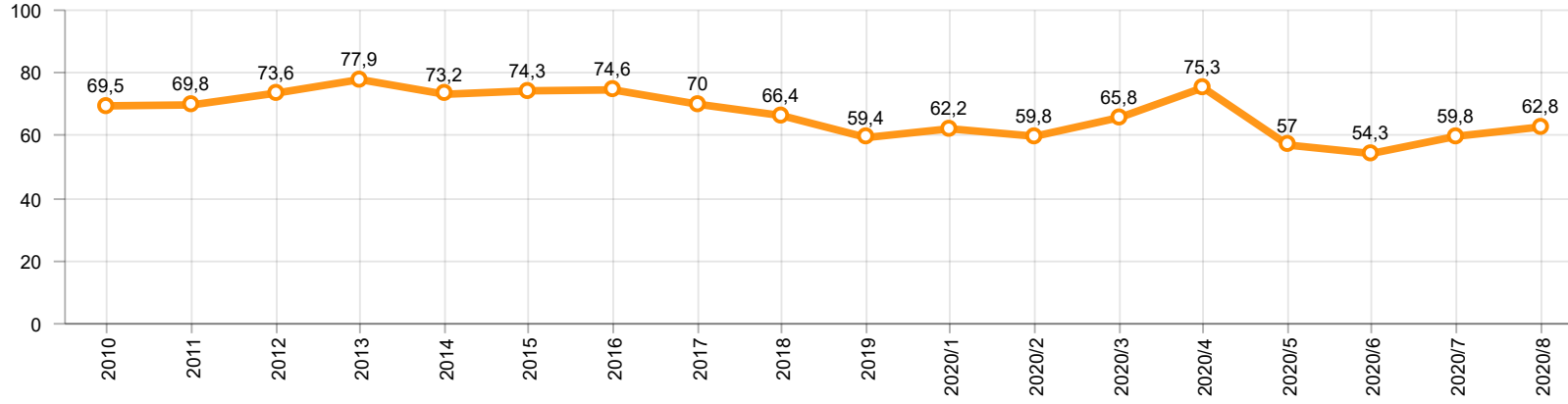
Otomotiv Ana ve Yan Sanayii İhracatı (ABD \$)
CBU and CKD Exports - \$

Sektör / Sector	2018	2019	OCAK - AĞUSTOS / January - August 2019	OCAK - AĞUSTOS / January - August 2020	2020 / 2019 %
Toplam Yan Sanayi / Total Component Industry	10.878.550.618	10.617.878.409	6.992.525.522,86	5.563.610.961,98	-20,4
İç ve Dış Lastik / Tyres	1.353.862.295	1.479.469.475	981.689.087,37	777.653.739,61	-20,8
Emniyet Camı / Safety Glasses	151.148.111	150.706.975	97.595.886,4	84.801.564,21	-13,1
Motor / Engine	581.983.113	518.051.731	342.109.519,32	281.461.815	-17,7
Akümülatör / Batteries	387.879.636	397.638.079	247.911.088,42	204.645.162,43	-17,5
Diğer Aksam ve Parça / Spare Parts&Components	8.403.677.463	8.072.012.149	5.323.219.941,35	4.215.048.680,73	-20,8
Toplam Ana Sanayi / Total Vehicle Industry	21.349.203.156	20.613.852.926	13.339.817.825,45	9.206.717.306,12	-31,0
Otobüs / Bus	1.503.156.428	1.759.421.232	1.163.011.281,37	769.872.436,13	-33,8
Midibüs-Minibüs / Midibus-Minibus	215.450.022	222.922.952	125.607.713,37	129.564.539,85	3,2
Otomobil / P.Cars	12.420.951.066	11.864.837.779	7.406.300.278,99	5.407.645.448,73	-27,0
Kamyon-Kamyonet / Truck-Pick Up&Van	5.375.329.018	4.945.381.202	3.314.476.195,45	2.048.081.457,96	-38,2
Römork ve Yarı Römork / Trailer-Semi Trailer	507.223.886	503.258.885	357.688.700,15	252.857.015,53	-29,3
Çekici / Tractor	904.738.051	839.891.843	670.199.434,36	355.772.867,48	-46,9
Tarım Traktörü / Farm Tractor	422.354.685	478.139.033	302.534.221,76	242.923.540,44	-19,7
Toplam / Total	32.227.753.774	31.231.731.335	20.332.343.348,31	14.770.328.268,1	-27,4

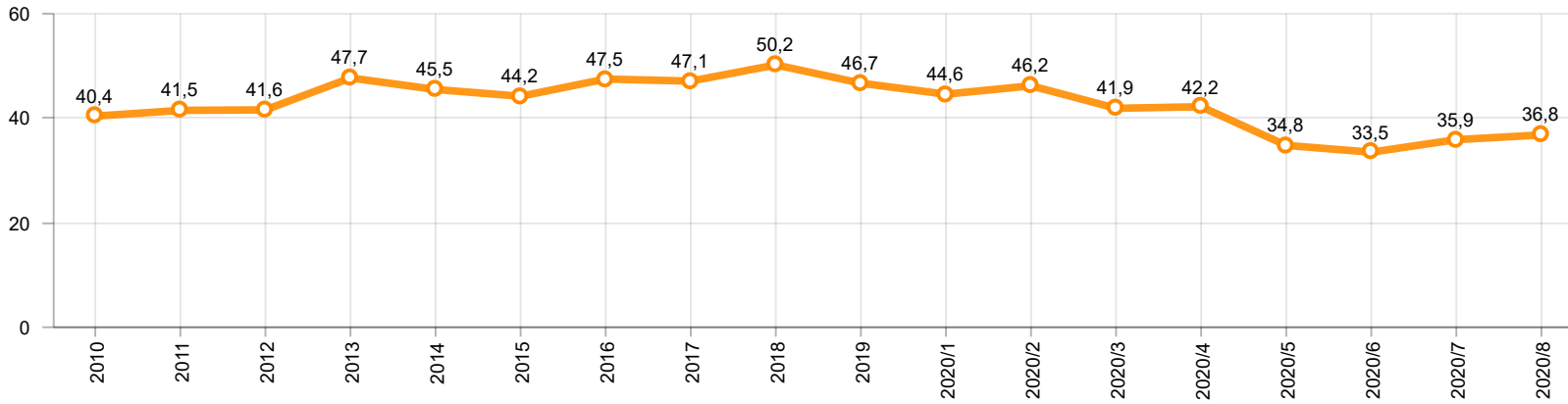
Kaynak: Uludağ İhracatçı Birlikleri . ÜİB tarafından OSD için özel olarak analiz edilen Otomotiv İhracatı kapsamında; ÜİB Türkiye Geneli Otomotiv Endüstrisi sınıflandırmasına kıyasla “Römork ve Yarı Römork” , “Tarım Traktörü” verileri dahil edilmekte; “Kullanılmış Araçlar” ,”İki Tekerlekli Taşıtlar” , “Demiryolu Taşıtları” hariç tutulmaktadır.

Source: Uludağ Exporters Association – Special Analyze for OSD.Compared to Turkish General Automotive Industry classification, this special analyze includes; farms tractors, trailers and semi-trailers, does not include; used vehicles, two-wheeled vehicles and railway vehicles

Otomobil Pazarında İthalatın Payı (%)
Import Share in P.Car Market (%)



Hafif Ticari Araçlar Pazarında İthalatın Payı (%)
Import Share in LCV Market (%)



Araç Tipleri / Vehicle Types	1	2	3	4	5	6	7	8	9	10	11	12	Toplam / Total
OTOMOBİL - Pass.Car	60.438	73.844	57.326	9.327	31.849	48.853	52.088	26.393					360.118
KAMYON - H. Truck	202	942	1.137	295	588	934	1.013	996					6.107
K.KAMYON - L. Truck	-	-	-	-	-	-	-	-					-
KAMYONET - Pick Up	25.435	24.356	21.081	882	9.461	17.524	21.102	12.858					132.699
OTOBÜS - Bus	551	696	593	91	418	829	604	459					4.241
MİNİBÜS - Minibus	3.309	2.709	3.553	-	2.058	2.605	3.340	2.132					19.706
MİDİBÜS - Midibus	31	68	82	18	32	64	95	27					417
TİCARİ ARAÇLAR TOPLAMI - CV Total	29.528	28.771	26.446	1.286	12.557	21.956	26.154	16.472					163.170
TAŞIT ARAÇLARI TOPLAMI - MV Total	89.966	102.615	83.772	10.613	44.406	70.809	78.242	42.865					523.288
TRAKTÖR - F.Tractor	1.468	1.181	994	384	680	1.421	1.322	926					8.376
GENEL TOPLAM - Grand Total	91.434	103.796	84.766	10.997	45.086	72.230	79.564	43.791					531.664

Otomobil / P.Car

Firmalar / Firms	1	2	3	4	5	6	7	8	9	10	11	12	Toplam / Total
FORD OTOSAN	583	867	505	-	405	632	639	246	-	-	-	-	3.877
HONDA TÜRKİYE	1.087	1.566	1.009	28	117	755	341	743	-	-	-	-	5.646
HYUNDAI ASSAN	10.700	14.160	13.138	5.123	9.923	12.200	9.287	12.932	-	-	-	-	87.463
OYAK RENAULT	18.323	24.729	24.536	3.021	14.036	17.391	20.319	4.418	-	-	-	-	126.773
TOFAŞ	7.835	10.136	5.249	1.155	648	1.978	5.541	2.943	-	-	-	-	35.485
TOYOTA	21.910	22.386	12.889	-	6.720	15.897	15.961	5.111	-	-	-	-	100.874
TOPLAM - Total	60.438	73.844	57.326	9.327	31.849	48.853	52.088	26.393	-	-	-	-	360.118

Kamyonet / Pick-up

Firmalar / Firms	1	2	3	4	5	6	7	8	9	10	11	12	Toplam / Total
A.I.O.S.	-	-	-	-	-	-	-	-	-	-	-	-	-
FORD OTOSAN	20.932	16.627	17.047	125	9.411	14.188	15.344	10.124	-	-	-	-	103.798
KARSAN	37	-	2	-	8	34	22	44	-	-	-	-	147
OTOKAR	22	-	-	46	-	22	-	18	-	-	-	-	108
TOFAŞ	4.444	7.729	4.032	711	42	3.280	5.736	2.672	-	-	-	-	28.646
TOPLAM - Total	25.435	24.356	21.081	882	9.461	17.524	21.102	12.858	-	-	-	-	132.699

Minibüs / Minibus

Firmalar / Firms	1	2	3	4	5	6	7	8	9	10	11	12	Toplam / Total
FORD OTOSAN	3.303	2.708	3.552	-	2.055	2.593	3.337	2.132	-	-	-	-	19.680
KARSAN	6	1	1	-	3	12	3	-	-	-	-	-	26
TOPLAM - Total	3.309	2.709	3.553	-	2.058	2.605	3.340	2.132	-	-	-	-	19.706

Kamyon / Truck

Firmalar / Firms	1	2	3	4	5	6	7	8	9	10	11	12	Toplam / Total
A.I.O.S.	-	-	-	-	-	-	-	-	-	-	-	-	-
FORD OTOSAN	145	192	119	92	132	235	175	173	-	-	-	-	1.263
KARSAN	-	-	-	-	-	-	-	-	-	-	-	-	-
M. BENZ TÜRK	57	750	1.018	203	456	699	838	823	-	-	-	-	4.844
OTOKAR	-	-	-	-	-	-	-	-	-	-	-	-	-
TOPLAM - Total	202	942	1.137	295	588	934	1.013	996	-	-	-	-	6.107

Midibüs / Midibus

Firmalar / Firms	1	2	3	4	5	6	7	8	9	10	11	12	Toplam / Total
A.I.O.S.	16	42	76	15	16	43	34	17	-	-	-	-	259
KARSAN	-	-	-	-	7	4	15	-	-	-	-	-	26
OTOKAR	15	20	5	3	8	16	42	2	-	-	-	-	111
TEMSA	-	6	1	-	1	1	4	8	-	-	-	-	21
TOPLAM - Total	31	68	82	18	32	64	95	27	-	-	-	-	417

Otobüs / Bus

Firmalar / Firms	1	2	3	4	5	6	7	8	9	10	11	12	Toplam / Total
A.I.O.S.	6	15	26	-	12	23	-	4	-	-	-	-	86
KARSAN	-	-	23	-	-	30	42	27	-	-	-	-	122
M. BENZ TÜRK	231	380	230	53	153	401	245	229	-	-	-	-	1.922
MAN TÜRKİYE	288	284	269	3	218	270	281	161	-	-	-	-	1.774
OTOKAR	19	15	29	34	16	79	32	23	-	-	-	-	247
TEMSA	7	2	16	1	19	26	4	15	-	-	-	-	90
TOPLAM - Total	551	696	593	91	418	829	604	459	-	-	-	-	4.241

Traktör / F.Tractor

Firmalar / Firms	1	2	3	4	5	6	7	8	9	10	11	12	Toplam / Total
HATTAT TRAKTÖR	120	84	22	38	25	53	65	67	-	-	-	-	474
TÜRK TRAKTÖR	1.348	1.097	972	346	655	1.368	1.257	859	-	-	-	-	7.902
TOPLAM - Total	1.468	1.181	994	384	680	1.421	1.322	926	-	-	-	-	8.376

Firmalar / Firms	2019 Toplam / Total	1	2	3	4	5	6	7	8	9	10	11	12	Toplam / Total
Alfa Romeo	253	2	-	5	-	12	11	8	29	-	-	-	-	67
Aston Martin	18	1	2	1	-	2	1	1	5	-	-	-	-	13
Audi	10.024	461	733	995	613	321	2.211	4.076	2.617	-	-	-	-	12.027
Bentley	9	-	1	-	3	2	3	-	-	-	-	-	-	9
BMW	9.583	251	815	1.168	373	191	882	1.412	2.124	-	-	-	-	7.216
Citroen	8.827	584	1.534	1.126	1.413	1.680	2.644	1.698	905	-	-	-	-	11.584
Dacia	17.533	2.261	1.851	1.245	601	787	3.033	4.282	930	-	-	-	-	14.990
DS	269	10	101	38	34	29	26	80	52	-	-	-	-	370
Ferrari	20	1	3	2	-	2	3	2	2	-	-	-	-	15
Fiat	1.043	7	22	79	21	39	154	102	131	-	-	-	-	555
Ford	12.484	206	862	2.042	1.032	604	1.111	3.098	2.080	-	-	-	-	11.035
Honda	3.108	101	172	160	96	227	152	298	267	-	-	-	-	1.473
Hyundai	15.460	950	1.385	1.261	574	732	1.790	2.465	2.225	-	-	-	-	11.382
Jaguar	244	-	47	24	6	9	13	7	15	-	-	-	-	121
Jeep	2.123	196	330	504	40	91	367	713	279	-	-	-	-	2.520
Kia	4.987	325	1.140	565	314	565	1.278	1.379	1.317	-	-	-	-	6.883
Lamborghini	9	-	1	2	1	3	1	3	2	-	-	-	-	13
Land Rover	1.371	8	151	206	237	135	112	134	128	-	-	-	-	1.111
Lexus	85	7	7	7	7	12	17	22	14	-	-	-	-	93
Maserati	45	-	2	-	1	4	5	6	4	-	-	-	-	22
Mazda	417	11	7	10	6	15	12	20	16	-	-	-	-	97
Mercedes-Benz	9.862	504	1.239	1.170	944	862	1.355	1.257	1.229	-	-	-	-	8.560
Mini	1.254	28	82	168	60	26	101	37	191	-	-	-	-	693
Mitsubishi	747	29	21	16	16	52	360	273	78	-	-	-	-	845
Nissan	11.980	757	275	548	188	310	246	770	2.160	-	-	-	-	5.254
Opel	16.689	554	1.768	2.726	2.044	1.770	2.913	4.233	803	-	-	-	-	16.811
Peugeot	23.057	1.338	2.440	2.540	3.792	2.473	2.661	2.929	1.341	-	-	-	-	19.514
Porsche	361	11	36	19	17	14	24	42	11	-	-	-	-	174
Renault	9.410	185	715	968	393	451	709	1.229	241	-	-	-	-	4.891
Seat	5.914	578	1.199	1.036	532	442	694	1.567	1.417	-	-	-	-	7.465
Skoda	15.369	884	1.570	1.303	313	374	3.205	2.599	1.839	-	-	-	-	12.087
Smart	44	12	16	8	3	2	4	2	-	-	-	-	-	47
Ssangyong	111	23	33	1	5	-	139	1	72	-	-	-	-	274
Subaru	662	17	59	84	22	43	87	83	96	-	-	-	-	491
Suzuki	2.381	22	124	173	181	134	535	275	175	-	-	-	-	1.619
Toyota	1.350	30	85	479	70	117	209	280	119	-	-	-	-	1.389
Volkswagen	38.820	3.292	3.469	5.164	2.108	1.408	3.444	4.589	4.459	-	-	-	-	27.933
Volvo	4.155	44	256	397	383	357	502	1.545	507	-	-	-	-	3.991
GENEL TOPLAM - Grand Total	230.078	13.690	22.553	26.240	16.443	14.297	31.014	41.517	27.880	-	-	-	-	193.634

Firmalar / Firms	2019 Toplam / Total	1	2	3	4	5	6	7	8	9	10	11	12	Toplam / Total
Citroen	3.206	250	341	434	133	44	182	411	600	-	-	-	-	2.395
Dacia	2.473	271	352	474	120	272	332	125	54	-	-	-	-	2.000
Fiat	1.767	176	350	252	106	131	639	795	422	-	-	-	-	2.871
Ford	1.198	50	71	63	161	241	107	72	115	-	-	-	-	880
Hyundai	1.114	55	96	54	29	59	42	-	108	-	-	-	-	443
Isuzu	75	2	3	1	1	13	24	4	1	-	-	-	-	49
Iveco	1.326	64	83	104	62	79	164	129	183	-	-	-	-	868
Kia	1.355	5	4	144	45	118	175	83	264	-	-	-	-	838
Mercedes-Benz	5.074	219	480	372	213	263	520	433	628	-	-	-	-	3.128
Mitsubishi	1.880	99	146	160	185	174	379	1.084	1.185	-	-	-	-	3.412
Nissan	1.087	66	92	59	22	47	56	2	1	-	-	-	-	345
Opel	1.370	51	33	298	99	49	231	336	303	-	-	-	-	1.400
Peugeot	5.804	418	555	495	168	260	317	431	396	-	-	-	-	3.040
Renault	4.309	171	228	117	90	219	314	271	115	-	-	-	-	1.525
Ssangyong	260	19	21	36	19	18	61	39	7	-	-	-	-	220
Toyota	939	25	34	70	23	96	103	90	58	-	-	-	-	499
Volkswagen	9.676	403	1.456	1.103	479	412	1.018	2.151	1.878	-	-	-	-	8.900
GENEL TOPLAM - Grand Total	42.913	2.344	4.345	4.236	1.955	2.495	4.664	6.456	6.318	-	-	-	-	32.813