



OTOMOTİV SANAYİİ DERNEĐİ
AUTOMOTIVE MANUFACTURERS ASSOCIATION

OTOMOTİV SEKTÖRÜ AYLIK DEĐERLENDİRME RAPORU HAZİRAN 2020

AUTOMOTIVE INDUSTRY MONTHLY REPORT
June 2020

OSD "OICA" Üyesidir © O I C A OSD is a Member of "OICA"

	6 - 2019	6 - 2020	%	1 - 6 / 2019	1 - 6 / 2020	%	7/2018 - 6/2019	7/2019 - 6/2020	%
Otomobil Üretimi/P.Cars Production	74.074	74.264	0,3	492.700	362.397	-26,5	961.869	852.339	-11,4
Toplam Üretim/Total Production	109.116	103.273	-5,4	735.058	518.727	-29,4	1.441.992	1.244.913	-13,7
Otomobil Pazar/P.Cars Market	36.024	57.067	58,4	156.378	203.595	30,2	366.829	434.473	18,4
Toplam Pazar/Total Market	43.899	72.778	65,8	200.857	261.902	30,4	475.844	552.992	16,2
Otomobil İthalat/P.Cars Import	19.562	31.014	58,5	88.185	124.254	40,9	227.801	266.147	16,8
Toplam İthalat/Total Import	23.150	36.303	56,8	108.195	146.620	35,5	280.141	315.494	12,6
Otomobil İhracat/P.Cars Export	62.846	48.853	-22,3	419.046	281.634	-32,8	833.641	691.332	-17,1
Toplam İhracat/Total Export	96.881	70.813	-26,9	634.773	402.179	-36,6	1.265.763	1.019.992	-19,4
Otomobil İhracat(\$)/P.Cars Export (\$)	864.823.157,14	772.428.389,6	-10,7	5.755.782.531	4.243.604.658	-26,3	11.626.304.406	10.352.637.443	-11,0
Toplam İhracat(\$)/Total Export (\$)*	2.216.721.289,53	2.022.609.320,06	-8,8	15.586.065.678	10.977.381.734	-29,6	31.048.152.833	26.621.490.480	-14,3

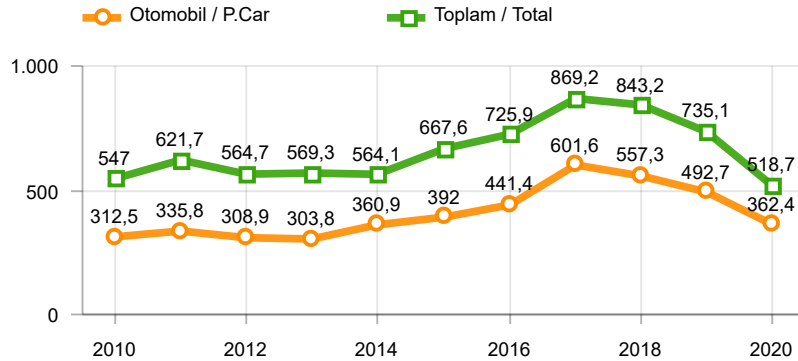
Parametreler/Parameters	6 - 2019	6 - 2020	%	1 - 6 / 2019	1 - 6 / 2020	%	7/2018 - 6/2019	7/2019 - 6/2020	%
ÜFE / PPI	0,1	0,7	-	8,1	6,9	-	32,8	7,7	-
TÜFE / CPI	0,0	1,1	-	5,0	5,8	-	19,9	11,9	-
Sanayi Endeksi / Industry Index	-0,5	0,5	-	8,2	7,2	-	31,2	7,0	-
Dolar \$ ** (1 birim)	5,8	6,8	17,5	5,6	6,5	16,3	5,5	6,1	9,9
Euro € ** (1 birim)	6,6	7,7	16,8	6,3	7,2	13,4	6,3	6,7	6,4
Japon Yeni ¥ ** (100 birim)	5,3	6,3	18,1	5,0	6,0	18,5	5,0	5,6	13,0

*Toplam Sanayi / Total Industry Including Components

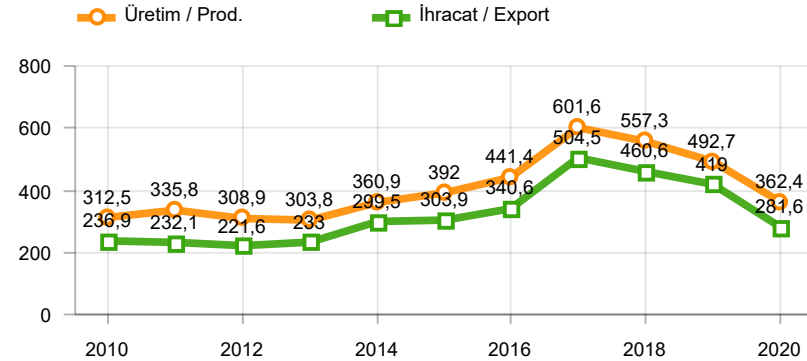
** Ortalama Değerler / Average Values

Araç Tipleri / Types	6 / 2019	6 / 2020	6 % Değişim	1-6 / 2019	1-6 / 2020	1-6 % Değişim
OTOMOBİL / Pass.Car	74.074	74.264	0,3	492.700	362.397	-26,4
OTOMOBİL Toplam / Pass.Car Total	74.074	74.264	0,3	492.700	362.397	-26,4
B.KAMYON / H. Truck	1.688	1.609	-4,7	8.836	7.058	-20,1
K.KAMYON / L. Truck	7	140	1900,0	350	602	72,0
KAMYONET / Pick Up	29.074	22.160	-23,8	199.134	122.701	-38,4
OTOBÜS / Bus	700	904	29,1	4.726	3.814	-19,3
MİNİBÜS / Minibus	3.399	4.012	18,0	28.241	21.237	-24,8
MİDİBÜS / Midibus	174	184	5,7	1.071	918	-14,3
TİCARİ ARAÇLAR Toplam / Commercial Vehicles Total	35.042	29.009	-17,2	242.358	156.330	-35,5
TAŞIT ARAÇLARI Toplam / Motor Vehicles Total	109.116	103.273	-5,4	735.058	518.727	-29,4
TRAKTÖR / F.Tractor	1.588	3.172	99,7	10.570	13.522	27,9
TRAKTÖR Toplam / F.Tractor Total	1.588	3.172	99,7	10.570	13.522	27,9
GENEL TOPLAM / Grand Total	110.704	106.445	-3,8	745.628	532.249	-28,6

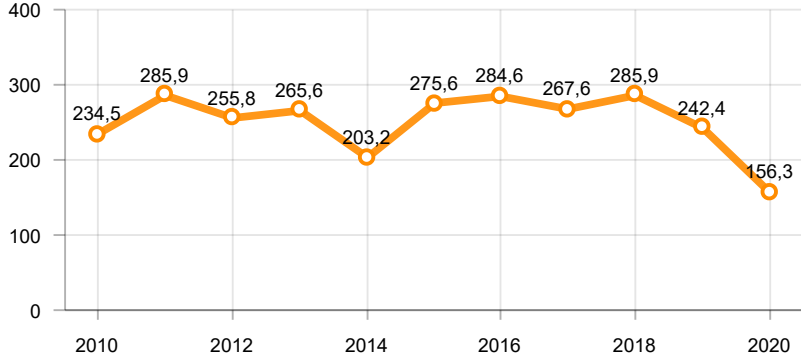
Toplam Üretim ve Otomobil Üretimi (x1000)(OCAK - HAZİRAN)
Total & P.Cars Production (x1000)(January - June)



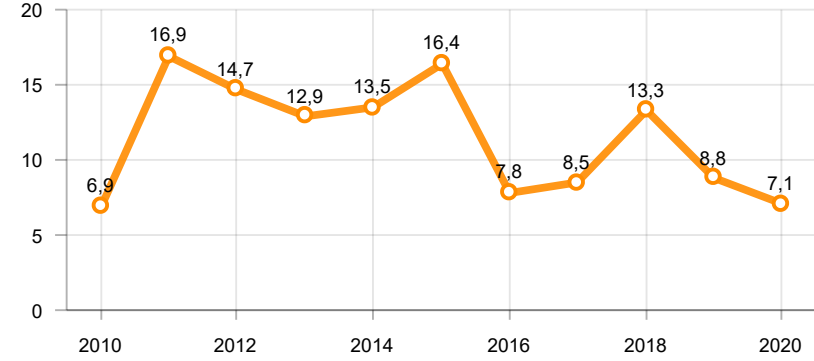
Otomobil Üretimi ve İhracat (x1000)(OCAK - HAZİRAN)
P.Cars Production & Exports (x1000)(January - June)



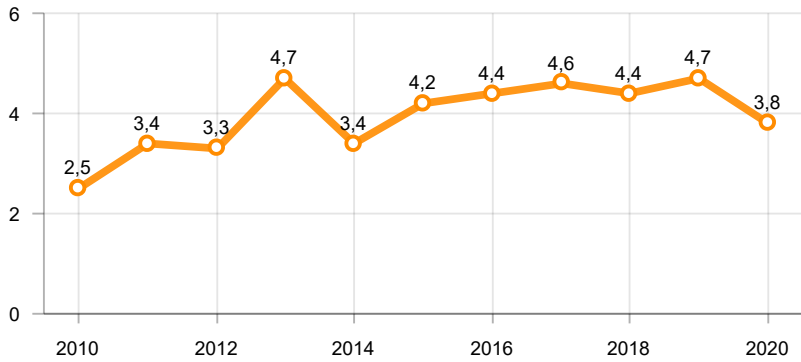
Ticari Araç Üretimi (x1000)(OCAK - HAZİRAN)
Commercial Vehicle Production (x1000)(January - June)



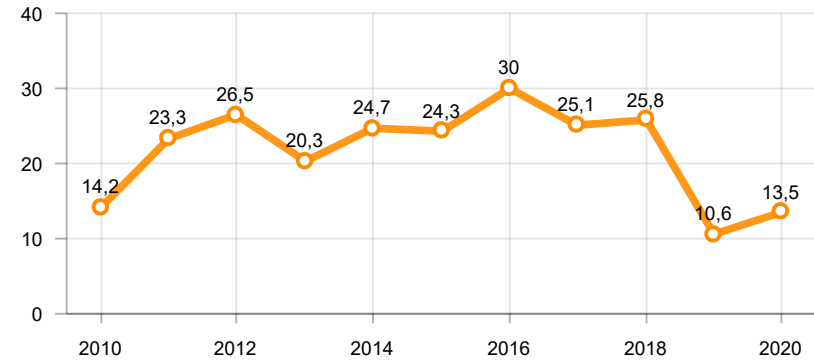
Büyük Kamyon Üretimi (x1000)(OCAK - HAZİRAN)
Heavy Truck Production (x1000)(January - June)

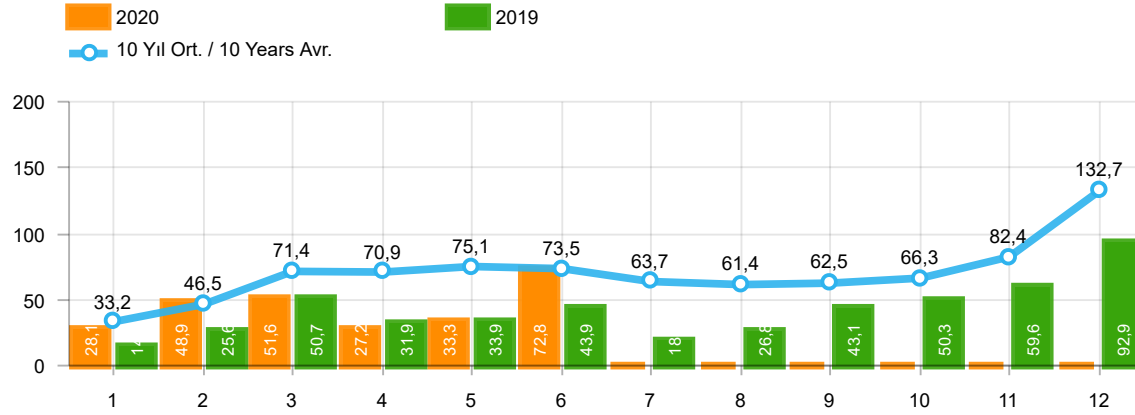


Otobüs Üretimi (x1000)(OCAK - HAZİRAN)
Bus Production (x1000)(January - June)



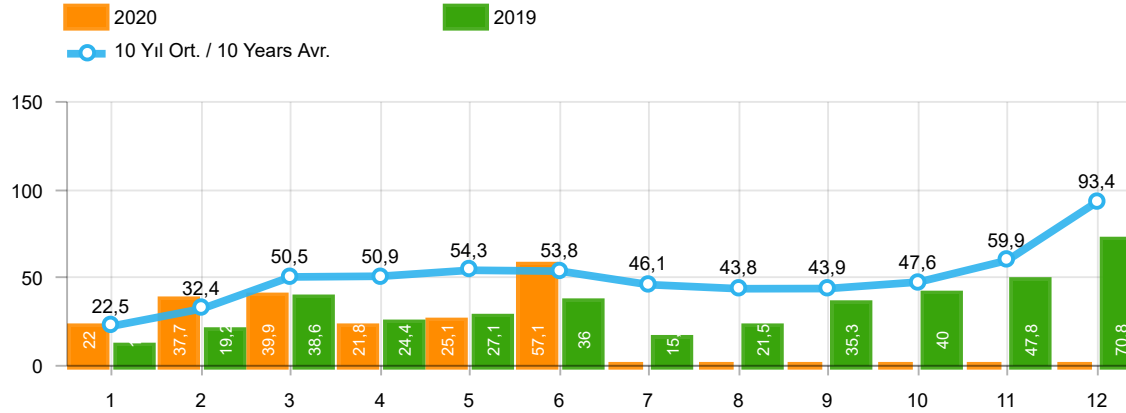
Traktör Üretimi (x1000)(OCAK - HAZİRAN)
F. Tractor Production (x1000)(January - June)





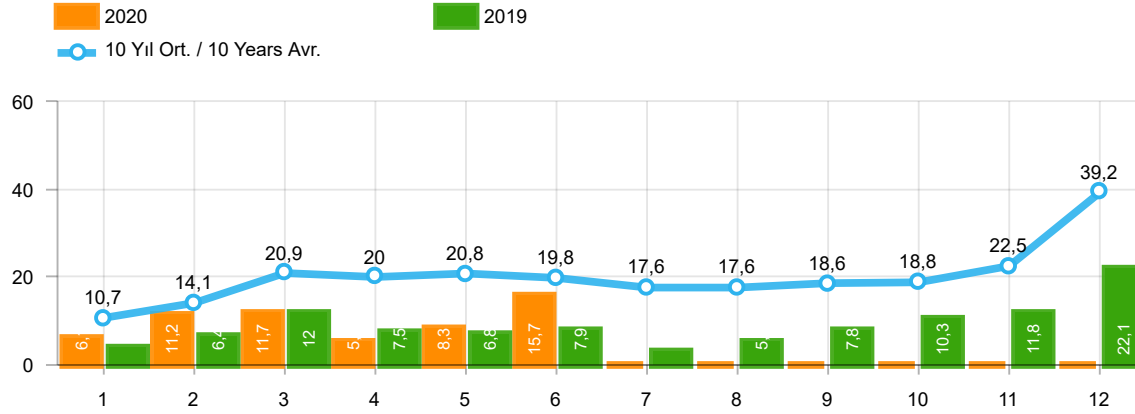
Aylar / Months	10 Yıl Ort / 10 Years Avr.	2020	%
1	33.233	28.123	-15,4
2	46.483	48.948	5,3
3	71.368	51.555	-27,8
4	70.895	27.165	-61,7
5	75.107	33.333	-55,6
6	73.519	72.778	-1,0
TOPLAM/TOTAL	370.607	261.902	-29,3

Yıl / Year	1	2	3	4	5	6	7	8	9	10	11	12	1-6 Toplam / Total	Toplam / Total	1-6 Yerli / Local	1-6 İthal / Import	İthal Oran / Import %
2010	21.070	32.331	54.019	57.241	61.837	63.511	64.011	64.961	67.040	76.753	77.488	155.234	290.009	795.496	124.340	165.669	57,1
2011	47.759	62.586	84.045	82.782	85.862	85.992	65.658	61.645	64.313	73.227	67.150	134.468	449.026	915.487	181.388	267.638	59,6
2012	31.552	44.138	69.242	66.559	75.195	75.108	65.444	60.982	73.501	62.933	75.203	121.442	361.794	821.299	140.168	221.626	61,3
2013	37.563	51.133	72.943	77.265	85.835	78.043	75.152	67.662	71.388	60.690	83.470	136.048	402.782	897.192	126.686	276.096	68,5
2014	34.751	37.659	51.312	57.113	62.447	64.295	62.770	63.303	70.764	69.742	84.368	154.843	307.577	813.367	103.125	204.452	66,5
2015	37.256	59.221	89.765	96.182	85.804	91.071	87.358	85.244	67.181	67.086	88.431	164.464	459.299	1.019.063	163.138	296.161	64,5
2016	34.369	54.840	85.932	87.748	97.090	94.666	59.732	73.654	69.413	85.666	125.462	145.706	454.645	1.014.278	152.586	302.059	66,4
2017	36.640	48.585	76.178	78.231	88.066	85.820	84.727	74.818	74.046	94.439	103.772	141.507	413.520	986.829	153.331	260.189	62,9
2018	36.525	48.768	79.600	73.886	74.996	52.788	54.194	35.137	23.915	22.321	59.406	80.014	366.563	641.550	141.241	225.322	61,5
2019	14.847	25.569	50.651	31.944	33.947	43.899	18.442	26.832	43.068	50.288	59.575	92.885	200.857	491.947	92.662	108.195	53,9
2020	28.123	48.948	51.555	27.165	33.333	72.778							261.902	261.902	115.282	146.620	56,0



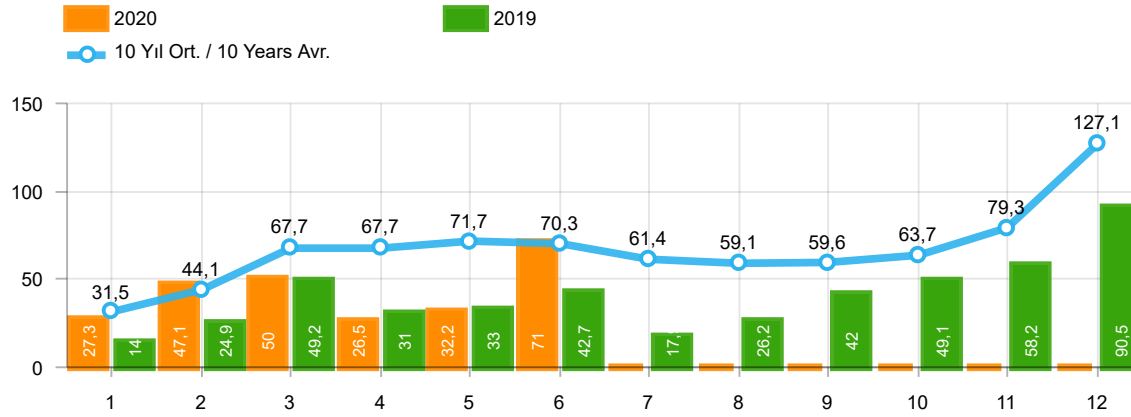
Aylar / Months	10 Yıl Ort / 10 Years Avr.	2020	%
1	22.488	22.016	-2,1
2	32.399	37.727	16,4
3	50.454	39.887	-20,9
4	50.915	21.825	-57,1
5	54.285	25.073	-53,8
6	53.751	57.067	6,2
TOPLAM / TOTAL	264.292	203.595	-23,0

Yıl / Year	1	2	3	4	5	6	7	8	9	10	11	12	1-6 Toplam / Total	Toplam / Total	1-6 Yerli / Local	1-6 İthal / Import	İthal Oran / Import %
2010	12.594	20.651	33.958	36.549	40.467	42.086	41.399	42.222	42.477	47.859	50.061	99.461	186.305	509.784	59.686	126.619	68,0
2011	29.868	39.004	54.023	53.835	56.302	56.714	43.518	38.875	39.964	47.508	44.951	88.957	289.746	593.519	89.601	200.145	69,1
2012	21.077	29.189	47.270	45.645	50.460	50.849	44.531	41.236	49.360	43.440	52.297	80.926	244.490	556.280	69.994	174.496	71,4
2013	25.835	36.814	51.785	56.999	62.383	58.290	55.712	51.611	52.925	46.985	64.117	101.199	292.106	664.655	63.686	228.420	78,2
2014	24.368	27.167	37.812	42.769	46.379	47.278	46.602	45.131	49.262	50.814	59.695	110.054	225.773	587.331	56.924	168.849	74,8
2015	24.498	40.817	61.676	70.211	62.878	67.766	64.218	61.753	47.088	47.954	62.397	114.340	327.846	725.596	83.639	244.207	74,5
2016	23.358	40.588	63.975	65.618	73.832	71.111	45.566	53.977	51.340	63.746	95.783	108.044	338.482	756.938	88.101	250.381	74,0
2017	25.689	34.658	55.616	57.998	65.799	66.164	62.384	54.890	53.423	70.488	75.956	99.694	305.924	722.759	95.793	210.131	68,7
2018	26.611	35.901	59.798	55.108	57.227	41.225	42.024	26.976	17.595	16.809	46.204	60.843	275.870	486.321	92.570	183.300	66,4
2019	10.979	19.205	38.628	24.416	27.126	36.024	15.398	21.544	35.308	39.996	47.803	70.829	156.378	387.256	68.193	88.185	56,4
2020	22.016	37.727	39.887	21.825	25.073	57.067							203.595	203.595	79.341	124.254	61,0



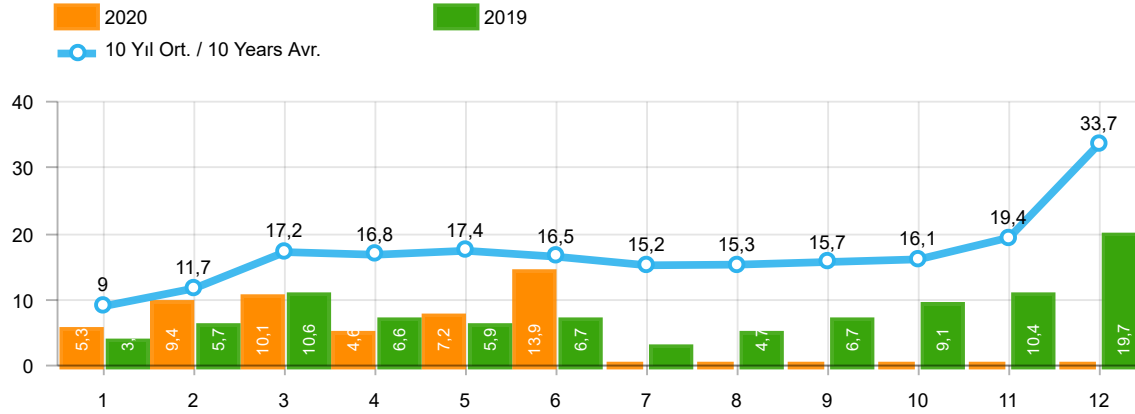
Aylar / Months	10 Yıl Ort / 10 Years Avr.	2020	%
1	10.746	6.107	-43,2
2	14.084	11.221	-20,3
3	20.915	11.668	-44,2
4	19.980	5.340	-73,3
5	20.823	8.260	-60,3
6	19.769	15.711	-20,5
TOPLAM / TOTAL	106.315	58.307	-45,2

Yıl / Year	1	2	3	4	5	6	7	8	9	10	11	12	1-6 Toplam / Total	Toplam / Total	1-6 Yerli / Local	1-6 İthal / Import	İthal Oran / Import %
2010	8.476	11.680	20.061	20.692	21.370	21.425	22.612	22.739	24.563	28.894	27.427	55.773	103.704	285.712	64.654	39.050	37,7
2011	17.891	23.582	30.022	28.947	29.560	29.278	22.140	22.770	24.349	25.719	22.199	45.511	159.280	321.968	91.787	67.493	42,4
2012	10.475	14.949	21.972	20.914	24.735	24.259	20.913	19.746	24.141	19.493	22.906	40.516	117.304	265.019	70.174	47.130	40,2
2013	11.728	14.319	21.158	20.266	23.452	19.753	19.440	16.051	18.463	13.705	19.353	34.849	110.676	232.537	63.000	47.676	43,1
2014	10.383	10.492	13.500	14.344	16.068	17.017	16.168	18.172	21.502	18.928	24.673	44.789	81.804	226.036	46.201	35.603	43,5
2015	12.758	18.404	28.089	25.971	22.926	23.305	23.140	23.491	20.093	19.132	26.034	50.124	131.453	293.467	79.499	51.954	39,5
2016	11.011	14.252	21.957	22.130	23.258	23.555	14.166	19.677	18.073	21.920	29.679	37.662	116.163	257.340	64.485	51.678	44,5
2017	10.951	13.927	20.562	20.233	22.267	19.656	22.343	19.928	20.623	23.951	27.816	41.813	107.596	264.070	57.538	50.058	46,5
2018	9.914	12.867	19.802	18.778	17.769	11.563	12.170	8.161	6.320	5.512	13.202	19.171	90.693	155.229	48.671	42.022	46,3
2019	3.868	6.364	12.023	7.528	6.821	7.875	3.044	5.288	7.760	10.292	11.772	22.056	44.479	104.691	24.469	20.010	45,0
2020	6.107	11.221	11.668	5.340	8.260	15.711							58.307	58.307	35.941	22.366	38,4



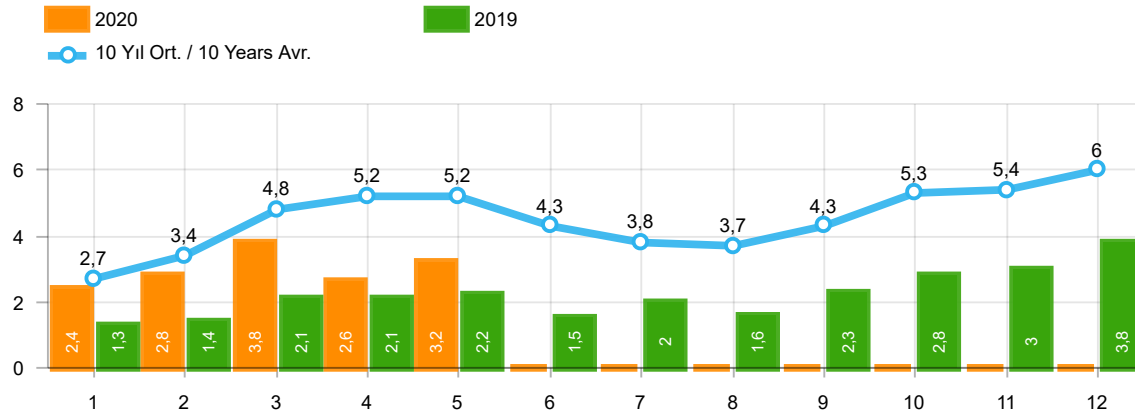
Aylar / Months	10 Yıl Ort / 10 Years Avr.	2020	%
1	31.483	27.273	-13,4
2	44.149	47.122	6,7
3	67.703	50.008	-26,1
4	67.704	26.457	-60,9
5	71.711	32.235	-55,0
6	70.288	70.973	1,0
TOPLAM / TOTAL	353.038	254.068	-28,0

Yıl / Year	1	2	3	4	5	6	7	8	9	10	11	12	1-6 Toplam / Total	Toplam / Total	1-6 Yerli / Local	1-6 İthal / Import	İthal Oran / Import %
2010	20.095	31.172	51.769	54.946	59.377	60.896	61.345	61.764	63.814	73.404	73.962	148.369	278.255	760.913	115.458	162.797	58,5
2011	44.892	58.663	78.403	77.695	80.646	81.573	63.044	58.406	60.129	69.421	63.657	127.910	421.872	864.439	162.944	258.928	61,4
2012	29.545	41.324	64.884	62.949	70.863	71.067	62.304	58.148	69.629	59.938	71.710	115.400	340.632	777.761	124.724	215.908	63,4
2013	35.523	48.307	68.774	73.575	81.468	74.096	71.596	65.043	67.963	58.014	79.301	129.718	381.743	853.378	110.647	271.096	71,0
2014	32.670	35.021	47.581	53.305	58.121	60.163	59.907	60.199	66.531	66.573	80.621	146.989	286.861	767.681	87.190	199.671	69,6
2015	34.615	55.331	83.302	91.602	81.542	86.158	83.836	82.577	64.025	64.255	84.601	156.173	432.550	968.017	143.052	289.498	66,9
2016	32.713	52.825	82.948	84.887	93.904	91.540	58.533	71.556	67.593	83.000	122.309	141.912	438.817	983.720	140.957	297.860	67,9
2017	35.323	46.965	73.802	75.988	85.422	83.658	82.297	72.536	71.352	91.752	100.859	136.240	401.158	956.194	144.000	257.158	64,1
2018	35.076	47.009	76.345	71.126	72.755	51.037	52.734	34.346	23.028	21.571	58.204	77.706	353.348	620.937	132.507	220.841	62,5
2019	14.373	24.875	49.221	30.971	33.016	42.688	17.927	26.246	41.992	49.075	58.176	90.500	195.144	479.060	88.809	106.335	54,5
2020	27.273	47.122	50.008	26.457	32.235	70.973							254.068	254.068	109.775	144.293	56,8



Aylar / Months	10 Yıl Ort / 10 Years Avr.	2020	%
1	8.995	5.257	-41,6
2	11.750	9.395	-20,0
3	17.249	10.121	-41,3
4	16.790	4.632	-72,4
5	17.426	7.162	-58,9
6	16.537	13.906	-15,9
TOPLAM / TOTAL	88.746	50.473	-43,1

Yıl / Year	1	2	3	4	5	6	7	8	9	10	11	12	1-6 Toplam / Total	Toplam / Total	1-6 Yerli / Local	1-6 İthal / Import	İthal Oran / Import %
2010	7.501	10.521	17.811	18.397	18.910	18.810	19.946	19.542	21.337	25.545	23.901	48.908	91.950	251.129	55.772	36.178	39,3
2011	15.024	19.659	24.380	23.860	24.344	24.859	19.526	19.531	20.165	21.913	18.706	38.953	132.126	270.920	73.343	58.783	44,5
2012	8.468	12.135	17.614	17.304	20.403	20.218	17.773	16.912	20.269	16.498	19.413	34.474	96.142	221.481	54.730	41.412	43,1
2013	9.688	11.493	16.989	16.576	19.085	15.806	15.884	13.432	15.038	11.029	15.184	28.519	89.637	188.723	46.961	42.676	47,6
2014	8.302	7.854	9.769	10.536	11.742	12.885	13.305	15.068	17.269	15.759	20.926	36.935	61.088	180.350	30.266	30.822	50,5
2015	10.117	14.514	21.626	21.391	18.664	18.392	19.618	20.824	16.937	16.301	22.204	41.833	104.704	242.421	59.413	45.291	43,3
2016	9.355	12.237	18.973	19.269	20.072	20.429	12.967	17.579	16.253	19.254	26.526	33.868	100.335	226.782	52.856	47.479	47,3
2017	9.634	12.307	18.186	17.990	19.623	17.494	19.913	17.646	17.929	21.264	24.903	36.546	95.234	233.435	48.207	47.027	49,4
2018	8.465	11.108	16.547	16.018	15.528	9.812	10.710	7.370	5.433	4.762	12.000	16.863	77.478	134.616	39.937	37.541	48,5
2019	3.394	5.670	10.593	6.555	5.890	6.664	2.529	4.702	6.684	9.079	10.373	19.671	38.766	91.804	20.616	18.150	46,8
2020	5.257	9.395	10.121	4.632	7.162	13.906							50.473	50.473	30.434	20.039	39,7



Aylar / Months	10 Yıl Ort / 10 Years Avr.	2020	%
1	2.729	2.425	-11,1
2	3.442	2.778	-19,3
3	4.845	3.771	-22,2
4	5.152	2.606	-49,4
5	5.209	3.244	-37,7
TOPLAM / TOTAL	21.377	14.824	-30,7

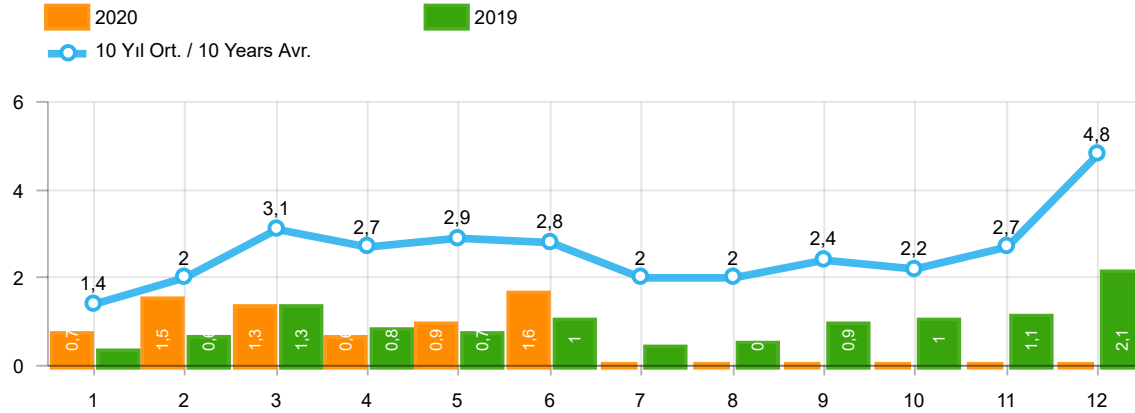
Yıl / Year	1	2	3	4	5	6	7	8	9	10	11	12	1-5 Toplam / Total	Toplam / Total
2010	1.111	1.991	2.330	3.039	2.567	2.638	1.965	3.019	2.806	4.424	3.978	6.168	11.038	36.036
2011	2.975	5.242	5.927	5.358	6.016	6.335	4.534	4.051	4.140	5.828	4.943	4.992	25.518	60.341
2012	2.362	1.983	4.348	6.579	6.273	4.569	3.837	3.158	3.618	4.027	4.807	4.757	21.545	50.318
2013	2.161	2.432	4.005	4.585	5.616	3.136	4.574	3.408	4.935	4.762	5.781	6.891	18.799	52.286
2014	2.169	3.512	4.476	4.905	5.094	5.028	4.233	4.920	5.619	5.743	6.250	7.409	20.156	59.358
2015	3.124	3.984	5.460	6.383	6.078	5.748	4.677	5.044	4.765	7.049	6.898	7.564	25.029	66.774
2016	3.739	4.731	7.067	6.546	6.575	5.543	3.833	5.134	4.945	7.372	7.090	7.603	28.658	70.178
2017	3.974	4.964	6.773	6.780	7.057	5.356	5.003	4.396	6.064	7.734	7.457	7.351	29.548	72.909
2018	4.362	4.179	5.925	5.216	4.584	3.146	3.654	2.587	3.541	3.698	3.578	3.886	24.266	48.356
2019	1.311	1.401	2.143	2.126	2.229	1.538	2.039	1.579	2.284	2.828	3.037	3.782	9.210	26.297
2020	2.425	2.778	3.771	2.606	3.244	-							14.824	14.824

Kaynak: TÜİK trafik kayıtları.

Rakamlar, son iki model yılına ait traktör tescillerinden oluşmaktadır.

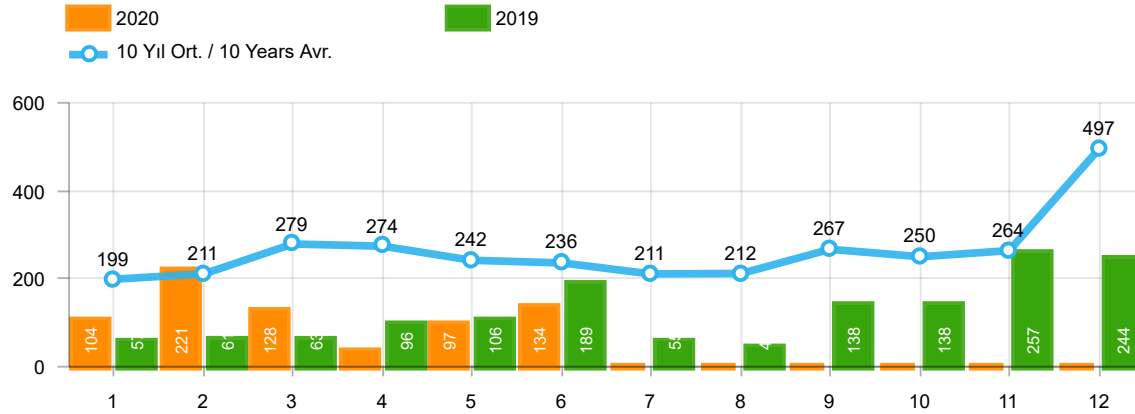
Source: Turkish Statistical Institute – Traffic registrations

Data represents the last two model year's farm tractors registration figures



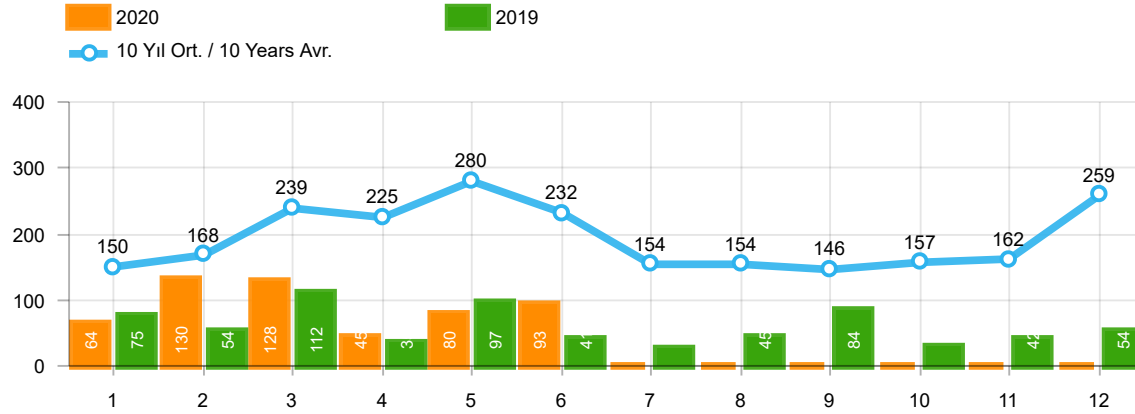
Aylar / Months	10 Yıl Ort / 10 Years Avr.	2020	%
1	1.402	682	-51,4
2	1.955	1.475	-24,6
3	3.148	1.291	-59,0
4	2.692	628	-76,7
5	2.874	921	-68,0
6	2.764	1.578	-42,9
TOPLAM / TOTAL	14.835	6.575	-55,7

Yıl / Year	1	2	3	4	5	6	7	8	9	10	11	12	1-6 Toplam / Total	Toplam / Total	1-6 Yerli / Local	1-6 İthal / Import	İthal Oran / Import %
2010	768	960	1.950	1.949	2.140	2.314	2.403	2.754	2.864	3.001	3.231	6.158	10.081	30.492	7.249	2.832	28,1
2011	2.651	3.544	5.142	4.503	4.563	3.852	2.261	2.745	3.784	3.400	3.149	5.712	24.255	45.306	15.616	8.639	35,6
2012	1.703	2.454	3.866	3.209	3.678	3.540	2.750	2.403	3.296	2.497	3.154	5.300	18.450	37.850	12.758	5.692	30,9
2013	1.484	2.113	3.343	2.925	3.504	3.186	2.777	2.103	2.875	2.086	3.631	5.444	16.555	35.471	11.564	4.991	30,1
2014	1.522	2.065	3.094	3.224	3.727	3.726	2.578	2.783	3.708	2.858	3.384	6.869	17.358	39.538	12.720	4.638	26,7
2015	2.215	3.346	5.699	3.729	3.600	4.253	2.922	2.211	2.687	2.266	3.146	7.307	22.842	43.381	16.240	6.602	28,9
2016	1.167	1.648	2.515	2.319	2.711	2.623	984	1.796	1.438	2.238	2.485	3.127	12.983	25.051	8.815	4.168	32,1
2017	931	1.290	1.982	1.888	2.184	1.891	1.974	1.860	2.284	2.188	2.487	4.438	10.166	25.397	7.147	3.019	29,7
2018	1.237	1.552	2.630	2.328	1.909	1.272	1.235	603	653	488	905	1.695	10.928	16.507	6.458	4.470	40,9
2019	342	579	1.255	842	728	981	435	497	854	1.047	1.100	2.087	4.727	10.747	2.867	1.860	39,3
2020	682	1.475	1.291	628	921	1.578							6.575	6.575	4.248	2.327	35,4



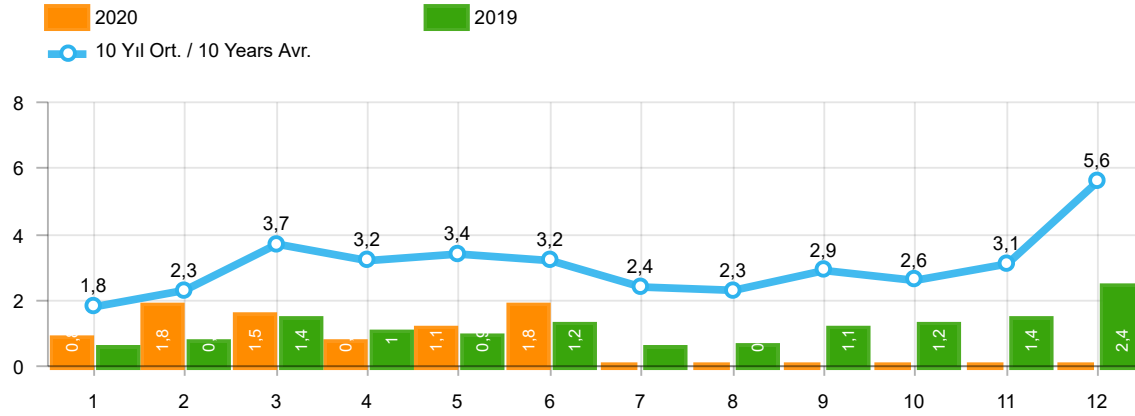
Aylar / Months	10 Yıl Ort / 10 Years Avr.	2020	%
1	199	104	-47,6
2	211	221	4,8
3	279	128	-54,1
4	274	35	-87,2
5	242	97	-59,9
6	236	134	-43,1
TOPLAM / TOTAL	1.440	719	-50,1

Yıl / Year	1	2	3	4	5	6	7	8	9	10	11	12	1-6 Toplam / Total	Toplam / Total
2010	140	128	172	153	127	124	93	232	199	204	162	382	844	2.116
2011	124	167	267	260	241	233	205	280	270	230	168	525	1.292	2.970
2012	179	257	277	229	257	239	216	249	325	269	189	398	1.438	3.084
2013	191	268	289	276	283	241	367	235	305	392	415	697	1.548	3.959
2014	360	394	384	333	294	258	216	229	395	220	266	653	2.023	4.002
2015	280	322	451	561	372	405	389	253	316	394	325	621	2.391	4.689
2016	309	158	251	302	261	196	139	220	241	230	354	431	1.477	3.092
2017	212	211	227	231	272	156	250	235	318	268	317	594	1.309	3.291
2018	134	142	410	296	207	315	180	146	160	155	184	425	1.504	2.754
2019	57	61	63	96	106	189	55	44	138	138	257	244	572	1.448
2020	104	221	128	35	97	134							719	719



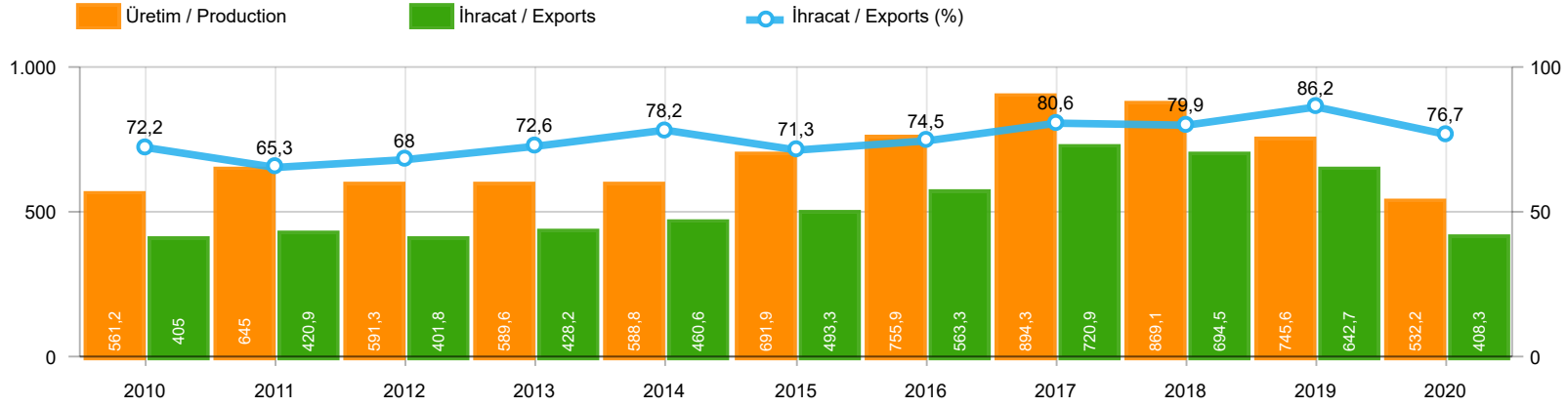
Aylar / Months	10 Yıl Ort / 10 Years Avr.	2020	%
1	150	64	-57,4
2	168	130	-22,6
3	239	128	-46,5
4	225	45	-80,0
5	280	80	-71,4
6	232	93	-60,0
TOPLAM / TOTAL	1.295	540	-58,3

Yıl / Year	1	2	3	4	5	6	7	8	9	10	11	12	1-6 Toplam / Total	Toplam / Total	1-6 Yerli / Local	1-6 İthal / Import	İthal Oran / Import %
2010	67	71	128	193	193	177	170	211	163	144	133	325	829	1.975	789	40	4,8
2011	92	212	233	324	412	334	148	214	130	176	176	321	1.607	2.772	1.536	71	4,4
2012	125	103	215	172	397	262	174	182	251	229	150	344	1.274	2.604	1.248	26	2,0
2013	365	445	537	489	580	520	412	281	245	198	123	189	2.936	4.384	2.927	9	0,3
2014	199	179	253	251	305	148	69	92	130	91	97	332	1.335	2.146	1.192	143	10,7
2015	146	222	313	290	290	255	211	203	153	171	359	363	1.516	2.976	1.455	61	4,0
2016	180	209	218	240	214	307	76	82	141	198	314	236	1.368	2.415	1.337	31	2,3
2017	174	119	167	124	188	115	206	187	92	231	109	235	887	1.947	875	12	1,4
2018	78	65	215	136	125	164	45	42	74	107	113	188	783	1.352	772	11	1,4
2019	75	54	112	35	97	41	25	45	84	28	42	54	414	692	414	-	-
2020	64	130	128	45	80	93							540	540	540	-	-



Aylar / Months	10 Yıl Ort. / 10 Years Avr.	2020	%
1	1.751	850	-51,4
2	2.334	1.826	-21,8
3	3.666	1.547	-57,8
4	3.191	708	-77,8
5	3.397	1.098	-67,7
6	3.232	1.805	-44,1
TOPLAM / TOTAL	17.569	7.834	-55,4

Yıl / Year	1	2	3	4	5	6	7	8	9	10	11	12	1-6 Toplam / Total	Toplam / Total	1-6 Yerli / Local	1-6 İthal / Import	İthal Oran / Import %
2010	975	1.159	2.250	2.295	2.460	2.615	2.666	3.197	3.226	3.349	3.526	6.865	11.754	34.583	8.882	2.872	24,4
2011	2.867	3.923	5.642	5.087	5.216	4.419	2.614	3.239	4.184	3.806	3.493	6.558	27.154	51.048	18.444	8.710	32,1
2012	2.007	2.814	4.358	3.610	4.332	4.041	3.140	2.834	3.872	2.995	3.493	6.042	21.162	43.538	15.444	5.718	27,0
2013	2.040	2.826	4.169	3.690	4.367	3.947	3.556	2.619	3.425	2.676	4.169	6.330	21.039	43.814	16.039	5.000	23,8
2014	2.081	2.638	3.731	3.808	4.326	4.132	2.863	3.104	4.233	3.169	3.747	7.854	20.716	45.686	15.935	4.781	23,1
2015	2.641	3.890	6.463	4.580	4.262	4.913	3.522	2.667	3.156	2.831	3.830	8.291	26.749	51.046	20.086	6.663	24,9
2016	1.656	2.015	2.984	2.861	3.186	3.126	1.199	2.098	1.820	2.666	3.153	3.794	15.828	30.558	11.629	4.199	26,5
2017	1.317	1.620	2.376	2.243	2.644	2.162	2.430	2.282	2.694	2.687	2.913	5.267	12.362	30.635	9.331	3.031	24,5
2018	1.449	1.759	3.255	2.760	2.241	1.751	1.460	791	887	750	1.202	2.308	13.215	20.613	8.734	4.481	33,9
2019	474	694	1.430	973	931	1.211	515	586	1.076	1.213	1.399	2.385	5.713	12.887	3.853	1.860	32,6
2020	850	1.826	1.547	708	1.098	1.805							7.834	7.834	5.507	2.327	29,7



	2010	2011	2012	2013	2014	2015	2016	2017	2018	2019	2020
İhracat/Export	404.957	420.850	401.791	428.208	460.644	493.268	563.286	720.907	694.465	642.685	408.307
Üretim/Production	561.225	644.956	591.263	589.623	588.753	691.907	755.920	894.257	869.065	745.628	532.249
İhracat/Exports (%)	72,2	65,3	68	72,6	78,2	71,3	74,5	80,6	79,9	86,2	76,7

Taşıt Araçları İhracatı (2018 - 2020)
Motor Vehicle Exports (2018 - 2020)

SEKTÖR / SECTOR	2018	2019	1/6-2019	1/6-2020	2020/2019 %
OTOMOBİL / Pass.Car	875.147	828.744	419.046	281.634	-32,8
OTOMOBİL TOPLAM / Pass. Car Total	875.147	828.744	419.046	281.634	-32,8
KAMYON / Truck	14.478	14.824	7.746	4.100	-47,1
KAMYONET / Pick Up	372.954	349.490	177.869	98.739	-44,5
OTOBÜS / Bus	7.708	9.001	4.592	3.180	-30,7
MİNİBÜS / Minibus	47.736	49.283	24.893	14.230	-42,8
MİDİBÜS / Midibus	846	1.244	627	296	-52,8
TİCARİ ARAÇLAR TOPLAM / Commercial Vehicle Total	443.722	423.842	215.727	120.545	-44,1
TAŞIT ARAÇLARI TOPLAM / Motor Vehicles Total	1.318.869	1.252.586	634.773	402.179	-36,6
TRAKTÖR / F.Tractor	15.123	15.844	7.912	6.128	-22,5
TRAKTÖR TOPLAM / F.Tractor Total	15.123	15.844	7.912	6.128	-22,5
GENEL TOPLAM / GRAND TOTAL	1.333.992	1.268.430	642.685	408.307	-36,5

Üretici Bazında İhracat (adet)
Exports by Manufacturer (unit)

Üreticiler / Manufacturers	2018	2019	1-6 / 2019	1-6 / 2020
A.I.O.S.	964	1.433	855	290
FORD OTOSAN	328.502	333.734	167.324	96.448
HATTAT TRAKTÖR	621	637	350	342
HONDA TÜRKİYE	13.699	7.528	3.611	4.562
HYUNDAI ASSAN	190.347	169.803	81.314	65.241
KARSAN	3.419	2.713	929	164
M. BENZ TÜRK	16.309	16.324	8.505	4.633
MAN TÜRKİYE	2.425	2.892	1.516	1.335
OTOKAR	901	1.156	648	349
OYAK RENAULT	280.411	295.275	150.742	102.036
TEMSA	645	602	258	80
TOFAŞ	243.796	194.107	102.807	47.239
TOYOTA	237.451	227.019	116.264	79.802
TÜRK TRAKTÖR	14.502	15.207	7.562	5.786
GENEL TOPLAM / Grand Total	1.333.992	1.268.430	642.685	408.307

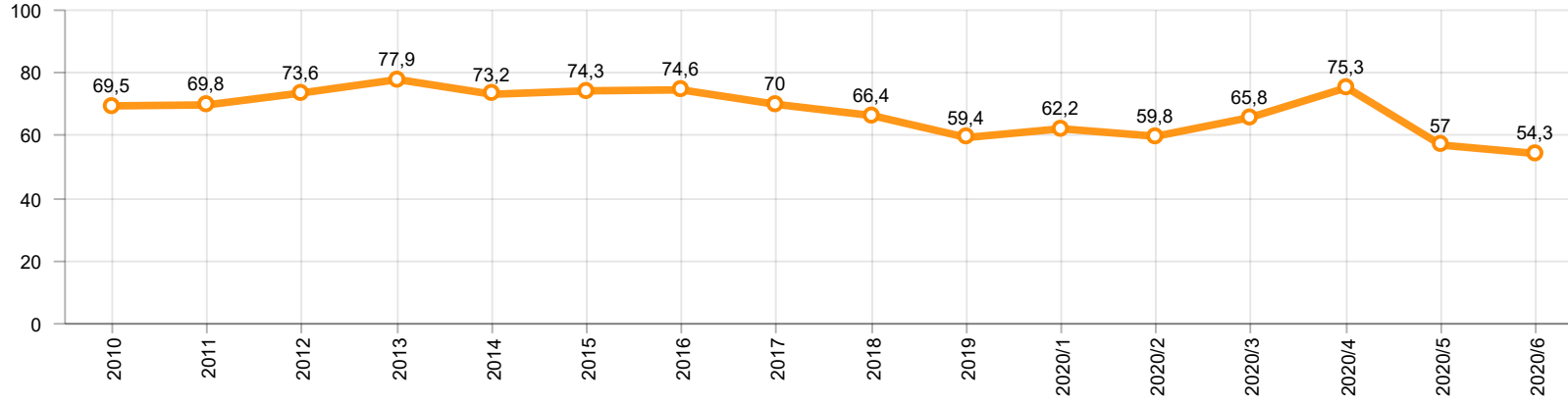
Otomotiv Ana ve Yan Sanayii İhracatı (ABD \$)
CBU and CKD Exports - \$

Sektör / Sector	2018	2019	OCAK - HAZİRAN / January - June 2019	OCAK - HAZİRAN / January - June 2020	2020 / 2019 %
Toplam Yan Sanayi / Total Component Industry	10.878.550.618	10.617.878.409	5.379.987.177,12	3.996.848.422,88	-25,7
İç ve Dış Lastik / Tyres	1.353.862.295	1.479.469.475	724.282.474,86	533.834.208,99	-26,3
Emniyet Camı / Safety Glasses	151.148.111	150.706.975	75.377.445,11	61.224.011,41	-18,8
Motor / Engine	581.983.113	518.051.731	284.439.680,57	212.373.530,71	-25,3
Akümülatör / Batteries	387.879.636	397.638.079	185.225.963,68	141.932.545,68	-23,4
Diğer Aksam ve Parça / Spare Parts&Components	8.403.677.463	8.072.012.149	4.110.661.612,9	3.047.484.126,09	-25,9
Toplam Ana Sanayi / Total Vehicle Industry	21.349.203.156	20.613.852.926	10.206.078.501,35	6.980.533.311,05	-31,6
Otobüs / Bus	1.503.156.428	1.759.421.232	883.374.430,65	566.685.476,47	-35,8
Midibüs-Minibüs / Midibus-Minibus	215.450.022	222.922.952	76.081.485,64	94.186.429,98	23,8
Otomobil / P.Cars	12.420.951.066	11.864.837.779	5.755.782.531,42	4.243.604.658,31	-26,3
Kamyon-Kamyonet / Truck-Pick Up&Van	5.375.329.018	4.945.381.202	2.557.275.370,95	1.481.905.522,39	-42,1
Römork ve Yarı Römork / Trailer-Semi Trailer	507.223.886	503.258.885	278.741.353,94	191.254.829,46	-31,4
Çekici / Tractor	904.738.051	839.891.843	433.374.682,96	224.285.483,69	-48,2
Tarım Traktörü / Farm Tractor	422.354.685	478.139.033	221.448.645,79	178.610.910,75	-19,3
Toplam / Total	32.227.753.774	31.231.731.335	15.586.065.678,47	10.977.381.733,93	-29,6

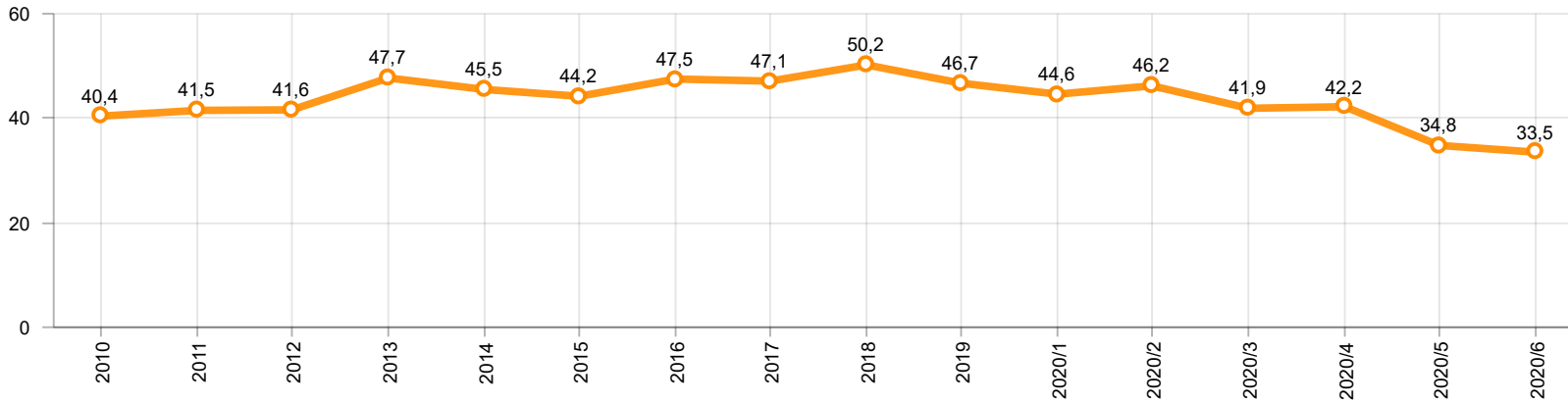
Kaynak: Uludağ İhracatçı Birlikleri . ÜİB tarafından OSD için özel olarak analiz edilen Otomotiv İhracatı kapsamında; ÜİB Türkiye Geneli Otomotiv Endüstrisi sınıflandırmasına kıyasla “Römork ve Yarı Römork” , “Tarım Traktörü” verileri dahil edilmekte; “Kullanılmış Araçlar” ,”İki Tekerlekli Taşıtlar” , “Demiryolu Taşıtları” hariç tutulmaktadır.

Source: Uludağ Exporters Association – Special Analyze for OSD.Compared to Turkish General Automotive Industry classification, this special analyze includes; farms tractors, trailers and semi-trailers, does not include; used vehicles, two-wheeled vehicles and railway vehicles

Otomobil Pazarında İthalatın Payı (%)
Import Share in P.Car Market (%)



Hafif Ticari Araçlar Pazarında İthalatın Payı (%)
Import Share in LCV Market (%)



Araç Tipleri / Vehicle Types	1	2	3	4	5	6	7	8	9	10	11	12	Toplam / Total
OTOMOBİL - Pass.Car	60.438	73.844	57.326	9.327	31.846	48.853							281.634
KAMYON - H. Truck	202	942	1.138	295	588	935							4.100
K.KAMYON - L. Truck	-	-	-	-	-	-							-
KAMYONET - Pick Up	25.435	24.356	21.081	882	9.461	17.524							98.739
OTOBÜS - Bus	551	696	593	90	418	832							3.180
MİNİBÜS - Minibus	3.305	2.709	3.553	-	2.058	2.605							14.230
MİDİBÜS - Midibus	31	68	82	19	32	64							296
TİCARİ ARAÇLAR TOPLAMI - CV Total	29.524	28.771	26.447	1.286	12.557	21.960							120.545
TAŞIT ARAÇLARI TOPLAMI - MV Total	89.962	102.615	83.773	10.613	44.403	70.813							402.179
TRAKTÖR - F.Tractor	1.468	1.181	994	384	680	1.421							6.128
GENEL TOPLAM - Grand Total	91.430	103.796	84.767	10.997	45.083	72.234							408.307

Otomobil / P.Car

Firmalar / Firms	1	2	3	4	5	6	7	8	9	10	11	12	Toplam / Total
FORD OTOSAN	583	867	505	-	405	632	-	-	-	-	-	-	2.992
HONDA TÜRKİYE	1.087	1.566	1.009	28	117	755	-	-	-	-	-	-	4.562
HYUNDAI ASSAN	10.700	14.160	13.138	5.123	9.920	12.200	-	-	-	-	-	-	65.241
OYAK RENAULT	18.323	24.729	24.536	3.021	14.036	17.391	-	-	-	-	-	-	102.036
TOFAŞ	7.835	10.136	5.249	1.155	648	1.978	-	-	-	-	-	-	27.001
TOYOTA	21.910	22.386	12.889	-	6.720	15.897	-	-	-	-	-	-	79.802
TOPLAM - Total	60.438	73.844	57.326	9.327	31.846	48.853	-	-	-	-	-	-	281.634

Kamyonet / Pick-up

Firmalar / Firms	1	2	3	4	5	6	7	8	9	10	11	12	Toplam / Total
A.I.O.S.	-	-	-	-	-	-	-	-	-	-	-	-	-
FORD OTOSAN	20.932	16.627	17.047	125	9.411	14.188	-	-	-	-	-	-	78.330
KARSAN	37	-	2	-	8	34	-	-	-	-	-	-	81
OTOKAR	22	-	-	46	-	22	-	-	-	-	-	-	90
TOFAŞ	4.444	7.729	4.032	711	42	3.280	-	-	-	-	-	-	20.238
TOPLAM - Total	25.435	24.356	21.081	882	9.461	17.524	-	-	-	-	-	-	98.739

Minibüs / Minibus

Firmalar / Firms	1	2	3	4	5	6	7	8	9	10	11	12	Toplam / Total
FORD OTOSAN	3.303	2.708	3.552	-	2.055	2.593	-	-	-	-	-	-	14.211
KARSAN	2	1	1	-	3	12	-	-	-	-	-	-	19
TOPLAM - Total	3.305	2.709	3.553	-	2.058	2.605	-	-	-	-	-	-	14.230

Kamyon / Truck

Firmalar / Firms	1	2	3	4	5	6	7	8	9	10	11	12	Toplam / Total
A.I.O.S.	-	-	-	-	-	-	-	-	-	-	-	-	-
FORD OTOSAN	145	192	119	92	132	235	-	-	-	-	-	-	915
KARSAN	-	-	-	-	-	-	-	-	-	-	-	-	-
M. BENZ TÜRK	57	750	1.019	203	456	700	-	-	-	-	-	-	3.185
OTOKAR	-	-	-	-	-	-	-	-	-	-	-	-	-
TOPLAM - Total	202	942	1.138	295	588	935	-	-	-	-	-	-	4.100

Midibüs / Midibus

Firmalar / Firms	1	2	3	4	5	6	7	8	9	10	11	12	Toplam / Total
A.I.O.S.	16	42	76	15	16	43	-	-	-	-	-	-	208
KARSAN	-	-	-	-	7	4	-	-	-	-	-	-	11
OTOKAR	15	20	5	3	8	16	-	-	-	-	-	-	67
TEMSA	-	6	1	1	1	1	-	-	-	-	-	-	10
TOPLAM - Total	31	68	82	19	32	64	-	-	-	-	-	-	296

Otobüs / Bus

Firmalar / Firms	1	2	3	4	5	6	7	8	9	10	11	12	Toplam / Total
A.I.O.S.	6	15	26	-	12	23	-	-	-	-	-	-	82
KARSAN	-	-	23	-	-	30	-	-	-	-	-	-	53
M. BENZ TÜRK	231	380	230	53	153	401	-	-	-	-	-	-	1.448
MAN TÜRKİYE	288	284	269	3	218	273	-	-	-	-	-	-	1.335
OTOKAR	19	15	29	34	16	79	-	-	-	-	-	-	192
TEMSA	7	2	16	-	19	26	-	-	-	-	-	-	70
TOPLAM - Total	551	696	593	90	418	832	-	-	-	-	-	-	3.180

Traktör / F.Tractor

Firmalar / Firms	1	2	3	4	5	6	7	8	9	10	11	12	Toplam / Total
HATTAT TRAKTÖR	120	84	22	38	25	53	-	-	-	-	-	-	342
TÜRK TRAKTÖR	1.348	1.097	972	346	655	1.368	-	-	-	-	-	-	5.786
TOPLAM - Total	1.468	1.181	994	384	680	1.421	-	-	-	-	-	-	6.128

Firmalar / Firms	2019 Toplam / Total	1	2	3	4	5	6	7	8	9	10	11	12	Toplam / Total
Alfa Romeo	253	2	-	5	-	12	11	-	-	-	-	-	-	30
Aston Martin	18	1	2	1	-	2	1	-	-	-	-	-	-	7
Audi	10.024	461	733	995	613	321	2.211	-	-	-	-	-	-	5.334
Bentley	9	-	1	-	3	2	3	-	-	-	-	-	-	9
BMW	9.583	251	815	1.168	373	191	882	-	-	-	-	-	-	3.680
Citroen	8.827	584	1.534	1.126	1.413	1.680	2.644	-	-	-	-	-	-	8.981
Dacia	17.533	2.261	1.851	1.245	601	787	3.033	-	-	-	-	-	-	9.778
DS	269	10	101	38	34	29	26	-	-	-	-	-	-	238
Ferrari	20	1	3	2	-	2	3	-	-	-	-	-	-	11
Fiat	1.043	7	22	79	21	39	154	-	-	-	-	-	-	322
Ford	12.484	206	862	2.042	1.032	604	1.111	-	-	-	-	-	-	5.857
Honda	3.108	101	172	160	96	227	152	-	-	-	-	-	-	908
Hyundai	15.460	950	1.385	1.261	574	732	1.790	-	-	-	-	-	-	6.692
Jaguar	244	-	47	24	6	9	13	-	-	-	-	-	-	99
Jeep	2.123	196	330	504	40	91	367	-	-	-	-	-	-	1.528
Kia	4.987	325	1.140	565	314	565	1.278	-	-	-	-	-	-	4.187
Lamborghini	9	-	1	2	1	3	1	-	-	-	-	-	-	8
Land Rover	1.371	8	151	206	237	135	112	-	-	-	-	-	-	849
Lexus	85	7	7	7	7	12	17	-	-	-	-	-	-	57
Maserati	45	-	2	-	1	4	5	-	-	-	-	-	-	12
Mazda	417	11	7	10	6	15	12	-	-	-	-	-	-	61
Mercedes-Benz	9.862	504	1.239	1.170	944	862	1.355	-	-	-	-	-	-	6.074
Mini	1.254	28	82	168	60	26	101	-	-	-	-	-	-	465
Mitsubishi	747	29	21	16	16	52	360	-	-	-	-	-	-	494
Nissan	11.980	757	275	548	188	310	246	-	-	-	-	-	-	2.324
Opel	16.689	554	1.768	2.726	2.044	1.770	2.913	-	-	-	-	-	-	11.775
Peugeot	23.057	1.338	2.440	2.540	3.792	2.473	2.661	-	-	-	-	-	-	15.244
Porsche	361	11	36	19	17	14	24	-	-	-	-	-	-	121
Renault	9.410	185	727	968	393	451	709	-	-	-	-	-	-	3.433
Seat	5.914	578	1.199	1.036	532	442	694	-	-	-	-	-	-	4.481
Skoda	15.369	884	1.570	1.303	313	374	3.205	-	-	-	-	-	-	7.649
Smart	44	12	16	8	3	2	4	-	-	-	-	-	-	45
Ssangyong	111	23	33	1	5	-	139	-	-	-	-	-	-	201
Subaru	662	17	59	84	22	43	87	-	-	-	-	-	-	312
Suzuki	2.381	22	124	173	181	134	535	-	-	-	-	-	-	1.169
Toyota	1.350	30	90	479	70	117	209	-	-	-	-	-	-	995
Volkswagen	38.820	3.292	3.469	5.164	2.108	1.408	3.444	-	-	-	-	-	-	18.885
Volvo	4.155	44	256	397	383	357	502	-	-	-	-	-	-	1.939
GENEL TOPLAM - Grand Total	230.078	13.690	22.570	26.240	16.443	14.297	31.014	-	-	-	-	-	-	124.254

Firmalar / Firms	2019 Toplam / Total	1	2	3	4	5	6	7	8	9	10	11	12	Toplam / Total
Citroen	3.206	250	341	434	133	44	182	-	-	-	-	-	-	1.384
Dacia	2.473	271	352	474	120	272	332	-	-	-	-	-	-	1.821
Fiat	1.767	176	350	252	106	131	639	-	-	-	-	-	-	1.654
Ford	1.198	50	71	63	161	241	107	-	-	-	-	-	-	693
Hyundai	1.114	55	96	54	29	59	42	-	-	-	-	-	-	335
Isuzu	75	2	3	1	1	13	24	-	-	-	-	-	-	44
Iveco	1.326	64	83	104	62	79	164	-	-	-	-	-	-	556
Kia	1.355	5	4	144	45	118	175	-	-	-	-	-	-	491
Mercedes-Benz	5.074	219	480	372	213	263	520	-	-	-	-	-	-	2.067
Mitsubishi	1.880	99	146	160	185	174	379	-	-	-	-	-	-	1.143
Nissan	1.087	66	92	59	22	47	56	-	-	-	-	-	-	342
Opel	1.370	51	33	298	99	49	231	-	-	-	-	-	-	761
Peugeot	5.804	418	555	495	168	260	317	-	-	-	-	-	-	2.213
Renault	4.309	171	228	117	90	219	314	-	-	-	-	-	-	1.139
Ssangyong	260	19	21	36	19	18	61	-	-	-	-	-	-	174
Toyota	939	25	34	70	23	96	103	-	-	-	-	-	-	351
Volkswagen	9.676	403	1.456	1.103	479	412	1.018	-	-	-	-	-	-	4.871
GENEL TOPLAM - Grand Total	42.913	2.344	4.345	4.236	1.955	2.495	4.664	-	-	-	-	-	-	20.039