



OTOMOTİV SANAYİİ DERNEĞİ  
AUTOMOTIVE MANUFACTURERS ASSOCIATION

# AYLIK RAPOR

## Automotive Industry Monthly Report

Mart / March 2018

- **Üretim/Production**
- **Satış/Sales**
- **İthalat/Imports**
- **İhracat/Exports**

OSD "OICA" Üyesidir



OSD is a Member of "OICA"

## 2018 Mart Ayı Özeti / 2018 March Summary

		MART / MARCH			3 AY/ 3 MONTHS			SON 12 AYLIK / YoY		
		2017	2018	2018/2017 (%)	2017	2018	2018/2017 (%)	2017	2018	2018/2017 (%)
Üretim/Production	Toplam/Total	157.728	159.464	1	424.216	425.183	0	1.564.016	1.696.698	8
	Otomobil/P.Cars	109.442	105.687	-3	300.252	285.168	-5	1.043.144	1.127.822	8
Pazar/Market	Toplam/Total	75.580	78.871	4	159.867	163.358	2	994.548	983.726	-1
	Otomobil/P.Cars	55.616	59.798	8	115.963	122.310	5	744.980	729.106	-2
İthalat/Import	Toplam/Total	48.819	48.784	0	101.313	100.343	-1	666.667	623.428	-6
	Otomobil/P.Cars	39.467	40.079	2	80.243	80.960	1	551.127	506.685	-8
İhracat/Export	Toplam/Total	135.966	130.320	-4	355.399	344.257	-3	1.230.464	1.321.651	7
	Otomobil/P.Cars	96.314	87.525	-9	254.796	234.889	-8	841.104	901.447	7
İhracat / Export (\$)	Toplam/Total **	2.757.874.177	3.198.415.502	16	7.094.176.653	8.376.132.656	18	25.685.812.042	30.272.047.511	18
	Otomobil/P.Cars	1.169.446.193	1.274.572.893	9	3.012.913.300	3.293.052.524	9	9.758.750.965	12.071.292.795	24

PARAMETRELER / PARAMETERS		MART / MARCH			3 AY/ 3 MONTHS			SON 12 AYLIK / YoY		
		2017	2018	2018/2017 (%)	2017	2018	2018/2017 (%)	2017	2018	2018/2017 (%)
ÜFE/PPI		1,04	1,54	-	6,38	5,29	-	6,89	15,35	-
TÜFE/CPI		1,02	0,99	-	4,34	2,77	-	8,21	11,14	-
Sanayi Endeksi/Industry Index		1,35	1,79	-	6,70	4,98	-	8,41	16,79	-
\$ (*)		3,6312	3,8758	7	3,6593	3,8028	4	3,1872	3,6615	15
EURO (*)		3,8542	4,7520	23	3,8929	4,6687	20	3,4881	4,2970	23
Japon Yeni (*)		3,2047	3,6208	13	3,2029	3,4893	9	2,9191	3,2858	13

(\*) Ortalama Değerler / Average Values

(\*\*) Toplam Sanayi / Total Industry Including Components

*Raporda yer alan üretim adetleri yalnızca OSD üyelerinin verilerini göstermektedir.  
Production units in this report only show the data of OSD members.*

## 2017/2018 Yılları Üretim

2017/2018 Production

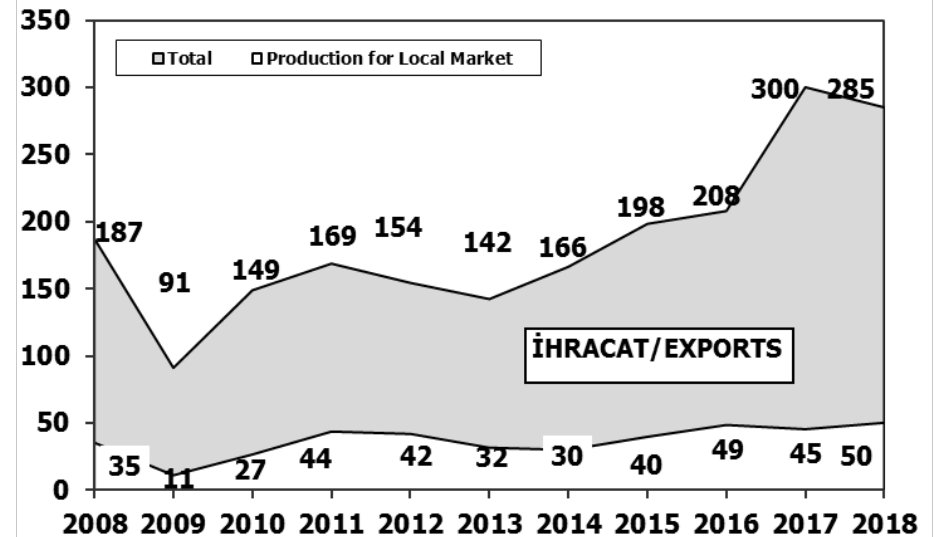
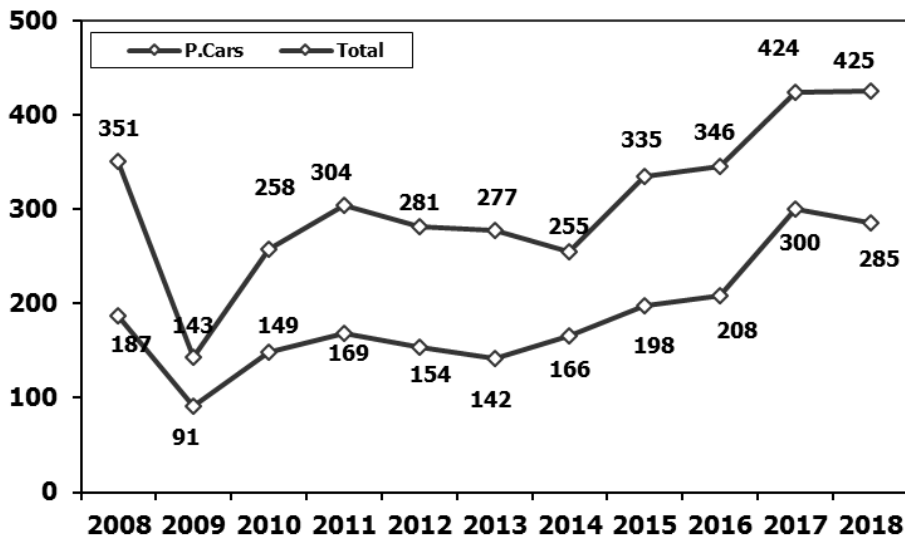
K.KAMYON : AYA 3.5-12 Ton (L.Truck:GVW 3.5-12 Ton)

B.KAMYON : AYA 12 Ton'dan Büyük (M.Truck:GVW 12 Ton And Up)

ARAÇ TİPLERİ	MART AYI ÜRETİMİ March Production		3 AYLIK ÜRETİM 3 Months Production		DEĞİŞİM % Percent Change %	
	2017	2018	2017	2018	MART March	3 AY 3 Months
<b>OTOMOBİL - Pass.Car</b>	<b>109.442</b>	<b>105.687</b>	<b>300.252</b>	<b>285.168</b>	<b>-3</b>	<b>-5</b>
<b>TİCARİ ARAÇLAR - Commercial Vehicles</b>	<b>48.286</b>	<b>53.777</b>	<b>123.964</b>	<b>140.015</b>	<b>11</b>	<b>13</b>
* B. KAMYON - H. Truck	1.657	2.350	3.810	6.350	42	67
* K. KAMYON - L. Truck	465	222	914	914	-52	0
* KAMYONET - Pick Up	40.214	45.190	103.985	117.150	12	13
* OTOBÜS - Bus	818	833	2.301	2.109	2	-8
* MİNİBÜS - Minibus	4.765	4.831	12.138	12.496	1	3
* MİDİBÜS - Midibus	367	351	816	996	-4	22
<b>TAŞIT ARAÇLARI TOPLAM - MV Total</b>	<b>157.728</b>	<b>159.464</b>	<b>424.216</b>	<b>425.183</b>	<b>1</b>	<b>0</b>
<b>TRAKTÖR - F.Tractor</b>	<b>4.806</b>	<b>5.122</b>	<b>12.294</b>	<b>14.194</b>	<b>7</b>	<b>15</b>
<b>GENEL TOPLAM - Grand Total</b>	<b>162.534</b>	<b>164.586</b>	<b>436.510</b>	<b>439.377</b>	<b>1</b>	<b>1</b>

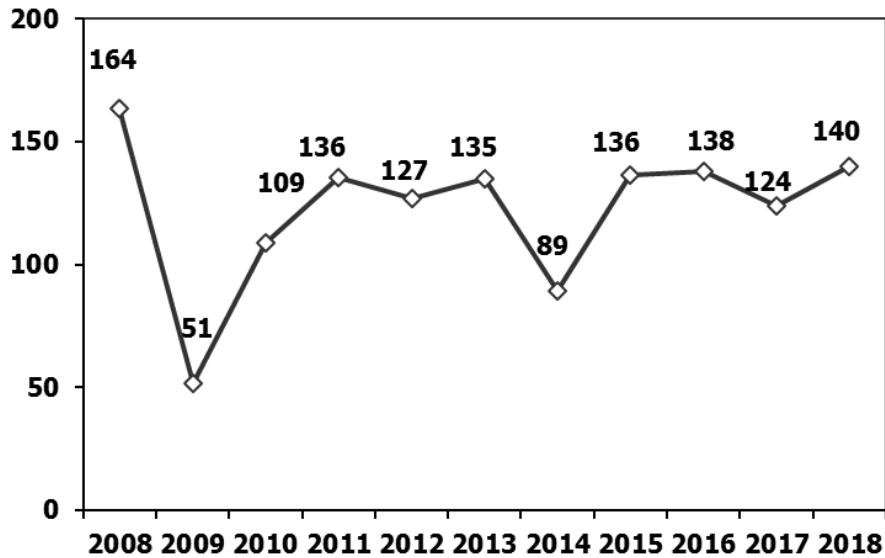
**Toplam Üretim ve Otomobil Üretimi (x1000) (Ocak-Mart)**  
Total & P.Cars Production (x1000) (January-March)

**Otomobil Üretimi ve İhracat (x1000) (Ocak-Mart)**  
P.Cars Production & Exports (x1000) (January-March)



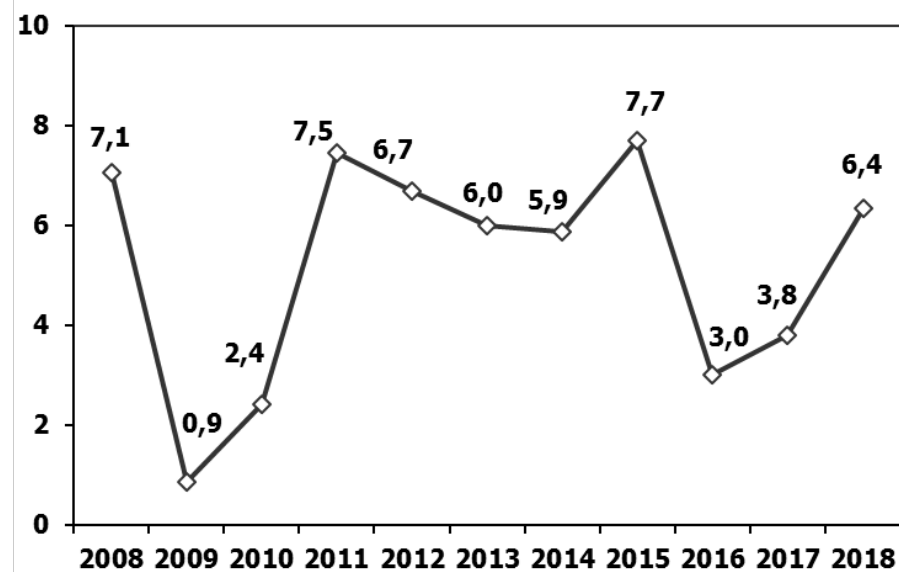
### Ticari Araç Üretimi (x1000) (Ocak-Mart)

Commercial Vehicle Production (x1000) (January-March)



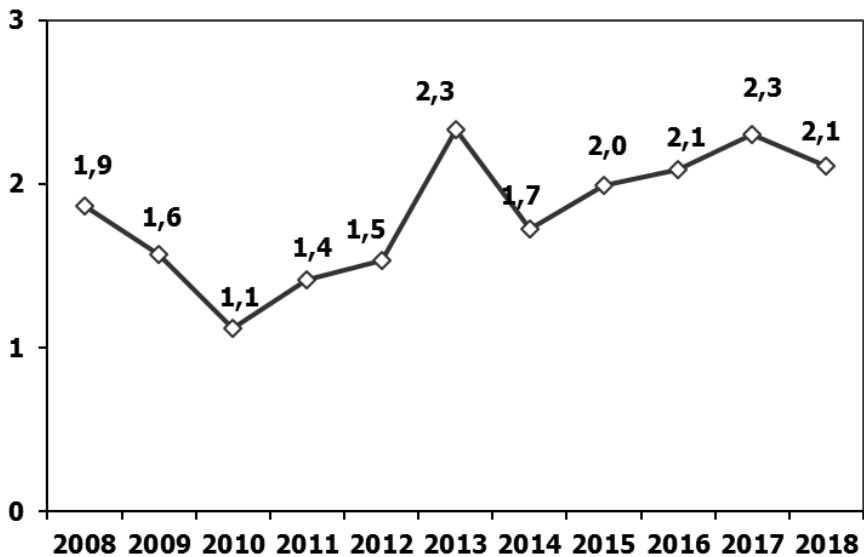
### (AYA >12 Ton) Büyük Kamyon Üretimi (x1000) (Ocak-Mart)

(GVW >12 Ton) Heavy Truck Production (x1000) (January-March)



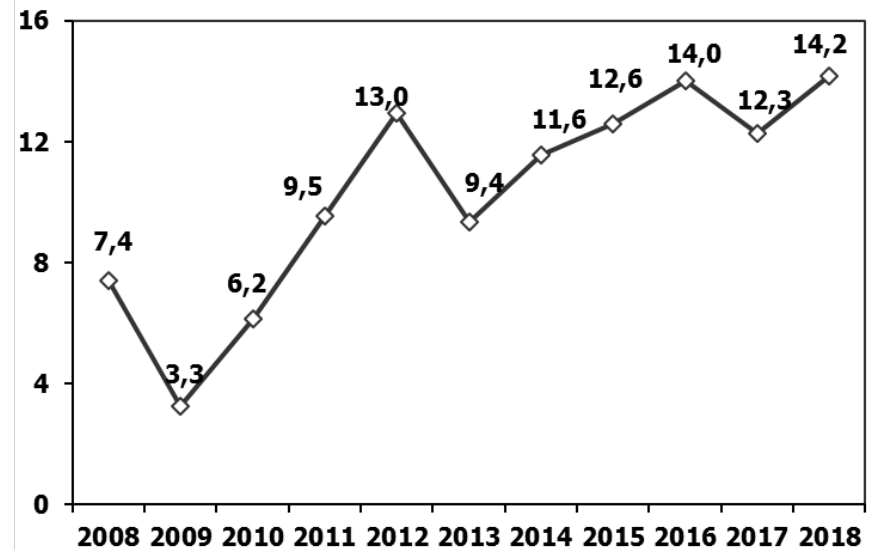
### Otobüs Üretimi (x1000) (Ocak-Mart)

Bus Production (x1000) (January-March)



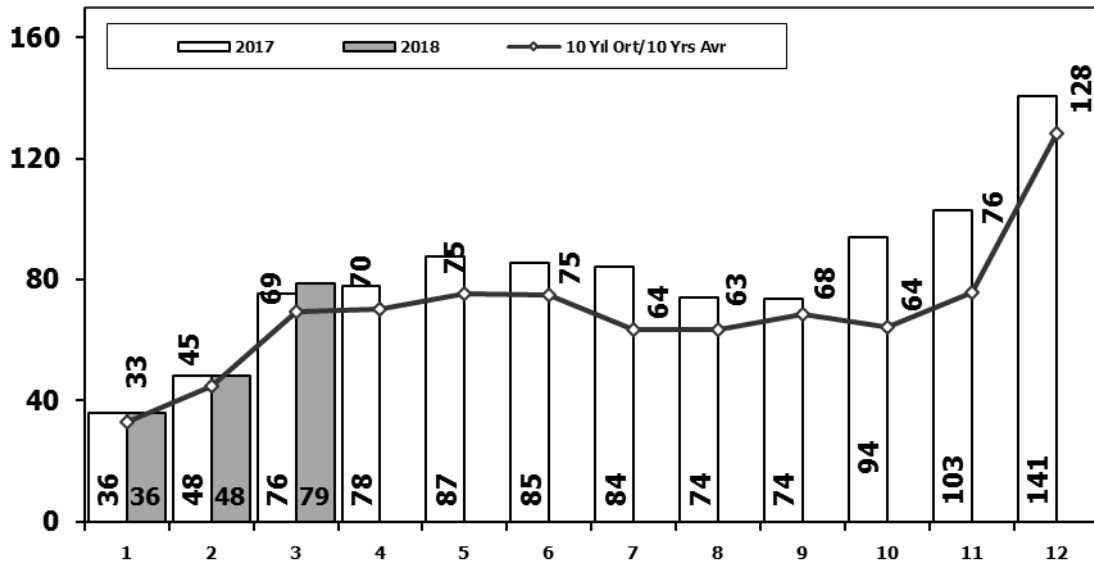
### Traktör Üretimi (x1000) (Ocak-Mart)

F. Tractor Production (x1000) (January-March)



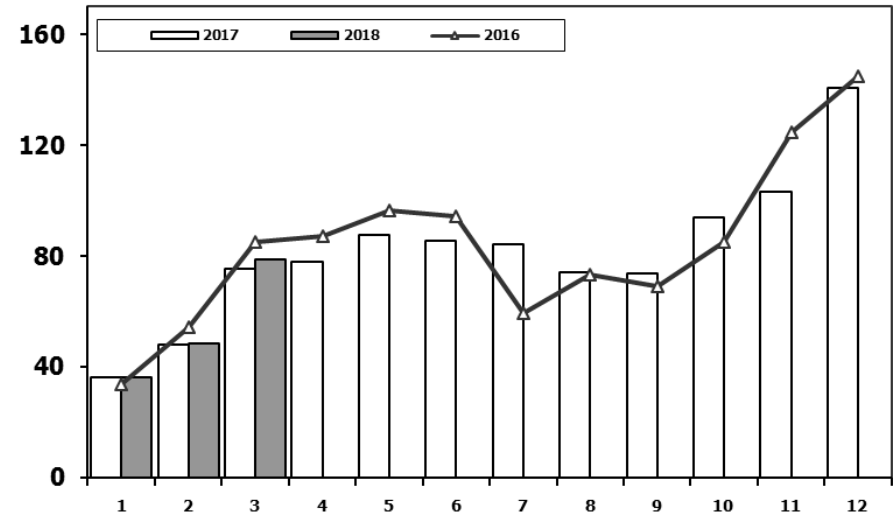
## Toplam Pazarın Analizi (x1000)

Total Market Analysis (x1000)



## Toplam Pazar (x1000)

Total Market (x1000)

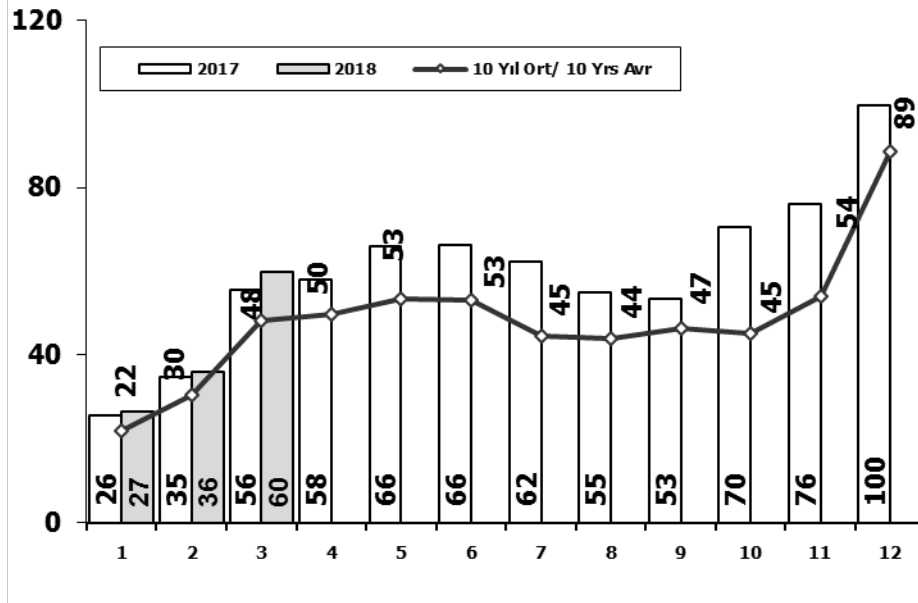


	1	2	3	4	5	6	7	8	9	10	11	12	3 Ay/Mo	Total
2008	33.792	38.121	56.814	50.967	51.627	49.393	44.692	46.592	46.829	35.147	28.152	44.418	128.727	526.544
2009	20.631	22.846	56.531	54.426	64.887	63.102	30.246	37.092	83.403	22.117	29.202	91.386	100.008	575.869
2010	21.050	32.313	53.828	57.079	61.628	63.390	63.718	64.645	66.601	76.780	77.406	154.734	107.191	793.172
2011	47.658	62.348	83.333	82.071	85.093	85.863	65.364	61.378	63.643	72.640	67.195	134.281	193.339	910.867
2012	31.219	43.827	68.957	66.014	74.820	74.781	65.122	60.848	73.197	62.677	75.045	121.113	144.003	817.620
2013	37.140	50.931	72.688	77.015	85.421	77.771	74.726	67.383	71.037	60.399	83.017	135.596	160.759	893.124
2014	34.225	37.308	50.964	56.766	61.909	63.952	62.206	62.839	70.180	69.259	83.937	153.941	122.497	807.486
2015	36.576	58.533	89.121	95.431	85.145	90.463	86.625	84.683	66.622	66.520	88.043	163.432	184.230	1.011.194
2016	33.740	54.223	85.214	87.041	96.576	94.203	59.505	73.269	69.068	85.251	124.839	144.928	173.177	1.007.857
2017	36.146	48.141	75.580	77.848	87.476	85.416	84.189	74.295	73.602	93.806	103.121	140.657	159.867	980.277
2018	36.096	48.391	78.871										163.358	163.358

Aylar / Months	10 Yil Ort. 10 Yrs Avr. (x1000)	2018 (x1000)	%
1	33,2	36,1	8,7
2	44,9	48,4	7,9
3	69,3	78,9	13,8
<b>Total</b>	<b>147,4</b>	<b>163,4</b>	<b>10,8</b>

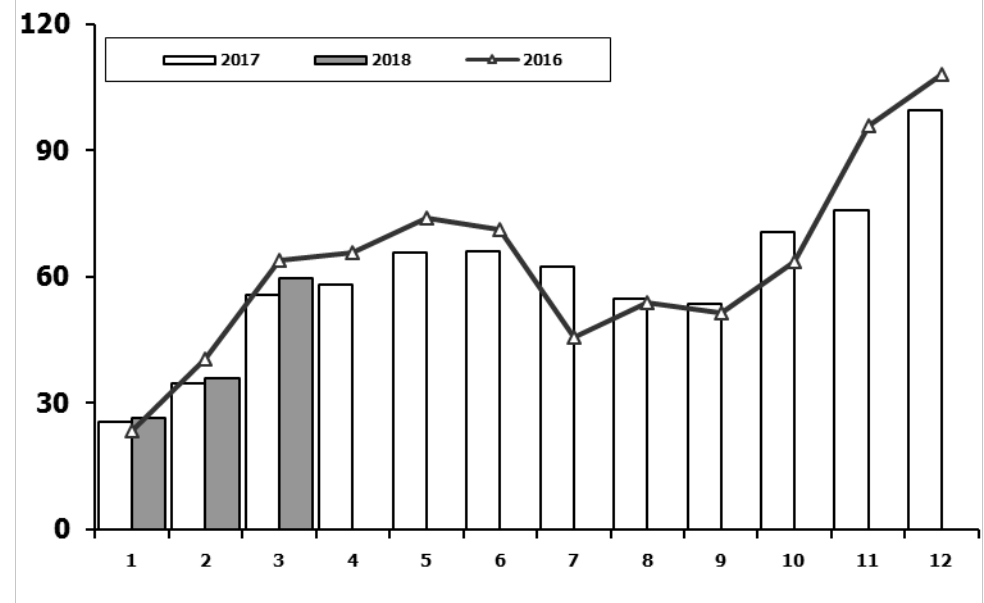
## Otomobil Pazarının Analizi (x1000)

P.Cars Market Analysis (x1000)



## Otomobil Pazarı (x1000)

P.Cars Market (x1000)

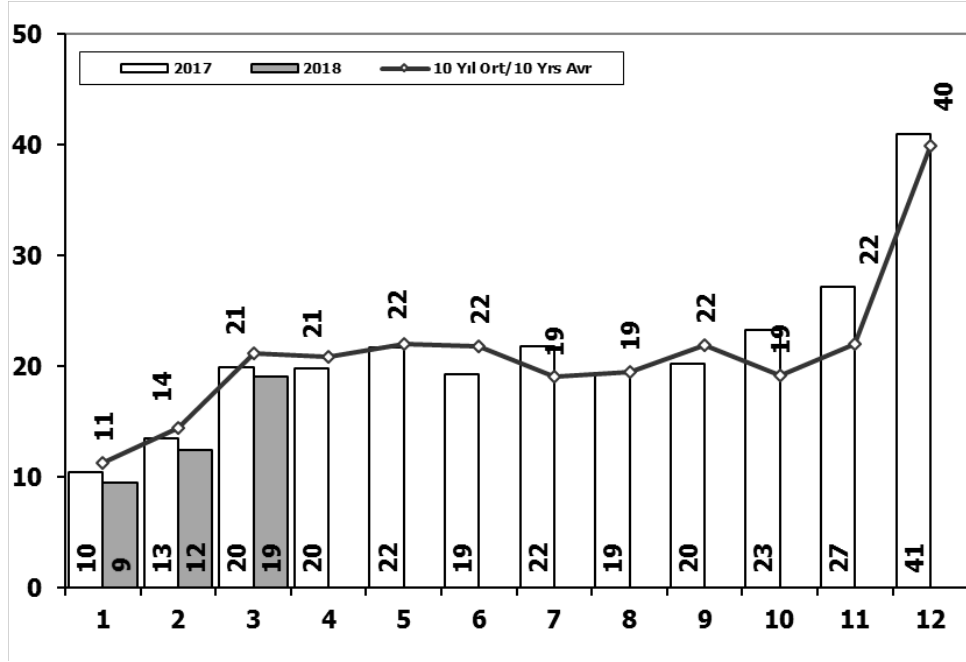


	1	2	3	4	5	6	7	8	9	10	11	12	3 Ay/Mo	Total
2008	18.588	21.196	34.147	30.313	31.477	28.724	25.530	26.102	27.053	19.788	17.201	25.879	73.931	305.998
2009	13.173	14.492	40.622	36.202	44.188	41.019	16.637	22.537	52.162	13.828	17.781	57.178	68.287	369.819
2010	12.594	20.651	33.958	36.549	40.467	42.086	41.399	42.222	42.477	47.859	50.061	99.461	67.203	509.784
2011	29.868	39.004	54.023	53.835	56.302	56.714	43.518	38.875	39.964	47.508	44.951	88.957	122.895	593.519
2012	21.077	29.189	47.270	45.645	50.460	50.849	44.531	41.236	49.360	43.440	52.297	80.926	97.536	556.280
2013	25.835	36.814	51.785	56.999	62.383	58.290	55.712	51.611	52.925	46.985	64.117	101.199	114.434	664.655
2014	24.368	27.167	37.812	42.769	46.379	47.278	46.602	45.131	49.262	50.814	59.695	110.054	89.347	587.331
2015	24.498	40.817	61.676	70.211	62.878	67.766	64.218	61.753	47.088	47.954	62.397	114.340	126.991	725.596
2016	23.358	40.588	63.975	65.618	73.832	71.111	45.566	53.977	51.340	63.746	95.783	108.044	127.921	756.938
2017	25.689	34.658	55.616	57.998	65.799	66.164	62.384	54.890	53.423	70.488	75.956	99.694	115.963	722.759
2018	26.611	35.901	59.798										122.310	122.310

Aylar / Months	10 Yil Ort. 10 Yrs Avr. (x1000)	2018 (x1000)	%
1	21,9	26,6	21,5
2	30,5	35,9	17,9
3	48,1	59,8	24,4
<b>Total</b>	<b>100,5</b>	<b>122,3</b>	<b>21,8</b>

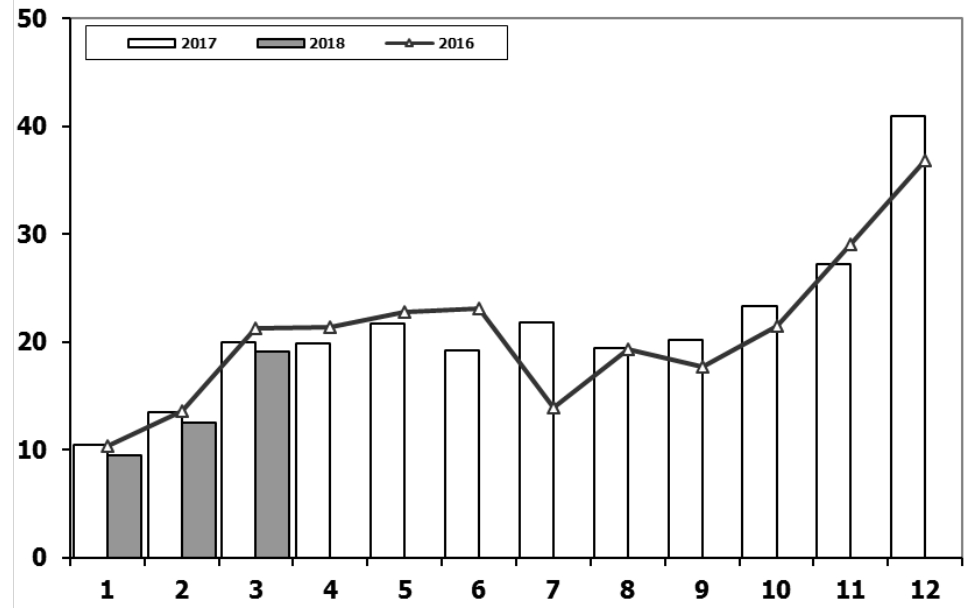
## Ticari Araç Pazarının Analizi (x1000)

### CV Market Analysis (x1000)



## Ticari Araç Pazarı (x1000)

### CV Total Market (x1000)

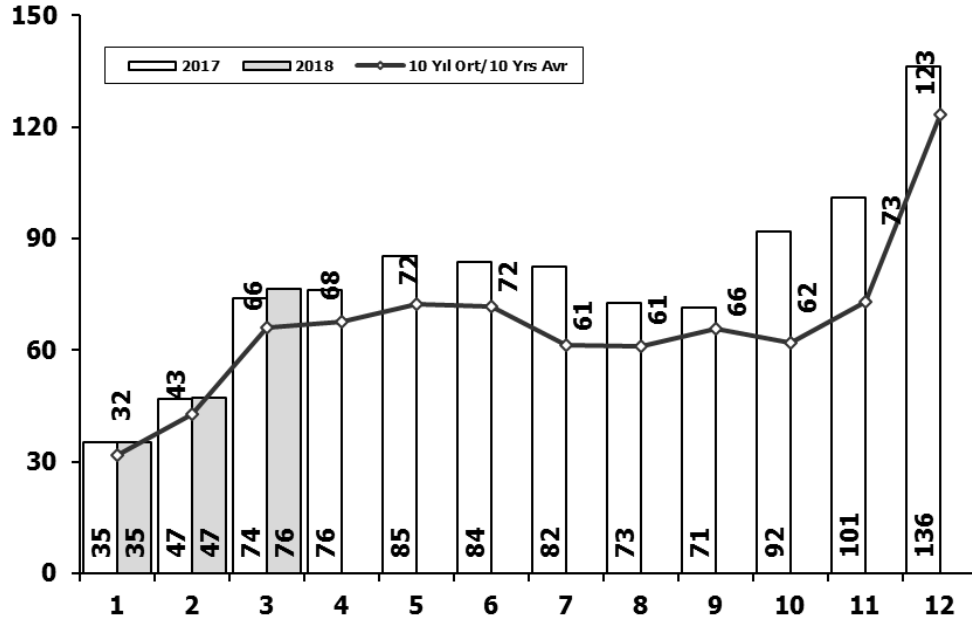


	1	2	3	4	5	6	7	8	9	10	11	12	3 Ay/Mo	Total
2008	15.204	16.925	22.667	20.654	20.150	20.669	19.162	20.490	19.776	15.359	10.951	18.539	54.796	220.546
2009	7.458	8.354	15.909	18.224	20.699	22.083	13.609	14.555	31.241	8.289	11.421	34.208	31.721	206.050
2010	8.456	11.662	19.870	20.530	21.161	21.304	22.319	22.423	24.124	28.921	27.345	55.273	39.988	283.388
2011	17.790	23.344	29.310	28.236	28.791	29.149	21.846	22.503	23.679	25.132	22.244	45.324	70.444	317.348
2012	10.142	14.638	21.687	20.369	24.360	23.932	20.591	19.612	23.837	19.237	22.748	40.187	46.467	261.340
2013	11.305	14.117	20.903	20.016	23.038	19.481	19.014	15.772	18.112	13.414	18.900	34.397	46.325	228.469
2014	9.857	10.141	13.152	13.997	15.530	16.674	15.604	17.708	20.918	18.445	24.242	43.887	33.150	220.155
2015	12.078	17.716	27.445	25.220	22.267	22.697	22.407	22.930	19.534	18.566	25.646	49.092	57.239	285.598
2016	10.382	13.635	21.239	21.423	22.744	23.092	13.939	19.292	17.728	21.505	29.056	36.884	45.256	250.919
2017	10.457	13.483	19.964	19.850	21.677	19.252	21.805	19.405	20.179	23.318	27.165	40.963	43.904	257.518
2018	9.485	12.490	19.073										41.048	41.048

Aylar / Months	10 Yil Ort. 10 Yrs Avr. (x1000)	2018 (x1000)	%
1	11,3	9,5	-16,2
2	14,4	12,5	-13,3
3	21,2	19,1	-10,1
<b>Total</b>	<b>46,9</b>	<b>41,0</b>	<b>-12,5</b>

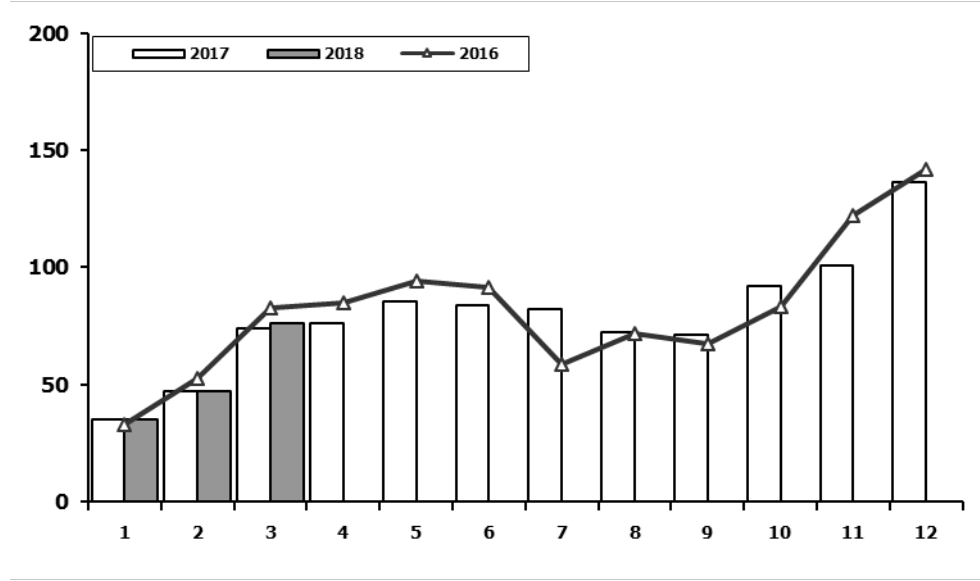
## Hafif Araç Pazarının Analizi (x1000)

### LV Market Analysis (x1000)



## Hafif Araç Pazarı (x1000)

### LV Total Market (x1000)



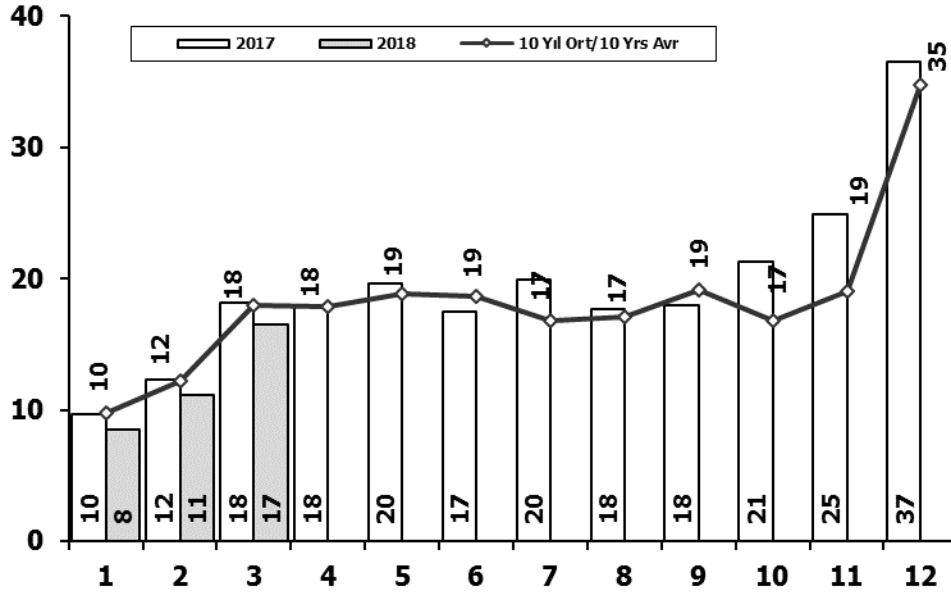
	1	2	3	4	5	6	7	8	9	10	11	12	3 Ay/Mo	Total
2008	31.527	35.251	53.649	47.701	48.598	46.324	42.156	43.670	43.932	32.884	26.253	42.078	120.427	494.023
2009	19.606	21.742	55.111	52.640	63.191	61.067	28.845	35.609	81.397	21.033	27.962	88.923	96.459	557.126
2010	20.095	31.172	51.769	54.946	59.377	60.896	61.345	61.764	63.814	73.404	73.962	148.369	103.036	760.913
2011	44.892	58.663	78.403	77.695	80.646	81.573	63.044	58.406	60.129	69.421	63.657	127.910	181.958	864.439
2012	29.545	41.324	64.884	62.949	70.863	71.067	62.304	58.148	69.629	59.938	71.710	115.400	135.753	777.761
2013	35.523	48.307	68.774	73.575	81.468	74.096	71.596	65.043	67.963	58.014	79.301	129.718	152.604	853.378
2014	32.670	35.021	47.581	53.305	58.121	60.163	59.907	60.199	66.531	66.573	80.621	146.989	115.272	767.681
2015	34.615	55.331	83.302	91.602	81.542	86.158	83.836	82.577	64.025	64.255	84.601	156.173	173.248	968.017
2016	32.713	52.825	82.948	84.887	93.904	91.540	58.533	71.556	67.593	83.000	122.309	141.912	168.486	983.720
2017	35.323	46.965	73.802	75.988	85.422	83.658	82.297	72.536	71.352	91.752	100.859	136.240	156.090	956.194
2018	35.076	47.009	76.345										158.430	158.430

Aylar / Months	10 Yil Ort. 10 Yrs Avr. (x1000)	2018 (x1000)	%
1	31,7	35,1	10,8
2	42,7	47,0	10,2
3	66,0	76,3	15,6
<b>Total</b>	<b>140,3</b>	<b>158,4</b>	<b>12,9</b>



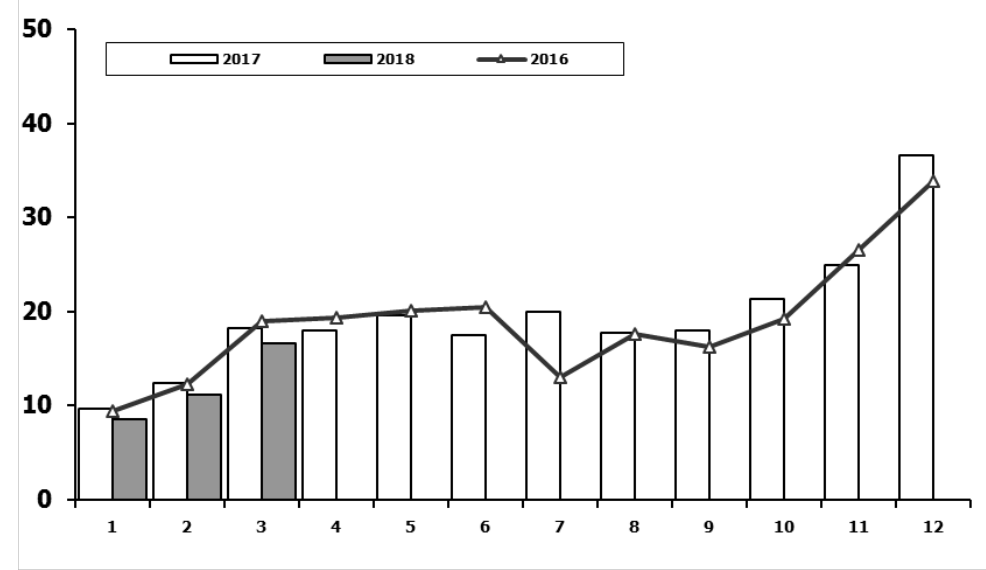
## Hafif Ticari Araç Pazarının Analizi (x1000)

### LCV Market Analysis (x1000)



## Hafif Ticari Araç Pazarı (x1000)

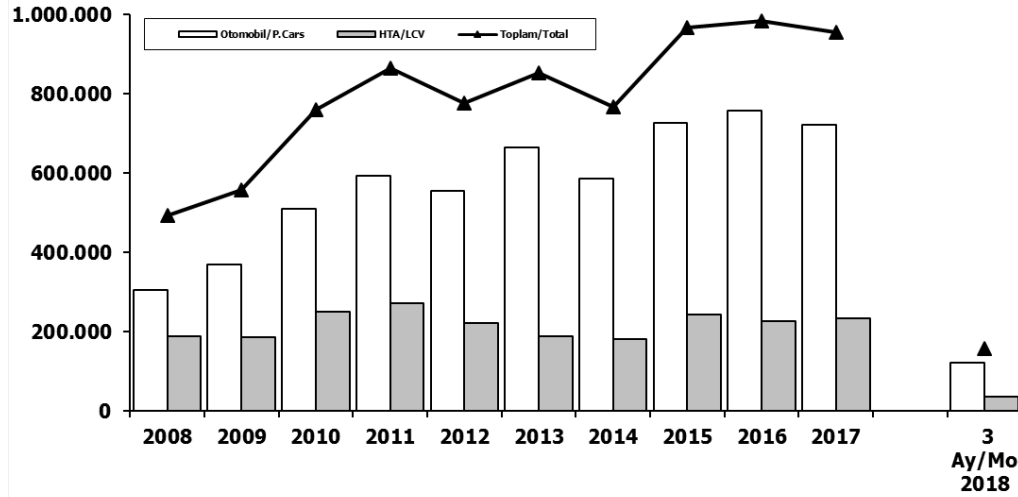
### LCV Total Market (x1000)



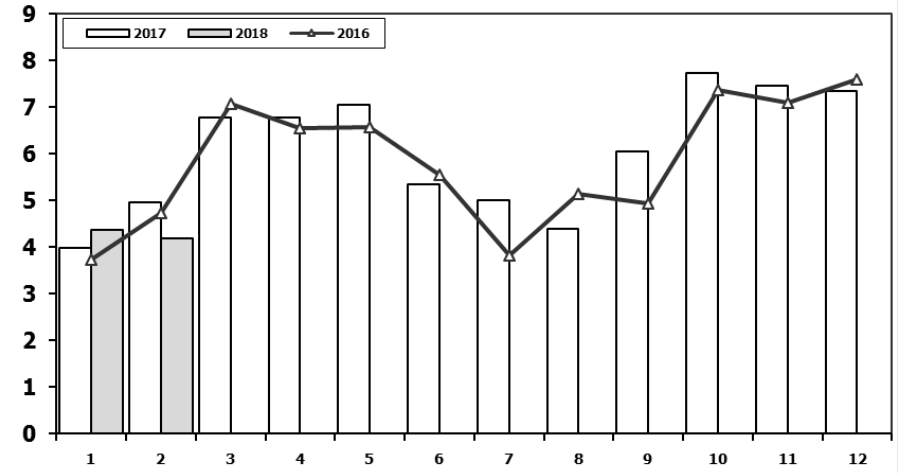
	1	2	3	4	5	6	7	8	9	10	11	12	3 Ay/Mo	Total
2008	12.939	14.055	19.502	17.388	17.121	17.600	16.626	17.568	16.879	13.096	9.052	16.199	46.496	188.025
2009	6.433	7.250	14.489	16.438	19.003	20.048	12.208	13.072	29.235	7.205	10.181	31.745	28.172	187.307
2010	7.501	10.521	17.811	18.397	18.910	18.810	19.946	19.542	21.337	25.545	23.901	48.908	35.833	251.129
2011	15.024	19.659	24.380	23.860	24.344	24.859	19.526	19.531	20.165	21.913	18.706	38.953	59.063	270.920
2012	8.468	12.135	17.614	17.304	20.403	20.218	17.773	16.912	20.269	16.498	19.413	34.474	38.217	221.481
2013	9.688	11.493	16.989	16.576	19.085	15.806	15.884	13.432	15.038	11.029	15.184	28.519	38.170	188.723
2014	8.302	7.854	9.769	10.536	11.742	12.885	13.305	15.068	17.269	15.759	20.926	36.935	25.925	180.350
2015	10.117	14.514	21.626	21.391	18.664	18.392	19.618	20.824	16.937	16.301	22.204	41.833	46.257	242.421
2016	9.355	12.237	18.973	19.269	20.072	20.429	12.967	17.579	16.253	19.254	26.526	33.868	40.565	226.782
2017	9.634	12.307	18.186	17.990	19.623	17.494	19.913	17.646	17.929	21.264	24.903	36.546	40.127	233.435
2018	8.465	11.108	16.547										36.120	36.120

Aylar / Months	10 Yil Ort. 10 Yrs Avr. (x1000)	2018 (x1000)	%
1	9,7	8,5	-13,1
2	12,2	11,1	-9,0
3	17,9	16,5	-7,7
Total	39,9	36,1	-9,4

## Hafif Araç Pazarı Light Vehicle Market



## Traktör Pazarı (x1000) F.Tractor Market (x1000)



	2008	2009	2010	2011	2012	2013	2014	2015	2016	2017	3 Ay/Mo 2018
Otomobil/P.Cars	305.998	369.819	509.784	593.519	556.280	664.655	587.331	725.596	756.938	722.759	122.310
HTA/LCV	188.025	187.307	251.129	270.920	221.481	188.723	180.350	242.421	226.782	233.435	36.120
Toplam/Total	494.023	557.126	760.913	864.439	777.761	853.378	767.681	968.017	983.720	956.194	158.430
HTA/LCV (%)	38	34	33	31	28	22	23	25	23	24	23

	1	2	3	4	5	6	7	8	9	10	11	12	2 Ay/Mo	Total
2008	2.770	1.855	3.395	3.081	2.769	2.400	2.232	2.485	1.856	1.773	1.305	1.101	4.625	27.022
2009	717	572	688	1.070	1.297	1.256	1.054	1.183	1.117	1.356	1.304	2.144	1.289	13.758
2010	1.111	1.991	2.330	3.039	2.567	2.638	1.965	3.019	2.806	4.424	3.978	6.168	3.102	36.036
2011	2.975	5.242	5.927	5.358	6.016	6.335	4.534	4.051	4.140	5.828	4.943	4.992	8.217	60.341
2012	2.362	1.983	4.348	6.579	6.273	4.569	3.837	3.158	3.618	4.027	4.807	4.757	4.345	50.318
2013	2.161	2.432	4.005	4.585	5.616	3.136	4.574	3.408	4.935	4.762	5.781	6.891	4.593	52.286
2014	2.169	3.512	4.476	4.905	5.094	5.028	4.233	4.920	5.619	5.743	6.250	7.409	5.681	59.358
2015	3.124	3.984	5.460	6.383	6.078	5.748	4.677	5.044	4.765	7.049	6.898	7.564	7.108	66.774
2016	3.739	4.731	7.067	6.546	6.575	5.543	3.833	5.134	4.945	7.372	7.090	7.603	8.470	70.178
2017	3.974	4.964	6.773	6.780	7.057	5.356	5.003	4.396	6.064	7.734	7.457	7.351	8.938	72.909
2018	4.362	4.179											8.541	8.541

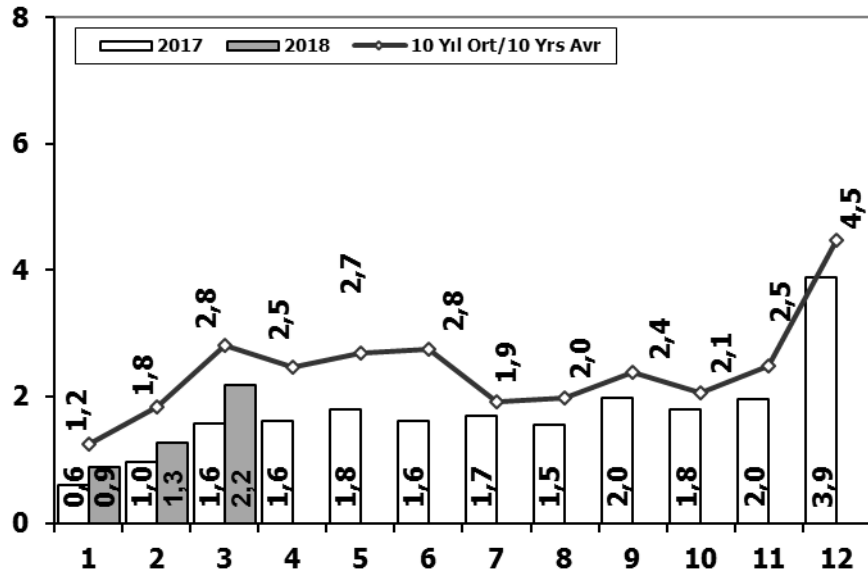
Kaynak: TÜİK trafik kayıtları.

Rakamlar, son iki model yılına ait traktör tescillerinden oluşmaktadır.

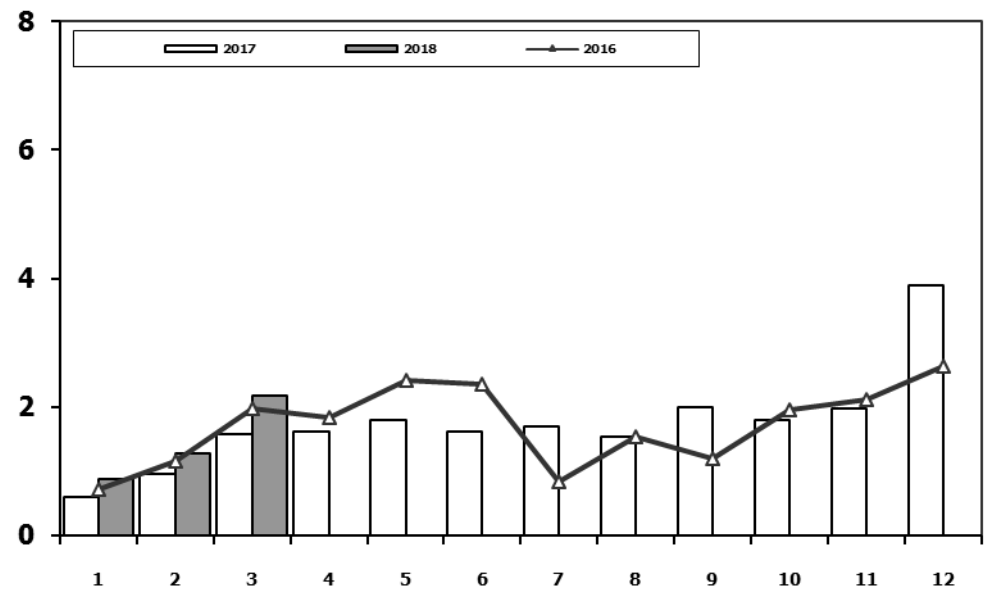
Source: Turkish Statistical Institute – Traffic registrations

Data represents the last two model year's farm tractors registration figures

## Kamyon Pazarının Analizi (x1000) AYA > 5 Ton Truck Market Analysis (x1000) GVW > 5 Ton



## Kamyon Pazarı (x1000) AYA > 5 Ton Truck Market (x1000) GVW > 5 Ton

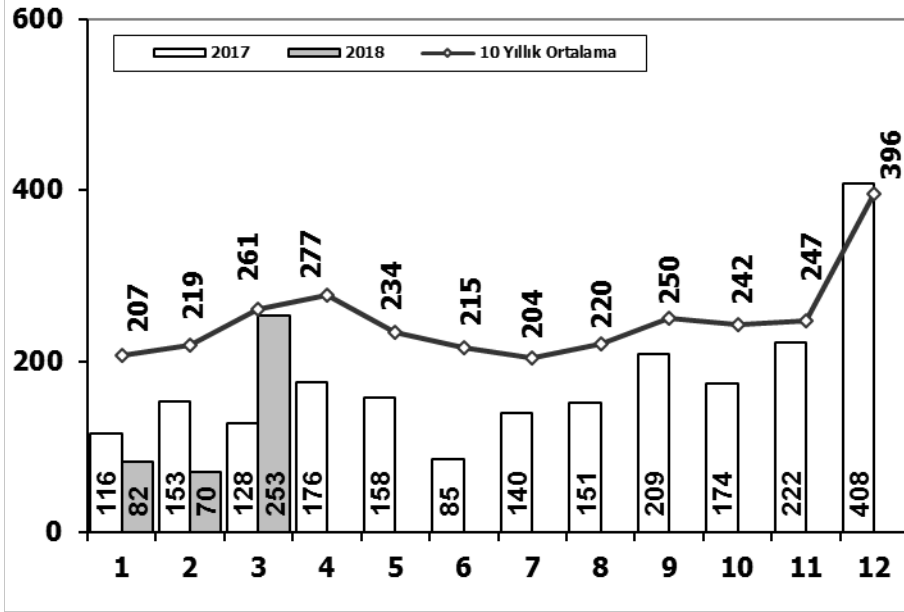


	1	2	3	4	5	6	7	8	9	10	11	12	3 Ay/Mo	Total
2008	1.797	2.309	2.621	2.578	2.459	2.526	2.067	2.377	2.390	1.790	1.512	1.834	6.727	26.260
2009	771	759	1.034	1.342	1.355	1.651	1.156	1.205	1.780	866	981	2.015	2.564	14.915
2010	777	968	1.772	1.807	1.966	2.205	2.093	2.446	2.444	3.071	3.136	5.677	3.517	28.362
2011	2.552	3.292	4.418	3.754	3.803	3.749	1.996	2.478	3.081	2.774	3.108	5.787	10.262	40.792
2012	1.375	2.159	3.595	2.697	3.321	3.250	2.450	2.277	2.991	2.244	3.006	5.000	7.129	34.365
2013	1.077	1.931	3.127	2.720	3.145	2.951	2.411	1.845	2.554	1.801	3.173	5.025	6.135	31.760
2014	1.117	1.949	2.818	3.092	3.405	3.438	2.083	2.390	3.281	2.494	3.028	6.313	5.884	35.408
2015	1.705	2.841	5.270	3.208	3.190	3.824	2.463	1.798	2.244	1.848	2.902	6.540	9.816	37.833
2016	718	1.154	1.984	1.835	2.420	2.358	830	1.529	1.204	1.962	2.123	2.640	3.856	20.757
2017	607	964	1.569	1.610	1.807	1.621	1.689	1.546	1.990	1.800	1.970	3.894	3.140	21.067
2018	880	1.269	2.180										4.329	4.329

Aylar / Months	10 Yil Ort. 10 Yrs Avr. (x1000)	2018 (x1000)	%
1	1,2	0,9	-29,6
2	1,8	1,3	-30,8
3	2,8	2,2	-22,7
Total	5,9	4,3	-26,7

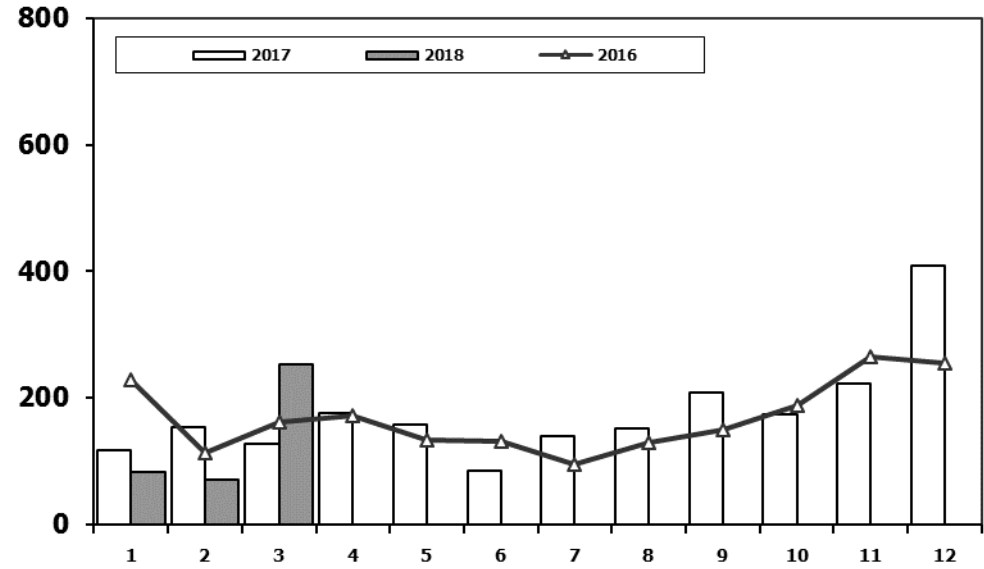
## Midibüs Pazarının Analizi (7-9 mt / 25-35 Kişilik)

Midibus Market Analysis (7-9 mt / 25-35 Passengers)



## Midibüs Pazarı (7-9 mt / 25-35 Kişilik Midibüs)

Midibus Market (7-9 mt / 25-35 Passengers)

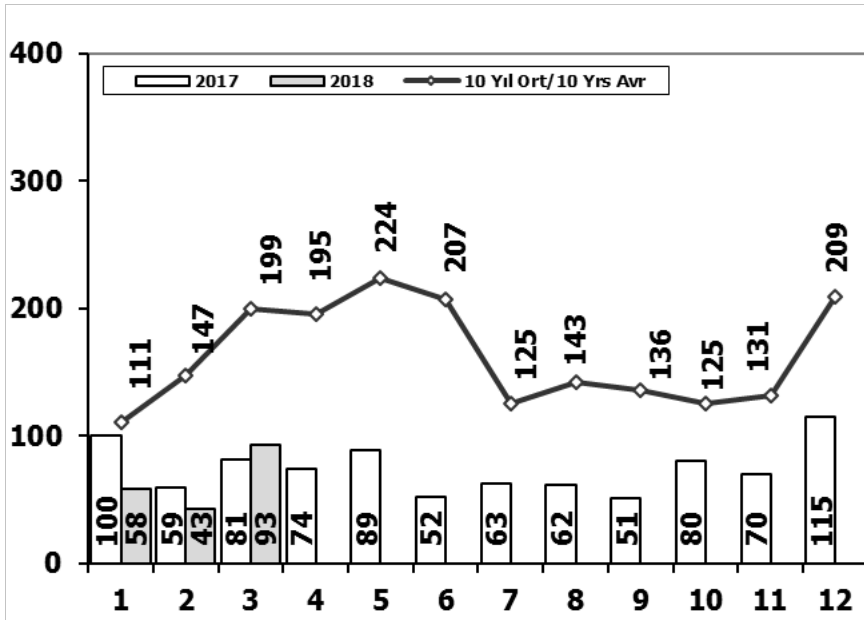


	1	2	3	4	5	6	7	8	9	10	11	12	3 Ay/Mo	Total
2008	391	476	436	512	419	331	368	380	341	352	246	270	1.303	4.522
2009	154	124	160	220	174	198	160	175	168	143	206	323	438	2.205
2010	155	131	185	167	140	138	129	246	236	206	202	437	471	2.372
2011	138	195	294	316	280	258	211	305	301	276	260	270	627	3.104
2012	179	257	277	229	257	239	216	249	325	269	189	398	713	3.084
2013	191	268	289	276	283	241	367	235	305	392	415	697	748	3.959
2014	335	265	326	280	206	223	161	174	229	140	226	454	926	3.019
2015	177	213	350	425	288	306	195	154	231	283	240	450	740	3.312
2016	229	112	161	172	133	132	95	130	150	187	264	254	502	2.019
2017	116	153	128	176	158	85	140	151	209	174	222	408	397	2.120
2018	82	70	253										405	405

Aylar / Months	10 Yıl Ort. 10 Yrs Avr.	2018	%
1	207	82	-60
2	219	70	-68
3	261	253	-3
Total	687	405	-41

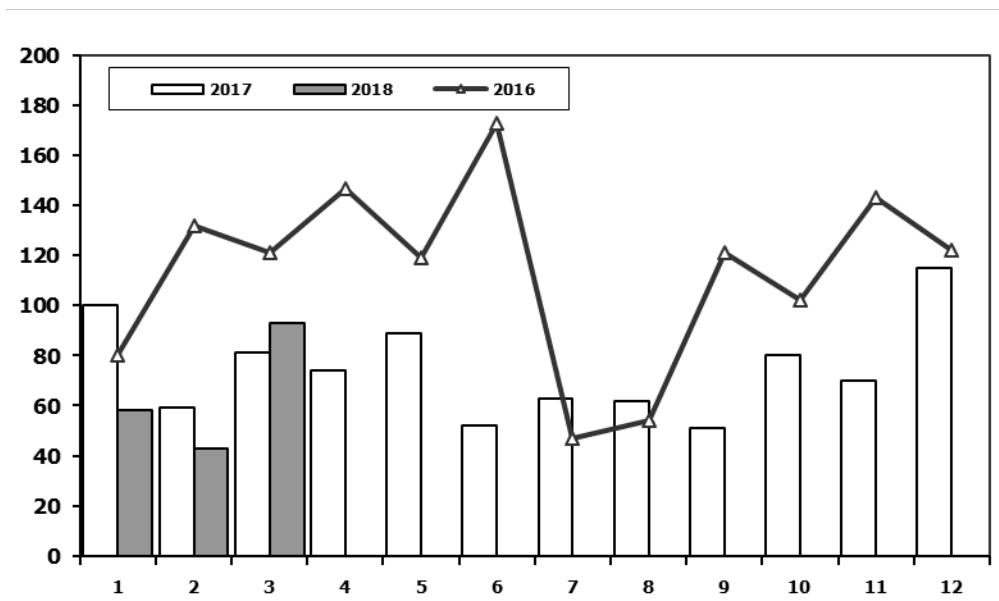
## Otobüs Pazarının Analizi

Bus Market Analysis



## Otobüs Pazarı

Bus Market

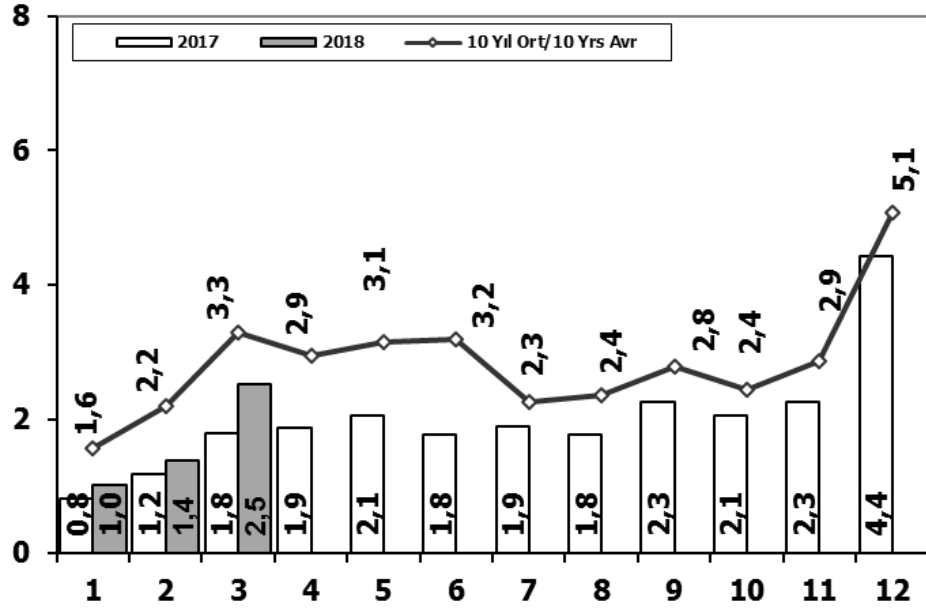


	1	2	3	4	5	6	7	8	9	10	11	12	3 Ay/Mo	Total
2008	77	85	108	176	151	212	101	165	166	121	141	236	270	1.739
2009	100	221	226	224	167	186	85	103	58	75	53	125	547	1.623
2010	23	42	102	159	145	151	151	189	107	99	106	251	167	1.525
2011	76	198	218	306	364	283	113	189	132	169	170	314	492	2.532
2012	120	87	201	139	379	225	152	174	252	226	140	315	408	2.410
2013	349	425	498	444	525	483	352	260	215	192	128	156	1.272	4.027
2014	103	73	239	89	177	128	55	76	139	52	62	185	415	1.378
2015	79	148	199	196	125	175	131	154	122	134	300	269	426	2.032
2016	80	132	121	147	119	173	47	54	121	102	143	122	333	1.361
2017	100	59	81	74	89	52	63	62	51	80	70	115	240	896
2018	58	43	93										194	194

Aylar / Months	10 Yil Ort. 10 Yrs Avr.	2018	%
1	111	58	-48
2	147	43	-71
3	199	93	-53
<b>Total</b>	<b>457</b>	<b>194</b>	<b>-58</b>

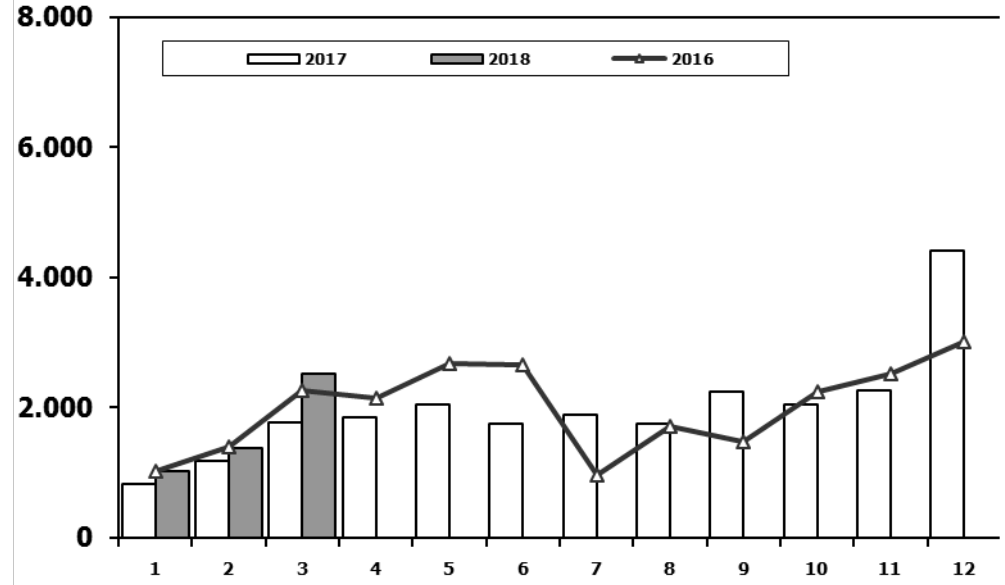
## Ağır Ticari Araç Pazarının Analizi (x1000)

### HCV Market Analysis (x1000)



## Ağır Ticari Araç Pazarı (x1000)

### HCV Market (x1000)

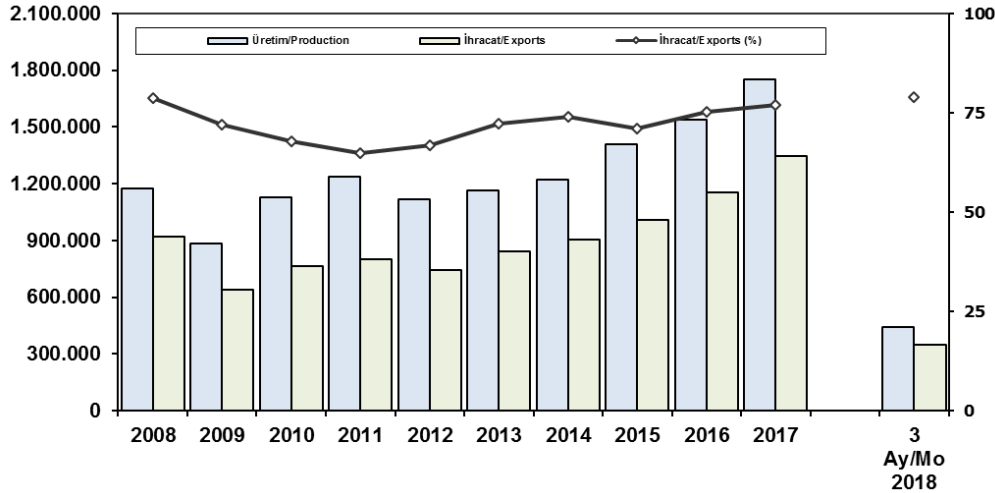


	1	2	3	4	5	6	7	8	9	10	11	12	3 Ay/Mo	Total
2008	2.265	2.870	3.165	3.266	3.029	3.069	2.536	2.922	2.897	2.263	1.899	2.340	8.300	32.521
2009	1.025	1.104	1.420	1.786	1.696	2.035	1.401	1.483	2.006	1.084	1.240	2.463	3.549	18.743
2010	955	1.141	2.059	2.133	2.251	2.494	2.373	2.881	2.787	3.376	3.444	6.365	4.155	32.259
2011	2.766	3.685	4.930	4.376	4.447	4.290	2.320	2.972	3.514	3.219	3.538	6.371	11.381	46.428
2012	1.674	2.503	4.073	3.065	3.957	3.714	2.818	2.700	3.568	2.739	3.335	5.713	8.250	39.859
2013	1.617	2.624	3.914	3.440	3.953	3.675	3.130	2.340	3.074	2.385	3.716	5.878	8.155	39.746
2014	1.555	2.287	3.383	3.461	3.788	3.789	2.299	2.640	3.649	2.686	3.316	6.952	7.225	39.805
2015	1.961	3.202	5.819	3.829	3.603	4.305	2.789	2.106	2.597	2.265	3.442	7.259	10.982	43.177
2016	1.027	1.398	2.266	2.154	2.672	2.663	972	1.713	1.475	2.251	2.530	3.016	4.691	24.137
2017	823	1.176	1.778	1.860	2.054	1.758	1.892	1.759	2.250	2.054	2.262	4.417	3.777	24.083
2018	1.020	1.382	2.526										4.928	4.928

Aylar / Months	10 Yil Ort. 10 Yrs Avr. (x1000)	2018 (x1000)	%
1	1,6	1,0	-34,9
2	2,2	1,4	-37,2
3	3,3	2,5	-23,0
Total	7,0	4,9	-30,1

## İhracat/Üretim (2008-2018) (Traktör dahil)

Exports/Production (2008-2018) (Including F. Tractor)



## Taşıt Araçları İhracatı (2016-2018)

Motor Vehicle Exports (2016-2018)

SEKTÖR/SECTOR	2016	2017	2017	2018	2018/2017 (%)
			3 Ay - Mo		
OTOMOBİL / P.Cars	745.709	921.354	254.796	234.889	-8
TİCARİ ARAÇLAR / CV	395.673	411.440	100.603	109.368	9
* Kamyonet/Pick-Up	347.949	350.108	86.545	94.509	9
* Minibüs/Minibus	34.790	45.794	10.835	10.117	-7
* Kamyon/Truck	5.521	7.800	1.448	2.838	96
* Midibüs/Midibus	915	710	123	152	24
* Otobüs/Bus	6.498	7.028	1.652	1.752	6
<b>TAŞIT ARAÇLARI /MV TOTAL</b>	<b>1.141.382</b>	<b>1.332.794</b>	<b>355.399</b>	<b>344.257</b>	<b>-3</b>
<b>TRAKTÖR/F.TRACTOR</b>	<b>13.651</b>	<b>13.123</b>	<b>3.283</b>	<b>2.898</b>	<b>-12</b>
<b>TOTAL</b>	<b>1.155.033</b>	<b>1.345.917</b>	<b>358.682</b>	<b>347.155</b>	<b>-3</b>

## Otomotiv Ana ve Yan Sanayii İhracatı (ABD \$)

CBU and CKD Exports - \$

Sektör / Sector	2014	2015	2016	2017	2017	2018	2018/2017 (%)
					Ocak-Mart / January-March		
<b>Yan Sanayi İhracatı/Total Component Exports</b>	<b>9.504.013.791</b>	<b>8.641.977.425</b>	<b>8.946.472.202</b>	<b>9.838.541.337</b>	<b>2.349.859.204</b>	<b>2.896.749.035</b>	<b>23%</b>
İç ve Dış Lastik / Tyres	1.126.709.610,14	960.550.807	978.124.241	1.131.881.119	268.221.754	348.336.660	30%
Emniyet Camı / Safety Glasses	143.208.298,99	124.564.841	119.553.098	136.486.808	32.215.844	40.717.015	26%
Motor (Engine)	171.893.752,32	221.897.271	370.418.066	486.426.738	116.279.722	171.572.549	48%
Akümülatör / Batteries	289.101.198,21	220.462.827	224.588.995	296.139.813	54.560.294	77.192.458	41%
Diğer Aksam ve Parça / Spare Parts&Components	7.773.100.931,83	7.114.501.679	7.253.787.802	7.787.606.860	1.878.581.590	2.258.930.352	20%
<b>Ana Sanayi İhracatı/Total Vehicle Exports</b>	<b>13.259.499.977</b>	<b>12.977.346.859</b>	<b>15.302.656.887</b>	<b>19.147.991.646</b>	<b>4.744.317.449</b>	<b>5.479.383.622</b>	<b>15%</b>
Otobüs / Bus	985.983.007,01	1.023.556.746	1.190.475.986	1.311.098.736	288.725.281	344.295.074	19%
Midibüs-Minibüs / Minibus- Minibus	97.685.509,12	130.195.838	238.911.957	217.704.499	62.805.548	57.301.966	-9%
Otomobil (P. Cars)	7.258.361.005,24	6.881.867.274	8.336.928.418	11.790.776.093	3.012.913.300	3.293.052.524	9%
Kamyon-Kamyonet/HCV-LCV	4.201.760.813,55	4.264.018.829	4.617.147.751	4.849.465.868	1.148.069.619	1.413.935.039	23%
Römork ve Yarı Römork/Trailer-Semi Trailer	252.354.014,20	252.397.167	265.338.366	230.168.223	73.441.511	114.115.818	55%
Çekici/Truck-Tractor	38.396.524,81	48.108.959	316.355.575	427.967.083	85.289.764	187.317.207	120%
Tarım Traktörü/Farm Tractor	424.959.103,39	377.202.046	337.498.834	320.811.145	73.072.426	69.365.994	-5%
<b>Toplam/Total</b>	<b>22.763.513.769</b>	<b>21.619.324.284</b>	<b>24.249.129.088</b>	<b>28.986.532.983</b>	<b>7.094.176.653</b>	<b>8.376.132.656</b>	<b>18%</b>

Kaynak: Uludağ İhracatçı Birlikleri . UİB tarafından OSD için özel olarak analiz edilen Otomotiv İhracatı kapsamında; UİB Türkiye Genel Otomotiv Endüstrisi sınıflandırmasına kıyasla "Römork ve Yarı Römork", "Tarım Traktörü" verileri dahil edilmekte; "Kullanılmış Araçlar", "İki Tekerlekli Taşıtlar", "Demiryolu Taşıtları" hariç tutulmaktadır.

Source: Uludağ Exporters Association - Special Analyze for OSD

Compared to Turkish General Automotive Industry classification, this special analyze includes: farms tractors, trailers and semi-trailers, does not include: used vehicles, two-wheeled vehicles and railway vehicles.

## Sektör Bazında İhracat (1000 \$)

Exports on Sectorial Basis

SEKTÖRLER (1.000 \$)	MART				OCAK-MART				SON 12 AYLIK			
	2017	2018	Değişim ('18/'17)	Pay(18)	2017	2018	Değişim ('18/'17)	Pay(18)	2017	2018	Değişim ('18/'17)	Pay(18)
Otomotiv Endüstrisi	2.708.842	3.146.222	16,1	20,8	7.000.186	8.228.175	17,5	20,2	25.345.455	32.466.105	28,1	20,3
Hazırgiyim ve Konfeksiyon	1.529.939	1.683.513	10,0	11,1	4.057.945	4.520.217	11,4	11,1	16.769.168	19.026.361	13,5	11,9
Kimyevi Maddeler ve Mamulleri	1.518.647	1.558.976	2,7	10,3	4.092.539	4.170.484	1,9	10,2	14.704.615	17.633.320	19,9	11,0
Çelik	1.169.223	1.293.576	10,6	8,6	2.948.707	3.562.443	20,8	8,7	9.918.435	13.218.545	33,3	8,3
Elektrik Elektronik ve Hizmet	907.667	1.031.375	13,6	6,8	2.206.416	2.682.135	21,6	6,6	9.853.370	11.875.433	20,5	7,4
Tekstil ve Hammaddeleri	755.319	792.339	4,9	5,2	2.004.697	2.187.268	9,1	5,4	7.939.057	9.036.772	13,8	5,7
Demir ve Demir Dışı Metaller	611.702	754.600	23,4	5,0	1.577.229	1.988.268	26,1	4,9	6.060.522	7.832.989	29,2	4,9
Makine ve Aksamları	517.075	636.885	23,2	4,2	1.338.436	1.697.149	26,8	4,2	5.353.464	6.958.486	30,0	4,4
Hububat, Bakliyat, Yağlı Tohumlar ve Mamulleri	622.260	600.474	-3,5	4,0	1.701.912	1.683.368	-1,1	4,1	6.468.439	6.973.312	7,8	4,4
Mobilya, Kağıt ve Orman Ürünleri	390.179	456.639	17,0	3,0	1.031.792	1.226.042	18,8	3,0	4.145.914	5.029.416	21,3	3,1
<b>TOPLAM</b>	<b>13.551.339</b>	<b>15.105.791</b>	<b>11,5</b>	<b>100,0</b>	<b>36.890.065</b>	<b>40.726.582</b>	<b>10,4</b>	<b>100,0</b>	<b>144.749.473</b>	<b>159.922.887</b>	<b>10,5</b>	<b>100,0</b>

Kaynak: TİM

Mart ayı ihracat verilerine, "İhracatçı Birlikleri Kaydından Muaf İhracat" verisi dahil değildir.

Source: TİM

Exportation data for March does not include "Exempted Exports from the Exporters' Union Registration".

## Firma Bazında İhracat (Adet)

Export Of Member Companies (Unit)

### First 3 Sectors:

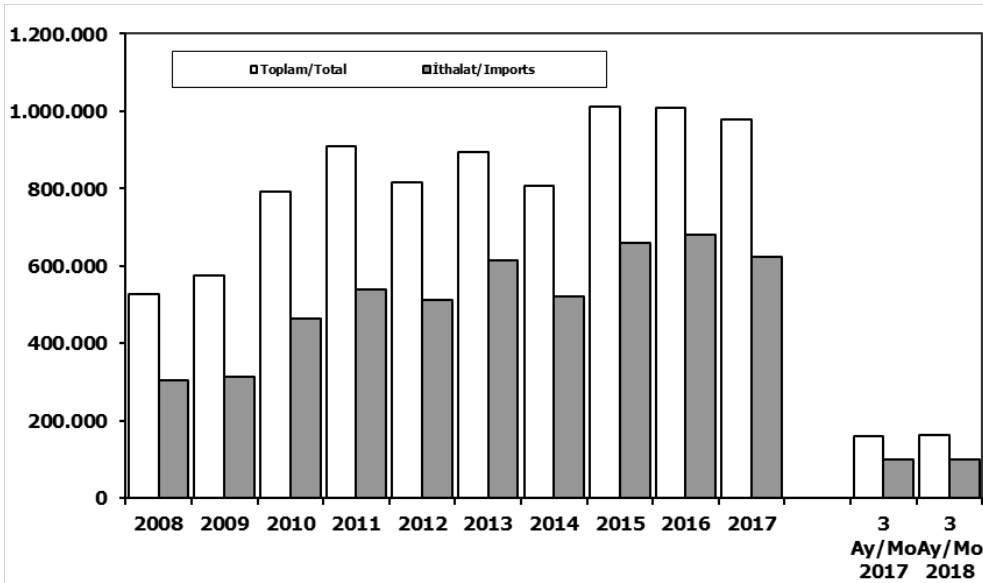
- 1- Automotive Industry
- 2- Apparel and Clothing
- 3- Chemical Articles and Products

FİRMALAR Companies	2015	2016	2017	Ocak-Mart January-March	
				2017	2018
FORD OTOSAN	252.571	256.706	296.840	75.551	82.946
OYAK RENAULT	270.299	270.088	287.915	79.277	71.729
TOFAŞ	173.743	279.444	270.698	78.531	69.971
TOYOTA	81.962	109.184	246.466	65.548	62.661
HYUNDAI ASSAN	201.276	207.234	204.382	51.392	47.284
HONDA TÜRKİYE	2.220	2.914	9.391	1.760	4.365
M. BENZ TÜRK	4.252	8.307	9.865	2.213	3.362
TÜRK TRAKTÖR	14.122	12.625	12.023	3.011	2.828
KARSAN	3.067	3.629	2.969	234	889
MAN TÜRKİYE	1.493	1.717	2.007	519	749
A.I.O.S.	291	673	700	127	136
OTOKAR	720	833	691	151	117
HATTAT TRAKTÖR	810	1.026	1.100	272	70
TEMSA	441	653	870	96	48
<b>GENEL TOPLAM</b>	<b>1.007.267</b>	<b>1.155.033</b>	<b>1.345.917</b>	<b>358.682</b>	<b>347.155</b>

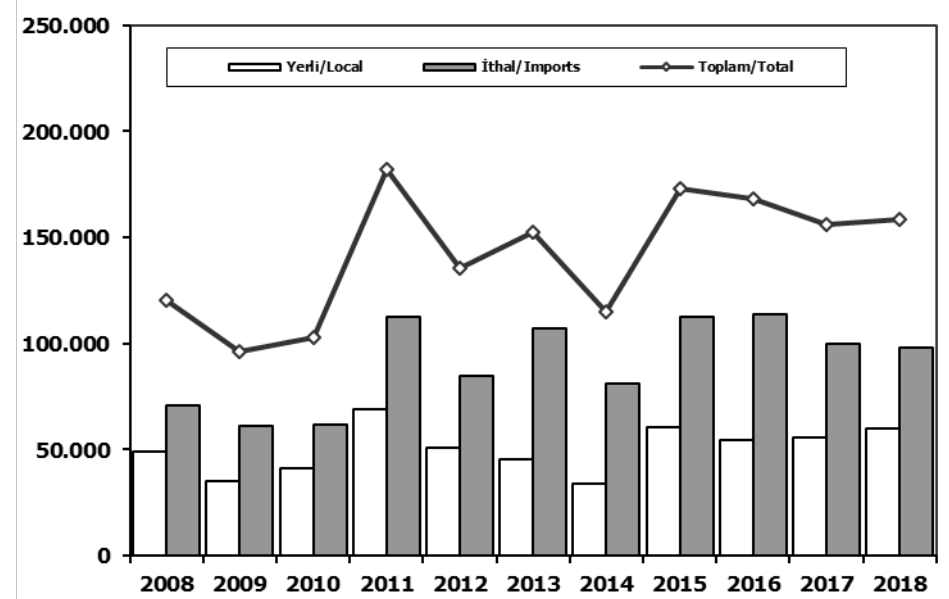
Kaynak: OSD



## Toplam Pazar (Otomobil+T.Araç) Total Market (P.Cars+C.V)



## Hafif Araçlar Pazarı (2008-2018 Ocak-Mart) Light Vehicle Market (2008-2018 January-March)

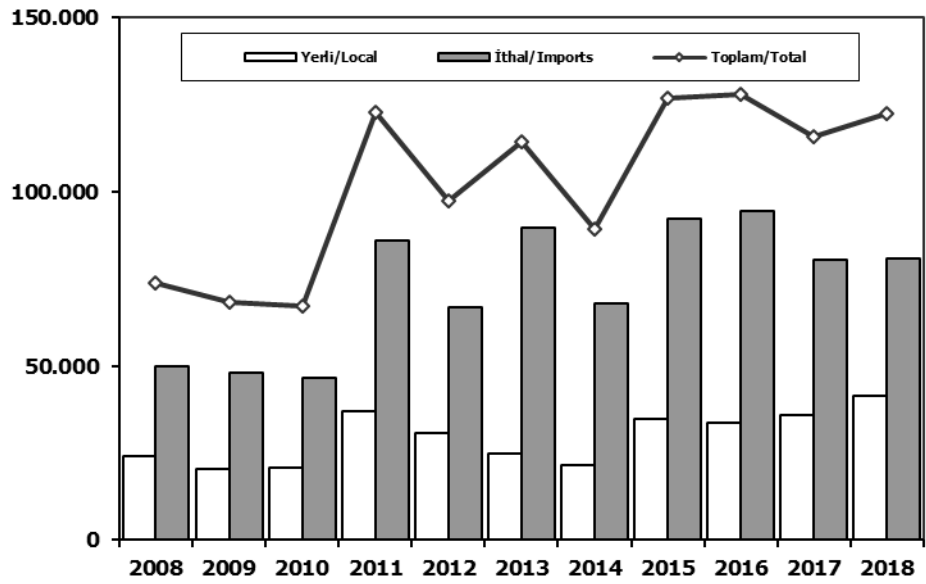


	2008	2009	2010	2011	2012	2013	2014	2015	2016	2017	3 Ay/Mo 2017	3 Ay/Mo 2018
<b>Toplam/Total</b>	526.544	575.869	793.172	910.867	817.620	893.124	807.486	1.011.194	1.007.857	980.277	159.867	163.358
<b>İthalat/Imports</b>	306.087	313.921	465.408	538.532	511.694	615.609	522.842	660.045	681.308	624.409	101.313	100.343
<b>İthalat/Imports (%)</b>	58	55	59	59	63	69	65	65	68	64	63	61

	2008	2009	2010	2011	2012	2013	2014	2015	2016	2017	2018
<b>Yerli/Local</b>	49.297	35.241	41.107	69.196	51.098	45.477	34.026	60.533	54.494	56.013	60.068
<b>İthal/Imports</b>	71.130	61.218	61.929	112.762	84.655	107.127	81.246	112.715	113.992	100.077	98.362
<b>Toplam/Total</b>	120.427	96.459	103.036	181.958	135.753	152.604	115.272	173.248	168.486	156.090	158.430
<b>İthalat/Imports (%)</b>	59	63	60	62	62	70	70	65	68	64	62

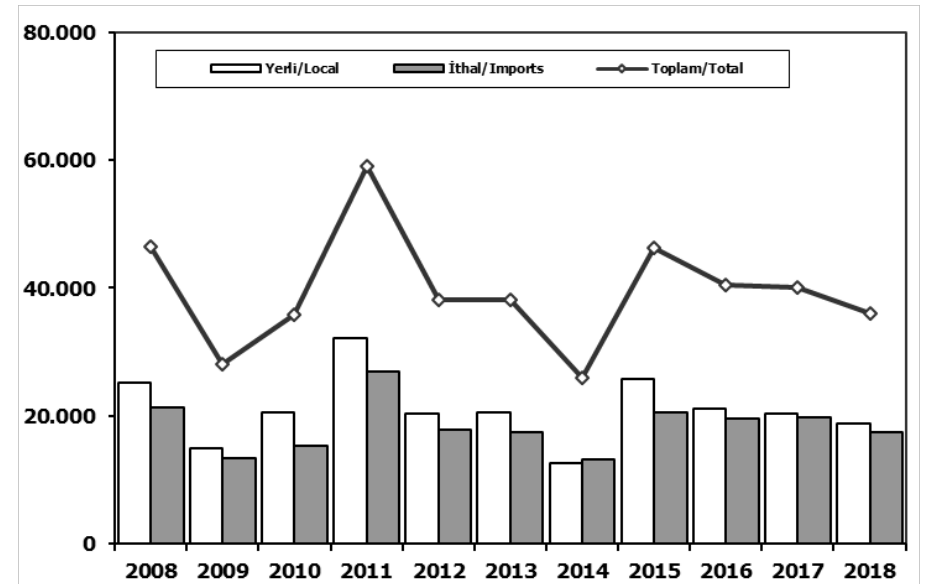
## Otomobil Pazarı (2008-2018 Ocak-Mart)

### P.Cars Market (2008-2018 January-March)



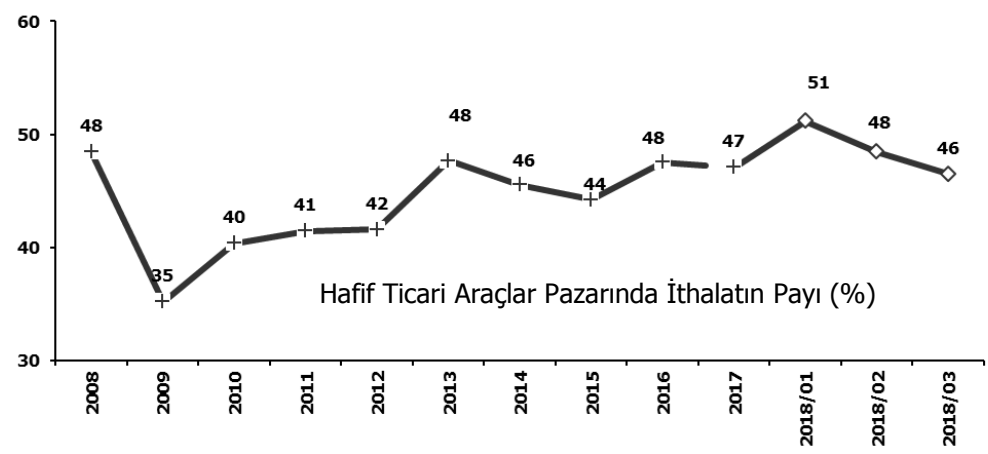
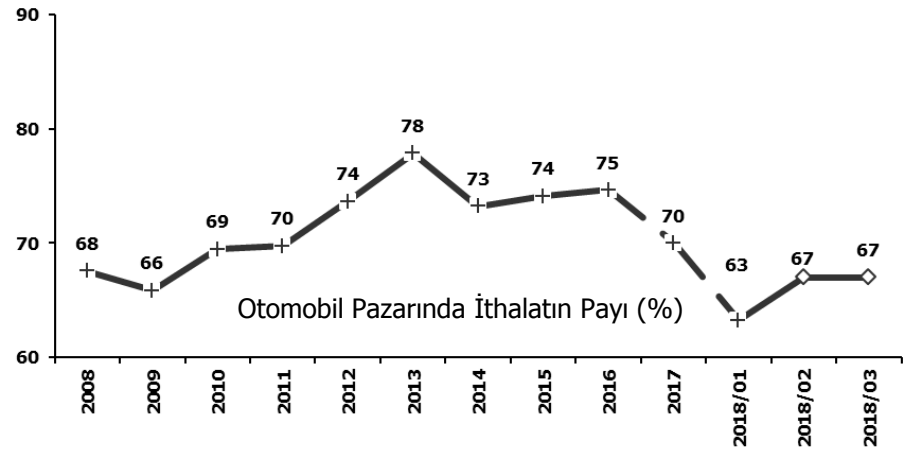
## Hafif Ticari Araçlar Pazarı (2008-2018 Ocak-Mart)

### Light Commercial Vehicle Market (2008-2018 January-March)



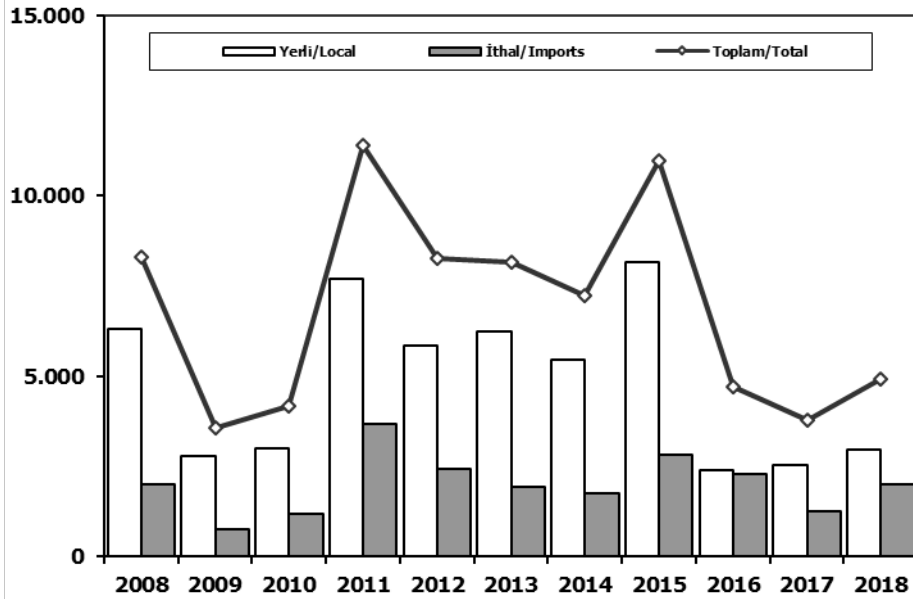
	2008	2009	2010	2011	2012	2013	2014	2015	2016	2017	2018
Yerli/Local	24.175	20.361	20.614	37.090	30.704	24.846	21.342	34.745	33.436	35.720	41.350
İthal/Imports	49.756	47.926	46.589	85.805	66.832	89.588	68.005	92.246	94.485	80.243	80.960
Toplam/Total	73.931	68.287	67.203	122.895	97.536	114.434	89.347	126.991	127.921	115.963	122.310
İthalat/Imports (%)	67	70	69	70	69	78	76	73	74	69	66

	2008	2009	2010	2011	2012	2013	2014	2015	2016	2017	2018
Yerli/Local	25.122	14.880	20.493	32.106	20.394	20.631	12.684	25.788	21.058	20.293	18.718
İthal/Imports	21.374	13.292	15.340	26.957	17.823	17.539	13.241	20.469	19.507	19.834	17.402
Toplam/Total	46.496	28.172	35.833	59.063	38.217	38.170	25.925	46.257	40.565	40.127	36.120
İthalat/Imports (%)	46	47	43	46	47	46	51	44	48	49	48



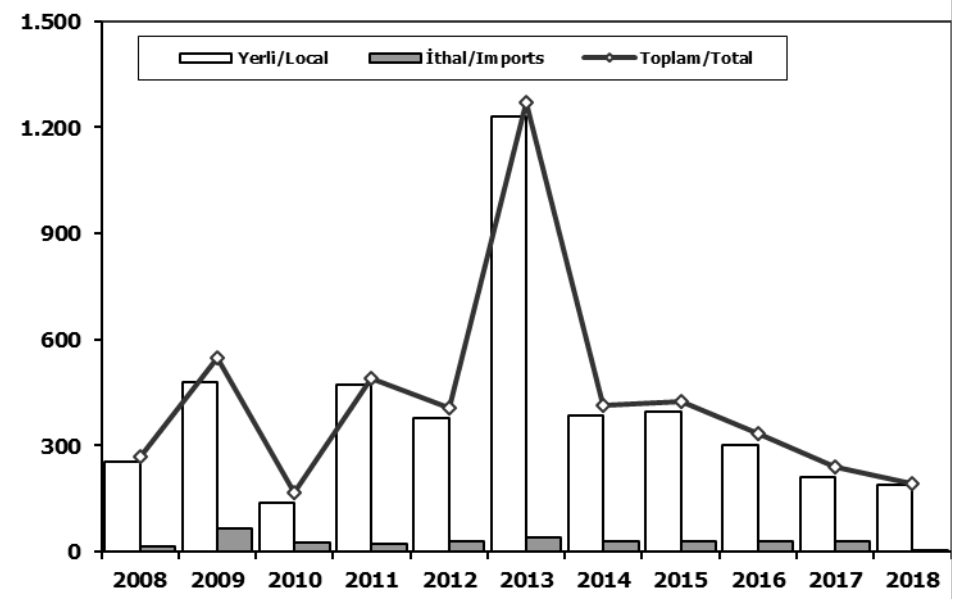
## Ağır Ticari Araçlar Pazarı (2008-2018 Ocak-Mart)

### HCV Market (2008-2018 January-March)



## Otobüs Pazarı (2008-2018 Ocak-Mart)

### Bus Market (2008-2018 January-March)

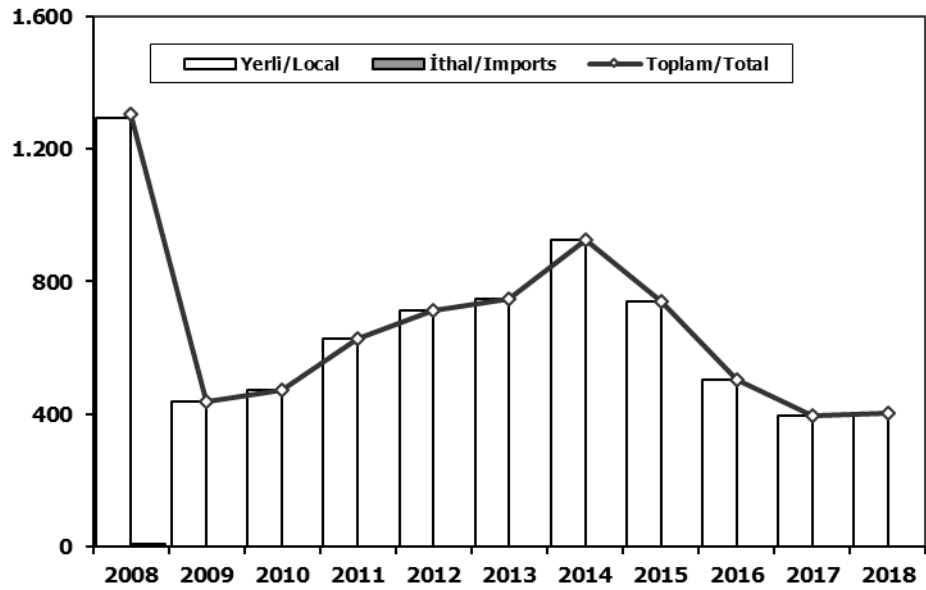


	2008	2009	2010	2011	2012	2013	2014	2015	2016	2017	2018
Yerli/Local	6.309	2.798	2.987	7.693	5.831	6.239	5.466	8.157	2.404	2.541	2.947
İthal/Imports	1.991	751	1.168	3.688	2.419	1.916	1.759	2.825	2.287	1.236	1.981
Toplam/Total	8.300	3.549	4.155	11.381	8.250	8.155	7.225	10.982	4.691	3.777	4.928
İthalat/Imports (%)	24	21	28	32	29	23	24	26	49	33	40

	2008	2009	2010	2011	2012	2013	2014	2015	2016	2017	2018
Yerli/Local	255	480	140	471	379	1.232	385	396	303	210	191
İthal/Imports	15	67	27	21	29	40	30	30	30	30	3
Toplam/Total	270	547	167	492	408	1.272	415	426	333	240	194
İthalat/Imports (%)	6	12	16	4	7	3	7	7	9	13	2

## Midibüs Pazarı (2008-2018 Ocak-Mart) (7-9 mt / 25-35 Kişilik)

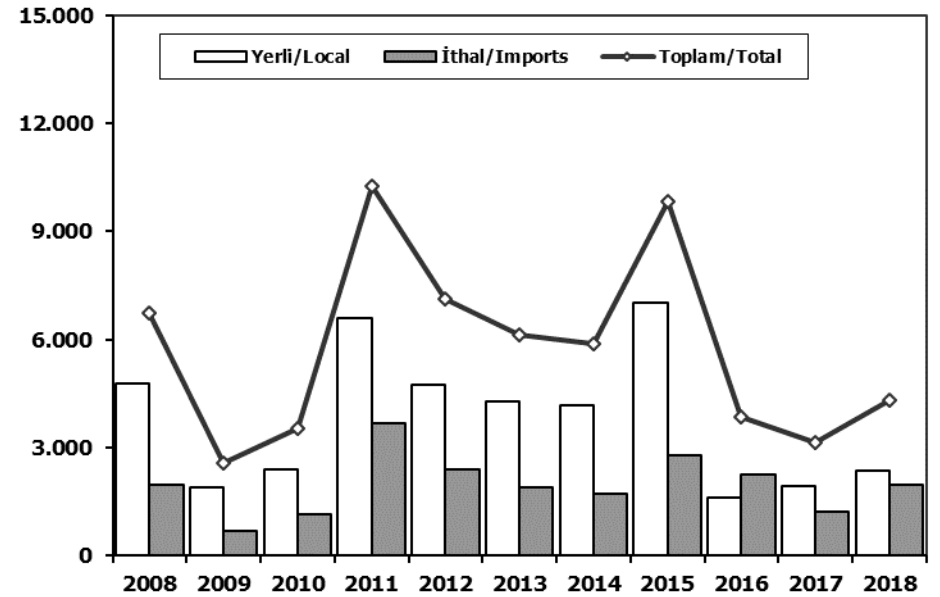
Midibus Market (2008-2018 January-March) (7-9 mt / 25-35 Passengers)



	2008	2009	2010	2011	2012	2013	2014	2015	2016	2017	2018
Yerli/Local	1.294	438	471	627	713	748	926	740	502	397	405
İthal/Imports	9	0	0	0	0	0	0	0	0	0	0
Toplam/Total	1.303	438	471	627	713	748	926	740	502	397	405
İthalat/Imports (%)	1	0	0	0	0	0	0	0	0	0	0

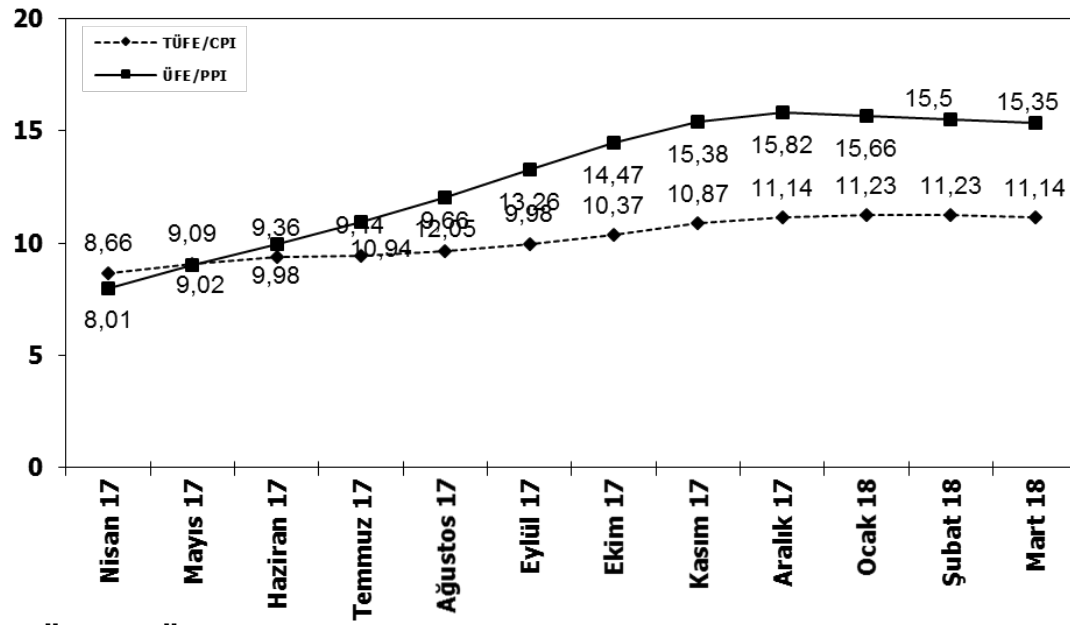
## Kamyon Pazarı (2008-2018 Ocak-Mart)

Truck Market (2008-2018 January-March)

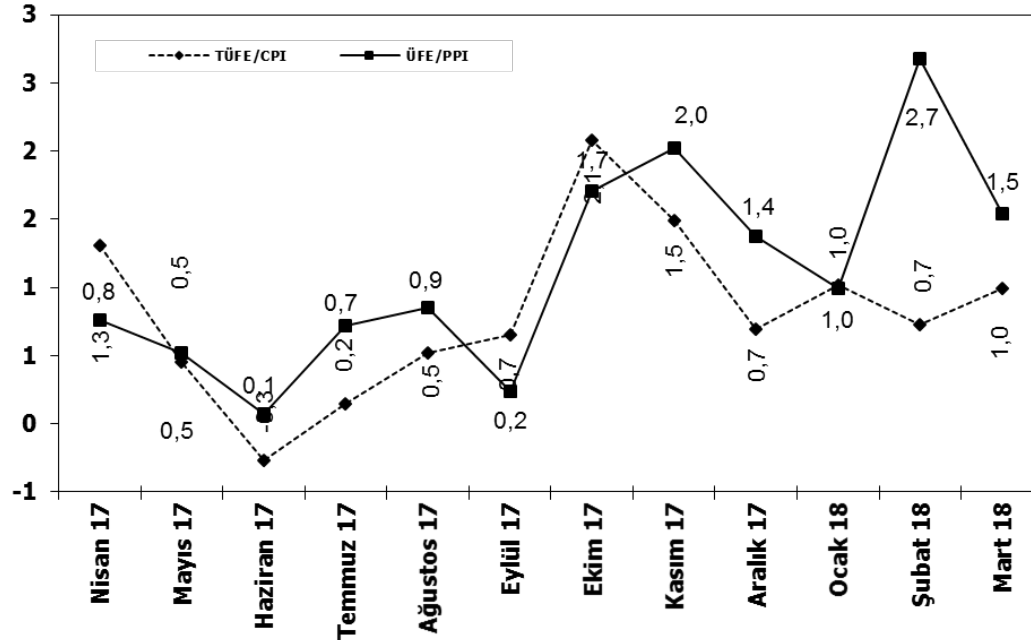


	2008	2009	2010	2011	2012	2013	2014	2015	2016	2017	2018
Yerli/Local	4.760	1.880	2.376	6.595	4.739	4.259	4.155	7.021	1.599	1.934	2.351
İthal/Imports	1.967	684	1.141	3.667	2.390	1.876	1.729	2.795	2.257	1.206	1.978
Toplam/Total	6.727	2.564	3.517	10.262	7.129	6.135	5.884	9.816	3.856	3.140	4.329
İthalat/Imports (%)	29	27	32	36	34	31	29	28	59	38	46

## TÜFE ve ÜFE'nin 12 Aylık Ort. Değişimi (%) CPI and PPI 12 Months Avr. Changes (%)



## TÜFE ve ÜFE'nin Aylık Değişimi (%) CPI and PPI Monthly Changes (%)





2018 YILI İTHAL OTOMOBİL SATIŞLARI / P.Cars Import 2018

	2017 TOPLAMI 2017 Total	1	2	3	4	5	6	7	8	9	10	11	12	2018 TOPLAMI 2018 Total
VOLKSWAGEN	89.688	2.497	3.763	6.561										12.821
SKODA	24.679	1.564	2.161	2.911										6.636
OPEL	44.707	1.327	1.568	2.989										5.884
DACIA	41.914	937	1.298	3.600										5.835
PEUGEOT	29.981	809	1.625	3.038										5.472
HYUNDAI	26.841	1.282	1.734	2.376										5.392
NISSAN	32.043	767	1.470	2.908										5.145
FORD	33.671	920	1.440	2.638										4.998
RENAULT	37.021	1.013	1.552	1.821										4.386
MERCEDES-BENZ	25.588	1.190	1.151	2.031										4.372
AUDI	21.585	1.013	1.033	1.552										3.598
BMW	19.564	626	1.003	1.586										3.215
SEAT	16.064	663	869	1.226										2.758
CITROEN	14.709	407	1.128	1.086										2.621
KIA	10.937	431	514	872										1.817
VOLVO	4.470	250	302	503										1.055
TOYOTA	7.297	309	376	294										979
HONDA	7.250	207	189	469										865
JEEP	2.357	101	159	255										515
SUZUKI	4.316	67	122	323										512
LAND ROVER	1.879	84	145	162										391
SUBARU	1.726	86	55	224										365
FIAT	2.157	56	102	142										300
MAZDA	1.412	62	76	135										273
MINI	1.480	55	82	116										253
PORSCHE	670	43	50	61										154
SSANGYONG	362	26	25	38										89
DS	119	0	0	81										81
JAGUAR	339	12	20	24										56
MITSUBISHI	354	12	9	21										42
ALFA ROMEO	320	5	14	13										32
MASERATI	76	4	2	6										12
LEXUS	101	2	2	8										12
INFINITI	122	3	5	2										10
FERRARI	16	1	1	2										4
SMART	105	0	0	4										4
BENTLEY	16	0	3	0										3
ASTON MARTIN	25	1	1	1										3
LAMBORGHINI	7	0	0	0										0
<b>TOPLAM</b>	<b>505.968</b>	<b>16.832</b>	<b>24.049</b>	<b>40.079</b>	<b>0</b>	<b>0</b>	<b>0</b>	<b>0</b>	<b>0</b>	<b>0</b>	<b>0</b>	<b>0</b>	<b>0</b>	<b>80.960</b>

2018 YILI İTHAL HAFİF TİCARİ ARAÇ SATIŞLARI / Light Commercial Vehicles Import 2018

	2017 TOPLAMI 2017 Total	1	2	3	4	5	6	7	8	9	10	11	12	2018 TOPLAMI 2018 Total
VOLKSWAGEN	27.793	1.630	1.516	1.974										5.120
RENAULT	16.822	512	793	1.087										2.392
MERCEDES-BENZ	9.043	480	646	1.121										2.247
CITROEN	8.023	94	291	706										1.091
PEUGEOT	10.458	178	277	485										940
MITSUBISHI	3.527	158	347	403										908
DACIA	6.456	254	302	335										891
FIAT	6.582	163	252	401										816
TOYOTA	4.551	210	267	310										787
FORD	4.188	174	142	251										567
KIA	3.591	111	143	207										461
NISSAN	2.779	95	154	197										446
IVECO	2.566	122	148	161										431
HYUNDAI	2.984	119	85	28										232
ISUZU	302	24	18	19										61
SSANGYONG	255	5	1	6										12
<b>TOPLAM</b>	<b>109.920</b>	<b>4.329</b>	<b>5.382</b>	<b>7.691</b>	<b>0</b>	<b>0</b>	<b>0</b>	<b>0</b>	<b>0</b>	<b>0</b>	<b>0</b>	<b>0</b>	<b>0</b>	<b>17.402</b>